
314D CR Track-Type Excavator

Powered by C4.2 Engine

SERIAL NUMBER

MFK1-Up(Vehicle)

JKH00295-Up(Engine)

CLICK HERE TO **DOWNLOAD** THE COMPLETE MANUAL

- Thank you very much for reading the preview of the manual.
- You can download the complete manual from: www.heydownloads.com by clicking the link below



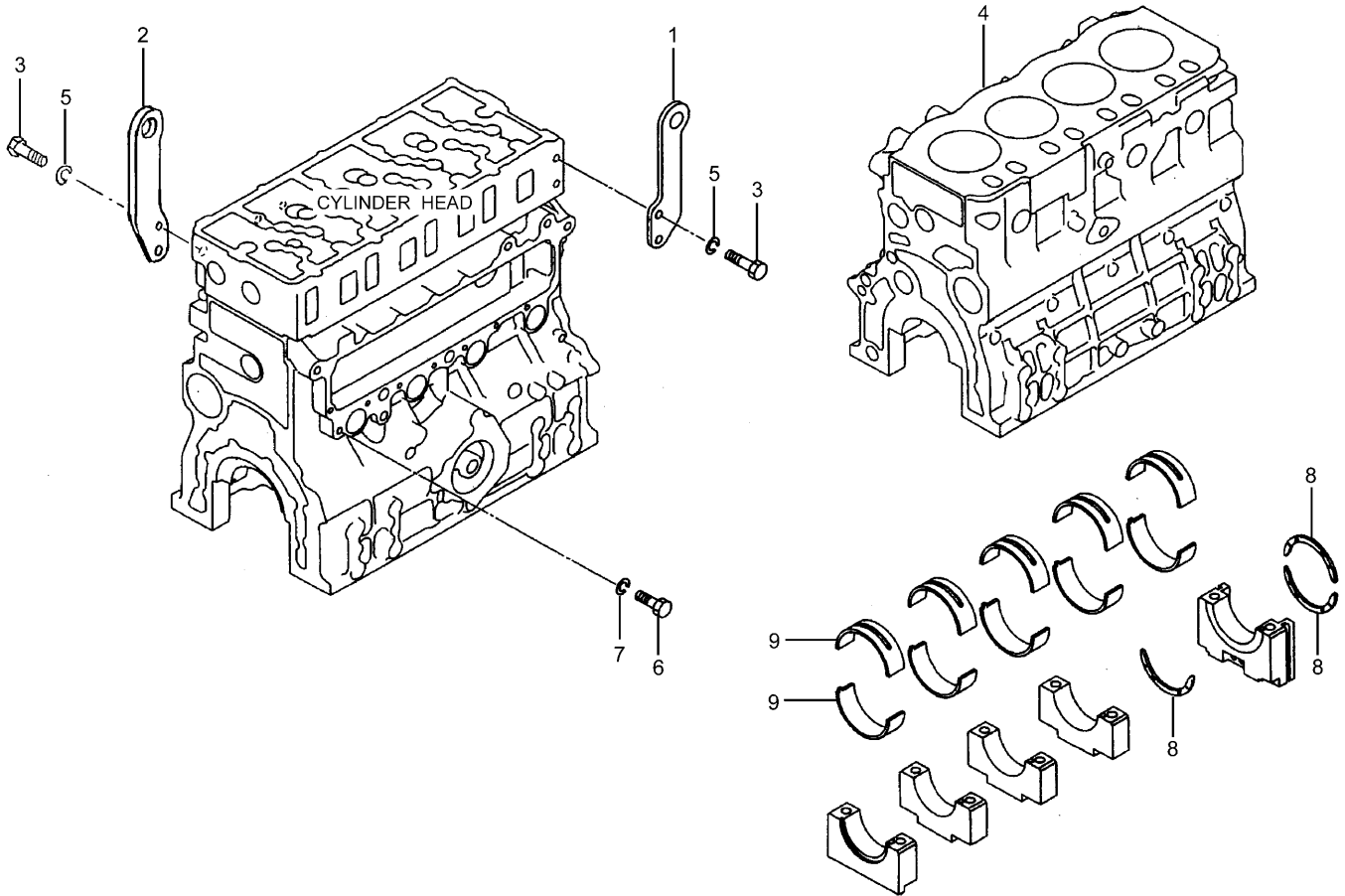
- Please note: If there is no response to CLICKING the link, please download this PDF first and then click on it.

CLICK HERE TO **DOWNLOAD** THE COMPLETE MANUAL

INDEX

Name	Page	Name	Page
HARNES AS	92	INJECTOR GP - FUEL.....	74
	104	INSTALLATION AR.....	580.04
	110		643
	118		
	122		
	127	K	
	132	KNOB AS.....	475
	136		
	140	L	
	144	LAMP GP - FLOOD.....	206
	146	LEVER AS.....	592
	148	LIGHTING GP - BOOM.....	202
	151	LIGHTING GP - CAB	200
	154	LIGHTING GP - CHASSIS.....	198
	157	LIGHTING GP - WARNING.....	210
	160	LINES & CONTROL GP - FRONT	444
	164	LINES & CONTROL GP - REAR.....	446
	167	LINES AR - AUXILIARY HYDRAULIC.....	358
	173	LINES GP - AIR.....	63
	207	LINES GP - AIR CONDITIONER.....	626
	212	LINES GP - AUXILIARY HYDRAULIC	360
HATCH GP	562	LINES GP - BLADE CYLINDER	346
HEAD GP - PUMP CONTROL.....	316		440
HEADREST AS	615	LINES GP - BOOM	352
HEATER AR	617	LINES GP - BOOM CYLINDER	336
HEATER GP - MOUNTING	628		438
HOOD & GUARD GP	224	LINES GP - BUCKET CYLINDER	344
HOOD GP - ENGINE	230	LINES GP - COOLING.....	49
HORN GP - ELECTRIC	211	LINES GP - DRAIN	62
	578		376
HOUSING GP - FILTER.....	303		442
HOUSING GP - FLYWHEEL.....	32	LINES GP - ENGINE OIL.....	39
HOUSING GP - FRONT	28	LINES GP - FRONT	432
		LINES GP - FUEL	70
I		LINES GP - GREASE.....	656
IDLER GP - FRONT.....	276	LINES GP - HEATER	630
		LINES GP - OIL COOLER.....	54
		LINES GP - PILOT	404
		LINES GP - PUMP	396
		LINES GP - QUICK COUPLER.....	384
		LINES GP - RETURN & FILTER.....	390

BASIC ENGINE



NOTE	No.	PART No.	QTY	PART NAME	NOTE	No.	PART No.	QTY	PART NAME
	1	294-1723	1	EYE					
	2	294-1724	1	EYE					
	3	51-5181	4	BOLT (L=25mm)					
Y	4	296-4699	1	CRANKCASE AS					
	5	096-2501	4	WASHER					
	6	8T-4191	1	BOLT (L=16mm)					
	7	095-2039	1	WASHER					
	8	51-7654	3	PLATE (STANDARD)					
A		51-7787	3	PLATE (OS=0.15mm)					
A		51-7788	3	PLATE (OS=0.30mm)					
A		51-7789	3	PLATE (OS=0.45mm)					
	9	51-7588	5	BEARING SET (STANDARD)					
A		51-7784	5	BEARING SET (US=0.25mm)					
A		51-7785	5	BEARING SET (US=0.50mm)					
A		51-7786	5	BEARING SET (US=0.75mm)					

A-NOT PART OF THIS GROUP
 Y-SEE SEPARATE ILLUSTRATION

H97485E 02

296-4787 CYLINDER BLOCK GP
 Part of 279-7766-Page14
 296-4699-Page18

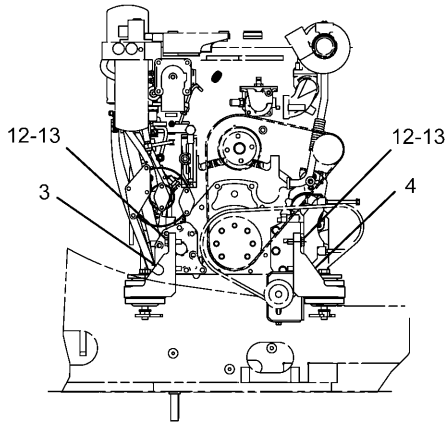
BASIC ENGINE

NOTE	No.	PART No.	QTY	PART NAME	NOTE	No.	PART No.	QTY	PART NAME
	1	305-4767	1	CASE					
	2	296-4692	1	COVER					
	3	305-4768	1	GASKET					
	4	296-4694	1	GASKET					
	5	296-4695	1	COVER					
	6	294-1708	1	CAP					
	7	296-4696	1	BRACKET					
	8	294-1710	6	BOLT					
	9	294-1711	12	WASHER					
	10	096-8569	2	BOLT					
	11	294-1712	1	SEAL					
	12	195-8497	7	WASHER					
	13	294-1713	12	BOLT					
	14	294-1700	12	BOLT					
	15	095-8799	5	BOLT AS					
	16	294-1821	2	BOLT AS					
	17	294-1714	2	STUD					

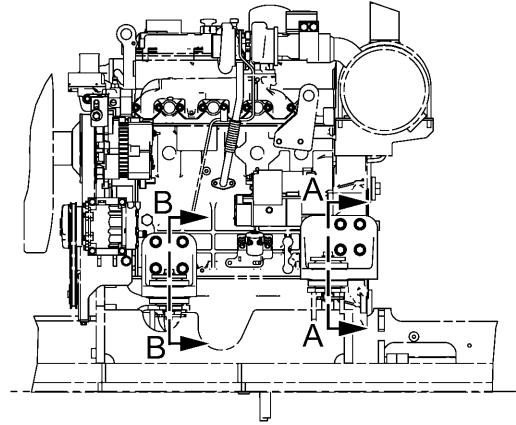
H97487E 02

296-4786 COVER GP-VALVE MECHANISM
Part of 279-7766-Page14

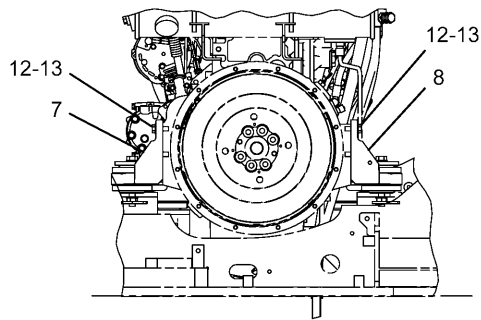
BASIC ENGINE



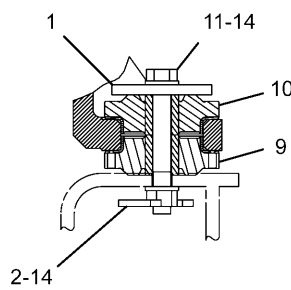
FRONT VIEW OF ENGINE



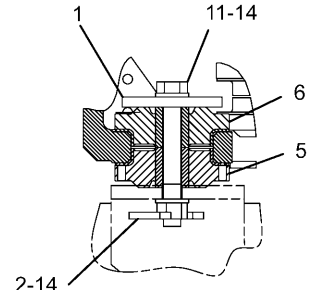
LH VIEW OF ENGINE



REAR VIEW OF ENGINE



A - A



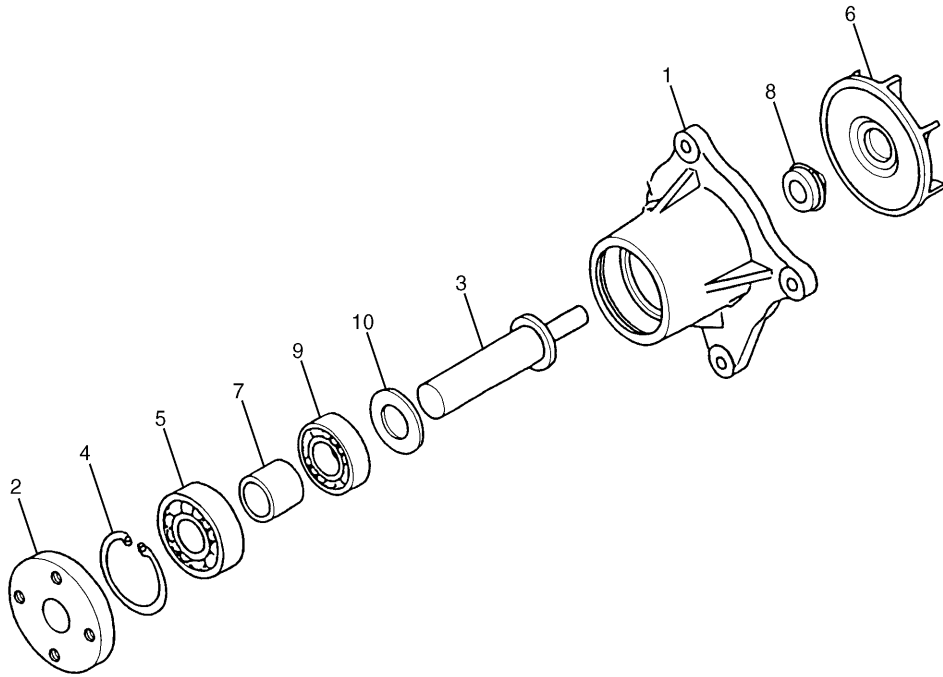
B - B

NOTE	No.	PART No.	QTY	PART NAME	NOTE	No.	PART No.	QTY	PART NAME
	1	099-4707	4	WASHER					
	2	118-9941	4	SUPPORT AS					
	3	266-6203	1	BRACKET					
	4	266-6204	1	BRACKET					
	5	266-6303	2	MOUNT					
	6	266-6304	2	MOUNT					
	7	279-7880	1	BRACKET					
	8	279-7881	1	BRACKET					
	9	310-9519	2	MOUNT					
	10	310-9520	2	MOUNT					
	11	8T-4174	4	BOLT (L=120mm)					
	12	8T-4223	16	WASHER					
	13	8T-4956	16	BOLT (L=35mm)					
	14	9X-8257	8	WASHER					

H99437E 02

279-7772 MOUNTING GP-ENGINE

COOLING SYSTEM



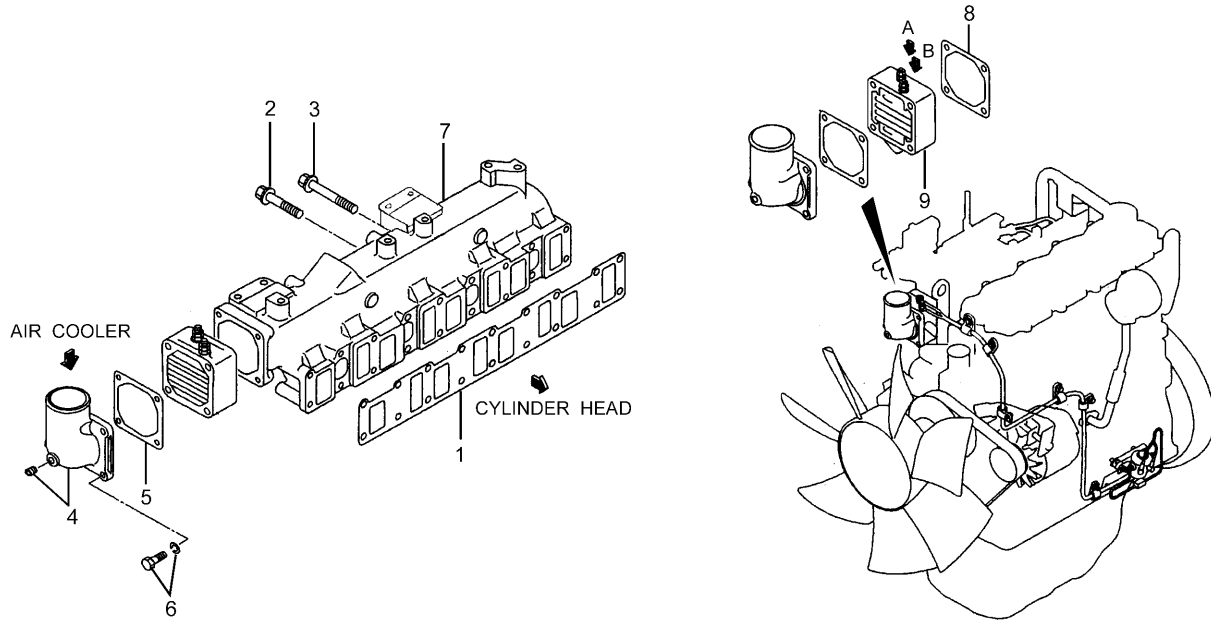
NOTE	No.	PART No.	QTY	PART NAME	NOTE	No.	PART No.	QTY	PART NAME
Z	1		1	CASE					
	2	51-7696	1	FLANGE					
	3	178-6635	1	SHAFT					
	4	8T-9598	1	RING					
	5	5L-6326	1	BEARING					
	6	178-6634	1	IMPELLER					
	7	51-7697	1	SPACER					
	8	178-6636	1	SEAL					
	9	2H-3814	1	BEARING					
	10	125-2947	1	WASHER					

Z-NOT SERVICED

H81949E 00

178-6633 PUMP AS-WATER
Part of 296-4655-Page46

AIR INLET AND EXHAUST SYSTEM

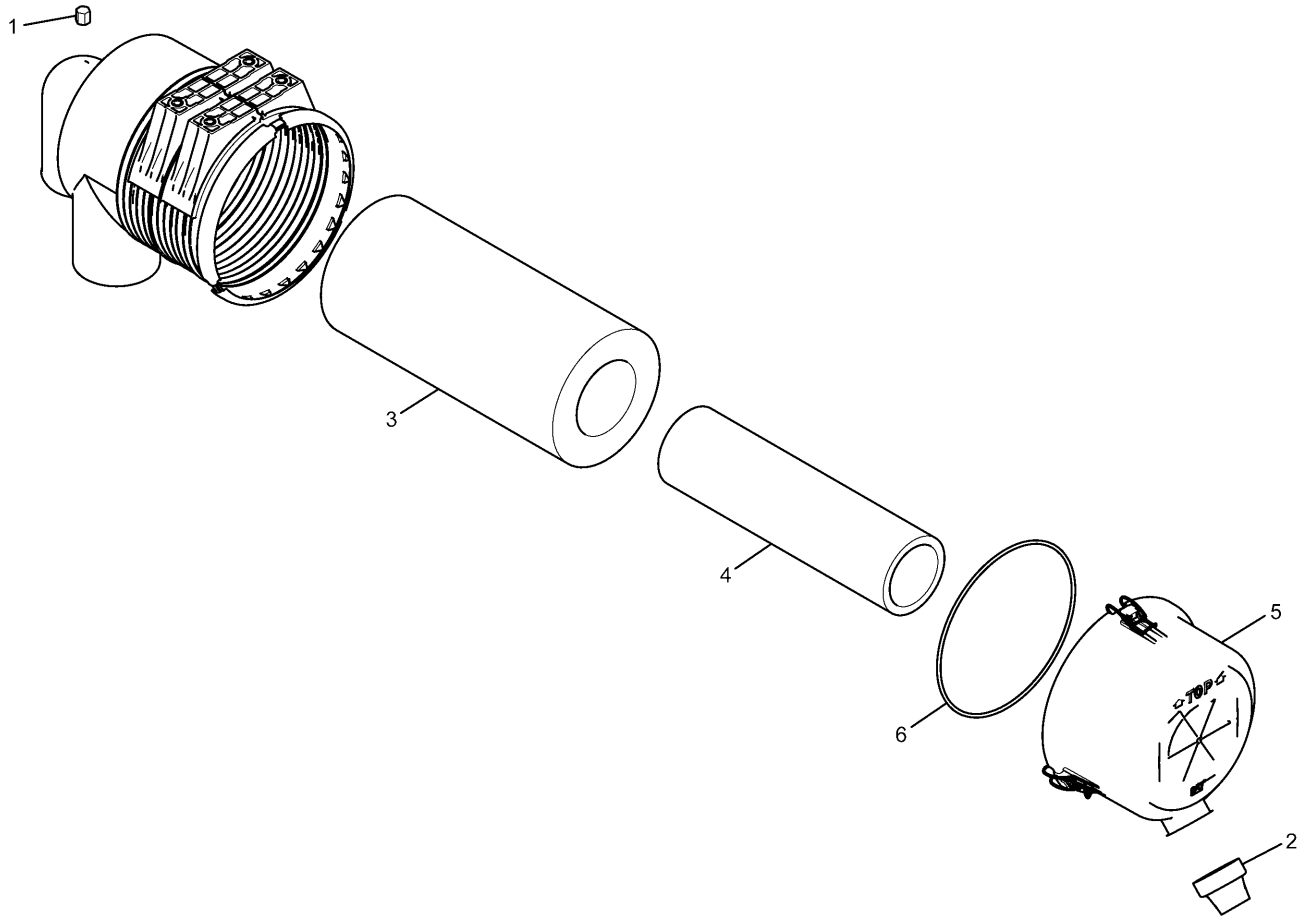


NOTE	No.	PART No.	QTY	PART NAME	NOTE	No.	PART No.	QTY	PART NAME
	1	296-4714	1	GASKET					
	2	096-8490	7	BOLT (L=40mm)					
	3	294-1700	11	BOLT					
	4	51-8021	1	ELBOW AS					
		51-8022	1	ELBOW					
		51-8023	1	PLUG					
	5	51-7678	1	GASKET					
	6	303-6261	4	BOLT AS					
	7	310-9528	1	MANIFOLD					
	8	51-7677	1	GASKET					
	9	168-5057	1	HEATER					

H98320E 04

296-4790 MANIFOLD GP-INLET
Part of 279-7766-Page15

AIR INLET AND EXHAUST SYSTEM



NOTE	No.	PART No.	QTY	PART NAME	NOTE	No.	PART No.	QTY	PART NAME
	1	1R-9953	1	CAP					
	2	131-8901	1	VALVE (VACUATOR)					
	3	131-8902	1	ELEMENT AS					
	4	131-8903	1	ELEMENT AS					
	5	310-9621	1	COVER AS					
	6	310-9622	1	SEAL					

HA0298E 00

310-9700 AIR CLEANER GP
 Double Elements
 Part of 297-7693-Page66
 An Attachment

FUEL SYSTEM

NOTE	No.	PART No.	QTY	PART NAME	NOTE	No.	PART No.	QTY	PART NAME
	1	099-4437	19	GASKET					
	2	099-5041	8	BOLT (L=27mm)					
	3	294-1811	2	WASHER					
	4	296-4749	1	HOSE					
	5	137-5541	1	PUMP AS					
		229-3218	2	VALVE AS					
		061-7539	1	SEAL-O-RING (ID=20.22mm)					
	6	294-1820	1	GASKET					
	7	199-2241	1	BOLT AS					
	8	294-1821	1	BOLT AS					
	9	294-1822	1	BASE					
	10	296-4750	4	BOLT AS					
	11	1R-0751	2	FILTER AS					
	12	305-4886	1	HOSE					
	13	296-4752	1	BRACKET					
	14	296-4753	2	BOLT AS					
	15	8T-4121	2	WASHER					
	16	294-1804	3	SEAL-O-RING					
	17	294-1819	1	HOSE					
	18	296-4754	1	TUBE					
	19	190-5830	1	TUBE					
	20	094-9725	2	PLUG					
	21	310-9529	1	BRACKET					
	22	310-9530	1	HOSE					
	23	095-2038	2	WASHER					
	24	213-9433	2	BOLT AS					
	25	294-1838	1	BRACKET					
	26	294-1831	3	CLAMP					
	27	310-9531	1	CLAMP					
	28	297-7706	2	BOLT					
	29	096-2500	2	WASHER					
	30	51-5078	2	NUT					
	31	125-2983	1	JOINT					
	32	305-4900	1	PIPE					
	33	294-1809	1	BOLT					
	34	294-1844	1	BOLT AS					
	35	294-1845	1	BOLT AS					
	36	305-4902	1	CONNECTOR					
	37	297-7660	1	NUT					
	38	51-8058	1	CONNECTOR					
	39	297-7661	1	CONNECTOR					
	40	294-1810	2	CONNECTOR					
	41	6V-5215	2	BOLT (L=16mm)					
	42	305-4901	1	SEAL					
	43	294-1837	1	BRACKET					

HA0231E 05

296-4794 FILTER GP-FUEL
Part of 279-7766-Page15

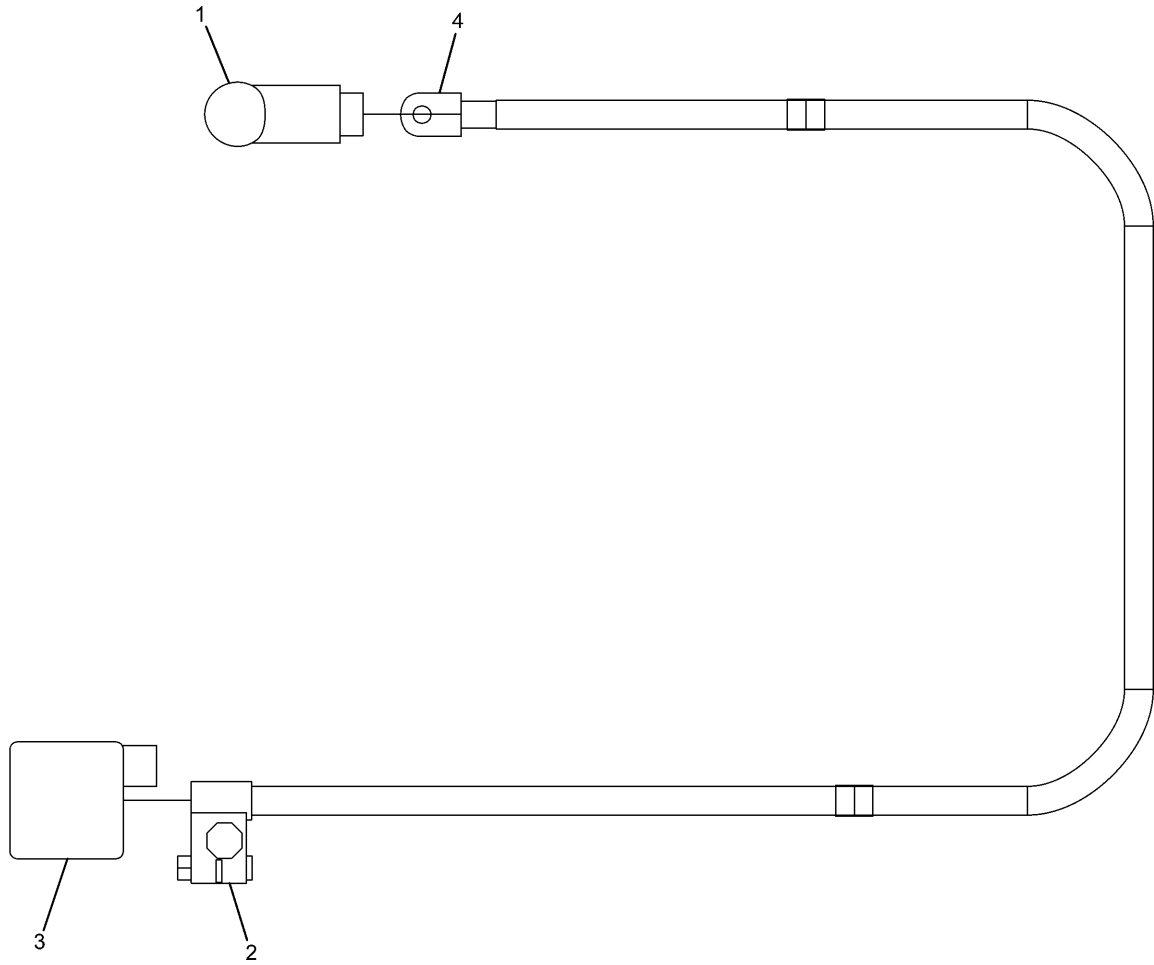
ELECTRICAL AND STARTING SYSTEM

NOTE	No.	PART No.	QTY	PART NAME	NOTE	No.	PART No.	QTY	PART NAME
	1	3S-2093	7	STRAP					
	2	6G-2263	1	SPACER					
	3	7K-1181	10	STRAP					
	4	7Y-8167	1	GROMMET					
	5	111-4836	3	CLIP					
	6	111-4837	8	CLIP					
	7	111-4838	4	CLIP					
	8	111-4839	4	STRAP					
	9	116-0118	3	CLIP					
	10	202-4004	1	GROMMET					
	11	233-0891	2	BRACKET AS					
	12	4P-7428	1	CLIP					
	13	4P-7429	1	CLIP					
	14	4P-8134	1	CLIP					
	15	7X-2621	1	BOLT (L=12mm)					
	16	8T-4121	15	WASHER					
	17	8T-4137	11	BOLT (L=20mm)					
	18	8T-4179	2	BOLT (L=20mm)					
	19	8T-4182	1	BOLT (L=45mm)					
	20	8T-4195	3	BOLT (L=30mm)					
	21	8T-4223	2	WASHER					

H99989E 05

275-7106 BATTERY & WIRING GP (2/4)

ELECTRICAL AND STARTING SYSTEM



NOTE	No.	PART No.	QTY	PART NAME	NOTE	No.	PART No.	QTY	PART NAME
	1	9G-8909	1	COVER					
	2	8T-9757	1	TERMINAL AS					
	3	9G-0003	1	COVER					
	4	1S-7252	1	TERMINAL					

H99553E 03

275-7142 CABLE AS
Part of 275-7106-Page85

ELECTRICAL AND STARTING SYSTEM

NOTE	No.	PART No.	QTY	PART NAME	NOTE	No.	PART No.	QTY	PART NAME
	1	163-6795	3	STRAP					

HA0336E 06

275-7111 WIRING GP-CAB (1/2)

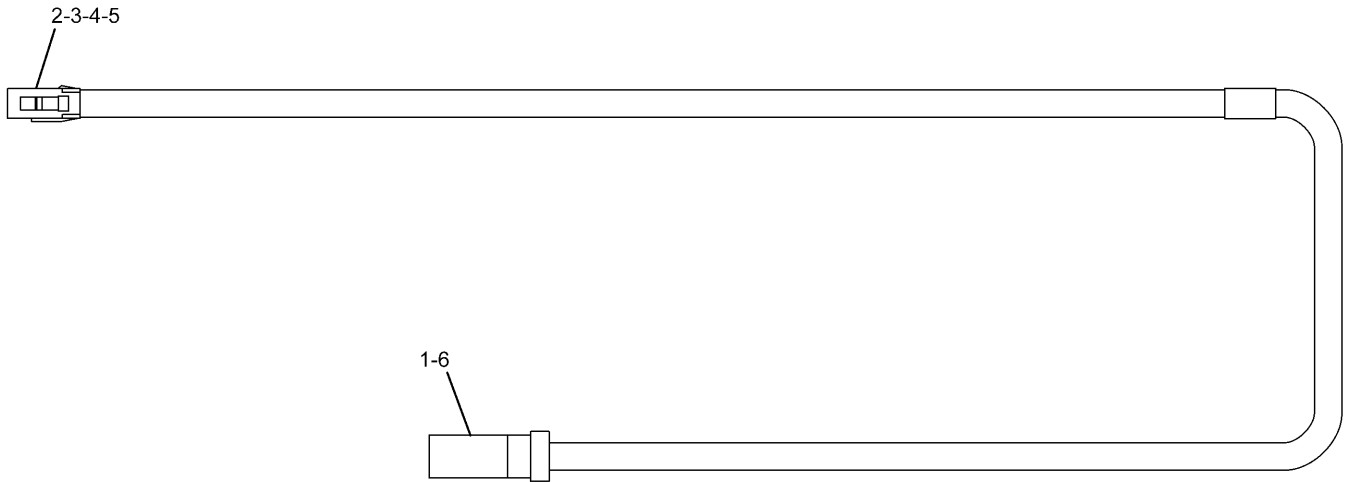
ELECTRICAL AND STARTING SYSTEM

NOTE	No.	PART No.	QTY	PART NAME	NOTE	No.	PART No.	QTY	PART NAME
	1	3E-5169	1	GUARD					
	2	3S-2093	3	STRAP					
	3	7G-1060	1	STRAP AS					
	4	7K-1181	7	STRAP					
	5	104-8161	1	GROMMET					
	6	111-4836	14	CLIP					
	7	116-0118	8	CLIP					
	8	9X-2042	2	SCREW					
	9	267-7933	1	BRACKET AS					
	10	267-7937	1	BRACKET AS					
Y	11	267-7950	1	HARNESS AS					
	12	306-8379	1	BRACKET AS					
	13	4D-1836	1	SWITCH					
	14	8T-4121	22	WASHER					
	15	8T-4137	11	BOLT (L=20mm)					
	16	8T-4191	9	BOLT (L=16mm)					
	17	8T-4195	2	BOLT (L=30mm)					
	18	5C-8312	2	NUT					
	19	9B-7233	2	LOCKWASHER					
	20	096-6166	2	WASHER					
	21	121-1241	1	METER KIT					

Y-SEE SEPARATE ILLUSTRATION

H99574E 02

ELECTRICAL AND STARTING SYSTEM



NOTE	No.	PART No.	QTY	PART NAME	NOTE	No.	PART No.	QTY	PART NAME
	1	9W-0852	2	PIN					
	2	213-0663	1	CONNECTOR					
	3	213-0664	1	WEDGE					
	4	213-0665	2	TERMINAL					
	5	213-0666	2	SEAL					
	6	243-4505	1	RECEPTACLE AS					

H99499E 00

319-1164 HARNESS AS
Part of 319-0870-Page126

ELECTRICAL AND STARTING SYSTEM

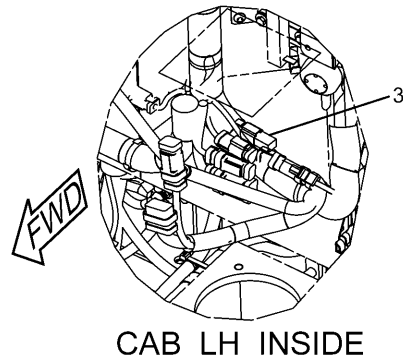
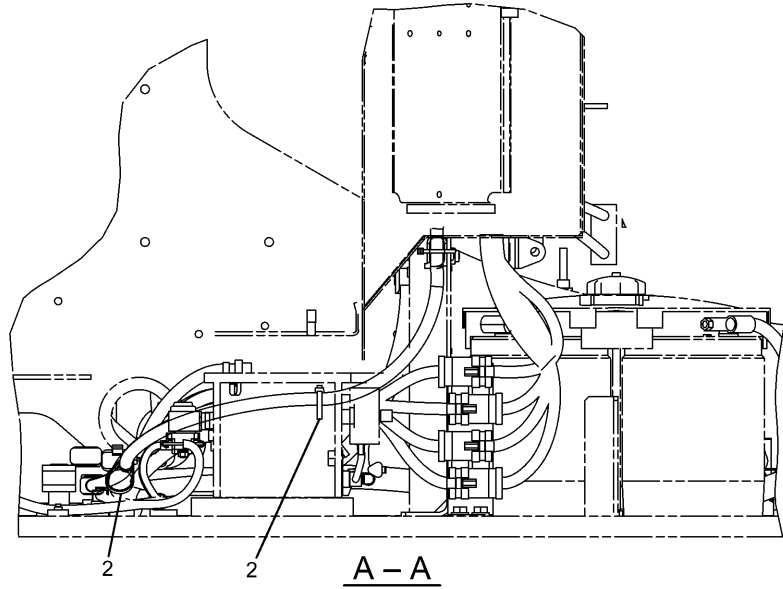
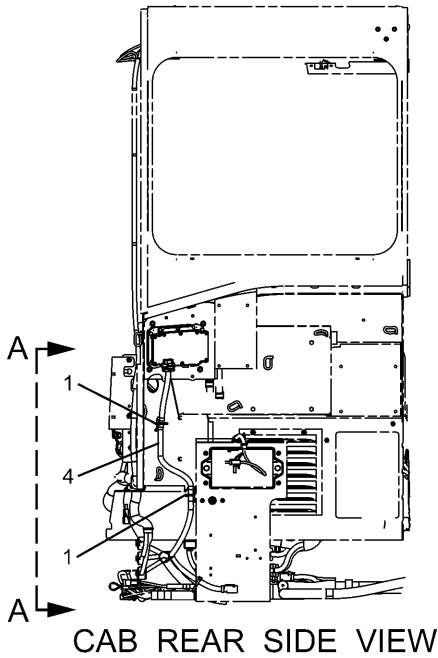


NOTE	No.	PART No.	QTY	PART NAME	NOTE	No.	PART No.	QTY	PART NAME
	1	186-3735	2	PIN					
	2	187-6417	1	CONNECTOR					
	3	187-6421	2	TERMINAL					
	4	187-6422	1	WEDGE					
	5	243-4505	1	RECEPTACLE AS					

H99491E 01

299-2906 HARNESS AS
 Part of 291-7890-Page135
 An Attachment

ELECTRICAL AND STARTING SYSTEM



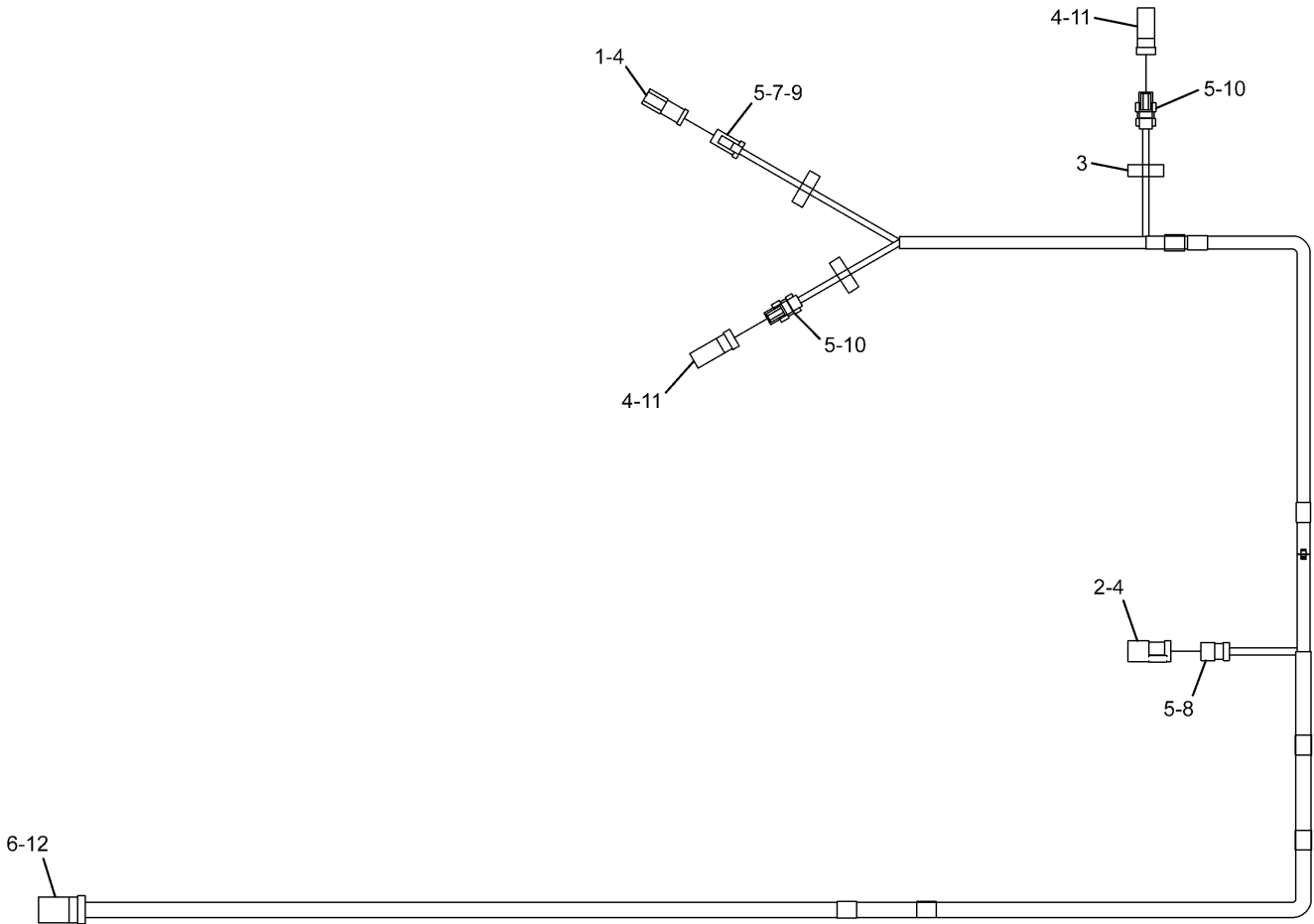
NOTE	No.	PART No.	QTY	PART NAME	NOTE	No.	PART No.	QTY	PART NAME
	1	3S-2093	2	STRAP					
	2	7K-1181	2	STRAP					
	3	145-0549	1	RECEPTACLE AS					
		102-8802	1	RECEPTACLE KIT					
		8T-8737	2	PLUG					
Y	4	291-7503	1	HARNESS AS					

Y-SEE SEPARATE ILLUSTRATION

H99551E 00

275-7125 WIRING GP
 Product Link Japan
 Part of 260-7202-Page185
 291-7503-Page148
 An Attachment

ELECTRICAL AND STARTING SYSTEM

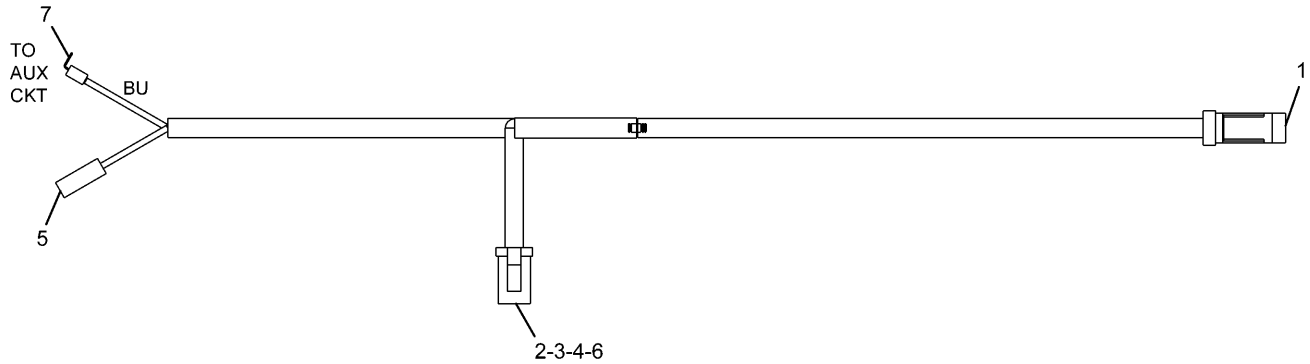


NOTE	No.	PART No.	QTY	PART NAME	NOTE	No.	PART No.	QTY	PART NAME
	1	102-8802	1	RECEPTACLE KIT					
	2	102-8803	1	RECEPTACLE KIT					
	3	3S-2093	3	STRAP					
	4	8T-8737	9	PLUG					
	5	126-1768	9	SOCKET					
	6	9X-3401	8	PIN					
	7	155-2261	1	WEDGE					
	8	155-2260	1	PLUG KIT					
	9	155-2270	1	PLUG KIT					
	10	230-4011	2	PLUG AS					
	11	243-4505	2	RECEPTACLE AS					
	12	243-4509	1	RECEPTACLE AS					

H99494E 04

283-2856 HARNESS AS
Part of 283-2867-Page156
An Attachment

ELECTRICAL AND STARTING SYSTEM

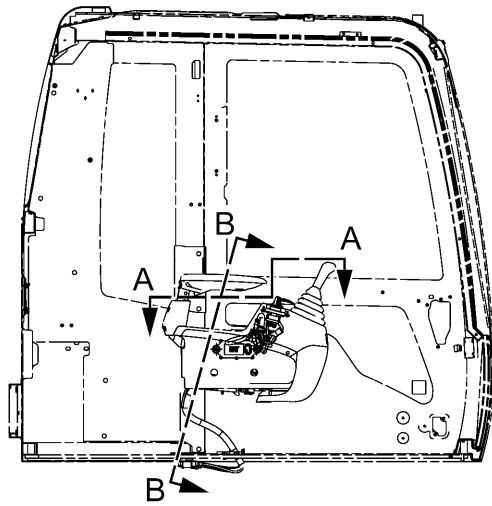


NOTE	No.	PART No.	QTY	PART NAME	NOTE	No.	PART No.	QTY	PART NAME
	1	9W-0852	2	PIN					
	2	9W-0844	5	SOCKET					
	3	155-2263	1	WEDGE					
	4	8T-8737	1	PLUG					
	5	153-2602	1	CONNECTOR					
	6	155-2274	1	PLUG KIT					
	7	2L-8075	1	TERMINAL					

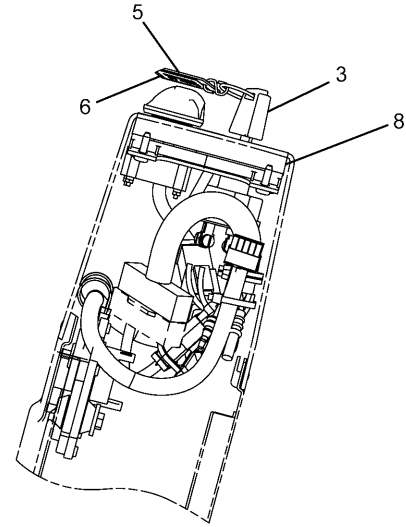
H91871E 00

267-7901 HARNESS AS
 Part of 267-7775-Page166
 An Attachment

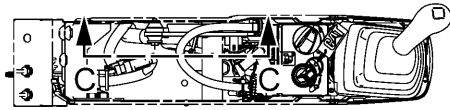
ELECTRICAL AND STARTING SYSTEM



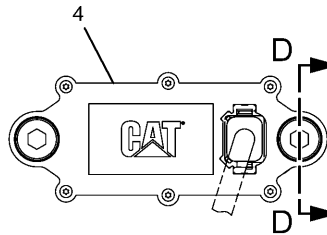
RIGHT SIDE VIEW OF CAB



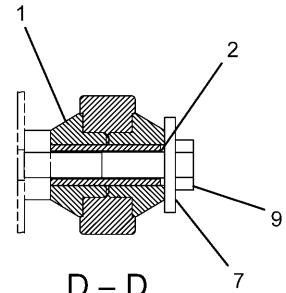
A - A



B - B



C - C



D - D

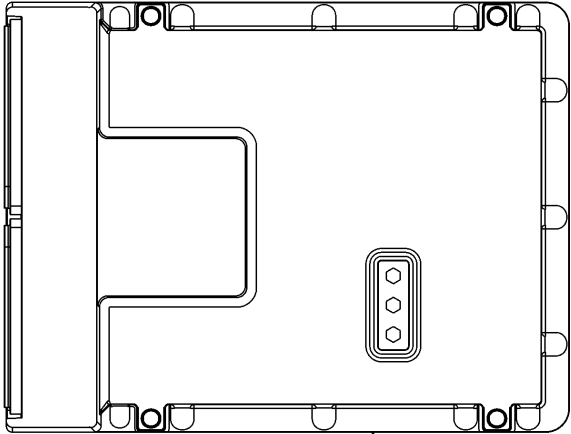
NOTE	No.	PART No.	QTY	PART NAME	NOTE	No.	PART No.	QTY	PART NAME
	1	8C-5607	4	MOUNT					
	2	8C-5608	2	SPACER					
	3	206-5162	2	KEY AS					
Y	4	218-0404	1	CONTROL GP					
	5	219-6314	2	TAG					
	6	219-6607	2	LABEL					
	7	9X-6165	2	WASHER					
Y	8	251-0544	1	PANEL GP					
	9	7X-2533	2	BOLT (L=35mm)					

Y-SEE SEPARATE ILLUSTRATION

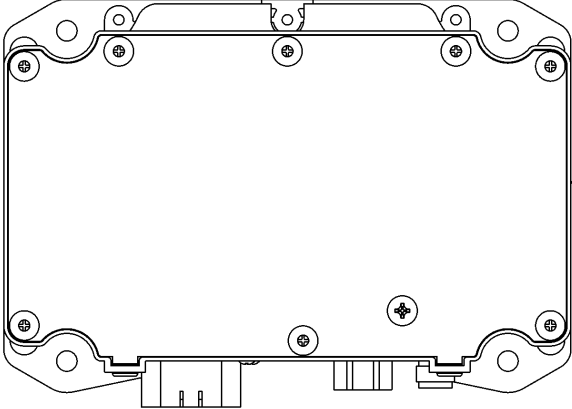
H99528E 00

309-5764 CONTROL GP
 251-0544-Page178,218-0404-Page180
 An Attachment

ELECTRICAL AND STARTING SYSTEM

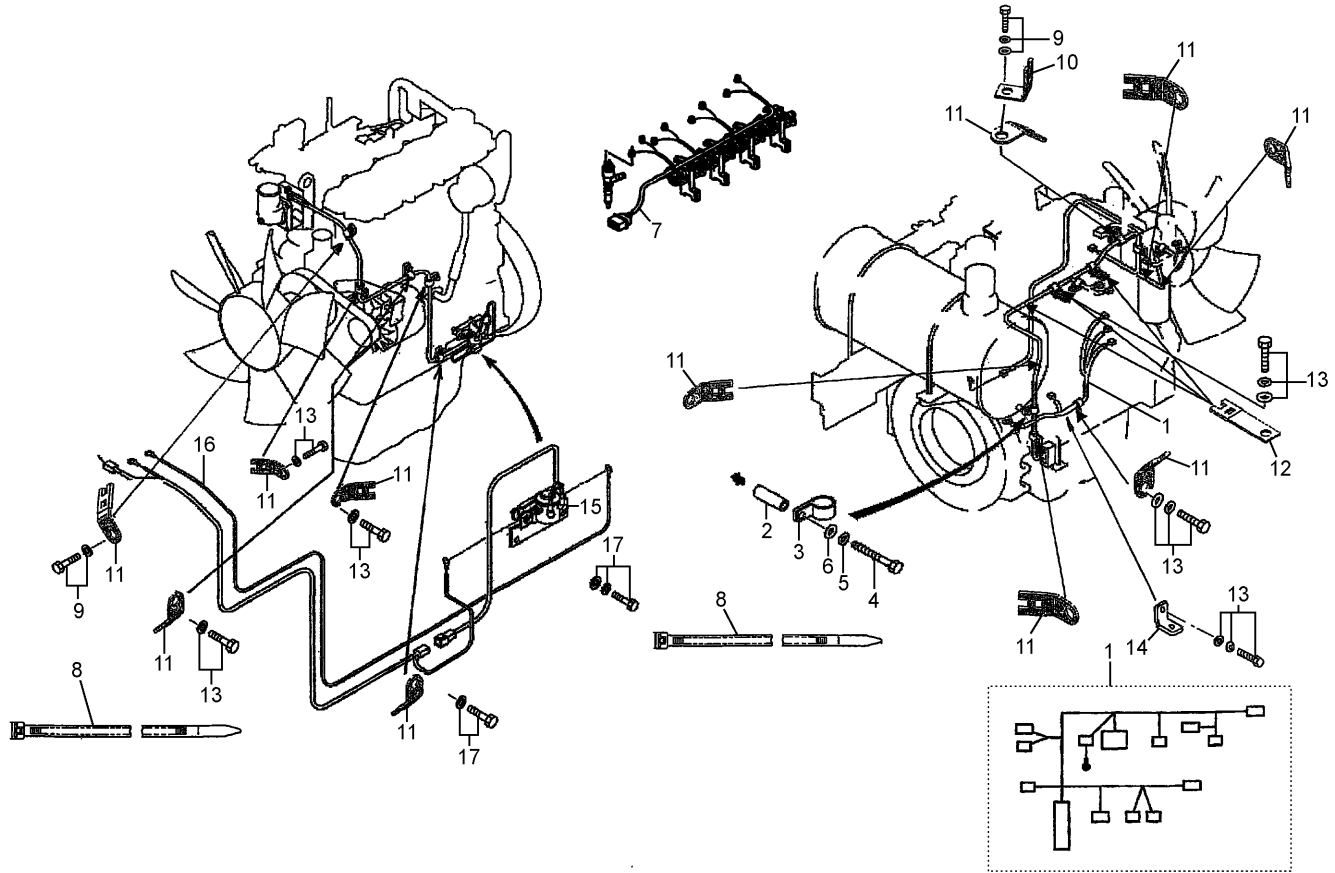
	NOTE	No.	PART No.	QTY	PART NAME
 <p style="text-align: center;">1-2</p>		1	2 2 1 - 8 8 7 4	1	CONTROL GP
		2	2 9 0 - 9 4 5 9	1	SOFTWARE GP
H99778E 00					

290-9460 CONTROL GP-ELECTRONIC
Part of 279-7555-Page182

	NOTE	No.	PART No.	QTY	PART NAME
 <p style="text-align: center;">1-2</p>		1	3 0 9 - 5 7 0 6	1	CONTROL GP
		2	3 1 9 - 4 3 8 0	1	SOFTWARE GP
HA0091E 00					

319-4381 CONTROL GP-ELECTRONIC
Part of 270-5497-Page182
An Attachment

ELECTRICAL AND STARTING SYSTEM



NOTE	No.	PART No.	QTY	PART NAME	NOTE	No.	PART No.	QTY	PART NAME
	1	310-9688	1	HARNESS					
	2	296-4618	1	SPACER					
	3	296-4619	1	CLIP					
	4	099-4460	1	BOLT					
	5	096-2501	1	WASHER					
	6	8T-4223	1	WASHER					
	7	305-4891	1	HARNESS					
	8	305-4895	15	STRAP					
	9	282-8567	2	BOLT AS					
	10	305-4898	1	CLIP					
	11	305-4896	11	CLIP					
	12	305-4897	3	CLIP					
	13	294-1768	6	BOLT AS					
	14	296-4766	1	BRACKET					
Y	15	223-7577	1	SWITCH GP					
	16	296-4755	1	CABLE					
	17	296-4621	2	BOLT					

Y-SEE SEPARATE ILLUSTRATION

H98873E 05

296-4801 WIRING GP-ELECTRONIC CONTROL
 Part of 279-7766-Page15
 223-7577-Page194

ELECTRICAL AND STARTING SYSTEM

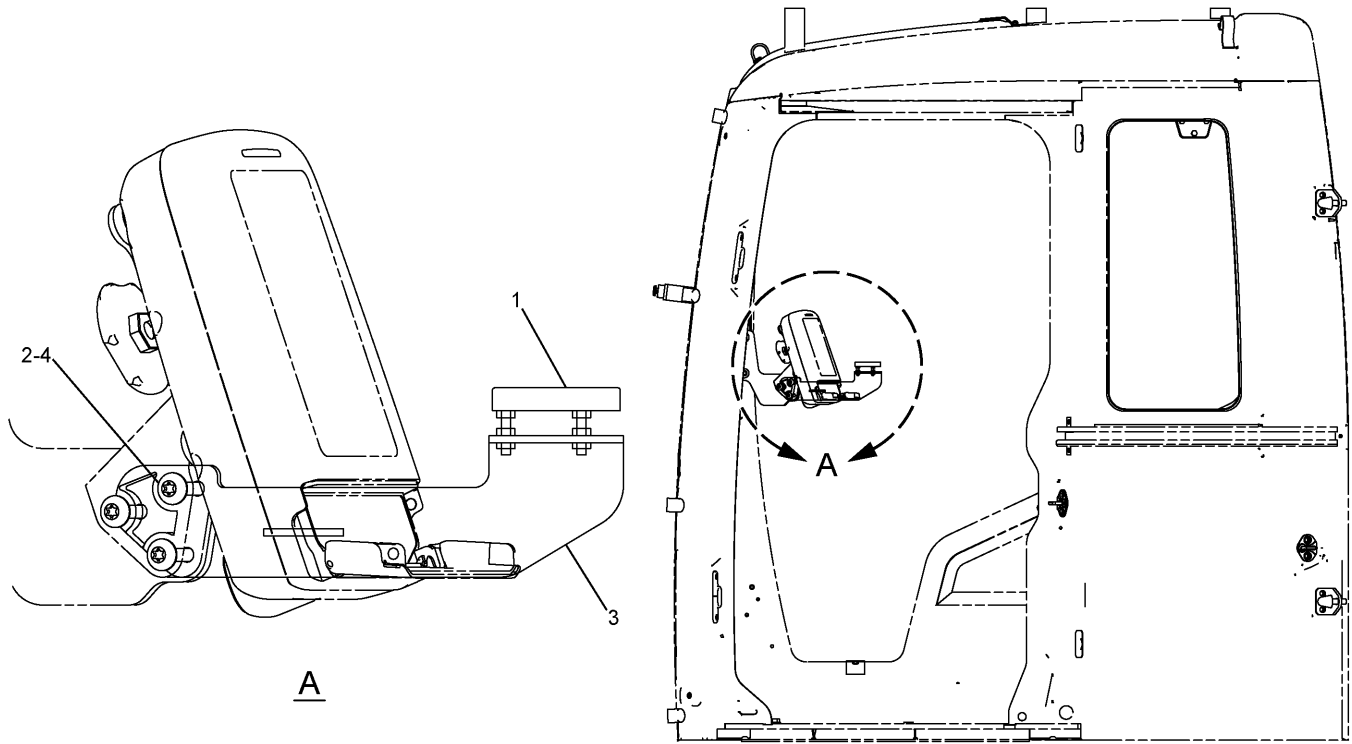
NOTE	No.	PART No.	QTY	PART NAME	NOTE	No.	PART No.	QTY	PART NAME
	1	71-2673	1	STRAP					
	2	111-4836	5	CLIP					
	3	116-0118	1	CLIP					
	4	134-3284	1	BRACKET					
Y	5	153-2521	1	LAMP GP					
Y	6	283-2802	1	HARNESS AS					
	7	3S-8664	1	CLIP					
	8	8T-4121	7	WASHER					
	9	8T-4133	6	NUT					
	10	8T-4137	1	BOLT (L=20mm)					
	11	8T-4190	1	BOLT (L=25mm)					
	12	9X-8257	1	WASHER					

Y-SEE SEPARATE ILLUSTRATION

H99649E 02

275-7113 LIGHTING GP-BOOM
 Left Hand
 Part of 260-7189,283-9052-Page637
 153-2521-Page206,283-2802-Page207
 An Attachment

ELECTRICAL AND STARTING SYSTEM



LEFT SIDE VIEW

NOTE	No.	PART No.	QTY	PART NAME	NOTE	No.	PART No.	QTY	PART NAME
	1	186-3792	1	TILT					
	2	243-5027	3	NUT AS					
	3	279-2829	1	BRACKET AS					
	4	9X-2046	3	SCREW					

H97757E 01

279-2772 SENSOR GP-LEVEL
 Part of 279-2641-Page11
 An Attachment

FRAME AND BODY

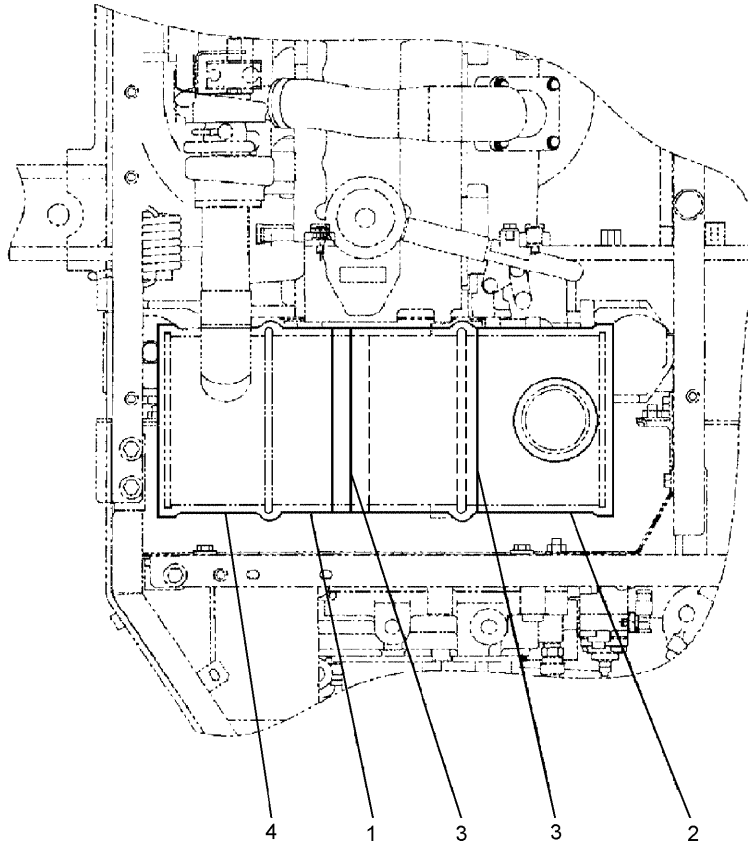
NOTE	No.	PART No.	QTY	PART NAME	NOTE	No.	PART No.	QTY	PART NAME
	1	8 T - 4 1 9 3	32	BOLT (L=50mm)					
	2	9 X - 8 2 5 7	46	WASHER					
	3	8 T - 7 3 3 8	14	BOLT (L=45mm)					
	4	1 9 1 - 2 5 4 3	2	PIN					
B	5	1 U - 8 8 4 6		GASKET MAKER... (15ml)					

B-USE AS REQUIRED

H76616E 01

191-2595 FASTENER GP-SWING & FINAL DR

FRAME AND BODY



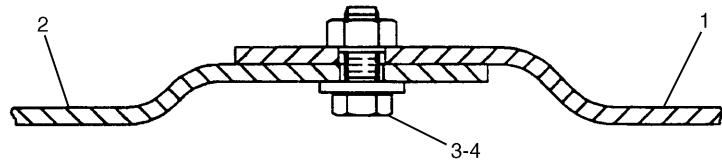
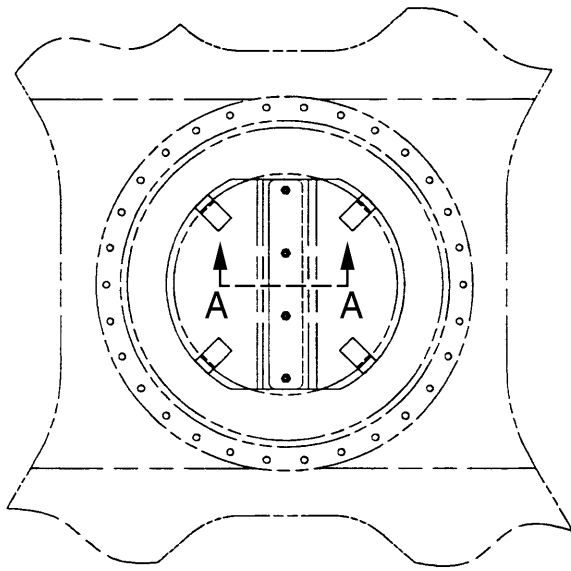
NOTE	No.	PART No.	QTY	PART NAME	NOTE	No.	PART No.	QTY	PART NAME
	1	255-2972	1	SHEET					
	2	255-2973	1	SHEET					
	3	255-2981	2	WIRE					
	4	255-2974	1	TAPE					

H89010E 00

255-2971 COVER GP

MEMORANDA

FRAME AND BODY



A - A

NOTE	No.	PART No.	QTY	PART NAME	NOTE	No.	PART No.	QTY	PART NAME
	1	137-2853	1	PLATE AS					
	2	137-2854	1	PLATE AS					
	3	8C-8992	4	BOLT (L=30mm)					
	4	5P-1076	4	WASHER					

H52346E 00

137-2813 GUARD GP-SWIVEL
An Attachment

FRAME AND BODY

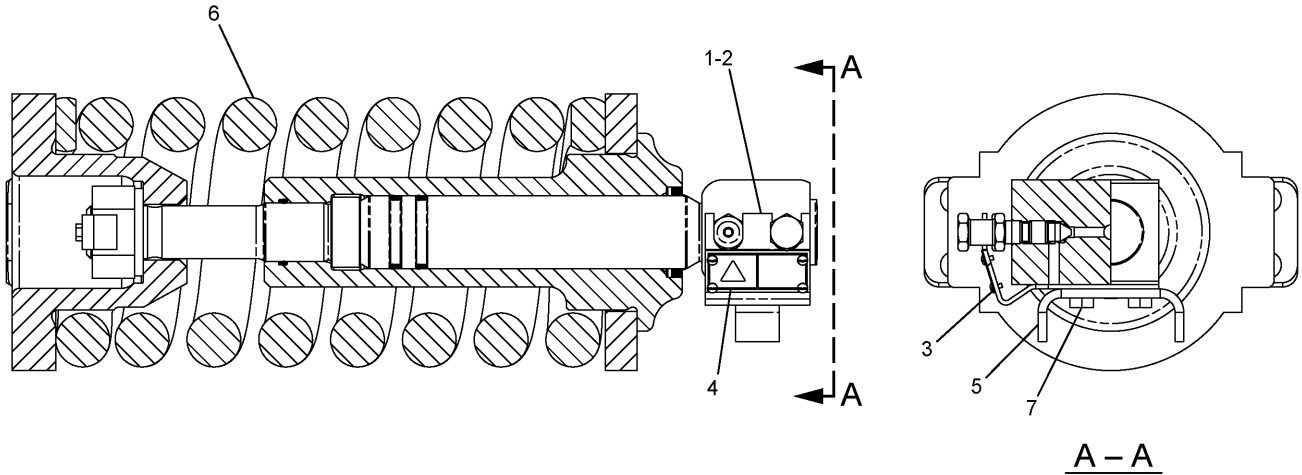
NOTE	No.	PART No.	QTY	PART NAME	NOTE	No.	PART No.	QTY	PART NAME
	1	121-5204	1	RETAINER					
	2	099-0913	1	CLAMP					
	3	121-5203	1	BOOT					
	4	8T-4136	12	BOLT (L=25mm)					
	5	8T-4121	12	WASHER					
	6	5K-9243	2	ELBOW					
	7	7X-2555	34	BOLT (L=80mm)					
	8	095-1299	1	DOWEL					
	9	8T-4199	2	BOLT (L=12mm)					
	10	4N-9170	2	CLIP					
	11	3B-8489	1	FITTING					
	12	4I-7446	1	GASKET					
	13	4I-7326	1	STRIP					
	14	191-2665	1	TUBE AS					
B	15	1U-8846		GASKET MAKER... (30ml)					
	16	8T-0357	38	BOLT (L=70mm)					
	17	085-9310	38	SPACER					
B	18	1U-8846		GASKET MAKER... (33ml)					
	19	191-2544	34	WASHER					
	20	229-1079	1	GEAR GP					
	21	3B-8489	1	FITTING					
	22	229-1078	1	SEAL					
E	23	148-4685		SEAL... (309cm)					

B—USE AS REQUIRED
E—ORDER BY THE CENTIMETER

H98119E 02

199-4692 GEAR & BEARING GP-SWING
Blade Control
Part of 260-7211-Page643
An Attachment

FRAME AND BODY



NOTE	No.	PART No.	QTY	PART NAME	NOTE	No.	PART No.	QTY	PART NAME
	1	248-7200	1	PLATE AS					
	2	248-7204	1	PLATE					
	3	4B-4158	4	SCREW					
	4	253-1346	1	PLATE (WARNING)					
	5	248-7203	1	PLATE					
Y	6	297-9142	1	RECOIL GP					
	7	8T-4137	2	BOLT (L=20mm)					

Y-SEE SEPARATE ILLUSTRATION

H97909E 00

297-9141 TRACK ADJUSTER & RECOIL GP

Left Hand

Part of 297-9139-Page277

297-9142-Page282

FRAME AND BODY

Consists of :

		Page
1	176-4865 TRACK GP	291
1	235-7764 STEP GP	275

H98899E 01

283-8848 TRACK GP
700MM Triple Grouser Shoe-2 Required
An Attachment

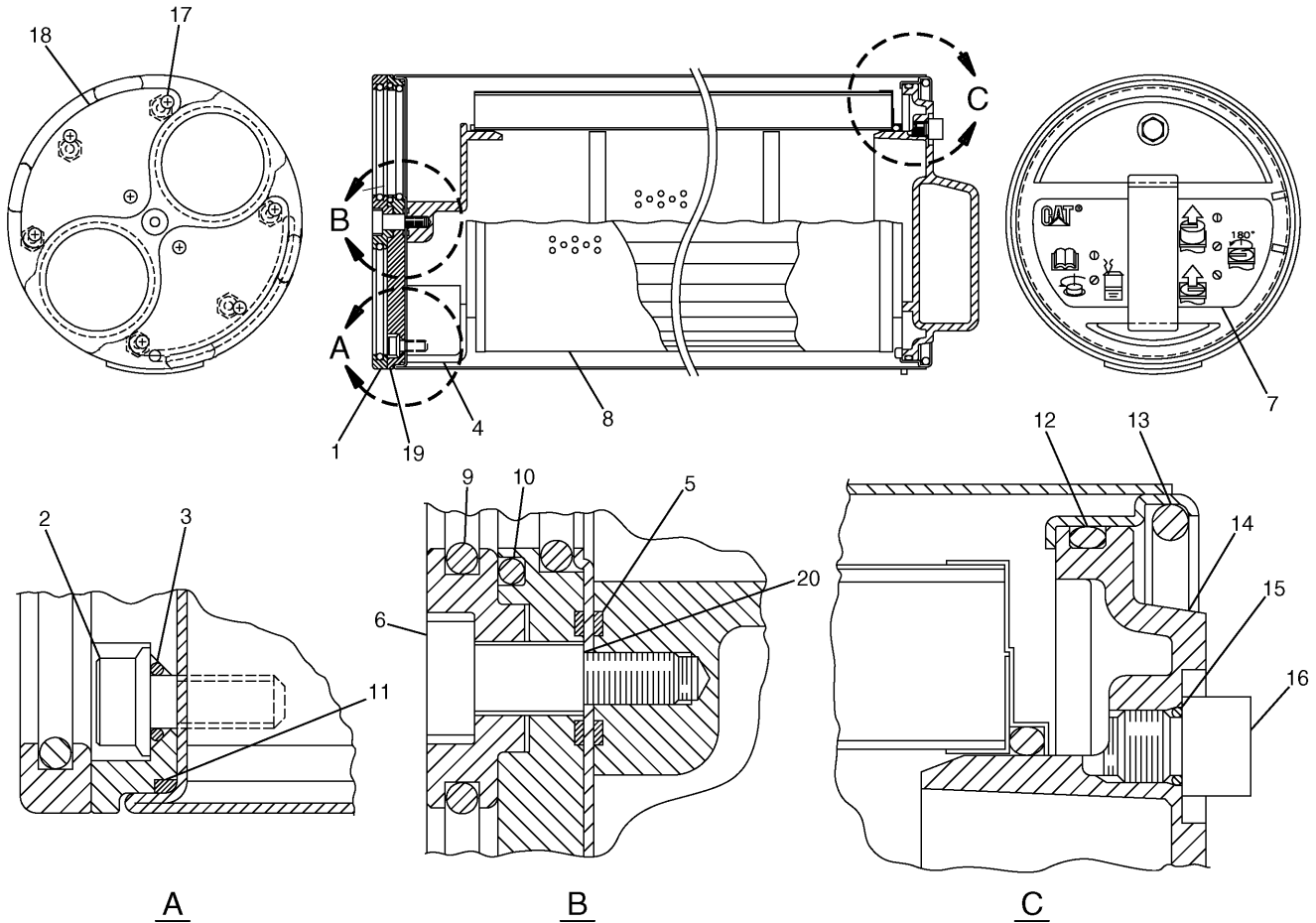
Consists of :

		Page
1	176-4870 LINK AS-TRACK	293
43	1R-6010 SHOE	
172	41-7538 BOLT (L=46mm)	
172	51-6125 NUT	

H98901E 01

176-4865 TRACK GP
Part of 283-8848-Page291
An Attachment

HYDRAULIC SYSTEM

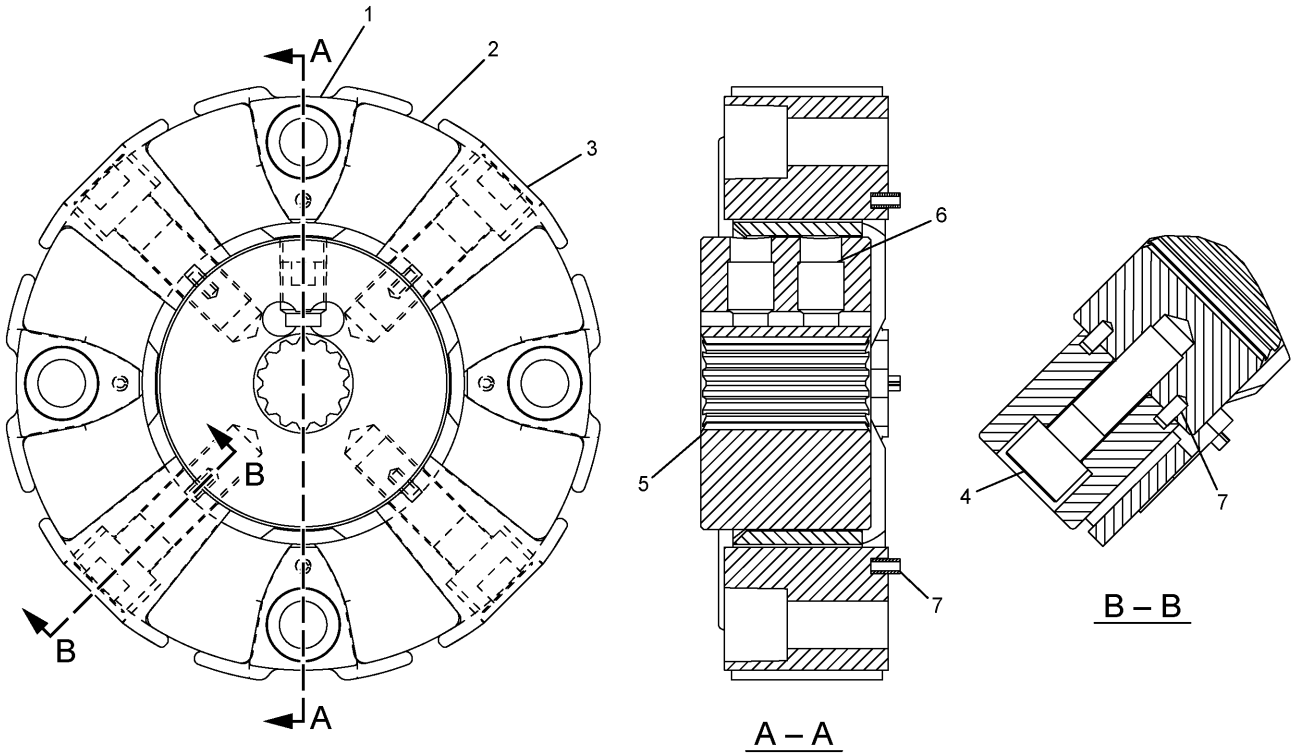


NOTE	No.	PART No.	QTY	PART NAME	NOTE	No.	PART No.	QTY	PART NAME
	1	204-2762	1	PLATE					THE FOLLOWING REPAIR KIT IS AVAILABLE: SERVICE KIT (INCLUDES PARTS MARKED J)
J	2	173-3529	6	BOLT (L=15mm)					
J	3	3T-7528	6	SEAL-O-RING (ID=5.80mm)			201-9299	1	
	4	173-3513	1	BASE					
J	5	3E-4297	2	SEAL-O-RING (ID=10.00mm)					
	6	137-3626	1	BOLT					
	7	188-4143	1	FILM (INSTRUCTION)					
	8	179-9806	1	ELEMENT					
J	9	137-3623	4	SEAL-O-RING (ID=55.60mm)					
J	10	6V-7658	2	SEAL-O-RING (ID=59.40mm)					
J	11	177-2553	1	SEAL-O-RING (ID=149.50mm)					
J	12	095-1681	1	SEAL-O-RING (ID=144.40mm)					
	13	173-3515	1	RING					
	14	173-3516	1	HANDLE					
J	15	4J-7533	1	SEAL-O-RING (ID=6.07mm)					
J	16	9S-4180	1	PLUG					
J	17	137-3624	8	SCREW					
J	18	137-3625	2	PAD					
	19	173-3517	1	PLATE					
J	20	137-3628	1	SHIM (T=0.10mm)					

H77561E 02

188-4142 FILTER GP-HYDRAULIC
 Part of 188-4145-Page300

HYDRAULIC SYSTEM



NOTE	No.	PART No.	QTY	PART NAME	NOTE	No.	PART No.	QTY	PART NAME
	1	7Y-1900	4	INSERT					
	2	7Y-1901	1	ELEMENT					
	3	7Y-1902	4	INSERT					
	4	7Y-1904	4	BOLT (L=50mm)					
	5	248-7284	1	HUB					
	6	7Y-0466	2	SETSCREW					
	7	7Y-0468	12	PIN					

H96844E 02

266-6280 COUPLING GP-PUMP
Part of 255-3027-Page310

HYDRAULIC SYSTEM

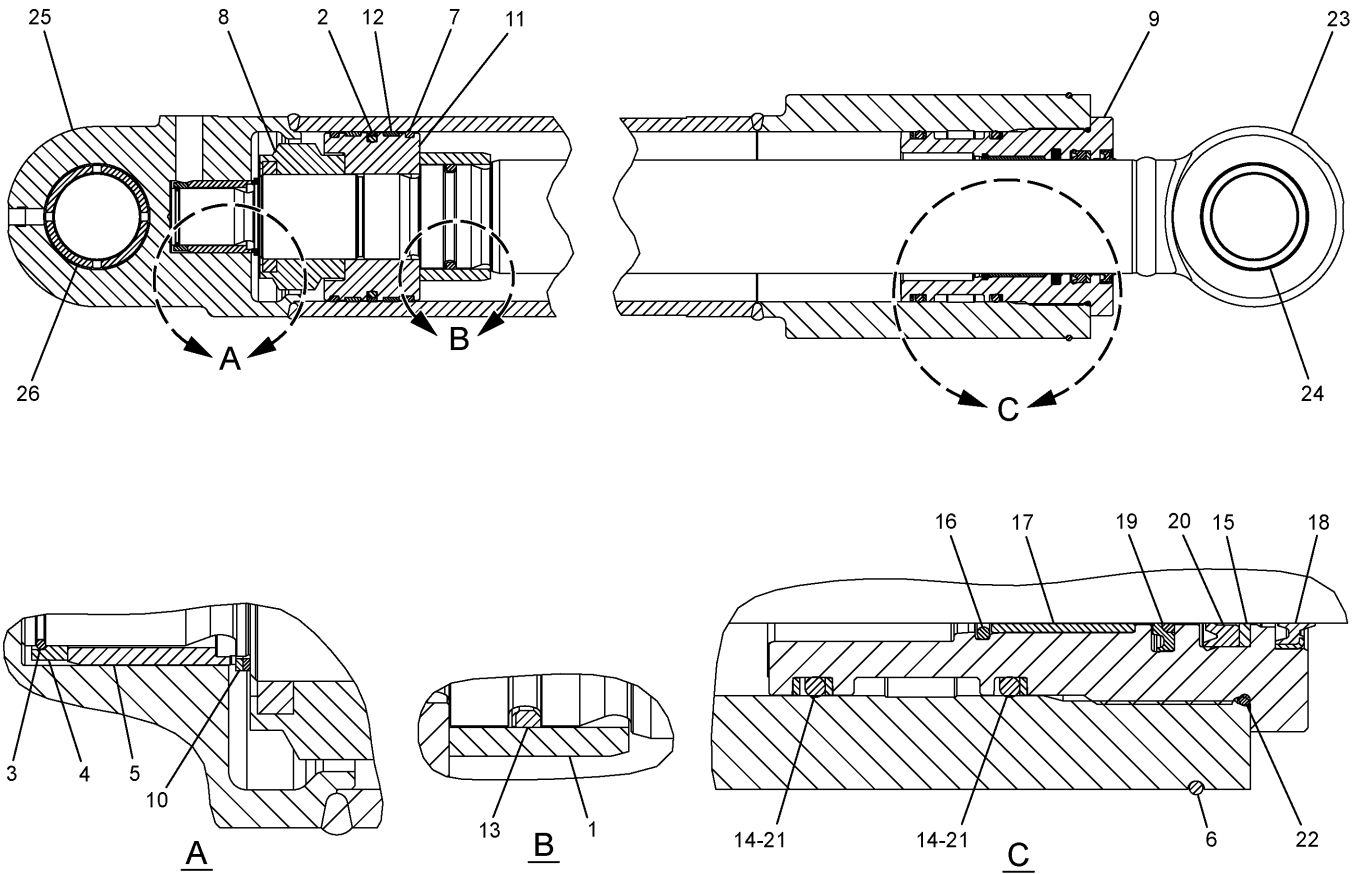
Consists of :

		Page
1	194-8989 LINES GP-STICK CYLINDER	340
1	289-7712 CYLINDER & SEAL GP-STICK.....	325

H98904E 01

289-7711 CYLINDER & LINES GP-STICK
Part of 260-7189,283-9052-Page637
An Attachment

HYDRAULIC SYSTEM



NOTE	No.	PART No.	QTY	PART NAME	NOTE	No.	PART No.	QTY	PART NAME
	1	51-3046	1	STOP	J	21	095-1628	2	SEAL-O-RING (ID=109.60mm)
J	2	9X-3592	1	SEAL AS	J	22	095-1676	1	SEAL-O-RING (ID=119.40mm)
	3	103-8441	1	RING		23	289-8082	1	ROD AS
	4	103-8442	1	RING		24	273-6812	1	BEARING
	5	105-7398	1	STOP		25	289-7714	1	CYLINDER AS
	6	123-2002	1	RING		26	273-6812	1	BEARING
J	7	143-8027	2	RING					
	8	143-8151	1	LOCKNUT					
	9	173-3358	1	HEAD					
J	10	8T-4241	2	RING			289-7716	1	SEAL KIT
	11	283-5939	1	PISTON					
J	12	283-5940	2	RING					
J	13	283-5972	1	RING					
J	14	099-0681	3	RING					
J	15	096-1054	1	RING					
	16	096-8139	1	RING					
	17	114-0755	1	BEARING					
J	18	165-9285	1	SEAL					
J	19	170-9843	1	SEAL					
J	20	170-9859	1	SEAL					

THE FOLLOWING REPAIR
KIT IS AVAILABLE:

H97867E 01

289-7713 CYLINDER GP-STICK
Part of 289-7712-Page325
An Attachment

MEMORANDA

MEMORANDA

HYDRAULIC SYSTEM

NOTE	No.	PART No.	QTY	PART NAME	NOTE	No.	PART No.	QTY	PART NAME
	1	41-1676	2	CLIP					
	2	128-7624	1	FLANGE					
	3	6V-9007	1	ELBOW					
	4	202-7000	1	COUPLING AS					
	5	253-6276	2	PLATE					
	6	270-5672	1	VALVE GP					
	7	270-5757	1	VALVE GP					
	8	278-6756	1	HOSE AS					
	9	282-5902	1	SUPPORT AS					
	10	302-9461	1	TUBE AS					
	11	302-9463	1	TUBE AS					
	12	302-9465	1	TUBE AS					
	13	302-9484	1	SUPPORT AS					
	14	302-9487	1	HOSE AS					
	15	302-9491	1	HOSE AS					
	16	6V-9854	1	ELBOW					
	17	9S-4183	2	PLUG					
	18	9S-4185	1	PLUG					
	19	6V-8785	1	TEE					
	20	1P-3703	1	SEAL					
	21	5K-9090	6	SEAL-O-RING (OD=27.22mm)					
	22	6V-9746	6	SEAL-O-RING (OD=22.50mm)					
	23	7M-8485	2	SEAL-O-RING (ID=29.74mm)					
	24	7X-2549	4	BOLT (L=100mm)					
	25	7Y-3732	6	CLIP					
	26	7Y-4868	10	CLIP					
	27	8T-4139	6	BOLT (L=30mm)					
	28	8T-4184	4	BOLT (L=45mm)					
	29	8T-4192	4	BOLT (L=25mm)					
	30	8T-4223	32	WASHER					
	31	8T-4956	12	BOLT (L=35mm)					
	32	8T-5041	2	BOLT (L=120mm)					
	33	3D-2824	3	SEAL-O-RING (ID=23.47mm)					
	34	3K-0360	1	SEAL-O-RING (ID=16.36mm)					

H99646E 00

282-5542 LINES GP-AUXILIARY HYDRAULIC
 Part of 294-6360-Page358
 An Attachment

HYDRAULIC SYSTEM

NOTE	No.	PART No.	QTY	PART NAME	NOTE	No.	PART No.	QTY	PART NAME
	1	6C-6760	2	MANIFOLD					
	2	149-1738	8	CLIP					
	3	7X-3164	2	ADAPTER					
	4	288-7692	2	TUBE AS					
	5	288-7693	2	PLATE					
	6	288-7694	2	SUPPORT AS					
	7	288-7696	2	SUPPORT AS					
	8	288-7709	2	HOSE AS					
	9	6V-8398	4	SEAL-O-RING (OD=16.03mm)					
	10	8T-4121	4	WASHER					
	11	8T-4136	4	BOLT (L=25mm)					
	12	8T-4139	8	BOLT (L=30mm)					
	13	8T-4185	4	BOLT (L=50mm)					
	14	8T-4192	8	BOLT (L=25mm)					
	15	8T-4223	16	WASHER					
	16	105-3479	4	BOLT (L=90mm)					
	17	8T-4648	8	BOLT (L=70mm)					
	18	3K-0360	2	SEAL-O-RING (ID=16.36mm)					
	19	8T-7971	8	WASHER					

H98692E 02

288-7393 LINES GP-AUXILIARY HYDRAULIC
An Attachment

CLICK HERE TO **DOWNLOAD** THE COMPLETE MANUAL

- Thank you very much for reading the preview of the manual.
- You can download the complete manual from: www.heydownloads.com by clicking the link below



- Please note: If there is no response to CLICKING the link, please download this PDF first and then click on it.

CLICK HERE TO **DOWNLOAD** THE COMPLETE MANUAL

HYDRAULIC SYSTEM

NOTE	No.	PART No.	QTY	PART NAME	NOTE	No.	PART No.	QTY	PART NAME
	1	6C-6760	1	MANIFOLD					
	2	7K-1181	2	STRAP					
	3	210-9907	1	PLATE					
	4	253-6417	1	BRACKET					
	5	253-6423	1	HOSE AS					
	6	316-3683	1	HOSE AS					
	7	6V-8639	1	CONNECTOR					
	8	6V-8981	1	ELBOW					
	9	6V-9169	1	NUT					
	10	8T-4178	2	BOLT (L=90mm)					
	11	8T-4223	2	WASHER					
	12	8T-6868	2	BOLT (L=80mm)					
	13	105-3479	2	BOLT (L=90mm)					
	14	210-9907	2	PLATE					
	15	288-7693	1	PLATE					
	16	8T-4185	2	BOLT (L=50mm)					
	17	8T-4648	2	BOLT (L=70mm)					
	18	8T-7971	2	WASHER					
	19	8T-4183	2	BOLT (L=40mm)					
	20	3K-0360	1	SEAL-O-RING (ID=16.36mm)					
	21	6V-8398	2	SEAL-O-RING (OD=16.03mm)					

H98084E 00

277-1171 LINES GP-DRAIN
An Attachment

MEMORANDA

HYDRAULIC SYSTEM

Consists of :

			Page
1	267-7773	WIRING GP-CAB.....	139
1	275-7118	WIRING GP.....	175
1	282-5705	FILM GP.....	699
1	282-7300	LINES GP-FRONT.....	436

H99709E 01

282-5547 CONTROL AR-QUICK COUPLER An Attachment

Consists of :

			Page
1	275-7174	WIRING GP.....	174
1	283-2867	WIRING GP-BOOM.....	156
1	294-6364	LINES GP-RETURN & FILTER.....	390
1	306-8629	WIRING GP-BOOM.....	155

H99707E 01

301-2515 FILTER AR An Attachment

HYDRAULIC SYSTEM

NOTE	No.	PART No.	QTY	PART NAME	NOTE	No.	PART No.	QTY	PART NAME
	1	4 I - 0 8 3 6	1	HOSE AS (NOM 06, L=1200mm)					
	2	4 I - 1 7 0 4	1	HOSE AS (NOM 06, L=330mm)					
	3	4 I - 1 7 8 0	1	HOSE AS (NOM 06, L=1450mm)					
	4	4 I - 3 5 7 3	1	HOSE AS (NOM 08, L=2000mm)					
	5	4 I - 3 9 4 1	1	FITTING AS					
	6	4 I - 9 5 2 2	2	BAND (L2,YELLOW)					
	7	4 I - 9 5 2 3	2	BAND (L3,BLUE)					
	8	4 I - 9 5 2 4	2	BAND (L4,BROWN)					
	9	4 I - 9 5 2 5	2	BAND (R1,ORANGE)					
	10	4 I - 9 5 2 7	4	BAND (R3,GREEN)					
	11	7 K - 1 1 8 1	3	STRAP					
	12	7 Y - 8 3 7 9	2	HOSE AS (NOM 06, L=800mm)					
	13	0 8 7 - 5 7 6 2	1	HOSE AS (NOM 06, L=440mm)					
	14	0 8 7 - 5 7 7 4	1	HOSE AS (NOM 06, L=1060mm)					
Y	15	1 2 3 - 2 4 3 0	1	VALVE GP					
	16	1 2 4 - 1 0 0 8	1	GUARD					
	17	1 3 3 - 5 8 1 3	2	BAND (P,GRAY)					
	18	8 T - 4 9 5 6	3	BOLT (L=35mm)					
	19	3 E - 7 4 1 0	1	TEE					
	20	1 0 8 - 7 5 1 6	1	FITTING					
Y	21	1 6 4 - 6 9 8 1	1	ACCUMULATOR GP					
	22	2 0 8 - 3 2 3 8	1	PLATE					
	23	2 1 2 - 5 4 0 2	1	HOSE AS (NOM 06, L=460mm)					
Y	24	2 1 5 - 5 0 3 7	1	VALVE GP					
	25	2 2 1 - 4 8 0 7	1	HOSE AS (NOM 06, L=1750mm)					
	26	2 7 8 - 6 6 2 6	1	HOSE AS (NOM 08, L=1950mm)					
	27	3 2 5 - 8 7 8 5	1	SUPPORT AS					
	28	3 0 9 - 5 7 6 8	2	SWITCH AS (PRESSURE)					
		1 5 5 - 2 2 7 0	1	PLUG KIT					
		1 2 6 - 1 7 6 8	2	SOCKET					
	29	0 9 9 - 3 6 4 9	2	BOLT (L=40mm)					
	30	6 V - 8 6 3 6	3	CONNECTOR					
	31	8 T - 0 0 7 5	1	CONNECTOR					
	32	6 V - 8 6 3 9	2	CONNECTOR					
	33	6 V - 9 8 5 0	2	ELBOW					
	34	6 V - 8 7 2 4	3	ELBOW					
	35	9 S - 4 1 9 1	7	PLUG					
	36	6 V - 8 7 8 1	1	TEE					
	37	8 T - 1 9 0 5	2	ELBOW					
	38	3 J - 1 9 0 7	19	SEAL-O-RING (ID=11.89mm)					
	39	6 V - 8 3 9 7	15	SEAL-O-RING (OD=12.83mm)					
	40	8 T - 4 1 3 9	3	BOLT (L=30mm)					
	41	8 T - 4 1 9 2	4	BOLT (L=25mm)					
	42	8 T - 4 2 2 3	7	WASHER					
	43	5 P - 1 0 7 6	3	WASHER					
	44	3 K - 0 3 6 0	2	SEAL-O-RING (ID=16.36mm)					
	45	6 V - 8 3 9 8	2	SEAL-O-RING (OD=16.03mm)					

Y-SEE SEPARATE ILLUSTRATION

HA0069E 04

282-7234 LINES GP-PILOT (1/2)

Control Valve

164-6981-Page319,215-5037-Page506,123-2430-Page532

HYDRAULIC SYSTEM

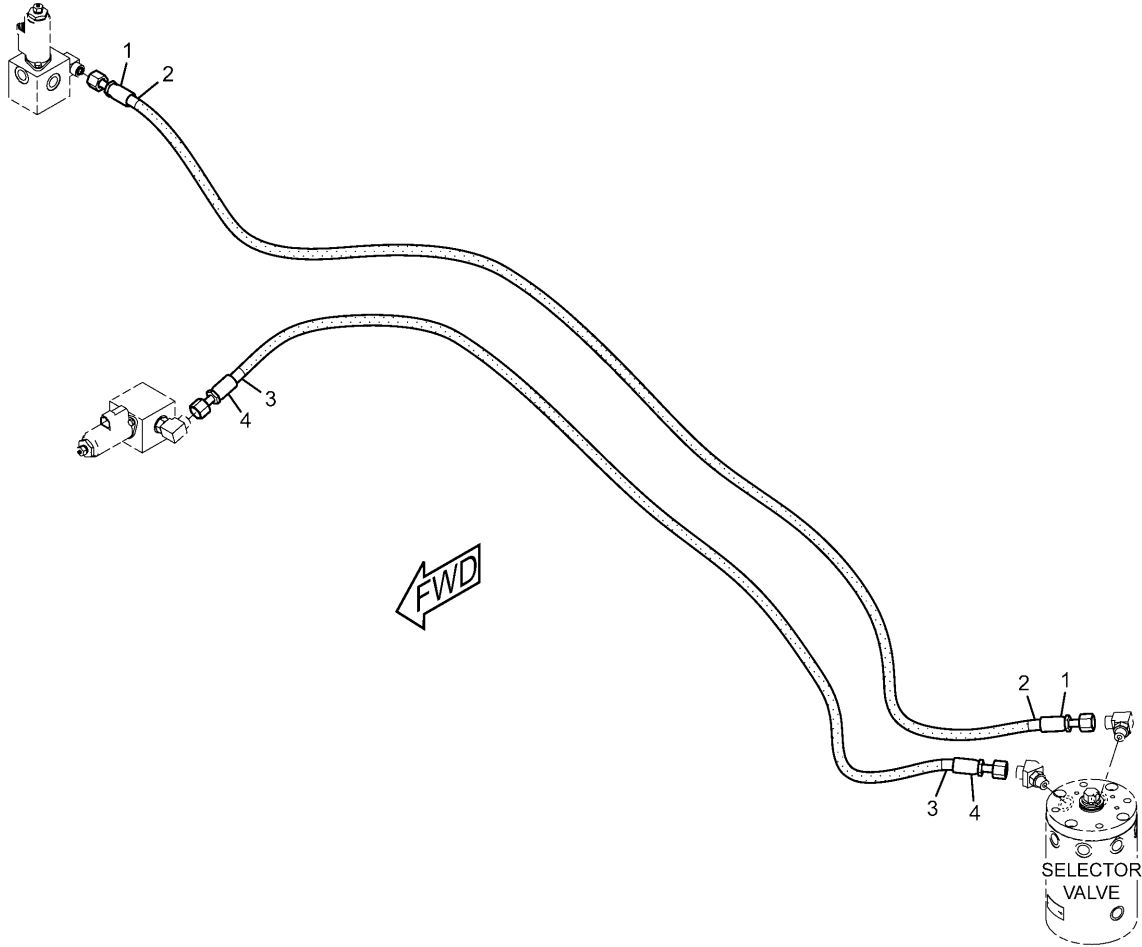
NOTE	No.	PART No.	QTY	PART NAME	NOTE	No.	PART No.	QTY	PART NAME
	1	285-2869	1	HOSE AS (NOM 06, L=420mm)		50	9X-8256	4	WASHER
	2	41-9523	6	BAND (L3,BLUE)		51	3J-1907	26	SEAL-O-RING (ID=11.89mm)
	3	41-9522	2	BAND (L2,YELLOW)		52	6V-8397	21	SEAL-O-RING (OD=12.83mm)
	4	41-9527	6	BAND (R3,GREEN)					
	5	41-9528	2	BAND (R4,PURPLE)					
	6	7K-1181	3	STRAP					
	7	087-5777	1	HOSE AS (NOM 06, L=1600mm)					
Y	8	121-6303	2	VALVE GP					
	9	104-8777	1	HOSE AS (NOM 06, L=2030mm)					
		205-3717		HOSE...(197cm)					
	10	3E-2310	2	TEE					
	11	3E-7410	1	TEE					
	12	108-7516	1	FITTING					
	13	085-7356	2	FITTING					
	14	309-5769	1	SWITCH AS (PRESSURE)					
		102-8802	1	RECEPTACLE KIT					
		9X-3401	2	PIN					
	15	126-6872	1	TEE					
	16	176-4569	2	HOSE AS (NOM 06, L=1070mm)					
	17	179-7616	2	HOSE AS (NOM 06, L=2500mm)					
		205-3717		HOSE...(244cm)					
	18	9X-2297	1	CONNECTOR					
	19	272-4186	1	HOSE AS (NOM 06, L=370mm)					
	20	278-6768	1	HOSE AS (NOM 06, L=330mm)					
	21	282-7092	1	GROMMET					
	22	285-2661	1	SUPPORT AS					
	23	319-9940	1	HOSE AS (NOM 06, L=2050mm)					
	24	286-6532	1	SUPPORT AS					
	25	296-7223	1	SUPPORT AS					
	26	296-7226	1	HOSE AS (NOM 06, L=580mm)					
	27	296-7229	1	HOSE AS (NOM 06, L=480mm)					
	28	319-9943	1	HOSE AS (NOM 06, L=2200mm)					
	29	302-2856	1	SUPPORT					
	30	6V-8636	6	CONNECTOR					
	31	8T-0075	1	CONNECTOR					
	32	6V-8724	6	ELBOW					
	33	6V-8781	1	TEE					
	34	8T-1905	2	ELBOW					
	35	6V-3965	2	NIPPLE AS					
Y	36	171-0188	1	VALVE GP					
	37	5C-9553	4	BOLT (L=16mm)					
	38	5P-7462	1	CLIP					
	39	5P-7463	1	CLIP					
	40	6V-0683	1	GROMMET					
	41	6V-0852	2	CAP					
	42	8T-4121	9	WASHER					
	43	8T-4137	4	BOLT (L=20mm)					
	44	8T-4177	4	BOLT (L=90mm)					
	45	8T-4182	2	BOLT (L=45mm)					
	46	8T-4192	1	BOLT (L=25mm)					
	47	8T-4196	3	BOLT (L=35mm)					
	48	8T-4223	1	WASHER					
	49	8T-4224	4	WASHER					

Y-SEE SEPARATE ILLUSTRATION

HA0350E 02

282-7258 LINES GP-PILOT
 Part of 270-5995-Page399,285-1676-Page400
 171-0188-Page537,121-6303-Page540
 An Attachment

HYDRAULIC SYSTEM



NOTE	No.	PART No.	QTY	PART NAME	NOTE	No.	PART No.	QTY	PART NAME
	1	41-3988	1	HOSE AS (NOM 06, L=2250mm)					
	2	41-9521	2	BAND (L1,RED)					
	3	41-9528	2	BAND (R4,PURPLE)					
	4	104-8976	1	HOSE AS (NOM 06, L=1900mm)					

H99164E 01

302-2921 LINES GP-PILOT
An Attachment

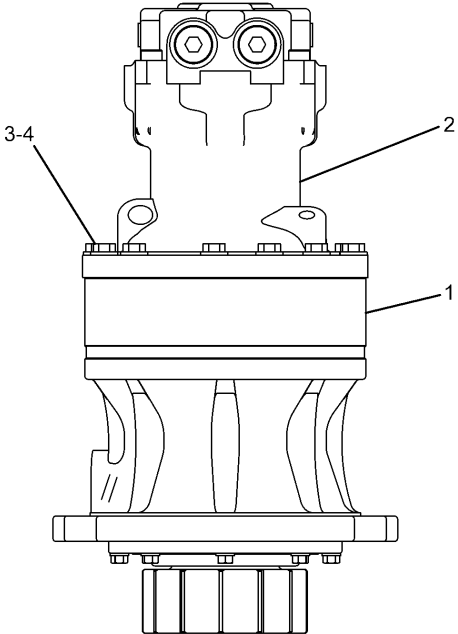
HYDRAULIC SYSTEM

NOTE	No.	PART No.	QTY	PART NAME	NOTE	No.	PART No.	QTY	PART NAME
	1	7K-1181	3	STRAP					
	2	087-4587	1	GROMMET					
	3	8C-8400	1	ELBOW					
	4	124-1008	1	GUARD					
	5	194-9077	1	TUBE AS					
	6	198-1978	4	HOSE AS					
	7	198-2330	1	GROMMET					
	8	202-1718	1	GUARD					
	9	208-3107	3	SPACER					
	10	211-6257	1	ELBOW					
	11	266-7940	1	ROD AS					
		225-4539	1	WASHER					
		289-7909	1	ROD					
	12	266-7941	1	BRACKET AS					
	13	194-9041	2	ELBOW					
	14	194-9040	1	ELBOW					
	15	285-2593	2	SPACER					
	16	285-2616	2	SPACER					
	17	285-2621	1	GROMMET					
	18	285-2622	1	GROMMET					
	19	285-2623	2	SUPPORT AS					
	20	286-6476	1	BRACKET AS					
	21	296-6944	1	TUBE AS					
	22	296-6946	1	SUPPORT AS					
	23	296-6948	1	PLATE					
	24	319-9902	1	HOSE AS					
	25	319-9986	1	SPACER					
	26	096-5766	2	CLAMP					
	27	6V-9007	1	ELBOW					
	28	6V-9200	1	ELBOW					
	29	8T-6876	1	ELBOW					
	30	6V-9851	1	ELBOW					
	31	6V-8724	1	ELBOW					
	32	8T-0404	1	ELBOW					
	33	6V-8782	1	TEE					
	34	3D-2824	7	SEAL-O-RING (ID=23.47mm)					
	35	5P-7468	1	CLIP					
	36	5P-7469	1	CLIP					
	37	6V-1874	1	GROMMET					
	38	6V-9746	6	SEAL-O-RING (OD=22.50mm)					
	39	7J-9108	7	SEAL-O-RING (OD=19.28mm)					
	40	8T-4121	6	WASHER					
	41	8T-4136	2	BOLT (L=25mm)					
	42	8T-4137	2	BOLT (L=20mm)					
	43	8T-4139	4	BOLT (L=30mm)					
	44	8T-4192	5	BOLT (L=25mm)					
	45	8T-4223	9	WASHER					
	46	8T-6466	2	BOLT (L=60mm)					
	47	3J-7354	1	SEAL-O-RING (ID=8.92mm)					
	48	6V-8397	2	SEAL-O-RING (OD=12.83mm)					
	49	6V-8398	4	SEAL-O-RING (OD=16.03mm)					
	50	3K-0360	1	SEAL-O-RING (ID=16.36mm)					
	51	3J-1907	2	SEAL-O-RING (ID=11.89mm)					

H99898E 02

282-7225 LINES GP-BOOM CYLINDER

HYDRAULIC SYSTEM



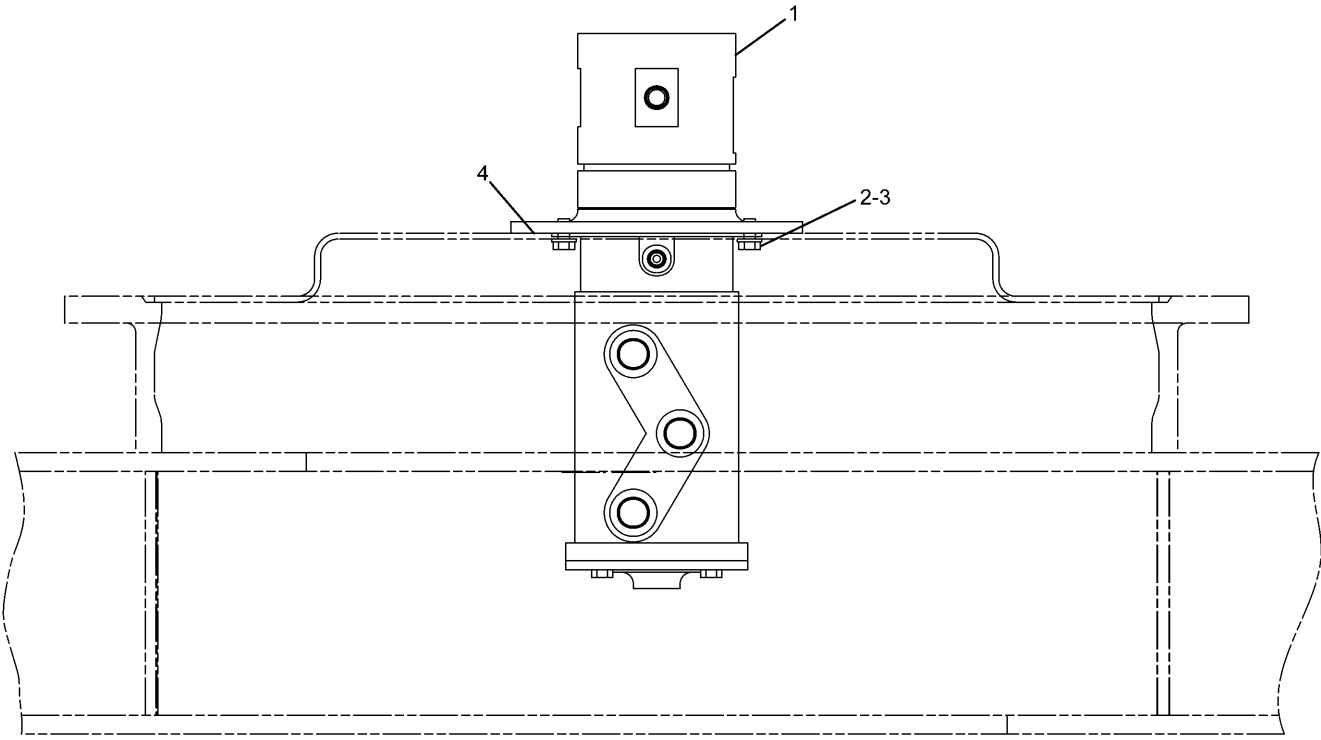
NOTE	No.	PART No.	QTY	PART NAME
Y	1	169-5549	1	DRIVE GP
Y	2	274-2636	1	MOTOR GP
	3	8T-4223	12	WASHER
	4	8T-5041	12	BOLT (L=120mm)

Y-SEE SEPARATE ILLUSTRATION

H98469E 01

267-6845 DRIVE GP-SWING
 With Motor
 169-5549-Page450,274-2636-Page452

HYDRAULIC SYSTEM



NOTE	No.	PART No.	QTY	PART NAME	NOTE	No.	PART No.	QTY	PART NAME
Y	1	162-4695	1	SWIVEL GP					
	2	8T-4121	4	WASHER					
	3	8T-4137	4	BOLT (L=20mm)					
B	4	1U-8846		GASKET MAKER... (2ml)					

B—USE AS REQUIRED
 Y—SEE SEPARATE ILLUSTRATION

HA0274E 01

296-7225 SWIVEL & MOUNTING GP
 Part of 260-7211—Page643
 162-4695—Page459
 An Attachment

HYDRAULIC SYSTEM

NOTE	No.	PART No.	QTY	PART NAME	NOTE	No.	PART No.	QTY	PART NAME
	1	165-9431	1	PLATE					
	2	41-6365	1	JOINT					
	3	118-4087	4	SPRING					
	4	165-9444	2	SEAT					
	5	096-1628	4	PLUG					
	6	165-9436	2	SEAT					
	7	165-9460	2	SPRING					
	8	165-9461	4	SPRING					
	9	165-9439	1	BUSHING					
	10	165-9448	1	SEAL-O-RING (ID=84.50mm)					
	11	168-0794	1	PLATE					
	12	096-4498	2	WASHER					
	13	6V-8337	2	BOLT (L=35mm)					
	14	171-0087	1	BELLOW					
	15	5B-9304	2	SCREW					
	16	7Y-0468	1	PIN					
	17	094-0876	4	SEAL					
B	18	099-6137	4	WASHER (T=0.2mm)					
	19	165-9442	2	SPRING					
	20	165-9435	2	SEAT					
	21	095-1586	4	SEAL-O-RING (ID=19.80mm)					
	22	165-9443	2	SEAT					
	23	165-9438	1	PLATE					
	24	118-4086	4	ROD					
	25	131-5915	1	NUT					

B-USE AS REQUIRED

H92731E 02

206-3305 VALVE GP-PILOT
 Part of 259-7765-Page461,259-7764-Page462
 An Attachment

HYDRAULIC SYSTEM

NOTE	No.	PART No.	QTY	PART NAME	NOTE	No.	PART No.	QTY	PART NAME
	1	096-6166	2	WASHER					
	2	095-0728	2	SCREW					
	3	8T-4121	12	WASHER					
	4	8T-4136	4	BOLT (L=25mm)					
	5	8T-4191	8	BOLT (L=16mm)					
	6	142-5546	2	KNOB					
	7	117-6356	2	STEP AS					
	8	122-9610	2	STEP					
	9	170-9499	1	LEVER AS (LH)					
	10	170-9498	1	LEVER AS (RH)					
	11	122-9608	1	PEDAL					
	12	117-6350	1	PEDAL AS (RH)					
	13	122-9609	1	PEDAL					
	14	117-6349	1	PEDAL AS (LH)					

H70098E 02

170-9497 CONTROL GP-PILOT OPERATED HYD

HYDRAULIC SYSTEM

NOTE	No.	PART No.	QTY	PART NAME	NOTE	No.	PART No.	QTY	PART NAME
	1	095-1578	1	SEAL-O-RING (ID=9.80mm)					
	2	095-1696	2	SEAL-O-RING (ID=24.40mm)					
	3	095-1698	5	SEAL-O-RING (ID=29.40mm)					
	4	197-0145	1	PLUG					
	5	095-1582	1	SEAL-O-RING (ID=13.80mm)					
	6	095-1585	1	SEAL-O-RING (ID=17.80mm)					
	7	71-7192	2	PLUG					
	8	215-4855	2	VALVE AS					
	9	095-1700	3	SEAL-O-RING (ID=34.40mm)					
	10	197-0168	3	COVER					
	11	270-5981	3	VALVE GP					
	12	71-7208	3	VALVE					
	13	71-7207	3	SPRING					
	14	095-1586	3	SEAL-O-RING (ID=19.80mm)					
	15	71-7206	3	PLUG					
Y	16	197-0213	1	VALVE GP					
	17	71-7204	3	SEAL-O-RING (ID=35.80mm)					
	18	197-0170	3	COVER					
Y	19	309-9990	1	STEM AS					
	20	197-0225	2	PLUG AS					
Y	21	197-0173	1	VALVE GP					
	22	197-0169	1	VALVE AS					
	23	71-7235	1	PLUG					
	24	095-1592	1	SEAL-O-RING (ID=23.70mm)					
	25	285-1506	1	VALVE					
	26	285-1507	1	SPRING					

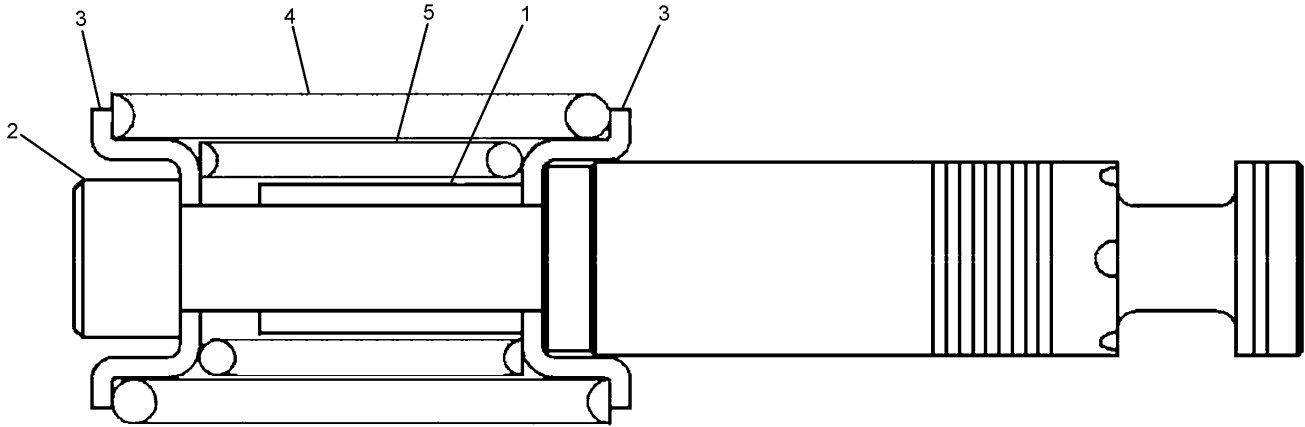
Y-SEE SEPARATE ILLUSTRATION

H99858E 01

270-5960 VALVE GP-MAIN CONTROL (3/5)

Part of 285-1759-Page480
197-0213-Page493,197-0173-Page495,309-9990-Page500

HYDRAULIC SYSTEM



NOTE	No.	PART No.	QTY	PART NAME	NOTE	No.	PART No.	QTY	PART NAME
	1	297-0366	1	STOPPER					
	2	197-0148	1	BOLT					
	3	71-7203	2	SEAT					
	4	197-0151	1	SPRING					
	5	197-0150	1	SPRING					

H98377E 01

285-1505 VALVE GP-CONTROL
Part of 270-5960-Page491

MEMORANDA

HYDRAULIC SYSTEM

NOTE	No.	PART No.	QTY	PART NAME	NOTE	No.	PART No.	QTY	PART NAME
	1	6V-8202	6	BOLT (L=16mm)					
	2	095-1590	1	SEAL-O-RING (ID=21.80mm)					
	3	095-0965	7	PLUG					
	4	1F-0425	1	BALL					
	5	126-9993	2	SCREW					
	6	6V-3938	4	BOLT (L=20mm)					
	7	171-0185	1	COVER					
	8	085-7081	4	NEEDLE					
	9	171-0184	1	SPRING					
	10	8T-9533	1	SETSCREW					
	11	006-6803	1	BALL					
	12	171-0183	1	COVER					
	13	095-1710	2	SEAL-O-RING (ID=79.40mm)					
	14	6I-6923	1	SEAL					

H76676E 01

165-9603 VALVE GP-PILOT
 Part of 282-7283-Page423
 An Attachment

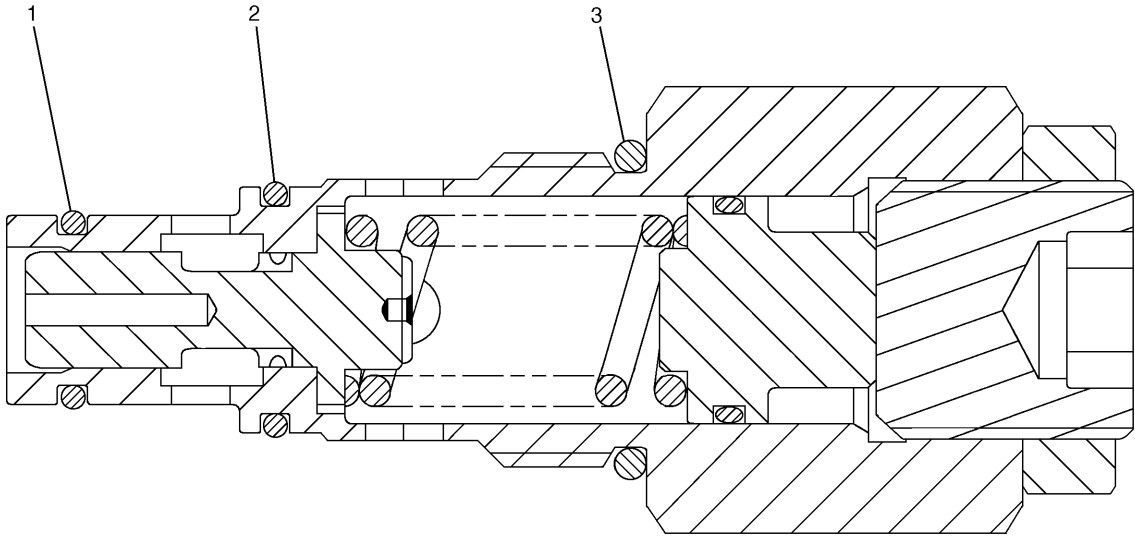
HYDRAULIC SYSTEM

NOTE	No.	PART No.	QTY	PART NAME	NOTE	No.	PART No.	QTY	PART NAME
	1	71-8084	3	PLUG					
	2	5B-9304	2	SCREW					
	3	095-1573	1	SEAL-O-RING (ID=5.80mm)					
	4	095-1584	1	SEAL-O-RING (ID=15.80mm)					
	5	095-1589	1	SEAL-O-RING (ID=21.70mm)					
	6	095-1590	1	SEAL-O-RING (ID=21.80mm)					
	7	095-1592	1	SEAL-O-RING (ID=23.70mm)					
	8	201-9285	1	SEAT					
	9	201-9287	1	SPRING					
	10	201-9288	1	SPRING					
	11	201-9331	1	SCREW					
	12	201-9291	1	VALVE					
	13	197-0145	1	PLUG					
	14	201-9294	1	PLUG					
	15	201-9295	1	PLUG					
	16	201-9330	1	NUT					
	17	095-1582	1	SEAL-O-RING (ID=13.80mm)					
	18	7J-9108	1	SEAL-O-RING (OD=19.28mm)					

H99891E 00

297-0188 VALVE GP-PILOT
 BOOM LOWERING CONTROL
 Part of 282-7285-Page339
 An Attachment

HYDRAULIC SYSTEM



NOTE	No.	PART No.	QTY	PART NAME	NOTE	No.	PART No.	QTY	PART NAME
	1	095-1584	1	SEAL-O-RING (ID=15.80mm)					
	2	095-1590	1	SEAL-O-RING (ID=21.80mm)					
	3	095-1596	1	SEAL-O-RING (ID=28.70mm)					

H81796E 00

215-4909 VALVE GP-RELIEF
 Direct Operated
 Part of 289-7836-Page306,188-2084-Page307

OPERATOR STATION

NOTE	No.	PART No.	QTY	PART NAME	NOTE	No.	PART No.	QTY	PART NAME
Y	1	273-5171	1	DOOR GP					
Y	2	273-5214	1	HATCH GP					
	3	196-1469	1	GLASS					
	4	196-1470	1	SEAL					
	5	210-5808	1	SEAL					
	6	196-1472	1	SEAL					
	7	196-1473	1	SEAL					
	8	196-1474	1	SEAL					
	9	207-0204	1	SEAL					
	10	273-5173	1	LINER					
	11	185-8205	12	CLIP					
	12	273-5174	1	VISOR AS					
		235-8929	2	HANDLE					
	13	207-0150	1	RAIL					
	14	207-0151	1	RAIL					
	15	196-1475	1	RAIL					
	16	273-5198	1	COVER					
	17	196-1479	2	STRIKER					
	18	196-1526	2	SHIM (T=1.60mm)					
	19	127-3947	2	BUMPER					
	20	196-1482	2	BRACKET					
	21	139-6403	1	STOPPER					
	22	127-3928	2	STRIKER					
	23	41-4282	2	STOPPER					
	24	8T-4195	2	BOLT (L=30mm)					
	25	207-0211	4	BOLT					
	26	9X-2041	4	SCREW					
	27	8T-4189	4	BOLT (L=20mm)					
	28	087-8484	1	GROMMET					
	29	9X-2043	1	SCREW					
	30	273-5181	1	HANDLE AS					
	31	196-1493	1	COVER					
	32	273-5183	1	COVER AS					
	33	273-5190	1	COVER					
	34	273-5164	1	CAP					
	35	128-2135	1	SCREW					
	36	121-1125	4	PLUG					
	37	095-1207	4	NUT					
	38	8T-4133	1	NUT					
	39	8T-4224	7	WASHER					
	40	8T-4223	4	WASHER					
	41	8T-4121	2	WASHER					
	42	9X-2042	23	SCREW					
	43	170-9360	1	GROMMET					
	44	5C-7261	3	NUT					

Y-SEE SEPARATE ILLUSTRATION

H99104E 03

259-7271 CAB GP (BASIC) (1/3)
 Part of 259-7270-Page542
 273-5171-Page554,273-5214-Page562
 An Attachment

OPERATOR STATION

NOTE	No.	PART No.	QTY	PART NAME	NOTE	No.	PART No.	QTY	PART NAME
	1	127-3991	7	SNAP					
	2	196-1444	1	LOCK AS					
	3	9X-2042	25	SCREW					
	4	201-4528	2	SEAL					
	5	196-1446	1	ROLLER AS					
	6	8T-4224	7	WASHER					
	7	8T-4189	7	BOLT (L=20mm)					
Y	8	196-1436	1	WINDOW GP					
	9	196-1541	7	SPACER					
	10	207-0212	1	TAPE					
	11	196-1542	1	SEAL					
	12	139-6497	2	CLIP					
	13	196-1438	1	SEAL					
	14	207-0213	2	BOLT (L=10mm)					
	15	196-1439	1	HANDLE AS					
	16	196-1441	1	LOCK AS					
	17	196-1437	1	GLASS					
	18	196-1443	1	LOCK AS					
	19	196-1445	1	ROLLER AS					
	20	196-1538	1	SHIM					
	21	132-7627	2	BUMPER					
	22	196-1449	1	BRACKET					
	23	8T-4244	4	NUT					
	24	8T-4192	4	BOLT (L=25mm)					
	25	8T-4223	4	WASHER					
	26	273-5204	1	HANDLE AS					
	27	9X-2043	2	SCREW					
	28	196-1447	1	ROLLER AS					
	29	196-1462	1	COVER					
	30	196-1460	1	ROD					
	31	196-1451	1	LINK AS					
	32	196-1457	1	ROD					
	33	196-1458	1	ROD					
	34	5C-8312	6	NUT					
	35	096-6166	6	WASHER					
	36	196-1456	1	ROD					
	37	196-1455	1	ROD					
	38	196-1442	1	LINK AS					
	39	095-0736	4	SCREW					
	40	196-1454	1	ROD					
	41	196-1450	1	LINK AS					
	42	196-1452	1	ROD					
	43	196-1453	1	ROD					
	44	196-1463	1	COVER					
	45	196-1539	1	SEAL					
	46	196-1461	1	CLIP					
	47	196-1459	1	ROD					
	48	196-1448	1	BRACKET					
	49	127-3959	2	SHIM (T=1.00mm)					
	50	127-3958	2	STRIKER					

Y-SEE SEPARATE ILLUSTRATION

H92398E 00

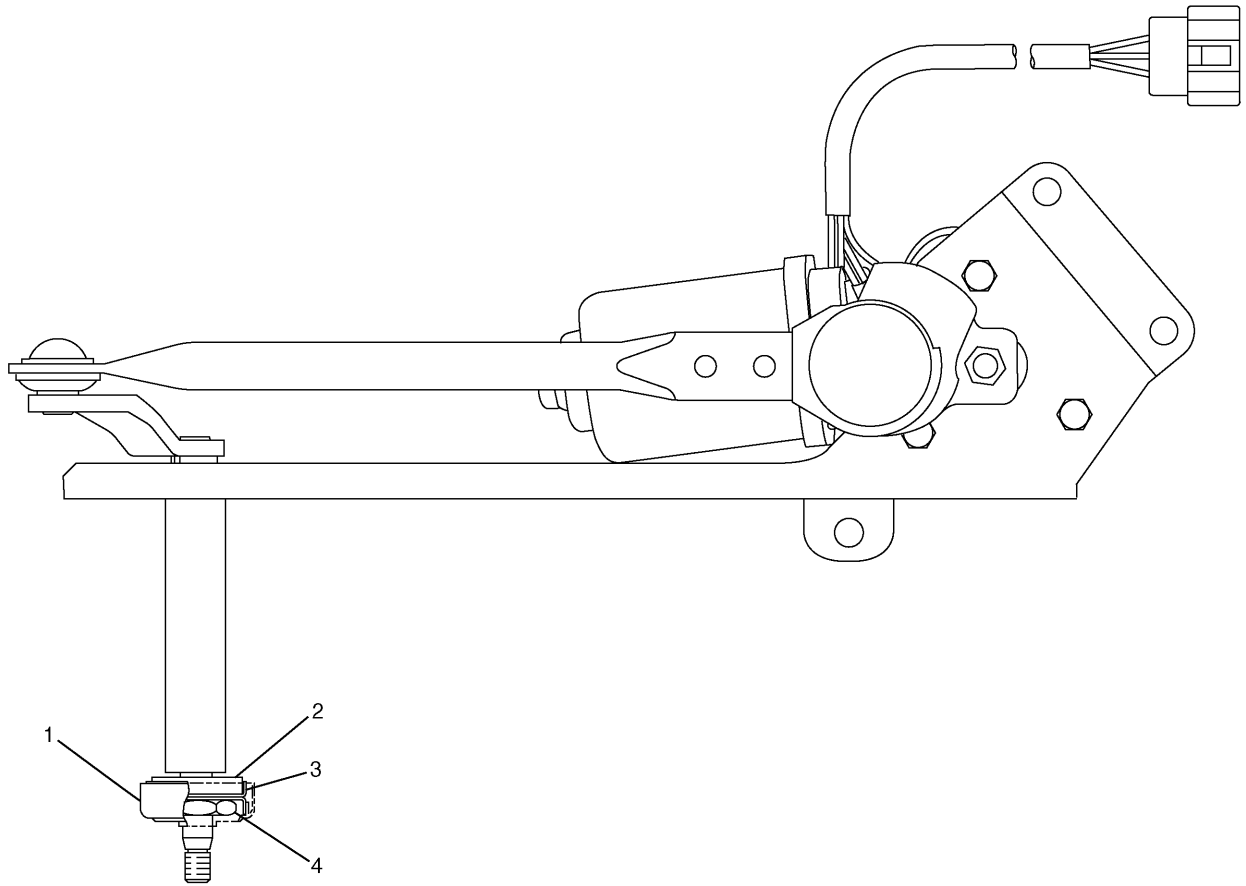
273-5171 DOOR GP-CAB

Part of 259-7271-Page545

196-1436-Page558

An Attachment

OPERATOR STATION



NOTE	No.	PART No.	QTY	PART NAME	NOTE	No.	PART No.	QTY	PART NAME
	1	201-4503	1	CAP					
	2	196-1518	1	PACKING					
	3	196-1521	2	WASHER					
	4	196-1522	1	NUT					

H78797E 01

196-1505 MOTOR AS-WINDOW WIPER
 Part of 273-5344-Page564
 An Attachment

OPERATOR STATION

Consists of :

			Page
1	189-2720	GUARD GP-FRONT WINDOW	576
1	305-0334	BOSS AS	574

H99402E 00

305-0335 GUARD AR-FRONT WINDOW
Full Net
An Attachment

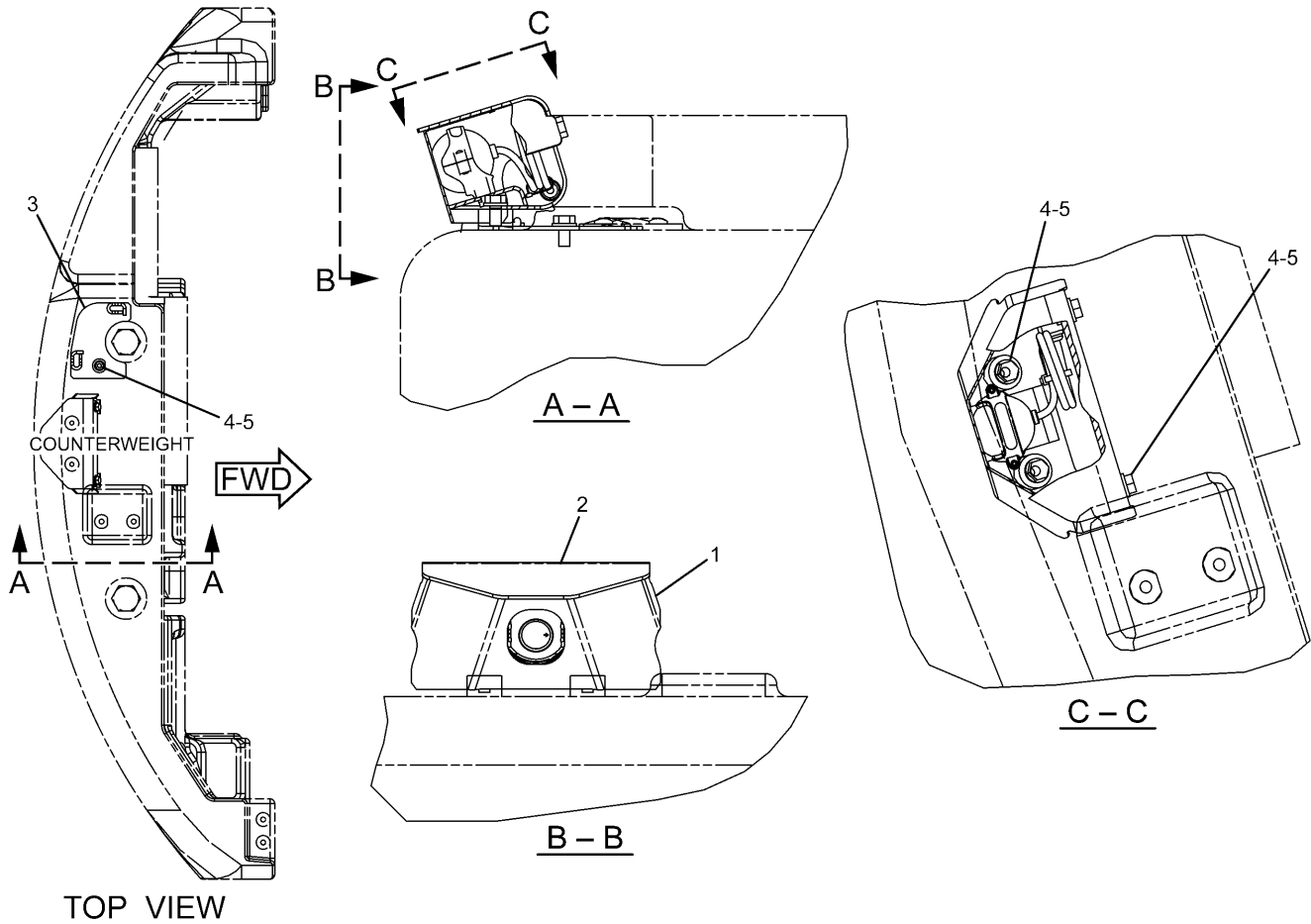
Consists of :

			Page
1	189-2719	GUARD GP-FRONT WINDOW	577
1	305-0334	BOSS AS	574

H99400E 00

305-0336 GUARD AR-FRONT WINDOW
Half Net
An Attachment

OPERATOR STATION



NOTE	No.	PART No.	QTY	PART NAME	NOTE	No.	PART No.	QTY	PART NAME
Y	1	313-7833	1	BRACKET GP					
	2	320-5396	1	COVER					
	3	333-5082	1	SHEET AS					
	4	8T-4121	5	WASHER					
	5	8T-4137	5	BOLT (L=20mm)					

Y-SEE SEPARATE ILLUSTRATION

HA1270E 00

330-1319 MOUNTING GP
 Part of 330-8728-Page580.04
 313-7833-Page580.07
 An Attachment

OPERATOR STATION

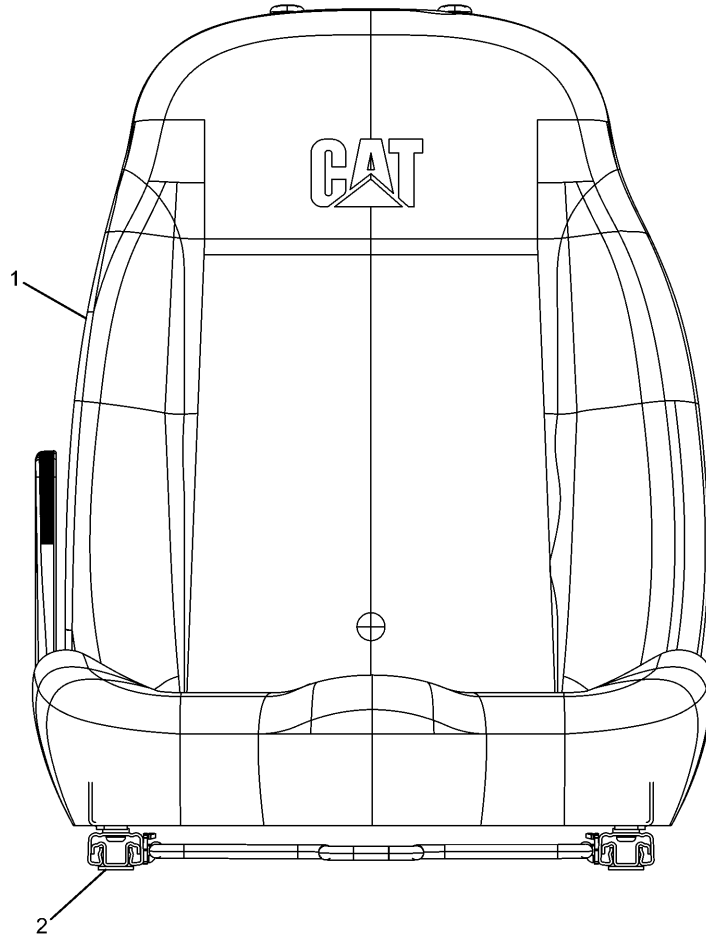
NOTE	No.	PART No.	QTY	PART NAME	NOTE	No.	PART No.	QTY	PART NAME
	1	128-2135	5	SCREW					
	2	171-7325	3	SCREW					
	3	234-6579	6	NUT					
	4	234-6580	4	CAP					
	5	234-6603	1	COVER					
	6	234-6605	1	COVER					
	7	234-6608	1	COVER					
	8	234-6609	1	COVER					
	9	234-6610	1	COVER					
	10	234-6612	1	COVER					
	11	234-6614	1	COVER					
	12	235-8914	4	NUT					
	13	235-8965	1	GUARD					
	14	245-7790	3	SCREW					
Y	15	245-7932	1	LEVER AS					
	16	245-7948	7	SCREW					
	17	259-7202	1	ASHTRAY					
Y	18	259-7347	1	ARMREST GP					
	19	284-4570	1	SUPPORT AS					
	20	9X-2041	3	SCREW					
	21	9X-2042	2	SCREW					

Y-SEE SEPARATE ILLUSTRATION

H93417E 00

284-4569 CONSOLE GP
 Left Hand
 Part of 259-7246-Page584
 259-7347-Page591,245-7932-Page592

OPERATOR STATION

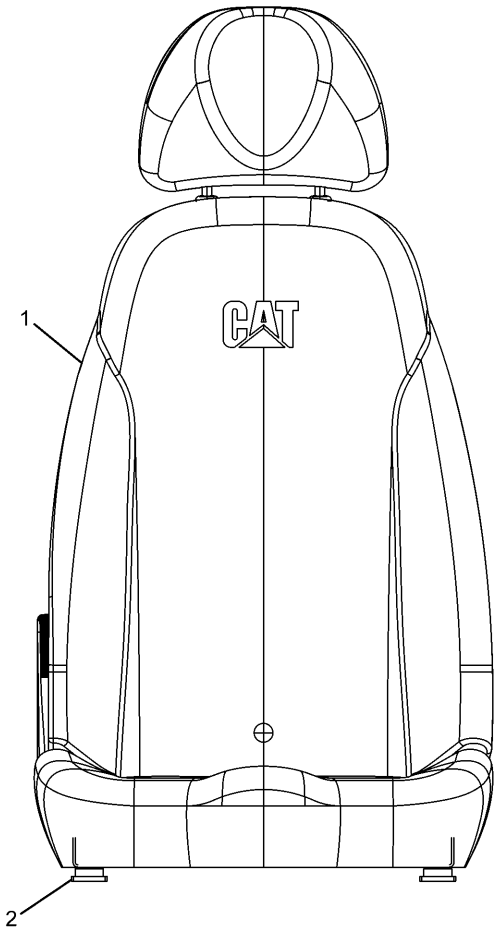


NOTE	No.	PART No.	QTY	PART NAME	NOTE	No.	PART No.	QTY	PART NAME
	1	284-4479	1	SEAT KIT					
	2	284-4484	1	ADJUSTER KIT					

H97854E 01

273-5417 SEAT GP
 Part of 273-5416-Page596
 An Attachment

OPERATOR STATION



NOTE	No.	PART No.	QTY	PART NAME	NOTE	No.	PART No.	QTY	PART NAME
	1	284-4481	1	SEAT KIT					
	2	284-4483	1	PLINTH KIT					

H97856E 01

273-5423 SEAT GP
 Part of 273-5422-Page606
 An Attachment

OPERATOR STATION

Consists of :

			Page
1	284-4465	DUCT GP-AIR.....	623
1	293-1235	HEATER GP-MOUNTING.....	628
1	293-1236	LINES GP-HEATER.....	630

HA0560E 00

316-8942 HEATER AR
An Attachment

OPERATOR STATION

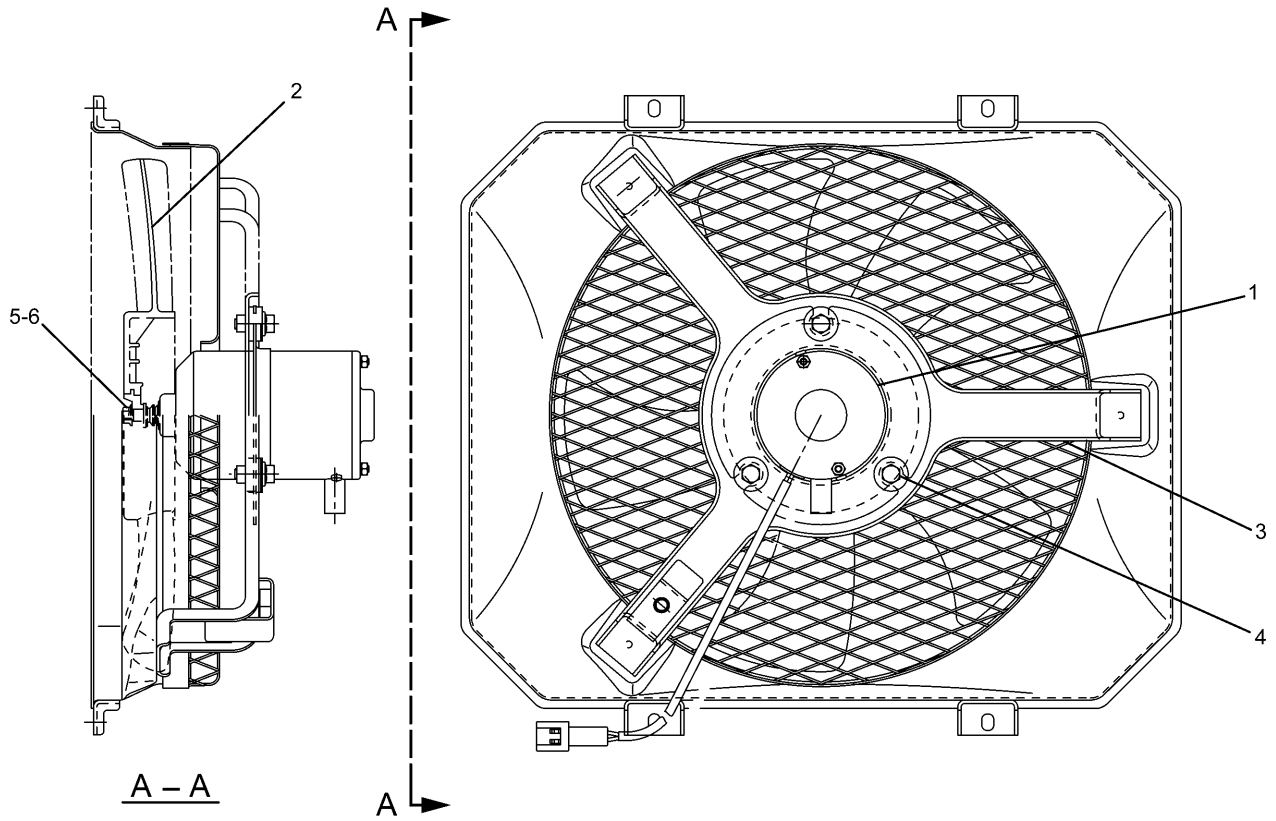
NOTE	No.	PART No.	QTY	PART NAME	NOTE	No.	PART No.	QTY	PART NAME
	1	41-4580	1	NIPPLE	E	44	5P-0767		HOSE...(130cm)
	2	71-0375	1	ELBOW	E	45	5P-0767		HOSE...(52cm)
	3	122-9605	2	JOINT	E	46	5P-0767		HOSE...(42cm)
	4	155-7024	2	SPACER	E	47	225-5714		GUARD...(35cm)
	5	229-8997	1	RECEIVER AS	E	48	225-5707		GUARD...(40cm)
	6	229-8998	1	BRACKET AS					
	7	235-9014	8	CLAMP					
	8	284-4434	1	HOSE AS					
		113-3468	1	SEAL-O-RING (ID=13.80mm)					
		245-7851	1	PLUG					
	9	284-4435	1	BRACKET AS					
	10	284-4443	1	BRACKET AS					
	11	293-1233	1	HOSE AS					
		113-3468	2	SEAL-O-RING (ID=13.80mm)					
	12	305-0441	2	BAND (HS)					
	13	305-0442	2	BAND (HR)					
	14	316-8801	1	HOSE AS					
		113-3467	1	SEAL-O-RING (ID=11.00mm)					
		245-7850	1	PLUG					
	15	316-8802	1	HOSE AS					
		113-3467	2	SEAL-O-RING (ID=11.00mm)					
E		145-8495		GUARD...(35cm)					
	16	316-8803	1	HOSE AS					
		121-7063	2	SEAL-O-RING (ID=6.70mm)					
E		71-7439		GUARD...(40cm)					
	17	316-8804	1	HOSE AS					
		121-7063	2	SEAL-O-RING (ID=6.70mm)					
	18	095-0827	2	LOCKWASHER					
	19	225-5800	2	CLAMP					
	20	4S-1962	4	CLIP					
	21	5C-9553	4	BOLT (L=16mm)					
	22	5K-3294	3	CLIP					
	23	7X-7729	3	WASHER					
	24	5P-9297	1	CLIP					
	25	6D-1641	5	CLIP					
	26	6D-4244	2	CLIP					
	27	6V-7357	4	BOLT (L=25mm)					
	28	8M-2773	7	CLIP					
	29	8T-3647	2	BOLT (L=80mm)					
	30	8T-4121	16	WASHER					
	31	8T-4136	5	BOLT (L=25mm)					
	32	8T-4137	13	BOLT (L=20mm)					
	33	8T-4191	1	BOLT (L=16mm)					
	34	8T-4224	5	WASHER					
	35	8T-4971	1	BOLT (L=30mm)					
	36	8T-7547	3	BOLT (L=30mm)					
	37	9X-8256	9	WASHER					
E	38	305-0432		GUARD...(10cm)					
E	39	225-5714		GUARD...(20cm)					
E	40	225-5714		GUARD...(20cm)					
E	41	225-5714		GUARD...(40cm)					
E	42	5P-0767		HOSE...(200cm)					
	43	225-5799	2	HOSE					

E—ORDER BY THE CENTIMETER

HA0351E 01

316-8807 LINES GP-AIR CONDITIONER

OPERATOR STATION



NOTE	No.	PART No.	QTY	PART NAME	NOTE	No.	PART No.	QTY	PART NAME
	1	236-1908	1	MOTOR AS					
	2	236-1909	1	FAN					
	3	316-8904	1	GUARD AS					
	4	214-3967	3	BOLT					
	5	8T-4205	1	WASHER					
	6	140-4722	1	NUT					

HA0271E 00

316-8903 MOTOR AS-FAN
Part of 316-8809-Page635.01

IMPLEMENTS

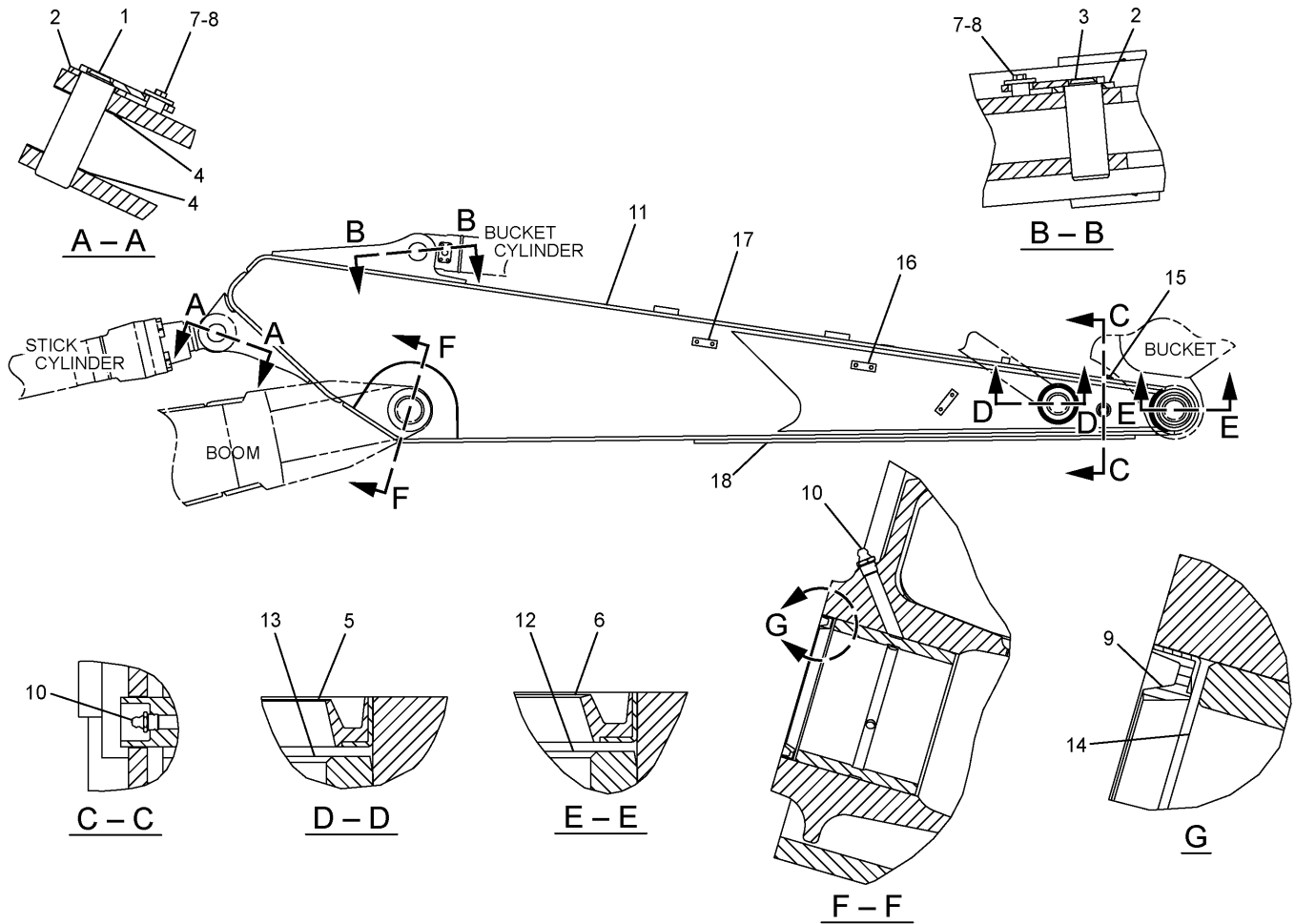
NOTE	No.	PART No.	QTY	PART NAME	NOTE	No.	PART No.	QTY	PART NAME
	1	1R-6225	1	PIN AS					
	2	1R-6226	1	PIN AS					
	3	4I-3309	2	SPACER					
B	4	093-0115	1	SHIM (T=2.00mm)					
	5	093-0357	1	WASHER					
B	6	133-2425	1	SHIM (T=0.50mm)					
	7	166-1486	4	SHIM (T=2.00mm)					
	8	172-3080	1	PIN					
	9	8T-4192	4	BOLT (L=25mm)					
	10	086-0297	1	WASHER					
	11	086-0298	1	WASHER					
	12	095-6824	2	PLATE					
	13	099-3600	4	WASHER					
	14	166-1494	2	SEAL					
	15	7X-2552	1	BOLT (L=30mm)					
	16	8T-4179	1	BOLT (L=20mm)					
	17	282-4499	1	BOOM AS					
	18	273-6814	2	BEARING					
	19	087-5841	3	PLATE					
	20	7Y-2579	2	BAR					
	21	7Y-3459	1	BOSS					

B-USE AS REQUIRED

H98165E 02

282-4498 BOOM GP
Part of 260-7189-Page637
An Attachment

IMPLEMENTS

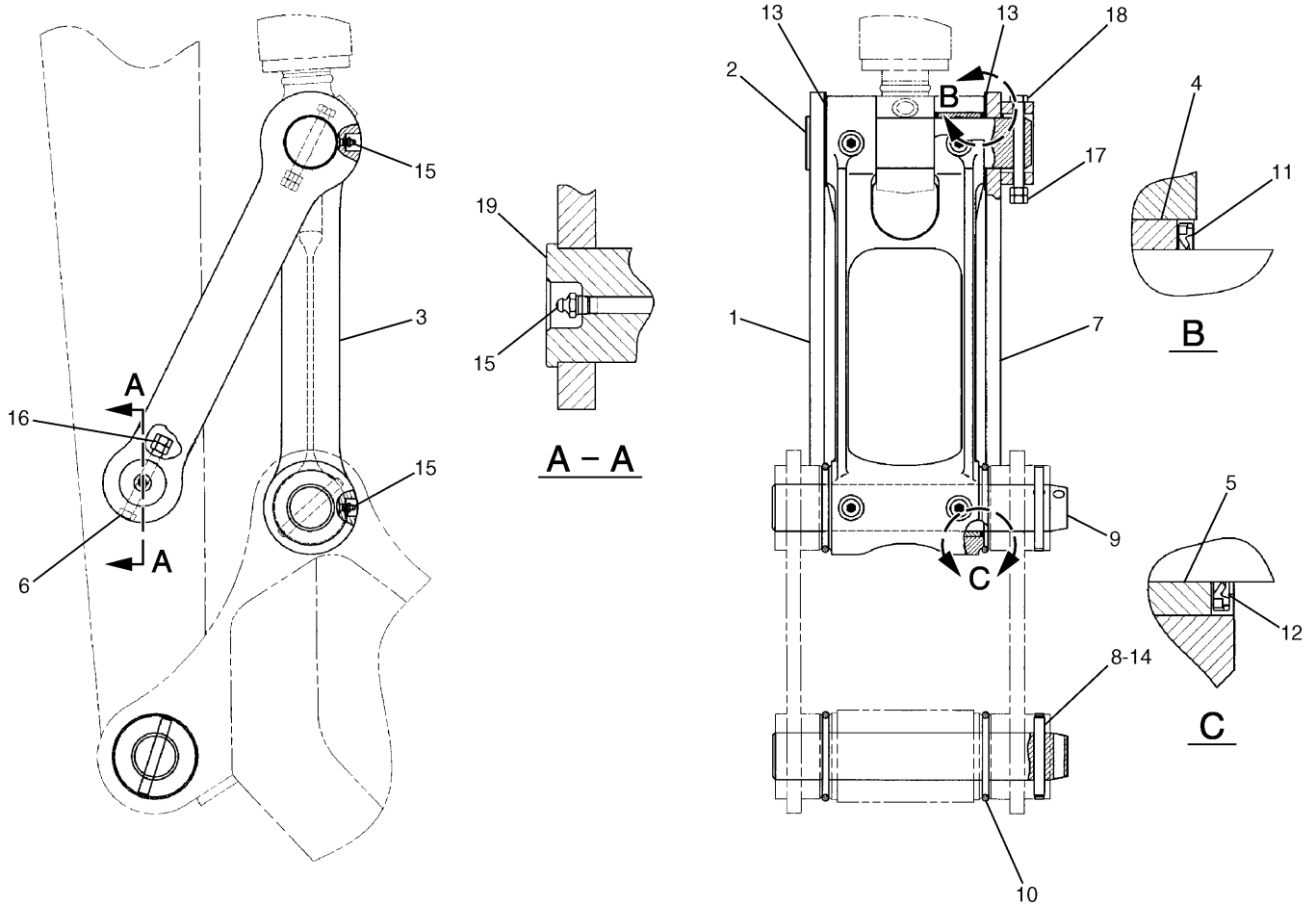


NOTE	No.	PART No.	QTY	PART NAME	NOTE	No.	PART No.	QTY	PART NAME
	1	1R-6225	1	PIN AS					
	2	093-0357	2	WASHER					
	3	127-3913	1	PIN AS					
	4	166-1481	2	SHIM (T=2.00mm)					
	5	166-1492	2	SEAL					
	6	248-7836	2	SEAL					
	7	8T-4179	2	BOLT (L=20mm)					
	8	086-0297	2	WASHER					
	9	166-1494	2	SEAL					
	10	3B-8489	3	FITTING					
	11	297-7482	1	STICK AS					
	12	229-1091	2	BEARING					
	13	229-1095	2	BEARING					
	14	273-6814	2	BEARING					
	15	7V-2882	1	PLATE AS					
	16	4I-0507	2	PLATE					
	17	5I-7148	2	PLATE AS					
	18	135-4114	1	PLATE					

H97899E 00

278-9297 STICK GP-HOE
Part of 260-7064-Page640
An Attachment

IMPLEMENTS

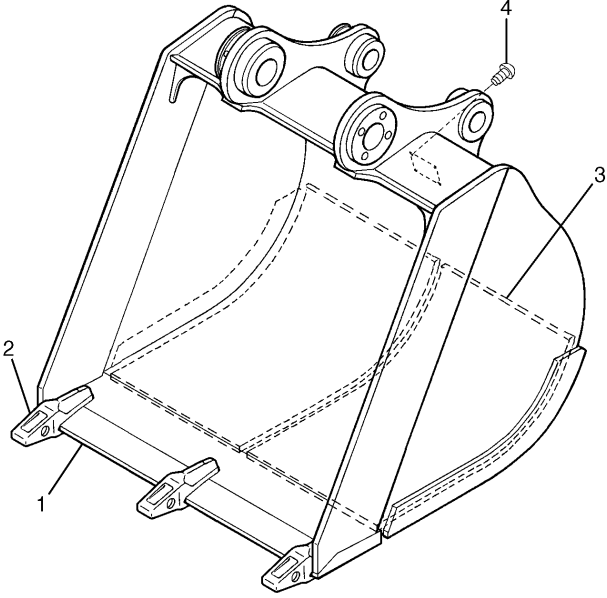


NOTE	No.	PART No.	QTY	PART NAME	NOTE	No.	PART No.	QTY	PART NAME
	1	248-7822	1	LINK					
	2	248-7820	1	PIN					
	3	248-7838	1	LINK AS					
	4	248-7835	2	BEARING					
	5	229-1092	2	BEARING					
	6	099-0707	1	BOLT (L=115mm)					
	7	248-7823	1	LINK AS					
	8	134-7178	2	PIN					
	9	086-0523	2	PIN					
	10	093-1342	4	SEAL-O-RING (ID=96.00mm)					
	11	235-7679	4	SEAL					
	12	248-7836	2	SEAL					
	13	166-1482	2	SHIM (T=2.00mm)					
	14	134-7179	2	RING					
	15	3B-8489	5	FITTING					
	16	096-4876	2	NUT					
	17	8T-4132	2	NUT					
	18	186-5644	1	BOLT (L=150mm)					
	19	71-6843	1	PIN					

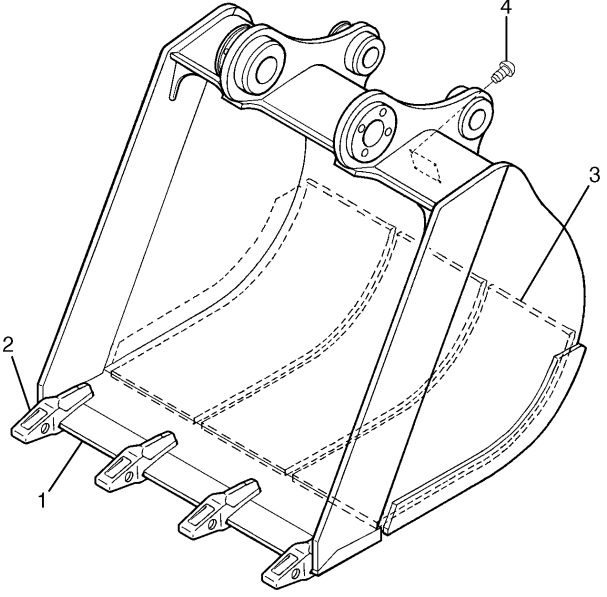
H87156E 00

248-7837 LINKAGE GP-BUCKET
Part of 260-7065-Page640
An Attachment

IMPLEMENTS

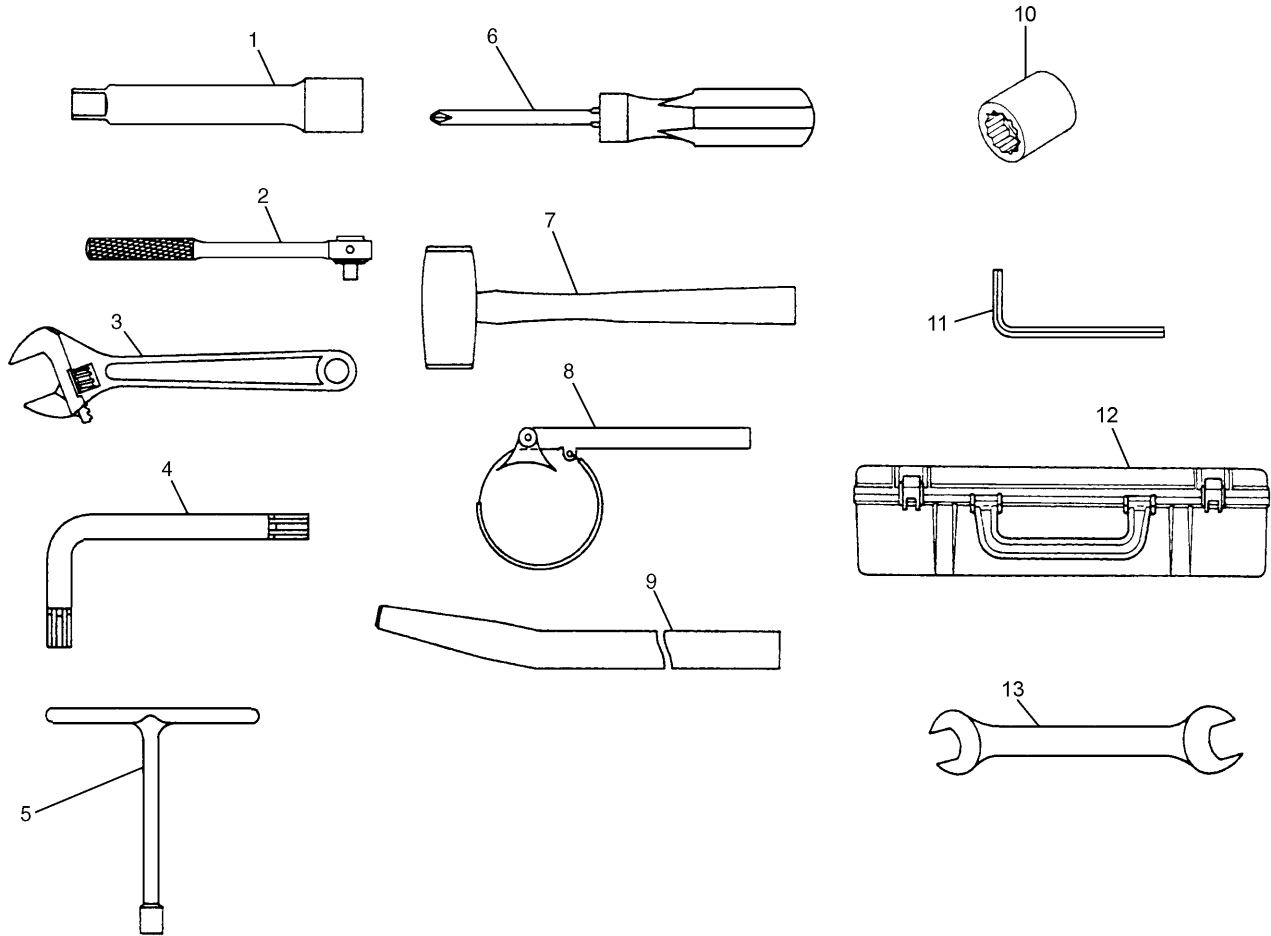
	NOTE	No.	PART No.	QTY	PART NAME
		1	250-6440	1	EDGE AS
		2	7Y-0254	3	ADAPTER
		3	250-6465	2	PLATE
	B	4	4B-4158	4	SCREW
B-USE AS REQUIRED					
					H97636E 00

275-2811 BUCKET AS
 564MM Wide--0.32Cu.M.-Adapter Size J250
 Part of 250-6368-Page672
 An Attachment

	NOTE	No.	PART No.	QTY	PART NAME
		1	250-6462	1	EDGE AS
		2	7Y-0254	4	ADAPTER
		3	255-0317	3	PLATE
	B	4	4B-4158	4	SCREW
B-USE AS REQUIRED					
					H97637E 00

275-2816 BUCKET AS
 664MM Wide--0.38Cu.M.-Adapter Size J250
 Part of 250-6371-Page672
 An Attachment

SERVICE EQUIPMENT AND SUPPLIES

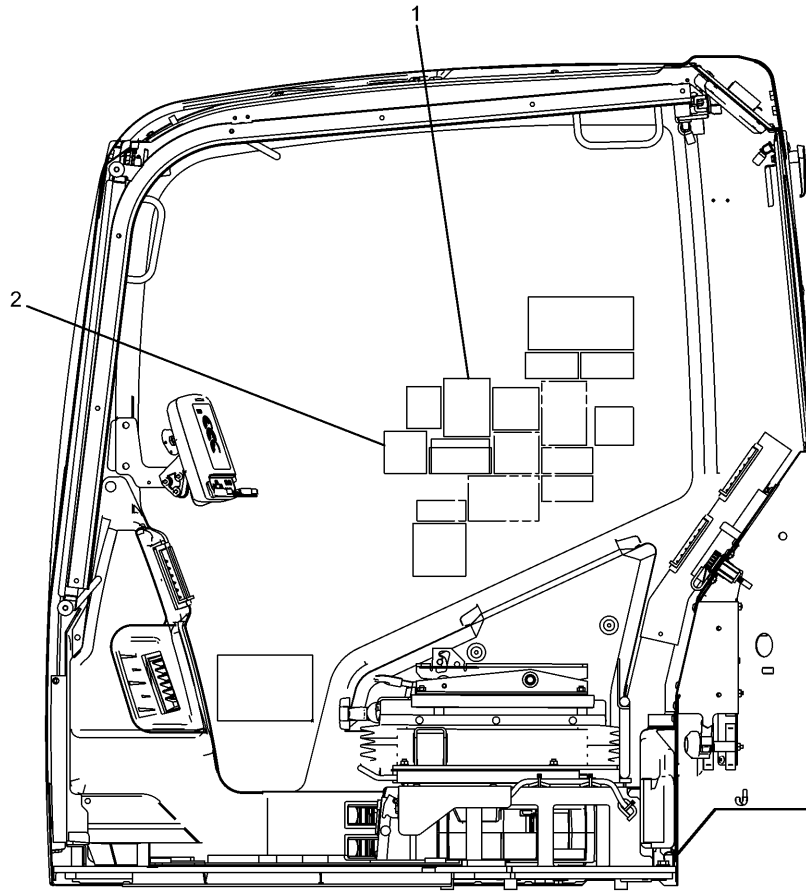


NOTE	No.	PART No.	QTY	PART NAME	NOTE	No.	PART No.	QTY	PART NAME
	1	099-3250	1	EXTENSION		13	099-3246	1	WRENCH (21MM × 24MM)
	2	095-1852	1	RATCHET					
	3	71-6395	1	WRENCH (200MM)					
	4	41-2604	1	WRENCH (6MM)					
		41-2605	1	WRENCH (10MM)					
	5	7Y-6108	1	WRENCH (11MM)					
	6	095-1855	1	SCREWDRIVER					
	7	095-1857	1	HAMMER					
	8	2P-8250	1	WRENCH AS					
		1P-0551	1	PIN					
		2P-8253	1	STRAP					
		6H-7378	1	RING					
	9	093-7638	1	BAR					
	10	095-1066	1	SOCKET (13MM)					
		099-3248	1	SOCKET (16MM)					
		099-3249	1	SOCKET (18MM)					
		095-1070	1	SOCKET (22MM)					
		096-8251	1	SOCKET (30MM)					
	11	095-1083	1	WRENCH (12MM)					
	12	7Y-0070	1	TOOLBOX					

H99465E 00

301-2603 TOOL GP
An Attachment

SERVICE EQUIPMENT AND SUPPLIES



NOTE	No.	PART No.	QTY	PART NAME	NOTE	No.	PART No.	QTY	PART NAME
	1	118-6054	1	FILM (NOTICE)					
	2	260-6945	1	FILM (CONTROLS)					

H98722E 00

264-8564 FILM GP
 Combined Function/2 Pumps
 Part of 270-5995-Page399
 An Attachment

PART NUMBER INDEX

Part.No	Page	Part.No	Page	Part.No	Page
51-7848	61		656	5P-4325	405
51-7862	45	5L-3233	63	5P-4924	73
51-7864	38	5L-4758	302		81
51-7867	48	5L-6326	47	5P-4961	62
51-7896	29	5P-0767	627	5P-5148	433
51-7933	59		631		435
51-7937	61	5P-1075	215		435.02
51-7941	60		246		437
51-7942	60	5P-1076	43		442
51-7985	192		63		445
51-7987	192		73	5P-5995	209
51-7997	192		180.03	5P-5998	217
51-8009	19		186	5P-7174	51
51-8010	48		225	5P-7175	73
51-8021	57		227	5P-7462	413
51-8022	57		229		417
51-8023	57		245		421
51-8056	48		250		429
51-8058	40		254	5P-7463	413
	77		256		417
51-8066	38		258		421
51-8067	35		259		429
51-8080	192		260	5P-7468	433
51-8086	192		261		435
51-8087	192		262		439
51-8088	192		285	5P-7469	433
51-8089	192		289		435
51-8090	192		349		439
51-8094	192		411	5P-7958	616
51-8095	192		579	5P-8196	43
51-8097	192	5P-1442	62	5P-8247	660
51-8098	192		73		662
51-8124	60	5P-2321	111		664
51-8270	85		140	5P-8309	238
51-8670	306	5P-3454	93		239
51-9368	91	5P-4115	91	5P-8500	79
5K-3294	627	5P-4116	91	5P-8874	339
5K-8451	395		196	5P-9297	205
5K-9090	361		215		627
	363		230	5P-9617	43
	390		343	5P-9909	51
	441		619	5Q-4212	385
5K-9243	269		629		386
	271		633		387

PART NUMBER INDEX

Part.No	Page	Part.No	Page	Part.No	Page
	423		363		545
	545		371		551
	547		373		581
	551		375	8T-4196	43
	553		411		55
	555		417		62
	557		421		336
	564		429		337
	619		433		340
	629		435		343
8T-4190	159		439		344
	203		555		345
	205		557		346
8T-4191	17		573		347
	19		576		367
	85		577		417
	89		645		421
	91		647		429
	117		649	8T-4197	43
	149	8T-4193	223	8T-4198	405
	153		580	8T-4199	196
	413	8T-4194	225		269
	477		245		271
	578		256	8T-4200	51
	582		297		64
	584		344		126
	593		345		253
	619		346		427
	623		347		635
	627		441	8T-4205	103
	629	8T-4195	53		635.01
	656		56		635.02
8T-4192	43		73	8T-4223	36
	73		87		37
	180.03		117		55
	186		309		87
	225		366		89
	227		368		150
	229		386		193
	245		387		206
	256		388		227
	317		397		229
	349		451		297
	361		518		300

PART NUMBER INDEX

Part.No	Page	Part.No	Page	Part.No	Page
114-0623	512		696		421
	534	118-9863	633		540
114-0750	330	118-9941	37	121-6304	540
	333	119-5026	131	121-7063	627
114-0753	332		179	122-5420	346
114-0755	331		569		347
	334		619	122-5500	346
	335		629		347
114-8223	451	119-5362	457	122-9605	627
114-8224	451	119-5364	457		631
114-8249	459	119-5388	515	122-9608	477
114-8250	459	119-5389	515	122-9609	477
115-3667	417	119-5391	515	122-9610	477
	423	119-5392	515	122-9611	478
115-8647	245	119-5445	334	123-2002	331
116-0114	103		335	123-2003	300
116-0118	43	119-9947	541		303
	85	120-0044	214	123-2143	453
	87		215	123-2145	453
	89	120-5054	698	123-2430	411
	91	120-7199	284		532
	117	120-8071	143	123-2431	408
	149	120-9027	592		413
	153	121-0307	43		532
	156	121-0987	166	123-2511	437
	159	121-1125	143	123-2552	532
	175		545	123-2729	355
	203		553		356
	348	121-1168	132	123-9950	334
116-0243	201	121-1173	132		335
	209	121-1241	117	124-0838	357
116-3522	300	121-1491	509	124-1008	411
117-6306	547		511		439
	553		512	124-1212	395
117-6349	477	121-5203	271	124-1305	355
117-6350	477	121-5204	271		356
117-6356	477	121-6217	336	124-4003	131
118-4086	467		337		179
	473	121-6219	340	124-4009	475
118-4087	467	121-6220	340	124-4010	474
	473		343	124-4042	621
118-4569	441	121-6222	344	124-4046	621
118-6054	694	121-6223	344	125-1551	334
	695	121-6303	417		335

PART NUMBER INDEX

Part.No	Page	Part.No	Page	Part.No	Page
201-9271	489	204-1086	221		551
201-9283	529	204-1611	85	207-0209	547
201-9285	524		89		553
	527		91	207-0210	166
	529		126		547
201-9287	524		150		553
	527		163	207-0211	545
	529		172		551
201-9288	524	204-1673	168	207-0212	555
	527	204-1936	91		557
	529	204-1974	521	207-0213	555
201-9290	529	204-1976	521		557
201-9291	524	204-2762	301	207-0214	560
	527	204-4579	11	207-0215	560
	529		210	207-0234	562
201-9294	524	205-0826	179	207-0235	562
	527	205-3717	414	207-0236	551
	529		417	207-0237	547
201-9295	524		418		553
	527		419	207-0238	560
	529		421	207-0241	562
201-9296	529		424	207-0242	562
201-9299	301		437	207-0268	576
201-9330	524	205-4285	166	207-2985	315
	527	205-6716	43	207-6269	441
	529	205-6788	31	207-6403	297
201-9331	524	205-8257	179	207-6404	297
	527	206-3288	521	208-3096	691
	529	206-3290	521	208-3106	445
201-9394	521	206-3305	461	208-3107	439
202-1487	698		462	208-3110	433
202-1548	643		466		435
	692	206-3336	478	208-3238	411
202-1718	439		523	208-3286	231
202-1741	248	206-5162	177	208-3287	231
202-1766	229	207-0150	545		232
202-4004	85	207-0151	545	209-5582	194
	87	207-0204	545	209-5931	529
202-7000	361		551	209-6002	298
202-7144	343	207-0205	549	210-2957	668
204-0894	53		551	210-5784	577
204-0991	53	207-0207	549	210-5808	545
204-1002	53		551		551
204-1071	63	207-0208	547	210-5830	562

PART NUMBER INDEX

Part.No	Page	Part.No	Page	Part.No	Page
283-2807	205	283-6102	297		607
	208		298		610
283-2856	156	283-6179	332	284-4484	597
	157	283-8807	686		601
283-2857	153		688	284-4485	611
	154		690	284-4486	612
	155	283-8827	691	284-4487	611
283-2867	156	283-8848	291		612
	358	283-9052	637	284-4496	623
	401	283-9074	687	284-4568	621
283-2881	85	283-9075	687	284-4569	584
283-2888	85	284-4396	598		586
283-2893	631	284-4399	598	284-4570	587
283-3022	145		611	284-7105	651
	146		612	285-1328	433
283-3074	121	284-4403	603		435
	145	284-4434	627	285-1503	491
283-3738	81	284-4435	627	285-1504	491
283-3969	255		631		496
283-3970	255	284-4437	616	285-1505	491
283-4049	258	284-4438	616		497
283-4050	258		618	285-1506	487
283-4051	258	284-4439	619	285-1507	487
283-4053	258		620	285-1600	480
283-4715	317		629		504
283-5926	330	284-4440	619	285-1676	400
	333	284-4443	627	285-1759	400
283-5927	330	284-4456	582		480
	333	284-4457	582	285-2564	395
283-5939	331	284-4459	593	285-2566	395
283-5940	331	284-4460	593	285-2580	252.01
283-5952	332		594	285-2593	439
283-5953	332	284-4461	594	285-2594	336
283-5957	333	284-4465	616	285-2595	337
283-5959	333		617	285-2598	397
283-5971	330		623	285-2603	397
	333	284-4466	623	285-2604	397
283-5972	331		625	285-2605	397
283-6040	330	284-4478	601	285-2609	397
283-6080	334	284-4479	597	285-2616	439
283-6081	335	284-4480	604	285-2621	439
283-6083	334	284-4481	607	285-2622	439
	335	284-4482	610	285-2623	439
283-6098	453	284-4483	604	285-2626	445

CLICK HERE TO **DOWNLOAD** THE COMPLETE MANUAL

- Thank you very much for reading the preview of the manual.
- You can download the complete manual from: www.heydownloads.com by clicking the link below



- Please note: If there is no response to CLICKING the link, please download this PDF first and then click on it.

CLICK HERE TO **DOWNLOAD** THE COMPLETE MANUAL