
313C SR Track-Type Excavator

Powered by 3064 Engine

SERIAL NUMBER

WSA1 To Last Built(Vehicle)

6LK26452 To Last Installed(Engine)

CLICK HERE TO **DOWNLOAD** THE COMPLETE MANUAL

- Thank you very much for reading the preview of the manual.
- You can download the complete manual from: www.heydownloads.com by clicking the link below



- Please note: If there is no response to CLICKING the link, please download this PDF first and then click on it.

CLICK HERE TO **DOWNLOAD** THE COMPLETE MANUAL

ENGINE ARRANGEMENT

Consists of :

			Page
1	201-3871	ENGINE AR.....	12
1	205-6810	PULLEY GP.....	31

H82573E 01

217-5537 ENGINE AR

BASIC ENGINE

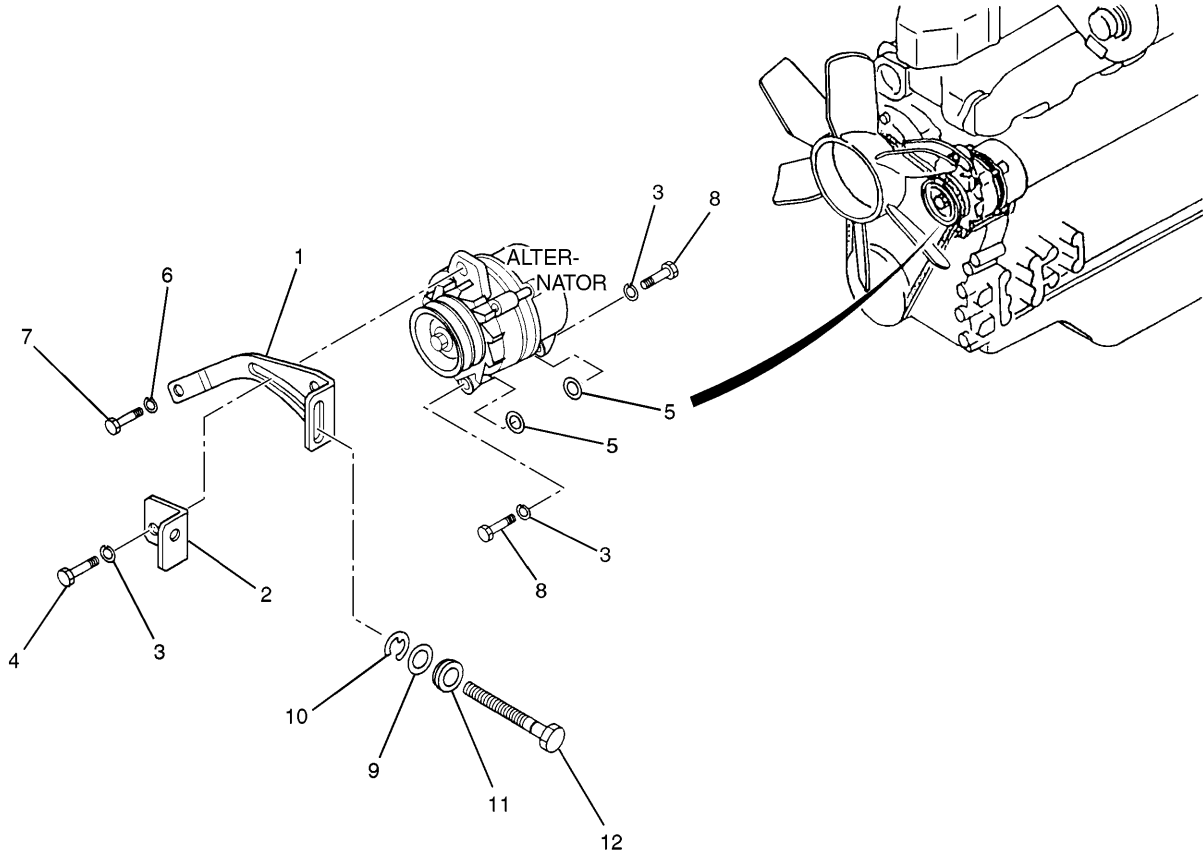
NOTE	No.	PART No.	QTY	PART NAME	NOTE	No.	PART No.	QTY	PART NAME
	1	212-8478	1	CRANKCASE AS					
	2	095-2005	2	CAP					
	3	3P-1896	5	PLUG					
	4	096-3741	5	CAP					
	5	51-7528	1	BUSHING					
	6	51-7523	4	SLEEVE					
	7	51-7525	1	PLUG					
	8	51-7529	1	BUSHING					
	9	095-2039	1	WASHER					
	10	8T-4191	1	BOLT (L=16mm)					
	11	099-4420	2	PIN					
	12	51-7505	10	PLUG					
	13	51-7724	2	PIN					
	14	51-8009	1	BUSHING					
	15	51-7524	2	SEAL					
	16	51-7839	1	CAP SET					
	17	094-7741	10	BOLT					
	18	6V-8236	6	PIN					
	19	095-2011	1	CAP					
	20	51-7526	4	VALVE					
	21	222-8201	1	SHAFT					
	22	095-8638	1	WASHER					
	23	51-7588	5	BEARING SET (STANDARD)					
A		51-7784	5	BEARING SET (US=0.25mm)					
A		51-7785	5	BEARING SET (US=0.50mm)					
A		51-7786	5	BEARING SET (US=0.75mm)					
	24	51-7654	3	PLATE (STANDARD)					
A		51-7787	3	PLATE (OS=0.15mm)					
A		51-7788	3	PLATE (OS=0.30mm)					
A		51-7789	3	PLATE (OS=0.45mm)					
	25	266-6210	1	SWITCH					
	26	212-8479	1	EYE					
	27	212-8511	1	EYE					
	28	8T-4179	4	BOLT (L=20mm)					
	29	096-2501	4	WASHER					
	30	51-7978	1	SHEET					
	31	4D-7794	1	CLIP					
	32	7X-2536	1	BOLT (L=14mm)					

A—NOT PART OF THIS GROUP

H97622E 01

205-6839 CYLINDER BLOCK GP
Part of 201-3871-Page12

BASIC ENGINE



NOTE	No.	PART No.	QTY	PART NAME	NOTE	No.	PART No.	QTY	PART NAME
	1	178-6597	1	PLATE					
	2	178-6600	1	PULLER					
	3	096-2501	3	WASHER					
	4	099-4483	1	BOLT (L=30mm)					
	5	51-7750	2	WASHER					
	6	7X-0796	1	LOCKWASHER					
	7	8T-4137	1	BOLT (L=20mm)					
	8	8T-4183	2	BOLT (L=40mm)					
	9	8T-4223	1	WASHER					
	10	178-6601	1	RING					
	11	178-6599	1	WASHER					
	12	178-6598	1	BOLT (L=135mm)					

H78535E 02

178-6531 MOUNTING GP-ALTERNATOR
Part of 201-3871-Page12

COOLING SYSTEM

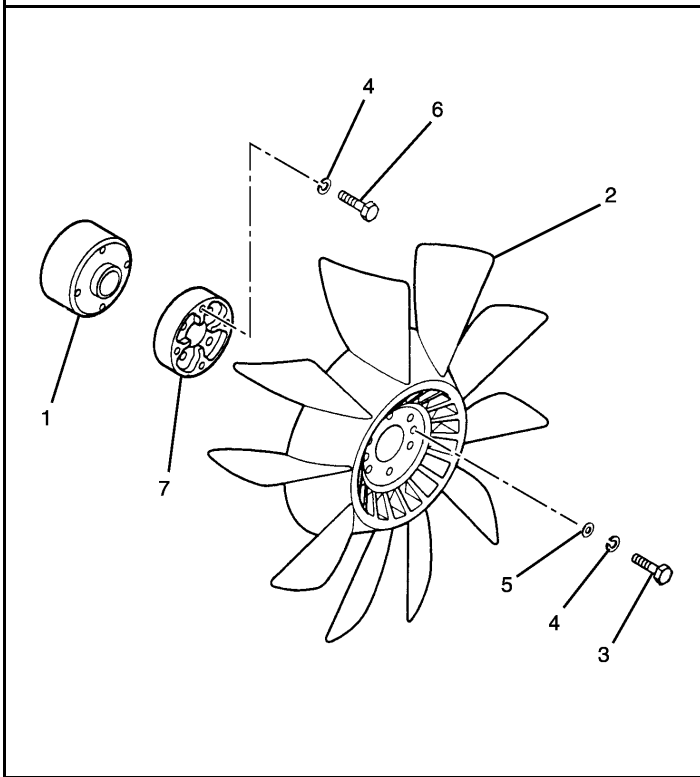
NOTE	No.	PART No.	QTY	PART NAME	NOTE	No.	PART No.	QTY	PART NAME
Y	1	196-8100	1	RADIATOR GP					
	2	196-8109	1	HOSE					
	3	196-8108	1	HOSE					
	4	8T-6703	3	CLAMP					
	5	7X-7729	11	WASHER					
	6	8T-4137	11	BOLT (L=20mm)					
	7	201-3727	1	GUARD AS					
	8	8T-4984	1	CLAMP					
	9	193-2741	1	GUARD AS					
	10	196-8174	1	BAND					
	11	8T-4224	2	WASHER					
	12	8T-4189	2	BOLT (L=20mm)					
	13	096-5819	1	TANK AS					
	14	171-3369	1	CAP AS					
	15	096-4035	1	CLIP					
	D	16	8T-4223	4	WASHER				
17		8T-6868	2	BOLT (L=80mm)					
E	18	5P-9909	1	SEAL···(0.5m)					
	19	8T-4956	2	BOLT (L=35mm)					
20	3S-2093	1	STRAP						
E	20	7Y-1976	1	HOSE···(65cm)					

D—ORDER BY THE METER
 E—ORDER BY THE CENTIMETER
 Y—SEE SEPARATE ILLUSTRATION

H82579E 03

196-8099 RADIATOR & HYD OIL COOLER GP
 196-8100-Page40

COOLING SYSTEM

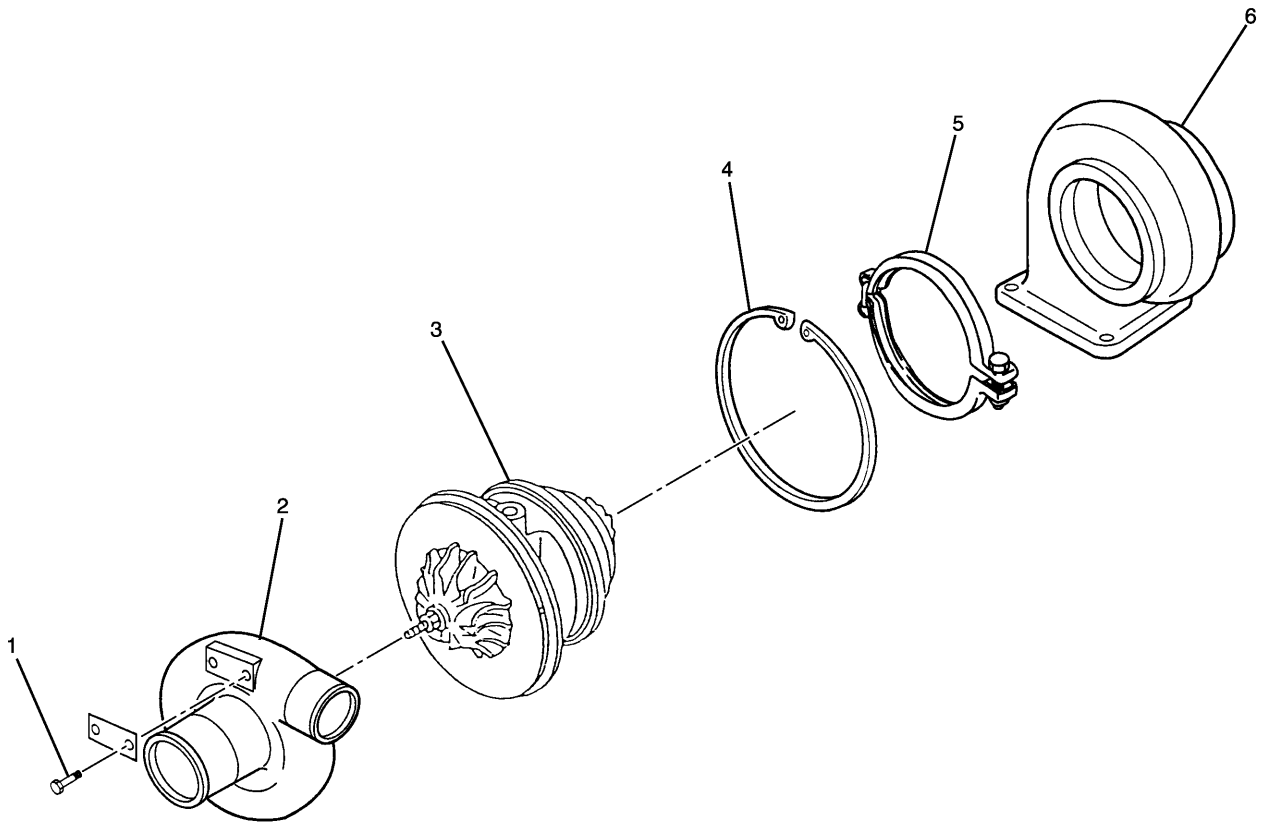


NOTE	No.	PART No.	QTY	PART NAME
	1	51-7895	1	SPACER
	2	135-2407	1	FAN
	3	8T-4195	4	BOLT (L=30mm)
	4	7X-0796	8	LOCKWASHER
	5	8T-4121	4	WASHER
	6	8T-4198	4	BOLT (L=100mm)
	7	185-8977	1	SPACER

H78541E 01

196-7994 FAN GP-SUCTION
Part of 201-3871-Page13

AIR INLET AND EXHAUST SYSTEM



NOTE	No.	PART No.	QTY	PART NAME	NOTE	No.	PART No.	QTY	PART NAME
	1	5B-9304	2	SCREW					
	2	51-7939	1	COVER					
Y	3	51-7940	1	CARTRIDGE AS					
	4	51-7941	1	RING					
	5	51-7942	1	COUPLING AS					
	6	196-8016	1	HOUSING					

Y—SEE SEPARATE ILLUSTRATION

H71769E 00

196-7988 TURBOCHARGER GP

Part of 201-3871-Page13
51-7940-Page56

FUEL SYSTEM

NOTE	No.	PART No.	QTY	PART NAME	NOTE	No.	PART No.	QTY	PART NAME
	1	196-8236	1	FILTER AS					
	2	1R-0751	1	FILTER AS					
	3	094-9725	1	PLUG					
	4	095-2038	1	WASHER					
	5	094-9726	2	BOLT (L=26mm)					
	6	095-2040	4	WASHER					
	7	183-8224	2	TUBE					
	8	51-7829	1	HOSE AS					
	9	178-6591	1	HOSE					
	10	196-8238	1	HOSE					
	11	099-5041	2	BOLT (L=27mm)					
	12	095-2040	4	WASHER					
	13	137-5541	1	PUMP AS					
	14	1P-0436	1	GASKET					
	15	8T-4186	2	BOLT (L=40mm)					
	16	178-6595	1	BOLT (L=30mm)					
	17	8T-7547	1	BOLT (L=30mm)					
	18	8T-4136	3	BOLT (L=25mm)					
	19	096-2500	1	WASHER					
	20	095-8638	1	WASHER					
	21	7X-0796	7	LOCKWASHER					
	22	212-8502	1	BRACKET					
	23	196-8216	1	BRACKET					
	24	8T-4196	2	BOLT (L=35mm)					
	25	183-8223	1	TUBE					
	26	196-8215	1	BASE AS					
	27	51-7505	2	PLUG					

H81950E 01

212-8471 FILTER GP-FUEL
Part of 201-3871-Page13

MEMORANDA

ELECTRICAL AND STARTING SYSTEM

NOTE	No.	PART No.	QTY	PART NAME	NOTE	No.	PART No.	QTY	PART NAME
	1	8T-4191	2	BOLT (L=16mm)					
	2	8T-4121	11	WASHER					
	3	111-4836	1	CLIP					
	4	8T-4137	9	BOLT (L=20mm)					
	5	3S-2093	10	STRAP					
	6	111-4837	9	CLIP					
	7	7I-2673	4	STRAP					
	8	111-4838	1	CLIP					
	9	111-4839	1	STRAP					
	10	9X-8256	2	WASHER					
	11	7X-2533	1	BOLT (L=35mm)					
	12	8J-1256	1	CLIP					
	13	5I-9368	1	SPACER					
	14	8T-0328	2	WASHER					
	15	7Y-5226	1	NUT					
	16	7X-2619	1	BOLT (L=10mm)					
	17	204-1901	1	BRACKET AS					
	18	8T-0286	1	BOLT (L=8mm)					
	19	6G-2263	3	SPACER					
	20	8T-4172	1	BOLT (L=80mm)					
	21	4I-5479	1	CLAMP					
	22	4I-5480	2	WASHER					
	23	5P-4116	2	WASHER					
	24	143-0008	1	SPACER					
	25	8T-3647	1	BOLT (L=80mm)					
	26	8T-6912	1	BOLT (L=50mm)					
	27	167-3583	1	STRAP AS					
	28	7Y-8167	1	GROMMET					
	29	8T-4223	2	WASHER					
	30	7K-1181	1	STRAP					
	31	8T-4179	2	BOLT (L=20mm)					
	32	170-6843	1	BRACKET AS					
	33	204-1673	2	STRAP					
	34	116-0118	1	CLIP					
	35	229-2917	1	BRACKET AS					
	36	8T-4224	3	WASHER					
	37	8T-4189	3	BOLT (L=20mm)					

H97683E 12

204-1619 BATTERY & WIRING GP (3/3)
S/N WSA 00468-Up

ELECTRICAL AND STARTING SYSTEM

NOTE	No.	PART No.	QTY	PART NAME	NOTE	No.	PART No.	QTY	PART NAME
	1	155-2260	2	PLUG KIT					
	2	186-3736	34	SOCKET					
	3	7Y-3952	1	CONNECTOR					
	4	7Y-3951	2	TERMINAL					
	5	155-2274	2	PLUG KIT					
	6	155-2263	2	WEDGE					
	7	9W-0844	13	SOCKET					
	8	3S-2093	8	STRAP					
	9	102-8802	2	RECEPTACLE KIT					
	10	9X-3401	27	PIN					
	11	7Y-3962	1	TERMINAL					
		7Y-3964	1	TUBE					
	12	7Y-3963	4	TERMINAL					
		7Y-3965	3	TUBE					
	13	2L-8075	5	TERMINAL					
	14	155-2270	8	PLUG KIT					
	15	155-2261	8	WEDGE					
	16	102-8801	4	RECEPTACLE KIT					
	17	9W-0852	12	PIN					
	18	186-3735	17	PIN					
	19	121-1038	1	HOUSING					
	20	116-0128	2	SEAL					
	21	121-1039	2	TERMINAL					
	22	3T-4696	4	TERMINAL					
	23	155-2255	3	PLUG KIT					
	24	155-2258	3	WEDGE					
	25	8T-8737	11	PLUG					
	26	126-1768	24	SOCKET					
	27	116-0126	1	HOUSING					
	28	116-0255	2	TERMINAL					
	29	2L-8050	5	TERMINAL					
	30	102-8806	1	RECEPTACLE KIT					
	31	9G-4343	4	TERMINAL					
	32	155-2265	1	PLUG KIT					
	33	155-2259	1	WEDGE					
	34	3T-4692	1	TERMINAL					
	35	127-5483	1	PLUG AS					
	36	9G-4336	1	TERMINAL					
	37	2L-8077	1	TERMINAL					
	38	7Y-3995	1	CONNECTOR					
	39	7Y-3996	1	TERMINAL					
	40	7Y-3820	1	HOUSING					
	41	7Y-3821	2	SOCKET					
	42	8T-8799	1	BOOT					

H91729E 00

238-2522 HARNESS AS

S/N WSA 00468-Up
Part of 204-1619-Page79.06B

ELECTRICAL AND STARTING SYSTEM

NOTE	No.	PART No.	QTY	PART NAME	NOTE	No.	PART No.	QTY	PART NAME
	1	9W-1446	1	FUSE (20A)					
	2	9W-1442	11	FUSE (10A)					
	3	139-5345	8	FUSE (5A)					
	4	8T-9636	1	FUSE (30A)					
	5	140-0866	6	RELAY					
	6	7Y-5493	1	TOOL					
	7	171-2208	1	BREAKER AS					
		1H-3244	2	LOCKWASHER					
		6V-8187	2	NUT					
		8T-4205	2	WASHER					
	8	6V-5645	2	SCREW					
	9	170-9373	2	LATCH					
	10	8T-6411	5	SCREW					
	11	9X-8256	13	WASHER					
	12	170-9372	1	COVER					
	13	095-0728	4	SCREW					
	14	096-6166	5	WASHER					
	15	167-3593	1	STRAP					
	16	197-4330	1	CONTROLLER					
	17	8T-4136	1	BOLT (L=25mm)					
	18	8T-4121	1	WASHER					
	19	111-4837	1	CLIP					
	20	094-2080	1	RELAY					
	21	7X-2619	4	BOLT (L=10mm)					
	22	3S-2093	2	STRAP					
Y	23	213-0857	1	HARNESS AS					
	24	163-6758	1	WIRE AS					
		102-8802	1	RECEPTACLE KIT					
		186-3735	2	PIN					
	25	8C-7581	1	SCREW					
	26	105-9981	1	CLIP					
Y	27	163-6703	1	TIMER AS					
	28	8T-4171	4	BOLT (L=12mm)					
	29	136-4055	1	STRIP					
	30	3E-8048	4	SCREW					
	31	096-5962	4	WASHER					
	32	204-1899	1	BRACKET AS					
	33	9G-8451	1	BLOCK AS					
		1H-3244	1	LOCKWASHER					
		4B-4276	2	WASHER					
		4L-7124	1	BOLT (L=32mm)					
		6V-8185	2	NUT					

Y—SEE SEPARATE ILLUSTRATION

H82594E 01

213-0783 PANEL GP-CIRCUIT BREAKER

S/N WSA 00165-00336
Part of 204-1619-Page79.02
213-0857-Page93.01,163-6703-Page94

ELECTRICAL AND STARTING SYSTEM

NOTE	No.	PART No.	QTY	PART NAME	NOTE	No.	PART No.	QTY	PART NAME
	1	7Y-5494	17	TERMINAL					
	2	7Y-5496	2	TERMINAL					
	3	7Y-5475	6	TERMINAL					
	4	7Y-5495	2	TERMINAL					
	5	138-5193	1	TERMINAL					
	6	3S-2093	13	STRAP					
	7	7Y-3951	27	TERMINAL					
	8	9W-1951	1	RECEPTACLE					
	9	8C-6354	1	CAP					
	10	9X-3401	4	PIN					
	11	8T-8737	5	PLUG					

H85551E 01

213-0857 HARNESS AS (1/2)
 S/N WSA 00165-00336
 Part of 213-0783-Page89.02

ELECTRICAL AND STARTING SYSTEM

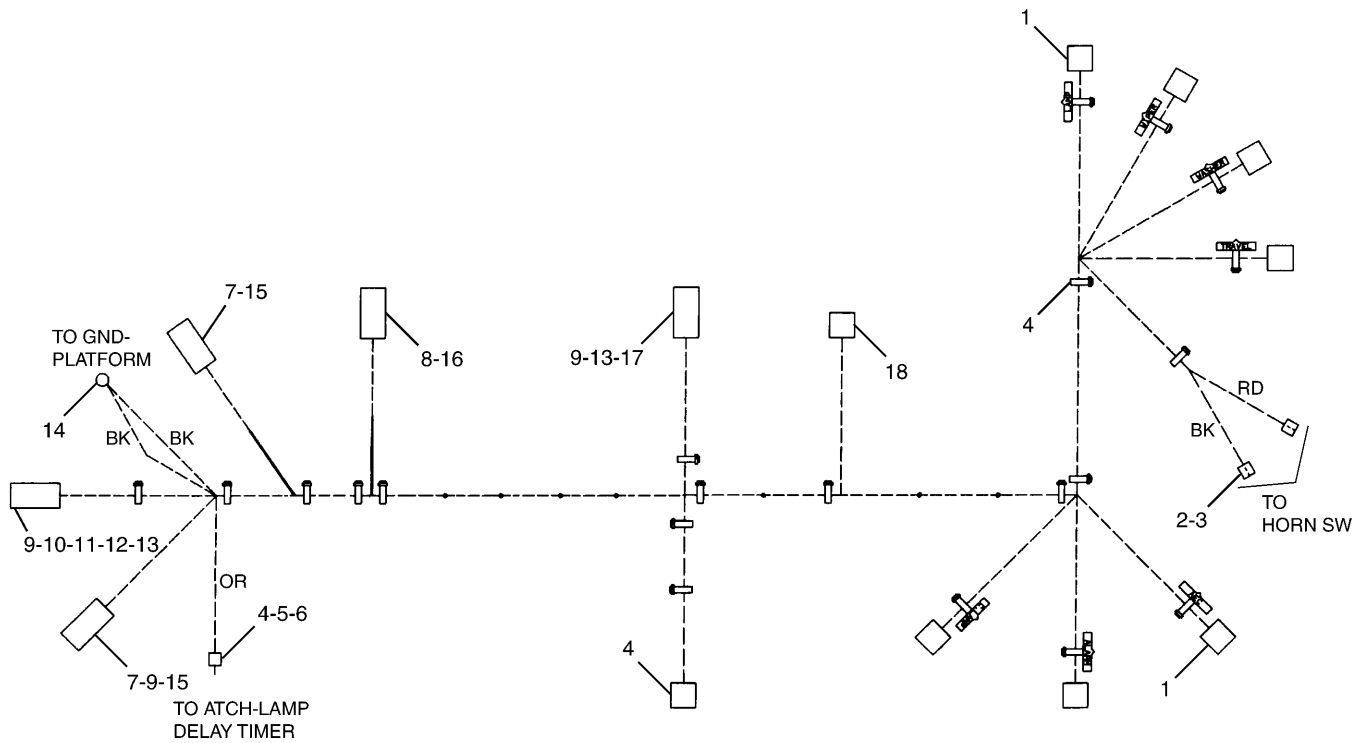
NOTE	No.	PART No.	QTY	PART NAME	NOTE	No.	PART No.	QTY	PART NAME
	1	170-9371	1	BASE					
	2	7Y-5494	4	TERMINAL					
	3	3S-2093	13	STRAP					
	4	7Y-3951	12	TERMINAL					
	5	9X-3401	6	PIN					
	6	8T-8737	16	PLUG					
	7	2L-8050	4	TERMINAL					
	8	2L-8067	6	TERMINAL					
	9	2L-8077	2	TERMINAL					
	10	155-2270	6	PLUG KIT					
	11	155-2261	6	WEDGE					
	12	186-3736	30	SOCKET					
	13	155-2260	2	PLUG KIT					
	14	102-8803	2	RECEPTACLE KIT					
	15	9W-0844	15	SOCKET					
	16	155-2271	1	PLUG KIT					
	17	7Y-3958	1	CONNECTOR					
	18	116-0126	1	HOUSING					
	19	116-0128	1	SEAL					
	20	116-0255	2	TERMINAL					
	21	155-2255	1	PLUG KIT					
	22	155-2258	1	WEDGE					
	23	102-8801	1	RECEPTACLE KIT					
	24	186-3735	6	PIN					
	25	155-2265	1	PLUG KIT					
	26	155-2259	1	WEDGE					
	27	7Y-3963	3	TERMINAL					
		7Y-3965	3	TUBE					
	28	104-6573	1	PLUG					
	29	197-4385	1	DIODE					
	30	155-2263	1	WEDGE					
	31	155-2274	1	PLUG KIT					
	32	102-8805	1	RECEPTACLE KIT					
	33	126-1768	3	SOCKET					
	34	102-8802	2	RECEPTACLE KIT					

H91705E 00

267-7657 HARNESS AS (2/2)

S/N WSA 00468-Up
Part of 213-0783-Page89.06

ELECTRICAL AND STARTING SYSTEM



NOTE	No.	PART No.	QTY	PART NAME	NOTE	No.	PART No.	QTY	PART NAME
	1	116-0087	7	CONNECTOR					
	2	7Y-3963	2	TERMINAL					
	3	7Y-3965	2	TUBE					
	4	3S-2093	14	STRAP					
	5	7Y-3962	1	TERMINAL					
	6	7Y-3964	1	TUBE					
	7	102-8801	2	RECEPTACLE KIT					
	8	8T-8729	6	PIN					
	9	8T-8737	5	PLUG					
	10	155-2255	1	PLUG KIT					
	11	155-2258	1	WEDGE					
	12	9W-0844	3	SOCKET					
	13	8T-8730	9	SOCKET					
	14	2L-8069	1	TERMINAL					
	15	9X-3401	22	PIN					
	16	102-8805	1	RECEPTACLE KIT					
	17	155-2260	1	PLUG KIT					
	18	9X-0196	1	TERMINAL AS					

H83831E 03

193-3558 HARNESS AS-CONSOLE
Part of 193-3557-Page98

ELECTRICAL AND STARTING SYSTEM

NOTE	No.	PART No.	QTY	PART NAME	NOTE	No.	PART No.	QTY	PART NAME
	1	7K-1181	2	STRAP					
	2	279-7694	1	LAMP AS					
	3	284-4555	1	COVER					
Y	4	283-2877	1	HARNESS AS					
Y	5	291-7435	1	HARNESS AS					
	6	3S-2093	3	STRAP					
	7	290-9340	1	SUPPORT AS					
	8	8T-4138	2	BOLT (L=20mm)					
	9	9X-8256	2	WASHER					

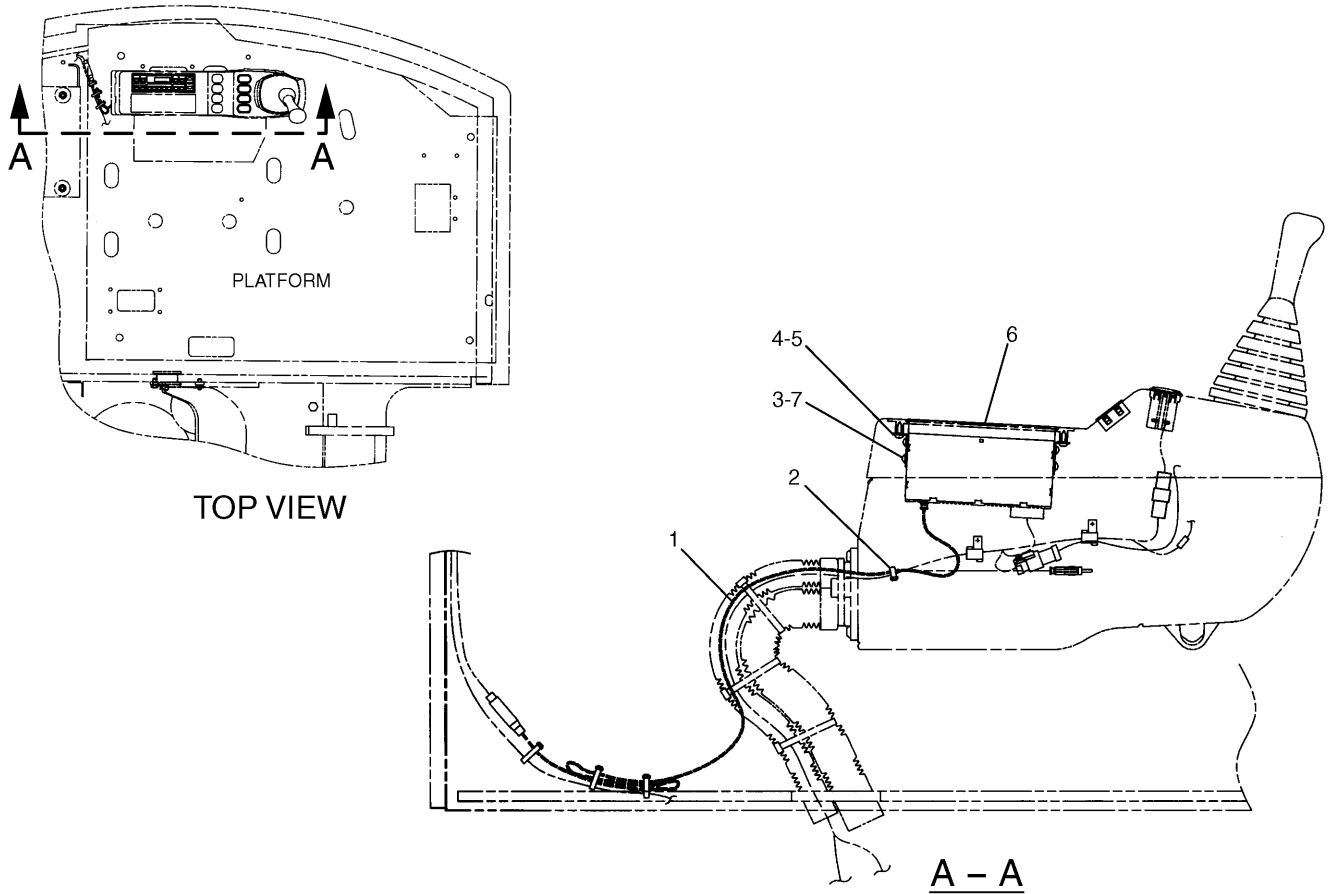
Y—SEE SEPARATE ILLUSTRATION

HA1980E 01

283-2825 WIRING GP (2/2)
 Product Link Japan
 Part of 283-8802-Page135.01
 283-2877-Page103.08,291-7435-Page103.09
 An Attachment

MEMORANDA

ELECTRICAL AND STARTING SYSTEM

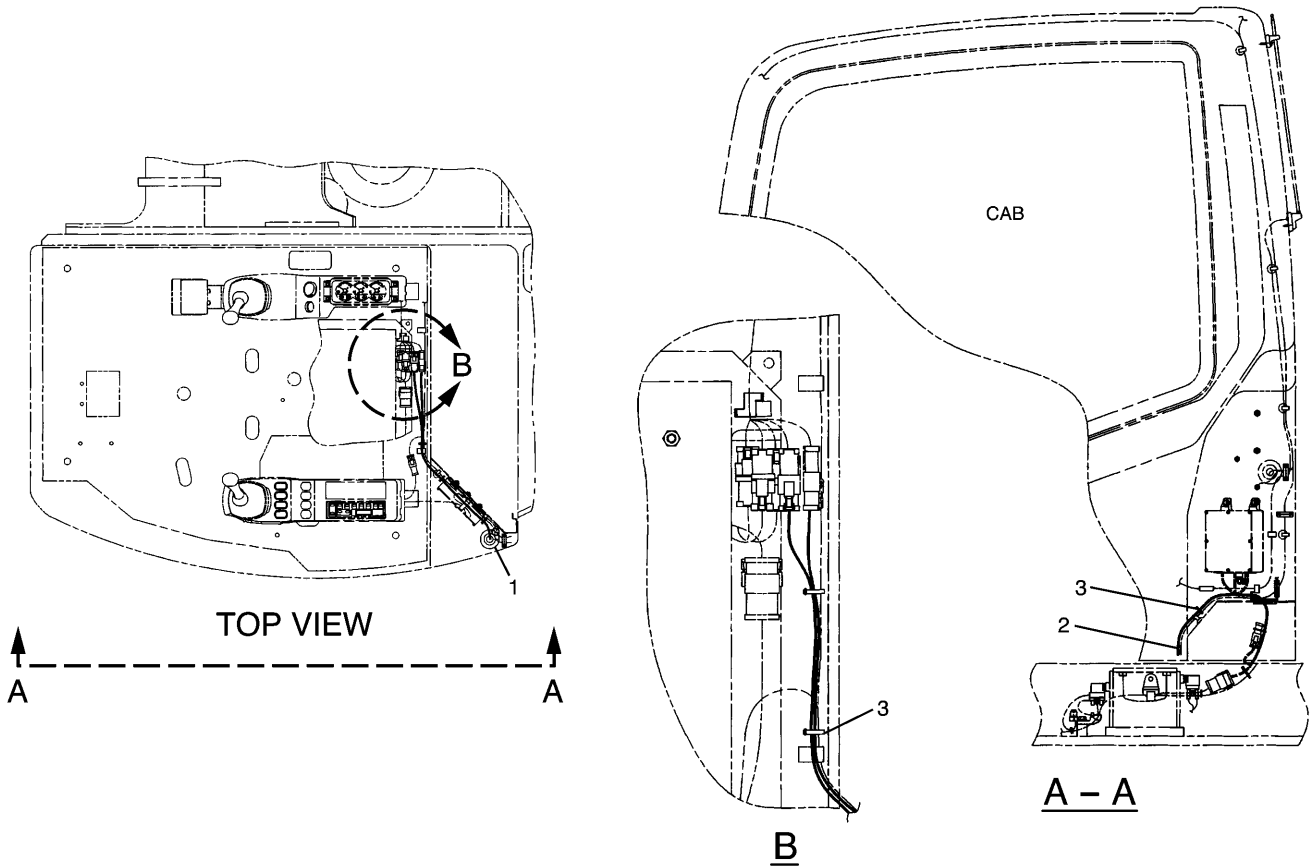


NOTE	No.	PART No.	QTY	PART NAME	NOTE	No.	PART No.	QTY	PART NAME
	1	093-2061	1	CABLE					
	2	3S-2093	4	STRAP					
	3	095-0736	4	SCREW					
	4	119-5026	4	SCREW					
	5	117-6259	2	ANGLE					
	6	153-2444	1	RADIO (AM/FM)					
	7	8T-0328	4	WASHER					

H82019E 02

193-3422 WIRING GP-CONSOLE
 Part of 170-9449-Page369
 An Attachment

ELECTRICAL AND STARTING SYSTEM



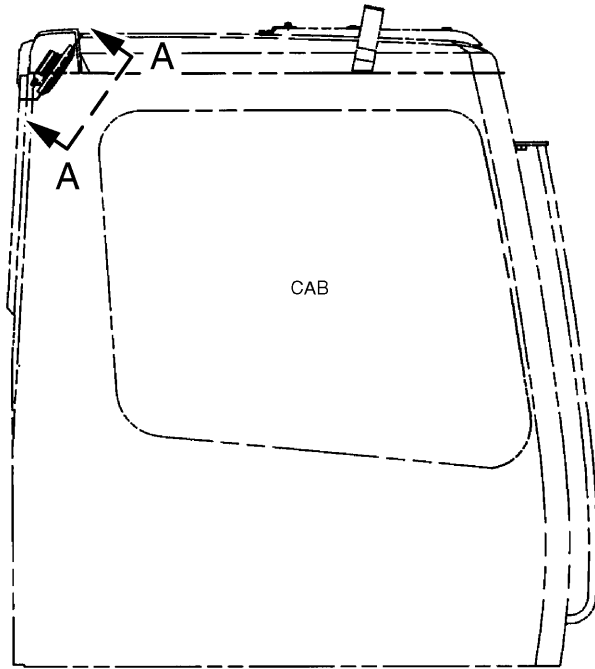
NOTE	No.	PART No.	QTY	PART NAME	NOTE	No.	PART No.	QTY	PART NAME
Y	1	170-9360	1	GROMMET					
	2	204-1646	1	HARNES AS					
	3	3S-2093	5	STRAP					

Y—SEE SEPARATE ILLUSTRATION

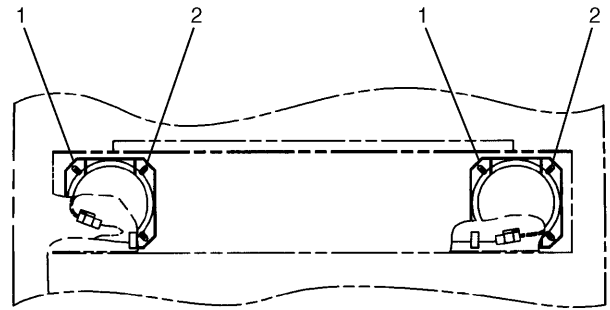
H78681E 01

204-1624 WIRING GP-CAB
 S/N WSA 1-00295
 204-1646-Page120

ELECTRICAL AND STARTING SYSTEM



RIGHT SIDE VIEW



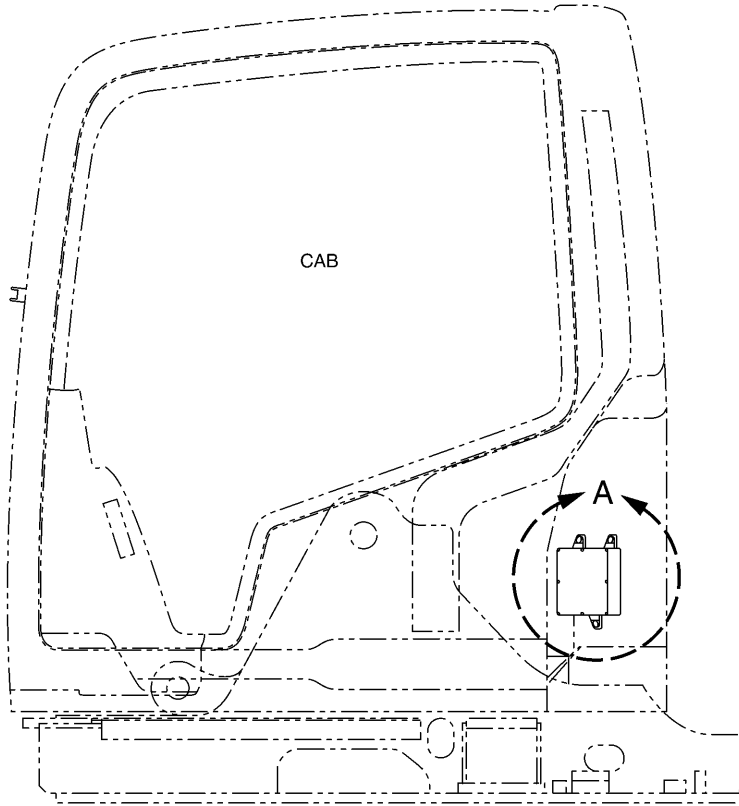
A - A

NOTE	No.	PART No.	QTY	PART NAME	NOTE	No.	PART No.	QTY	PART NAME
	1	7Y-5434	2	SPEAKER AS					
		7Y-3951	2	TERMINAL					
	2	6V-9492	8	SCREW					

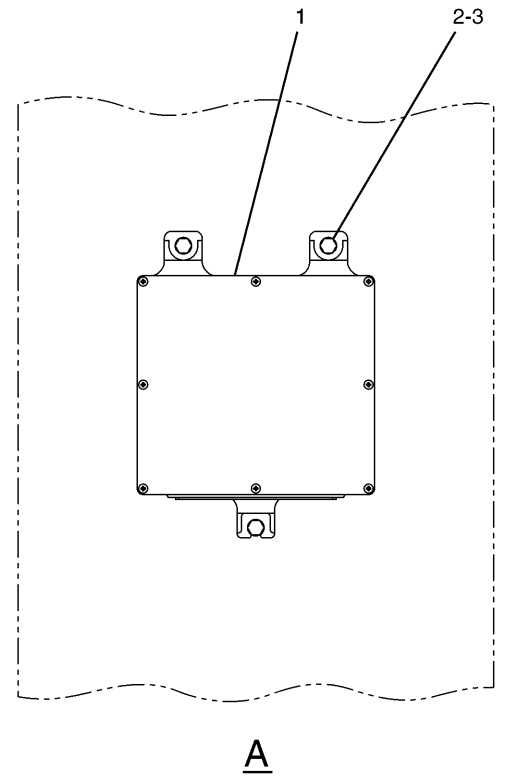
H76576E 01

193-3421 WIRING GP-RADIO
 Part of 170-9449-Page369
 An Attachment

ELECTRICAL AND STARTING SYSTEM



LEFT SIDE VIEW



A

NOTE	No.	PART No.	QTY	PART NAME	NOTE	No.	PART No.	QTY	PART NAME
	1	221-8960	1	CONTROL GP					
	2	5C-9553	3	BOLT (L=16mm)					
	3	9X-8256	3	WASHER					

H86952E 03

195-8927 CONTROL & MTG GP-ELECTRONIC

ELECTRICAL AND STARTING SYSTEM

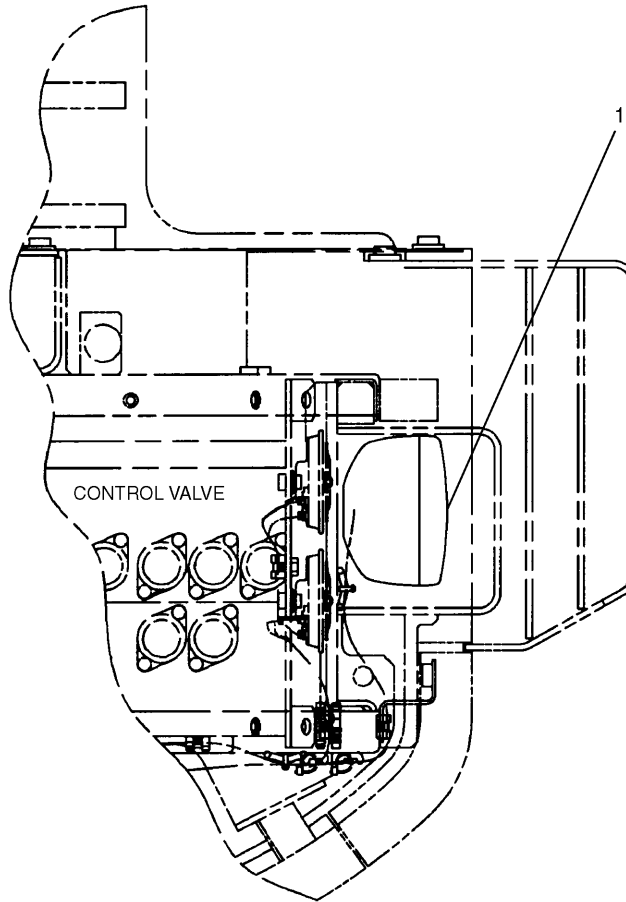
NOTE	No.	PART No.	QTY	PART NAME	NOTE	No.	PART No.	QTY	PART NAME
	1	127-5947	1	SETSCREW					
	2	135-2363	1	BRACKET AS					
	3	127-5937	1	BEARING AS					
	4	127-5944	1	LEVER AS					
	5	135-2364	1	SWITCH AS					
	6	127-5948	1	BALL					
	7	127-5949	1	PACKING AS					
	8	127-5950	1	ARMATURE AS					
	9	095-0410	1	BEARING					
	10	095-0085	1	BOLT SET					
	11	135-2365	1	PINION SET					
	12	094-9950	1	STOPPER SET					
	13	233-1279	1	SHAFT AS					
	14	233-1280	1	CLUTCH					
	15	127-5941	1	GEAR AS					
	16	127-5940	1	WASHER AS					
	17	127-5939	1	SHAFT AS					
	18	127-5943	4	GEAR AS					
	19	094-9980	2	GASKET					
	20	127-5952	1	YOKE AS					
	21	127-5953	2	BRUSH					
	22	127-5955	1	HOLDER AS					
	23	127-5956	4	SPRING					
	24	135-2366	1	BRACKET					

H86006E 03

125-2988 STARTING MOTOR GP-ELECTRIC

S/N WSA 1-00353
Part of 201-3871-Page13

ELECTRICAL AND STARTING SYSTEM



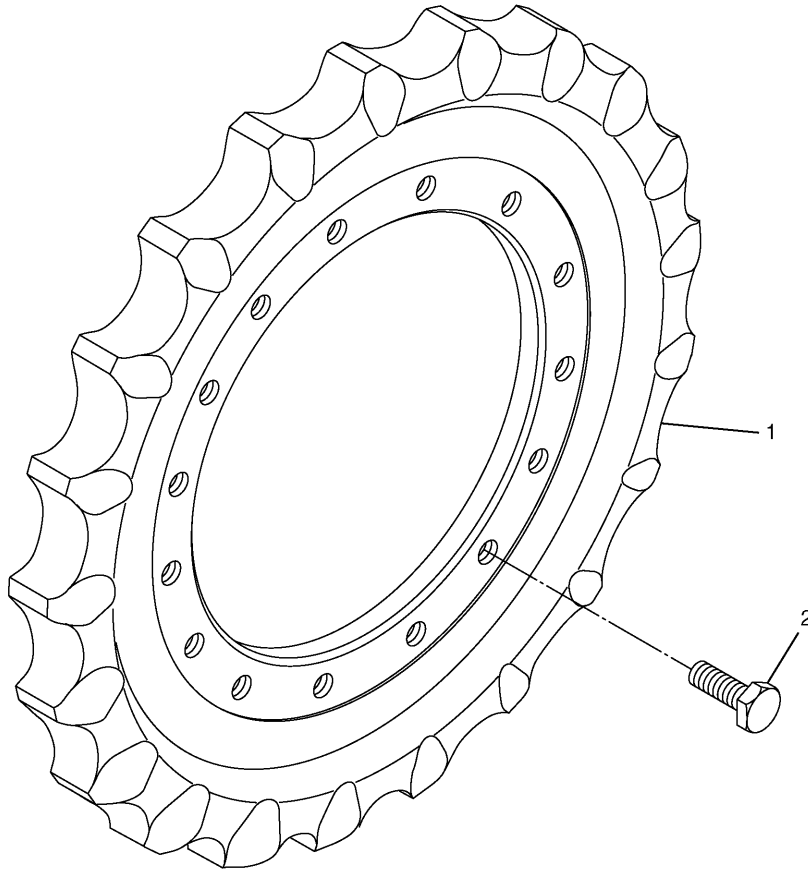
TOP VIEW

NOTE	No.	PART No.	QTY	PART NAME	NOTE	No.	PART No.	QTY	PART NAME
Y	1	153-2521	1	LAMP GP					

Y—SEE SEPARATE ILLUSTRATION

H76585E 01

POWER TRAIN



NOTE	No.	PART No.	QTY	PART NAME	NOTE	No.	PART No.	QTY	PART NAME
	1	41-7472	1	SPROCKET					
	2	8T-7338	15	BOLT (L=45mm)					

H71873E 01

168-6728 SPROCKET GP-NONSEGMENTED
2 Required

POWER TRAIN

NOTE	No.	PART No.	QTY	PART NAME	NOTE	No.	PART No.	QTY	PART NAME
	1	5A-3604	16	BOLT (L=25mm)					
	2	3B-4505	16	LOCKWASHER					
	3	191-2623	1	HOUSING					
	4	1R-5839	1	NUT					
	5	191-2622	2	BEARING					
	6	191-2621	1	SEAL GP					
	7	191-2620	1	HOUSING					
	8	5I-4898	1	DOWEL					
	9	5I-4897	1	WASHER					
	10	6I-6530	4	PLATE					
	11	1R-5846	4	GEAR					
	12	1R-5848	4	BEARING					
	13	1R-5847	4	RACE					
	14	191-2627	1	CARRIER					
	15	191-2625	3	GEAR					
	16	191-2626	3	BEARING					
	17	191-2630	1	COVER					
	18	191-2633	2	PLUG					
	19	095-1525	2	SEAL-O-RING (ID=22.10mm)					
	20	1R-5854	8	SCREW					
	21	1R-5852	1	PLATE					
	22	191-2629	1	PLATE					
	23	191-2624	1	GEAR					
	24	191-2628	1	GEAR					
	25	1R-5849	1	RING					

H72113E 00

191-2619 FINAL DRIVE GP

S/N WSA 1-00681

Part of 191-2592-Page159,267-6826-Page161.02

FRAME AND BODY

NOTE	No.	PART No.	QTY	PART NAME	NOTE	No.	PART No.	QTY	PART NAME
	1	208-3289	1	LINER					
	2	198-2362	1	SUPPORT AS					
	3	177-5916	1	STRIKER					
Y	4	211-6157	1	COVER GP					
	5	8T-4194	2	BOLT (L=50mm)					
	6	099-3600	2	WASHER					
	7	211-6246	2	SPACER					
	8	211-6170	1	SUPPORT AS					
	9	198-2212	1	SUPPORT AS					
	10	211-6168	1	SUPPORT AS					
	11	211-6166	1	SUPPORT AS					
	12	198-2215	1	SUPPORT AS					
	13	198-2241	1	SHEET AS					
	14	178-5801	2	GROMMET					
	15	198-2248	1	SHEET AS					
	16	5P-1076	40	WASHER					
	17	7X-7729	6	WASHER					
	18	244-5215	1	SUPPORT AS					
	19	8T-4137	2	BOLT (L=20mm)					
	20	202-1766	1	PLATE					
	21	202-1622	1	SHEET AS					
	22	198-2287	1	LINER					
	23	198-2295	1	PLATE AS					
	24	8T-4136	4	BOLT (L=25mm)					
	25	8T-4139	4	BOLT (L=30mm)					
	26	8T-4192	30	BOLT (L=25mm)					
	27	198-2312	1	LINER					
	28	190-6821	3	SHIM (T=1.00mm)					
Y	29	202-1758	1	COVER GP					
	30	198-2246	1	SHEET AS					
	31	198-2324	1	SEAL					
	32	198-2323	2	SEAL					
	33	208-3357	1	LINER					
	34	198-2260	1	SHEET AS					
	35	198-2273	1	LINER					
	36	198-2274	2	LINER					
	37	198-2275	1	LINER					
	38	198-2292	1	LINER					
	39	198-2293	1	LINER					
	40	202-1739	1	LINER					
	41	202-1740	1	LINER					
	42	8T-4179	6	BOLT (L=20mm)					
	43	229-0973	1	LINER					

Y—SEE SEPARATE ILLUSTRATION

H86954E 02

218-7980 HOOD & GUARD GP (2/2)

S/N WSA 1-00369

211-6157-Page176,202-1758-Page177

FRAME AND BODY

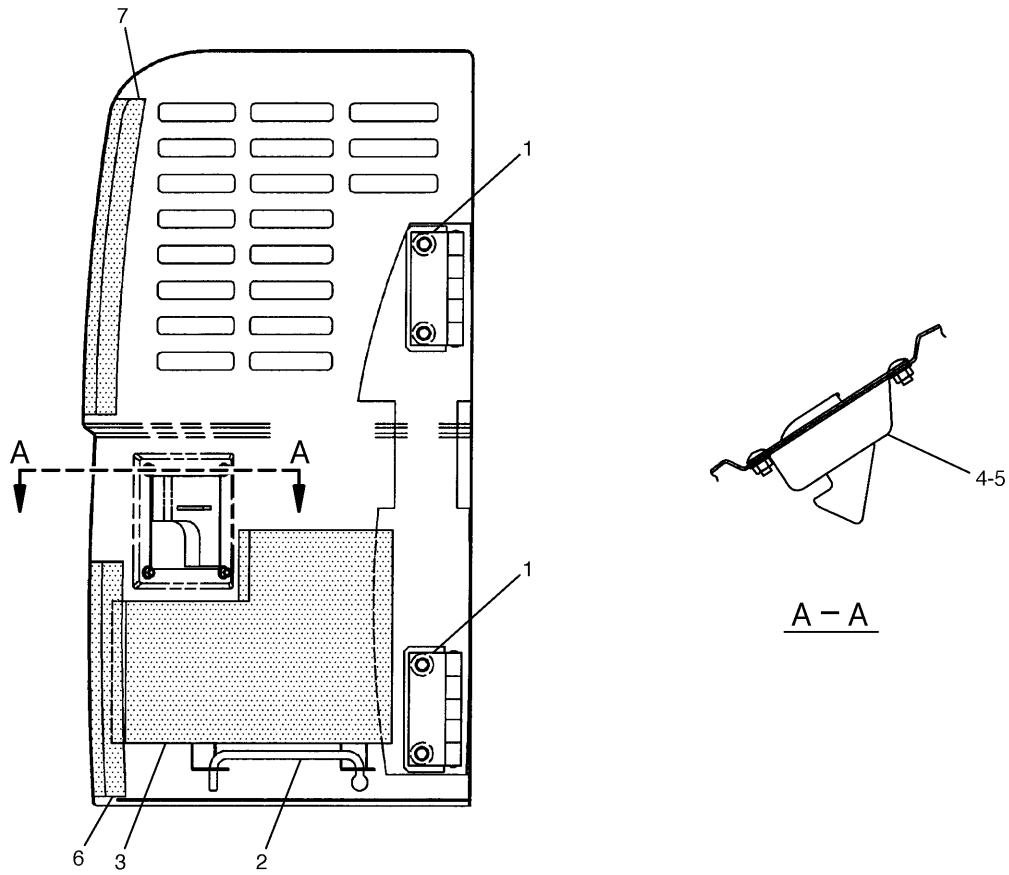
NOTE	No.	PART No.	QTY	PART NAME	NOTE	No.	PART No.	QTY	PART NAME
	1	8T-4194	2	BOLT (L=50mm)					
B	2	096-0684	2	SHIM (T=0.80mm)					
B		102-5689	2	SHIM (T=2.00mm)					
	3	8T-4137	2	BOLT (L=20mm)					
	4	8T-4192	15	BOLT (L=25mm)					
	5	8T-4139	4	BOLT (L=30mm)					
	6	198-2215	1	SUPPORT AS					
	7	198-2284	1	STRIKER					
	8	198-2312	1	LINER					
	9	198-2362	1	SUPPORT AS					
	10	211-6166	1	SUPPORT AS					
	11	211-6170	1	SUPPORT AS					
	12	211-6246	2	SPACER					
	13	244-5215	1	SUPPORT AS					
	14	251-2819	1	SUPPORT AS					
	15	251-2911	1	SUPPORT AS					
	16	099-3600	2	WASHER					
	17	178-5801	2	GROMMET					
	18	5P-1076	19	WASHER					
	19	7X-7729	4	WASHER					
	20	8T-4136	2	BOLT (L=25mm)					

B—USE AS REQUIRED

HA1985E 07

218-7980 HOOD & GUARD GP (1/4)
S/N WSA 00494-Up

FRAME AND BODY



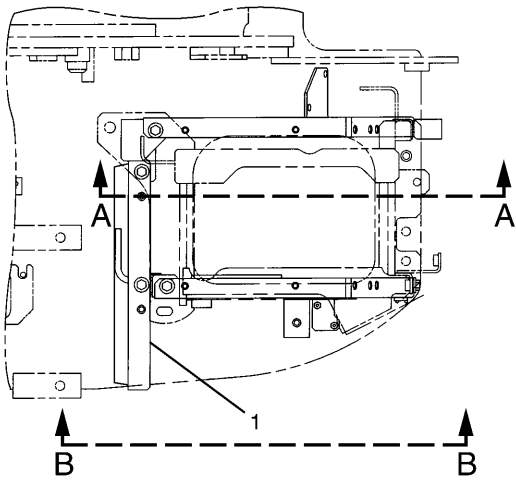
NOTE	No.	PART No.	QTY	PART NAME	NOTE	No.	PART No.	QTY	PART NAME
	1	099-7857	2	HINGE					
	2	184-8874	1	ROD					
	3	198-2311	1	INSULATION					
	4	168-1587	1	LOCK AS					
	5	099-6418	4	NUT					
	6	208-3286	1	LINER					
	7	208-3287	1	LINER					

H87184E 04

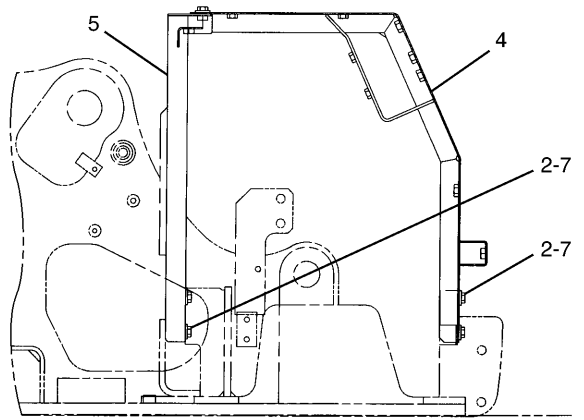
198-2309 DOOR GP-HOOD
 S/N WSA 1-00369
 Part of 218-7980-Page167

MEMORANDA

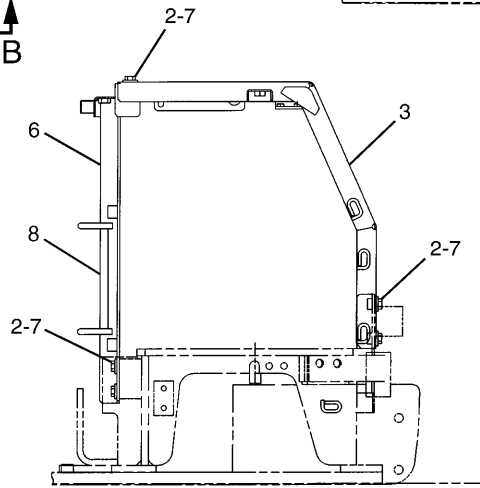
FRAME AND BODY



TOP VIEW



A - A



B - B

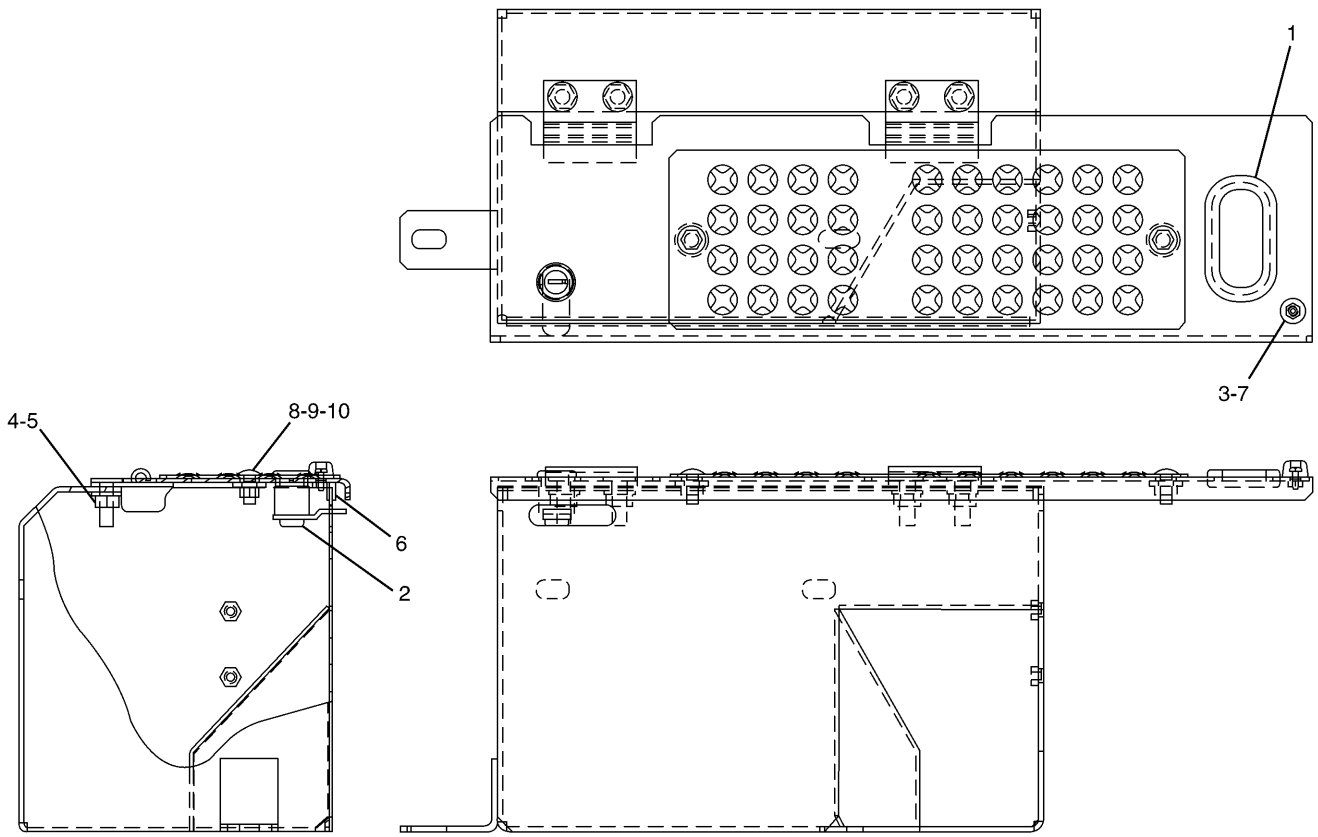
NOTE	No.	PART No.	QTY	PART NAME	NOTE	No.	PART No.	QTY	PART NAME
	1	248-7811	1	SUPPORT AS					
	2	8T-4192	12	BOLT (L=25mm)					
	3	198-2166	1	SUPPORT AS					
	4	198-2171	1	SUPPORT AS					
	5	198-2156	1	SUPPORT AS					
	6	202-1591	1	SUPPORT AS					
	7	5P-1076	12	WASHER					
	8	115-8646	1	GUARD					

H87133E 02

208-4418 SUPPORT GP-FENDER

S/N WSA 00370-Up
Part of 202-1570-Page275

FRAME AND BODY



NOTE	No.	PART No.	QTY	PART NAME	NOTE	No.	PART No.	QTY	PART NAME
E	1	2S-1647	1	GROMMET					
	2	8Y-4804	1	LOCK GP					
	3	162-4635	1	CUSHION					
	4	8T-4121	4	WASHER					
	5	8T-4133	4	NUT					
	6	184-8580		SEAL... (36cm)					
	7	095-0728	1	SCREW					
	8	137-2255	2	BOLT					
	9	5C-7261	2	NUT					
	10	5P-1075	2	WASHER					

E—ORDER BY THE CENTIMETER

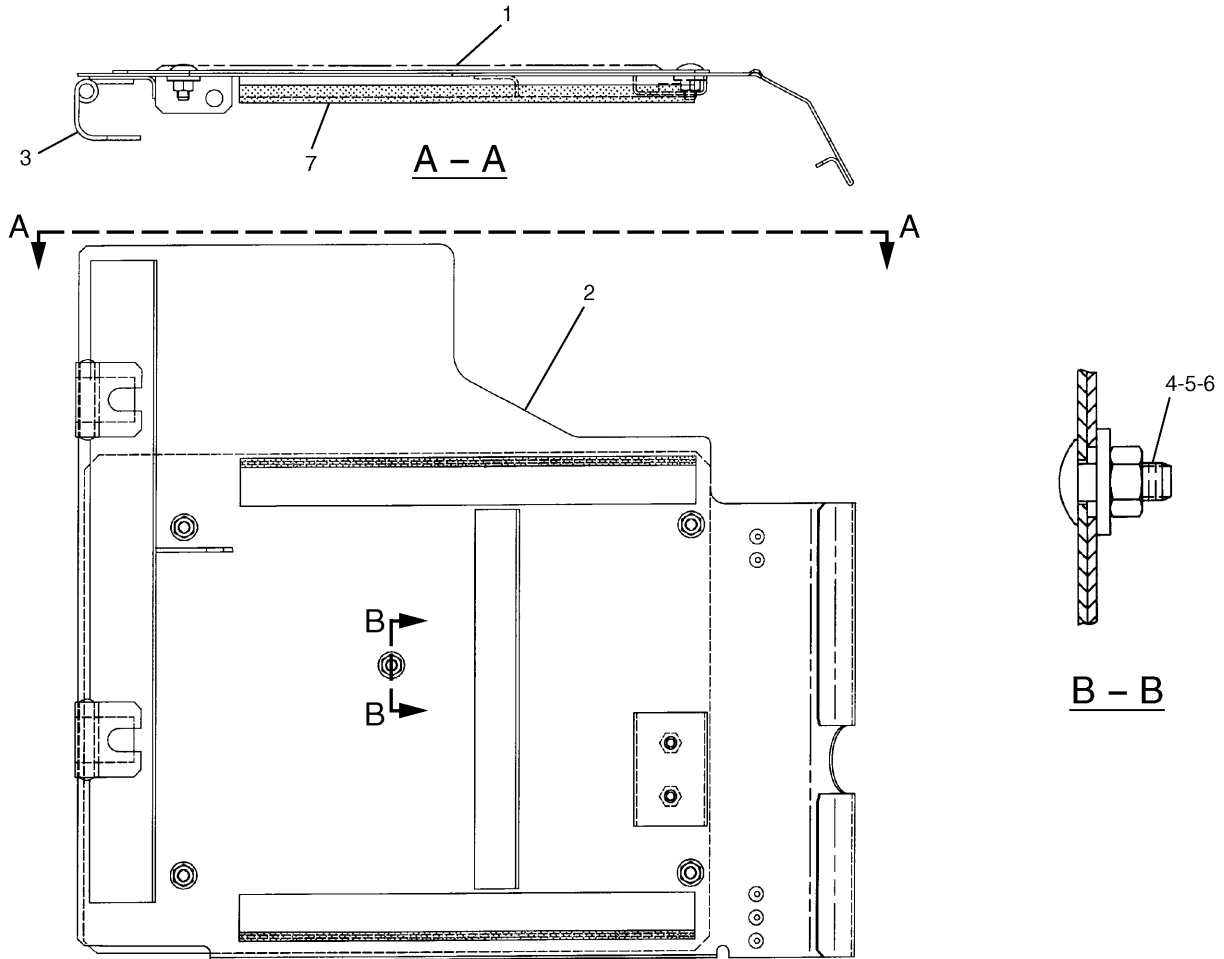
H87128E 00

208-4411 BOX GP-STORAGE

S/N WSA 1-00369

Part of 194-8898-Page184

FRAME AND BODY



NOTE	No.	PART No.	QTY	PART NAME	NOTE	No.	PART No.	QTY	PART NAME
	1	194-9009	1	SHEET					
	2	211-6194	1	COVER AS					
	3	142-0963	2	HINGE					
	4	5C-7261	5	NUT					
	5	137-2255	5	BOLT					
	6	5P-1075	5	WASHER					
E	7	184-8580		SEAL... (31cm x 2)					

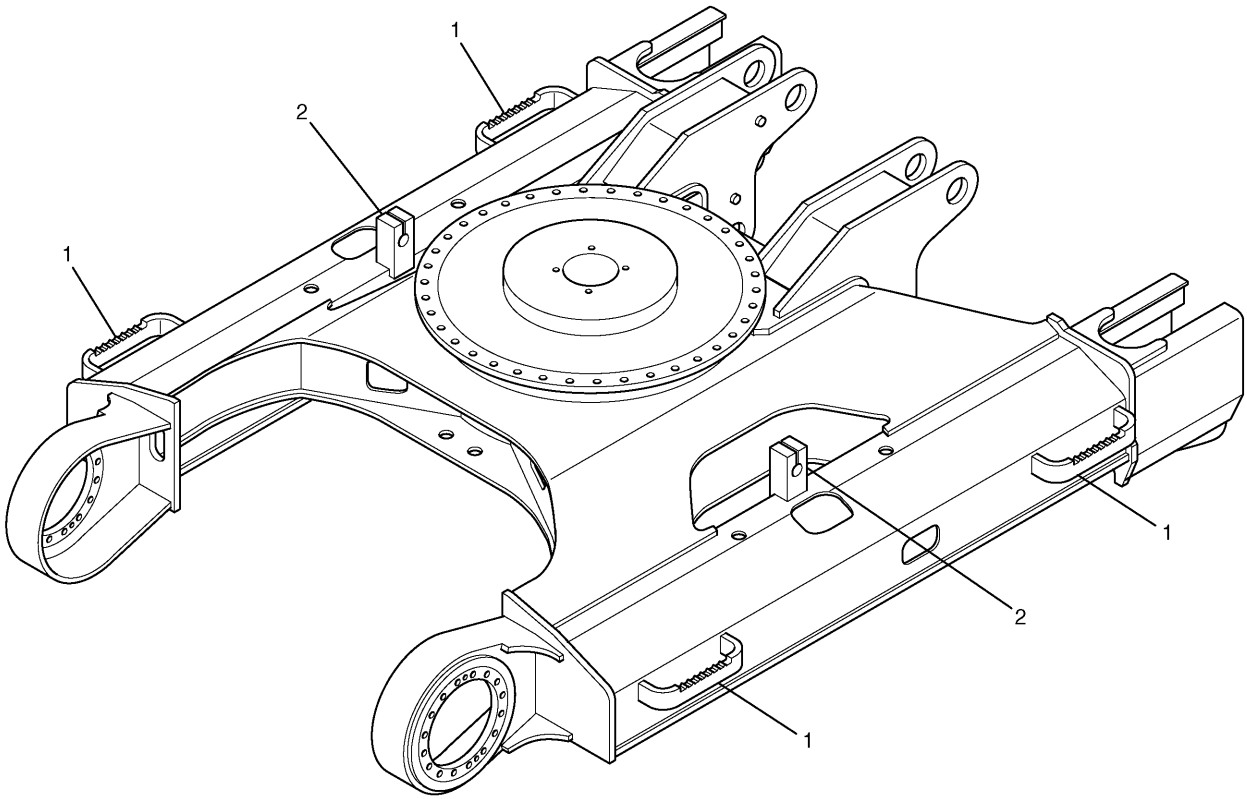
E—ORDER BY THE CENTIMETER

H78944E 02

211-6193 COVER GP-STORAGE BOX

S/N WSA 1-00369
Part of 202-1613-Page187

FRAME AND BODY



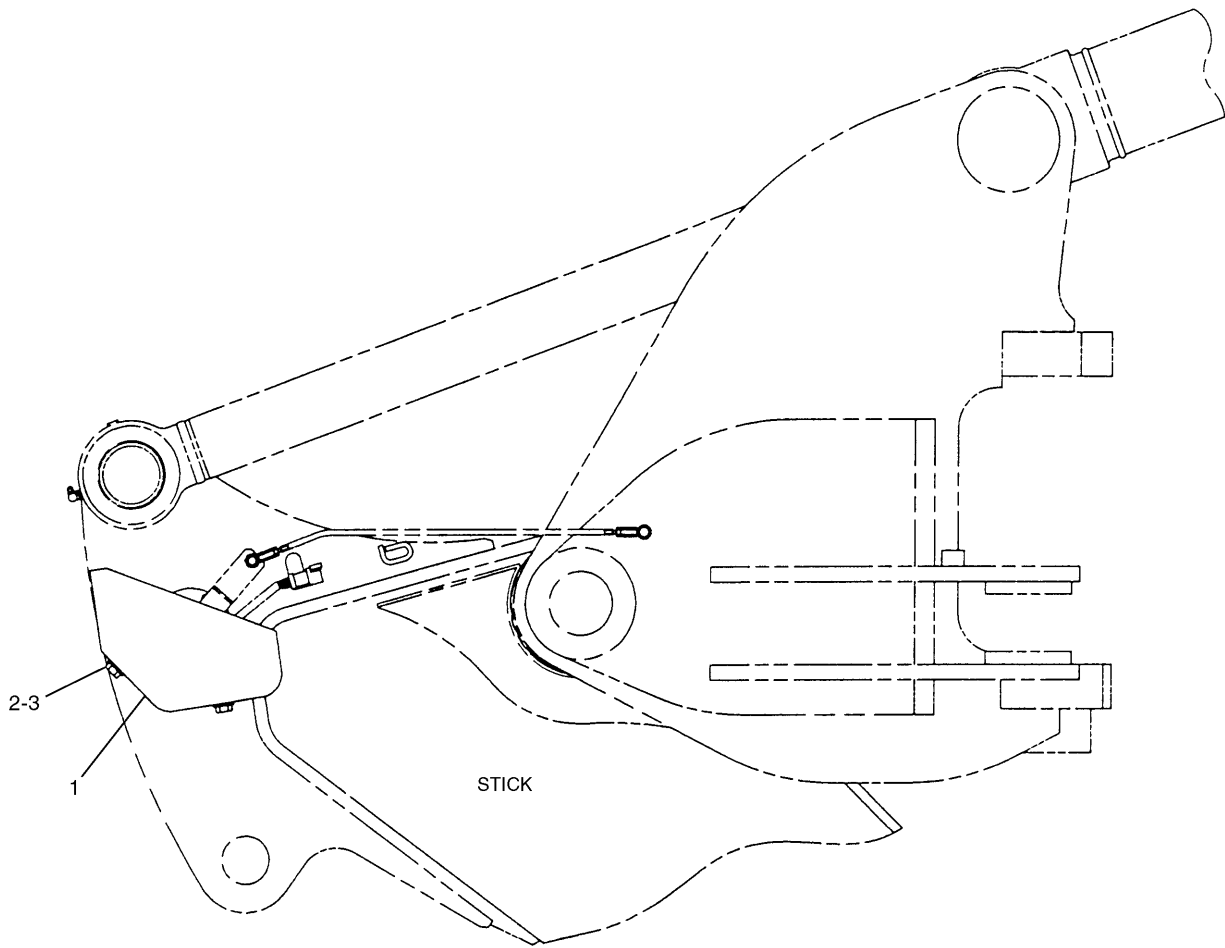
NOTE	No.	PART No.	QTY	PART NAME	NOTE	No.	PART No.	QTY	PART NAME
	1	120-7215	4	STEP					
	2	151-9751	2	BRACKET					

H78943E 00

212-3071 FRAME AS-UNDERCARRIAGE

MEMORANDA

FRAME AND BODY

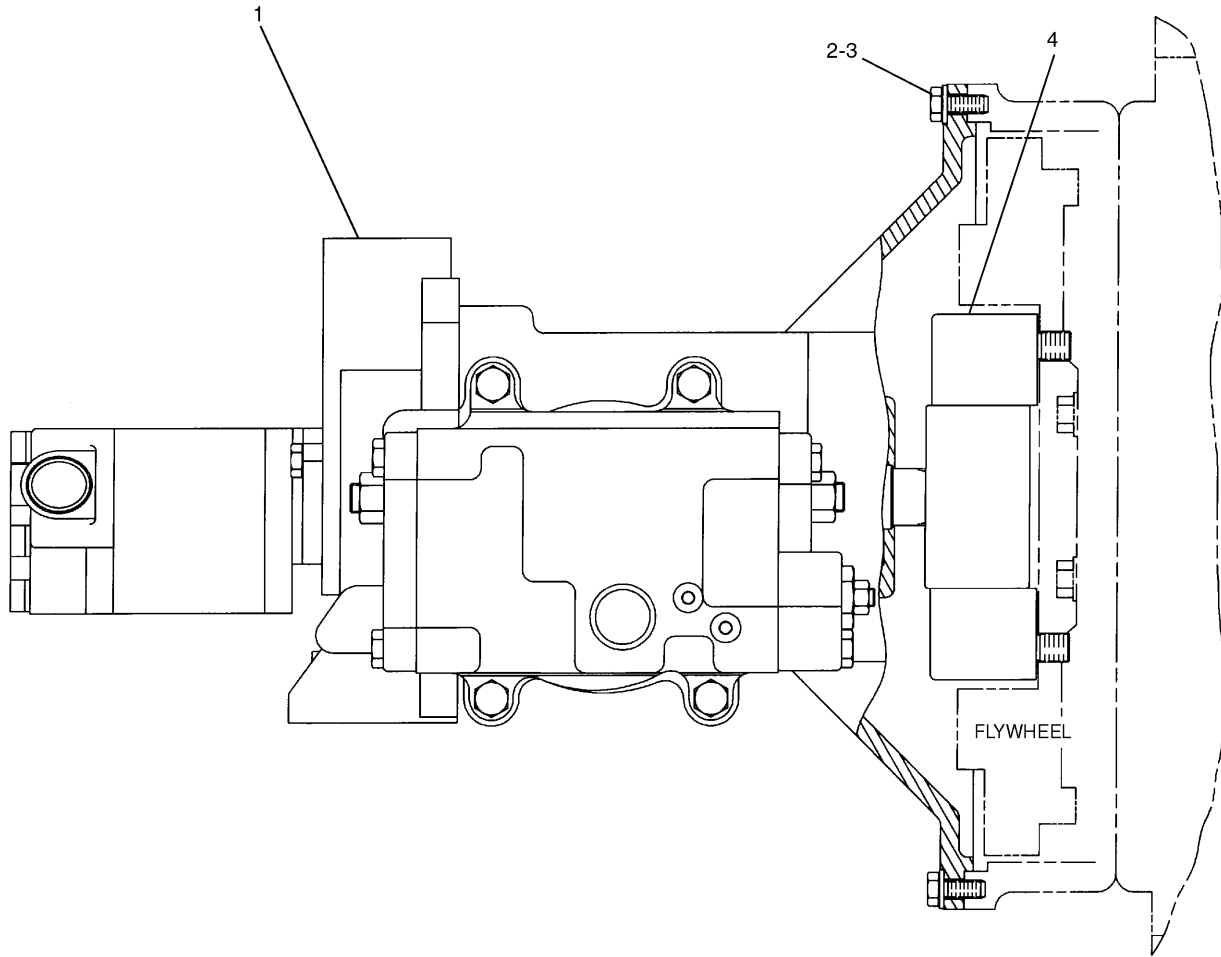


NOTE	No.	PART No.	QTY	PART NAME	NOTE	No.	PART No.	QTY	PART NAME
	1	211-6406	1	COVER AS					
	2	8T-4139	2	BOLT (L=30mm)					
	3	8T-4223	2	WASHER					

H82628E 01

157-9168 GUARD GP-FRONT
 Part of 202-1525-Page411
 An Attachment

HYDRAULIC SYSTEM



NOTE	No.	PART No.	QTY	PART NAME	NOTE	No.	PART No.	QTY	PART NAME
Y	1	199-6383	1	PUMP GP					
	2	8T-4136	12	BOLT (L=25mm)					
	3	8T-4121	12	WASHER					
Y	4	190-5846	1	COUPLING GP					

Y—SEE SEPARATE ILLUSTRATION

H78728E 00

201-3867 PUMP & MOUNTING GP
190-5846-Page218,199-6383-Page220

HYDRAULIC SYSTEM

NOTE	No.	PART No.	QTY	PART NAME	NOTE	No.	PART No.	QTY	PART NAME
B	1	099-3669	2	SHIM (T=1.00mm)					
B	2	099-6109	2	SHIM (T=1.05mm)					
B	3	099-6110	2	SHIM (T=1.10mm)					
B	4	099-6111	2	SHIM (T=1.15mm)					
B	5	099-6112	2	SHIM (T=1.20mm)					
B	6	099-6113	2	SHIM (T=1.25mm)					
B	7	099-6115	2	SHIM (T=1.30mm)					
	8	173-1169	1	SPRING					
	9	173-1170	1	SPRING					
	10	173-3387	1	ADJUSTER					
	11	173-3389	2	STOPPER					
	12	174-7213	1	PISTON					
	13	174-7220	2	COVER					
	14	174-7221	1	COVER					
	15	174-7222	1	COVER					
	16	176-0578	1	SPOOL AS					
	17	184-2565	1	SPRING					
	18	185-0172	1	RETAINER					
	19	190-4896	2	PLUG					
	20	192-2376	1	PIN AS					
	21	9S-8001	7	PLUG					
	22	225-0224	1	SETSCREW					
	23	225-0225	1	SETSCREW					
	24	225-0417	1	SETSCREW					
	25	268-4201	1	LEVER AS					
	26	268-4203	1	PIN					
	27	273-8316	1	SEAL-O-RING (ID=15.80mm)					
	28	273-8317	1	SEAL-O-RING (ID=24.70mm)					
	29	273-8318	1	SEAL-O-RING (ID=38.70mm)					
	30	094-1881	1	PLATE					
	31	095-1788	2	RING					
	32	099-3671	1	SPRING					
	33	185-0169	1	GUIDE					
	34	190-7674	2	SEAL-O-RING (ID=23.70mm)					
	35	200-3254	1	NUT					
	36	200-3255	1	NUT					
	37	3D-2891	1	BALL					
	38	3J-1907	1	SEAL-O-RING (ID=11.89mm)					
	39	4J-7533	7	SEAL-O-RING (ID=6.07mm)					
	40	6V-5391	1	SEAL-O-RING (ID=37.77mm)					
	41	8T-4132	2	NUT					
	42	8T-4183	8	BOLT (L=40mm)					
	43	8T-4192	2	BOLT (L=25mm)					

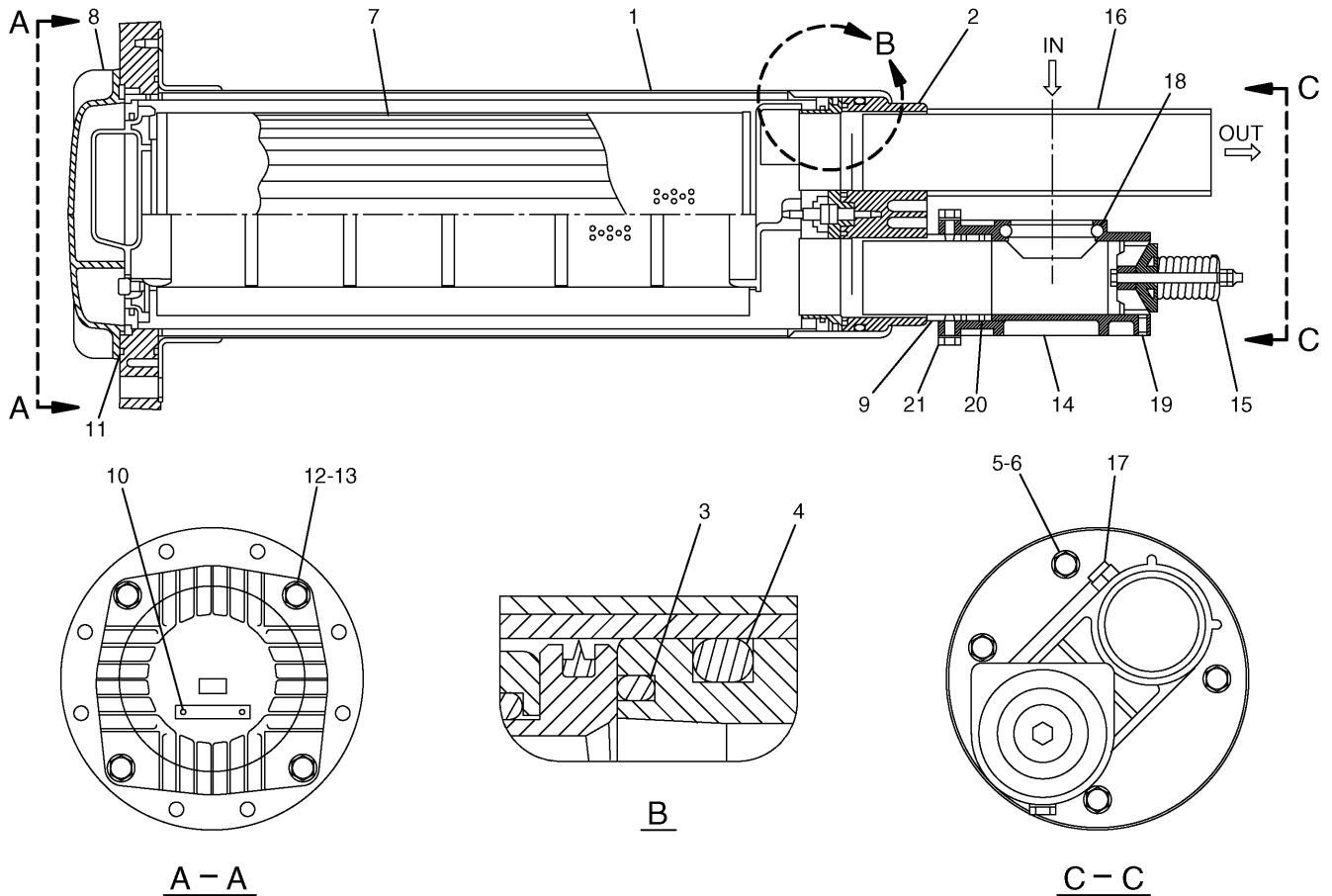
B—USE AS REQUIRED

H96562E 20

173-1168 HEAD GP-PUMP CONTROL

S/N WSA 00630-00630
Part of 199-6383-Page221

HYDRAULIC SYSTEM



NOTE	No.	PART No.	QTY	PART NAME	NOTE	No.	PART No.	QTY	PART NAME
Y	1	177-2620	1	HOUSING GP		21	187-7171	2	BOLT (L=14mm)
Y	2	177-2617	1	BLOCK GP					
	3	177-2625	1	PACKING					
	4	095-1682	1	SEAL-O-RING (ID=149.30mm)					
	5	8T-4189	4	BOLT (L=20mm)					
	6	8T-4224	4	WASHER					
Y	7	188-4142	1	FILTER GP					
	8	173-3510	1	COVER					
	9	175-6175	1	PIPE					
	10	116-3522	2	SCREW					
	11	123-2003	1	SEAL-O-RING (ID=185.00mm)					
	12	8T-4184	4	BOLT (L=45mm)					
	13	8T-4223	4	WASHER					
	14	175-6178	1	HOUSING					
	15	177-2623	1	VALVE AS					
	16	175-6174	1	PIPE					
	17	8T-4970	2	BOLT (L=14mm)					
	18	175-6176	1	SEAL-O-RING (ID=56.00mm)					
	19	6V-8932	1	SCREW					
	20	095-1663	2	SEAL-O-RING (ID=54.40mm)					

Y—SEE SEPARATE ILLUSTRATION

H77562E 02

188-4145 FILTER GP-HYDRAULIC

S/N WSA 00370-Up

Part of 211-6201-Page215.02

188-4142-Page229.01, 177-2617-Page230, 177-2620-Page231

CLICK HERE TO **DOWNLOAD** THE COMPLETE MANUAL

- Thank you very much for reading the preview of the manual.
- You can download the complete manual from: www.heydownloads.com by clicking the link below



- Please note: If there is no response to CLICKING the link, please download this PDF first and then click on it.

CLICK HERE TO **DOWNLOAD** THE COMPLETE MANUAL

HYDRAULIC SYSTEM

Consists of :

			Page
1	170-9803	CYLINDER & SEAL GP-BUCKET.....	240
1	208-3071	LINES GP-BUCKET CYLINDER.....	257

H78735E 00

209-6047 CYLINDER & LINES GP-BUCKET

S/N WSA 1-00369
Part of 202-1526,202-1586-Page412
An Attachment

Consists of :

			Page
1	248-7854	CYLINDER & SEAL GP-BUCKET.....	240.01
1	208-3071	LINES GP-BUCKET CYLINDER.....	257

H87198E 00

251-2825 CYLINDER & LINES GP-BUCKET

S/N WSA 00370-Up
Part of 251-2867,251-2868-Page413
An Attachment

MEMORANDA

HYDRAULIC SYSTEM

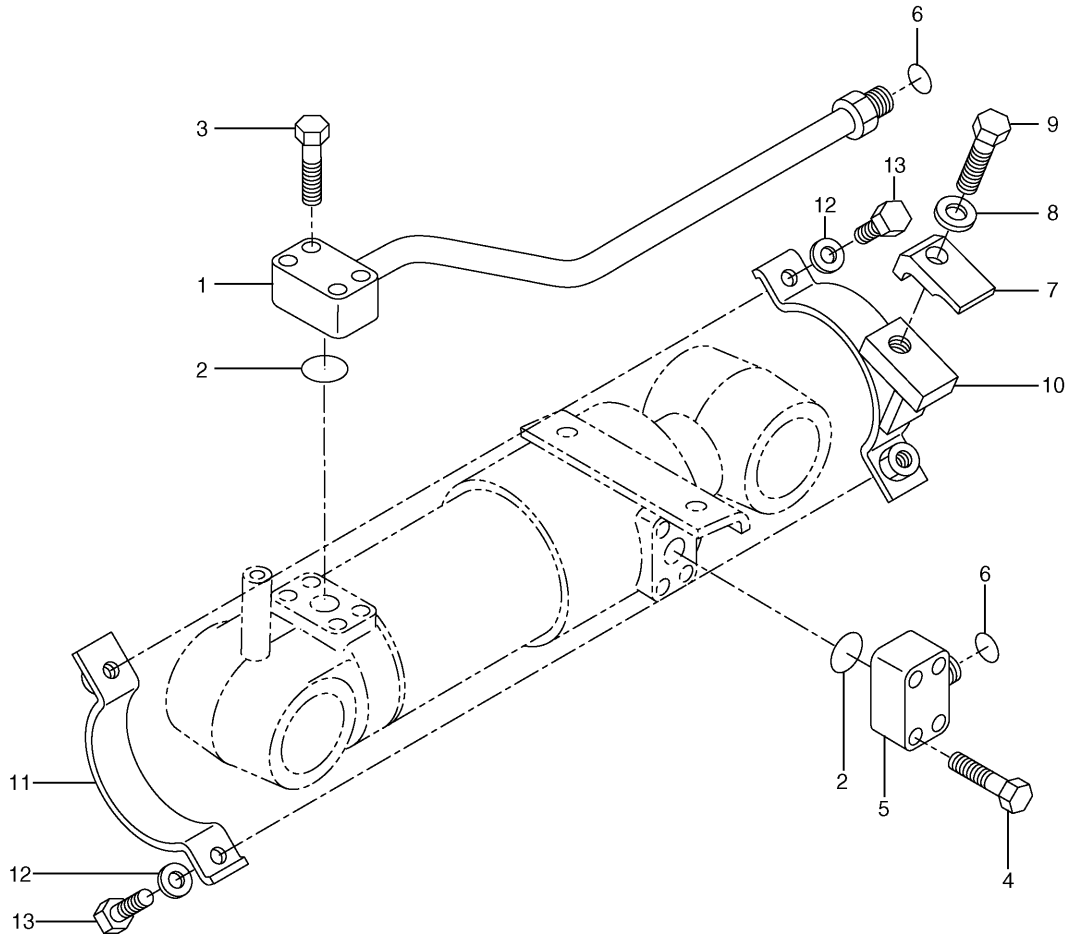
NOTE	No.	PART No.	QTY	PART NAME	NOTE	No.	PART No.	QTY	PART NAME
	1	170-9938	1	CYLINDER AS					
	2	229-1009	1	BEARING					
J	3	143-8024	1	RING					
J	4	9X-7298	1	SEAL AS					
J	5	143-8025	1	RING					
	6	143-8023	1	PISTON					
	7	099-0700	1	RING					
J	8	095-1625	1	SEAL-O-RING (ID=89.60mm)					
J	9	099-0699	1	RING					
	10	114-0754	1	BEARING					
J	11	170-9840	1	SEAL					
	12	099-0600	1	RING					
J	13	170-9856	1	SEAL					
J	14	096-1055	1	RING					
J	15	6V-8467	1	SEAL-O-RING (ID=99.40mm)					
	16	099-0596	1	HEAD					
J	17	165-9282	1	SEAL					
	18	248-7856	1	ROD AS					
	19	248-7857	1	BEARING					
	20	143-8149	1	LOCKNUT					
J	21	143-8033	1	RING					
				THE FOLLOWING REPAIR KIT IS AVAILABLE:					
		170-9941	1	SEAL KIT (INCLUDES PARTS MARKED J)					

H87960E 00

248-7855 CYLINDER GP-BUCKET

S/N WSA 00370-Up
Part of 248-7854-Page240.01
An Attachment

HYDRAULIC SYSTEM



NOTE	No.	PART No.	QTY	PART NAME	NOTE	No.	PART No.	QTY	PART NAME
	1	179-7605	1	PIPE AS					
	2	4J-5267	2	SEAL-O-RING (ID=24.99mm)					
	3	8T-4182	4	BOLT (L=45mm)					
	4	8T-4185	4	BOLT (L=50mm)					
	5	139-1773	1	ELBOW					
	6	7J-9108	2	SEAL-O-RING (OD=19.28mm)					
	7	093-1291	1	CLAMP					
	8	8T-4223	1	WASHER					
	9	8T-4194	1	BOLT (L=50mm)					
	10	122-5420	1	SUPPORT AS					
	11	122-5500	1	SUPPORT AS					
	12	8T-4121	2	WASHER					
	13	8T-4196	2	BOLT (L=35mm)					

H82619E 03

179-7604 LINES GP-BLADE CYLINDER

Right Hand
Part of 170-9800-Page236

HYDRAULIC SYSTEM

NOTE	No.	PART No.	QTY	PART NAME	NOTE	No.	PART No.	QTY	PART NAME
	1	6V-8716	4	CONNECTOR					
	2	6V-8639	2	CONNECTOR					
	3	6V-9746	16	SEAL-O-RING (OD=22.50mm)					
	4	179-7770	2	HOSE AS					
Y	5	162-4695	1	SWIVEL GP					
	6	194-9043	2	HOSE AS					
	7	200-3261	1	ROD					
	8	225-4539	1	WASHER					
	9	7K-1181	6	STRAP					
	10	194-9047	2	HOSE AS					
	11	194-9040	1	ELBOW					
	12	3D-2824	12	SEAL-O-RING (ID=23.47mm)					
	13	5I-4366	2	GROMMET					
	14	194-9041	2	ELBOW					
	15	5I-4365	2	GROMMET					
	16	8C-8400	1	ELBOW					
	17	8T-4137	4	BOLT (L=20mm)					
	18	8T-4121	4	WASHER					
B	19	1U-8846		GASKET MAKER···(2ml)					
	20	6V-8641	2	CONNECTOR					
	21	6V-8637	8	CONNECTOR					
	22	6V-8775	1	TEE					
	23	7I-1303	4	HOSE AS					
	24	179-7771	2	HOSE AS					
	25	156-8801	2	CONNECTOR					
	26	3J-1907	4	SEAL-O-RING (ID=11.89mm)					
	27	4J-5477	4	SEAL-O-RING (OD=11.23mm)					
	28	7M-8485	4	SEAL-O-RING (ID=29.74mm)					
	29	3K-0360	3	SEAL-O-RING (ID=16.36mm)					
	30	6V-8398	4	SEAL-O-RING (OD=16.03mm)					

B—USE AS REQUIRED

Y—SEE SEPARATE ILLUSTRATION

H97685E 02

202-1514 LINES GP-TRAVEL MOTOR

S/N WSA 00682-Up
162-4695-Page298

HYDRAULIC SYSTEM

NOTE	No.	PART No.	QTY	PART NAME	NOTE	No.	PART No.	QTY	PART NAME
Y	1	206-3304	1	VALVE GP (WORKING CONTROL)		52	099-7241	8	WASHER
Y	2	206-3303	1	VALVE GP (WORKING CONTROL)		53	6V-8987	8	ELBOW
	3	6V-7357	6	BOLT (L=25mm)	Y	54	123-2430	1	VALVE GP
	4	9X-8256	6	WASHER		55	6V-9843	1	TEE
	5	6V-3965	7	NIPPLE AS		56	8T-3647	2	BOLT (L=80mm)
	6	6V-0852	7	CAP		57	123-2431	1	BODY
	7	199-9325	1	SUPPORT AS		58	202-1771	1	CONNECTOR
	8	8T-4137	18	BOLT (L=20mm)		59	157-3180	1	SENSOR AS
	9	8T-4121	20	WASHER			9X-3401	3	PIN
Y	10	215-5002	1	VALVE GP			185-2478	1	SEAL
	11	7K-1181	7	STRAP		60	184-9336	1	SUPPORT
	12	9S-4185	2	PLUG		61	4I-9521	4	BAND (L1,RED)
	13	3J-1907	62	SEAL-O-RING (ID=11.89mm)		62	4I-9522	2	BAND (L2,YELLOW)
	14	168-9759	1	BLOCK		63	4I-9523	4	BAND (L3,BLUE)
	15	8T-4198	2	BOLT (L=100mm)		64	4I-9524	2	BAND (L4,BROWN)
	16	6V-8397	80	SEAL-O-RING (OD=12.83mm)		65	4I-9525	4	BAND (R1,ORANGE)
	17	4I-1760	1	HOSE AS (NOM 06, L=500mm)		66	4I-9526	2	BAND (R2,WHITE)
	18	6V-8724	15	ELBOW		67	4I-9527	4	BAND (R3,GREEN)
	19	7Y-4196	2	HOSE AS (NOM 06, L=320mm)		68	4I-9528	2	BAND (R4,PURPLE)
	20	087-6582	3	HOSE AS (NOM 06, L=400mm)		69	133-5813	4	BAND (PGRAY)
	21	4I-1754	1	HOSE AS (NOM 06, L=470mm)		70	198-2003	2	CONNECTOR
	22	199-9327	2	PLATE		71	3K-0360	2	SEAL-O-RING (ID=16.36mm)
	23	6V-9001	6	ELBOW		72	258-5855	1	SUPPORT AS
	24	6V-8636	22	CONNECTOR					
	25	309-5769	1	SWITCH AS (PRESSURE)					
		102-8802	1	RECEPTACLE KIT					
		9X-3401	2	PIN					
	26	3S-2093	1	STRAP					
	27	194-8984	1	HOSE AS (NOM 06, L=1740mm)					
	28	183-1813	1	HOSE AS (NOM 06, L=1740mm)					
	29	6V-8781	3	TEE					
	30	6V-9850	1	ELBOW					
	31	6V-9836	1	TEE					
	32	5I-8825	1	HOSE AS (NOM 06, L=750mm)					
	33	087-4532	3	HOSE AS (NOM 06, L=900mm)					
	34	087-5767	1	HOSE AS (NOM 06, L=700mm)					
	35	202-1733	3	HOSE AS (NOM 06, L=1480mm)					
	36	202-1735	1	HOSE AS (NOM 06, L=1440mm)					
	37	202-1732	1	HOSE AS (NOM 06, L=1840mm)					
	38	202-1730	1	HOSE AS (NOM 06, L=1790mm)					
	39	202-1734	2	HOSE AS (NOM 06, L=1520mm)					
	40	202-1731	1	HOSE AS (NOM 06, L=1790mm)					
	41	202-1729	1	HOSE AS (NOM 06, L=1840mm)					
	42	4I-5906	2	HOSE AS (NOM 06, L=600mm)					
	43	8T-4136	4	BOLT (L=25mm)					
	44	107-6631	5	CONNECTOR					
Y	45	165-9522	1	VALVE GP (TRAVEL CONTROL)					
	46	104-8821	1	HOSE AS (NOM 06, L=860mm)					
	47	087-4411	2	HOSE AS (NOM 06, L=450mm)					
	48	8T-1905	1	ELBOW					
Y	49	185-0514	1	VALVE GP					
	50	183-1695	1	SUPPORT AS					
	51	6V-9168	8	NUT					

Y-SEE SEPARATE ILLUSTRATION

HA3623E 08

202-1516 LINES GP-PILOT

S/N WSA 00370-Up

206-3303-Page300,206-3304-Page301,215-5002-Page335,165-9522-Page346,185-0514-Page352,123-2430-Page353

HYDRAULIC SYSTEM

NOTE	No.	PART No.	QTY	PART NAME	NOTE	No.	PART No.	QTY	PART NAME
	1	136-0289	1	HOSE AS (NOM 12, L=435mm)		52	6V-9874	1	CONNECTOR
	2	8T-1905	3	ELBOW		53	6V-9853	1	ELBOW
	3	6V-9007	2	ELBOW		54	8T-0075	1	CONNECTOR
	4	159-7758	1	HOSE AS (NOM 08, L=900mm)		55	9S-4185	2	PLUG
	5	8T-7546	1	ELBOW		56	115-8848	1	HOSE AS (NOM 08, L=1100mm)
	6	6V-9872	1	CONNECTOR		57	6K-8178	1	CLIP
	7	8C-8988	1	ELBOW		58	7K-1181	7	STRAP
	8	6V-8636	1	CONNECTOR		59	8T-6663	1	ADAPTER
	9	6V-9850	1	ELBOW		60	198-2000	1	PLATE AS
	10	4I-5933	1	HOSE AS (NOM 06, L=1600mm)		61	8T-4139	2	BOLT (L=30mm)
	11	087-5775	2	HOSE AS (NOM 06, L=1130mm)		62	8T-4223	2	WASHER
	12	6V-8775	1	TEE		63	211-6177	1	PLATE AS
	13	202-1722	1	BLOCK		64	6V-9851	1	ELBOW
	14	6V-8397	21	SEAL-O-RING (OD=12.83mm)		65	3J-7354	3	SEAL-O-RING (ID=8.92mm)
	15	6V-8398	14	SEAL-O-RING (OD=16.03mm)		66	3K-0360	8	SEAL-O-RING (ID=16.36mm)
	16	8T-6912	2	BOLT (L=50mm)		67	2M-9780	2	SEAL-O-RING (ID=19.18mm)
	17	6D-1641	2	CLIP		68	6V-9004	1	ELBOW
	18	8T-4191	2	BOLT (L=16mm)		69	6V-8637	1	CONNECTOR
	19	8T-4121	8	WASHER					
	20	124-1246	1	HOSE AS (NOM 08, L=2480mm)					
	21	6V-9829	3	CAP AS					
Y	22	126-2075	1	FILTER GP					
	23	8T-4137	5	BOLT (L=20mm)					
	24	6V-8639	2	CONNECTOR					
	25	124-1212	1	FITTING					
	26	3D-2824	5	SEAL-O-RING (ID=23.47mm)					
	27	6V-9746	7	SEAL-O-RING (OD=22.50mm)					
Y	28	158-8987	1	FILTER GP					
	29	8T-4189	4	BOLT (L=20mm)					
	30	8T-4224	4	WASHER					
	31	6V-8721	2	ELBOW					
	32	8C-3446	1	VALVE					
	33	8C-3451	1	CAP					
	34	6V-3965	5	NIPPLE AS					
	35	6V-0852	5	CAP					
	36	6V-8723	1	ELBOW					
	37	198-2330	1	GROMMET					
	38	6V-9873	1	CONNECTOR					
	39	6V-9837	1	TEE					
	40	202-1723	1	ADAPTER					
	41	3J-1907	13	SEAL-O-RING (ID=11.89mm)					
	42	221-8859	1	SENSOR AS					
		3K-0360	1	SEAL-O-RING (ID=16.36mm)					
		9X-3401	3	PIN					
	43	4I-0794	1	HOSE AS (NOM 08, L=500mm)					
	44	108-7547	1	HOSE AS (NOM 12, L=710mm)					
	45	133-5813	2	BAND (PGRAY)					
	46	087-5771	1	HOSE AS (NOM 06, L=960mm)					
	47	8T-6876	1	ELBOW					
	48	8T-0077	1	CONNECTOR					
	49	4I-0788	1	HOSE AS (NOM 08, L=535mm)					
	50	087-4587	1	GROMMET					
	51	227-0292	1	HOSE AS (NOM 12, L=380mm)					

Y-SEE SEPARATE ILLUSTRATION

H85536E 04

202-1571 LINES GP-PILOT
S/N WSA 00242-00369
126-2075-Page226,158-8987-Page227

HYDRAULIC SYSTEM

NOTE	No.	PART No.	QTY	PART NAME	NOTE	No.	PART No.	QTY	PART NAME
	1	139-1765	2	HOSE AS					
	2	139-1762	2	HOSE AS					
	3	208-3105	1	ELBOW					
	4	6V-8722	2	ELBOW					
	5	6V-9005	1	ELBOW					
	6	8T-0404	1	ELBOW					
	7	6V-9852	1	ELBOW					
	8	6V-8943	1	REDUCER AS					
	9	6V-8784	1	TEE					
	10	198-2081	1	HOSE AS					
	11	198-2084	1	HOSE AS					
	12	179-7874	1	TUBE AS					
	13	7J-9108	15	SEAL-O-RING (OD=19.28mm)					
	14	093-1295	2	CLAMP					
	15	8T-4194	2	BOLT (L=50mm)					
	16	8T-4223	2	WASHER					
	17	179-7875	1	TUBE AS					
	18	2M-9780	2	SEAL-O-RING (ID=19.18mm)					
	19	6V-3965	1	NIPPLE AS					
	20	6V-0852	1	CAP					
	21	198-2087	1	HOSE AS					
	22	7K-1181	3	STRAP					
	23	8T-6684	1	ELBOW					
	24	198-2090	1	HOSE AS					
	25	168-9390	1	HOSE AS					
Y	26	122-5373	1	VALVE GP					
	27	5A-3604	3	BOLT (L=25mm)					
	28	8T-4224	3	WASHER					
	29	6V-8713	2	CONNECTOR					
	30	6V-8632	2	CONNECTOR					
	31	6V-8642	1	CONNECTOR					
	32	3K-0360	4	SEAL-O-RING (ID=16.36mm)					
	33	5K-9090	2	SEAL-O-RING (OD=27.22mm)					
	34	7M-8485	1	SEAL-O-RING (ID=29.74mm)					
	35	3D-2824	5	SEAL-O-RING (ID=23.47mm)					
	36	6V-9746	2	SEAL-O-RING (OD=22.50mm)					
	37	3J-1907	1	SEAL-O-RING (ID=11.89mm)					

Y—SEE SEPARATE ILLUSTRATION

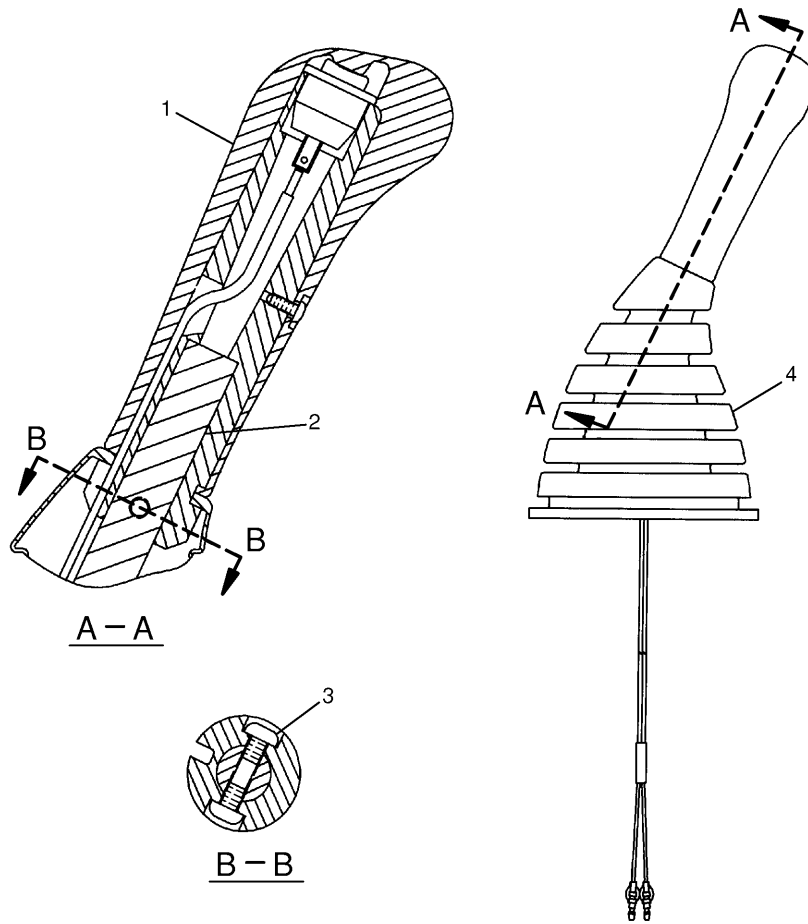
H78760E 00

212-5471 LINES GP-BLADE CYL & VALVE
122-5373-Page339

MEMORANDA

MEMORANDA

HYDRAULIC SYSTEM



NOTE	No.	PART No.	QTY	PART NAME	NOTE	No.	PART No.	QTY	PART NAME
Y	1	167-7051	1	KNOB AS					
	2	124-4010	1	LEVER					
	3	096-2617	2	SCREW					
	4	167-7050	1	BOOT					

Y—SEE SEPARATE ILLUSTRATION

H70092E 02

164-0533 CONTROL GP-PILOT OPERATED HYD
 Part of 206-3304-Page301
 167-7051-Page305

HYDRAULIC SYSTEM

NOTE	No.	PART No.	QTY	PART NAME	NOTE	No.	PART No.	QTY	PART NAME
	1	5 A - 3 6 0 4	22	BOLT (L=25mm)					
	2	1 9 7 - 0 1 6 5	22	BOLT					
	3	1 9 7 - 0 1 6 7	1	PLATE					
	4	0 9 5 - 1 5 7 8	4	SEAL-O-RING (ID=9.80mm)					
	5	0 9 5 - 1 6 9 6	2	SEAL-O-RING (ID=24.40mm)					
	6	1 0 4 - 8 1 0 7	5	BOLT					
	7	0 9 5 - 1 6 9 8	3	SEAL-O-RING (ID=29.40mm)					
	8	1 9 7 - 0 1 4 5	1	PLUG					
	9	0 9 5 - 1 5 8 2	1	SEAL-O-RING (ID=13.80mm)					
	10	0 9 5 - 1 5 8 5	1	SEAL-O-RING (ID=17.80mm)					
	11	1 9 7 - 0 2 7 2	1	PLUG					
	12	5 B - 9 3 0 4	2	SCREW					

H82696E 01

215-4886 VALVE GP-MAIN CONTROL (1/5)
S/N WSA 1-00369

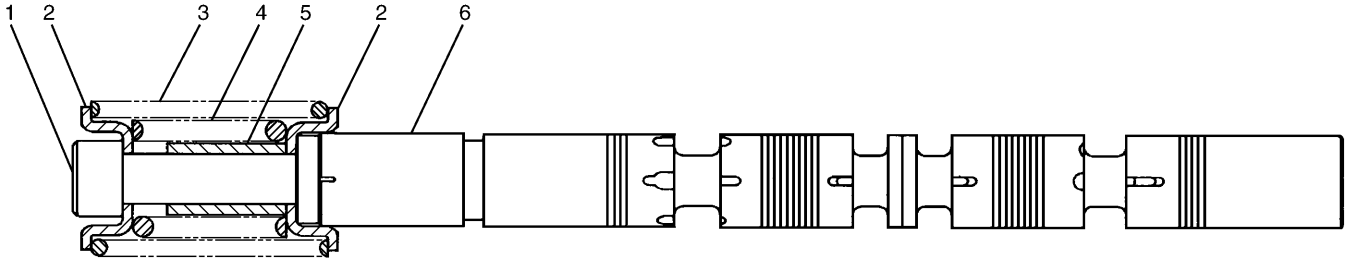
HYDRAULIC SYSTEM

NOTE	No.	PART No.	QTY	PART NAME	NOTE	No.	PART No.	QTY	PART NAME
	1	5 A - 3 6 0 4	22	BOLT (L=25mm)					
	2	1 9 7 - 0 1 6 5	22	BOLT					
	3	1 9 7 - 0 1 6 7	1	PLATE					
	4	0 9 5 - 1 5 7 8	4	SEAL-O-RING (ID=9.80mm)					
	5	0 9 5 - 1 6 9 6	2	SEAL-O-RING (ID=24.40mm)					
	6	1 0 4 - 8 1 0 7	5	BOLT					
	7	0 9 5 - 1 6 9 8	3	SEAL-O-RING (ID=29.40mm)					
	8	1 9 7 - 0 1 4 5	1	PLUG					
	9	0 9 5 - 1 5 8 2	1	SEAL-O-RING (ID=13.80mm)					
	10	0 9 5 - 1 5 8 5	1	SEAL-O-RING (ID=17.80mm)					
	11	1 9 7 - 0 2 7 2	1	PLUG					
	12	5 B - 9 3 0 4	2	SCREW					

H87202E 00

248-7868 VALVE GP-MAIN CONTROL (1/5)
S/N WSA 00370-Up

HYDRAULIC SYSTEM



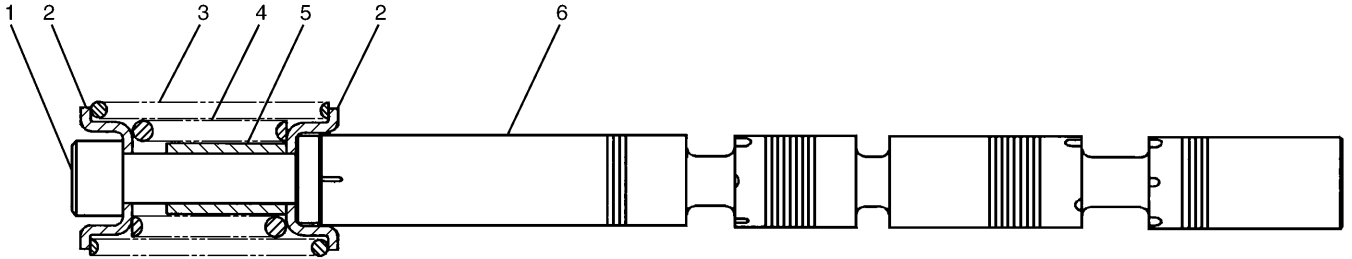
NOTE	No.	PART No.	QTY	PART NAME	NOTE	No.	PART No.	QTY	PART NAME
	1	197-0148	1	BOLT					
	2	71-7203	2	SEAT					
	3	197-0151	1	SPRING					
	4	197-0150	1	SPRING					
	5	197-0149	1	STOPPER					
	6	225-4654	1	SPOOL					

H82708E 00

225-4653 VALVE GP-CONTROL

S/N WSA 1-00369
Part of 215-4886-Page321

HYDRAULIC SYSTEM

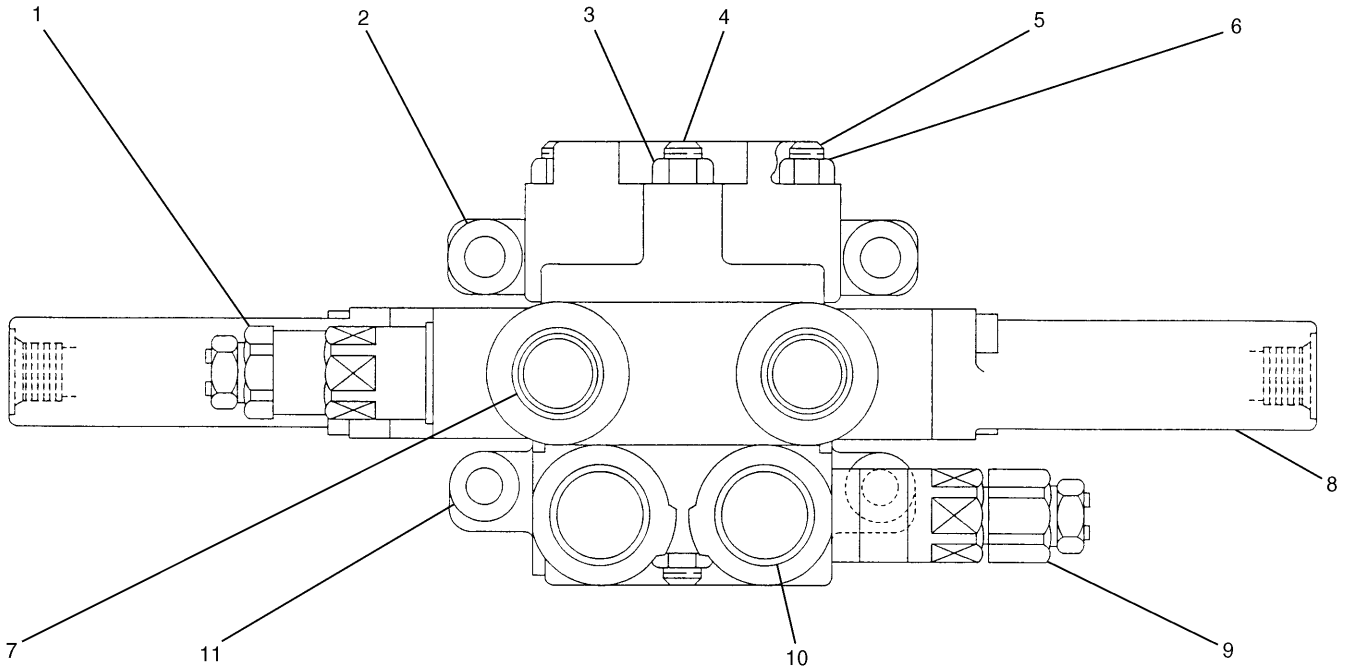


NOTE	No.	PART No.	QTY	PART NAME	NOTE	No.	PART No.	QTY	PART NAME
	1	197-0148	1	BOLT					
	2	71-7203	2	SEAT					
	3	197-0153	1	SPRING					
	4	197-0150	1	SPRING					
	5	197-0149	1	STOPPER					
	6	215-4876	1	SPOOL					

H85712E 00

215-4875 VALVE GP-CONTROL
Part of 215-4886-Page317,248-7868-Page321.06

HYDRAULIC SYSTEM



NOTE	No.	PART No.	QTY	PART NAME	NOTE	No.	PART No.	QTY	PART NAME
	1	125-7193	1	VALVE GP					
		2M-9780	1	SEAL-O-RING (ID=19.18mm)					
	2	099-3990	1	BODY					
	3	1R-6484	2	NUT					
	4	093-3093	1	ROD					
	5	093-3094	2	ROD					
	6	095-6636	4	NUT					
	7	71-0135	2	PLUG					
Y	8	122-5400	1	VALVE GP					
	9	125-7192	1	VALVE GP					
		2M-9780	1	SEAL-O-RING (ID=19.18mm)					
	10	71-0134	2	PLUG					
	11	122-5399	1	BODY					

Y—SEE SEPARATE ILLUSTRATION

H51350E 02

122-5373 VALVE GP-CONTROL

Part of 212-5471-Page285
122-5400-Page340

HYDRAULIC SYSTEM

NOTE	No.	PART No.	QTY	PART NAME	NOTE	No.	PART No.	QTY	PART NAME
	1	095-1586	4	SEAL-O-RING (ID=19.80mm)					
	2	41-6365	1	JOINT					
	3	094-0876	4	SEAL					
	4	096-1628	4	PLUG					
B	5	099-6137	4	WASHER					
	6	118-4086	4	ROD					
	7	118-4087	4	SPRING					
	8	131-5915	1	NUT					
	9	165-9431	1	PLATE					
	10	165-9435	2	SEAT					
	11	165-9436	2	SEAT					
	12	165-9438	1	PLATE					
	13	165-9442	2	SPRING					
	14	165-9443	2	SEAT					
	15	165-9444	2	SEAT					
	16	165-9460	2	SPRING					
	17	165-9461	4	SPRING					
	18	171-0087	1	BELLOW (T=0.2mm)					

B-USE AS REQUIRED

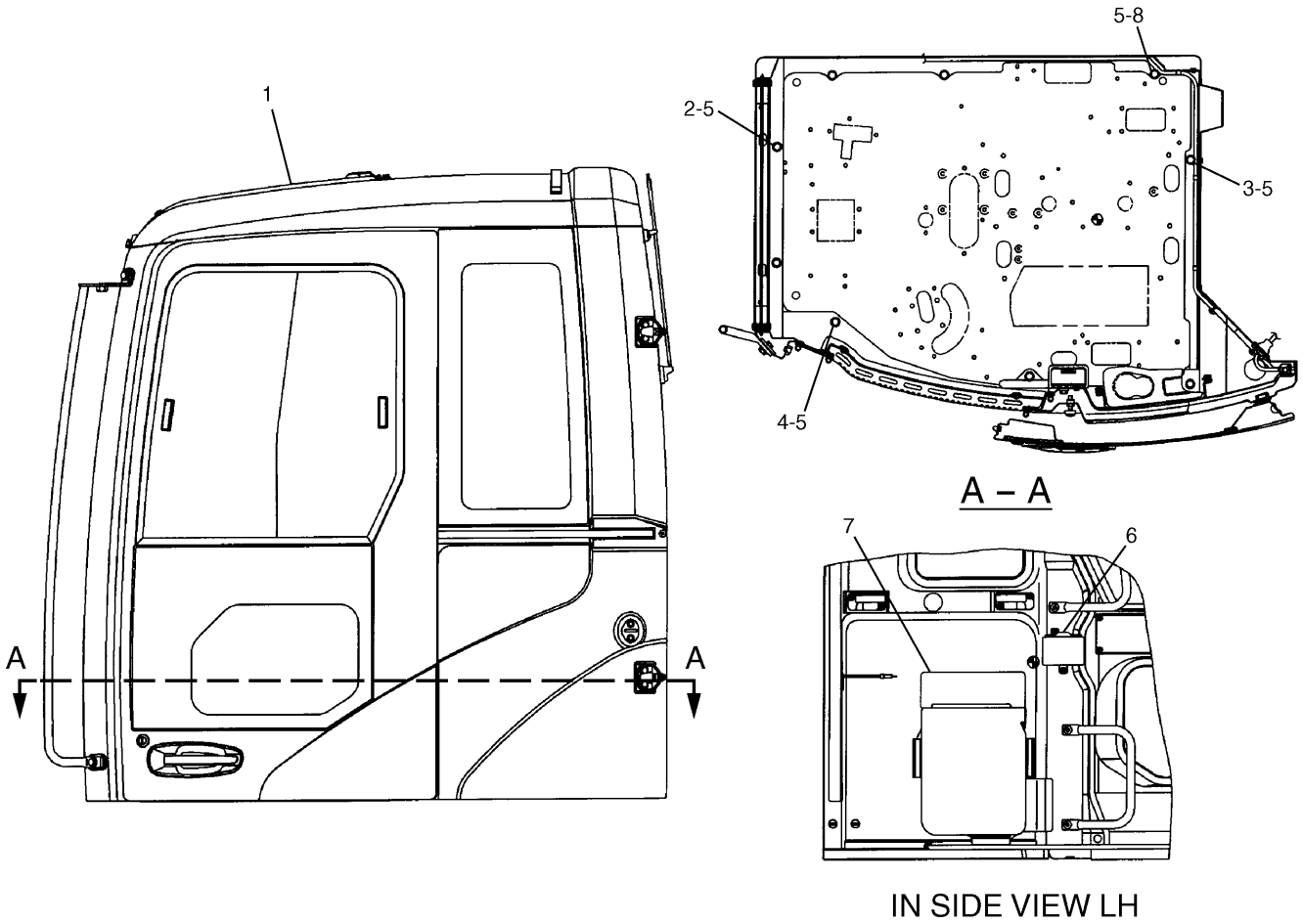
HA1726E 00

297-0589 VALVE GP-PILOT

S/N WSA 00744-Up

Part of 206-3303-Page300.01,206-3304-Page301.01

OPERATOR STATION



NOTE	No.	PART No.	QTY	PART NAME	NOTE	No.	PART No.	QTY	PART NAME
Y	1	196-1410	1	CAB GP					
	2	8T-6868	2	BOLT (L=80mm)					
	3	8T-4179	3	BOLT (L=20mm)					
	4	8T-4139	3	BOLT (L=30mm)					
	5	8T-4223	9	WASHER					
	6	178-5530	1	ASHTRAY					
Y	7	196-1540	1	BOX GP					
	8	8T-4192	1	BOLT (L=25mm)					

Y—SEE SEPARATE ILLUSTRATION

H82562E 03

189-3482 CAB GP
 Skylight
 S/N WSA 1-00275
 196-1410-Page356,196-1540-Page367

OPERATOR STATION

NOTE	No.	PART No.	QTY	PART NAME	NOTE	No.	PART No.	QTY	PART NAME
	1	196-1552	1	BRACKET		51	189-2837	1	COVER AS
	2	9X-8256	2	WASHER		52	8C-7505	6	SCREW
	3	196-1535	1	COVER		53	196-1484	1	STOPPER
	4	8Y-6967	3	LOUVER AS		54	167-7083	1	SENSOR
	5	207-0206	1	BRACKET AS		55	196-1549	1	GUIDE
	6	9X-2042	36	SCREW		56	117-6306	1	SWITCH
	7	8T-4224	2	WASHER		57	185-8181	2	SCREW
	8	8T-4189	2	BOLT (L=20mm)		58	196-1528	1	BRACKET
	9	8T-4137	6	BOLT (L=20mm)		59	196-1486	2	STOPPER
	10	196-1511	1	SEAL		60	196-1503	2	DAMPER AS
	11	196-1471	1	GLASS		61	102-7142	4	RING
	12	127-3940	1	RING		62	196-1477	1	RAIL
	13	8T-4121	6	WASHER		63	185-8205	2	CLIP
	14	196-1481	1	BRACKET		64	8T-6693	4	SCREW
Y	15	196-1432	1	WINDOW GP		65	128-2135	4	SCREW
	16	196-1466	1	GLASS		66	207-0237	1	BRACKET AS
	17	9X-2041	2	SCREW		67	196-1491	1	HANDLE
	18	8T-4133	1	NUT	Y	68	207-0198	1	WIPER GP
	19	196-1479	1	STRIKER		69	3B-4501	8	LOCKWASHER
	20	096-0721	1	LIGHT		70	095-0728	8	SCREW
		099-0864	1	BODY		71	096-6166	8	WASHER
		099-0865	1	LIGHT					
		099-0866	1	COVER					
	21	196-1478	1	RAIL					
	22	196-1480	1	STRIKER					
	23	196-1531	1	SHIM (T=2.30mm)					
	24	196-1548	1	GUIDE					
	25	196-1485	1	STOPPER					
	26	9X-2040	4	SCREW					
	27	196-1490	1	HANDLE					
	28	9X-2043	2	SCREW					
	29	6I-5340	1	HOLDER					
	30	196-1492	1	PLUG					
	31	6I-5339	1	HOLDER					
	32	9X-2045	2	SCREW					
	33	196-1527	1	COVER					
	34	196-1533	1	COVER					
	35	196-1532	1	COVER					
	36	207-0207	1	CABLE AS					
	37	207-0209	5	GROMMET					
	38	196-1529	1	BRACKET					
	39	196-1550	1	BRACKET AS					
	40	3E-8020	2	SCREW					
	41	4I-4253	1	HOLDER					
	42	196-1488	2	STOPPER					
	43	8T-4127	12	SCREW					
	44	207-0205	1	WASHER					
	45	139-6403	1	STOPPER					
	46	189-2840	2	PLATE					
	47	207-0210	4	GROMMET					
	48	095-0755	2	SCREW					
	49	127-3925	1	HOOK					
	50	8Y-6352	1	LOUVER AS					

Y—SEE SEPARATE ILLUSTRATION

H96611E 03

225-5728 CAB GP (BASIC) (2/2)

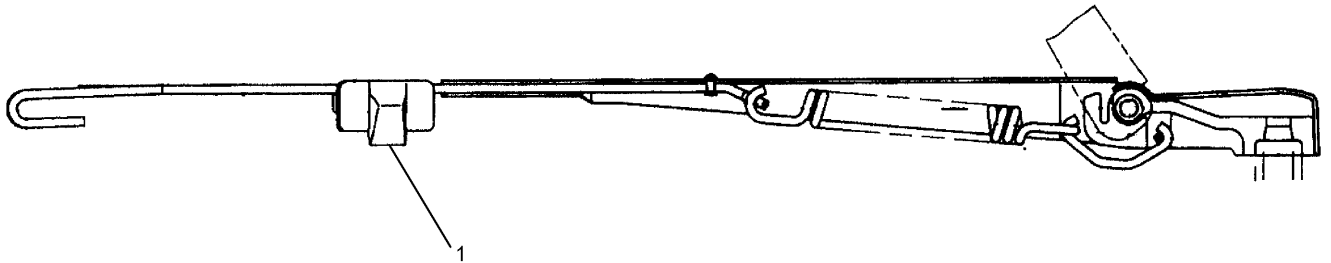
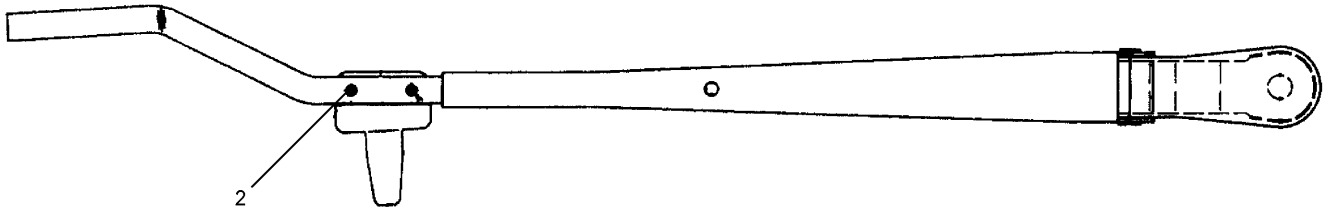
Skylight

S/N WSA 00276-Up

Part of 229-9052-Page355.01

196-1432-Page364,207-0198-Page365

OPERATOR STATION

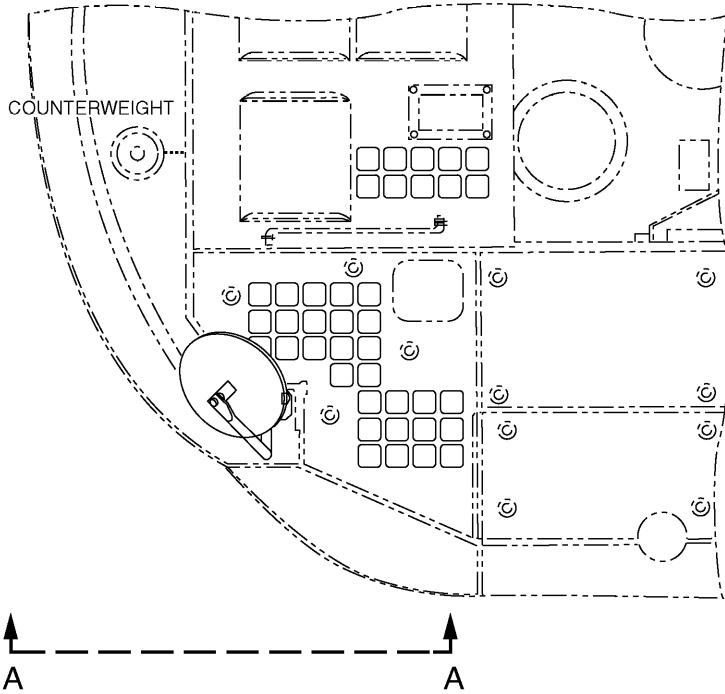


NOTE	No.	PART No.	QTY	PART NAME	NOTE	No.	PART No.	QTY	PART NAME
	1	196-1507	1	STOPPER					
	2	201-4508	2	SCREW AS					

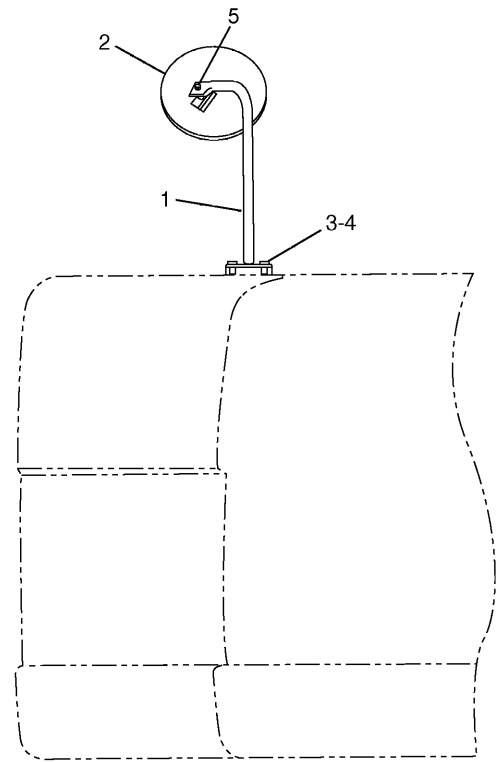
H91913E 01

196-1506 ARM AS-WIPER
Part of 207-0198-Page365

OPERATOR STATION



TOP VIEW



A - A

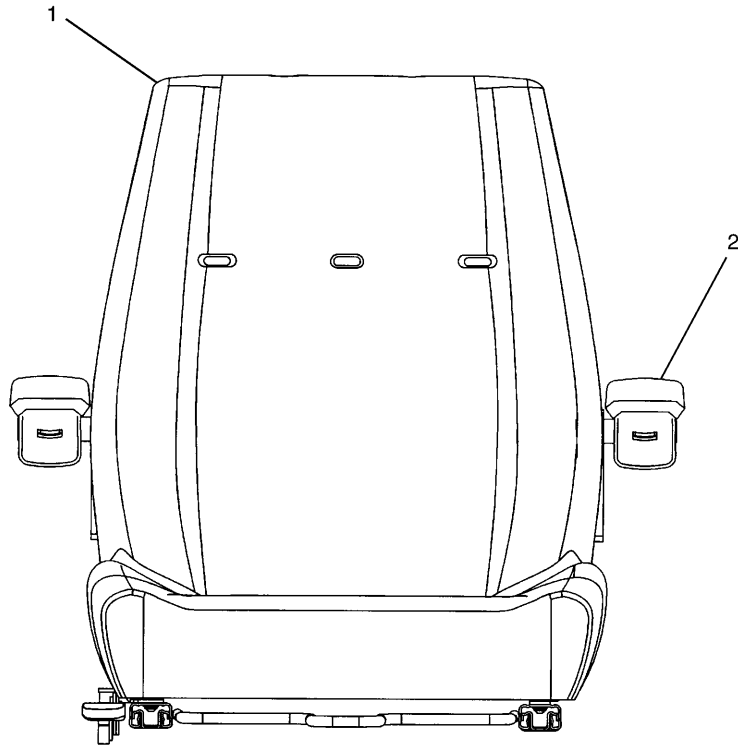
NOTE	No.	PART No.	QTY	PART NAME	NOTE	No.	PART No.	QTY	PART NAME
	1	218-7797	1	SUPPORT AS					
	2	162-3548	1	MIRROR					
	3	8T-4179	2	BOLT (L=20mm)					
	4	5P-1076	2	WASHER					
	5	320-5472	1	NUT					

HA3624E 02

194-8894 MIRROR GP-REAR VIEW

MEMORANDA

OPERATOR STATION



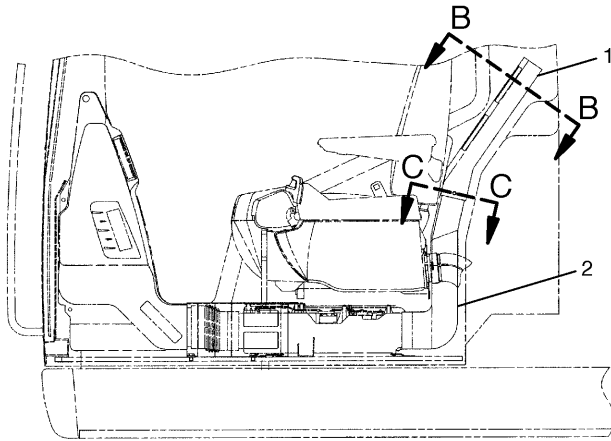
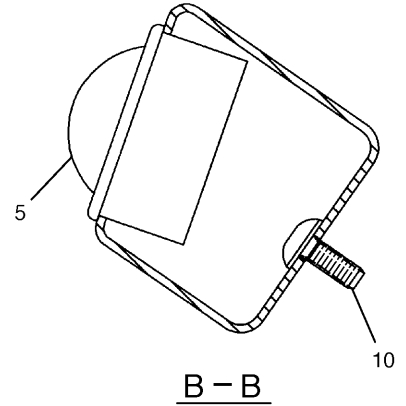
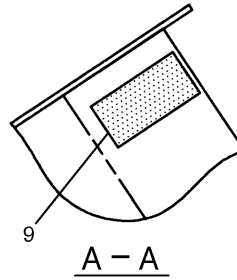
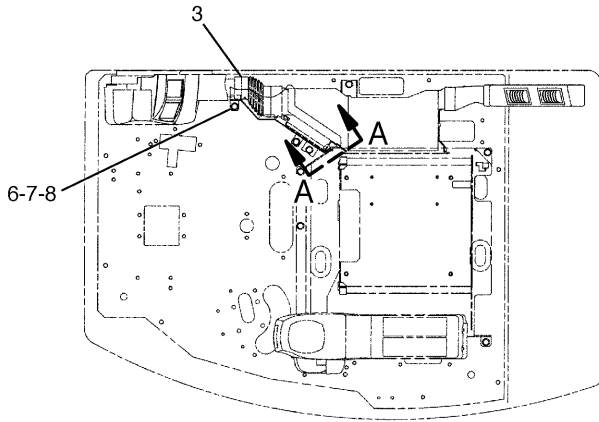
NOTE	No.	PART No.	QTY	PART NAME	NOTE	No.	PART No.	QTY	PART NAME
Y	1	196-1415	1	SEAT GP					
	2	201-4507	1	CUSHION GP					

Y—SEE SEPARATE ILLUSTRATION

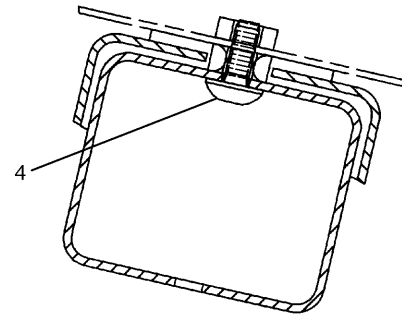
H78792E 02

196-1414 SEAT GP
 Part of 196-1413-Page384
 201-4507-Page388

OPERATOR STATION



LEFT SIDE VIEW



C - C

NOTE	No.	PART No.	QTY	PART NAME	NOTE	No.	PART No.	QTY	PART NAME
	1	201-4541	1	DUCT AS					
		201-4545	1	INSULATOR					
	2	201-4542	1	DUCT AS					
		201-4546	1	INSULATOR					
	3	201-4543	1	DUCT AS					
		201-4547	1	INSULATOR					
		201-4548	1	INSULATOR					
	4	9X-2044	1	SCREW					
	5	8Y-6967	2	LOUVER AS					
	6	201-4537	1	COVER AS					
	7	8T-4191	2	BOLT (L=16mm)					
	8	8T-4121	2	WASHER					
	9	201-4560	1	CUSHION					
	10	9X-2042	2	SCREW					

H77390E 04

189-2743 DUCT GP-AIR
 S/N WSA 1-00295
 Part of 189-3476-Page391,201-4509-Page399

OPERATOR STATION

NOTE	No.	PART No.	QTY	PART NAME	NOTE	No.	PART No.	QTY	PART NAME
	1	229-9133	1	CORE AS					
	2	9X-8256	2	WASHER					
	3	235-8889	1	PACKING					
	4	229-9020	2	SCREW					
	5	229-9136	1	CORE AS					
	6	229-9137	1	MOTOR AS					
	7	305-0314	2	MOTOR AS					
	8	229-9139	1	CONTROL AS					
	9	124-4042	1	RELAY					
	10	229-9140	1	SENSOR AS					
	11	124-4046	1	THERMISTOR					
	12	229-9165	1	CLIP					
	13	229-9142	1	HARNESS AS					
	14	229-9193	1	HARNESS AS					
	15	229-9144	1	LEVER					
	16	229-9145	1	LEVER					
	17	229-9146	1	LEVER					
	18	229-9147	1	LEVER					
	19	229-9148	1	LEVER					
	20	229-9149	1	ROD					
	21	229-9150	1	ROD					
	22	229-9151	1	ROD					
	23	229-9152	1	SHAFT					
	24	229-9153	1	SHAFT					
	25	229-9154	1	DAMPER					
	26	229-9155	1	DAMPER					
	27	229-9156	1	DAMPER					
	28	284-4568	1	FILTER					
	29	235-8887	1	CLAMP					
	30	229-9159	1	HOSE					
	31	235-8888	1	INSULATOR					
	32	229-9163	1	PACKING					
	33	229-9164	1	CLIP					
	34	51-3605	2	CLAMP					
	35	229-9166	1	CLAMP					
	36	51-3581	2	CLAMP					
	37	229-9167	3	CLAMP					
	38	229-9168	1	CLAMP					
	39	9X-2480	2	BOLT (L=45mm)					
	40	229-9188	2	CAP					
	41	51-3640	6	SCREW					
	42	225-5731	54	SCREW					
	43	229-9017	6	SCREW					

H97627E 04

225-5803 HEATER GP-CAB

S/N WSA 00296-Up
Part of 225-5802-Page401.02
An Attachment

OPERATOR STATION

NOTE	No.	PART No.	QTY	PART NAME	NOTE	No.	PART No.	QTY	PART NAME
	1	8T-4121	7	WASHER					
	2	8T-4182	4	BOLT (L=45mm)					
	3	1W-5555	1	V-BELT					
	4	8T-4184	2	BOLT (L=45mm)					
	5	8T-4223	2	WASHER					
	6	7X-2538	4	BOLT (L=100mm)					
	7	8T-4224	5	WASHER					
	8	8T-4172	3	BOLT (L=80mm)					
	9	229-8994	1	COMPRESSOR GP					
		102-8802	1	RECEPTACLE KIT					
		8T-8737	1	PLUG					
		9W-0852	1	PIN					
	10	222-8369	1	BRACKET AS					
	11	118-9863	1	PULLEY					
	12	233-1146	1	PULLEY AS					
	13	085-4771	1	NUT					
	14	233-1147	1	PULLEY AS					
	15	233-1150	1	COLLAR					
	16	233-1148	1	BOLT (L=100mm)					
	17	233-1149	1	SHAFT					
	18	71-2673	1	STRAP					

H83856E 00

222-8368 COMPRESSOR GP-REFRIGERANT
S/N WSA 00296-00328

IMPLEMENTS

Consists of :

			Page
1	157-9162	SENSOR & MOUNTING GP	133
1	157-9168	GUARD GP-FRONT.....	211
1	203-7277	STICK GP-HOE	418
1	208-3070	LINES GP-STICK.....	264

H78805E 02

202-1525 STICK AR-HOE
An Attachment

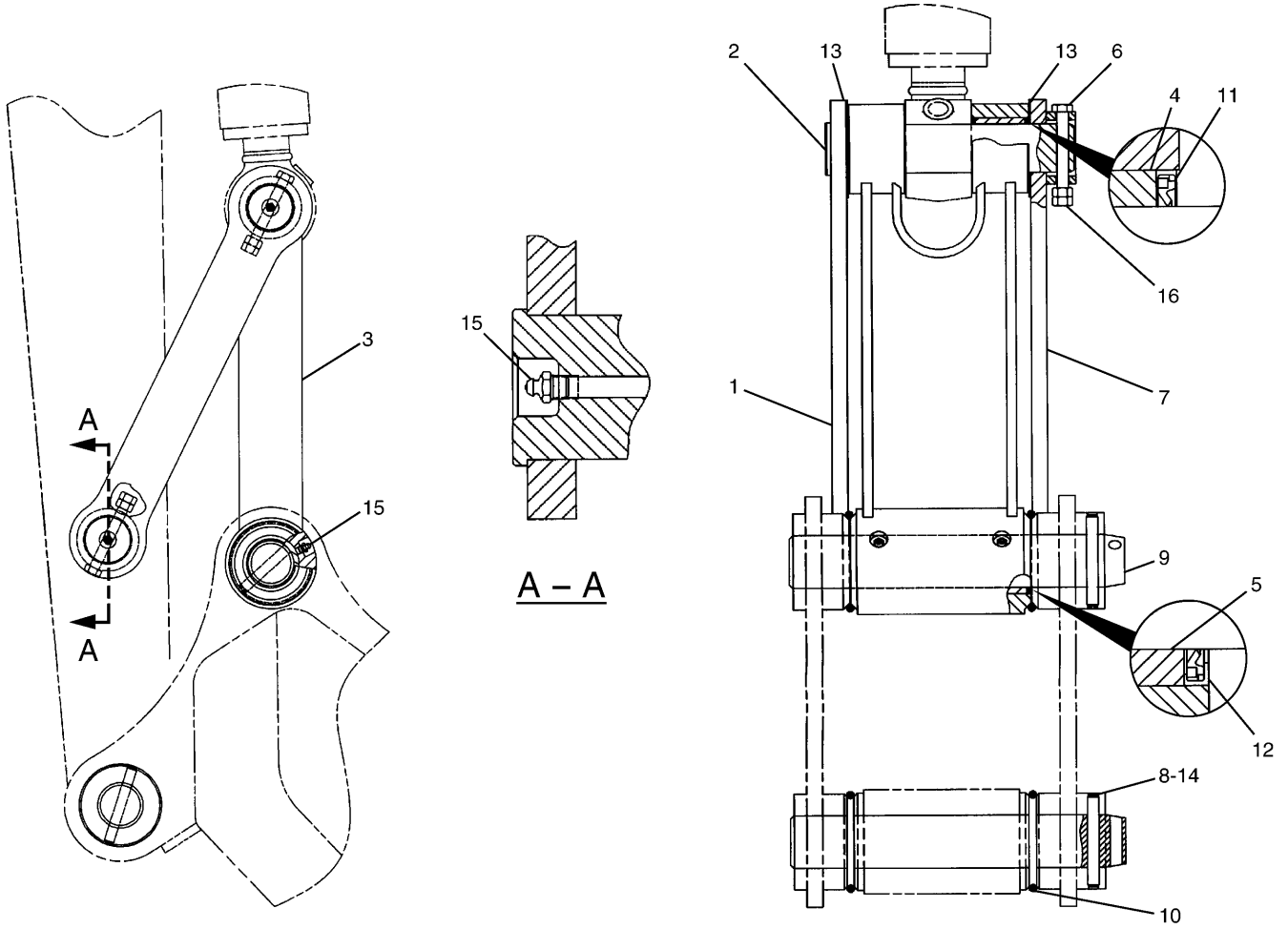
IMPLEMENTS

NOTE	No.	PART No.	QTY	PART NAME	NOTE	No.	PART No.	QTY	PART NAME
	1	218-5445	1	TUBE AS					
	2	218-5446	1	TUBE AS					
	3	166-1579	3	CLIP					
	4	203-7401	1	HOSE AS					
	5	105-6431	1	CONNECTOR					
	6	8T-4121	12	WASHER					
	7	8T-4133	9	NUT					
	8	3B-8489	7	FITTING					
	9	6L-3616	3	CONNECTOR					
	10	5K-9243	5	ELBOW					
	11	7J-8611	2	ELBOW					
	12	8M-2772	2	CLIP					
	13	203-7400	1	HOSE AS					
	14	105-6431	1	CONNECTOR					
	15	8T-4191	3	BOLT (L=16mm)					
	16	8T-6757	5	PLUG					
	17	125-1629	1	TUBE AS					
	18	125-1631	1	TUBE AS					
	19	033-8248	7	CLIP					
	20	115-2677	1	HOSE AS					
	21	105-6431	1	CONNECTOR					

H91753E 04

203-7276 LINES GP-GREASE
 Part of 194-8950-Page410
 An Attachment

IMPLEMENTS



NOTE	No.	PART No.	QTY	PART NAME	NOTE	No.	PART No.	QTY	PART NAME
	1	198-5737	1	LINK					
	2	71-6843	2	PIN					
	3	195-5361	1	LINK AS					
	4	229-1095	2	BEARING					
	5	229-1092	2	BEARING					
	6	099-0707	2	BOLT (L=115mm)					
	7	198-5736	1	LINK AS					
	8	134-7178	2	PIN					
	9	086-0523	2	PIN					
	10	093-1342	4	SEAL-O-RING (ID=96.00mm)					
	11	093-1433	4	SEAL					
	12	096-0131	2	SEAL					
	13	166-1481	2	SHIM (T=2.00mm)					
	14	134-7179	2	RING					
	15	3B-8489	4	FITTING					
	16	096-4876	4	NUT					

H85478E 01

198-5741 LINKAGE GP-BUCKET
 Fabrication Type
 S/N WSA 1-00369
 Part of 195-5411-Page427
 An Attachment

IMPLEMENTS

Consists of :

			Page
1	154-0616	BUCKET AS	435
1	41-6914	ADJUSTER GP-BUCKET	436

H60261E 00

150-2247 BUCKET & ADJUSTER GP

S/N WSA 1-(T04.11)
Part of 150-2241-Page431
An Attachment

Consists of :

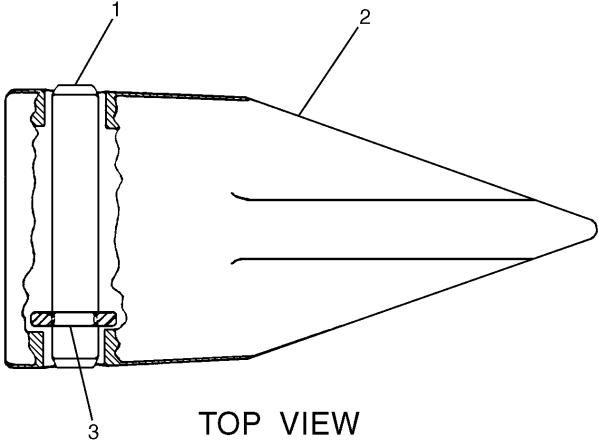
			Page
1	275-2821	BUCKET AS	435
1	41-6914	ADJUSTER GP-BUCKET	436

H97631E 01

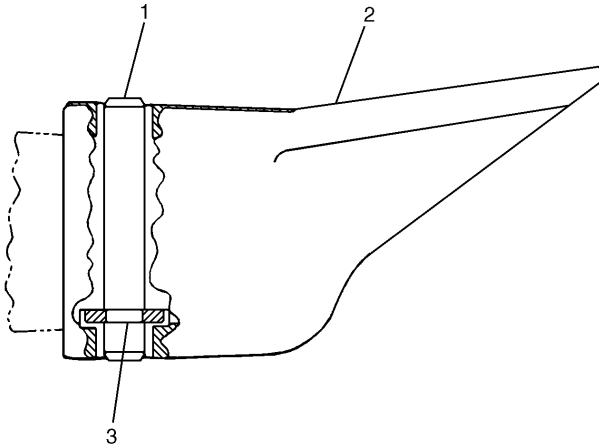
250-6374 BUCKET & ADJUSTER GP

S/N WSA (T04.12)-Up
Part of 250-6373-Page431
An Attachment

IMPLEMENTS

	NOTE	No.	PART No.	QTY	PART NAME
 <p style="text-align: center;">TOP VIEW</p>		1	8 E - 6 2 5 8	1	PIN
		2	9 W - 8 2 5 9	1	TIP
		3	8 E - 6 2 5 9	1	RETAINER AS
H 5 1 4 6 6 E 0 0					

100-6464 TIP GP
 Sharp Center
 Adapter Size J250
 An Attachment

	NOTE	No.	PART No.	QTY	PART NAME
 <p style="text-align: center;">TOP VIEW</p>		1	8 E - 6 2 5 8	1	PIN
		2	9 W - 8 2 5 8	1	TIP
		3	8 E - 6 2 5 9	1	RETAINER AS
H 5 1 4 6 5 E 0 0					

100-6463 TIP GP
 Sharp Corner
 Adapter Size J250
 An Attachment

SERVICE EQUIPMENT AND SUPPLIES

NOTE	No.	PART No.	QTY	PART NAME	NOTE	No.	PART No.	QTY	PART NAME
E	1	134-6146		FILM (STRIPE)···(350cm)					
	2	137-9039	2	FILM (CAT)					
	3	186-1147	2	FILM (REGA)					
	4	132-7552	1	FILM (CAT)					
	5	160-6853	2	FILM (DANGER)					
	6	1P-2807	4	FILM (LIFT)					
	7	160-6832	2	FILM (WARNING)					
	8	71-6508	1	FILM (NOTICE)					
	9	144-9126	1	FILM (INSTRUCTION)					
	10	211-6347	1	FILM (NOTICE)					
	11	169-7659	1	FILM (CIRCUIT BREAKER)					
Z	12		1	PLATE (PIN)					
	13	4P-6422	1	FILM (WARNING)					
	14	3Y-8905	1	FILM (WARNING)					
	15	208-3094	1	FILM (FUSE)					

E—ORDER BY THE CENTIMETER
 Z—NOT SERVICED

H87215E 09

202-1511 PLATE & FILM GP (1/3)
 S/N WSA 00337-00369

SERVICE EQUIPMENT AND SUPPLIES

NOTE	No.	PART No.	QTY	PART NAME	NOTE	No.	PART No.	QTY	PART NAME
	1	127-5272	1	FILM (WARNING)					
	2	244-5747	1	FILM (WARNING)					
	3	160-6848	2	FILM (WARNING)					
	4	71-1533	1	PLATE (INSTRUCTION)					
	5	41-2885	1	CASE					
	6	219-3148	1	FILM (NOTICE)					
	7	214-7915	1	FILM (ENGINE SHUT OFF)					
	8	183-1453	1	FILM (WARNING)					
	9	187-0661	1	FILM (ALTERNATE EXIT)					
	10	61-6075	1	FILM (EMERGENCY EXIT)					
	11	8T-6842	1	FILM (ALTERNATE EXIT)					
	12	211-6346	1	FILM (LUBRICANT CHART)					
	13	208-3298	1	FILM (REGISTRATION)					
	14	102-5474	1	FILM (INSTRUCTION) (BLADE)					
	15	127-4090	1	FILM (INSTRUCTION)					
	16	126-2886	1	FILM (WARNING)					
	17	244-5302	1	FILM (WARNING)					
	18	211-6294	1	FILM (THROTTLE CONTROL)					
	19	283-8827	1	FILM (WARNING)					

H96625E 15

202-1511 PLATE & FILM GP (3/3)
S/N WSA 00370-00661

PART NUMBER INDEX

Part.No	Page	Part.No	Page	Part.No	Page
	130	3B-4501	152		283
	155		153		285
	156		359		287
2L-8077	83		359.04		287.02
	83.02	3B-4503	138		288
	83.04	3B-4505	163		315
	93	3B-4510	376		321.04
	93.04	3B-4615	167		341.01
	93.08		169.08	3D-2891	225
	93.12		169.16		225.02
	102		187		225.04
	103		187.02	3D-4603	204
	103.01	3B-4618	167	3E-2310	275
	103.02		169.08	3E-2338	163.03
	103.10		169.16	3E-3365	87
2L-8079	103.07	3B-8488	238	3E-4297	229
	146		417		229.01
2M-9780	161	3B-8489	195	3E-5169	108.01
	161.04		237	3E-6573	170
	215		238		188
	215.02		239	3E-6611	383
	263		240		383.01
	279		240.01		383.02
	279.02		241	3E-7739	145
	279.04		242	3E-8020	359
	279.06		415		359.04
	285		417	3E-8048	89
	297.04		418		89.02
	339		421		89.04
2P-8250	443		425		89.06
2P-8253	443		426	3E-8320	77
2S-1647	185		426.01		79.04
	185.01		428		79.06D
	383		429	3F-5108	423
	383.01		429.01	3G-8250	439
	383.02	3D-2824	263	3J-1907	159
2S-3440	33		267		161.02
	44		267.02		221
	44.01		269		223
2S-5926	202		269.02		225
2W-6047	17		279		225.02
			279.02		225.04
			279.04		267
			279.06		267.02

PART NUMBER INDEX

Part.No	Page	Part.No	Page	Part.No	Page
7I-8081	332		279		407.04
7I-8084	315		279.02	7X-2543	75
	319		279.04		79.02
	321		279.06		79.06B
	321.04		281	7X-2548	77
	321.08		285		79.04
	321.10		287		79.06D
	335		287.02		377
7I-8087	332		378		393
7I-8095	332		378.01		393.02
7I-8096	332	7M-8485	163.03		401
7I-8098	332		267		401.02
7I-8100	332		267.02	7X-2549	341
7J-8611	421		269	7X-2552	415
7J-9108	253		269.02	7X-2553	221
	254		283	7X-2555	57
	256		285		195
	257		287		203
	258		341.01		213
	259	7N-0718	77		213.01
	263		79.04	7X-2556	221
	283		79.06D	7X-2561	415
	285		86	7X-2569	415
	288	7X-0796	25	7X-2619	79
7K-1181	79		26		79.06
	79.06		29		79.06F
	79.06F		33		89
	89.06		35		89.02
	103.04		45		89.04
	103.06		48		89.06
	108		61		108
	108.01		63		108.01
	119.01	7X-2533	79.06	7X-2621	129
	129		79.06F	7X-7644	447
	167		395		449.04
	169.06	7X-2534	73		449.10
	169.14	7X-2536	19		449.16
	267		25	7X-7729	39
	267.02		63		167
	273	7X-2537	53		169
	273.02		73		169.02
	275	7X-2538	144		169.04
	277		407		169.08
	277.02		407.02		169.10

PART NUMBER INDEX

Part.No	Page	Part.No	Page	Part.No	Page
	269. 02		93. 08		93. 02
	287		93. 12		93. 06
	287. 02		99		93. 10
	315		100	9W-8258	441
	321. 04		102	9W-8259	441
	341. 01		103	9X-0196	99
9S-4185	273. 02		103. 01		100
	279		103. 02	9X-1813	87
	279. 02		110	9X-2040	359
	279. 04		111		359. 04
	279. 06		111. 01	9X-2041	357
	287		111. 02		359
9S-4190	215		117		359. 02
	215. 02		118		359. 04
9S-4191	221		118. 01		364
	223		118. 02	9X-2042	126
	277		127		357
	277. 02		130		359
	297	9W-0852	83		359. 02
	319		83. 02		359. 04
	321. 08		83. 04		361
9S-8001	225		102		364
	225. 02		103		365
	225. 04		103. 01		383
	297. 04		103. 02		383. 01
	337		117		383. 02
9S-8004	159		118		397
	161. 02		118. 01		398. 01
	297. 04		118. 02	9X-2043	359
	298		127		359. 04
	337		130		361
	352		156		363
9S-8005	161		407. 02		378
	161. 04		407. 04		378. 01
	297. 02	9W-1442	89	9X-2044	378
	297. 04		89. 02		378. 01
	337		89. 04		379
9S-8006	297. 04		89. 06		379. 01
9V-3659	178	9W-1446	89		380
9W-0844	83		89. 02		397
	83. 02		89. 04		398. 01
	83. 04		89. 06	9X-2045	359
	93	9W-1494	96		359. 04
	93. 04	9W-1951	91		378

PART NUMBER INDEX

Part.No	Page	Part.No	Page	Part.No	Page
	83.04	118-9863	407		103
	93		407.02		103.01
	93.04		407.04		103.02
	93.08	118-9919	30	121-1039	83
	93.12	118-9935	30		83.02
	102	118-9936	30		83.04
	103	118-9941	30		102
	103.01	119-5026	97		103
	103.02		97.01		103.01
116-0173	96		97.02		103.02
	144		112	121-1156	117
	144.01		113		118
	149		379		118.01
116-0174	96		379.01		118.02
	144		380	121-1157	117
	144.01		393.02		118
	149		401.02		118.01
116-0243	149	119-5362	297.04		118.02
	155	119-5364	297.04	121-1158	117
116-0255	83	119-5388	347		118
	83.02	119-5389	347		118.01
	83.04	119-5391	347		118.02
	93	119-5392	347	121-1159	117
	93.04	119-5445	251		118
	93.08		252		118.01
	93.12	120-0009	73		118.02
116-3522	228	120-0044	131	121-1173	110
	228.01		132		111
117-6259	112		133		111.01
	113	120-5054	450		111.02
117-6269	381	120-5107	447	121-1459	297.05
117-6270	381		449.04	121-5203	195
117-6271	381		449.10	121-5204	195
117-6274	381		449.16	121-6217	253
117-6306	359	120-7215	197		254
	359.04	120-9027	381	121-6223	257
117-6349	307	121-0987	126	121-7063	393.02
117-6350	307	121-1029	58		403.02
117-6356	307		58.01		409.01
118-4086	345		416	122-5373	285
	345.02	121-1038	83		339
118-4087	345		83.02	122-5399	339
	345.02		83.04	122-5400	339
118-5982	418		102		340

PART NUMBER INDEX

Part.No	Page	Part.No	Page	Part.No	Page
	230		24	179-7605	259
177-2619	230	178-6531	12	179-7616	275
177-2620	228		13.01	179-7770	267
	228.01		29		267.02
	231	178-6532	17	179-7771	267
177-2621	231	178-6534	33		267.02
177-2623	228	178-6537	25	179-7874	285
	228.01	178-6538	25	179-7875	285
177-2625	228	178-6543	23	179-9618	230
	228.01	178-6544	23	179-9771	249
177-2684	337	178-6545	23	179-9806	229.01
177-5879	182	178-6550	24	180-3861	152
177-5880	182	178-6554	54		153
177-5916	169	178-6566	35	183-1453	449
	169.08	178-6567	35		449.06
	169.16	178-6569	35		449.12
177-5987	213	178-6571	35		449.18
	213.01	178-6572	42	183-1695	273
177-7636	73	178-6576	35		273.02
177-7640	378	178-6577	35	183-1813	273
	378.01	178-6591	61		273.02
178-0878	415	178-6595	61	183-8172	14
178-5425	403	178-6597	29	183-8173	14
	403.02	178-6598	29	183-8179	35
	405	178-6599	29	183-8222	44
178-5459	376	178-6600	29		44.01
178-5495	309	178-6601	29	183-8223	61
178-5502	309	178-6633	13	183-8224	61
178-5528	308		13.02	184-2565	225
178-5530	355		43		225.02
	355.01	178-6634	43		225.04
178-5601	368	178-6635	43	184-3949	41
178-5789	188	178-6636	43	184-8580	169.06
	188.01	178-8802	223		169.14
178-5801	169	179-2980	201		185
	169.02	179-7468	215		185.01
	169.10		215.02		189
	187	179-7536	215		189.01
	187.02		215.02	184-8862	170
178-5870	182	179-7602	236		170.01
178-5871	182		258	184-8874	171
178-6500	41	179-7603	258		171.01
178-6519	12	179-7604	236		172
	13.01		259	184-9336	273

PART NUMBER INDEX

Part.No	Page	Part.No	Page	Part.No	Page
	169.06	202-1734	273	203-7332	418
	169.14		273.02	203-7370	418
202-1613	186	202-1735	273	203-7392	415
	187.01		273.02	203-7394	415
202-1614	173	202-1737	170	203-7395	415
202-1615	167		170.01	203-7397	415
	173	202-1739	169	203-7399	415
202-1619	167		169.04	203-7400	421
202-1622	169		169.12	203-7401	421
202-1627	174	202-1740	169	203-7411	415
202-1628	174		169.04	203-7437	418
	174.01		169.12	203-7439	418
202-1650	187	202-1741	174	204-0955	41
	187.02		174.01	204-0956	41
202-1666	167	202-1756	256	204-0957	41
	169.08	202-1758	169	204-1017	41
	169.16		169.06	204-1018	41
202-1668	187		169.14	204-1019	41
	187.02		177	204-1086	163.03
202-1713	269	202-1760	177	204-1611	403
202-1716	287	202-1761	177		403.02
	287.02	202-1766	169	204-1619	74
202-1717	273		169.04		76
202-1718	275		169.12		78
202-1719	277	202-1768	277		79.01
	277.02		277.02		79.03
202-1722	279	202-1770	277		79.05
	279.02		277.02		79.06A
	279.04	202-1771	273		79.06C
	279.06		273.02		79.06E
202-1723	279	202-1773	256	204-1620	95
	279.02	203-7249	415	204-1622	95
	279.04		417		97
	279.06	203-7250	417		97.01
202-1729	273	203-7275	410		97.02
	273.02		414	204-1623	95
202-1730	273	203-7276	410		108
	273.02		420		108.01
202-1731	273	203-7277	411	204-1624	119
	273.02		418		119.01
202-1732	273	203-7290	415	204-1625	128
	273.02	203-7328	415		410
202-1733	273		416	204-1642	124
	273.02	203-7329	416		369

CLICK HERE TO **DOWNLOAD** THE COMPLETE MANUAL

- Thank you very much for reading the preview of the manual.
- You can download the complete manual from: www.heydownloads.com by clicking the link below



- Please note: If there is no response to CLICKING the link, please download this PDF first and then click on it.

CLICK HERE TO **DOWNLOAD** THE COMPLETE MANUAL