



Parts Catalog

CLICK HERE TO **DOWNLOAD** THE COMPLETE MANUAL

- Thank you very much for reading the preview of the manual.
- You can download the complete manual from: www.heydownloads.com by clicking the link below

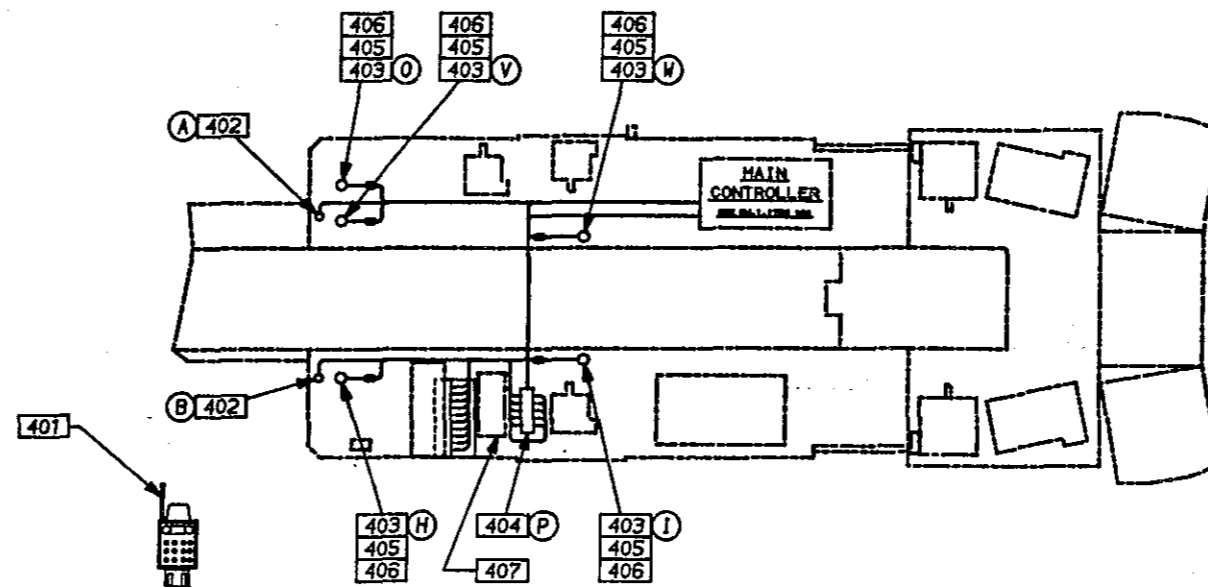


- Please note: If there is no response to CLICKING the link, please download this PDF first and then click on it.

CLICK HERE TO **DOWNLOAD** THE COMPLETE MANUAL

ITEM NO.	PART NO.	QTY	U/M	DESCRIPTION	BM	DWG. SIZE
.

- (1) RADIO INTRINSICALLY SAFE RECEIVER, MODEL A74586, EIMCO PART NO. 30177380, INVESTIGATION NO. I.S.C. 1A434, IS LOCATED IN THE MAIN CONTROLLER SEE SHEET 1, ITEM 101.
- (2) WIRING FOR NONINTRINSICALLY SAFE CIRCUIT CONDUCTORS NOT TO BE INTERMINGLED WITH WIRING FOR INTRINSICALLY SAFE CIRCUIT CONDUCTORS.
- (3) ANY CHANGES IN THE INTRINSICALLY SAFE CIRCUITRY OR COMPONENTS MAY RESULT IN AN UNSAFE CONDITION.
- (4) ITEM 407 TO BE SIZED TO FIT CORRESPONDING GLAND ENTRY HOLE.



CABLE AND CONDUIT SPECIFICATIONS

ITEM	CABLE SIZE	CABLE TYPE	CABLE MAX OD	CABLE MIN OD	CABLE VOLTAGE	CABLE AMPS	CABLE LENGTH	CONDUIT I.D.	CONDUIT LENGTH	ROUTING
A	R9-213	COAXIAL	.415	.345			25'	FLAME RES. CABLE	18"	MAIN CONTROLLER I LEFT ANTENNA
B	R9-213	COAXIAL	.415	.345			30'	FLAME RES. CABLE	18"	MAIN CONTROLLER I RIGHT ANTENNA
H	14-2C	50	.550	.495	600	15	20'	3/4"	18"	MAIN CONTROLLER I FIRE SPRAY SOLENOID
I	14-2C	50	.550	.495	600	15	20'	3/4"	18"	MAIN CONTROLLER I WATER SPRAY SOLENOID
Q	14-2C	50	.550	.495	600	15	20'	3/4"	18"	MAIN CONTROLLER I WATER/FIRE SPRAY SOL.
P	18-16C	50	.790	.730	600	5	25'	1"	18"	MAIN CONTROLLER I CONNECTION BOX
V	14-2C	50	.550	.495	600	15	20'	3/4"	18"	MAIN CONTROLLER I WATER/FIRE SPRAY SOL.
W	14-2C	50	.550	.495	600	15	20'	3/4"	18"	MAIN CONTROLLER I WATER/FIRE SPRAY SOL.

OPTIONAL CABLE AND CONDUIT SPECIFICATIONS

H	18-2C	SJO	.315	.280	300 V.	7	20'	SEE 405, 408	18"	MAIN CONTROLLER I FIRE SPRAY SOLENOID
I	18-2C	SJO	.315	.280	300 V.	7	20'	SEE 405, 408	18"	MAIN CONTROLLER I WATER SPRAY SOLENOID
Q	18-2C	SJO	.315	.280	300 V.	7	20'	SEE 405, 408	18"	MAIN CONTROLLER I WATER/FIRE SPRAY SOL.
V	18-2C	SJO	.315	.280	300 V.	7	20'	SEE 405, 408	18"	MAIN CONTROLLER I WATER/FIRE SPRAY SOL.
W	18-2C	SJO	.315	.280	300 V.	7	20'	SEE 405, 408	18"	MAIN CONTROLLER I WATER/FIRE SPRAY SOL.

RADIO AND CONTROL COMPONENTS

ITEM	QTY	DESCRIPTION	MFG.	MFG. NO.	M.S.H.A.
401	1	RADIO TRANSMITTER	MOORE	129-188	98-188-0
402	1-2	ANTENNA	MOORE	082-88585-3	I.S.C. #1A-434
403	0-5	SOLENOID VALVE (WATER/FIRE)	SKINNER	AXS-0131-P138	X/P-1638-1
404	1	SOLENOID SYSTEM	EIMCO	1610009	I.S.C. #1A-581-0
407	1	SWITCHING ARRANGEMENT	EIMCO	5010058	

ALTERNATE/OPTIONAL RADIO OR CONTROL COMPONENTS

403	0-5	SOLENOID VALVE (WATER/FIRE)	SKINNER	AXS-0131-P119	X/P-1638-1
403	0-5	SOLENOID VALVE (WATER/FIRE)	SKINNER	AXS-0131-P152	X/P-1638-1
403	0-5	SOLENOID VALVE (WATER/FIRE)	FLUID CONT	7450-2-0C1153597	X/P-1682-30
404	1	SOLENOID SYSTEM (115 VDC)	EIMCO	1610122	N/A
405	REF	MALE CONNECTOR/PENETRATOR ASS'Y (SUPPLIED W/ITEM ALT. 403)	ELEC. OCEAN	4102/51F2H	FLAME RESISTANT CABLE
406	1	FEMALE RECEPTACLE ASS'Y	ELEC. OCEAN	51F2F-10	FLAME RESISTANT CABLE
407	1	SWITCHING ARRANGEMENT	EIMCO	5010058	

THIS DRAWING NOT TO BE CHANGED WITHOUT M.S.H.A. APPROVAL

REV	ECN	BY	DATE	REV	ECN	BY	DATE
(E)				(L)			
(D)				(K)			
(C)				(H)			
(B)	J492	RCP	8/13/88	(G)			
(A)	G961	HRB	8/28/88	(F)			

-NOTICE-
TO ALL PERSONS RECEIVING THIS DRAWING
This drawing contains confidential information and is issued in confidence on the condition that it be returned on demand and not be copied, reproduced, disclosed to others or used in the manufacture of the subject matter thereof without the consent of Eimco Mining Machinery International.

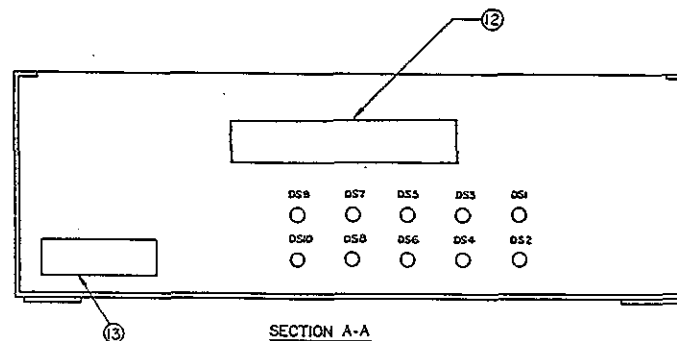
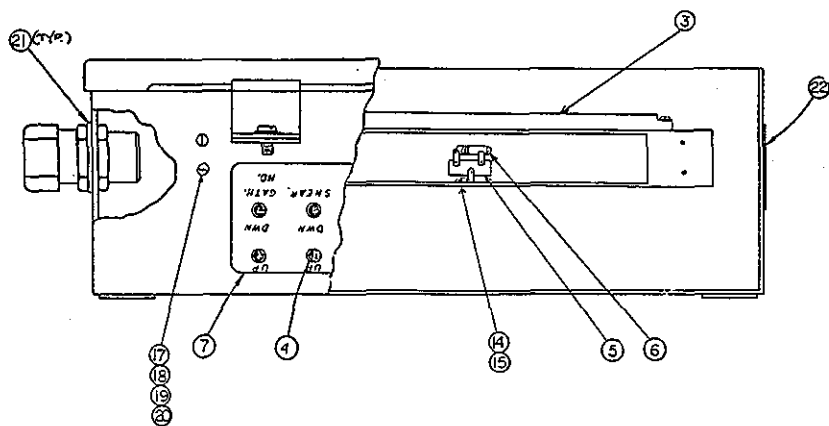
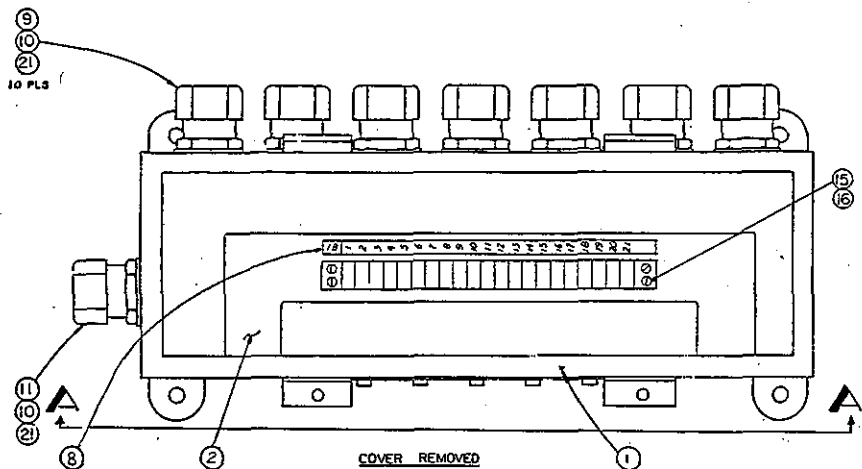
Drawn on CAD Copyright 1988
Eimco-Cool Machinery
EIMCO Mining Machinery
Fairmont WV 26554

UNLESS OTHERWISE NOTED ALL DIMENSIONS ARE IN INCHES
MACHINE DECIMALS & .005"
TOLERANCE ANGLES & 30 MINUTES
FABRICATION TOL. ± 1/16"
MODEL 2810 DATE 01/19/88
WEIGHT N/A DRAWN HRB
SCALE N/A CHECKED RHB
DO NOT SCALE CHIEF ENGR

NEXT ASSY. SHEET 4 OF 6
TITLE LAYOUT DIAGRAM RADIO OPTIONS
DWG No./PART No. 1610004/SH.4
DWG SIZE C

LEGEND

ITEM	DESCRIPTION	550V SETTING/RATING	950V SETTING/RATING
CT-1	CURRENT TRANSFORMER F/LEFT CUTTERHEAD AMMETER	500:5 RATIO	500:5 RATIO
CT-2	CURRENT TRANSFORMER F/LEFT CUTTERHEAD INST. OVERLOAD	500:5 RATIO	500:5 RATIO
CT-3	CURRENT TRANSFORMER F/TRAM INTERFACE	150:5 RATIO	150:5 RATIO
CT-4	CURRENT TRANSFORMER F/LEFT CUTTERHEAD THERMAL OVERLOAD	250:5 RATIO	250:5 RATIO
CT-5	CURRENT TRANSFORMER F/LEFT CUTTERHEAD THERMAL OVERLOAD	250:5 RATIO	250:5 RATIO
CT-6	CURRENT TRANSFORMER F/LEFT CUTTERHEAD THERMAL OVERLOAD	250:5 RATIO	250:5 RATIO
CT-7	CURRENT TRANSFORMER F/RIGHT CUTTERHEAD AMMETER	500:5 RATIO	500:5 RATIO
CT-8	CURRENT TRANSFORMER F/RIGHT CUTTERHEAD INST. OVERLOAD	500:5 RATIO	500:5 RATIO
CT-9	CURRENT TRANSFORMER F/RIGHT CUTTERHEAD THERMAL OVERLOAD	250:5 RATIO	250:5 RATIO
CT-10	CURRENT TRANSFORMER F/RIGHT CUTTERHEAD THERMAL OVERLOAD	250:5 RATIO	250:5 RATIO
CT-11	CURRENT TRANSFORMER F/RIGHT CUTTERHEAD THERMAL OVERLOAD	250:5 RATIO	250:5 RATIO
OL1	INST. OVERLOAD F/LEFT CUTTERHEAD	5.0 AMPS/START UP 2 SC./RESPONSE 1.5 SC.	3.9 AMPS/START UP 2 SC./RESPONSE 1.5 SC.
OL2	THERMAL OVERLOAD F/LEFT CUTTERHEAD	4.0 AMPS	2.3 AMPS
OL3	INST. OVERLOAD F/RIGHT CUTTERHEAD	5.0 AMPS/START UP 2 SC./RESPONSE 1.5 SC.	3.9 AMPS/START UP 2 SC./RESPONSE 1.5 SC.
OL4	THERMAL OVERLOAD F/RIGHT CUTTERHEAD	4.0 AMPS	2.3 AMPS



G.L. PN		QTY	PART NO.	QTY	DESCRIPTION	BY
6400 071 003	1	5100008	1	EA	HSG. J-BOX	
6040 156 001	2	5070080	1	EA	MTG BRACKET	
1121009	3	1140066	1	EA	TERM STRIP	
1630020	4	1210180	10	EA	LED, RED	
1121120	5	1140065	5	EA	TERM STRIP	
2655110	6	1050264	5	EA	RESISTOR	
6560 189 003	7	99024585	1	EA	LABEL VAL. IND.	
6560 196 001	8	1140067	1	EA	LABEL TERM.	
	9	30108286	10	EA	CONNECTOR	
3833810	10	30048136	11	EA	NUT	
	11	30108294	1	EA	CONNECTOR	
	12	99024529	1	EA	LABEL I.S.	
	13	99024528	1	EA	LABEL I.A *	
3550503	14	37490489	5	EA	6-32X 3/8 RHMS	
3810604	15	3095031	9	EA	#6 LOCKWASHERS	
3550801	16	37490521	4	EA	6-32X 1/2 RHMS	
3610801	17	37493616	4	EA	10-32X 1/2 RHMS	
3811000	18	37704814	4	EA	#10 FLW	
3811002	19	REF.	4	EA	#10 LW	
	20	REF.	4	EA	10-32 NUTS	
3814000	21	REF.	11	EA	SEAL WASHERS	
	22	REF.	1	EA	PLUG	

FOR WIRING SEE 1610038

<p>NOTICE</p> <p>ALL PERSONS RECEIVING THIS DRAWING ARE ADVISED THAT THIS DRAWING IS THE PROPERTY OF EIMCO MINE-COAL MACHINERY AND IS LOANED TO YOU FOR YOUR INFORMATION ONLY. IT IS NOT TO BE REPRODUCED OR COPIED IN ANY MANNER WITHOUT THE WRITTEN PERMISSION OF EIMCO MINE-COAL MACHINERY. IF YOU ARE A CONTRACTOR OR SUBCONTRACTOR, YOU ARE TO BE RESPONSIBLE FOR THE PROTECTION OF THIS DRAWING AND TO RETURN IT TO THE SOURCE OF ISSUE AT THE END OF THE PROJECT. IF YOU ARE A USER OF THIS DRAWING, YOU ARE TO BE RESPONSIBLE FOR THE PROTECTION OF THIS DRAWING AND TO RETURN IT TO THE SOURCE OF ISSUE AT THE END OF THE PROJECT.</p>		<p>Copyright 1978 Eimco-Coal Machinery EIMCO Mining Machinery</p>	<p>JCT. BOX ASSY. MINER 5100007</p>
--	--	---	---

PARTS CATALOG USE ONLY

CLICK HERE TO **DOWNLOAD** THE COMPLETE MANUAL

- Thank you very much for reading the preview of the manual.
- You can download the complete manual from: www.heydownloads.com by clicking the link below



- Please note: If there is no response to CLICKING the link, please download this PDF first and then click on it.

CLICK HERE TO **DOWNLOAD** THE COMPLETE MANUAL

REVISIONS
E.C.N., Date, Initials

A

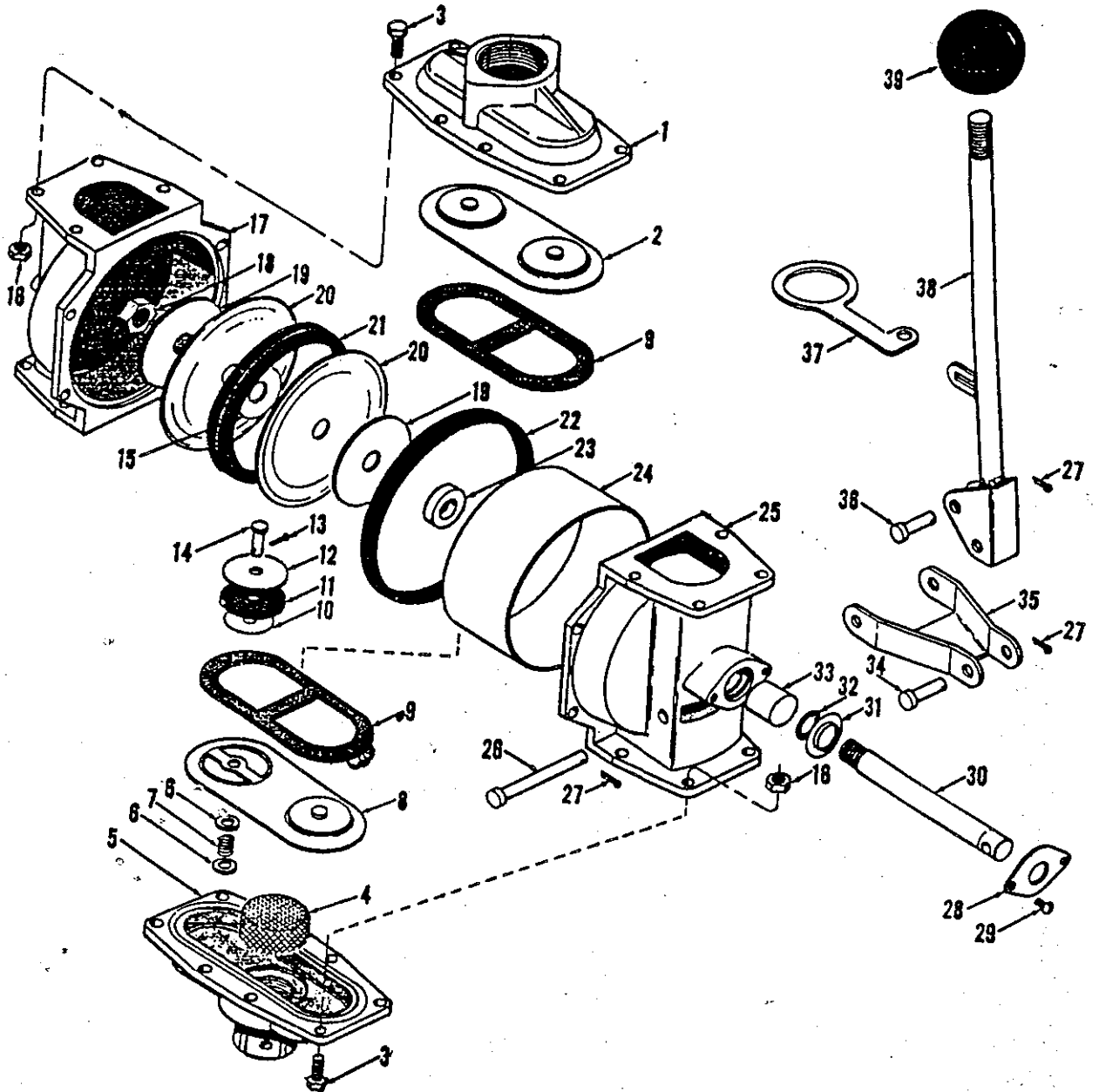
B

#7800 3316 A

C

D

E



EIMCO

Mining Machinery

PUMP,
HAND OPERATED

UNLESS OTHERWISE NOTED:
DIMENSIONS ARE IN INCHES

MACH.
TOL.

{ DECIMALS $\pm .005"$
FRACTIONS $\pm 1/64"$
ANGLES ± 30 minutes

FABRICATION TOL. $\pm 1/16"$

MODEL

WEIGHT

Drwn. & Dt. EH 8/20/74

Scale *H*

DO NOT SCALE DRAWING

NMSC NO.

7800 3316

Checked

Ref.

Sheet

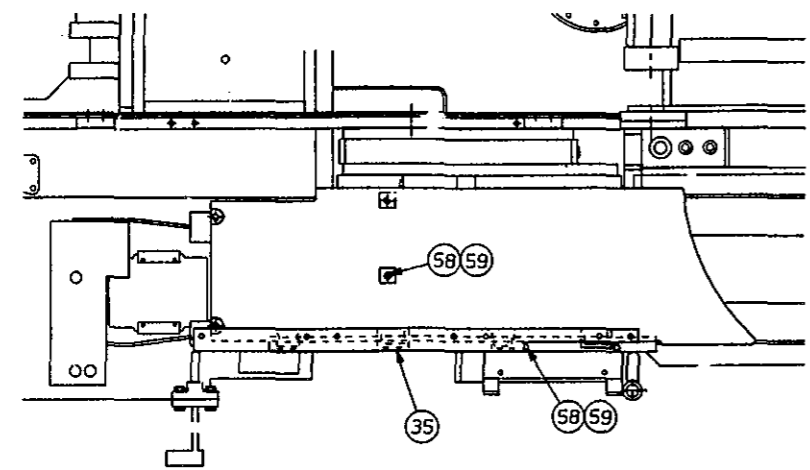
Of

DRAWING NO.

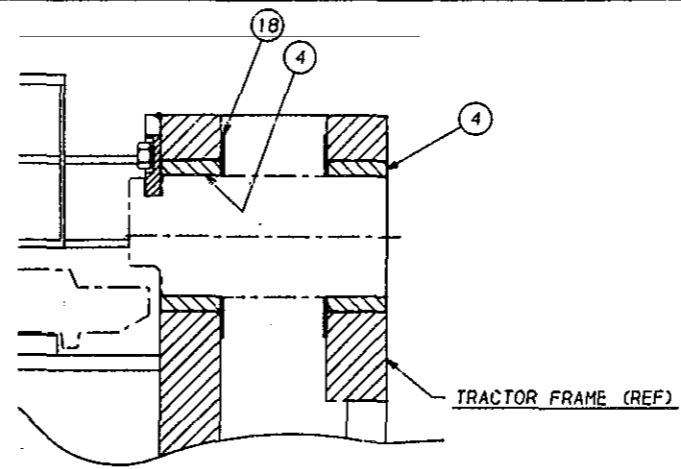
7800 3316-A

PARTS CATALOG USE ONLY

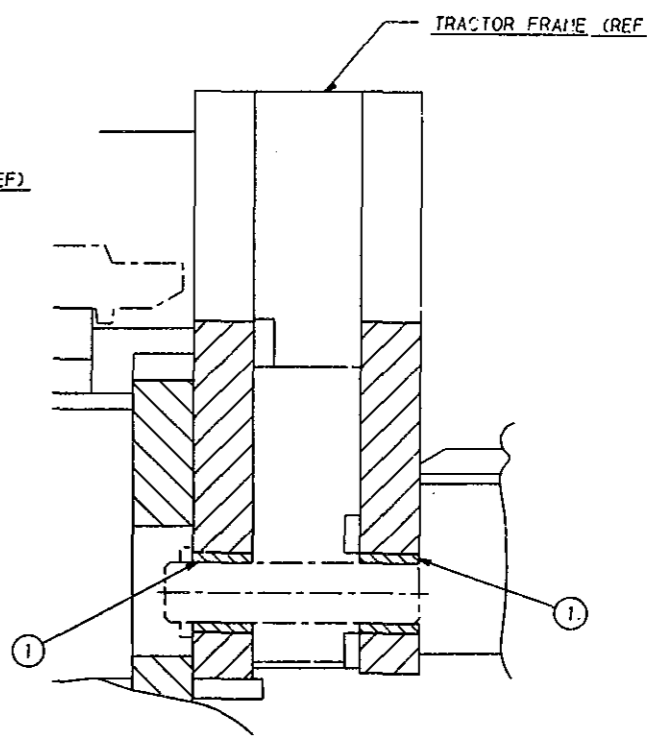
BILL OF MATERIAL				
ITEM NO.	PART NO.	QTY/U/M	DESCRIPTION	BM SIZE



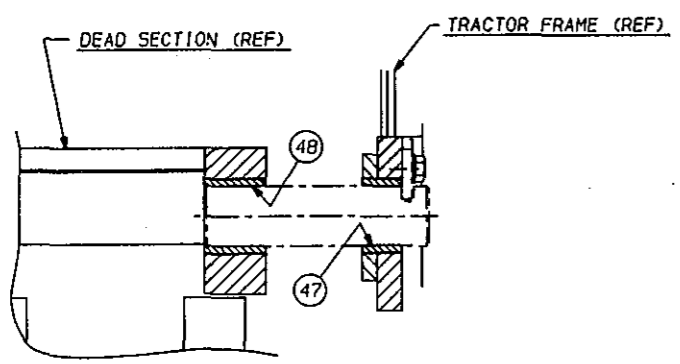
VIEW H-H
TRACK COVER
3/32 SCALE



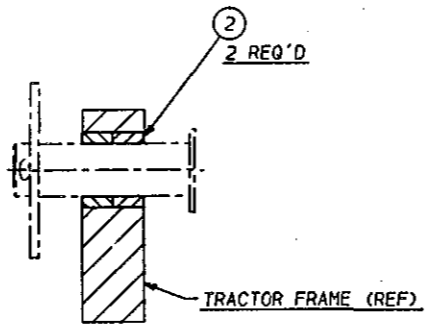
SECTION D-D
SHEAR BOOM PIVOT
1/4 SCALE



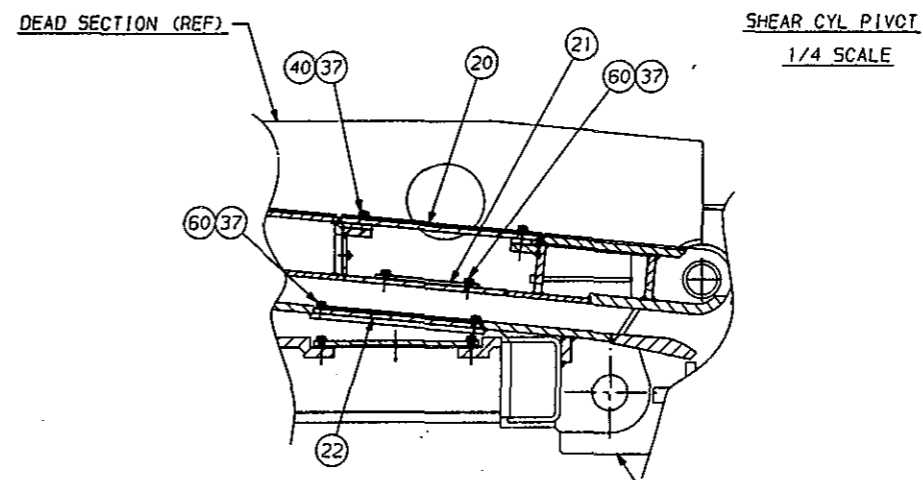
SECTION J-J
SHEAR CYL PIVOT
1/4 SCALE



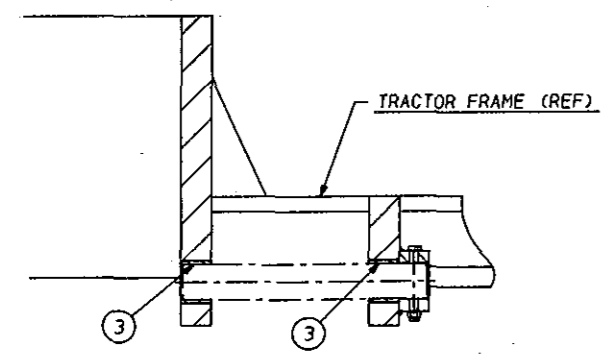
SECTION F-F
CONV/DEAD SECTION PIVOT
1/4 SCALE



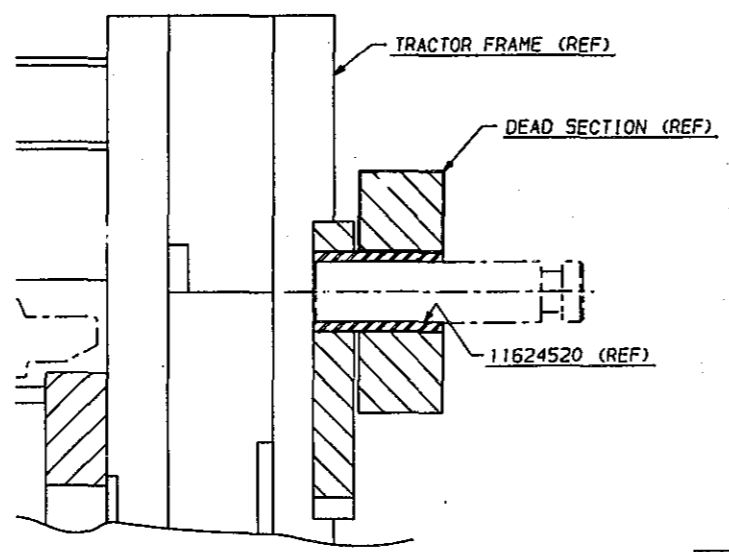
SECTION A-A
GATH HD CYL PIVOT
1/2 SCALE



SECTION E-E
DEAD SECTION COVERS
1/8 SCALE



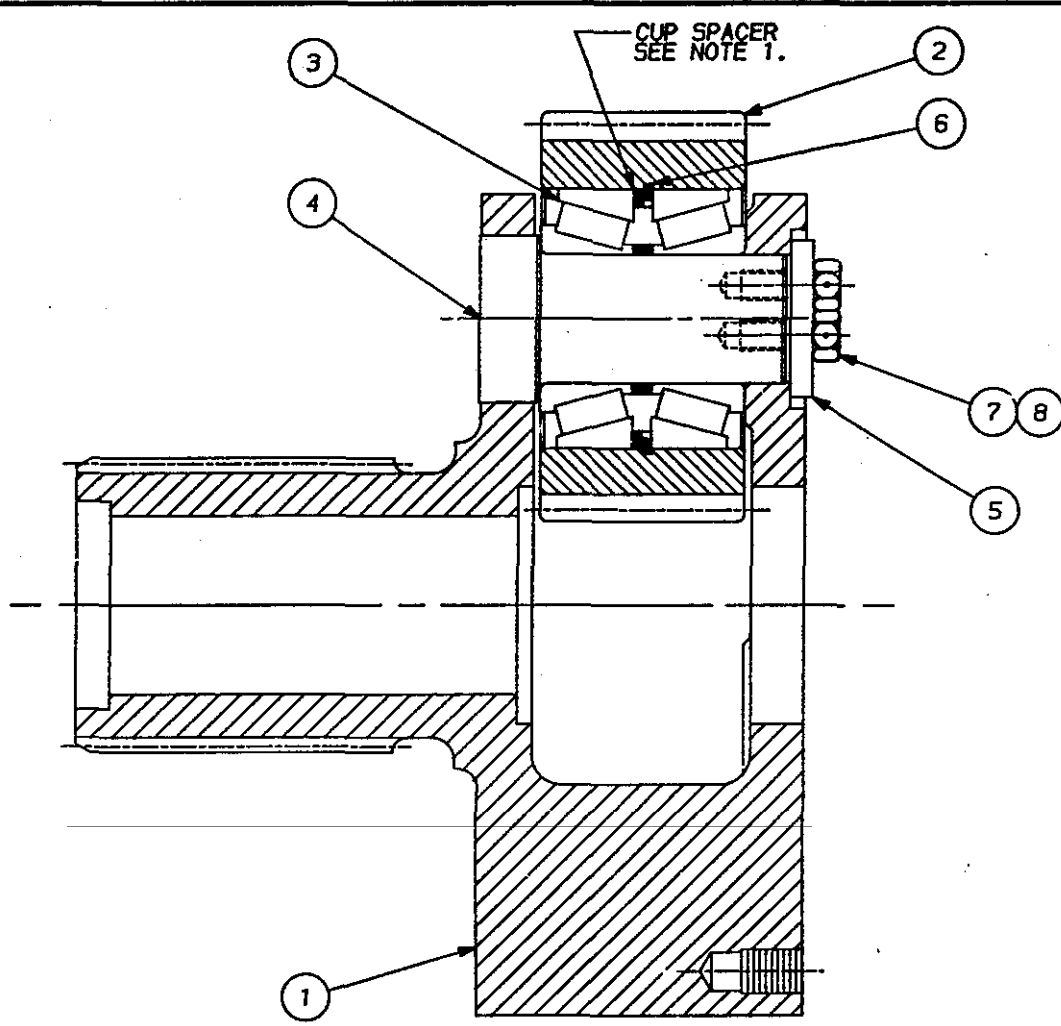
SECTION C-C
CONV LIFT
1/4 SCALE



SECTION B-B
DEAD SECTION/GATH HD PIVOT
1/4 SCALE

SHEET 2 of 2

<p>© 1990 EIMCO Coal Machinery Incorporated</p>		<p>-NOTICE- THIS DRAWING CONTAINS CONFIDENTIAL INFORMATION AND IS LOANED IN CONFIDENCE ON THE CONDITION THAT IT IS TO BE RETURNED ON DEMAND AND NOT BE COPIED, REPRODUCED, DISCLOSED TO OTHERS OR USED IN THE MANUFACTURE OF THE SUBJECT MATTER THEREOF WITHOUT THE CONSENT OF EIMCO Coal Machinery Incorporated.</p>		<p>Drawn on C10 Copyright 1990</p>		<p>UNLESS SPECIFIED WITH ALL DIMENSIONS ARE IN INCHES. FRACTIONS ARE TO BE SHOWN AS DECIMALS. DIMENSIONS ARE TO BE SHOWN AS DECIMALS. FRACTIONS ARE TO BE SHOWN AS DECIMALS. DATE: 6-4-90 SCALE: AS SHOWN BY: [Signature]</p>		<p>REV. ASSY. TITLE ASSY. TRACTOR FRAME COVER SECTION VIEWS DWG No / PART No. 60234298 / SH. 2</p>			
REV	BY	DATE	REV	BY	DATE	REV	BY	DATE	REV	BY	DATE



BILL OF MATERIAL

B/M No. 60230424

ITEM NO.	PART NO.	QTY/U/M	DESCRIPTION	BM	DWG. SIZE
1	6023 0339	1	MACH, PLANETARY CARRIER		C
2	6023 0250	3	GEAR, PLANETARY SEC.		B
3	1190 5006	3	BEARING		
4	6023 0258	3	PIN, PLANETARY		B
5	6023 0257	3	RETAINER, PIN		B
6	1102 7101	3	RING, SNAP		
7	3741 8837	9	CAPS, HEX. 1/2-13 x 1 1/8		
8	9902 3962	3	FT. WIRE		

⑦ ⑧ TORQUE CAPSCREWS TO 119 FT/LBS. AND LOCK WIRE IN POSITION.

NOTES

1. SNAP RING GROOVE NOT IN THE CENTER OF THE GEAR BORE. ENSURE THAT CUP SPACER IS ASSEMBLED ON LONG SIDE OF BORE. THIS WILL RESULT IN EQUAL SPACING OF BEARINGS.
2. PLANETARY PIN ITEM #4 IS ASSEMBLED AS A LIGHT DRIVE FIT.

(E)				(L)			
(D)				(K)			
(C)				(H)			
(B)	F800	LML	2-9-88	(G)			
(A)	F367		11/17/87	(F)			
REV	ECN	BY	DATE	REV	ECN	BY	DATE

-NOTICE-

TO ALL PERSONS RECEIVING THIS DRAWING
This drawing contains confidential information and is issued in confidence on the conditions that it be returned on demand and not be copied, reproduced, disclosed to others or used in the manufacture of the subject matter thereof without the consent of Eimco Mining Machinery International.

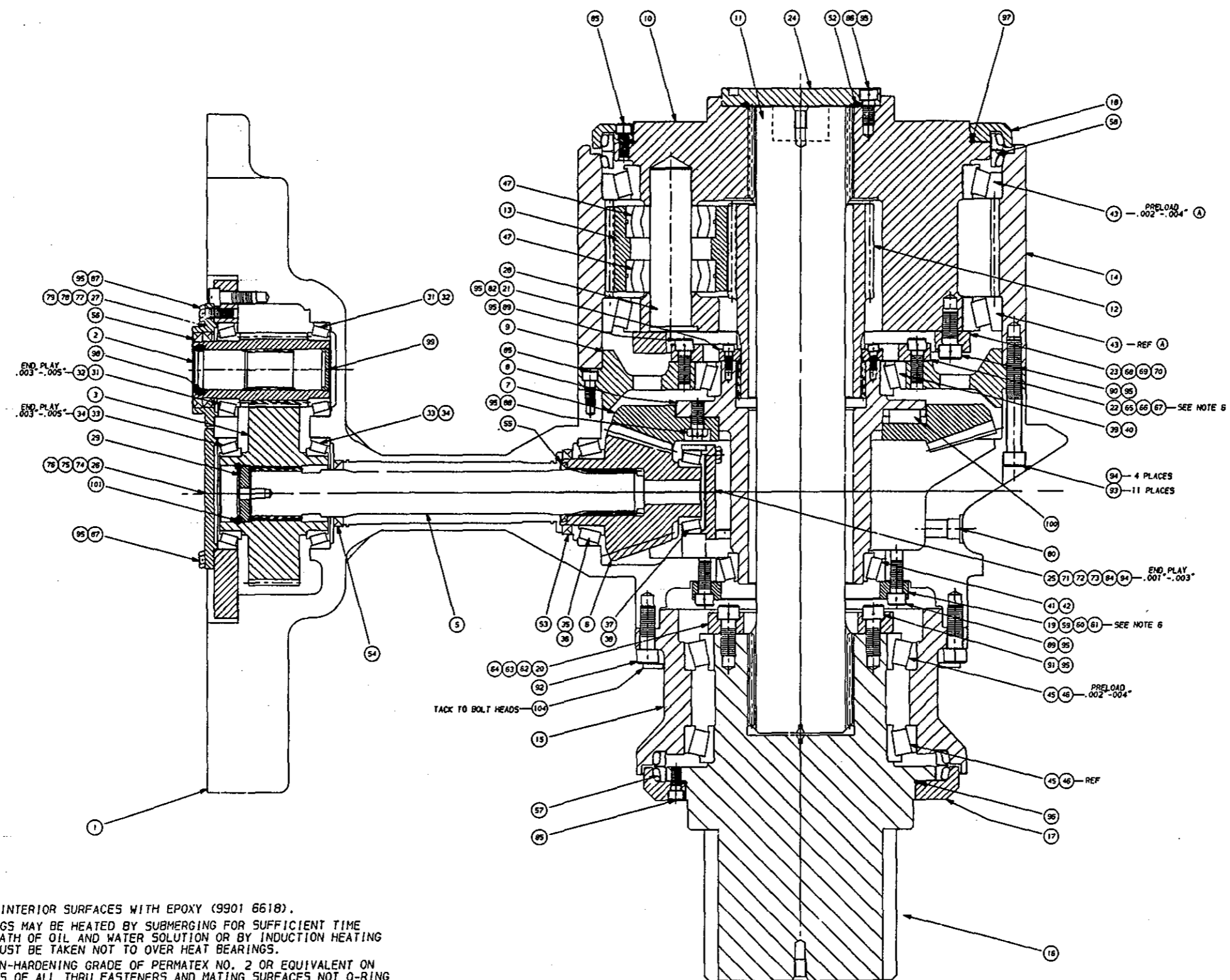
Drawn on CAD Copyright 1987

EIMCO Mining Machinery
Fairmont NY 26554

UNLESS OTHERWISE NOTED ALL DIMENSIONS ARE IN INCHES
MACHINE DECIMALS & 0.005"
TOLERANCE FRACTIONS & 1/32"
ANGLES & 30 MINUTES
FABRICATION TOL. & 1/16"

MODEL 2810 DATE 11/12/87
WEIGHT 120 DRAWN JBP
SCALE HALF CHECKED ITC
DO NOT SCALE CHIEF ENGR. ITC

NEXT ASSY. 60230407 D
TITLE PLANETARY, SECONDARY ASSEMBLY
DWG No./PART No. 60230424
DWG SIZE B



ITEM NO.	PART NO.	QTY/U/M	DESCRIPTION	BM	DWG. SIZE
1	6023 0573	1	EA DRUM DRIVE, GEARCASE	E	
2	6023 0576	1	EA PINION DRUM DRIVE	C	
3	6023 0577	1	EA GEAR, INPUT	B	
4					
5	8212 3701	1	EA SHAFT, GEARCASE	B	
6	6023 0504	1	EA GEAR, BEVEL	C	
7	6023 0575	1	EA GEAR, BEVEL	C	
8	4350 1800	1	EA SHAFT, BEVEL GEAR	C	
9	6023 0839	1	EA BEARING CARRIER	D	
10	6023 0493	1	EA PLANET, DRUM DRIVE MACH.	C	
11	8212 3705	1	EA SHAFT, INPUT CENTER DRUM	C	
12	4322 6903	1	EA GEAR, SUN	C	
13	4322 6902	3	EA GEAR, PLANET	B	
14	4322 6904	1	EA GEAR, RING	C	
15	6023 0857	1	EA BEARING CARRIER CENTER DRUM	D	
16	6023 4105	1	EA SHAFT, CENTER DRUM DRIVE	D	
17	6023 0902	1	EA CARRIER SEAL	C	
18	6023 0903	1	EA CARRIER SEAL	C	
19	6023 0859	1	EA PLATE, BEARING ADJ.	C	
20	6023 0849	1	EA PLATE, BEARING ADJ.	C	
21	6023 0617	1	EA RING, SPLIT	B	
22	6023 0888	1	EA PLATE, BEVEL GEAR ADJ.	C	
23	6023 0875	1	EA PLATE, PLANET, BEARING	C	
24	6023 0904	1	EA CAP END	B	
25	6023 0899	1	EA PLATE, NOSE BEARING ADJ.	B	
26	6023 0894	1	EA PLATE, BEARING ADJ.	B	
27	6023 0893	1	EA PLATE, INPUT BEARING ADJ.	B	
28	6023 0763	3	EA PIN, PLANETARY	B	
29	6023 0895	1	EA SPACER	A	
30	6023 0905	1	EA COVCR	A	
31	1151 3967	2	EA CONE BEARING		
32	1153 1712	2	EA CUP BEARING		
33	1154 0514	2	EA CONE BEARING		
34	1154 0516	2	EA CUP BEARING		
35	1151 6564	1	EA CONE BEARING		
36	1152 1432	1	EA CUP BEARING		
37	1151 0419	1	EA CONE BEARING		
38	1152 9815	1	EA CUP BEARING		
39	1152 2513	1	EA CONE BEARING		
40	1153 8618	1	EA CUP BEARING		
41	1152 1994	1	EA CONE BEARING		
42	1152 2598	1	EA CUP BEARING		
43	1154 0511	2	EA CONE BEARING		
44	1154 0543	2	EA BEARING ASS'Y		
45					
46	1154 0510	2	EA CUP BEARING		
47	1140 9500	6	EA BEARING		
48					
49					
50					
51					
52	7121 0918	1	EA O-RING		
53	7171 8142	1	EA OIL SEAL		
54	7173 0009	1	EA SEAL LIP		
55	7173 0010	1	EA SEAL LIP		
56	7173 0011	2	EA SEAL LIP		
57	7190 1367	1	EA SEAL DUO ASSY		
58	7190 1615	1	EA SEAL DUO CONE		
59	8422 7215	3	EA SHIM, BEVEL GEAR CARRIER .005	A	
60	8422 7216	3	EA SHIM, BEVEL GEAR CARRIER .007	A	
61	8422 7217	1	EA SHIM, BEVEL GEAR CARRIER .020	A	
62	8422 7218	3	EA SHIM, CENTER DRUM SHAFT .005	A	
63	8422 7219	3	EA SHIM, CENTER DRUM SHAFT .007	A	
64	8422 7220	1	EA SHIM, CENTER DRUM SHAFT .020	A	
65	8422 7212	3	EA SHIM, BEVEL GEAR ADJ. .005	A	
66	8422 7213	3	EA SHIM, BEVEL GEAR ADJ. .007	A	
67	8422 7214	1	EA SHIM, BEVEL GEAR ADJ. .020	A	
68	8422 7206	3	EA SHIM, PLANET. BRG. ADJ. .005	A	
69	8422 7207	3	EA SHIM, PLANET. BRG. ADJ. .007	A	
70	8422 7208	1	EA SHIM, PLANET. BRG. ADJ. .020	A	

NOTES

1. PAINT INTERIOR SURFACES WITH EPOXY (9901 6618).
2. BEARINGS MAY BE HEATED BY SUBMERGING FOR SUFFICIENT TIME IN A BATH OF OIL AND WATER SOLUTION OR BY INDUCTION HEATING CARE MUST BE TAKEN NOT TO OVER HEAT BEARINGS.
3. USE NON-HARDENING GRADE OF PERMATEX NO. 2 OR EQUIVALENT ON THREADS OF ALL THRU FASTENERS AND MATING SURFACES NOT O-RING SEALED. USE LUBON 404 ON PIPE FITTINGS.
4. REFER TO DWG. NO. (9104 0675-A) FOR MECH FACE SEAL INSTALLATION.
5. USE SUFFICIENT SHIMS TO PROVIDE BEARING SETTINGS AS NOTED.
6. BEVEL GEAR SHAFT TO BE SET AT .000"-.002" END PLAY. SHIMS TO BE PROPORTIONED SUCH THAT GEAR & PINION HAVE .006"-.008" BACKLASH.
7. ALIGN KEYWAY ON PLANETARY WITH CORNER ON CENTER DRUM DRIVE SHAFT.

<p>TO ALL PERSONS RECEIVING THIS DRAWING this drawing contains confidential information and is loaned to you on the condition that it be returned as directed and not be copied, reproduced, disclosed to others or used in the manufacture of the subject matter thereof without the consent of Eimco Coal Machinery Incorporated.</p>		<p>-NOTICE-</p>		<p>Drawn on CAD Copyright 1990</p>		<p>NETT ASSY: 60234190 TITLE: DRUM DRIVE ASSEMBLY S7 RPM</p>	
<p>REV: ECN BY DATE</p>		<p>REV: ECN BY DATE</p>		<p>EIMCO Coal Machinery Incorporated A Tompkins Tooling Company Fairport NY 26554</p>		<p>DATE: 4-25-90 SCALE: 3/8 DWG NO./PART NO.: 60234192/SH.1</p>	

CLICK HERE TO **DOWNLOAD** THE COMPLETE MANUAL

- Thank you very much for reading the preview of the manual.
- You can download the complete manual from: www.heydownloads.com by clicking the link below



- Please note: If there is no response to CLICKING the link, please download this PDF first and then click on it.

CLICK HERE TO **DOWNLOAD** THE COMPLETE MANUAL