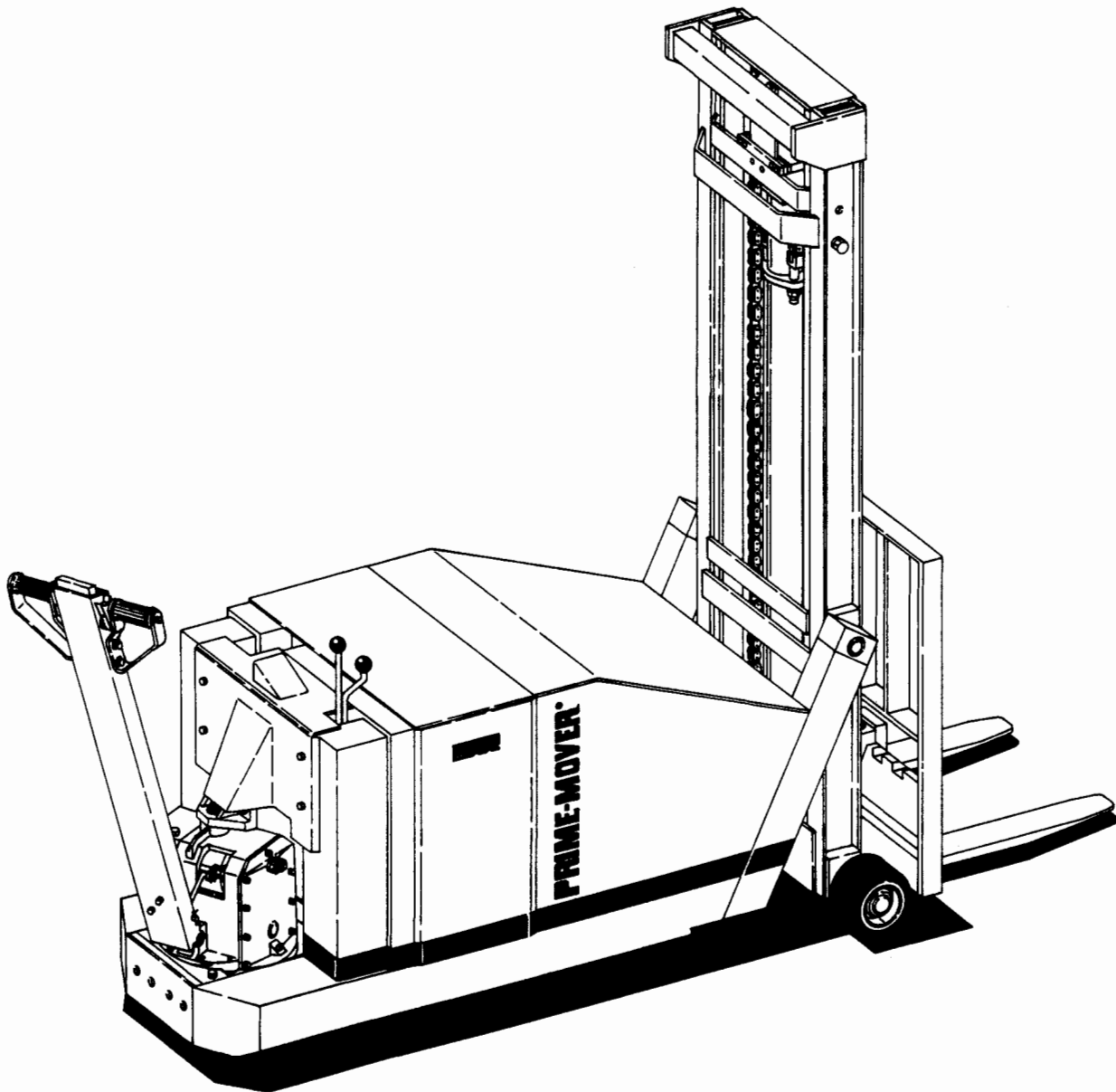


# Parts Manual

SC-40 ELECTRIC COUNTER BALANCED WALKIE STACKER

SC-40



**⚠ WARNING** Read and observe all warnings on the unit before operating it. Do not operate this equipment unless all factory installed guards and shields are properly secured in place.

Return

JANUARY 1989

**PRIME-MOVER**®

CLICK HERE TO **DOWNLOAD** THE COMPLETE MANUAL

- Thank you very much for reading the preview of the manual.
- You can download the complete manual from: [www.heydownloads.com](http://www.heydownloads.com) by clicking the link below



- Please note: If there is no response to CLICKING the link, please download this PDF first and then click on it.

CLICK HERE TO **DOWNLOAD** THE COMPLETE MANUAL

FIG. ITEM		PART #	NAME	# for Assy.	Unit
#	#				
1.1	1	20682-00	Shield, motor	1	
1.1	2	11016-11	Washer, flat	4	
1.1	3	11009-04	Lockwasher	4	
1.1	4	11045-02	Screw, cap	5	
1.1	5	11261-05	Nut	1	
1.1	6	20670-00	Bracket	1	
1.1	7	11016-21	Washer	2	
1.1	8	11261-01	Nut	2	
1.1	9	20208-00	Switch, interlock	1	
1.1	10	11880-08	Screw, machine	2	
1.1	11	20497-00	Clamp	1	
1.1	12	11170-04	Nut	1	
1.1	13	11813-06	Grommet, rubber	1	
1.1	14	11009-05	Lockwasher	4	
1.1	15	11854-03	Screw, cap	4	
1.1	16		Handle assembly (See Fig. #1.2)	1	
1.1	17	25548-00	Bar	1	
1.1	18	11009-06	Lockwasher	2	
1.1	19	14892-01	Screw, cap	2	
1.1	20	49788-00	Bumper	1	
1.1	21	27529-02	Rod	1	
1.1	22	11429-04	Pin, hair	2	
1.1	23	11073-04	Pin, roll	1	
1.1	24	13813-19	Pin, rivot	1	
1.1	25	20405-02	Spring assembly	1	
1.1	26	20398-01	Retainer, spring	1	
1.1	27	20400-00	Spring	1	
1.1	28	27542-00	Spring	1	
1.1	29	20398-02	Retainer, spring	1	
1.1	30	11025-21	Ring, retainer	2	
1.1	31	20661-00	Pin	1	
1.1	32		Transmission assembly (See Fig. #1.3)	1	
1.1	33	20069-01	Washer	1	
1.1	34	20070-01	Bearing	1	
1.1	35	11898-07	Ring, Retaining	1	
1.1	36	20393-00	Holder, spring	2	

FIG. #	ITEM #	PART #	NAME	# for Assy.	Unit
2.2	1	200019	Head assembly, commutator end	1	
2.2	2	200020	Cover	1	
2.2	3	200241	Spring, brush	1	
2.2	4	200021	Brush	1	
2.2	5	200178	Cover, plate	1	
2.2	6	200022	Washer	1	
2.2	7	200320	Bearing (supplied with item #12)	1	
2.2	8	200023	Field coil	1	
2.2	9	200151	Terminal stud	1	
2.2	10	200140	Screw, pole shoe	1	
2.2	11	200024	Armature and fan assembly	1	
2.2	12	200306	Fan	1	
2.2	13	200304	Head assembly, drive end	1	
2.2	14	200320	Bearing	1	
2.2	15	200322	Seal	1	

FIG. #	ITEM #	PART #	NAME	# for Assy.
2.8	1	200076	Base, magnet	1
2.8	2	200077	Coil, 24 volt	2
2.8	3	200078	Frame, magnet	2
2.8	4	200079	Spring (red)	2
2.8	5	200080	Armature	2
2.8	6	200081	Base, bus	2
2.8	7	200082	Tip, contact	2
2.8	8	200083	Tip, contact	1
2.8	9	200084	Tip, movable	4
2.8	10	201267	Spring (gold)	2
2.8	11	200085	Insulation	2
2.8	12	201215	Locknut	2
2.8	13	200086	Clamp	4
2.8	14	200087	Tip, contact	1
2.8	15	200088	Cover	2
2.8	16	201368	Lockwasher	8
2.8	17	201372	Screw, machine	8
2.8	18	200089	Screw, cap	2
2.8	19	200090	Lockwasher	2
2.8	20	200091	Washer, flat	2
2.8	21	200092	Tip, contact	1
2.8	22	200093	Clamp	2
2.8	23	201367	Washer, flat	2
2.8	24	200094	Seat	4
2.8	25	200095	Carrier	2
2.8	26	200096	Bushing	2
2.8	27	200097	Tip, contact	1

FIG. ITEM		PART #	NAME	# for Assy.	Unit
#	#				
2.13	1	X49439-00	Lamp, assembly	1	
2.13	2	11170-05	Nut	3	
2.13	3	15677-00	Clamp	3	
2.13	4	52-07907-00	Cable, wire 16/2	As Req'd.	
2.13	5	25332-01	Tie, wire	As Req'd.	
2.13	6	14928-00	Holder, fuse	1	
2.13	7	25275-05	Fuse, 5 Amp	1	



FIG. #	ITEM #	PART #	NAME	# for Assy.	Unit
3.6	1K	NSS	Ring, retainer	1	
3.6	2K	NSS	Seal	1	
3.6	3K	NSS	Spacer	1	
3.6	4	201973	Bearing,	1	
3.6	5K	NSS	Ring, retainer	1	
3.6	6K	NSS	Washer, wave	1	
3.6	7	NA	Stator	1	
3.6	8	200033	Pin, dowel	2	
3.6	9K	NSS	Seal	1	
3.6	10K	NSS	Seal, rubber	1	
3.6	11K	NSS	Plate, wear	1	
3.6	12	202033	Shaft, drive	1	
3.6	13	NSS	Key	2	
3.6	14	NSS	Gear	2	
3.6	15	202068	Plate, pressure	1	
3.6	16K	NSS	Seal	1	
3.6	17K	NSS	Seal, plate	1	
3.6	18	200032	Screw, 12 point	8	
3.6	19	NA	Housing, end gear	1	
3.6	20	NA	Plug	1	
3.6	21	NSS	Spacer	2	
3.6	22	NSS	Ball, Steel	1	
3.6	23	200031	Shaft, idler	1	
3.6	*K	NSS	Gasket, pump and motor	1	
3.6	K	200028	Kit, seal (contains items marked with "K")	1	
3.6	K	200029	Kit, gear (contains items #13,14,22)	1	

FIG. ITEM		PART #	NAME	# FOR ASSY	UNIT
#	#				
3.11	1	201639	Switch	2	
3.11	2	201545	Nut	4	
3.11	3	201553	Lockwasher	4	
3.11	4	201624	Bracket	2	
3.11	5	204250	Screw, machine	4	
3.11	6	204259	Washer, flat	4	
3.11	7	201578	Screw, machine	4	
3.11	8	201625	Screw, spool	1	
3.11	9	201623	Screw, spool	1	
3.11	10	201533	Washer, shallow	2	
3.11	11	201584	Spring	2	
3.11	12	204251	Washer	2	
3.11	13	201616	Washer, deep	2	
3.11	14K	NSS	O ring	2	
3.11	15	NA	Body	1	
3.11	16	204252	Plug	1	
3.11	17K	NSS	O ring	1	
3.11	18	204253	Plug, check	2	
3.11	19K	NSS	O ring	1	
3.11	20	201618	Spring	2	
3.11	21	201617	Plunger	2	
3.11	22K	NSS	O ring	2	
3.11	23	NA	Spool	1	
3.11	24	NA	Spool	1	
3.11	25	201650	Valve, relief	1	
3.11	26K	NSS	O ring	1	
3.11	27K	NSS	Ring, backup	1	
3.11	28K	NSS	O ring	1	
3.11	K	204254	Kit, seal	1	

FIG. ITEM		PART #	NAME	# for Assy.
#	#			
5.1	1	21090-00	Stop, column	2
5.1	2	11009-12	Lockwasher	2
5.1	3	13281-01	Ring, Retaining	4
5.1	3	13281-03	Ring, Retaining	4
5.1	4	25012-00	Pin, clevis	2
5.1	5	25008-02	Fork, 36" long (See Fig. #5.6)	2
5.1	6	11047-15	Screw, cap	2
5.1	7		Column, outer (See Fig. #5.2)	1
5.1	8		Column, inner (See Fig. #5.3)	1
5.1	9		Frame, lift (See Fig. #5.5)	1

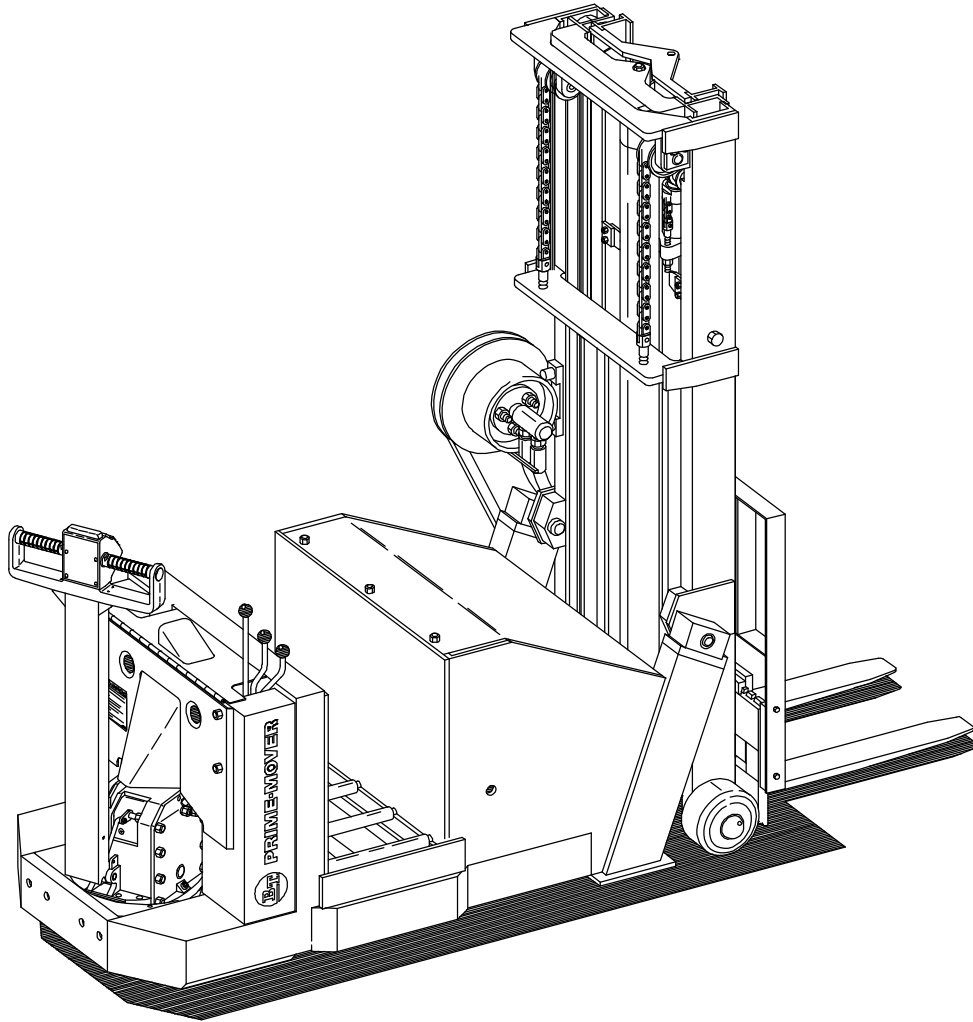
FIG. ITEM					# for
#	#	PART #	NAME		Assy.
5.6	1K	NSS	Pin, roll		1
5.6	2K	NSS	Handle		1
5.6	3K	NSS	Spring		1
5.6	4K	NSS	Pin		1
5.6	5	NA	Fork, 36" long		1
5.6	K	200843	Pin Assembly (contains part indicated by letter "K")		1

# PART MANUAL

Manual Part Number 303625-000

SC-40 ELECTRIC COUNTER BALANCED WALKIE STACKER

---



**WARNING**

Read and observe all warnings on this unit before operating it.



**WARNING**

**DO NOT** operate this equipment unless all factory installed guards and shields are properly secured in place.



FIG #	ITEM #	PART #	NAME	# FOR ASSY.	UNIT
1.2	1	23139-00	Reverser assembly	1	
1.2	2	49519-03	Screw, machine	2	
1.2	3	23040-00	Switch	1	
1.2	4	23036-00	Cup, spring	1	
1.2	5	27212-00	Bar, reverser	1	
1.2	6	27210-00	Spring	3	
1.2	7	23037-00	Cover	1	
1.2	8	11072-13	Lockwasher	2	
1.2	9	49525-01	Screw, flathead	4	
1.2	10	23067-00	Plate, switch	1	
1.2	11	11176-01	Screw, truss head	4	
1.2	12	23214-00	Spring	6	
1.2	13	23033-00	Bushing, sleeve	1	
1.2	14	14900-00	Nut	6	
1.2	15	11072-13	Lockwasher	5	
1.2	16	23040-00	Switch	3	
1.2	17	49525-04	Screw, flat head	1	
1.2	18	49519-06	Screw, machine	1	
1.2	19	49519-04	Screw, machine	4	
1.2	20	23035-00	Grip, hand	2	
1.2	21	11073-29	Pin, roll	3	
1.2	22	11047-30	Screw, Allen head	2	
1.2	23	23034-00	Bushing	2	
1.2	24	11047-03	Screw, Allen head 2.25" long	1	
1.2	25	14892-03	Screw, flanged head cap	2	
1.2	26	14892-01	Screw, flanged head cap	2	
1.2	27	49994-06	Screw, flanged button head	2	
1.2	28	11813-16	Grommet	1	
1.2	29	49549-00	Clamp	1	
1.2	30	23244-00	Sheave	1	
1.2	31	23466-00	Pin	1	
1.2	31	23467-00	Pin, cold storage	1	
1.2	32	27291-00	Handle, lower	1	
1.2	33	27299-01	Anchor, chain	1	
1.2	34	21542-10	Chain	1	
1.2	35	300661-001	Link, connector	1	
1.2	36	23414-01	Tube, plastic	1	
1.2	37	14892-02	Screw, flanged head 1.00" long	2	
1.2	38	23026-00	Spring, return	1	
1.2	39	11047-19	Screw, Allen head 1.25" long	2	
1.2	40	23078-00	Plate, anchor	1	
1.2	41	23024-00	Guard, hand	1	RESISTOR
1.2	42	23369-00	Switch, master (RESISTOR)	1	TRANSISTOR
1.2	42	27303-00	Switch, master (TRANSISTOR)	1	
1.2	43	11936-04	Washer, shim	As Req'd.	
1.2	44	27541-00	Gear, miter	2	
1.2	45	23032-00	Shaft	1	
1.2	46	11073-26	Pin, roll	1	
1.2	47	23030-00	Washer, stop	1	
1.2	48	27523-00	Bushing, flanged	1	
1.2	49	23061-00	Housing, head	1	
1.2	50	23044-02	Bar, lower	1	
1.2	51	23044-01	Bar, raise	1	24 VOLT
1.2	52	23044-00	Bar, horn	1	TRANSISTOR
1.2	53	49506-03	Heater (COLD STORAGE)	1	
1.2	54	29304-00	Potentiometer	1	RESISTOR
1.2	55	23081-00	Harness, head wiring (RESISTOR)	1	TRANSISTOR
1.2	55	27312-00	Harness, head wiring (TRANSISTOR)	1	RESISTOR
1.2	56	27357-00	Harness, main wiring (RESISTOR)	1	TRANSISTOR
1.2	56	27356-00	Harness, main wiring (TRANSISTOR)	1	

FIGURE # 2.2 RESISTOR ELECTRICAL SCHEMATIC SYMBOLS

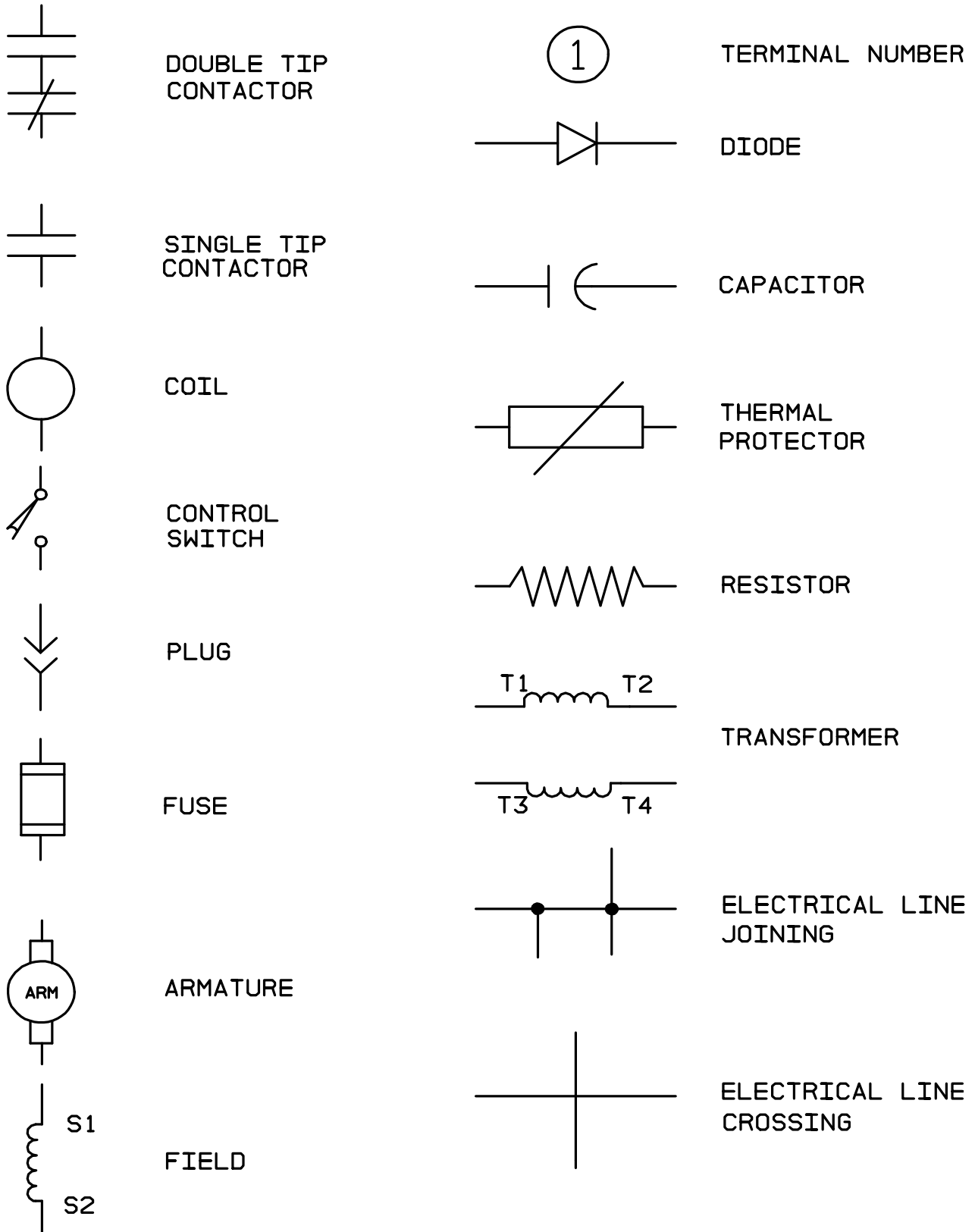


FIG #	ITEM #	PART #	NAME	# FOR ASSY.	UNIT
2.7	1	201962	Base, magnet	1	
2.7	2	200077	Coil	1	
2.7	3	201962	Frame, magnet	1	
2.7	4	201262	Spring (red)	1	
2.7	5	201964	Armature	1	
2.7	6	200081	Base, bus	1	
2.7	7	204240	Tip, contact	1	
2.7	8	204239	Tip, contact	1	
2.7	9	200096	Bushing	1	
2.7	10	200095	Carrier	1	
2.7	11	201966	Tip, movable	1	
2.7	12	201259	Cap	1	
2.7	13	201266	Spring (gold)	1	
2.7	14	201367	Washer, flat	1	
2.7	15	201215	Nut, lock	1	
2.7	16	201967	Clamp	2	
2.7	17	201368	Lockwasher	4	
2.7	18	201372	Screw, machine	4	
2.7	19	200095	Seat	1	

FIG ITEM		PART #	NAME	# FOR ASSY.	UNIT
#	#				
2.13	1	49855-66	Connector assembly, Red, SB-175	1	
2.13	1	49855-67	Connector assembly, Gray, SB-175	1	
2.13	2	49854-04	Connector, housing, Red, SB-175	1	
2.13	2	49854-01	Connector, housing, Gray, SB-175	1	
2.13	3	49852-01	Connector, tip	2	
2.13	4	49853-02	Bushing	2	
2.13	5	49856-44	Cable, negative	1	
2.13	6	49856-150	Cable, positive	1	

FIG #	ITEM #	PART #	NAME	# FOR ASSY.	UNIT
3.4	1	300284-000	Motor, pump (See Fig.# 2.15)	1	
3.4	2	200037	Pump assembly, lift	1	
3.4	3	200765	Gasket	1	
3.4	4	NSS	Pump, lift (See Fig.# 3.5)	1	
3.4	5	11009-05	Lockwasher	4	
3.4	6	11854-03	Screw, cap	4	

FIG #	ITEM #	PART #	NAME	# FOR ASSY.	UNIT
3.9	1	24924-00	Two spool control valve assembly (See Fig.# 3.6)	1	
3.9	1	24925-00	Three spool control valve assembly (See Fig.# 3.6)	1	
3.9	2	12391-05	O ring	1	
3.9	3	25108-08	Adapter	1	
3.9	4	12391-06	O ring	2	
3.9	5	25377-08	Elbow, 90°	2	
3.9	6	21037-02	Regulator	1	
3.9	7	15609-41	Hose assembly	1	
3.9	8	28126-01	Tube assembly	1	71/150
3.9	8	28126-02	Tube assembly	1	83/180
3.9	8	28126-03	Tube assembly	1	87/189
3.9	8	28126-04	Tube assembly	1	90/198
3.9	8	28126-05	Tube assembly	1	95/210
3.9	8	28126-06	Tube assembly	1	102/225
3.9	9	30354-23	Hose assembly	1	
3.9	10	14912-02	Reducer, tube end	1	
3.9	11	25349-04	Tee, swivel nut	1	
3.9	12	49963-00	Valve, flow limiting	2	
3.9	13	22012-05	Elbow, 90°	2	
3.9	14	25108-08	Adapter	1	
3.9	15	30354-15	Hose assembly	1	71/150
3.9	15	30354-16	Hose assembly	1	83/180
3.9	15	30354-17	Hose assembly	1	87/189
3.9	15	30354-18	Hose assembly	1	90/198
3.9	15	30354-19	Hose assembly	1	95/210
3.9	15	30354-20	Hose assembly	1	102/225
3.9	16	30354-24	Hose assembly	1	
3.9	17	28150-01	Cylinder assy, free lift (See Fig.# 3.11)	1	71/150
3.9	17	28150-02	Cylinder assy, free lift (See Fig.# 3.11)	1	83/180
3.9	17	28150-03	Cylinder assy, free lift (See Fig.# 3.11)	1	87/189
3.9	17	28150-04	Cylinder assy, free lift (See Fig.# 3.11)	1	90/198
3.9	17	28150-05	Cylinder assy, free lift (See Fig.# 3.11)	1	95/210
3.9	17	28150-06	Cylinder assy, free lift (See Fig.# 3.11)	1	102/225
3.9	18	28131-01	Cylinder assy, staging (See Fig.# 3.10)	1	71/150
3.9	18	28131-02	Cylinder assy, staging (See Fig.# 3.10)	1	83/180
3.9	18	28131-03	Cylinder assy, staging (See Fig.# 3.10)	1	87/189
3.9	18	28131-04	Cylinder assy, staging (See Fig.# 3.10)	1	90/198
3.9	18	28131-05	Cylinder assy, staging (See Fig.# 3.10)	1	95/210
3.9	18	28131-06	Cylinder assy, staging (See Fig.# 3.10)	1	102/225
3.9	19	15677-03	Clamp	2	
3.9	20	11170-06	Nut	2	

FIG #	ITEM #	PART #	NAME	# FOR ASSY.	UNIT
3.14	1	204242	Joint dual swivel	1	
3.14	2K	NSS	O ring	3	
3.14	3K	NSS	O ring	1	
3.14	4K	NSS	O ring	2	
3.14	5K	NSS	Ring, backup	3	
3.14	6K	NSS	Ring, retainer	1	
3.14	7	204243	O ring	2	
3.14	8	200912	Tube, center	1	
3.14	9	204244	Nut	6	
3.14	10	200913	Housing, bearing	4	
3.14	11	204245	Bearing	2	
3.14	12	200907	Ring, retaining	1	
3.14	13	200911	Hook, spring	1	
3.14	14	200916	Spring assembly	1	BELOW 207"
3.14	14	300639-000	Spring assembly	1	ABOVE 207"
3.14	15	200905	Key	1	
3.14	16	200920	Manifold assembly	1	BELOW 207"
3.14	16	200919	Manifold assembly	1	ABOVE 207"
3.14	17	200914	Saddle, hose	1	
3.14	18	204248	Lockwasher	1	
3.14	19	200902	Screw, cap	1	
3.14	20	200915	Cover	1	
3.14	21	204267	Screw, button head	2	
3.14	K	200904	Kit, dual swivel (contains items marked with "K")	1	

**NSS - Not Sold Separately**  
**NA - Not Available**

FIG #	ITEM #	PART #	NAME	# FOR ASSY.	UNIT
4.3	1	11234-00	Knob	3	
4.3	2	22382-00	Lever, tilt	1	
4.3	3	22385-00	Lever, side shifter	1	
4.3	4	11936-03	Washer, hardened	3	
4.3	5	22248-00	Bar	1	
4.3	6	14813-00	Link, chain	1	
4.3	7	11429-03	Pin, cotter	1	
4.3	8	11135-06	Pin	1	
4.3	9	11261-05	Nut	2	
4.3	10	11009-05	Lockwasher	2	
4.3	11	11016-05	Washer, flat	3	
4.3	12	24924-00	Valve, 2 spool (See Fig. # 3.6)	1	
4.3	12	24925-00	Valve, 3 spool (See Fig. # 3.6)	1	
4.3	13	11854-12	Screw, cap	2	
4.3	14	22258-00	Pin, clevis with roll pin	2	
4.3	15	22389-01	Rod, side shifter	1	
4.3	16	22391-01	Rod, tilt	1	
4.3	17	22388-01	Rod, lift	1	
4.3	18	11135-04	Pin, yoke	1	
4.3	19	11429-04	Pin, cotter	1	
4.3	20	22120-00	End, rod	4	
4.3	21	11020-21	Bushing	2	
4.3	22	11020-17	Bushing	1	
4.3	23	11873-22	Bolt, shoulder	1	
4.3	24	22378-00	Lever, lift	1	

FIG #	ITEM #	PART #	NAME	# FOR ASSY.	UNIT
5.3	1	11047-15	Screw, socket head	4	
5.3	2	25018-00	Bar, clamp	1	
5.3	3	21111-02	Block, .0359" spacer	2	
5.3	4	21111-01	Block, .375" spacer	2	
5.3	5	11854-04	Screw, cap	4	
5.3	6	25038-02	Bar, sheave head tie	1	
5.3	7	-----	Lift cylinder assembly (See Fig.# 5.4)	1	
5.3	8	21089-02	Bearing	2	
5.3	9	11857-05	Shim, .050"	As Req'd.	
5.3	9	11857-12	Shim, .025"	As Req'd.	
5.3	10	25033-01	Column, inner	1	71/106
5.3	10	25033-02	Column, inner	1	83/130
5.3	10	25033-03	Column, inner	1	90/144
5.3	10	25033-04	Column, inner	1	96/156
5.3	10	25033-05	Column, inner	1	108/180

FIG #	ITEM #	PART #	NAME	# FOR ASSY.	UNIT
5.8	1	-----	Column, outer (See Fig.# 5.9)	1	
5.8	2	-----	Column, intermediate (See Fig.# 5.10)	1	
5.8	3	14992-09	Screw, cap	1	
5.8	4	-----	Column, inner (See Fig.# 5.11)	1	
5.8	5	-----	Frame, lift (See Fig.# 5.13)	1	
5.8	6	25008-01	Fork, 30" long (See Fig.# 5.15)	2	
5.8	6	25008-02	Fork, 36" long (See Fig.# 5.15)	2	
5.8	6	25008-03	Fork, 42" long (See Fig.# 5.15)	2	
5.8	6	25008-04	Fork, 48" long (See Fig.# 5.15)	2	
5.8	7	30554-00	Pin	4	
5.8	8	21090-00	Stop, column	2	

FIG ITEM		PART #	NAME	# FOR ASSY.	UNIT
#	#				
5.13	1	25593-01	Backrest, load (25309-02 Load backrest) (28148-00 Lift frame)	1 1 1	
5.13	2	11143-07	Screw, cap	4	
5.13	3	49986-03	Washer, thrust	4	
5.13	4	28146-01	Shaft	2	
5.13	5	49993-01	Race, inner	2	
5.13	6	49985-01	Roller	2	
5.13	7	14993-12	Washer, shim	As Req'd.	
5.13	8	25411-00	Sideshifter assembly (See Fig.# 5.14)	1	
5.13	9	11857-05	Shim, .050"	As Req'd.	
5.13	9	11857-12	Shim, .025"	As Req'd.	
5.13	10	21089-02	Bearing	4	

# MODEL SC-40 ELECTRIC COUNTER BALANCED WALKIE STACKER

## NUMERICAL INDEX

<u>PART #</u>	<u>FIG. #</u>	<u>ITEM #</u>	<u>PART #</u>	<u>FIG.#</u>	<u>ITEM #</u>
11898-07	1.1	15	14892-01	1.3	28
11936-03	4.3	4	14892-02	1.2	37
11936-04	1.3	47	14892-03	1.3	27
11936-04	1.2	43	14892-03	1.2	25
11936-04	1.5	27	14900-00	1.2	14
11936-07	1.6	5	14900-00	1.3	13
11936-08	1.5	29	14905-00	3.16	13
11936-18	2.10	*	14908-16	3.16	20
12298-00	4.4	7	14912-02	3.9	10
12391-05	3.9	2	14913-04	2.12	12
12391-05	3.7	2	14928-00	2.10	*
12391-05	3.3	45	14972-03	3.3	9
12391-05	3.15	6	14986-03	2.3	*
12391-06	3.3	35	14992-09	5.8	3
12391-06	3.3	28	14993-12	5.13	7
12391-06	3.3	26	14994-05	3.16	7
12391-06	3.7	8	14994-05	5.1	9
12391-06	3.9	4	14994-05	5.11	5
12391-06	3.3	39	14994-05	5.9	5
12391-06	3.15	2	14994-08	1.4	15
12391-06	3.12	9	14994-12	5.10	1
12391-07	3.3	40	14994-15	4.1	12
12391-07	3.3	32	14998-01	1.4	21
12391-08	3.3	31	14999-01	1.5	25
12392-03	3.3	44	15609-17	3.15	4
12459-00	1.5	18	15609-31	3.3	29
13281-03	5.1	8	15609-41	3.7	6
13281-03	5.4	8	15609-41	3.9	7
13813-19	1.1	20	15609-65	3.3	37
13857-01	3.10	5	15609-76	3.3	14
13857-01	3.11	5	15677-03	3.9	19
13928-00	3.3	4	15898-01	3.12	3
14342-00	2.10	2	20002-00	1.5	13
14342-00	2.3	2	200025	10.1	6
14813-00	4.3	6	200028	3.5	K
14835-05	5.12	20	200029	3.5	K
14835-06	5.12	20	20003-00	1.4	13
14835-07	5.12	20	200031	3.5	23
14835-08	5.12	20	200032	3.5	18
14835-09	5.12	20	200033	3.5	8
14835-10	5.12	20	200037	3.4	2
14835-13	5.9	12	200076	2.6	1
14835-14	5.9	12	200077	2.7	2
14835-15	5.9	12	200077	2.6	2
14835-16	5.9	12	200078	2.6	3
14835-17	5.9	12	200079	2.6	4
14835-18	5.9	12	200080	2.6	5
14844-02	3.3	27	200081	2.7	6
14892-01	1.2	26	200081	2.6	6

# PARTS ORDERING INSTRUCTIONS

## HOW TO ORDER

When you order, supply the part number, quantity, model and serial numbers of your machine. Supplying this information will assure prompt, efficient handling of your order. The pictorial reference number is not needed and including it can only add confusion.

Since your dealer carries many parts in stock and maintains up-to-date prices on all parts, he will be able to process your order immediately. If, for some reason, the part is not in stock, he will order it from the factory. In either event, he maintains a current file of service manuals, which give all available parts ordering or technical information.

All prices are FOB factory in Muscatine, Iowa. Shipping charges are added to the price of the part shipping from the factory.

## WHERE TO ORDER

Always order parts from the dealer who sold you your BT PRIME-MOVER. If it is necessary for the dealer to order parts from the factory, he is able to get prompt service for you. Parts are shipped in accordance with shipping instructions given on the order.

## INSTRUCTIONS FOR RETURNING PARTS

Under NO CIRCUMSTANCES will parts be accepted at the factory for credit without prior approval. THE BT PRIME-MOVER Co. cannot accept responsibility for parts returned without authorization.

If you have some parts which must be returned, contact your dealer. If he believes parts should be returned, he will arrange for authorization to return the parts.

## FIELD MODIFICATIONS

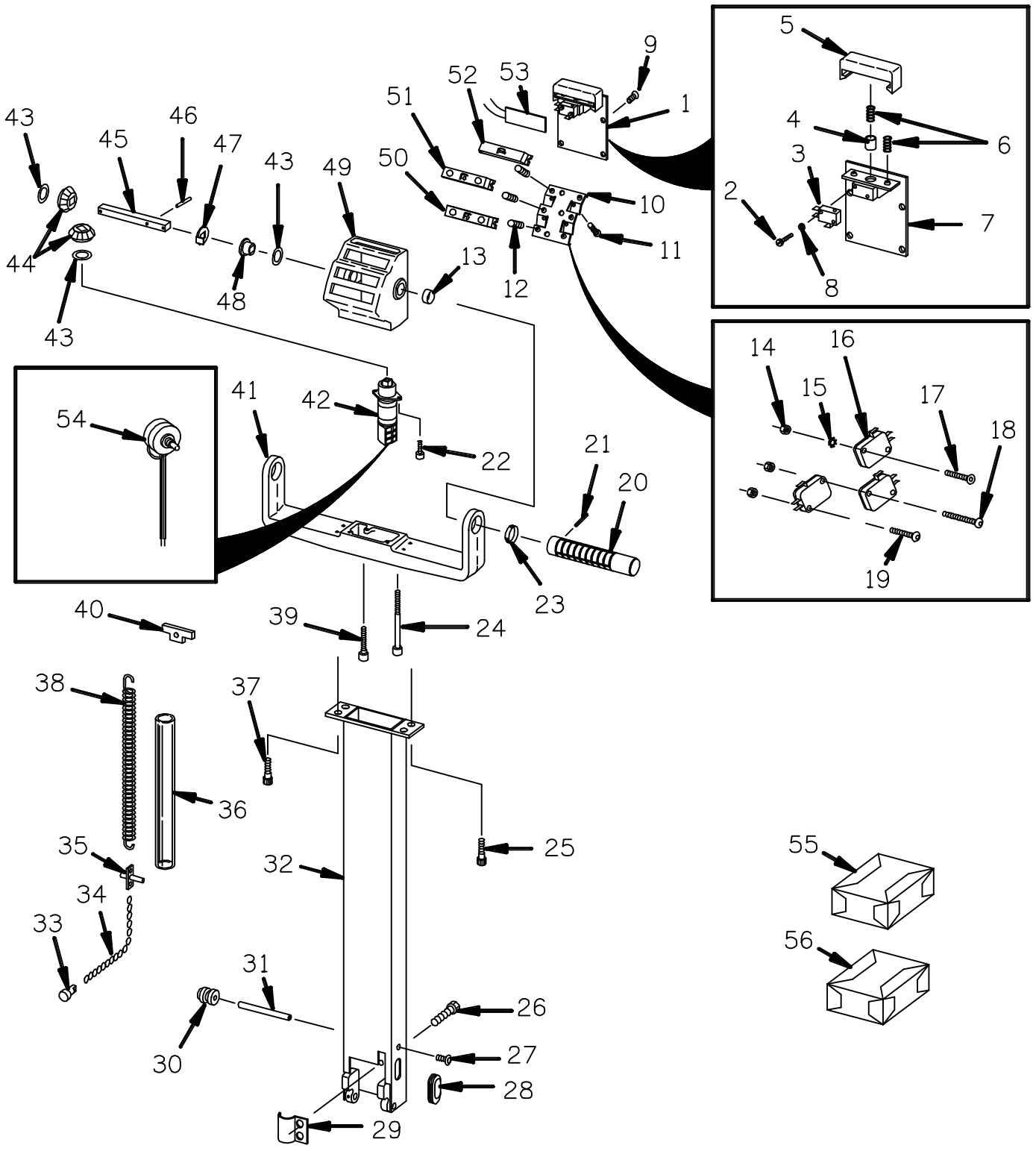
The regulations imposed by OSHA make it mandatory that alternation of industrial trucks be done only as approved in advance and in writing by the manufacturer. Their regulation apply to counter-weighting, changes in masts when such changes affect capacity and any other safety modifications. It is mandatory that nameplate and instructions be changed accordingly (1910.178 (a)(4)).

BT PRIME-MOVER will approve such changes requested as we can properly evaluate and rerate as to capacity. Normally a change will be evaluated upon receipt of a written request with full particulars including truck and mast serial number, proposed changes, new heights of lift, etc.

If the change is approved, authorization will be sent as will new nameplates or other labeling where appropriate. The new nameplates should be installed over the earlier nameplate.

The modifier should send confirmation of the change to the factory along with pictures of the revised truck.

FIGURE # 1.2 TWIST GRIP RESISTOR CONTROL HANDLE ASSEMBLY (27354-04)  
 TWIST GRIP TRANSISTOR CONTROL HANDLE ASSEMBLY (27354-05)



CLICK HERE TO **DOWNLOAD** THE COMPLETE MANUAL

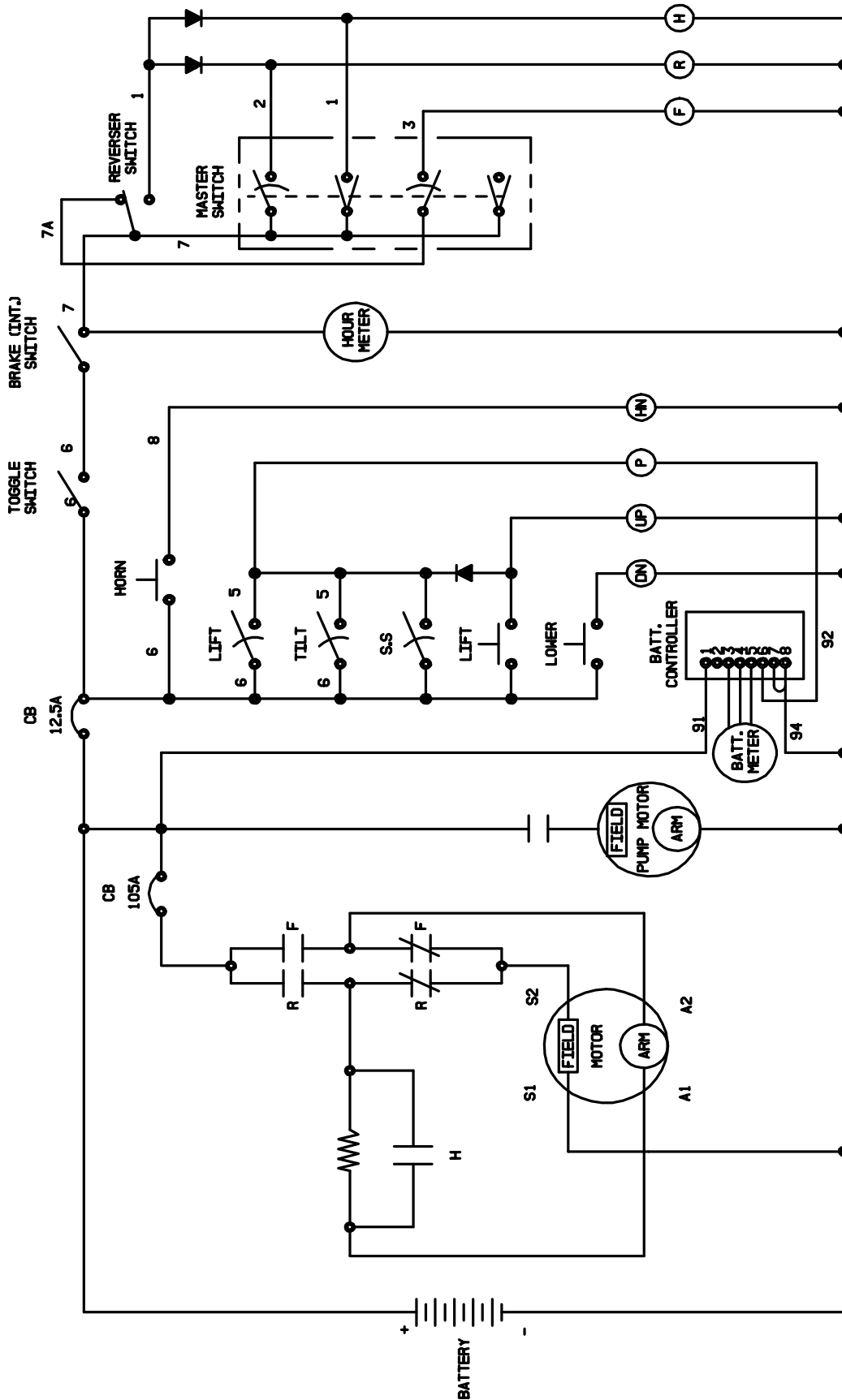
- Thank you very much for reading the preview of the manual.
- You can download the complete manual from: [www.heydownloads.com](http://www.heydownloads.com) by clicking the link below



- Please note: If there is no response to CLICKING the link, please download this PDF first and then click on it.

CLICK HERE TO **DOWNLOAD** THE COMPLETE MANUAL

FIGURE # 2.1 RESISTOR ELECTRICAL SCHEMATIC



ELECTRICAL SCHEMATIC

FIGURE # 2.7 SECOND SPEED CONTACTOR ASSEMBLY  
(12 VOLT, 27693-01) (24 VOLT, 27693-00)

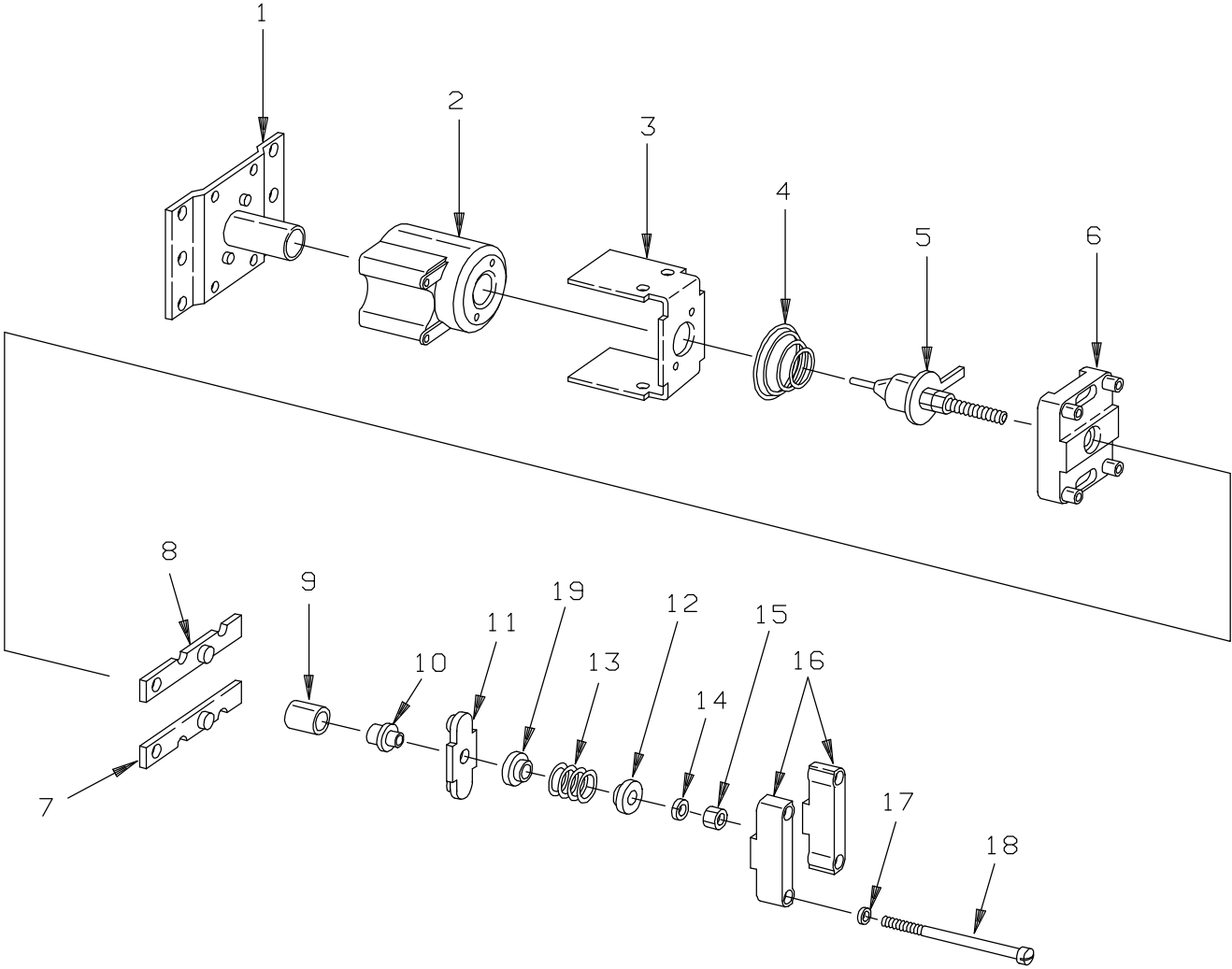


FIGURE # 2.13 POWER CONNECTOR ASSEMBLY

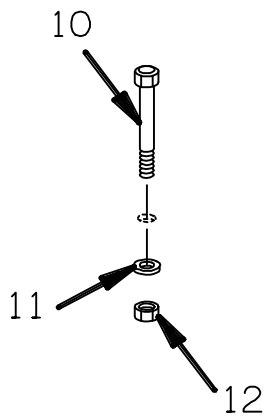
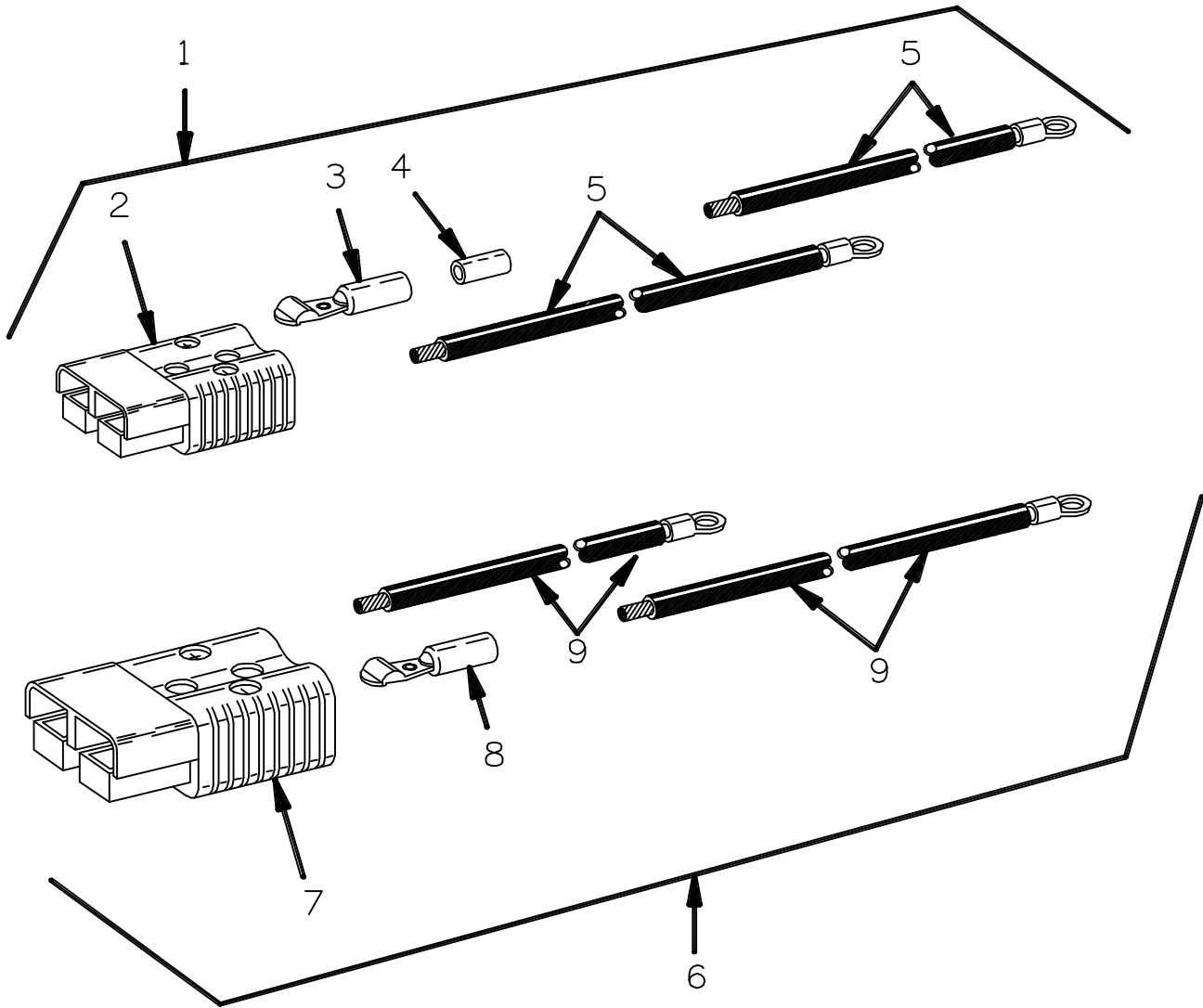


FIGURE # 2.18 12 VOLT DRIVE MOTOR ASSEMBLY (300280-000)

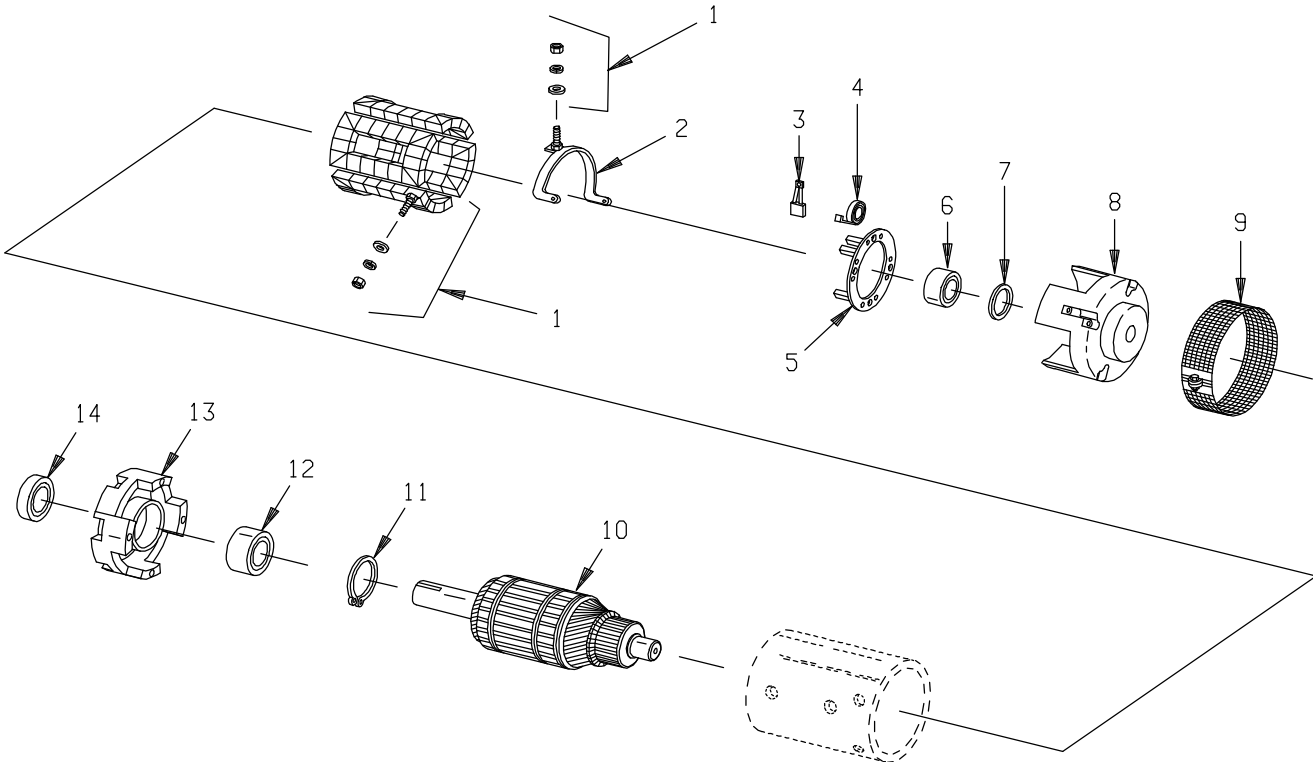


FIGURE # 3.3 SC-20 HYDRAULIC PUMP AND VALVE INSTALLATION

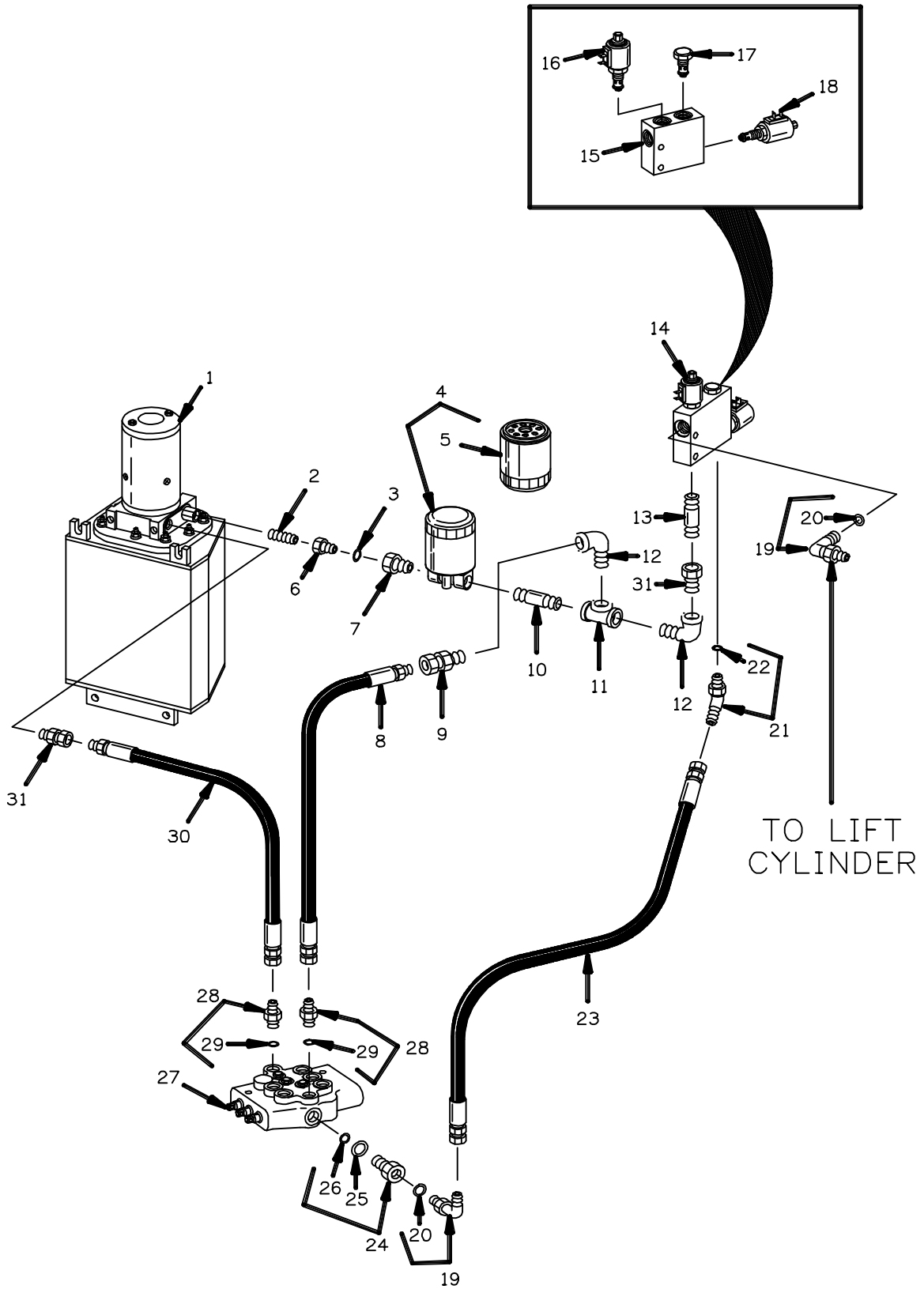


FIGURE # 3.8 SC-20 TWO STAGE FULL FREE LIFT CYLINDERS AND RELATED PARTS

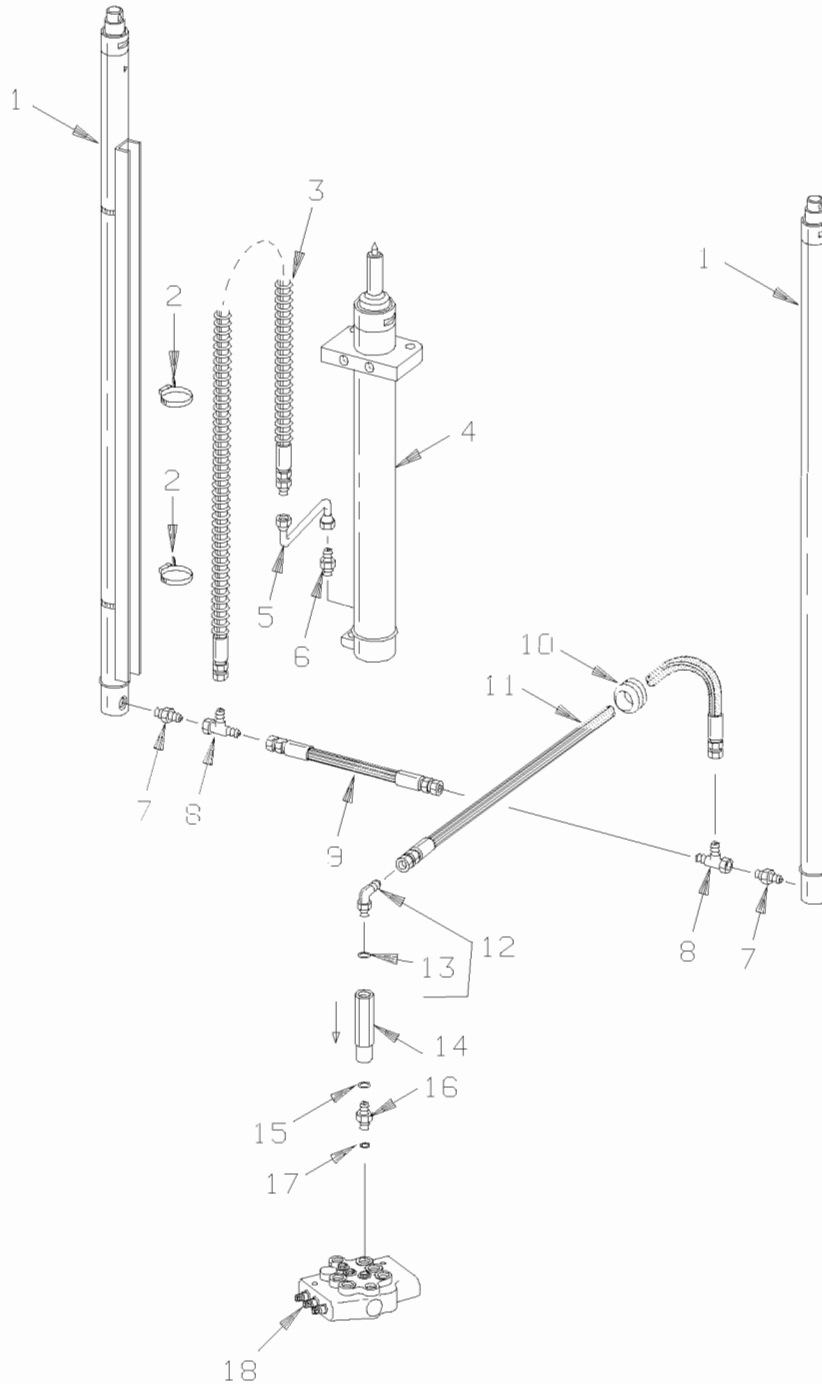


FIGURE # 3.13 SC-20 THREE STAGE LIFT CYLINDERS AND RELATED PARTS

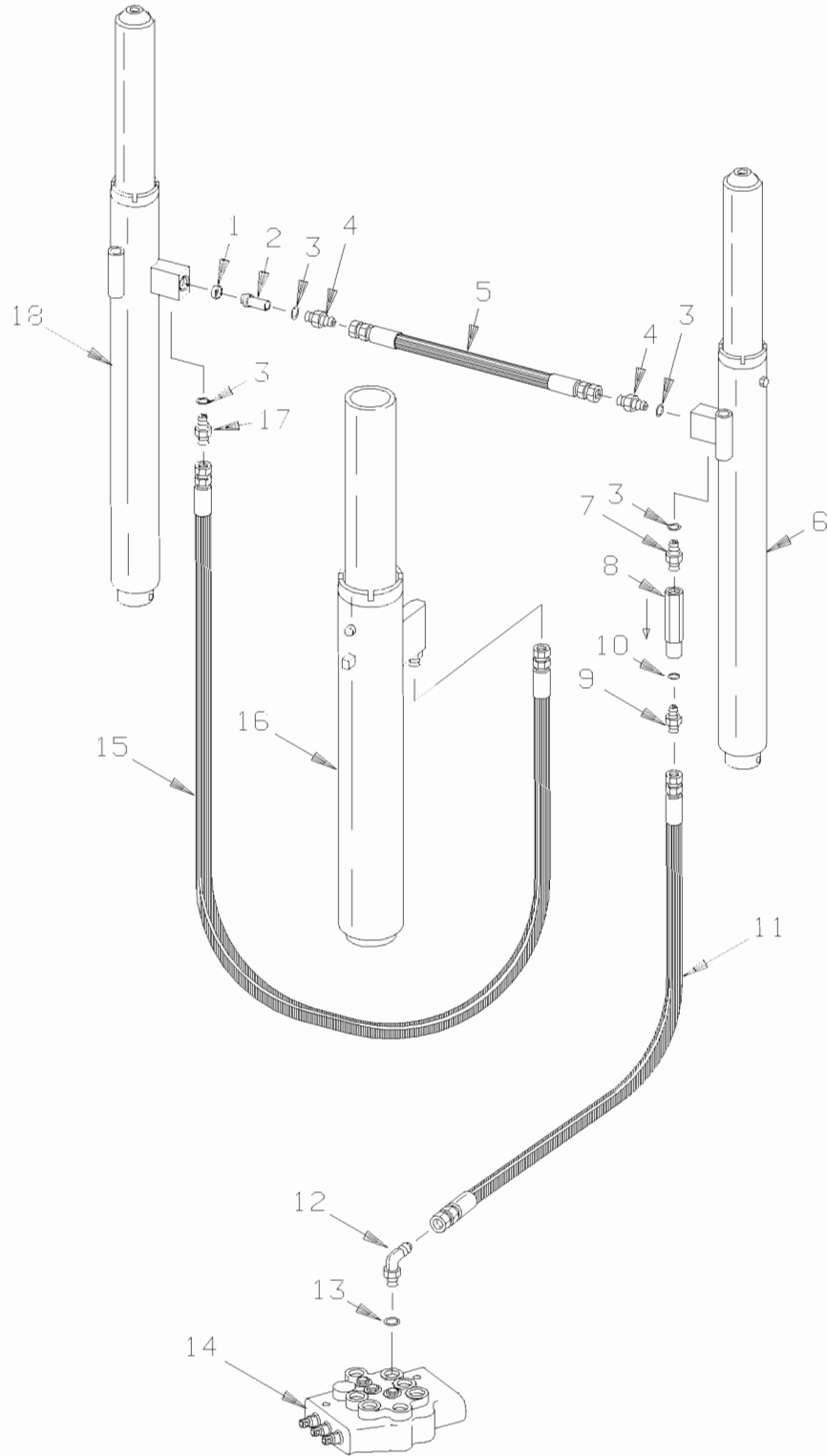


FIGURE # 3.18 SC-20 DUAL ELBOW SWIVEL ASSEMBLY (25623-00)

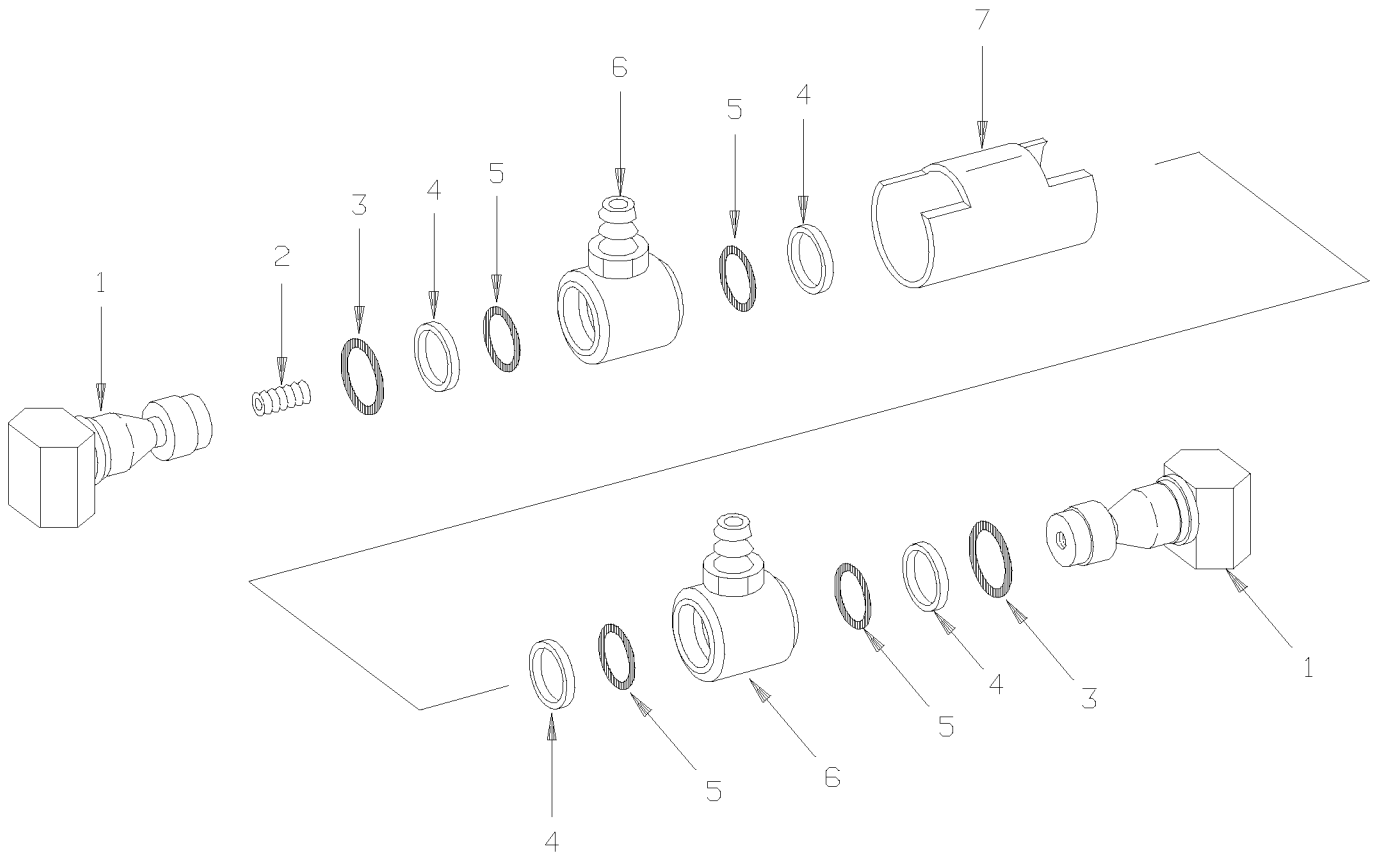




FIGURE # 3.27 SC-30 LIFT PUMP ASSEMBLY (200037)

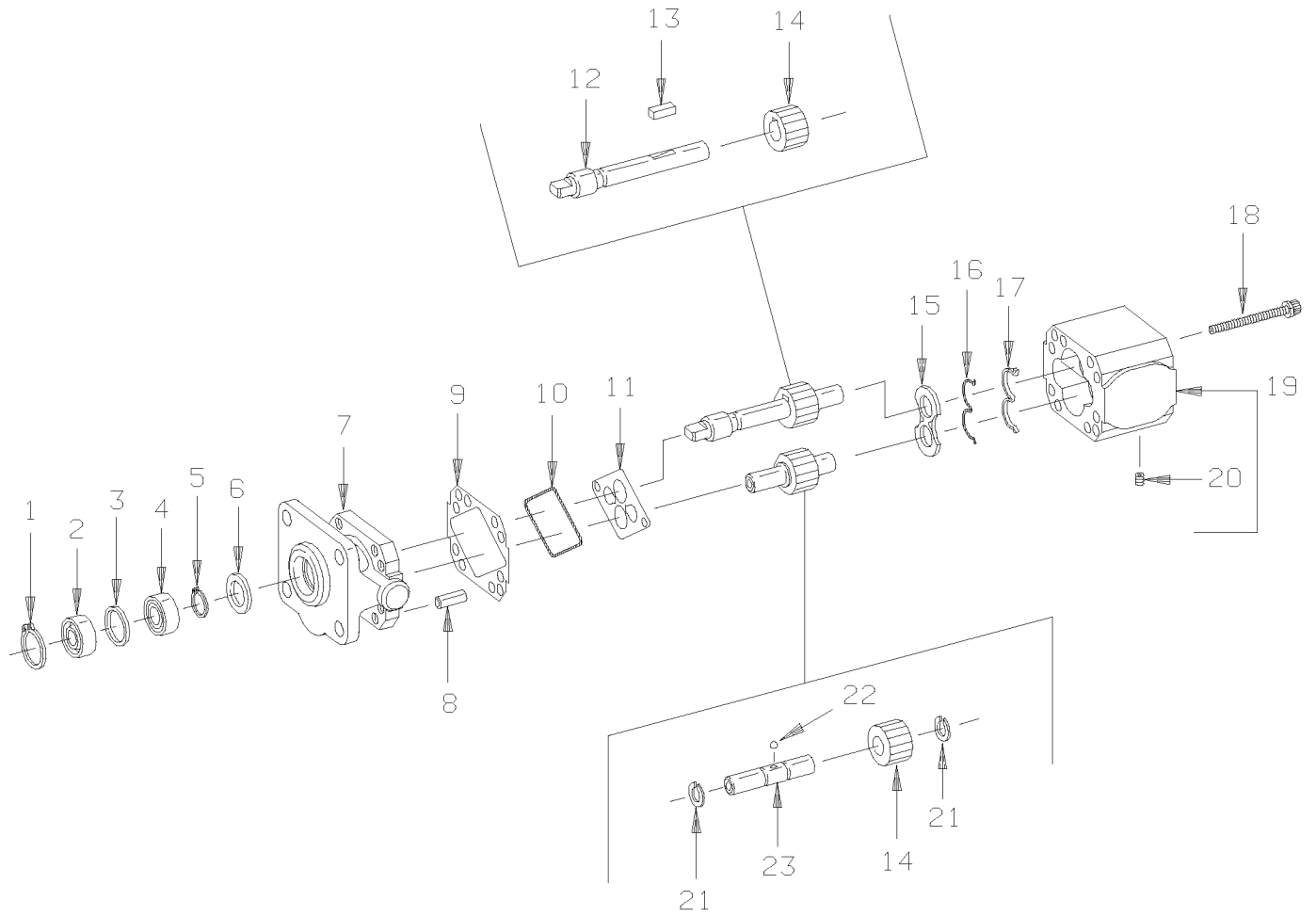


FIGURE # 3.32 SC-30 TWO STAGE CYLINDER AND HOSE INSTALLATION

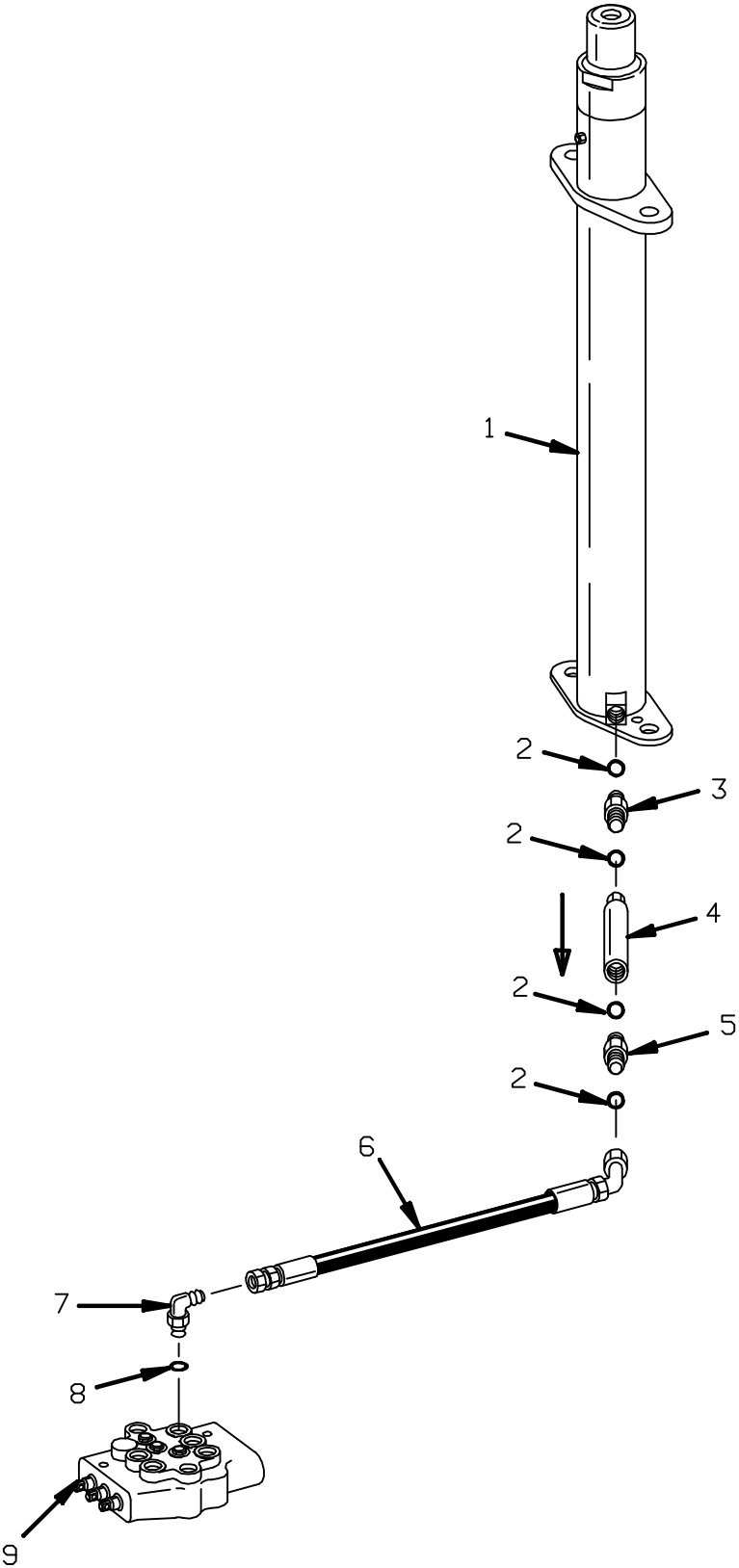


FIGURE # 3.37 SC-30 TWO STAGE FULL FREELIFT SIDESHIFTER HYDRAULIC ASSEMBLY

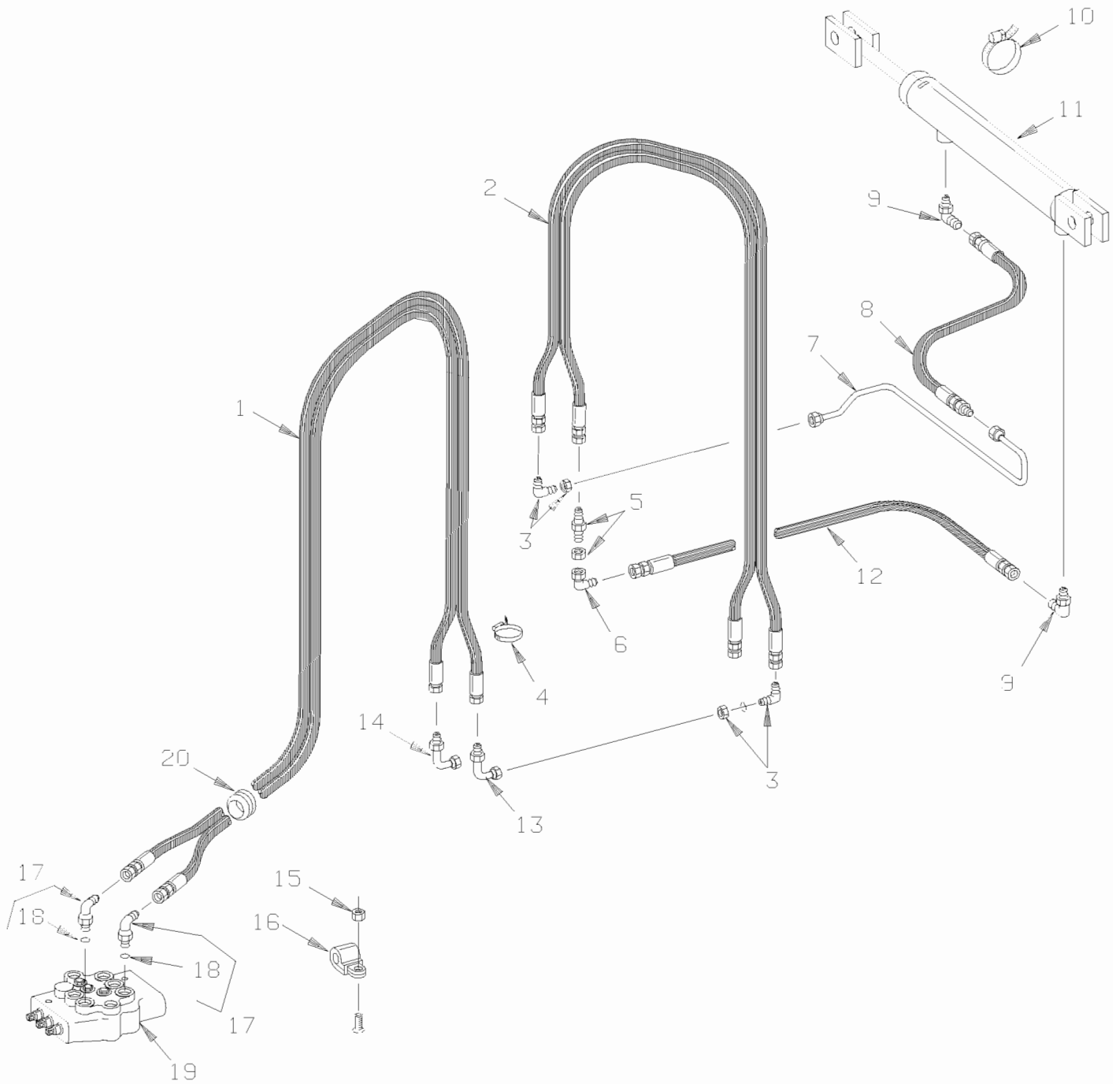


FIGURE # 3.42 SC-30 TILT CYLINDER ASSEMBLY (22015-01)

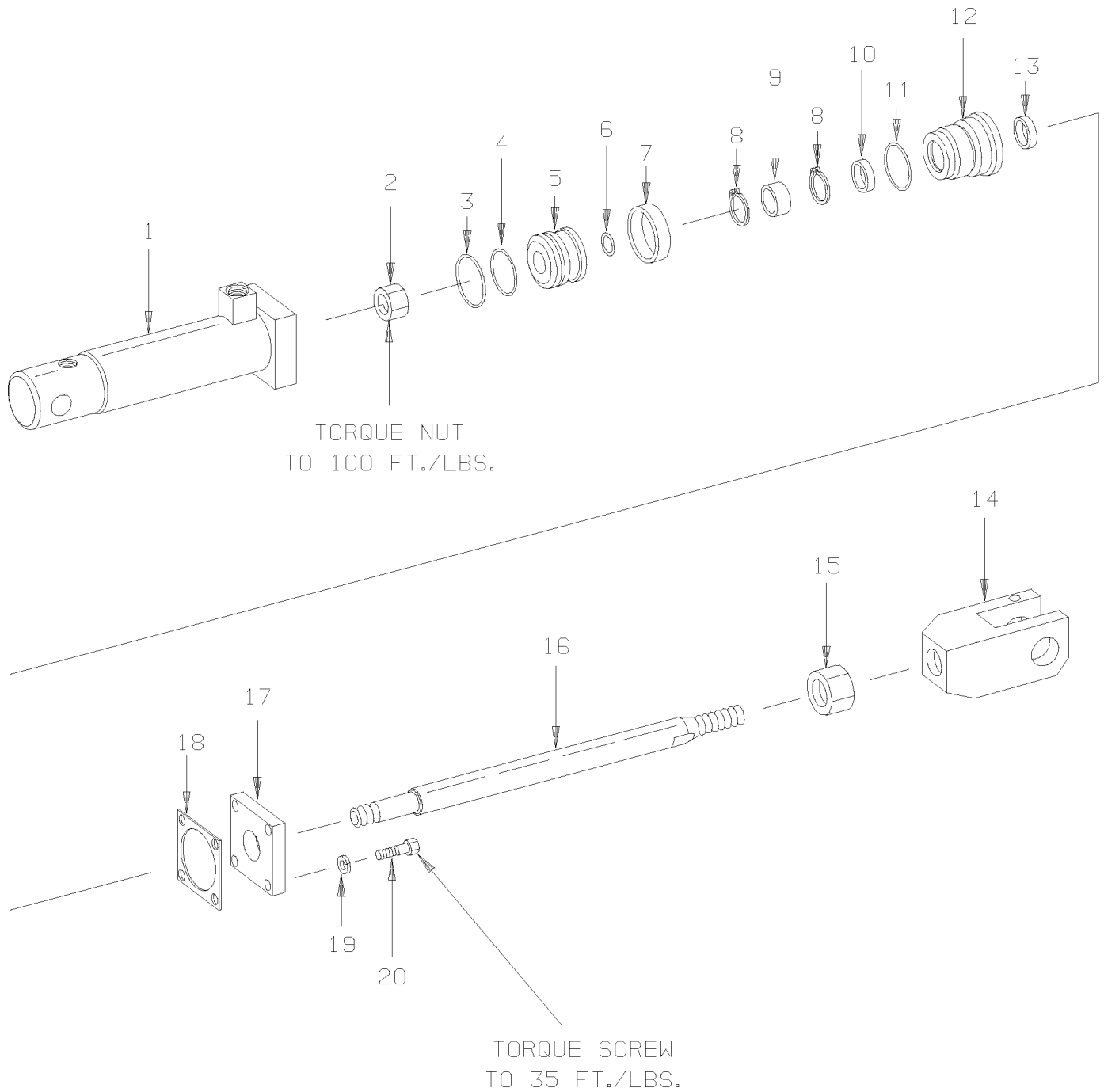




FIGURE # 5.5 SC-20 TWO STAGE FULL FREELIFT LIFT FRAME & BACKREST ASSEMBLY

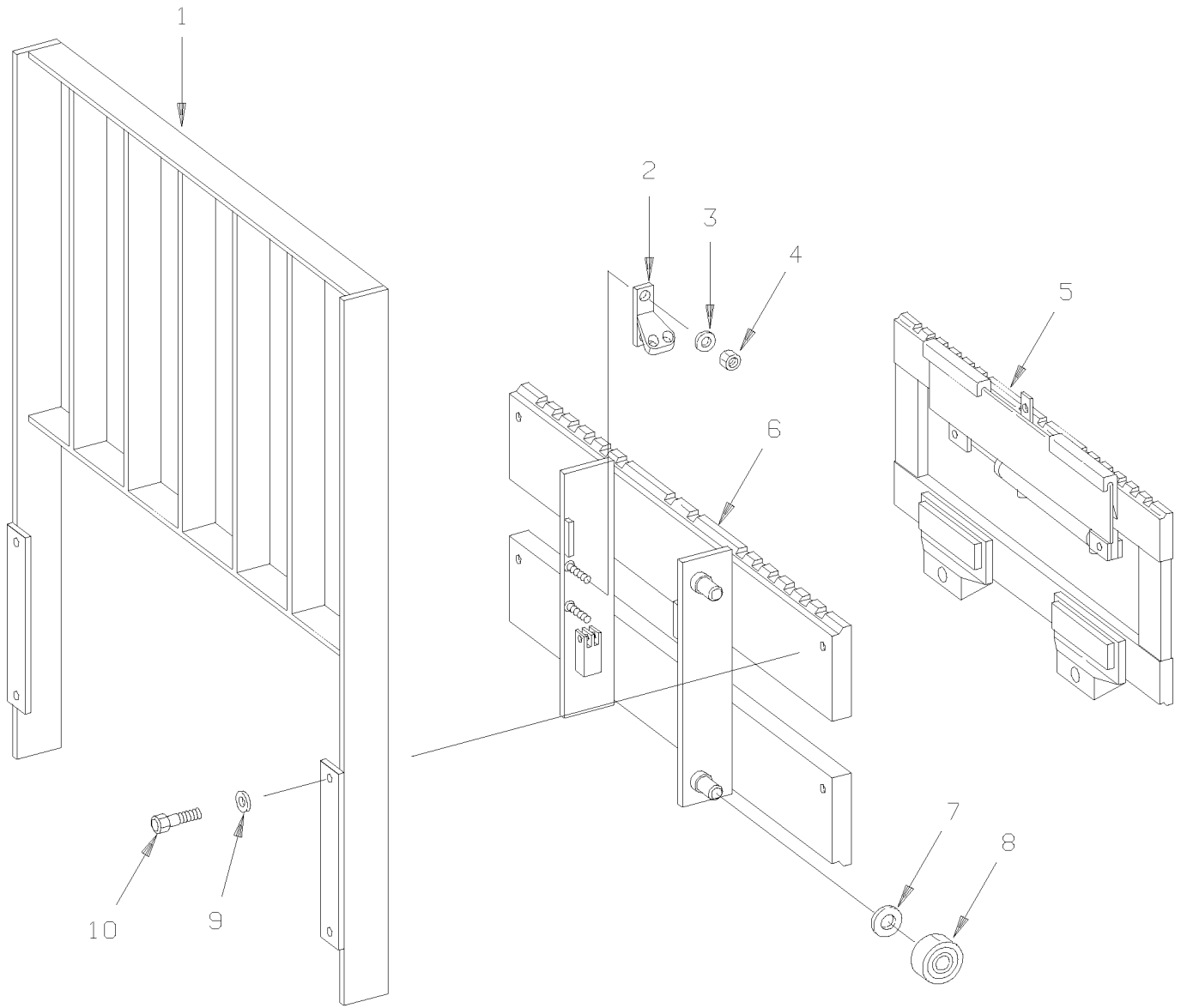


FIGURE # 5.10 SC-20 TWO STAGE MAST INNER COLUMN ASSEMBLY

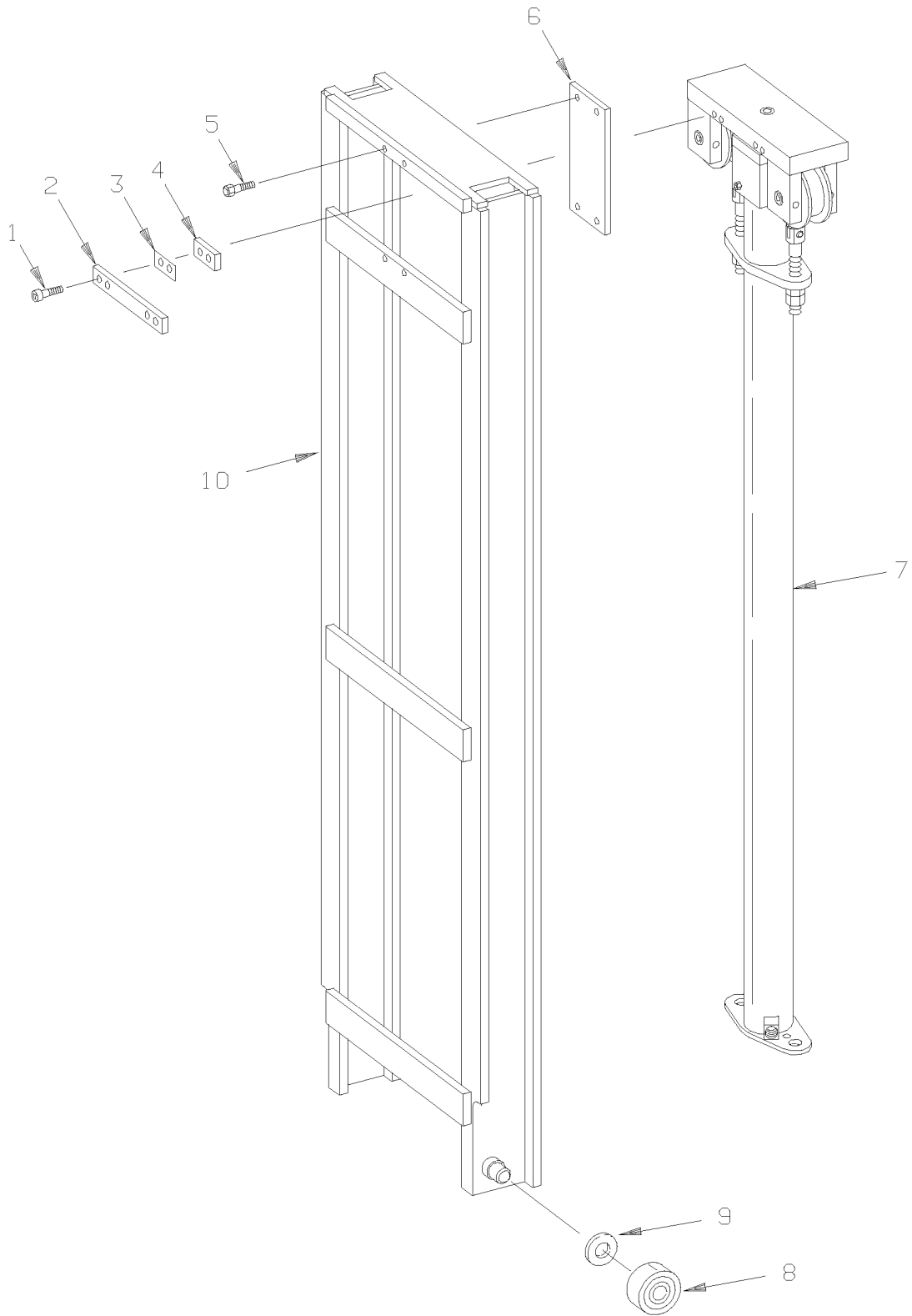


FIGURE # 5.15 SC-20 THREE STAGE MAST INSTALLATION

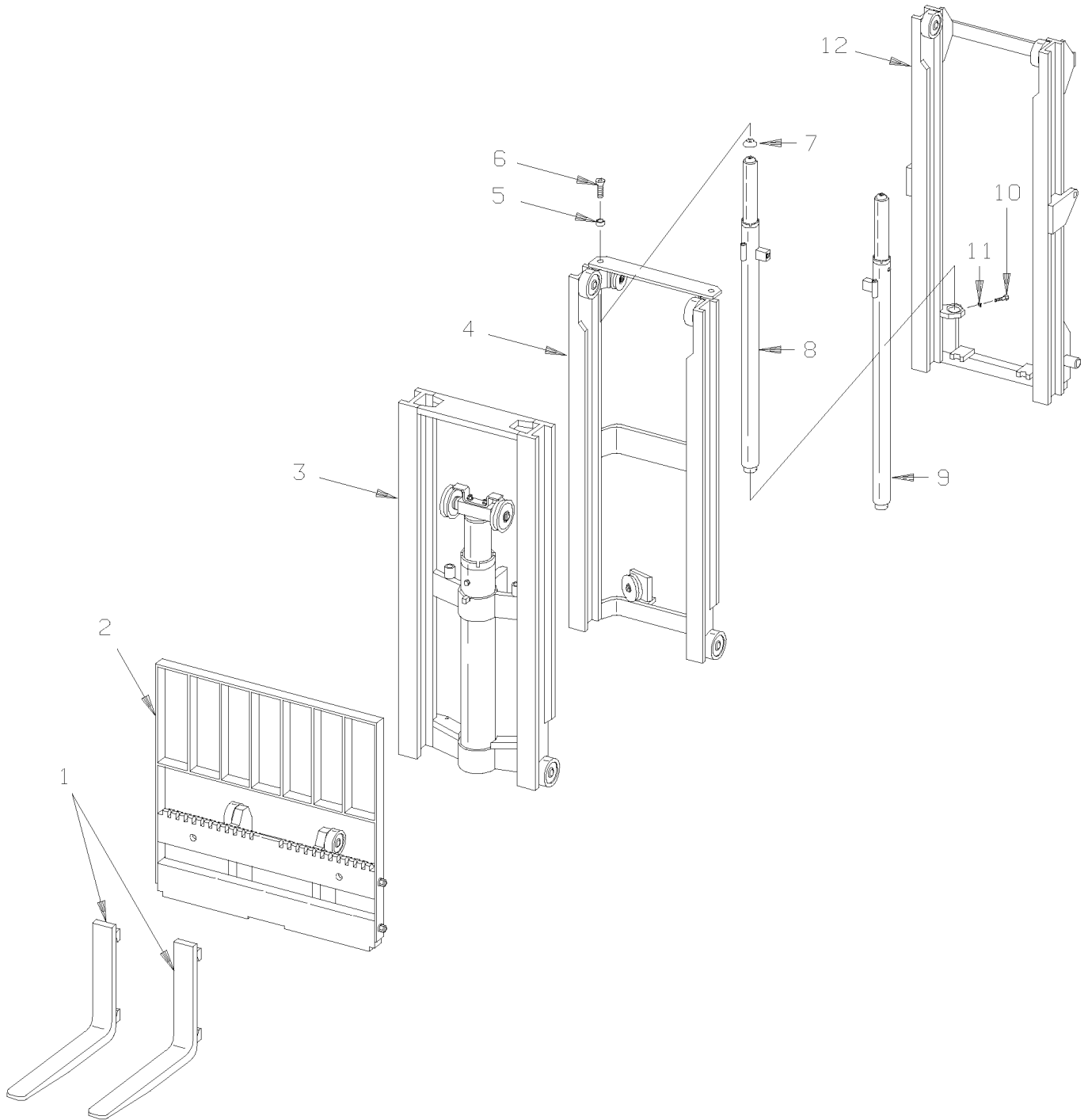


FIGURE # 5.20 SC-20 THREE STAGE MAST LIFT FRAME AND BACKREST ASSEMBLY

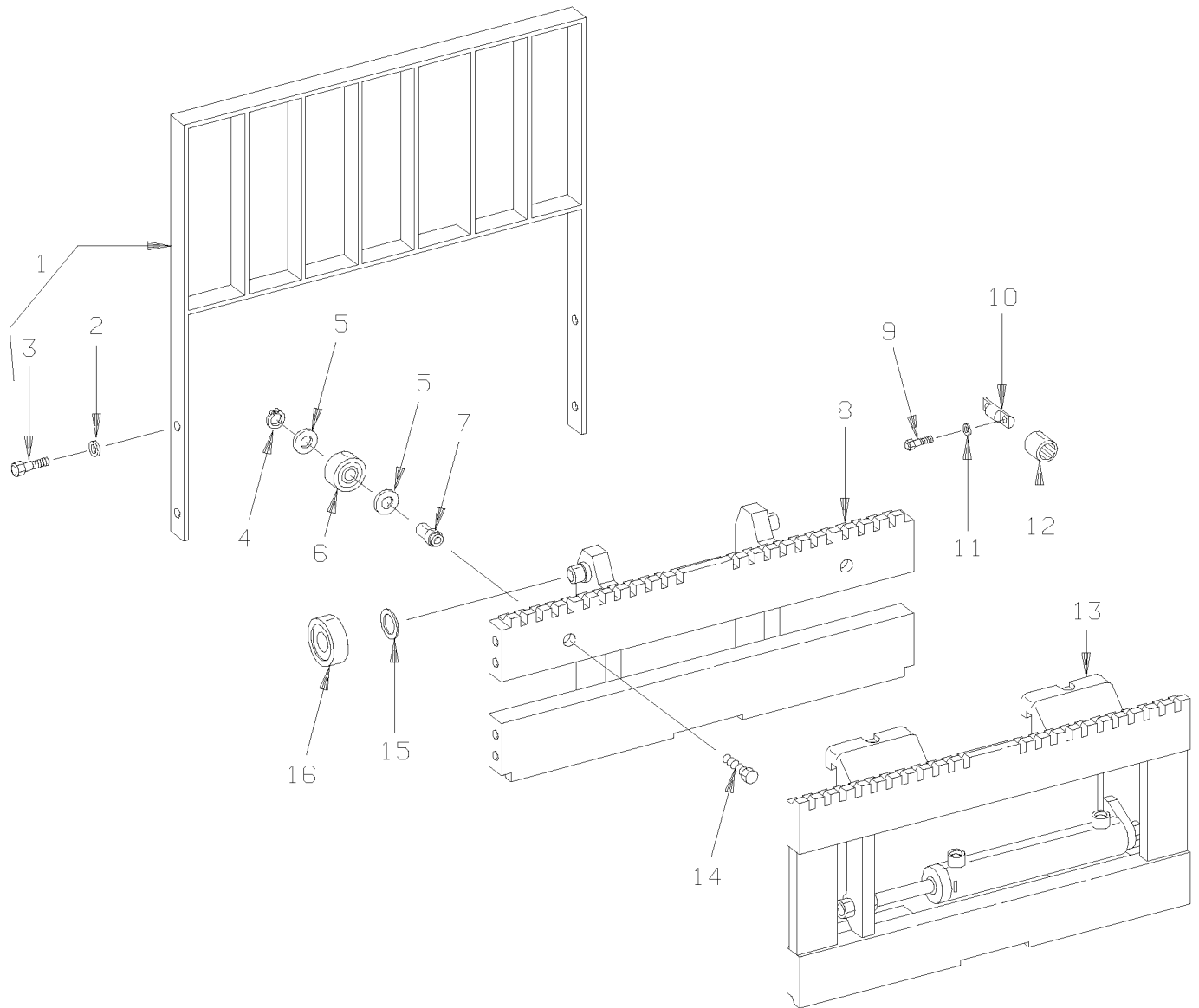


FIGURE # 5.24 SC-30 TWO STAGE FULL FREE LIFT MAST OUTER COLUMN ASSEMBLY

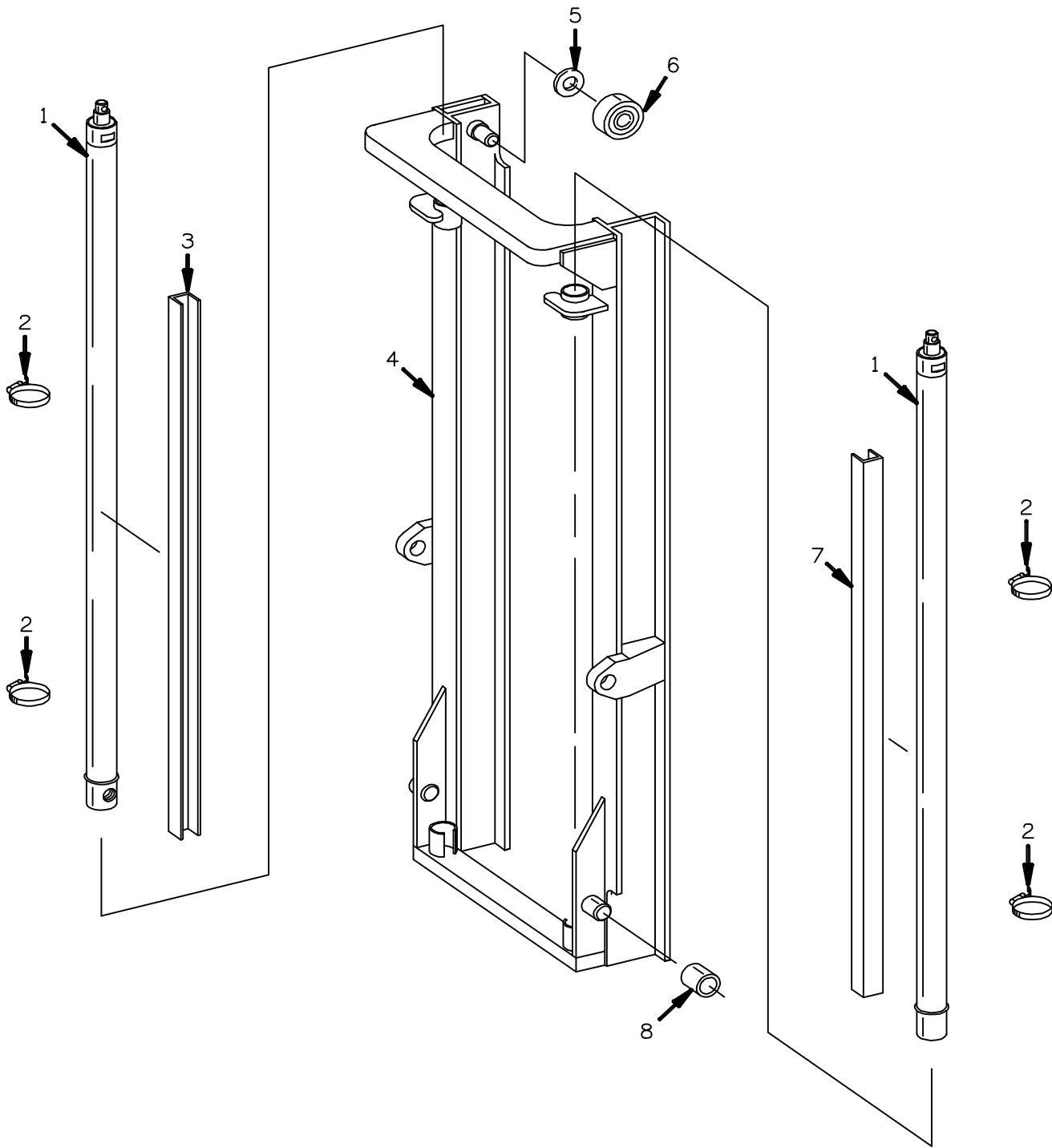


FIGURE # 5.29 SC-30 TWO STAGE FULL FREELIFT FORK ASSEMBLY (21372-XX)

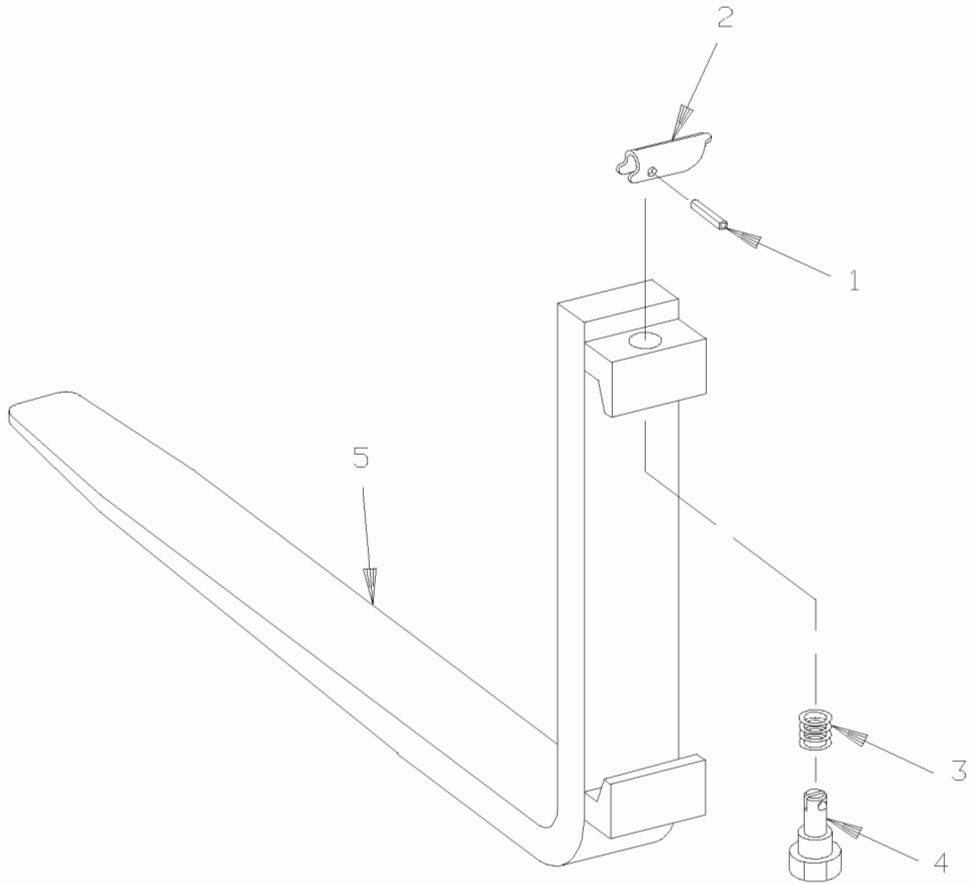


FIGURE # 5.34 SC-30 TWO STAGE MAST LIFT FRAME AND LOAD BACKREST ASSEMBLY

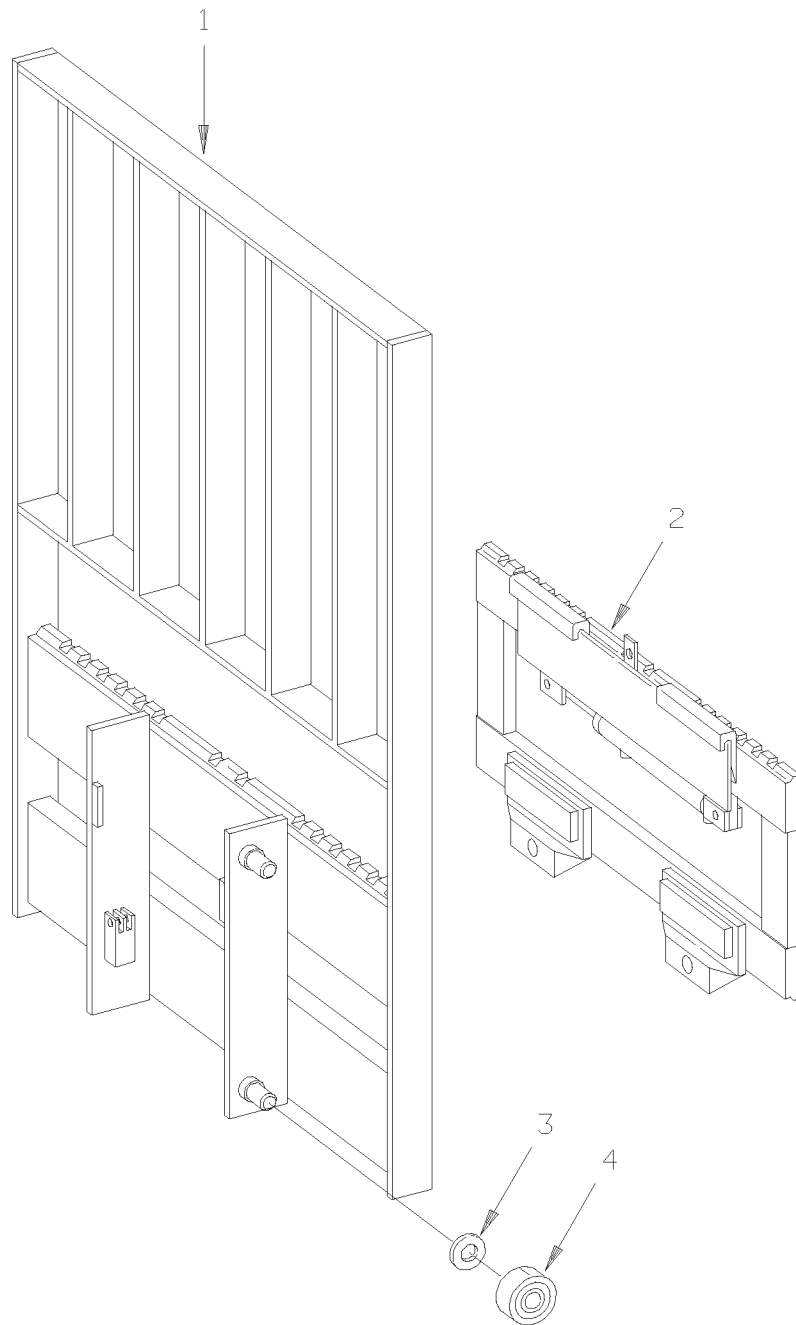


FIGURE # 5.39 SC-30 THREE STAGE MAST INTERMEDIATE COLUMN ASSEMBLY

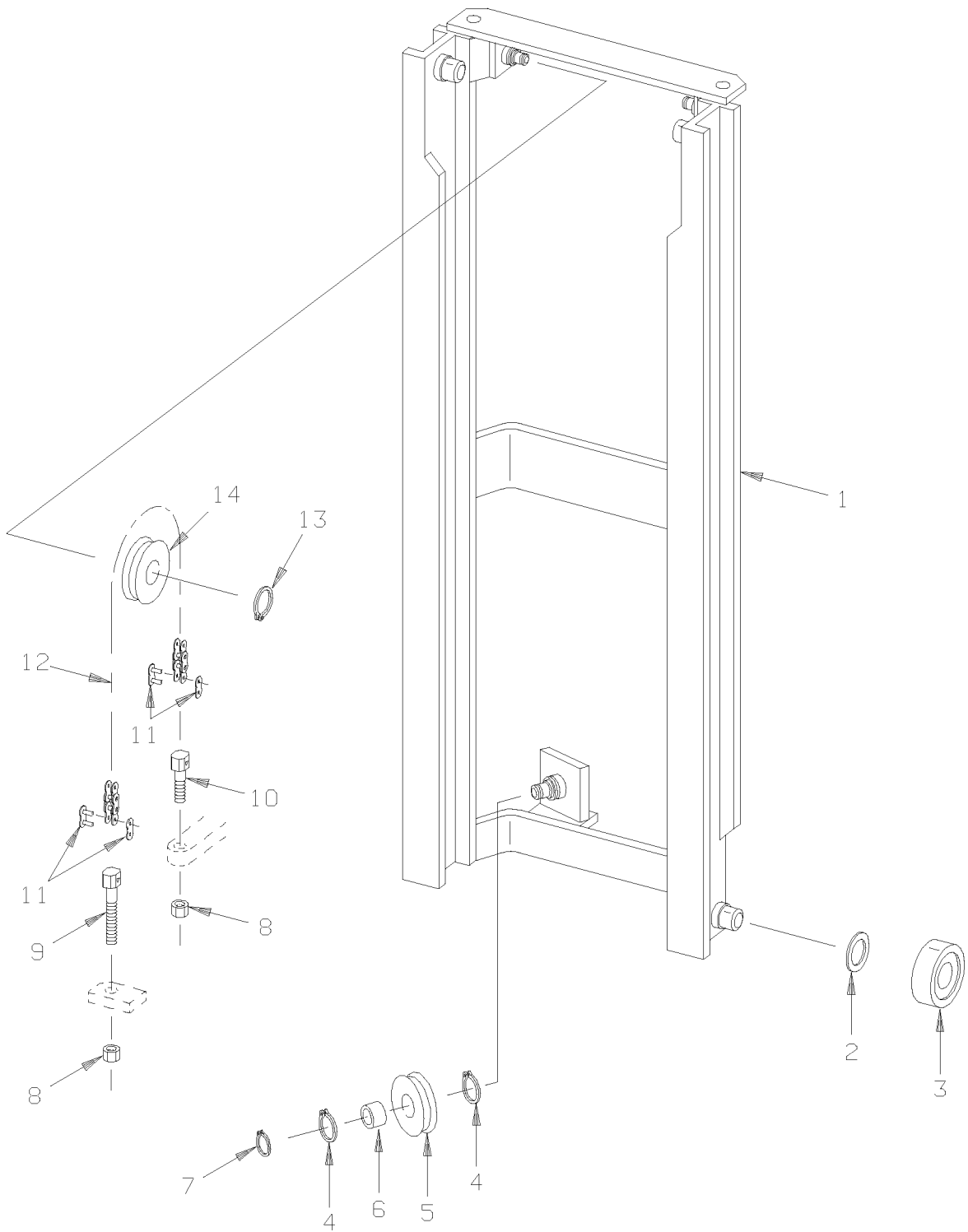
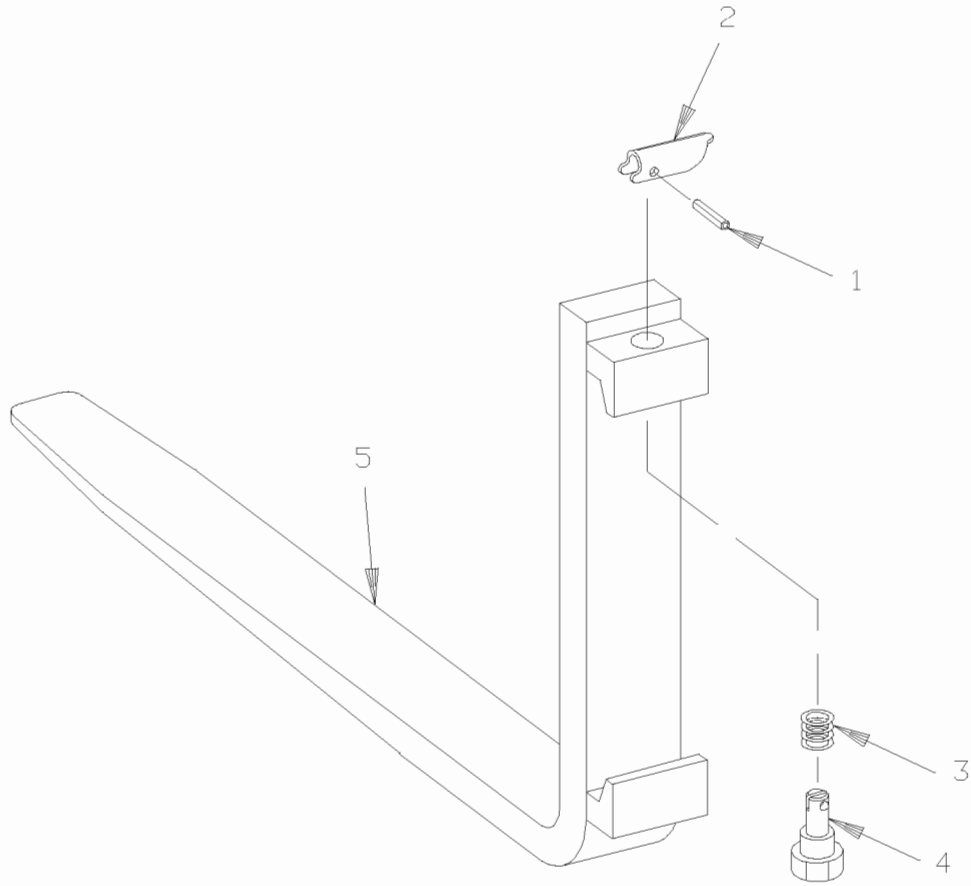


FIGURE # 5.44 SC-30 THREE STAGE FORK ASSEMBLY (21372-XX)



MODEL SC ELECTRIC COUNTER BALANCED WALKIE STACKER

NUMERICAL INDEX

<u>PART #</u>	<u>FIG. #</u>	<u>ITEM #</u>	<u>PART #</u>	<u>FIG.#</u>	<u>ITEM #</u>
11854-04	5.41	1	11936-07	1.6	5
11854-04	5.19	1	11936-08	1.5	29
11854-04	5.10	5	11936-08	1.4	23
11854-05	2.3	*	11936-18	2.10	*
11854-05	2.4	25*	11936-18	2.3	*
11854-12	4.3	13	12247-00	3.11	4
11857-03	5.27	7	12247-00	3.32	4
11857-03	5.3	9	12298-00	4.4	7
11857-03	5.31	2	12318-01	3.12	14
11857-03	5.32	9	12318-01	3.33	14
11857-03	5.34	3	12391-01	3.33	15
11857-03	5.2	5	12391-01	3.12	15
11857-03	5.10	9	12391-05	3.29	17
11857-03	5.12	3	12391-05	3.20	7
11857-03	5.25	9	12391-05	3.13	10
11857-03	5.24	5	12391-05	3.41	7
11857-03	5.5	7	12391-05	3.29	13
11857-03	5.9	2	12391-05	3.34	13
11859-03	1.4	16	12391-05	3.29	15
11859-03	1.5	23	12391-05	3.8	17
11870-02	3.12	9	12391-05	3.11	7
11873-21	4.3	23	12391-05	3.32	7
11878-02	1.5	22	12391-05	3.41	12
11878-02	1.4	14	12391-05	3.3	3
11880-03	2.12	12	12391-05	3.41	14
11880-08	1.1	4	12391-05	3.20	10
11880-08	1.7	4	12391-05	3.34	10
11880-08	2.3	*	12391-05	3.41	18
11885-03	2.20	10	12391-05	3.8	15
11885-06	2.5	8	12391-05	3.20	14
11890-01	1.5	3	12391-05	3.8	13
11890-03	1.4	3	12391-05	3.13	13
11890-03	1.5	17	12391-06	3.11	13
11894-11	4.1	1	12391-06	3.32	13
11897-03	3.9	3	12391-06	3.38	9
11897-03	3.10	3	12391-06	3.37	18
11897-03	3.30	3	12391-06	3.24	6
11897-03	3.31	3	12391-06	3.16	18
11898-02	5.26	2	12391-06	3.3	8
11898-02	5.4	2	12391-06	3.24	9
11898-03	3.9	5	12391-06	3.17	9
11898-03	3.30	5	12391-07	3.24	13
11898-07	1.1	14	12459-00	1.4	12
11898-07	1.7	15	12459-00	1.5	18
11898-08	3.31	5	13280-00	5.30	7
11898-08	3.10	5	13280-00	5.11	9
11936-03	4.3	4	13280-00	5.8	7
11936-04	1.4	20	13280-00	5.33	9
11936-04	1.5	27	13281-01	5.33	8
11936-04	1.2	43	13281-01	5.30	8
11936-04	1.3	47	13281-01	5.11	8
11936-04	1.8	42	13281-01	5.8	8

CLICK HERE TO **DOWNLOAD** THE COMPLETE MANUAL

- Thank you very much for reading the preview of the manual.
- You can download the complete manual from: [www.heydownloads.com](http://www.heydownloads.com) by clicking the link below



- Please note: If there is no response to CLICKING the link, please download this PDF first and then click on it.

CLICK HERE TO **DOWNLOAD** THE COMPLETE MANUAL