



BT Prime-Mover

TCB

● Parts Manuals

3016924-000 1992_February



CLICK HERE TO **DOWNLOAD** THE COMPLETE MANUAL

- Thank you very much for reading the preview of the manual.
- You can download the complete manual from: www.heydownloads.com by clicking the link below



- Please note: If there is no response to CLICKING the link, please download this PDF first and then click on it.

CLICK HERE TO **DOWNLOAD** THE COMPLETE MANUAL

FIG #	ITEM #	PART #	NAME	# FOR ASSY.	UNIT
1.1	1	-----	Handle assembly (See Fig.# 1.2)	1	
1.1	2	11885-04	Screw, machine	2	
1.1	3	49742-00	Diode	1	
1.1	4	14981-02	Screw, nylon	2	
1.1	5	24213-00	Block, diode	1	
1.1	6	24212-00	Gasket	1	
1.1	7	14994-08	Screw, cap	1	
1.1	8	11009-08	Lockwasher	1	
1.1	9	20969-01	Plate, mounting	1	
1.1	10	11898-07	Ring, retainer	1	
1.1	11	11170-08	Nut	2	
1.1	12	20070-01	Bearing	1	
1.1	13	20069-01	Washer	1	
1.1	14	-----	Transmission assembly (See Fig.# 1.3)	1	
1.1	15	24177-00	Spring	1	
1.1	16	11135-04	Pin with cotter pin	3	
1.1	17	24174-00	Anchor, spring	1	
1.1	18	24175-00	Shift	1	
1.1	19	11898-01	Ring, retainer	2	
1.1	20	11261-06	Nut	2	
1.1	21	49929-01	Bearing	2	
1.1	22	11057-02	Key	1	
1.1	23	11143-08	Screw, cap	2	
1.1	24	11271-16	Screw, cap	1	
1.1	25	24194-01	Collar	1	
1.1	26	24298-01	Solenoid, 24 VOLT	1	24 VOLT
1.1	27	11009-04	Lockwasher	4	
1.1	28	11261-04	Nut	4	
1.1	29	11016-11	Washer, flat	7	
1.1	30	24300-00	Yoke	1	
1.1	31	11486-06	Nut, jam	1	
1.1	32	11936-17	Washer, shim	As Req'd.	
1.1	33	27281-01	Bracket	1	
1.1	34	11170-04	Nut	2	
1.1	35	24211-01	Plate	1	
1.1	36	11853-09	Screw, flat head	4	
1.1	37	11070-06	Nut	2	
1.1	38	22226-01	Contactora, 24 VOLT	1	24 VOLT
1.1	39	11045-02	Screw, cap	3	
1.1	40	24344-00	Block, module	1	
1.1	41	14911-04	Screw, cap	2	
1.1	42	49576-02	Clamp	1	
1.1	43	11020-36	Bearing	2	
1.1	44	11160-11	Fitting, grease	1	
1.1	45	14994-07	Screw, cap	2	
1.1	46	24163-00	Frame, tube	1	
1.1	47	11936-21	Washer, shim	As Req'd.	
1.1	48	11261-05	Nut	1	
1.1	49	11009-05	Lockwasher	1	
1.1	50	49788-00	Bumper	1	

FIGURE # 2.4 EV-100 SCR CONTROL WIRING

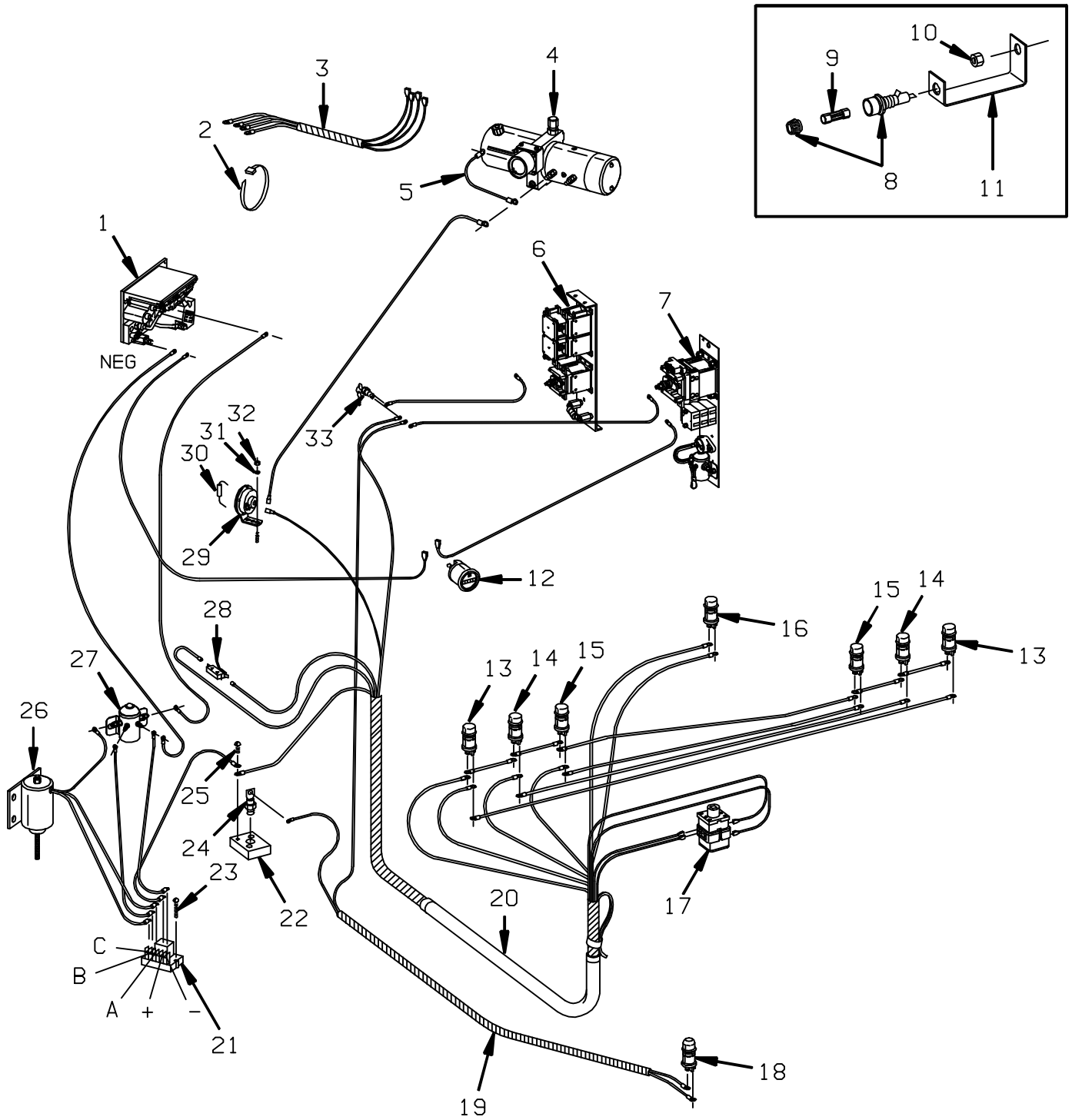


FIG #	ITEM #	PART #	NAME	# FOR ASSY.	UNIT
2.9	1	200056	Base	1	
2.9	2	200040	5 Rec	1	
2.9	3	200039	2 Rec	1	
2.9	4	NA	Panhead, M3.5 x .60, 10mm long	4	
2.9	5	NA	Hexhead, M5 x .80, 25mm long	8	
2.9	6	200043	Bar, bus	1	
2.9	7	NA	Hexhead, M5 x .80, 10mm long	8	
2.9	*	NA	Lockwasher, M5	8	
2.9	*	NA	Washer, M5 flat	8	
2.9	8	200042	Bar, buss	1	
2.9	9	200041	Bar, buss	1	
2.9	10	202048	Card, two speed D1	1	
2.9	11	200059	Harness, SCR wiring	1	
2.9	12	200052	Kit, 1 Rec	1	
2.9	13	200045	Insulation, 1 Rec	1	
2.9	14	NA	Hexhead, M5 x .80, 50mm long	4	
2.9	15	200044	Bar, buss	1	
2.9	16	NA	Panhead, M3.5 x .60, 8mm long	8	
2.9	*	NA	Lockwasher, M3.5	6	
2.9	*	NA	Washer, M3,5 flat	6	
2.9	17	NA	Panhead, M3.5 x .60, 44mm long	1	
2.9	*	NA	Lockwasher, M3.5	1	
2.9	*	NA	Washer, M3.5 flat	1	
2.9	18	NA	Panhead, M3.5 x .60, 23mm long	8	
2.9	*	NA	Lockwasher, M3.5	8	
2.9	*	NA	Washer, M3.5 flat	8	
2.9	19	200050	Snubber	4	
2.9	20	200051	Spider and wire assembly	1	
2.9	21	200058	Thermal protector	1	
2.9	22	200038	Reactor	1	
2.9	23	NA	Hex cap, M6 x 1, 16mm long	1	
2.9	*	NA	Lockwasher, M6	1	
2.9	*	NA	Washer, M6 flat	1	
2.9	24	NA	Nut, M6 x 1.25	4	
2.9	25	50001-11	Lockwasher, M8	2	
2.9	*	NA	Washer, M8 flat	2	
2.9	26	200049	Shunt	1	
2.9	27	200048	Post	1	
2.9	28	201297	Rectifier (3 Rec and 4 Rec)	2	
2.9	29	200054	Strap, capacitor	2	
2.9	30	200046	Heatsink	1	
2.9	31	200045	Insulation, heatsink	1	
2.9	32	200055	Capacitor, 150mf	1	
2.9	33	200047	Bushing	3	
2.9	34	NA	Hexcap, M8 x 1.25, 16mm long	3	
2.9	*	50001-11	Lockwasher, M8	3	
2.9	*	NA	Washer, M8	3	

* Local purchase hardware for reference only.

FIGURE # 3.1 HYDRAULIC SCHEMATIC

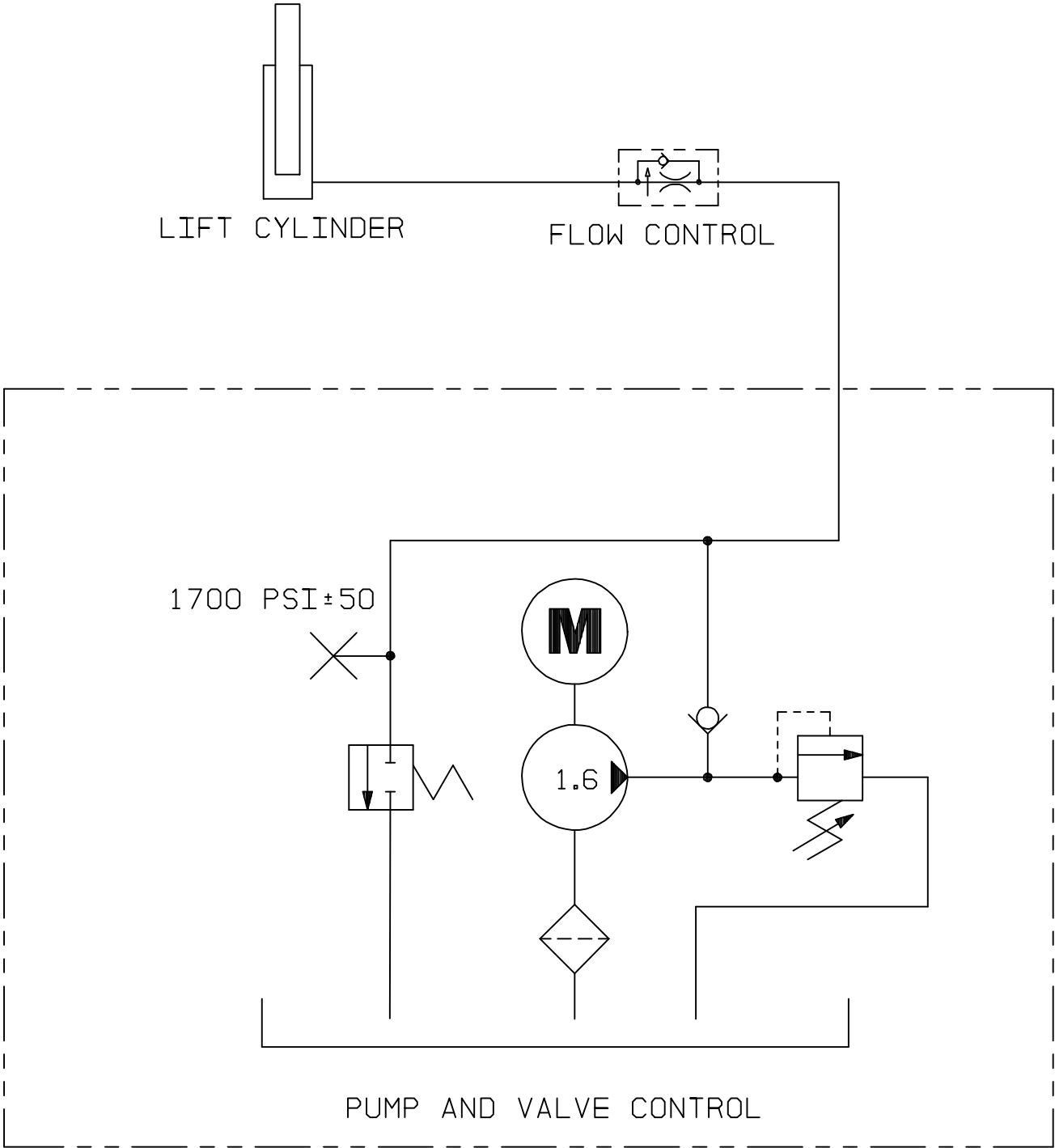
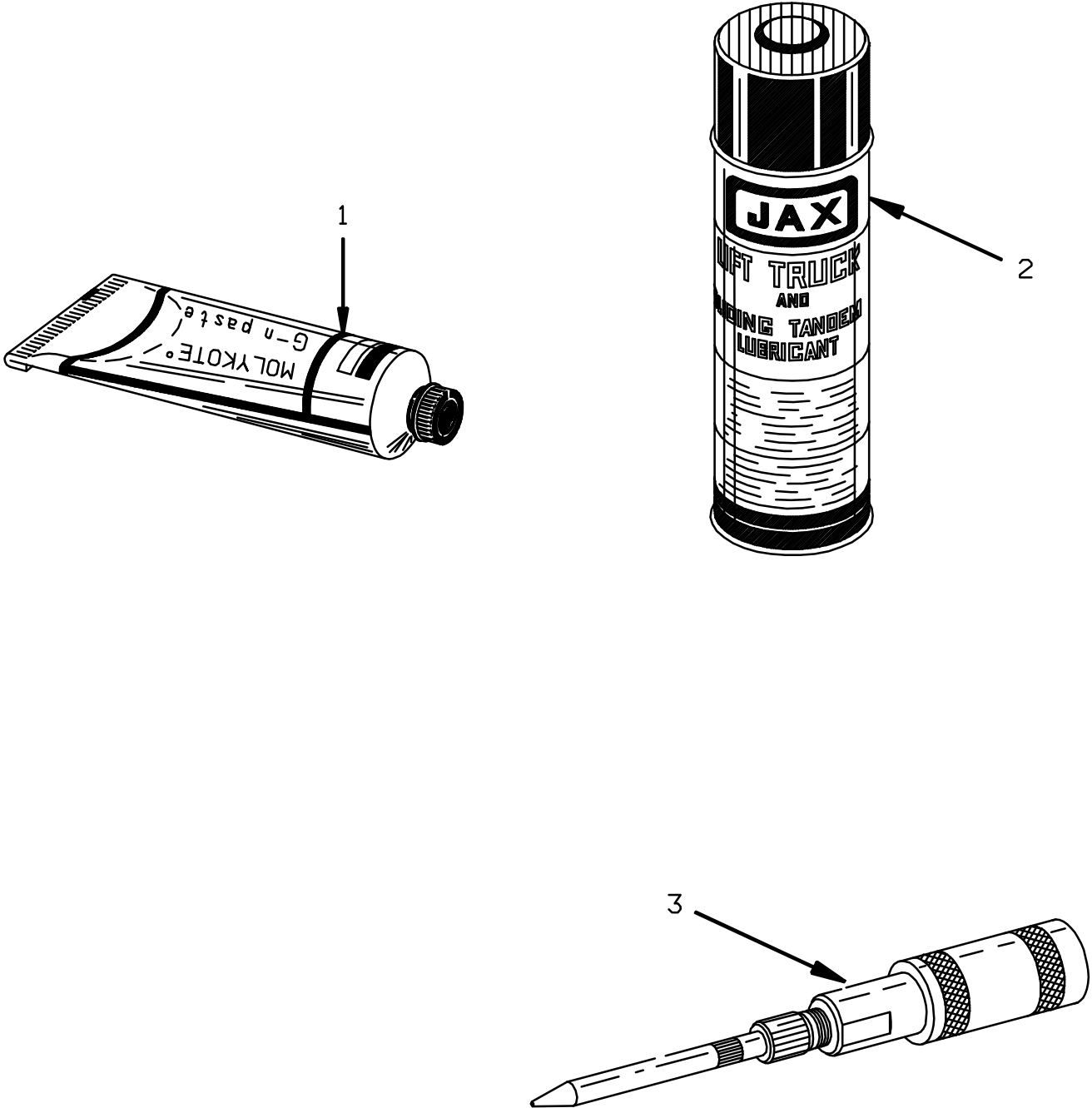


FIG #	ITEM #	PART #	NAME	# FOR ASSY.	UNIT
4.2	1	11813-06	Grommet, rubber	1	
4.2	2	X24583-00	Shield, top	1	
4.2	3	11016-02	Washer, flat	As Req'd.	
4.2	4	11009-05	Lockwasher	As Req'd.	
4.2	5	11261-05	Nut	As Req'd.	
4.2	6	X24585-00	Shield, front	1	
4.2	7	X24367-00	Frame, main	1	
4.2	8	49788-00	Bumper	As Req'd.	
4.2	9	X24587-00	Door, left hand side	1	LEFT HAND
4.2	10	21789-01	Shield, bottom	1	
4.2	11	11143-06	Screw, cap	2	
4.2	12	11143-14	Screw, cap	2	
4.2	13	21789-02	Shield, bottom	1	
4.2	14	49942-00	Spring	1	
4.2	15	11073-26	Pin, roll	2	
4.2	16	21784-00	Rod	1	
4.2	17	X24586-00	Door, right hand side	1	RIGHT HAND

FIGURE # 10.1 SPECIAL TOOLS AND LUBRICATIONS



CLICK HERE TO **DOWNLOAD** THE COMPLETE MANUAL

- Thank you very much for reading the preview of the manual.
- You can download the complete manual from: www.heydownloads.com by clicking the link below



- Please note: If there is no response to CLICKING the link, please download this PDF first and then click on it.

CLICK HERE TO **DOWNLOAD** THE COMPLETE MANUAL