



BT Prime-Mover

SR30

● Parts Manuals

300386-000 1991_April

300386-001 1991_July Designed and built for Long Island Railroad

300386-002 1993_August



CLICK HERE TO **DOWNLOAD** THE COMPLETE MANUAL

- Thank you very much for reading the preview of the manual.
- You can download the complete manual from: www.heydownloads.com by clicking the link below



- Please note: If there is no response to CLICKING the link, please download this PDF first and then click on it.

CLICK HERE TO **DOWNLOAD** THE COMPLETE MANUAL

FIGURE # 1.1 TRANSMISSION AND HANDLE ASSEMBLY

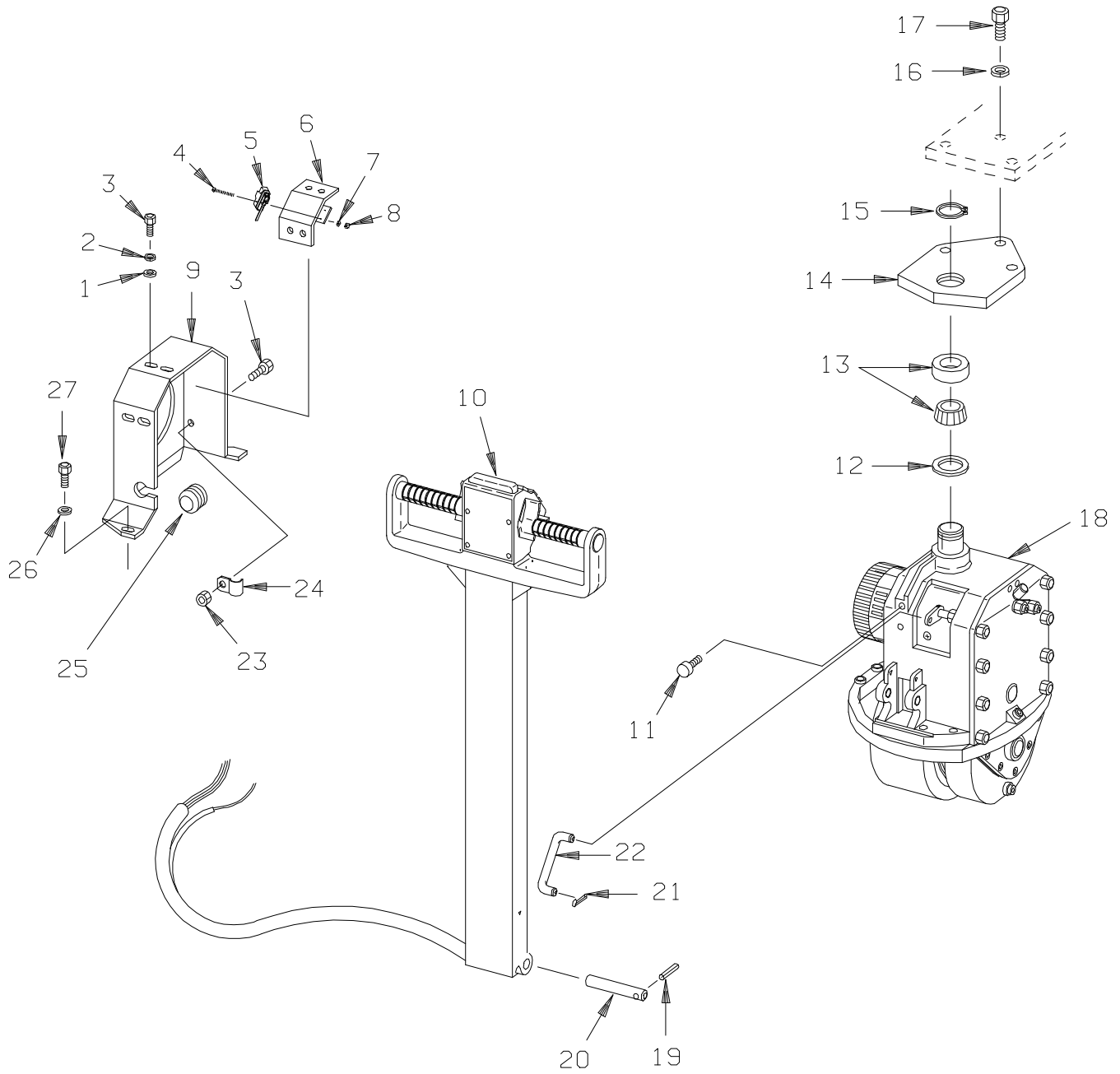
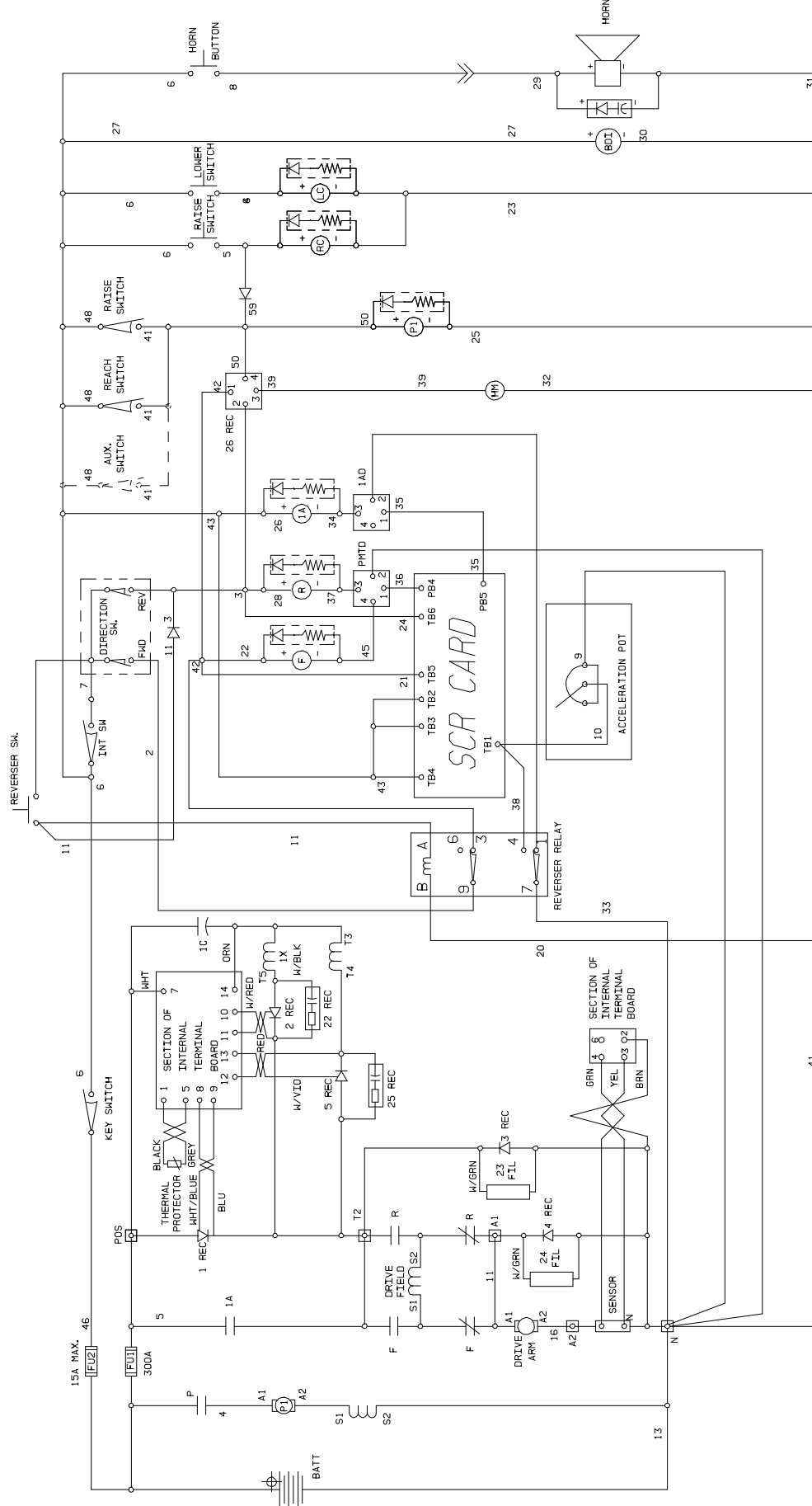


FIGURE # 2.1 SCR ELECTRICAL SCHEMATIC WITH OUT LIMIT SWITCH



ELECTRICAL SCHEMATIC WITH OUT LIFT LIMIT SWITCH

FIGURE # 2.8 CONTACTOR PANEL ASSEMBLY

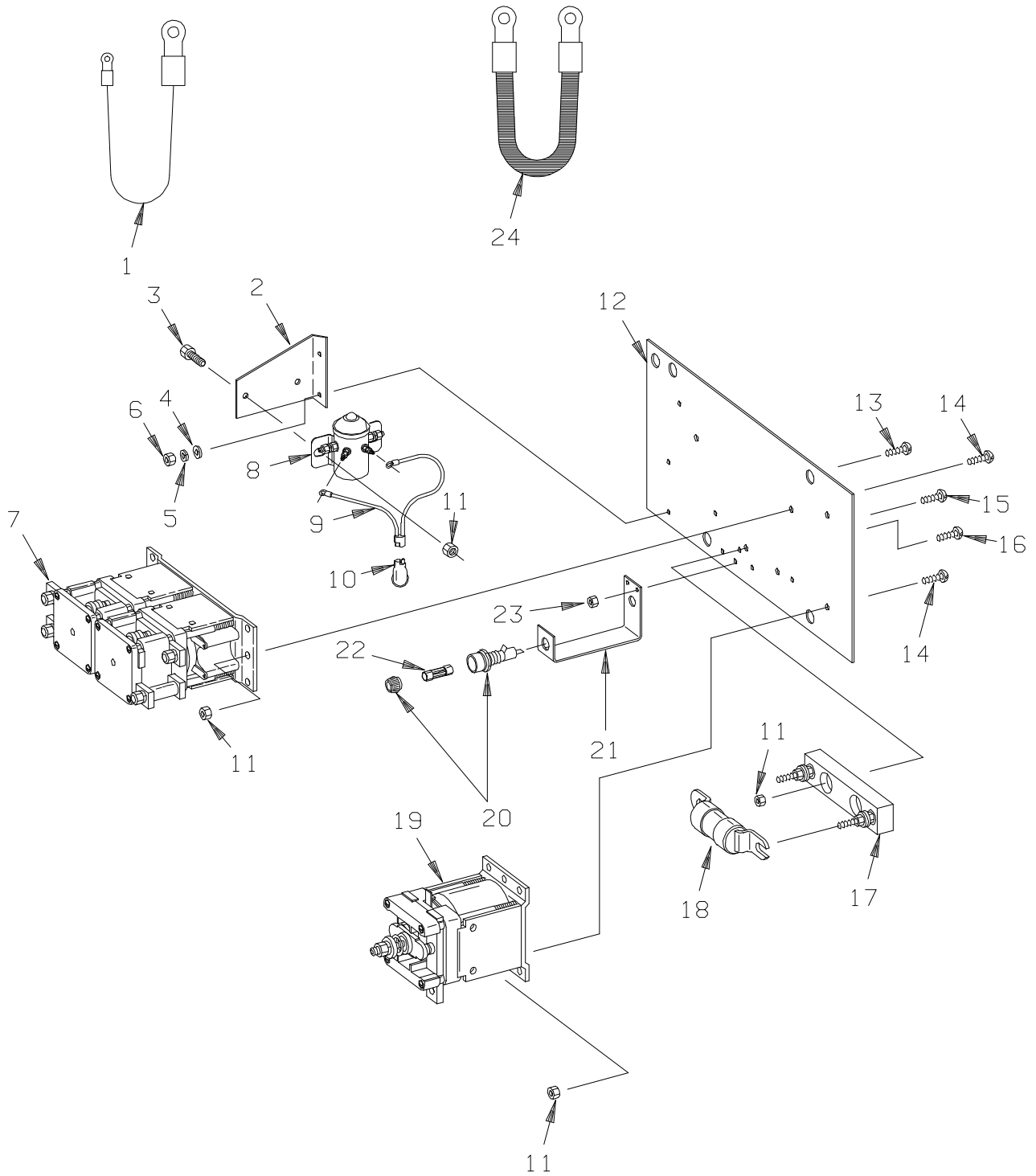


FIGURE # 2.13 PUMP MOTOR ASSEMBLY (MBD-5107A, 200060)
(D-4608214XWF07, 300284-000)

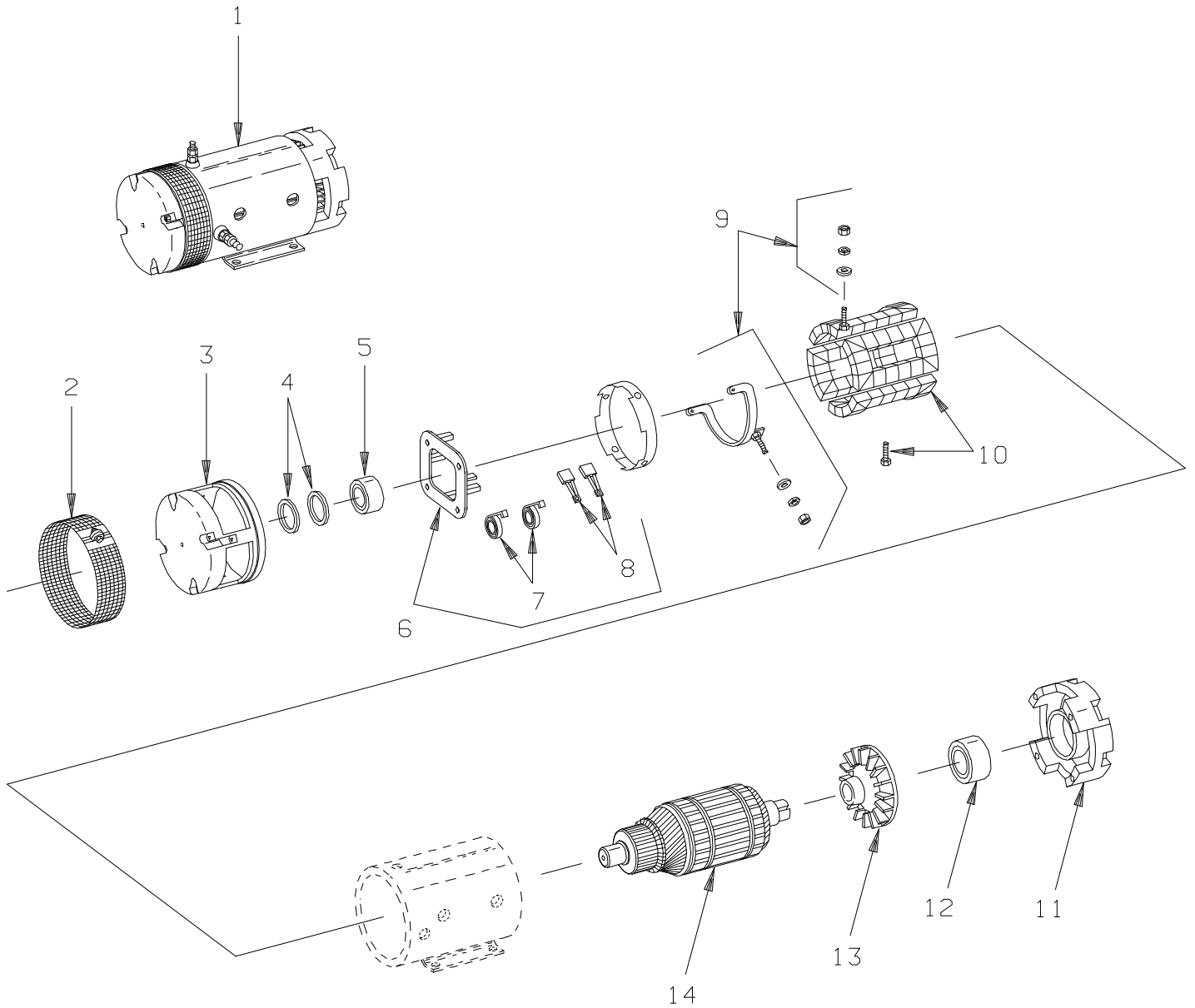


FIGURE # 3.6 TWO SPOOL CONTROL VALVE ASSEMBLY (24924-00)
 THREE SPOOL CONTROL VALVE ASSEMBLY (24925-00)

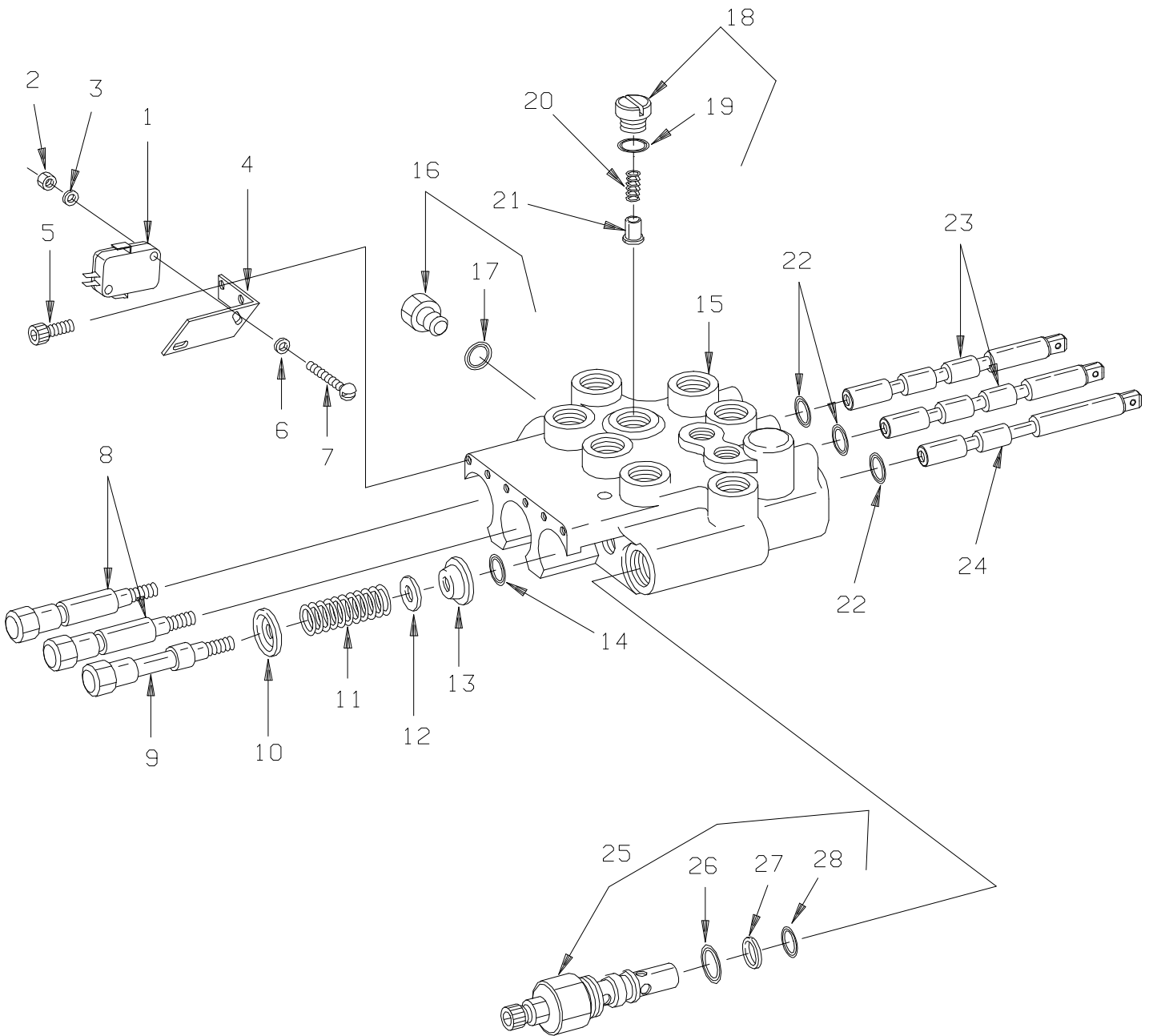


FIGURE # 3.11 THREE STAGE FREELIFT CYLINDER ASSEMBLY (28150-01)

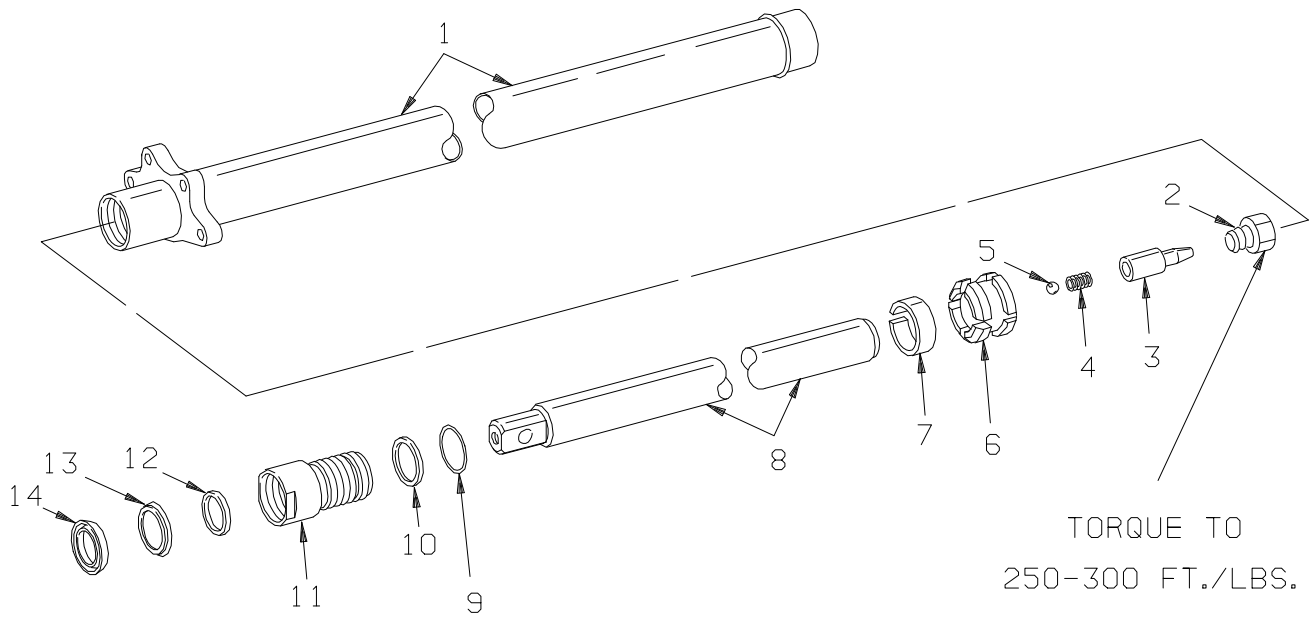


FIGURE # 3.16 THREE STAGE MAST REACH CYLINDER ASSEMBLY (301317-XXX)

NOTE: WHEN ORDERING PARTS FOR THE REACH ATTACHMENT ALWAYS SPECIFY MODEL AND SERIAL NUMBER OF THE SWING SHIFT/BRUDI REACH ATTACHMENT.

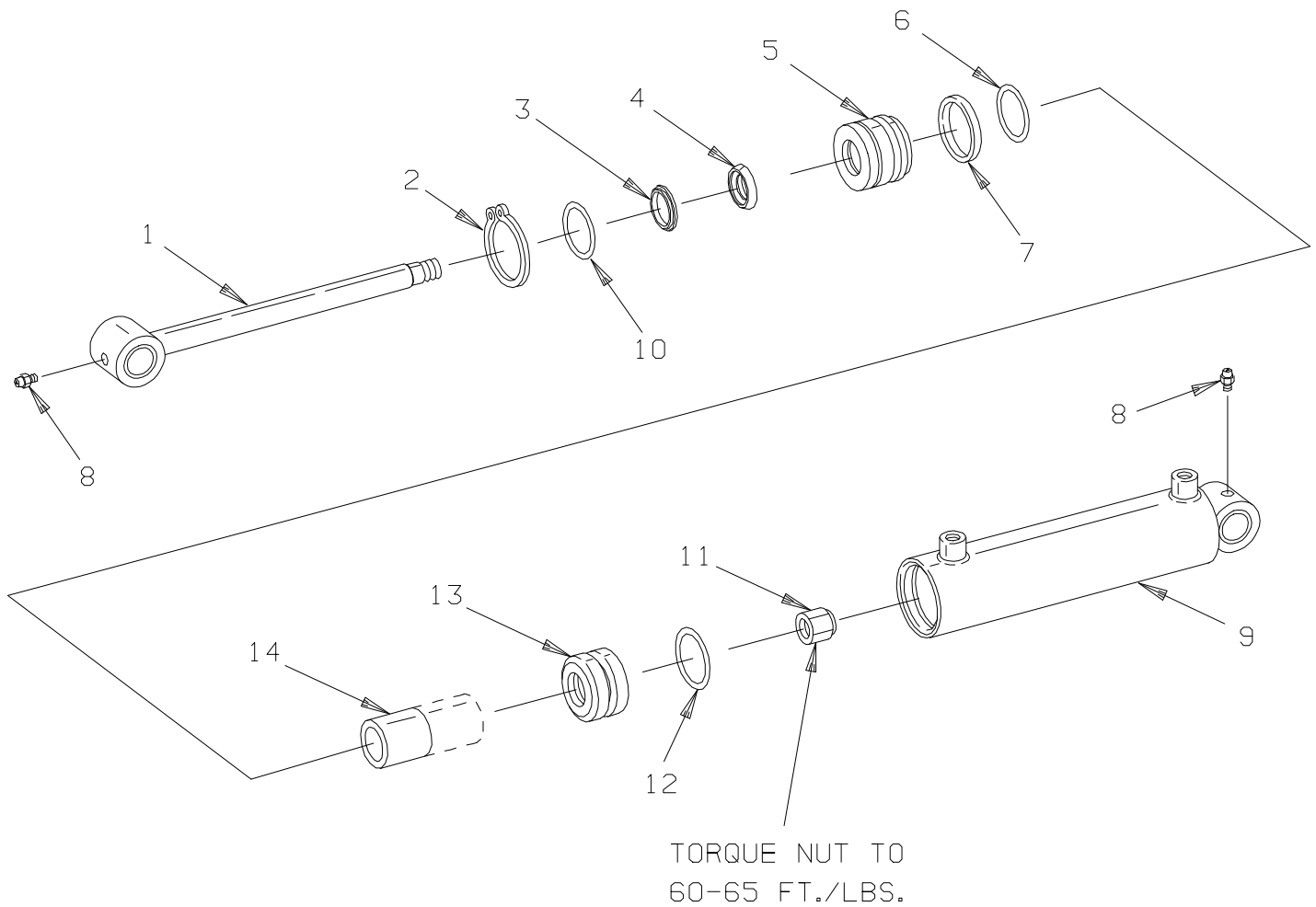


FIGURE # 5.1 THREE STAGE MAST INSTALLATION

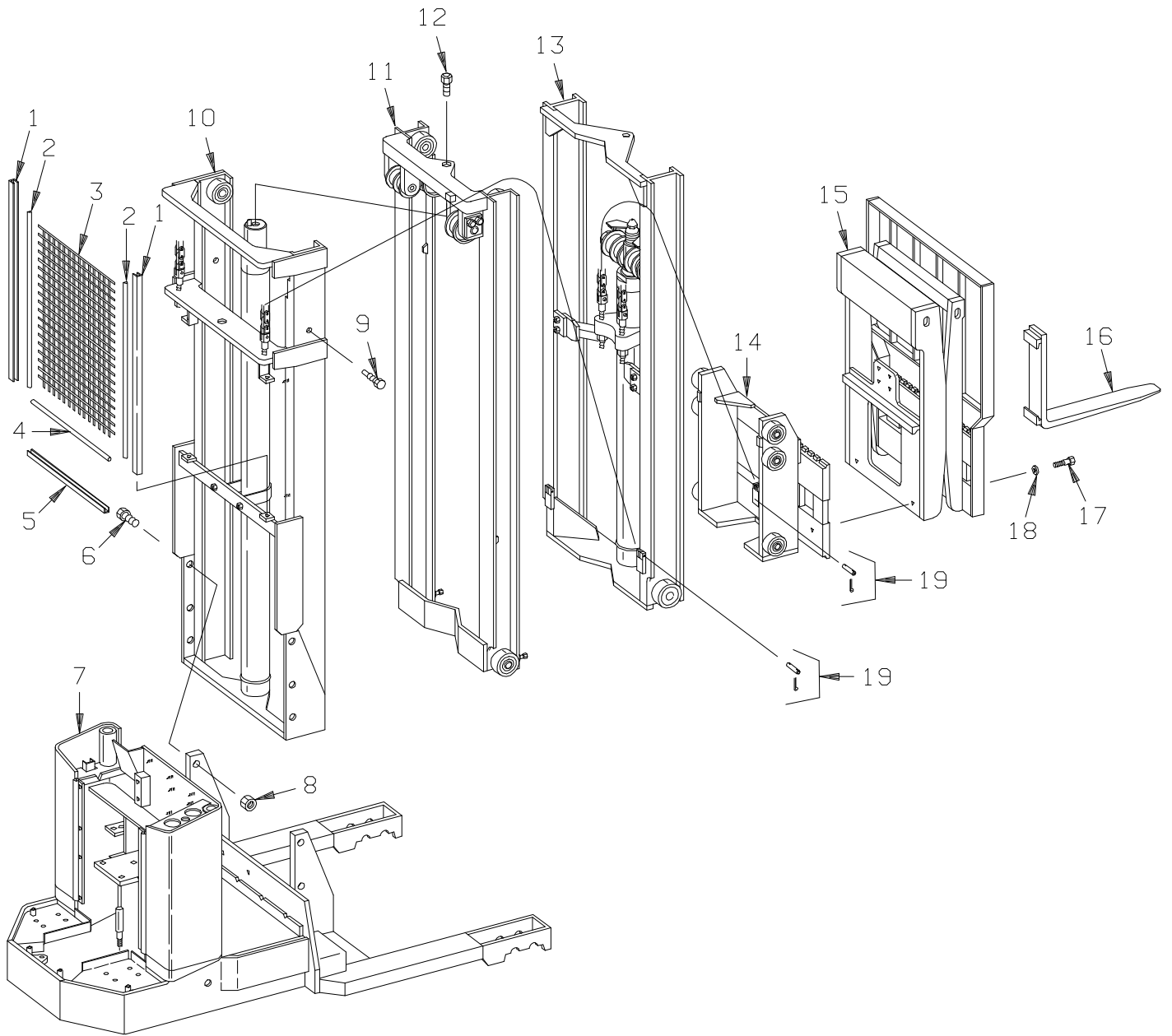
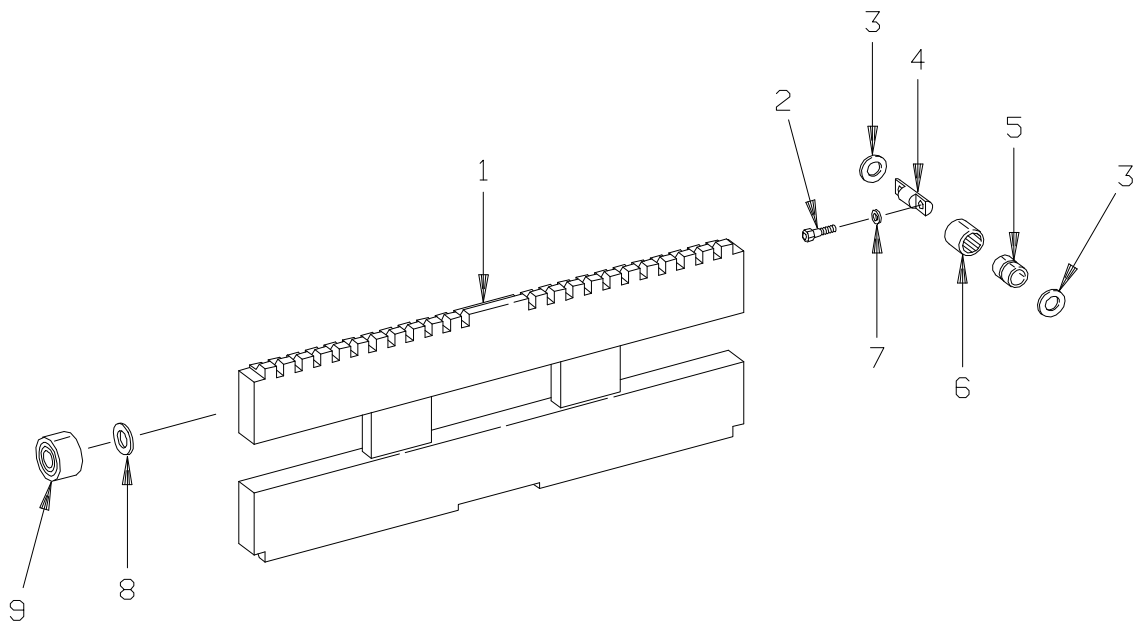


FIGURE # 5.6 THREE STAGE MAST LIFT FRAME ASSEMBLY



MODEL SR ELECTRIC TRUCK

NUMERICAL INDEX

<u>PART #</u>	<u>FIG. #</u>	<u>ITEM</u>	<u>PART #</u>	<u>FIG.#</u>	<u>ITEM #</u>
201098	5.7	15	201973	3.8	4
201100	5.7	24	202033	3.8	12
201101	5.7	20	202048	2.7	10
201120	5.7	25	202068	3.8	15
201130	5.7	1	204242	3.14	1
201131	5.7	7	204243	3.14	7
201137	5.7	5	204244	3.14	9
201137	3.15	10	204245	3.14	11
201145	5.7	2	204246	3.14	14
201155	3.15	12	204248	3.14	18
201155	5.7	10	204249	3.13	K
201215	2.10	12	204250	3.6	5
201215	2.9	14	204251	3.6	12
201259	2.9	11	204252	3.6	16
201262	2.9	4	204253	3.6	18
201266	2.9	12	204259	3.6	6
201267	2.10	10	204267	3.14	21
201297	2.7	28	204268	3.14	12
201367	2.10	23	301553	3.6	3
201367	2.9	13	04958-00	2.8	20
201368	2.9	16	11003-05	1.4	32
201368	2.10	16	11004-02	2.8	14
201372	2.10	17	11009-02	2.8	5
201372	2.9	17	11009-04	5.7	12
201435	3.3	5	11009-04	1.1	2
201533	3.6	10	11009-05	4.3	10
201545	3.6	2	11009-05	1.1	26
201578	3.6	7	11009-05	3.7	5
201584	3.6	11	11009-05	4.4	12
201616	3.6	13	11009-05	5.7	17
201617	3.6	21	11009-05	3.12	13
201618	3.6	20	11009-05	4.1	12
201623	3.6	9	11009-06	3.12	7
201624	3.6	4	11009-06	5.3	11
201625	3.6	8	11009-08	5.3	2
201628	3.6	K	11009-08	1.3	14
201629	3.6	K	11009-08	1.1	16
201639	2.5	28	11009-08	5.4	6
201650	3.6	25	11009-12	5.1	18
201962	2.9	1	11015-02	1.5	3
201963	2.9	3	11015-09	1.3	7
201964	2.9	5	11015-31	1.3	9
201965	2.9	7	11015-50	1.3	10
201966	2.9	10	11016-01	4.1	9
201967	2.9	15	11016-02	1.3	32

PARTS ORDERING INSTRUCTIONS

HOW TO ORDER

When you order, supply the part number, quantity, model and serial numbers of your machine. Supplying this information will assure prompt, efficient handling of your order. The pictorial reference number is not needed and including it can only add confusion.

Since your dealer carries many parts in stock and maintains up-to-date prices on all parts, he will be able to process your order immediately. If, for some reason, the part is not in stock, he will order it from the factory. In either event, he maintains a current file of Service References, which give all available parts ordering or technical information.

All prices are FOB factory in Muscatine, Iowa. Shipping charges are added to the price of the part shipped from the factory.

WHERE TO ORDER

Always order parts from the dealer who sold you your BT Prime-Mover. If it is necessary for the dealer to order parts from the factory, he is able to get prompt service for you. Parts are shipped in accordance with shipping instructions given on the order.

INSTRUCTIONS FOR RETURNING PARTS

Under NO CIRCUMSTANCES will parts be accepted at the factory for credit without prior approval. The BT PRIME-MOVER Co. cannot accept responsibility for parts returned without authorization.

If you have some parts which must be returned, contact your dealer. If he believes parts should be returned, he will arrange for authorization to return the parts.

FIELD MODIFICATIONS

The regulations imposed by OSHA make it mandatory that alternation of industrial trucks be done only as approved in advance and in writing by the manufacturer. These regulations apply to counter-weighting, changes in masts when such changes affect capacity and any other safety modification. It is mandatory that nameplates and instructions be changed accordingly (1910.178 (a)(4)).

BT PRIME-MOVER will approve such change requested as we can properly evaluate and rerate as to capacity. Normally a change will be evaluated upon receipt of a written request with full particulars including truck and mast serial numbers, proposed changes, proposed changes, new heights of lift, etc.

If the change is approved, authorization will be sent as will new nameplates or other labeling where appropriate. The new nameplates should be installed over the earlier nameplate.

The modifier should send confirmation of the change to the factory along with pictures of the revised truck.

FIGURE # 1.1 TRANSMISSION AND HANDLE ASSEMBLY

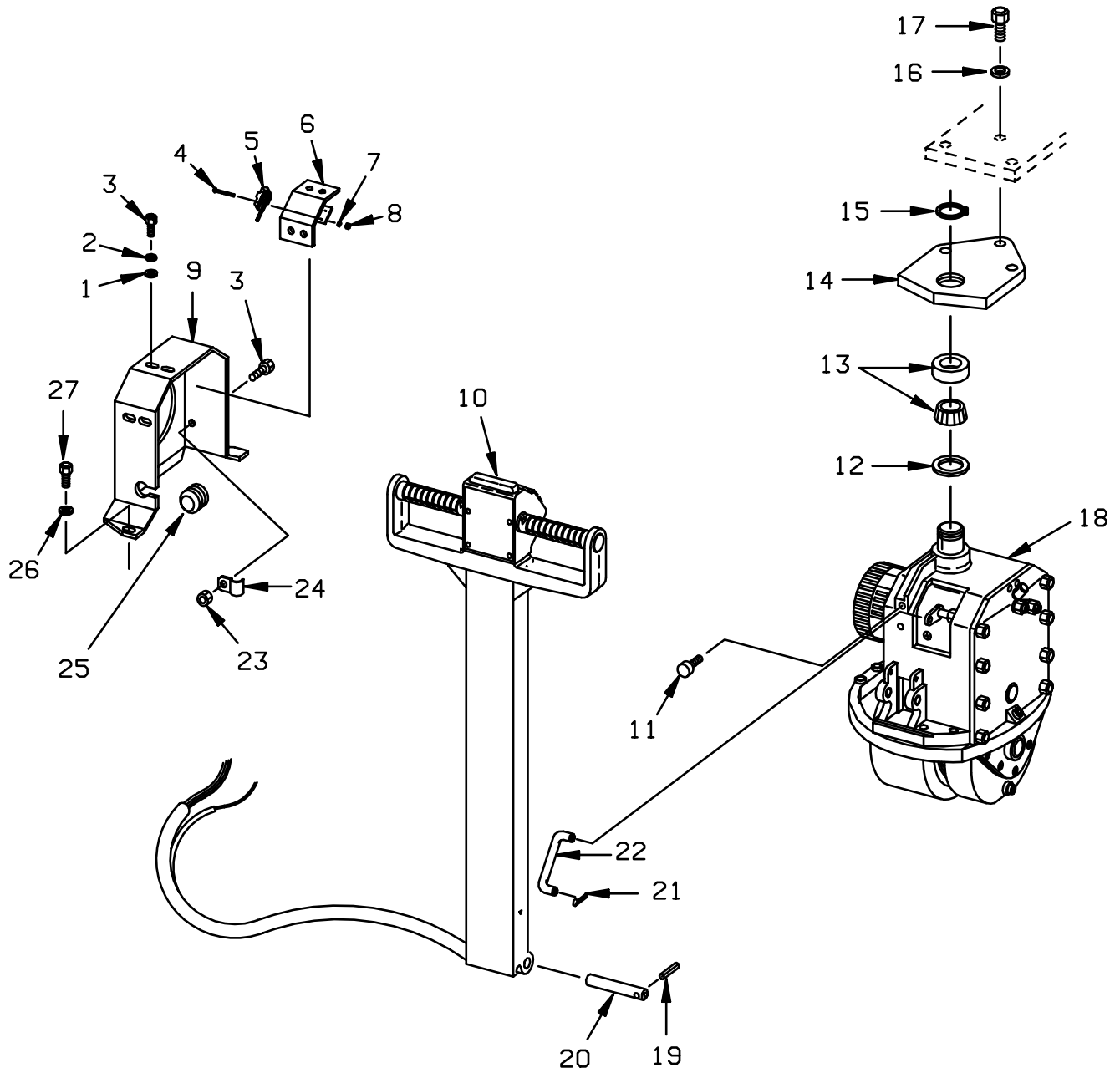


FIGURE # 1.6 DRIVE MOTOR ASSEMBLY (20844-01, G.E.)

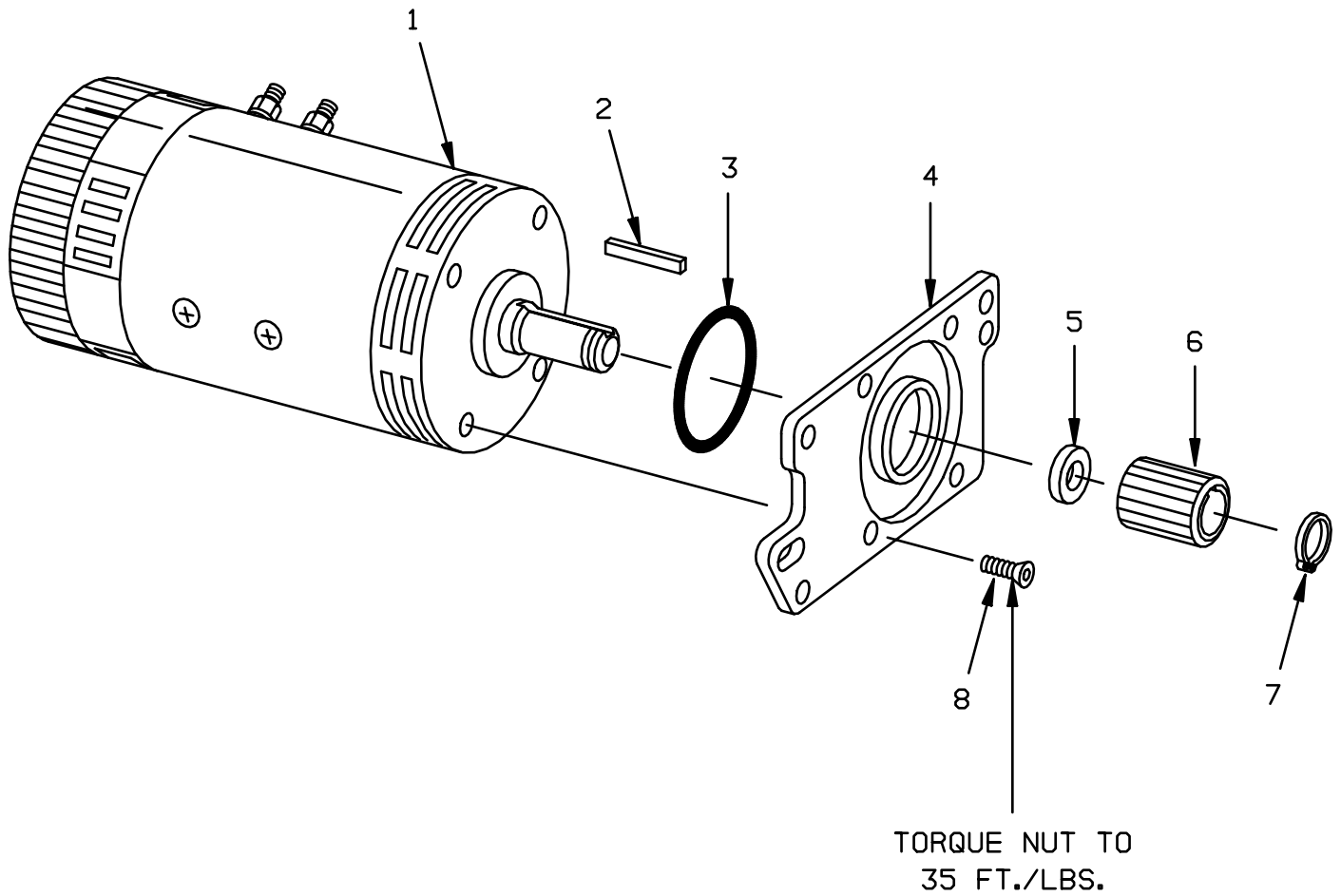


FIGURE # 2.7 FORWARD & REARWARD CONTACTOR ASSEMBLY (27692-00)

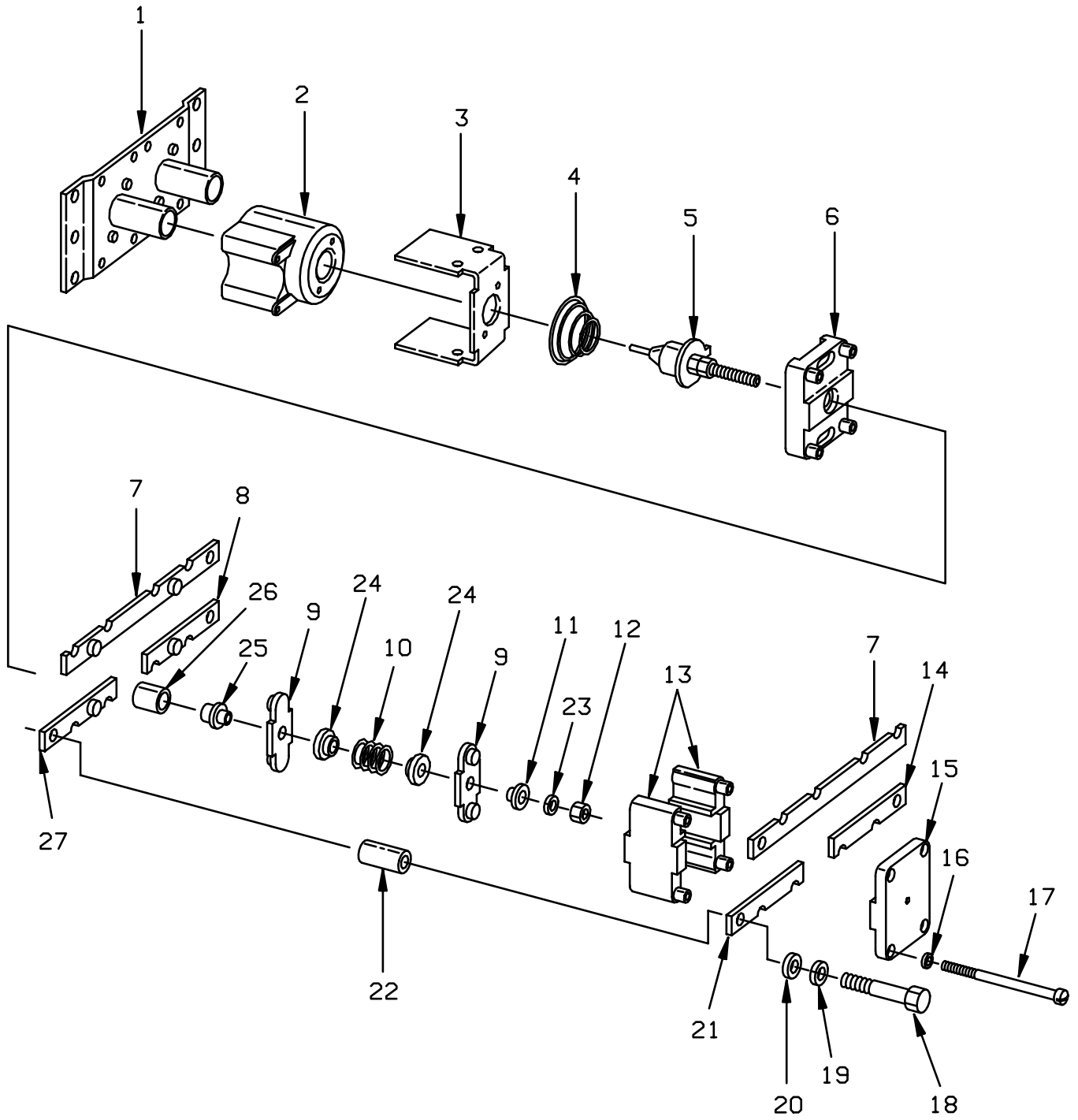


FIGURE # 3.1 TWO STAGE HYDRAULIC SCHEMATIC

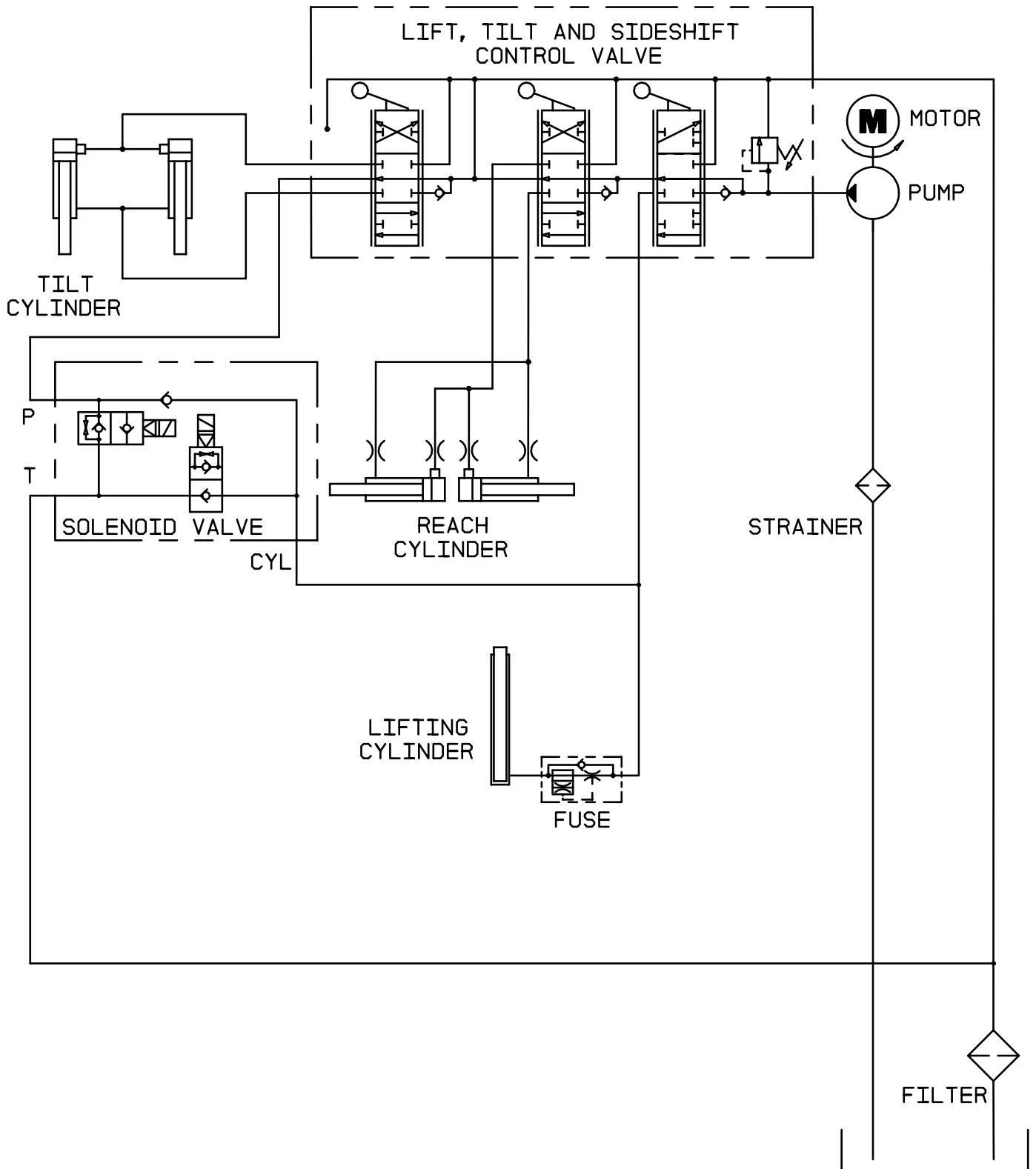


FIGURE # 3.7 TWO STAGE MAST LIFT PUMP AND MOTOR ASSEMBLY (300336-000)

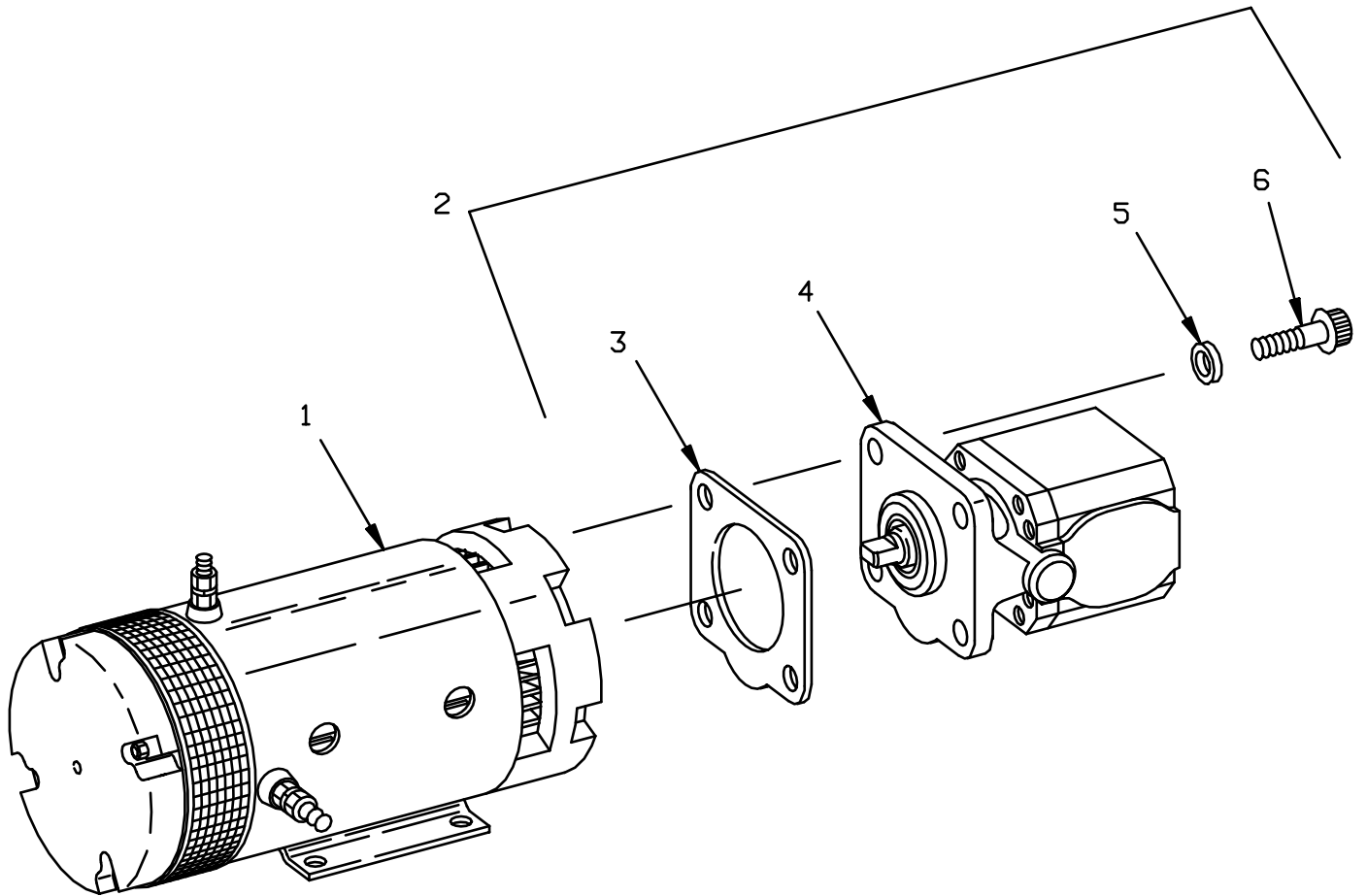


FIGURE # 3.12 TWO STAGE MAST DUAL ELBOW SWIVEL ASSEMBLY (25623-00)

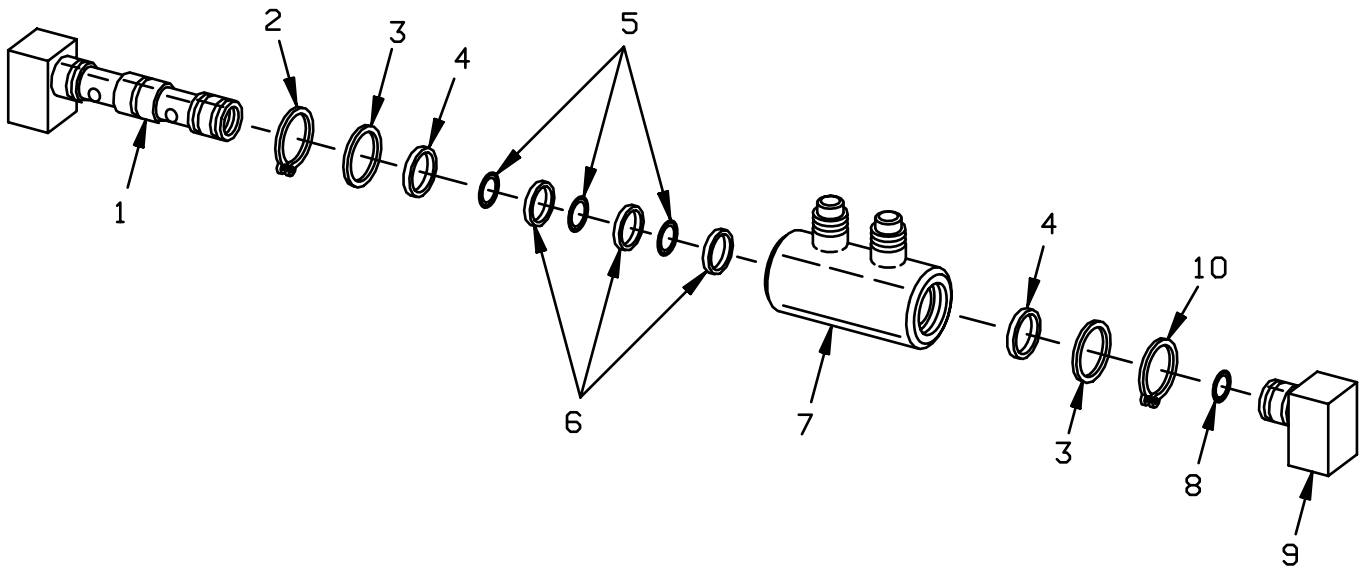


FIGURE # 3.17 TWO STAGE MAST TILT CYLINDER ASSEMBLY (301316-XXX)

NOTE: WHEN ORDERING PARTS FOR THE REACH ATTACHMENT ALWAYS SPECIFY MODEL AND SERIAL NUMBER OF THE SWING SHIFT/BRUDI REACH ATTACHMENT.

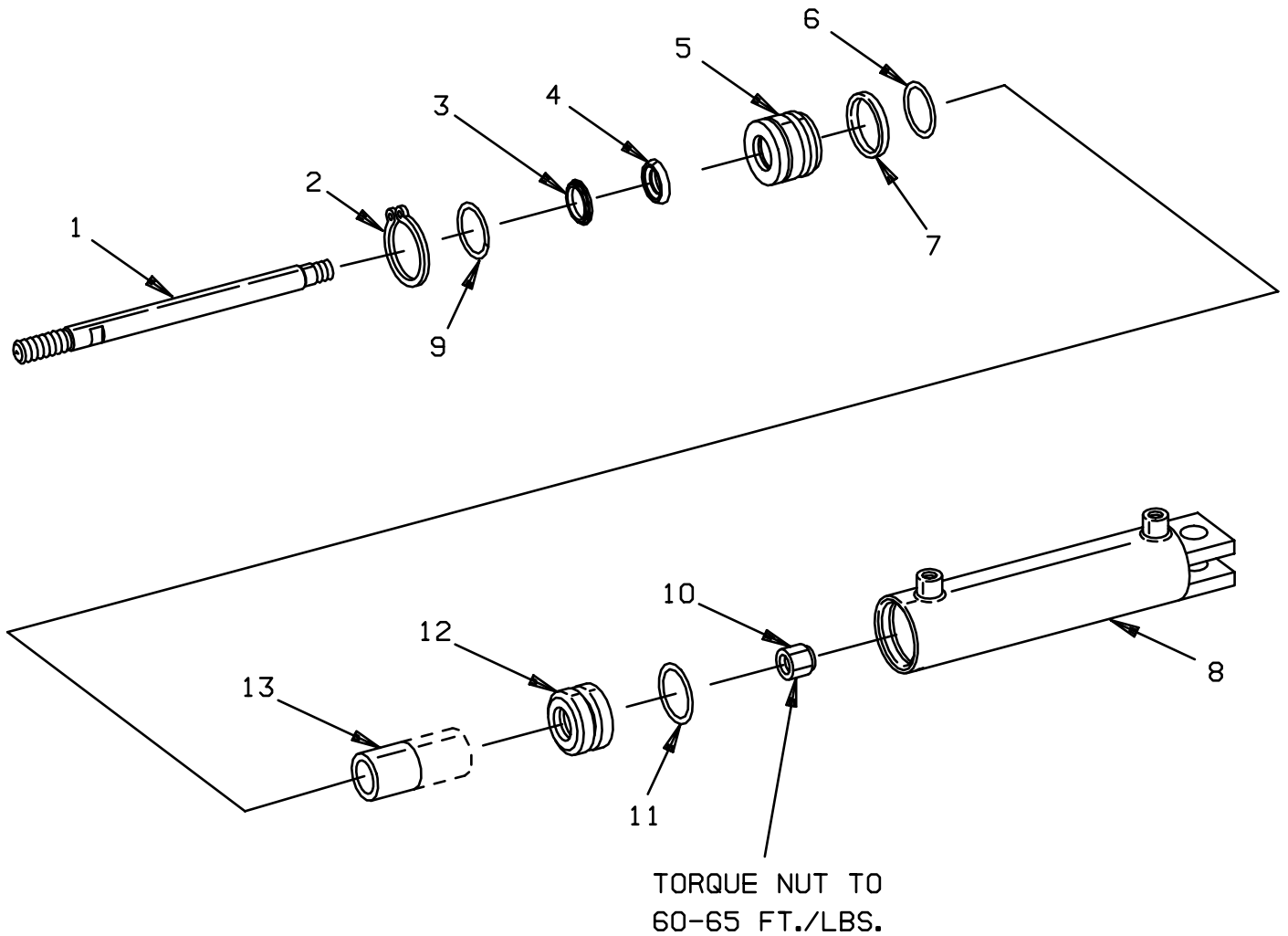


FIGURE # 3.23 TWO SPOOL CONTROL VALVE ASSEMBLY (24924-00)
 THREE SPOOL CONTROL VALVE ASSEMBLY (24925-00)

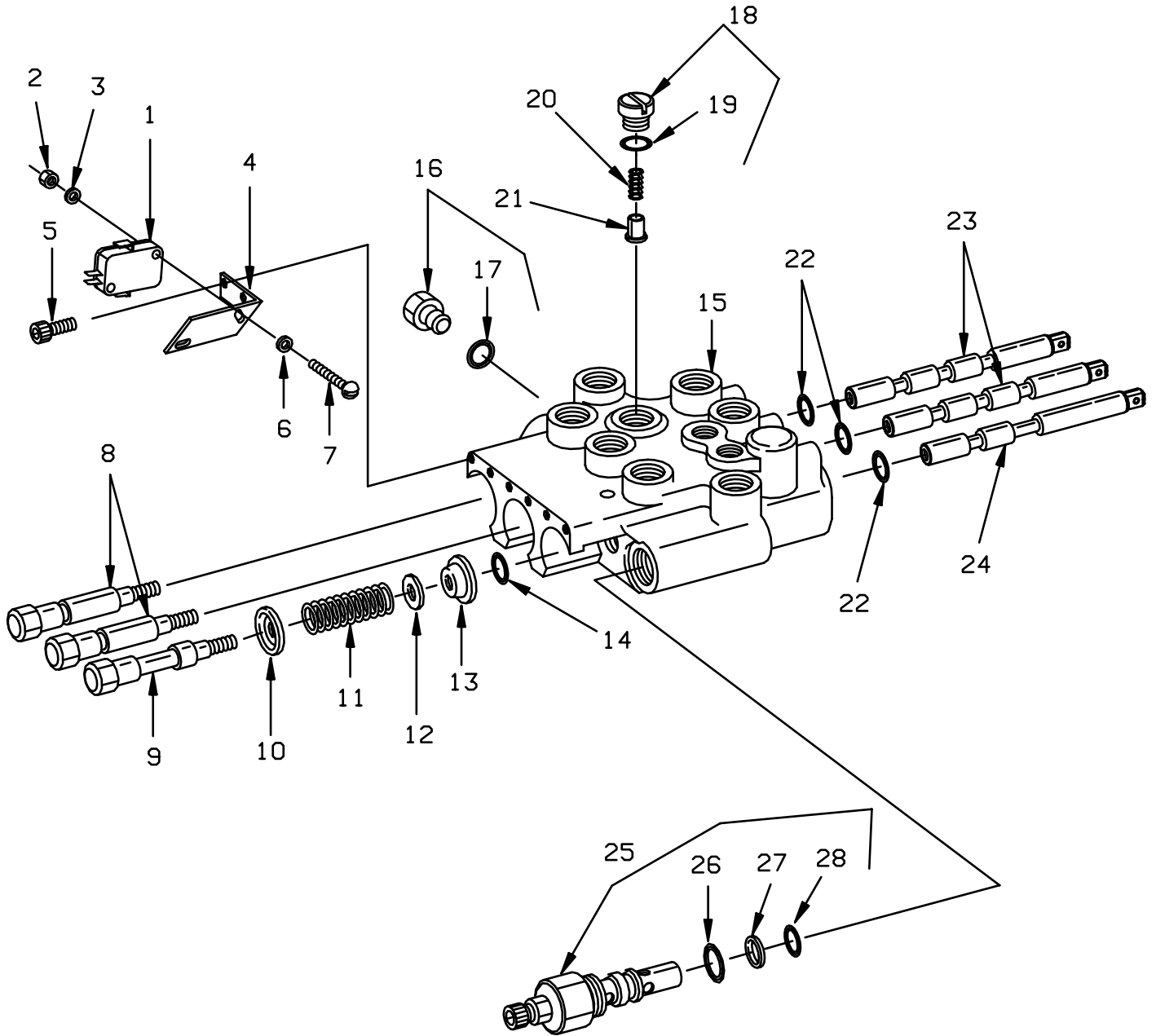
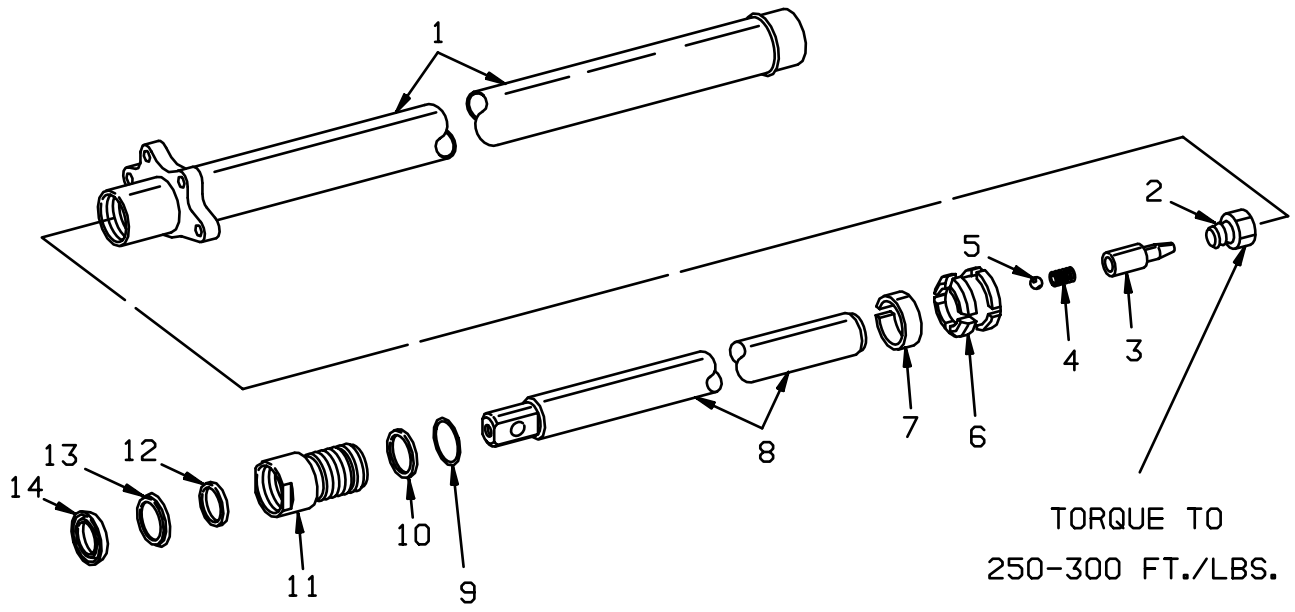


FIGURE # 3.28 THREE STAGE FREELIFT CYLINDER ASSEMBLY (28150-XX)



CLICK HERE TO **DOWNLOAD** THE COMPLETE MANUAL

- Thank you very much for reading the preview of the manual.
- You can download the complete manual from: www.heydownloads.com by clicking the link below



- Please note: If there is no response to CLICKING the link, please download this PDF first and then click on it.

CLICK HERE TO **DOWNLOAD** THE COMPLETE MANUAL

FIGURE # 3.33 THREE STAGE MAST REACH CYLINDER ASSEMBLY (301317-XXX)

NOTE: WHEN ORDERING PARTS FOR THE REACH ATTACHMENT ALWAYS SPECIFY MODEL AND SERIAL NUMBER OF THE SWING SHIFT/BRUDI REACH ATTACHMENT.

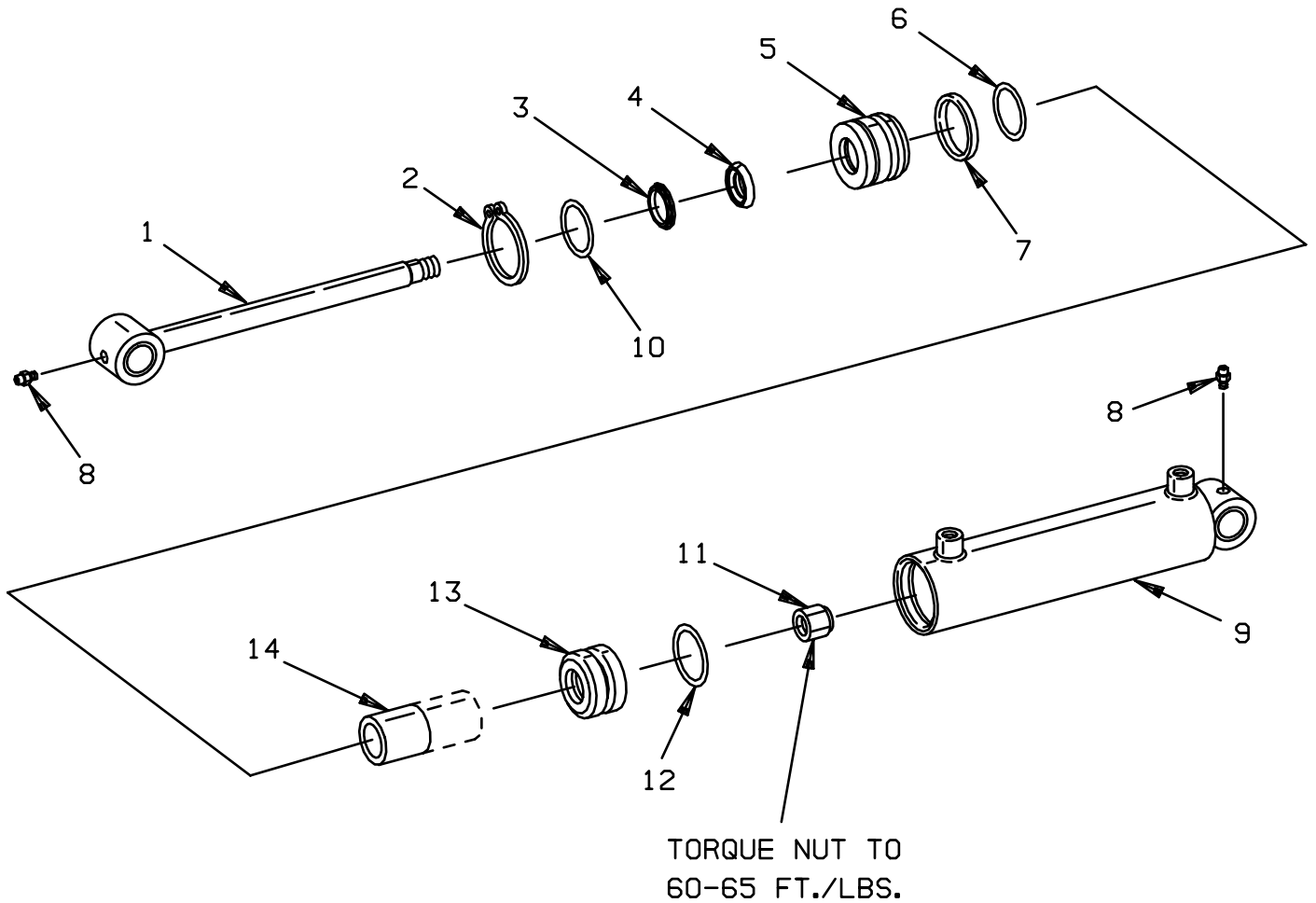


FIGURE # 4.3 CASTER ASSEMBLY (27332-00)

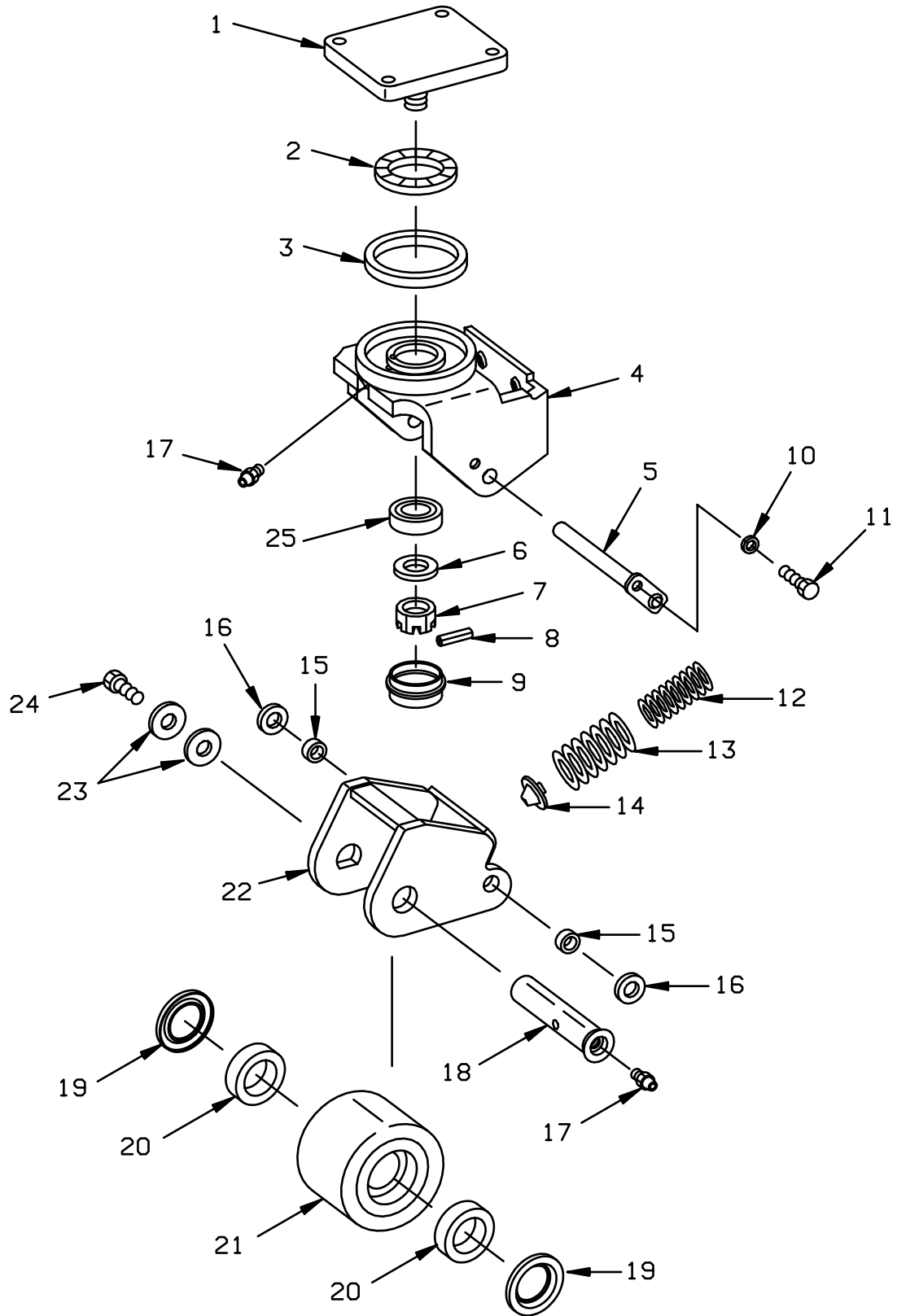


FIGURE # 5.4 TWO STAGE MAST CYLINDER AND RELATED PARTS

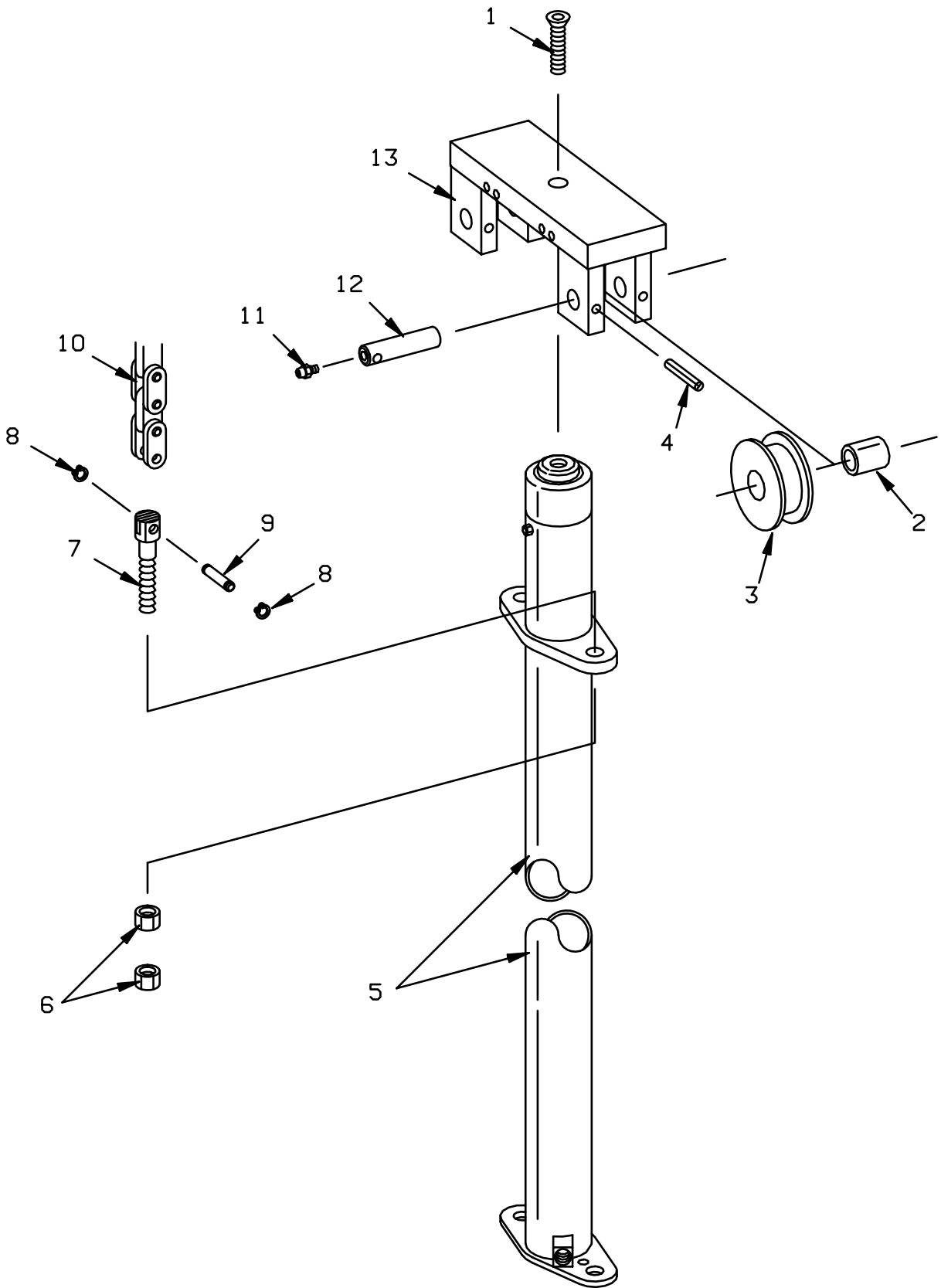


FIGURE # 5.9 THREE STAGE MAST INSTALLATION

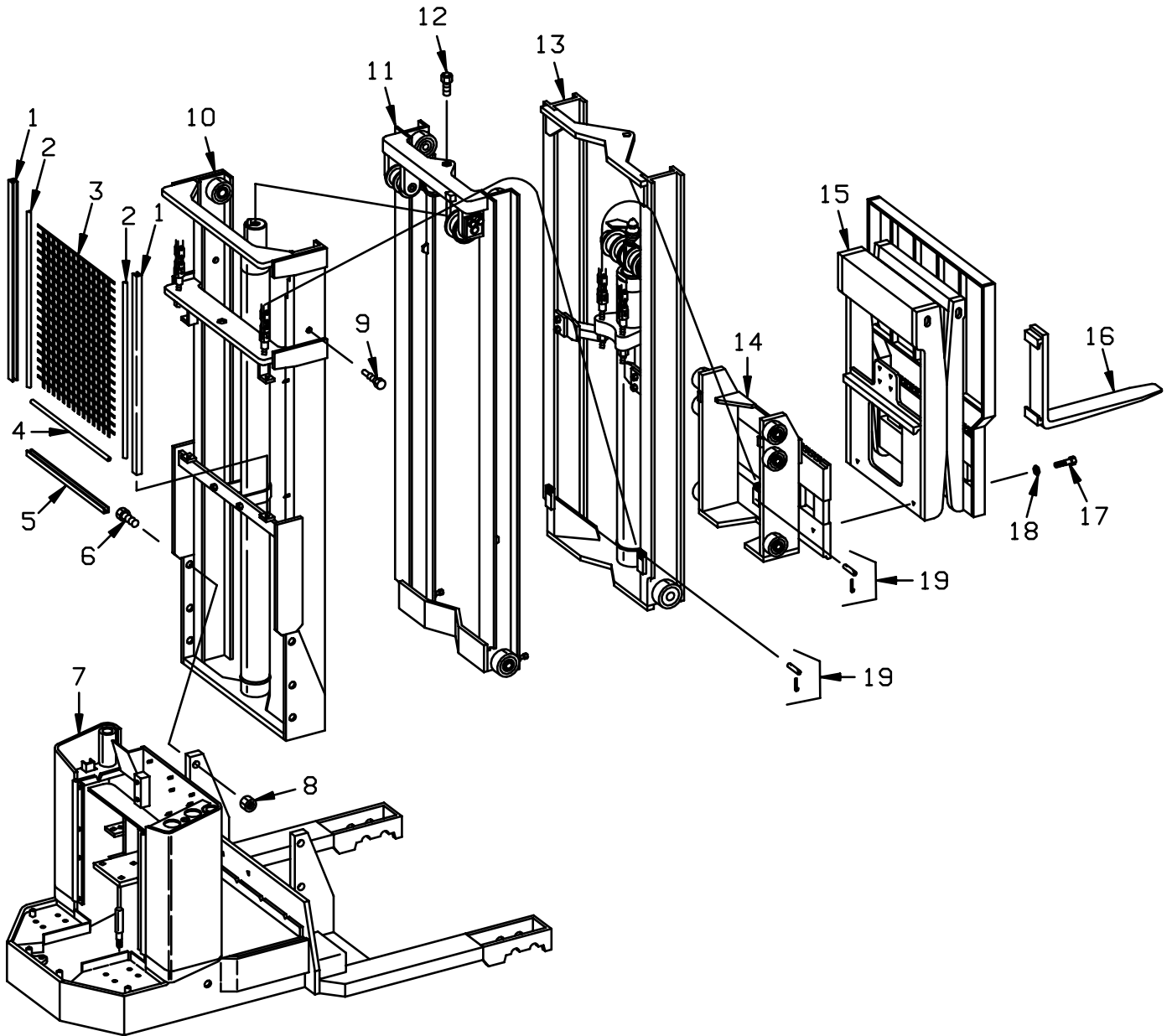
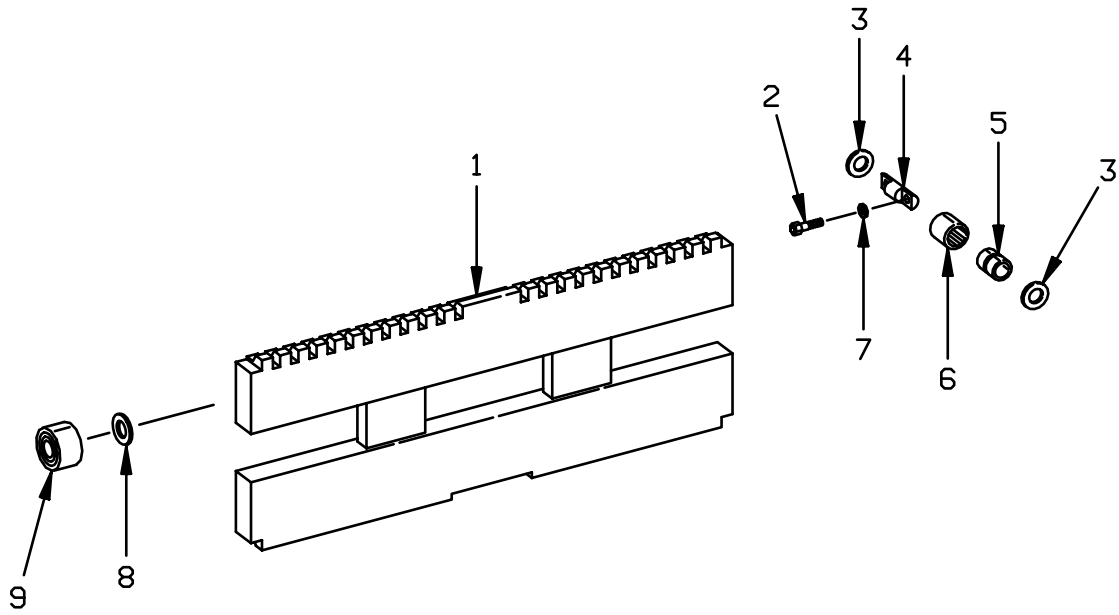


FIGURE # 5.14 THREE STAGE MAST LIFT FRAME ASSEMBLY





THE PRIME-MOVER CO., 3000 NORTH US HIGHWAY 61
MUSCATINE, IOWA 52761-5810

FIGURE # 1.2 TWIST GRIP RESISTOR CONTROL HANDLE ASSEMBLY (27354-04)
 TWIST GRIP TRANSISTOR CONTROL HANDLE ASSEMBLY (27354-05)

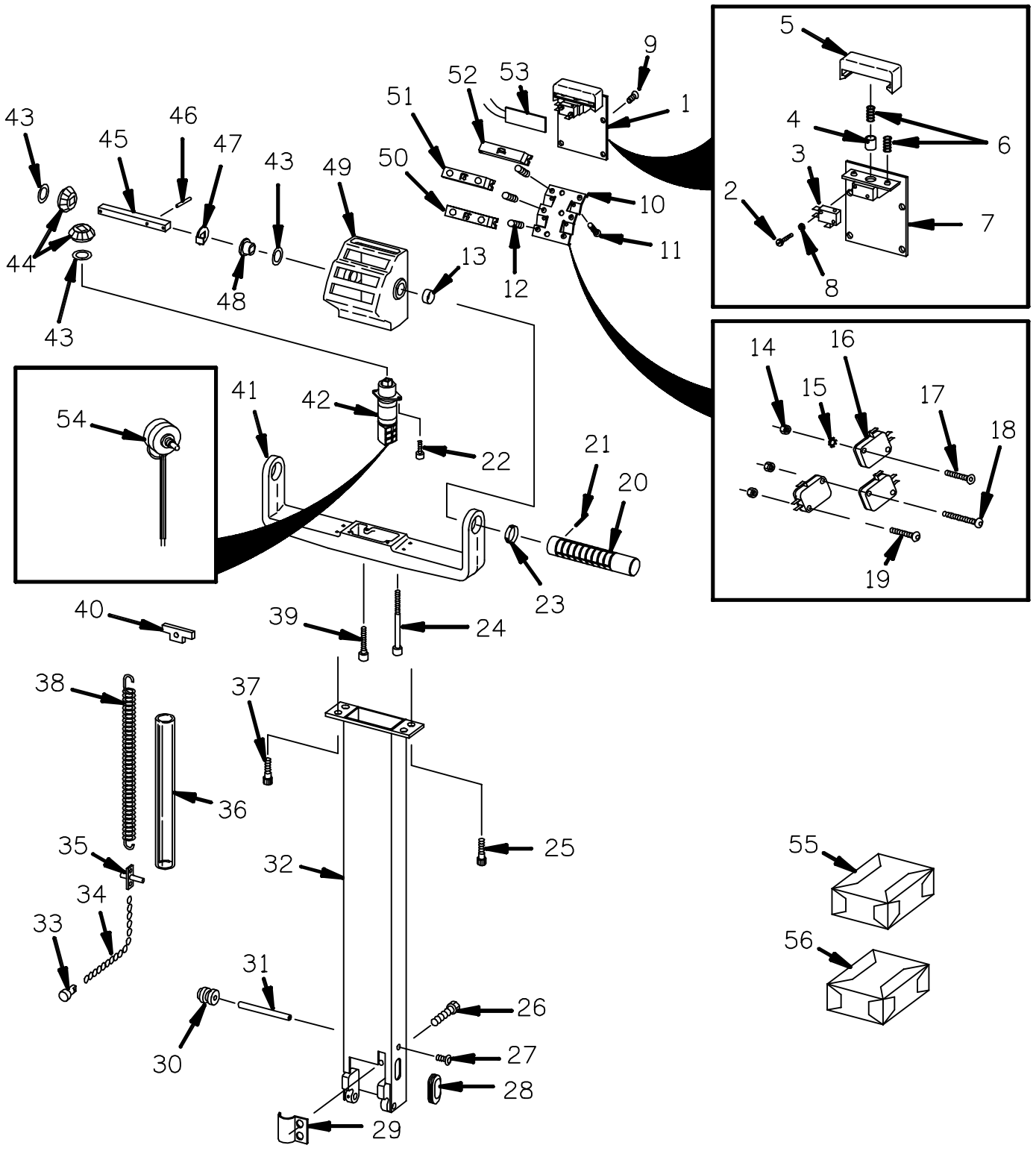


FIGURE # 2.1 RESISTOR ELECTRICAL SCHEMATIC

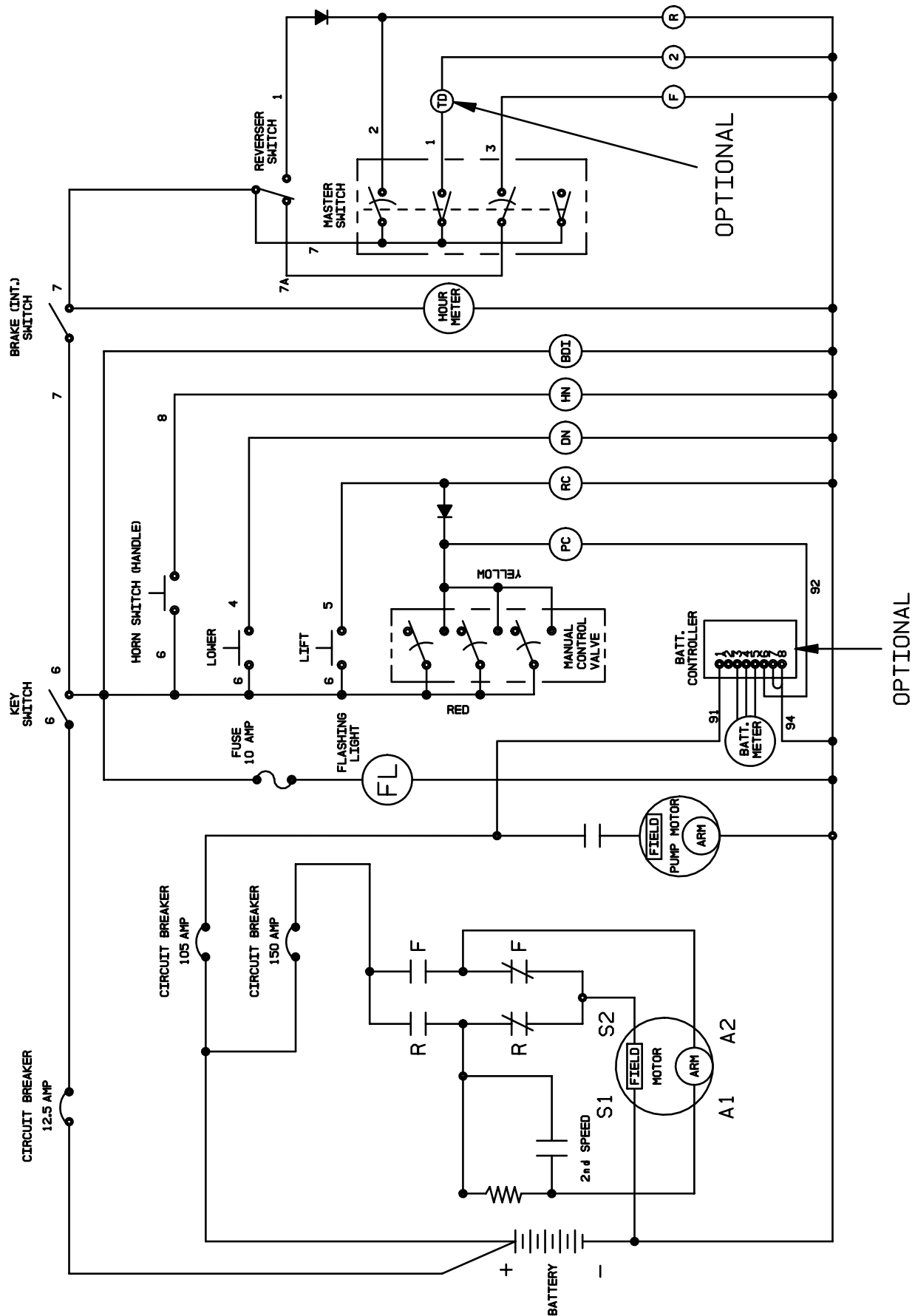


FIGURE # 2.8 POWER CONNECTOR ASSEMBLY

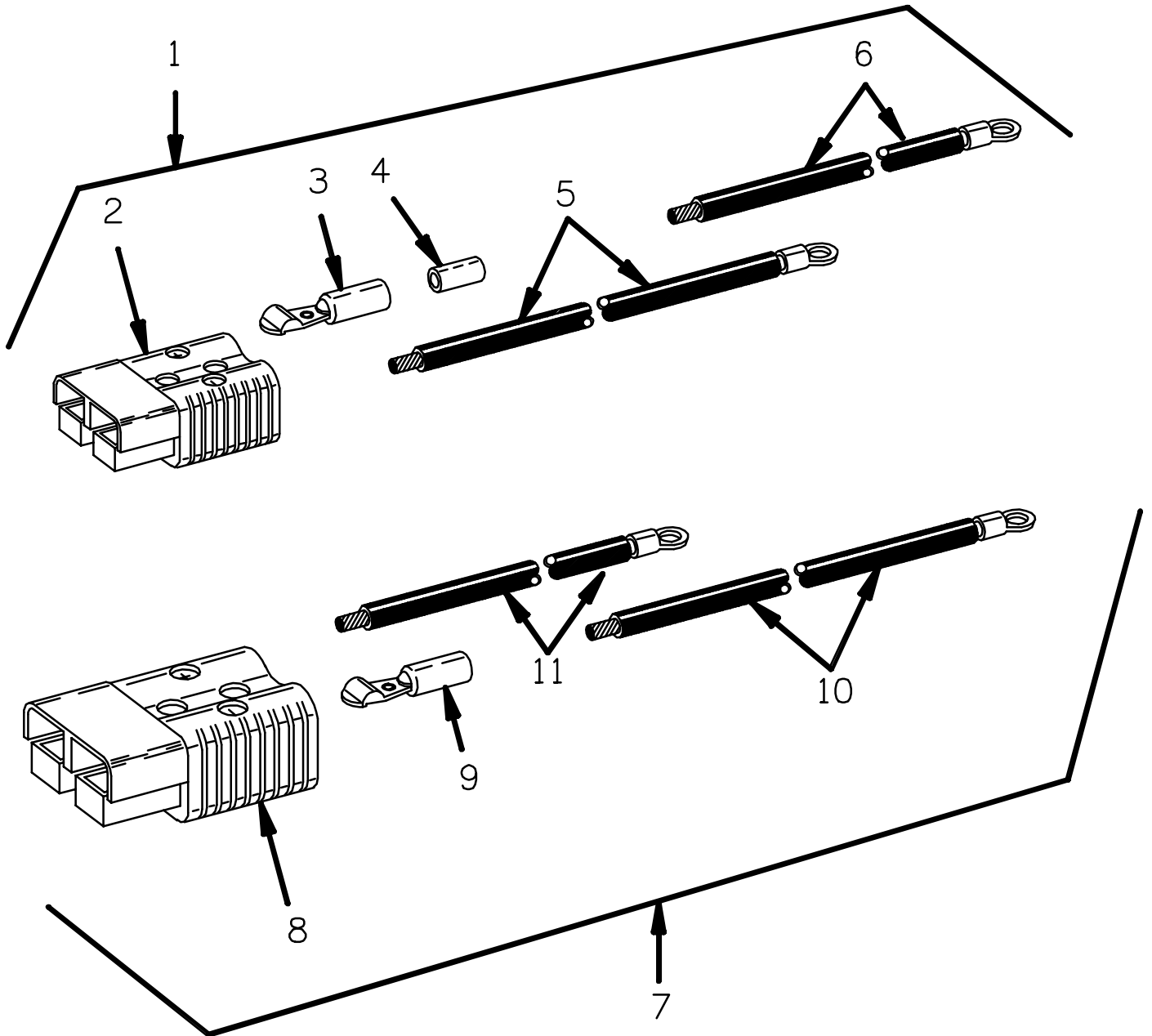


FIGURE # 2.14 TRANSISTOR CONTROL WIRING HARNESS ASSEMBLY

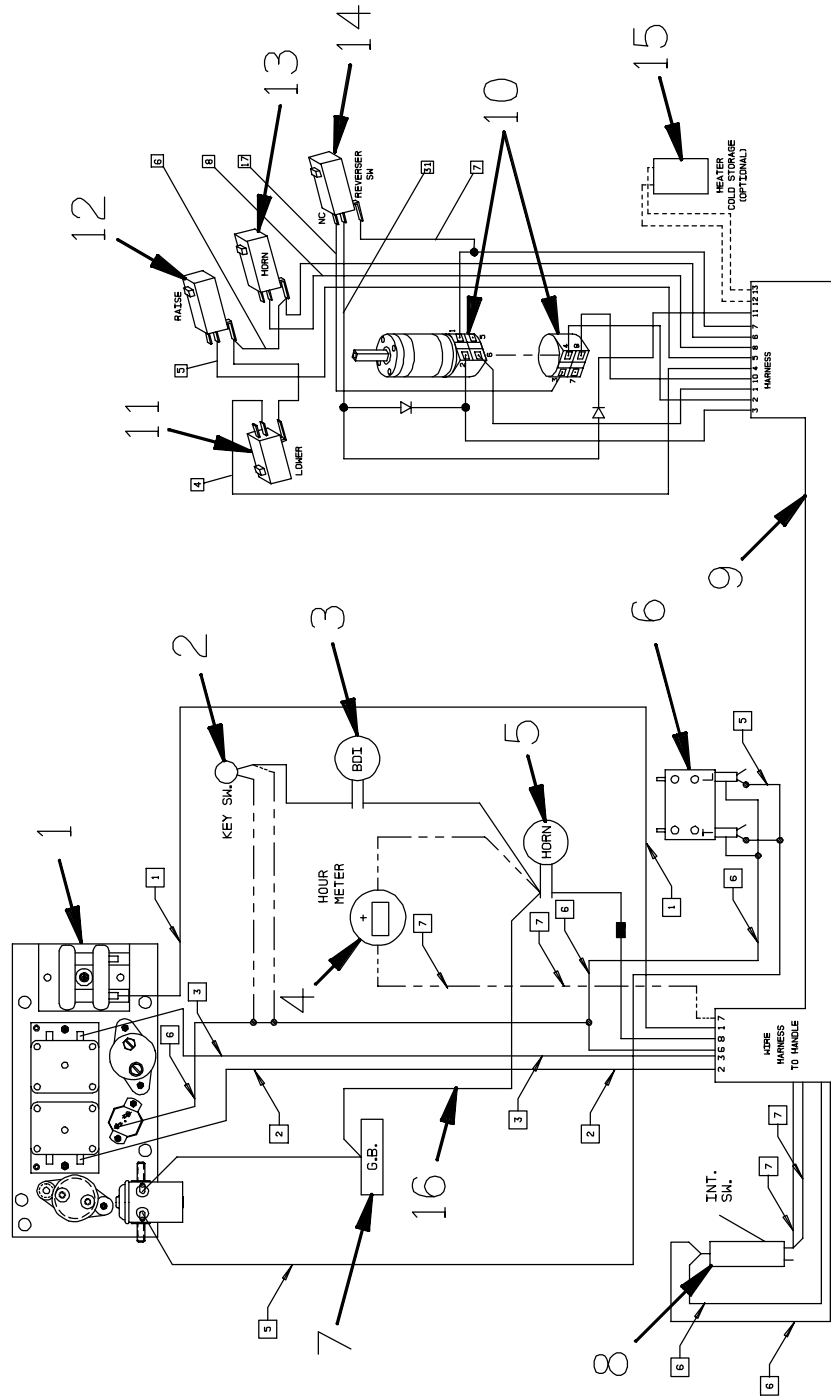
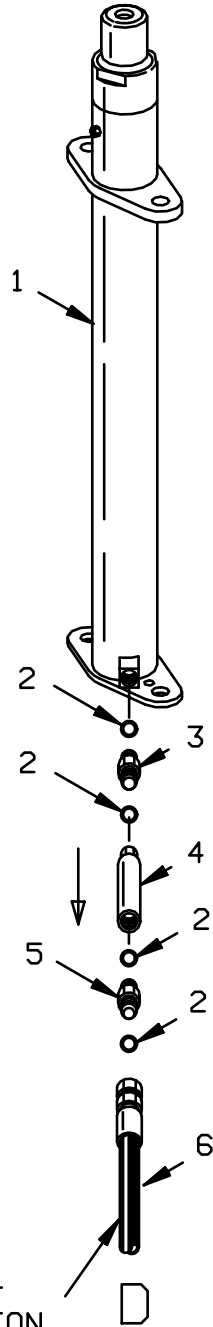


FIGURE # 3.5 TWO STAGE LIFT CYLINDER AND RELATED PARTS



SEE FIGURE NUMBER 3.3, 3.4
FOR FURTHER PARTS INFORMATION

FIGURE # 3.10 TWO STAGE LIFT CYLINDER ASSEMBLY (300745-XXX)

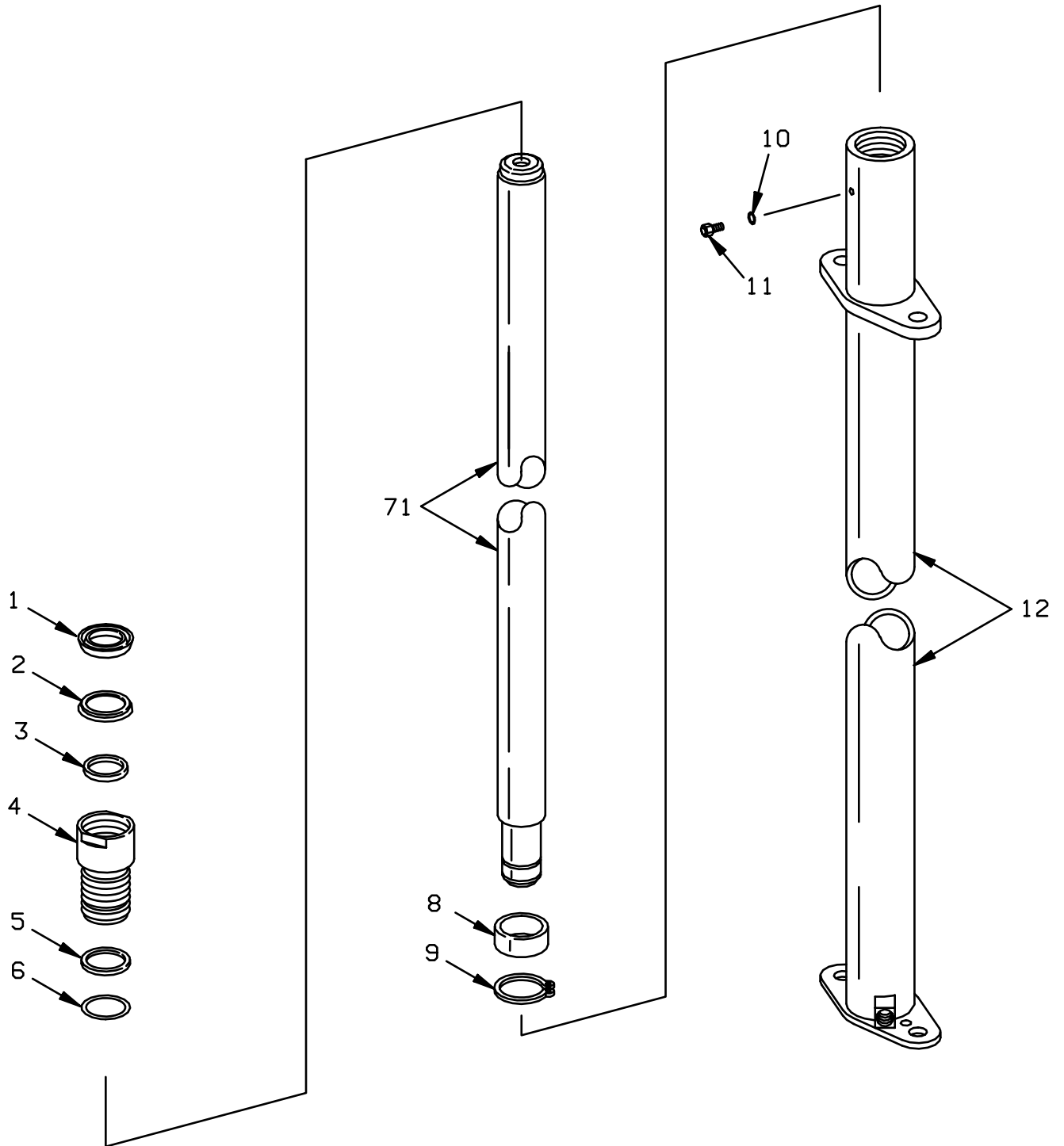


FIGURE # 3.15 TWO STAGE MAST REACH CYLINDER ASSEMBLY (301317-XXX)

NOTE: WHEN ORDERING PARTS FOR THE REACH ATTACHMENT ALWAYS SPECIFY MODEL AND SERIAL NUMBER OF THE SWING SHIFT/BRUDI REACH ATTACHMENT.

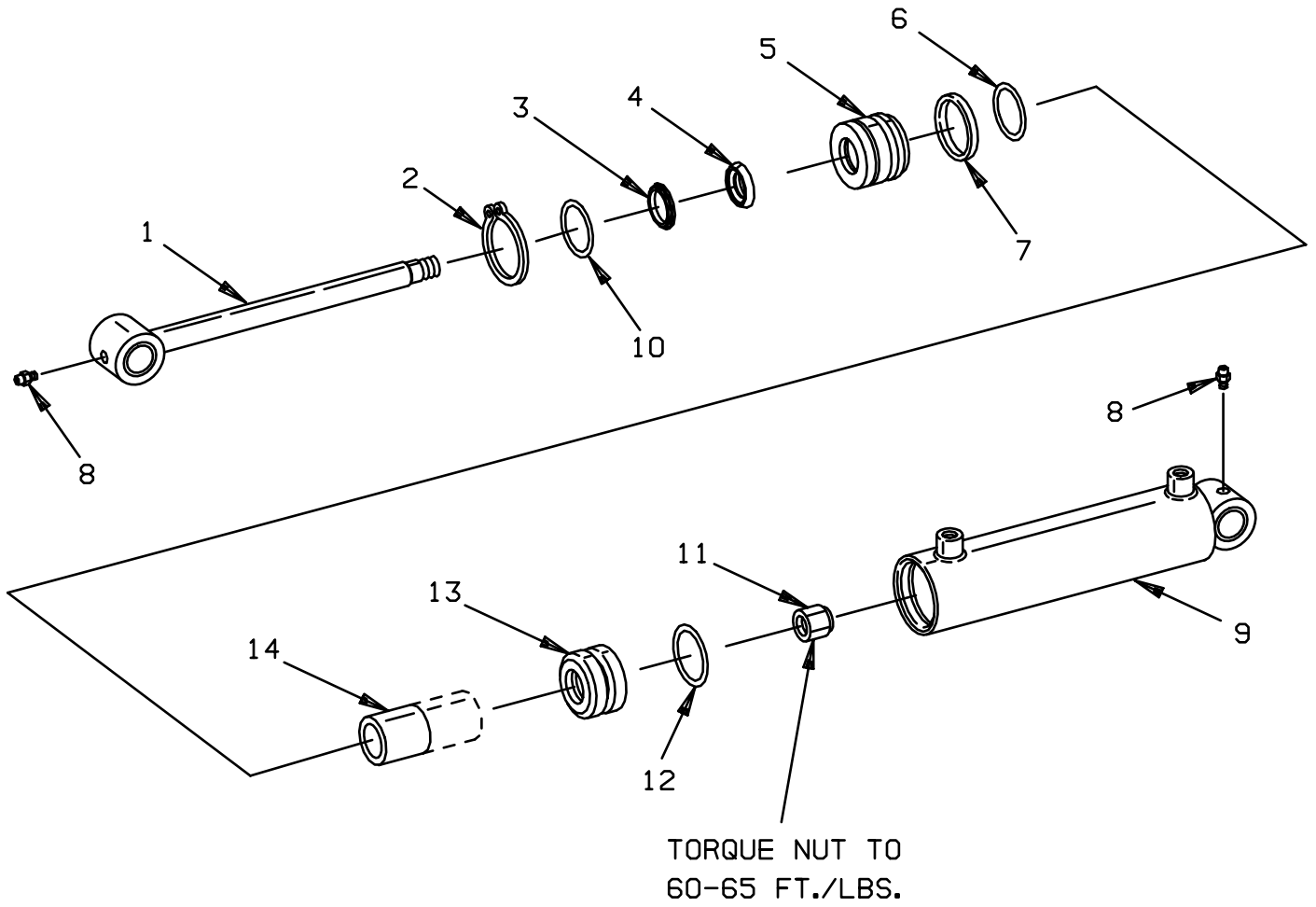


FIGURE # 3.21 THREE STAGE HYDRAULIC SYSTEM - PART# II

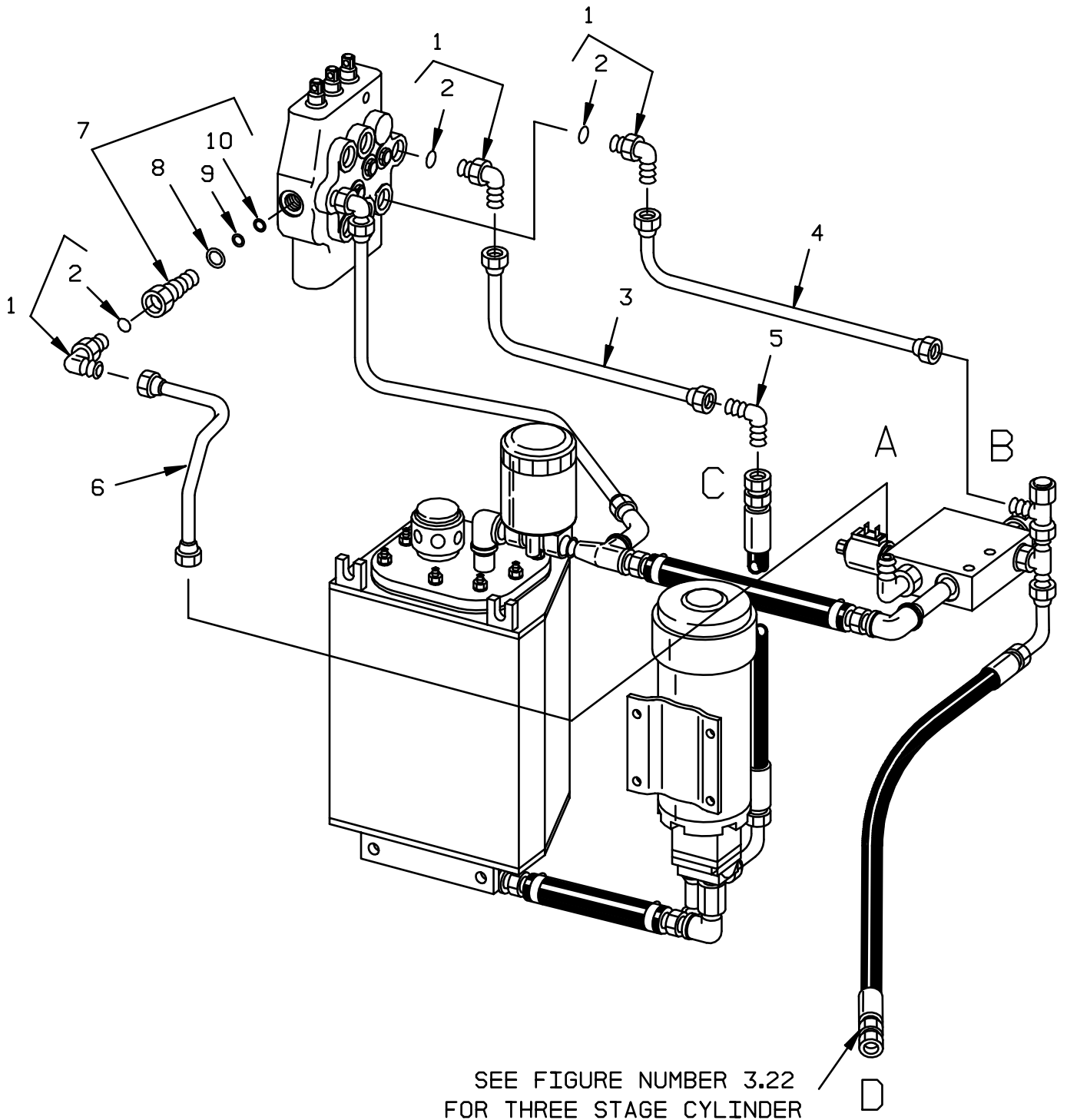


FIGURE # 3.26 THREE STAGE HYDRAULIC RESERVOIR ASSEMBLY

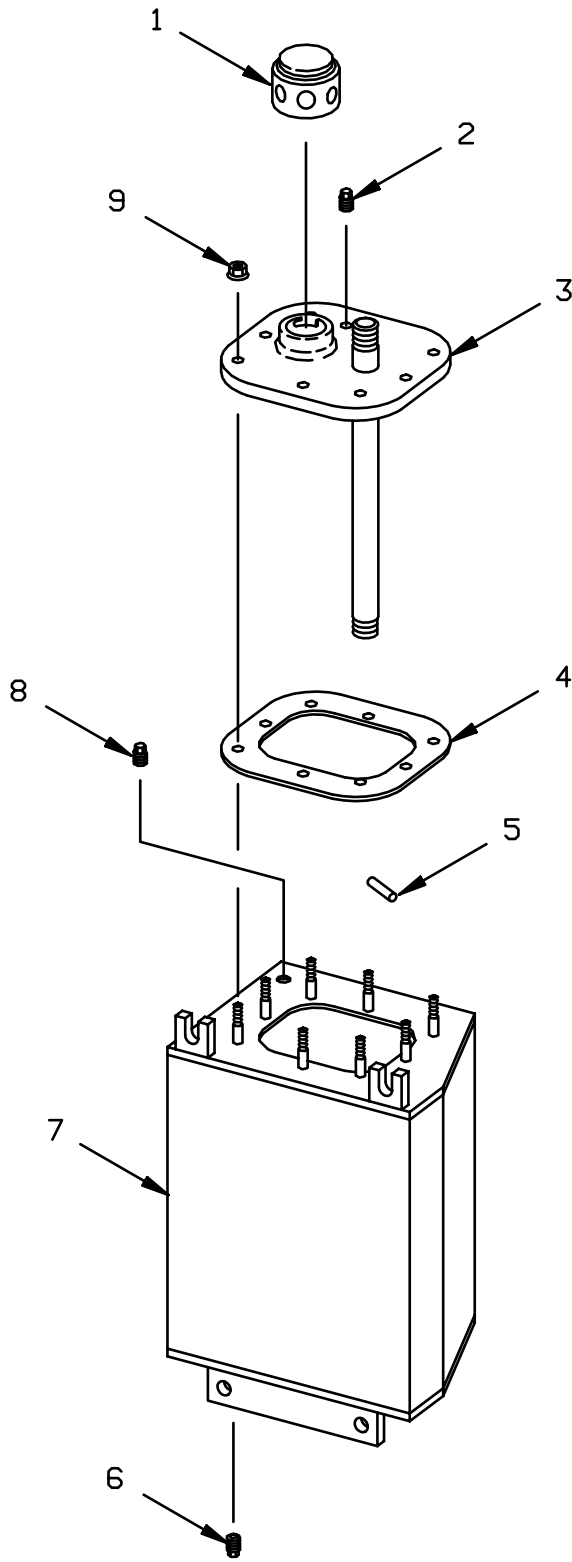


FIGURE # 3.31 THREE STAGE MAST GLEASON HOSE REEL ASSEMBLY (24907-00, LEFT)
 (24908-00, RIGHT)

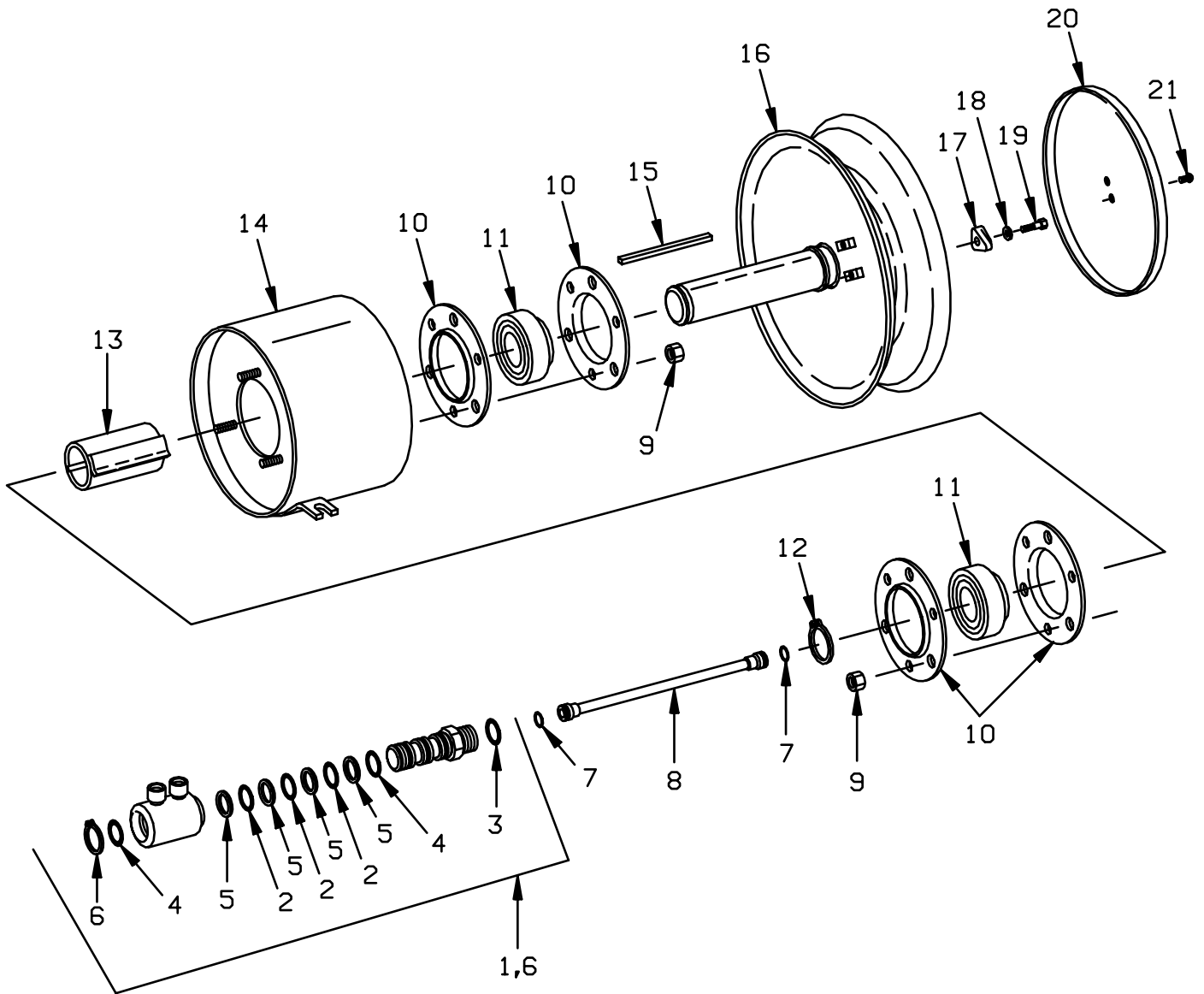


FIGURE # 3.36 THREE STAGE MAST AUXILIARY HOSE ASSEMBLY

- NOTE:
Item 18 Includes Items
4, 12, & 14

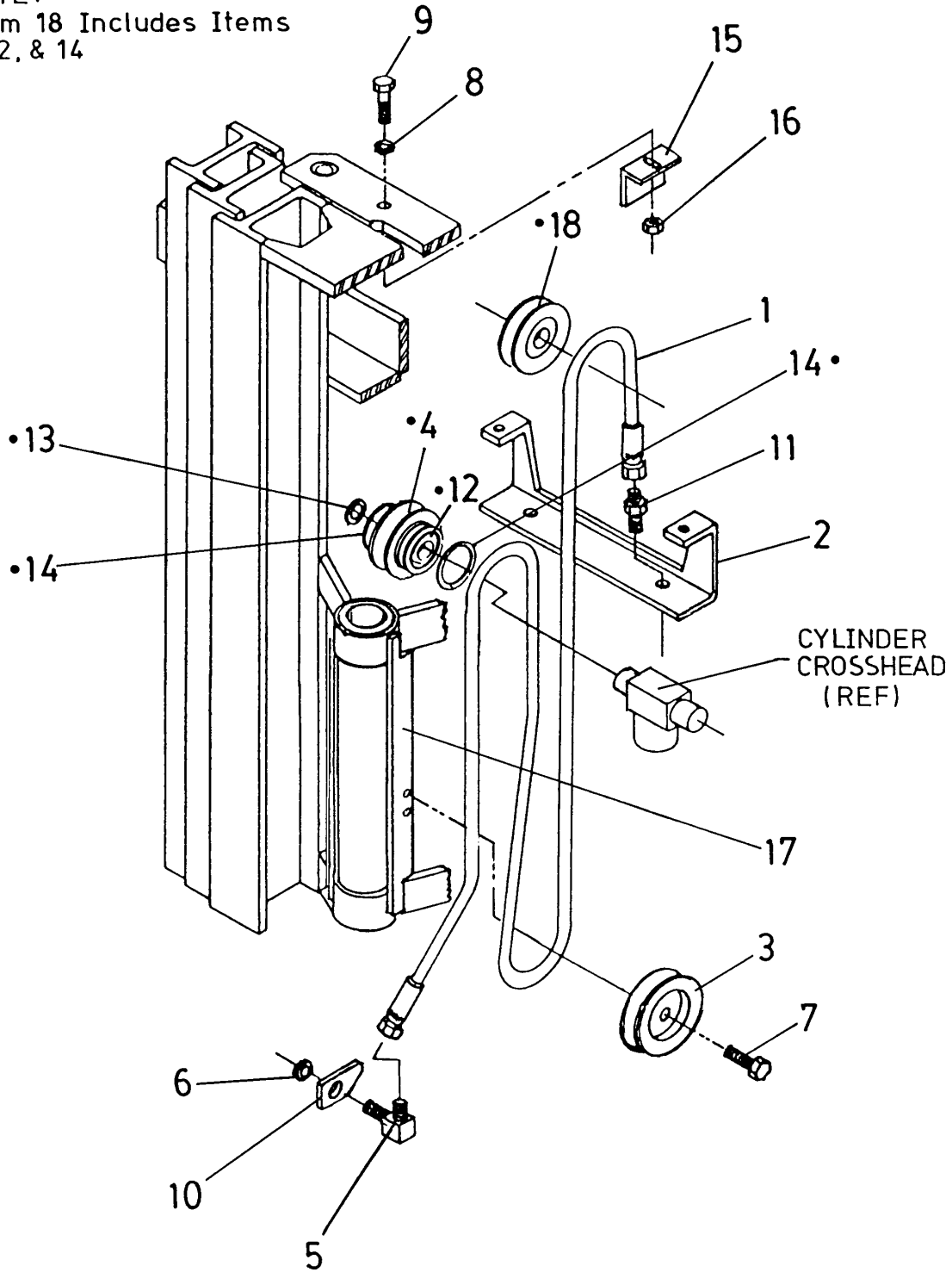


FIGURE # 5.1 TWO STAGE MAST INSTALLATION

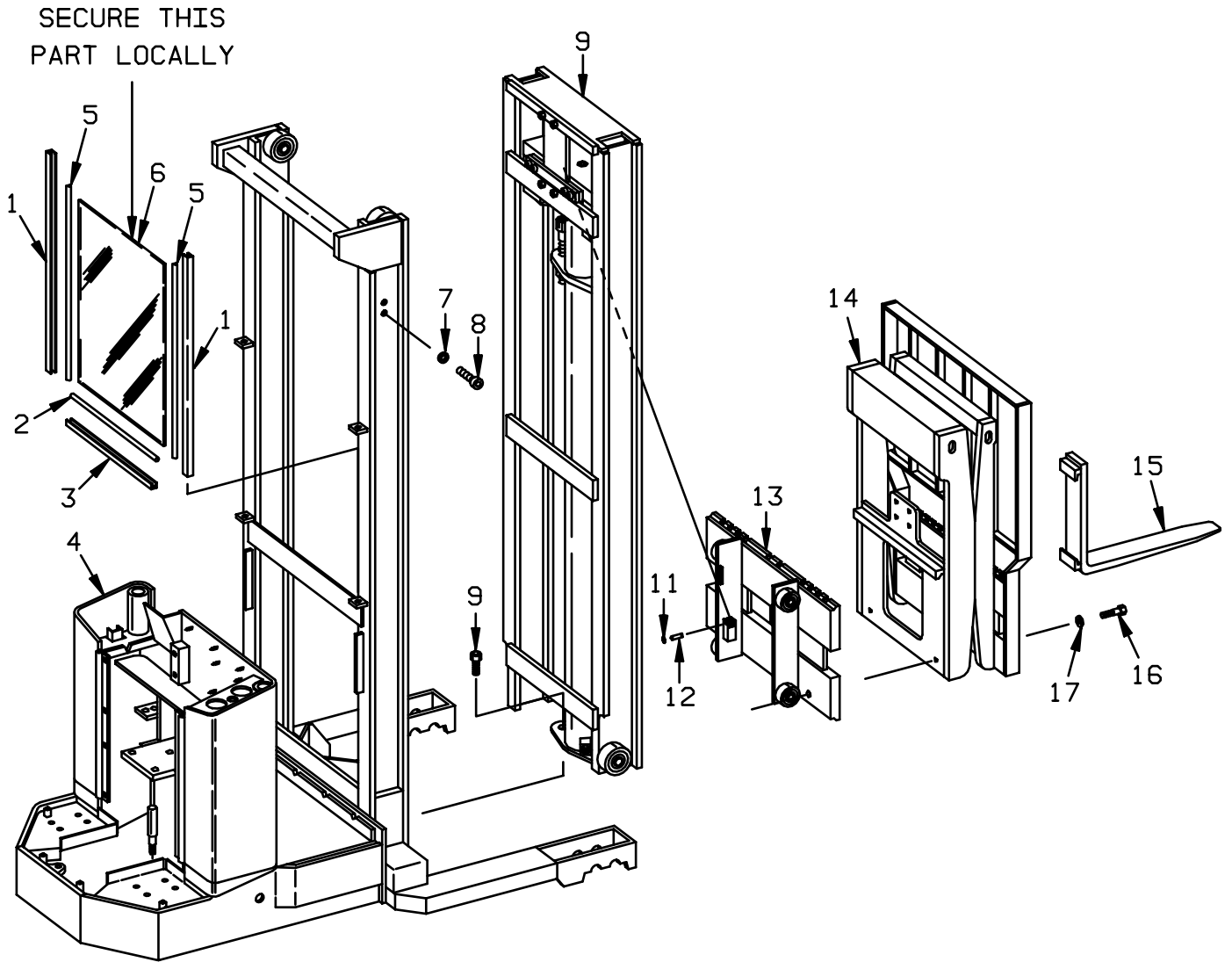


FIGURE # 5.6 THREE STAGE REACH ASSEMBLY (25347-00)

SWING SHIFT (WITH OUT TILT)

NOTE: WHEN ORDERING PARTS FOR THE REACH ATTACHMENT ALWAYS SPECIFY MODEL AND SERIAL NUMBER OF THE SWING SHIFT/BRUDI REACH ATTACHMENT.

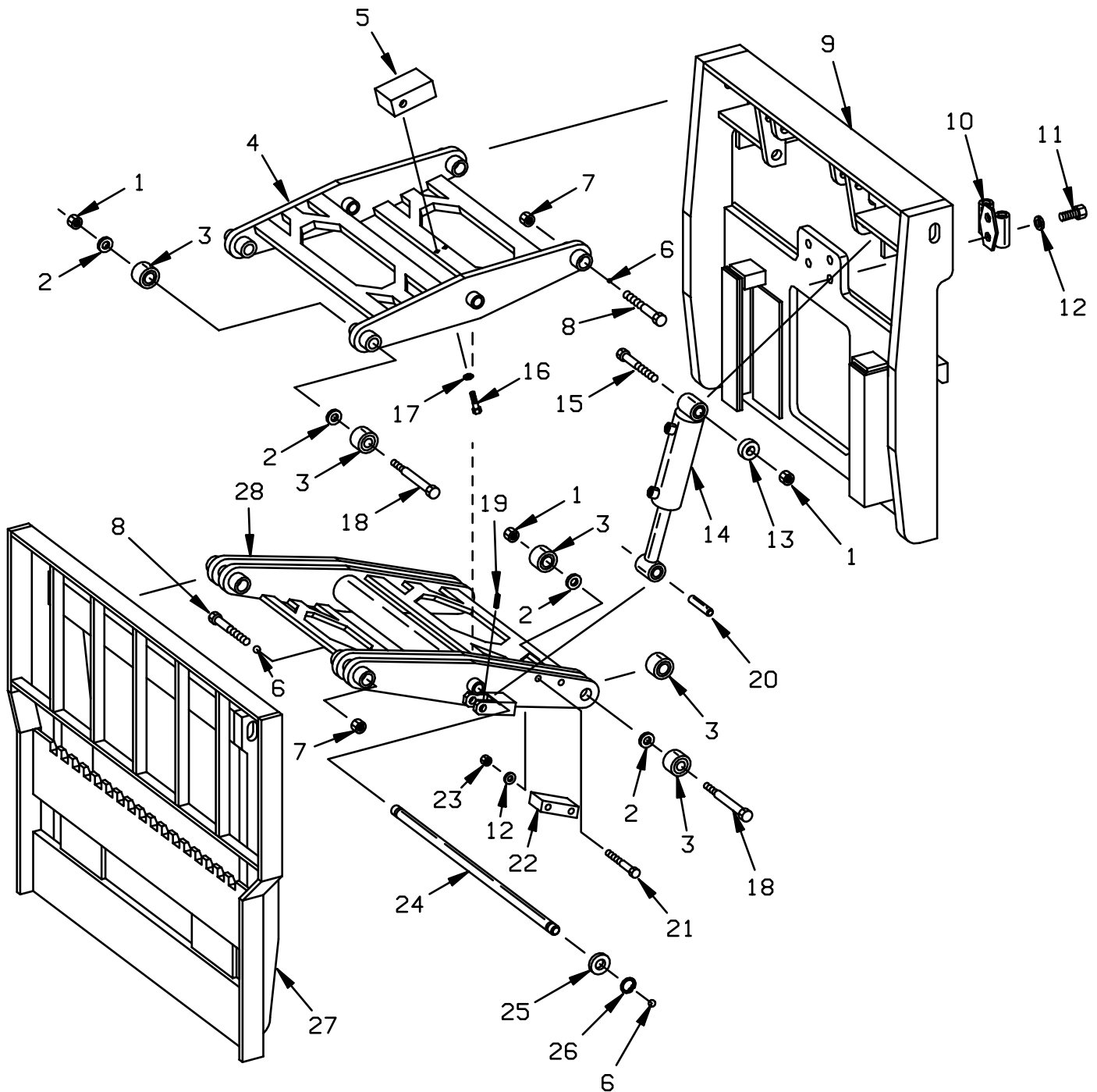
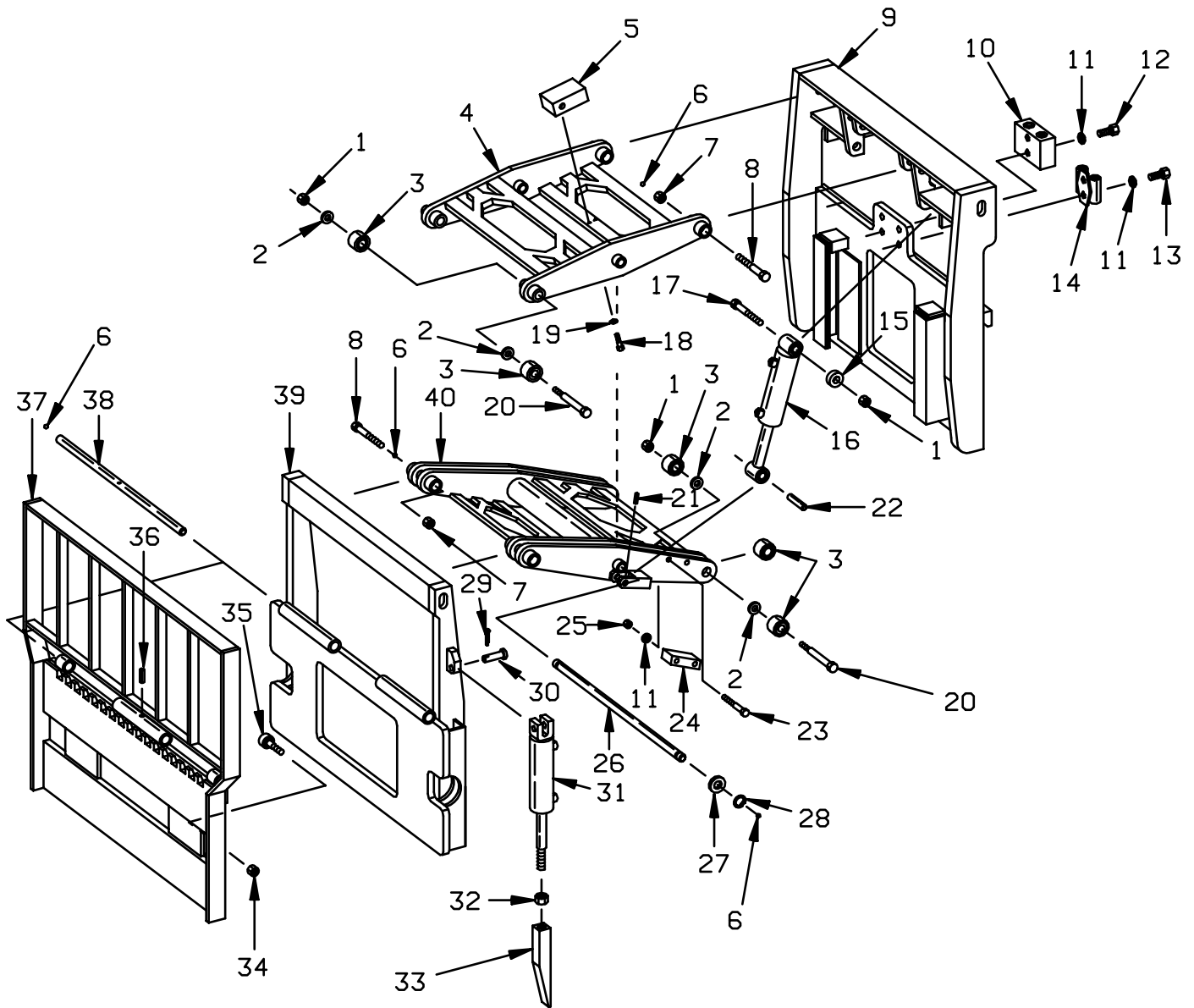


FIGURE # 5.16 THREE STAGE MAST REACH ASSEMBLY (21496-00)
SWING SHIFT/BRUDI (WITH TILT)

NOTE: WHEN ORDERING PARTS FOR THE REACH ATTACHMENT ALWAYS SPECIFY MODEL AND SERIAL NUMBER OF THE SWING SHIFT/BRUDI REACH ATTACHMENT.



MODEL SR ELECTRIC WALKIE REACH TRUCK

NUMERICAL INDEX

<u>PART #</u>	<u>FIG. #</u>	<u>ITEM #</u>	<u>PART #</u>	<u>FIG.#</u>	<u>ITEM #</u>
11045-02	1.1	3	11143-07	5.14	2
11045-02	2.15	3	11143-14	4.1	13
11045-02	2.4	10	11157-03	1.5	15
11045-04	5.6	11	11160-06	4.2	18
11045-04	5.16	13	11160-08	5.16	6
11045-04	5.7	13	11160-08	4.2	26
11045-04	5.15	11	11160-08	4.4	5
11045-07	5.7	12	11160-08	5.15	6
11045-07	5.16	12	11160-08	5.6	6
11047-03	1.3	26	11160-08	5.7	6
11047-15	5.3	1	11160-09	5.4	11
11047-15	5.1	9	11160-09	4.2	5
11047-16	4.2	2	11160-11	5.11	9
11047-16	2.4	2	11160-11	4.3	17
11047-19	1.2	39	11160-11	5.13	1
11047-19	1.3	40	11170-01	2.15	12
11047-30	1.2	22	11170-04	2.15	4
11047-30	1.3	25	11170-04	2.3	4
11054-05	2.3	6*	11170-04	2.5	9
11072-01	2.15	11	11170-04	2.4	18
11072-02	2.15	6	11170-04	1.1	23
11072-13	1.2	15	11170-05	2.3	29
11072-13	1.2	8	11170-05	2.14	*
11072-13	1.3	14	11170-05	2.11	*
11072-13	1.3	8	11170-05	2.3	9*
11073-02	4.4	8	11170-05	2.11	*
11073-04	1.1	19	11170-05	2.3	10
11073-15	1.4	1	11170-05	2.4	20*
11073-20	5.7	36	11170-05	2.4	24
11073-20	5.16	36	11170-06	2.14	*
11073-25	5.4	4	11170-06	3.3	32
11073-26	1.2	46	11170-06	3.20	32
11073-26	1.3	50	11170-06	3.22	16
11073-26	4.1	17	11170-06	2.4	3
11073-29	1.2	21	11170-06	1.4	4
11073-34	4.3	8	11170-06	4.2	14
11073-40	5.15	19	11170-08	5.10	6
11073-40	5.7	21	11170-10	5.13	14
11073-40	5.16	21	11170-12	5.9	8
11073-40	5.6	19	11170-12	4.2	18
11077-04	4.3	2	11176-01	1.2	11
11129-12	5.16	32	11176-01	1.3	11
11129-12	5.7	32	11176-15	2.8	*
11129-14	5.7	34	11205-01	4.2	9
11129-14	5.16	34	11205-25	4.3	25
11129-14	5.4	6	11216-05	4.4	13
11135-04	1.5	5	11234-00	4.4	1
11143-04	3.11	8	11241-05	3.3	29
11143-04	5.11	12	11241-05	3.20	29
11143-04	3.29	8	11242-27	3.20	14
11143-06	4.2	15	11242-27	3.3	14
11143-06	4.1	12	11245-05	3.3	13

CLICK HERE TO **DOWNLOAD** THE COMPLETE MANUAL

- Thank you very much for reading the preview of the manual.
- You can download the complete manual from: www.heydownloads.com by clicking the link below



- Please note: If there is no response to CLICKING the link, please download this PDF first and then click on it.

CLICK HERE TO **DOWNLOAD** THE COMPLETE MANUAL