

SC PART MANUAL

Manual Number 9003

Manual Part Number 300322-000

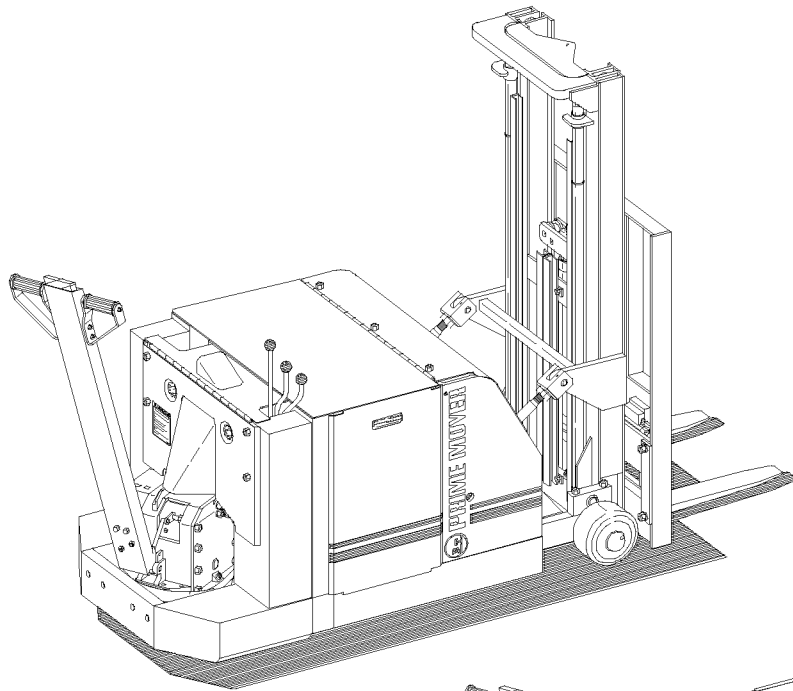
SC ELECTRIC COUNTER BALANCED WALKIE STACKER

SC-20

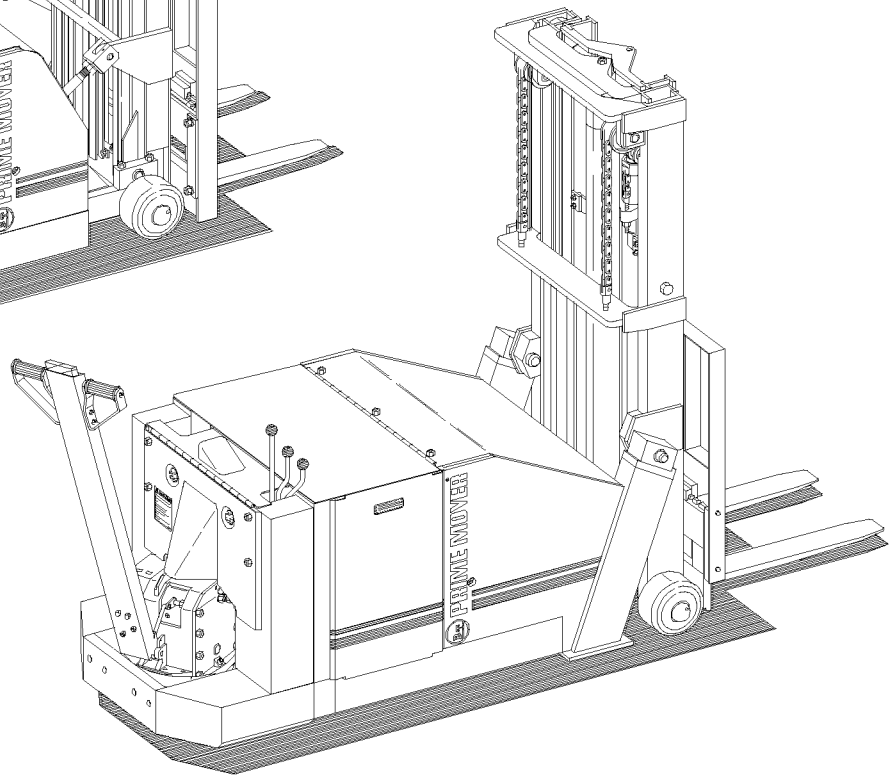
SC-30

SC-40


Effective Serial Number SCXX0207959



SC-20/30



SC-40

 **WARNING** Read and observe all warnings on the unit before operating it. Do not operate this equipment unless all factory installed guards and shields are properly secured in place.

ISSUED JUNE 1990



 **Return**

CLICK HERE TO **DOWNLOAD** THE COMPLETE MANUAL

- Thank you very much for reading the preview of the manual.
- You can download the complete manual from: www.heydownloads.com by clicking the link below



- Please note: If there is no response to CLICKING the link, please download this PDF first and then click on it.

CLICK HERE TO **DOWNLOAD** THE COMPLETE MANUAL



FIG #	ITEM #	PART #	NAME	# FOR ASSY.	UNIT
1.4	1	11841-03	Screw, machine	4	
1.4	2	22277-02	Case, gear	1	
1.4	3	11890-03	Pin, dowel	2	
1.4	4	20047-00	Shoe, brake	2	
1.4	5	20044-00	Disc, brake	1	
1.4	6	20176-00	Bolt, eye	1	
1.4	7	11135-04	Pin, yoke	1	
1.4	8	20045-01	Lever	1	
1.4	9	20067-00	Spring	2	
1.4	10	20536-00	Seat, spring	2	
1.4	11	20002-00	Cover, gear case	1	
1.4	12	12459-00	Vent, air	1	
1.4	13	11830-06	Screw, cap	9	
1.4	14	11878-02	Nut, nylock	2	
1.4	15	11271-06	Screw, set	2	
1.4	16	11859-03	Plug, pipe	1	
1.4	17	11523-06	Bearing, roller	2	
1.4	18	14999-01	Screw, machine	4	
1.4	19	20064-01	Bearing, roller	3	
1.4	20	11936-04	Race, washer .032"	1	
1.4	21	27163-00	Gear, idler pinion	1	
1.4	22	11157-03	Pin, cotter	1	
1.4	23	11936-08	Race, washer .063"	2	
1.4	24	22313-00	Locknut	1	
1.4	25	27161-00	Gear, drive	1	
1.4	26	11003-05	Plug, magnetic	1	
1.4	27	20065-00	Bearing assembly (matched set)	1	
1.4	28	20281-00	Spacer, oil seal	1	
1.4	29	11039-18	Seal, oil	1	
1.4	30	27200-00	Axle, string guard drive	1	

FIG #	ITEM #	PART #	NAME	# FOR ASSY.	UNIT
2.1	1	201985	Lockwasher	2	
2.1	2	201984	Screw	2	
2.1	3	201716	Cover	1	
2.1	4	201715	Retainer, pin	2	
2.1	5	201714	Pin, detent	2	
2.1	6	201712	Cam, detent	1	
2.1	7	201711	Housing, detent	1	
2.1	8	201758	Housing, switch	1	
2.1	9	201761	Cam	1	
2.1	10	201768	Switch, snap	4	
2.1	11	201757	Cover	1	
2.1	12	201760	Shaft	1	
2.1	13	201718	Bearing, shaft	2	
2.1	14	201721	Drive, spring	1	
2.1	15	201766	Support, spring	1	
2.1	16	201675	Spring	1	
2.1	17	201756	Drive, spring	1	
2.1	18	201765	Housing, spring return	1	
2.1	19	11881-04	Screw, flat head	2	
2.1	20	27544-00	Block	1	

FIG #	ITEM #	PART #	NAME	# FOR ASSY.	UNIT
2.7	1	11170-04	Nut, locking	6	
2.7	2	22226-02	Contactor, 12 volt pump	1	12 VOLT
2.7	2	22226-01	Contactor, 24 volt pump	1	24 VOLT
2.7	3	49856-83	Cable	2	
2.7	4	20140-01	Breaker, 150 AMP circuit	1	12 VOLT
2.7	4	20140-02	Breaker, 105 AMP circuit	1	24 VOLT
2.7	5	20163-85	Wire	1	
2.7	6	27268-00	Base, panel	1	
2.7	7	11045-02	Screw, cap	2	
2.7	8	11885-06	Screw, cap	4	
2.7	9	11004-03	Screw, machine	4	
2.7	10	20141-00	Breaker, 12.5 AMP circuit	1	
2.7	11	11016-23	Washer, flat	4	
2.7	12	11009-02	Lockwasher	4	
2.7	13	11261-02	Nut	4	
2.7	14	49771-01	Fitting, wire	3	
2.7	15	50022-01	Screw, machine	6	
2.7	16	50003-01	Screw, machine	6	
2.7	17	50001-11	Lockwasher	6	
2.7	18	27257-00	Bar, bus	1	
2.7	19	27693-01	Contactor, 12 volt high speed (See Fig.# 2.9)	1	12 VOLT
2.7	19	27693-00	Contactor, 24 volt high speed (See Fig.# 2.9)	1	24 VOLT
2.7	20	27692-01	Contactor, 12 volt forward & rearward (See Fig.# 2.8)	1	12 VOLT
2.7	20	27692-00	Contactor, 24 volt forward & rearward (See Fig.# 2.8)	1	24 VOLT
2.7	21	27272-00	Wire	1	


FIG ITEM		PART #	NAME	# FOR ASSY.	UNIT
#	#				
2.13	1	11045-06	Screw, cap	2	
2.13	2	-----	Power connector assembly (See Fig.# 2.18)	1	
2.13	3	11009-04	Lockwasher	2	
2.13	4	11261-04	Nut	2	
2.13	5	25095-00	Holder, fuse	1	
2.13	6	11170-04	Nut, lock	2	
2.13	7	25094-01	Fuse, 300 AMP 	1	
2.13	8	49856-66	Cable	2	
2.13	9	22407-00	Panel, EV-100 SCR control & contactor (See Fig.# 2.14)	1	
2.13	10	11016-02	Washer, flat	4	
2.13	11	11170-05	Nut	3	
2.13	12	49856-67	Cable	1	
2.13	13	49856-82	Cable	2	
2.13	14	49856-03	Cable	2	
2.13	15	20685-00	Drive motor assembly (MVA-4001) (See Fig.# 2.21)	1	
2.13	15	27906-00	Drive motor assembly (5BC48JB90) (See Fig.# 2.21)	1	
2.13	16	49856-81	Cable	2	
2.13	17	49856-80	Cable	1	
2.13	18	49856-21	Cable	1	
2.13	19	11854-04	Screw, cap	1	
2.13	20	25428-00	Pump and motor assembly (See Fig.# 3.26)	1	
2.13	20	300336-000	Pump and motor assembly (See Fig.# 3.26)	1	
2.13	21	49856-00	Cable	1	

FIG ITEM		PART #	NAME	# FOR ASSY.	UNIT
#	#				
2.18	1	49855-05	Connector, SB-175	1	
2.18	2	49854-01	Connector, housing	1	
2.18	3	49852-01	Connector, tip	2	
2.18	4	49853-02	Bushing	2	
2.18	5	49856-09	Cable, 21.50"	1	
2.18	6	49856-10	Cable, 26.50"	1	
2.18	1	49855-19	Connector, SB-175	1	EV-100
2.18	2	49854-01	Connector, housing	1	EV-100
2.18	3	49852-01	Connector, tip	2	EV-100
2.18	4	49853-02	Bushing	2	EV-100
2.18	5	49856-19	Cable, 25.00"	1	EV-100
2.18	6	49856-92	Cable, 31.00"	1	EV-100
2.18	7	49855-09	Connector, SB-350	1	
2.18	8	49855-02	Connector, housing	1	
2.18	9	49852-04	Connector, tips	2	
2.18	10	49856-42	Cable, 24.5"	1	
2.18	11	49856-43	Cable, 28.0"	1	
2.18	12	49850-03	Connector, YC-175	1	
2.18	13	49856-35	Cable, 27.5"	1	
2.18	14	49856-33	Cable, 24.5"	1	
2.18	15	20295-02	Connector, housing	1	
2.18	16	11261-04	Nut	As Req'd	
2.18	17	11009-04	Lockwasher	As Req'd	
2.18	18	11176-15	Screw, machine	As Req'd	

FIG #	ITEM #	PART #	NAME	# FOR ASSY.	UNIT
2.23	1	300439-000	Coil, field	1	
2.23	2	300433-000	Terminal assembly	1	
2.23	3	300417-000	Brush	4	
2.23	4	300418-000	Spring, brush	4	
2.23	5	300431-000	Plate, brush	1	
2.23	6	300420-000	Bearing	1	
2.23	7	300421-000	Washer, wave	1	
2.23	8	300440-000	Head, commutator end	1	
2.23	9	300435-000	Band, head	1	
2.23	10	300438-000	Armature	1	
2.23	11	300427-000	Ring, Retainer	1	
2.23	12	300420-000	Bearing	1	
2.23	13	300437-000	Head, drive end	1	
2.23	14	300436-000	Seal	1	

FIG #	ITEM #	PART #	NAME	# FOR ASSY.	UNIT
3.3	1	-----	Reservoir pump and motor assembly (See Fig.# 3.4)	1	
3.3	2	11242-47	Nipple	1	
3.3	3	12391-05	O ring	1	
3.3	4	49956-00	Filter assembly	1	
3.3	5	201435	Element, filter	1	
3.3	6	15609-76	Hose assembly	1	
3.3	7	25108-08	Adapter, straight	1	
3.3	8	12391-06	O ring	1	
3.3	9	24924-00	Valve, 2 spool (See Fig.# 3.7)	1	
3.3	9	24925-00	Valve, 3 spool (See Fig.# 3.7)	1	
3.3	10	15609-75	Hose assembly	1	
3.3	11	11425-01	Adapter	1	
3.3	12	11256-02	Adapter	1	
3.3	13	49835-01	Adapter	1	
3.3	14	15901-03	Adapter	1	

FIG #	ITEM #	PART #	NAME	# FOR ASSY.	UNIT
3.8	1	24477-01	Cylinder assembly (See Fig.# 3.9)	2	71/106
3.8	1	24477-02	Cylinder assembly (See Fig.# 3.9)	2	83/130
3.8	1	24477-03	Cylinder assembly (See Fig.# 3.9)	2	95/154
3.8	2	14859-06	Clamp, hose	2	
3.8	3	30354-46	Hose assmbly	1	71/106
3.8	3	30354-47	Hose assmbly	1	83/130
3.8	3	30354-48	Hose assmbly	1	95/154
3.8	4	24517-01	Cylinder assembly (See Fig.# 3.10)	1	71/106
3.8	4	24517-02	Cylinder assembly (See Fig.# 3.10)	1	83/130
3.8	4	24517-03	Cylinder assembly (See Fig.# 3.10)	1	95/154
3.8	5	24518-00	Tube assmbly	1	
3.8	6	24488-02	Fuse	1	
3.8	7	24488-01	Fuse	2	
3.8	8	25349-03	Tee	1	
3.8	9	30354-45	Hose assembly	1	
3.8	10	11813-06	Grommet	1	
3.8	11	15609-41	Hose assembly	1	
3.8	12	25377-08	Elbow, 90°	1	
3.8	13	12391-05	O ring	1	
3.8	14	21037-02	Regulator, flow	1	
3.8	15	12391-05	O ring	1	
3.8	16	25108-08	Adaptor	1	
3.8	17	12391-05	O ring	1	
3.8	18	24924-00	Valve, 2 spool (See Fig.# 3.7)	1	
3.8	18	24925-00	Valve, 3 spool (See Fig.# 3.7)	1	

FIG ITEM		PART #	NAME	# FOR ASSY.	UNIT
#	#				
3.13	1	300497-000	Stop	1	
3.13	2	300498-000	Protector, flow	1	
3.13	3	300474-000	O ring	4	
3.13	4	300499-000	Fitting	2	
3.13	5	300500-001	Hose assembly	1	
3.13	6	300486-001	Cylinder assy, RIGHT (See Fig.# 3.14)	1	71/155
3.13	6	300486-002	Cylinder assy, RIGHT (See Fig.# 3.14)	1	77/173
3.13	6	300486-003	Cylinder assy, RIGHT (See Fig.# 3.14)	1	83/189
3.13	7	300501-000	Fitting	1	
3.13	8	300502-000	Regulator, flow	1	
3.13	9	25416-01	Fitting	2	
3.13	10	12391-05	O ring	2	
3.13	11	30354-70	Hose assembly	1	71/155
3.13	11	30354-71	Hose assembly	1	77/173
3.13	11	30354-72	Hose assembly	1	83/189
3.13	12	22012-04	Elbow, 90°	1	
3.13	13	12391-05	O ring	1	
3.13	14	24924-00	Two spool control valve assembly (See Fig.# 3.7)	1	2 spool
3.13	14	24925-00	Three spool control valve assembly (See Fig.# 3.7)	1	3 spool
3.13	15	300500-002	Hose assembly	1	71/155
3.13	15	300500-003	Hose assembly	1	77/173
3.13	15	300500-004	Hose assembly	1	83/189
3.13	16	300465-001	Cylinder assembly (See Fig.# 3.15)	1	71/155
3.13	16	300465-002	Cylinder assembly (See Fig.# 3.15)	1	77/173
3.13	16	300465-003	Cylinder assembly (See Fig.# 3.15)	1	83/189
3.13	17	300503-000	Fitting	1	
3.13	18	300487-001	Cylinder assy, LEFT (See Fig.# 3.14)	1	71/155
3.13	18	300487-002	Cylinder assy, LEFT (See Fig.# 3.14)	1	77/173
3.13	18	300487-003	Cylinder assy, LEFT (See Fig.# 3.14)	1	83/189

FIG #	ITEM #	PART #	NAME	# FOR ASSY.	UNIT
3.18	1	NA	Body, coupler	2	
3.18	2	NA	Screw, set	1	
3.18	3K	NSS	O ring	2	
3.18	4K	NSS	Ring, backup	4	
3.18	5K	NSS	O ring	4	
3.18	6	NA	Body, rotating	1	
3.18	7	NA	Sleeve	1	
3.18	K	300630-000	Kit, seal (contains items marked with "K")	1	

NSS - Not Sold Separately
NA - Not Available

FIGURE # 3.23 SC-30 HYDRAULIC SCHEMATIC SYMBOLS

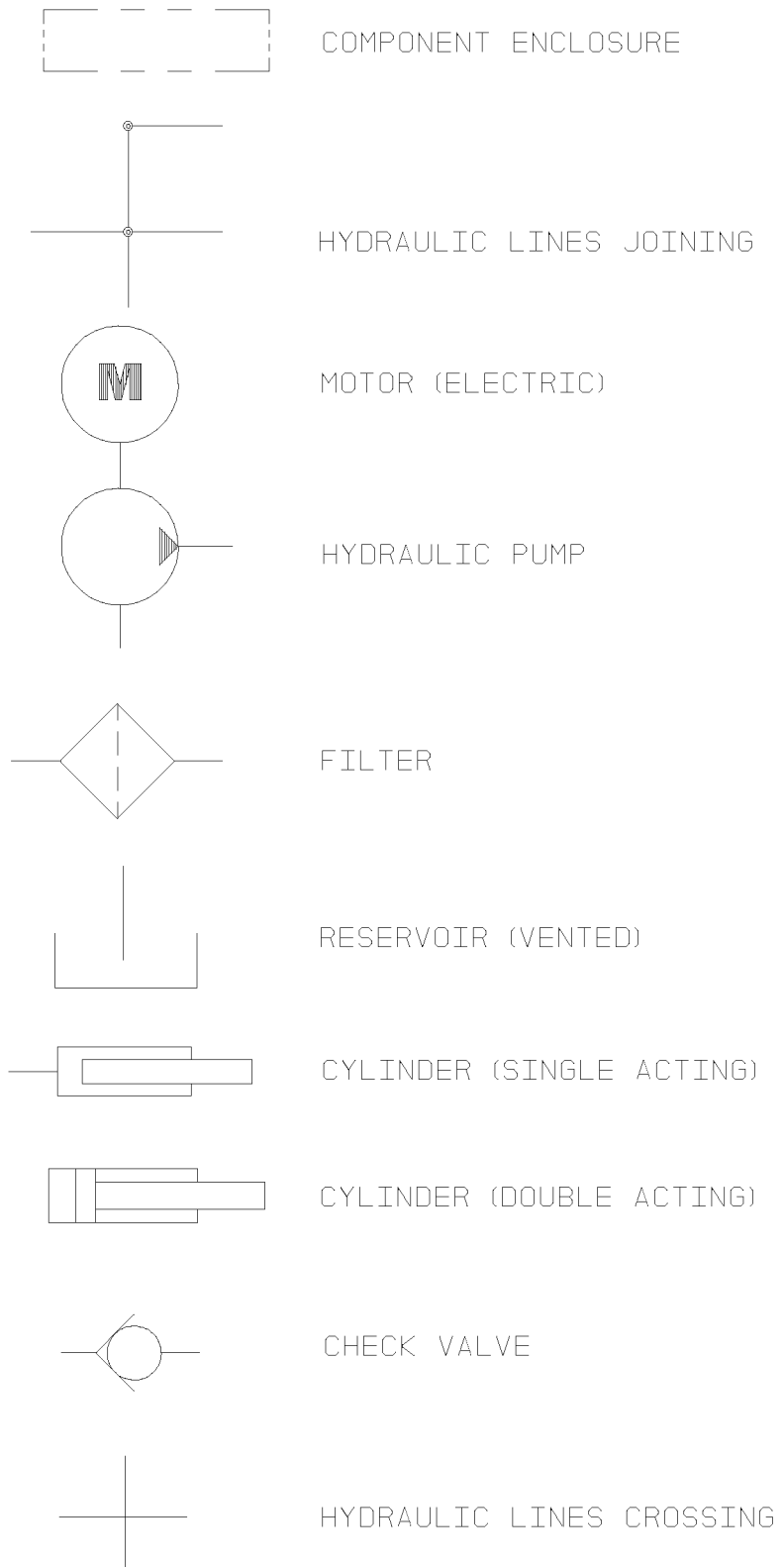


FIG	ITEM	PART #	NAME	2 SPOOL VALVE	3 SPOOL VALVE
#	#				
3.28	1	201639	Switch	2	3
3.28	2	201545	Nut	4	6
3.28	3	201553	Lockwasher	4	6
3.28	4	201624	Bracket	2	3
3.28	5	204250	Screw, machine	4	6
3.28	6	204259	Washer, flat	4	6
3.28	7	201578	Screw, machine	4	6
3.28	8	201625	Screw, spool	1	2
3.28	9	201623	Screw, spool	1	1
3.28	10	201533	Washer, shallow	2	3
3.28	11	201584	Spring	2	3
3.28	12	204251	Washer	2	3
3.28	13	201616	Washer, deep	2	3
3.28	14K	NSS	O ring	2	3
3.28	15	NA	Body	1	1
3.28	16	204252	Plug	1	1
3.28	17K	NSS	O ring	1	1
3.28	18	204253	Plug, check	2	3
3.28	19K	NSS	O ring	1	1
3.28	20	201618	Spring	2	3
3.28	21	201617	Plunger	2	3
3.28	22K	NSS	O ring	2	3
3.28	23	NA	Spool	1	2
3.28	24	NA	Spool	1	1
3.28	25	201650	Valve, relief	1	1
3.28	26K	NSS	O ring	1	1
3.28	27K	NSS	Ring, backup	1	1
3.28	28K	NSS	O ring	1	1
3.28	K	201628	Kit, seal (Contains items marked by "K")	1	
3.28	K	201629	Kit, seal (Contains items marked by "K")		1

FIG	ITEM			# FOR	
#	#	PART #	NAME	ASSY.	UNIT
3.33	1	11143-05	Screw, cap	4	
3.33	2K	NSS	Ring, wiper	1	
3.33	3	22247-00	Cap, cylinder	1	
3.33	4K	NSS	Shim, .005"	As Req'd	
3.33	4K	NSS	Shim, .020"	As Req'd	
3.33	5K	NSS	Bearing	1	
3.33	6K	NSS	Packing	1	
3.33	7K	NSS	Seal, rod	1	
3.33	8	22208-00	Ring, retainer	1	
3.33	9	11826-18	Ring, retainer	As Req'd	
3.33	10	22206-00	Guide	1	
3.33	11	22207-00	Stop	1	
3.33	12	22205-01	Rod, cylinder	1	71/100
3.33	12	22205-02	Rod, cylinder	1	83/124
3.33	12	22205-04	Rod, cylinder	1	90/138
3.33	12	22205-05	Rod, cylinder	1	96/150
3.33	12	22205-08	Rod, cylinder	1	105/168
3.33	12	22205-06	Rod, cylinder	1	108/174
3.33	13	22204-01	Sleeve, cylinder	1	71/100
3.33	13	22204-02	Sleeve, cylinder	1	83/124
3.33	13	22204-04	Sleeve, cylinder	1	90/138
3.33	13	22204-05	Sleeve, cylinder	1	96/150
3.33	13	22204-08	Sleeve, cylinder	1	105/168
3.33	13	22204-06	Sleeve, cylinder	1	108/174
3.33	14	12318-01	Plug, seal	1	
3.33	15	12391-01	O ring	1	
3.33	K	25589-00	Kit, seal	1	

(contains items marked with "K")

NSS - Not Sold Separately

FIG	ITEM			# FOR	
#	#	PART #	NAME	ASSY.	UNIT
3.38	1	25793-07	Fitting	6	
3.38	2	52-05062-00	Hose (specify length)	1	
3.38	3	15898-01	Fitting, bulkhead	2	
3.38	4	25623-00	Swivel, dual elbow (See Fig.# 3.39)	1	
3.38	5	52-05059-00	Hose, twin (specify length)	1	
3.38	6	24907-00	Hose reel assembly (See Fig.# 3.40)	1	
3.38	7	11009-06	Lockwasher	2	
3.38	8	11143-04	Screw, cap	2	
3.38	9	12391-06	O ring	4	
3.38	10	25108-06	Adapter	2	
3.38	11	25793-06	Swivel	2	
3.38	12	25444-00	Clamp, hose	3	
3.38	13	11009-05	Lockwasher	3	
3.38	14	11854-03	Screw, cap	3	
3.38	15	22012-04	Elbow, 90°	2	
3.38	16	24924-00	Two spool control valve assembly (See Fig.# 3.28)	1	
3.38	16	24925-00	Three spool control valve assembly (See Fig.# 3.28)	1	

SC-40
HYDRAULIC
SECTION

JUNE 1990

 PRIME-MOVER

 Return

FIG #	ITEM #	PART #	NAME	2 SPOOL VALVE	3 SPOOL VALVE
3.48	1	201639	Switch	2	3
3.48	2	201545	Nut	4	6
3.48	3	201553	Lockwasher	4	6
3.48	4	201624	Bracket	2	3
3.48	5	204250	Screw, machine	4	6
3.48	6	204259	Washer, flat	4	6
3.48	7	201578	Screw, machine	4	6
3.48	8	201625	Screw, spool	1	2
3.48	9	201623	Screw, spool	1	1
3.48	10	201533	Washer, shallow	2	3
3.48	11	201584	Spring	2	3
3.48	12	204251	Washer	2	3
3.48	13	201616	Washer, deep	2	3
3.48	14K	NSS	O ring	2	3
3.48	15	NA	Body	1	1
3.48	16	204252	Plug	1	1
3.48	17K	NSS	O ring	1	1
3.48	18	204253	Plug, check	2	3
3.48	19K	NSS	O ring	1	1
3.48	20	201618	Spring	2	3
3.48	21	201617	Plunger	2	3
3.48	22K	NSS	O ring	2	3
3.48	23	NA	Spool	1	2
3.48	24	NA	Spool	1	1
3.48	25	201650	Valve, relief	1	1
3.48	26K	NSS	O ring	1	1
3.48	27K	NSS	Ring, backup	1	1
3.48	28K	NSS	O ring	1	1
3.48	K	201628	Kit, seal (Contains items marked by "K")	1	
3.48	K	201629	Kit, seal (Contains items marked by "K")		1

FIG #	ITEM #	PART #	NAME	# FOR ASSY.	UNIT
3.53	1	28130-01	Tube, cylinder	1	71/150
3.53	1	28130-02	Tube, cylinder	1	83/180
3.53	1	28130-03	Tube, cylinder	1	87/189
3.53	1	28130-04	Tube, cylinder	1	90/198
3.53	1	28130-05	Tube, cylinder	1	95/210
3.53	1	28130-06	Tube, cylinder	1	102/225
3.53	2	30555-00	Retainer	1	
3.53	3	30556-00	Plunger	1	
3.53	4	30612-01	Spring	1	
3.53	5	13857-01	Ball	1	
3.53	6	28137-00	Piston	1	
3.53	7K	NSS	Ring, wear	1	
3.53	8	28141-01	Rod	1	71/150
3.53	8	28141-02	Rod	1	83/180
3.53	8	28141-03	Rod	1	87/189
3.53	8	28141-04	Rod	1	90/198
3.53	8	28141-05	Rod	1	95/210
3.53	8	28141-06	Rod	1	102/225
3.53	9K	NSS	O ring	1	
3.53	10K	NSS	Ring, backup	1	
3.53	11	28142-00	Bearing	1	
3.53	12K	NSS	Ring, wear	1	
3.53	13K	NSS	Seal	1	
3.53	14K	NSS	Wiper	1	
3.53	K	28200-00	Kit, seal	1	

(contains items marked with "K")

FIG #	ITEM #	PART #	NAME	# FOR ASSY.	UNIT
3.58	1	25639-00	Sleeve, cylinder	1	
3.58	2	24401-00	Head, cylinder	1	
3.58	3K	NSS	Wiper, rod	1	
3.58	4	25638-00	Gasket, cylinder cap	1	
3.58	5	25636-00	Cap, cylinder	1	
3.58	6	11009-08	Lockwasher	4	
3.58	7	14994-05	Screw, cap	4	
3.58	8	25643-01	Rod, 2°F/6°R cylinder	1	
3.58	9K	NSS	Ring, back-up	1	
3.58	10K	NSS	O ring	1	
3.58	11K	NSS	Rod, guide	1	
3.58	12K	NSS	Ring, wear	1	
3.58	13	14905-00	Washer, flat	2	
3.58	14K	NSS	Ring, back-up	2	
3.58	15K	NSS	O ring	1	
3.58	16K	NSS	O ring	1	
3.58	17K	NSS	Ring, back-up	1	
3.58	18K	NSS	Ring, wear	1	
3.58	19	25654-00	Piston, cylinder	1	
3.58	20	14908-16	Nut, jam	1	
3.58	K	25632-00	Kit, seal	1	

(contains items marked with "K")

FIG #	ITEM #	PART #	NAME	# FOR ASSY.	UNIT
4.5	1	11039-10	Seal, oil	1	
4.5	2	11205-01	Bearing	2	
4.5	3	11160-08	Fitting, grease	1	
4.5	4	22005-06	Washer	1	
4.5	5	11828-06	Lockwasher	1	
4.5	6	11829-06	Nut	1	
4.5	7	12298-00	Cap	1	
4.5	8	22001-01	Wheel, load Rubber SC-20	1	SC-20
4.5	8	22050-01	Wheel, load poly SC-20/30	1	SC-20/30
4.5	8	22050-02	Wheel, load poly SC-40	1	SC-40
4.5	9	22002-00	Tire, Rubber SC-20	1	SC-20
4.5	9	22006-00	Tire, poly SC-20/30	1	SC-20/30
4.5	9	25612-00	Tire, poly SC-40	1	SC-40
4.5	10	22003-00	Hub, wheel SC-20 (FOR RUBBER TIRE)	1	SC-20
4.5	10	22046-00	Hub, wheel SC-20/30 (POLY)	1	SC-20/30
4.5	10	22003-00	Hub, wheel SC-40	1	SC-40

FIG #	ITEM #	PART #	NAME	# FOR ASSY.	UNIT
5.4	1	24514-00	Head, sheave	1	
5.4	1	22285-00	Head, sheave (WITH INTERNAL REEVING)	1	
5.4	2	11898-02	Ring, retainer	1	
5.4	3	22286-00	Pin (WITH INTERNAL REEVING)	2	
5.4	4	22283-00	Sheave, hose (WITH INTERNAL REEVING)	2	
5.4	5	22282-00	Shaft	2	
5.4	6	11160-09	Fitting, grease	2	
5.4	7	22281-00	Spacer, sheave	2	
5.4	8	22211-00	Sheave, chain	2	
5.4	9	11523-10	Bearing	2	
5.4	10	14835-50	Chain, lift	2	71/106
5.4	10	14835-51	Chain, lift	2	83/130
5.4	10	14835-52	Chain, lift	2	95/154
5.4	11	11143-03	Screw, cap	2	
5.4	12	11009-06	Lockwasher	2	
5.4	13	22258-00	Pin, chain	2	
5.4	14	11271-07	Screw, set	2	
5.4	15	22257-00	Anchor, chain	2	
5.4	16	11261-12	Nut	4	
5.4	17	24517-01	Cylinder assembly (See Fig.# 3.10)	1	71/106
5.4	17	24517-02	Cylinder assembly (See Fig.# 3.10)	1	83/130
5.4	17	24517-03	Cylinder assembly (See Fig.# 3.10)	1	95/154

FIG ITEM		PART #	NAME	# FOR	
#	#			ASSY.	UNIT
5.9	1	21089-01	Bearing, mast	2	
5.9	2	11857-03	Shim, .050" washer	As Req'd	
5.9	3	22031-01	Column, outer	1	71/106
5.9	3	22031-02	Column, outer	1	83/130
5.9	3	22031-04	Column, outer	1	90/144
5.9	3	22031-05	Column, outer	1	96/156
5.9	3	22031-06	Column, outer	1	105/174
5.9	3	22031-07	Column, outer	1	108/180

FIG ITEM		PART #	NAME	# FOR ASSY.	UNIT
#	#				
5.14	1K	NSS	Pin, roll	1	
5.14	2K	NSS	Handle	1	
5.14	3K	NSS	Spring	1	
5.14	4K	NSS	Pin	1	
5.14	5	NA	Fork	1	
5.14	K	200843	Pin assembly (contains items marked with "K")	1	

NSS - Not Sold Separately

NA - Not Available

FIG ITEM		PART #	NAME	# FOR ASSY.	UNIT
#	#				
5.19	1	11854-04	Screw, cap	2	
5.19	2	11009-05	Lockwasher	2	
5.19	3	300464-000	Sheave, chain	2	
5.19	4	300463-000	Ring, retainer	2	
5.19	5	300462-001	Chain, lift	2	71/155
5.19	5	300462-002	Chain, lift	2	77/173
5.19	5	300462-003	Chain, lift	2	83/189
5.19	6	300461-000	Link, chain connector	4	
5.19	7	300459-000	Anchor, chain	4	
5.19	8	300458-000	Nut	4	
5.19	9	300465-001	Cylinder, freelif t (See Fig.# 3.15)	1	71/155
5.19	9	300465-002	Cylinder, freelif t (See Fig.# 3.15)	1	77/173
5.19	9	300465-003	Cylinder, freelif t (See Fig.# 3.15)	1	83/189
5.19	10	300466-000	Head, cross	1	
5.19	11	300467-000	Guard	1	

FIG ITEM		PART #	NAME	# FOR ASSY.	UNIT
#	#				
5.23	1	-----	Outer column assembly (See Fig.# 5.24)	1	
5.23	2	11073-23	Pin, roll	2	
5.23	3	-----	Inner column assembly (See Fig.# 5.25)	1	
5.23	4	-----	Lift frame assembly (See Fig.# 5.27)	1	
5.23	5	21372-00	Fork, 30 inch long (See Fig.# 5.29)	2	
2.23	5	21372-01	Fork, 36 inch long (See Fig.# 5.29)	2	
5.23	5	21372-02	Fork, 42 inch long (See Fig.# 5.29)	2	
5.23	5	21372-03	Fork, 48 inch long (See Fig.# 5.29)	2	
5.23	6	22258-00	Pin	2	

FIG #	ITEM #	PART #	NAME	# FOR ASSY.	UNIT
5.28	1	204275	Insert, upper	2	
5.28	2	NA	Frame	1	
5.28	3	204277	Screw, cap	1	
5.28	4	204283	Screw, cap	2	
5.28	5	204282	Washer, flat	2	
5.28	6	204280	Insert, lower	2	
5.28	7	204281	Retainer	2	
5.28	8	204276	Elbow, 90°	2	
5.28	9	204268	Cylinder assembly	1	
5.28	10	204279	Pin, clevis	2	
5.28	11	204278	Pin, cotter hair	2	
5.28	12	-----	Anchor, cylinder	1	

FIG ITEM		PART #	NAME	# FOR ASSY.	UNIT
#	#				
5.33	1	11047-09	Screw, socket head flat	1	
5.33	2	11523-04	Bearing, needle	2	
5.33	3	21056-00	Sheave, chain	2	
5.33	4	11073-21	Pin, roll	2	
5.33	5	22214-01	Lift cylinder assy (See Fig.# 3.33)	1	71/100
5.33	5	22214-02	Lift cylinder assy (See Fig.# 3.33)	1	83/124
5.33	5	22214-04	Lift cylinder assy (See Fig.# 3.33)	1	90/138
5.33	5	22214-05	Lift cylinder assy (See Fig.# 3.33)	1	96/150
5.33	5	22214-08	Lift cylinder assy (See Fig.# 3.33)	1	105/168
5.33	5	22214-06	Lift cylinder assy (See Fig.# 3.33)	1	108/174
5.33	6	11261-12	Nut	4	
5.33	7	21055-00	Anchor, chain	2	
5.33	8	13281-01	Ring, retainer	4	
5.33	9	13280-00	Pin, lift chain	2	
5.33	10	52-07960-00	Chain, lift (11 feet)	As Req'd	71/100
5.33	10	52-07960-00	Chain, lift (13 feet)	As Req'd	83/124
5.33	10	52-07960-00	Chain, lift (14 feet)	As Req'd	90/138
5.33	10	52-07960-00	Chain, lift (15 feet)	As Req'd	96/150
5.33	10	52-07960-00	Chain, lift (16 feet)	As Req'd	105/168
5.33	10	52-07960-00	Chain, lift (17 feet)	As Req'd	108/174
5.33	11	11160-09	Fitting, grease	2	
5.33	12	21057-00	Shaft, sheave	2	
5.33	13	21114-00	Head, sheave	1	

FIG ITEM		PART #	NAME	# FOR	
#	#			ASSY.	UNIT
5.38	1	22266-11	Column, outer	1	71/155
5.38	1	22266-12	Column, outer	1	77/173
5.38	1	22266-13	Column, outer	1	83/189
5.38	2	300451-000	Shim	As Req'd	
5.38	3	300452-000	Bearing	2	

FIG ITEM		PART #	NAME	# FOR ASSY.	UNIT
#	#				
5.43	1	204275	Insert, upper	2	
5.43	2	NA	Frame	1	
5.43	3	204277	Screw, cap	1	
5.43	4	204283	Screw, cap	2	
5.43	5	204282	Washer, flat	2	
5.43	6	204280	Insert, lower	2	
5.43	7	204281	Retainer	2	
5.43	8	204276	Elbow, 90°	2	
5.43	9	204268	Cylinder assembly	1	
5.43	10	204279	Pin, clevis	2	
5.43	11	204278	Pin, cotter hair	2	
5.43	12		Anchor, cylinder	1	

FIG ITEM		PART #	NAME	# FOR	UNIT
#	#			ASSY.	
5.47	1	11047-15	Screw, socket head	4	
5.47	2	25018-00	Bar, clamp	1	
5.47	3	21111-02	Block, .0359" spacer	2	
5.47	4	21111-01	Block, .375" spacer	2	
5.47	5	11854-04	Screw, cap	4	
5.47	6	25038-02	Bar, sheave head tie	1	
5.47	7	-----	Lift cylinder assembly (See Fig.# 5.48)	1	
5.47	8	21089-02	Bearing	2	
5.47	9	11857-05	Shim, .050"	As Req'd	
5.47	9	11857-12	Shim, .025"	As Req'd	
5.47	10	25033-01	Column, inner	1	71/106
5.47	10	25033-02	Column, inner	1	83/130
5.47	10	25033-03	Column, inner	1	90/144
5.47	10	25033-04	Column, inner	1	96/156
5.47	10	25033-05	Column, inner	1	108/180

FIG ITEM		PART #	NAME	# FOR ASSY.	UNIT
#	#				
5.52	1	-----	Column, outer (See Fig.# 5.53)	1	
5.52	2	-----	Column, intermediate (See Fig.# 5.54)	1	
5.52	3	14992-09	Screw, cap	1	
5.52	4	-----	Column, inner (See Fig.# 5.55)	1	
5.52	5	-----	Frame, lift (See Fig.# 5.57)	1	
5.52	6	25008-04	Fork, 48 inch long (See Fig.# 5.59)	2	
5.52	7	30554-00	Pin	4	
5.52	8	21090-00	Stop, column	2	

FIG	ITEM				# FOR	UNIT
#	#	PART #	NAME		ASSY.	
5.57	1	25593-01	Backrest, load		1	
			Load backrest	25309-02	1	
			Lift frame	28148-00	1	
5.57	2	11143-07	Screw, cap		4	
5.57	3	49986-03	Washer, thrust		4	
5.57	4	28146-01	Shaft		2	
5.57	5	49993-01	Race, inner		2	
5.57	6	49985-01	Roller		2	
5.57	7	14993-12	Washer, shim		As Req'd	
5.57	8	25411-00	Sideshifter assembly (See Fig.# 5.58)		1	
5.57	9	11857-05	Shim, .050"		As Req'd	
5.57	9	11857-12	Shim, .025"		As Req'd	
5.57	10	21089-02	Bearing		4	

ALPHABETICAL INDEX

<u>NAME</u>	FIGURE #	PAGE #
A,B,C		
Connector Assembly	2.11	2.19
Control Wiring Harness Assembly	2.4	2.5
D		
Decal and Parts Assembly	0.1	0.1
Drive Motor Assembly	1.5	1.9
Drive Motor Assembly (5BC48JB890)	2.13	2.23
Dual Elbow Swival Assembly	3.11	3.19
E		
EV-100 Electrical Schematic	2.2	2.3
EV-100 Electrical Schematic Symbols	2.3	2.4
EV-100 SCR Control and Contactor Panel Assembly	2.6	2.9
EV-100 SCR Control Panel	2.7	2.11
EV-100 SCR Forward and Rearward Contactor Assembly	2.8	2.13
EV-100 SCR Master Control Switch	2.1	2.1
EV-100 SCR 1A Contactor Assembly	2.9	2.15
F		
Fork Assembly	5.8	5.15
Frame Assembly	4.1	4.1
G		
Gleason Hose Reel Assembly	3.12	3.21
H		
Handle and Linkage for Control Valve	4.3	4.5
Handle Assembly	1.2	1.3
Hose Reel and Related Parts	3.10	3.17
Hydraulic Schematic	3.1	3.1
Hydraulic Schematic Symbols	3.2	3.2
Hydraulic Pump and Valve Installation	3.3	3.3
I,J,K,L		
Lift Frame Assembly	5.6	5.11
Lift Hydraulic Assembly	3.7	3.11
Lift/Travel Limit Switches	2.10	2.17
Lift Pump and Motor Assembly	3.4	3.5
Load Wheel Assembly	4.5	4.9
M		
Multiple Disc Brake Transmission Assembly	1.4	1.7
N		
Numerical Index		99.1
O,P		
Part #1 Transmission Assembly	1.3	1.5
Parts list and Service Reference Index	0.2	0.3
Power Component Wiring	2.5	2.7
Pump Assembly	3.5	3.7
Pump Motor Assembly (D-4608214XWF07)	2.12	2.21
Q,R,S		
Shield Assembly	4.2	4.3
Sideshifter Assembly	5.7	5.13
Slide Link Installation	4.4	4.7
Special Tools and Lubrications	6.1	6.1

CLICK HERE TO **DOWNLOAD** THE COMPLETE MANUAL

- Thank you very much for reading the preview of the manual.
- You can download the complete manual from: www.heydownloads.com by clicking the link below



- Please note: If there is no response to CLICKING the link, please download this PDF first and then click on it.

CLICK HERE TO **DOWNLOAD** THE COMPLETE MANUAL

FIGURE # 1.3 22:1 PART # I TRANSMISSION ASSEMBLY

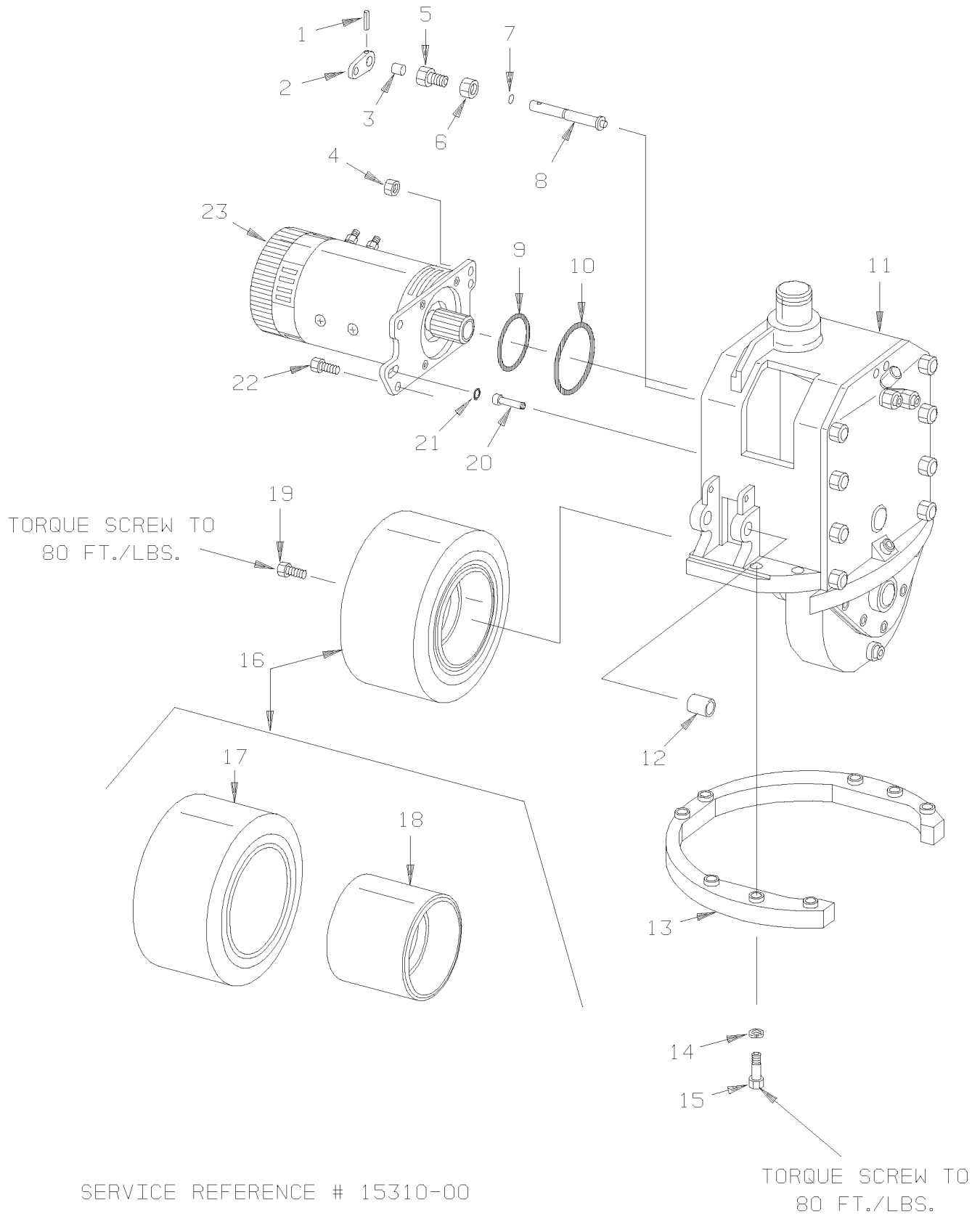
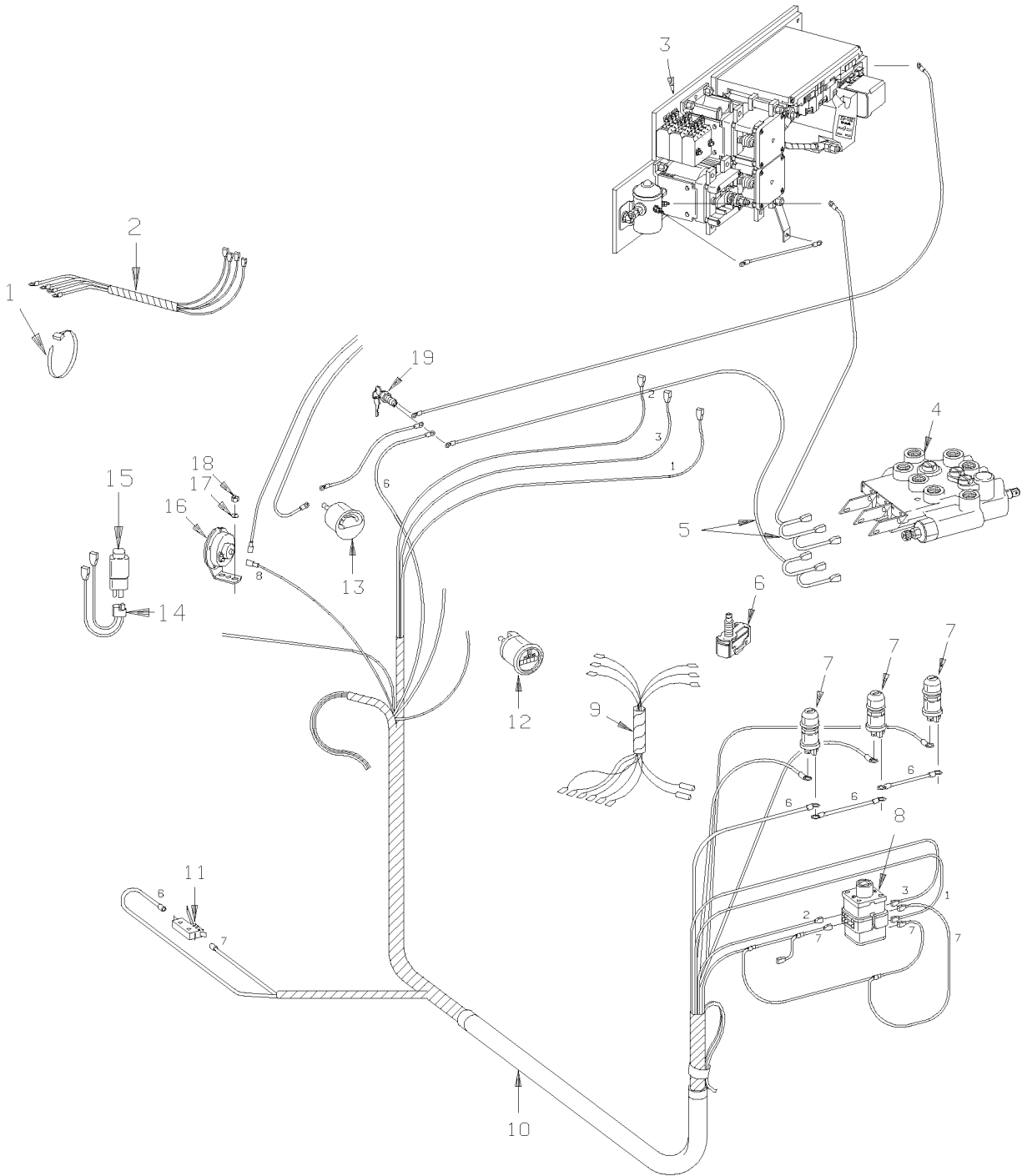
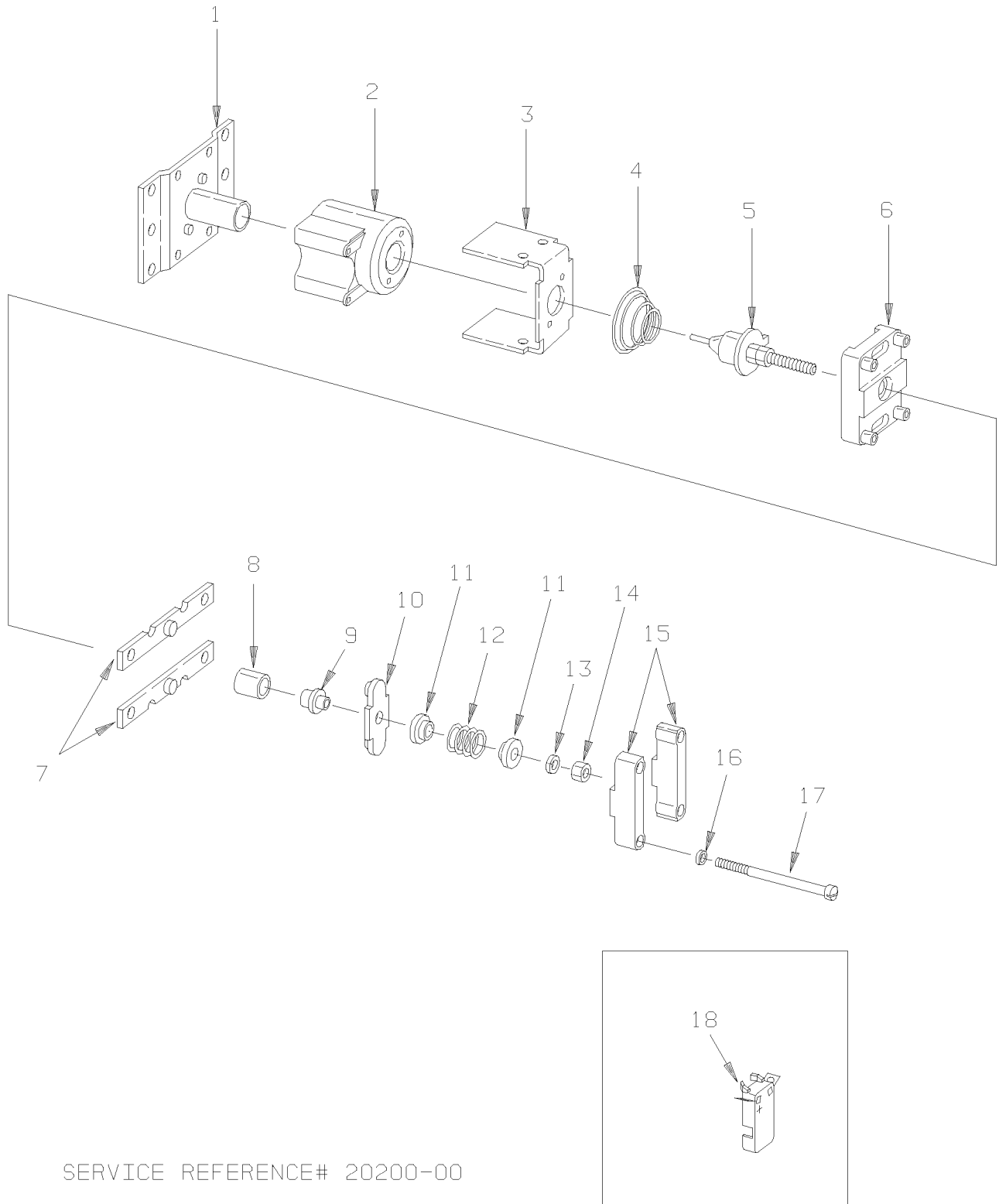


FIGURE # 2.4 CONTROL WIRING HARNESS ASSEMBLY



SERVICE REFERENCE # 20200-00

FIGURE # 2.9 EV-100 1A CONTACTOR ASSEMBLY (27693-02)



SERVICE REFERENCE# 20200-00



FIGURE # 3.1 HYDRAULIC SCHEMATIC

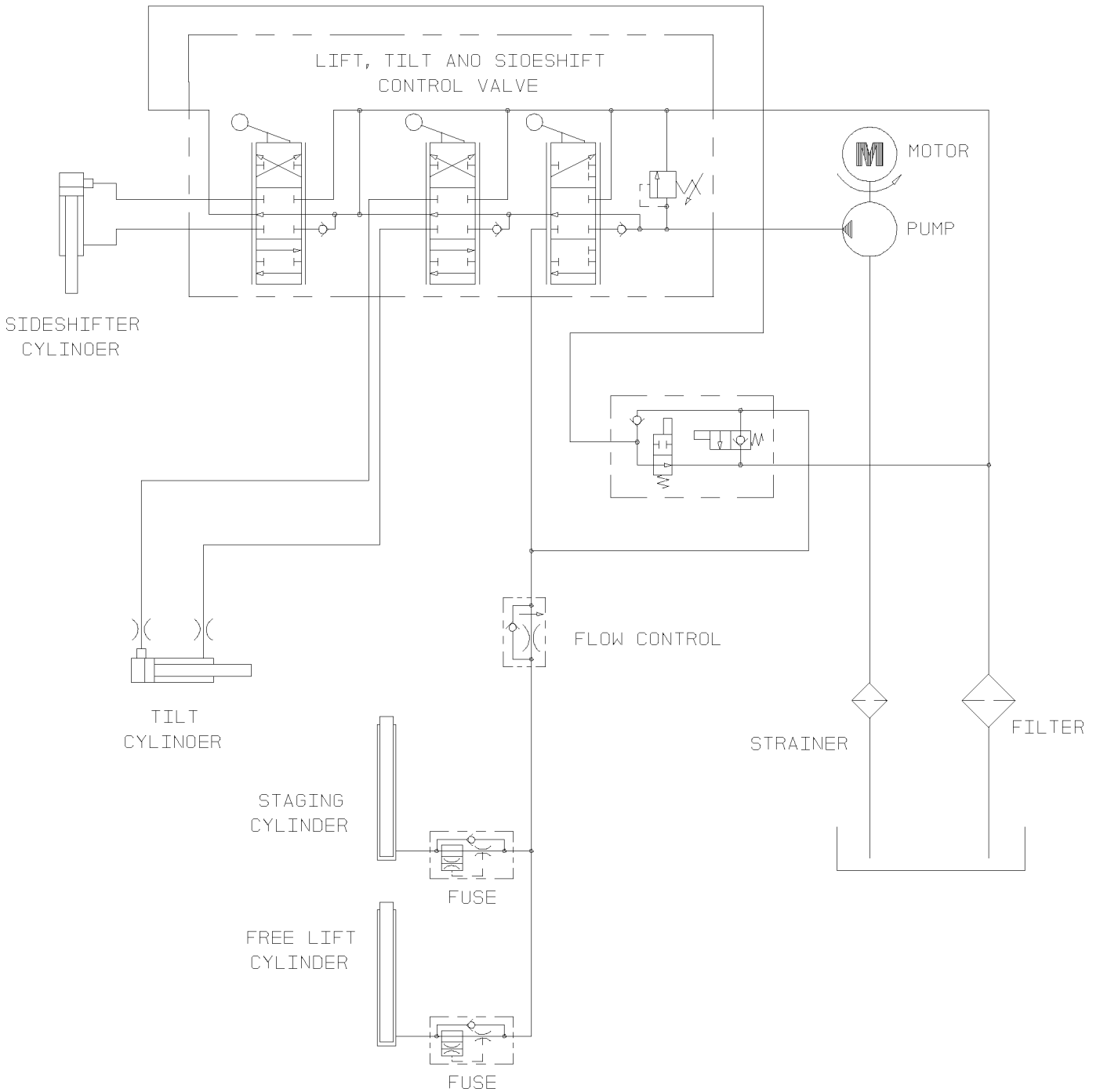


FIGURE # 3.7 LIFT HYDRAULIC ASSEMBLY

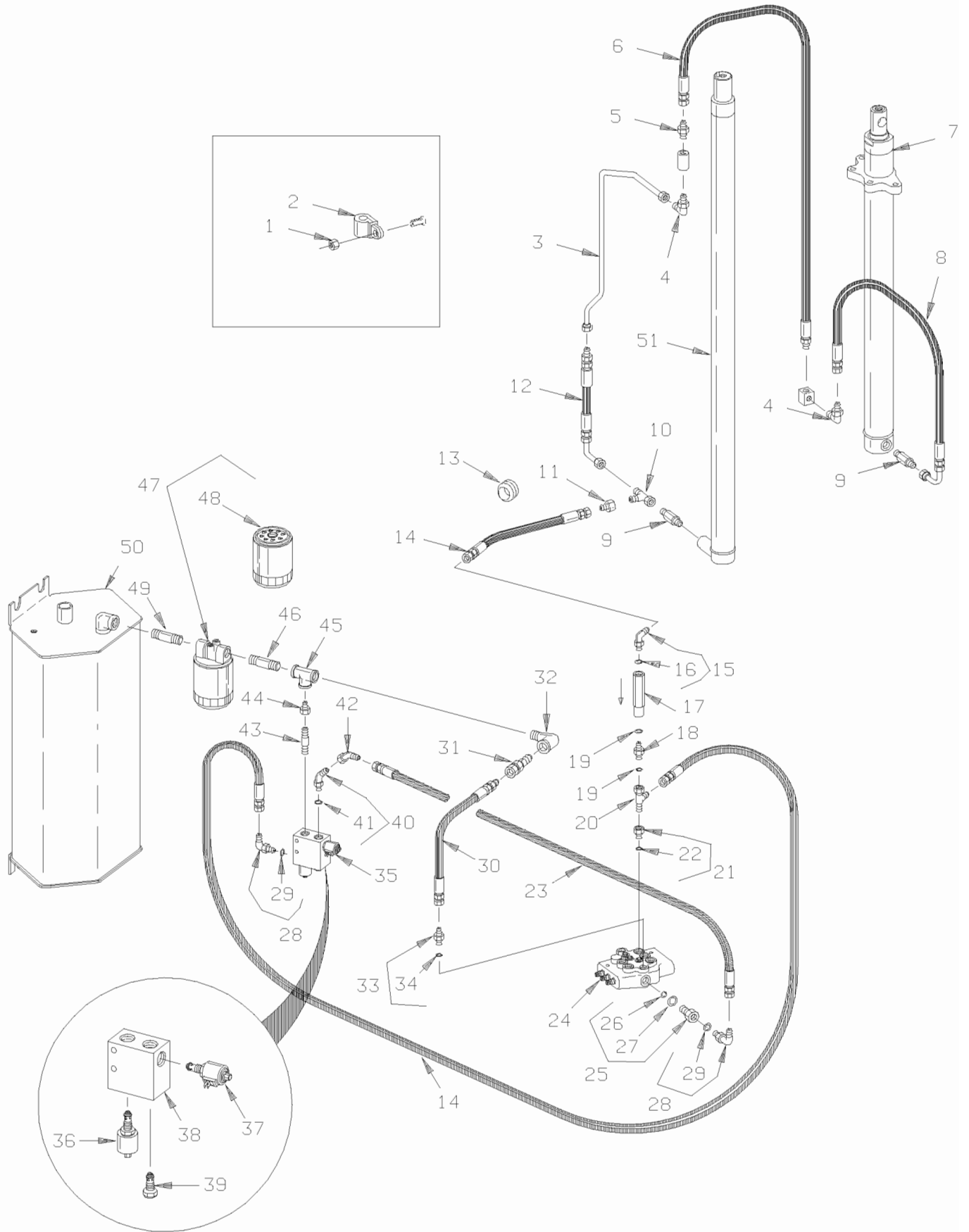


FIGURE # 4.3 HANDLE AND LINKAGE FOR CONTROL VALVE

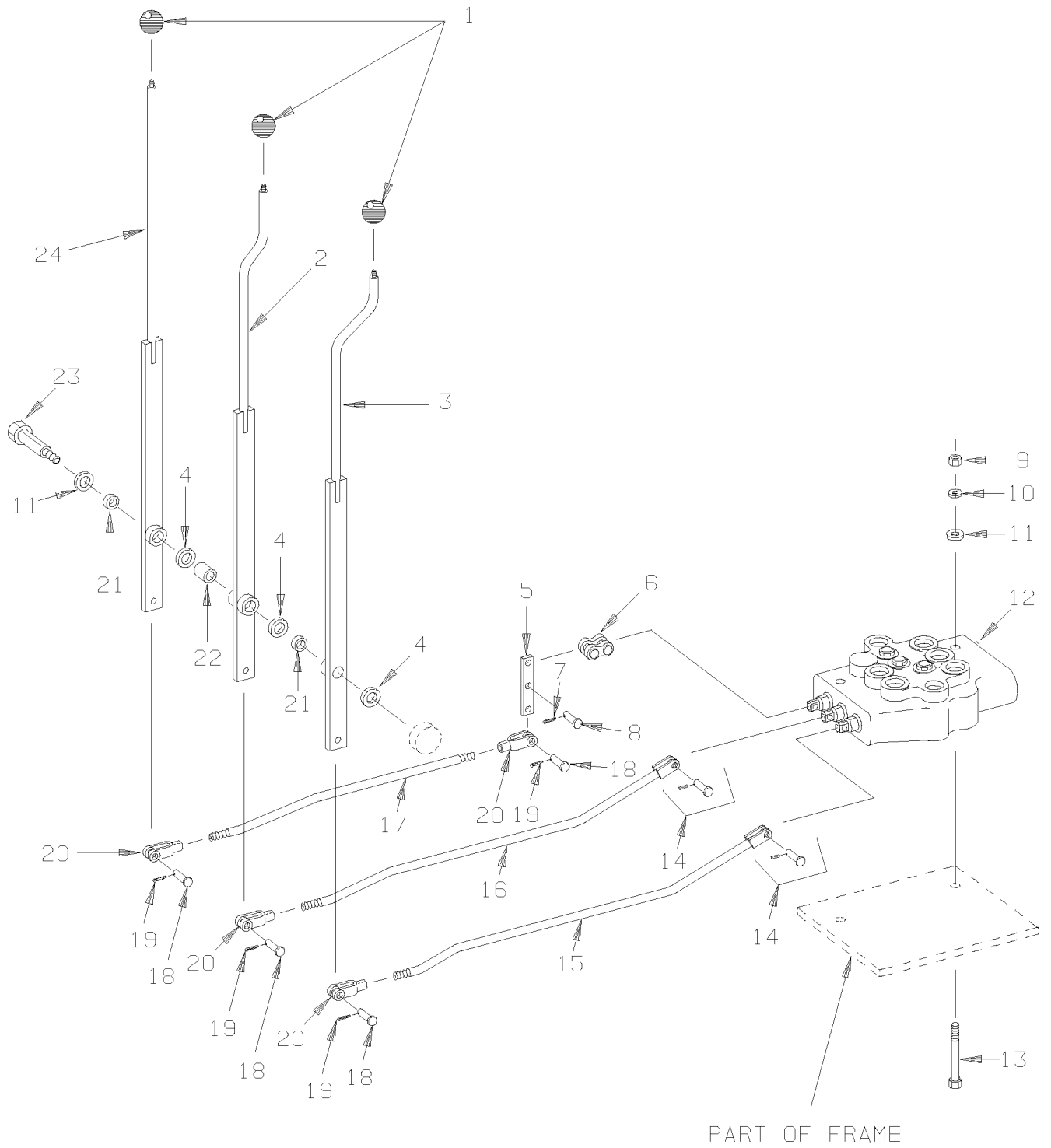


FIGURE # 5.3 THREE STAGE INTERMEDIATE COLUMN ASSEMBLY

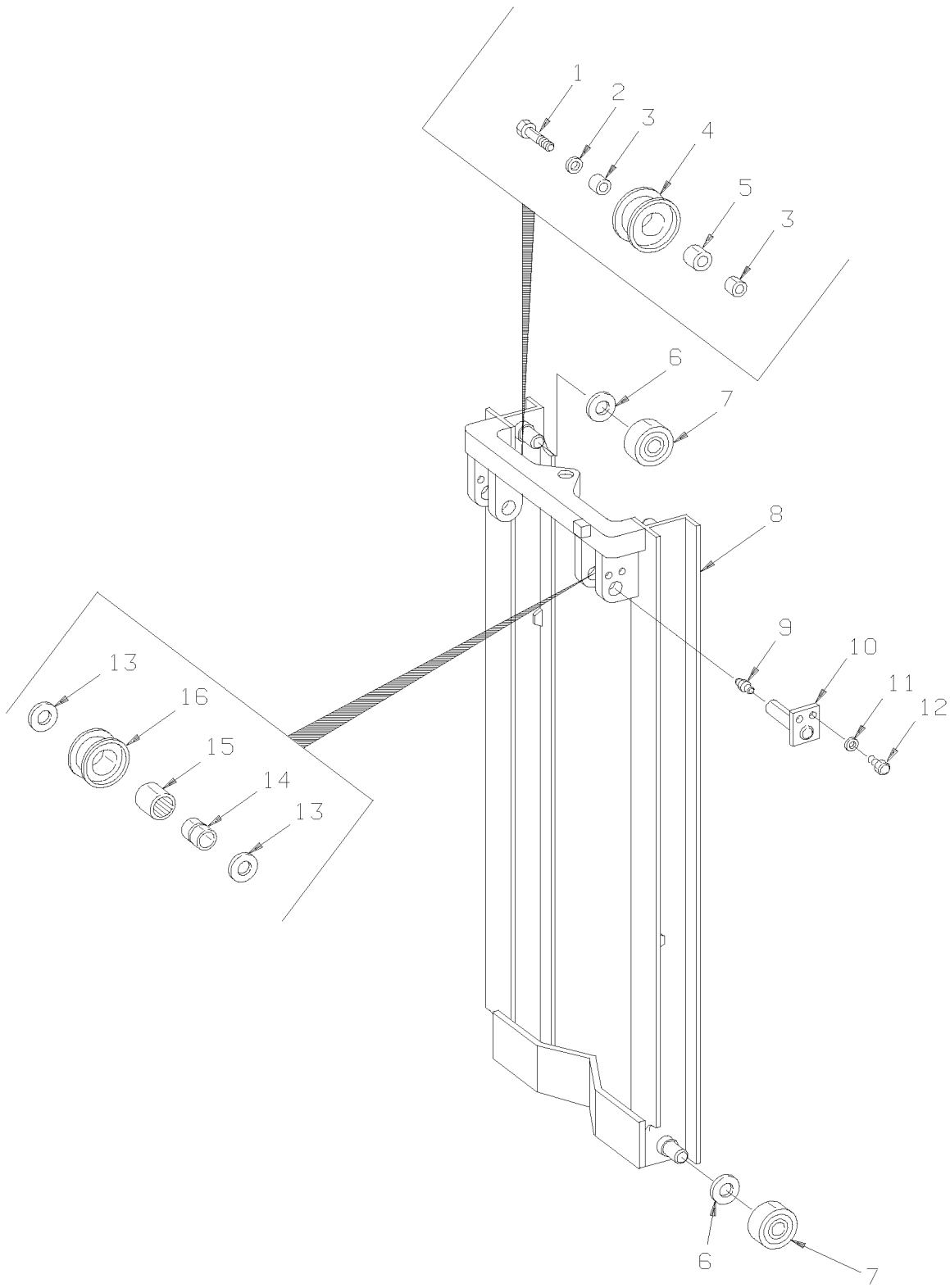
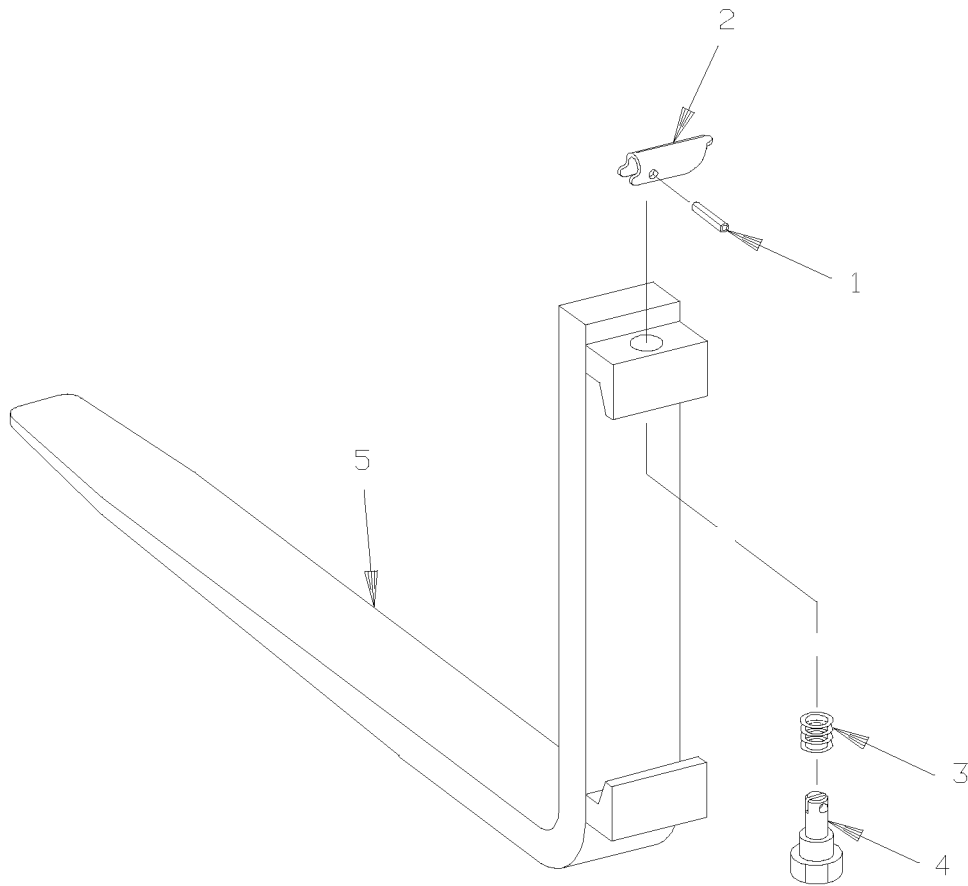


FIGURE # 5.8 FORK ASSEMBLY (25008-04)



LONG ISLAND SC-40 ELECTRIC TRUCK

NUMERICAL INDEX

<u>PART #</u>	<u>FIGURE #</u>	<u>ITEM #</u>	<u>PART #</u>	<u>FIGURE #</u>	<u>ITEM #</u>
25004-00	1.3	18	25744-00	1.4	9
25008-04	5.1	6	25745-00	1.4	10
25018-06	3.10	10	25793-06	3.10	11
25094-01	2.5	7	25793-07	3.10	1
25095-00	2.5	5	26200-00	3.3	13
25103-00	3.3	3	26205-01	2.4	13
25106-01	3.7	18	26389-00	5.5	9
25106-03	3.3	21	26493-01	5.3	5
25108-07	3.13	5	26519-02	5.5	8
25108-08	3.3	17	26617-03	5.3	3
25108-08	3.7	5	27161-00	1.4	31
25108-08	3.7	33	27163-00	1.4	28
25108-08	3.13	3	27164-00	1.5	6
25189-02	4.1	14	27200-00	1.4	36
25203-03	4.1	13	27209-00	1.2	3
25204-03	4.1	15	27210-00	1.2	2
25226-00	4.1	11	27211-00	1.2	18
25275-06	2.6	4	27211-00	2.4	10
25300-00	1.3	20	27212-00	1.2	1
25332-01	2.4	1	27214-00	1.2	35
25332-01	2.10	9	27214-00	2.4	9
25349-03	3.3	14	27215-00	1.2	36
25349-03	3.7	20	27215-00	2.4	6
25349-04	3.7	10	27245-01	1.2	27
25363-03	3.13	7	27523-00	1.2	10
25377-08	3.7	15	27529-02	1.1	34
25427-01	2.4	16	27533-00	1.2	31
25442-04	3.7	42	27541-00	1.2	7
25444-00	3.10	12	27543-00	1.2	11
25458-01	3.3	23	27544-00	1.2	16
25496-00	3.3	5	27544-00	2.1	17
25496-00	3.7	50	27547-00	1.2	29
25612-00	4.5	9	27548-00	1.1	14
25623-00	3.10	4	27549-00	1.2	34
25632-00	3.14	K	27551-02	1.2	32
25635-01	3.13	8	27555-01	1.2	33
25635-01	4.4	8	27556-01	1.2	9
25636-00	3.14	5	27691-01	2.6	8
25638-00	3.14	4	27692-00	2.6	9
25639-00	3.14	1	27693-02	2.6	16
25643-01	3.14	8	27697-00	2.6	24
25651-00	4.4	7	27697-00	2.6	25
25653-00	4.4	4	27697-01	2.6	23
25654-00	3.14	19	27906-00	1.5	1
25660-01	4.4	6	27906-00	2.5	15
25660-02	4.4	5	28102-00	5.8	8

FIGURE # 0.1 DECALS AND PARTS ASSEMBLY

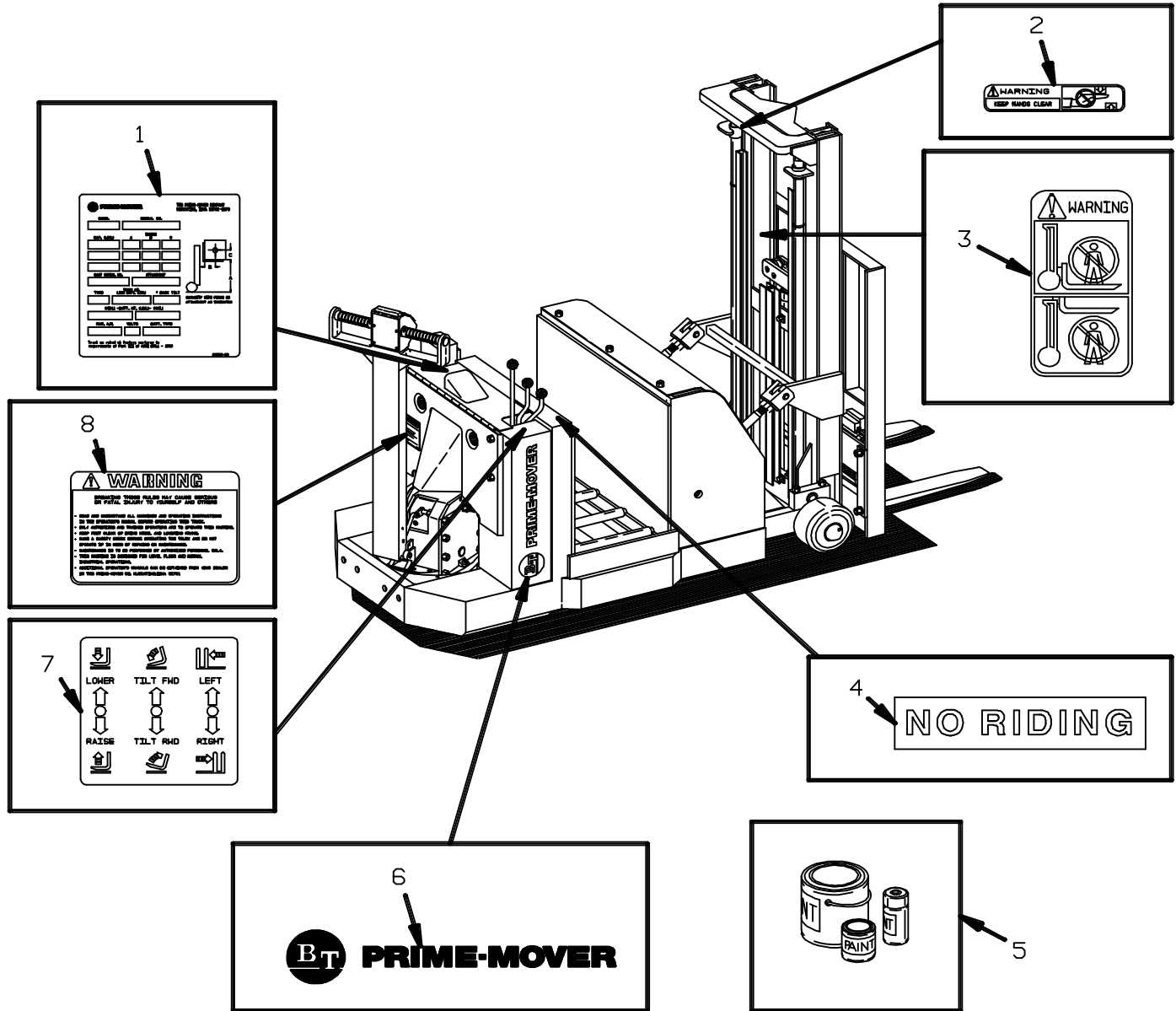


FIGURE # 1.5 TRANSMISSION ASSEMBLY, PART # II

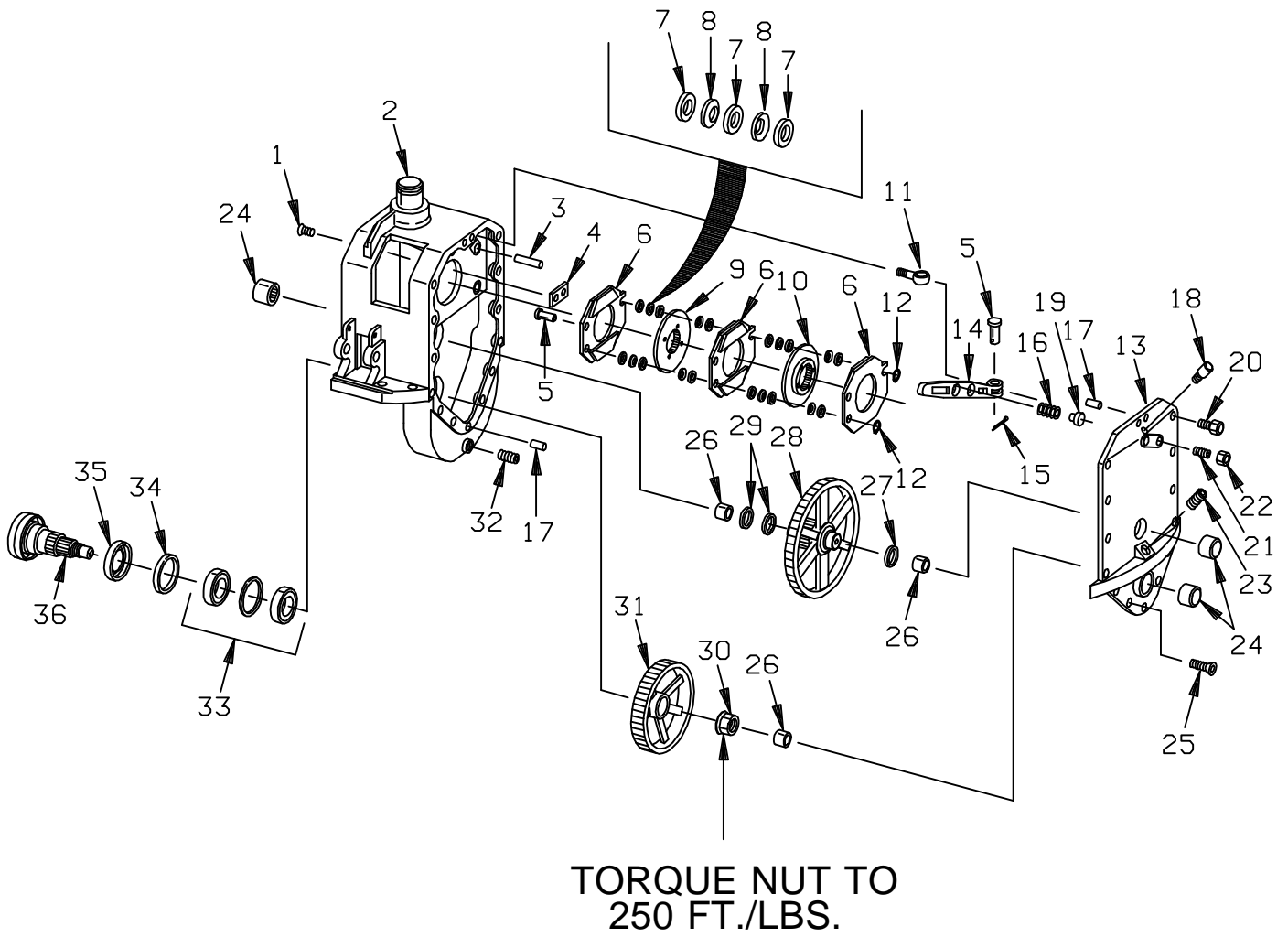


FIGURE # 2.5 CONTACTOR PANEL ASSEMBLY (12 VOLT 22196-00, 24 VOLT 22196-01)

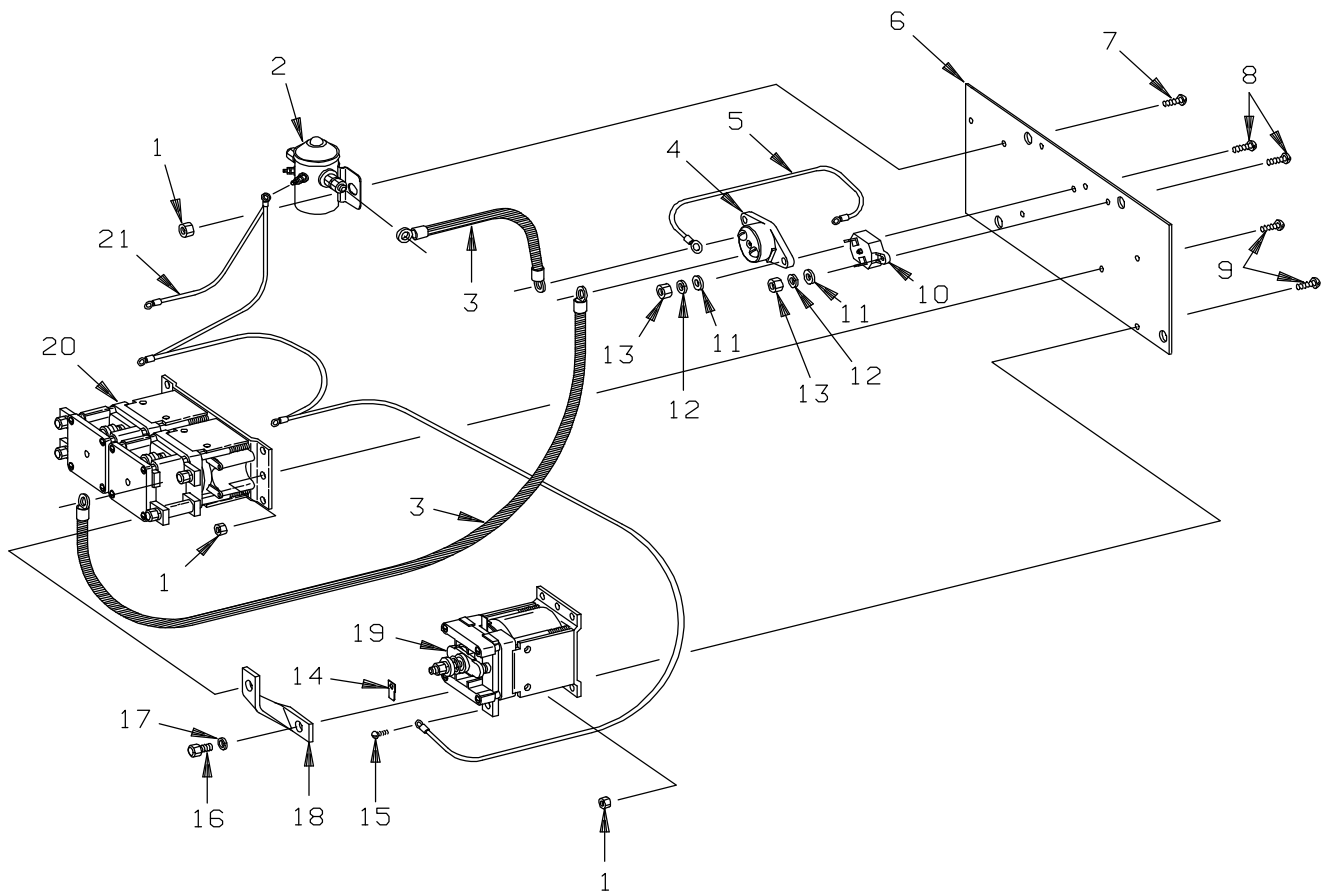


FIGURE # 2.11 TRANSISTOR POWER COMPONENT WIRING

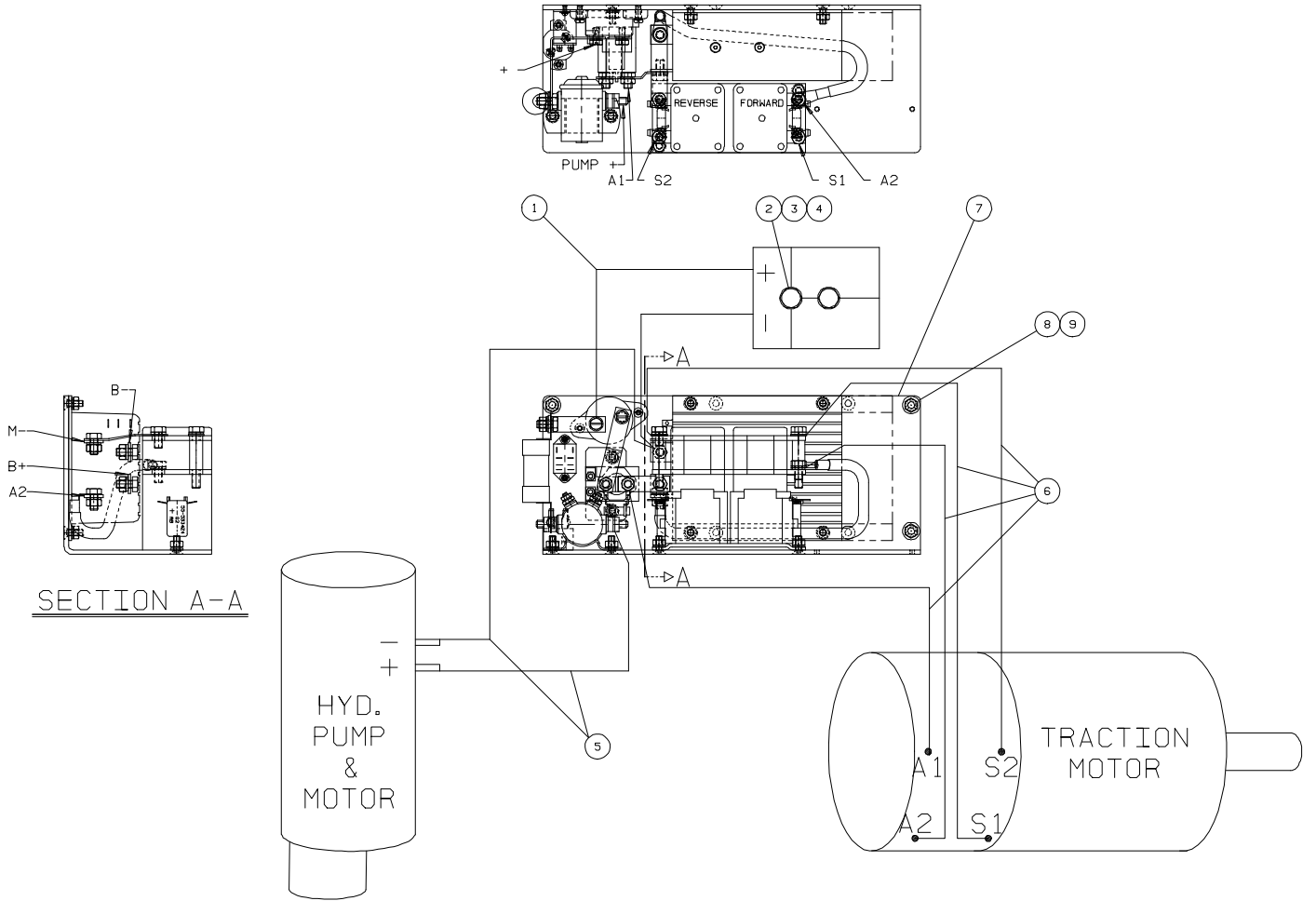


FIGURE # 2.16 PUMP MOTOR ASSEMBLY

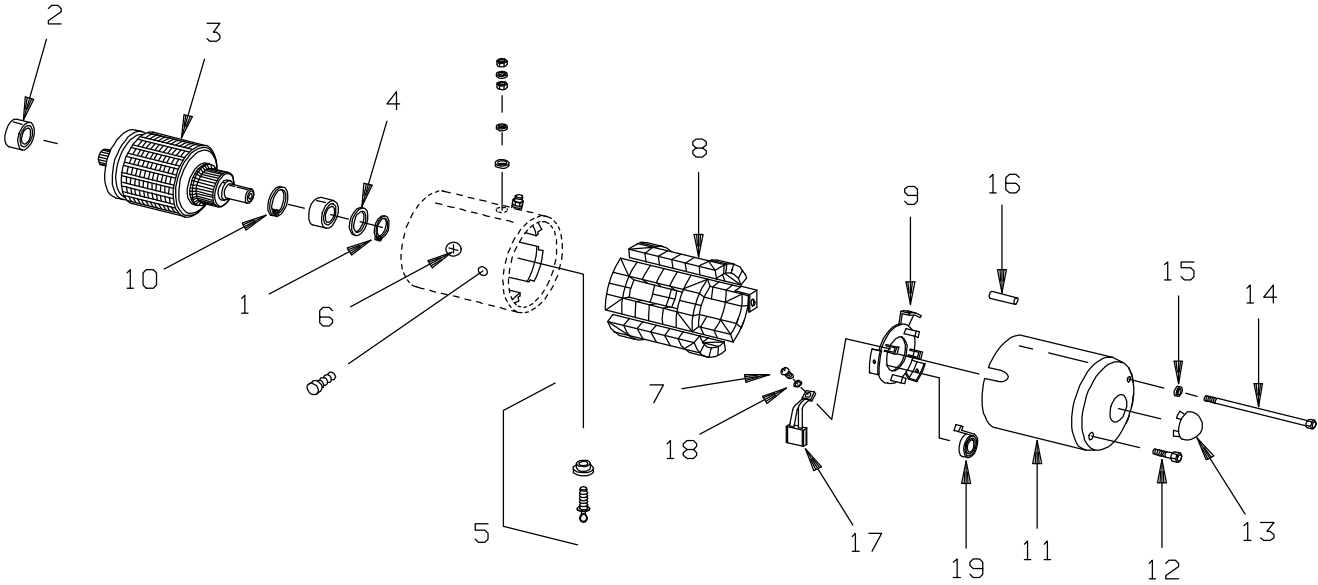




FIGURE # 3.6 SC-20 BOSH PUMP AND MOTOR ASSEMBLY (12 VOLT, 21872-00)
(24 VOLT, 21873-00)

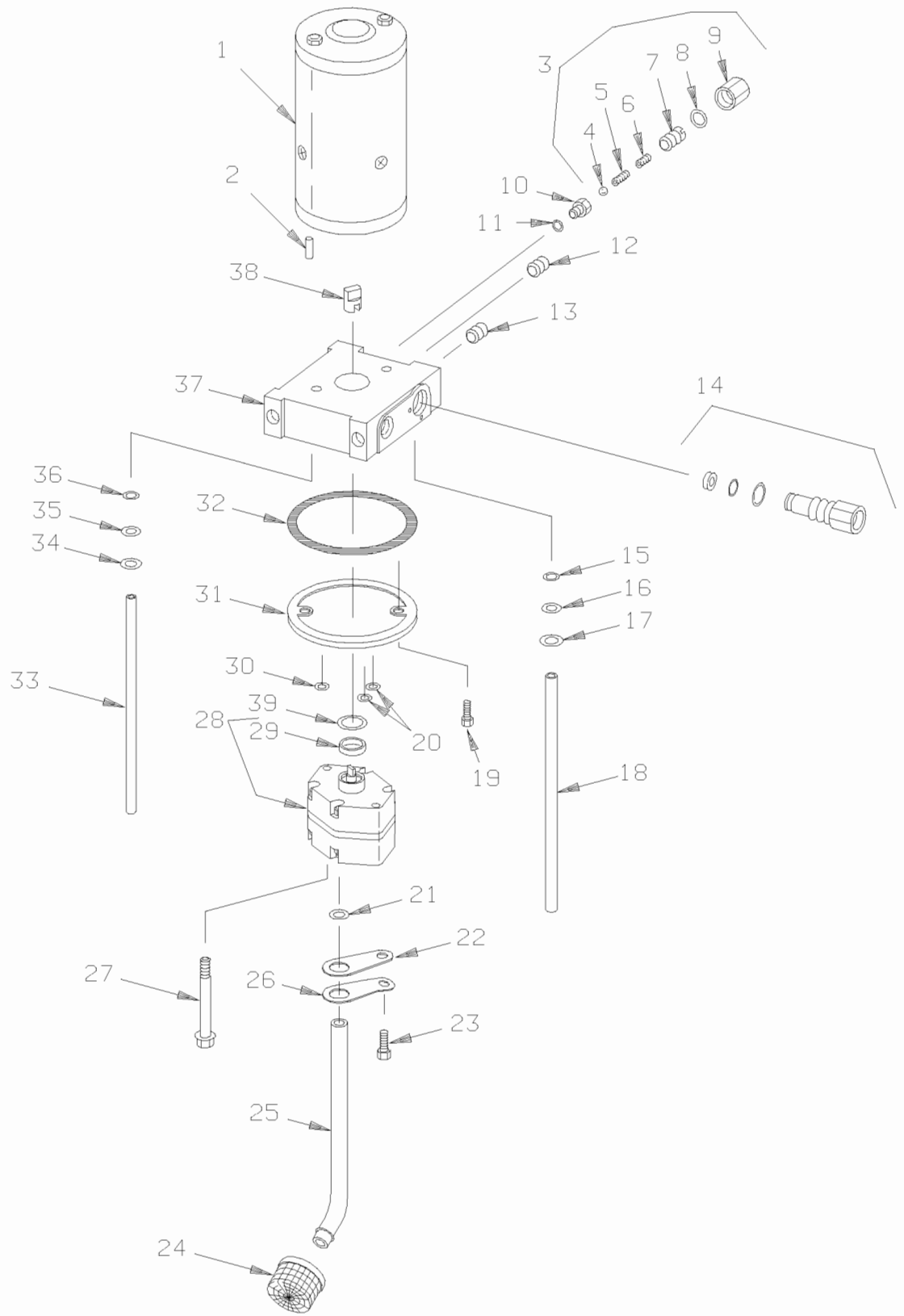


FIGURE # 3.11 SC-20 TWO STAGE CYLINDER AND HOSE INSTALLATION

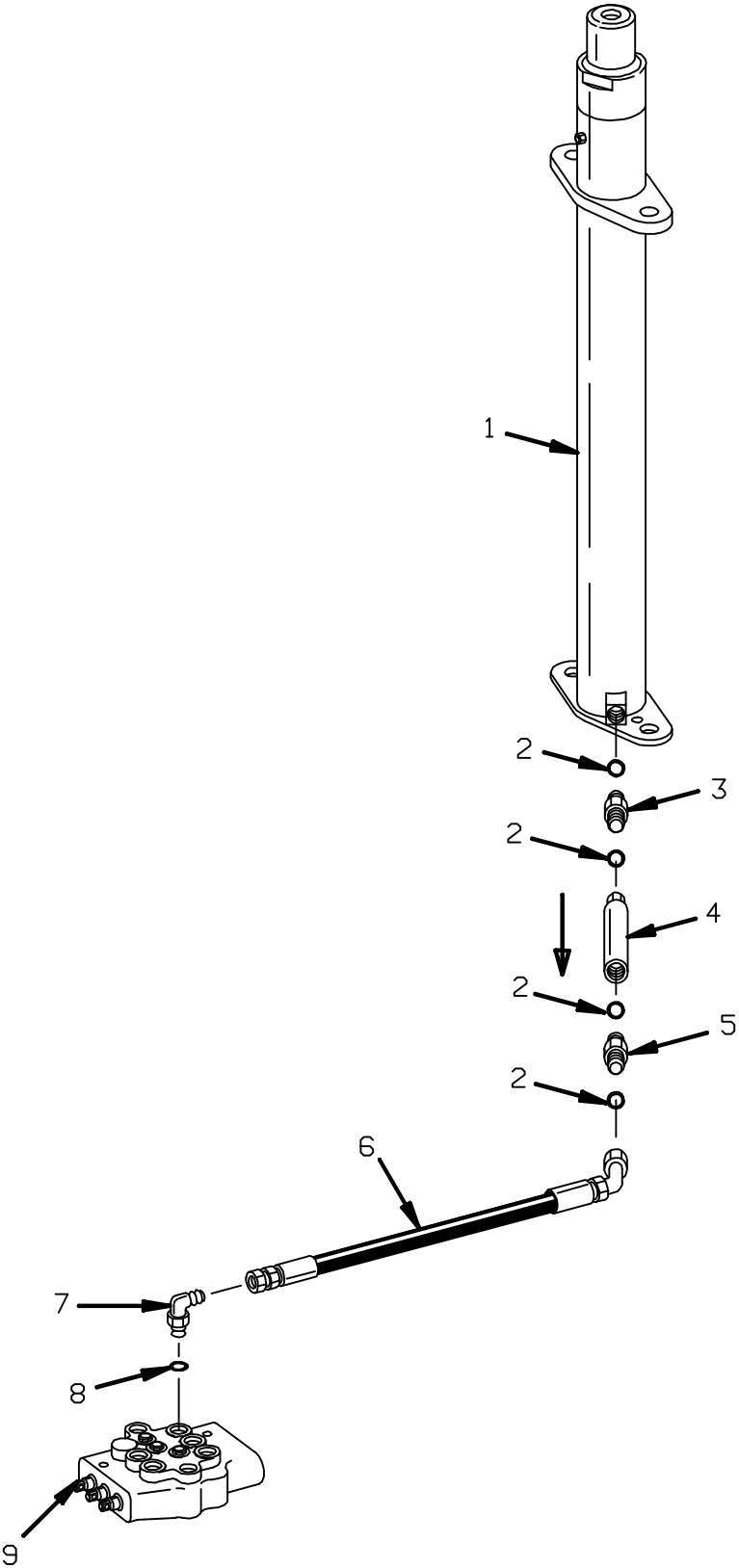


FIGURE # 3.16 SC-20 TWO STAGE FULL FREELIFT SIDESHIFTER HYDRAULIC ASSEMBLY

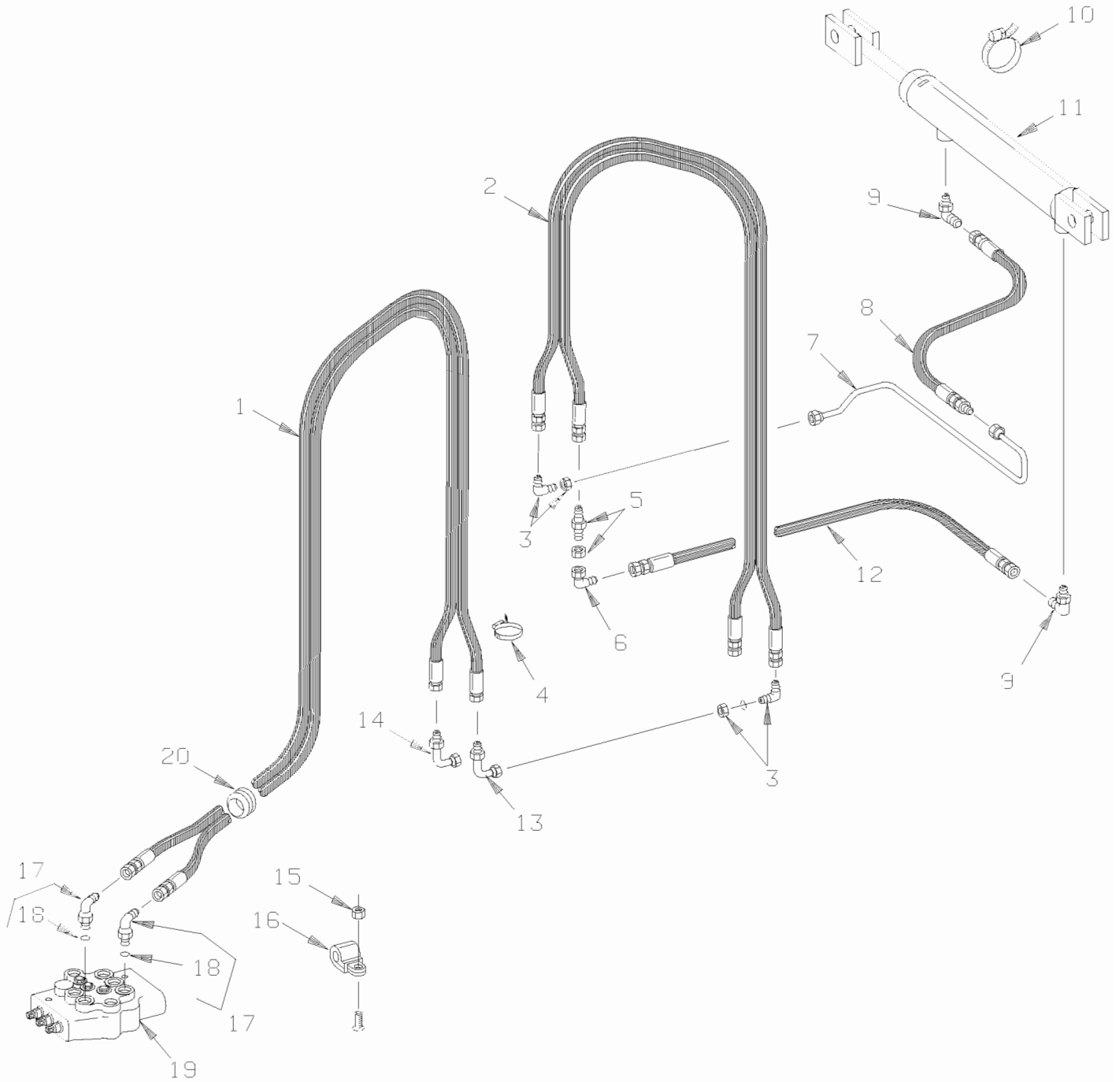


FIGURE # 3.21 SC-20 TILT CYLINDER ASSEMBLY (22015-01)

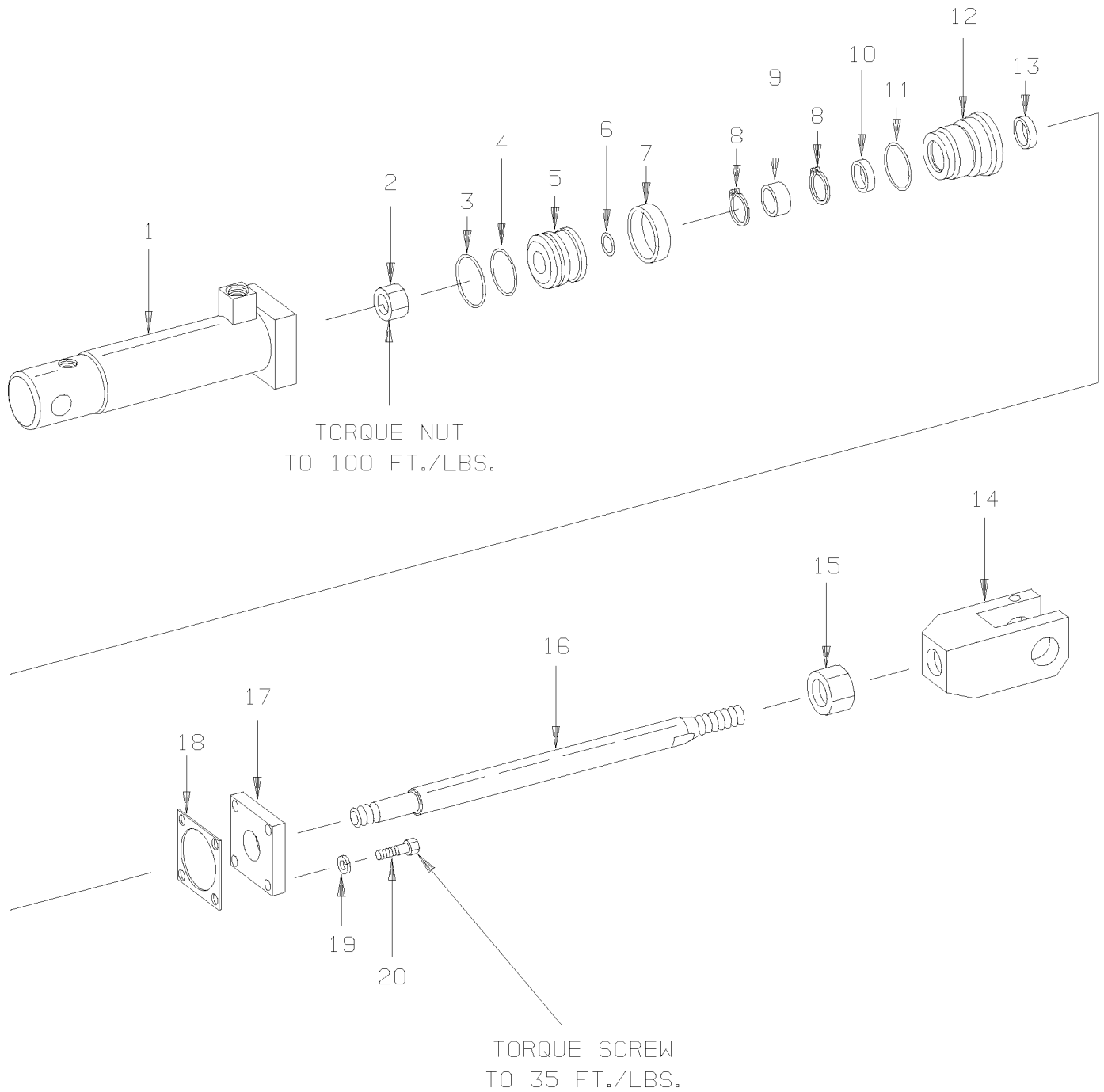


FIGURE # 3.25 SC-30 HYDRAULIC RESERVOIR ASSEMBLY

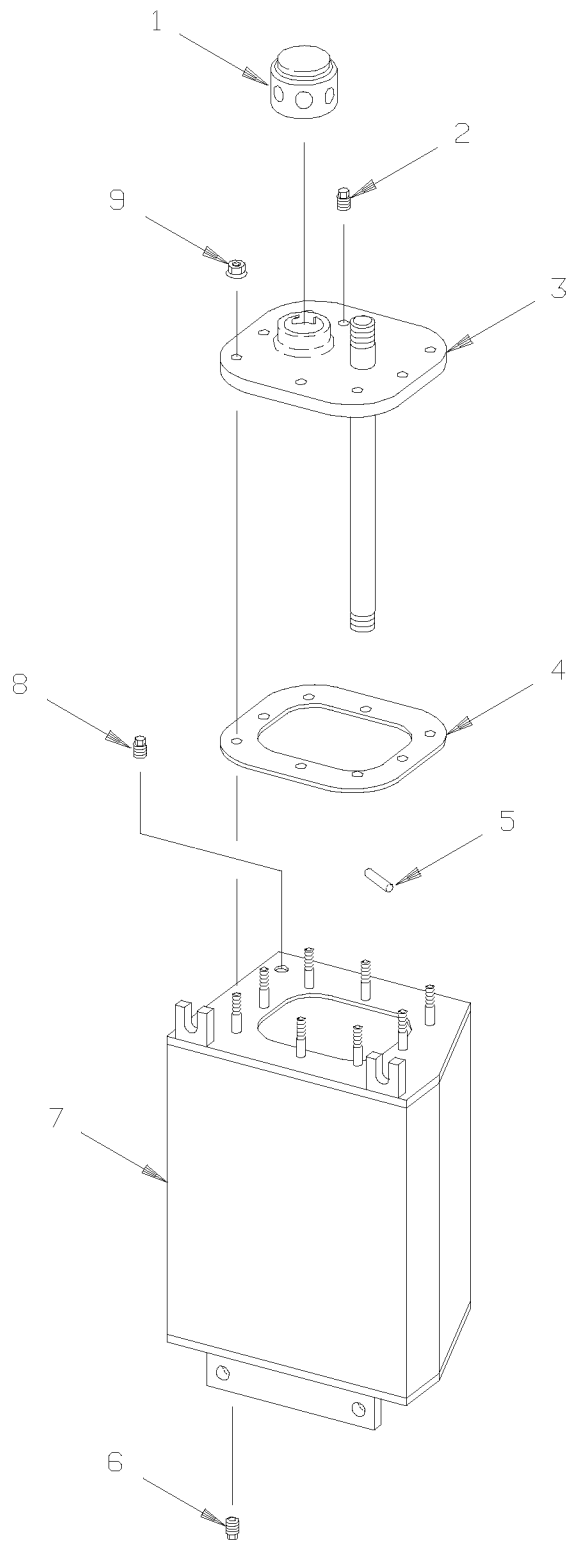


FIGURE # 3.30 SC-30 TWO STAGE LIFT CYLINDER ASSEMBLY, 1.125 INCH (24477-XX)

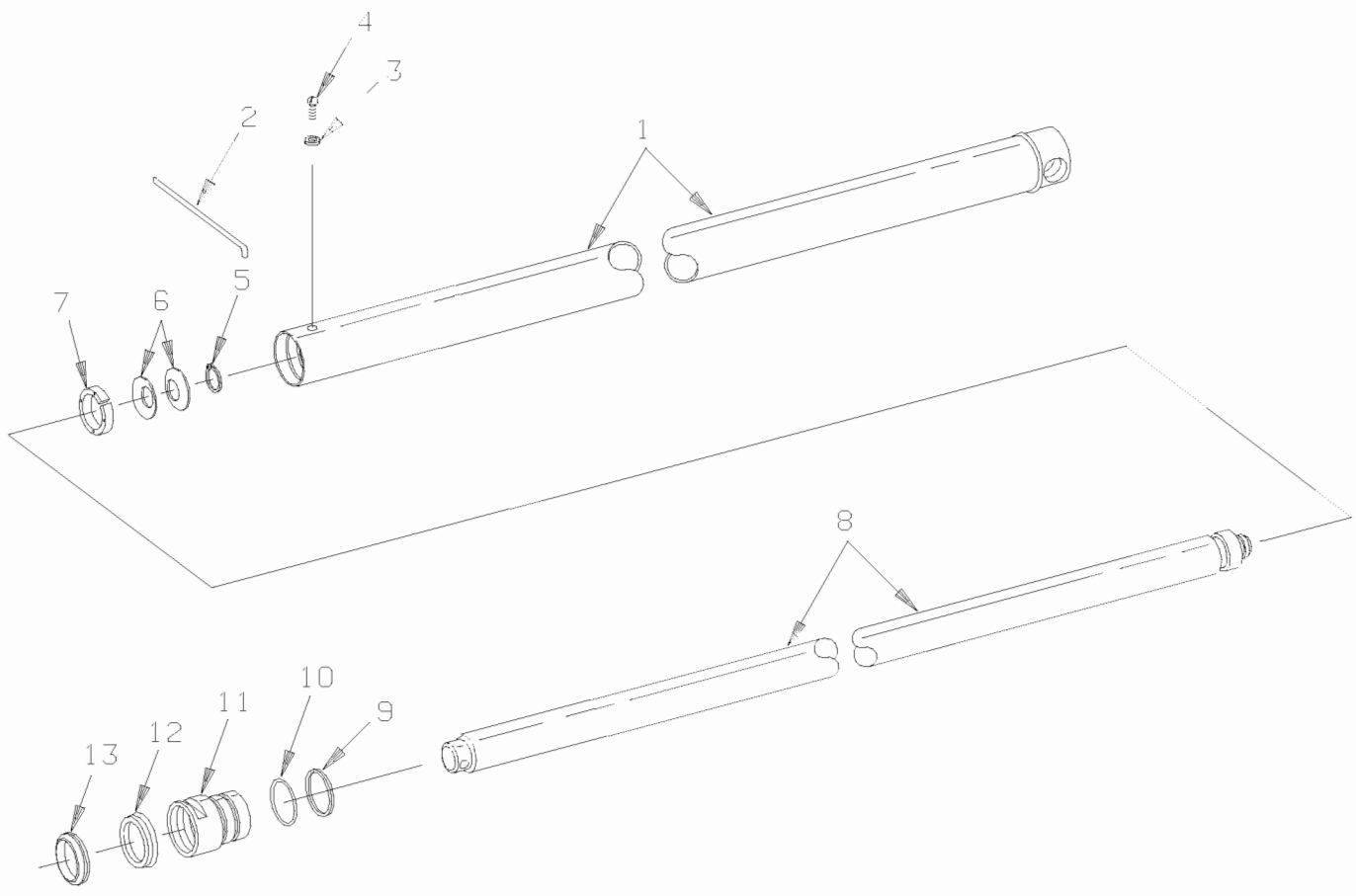


FIGURE # 3.35 SC-30 THREE STAGE FREELIFT CYLINDER ASSEMBLY (300486-000)
(300487-000)

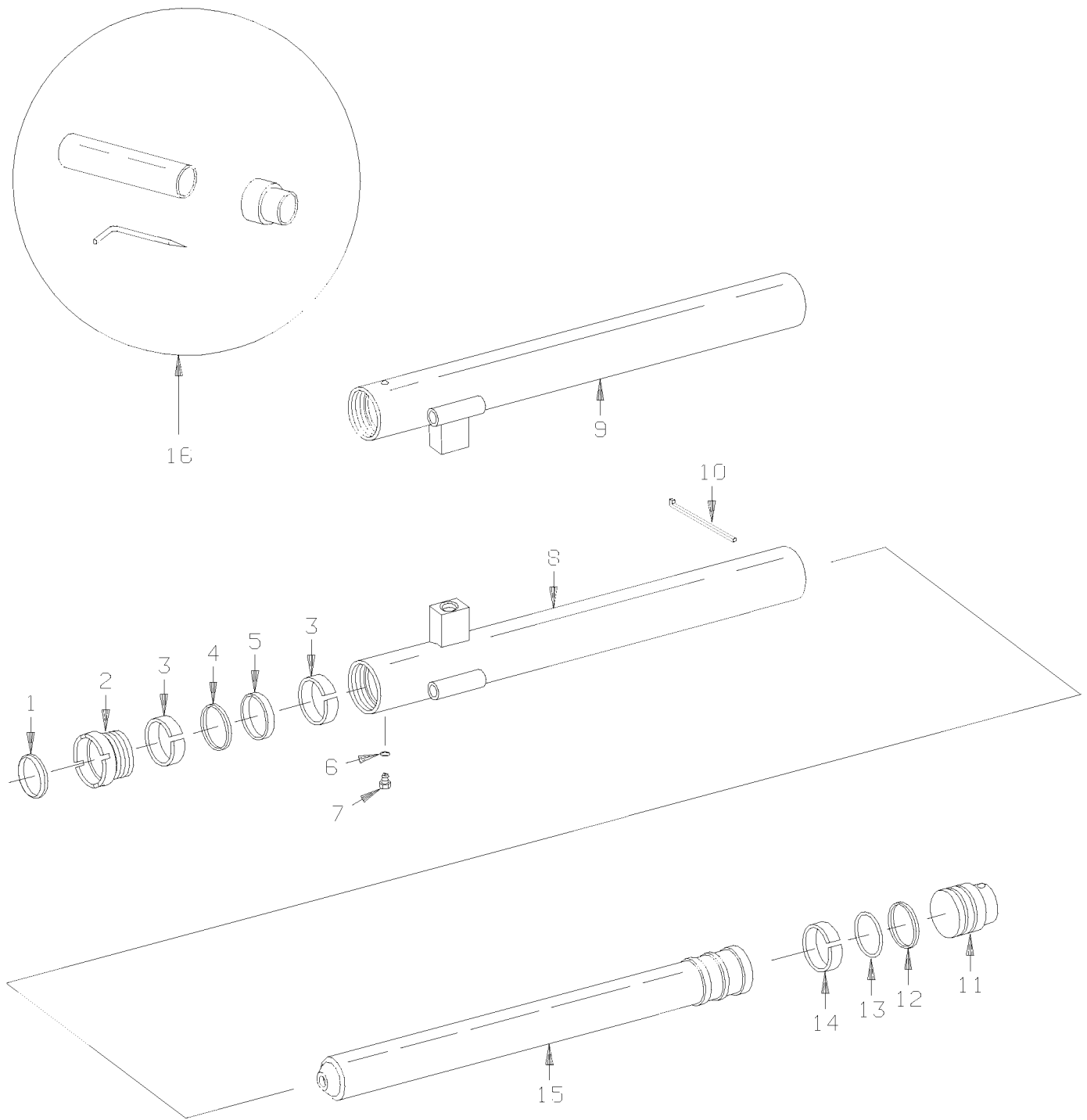


FIGURE # 3.40 SC-30 GLEASON HOSE REEL ASSEMBLY (24907-00)

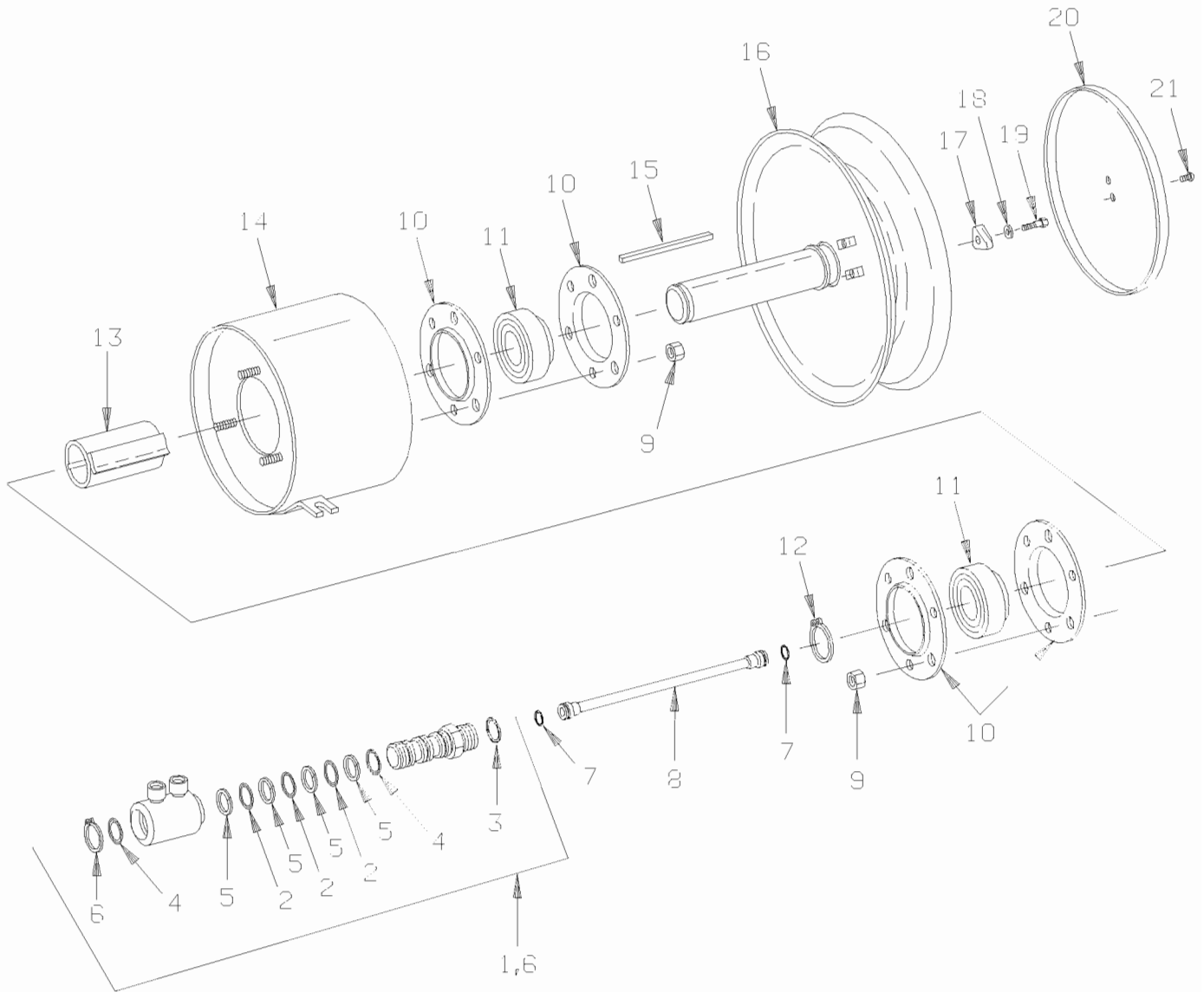


FIGURE # 4.3 HANDLE AND LINKAGE FOR CONTROL VALVE

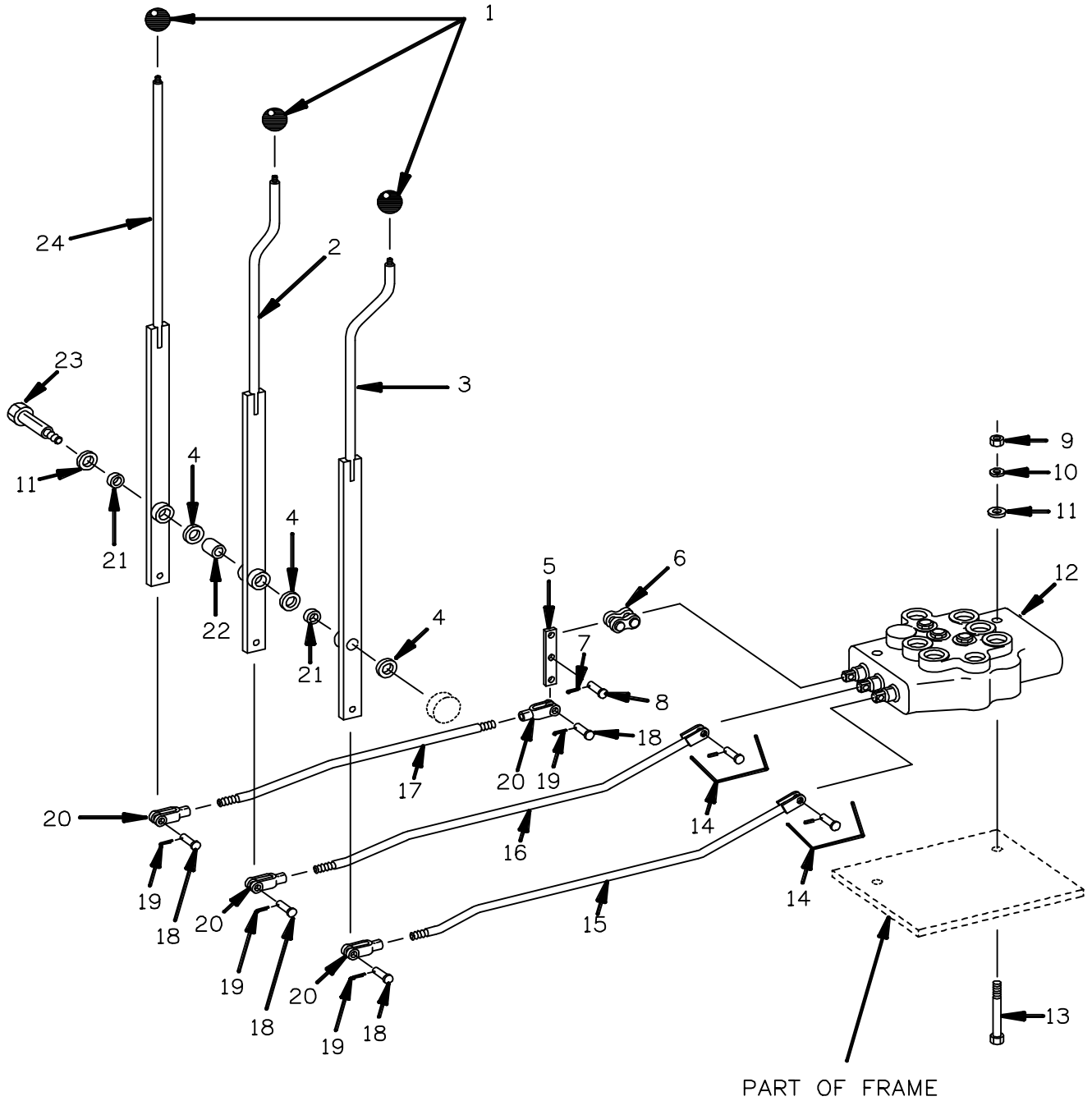


FIGURE # 5.3 SC-20 TWO STAGE FULL FREE LIFT MAST INNER COLUMN ASSEMBLY

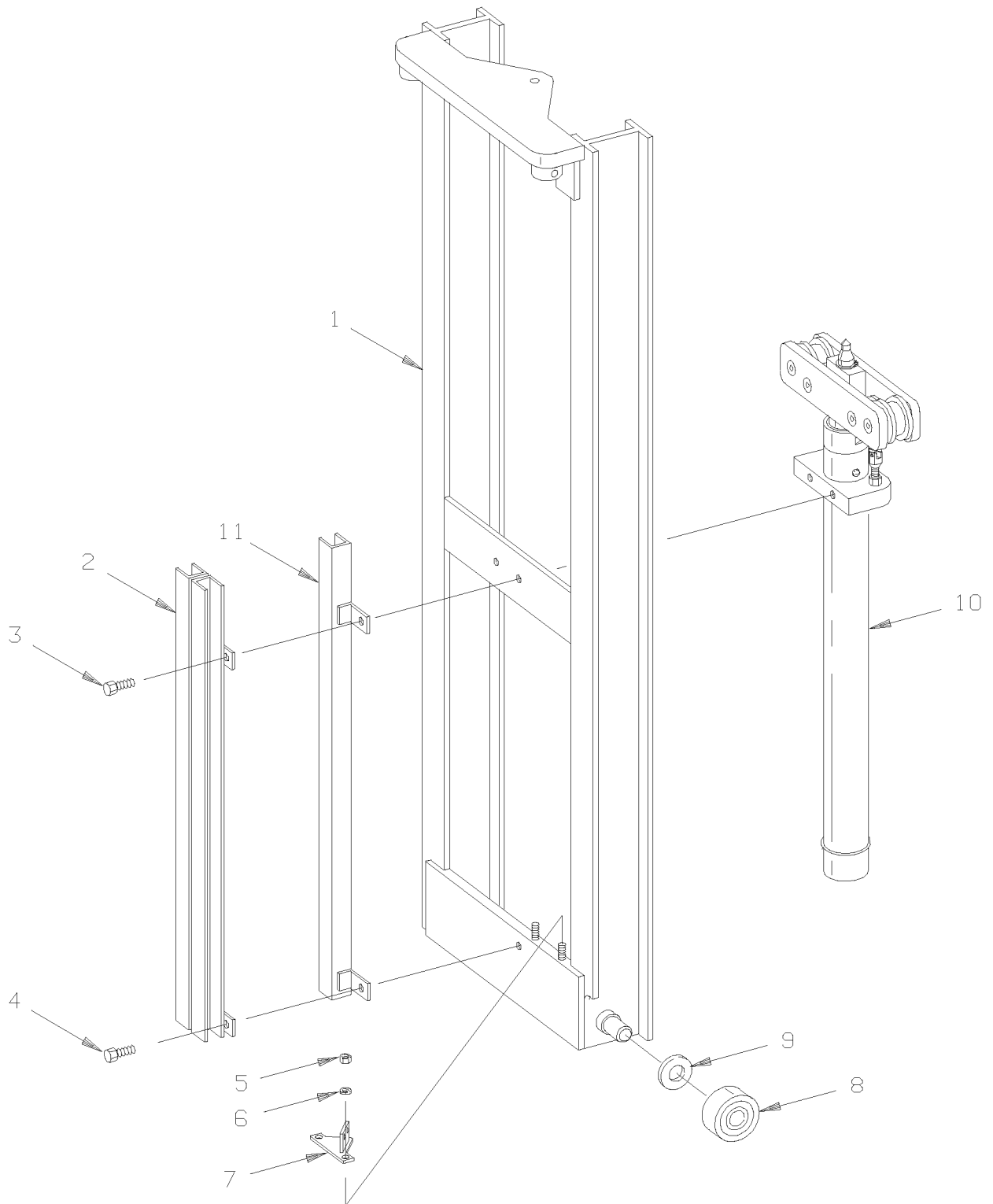


FIGURE # 5.8 SC-20 TWO STAGE MAST INSTALLATION

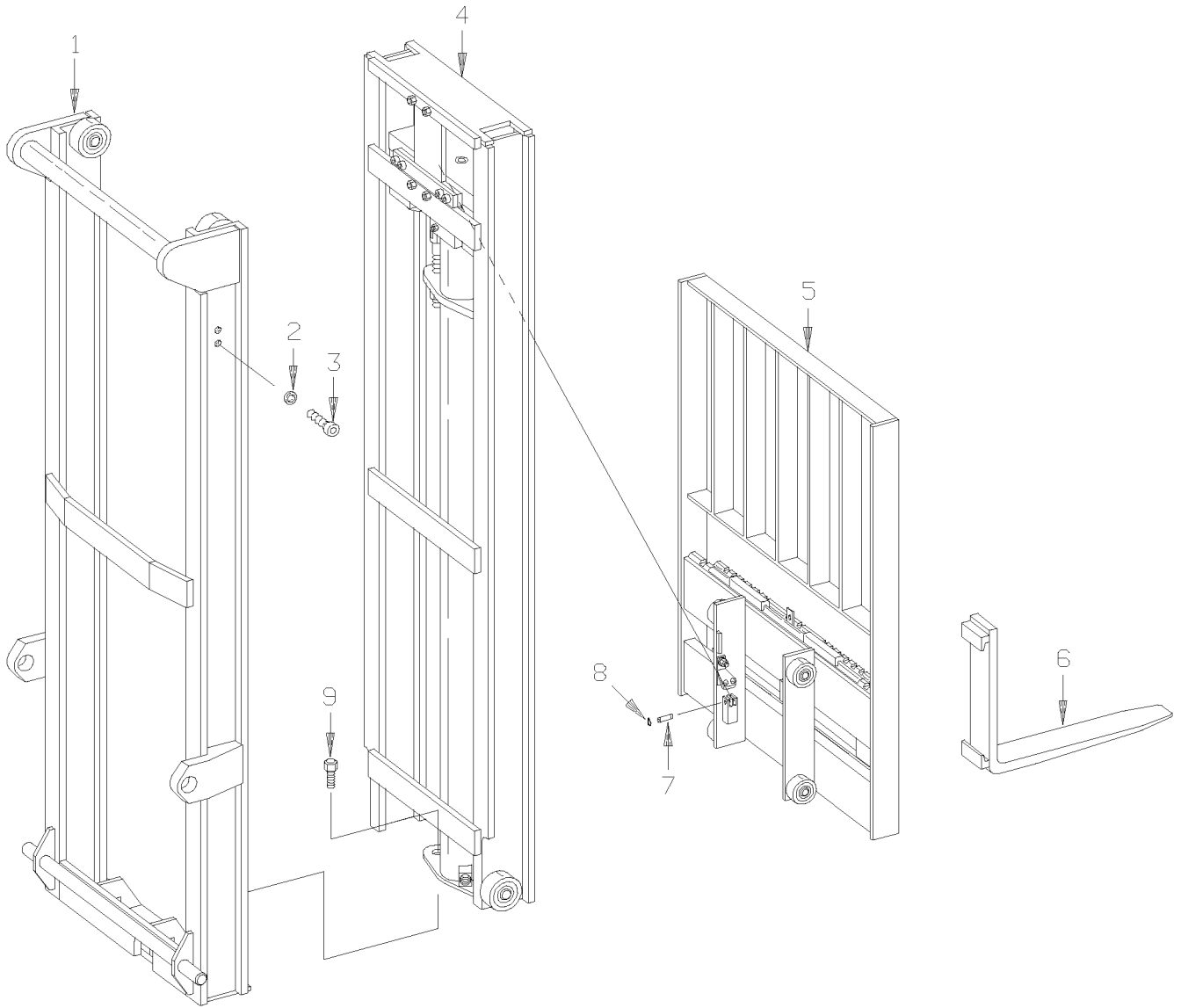


FIGURE # 5.13 SC-20 TWO STAGE MAST SIDESHIFTER ASSEMBLY (25411-00)

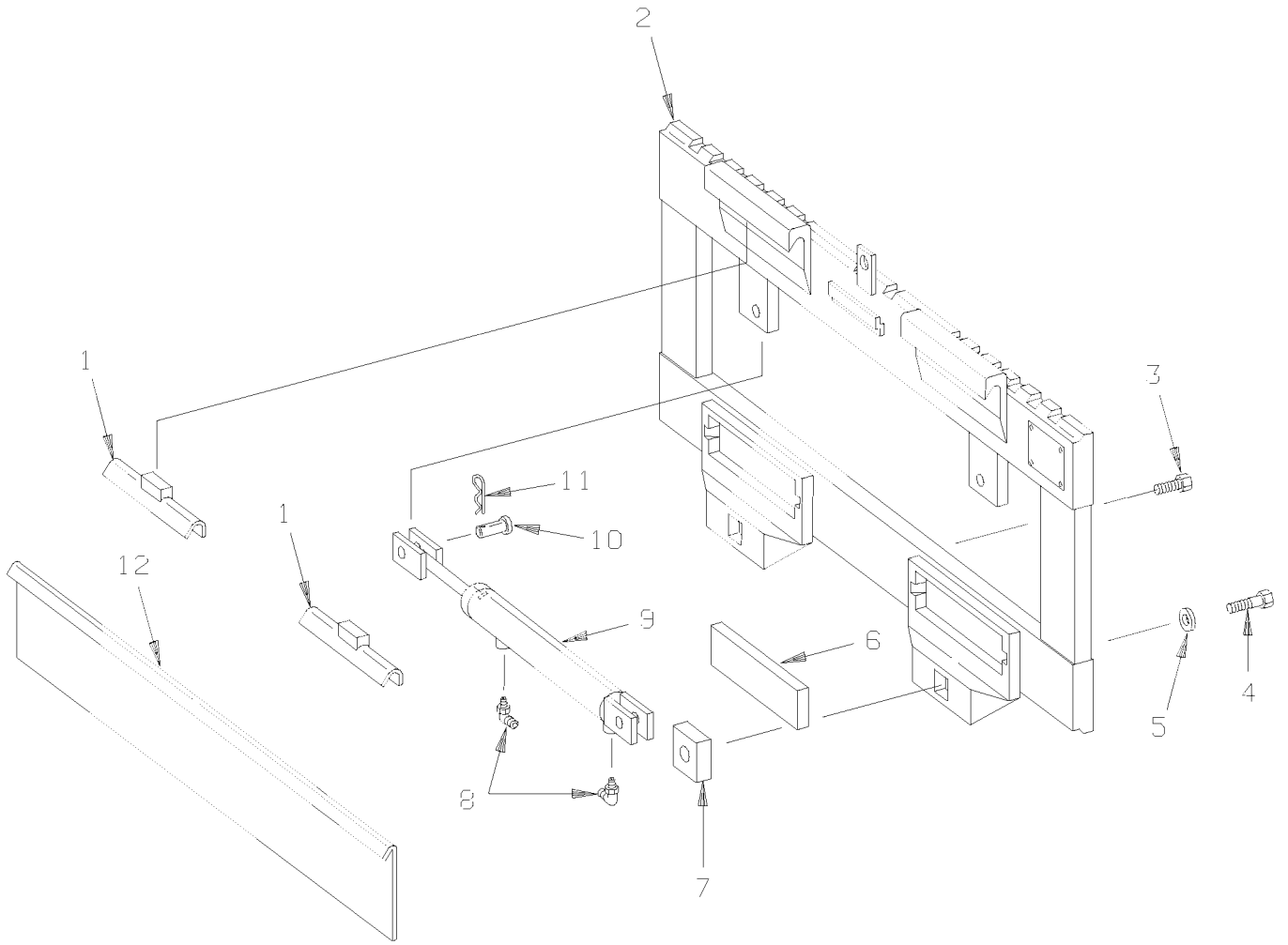


FIGURE # 5.18 SC-20 THREE STAGE MAST INNER COLUMN ASSEMBLY

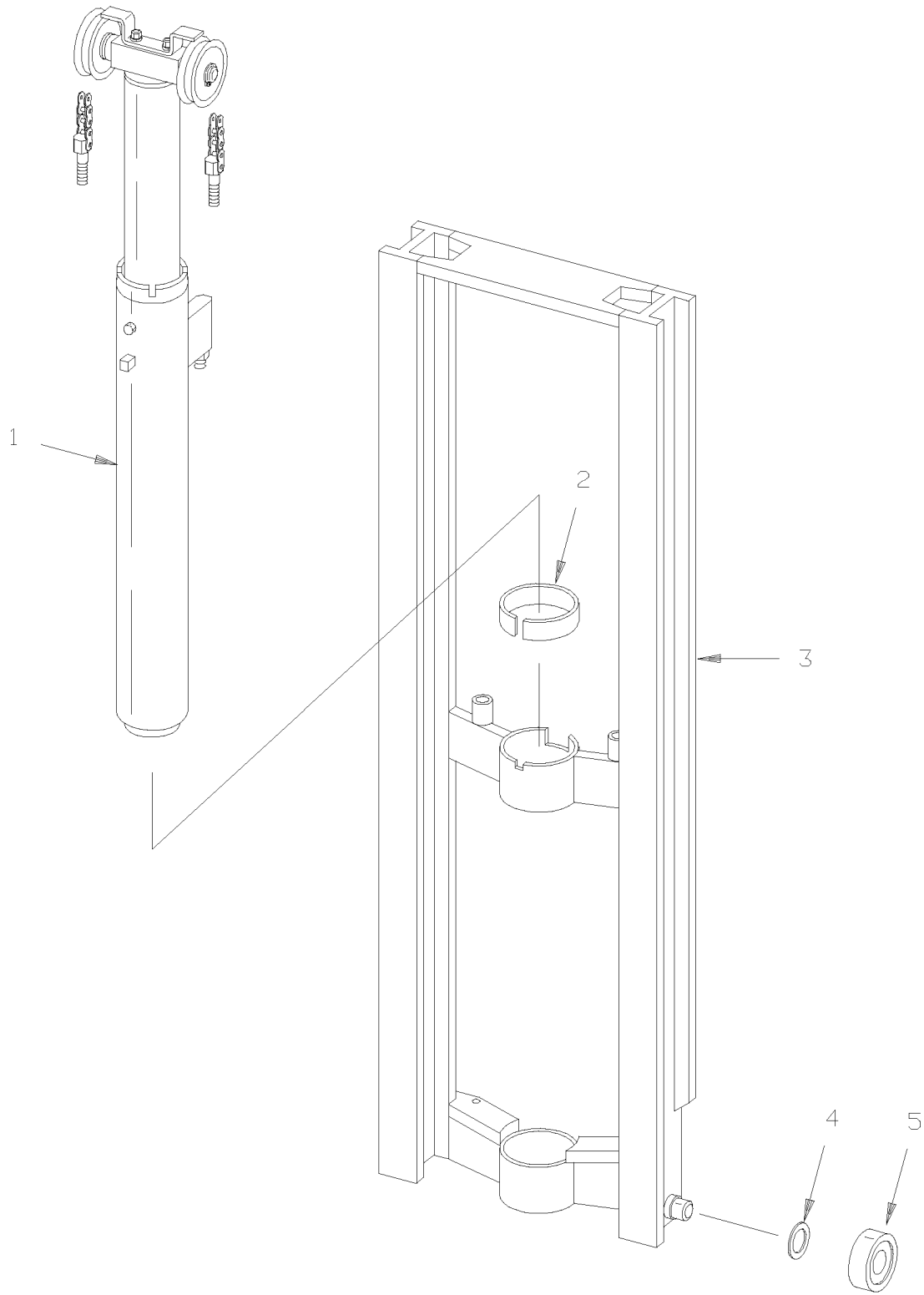




FIGURE # 5.27 SC-30 TWO STAGE FULL FREELIFT LIFT FRAME & BACKREST ASSEMBLY

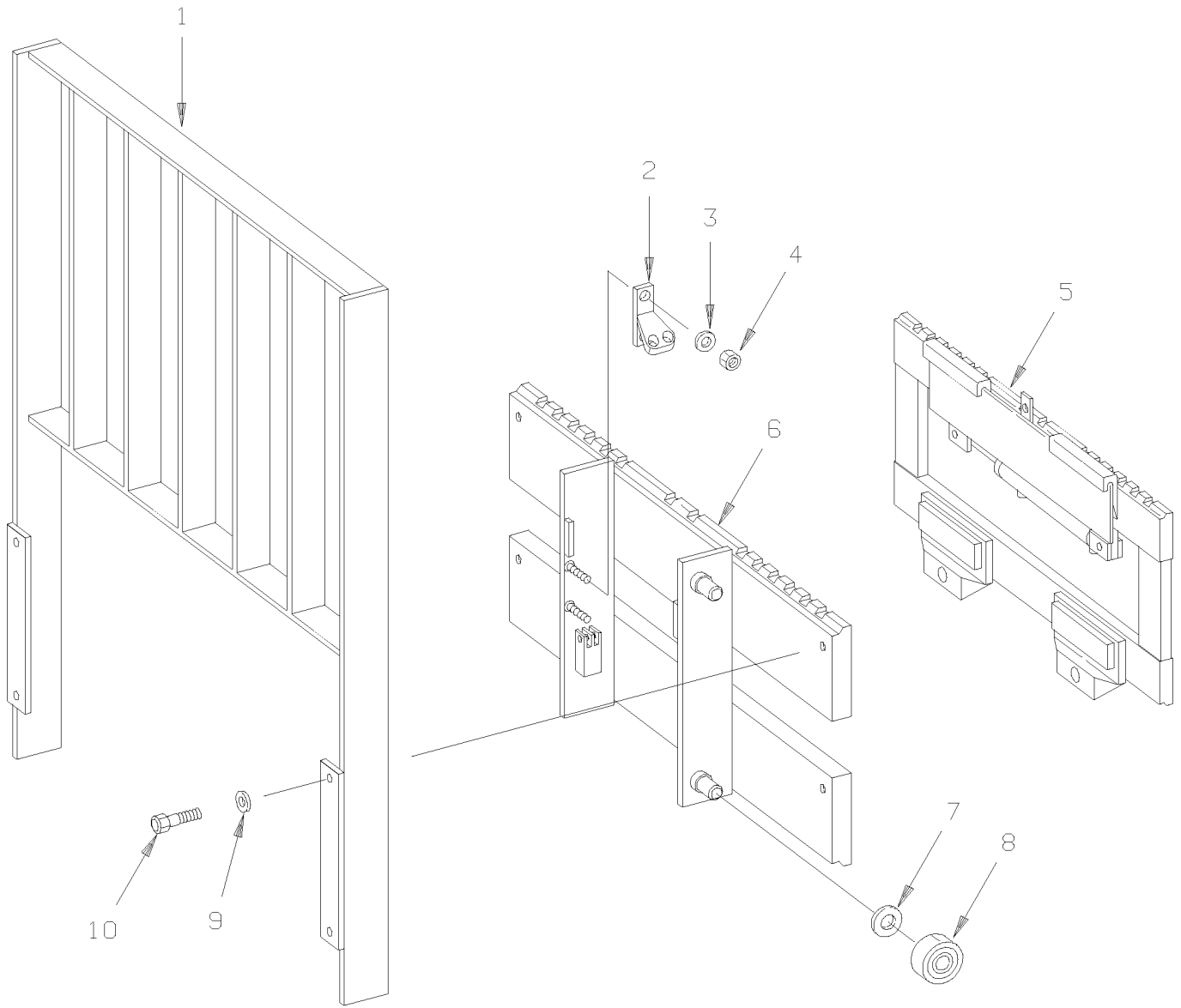


FIGURE # 5.32 SC-30 TWO STAGE MAST INNER COLUMN ASSEMBLY

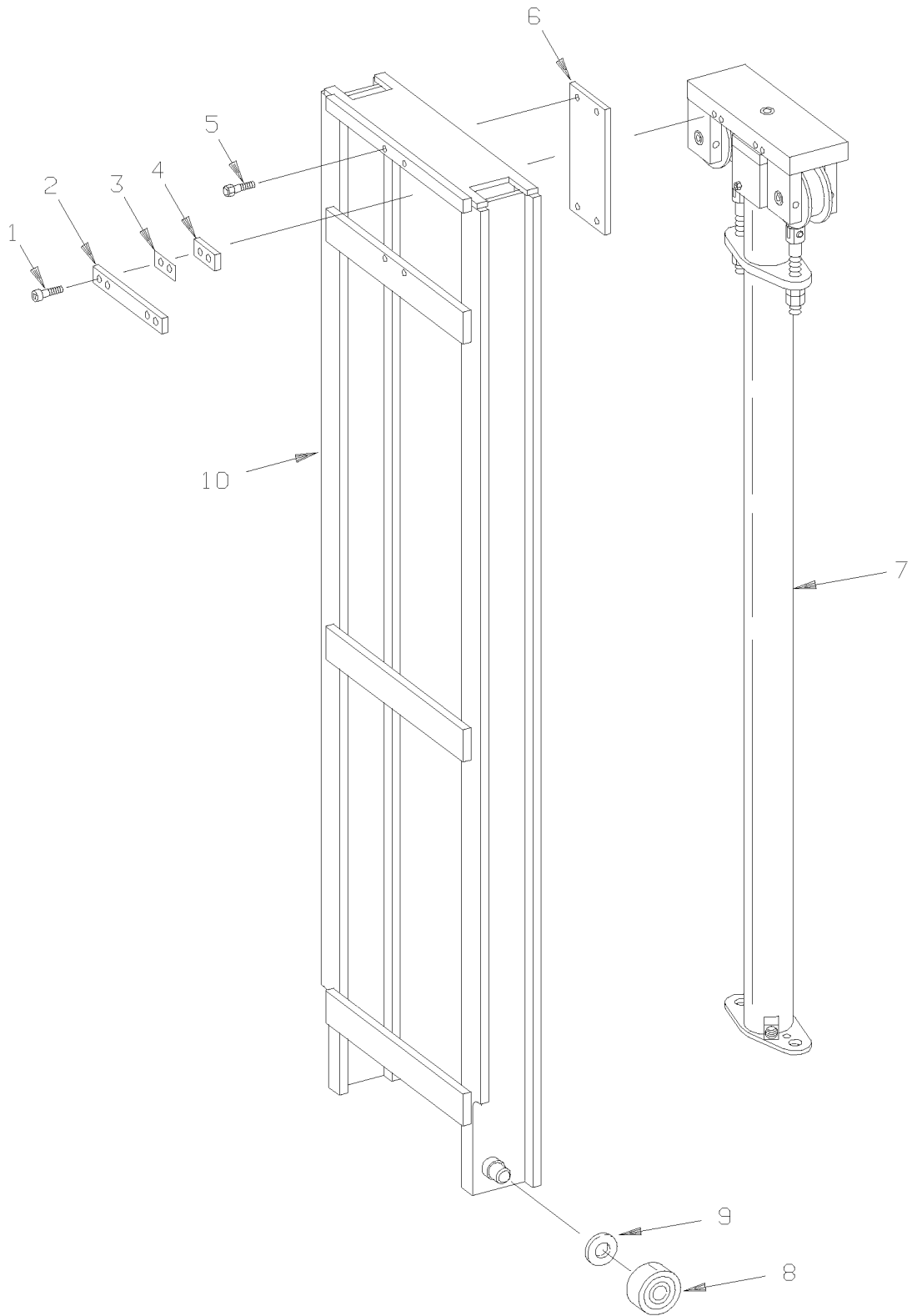


FIGURE # 5.37 SC-30 THREE STAGE MAST INSTALLATION

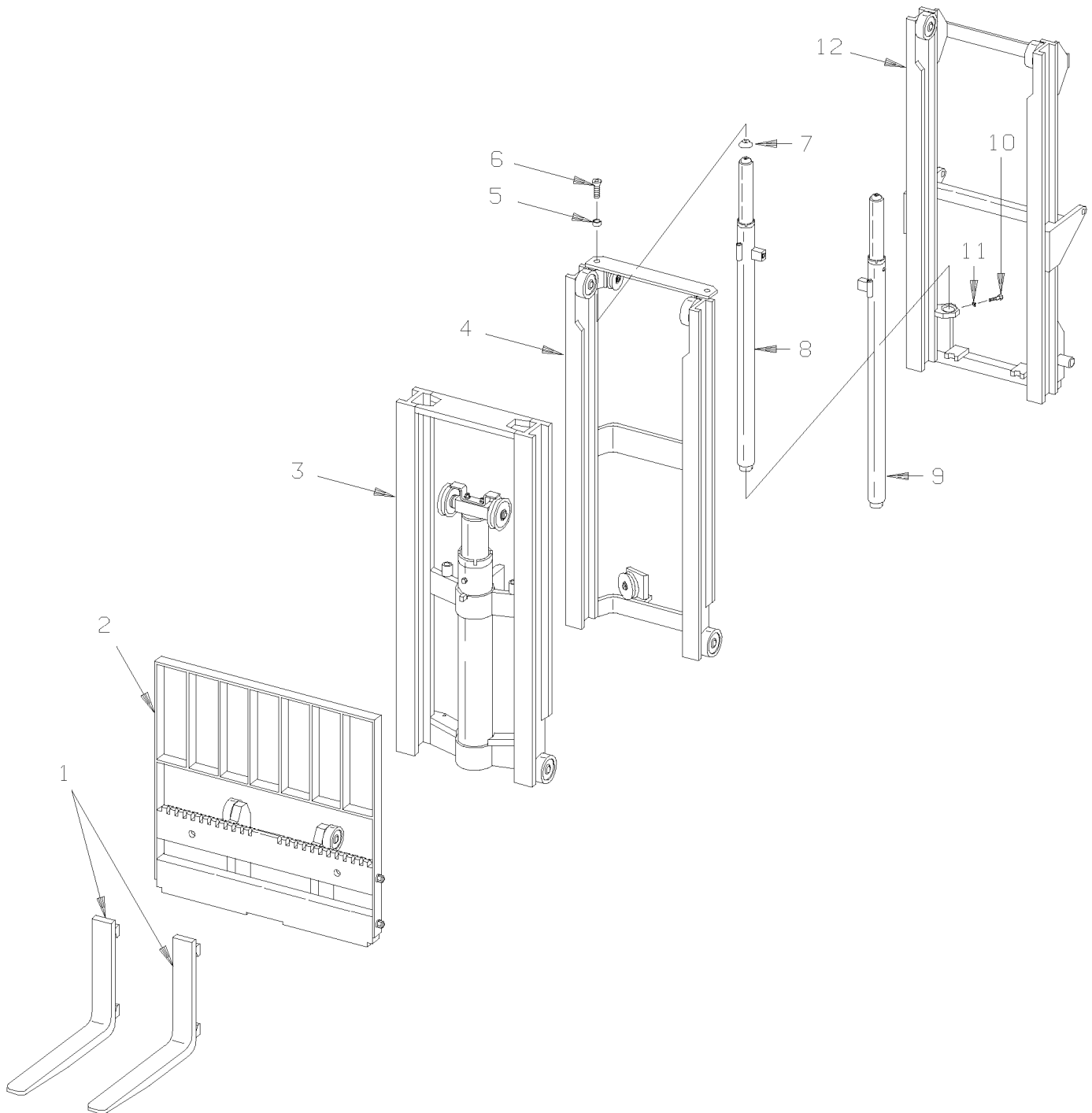
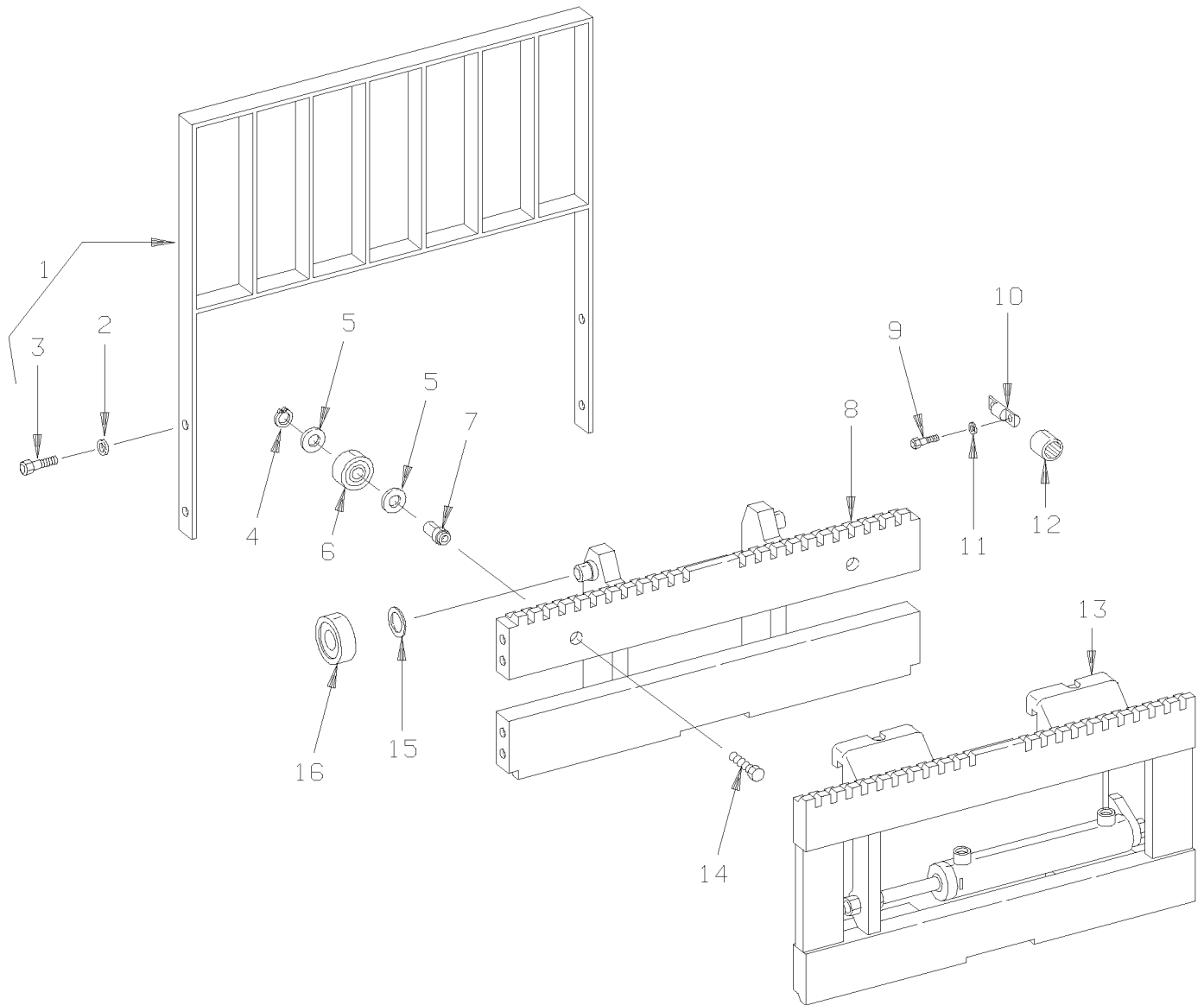


FIGURE # 5.42 SC-30 THREE STAGE MAST LIFT FRAME AND BACKREST ASSEMBLY



MODEL SC ELECTRIC COUNTER BALANCED WALKIE STACKER

NUMERICAL INDEX

<u>PART #</u>	<u>FIG. #</u>	<u>ITEM #</u>	<u>PART #</u>	<u>FIG.#</u>	<u>ITEM #</u>
200904	3.19	K	201625	3.7	8
200905	3.19	15	201628	3.7	K
200905	3.40	15	201628	3.28	K
200911	3.40	13	201629	3.28	K
200911	3.19	13	201629	3.7	K
200912	3.19	8	201639	3.28	1
200912	3.40	8	201639	3.7	1
200913	3.19	10	201650	3.7	25
200913	3.40	10	201650	3.28	25
200914	3.40	17	201962	2.7	1
200914	3.19	17	201962	2.7	4
200915	3.19	20	201964	2.7	6
200915	3.40	20	201966	2.7	12
200916	3.40	14	201967	2.7	17
200916	3.19	14	201973	3.27	4
200920	3.19	16	202033	3.27	12
200920	3.40	16	202068	3.27	15
201215	2.6	13	202154	10.1	5
201215	2.7	16	202420	10.1	3
201259	2.7	13	204239	2.7	9
201262	2.7	5	204240	2.7	8
201266	2.7	14	204241	2.6	2
201267	2.6	11	204241	2.7	2
201367	2.7	15	204242	3.19	1
201367	2.6	24	204242	3.40	1
201368	2.6	17	204243	3.19	7
201368	2.7	18	204243	3.40	7
201372	2.6	18	204244	3.19	9
201372	2.7	19	204244	3.40	9
201435	3.3	5	204245	3.40	11
201435	3.24	23	204245	3.19	11
201533	3.28	10	204248	3.40	18
201533	3.7	10	204248	3.19	18
201545	3.7	2	204250	3.28	5
201545	3.28	2	204250	3.7	5
201553	3.7	3	204251	3.28	12
201553	3.28	3	204251	3.7	12
201578	3.28	7	204252	3.28	16
201578	3.7	7	204252	3.7	16
201584	3.7	11	204253	3.7	18
201584	3.28	11	204253	3.28	18
201616	3.7	13	204259	3.7	6
201616	3.28	13	204259	3.28	6
201617	3.7	21	204267	3.40	21
201617	3.28	21	204267	3.19	21
201618	3.28	20	204268	3.16	11
201618	3.7	20	204268	3.40	12
201623	3.28	9	204268	3.37	11
201623	3.7	9	204268	3.19	12
201624	3.28	4	204268	5.35	9
201624	3.7	4	204268	5.21	9
201625	3.28	8	204268	5.6	9

CLICK HERE TO **DOWNLOAD** THE COMPLETE MANUAL

- Thank you very much for reading the preview of the manual.
- You can download the complete manual from: www.heydownloads.com by clicking the link below



- Please note: If there is no response to CLICKING the link, please download this PDF first and then click on it.

CLICK HERE TO **DOWNLOAD** THE COMPLETE MANUAL