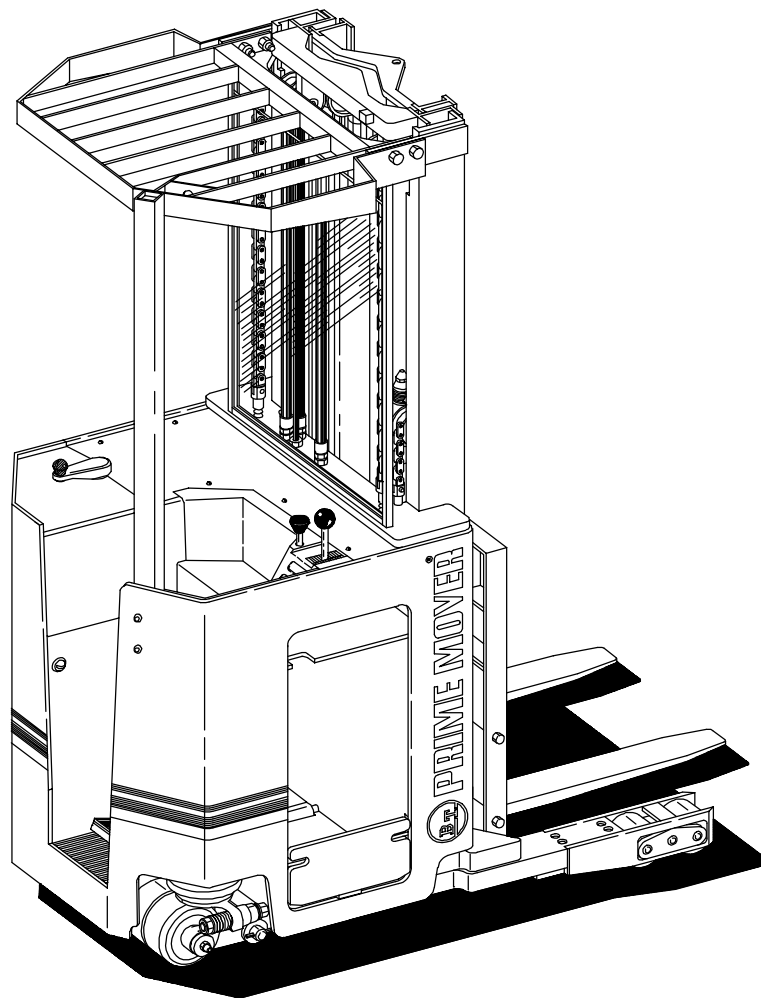


PARTS MANUAL

Manual Number 9205
Manual Part Number 301040-001
RS-40C ELECTRIC STRADDLE TRUCK

RS-40C



⚠ WARNING Read and observe all warnings on this unit before operating it.

⚠ WARNING **DO NOT** operate this equipment unless all factory installed guards and shields are properly secured in place.

CLICK HERE TO **DOWNLOAD** THE COMPLETE MANUAL

- Thank you very much for reading the preview of the manual.
- You can download the complete manual from: www.heydownloads.com by clicking the link below



- Please note: If there is no response to CLICKING the link, please download this PDF first and then click on it.

CLICK HERE TO **DOWNLOAD** THE COMPLETE MANUAL

FIG #	ITEM #	PART #	NAME	# FOR ASSY.	UNIT
1.1	1	14989-18	Screw, cap	4	
1.1	2	-----	Drive motor assembly (See Fig.# 1.2)	1	
1.1	3	14994-06	Screw, cap	4	
1.1	4	11016-04	Washer, flat	6	
1.1	5	40011-01	Transmission assembly (See Fig.# 1.3 & 1.4)	1	
1.1	6	14994-07	Screw, cap	2	
1.1	7	20904-01	Bumper	1	
1.1	8	40425-00	Shim, .005"	As Req'd.	

FIGURE # 2.4 "EE" EV-100LX SCR ELECTRICAL SCHEMATIC SYMBOLS

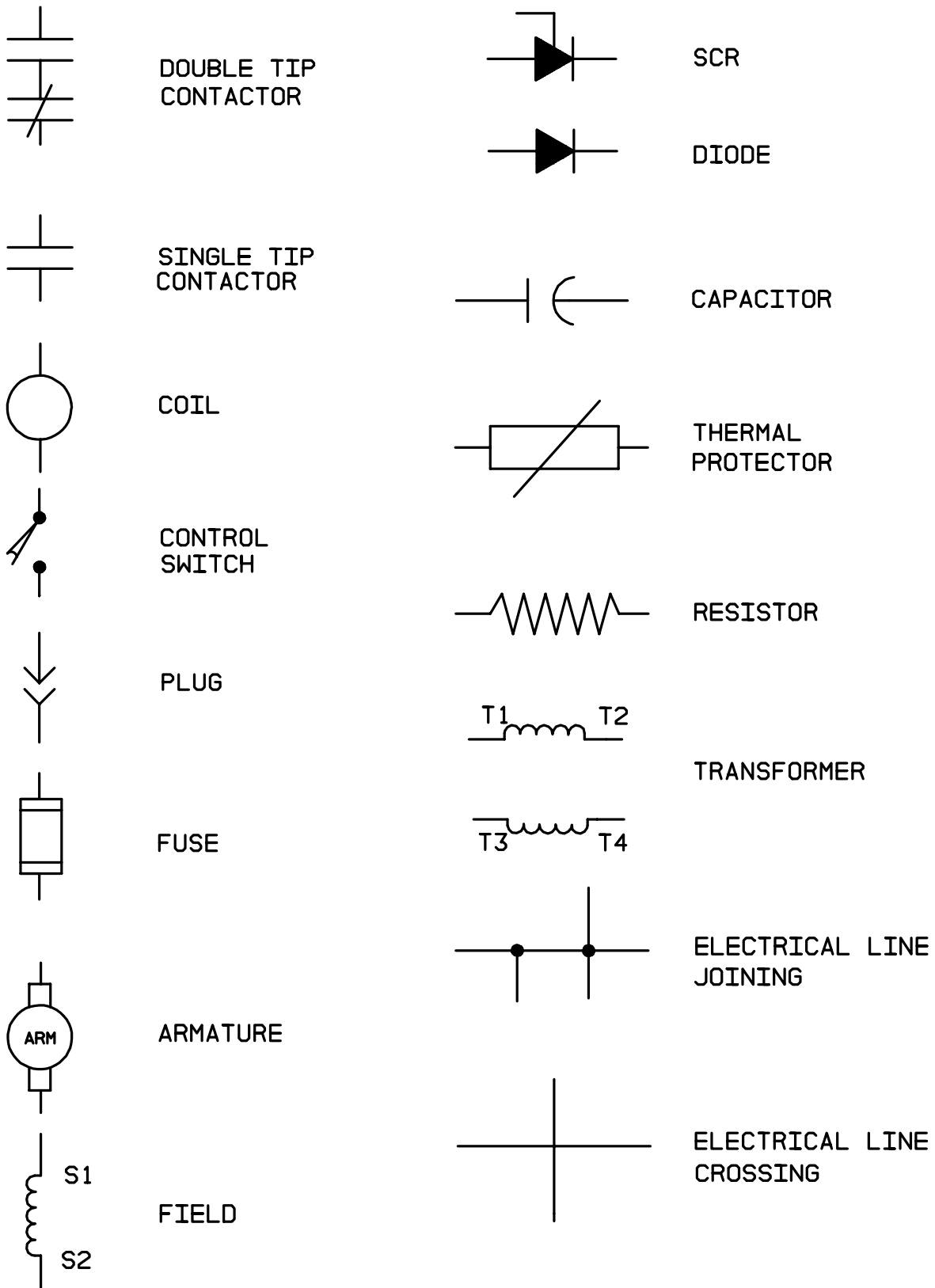


FIG #	ITEM #	PART #	NAME	# FOR ASSY.	UNIT
2.9	1	25332-01	Tie, wire	As Req'd	
2.9	2	41771-00	Harness, wiring(See Fig.# 2.6)	1	
2.9	3	49611-00	Receptacle	1	
2.9	4	49861-05	Relief, strain	1	
2.9	5	52-07920-00	Cable	As Req'd	
			21 FEET	89/180	
			21 FEET	89/192	
			23 FEET	95/198	
			23 FEET	95/210	
			25 FEET	107/226	
			26 FEET	111/240	
			28 FEET	119/258	
2.9	6	11170-06	Nut	1	
2.9	7	15677-08	Clamp	1	
2.9	8	49610-00	Pin	5	
2.9	9	11009-05	Lockwasher	2	
2.9	10	11854-03	Screw, cap	2	
2.9	11	40077-00	Bracket	1	
2.9	12	49609-00	Plug	1	
2.9	13	41255-00	Cable, reach (See Fig.# 2.10)	1	
2.9	14	49608-00	Socket	5	
2.9	15	41588-00	Sleeve, cable	2	
2.9	16	49501-00	Spring	2	
2.9	17	41602-00	Strain relief, clamp	2	
2.9	18	41602-01	Strain relief, fitting	2	
2.9	19	41596-00	Bracket	2	

FIG #	ITEM #	PART #	NAME	# FOR ASSY.	UNIT
2.14	1	41757-01	Panel assembly, 24 Volt contactor	1	24 Volt
2.14	1	41757-02	Panel assembly, 36 Volt contactor	1	36 Volt
2.14	2	27693-02	Contactor, 1A (See Fig.# 2.17)	1	
2.14	3	50000-13	Washer, flat	As Req'd	
2.14	4	50001-11	Lockwasher	As Req'd	
2.14	5	50003-01	Screw, cap (M8x1.25MM 16M LG)	As Req'd	
2.14	6	301122-000	Bar, buss	1	
2.14	6	NOT USED	Bar, buss (NOT USED ON "EE" ONLY)	0	"EE"TYPE
2.14	7	27693-02	Contactor, 24 Volt lift pump (See Fig.# 2.18)	1	24 Volt
2.14	*	300113-000	Suppression	1	
2.14	7	27693-04	Contractor, 36 Volt lift pump (See Fig.# 2.18)	1	36 Volt
2.14	*	300113-000	Suppression	1	
2.14	8	300073-000	Contactor, auxiliary pump (See Fig.# 2.19)	1	
2.14	9	301121-000	Bar, buss	1	
2.14	10	301125-000	Standoff	1	
2.14	11	300110-000	Block, fuse	1	
2.14	12	25275-06	Fuse, 15 AMP control	1	
2.14	13	NSS	Screw, machine (M3.5x0.6MM 8M LG)	1	
2.14	14	301123-000	Bar, buss	1	"E" TYPE
2.14	15	301147-000	Harness, wiring	1	
2.14	16	301120-000	Bar, buss	1	
2.14	17	27692-00	Contactor, forward and rearward (See Fig.# 2.16)	1	
2.14	18	301126-000	Base	1	
2.14	19	50003-02	Screw, machine (M8x1.25MM 20M LG)	As Req'd.	
2.14	20	50001-11	Lockwasher	As Req'd.	
2.14	21	50000-13	Washer, flat	As Req'd.	
2.14	22	25094-02	Fuse, 500 AMP power (FOR "E" ONLY)	1	"E" TYPE
2.14	22	25094-01	Fuse, 300 AMP power ("EE" DRIVE)	1	"EE"TYPE
2.14	23	25094-03	Fuse, 400 AMP power ("EE" HYDRAULIC)	1	"EE"TYPE
2.14	24	29408-00	Bar, buss	1	"EE"TYPE
2.14	25	202009	Suppression, forward/rearward	2	
2.14	25	202004	Suppression, 1A contactor	1	

* - NOT SHOWN BUT IS ON CONTACTOR PANEL ASSEMBLY (SEE ITEM # 25: EXAMPLE)

EV-100LX POWER CONNECTOR ASSEMBLY (24 VOLT, 49855-24, RED)

FIG ITEM		PART #	NAME	# FOR ASSY.	UNIT
#	#				
2.19	1	49855-24	Connector assembly, RED SB-350	1	
2.19	2	49854-05	Connector, RED housing	1	
2.19	3	49852-03	Connector, tip	2	
2.19	4	49853-04	Bushing	2	
2.19	5	49856-121	Cable, 55.00" NEGATIVE	1	
2.19	6	49856-120	Cable, 75.00", POSITIVE	1	

EV-100LX POWER CONNECTOR ASSEMBLY (36 VOLT, 49855-22, GRAY)

FIG ITEM		PART #	NAME	# FOR ASSY.	UNIT
#	#				
2.19	1	49855-22	Connector assembly, GRAY SB-350	1	
2.19	2	49854-02	Connector, GRAY housing	1	
2.19	3	49852-03	Connector, tip	2	
2.19	4	49853-04	Bushing	2	
2.19	5	49856-121	Cable, 55.00" NEGATIVE	1	
2.19	6	49856-120	Cable, 75.00", POSITIVE	1	

FIGURE # 2.25 "E" EV-100LX TT SCR ELECTRICAL SCHEMATIC SYMBOLS

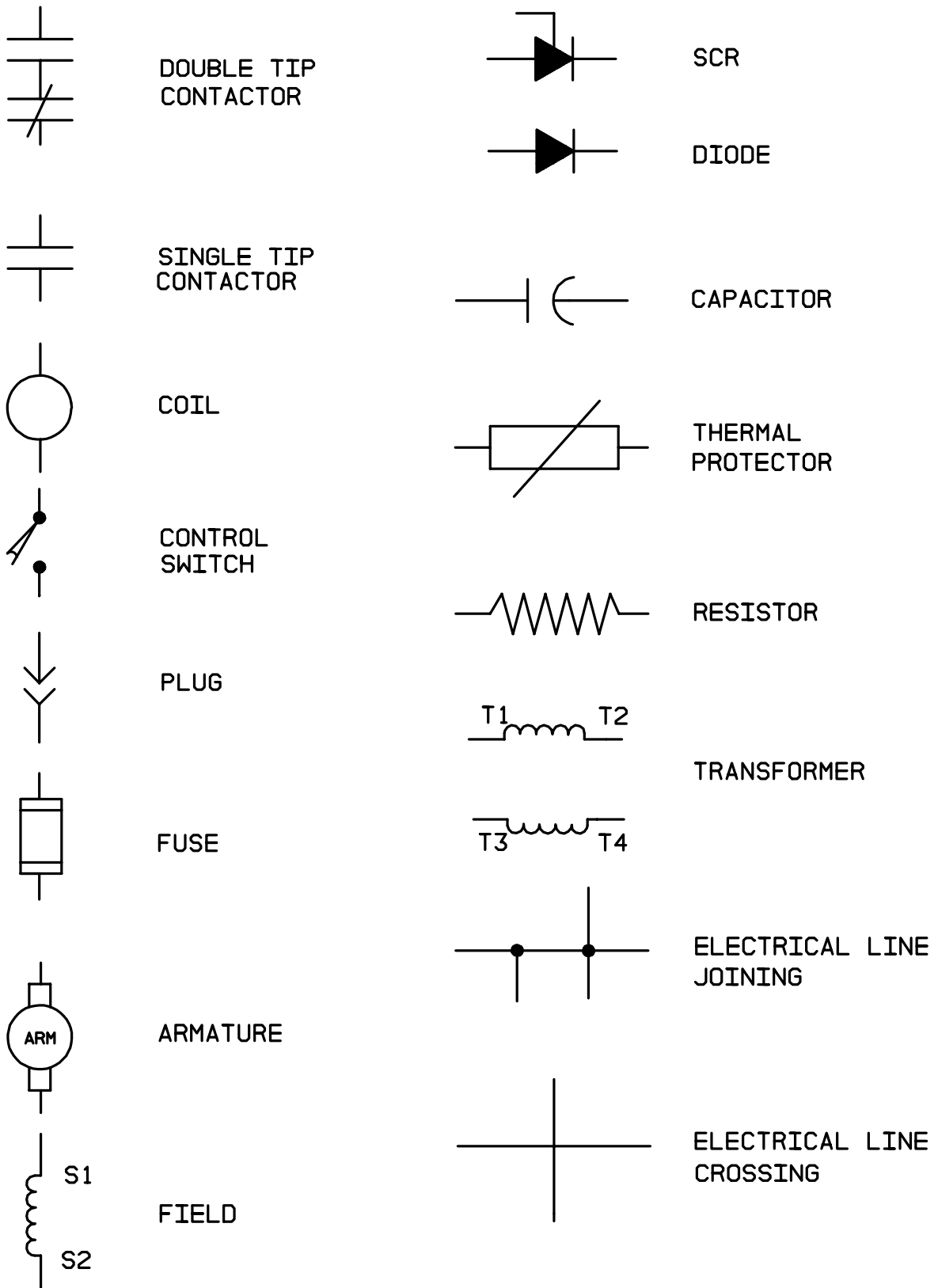


FIG #	ITEM #	PART #	NAME	# FOR ASSY.	UNIT
3.4	1	201546	Pin, roll	1	
3.4	2	202138	Cam, switch	1	
3.4	3	201643	Jam, nut	1	
3.4	4	202139	Nut	2	
3.4	5	201553	Lockwasher	2	
3.4	6	202140	Bracket	1	
3.4	7	202141	Cap	1	
3.4	8	202142	Cap, adapter	1	
3.4	9K	NSS	Ring, retainer	1	
3.4	10	201578	Screw, machine	2	
3.4	11	201556	Washer, flat	2	
3.4	12	201639	Switch	1	
3.4	13	202144	Plug	1	
3.4	14K	NSS	O ring	1	
3.4	15	201630	Spring	1	
3.4	16	202091	Plunger	1	
3.4	17	NA	Body	1	
3.4	18	NA	Spool	1	
3.4	19	201634	Bushing	1	
3.4	20	202143	Spring	1	
3.4	21	202096	Washer	1	
3.4	22	202097	Washer	1	
3.4	23K	NSS	O ring	2	
3.4	24K	NSS	Seal, wiper	1	
3.4	K	202104	Kit, seal	1	

(CONTAINS ITEMS MARKED WITH "K")

FIG #	ITEM #	PART #	NAME	# FOR ASSY.	UNIT
3.9	1	49640-07	Hose assembly, 89/126	1	89/126
3.9	1	49640-08	Hose assembly, 95/138	1	95/138
3.9	1	49840-09	Hose assembly, 107/162	1	107/162
3.9	1	49640-10	Hose assembly, 119/186	1	119/186
3.9	2	49632-01	Bulkhead, fitting	2	
3.9	3	49604-01	O ring	2	
3.9	4	49642-01	Hose	2	
3.9	5	49654-01	Elbow, 45°	2	
3.9	6	49604-01	O ring	1	
3.9	7	12391-05	O ring	1	
3.9	8	41331-00	Valve assembly, auxiliary control (See Fig.# 3.4)	1	

FIG #	ITEM #	PART #	NAME	# FOR ASSY.	UNIT
3.14	1	41243-01	Coil, 24 volt	2	
3.14	1	41243-00	Coil, 36 volt	2	
3.14	2	41278-00	Valve, manifold	1	
3.14	3	NA	Block, valve	1	
3.14	4	41187-00	Valve, solenoid	2	
3.14	K	200073	Kit, seal (FOR ITEM #4)	1	

FIG #	ITEM #	PART #	NAME	# FOR ASSY.	UNIT
3.19	1	202093	Screw, machine	2	
3.19	2	201624	Bracket	1	
3.19	3	201556	Washer, flat	2	
3.19	4	201578	Screw, machine	2	
3.19	5	202094	Plug	1	
3.19	6K	NSS	O ring	1	
3.19	7K	NSS	Plunger	1	
3.19	8	201618	Spring	1	
3.19	9	201619	Plug	1	
3.19	10K	NSS	O ring	1	
3.19	11K	NSS	O ring	2	
3.19	12	NA	Body	2	
3.19	13	NA	Spool	1	
3.19	14	202095	Valve, relief	1	
3.19	15K	NSS	O ring	1	
3.19	16K	NSS	Washer, backup	1	
3.19	17K	NSS	O ring	1	
3.19	18K	NSS	O ring	1	
3.19	19	201616	Washer, deep	1	
3.19	20	201560	Washer	1	
3.19	21	201655	Spring	1	
3.19	22	201533	Washer, shallow	1	
3.19	23	201623	Screw, spool	1	
3.19	24	201545	Nut	2	
3.19	25	201639	Switch	1	
3.19	26	201553	Lockwasher	2	
3.19	K	201627	Kit, seal	1	

(CONTAINS ITEMS MARKED WITH "K")

FIG #	ITEM #	PART #	NAME	# FOR ASSY.	UNIT
3.24	1	49548-00	Screw	1	
3.24	2	11897-03	Washer, seal	1	
3.24	3	40728-01	Tube, 89/192 cylinder	1	89/192
3.24	3	40728-02	Tube, 95/210 cylinder	1	95/210
3.24	3	40728-03	Tube, 98/216 cylinder	1	98/216
3.24	3	40728-04	Tube, 102/225 cylinder	1	102/225
3.24	3	40728-05	Tube, 111/240 cylinder	1	111/240
3.24	3	40728-06	Tube, 119/258 cylinder	1	119/258
3.24	4	30555-00	Retainer	1	
3.24	5	30556-00	Pin	1	
3.24	6	30612-01	Spring	1	
3.24	7	13857-01	Ball	1	
3.24	8	28137-00	Piston	1	
3.24	9K	NSS	Ring, wear	1	
3.24	10	40730-01	Rod, 89/192 cylinder	1	89/192
3.24	10	40730-02	Rod, 95/210 cylinder	1	95/210
3.24	10	40730-03	Rod, 98/216 cylinder	1	98/216
3.24	10	40730-04	Rod, 102/225 cylinder	1	102/225
3.24	10	40730-05	Rod, 111/240 cylinder	1	111/240
3.24	10	40730-06	Rod, 119/258 cylinder	1	119/258
3.24	11K	NSS	O ring	1	
3.24	12K	NSS	Ring, backup	1	
3.24	13	28142-00	Bearing	1	
3.24	14K	NSS	Ring, wear	1	
3.24	15K	NSS	Seal	1	
3.24	16K	NSS	Wiper	1	
3.24	K	28200-00	Kit, seal	1	

(CONTAINS ITEMS MARKED WITH "K")

FIG #	ITEM #	PART #	NAME	# FOR ASSY.	UNIT
4.5	1	49919-03	Knob	1	
4.5	2	14915-05	Plug, hole	1	
4.5	3	40105-01	Crank, steering	1	
4.5	4	11073-06	Pin, roll	1	
4.5	5	40795-01	Torque generator (See Fig.# 3.8)	1	
4.5	6	14994-11	Screw, cap	1	
4.5	7	11854-03	Screw, cap	2	
4.5	8	49796-00	Bearing, flange	1	
4.5	9	11261-05	Nut	2	
4.5	10	11047-21	Screw, cap	1	
4.5	11	26466-01	Sprocket	1	
4.5	12	11073-11	Pin, roll	1	
4.5	13	40783-00	Sprocket	1	
4.5	14	11271-11	Screw, cap	1	
4.5	15	40782-00	Rod	1	
4.5	16	49725-00	Bearing, pillow block	1	
4.5	17	11830-03	Screw, cap	1	
4.5	18	25125-01	Sprocket	1	
4.5	19	11073-27	Pin, roll	1	
4.5	20	20121-01	Chain	1	
4.5	21	11057-03	Key	1	
4.5	22	41079-00	Shim, .120"	As Req'd.	
4.5	22	41079-01	Shim, .060"	As Req'd.	
4.5	22	41079-02	Shim, .030"	As Req'd.	
4.5	23	11057-03	Key	1	
4.5	24	21542-09	Chain	1	
4.5	25	11170-08	Locknut	2	
4.5	26	11016-04	Washer,flat	2	
4.5	27	11857-01	Washer, 18 gauge	2	
4.5	28	11857-02	Washer, 14 gauge	2	
4.5	29	11936-17	Bearing, thrust	2	
4.5	30	40780-00	Sprocket	2	
4.5	31	11020-35	Bearing	2	
4.5	32	40900-00	Sleeve, flanged	2	
4.5	33	41138-00	Bracket, mounting	1	
4.5	34	40781-00	Bolt, special	1	
4.5	35	11806-06	Nut	1	
4.5	36	40779-01	Screw, special	1	
4.5	37	11873-16	Screw, shoulder	1	
4.5	38	11695-07	Bearing, flange	1	

FIG #	ITEM #	PART #	NAME	# FOR ASSY.	UNIT
4.10	1	11073-33	Pin, roll	1	
4.10	2	40245-00	Axle	1	
4.10	3	41159-00	Bracket	1	
4.10	4	40247-00	Pin	1	
4.10	5	40249-00	Plate	2	
4.10	6	11016-09	Washer	4	
4.10	7	40248-01	Shim, .005"	As Req'd.	
4.10	7	40248-02	Shim, .010"	As Req'd.	
4.10	7	40248-03	Shim, .062"	As Req'd.	
4.10	7	40248-04	Shim, .031"	As Req'd.	
4.10	8	49972-05	Seal, oil	4	
4.10	9	11205-21	Bearing	4	
4.10	10	40222-00	Wheel	2	
4.10	11	11160-09	Fitting, grease	2	
4.10	*	202154	Adapter for grease gun	1	

FIG #	ITEM #	PART #	NAME	# FOR ASSY.	UNIT
5.3	1	11857-05	Shim, .050"	As Req'd.	
5.3	1	11857-12	Shim, .025"	As Req'd.	
5.3	2	21089-02	Bearing	2	89/126
5.3	3	14835-44	Chain, lift	2	95/138
5.3	3	14835-45	Chain, lift	2	107/162
5.3	3	14835-46	Chain, lift	2	119/186
5.3	3	14835-47	Chain, lift	2	
5.3	4	30558-00	Anchor, chain	2	
5.3	5	30554-00	Pin, chain	2	
5.3	6	49837-00	Nut	2	
5.3	7	11486-12	Nut, jum	2	
5.3	8	-----	Cylinder assembly (See Fig.# 5.4)	1	
5.3	9	40518-01	Column, outer	1	89/126
5.3	9	40518-02	Column, outer	1	95/138
5.3	9	40518-03	Column, outer	1	107/162
5.3	9	40518-04	Column, outer	1	119/186

FIG #	ITEM #	PART #	NAME	# FOR ASSY.	UNIT
5.8	1	40225-00	Guard, overhead	1	
5.8	2	11170-12	Nut	4	
5.8	3	14992-08	Screw, cap	4	
5.8	4	14992-02	Screw, cap	1	
5.8	5	-----	Column, inner (See Fig.# 5.9)	1	
5.8	6	-----	Lift frame assembly (See Fig.# 5.13)	1	
5.8	7	25008-01	Fork, 30" (See Fig.# 5.15)	2	30 inch
5.8	7	25008-02	Fork, 36" (See Fig.# 5.15)	2	36 inch
5.8	7	25008-03	Fork, 42" (See Fig.# 5.15)	2	42 inch
5.8	7	25008-04	Fork, 48" (See Fig.# 5.15)	2	48 inch
5.8	8	40472-00	Sideshifter assembly (See Fig.# 5.20)	1	
5.8	9	30554-00	Pin with cotter pin	4	
5.8	10	-----	Column, intermediate (See Fig.# 5.11)	1	
5.8	11	14992-17	Screw, cap	2	
5.8	12	49925-01	Shim, .250"	As Req'd.	.250 inch
5.8	12	49925-02	Shim, .125"	As Req'd.	.125 inch
5.8	12	49925-03	Shim, .062"	As Req'd.	.062 inch
5.8	13	11016-06	Washer	2	
5.8	14	11271-15	Screw, set	4	
5.8	15	11271-14	Screw, set	4	
5.8	16	40486-00	Screen (COLD STORAGE)	1	cold storage
5.8	17	52-05007-00	Edge, rubber (COLD STORAGE)	As Req'd.	cold storage
5.8	18	40228-03	Channel	1	
5.8	19	40467-00	Channel, windshield	1	
5.8	20	41084-00	Channel	2	
5.8	20	41084-01	Channel, 95/210	2	95/210
5.8	21	-----	Column, outer (See Fig.# 5.9)	1	
5.8	22	NA	Laminated safety sheet gless S.A.E. J-673 33 $\frac{1}{8}$ "x33 $\frac{3}{4}$ "x.234" (Secure this part locally)	1	
5.8	23	41082-00	Cap, plastic	2	

FIG #	ITEM #	PART #	NAME	# FOR ASSY.	UNIT
5.13	1	40771-00	Frame	1	
5.13	2	14994-02	Screw, cap	2	
5.13	3	40618-00	Bracket	1	
5.13	4	11073-20	Pin, roll	2	
5.13	5	40699-00	Pin	2	
5.13	6	11857-05	Washer, shim	As Req'd.	
5.13	7	21089-02	Bearing	6	
5.13	8	40637-00	Cylinder, tilt (See Fig.# 3.12)	2	
5.13	9	14994-06	Screw, cap	12	
5.13	10	40603-00	Clamp	4	
5.13	11	40629-01	Pin	2	
5.13	12	40600-00	Frame, fork	1	
5.13	13	40382-01	Rod	1	
5.13	14	11073-23	Pin, roll	1	
5.13	15	40594-00	Rest, load	1	

FIG #	ITEM #	PART #	NAME	# FOR ASSY.	UNIT
7.5	1	49399-00	Control, EV-100LX SCR TX panel (See Fig.# 2.12)	1	
7.5	2	41757-01	Panel, 24 Volt contactor (See Fig.# 2.13 & 2.14)	1	24 VOLT
7.5	2	41757-02	Panel, 36 Volt contactor (See Fig.# 2.13 & 2.14)	1	36 VOLT
7.5	3	41799-00	Harness, curtis	1	
7.5	4	301579-000	Wire assembly	1	
7.5	5	49712-01	Lift interrupt control, 24 volt	1	24 VOLT
7.5	5	49712-02	Lift interrupt control, 36 volt	1	36 VOLT
7.5	6	301578-000	Gauge, lift interrupt	1	
7.5	7	11016-01	Washer, flat	2	
7.5	8	11009-04	Lockwasher	2	
7.5	9	11045-04	Screw, cap	2	

MODEL RS-40C ELECTRIC STRADDLE TRUCK

NUMERICAL INDEX

<u>PART #</u>	<u>FIG. #</u>	<u>ITEM #</u>	<u>PART #</u>	<u>FIG.#</u>	<u>ITEM #</u>
27693-02	2.14	7	300299-000	2.20	4
27693-04	2.14	7	300299-000	2.21	4
27899-00	2.11	11	300300-000	2.20	3
27899-00	3.16	1	300301-000	2.20	2
27900-00	2.11	11	300301-000	2.21	2
27900-00	3.16	1	300302-000	2.20	9
27901-00	2.11	17	300302-000	2.21	9
27901-00	1.2	31	300303-000	2.20	8
27902-00	1.2	31	300303-000	2.21	8
27902-00	2.11	17	300304-000	2.20	7
28137-00	3.24	8	300304-000	2.21	7
28142-00	3.24	13	300305-000	2.20	15
28142-00	3.23	11	300305-000	2.21	15
28159-04	5.11	21	300307-000	2.20	12
28159-06	5.11	11	300307-000	2.21	12
28200-00	3.24	K	300308-000	2.20	11
28200-00	3.23	K	300309-000	2.20	10
28286	2.24	8	300310-000	2.21	6
29030-01	2.23	1	300311-000	2.21	11
29030-02	2.23	1	300312-000	2.21	10
29304-00	2.6	11	300313-000	2.21	13
29304-00	4.4	56	300314-000	2.21	14
29329-00	2.13	6	300315-000	2.21	3
29408-00	2.14	24	300316-000	2.21	7
300073-000	2.14	8	300317-000	2.21	15
300074-001	2.18	1	300326-000	2.21	11
300074-002	2.18	3	300327-000	2.21	10
300074-003	2.18	7	300333-000	3.3	50
300074-004	2.18	10	300333-000	4.7	5
300084-000	2.12	10	300334-000	3.3	50
300085-000	2.12	32	300334-000	4.7	5
300086-000	2.12	21	300374-001	0.1	*
300110-000	2.14	11	300665-000	2.11	13
300110-000	2.24	12	300665-000	3.5	1
300113-000	2.14	*	300665-001	2.22	6
300113-000	2.14	*	300665-002	2.22	7
300143-000	3.6	21	300665-003	2.22	3
300184-000	3.6	K	300665-004	2.22	11
300246-000	3.17	14	300666-000	2.11	13
300247-000	3.17	7	300666-000	3.5	1
300249-000	3.17	10	300666-001	2.22	1
300249-000	3.17	2	300666-002	2.22	3
300250-000	3.17	K	300666-003	2.22	8
300292-000	2.20	5	300666-004	2.22	14
300292-000	2.21	5	300666-007	2.22	*
300293-000	2.20	6	300666-008	2.22	*
300294-000	2.21	1	300666-010	2.22	2
300294-000	2.20	1	300666-012	2.22	10
300295-000	2.20	11	300666-013	2.22	12
300296-000	2.20	10	300666-014	2.22	4
300297-000	2.20	14	300666-015	2.22	11
300298-000	2.20	13	300666-016	2.22	9

PARTS ORDERING INSTRUCTIONS

HOW TO ORDER

When you order, supply the part number, quantity, model and serial numbers of your machine. Supplying this information will assure prompt, efficient handling of your order. The pictorial reference number is not needed and including it can only add confusion.

Since your dealer carries many parts in stock and maintains up-to-date prices on all parts, he will be able to process your order immediately. If, for some reason, the part is not in stock, he will order it from the factory. In either event, he maintains a current file of service manuals, which give all available parts ordering or technical information.

All prices are FOB factory in Muscatine, Iowa. Shipping charges are added to the price of the part shipping from the factory.

WHERE TO ORDER

Always order parts from the dealer who sold you your BT PRIME-MOVER. If it is necessary for the dealer to order parts from the factory, he is able to get prompt service for you. Parts are shipped in accordance with shipping instructions given on the order.

INSTRUCTIONS FOR RETURNING PARTS

Under NO CIRCUMSTANCES will parts be accepted at the factory for credit without prior approval. THE BT PRIME-MOVER Co. cannot accept responsibility for parts returned without authorization.

If you have some parts which must be returned, contact your dealer. If he believes parts should be returned, he will arrange for authorization to return the parts.

FIELD MODIFICATIONS

The regulations imposed by OSHA make it mandatory that alternation of industrial trucks be done only as approved in advance and in writing by the manufacturer. Their regulation apply to counter-weighting, changes in masts when such changes affect capacity and any other safety modifications. It is mandatory that nameplate and instructions be changed accordingly (1910.178 (a)(4)).

BT PRIME-MOVER will approve such changes requested as we can properly evaluate and rerate as to capacity. Normally a change will be evaluated upon receipt of a written request with full particulars including truck and mast serial number, proposed changes, new heights of lift, etc.

If the change is approved, authorization will be sent as will new nameplates or other labeling where appropriate. The new nameplates should be installed over the earlier nameplate.

The modifier should send confirmation of the change to the factory along with pictures of the revised truck.

FIGURE # 1.2 DRIVE MOTOR AND BRAKE ASSEMBLY

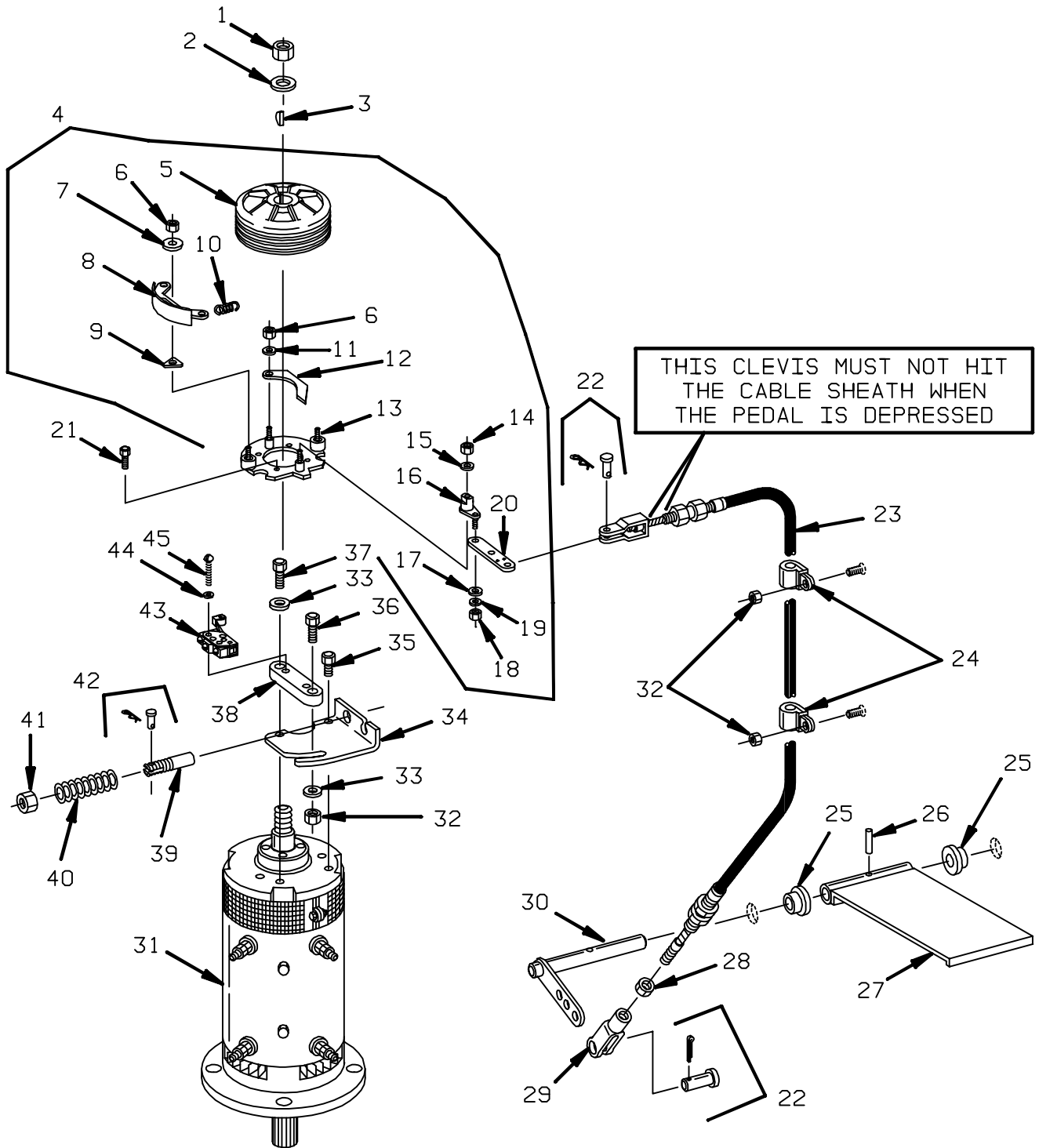


FIGURE # 2.5 WIRING ASSEMBLY FOR COLD STORAGE

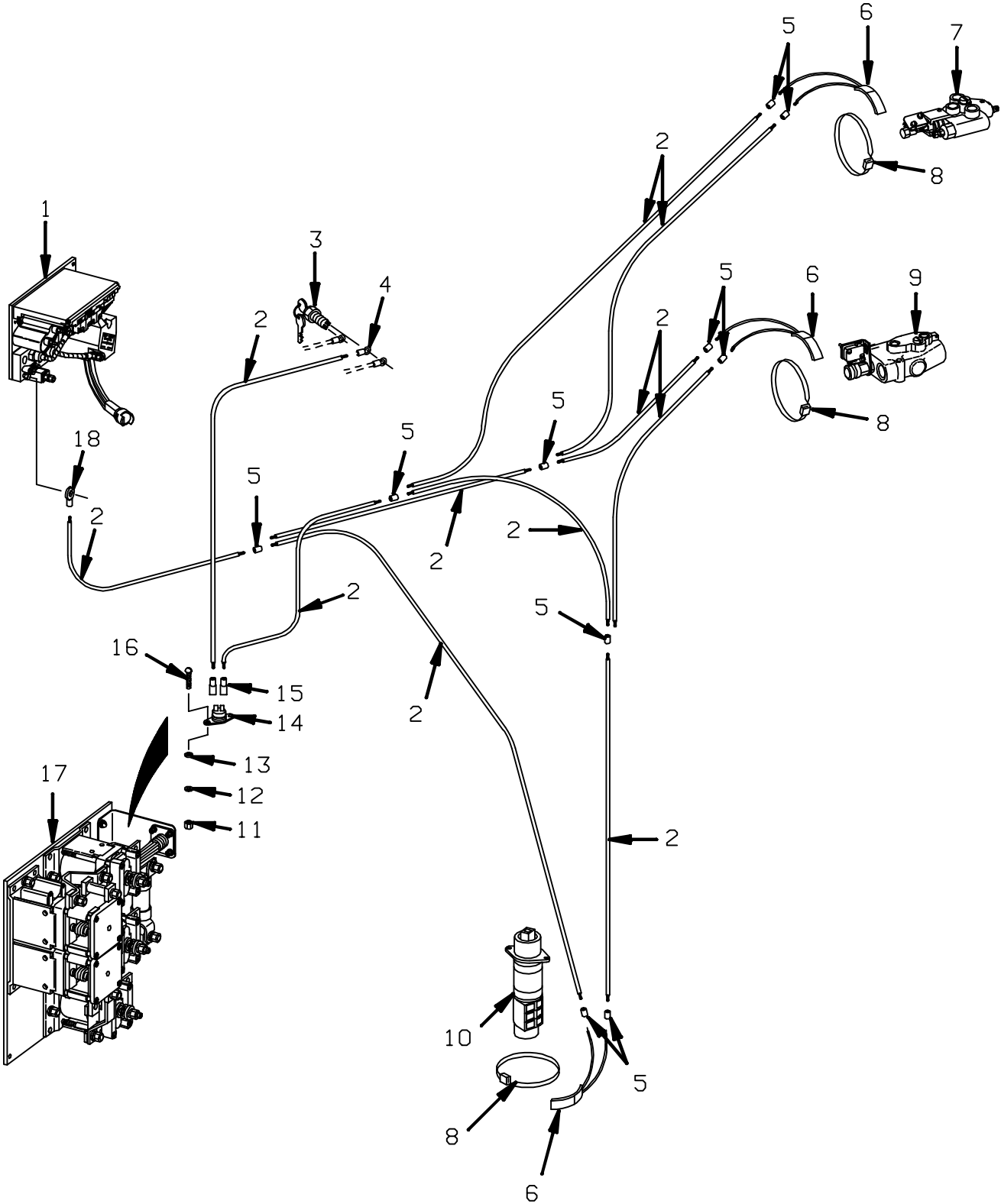


FIGURE # 2.10 TILT WITH SIDESHIFTER CABLE ASSEMBLY

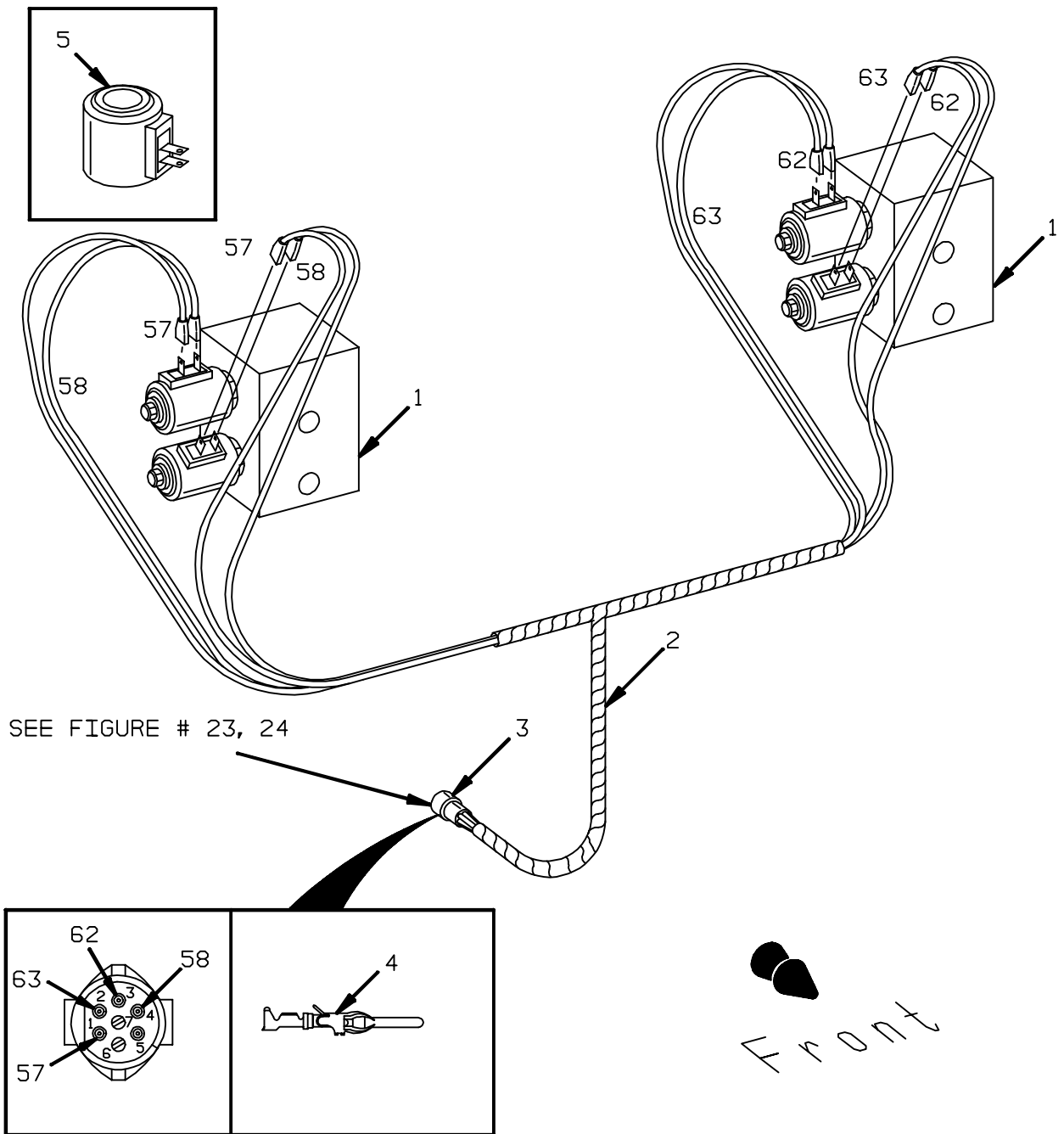


FIGURE # 2.15 EV-100LX SCR FORWARD & REARWARD CONTACTOR ASSEMBLY (27692-00)

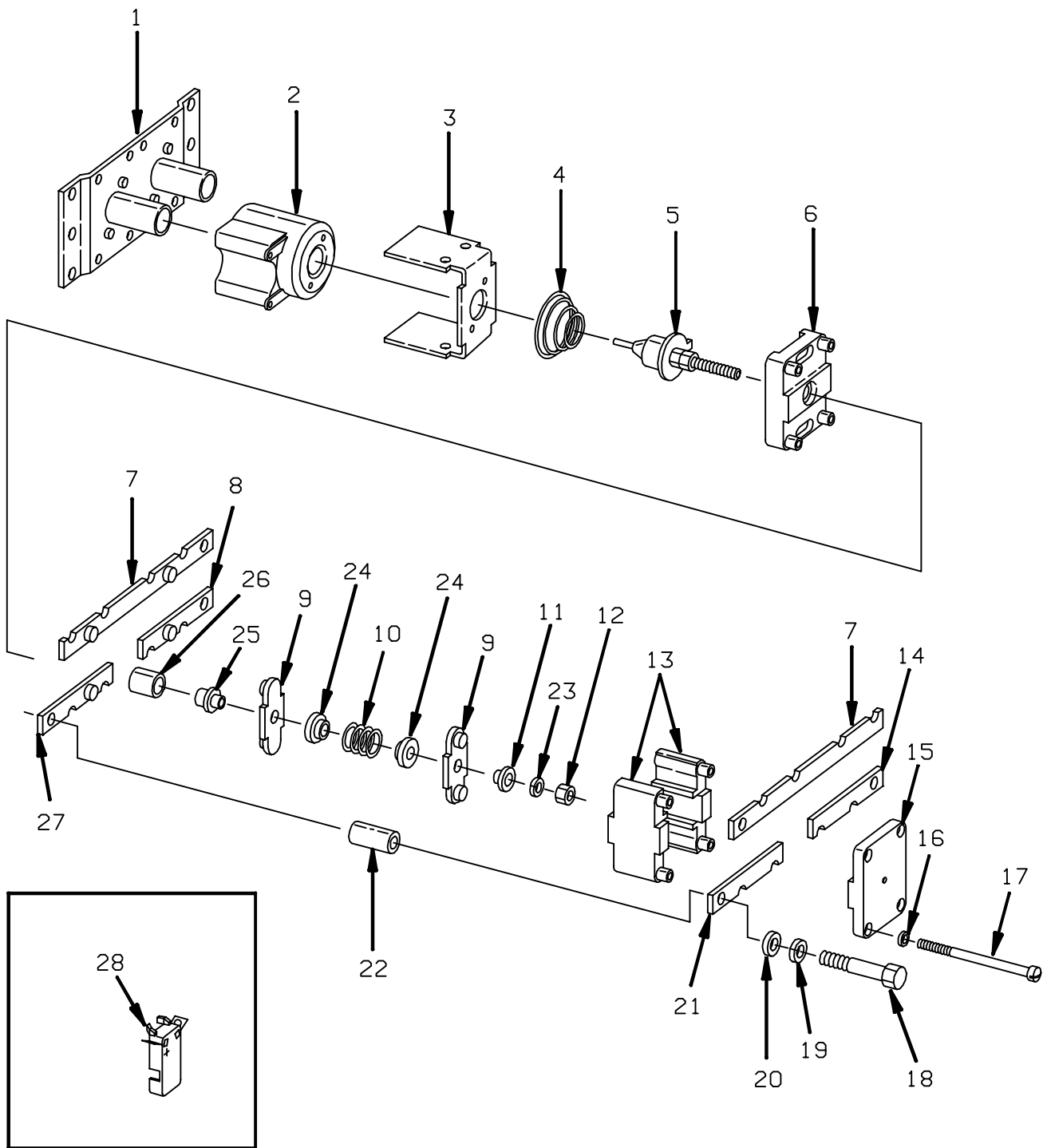


FIGURE # 2.20 LIFT PUMP MOTOR ASSEMBLY, 24 VOLT (27900-00, 5BT1324B54) G.E.
LIFT PUMP MOTOR ASSEMBLY, 36 VOLT (27899-00, 5BT1326B234) G.E.

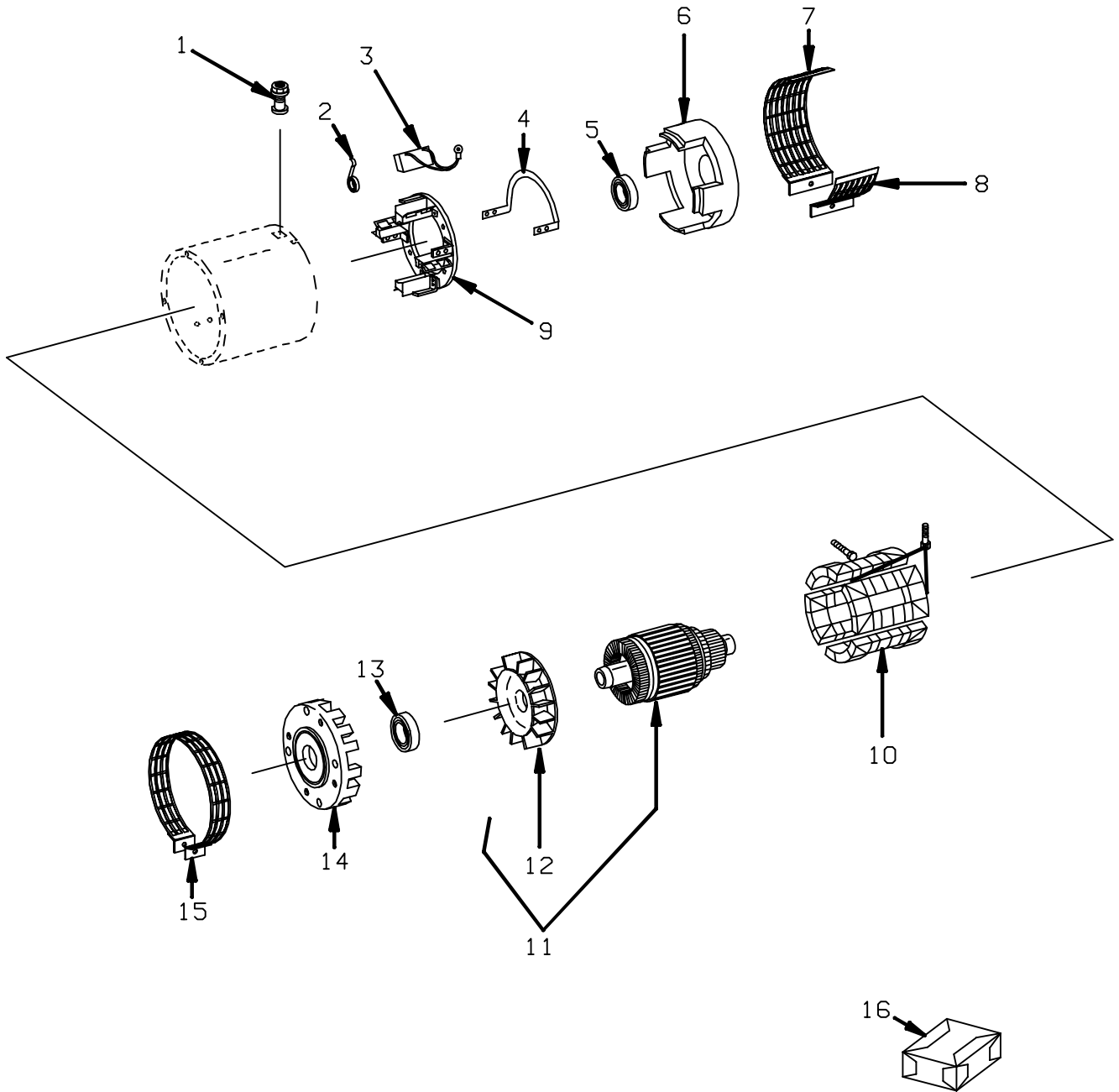
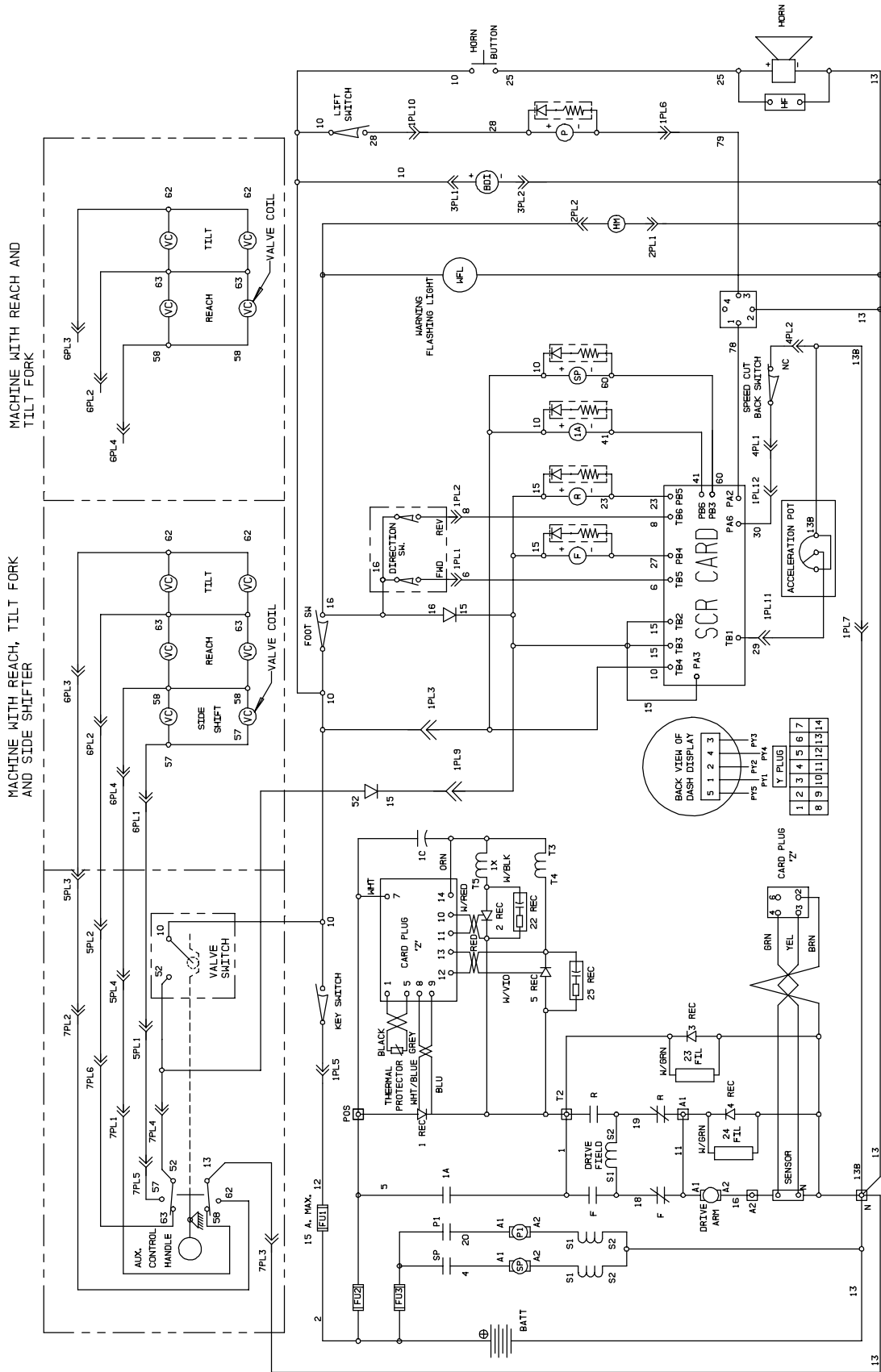


FIGURE # 2.26 "EE" EV-100LX TT SCR ELECTRICAL SCHEMATIC



"EE" TT ELECTRICAL SCHEMATIC

FIGURE # 3.3 AUXILIARY PUMP AND RESERVOIR ASSEMBLY

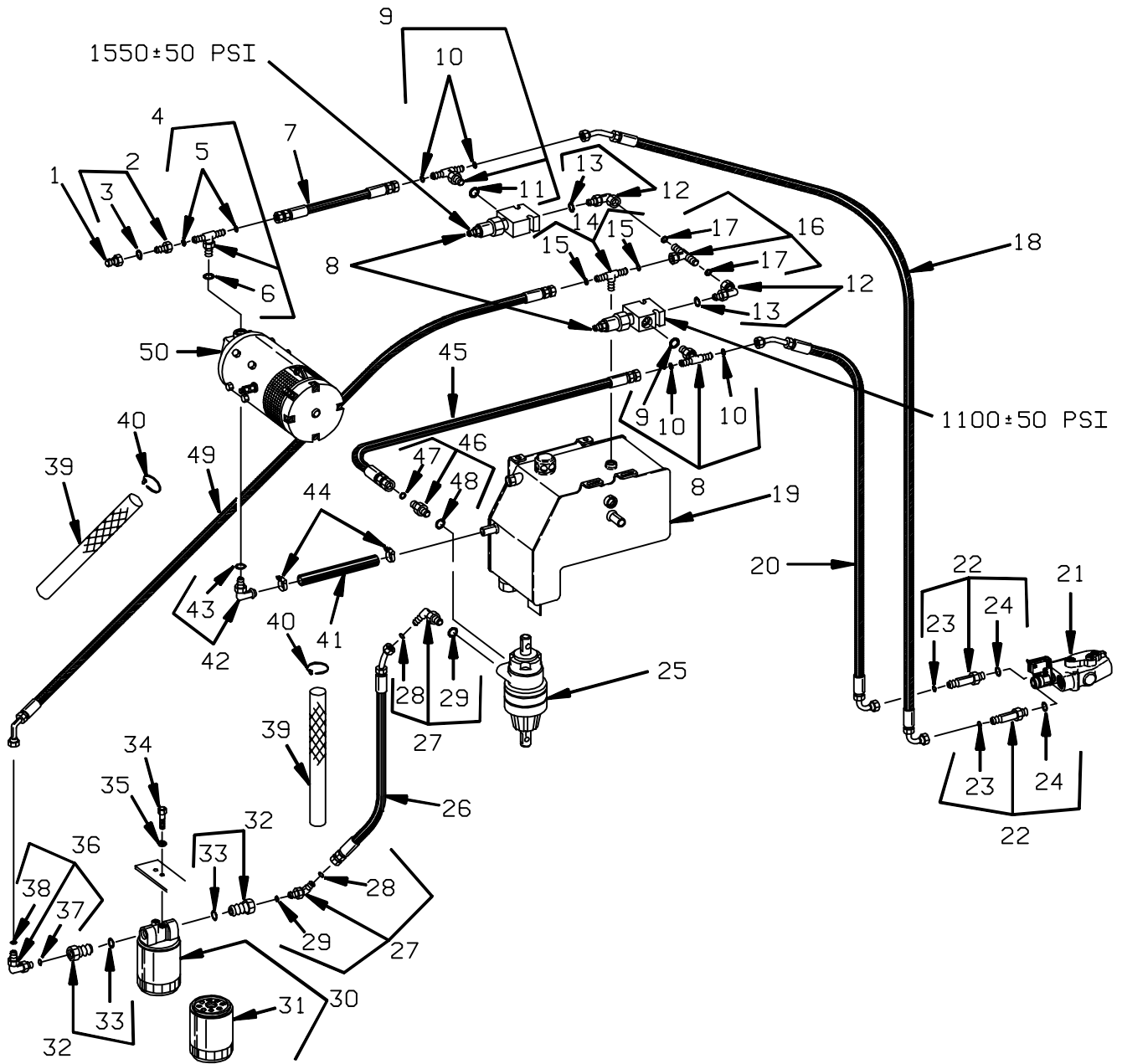


FIGURE # 3.8 TORQUE GENERATOR ASSEMBLY (40795-01)

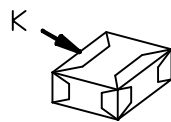
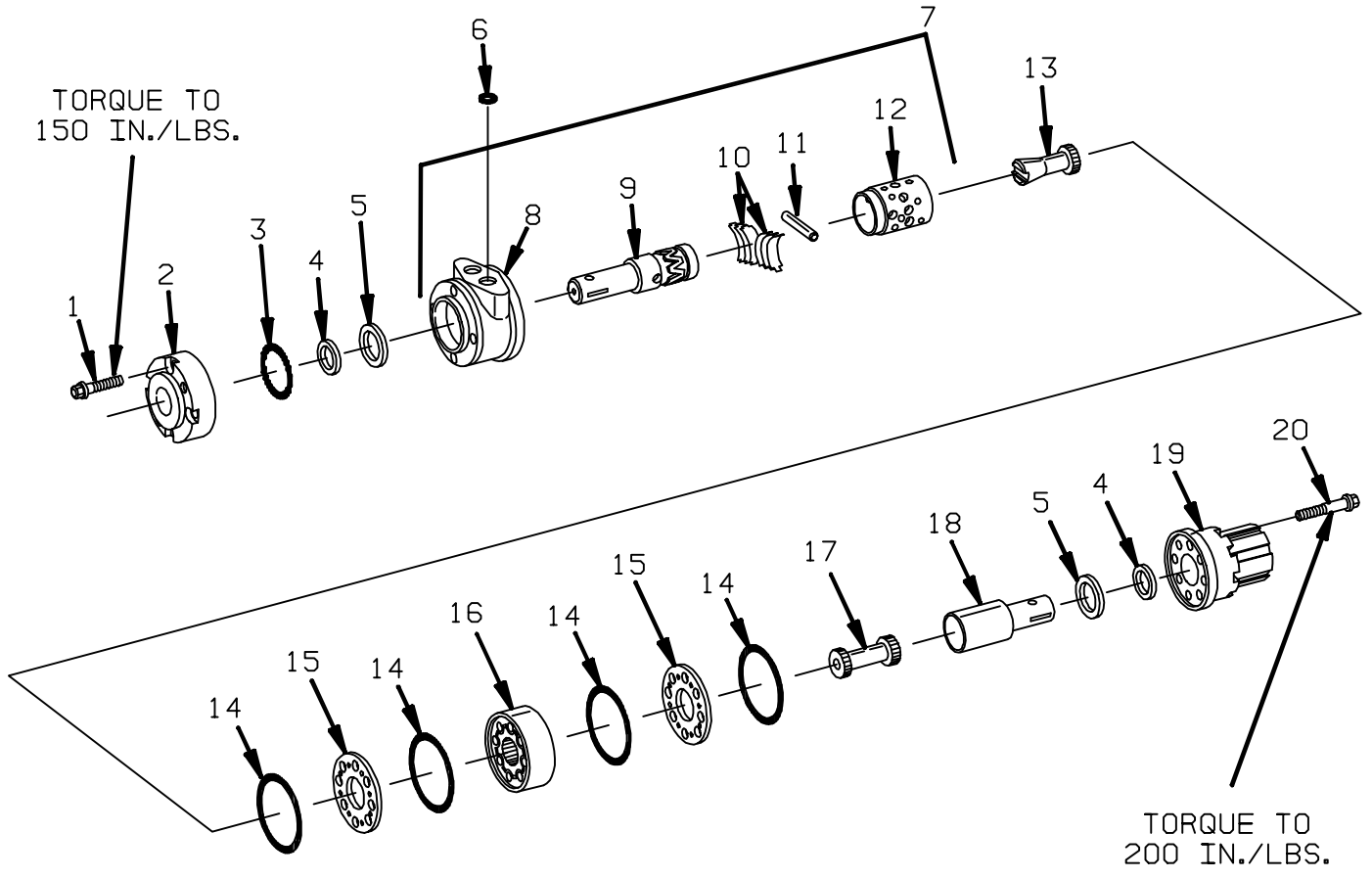


FIGURE # 3.13 SIDESHIFTER CYLINDER WITH TILT ASSEMBLY

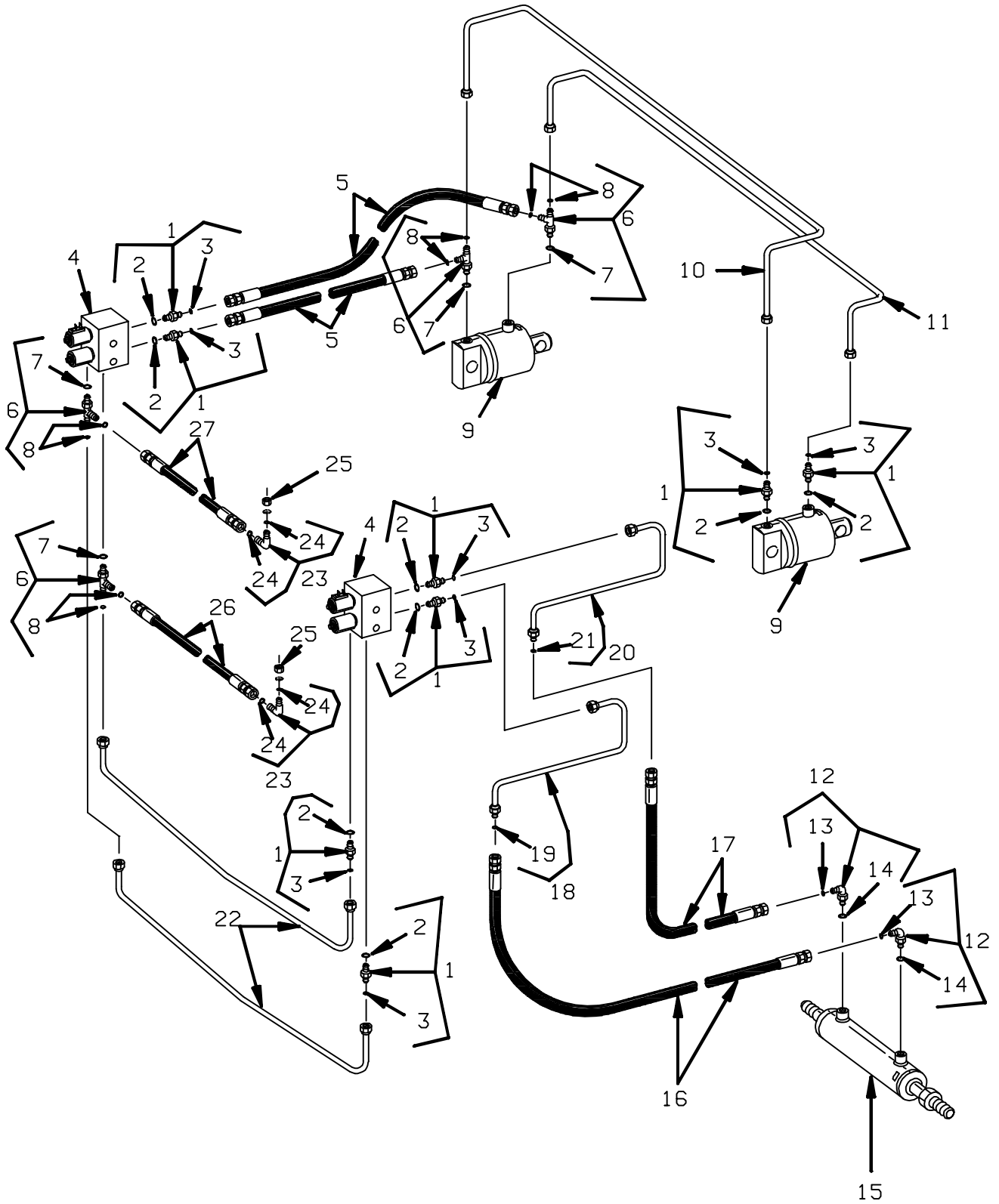


FIGURE # 3.18 LIFT PUMP ASSEMBLY, 36 VOLT (41178-00)

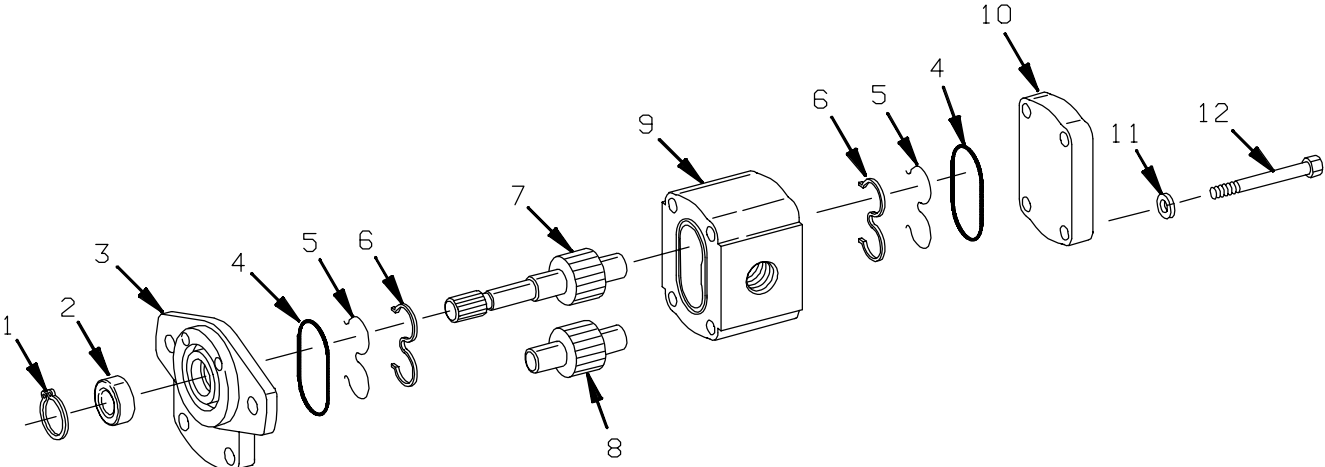


FIGURE # 3.23 THREE STAGE STAGING CYLINDER ASSEMBLY (41651-XX)

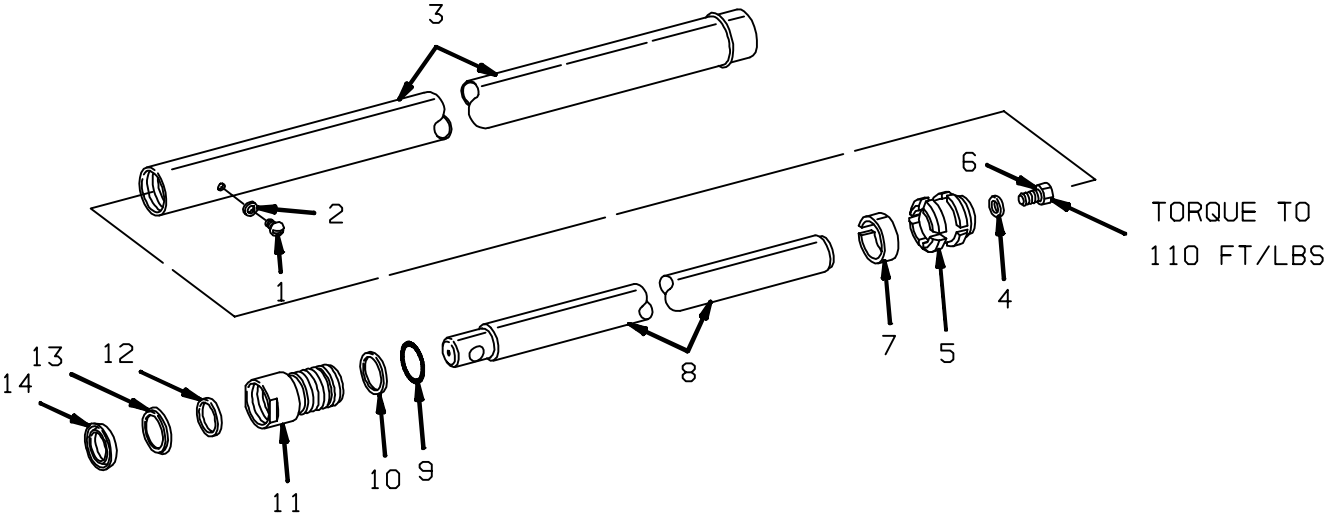


FIGURE # 3.29 TWO STAGE MAST HYDRAULIC ASSEMBLY

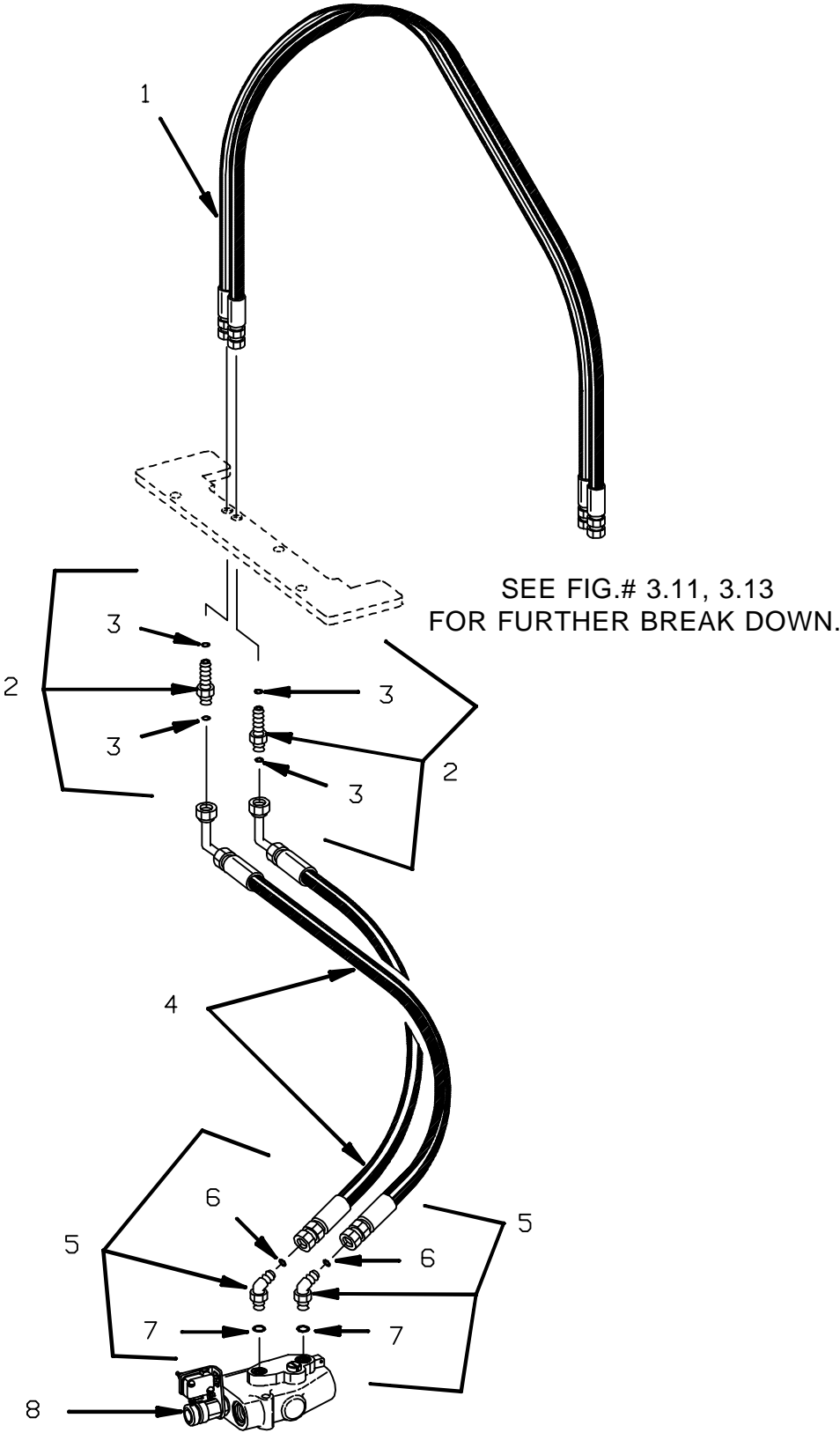
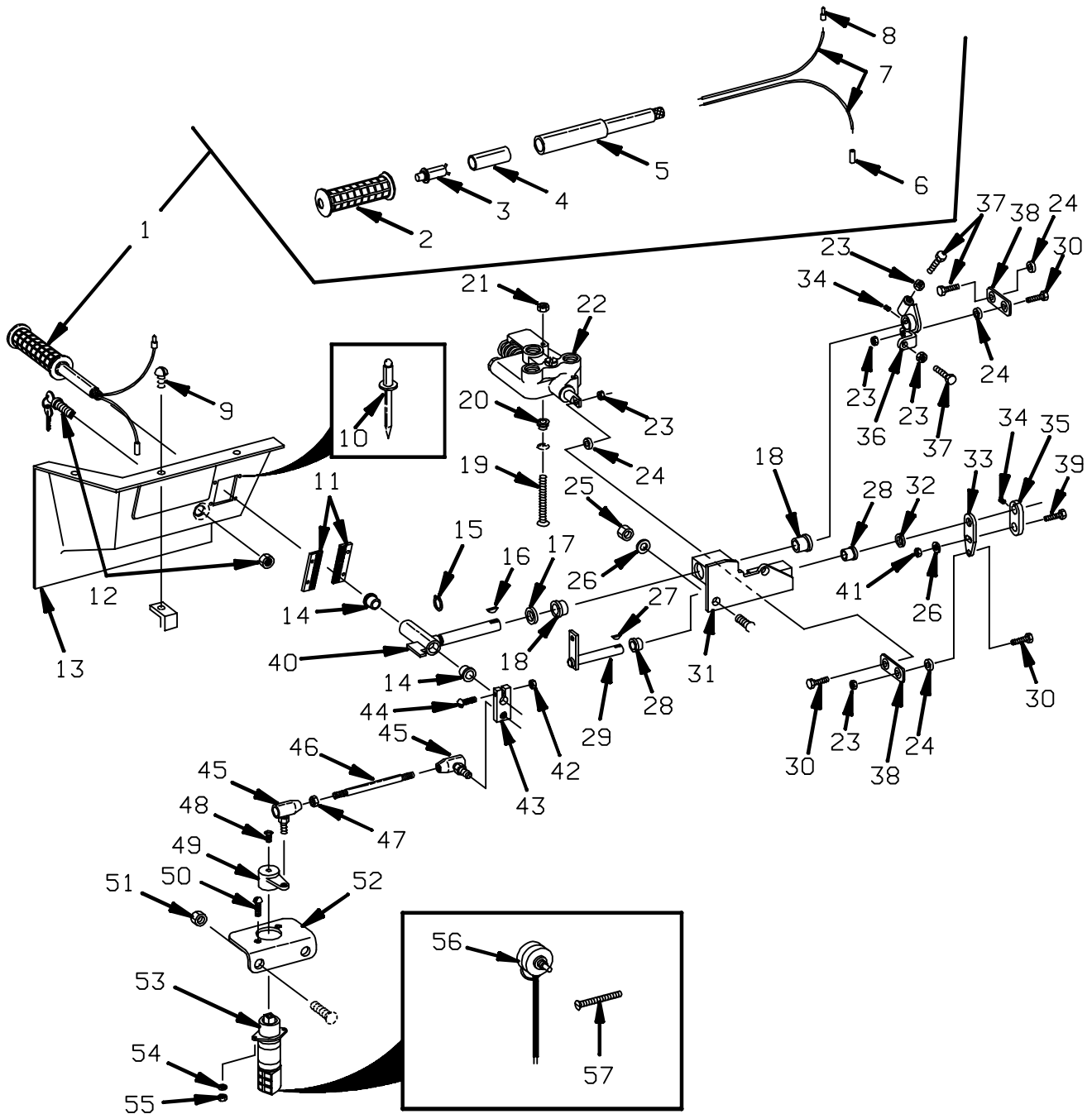


FIGURE # 4.4 HAND LIFT/LOWER AND SPEED CONTROL



CLICK HERE TO **DOWNLOAD** THE COMPLETE MANUAL

- Thank you very much for reading the preview of the manual.
- You can download the complete manual from: www.heydownloads.com by clicking the link below



- Please note: If there is no response to CLICKING the link, please download this PDF first and then click on it.

CLICK HERE TO **DOWNLOAD** THE COMPLETE MANUAL

FIGURE # 4.9 SINGLE LOAD WHEEL ASSEMBLY

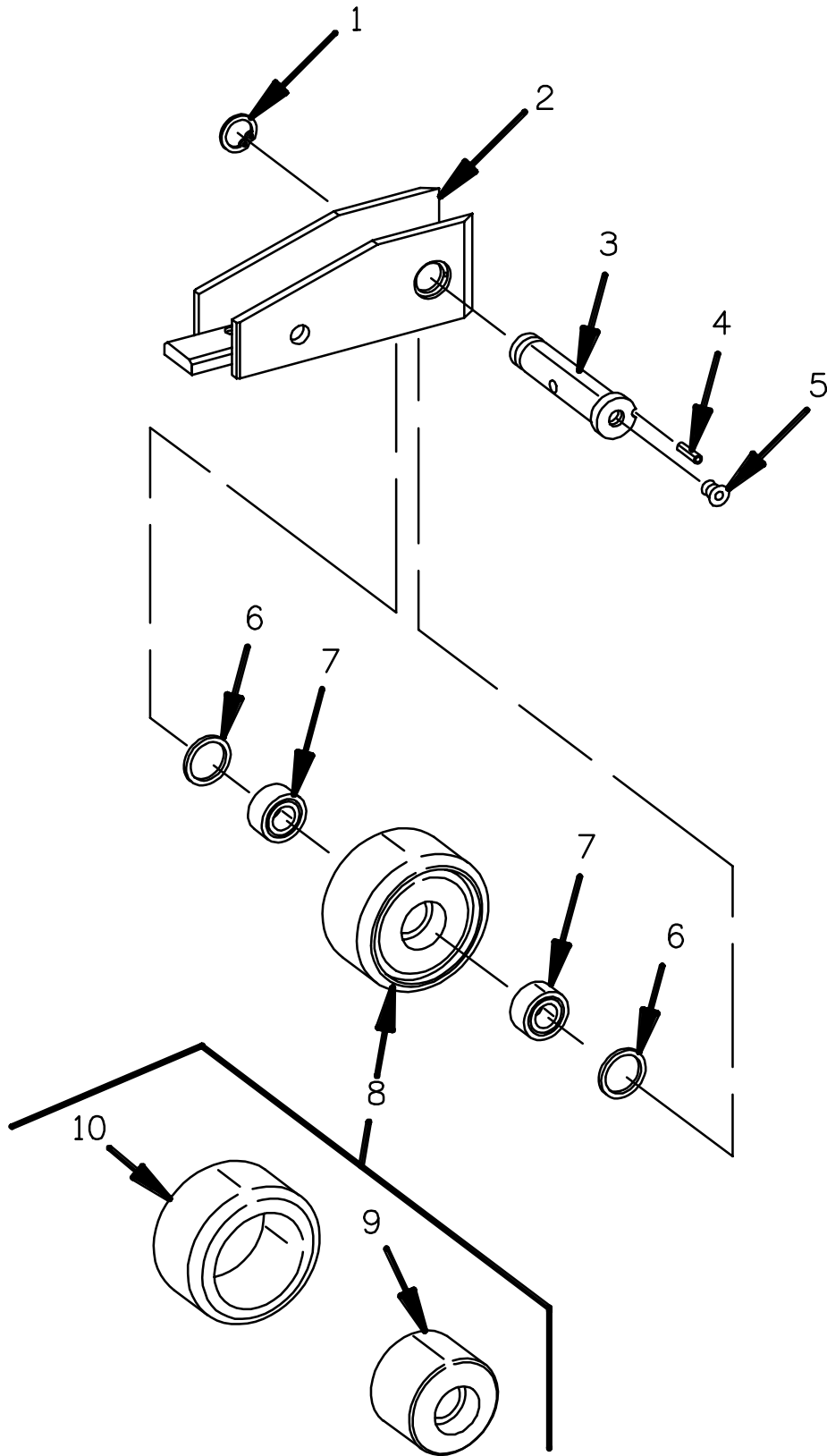


FIGURE # 5.1 TWO STAGE MAST INSTALLATION

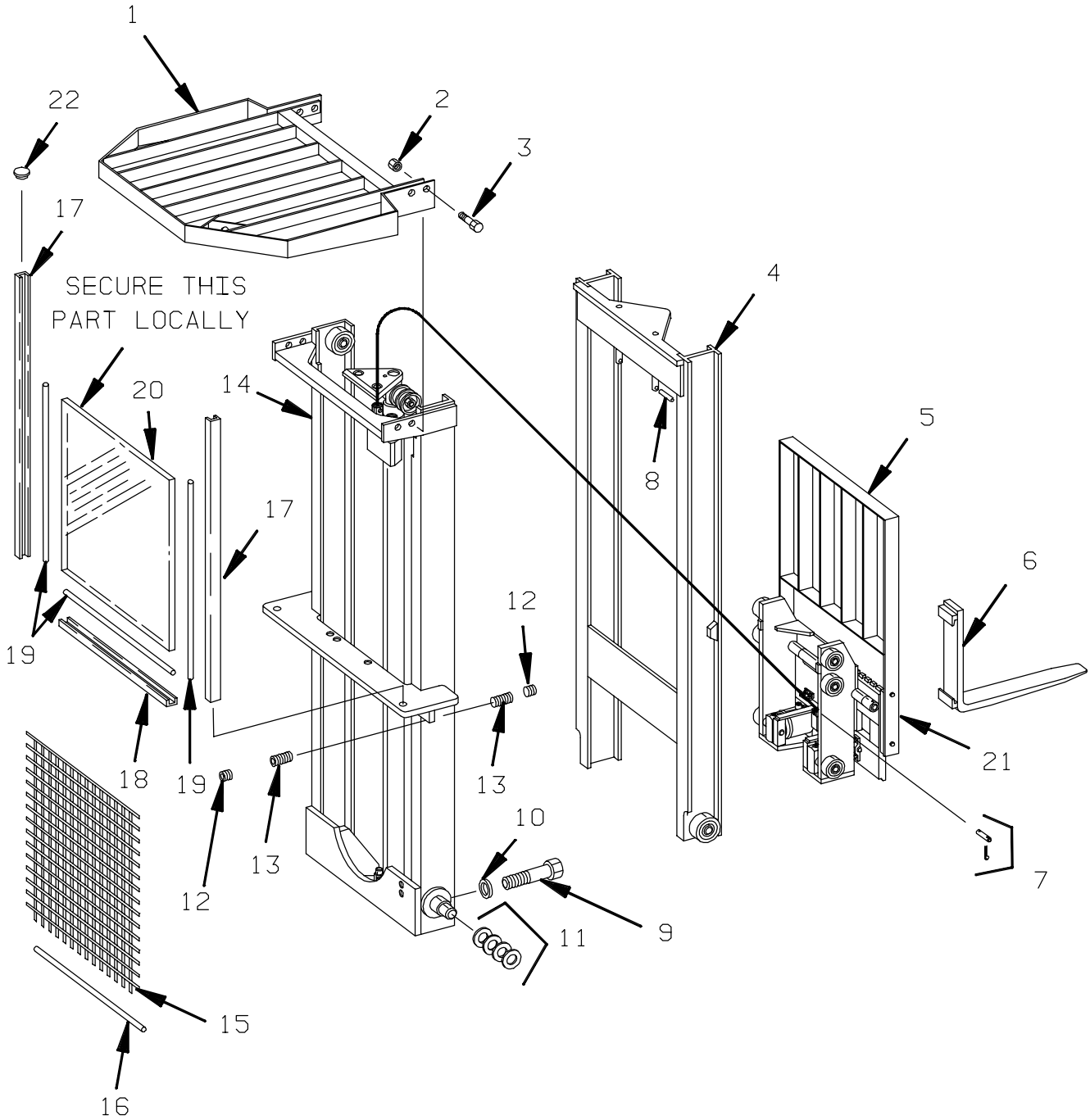


FIGURE # 5.11 THREE STAGE INTERMEDIATE COLUMN ASSEMBLY

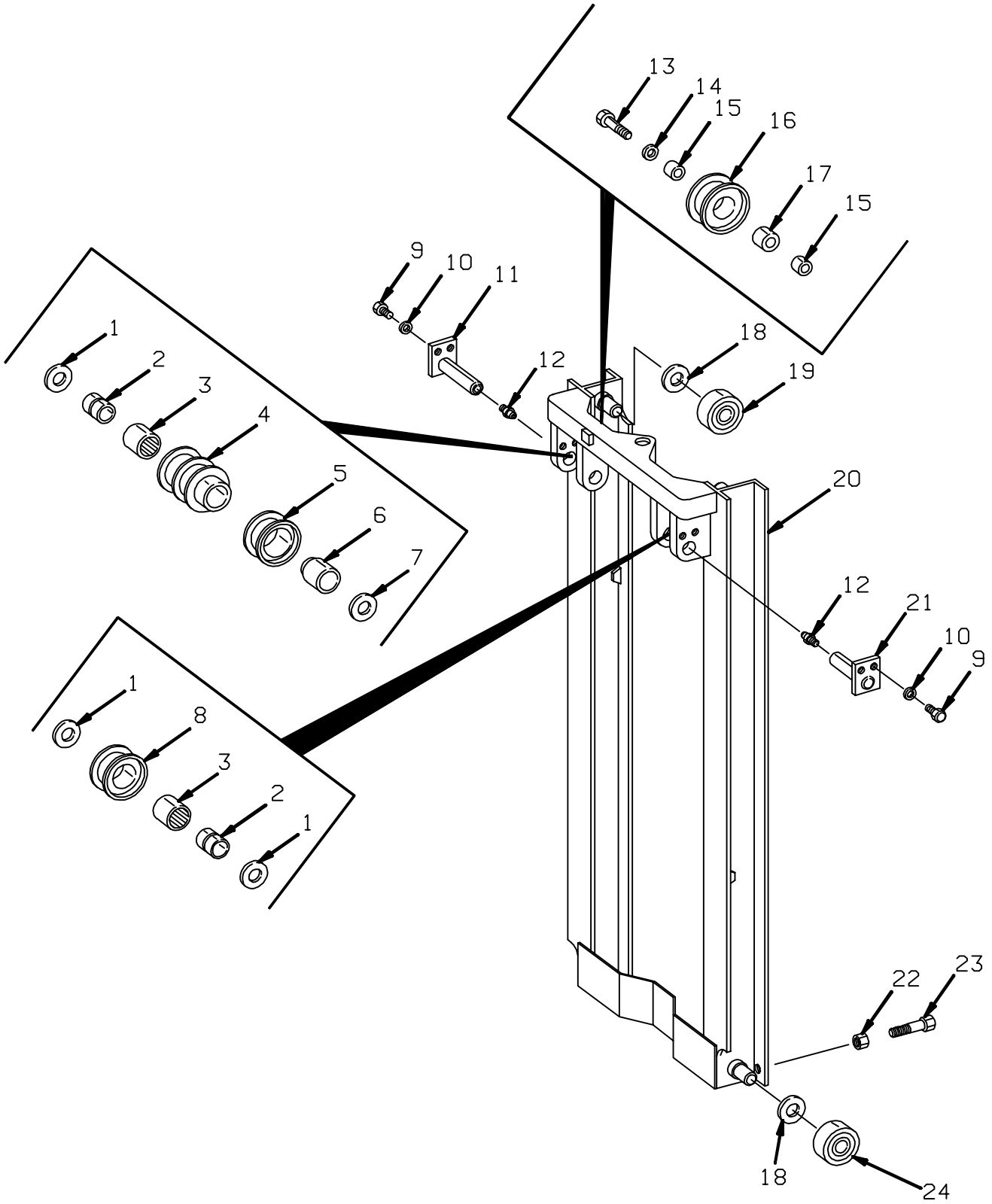
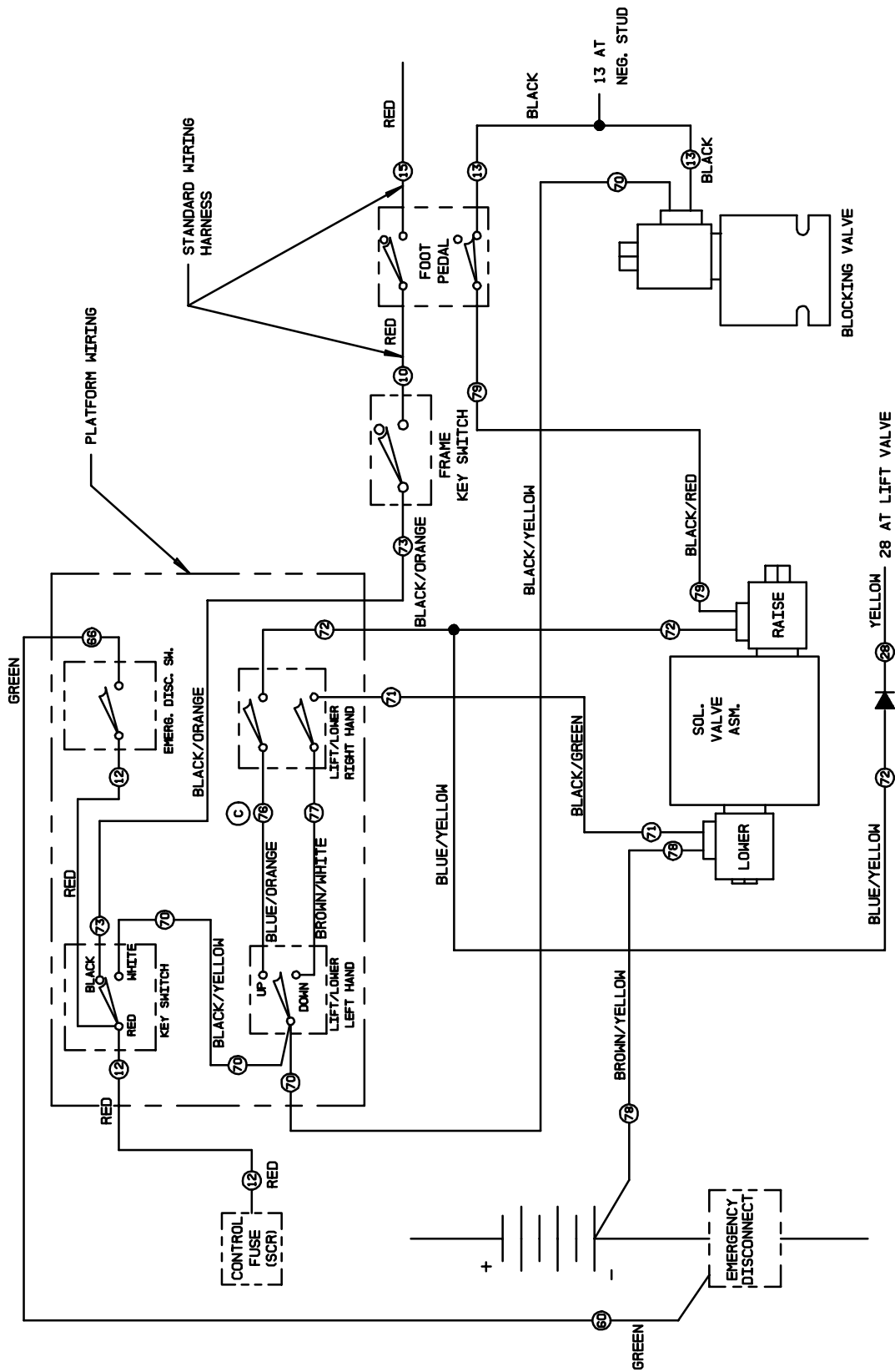


FIGURE # 6.1 MANLIFT EV-100 LX SCR ELECTRICAL SCHEMATIC



MANLIFT ELECTRICAL SCHEMATIC

FIGURE # 6.7 MANLIFT CONNECTOR ASSEMBLY (49855-16)

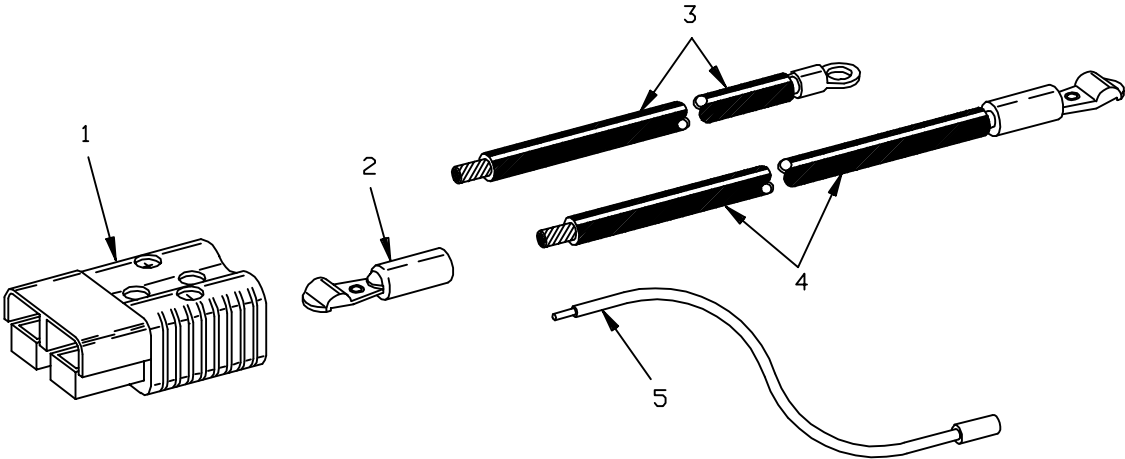
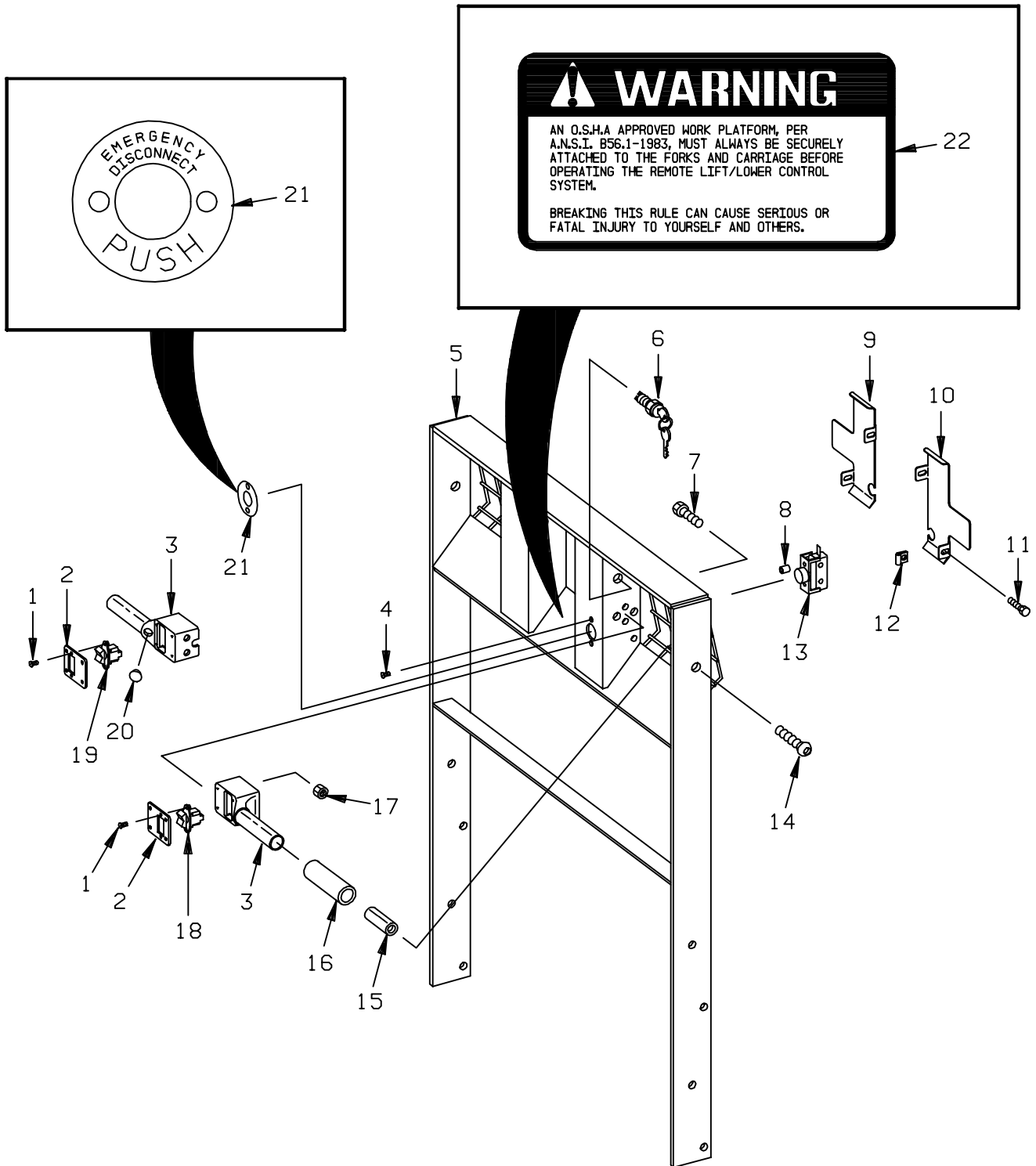


FIGURE # 6.13 MANLIFT LOADBACK REST INSTALLATION





MODEL RS-40C ELECTRIC STRADDLE TRUCK

NUMERICAL INDEX

<u>PART #</u>	<u>FIG. #</u>	<u>ITEM #</u>	<u>PART #</u>	<u>FIG.#</u>	<u>ITEM #</u>
41314-00	4.4	38	41651-01	3.22	20
41318-00	4.3	21	41651-02	5.12	9
41322-00	4.3	5	41651-02	3.22	20
41324-00	4.4	24	41651-03	3.22	20
41331-00	4.3	13	41651-03	5.12	9
41331-00	2.6	7	41651-04	5.12	9
41331-00	2.5	9	41651-04	3.22	20
41331-00	3.3	21	41651-05	3.22	20
41331-00	3.9	8	41651-05	5.12	9
41331-00	3.10	8	41651-06	5.12	9
41361-00	2.6	6	41651-06	3.22	20
41364-00	4.4	22	41652-01	3.23	3
41364-00	3.22	31	41652-02	3.23	4
41364-00	3.15	7	41652-03	3.23	4
41364-00	2.5	7	41652-04	3.23	4
41364-00	3.20	21	41652-05	3.23	4
41426-00	3.7	3	41652-06	3.23	4
41427-00	3.22	21	41666-00	4.8	18
41429-01	3.7	3	41680-00	3.16	2
41436-00	3.22	16	41680-00	3.15	12
41437-00	5.9	15	41710-00	2.13	1
41464-00	2.6	5	41711-00	2.13	8
41494-00	2.7	10	41714-00	2.13	4
41494-00	2.7	6	41715-00	2.13	2
41494-00	2.7	6	41757-01	2.14	1
41494-00	2.7	6	41757-01	2.13	5
41494-01	2.7	6	41757-01	2.5	17
41494-01	2.7	6	41757-01	7.5	2
41494-01	2.7	6	41757-02	2.13	5
41494-02	2.7	6	41757-02	2.5	17
41494-02	2.7	6	41757-02	2.14	1
41494-03	2.7	6	41757-02	7.5	2
41494-03	2.7	6	41771-00	2.6	13
41494-04	2.7	6	41771-00	2.9	2
41534-00	3.21	K	41771-00	2.8	2
41547-00	4.8	6	41790-00	4.2	21
41550-00	4.8	1	41794-00	4.4	52
41581-00	5.10	18	41796-00	4.4	49
41581-00	5.4	11	41799-00	7.5	3
41584-00	5.11	5	41800-00	2.24	4
41585-00	5.10	17	42115-01	4.10	2
41585-00	5.4	10	42117-00	4.10	1
41586-00	5.11	4	42125-00	4.10	9
41587-00	5.10	16	42127-01	4.11	2
41587-00	5.4	9	42129-00	4.11	1
41588-00	2.9	15	42136-00	4.11	9
41596-00	2.9	19	42139-00	4.9	9
41602-00	2.9	17	42140-01	4.9	8
41602-01	2.9	18	42144-00	4.9	3
41642-00	4.2	19	42151-00	4.9	2
41648-00	1.3	3	42176-00	4.10	3
41651-01	5.12	9	42178-00	4.11	3

ALPHABETICAL INDEX

NAME	FIG.#	PAGE #
G, H		
Hand Lift/Lower and Speed Control	4.4	4.7
Hand Lift/Lower and Speed Control for 3 Function Control	4.13	4.25
Hydraulic Reservoir Assembly	3.7	3.11
Hydraulic Schematic for 3 Function Control Handle	3.25	3.47
Hydraulic Schematic	3.1	3.1
Hydraulic Schematic Symbols	3.2	3.2
Hydraulic Schematic Symbols	3.26	3.48
I, J, K, L		
Lift Control Valve Assembly	3.19	3.35
Lift Pump Assembly, 24 Volt "E"&"EE" & 36 VOLT "EE"	3.17	3.31
Lift Pump Assembly, 36 Volt	3.18	3.33
Lift Pump Contactor Assembly	2.17	2.29
Lift Pump Motor Assembly	2.20	2.35
Lift Pump Motor Assembly	2.20A	2.35A
Lift Pump Motor Assembly	3.16	3.29
Lift Pump and Reservoir Assembly	3.15	3.27
Limit Switch Wiring Assembly	2.7	2.9
M, N, O, P		
Main Frame and Load Wheel Assembly	4.8	4.15
Numerical Index	*	99.1
Power Connector Assembly	2.19	2.33
Q, R		
Rearward Steering Control Assembly	4.6	4.11
Remote Lift/Lower Connector Assembly	6.7	6.11
Remote Lift/Lower EV-100 LX SCR Electrical Schematic	6.1	6.1
Remote Lift/Lower EV-100 LX SCR Electrical Schematic Symbols	6.2	6.2
Remote Lift/Lower Hydraulic Diagram	6.10	6.15
Remote Lift/Lower Hydraulic Schematic	6.8	6.13
Remote Lift/Lower Hydraulic Schematic Symbols	6.9	6.14
Remote Lift/Lower Load Backrest Installation	6.13	6.21
Remote Lift/Lower Power Component Wiring	6.6	6.9
Remote Lift/Lower Reach and Platform Cable Assembly	6.5	6.7
Remote Lift/Lower Three Stage Mast Cable Assembly	6.4	6.5
Remote Lift/Lower Valve Assembly	6.12	6.19
Remote Lift/Lower Wiring Harness Assembly	6.3	6.3
S		
Shielding Assembly	4.1	4.1
Sideshifter Cylinder With Tilt Assembly	3.13	3.23
Sideshifter Manifold Valve Assembly	3.14	3.25
Single Load Wheel Assembly	4.9	4.17
Single Load Wheel Assembly	4.9A	4.17A
Special Tools and Lubrications	10.1	10.1

FIG #	ITEM #	PART #	NAME	# FOR ASSY.	UNIT
1.3	1	11160-01	Fitting, grease	2	
1.3	2	40688-00	Yoke	1	
1.3	3	41648-00	Plate	1	
1.3	4	11143-03	Screw, cap	4	
1.3	5	49972-02	Ring	1	
1.3	6	40005-00	Pin	1	
1.3	7	11205-15	Bearing	1	
1.3	8	49969-01	Shim, .005	As Req'd	
1.3	8	49969-02	Shim, .007	As Req'd	
1.3	8	49969-03	Shim, .010	As Req'd	
1.3	8	49969-04	Shim, .020	As Req'd	
1.3	9	11015-16	O ring	1	
1.3	10	40473-00	Gear and pinion set (See Fig.# 1.4 for Gear)	1	
1.3	11	40023-00	Piston	1	
1.3	12	11827-14	Ring, retainer	1	
1.3	13	14908-12	Locknut	1	
1.3	14	49966-02	Washer	1	
1.3	15	11890-05	Pin	2	
1.3	16	-----	Transmission assembly (See Fig.# 1.4)	1	
1.3	17	11872-02	Bolt, wheel	8	
1.3	18	11827-15	Ring, retainer	1	
1.3	19	49967-07	Shim, .005	As Req'd	
1.3	19	49967-08	Shim, .007	As Req'd	
1.3	19	49967-09	Shim, .010	As Req'd	
1.3	19	49967-10	Shim, .060	As Req'd	
1.3	20	11205-18	Bearing	1	
1.3	21	49972-04	Ring	1	
1.3	22	49973-01	Locknut	2	
1.3	23	49974-01	Lockwasher	1	
1.3	24	40756-00	Sprocket assembly	1	
1.3	25	NSS	Sprocket	2	
1.3	26	NSS	Collar	1	
1.3	27	11854-03	Screw, cap	2	
1.3	28	40754-00	Bolt, fit	2	
1.3	29	11854-03	Screw, cap	4	
1.3	30	49968-00	Bearing set	1	
1.3	31	49972-01	Ring	1	
1.3	32	22012-05	Elbow, 90°	1	
1.3	33	12391-07	O ring	1	
1.3	34	49928-07	Cap	1	
1.3	35	11241-01	Elbow, 90°	1	
1.3	36	11459-00	Vent, air	1	
1.3	37	11801-00	Nut, wheel	8	
1.3	38	40267-00	Wheel, drive	1	
1.3	39	40004-00	Wheel, hub	1	
1.3	40	46266-00	Tire, rubber	1	



FIG #	ITEM #	PART #	NAME	# FOR ASSY.	UNIT
2.6	1	49399-00	Control, EV-100LX SCR TX panel (See Fig.# 2.12)	1	TX panel
2.6	1	49399-01	Control, EV-100LX SCR TT panel (See Fig.# 2.12)	1	TT panel
2.6	2	26204-00	Meter, hour	1	
2.6	3	23228-01	Indicator, 24 volt battery discharge (BDI)	1	24 volt
2.6	3	23228-02	Indicator, 36 volt battery discharge (BDI)	1	36 volt
2.6	4	20151-00	Switch, key	1	
2.6	5	49794-00	Switch, brake	1	
2.6	5	41464-00	Switch, manlift brake	1	
2.6	6	41361-00	Valve, lift control (See Fig.# 3.19)	1	
2.6	7	41331-00	Valve, auxiliary control (See Fig.# 3.4)	1	
2.6	8	49965-00	Switch, auxiliary	2	
2.6	9	40416-00	Handle assembly (See Fig.# 4.4)	1	
2.6	10	27303-00	Switch, master	1	
2.6	11	29304-00	Potentiometer	1	
2.6	12	49607-00	Diode	2	
2.6	13	41771-00	Harness, wiring	1	
2.6	14	26618-04	Spacer	1	
2.6	15	23309-01	Horn, 24 volt	1	24 volt
2.6	15	23309-02	Horn, 36 volt	1	36 volt
2.6	16	11170-05	Nut	1	
2.6	171	49605-00	Filter, horn	1	
2.6	8	11045-03	Screw, cap	2	
2.6	19	11016-01	Washer, flat	2	
2.6	20	11009-04	Lockwasher	2	
2.6	21	49283-00	Alarm, travel	1	

FIG #	ITEM #	PART #	NAME	# FOR ASSY.	UNIT
2.11	1	49399-00	Control, EV-100LX SCR TX panel (See Fig.# 2.12)	1	TX PANEL
2.11	1	49399-01	Control, EV-100LX SCR TT panel (See Fig.# 2.12)	1	TT PANEL
2.11	2	11016-12	Washer, flat	3	
2.11	3	11009-05	Lockwasher	3	
2.11	4	11261-05	Nut	2	
2.11	5	11170-04	Nut	2	
2.11	6	49855-22	Connector assembly (See Fig.# 2.19)	1	
2.11	7	11813-03	Grommet, rubber	2	
2.11	8	49886-09	Screw, cap	2	
2.11	9	49856-116	Cable	1	
2.11	10	49856-117	Cable	2	
2.11	11	27900-00	Motor, 24 Volt lift (See Fig.# 2.20)	1	24 VOLT
2.11	11	27899-00	Motor, 36 Volt lift (See Fig.# 2.20)	1	36 VOLT
2.11	11	301985-000	Motor, 36 Volt lift (See Fig.# 2.20A)	1	
2.11	12	49856-27	Cable	1	24 VOLT
2.11	13	300666-000	Motor, 24 Volt auxiliary (See Fig.# 2.22)	1	36 VOLT
2.11	13	300665-000	Motor, 36 Volt auxiliary (See Fig.# 2.22)	1	
2.11	14	49856-113	Cable	1	
2.11	15	49856-115	Cable	2	
2.11	16	49856-112	Cable	1	24 VOLT
2.11	17	27901-00	Motor, 24 Volt drive (See Fig.# 2.21)	1	36 VOLT
2.11	17	27902-00	Motor, 36 Volt drive (See Fig.# 2.21)	1	
2.11	18	49856-114	Cable	1	
2.11	19	41757-01	Panel assembly, 24 VOLT contactor (See Fig.# 2.13 and Fig.# 2.14)	1	24 VOLT
2.11	19	41757-02	Panel assembly, 36 VOLT contactor (See Fig.# 2.13 and Fig.# 2.14)	1	36 VOLT
2.11	20	49856-118	Cable	1	
2.11	21	49856-119	Cable	1	
2.11	22	49856-104	Cable	1	
2.11	23	49545-00	Bracket	1	
2.11	24	11854-04	Screw, cap	1	

FIG ITEM		PART #	NAME	# FOR ASSY.	UNIT
#	#				
2.16	1	201962	Base, magnet	1	
2.16	2	200077	Coil, field	1	
2.16	3	201963	Frame, magnet	1	
2.16	4	201262	Spring (RED)	1	
2.16	5	201964	Armature	1	
2.16	6	200081	Base, buss	1	
2.16	7	201965	Tip, contact	2	
2.16	8	200096	Bushing	1	
2.16	9	200095	Carrier	1	
2.16	10	201966	Tip, movable	1	
2.16	11	201259	Cap	1	
2.16	12	201266	Spring (GOLD)	1	
2.16	13	201367	Washer, flat	1	
2.16	14	201215	Nut, lock	1	
2.16	15	201967	Clamp	2	
2.16	16	201368	Lockwasher	4	
2.16	17	201372	Screw, machine	4	
2.16	18	202004	Suppression, 1A contactor	1	
2.16	19	200094	Seat	1	

FIG ITEM		PART #	NAME	# FOR ASSY.	UNIT
#	#				
2.20A	1	300571-000	Screw, clamp	2	
2.20A	2	301327-034	Cover, brush	1	
2.20A	3	301327-035	Shield, end	1	
2.20A	4	300574-000	Terminal, crossover	1	
2.20A	5	300540-000	Washer, insul	2	
2.20A	6	300541-000	Bushing	1	
2.20A	7	300542-000	Gasket	2	
2.20A	8	300543-000	Washer, insul	1	
2.20A	9	300544-000	Washer	2	
2.20A	10	300545-000	Lockwasher	2	
2.20A	11	300546-000	Nut	4	
2.20A	12	301327-008	Screw, holder mounting	4	
2.20A	13	301327-006	Spring	4	
2.20A	14	301327-036	Holder, brush	1	
2.20A	15	301327-007	Screw, brush terminal	4	
2.20A	16	301327-037	Brush	4	
2.20A	17	300553-000	Bushing, insul	1	
2.20A	18	300554-000	Washer, insul	1	
2.20A	19	300555-000	Screw, pole	16	
2.20A	20	300556-000	Pole, main	4	
2.20A	21	301327-038	Coil, field	1	
2.20A	22	300558-000	Bearing, ball	1	
2.20A	23	301327-039	Armature	1	
2.20A	24	300560-000	Bearing, ball	1	
2.20A	25	301327-010	Washer, shim	1	
2.20A	26	300562-000	Washer, belleville	2	
2.20A	27	300563-000	Washer, spacer	1	
2.20A	28	301327-040	Shield, end	1	
2.20A	29	301327-013	Screw, clamp	4	

FIGURE # 2.27 "EE" EV-100LX TT SCR ELECTRICAL SCHEMATIC SYMBOLS

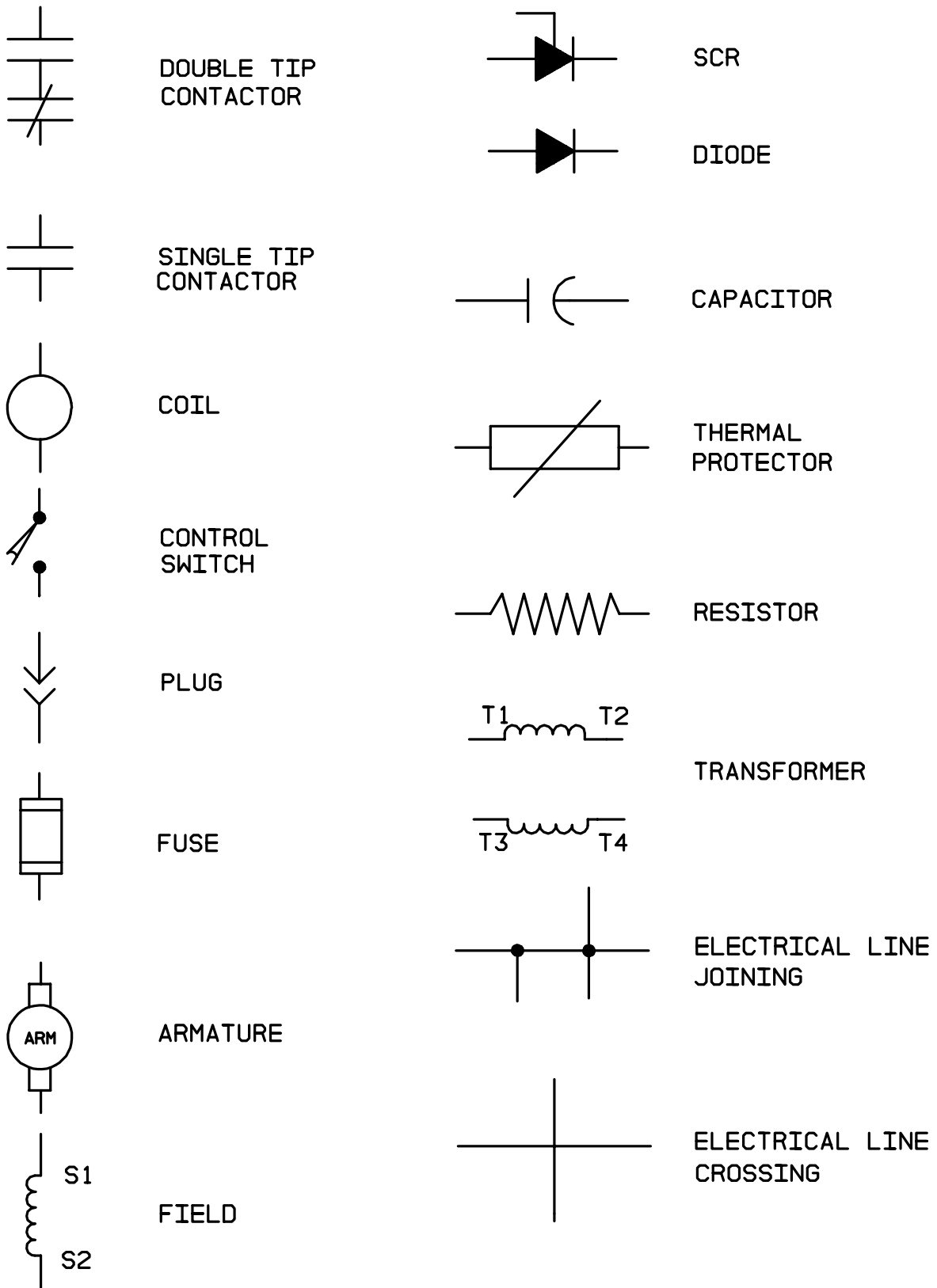


FIGURE # 3.2 HYDRAULIC SCHEMATIC SYMBOLS

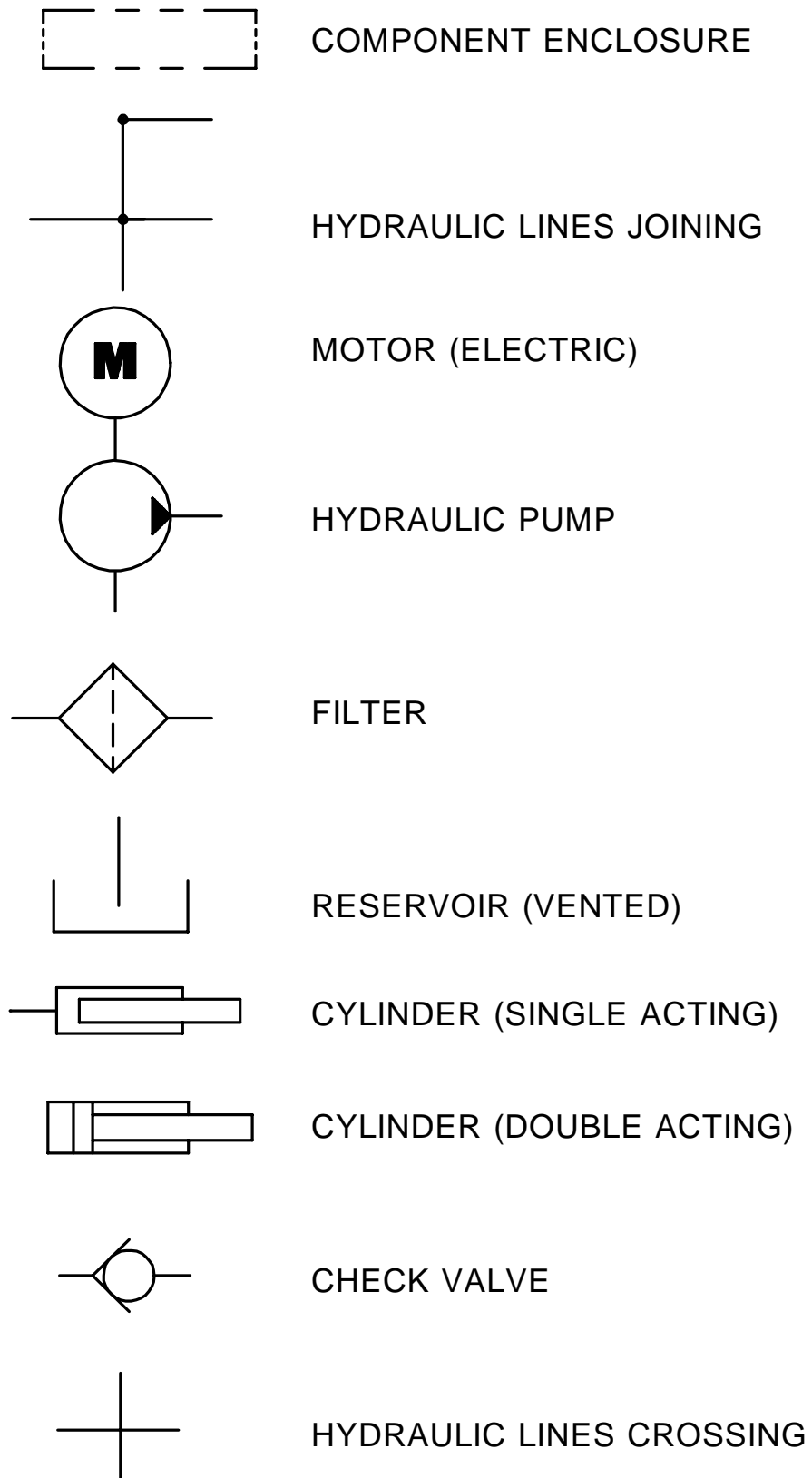


FIG #	ITEM #	PART #	NAME	# FOR ASSY.	UNIT
3.7	1	1-08759-00	Gage, sight	1	
3.7	2	14961-00	Breather	1	
3.7	3	41426-00	Reservoir	1	
3.7	3	41429-01	Reservoir, 127/276 and above	1	127/276 & ABOVE
3.7	4	40323-00	Screen	1	
3.7	5	12318-11	Plug	1	
3.7	6	12391-12	O ring	1	
3.7	7	11016-03	Washer, flat	2	
3.7	8	11143-08	Screw, cap	2	

FIG #	ITEM #	PART #	NAME	# FOR ASSY.	UNIT
3.12	1	11160-08	Fitting, grease	2	
3.12	2	40625-00	Rod	1	
3.12	3K	NSS	O ring	1	
3.12	4K	NSS	O ring	1	
3.12	5K	NSS	Seal	1	
3.12	6	40628-00	Piston	1	
3.12	7	14908-12	Nut	1	
3.12	8	NSS	Retainer	1	
3.12	9	40636-00	Tube	1	
3.12	10K	NSS	O ring	1	
3.12	11K	NSS	Seal	1	
3.12	12	40626-00	Bearing	1	
3.12	13K	NSS	Seal	1	
3.12	14K	NSS	Wiper	1	
3.12	K	40657-00	Kit, seal	1	

(CONTAINS ITEMS MARKED WITH "K")

FIG	ITEM				# FOR	
#	#	PART #	NAME		ASSY.	UNIT
3.17	1K	NSS	Seal, shaft		1	
3.17	2	300248-000	Body		2	
3.17	2	301327-043	Body, 24 volt "EE"		1	
3.17	3	202303	Pin, dowel		1	
3.17	4K	NSS	Nylatron		1	
3.17	5K	NSS	Spacer, rubber		1	
3.17	6K	NSS	Plate, wear		1	
3.17	7	300247-000	Gear, drive		1	
3.17	7	301327-044	Gear, drive, 24 volt "EE"		1	
3.17	8K	NSS	Plate, thrust		1	
3.17	9K	NSS	Seal, gasket		1	
3.17	10	300249-000	Cover-side, port		1	
3.17	11	202297	Washer, flat		2	
3.17	12	202296	Screw, cap		2	
3.17	13	202299	Plug, pipe		1	
3.17	14	300246-000	Gear, driven		1	
3.17	14	301327-045	Gear, driven, 24 volt "EE"		1	
3.17	K	300250-000	Kit, seal		1	
(CONTAINS ITEMS MARKED WITH "K")						

FIG #	ITEM #	PART #	NAME	# FOR ASSY.	UNIT
3.22	1	-----	Reservoir assembly (See Fig.# 3.7)	1	
3.22	2	49631-10	Adapter	1	
3.22	3	49604-02	O ring	1	
3.22	4	49641-22	Hose assembly	1	
3.22	5	49656-14	Adapter	2	
3.22	6	49604-02	O ring	1	
3.22	7	12391-07	O ring	1	
3.22	8	49641-23	Hose assembly	1	
3.22	9	49594-02	Diagnostic	1	
3.22	10	49632-02	Adapter	2	
3.22	11	49604-02	O ring	1	
3.22	12	11016-17	Washer, flat	1	
3.22	13	49641-27	Hose assembly, 89/192	1	89/192
3.22	13	49641-28	Hose assembly, 95/210	1	95/210
3.22	13	49641-29	Hose assembly, 98/216	1	98/216
3.22	13	49641-30	Hose assembly, 102/225	1	102/225
3.22	13	49641-31	Hose assembly, 111/240	1	111/240
3.22	13	49641-32	Hose assembly, 119/258	1	119/258
3.22	14	48624-02	Nut	1	
3.22	15	40727-01	Cylinder assembly, 89/192 (See Fig.# 3.24)	1	89/192
3.22	15	40727-02	Cylinder assembly, 95/210 (See Fig.# 3.24)	1	95/210
3.22	15	40727-03	Cylinder assembly, 98/216 (See Fig.# 3.24)	1	98/216
3.22	15	40727-04	Cylinder assembly, 102/225 (See Fig.# 3.24)	1	102/225
3.22	15	40727-05	Cylinder assembly, 111/240 (See Fig.# 3.24)	1	111/240
3.22	15	40727-06	Cylinder assembly, 119/258 (See Fig.# 3.24)	1	119/258
3.22	16	41436-00	Tube assembly	1	
3.22	17	41241-00	Valve, flow limit (FUSE)	2	
3.22	18	49604-02	O ring	1	
3.22	19	12391-07	O ring	1	
3.22	20	41651-01	Cylinder assembly, 89/192 (See Fig.# 3.23)	1	89/192
3.22	20	41651-02	Cylinder assembly, 95/210 (See Fig.# 3.23)	1	95/210
3.22	20	41651-03	Cylinder assembly, 98/216 (See Fig.# 3.23)	1	98/216
3.22	20	41651-04	Cylinder assembly, 102/225 (See Fig.# 3.23)	1	102/225
3.22	20	41651-05	Cylinder assembly, 111/240 (See Fig.# 3.23)	1	111/240
3.22	20	41651-06	Cylinder assembly, 119/258 (See Fig.# 3.23)	1	119/258
3.22	21	41427-00	Tube assembly	1	
3.22	22	49641-32	Hose assembly	1	
3.22	23	49615-02	Tee	1	
3.22	24	49604-02	O ring	2	
3.22	25	49656-15	Adapter	2	
3.22	26	49604-02	O ring	1	
3.22	27	12391-08	O ring	1	
3.22	28	49616-02	Tee	1	
3.22	29	49604-02	O ring	2	
3.22	30	40107-00	Valve, flow control	1	
3.22	31	41364-00	Valve, lift control (See Fig.# 3.19)	1	

FIG #	ITEM #	PART #	NAME	# FOR ASSY.	UNIT
3.28	1	NSS	Block, valve	1	
3.28	2	301970-000	Valve, spool	1	
3.28	3	301972-000	Kit, seal	1	
3.28	4	300949-001	Coil, 24 volt	2	24 VOLT
3.28	4	300949-000	Coil, 36 volt	2	36 VOLT

FIG #	ITEM #	PART #	NAME	# FOR ASSY.	UNIT
4.3	1	40237-00	Cover, seat panel	1	
4.3	2	49919-02	Knob	1	
4.3	3	NA	Rivet, pop (1/8"x1/4")	4	
4.3	4	40679-00	Brush	2	
4.3	5	41322-00	Rod	1	
4.3	6	14993-10	Washer, flat	As Req'd.	
4.3	7	11880-09	Screw, machine	4	
4.3	8	49965-00	Switch	2	
4.3	9	14986-03	Nut, twin	2	
4.3	10	11073-20	Pin, roll	1	
4.3	11	11261-04	Nut	3	
4.3	12	11009-01	Lockwasher	4	
4.3	13	41331-00	Valve, auxiliary control (See Fig.# 3.4)	1	
4.3	14	11020-27	Bushing	2	
4.3	15	49819-00	Spring	2	
4.3	16	41147-00	Puck	2	
4.3	17	14813-00	Link	1	
4.3	18	14892-01	Bolt, flange	2	
4.3	19	49751-06	Nut, flange	2	
4.3	20	40931-00	Plate	1	
4.3	21	41318-00	Tube	1	
4.3	22	11073-14	Pin, roll	1	
4.3	23	11873-19	Screw, socket head	1	
4.3	24	40677-00	Round	1	

FIG #	ITEM #	PART #	NAME	# FOR ASSY.	UNIT
4.8	1	41552-00	Door	1	
4.8	2	20904-01	Bumper	2	
4.8	3	11429-04	Pin, cotter	1	
4.8	4	11016-27	Washer, flat	11	
4.8	5	49914-00	Screw, cap	1	
4.8	6	41547-00	Hinge	1	
4.8	7	14989-17	Screw, 12 point cap	8	
4.8	7	49761-22	Screw, cap 4" high outriggers	8	
4.8	8	25189-02	Bearing	8	
4.8	9	25204-03	Roller, 14½" battery	4	14½" BATT.
4.8	9	25204-06	Roller, 16½" battery	4	16½" BATT.
4.8	10	25203-07	Shaft, 14½" battery	4	14½" BATT.
4.8	10	25203-06	Shaft, 16½" battery	4	16½" BATT.
4.8	11	-----	Frame, main (State Serial Number)	1	
4.8	12	41064-01	Retainer, battery 14½" battery	2	14½" BATT.
4.8	12	41064-00	Retainer, battery 16½" battery	2	16½" BATT.
4.8	13	-----	Load wheel, 5" articulating (See Fig.# 4.10 & 4.10A)	2	
4.8	14	-----	Load wheel, single (See Fig.# 4.9 & 4.9A)	2	
4.8	15	-----	Load wheel, 4" articulating (See Fig.# 4.11 & 4.11A)	2	
4.8	16	40152-04	Retainer, 14½" right top battery	1	14½" BATT.
4.8	16	40152-02	Retainer, 16½" right top battery	1	16½" BATT.
4.8	16	40152-03	Retainer, 14½" left top battery	1	14½" BATT.
4.8	16	40152-01	Retainer, 16½" left top battery	1	16½" BATT.
4.8	17	11170-06	Nut	10	
4.8	18	41666-00	Caster assembly (See Fig.# 4.12)	1	
4.8	19	11016-04	Washer, flat	4	
4.8	20	14994-05	Screw, cap	4	

FIG #	ITEM #	PART #	NAME	# FOR ASSY.	UNIT
4.11	1	42129-00	Axle	2	
4.11	2	42127-01	Toe box, 4" high with nose guard	2	
4.11	3	42178-00	Plate	2	
4.11	4	11898-02	Ring, retainer	4	
4.11	5	11160-09	Fitting, grease	4	
4.11	6	11857-14	Washer, 10 gauge	8	
4.11	7	11857-16	Washer, 18 gauge	8	
4.11	8	49910-02	Bearing	8	
4.11	9	42136-00	Wheel, load (4 x 3)	4	

FIG #	ITEM #	PART #	NAME	# FOR ASSY.	UNIT
5.3	1	11857-05	Shim, .050"	As Req'd.	
5.3	1	11857-12	Shim, .025"	As Req'd.	
5.3	2	21089-02	Bearing	2	89/126
5.3	3	14835-44	Chain, lift 89/126	2	95/138
5.3	3	14835-45	Chain, lift 95/138	2	107/162
5.3	3	14835-46	Chain, lift 107/162	2	119/186
5.3	3	14835-47	Chain, lift 119/186	2	
5.3	4	30558-00	Anchor, chain	2	
5.3	5	30554-00	Pin, chain	2	
5.3	6	49837-00	Nut	2	
5.3	7	11486-12	Nut, jum	2	
5.3	8	-----	Cylinder assembly (See Fig.# 5.4)	1	
5.3	9	40518-01	Column, outer 89/126	1	89/126
5.3	9	40518-02	Column, outer 95/138	1	95/138
5.3	9	40518-03	Column, outer 107/162	1	107/162
5.3	9	40518-04	Column, outer 119/186	1	119/186

FIG #	ITEM #	PART #	NAME	# FOR ASSY.	UNIT
5.8	1	40225-00	Guard, overhead	1	
5.8	2	11170-12	Nut	4	
5.8	3	14992-08	Screw, cap	4	
5.8	4	14992-02	Screw, cap	1	
5.8	5	-----	Column, inner (See Fig.# 5.9)	1	
5.8	6	-----	Lift frame assembly (See Fig.# 5.13)	1	
5.8	7	25008-01	Fork, 30" (See Fig.# 5.15)	2	30 inch
5.8	7	25008-02	Fork, 36" (See Fig.# 5.15)	2	36 inch
5.8	7	25008-03	Fork, 42" (See Fig.# 5.15)	2	42 inch
5.8	7	25008-04	Fork, 48" (See Fig.# 5.15)	2	48 inch
5.8	8	-----	Sideshifter assembly (See Fig.# 5.14)	1	
5.8	9	30554-00	Pin with cotter pin	4	
5.8	10	-----	Column, intermediate (See Fig.# 5.11)	1	
5.8	11	14992-17	Screw, cap	2	
5.8	12	49925-01	Shim, .250"	As Req'd.	.250 inch
5.8	12	49925-02	Shim, .125"	As Req'd.	.125 inch
5.8	12	49925-03	Shim, .062"	As Req'd.	.062 inch
5.8	13	11016-06	Washer	2	
5.8	14	11271-15	Screw, set	4	
5.8	15	11271-14	Screw, set	4	
5.8	16	40486-00	Screen (COLD STORAGE)	1	cold storage
5.8	17	52-05007-00	Edge, rubber (COLD STORAGE)	As Req'd.	cold storage
5.8	18	40228-03	Channel	1	
5.8	19	40467-00	Channel, windshield	1	
5.8	20	41084-00	Channel	2	
5.8	20	41084-01	Channel, 95/210	2	95/210
5.8	21	-----	Column, outer (See Fig.# 5.12)	1	
5.8	22	NA	Laminated safety sheet gless S.A.E. J-673 33 $\frac{1}{8}$ "x33 $\frac{3}{4}$ "x.234" (Secure this part locally)	1	
5.8	23	41082-00	Cap, plastic	2	

FIG ITEM		PART #	NAME	# FOR ASSY.	UNIT
#	#				
5.13	1	40771-00	Frame	1	
5.13	2	14994-02	Screw, cap	2	
5.13	3	40618-00	Bracket	1	
5.13	4	11073-20	Pin, roll	2	
5.13	5	40699-00	Pin	2	
5.13	6	11857-05	Washer, shim	As Req'd.	
5.13	7	21089-02	Bearing	6	
5.13	8	40637-00	Cylinder, tilt (See Fig.# 3.12)	2	
5.13	9	14994-06	Screw, cap	12	
5.13	10	40603-00	Clamp	4	
5.13	11	40629-01	Pin	2	
5.13	12	40600-00	Frame, fork	1	
5.13	13	40382-01	Rod	1	
5.13	14	11073-23	Pin, roll	1	
5.13	15	40594-00	Rest, loadback	1	

FIG #	ITEM #	PART #	NAME	# FOR ASSY.	UNIT
6.4	1	25332-01	Tie, wire	As Req'd	
6.4	2	41771-00	Harness, wiring (See Fig.# 2.6)	1	
6.4	3	49611-00	Receptacle	2	
6.4	4	49861-05	Relief, strain	1	
6.4	5	52-07921-00	Cable	As Req'd	
			21 FEET	89/180	
			23 FEET	95/198	
			24 FEET	95/210	
			25 FEET	107/226	
			27 FEET	111/240	
			29 FEET	119/258	
			31 FEET	127/276	
			33 FEET	137/300	
			35 FEET	143/318	
			37 FEET	149/330	
6.4	6	11170-06	Nut	1	
6.4	7	15677-08	Clamp	1	
6.4	8	49610-00	Pin	10	
6.4	9	11009-05	Lockwasher	2	
6.4	10	11854-03	Screw, cap	2	
6.4	11	40077-00	Bracket	1	
6.4	12	49609-00	Plug	2	
6.4	13	41623-00	Harness, reach (See Fig.# 6.5)	1	
6.4	14	49608-00	Socket	10	
6.4	15	41588-00	Sleeve, cable	2	
6.4	16	49501-00	Spring	2	
6.4	17	41602-00	Strain relief, clamp	2	
6.4	18	41602-01	Strain relief, fitting	2	
6.4	19	41596-00	Bracket	2	
6.4	20	41622-00	Harness, wiring (See Fig.# 6.3)	1	

FIG #	ITEM #	PART #	NAME	# FOR ASSY.	UNIT
6.10	1	41461-01	Valve, 24 volt blocking (See Fig.# 6.11)	1	24 VOLT
6.10	1	41461-00	Valve, 36 volt blocking (See Fig.# 6.11)	1	36 VOLT
6.10	2	49656-15	Adapter	1	
6.10	3	12391-08	O ring	1	
6.10	4	49604-02	O ring	1	
6.10	5	49516-26	Hose	1	
6.10	6	49637-02	Tee	1	
6.10	7	49604-02	O ring	3	
6.10	8	49516-32	Hose assembly	1	
6.10	9	-----	Three stage cylinder and reservoir assy. (See Fig.# 3.22)	1	
6.10	10	49653-02	Elbow, 90°	1	
6.10	11	12391-06	O ring	1	
6.10	12	49604-02	O ring	1	
6.10	13	49516-31	Hose assembly	1	
6.10	14	41624-00	Tube assembly	1	
6.10	15	49604-02	O ring	1	
6.10	16	49656-02	Adapter	2	
6.10	17	49604-02	O ring	1	
6.10	18	12391-06	O ring	1	
6.10	19	49516-27	Hose assembly	1	ALL ELSE
6.10	19	49516-28	Hose assembly	1	21" BATT.
6.10	20	41460-01	Valve, 24 volt manlift (See Fig.# 6.12)	1	24 VOLT
6.10	20	41460-00	Valve, 36 volt manlift (See Fig.# 6.12)	1	36 VOLT
6.10	21	49516-29	Hose assembly	1	ALL ELSE
6.10	21	49516-30	Hose assembly	1	21" BATT.
6.10	22	41364-00	Lift valve assembly (See Fig.# 3.19)	1	
6.10	23	49656-14	Adapter	2	
6.10	24	12391-07	O ring	1	
6.10	25	49604-02	O ring	1	
6.10	26	49776-00	Beyond, power	1	
6.10	27	12391-08	O ring	1	
6.10	28	12391-07	O ring	1	
6.10	29	49615-02	Tee	1	
6.10	30	49604-02	O ring	2	
6.10	31	49397-00	Hose assembly	1	ALL ELSE
6.10	31	49397-01	Hose assembly	1	21" BATT.
6.10	32	49653-14	Elbow, 90°	1	
6.10	33	49604-02	O ring	1	
6.10	34	12391-08	O ring	1	

FIGURE # 7.2 BATTERY LIFT INTERRUPT "E" EV-100LX SCR ELECTRICAL SCHEMATIC SYMBOLS

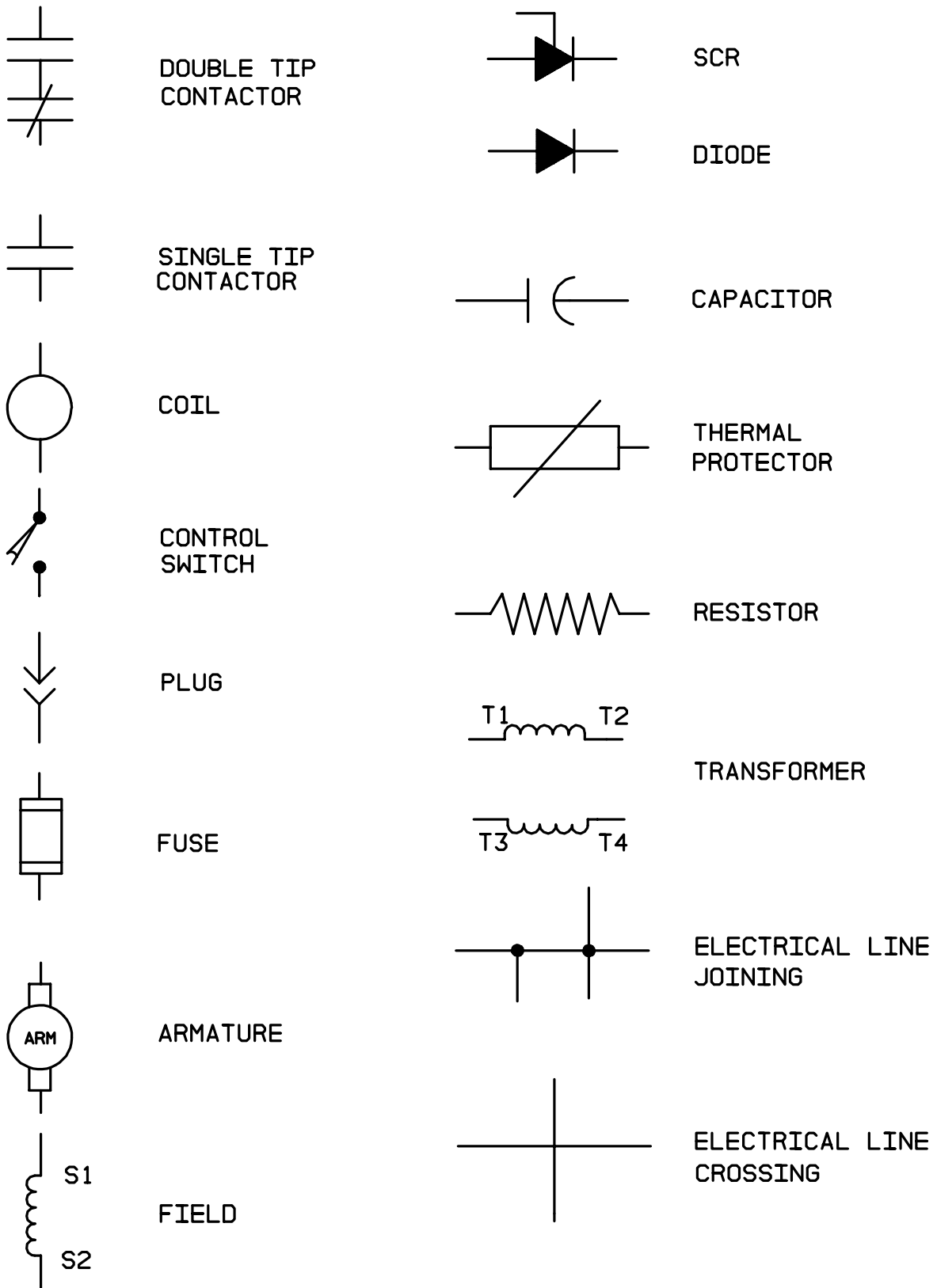


FIG #	ITEM #	PART #	NAME	# FOR ASSY.	UNIT
10.1	1	202420	Fitting, quick coupler	1	
10.1	2	200025	Lubricate, 2 oz. Molykote	1	2 oz. Tube
10.1	3	204317	Set, hand	1	
10.1	4	301529-000	Cord, hand set	1	
10.1	5	49670-00	Lubricant, lift truck	1	13oz. Can
10.1	6	202154	Adapter, flush & hard to reach	1	
10.1	7	PM-4011	Adapter, torque wrench	1	
10.1	8	PM-4246	Adapter, slotted nut	1	
10.1	9	301582-000	Loctite tube, #RC680	1	50ml Tube
10.1	10	301583-000	Loctite spray can, N primer (for #RC680)	1	6oz. Can
10.1	11	301584-000	Loctite, 50ml tube #515 gasket eliminator	1	50ml Tube

MODEL RS-40C ELECTRIC REACK TRUCK

NUMERICAL INDEX

<u>PART #</u>	<u>FIG. #</u>	<u>ITEM #</u>	<u>PART #</u>	<u>FIG. #</u>	<u>ITEM #</u>
300666-003	2.22	8	301327-043	3.17	2
300666-004	2.22	14	301327-044	3.17	7
300666-007	2.22	*	301327-045	3.17	14
300666-008	2.22	*	301491-000	3.5	3
300666-010	2.22	2	301507-000	3.5	6
300666-012	2.22	10	301508-000	3.5	5
300666-013	2.22	12	301529-000	10.1	4
300666-014	2.22	4	301530-000	3.8	7
300666-015	2.22	11	301531-000	3.8	2
300666-016	2.22	9	301532-000	3.8	15
300666-017	2.22	5	301533-000	3.8	16
300666-018	2.22	13	301534-000	3.8	18
300681-000	3.5	2	301535-000	3.8	19
300681-002	3.6	2	301536-000	3.8	20
300681-006	3.6	19	301552-000	2.31	13
300681-007	3.6	6	301572-000	1.2	5
300681-008	3.6	10	301573-000	1.2	4
300792-000	2.23	4	301578-000	7.5	6
300793-000	2.23	4	301579-000	7.5	4
300948-000	6.12	27	301582-000	10.1	9
300948-000	6.11	7	301583-000	10.1	10
300949-000	3.28	4	301584-000	10.1	11
300949-000	6.12	27	301741-000	2.15	K
300949-000	6.11	7	301790-001	5.14	10
300949-001	3.28	4	301790-001	5.6	10
300979-003	2.28	6	301790-002	5.14	9
300979-004	2.28	5	301790-002	5.6	9
300979-007	2.28	7	301790-003	5.14	11
301039-001	0.1	*	301790-003	5.6	11
301040-003	0.1	*	301790-004	5.14	8
301120-000	2.14	16	301790-004	5.6	8
301121-000	2.14	9	301790-005	5.6	7
301122-000	2.14	6	301790-005	5.14	7
301123-000	2.14	14	301790-006	5.14	6
301125-000	2.14	10	301790-006	5.6	6
301126-000	2.28	14	301790-007	5.14	1
301126-000	2.14	18	301790-007	5.6	1
301147-000	2.14	15	301790-008	5.6	3
301265-000	6.3	2	301790-008	5.14	3
301281-000	2.12	10	301790-009	5.6	5
301327-006	2.20A	13	301790-009	5.14	5
301327-007	2.20A	15	301790-010	5.14	13
301327-008	2.20A	12	301790-010	5.6	13
301327-010	2.20A	25	301790-011	5.6	14
301327-013	2.20A	29	301790-011	5.14	14
301327-034	2.20A	2	301790-012	5.6	15
301327-035	2.20A	3	301790-012	5.14	15
301327-036	2.20A	14	301790-013	5.6	15
301327-037	2.20A	16	301790-013	5.14	15
301327-038	2.20A	21	301790-014	5.6	15
301327-039	2.20A	23	301790-014	5.14	15
301327-040	2.20A	28	301790-015	5.6	21

CLICK HERE TO **DOWNLOAD** THE COMPLETE MANUAL

- Thank you very much for reading the preview of the manual.
- You can download the complete manual from: www.heydownloads.com by clicking the link below



- Please note: If there is no response to CLICKING the link, please download this PDF first and then click on it.

CLICK HERE TO **DOWNLOAD** THE COMPLETE MANUAL