

RR-45Z PARTS MANUAL

Manual Number 9101

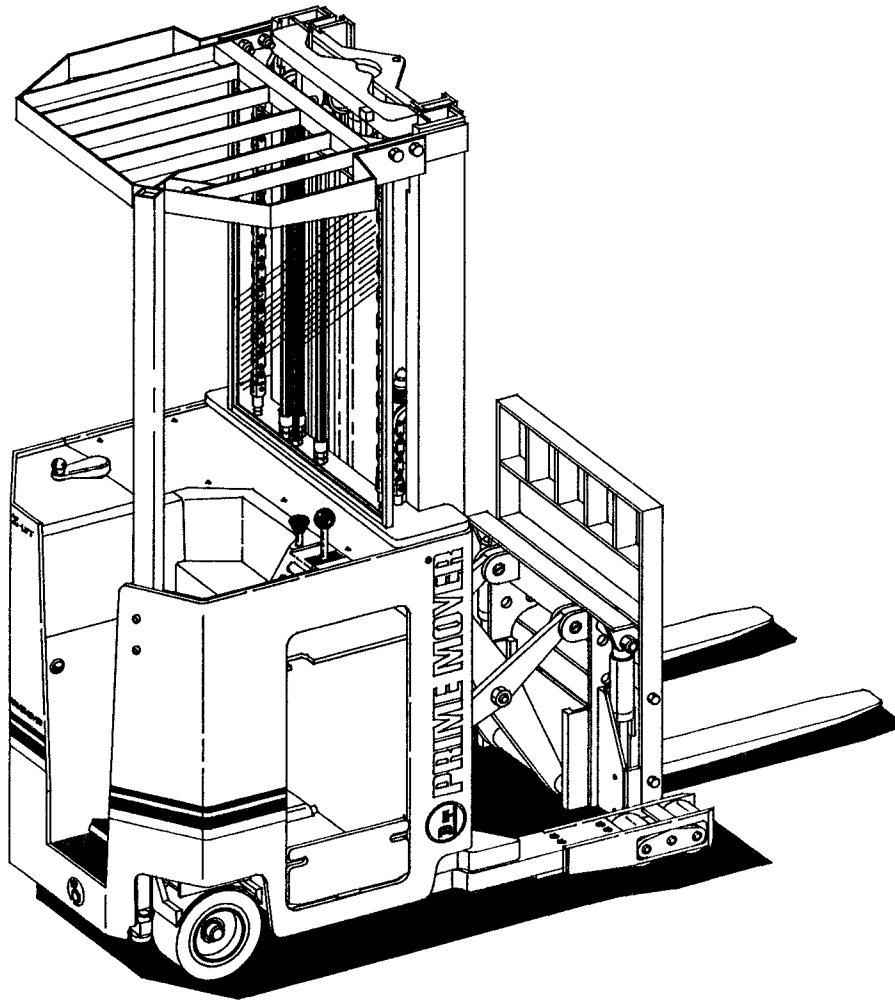
Manual Part Number 301185-000


RR-45Z REACH TRUCK

RR-45Z

Effective Serial Number

RR45Z0207217



 **WARNING** Read and observe all warnings on the unit before operating it. Do not operate this equipment unless all factory installed guards and shields are properly secured in place.

ISSUED JANUARY 1991

 **PRIME-MOVER®**

CLICK HERE TO **DOWNLOAD** THE COMPLETE MANUAL

- Thank you very much for reading the preview of the manual.
- You can download the complete manual from: www.heydownloads.com by clicking the link below



- Please note: If there is no response to CLICKING the link, please download this PDF first and then click on it.

CLICK HERE TO **DOWNLOAD** THE COMPLETE MANUAL

FIG #	ITEM #	PART #	NAME	# FOR ASSY.	UNIT
1.2	1	11261-08	Nut	1	
1.2	2	11016-04	Washer	1	
1.2	3	11018-03	Key	1	
1.2	4	40094-01	Brake, drive motor	1	
1.2	5	201864	Nut	3	
1.2	6	201870	Washer	2	
1.2	7	201868	Shoe, brake	2	
1.2	8	201867	Block, drive	2	
1.2	9	201869	Spring	2	
1.2	10	201876	Drum, brake	1	
1.2	11	201866	Arm, actuator	1	
1.2	12	11261-08	Washer	1	
1.2	13	201874	Plate, mounting	1	
1.2	14	202150	Nut, cam	1	
1.2	15	202151	Washer, cam	1	
1.2	16	201872	Cam	1	
1.2	17	201873	Arm, cam	1	
1.2	18	202132	Lockwasher	1	
1.2	19	202131	Nut	1	
1.2	20	202133	Washer, flat	1	
1.2	21	11854-03	Screw, cap	1	
1.2	22	11880-08	Screw, machine	1	
1.2	23	11009-01	Lockwasher	1	
1.2	24	49794-00	Switch	1	
1.2	25	11143-05	Screw, cap	4	
1.2	26	11016-03	Washer, flat	2	
1.2	27	40791-00	Plate, switch	2	
1.2	28	11143-06	Screw, cap	1	
1.2	29	11143-03	Screw, cap	1	
1.2	30	11135-02	Pin with cotter pin	2	
1.2	31	40943-00	Rod	1	
1.2	32	49746-00	Spring	1	
1.2	33	40885-00	Sleeve	1	
1.2	34	11170-10	Nut	1	
1.2	35	41337-00	Cylinder, drive motor (See Fig.# 3.28)	1	
1.2	36	41344-00	Mount, cylinder	1	
1.2	37	11170-05	Nut	2	
1.2	38	11016-02	Washer, flat	2	
1.2	39	41346-00	Spring	2	
1.2	40	11170-06	Nut	1	
1.2	41	27902-00	Motor, drive (See Fig.# 2.19)	1	36 volt
1.2	42	11854-10	Screw, cap	2	
1.2	43	41343-00	Plate, motor	1	
1.2	44	40944-00	Stop	1	

FIG #	ITEM #	PART #	NAME	# FOR ASSY.	UNIT
2.4	1	49399-00	Control, EV-100LX SCR TX panel (See Fig.# 2.10)	1	
2.4	1	49399-01	Control, EV-100LX SCR TT panel (See Fig.# 2.10)	1	
2.4	2	26204-00	Meter, hour	1	
2.4	3	23228-02	Indicator, battery discharge (BDI)	1	
2.4	4	20151-00	Switch, key	1	
2.4	5	49794-00	Switch, brake	1	
2.4	5	41464-00	Switch, manlift brake	1	
2.4	6	41361-00	Valve, lift control (See Fig.# 3.23)	1	
2.4	7	41331-00	Valve, auxiliary control (See Fig.# 3.4)	1	
2.4	8	49965-00	Switch, auxiliary	2	
2.4	9	40416-00	Handle assembly (See Fig.# 4.4)	1	
2.4	10	27303-00	Switch, master	1	
2.4	11	29304-00	Potentioneter	1	
2.4	12	49607-00	Diode	2	
2.4	13	41771-00	Harness, wiring	1	
2.4	14	26618-04	Spacer	1	
2.4	15	23309-02	Horn	1	
2.4	16	11170-05	Nut	1	
2.4	17	49605-00	Filter, horn	1	
2.4	18	300979-000	Wire assembly	1	
2.4	19	20323-00	Switch, lift pump #2	1	
2.4	20	41792-00	Wire assembly	1	

FIG ITEM		PART #	NAME	# FOR ASSY.	UNIT
#	#				
2.9	1	49399-00	Control, EV-100LX SCR TX panel (See Fig.# 2.10)	1	
2.9	1	49399-01	Control, EV-100LX SCR TT panel (See Fig.# 2.10)	1	
2.9	2	11016-12	Washer, flat	3	
2.9	3	11009-05	Lockwasher	3	
2.9	4	11261-05	Nut	2	
2.9	5	11170-04	Nut	2	
2.9	6	49855-22	Connector assembly (See Fig.# 2.17)	1	
2.9	7	11813-03	Grammet, rubber	2	
2.9	8	49886-09	Screw, cap	2	
2.9	9	49856-116	Cable	1	
2.9	10	49856-117	Cable	2	
2.9	11	41777-00	Motor, lift (See Fig.# 2.18)	2	
2.9	12	49856-27	Cable	1	
2.9	13	300665-000	Motor, auxiliary (See Fig.# 2.20)	1	
2.9	14	49856-113	Cable	1	
2.9	15	49856-115	Cable	1	
2.9	16	49856-112	Cable	2	
2.9	17	27902-00	Motor, drive (See Fig.# 2.19)	1	
2.9	18	49856-114	Cable	1	
2.9	19	41757-02	Panel, contactor (See Fig.# 2.11 & 2.12)	1	
2.9	20	49856-118	Cable	1	
2.9	21	49856-119	Cable	1	
2.9	22	49856-104	Cable	1	
2.9	23	49545-00	Bracket	1	
2.9	24	11854-04	Screw, cap	1	
2.9	25	49856-29	Cable	1	

FIG ITEM		PART #	NAME	# FOR ASSY.	UNIT
#	#				
2.14	1	201962	Base, magnet	1	
2.14	2	200077	Coil, field	1	
2.14	3	201963	Frame, magnet	1	
2.14	4	201262	Spring (red)	1	
2.14	5	201964	Armature	1	
2.14	6	200081	Base, bus	1	
2.14	7	201965	Tip, contact	2	
2.14	8	200096	Bushing	1	
2.14	9	200095	Carrier	1	
2.14	10	201966	Tip, movable	1	
2.14	11	201259	Cap	1	
2.14	12	201266	Spring (gold)	1	
2.14	13	201367	Washer, flat	1	
2.14	14	201215	Nut, lock	1	
2.14	15	201967	Clamp	2	
2.14	16	201368	Lockwasher	4	
2.14	17	201372	Screw, machine	4	
2.14	18	202004	Suppression, 1A contactor	1	
2.14	19	200094	Seat	1	

FIG ITEM		PART #	NAME	# FOR ASSY.	UNIT
#	#				
2.19	1	300294-000	Stub and nut assembly	4	
2.19	2	300301-000	Spring	8	
2.19	3	300315-000	Brush	4	
2.19	4	300299-000	Connector, cross	2	
2.19	5	300292-000	Bearing	1	
2.19	6	300310-000	End, shield C.E.	1	
2.19	7	300304-000	Cover, large	1	
2.19	8	300303-000	Cover, small	1	
2.19	9	300302-000	Yoke and holder assembly	1	
2.19	10	300327-000	Coil, field	1	
2.19	11	300326-000	Armature	1	
2.19	12	300307-000	Fan	1	
2.19	13	300313-000	End, shield D.E.	1	
2.19	14	300314-000	Seal, shaft	1	
2.19	15	300305-000	Cover, drive end	1	

FIGURE # 3.2 HYDRAULIC SCHEMATIC SYMBOLS

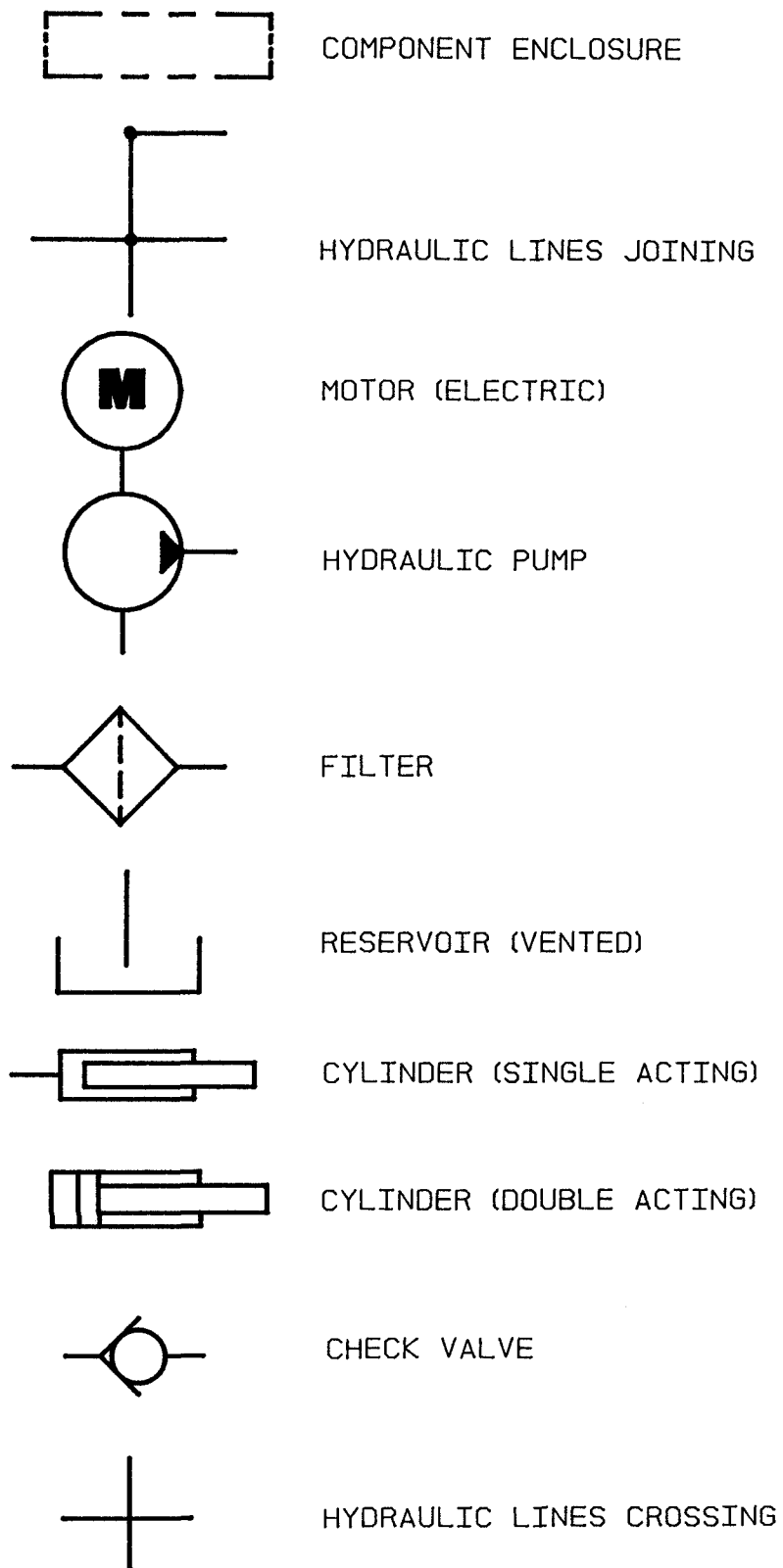


FIG	ITEM			# FOR	UNIT
#	#	PART #	NAME	ASSY.	
3.7	1	200568	Screw, cap 12 pt.	4	
3.7	2	202079	Ring, retainer	1	
3.7	3	200549	Ring, retainer	1	
3.7	4	200571	Bearing	1	
3.7	5	200601	Shaft, control	1	
3.7	6	202080	Column, steering	1	
3.7	7	200604	Spring	1	
3.7	8K	NSS	Seal, quad ring	1	
3.7	9K	NSS	Seal	1	
3.7	10	200592	Kit, needle bearing	1	
3.7	11	202081	Bearing	1	
3.7	12	202082	Race, bearing	2	
3.7	13	202083	Bearing	1	
3.7	14K	NSS	Seal	1	
3.7	15	200602	Seal, check ball	1	
3.7	16K	NSS	Seal	1	
3.7	17	202084	Ball, check	1	
3.7	18	202085	Retainer, check ball	1	
3.7	19	200603	Control parts	1	
3.7	20	NA	Housing	1	
3.7	21	201980	Pin, control	1	
3.7	22	201979	Spring, control	6	
3.7	23	NA	Sleeve, control	1	
3.7	24	NA	Spool, control	1	
3.7	25	200600	Plate, spacer	1	
3.7	26K	NSS	Seal	3	
3.7	27	202086	Drive	1	
3.7	28	202087	Gerotor set	1	
3.7	29	200605	Cap, end	1	
3.7	30	202088	Screw, cap	7	
3.7	K	200594	Kit, seal	1	

(CONTAINS ITEMS MARKED WITH "K")

NSS - Not Sold Separately

NA - Not Available

FIG #	ITEM #	PART #	NAME	# FOR ASSY.	UNIT
3.12	1	12318-06	Plug	2	
3.12	2	12391-06	O ring	1	
3.12	3	41187-00	Valve, solenoid	4	
3.12	4	41230-00	Manifold	1	
3.12	5	12318-01	Plug	2	
3.12	6	12391-01	O ring	1	
3.12	7	12318-03	Plug	2	
3.12	8	12391-03	O ring	1	
3.12	K	200073	Kit, seal (for item #3)	1	

FIG ITEM		PART #	NAME	# FOR ASSY.	UNIT
#	#				
3.17	1	41187-00	Valve, solenoid	4	
3.17	2	41188-00	Manifold	1	
3.17	3	12318-06	Plug	2	
3.17	4	12391-06	O ring	1	
3.17	5	12318-01	Plug	4	
3.17	6	12391-01	O ring	1	
3.17	7	49573-00	Valve, relief	1	
3.17	8	12391-04	O ring	1	
3.17	9	NSS	Seat	1	
3.17	10	NSS	Ball	1	
3.17	11	NSS	Spring	1	
3.17	12	202153	O ring	1	
3.17	13	NSS	Cap	1	
3.17	14	12318-03	Plug	2	
3.17	15	12391-03	O ring	2	

FIG ITEM		PART #	NAME	# FOR ASSY.	UNIT
#	#				
3.22	1K	NSS	Seal, shaft	1	
3.22	2	NA	Body	2	
3.22	3	202303	Pin, dowel	1	
3.22	4K	NSS	Nylatron	1	
3.22	5K	NSS	Spacer, rubber	1	
3.22	6K	NSS	Plate, wear	1	
3.22	7	301146-000	Gear, drive	1	
3.22	8K	NSS	Seal, gasket	1	
3.22	9	300249-000	Cover-side, port	1	
3.22	10	202297	Washer, flat	2	
3.22	11	202296	Screw, cap	2	
3.22	12	202299	Plug, pipe	1	
3.22	13	301145-000	Gear, driven	1	
3.22	K	300250-000	Kit, seal	1	
(CONTAINS ITEMS MARKED WITH "K")					

FIG ITEM		PART #	NAME	# FOR ASSY.	UNIT
#	#				
3.27	1K	NSS	Retainer	1	
3.27	2K	NSS	O ring	1	
3.27	3K	NSS	Stop	1	
3.27	4K	NSS	Seat	1	
3.27	5K	NSS	Piston	1	
3.27	6K	NSS	Spring	1	
3.27	7	NA	Body	1	
3.27	K	202145	Kit, seal	1	
(CONTAINS ITEMS MARKED WITH "K")					

FIG	ITEM			# FOR	UNIT
#	#	PART #	NAME	ASSY.	
4.3	1	40237-00	Cover, seat panel	1	
4.3	2	49919-02	Knob	1	
4.3	3	NA	Rivet, pop (1/8" X 1/4")	4	
4.3	4	40679-00	Brush	2	
4.3	5	41322-00	Rod	1	
4.3	6	14993-10	Washer, flat	As Req'd	
4.3	7	11880-09	Screw, machine	4	
4.3	8	49965-00	Switch	2	
4.3	9	14986-03	Nut, twin	2	
4.3	10	11073-20	Pin, roll	1	
4.3	11	11261-04	Nut	3	
4.3	12	11009-01	Lockwasher	4	
4.3	13	41331-00	Valve, auxiliary control	1	
4.3			(See Fig.# 3.4)		
4.3	14	11020-27	Bushing	2	
4.3	15	49819-00	Spring	2	
4.3	16	41147-00	Puck	2	
4.3	17	14813-00	Link	1	
4.3	18	14892-01	Bolt, flange	2	
4.3	19	49751-06	Nut, flange	2	
4.3	20	40931-00	Plate	1	
4.3	21	41318-00	Tube	1	
4.3	22	11073-14	Pin, roll	1	
4.3	23	11873-19	Screw, soc. head	1	
4.3	24	40677-00	Round	1	

FIG	ITEM			# FOR	UNIT
#	#	PART #	NAME	ASSY.	
4.8	1	11135-02	Pin with cotter pin	2	
4.8	2	40946-00	Block, pivot	1	
4.8	3	40093-01	Brake assembly	1	
4.8	4K	201873	Arm	1	
4.8	5K	202131	Nut (torque to 55 ft./lbs.)	1	
4.8	6K	202132	Lockwasher	1	
4.8	7K	202133	Washer, flat	1	
4.8	8K	202134	Plate, mounting	1	
4.8	9K	201875	Cam	1	
4.8	10K	201868	Shoe, brake	2	
4.8	11K	201869	Spring	1	
4.8	12K	201867	Block, drive	2	
4.8	13K	201864	Nut (torque to 40 ft./lbs.)	3	
4.8	14K	202090	Washer, cam	1	
4.8	15K	201871	Screw (torque to 45 ft./lbs)	1	
4.8	16K	202135	Washer	1	
4.8	17K	201870	Washer, shoe	2	
4.8	18K	201866	Arm, actuator	1	
4.8	19	11854-02	Screw, cap	4	
4.8	20	11020-27	Bushing	1	
4.8	21	40936-00	Axle	1	
4.8	22	11020-21	Bushing	1	
4.8	23	11936-03	Washer, flat	1	
4.8	24	11898-03	Ring, retainer	1	
4.8	25	11205-01	Bearing	2	
4.8	26	11039-30	Seal	1	
4.8	27	11160-08	Fitting, grease	1	
4.8	28	22005-06	Washer	1	
4.8	29	11828-06	Lockwasher	1	
4.8	30	11829-06	Nut	1	
4.8	31	12298-00	cap, hub	1	
4.8	32	22050-03	Wheel, idler	1	
4.8	33	40265-00	Tire, polyurethane	1	
4.8	34	40136-00	Wheel	1	
4.8	35	41338-00	Cylinder, idler brake (See Fig.# 3.29)	1	
4.8	36	40945-00	Rod, spring	1	
4.8	37	49746-00	Spring	1	
4.8	38	40885-00	Sleeve	1	
4.8	39	11170-10	Nut	1	
4.8	40	11429-04	Pin, hair cotter	2	

FIG	ITEM			# FOR	UNIT
#	#	PART #	NAME	ASSY.	
5.1	1	40225-00	Guard, overhead	1	
5.1	1	41630-00	Guard, overhead	1	89/192
5.1	2	11170-12	Nut	1	
5.1	3	14992-08	Screw, cap	4	
5.1	4	11143-19	Screw, cap	4	
5.1	5	41171-00	Tube	1	
5.1	6	14674-00	Washer	1	
5.1	7	11170-06	Nut	1	
5.1	8	-----	Column, outer (See Fig.# 5.5)	1	
5.1	8	NA	Laminated safety sheet glass S.A.E. J-673 30 1/8"x 33 3/4"x .234 (secure this part locally)		
5.1	10	41084-00	Channel	2	
5.1	10	41084-01	Channel	2	89/192
5.1	11	40228-03	Channel	1	
5.1	12	40467-00	Cushion, windshild	1	
5.1	13	40486-00	Screen (cold storage)	1	
5.1	14	11271-14	Setscrew	4	
5.1	15	11271-15	Setscrew	4	
5.1	16	11016-06	Washer	2	
5.1	17	14992-17	Screw, cap	2	
5.1	18	49925-01	Shim, .250	As Req'd	
5.1	18	49925-02	Shim, .125	As Req'd	
5.1	18	49925-03	Shim, .062	As Req'd	
5.1	19	-----	Column, intermediate (See Fig.# 5.4)	1	
5.1	20	-----	Column, inner (See Fig.# 5.2)	1	
5.1	21	30554-00	Pin with cotter pin	4	
5.1	22	40472-00	Sideshifter assembly (See Fig.# 5.10)	1	
5.1	23	-----	Single reach assembly (See Fig.# 5.6)	1	
5.1	23	-----	Double reach assembly (See Fig.# 5.8)	1	
5.1	24	25008-01	Fork, 30" (See Fig.# 5.11)	2	
5.1	24	25008-02	Fork, 36" (See Fig.# 5.11)	2	
5.1	24	25008-03	Fork, 42" (See Fig.# 5.11)	2	
5.1	24	25008-04	Fork, 48" (See Fig.# 5.11)	2	
5.1	25	52-05007-00	Edge, rubber (cold storage)	As Req'd	

FIG #	ITEM #	PART #	NAME	# FOR ASSY.	UNIT
5.6	1	11073-35	Pin, roll	6	
5.6	2	40357-02	Pin	2	
5.6	3	41700-00	Frame, rear standard	1	
5.6	4	40358-02	Screw, special	2	
5.6	5	40355-02	Arm, outer left hand	1	
5.6	6	49925-04	Shim, .187	As Req'd	
5.6	6	49925-05	Shim, .125	As Req'd	
5.6	6	49925-06	Shim, .062	As Req'd	
5.6	7	40103-02	Bearing	4	
5.6	8	40103-03	Bearing	2	
5.6	9	40104-00	Bearing, thrust	4	
5.6	10	41228-01	Cylinder, left reach (See Fig.# 3.13)	1	
5.6	11	41228-00	Cylinder, right reach (See Fig.# 3.13)	1	
5.6	12	11073-22	Pin, roll	2	
5.6	13	40356-00	Nut	2	
5.6	14	49967-13	Shim, .005	As Req'd	
5.6	14	49967-14	Shim, .015	As Req'd	
5.6	15	40357-01	Pin	2	
5.6	16	-----	Frame, front (See Fig.# 5.7)	1	
5.6	17	40358-01	Screw, special	2	
5.6	18	40359-00	Pin, roll	2	
5.6	19	11160-11	Fitting, grease	10	
5.6	20	11852-21	Screw, flathead	4	
5.6	21	40354-00	Cap	4	
5.6	22	49940-00	Bearing, roller	4	
5.6	23	40355-01	Arm, outer right hand	1	
5.6	24	40345-00	Arm, inner	1	
5.6	25	11073-04	Pin, roll	4	
5.6	26	13813-30	Pin	4	
5.6	27	11852-02	Screw, flat head	2	
5.6	28	40548-00	Washer	2	
5.6	29	49832-00	Bearing	6	
5.6	30	11857-10	Shim, .050	As Req'd	
5.6	30	11857-11	Shim, .025	As Req'd	

FIG ITEM		PART #	NAME	# FOR ASSY.	UNIT
#	#				
5.11	1K	NSS	Pin, roll	1	
5.11	2K	NSS	Handle	1	
5.11	3K	NSS	Spring	1	
5.11	4K	NSS	Pin	1	
5.11	5	NA	Fork	1	
5.11	K	200843	Pin assembly	1	

NSS - Not Sold Separately
NA - Not Available

MODEL RR-45Z REACH TRUCK

NUMERICAL INDEX

<u>PART #</u>	<u>FIG. #</u>	<u>ITEM</u>	<u>PART #</u>	<u>FIG.#</u>	<u>ITEM #</u>
12391-03	3.11	16	14835-36	5.3	2
12391-03	3.11	10	14835-37	5.3	2
12391-04	3.14	25	14835-37	5.3	2
12391-04	3.17	8	14835-38	5.3	2
12391-05	3.8	5	14835-39	5.3	2
12391-05	3.3	37	14835-45	5.3	2
12391-05	3.8	10	14835-46	5.3	2
12391-05	3.3	48	14835-48	5.5	4
12391-05	3.3	29	14835-49	5.5	4
12391-05	3.3	13	14835-56	5.3	2
12391-05	3.3	24	14835-63	5.5	4
12391-05	3.3	11	14835-64	5.5	4
12391-05	3.10	10	14835-75	5.5	4
12391-05	3.10	7	14835-76	5.3	2
12391-06	3.3	6	14845-04	4.5	4
12391-06	3.24	36	14848-03	3.20	13
12391-06	3.20	23	14851-02	4.1	17
12391-06	3.17	4	14851-04	3.21	4
12391-06	3.20	17	14859-01	4.5	13
12391-06	3.12	2	14859-03	3.24	2
12391-07	1.3	29	14859-04	3.3	44
12391-07	3.3	43	14859-04	3.20	2
12391-07	3.24	5	14892-01	4.3	18
12391-07	3.24	27	14898-00	1.4	2
12391-07	3.24	40	14908-08	3.9	11
12391-07	3.24	45	14908-08	3.19	17
12391-07	3.24	8	14908-08	3.15	17
12391-08	3.3	33	14908-08	3.18	12
12391-08	3.20	5	14908-08	3.13	13
12391-08	3.24	16	14908-10	1.1	15
12391-08	3.24	13	14908-12	1.3	13
12391-10	3.20	14	14908-16	1.4	1
12391-12	3.6	6	14908-28	1.4	44
12455-01	4.5	22	14910-02	2.5	5
12459-00	1.4	15	14911-03	4.4	50
13813-19	5.9	13	14911-06	2.5	2
13813-30	5.6	26	14915-05	4.6	2
13813-31	5.7	13	14939-00	4.4	3
13857-01	3.26	7	14944-00	4.2	2
14674-00	5.1	6	14952-03	3.24	4
14813-00	4.3	17	14961-00	3.6	2
14835-18	5.5	4	14985-07	4.5	2
14835-24	5.5	4	14986-03	4.2	22
14835-33	5.5	4	14986-03	4.3	9
14835-34	5.5	4	14989-17	4.9	7
14835-35	5.5	4	14992-08	5.1	3

MODEL RR-45Z REACH TRUCK

NUMERICAL INDEX

<u>PART #</u>	<u>FIG. #</u>	<u>ITEM</u>	<u>PART #</u>	<u>FIG.#</u>	<u>ITEM #</u>
49899-00	0.1	9	49967-12	4.10	6
49914-00	4.9	5	49967-13	5.6	14
49916-00	4.2	7	49967-14	5.6	14
49919-02	4.3	2	49968-00	1.3	26
49919-03	4.6	1	49969-01	1.3	8
49922-01	4.1	10	49969-02	1.3	8
49922-01	4.4	9	49969-03	1.3	8
49923-02	1.1	27	49969-04	1.3	8
49925-01	5.1	18	49969-10	1.3	19
49925-02	5.1	18	49970-01	1.4	14
49925-03	5.1	18	49970-02	1.4	14
49925-04	5.6	6	49970-03	1.4	14
49925-04	5.8	12	49971-00	1.4	29
49925-05	5.6	6	49972-01	1.3	27
49925-05	5.8	12	49972-02	1.3	5
49925-06	5.8	12	49972-04	1.3	21
49925-06	5.6	6	49972-05	4.11	8
49925-07	4.7	5	49972-05	4.12	8
49925-08	4.7	5	49973-01	1.3	22
49925-09	4.7	5	49973-01	1.4	12
49926-08	4.7	11	49974-01	1.3	23
49926-08	5.8	15	49974-01	1.4	13
49928-07	1.3	30	49975-00	0.1	3
49929-01	3.13	2	49990-00	0.1	2
49929-06	1.1	28	49991-00	4.4	20
49929-07	1.1	22	49993-02	5.4	3
49929-08	3.9	14	49993-02	5.3	12
49929-08	1.1	10	49994-01	5.4	2
49940-00	5.6	22	49994-01	5.3	13
49940-00	5.8	49	50000-13	2.12	3
49941-01	5.3	17	50001-07	2.24	9
49956-02	3.3	30	50001-11	2.10	25
49965-00	2.4	8	50001-11	2.11	10
49965-00	4.3	8	50001-11	2.12	4
49966-01	1.4	43	50001-11	2.10	*
49966-02	1.3	14	50003-01	2.12	5
49967-01	1.4	39	50003-06	2.11	11
49967-02	1.4	39	50016-04	3.21	5
49967-03	1.4	39	50022-01	2.11	*
49967-04	1.4	9	50022-01	2.12	*
49967-05	1.4	9	50023-00	4.4	57
49967-06	1.4	9	49856-104	2.9	22
49967-07	1.3	19	49856-112	2.9	16
49967-08	1.3	19	49856-113	2.9	14
49967-09	1.3	19	49856-114	2.9	18
49967-11	4.10	6	49856-115	2.9	15

ALPHABETICAL INDEX

NAME	FIG.#	PAGE #
<u>F, G, H</u>		
Five Inch High Articulating Load Wheel Assembly	4.10	4.19
Forward & Rearward Contactor Assembly	2.13	2.23
Hand Lift/Lower and Speed Control	4.4	4.7
Hand Lift/Lower and Speed Control for 3 Function Control	4.12	4.23
Hydraulic Schematic for 3 Function Control Handle	3.36	3.69
Hydraulic Schematic Symbols	3.31	3.58
Hydraulic Schematic Symbols	3.37	3.70
Hydraulic Schematic for 3 Function Control Handle	3.30	3.57
Hydraulic Reservoir Assembly	3.6	3.9
<u>I, J, K</u>		
Idler Wheel Assembly	4.7	4.13
Idler Wheel Brake Cylinder	3.35	3.67
Idler Wheel Installation	4.6	4.11
<u>L, M, N</u>		
Lift Control Valve Assembly	3.26	3.49
Lift Pump Assembly	3.22	3.41
Lift Pump Contactor Assembly	2.15	2.27
Lift Pump Motor Assembly	3.21	3.39
Lift Pump Motor Assembly	2.18	2.33
Lift Pump and Reservoir Assembly	3.20	3.37
Limit Switch Wiring Harness Assembly	2.5	2.7
Main Frame and Load Wheel Assembly	4.8	4.15
<u>O, P, Q</u>		
Power Connector Assembly	2.17	2.31
<u>R</u>		
RR45Z "Z" Lift EV-100LX SCR Electrical Schematic	2.1	2.1
Remote Lift/Lower Connector Assembly	6.7	6.11
Remote Lift/Lower EV-100 LX SCR Electrical Schematic	6.1	6.1
Remote Lift/Lower EV-100 LX SCR Electrical Schematic Symbols	6.2	6.2
Remote Lift/Lower Hydraulic Diagram	6.10	6.15
Remote Lift/Lower Hydraulic Schematic	6.8	6.13
Remote Lift/Lower Hydraulic Schematic Symbols	6.9	6.14
Remote Lift/Lower Load Backrest Installation	6.13	6.21
Remote Lift/Lower Power Component Wiring	6.6	6.9
Remote Lift/Lower Reach and Platform Cable Assembly	6.5	6.7
Remote Lift/Lower Three Stage Mast Cable Assembly	6.4	6.5
Remote Lift/Lower Valve Assembly	6.12	6.19
Remote Lift/Lower Wiring Harness Assembly	6.3	6.3

FIG #	ITEM #	PART #	NAME	# FOR ASSY.	UNIT
1.3	1	11160-01	Fitting, grease	2	
1.3	2	40002-00	Yoke	1	
1.3	3	41648-00	Plate	1	
1.3	4	11143-03	Screw, cap	4	
1.3	5	49972-02	Ring	1	
1.3	6	40005-00	Pin	1	
1.3	7	11205-15	Bearing	1	
1.3	8	49969-01	Shim, .005	As Req'd	
1.3	8	49969-02	Shim, .007	As Req'd	
1.3	8	49969-03	Shim, .010	As Req'd	
1.3	8	49969-04	Shim, .020	As Req'd	
1.3	9	11015-16	O ring	1	
1.3	10	40473-00	Gear and pinion set (See Fig.# 1.4 for Gear)	1	
1.3	11	40023-00	Piston	1	
1.3	12	11827-14	Ring, retainer	1	
1.3	13	14908-12	Locknut	1	
1.3	14	49966-02	Washer	1	
1.3	15	11890-05	Pin	2	
1.3	16	-----	Transmission assembly (See Fig.# 1.4)	1	
1.3	17	11872-02	Bolt, wheel	8	
1.3	18	11827-15	Ring, retainer	1	
1.3	19	49967-07	Shim, .005	As Req'd	
1.3	19	49967-08	Shim, .007	As Req'd	
1.3	19	49967-09	Shim, .010	As Req'd	
1.3	19	49967-10	Shim, .060	As Req'd	
1.3	20	11205-18	Bearing	1	
1.3	21	49972-04	Ring	1	
1.3	22	49973-01	Locknut	2	
1.3	23	49974-01	Lockwasher	1	
1.3	24	11854-03	Screw, cap	4	
1.3	25	40000-00	Collar	1	
1.3	26	49968-00	Bearing set	1	
1.3	27	49972-01	Ring	1	
1.3	28	22012-05	Elbow, 90	1	
1.3	29	12391-07	O ring	1	
1.3	30	49928-07	Cap	1	
1.3	31	40267-00	Wheel, drive	1	
1.3	32	40004-00	Wheel, hub	1	
1.3	33	40266-00	Tire, rubber	1	
1.3	34	11801-00	Nut, wheel	8	
1.3	35	11241-01	Elbow, 90	1	
1.3	36	11459-00	Vent, air	1	

FIG #	ITEM #	PART #	NAME	# FOR ASSY.	UNIT
2.5	1	25332-01	Tie, wire	As Req'd	
2.5	2	14911-06	Screw, machine	2	
2.5	3	11009-03	Lockwasher	2	
2.5	4	49574-00	Switch, limit	1	
2.5	5	14910-02	Connector	1	
2.5	6	41494-00	Cable assembly	1	89/126
2.5	6	41494-00	Cable assembly	1	89/180
2.5	6	41494-01	Cable assembly	1	95/138
2.5	6	41494-01	Cable assembly	1	95/198
2.5	6	41494-02	Cable assembly	1	95/210
2.5	6	41494-02	Cable assembly	1	107/162
2.5	6	41494-03	Cable assembly	1	107/226
2.5	6	41494-03	Cable assembly	1	111/240
2.5	6	41494-04	Cable assembly	1	119/258
2.5	6	41494-05	Cable assembly	1	127/276
2.5	6	41494-06	Cable assembly	1	137/300
2.5	6	41494-07	Cable assembly	1	143/318
2.5	6	41494-08	Cable assembly	1	149/330
2.5	7	49557-00	Receptacle	1	
2.5	8	49610-00	Pin	2	
2.5	9	15677-08	Nut	3	2 STAGE
2.5	10	41494-00	Clamp	3	2 STAGE

FIG #	ITEM #	PART #	NAME	# FOR ASSY.	UNIT
2.10	1	200056	Base	1	
2.10	2	200040	5 Rec	1	
2.10	3	200039	2 Rec	1	
2.10	4	NA	Panhead, M3.5 x .60, 10mm long	4	
2.10	5	NA	Hexhead, M5 x .80, 25mm long	8	
2.10	6	200043	Bar, bus	1	
2.10	7	NA	Hexhead, M5 x .80, 10mm long	8	
2.10	*	NA	Lockwasher, M5	8	
2.10	*	NA	Washer, M5 flat	8	
2.10	8	200042	Bar, buss	1	
2.10	9	200041	Bar, buss	1	
2.10	10	300084-000	Card, TX control	1	
2.10	10	301281-000	Card, TT control	1	
2.10	10*	302103-000	Card, TX control, REMANUFACTURED	1	
2.10	10*	301976-000	Card, TT control, REMANUFACTURED	1	
2.10	11	200059	Harness, SCR wiring	1	
2.10	11A	27694-00	Kit, A plug	1	
2.10	11B	27702-02	Kit, B plug	1	
2.10	11C	302211-000	Kit, Y plug	1	
2.10	11D	301567-000	Kit, Z plug	1	
2.10	12	200052	Kit, 1 Rec	1	
2.10	13	200045	Insulation, 1 Rec	1	
2.10	14	NA	Hexhead, M5 x .80, 50mm long	4	
2.10	15	200044	Bar, buss	1	
2.10	16	NA	Panhead, M3.5 x .60, 8mm long	8	
2.10	*	NA	Lockwasher, M3.5	6	
2.10	*	NA	Washer, M3,5 flat	6	
2.10	17	NA	Panhead, M3.5 x .60, 44mm long	1	
2.10	*	NA	Lockwasher, M3.5	1	
2.10	*	NA	Washer, M3.5 flat	1	
2.10	18	NA	Panhead, M3.5 x .60, 23mm long	8	
2.10	*	NA	Lockwasher, M3.5	8	
2.10	*	NA	Washer, M3.5 flat	8	
2.10	19	200050	Snubber	4	
2.10	20	200051	Spider and wire assembly	1	
2.10	21	300086-000	Thermal protector	1	
2.10	22	200038	Reactor	1	
2.10	23	NA	Hex cap, M6 x 1, 16mm long	1	
2.10	*	NA	Lockwasher, M6	1	
2.10	*	NA	Washer, M6 flat	1	
2.10	24	NA	Nut, M6 x 1.25	4	
2.10	25	50001-11	Lockwasher, M8	2	
2.10	*	NA	Washer, M8 flat	2	
2.10	26	200049	Shunt	1	
2.10	27	200048	Post	1	
2.10	28	201297	Rectifier (3 Rec and 4 Rec)	2	
2.10	29	200054	Strap, capacitor	2	
2.10	30	200046	Heatsink	1	
2.10	31	200045	Insulation, heatsink	1	
2.10	32	300085-000	Capacitor	1	
2.10	33	200047	Bushing	3	
2.10	34	NA	Hexcap, M8 x 1.25, 16mm long	3	
2.10	*	50001-11	Lockwasher, M8	3	
2.10	*	NA	Washer, M8	3	

*** Local purchase hardware for reference only.**

FIG #	ITEM #	PART #	NAME	# FOR ASSY.	UNIT
2.15	1	201962	Base, magnet	1	
2.15	2	202172	Coil, field	1	
2.15	3	201963	Frame, magnet	1	
2.15	4	201262	Spring (red)	1	
2.15	5	201964	Armature	1	
2.15	6	200081	Base, bus	1	
2.15	7	201965	Tip, contact	1	
2.15	8	200096	Bushing	2	
2.15	9	200094	Seat	1	
2.15	10	201966	Tip, movable	1	
2.15	11	201259	Cap	1	
2.15	12	201266	Spring, (gold)	1	
2.15	13	201367	Washer, flat	1	
2.15	14	201215	Nut, lock	1	
2.15	15	201967	Clamp	1	
2.15	16	201368	Lockwasher	2	
2.15	17	201372	Screw, machine	4	

FIG #	ITEM #	PART #	NAME	# FOR ASSY.	UNIT
2.20	1	300666-001	Bolt	2	
2.20	2	300666-010	Washer, flat	2	
2.20	3	300665-003	Plug	1	
2.20	4	300666-014	Cover, comm.	1	
2.20	5	300666-017	Ring, brush	1	
2.20	6	300665-001	Spring, brush	4	
2.20	7	300665-002	Brush	4	
2.20	8	300666-003	Washer, spring	1	
2.20	9	300666-016	Cover, drive	1	
2.20	10	300666-012	Bearing	1	
2.20	11	300665-004	Armature	1	
2.20	12	300666-013	Bearing	1	
2.20	13	300666-018	Stator	1	
2.20	14	300666-004	Cover, brush	2	
2.20	*	300666-007	Screw, PHLP head	1	
2.20	*	300666-008	Nut, square	1	

FIG #	ITEM #	PART #	NAME	# FOR ASSY.	UNIT
2.27	1	49399-00	Control, EV-100LX SCR TX panel (See Fig.# 2.10)	1	TX panel
2.27	1	49399-01	Control, EV-100LX SCR TT panel (See Fig.# 2.10)	1	TT panel
2.27	2	26204-00	Meter, hour	1	
2.27	3	23228-02	Indicator, 36 volt battery discharge (BDI)	1	36 Volt
2.27	4	20151-00	Switch, key	1	
2.27	5	42181-00	Handle assembly (See Fig.# 4.12)	1	
2.27	6	49794-00	Switch, brake	1	
2.27	*	11880-08	Screw, machine	2	
2.27	*	14986-03	Nut, twin	2	
2.27	7	41361-00	Valve, lift control (See Fig.# 3.26)	1	
2.27	9	42037-00	Lamp, Side-Shift (AMBER)	2	
2.27	10	42037-01	Lamp, Tilt (GREEN)	2	
2.27	11	42062-01	Valve assembly, 36 Volt (See Fig.# 3.29)	1	
2.27	12	49607-00	Diode	8	36 Volt
2.27	13	301552-000	Zener diode	1	
2.27	14	42032-00	Harness, 3 function wiring	1	36 Volt
2.27	15	49304-00	Bracket, relay	1	
2.27	16	11176-19	Screw, machine	2	
2.27	17	49367-01	Relay	1	
2.27	18	11009-01	Lockwasher	2	
2.27	19	11016-21	Washer, flat	2	
2.27	20	11261-01	Nut	2	
2.27	21	29304-00	Potentiometer	1	
2.27	22	27303-00	Switch, master	1	
2.27	23	41771-00	Harness, wiring	1	
2.27	24	23309-02	Horn, 36 Volt	1	
2.27	25	26618-04	Spacer	1	36 Volt
2.27	26	11170-05	Nut	1	
2.27	27	49605-00	Filter, horn	1	
2.27	28	302008-000	Nut, cap	4	
2.27	29	11009-04	Lockwasher	4	
2.27	30	11016-01	Washer, flat	4	
2.27	31	42027-00	Bracket	1	
2.27	32	300979-000	Wire assembly	1	
2.27	33	20323-00	Switch, lift pump #2	1	
2.27	34	41792-00	Wire assembly	1	

FIG #	ITEM #	PART #	NAME	# FOR ASSY.	UNIT
3.5	1	300665-000	Motor assembly, 36 volt auxiliary pump (See Fig.# 2.23)	1	36 Volt
3.5	2	300681-000	Pump assembly, auxiliary	1	
3.5	3	301491-000	Coupler	1	
3.5	4	NSS	Pump assembly (See Fig.# 3.6)	1	
3.5	5	301508-000	Lockwasher	2	
3.5	6	301507-000	Screw, 12 point	2	

FIG #	ITEM #	PART #	NAME	# FOR ASSY.	UNIT
3.10	1K	NSS	Wiper	1	
3.10	2K	NSS	Seal	1	
3.10	3	40290-00	Bearing	1	
3.10	4K	NSS	Ring, back-up	1	
3.10	5K	NSS	O ring	1	
3.10	6K	NSS	O ring	1	
3.10	7K	NSS	O ring	1	
3.10	8K	NSS	Ring, wear	1	
3.10	9	40285-00	Piston	1	
3.10	10K	NSS	Ring, wear	1	
3.10	11	14908-08	Locknut	1	
3.10	12	41545-00	Tube, cylinder	1	
3.10	13	40286-00	Rod, cylinder	1	
3.10	14	49929-08	Bearing	1	
3.10	K	40470-00	Kit, seal	1	

(CONTAINS ITEMS MARKED WITH "K")

FIG #	ITEM #	PART #	NAME	# FOR ASSY.	UNIT
3.15	1	41243-00	Coil, 36 volt	As Req'd.	
3.15	2	41242-00	Divider, valve assembly (See Fig.# 3.13)	1	
3.15	3	49656-00	Adapter	4	
3.15	4	12391-03	O ring	1	
3.15	5	49604-00	O ring	1	
3.15	6	49617-06	Hose assembly	1	
3.15	7	49655-01	Fitting, straight long	2	
3.15	8	49604-00	O ring	1	
3.15	9	12391-03	O ring	1	
3.15	10	41469-00	Cylinder, left tilt (See Fig.# 3.17)	1	
3.15	11	49616-00	Elbow, 90°	2	
3.15	12	49604-00	O ring	2	
3.15	13	49579-00	Hose assembly	1	
3.15	14	49578-00	Hose assembly	1	
3.15	15	49623-00	Elbow, 90°	1	
3.15	16	49604-00	O ring	1	
3.15	17	49617-05	Hose assembly	1	
3.15	18	49617-01	Hose assembly	1	
3.15	19	201264	Cylinder, sideshift	1	
3.15	20	49654-08	Elbow, 90°	1	
3.15	21	49604-00	O ring	1	
3.15	22	49604-00	O ring	1	
3.15	23	49653-08	Elbow, 90°	1	
3.15	24	49604-00	O ring	1	
3.15	25	12391-04	O ring	1	
3.15	26	49617-00	Hose assembly	1	
3.15	27	49655-00	Fitting, straight long	1	
3.15	28	49604-00	O ring	1	
3.15	29	12391-03	O ring	1	
3.15	30	49531-00	Elbow, 90°	1	
3.15	31	49604-00	O ring	2	
3.15	32	41559-00	Cylinder, right tilt (See Fig.# 3.17)	1	

FIG #	ITEM #	PART #	NAME	# FOR ASSY.	UNIT
3.20	1	41391-00	Yoke	1	
3.20	2	41390-00	Rod	1	
3.20	3K	NSS	Wiper	1	
3.20	4K	NSS	Seal	1	
3.20	5	40495-00	Bearing	1	
3.20	6K	NSS	O ring	1	
3.20	7K	NSS	Ring, back-up	1	
3.20	8K	NSS	Ring, guide	1	
3.20	9	49511-00	Nut, jam	1	
3.20	10K	NSS	Ring, back-up	1	
3.20	11	41389-00	Piston	1	
3.20	12	14908-08	Nut	1	
3.20	13	41392-01	Tube, left	1	
3.20	14	11020-37	Bushing	1	
3.20	15	41392-00	Tube, right	1	
3.20	16	31057-04	Retainer	1	
3.20	17K	NSS	Ring, guide	1	
3.20	18K	NSS	O ring	1	
3.20	19K	NSS	O ring	1	
3.20	20	41527-XX	Spacer (STATE SERIAL NUMBER)	1	
3.20	K	41488-00	Kit, seal	1	

(CONTAINS ITEM MARKED WITH "K")

FIG #	ITEM #	PART #	NAME	# FOR ASSY.	UNIT
3.25	1K	NSS	Ring, retainer	1	
3.25	2K	NSS	Seal, oil	1	
3.25	3	NA	Plate, face	1	
3.25	4K	NSS	O ring	2	
3.25	5K	NSS	Seal	2	
3.25	6	NSS	Seal, plate	2	
3.25	7	NA	Shaft, drive	1	
3.25	8K	NA	Shaft, idler	1	
3.25	9	NA	Body	1	
3.25	10	NA	Plate	1	
3.25	11	NA	Lockwasher	4	
3.25	12	NA	Screw, cap	4	
3.25	K	201990	Kit, seal (CONTAINS ITEMS #4, 5, AND 6)	1	
3.25	K	201989	Kit, oil seal (CONTAINS ITEMS #1 and 2)	1	

CLICK HERE TO **DOWNLOAD** THE COMPLETE MANUAL

- Thank you very much for reading the preview of the manual.
- You can download the complete manual from: www.heydownloads.com by clicking the link below



- Please note: If there is no response to CLICKING the link, please download this PDF first and then click on it.

CLICK HERE TO **DOWNLOAD** THE COMPLETE MANUAL

FIG #	ITEM #	PART #	NAME	# FOR ASSY.	UNIT
3.30	1	41337-00	Cylinder, drive motor brake (See Fig.# 3.32)	1	
3.30	2	14985-07	Elbow, 90°	2	
3.30	3	12391-07	O ring	1	
3.30	4	41345-00	Hose assembly	1	
3.30	5	11129-06	Nut	1	
3.30	6	11009-06	Lockwasher	1	
3.30	7	11016-03	Washer, flat	1	
3.30	8	41339-00	Reservoir, brake fluid	1	
3.30	9	49602-00	Fitting, beaded	1	
3.30	10	14859-01	Clamp	2	
3.30	11	52-05102-00	Hose	As Req'd.	
3.30	12	49601-00	Tee	1	
3.30	13	41355-00	Hose assembly	1	
3.30	14	41338-00	Cylinder, idler wheel brake (See Fig.# 3.33)	1	
3.30	15	41357-00	Crank	2	
3.30	16	42068-00	End, rod	1	
3.30	17	14993-10	Washer, stripper	4	
3.30	18	42067-00	Cylinder, master (See Fig.# 3.31)	1	
3.30	19	11486-12	Nut, jam	1	
3.30	20	11170-05	Nut	4	
3.30	21	11016-02	Washer, flat	4	
3.30	22	42066-00	Bracket	1	
3.30	23	41351-00	Bracket	1	
3.30	24	11854-03	Screw, cap	4	
3.30	25	40882-00	Roller	1	
3.30	26	49744-02	Pin with cotter pin	1	
3.30	27	49744-03	Pin with cotter pin	1	
3.30	28	49744-04	Pin with cotter pin	1	

FIG #	ITEM #	PART #	NAME	# FOR ASSY.	UNIT
3.37	1	NSS	Block, valve	1	
3.37	2	301970-000	Valve, spool	1	
3.37	3	301972-000	Kit, seal	1	
3.37	4	300949-000	Coil	2	

FIG #	ITEM #	PART #	NAME	# FOR ASSY.	UNIT
4.4	1	40416-00	Handle assembly	1	
4.4	2	40482-01	Grip, hand	1	
4.4	3	14939-00	Switch, horn	1	
4.4	4	49887-01	Tubing, heat shrink	As Req'd.	
4.4	5	40402-00	Shaft	1	
4.4	6	11823-39	Fitting, wire	1	
4.4	7	52-07901-01	Wire, 16 Ga. black	As Req'd.	
4.4	8	11823-10	Fitting, wire	1	
4.4	9	49922-01	Screw, machine	3	
4.4	10	NA	Rivet, pop (1/8"x1/4")	As Req'd.	
4.4	11	40676-00	Brush	2	
4.4	12	20151-00	Switch, key	1	
4.4	13	40238-00	Cover, instrument	1	
4.4	14	11695-06	Bushing	2	
4.4	15	11025-02	Ring, retainer	1	
4.4	16	11018-08	Key	1	
4.4	17	14993-30	Washer	1	
4.4	18	11695-01	Bushing	2	
4.4	19	49892-10	Screw, machine	2	
4.4	20	49991-00	Grommet, rubber	2	
4.4	21	11170-05	Nut	2	
4.4	22	41364-00	Valve, lift control (See Fig.3.26)	1	
4.4	23	49717-01	Nut	4	
4.4	24	41324-00	Spacer	2	
4.4	25	11261-06	Nut	2	
4.4	26	11016-03	Washer	4	
4.4	27	11018-11	Key	1	
4.4	28	11695-05	Bushing	2	
4.4	29	41309-00	Rod	1	
4.4	30	49612-06	Screw, cap	2	
4.4	31	41297-00	Block	1	
4.4	32	14993-20	Washer	2	
4.4	33	41313-00	Arm	1	
4.4	34	11271-31	Screw, cap	2	
4.4	35	41312-00	Block	1	
4.4	36	41306-00	Arm	1	
4.4	37	49612-05	Screw, cap	2	
4.4	38	41314-00	Link	2	
4.4	39	11143-05	Screw, cap	1	
4.4	40	41301-00	Handle	1	
4.4	41	11170-06	Nut	1	
4.4	42	11419-03	Nut	2	
4.4	43	40694-00	Arm	1	
4.4	44	11047-13	Screw, cap	1	
4.4	45	49329-00	Joint, ball	2	
4.4	46	49591-00	Rod	1	
4.4	47	11129-03	Nut	1	
4.4	48	49330-00	Screw	1	
4.4	49	41796-00	Lever	1	
4.4	50	14911-03	Screw, machine	2	
4.4	51	49751-04	Nut, flanged	2	
4.4	52	41794-00	Bracket, switch	1	
4.4	53	27303-00	Switch, master	1	
4.4	54	11016-01	Washer, flat	2	
4.4	55	11419-03	Nut	2	
4.4	56	29304-00	Potentioneter	1	
4.4	57	50023-00	Screw, flat head	2	

FIG #	ITEM #	PART #	NAME	# FOR ASSY.	UNIT
4.9	1	11898-11	Ring, retainer	2	
4.9	2	42137-00	Toe Box, left hand	1	
4.9	2	42137-00	Toe Box, right hand	1	
4.9	3	42138-00	Axle	2	
4.9	4	11073-32	Pin, roll	2	
4.9	5	11160-09	Fitting, grease	2	
4.9	6	42143-00	Spacer	4	
4.9	7	11857-17	Washer	4	
4.9	8	49910-03	Bearing	4	
4.9	9	42140-00	Wheel Assembly	1	
4.9	10	42139-00	Wheel, rim	1	
4.9	11	40254-00	Tire	1	

FIG ITEM		PART #	NAME	# FOR	UNIT
#	#			ASSY.	
5.2	1	41695-01	Column, inner	1	89/180
5.2	1	41695-01	Column, inner	1	89/192
5.2	1	41695-02	Column, inner	1	95/198
5.2	1	41695-03	Column, inner	1	107/226
5.2	1	41695-04	Column, inner	1	111/240
5.2	1	41695-05	Column, inner	1	119/258
5.2	1	41695-06	Column, inner	1	127/276
5.2	1	41695-07	Column, inner	1	137/300
5.2	1	41695-08	Column, inner	1	143/318
5.2	1	41695-09	Column, inner	1	149/330
5.2	2	-----	Cylinder assembly (See Fig.# 5.3)	1	
5.2	3	11898-04	Ring, retaining	2	
5.2	4	11936-10	Washer	2	
5.2	5	49832-00	Bearing	2	
5.2	6	11857-10	Shim, .050	As Req'd	
5.2	6	11857-11	Shim, .025	As Req'd	
5.2	7	11073-20	Pin, roll	1	
5.2	8	11261-02	Nut	1	
5.2	9	11009-08	Lockwasher	2	
5.2	10	11936-07	Washer, flat	1	
5.2	11	41194-00	Tube assembly	1	
5.2	12	14994-04	Screw, cap	1	

FIG #	ITEM #	PART #	NAME	# FOR ASSY.	UNIT
5.7	1	41469-00	Cylinder, tilt (See Fig.# 3.15)	1	
5.7	2	40499-00	Spacer	2	
5.7	3	40980-00	Frame, front	1	
5.7	3	41637-00	Frame, manlift front	1	
5.7	4	40641-00	Frame, fork	1	
5.7	5	40382-00	Pin	2	
5.7	6	11073-23	Pin, roll	2	
5.7	7	40988-01	Rest, load back	1	
5.7	8	14994-06	Screw, cap	4	
5.7	9	11852-14	Screw, flathead	4	
5.7	10	40593-00	Bar, wear	2	
5.7	11	40441-00	Shim, .060	As Req'd	
5.7	12	11073-04	Pin, roll	2	
5.7	13	13813-31	Shaft	2	
5.7	14	11009-08	Lockwasher	4	
5.7	15	41559-00	Cylinder, tilt (See Fig.# 3.15)	1	
5.7	16	49785-00	Bumper	2	
5.7	17	11857-06	Washer, shim	2	

FIGURE # 6.2 MANLIFT EV-100 LX SCR ELECTRICAL SCHEMATIC SYMBOLS

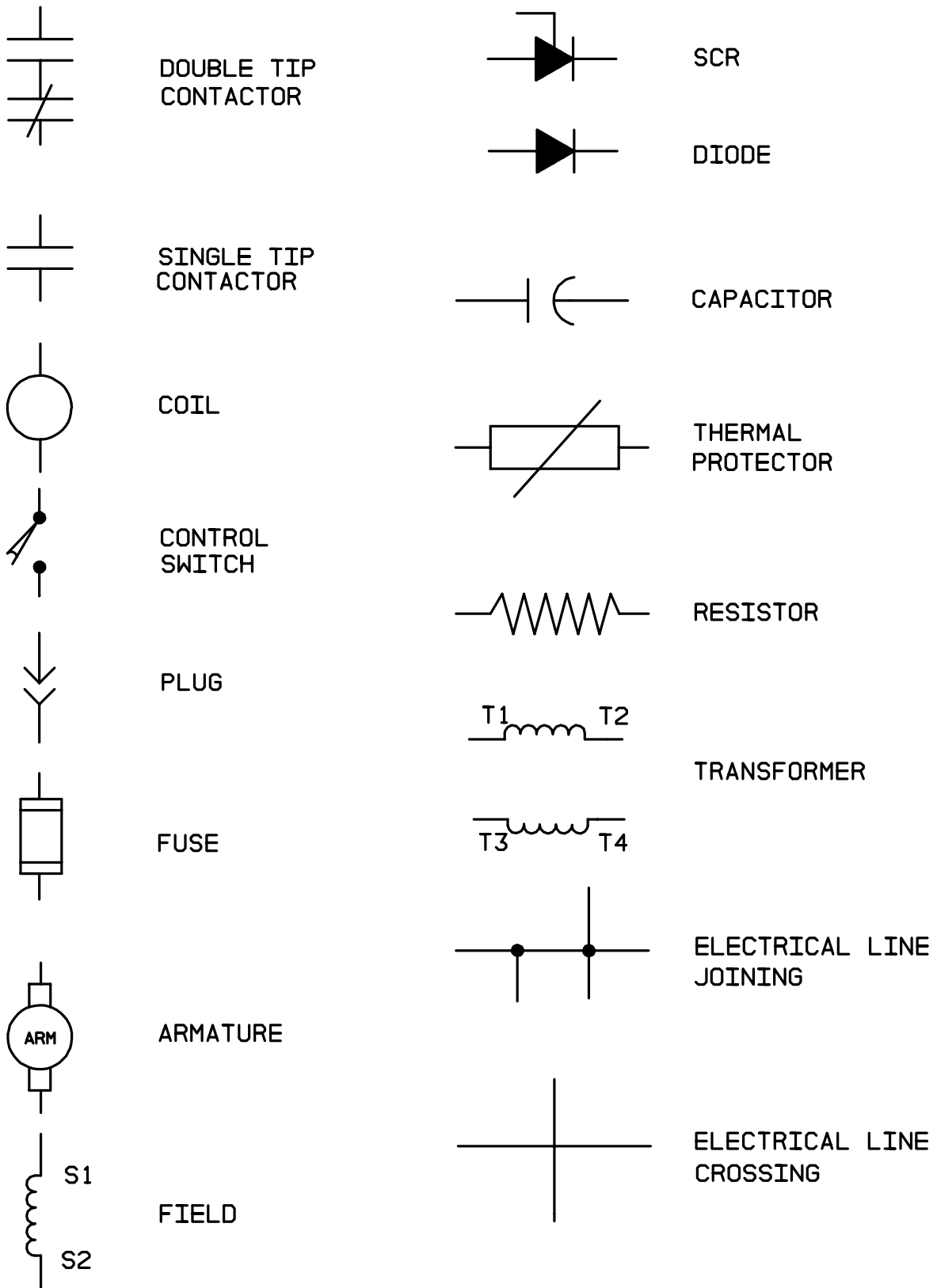


FIG #	ITEM #	PART #	NAME	# FOR ASSY.	UNIT
6.7	1	49854-02	Connector, housing	1	
6.7	2	49852-02	Connector, tip	2	
6.7	3	49856-49	Cable, 65"	1	
6.7	4	49856-85	Cable, 83½"	1	
6.7	5	20163-94	Wire assembly	1	

FIG #	ITEM #	PART #	NAME	# FOR ASSY.	UNIT
6.13	1	14913-03	Screw, flat head	12	
6.13	2	41627-00	Plate	2	
6.13	3	41628-00	Handle, manlift	2	
6.13	4	14913-04	Screw, flat head	2	
6.13	5	41610-00	Loadback rest, manlift	1	
6.13	6	49458-00	Switch, key (SET OF TWO SWITCHS)	1	
6.13	7	11854-04	Screw, cap	4	
6.13	8	49885-01	Spacer	2	
6.13	9	41614-00	Cover	1	
6.13	10	41614-01	Cover	1	
6.13	11	11854-03	Screw, cap	4	
6.13	12	14851-02	Nut, clip	4	
6.13	13	26662-01	Switch, pushbutton	1	
6.13	14	11885-10	Screw, socket button head	2	
6.13	15	41616-00	Spacer	2	
6.13	16	27551-02	Grip, hand	2	
6.13	17	49717-02	Nut	4	
6.13	18	49459-00	Switch, rocker	1	
6.13	19	49459-01	Switch, rocker	1	
6.13	20	14915-03	Plug, 3/4" hole	2	
6.13	21	26629-00	Decal, emergency disconnect	1	
6.13	22	41439-00	Decal, WARNING	1	

MODEL RR-45Z REACH TRUCK

NUMERICAL INDEX

<u>PART #</u>	<u>FIG. #</u>	<u>ITEM #</u>	<u>PART #</u>	<u>FIG.#</u>	<u>ITEM #</u>
14994-06	1.1	3	26617-03	5.4	15
14994-06	5.9	8	26618-04	2.27	24
14994-06	5.8	56	26629-00	6.13	21
14994-06	5.7	8	26645-00	5.4	16
14994-08	1.1	1	26662-01	6.5	12
14994-10	5.4	13	26662-01	6.13	13
15677-04	3.27	47	26743-00	0.1	1
15677-08	2.6	7	27303-00	2.3	10
15677-08	2.5	9	27303-00	2.27	21
15677-08	6.5	8	27303-00	4.4	53
15677-08	6.4	7	27303-00	4.13	54
20148-01	4.13	59	27551-02	6.13	16
20151-00	4.13	13	27561-03	4.1	18
20151-00	2.27	4	27692-00	2.12	17
20151-00	2.3	3	27693-02	2.12	2
20151-00	4.4	12	27693-04	2.11	19
20163-94	6.7	5	27693-04	2.12	7
20188-00	4.13	60	27694-00	2.10	11A
20323-00	2.27	32	27697-00	2.24	13
20323-00	4.2	20	27702-02	2.10	11B
20323-00	2.4	19	27704-05	2.11	*
20904-01	4.5	20	27901-00	1.2	34
20904-01	4.8	2	27902-00	1.2	34
21089-02	5.5	7	27902-00	2.9	17
22005-06	4.7	28	28159-04	5.4	21
22012-05	1.3	28	28159-06	5.4	11
22050-03	4.7	32	29030-02	2.21	1
23228-02	2.27	3	29304-00	2.27	20
23309-02	2.27	23	29304-00	4.4	56
25008-01	5.1	24	29304-00	4.13	57
25008-02	5.1	24	29329-00	2.11	2
25008-03	5.1	24	29831-00	2.21	1
25008-04	5.1	24	30320-01	3.27	38
25094-02	2.11	12	30434-00	4.5	3
25189-02	4.8	8	30553-02	5.4	1
25203-06	4.8	10	30553-05	5.3	10
25203-07	4.8	10	30553-06	5.3	14
25203-08	4.8	10	30553-07	5.4	7
25204-03	4.8	9	30554-00	5.1	21
25204-06	4.8	9	30554-00	5.5	5
25204-07	4.8	9	30554-00	5.3	3
25275-06	2.12	12	30558-00	5.3	1
25275-06	2.24	11	30558-00	5.5	3
25332-01	2.3	8	30559-00	5.4	8
25332-01	2.5	1	30612-01	3.29	6
25332-01	2.21	13	40000-00	1.3	25
25332-01	2.6	1	40001-00	1.4	10
25332-01	3.3	40	40002-00	1.3	2
25332-01	3.36	45	40003-00	1.4	42
25332-01	6.3	13	40004-00	1.3	32
25332-01	6.4	1	40005-00	1.3	6
26204-00	2.27	2	40006-00	1.4	35
26270-00	4.2	1	40007-00	1.4	25
26270-00	0.1	16	40009-00	1.4	8
26389-00	5.3	16	40011-00	1.1	31
26493-01	5.4	17	40012-00	1.4	37
26519-02	5.3	15	40017-00	1.4	31

MODEL RR-45Z REACH TRUCK

NUMERICAL INDEX

<u>PART #</u>	<u>FIG. #</u>	<u>ITEM #</u>	<u>PART #</u>	<u>FIG.#</u>	<u>ITEM #</u>
300292-000	2.19	5	300979-007	2.24	7
300294-000	2.19	1	300994-000	3.27	3
300299-000	2.19	4	301078-001	0.1	*
300301-000	2.19	2	301120-000	2.12	16
300302-000	2.19	9	301121-000	2.12	9
300303-000	2.19	8	301122-000	2.12	6
300304-000	2.19	7	301123-000	2.12	14
300305-000	2.19	15	301125-000	2.12	10
300307-000	2.19	12	301126-000	2.24	14
300310-000	2.19	6	301126-000	2.12	18
300313-000	2.19	13	301147-000	2.12	15
300314-000	2.19	14	301265-000	6.6	8
300315-000	2.19	3	301265-000	6.3	2
300326-000	2.19	11	301280-001	2.18	11
300327-000	2.19	10	301280-002	2.18	10
300334-000	3.36	58	301280-003	2.18	1
300334-000	4.5	19	301280-004	2.18	3
300334-000	2.9	13	301280-005	2.18	5
300374-002	0.1	*	301280-006	2.18	8
300377-002	0.1	*	301280-007	2.18	2
300411-000	2.18	14	301280-008	2.18	9
300412-000	2.18	13	301281-000	2.10	10
300413-000	2.18	12	301491-000	3.5	3
300418-000	2.18	4	301507-000	3.5	6
300420-000	2.18	6	301508-000	3.5	5
300421-000	2.18	7	301529-000	10.1	7
300665-000	3.5	1	301552-000	2.27	12
300665-001	2.20	6	301567-000	2.10	11D
300665-002	2.20	7	301572-000	1.2	5
300665-003	2.20	3	301573-000	1.2	4
300665-004	2.20	11	301578-000	7.5	6
300666-001	2.20	1	301579-000	7.5	4
300666-003	2.20	8	301790-001	5.10	10
300666-004	2.20	14	301790-002	5.10	9
300666-007	2.20	*	301790-003	5.10	11
300666-008	2.20	*	301790-004	5.10	8
300666-010	2.20	2	301790-005	5.10	7
300666-012	2.20	10	301790-006	5.10	6
300666-013	2.20	12	301790-007	5.10	1
300666-014	2.20	4	301790-008	5.10	3
300666-016	2.20	9	301790-009	5.10	5
300666-017	2.20	5	301790-010	5.10	13
300666-018	2.20	13	301790-011	5.10	14
300681-000	3.5	2	301790-012	5.10	15
300681-002	3.6	2	301790-013	5.10	15
300681-006	3.6	19	301790-014	5.10	15
300681-007	3.6	6	301790-015	5.10	21
300681-008	3.6	10	301790-016	5.10	19
300793-000	2.21	4	301790-017	5.10	17
300949-000	3.37	4	301790-018	5.10	K
300949-000	6.11	7	301790-019	5.10	2
300949-000	6.12	27	301793-001	1.2	9
300979-000	2.27	31	301793-002	1.2	13
300979-001	2.11	20	301793-003	1.2	10
300979-002	2.11	21	301793-004	1.2	8
300979-003	2.24	6	301793-005	1.2	11
300979-004	2.24	5	301793-006	1.2	12

FIG #	ITEM #	PART #	NAME	# FOR ASSY.	UNIT
1.4	1	14908-16	Locknut	1	
1.4	2	14898-00	Washer	1	
1.4	3	11057-13	Key	1	
1.4	4	40473-00	Gear & pinion set (See Fig.# 1.3 for pinion)	1	
1.4	5	40020-00	Case	1	
1.4	6	11890-03	Pin, dowel	2	
1.4	7	11205-13	Bearing	1	
1.4	8	40009-00	Shaft	1	
1.4	9	49967-04	Shim, .005"	As Req'd.	
1.4	9	49967-05	Shim, .007"	As Req'd.	
1.4	9	49967-06	Shim, .010"	As Req'd.	
1.4	10	40001-00	Holder, bearing	1	
1.4	11	11205-14	Bearing	1	
1.4	12	49973-01	Locknut	2	
1.4	13	49974-01	Lockwasher	1	
1.4	14	49970-01	Shim, .005"	As Req'd.	
1.4	14	49970-02	Shim, .007"	As Req'd.	
1.4	14	49970-03	Shim, .010"	As Req'd.	
1.4	15	14908-28	Locknut	1	
1.4	16	40828-00	Plate	1	
1.4	17	11143-03	Screw, cap	4	
1.4	18	11143-04	Screw, cap	4	
1.4	19	40829-00	Cover	1	
1.4	20	12318-03	Plug	1	
1.4	21	12391-03	O ring	1	
1.4	22	11143-04	Screw, cap	8	
1.4	23	11009-06	Lockwasher	8	
1.4	24	11015-30	O ring	3	
1.4	25	40007-00	Shaft	1	
1.4	26	11936-16	Race	2	
1.4	27	11935-06	Bearing, thrust	2	
1.4	28	11936-15	Race	2	
1.4	29	49971-00	Roller	122	
1.4	30	40024-01	Spacer	1	
1.4	31	40017-00	Gear	1	
1.4	32	11936-01	Race	1	
1.4	33	40018-00	Gear	1	
1.4	34	40024-02	Spacer	1	
1.4	35	40006-00	Shaft	1	
1.4	36	11073-19	Pin	1	
1.4	37	40012-00	Gear, axle	1	
1.4	38	11205-17	Bearing	2	
1.4	39	49967-01	Shim, .005"	As Req'd.	
1.4	39	49967-02	Shim, .007"	As Req'd.	
1.4	39	49967-03	Shim, .010"	As Req'd.	
1.4	40	40022-00	Spacer	1	
1.4	41	11039-29	Seal, oil	1	
1.4	42	40003-00	Hub	1	
1.4	43	49966-01	Ring	1	
1.4	44	11205-16	Bearing	1	

FIG #	ITEM #	PART #	NAME	# FOR ASSY.	UNIT
2.6	1	25332-01	Tie, wire	As Req'd	
2.6	2	41771-00	Harness, wiring (See Fig.# 2.4)	1	
2.6	3	49611-00	Receptacle	1	
2.6	4	49861-05	Relief, strain	1	
2.6	5	52-07920-00	Cable	As Req'd	
			21 FEET	89/180	
			23 FEET	95/198	
			25 FEET	107/226	
			27 FEET	111/240	
			29 FEET	119/258	
			31 FEET	127/276	
			33 FEET	137/300	
			35 FEET	143/318	
			37 FEET	149/330	
2.6	6	11170-06	Nut	1	
2.6	7	15677-08	Clamp	1	
2.6	8	49610-00	Pin	5	
2.6	9	11009-05	Lockwasher	2	
2.6	10	11854-03	Screw, cap	2	
2.6	11	40077-00	Bracket	1	
2.6	12	49609-00	Plug	1	
2.6	13	41255-00	Cable, single reach (See Fig.# 2.7)	1	
2.6	13	41486-00	Cable, double reach (See Fig.# 2.8)	1	
2.6	14	49608-00	Socket	5	
2.6	15	41588-00	Sleeve, cable	2	
2.6	16	49501-00	Spring	2	
2.6	17	41602-00	Strain relief, clamp	2	
2.6	18	41602-01	Strain relief, fitting	2	
2.6	19	41596-00	Bracket	2	

FIG #	ITEM #	PART #	NAME	# FOR ASSY.	UNIT
2.11	1	41757-02	Panel, contactor (See Fig.# 2.12)	1	
2.11	2	29329-00	Bracket, plug	1	
2.11	3	11176-20	Screw, machine	4	
2.11	4	11176-01	Screw, machine	2	
2.11	5	11009-03	Lockwasher	2	
2.11	6	11016-21	Washer, flat	4	
2.11	7	11009-01	Lockwasher	4	
2.11	8	11261-01	Nut	4	
2.11	9	20404	Washer, flat	4	
2.11	10	50001-11	Lockwasher	4	
2.11	11	50003-06	Screw, machine	3	
2.11	12	25094-02	Fuse, 500 AMP Power	1	
2.11	13	11016-12	Washer, flat	3	
2.11	14	11009-05	Lockwasher	3	
2.11	15	11261-05	Nut	3	
2.11	16	21935	Screw, machine	1	
2.11	17	41788-00	Bar, buss	1	
2.11	18	49547-01	Spacer	1	
2.11	19	27693-04	Contactora, lift pump (See Fig.# 2.15)	1	
2.11	*	27704-05	Suppression	1	
2.11	*	50022-01	Screw, machine	2	
2.11	*	11072-01	Lockwasher, toothed	2	
2.11	20	300979-001	Wire assembly	1	
2.11	21	300979-002	Wire assembly	1	

FIG #	ITEM #	PART #	NAME	# FOR ASSY.	UNIT
2.16	1	300074-001	Base, magnet	1	
2.16	2	200077	Coil, field	1	
2.16	3	300074-002	Frame, magnet	1	
2.16	4	201267	Spring (GOLD)	1	
2.16	5	202424	Armature	1	
2.16	6	200081	Base, buss	1	
2.16	7	300074-003	Tip, contact	2	
2.16	8	200096	Bushing	1	
2.16	9	200095	Carrier	1	
2.16	10	300074-004	Tip, movable	1	
2.16	11	201259	Cap	1	
2.16	12	201266	Spring (GOLD)	1	
2.16	13	201367	Washer, flat	1	
2.16	14	201215	Nut, lock	1	
2.16	15	201967	Clamp	2	
2.16	16	201368	Lockwasher	4	
2.16	17	201372	Screw, machine	4	
2.16	18	202010	Suppression, pump contactor	1	
2.16	19	200094	Seat	1	

FIG #	ITEM #	PART #	NAME	# FOR ASSY.	UNIT
2.21	1	29030-02	Light, 36 volt flashing	1	
2.21	2	NSS	Lens	1	
2.21	3	NSS	Reflector	1	
2.21	4	300793-000	Bulb, 36 volt (FLASHING ONLY)	1	
2.21	5	NSS	Screw	3	
2.21	6	NSS	Base	1	
2.21	7	11016-02	Washer, flat	2	
2.21	8	11170-05	Nut	2	
2.21	9	11823-06	Connector, butt	2	
2.21	10	52-07901-03	Wire, red #16 AWG (16 feet)	As Req'd.	
2.21	11	11854-06	Screw, cap	2	
2.21	12	11823-27	Connector, #6 stud	1	
2.21	13	25332-01	Tie, wire	8	
2.21	14	11823-12	Connector, 3/8" stud	2	
2.21	15	52-07901-01	Wire, black #16 AWG (14 feet)	As Req'd.	
2.21	16	49680-00	Hanger	1	
2.21	17	29831-00	Light, strobe (red)	1	

FIGURE # 3.2 HYDRAULIC SCHEMATIC SYMBOLS

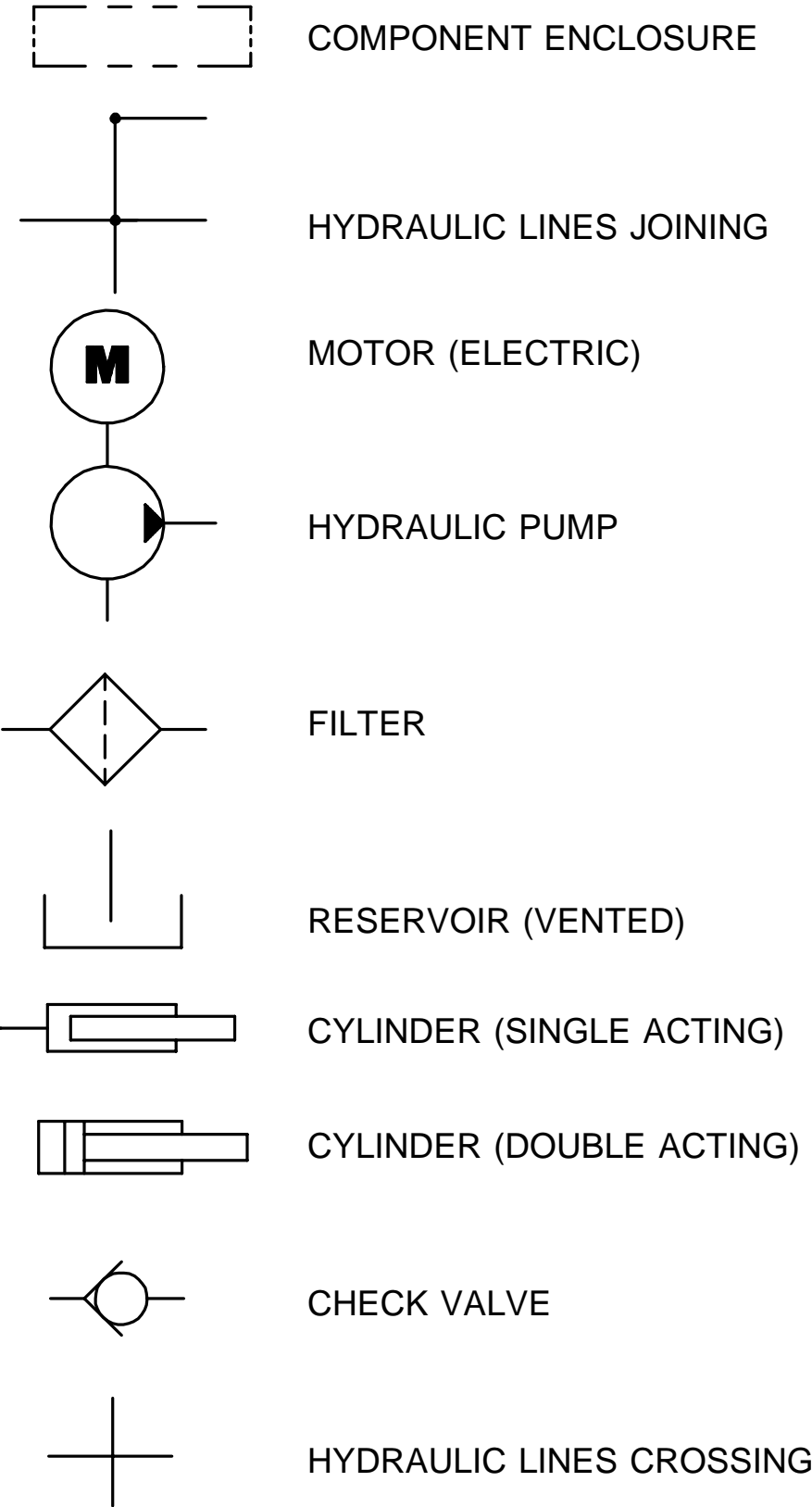


FIG #	ITEM #	PART #	NAME	# FOR ASSY.	UNIT
3.7	1	1-08759-00	Gage, sight	1	
3.7	2	14961-00	Breather	1	
3.7	3	41426-00	Reservoir	1	
3.7	3	41426-01	Reservoir, 127/276 and above	1	127/276 & ABOVE
3.7	4	40323-00	Screen	1	
3.7	5	12318-11	Plug	1	
3.7	6	12391-12	O ring	1	
3.7	7	11016-03	Washer, flat	2	
3.7	8	11143-08	Screw, cap	2	

FIG #	ITEM #	PART #	NAME	# FOR ASSY.	UNIT
3.12	1	41243-00	Coil, 36 volt	As Req'd.	36 VOLT
3.12	2	11854-03	Screw, cap	3	
3.12	3	11009-05	Lockwasher	3	
3.12	4	11016-02	Washer, flat	3	
3.12	5	49617-03	Hose assembly	2	
3.12	6	41199-00	Tube assembly	1	
3.12	7	49604-00	O ring	2	
3.12	8	49656-00	Adapter	4	
3.12	9	49604-00	O ring	1	
3.12	10	12391-03	O ring	1	
3.12	11	41242-00	Dividter valve assembly (See Fig.# 3.13)	1	
3.12	12	49617-02	Hose assembly	2	
3.12	13	49617-04	Hose assembly	2	
3.12	14	49655-00	Fitting, straight long	2	
3.12	15	49604-00	O ring	1	
3.12	16	12391-03	O ring	1	
3.12	17	49653-00	Elbow, 90°	4	
3.12	18	12391-03	O ring	1	
3.12	19	49604-00	O ring	1	
3.12	20	41226-00	Tube assembly	2	
3.12	21	49604-00	O ring	1	
3.12	22	-----	Cylinder, left reach (See Fig.# 3.14)	1	
3.12	23	-----	Cylinder, right reach (See Fig.# 3.14)	1	

FIG #	ITEM #	PART #	NAME	# FOR ASSY.	UNIT
3.17	1	41243-00	Coil, 36 volt	As Req'd.	
3.17	2	49617-14	Hose with wire guard	2	
3.17	3	49617-13	Hose with wire guard	2	
3.17	4	49653-00	Elbow, 90°	4	
3.17	5	12391-03	O ring	1	
3.17	6	49604-00	O ring	1	
3.17	7	41226-00	Tube assembly	2	
3.17	8	49604-00	O ring	1	
3.17	9	49656-00	Adapter	6	
3.17	10	12391-03	O ring	1	
3.17	11	49604-00	O ring	1	
3.17	12	41387-XX	Cylinder, right reach (See Fig.# 3.19)	1	
3.17	13	49655-00	Fitting, straight long	10	
3.17	14	49604-00	O ring	1	
3.17	15	12391-03	O ring	1	
3.17	16	41512-00	Tube assembly	1	
3.17	17	49580-01	Orifice	1	
3.17	18	49653-09	Elbow, 90°	2	
3.17	19	49604-00	O ring	1	
3.17	20	12391-03	O ring	1	
3.17	21	41478-00	Double diverter valve assembly (See Fig.# 3.18)	1	
3.17	22	41475-00	Tube assembly	1	
3.17	23	49604-00	O ring	1	
3.17	24	41477-00	Manifold, tee block	1	
3.17	25	41517-00	Tube assembly	1	
3.17	26	42153-XX	Cylinder, left reach (See Fig.# 3.19)	1	
3.17	27	49643-24	Hose assembly (without sidershifter)	2	
3.17	27	49561-00	Hose assembly (with sidershifter)	2	RED FLAG
3.17	28	52-05103-00	Guard, sidershifter hose (108")	As Req'd.	RED FLAG
3.17	29	49624-00	Nut, fitting	2	
3.17	30	49634-00	Elbow, 90°	2	
3.17	31	49604-00	O ring	1	
3.17	32	49617-16	Hose with wire guard	1	
3.17	33	49617-15	Hose with wire guard	1	
3.17	34	49617-10	Hose with wire guard	1	
3.17	35	49617-09	Hose with wire guard	1	
3.17	36	49617-12	Hose with wire guard	1	
3.17	37	49617-11	Hose with wire guard	1	
3.17	38	49616-00	Tee	2	
3.17	39	49604-00	O ring	1	
3.17	40	42153-XX	Cylinder, tilt (See Fig.# 3.20)	2	
3.17	41	201064	Cylinder, sidershifter	1	
3.17	42	49654-08	Elbow, 90°	1	
3.17	43	12391-03	O ring	1	
3.17	44	49604-00	O ring	1	
3.17	45	49653-08	Elbow, 90°	1	
3.17	46	12391-03	O ring	1	
3.17	47	49604-00	O ring	1	
3.17	48	12318-01	Plug	2	
3.17	49	12391-03	O ring	1	

XX - SPECIFY MODEL AND SERIAL NUMBER WHEN ORDERING THIS PART . . .

FIG #	ITEM #	PART #	NAME	# FOR ASSY.	UNIT
3.22	1	41777-00	Motor, lift pump (See Fig.# 2.18)	1	
3.22	2	41783-00	Pump, lift (See Fig.# 3.23)	1	
3.22	3	11143-05	Screw, cap	2	
3.22	4	49509-00	Nut, clip	4	
3.22	5	11854-05	Screw, cap	4	
3.22	6	11016-12	Washer, flat	4	
3.22	7	31267-00	Grommet	4	

FIG #	ITEM #	PART #	NAME	# FOR ASSY.	UNIT
3.27	1	49548-00	Screw	1	
3.27	2	11897-03	Washer, seal	1	
3.27	3	40089-01	Tube, 89/180 cylinder	1	89/180
3.27	3	40089-02	Tube, 95/198 cylinder	1	95/198
3.27	3	40089-03	Tube, 107/226 cylinder	1	107/226
3.27	3	40089-04	Tube, 111/240 cylinder	1	111/240
3.27	3	40089-05	Tube, 119/258 cylinder	1	119/258
3.27	3	40089-06	Tube, 127/276 cylinder	1	127/276
3.27	3	40089-07	Tube, 137/300 cylinder	1	137/300
3.27	3	40089-08	Tube, 143/318 cylinder	1	143/318
3.27	3	40089-09	Tube, 149/330 cylinder	1	149/330
3.27	4	40052-00	Nut	1	
3.27	5	40051-00	Plunger	1	
3.27	6	30612-01	Spring	1	
3.27	7	13857-01	Ball	1	
3.27	8	40047-00	Piston	1	
3.27	9K	NSS	Ring, wear	1	
3.27	10	40070-01	Rod, 89/180 cylinder	1	89/180
3.27	10	40070-02	Rod, 95/198 cylinder	1	95/198
3.27	10	40070-03	Rod, 107/226 cylinder	1	107/226
3.27	10	40070-04	Rod, 111/240 cylinder	1	111/240
3.27	10	40070-05	Rod, 119/258 cylinder	1	119/258
3.27	10	40070-06	Rod, 127/276 cylinder	1	127/276
3.27	10	40070-08	Rod, 137/300 cylinder	1	137/300
3.27	10	40070-10	Rod, 143/318 cylinder	1	143/318
3.27	10	40070-11	Rod, 149/330 cylinder	1	149/330
3.27	11K	NSS	O ring	1	
3.27	12K	NSS	Ring, backup	1	
3.27	13	40068-00	Bearing	1	
3.27	14K	NSS	Ring, wear	1	
3.27	15K	NSS	Seal	1	
3.27	16K	NSS	Wiper	1	
3.27	K	41534-00	Kit, seal	1	

(CONTAINS ITEMS MARKED WITH "K")

FIG #	ITEM #	PART #	NAME	# FOR ASSY.	UNIT
3.32	9	49651-01	Tee	2	
3.32	10	49604-01	O ring	2	
3.32	11	12391-05	O ring	1	
3.32	12	42019-00	Valve, relief	1	
3.32	13	49652-01	Tee	1	
3.32	14	12391-05	O ring	1	
3.32	15	49604-01	O ring	1	
3.32	16	49597-01	Elbow, 90°	2	
3.32	17	12391-05	O ring	1	
3.32	18	42018-00	Tee	1	
3.32	19	49604-01	O ring	2	
3.32	20	49517-12	Hose	1	
3.32	21	49430-00	Hose	1	
3.32	22	49430-03	Hose	1	
3.32	23	49656-01	Adapter	2	
3.32	24	49604-01	O ring	1	
3.32	25	12391-05	O ring	1	
3.32	26	49653-01	Elbow, 90°	3	
3.32	27	49604-01	O ring	1	
3.32	28	12391-05	O ring	1	
3.32	29	42062-01	Valve assembly (See Fig.# 3.33)	1	
3.32	30	-----	Reservoir assembly (See Fig.# 3.7)	1	
3.32	31	49623-01	Elbow, 90°	2	
3.32	32	49604-01	O ring	1	
3.32	33	40102-01	Steering control valve assy. (See Fig.# 3.8)	1	
3.32	34	49517-03	Hose	1	
3.32	35	49956-02	Filter assembly	1	
3.32	36	201435	Element, filter	1	
3.32	37	49666-12	Reducer	2	
3.32	38	12391-08	O ring	1	
3.32	39	49653-01	Elbow, 90°	1	
3.32	40	12391-05	O ring	1	
3.32	41	49604-01	O ring	1	
3.32	42	11009-04	Lockwasher	2	
3.32	43	11045-03	Screw, cap	2	
3.32	44	52-05104-00	Guard, hose	As Req'd.	
3.32	45	25332-01	Tie, wire	4	
3.32	46	52-05054-00	Hose (.8 feet)	As Req'd.	
3.32	47	14859-04	Clamp, hose	2	
3.32	48	49674-01	Elbow, beaded	1	
3.32	49	12391-07	O ring	1	
3.32	50	49595-00	Check, valve	1	
3.32	51	12391-05	O ring	1	
3.32	52	49604-01	O ring	1	
3.32	53	49642-06	Hose	1	
3.32	54	49656-10	Adapter	1	
3.32	55	49604-01	O ring	1	
3.32	56	12391-03	O ring	1	
3.32	57	49517-02	Hose	1	
3.32	58	300334-000	Aux. pump & motor assy. (See Fig.# 3.5)	1	

FIG #	ITEM #	PART #	NAME	# FOR ASSY.	UNIT
4.3	1	41784-01	Cover, seat panel	1	
4.3	1	41784-00	Cover, seat panel, multi-function handle	1	
4.3	2	49919-02	Knob	1	
4.3	3	NA	Rivet, pop (1/8"x1/4")	4	
4.3	4	40679-00	Brush	2	
4.3	5	41322-00	Rod	1	
4.3	6	14993-10	Washer, flat	As Req'd.	
4.3	7	11880-09	Screw, machine	4	
4.3	8	49965-00	Switch	2	
4.3	9	14986-03	Nut, twin	2	
4.3	10	11073-20	Pin, roll	1	
4.3	11	11261-04	Nut	3	
4.3	12	11009-01	Lockwasher	4	
4.3	13	41331-00	Valve, auxiliary control (See Fig.# 3.4)	1	
4.3	14	11020-27	Bushing	2	
4.3	15	49819-00	Spring	2	
4.3	16	41147-00	Puck	2	
4.3	17	14813-00	Link	1	
4.3	18	14892-01	Bolt, flange	2	
4.3	19	49751-06	Nut, flange	2	
4.3	20	40931-00	Plate	1	
4.3	21	41318-00	Tube	1	
4.3	22	11073-14	Pin, roll	1	
4.3	23	11873-19	Screw, socket head	1	
4.3	24	40677-00	Round	1	

FIG #	ITEM #	PART #	NAME	# FOR ASSY.	UNIT
4.8	1	41550-00	Door	1	
4.8	2	20904-01	Bumper	2	
4.8	3	11429-04	Pin, cotter	1	
4.8	4	11016-27	Washer, flat	11	
4.8	5	49914-00	Screw, cap	1	
4.8	6	41547-00	Hinge	1	
4.8	7	14989-17	Screw, 12 point cap	8	
4.8	7	49761-22	Screw, cap 4" high outriggers	8	
4.8	8	25189-02	Bearing	8	
4.8	9	25204-06	Roller, 16.5" battery	4	16.5"BATT.
4.8	9	25204-07	Roller, 21" battery	4	21" BATT.
4.8	10	25203-06	Shaft, 16.5" battery	4	16.5"BATT.
4.8	10	25203-08	Shaft, 21" battery	4	21" BATT.
4.8	11	-----	Frame, main (State Serial Number)	1	
4.8	12	41064-00	Retainer, battery 16.5" battery	2	16.5"BATT.
4.8	12	41064-02	Retainer, battery 21" battery	2	21" BATT.
4.8	13	-----	Load wheel, 5" articulating (See Fig.# 4.10 & 4.10A)	2	
4.8	14	-----	Load wheel, single (See Fig.# 4.9 & 4.9A)	2	
4.8	15	-----	Load wheel, 4" articulating (See Fig.# 4.11 & 4.11A)	2	
4.8	16	40152-02	Retainer, right top battery	1	RIGHT
4.8	16	40152-01	Retainer, left top battery	1	LEFT
4.8	17	11170-06	Nut	10	

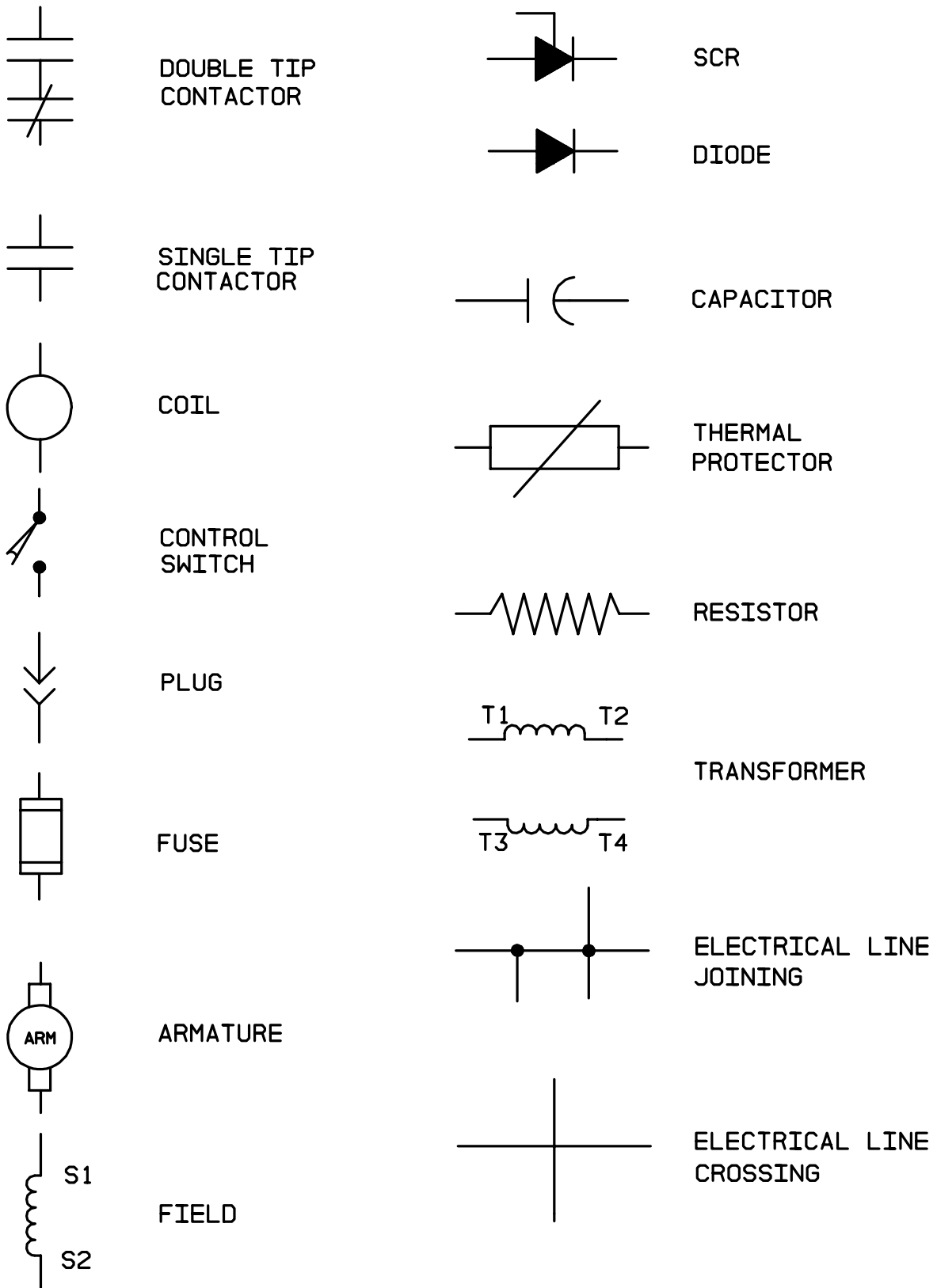
FIG #	ITEM #	PART #	NAME	# FOR ASSY.	UNIT
4.11	1	42129-00	Axle	2	
4.11	2	42127-00	Toe box, 4" high	2	
4.11	3	42178-00	Plate	2	
4.11	4	11898-02	Ring, retainer	4	
4.11	5	11160-09	Fitting, grease	4	
4.11	6	11857-14	Washer, 10 gauge	8	
4.11	7	11857-16	Washer, 18 gauge	8	
4.11	8	49910-02	Bearing	8	
4.11	9	42136-00	Wheel, load (4 x 3)	4	

FIG #	ITEM #	PART #	NAME	# FOR ASSY.	UNIT
5.3	1	30558-00	Anchor	2	
5.3	2	14835-36	Chain, 89/180 lift	2	89/180
5.3	2	14835-37	Chain, 89/192 lift	2	89/192
5.3	2	14835-37	Chain, 95/198 lift	2	95/198
5.3	2	14835-27	Chain, 107/226 lift	2	107/226
5.3	2	14835-38	Chain, 111/240 lift	2	111/240
5.3	2	14835-39	Chain, 119/258 lift	2	119/258
5.3	2	14835-45	Chain, 127/276 lift	2	127/276
5.3	2	14835-46	Chain, 137/300 lift	2	137/300
5.3	2	14835-56	Chain, 143/318 lift	2	143/318
5.3	2	14835-76	Chain, 149/330 lift	2	149/330
5.3	3	30554-00	Pin with cotter pin	2	
5.3	4	49837-00	Nut, wheel	2	
5.3	5	11486-12	Nut, jum	2	
5.3	6	40092-01	Cylinder, 89/180 freelift (See Fig.# 3.27)	1	89/180
5.3	6	40092-10	Cylinder, 89/192 freelift (See Fig.# 3.27)	1	89/192
5.3	6	40092-02	Cylinder, 95/198 freelift (See Fig.# 3.27)	1	95/198
5.3	6	40092-03	Cylinder, 107/226 freelift (See Fig.# 3.27)	1	107/226
5.3	6	40092-04	Cylinder, 111/240 freelift (See Fig.# 3.27)	1	111/240
5.3	6	40092-05	Cylinder, 119/258 freelift (See Fig.# 3.27)	1	119/258
5.3	6	40092-06	Cylinder, 127/276 freelift (See Fig.# 3.27)	1	127/276
5.3	6	40092-07	Cylinder, 137/300 freelift (See Fig.# 3.27)	1	137/300
5.3	6	40092-08	Cylinder, 143/318 freelift (See Fig.# 3.27)	1	143/318
5.3	6	40092-09	Cylinder, 149/330 freelift (See Fig.# 3.27)	1	149/330
5.3	7	11160-09	Fitting, grease	2	
5.3	8	11831-06	Nut	1	
5.3	9	11016-08	Washer, flat	1	
5.3	10	30553-05	Washer, shim	1	
5.3	11	40045-00	Sheave	1	
5.3	12	49993-02	Race, inner	2	
5.3	13	49994-01	Bearing, roller	2	
5.3	14	30553-06	Washer, shim	5	
5.3	15	26519-02	Pin	1	
5.3	16	26389-00	Nut, spacer	1	
5.3	17	49941-01	Washer, belleville	6	
5.3	18	40565-00	Retainer	1	
5.3	19	11016-03	Washer, flat	2	
5.3	20	11143-03	Screw, cap	2	
5.3	21	41587-00	Sheave, chain	1	
5.3	22	41585-00	Sheave, cable	1	
5.3	23	41581-00	Shaft	1	

FIG #	ITEM #	PART #	NAME	# FOR ASSY.	UNIT
5.8	8	-----	Double reach front (See Fig.# 5.9)	1	
5.8	9	40358-01	Screw	2	
5.8	10	40359-00	Pin, roll	4	
5.8	11	40103-02	Bearing	2	
5.8	12	49925-04	Shim, .187"	As Req'd.	
5.8	12	49925-05	Shim, .125"	As Req'd.	
5.8	12	49925-06	Shim, .062"	As Req'd.	
5.8	13	41399-00	Arm	1	
5.8	14	41423-00	Nut	1	
5.8	15	49926-08	Pin, cotter	4	
5.8	16	49566-00	Nut	4	
5.8	17	11016-08	Washer, flat	4	
5.8	18	41422-00	Ring, Nilos	8	
5.8	19	41420-00	Cone, bearing	8	
5.8	20	41421-00	Race, bearing	8	
5.8	21	11827-09	Ring, retainer	4	
5.8	22	41424-00	Shim, .120"	As Req'd.	
5.8	23	41395-01	Arm	1	
5.8	24	41419-00	Bearing	2	
5.8	25	49564-00	Ring, Nilos	4	
5.8	26	49565-00	Set, bearing	2	
5.8	27	NSS	Cone, bearing	2	
5.8	28	NSS	Race, bearing	2	
5.8	29	NSS	Spacer	1	
5.8	30	NSS	Ring, retainer	2	
5.8	31	11271-16	Screw, set	1	
5.8	32	41403-01	Arm	1	
5.8	33	41500-00	Nut	2	
5.8	34	41403-00	Arm	1	
5.8	35	41395-00	Arm	1	
5.8	36	41417-00	Pin	2	
5.8	37	41416-00	Screw	2	
5.8	38	-----	Cylinder, reach (See Fig.# 3.19)	2	
5.8	39	11160-12	Fitting, grease	As Req'd.	
5.8	40	41524-00	Frame, rear	1	89/192 95/210 ALL ELSE
5.8	40	41704-00	Frame, rear	1	
5.8	41	41503-00	Pin	2	
5.8	42	11073-39	Pin, roll	2	
5.8	43	11073-40	Pin, roll	2	
5.8	44	41504-00	Pin	2	
5.8	45	11857-10	Shim, .050"	As Req'd.	
5.8	45	11857-11	Shim, .025"	As Req'd.	
5.8	46	49832-00	Bearing	6	
5.8	47	40548-00	Washer	2	
5.8	48	11852-02	Screw, flat head	2	
5.8	49	49940-00	Bearing	2	
5.8	50	40354-00	Cap	2	
5.8	51	11852-21	Screw, flat head	2	
5.8	52	41508-01	Block	2	
5.8	53	41509-00	Block	2	
5.8	54	41508-00	Block	2	
5.8	55	11009-08	Lockwasher	4	
5.8	56	14994-06	Screw, cap	4	
5.8	57	49563-00	Bumper	2	
5.8	58	11047-27	Screw, socket head cap	4	
5.8	59	41459-00	Shield	1	
5.8	60	41476-00	Bracket	1	
5.8	61	11020-37	Bushing	2	

XX - SPECIFY MODEL AND SERIAL NUMBER WHEN ORDERING THIS PART.

FIGURE # 7.4 BATTERY LIFT INTERRUPT ELECTRICAL SCHEMATIC SYMBOLS



MODEL RR-45Z ELECTRIC REACK TRUCK

NUMERICAL INDEX

<u>PART #</u>	<u>FIG. #</u>	<u>ITEM #</u>	<u>PART #</u>	<u>FIG. #</u>	<u>ITEM #</u>
14835-24	5.5	4	14993-10	4.3	6
14835-27	5.3	2	14993-10	3.28	17
14835-33	5.5	4	14993-20	4.4	32
14835-34	5.5	4	14993-20	4.12	33
14835-35	5.5	4	14993-20	5.4	14
14835-36	5.3	2	14993-30	4.4	17
14835-37	5.3	2	14993-30	4.12	18
14835-38	5.3	2	14994-04	4.6	15
14835-39	5.3	2	14994-04	5.2	12
14835-45	5.3	2	14994-05	5.4	23
14835-46	5.3	2	14994-06	1.1	3
14835-48	5.5	4	14994-06	5.7	8
14835-49	5.5	4	14994-06	5.9	8
14835-56	5.3	2	14994-06	5.8	56
14835-63	5.5	4	14994-08	1.1	1
14835-64	5.5	4	14994-10	5.4	13
14835-75	5.5	4	15677-04	3.25	47
14835-76	5.3	2	15677-08	2.6	7
14848-03	3.21	13	200025	10.1	2
14851-02	4.1	17	200033	3.6	15
14859-01	3.28	10	200038	2.10	22
14859-03	3.25	2	200039	2.10	3
14859-04	3.32	47	200040	2.10	2
14859-04	3.3	45	200041	2.10	9
14859-05	3.21	2	200042	2.10	8
14892-01	4.3	18	200043	2.10	6
14898-00	1.4	2	200044	2.10	15
14908-08	3.10	11	200045	2.10	31
14908-08	3.16	18	200045	2.10	13
14908-08	3.14	13	200046	2.10	30
14908-08	3.20	17	200047	2.10	33
14908-08	3.19	12	200048	2.10	27
14908-10	1.1	15	200049	2.10	26
14908-12	1.3	13	200050	2.10	19
14908-16	1.4	1	200051	2.10	20
14908-28	1.4	15	200052	2.10	12
14910-02	2.5	5	200054	2.10	29
14911-03	4.4	50	200056	2.10	1
14911-03	4.12	51	200059	2.10	11
14911-06	2.5	2	200073	3.13	K
14915-05	4.5	2	200076	2.13	1
14939-00	4.4	3	200077	2.14	2
14944-00	4.2	2	200077	2.16	2
14952-03	3.25	4	200077	2.13	2
14961-00	3.7	2	200077	2.15	2
14985-07	3.28	2	200078	2.13	3
14986-03	4.3	9	200079	2.13	4
14986-03	2.27	*	200080	2.13	5
14986-03	4.2	22	200081	2.16	6
14989-17	4.8	7	200081	2.15	6
14992-08	5.1	3	200081	2.14	6
14992-10	4.6	3	200081	2.13	6
14992-17	5.1	17	200085	2.13	11

CLICK HERE TO **DOWNLOAD** THE COMPLETE MANUAL

- Thank you very much for reading the preview of the manual.
- You can download the complete manual from: www.heydownloads.com by clicking the link below



- Please note: If there is no response to CLICKING the link, please download this PDF first and then click on it.

CLICK HERE TO **DOWNLOAD** THE COMPLETE MANUAL