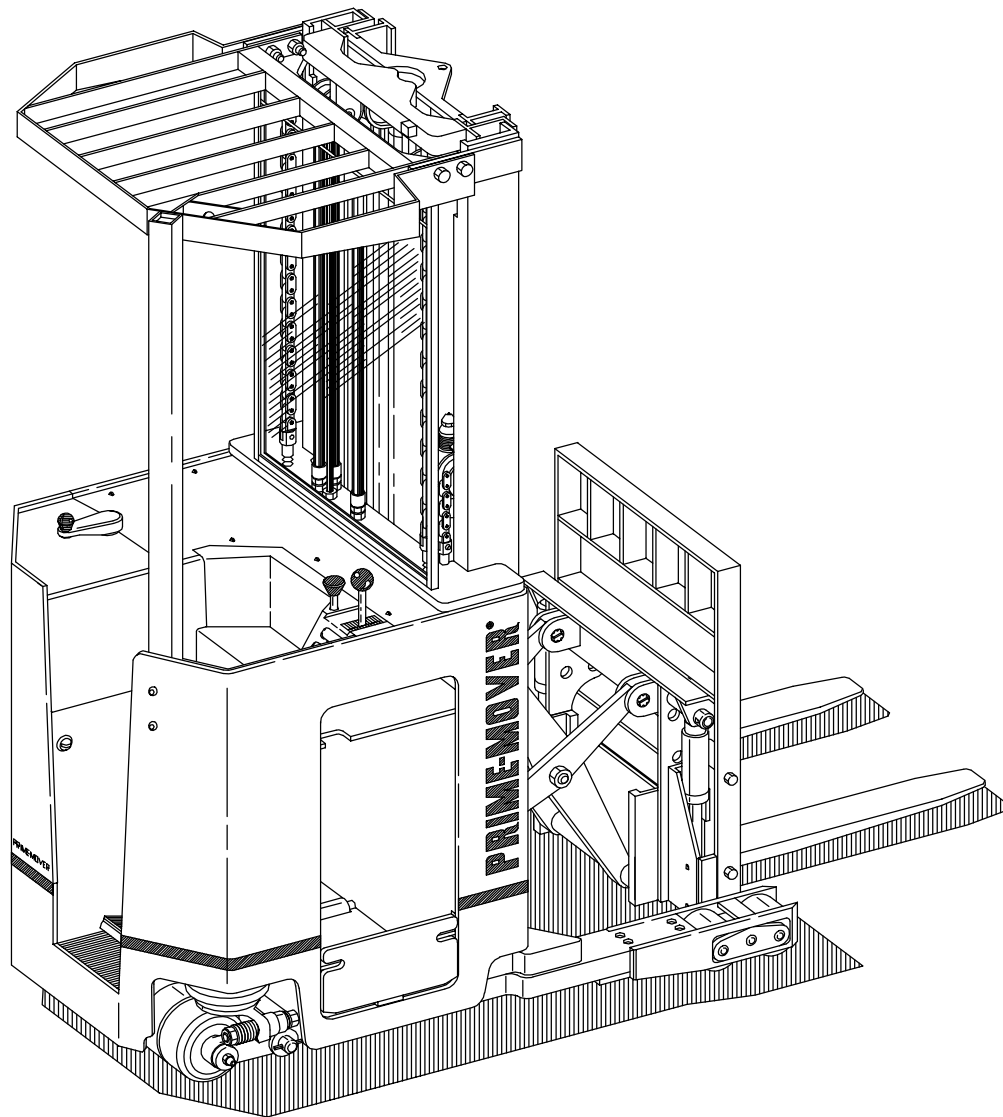


RR-34B PARTS MANUAL

RR-34B REACH TRUCK

RR-34B

Effective Serial Number RR34B181728



WARNING Read and observe all warnings on the unit before operating it. Do not operate this equipment unless all factory installed guards and shields are properly secured in place.

ISSUED SEPTEMBER 1988

PRIME-MOVER®

CLICK HERE TO **DOWNLOAD** THE COMPLETE MANUAL

- Thank you very much for reading the preview of the manual.
- You can download the complete manual from: www.heydownloads.com by clicking the link below



- Please note: If there is no response to **CLICKING** the link, please download this PDF first and then click on it.

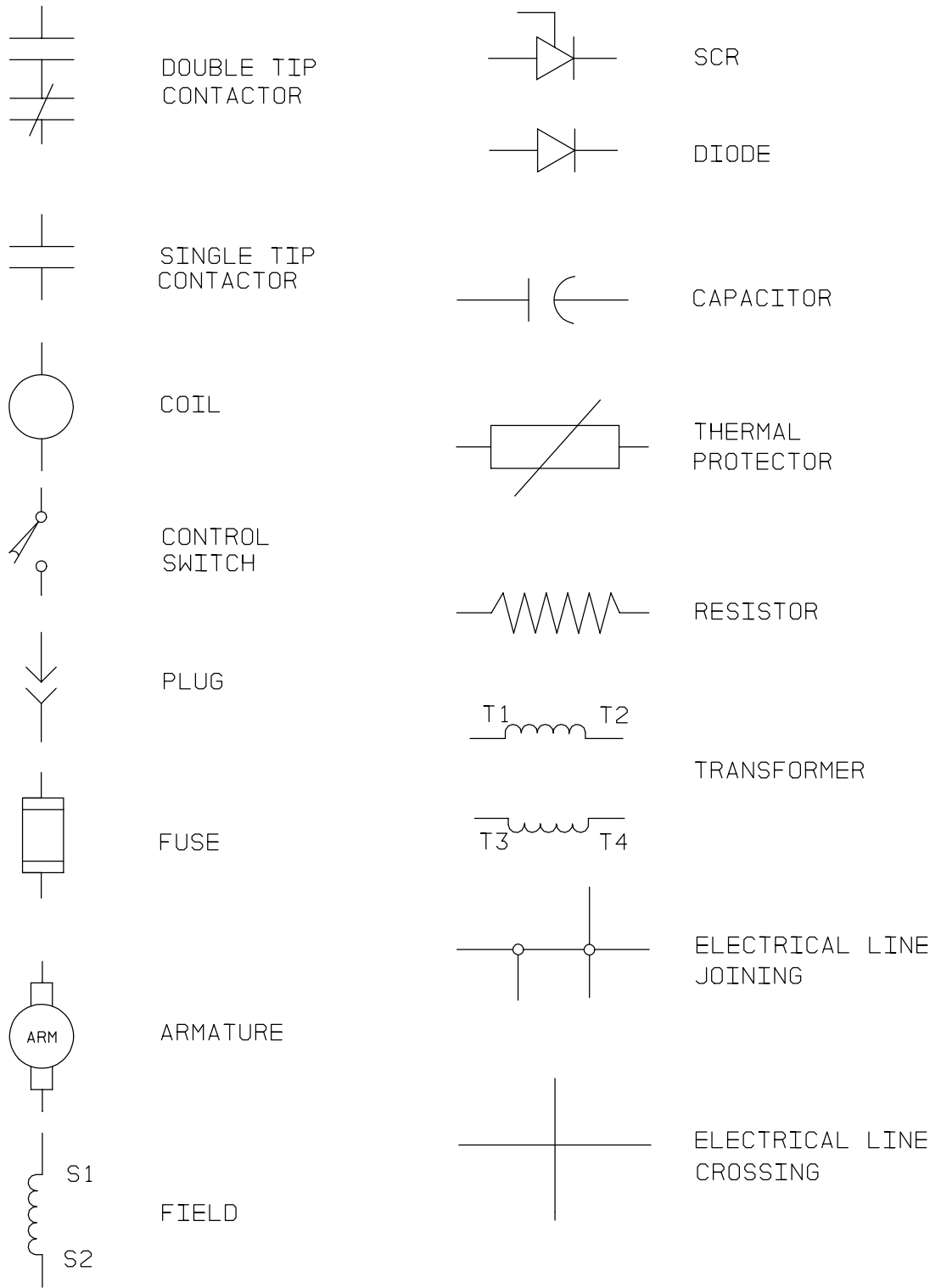
CLICK HERE TO **DOWNLOAD** THE COMPLETE MANUAL

FIG #	ITEM #	PART #	NAME	# FOR ASSY.	UNIT
3	1	40919-00	Block	1	
3	2	11894-06	Screw, cap	1	
3	3	40923-00	Post	1	95/138,198,210
3	3	40923-01	Post	1	All Else
3	4	11884-01	Screw, socket	1	
3	5	11170-08	Locknut	1	
3	6	40806-00	Mat, floor	1	
3	7	40786-01	Pedal	1	
3	8	40419-00	Mat, pedal	1	
3	9	11073-38	Pin, roll	1	
3	10	11695-07	Bushing	2	
3	11	40743-00	Cover	1	16 1/2" battery
3	11	40743-01	Cover	1	14 1/2" battery
3	12	49922-01	Screw, machine	11	
3	13	40237-00	Cover, seat panel	1	
3	14	40418-00	Pad, seat	1	
3	15	49892-01	Screw, flat head	1	
3	16	40233-00	Angle	1	
3	17	27561-03	Edging	1	
3	18	14851-02	Nut, clip	6	
3	19	40238-03	Cover, instrument	1	
3	20	41109-00	Cover, SCR	1	

FIG #	ITEM #	PART #	NAME	# FOR ASSY.	UNIT
8	1	49919-03	Knob	1	
8	2	14915-05	Plug, hole	1	
8	3	40105-01	Crank, steering	1	
8	4	11073-06	Pin, roll	1	
8	5	40795-00	Torque generator (See Fig.# 9)	1	
8	6	14994-11	Screw, cap	1	
8	7	11854-03	Screw, cap	2	Forward
8	7	11854-05	Screw, cap	2	Reverse
8	8	49796-00	Bearing, flange	1	Forward
8	8	49752-00	Bearing, flange	1	Reverse
8	9	11261-05	Nut	2	Forward
8	9	11170-05	Nut	2	Reverse
8	*	11143-05	Screw, cap	1	Reverse
8	*	11806-06	Nut	1	Reverse
8	10	11047-21	Screw, cap	1	
8	11	26466-01	Sprocket	1	
8	12	11073-11	Pin, roll	1	
8	13	40783-00	Sprocket	1	
8	14	11271-11	Screw, set	1	
8	15	40782-00	Rod	1	
8	16	49725-00	Bearing, pillow block	1	
8	17	11830-03	Screw, cap	1	
8	18	25125-01	Sprocket	1	
8	19	11073-27	Pin, roll	1	
8	20	25121-01	Chain	1	
8	21	11057-03	Key	1	
8	22	41079-00	Shim, .120	As Req'd.	
8	22	41079-01	Shim, .060	As Req'd.	
8	22	41079-02	Shim, .030	As Req'd.	
8	23	11057-03	Key	1	
8	24	21542-01	Chain	1	Reverse
8	25	21542-09	Chain	1	Forward
8	26	11170-08	Nut	1	
8	27	11857-01	Washer	1	
8	28	11936-17	Bearing, thrust	1	
8	29	40780-00	Sprocket	1	
8	30	11020-35	Bearing	1	
8	31	11857-02	Washer	1	
8	32	41138-00	Bracket, mounting	1	
8	33	40781-00	Bolt, special	1	
8	34	11806-06	Nut	1	
8	35	40779-01	Screw, special	1	
8	36	11873-16	Screw, shoulder	1	
8	37	11695-07	Bearing, flange	1	
8	38	25306-01	Link, offset	1	Reverse

FIG #	ITEM #	PART #	NAME	# FOR ASSY.	UNIT
13	1	14989-18	Screw, cap	4	
13	2	40506-00	motor assembly (See Fig.# 15)	1	24 volt
13	2	40096-00	Drive motor assembly (See Fig.# 15)	1	36 volt
13	3	14994-06	Screw, cap	4	
13	4	11016-04	Washer, flat	6	
13	5	40011-01	Transmission assembly (See Fig.# 16 and 17)	1	
13	6	14994-05	Screw, cap	2	
13	7	20904-01	Bumper	1	
13	8	40425-00	Shim, .005	As Req'd.	

FIGURE # 19 ELECTRICAL SCHEMATIC SYMBOLS



NOTE: SEE APPENDIX I FOR EV-1 ELECTRICAL SYSTEM

FIG #	ITEM #	PART #	NAME	# FOR ASSY.	UNIT
24	1	25332-01	Tie, wire	As Req'd	
24	2	41166-00	Harness, wiring (See Fig.# 21)	1	
24	3	49611-00	Receptacle	1	
24	4	49861-05	Relief, strain	1	
24	5	52-07920-00	Cable	As Req'd	
24	6	11170-06	Nut	1	
24	7	15677-08	Clamp	1	
24	8	49610-00	Pin	5	
24	9	11009-05	Lockwasher	2	
24	10	11854-03	Screw, cap	2	
24	11	40030-02	Bracket	1	
24	12	49609-00	Plug	1	
24	13	41255-00	Cable, single reach (See Fig.# 25)	1	
24	13	41486-00	Cable, double reach (See Fig.# 26)	1	
24	14	49608-00	Socket	5	
24	15	41588-00	Sleeve, cable	2	
24	16	49501-00	Spring	2	
24	17	41602-00	Strain relief, clamp	2	
24	18	41602-01	Strain relief, fitting	2	
24	19	41596-00	Bracket	2	

FIG #	ITEM #	PART #	NAME	# FOR ASSY.	UNIT
29	6	200043	Bar, bus	1	
29	7	NA	Hexhead, M5 x .80, 10mm long	8	
29	*	NA	Lockwasher, M5	8	
29	*	NA	Washer, M5 flat	8	
29	8	200042	Bar, bus	1	
29	9	200041	Bar, bus	1	
29	10	202048	Card, T1	1	
29	11	200059	Harness, SCR wiring	1	
29	12	200052	Kit, 1 rec	1	
29	13	200045	Insulation, 1 rec	1	
29	14	NA	Hexhead, M5 x .80, 50mm long	4	
29	15	200044	Bar, bus	1	
29	16	NA	Panhead, M3.5 x .60, 8mm long	8	
29	*	NA	Lockwasher, M3.5	6	
29	*	NA	Washer, M3.5 flat	6	
29	17	NA	Panhead, M3.5 x .60, 44mm long	1	
29	*	NA	Lockwasher, M3.5	1	
29	*	NA	Washer, M3.5 flat	1	
29	18	NA	Panhead, M3.5 x .60, 23mm long	8	
29	*	NA	Lockwasher, M3.5	8	
29	*	NA	Washer, M3.5 flat	8	
29	19	200050	Snubber	4	
29	20	200051	Spider and wire assembly	1	
29	21	200058	Thermal protector	1	
29	22	200038	Reactor	1	
29	23	NA	Hex cap, M6 x 1, 16mm long	1	
29	*	NA	Lockwasher, M6	1	
29	*	NA	Washer, M6 flat	1	
29	24	NA	Nut, M8 x 1.25	4	
29	25	50001-11	Lockwasher, M8	2	
29	*	NA	Washer, M8 flat	2	
29	26	200049	Shunt	1	
29	27	200048	Post	1	
29	28	201297	Rectifier (3 rec and 4 rec)	2	
29	29	200054	Strap, capacitor	2	
29	30	200046	Heatsink	1	
29	31	200045	Insulation, heatsink	1	
29	32	200055	Capacitor, 150mf	1	
29	33	200047	Bushing	3	
29	34	NA	Hexcap, M8 x 1.25, 16mm long	3	
29	*	50001-11	Lockwasher, M8	3	
29	*	NA	Washer, M8	3	




* Local purchase hardware for reference only.

FIG #	ITEM #	PART #	NAME	# FOR ASSY.	UNIT
34	1	26210-02	Light, flashing	1	24 volt
34	1	26210-03	Light, flashing	1	36 volt
34	2	200869	Lens (for flashing light only)	1	

FIG #	ITEM #	PART #	NAME	# FOR ASSY.	UNIT
40	1	49640-07	Hose assembly	1	89/126
40	1	49640-08	Hose assembly	1	95/138
40	1	49640-09	Hose assembly	1	107/162
40	1	49640-10	Hose assembly	1	119/186
40	2	41199-00	Tube, single reach	1	
40	3	49604-00	O ring	2	
40	4	49632-01	Bulkhead, fitting	2	
40	5	49604-01	O ring	2	
40	6	49642-01	Hose	2	
40	7	49654-01	Elbow, 45°	2	
40	8	49604-01	O ring	1	
40	9	12391-05	O ring	1	
40	10	41331-00	Valve assembly (See Fig.# 38)	2	
40	11	41475-00	Tube, double reach	1	
40	12	49604-00	O ring	2	

FIG #	ITEM #	PART #	NAME	# FOR ASSY.	UNIT
45	1	41243-01	Coil, 24 volt	As Req'd	
45	1	41243-00	Coil, 36 volt	As Req'd	
45	2	41242-00	Divider valve assembly (See Fig.# 43)	1	
45	3	49656-00	Adapter	4	
45	4	12391-03	O ring	1	
45	5	49604-00	O ring	1	
45	6	49617-06	Hose	1	
45	7	49655-00	Fitting, straight long	3	
45	8	49604-00	O ring	1	
45	9	12391-03	O ring	1	
45	10	41469-00	Cylinder, left tilt (See Fig.# 46)	1	
45	11	49616-00	Tee	1	
45	12	49604-00	O ring	2	
45	13	49579-00	Hose	1	
45	14	49578-00	Hose	1	
45	15	49623-00	Elbow, 90°	1	
45	16	49604-00	O ring	1	
45	17	49617-05	Hose	1	
45	18	49617-01	Hose	1	
45	19	201264	Cylinder, sideshift (See Fig.# 47)	1	
45	20	49654-08	Elbow, 45°	1	
45	21	49604-00	O ring	1	
45	22	49604-00	O ring	1	
45	23	49653-08	Elbow, 90°	1	
45	24	49604-00	O ring	1	
45	25	12391-04	O ring	1	
45	26	49617-00	Hose	1	
45	27	49531-00	Tee	1	
45	28	49604-00	O ring	2	
45	29	49655-01	Fitting, straight long	1	
45	30	12391-03	O ring	1	
45	31	49604-00	O ring	1	
45	32	41469-00	Cylinder, right tilt (See Fig.# 46)	1	



FIG #	ITEM #	PART #	NAME	# FOR ASSY.	UNIT
50	1	41391-00	Yoke	1	
50	2	41390-00	Rod	1	
50	3K	NSS	Wiper	1	
50	4K	NSS	Seal	1	
50	5	40495-00	Bearing 	1	
50	6K	NSS	O ring	1	
50	7K	NSS	Ring, back-up	1	
50	8K	NSS	Ring, guide	1	
50	9	11806-12	Nut, jam	1	
50	10K	NSS	Ring, back-up	1	
50	11	41389-00	Piston	1	
50	12	14908-08	Nut	1	
50	13	41392-01	Tube, left 	1	
50	14	11020-12	Bushing	1	
50	15	41392-00	Tube, right 	1	
50	16	31057-04	Retainer	1	
50	17K	NSS	Ring, guide	1	
50	18K	NSS	O ring	1	
50	19K	NSS	O ring	1	
50	20	41527-XX	Spacer, stop	As Req'd	
50	K	41488-00	Kit, seal (contains items marked with "K")	1	

XX - SPECIFY MODEL AND SERIAL NUMBER WHEN ORDERING THIS PART.

FIG #	ITEM #	PART #	NAME	# FOR ASSY.	UNIT
54	1K	NSS	Seal, shaft	1	
54	2	201527	Body	2	
54	3	202303	Pin, dowel	1	
54	4K	NSS	Nylatron	1	
54	5K	NSS	Spacer, rubber	1	
54	6	201526	Plate, wear	1	
54	7	201523	Gear, drive	1	
54	8K	NSS	Seal, gasket	1	
54	9	202355	Cover-side, port	1	
54	10	202297	Washer, flat	2	
54	11	202296	Screw, cap	2	
54	12	202299	Plug, pipe	1	
54	13	201524	Gear, driven	1	
54	K	201528	Kit, seal	1	
			(contains items marked with "K")		

FIG #	ITEM #	PART #	NAME	# FOR ASSY.	UNIT
59	6	49604-02	O ring	1	
59	7	12391-07	O ring	1	
59	8	41364-00	Valve, lift control (See Fig.# 56)	1	
59	9	49641-23	Hose	1	
59	10	49641-24	Hose	2	
59	11	49533-00	Valve, flow control	1	
59	12	49656-14	Adapter	1	
59	13	49604-02	O ring	2	
59	14	12391-07	O ring	1	
59	15	49516-01	Hose	1	
59	16	49594-02	Diagnostic	1	
59	17	49615-02	Tee	3	
59	18	49604-02	O ring	1	
59	19	41241-00	Valve, flow limit	1	
59	20	49604-02	O ring	1	
59	21	12391-07	O ring	1	
59	22	11016-02	Washer, flat	1	
59	23	49632-02	Adapter	1	
59	24	49604-02	O ring	2	
59	25	40091-01	Cylinder assembly (See Fig.# 60)	2	89/180
59	25	40091-02	Cylinder assembly (See Fig.# 60)	2	95/198
59	25	40091-02	Cylinder assembly (See Fig.# 60)	2	95/210
59	25	40091-03	Cylinder assembly (See Fig.# 60)	2	107/226
59	25	40091-04	Cylinder assembly (See Fig.# 60)	2	111/240
59	25	40091-05	Cylinder assembly (See Fig.# 60)	2	119/258
59	26	49641-00	Hose	1	89/180
59	26	49641-00	Hose	1	95/198
59	26	49641-06	Hose	1	95/210
59	26	49641-01	Hose	1	107/226
59	26	49641-02	Hose	1	111/240
59	26	49641-03	Hose	1	119/258
59	27	49625-00	Fitting, special	1	
59	28	49604-02	O ring	1	
59	29	12391-06	O ring	1	
59	30	41219-00	Tube	1	
59	31	30320-01	Regulator, flow	1	
59	32	49656-18	Adapter	1	
59	33	12391-07	O ring	1	
59	34	49604-03	O ring	1	
59	35	41227-00	Line, hydraulic	1	
59	36	49656-03	Adapter	1	
59	37	49604-03	O ring	1	
59	38	12391-07	O ring	1	
59	39	40092-01	Cylinder assembly (See Fig.# 61)	1	89/180
59	39	40092-02	Cylinder assembly (See Fig.# 61)	1	95/198
59	39	40092-11	Cylinder assembly (See Fig.# 61)	1	95/210
59	39	40092-03	Cylinder assembly (See Fig.# 61)	1	107/226
59	39	40092-04	Cylinder assembly (See Fig.# 61)	1	111/240
59	39	40092-05	Cylinder assembly (See Fig.# 61)	1	119/258
59	40	25109-05	Adapter	1	95/210
59	41	12391-08	O ring	1	
59	42	12391-07	O ring	1	95/210
59	43	49656-03	Adapter	2	95/210
59	44	12391-07	O ring	1	
59	45	48604-03	O ring	1	
59	46	41260-00	Line, hydraulic	1	95/210
59	47	49641-06	Hose	1	95/210
59	48	49656-17	Adapter	1	95/210
59	49	49604-03	O ring	1	
59	50	12391-06	O ring	1	

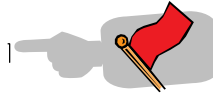


FIG #	ITEM #	PART #	NAME	# FOR ASSY.	UNIT
64	1	11857-05	Shim, washer	As Req'd	
64	2	21089-02	Bearing	2	
64	3	14835-44	Chain, lift	2	89/126
64	3	14835-45	Chain, lift	2	95/138
64	3	14835-46	Chain, lift	2	107/162
64	3	14835-47	Chain, lift	2	119/186
64	4	30558-00	Anchor, chain	2	
64	5	30554-00	Pin, chain	2	
64	6	49837-00	Nut	2	
64	7	11486-12	Nut, jam	2	
64	8		Cylinder assembly (See Fig.# 65)	1	
64	9	40518-01	Column, outer	1	89/126
64	9	40518-02	Column, outer	1	95/138
64	9	40518-03	Column, outer	1	107/162
64	9	40518-04	Column, outer	1	119/186

FIG #	ITEM #	PART #	NAME	# FOR ASSY.	UNIT
69	1	41561-00	Cylinder, tilt (See Fig.# 44)	2	
69	2	40499-00	Spacer	2	
69	3	41374-00	Frame, front	1	
69	4	40641-00	Frame, fork	1	
69	5	40382-00	Pin	2	
69	6	11073-23	Pin, roll	2	
69	7	40988-00	Rest, load back	1	
69	8	14994-06	Screw, cap	4	
69	9	11852-14	Screw, flathead	4	
69	10	40593-00	Bar, wear	2	
69	11	40441-00	Shim, .060	As Req'd	
69	12	11073-04	Pin, roll	2	
69	13	13813-19	Pin	2	
69	14	11009-08	Lockwasher	4	

FIG #	ITEM #	PART #	NAME	# FOR ASSY.	UNIT
74	1	30553-02	Washer, shim	4	
74	2	49994-01	Bearing	2	
74	3	49993-02	Race, inner	2	
74	4	41586-00	Sheave	1	
74	5	41584-00	Sheave	1	
74	6	40058-02	Spacer	1	
74	7	30553-07	Washer, shim	1	
74	8	30559-00	Sheave	1	
74	9	11143-04	Screw, cap	4	
74	10	11009-06	Lockwasher	4	
74	11	28159-06	Pin	1	
74	12	11160-11	Fitting, grease	2	
74	13	14994-00	Screw, cap	1	
74	14	14993-20	Washer, flat	1	
74	15	26617-03	Spacer	2	
74	16	26645-00	Sheave, hose	1	
74	17	26493-01	Bearing	1	
74	18	11857-05	Shim, .050	As Req'd	
74	18	11857-12	Shim, .025	As Req'd	
74	18	11857-09	Shim, .080	As Req'd	
74	18	11857-10	Shim, .050	As Req'd	95/210
74	18	11857-11	Shim, .025	As Req'd	95/210
74	19	21089-02	Bearing	4	
74	19	49832-00	Bearing	4	95/210
74	20	40080-01	Column, intermediate	1	89/180
74	20	40080-02	Column, intermediate	1	95/198
74	20	40080-16	Column, intermediate	1	95/210
74	20	40080-03	Column, intermediate	1	107/226
74	20	40080-04	Column, intermediate	1	119/256
74	21	28159-04	Pin	1	
74	22	11806-08	Nut, jam	2	
74	23	14994-05	Screw, cap	2	

FIG #	ITEM #	PART #	NAME	# FOR ASSY.	UNIT
79	1	11073-33	Pin, roll	1	
79	2	40245-00	Axle	1	
79	3	41159-00	Bracket	1	
79	4	40247-00	Pin	1	
79	5	40249-00	Plate	1	
79	6	11016-09	Washer	4	
79	7	40248-01	Shim, .005	As Req'd	
79	7	40248-02	Shim, .010	As Req'd	
79	7	40248-03	Shim, .062	As Req'd	
79	7	40248-04	Shim, .031	As Req'd	
79	8	49972-05	Seal	4	
79	9	11205-21	Bearing	4	
79	10	40222-00	Wheel	2	
79	11	11160-09	Fitting, grease	2	
79	*	202154	Adapter for grease gun	1	

MODEL RR-34B ELECTRIC REACH TRUCK

NUMERICAL INDEX

<u>PART #</u>	<u>FIGURE #</u>	<u>ITEM #</u>	<u>PART #</u>	<u>FIGURE #</u>	<u>ITEM #</u>
11857-06	81	12	12318-01	48	48
11857-09	63	1	12318-01	49	5
11857-09	66	7	12318-03	17	20
11857-09	73	6	12318-03	43	7
11857-09	74	18	12318-03	49	14
11857-09	75	6	12318-06	43	1
11857-10	66	7	12318-06	49	3
11857-10	68	45	12318-07	16	32
11857-10	73	6	12318-11	39	5
11857-10	74	18	12391-01	43	6
11857-10	75	6	12391-01	49	6
11857-11	66	7	12391-03	17	21
11857-11	68	45	12391-03	42	10
11857-11	73	6	12391-03	42	16
11857-11	75	6	12391-03	42	18
11857-12	63	1	12391-03	43	8
11857-12	66	7	12391-03	45	4
11857-12	73	6	12391-03	45	9
11857-12	74	18	12391-03	45	30
11857-12	76	6	12391-03	48	5
11872-02	16	17	12391-03	48	10
11873-16	8	36	12391-03	48	15
11873-19	5	23	12391-03	48	20
11880-08	14	45	12391-03	48	43
11880-09	5	7	12391-03	48	46
11884-01	3	4	12391-03	48	49
11885-03	20	2	12391-03	49	15
11885-04	6	49	12391-03	57	20
11890-03	17	6	12391-04	45	25
11890-03	65	5	12391-04	49	8
11890-05	16	15	12391-05	37	11
11890-10	62	10	12391-05	37	13
11894-06	3	2	12391-05	37	24
11894-06	60	6	12391-05	37	29
11897-03	58	1	12391-05	37	37
11897-03	60	2	12391-05	37	48
11898-04	75	3	12391-05	40	9
11935-06	17	27	12391-05	41	9
11936-01	17	32	12391-05	41	13
11936-07	75	10	12391-05	41	17
11936-10	75	4	12391-06	37	6
11936-15	17	28	12391-06	43	2
11936-16	17	26	12391-06	49	4
11936-17	8	28	12391-06	59	29
12318-01	43	5	12391-06	59	50

MODEL RR-34B ELECTRIC REACH TRUCK

NUMERICAL INDEX

<u>PART #</u>	<u>FIGURE #</u>	<u>ITEM #</u>	<u>PART #</u>	<u>FIGURE #</u>	<u>ITEM #</u>
41213-00	46	K	41322-00	5	5
41219-00	59	30	41324-00	6	24
41221-00	46	6	41331-00	20	15
41221-00	46	7	41331-00	21	7
41222-00	46	11	41331-00	37	21
41226-00	42	20	41331-00	40	10
41226-00	48	7	41331-00	41	14
41227-00	59	35	41331-00	5	13
41228-00	42	23	41361-00	21	6
41228-00	66	14	41364-00	20	13
41228-01	42	22	41364-00	51	13
41228-01	66	11	41364-00	57	21
41229-00	67	8	41364-00	59	8
41230-00	43	4	41364-00	6	22
41233-00	67	7	41367-00	68	40
41239-00	66	20	41374-00	69	3
41241-00	59	19	41387-XX	48	12
41242-00	25	1	41387-XX	48	26
41242-00	42	11	41389-00	50	11
41242-00	45	2	41390-00	50	2
41243-00	25	5	41391-00	50	1
41243-00	26	5	41392-00	50	15
41243-00	42	1	41392-01	50	13
41243-00	45	1	41395-00	68	35
41243-00	48	1	41395-01	68	23
41243-01	25	5	41399-00	68	13
41243-01	26	5	41403-00	68	34
41243-01	42	1	41403-01	68	32
41243-01	45	1	41408-00	68	5
41243-01	48	1	41416-00	21	9
41244-00	57	9	41416-00	68	37
41255-00	23	11	41417-00	68	36
41255-00	24	13	41419-00	68	24
41255-00	25	2	41420-00	68	19
41257-00	60	5	41421-00	68	20
41259-00	44	12	41422-00	68	18
41260-00	59	46	41423-00	68	14
41297-00	6	31	41424-00	68	22
41301-00	6	51	41426-00	39	3
41306-00	6	36	41426-01	39	3
41309-00	6	29	41459-00	68	59
41313-00	6	33	41469-00	45	10
41314-00	6	38	41469-00	45	32
41318-00	5	21	41469-00	67	1
41321-00	6	35	41470-04	46	15

FIG #	ITEM #	PART #	NAME	# FOR ASSY.	UNIT
III	1	40504-00	Motor, auxiliary (See Fig.# 12)	1	24 volt
III	1	40098-00	Motor, auxiliary (See Fig.# 12)	1	36 volt
III	2	49856-28	Cable	1	
III	3	40095-03	SCR and contactor panel assembly (See Fig.# 32)	1	24 volt
III	3	40095-04	SCR and contactor panel assembly (See Fig.# 32)	1	36 volt
III	4	11261-05	Nut	4	
III	5	11170-04	Nut	2	
III	6	49855-08	Connector, assembly	1	
III	7	11813-03	Grommet, rubber	2	
III	8	49886-09	Screw, cap	2	
III	9	40505-00	Motor, lift (See Fig.# 51)	1	24 volt
III	9	40097-00	Motor, lift (See Fig.# 51)	1	36 volt
III	10	26316-00	Cable	2	
III	11	49856-24	Cable	2	
III	12	49856-26	Cable	1	
III	13	49856-25	Cable	1	
III	14	40506-00	Motor, drive (See Fig.# 15)	1	24 volt
III	14	40096-00	Motor, drive (See Fig.# 15)	1	36 volt
III	15	49856-21	Cable	1	
III	16	49856-27	Cable	1	

FIG ITEM		Contactor(P1&P2)	Contactor(1A)		# FOR	UNIT
#	#	PART #	PART #	NAME	ASSY.	
VIII	1	201372	201372	Screw, mounting	4	
VIII	2	201368	201368	Lockwasher	4	
VIII	3	201264	201264	Clamp, tip lower	2	
VIII	4	201215	201215	Nut, lock	1	
VIII	5	201367	201367	Washer, plain	1	
VIII	6	201259	201259	Retainer	1	
VIII	7	201266	201263	Spring	1	
VIII	8	201252	201252	Tip, movable	1	
VIII	9	201271	201271	Tip, left-hand	1	
VIII	10	201271	201271	Tip, right-hand	1	
VIII	11	201258	201258	Shim	1	
VIII	12	201261	201261	Carrier, movable tip	1	
VIII	13	201212	201212	Carrier, stationary tip	1	
VIII	14	201247	201247	Stud and nut assembly	1	
VIII	15	201369	201369	Lockwasher	1	
VIII	16	201284	201284	Guide	1	
VIII	17	202106	202106	Plate, bumper	1	
VIII	18	201257	201257	Shim	1	
VIII	19	201255	201255	Core head	1	
VIII	20	201267	201262	Spring	1	
VIII	21	201272	201249	Core assembly	1	
VIII	22	201242	201269	Frame, magnet	1	
VIII	23	201304	201310	Coil, 24 volt	1	24 volt
VIII	23	201305	201311	Coil, 36 volt	1	36 volt
VIII	24	201244	201243	Magnet assembly	1	
VIII	25	11885-04	11885-04	Screw, machine	2	
VIII	26	11823-22	11823-22	Terminal, blade	1	
VIII	26	201268	201268	Bushing	1	

ALPHABETICAL INDEX

<u>NAME</u>	<u>FIG #</u>	<u>PAGE #</u>
24/36 VOLT DRIVE MOTOR ASSEMBLY	XXII	41
24/36 VOLT PUMP MOTOR ASSEMBLY	XXI	39
EV-100 SCR LIFT PUMP CONTACTOR ASSEMBLY	XVIII	33
EV-100LX SCR CONTROL PANEL (49399-00)	XIII	23
EV-100LX CONTACTOR PANEL ASSY & RELATED PARTS "E/EE"	XIV	25
EV-100LX POWER COMPONENT WIRING	XII	21
EV-100LX 1A CONTACTOR ASSEMBLY	XVII	31
EV-100LX DOUBLE REACH CABLE ASSEMBLY	XI	19
EV-100LX FORWARD & REARWARD CONTACTOR ASSEMBLY	XVI	29
EV-100LX CONTACTOR PANEL ASSEMBLY	xv	27
EV-100LX THREE STAGE MAST CABLE ASSEMBLY	IX	15
EV-100LX WIRING ASSEMBLY FOR COLD STORAGE	V	7
EV-100LX AUXILIARY PUMP CONTACTOR ASSEMBLY	XIX	35
EV-100LX CONTROL WIRING HARNESS AND RELATED PARTS	VI	9
EV-100LX LIMIT SWITCH WIRING HARNESS ASSEMBLY	VII	11
EV-100LX POWER CONNECTOR ASSEMBLY	xx	37
EV-100LX TWO STAGE MAST CABLE ASSEMBLY	VIII	13
EV-100LX SINGLE REACH CABLE ASSEMBLY	X	17
OHIO PUMP MOTOR ASSEMBLY	XXIII	43
RR34B "EE" ELECTRICAL SCHEMATIC SYMBOLS	IV	6
RR34B "EE" EV-100LX SCR ELECTRICAL SCHEMATIC	III	5
RR34B "E" EV-100LX SCR ELECTRICAL SCHEMATIC SYMBOLS	II	4
RR34B "E" EV-100LX SCR ELECTRICAL SCHEMATIC	I	3

FIG #	ITEM #	PART #	NAME	# FOR ASSY.	UNIT
VII	1	25332-01	Tie, wire	As Req'd	
VII	2	14911-06	Screw, machine	2	
VII	3	11009-03	Lockwasher	2	
VII	4	49574-00	Switch, limit	1	
VII	5	14910-02	Connector	1	
VII	6	11170-05	Nut	3	2 stage
VII	7	15677-08	Clamp	3	2 stage
VII	8	41494-00	Cable assembly	1	89/126
VII	8	41494-00	Cable assembly	1	89/180
VII	8	41494-00	Cable assembly	1	89/192
VII	8	41494-01	Cable assembly	1	95/138
VII	8	41494-01	Cable assembly	1	95/198
VII	8	41494-01	Cable assembly	1	95/210
VII	8	41494-02	Cable assembly	1	107/162
VII	8	41494-02	Cable assembly	1	107/226
VII	8	41494-03	Cable assembly	1	111/240
VII	8	41494-03	Cable assembly	1	119/186
VII	8	41494-04	Cable assembly	1	119/258
VII	9	49557-00	Receptacle	1	
VII	10	49610-00	Pin	2	

FIG #	ITEM #	PART #	NAME	# FOR ASSY.	UNIT
XII	1	49399-00	Control, EV-100LX SCR (See Fig.# XIII)	1	
XII	2	11016-12	Washer, flat	3	
XII	3	11009-05	Lockwasher	3	
XII	4	11261-05	Nut	2	
XII	5	11170-04	Nut	2	
XII	6	49855-24	Connector assy, 24 Volt (See Fig.# XX)	1	24 Volt
XII	6	49855-22	Connector assy, 36 Volt (See Fig.# XX)	1	36 Volt
XII	7	11813-03	Grammet, rubber	2	
XII	8	49886-09	Screw, cap	2	
XII	9	49856-116	Cable	1	
XII	10	49856-117	Cable	1	
XII	11	27900-00	Motor, 24 Volt lift (See Fig.# XXI)	1	24 Volt
XII	11	27899-00	Motor, 36 Volt lift (See Fig.# XXI)	1	36 Volt
XII	12	49856-27	Cable	1	
XII	13	300666-000	Motor, 24 Volt auxiliary (See Fig.# XXIII)	1	24 Volt
XII	13	300665-000	Motor, 36 Volt auxiliary (See Fig.# XXIII)	1	36 Volt
XII	14	49856-113	Cable	1	
XII	15	49856-115	Cable	1	
XII	16	49856-112	Cable	2	
XII	17	27901-00	Motor, 24 Volt drive (See Fig.# XXII)	1	24 Volt
XII	17	27902-00	Motor, 36 Volt drive (See Fig.# XXII)	1	36 Volt
XII	18	49856-114	Cable	1	
XII	19	41757-01	Panel, 24 Volt contactor (See Fig.# XV, XVI)	1	24 Volt
XII	19	41757-02	Panel, 36 Volt contactor (See Fig.# XV, XVI)	1	36 Volt
XII	20	49856-118	Cable	1	
XII	21	49856-119	Cable	1	
XII	22	49856-104	Cable	1	
XII	23	49545-00	Bracket	1	
XII	24	11854-04	Screw, cap	1	

FIG ITEM		PART #	NAME	# FOR ASSY.	UNIT
#	#				
XVII	1	201962	Base, magnet	1	
XVII	2	200077	Coil, field	1	
XVII	3	201963	Frame, magnet	1	
XVII	4	201262	Spring (red)	1	
XVII	5	201964	Armature	1	
XVII	6	200081	Base, bus	1	
XVII	7	201965	Tip, contact	2	
XVII	8	200096	Bushing	1	
XVII	9	200095	Carrier	1	
XVII	10	201966	Tip, movable	1	
XVII	11	201259	Cap	1	
XVII	12	201266	Spring (gold)	1	
XVII	13	201367	Washer, flat	1	
XVII	14	201215	Nut, lock	1	
XVII	15	201967	Clamp	2	
XVII	16	201368	Lockwasher	4	
XVII	17	201372	Screw, machine	4	
XVII	18	202004	Suppression, 1A contactor	1	
XVII	19	200094	Seat	1	

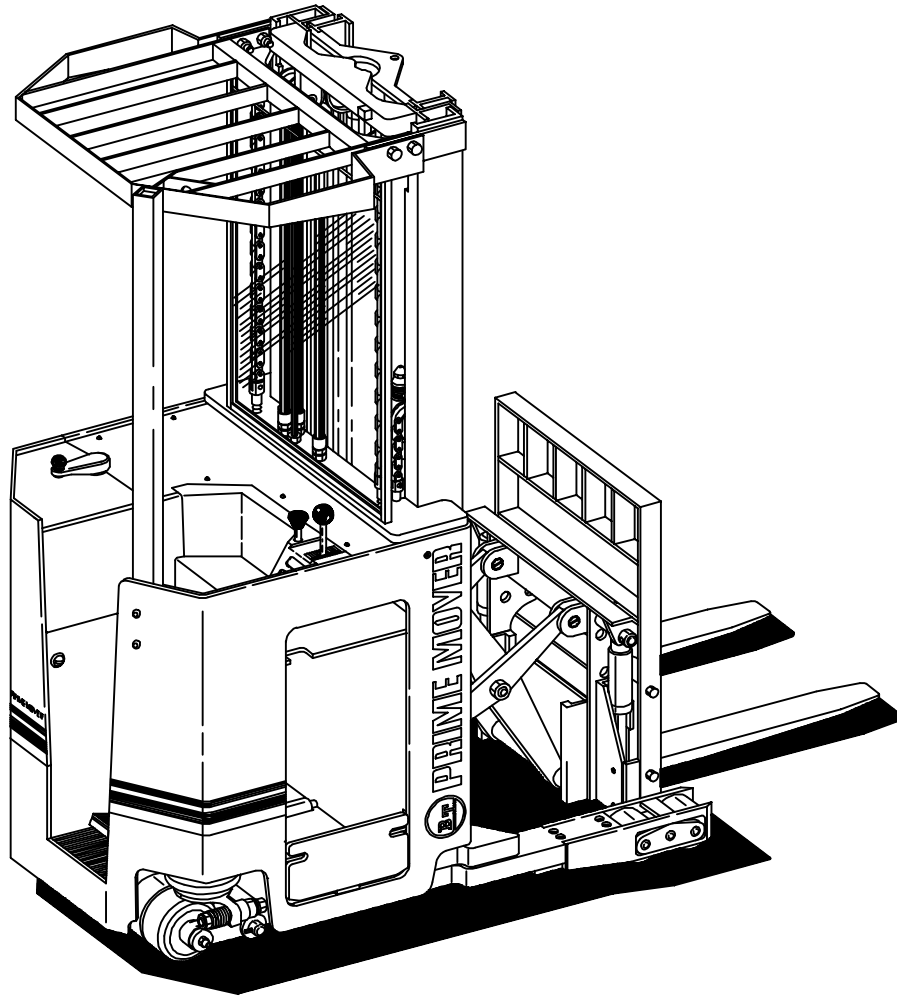
FIG ITEM		PART #	NAME	# FOR ASSY.	UNIT
#	#				
XXII	1	300294-000	Stub and nut assembly	4	
XXII	2	300301-000	Spring	8	
XXII	3	300315-000	Brush	4	
XXII	4	300299-000	Connector, cross	2	
XXII	5	300292-000	Bearing	1	
XXII	6	300310-000	End, shield C.E.	1	
XXII	7	300316-000	Cover, 24 VOLT large	1	24 VOLT
XXII	7	300304-000	Cover, 36 VOLT large	1	36 VOLT
XXII	8	300303-000	Cover, small	1	
XXII	9	300302-000	Yoke and holder assembly	1	
XXII	10	300312-000	Coil, 24 VOLT field	1	24 VOLT
XXII	10	300327-000	Coil, 36 VOLT field	1	36 VOLT
XXII	11	300311-000	Armature, 24 VOLT	1	24 VOLT
XXII	11	300326-000	Armature, 36 VOLT	1	36 VOLT
XXII	12	300307-000	Fan	1	
XXII	13	300313-000	End, shield D.E.	1	
XXII	14	300314-000	Seal, shaft	1	
XXII	15	300317-000	Cover, 24 VOLT D.E.	1	24 VOLT
XXII	15	300305-000	Cover, 36 VOLT D.E.	1	36 VOLT
XXII	16	49339-00	Kit, "EE" solid cover	1	

PARTS MANUAL

Manual Number 9202
Manual Part Number 300377-001
RR-34B ELECTRIC REACH TRUCK

RR-34B

Effective Serial Number 200482



⚠ WARNING Read and observe all warnings on this unit before operating it.

⚠ WARNING **DO NOT** operate this equipment unless all factory installed guards and shields are properly secured in place.

FIG #	ITEM #	PART #	NAME	FIG. #	Page
0.2	1		Decals and parts list assembly	0.1	0.1
0.2	*		Parts list index	0.2	0.3
0.2	2		Transmission and drive motor installation	1.1	1.1
0.2	2		Drive motor brake assembly	1.2	1.3
0.2	2	40011-01	Transmission assembly, PART I	1.3	1.5
0.2	2	40011-01	Transmission assembly, PART II	1.4	1.7
0.2	3		"E" EV-100LX SCR electrical schematic	2.1	2.1
0.2	3		"E" EV-100LX SCR electrical schematic symbols	2.2	2.2
0.2	3		"EE" EV-100LX SCR electrical schematic	2.3	2.3
0.2	3		"EE" EV-100LX SCR electrical schematic symbols	2.4	2.4
0.2	3		Wiring assembly for cold storage	2.5	2.5
0.2	3		Wiring harness assembly	2.6	2.7
0.2	3		Limit switch wiring assembly	2.7	2.9
0.2	3		Two stage mast cable assembly	2.8	2.11
0.2	3		Three stage mast cable assembly	2.9	2.13
0.2	3		Single reach cable assembly	2.10	2.15
0.2	3		Double reach cable assembly	2.11	2.17
0.2	3		EV-100LX power component wiring	2.12	2.19
0.2	3	49399-00	EV-100LX TX SCR control panel assembly	2.13	2.21
0.2	3	49399-01	EV-100LX TT SCR control panel assembly	2.13	2.21
0.2	3		EV-100LX contactor panel assembly & related parts for "E" & "EE"	2.14	2.23
0.2	3	41757-01	EV-100LX SCR contactor panel assembly, 24 volt	2.15	2.25
0.2	3	41757-00	EV-100LX SCR contactor panel assembly, 36 volt	2.15	2.25
0.2	3	27692-00	EV-100LX SCR forward & rearward contactor assembly	2.16	2.27
0.2	3	27693-02	EV-100LX SCR 1A contactor assembly	2.17	2.29
0.2	3	27693-02	Lift pump contactor assembly, (24 volt)	2.18	2.31
0.2	3	202169	Lift pump contactor assembly, (36 volt)	2.18	2.31
0.2	3	300073-000	EV-100LX SCR auxiliary pump contactor assembly	2.19	2.33
0.2	3	49855-24	Power connector assembly, (RED)	2.20	2.35
0.2	3	49855-22	Power connector assembly, (GRAY)	2.20	2.35
0.2	3	27900-00	Lift Pump motor assembly, (24 volt, G.E., 5BT1324B54)	2.21	2.37
0.2	3	27899-00	Lift Pump motor assembly, (36 volt, G.E., 5BT1326B234)	2.21	2.37
0.2	3	27901-00	Drive motor assembly, (24 Volt, G.E., 5BT1326B235)	2.22	2.39
0.2	3	27902-00	Drive motor assembly, (36 volt, G.E., 5BT1326B233)	2.22	2.39
0.2	3	300666-000	Auxiliary pump motor assy., (24 Volt, OHIO, D-561371X8015A)	2.23	2.41
0.2	3	300665-000	Auxiliary pump motor assy., (36 Volt, OHIO, D-561369X8005A)	2.23	2.41
0.2	3	29030-01	Warning light assembly, 24 volt	2.24	2.43
0.2	3	29030-02	Warning light assembly, 36 volt	2.24	2.43
0.2	3		"E" EV-100LX TT SCR electrical schematic	2.25	2.45
0.2	3		"E" EV-100LX TT SCR electrical schematic symbols	2.26	2.46
0.2	3		"EE" EV-100LX TT SCR electrical schematic	2.27	2.47
0.2	3		"EE" EV-100LX TT SCR electrical schematic symbols	2.28	2.48
0.2	3		EV-100LX dash display installation	2.29	2.49
0.2	4		Hydraulic schematic	3.1	3.1
0.2	4		Hydraulic schematic symbols	3.2	3.2
0.2	4		Auxiliary pump and reservoir assembly	3.3	3.3
0.2	4	41331-00	Auxiliary control valve assembly	3.4	3.5
0.2	4	300333-000	Auxiliary pump and motor assembly, 24 volt	3.5	3.7
0.2	4	300334-000	Auxiliary pump and motor assembly, 36 volt	3.5	3.7
0.2	4		Auxiliary pump assembly	3.6	3.9
0.2	4		Hydraulic reservoir assembly	3.7	3.11
0.2	4	40795-01	Torque generator assembly	3.8	3.13
0.2	4		Two stage mast hydraulic assembly	3.9	3.15
0.2	4		Three stage mast hydraulic assembly	3.10	3.17
0.2	4		Single reach cylinder hose installation	3.11	3.19
0.2	4	41242-00	Single reach diverter valve assembly	3.12	3.21
0.2	4	41228-XX	Single reach cylinder assembly	3.13	3.23
0.2	4		Single tilt and sideshifter hose installation	3.14	3.25

FIG #	ITEM #	PART #	NAME	# FOR ASSY.	UNIT
1.4	1	14908-16	Lockwasher	1	
1.4	2	14898-00	Washer	1	
1.4	3	11057-13	Key	1	
1.4	4	40473-00	Gear & pinion set (See Fig.# 1.3 for pinion)	1	
1.4	5	40020-00	Case	1	
1.4	6	11890-03	Pin, dowel	2	
1.4	7	11205-13	Bearing	1	
1.4	8	40009-00	Shaft	1	
1.4	9	49967-04	Shim, .005"	As Req'd.	
1.4	9	49967-05	Shim, .007"	As Req'd.	
1.4	9	49967-06	Shim, .010"	As Req'd.	
1.4	10	40001-00	Holder, bearing	1	
1.4	11	11205-14	Bearing	1	
1.4	12	49973-01	Locknut	2	
1.4	13	49974-01	Lockwasher	1	
1.4	14	49970-01	Shim, .005"	As Req'd.	
1.4	14	49970-02	Shim, .007"	As Req'd.	
1.4	14	49970-03	Shim, .010"	As Req'd.	
1.4	15	12459-00	Vent, air	1	
1.4	16	40828-00	Plate	1	
1.4	17	11143-03	Screw, cap	4	
1.4	18	11043-03	Screw, cap	4	
1.4	19	40829-00	Cover	1	
1.4	20	12318-01	Plug	1	
1.4	21	12391-03	O ring	1	
1.4	22	11143-04	Screw, cap	8	
1.4	23	11009-06	Lockwasher	8	
1.4	24	11015-30	O ring	3	
1.4	25	40007-00	Shaft	1	
1.4	26	11936-16	Race	2	
1.4	27	11935-06	Bearing, thrust	2	
1.4	28	11936-15	Race	2	
1.4	29	49971-00	Roller	122	
1.4	30	40024-01	Spacer	1	
1.4	31	40017-00	Gear	1	
1.4	32	11936-01	Race	1	
1.4	33	40018-00	Gear	1	
1.4	34	40024-02	Spacer	1	
1.4	35	40006-00	Shaft	1	
1.4	36	11073-19	Pin	1	
1.4	37	40012-00	Gear, axle	1	
1.4	38	11205-16	Bearing	2	
1.4	39	49967-01	Shim, .005"	As Req'd	
1.4	39	49967-02	Shim, .007"	As Req'd	
1.4	39	49967-03	Shim, .010"	As Req'd	
1.4	40	40022-00	Spacer	1	
1.4	41	11039-29	Seal, oil	1	
1.4	42	40003-00	Hub	1	
1.4	43	49966-01	Ring	1	
1.4	44	14908-28	Locknut	1	

FIG #	ITEM #	PART #	NAME	# FOR ASSY.	UNIT
2.7	1	25332-01	Tie, wire	As Req'd	
2.7	2	14911-06	Screw, machine	2	
2.7	3	11009-03	Lockwasher	2	
2.7	4	49574-00	Switch, limit	1	
2.7	5	14910-02	Connector	1	
2 Stage Masts					
2.7	6	41494-00	Cable assembly, 89/126	1	89/126
2.7	6	41494-01	Cable assembly, 95/138	1	95/138
2.7	6	41494-02	Cable assembly, 107/162	1	107/162
2.7	6	41494-03	Cable assembly, 119/186	1	119/186
3 Stage Masts					
2.7	6	41494-00	Cable assembly, 89/180	1	89/180
2.7	6	41494-00	Cable assembly, 89/192	1	89/192
2.7	6	41494-01	Cable assembly, 95/198	1	95/198
2.7	6	41494-01	Cable assembly, 95/210	1	95/210
2.7	6	41494-02	Cable assembly, 107/226	1	107/226
2.7	6	41494-03	Cable assembly, 111/240	1	111/240
2.7	6	41494-04	Cable assembly, 119/258	1	119/258
2.7	7	49557-00	Receptacle	1	
2.7	8	49610-00	Pin	2	
2.7	9	15677-08	Nut	3	2 STAGE
2.7	10	41494-00	Clamp	3	2 STAGE

FIG #	ITEM #	PART #	NAME	# FOR ASSY.	UNIT
2.12	1	49399-00	Control, EV-100LX SCR TX panel (See Fig.# 2.13)	1	TX PANEL
2.12	1	49399-01	Control, EV-100LX SCR TT panel (See Fig.# 2.13)	1	TT PANEL
2.12	2	11016-12	Washer, flat	3	
2.12	3	11009-05	Lockwasher	3	
2.12	4	11261-05	Nut	2	
2.12	5	11170-04	Nut	2	
2.12	6	49855-22	Connector assembly (See Fig.# 2.20)	1	
2.12	7	11813-03	Grommet, rubber	2	
2.12	8	49886-09	Screw, cap	2	
2.12	9	49856-116	Cable	1	
2.12	10	49856-117	Cable	2	
2.12	11	27900-00	Motor, 24 Volt lift (See Fig.# 2.21)	1	24 VOLT
2.12	11	27899-00	Motor, 36 Volt lift (See Fig.# 2.21)	1	36 VOLT
2.12	12	49856-27	Cable	1	
2.12	13	300666-000	Motor, 24 Volt auxiliary (See Fig.# 2.23)	1	24 VOLT
2.12	13	300665-000	Motor, 36 Volt auxiliary (See Fig.# 2.23)	1	36 VOLT
2.12	14	49856-113	Cable	1	
2.12	15	49856-115	Cable	1	
2.12	16	49856-112	Cable	2	
2.12	17	27901-00	Motor, 24 Volt drive (See Fig.# 2.22)	1	24 VOLT
2.12	17	27902-00	Motor, 36 Volt drive (See Fig.# 2.22)	1	36 VOLT
2.12	18	49856-114	Cable	1	
2.12	19	49399-00	Control, EV-100LX SCR TX panel (See Fig.# 2.14 and Fig.# 2.15)	1	
2.12	19	49399-01	Control, EV-100LX SCR TT panel (See Fig.# 2.13 and Fig.# 2.15)	1	
2.12	20	49856-118	Cable	1	
2.12	21	49856-119	Cable	1	
2.12	22	49856-104	Cable	1	
2.12	23	49545-00	Bracket	1	
2.12	24	11854-04	Screw, cap	1	
2.12	25	49856-29	Cable		

FIG #	ITEM #	PART #	NAME	# FOR ASSY.	UNIT
2.17	1	201962	Base, magnet	1	
2.17	2	200077	Coil, field	1	
2.17	3	201963	Frame, magnet	1	
2.17	4	201262	Spring (RED)	1	
2.17	5	201964	Armature	1	
2.17	6	200081	Base, buss	1	
2.17	7	201965	Tip, contact	2	
2.17	8	200096	Bushing	1	
2.17	9	200095	Carrier	1	
2.17	10	201966	Tip, movable	1	
2.17	11	201259	Cap	1	
2.17	12	201266	Spring (GOLD)	1	
2.17	13	201367	Washer, flat	1	
2.17	14	201215	Nut, lock	1	
2.17	15	201967	Clamp	2	
2.17	16	201368	Lockwasher	4	
2.17	17	201372	Screw, machine	4	
2.17	18	202004	Suppression, 1A contactor	1	
2.17	19	200094	Seat	1	

FIG #	ITEM #	PART #	NAME	# FOR ASSY.	UNIT
2.22	1	300294-000	Stud and nut assembly	4	
2.22	2	300301-000	Spring	8	
2.22	3	300315-000	Brush	4	
2.22	4	300299-000	Connector, cross	2	
2.22	5	300292-000	Bearing	1	
2.22	6	300310-000	End, shield C.E.	1	
2.22	7	300316-000	Cover, 24 volt large	1	24 volt
2.22	7	300304-000	Cover, 36 volt large	1	36 volt
2.22	8	300303-000	Cover, small	1	
2.22	9	300302-000	Yoke and holder assembly	1	
2.22	10	300312-000	Coil, 24 volt field	1	24 VOLT
2.22	10	300327-000	Coil, 36 volt field	1	36 VOLT
2.22	11	300311-000	Armature, 24 volt	1	24 VOLT
2.22	11	300326-000	Armature, 36 volt	1	36 VOLT
2.22	12	300307-000	Fan	1	
2.22	13	300313-000	End, shield D.E.	1	
2.22	14	300314-000	Seal, shaft	1	
2.22	15	300317-000	Cover, 24 volt D.E.	1	24 VOLT
2.22	15	300305-000	Cover, 36 volt D.E.	1	36 VOLT
2.22	16	49339-00	Kit, "EE" solid cover	1	"EE"TYPE


FIG #	ITEM #	PART #	NAME	# FOR ASSY.	UNIT
2.29	1	49399-01	Control, EV-100LX TT SCR panel (See Fig.# 2.12)	1	
2.29	2	40412-04	Plat	1	
2.29	3	49326-00	Gauge, display  RED FLAG	1	
2.29	4	41800-00	Cable assembly	1	
2.29	5	300979-004	Wire assembly	1	
2.29	6	300979-003	Wire assembly	1	
2.29	7	300979-007	Wire assembly	1	
2.29	8	28286	Screw, machine	2	
2.29	9	50001-07	Lockwasher	2	
2.29	10	21035	Washer, flat	2	
2.29	11	25275-06	Fuse, 15 AMP control	1	
2.29	12	300110-000	Block, fuse	1	
2.29	13	201328	Block, driver	1	
2.29	14	301126-000	Base		

FIG #	ITEM #	PART #	NAME	# FOR ASSY.	UNIT
3.6	1K	NSS	Seal, oil	1	
3.6	2	300681-002	Stator	1	
3.6	3K	NSS	Seal	1	
3.6	4K	NSS	Seal, rubber	1	
3.6	5K	NSS	Plate, wear	1	
3.6	6	300681-007	Gear, drive	1	
3.6	7	NA	Shaft, drive	1	
3.6	8	NA	Key	1	
3.6	9	NA	Gear	1	
3.6	10	300681-008	Gear, idler	1	
3.6	11	NA	Ball	1	
3.6	12	NA	Ring, retainer	2	
3.6	13	NA	Shaft, idler	1	
3.6	14	NA	Gear	1	
3.6	15	200033	Pin, dowel	1	
3.6	16K	NSS	Plate, pressure	1	
3.6	17K	NSS	Seal	1	
3.6	18K	NSS	Seal, plate	1	
3.6	19	300681-006	Housing, end gear	1	
3.6	20	202065	Plug	1	
3.6	21	300143-000	Screw, 12 point	8	
3.6	K	300184-000	Kit, seal	1	

(CONTAINS ITEMS MARKED WITH "K")

FIG #	ITEM #	PART #	NAME	# FOR ASSY.	UNIT
3.11	1	41243-01	Coil, 24 volt	As Req'd.	24 VOLT
3.11	1	41243-00	Coil, 36 volt	As Req'd.	36 VOLT
3.11	2	11854-03	Screw, cap	3	
3.11	3	11009-05	Lockwasher	3	
3.11	4	11016-02	Washer, flat	3	
3.11	5	49617-03	Hose assembly	2	
3.11	6	41199-00	Tube assembly	1	
3.11	7	49604-00	O ring	2	
3.11	8	49656-00	Adapter	4	
3.11	9	49604-00	O ring	1	
3.11	10	12391-03	O ring	1	
3.11	11	41242-00	Divider valve assembly (See Fig.# 3.14)	1	
3.11	12	49617-02	Hose assembly	2	
3.11	13	49617-04	Hose assembly	2	
3.11	14	49655-00	Fitting, straight long	2	
3.11	15	49604-00	O ring	1	
3.11	16	12391-03	O ring	1	
3.11	17	49653-00	Elbow, 90°	4	
3.11	18	12391-03	O ring	1	
3.11	19	49604-00	O ring	1	
3.11	20	41226-00	Tube assembly	2	
3.11	21	49604-00	O ring	1	
3.11	22	41228-00	Cylinder, left reach (See Fig.# 3.15)	1	LEFT
3.11	23	41228-01	Cylinder, right reach (See Fig.# 3.15)	1	RIGHT

FIG #	ITEM #	PART #	NAME	# FOR ASSY.	UNIT
3.16	1	41243-01	Coil, 24 volt	As Req'd.	24 VOLT
3.16	1	41243-00	Coil, 36 volt	As Req'd.	36 VOLT
3.16	2	49617-14	Hose with wire guard	2	
3.16	3	49617-13	Hose with wire guard	2	
3.16	4	49653-00	Elbow, 90°	4	
3.16	5	12391-03	O ring	1	
3.16	6	49604-00	O ring	1	
3.16	7	41226-00	Tube assembly	2	
3.16	8	49604-00	O ring	1	
3.16	9	49656-00	Adapter	6	
3.16	10	12391-03	O ring	1	
3.16	11	49604-00	O ring	1	
3.16	12	41387-XX	Cylinder, right reach (See Fig.# 3.18)	1	RIGHT
3.16	13	49655-00	Fitting, straight long	10	
3.16	14	49604-00	O ring	1	
3.16	15	12391-03	O ring	1	
3.16	16	41512-00	Tube assembly	1	
3.16	17	49580-01	Orifice	1	
3.16	18	49653-09	Elbow, 90°	2	
3.16	19	49604-00	O ring	1	
3.16	20	12391-03	O ring	1	
3.16	21	41478-00	Double reach diverter valve assembly (See Fig.# 3.17)	1	
3.16	22	41475-00	Tube assembly	1	
3.16	23	49604-00	O ring	1	
3.16	24	41477-00	Manifold, tee block	1	
3.16	25	41517-00	Tube assembly	1	
3.16	26	41387-XX	Cylinder, left reach (See Fig.# 3.18)	1	LEFT
3.16	27	49643-24	Hose assembly (with out sidershifter)	2	W/O SIDE/S
3.16	27	49561-00	Hose assembly (with sidershifter)	2	W SIDE/S
3.16	28	52-05103-00	Guard, sidershifter hose (108")	As Req'd.	
3.16	29	49624-00	Nut, fitting	2	
3.16	30	49634-00	Elbow, 90°	2	
3.16	31	49604-00	O ring	1	
3.16	32	49617-16	Hose with wire guard	1	
3.16	33	49617-15	Hose with wire guard	1	
3.16	34	49617-10	Hose with wire guard	1	
3.16	35	49617-09	Hose with wire guard	1	
3.16	36	49617-12	Hose with wire guard	1	
3.16	37	49617-11	Hose with wire guard	1	
3.16	38	49616-00	Tee	2	
3.16	39	49604-00	O ring	1	
3.16	40	41561-00	Cylinder, tilt (See Fig.# 3.19)	2	
3.16	41	201064	Cylinder, sidershifter	1	
3.16	42	49654-08	Elbow, 45°	1	
3.16	43	12391-03	O ring	1	
3.16	44	49604-00	O ring	1	
3.16	45	49653-08	Elbow, 90°	1	
3.16	46	12391-03	O ring	1	
3.16	47	49604-00	O ring	1	
3.16	48	12318-01	Plug	2	
3.16	49	12391-03	O ring	1	



XX - SPECIFY MODEL AND SERIAL NUMBER WHEN ORDERING THIS PART . . .

FIG #	ITEM #	PART #	NAME	# FOR ASSY.	UNIT
3.21	1	27900-00	Motor, 24 volt lift pump (See Fig.# 2.21)	1	24 volt
3.21	1	27899-00	Motor, 36 volt lift pump (See Fig.# 2.21)	1	36 volt
3.21	2	41680-00	Pump, 24 volt lift (See Fig.# 3.24)	1	24 volt
3.21	2	41178-00	Pump, 36 volt lift (See Fig.# 3.25)	1	36 volt
3.21	3	11143-05	Screw, cap	2	
3.21	4	14851-04	Nut, clip	4	
3.21	5	50016-04	Screw, cap	4	

FIG #	ITEM #	PART #	NAME	# FOR ASSY.	UNIT
3.26	1	11897-03	Washer, seal	1	
3.26	2	49548-00	Screw	1	
3.26	3	40535-01	Tube, 89/126 cylinder	1	89/126
3.26	3	40535-02	Tube, 95/138 cylinder	1	95/138
3.26	3	40353-03	Tube, 107/162 cylinder	1	107/162
3.26	3	40535-04	Tube, 119/186 cylinder	1	119/186
3.26	4	40052-00	Nut	1	
3.26	5	40051-00	Plunger	1	
3.26	6	13857-01	Ball	1	
3.26	7	30612-01	Spring	1	
3.26	8	40047-00	Piston	1	
3.26	9K	NSS	Ring, wear	1	
3.26	10	40539-01	Rod, 89/126	1	89/126
3.26	10	40539-02	Rod, 95/138	1	95/138
3.26	10	40539-03	Rod, 107/162	1	107/162
3.26	10	40539-04	Rod, 119/186	1	119/186
3.26	11K	NSS	O ring	1	
3.26	12K	NSS	Ring, backup	1	
3.26	13	40068-00	Bearing	1	
3.26	14K	NSS	Ring, wear	1	
3.26	15K	NSS	Seal	1	
3.26	16K	NSS	Wiper	1	
3.26	17	41534-00	Kit, seal	1	

(CONTAINS ITEMS MARKED WITH "K")

FIG #	ITEM #	PART #	NAME	# FOR ASSY.	UNIT
4.2	1	26270-00	Decal	1	
4.2	2	14944-00	Knob	1	
4.2	3	11813-07	Grommet	1	
4.2	4	40237-00	Cover, seat panel	1	
4.2	5	40274-00	Rod	1	
4.2	6	11806-08	Nut, jam	1	
4.2	7	49916-00	Yoke, end	1	
4.2	8	11135-06	Pin with cotter pin	1	
4.2	9	40940-00	Spacer	2	
4.2	10	11143-16	Screw, cap	2	
4.2	11	11016-03	Washer, flat	4	
4.2	12	40275-01	Bar	1	
4.2	13	11261-06	Nut	2	
4.2	14	11170-04	Nut	2	
4.2	15	11045-08	Screw, cap	2	
4.2	16	40414-00	Block	1	
4.2	17	-----	Connector assembly (See Fig.# 2.19)	1	
4.2	18	11880-08	Screw, machine	2	
4.2	19	41642-00	Plate	1	
4.2	20	20323-00	Switch	1	
4.2	21	41790-00	Plate, switch	1	
4.2	22	14986-03	Nut, twin	1	

FIG #	ITEM #	PART #	NAME	# FOR ASSY.	UNIT
4.7	1	11143-05	Screw, cap	2	
4.7	2	40796-00	Bracket, pump	1	
4.7	3	11143-06	Screw, cap	2	
4.7	4	49891-00	Mount, shock	2	
4.7	5	300333-000	Pump and motor assembly, 24 volt (See Fig.# 3.5)	1	24 VOLT
4.7	5	300334-000	Pump and motor assembly, 36 volt (See Fig.# 3.5)	1	36 VOLT
4.7	6	20904-01	Bumper	3	
4.7	7	11143-02	Screw, cap	2	
4.7	8	11016-03	Washer, flat	6	
4.7	9	11261-08	Nut	2	
4.7	10	11261-06	Nut	2	
4.7	11	41138-00	Bracket, mounting	1	

FIG #	ITEM #	PART #	NAME	# FOR ASSY.	UNIT
4.12	1	40165-00	Cap, hub	1	
4.12	2	49745-13	Nut	1	
4.12	3	49743-09	Pin, cotter	1	
4.12	4	11016-09	Washer, flat	1	
4.12	5	11205-22	Bearing	1	
4.12	6	40992-00	Flange	1	
4.12	7	40993-01	Bearing	1	
4.12	8	40996-00	Spindle assembly	1	
4.12	9	40991-00	Pin	1	
4.12	10	11160-11	Fitting, grease	2	
4.12	11	11073-23	Pin, roll	2	
4.12	12	11857-06	Washer, flat	4	
4.12	13	11782-05	Bearing, thrust	4	
4.12	14	11695-08	Bearing, flange	2	
4.12	15	49800-00	Bearing	2	
4.12	16	49799-00	Sleeve	2	
4.12	17	11856-21	Screw, cap	2	
4.12	18	40762-00	Axle	2	
4.12	19	40768-00	Arm, right (Shown)	1	
4.12	19	40768-01	Arm, left (Not Shown)	1	
4.12	20	49972-06	Ring, nelos	4	
4.12	21	11205-01	Bearing	4	
4.12	22	40721-00	Wheel	2	
4.12	23	22005-06	Washer	2	
4.12	24	11828-06	Lockwasher	2	
4.12	25	11829-06	Nut	2	
4.12	26	11831-07	Nut	2	
4.12	27	49798-00	Retainer	2	
4.12	28	49797-02	Spring	2	

FIG #	ITEM #	PART #	NAME	# FOR ASSY.	UNIT
5.5	1	11073-35	Pin, roll	6	
5.5	2	40357-02	Pin	2	
5.5	3	41700-00	Frame, rear standard	1	
5.5	4	40358-02	Screw, special	2	
5.5	5	40355-02	Arm, outer left hand	1	
5.5	6	49925-04	Shim, .187"	As Req'd.	
5.5	6	49925-05	Shim, .125"	As Req'd.	
5.5	6	49925-06	Shim, .062"	As Req'd.	
5.5	7	40103-02	Bearing	4	
5.5	8	40103-03	Bearing	2	
5.5	9	40104-00	Bearing, thrust	4	
5.5	10	41228-01	Cylinder, left reach (See Fig.# 3.15)	1	
5.5	11	41228-00	Cylinder, right reach (See Fig.# 3.15)	1	
5.5	12	11073-22	Pin, roll	2	
5.5	13	40356-00	Nut	2	
5.5	14	49967-13	Shim, .005"	As Req'd.	
5.5	14	49967-14	Shim, .015"	As Req'd.	
5.5	15	40357-01	Pin	2	
5.5	16	-----	Frame, front (See Fig.# 5.6)	1	
5.5	17	40358-01	Screw, special	2	
5.5	18	40359-00	Pin, roll	2	
5.5	19	11160-11	Fitting, grease	10	
5.5	20	11852-21	Screw, flat head	4	
5.5	21	40354-00	Cap	4	
5.5	22	49940-00	Rearing, roller	4	
5.5	23	40355-01	Arm, outer right hand	1	
5.5	24	40345-00	Arm, inner	1	
5.5	25	11073-04	Pin, roll	4	
5.5	26	13813-30	Pin	4	
5.5	27	11852-02	Screw, flat head	2	
5.5	28	40548-00	Washer	2	
5.5	29	21089-02	Bearing	6	
5.5	30	11857-05	Shim, .050"	As Req'd.	
5.5	30	11857-12	Shim, .025"	As Req'd.	

FIG #	ITEM #	PART #	NAME	# FOR ASSY.	UNIT
5.10	1	NSS	Pin, roll	1	
5.10	2	NSS	Handle	1	
5.10	3	NSS	Spring	1	
5.10	4	NSS	Pin	1	
5.10	5	NA	Fork	1	
5.10	K	200843	Pin assembly (CONTAINS ITEMS MARKED WITH "K")	1	

FIG #	ITEM #	PART #	NAME	# FOR ASSY.	UNIT
5.15	1	49837-00	Nut, wheel	2	
5.15	2	11486-12	Nut, jum	2	
5.15	3	30558-00	Anchor	2	
5.15	4	14835-18	Chain, 89/180 lift	2	89/180
5.15	4	14835-63	Chain, 89/192 lift	2	89/192
5.15	4	14835-33	Chain, 95/198 lift	2	95/198
5.15	4	14835-33	Chain, 95/210 lift	2	95/210
5.15	4	14835-34	Chain, 107/226 lift	2	107/226
5.15	4	14835-24	Chain, 111/240 lift	2	111/240
5.15	4	14835-35	Chain, 119/276 lift	2	119/258
5.15	5	30554-00	Pin, chain	2	
5.15	6	11857-05	Shim, .050"	As Req'd.	
5.15	6	11857-12	Shim, .025"	As Req'd.	
5.15	6	11857-09	Shim, .080"	As Req'd.	
5.15	6	11857-10	Shim, .050"	As Req'd.	
5.15	6	11857-11	Shim, .025"	As Req'd.	
5.15	7	21089-02	Bearing	2	
5.15	7	49832-00	Bearing, 95/210	2	95/210
5.15	8	41693-01	Column, 89/180 outer	1	89/180
5.15	8	41693-01	Column, 89/192 outer	1	89/192
5.15	8	41693-02	Column, 95/198 outer	1	95/198
5.15	8	41693-16	Column, 95/210 outer	1	95/210
5.15	8	41693-03	Column, 107/226 outer	1	107/226
5.15	8	41693-04	Column, 111/240 outer	1	111/240
5.15	8	41693-05	Column, 119/258 outer	1	119/258
5.15	9	40891-01	Cylinder assembly (See Fig.# 3.28)	2	89/180
5.15	9	40891-01	Cylinder assembly (See Fig.# 3.28)	2	89/192
5.15	9	40891-02	Cylinder assembly (See Fig.# 3.28)	2	95/198
5.15	9	40891-02	Cylinder assembly (See Fig.# 3.28)	2	95/210
5.15	9	40891-03	Cylinder assembly (See Fig.# 3.28)	2	107/226
5.15	9	40891-04	Cylinder assembly (See Fig.# 3.28)	2	111/240
5.15	9	40891-05	Cylinder assembly (See Fig.# 3.28)	2	119/258

FIG #	ITEM #	PART #	NAME	# FOR ASSY.	UNIT
5.20	1	201064	Cylinder assembly	1	
5.20	2	201075	Anchor, cylinder	1	
5.20	3	11073-19	Pin, roll	1	
5.20	4	11419-12	Nut	2	
5.20	5	NA	Fitting, grease (1/4"-28 SAE-LT ST)	2	
5.20	6	11016-01	Washer, flat	2	
5.20	7	11016-02	Washer, flat	2	
5.20	8	202155	Frame	1	
5.20	9	201074	Bolt	4	
5.20	10	11009-10	Lockwasher	4	
5.20	11	NA	Fitting, grease (.257" dia. drive)	2	
5.20	12	201062	Retainer	2	
5.20	13	201050	Slider-bottom bronze	2	
5.20	14	201063	Slider-top bronze	2	

FIG #	ITEM #	PART #	NAME	# FOR ASSY.	UNIT
6.5	1	41243-01	Coil, 24 volt	As Req'd	24 VOLT
6.5	1	41243-00	Coil, 36 volt	As Req'd	36 VOLT
6.5	2	49609-00	Plug	1	
6.5	3	49611-00	Receptacle	1	
6.5	4	49608-00	Socket	5	
6.5	5	49610-00	Pin	5	
6.5	6	49717-02	Nut	1	
6.5	7	11016-02	Washer, flat	1	
6.5	8	15677-08	Clamp, hose	1	
6.5	9	11954-03	Screw, cap	1	
6.5	10	41623-00	Harness, reach and platform	1	
6.5	11	41242-00	Valve, single diverter (See Fig.# 3.12)	1	
6.5	12	26662-01	Switch, pushbotton	1	
6.5	13	49459-01	Switch, rocker (DPDT)	1	
6.5	14	49458-00	Switch, key (Set of Two KEY SWITCHS)	1	
6.5	15	49459-00	Switch, rocket (SPDT)	1	

FIG #	ITEM #	PART #	NAME	# FOR ASSY.	UNIT
6.11	1	300269-000	Valve, N,O. cartridge	1	
6.11	2	300270-000	Kit, seal	1	
6.11	3	NSS	O ring	2	
6.11	4	NSS	O ring	2	
6.11	5	NSS	Ring, backup	1	
6.11	6	NA	Block	1	
6.11	7	41243-01	Coil, 24 volt solenoid	1	24 VOLT
6.11	7	41243-00	Coil, 36 volt solenoid	1	36 VOLT

FIG #	ITEM #	PART #	NAME	# FOR ASSY.	UNIT
7.5	1	49399-00	Control, EV-100LX SCR TX panel (See Fig.# 2.12)	1	
7.5	2	41757-01	Panel, 24 Volt contactor (See Fig.# 2.13 & 2.14)	1	24 VOLT
7.5	2	41757-02	Panel, 36 Volt contactor (See Fig.# 2.13 & 2.14)	1	36 VOLT
7.5	3	41799-00	Harness, curtis	1	
7.5	4	301579-000	Wire assembly	1	
7.5	5	49712-01	Lift interrupt control, 24 volt	1	24 VOLT
7.5	5	49712-02	Lift interrupt control, 36 volt	1	36 VOLT
7.5	6	301578-000	Gauge, lift interrupt	1	
7.5	7	11016-01	Washer, flat	2	
7.5	8	11009-04	Lockwasher	2	
7.5	9	11045-04	Screw, cap	2	

CLICK HERE TO **DOWNLOAD** THE COMPLETE MANUAL

- Thank you very much for reading the preview of the manual.
- You can download the complete manual from: www.heydownloads.com by clicking the link below



- Please note: If there is no response to **CLICKING** the link, please download this PDF first and then click on it.

CLICK HERE TO **DOWNLOAD** THE COMPLETE MANUAL

MODEL RR-34 ELECTRIC REACH TRUCK

NUMERICAL INDEX

<u>PART #</u>	<u>FIG. #</u>	<u>ITEM #</u>	<u>PART #</u>	<u>FIG.#</u>	<u>ITEM #</u>
201267	2.19	4	201962	2.17	1
201297	2.13	28	201962	2.18	1
201328	2.29	13	201963	2.18	3
201367	2.19	13	201963	2.17	3
201367	2.17	13	201964	2.18	5
201367	2.18	13	201964	2.17	5
201367	2.16	23	201965	2.18	7
201368	2.19	16	201965	2.17	7
201368	2.17	16	201966	2.18	10
201368	2.18	16	201966	2.17	10
201368	2.16	16	201967	2.17	15
201372	2.18	17	201967	2.18	15
201372	2.17	17	201967	2.19	15
201372	2.19	17	201979	3.8	10
201372	2.16	17	201980	3.8	11
201435	3.3	31	201989	3.23	K
20151-00	2.6	4	201990	3.23	K
20151-00	2.5	3	202004	2.17	18
20151-00	4.4	12	202004	2.15	26
201533	3.24	22	202009	2.16	28
201545	3.24	24	202009	2.15	25
201546	3.4	1	202010	2.19	18
201553	3.24	26	202010	2.18	18
201553	3.4	5	202065	3.6	20
201556	3.24	3	202091	3.4	16
201556	3.4	11	202093	3.24	1
201560	3.24	20	202094	3.24	5
201578	3.4	10	202095	3.24	14
201578	3.24	4	202096	3.4	21
201616	3.24	19	202097	3.4	22
201618	3.24	8	202104	3.4	K
201619	3.24	9	202131	1.2	18
201623	3.24	23	202132	1.2	19
201624	3.24	2	202133	1.2	17
201627	3.24	K	202138	3.4	2
20163-94	6.7	5	202139	3.4	4
201630	3.4	15	202140	3.4	6
201634	3.4	19	202141	3.4	7
201639	3.24	25	202142	3.4	8
201639	3.4	12	202143	3.4	20
201643	3.4	3	202144	3.4	13
201655	3.24	21	202150	1.2	14
201864	1.2	6	202151	1.2	15
201866	1.2	12	202153	3.17	12
201867	1.2	9	202154	4.10	*
201868	1.2	8	202154	4.11	*
201869	1.2	10	202154	10.1	4
201870	1.2	7	202155	5.20	8
201872	1.2	16	202155	5.9	8
201873	1.2	20	202172	2.18	2
201874	1.2	13	202296	3.22	12
201876	1.2	5	202297	3.22	11

MODEL RR-34 ELECTRIC REACH TRUCK

NUMERICAL INDEX

<u>PART #</u>	<u>FIG. #</u>	<u>ITEM #</u>	<u>PART #</u>	<u>FIG.#</u>	<u>ITEM #</u>
49604-00	3.14	28	49607-00	2.6	12
49604-00	3.14	5	49607-00	6.3	10
49604-00	3.11	21	49608-00	2.8	12
49604-00	3.14	24	49608-00	2.9	14
49604-00	3.11	15	49608-00	6.5	4
49604-00	3.11	19	49608-00	6.4	13
49604-00	3.14	16	49609-00	2.8	10
49604-00	3.16	6	49609-00	2.9	12
49604-00	3.14	12	49609-00	6.4	12
49604-00	3.16	23	49609-00	6.5	2
49604-01	3.3	10	49610-00	2.10	4
49604-01	3.3	3	49610-00	2.9	8
49604-01	3.3	17	49610-00	2.11	4
49604-01	3.3	38	49610-00	2.7	8
49604-01	3.3	28	49610-00	2.8	5
49604-01	3.9	6	49610-00	6.3	12
49604-01	3.9	3	49610-00	6.5	5
49604-01	3.3	15	49610-00	6.4	8
49604-01	3.3	23	49611-00	2.11	3
49604-01	3.3	47	49611-00	2.9	3
49604-01	3.10	14	49611-00	2.10	3
49604-01	3.10	6	49611-00	2.8	3
49604-01	3.10	11	49611-00	6.4	3
49604-02	3.3	5	49611-00	6.3	11
49604-02	3.20	16	49611-00	6.5	3
49604-02	3.20	11	49612-05	4.4	37
49604-02	3.25	24	49612-06	4.4	30
49604-02	3.25	15	49615-02	3.27	17
49604-02	3.25	10	49615-02	6.10	29
49604-02	3.25	6	49616-00	3.14	11
49604-02	3.25	3	49616-00	3.16	38
49604-02	3.25	12	49616-01	3.3	16
49604-02	3.27	18	49617-00	3.14	26
49604-02	3.27	6	49617-01	3.14	18
49604-02	3.27	3	49617-02	3.11	12
49604-02	3.27	23	49617-03	3.11	5
49604-02	3.27	33	49617-04	3.11	13
49604-02	3.27	27	49617-05	3.14	17
49604-02	3.27	16	49617-06	3.14	6
49604-02	3.27	11	49617-09	3.16	35
49604-02	6.10	12	49617-10	3.16	34
49604-02	6.10	33	49617-11	3.16	37
49604-02	6.10	4	49617-12	3.16	36
49604-02	6.10	7	49617-13	3.16	3
49604-02	6.10	25	49617-14	3.16	2
49604-02	6.10	30	49617-15	3.16	33
49604-02	6.10	15	49617-16	3.16	32
49604-02	6.10	17	49620-00	3.10	1
49604-03	3.27	42	49620-01	3.10	1
49604-03	3.27	54	49620-02	3.10	1
49604-03	3.27	39	49620-03	3.10	1
49605-00	2.6	17	49620-04	3.10	1

ALPHABETICAL INDEX

NAME	FIG.#	PAGE #
<u>F, G, H</u>		
Five Inch High Articulating Load Wheel Assembly	4.10	4.19
Forward Steering Control Assembly	4.5	4.9
Four Inch High Articulating Load Wheel Assembly	4.11	4.21
Hand Lift/Lower and Speed Control	4.4	4.7
Hand Lift/Lower and Speed Control for 3 Function Control	4.13	4.25
Hydraulic Schematic	3.1	3.1
Hydraulic Schematic for 3 Function Control Handle	3.26	3.49
Hydraulic Schematic Symbols	3.2	3.2
Hydraulic Schematic Symbols	3.27	3.50
Hydraulic Reservoir Assembly	3.7	3.11
<u>I, J, K, L</u>		
Lift Control Valve Assembly	3.20	3.37
Lift Pump Contactor Assembly	2.17	2.29
Lift Pump Motor Assembly	3.17	3.31
Lift Pump Motor Assembly, 24 Volt	3.18	3.33
Lift Pump Motor Assembly, 36 Volt	3.19	3.35
Lift Pump and Reservoir Assembly	3.16	3.29
Limit Switch Wiring Assembly	2.7	2.9
<u>M, N, O, P</u>		
Main Frame and Load Wheel Assembly	4.8	4.15
Power Connector Assembly	2.19	2.33
<u>Q, R</u>		
Reach Cable Assembly	2.10	2.15
Reach Cylinder Assembly	3.13	3.23
Reach Diverter Valve Assembly	3.12	3.21
Rearward Steering Control Assembly	4.6	4.11
Remote Lift/Lower Connector Assembly	6.7	6.11
Remote Lift/Lower EV-100 LX SCR Electrical Schematic	6.1	6.1
Remote Lift/Lower EV-100 LX SCR Electrical Schematic Symbols	6.2	6.2
Remote Lift/Lower Hydraulic Diagram	6.10	6.15
Remote Lift/Lower Hydraulic Schematic	6.8	6.13
Remote Lift/Lower Hydraulic Schematic Symbols	6.9	6.14
Remote Lift/Lower Load Backrest Installation	6.13	6.21
Remote Lift/Lower Power Component Wiring	6.6	6.9
Remote Lift/Lower Reach and Platform Cable Assembly	6.5	6.7
Remote Lift/Lower Three Stage Mast Cable Assembly	6.4	6.5
Remote Lift/Lower Wiring Harness Assembly	6.3	6.3
Remote Lift/Lower Valve Assembly	6.12	6.19

FIG #	ITEM #	PART #	NAME	# FOR ASSY.	UNIT
1.3	1	11160-01	Fitting, grease	2	
1.3	2	40688-00	Yoke	1	
1.3	3	41648-00	Plate	1	
1.3	4	11143-03	Screw, cap	4	
1.3	5	49972-02	Ring	1	
1.3	6	40005-00	Pin	1	
1.3	7	11205-15	Bearing	1	
1.3	8	49969-01	Shim, .005	As Req'd	
1.3	8	49969-02	Shim, .007	As Req'd	
1.3	8	49969-03	Shim, .010	As Req'd	
1.3	8	49969-04	Shim, .020	As Req'd	
1.3	9	11015-16	O ring	1	
1.3	10	40473-00	Gear and pinion set (See Fig.# 1.4 for Gear)	1	
1.3	11	40023-00	Piston	1	
1.3	12	11827-14	Ring, retainer	1	
1.3	13	14908-12	Locknut	1	
1.3	14	49966-02	Washer	1	
1.3	15	11890-05	Pin	2	
1.3	16	-----	Transmission assembly (See Fig.# 1.4)	1	
1.3	17	11872-02	Bolt, wheel	8	
1.3	18	11827-15	Ring, retainer	1	
1.3	19	49967-07	Shim, .005	As Req'd	
1.3	19	49967-08	Shim, .007	As Req'd	
1.3	19	49967-09	Shim, .010	As Req'd	
1.3	19	49967-10	Shim, .060	As Req'd	
1.3	20	11205-18	Bearing	1	
1.3	21	49972-04	Ring	1	
1.3	22	49973-01	Locknut	2	
1.3	23	49974-01	Lockwasher	1	
1.3	24	40756-00	Sprocket assembly	1	
1.3	25	NSS	Sprocket	2	
1.3	26	NSS	Collar	1	
1.3	27	11854-03	Screw, cap	2	
1.3	28	40754-00	Bolt, fit	2	
1.3	29	11854-03	Screw, cap	4	
1.3	30	49968-00	Bearing set	1	
1.3	31	49972-01	Ring	1	
1.3	32	22012-05	Elbow, 90°	1	
1.3	33	12391-07	O ring	1	
1.3	34	49928-07	Cap	1	
1.3	35	11241-01	Elbow, 90°	1	
1.3	36	11459-00	Vent, air	1	
1.3	37	11801-00	Nut, wheel	8	
1.3	38	40267-00	Wheel, drive	1	
1.3	39	40004-00	Wheel, hub	1	
1.3	40	46266-00	Tire, rubber	1	



FIG #	ITEM #	PART #	NAME	# FOR ASSY.	UNIT
2.6	1	49399-00	Control, EV-100LX SCR TX panel (See Fig.# 2.12)	1	TX panel
2.6	1	49399-01	Control, EV-100LX SCR TT panel (See Fig.# 2.12)	1	TT panel
2.6	2	26204-00	Meter, hour	1	
2.6	3	23228-01	Indicator, 24 volt battery discharge (BDI)	1	24 volt
2.6	3	23228-02	Indicator, 36 volt battery discharge (BDI)	1	36 volt
2.6	4	20151-00	Switch, key	1	
2.6	5	49794-00	Switch, brake	1	
2.6	5	41464-00	Switch, manlift brake	1	
2.6	6	41361-00	Valve, lift control (See Fig.# 3.20)	1	
2.6	7	41331-00	Valve, auxiliary control (See Fig.# 3.4)	1	
2.6	8	49965-00	Switch, auxiliary	2	
2.6	9	40416-00	Handle assembly (See Fig.# 4.4)	1	
2.6	10	27303-00	Switch, master	1	
2.6	11	29304-00	Potentiometer	1	
2.6	12	49607-00	Diode	2	
2.6	13	41771-00	Harness, wiring	1	
2.6	14	26618-04	Spacer	1	
2.6	15	23309-01	Horn, 24 volt	1	24 volt
2.6	15	23309-02	Horn, 36 volt	1	36 volt
2.6	16	11170-05	Nut	1	
2.6	17	49605-00	Filter, horn	1	
2.6	18	11045-03	Screw, cap	2	
2.6	19	11016-01	Washer, flat	2	
2.6	20	11009-04	Lockwasher	2	
2.6	21	49283-00	Alarm, travel	1	

FIG #	ITEM #	PART #	NAME	# FOR ASSY.	UNIT
2.11	1	49399-00	Control, EV-100LX SCR TX panel (See Fig.# 2.12)	1	TX PANEL
2.11	1	49399-01	Control, EV-100LX SCR TT panel (See Fig.# 2.12)	1	TT PANEL
2.11	2	11016-12	Washer, flat	3	
2.11	3	11009-05	Lockwasher	3	
2.11	4	11261-05	Nut	2	
2.11	5	11170-04	Nut	2	
2.11	6	49855-22	Connector assembly (See Fig.# 2.19)	1	
2.11	7	11813-03	Grommet, rubber	2	
2.11	8	49886-09	Screw, cap	2	
2.11	9	49856-116	Cable	1	
2.11	10	49856-117	Cable	2	
2.11	11	27900-00	Motor, "E"&"EE" 24 Volt lift (See Fig.# 2.20)	1	24 Volt
2.11	11	301985-000	Motor, "E" 36 Volt lift (See Fig.# 2.21)	1	"E" 36 Volt
2.11	11	27899-00	Motor, "EE" 36 Volt lift (See Fig.# 2.22)	1	"EE" 36 Volt
2.11	12	49856-27	Cable	1	
2.11	13	300666-000	Motor, 24 Volt auxiliary (See Fig.# 2.22)	1	24 Volt
2.11	13	300665-000	Motor, 36 Volt auxiliary (See Fig.# 2.22)	1	36 Volt
2.11	14	49856-113	Cable	1	
2.11	15	49856-115	Cable	1	
2.11	16	49856-112	Cable	2	
2.11	17	27901-00	Motor, 24 Volt drive (See Fig.# 2.21)	1	24 Volt
2.11	17	27902-00	Motor, 36 Volt drive (See Fig.# 2.21)	1	36 Volt
2.11	18	49856-114	Cable	1	
2.11	19	41757-01	Panel, 24 Volt contactor (See Fig.# 2.13 & 2.14)	1	24 Volt
2.11	19	41757-02	Panel, 36 Volt contactor (See Fig.# 2.13 & 2.14)	1	36 Volt
2.11	20	49856-118	Cable	1	
2.11	21	49856-119	Cable	1	
2.11	22	49856-104	Cable	1	
2.11	23	49545-00	Bracket	1	

FIG #	ITEM #	PART #	NAME	# FOR ASSY.	UNIT
2.16	1	201962	Base, magnet	1	
2.16	2	200077	Coil, field	1	
2.16	3	201963	Frame, magnet	1	
2.16	4	201262	Spring (RED)	1	
2.16	5	201964	Armature	1	
2.16	6	200081	Base, buss	1	
2.16	7	201965	Tip, contact	2	
2.16	8	200096	Bushing	1	
2.16	9	200095	Carrier	1	
2.16	10	201966	Tip, movable	1	
2.16	11	201259	Cap	1	
2.16	12	201266	Spring (GOLD)	1	
2.16	13	201367	Washer, flat	1	
2.16	14	201215	Nut, lock	1	
2.16	15	201967	Clamp	2	
2.16	16	201368	Lockwasher	4	
2.16	17	201372	Screw, machine	4	
2.16	18	202004	Suppression, 1A contactor	1	
2.16	19	200094	Seat	1	

FIG #	ITEM #	PART #	NAME	# FOR ASSY.	UNIT
2.21	1	300571-000	Screw, clamp	2	
2.21	2	301327-034	Cover, brush	1	
2.21	3	301327-035	Shield, comutator end	1	
2.21	4	300574-000	Terminal and crossover	1	
2.21	5	300540-000	Washer insulator	2	
2.21	6	300541-000	Bushing, insulator	1	
2.21	7	300542-000	Gasket	2	
2.21	8	300543-000	Washer, insulator	1	
2.21	9	300544-000	Washer	2	
2.21	10	300545-000	Lockwasher	2	
2.21	10	300546-000	Nut	4	
2.21	11	301327-008	Screw, brush holder	4	
2.21	11	301327-006	Spring	4	
2.21	12	301327-036	Holder, brush	1	
2.21	13	301327-007	Screw, brush	4	
2.21	14	301327-037	Brush	4	
2.21	15	300553-000	Bushing	1	
2.21	16	300554-000	Washer, insulator	1	
2.21	17	300555-000	Screw, pole	16	
2.21	18	300556-000	Pole, main	4	
2.21	19	301327-038	Coil, field	1	
2.21	20	300558-000	Bearing	1	
2.21	21	301327-039	Armature	1	
2.21	22	300560-000	Bearing	1	
2.21	23	301327-010	Washer, shim	1	
2.21	24	300562-000	Washer, belleville	2	
2.21	25	300563-000	Washer, spacer	1	
2.21	26	301327-040	Shield, drive end	1	
2.21	27	301327-013	Screw, clamp	4	

FIGURE # 2.27 "E" EV-100LX TT SCR ELECTRICAL SCHEMATIC SYMBOLS

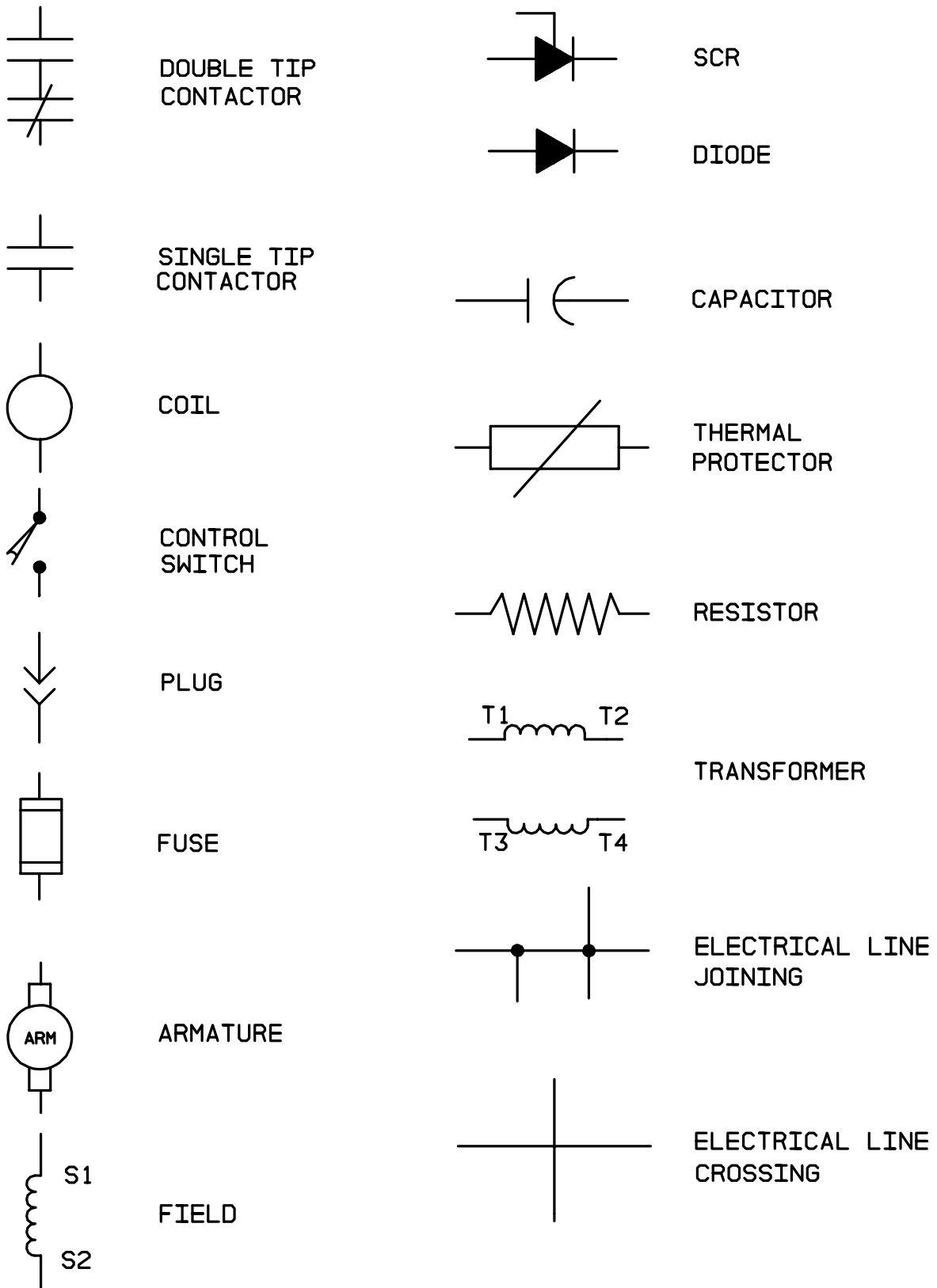


FIGURE # 3.2 HYDRAULIC SCHEMATIC SYMBOLS

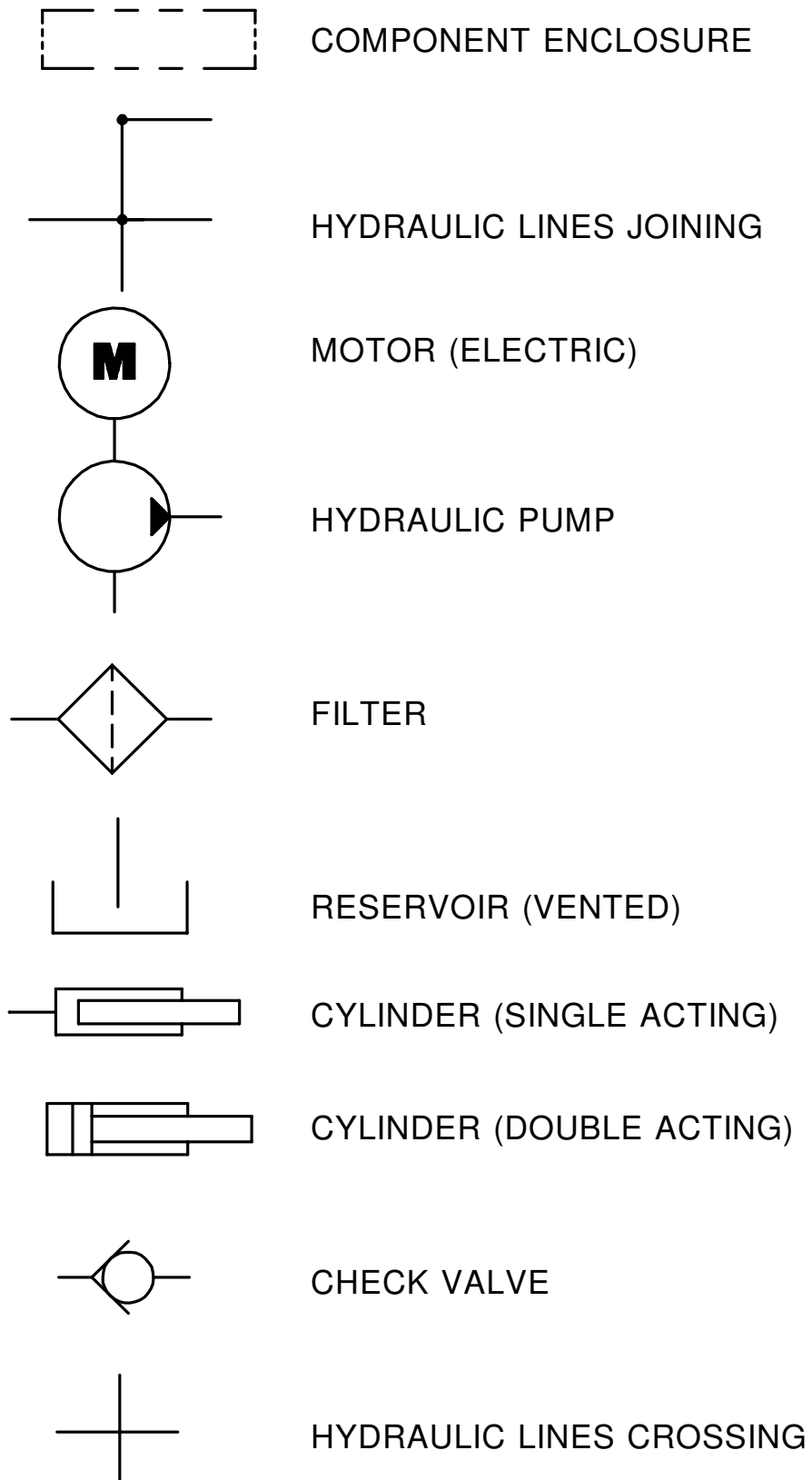


FIG #	ITEM #	PART #	NAME	# FOR ASSY.	UNIT
3.7	1	1-08759-00	Gage, sight	1	
3.7	2	14961-00	Breather	1	
3.7	3	41426-00	Reservoir	1	
3.7	4	40323-00	Screen	1	
3.7	5	12318-11	Plug	1	
3.7	6	12391-12	O ring	1	
3.7	7	11016-03	Washer, flat	2	
3.7	8	11143-08	Screw, cap	2	

FIG #	ITEM #	PART #	NAME	# FOR ASSY.	UNIT
3.12	1	12318-06	Plug	2	
3.12	1	12391-06	O ring	1	
3.12	2	41187-00	Valve, solenoid	4	
3.12	3	41230-00	Manifold	1	
3.12	4	12318-01	Plug	2	
3.12	5	12391-01	O ring	1	
3.12	6	12318-03	Plug	2	
3.12	7	12391-03	O ring	1	
3.12	K	200073	Kit, seal (for item #3)	1	

FIG ITEM		PART #	NAME	# FOR ASSY.	UNIT
#	#				
3.17	1	27900-00	Motor, 24 volt lift pump (See Fig.# 2.20)	1	24 volt
3.17	1	301774-000	Motor, "E" 36 volt lift pump (See Fig.# 2.21)	1	"E" 36 volt
3.17	1	27899-00	Motor, "EE" 36 volt lift pump (See Fig.# 2.22)	1	"EE" 36 volt
3.17	2	41680-00	Pump, 24 volt lift (See Fig.# 3.18)	1	24 volt
3.17	2	41997-00	Pump, 36 volt lift (See Fig.# 3.19)	1	36 volt
3.17	3	11143-05	Screw, cap	2	
3.17	4	49509-00	Nut, clip	4	
3.17	5	11854-05	Screw, cap	4	
3.17	6	11016-12	Washer, flat	4	
3.17	7	31267-00	Grommet	4	

FIG #	ITEM #	PART #	NAME	# FOR ASSY.	UNIT
3.22	1	11897-03	Washer, seal	1	
3.22	2	49548-00	Screw	1	
3.22	3	40535-01	Tube, 89/126 cylinder	1	89/126
3.22	3	40535-02	Tube, 95/138 cylinder	1	95/138
3.22	3	40535-03	Tube, 107/162 cylinder	1	107/162
3.22	3	40535-04	Tube, 119/186 cylinder	1	119/186
3.22	4	40052-00	Nut	1	
3.22	5	40051-00	Plunger	1	
3.22	6	13857-01	Ball	1	
3.22	7	30612-01	Spring	1	
3.22	8	40047-00	Piston	1	
3.22	9K	NSS	Ring, wear	1	
3.22	10	40539-01	Rod, 89/126	1	89/126
3.22	10	40539-02	Rod, 95/138	1	95/138
3.22	10	40539-03	Rod, 107/162	1	107/162
3.22	10	40539-04	Rod, 119/186	1	119/186
3.22	11K	NSS	O ring	1	
3.22	12K	NSS	Ring, backup	1	
3.22	13	40068-00	Bearing	1	
3.22	14K	NSS	Ring, wear	1	
3.22	15K	NSS	Seal	1	
3.22	16K	NSS	Wiper	1	
3.22	17	41534-00	Kit, seal	1	

(CONTAINS ITEMS MARKED WITH "K")

FIG #	ITEM #	PART #	NAME	# FOR ASSY.	UNIT
3.28	1	49594-02	Diagnostic	1	
3.28	2	49649-02	Reducer	1	
3.28	3	49604-01	O ring	1	
3.28	4	49651-02	Tee	1	
3.28	5	49604-02	O ring	1	
3.28	6	12391-06	O ring	1	
3.28	7	49642-04	Hose	1	
3.28	8	49596-00	Valve, relief	1	
3.28	9	49651-01	Tee	2	
3.28	10	49604-01	O ring	2	
3.28	11	12391-05	O ring	1	
3.28	12	42019-00	Valve, relief	1	
3.28	13	49652-01	Tee	1	
3.28	14	12391-05	O ring	1	
3.28	15	49604-01	O ring	1	
3.28	16	49597-01	Elbow, 90°	2	
3.28	17	12391-05	O ring	1	
3.28	18	42018-00	Tee	1	
3.28	19	49604-01	O ring	2	
3.28	20	49517-12	Hose	1	
3.28	21	49430-00	Hose	1	
3.28	22	49430-03	Hose	1	
3.28	23	49656-01	Adapter	3	
3.28	24	49604-01	O ring	1	
3.28	25	12391-05	O ring	1	
3.28	26	49653-01	Elbow, 90°	3	
3.28	27	49604-01	O ring	1	
3.28	28	12391-05	O ring	1	
3.28	29	42062-00	Valve assembly, 24 Volt (See Fig.# 3.29)	1	24 VOLT
3.28	29	42062-01	Valve assembly, 36 Volt (See Fig.# 3.29)	1	36 VOLT
3.28	30	-----	Reservoir assembly (See Fig.# 3.7)	1	
3.28	31	49623-01	Elbow, 90°	1	
3.28	32	49604-01	O ring	1	
3.28	33	40795-01	Torque generator assembly (See Fig.# 3.8)	1	
3.28	34	49654-01	Elbow, 90°	2	
3.28	35	12391-05	O ring	1	
3.28	36	49604-01	O ring	1	
3.28	37	49642-08	Hose	1	
3.28	38	49956-02	Filter assembly	1	
3.28	39	201435	Element, filter	1	
3.28	40	49666-12	Reducer	2	
3.28	41	12391-08	O ring	1	
3.28	42	11009-04	Lockwasher	2	
3.28	43	11045-03	Screw, cap	2	
3.28	44	52-05104-00	Guard, hose	As Req'd.	
3.28	45	25332-01	Tie, wire	4	
3.28	46	52-05054-00	Hose (.8 feet)	As Req'd.	
3.28	47	14859-04	Clamp, hose	2	
3.28	48	49674-01	Elbow, beaded	1	
3.28	49	12391-07	O ring	1	
3.28	50	49517-08	Hose	1	
3.28	51	49656-10	Adapter	1	
3.28	52	49604-01	O ring	1	
3.28	53	12391-03	O ring	1	
3.28	54	49517-02	Hose	1	
3.28	55	300333-000	Auxiliary pump & motor assy., 24 VOLT (See Fig.# 3.5)	1	24 VOLT
3.28	55	300334-000	Auxiliary pump & motor assy., 36 VOLT (See Fig.# 3.5)	1	36 VOLT

FIG #	ITEM #	PART #	NAME	# FOR ASSY.	UNIT
4.2	1	26270-00	Decal	1	
4.2	2	14944-00	Knob	1	
4.2	3	11813-07	Grommet	1	
4.2	4	40237-00	Cover, seat panel	1	
4.2	5	40274-00	Rod	1	
4.2	6	11806-08	Nut, jam	1	
4.2	7	49916-00	Yoke, end	1	
4.2	8	11135-06	Pin with cotter pin	1	
4.2	9	40940-00	Spacer	2	
4.2	10	11143-16	Screw, cap	2	
4.2	11	11016-03	Washer, flat	4	
4.2	12	40275-01	Bar	1	
4.2	13	11261-06	Nut	2	
4.2	14	11170-04	Nut	2	
4.2	15	11045-08	Screw, cap	2	
4.2	16	40414-00	Block	1	
4.2	17	-----	Connector assembly (See Fig.# 2.19)	1	
4.2	18	11880-08	Screw, machine	2	
4.2	19	41642-00	Plate	1	
4.2	20	20323-00	Switch	1	
4.2	21	41790-00	Plate, switch	1	
4.2	22	14986-03	Nut, twin	1	

FIG #	ITEM #	PART #	NAME	# FOR ASSY.	UNIT
4.7	1	11143-05	Screw, cap	2	
4.7	2	40796-00	Bracket, pump	1	
4.7	3	11143-06	Screw, cap	2	
4.7	4	49891-00	Mount, shock	2	
4.7	5	300333-000	Pump and motor assembly, 24 volt (See Fig.# 3.5)	1	24 VOLT
4.7	5	300334-000	Pump and motor assembly, 36 volt (See Fig.# 3.5)	1	36 VOLT
4.7	6	20904-01	Bumper	3	
4.7	7	11143-02	Screw, cap	2	
4.7	8	11016-03	Washer, flat	6	
4.7	9	11261-08	Nut	2	
4.7	10	11261-06	Nut	2	
4.7	11	41138-00	Bracket, mounting	1	

FIG #	ITEM #	PART #	NAME	# FOR ASSY.	UNIT
4.12	1	40165-00	Cap, hub	1	
4.12	2	49745-13	Nut	1	
4.12	3	49743-09	Pin, cotter	1	
4.12	4	11016-09	Washer, flat	1	
4.12	5	11205-22	Bearing	1	
4.12	6	40992-00	Flange	1	
4.12	7	40993-01	Bearing	1	
4.12	8	40996-00	Spindle assembly	1	
4.12	9	40991-00	Pin	1	
4.12	10	11160-11	Fitting, grease	2	
4.12	11	11073-23	Pin, roll	2	
4.12	12	11857-06	Washer, flat	4	
4.12	13	11782-05	Bearing, thrust	4	
4.12	14	11695-08	Bearing, flange	2	
4.12	15	49800-00	Bearing	2	
4.12	16	49799-00	Sleeve	2	
4.12	17	11856-21	Screw, cap	2	
4.12	18	40762-00	Axle	2	
4.12	19	40768-00	Arm, right (Shown)	1	
4.12	19	40768-01	Arm, left (Not Shown)	1	
4.12	20	49972-06	Ring, nelos	4	
4.12	21	11205-01	Bearing	4	
4.12	22	40721-00	Wheel	2	
4.12	23	22005-06	Washer	2	
4.12	24	11828-06	Lockwasher	2	
4.12	25	11829-06	Nut	2	
4.12	26	11831-07	Nut	2	
4.12	27	49798-00	Retainer	2	
4.12	28	49797-02	Spring	2	

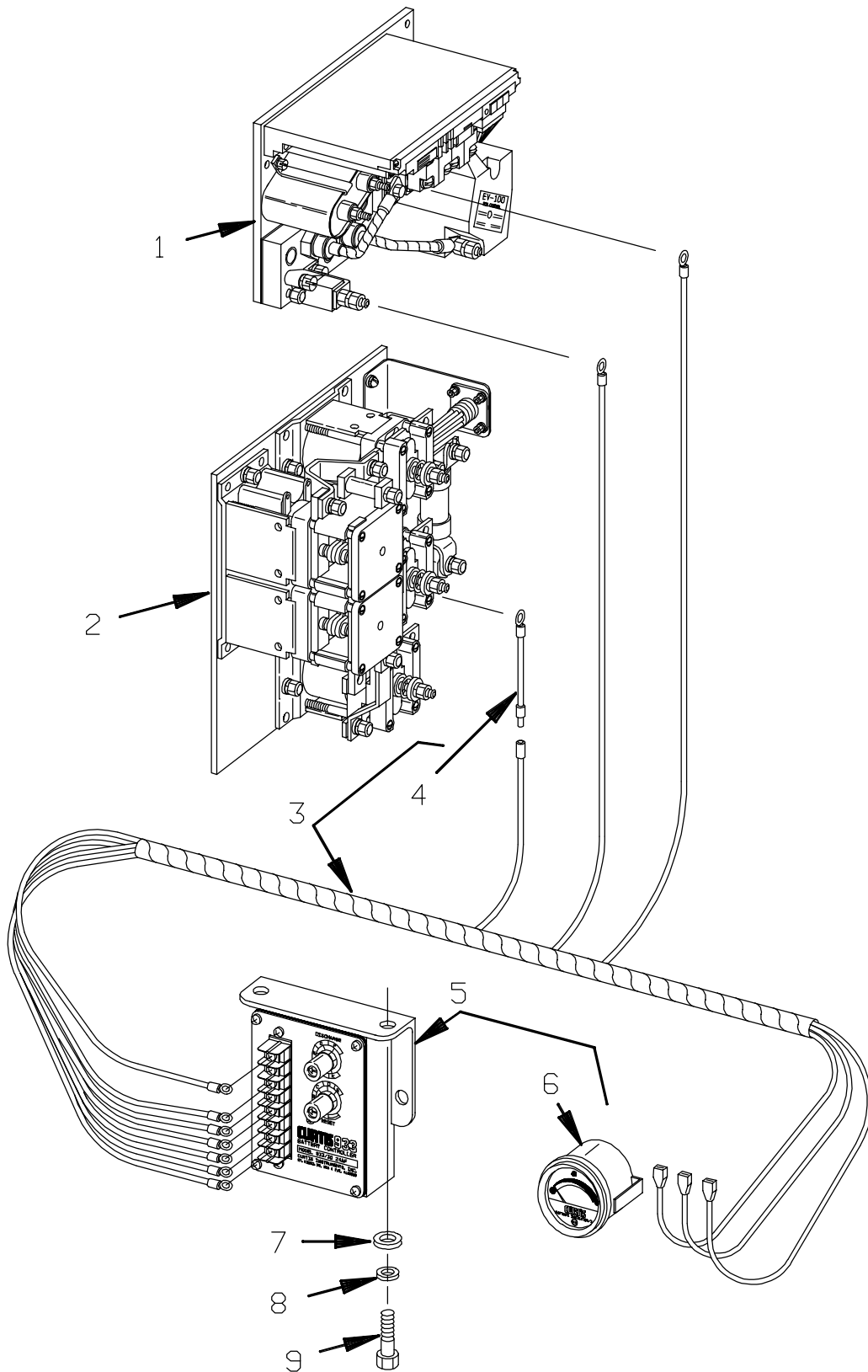
FIG #	ITEM #	PART #	NAME	# FOR ASSY.	UNIT
5.4	1	40542-00	Guide assembly	1	
5.4	2	49929-03	Bushing	2	
5.4	3	40540-00	Guide	1	
5.4	4	49843-00	Screw, cap	1	
5.4	5	11890-03	Pin, dowel	2	
5.4	6	30553-06	Washer, shim	5	
5.4	7	49994-01	Bearing, rooler	2	
5.4	8	49993-02	Race, inner	2	
5.4	9	41587-00	Sheave, chain	1	
5.4	10	41585-00	Sheave, cable	1	
5.4	11	41581-00	Shaft	1	
5.4	12	11160-09	Fitting, grease	2	
5.4	13	40534-01	Cylinder assembly (See Fig.# 3.22)	1	89/126
5.4	13	40534-02	Cylinder assembly (See Fig.# 3.22)	1	95/138
5.4	13	40534-03	Cylinder assembly (See Fig.# 3.22)	1	107/162
5.4	13	40534-04	Cylinder assembly (See Fig.# 3.22)	1	119/186
5.4	14	40045-00	Sheave	1	
5.4	15	30553-05	Washer, shim	1	
5.4	16	11016-08	Washer, flat	1	
5.4	17	11831-06	Nut	1	

FIG #	ITEM #	PART #	NAME	# FOR ASSY.	UNIT
5.9	1	40225-00	Guard, overhead	1	
5.9	1	41630-00	Guard, 89/192, 95/210 overhead	1	89/192 95/210
5.9	2	11170-12	Nut	1	
5.9	3	14992-08	Screw, cap	4	
5.9	4	11143-19	Screw, cap	4	
5.9	5	41171-00	Tube	1	
5.9	6	14674-00	Washer	1	
5.9	7	11170-06	Nut	1	
5.9	8	-----	Column, outer (See Fig.# 5.15)	1	
5.9	9	NA	Laminated safety sheet gless S.A.E. J-673 30 ¹ / ₈ "x33 ³ / ₄ "x .234" (Secure this part locally)	1	
5.9	10	41084-00	Channel	2	
5.9	10	41084-01	Channel, 89/192, 95/210	2	89/192 95/210
5.9	11	40228-03	Channel	1	
5.9	12	40467-00	Channel, windshield	1	
5.9	13	40486-00	Screen (COLD STORAGE)	1	cold storage
5.9	14	11271-14	Screw, set	4	
5.9	15	11271-15	Screw, set	4	
5.9	16	11016-06	Washer	2	
5.9	17	14992-17	Screw, cap	2	
5.9	18	49925-01	Shim, .250"	As Req'd.	
5.9	18	49925-02	Shim, .125"	As Req'd.	
5.9	18	49925-03	Shim, .062"	As Req'd.	
5.9	19	-----	Column, intermediate (See Fig.# 5.14)	1	
5.9	20	-----	Column, inner (See Fig.# 5.12)	1	
5.9	21	30554-00	Pin with cotter pin	4	
5.9	22	40472-00	Sideshifter assembly (See Fig.# 5.20)	1	
5.9	23	-----	Single reach assembly (See Fig.# 5.16)	1	
5.9	23	-----	Double reach assembly (See Fig.# 5.18)	1	
5.9	24	25008-01	Fork, 30" (See Fig.# 5.21)	2	
5.9	24	25008-02	Fork, 36" (See Fig.# 5.21)	2	
5.9	24	25008-03	Fork, 42" (See Fig.# 5.21)	2	
5.9	24	25008-04	Fork, 48" (See Fig.# 5.21)	2	
5.9	25	52-05007-00	Edge, rubber (COLD STORAGE)	As Req'd.	cold storage



FIG #	ITEM #	PART #	NAME	# FOR ASSY.	UNIT
5.14	1	11073-35	Pin, roll	6	
5.14	2	40357-02	Pin	2	
5.14	3	41700-00	Frame, rear standard	1	
5.14	3	40589-00	Frame, rear 20" bearing	1	95/210
5.14	4	40358-02	Screw, special	2	
5.14	5	40355-02	Arm, outer left hand	1	
5.14	6	49925-04	Shim, .187"	As Req'd.	
5.14	6	49925-05	Shim, .125"	As Req'd.	
5.14	6	49925-06	Shim, .062"	As Req'd.	
5.14	7	40103-02	Bearing	4	
5.14	8	40103-03	Bearing	2	
5.14	9	40104-00	Bearing, thrust	4	
5.14	10	-----	Cylinder, left reach (See Fig.# 3.15)	1	
5.14	11	-----	Cylinder, right reach (See Fig.# 3.15)	1	
5.14	12	11073-22	Pin, roll	2	
5.14	13	40356-00	Nut	2	
5.14	14	49967-13	Shim, .005"	As Req'd.	
5.14	14	49967-14	Shim, .015"	As Req'd.	
5.14	15	40357-01	Pin	2	
5.14	16	-----	Frame, front (See Fig.# 5.17)	1	
5.14	17	40358-01	Screw, special	2	
5.14	18	40359-00	Pin, roll	2	
5.14	19	11160-11	Fitting, grease	10	
5.14	20	11852-21	Screw, flat head	4	
5.14	21	40354-00	Cap	4	
5.14	22	49940-00	Rearing, roller	4	
5.14	23	40355-01	Arm, outer right hand	1	
5.14	24	40345-00	Arm, inner	1	
5.14	25	11073-04	Pin, roll	4	
5.14	26	13813-30	Pin	4	
5.14	27	11852-02	Screw, flat head	2	
5.14	28	40548-00	Washer	2	
5.14	29	49832-00	Bearing	6	
5.14	30	11857-10	Shim, .050"	As Req'd.	
5.14	30	11857-11	Shim, .025"	As Req'd.	

FIGURE # 7.5 BATTERY LIFT INTERRUPT INSTALLATION



MODEL RR-34 ELECTRIC REACH TRUCK

NUMERICAL INDEX

<u>PART #</u>	<u>FIG. #</u>	<u>ITEM #</u>	<u>PART #</u>	<u>FIG.#</u>	<u>ITEM #</u>
12391-08	3.21	16	14908-28	1.4	44
12391-08	3.23	12	14910-02	2.7	5
12391-08	3.23	46	14911-03	4.4	50
12391-08	3.23	15	14911-03	4.13	51
12391-08	3.28	41	14911-06	2.7	2
12391-08	3.3	36	14913-03	6.13	1
12391-08	6.10	27	14913-04	6.13	4
12391-08	6.10	34	14915-03	6.13	20
12391-08	6.10	3	14915-05	4.6	2
12391-10	3.16	14	14915-05	4.5	2
12391-12	3.7	6	14939-00	4.4	3
12459-00	1.4	15	14944-00	4.2	2
13282-00	1.2	15	14944-00	4.2	2
13813-30	5.14	26	14961-00	3.7	2
13813-30	5.5	26	14986-03	2.33	*
13813-31	5.6	13	14986-03	4.2	22
13813-31	5.15	13	14986-03	4.3	9
13857-01	3.25	1	14989-00	1.4	2
13857-01	3.22	6	14989-17	4.8	7
14674-00	5.9	6	14989-18	1.1	1
14813-00	4.3	17	14992-08	5.1	3
14835-07	5.11	2	14992-08	5.9	3
14835-18	5.13	4	14992-17	5.9	17
14835-24	5.13	4	14992-17	5.1	15
14835-27	5.11	2	14993-10	4.3	6
14835-33	5.13	4	14993-20	4.4	32
14835-34	5.13	4	14993-20	4.13	33
14835-35	5.13	4	14993-20	5.12	14
14835-36	5.11	2	14993-30	4.4	17
14835-37	5.11	2	14993-30	4.13	18
14835-38	5.11	2	14994-04	5.10	12
14835-39	5.11	2	14994-05	4.8	20
14835-44	5.3	3	14994-05	5.12	23
14835-45	5.3	3	14994-06	1.1	3
14835-45	5.11	2	14994-06	5.6	8
14835-46	5.3	3	14994-06	5.15	8
14835-46	5.11	2	14994-07	1.1	6
14835-47	5.3	3	14994-10	5.12	13
14835-48	5.13	4	14994-11	4.6	6
14835-49	5.13	4	14994-11	4.5	6
14835-56	5.11	2	15677-04	3.23	56
14835-63	5.13	4	15677-08	1.2	17
14835-64	5.13	4	15677-08	2.9	7
14835-75	5.13	4	15677-08	2.7	9
14835-76	5.11	2	15677-08	6.4	7
14848-03	3.16	13	15677-08	6.5	8
14851-02	4.1	18	20121-01	4.5	20
14851-02	6.13	12	20121-01	4.6	20
14859-04	3.3	45	20148-01	4.13	59
14859-04	3.16	2	20151-00	2.5	3
14859-04	3.28	47	20151-00	2.6	4
14892-01	4.3	18	20151-00	2.33	4
14892-04	5.1	10	20151-00	4.4	12
14908-08	3.15	17	20151-00	4.13	13
14908-08	3.13	16	20163-94	6.7	5
14908-12	1.3	13	20188-00	4.13	60
14908-16	1.4	1	20323-00	4.2	20

MODEL RR-34 ELECTRIC REACH TRUCK

NUMERICAL INDEX

<u>PART #</u>	<u>FIG. #</u>	<u>ITEM #</u>	<u>PART #</u>	<u>FIG.#</u>	<u>ITEM #</u>
49712-02	7.5	5	49885-01	6.13	8
49717-01	3.23	62	49886-09	2.11	8
49717-01	4.4	23	49886-09	6.6	4
49717-01	4.13	24	49887-01	4.4	4
49717-02	6.13	17	49891-00	4.7	4
49717-02	6.5	6	49892-01	4.1	15
49728-00	0.1	4	49892-10	4.4	19
49743-09	4.12	3	49892-10	4.13	20
49745-13	4.12	2	49895-00	0.1	7
49751-04	4.4	51	49899-00	0.1	8
49751-04	4.13	52	49908-00	1.2	28
49751-06	4.3	19	49910-02	4.11	8
49761-11	4.8	7	49910-03	4.10	8
49770-00	4.4	8	49910-03	4.9	8
49770-01	4.4	6	49914-00	4.8	5
49771-00	2.5	15	49916-00	4.2	7
49776-00	6.10	26	49916-00	4.2	7
49785-01	5.6	16	49919-02	4.3	2
49785-01	5.15	16	49919-03	4.5	1
49794-00	2.33	6	49919-03	4.6	1
49794-00	1.2	38	49922-01	4.1	12
49794-00	2.6	5	49922-01	4.4	9
49797-02	4.12	28	49922-01	4.13	10
49798-00	4.12	27	49925-01	5.1	16
49799-00	4.12	16	49925-01	5.9	18
49800-00	4.12	15	49925-02	5.9	18
49819-00	4.3	15	49925-02	5.1	16
49830-00	2.5	6	49925-03	5.9	18
49830-01	2.5	6	49925-03	5.1	17
49831-00	2.5	14	49925-04	5.14	6
49832-00	5.10	5	49925-04	5.5	6
49832-00	5.12	19	49925-05	5.14	6
49832-00	5.13	7	49925-05	5.5	6
49832-00	5.14	29	49925-06	5.14	6
49837-00	5.13	1	49925-06	5.5	6
49837-00	5.3	6	49928-07	1.3	34
49837-00	5.11	4	49929-01	3.13	20
49843-00	5.4	4	49929-03	5.4	2
49852-02	6.7	2	49940-00	5.5	22
49852-03	2.19	3	49940-00	5.14	22
49853-04	2.19	4	49941-01	5.11	17
49854-02	2.19	2	49953-01	3.31	9
49854-02	6.7	1	49956-02	3.3	33
49854-05	2.19	2	49956-02	3.28	38
49855-16	6.3	4	49965-00	2.6	8
49855-16	6.6	2	49965-00	4.3	8
49855-22	2.11	6	49966-01	1.4	43
49855-22	2.19	1	49966-02	1.3	14
49855-24	2.19	1	49966-12	3.3	35
49856-27	2.11	12	49967-01	1.4	39
49856-49	6.7	3	49967-02	1.4	39
49856-85	6.7	4	49967-03	1.4	39
49856-86	6.6	7	49967-04	1.4	9
49861-05	2.8	4	49967-05	1.4	9
49861-05	2.9	4	49967-06	1.4	9
49861-05	6.4	4	49967-07	1.3	19
49878-01	0.1	15	49967-08	1.3	19

ALPHABETICAL INDEX

NAME	FIG.#	PAGE #
<u>F, G, H</u>		
Five Inch High Articulating Load Wheel Assembly	4.10	4.19
Five Inch High Articulating Load Wheel Assembly	4.10A	4.19A
Forward Steering Control Assembly	4.5	4.9
Four Inch High Articulating Load Wheel Assembly	4.11	4.21
Four Inch High Articulating Load Wheel Assembly	4.11A	4.21A
Hand Lift/Lower and Speed Control	4.4	4.7
Hand Lift/Lower and Speed Control for 3 Function Control	4.13	4.25
Hydraulic Schematic	3.1	3.1
Hydraulic Schematic for 3 Function Control Handle	3.26	3.49
Hydraulic Schematic Symbols	3.2	3.2
Hydraulic Schematic Symbols	3.27	3.50
Hydraulic Reservoir Assembly	3.7	3.11
<u>I, J, K, L</u>		
Lift Control Valve Assembly	3.20	3.37
Lift Pump Assembly, 24 VOLT "E"&"EE" & 36 VOLT "EE"	3.18	3.33
Lift Pump Assembly, 36 VOLT "E"	3.19	3.25
Lift Pump Contactor Assembly	2.17	2.29
Lift Pump Motor Assembly	3.17	3.31
Lift Pump Motor Assembly, 24 Volt	3.20	3.35
Lift Pump Motor Assembly, 36 Volt	3.20	3.35
Lift Pump Motor Assembly, 36 Volt	3.20A	3.35A
Lift Pump and Reservoir Assembly	3.16	3.29
Limit Switch Wiring Assembly	2.7	2.9
<u>M, N, O, P</u>		
Main Frame and Load Wheel Assembly	4.8	4.15
Numerical Index	*	99.1
Power Connector Assembly	2.19	2.33
<u>Q, R</u>		
Reach Cable Assembly	2.10	2.15
Reach Cylinder Assembly	3.13	3.23
Reach Diverter Valve Assembly	3.12	3.21
Rearward Steering Control Assembly	4.6	4.11
Remote Lift/Lower Connector Assembly	6.7	6.11
Remote Lift/Lower EV-100 LX SCR Electrical Schematic	6.1	6.1
Remote Lift/Lower EV-100 LX SCR Electrical Schematic Symbols	6.2	6.2
Remote Lift/Lower Hydraulic Diagram	6.10	6.15
Remote Lift/Lower Hydraulic Schematic	6.8	6.13
Remote Lift/Lower Hydraulic Schematic Symbols	6.9	6.14
Remote Lift/Lower Load Backrest Installation	6.13	6.21
Remote Lift/Lower Power Component Wiring	6.6	6.9
Remote Lift/Lower Reach and Platform Cable Assembly	6.5	6.7
Remote Lift/Lower Three Stage Mast Cable Assembly	6.4	6.5
Remote Lift/Lower Wiring Harness Assembly	6.3	6.3
Remote Lift/Lower Valve Assembly	6.12	6.19
Remote Lift/Lower Valve Assembly, Blocking	6.11	6.17

FIG #	ITEM #	PART #	NAME	# FOR ASSY.	UNIT
1.3	1	11160-01	Fitting, grease	2	
1.3	2	40688-00	Yoke	1	
1.3	3	41648-00	Plate	1	
1.3	4	11143-03	Screw, cap	4	
1.3	5	49972-02	Ring	1	
1.3	6	40005-00	Pin	1	
1.3	7	11205-15	Bearing	1	
1.3	8	49969-01	Shim, .005	As Req'd	
1.3	8	49969-02	Shim, .007	As Req'd	
1.3	8	49969-03	Shim, .010	As Req'd	
1.3	8	49969-04	Shim, .020	As Req'd	
1.3	9	11015-16	O ring	1	
1.3	10	40473-00	Gear and pinion set (See Fig.# 1.4 for Gear)	1	
1.3	11	40023-00	Piston	1	
1.3	12	11827-14	Ring, retainer	1	
1.3	13	14908-12	Locknut	1	
1.3	14	49966-02	Washer	1	
1.3	15	11890-05	Pin	2	
1.3	16	-----	Transmission assembly (See Fig.# 1.4)	1	
1.3	17	11872-02	Bolt, wheel	8	
1.3	18	11827-15	Ring, retainer	1	
1.3	19	49967-07	Shim, .005	As Req'd	
1.3	19	49967-08	Shim, .007	As Req'd	
1.3	19	49967-09	Shim, .010	As Req'd	
1.3	19	49967-10	Shim, .060	As Req'd	
1.3	20	11205-18	Bearing	1	
1.3	21	49972-04	Ring	1	
1.3	22	49973-01	Locknut	2	
1.3	23	49974-01	Lockwasher	1	
1.3	24	40756-00	Sprocket assembly	1	
1.3	25	NSS	Sprocket	2	
1.3	26	NSS	Collar	1	
1.3	27	11854-03	Screw, cap	2	
1.3	28	40754-00	Bolt, fit	2	
1.3	29	11854-03	Screw, cap	4	
1.3	30	49968-00	Bearing set	1	
1.3	31	49972-01	Ring	1	
1.3	32	22012-05	Elbow, 90°	1	
1.3	33	12391-07	O ring	1	
1.3	34	49928-07	Cap	1	
1.3	35	11241-01	Elbow, 90°	1	
1.3	36	11459-00	Vent, air	1	
1.3	37	11801-00	Nut, wheel	8	
1.3	38	40267-00	Wheel, drive	1	
1.3	39	40004-00	Wheel, hub	1	
1.3	40	46266-00	Tire, rubber	1	



FIG #	ITEM #	PART #	NAME	# FOR ASSY.	UNIT
2.6	1	49399-00	Control, EV-100LX SCR TX panel (See Fig.# 2.12)	1	TX panel
2.6	1	49399-01	Control, EV-100LX SCR TT panel (See Fig.# 2.12)	1	TT panel
2.6	2	26204-00	Meter, hour	1	
2.6	3	23228-01	Indicator, 24 volt battery discharge (BDI)	1	24 volt
2.6	3	23228-02	Indicator, 36 volt battery discharge (BDI)	1	36 volt
2.6	4	20151-00	Switch, key	1	
2.6	5	49794-00	Switch, brake	1	
2.6	5	41464-00	Switch, manlift brake	1	
2.6	6	41361-00	Valve, lift control (See Fig.# 3.20)	1	
2.6	7	41331-00	Valve, auxiliary control (See Fig.# 3.4)	1	
2.6	8	49965-00	Switch, auxiliary	2	
2.6	9	40416-00	Handle assembly (See Fig.# 4.4)	1	
2.6	10	27303-00	Switch, master	1	
2.6	11	29304-00	Potentiometer	1	
2.6	12	49607-00	Diode	2	
2.6	13	41771-00	Harness, wiring	1	
2.6	14	26618-04	Spacer	1	
2.6	15	23309-01	Horn, 24 volt	1	24 volt
2.6	15	23309-02	Horn, 36 volt	1	36 volt
2.6	16	11170-05	Nut	1	
2.6	17	49605-00	Filter, horn	1	
2.6	18	11045-03	Screw, cap	2	
2.6	19	11016-01	Washer, flat	2	
2.6	20	11009-04	Lockwasher	2	
2.6	21	49283-00	Alarm, travel	1	

FIG #	ITEM #	PART #	NAME	# FOR ASSY.	UNIT
2.11	1	49399-00	Control, EV-100LX SCR TX panel (See Fig.# 2.12)	1	TX PANEL
2.11	1	49399-01	Control, EV-100LX SCR TT panel (See Fig.# 2.12)	1	TT PANEL
2.11	2	11016-12	Washer, flat	3	
2.11	3	11009-05	Lockwasher	3	
2.11	4	11261-05	Nut	2	
2.11	5	11170-04	Nut	2	
2.11	6	49855-22	Connector assembly (See Fig.# 2.19)	1	
2.11	7	11813-03	Grommet, rubber	2	
2.11	8	49886-09	Screw, cap	2	
2.11	9	49856-116	Cable	1	
2.11	10	49856-117	Cable	2	
2.11	11	27900-00	Motor, "E"&"EE" 24 Volt lift (See Fig.# 2.20)	1	24 Volt
2.11	11	301985-000	Motor, "E" 36 Volt lift (See Fig.# 2.20A)	1	"E" 36 Volt
2.11	11	27899-00	Motor, "EE" 36 Volt lift (See Fig.# 2.20)	1	"EE" 36 Volt
2.11	12	49856-27	Cable	1	
2.11	13	300666-000	Motor, 24 Volt auxiliary (See Fig.# 2.22)	1	24 Volt
2.11	13	300665-000	Motor, 36 Volt auxiliary (See Fig.# 2.22)	1	36 Volt
2.11	14	49856-113	Cable	1	
2.11	15	49856-115	Cable	1	
2.11	16	49856-112	Cable	2	
2.11	17	27901-00	Motor, 24 Volt drive (See Fig.# 2.21)	1	24 Volt
2.11	17	27902-00	Motor, 36 Volt drive (See Fig.# 2.21)	1	36 Volt
2.11	18	49856-114	Cable	1	
2.11	19	41757-01	Panel, 24 Volt contactor (See Fig.# 2.13 & 2.14)	1	24 Volt
2.11	19	41757-02	Panel, 36 Volt contactor (See Fig.# 2.13 & 2.14)	1	36 Volt
2.11	20	49856-118	Cable	1	
2.11	21	49856-119	Cable	1	
2.11	22	49856-104	Cable	1	
2.11	23	49545-00	Bracket	1	
2.11	24	11854-04	Screw, cap	1	

FIG #	ITEM #	PART #	NAME	# FOR ASSY.	UNIT
2.16	1	201962	Base, magnet	1	
2.16	2	200077	Coil, field	1	
2.16	3	201963	Frame, magnet	1	
2.16	4	201262	Spring (RED)	1	
2.16	5	201964	Armature	1	
2.16	6	200081	Base, buss	1	
2.16	7	201965	Tip, contact	2	
2.16	8	200096	Bushing	1	
2.16	9	200095	Carrier	1	
2.16	10	201966	Tip, movable	1	
2.16	11	201259	Cap	1	
2.16	12	201266	Spring (GOLD)	1	
2.16	13	201367	Washer, flat	1	
2.16	14	201215	Nut, lock	1	
2.16	15	201967	Clamp	2	
2.16	16	201368	Lockwasher	4	
2.16	17	201372	Screw, machine	4	
2.16	18	202004	Suppression, 1A contactor	1	
2.16	19	200094	Seat	1	

FIG ITEM		PART #	NAME	# FOR ASSY.	UNIT
#	#				
2.20A	1	300571-000	Screw, clamp	2	
2.20A	2	301327-034	Cover, brush	1	
2.20A	3	301327-035	Shield, end	1	
2.20A	4	300574-000	Terminal, crossover	1	
2.20A	5	300540-000	Washer, insul	2	
2.20A	6	300541-000	Bushing	1	
2.20A	7	300542-000	Gasket	2	
2.20A	8	300543-000	Washer, insul	1	
2.20A	9	300544-000	Washer	2	
2.20A	10	300545-000	Lockwasher	2	
2.20A	11	300546-000	Nut	4	
2.20A	12	301327-008	Screw, holder mounting	4	
2.20A	13	301327-006	Spring	4	
2.20A	14	301327-036	Holder, brush	1	
2.20A	15	301327-007	Screw, brush terminal	4	
2.20A	16	301327-037	Brush	4	
2.20A	17	300553-000	Bushing, insul	1	
2.20A	18	300554-000	Washer, insul	1	
2.20A	19	300555-000	Screw, pole	16	
2.20A	20	300556-000	Pole, main	4	
2.20A	21	301327-038	Coil, field	1	
2.20A	22	300558-000	Bearing, ball	1	
2.20A	23	301327-039	Armature	1	
2.20A	24	300560-000	Bearing, ball	1	
2.20A	25	301327-010	Washer, shim	1	
2.20A	26	300562-000	Washer, belleville	2	
2.20A	27	300563-000	Washer, spacer	1	
2.20A	28	301327-040	Shield, end	1	
2.20A	29	301327-013	Screw, clamp	4	

FIGURE # 2.27 "EE" EV-100LX TT SCR ELECTRICAL SCHEMATIC SYMBOLS

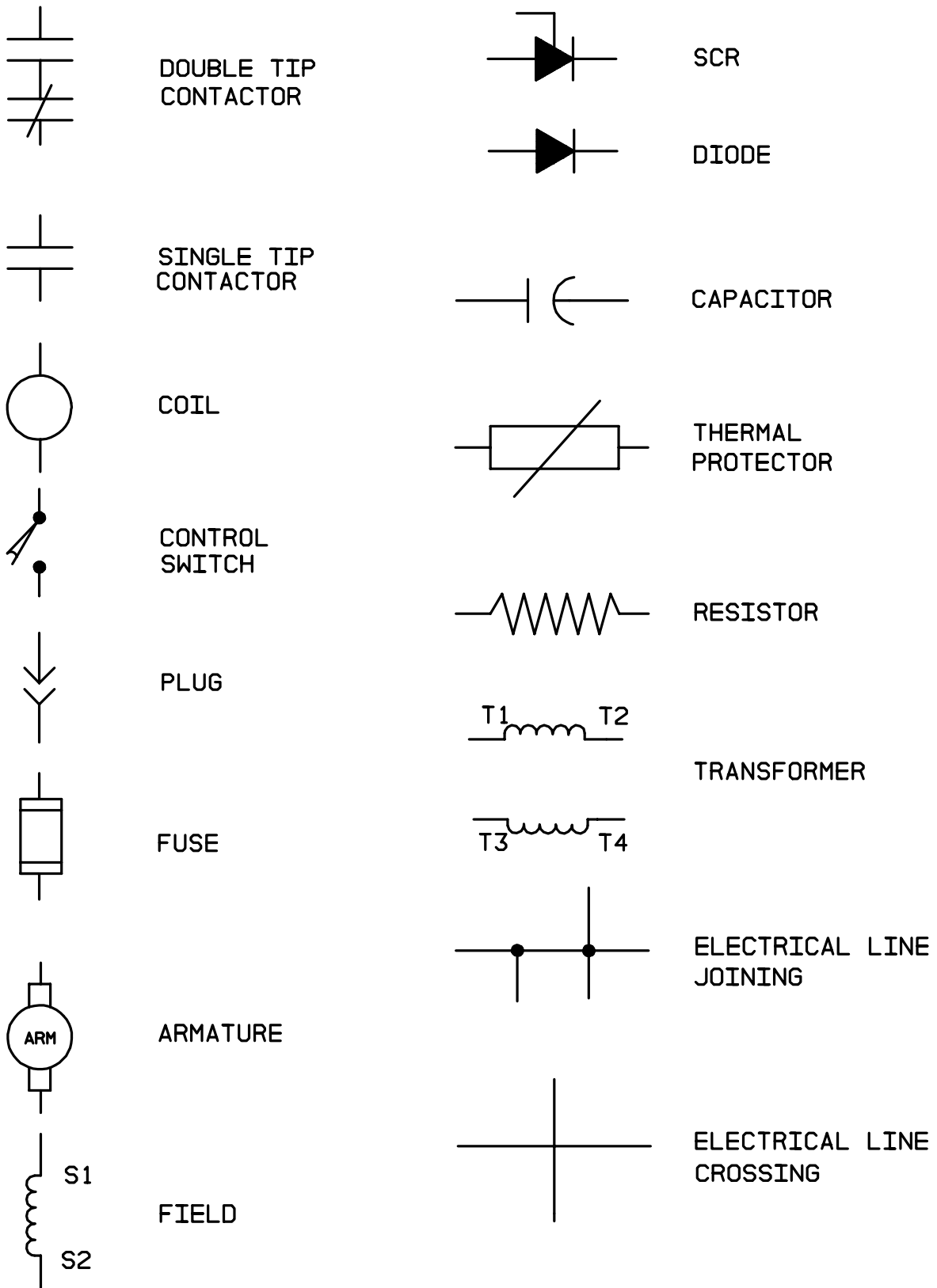


FIGURE # 3.2 HYDRAULIC SCHEMATIC SYMBOLS

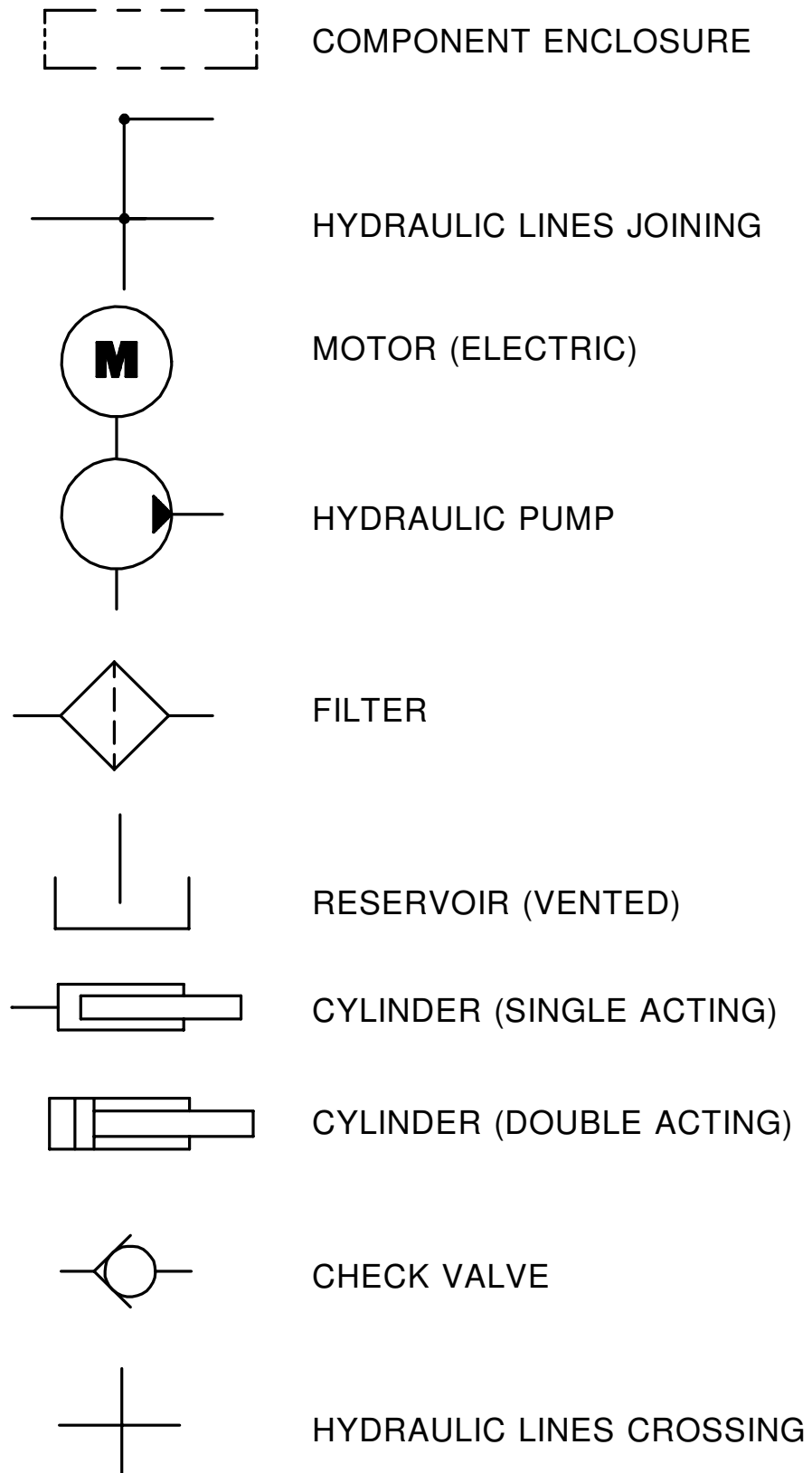


FIG #	ITEM #	PART #	NAME	# FOR ASSY.	UNIT
3.7	1	1-08759-00	Gage, sight	1	
3.7	2	14961-00	Breather	1	
3.7	3	41426-00	Reservoir	1	
3.7	4	40323-00	Screen	1	
3.7	5	12318-11	Plug	1	
3.7	6	12391-12	O ring	1	
3.7	7	11016-03	Washer, flat	2	
3.7	8	11143-08	Screw, cap	2	

FIG #	ITEM #	PART #	NAME	# FOR ASSY.	UNIT
3.12	1	12318-06	Plug	2	
3.12	1	12391-06	O ring	1	
3.12	2	41187-00	Valve, solenoid	4	
3.12	3	41230-00	Manifold	1	
3.12	4	12318-01	Plug	2	
3.12	5	12391-01	O ring	1	
3.12	6	12318-03	Plug	2	
3.12	7	12391-03	O ring	1	
3.12	K	200073	Kit, seal (for item #3)	1	

FIG ITEM		PART #	NAME	# FOR ASSY.	UNIT
#	#				
3.17	1	27900-00	Motor, 24 volt lift pump (See Fig.# 2.20)	1	24 volt
3.17	1	301985-000	Motor, "E" 36 volt lift pump (See Fig.# 2.20A)	1	"E" 36 volt
3.17	1	27899-00	Motor, "EE" 36 volt lift pump (See Fig.# 2.20)	1	"EE" 36 volt
3.17	2	41680-00	Pump, 24 volt lift (See Fig.# 3.18) "E"	1	"E" 24 volt
3.17	2	41997-00	Pump, 36 volt lift (See Fig.# 3.19) "E"	1	"E" 36 volt
3.17	2	41680-02	Pump, 24 volt lift (See Fig.# 3.18) "EE"	1	"EE" 24 volt
3.17	2	41680-00	Pump, 36 volt lift (See Fig.# 3.18) "EE"	1	"EE" 36 volt
3.17	3	11143-05	Screw, cap	2	
3.17	4	49509-00	Nut, clip	4	
3.17	5	11854-05	Screw, cap	4	
3.17	6	11016-12	Washer, flat	4	
3.17	7	31267-00	Grommet	4	

FIG #	ITEM #	PART #	NAME	# FOR ASSY.	UNIT
3.22	1	11897-03	Washer, seal	1	
3.22	2	49548-00	Screw	1	
3.22	3	40535-01	Tube, 89/126 cylinder	1	89/126
3.22	3	40535-02	Tube, 95/138 cylinder	1	95/138
3.22	3	40535-03	Tube, 107/162 cylinder	1	107/162
3.22	3	40535-04	Tube, 119/186 cylinder	1	119/186
3.22	4	40052-00	Nut	1	
3.22	5	40051-00	Plunger	1	
3.22	6	13857-01	Ball	1	
3.22	7	30612-01	Spring	1	
3.22	8	40047-00	Piston	1	
3.22	9K	NSS	Ring, wear	1	
3.22	10	40539-01	Rod, 89/126	1	89/126
3.22	10	40539-02	Rod, 95/138	1	95/138
3.22	10	40539-03	Rod, 107/162	1	107/162
3.22	10	40539-04	Rod, 119/186	1	119/186
3.22	11K	NSS	O ring	1	
3.22	12K	NSS	Ring, backup	1	
3.22	13	40068-00	Bearing	1	
3.22	14K	NSS	Ring, wear	1	
3.22	15K	NSS	Seal	1	
3.22	16K	NSS	Wiper	1	
3.22	17	41534-00	Kit, seal	1	

(CONTAINS ITEMS MARKED WITH "K")

FIG #	ITEM #	PART #	NAME	# FOR ASSY.	UNIT
3.28	1	49594-02	Diagnostic	1	
3.28	2	49649-02	Reducer	1	
3.28	3	49604-01	O ring	1	
3.28	4	49651-02	Tee	1	
3.28	5	49604-02	O ring	1	
3.28	6	12391-06	O ring	1	
3.28	7	49642-04	Hose	1	
3.28	8	49596-00	Valve, relief	1	
3.28	9	49651-01	Tee	2	
3.28	10	49604-01	O ring	2	
3.28	11	12391-05	O ring	1	
3.28	12	42019-00	Valve, relief	1	
3.28	13	49652-01	Tee	1	
3.28	14	12391-05	O ring	1	
3.28	15	49604-01	O ring	1	
3.28	16	49597-01	Elbow, 90°	2	
3.28	17	12391-05	O ring	1	
3.28	18	42018-00	Tee	1	
3.28	19	49604-01	O ring	2	
3.28	20	49517-12	Hose	1	
3.28	21	49430-00	Hose	1	
3.28	22	49430-03	Hose	1	
3.28	23	49656-01	Adapter	3	
3.28	24	49604-01	O ring	1	
3.28	25	12391-05	O ring	1	
3.28	26	49653-01	Elbow, 90°	3	
3.28	27	49604-01	O ring	1	
3.28	28	12391-05	O ring	1	
3.28	29	42062-00	Valve assembly, 24 Volt (See Fig.# 3.29)	1	24 VOLT
3.28	29	42062-01	Valve assembly, 36 Volt (See Fig.# 3.29)	1	36 VOLT
3.28	30	-----	Reservoir assembly (See Fig.# 3.7)	1	
3.28	31	49623-01	Elbow, 90°	1	
3.28	32	49604-01	O ring	1	
3.28	33	40795-01	Torque generator assembly (See Fig.# 3.8)	1	
3.28	34	49654-01	Elbow, 90°	2	
3.28	35	12391-05	O ring	1	
3.28	36	49604-01	O ring	1	
3.28	37	49642-08	Hose	1	
3.28	38	49956-02	Filter assembly	1	
3.28	39	201435	Element, filter	1	
3.28	40	49666-12	Reducer	2	
3.28	41	12391-08	O ring	1	
3.28	42	11009-04	Lockwasher	2	
3.28	43	11045-03	Screw, cap	2	
3.28	44	52-05104-00	Guard, hose	As Req'd.	
3.28	45	25332-01	Tie, wire	4	
3.28	46	52-05054-00	Hose (.8 feet)	As Req'd.	
3.28	47	14859-04	Clamp, hose	2	
3.28	48	49674-01	Elbow, beaded	1	
3.28	49	12391-07	O ring	1	
3.28	50	49517-08	Hose	1	
3.28	51	49656-10	Adapter	1	
3.28	52	49604-01	O ring	1	
3.28	53	12391-03	O ring	1	
3.28	54	49517-02	Hose	1	
3.28	55	300333-000	Auxiliary pump & motor assy., 24 VOLT (See Fig.# 3.5)	1	24 VOLT
3.28	55	300334-000	Auxiliary pump & motor assy., 36 VOLT (See Fig.# 3.5)	1	36 VOLT

FIG #	ITEM #	PART #	NAME	# FOR ASSY.	UNIT
4.2	1	26270-00	Decal	1	
4.2	2	14944-00	Knob	1	
4.2	3	11813-07	Grommet	1	
4.2	4	41784-01	Cover, seat panel	1	
4.2	4	41784-00	Cover, seat panel multi-function handle	1	
4.2	5	40274-00	Rod	1	
4.2	6	11806-08	Nut, jam	1	
4.2	7	49916-00	Yoke, end	1	
4.2	8	11135-06	Pin with cotter pin	1	
4.2	9	40940-00	Spacer	2	
4.2	10	11143-16	Screw, cap	2	
4.2	11	11016-03	Washer, flat	4	
4.2	12	40275-01	Bar	1	
4.2	13	11261-06	Nut	2	
4.2	14	11170-04	Nut	2	
4.2	15	11045-08	Screw, cap	2	
4.2	16	40414-00	Block	1	
4.2	17	-----	Connector assembly (See Fig.# 2.19)	1	
4.2	18	11880-08	Screw, machine	2	
4.2	19	41642-00	Plate	1	
4.2	20	20323-00	Switch	1	
4.2	21	41790-00	Plate, switch	1	
4.2	22	14986-03	Nut, twin	1	

FIG #	ITEM #	PART #	NAME	# FOR ASSY.	UNIT
4.7	1	11143-05	Screw, cap	2	
4.7	2	40796-00	Bracket, pump	1	
4.7	3	11143-06	Screw, cap	2	
4.7	4	49891-00	Mount, shock	2	
4.7	5	300333-000	Pump and motor assembly, 24 volt (See Fig.# 3.5)	1	24 VOLT
4.7	5	300334-000	Pump and motor assembly, 36 volt (See Fig.# 3.5)	1	36 VOLT
4.7	6	20904-01	Bumper	3	
4.7	7	11143-02	Screw, cap	2	
4.7	8	11016-03	Washer, flat	6	
4.7	9	11261-08	Nut	2	
4.7	10	11261-06	Nut	2	
4.7	11	41138-00	Bracket, mounting	1	

FIG ITEM		PART #	NAME	# FOR ASSY.	UNIT
#	#				
4.10A	1	11073-33	Pin, roll	1	
4.10A	2	40245-00	Axle	1	
4.10A	3	41159-00	Bracket	1	
4.10A	4	40247-00	Pin	1	
4.10A	5	40249-00	Plate	2	
4.10A	6	11016-09	Washer	4	
4.10A	7	40248-01	Shim, .005"	As Req'd.	
4.10A	7	40248-02	Shim, .010"	As Req'd.	
4.10A	7	40248-03	Shim, .062"	As Req'd.	
4.10A	7	40248-04	Shim, .031"	As Req'd.	
4.10A	8	49972-05	Seal, oil	4	
4.10A	9	11205-21	Bearing	4	
4.10A	10	40222-00	Wheel	2	
4.10A	11	11160-09	Fitting, grease	2	
4.10A	*	202154	Adapter for grease gun	1	

FIG #	ITEM #	PART #	NAME	# FOR ASSY.	UNIT
5.1	1	40514-00	Guard, overhead	1	
5.1	2	11170-12	Nut	4	
5.1	3	14992-08	Screw, cap	4	
5.1	4	-----	Column, inner (See Fig.#5.2)	1	
5.1	5	-----	Reach assembly (See Fig.# 5.5)	1	
5.1	6	25008-01	Fork, 30" (See Fig.# 5.8)	2	30 inch
5.1	6	25008-02	Fork, 36" (See Fig.# 5.8)	2	36 inch
5.1	6	25008-03	Fork, 42" (See Fig.# 5.8)	2	42 inch
5.1	6	25008-04	Fork, 48" (See Fig.# 5.8)	2	48 inch
5.1	7	30554-00	Pin	2	
5.1	8	11157-03	Pin, cotter	2	
5.1	9	40547-00	Plug	2	
5.1	10	14892-04	Screw, cap	2	
5.1	11	11890-10	Pin, dowel	2	
5.1	12	11009-06	Lockwasher	4	
5.1	13	40544-00	Stop	1	
5.1	14	40544-01	Stop	1	
5.1	15	14992-17	Screw, cap	2	
5.1	16	11016-06	Washer	2	
5.1	17	49925-01	Shim, .250"	As Req'd.	.250 inch
5.1	17	49925-02	Shim, .125"	As Req'd.	.125 inch
5.1	17	49925-03	Shim, .062"	As Req'd.	.062 inch
5.1	18	11271-15	Screw, set	4	
5.1	19	11271-14	Screw, set	4	
5.1	20	-----	Column, outer (See Fig.# 5.3)	1	
5.1	21	40228-05	Channel	1	
5.1	22	40467-01	Cushion, windshield	1	
5.1	23	41084-00	Channel	2	
5.1	23	41084-01	Channel, 95/138	2	95/138
5.1	24	NA	Laminated safety sheet gless S.A.E. J-673 26 ⁵ / ₈ "x33 ³ / ₄ "x .234" (Secure this part locally)	1	
5.1	25	11074-10	Pin, roll	2	
5.1	26	-----	Sideshifter assembly (See Fig.# 5.7)	1	
5.1	27	40486-01	Screen (Cold Storage)	1	cold storage
5.1	28	52-05007-00	Edge, rubber (Cold Storage)	As Req'd.	cold storage

FIG #	ITEM #	PART #	NAME	# FOR ASSY.	UNIT
5.6	1	41469-00	Cylinder, tilt (See Fig.# 3.15)	1	
5.6	2	40499-00	Spacer	2	
5.6	3	40980-00	Frame, front	1	
5.6	4	40641-00	Frame, fork	1	
5.6	5	40382-00	Pin	2	
5.6	6	11073-23	Pin, roll	2	
5.6	7	40988-01	Rest, load back	1	
5.6	8	14994-06	Screw, cap	4	
5.6	9	11852-14	Screw, flat head	4	
5.6	10	40593-00	Bar, wear	2	
5.6	11	40441-00	Shim, .060"	As Req'd.	.060 inch
5.6	12	11073-04	Pin, roll	2	
5.6	13	13813-31	Shaft	2	
5.6	14	11009-08	Lockwasher	4	
5.6	15	41559-00	Cylinder, tilt (See Fig.# 3.15)	1	
5.6	16	49785-01	Bumper	2	
5.6	17	40816-00	Spacer	2	
5.6	18	11857-06	Washer, shim	2	

FIG #	ITEM #	PART #	NAME	# FOR ASSY.	UNIT
5.11	1	30558-00	Anchor	2	
5.11	2	14835-36	Chain, 89/180 lift	2	89/180
5.11	2	14835-37	Chain, 89/192 lift	2	89/192
5.11	2	14835-37	Chain, 95/198 lift	2	95/198
5.11	2	14835-07	Chain, 95/210 lift	2	95/210
5.11	2	14835-27	Chain, 107/226 lift	2	107/226
5.11	2	14835-38	Chain, 111/240 lift	2	111/240
5.11	2	14835-39	Chain, 119/258 lift	2	119/258
5.11	2	14835-45	Chain, 127/276 lift	2	127/276
5.11	2	14835-46	Chain, 137/300 lift	2	137/300
5.11	2	14835-56	Chain, 143/318 lift	2	143/318
5.11	2	14835-76	Chain, 149/330 lift	2	149/330
5.11	3	30554-00	Pin with cotter pin	2	
5.11	4	49837-00	Nut, wheel	2	
5.11	5	11486-12	Nut, jum	2	
5.11	6	40092-01	Cylinder, 89/180 freelift (See Fig.# 3.25)	1	89/180
5.11	6	40092-10	Cylinder, 89/192 freelift (See Fig.# 3.25)	1	89/192
5.11	6	40092-02	Cylinder, 95/198 freelift (See Fig.# 3.25)	1	95/198
5.11	6	40092-11	Cylinder, 95/210 freelift (See Fig.# 3.25)	1	95/210
5.11	6	40092-03	Cylinder, 107/226 freelift (See Fig.# 3.25)	1	107/226
5.11	6	40092-04	Cylinder, 111/240 freelift (See Fig.# 3.25)	1	111/240
5.11	6	40092-05	Cylinder, 119/258 freelift (See Fig.# 3.25)	1	119/258
5.11	6	40092-06	Cylinder, 127/276 freelift (See Fig.# 3.25)	1	127/276
5.11	6	40092-07	Cylinder, 137/300 freelift (See Fig.# 3.25)	1	137/300
5.11	6	40092-08	Cylinder, 143/318 freelift (See Fig.# 3.25)	1	143/318
5.11	6	40092-09	Cylinder, 149/330 freelift (See Fig.# 3.25)	1	149/330
5.11	7	11160-09	Fitting, grease	2	
5.11	8	11831-06	Nut	1	
5.11	9	11016-08	Washer, flat	1	
5.11	10	30553-05	Washer, shim	1	
5.11	11	40045-00	Sheave	1	
5.11	12	49993-02	Race, inner	2	
5.11	13	49994-01	Bearing, roller	2	
5.11	14	30553-06	Washer, shim	5	
5.11	15	26519-02	Pin	1	
5.11	16	26389-00	Nut, spacer	1	
5.11	17	49941-01	Washer, belleville	6	
5.11	18	40565-00	Retainer	1	
5.11	19	11016-03	Washer, flat	2	
5.11	20	11143-03	Screw, cap	2	
5.11	21	41587-00	Sheave, chain	1	
5.11	22	41585-00	Sheave, cable	1	
5.11	23	41581-00	Shaft	1	

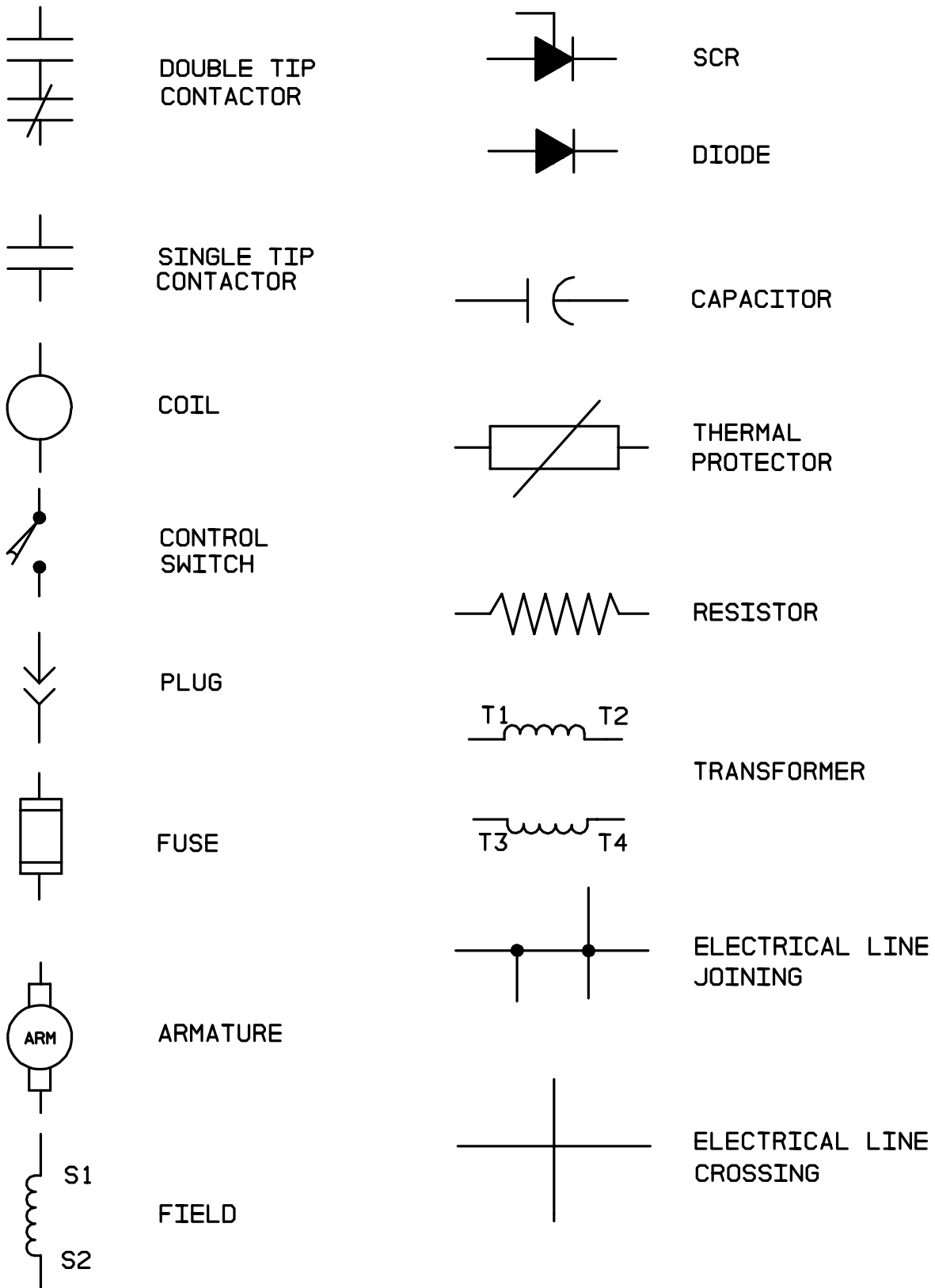
FIG #	ITEM #	PART #	NAME	# FOR ASSY.	UNIT
5.16	1	301790-007	Slide, top	5	
5.16	2	301790-019	Anchor, cylinder	1	
5.16	3	301790-008	Spacer	1	
5.16	4	49653-08	Fitting, 90°	1	
5.16	5	301790-009	Ring, retainer	2	
5.16	6	301790-006	Slide, lower	1	
5.16	7	301790-005	Nut	2	
5.16	8	301790-004	Hook, lower	4	
5.16	9	301790-002	Screw, set	2	
5.16	10	301790-001	Screw	2	
5.16	11	301790-003	Lockwasher	4	
5.16	12	NA	Frame, sideshifter	4	
5.16	13	301790-010	Nut	1	
5.16	14	301790-011	Spacer	1	
5.16	15	301790-012	Cylinder assembly, 2" CENTER STROKE	1	4.0" Cyd.
5.16	15	301790-013	Cylinder assembly, 3" CENTER STROKE	1	6.0" Cyd.
5.16	15	301790-014	Cylinder assembly, 4" CENTER STROKE	1	8.0" Cyd.
5.16	16K	NSS	Spacer, nylon	1	
5.16	17	301790-017	Spacer	1	
5.16	18K	NSS	Seal, gland	1	
5.16	19	301790-016	Retainer, wiper	1	
5.16	20K	NSS	Wiper, rod	1	
5.16	21	301790-015	Ring, retainer	1	
5.16	K	301790-018	Kit, seal	1	
			(CONTAINS ITEMS MARKED WITH "K")	1	

XX - SPECIFY MODEL AND SERIAL NUMBER WHEN ORDERING THIS PART.

FIG #	ITEM #	PART #	NAME	# FOR ASSY.	UNIT
6.5	1	41243-01	Coil, 24 volt	As Req'd	24 VOLT
6.5	1	41243-00	Coil, 36 volt	As Req'd	36 VOLT
6.5	2	49609-00	Plug	1	
6.5	3	49611-00	Receptacle	1	
6.5	4	49608-00	Socket	5	
6.5	5	49610-00	Pin	5	
6.5	6	49717-02	Nut	1	
6.5	7	11016-02	Washer, flat	1	
6.5	8	15677-08	Clamp, hose	1	
6.5	9	11954-03	Screw, cap	1	
6.5	10	41623-00	Harness, reach and platform	1	
6.5	11	41242-00	Valve, diverter (See Fig.# 3.12)	1	
6.5	12	26662-01	Switch, pushbotton	1	
6.5	13	49459-01	Switch, rocker (DPDT)	1	
6.5	14	49458-00	Switch, key (Set of Two KEYS)	1	
6.5	15	49459-00	Switch, rocket (SPDT)	1	

FIG #	ITEM #	PART #	NAME	# FOR ASSY.	UNIT
6.11	1	300269-000	Valve, N,O. cartridge	1	
6.11	2	300270-000	Kit, seal	1	
6.11	3	NSS	O ring	2	
6.11	4	NSS	O ring	2	
6.11	5	NSS	Ring, backup	1	
6.11	6	NA	Block	1	
6.11	7	300948-000	Coil, 24 volt solenoid	1	24 VOLT
6.11	7	300949-000	Coil, 36 volt solenoid	1	36 VOLT

FIGURE # 7.4 BATTERY LIFT INTERRUPT "EE" EV-100LX SCR ELECTRICAL SCHEMATIC SYMBOLS



MODEL RR-34B ELECTRIC REACK TRUCK

NUMERICAL INDEX

<u>PART #</u>	<u>FIG. #</u>	<u>ITEM #</u>	<u>PART #</u>	<u>FIG. #</u>	<u>ITEM #</u>
12391-07	3.23	49	14835-75	5.13	4
12391-07	3.21	23	14835-76	5.11	2
12391-07	3.28	49	14848-03	3.16	6
12391-07	3.21	18	14851-02	4.1	18
12391-07	6.10	24	14851-02	6.13	12
12391-07	6.10	28	14859-04	3.3	45
12391-08	3.23	46	14859-04	3.28	47
12391-08	3.28	41	14859-04	3.16	2
12391-08	3.16	10	14892-01	4.3	18
12391-08	3.23	15	14892-04	5.1	10
12391-08	3.21	16	14898-00	1.4	2
12391-08	3.23	12	14908-08	3.13	13
12391-08	3.3	36	14908-08	3.15	18
12391-08	6.10	34	14908-12	1.3	13
12391-08	6.10	27	14908-16	1.4	1
12391-08	6.10	3	14908-28	1.4	44
12391-10	3.16	7	14910-02	2.7	5
12391-12	3.7	6	14911-03	4.4	50
12459-00	1.4	15	14911-03	4.13	51
13282-00	1.2	15	14911-06	2.7	2
13813-30	5.14	26	14913-03	6.13	1
13813-30	5.5	26	14913-04	6.13	4
13813-31	5.6	13	14915-03	6.13	20
13813-31	5.15	13	14915-05	4.5	2
13857-01	3.25	7	14915-05	4.6	2
13857-01	3.22	6	14939-00	4.4	3
14674-00	5.9	6	14944-00	4.2	2
14810-03	3.16	3	14961-00	3.7	2
14810-04	3.16	5	14986-03	2.31	*
14813-00	4.3	17	14986-03	4.3	9
14835-07	5.11	2	14986-03	4.2	22
14835-18	5.13	4	14989-17	4.8	7
14835-24	5.13	4	14989-18	1.1	1
14835-27	5.11	2	14992-08	5.1	3
14835-33	5.13	4	14992-08	5.9	3
14835-34	5.13	4	14992-17	5.9	17
14835-35	5.13	4	14992-17	5.1	15
14835-36	5.11	2	14993-10	4.3	6
14835-37	5.11	2	14993-20	4.4	32
14835-38	5.11	2	14993-20	4.13	33
14835-39	5.11	2	14993-20	5.12	14
14835-44	5.3	3	14993-30	4.4	17
14835-45	5.3	3	14993-30	4.13	18
14835-45	5.11	2	14994-04	5.10	12
14835-46	5.3	3	14994-05	4.8	20
14835-46	5.11	2	14994-05	5.12	23
14835-47	5.3	3	14994-06	1.1	3
14835-48	5.13	4	14994-06	5.6	8
14835-49	5.13	4	14994-06	5.15	8
14835-56	5.11	2	14994-07	1.1	6
14835-63	5.13	4	14994-10	5.12	13
14835-64	5.13	4	14994-11	4.6	6

MODEL RR-34B ELECTRIC REACK TRUCK

NUMERICAL INDEX

<u>PART #</u>	<u>FIG. #</u>	<u>ITEM #</u>	<u>PART #</u>	<u>FIG. #</u>	<u>ITEM #</u>
41364-00	3.16	13	41602-00	2.9	17
41364-00	2.31	7	41602-00	6.4	17
41364-00	4.4	22	41602-01	2.9	18
41364-00	3.23	8	41602-01	6.4	18
41364-00	4.13	23	41610-00	6.13	5
41364-00	6.3	9	41614-00	6.13	9
41426-00	3.7	3	41614-01	6.13	10
41429-01	3.7	3	41616-00	6.13	15
41439-00	6.13	22	41622-00	6.3	8
41460-00	6.3	6	41622-00	6.4	20
41460-00	6.10	20	41623-00	6.5	10
41460-01	6.3	6	41623-00	6.4	13
41460-01	6.10	20	41624-00	6.10	14
41461-00	6.3	5	41627-00	6.13	2
41461-00	6.10	1	41628-00	6.13	3
41461-01	6.3	5	41630-00	5.9	1
41461-01	6.10	1	41642-00	4.2	19
41464-00	2.6	5	41648-00	1.3	3
41464-00	6.3	7	41666-00	4.8	18
41469-00	3.14	10	41680-00	3.17	2
41469-00	5.15	1	41680-00	3.16	8
41469-00	5.6	1	41680-02	3.16	8
41470-00	3.15	15	41680-02	3.17	2
41472-00	3.15	20	41693-01	5.13	8
41478-00	6.5	11	41693-02	5.13	8
41494-00	2.7	6	41693-03	5.13	8
41494-00	2.7	10	41693-04	5.13	8
41494-01	2.7	6	41693-05	5.13	8
41494-02	2.7	6	41693-06	5.13	8
41494-03	2.7	6	41693-07	5.13	8
41494-04	2.7	6	41693-08	5.13	8
41534-00	3.25	K	41693-09	5.13	8
41534-00	3.22	17	41693-16	5.13	8
41535-00	3.24	K	41694-01	5.12	20
41547-00	4.8	6	41694-02	5.12	20
41552-00	4.8	1	41694-03	5.12	20
41558-00	3.15	16	41694-04	5.12	20
41559-00	3.14	32	41694-05	5.12	20
41559-00	5.6	15	41694-06	5.12	20
41559-00	5.15	15	41694-07	5.12	20
41581-00	5.11	23	41694-08	5.12	20
41581-00	5.4	11	41694-09	5.12	20
41584-00	5.12	5	41694-16	5.12	20
41585-00	5.11	22	41694-17	5.12	20
41585-00	5.4	10	41695-00	5.10	1
41586-00	5.12	4	41695-01	5.10	1
41587-00	5.4	9	41695-02	5.10	1
41587-00	5.11	21	41695-03	5.10	1
41588-00	2.9	15	41695-04	5.10	1
41588-00	6.4	15	41695-05	5.10	1
41596-00	2.9	19	41695-06	5.10	1
41596-00	6.4	19	41695-07	5.10	1

CLICK HERE TO **DOWNLOAD** THE COMPLETE MANUAL

- Thank you very much for reading the preview of the manual.
- You can download the complete manual from: www.heydownloads.com by clicking the link below



- Please note: If there is no response to **CLICKING** the link, please download this PDF first and then click on it.

CLICK HERE TO **DOWNLOAD** THE COMPLETE MANUAL