

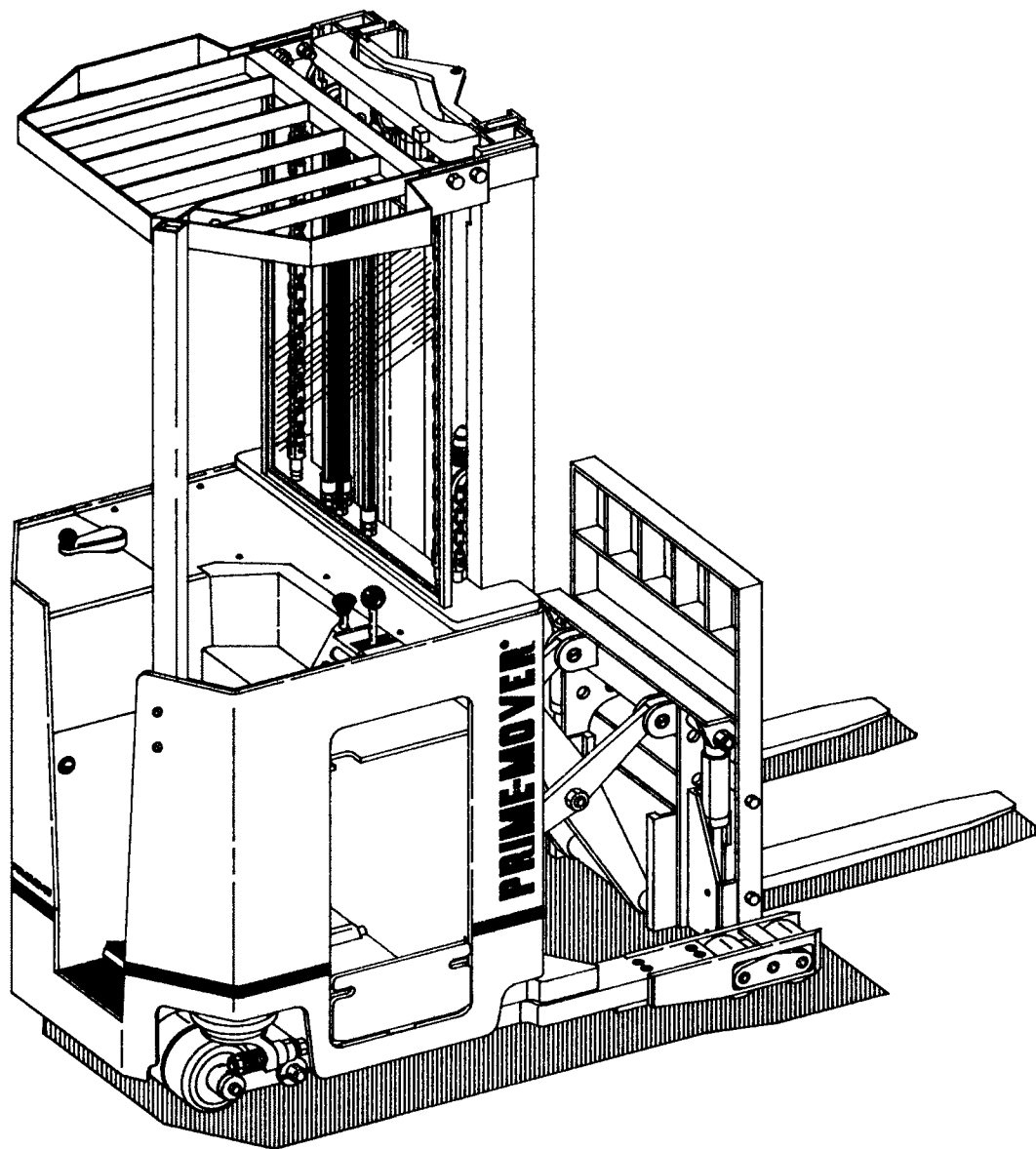
# RR-30C PARTS MANUAL


RR-30C REACH TRUCK

RR-30C

Effective Serial Number RR30C170373

---



 **WARNING** Read and observe all warnings on the unit before operating it. Do not operate this equipment unless all factory installed guards and shields are properly secured in place.

ISSUED MARCH 1988

**PRIME-MOVER**®

CLICK HERE TO **DOWNLOAD** THE COMPLETE MANUAL

- Thank you very much for reading the preview of the manual.
- You can download the complete manual from: [www.heydownloads.com](http://www.heydownloads.com) by clicking the link below



- Please note: If there is no response to CLICKING the link, please download this PDF first and then click on it.

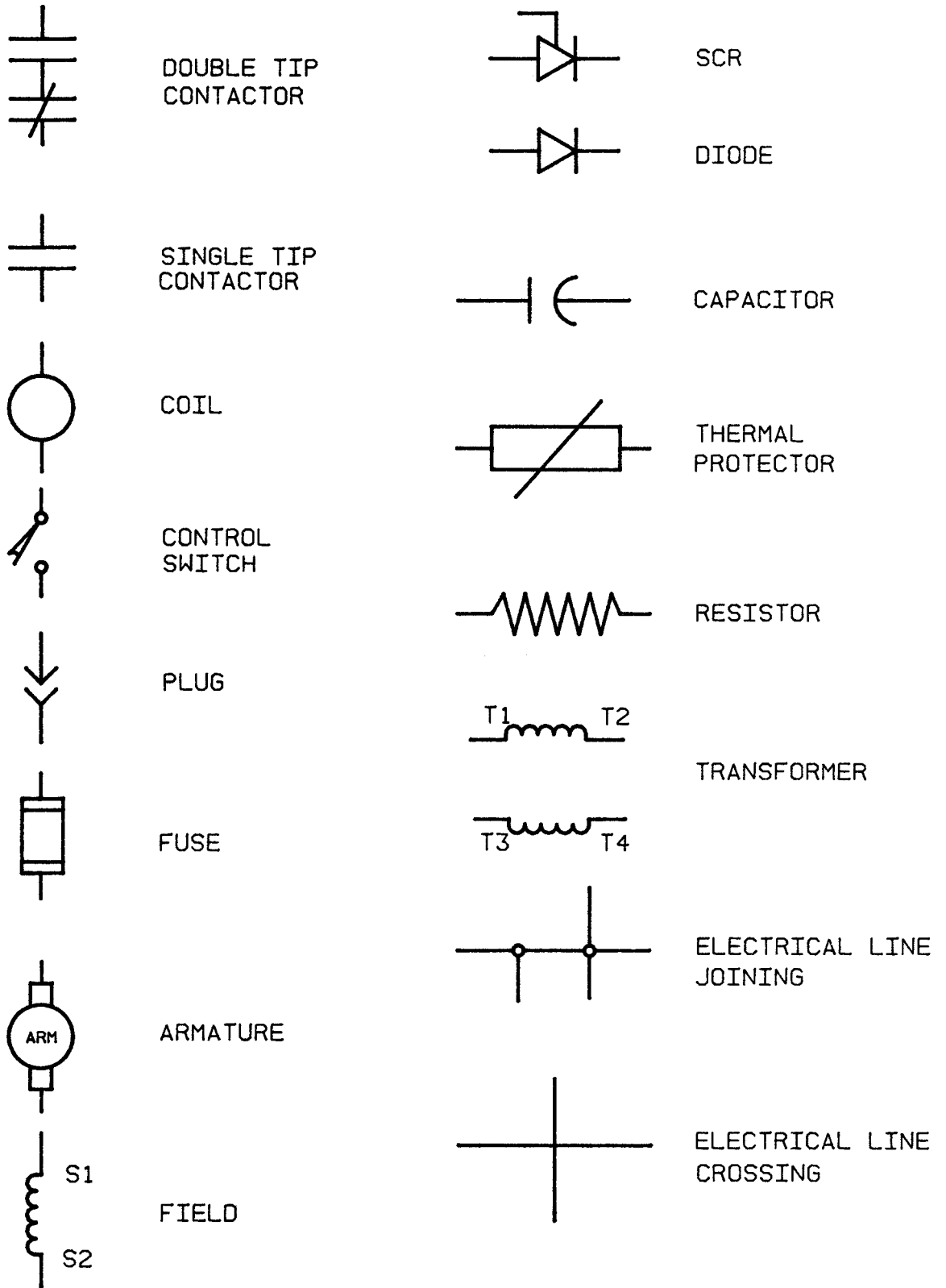
CLICK HERE TO **DOWNLOAD** THE COMPLETE MANUAL

FIG #	ITEM #	PART #	NAME	# FOR ASSY.	UNIT
3	1	40919-00	Block	1	
3	2	11894-06	Screw, cap	1	
3	3	40923-00	Post	1	95/138,198,210
3	3	40923-01	Post	1	All Else
3	4	11884-01	Screw, socket	1	
3	5	11170-08	Locknut	1	
3	6	40806-00	Mat, floor	1	
3	7	40786-01	Pedal	1	
3	8	40419-00	Mat, pedal	1	
3	9	11073-38	Pin, roll	1	
3	10	11695-07	Bushing	2	
3	11	40743-00	Cover	1	16 1/2" battery
3	11	40743-01	Cover	1	14 1/2" battery
3	12	49922-01	Screw, machine	11	
3	13	40237-00	Cover, seat panel	1	
3	14	40418-00	Pad, seat	1	
3	15	49892-01	Screw, flat head	1	
3	16	40233-00	Angle	1	
3	17	27561-03	Edging	1	
3	18	14851-02	Nut, clip	6	
3	19	40238-03	Cover, instrument	1	
3	20	41109-00	Cover, SCR	1	

FIG #	ITEM #	PART #	NAME	# FOR ASSY.	UNIT
8	1	49919-03	Knob	1	
8	2	14915-05	Plug, hole	1	
8	3	40105-01	Crank, steering	1	
8	4	11073-06	Pin, roll	1	
8	5	40795-00	Torque generator (See Fig.# 9)	1	
8	6	14994-11	Screw, cap	1	
8	7	11854-03	Screw, cap	2	Forward
8	7	11854-05	Screw, cap	2	Reverse
8	8	49796-00	Bearing, flange	1	Forward
8	8	49752-00	Bearing, flange	1	Reverse
8	9	11261-05	Nut	2	Forward
8	9	11170-05	Nut	2	Reverse
8	*	11143-05	Screw, cap	1	Reverse
8	*	11806-06	Nut	1	Reverse
8	10	11047-21	Screw, cap	1	
8	11	26466-01	Sprocket	1	
8	12	11073-11	Pin, roll	1	
8	13	40783-00	Sprocket	1	
8	14	11271-11	Screw, set	1	
8	15	40782-00	Rod	1	
8	16	49725-00	Bearing, pillow block	1	
8	17	11830-03	Screw, cap	1	
8	18	25125-01	Sprocket	1	
8	19	11073-27	Pin, roll	1	
8	20	25121-01	Chain	1	
8	21	11057-03	Key	1	
8	22	41079-00	Shim, .120	As Req'd.	
8	22	41079-01	Shim, .060	As Req'd.	
8	22	41079-02	Shim, .030	As Req'd.	
8	23	11057-03	Key	1	
8	24	21542-01	Chain	1	Reverse
8	25	21542-09	Chain	1	Forward
8	26	11170-08	Nut	1	
8	27	11857-01	Washer	1	
8	28	11936-17	Bearing, thrust	1	
8	29	40780-00	Sprocket	1	
8	30	11020-35	Bearing	1	
8	31	11857-02	Washer	1	
8	32	41138-00	Bracket, mounting	1	
8	33	40781-00	Bolt, special	1	
8	34	11806-06	Nut	1	
8	35	40779-01	Screw, special	1	
8	36	11873-16	Screw, shoulder	1	
8	37	11695-07	Bearing, flange	1	
8	38	25306-01	Link, offset	1	Reverse

FIG ITEM		PART #	NAME	# FOR	UNIT
#	#			ASSY.	
13	1	14989-18	Screw, cap	4	
13	2	40506-00	Drive motor assembly (See Fig.# 15)	1	24 volt
13	2	40096-00	Drive motor assembly (See Fig.# 15)	1	36 volt
13	3	14994-06	Screw, cap	4	
13	4	11016-04	Washer, flat	6	
13	5	40011-01	Transmission assembly (See Fig.# 16 and 17)	1	
13	6	14994-05	Screw, cap	2	
13	7	20904-01	Bumper	1	
13	8	40425-00	Shim, .005	As Req'd.	

FIGURE # 19 ELECTRICAL SCHEMATIC SYMBOLS



NOTE: SEE APPENDIX I FOR EV-1 ELECTRICAL SYSTEM

FIG ITEM		PART #	NAME	# FOR	UNIT
#	#			ASSY.	
24	1	25332-01	Tie, wire	As Req'd	
24	2	41166-00	Harness, wiring (See Fig.# 21)	1	
24	3	49611-00	Receptacle	1	
24	4	49861-05	Relief, strain	1	
24	5	52-07916-00	Cable	As Req'd	
24	6	11170-06	Nut	1	
24	7	15677-08	Clamp	1	
24	8	49610-00	Pin	5	
24	9	11009-05	Lockwasher	2	
24	10	11854-03	Screw, cap	2	
24	11	40030-02	Bracket	1	
24	12	49609-00	Plug	1	
24	13	41255-00	cable, single reach (See Fig.# 25)	1	
24	14	49608-00	Socket	5	

FIG #	ITEM #	PART #	NAME	# FOR ASSY.	UNIT
29	1	200076	Base, magnet	1	
29	2	200077	Coil, 24 volt	2	
29	2	202172	Coil, 36 volt	2	
29	3	200078	Frame, magnet	2	
29	4	200079	Spring (red)	2	
29	5	200080	Armature	2	
29	6	200081	Base, bus	2	
29	7	200082	Tip, contact	2	
29	8	200083	Tip, contact	1	
29	9	200084	Tip, movable	4	
29	10	201267	Spring (gold)	2	
29	11	200085	Insulation	2	
29	12	201215	Locknut	2	
29	13	200086	Clamp	4	
29	14	200087	Tip, contact	1	
29	15	200088	Cover	2	
29	16	201368	Lockwasher	8	
29	17	201372	Screw, machine	8	
29	18	200089	Screw, cap	2	
29	19	200090	lockwasher	2	
29	20	200091	Washer, flat	2	
29	21	200092	Tip, contact	1	
29	22	200093	Clamp	2	
29	23	201367	Washer, flat	2	
29	24	200094	Seat	4	
29	25	200095	Carrier	2	
29	26	200096	Bushing	2	
29	27	200097	Tip, contact	1	

FIGURE # 35 HYDRAULIC SCHEMATIC SYMBOLS

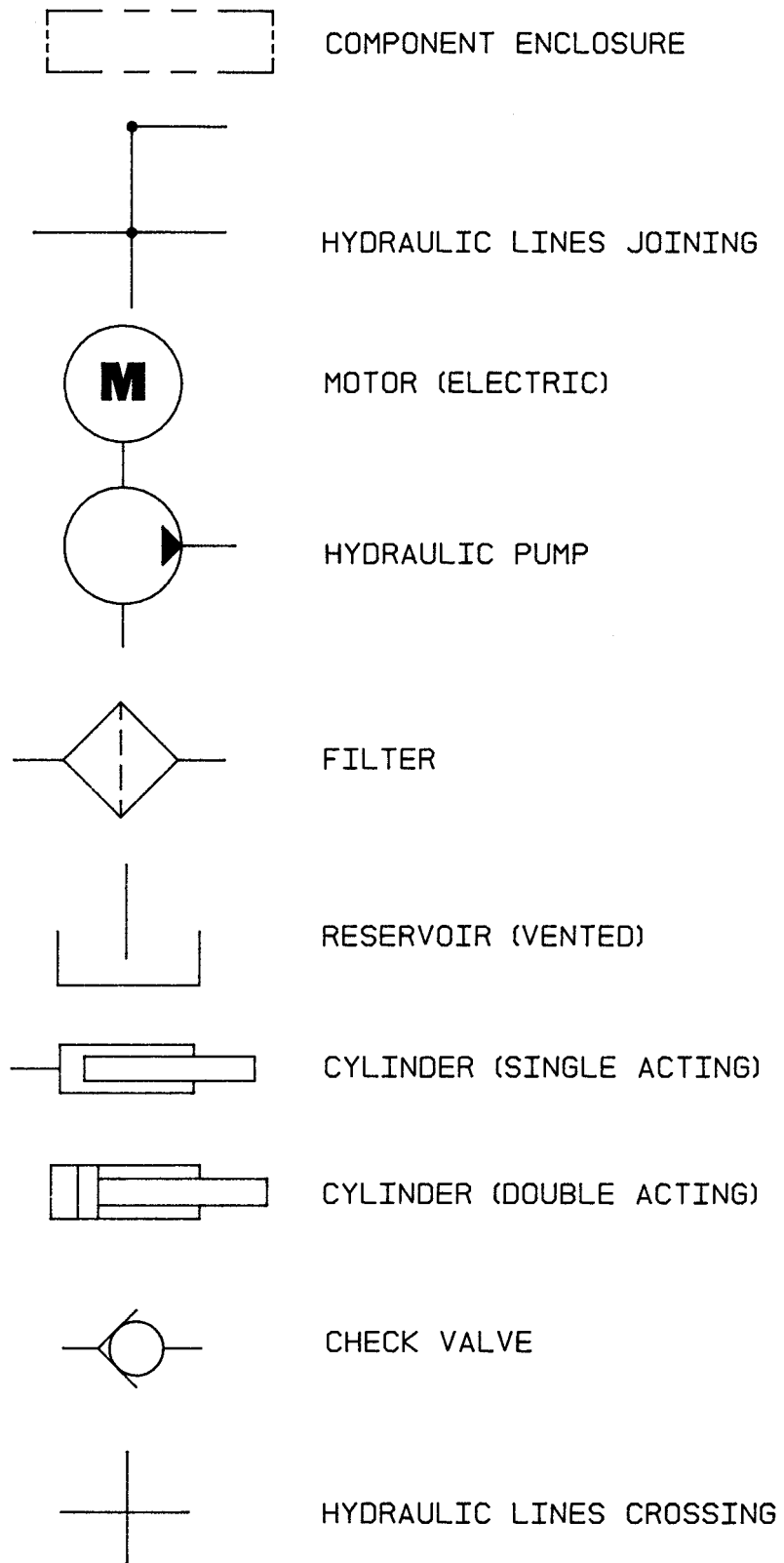


FIG ITEM		PART #	NAME	# FOR	UNIT
#	#			ASSY.	
40	1	49620-00	Hose assembly	1	89/180
40	1	49620-01	Hose assembly	1	95/198
40	1	49620-07	Hose assembly	1	95/210
40	1	49620-02	Hose assembly	1	107/226
40	1	49620-03	Hose assembly	1	111/240
40	1	49620-04	Hose assembly	1	119/258
40	1	49620-05	Hose assembly	1	127/276
40	1	49620-06	Hose assembly	1	137/300
40	2	49640-00	Hose assembly	1	89/180
40	2	49640-01	Hose assembly	1	95/198
40	2	49640-11	Hose assembly	1	95/210
40	2	49640-02	Hose assembly	1	107/226
40	2	49640-03	Hose assembly	1	111/240
40	2	49640-04	Hose assembly	1	119/258
40	2	49640-05	Hose assembly	1	127/276
40	2	49640-06	Hose assembly	1	137/300
40	3	41437-00	Tube assembly	1	
40	4	49604-00	O ring	2	
40	5	41199-00	Tube, single reach	1	
40	6	49604-00	O ring	2	
40	7	49656-01	Adapter, straight	6	
40	8	49604-01	O ring	1	
40	9	12391-05	O ring	1	
40	10	49642-01	Hose assembly	2	
40	11	49653-01	Elbow, 90°	1	
40	12	49604-01	O ring	1	
40	13	12391-05	O ring	1	
40	14	41331-00	Valve assembly (See Fig.# 37)	1	
40	15	49654-01	Elbow, 45°	1	
40	16	49604-01	O ring	1	
40	17	12391-05	O ring	1	

FIG ITEM		PART #	NAME	# FOR ASSY.	UNIT
#	#				
45	1	11857-04	Washer	2	
45	2	22014-02	Bushing	1	
45	3	40408-00	Pin	1	
45	4	11073-16	Pin, roll	1	
45	5	40570-00	Clevis	1	
45	6	41221-00	Rod	1	
45	7	11806-12	Nut	1	
45	8K	NSS	Wiper, rod	1	
45	9K	NSS	Seal, rod	1	
45	10K	NSS	Ring, guide	1	
45	11	41222-00	Bearing	1	
45	12K	NSS	Ring, sealing	1	
45	13K	NSS	O ring	1	
45	14	11020-34	Bearing	1	
45	15	41470-00	Tube	1	
45	16	31057-04	Retainer	1	
45	17	14908-08	Nut	1	
45	18	11016-27	Washer, flat	1	
45	19K	NSS	Ring, guide	1	
45	20	41472-00	Piston	1	
45	21K	NSS	O ring	1	
45	22K	NSS	O ring	1	
45	23K	NSS	Ring, sealing	1	
45	K	41213-00	Kit, seal	1	
			(contains items marked with "K")		

Items 1-4 are NOT part of tilt cylinder assembly and are sold separately.

FIG ITEM		PART #	NAME	# FOR ASSY.	UNIT
#	#				
49	1K	NSS	Seal, shaft	1	
49	2	202072	Plate, front	1	
49	3K	NSS	Ball	2	
49	4K	NSS	Spring	2	
49	5K	NSS	Seal, diaphragm	1	
49	6K	NSS	Gasket, protector	1	
49	7K	NSS	Gasket, back-up	1	
49	8K	NSS	Diaphragm	1	
49	9	202073	Body assembly	1	
49	10	201548	Pin, dowel	2	
49	11	202074	Gear, drive	1	
49	12	202075	Gear, idler	1	
49	13K	NSS	O ring	1	
49	14	202076	Plate, back	1	
49	15	202077	Screw, cap	4	
49	16	202078	Screw, cap	4	
49	K	201599	Kit, seal	1	
			(contains items marked with "K")		

FIG #	ITEM #	PART #	NAME	# FOR ASSY.	UNIT
54	1	11897-03	Washer, seal	1	
54	2	49548-00	Screw	1	
54	3	40535-01	Tube, cylinder	1	89/126
54	3	40535-02	Tube, cylinder	1	95/138
54	3	40535-03	Tube, cylinder	1	107/162
54	3	40535-04	Tube, cylinder	1	119/186
54	4	40052-00	Nut	1	
54	5	40051-00	Plunger	1	
54	6	13857-01	Ball	1	
54	7	30612-01	Spring	1	
54	8	40047-00	Piston	1	
54	9K	NSS	Ring, wear	1	
54	10	40539-01	Rod	1	89/126
54	10	40539-02	Rod	1	95/138
54	10	40539-03	Rod	1	107/162
54	10	40539-04	Rod	1	119/186
54	11K	NSS	O ring	1	
54	12K	NSS	Ring, backup	1	
54	13	40068-00	Bearing	1	
54	14K	NSS	Ring, wear	1	
54	15K	NSS	Seal	1	
54	16K	NSS	Wiper	1	
54	K	41534-00	Kit, seal	1	

(contains items marked with "K")

FIG ITEM		PART #	NAME	# FOR	
#	#			ASSY.	UNIT
59	1	11857-05	Shim, .050	As Req'd	
59	1	11857-12	Shim, .025	As Req'd	
59	1	11857-09	Shim, .080	As Req'd	
59	2	49832-00	Bearing	2	
59	3	40527-01	Column, inner	1	89/126
59	3	40527-02	Column, inner	1	95/138
59	3	40527-03	Column, inner	1	107/162
59	3	40527-04	Column, inner	1	119/186

FIG ITEM		PART #	NAME	# FOR ASSY.	UNIT
#	#				
64	1	201064	Cylinder assembly (See Fig.# 46)	1	
64	2	201075	Anchor, cylinder	1	
64	3	11073-19	Pin, roll	1	
64	4	11419-12	Nut	2	
64	5	NA	Fitting, grease (.25-28 SAE-LT ST)	2	
64	6	11016-01	Washer, flat	2	
64	7	11016-02	Washer, flat	2	
64	8	202155	Frame	1	
64	9	201074	Bolt	4	
64	10	11009-10	Lockwasher	4	
64	11	NA	Fitting, grease (.257 dia. drive)	2	
64	12	201062	Retainer	2	
64	13	201050	Slider-bottom bronze	2	
64	14	201063	Slider-top bronze	2	

FIG #	ITEM #	PART #	NAME	# FOR ASSY.	UNIT
69	1	40720-01	Column, inner	1	89/192
69	1	40720-02	Column, inner	1	95/210
69	1	40720-03	Column, inner	1	98/216
69	1	40720-04	Column, inner	1	102/225
69	1	40720-05	Column, inner	1	111/240
69	1	40720-06	Column, inner	1	119/258
69	2	49837-00	Nut, wheel	2	
69	3	11486-12	Nut, jam	2	
69	4	14835-08	Chain, lift	2	89/192
69	4	14835-27	Chain, lift	2	95/210
69	4	14835-09	Chain, lift	2	98/216
69	4	14835-61	Chain, lift	2	102/225
69	4	14835-29	Chain, lift	2	111/240
69	4	14835-10	Chain, lift	2	119/258
69	5	30558-00	Anchor	2	
69	6	30554-00	Pin with cotter pin	2	
69	7		Cylinder assembly (See Fig.# 70)	1	
69	8	11898-04	Ring, retaining	2	
69	9	11936-10	Washer, flat	2	
69	10	11857-05	Shim, .050	As Req'd	
69	10	11857-12	Shim, .025	As Req'd	
69	10	11857-09	Shim, .080	As Req'd	
69	10	11857-10	Shim, .050	As Req'd	95/210
69	10	11857-11	Shim, .025	As Req'd	95/210
69	11	21089-02	Bearing	2	
69	11	49832-00	Bearing	2	95/210
69	12	11261-06	Nut	1	
69	13	41437-00	Tube assembly	1	
69	14	11854-08	Screw, cap	1	

FIG ITEM		PART #	NAME	# FOR ASSY.	UNIT
#	#				
74	1	11073-33	Pin, roll	1	
74	2	40860-00	Axle	1	
74	3	40865-00	Bracket	1	
74	4	40859-00	Pin	1	
74	5	40857-00	Plate	1	
74	6	11016-09	Washer	4	
74	7	40248-01	Shim, .005	As Req'd	
74	7	40248-02	Shim, .010	As Req'd	
74	7	40248-03	Shim, .062	As Req'd	
74	7	40248-04	Shim, .031	As Req'd	
74	8	49972-05	Seal	4	
74	9	11205-21	Bearing	4	
74	10	40868-02	Wheel	2	
74	11	49760-00	Washer	2	
74	12	11160-09	Fitting, grease	2	
74	*	202154	Adapter for grease gun	1	

MODEL RR-30C ELECTRIC REACH TRUCK

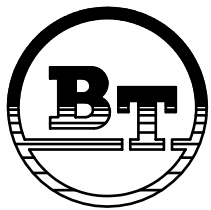
NUMERICAL INDEX

<u>PART #</u>	<u>FIGURE #</u>	<u>ITEM #</u>	<u>PART #</u>	<u>FIGURE #</u>	<u>ITEM #</u>
201367	30	13	201766	7	13
201368	29	16	201767	7	3
201368	30	16	201768	7	6
201372	29	17	201864	14	6K
201372	30	17	201866	14	12K
201435	36	31	201867	14	9K
201456	37	1	201868	14	8K
20151-00	6	12	201869	14	10K
20151-00	20	4	201870	14	7K
20151-00	21	4	201872	14	16K
201533	52	22	201873	14	20K
201545	52	24	201874	14	13K
201547	11	13	201876	14	5K
201548	49	10	201962	30	1
201553	37	5	201963	30	3
201553	52	26	201964	30	5
201556	37	11	201965	30	7
201556	52	3	201966	30	10
201560	52	19	201967	30	15
201571	11	1	201979	9	10
201578	37	10	201980	9	11
201578	52	4	201981	9	16
201586	11	3	201982	9	19
201591	11	4	201983	9	20
201595	11		201984	7	1
201597	11	3	201985	7	2
201598	11	4	201989	50	K
201599	49	K	201990	50	K
201616	52	18	201991	31	1
201618	52	8	201992	31	4K
201619	52	9	201993	31	5
201622	52	21	201994	31	6
201623	52	23	201995	31	11
201624	52	2	201996	31	12
201627	52	K	202000	27	4
201630	37	15	202004	27	1
201634	37	19	202006	27	13
201639	37	12	202007	27	12
201639	52	25	202008	27	10
201643	37	3	202009	27	1
201675	7	14	202010	27	1
201712	7	12	202011	27	6
201718	7	11	202014	31	
201755	7	4	202039	11	1
201756	7	15	202040	11	2
201757	7	9	202041	11	2
201758	7	5	202042	11	11
201759	7	7	202043	11	11
201760	7	10	202048	28	10
201761	7	8	202067	27	16
201765	7	16	202069	15	1

# *APPENDIX I*

*FOR EV-1 SCR ELECTRICAL SYSTEM*

FIG ITEM		PART #	NAME	# FOR ASSY.	UNIT
#	#				
VI	1	201361	Screw with lockwasher	5	
VI	2	201366	Washer, flat	5	
VI	3	201241	Support, card box (right hand)	1	
VI	4	201240	Support, card box (left hand)	1	
VI	5	201359	Screw with lockwasher	2	
VI	6	201365	Washer, flat	5	
VI	7	201239	Bus	2	
VI	8	201287	Capacitor, 200 volt	1	
VI	9	201360	Screw with lockwasher	4	
VI	10	201291	Resister assembly	1	
VI	11	201210	Snubber assembly	2	
VI	12	201260	Rectifier assembly (5 REC)	1	
VI	13	201260	Rectifier assembly (2 REC)	1	
VI	14	201179	Transformer	1	



**PRIME-MOVER<sup>®</sup>**

APPENDIX II

RR-30C G.E. EV-100LX SCR

ELECTRIC UPDATES

AND

PARTS

LIST REFERENCE

Part# 301259-000

JANUARY 1991

FIG ITEM		PART #	NAME	# FOR	UNIT
#	#			ASSY.	
VIII	1	25332-01	Tie, wire	As Req'd	
VIII	2	41771-00	Harness, wiring (See Fig.# VI)	1	
VIII	3	49611-00	Receptacle	1	
VIII	4	49861-05	Relief, strain	1	
VIII	5	49610-00	Pin	5	
VIII	6	52-07920-00	Cable	As Req'd	
			14 feet	89/126	
			15 feet	95/138	
			18 feet	107/162	
			19 feet	119/186	
VIII	7	11854-03	Screw, cap	2	
VIII	8	11009-05	Lockwasher	2	
VIII	9	40030-02	Bracket	1	
VIII	10	49609-00	Plug	1	
VIII	11	41255-00	Cable, single reach (See Fig.# X)	1	
VIII	12	49608-00	Socket	5	

FIG ITEM		PART #	NAME	# FOR	UNIT
#	#			ASSY.	
XIII	1	41710-00	Box, contactor - "EE"	1	"EE"TYPE
XIII	2	41715-00	Grip, cable - "EE"	1	"EE"TYPE
XIII	3	49343-00	Screw, flat head - "EE"	4	"EE"TYPE
XIII	4	41714-00	Grip, cable - "EE"	1	"EE"TYPE
XIII	5	41757-01	Panel, contactor (24 volt) (See Fig.# XIV)	1	
XIII	5	41757-02	Panel, contactor (36 volt) (See Fig.# XIV)	1	
XIII	6	29329-00	Bracket, plug - "E"	1	"E"TYPE
XIII	7	11176-20	Screw, machine	4	
XIII	8	41711-00	Lid, box - "EE"	1	"EE"TYPE
XIII	9	11176-01	Screw, machine	2	"E"TYPE
XIII	10	11009-03	Lockwasher	2	"E"TYPE
XIII	11	11016-21	Washer, flat	4	
XIII	12	11009-01	Lockwasher	4	
XIII	13	11261-01	Nut	4	
XIII	14	11016-12	Washer, flat	3	
XIII	15	11009-05	Lockwasher	3	
XIII	16	11261-05	Nut	3	
XIII	17	49369-00	Screw, self tapping	10	"EE"TYPE

FIG ITEM		PART #	NAME	# FOR ASSY.	UNIT
#	#				
XVIII	1	300074-001	Base, magnet	1	
XVIII	2	200077	Coil, field	1	
XVIII	3	300074-002	Frame, magnet	1	
XVIII	4	201267	Spring (gold)	1	
XVIII	5	202424	Armature	1	
XVIII	6	200081	Base, bus	1	
XVIII	7	300074-003	Tip, contact	2	
XVIII	8	200096	Bushing	1	
XVIII	9	200095	Carrier	1	
XVIII	10	300074-004	Tip, movable	1	
XVIII	11	200094	Seat	1	
XVIII	12	201266	Spring (gold)	1	
XVIII	13	201259	Cap	1	
XVIII	14	201367	Washer, flat	1	
XVIII	15	201215	Nut, lock	1	
XVIII	16	201967	Clamp	2	
XVIII	17	201368	Lockwasher	4	
XVIII	18	201372	Screw, machine	4	

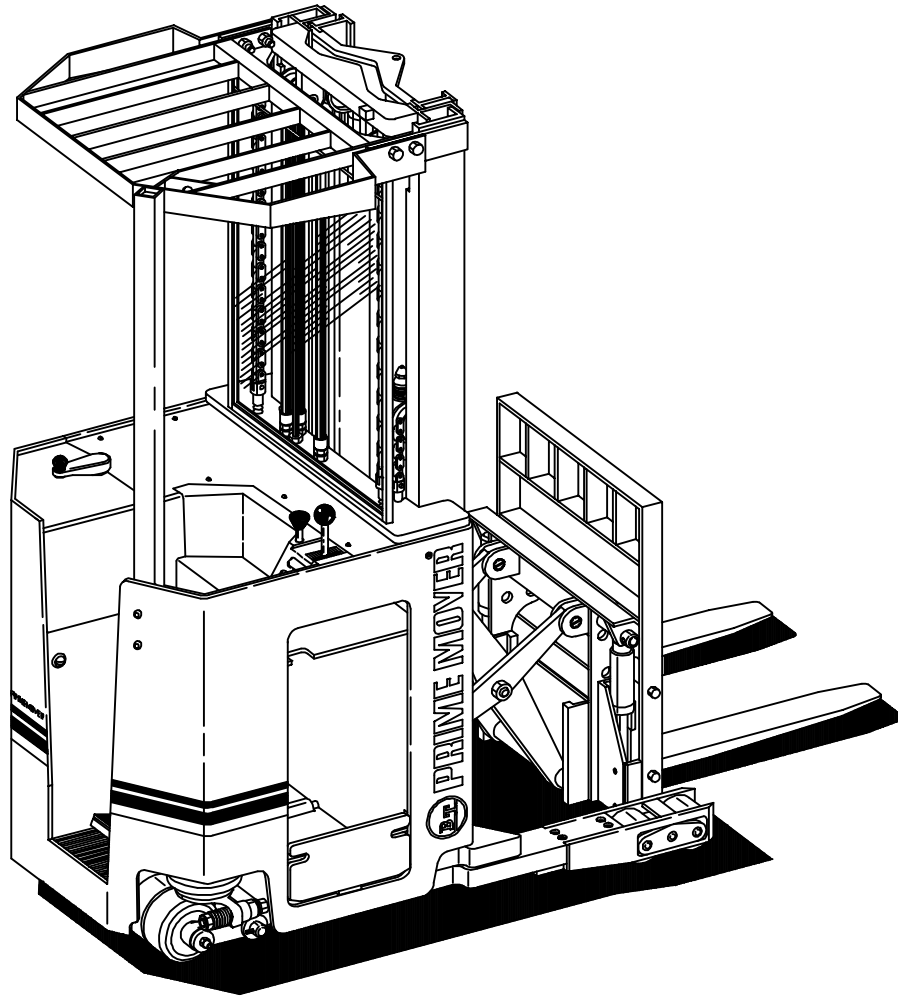
# PARTS MANUAL

Manual Number 9201  
Manual Part Number 300379-001  
RR-30C ELECTRIC REACH TRUCK

RR-30C

Effective Serial Number 200482

---



**⚠ WARNING**

Read and observe all warnings on this unit before operating it.

**⚠ WARNING**

**DO NOT** operate this equipment unless all factory installed guards and shields are properly secured in place.

FIG #	ITEM #	PART #	NAME	FIG. #	Page
0.2	1		Decals and parts list assembly	0.1	0.1
0.2	*		Parts list index	0.2	0.3
0.2	2		Transmission and drive motor installation	1.1	1.1
0.2	2		Drive motor brake assembly	1.2	1.3
0.2	2	40011-01	Transmission assembly, PART I	1.3	1.5
0.2	2	40011-01	Transmission assembly, PART II	1.4	1.7
0.2	3		"E" EV-100LX SCR electrical schematic	2.1	2.1
0.2	3		"E" EV-100LX SCR electrical schematic symbols	2.2	2.2
0.2	3		"EE" EV-100LX SCR electrical schematic	2.3	2.3
0.2	3		"EE" EV-100LX SCR electrical schematic symbols	2.4	2.4
0.2	3		Wiring assembly for cold storage	2.5	2.5
0.2	3		Wiring harness assembly	2.6	2.7
0.2	3		Limit switch wiring assembly	2.7	2.9
0.2	3		Two stage mast cable assembly	2.8	2.11
0.2	3		Three stage mast cable assembly	2.9	2.13
0.2	3		Reach cable assembly	2.10	2.15
0.2	3		EV-100LX power component wiring	2.11	2.17
0.2	3	49399-00	EV-100LX TX SCR control panel assembly	2.12	2.19
0.2	3	49399-01	EV-100LX TT SCR control panel assembly	2.12	2.19
0.2	3		EV-100LX contactor panel assembly & related parts for "E"&"EE"	2.13	2.21
0.2	3	41757-01	EV-100LX SCR contactor panel assembly, 24 volt	2.14	2.23
0.2	3	41757-00	EV-100LX SCR contactor panel assembly, 36 volt	2.14	2.23
0.2	3	27692-00	EV-100LX SCR forward & rearward contactor assembly	2.15	2.25
0.2	3	27693-02	EV-100LX SCR 1A contactor assembly	2.16	2.27
0.2	3	27693-02	Lift pump contactor assembly, (24 volt)	2.17	2.29
0.2	3	202169	Lift pump contactor assembly, (36 volt)	2.17	2.29
0.2	3	300073-000	EV-100LX SCR auxiliary pump contactor assembly	2.18	2.31
0.2	3	49855-24	Power connector assembly, (RED)	2.19	2.33
0.2	3	49855-22	Power connector assembly, (GRAY)	2.19	2.33
0.2	3	27900-00	Lift Pump motor assembly, (24 volt, G.E., 5BT1324B54)	2.20	2.35
0.2	3	27899-00	Lift Pump motor assembly, (36 volt, G.E., 5BT1326B234)	2.20	2.35
0.2	3	27901-00	Drive motor assembly, (24 Volt, G.E., 5BT1326B235)	2.21	2.37
0.2	3	27902-00	Drive motor assembly, (36 volt, G.E., 5BT1326B233)	2.21	2.37
0.2	3	300666-000	Auxiliary pump motor assy., (24 Volt, OHIO, D-561371X8015A)	2.22	2.39
0.2	3	300665-000	Auxiliary pump motor assy., (36 Volt, OHIO, D-561369X8005A)	2.22	2.39
0.2	3	29030-01	Warning light assembly, 24 volt	2.23	2.41
0.2	3	29030-02	Warning light assembly, 36 volt	2.23	2.41
0.2	3		"E" EV-100LX TT SCR electrical schematic	2.24	2.43
0.2	3		"E" EV-100LX TT SCR electrical schematic symbols	2.25	2.45
0.2	3		"EE" EV-100LX TT SCR electrical schematic	2.26	2.46
0.2	3		"EE" EV-100LX TT SCR electrical schematic symbols	2.27	2.47
0.2	3		EV-100LX dash display installation	2.28	2.48
0.2	4		Hydraulic schematic	3.1	3.1
0.2	4		Hydraulic schematic symbols	3.2	3.2
0.2	4		Auxiliary pump and reservoir assembly	3.3	3.3
0.2	4	41331-00	Auxiliary control valve assembly	3.4	3.5
0.2	4	300333-000	Auxiliary pump and motor assembly, 24 volt	3.5	3.7
0.2	4	300334-000	Auxiliary pump and motor assembly, 36 volt	3.5	3.7
0.2	4		Auxiliary pump assembly	3.6	3.9
0.2	4		Hydraulic reservoir assembly	3.7	3.11
0.2	4	40795-01	Torque generator assembly	3.8	3.13
0.2	4		Two stage mast hydraulic assembly	3.9	3.15
0.2	4		Three stage mast hydraulic assembly	3.10	3.17
0.2	4		Reach cylinder hose installation	3.11	3.19
0.2	4		Reach diverter valve assembly	3.12	3.21
0.2	4		Reach cylinder assembly	3.13	3.23
0.2	4		Tilt and sideshifter hose installation	3.14	3.25
0.2	4	41469-00	Tilt cylinder assembly, left	3.15	3.27
0.2	4	41559-00	Tilt cylinder assembly, right	3.15	3.27

FIG #	ITEM #	PART #	NAME	# FOR ASSY.	UNIT
1.4	1	14908-16	Lockwasher	1	
1.4	2	14898-00	Washer	1	
1.4	3	11057-13	Key	1	
1.4	4	40473-00	Gear & pinion set (See Fig.# 1.3 for pinion)	1	
1.4	5	40020-00	Case	1	
1.4	6	11890-03	Pin, dowel	2	
1.4	7	11205-13	Bearing	1	
1.4	8	40009-00	Shaft	1	
1.4	9	49967-04	Shim, .005"	As Req'd.	
1.4	9	49967-05	Shim, .007"	As Req'd.	
1.4	9	49967-06	Shim, .010"	As Req'd.	
1.4	10	40001-00	Holder, bearing	1	
1.4	11	11205-14	Bearing	1	
1.4	12	49973-01	Locknut	2	
1.4	13	49974-01	Lockwasher	1	
1.4	14	49970-01	Shim, .005"	As Req'd.	
1.4	14	49970-02	Shim, .007"	As Req'd.	
1.4	14	49970-03	Shim, .010"	As Req'd.	
1.4	15	12459-00	Vent, air	1	
1.4	16	40828-00	Plate	1	
1.4	17	11143-03	Screw, cap	4	
1.4	18	11043-03	Screw, cap	4	
1.4	19	40829-00	Cover	1	
1.4	20	12318-01	Plug	1	
1.4	21	12391-03	O ring	1	
1.4	22	11143-04	Screw, cap	8	
1.4	23	11009-06	Lockwasher	8	
1.4	24	11015-30	O ring	3	
1.4	25	40007-00	Shaft	1	
1.4	26	11936-16	Race	2	
1.4	27	11935-06	Bearing, thrust	2	
1.4	28	11936-15	Race	2	
1.4	29	49971-00	Roller	122	
1.4	30	40024-01	Spacer	1	
1.4	31	40017-00	Gear	1	
1.4	32	11936-01	Race	1	
1.4	33	40018-00	Gear	1	
1.4	34	40024-02	Spacer	1	
1.4	35	40006-00	Shaft	1	
1.4	36	11073-19	Pin	1	
1.4	37	40012-00	Gear, axle	1	
1.4	38	11205-16	Bearing	2	
1.4	39	49967-01	Shim, .005"	As Req'd.	
1.4	39	49967-02	Shim, .007"	As Req'd.	
1.4	39	49967-03	Shim, .010"	As Req'd.	
1.4	40	40022-00	Spacer	1	
1.4	41	11039-29	Seal, oil	1	
1.4	42	40003-00	Hub	1	
1.4	43	49966-01	Ring	1	
1.4	44	14908-28	Locknut	1	

FIG #	ITEM #	PART #	NAME	# FOR ASSY.	UNIT
2.7	1	25332-01	Tie, wire	As Req'd	
2.7	2	14911-06	Screw, machine	2	
2.7	3	11009-03	Lockwasher	2	
2.7	4	49574-00	Switch, limit	1	
2.7	5	14910-02	Connector	1	
<b>2 Stage Masts</b>					
2.7	6	41494-00	Cable assembly, 89/126	1	89/126
2.7	6	41494-01	Cable assembly, 95/138	1	95/138
2.7	6	41494-02	Cable assembly, 107/162	1	107/162
2.7	6	41494-03	Cable assembly, 119/186	1	119/186
<b>3 Stage Masts</b>					
2.7	6	41494-00	Cable assembly, 89/192	1	89/192
2.7	6	41494-01	Cable assembly, 95/210	1	95/210
2.7	6	41494-01	Cable assembly, 98/216	1	98/216
2.7	6	41494-02	Cable assembly, 102/225	1	102/225
2.7	6	41494-03	Cable assembly, 111/240	1	111/240
2.7	6	41494-04	Cable assembly, 119/258	1	119/258
2.7	7	49557-00	Receptacle	1	
2.7	8	49610-00	Pin	2	
2.7	9	15677-08	Nut	3	2 STAGE
2.7	10	41494-00	Clamp	3	2 STAGE

FIG #	ITEM #	PART #	NAME	# FOR ASSY.	UNIT
2.12	1	200056	Base	1	
2.12	2	200040	5 Rec	1	
2.12	3	200039	2 Rec	1	
2.12	4	NA	Panhead, M3.5 x .60, 10mm long	4	
2.12	5	NA	Hexhead, M5 x .80, 25mm long	8	
2.12	6	200043	Bar, bus	1	
2.12	7	NA	Hexhead, M5 x .80, 10mm long	8	
2.12	*	NA	Lockwasher, M5	8	
2.12	*	NA	Washer, M5 flat	8	
2.12	8	200042	Bar, buss	1	
2.12	9	200041	Bar, buss	1	
2.12	10	300084-000	Card, TX control	1	
2.12	10	301281-000	Card, TT control	1	
2.12	11	200059	Harness, SCR wiring	1	
2.12	12	200052	Kit, 1 Rec	1	
2.12	13	200045	Insulation, 1 Rec	1	
2.12	14	NA	Hexhead, M5 x .80, 50mm long	4	
2.12	15	200044	Bar, buss	1	
2.12	16	NA	Panhead, M3.5 x .60, 8mm long	8	
2.12	*	NA	Lockwasher, M3.5	6	
2.12	*	NA	Washer, M3.5 flat	6	
2.12	17	NA	Panhead, M3.5 x .60, 44mm long	1	
2.12	*	NA	Lockwasher, M3.5	1	
2.12	*	NA	Washer, M3.5 flat	1	
2.12	18	NA	Panhead, M3.5 x .60, 23mm long	8	
2.12	*	NA	Lockwasher, M3.5	8	
2.12	*	NA	Washer, M3.5 flat	8	
2.12	19	200050	Snubber	4	
2.12	20	200051	Spider and wire assembly	1	
2.12	21	300086-000	Thermal protector	1	
2.12	22	200038	Reactor	1	
2.12	23	NA	Hex cap, M6 x 1, 16mm long	1	
2.12	*	NA	Lockwasher, M6	1	
2.12	*	NA	Washer, M6 flat	1	
2.12	24	NA	Nut, M6 x 1.25	4	
2.12	25	50001-11	Lockwasher, M8	2	
2.12	*	NA	Washer, M8 flat	2	
2.12	26	200049	Shunt	1	
2.12	27	200048	Post	1	
2.12	28	201297	Rectifier (3 Rec and 4 Rec)	2	
2.12	29	200054	Strap, capacitor	2	
2.12	30	200046	Heatsink	1	
2.12	31	200045	Insulation, heatsink	1	
2.12	32	300085-000	Capacitor	1	
2.12	33	200047	Bushing	3	
2.12	34	NA	Hexcap, M8 x 1.25, 16mm long	3	
2.12	*	50001-11	Lockwasher, M8	3	
2.12	*	NA	Washer, M8	3	

\* Local purchase hardware for reference only.

FIG #	ITEM #	PART #	NAME	# FOR ASSY.	UNIT
2.17	1	201962	Base, magnet	1	
2.17	2	200077	Coil, 24 volt field	1	24 volt
2.17	2	202172	Coil, 36 volt field	1	36 volt
2.17	3	201963	Frame, magnet	1	
2.17	4	201262	Spring (RED)	1	
2.17	5	201964	Armature	1	
2.17	6	200081	Base, buss	1	
2.17	7	201965	Tip, contact	2	
2.17	8	200096	Bushing	1	
2.17	9	200095	Carrier	1	
2.17	10	201966	Tip, movable	1	
2.17	11	201259	Cap	1	
2.17	12	201266	Spring (GOLD)	1	
2.17	13	201367	Washer, flat	1	
2.17	14	201215	Nut, lock	1	
2.17	15	201967	Clamp	2	
2.17	16	201368	Lockwasher	4	
2.17	17	201372	Screw, machine	4	
2.17	18	202010	Suppression, pump contactor	1	
2.17	19	200094	Seat	1	

FIG #	ITEM #	PART #	NAME	# FOR ASSY.	UNIT
2.22	1	300666-001	Bolt, terminal	2	
2.22	2	300666-010	Washer, flat	2	
2.22	3	300666-002	Plug, 24 volt	1	24 VOLT
2.22	3	300665-003	Plug, 36 volt	1	36 VOLT
2.22	4	300666-014	Cover, commutator	1	
2.22	5	300666-017	Ring, brush	1	
2.22	6	300665-001	Spring, brush	4	
2.22	7	300665-002	Brush	4	
2.22	8	300666-003	Washer, spring	1	
2.22	9	300666-016	Cover, drive	1	
2.22	10	300666-012	Bearing	1	
2.22	11	300666-015	Armature, 24 volt	1	24 VOLT
2.22	11	300665-004	Armature, 36 volt	1	36 VOLT
2.22	12	300666-013	Bearing	1	
2.22	13	300666-018	Stator	1	
2.22	14	300666-004	Cover, brush	2	
2.22	*	300666-007	Screw, PHLP head	1	
2.22	*	300666-008	Nut, sward	1	

\* - NOT SHOWN

FIGURE # 3.2 HYDRAULIC SCHEMATIC SYMBOLS

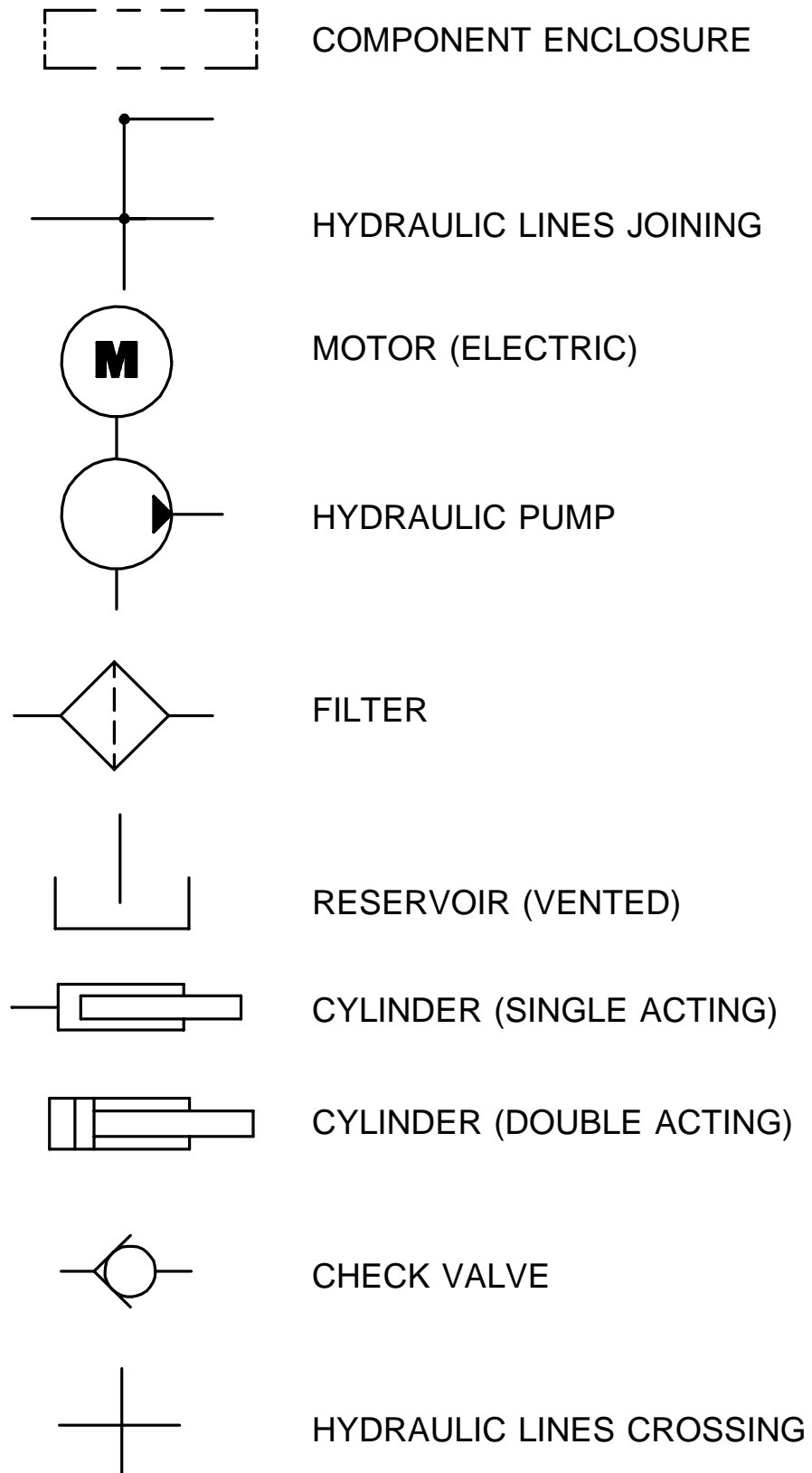


FIG #	ITEM #	PART #	NAME	# FOR ASSY.	UNIT
3.7	1	1-08759-00	Gage, sight	1	
3.7	2	14961-00	Breather	1	
3.7	3	41426-00	Reservoir	1	
3.7	4	40323-00	Screen	1	
3.7	5	12318-11	Plug	1	
3.7	6	12391-12	O ring	1	
3.7	7	11016-03	Washer, flat	2	
3.7	8	11143-08	Screw, cap	2	

FIG #	ITEM #	PART #	NAME	# FOR ASSY.	UNIT
3.12	1	12318-06	Plug	2	
3.12	1	12391-06	O ring	1	
3.12	2	41187-00	Valve, solenoid	4	
3.12	3	41230-00	Manifold	1	
3.12	4	12318-01	Plug	2	
3.12	5	12391-01	O ring	1	
3.12	6	12318-03	Plug	2	
3.12	7	12391-03	O ring	1	
3.12	K	200073	Kit, seal (for item #3)	1	

FIG ITEM		PART #	NAME	# FOR ASSY.	UNIT
#	#				
3.17	1	27900-00	Motor, 24 volt lift pump (See Fig.# 2.20)	1	24 volt
3.17	1	27899-00	Motor, 36 volt lift pump (See Fig.# 2.20)	1	36 volt
3.17	2	41680-00	Pump, 24 volt lift (See Fig.# 3.18)	1	24 volt
3.17	2	41178-00	Pump, 36 volt lift (See Fig.# 3.19)	1	36 volt
3.17	3	11143-05	Screw, cap	2	
3.17	4	14851-04	Nut, clip	4	
3.17	5	50016-04	Screw, cap	4	

FIG #	ITEM #	PART #	NAME	# FOR ASSY.	UNIT
3.22	1	11897-03	Washer, seal	1	
3.22	2	49548-00	Screw	1	
3.22	3	40535-01	Tube, 89/126 cylinder	1	89/126
3.22	3	40535-02	Tube, 95/138 cylinder	1	95/138
3.22	3	40353-03	Tube, 107/162 cylinder	1	107/162
3.22	3	40535-04	Tube, 119/186 cylinder	1	119/186
3.22	4	40052-00	Nut	1	
3.22	5	40051-00	Plunger	1	
3.22	6	13857-01	Ball	1	
3.22	7	30612-01	Spring	1	
3.22	8	40047-00	Piston	1	
3.22	9K	NSS	Ring, wear	1	
3.22	10	40539-01	Rod, 89/126	1	89/126
3.22	10	40539-02	Rod, 95/138	1	95/138
3.22	10	40539-03	Rod, 107/162	1	107/162
3.22	10	40539-04	Rod, 119/186	1	119/186
3.22	11K	NSS	O ring	1	
3.22	12K	NSS	Ring, backup	1	
3.22	13	40068-00	Bearing	1	
3.22	14K	NSS	Ring, wear	1	
3.22	15K	NSS	Seal	1	
3.22	16K	NSS	Wiper	1	
3.22	17	41534-00	Kit, seal	1	

(CONTAINS ITEMS MARKED WITH "K")

FIG #	ITEM #	PART #	NAME	# FOR ASSY.	UNIT
4.2	1	26270-00	Decal	1	
4.2	2	14944-00	Knob	1	
4.2	3	11813-07	Grommet	1	
4.2	4	40237-00	Cover, seat panel	1	
4.2	5	40274-00	Rod	1	
4.2	6	11806-08	Nut, jam	1	
4.2	7	49916-00	Yoke, end	1	
4.2	8	11135-06	Pin with cotter pin	1	
4.2	9	40940-00	Spacer	2	
4.2	10	11143-16	Screw, cap	2	
4.2	11	11016-03	Washer, flat	4	
4.2	12	40275-01	Bar	1	
4.2	13	11261-06	Nut	2	
4.2	14	11170-04	Nut	2	
4.2	15	11045-08	Screw, cap	2	
4.2	16	40414-00	Block	1	
4.2	17	-----	Connector assembly (See Fig.# 2.19)	1	
4.2	18	11880-08	Screw, machine	2	
4.2	19	41642-00	Plate	1	
4.2	20	20323-00	Switch	1	
4.2	21	41790-00	Plate, switch	1	
4.2	22	14986-03	Nut, twin	1	

FIG #	ITEM #	PART #	NAME	# FOR ASSY.	UNIT
4.7	1	11143-05	Screw, cap	2	
4.7	2	40796-00	Bracket, pump	1	
4.7	3	11143-06	Screw, cap	2	
4.7	4	49891-00	Mount, shock	2	
4.7	5	300333-000	Pump and motor assembly, 24 volt (See Fig.# 3.5)	1	24 VOLT
4.7	5	300334-000	Pump and motor assembly, 36 volt (See Fig.# 3.5)	1	36 VOLT
4.7	6	20904-01	Bumper	3	
4.7	7	11143-02	Screw, cap	2	
4.7	8	11016-03	Washer, flat	6	
4.7	9	11261-08	Nut	2	
4.7	10	11261-06	Nut	2	
4.7	11	41138-00	Bracket, mounting	1	

FIG #	ITEM #	PART #	NAME	# FOR ASSY.	UNIT
4.12	1	40165-00	Cap, hub	1	
4.12	2	49745-13	Nut	1	
4.12	3	49743-09	Pin, cotter	1	
4.12	4	11016-09	Washer, flat	1	
4.12	5	11205-22	Bearing	1	
4.12	6	40992-00	Flange	1	
4.12	7	40993-01	Bearing	1	
4.12	8	40996-00	Spindle assembly	1	
4.12	9	40991-00	Pin	1	
4.12	10	11160-11	Fitting, grease	2	
4.12	11	11073-23	Pin, roll	2	
4.12	12	11857-06	Washer, flat	4	
4.12	13	11782-05	Bearing, thrust	4	
4.12	14	11695-08	Bearing, flange	2	
4.12	15	49800-00	Bearing	2	
4.12	16	49799-00	Sleeve	2	
4.12	17	11856-21	Screw, cap	2	
4.12	18	40762-00	Axle	2	
4.12	19	40768-00	Arm, right (Shown)	1	
4.12	19	40768-01	Arm, left (Not Shown)	1	
4.12	20	49972-06	Ring, nelos	4	
4.12	21	11205-01	Bearing	4	
4.12	22	40721-00	Wheel	2	
4.12	23	22005-06	Washer	2	
4.12	24	11828-06	Lockwasher	2	
4.12	25	11829-06	Nut	2	
4.12	26	11831-07	Nut	2	
4.12	27	49798-00	Retainer	2	
4.12	28	49797-02	Spring	2	

FIG #	ITEM #	PART #	NAME	# FOR ASSY.	UNIT
5.5	1	11073-35	Pin, roll	6	
5.5	2	40357-02	Pin	2	
5.5	3	41700-00	Frame, rear standard	1	
5.5	4	40358-02	Screw, special	2	
5.5	5	40355-02	Arm, outer left hand	1	
5.5	6	49925-04	Shim, .187"	As Req'd.	.187 inch
5.5	6	49925-05	Shim, .125"	As Req'd.	.125 inch
5.5	6	49925-06	Shim, .062"	As Req'd.	.062 inch
5.5	7	40103-02	Bearing	4	
5.5	8	40103-03	Bearing	2	
5.5	9	40104-00	Bearing, thrust	4	
5.5	10	41228-01	Cylinder, left reach (See Fig.# 3.13)	1	
5.5	11	41228-00	Cylinder, right reach (See Fig.# 3.13)	1	
5.5	12	11073-22	Pin, roll	2	
5.5	13	40356-00	Nut	2	
5.5	14	49967-13	Shim, .005"	As Req'd.	.005 inch
5.5	14	49967-14	Shim, .015"	As Req'd.	.015 inch
5.5	15	40357-01	Pin	2	
5.5	16	-----	Frame, front (See Fig.# 5.6)	1	
5.5	17	40358-01	Screw, special	2	
5.5	18	40359-00	Pin, roll	2	
5.5	19	11160-11	Fitting, grease	10	
5.5	20	11852-21	Screw, flat head	4	
5.5	21	40354-00	Cap	4	
5.5	22	49940-00	Rearing, roller	4	
5.5	23	40355-01	Arm, outer right hand	1	
5.5	24	40345-00	Arm, inner	1	
5.5	25	11073-04	Pin, roll	4	
5.5	26	13813-30	Pin	4	
5.5	27	11852-02	Screw, flat head	2	
5.5	28	40548-00	Washer	2	
5.5	29	21089-02	Bearing	6	
5.5	30	11857-05	Shim, .050"	As Req'd.	.050 inch
5.5	30	11857-12	Shim, .025"	As Req'd.	.025 inch

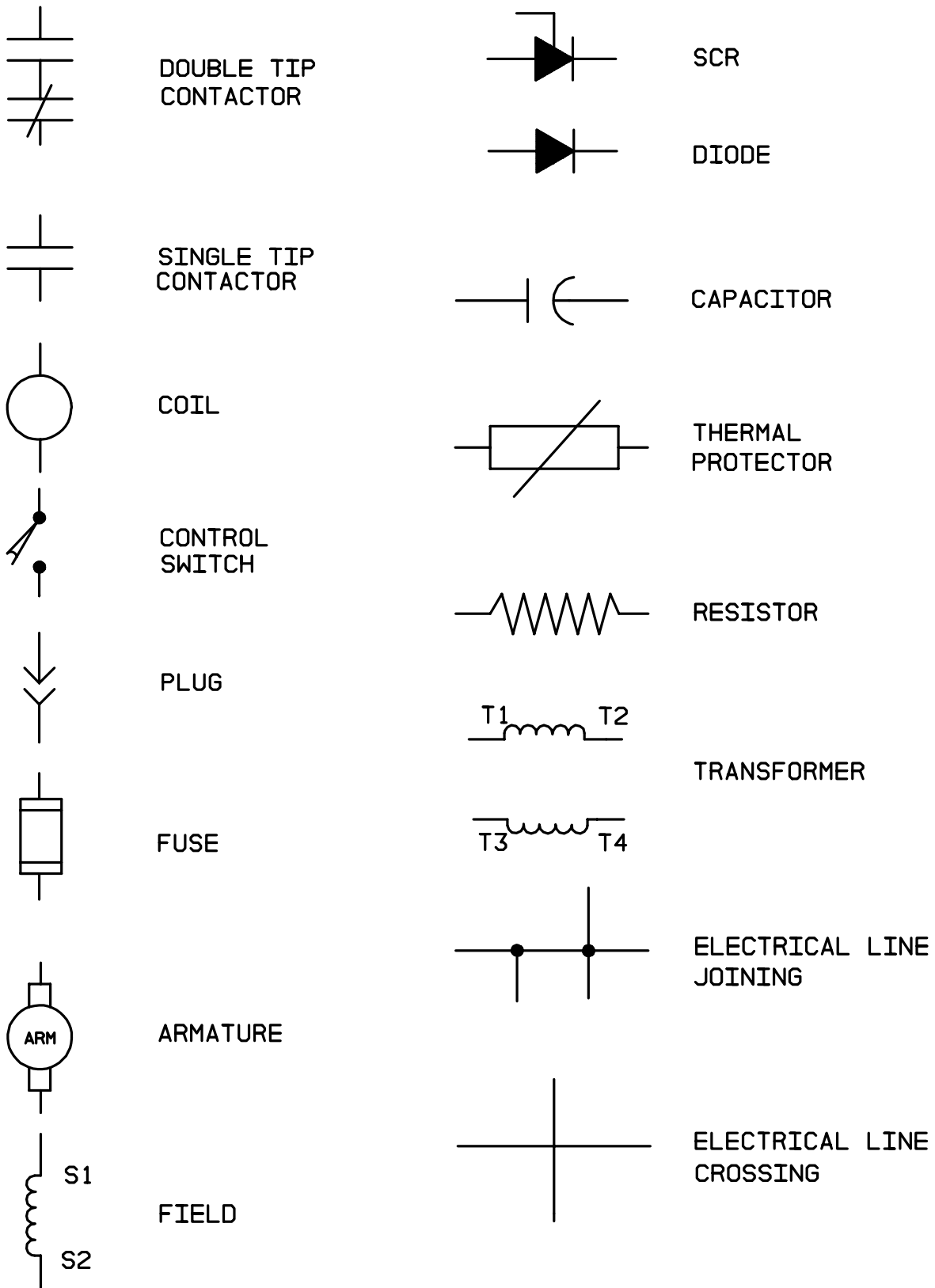
FIG #	ITEM #	PART #	NAME	# FOR ASSY.	UNIT
5.10	1	40720-01	Column, 89/192 inner	1	89/192
5.10	1	40720-02	Column, 95/210 inner	1	95/210
5.10	1	40720-03	Column, 98/216 inner	1	98/216
5.10	1	40720-04	Column, 102/225 inner	1	102/225
5.10	1	40720-05	Column, 111/240 inner	1	111/240
5.10	1	40720-06	Column, 119/258 inner	1	119/258
5.10	2	49837-00	Nut, wheel	2	
5.10	3	11486-12	Nut, jam	2	
5.10	4	14835-25	Chain, lift 89/192	2	89/192
5.10	4	14835-08	Chain, lift 95/210	2	95/210
5.10	4	14835-27	Chain, lift 98/216	2	98/216
5.10	4	14835-09	Chain, lift 102/225	2	102/225
5.10	4	14835-29	Chain, lift 111/240	2	111/240
5.10	4	14835-11	Chain, lift 119/258	2	119/258
5.10	5	30558-00	Anchor, lift chain	2	
5.10	6	30554-00	Pin, chain	2	
5.10	7	11157-03	Pin, cotter	4	
5.10	8	-----	Cylinder assembly (See Fig.# 5.11)	1	
5.10	9	11898-04	Ring, retainer	2	
5.10	10	11936-10	Washer, flat	2	
5.10	11	11936-07	Shim, .050"	As Req'd.	.050 inch
5.10	12	21089-02	Bearing	2	
5.10	13	11261-06	Nut	1	
5.10	14	11009-06	Lockwasher	1	
5.10	15	41437-00	Tube assembly	1	
5.10	16	11854-08	Screw, cap	1	

FIG #	ITEM #	PART #	NAME	# FOR ASSY.	UNIT
5.15	1	41469-00	Cylinder, tilt (See Fig.# 3.15)	1	
5.15	2	40499-00	Spacer	2	
5.15	3	40980-00	Frame, front	1	
5.15	3	41637-00	Frame, manlift frame	1	
5.15	4	40641-00	Frame, fork	1	
5.15	5	40382-00	Pin	2	
5.15	6	11073-23	Pin, roll	2	
5.15	7	40988-01	Rest, load back	1	
5.15	8	14994-06	Screw, cap	4	
5.15	9	11852-14	Screw, flat head	4	
5.15	10	40593-00	Bar, wear	2	
5.15	11	40441-00	Shim, .060"	As Req'd.	.060 inch
5.15	12	11073-04	Pin, roll	2	
5.15	13	13813-31	Shaft	2	
5.15	14	11009-08	Lockwasher	4	
5.15	15	41559-00	Cylinder, tilt (See Fig.# 3.15)	1	
5.15	16	49785-01	Bumper	2	
5.15	17	11857-06	Washer, shim	2	

FIG #	ITEM #	PART #	NAME	# FOR ASSY.	UNIT
6.4	1	25332-01	Tie, wire	As Req'd	
6.4	2	41166-00	Harness, wiring(See Fig.# 2.6)	1	
6.4	3	49611-00	Receptacle	2	
6.4	4	49861-05	Relief, strain	1	
6.4	5	52-07921-00	Cable	As Req'd	
			22 FEET	89/192	
			24 FEET	95/210	
			25 FEET	98/216	
			26 FEET	102/225	
			27 FEET	111/240	
			29 FEET	119/258	
6.4	6	11170-06	Nut	1	
6.4	7	15677-08	Clamp	1	
6.4	8	49610-00	Pin	10	
6.4	9	11009-05	Lockwasher	2	
6.4	10	11854-03	Screw, cap	2	
6.4	11	40077-00	Bracket	1	
6.4	12	49609-00	Plug	2	
6.4	13	41623-00	Harness, reach (See Fig.# 6.5)	1	
6.4	13	49608-00	Socket	10	
6.4	14	41588-00	Sleeve, cable	2	
6.4	15	49501-00	Spring	2	
6.4	16	41602-00	Strain relief, clamp	2	
6.4	17	41602-01	Strain relief, fitting	2	
6.4	18	41596-00	Bracket	2	
6.4	19	41622-00	Harness, wiring (See Fig.# 6.3)	1	

FIG #	ITEM #	PART #	NAME	# FOR ASSY.	UNIT
6.10	1	41461-01	Valve, 24 volt blocking (See Fig.# 6.11)	1	24 VOLT
6.10	1	41461-00	Valve, 36 volt blocking (See Fig.# 6.11)	1	36 VOLT
6.10	2	49656-15	Adapter	1	
6.10	3	12391-08	O ring	1	
6.10	4	49604-02	O ring	1	
6.10	5	49516-26	Hose	1	
6.10	6	49637-02	Tee	1	
6.10	7	49604-02	O ring	3	
6.10	8	49516-32	Hose assembly	1	
6.10	9	-----	Three stage cylinder and reservoir assy. (See Fig.# 3.23)	1	
6.10	10	49653-02	Elbow, 90°	1	
6.10	11	12391-06	O ring	1	
6.10	12	49604-02	O ring	1	
6.10	13	49516-31	Hose assembly	1	
6.10	14	41624-00	Tube assembly	1	
6.10	15	49604-02	O ring	1	
6.10	16	49656-02	Adapter	2	
6.10	17	49604-02	O ring	1	
6.10	18	12391-06	O ring	1	
6.10	19	49516-27	Hose assembly	1	
6.10	20	41460-01	Valve, 24 volt manlift (See Fig.# 6.12)	1	24 VOLT
6.10	20	41460-00	Valve, 36 volt manlift (See Fig.# 6.12)	1	36 VOLT
6.10	21	49516-29	Hose assembly	1	
6.10	22	41364-00	Lift valve assembly (See Fig.# 3.20)	1	
6.10	23	49656-14	Adapter	2	
6.10	24	12391-07	O ring	1	
6.10	25	49604-02	O ring	1	
6.10	26	49776-00	Beyond, power	1	
6.10	27	12391-08	O ring	1	
6.10	28	12391-07	O ring	1	
6.10	29	49615-02	Tee	1	
6.10	30	49604-02	O ring	2	
6.10	31	49397-00	Hose assembly	1	
6.10	32	49653-14	Elbow, 90°	1	
6.10	33	49604-02	O ring	1	
6.10	34	12391-08	O ring	1	

FIGURE # 7.4 BATTERY LIFT INTERRUPT "EE" EV-100LX SCR ELECTRICAL SCHEMATIC SYMBOLS



MODEL RR-30C ELECTRIC REACH TRUCK

NUMERICAL INDEX

<u>PART #</u>	<u>FIG. #</u>	<u>ITEM #</u>	<u>PART #</u>	<u>FIG.#</u>	<u>ITEM #</u>
14915-03	6.13	20	200056	2.12	1
14915-05	4.5	2	200059	2.12	11
14915-05	4.6	2	200073	3.12	K
14939-00	4.4	3	200074	6.12	23
14944-00	4.2	2	200074	6.12	8
14961-00	3.7	2	200074	6.12	13
14986-03	4.2	22	200076	2.15	1
14986-03	4.3	9	200077	2.15	2
14989-17	4.8	7	200077	2.16	2
14989-18	1.1	1	200077	2.17	2
14992-08	5.1	3	200077	2.18	2
14992-08	5.9	3	200078	2.15	3
14992-17	5.1	14	200079	2.15	4
14992-17	5.9	12	200080	2.15	5
14993-10	4.3	6	200081	2.17	6
14993-20	4.4	32	200081	2.18	6
14993-20	5.12	14	200081	2.15	6
14993-30	4.4	17	200081	2.16	6
14994-05	4.8	20	200082	2.15	7
14994-05	5.12	23	200083	2.15	8
14994-06	1.1	3	200084	2.15	9
14994-06	5.6	8	200085	2.15	11
14994-06	5.15	8	200086	2.15	13
14994-07	1.1	6	200087	2.15	14
14994-10	5.12	13	200088	2.15	15
14994-11	4.6	6	200089	2.15	18
14994-11	4.5	6	200090	2.15	19
15677-04	3.23	56	200091	2.15	20
15677-06	6.4	7	200092	2.15	21
15677-08	2.9	7	200093	2.15	22
15677-08	1.2	24	200094	2.15	24
15677-08	2.7	9	200094	2.15	25
15677-08	6.5	8	200094	2.16	19
200025	10.1	6	200094	2.18	19
200033	3.6	15	200094	2.17	19
200038	2.12	22	200095	2.18	9
200039	2.12	3	200095	2.17	9
200040	2.12	2	200095	2.16	9
200041	2.12	9	200096	2.15	26
200042	2.12	8	200096	2.18	8
200043	2.12	6	200096	2.17	8
200044	2.12	15	200096	2.16	8
200045	2.12	13	200097	2.15	27
200045	2.12	31	200548	3.8	5
200046	2.12	30	200557	3.8	13
200047	2.12	33	200558	3.8	17
200048	2.12	27	200567	3.8	1
200049	2.12	26	200570	3.8	K
200050	2.12	19	200843	5.17	K
200051	2.12	20	200843	5.8	K
200052	2.12	12	201050	5.7	13
200054	2.12	29	201050	5.16	13

MODEL RR-30C ELECTRIC REACH TRUCK

NUMERICAL INDEX

<u>PART #</u>	<u>FIG. #</u>	<u>ITEM #</u>	<u>PART #</u>	<u>FIG.#</u>	<u>ITEM #</u>
49604-00	3.14	12	49609-00	2.8	10
49604-01	3.10	16	49609-00	2.9	12
49604-01	3.9	6	49609-00	6.5	2
49604-01	3.3	23	49609-00	6.4	12
49604-01	3.3	15	49610-00	2.7	8
49604-01	3.10	8	49610-00	2.9	8
49604-01	3.10	12	49610-00	2.10	4
49604-01	3.3	17	49610-00	2.8	5
49604-01	3.3	3	49610-00	6.4	8
49604-01	3.3	47	49610-00	6.3	12
49604-01	3.3	28	49610-00	6.5	5
49604-01	3.3	10	49611-00	2.8	3
49604-01	3.9	3	49611-00	2.10	3
49604-01	3.3	38	49611-00	2.9	3
49604-02	3.23	3	49611-00	6.4	3
49604-02	3.23	11	49611-00	6.5	3
49604-02	3.21	15	49611-00	6.3	11
49604-02	3.23	23	49612-05	4.4	37
49604-02	3.21	10	49612-06	4.4	30
49604-02	3.21	24	49615-02	3.23	17
49604-02	3.21	12	49615-02	3.16	9
49604-02	3.23	18	49615-02	6.10	29
49604-02	3.23	16	49616-00	3.14	11
49604-02	3.23	6	49616-01	3.3	16
49604-02	3.16	10	49617-00	3.14	26
49604-02	3.23	33	49617-01	3.14	18
49604-02	3.16	16	49617-02	3.11	12
49604-02	3.16	19	49617-03	3.11	5
49604-02	3.3	5	49617-04	3.11	13
49604-02	3.23	27	49617-05	3.14	17
49604-02	3.21	3	49617-06	3.14	6
49604-02	3.21	6	49620-08	3.10	1
49604-02	3.16	6	49620-09	3.10	1
49604-02	3.16	24	49620-10	3.10	1
49604-02	6.10	25	49620-11	3.10	1
49604-02	6.10	12	49620-12	3.10	1
49604-02	6.10	7	49620-13	3.10	1
49604-02	6.10	30	49623-00	3.14	15
49604-02	6.10	15	49623-02	3.21	11
49604-02	6.10	17	49624-02	3.23	31
49604-02	6.10	33	49625-00	3.23	32
49604-02	6.10	4	49631-10	3.23	2
49604-03	3.23	39	49631-10	3.21	2
49604-03	3.23	42	49632-01	3.9	2
49604-03	3.23	54	49632-02	3.23	26
49605-00	2.6	17	49637-02	6.10	6
49607-00	2.6	12	49640-07	3.9	1
49607-00	6.3	10	49640-08	3.9	1
49608-00	2.8	12	49640-12	3.10	2
49608-00	2.9	14	49640-14	3.10	2
49608-00	6.5	4	49640-15	3.10	2
49608-00	6.4	13	49640-16	3.10	2

CLICK HERE TO **DOWNLOAD** THE COMPLETE MANUAL

- Thank you very much for reading the preview of the manual.
- You can download the complete manual from: [www.heydownloads.com](http://www.heydownloads.com) by clicking the link below



- Please note: If there is no response to CLICKING the link, please download this PDF first and then click on it.

CLICK HERE TO **DOWNLOAD** THE COMPLETE MANUAL

# ALPHABETICAL INDEX

NAME	FIG.#	PAGE #
<b>F</b> _____		
4" high articulating load wheel assembly	4.11	4.21
5" high articulation load wheel assembly	4.10	4.19
Forward steering control assembly	4.5	4.9
<b>H</b> _____		
Hand lift/lower and speed control	4.4	4.7
Hydraulic reservoir assembly	3.7	3.11
Hydraulic schematic	3.1	3.1
Hydraulic schematic symbols	3.2	3.2
<b>I,J,K,L</b> _____		
Lift control valve assembly	3.19	3.35
Lift pump and reservoir assembly	3.16	3.29
Lift pump assembly, 24 VOLT	3.18	3.33
Lift pump assembly, 36 VOLT	3.18	3.33
Lift pump contactor assembly, (24 volt)	2.17	2.29
Lift pump contactor assembly, (36 volt)	2.17	2.29
Lift pump motor assembly	3.17	3.31
Lift Pump motor assembly, (24 volt, G.E., 5BT1324B54)	2.20	2.35
Lift Pump motor assembly, (36 volt, G.E., 5BT1326B234)	2.20	2.35
Limit switch wiring assembly	2.7	2.9
<b>M</b> _____		
Main frame and load wheel assembly	4.8	4.15
Manlift connector assembly	6.7	6.11
Manlift EV-100LX SCR electrical schematic	6.1	6.1
Manlift EV-100LX SCR electrical schematic symbols	6.2	6.2
Manlift hydraulic diagram	6.10	6.15
Manlift hydraulic schematic	6.8	6.13
Manlift hydraulic schematic symbols	6.9	6.14
Manlift loadback rest installation	6.13	6.21
Manlift power component wiring	6.6	6.9
Manlift reach and platform cable assembly	6.5	6.7
Manlift three stage mast cable assembly	6.4	6.5
Manlift valve assembly, 24 VOLT	6.12	6.19
Manlift valve assembly, 36 VOLT	6.12	6.19
Manlift wiring harness assembly	6.3	6.3
<b>N</b> _____		
Numerical index	*	99.1
<b>O,P</b> _____		
Parts list index	0.2	0.3
Power connector assembly, (GRAY)	2.19	2.33
Power connector assembly, (RED)	2.19	2.33

FIG #	ITEM #	PART #	NAME	# FOR ASSY.	UNIT
1.1	1	14989-18	Screw, cap	4	
1.1	2	-----	Drive motor assembly (See Fig1.2)	1	
1.1	3	14994-06	Screw, cap	4	
1.1	4	11016-04	Washer, flat	6	
1.1	5	40011-01	Transmission assembly (See Fig.# 1.3 & 1.4)	1	
1.1	6	14994-07	Screw, cap	2	
1.1	7	20904-01	Bumper	1	
1.1	8	40425-00	Shim, .005"	As Req'd.	

FIGURE # 2.4 "EE" EV-100LX SCR ELECTRICAL SCHEMATIC SYMBOLS

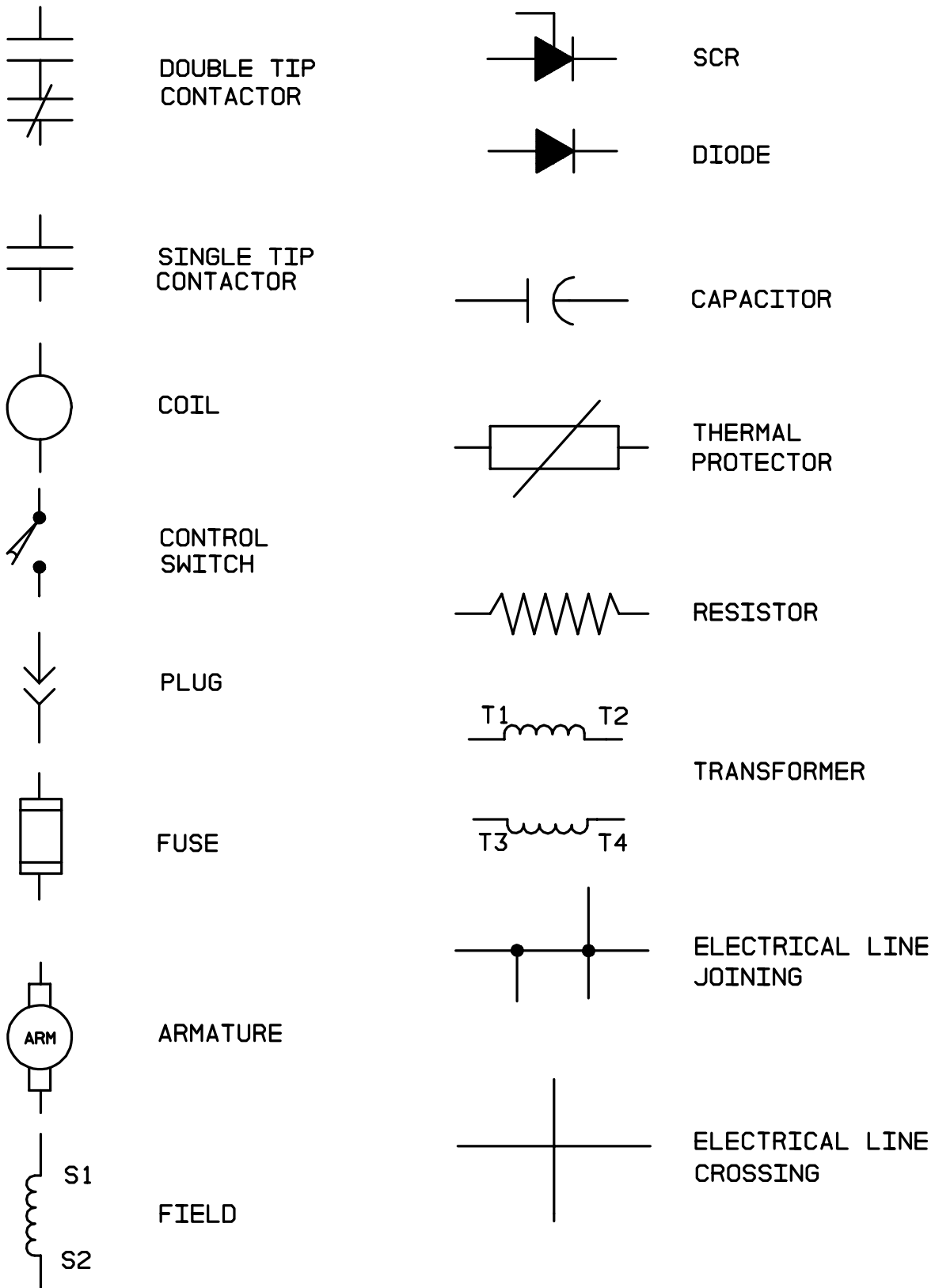


FIG #	ITEM #	PART #	NAME	# FOR ASSY.	UNIT
2.9	1	25332-01	Tie, wire	As Req'd	
2.9	2	41771-00	Harness, wiring(See Fig.# 2.6)	1	
2.9	3	49611-00	Receptacle	1	
2.9	4	49861-05	Relief, strain	1	
2.9	5	52-07920-00	Cable	As Req'd	
			21 FEET	89/192	
			23 FEET	95/210	
			24 FEET	98/216	
			25 FEET	102/225	
			26 FEET	111/240	
			28 FEET	119/258	
2.9	6	11170-06	Nut	1	
2.9	7	15677-08	Clamp	1	
2.9	8	49610-00	Pin	5	
2.9	9	11009-05	Lockwasher	2	
2.9	10	11854-03	Screw, cap	2	
2.9	11	40077-00	Bracket	1	
2.9	12	49609-00	Plug	1	
2.9	13	41255-00	Cable, reach (See Fig.# 2.10)	1	
2.9	14	49608-00	Socket	5	
2.9	15	41588-00	Sleeve, cable	2	
2.9	16	49501-00	Spring	2	
2.9	17	41602-00	Strain relief, clamp	2	
2.9	18	41602-01	Strain relief, fitting	2	
2.9	19	41596-00	Bracket	2	

FIG #	ITEM #	PART #	NAME	# FOR ASSY.	UNIT
2.14	1	41757-01	Panel assembly, 24 Volt contactor	1	24 Volt
2.14	1	41757-02	Panel assembly, 36 Volt contactor	1	36 Volt
2.14	2	27693-02	Contactor, 1A (See Fig.# 2.16)	1	
2.14	3	50000-13	Washer, flat	As Req'd	
2.14	4	50001-11	Lockwasher	As Req'd	
2.14	5	50003-01	Screw, cap (M8x1.25MM 16M LG)	As Req'd	
2.14	6	301122-000	Bar, buss	1	
2.14	6	NOT USED	Bar, buss (NOT USED ON "EE" ONLY)	0	"EE"TYPE
2.14	7	27693-02	Contactor, 24 Volt lift pump (See Fig.# 2.17)	1	24 Volt
2.14	*	300113-000	Suppression	1	
2.14	7	202169	Contractor, 36 Volt lift pump (See Fig.# 2.17)	1	36 Volt
2.14	*	300113-000	Suppression	1	
2.14	8	300073-000	Contactor, auxiliary pump (See Fig.# 2.18)	1	
2.14	9	301121-000	Bar, buss	1	
2.14	10	301125-000	Standoff	1	
2.14	11	300110-000	Block, fuse	1	
2.14	12	25275-06	Fuse, 15 AMP control	1	
2.14	13	NSS	Screw, machine (M3.5x0.6MM 8M LG)	1	
2.14	14	301123-000	Bar, buss	1	"E" TYPE
2.14	15	301147-000	Harness, wiring	1	
2.14	16	301120-000	Bar, buss	1	
2.14	17	27692-00	Contactor, forward and rearward (See Fig.# 2.15)	1	
2.14	18	301126-000	Base	1	
2.14	19	50003-02	Screw, machine (M8x1.25MM 20M LG)	As Req'd.	
2.14	20	50001-11	Lockwasher	As Req'd.	
2.14	21	50000-13	Washer, flat	As Req'd.	
2.14	22	25094-02	Fuse, 500 AMP power (FOR "E" ONLY)	1	"E" TYPE
2.14	22	25094-01	Fuse, 300 AMP power ("EE" DRIVE)	1	"EE"TYPE
2.14	23	25094-03	Fuse, 400 AMP power ("EE" HYDRAULIC)	1	"EE"TYPE
2.14	24	29408-00	Bar, buss	1	"EE"TYPE
2.14	25	202009	Suppression, forward/rearward	2	
2.14	25	202004	Suppression, 1A contactor	1	

\* - NOT SHOWN BUT IS ON CONTACTOR PANEL ASSEMBLY (SEE ITEM # 25: EXAMPLE)

EV-100LX POWER CONNECTOR ASSEMBLY (24 VOLT, 49855-24, RED)

FIG ITEM		PART #	NAME	# FOR ASSY.	UNIT
#	#				
2.19	1	49855-24	Connector assembly, RED SB-350	1	
2.19	2	49854-05	Connector, RED housing	1	
2.19	3	49852-03	Connector, tip	2	
2.19	4	49853-04	Bushing	2	
2.19	5	49856-121	Cable, 55.00" NEGATIVE	1	
2.19	6	49856-120	Cable, 75.00", POSITIVE	1	

EV-100LX POWER CONNECTOR ASSEMBLY (36 VOLT, 49855-22, GRAY)

FIG ITEM		PART #	NAME	# FOR ASSY.	UNIT
#	#				
2.19	1	49855-22	Connector assembly, GRAY SB-350	1	
2.19	2	49854-02	Connector, GRAY housing	1	
2.19	3	49852-03	Connector, tip	2	
2.19	4	49853-04	Bushing	2	
2.19	5	49856-121	Cable, 55.00" NEGATIVE	1	
2.19	6	49856-120	Cable, 75.00", POSITIVE	1	

FIGURE # 2.25 "E" EV-100LX TT SCR ELECTRICAL SCHEMATIC SYMBOLS

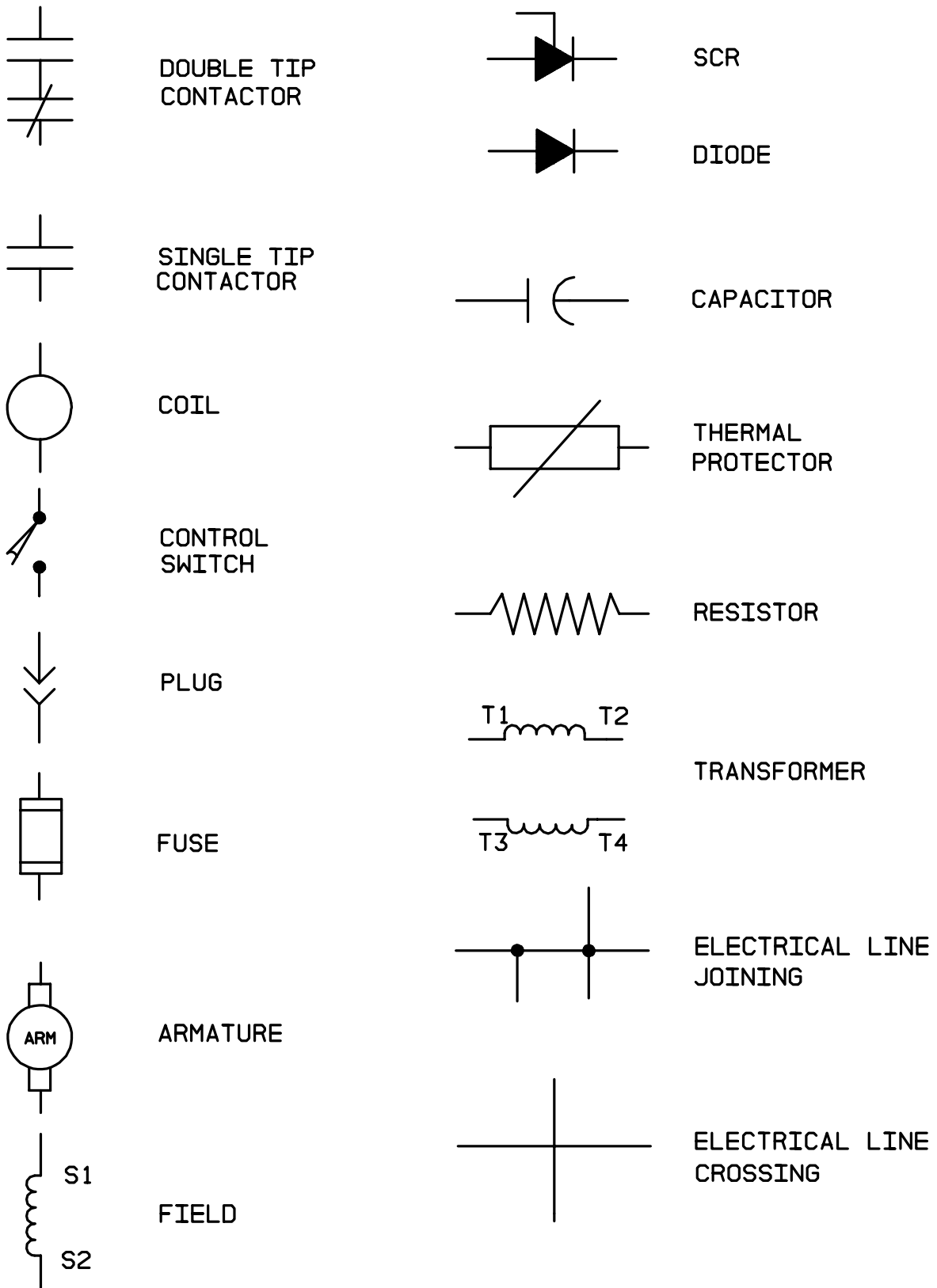


FIG #	ITEM #	PART #	NAME	# FOR ASSY.	UNIT
3.4	1	201546	Pin, roll	1	
3.4	2	202138	Cam, switch	1	
3.4	3	201643	Jam, nut	1	
3.4	4	202139	Nut	2	
3.4	5	201553	Lockwasher	2	
3.4	6	202140	Bracket	1	
3.4	7	202141	Cap	1	
3.4	8	202142	Cap, adapter	1	
3.4	9K	NSS	Ring, retainer	1	
3.4	10	201578	Screw, machine	2	
3.4	11	201556	Washer, flat	2	
3.4	12	201639	Switch	1	
3.4	13	202144	Plug	1	
3.4	14K	NSS	O ring	1	
3.4	15	201630	Spring	1	
3.4	16	202091	Plunger	1	
3.4	17	NA	Body	1	
3.4	18	NA	Spool	1	
3.4	19	201634	Bushing	1	
3.4	20	202143	Spring	1	
3.4	21	202096	Washer	1	
3.4	22	202097	Washer	1	
3.4	23K	NSS	O ring	2	
3.4	24K	NSS	Seal, wiper	1	
3.4	K	202104	Kit, seal	1	

(CONTAINS ITEMS MARKED WITH "K")

FIG #	ITEM #	PART #	NAME	# FOR ASSY.	UNIT
3.9	1	49640-07	Hose assembly, 89/126	1	89/126
3.9	1	49640-08	Hose assembly, 95/138	1	95/138
3.9	1	49640-09	Hose assembly, 107/162	1	107/162
3.9	1	49640-10	Hose assembly, 119/186	1	119/186
3.9	2	41199-00	Tube assembly, reach	1	
3.9	3	49604-00	O ring	2	
3.9	4	49656-08	Adapter, straight	2	
3.9	5	49604-00	O ring	1	
3.9	6	12391-05	O ring	1	
3.9	7	49665-01	Adapter, straight	2	
3.9	8	12391-05	O ring	1	
3.9	9	49604-01	O ring	1	
3.9	10	49643-01	Hose assembly	2	
3.9	11	49654-01	Elbow, 45°	2	
3.9	12	49604-01	O ring	1	
3.9	13	12391-05	O ring	1	
3.9	14	41331-00	Valve assembly (See Fig.# 3.4)	1	

FIG #	ITEM #	PART #	NAME	# FOR ASSY.	UNIT
3.14	1	41243-01	Coil, 24 volt	As Req'd.	24 VOLT
3.14	1	41243-00	Coil, 36 volt	As Req'd.	36 VOLT
3.14	2	41242-00	Divider, valve assembly (See Fig.# 3.12)	1	
3.14	3	49656-00	Adapter	4	
3.14	4	12391-03	O ring	1	
3.14	5	49604-00	O ring	1	
3.14	6	49617-06	Hose assembly	1	
3.14	7	49655-01	Fitting, straight long	2	
3.14	8	49604-00	O ring	1	
3.14	9	12391-03	O ring	1	
3.14	10	41469-00	Cylinder, left tilt (See Fig.# 3.15)	1	LEFT
3.14	11	49616-00	Elbow, 90°	2	
3.14	12	49604-00	O ring	2	
3.14	13	49579-00	Hose assembly	1	
3.14	14	49578-00	Hose assembly	1	
3.14	15	49623-00	Elbow, 90°	1	
3.14	16	49604-00	O ring	1	
3.14	17	49617-05	Hose assembly	1	
3.14	18	49617-01	Hose assembly	1	
3.14	19	201264	Cylinder, sideshift	1	
3.14	20	49654-08	Elbow, 45°	1	
3.14	21	49604-00	O ring	1	
3.14	22	49604-00	O ring	1	
3.14	23	49653-08	Elbow, 90°	1	
3.14	24	49604-00	O ring	1	
3.14	25	12391-04	O ring	1	
3.14	26	49617-00	Hose assembly	1	
3.14	27	49655-00	Fitting, straight long	1	
3.14	28	49604-00	O ring	1	
3.14	29	12391-03	O ring	1	
3.14	30	49531-00	Elbow, 90°	1	
3.14	31	49604-00	O ring	2	
3.14	32	41559-00	Cylinder, right tilt (See Fig.# 3.15)	1	RIGHT

FIG #	ITEM #	PART #	NAME	# FOR ASSY.	UNIT
3.19	1K	NSS	Ring, retainer	1	
3.19	2	NSS	Seal, oil	1	
3.19	3	NA	Plate, face	1	
3.19	4K	NSS	O ring	2	
3.19	5K	NSS	Seal	2	
3.19	6	NSS	Seal, plate	2	
3.19	7	NA	Shaft, drive	1	
3.19	8K	NA	Shaft, idler	1	
3.19	9	NA	Body	1	
3.19	10	NA	Plate	1	
3.19	11	NA	Lockwasher	4	
3.19	12	NA	Screw, cap	4	
3.19	K	201990	Kit, seal (CONTAINS ITEMS #4, 5, AND 6)	1	
3.19	K	201989	Kit, oil seal (CONTAINS ITEMS #1 and 2)	1	

FIG #	ITEM #	PART #	NAME	# FOR ASSY.	UNIT
3.24	1	49548-00	Screw	1	
3.24	2	11897-03	Washer, seal	1	
3.24	3	41652-01	Tube, 89/192 cylinder	1	89/192
3.24	3	41652-02	Tube, 95/210 cylinder	1	95/210
3.24	3	41652-03	Tube, 98/216 cylinder	1	98/216
3.24	3	41652-04	Tube, 102/225 cylinder	1	102/225
3.24	3	41652-05	Tube, 111/240 cylinder	1	111/240
3.24	3	41652-06	Tube, 119/258 cylinder	1	119/258
3.24	4	11016-05	Washer, flat	1	
3.24	5	41258-00	Piston	1	
3.24	6	11894-06	Screw, cap	1	
3.24	7K	NSS	Ring, wear	1	
3.24	8	40725-01	Rod, 89/192 cylinder	1	89/192
3.24	8	40725-02	Rod, 95/210 cylinder	1	95/210
3.24	8	40725-03	Rod, 98/216 cylinder	1	98/216
3.24	8	40725-04	Rod, 102/225 cylinder	1	102/225
3.24	8	40725-05	Rod, 111/240 cylinder	1	111/240
3.24	8	40725-06	Rod, 119/258 cylinder	1	119/258
3.24	9K	NSS	O ring	1	
3.24	10K	NSS	Ring, backup	1	
3.24	11	28142-00	Bearing	1	
3.24	12K	NSS	Ring, wear	1	
3.24	13K	NSS	Seal	1	
3.24	14K	NSS	Wiper	1	
3.24	K	28200-00	Kit, seal	1	

(CONTAINS ITEMS MARKED WITH "K")

FIG #	ITEM #	PART #	NAME	# FOR ASSY.	UNIT
4.4	1	40416-00	Handle assembly	1	
4.4	2	40482-01	Grip, hand	1	
4.4	3	14939-00	Switch, horn	1	
4.4	4	49887-01	Tubing, heat shrink	As Req'd.	
4.4	5	40402-00	Shaft	1	
4.4	6	49770-01	Fitting, wire	1	
4.4	7	52-07901-01	Wire, 16 Ga. black	As Req'd.	
4.4	8	49770-00	Fitting, wire	1	
4.4	9	49922-01	Screw, machine	3	
4.4	10	NA	Rivet, pop (1/8"x1/4")	As Req'd.	
4.4	11	40676-00	Brush	2	
4.4	12	20151-00	Switch, key	1	
4.4	13	40238-00	Cover, instrument	1	
4.4	14	11695-06	Bushing	2	
4.4	15	11025-02	Ring, retainer	1	
4.4	16	11018-08	Key	1	
4.4	17	14993-30	Washer	1	
4.4	18	11695-01	Bushing	2	
4.4	19	49892-10	Screw, machine	2	
4.4	20	49997-00	Grommet, rubber	2	
4.4	21	11170-05	Nut	2	
4.4	22	41364-00	Valve, lift control (See Fig.3.20)	1	
4.4	23	49717-01	Nut	4	
4.4	24	41324-00	Spacer	2	
4.4	25	11261-06	Nut	2	
4.4	26	11016-03	Washer	4	
4.4	27	11018-11	Key	1	
4.4	28	11695-05	Bushing	2	
4.4	29	41309-00	Rod	1	
4.4	30	49612-06	Screw, cap	2	
4.4	31	41297-00	Block	1	
4.4	32	14993-20	Washer	2	
4.4	33	41313-00	Arm	1	
4.4	34	11271-31	Screw, cap	2	
4.4	35	41312-00	Block	1	
4.4	36	41306-00	Arm	1	
4.4	37	49612-05	Screw, cap	2	
4.4	38	41314-00	Link	2	
4.4	39	11143-05	Screw, cap	1	
4.4	40	41301-00	Handle	1	
4.4	41	11170-06	Nut	1	
4.4	42	11419-03	Nut	2	
4.4	43	40694-00	Arm	1	
4.4	44	11047-13	Screw, cap	1	
4.4	45	49329-00	Joint, ball	2	
4.4	46	49591-00	Rod	1	
4.4	47	11129-03	Nut	1	
4.4	48	49330-00	Screw	1	
4.4	49	41796-00	Lever	1	
4.4	50	14911-03	Screw, machine	2	
4.4	51	49751-04	Nut, flanged	2	
4.4	52	41794-00	Bracket, switch	1	
4.4	53	27303-00	Switch, master	1	
4.4	54	11016-01	Washer, flat	2	
4.4	55	11419-03	Nut	2	
4.4	56	29304-00	Potentioneter	1	
4.4	57	50023-00	Screw, flat head	2	

FIG #	ITEM #	PART #	NAME	# FOR ASSY.	UNIT
4.9	1	11898-11	Ring, retainer	2	
4.9	2	42137-00	Toe box, left hand	1	
4.9	2	42137-00	Toe box, right hand	1	
4.9	3	42138-00	Axle	2	
4.9	4	11073-32	Pin, roll	2	
4.9	5	11160-09	Fitting, grease	2	
4.9	6	42143-00	Spacer	4	
4.9	7	11857-17	Washer	4	
4.9	8	49910-03	Bearing	4	
4.9	9	42140-00	Wheel Assembly	1	
4.9	10	42139-00	Wheel, rim	1	
4.9	11	40254-00	Tire	1	

FIG #	ITEM #	PART #	NAME	# FOR ASSY.	UNIT
5.1	1	40514-00	Guard, overhead	1	
5.1	2	11170-12	Nut	4	
5.1	3	14992-08	Screw, cap	4	
5.1	4	-----	Column, inner (See Fig.#5.2)	1	
5.1	5	-----	Reach assembly (See Fig.# 5.5)	1	
5.1	6	25008-01	Fork, 30" (See Fig.# 5.8)	2	30 inch
5.1	6	25008-02	Fork, 36" (See Fig.# 5.8)	2	36 inch
5.1	6	25008-03	Fork, 42" (See Fig.# 5.8)	2	42 inch
5.1	6	25008-04	Fork, 48" (See Fig.# 5.8)	2	48 inch
5.1	7	30554-00	Pin	2	
5.1	8	11157-03	Pin, cotter	2	
5.1	9	40547-00	Plug	2	
5.1	10	14892-04	Screw, cap	2	
5.1	11	11890-10	Pin, dowel	2	
5.1	12	11009-06	Lockwasher	4	
5.1	13	40544-00	Stop	1	
5.1	14	40544-01	Stop	1	
5.1	15	14992-17	Screw, cap	2	
5.1	16	11016-06	Washer	2	.250 inch
5.1	16	49925-01	Shim, .250"	As Req'd.	.125 inch
5.1	16	49925-02	Shim, .125"	As Req'd.	.062 inch
5.1	17	49925-03	Shim, .062"	As Req'd.	
5.1	18	11271-15	Screw, set	4	
5.1	19	11271-14	Screw, set	4	
5.1	20	-----	Column, outer (See Fig.# 5.3)	1	
5.1	21	40228-05	Channel	1	
5.1	22	40467-01	Cushion, windshield	1	
5.1	22	41084-00	Channel	2	95/138
5.1	23	41084-01	Channel, 95/138	2	
5.1		NA	Laminated safety sheet gless S.A.E. J-673	1	
	24		26 <sup>5</sup> / <sub>8</sub> "x33 <sup>3</sup> / <sub>4</sub> "x .234" (Secure this part locally)		
5.1	25	11074-10	Pin, roll	2	
5.1	26	40472-00	Sideshifter assembly (See Fig.# 5.7)	1	cold storage
5.1	27	40486-01	Screen (Cold Storage)	1	cold storage
5.1	28	52-05007-00	Edge, rubber (Cold Storage)	As Req'd.	

FIG #	ITEM #	PART #	NAME	# FOR ASSY.	UNIT
5.6	1	41469-00	Cylinder, tilt (See Fig.# 3.15)	1	
5.6	2	40499-00	Spacer	2	
5.6	3	40980-00	Frame, front	1	
5.6	4	40641-00	Frame, fork	1	
5.6	5	40382-00	Pin	2	
5.6	6	11073-23	Pin, roll	2	
5.6	7	40988-01	Rest, load back	1	
5.6	8	14994-06	Screw, cap	4	
5.6	9	11852-14	Screw, flat head	4	
5.6	10	40593-00	Bar, wear	2	
5.6	11	40441-00	Shim, .060"	As Req'd.	.060 inch
5.6	12	11073-04	Pin, roll	2	
5.6	13	13813-31	Shaft	2	
5.6	14	11009-08	Lockwasher	4	
5.6	15	41559-00	Cylinder, tilt (See Fig.# 3.15)	1	
5.6	16	49785-01	Bumper	2	
5.6	17	40816-00	Spacer	2	
5.6	18	11857-06	Washer, shim	2	

FIG #	ITEM #	PART #	NAME	# FOR ASSY.	UNIT
5.11	1	11160-11	Fitting, grease	2	
5.11	2	11831-06	Nut	1	
5.11	3	11016-08	Washer, flat	1	
5.11	4	30553-05	Washer, shim	As Req'd.	
5.11	5	40045-00	Sheave	1	
5.11	6	49993-02	Rase, inner	2	
5.11	7	49994-01	Bearing, roller	2	
5.11	8	30553-06	Washer, shim	As Req'd.	
5.11	9	26519-02	Pin	1	
5.11	10	26389-00	Nut, spacer	1	
5.11	11	49941-01	Washer, belleville	6	
5.11	12	40565-01	Retainer	1	
5.11	13	11016-03	Washer, flat	2	
5.11	14	11143-03	Screw, cap	2	
5.11	15	40732-00	Plate, shim	1	
5.11	16	41587-00	Sheave, chain	1	
5.11	17	41585-00	Sheave, cable	1	
5.11	18	41581-00	Shaft	1	
5.11	19	40727-01	Cylinder, 89/192 freelift (See Fig.# 3.25)	1	89/192
5.11	19	40727-02	Cylinder, 95/210 freelift (See Fig.# 3.25)	1	95/210
5.11	19	40727-03	Cylinder, 98/216 freelift (See Fig.# 3.25)	1	98/216
5.11	19	40727-04	Cylinder, 102/225 freelift (See Fig.# 3.25)	1	102/225
5.11	19	40727-05	Cylinder, 111/240 freelift (See Fig.# 3.25)	1	111/240
5.11	19	40727-06	Cylinder, 119/258 freelift (See Fig.# 3.25)	1	119/258

FIG #	ITEM #	PART #	NAME	# FOR ASSY.	UNIT
5.16	1	201064	Cylinder assembly	1	
5.16	2	201075	Anchor, cylinder	1	
5.16	3	11073-19	Pin, roll	1	
5.16	4	11419-12	Nut	2	
5.16	5	NA	Fitting, grease (1/4"-28 SAE-LT ST)	2	
5.16	6	11016-01	Washer, flat	2	
5.16	7	11016-02	Washer, flat	2	
5.16	8	202155	Frame	1	
5.16	9	201074	Bolt	4	
5.16	10	11009-10	Lockwasher	4	
5.16	11	NA	Fitting, grease (.257" dia. drive)	2	
5.16	12	201062	Retainer	2	
5.16	13	201050	Slider-bottom bronze	2	
5.16	14	201063	Slider-top bronze	2	

FIG #	ITEM #	PART #	NAME	# FOR ASSY.	UNIT
6.5	1	41243-01	Coil, 24 volt	As Req'd	24 VOLT
6.5	1	41243-00	Coil, 36 volt	As Req'd	36 VOLT
6.5	2	49609-00	Plug	1	
6.5	3	49611-00	Receptacle	1	
6.5	4	49608-00	Socket	5	
6.5	5	49610-00	Pin	5	
6.5	6	49717-02	Nut	1	
6.5	7	11016-02	Washer, flat	1	
6.5	8	15677-08	Clamp, hose	1	
6.5	9	11954-03	Screw, cap	1	
6.5	10	41623-00	Harness, reach and platform	1	
6.5	11	41242-00	Valve, single diverter (See Fig.# 3.12)	1	
6.5	12	26662-01	Switch, pushbutton	1	
6.5	13	49459-01	Switch, rocker (DPDT)	1	
6.5	14	49458-00	Switch, key (Set of Two KEY SWITCHS)	1	
6.5	15	49459-00	Switch, rocket (SPDT)	1	

FIG #	ITEM #	PART #	NAME	# FOR ASSY.	UNIT
6.11	1	300269-000	Valve, N,O. cartridge	1	
6.11	2	300270-000	Kit, seal	1	
6.11	3	NSS	O ring	2	
6.11	4	NSS	O ring	2	
6.11	5	NSS	Ring, backup	1	
6.11	6	NA	Block	1	
6.11	7	41243-01	Coil, 24 volt solenoid	1	24 VOLT
6.11	7	41243-00	Coil, 36 volt solenoid	1	36 VOLT

FIG #	ITEM #	PART #	NAME	# FOR ASSY.	UNIT
7.5	1	49399-00	Control, EV-100LX SCR TX panel (See Fig.# 2.12)	1	
7.5	2	41757-01	Panel, 24 Volt contactor (See Fig.# 2.13 & 2.14)	1	24 VOLT
7.5	2	41757-02	Panel, 36 Volt contactor (See Fig.# 2.13 & 2.14)	1	36 VOLT
7.5	3	41799-00	Harness, curtis	1	
7.5	4	301579-000	Wire assembly	1	
7.5	5	49712-01	Lift interrupt control, 24 volt	1	24 VOLT
7.5	5	49712-02	Lift interrupt control, 36 volt	1	36 VOLT
7.5	6	301578-000	Gauge, lift interrupt	1	
7.5	7	11016-01	Washer, flat	2	
7.5	8	11009-04	Lockwasher	2	
7.5	9	11045-04	Screw, cap	2	

# RR-30C ELECTRIC REACH TRUCK

## NUMERICAL INDEX

<u>PART #</u>	<u>FIG. #</u>	<u>ITEM #</u>	<u>PART #</u>	<u>FIG.#</u>	<u>ITEM #</u>
14994-11	4.6	6	25275-06	2.28	11
15677-04	3.23	56	25306-01	4.6	25
15677-08	2.7	9	25332-01	2.7	1
15677-08	2.9	7	25332-01	2.8	1
15677-08	1.2	24	25332-01	2.23	13
20121-01	4.5	20	25332-01	2.9	1
20121-01	4.6	20	25332-01	2.5	8
20151-00	2.6	4	25332-01	3.3	40
20151-00	2.5	3	26204-00	2.6	2
20151-00	4.4	12	26270-00	0.1	16
20323-00	4.2	20	26270-00	4.2	1
20393-00	10.1	4	26389-00	5.11	10
20904-01	4.7	6	26466-01	4.6	11
20904-01	4.8	2	26466-01	4.5	11
20904-01	1.1	7	26493-01	5.12	17
21089-02	5.13	7	26519-02	5.11	9
21089-02	5.5	29	26617-03	5.12	15
21089-02	5.3	2	26618-04	2.6	14
21089-02	5.2	2	26645-00	5.12	16
21089-02	5.10	12	26743-00	0.1	1
21542-01	4.6	24	27303-00	2.6	10
21542-09	4.5	24	27303-00	2.5	10
22005-06	4.12	23	27303-00	4.4	53
22012-05	1.3	32	27561-03	4.1	17
22014-02	3.15	2	27692-00	2.14	17
23228-01	2.6	3	27693-02	2.14	7
23228-02	2.6	3	27693-02	2.14	2
23309-01	2.6	15	27694-00	2.12	11A
23309-02	2.6	15	27697-00	2.28	13
25008-01	5.1	6	27702-02	2.12	11B
25008-01	5.9	7	27899-00	3.17	1
25008-02	5.9	7	27899-00	2.11	11
25008-02	5.1	6	27900-00	2.11	11
25008-03	5.9	7	27900-00	3.17	1
25008-03	5.1	6	27901-00	1.2	31
25008-04	5.1	6	27901-00	2.11	17
25008-04	5.9	7	27902-00	1.2	31
25094-01	2.14	22	27902-00	2.11	17
25094-02	2.14	22	28137-00	3.25	8
25094-03	2.14	23	28142-00	3.25	13
25109-05	3.23	45	28142-00	3.24	11
25109-05	3.21	19	28159-04	5.12	21
25125-01	4.5	18	28159-06	5.12	11
25125-01	4.6	18	28200-00	3.24	K
25189-02	4.8	8	28200-00	3.25	K
25203-06	4.8	10	29030-01	2.23	1
25203-07	4.8	10	29030-02	2.23	1
25203-08	4.8	10	29304-00	2.6	11
25204-03	4.8	9	29329-00	2.13	6
25204-06	4.8	9	29408-00	2.14	24
25204-07	4.8	9	30320-01	3.23	36
25275-06	2.14	12	30553-02	5.12	1

# RR-30C ELECTRIC REACH TRUCK

## NUMERICAL INDEX

<u>PART #</u>	<u>FIG. #</u>	<u>ITEM #</u>	<u>PART #</u>	<u>FIG.#</u>	<u>ITEM #</u>
52-07901-01	2.5	2			
52-07901-03	2.23	10			
52-07920-00	2.8	6			
52-07920-00	2.9	5			



FIG #	ITEM #	PART #	NAME	# FOR ASSY.	UNIT
1.4	1	14908-16	Lockwasher	1	
1.4	2	14898-00	Washer	1	
1.4	3	11057-13	Key	1	
1.4	4	40473-00	Gear & pinion set (See Fig.# 1.3 for pinion)	1	
1.4	5	40020-00	Case	1	
1.4	6	11890-03	Pin, dowel	2	
1.4	7	11205-13	Bearing	1	
1.4	8	40009-00	Shaft	1	
1.4	9	49967-04	Shim, .005"	As Req'd.	
1.4	9	49967-05	Shim, .007"	As Req'd.	
1.4	9	49967-06	Shim, .010"	As Req'd.	
1.4	10	40001-00	Holder, bearing	1	
1.4	11	11205-14	Bearing	1	
1.4	12	49973-01	Locknut	2	
1.4	13	49974-01	Lockwasher	1	
1.4	14	49970-01	Shim, .005"	As Req'd.	
1.4	14	49970-02	Shim, .007"	As Req'd.	
1.4	14	49970-03	Shim, .010"	As Req'd.	
1.4	15	12459-00	Vent, air	1	
1.4	16	40828-00	Plate	1	
1.4	17	11143-03	Screw, cap	4	
1.4	18	11043-03	Screw, cap	4	
1.4	19	40829-00	Cover	1	
1.4	20	12318-01	Plug	1	
1.4	21	12391-03	O ring	1	
1.4	22	11143-04	Screw, cap	8	
1.4	23	11009-06	Lockwasher	8	
1.4	24	11015-30	O ring	3	
1.4	25	40007-00	Shaft	1	
1.4	26	11936-16	Race	2	
1.4	27	11935-06	Bearing, thrust	2	
1.4	28	11936-15	Race	2	
1.4	29	49971-00	Roller	122	
1.4	30	40024-01	Spacer	1	
1.4	31	40017-00	Gear	1	
1.4	32	11936-01	Race	1	
1.4	33	40018-00	Gear	1	
1.4	34	40024-02	Spacer	1	
1.4	35	40006-00	Shaft	1	
1.4	36	11073-19	Pin	1	
1.4	37	40012-00	Gear, axle	1	
1.4	38	11205-16	Bearing	2	
1.4	39	49967-01	Shim, .005"	As Req'd	
1.4	39	49967-02	Shim, .007"	As Req'd	
1.4	39	49967-03	Shim, .010"	As Req'd	
1.4	40	40022-00	Spacer	1	
1.4	41	11039-29	Seal, oil	1	
1.4	42	40003-00	Hub	1	
1.4	43	49966-01	Ring	1	
1.4	44	14908-28	Locknut	1	

FIG #	ITEM #	PART #	NAME	# FOR ASSY.	UNIT
2.7	1	25332-01	Tie, wire	As Req'd	
2.7	2	14911-06	Screw, machine	2	
2.7	3	11009-03	Lockwasher	2	
2.7	4	49574-00	Switch, limit	1	
2.7	5	14910-02	Connector	1	
<b>2 Stage Masts</b>					
2.7	6	41494-00	Cable assembly, 89/126	1	89/126
2.7	6	41494-01	Cable assembly, 95/138	1	95/138
2.7	6	41494-02	Cable assembly, 107/162	1	107/162
2.7	6	41494-03	Cable assembly, 119/186	1	119/186
<b>3 Stage Masts</b>					
2.7	6	41494-00	Cable assembly, 89/192	1	89/192
2.7	6	41494-01	Cable assembly, 95/210	1	95/210
2.7	6	41494-01	Cable assembly, 98/216	1	98/216
2.7	6	41494-02	Cable assembly, 102/225	1	102/225
2.7	6	41494-03	Cable assembly, 111/240	1	111/240
2.7	6	41494-04	Cable assembly, 119/258	1	119/258
2.7	7	49557-00	Receptacle	1	
2.7	8	49610-00	Pin	2	
2.7	9	15677-08	Nut	3	2 STAGE
2.7	10	41494-00	Clamp	3	2 STAGE

FIG #	ITEM #	PART #	NAME	# FOR ASSY.	UNIT
2.12	6	200043	Bar, bus	1	
2.12	7	NA	Hexhead, M5 x .80, 10mm long	8	
2.12	*	NA	Lockwasher, M5	8	
2.12	*	NA	Washer, M5 flat	8	
2.12	8	200042	Bar, buss	1	
2.12	9	200041	Bar, buss	1	
2.12	10	300084-000	Card, TX control	1	
2.12	10	301281-000	Card, TT control	1	
2.12	10	302103-000	Card, TX control, <b>REMANUFACTURED</b>	1	
2.12	10	301976-000	Card, TT control, <b>REMANUFACTURED</b>	1	
2.12	11	200059	Harness, SCR wiring	1	
2.12	11A	27694-00	Kit, A plug	1	
2.12	11B	27702-02	Kit, B plug	1	
2.12	11C	302211-000	Kit, Y plug	1	
2.12	11D	301567-000	Kit, Z plug	1	
2.12	12	200052	Kit, 1 Rec	1	
2.12	13	200045	Insulation, 1 Rec	1	
2.12	14	NA	Hexhead, M5 x .80, 50mm long	4	
2.12	15	200044	Bar, buss	1	
2.12	16	NA	Panhead, M3.5 x .60, 8mm long	8	
2.12	*	NA	Lockwasher, M3.5	6	
2.12	*	NA	Washer, M3,5 flat	6	
2.12	17	NA	Panhead, M3.5 x .60, 44mm long	1	
2.12	*	NA	Lockwasher, M3.5	1	
2.12	*	NA	Washer, M3.5 flat	1	
2.12	18	NA	Panhead, M3.5 x .60, 23mm long	8	
2.12	*	NA	Lockwasher, M3.5	8	
2.12	*	NA	Washer, M3.5 flat	8	
2.12	19	200050	Snubber	4	
2.12	20	200051	Spider and wire assembly	1	
2.12	21	300086-000	Thermal protector	1	
2.12	22	200038	Reactor	1	
2.12	23	NA	Hex cap, M6 x 1, 16mm long	1	
2.12	*	NA	Lockwasher, M6	1	
2.12	*	NA	Washer, M6 flat	1	
2.12	24	NA	Nut, M6 x 1.25	4	
2.12	25	50001-11	Lockwasher, M8	2	
2.12	*	NA	Washer, M8 flat	2	
2.12	26	200049	Shunt	1	
2.12	27	200048	Post	1	
2.12	28	201297	Rectifier (3 Rec and 4 Rec)	2	
2.12	29	200054	Strap, capacitor	2	
2.12	30	200046	Heatsink	1	
2.12	31	200045	Insulation, heatsink	1	
2.12	32	300085-000	Capacitor	1	
2.12	33	200047	Bushing	3	
2.12	34	NA	Hexcap, M8 x 1.25, 16mm long	3	
2.12	*	50001-11	Lockwasher, M8	3	
2.12	*	NA	Washer, M8	3	

\* Local purchase hardware for reference only.

FIG ITEM		PART #	NAME	# FOR ASSY.	UNIT
#	#				
2.17	1	201962	Base, magnet	1	
2.17	2	200077	Coil, 24 volt field	1	24 volt
2.17	2	202172	Coil, 36 volt field	1	36 volt
2.17	3	201963	Frame, magnet	1	
2.17	4	201262	Spring (RED)	1	
2.17	5	201964	Armature	1	
2.17	6	200081	Base, buss	1	
2.17	7	201965	Tip, contact	2	
2.17	8	200096	Bushing	1	
2.17	9	200095	Carrier	1	
2.17	10	201966	Tip, movable	1	
2.17	11	201259	Cap	1	
2.17	12	201266	Spring (GOLD)	1	
2.17	13	201367	Washer, flat	1	
2.17	14	201215	Nut, lock	1	
2.17	15	201967	Clamp	2	
2.17	16	201368	Lockwasher	4	
2.17	17	201372	Screw, machine	4	
2.17	18	202010	Suppression, pump contactor	1	
2.17	19	200094	Seat	1	

FIG #	ITEM #	PART #	NAME	# FOR ASSY.	UNIT
2.22	1	300294-000	Stud and nut assembly	4	
2.22	2	300301-000	Spring	8	
2.22	3	300315-000	Brush	4	
2.22	4	300299-000	Connector, cross	2	
2.22	5	300292-000	Bearing	1	
2.22	6	300310-000	End, shield C.E.	1	
2.22	7	300316-000	Cover, 24 volt large	1	24 volt
2.22	7	300304-000	Cover, 36 volt large	1	36 volt
2.22	8	300303-000	Cover, small	1	
2.22	9	300302-000	Yoke and holder assembly	1	
2.22	10	300312-000	Coil, 24 volt field	1	24 VOLT
2.22	10	300327-000	Coil, 36 volt field	1	36 VOLT
2.22	11	300311-000	Armature, 24 volt	1	24 VOLT
2.22	11	300326-000	Armature, 36 volt	1	36 VOLT
2.22	12	300307-000	Fan	1	
2.22	13	300313-000	End, shield D.E.	1	
2.22	14	300314-000	Seal, shaft	1	
2.22	15	300317-000	Cover, 24 volt D.E.	1	24 VOLT
2.22	15	300305-000	Cover, 36 volt D.E.	1	36 VOLT
2.22	16	49339-00	Kit, "EE" solid cover	1	"EE"TYPE


FIG #	ITEM #	PART #	NAME	# FOR ASSY.	UNIT
2.29	1	49399-01	Control, EV-100LX TT SCR panel (See Fig.# 2.12)	1	
2.29	2	40412-04	Plate	1	
2.29	3	49326-00	Gauge, display  RED FLAG	1	
2.29	4	41800-00	Cable assembly	1	
2.29	5	300979-004	Wire assembly	1	
2.29	6	300979-003	Wire assembly	1	
2.29	7	300979-007	Wire assembly	1	
2.29	8	28286	Screw, machine	2	
2.29	9	50001-07	Lockwasher	2	
2.29	10	21035	Washer, flat	2	
2.29	11	25275-06	Fuse, 15 AMP control	1	
2.29	12	300110-000	Block, fuse	1	
2.29	13	27697-00	Block, driver	1	
2.29	14	301126-000	Base	1	

FIGURE # 3.2 HYDRAULIC SCHEMATIC SYMBOLS

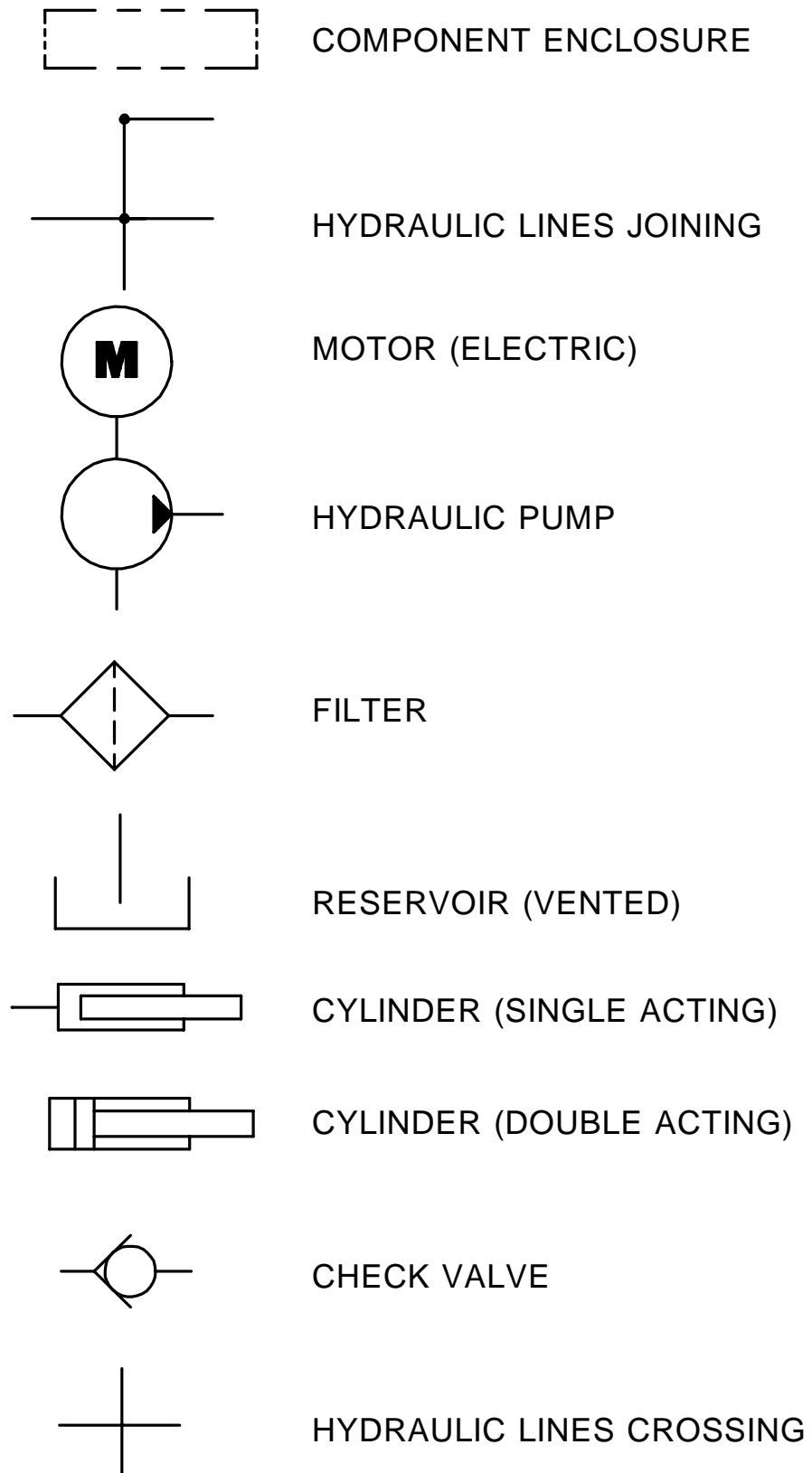


FIG #	ITEM #	PART #	NAME	# FOR ASSY.	UNIT
3.7	1	1-08759-00	Gage, sight	1	
3.7	2	14961-00	Breather	1	
3.7	3	41426-00	Reservoir	1	
3.7	4	40323-00	Screen	1	
3.7	5	12318-11	Plug	1	
3.7	6	12391-12	O ring	1	
3.7	7	11016-03	Washer, flat	2	
3.7	8	11143-08	Screw, cap	2	

FIG #	ITEM #	PART #	NAME	# FOR ASSY.	UNIT
3.12	1	12318-06	Plug	2	
3.12	1	12391-06	O ring	1	
3.12	2	41187-00	Valve, solenoid	4	
3.12	3	41230-00	Manifold	1	
3.12	4	12318-01	Plug	2	
3.12	5	12391-01	O ring	1	
3.12	6	12318-03	Plug	2	
3.12	7	12391-03	O ring	1	
3.12	K	200073	Kit, seal (for item #3)	1	

FIG ITEM		PART #	NAME	# FOR ASSY.	UNIT
#	#				
3.17	1	27900-00	Motor, 24 volt lift pump (See Fig.# 2.20)	1	24 volt
3.17	1	301985-000	Motor, "E" 36 volt lift pump (See Fig.# 2.21)	1	"E" 36 volt
3.17	1	27899-00	Motor, "EE" 36 volt lift pump (See Fig.# 2.20)	1	"EE" 36 volt
3.17	2	41680-00	Pump, 24 volt lift (See Fig.# 3.18) "E"	1	"E" 24 volt
3.17	2	41997-00	Pump, 36 volt lift (See Fig.# 3.19) "E"	1	"E" 36 volt
3.17	2	41680-02	Pump, 24 volt lift (See Fig.# 3.18) "EE"	1	"EE" 24 volt
3.17	2	41680-00	Pump, 36 volt lift (See Fig.# 3.18) "EE"	1	"EE" 36 volt
3.17	3	11143-05	Screw, cap	2	
3.17	4	49509-00	Nut, clip	4	
3.17	5	11854-05	Screw, cap	4	
3.17	6	11016-12	Washer, flat	4	
3.17	7	31267-00	Grommet	4	



FIG ITEM		PART #	NAME	# FOR ASSY.	UNIT
#	#				
3.22	1	11897-03	Washer, seal	1	
3.22	2	49548-00	Screw	1	
3.22	3	40535-01	Tube, 89/126 cylinder	1	89/126
3.22	3	40535-02	Tube, 95/138 cylinder	1	95/138
3.22	3	40353-03	Tube, 107/162 cylinder	1	107/162
3.22	3	40535-04	Tube, 119/186 cylinder	1	119/186
3.22	4	40052-00	Nut	1	
3.22	5	40051-00	Plunger	1	
3.22	6	13857-01	Ball	1	
3.22	7	30612-01	Spring	1	
3.22	8	40047-00	Piston	1	
3.22	9K	NSS	Ring, wear	1	
3.22	10	40539-01	Rod, 89/126	1	89/126
3.22	10	40539-02	Rod, 95/138	1	95/138
3.22	10	40539-03	Rod, 107/162	1	107/162
3.22	10	40539-04	Rod, 119/186	1	119/186
3.22	11K	NSS	O ring	1	
3.22	12K	NSS	Ring, backup	1	
3.22	13	40068-00	Bearing	1	
3.22	14K	NSS	Ring, wear	1	
3.22	15K	NSS	Seal	1	
3.22	16K	NSS	Wiper	1	
3.22	K	41534-00	Kit, seal	1	

(CONTAINS ITEMS MARKED WITH "K")

FIG #	ITEM #	PART #	NAME	# FOR ASSY.	UNIT
3.28	1	49594-02	Diagnostic	1	
3.28	2	49649-02	Reducer	1	
3.28	3	49604-01	O ring	1	
3.28	4	49651-02	Tee	1	
3.28	5	49604-02	O ring	1	
3.28	6	12391-06	O ring	1	
3.28	7	49642-04	Hose	1	
3.28	8	49596-00	Valve, relief	1	
3.28	9	49651-01	Tee	2	
3.28	10	49604-01	O ring	2	
3.28	11	12391-05	O ring	1	
3.28	12	42019-00	Valve, relief	1	
3.28	13	49652-01	Tee	1	
3.28	14	12391-05	O ring	1	
3.28	15	49604-01	O ring	1	
3.28	16	49597-01	Elbow, 90°	2	
3.28	17	12391-05	O ring	1	
3.28	18	42018-00	Tee	1	
3.28	19	49604-01	O ring	2	
3.28	20	49517-12	Hose	1	
3.28	21	49430-00	Hose	1	
3.28	22	49430-03	Hose	1	
3.28	23	49656-01	Adapter	3	
3.28	24	49604-01	O ring	1	
3.28	25	12391-05	O ring	1	
3.28	26	49653-01	Elbow, 90°	3	
3.28	27	49604-01	O ring	1	
3.28	28	12391-05	O ring	1	
3.28	29	42062-00	Valve assembly, 24 Volt (See Fig.# 3.29)	1	24 VOLT
3.28	29	42062-01	Valve assembly, 36 Volt (See Fig.# 3.29)	1	36 VOLT
3.28	30	-----	Reservoir assembly (See Fig.# 3.7)	1	
3.28	31	49623-01	Elbow, 90°	1	
3.28	32	49604-01	O ring	1	
3.28	33	40795-01	Torque generator assembly (See Fig.# 3.8)	1	
3.28	34	49654-01	Elbow, 90°	2	
3.28	35	12391-05	O ring	1	
3.28	36	49604-01	O ring	1	
3.28	37	49642-08	Hose	1	
3.28	38	49956-02	Filter assembly	1	
3.28	39	201435	Element, filter	1	
3.28	40	49666-12	Reducer	2	
3.28	41	12391-08	O ring	1	
3.28	42	11009-04	Lockwasher	2	
3.28	43	11045-03	Screw, cap	2	
3.28	44	52-05104-00	Guard, hose	As Req'd.	
3.28	45	25332-01	Tie, wire	4	
3.28	46	52-05054-00	Hose (.8 feet)	As Req'd.	
3.28	47	14859-04	Clamp, hose	2	
3.28	48	49674-01	Elbow, beaded	1	
3.28	49	12391-07	O ring	1	
3.28	50	49517-08	Hose	1	
3.28	51	49656-10	Adapter	1	
3.28	52	49604-01	O ring	1	
3.28	53	12391-03	O ring	1	
3.28	54	49517-02	Hose	1	
3.28	55	300333-000	Auxiliary pump & motor assy., 24 VOLT (See Fig.# 3.5)	1	24 VOLT
3.28	55	300334-000	Auxiliary pump & motor assy., 36 VOLT (See Fig.# 3.5)	1	36 VOLT

FIG #	ITEM #	PART #	NAME	# FOR ASSY.	UNIT
4.2	1	26270-00	Decal	1	
4.2	2	14944-00	Knob	1	
4.2	3	11813-07	Grommet	1	
4.2	4	41784-01	Cover, seat panel	1	
4.2	4	41784-00	Cover, seat panel multi-function handle	1	
4.2	5	40274-00	Rod	1	
4.2	6	11806-08	Nut, jam	1	
4.2	7	49916-00	Yoke, end	1	
4.2	8	11135-06	Pin with cotter pin	1	
4.2	9	40940-00	Spacer	2	
4.2	10	11143-16	Screw, cap	2	
4.2	11	11016-03	Washer, flat	4	
4.2	12	40275-01	Bar	1	
4.2	13	11261-06	Nut	2	
4.2	14	11170-04	Nut	2	
4.2	15	11045-08	Screw, cap	2	
4.2	16	40414-00	Block	1	
4.2	17	-----	Connector assembly (See Fig.# 2.19)	1	
4.2	18	11880-08	Screw, machine	2	
4.2	19	41642-00	Plate	1	
4.2	20	20323-00	Switch	1	
4.2	21	41790-00	Plate, switch	1	
4.2	22	14986-03	Nut, twin	1	

FIG #	ITEM #	PART #	NAME	# FOR ASSY.	UNIT
4.7	1	11143-05	Screw, cap	2	
4.7	2	40796-00	Bracket, pump	1	
4.7	3	11143-06	Screw, cap	2	
4.7	4	49891-00	Mount, shock	2	
4.7	5	300333-000	Pump and motor assembly, 24 volt (See Fig.# 3.5)	1	24 VOLT
4.7	5	300334-000	Pump and motor assembly, 36 volt (See Fig.# 3.5)	1	36 VOLT
4.7	6	20904-01	Bumper	3	
4.7	7	11143-02	Screw, cap	2	
4.7	8	11016-03	Washer, flat	6	
4.7	9	11261-08	Nut	2	
4.7	10	11261-06	Nut	2	
4.7	11	41138-00	Bracket, mounting	1	

FIG ITEM		PART #	NAME	# FOR ASSY.	UNIT
#	#				
4.10A	1	11073-33	Pin, roll	1	
4.10A	2	40245-00	Axle	1	
4.10A	3	41159-00	Bracket	1	
4.10A	4	40247-00	Pin	1	
4.10A	5	40249-00	Plate	2	
4.10A	6	11016-09	Washer	4	
4.10A	7	40248-01	Shim, .005"	As Req'd.	
4.10A	7	40248-02	Shim, .010"	As Req'd.	
4.10A	7	40248-03	Shim, .062"	As Req'd.	
4.10A	7	40248-04	Shim, .031"	As Req'd.	
4.10A	8	49972-05	Seal, oil	4	
4.10A	9	11205-21	Bearing	4	
4.10A	10	40222-00	Wheel	2	
4.10A	11	11160-09	Fitting, grease	2	
4.10A	*	202154	Adapter for grease gun	1	

FIG #	ITEM #	PART #	NAME	# FOR ASSY.	UNIT
5.1	1	40514-00	Guard, overhead	1	
5.1	2	11170-12	Nut	4	
5.1	3	14992-08	Screw, cap	4	
5.1	4	-----	Column, inner (See Fig.#5.2)	1	
5.1	5	-----	Reach assembly (See Fig.# 5.5)	1	
5.1	6	25008-01	Fork, 30" (See Fig.# 5.8)	2	30 inch
5.1	6	25008-02	Fork, 36" (See Fig.# 5.8)	2	36 inch
5.1	6	25008-03	Fork, 42" (See Fig.# 5.8)	2	42 inch
5.1	6	25008-04	Fork, 48" (See Fig.# 5.8)	2	48 inch
5.1	7	30554-00	Pin	2	
5.1	8	11157-03	Pin, cotter	2	
5.1	9	40547-00	Plug	2	
5.1	10	14892-04	Screw, cap	2	
5.1	11	11890-10	Pin, dowel	2	
5.1	12	11009-06	Lockwasher	4	
5.1	13	40544-00	Stop	1	
5.1	14	40544-01	Stop	1	
5.1	15	14992-17	Screw, cap	2	
5.1	16	11016-06	Washer	2	
5.1	17	49925-01	Shim, .250"	As Req'd.	.250 inch
5.1	17	49925-02	Shim, .125"	As Req'd.	.125 inch
5.1	17	49925-03	Shim, .062"	As Req'd.	.062 inch
5.1	18	11271-15	Screw, set	4	
5.1	19	11271-14	Screw, set	4	
5.1	20	-----	Column, outer (See Fig.# 5.3)	1	
5.1	21	40228-05	Channel	1	
5.1	22	40467-01	Cushion, windshield	1	
5.1	23	41084-00	Channel	2	
5.1	23	41084-01	Channel, 95/138	2	95/138
5.1	24	NA	Laminated safety sheet gless S.A.E. J-673 26 <sup>5</sup> / <sub>8</sub> "x33 <sup>3</sup> / <sub>4</sub> "x .234" (Secure this part locally)	1	
5.1	25	11074-10	Pin, roll	2	
5.1	26	-----	Sideshifter assembly (See Fig.# 5.7)	1	
5.1	27	40486-01	Screen (Cold Storage)	1	cold storage
5.1	28	52-05007-00	Edge, rubber (Cold Storage)	As Req'd.	cold storage

FIG #	ITEM #	PART #	NAME	# FOR ASSY.	UNIT
5.6	1	41469-00	Cylinder, tilt (See Fig.# 3.15)	1	
5.6	2	40499-00	Spacer	2	
5.6	3	40980-00	Frame, front	1	
5.6	4	40641-00	Frame, fork	1	
5.6	5	40382-00	Pin	2	
5.6	6	11073-23	Pin, roll	2	
5.6	7	40988-01	Rest, load back	1	
5.6	8	14994-06	Screw, cap	4	
5.6	9	11852-14	Screw, flat head	4	
5.6	10	40593-00	Bar, wear	2	
5.6	11	40441-00	Shim, .060"	As Req'd.	.060 inch
5.6	12	11073-04	Pin, roll	2	
5.6	13	13813-31	Shaft	2	
5.6	14	11009-08	Lockwasher	4	
5.6	15	41559-00	Cylinder, tilt (See Fig.# 3.15)	1	
5.6	16	49785-01	Bumper	2	
5.6	17	40816-00	Spacer	2	
5.6	18	11857-06	Washer, shim	2	

FIG #	ITEM #	PART #	NAME	# FOR ASSY.	UNIT
5.11	1	11160-11	Fitting, grease	2	
5.11	2	11831-06	Nut	1	
5.11	3	11016-08	Washer, flat	1	
5.11	4	30553-05	Washer, shim	As Req'd.	
5.11	5	40045-00	Sheave	1	
5.11	6	49993-02	Rase, inner	2	
5.11	7	49994-01	Bearing, roller	2	
5.11	8	30553-06	Washer, shim	As Req'd.	
5.11	9	26519-02	Pin	1	
5.11	10	26389-00	Nut, spacer	1	
5.11	11	49941-01	Washer, belleville	6	
5.11	12	40565-01	Retainer	1	
5.11	13	11016-03	Washer, flat	2	
5.11	14	11143-03	Screw, cap	2	
5.11	15	40732-00	Plate, shim	1	
5.11	16	41587-00	Sheave, chain	1	
5.11	17	41585-00	Sheave, cable	1	
5.11	18	41581-00	Shaft	1	
5.11	19	40727-01	Cylinder, 89/192 freelift (See Fig.# 3.25)	1	89/192
5.11	19	40727-02	Cylinder, 95/210 freelift (See Fig.# 3.25)	1	95/210
5.11	19	40727-03	Cylinder, 98/216 freelift (See Fig.# 3.25)	1	98/216
5.11	19	40727-04	Cylinder, 102/225 freelift (See Fig.# 3.25)	1	102/225
5.11	19	40727-05	Cylinder, 111/240 freelift (See Fig.# 3.25)	1	111/240
5.11	19	40727-06	Cylinder, 119/258 freelift (See Fig.# 3.25)	1	119/258

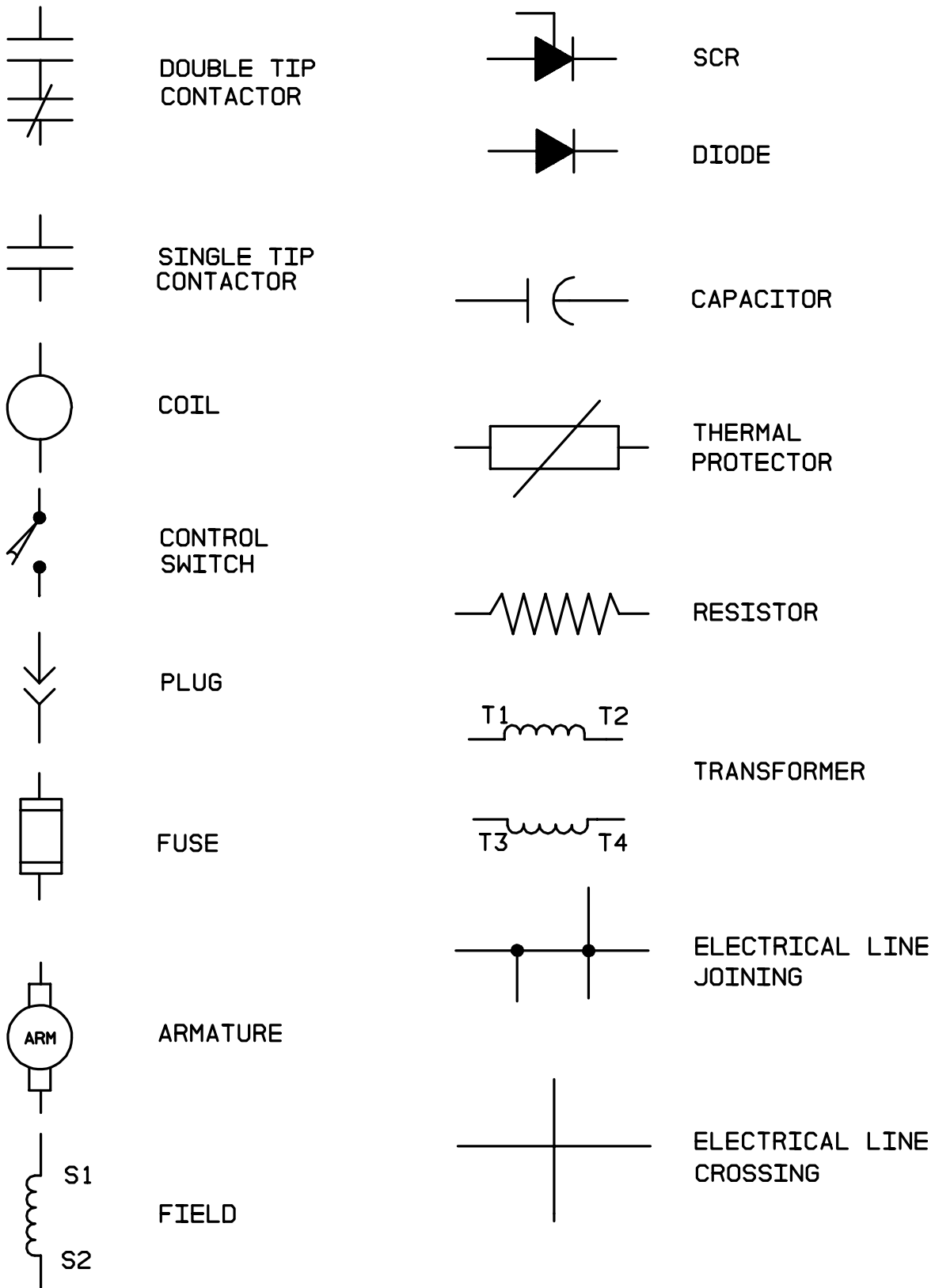
FIG #	ITEM #	PART #	NAME	# FOR ASSY.	UNIT
5.16	1	301790-007	Slide, top	5	
5.16	2	301790-019	Anchor, cylinder	1	
5.16	3	301790-008	Spacer	1	
5.16	4	49653-08	Fitting, 90°	1	
5.16	5	301790-009	Ring, retainer	2	
5.16	6	301790-006	Slide, lower	1	
5.16	7	301790-005	Nut	2	
5.16	8	301790-004	Hook, lower	4	
5.16	9	301790-002	Screw, set	2	
5.16	10	301790-001	Screw	2	
5.16	11	301790-003	Lockwasher	4	
5.16	12	NA	Frame, sideshifter	4	
5.16	13	301790-010	Nut	1	
5.16	14	301790-011	Spacer	1	
5.16	15	301790-012	Cylinder assembly, 2" CENTER STROKE	1	4.0" Cyd.
5.16	15	301790-013	Cylinder assembly, 3" CENTER STROKE	1	6.0" Cyd.
5.16	15	301790-014	Cylinder assembly, 4" CENTER STROKE	1	8.0" Cyd.
5.16	16K	NSS	Spacer, nylon	1	
5.16	17	301790-017	Spacer	1	
5.16	18K	NSS	Seal, gland	1	
5.16	19	301790-016	Retainer, wiper	1	
5.16	20K	NSS	Wiper, rod	1	
5.16	21	301790-015	Ring, retainer	1	
5.16	K	301790-018	Kit, seal	1	
			(CONTAINS ITEMS MARKED WITH "K")	1	

XX - SPECIFY MODEL AND SERIAL NUMBER WHEN ORDERING THIS PART.

FIG #	ITEM #	PART #	NAME	# FOR ASSY.	UNIT
6.5	1	41243-01	Coil, 24 volt	As Req'd	24 VOLT
6.5	1	41243-00	Coil, 36 volt	As Req'd	36 VOLT
6.5	2	49609-00	Plug	1	
6.5	3	49611-00	Receptacle	1	
6.5	4	49608-00	Socket	5	
6.5	5	49610-00	Pin	5	
6.5	6	49717-02	Nut	1	
6.5	7	11016-02	Washer, flat	1	
6.5	8	15677-08	Clamp, hose	1	
6.5	9	11954-03	Screw, cap	1	
6.5	10	41623-00	Harness, reach and platform	1	
6.5	11	41242-00	Valve, diverter (See Fig.# 3.12)	1	
6.5	12	26662-01	Switch, pushbotton	1	
6.5	13	49459-01	Switch, rocker (DPDT)	1	
6.5	14	49458-00	Switch, key (Set of Two KEYS)	1	
6.5	15	49459-00	Switch, rocket (SPDT)	1	

FIG #	ITEM #	PART #	NAME	# FOR ASSY.	UNIT
6.11	1	300269-000	Valve, N,O. cartridge	1	
6.11	2	300270-000	Kit, seal	1	
6.11	3	NSS	O ring	2	
6.11	4	NSS	O ring	2	
6.11	5	NSS	Ring, backup	1	
6.11	6	NA	Block	1	
6.11	7	300948-000	Coil, 24 volt solenoid	1	24 VOLT
6.11	7	300949-000	Coil, 36 volt solenoid	1	36 VOLT

FIGURE # 7.4 BATTERY LIFT INTERRUPT "EE" EV-100LX SCR ELECTRICAL SCHEMATIC SYMBOLS



# MODEL RR-45 ELECTRIC REACK TRUCK

## NUMERICAL INDEX

<u>PART #</u>	<u>FIG. #</u>	<u>ITEM #</u>	<u>PART #</u>	<u>FIG. #</u>	<u>ITEM #</u>
13813-30	5.14	26	14986-03	2.32	*
13813-30	5.5	26	14986-03	4.3	9
13813-31	5.15	13	14989-17	4.8	7
13813-31	5.6	13	14989-18	1.1	1
13857-01	3.22	6	14992-08	5.1	3
13857-01	3.25	7	14992-08	5.9	3
14810-03	3.16	3	14992-17	5.1	15
14810-04	3.16	5	14992-17	5.9	12
14813-00	4.3	17	14993-10	4.3	6
14835-08	5.10	4	14993-20	4.4	32
14835-09	5.10	4	14993-20	4.13	33
14835-11	5.10	4	14993-20	5.12	14
14835-25	5.10	4	14993-30	4.4	17
14835-27	5.10	4	14993-30	4.13	18
14835-29	5.10	4	14994-05	4.8	20
14835-44	5.3	3	14994-05	5.12	23
14835-45	5.3	3	14994-06	1.1	3
14835-46	5.3	3	14994-06	5.6	8
14835-47	5.3	3	14994-06	5.15	8
14835-56	5.13	4	14994-07	1.1	6
14835-57	5.13	4	14994-10	5.12	13
14835-58	5.13	4	14994-11	4.5	6
14835-59	5.13	4	14994-11	4.6	6
14835-60	5.13	4	15677-08	1.2	17
14835-61	5.13	4	15677-08	2.9	7
14848-03	3.16	6	15677-08	2.7	9
14851-02	4.1	18	15677-08	6.4	7
14851-02	4.1	17	15677-08	6.5	8
14851-02	6.13	12	200025	10.1	2
14859-04	3.28	47	200033	3.6	15
14859-04	3.3	45	200038	2.12	22
14859-05	3.16	2	200039	2.12	3
14892-01	4.3	18	200040	2.12	2
14892-04	5.1	10	200041	2.12	9
14898-00	1.4	2	200042	2.12	8
14908-08	3.13	13	200043	2.12	6
14908-08	3.15	18	200044	2.12	15
14908-12	1.3	13	200045	2.12	31
14908-16	1.4	1	200045	2.12	13
14908-28	1.4	44	200046	2.12	30
14910-02	2.7	5	200047	2.12	33
14911-03	4.4	50	200048	2.12	27
14911-03	4.13	51	200049	2.12	26
14911-06	2.7	2	200050	2.12	19
14913-03	6.13	1	200051	2.12	20
14913-04	6.13	4	200052	2.12	12
14915-03	6.13	20	200054	2.12	29
14915-05	4.6	2	200056	2.12	1
14915-05	4.5	2	200059	2.12	11
14939-00	4.4	3	200073	3.12	K
14944-00	4.2	2	200074	6.12	8
14961-00	3.7	2	200074	6.12	23
14986-03	4.2	22	200074	6.12	13

CLICK HERE TO **DOWNLOAD** THE COMPLETE MANUAL

- Thank you very much for reading the preview of the manual.
- You can download the complete manual from: [www.heydownloads.com](http://www.heydownloads.com) by clicking the link below



- Please note: If there is no response to CLICKING the link, please download this PDF first and then click on it.

CLICK HERE TO **DOWNLOAD** THE COMPLETE MANUAL