



BT Prime-Mover

HT-60W

● Parts Manuals

301483-000 1989_May

300382-001 1991_January



CLICK HERE TO **DOWNLOAD** THE COMPLETE MANUAL

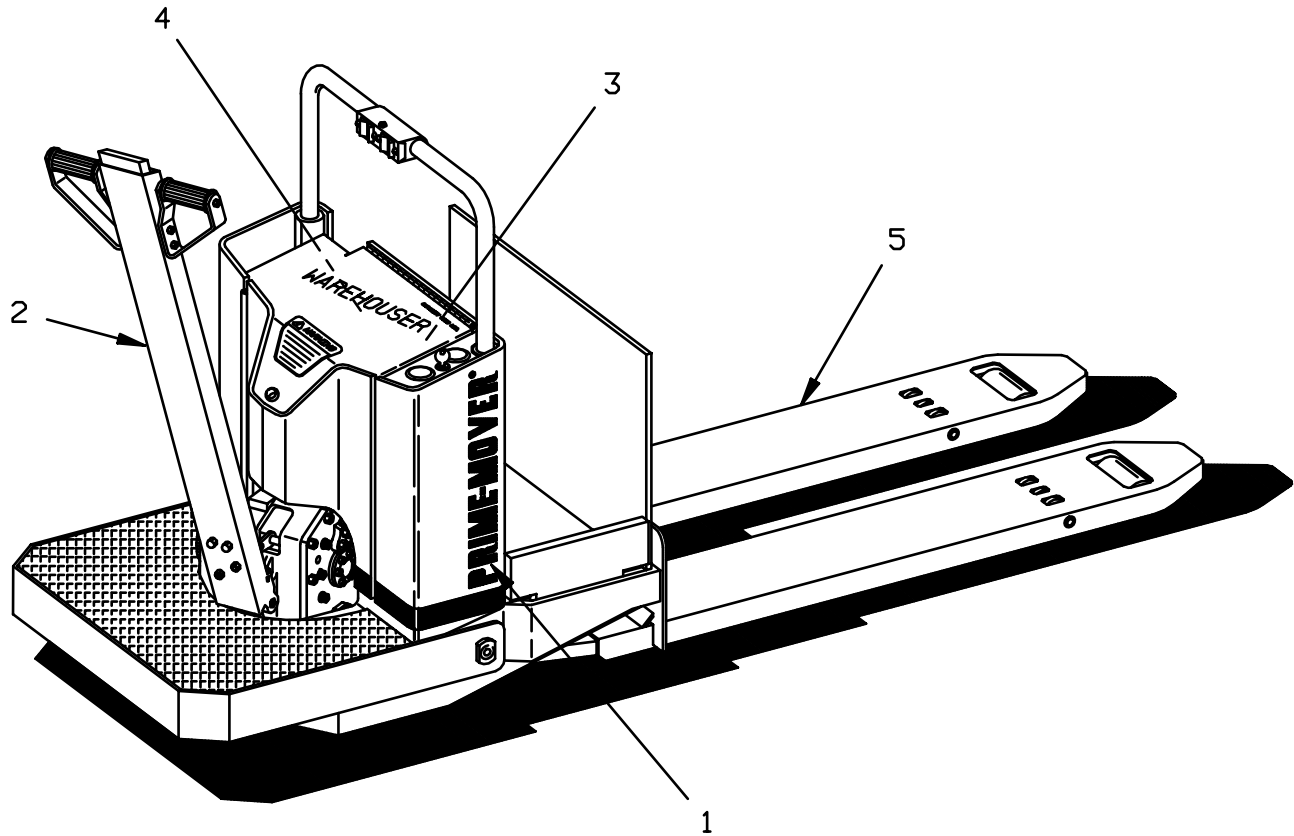
- Thank you very much for reading the preview of the manual.
- You can download the complete manual from: www.heydownloads.com by clicking the link below



- Please note: If there is no response to CLICKING the link, please download this PDF first and then click on it.

CLICK HERE TO **DOWNLOAD** THE COMPLETE MANUAL

FIGURE # 0.2 PARTS LIST AND SERVICE REFERENCE INDEX



| FIG # | ITEM # | PART# | NAME | Fig. # | Page |
|-------|--------|-------|--|--------|------|
| 0.2 | 1 | | Decals and parts list assembly | 0.1 | 0.1 |
| 0.2 | | | Parts list and service reference index | 0.2 | 0.3 |
| 0.2 | 2 | | Transmission and handle assembly | 1.1 | 1.1 |
| 0.2 | | | Handle assembly | 1.2 | 1.3 |
| 0.2 | | | Part I 14:1 transmission assembly | 1.3 | 1.5 |
| 0.2 | | | Part II 14:1 transmission assembly | 1.4 | 1.7 |
| 0.3 | | | PRIME-MOVER | MAY | 1989 |

FIGURE # 2.1 RESISTOR MASTER CONTROL SWITCH (24121-01)

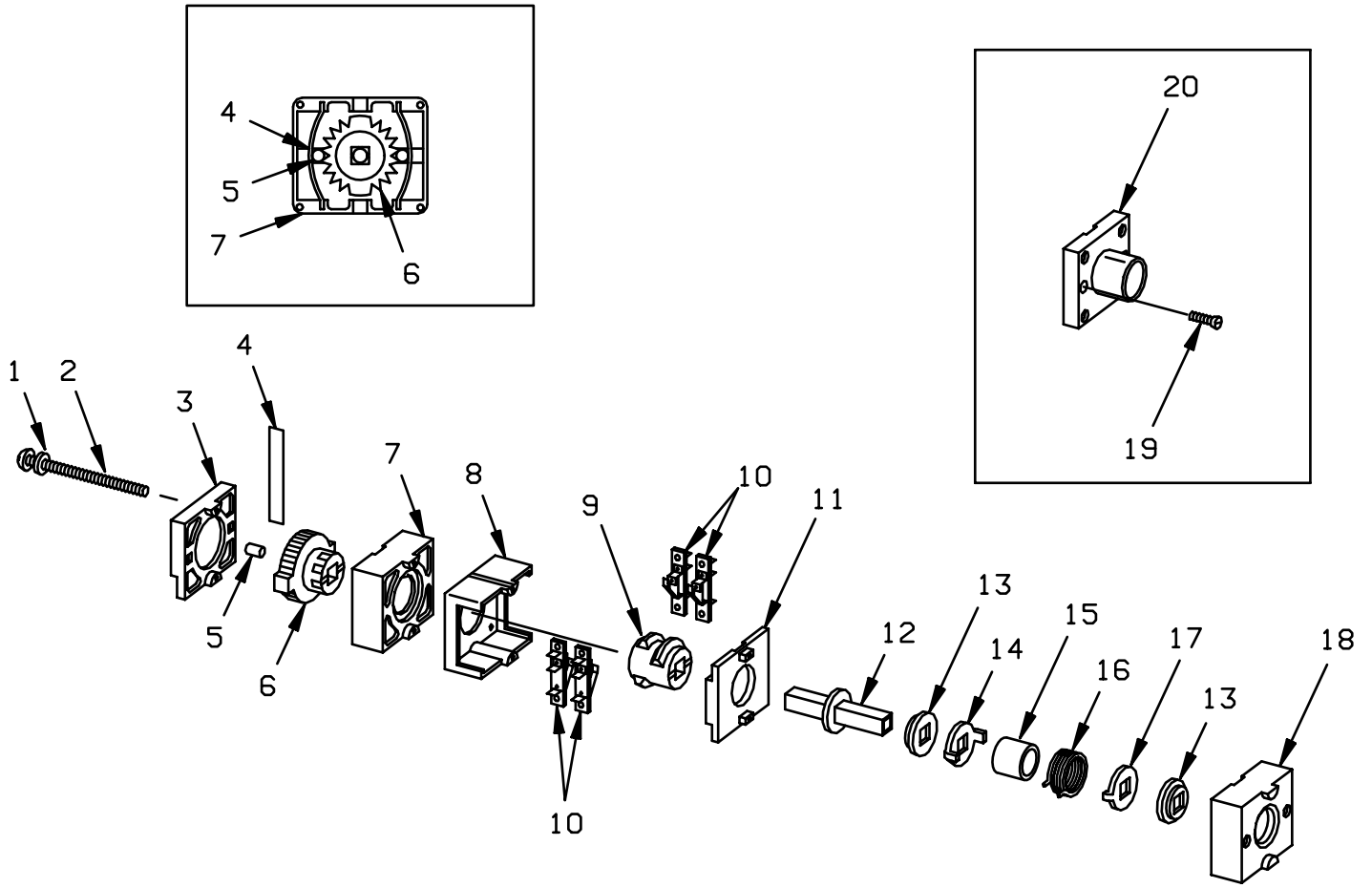


FIGURE # 2.7 THIRD SPEED POWER COMPONENT WIRING

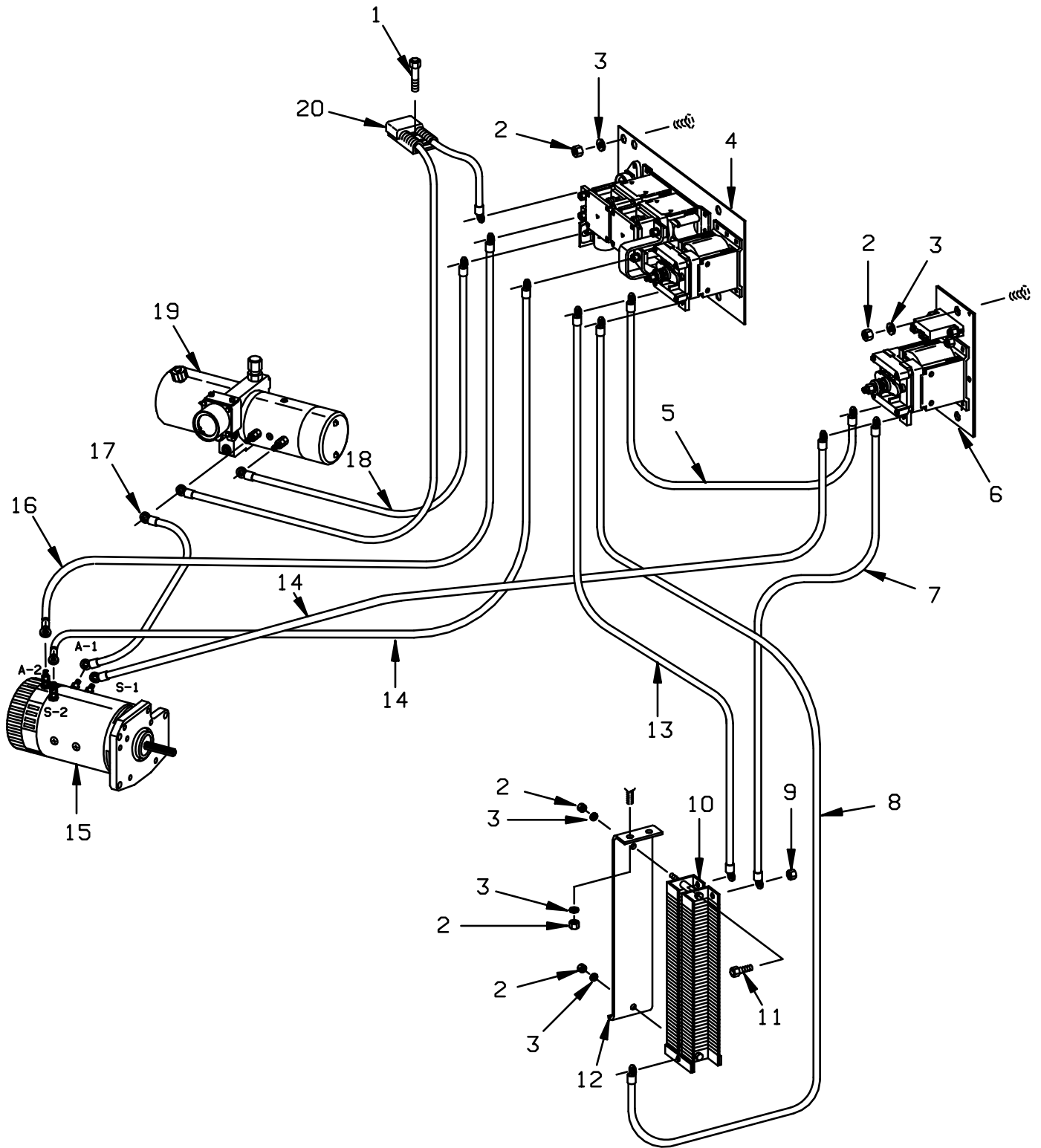


FIGURE # 2.12 FOURTH SPEED CONTROL WIRING

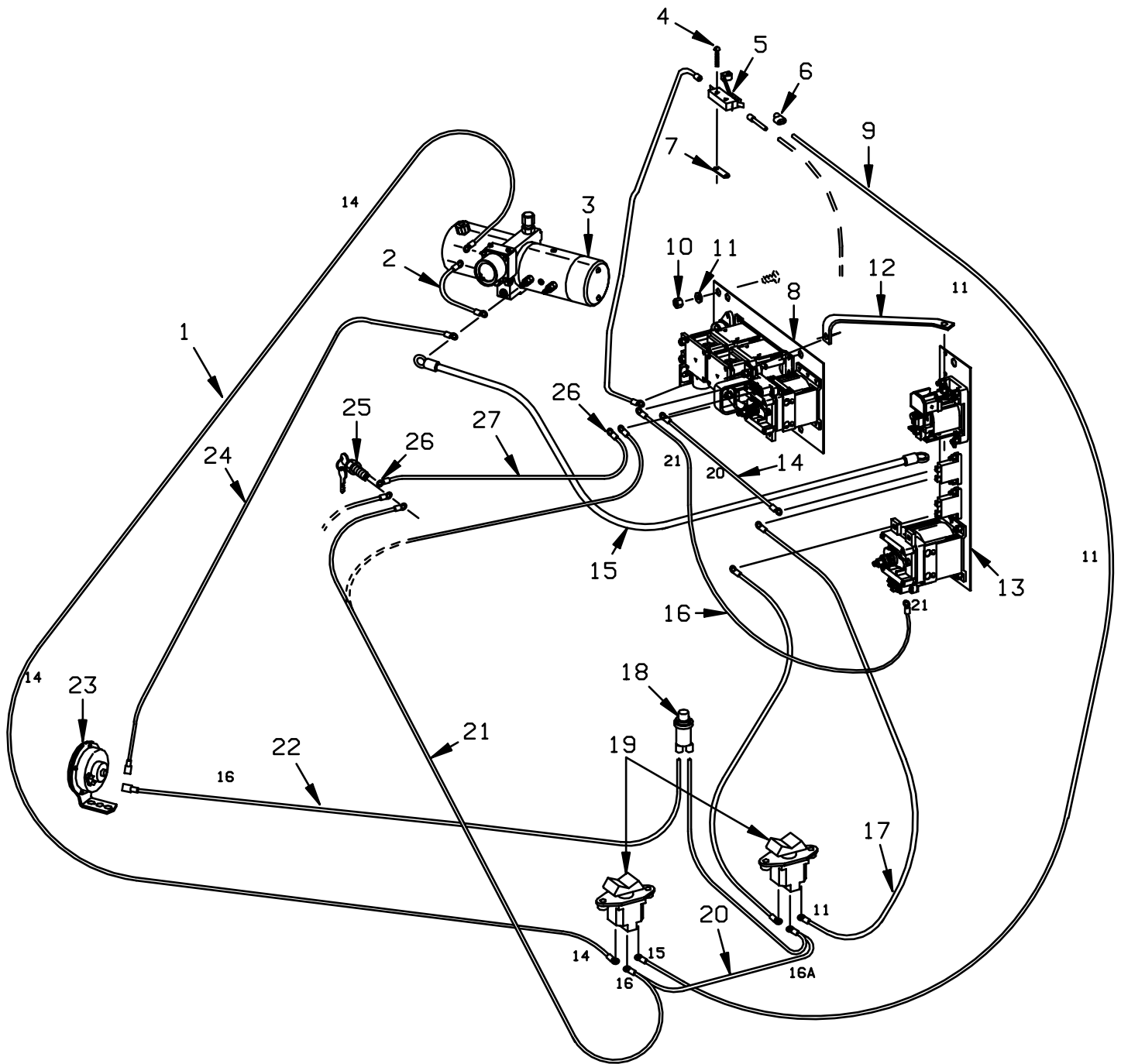
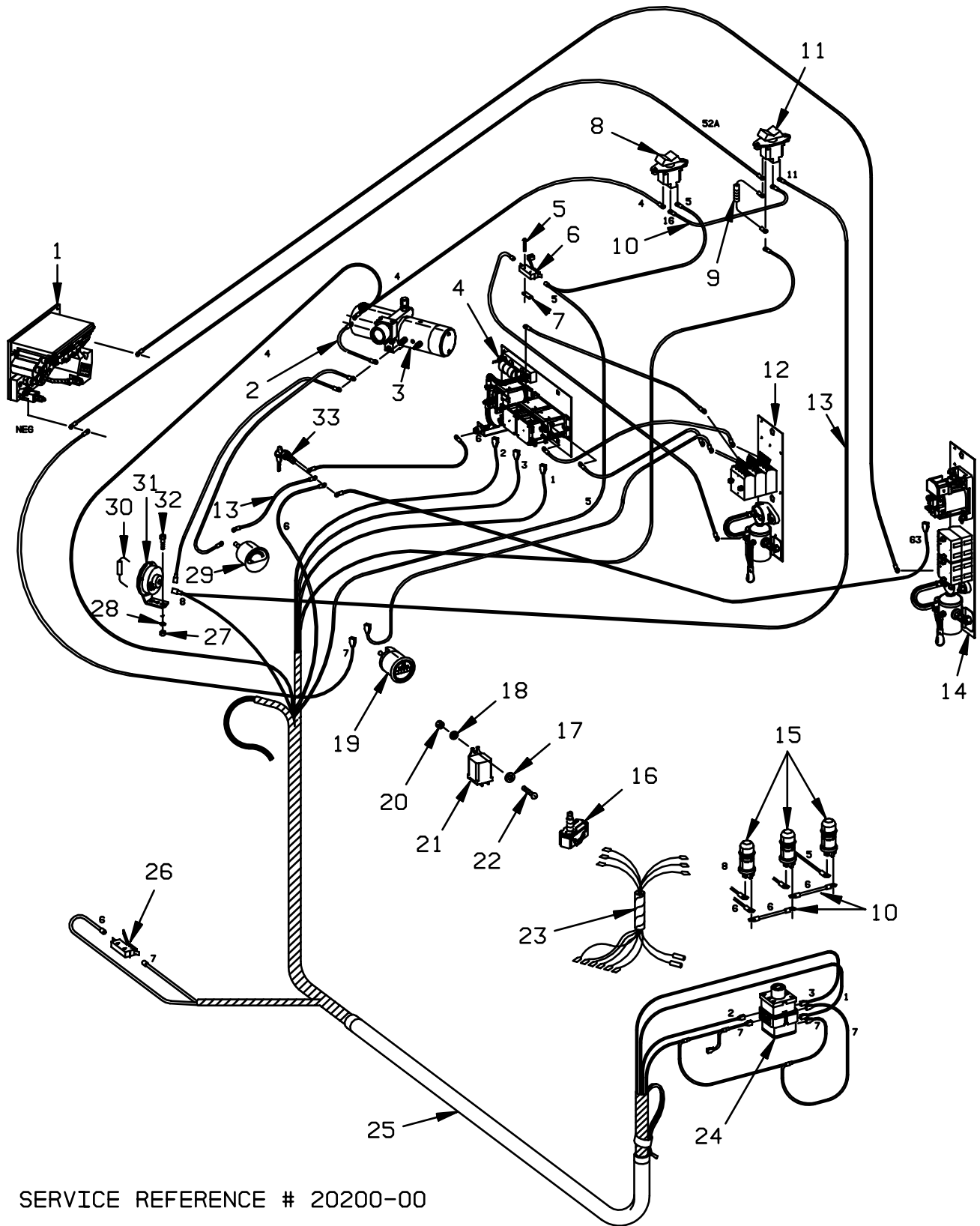


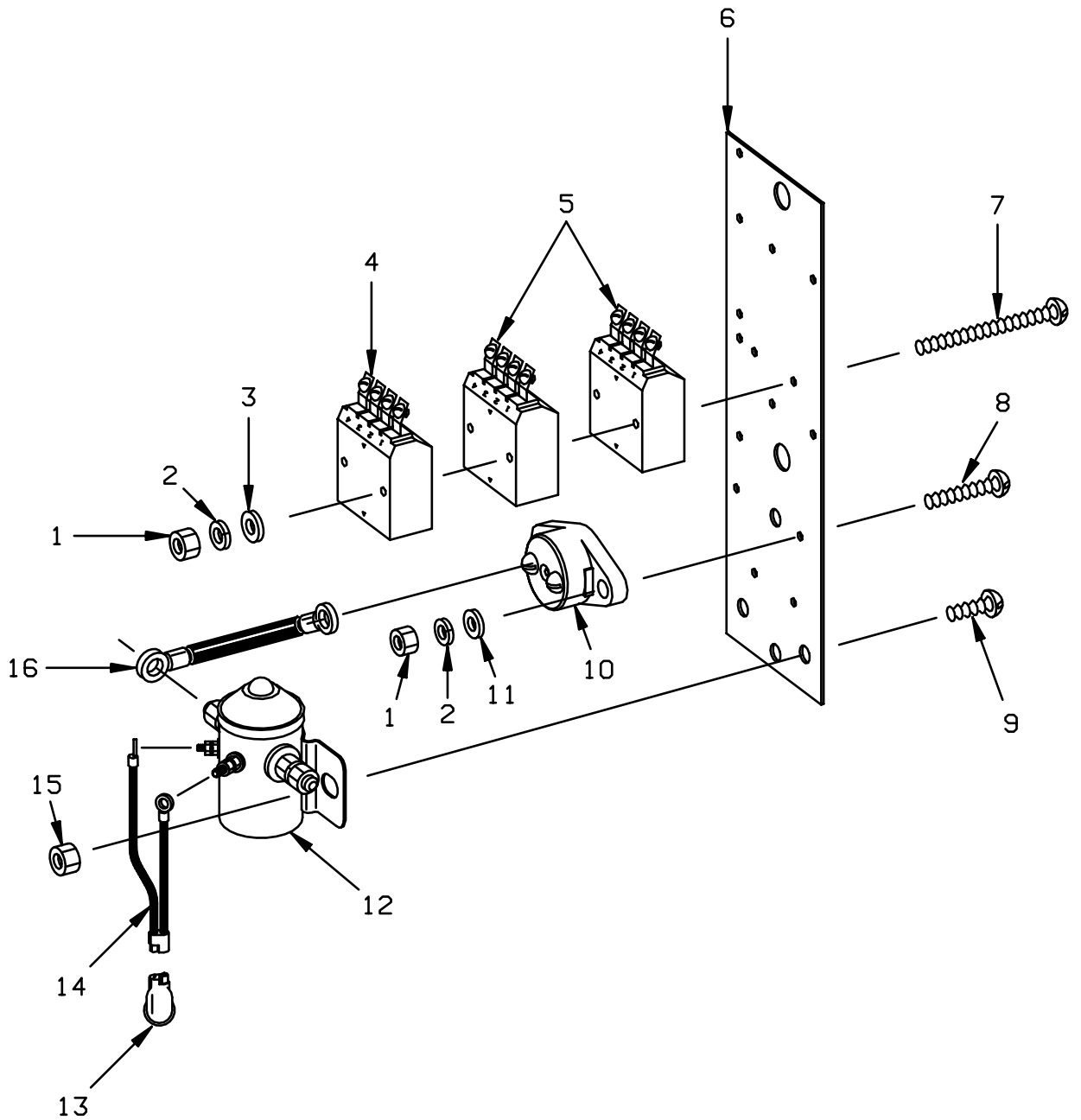
FIGURE # 2.18 EV-100 SCR CONTROL WIRING



SERVICE REFERENCE # 20200-00

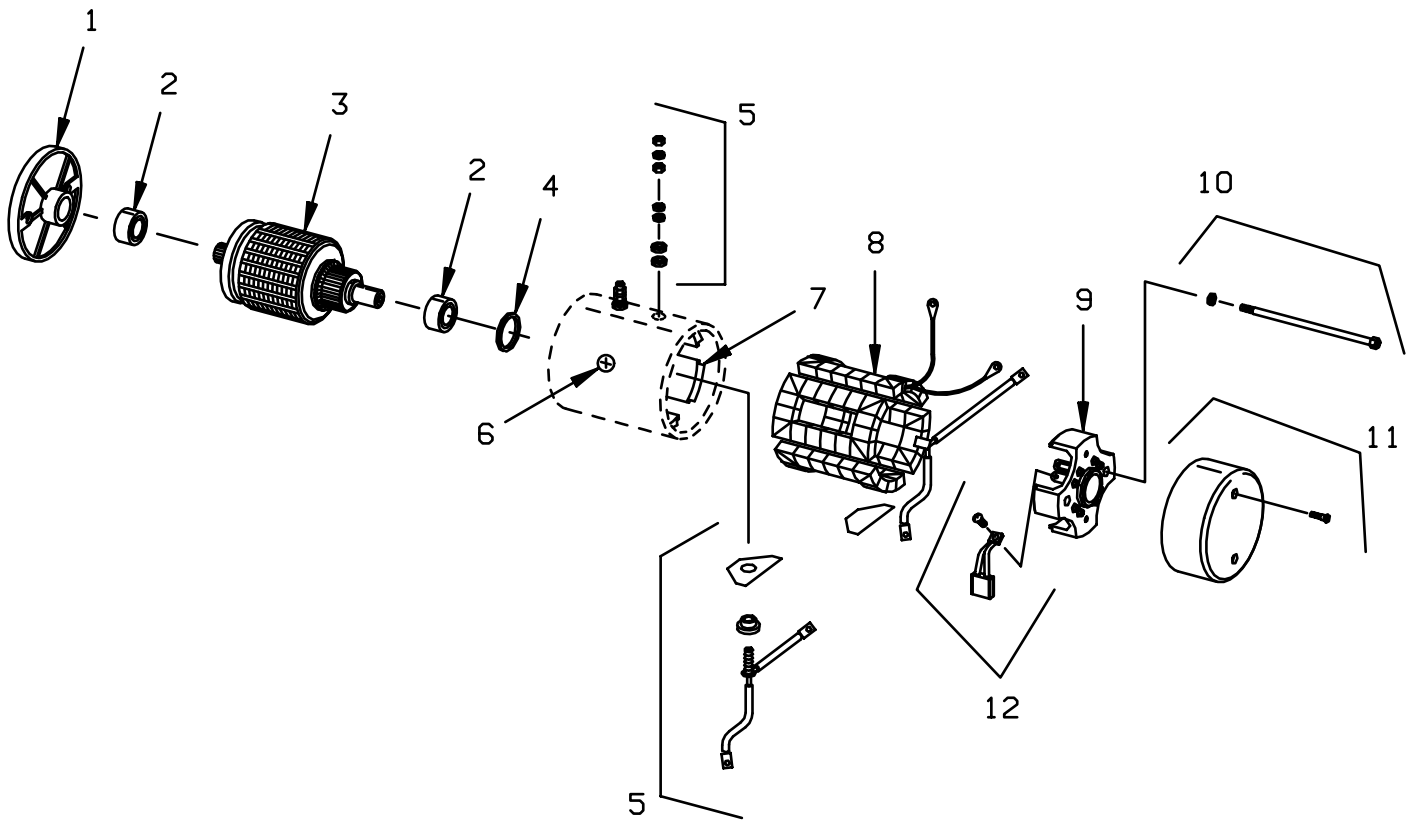
NOTE: ALL WIRES ARE NOT SHOWN SEE ELECTRICAL SCHEMATIC.

FIGURE # 2.23 EV-100 SCR THIRD SPEED PUMP CONTACTOR PANEL ASSEMBLY (27588-00)



SERVICE REFERENCE # 20200-00

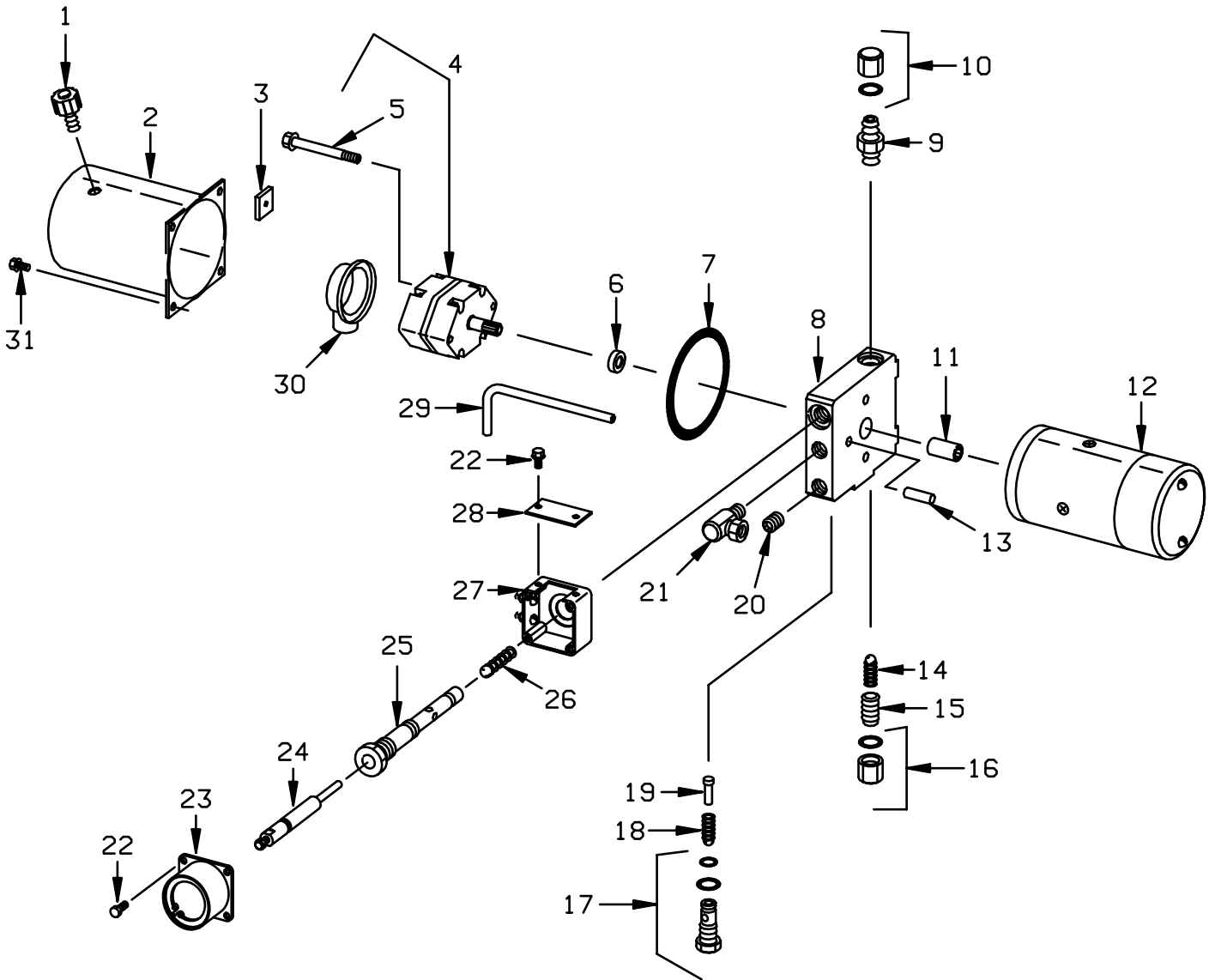
FIGURE # 2.28 HYDRAULIC PUMP MOTOR ASSEMBLY (202333)



PHANTOM ITEMS ARE NOT AVAILABLE

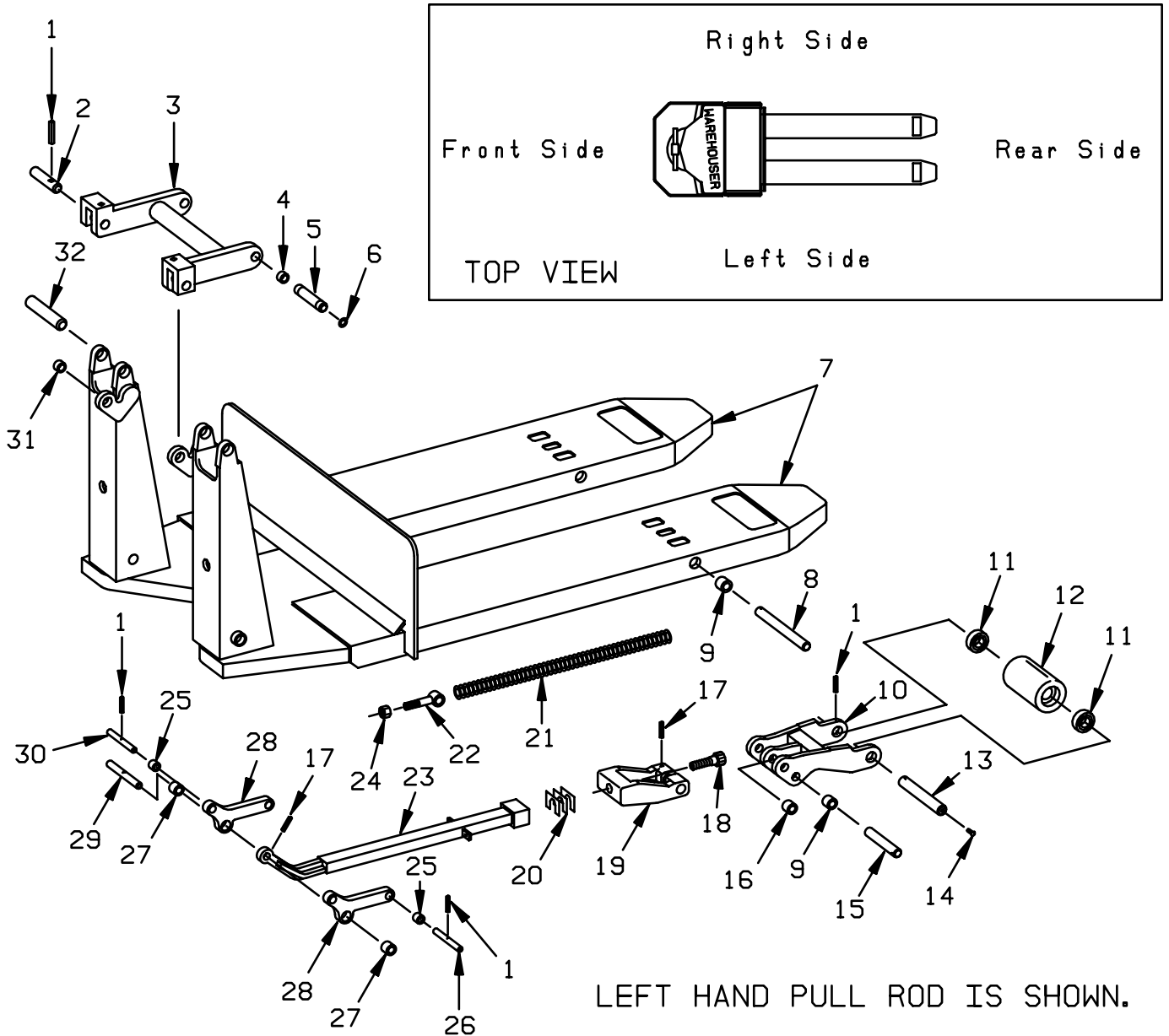
EFFECTIVE SERIAL NUMBER 181712 AND UP

FIGURE # 3.4 PUMP AND MOTOR ASSEMBLY (27277-00, 24 VOLT)



EFFECTIVE SERIAL NUMBER 181712 AND UP

FIGURE # 4.4 LIFT FRAME ASSEMBLY



EFFECTIVE SERIAL NUMBER 195152 AND UP

| FIG # | ITEM # | PART # | NAME | # FOR ASSY. | UNIT |
|-------|--------|----------|-------------------------|-------------|------|
| 4.4 | 1 | 11073-20 | Pin, roll | 10 | |
| 4.4 | 2 | 20287-22 | Pin, linkage | 2 | |
| 4.4 | 3 | 20735-00 | Linkage, upper | 1 | |
| 4.4 | 4 | 15032-09 | Bushing | 2 | |
| 4.4 | 5 | 20783-08 | Shaft | 2 | |
| 4.4 | 6 | 11878-01 | Ring, retainer | 4 | |
| 4.4 | 7 | | Frame, lift (See Chart) | See Chart | |
| 4.4 | 8 | 27608-00 | Shaft | 2 | |
| 4.7 | | | PRIME-MOVER | | |

CLICK HERE TO **DOWNLOAD** THE COMPLETE MANUAL

- Thank you very much for reading the preview of the manual.
- You can download the complete manual from: www.heydownloads.com by clicking the link below



- Please note: If there is no response to CLICKING the link, please download this PDF first and then click on it.

CLICK HERE TO **DOWNLOAD** THE COMPLETE MANUAL

MODEL HT-60W ELECTRIC TRUCK

NUMERICAL INDEX

| <u>PART #</u> | <u>FIGURE #</u> | <u>ITEM #</u> | <u>PART #</u> | <u>FIGURE #</u> | <u>ITEM #</u> |
|---------------|-----------------|---------------|---------------|-----------------|---------------|
| 27831-68 | 4.4 | 23 | 49856-01 | 2.13 | 18 |
| 27833-00 | 4.4 | 19 | 49856-02 | 2.19 | 15 |
| 27835-01 | 4.4 | 20 | 49856-02 | 2.24 | 9 |
| 27846-00 | 4.3 | 4 | 49856-03 | 2.7 | 17 |
| 27849-00 | 4.2 | 14 | 49856-03 | 2.12 | 15 |
| 29018-00 | 1.3 | 26 | 49856-03 | 2.13 | 17 |
| 29019-00 | 1.4 | 32 | 49856-03 | 2.19 | 2 |
| 29020-00 | 1.4 | 23 | 49856-03 | 2.24 | 2 |
| 29374-00 | 4.6 | 5 | 49856-04 | 2.7 | 16 |
| 29856-04 | 2.19 | 11 | 49856-04 | 2.13 | 16 |
| 30271-07 | 4.6 | 19 | 49856-04 | 2.24 | 11 |
| 49537-00 | 2.18 | 21 | 49856-05 | 2.7 | 7 |
| 49567-00 | 2.23 | 14 | 49856-05 | 2.13 | 7 |
| 49567-00 | 2.25 | 15 | 49856-06 | 2.19 | 12 |
| 49588-00 | 1.2 | 21 | 49856-06 | 2.24 | 13 |
| 49606-00 | 2.23 | 13 | 49856-07 | 2.20 | 4 |
| 49606-00 | 2.25 | 16 | 49856-08 | 2.19 | 14 |
| 49669-00 | 2.18 | 30 | 49856-10 | 2.7 | 14 |
| 49670-00 | 6.1 | 2 | 49856-10 | 2.13 | 14 |
| 49690-00 | 0.1 | 14 | 49856-11 | 2.7 | 8 |
| 49748-00 | 4.4 | 11 | 49856-11 | 2.13 | 8 |
| 49751-19 | 1.4 | 33 | 49856-12 | 2.7 | 13 |
| 49768-00 | 0.1 | 3 | 49856-12 | 2.13 | 13 |
| 49779-00 | 2.24 | 12 | 49856-33 | 2.27 | 13 |
| 49779-01 | 2.12 | 12 | 49856-35 | 2.27 | 12 |
| 49780-00 | 0.1 | 13 | 49856-42 | 2.27 | 9 |
| 49781-00 | 0.1 | 1 | 49856-43 | 2.27 | 10 |
| 49787-00 | 4.2 | 10 | 49856-44 | 2.27 | 5 |
| 49788-00 | 1.1 | 10 | 49856-70 | 2.8 | 24 |
| 49815-00 | 2.5 | 12 | 49903-04 | 0.1 | 8 |
| 49815-00 | 2.18 | 19 | 49903-05 | 0.1 | 12 |
| 49830-01 | 2.30 | 5 | 49910-01 | 4.3 | 15 |
| 49831-00 | 2.30 | 13 | 49929-01 | 1.3 | 22 |
| 49850-03 | 2.27 | 11 | 49929-01 | 4.4 | 9 |
| 49852-01 | 2.27 | 3 | 49929-03 | 4.4 | 25 |
| 49852-04 | 2.27 | 8 | 49929-04 | 4.4 | 27 |
| 49853-02 | 2.27 | 4 | 49929-05 | 4.4 | 16 |
| 49854-01 | 2.27 | 2 | 49929-10 | 4.3 | 12 |
| 49855-02 | 2.27 | 7 | 49942-00 | 4.1 | 16 |
| 49855-03 | 2.27 | 1 | 50001-11 | 2.8 | 20 |
| 49855-09 | 2.27 | 6 | 50001-11 | 2.20 | 2 |
| 49856-01 | 2.7 | 5 | 50001-11 | 2.26 | 25 |
| 49856-01 | 2.7 | 18 | 50001-11 | 2.26 | * |
| 49856-01 | 2.13 | 5 | 50003-01 | 2.8 | 21 |

ALPHABETICAL INDEX

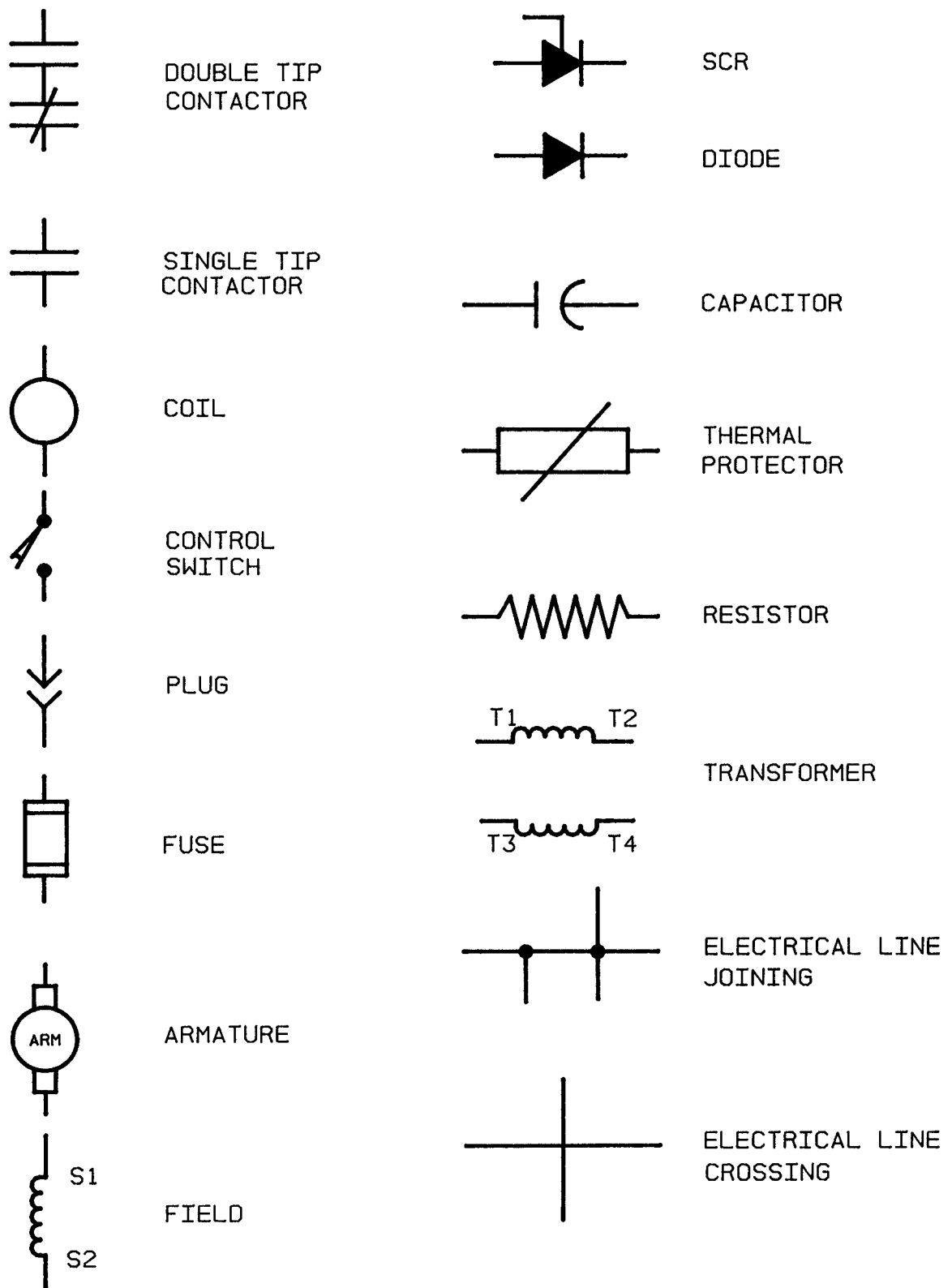
| <u>NAME</u> | <u>FIG.#</u> | <u>PAGE #</u> |
|---|--------------|---------------|
| Q, R | | |
| Reisistor power connector assembly, GRAY | 2.14 | 2.25 |
| Removable load backrest | 4.7 | 4.13 |
| Resistor control handle assembly | 1.2 | 1.3 |
| Resistor truck electrical schematic | 2.1 | 2.1 |
| Resistor hydraulic system | 3.3 | 3.3 |
| Resistor control wiring harness assembly | 2.3 | 2.5 |
| Resistor power connector assembly, RED | 2.14 | 2.25 |
| Resistor truck electrical schematic symbols | 2.2 | 2.3 |
| Resistor control panel assembly | 2.6 | 2.9 |
| S | | |
| Shielding assembly | 4.1 | 4.1 |
| Skid adapter and package guard assembly | 4.6 | 4.11 |
| Special tools and lubrications | 7.1 | 7.1 |
| T | | |
| Third speed contactor panel assembly | 2.9 | 2.15 |
| Third speed power component wiring | 2.5 | 2.7 |
| Third speed control wiring | 2.4 | 2.6 |
| Transistor truck electrical schematic symbols | 2.16 | 2.28 |
| Transistor truck electrical schematic | 2.15 | 2.27 |
| Transistor hydraulic system | 3.4 | 3.5 |
| Transistor power connector assembly, GRAY | 2.23 | 2.41 |
| Transistor power connector assembly, RED | 2.23 | 2.41 |
| Transistor power component wiring | 2.18 | 2.31 |
| Transistor control wiring harness assembly | 2.17 | 2.29 |
| Transistor control handle assembly | 1.2 | 1.3 |
| Transmission and handle assembly | 1.1 | 1.1 |

| FIG # | ITEM # | PART # | NAME | # FOR ASSY. | UNIT |
|-------|--------|----------|---|-------------|------|
| 1.3 | 1 | 20897-00 | Bushing | 1 | |
| 1.3 | 2 | 20134-00 | Screw, adjusting | 1 | |
| 1.3 | 3 | 11806-14 | Nut, jam | 1 | |
| 1.3 | 4 | 11880-08 | Screw, machine | 2 | |
| 1.3 | 5 | 20323-00 | Switch | 1 | |
| 1.3 | 6 | 14986-03 | Nut, twin | 1 | |
| 1.3 | 7 | 11073-15 | Pin, roll | 1 | |
| 1.3 | 8 | 25901-00 | Motor, drive (See Fig.# 2.25) | 1 | |
| 1.3 | 9 | 11020-28 | Bushing | 2 | |
| 1.3 | 10 | 11015-34 | O ring | 1 | |
| 1.3 | 11 | ----- | Transmission assembly, part II (See Fig.# 1.4) | 1 | |
| 1.3 | 12 | 11859-03 | Plug, pipe | 1 | |
| 1.3 | 13 | 12459-00 | Vent, air | 1 | |
| 1.3 | 14 | 11015-09 | O ring | 4 | |
| 1.3 | 15 | 11015-35 | O ring | 4 | |
| 1.3 | 16 | 25903-00 | Screw, special | 4 | |
| 1.3 | 17 | 11816-02 | Plug, pipe | 1 | |
| 1.3 | 18 | 11003-05 | Plug, magnetic | 1 | |
| 1.3 | 19 | 14994-15 | Screw, cap | 6 | |
| 1.3 | 20 | 11009-08 | Lockwasher | 6 | |
| 1.3 | 21 | 20899-00 | Ring, gear case | 1 | |
| 1.3 | 22 | 49929-01 | Bushing | 2 | |
| 1.3 | 23 | 25904-00 | Adaptor, motor | 1 | |
| 1.3 | 24 | 25902-00 | Gasket | 1 | |
| 1.3 | 25 | 25922-04 | Drive wheel assembly | 1 | |
| 1.3 | 26 | 29018-00 | Hub, wheel | 1 | |
| 1.3 | 27 | 20262-01 | Tire, urethane | 1 | |
| 1.3 | 28 | 11445-02 | Bolt, wheel | 5 | |
| 1.3 | 29 | 20892-01 | Arm, actuating | 1 | |
| 1.3 | 30 | 20898-00 | Rod, brake | 1 | |
| 1.3 | 31 | 20894-00 | Block, mounting | 1 | |
| 1.3 | 32 | 11009-06 | Lockwasher | 2 | |
| 1.3 | 33 | 11143-10 | Screw, cap | 2 | |

| FIG # | ITEM # | PART # | NAME | # FOR ASSY. | UNIT |
|-------|--------|----------|---|-------------|------|
| 2.5 | 1 | 11047-16 | Screw, sock head | 2 | |
| 2.5 | 2 | 11170-06 | Nut | 8 | |
| 2.5 | 3 | 11016-03 | Washer, flat | 8 | |
| 2.5 | 4 | 27259-04 | Panel, control (See Fig.# 2.6) | 1 | |
| 2.5 | 5 | 49856-01 | Cable assembly | 1 | |
| 2.5 | 6 | 27266-00 | Third speed panel assembly (See Fig.# 2.9) | 1 | |
| 2.5 | 7 | 49856-05 | Cable assembly | 1 | |
| 2.5 | 8 | 49856-11 | Cable assembly | 1 | |
| 2.5 | 9 | 11261-04 | Nut | 3 | |
| 2.5 | 10 | 20913-00 | Resistor | 1 | |
| 2.5 | 11 | 11045-02 | Screw, cap | 3 | |
| 2.5 | 12 | 20159-02 | Bracket | 1 | |
| 2.5 | 13 | 49856-12 | Cable assembly | 1 | |
| 2.5 | 14 | 49856-10 | Cable assembly | 2 | |
| 2.5 | 15 | 25901-00 | Drive motor assembly (See Fig.# 2.25) | 1 | |
| 2.5 | 16 | 49856-04 | Cable assembly | 1 | |
| 2.5 | 17 | 49856-03 | Cable assembly | 1 | |
| 2.5 | 18 | 49856-01 | Cable assembly | 1 | |
| 2.5 | 19 | 27277-01 | Pump and motor assembly (See Fig.# 3.5) | 1 | |
| 2.5 | 20 | ----- | Connector assembly (See Fig.# 2.14) | 1 | |

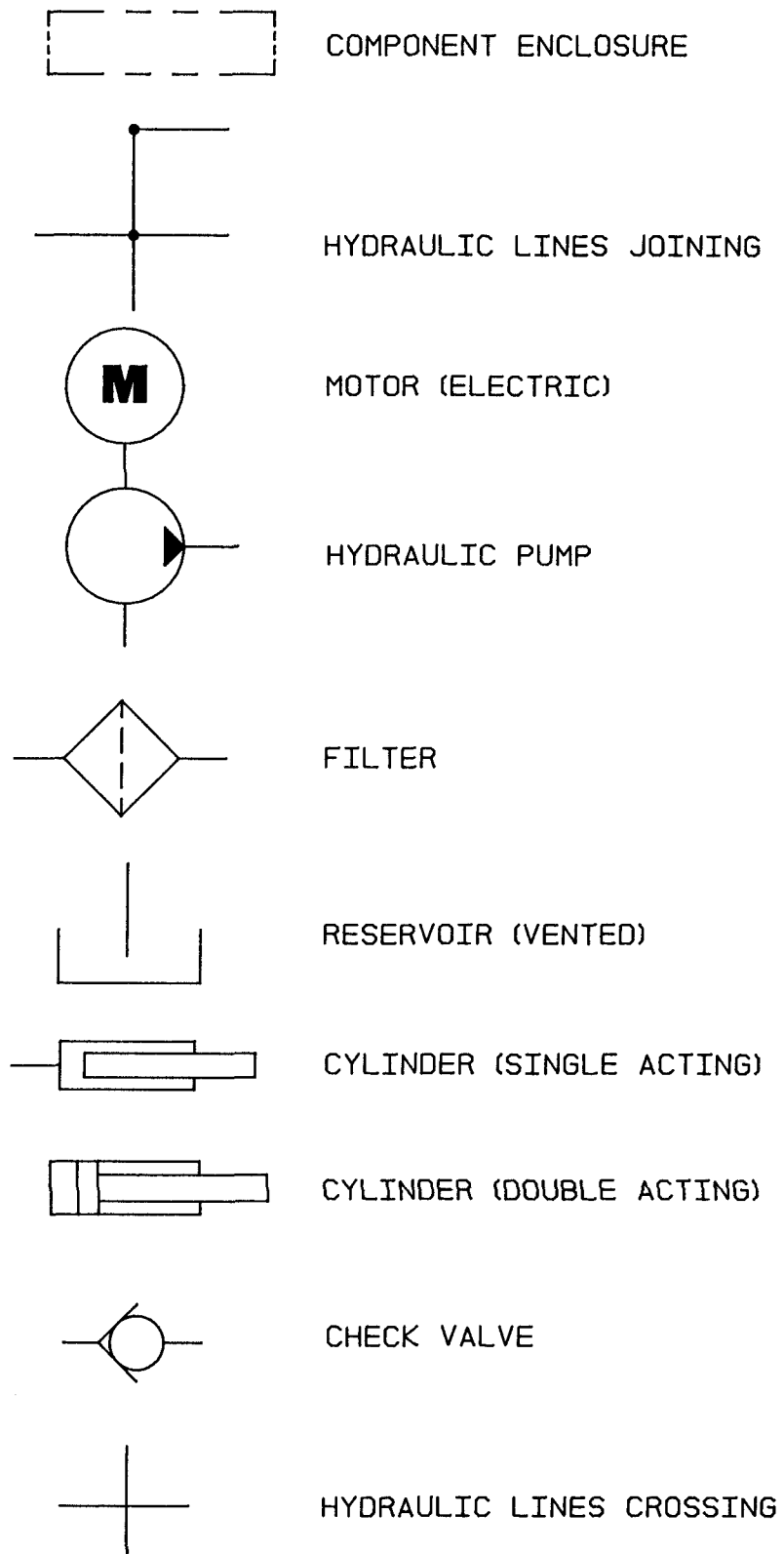
| FIG ITEM | | PART # | NAME | # FOR | UNIT |
|----------|----|-------------|---|----------|---------|
| # | # | | | ASSY. | |
| 2.10 | 1 | 20163-37 | Wire assembly | 1 | |
| 2.10 | 2 | 20163-07 | Wire assembly | 1 | |
| 2.10 | 3 | 27277-01 | Pump and motor assembly (See Fig.# 3.5) | 1 | 24 volt |
| 2.10 | 4 | 11880-08 | Screw, machine | 2 | |
| 2.10 | 5 | 20479-00 | Switch, lift limit | 1 | |
| 2.10 | 6 | 11823-06 | Connector, butt | As Req'd | |
| 2.10 | 7 | 14986-03 | Nut, twin | 1 | |
| 2.10 | 8 | 27259-04 | Resistor control panel assembly (See Fig.# 2.6) | 1 | 24 volt |
| 2.10 | 9 | 20163-36 | Wire assembly | 1 | |
| 2.10 | 10 | 11170-06 | Nut | 6 | |
| 2.10 | 11 | 11016-03 | Washer, flat | 6 | |
| 2.10 | 12 | 49779-00 | Resistor | 1 | |
| 2.10 | 13 | 27267-03 | Fourth speed control panel assembly (See Fig.# 2.12) | 1 | 24 volt |
| 2.10 | 14 | 52-07901-03 | Wire, red 16 gauge | As Req'd | |
| 2.10 | 15 | 49856-03 | Cable assembly | 1 | |
| 2.10 | 16 | 20163-55 | Wire assembly | 1 | |
| 2.10 | 17 | 20163-33 | Wire assembly | 1 | |
| 2.10 | 18 | 14939-00 | Switch, horn | 1 | |
| 2.10 | 19 | 20433-02 | Switch, rocker | 2 | |
| 2.10 | 20 | 20163-38 | Wire assembly | 1 | |
| 2.10 | 21 | 20163-34 | Wire assembly | 1 | |
| 2.10 | 22 | 20163-53 | Wire assembly | 1 | |
| 2.10 | 23 | 23309-01 | Horn, 24 volt | 1 | 24 volt |
| 2.10 | 24 | 11016-02 | Washer, flat | 1 | |
| 2.10 | 25 | 11170-05 | Nut, lock | 1 | |
| 2.10 | 26 | 20163-39 | Wire assembly | 1 | |
| 2.10 | 27 | 20151-00 | Switch, key | 1 | |
| 2.10 | 28 | 11823-01 | Connector, stud | 1 | |
| 2.10 | 29 | 20161-00 | Bar, negative buss | 1 | |
| 2.10 | 30 | 11009-04 | Lockwasher | 1 | |
| 2.10 | 31 | 11045-02 | Screw, cap | 1 | |

FIGURE # 2.16 HT-60W TRANSISTOR ELECTRICAL SCHEMATIC SYMBOLS



| FIG ITEM | | PART # | NAME | # FOR ASSY. | UNIT |
|----------|----|--------|---------------------------|----------------|------|
| # | # | | | | |
| 2.21 | 1 | 201962 | Base, magnet | 1 | |
| 2.21 | 2 | 200077 | Coil, field | 1 | |
| 2.21 | 3 | 201963 | Frame, magnet | 1 | |
| 2.21 | 4 | 201262 | Spring (red) | 1 | |
| 2.21 | 5 | 201964 | Armature | 1 | |
| 2.21 | 6 | 200081 | Base, bus | 1 | |
| 2.21 | 7 | 201965 | Tip, contact | 2 | |
| 2.21 | 8 | 200096 | Bushing | 1 | |
| 2.21 | 9 | 200095 | Carrier | 1 | |
| 2.21 | 10 | 201966 | Tip, movable | 1 | |
| 2.21 | 11 | 201259 | Cap | 1 | |
| 2.21 | 12 | 201266 | Spring (gold) | 1 | |
| 2.21 | 13 | 201367 | Washer, flat | 1 | |
| 2.21 | 14 | 201215 | Nut, lock | 1 | |
| 2.21 | 15 | 201967 | Clamp | 2 | |
| 2.21 | 16 | 201368 | Lockwasher | 4 | |
| 2.21 | 17 | 201372 | Screw, machine | 4 | |
| 2.21 | 18 | 202004 | Suppression, 1A contactor | 1 | |
| 2.21 | 19 | 200094 | Seat | 1 | |

FIGURE # 3.2 HYDRAULIC SCHEMATIC SYMBOLS



| FIG # | ITEM # | PART # | NAME | # FOR ASSY. | UNIT |
|-------|--------|----------|----------------------------------|-------------|------|
| 4.1 | 1 | 11429-04 | Pin, cotter | 2 | |
| 4.1 | 2 | 11016-02 | Washer, flat | 17 | |
| 4.1 | 3 | 27518-00 | Rod, door | 1 | |
| 4.1 | 4 | 27515-01 | Spring | 1 | |
| 4.1 | 5 | 11813-06 | Grommet | 1 | |
| 4.1 | 6 | 20983-00 | Shield, resistor truck top | 1 | |
| 4.1 | 7 | 11009-05 | Lockwasher | 15 | |
| 4.1 | 8 | 11261-05 | Nut | 15 | |
| 4.1 | 9 | 27827-03 | Frame, carrier | 1 | |
| 4.1 | 10 | 20938-01 | Retainer, standard battery | 2 | |
| 4.1 | 10 | 27057-04 | Retainer, 27.25" battery | 2 | |
| 4.1 | 10 | 27057-05 | Retainer, 23.25" battery | 2 | |
| 4.1 | 11 | 27576-01 | Shield, right hand bottom | 1 | |
| 4.1 | 12 | 11143-06 | Screw, cap | 2 | |
| 4.1 | 13 | 11143-14 | Screw, cap | 2 | |
| 4.1 | 14 | 27576-02 | Shield, left hand bottom | 1 | |
| 4.1 | 15 | 20981-00 | Shield, right hand resistor door | 1 | |
| 4.1 | 16 | 49942-00 | Spring | 1 | |
| 4.1 | 17 | 11073-26 | Pin, roll | 2 | |
| 4.1 | 18 | 27141-01 | Rod, resistor door | 1 | |
| 4.1 | 19 | 20904-01 | Bumper | 2 | |
| 4.1 | 20 | 27142-00 | Shield, left hand resistor door | 1 | |

| FIG | ITEM | | | # FOR | |
|-----|------|----------|----------------------|-------|----------|
| # | # | PART # | NAME | ASSY. | UNIT |
| 4.6 | 1 | 11073-07 | Pin, roll | 6 | |
| 4.6 | 2 | 11016-03 | Washer, flat | 1 | |
| 4.6 | 3 | 12319-00 | Spring | 1 | |
| 4.6 | 4 | 20379-02 | Mounting, hook | 1 | |
| 4.6 | 5 | 29374-00 | Hook | 1 | |
| 4.6 | 6 | 27506-01 | Side bar | 1 | 30 long |
| 4.6 | 6 | 27506-02 | Side bar | 1 | 32 long |
| 4.6 | 6 | 27506-03 | Side bar | 1 | 36 long |
| 4.6 | 6 | 27506-04 | Side bar | 1 | 42 long |
| 4.6 | 6 | 27506-05 | Side bar | 1 | 48 long |
| 4.6 | 6 | 27506-06 | Side bar | 1 | 54 long |
| 4.6 | 6 | 27506-07 | Side bar | 1 | 60 long |
| 4.6 | 7 | 27501-02 | Shaft, pivot | 1 | |
| 4.6 | 8 | 11073-24 | Pin, roll | 2 | |
| 4.6 | 9 | 27504-01 | Spacer, with hole | 2 | |
| 4.6 | 10 | 27509-01 | Bar, tie | 1 | 30 long |
| 4.6 | 10 | 27509-02 | Bar, tie | 1 | 32 long |
| 4.6 | 10 | 27509-03 | Bar, tie | 1 | 36 long |
| 4.6 | 10 | 27509-04 | Bar, tie | 1 | 42 long |
| 4.6 | 10 | 27509-05 | Bar, tie | 1 | 48 long |
| 4.6 | 10 | 27509-06 | Bar, tie | 1 | 54 long |
| 4.6 | 10 | 27509-07 | Bar, tie | 1 | 60 long |
| 4.6 | 11 | 11073-04 | Pin, roll | 2 | |
| 4.6 | 12 | 11854-07 | Screw, cap | 2 | |
| 4.6 | 13 | 20372-00 | Bracket | 2 | |
| 4.6 | 14 | 20015-01 | Bar, brace | 1 | |
| 4.6 | 15 | 11170-05 | Nut | 2 | |
| 4.6 | 16 | 27504-02 | Spacer, without hole | 2 | |
| 4.6 | 17 | 20382-01 | Support | 2 | 6" high |
| 4.6 | 17 | 20382-03 | Support | 2 | 7" high |
| 4.6 | 17 | 20382-05 | Support | 2 | 8" high |
| 4.6 | 17 | 20382-07 | Support | 2 | 9" high |
| 4.6 | 17 | 20382-09 | Support | 2 | 10" high |
| 4.6 | 17 | 20382-11 | Support | 2 | 11" high |
| 4.6 | 18 | 20720-05 | Plate, back-up | 1 | |
| 4.6 | 19 | 20371-01 | Block | 4 | 6" high |
| 4.6 | 19 | 20371-03 | Block | 4 | 7" high |
| 4.6 | 19 | 20371-05 | Block | 4 | 8" high |
| 4.6 | 19 | 20371-07 | Block | 4 | 9" high |
| 4.6 | 19 | 20371-09 | Block | 4 | 10" high |
| 4.6 | 19 | 20371-11 | Block | 4 | 11" high |
| 4.6 | 20 | 20373-00 | Pin, mounting | 2 | |

CLICK HERE TO **DOWNLOAD** THE COMPLETE MANUAL

- Thank you very much for reading the preview of the manual.
- You can download the complete manual from: www.heydownloads.com by clicking the link below



- Please note: If there is no response to CLICKING the link, please download this PDF first and then click on it.

CLICK HERE TO **DOWNLOAD** THE COMPLETE MANUAL