



Bendi

**Bendi AC Series 6 Forklifts
Parts Manual**



LANDOLL CORPORATION

1900 North Street

Marysville, Kansas 66508

(785) 562-5381

800-428-5655 ~ WWW.LANDOLL.COM

CLICK HERE TO **DOWNLOAD** THE COMPLETE MANUAL

- Thank you very much for reading the preview of the manual.
- You can download the complete manual from: www.heydownloads.com by clicking the link below



- Please note: If there is no response to CLICKING the link, please download this PDF first and then click on it.

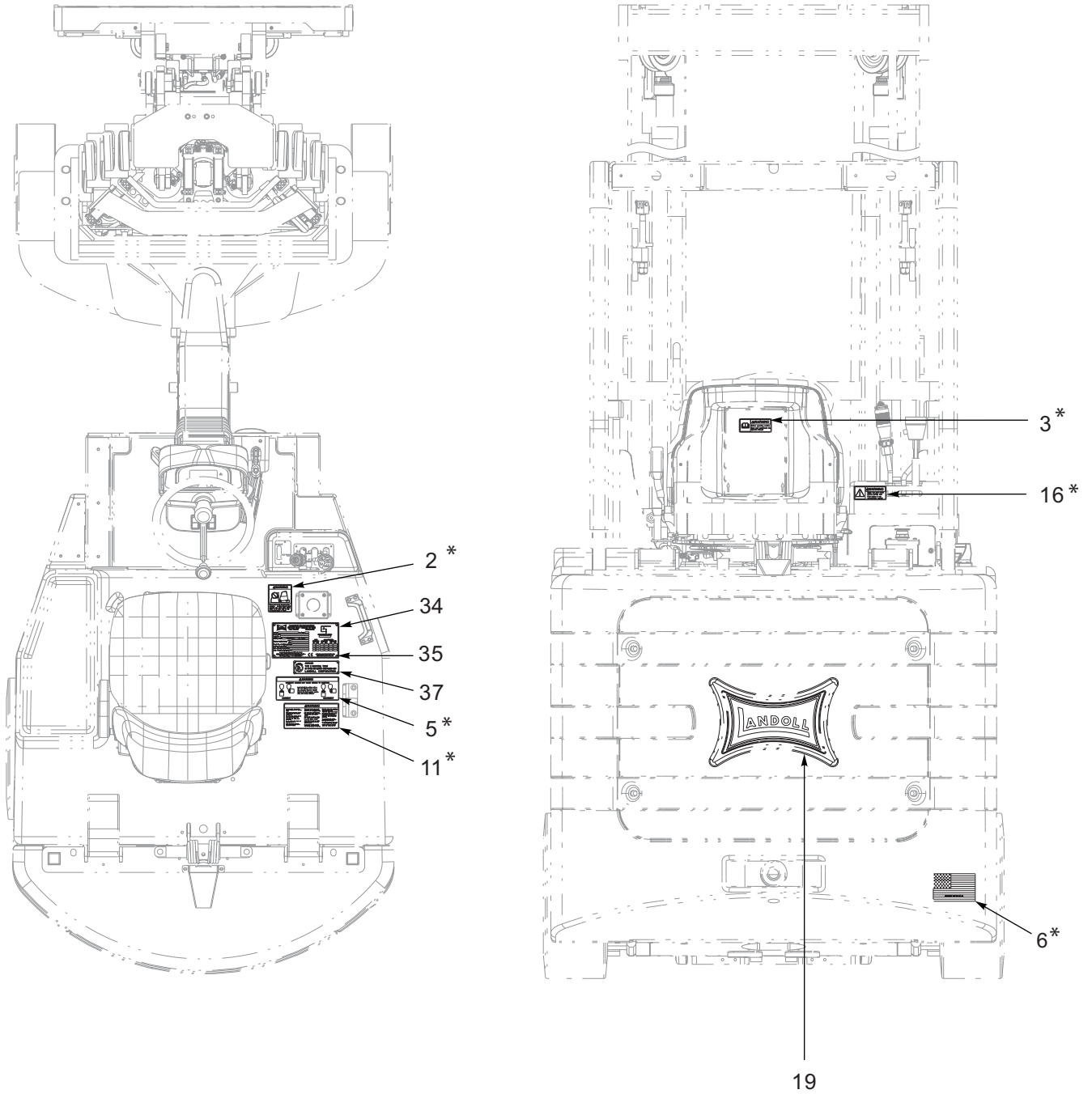
CLICK HERE TO **DOWNLOAD** THE COMPLETE MANUAL

Brake Lines

ITEM	PART NUMBER	DESCRIPTION	QTY.
1	0012203	FITTING, BRAKE LINE TEE	1
2	108417	NUT SPIRAL 1/4-20HX FG	9
3	125892	CLAMP, CABLE 3/8 SST	7
4	127648	BRAKE LINE, B55-6 LH (B50DR, B50HL, B55)	1
4	129928	BRAKE LINE, B40-4-6 LH (B40)	1
4	152868	BRAKE LINE, B30-4.5-6 LH (B30)	1
4	202695	BRAKE LINE, B40HL-6 LH (B40DR/LF, B40HL/LF)	1
5	127649	BRAKE LINE, B55-6 RH (B50DR, B50HL, B55)	1
5	129929	BRAKE LINE, B40-4-6 RH (B40)	1
5	154005	BRAKE LINE, B30-4.5-6 RH (B30)	1
5	202696	BRAKE LINE, B40HL-6 RH (B40DR/LF, B40HL/LF)	1
6	2039-4-4S	FITTING, 37 DEG. FLARE	2
7	140029	HOSE,FLEX SS BRAKE LINE 26 IN (NOT SHOWN)	1
8	104794	HOSE,FLEX SS BRAKE LINE 11INR (NOT SHOWN)	2

Battery Disconnect Cover

ITEM	PART NUMBER	DESCRIPTION	QTY.
1	199674	COVER,BTFRT BATT CONN	1
2	226304	SCREW,HEX SKT SHLDR 1/2	2
3	201907	WASHER,BT/HL-6 BATT CONN COVER	2
4	169764	SCREW BHSC 10-32X.625 ZP	1
5	202951	SCREW,BHSC 10-32X.75 ZP	2
6	162290	CLAMP, CABLE 1/4 SST	1
7	206199	SENSOR,M18,14MM RNG,2WIRE,PROX	1
8	206387	BRACKET,BT 6 BAT CONN SW MOUNT	1
9	115673	NUT,HEX FLANGE 10-32 SPIRAL	3
10	115963	NUT,HVY HX JAM 1/4-20	2
11	30008	CONNECTOR BATTERY SB350 BLUE	1
12	1-861-010032-02	WASHER,FL #8 ZP/CD	2
13	108220	SCREW,BHSC 1/4X20UNCX1-1/2	2



*Included in Decal Kit (P/N 173698).

Figure 3-2: Decal Placement (2 of 3)

Placards

ITEM	PART NUMBER	DESCRIPTION	QTY.
1	202547	DATA PLATE,BT SERIES 6 ENGLISH	1
1	206253	DATA PLATE,BT SERIES 6 DUTCH	1
1	206256	DATA PLATE,BT SERIES 6 FRENCH	1
1	206257	DATA PLATE,BT SERIES 6 GERMAN	1
1	206279	DATA PLATE,BT SERIES 6 SPANISH	1
	153310	PLACARD,BT-4.5 COLUMN SWITCH	1
2	206414	PLACARD,DUTCH BT COLUMN SWITCH	1
2	206415	PLACARD,FR BT COLUMN SWITCH	1
2	206416	PLACARD,GER BT COLUMN SWITCH	1
2	169140	PLACARD,SP BT COLUMN SWITCH	1
3	121422	PLACARD, OPERATOR DATA	1
4	197179	PLACARD,HL LIFT KNOB	1
5	197188	PLACARD,HL LIFT KNOB W/OR	1
6	206426	PLACARD,BT SS/FP KNOB	1
7	205693	PLACARD, DR CARRIAGE KNOB	1
8	212975	DWG,UL PLACARD/DECAL INSTL	1

Control Panel Assembly - Before 06/03/2019

ITEM	PART NUMBER	DESCRIPTION	QTY.
46	197913	MOUNT, FUSE/RELAY CONT PNL	1
47	1CM616ER	SCREW, HX HD, M6 X 16MM CL8.8, ZP	8
48	202928	CLAMP, PART CUSH ALUM, 1-1/4	3
49	206435	FUSE BLOCK, 4 PSTN BUSS ASSY	2
50	206461	DECAL, BT-6 CNTL FUSE	1
51	206462	DECAL, BT-6 POWER FUSE	1
52	27CM308ER	SCREW, M3 X 0.5-8 BUTTON	4
53	40DM6ER	LOCKNUT, HX HD, M6 CL10, ZP	3
54	6EM60ER	WASHER, LOCK SPRING M6, ZP	5

Heavy Cables

ITEM	PART NUMBER	DESCRIPTION	QTY.
1	200578	CABLE,1/0X63,3/8-3/8 (B30, B40, B40DR, B55, B50DR, B40VAC)	3
1	182602	CABLE ASSY 4/0 X 64 HI-TEMP (B40HL, B50HL)	3
2	201874	CABLE,1/0X40,1/4-3/8	3
3	201910	CABLE,2/0X78,CON-3/8 (B30, B40, B40DR, B55, B50DR, B40VAC)	2
3	178315	CABLE,4/0 X 78,SB MAIN LEAD (B40HL, B50HL)	2
4	202948	CABLE,1/0X70,1/4-3/8 (B30)	3
4	200661	CABLE,1/0X78,1/4-3/8 (B40, B40HL, B40DR, B55, B50HL, B50DR, B40VAC)	3

Pump Motor

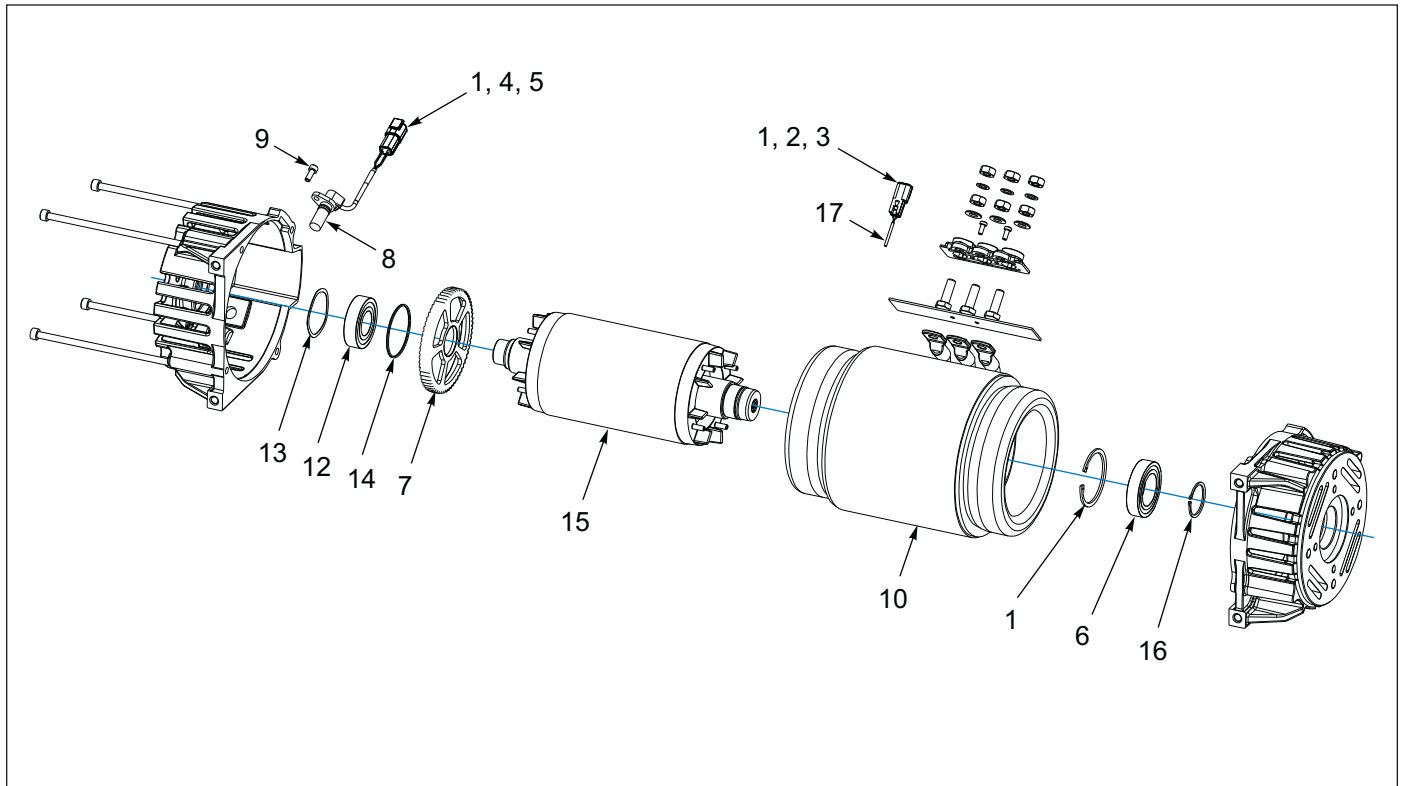


Figure 4-19: Pump Motor

Pump Motor

ITEM	PART NUMBER	DESCRIPTION	QTY.
	163960	MOTOR, SCH 20KW AC LIFT PUMP (B30, B40, B40DR/LF, B40VAC, B50DR, B55)	--
	173695	MOTOR, 21KW, 13SPL, 48V, OPEN PUMP (B40HL/LF, B50HL)	--
1	144599	PIN SIZE 20 DEUTSCH	1
2	150665	RECEPTACLE 2 PIN SIZE 20	1
3	150666	LOCK RECEPTACLE 2 PIN	1
4	150669	RECEPTACLE 4 PIN SIZE 20	1
5	150670	LOCK RECEPTACLE 4 PIN	1
6	170124	BALL BEARING 6008 2ZC3 HL	1
7	170127	GEAR WHEEL SENSOR 200-64	1
8	170129	SENSOR, SCH MOTOR SPD/DIR (WITH CONNECTOR)	1
9	170130	CYL SCRW DIN912 M6X16-8.8-A1P-	1
10	170134	STATOR 200 (B30, B40, B40DR/LF, B40VAC, B50DR, B55)	1
10	206516	STATOR, 173695 MOTOR (B40HL/LF, B50HL)	1
11	170135	CIRCLIP DIN 472-68 X 2, 5	1
12	170136	BALL BEARING 6206 2ZC3 HL	1
13	170137	WASHER, WAVY 6206K3	1
14	170138	O-RING 62 X 2, 0	1
15	170139	ROTOR 200-AS (B30, B40, B40DR/LF, B40VAC, B50DR, B55)	1
15	206517	'ROTOR, 173695 MOTOR (B40HL/LF, B50HL)	1
16	170140	CIRCLIP DIN471-40 X 1, 75	1
17	170141	TEMP SENSOR CPL KTY84-130 DTM (WITH CONNECTOR)	1

Electrical Diagram

ITEM	PART NUMBER	DESCRIPTION	QTY.
49	0020020	SWITCH FRONT ROTATION	REF
50	220564	HARNESS, BT-6 HD CONTROLS	REF
51	178260	ASSY,CURTIS ACUITY SINGLE LEAD	REF
52	178280	ASSY,CURTIS ACUITY DUAL LEAD	REF
53	206294	HARNESS ASSY BT-6 RR HRN BUTTN (NOT SHOWN)	REF

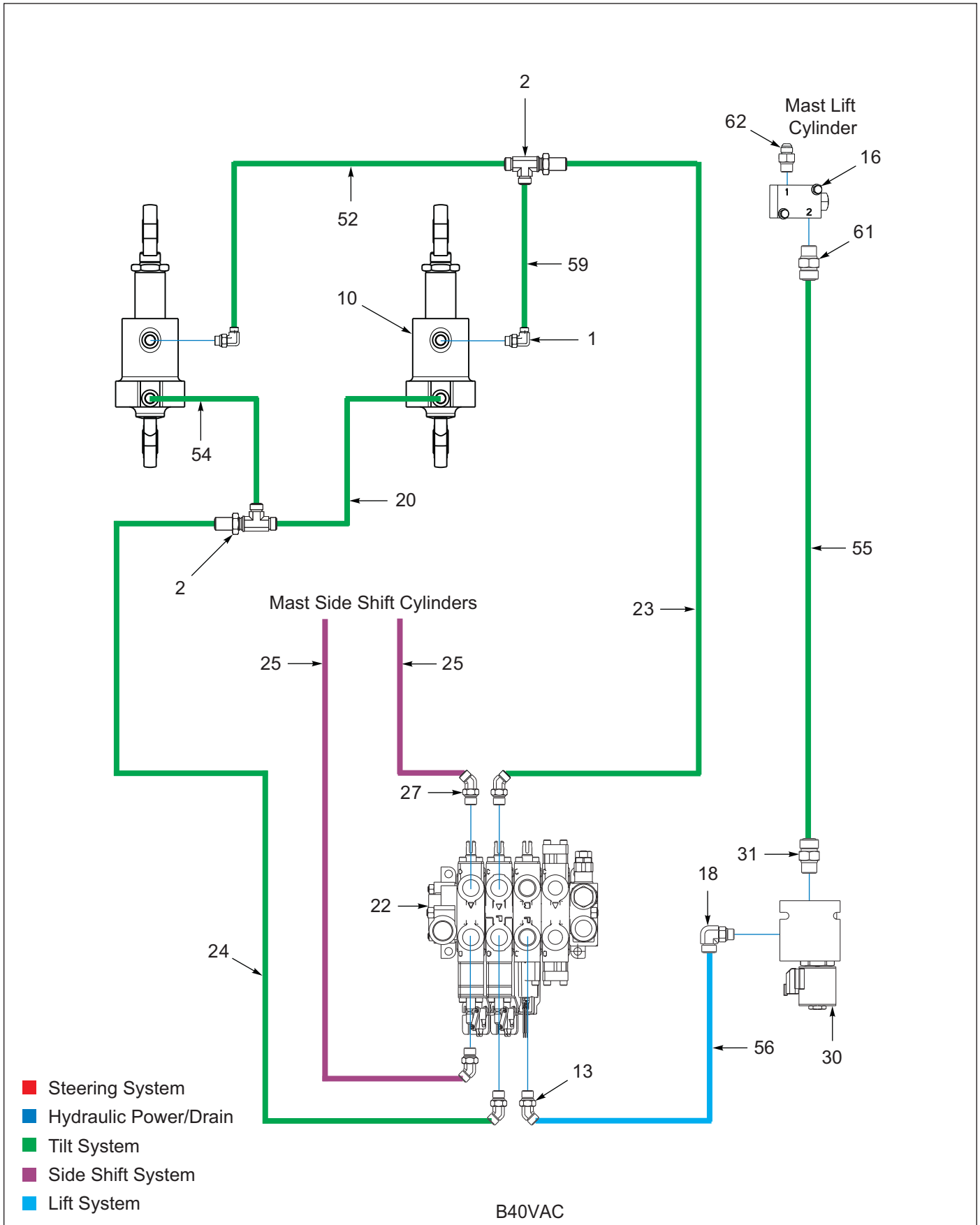


Figure 5-6: Hydraulic System Diagram (B40VAC) (2 of 2)

CLICK HERE TO **DOWNLOAD** THE COMPLETE MANUAL

- Thank you very much for reading the preview of the manual.
- You can download the complete manual from: www.heydownloads.com by clicking the link below



- Please note: If there is no response to CLICKING the link, please download this PDF first and then click on it.

CLICK HERE TO **DOWNLOAD** THE COMPLETE MANUAL

Steering Hydraulics (B40HL, B40DR, B50HL, B50DR, B40VAC)

ITEM	PART NUMBER	DESCRIPTION	QTY.
1	0018120	ADAPTER 60RSX80RB, 90S	2
2	0018160	ADAPTER WHITE CASE DRAIN	1
3	158957	ORBITAL, B55 LOAD SENSING	1
4	189872	ADAPTER,#6ORS X #8ORB STR	2
5	200550	TUBE,HL-6 VLV V2 TO ORB RH	1
6	200551	TUBE,HL-6 VLV V1 TO ORB LH	1
7	104582	ADAPTER,#6 ORS X #6 ORB ST	2
8	195920	VALVE,BT STEERING RELIEF (B40HL, B50HL, B40VAC)	1
8	194300	VALVE,BTDR STRG RELIEF/CUTOUT (B40DR, B50DR)	1
9	200547	TUBE,HL-6 ORBTL RETURN/LH DOWN	2
10	215815	TUBE, B40VAC LWR BLKHD TO P1 (B40VAC)	1
11	200545	TUBE,HL-6 ORBTL LDSN DOWN	1
12	200546	TUBE,HL-6 ORBTL PRESS/RH DOWN	2
13	215810	TUBE, B40VAC TOP BLKHD TO P2 (B40VAC)	1
14	200552	TUBE,HL-6 VLV LDSN TO ORB LDSN	1
15	200549	TUBE,HL-6 ORBTL PR TO CONT VLV	1
16	200548	TUBE,HL-6 ORB RTN TO HYD TANK	1
17	145318	ADAPTER,12X12X16ORB BRANCH TE	1
18	127165	ADAPTER 6-8 ORS/ORB, 45	1
19	127621	ADAPTER,#4 ORS X #8 ORB CONN	1
20	201935	BRACKET WLDMT,HL-6 ORBITAL BHD	1
21	194924	TUBE,HL-6 VLV C2 TO ACTR P1 (B40HL, B40DR, B50HL, B50DR)	1
21	215814	TUBE, B40VAC C2 TO BTM BLKHD (B40VAC)	1
22	194925	TUBE,HL-6 VLV C1 TO ACTR P2 (B40HL, B40DR, B50HL, B50DR)	1
22	215809	TUBE, B40VAC VLV-C1 TO UP BLK (B40VAC)	1
23	206483	CARTRIDGE,2POS,2WAY,24V,SUN	2
24	206417	CARTRIDGE,2500PSI,DIR ACT RLF	2
25	108210	SCREW SKT BTNCP 5/16-18UNCX1	2
26	127627	WASHER 5/16 LKG INT TOOTH	2
27	212976	FITTING,30 MICRON ACTUATOR	2

Valve Installation

ITEM	PART NUMBER	DESCRIPTION	QTY.
1	154004	VALVE, 3SPL HUSCO AX30454-180	1
2	106429	SCREW,HX SKTCTSK3/8-16X1-1/4	3
3	107470	NUT, SPIRALOCK 3/8-16HX	3
4	152120	ADAPTER, #10ORB X #10ORS ST	1
5	127621	ADAPTER,#4 ORS X #8 ORB CONN	1
6	127165	ADAPTER 6-8 ORS/ORB, 45	1
7	154541	ADAPTER, #8ORS X #10ORB,45ELB	4
8	154542	ADAPTER,#10ORS X #10ORB,45ELB	1
9	0018119	ADAPTER,#12ORS X #10ORB, 90ELB	1
10	1409355	PLUG,HOL HEX,O-RING.875-14UNF (B40HL, B50HL)	2

Front Plate Assembly (B30 - After 08/01/2019) (B40, B55 - After 10/15/2018)

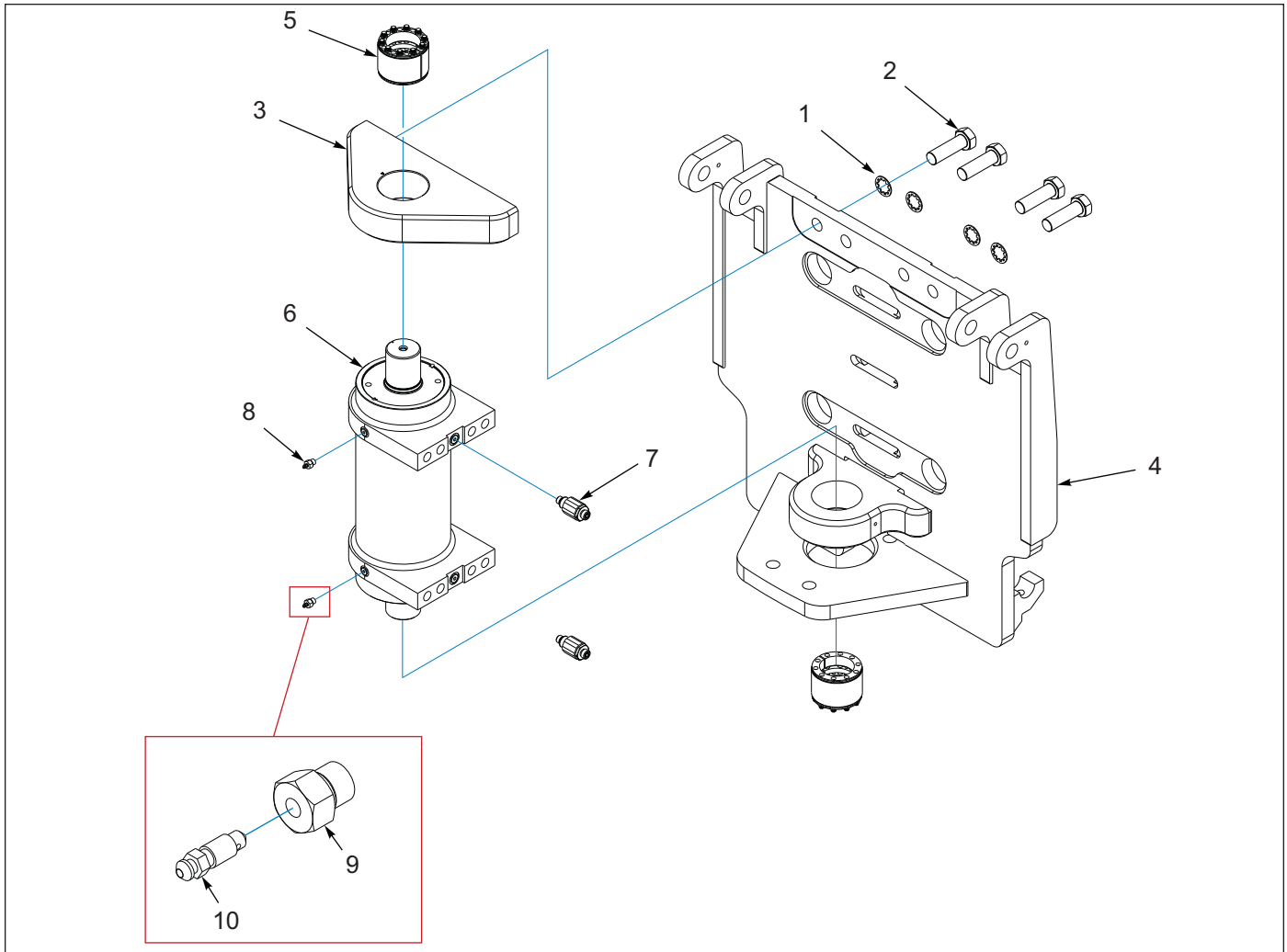


Figure 6-6: Front Plate Assembly (B30 - After 08/01/2019) (B40, B55 - After 10/15/2018)

Front Plate Assembly (B30 - After 08/01/2019) (B40, B55 - After 10/15/2018)

ITEM	PART NUMBER	DESCRIPTION	QTY.
	212974	FRONT PLATE ASSY, BT-6 HKS	--
1	143086	WASHER,1,LKG,INTERNAL TOOTH	4
2	143087	SCREW,HX CP,1-14UNFX3.25,GR8	4
3	146043	PLATE,B55 UPPER ACTUATOR MNT	1
4	146359	FRONT PLATE WLDMT,BT-5 ACTR	1
5	183207	CONNECTION,CLIMAX 12PT 65X95	2
6	206419	ACTUATOR,HKS M-DA-H-F2-150	2
7	212976	FITTING,30 MICRON ACTUATOR	1
8	189739	ASSY,#4ORB BLEEDER PLUG	2
9	216966	PLUG,#4 SAE ORB BLEEDER (BEFORE 06/20/2019)	2
9	211699	PLUG #4 SAE ORB BLEEDER (AFTER 06/20/2019)	2
10	216965	SCREW,1/4-28 BLEED	2

Mast Installation (B40DR, B50DR)

ITEM	PART NUMBER	DESCRIPTION	QTY.
1	1-861-010032-03	WASHER, FLAT #10 ZP/CD	2
2	1-861-010032-22	WASHER,FL 7/8 ZP/CD	6
3	109392	WASHER,#10 LKG,INTERNAL TOOTH	2
4	119554	WASHER, 7/8 LKG INTL TOOTH	6
5	152862	ADAPTER, #10 ORS X #8 ORB STR	1
6	153522	PLUG , # 10 ORS	1
7	157475	SCREW, HXSKT 7/8-9UNCX2.25	2
8	165751	SHIM, B55HL UPR MAST MNT	6
9	165754	CAP, #10 ORS	1
10	169764	SCREW BHSC 10-32X.625 ZP	2
11	172815	SCREW HX CP 7/8-9UNCX3-1/2 GR8	4
12	189733	CAP,#6 ORS	2
13	189734	PLUG, #6 ORS	2
14	206199	SENSOR,M18,14MM RNG,2WIRE,PROX	1
15	206201	BRACKET,DR PROX SENSOR MOUNT	1
16	214215	BRACKET,BT-DR HOME POSN SW MNT	1
17	206200	ASSEMBLY,4" M12 TO DETSCH 2PIN (NOT SHOWN)	1
18	205667	INSTALLATION, 45HR MAST ELECT (NOT SHOWN)	1
19	214972	ASSEMBLY,BTDR CARR COIL SUPPR (NOT SHOWN)	6

Two Function Control Lever

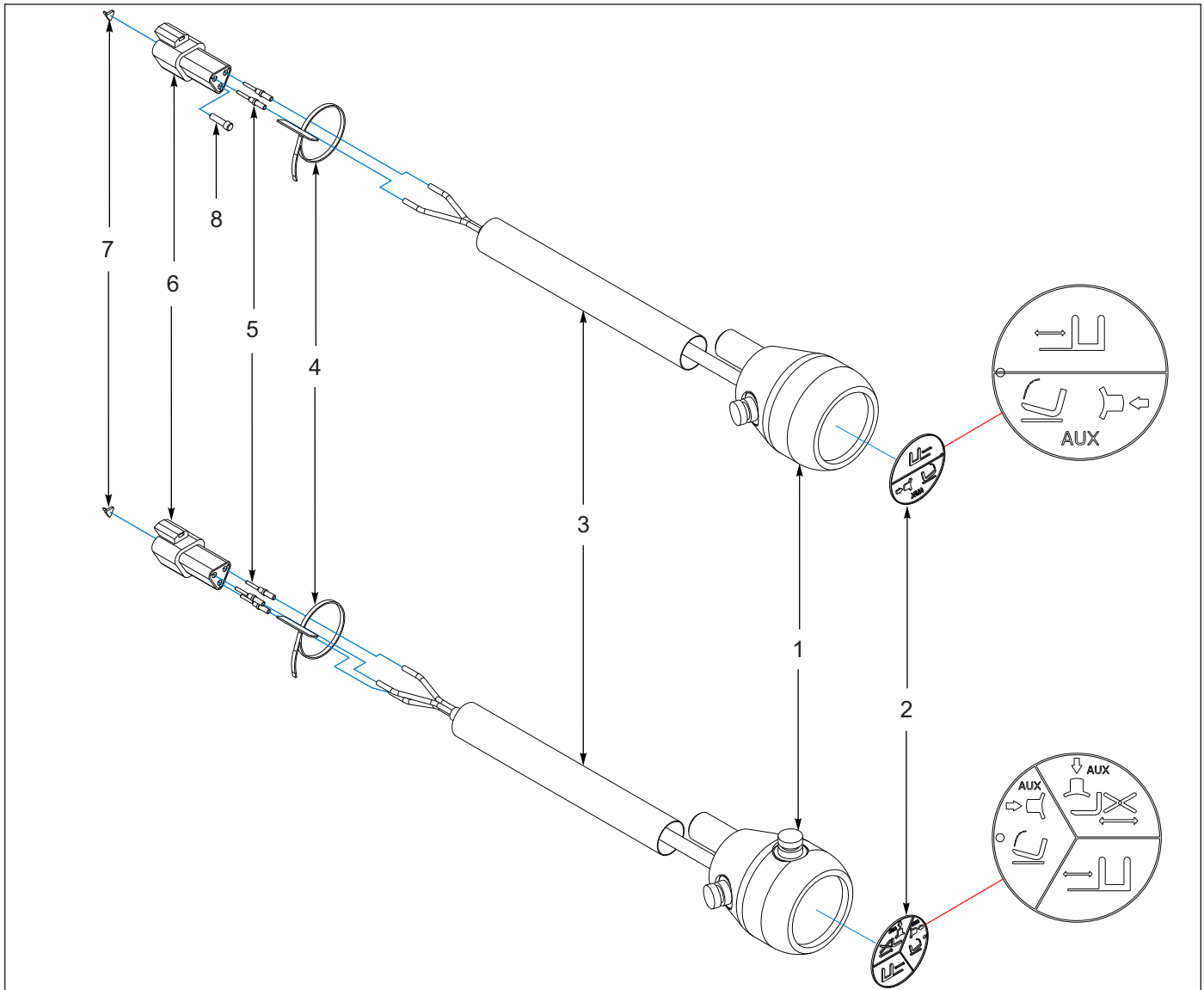


Figure 7-4: Two Function Control Lever

Two Function Control Lever

ITEM	PART NUMBER	DESCRIPTION	QTY.
	205668	ASSEMBLY, 2 FUNCTION HYDRAULIC KNOB	--
	206116	KNOB ASSY AUX HYD B-6	--
1	134911	SINGLE FUNCT PUSH BUTTON KNOB (B40HL/LF, B50HL)	1
1	157552	KNOB, 3-FUNCTION ATTACH CNTL (B40DR/LF, B50DR)	1
2	205693	PLACARD, DR CARRIAGE KNOB (B40DR/LF, B50DR)	1
2	211845	INSERT, HL 2-FUNC CARR KNOB (B40HL/LF, B50HL)	1
3	0013007	TUBING, HEAT SHRINK	4
4	57081	TY-RAP WITH MARKING BAD	1
5	622-2967-013	PIN, 16-18AWG	3
6	622-2967-003	RECEPTACLE 3 POS. MALE	1
7	622-2967-019	WEDGE, 3 POS RECEPTACLE	1
8	622-2962-009	PLUG, SEALING	1

Drive Wheels and Tires (B55, B50HL, B50DR)

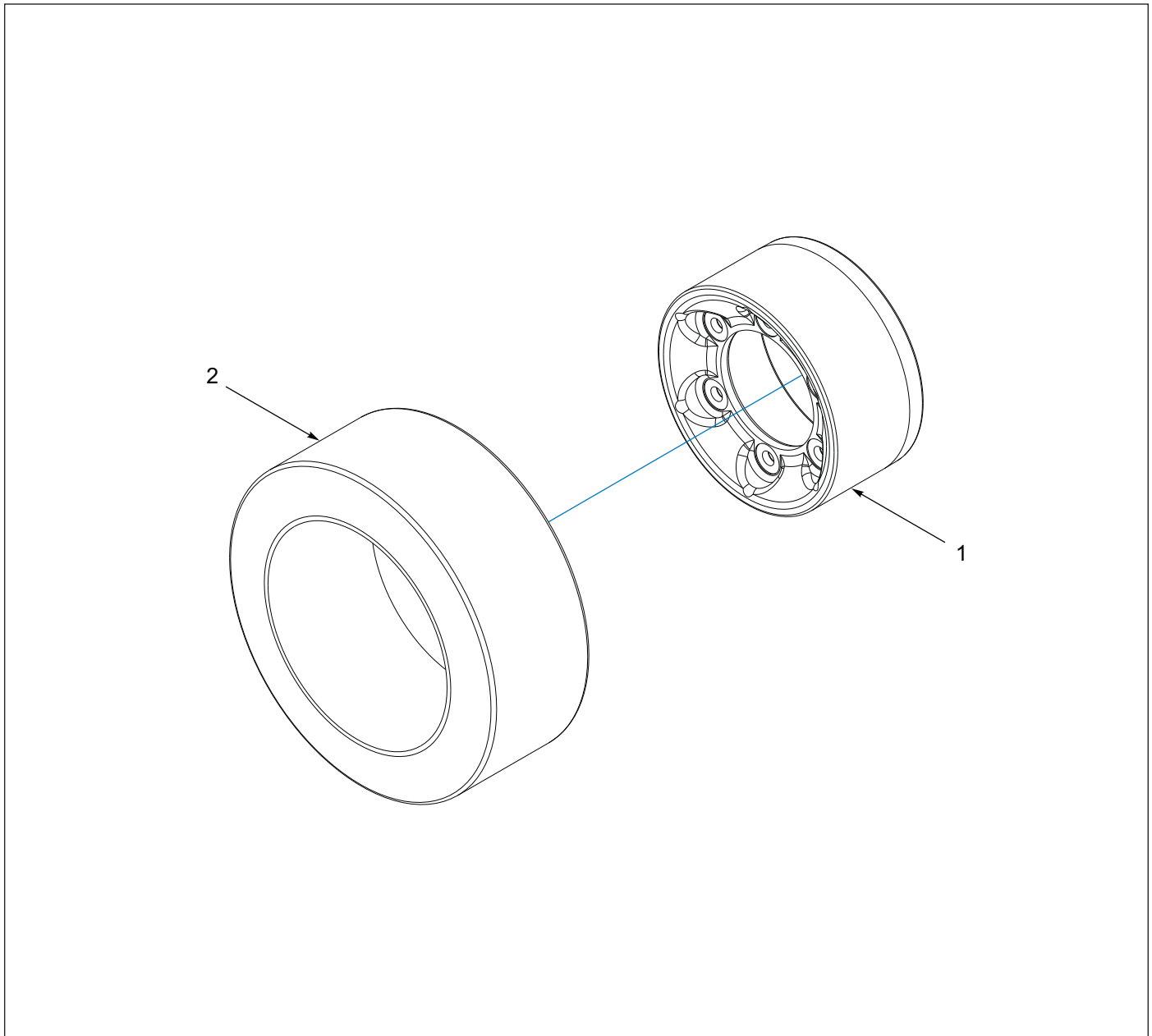


Figure 8-4: Drive Wheels and Tires (B55, B50HL, B50DR)

Drive Wheels and Tires (B55, B50HL, B50DR)

ITEM	PART NUMBER	DESCRIPTION	QTY.
1	126575	TIRE, MAXMATIC, 18X9X12.125	2
1	129673	WHEEL,SER 4 BREVINI 8" CAST	2
2	156375	TIRE, PO, SM KRT, 18X9	2
2	22-0895	TIRE,DRIVE AXLE 18X9 POLY BLK	2
2	129673	WHEEL,SER 4 BREVINI 8" CAST	2
2	160420	TIRE,PO,MAX,NM, 18X9	2
2	160419	TIRE,PO,SM KRT,NM,18X9	2
2	160421	TIRE,PO,TRELLEBORG, 18X9	2
2	160422	TIRE,PO,TRELLEBORG,NM, 18X9	2

Battery Tray, Roll Out

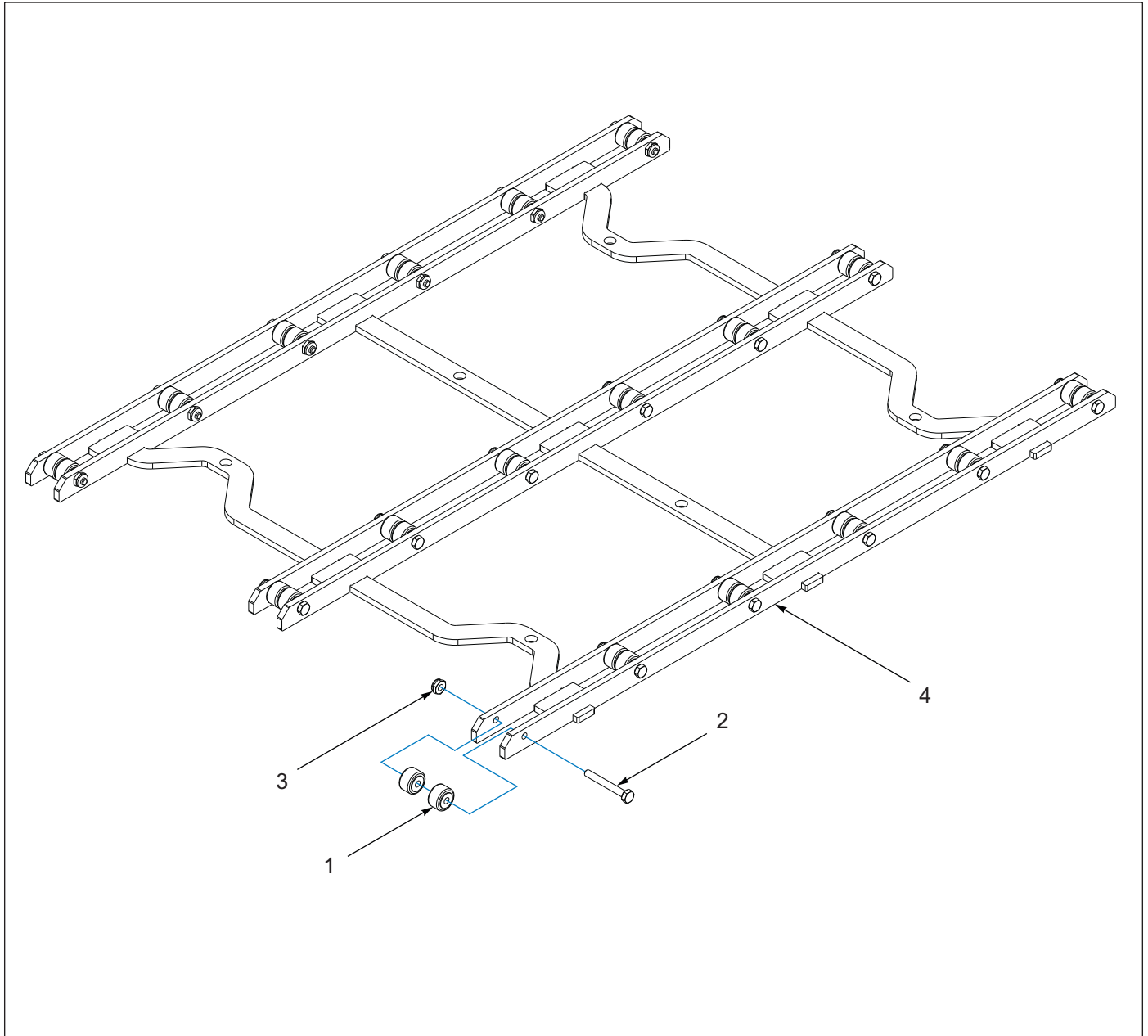


Figure 9-4: Battery Tray, Roll Out

Battery Tray, Roll Out

ITEM	PART NUMBER	DESCRIPTION	QTY.
	206177	ROLLER ASSEMBLY BATTERY TRAY B30 (B30)	--
	213036	ROLLER TRAY ASSEMBLY, B55 (B55, B50HL, B50DR)	
	205598	ROLLER BATTERY TRAY, B40 (B40, B40HL, B40DR, B40VAC)	
1	0019066	BEARING, BATTERY TRAY	36
2	1-654-010047-10	SCREW, HX CP, 1/4-20UNC X2 GR5	18
3	100627	NUT, ESNA HVY HEX THIN 1/4-20	18
4	206178	ROLLER WLDMNT TRAY B30 (B30)	1
	213035	ROLLER WLDMNT TRAY B55) (B55, B50HL, B50DR)	1
	205602	ROLLER TRAY WLDMT, B40 (B40, B40HL, B40DR, B40VAC)	1

Landview

ITEM	PART NUMBER	DESCRIPTION	QTY.
49	196034	KIT F55 OSCS 50HZ LANDVIEW	REF
50	197243	KIT F55 OSCS 50HZ LV W/ LT	REF
51	197242	KIT F55 OSCS 60HZ L/V W/LT	REF
52	196032	KIT F55 OSCS 60HZ LANDVIEW	REF
53	211687	KIT,240MFH 60HZ 45HR OSCS L/V	REF
54	221801	KIT,300MFH 50HZ 45HR OSCS L/V	REF
55	215871	KIT,300MFH 60HZ 45HR OSCS L/V	REF
56	206092	KIT,330MFH 60HZ 45HR OSCS L/V	REF
57	211771	KIT,338MFH 50HZ 45HR OSCS L/V	REF
58	214924	KIT,376MFH 50HZ 45HR OSCS L/V	REF
59	202968	KIT,376MFH 60HZ 45HR OSCS L/V	REF
60	197989	KIT,OSCS L/V 9M F55 CABLE	REF

R

RH Righthand
RND Round

S

SER Series
SHCS Socket Head Cap Screw
SHLD Shield
SKT Socket
SLFLKG Selflocking
SOC Socket
SPDT Single Pole Double Throw
SPR Spring

SQ Square
SRTD Serrated
SSCR Setscrew
SST Stainless Steel
STD Standard

U

UPR Upper

W

WHL Wheel
WLD OR WLDMT Weldment

170128	8-2	176120	10-4
170129	4-30	176154	5-22
170130	4-30, 8-2	177782	1-10
170134	4-30	177797	1-10
170135	4-30	177810	10-1
170136	4-30	177910	5-3, 5-7
170137	4-30	178110	1-10, 4-39
170138	4-30	178112	4-9
170139	4-30	178115	4-23
170140	4-30	178155	6-20
170141	4-30	178171	4-28, 5-7, 5-16
170580	8-7	178203	1-10
170581	8-7	178251	4-23
171510	4-28, 5-3, 5-11, 5-16	178256	1-10
171534	9-9	178260	4-40
171535	9-9	178280	4-40
171580	8-6	178287	4-28
171599	3-4	178315	4-20
171600	2-10	178321	4-9, 4-15
172217	10-4	181425	5-7
172234	6-1	181449	6-7
172285	9-9	181451	6-7
172815	6-16, 6-18	181460	6-4
173695	4-28, 4-30, 5-16	181490	6-4
173698	3-9	181492	6-4
173713	1-3, 8-1	181494	6-4
173928	5-14, 11-1	181497	4-28
173941	4-23	181508	6-9, 6-10
173979	5-16	181509	6-9, 6-10
174270	4-39, 8-2	181513	6-6, 6-9
174271	4-39, 8-2	181514	6-6, 6-9
175467	4-23, 4-39	182566	5-3, 5-11
175493	8-3	182567	5-3, 5-11
175509	8-7	182602	4-20
175511	8-3	182764	9-9
176097	8-7	182803	4-9
176117	1-2	182804	4-9, 4-15
176118	1-2	182821	2-10

CLICK HERE TO **DOWNLOAD** THE COMPLETE MANUAL

- Thank you very much for reading the preview of the manual.
- You can download the complete manual from: www.heydownloads.com by clicking the link below



- Please note: If there is no response to CLICKING the link, please download this PDF first and then click on it.

CLICK HERE TO **DOWNLOAD** THE COMPLETE MANUAL