



**Model B40i3
Narrow Aisle Forklift
Parts Manual**



LANDOLL CORPORATION

1900 North Street
Marysville, Kansas 66508
(785) 562-5381
800-428-5655 ~ WWW.LANDOLL.COM

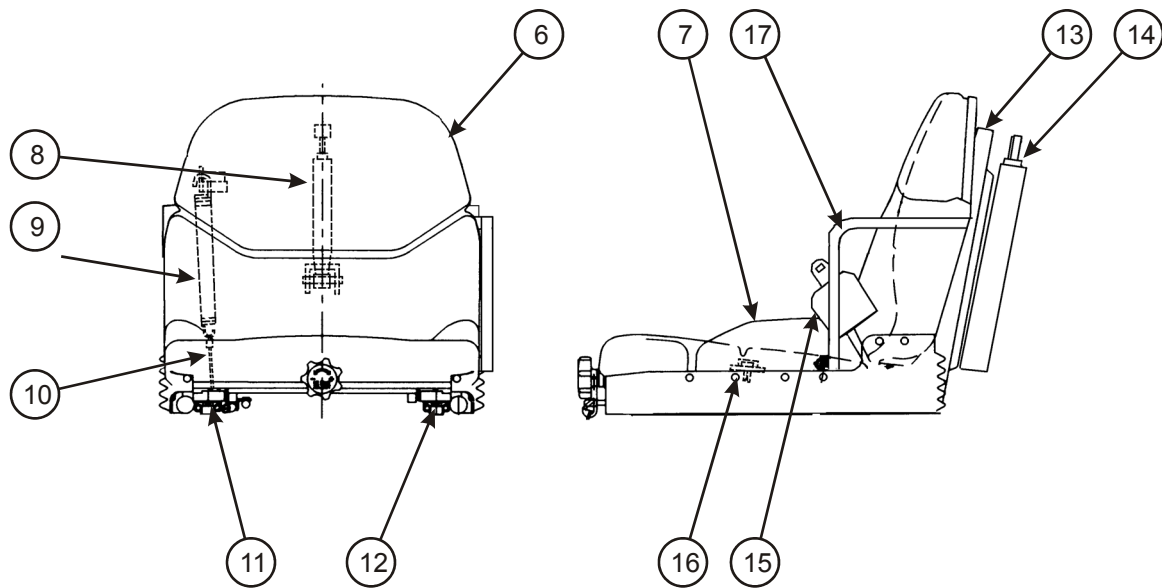
CLICK HERE TO **DOWNLOAD** THE COMPLETE MANUAL

- Thank you very much for reading the preview of the manual.
- You can download the complete manual from: www.heydownloads.com by clicking the link below



- Please note: If there is no response to CLICKING the link, please download this PDF first and then click on it.

CLICK HERE TO **DOWNLOAD** THE COMPLETE MANUAL



seat

Figure 2-5: Seat Assembly

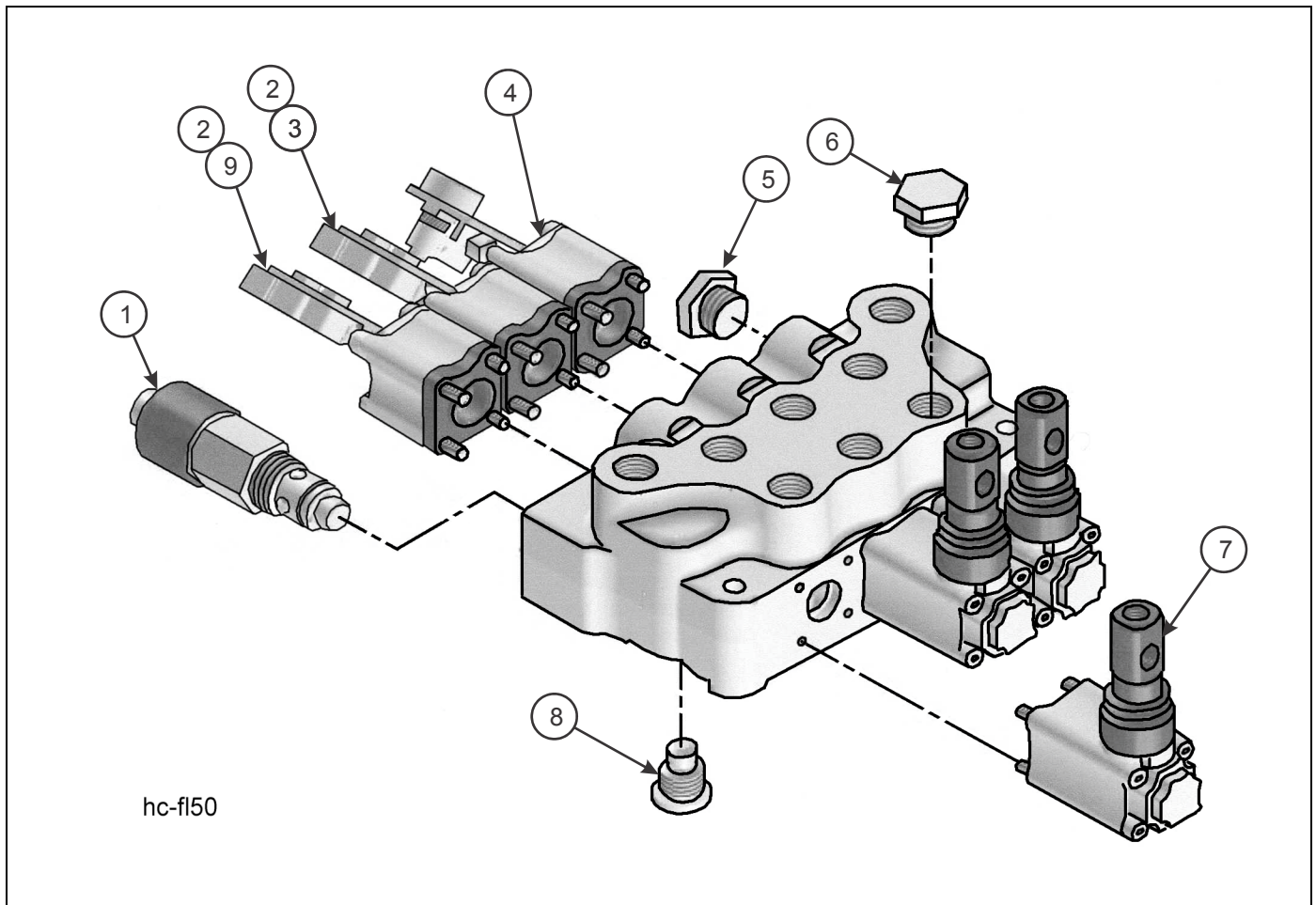


Figure 2-12: Hydraulic Control Valve Assembly

HYDRAULIC CONTROL VALVE

ITEM	PART NO.	DESCRIPTION	QTY.
	129640	VALVE HYDRAULIC CONTROL	
1	131021	RELIEF VALVE (2600 PSI)	1
2	132166	SWITCH	2
3	131023	SPOOL RETURN ACTION - TILT	1
4	131024	SPOOL RETURN ACTION - LIFT	1
	132167	HARNESSESS W/ POT	1
5	1-007-010025	PLUG, 3/4 SAE O-RING	1
6	900598-6S	PLUG, 9/16 SAE O-RING	1
7	131025	SPOOL ACTUATION	3
8	131026	CHECK VALVE	1
9	131022	SPOOL RETURN ACTION - SHIFT	
	131027	GASKET KIT	1

CANNOT HAVE ITEMS 3 AND 9 IF ITEM 2 IS USED

ILLUSTRATED PARTS LIST

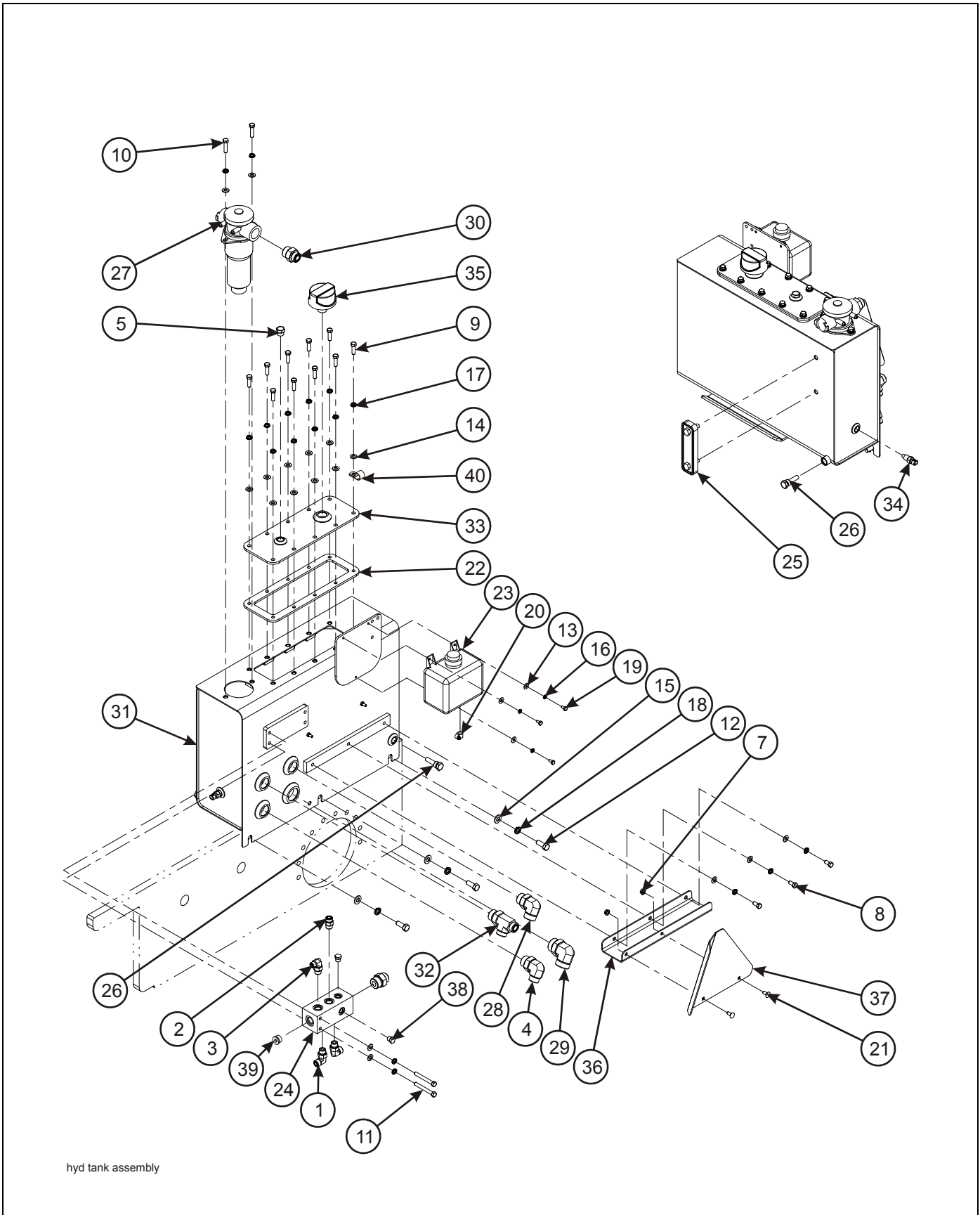


Figure 2-18: Hydraulic Tank Assembly

HYDRAULIC PUMP ASSEMBLY

ITEM	PART NO.	DESCRIPTION	QTY.
1	M10SLW ZP	WASHER, SPLIT LOCK M10	2
2	0018106	ADAPTER, VALVE RETURN POST 90	1
3	0018108	ADAPTER, VALVE REAR TILT	1
4	0018109	ADAPTER, VALVE FORWARD TILT 90	1
5	0018110	ADAPTER, VALVE 1/2	1
6	0018120	ADAPTER, POWER STEER PUMP PRESSURE 90	2
7	0018136	ADAPTER, POWER STEER RELIEF PRESSURE 90	1
8	0018137	ADAPTER	1
9	0018147	PORT	1
10	0018149	PORT, DUST COVER	1
11	1-510-010004-03	NUT, HEX FLANGE 5/16-18 GR8	2
12	1-654-010047-14	SCREW HEX HEAD CAP 1/4-20 X 3 GR5	2
13	1-654-010051-05	SCREW, HEX HEAD CAP 3/8-16 X 1 GR5	2
14	1-861-010032-06	WASHER, FLAT 1/4N	2
15	1-861-010034-09	WASHER, SPLIT LOCK 1/4	2
16	1CM1030ER	SCREW, HEX HEAD CAP M10 X 30 CL8.8	2
17	104825	ADAPTER, 90	1
18	107470	NUT, HEX LOCK 3/8-16	2
19	108151	SCREW, FLANGE HEAD 5/8-11 X 1-1/2	2
20	109874	SCREW, HEX HEAD CAP 5/16-18 X 3-1/4 GR5	2
21	110116	ADAPTER 90	3
22	122990	MANIFOLD, HYDRAULIC RETURN	1
23	135029	ADAPTER, STRAIGHT	1
24	135574	ADAPTER, SWIVEL TEE	1
25	135575	ADAPTER, LONG STR	1
26	1409355	PLUG, HOLLOW HEX 7/8-14	1
27	142350	MANIFOLD ASSEMBLY, LOAD SENSE (SEE PAGE 2-58)	REF
28	143868	PUMP, LINDE 75CC/REV HYDROSTAT	REF
	154635	PUMP, LINDE HYDROSTAT REMANUFACTURED	1
29	145307	MANIFOLD, HYDROSTAT DRIVE	1
30	145309	ADAPTER 90	1
31	145954	ADAPTER, 90	1
32	145955	ADAPTER, 90	1
33	146516	O-RING	2
34	146676	PUMP, AUXILIARY HYD	1
35	149488	BRACKET, CASE DRAIN MANIFOLD	1
36	151291	ADAPTER	1
37	151292	ADAPTER	3
38	151293	ADAPTER	1
39	151474	ADAPTER, RUN TEE	1
40	53080-9	SCREW, SOCKET HEAD M12 X 1.75 X 65	8
41	6-8 520120	ADAPTER, STR	1

2.4L ENGINE AND FUEL SYSTEM COMPONENTS

ITEM	PART NO.	DESCRIPTION	QTY.
1	143355 -----	ENGINE, LANDOLL GM 2.4L T3 LABEL, EMISSIONS LPH MY 08	1
2	-----	LABEL, ENGINE BUILD DATE	1
3	151192	HARNESS ASSEMBLY, 2.4L ENGINE LPG	1
4	156330	HARNESS, IGNITION TERMINATION	1
5	151190	ECU ASSEMBLY, 2.4L LPG, MY08 CERTIFIED, 2300 RPM	1
6	151191	COMMON SAX ASSEMBLY	1
7	154068	RELAY, POWER LATCH	1
8	151193	THROTTLE ASSEMBLY, ELECTRONIC	1
9	151195	GASKET, ELECTRONIC THROTTLE	1
10	-----	HCE-1047 CPSCR M6 X 1 X 45	4
11	156325	PLATE, THROTTLE ADAPTER	1
12	151194	GASKET, THROTTLE PLATE	1
13	-----	HCE-1047 CPSCR M6 X 1 X 12	6
14	-----	FUEL RAIL ASSEMBLY	1
15	-----	CAPSCREW, HEX FLANGE HEAD M6 X 1 X 35	2
16	-----	HCE-1047 CPSCR M8 X 1.25 X 16	3
17	-----	ADAPTER, INJECTOR	4
18	156323	O-RING, INJECTOR ADAPTER	4
19	-----	O-RING, LUBRICANT	2
20	-----	BRACKET, INJECTOR	1
21	-----	SPACER, FUEL RAIL MOUNTING BRACKET	2
22	151196	INJECTOR, FUEL	4
23	156324	HOSE CLAMP	8
24	-----	FUEL HOSE, 5/16	4
25	151185	CAM SENSOR ASSEMBLY	1
26	-----	P-CLIP 9/16	1
27	-----	STUD - EXHAUST	4
28	154065	ADAPTER	1
29	156283	SENSOR, 2.4L OIL PRESS MY2007	1
30	-----	BRACKET	1
31	-----	HEX PLAIN FLANGE NUT, M10 X 1.6	2
32	-----	HEX PIPE PLUG, M16 X 1.6	1
33	-----	HCE-1047 CPSCR M6 X 1 X 17	2
34	153465	SPARK PLUG WIRE ASSEMBLY SET	1
35	153466	FUSED STARTER HARNESS	1
36	-----	FLANGE NUT, M6 X 2	2
37	-----	COPPER RING	1
39	-----	HCE-1064 NUT, M8 X 1.26	1
40	-----	BRACKET	1
41	-----	HCE-83 THREAD SEALANT	2
42	154066	O-RING	1
43	154067	RETAINING RING	1
44	-----	BRACKET, COIL	1
45	145305	3 WAY PURIMUFFLER	1
46	151271	EXHAUST MANIFOLD	1
47	151197	VAPORIZER, 2.4L ENGINE (SEE PAGE 2-62 FOR LOCATION)	1
	151189	VAPORIZER REBUILD KIT (SEE PAGE 2-62 FOR LOCATION)	1
48	151198	HOSE VAPORIZER TO FUEL RAIL	1

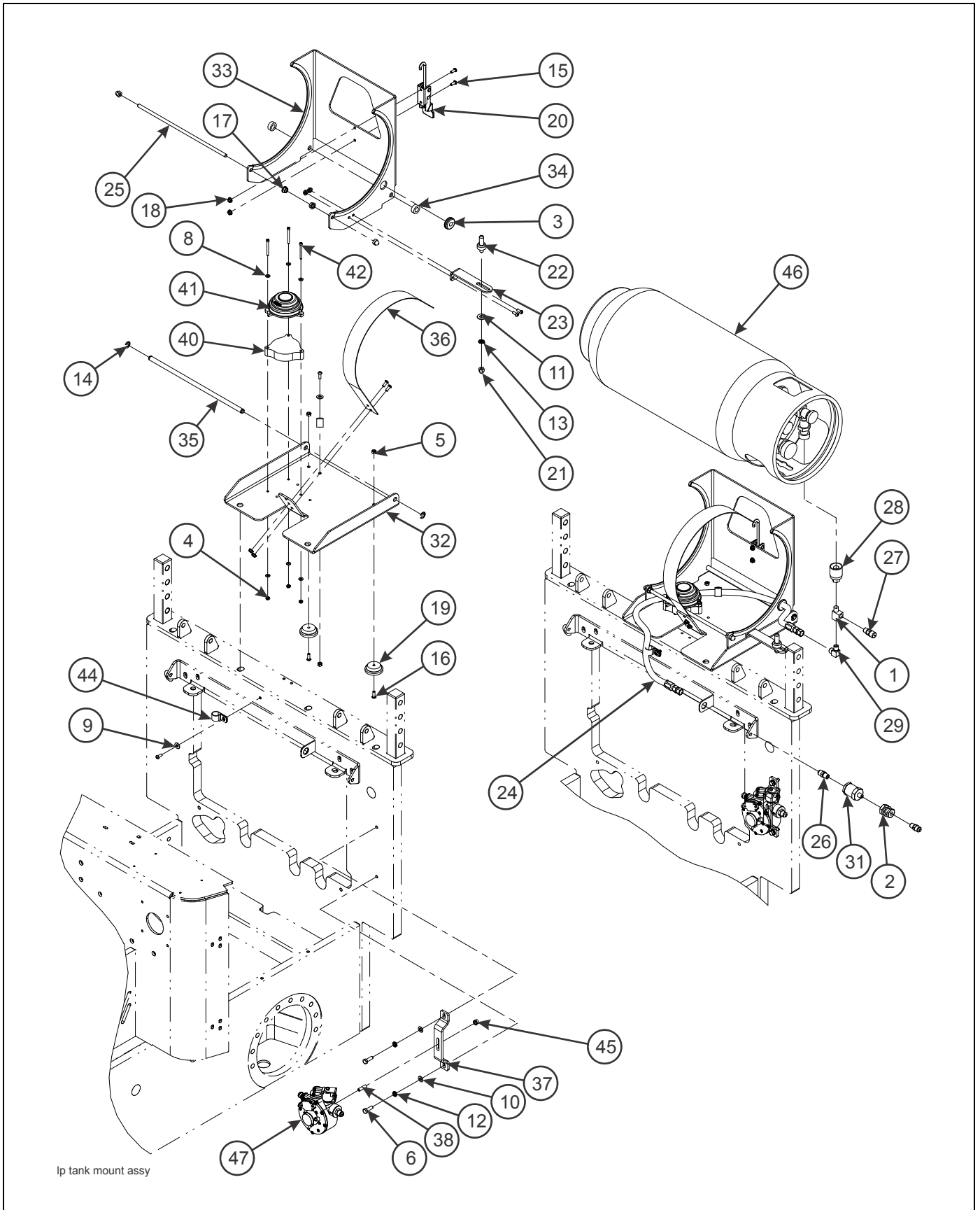


Figure 2-39: LP Gas Hookup Assembly

NUMERICAL INDEX

101864	2-15	107202	2-13
101909	2-22	107277	2-31
101967	2-4	107465	2-31
101988	2-19	107466	2-31
102-0899	2-37	107470	2-15, 2-39, 2-40, 2-62
102-0949	2-37	107518	2-4, 2-7
103-0633	2-25	107539	2-4, 2-66
10-32X1	2-22	107746	2-31
103804	2-66	107747	2-31
104031	2-9, 2-31	107750	2-19
104582	2-9, 2-25, 2-55	107920	2-19, 2-22
104825	2-39, 2-55	107944	2-31
104831	2-66	108151	2-22, 2-39
104877	2-29, 2-60	108336	2-15
104984	2-60	108337	2-31
105-0085	2-29	108409	2-22
105-0107	2-41	108417	2-19, 2-22, 2-62
105-0211	2-69	108610	2-22
105360	2-66	108797	2-4, 2-19, 2-22
105909	2-29	109029	2-29
106049	2-31	109091	2-13
106066	2-57	109394	2-22
106240	2-19, 2-62	109527	2-31
106429	2-57	109584	2-4, 2-7
106487	2-11	109598	2-31
106489	2-11	109874	2-39
106534	2-22	110-0354	2-13
106803	2-4	110116	2-15, 2-39, 2-55
106954	2-4, 2-19, 2-22, 2-62	110185	2-31
106955	2-4, 2-19, 2-22, 2-62	110346	2-55
107-0008	2-31, 2-60	110427	2-5
107-0828	2-66	110470	2-19, 2-22
107168	2-15, 2-55	110-7389	2-5
107184	2-19	110815	2-66
107185	2-19	110843	2-4, 2-9
107186	2-19	110978	2-13
107188	2-19	110994	2-55
107199	2-4	111009	2-66

CLICK HERE TO **DOWNLOAD** THE COMPLETE MANUAL

- Thank you very much for reading the preview of the manual.
- You can download the complete manual from: www.heydownloads.com by clicking the link below



- Please note: If there is no response to CLICKING the link, please download this PDF first and then click on it.

CLICK HERE TO **DOWNLOAD** THE COMPLETE MANUAL