

THIS MANUAL PREPARED FOR  
SERIAL NUMBER SRGOX

# EXTENDAMAT SCREED SRGO

CLICK HERE TO **DOWNLOAD** THE COMPLETE MANUAL

- Thank you very much for reading the preview of the manual.
- You can download the complete manual from: [www.heydownloads.com](http://www.heydownloads.com) by clicking the link below

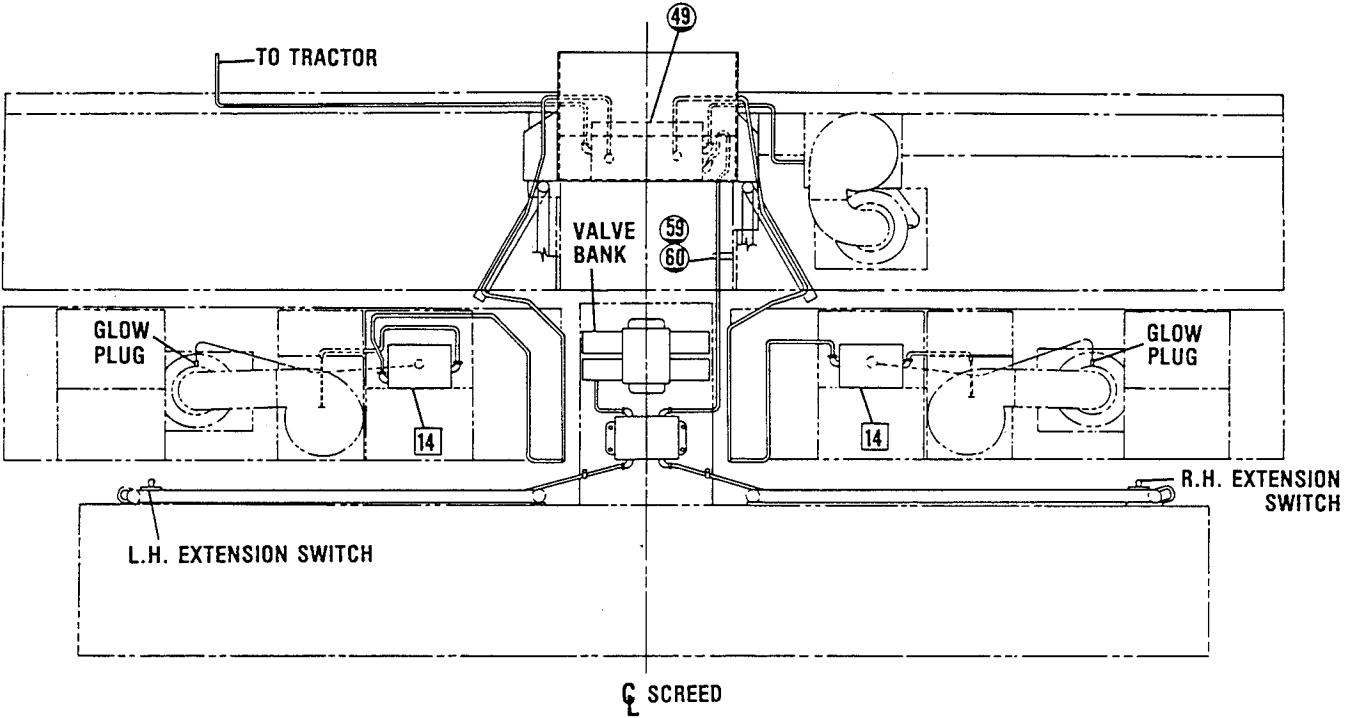


- Please note: If there is no response to CLICKING the link, please download this PDF first and then click on it.

CLICK HERE TO **DOWNLOAD** THE COMPLETE MANUAL



MAIN SCREED ELECTRICAL  
 K2-876-2480B  
 K3-876-2480B



Key to  
 Reference Number Symbols

SYMBOL	B/M
--------	-----



= K2 & K3-876-2480B



= J1-876-2480B (See Page D-3.2)

2/17/80  
 10/25/83

REF.	PART NUMBER	QTY.	DESCRIPTION
108	13J37	2	1/2" x 1-3/4" Hex Head Cap Screw
109	GB-876-2518	4	Strip, Nut
110	26F63	10	1/2" x 2" Flat Head Socket Cap Screw
110	26C72	10	1/2" x 1-1/2" Flat Head Socket Cap Screw
	CE-876-2518	2	Plate, Tie
	26E07	20	5/8"-18 N.F. Hex Nut
	27L59	20	5/8" Cut Washer
	27L84	20	5/8" Lock Washer
	CF-876-2518	10	Shim, .002"
	CG-876-2518	10	Shim, .005"
	CH-876-2518	10	Shim, .010"
119	27L58	2	1/2" Cut Washer
120	27L81	4	1/2" Lock Washer
121	BH-17-329	10	Shim, #22 Ga.
122	BG-17-329	10	Shim, .020"
123	BR-17-329	10	Shim, .010"
	CK-876-2518	20	Shim, .020"
	CJ-876-2518	2	Plate

( ) F3-876-2515B ONLY

*Ref. #105 thru #123 Symbolized by  on Illustration on Page D-6.1.*

105	FA-876-2517W	1	Plate, Screed - 10'-0"
107	26E28	2	1/2" x 1-1/4" Hex Head Cap Screw
108	13J37	2	1/2" x 1-3/4" Hex Head Cap Screw
109	GB-876-2518	4	Strip, Nut
110	26F63	20	1/2" x 2" Flat Head Socket Cap Screw
119	27L58	10	1/2" Cut Washer
120	27L81	4	1/2" Lock Washer
121	BH-17-329	10	Shim, #22 Ga.
122	BG-17-329	10	Shim, .020"
123	BR-17-329	10	Shim, .010"
127	26E92	20	1/2" Square Nut

( ) G-876-2515B ONLY

*Ref. #131 thru #142 Symbolized by  on Illustration on Page D-6.1.*

131	27L81	6	1/2" Lock Washer
132	26E24	1	1/2" x 1" Hex Head Cap Screw
133	26E29	1	1/2" x 1-1/2" Hex Head Cap Screw
134	27L58	1	1/2" Cut Washer
135	BH-17-329	1	Shim, #22 Ga.
136	BG-17-329	1	Shim, .020"
137	BR-17-329	1	Shim, .010"
138	DC-876-2517	1	Plate, Extender Screed - 48-1/8" (Att. to Extender Frame)
139	DA-876-2517W	2	Strip, Nut
141	26F63	4	1/2" x 1-1/2" Flat Head Socket Cap Screw
142	26E54	4	1/2" x 2" Hex Head Cap Screw

( ) G1-876-2515B ONLY

*Ref. #131 thru #142 Symbolized by  on Illustration on Page D-6.1.*

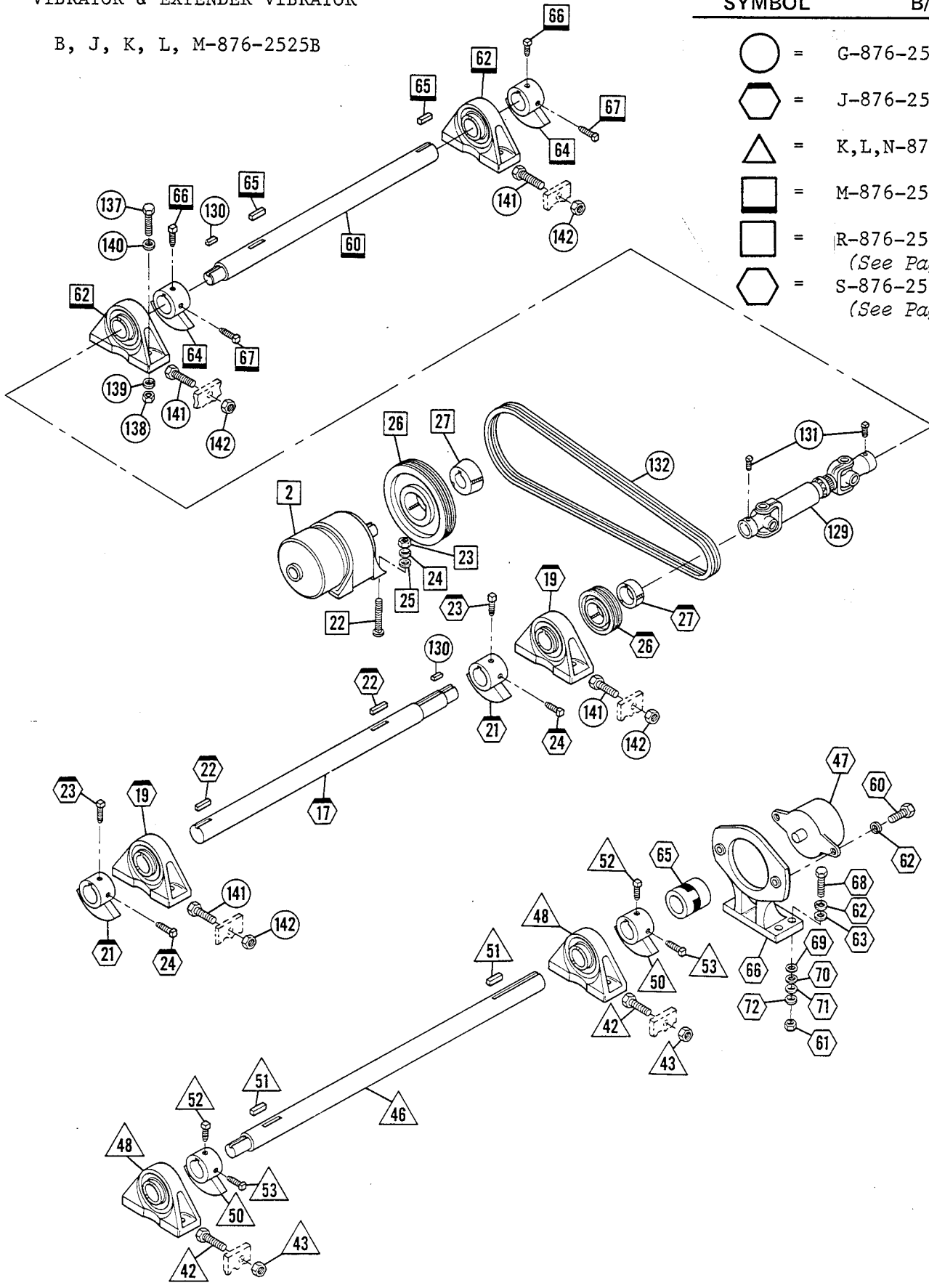
131	27L81	6	1/2" Lock Washer
132	26E24	1	1/2" x 1" Hex Head Cap Screw

VIBRATOR & EXTENDER VIBRATOR

B, J, K, L, M-876-2525B

Key to  
Reference Number Symbols

SYMBOL	B/M
○	G-876-2525B
⬡	J-876-2525B
△	K,L,N-876-2525B
□	M-876-2525B
◻	R-876-2560B (See Page D-13)
⬢	S-876-2560B (See Page D-14)



CLICK HERE TO **DOWNLOAD** THE COMPLETE MANUAL

- Thank you very much for reading the preview of the manual.
- You can download the complete manual from: [www.heydownloads.com](http://www.heydownloads.com) by clicking the link below



- Please note: If there is no response to CLICKING the link, please download this PDF first and then click on it.

CLICK HERE TO **DOWNLOAD** THE COMPLETE MANUAL

REF.	PART NUMBER	QTY	DESCRIPTION
6	26J03	1	Elbow, 90°
127	26S24	1	Bushing, 7/8" Bore, 1/4" Key
133	50E67	1	Plug, Plastic Thd.
135	26L58	5	5/16" x 2-3/4" Hex Head Cap Screw
140	12X17	1	Connector, 3/8" Bulkhead
160	23R41	1	Elbow, 90°, 1/2" P.T. x 3/8" Tube

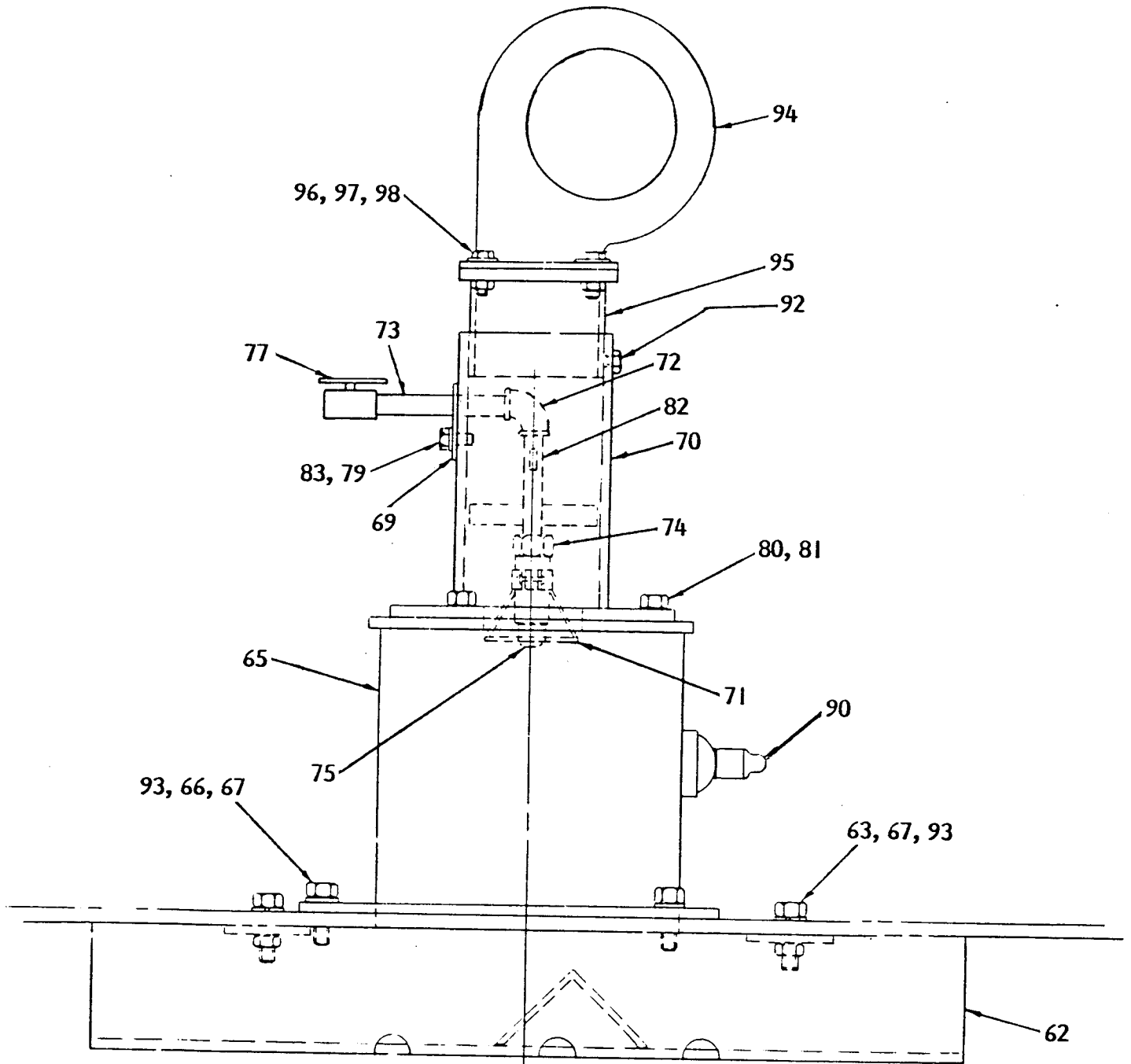
( ) S1-876-2560B ONLY

Ref. #47 thru #72 Symbolized by  on Illustration on Page D-14.1.

47	23X77	2	Motor (See Page D-32)
48	12X17	2	Connector, 3/8" Bulkhead
49	AH-80-484W	2	Hose, 3/8" I.D. x 23"
50	23A06	2	Connector, 1/4" P.T. x 3/8" T.
51	23N60	4	Connector, 1-1/16" ST. x 1/2" T.
52	14L35	4	Tee, 1/2" Swivel
53	12T60	4	Cap, 1/2" T.
54	BJ-80-482W	2	Hose, 3/8" I.D. x 21"
	D-17-32	1	Key, 3/8" Sq. x 1-3/4"
55	AT-80-482W	2	Hose, 3/8" I.D. x 25"
58	23X78	4	Connector, 1/2" Bulkhead
60	10E10	4	3/8" x 1-1/4" Hex Head Cap Screw
61	27C90	8	3/8" Hex Nut
62	27L78	12	3/8" Lock Washer
63	27L56	8	3/8" Flat Washer
64	27K32	4	3/8" x 1-1/4" Square Head Set Screw
65	26L27	2	Coupling, Flexible
66	26L28	2	Mount, Foot
67	27K34	4	3/8" x 1-3/4" Square Head Set Screw
68	10V14	8	3/8" x 1-1/2" Hex Head Cap Screw
69	D-876-2563	2	Shim, .001")
70	E-876-2563	2	Shim, .003") Use as
71	F-876-2563	4	Shim, .005") Required
72	G-876-2563	2	Shim, .010")

\* - NOTE: Consult Aurora Repair Parts Dept. for repairs on this item.

# SCREED HEATING UNIT



Key to  
Reference Number Symbols

SYMBOL	B/M
--------	-----

NONE = L-876-2530B

⊕ BURNER

8/27/85 (F-0)



REF.	PART NUMBER	QTY.	DESCRIPTION
	26E85	2	1/2" x 2-1/4" Hex Head Cap Screw
	AB-876-2587WL	1	Step (L.H.)
	AB-876-2587WR	1	Step (R.H.)
	AC-876-2588	2	Support
	U-17-10	2	Spacer, Pipe
	26E28	2	1/2" x 1-1/4" Hex Head Cap Screw
	C-876-2587W	1	Hand Rail (Basic Screed) (R.H.)
	CC-876-2588	1	Hand Rail (For Steps)
	AF-876-2587W	1	Hand Rail (For Steps)
			( ) <u>A1-876-2585B ONLY</u>
	10E10	4	3/8" x 1/4" Hex Head Cap Screw
	CF-876-2588	2	Cover (Heat Control)
	B-876-2587W	1	Step (Cover for Master Control)
	AC1-876-2587W	1	Step
	TT-17-10	2	Spacer, Pipe
	26C57	2	1/2" x 2-3/4" Hex Head Cap Screw
	NV-17-9	2	Cut Washer, 10 Ga.
	AB1-876-2587WL	1	Step (L.H.)
	AB1-876-2587WR	1	Step (R.H.)
	AC1-876-2588	2	Support
	T-17-10	2	Spacer, Pipe
	26E29	2	1/2" x 1-1/2" Hex Head Cap Screw
	DF-876-2587W	1	Hand Rail (Basic Screed) (R.H.)
	EA-876-2588	1	Hand Rail (For Steps)
	AC-876-2587W	1	Hand Rail (For Steps)
	DA-876-2587W	1	Hand Rail
	DB-876-2587W	1	Hand Rail
	HA-876-2588	1	Step
	26C54	2	1/2" x 2" Hex Head Cap Screw
	13M81	2	3/8" x 1-3/4" Hex Head Cap Screw
			( ) <u>COMMON TO A2 &amp; A3-876-2585B ONLY</u>
	CF1-876-2588	2	Cover (Heat Control)
	AC1-876-2587W	1	Step
	TT-17-10	2	Spacer, Pipe
	26C57	2	1/2" x 2-3/4" Hex Head Cap Screw
	NV-17-9	2	10 Ga. Cut Washer
	AB1-876-2587WL	1	Step (L.H.)
	AB1-876-2587WR	1	Step (R.H.)
	T-17-10	2	Spacer, Pipe
	26E29	2	1/2" x 1-1/2" Hex Head Cap Screw
	DF-876-2587W	1	Hand Rail (Basic Screed) (R.H.)
	EA-876-2588	1	Hand Rail (For Steps)
	AG-876-2587W	1	Hand Rail (For Steps)
			( ) <u>A2-876-2585B ONLY</u>
	10E10	4	3/8" x 1-1/4" Hex Head Cap Screw
	BA-876-2587W	1	Step, Main (Cover for Master Control)
			( ) <u>A3-876-2585B ONLY</u>
	10V14	4	3/8" x 1-1/2" Hex Head Cap Screw
	BA1-876-2587W	1	Step, Main (Cover for Master Control)
	TT-17-11	4	Spacer, 1/2" Pipe x 5/16"

REF.	PART NUMBER	QTY.	DESCRIPTION
			( ) <u>AA1-876-2560B ONLY</u>
	26J12	2	Reducer, Bushing, 1/2" x 3/8" T.
	23F70	2	1/2" Nut
	P-80-482W	1	Hose, 3/8" I.D. x 40"
	W-80-502W	1	Hose, 3/4" I.D. x 42"
	AS-80-480W	1	Hose, 3/4" I.D. x 45"
	23F60	1	Connector, 1/4" Male x 1/4" Tube
			( ) <u>AB-876-2560B ONLY</u>
	X-80-502W	1	Hose, 3/4" I.D. x 60"
	Y-80-502W	1	Hose, 3/4" I.D. x 36"
	13K98	2	Elbow, 90°
			( ) <u>AB1-876-2560B ONLY</u>
	Z-80-502W	1	Hose, 3/4" I.D. x 48"
	Y-80-502W	1	Hose, 3/4" I.D. x 36"
	13K98	2	Elbow, 90°
	DA-876-2587W	1	Handrail
	DB-876-2587W	1	Handrail
	HA-876-2588	1	Step
	12K15	2	1/2" x 2" Hex Head Cap Screw
	12K04	2	3/8" x 1-3/4" Hex Head Cap Screw
	R-80-482W	1	Hose, 3/8" I.D. x 48"
	23F60	1	Connector, 1/4" Male x 1/4" Tube
			( ) <u>AC-876-2560B ONLY</u>
	AJ-17-9	6	Washer, 10 Ga.
			( ) <u>AE-876-2560B ONLY</u>
	KA-876-1967W	1	Extension, 14" Diameter Screw
	LA-876-1967W	1	Extension, 14" Diameter Screw
	14J49	2	1/2" x 5" Hex Head Cap Screw
	12Z45	2	1/2" Lock Nut
	A-3-4555C	7	Segment, NI-HARD Screw
	AA-3-4555C	7	Segment, NI-HARD Screw
	26C84	14	1/2" x 1-1/2" Carriage Bolt
	26D02	14	1/2" Hex Nut
	27L81	14	1/2" Lock Washer
	27L58	28	1/2" Cut Washer
			( ) <u>C-876-3180B ONLY</u>
	CA-876-3182W	1	Arm, Leveling
	DA-876-3182W	1	Arm, Leveling
	50L87	2	Bushing Assembly, 1.500 Shaft Dia.
	12S33	2	Ring, Snap - Internal
	AF-876-1883	4	Spacer
	BG-876-1883	2	Stud, Leveling Arm
	26C18	2	1-1/4"-12 N.F. Hex Slot Nut
	27M62	2	Pin, Cotter - 1/4" x 2-3/4"
	AJ-17-9	12	Washer, 10 Ga.
	13M24	2	1/2" x 4-1/2" Hex Head Cap Screw
	12Z45	2	1/2" Nut
	27L58	4	1/2" Cut Washer
	12Y67	2	3/8" x 1-3/4" Socket Head Set Screw

NUMERICAL INDEX

This index is designed to locate items by part number within the parts manual. Some parts may appear in several assemblies as indicated by multiple page number listing.

SRGO SCREED 5/2/84

<u>PART NUMBER</u>	<u>PAGE NUMBER</u>	<u>PART NUMBER</u>	<u>PAGE NUMBER</u>
27K 44	D 10		D 21.2
	D 11		D 22
27K 67	D 34.1		D 23
27K 97	D 19		D 24
	D 21		D 26
	D 21.1	27L 77	D 3.4
	D 21.2		D 5
	D 22		D 5.2
	D 23		D 5.4
	D 24		D 5.6
27L 06	D 19		D 5.8
	D 21		D 14.2
	D 22		D 18
27L 20	D 6.4		D 19.2
	D 6.7		D 21
	D 6.9	27L 78	D 6.4
27L 52	D 8		D 6.7
	D 19.2		D 6.8
27L 54	D 14.2		D 8
27L 56	D 8		D 13
	D 14		D 14
	D 14.3		D 14.3
27L 58	D 6.2		D 26
	D 6.3		D 28.1
	D 6.4		D 29
	D 6.6		D 38
	D 6.7	27L 81	D 6
	D 6.8		D 6.2
	D 6.9		D 6.3
	D 13		D 6.4
	D 14.2		D 6.6
	D 27		D 6.7
	D 27.2		D 6.8
	D 29		D 6.9
	D 30		D 13
	D 34.1		D 14.2
	D 34.2		D 16
	D 36		D 18
27L 59	D 6.2		D 19.2
	D 6.3		D 21
	D 10		D 27
	D 11		D 27.1
	D 16		D 27.2
	D 26		D 29
	D 34.1		D 30
	D 34.2		D 34.1
	D 38		D 34.2
27L 60	D 8		D 36
	D 16.1		D 37
27L 62	D 28.1		D 38
	D 34.1		D 39
	D 34.2	27L 84	D 6.2
	D 38		D 6.3
27L 60	D 8		D 10
	D 16.1		D 11
27L 62	D 28.1		D 26
	D 34.1		D 34.2
	D 34.2	27L 87	D 5.9
	D 38		D 16
27L 76	D 3	27L 99	D 3
	D 3.2		
	D 13		
	D 16		
	D 18		
	D 19		
	D 19.2		
	D 21.1		

CLICK HERE TO **DOWNLOAD** THE COMPLETE MANUAL

- Thank you very much for reading the preview of the manual.
- You can download the complete manual from: [www.heydownloads.com](http://www.heydownloads.com) by clicking the link below



- Please note: If there is no response to CLICKING the link, please download this PDF first and then click on it.

CLICK HERE TO **DOWNLOAD** THE COMPLETE MANUAL