

**XRS 396 CD - XRS 830 CD6**

Engine CAT C9

**Parts List for Portable Compressors  
English**

CLICK HERE TO **DOWNLOAD** THE COMPLETE MANUAL

- Thank you very much for reading the preview of the manual.
- You can download the complete manual from: [www.heydownloads.com](http://www.heydownloads.com) by clicking the link below



- Please note: If there is no response to CLICKING the link, please download this PDF first and then click on it.

CLICK HERE TO **DOWNLOAD** THE COMPLETE MANUAL

---

# 1. SAFETY PRECAUTIONS FOR PORTABLE COMPRESSORS

To be read attentively and acted accordingly before towing, lifting, operating, performing maintenance or repairing the compressor

## 1.1 INTRODUCTION

The policy of Atlas Copco is to provide the users of their equipment with safe, reliable and efficient products. Factors taken into account are among others:

- the intended and predictable future use of the products, and the environments in which they are expected to operate,
- applicable rules, codes and regulations,
- the expected useful product life, assuming proper service and maintenance,
- providing the manual with up-to-date information.

Before handling any product, take time to read the relevant instruction manual. Besides giving detailed operating instructions, it also gives specific information about safety, preventive maintenance, etc.

Keep the manual always at the unit location, easy accessible to the operating personnel.

See also the safety precautions of the engine and possible other equipment, which are separately sent along or are mentioned on the equipment or parts of the unit.

These safety precautions are general and some statements will therefore not always apply to a particular unit.

Only people that have the right skills should be allowed to operate, adjust, perform maintenance or repair on Atlas Copco equipment. It is the responsibility of management to appoint operators with the appropriate training and skill for each category of job.

### **Skill level 1: Operator**

An operator is trained in all aspects of operating the unit with the push-buttons, and is trained to know the safety aspects.

### **Skill level 2: Mechanical technician**

A mechanical technician is trained to operate the unit the same as the operator. In addition, the mechanical technician is also trained to perform maintenance and repair, as described in the instruction manual, and is allowed to change settings of the control and safety system. A mechanical technician does not work on live electrical components.

### **Skill level 3: Electrical technician**

An electrical technician is trained and has the same qualifications as both the operator and the mechanical technician. In addition, the electrical technician may carry out electrical repairs within the various enclosures of the unit. This includes work on live electrical components.

### **Skill level 4: Specialist from the manufacturer**

This is a skilled specialist sent by the manufacturer or its agent to perform complex repairs or modifications to the equipment.

In general it is recommended that not more than two people operate the unit, more operators could lead to unsafe operating conditions. Take necessary steps to keep unauthorized persons away from the unit and eliminate all possible sources of danger at the unit.

When handling, operating, overhauling and/or performing maintenance or repair on Atlas Copco equipment, the mechanics are expected to use safe engineering practices and to observe all relevant local safety requirements and ordinances. The following list is a reminder of special safety directives and precautions mainly applicable to Atlas Copco equipment.

These safety precautions apply to machinery processing or consuming air. Processing of any other gas requires additional safety precautions typical to the application and are not included herein.

Neglecting the safety precautions may endanger people as well as environment and machinery:

- endanger people due to electrical, mechanical or chemical influences,
- endanger the environment due to leakage of oil, solvents or other substances,
- endanger the machinery due to function failures.

All responsibility for any damage or injury resulting from neglecting these precautions or by non-observance of ordinary caution and due care required in handling, operating, maintenance or repair, also if not expressly mentioned in this instruction manual, is disclaimed by Atlas Copco.

The manufacturer does not accept any liability for any damage arising from the use of non-original parts and for modifications, additions or conversions made without the manufacturer's approval in writing.

If any statement in this manual does not comply with local legislation, the stricter of the two shall be applied.

Statements in these safety precautions should not be interpreted as suggestions, recommendations or inducements that it should be used in violation of any applicable laws or regulations.

## 1.2 GENERAL SAFETY PRECAUTIONS

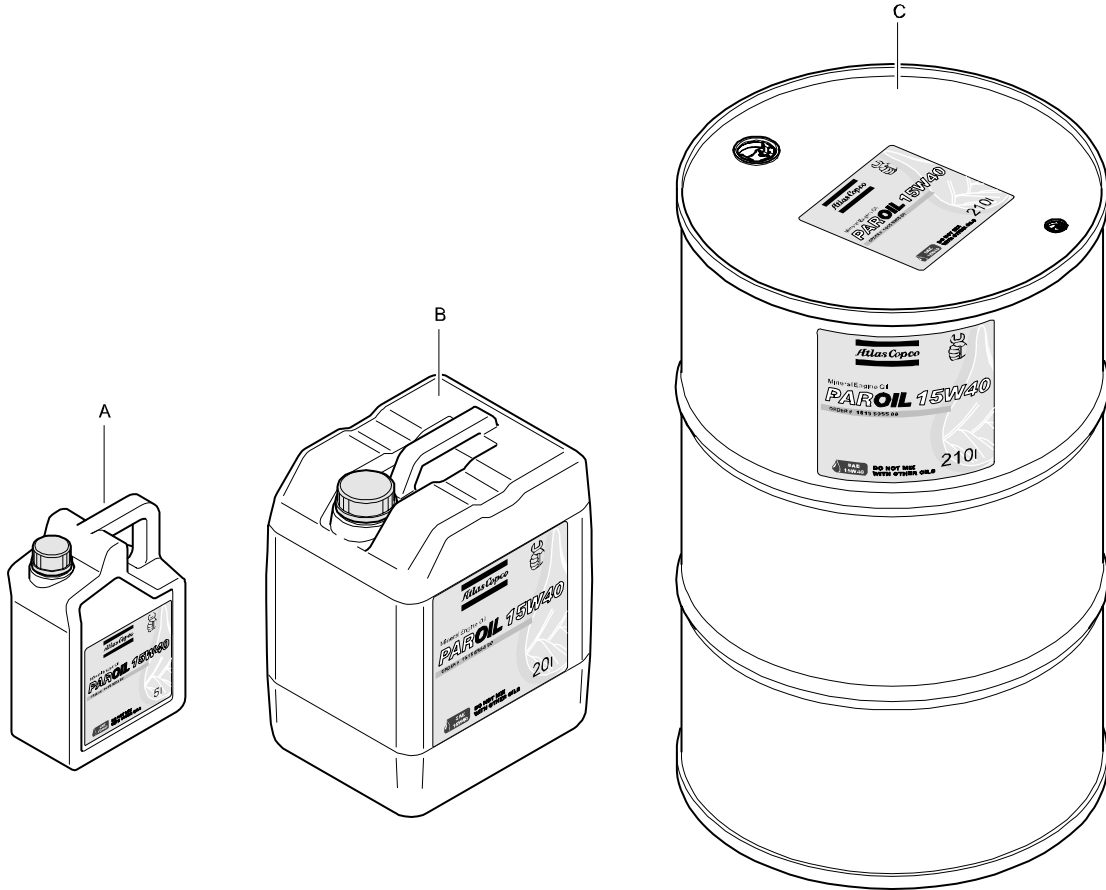
- 1 The owner is responsible for maintaining the unit in a safe operating condition. Unit parts and accessories must be replaced if missing or unsuitable for safe operation.
- 2 The supervisor, or the responsible person, shall at all times make sure that all instructions regarding machinery and equipment operation and maintenance are strictly followed and that the machines with all accessories and safety devices, as well as the consuming devices, are in good repair, free of abnormal wear or abuse, and are not tampered with.
- 3 Whenever there is an indication or any suspicion that an internal part of a machine is overheated, the machine shall be stopped but no inspection covers shall be opened before sufficient cooling time has elapsed; this to avoid the risk of spontaneous ignition of oil vapour when air is admitted.
- 4 Normal ratings (pressures, temperatures, speeds, etc.) shall be durably marked.
- 5 Operate the unit only for the intended purpose and within its rated limits (pressure, temperature, speeds, etc.).
- 6 The machinery and equipment shall be kept clean, i.e. as free as possible from oil, dust or other deposits.
- 7 To prevent an increase in working temperature, inspect and clean heat transfer surfaces (cooler fins, intercoolers, water jackets, etc.) regularly. See the maintenance schedule.
- 8 All regulating and safety devices shall be maintained with due care to ensure that they function properly. They may not be put out of action.
- 9 Care shall be taken to avoid damage to safety valves and other pressure-relief devices, especially to avoid plugging by paint, oil coke or dirt accumulation, which could interfere with the functioning of the device.
- 10 Pressure and temperature gauges shall be checked regularly with regard to their accuracy. They shall be replaced whenever outside acceptable tolerances.
- 11 Safety devices shall be tested as described in the maintenance schedule of the instruction manual to determine that they are in good operating condition.
- 12 Mind the markings and information labels on the unit.
- 13 In the event the safety labels are damaged or destroyed, they must be replaced to ensure operator safety.
- 14 Keep the work area neat. Lack of order will increase the risk of accidents.
- 15 When working on the unit, wear safety clothing. Depending on the kind of activities these are: safety glasses, ear protection, safety helmet (including visor), safety gloves, protective clothing, safety shoes. Do not wear the hair long and loose (protect long hair with a hairnet), or wear loose clothing or jewelry.
- 16 Take precautions against fire. Handle fuel, oil and anti-freeze with care because they are inflammable substances. Do not smoke or approach with naked flame when handling such substances. Keep a fire-extinguisher in the vicinity.

---

# ENGINE OIL

PAROIL 15W40

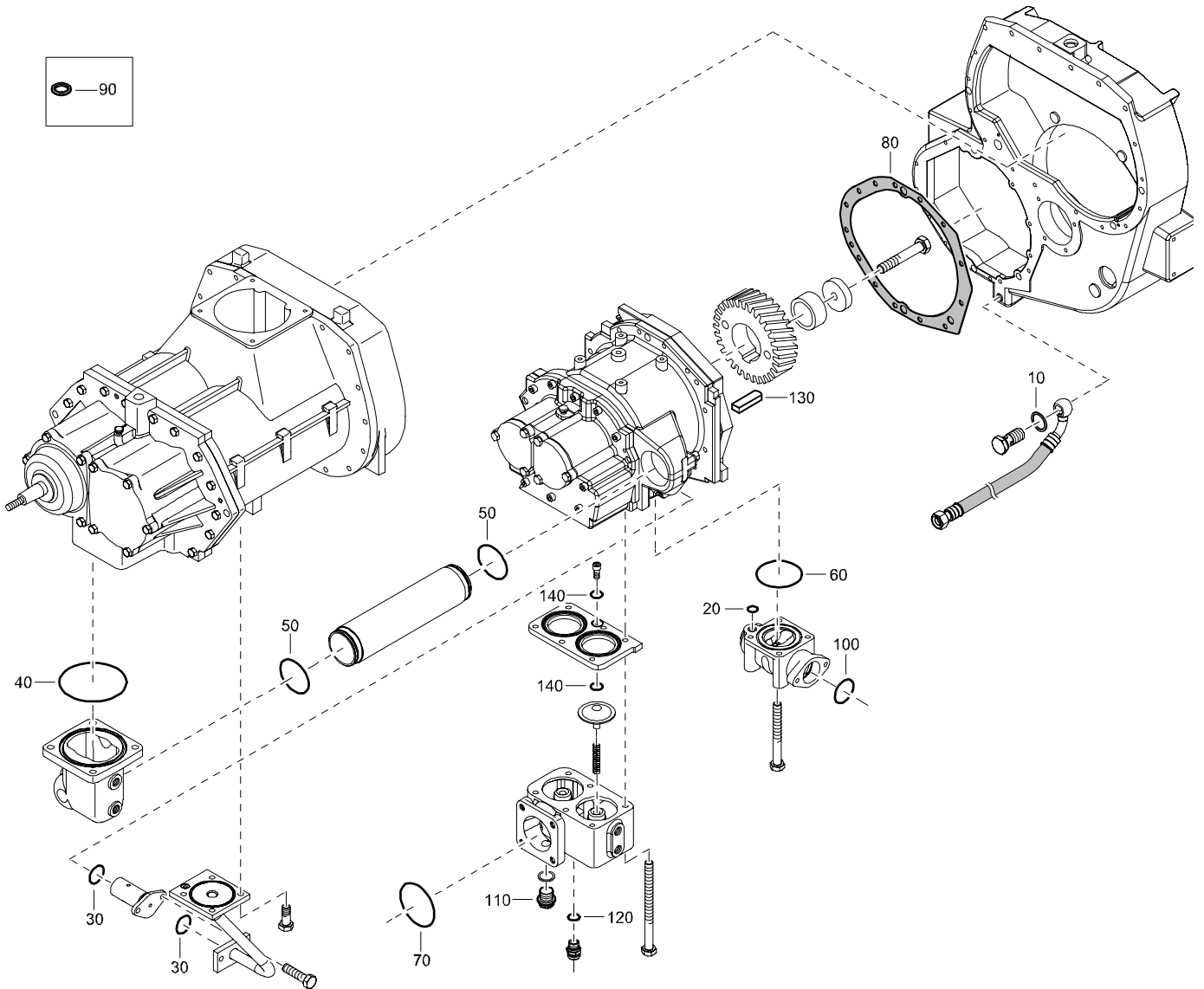
---



REF	PART NUMBER	DESIGNATION	QTY	REF	PART NUMBER	DESIGNATION	QTY
A	1615 5953 00	PAROIL 15W40 5 LITER CAN	1				
B	1615 5954 00	PAROIL 15W40 20 LITER CAN	1				
C	1615 5955 00	PAROIL 15W40 210 LITER BARREL	1				

# SERVICE KIT

## ELEMENT MOUNTING



REF	PART NUMBER	DESIGNATION	QTY	REF	PART NUMBER	DESIGNATION	QTY
-	2911 0120 00	SERVICE KIT ELEMENT MOUNTING	1				
•10	-	FLAT GASKET	3				
•20	-	O-RING	1				
•30	-	O-RING	2				
•40	-	O-RING	1				
•50	-	O-RING	2				
•60	-	O-RING	6				
•70	-	O-RING	1				
•80	-	GASKET	1				
•90	-	SEALING WASHER	1				
•100	-	O-RING	1				
•110	-	HEXAGON PLUG	1				
•120	-	FLAT GASKET	2				
•130	-	PARALLEL KEY	1				
•140	-	O-RING	2				

# STANDARD

## REGULATING SYSTEM

REF	PART NUMBER	DESIGNATION	QTY	REF	PART NUMBER	DESIGNATION	QTY
25	0147 1362 03	HEX. HEAD SCREW	2				
30	-	PLAIN WASHER	2				
		(Part of service kit, see page 26)					
50	1089 0451 10	SOLENOID VALVE	1				
130	0575 0791 57	HOSE ASSEMBLY	1				
160	1079 5840 01	HEXAGON NIPPLE	1				
165	0653 1046 00	FLAT GASKET	1				
170	0653 1062 00	FLAT GASKET	1				
175	1615 9643 00	REDUCER FOR SCAVENGE PIPE	1				
180	0653 1062 00	FLAT GASKET	1				
181	0823 0000 19	NON-RETURN VALVE	1				
183	0653 1062 00	FLAT GASKET	1				
185	0571 0035 14	HEXAGON NIPPLE	1				
200	0603 4102 03	HEXAGON NIPPLE	1				
220	0560 4401 61	CROSS	1				
240	0653 1062 00	FLAT GASKET	1				
245	0581 0028 01	STRAIGHT PIPE COUPLING	1				
250	0575 0102 08	HOSE ASSEMBLY	1				
251	0395 1010 43	INSULATING HOSE	1				
255	0653 1062 00	FLAT GASKET	1				
260	0581 0028 01	STRAIGHT PIPE COUPLING	1				
265	0653 1062 00	FLAT GASKET	1				
270	0581 0028 01	STRAIGHT PIPE COUPLING	1				
275	0575 0102 11	HOSE ASSEMBLY	1				
276	0395 1010 47	INSULATING HOSE	1				
280	0653 1062 00	FLAT GASKET	1				
285	0581 0028 01	STRAIGHT PIPE COUPLING	1				
290	1615 9643 00	REDUCER FOR SCAVENGE PIPE	1				
325	0581 0028 01	STRAIGHT PIPE COUPLING	2				
327	0653 1062 00	FLAT GASKET	2				
329	0564 0000 24	TEE	1				
330	0653 1062 00	FLAT GASKET	1				
335	1615 9643 00	REDUCER FOR SCAVENGE PIPE	1				
345	0560 4401 56	TEE	1				
355	0581 0028 01	STRAIGHT PIPE COUPLING	1				
360	0575 0112 35	HOSE ASSEMBLY	2				
365	0395 1010 57	INSULATING HOSE	1				
375	0581 0028 01	STRAIGHT PIPE COUPLING	1				
380	-	FLAT GASKET	1				
		(Part of service kit, see page 25)					
390	1604 5758 01	ADAPTER	1				
395	0581 0000 67	STRAIGHT PIPE COUPLING	1				
396	0070 6002 10	PLASTIC TUBE	AR				
397	0581 1200 30	ELBOW PIPE COUPLING	1				
400	0560 4401 56	TEE	1				
410	-	FLAT GASKET	1				
		(Part of service kit, see page 25)					
420	1079 5840 35	NIPPLE	1				
425	0575 0403 55	HOSE ASSEMBLY	1				
430	1079 5840 02	HEXAGON NIPPLE	1				
435	0653 1124 00	FLAT GASKET	1				
460	1604 2739 00	NIPPLE	1				
470	3176 2446 00	BUSHING	2				
475	0653 1100 00	FLAT GASKET	2				

---

# STANDARD

## OUTER CANOPY

---

REF	PART NUMBER	DESIGNATION	QTY	REF	PART NUMBER	DESIGNATION	QTY
20	1604 2465 85	PANEL <a href="#">(For details see page 98)</a>	1				
50	1615 5664 00	HEX. HEAD SCREW	3				
60	1604 2487 84	DOOR ASSY <a href="#">(For details see page 102)</a>	1				
75	1604 3716 81	PANEL ASSY <a href="#">(For details see page 114)</a>	1				
80	1615 5664 00	HEX. HEAD SCREW	2				
90	1604 2487 85	DOOR ASSY <a href="#">(For details see page 103)</a>	1				
105	1615 5664 00	HEX. HEAD SCREW	3				
130	1604 2460 84	PANEL ASSY <a href="#">(For details see page 96)</a>	1				
135	1615 5664 00	HEX. HEAD SCREW	2				
150	1604 2456 81	DOOR ASSY <a href="#">(For details see page 94)</a>	1				
175	1615 5664 00	HEX. HEAD SCREW	2				
180	1604 2456 81	DOOR ASSY <a href="#">(For details see page 94)</a>	1				
195	1615 5664 00	HEX. HEAD SCREW	6				
210	1604 2460 83	PANEL ASSY <a href="#">(For details see page 95)</a>	1				
215	1615 5664 00	HEX. HEAD SCREW	2				
250	1604 2456 80	DOOR ASSY <a href="#">(For details see page 93)</a>	1				
260	1604 2460 85	PANEL ASSY <a href="#">(For details see page 97)</a>	1				
265	1615 5664 00	HEX. HEAD SCREW	2				
280	1604 2500 00	KEY	2				
285	1088 1301 03	CABLE STRIP	2				
290	1615 7271 00	KEY	2				
300	1604 3562 01	BRACKET	2				
305	0216 1324 03	HEX SOCK. SCREW	8				

---

# STANDARD

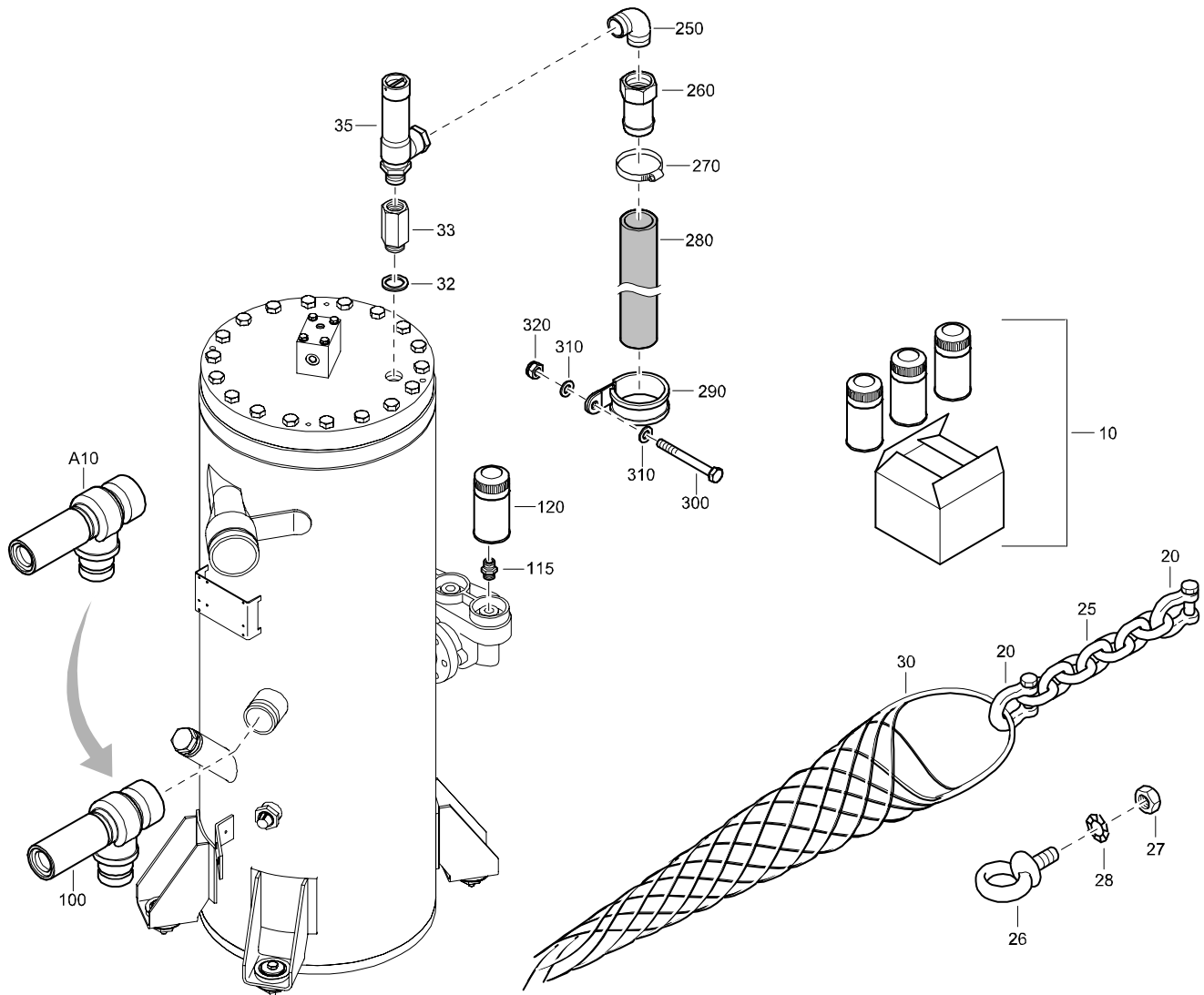
## CLAMPING

---

REF	PART NUMBER	DESIGNATION	QTY	REF	PART NUMBER	DESIGNATION	QTY
20	1604 2745 03	CABLE GUIDE	1				
25	1619 2766 00	HEX. HEAD SCREW	3				
50	1613 0801 07	PIPE CLAMP	4				
100	0348 0110 03	ANCHOR PLATE	40				
105	0129 3110 00	BLIND RIVET	45				
110	0348 0101 05	CABLE TIE	65				
150	1604 2765 02	GUIDE	2				
155	0147 1251 03	HEX. HEAD SCREW	2				
160	0266 2108 00	HEXAGON NUT	1				
165	0301 2321 00	PLAIN WASHER	1				
170	0333 3220 00	LOCK WASHER	1				
250	1615 5619 00	BRACKET	1				
255	0147 1325 03	HEX. HEAD SCREW	1				
260	0301 2335 00	PLAIN WASHER	1				
265	1613 0803 02	PIPE CLAMP	2				
270	0147 1247 03	HEX. HEAD SCREW	1				
275	0266 2108 00	HEXAGON NUT	1				
280	0301 2321 00	PLAIN WASHER	1				
285	0333 3220 00	LOCK WASHER	1				
320	1088 0832 01	CABLE CLAMP	1				
325	0129 3110 00	BLIND RIVET	1				
350	1604 4358 01	GUIDE	1				
351	0144 3489 03	HEX BOLT	1				
353	0301 2394 00	PLAIN WASHER	2				
360	1613 0804 02	PIPE CLAMP	4				
362	1613 0801 07	PIPE CLAMP	2				
365	0147 1247 03	HEX. HEAD SCREW	6				
370	0333 3220 00	LOCK WASHER	6				
375	0266 2108 00	HEXAGON NUT	6				
380	1613 0807 00	SUPPORT	5				
381	2252 2529 00	BRACKET	1				
382	0147 1474 03	HEX. HEAD SCREW	1				
383	0301 2378 00	PLAIN WASHER	1				
385	1613 0801 03	PIPE CLAMP	12				
390	0147 1325 03	HEX. HEAD SCREW	7				
395	1613 0801 03	PIPE CLAMP	2				
400	0147 1249 03	HEX. HEAD SCREW	2				
405	0333 3220 00	LOCK WASHER	2				
410	0266 2108 00	HEXAGON NUT	2				
415	1619 2861 08	PIPE CLAMP	3				
420	0147 1249 03	HEX. HEAD SCREW	3				
425	0333 3220 00	LOCK WASHER	3				
430	0266 2108 00	HEXAGON NUT	3				
435	0346 1000 19	PIPE CLAMP	12				
440	0147 1247 03	HEX. HEAD SCREW	11				
445	0147 1325 03	HEX. HEAD SCREW	1				
450	0301 2335 00	PLAIN WASHER	1				
455	0266 2108 00	HEXAGON NUT	4				
460	0333 3220 00	LOCK WASHER	4				
465	0301 2321 00	PLAIN WASHER	4				
480	1613 2679 00	SUPPORT	1				
485	0147 1358 03	HEX. HEAD SCREW	1				
490	0301 2344 00	PLAIN WASHER	1				

# STANDARD

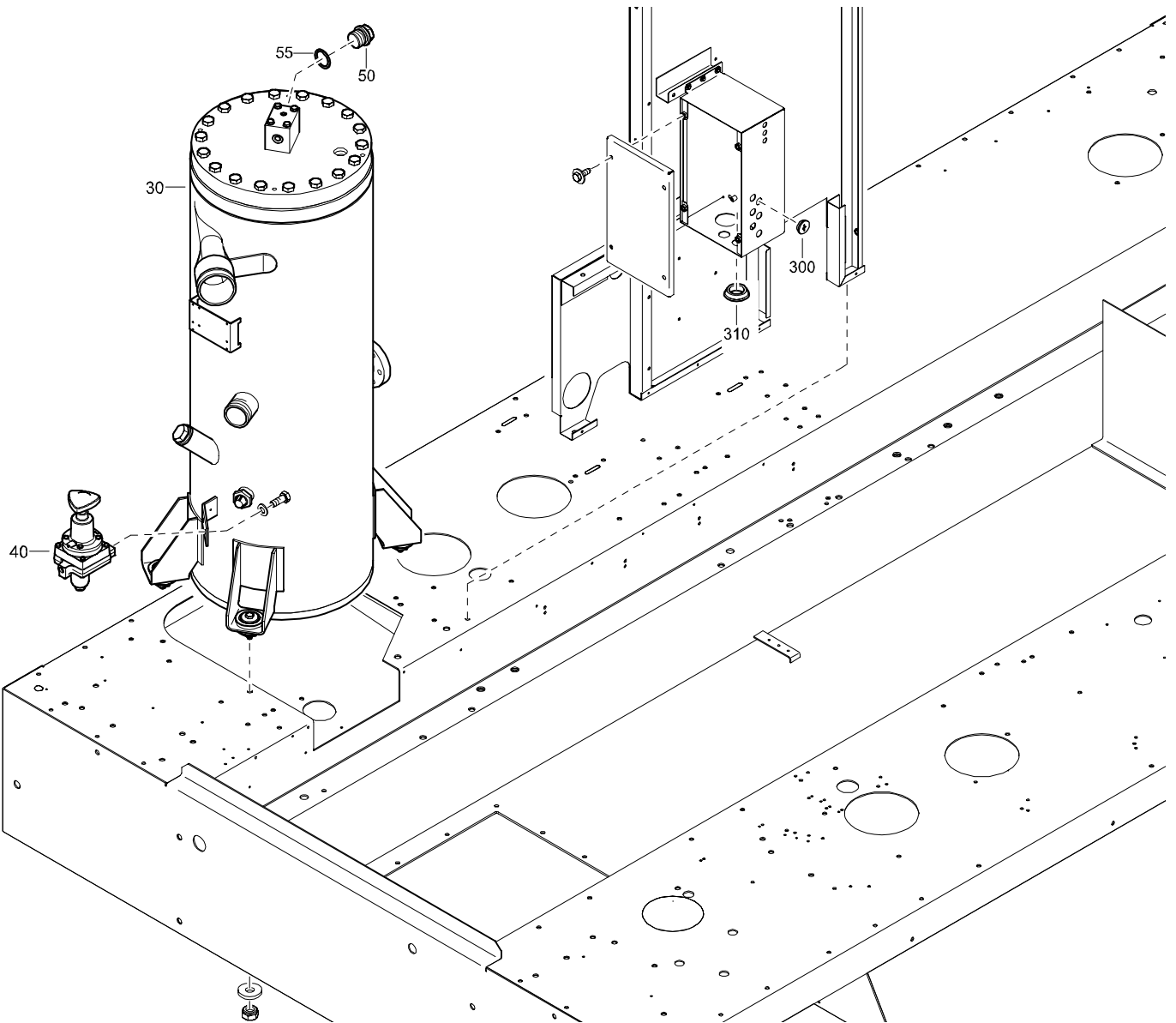
## VALVES ON VESSEL FOR COMPRESSOR WITH NOISE REGULATION NOT CE



REF	PART NUMBER	DESIGNATION	QTY	REF	PART NUMBER	DESIGNATION	QTY
10	WITH UNIT	PAK 50H HP SIZE II (Not available separately)	1	300	0147 1375 03	HEX. HEAD SCREW	1
20	0372 4100 08	BOW SHACKLE	2	310	0301 2344 00	PLAIN WASHER	2
25	3163 1853 00	CHAIN	1	320	0291 1111 00	LOCKNUT	1
26	0371 1100 21	LIFTING EYE	1				
27	0266 2111 00	HEXAGON NUT	1				
28	0333 3232 00	LOCK WASHER	1				
30	3163 1852 00	WIRE MESH HOSE	1				
32	0661 1038 00	SEALING WASHER	1				
33	0605 8700 12	BUSHING	1				
35	0832 1000 58	SAFETY VALVE	1				
100	-	MIN. PRESSURE VALVE	1				
•A10	2914 8345 00	MPV	1				
115	2254 7257 00	NIPPLE	3				
120	1202 8040 02	OILFILTER	3				
250	0562 4509 03	BEND	1				
260	1615 6942 00	NIPPLE	1				
270	1079 3471 11	HOSE CLIP	1				
280	1604 5835 00	HOSE	1				
290	0346 1005 19	PIPE CLAMP	1				

# STANDARD

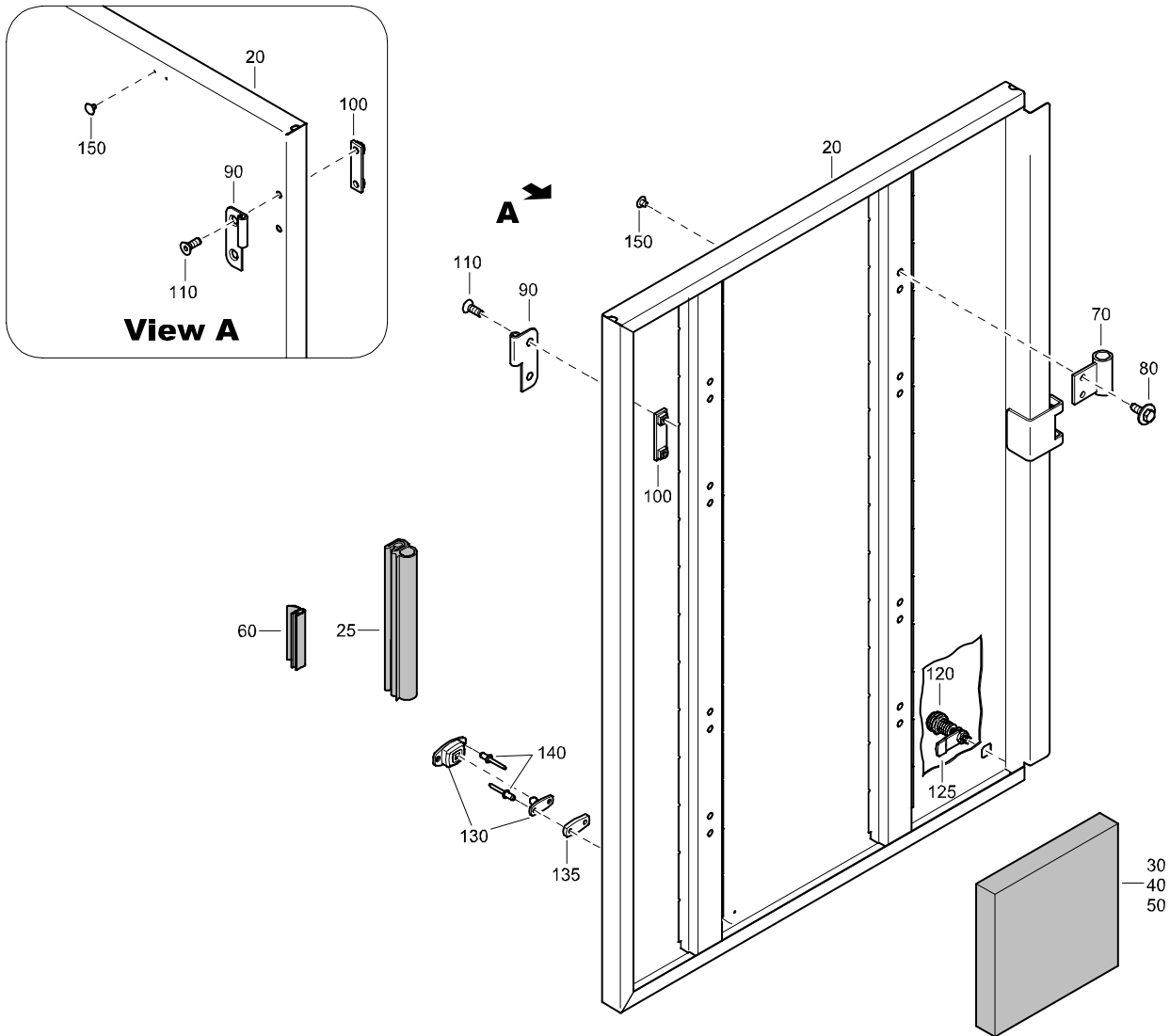
## OIL SEPARATOR ASSEMBLY AND REGULATING VALVE FOR COMPRESSOR WITHOUT COLD WEATHER EQUIPMENT FOR EC



REF	PART NUMBER	DESIGNATION	QTY	REF	PART NUMBER	DESIGNATION	QTY
30	1604 2532 92	OILSEP. ASSY EC <i>(For details see page 106)</i>	1				
40	2252 0495 96	REGUL. VALVE <i>(For details see page 120)</i>	1				
50	0686 3716 02	HEXAGON PLUG	1				
55	0653 1124 00	FLAT GASKET	1				
300	0686 9252 75	PROTECTION PLUG	1				
310	0686 9252 84	RUBBER PLUG	1				

# STANDARD

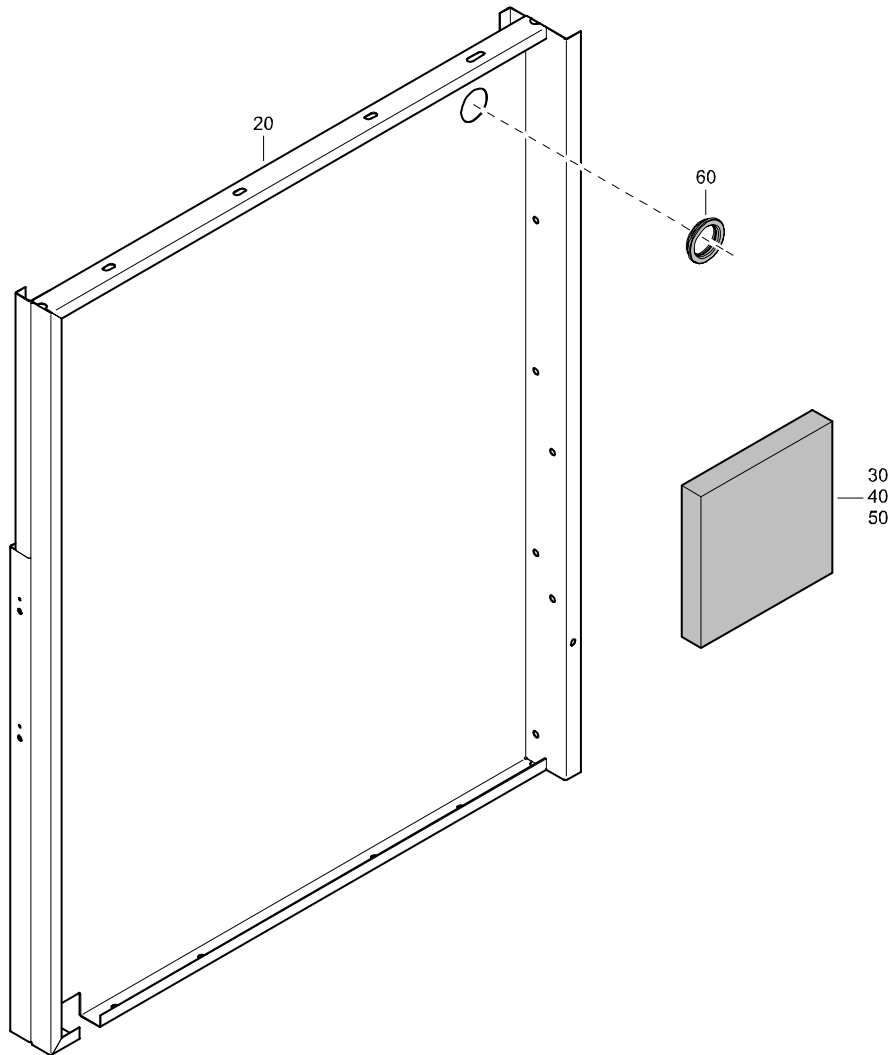
## DOOR ASSEMBLY FOR COMPRESSOR WITH NOISE REGULATION NOT CE



REF	PART NUMBER	DESIGNATION	QTY	REF	PART NUMBER	DESIGNATION	QTY
-	1604 2454 86	DOOR ASSY	(From page 78)	-	1079 0003 33	SILENCING FOAM	
•20	1604 2454 01	DOOR	1			2000 mm x 1500 mm x 50 mm	
•25	1619 6858 00	SEAL	AR				
•30	-	SILENCING FOAM (50 mm)	1				
•40	-	SILENCING FOAM (50 mm)	1				
•50	-	SILENCING FOAM (50 mm)	1				
•60	1619 2665 00	SEAL	AR				
•70	1604 2467 00	SUPPORT	4				
•80	1615 5664 00	HEX. HEAD SCREW	8				
•90	1604 3431 00	HINGE	2				
•100	1615 5684 00	BRACKET	2				
•110	0216 1324 03	HEX SOCK. SCREW	4				
•120	1604 2519 01	LOCK	2				
•125	1604 3743 00	LATCH	2				
•130	1619 1663 00	DOOR HOOK	1				
•135	1604 9594 00	SPACER	1				
•140	0129 3117 00	BLIND RIVET	2				
•150	0686 9252 87	PLUG	2				

# STANDARD

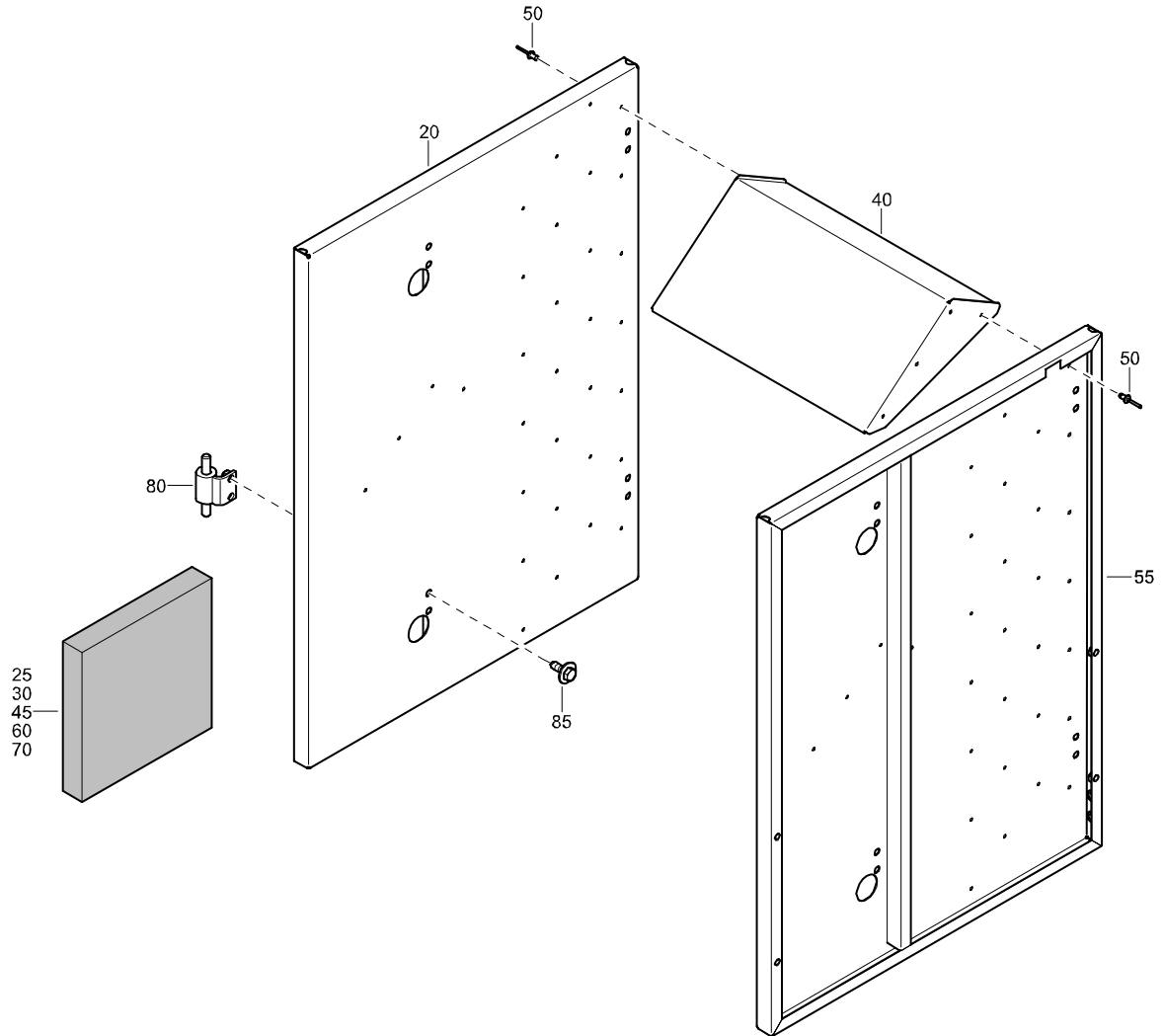
## PANEL ASSEMBLY FOR COMPRESSOR WITHOUT AFTERCOOLER



REF	PART NUMBER	DESIGNATION	QTY	REF	PART NUMBER	DESIGNATION	QTY
-	1604 2477 84	PANEL ASSY				(From page 74, 75)	
•20	1604 2477 04	PANEL ASSY	1				
•30	-	SILENCING FOAM (30 mm)	1				
•40	-	SILENCING FOAM (50 mm)	1				
•50	-	INSULATION SILENCING FOAM (30 mm)	1				
•60	1604 0383 00	SEAL (OIL SEPARATOR)	1				
-	1079 0003 32	SILENCING FOAM 2000 mm x 1500 mm x 30 mm					
-	1079 0003 33	SILENCING FOAM 2000 mm x 1500 mm x 50 mm					

# STANDARD

## BAFFLE FOR COMPRESSOR WITH NOISE REGULATION CE



REF	PART NUMBER	DESIGNATION	QTY	REF	PART NUMBER	DESIGNATION	QTY
-	1604 2659 82	BAFFLE	(From page 76)				
•20	1604 2659 02	PANEL	1				
•25	-	SILENCING FOAM (30 mm)	1				
•30	-	SILENCING FOAM (30 mm)	1				
•40	1604 2523 00	BAFFLE	8				
•45	-	SILENCING FOAM (30 mm)	8				
•50	0129 3270 30	BLIND RIVET	64				
•55	1604 2658 00	PANEL	1				
•60	-	SILENCING FOAM (30 mm)	1				
•70	-	SILENCING FOAM (30 mm)	1				
•80	1604 3434 00	SUPPORT	4				
•85	1615 5664 00	HEX. HEAD SCREW	8				
-	1079 0003 32	SILENCING FOAM 2000 mm x 1500 mm x 30 mm					

CLICK HERE TO **DOWNLOAD** THE COMPLETE MANUAL

- Thank you very much for reading the preview of the manual.
- You can download the complete manual from: [www.heydownloads.com](http://www.heydownloads.com) by clicking the link below

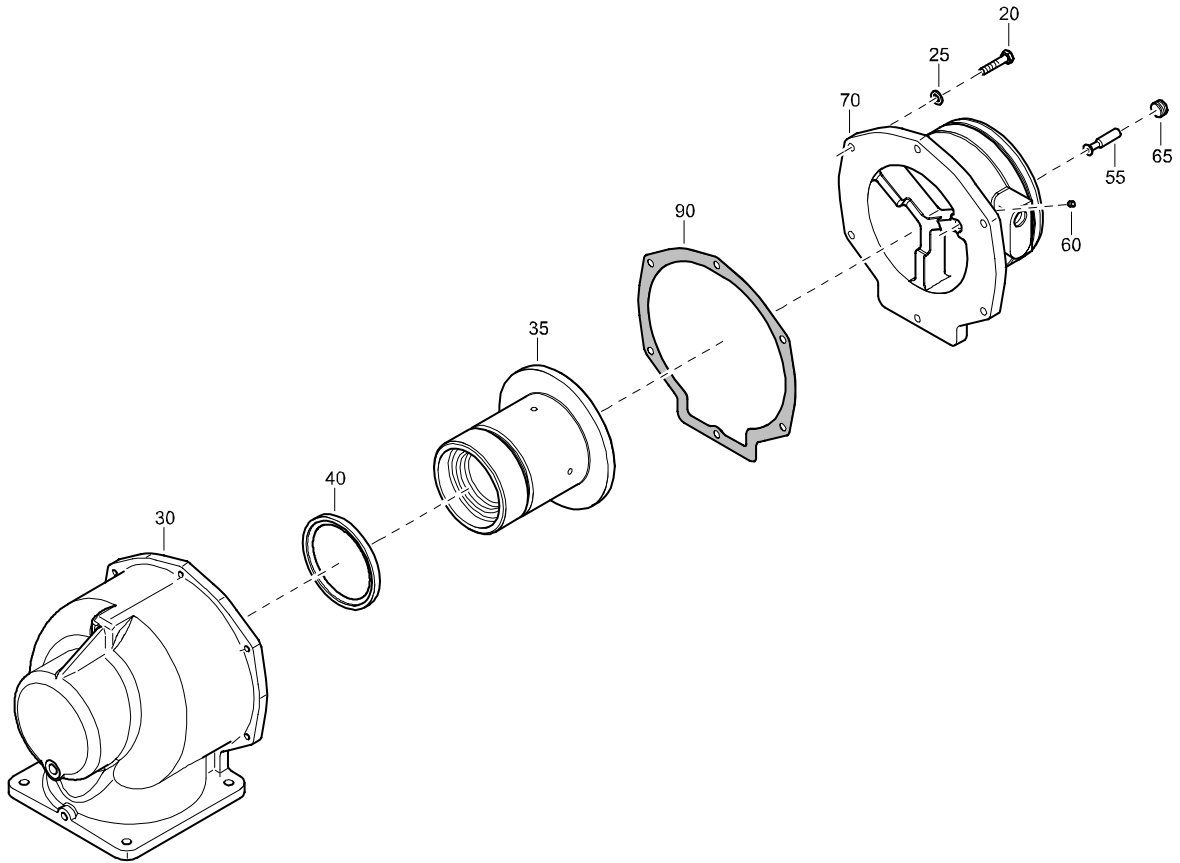


- Please note: If there is no response to CLICKING the link, please download this PDF first and then click on it.

CLICK HERE TO **DOWNLOAD** THE COMPLETE MANUAL

# STANDARD

## UNLOADER VALVE ASSEMBLY



REF	PART NUMBER	DESIGNATION	QTY	REF	PART NUMBER	DESIGNATION	QTY
-	2252 5502 92	UNLOADER ASS'Y (From page 38)					
•20	0147 1327 03	HEX. HEAD SCREW	6				
•25	-	PLAIN WASHER (Part of service kit, see page 25)	6				
•30	2252 5502 00	UNLOADER HOUS. (Not available separately)	1				
•35	2252 5503 02	VALVE	1				
•40	-	SEALRING (Part of service kit, see page 25)	1				
•55	1604 6205 00	VALVE	1				
•60	0686 2606 00	CORE PLUG	1				
•65	1613 2913 00	PLUG	1				
•70	1616 5051 00	CONNECTION	1				
•90	-	GASKET (Part of service kit, see page 25)	1				

# STANDARD

## COOLER FOR COMPRESSOR WITH NOISE REGULATION CE

REF	PART NUMBER	DESIGNATION	QTY	REF	PART NUMBER	DESIGNATION	QTY
-	1604 2676 85	COOLER	(From page 112)	•380	1604 2706 02	PLATE	1
•20	1604 7687 01	SUPPORT	1	•382	1604 2666 01	PLATE	1
•25	-	SILENCING FOAM (50 mm)	1	•384	1604 2668 04	PLATE	1
•27	1615 7884 00	CLIP	4	•385	1088 0803 25	GROMMET	1
•30	1604 7689 00	PAD	1	•386	1088 0801 33	GROMMET	1
•40	1604 2679 02	OILCOOLER	1	•390	1615 5664 00	HEX. HEAD SCREW	11
•50	0196 1362 00	SET SCREW	2	•440	1604 7548 00	PIPE	2
•60	1604 2676 02	RADIATOR	1	•445	1615 5664 00	HEX. HEAD SCREW	4
••A20	1604 2662 01	CAP	1	•450	2252 6291 01	HOSE	4
•65	0196 1362 00	SET SCREW	2	•455	0347 6100 21	HOSE CLAMP	8
•70	0075 4005 70	RUBBER TUBE	AR	•460	1604 2786 02	HOSE	2
•75	0347 6110 00	HOSE CLAMP	2	•461	1604 2785 00	HOSE	2
•80	0661 1033 00	SEALING WASHER	1	•465	0347 6100 23	HOSE CLAMP	12
•81	1604 2772 00	NIPPLE	1	•470	1604 2769 01	PIPE	2
•82	0661 1026 00	SEALING WASHER	1	•480	1604 7568 00	PIPE	1
•83	1604 7688 00	EXTENSION	1	•485	1604 7553 00	PIPE	1
•85	1089 0659 53	LEVEL SWITCH	2	•490	0663 3131 00	O-RING	2
•86	0661 1023 00	SEALING WASHER	2	•495	0246 1956 42	STUD	4
•87	1615 9329 00	NIPPLE	2	•500	0333 3232 00	LOCK WASHER	4
•90	1604 2812 02	WIRING	1	•505	0266 2111 00	HEXAGON NUT	4
•91	1088 0801 28	GROMMET	1	•520	1604 2771 01	PLATE	2
•92	0129 3115 00	BLIND RIVET	4	•530	1615 5664 00	HEX. HEAD SCREW	4
•94	1088 1301 02	CABLE STRIP	5	•535	1604 2496 00	GROMMET	2
•96	0348 0110 13	ANCHOR PLATE	4	•560	1604 7685 00	PLATE	1
•98	1088 1301 02	CABLE STRIP	4	•565	1615 5664 00	HEX. HEAD SCREW	3
•100	1604 2499 01	INTERCOOLER	1	•600	1619 5562 00	SEAL	AR
•105	0196 1362 00	SET SCREW	2	-	1079 0003 33	SILENCING FOAM	
•113	1604 2496 00	GROMMET	1			2000 mm x 1500 mm x 50 mm	
•114	1088 0801 40	GROMMET	1				
•115	1604 2672 03	BEAM	1				
•116	-	SILENCING FOAM (50 mm)	1				
•117	-	SILENCING FOAM (50 mm)	1				
•118	-	SILENCING FOAM (50 mm)	1				
•120	1604 7686 00	BEAM	1				
•121	-	SILENCING FOAM (50 mm)	1				
•122	-	SILENCING FOAM (50 mm)	1				
•125	-	SILENCING FOAM (50 mm)	1				
•127	1615 7884 00	CLIP	3				
•130	0147 1362 03	HEX. HEAD SCREW	6				
•140	0301 2344 00	PLAIN WASHER	6				
•145	1615 5664 00	HEX. HEAD SCREW	3				
•150	1604 2504 01	PLATE	1				
•151	-	SILENCING FOAM (50 mm)	1				
•153	1615 7884 00	CLIP	1				
•155	1615 5664 00	HEX. HEAD SCREW	9				
•170	1604 2503 01	PLATE	1				
•171	-	SILENCING FOAM (50 mm)	1				
•173	1615 7884 00	CLIP	1				
•175	1615 5664 00	HEX. HEAD SCREW	9				
•190	1604 9892 00	COWL	1				
•191	-	SILENCING FOAM (50 mm)	1				
•192	-	SILENCING FOAM (50 mm)	1				
•193	-	SILENCING FOAM (50 mm)	1				
•194	-	SILENCING FOAM (50 mm)	1				
•195	1615 5664 00	HEX. HEAD SCREW	8				
•197	1615 7884 00	CLIP	8				
•210	1604 2797 02	PLATE	1				
•215	-	SILENCING FOAM (50 mm)	1				
•220	1604 2670 02	PLATE	1				
•221	-	SILENCING FOAM (50 mm)	1				
•223	1615 7884 00	CLIP	6				
•225	1615 5664 00	HEX. HEAD SCREW	12				
•260	1604 2707 01	COVER	2				
•261	-	SILENCING FOAM (50 mm)	2				
•263	1615 7884 00	CLIP	6				
•265	0147 1326 03	HEX. HEAD SCREW	6				
•267	0301 2335 00	PLAIN WASHER	6				
•270	0291 1110 00	LOCKNUT	6				
•275	1615 5664 00	HEX. HEAD SCREW	6				
•300	1604 2643 01	GUARD	2				
•310	1615 5664 00	HEX. HEAD SCREW	8				
•350	0147 1323 03	HEX. HEAD SCREW	2				
•355	0301 2335 00	PLAIN WASHER	2				
•360	0291 1110 00	LOCKNUT	2				

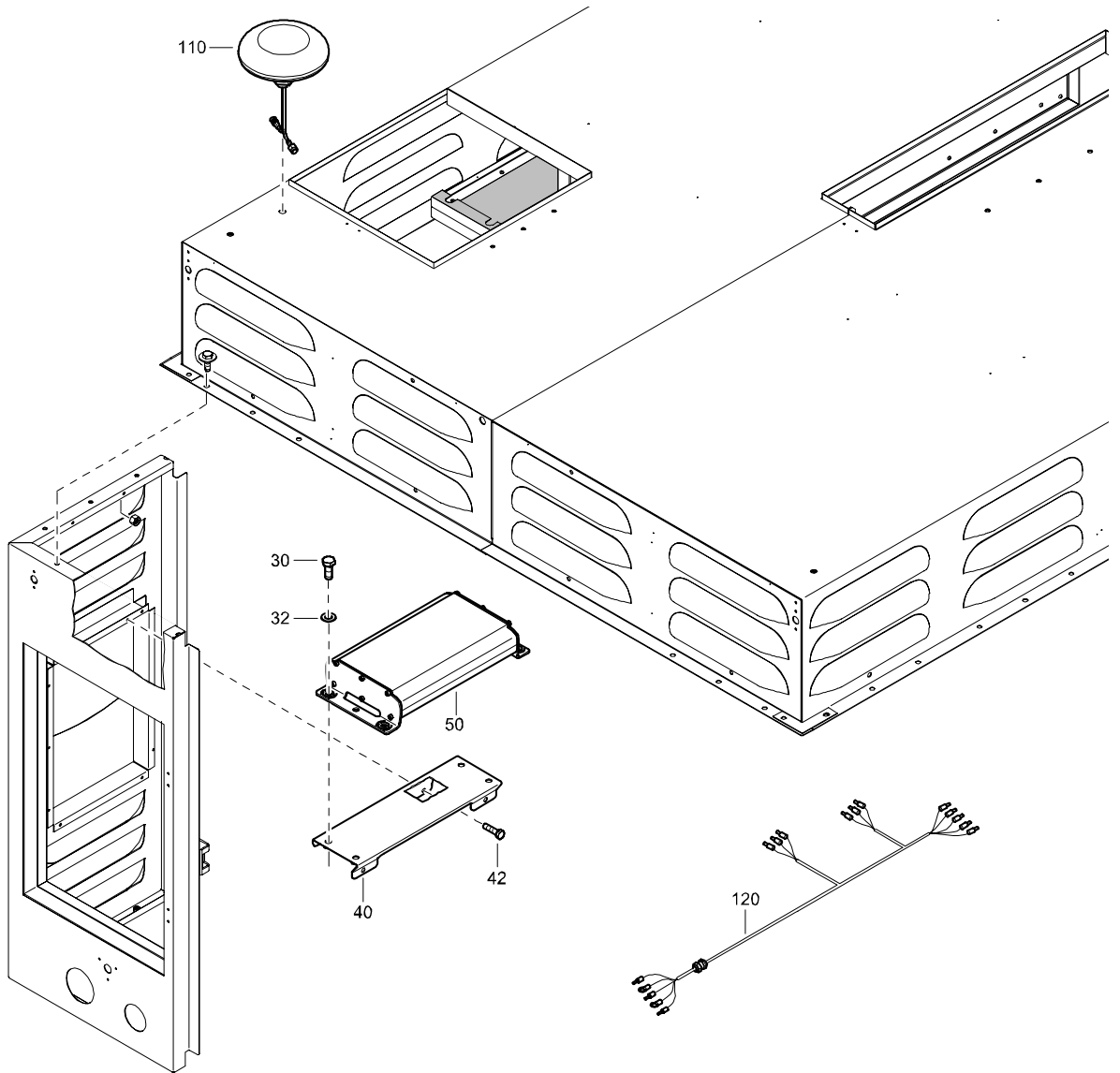
# OPTIONS

## FUEL SYSTEM TANDEM

REF	PART NUMBER	DESIGNATION	QTY	REF	PART NUMBER	DESIGNATION	QTY
25	1604 2492 02	SUPPORT	2	520	0571 0020 40	HOSE NIPPLE	1
30	0147 1401 03	HEX. HEAD SCREW	2	525	0571 0020 40	HOSE NIPPLE	1
35	0301 2358 00	PLAIN WASHER	2	530	0075 4025 35	FUEL HOSE	AR
37	1604 1275 00	SEAL	AR	550	1604 1384 00	HOSE NIPPLE	1
40	1604 2473 00	SUPPORT	2	560	0075 4025 42	FUEL HOSE	2,3
45	0147 1377 03	HEX. HEAD SCREW	2	565	0347 6103 00	HOSE CLAMP	1
50	0291 1111 00	LOCKNUT	2	570	1079 5840 28	HEXAGON NIPPLE	1
51	0226 9920 14	LINK SCREW	2	575	0653 1100 00	FLAT GASKET	1
52	0291 1111 00	LOCKNUT	2	580	1604 2799 00	ELBOW	1
55	1604 2471 00	RETAINER	2	585	0075 4025 42	FUEL HOSE	1
60	0147 1343 03	HEX. HEAD SCREW	2	590	0347 6103 00	HOSE CLAMP	1
65	0291 1110 00	LOCKNUT	2	600	1604 4105 84	FUELTANK ASSY	2
75	1604 2492 02	SUPPORT	2			(For details see page 217)	
80	0147 1401 03	HEX. HEAD SCREW	2	605	1604 2781 01	CONNECTION	1
85	0301 2358 00	PLAIN WASHER	2	610	1604 2780 02	GASKET	2
90	1604 2473 00	SUPPORT	2	615	0147 1250 03	HEX. HEAD SCREW	4
95	0147 1377 03	HEX. HEAD SCREW	2	620	0347 6108 00	HOSE CLAMP	1
100	0291 1111 00	LOCKNUT	2	625	0072 8403 16	HOSE	AR
101	0226 9920 14	LINK SCREW	2	630	1604 4399 01	MANIFOLD	1
102	0291 1111 00	LOCKNUT	2	640	1604 2779 01	CONNECTION	1
105	1604 2471 00	RETAINER	2	645	1604 2780 02	GASKET	1
110	0147 1343 03	HEX. HEAD SCREW	2	650	1604 4369 00	WIRE	1
115	0291 1110 00	LOCKNUT	2	700	0348 0110 13	ANCHOR PLATE	23
120	1089 0659 03	LEVEL SENSOR	1	710	0348 0101 05	CABLE TIE	23
125	0147 1212 03	HEX. HEAD SCREW	5				
130	0301 2318 00	PLAIN WASHER	5				
150	1604 3546 00	HOSE	1				
155	0347 6100 22	HOSE CLAMP	2				
210	1604 2582 00	GASKET	2				
215	1604 2583 00	HOSE ASSEMBLY	1				
220	0211 1249 03	HEX SOCK. SCREW	8				
225	0303 1274 04	PLAIN WASHER	8				
230	1604 2511 05	PROTECTION	1				
235	1615 5664 00	HEX. HEAD SCREW	4				
300	0075 4025 23	FUEL HOSE	AR				
305	1626 0264 80	NIPPLE ASSY.	2				
•A10	1626 0264 00	NIPPLE	1				
•A20	1626 0265 00	NIPPLE	1				
•A30	1626 0266 00	WASHER	1				
•A40	0517 1100 31	BEARING BALL	1				
306	0347 6110 00	HOSE CLAMP	2				
308	1626 0999 00	SUPPORT	2				
310	0075 4025 23	FUEL HOSE	AR				
312	1626 0375 00	FILTER	2				
•B10	2914 9975 00	FILTER ELEMENT	1				
313	1615 1789 00	BRACKET	2				
315	0347 6110 00	HOSE CLAMP	2				
316	0147 1322 03	HEX. HEAD SCREW	2				
317	0333 3227 00	LOCK WASHER	2				
318	0266 2110 00	HEXAGON NUT	2				
320	9000 0246 00	HOSE NIPPLE	1				
380	1604 2742 00	FUEL COOLER	1				
390	1615 5664 00	HEX. HEAD SCREW	3				
400	1604 4236 00	FUELFILTER	1				
410	1626 1321 00	BRACKET	1				
415	0147 1363 03	HEX. HEAD SCREW	2				
420	0301 2344 00	PLAIN WASHER	2				
485	1079 5840 21	BUSHING	1				
490	0653 1128 00	FLAT GASKET	1				
495	0571 0020 43	HOSE NIPPLE	1				
500	0075 4025 35	FUEL HOSE	AR				

# OPTIONS

## COSMOS GLOBAL COVERAGE WITH CDMA NETWORK



REF	PART NUMBER	DESIGNATION	QTY	REF	PART NUMBER	DESIGNATION	QTY
30	0147 1322 03	HEX. HEAD SCREW	4				
32	0301 2335 00	PLAIN WASHER	4				
40	1604 7456 00	BRACKET	1				
42	0147 1247 03	HEX. HEAD SCREW	2				
50	1604 8945 00	COSMOS MODULE	1				
110	1604 7837 00	ANTENNA	1				
120	1604 7628 00	WIRING	1				

**OPTIONS**  
**UNDERCARRIAGE**  
**FOR COMPRESSOR WITH NOISE REGULATION NOT CE**  
**WAGON**

REF	PART NUMBER	DESIGNATION	QTY	REF	PART NUMBER	DESIGNATION	QTY
15	1604 2527 13	FRAME	1				
20	1604 2685 01	AXLE REAR	1				
		(For details see page 221)					
25	0301 2378 00	PLAIN WASHER	8				
30	0147 1958 96	HEX. HEAD SCREW	8				
40	1604 2813 00	BRAKE CABLE	2				
50	1604 2682 03	AXLE FRONT	1				
		(For details see page 220)					
55	0301 2378 00	PLAIN WASHER	8				
60	0147 1958 96	HEX. HEAD SCREW	8				
80	1604 2691 03	TOWBAR	1				
•A20	1604 2796 02	BRAKE CABLE	1				
120	1615 7620 00	CHAIN (TOWBAR)	1				
121	1615 7776 00	COUPLING LINK	1				
150	1604 2794 81	TYRE ASSY	4				
•B20	1626 0041 00	WHEEL	1				
•B25	0380 0000 09	TYRE	1				
•B30	1604 2795 00	VALVE	1				
160	1079 9917 98	INFORMATION LABEL	2				
170	1079 9917 98	INFORMATION LABEL	2				
230	0147 1465 03	HEX. HEAD SCREW	2				
235	0147 1962 18	HEX. HEAD SCREW	2				
240	0301 2358 00	PLAIN WASHER	4				
245	1604 4346 02	MUDGUARD	4				
255	1615 5664 00	HEX. HEAD SCREW	12				
280	1604 2805 03	PROTECTION	2				
285	1615 5664 00	HEX. HEAD SCREW	8				
340	1079 3463 07	U-BOLT	1				
345	0266 2110 00	HEXAGON NUT	2				
350	0301 2335 00	PLAIN WASHER	4				
355	1079 3463 07	U-BOLT	1				
360	0266 2110 00	HEXAGON NUT	2				
365	0301 2335 00	PLAIN WASHER	4				
370	1615 6219 02	CHAIN	1				
850	1604 4338 00	PROTECTION	1				
855	1615 5664 00	HEX. HEAD SCREW	1				

---

# OPTIONS

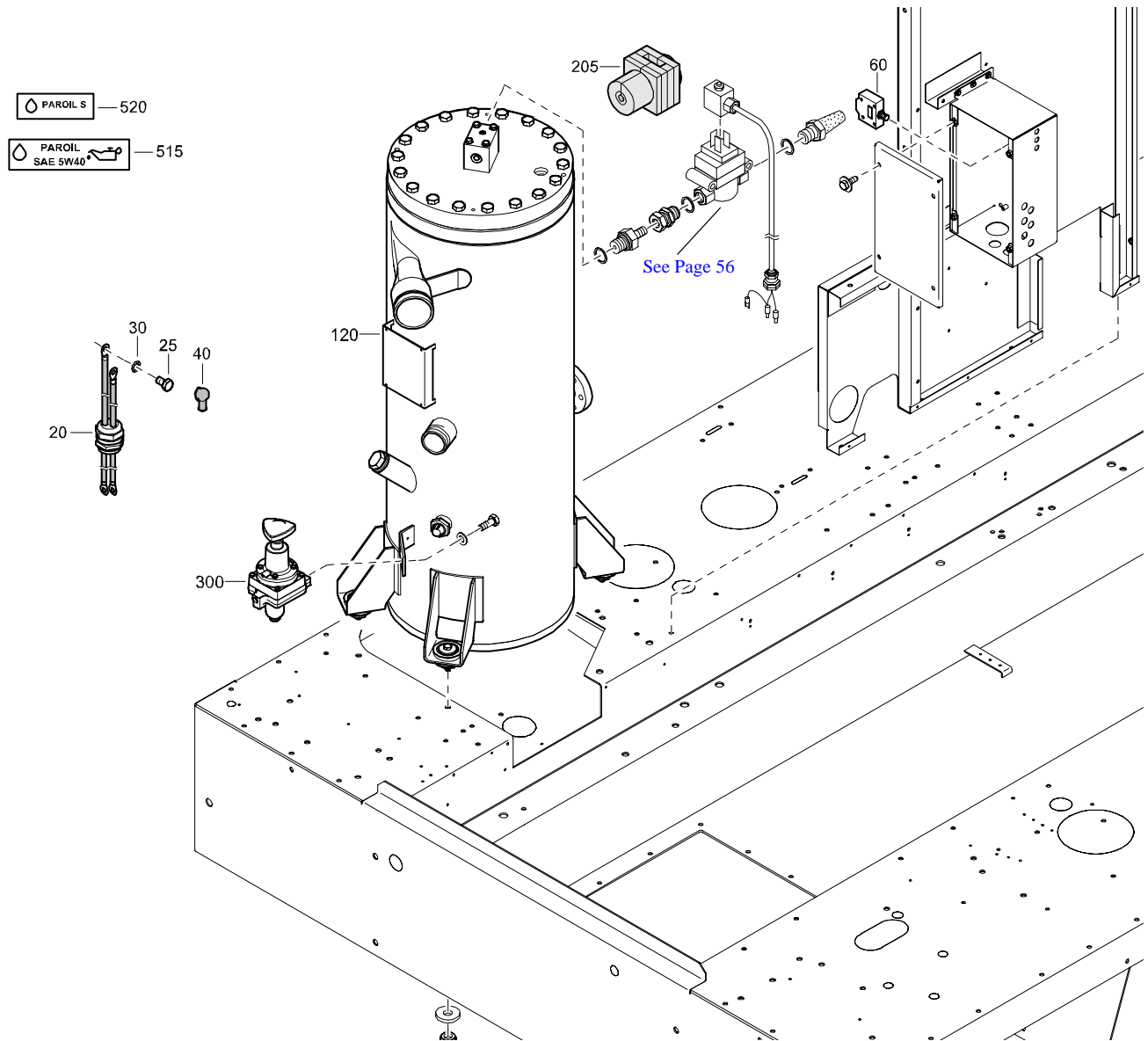
## OILTRONIX

---

REF	PART NUMBER	DESIGNATION	QTY	REF	PART NUMBER	DESIGNATION	QTY
20	1604 7307 80	VALVE ASSEMBLY <a href="#">(For details see page 235)</a>	1				
22	0346 1000 22	PIPE CLAMP	1				
23	0147 1322 03	HEX. HEAD SCREW	1				
24	0266 2110 00	HEXAGON NUT	1				
25	0663 3131 00	O-RING	2				
35	1619 7560 00	THERMOST.VALVE	1				
45	1604 8241 00	HOSE ASSEMBLY	1				
50	0147 1365 03	HEX. HEAD SCREW	2				
55	0333 3132 00	LOCK WASHER	2				
60	0266 2111 00	HEXAGON NUT	2				
70	1604 8242 00	HOSE ASSEMBLY	1				
71	0147 1362 03	HEX. HEAD SCREW	2				
75	1604 8402 00	SUPPORT	1				
80	1604 0295 80	CUBICLE ASSEMBLY <a href="#">(For details see page 211)</a>	1				
85	0147 1247 03	HEX. HEAD SCREW	8				
87	0301 2321 00	PLAIN WASHER	8				
90	1089 0705 01	COMBO SENSOR	1				
95	1619 2765 00	SCREW	2				
100	1604 7858 02	WIRING	1				
103	0348 0101 05	CABLE TIE	20				
120	1604 2758 03	AIRDUCT	1				
200	1604 2458 04	HOSE ASSEMBLY	1				

# OPTIONS

## OIL SEPARATOR ASSEMBLY AND REGULATING VALVE FOR COMPRESSOR WITH COLD WEATHER EQUIPMENT FOR ASME



REF	PART NUMBER	DESIGNATION	QTY	REF	PART NUMBER	DESIGNATION	QTY
20	1604 3792 02	CABLE (ELEC)	1				
25	0147 1321 03	HEX. HEAD SCREW	1				
30	0333 3227 00	LOCK WASHER	1				
40	1612 0846 00	RUBBER CAP	1				
60	1089 9530 05	CIRCUIT BREAKER	1				
120	1604 2532 93	OILSEP. ASSY ASME (For details see page 107)	1				
205	1604 4609 00	INSULATION	1				
300	2252 0495 98	REGUL. VALVE (For details see page 246)	1				
515	1079 9920 45	INFORMATION LABEL	1				
520	1079 9920 00	INFORMATION LABEL	1				

---

**OPTIONS**  
**SKID**  
**FOR COMPRESSOR WITH LARGE FUEL TANK**

---

<b>REF</b>	<b>PART NUMBER</b>	<b>DESIGNATION</b>	<b>QTY</b>	<b>REF</b>	<b>PART NUMBER</b>	<b>DESIGNATION</b>	<b>QTY</b>
15	1604 9841 81	FRAME/LARGE FUELTANK ASSY <a href="#">(For details see page 238)</a>	1				
20	1604 2837 03	SKID	1				
25	0147 1958 96	HEX. HEAD SCREW	8				
30	0301 2378 00	PLAIN WASHER	8				
70	1604 3455 05	PROTECTION	2				
75	1615 5664 00	HEX. HEAD SCREW	8				
80	-	SILENCING FOAM (50 mm)	8				
85	-	SILENCING FOAM (50 mm)	2				
-	1079 0003 33	SILENCING FOAM 2000 mm x 1500 mm x 50 mm					

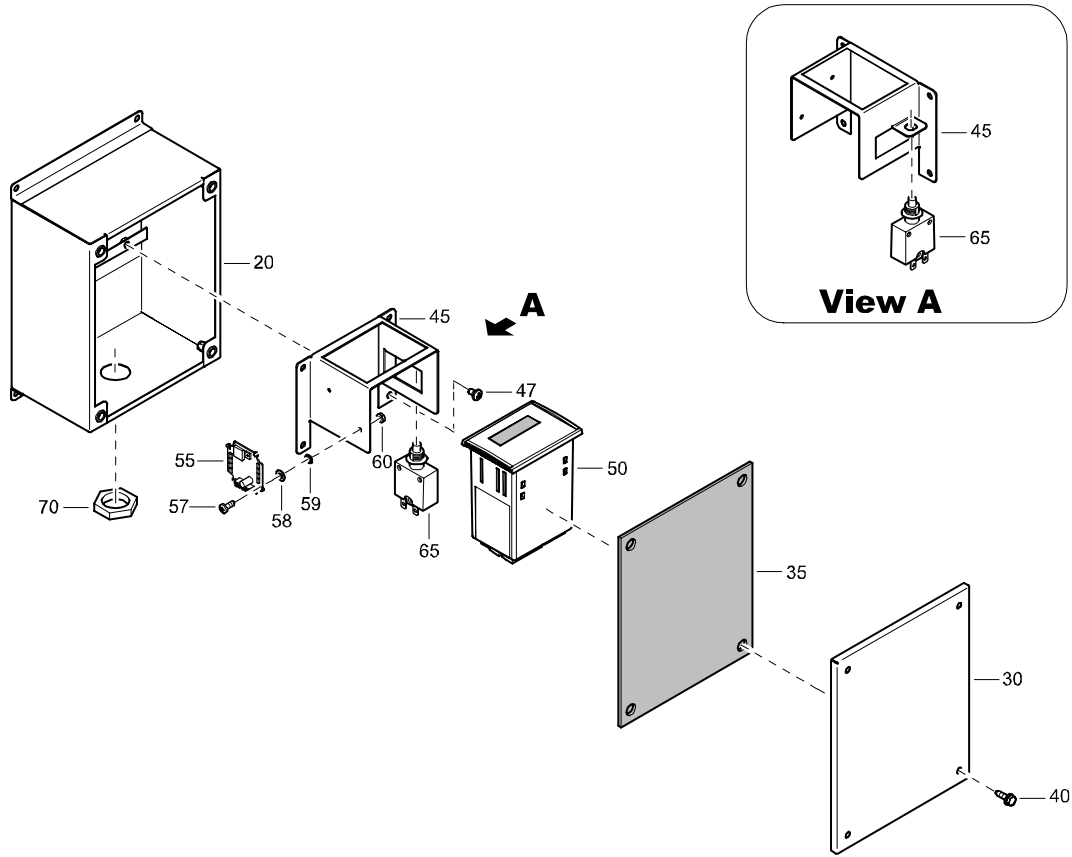
# OPTIONS

## AFTERCOOLER WITH WATERSEPARATOR-PD FILTER

REF	PART NUMBER	DESIGNATION	QTY	REF	PART NUMBER	DESIGNATION	QTY
20	1604 3353 01	MANIFOLD	1	472	0634 1000 59	PIPE COUPLING	1
25	0686 3716 10	HEXAGON PLUG	1	475	1604 5112 00	PIPE	1
27	0653 1254 00	FLAT GASKET	1	477	1079 9902 55	LABEL	1
30	0634 1000 59	PIPE COUPLING	1	480	1604 3364 02	SUPPORT	1
35	1604 3354 01	PIPE	1	485	0147 1359 03	HEX. HEAD SCREW	2
40	0663 7141 00	O-RING	1	490	0301 2344 00	PLAIN WASHER	2
45	0147 1403 03	HEX. HEAD SCREW	4	495	0147 1362 03	HEX. HEAD SCREW	2
50	0301 2358 00	PLAIN WASHER	4	500	0301 2344 00	PLAIN WASHER	2
60	1604 3372 01	AFTERCOOLER	1	505	0266 2111 00	HEXAGON NUT	2
65	1604 3366 01	SUPPORT	1	510	0634 1000 59	PIPE COUPLING	1
70	0147 1359 03	HEX. HEAD SCREW	4	520	1604 3361 01	MANIFOLD	1
75	0301 2344 00	PLAIN WASHER	4	525	0147 1362 03	HEX. HEAD SCREW	4
80	0147 1362 03	HEX. HEAD SCREW	3	530	0301 2344 00	PLAIN WASHER	4
85	0301 2344 00	PLAIN WASHER	3	535	1089 0574 70	TEMP.SENSOR	1
90	1604 3365 04	SUPPORT	1	540	1089 9579 55	PRESSURE SENSOR	1
95	0147 1359 03	HEX. HEAD SCREW	4	550	1604 3449 00	WIRE HARNESS	1
100	0301 2344 00	PLAIN WASHER	4	560	0852 0010 28	BALL VALVE	1
105	1615 5664 00	HEX. HEAD SCREW	3	565	0623 2100 09	BACKNUT	1
110	1615 5664 00	HEX. HEAD SCREW	2	590	1604 4760 01	SUPPORT	1
115	0300 0274 91	PLAIN WASHER	1	595	1615 5664 00	HEX. HEAD SCREW	2
120	1604 3356 00	ELBOW	1	600	1604 3550 83	PANEL ASSY	1
125	0663 7141 00	O-RING	1			(For details see page 224)	
130	0147 1403 03	HEX. HEAD SCREW	4	610	1615 5664 00	HEX. HEAD SCREW	2
135	0301 2358 00	PLAIN WASHER	4	615	1604 3551 81	PANEL ASSY	1
140	1615 8005 00	WATERSEPARATOR	1			(For details see page 225)	
145	1604 1591 02	GASKET	2	625	1615 5664 00	HEX. HEAD SCREW	7
150	1604 3373 00	PD FILTER	1	630	1604 3552 02	SUPPORT	1
		(For details see page 218)		635	1615 5664 00	HEX. HEAD SCREW	2
155	1604 1591 02	GASKET	1	650	1604 2689 84	PANEL ASSEMBLY	1
165	0248 9979 61	THREADED ROD	2			(For details see page 213)	
170	0301 2358 00	PLAIN WASHER	4	655	1604 2454 87	DOOR ASSY	1
175	0266 2112 00	HEXAGON NUT	8			(For details see page 92)	
180	0653 1124 00	FLAT GASKET	2	660	1604 2678 82	CORNER ASSY	1
181	0603 4200 38	HEXAGON NIPPLE	1			(For details see page 215)	
182	0653 1124 00	FLAT GASKET	1	662	0686 9252 69	PROTECTION PLUG	1
183	0803 5010 10	STRAINER	1	670	1616 4615 00	NYLON BAND	1
184	0653 1124 00	FLAT GASKET	1	675	0129 3101 00	BLIND RIVET	3
185	0581 1200 27	ELBOW PIPE COUPLING	1	680	0301 2318 00	PLAIN WASHER	3
186	1604 6697 00	RESTRICTOR	1				
190	0070 6002 06	PLASTIC TUBE	AR				
192	0581 0000 53	STRAIGHT PIPE COUPLING	1				
193	0653 1124 00	FLAT GASKET	3				
194	0560 0200 29	ELBOW	1				
195	9090 0510 00	SILENCER	1				
201	0147 1362 03	HEX. HEAD SCREW	2				
202	0301 2344 00	PLAIN WASHER	2				
220	0661 1049 00	SEALING WASHER	1				
240	1612 0685 83	VALVE	1				
250	0653 1062 00	FLAT GASKET	1				
255	0581 0060 00	STRAIGHT PIPE COUPLING	1				
275	1604 4725 00	TUBE	1				
277	1503 1056 00	SEAL	AR				
350	0372 4100 08	BOW SHACKLE	2				
355	0371 1100 21	LIFTING EYE	1				
360	0266 2111 00	HEXAGON NUT	1				
365	0333 3232 00	LOCK WASHER	1				
370	3163 1853 00	CHAIN	1				
375	3163 1853 00	CHAIN	1				
400	1613 0807 00	SUPPORT	2				
405	1615 5664 00	HEX. HEAD SCREW	1				
470	1604 3380 01	PIPE	1				

# OPTIONS

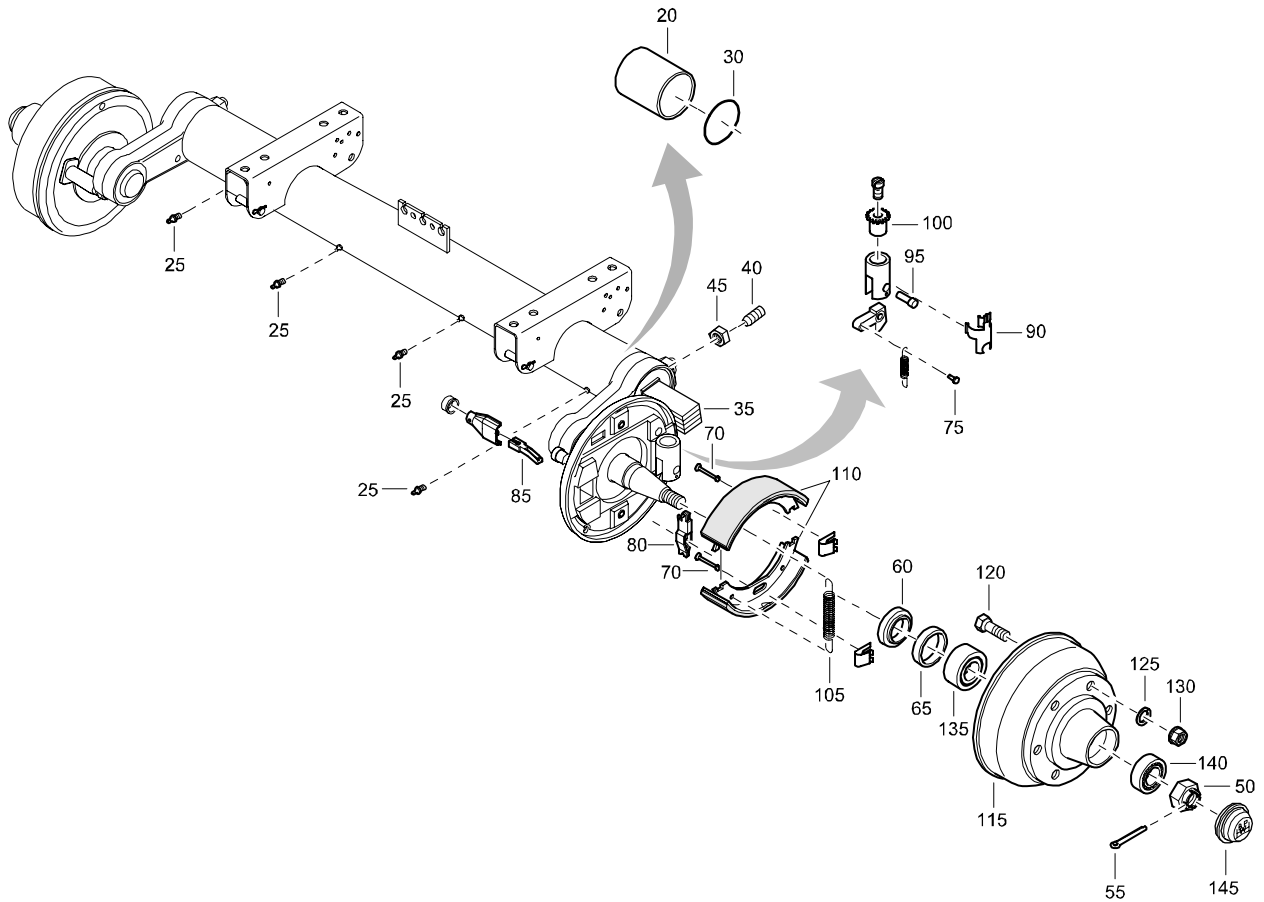
## CUBICLE ASSEMBLY



REF	PART NUMBER	DESIGNATION	QTY	REF	PART NUMBER	DESIGNATION	QTY
-	1604 0295 80	CUBICLE ASSEMBLY (From page 170)					
•20	1604 0295 00	BOX	1				
•30	1604 0298 00	COVER	1				
•35	1604 0302 00	SEAL	1				
•40	1619 5898 01	HEX. HEAD SCREW	4				
•45	1604 8268 00	BRACKET	1				
•47	0160 0996 71	CROSS REC SCREW	4				
•50	1089 9561 43	CONTROLLER	1				
•55	1089 0706 51	DRIVER CARD	1				
•57	0160 0996 03	CROSS REC SCREW	2				
•58	0301 2309 00	PLAIN WASHER	2				
•59	0333 3210 00	LOCK WASHER	2				
•60	0261 2104 00	HEXAGON NUT	2				
•65	1089 9423 01	CIRCUIT BREAKER	1				
•70	0697 9809 51	LOCK NUT	1				

# OPTIONS

## REAR AXLE FOR COMPRESSOR WITHOUT ANTI-LOCK BRAKING SYSTEM WAGON



REF	PART NUMBER	DESIGNATION	QTY	REF	PART NUMBER	DESIGNATION	QTY
-	1604 2685 01	AXLE REAR	(From page 158, 160)	•135	2914 0351 00	BEARING	2
•20	2914 0326 00	BUSHING	8	•140	1619 3815 00	BEARING	2
•25	2914 0327 00	GREASE NIPPLE	4	•145	1619 2468 00	CAP	2
•30	1619 2445 00	O-RING	2				
•35	2914 0330 00	TORSION BAR	1				
•40	1619 2444 00	BOLT	2				
•45	1619 3809 00	NUT	2				
•50	1619 3822 00	CASTLED NUT	2				
•55	2914 0086 00	SPLIT PIN	2				
•60	2914 0331 00	RING	2				
•65	2914 0332 00	SEAL RING	2				
•70	2914 0312 00	SHACKLE	4				
•75	2914 0313 00	SHACKLE	2				
•80	2914 0314 00	CLASP	2				
•85	2914 0315 00	SHACKLE	2				
•90	2914 0316 00	RETAINER	2				
•95	2914 0317 00	ADJUSTING NUT	2				
•100	2914 0318 00	ADJUSTING BOLT	2				
•105	2914 0319 00	SPRING	2				
•110	2914 2235 00	BRAKE SHOE	4				
•115	2914 0349 00	DRUM	2				
•120	2914 0350 00	WHEEL BOLT	12				
•125	1619 0319 00	SPRING WASHER	12				
•130	1619 0296 00	NUT	12				

---

**OPTIONS**  
**BRAKE**  
**ANTI-LOCK BRAKING SYSTEM**  
**FOR WAGON**

---

REF	PART NUMBER	DESIGNATION	QTY	REF	PART NUMBER	DESIGNATION	QTY
-	1604 3668 02	BRAKE ABS					
						<a href="#">(From page 154)</a>	
•20	1604 4802 00	BRAKE CHAMBER ASSY FRONT	4				
•40	1604 4804 00	MODULATOR ASSY REAR	2				
•50	1604 4805 00	MODULATOR ASSY FRONT	1				
•60	1604 4806 00	RELAY EMERGENCY VALVE ASSY	1				
•70	1604 4807 00	VESSEL ASSY	1				
•80	1604 4808 01	COUPLING ASSY BRAKE SIGNAL	1				
•90	1604 4809 01	COUPLING ASSY BRAKE SIGNAL	1				
•100	1604 4810 01	BRAKE SYSTEM	1				
						<a href="#">(For details see page 240)</a>	

---

# OPTIONS

## ANTI-LOCK BRAKING SYSTEM WAGON

---

REF	PART NUMBER	DESIGNATION	QTY	REF	PART NUMBER	DESIGNATION	QTY
-	1604 4810 01	BRAKE SYSTEM	(From page 230)				
•10	2914 8332 00	ABS ECU	1				
•20	2914 8335 00	CABLE MODULATOR	1				
•30	2914 8269 00	ABS SENSOR MONTAGE SET	4				
•40	2914 8334 00	CABLE SUPPLY + DIAGNOSTIC	1				
•50	2914 8339 00	CABLE POWER SUPPLY	1				
•60	2914 8280 00	YOKE (FRONT BRAKE)	2				
•70	2914 8281 00	YOKE (REAR BRAKE )	2				

CLICK HERE TO **DOWNLOAD** THE COMPLETE MANUAL

- Thank you very much for reading the preview of the manual.
- You can download the complete manual from: [www.heydownloads.com](http://www.heydownloads.com) by clicking the link below



- Please note: If there is no response to CLICKING the link, please download this PDF first and then click on it.

CLICK HERE TO **DOWNLOAD** THE COMPLETE MANUAL