

XAS 746 CD - XAS 1600 CD6

Engine CAT C13

**Parts List for Portable Compressors
English**

CLICK HERE TO **DOWNLOAD** THE COMPLETE MANUAL

- Thank you very much for reading the preview of the manual.
- You can download the complete manual from: www.heydownloads.com by clicking the link below



- Please note: If there is no response to CLICKING the link, please download this PDF first and then click on it.

CLICK HERE TO **DOWNLOAD** THE COMPLETE MANUAL

1. SAFETY PRECAUTIONS FOR PORTABLE COMPRESSORS

To be read attentively and acted accordingly before towing, lifting, operating, performing maintenance or repairing the compressor

1.1 INTRODUCTION

The policy of Atlas Copco is to provide the users of their equipment with safe, reliable and efficient products. Factors taken into account are among others:

- the intended and predictable future use of the products, and the environments in which they are expected to operate,
- applicable rules, codes and regulations,
- the expected useful product life, assuming proper service and maintenance,
- providing the manual with up-to-date information.

Before handling any product, take time to read the relevant instruction manual. Besides giving detailed operating instructions, it also gives specific information about safety, preventive maintenance, etc.

Keep the manual always at the unit location, easy accessible to the operating personnel.

See also the safety precautions of the engine and possible other equipment, which are separately sent along or are mentioned on the equipment or parts of the unit.

These safety precautions are general and some statements will therefore not always apply to a particular unit.

Only people that have the right skills should be allowed to operate, adjust, perform maintenance or repair on Atlas Copco equipment. It is the responsibility of management to appoint operators with the appropriate training and skill for each category of job.

Skill level 1: Operator

An operator is trained in all aspects of operating the unit with the push-buttons, and is trained to know the safety aspects.

Skill level 2: Mechanical technician

A mechanical technician is trained to operate the unit the same as the operator. In addition, the mechanical technician is also trained to perform maintenance and repair, as described in the instruction manual, and is allowed to change settings of the control and safety system. A mechanical technician does not work on live electrical components.

Skill level 3: Electrical technician

An electrical technician is trained and has the same qualifications as both the operator and the mechanical technician. In addition, the electrical technician may carry out electrical repairs within the various enclosures of the unit. This includes work on live electrical components.

Skill level 4: Specialist from the manufacturer

This is a skilled specialist sent by the manufacturer or its agent to perform complex repairs or modifications to the equipment.

In general it is recommended that not more than two people operate the unit, more operators could lead to unsafe operating conditions. Take necessary steps to keep unauthorized persons away from the unit and eliminate all possible sources of danger at the unit.

When handling, operating, overhauling and/or performing maintenance or repair on Atlas Copco equipment, the mechanics are expected to use safe engineering practices and to observe all relevant local safety requirements and ordinances. The following list is a reminder of special safety directives and precautions mainly applicable to Atlas Copco equipment.

These safety precautions apply to machinery processing or consuming air. Processing of any other gas requires additional safety precautions typical to the application and are not included herein.

Neglecting the safety precautions may endanger people as well as environment and machinery:

- endanger people due to electrical, mechanical or chemical influences,
- endanger the environment due to leakage of oil, solvents or other substances,
- endanger the machinery due to function failures.

All responsibility for any damage or injury resulting from neglecting these precautions or by non-observance of ordinary caution and due care required in handling, operating, maintenance or repair, also if not expressly mentioned in this instruction manual, is disclaimed by Atlas Copco.

The manufacturer does not accept any liability for any damage arising from the use of non-original parts and for modifications, additions or conversions made without the manufacturer's approval in writing.

If any statement in this manual does not comply with local legislation, the stricter of the two shall be applied.

Statements in these safety precautions should not be interpreted as suggestions, recommendations or inducements that it should be used in violation of any applicable laws or regulations.

1.2 GENERAL SAFETY PRECAUTIONS

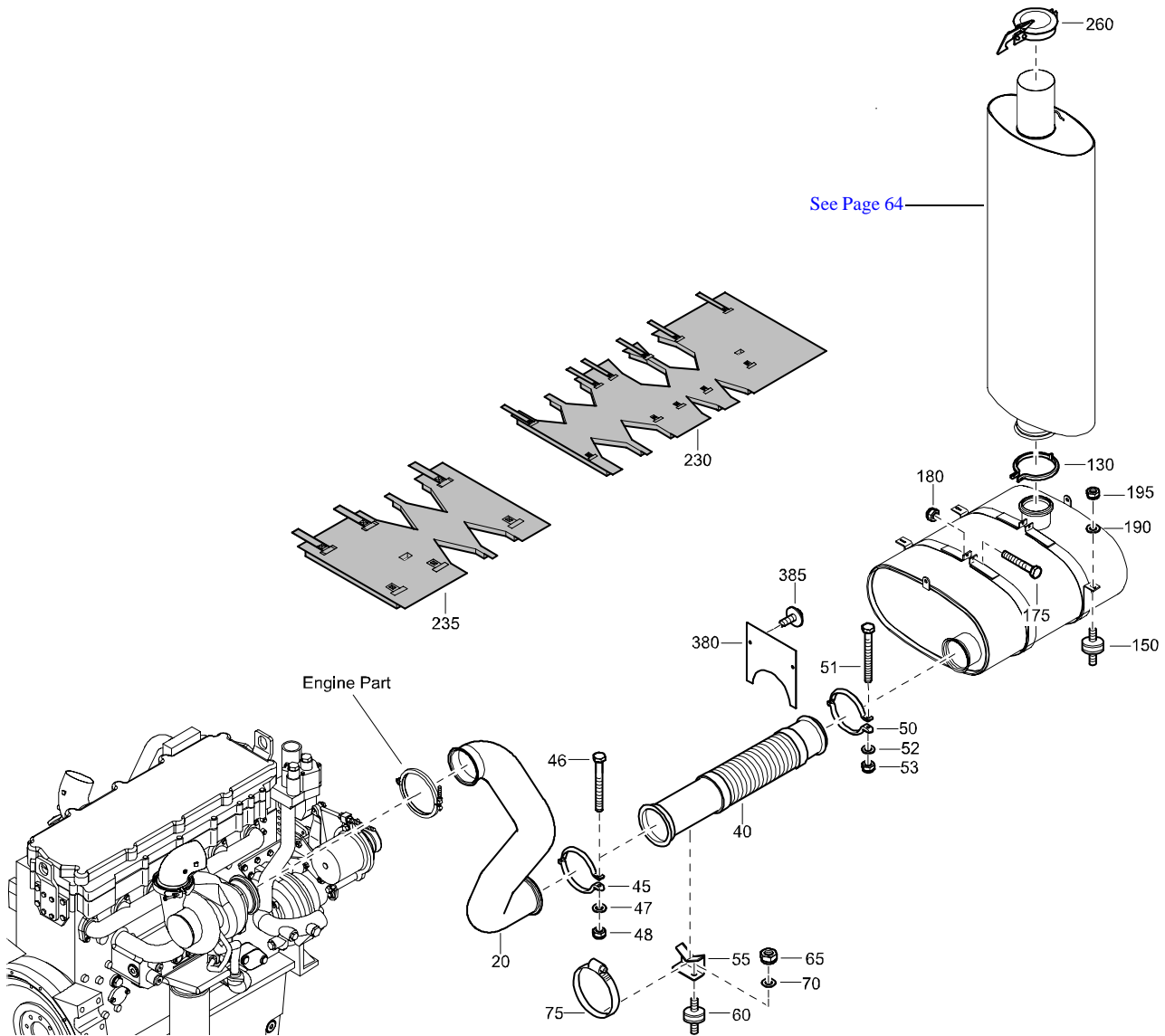
- 1 The owner is responsible for maintaining the unit in a safe operating condition. Unit parts and accessories must be replaced if missing or unsuitable for safe operation.
- 2 The supervisor, or the responsible person, shall at all times make sure that all instructions regarding machinery and equipment operation and maintenance are strictly followed and that the machines with all accessories and safety devices, as well as the consuming devices, are in good repair, free of abnormal wear or abuse, and are not tampered with.
- 3 Whenever there is an indication or any suspicion that an internal part of a machine is overheated, the machine shall be stopped but no inspection covers shall be opened before sufficient cooling time has elapsed; this to avoid the risk of spontaneous ignition of oil vapour when air is admitted.
- 4 Normal ratings (pressures, temperatures, speeds, etc.) shall be durably marked.
- 5 Operate the unit only for the intended purpose and within its rated limits (pressure, temperature, speeds, etc.).
- 6 The machinery and equipment shall be kept clean, i.e. as free as possible from oil, dust or other deposits.
- 7 To prevent an increase in working temperature, inspect and clean heat transfer surfaces (cooler fins, intercoolers, water jackets, etc.) regularly. See the maintenance schedule.
- 8 All regulating and safety devices shall be maintained with due care to ensure that they function properly. They may not be put out of action.
- 9 Care shall be taken to avoid damage to safety valves and other pressure-relief devices, especially to avoid plugging by paint, oil coke or dirt accumulation, which could interfere with the functioning of the device.
- 10 Pressure and temperature gauges shall be checked regularly with regard to their accuracy. They shall be replaced whenever outside acceptable tolerances.
- 11 Safety devices shall be tested as described in the maintenance schedule of the instruction manual to determine that they are in good operating condition.
- 12 Mind the markings and information labels on the unit.
- 13 In the event the safety labels are damaged or destroyed, they must be replaced to ensure operator safety.
- 14 Keep the work area neat. Lack of order will increase the risk of accidents.
- 15 When working on the unit, wear safety clothing. Depending on the kind of activities these are: safety glasses, ear protection, safety helmet (including visor), safety gloves, protective clothing, safety shoes. Do not wear the hair long and loose (protect long hair with a hairnet), or wear loose clothing or jewelry.
- 16 Take precautions against fire. Handle fuel, oil and anti-freeze with care because they are inflammable substances. Do not smoke or approach with naked flame when handling such substances. Keep a fire-extinguisher in the vicinity.

SERVICE PAK

REF	PART NUMBER	DESIGNATION	QTY	REF	PART NUMBER	DESIGNATION	QTY
-	WITH UNIT	SERVICE PAK 50H (Not available separately)					
•A	-	OIL FILTER	3				
•N	-	NIPPLE	3				
-	2912 4449 05	SERVICE PAK 500H					
•B	-	OIL FILTER	1				
•C	-	FINAL FUEL FILTER	1				
•D	-	FUEL PRE FILTER	1				
•E	-	SEALING WASHER	2				
		(For details see page 209)					
-	2912 4450 06	SERVICE PAK 1000H					
•B	-	OIL FILTER	1				
•C	-	FINAL FUEL FILTER	1				
•D	-	FUEL PRE FILTER	1				
•A	-	OIL FILTER	3				
•F	-	FLAT GASKET	1				
		(For details see page 209)					
•G	-	VALVE	2				
•E	-	SEALING WASHER	6				
		(For details see page 209)					
•H	-	FILTER	1				
-	2912 4451 07	SERVICE PAK 1500H					
•B	-	OIL FILTER	1				
•C	-	FINAL FUEL FILTER	1				
•D	-	FUEL PRE FILTER	1				
•K	-	AIR FILTER ELEMENT	4				
•M	-	AIR FILTER SAFETY CARTRIDGE	4				
•P	-	OIL FILTER	3				
•E	-	SEALING WASHER	5				
		(For details see page 209)					

STANDARD

EXHAUST



REF	PART NUMBER	DESIGNATION	QTY	REF	PART NUMBER	DESIGNATION	QTY
20	1604 7070 01	PIPE	1	195	0291 1185 04	LOCKNUT	4
40	1604 3618 00	EXHAUST PIPE	1	230	1604 7418 01	INSULATION	1
45	1604 2548 00	CLAMP	1	235	1604 7419 01	INSULATION	1
46	0147 1963 95	HEX. HEAD SCREW	1	260	1615 8817 00	EXHAUST COVER	1
47	0301 2335 00	PLAIN WASHER	1	380	1604 2489 00	PLATE	1
48	0291 1185 04	LOCKNUT	1	385	1615 5664 00	HEX. HEAD SCREW	2
50	1604 2548 00	CLAMP	1				
51	0147 1963 95	HEX. HEAD SCREW	1				
52	0301 2335 00	PLAIN WASHER	1				
53	0291 1185 04	LOCKNUT	1				
55	1604 2654 01	SUPPORT	1				
60	1604 0134 00	BUFFER	2				
65	0291 1110 00	LOCKNUT	2				
70	0301 2335 00	PLAIN WASHER	2				
75	0347 6100 15	HOSE CLAMP	1				
130	1604 2548 00	CLAMP	1				
150	1604 0134 00	BUFFER	4				
175	0147 1330 12	HEX. HEAD SCREW	2				
180	0291 1185 04	LOCKNUT	2				
190	0300 8019 00	PLAIN WASHER	4				

STANDARD

DRAINS

REF	PART NUMBER	DESIGNATION	QTY	REF	PART NUMBER	DESIGNATION	QTY
20	1079 5840 15	NIPPLE	1	340	0661 1038 00	SEALING WASHER	1
22	0661 1033 00	SEALING WASHER	1	345	0686 3716 35	HEXAGON PLUG	1
25	1604 8369 00	HOSE	1	440	0661 1038 00	SEALING WASHER	2
32	0070 4022 60	CONDUIT	AR	445	0686 3716 35	HEXAGON PLUG	2
33	1604 8278 00	PIPE	1	500	1604 9581 00	HOSE	1
34	1088 1501 11	SHRINKING HOSE	AR	505	0627 5100 05	PRESSURE SCREW	1
35	0571 0035 53	NIPPLE	1	510	0653 1124 00	FLAT GASKET	1
36	1088 0832 07	CLAMP	1	515	1088 1501 10	SHRINKING HOSE	AR
37	0129 3110 00	BLIND RIVET	2	520	0571 0035 36	HEXAGON NIPPLE	1
40	1619 6153 05	BALL VALVE	1	525	1619 6153 05	BALL VALVE	1
45	0571 0035 52	HEXAGON NIPPLE	1	530	0571 0035 52	HEXAGON NIPPLE	1
48	1604 3383 00	HEXAGON NIPPLE	1	532	1604 3383 00	HEXAGON NIPPLE	1
50	0661 1038 00	SEALING WASHER	1	535	0661 1038 00	SEALING WASHER	1
55	0661 1038 00	SEALING WASHER	1	540	0661 1038 00	SEALING WASHER	1
60	0686 3716 35	HEXAGON PLUG	1	545	0686 3716 35	HEXAGON PLUG	1
75	0346 1002 10	PIPE CLAMP	1				
80	1604 4330 00	BRACKET	1				
85	0147 1319 03	HEX. HEAD SCREW	1				
90	0147 1322 03	HEX. HEAD SCREW	1				
95	0261 1110 00	HEXAGON NUT	1				
100	0661 1038 00	SEALING WASHER	2				
105	0627 4200 07	PRESSURE SCREW	1				
106	1615 9099 02	NIPPLE	1				
110	1604 8367 00	HOSE	1				
111	1604 8276 00	PIPE	1				
112	1088 0832 07	CLAMP	1				
113	0129 3110 00	BLIND RIVET	1				
120	0571 0035 53	NIPPLE	1				
125	1619 6153 05	BALL VALVE	1				
130	0571 0035 52	HEXAGON NIPPLE	1				
132	1604 3383 00	HEXAGON NIPPLE	1				
135	0661 1038 00	SEALING WASHER	1				
140	0661 1038 00	SEALING WASHER	1				
145	0686 3716 35	HEXAGON PLUG	1				
200	1604 9471 00	HOSE	1				
205	0627 5100 05	PRESSURE SCREW	1				
210	0653 1124 00	FLAT GASKET	2				
215	1088 1501 10	SHRINKING HOSE	AR				
220	0571 0035 36	HEXAGON NIPPLE	1				
225	1619 6153 05	BALL VALVE	1				
230	0571 0035 52	HEXAGON NIPPLE	1				
232	1604 3383 00	HEXAGON NIPPLE	1				
235	0661 1038 00	SEALING WASHER	1				
237	0661 1038 00	SEALING WASHER	1				
238	0686 3716 35	HEXAGON PLUG	1				
240	1088 0832 04	CABLE CLAMP	3				
245	0129 3110 00	BLIND RIVET	3				
300	0653 1124 00	FLAT GASKET	1				
305	0603 5110 00	HEXAGON NIPPLE	1				
306	1619 6153 05	BALL VALVE	1				
307	0571 0035 36	HEXAGON NIPPLE	1				
310	1604 8368 00	HOSE	1				
311	1604 8277 00	PIPE	1				
312	1088 0832 07	CLAMP	1				
313	0129 3110 00	BLIND RIVET	1				
315	1088 1501 10	SHRINKING HOSE	AR				
320	0571 0035 53	NIPPLE	1				
325	1619 6153 05	BALL VALVE	1				
330	0571 0035 52	HEXAGON NIPPLE	1				
332	1604 3383 00	HEXAGON NIPPLE	1				
335	0661 1038 00	SEALING WASHER	1				

STANDARD

OUTER CANOPY

REF	PART NUMBER	DESIGNATION	QTY	REF	PART NUMBER	DESIGNATION	QTY
20	1604 2465 85	PANEL (For details see page 92)	1				
50	1615 5664 00	HEX. HEAD SCREW	3				
60	1604 2487 84	DOOR ASSY (For details see page 96)	1				
75	1604 3716 81	PANEL ASSY (For details see page 103)	1				
80	1615 5664 00	HEX. HEAD SCREW	2				
90	1604 2487 85	DOOR ASSY (For details see page 97)	1				
105	1615 5664 00	HEX. HEAD SCREW	3				
130	1604 2460 84	PANEL ASSY (For details see page 90)	1				
135	1615 5664 00	HEX. HEAD SCREW	2				
150	1604 2456 81	DOOR ASSY (For details see page 88)	1				
175	1615 5664 00	HEX. HEAD SCREW	2				
180	1604 2456 81	DOOR ASSY (For details see page 88)	1				
195	1615 5664 00	HEX. HEAD SCREW	6				
210	1604 2460 83	PANEL ASSY (For details see page 89)	1				
215	1615 5664 00	HEX. HEAD SCREW	2				
250	1604 2456 80	DOOR ASSY (For details see page 87)	1				
260	1604 2460 85	PANEL ASSY (For details see page 91)	1				
265	1615 5664 00	HEX. HEAD SCREW	2				
280	1604 2500 00	KEY	2				
285	1088 1301 03	CABLE STRIP	2				
290	1615 7271 00	KEY	2				
300	1604 3562 01	BRACKET	2				
305	0216 1324 03	HEX SOCK. SCREW	8				

STANDARD

MARKINGS TWO FUEL TANKS

REF	PART NUMBER	DESIGNATION	QTY	REF	PART NUMBER	DESIGNATION	QTY
20	0690 1150 00	HOUSE MARK	4				
25	1079 9903 59	INFORMATION LABEL	1				
30	1079 9903 62	INFORMATION LABEL	2				
35	1079 9902 38	INFORMATION LABEL	2				
40	1079 9902 45	INFORMATION LABEL	1				
45	1079 9903 60	INFORMATION LABEL	1				
60	1079 9921 73	INFORMATION LABEL	1				
65	1079 9922 09	INFORMATION LABEL	1				
70	1079 9924 91	INFORMATION LABEL	1				
75	1079 9922 07	INFORMATION LABEL	1				
80	1079 9905 51	INSTRUCTION LABEL	1				
85	1079 9902 49	INFORMATION LABEL	1				
90	1079 9903 58	INFORMATION LABEL	1				
95	1079 9921 03	INFORMATION LABEL	1				
100	1079 9910 02	INFORMATION LABEL	1				
150	-	DATA PLATE	1				
		(Not available separately)					
155	0129 3270 34	BLIND RIVET	4				
160	1079 9908 37	INSTRUCTION LABEL	1				
165	1079 9908 38	INSTRUCTION LABEL	1				
170	1079 9902 39	INFORMATION LABEL	1				
180	1604 7907 03	LABEL	1				
190	1626 0975 00	DECAL	2				

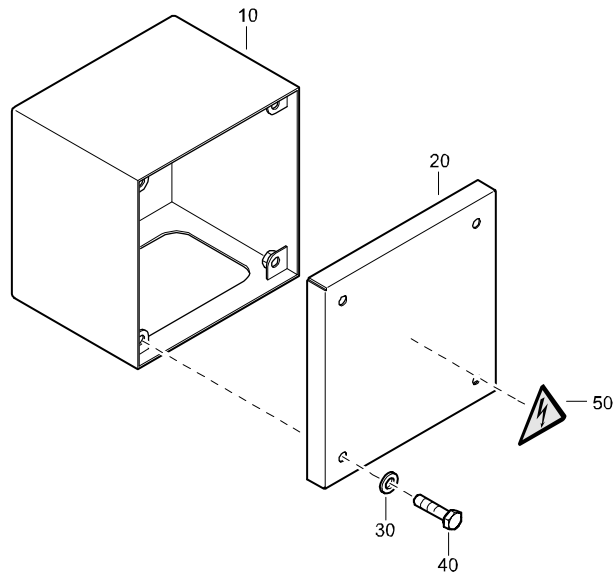
STANDARD

HOSE ASSEMBLY FOR OIL SYSTEM WITHOUT REHEATER

REF	PART NUMBER	DESIGNATION	QTY	REF	PART NUMBER	DESIGNATION	QTY
10	1604 7726 02	HOSE	1				
20	1604 7733 01	HOSE	1				
30	1604 7734 01	HOSE	1				

STANDARD

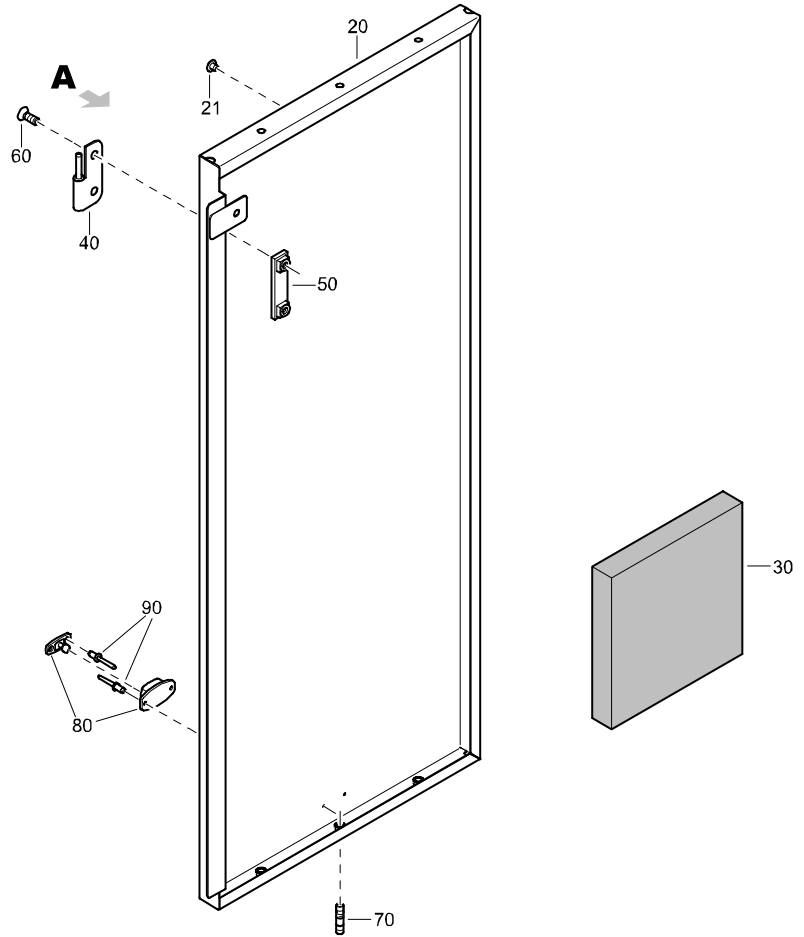
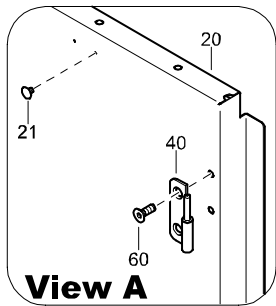
POWER SUPPLY BOX ASSEMBLY



REF	PART NUMBER	DESIGNATION	QTY	REF	PART NUMBER	DESIGNATION	QTY
-	1604 2124 81	POWER SUPPLY BOX ASSY(From page 54)					
•10	1604 2124 04	POWER SUPPLY BOX	1				
•20	1604 2153 01	LID OF POWER SUPPLY BOX	1				
•30	0301 2321 00	PLAIN WASHER	4				
•40	0147 1249 03	HEX. HEAD SCREW	4				
•50	1088 1001 02	WARNING MARK	1				

STANDARD

PANEL ASSEMBLY



REF	PART NUMBER	DESIGNATION	QTY	REF	PART NUMBER	DESIGNATION	QTY
-	1604 2460 85	PANEL ASSY	(From page 50)				
•20	1604 2460 02	PANEL	1				
•21	0686 9252 87	PLUG	2				
•30	-	SILENCING FOAM (50 mm)	1				
•40	1604 3428 00	HINGE	2				
•50	1615 5684 00	BRACKET	2				
•60	0216 1324 03	HEX SOCK. SCREW	4				
•70	0246 1956 35	STUD	2				
•80	1619 1663 00	DOOR HOOK	1				
•90	0129 3270 17	BLIND RIVET	2				
-	1079 0003 33	SILENCING FOAM 2000 mm x 1500 mm x 50 mm					

CLICK HERE TO **DOWNLOAD** THE COMPLETE MANUAL

- Thank you very much for reading the preview of the manual.
- You can download the complete manual from: www.heydownloads.com by clicking the link below

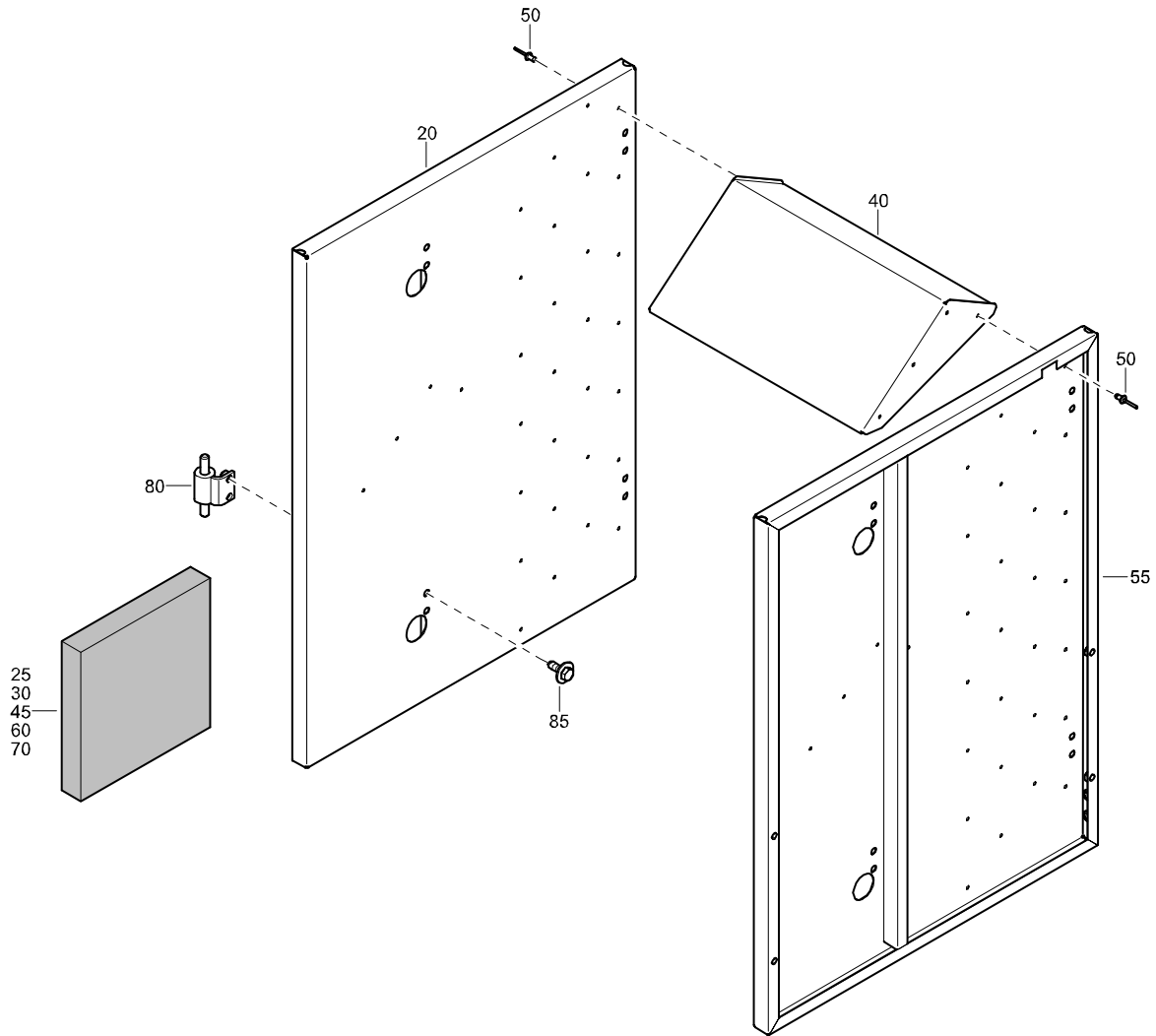


- Please note: If there is no response to CLICKING the link, please download this PDF first and then click on it.

CLICK HERE TO **DOWNLOAD** THE COMPLETE MANUAL

STANDARD

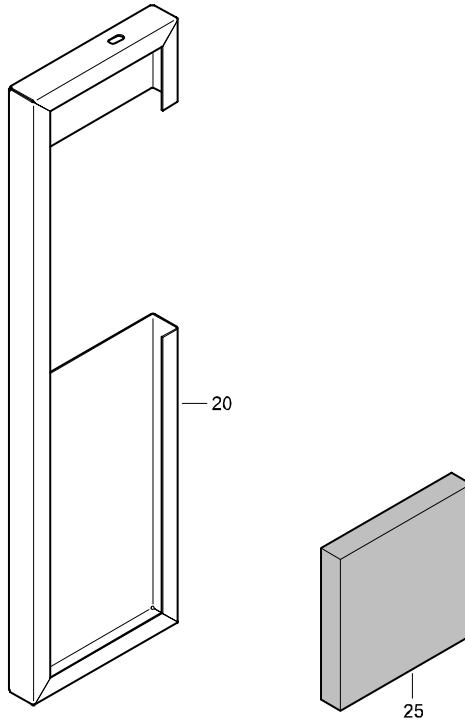
BAFFLE FOR COMPRESSOR WITH NOISE REGULATION CE



REF	PART NUMBER	DESIGNATION	QTY	REF	PART NUMBER	DESIGNATION	QTY
-	1604 2659 82	BAFFLE	(From page 76)				
•20	1604 2659 02	PANEL	1				
•25	-	SILENCING FOAM (30 mm)	1				
•30	-	SILENCING FOAM (30 mm)	1				
•40	1604 2523 00	BAFFLE	8				
•45	-	SILENCING FOAM (30 mm)	8				
•50	0129 3270 30	BLIND RIVET	64				
•55	1604 2658 00	PANEL	1				
•60	-	SILENCING FOAM (30 mm)	1				
•70	-	SILENCING FOAM (30 mm)	1				
•80	1604 3434 00	SUPPORT	4				
•85	1615 5664 00	HEX. HEAD SCREW	8				
-	1079 0003 32	SILENCING FOAM 2000 mm x 1500 mm x 30 mm					

STANDARD

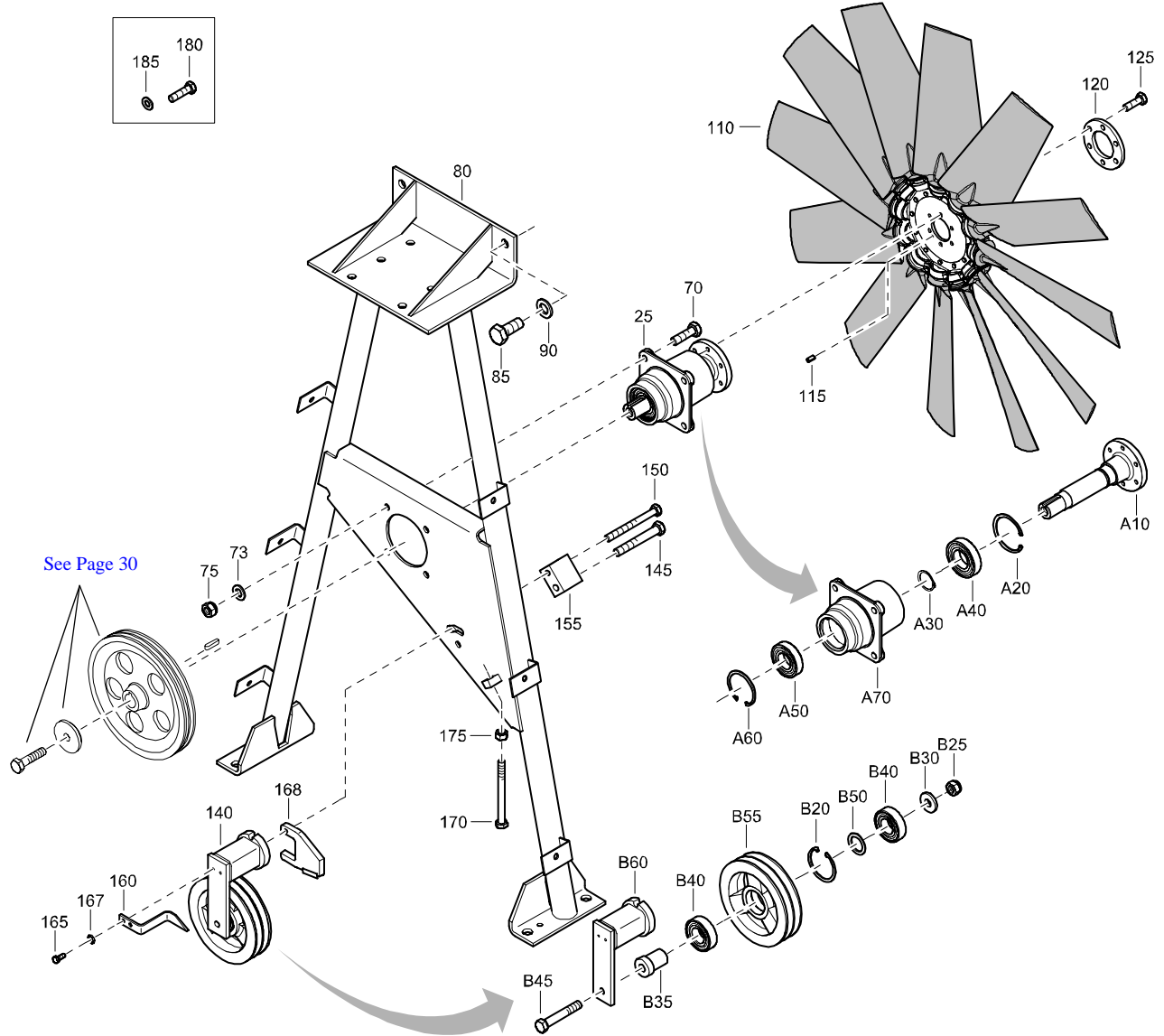
PANEL



REF	PART NUMBER	DESIGNATION	QTY	REF	PART NUMBER	DESIGNATION	QTY
-	1604 7786 83	PANEL	(From page 44)				
•20	1604 7786 03	PANEL	1				
•25	-	SILENCING FOAM (40 mm)	1				
-	1079 0001 91	SILENCING FOAM 2000 mm x 1500 mm x 40 mm					

STANDARD

FANDRIVE ASSEMBLY



REF	PART NUMBER	DESIGNATION	QTY	REF	PART NUMBER	DESIGNATION	QTY
-	1604 7535 81	FAN DRIVE ASSEMBLY (From page 108)		••B40	0502 1100 12	BALL BEARING	2
•25	1604 2455 81	FAN SHAFT ASSY	1	••B45	0147 1410 03	HEX. HEAD SCREW	1
••A10	-	FAN SHAFT	1	••B50	1615 5446 01	SPACER	1
••A20	-	CIRCLIP	1	••B55	1615 6034 00	TENSION PULLEY	1
••A30	-	CIRCLIP	1	••B60	1615 5443 00	TENSIONER	1
••A40	-	BALL BEARING	1	•145	0147 1412 03	HEX. HEAD SCREW	1
••A50	-	BALL BEARING	1	•150	0147 1377 03	HEX. HEAD SCREW	1
••A60	-	CIRCLIP	1	•155	1604 2665 00	SPACER	1
••A70	-	HOUSING	1	•160	1615 6048 00	POINTER	1
•70	0147 1403 03	HEX. HEAD SCREW	4	•165	0147 1244 03	HEX. HEAD SCREW	2
•73	0301 2358 00	PLAIN WASHER	4	•167	0333 3220 00	LOCK WASHER	2
•75	0291 1112 00	LOCKNUT	4	•168	1615 5540 00	LEVER	1
•80	1604 2490 01	SUPPORT	1	•170	0147 1379 12	HEX. HEAD SCREW	1
•85	0147 1477 03	HEX. HEAD SCREW	2	•175	0266 2111 00	HEXAGON NUT	1
•90	0301 2378 00	PLAIN WASHER	2	•180	0147 1326 03	HEX. HEAD SCREW	2
•110	1626 0668 00	FAN	1	•185	0301 2335 00	PLAIN WASHER	2
•115	0108 1320 00	SPRING PIN	1				
•120	1615 5439 00	CLAMP RING	1				
•125	0147 1363 15	HEX. HEAD SCREW	6				
•140	1615 6034 80	TENSION PULLEY ASSY	1				
••B20	0335 2146 00	CIRCLIP	1				
••B25	0291 1112 00	LOCKNUT	1				
••B30	1615 5447 00	WASHER	1				
••B35	1615 6036 00	SPACER	1				

OPTIONS

REGULATING SYSTEM FUELEXPERT

REF	PART NUMBER	DESIGNATION	QTY	REF	PART NUMBER	DESIGNATION	QTY
25	0147 1360 03	HEX. HEAD SCREW	4	630	1604 8378 01	MANIFOLD	1
30	-	PLAIN WASHER <i>(Part of service kit, see page 27)</i>	4	635	0581 0028 01	STRAIGHT PIPE COUPLING	1
45	0581 0000 72	STRAIGHT PIPE-COUPLING	1	640	1604 9398 02	PIPE	1
50	1079 5840 19	HEXAGON NIPPLE	1	645	0581 0028 01	STRAIGHT PIPE COUPLING	1
51	0661 1033 00	SEALING WASHER	1	650	0581 0228 01	STRAIGHT PIPE COUPLING	1
60	0575 0121 21	HOSE ASSEMBLY	1	655	1604 9399 01	PIPE	1
65	0575 0791 57	HOSE ASSEMBLY	1	662	-	FLAT GASKET <i>(Part of service kit, see page 27)</i>	1
70	0070 4022 43	FLEXIBLE CONDUIT	AR	665	0581 1228 04	PIPE COUPLING	1
170	0653 1062 00	FLAT GASKET	1	668	0605 8816 00	BUSHING	1
175	1615 9643 00	REDUCER FOR SCAVENGE PIPE	1	670	0581 2000 19	TEE PIPE COUPLING	1
180	0653 1062 00	FLAT GASKET	1	675	0575 0102 11	HOSE ASSEMBLY	2
185	0605 8814 06	BUSHING	1	680	0686 6442 03	HEXAGON PLUG	1
186	0653 1124 00	FLAT GASKET	1				
245	0581 0028 01	STRAIGHT PIPE COUPLING	1				
251	0395 1010 39	INSULATING HOSE	1				
255	0653 1062 00	FLAT GASKET	1				
270	0581 1200 23	ELBOW PIPE COUPLING	1				
280	0653 1062 00	FLAT GASKET	2				
285	0581 0028 01	STRAIGHT PIPE COUPLING	1				
290	1615 9643 00	REDUCER FOR SCAVENGE PIPE	2				
315	0070 6002 06	PLASTIC TUBE	AR				
320	0070 6002 06	PLASTIC TUBE	AR				
325	0581 1200 27	ELBOW PIPE COUPLING	1				
329	1503 2566 11	TEE	1				
330	0653 1062 00	FLAT GASKET	1				
346	0653 1062 00	FLAT GASKET	1				
347	0823 0000 19	NON-RETURN VALVE	1				
365	0395 1010 39	INSULATING HOSE	1				
396	0070 6002 05	PLASTIC TUBE	AR				
397	0581 1200 23	ELBOW PIPE COUPLING	1				
400	1604 5758 01	ADAPTER	1				
405	-	FLAT GASKET <i>(Part of service kit, see page 26)</i>	1				
410	0653 1124 00	FLAT GASKET	1				
445	1089 9515 02	SOLENOID VALVE	1				
450	1619 5205 00	NIPPLE	3				
460	0575 0102 04	HOSE ASSEMBLY	1				
465	0395 1010 43	INSULATING HOSE	1				
470	0581 0034 01	STRAIGHT PIPE COUPLING	2				
485	0581 0000 35	STRAIGHT PIPE COUPLING	1				
490	0686 4201 03	HEXAGON PLUG	1				
495	-	FLAT GASKET <i>(Part of service kit, see page 26)</i>	1				
510	0581 2000 28	TEE PIPE COUPLING	1				
530	0581 2000 28	TEE PIPE COUPLING	1				
535	0581 1200 29	ELBOW PIPE COUPLING	1				
540	0581 0028 01	STRAIGHT PIPE COUPLING	1				
545	0653 1062 00	FLAT GASKET	1				
560	1604 8379 00	SUPPORT	1				
565	0653 1062 00	FLAT GASKET	1				
570	0686 3716 03	HEXAGON PLUG	1				
575	0603 4102 03	HEXAGON NIPPLE	1				
580	0653 1062 00	FLAT GASKET	1				
585	1604 9397 01	PIPE	1				
590	0070 6002 05	PLASTIC TUBE	AR				
595	0803 5010 08	STRAINER	1				
610	0070 6002 05	PLASTIC TUBE	AR				
615	1604 9396 02	PIPE	1				
620	0581 1200 56	ELBOW	1				
625	0581 0028 01	STRAIGHT PIPE COUPLING	2				

OPTIONS

UNDERCARRIAGE FOR COMPRESSOR WITH NOISE REGULATION CE - WAGON

REF	PART NUMBER	DESIGNATION	QTY	REF	PART NUMBER	DESIGNATION	QTY
15	1604 2527 13	FRAME	1				
20	1604 4529 01	AXLE	1				
		(For details see page 189)					
25	0301 2378 00	PLAIN WASHER	8				
30	0147 1958 96	HEX. HEAD SCREW	8				
40	1604 2813 00	BRAKE CABLE	2				
50	1604 4530 03	AXLE	1				
		(For details see page 190)					
55	0301 2378 00	PLAIN WASHER	8				
60	0147 1958 96	HEX. HEAD SCREW	8				
80	1604 2691 03	TOWBAR	1				
•A20	1604 2796 02	BRAKE CABLE	1				
120	1615 7620 00	CHAIN (TOWBAR)	1				
121	1615 7776 00	COUPLING LINK	1				
150	1615 9260 82	TYRE ASSY	4				
•B20	0538 0400 19	TYRE	1				
•B25	1626 0078 00	WHEEL	1				
•B30	1615 6691 00	VENTIL	1				
160	1079 9917 99	INFORMATION LABEL	2				
170	1079 9917 79	INFORMATION LABEL	2				
230	0147 1465 03	HEX. HEAD SCREW	2				
235	0147 1962 18	HEX. HEAD SCREW	2				
240	0301 2358 00	PLAIN WASHER	4				
245	1604 4346 02	MUDGUARD	4				
255	1615 5664 00	HEX. HEAD SCREW	12				
280	1604 2805 03	PROTECTION	2				
285	1615 5664 00	HEX. HEAD SCREW	8				
290	-	SILENCING FOAM (50 mm)	2				
340	1079 3463 07	U-BOLT	1				
345	0266 2110 00	HEXAGON NUT	2				
350	0301 2335 00	PLAIN WASHER	4				
355	1079 3463 07	U-BOLT	1				
360	0266 2110 00	HEXAGON NUT	2				
365	0301 2335 00	PLAIN WASHER	4				
370	1615 6219 02	CHAIN	1				
850	1604 4338 00	PROTECTION	1				
855	1615 5664 00	HEX. HEAD SCREW	2				
-	1079 0003 33	SILENCING FOAM 2000 mm x 1500 mm x 50 mm					

OPTIONS

ADDITIONAL FUELFILTER

REF	PART NUMBER	DESIGNATION	QTY	REF	PART NUMBER	DESIGNATION	QTY
20	1604 5491 00	FUELFILTER	1				
•A20	2914 8307 00	FUELFILTER ELEMENT	1				
30	0147 1363 03	HEX. HEAD SCREW	3				
35	0301 2344 00	PLAIN WASHER	3				
40	0582 0000 56	BODY	1				
50	0653 1128 00	FLAT GASKET	2				
60	0571 0020 43	HOSE NIPPLE	1				
70	0582 0000 58	BODY	1				
90	0571 0020 40	HOSE NIPPLE	1				
100	0075 4025 35	FUEL HOSE	AR				
110	0582 0000 56	BODY	1				
120	0571 0020 43	HOSE NIPPLE	1				
180	0582 0000 58	BODY	1				
190	0571 0020 40	HOSE NIPPLE	1				
210	0075 4025 35	FUEL HOSE	AR				
220	1613 0801 03	PIPE CLAMP	2				

OPTIONS

ROADSIGNALISATION DOT USA

REF	PART NUMBER	DESIGNATION	QTY	REF	PART NUMBER	DESIGNATION	QTY
10	1604 4779 02	WIRE HARNESS	1				
20	1615 9602 00	CONNECTOR USA ROADSIGNALISATION1					
30	0147 1325 03	HEX. HEAD SCREW	2				
40	0266 2110 00	HEXAGON NUT	2				
50	0301 2335 00	PLAIN WASHER	2				
60	1604 4775 00	LIGHT	2				
70	0147 1249 03	HEX. HEAD SCREW	4				
80	0266 2108 00	HEXAGON NUT	4				
90	0301 2321 00	PLAIN WASHER	4				
100	1202 9402 01	REFLECTOR	2				
110	0266 2108 00	HEXAGON NUT	4				
120	0301 2321 00	PLAIN WASHER	4				
130	1604 4777 00	LIGHT	2				
140	0147 1208 03	HEX. HEAD SCREW	4				
150	0266 2107 00	HEXAGON NUT	4				
160	0301 2318 00	PLAIN WASHER	4				
170	1604 4773 00	LIGHT	2				
180	0147 1208 03	HEX. HEAD SCREW	4				
190	0266 2107 00	HEXAGON NUT	4				
200	0301 2318 00	PLAIN WASHER	4				
210	1604 4778 01	BRACKET	1				
220	0147 1325 03	HEX. HEAD SCREW	2				
230	0266 2110 00	HEXAGON NUT	2				
240	0301 2335 00	PLAIN WASHER	4				
250	1604 4774 00	LIGHT	3				
260	0147 1208 03	HEX. HEAD SCREW	6				
270	0266 2107 00	HEXAGON NUT	6				
280	0301 2318 00	PLAIN WASHER	6				
290	1604 4776 00	LIGHT	2				
300	0147 1208 03	HEX. HEAD SCREW	4				
310	0266 2107 00	HEXAGON NUT	4				
320	0301 2318 00	PLAIN WASHER	4				
330	1604 4772 00	LIGHT	2				
340	0147 1208 03	HEX. HEAD SCREW	4				
350	0266 2107 00	HEXAGON NUT	4				
360	0301 2318 00	PLAIN WASHER	4				
370	1604 2809 03	BUMPER	1				
380	0348 0110 03	ANCHOR PLATE	30				
390	0129 3110 00	BLIND RIVET	30				
400	0348 0101 05	CABLE TIE	40				
410	1604 2536 01	PLATE	2				
420	1615 5664 00	HEX. HEAD SCREW	12				
430	1088 0801 52	GROMMET	1				
440	1604 0383 00	SEAL (OIL SEPARATOR)	2				

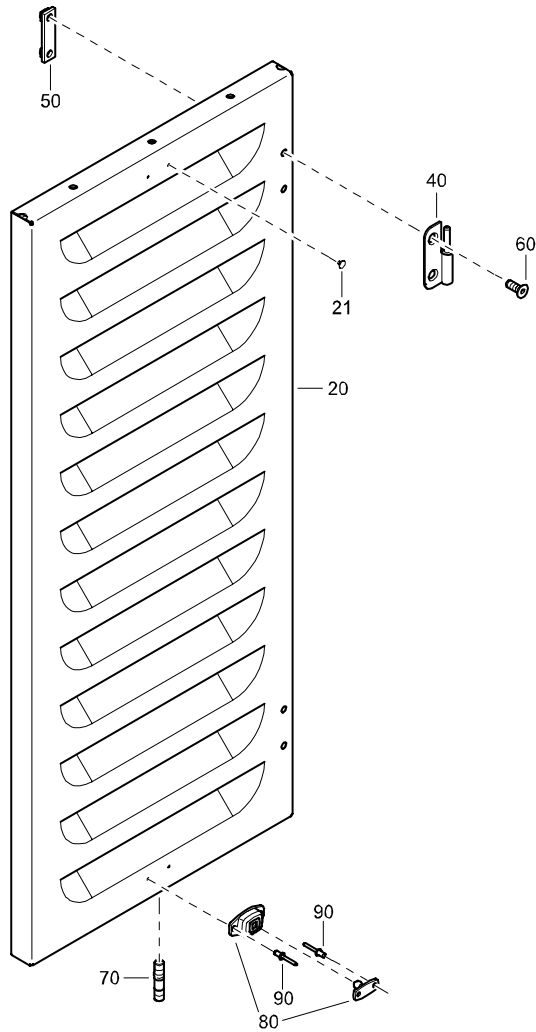
OPTIONS

FRAME AND SUPPORT FOR COMPRESSOR WITHOUT UNDERCARRIAGE FOR TANDEM

REF	PART NUMBER	DESIGNATION	QTY	REF	PART NUMBER	DESIGNATION	QTY
15	1604 4239 07	FRAME	1				
200	1604 2849 03	SUPPORT	2				
205	0301 2378 00	PLAIN WASHER	8				
210	0147 1958 96	HEX. HEAD SCREW	8				
260	1604 3588 01	PROTECTION	1				
262	1615 5664 00	HEX. HEAD SCREW	4				
265	1604 3589 01	PROTECTION	1				
267	1615 5664 00	HEX. HEAD SCREW	5				
270	1604 3590 01	PROTECTION	1				
275	1615 5664 00	HEX. HEAD SCREW	5				
280	1604 3587 01	PROTECTION	1				
285	1615 5664 00	HEX. HEAD SCREW	4				
300	1604 3763 02	PLATE	2				
310	1619 2766 00	HEX. HEAD SCREW	6				

OPTIONS

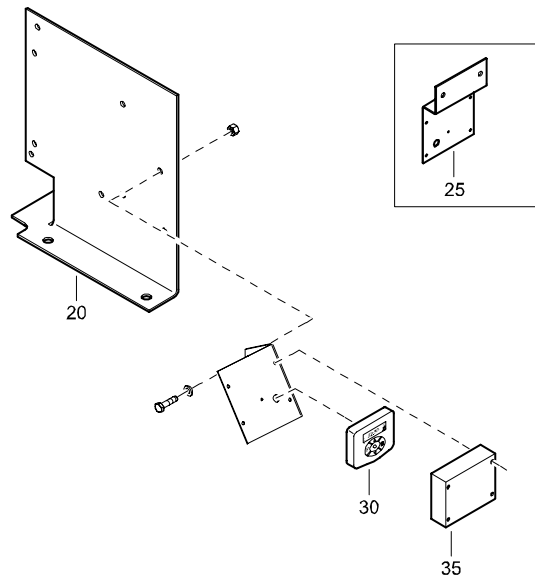
PANEL ASSEMBLY FOR WAGON



REF	PART NUMBER	DESIGNATION	QTY	REF	PART NUMBER	DESIGNATION	QTY
-	1604 3545 80	PANEL ASSY	(From page 133)				
•20	1604 3545 00	PANEL	1				
•21	0686 9252 87	PLUG	2				
•40	1604 3428 00	HINGE	2				
•50	1615 5684 00	BRACKET	2				
•60	0216 1324 03	HEX SOCK. SCREW	4				
•70	0246 1956 35	STUD	2				
•80	1619 1663 00	DOOR HOOK	1				
•90	0129 3270 17	BLIND RIVET	2				

OPTIONS

PREHEATER KIT



REF	PART NUMBER	DESIGNATION	QTY	REF	PART NUMBER	DESIGNATION	QTY
-	1604 4690 05	KIT	(From page 152)				
•20	1604 8314 00	BRACKET	1				
•25	1604 5281 01	BRACKET	1				
•30	1089 9585 01	TIME RELAY	1				
•35	1089 9585 81	COVER	1				

OPTIONS

FRAME/LARGE FUELTANK ASSEMBLY

REF	PART NUMBER	DESIGNATION	QTY	REF	PART NUMBER	DESIGNATION	QTY
-	1604 9841 81	FRAME/LARGE FUELTANK ASSY					
		(From page 164, 166)					
•10	1604 2849 03	SUPPORT	2				
•15	0147 1958 96	HEX. HEAD SCREW	8				
•20	0301 2378 00	PLAIN WASHER	8				
•25	1604 9841 00	FRAME	1				
•30	1604 7860 03	COVER	1				
•35	1604 8370 02	SEAL	1				
•40	0147 1323 03	HEX. HEAD SCREW	14				
•45	0301 2335 00	PLAIN WASHER	14				
•48	1613 2655 00	PLUG	5				
•50	1604 9842 80	FUELTANK ASSY	1				
		(For details see page 207)					
•52	1604 2492 02	SUPPORT	4				
•54	0147 1401 03	HEX. HEAD SCREW	4				
•56	0301 2358 00	PLAIN WASHER	4				
•58	1604 1275 00	SEAL	AR				
•60	1604 2473 00	SUPPORT	4				
•62	0147 1377 03	HEX. HEAD SCREW	4				
•64	0301 2344 00	PLAIN WASHER	8				
•66	0291 1111 00	LOCKNUT	4				
•68	0226 9920 14	LINK SCREW	4				
•70	0291 1111 00	LOCKNUT	4				
•72	1604 2471 00	RETAINER	4				
•74	0291 1110 00	LOCKNUT	4				
•76	0147 1343 03	HEX. HEAD SCREW	4				
•100	1604 9843 81	FUELTANK ASSY	1				
		(For details see page 208)					
•102	1604 2492 02	SUPPORT	5				
•104	0147 1401 03	HEX. HEAD SCREW	5				
•106	0301 2358 00	PLAIN WASHER	5				
•108	1604 2473 00	SUPPORT	5				
•110	0147 1377 03	HEX. HEAD SCREW	5				
•112	0301 2344 00	PLAIN WASHER	10				
•114	0291 1111 00	LOCKNUT	5				
•116	0226 9920 14	LINK SCREW	5				
•118	0291 1111 00	LOCKNUT	5				
•120	1604 2471 00	RETAINER	5				
•122	0291 1110 00	LOCKNUT	5				
•124	0147 1343 03	HEX. HEAD SCREW	5				
•200	1604 2582 00	GASKET	2				
•202	1604 2583 00	HOSE ASSEMBLY	1				
•204	0211 1249 03	HEX SOCK. SCREW	8				
•206	0301 2321 00	PLAIN WASHER	8				
•208	1604 2511 05	PROTECTION	1				
•210	1615 5664 00	HEX. HEAD SCREW	4				

CLICK HERE TO **DOWNLOAD** THE COMPLETE MANUAL

- Thank you very much for reading the preview of the manual.
- You can download the complete manual from: www.heydownloads.com by clicking the link below



- Please note: If there is no response to CLICKING the link, please download this PDF first and then click on it.

CLICK HERE TO **DOWNLOAD** THE COMPLETE MANUAL