

Parts List for Portable Compressors

XAS 37 Kd

CLICK HERE TO **DOWNLOAD** THE COMPLETE MANUAL

- Thank you very much for reading the preview of the manual.
- You can download the complete manual from: www.heydownloads.com by clicking the link below



- Please note: If there is no response to CLICKING the link, please download this PDF first and then click on it.

CLICK HERE TO **DOWNLOAD** THE COMPLETE MANUAL

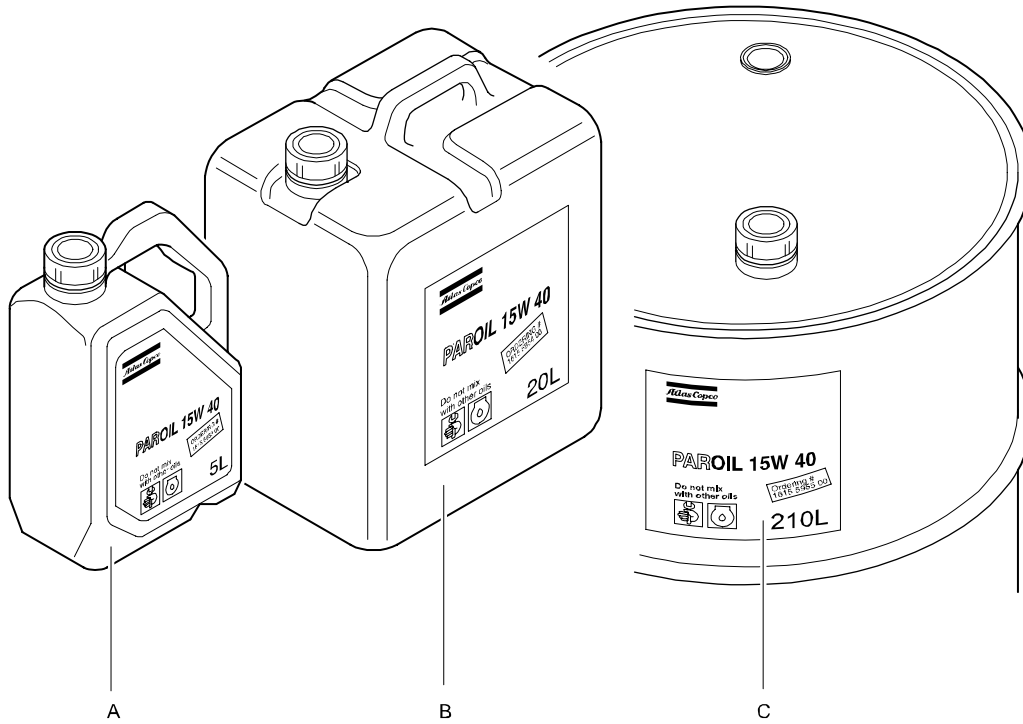
PARTS LIST

PARTS INDEX

PART	PAGE	PART	PAGE
A			
A.C. EYE.....	68	DECAL.....	47, 51, 64
ACTUATOR.....	37	DIN EYE.....	68
ADAPTER.....	85	DISK.....	33
ADJUSTABLE NO BRAKES.....	75, 93	DISK WHEEL.....	103, 104
AIR DUCT.....	43	DOOR.....	45
AIR FILTER.....	18, 43, 55	DRUM.....	95
AIR FILTER ELEMENT.....	55	E	
AIR INLET.....	43	ELBOW.....	87, 91
AIR OUTLET.....	42	ELECTRICAL SYSTEM.....	44
ANTI THEFT.....	81	ELEMENT MOUNTING KIT.....	29
ANTIFROST.....	87	ENGINE AND ACCESSORIES.....	32
ANTIVIBRATION PAD.....	33	ENGINE COOLANT.....	23
AXLE.....	74, 75, 76, 77, 94, 95	ENGINE.....	32
B			
BALL COUPLING.....	68, 70, 90	ENGINE OIL.....	19, 20
BANJO UNION.....	80	ENGINE WATERSYSTEM.....	36
BATTERY.....	53, 91	EQUALIZER.....	96, 98
BATTERY CABLE.....	53	EXHAUST PIPE.....	32
BEARING.....	27, 28, 94, 95	EXPANSION TANK ASSEMBLY.....	36
BELLOWS.....	105	EYE HOUSING.....	105
BODYWORK AND MOUNTS.....	45, 46	F	
BRAKE CABLE.....	76, 77, 96, 98	FAN.....	39
BRAKE SHOE.....	25, 95	FAN ADAPTER.....	39
BRAKE SHOES KIT.....	25	FAN COWL.....	39
BREMSE.....	92	FAN GUARD.....	39
BUFFER.....	58	FILTER ELEMENT.....	18
BULB.....	64	FILTER HOUSING.....	40
BUMPER.....	99	FLANGE.....	67
BUMPER ASSEMBLY.....	83, 99	FLANGE ASSEMBLY.....	40, 67
BUSH.....	68, 70, 92, 105	FOOT.....	71
BUSHING.....	35, 65, 91, 95	FRAME.....	48, 56, 80, 100
BUTTON.....	64	FRAME AND MOUNTS.....	33, 34
C			
CABLE.....	44, 83, 91, 105	FRAME ASSEMBLY.....	48, 56
CABLE ROAD SIGNALISATION.....	99	FRONT BAFFLE.....	61
CABLE STRIP.....	37, 40, 44, 105	FRONT BAFFLE ASSEMBLY.....	45, 61
CAP.....	27, 28, 94, 95	FRONT TOWBAR.....	96, 98, 105
CATCH.....	58	FUEL FILTER.....	31
CHAIN ASSEMBLY.....	70	FUEL HOSE.....	31, 36
CIRCLIPS.....	27, 95	FUEL SYSTEM.....	31
CIRCUIT BREAKER.....	64	FUELTANK ASSEMBLY.....	31
CLAMP.....	36, 44, 73, 93, 96, 97, 98	FUSE.....	92
CLAMP ASSEMBLY.....	71	G	
CLAMPING RING.....	39	GASSPRING.....	45
CLASP.....	95, 105	GROMMET.....	62, 82
CLIP.....	93, 96, 97, 98	H	
COLD START.....	87, 91	HANDGRIP.....	45
COMPRESSOR OIL.....	21, 22	HANDLE.....	92
CONNECTION.....	92	HEXAGON PLUG.....	37, 59, 67, 80
CONNECTION ELBOW.....	92	HOLDER (DOCUMENT).....	58
COOLER.....	39	HOOD.....	58
COOLER AND FAN.....	39	HOOD ASSEMBLY.....	45, 58
COUNTRY SET.....	50, 51	HOSE.....	36, 40, 42, 43, 48, 80, 82, 87, 91
COUPLING.....	35	HOSE ASSEMBLY.....	40
COUPLING AND ELEMENT.....	35	HOSE CLAMP.....	36, 43, 80
COVER.....	59, 64, 65	HOSE CLIP.....	31, 40, 42, 80, 82, 87, 91
D			
DATA PLATE.....	47	HOSE NIPPLE.....	80, 82
		HOSE OLNH.....	40
		HOSE REEL.....	82, 92
		HOSE+COUPLING.....	92

ENGINE OIL

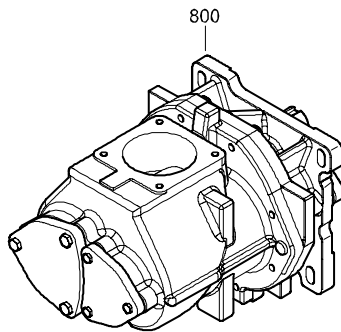
15W 40



REF	PART NUMBER	DESIGNATION	QTY	REF	PART NUMBER	DESIGNATION	QTY
A	1615 5953 00	PAROIL 15W40 5 LITER CAN	1				
B	1615 5954 00	PAROIL 15W40 20 LITER CAN	1				
C	1615 5955 00	PAROIL 15W40 210 LITER BARREL	1				

SERVICE STAGE

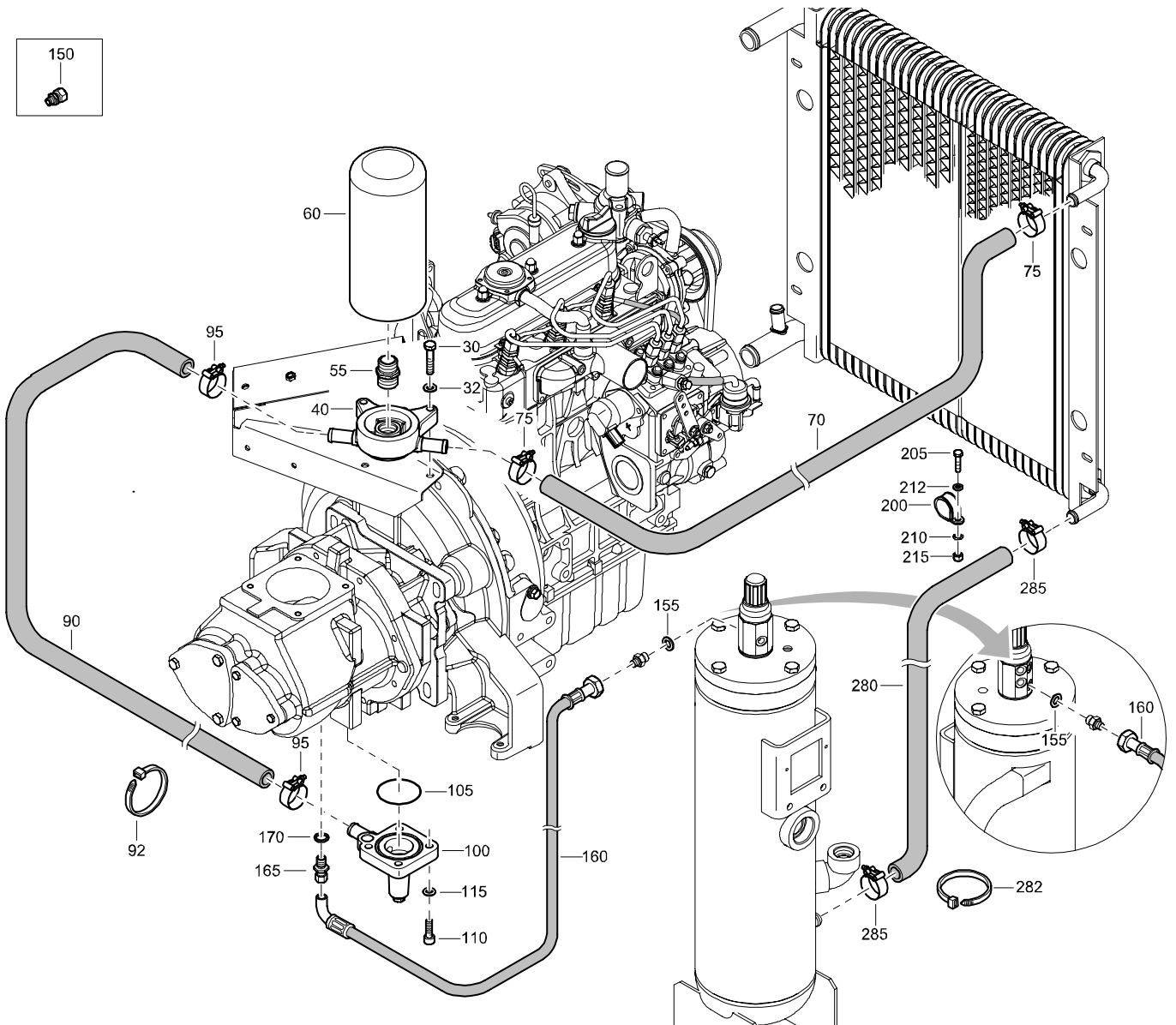
COMPRESSOR ELEMENT



REF	PART NUMBER	DESIGNATION	QTY	REF	PART NUMBER	DESIGNATION	QTY
-	1616 6260 90	SERVICE STAGE O.I.S. H-05					
• 800	-	SERVICE STAGE O.I.S. H-05	1				

STANDARD

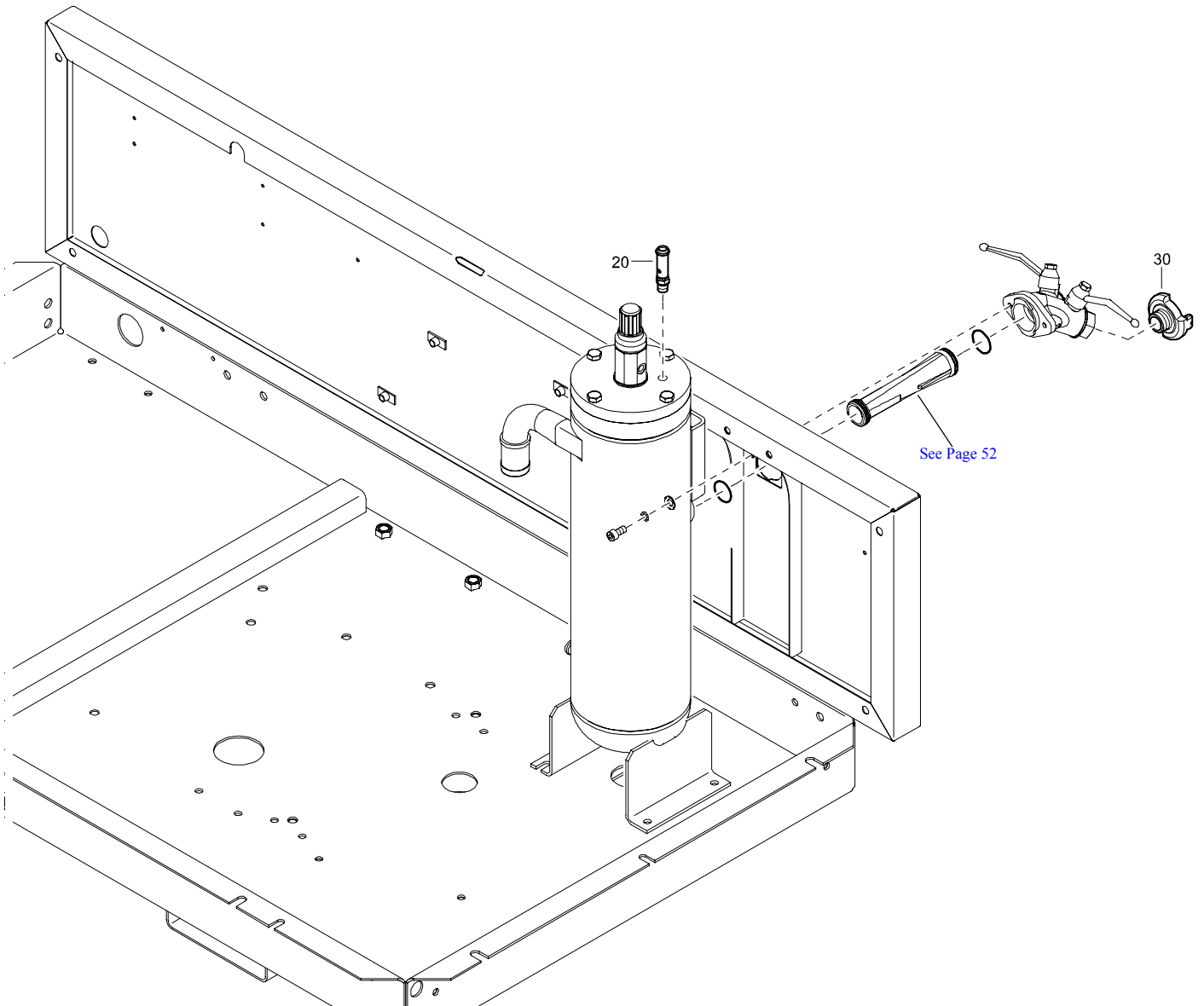
OIL SYSTEM



REF	PART NUMBER	DESIGNATION	QTY	REF	PART NUMBER	DESIGNATION	QTY
30	0147 1327 03	HEX. HEAD SCREW	2	170	0653 1070 00	FLAT GASKET	1
32	0301 2335 00	PLAIN WASHER	2	200	1613 0801 08	PIPE CLAMP	2
40	-	FILTER HOUSING (Not available separately)	1	205	0147 1249 03	HEX. HEAD SCREW	1
55	1619 3770 00	NIPPLE	1	210	0333 3220 00	LOCK WASHER	1
60	1613 6105 00	OIL FILTER	1	212	0301 2321 00	PLAIN WASHER	2
70	1615 8993 10	HOSE OLNH	1	215	0266 2108 00	HEXAGON NUT	1
75	1202 8663 06	HOSE CLIP	2	280	0072 8403 16	HOSE	AR
90	1615 8993 01	HOSE	AR	282	1088 1301 04	CABLE STRIP	4
92	1088 1301 04	CABLE STRIP	1	285	1202 8663 06	HOSE CLIP	2
95	1202 8663 06	HOSE CLIP	2				
100	1615 7768 80	FLANGE ASSY (For details see page 67)	1				
105	0663 7135 00	O-RING	1				
110	0211 1325 03	HEX SOCK. SCREW	4				
115	0301 2335 00	PLAIN WASHER	4				
150	0581 0000 47	STRAIGHT PIPE COUPLING	1				
155	0653 1046 00	FLAT GASKET	1				
160	0575 0241 28	HOSE ASSEMBLY	1				
165	0581 0000 47	STRAIGHT PIPE COUPLING	1				

STANDARD

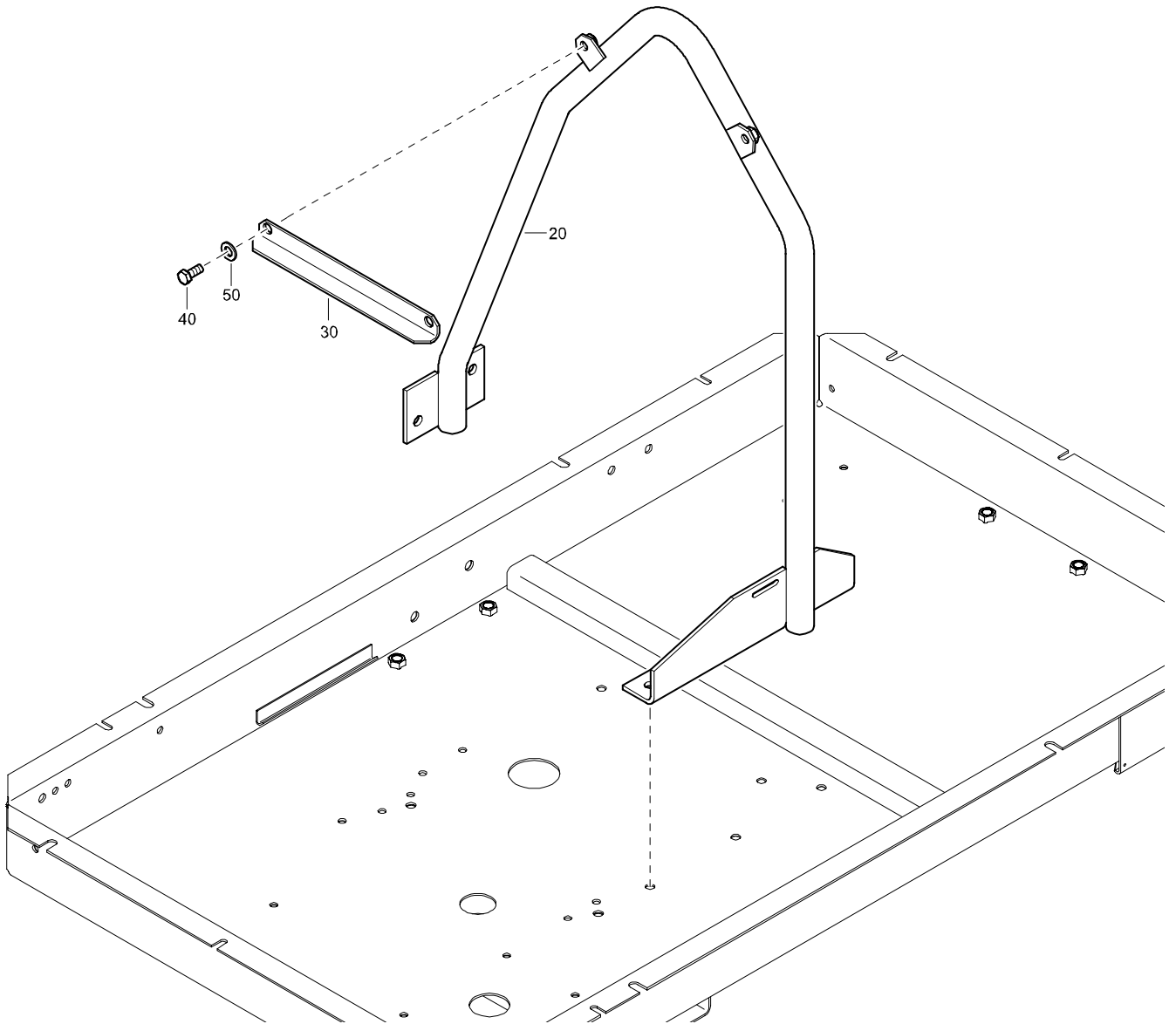
COUNTRY SET
EC



REF	PART NUMBER	DESIGNATION	QTY	REF	PART NUMBER	DESIGNATION	QTY
20	0830 1009 26	SAFETY VALVE	1				
30	9000 0302 00	PIPE COUPL.	1				

STANDARD

LIFTING EYE ASSEMBLY

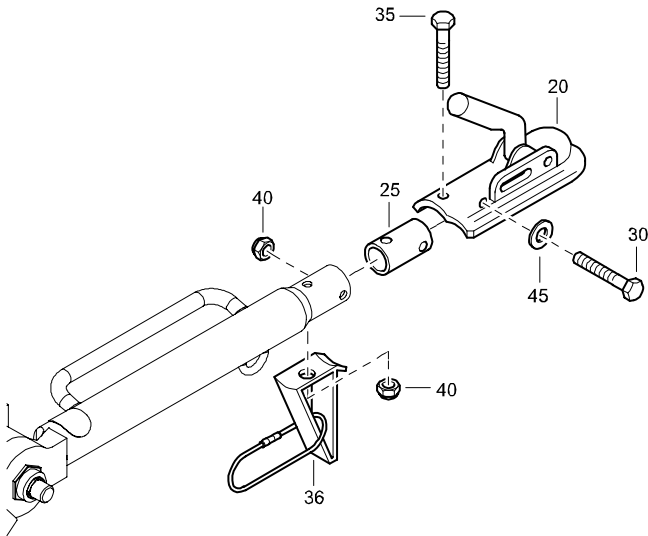


REF	PART NUMBER	DESIGNATION	QTY	REF	PART NUMBER	DESIGNATION	QTY
-	1604 6803 81	LIFTING EYE ASSEMBLY (From page 33)					
•20	1604 6803 02	SUPPORT	1				
•30	1604 7298 01	PROFILE	1				
•40	0147 1362 03	HEX. HEAD SCREW	2				
•50	0301 2358 00	PLAIN WASHER	2				

OPTIONS

TOWING EYES BALL COUPLING, JOCKY WHEEL, SAFETY CHAIN

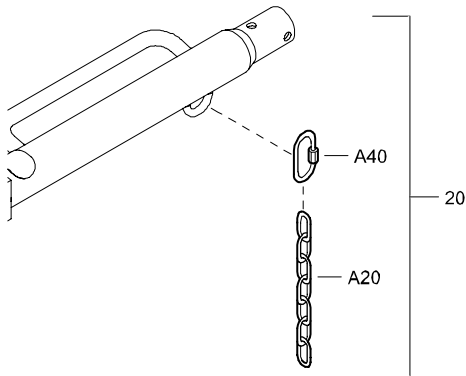
BALL COUPLING - NO BRAKES



REF	PART NUMBER	DESIGNATION	QTY
20	1619 6826 00	BALL COUPLING	1
25	1202 9732 00	BUSH	1
30	1202 9844 02	BOLT	1
35	1202 9844 05	BOLT	1
36	1615 7467 00	BRACKET	1
•	1619 7213 00	SUPPORT	1
•	1615 6884 00	CABLE	1
40	0291 1185 13	LOCKNUT	2
45	0301 2358 00	PLAIN WASHER	1

1611 7713 12/02

SAFETY CHAIN

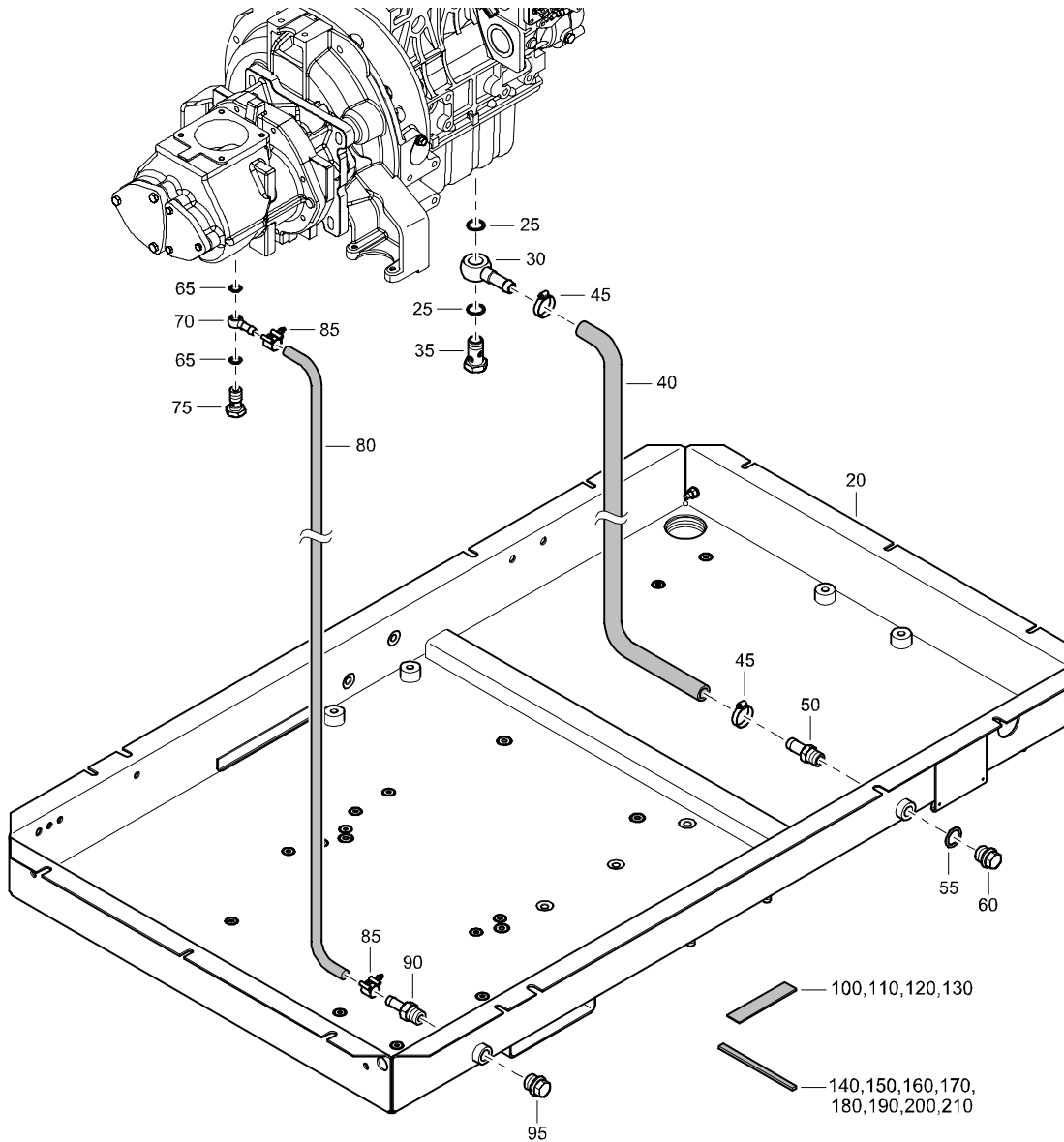


REF	PART NUMBER	DESIGNATION	QTY
20	1604 1574 80	CHAIN ASSY	1
•A20	1604 1574 00	SAFETY CHAIN	1
•A40	1604 1572 02	QUICK COUPLING	2

1611 7722 12/02

OPTIONS

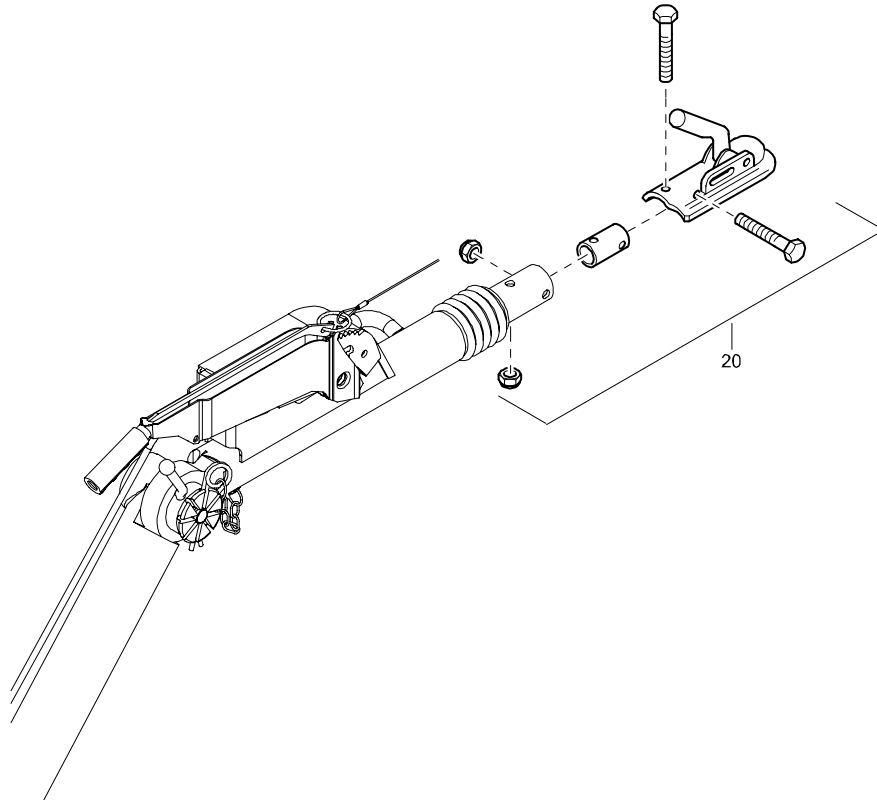
FRAME SPILLAGE FREE



REF	PART NUMBER	DESIGNATION	QTY	REF	PART NUMBER	DESIGNATION	QTY
20	1604 7377 81	FRAME SF <i>(For details see page 100)</i>	1	130	1619 5188 00	SEAL	AR
25	0653 1128 00	FLAT GASKET	2	140	1615 7057 00	SEAL	AR
30	0571 0050 07	BANJO NIPPLE	1	150	1615 7057 00	SEAL	AR
35	0627 4217 00	PRESSURE SCREW	1	160	1615 7057 00	SEAL	AR
40	0072 8403 16	HOSE	AR	170	1615 7057 00	SEAL	AR
45	0347 6108 00	HOSE CLAMP	2	180	1615 7057 00	SEAL	AR
50	9000 0244 00	HOSE NIPPLE	1	190	1615 7057 00	SEAL	AR
55	0653 1115 00	FLAT GASKET	1	200	1615 7057 00	SEAL	AR
60	0686 4230 18	HEXAGON PLUG	1	210	1615 7057 00	SEAL	AR
65	0653 9056 00	FLAT GASKET	2				
70	9000 0294 00	BANJO UNION	1				
75	0627 5113 03	PRESSURE SCREW	1				
80	0075 4025 41	HOSE	AR				
85	1202 8663 03	HOSE CLIP	2				
90	9000 0242 00	HOSE NIPPLE	1				
95	0686 4230 18	HEXAGON PLUG	1				
100	1619 5188 00	SEAL	AR				
110	1619 5188 00	SEAL	AR				
120	1619 5188 00	SEAL	AR				

OPTIONS

BALL COUPLING



REF	PART NUMBER	DESIGNATION	QTY	REF	PART NUMBER	DESIGNATION	QTY
20	1619 6826 80	BALL COUPLING	1				

CLICK HERE TO **DOWNLOAD** THE COMPLETE MANUAL

- Thank you very much for reading the preview of the manual.
- You can download the complete manual from: www.heydownloads.com by clicking the link below



- Please note: If there is no response to CLICKING the link, please download this PDF first and then click on it.

CLICK HERE TO **DOWNLOAD** THE COMPLETE MANUAL