

**Parts List**  
**For Portable Compressors**

**XAS 356 Cd**

CLICK HERE TO **DOWNLOAD** THE COMPLETE MANUAL

- Thank you very much for reading the preview of the manual.
- You can download the complete manual from: [www.heydownloads.com](http://www.heydownloads.com) by clicking the link below



- Please note: If there is no response to CLICKING the link, please download this PDF first and then click on it.

CLICK HERE TO **DOWNLOAD** THE COMPLETE MANUAL

---

**PARTS LIST**

---

**PARTS INDEX**

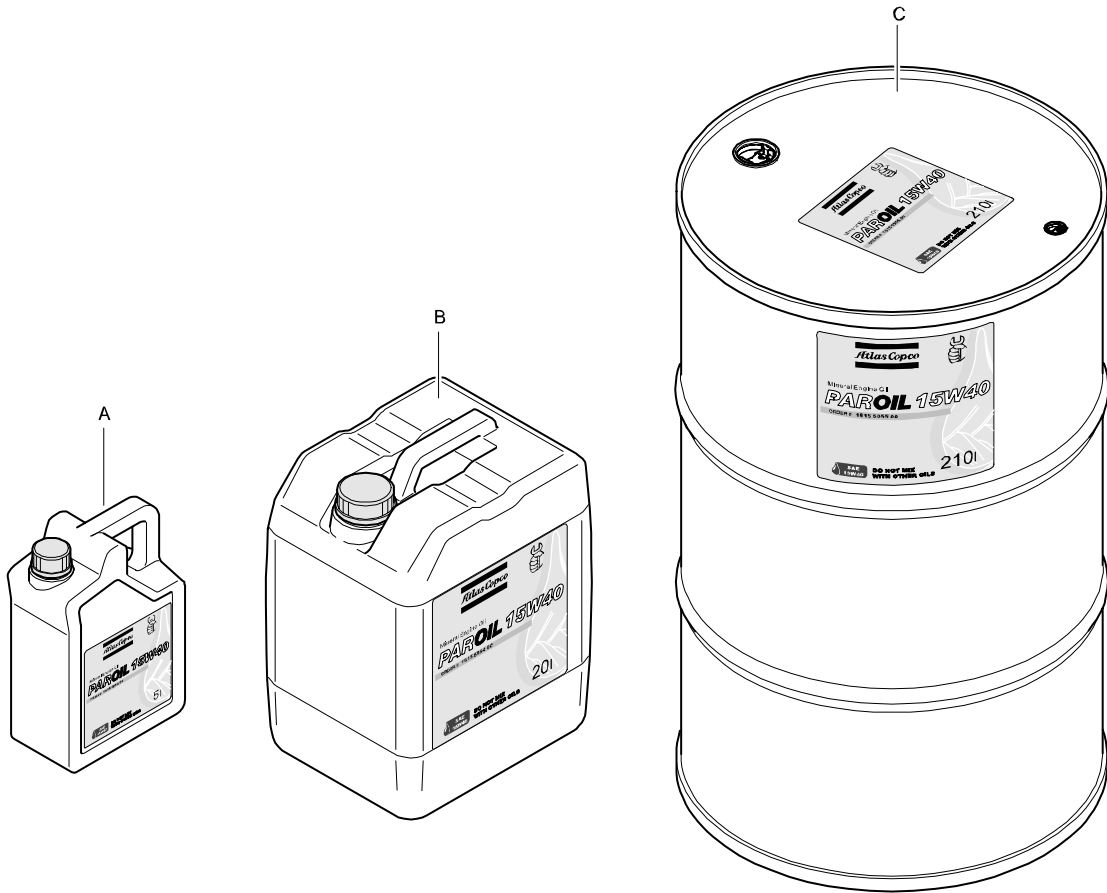
<b>PART</b>	<b>PAGE</b>	<b>PART</b>	<b>PAGE</b>
<b>A</b>			
ADAPTER .....	37, 39, 40	DIODE .....	54
ADAPTER FLANGE .....	37, 46, 96, 97, 104, 98, 100, 102	DISPLAY .....	81
AFTERCOOLER.....	96, 97, 104, 98, 99, 100, 101, 102, 103	DISTANCE PIECE .....	51, 54
AIR DUCT .....	51	DISTANCE SLEEVE .....	48
AIR FILTER .....	51	DOOR .....	48
AIR FILTER ELEMENT .....	51	DRAINS.....	50
AIR FILTER SAFETY CARTRIDGE .....	51	<b>E</b>	
AIR INLET.....	51	ELBOW .....	50, 91
AIR INLET VALVE .....	91	ELBOW COUPLING .....	39
AIR OUTLET .....	46, 47	ELBOW PIPE COUPLING .....	39
ANCHOR PLATE .....	54	ELECTRICAL SYSTEM .....	54, 55
ANTIVIBRATION PAD .....	46	ELEMENT MOUNTING .....	30
APPLIANCE INLET .....	92, 93	ENGINE COOLANT .....	25
AXLE.....	86, 88	ENGINE OIL .....	20, 21
<b>B</b>			
BAFFLE .....	40, 63, 64	EMERGENCY STOP.....	54
BALL CAGE.....	82	ENGINE.....	34
BALL VALVE .....	46, 96, 97, 104, 98, 100, 102	ENGINE AND ACCESSORIES .....	34, 35
BATTERY .....	65, 66, 67, 106, 107	ENGINE AIR AND WATER SYSTEM .....	42, 43
BATTERY CABLE .....	54	ENGINE AIR INLET PIPE .....	56
BEAM.....	110	EXHAUST PIPE.....	34
BEARING .....	110	<b>F</b>	
BELLOW.....	110	FAN .....	40
BODYWORK AND MOUNTS .....	48, 49	FAN COWL .....	40
BRAKE CABLE.....	86, 88	FAN GUARD.....	40
BRAKE LEVER.....	110	FAN GUIDE .....	40
BRAKE ROD .....	110	FILTER .....	51, 97, 104, 100, 102
BUFFER.....	34, 90, 110	FRAME.....	32
BUMPER.....	86, 88, 93, 94	FRAME AND MOUNTS .....	32
<b>C</b>			
CABLE .....	54, 81, 91, 92, 93, 110	FRONT MARKER .....	92, 93
CABLE CLAMP .....	92, 93	FUEL GAUGE.....	81
CABLE STRIP .....	54	FUEL HOSE .....	33, 42, 51
CANOPY.....	63, 64	FUEL SYSTEM.....	33
CAN PAROIL.....	24	FUEL TANK ASSEMBLY .....	33, 69
CAP .....	69	FUEL FILTER .....	33
CATCH.....	48	FUEL TANK.....	69
CHAIN.....	69	<b>G</b>	
CIRCLIP.....	75	GAS SPRING .....	48
CIRCUIT BREAKER.....	54	GEAR CASING.....	36
CLIP.....	40, 48	GEAR SET.....	57
CONNECTION .....	69, 70, 71, 72, 91	GEAR CASING & MOUNTS .....	36
CONNECTION SET .....	97, 104, 100, 102	GEARS .....	57
CONTAINER .....	23	GROMMET .....	92, 93, 96, 97, 104, 98, 100, 102
CONTROL BOX.....	76, 81	GUIDE .....	54
CONTROL UNIT.....	52, 76	<b>H</b>	
COMPRESSOR OIL .....	22, 23, 24	HANDGRIP.....	48
COOLER AND FAN.....	40, 41	HANDLE .....	82
CORE PLUG .....	77	HEXAGON PLUG .....	37, 39, 44, 50, 69, 75, 78, 79, 80
COUPLING .....	38, 96, 97, 104, 98, 100, 102	HINGE .....	48, 81
COUPLING HUB.....	38	HOLDER .....	32, 54
COUPLING RING .....	38	HOSE .....	42, 51, 54, 91, 106, 107
COVER.....	36, 40, 48, 78, 79, 80, 81	HOSE ASSEMBLY .....	44, 50, 46, 98, 100, 102
COVER AIR FILTER .....	51	HOSE CLAMP .....	33, 42, 51, 69, 91
CUBICLE.....	54	HOUSE MARK .....	53
<b>D</b>			
DECAL.....	59, 68, 83	HOUSING.....	37, 81, 82, 110
DECAL ASSEMBLY .....	81, 83	HUMP HOSE.....	51

---

# ENGINE OIL

## PAROIL 15W40

---



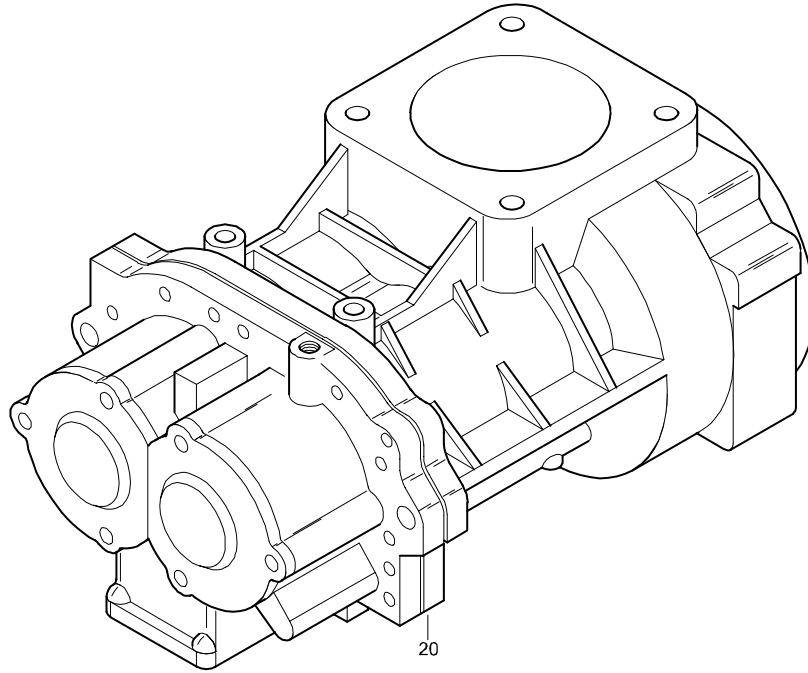
REF	PART NUMBER	DESIGNATION	QTY	REF	PART NUMBER	DESIGNATION	QTY
A	1615 5953 00	PAROIL 15W40 5 LITER CAN	1				
B	1615 5954 00	PAROIL 15W40 20 LITER CAN	1				
C	1615 5955 00	PAROIL 15W40 210 LITER BARREL	1				

---

# SERVICE STAGE

O. I. S. M-01

---



REF	PART NUMBER	DESIGNATION	QTY	REF	PART NUMBER	DESIGNATION	QTY
20	2989 0163 00	SERVICE STAGE O. I. S. M-01	1				

---

# STANDARD

## COOLER AND FAN

---

REF	PART NUMBER	DESIGNATION	QTY	REF	PART NUMBER	DESIGNATION	QTY
20	1604 7691 01	ADAPTER	1				
25	0211 1963 92	HEX SOCK. SCREW	6				
30	1604 1346 00	FAN	1				
35	1604 1726 00	RING	1				
40	0147 1326 03	HEX. HEAD SCREW	6				
45	0301 2335 00	PLAIN WASHER	6				
50	1604 1369 00	RADIATOR	1				
60	1604 1345 00	OILCOOLER	1				
70	1604 1789 01	INTERCOOLER	1				
100	1604 1351 00	PAD	1				
105	1604 2128 00	PAD	2				
110	0147 1321 03	HEX. HEAD SCREW	10				
115	0300 8019 00	PLAIN WASHER	10				
130	0147 1321 03	HEX. HEAD SCREW	10				
135	0300 8019 00	PLAIN WASHER	10				
140	1604 1738 00	BRACKET	2				
142	1604 2167 00	BRACKET	1				
144	1604 2168 00	BRACKET	1				
150	1604 1370 02	FAN COWL	1				
155	0147 1321 03	HEX. HEAD SCREW	15				
157	0301 2335 00	PLAIN WASHER	15				
165	1604 2131 01	PLATE	1				
170	1604 2171 01	PLATE	1				
175	1619 2766 00	HEX. HEAD SCREW	4				
205	1089 0659 53	LEVEL SWITCH	1				
210	0661 1023 00	SEALING WASHER	1				
220	1604 1350 01	FAN GUIDE	1				
222	0300 0274 91	PLAIN WASHER	16				
225	1615 5664 00	HEX. HEAD SCREW	8				
250	1604 1733 01	FAN GUARD	2				
255	1615 5664 00	HEX. HEAD SCREW	8				
260	-	SILENCING FOAM	1				
265	-	SILENCING FOAM	1				
270	-	SILENCING FOAM	1				
275	1615 7884 00	CLIP	9				
300	1604 7979 00	PROTECTION	1				
302	0147 1322 03	HEX. HEAD SCREW	1				
304	0147 1359 03	HEX. HEAD SCREW	1				
306	0147 1474 03	HEX. HEAD SCREW	2				
310	-	SILENCING FOAM	1				
315	-	SILENCING FOAM	1				
320	1604 1715 00	BAFFLE	1				
350	1604 4731 00	COVER	1				
360	1615 5664 00	HEX. HEAD SCREW	6				
-	1079 0003 32	SILENCING FOAM 2000 mm x 1500 mm x 30 mm					
-	1079 0001 91	SILENCING FOAM 2000 mm x 1500 mm x 40 mm					
-	1079 0003 33	SILENCING FOAM 2000 mm x 1500 mm x 50 mm					

CLICK HERE TO **DOWNLOAD** THE COMPLETE MANUAL

- Thank you very much for reading the preview of the manual.
- You can download the complete manual from: [www.heydownloads.com](http://www.heydownloads.com) by clicking the link below

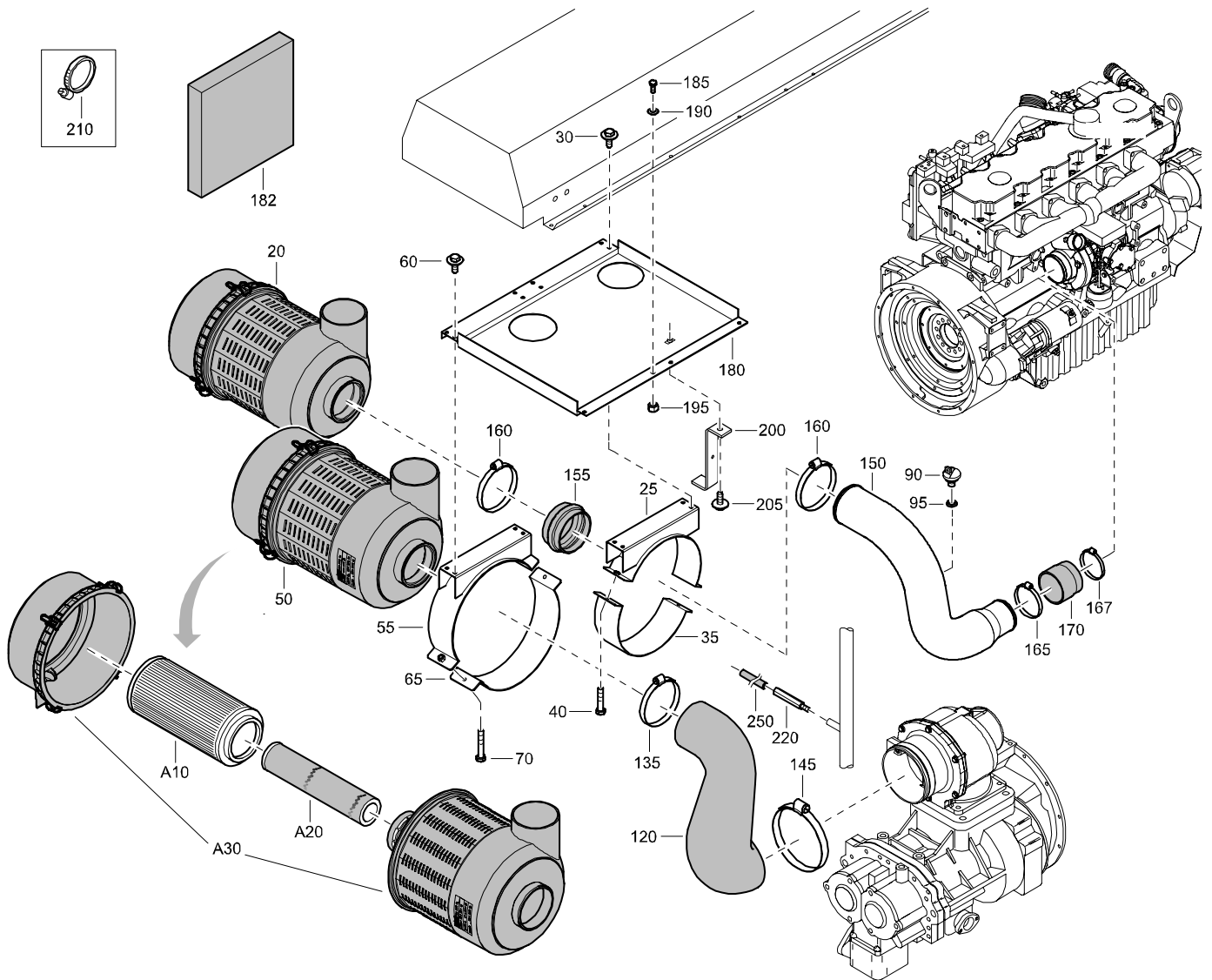


- Please note: If there is no response to CLICKING the link, please download this PDF first and then click on it.

CLICK HERE TO **DOWNLOAD** THE COMPLETE MANUAL

# STANDARD

## AIR INLET



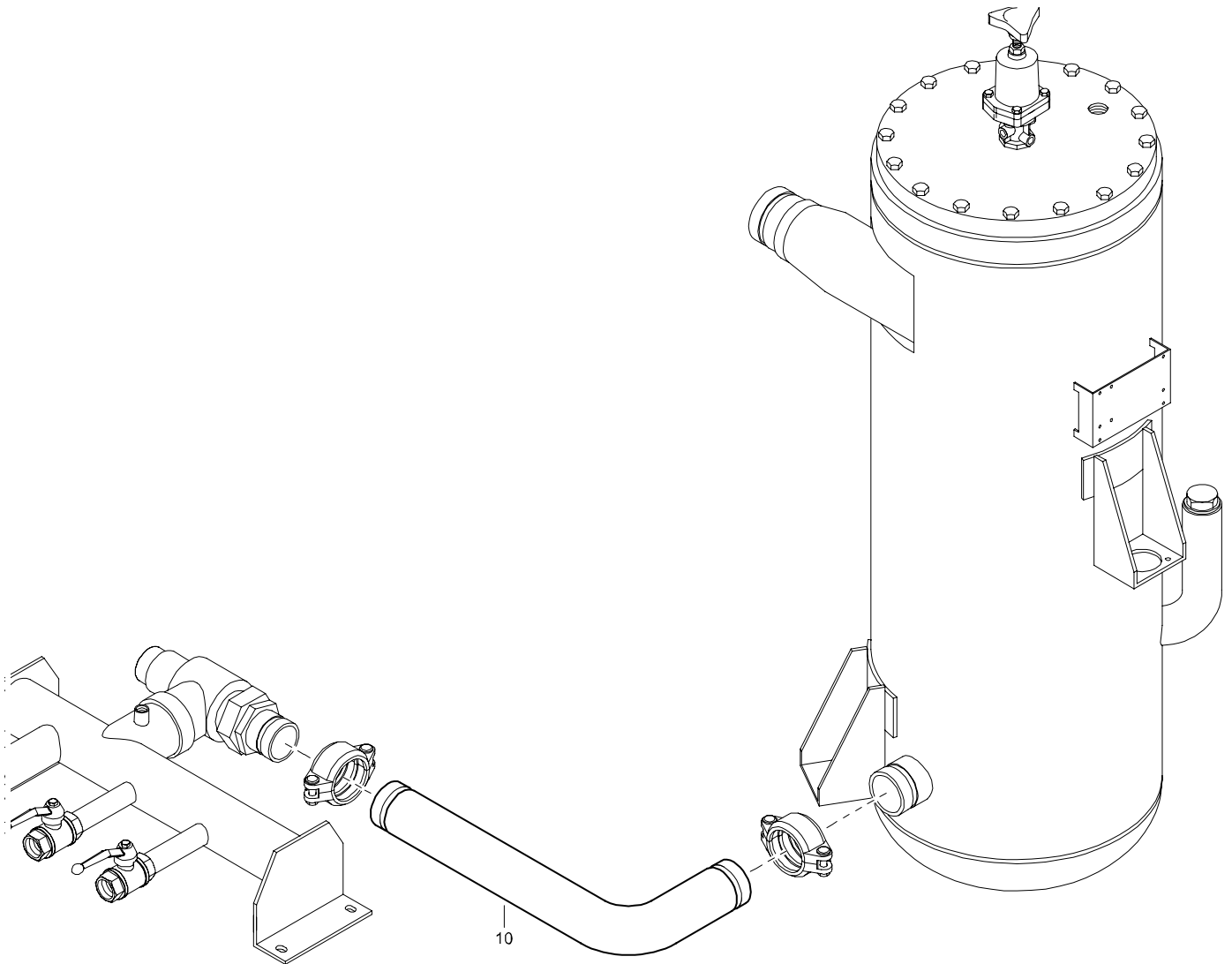
REF	PART NUMBER	DESIGNATION	QTY	REF	PART NUMBER	DESIGNATION	QTY
20	1615 9464 02	FILTER	1	160	0347 6119 00	HOSE CLAMP	2
25	1604 1316 00	SUPPORT	1	165	0347 6115 00	HOSE CLAMP	1
30	1615 5664 00	HEX. HEAD SCREW	4	167	0347 6100 23	HOSE CLAMP	1
35	1615 9465 00	CLAMP	1	170	1604 7651 01	HOSE	1
40	0147 1328 03	HEX. HEAD SCREW	2	180	1604 1711 01	PLATE	1
50	1604 0120 01	AIR FILTER	1	182	-	SILENCING FOAM	1
•A10	2914 5017 00	AIR FILTER ELEMENT	1	185	0147 1322 03	HEX. HEAD SCREW	4
•A20	2914 5018 00	AIR FILTER SAFETY CARTRIDGE	1	190	0301 2335 00	PLAIN WASHER	4
•A30	2914 8662 00	COVER AIR FILTER	1	195	0266 2110 00	HEXAGON NUT	4
55	1604 1709 00	SUPPORT	1	200	1604 1324 02	BRACKET	1
60	1615 5664 00	HEX. HEAD SCREW	4	205	1615 5664 00	HEX. HEAD SCREW	1
65	1604 0128 00	CLAMP (AIRFILTER)	1	210	0347 6119 00	HOSE CLAMP	1
70	0147 1330 03	HEX. HEAD SCREW	2	220	0324 1800 27	DISTANCE PIECE	1
90	1089 0607 06	WARNING SWITCH	1	250	0071 8403 01	FUEL HOSE	AR
95	0661 1014 00	SEALING WASHER	1	-	1079 0003 32	SILENCING FOAM 2000 mm x 1500 mm x 30 mm	
120	1604 1706 00	AIR DUCT	1	-	1079 0001 91	SILENCING FOAM 2000 mm x 1500 mm x 40 mm	
135	0347 6121 00	HOSE CLAMP	1	-	1079 0003 33	SILENCING FOAM 2000 mm x 1500 mm x 50 m	
145	0347 6122 00	HOSE CLAMP	1				
150	1604 7649 01	PIPE	1				
155	2250 8002 00	HUMP HOSE	1				

---

# STANDARD

## VESSEL AIR OUTLET PIPE FOR COMPRESSOR WITHOUT AFTERCOOLER

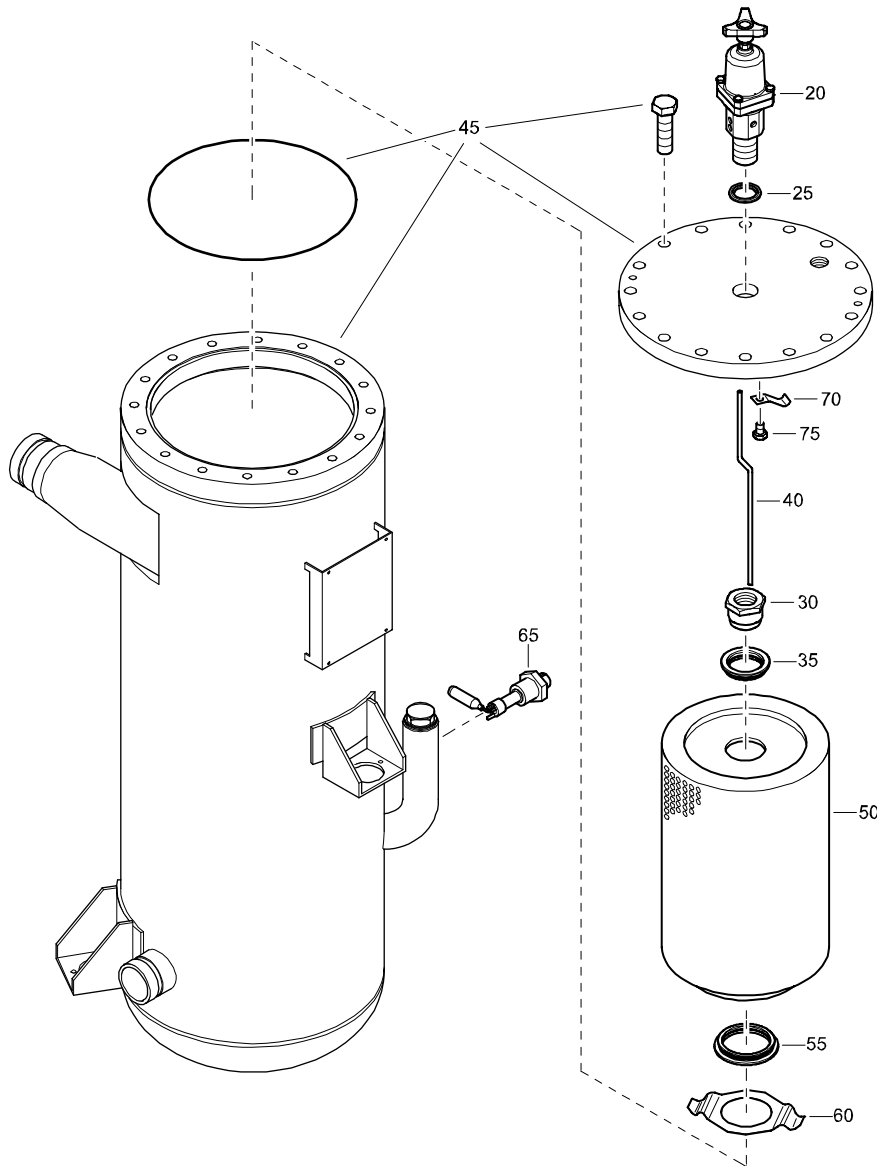
---



REF	PART NUMBER	DESIGNATION	QTY	REF	PART NUMBER	DESIGNATION	QTY
10	1604 1730 01	PIPE	1				

# STANDARD

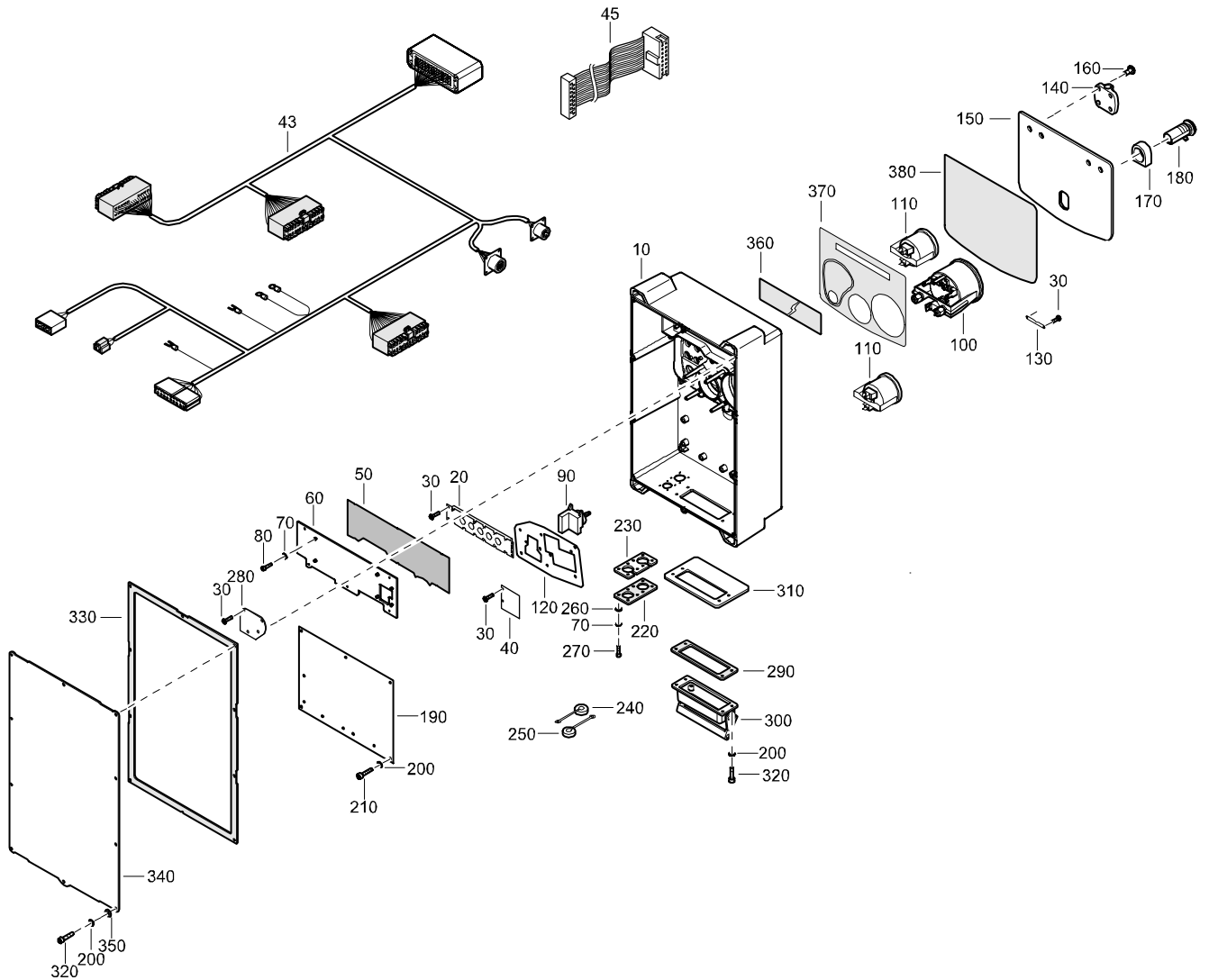
## OIL SEPARATOR ASSEMBLY ASME



REF	PART NUMBER	DESIGNATION	QTY	REF	PART NUMBER	DESIGNATION	QTY
-	1604 1327 91	OIL SEPARATOR (ASSY ASME) (From page 66, 106)					
•20	1604 2170 81	REGUL VALVE ASSY (For details see page 82)	1				
•25	0661 1049 00	SEALING WASHER	1				
•30	1604 1399 01	CONNECTION	1				
•35	1604 0383 00	SEAL (OIL SEPARATOR)	1				
•40	1604 1331 02	TUBE	1				
•45	1604 1378 83	PRESSURE VESSEL (ASME) (For details see page 79)	1				
•50	-	OILSEP.ELEMENT (Part of service kit, see page 29)	1				
•55	1604 1329 01	SEAL (OILSEPARATOR)	1				
•60	1604 1330 01	RETAINER	1				
•65	1616 5108 00	LEVEL GAUGE	1				
•70	1604 5745 00	RETAINER	1				
•75	0147 1320 03	HEX. HEAD SCREW	1				

# STANDARD

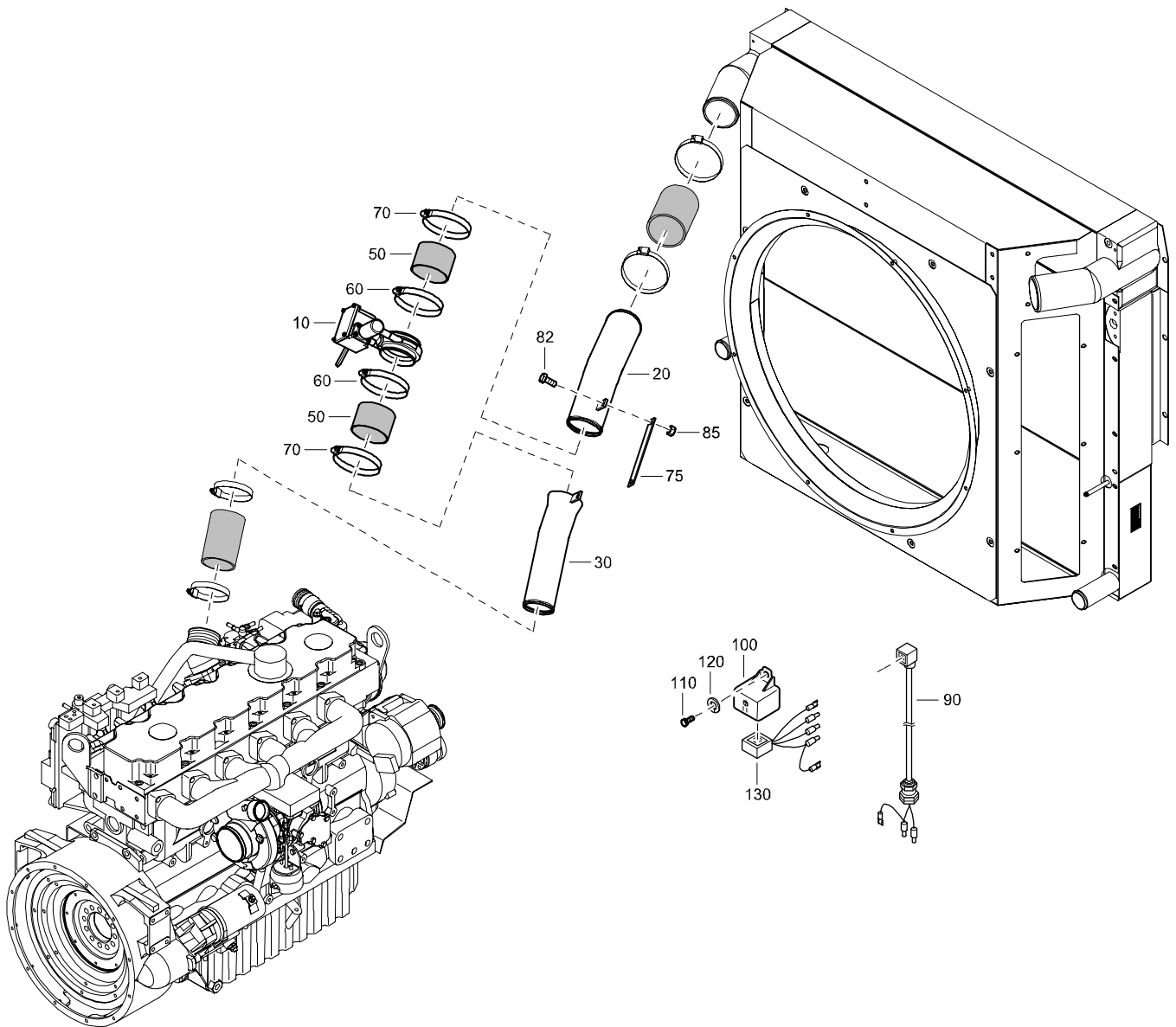
## CONTROL BOX



REF	PART NUMBER	DESIGNATION	QTY	REF	PART NUMBER	DESIGNATION	QTY
-	1604 1782 81	CONTROL BOX	(From page 76)	•220	1604 4271 00	SEAL	1
•10	1604 2738 00	HOUSING	1	•230	1604 1347 00	PLATE	1
•20	1604 1371 00	DISPLAY	1	•240	1604 2194 00	COVER	1
•30	0226 0300 48	TAPPING SCREW	12	•250	1604 2199 00	COVER	1
•40	1604 4299 80	PCB	1	•260	0301 2309 00	PLAIN WASHER	8
•43	1604 1758 00	WIRE HARNESS	1	•270	0211 1107 03	HEX SOCK. SCREW	8
•45	1604 5826 00	CABLE	1	•280	1604 1756 80	PCB	1
•50	1604 4270 00	SEAL	1	•290	1604 4300 00	SEAL	1
•60	1604 1795 00	PLATE	1	•300	1604 1757 00	HOUSING	1
•70	0333 3210 00	LOCK WASHER	14	•310	1604 2169 00	PLATE	1
•80	0211 1106 03	HEX SOCK. SCREW	6	•320	0211 1173 03	HEX SOCK. SCREW	14
•90	1089 0263 27	SELECTOR SWITCH	1	•330	1604 4274 00	SEAL	1
•100	1089 0565 40	PRESSURE GAUGE LP	1	•340	1604 2160 00	PLATE	1
•110	1089 0631 02	FUEL GAUGE	1	•350	0301 2315 00	PLAIN WASHER	10
•120	1604 1785 00	PLATE	1	•360	1604 1780 00	SCREEN, DE1091	1
•130	1604 2193 01	BRACKET	1	•370	1604 1781 80	DECAL ASSEMBLY	1
•140	1604 7601 03	HINGE	2			(For details see page 83)	
•150	1604 1784 01	PLATE	1	•380	1604 4246 00	SEAL	1
•160	0160 0996 ; 3	CROSS REC SCREW	8				
•170	1604 1336 03	LOCK WASHER	1				
•180	1604 9824 00	PUSH LOCK	1				
•190	1604 1755 80	PCB	1				
•200	0333 3114 01	LOCK WASHER	23				
•210	0211 1170 03	HEX SOCK. SCREW	9				

# OPTIONS

## INLET SHUT DOWN VALVE



REF	PART NUMBER	DESIGNATION	QTY	REF	PART NUMBER	DESIGNATION	QTY
10	1604 1398 00	AIR INLET VALVE	1				
20	1604 9164 00	PIPE	1				
30	1604 9185 00	PIPE	1				
50	1604 2112 00	HOSE	2				
60	0347 6117 00	HOSE CLAMP	2				
70	0347 6100 23	HOSE CLAMP	2				
75	1604 3557 00	BRACKET	2				
82	0147 1323 03	HEX. HEAD SCREW	4				
85	0266 2110 00	HEXAGON NUT	4				
90	1604 3673 00	CABLE	1				
100	1089 0341 02	RELAY	1				
110	0147 1204 03	HEX. HEAD SCREW	1				
120	0333 3150 00	LOCK WASHER	1				
130	1604 3742 00	CONNECTION	1				

# OPTIONS

## AFTERCOOLER WITH WATERSEPARATOR - PD FILTER & REHEATER

REF	PART NUMBER	DESIGNATION	QTY	REF	PART NUMBER	DESIGNATION	QTY
10	1604 2147 01	BRACKET	1	550	1604 1775 00	HOSE ASSEMBLY	1
20	1619 2766 00	BOLT	2	560	0661 1049 00	SEALING WASHER	3
30	1604 2134 01	AFTERCOOLER	1	570	0571 0035 09	HEXAGON NIPPLE	1
35	1604 1393 00	PAD	1	580	0564 0000 29	TEE	1
40	1615 5664 00	SCRAPER BOLT	6	590	2250 4983 00	NIPPLE	2
41	1604 2183 01	SUPPORT	1	600	0346 1003 14	PIPE CLAMP	2
42	0147 1323 03	HEX. HEAD SCREW	3	610	0147 1245 03	HEX. HEAD SCREW	1
43	0266 2110 00	HEXAGON NUT	1	615	0261 1108 00	HEXAGON NUT	1
44	1604 2184 01	SUPPORT	1	620	0301 2321 00	PLAIN WASHER	1
45	0147 1323 03	HEX. HEAD SCREW	3	700	1079 9922 44	LABEL	1
46	0266 2110 00	HEXAGON NUT	1				
47	0301 2335 00	PLAIN WASHER	6				
50	1604 1792 01	CLAMP	3				
60	1604 2135 01	PIPE	1				
70	1604 2126 01	BALL VALVE	1				
71	1604 4139 00	LEVER	1				
72	9125 7729 00	HEXAGON NUT	1				
73	1088 0801 28	GROMMET	1				
80	1604 2129 01	TEE	1				
90	1604 1729 00	ADAPTER FLANGE	1				
95	0653 1293 00	FLAT GASKET	1				
100	0605 8700 86	BUSHING	1				
105	0653 1331 00	FLAT GASKET	2				
110	1604 2145 00	BRACKET	1				
120	1604 2146 00	BRACKET	1				
125	0147 1476 03	HEX. HEAD SCREW	4				
126	0301 2378 00	PLAIN WASHER	4				
127	0266 2114 00	HEXAGON NUT	4				
130	1604 2142 00	WATERSEPARATOR	1				
140	1604 2143 00	FILTER	1				
		<a href="#">(For details see page 108)</a>					
160	1604 2154 00	CONNECTION SET	1				
170	1619 2766 00	BOLT	2				
190	1604 1396 00	PAD	1				
200	1604 2149 03	BRACKET	1				
205	1604 2139 03	REHEATER	1				
210	1619 2766 00	BOLT	1				
215	1604 1792 01	CLAMP	2				
220	1604 2136 02	PIPE	1				
225	1604 2152 01	BRACKET	1				
230	1619 2766 00	BOLT	1				
240	1604 1792 01	CLAMP	2				
245	1604 2138 02	PIPE	1				
280	0605 8700 62	BUSHING	2				
282	0661 1049 00	SEALING WASHER	2				
285	1615 8619 01	COUPLING	3				
290	0070 6002 05	PLASTIC TUBE	AR				
295	1615 8620 00	RESTRICTOR	3				
300	0803 5012 11	SILENCER	3				
301	0346 2900 22	U-BOLT	1				
350	1604 2158 02	HOSE ASSEMBLY	1				
355	0627 4224 03	PRESSURE SCREW	1				
360	0653 1174 00	FLAT GASKET	2				
365	1604 1774 00	HOSE ASSEMBLY	1				
370	0627 4224 03	PRESSURE SCREW	1				
375	0653 1174 00	FLAT GASKET	2				
450	1202 5869 05	THERMOSTATIC VALVE	1				
510	1619 6877 06	3-WAY BALL VALVE	1				
520	0661 1049 00	SEALING WASHER	2				
530	0603 4106 03	HEXAGON NIPPLE	1				
540	2250 4983 00	NIPPLE	2				

CLICK HERE TO **DOWNLOAD** THE COMPLETE MANUAL

- Thank you very much for reading the preview of the manual.
- You can download the complete manual from: [www.heydownloads.com](http://www.heydownloads.com) by clicking the link below



- Please note: If there is no response to CLICKING the link, please download this PDF first and then click on it.

CLICK HERE TO **DOWNLOAD** THE COMPLETE MANUAL