

Parts List
for Portable Compressor
English

XAHS 347 Cd - XAHS 710 CD7

Engine CAT C7

CLICK HERE TO **DOWNLOAD** THE COMPLETE MANUAL

- Thank you very much for reading the preview of the manual.
- You can download the complete manual from: www.heydownloads.com by clicking the link below



- Please note: If there is no response to CLICKING the link, please download this PDF first and then click on it.

CLICK HERE TO **DOWNLOAD** THE COMPLETE MANUAL

SAFETY PRECAUTIONS FOR PORTABLE COMPRESSOR

To be read attentively and acted accordingly before towing, lifting, operating, performing maintenance or repairing the compressor

0.1 INTRODUCTION

The policy of Atlas Copco is to provide the users of their equipment with safe, reliable and efficient products. Factors taken into account are among others:

- the intended and predictable future use of the products, and the environments in which they are expected to operate,
- applicable rules, codes and regulations,
- the expected useful product life, assuming proper service and maintenance,
- providing the manual with up-to-date information.

Before handling any product, take time to read the relevant instruction manual. Besides giving detailed operating instructions, it also gives specific information about safety, preventive maintenance, etc. Keep the manual always at the unit location, easy accessible to the operating personnel.

See also the safety precautions of the engine and possible other equipment, which are separately sent along or are mentioned on the equipment or parts of the unit.

These safety precautions are general and some statements will therefore not always apply to a particular unit.

Only people that have the right skills should be allowed to operate, adjust, perform maintenance or repair on Atlas Copco equipment. It is the responsibility of management to appoint operators with the appropriate training and skill for each category of job.

Skill level 1: Operator

An operator is trained in all aspects of operating the unit with the push-buttons, and is trained to know the safety aspects.

Skill level 2: Mechanical technician

A mechanical technician is trained to operate the unit the same as the operator. In addition, the mechanical technician is also trained to perform maintenance and repair, as described in the instruction manual, and is allowed to change settings of the control and safety system. A mechanical technician does not work on live electrical components.

Skill level 3: Electrical technician

An electrical technician is trained and has the same qualifications as both the operator and the mechanical technician. In addition, the electrical technician may carry out electrical repairs within the various enclosures of the unit. This includes work on live electrical components.

Skill level 4: Specialist from the manufacturer

This is a skilled specialist sent by the manufacturer or its agent to perform complex repairs or modifications to the equipment.

In general it is recommended that not more than two people operate the unit, more operators could lead to unsafe operating conditions. Take necessary steps to keep unauthorized persons away from the unit and

eliminate all possible sources of danger at the unit.

When handling, operating, overhauling and/or performing maintenance or repair on Atlas Copco equipment, the mechanics are expected to use safe engineering practices and to observe all relevant local safety requirements and ordinances. The following list is a reminder of special safety directives and precautions mainly applicable to Atlas Copco equipment.

These safety precautions apply to machinery processing or consuming air. Processing of any other gas requires additional safety precautions typical to the application and are not included herein.

Neglecting the safety precautions may endanger people as well as environment and machinery:

- endanger people due to electrical, mechanical or chemical influences,
- endanger the environment due to leakage of oil, solvents or other substances,
- endanger the machinery due to function failures.

All responsibility for any damage or injury resulting from neglecting these precautions or by non-observance of ordinary caution and due care required in handling, operating, maintenance or repair, also if not expressly mentioned in this instruction manual, is disclaimed by Atlas Copco.

The manufacturer does not accept any liability for any damage arising from the use of non-original parts and for modifications, additions or conversions made without the manufacturer's approval in writing.

If any statement in this manual does not comply with local legislation, the stricter of the two shall be applied.

Statements in these safety precautions should not be interpreted as suggestions, recommendations or inducements that it should be used in violation of any applicable laws or regulations.

0.2 GENERAL SAFETY PRECAUTIONS

- 1 The owner is responsible for maintaining the unit in a safe operating condition. Unit parts and accessories must be replaced if missing or unsuitable for safe operation.
- 2 The supervisor, or the responsible person, shall at all times make sure that all instructions regarding machinery and equipment operation and maintenance are strictly followed and that the machines with all accessories and safety devices, as well as the consuming devices, are in good repair, free of abnormal wear or abuse, and are not tampered with.
- 3 Whenever there is an indication or any suspicion that an internal part of a machine is overheated, the machine shall be stopped but no inspection covers shall be opened before sufficient cooling time has elapsed; this to avoid the risk of spontaneous ignition of oil vapour

when air is admitted.

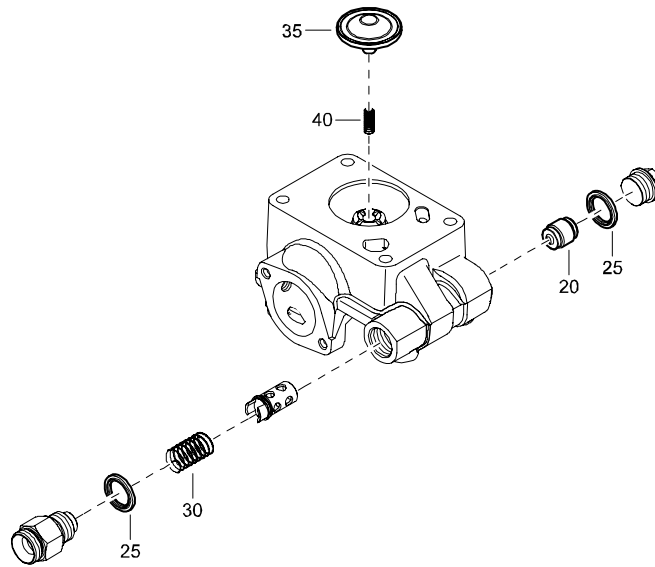
- 4 Normal ratings (pressures, temperatures, speeds, etc.) shall be durably marked.
- 5 Operate the unit only for the intended purpose and within its rated limits (pressure, temperature, speeds, etc.).
- 6 The machinery and equipment shall be kept clean, i.e. as free as possible from oil, dust or other deposits.
- 7 To prevent an increase in working temperature, inspect and clean heat transfer surfaces (cooler fins, intercoolers, water jackets, etc.) regularly. See the maintenance schedule.
- 8 All regulating and safety devices shall be maintained with due care to ensure that they function properly. They may not be put out of action.
- 9 Care shall be taken to avoid damage to safety valves and other pressure-relief devices, especially to avoid plugging by paint, oil coke or dirt accumulation, which could interfere with the functioning of the device.
- 10 Pressure and temperature gauges shall be checked regularly with regard to their accuracy. They shall be replaced whenever outside acceptable tolerances.
- 11 Safety devices shall be tested as described in the maintenance schedule of the instruction manual to determine that they are in good operating condition.
- 12 Mind the markings and information labels on the unit.
- 13 In the event the safety labels are damaged or destroyed, they must be replaced to ensure operator safety.
- 14 Keep the work area neat. Lack of order will increase the risk of accidents.
- 15 When working on the unit, wear safety clothing. Depending on the kind of activities these are: safety glasses, ear protection, safety helmet (including visor), safety gloves, protective clothing, safety shoes. Do not wear the hair long and loose (protect long hair with a hairnet), or wear loose clothing or jewelry.
- 16 Take precautions against fire. Handle fuel, oil and anti-freeze with care because they are inflammable substances. Do not smoke or approach with naked flame when handling such substances. Keep a fire-extinguisher in the vicinity.

SERVICE PAK

REF	PART NUMBER	DESIGNATION	QTY	REF	PART NUMBER	DESIGNATION	QTY	REF	PART NUMBER	DESIGNATION	QTY
-	WITH UNIT	SERVICE PAK 50HR									
•A	-	OIL FILTER ENGINE	3								
-	2912 4482 05	SERVICE PAK 500HR									
•A	-	OIL FILTER ENGINE	1								
•B	-	FUELFILTER ELEMENT	1								
•C	-	FUEL FILTER	1								
•J	-	FUEL PRE FILTER	1								
•L	-	FLAT GASKET	1								
		(For details see page 133)									
-	2912 4483 06	SERVICE PAK 1000HR YEARLY									
•A	-	OIL FILTER ENGINE	1								
•B	-	FUELFILTER ELEMENT	1								
•C	-	FUEL FILTER	1								
•D	-	OIL FILTER COMPRESSOR	3								
•E	-	AIR FILTER ELEMENT	1								
•F	-	AIR FILTER SAFETY CARTRIDGE	1								
•G	-	AIR FILTER ELEMENT	1								
•H	-	AIR FILTER SAFETY CARTRIDGE	1								
•J	-	FUEL PRE FILTER	1								
•K	-	FLAT GASKET	1								
		(For details see page 133)									
•L	-	FLAT GASKET	1								
		(For details see page 133)									
•M	-	FLAT GASKET	1								
		(For details see page 133)									
•N	-	FLAT GASKET	1								
		(For details see page 133)									
•O	-	FILTER	1								
•P	-	VALVE	1								

SERVICE KIT - OIL STOP VALVE

REF	PART NUMBER	DESIGNATION	QTY
-	2911 0149 00	SERVICE KIT OIL STOP VALVE	
•20	-	PISTON	1
•25	-	SEALING WASHER	2
•30	-	SPRING	1
•35	-	CHECK VALVE	1
•40	-	SPRING	1



AIR OUTLET - STANDARD

REF	PART NUMBER	DESIGNATION	QTY	REF	PART NUMBER	DESIGNATION	QTY	REF	PART NUMBER	DESIGNATION	QTY
20	1604 9860 00	HOSE	1								
22	0686 3716 01	HEXAGON PLUG	1								
23	0653 1062 00	FLAT GASKET	1								
25	0663 7138 00	O-RING	1								
30	0147 1363 03	HEX. HEAD SCREW	2								
35	1604 1791 01	CLAMP	1								
40	-	MIN. PRESSURE VALVE	1								
•A10	2914 8344 00	MPV	1								
45	1604 1729 01	ADAPTER	1								
50	1604 1792 01	CLAMP	2								
55	0653 1293 00	FLAT GASKET	1								
60	1626 0355 02	MANIFOLD	1								
65	1615 5664 00	HEX. HEAD SCREW	4								
70	1619 6153 05	BALL VALVE	2								
75	0852 0010 52	VALVE	1								
80	0266 2108 00	HEXAGON NUT	4								
85	1604 2116 00	ANTIVIBR. PAD	2								
90	0301 2321 00	PLAIN WASHER	4								
95	0147 1247 03	HEX. HEAD SCREW	4								
100	0147 1329 03	HEX. HEAD SCREW	2								
105	0300 0274 91	PLAIN WASHER	2								
110	0266 2108 00	HEXAGON NUT	2								
115	1604 2116 00	ANTIVIBR. PAD	1								
120	0301 2321 00	PLAIN WASHER	2								
125	0147 1247 03	HEX. HEAD SCREW	2								
130	0147 1329 03	HEX. HEAD SCREW	1								
135	0300 0274 91	PLAIN WASHER	1								
150	1626 1019 00	PLATE	1								
155	1615 5664 00	HEX. HEAD SCREW	3								

COOLER AND FAN - STANDARD

REF	PART NUMBER	DESIGNATION	QTY	REF	PART NUMBER	DESIGNATION	QTY	REF	PART NUMBER	DESIGNATION	QTY
25	1626 1160 00	PAD	1	280	1626 1171 01	PLATE	1				
30	1626 1161 00	PAD	1	285	0147 1320 03	HEX. HEAD SCREW	4				
40	0147 1320 03	HEX. HEAD SCREW	4	290	0300 0276 21	PLAIN WASHER	4				
45	0300 0274 91	PLAIN WASHER	4	295	1626 1365 01	PLATE	1				
50	1626 1105 02	RADIATOR	1	300	0147 1320 03	HEX. HEAD SCREW	4				
51	1626 1412 01	RESTRICTOR	1	305	0300 0276 21	PLAIN WASHER	4				
55	1626 1071 01	COOLER INTER	1	310	1626 1363 02	BRACKET	1				
60	1626 1061 03	COOLER OIL	1	315	0147 1325 03	HEX. HEAD SCREW	2				
70	1626 0367 03	PLATE	1	320	0300 0276 21	PLAIN WASHER	2				
75	1626 0368 02	PLATE	1	325	1626 1364 02	BRACKET	1				
80	1615 5664 00	HEX. HEAD SCREW	10	330	0147 1325 03	HEX. HEAD SCREW	2				
100	1604 9590 82	COWL FAN	1	335	0300 0276 21	PLAIN WASHER	2				
		(For details see page 87)		340	1626 1366 01	BAR ROUND	3				
105	0147 1321 03	HEX. HEAD SCREW	16	345	0147 1958 98	HEX. HEAD SCREW	3				
110	0300 0274 91	PLAIN WASHER	16	350	1626 3145 00	GRATING	1				
115	0147 1963 95	HEX. HEAD SCREW	2	355	0348 0110 13	PAD	1				
120	0300 0274 91	PLAIN WASHER	2	360	1088 1301 03	CABLE STRIP	1				
145	1604 9821 02	GUIDE	4								
148	0147 1246 03	HEX. HEAD SCREW	8								
150	0300 0274 91	PLAIN WASHER	12								
155	1615 5664 00	HEX. HEAD SCREW	12								
160	1626 0292 03	GRATING	1								
162	1615 5664 00	HEX. HEAD SCREW	2								
165	1626 0287 04	GRATING	1								
170	1615 5664 00	HEX. HEAD SCREW	3								
175	1626 2309 01	GRATING	1								
180	1615 5664 00	HEX. HEAD SCREW	3								
195	1626 1108 01	ADAPTER	1								
200	1626 0614 00	FAN	1								
205	1615 5439 00	CLAMP RING	1								
210	0108 1320 00	SPRING PIN	1								
215	0147 1364 03	HEX. HEAD SCREW	6								
225	0211 1330 03	HEX SOCK. SCREW	6								
230	1626 1466 00	PLATE	2								
235	0147 1246 03	HEX. HEAD SCREW	4								
255	1626 1065 01	COWL FAN	1								
260	0147 1322 03	HEX. HEAD SCREW	8								
265	0300 0274 91	PLAIN WASHER	8								
270	1604 9816 00	FAN	2								
272	1626 1799 00	GUARD	2								
273	0301 2321 00	PLAIN WASHER	8								
275	1619 5898 01	HEX. HEAD SCREW	8								

CLICK HERE TO **DOWNLOAD** THE COMPLETE MANUAL

- Thank you very much for reading the preview of the manual.
- You can download the complete manual from: www.heydownloads.com by clicking the link below



- Please note: If there is no response to CLICKING the link, please download this PDF first and then click on it.

CLICK HERE TO **DOWNLOAD** THE COMPLETE MANUAL

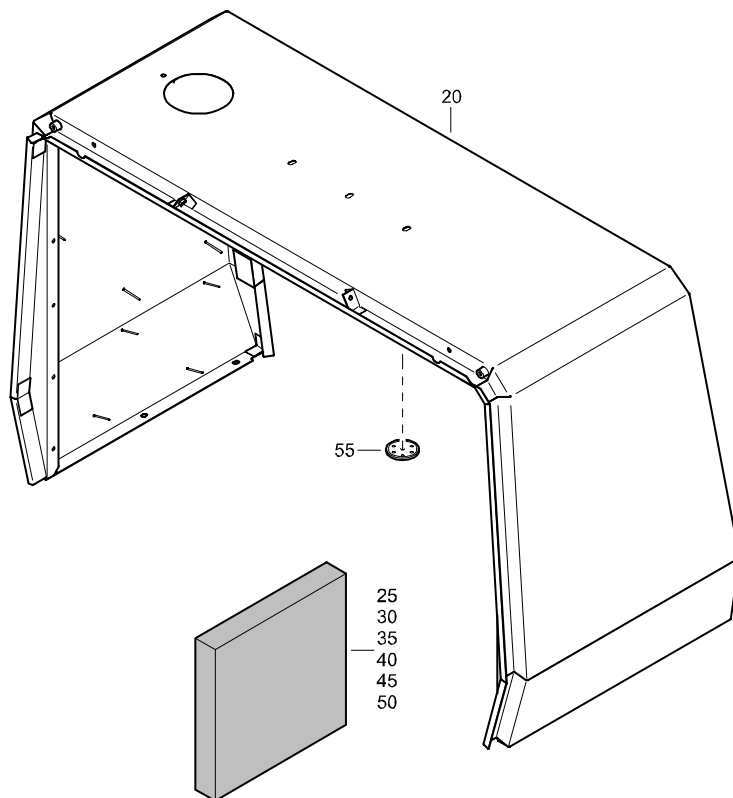
FUEL SYSTEM - STANDARD

REF	PART NUMBER	DESIGNATION	QTY	REF	PART NUMBER	DESIGNATION	QTY	REF	PART NUMBER	DESIGNATION	QTY
20	1604 9575 85	TANK FUEL (For details see page 86)	1	•B30	1626 0264 00	NIPPLE	1				
				•B40	0517 1100 31	BEARING BALL	1				
25	1626 1947 00	STRAP	2	•B50	1626 0266 00	WASHER	1				
30	1626 1948 00	STRAP	1	270	1626 0375 00	FILTER	1				
35	0211 1330 03	HEX SOCK. SCREW	3	•C10	2914 9975 00	FILTER ELEMENT	1				
40	1619 2766 00	HEX. HEAD SCREW	3	275	0072 8403 16	HOSE	AR				
50	0582 0000 58	BODY	1	280	0347 6105 00	HOSE CLAMP	2				
55	0571 0020 43	HOSE NIPPLE	1	310	1626 3316 00	RUBBER PAD	2				
60	0071 8403 01	FUEL HOSE	AR								
65	0347 6105 00	HOSE CLAMP	2								
70	0571 0020 43	HOSE NIPPLE	1								
75	0582 0000 56	BODY	1								
80	0653 1128 00	FLAT GASKET	1								
85	1604 5491 00	FUELFILTER	1								
•A20	2914 8307 00	FUELFILTER ELEMENT	1								
86	1619 2766 00	HEX. HEAD SCREW	2								
90	0653 1128 00	FLAT GASKET	1								
95	0582 0000 56	BODY	1								
100	0571 0020 43	HOSE NIPPLE	1								
105	0071 8403 01	FUEL HOSE	AR								
110	0347 6105 00	HOSE CLAMP	2								
115	0571 0020 43	HOSE NIPPLE	1								
120	0582 0000 58	BODY	1								
125	1604 6812 00	FUELFILTER	1								
126	1626 2021 00	SUPPORT	1								
127	1619 2766 00	HEX. HEAD SCREW	4								
128	1619 5337 01	HEX. HEAD SCREW	2								
130	3176 3829 00	NIPPLE	1								
132	1604 1384 00	HOSE NIPPLE	1								
135	0071 8402 90	FUEL HOSE	AR								
140	0347 6105 00	HOSE CLAMP	2								
145	0571 0020 42	HOSE NIPPLE	1								
150	1604 1384 00	HOSE NIPPLE	1								
152	0071 8402 90	FUEL HOSE	AR								
155	0347 6104 00	HOSE CLAMP	2								
160	1604 1384 00	HOSE NIPPLE	1								
165	3176 3829 00	NIPPLE	1								
250	1626 1196 00	BRACKET	1								
255	0147 1325 03	HEX. HEAD SCREW	1								
260	0301 2335 00	PLAIN WASHER	1								
265	1626 1871 80	NIPPLE	1								
•B20	1626 1871 00	NIPPLE	1								

ENGINE COOLING - STANDARD

REF	PART NUMBER	DESIGNATION	QTY	REF	PART NUMBER	DESIGNATION	QTY	REF	PART NUMBER	DESIGNATION	QTY
20	1604 9983 06	PIPE RADIATOR	1								
25	1604 5868 00	HOSE	1								
30	0347 6100 19	HOSE CLAMP	2								
35	1604 1280 01	HOSE	1								
40	0347 6100 22	HOSE CLAMP	2								
45	0346 1002 17	PIPE CLAMP	1								
50	1619 5337 03	HEX. HEAD SCREW	1								
55	0300 0274 93	PLAIN WASHER	4								
56	0346 1002 17	PIPE CLAMP	1								
57	0147 1323 03	HEX. HEAD SCREW	1								
58	0301 2335 00	PLAIN WASHER	2								
59	0266 2110 00	HEXAGON NUT	1								
60	1626 2062 00	PIPE	1								
65	1604 1280 01	HOSE	1								
70	0347 6100 19	HOSE CLAMP	2								
75	1604 1280 01	HOSE	1								
80	0347 6100 19	HOSE CLAMP	2								
85	1626 1148 82	TANK TOP	1								
•A20	1615 5451 02	RADIATOR CAP	1								
•A25	1626 1148 02	TANK TOP	1								
90	1615 5664 00	HEX. HEAD SCREW	4								
95	1089 0659 53	LEVEL SWITCH	1								
97	0653 1076 00	FLAT GASKET	1								
100	0661 1023 00	SEALING WASHER	1								
105	0071 8402 90	FUEL HOSE	AR								
110	0347 6104 00	HOSE CLAMP	2								
111	9000 0247 00	HOSE NIPPLE	1								
115	0071 8402 90	FUEL HOSE	AR								
120	0347 6104 00	HOSE CLAMP	2								
125	0075 4025 36	HOSE	AR								
130	0347 6110 00	HOSE CLAMP	2								
132	1619 2861 08	PIPE CLAMP	2								
135	1604 9980 03	PIPE IC	1								
140	1626 0831 00	HOSE	1								
145	0347 6100 21	HOSE CLAMP	2								
150	1604 1356 01	HOSE	1								
155	0347 6100 22	HOSE CLAMP	2								
170	0347 6100 21	HOSE CLAMP	1								
180	0347 6100 22	HOSE CLAMP	1								

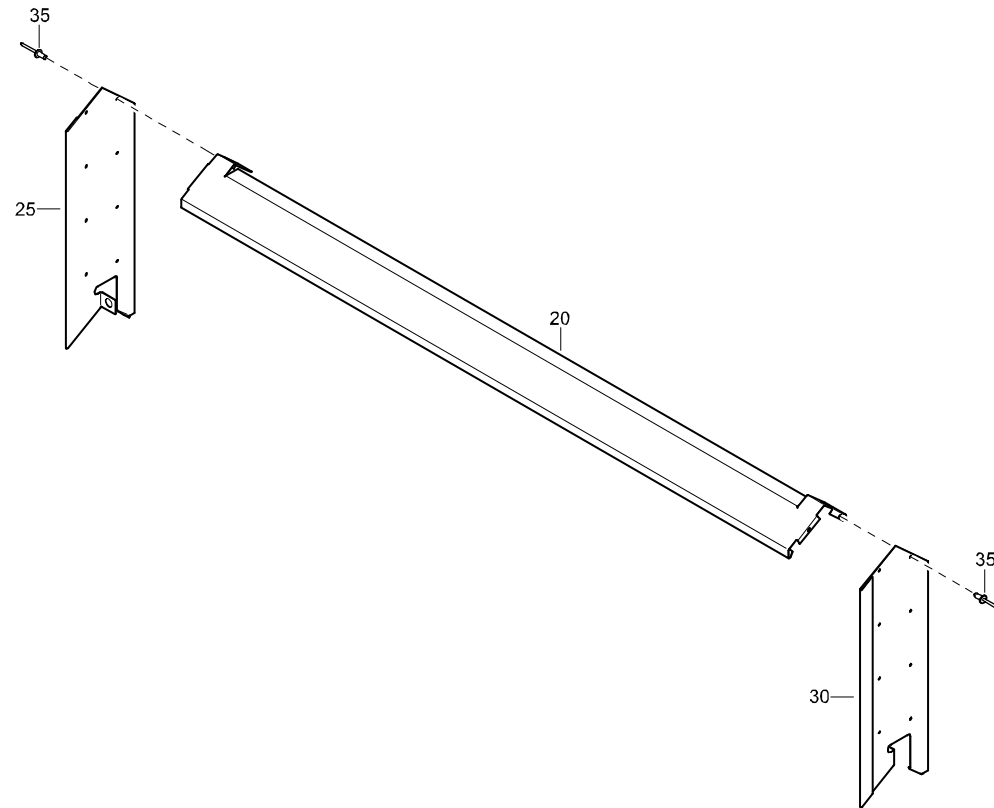
FRONT PANEL ASSEMBLY - STANDARD



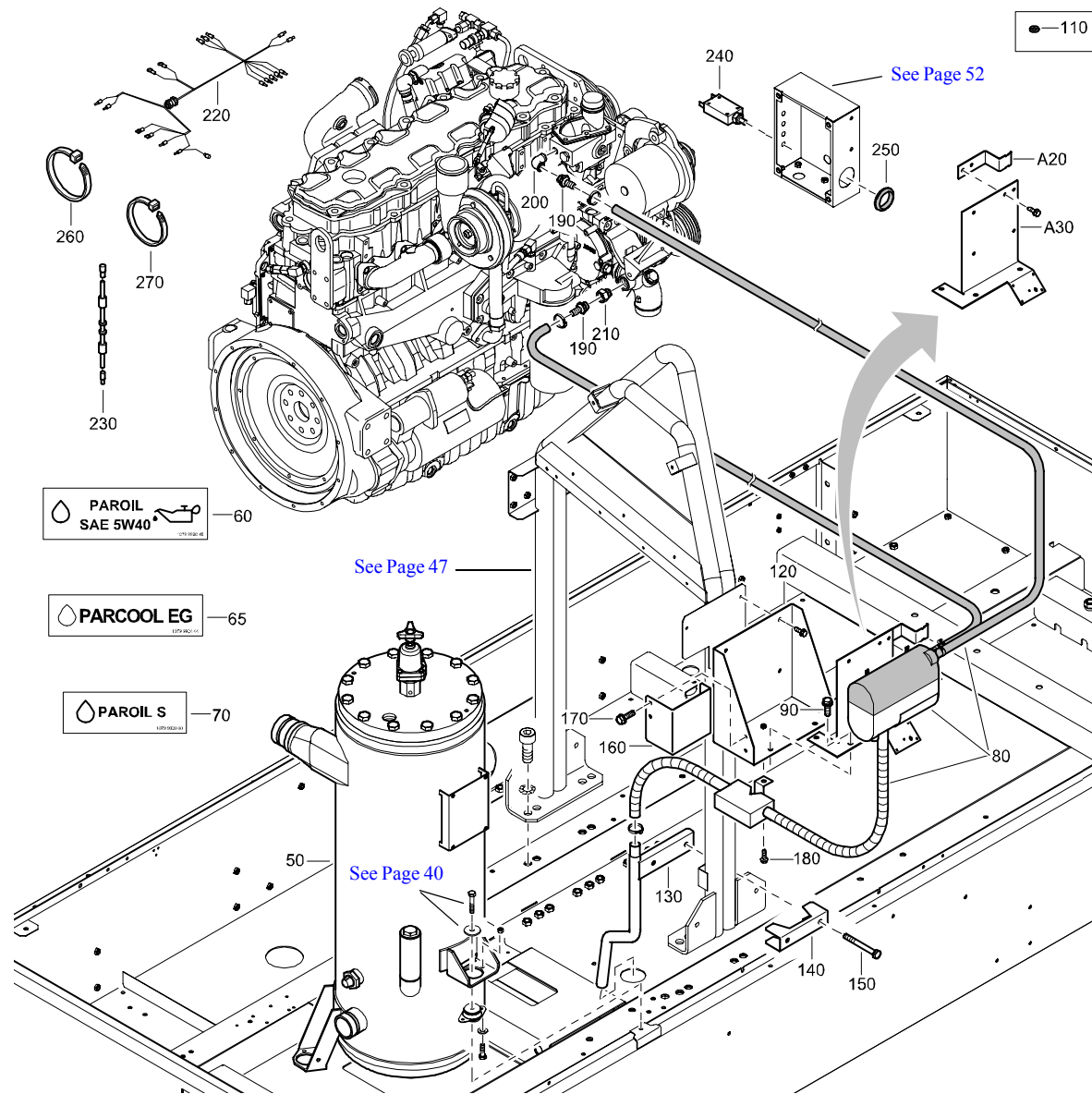
REF	PART NUMBER	DESIGNATION	QTY
-	1604 9519 84	PANEL ASSY (From page 42)	
•20	1604 9519 06	PANEL	1
•25	-	INSULATION SILENCING FOAM (50 mm)	1
•30	-	INSULATION SILENCING FOAM (50 mm)	1
•35	-	SILENCING FOAM (50 mm)	1
•40	-	SILENCING FOAM (50 mm)	1
•45	-	SILENCING FOAM (30 mm)	1
•50	-	SILENCING FOAM (50 mm)	1
•55	1615 7884 00	CLIP	44
-	1079 0003 32	SILENCING FOAM 2000 mm x 1500 mm x 30 mm	
-	1079 0003 33	SILENCING FOAM 2000 mm x 1500 mm x 50 mm	

BAFFLE - STANDARD

REF	PART NUMBER	DESIGNATION	QTY
-	1626 1375 86	BAFFLE	(From page 64)
•20	1626 1375 05	BAFFLE	4
•25	1626 1376 03	PLATE	1
•30	1626 1377 03	PLATE	1
•35	0129 3121 00	BLIND RIVET	16



OIL SEPARATOR ASSEMBLY - FOR COMPRESSOR WITH COLD WEATHER EQUIPMENT - FOR EC/ASME - OPTIONS

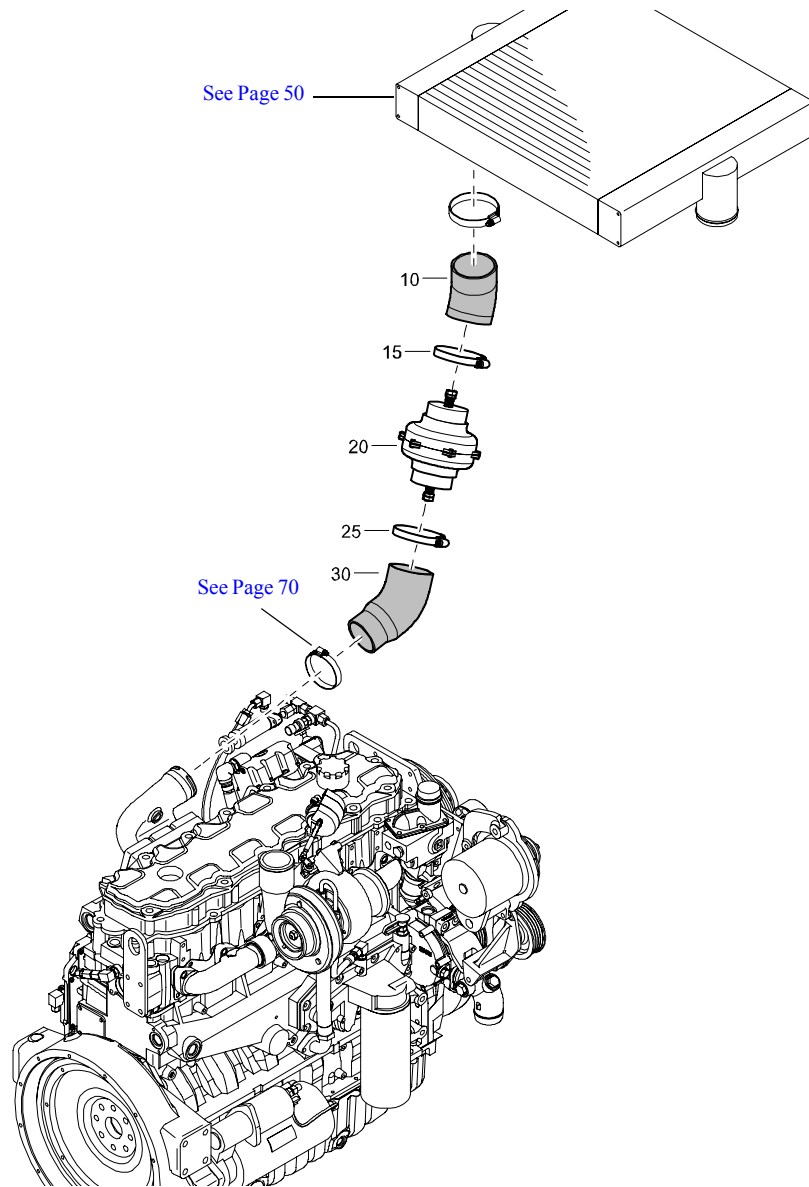


REF	PART NUMBER	DESIGNATION	QTY
50	1626 0319 85	SEPARATOR OIL (For details see page 89)	1
60	1079 9920 45	INFORMATION LABEL	1
65	1079 9924 44	INFORMATION LABEL	1
70	1079 9920 00	INFORMATION LABEL	1
80	1626 3478 00	KIT	1
•A20	1626 3449 00	PLATE	1
•A30	1626 2946 00	BRACKET	1
90	1619 2766 00	HEX. HEAD SCREW	3
110	0301 2335 00	PLAIN WASHER	1
120	1626 2942 00	BRACKET	1
130	1626 3294 00	PIPE	1
140	1626 3450 00	PLATE	1
150	0147 1334 03	HEX. HEAD SCREW	2
160	1626 3446 00	PLATE	1
170	1619 5898 01	HEX. HEAD SCREW	2
180	1619 5898 01	HEX. HEAD SCREW	1
190	0571 0020 10	HOSE NIPPLE	2
200	0560 0200 07	ELBOW	1
210	5500 5092 00	BUSHING	1
220	1626 1467 01	WIRING	1
230	1604 7580 00	RESISTOR	1
240	1089 9206 12	CIRCUIT BREAKER	1
250	1088 0801 53	GROMMET	1
260	1088 1301 04	CABLE STRIP	10
270	1088 1301 05	CABLE STRIP	5

ROAD LIGHT SYSTEM - OPTIONS

REF	PART NUMBER	DESIGNATION	QTY	REF	PART NUMBER	DESIGNATION	QTY	REF	PART NUMBER	DESIGNATION	QTY
20	1626 1453 00	LIGHT	1								
25	1626 3455 00	LIGHT	1								
30	0266 2108 00	HEXAGON NUT	4								
35	1626 0816 00	PROTECTION	1								
40	1626 0996 00	PROTECTION	1								
45	0147 1400 03	HEX. HEAD SCREW	4								
50	1626 0812 02	BUMPER	1								
55	0147 1400 03	HEX. HEAD SCREW	4								
60	0301 2358 00	PLAIN WASHER	4								
70	1088 0801 40	GROMMET	1								
75	1626 0894 00	REFLECTOR	4								
80	0226 3343 90	TAPPING SCREW	8								
85	1626 0790 00	PROTECTION	4								
90	1604 6466 00	BOLT	24								
95	1626 0824 00	GUIDE	3								
100	1619 2766 00	HEX. HEAD SCREW	6								
105	1626 1419 00	GUIDE	2								
110	1619 2766 00	HEX. HEAD SCREW	4								
115	1626 1437 00	LIGHT	2								
120	0226 3343 90	TAPPING SCREW	4								
125	1626 1420 00	PLATE	1								
130	1619 2766 00	HEX. HEAD SCREW	4								
135	1604 0575 02	WIRE HARNESS	1								
140	1089 0291 04	RECEPTACLE	1								
145	0160 6066 00	SLOTTED SCREW	3								
150	0333 3215 00	LOCK WASHER	3								
155	0266 2107 00	HEXAGON NUT	3								
160	1626 1482 01	CABLE	1								
165	1626 1483 01	CABLE	1								
170	1088 1301 03	CABLE STRIP	30								
180	1626 3494 00	CABLE	1								

AIR INLET SHUT DOWN VALVE - OPTIONS



REF	PART NUMBER	DESIGNATION	QTY
10	1626 1588 00	HOSE	1
15	0347 6117 00	HOSE CLAMP	1
20	1626 0115 00	AIR INLET VALVE	1
25	0347 6117 00	HOSE CLAMP	1
30	1626 1589 00	HOSE	1

CLICK HERE TO **DOWNLOAD** THE COMPLETE MANUAL

- Thank you very much for reading the preview of the manual.
- You can download the complete manual from: www.heydownloads.com by clicking the link below



- Please note: If there is no response to CLICKING the link, please download this PDF first and then click on it.

CLICK HERE TO **DOWNLOAD** THE COMPLETE MANUAL