

**Parts List
For Portable Compressors**

XAHS 186 Dd

CLICK HERE TO **DOWNLOAD** THE COMPLETE MANUAL

- Thank you very much for reading the preview of the manual.
- You can download the complete manual from: www.heydownloads.com by clicking the link below



- Please note: If there is no response to CLICKING the link, please download this PDF first and then click on it.

CLICK HERE TO **DOWNLOAD** THE COMPLETE MANUAL

- 14 All doors shall be shut during operation so as not to disturb the cooling air flow inside the bodywork and/or render the silencing less effective. A door should be kept open for a short period only e.g. for inspection or adjustment.
- 15 Periodically carry out maintenance works according to the maintenance schedule.
- 16 Stationary housing guards are provided on all rotating or reciprocating parts not otherwise protected and which may be hazardous to personnel. Machinery shall never be put into operation, when such guards have been removed, before the guards are securely reinstalled.
- 17 Noise, even at reasonable levels, can cause irritation and disturbance which, over a long period of time, may cause severe injuries to the nervous system of human beings.
When the sound pressure level, at any point where personnel normally has to attend, is:
below 70 dB(A): no action needs to be taken,
above 70 dB(A): noise-protective devices should be provided for people continuously being present in the room,
below 85 dB(A): no action needs to be taken for occasional visitors staying a limited time only,
above 85 dB(A): room to be classified as a noise-hazardous area and an obvious warning shall be placed permanently at each entrance to alert people entering the room, for even relatively short times, about the need to wear ear protectors,
above 95 dB(A): the warning(s) at the entrance(s) shall be completed with the recommendation that also occasional visitors shall wear ear protectors,
above 105 dB(A): special ear protectors that are adequate for this noise level and the spectral composition of the noise shall be provided and a special warning to that effect shall be placed at each entrance.
- 18 Insulation or safety guards of parts the temperature of which can be in excess of 80 °C (175 °F) and which may be accidentally touched by personnel shall not be removed before the parts have cooled to room temperature.
- 19 Never operate the unit in surroundings where there is a possibility of taking in flammable or toxic fumes.
- 20 If the working process produces fumes, dust or vibration hazards, etc., take the necessary steps to eliminate the risk of personnel injury.
- 21 When using compressed air or inert gas to clean down equipment, do so with caution and use the appropriate protection, at least safety glasses, for the operator as well as for any bystander. Do not apply compressed air or inert gas to your skin or direct an air or gas stream at people. Never use it to clean dirt from your clothes.
- 22 When washing parts in or with a cleaning solvent, provide the required ventilation and use appropriate protection such as a breathing filter, safety glasses, rubber apron and gloves, etc.
- 23 Safety shoes should be compulsory in any workshop and if there is a risk, however small, of falling objects, wearing of a safety helmet should be included.
- 24 If there is a risk of inhaling hazardous gases, fumes or dust, the respiratory organs must be protected and depending on the nature of the hazard, so must the eyes and skin.
- 25 Remember that where there is visible dust, the finer, invisible particles will almost certainly be present too; but the fact that no dust can be seen is not a reliable indication that dangerous, invisible dust is not present in the air.
- 26 Never operate the unit at pressures or speeds below or in excess of its limits as indicated in the technical specifications.

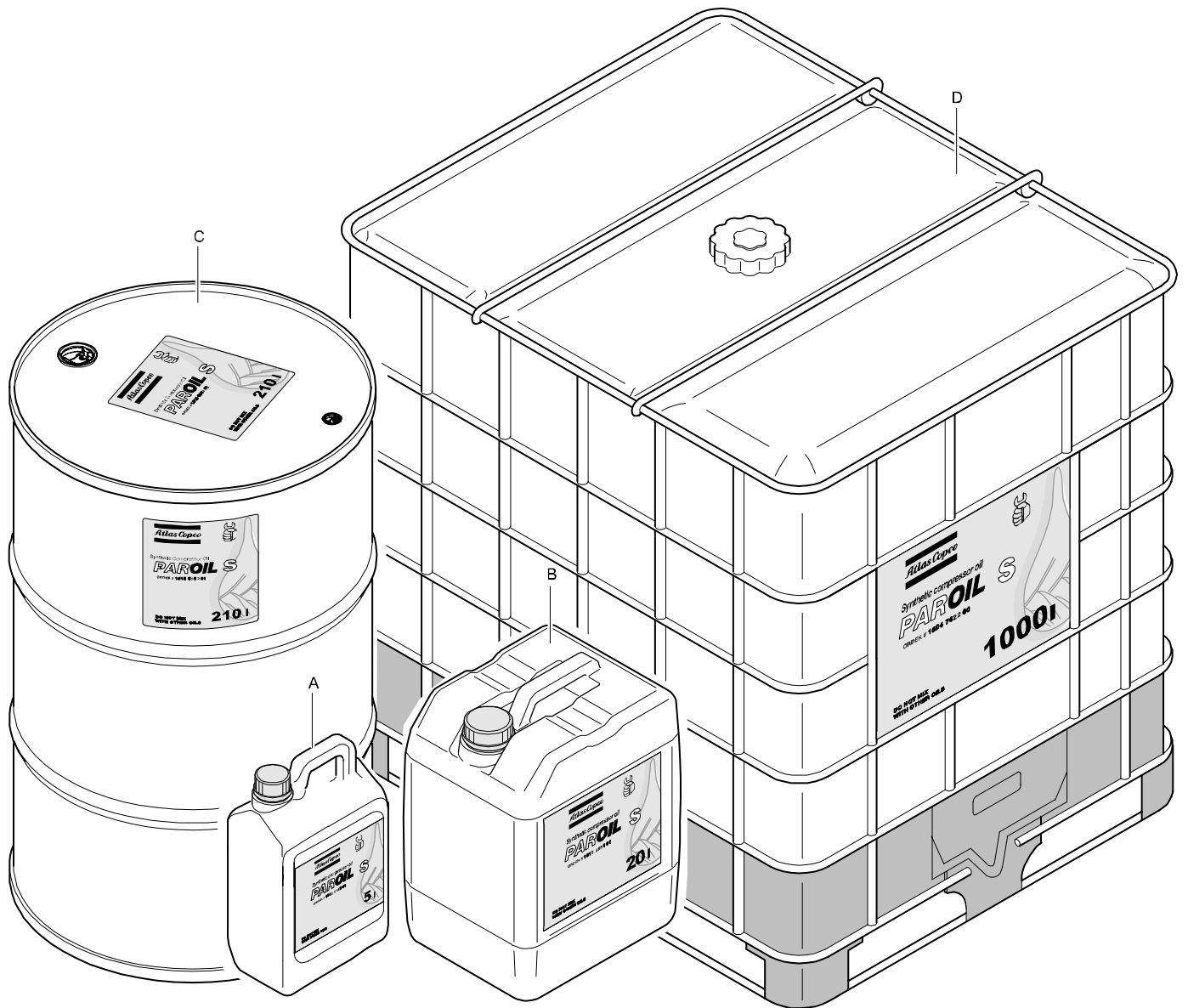
1.5 SAFETY DURING MAINTENANCE AND REPAIR

Maintenance, overhaul and repair work shall only be carried out by adequately trained personnel; if required, under supervision of someone qualified for the job.

- 1 Use only the correct tools for maintenance and repair work, and only tools which are in good condition.
- 2 Parts shall only be replaced by genuine Atlas Copco replacement parts.
- 3 All maintenance work, other than routine attention, shall only be undertaken when the unit is stopped. Steps shall be taken to prevent inadvertent starting. In addition, a warning sign bearing a legend such as "work in progress; do not start" shall be attached to the starting equipment.
On engine-driven units the battery shall be disconnected and removed or the terminals covered by insulating caps.
On electrically driven units the main switch shall be locked in open position and the fuses shall be taken out. A warning sign bearing a legend such as "work in progress; do not supply voltage" shall be attached to the fuse box or main switch.
- 4 Before dismantling any pressurized component, the compressor or equipment shall be effectively isolated from all sources of pressure and the entire system shall be relieved of pressure. Do not rely on non-return valves (check valves) to isolate pressure systems. In addition, a warning sign bearing a legend such as "work in progress; do not open" shall be attached to each of the outlet valves.
- 5 Prior to stripping an engine or other machine or undertaking major overhaul on it, prevent all movable parts from rolling over or moving.
- 6 Make sure that no tools, loose parts or rags are left in or on the machine. Never leave rags or loose clothing near the engine air intake.
- 7 Never use flammable solvents for cleaning (fire-risk).
- 8 Take safety precautions against toxic vapours of cleaning liquids.
- 9 Never use machine parts as a climbing aid.
- 10 Observe scrupulous cleanliness during maintenance and repair. Keep away dirt, cover the parts and exposed openings with a clean cloth, paper or tape.
- 11 Never weld on or perform any operation involving heat near the fuel or oil systems. Fuel and oil tanks must be completely purged, e.g. by steam-cleaning, before carrying out such operations. Never weld on, or in any way modify, pressure vessels. Disconnect the alternator cables during arc welding on the unit.
- 12 Support the towbar and the axle(s) securely if working underneath the unit or when removing a wheel. Do not rely on jacks.
- 13 Do not remove any of, or tamper with, the sound-damping material. Keep the material free of dirt and liquids such as fuel, oil and cleansing agents. If any sound-damping material is damaged, replace it to prevent the sound pressure level from increasing.
- 14 Use only lubricating oils and greases recommended or approved by Atlas Copco or the machine manufacturer. Ascertain that the selected lubricants comply with all applicable safety regulations, especially with regard to explosion or fire-risk and the possibility of decomposition or generation of hazardous gases. Never mix synthetic with mineral oil.
- 15 Protect the engine, alternator, air intake filter, electrical and regulating components, etc., to prevent moisture ingress, e.g. when steam-cleaning.
- 16 When performing any operation involving heat, flames or sparks on a machine, the surrounding components shall first be screened with non-flammable material.
- 17 Never use a light source with open flame for inspecting the interior of a machine.

COMPRESSOR OIL

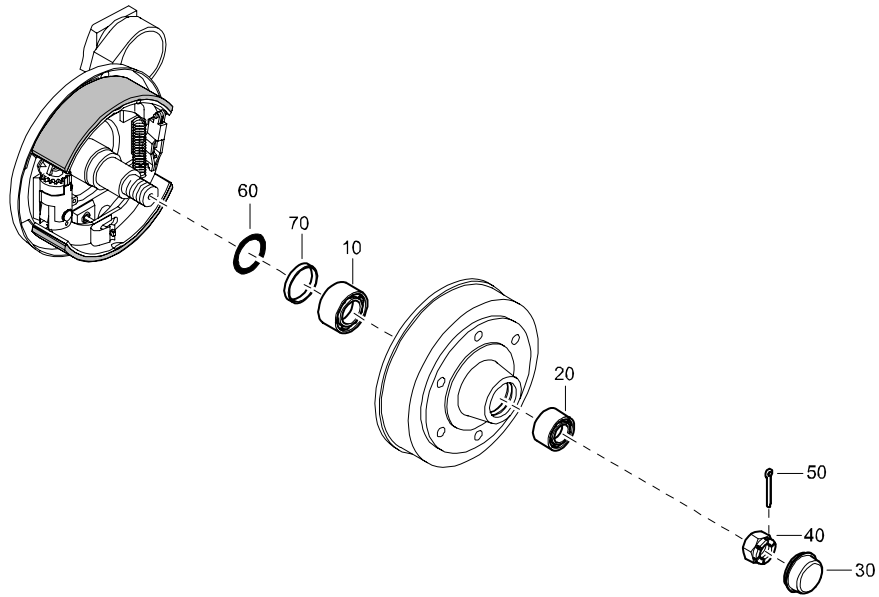
PAROIL S



| REF | PART NUMBER | DESIGNATION | QTY | REF | PART NUMBER | DESIGNATION | QTY |
|-----|--------------|------------------|-----|-----|-------------|-------------|-----|
| | | PAROIL S | | | | | |
| A | 1615 5950 01 | OIL CAN 5 L | 1 | | | | |
| B | 1615 5951 01 | OIL CAN 20 L | 1 | | | | |
| C | 1615 5952 01 | STEEL DRUM 210 L | 1 | | | | |
| D | 1604 7422 00 | CONTAINER 1000 L | 1 | | | | |

SERVICE KIT

ROAD AXLE BEARINGS



| REF | PART NUMBER | DESIGNATION | QTY | REF | PART NUMBER | DESIGNATION | QTY |
|-----|--------------|-------------------------------|-----|-----|-------------|-------------|-----|
| - | 2911 0096 00 | SERVICE KIT ROAD AXLE BEARING | | | | | |
| • | 10 | BEARING | 1 | | | | |
| • | 20 | BEARING | 1 | | | | |
| • | 30 | CAP | 1 | | | | |
| • | 40 | CASTLED NUT | 1 | | | | |
| • | 50 | SPLIT PIN | 1 | | | | |
| • | 60 | SEAL RING | 1 | | | | |
| • | 70 | RING | 1 | | | | |

STANDARD

REGULATING SYSTEM

| REF | PART NUMBER | DESIGNATION | QTY | REF | PART NUMBER | DESIGNATION | QTY |
|-----|--------------|--|-----|-----|-------------|-------------|-----|
| 20 | 1604 0306 83 | UNLOADING VALVE (For details see page 68) | 1 | | | | |
| 40 | - | O-RING (Part of service kit, see page 25, 29) | 1 | | | | |
| 50 | 0301 2344 00 | PLAIN WASHER | 4 | | | | |
| 60 | 0211 1360 03 | HEX SOCK. SCREW | 4 | | | | |
| 80 | 1604 1289 00 | LEVER (ACT. UNIT) | 1 | | | | |
| 120 | 0147 1246 03 | HEX. HEAD SCREW | 1 | | | | |
| 140 | 0301 2335 00 | PLAIN WASHER | 1 | | | | |
| 160 | 1604 0321 80 | ACTUATING UNIT (ASSY) (For details see page 70) | 1 | | | | |
| 180 | 0301 2335 00 | PLAIN WASHER | 1 | | | | |
| 220 | 0291 1110 00 | LOCKNUT | 1 | | | | |
| 290 | 1604 0327 00 | BUSH | 1 | | | | |
| 300 | 0147 1247 03 | HEX. HEAD SCREW | 1 | | | | |
| 310 | 0301 2321 00 | PLAIN WASHER | 2 | | | | |
| 320 | 0291 1108 00 | LOCKNUT | 1 | | | | |
| 485 | 0582 1200 06 | STRAIGHT PIPE COUPLING | 1 | | | | |
| 490 | 0661 1014 00 | SEALING WASHER | 1 | | | | |
| 495 | 0070 6002 04 | PLASTIC TUBE | AR | | | | |
| 500 | 0582 1200 07 | ELBOW PIPE COUPLING | 2 | | | | |
| 505 | 0070 6002 04 | PLASTIC TUBE | AR | | | | |
| 510 | 0581 2000 23 | TEE PIPE COUPLING | 1 | | | | |
| 515 | 0070 6002 05 | PLASTIC TUBE | AR | | | | |
| 520 | 0661 1014 00 | SEALING WASHER | 1 | | | | |
| 525 | 0582 1200 06 | STRAIGHT PIPE COUPLING | 1 | | | | |
| 530 | 0070 6002 05 | PLASTIC TUBE | AR | | | | |
| 550 | 1604 0341 00 | PIPE COUPLING | 1 | | | | |
| 555 | 0070 6002 10 | PLASTIC TUBE | AR | | | | |
| 560 | 0070 6002 05 | PLASTIC TUBE | AR | | | | |
| 565 | 0395 1010 35 | INSULATION HOSE | 1 | | | | |
| 566 | 1202 8335 00 | RING | 1 | | | | |
| 570 | 1088 0830 10 | CABLE CLAMP | 6 | | | | |
| 600 | 1503 2566 01 | TEE | 1 | | | | |
| 605 | 0653 1043 00 | FLAT GASKET | 1 | | | | |
| 607 | 0661 1014 00 | SEALING WASHER | 2 | | | | |
| 610 | 0582 1200 05 | STRAIGHT PIPE COUPLING | 1 | | | | |
| 612 | 0580 0013 29 | STRAIGHT PIPE-COUPLING | 1 | | | | |
| 615 | 1615 7264 00 | PRESSURE GAUGE | 1 | | | | |
| 620 | 0653 1043 00 | FLAT GASKET | 1 | | | | |
| 625 | 0580 0013 29 | STRAIGHT PIPE-COUPLING | 1 | | | | |
| 630 | 0582 1200 05 | STRAIGHT PIPE COUPLING | 1 | | | | |
| 635 | 0653 1046 00 | FLAT GASKET | 1 | | | | |

CLICK HERE TO **DOWNLOAD** THE COMPLETE MANUAL

- Thank you very much for reading the preview of the manual.
- You can download the complete manual from: www.heydownloads.com by clicking the link below



- Please note: If there is no response to CLICKING the link, please download this PDF first and then click on it.

CLICK HERE TO **DOWNLOAD** THE COMPLETE MANUAL

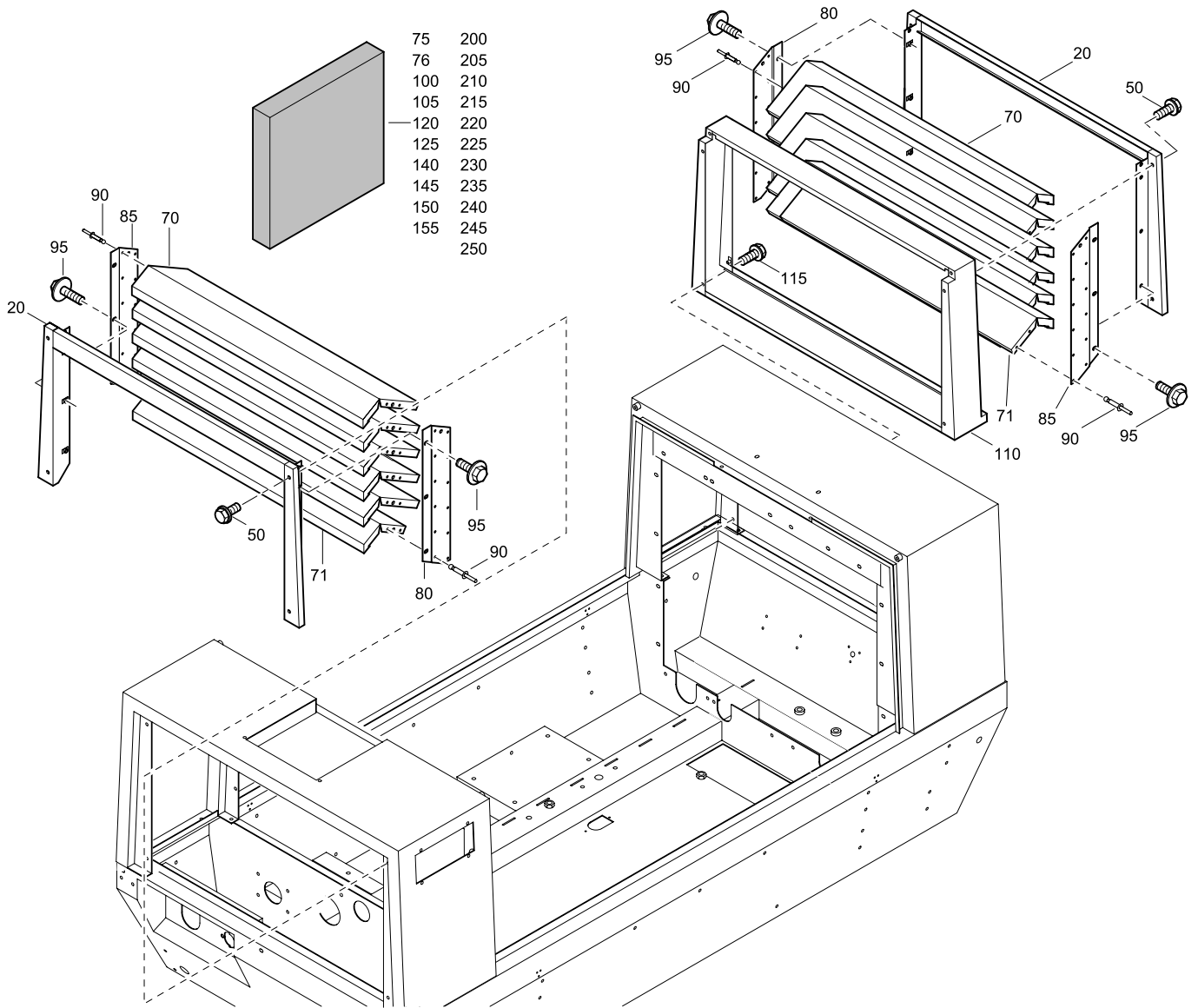
STANDARD

BODYWORK AND MOUNTS

| REF | PART NUMBER | DESIGNATION | QTY | REF | PART NUMBER | DESIGNATION | QTY |
|-----|--------------|-------------------|-----|-----|-------------|-------------|-----|
| 20 | 1604 0420 07 | PANEL | 1 | | | | |
| 35 | 1615 5664 00 | HEX. HEAD SCREW | 8 | | | | |
| 40 | 1604 0422 05 | FRONT PANEL | 1 | | | | |
| 45 | 1604 0848 00 | PLATE | 1 | | | | |
| 50 | 1604 0849 00 | PLATE | 1 | | | | |
| 55 | 1615 5664 00 | HEX. HEAD SCREW | 2 | | | | |
| 60 | 1615 5664 00 | HEX. HEAD SCREW | 8 | | | | |
| 65 | 1604 0434 01 | ROOF DUCT | 1 | | | | |
| 70 | 1615 5664 00 | HEX. HEAD SCREW | 7 | | | | |
| 75 | 0266 2110 00 | HEXAGON NUT | 1 | | | | |
| 80 | 0301 2335 00 | PLAIN WASHER | 1 | | | | |
| 95 | 1615 7712 00 | HINGE | 4 | | | | |
| 100 | 0216 1324 03 | HEX SOCK. SCREW | 8 | | | | |
| 110 | 1604 0423 02 | DOOR (LH & RH) | 2 | | | | |
| 115 | 0216 1324 03 | HEX SOCK. SCREW | 8 | | | | |
| 125 | 1604 0435 00 | GASSPRING | 2 | | | | |
| 130 | 0147 1328 03 | HEX. HEAD SCREW | 2 | | | | |
| 135 | 0324 1000 16 | DISTANCE SLEEVE | 4 | | | | |
| 140 | 0147 1331 03 | HEX. HEAD SCREW | 2 | | | | |
| 145 | 0291 1110 00 | LOCKNUT | 2 | | | | |
| 160 | 1619 2665 00 | SEAL | AR | | | | |
| 165 | 1604 4318 00 | SEAL | AR | | | | |
| 240 | 1604 0429 01 | COVER | 1 | | | | |
| 245 | 0129 3174 01 | BLIND RIVET | 3 | | | | |
| 250 | 0301 2318 00 | PLAIN WASHER | 3 | | | | |
| 260 | 1615 5692 00 | LOCK | 1 | | | | |
| 265 | 1612 1574 00 | SPRING CLIP | 1 | | | | |
| 270 | 0129 3115 00 | BLIND RIVET | 1 | | | | |
| 275 | 1089 9068 01 | KEY | 1 | | | | |
| 360 | 1202 8673 00 | HANDGRIP | 2 | | | | |
| 363 | 0147 1246 03 | HEX. HEAD SCREW | 4 | | | | |
| 365 | 0333 3220 00 | LOCK WASHER | 4 | | | | |
| 367 | 0266 2108 00 | HEXAGON NUT | 4 | | | | |
| 370 | 1615 8605 00 | STIRRUP | 4 | | | | |
| 380 | 0129 3174 01 | BLIND RIVET | 8 | | | | |
| 390 | 1619 2980 01 | BASE PLATE | 4 | | | | |
| 400 | 0129 3174 01 | BLIND RIVET | 12 | | | | |
| 410 | 1619 2978 01 | CATCH | 4 | | | | |
| 415 | 0147 1214 03 | HEX. HEAD SCREW | 4 | | | | |
| 420 | 0291 1107 00 | LOCKNUT | 4 | | | | |
| 440 | 1615 8604 00 | BRACKET | 2 | | | | |
| 445 | 0226 9915 17 | SQ. NECK BOLT | 2 | | | | |
| 450 | 0333 3227 00 | LOCK WASHER | 2 | | | | |
| 455 | 0266 2110 00 | HEXAGON NUT | 2 | | | | |
| 470 | 1604 2206 00 | HOLDER (DOCUMENT) | 1 | | | | |
| 475 | 0129 3174 01 | BLIND RIVET | 2 | | | | |

STANDARD

SILENCING SET



| REF | PART NUMBER | DESIGNATION | QTY | REF | PART NUMBER | DESIGNATION | QTY |
|-----|--------------|------------------------|-----|-----|--------------|---|-----|
| 20 | 1604 0425 03 | BAFFLE | 2 | 200 | - | SILENCING FOAM (50 mm) | 1 |
| 50 | 1619 5337 03 | BOLT | 8 | 205 | - | SILENCING FOAM (50 mm) | 1 |
| 70 | 1604 0427 02 | PLATE | 10 | 210 | - | SILENCING FOAM (50 mm) | 1 |
| 71 | 1604 0286 00 | BAFFLE | 2 | 215 | - | SILENCING FOAM (50 mm) | 1 |
| 75 | - | SILENCING FOAM (30 mm) | 10 | 220 | - | SILENCING FOAM (50 mm) | 1 |
| 76 | - | SILENCING FOAM (30 mm) | 2 | 225 | - | SILENCING FOAM (50 mm) | 1 |
| 80 | 1604 0426 02 | PLATE | 2 | 230 | - | SILENCING FOAM (50 mm) | 1 |
| 85 | 1604 0428 02 | PLATE | 2 | 235 | - | SILENCING FOAM (50 mm) | 1 |
| 90 | 0129 3174 01 | BLIND RIVET | 48 | 240 | - | SILENCING FOAM (50 mm) | 1 |
| 95 | 1615 5664 00 | SCRAPER BOLT | 12 | 245 | - | SILENCING FOAM (50 mm) | 1 |
| 100 | - | SILENCING FOAM (50 mm) | 1 | 250 | - | SILENCING FOAM (50 mm) | 2 |
| 105 | - | SILENCING FOAM (50 mm) | 1 | | | | |
| 110 | 1604 0929 00 | BAFFLE | 1 | | | | |
| 115 | 1615 5664 00 | SCRAPER BOLT | 4 | | | | |
| 120 | - | SILENCING FOAM (50 mm) | 2 | - | 1079 0003 32 | SILENCING FOAM 2000 mm x 1500 mm x 30 mm | |
| 125 | - | SILENCING FOAM (50 mm) | 1 | - | 1079 0003 33 | SILENCING FOAM 2000 mm x 1500 mm x 50 mm | |
| 140 | - | SILENCING FOAM (50 mm) | 2 | | | | |
| 145 | - | SILENCING FOAM (50 mm) | 2 | | | | |
| 150 | - | SILENCING FOAM (50 mm) | 1 | | | | |
| 155 | - | SILENCING FOAM (50 mm) | 1 | | | | |

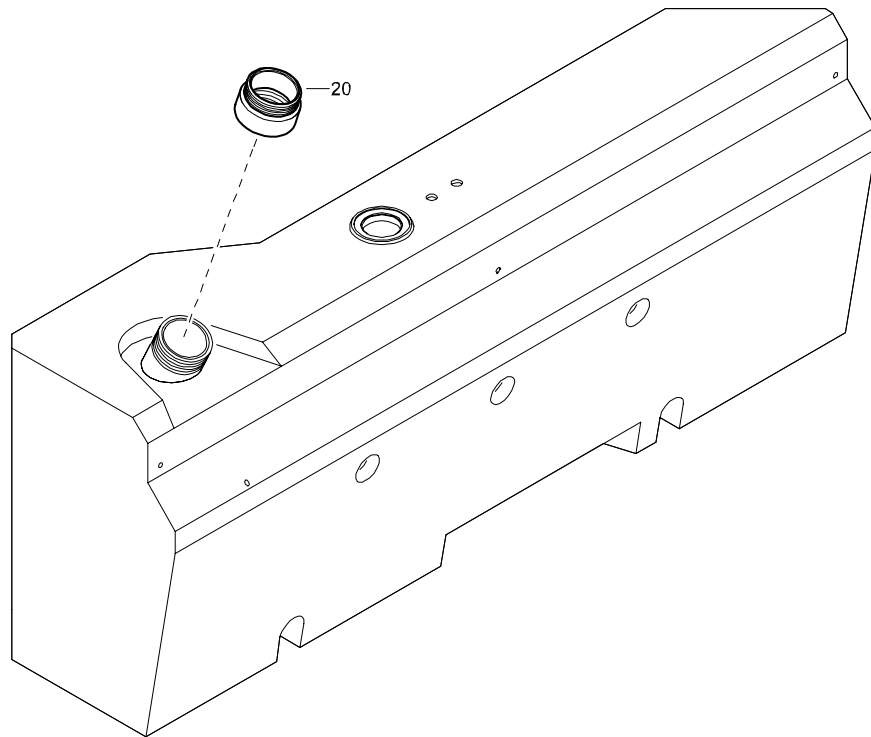
STANDARD

ENGINE SPEED REGULATOR

| REF | PART NUMBER | DESIGNATION | QTY | REF | PART NUMBER | DESIGNATION | QTY |
|------|--------------|--|-----|-----|-------------|-------------|-----|
| - | 1604 0321 80 | ACTUATING UNIT ASSY (From page 40) | | | | | |
| •30 | - | WIPER (Part of service kit, see page 24) | 1 | | | | |
| •35 | - | PLAIN BEARING (Not available separately) | 1 | | | | |
| •40 | 2252 0489 00 | COMPR.SPRING | 1 | | | | |
| •45 | - | HOUSING (ACTUATING UNIT) (Not available separately) | 1 | | | | |
| •50 | 1615 8755 00 | PISTON | 1 | | | | |
| •55 | - | PISTON SEAL (Part of service kit, see page 24) | 1 | | | | |
| •60 | 0291 1110 00 | LOCKNUT | 2 | | | | |
| •65 | 1615 8369 00 | SPRING | 1 | | | | |
| •70 | 0266 2108 00 | HEXAGON NUT | 2 | | | | |
| •75 | 0147 1252 12 | HEX .HEAD SCREW | 2 | | | | |
| •80 | - | COVER (Not available separately) | 1 | | | | |
| •85 | 0501 0007 00 | SPHERICAL PLAIN BEARING | 1 | | | | |
| •90 | 1615 8382 00 | ADAPTOR | 1 | | | | |
| •100 | 1615 8756 80 | PISTON | 1 | | | | |
| •A10 | 1615 8756 01 | PISTON ROD | 1 | | | | |
| •A20 | 1615 9770 00 | EYE BOLT WITH BEARING | 1 | | | | |

OPTIONS

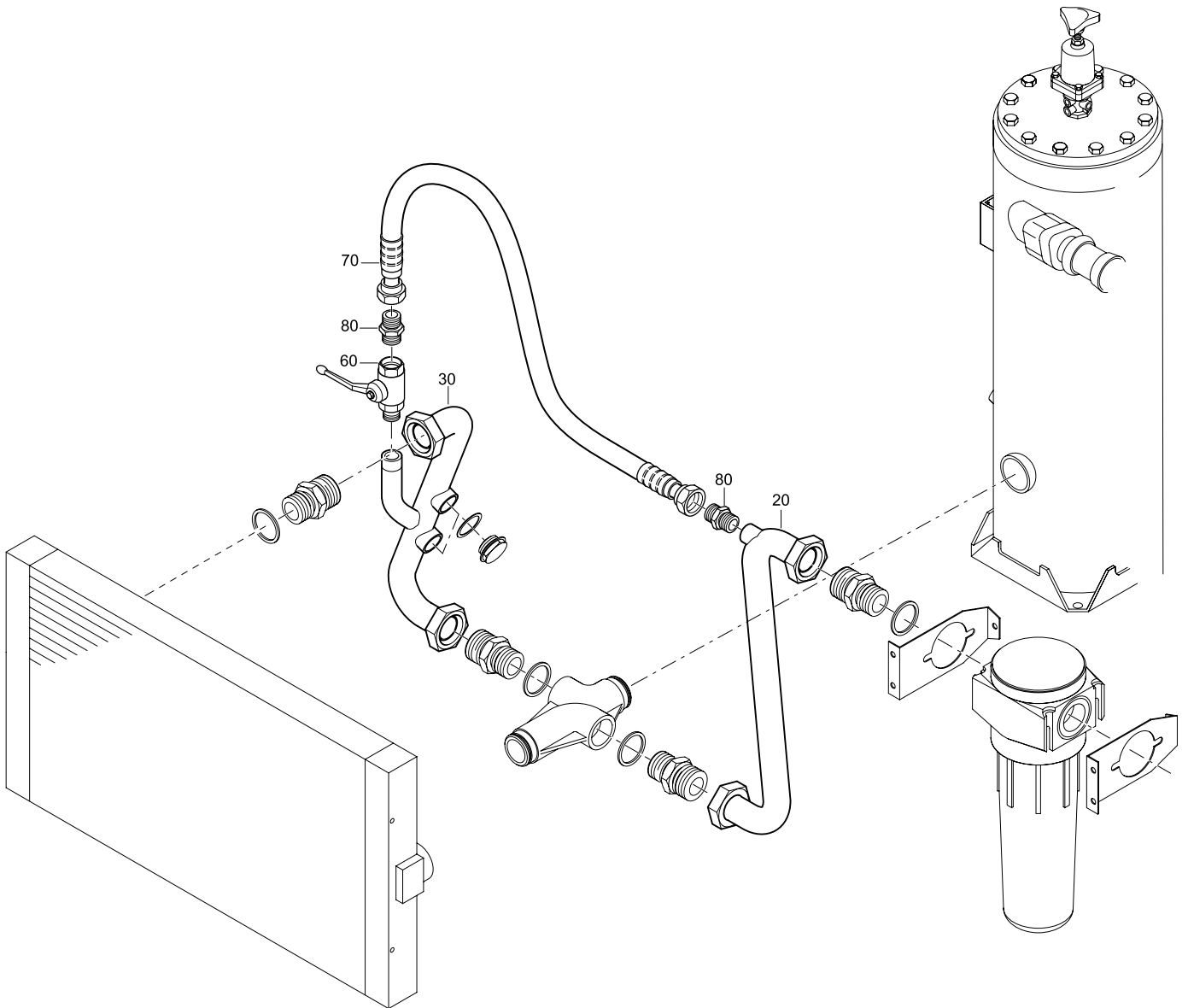
METAL FILLERNECK FOR FUEL TANK



| REF | PART NUMBER | DESIGNATION | QTY | REF | PART NUMBER | DESIGNATION | QTY |
|-----|--------------|--------------------------|-----|-----|-------------|-------------|-----|
| 20 | 1604 4494 00 | CONNECTION NUT FUEL TANK | 1 | | | | |

OPTIONS

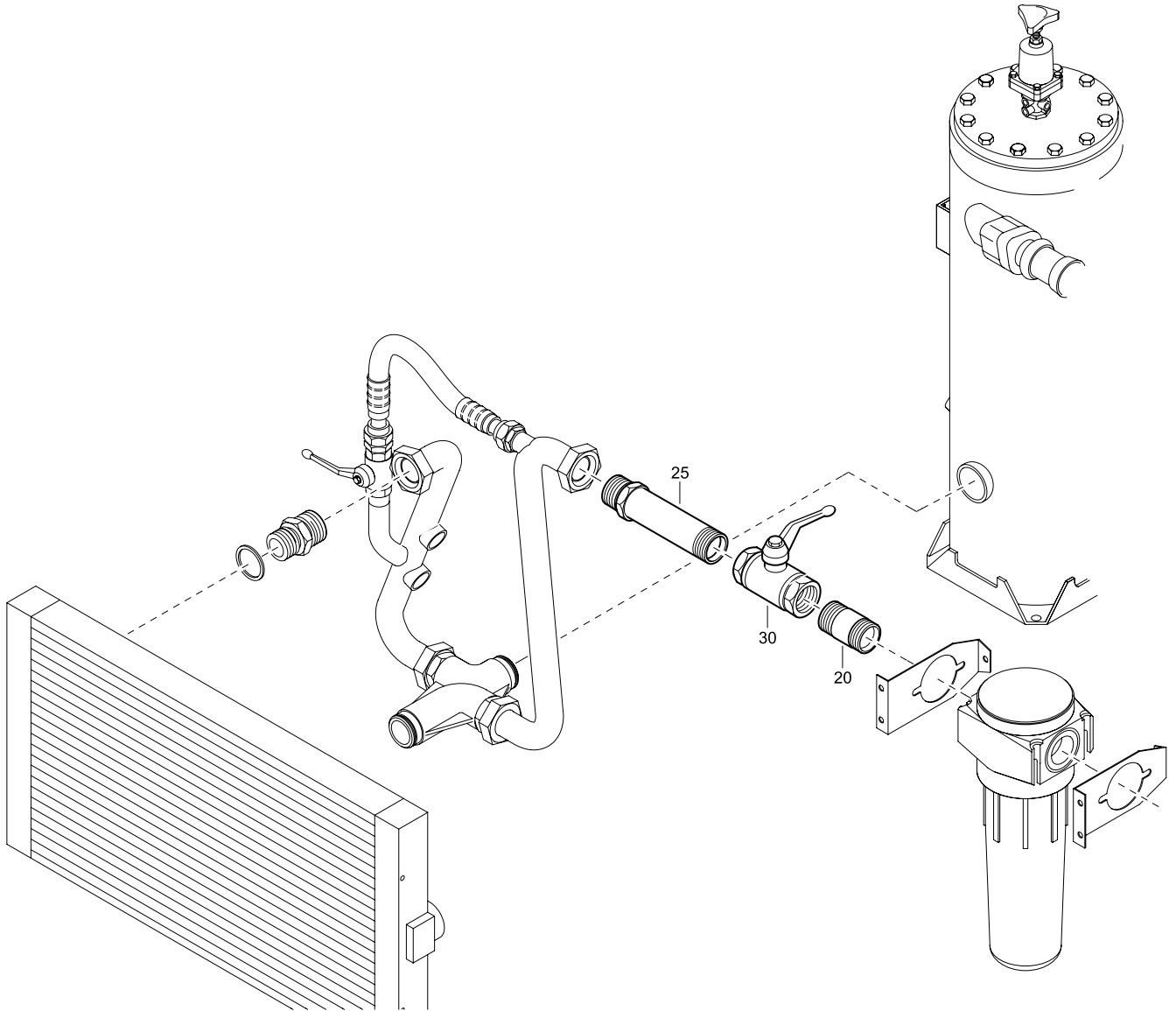
PIPES AND VALVE FOR PARTIAL AFTERCOOLER BY-PASS



| REF | PART NUMBER | DESIGNATION | QTY | REF | PART NUMBER | DESIGNATION | QTY |
|-----|--------------|-------------|-----|-----|-------------|-------------|-----|
| 20 | 1604 3692 00 | PIPE | 1 | | | | |
| 30 | 1604 3520 00 | PIPE | 1 | | | | |
| 60 | 1619 6153 06 | BALL VALVE | 1 | | | | |
| 70 | 1604 3521 00 | HOSE ASSY | 1 | | | | |
| 80 | 2250 4983 00 | NIPPLE | 2 | | | | |

OPTIONS

BALL VALVE FOR COMPRESSOR WITH FULL AFTERCOOLER BY-PASS



| REF | PART NUMBER | DESIGNATION | QTY | REF | PART NUMBER | DESIGNATION | QTY |
|-----|--------------|-------------|-----|-----|-------------|-------------|-----|
| 20 | 1604 4750 00 | PIPE | 1 | | | | |
| 25 | 1604 0538 00 | PIPE | 1 | | | | |
| 30 | 1619 6153 08 | BALL VALVE | 1 | | | | |

CLICK HERE TO **DOWNLOAD** THE COMPLETE MANUAL

- Thank you very much for reading the preview of the manual.
- You can download the complete manual from: www.heydownloads.com by clicking the link below



- Please note: If there is no response to CLICKING the link, please download this PDF first and then click on it.

CLICK HERE TO **DOWNLOAD** THE COMPLETE MANUAL