

Parts List
for Portable Generator
English

QAX 70 Dd

Engine BF04M2011C

CLICK HERE TO **DOWNLOAD** THE COMPLETE MANUAL

- Thank you very much for reading the preview of the manual.
- You can download the complete manual from: www.heydownloads.com by clicking the link below



- Please note: If there is no response to CLICKING the link, please download this PDF first and then click on it.

CLICK HERE TO **DOWNLOAD** THE COMPLETE MANUAL

- 13 When using compressed air or inert gas to clean down equipment, do so with caution and use the appropriate protection, at least safety glasses, for the operator as well as for any bystander. Do not apply compressed air or inert gas to your skin or direct an air or gas stream at people. Never use it to clean dirt from your clothes.
- 14 When washing parts in or with a cleaning solvent, provide the required ventilation and use appropriate protection such as a breathing filter, safety glasses, rubber apron and gloves, etc.
- 15 Safety shoes should be compulsory in any workshop and if there is a risk, however small, of falling objects, wearing of a safety helmet should be included.
- 16 If there is a risk of inhaling hazardous gases, fumes or dust, the respiratory organs must be protected and depending on the nature of the hazard, so must the eyes and skin.
- 17 Remember that where there is visible dust, the finer, invisible particles will almost certainly be present too; but the fact that no dust can be seen is not a reliable indication that dangerous, invisible dust is not present in the air.
- 18 Never operate the generator in excess of its limits as indicated in the technical specifications and avoid long no-load sequences.
- 19 Never operate the generator in a humid atmosphere. Excessive moisture causes worsening of the generator insulation.
- 20 Do not open electrical cabinets, cubicles or other equipment while voltage is supplied. If such cannot be avoided, e.g. for measurements, tests or adjustments, have the action carried out by a qualified electrician only, with appropriate tools, and ascertain that the required bodily protection against electrical hazards is applied.
- 21 Never touch the power terminals during operation of the machine.
- 22 Whenever an abnormal condition arises, e.g. excessive vibration, noise, odour, etc., switch the circuit breakers to OFF and stop the engine. Correct the faulty condition before restarting.
- 23 Check the electric cables regularly. Damaged cables and insufficient lightening of connections may cause electric shocks. Whenever damaged wires or dangerous conditions are observed, switch the circuit breakers to OFF and stop the engine. Replace the damaged wires or correct the dangerous condition before restarting. Make sure that all electric connections are securely tightened.
- 24 Avoid overloading the generator. The generator is provided with circuit breakers for overload protection. When a breaker has tripped, reduce the concerned load before restarting.
- 25 If the generator is used as stand-by for the mains supply, it must not be operated without control system which automatically disconnects the generator from the mains when the mains supply is restored.
- 26 Never remove the cover of the output terminals during operation. Before connecting or disconnecting wires, switch off the load and the circuit breakers, stop the machine and make sure that the machine

cannot be started inadvertently or there is any residual voltage on the power circuit.

- 27 Running the generator at low load for long periods will reduce the lifetime of the engine.

0.5 SAFETY DURING MAINTENANCE AND REPAIR

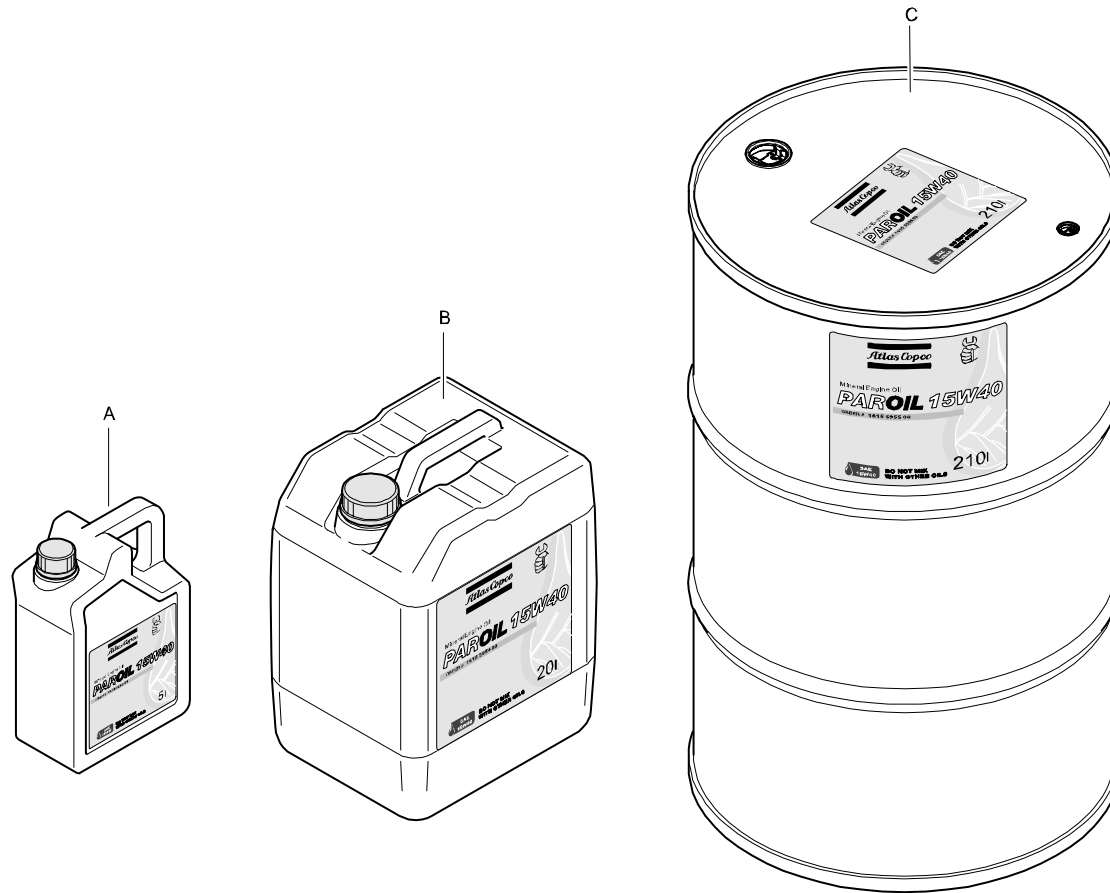
Maintenance, overhaul and repair work shall only be carried out by adequately trained personnel; if required, under supervision of someone qualified for the job.

- 1 Use only the correct tools for maintenance and repair work, and only tools which are in good condition.
- 2 Parts shall only be replaced by genuine Atlas Copco replacement parts.
- 3 All maintenance work, other than routine attention, shall only be undertaken when the unit is stopped. Steps shall be taken to prevent inadvertent starting. In addition, a warning sign bearing a legend such as "work in progress; do not start" shall be attached to the starting equipment.
On engine-driven units the battery shall be disconnected and removed or the terminals covered by insulating caps.
On electrically driven units the main switch shall be locked in open position and the fuses shall be taken out. A warning sign bearing a legend such as "work in progress; do not supply voltage" shall be attached to the fuse box or main switch.
- 4 Prior to stripping an engine or other machine or undertaking major overhaul on it, prevent all movable parts from rolling over or moving.
- 5 Make sure that no tools, loose parts or rags are left in or on the machine. Never leave rags or loose clothing near the engine air intake.
- 6 Never use flammable solvents for cleaning (fire-risk).
- 7 Take safety precautions against toxic vapours of cleaning liquids.
- 8 Never use machine parts as a climbing aid.
- 9 Observe scrupulous cleanliness during maintenance and repair. Keep away dirt, cover the parts and exposed openings with a clean cloth, paper or tape.
- 10 Never weld on or perform any operation involving heat near the fuel or oil systems. Fuel and oil tanks must be completely purged, e.g. by steam-cleaning, before carrying out such operations. Never weld on, or in any way modify, pressure vessels. Disconnect the alternator cables during arc welding on the unit.
- 11 Support the towbar and the axle(s) securely if working underneath the unit or when removing a wheel. Do not rely on jacks.
- 12 Do not remove any of, or tamper with, the sound-damping material. Keep the material free of dirt and liquids such as fuel, oil and cleansing

agents. If any sound-damping material is damaged, replace it to prevent the sound pressure level from increasing.

- 13 Use only lubricating oils and greases recommended or approved by Atlas Copco or the machine manufacturer. Ascertain that the selected lubricants comply with all applicable safety regulations, especially with regard to explosion or fire-risk and the possibility of decomposition or generation of hazardous gases. Never mix synthetic with mineral oil.
- 14 Protect the engine, alternator, air intake filter, electrical and regulating components, etc., to prevent moisture ingress, e.g. when steam-cleaning.
- 15 When performing any operation involving heat, flames or sparks on a machine, the surrounding components shall first be screened with non-flammable material.
- 16 Never use a light source with open flame for inspecting the interior of a machine.
- 17 When repair has been completed, the machine shall be barred over at least one revolution for reciprocating machines, several revolutions for rotary ones to ensure that there is no mechanical interference within the machine or driver. Check the direction of rotation of electric motors when starting up the machine initially and after any alteration to the electrical connection(s) or switch gear, to check that the oil pump and the fan function properly.
- 18 Maintenance and repair work should be recorded in an operator's logbook for all machinery. Frequency and nature of repairs can reveal unsafe conditions.
- 19 When hot parts have to be handled, e.g. shrink fitting, special heat-resistant gloves shall be used and, if required, other body protection shall be applied.
- 20 When using cartridge type breathing filter equipment, ascertain that the correct type of cartridge is used and that its useful service life is not surpassed.
- 21 Make sure that oil, solvents and other substances likely to pollute the environment are properly disposed of.
- 22 Before clearing the generator for use after maintenance or overhaul, submit it to a testrun, check that the AC power performance is correct and that the control and shutdown devices function correctly.

ENGINE OIL - PAROIL 15W40

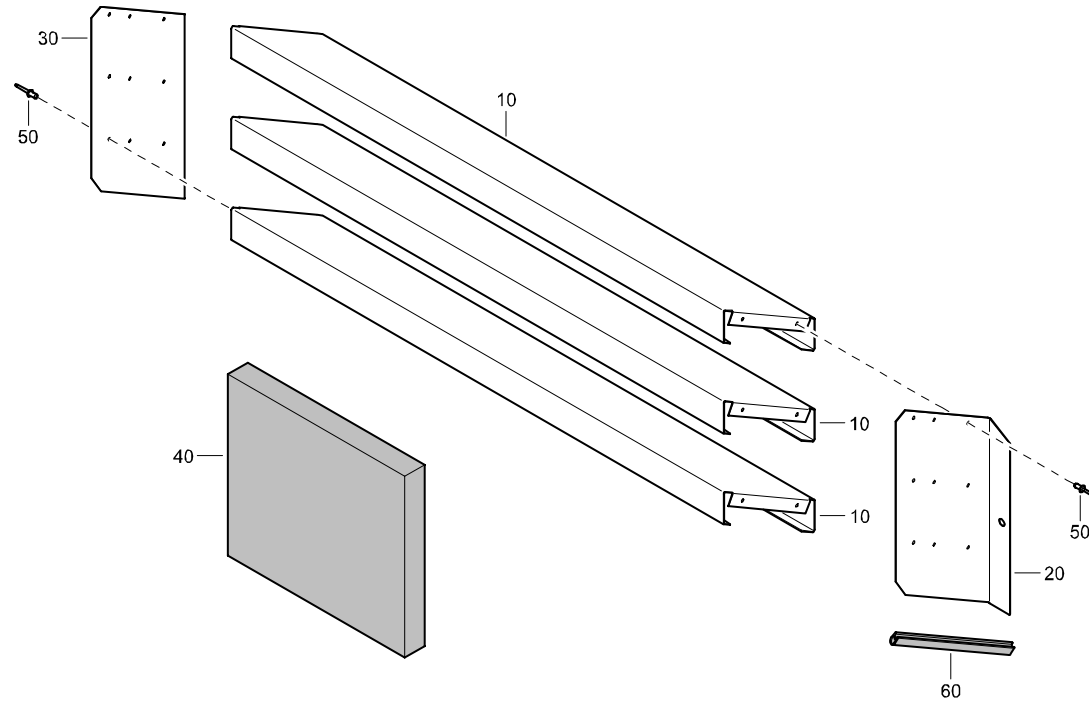


REF	PART NUMBER	DESIGNATION	QTY
A	1615 5953 00	PAROIL 15W40 5 LITER CAN	1
B	1615 5954 00	PAROIL 15W40 20 LITER CAN	1
C	1615 5955 00	PAROIL 15W40 210 LITER BARREL	1

BODYWORK - STANDARD

REF	PART NUMBER	DESIGNATION	QTY	REF	PART NUMBER	DESIGNATION	QTY	REF	PART NUMBER	DESIGNATION	QTY
10	1604 9730 03	BAFFLE	1								
20	1626 1059 81	BAFFLE	1								
		(For details see page 41)									
25	1604 3423 00	SCRAPER BOLT	2								
30	1604 3858 00	PLUG	1								
40	1615 5664 00	HEX. HEAD SCREW	3								
50	1626 1427 02	BAFFLE	1								
60	1626 1429 81	BAFFLE	1								
		(For details see page 42)									
70	1615 5664 00	HEX. HEAD SCREW	3								
80	1604 3423 00	SCRAPER BOLT	2								
90	1626 1704 82	SIDE PANEL	1								
		(For details see page 44)									
100	1626 1704 83	PANEL	1								
		(For details see page 45)									
110	1615 5664 00	HEX. HEAD SCREW	8								
120	1604 3858 00	PLUG	8								
170	1626 0711 01	ACTUATOR	2								
180	0291 1108 00	LOCKNUT	2								
190	1605 0025 00	ROD	2								
200	1604 6686 00	LATCH	2								
210	0129 3174 01	BLIND RIVET	1								
220	1202 8673 00	HANDGRIP	2								
230	0147 1246 03	HEX. HEAD SCREW	4								
240	0333 3220 00	LOCK WASHER	4								
250	1604 3846 01	DOOR	1								
260	1613 6650 01	LOCK	1								
270	1604 6181 00	SEAL	1								
280	0129 3172 01	BLIND RIVET	4								
290	0129 3172 01	BLIND RIVET	4								
300	0686 9252 86	PLUG	2								
315	1615 5664 00	HEX. HEAD SCREW	7								
320	1626 1659 84	HOOD	1								
		(For details see page 43)									
330	1604 2206 00	HOLDER (DOCUMENT)	1								
335	1619 5898 01	HEX. HEAD SCREW	4								
400	1619 5188 00	SEAL	AR								
410	1615 7057 00	SEAL	AR								

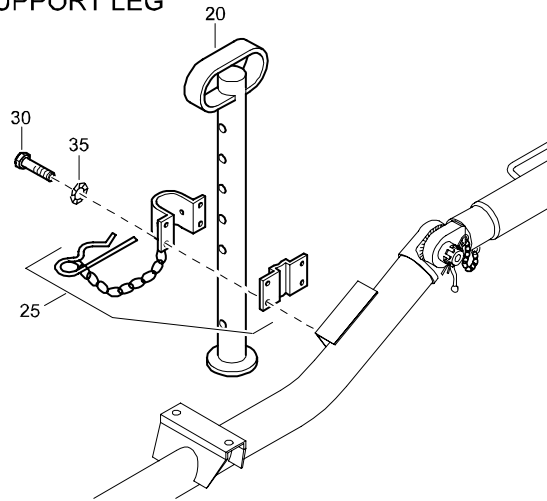
BAFFLE - STANDARD



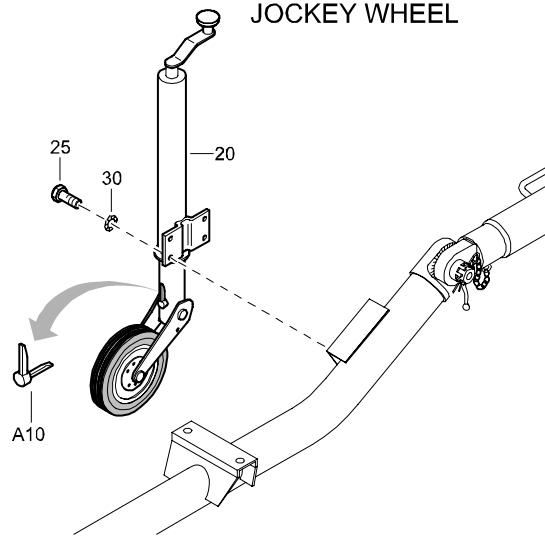
REF	PART NUMBER	DESIGNATION	QTY
-	1626 1059 81	BAFFLE (From page 30)	
•10	1626 0928 01	BAFFLE	3
•20	1626 1059 01	PLATE	1
•30	1626 1060 01	PLATE	1
•40	-	INSULATION	
		SILENCING FOAM (50 mm)	3
•50	0129 3174 01	BLIND RIVET	12
•60	1503 1056 00	SEAL	2
-	1079 0003 33	SILENCING FOAM 2000 mm x 1500 mm x 50 mm	

TOWBAR ACCESSORIES - SUPPORT LEG, JOCKEY WHEEL, SAFETY CHAIN CE - OPTIONS

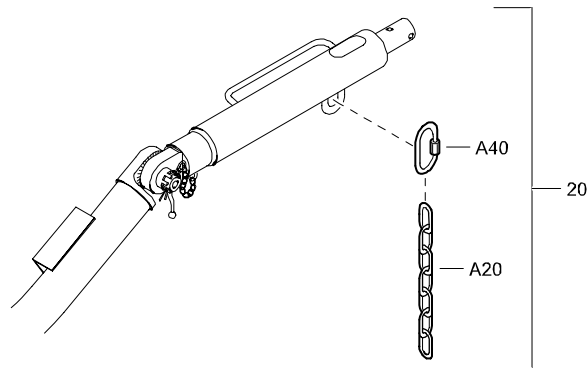
SUPPORT LEG



JOCKEY WHEEL



SAFETY CHAIN CE



REF	PART NUMBER	DESIGNATION	QTY
-----	-------------	-------------	-----

SUPPORT LEG

20	1615 7752 01	FOOT	1
25	1615 7751 00	CLAMP ASSY	1
30	0147 1365 03	HEX. HEAD SCREW	4
35	0333 3232 00	LOCK WASHER	4

1611 7720 27/03

JOCKEY WHEEL

20	1615 7769 00	SWIVEL WHEEL	1
•A10	2914 2370 00	LOCKING PIN	1
25	0147 1362 03	HEXAGON HEAD SCREW	4
30	0333 3232 00	SERRATED LOCK WASHER	4

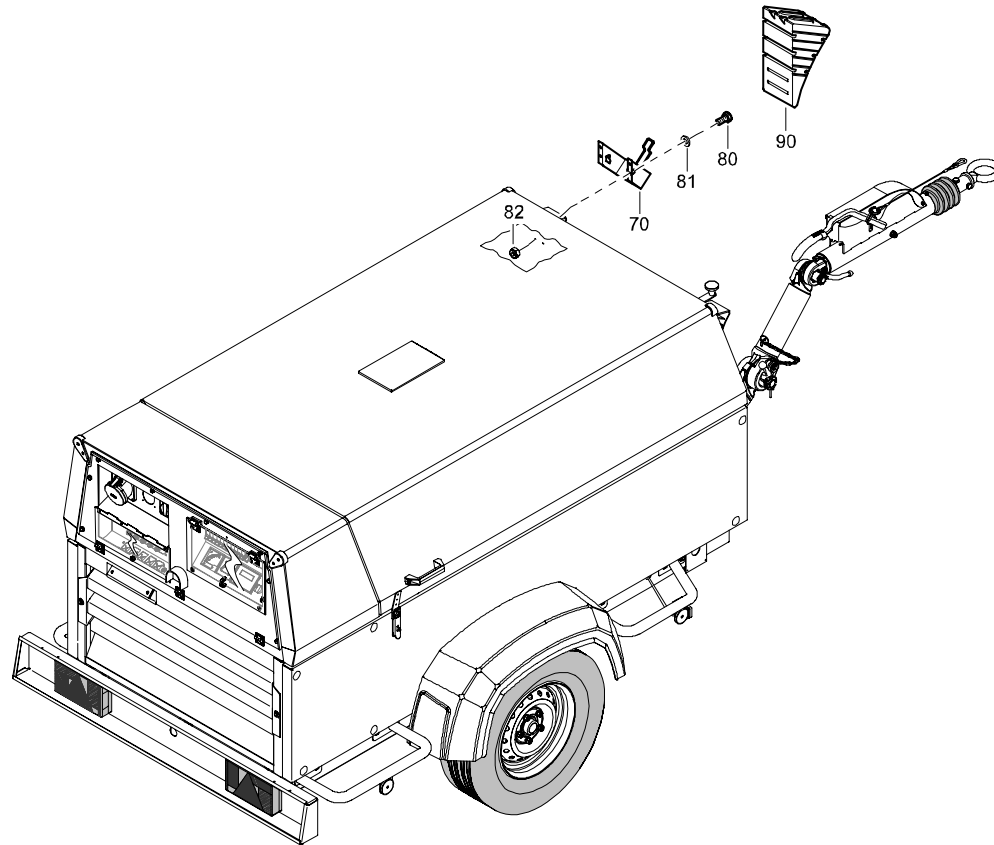
1611 7721 27/00

SAFETY CHAIN CE

20	1604 1575 80	CHAIN ASSY	1
•A20	1604 1575 00	SAFETY CHAIN	1
•A40	1604 1572 03	QUICK COUPLING	2

1611 7722 27/02

WHEELCHOCKS - OPTIONS



REF	PART NUMBER	DESIGNATION	QTY
70	1202 9354 01	BRACKET	2
80	0147 1244 03	HEX. HEAD SCREW	8
81	0301 2321 00	PLAIN WASHER	8
82	0291 1108 00	LOCKNUT	8
90	1202 9353 01	WHEELCHOCKS	2

CLICK HERE TO **DOWNLOAD** THE COMPLETE MANUAL

- Thank you very much for reading the preview of the manual.
- You can download the complete manual from: www.heydownloads.com by clicking the link below



- Please note: If there is no response to CLICKING the link, please download this PDF first and then click on it.

CLICK HERE TO **DOWNLOAD** THE COMPLETE MANUAL