

**Parts List**  
**For Portable Generators**

**QAX 20 Dd**

CLICK HERE TO **DOWNLOAD** THE COMPLETE MANUAL

- Thank you very much for reading the preview of the manual.
- You can download the complete manual from: [www.heydownloads.com](http://www.heydownloads.com) by clicking the link below



- Please note: If there is no response to CLICKING the link, please download this PDF first and then click on it.

CLICK HERE TO **DOWNLOAD** THE COMPLETE MANUAL

- 
- 18 Maintenance and repair work should be recorded in an operator's logbook for all machinery. Frequency and nature of repairs can reveal unsafe conditions.
  - 19 When hot parts have to be handled, e.g. shrink fitting, special heat-resistant gloves shall be used and, if required, other body protection shall be applied.
  - 20 When using cartridge type breathing filter equipment, ascertain that the correct type of cartridge is used and that its useful service life is not surpassed.
  - 21 Make sure that oil, solvents and other substances likely to pollute the environment are properly disposed of.
  - 22 Before clearing the generator for use after maintenance or overhaul, submit it to a testrun, check that the AC power performance is correct and that the control and shutdown devices function correctly.

## 1.6 TOOL APPLICATIONS SAFETY

Apply the proper tool for each job. With the knowledge of correct tool use and knowing the limitations of tools, along with some common sense, many accidents can be prevented.

Special service tools are available for specific jobs and should be used when recommended. The use of these tools will save time and prevent damage to parts.

## 1.7 SPECIFIC SAFETY PRECAUTIONS

### Batteries

When servicing batteries, always wear protecting clothing and glasses.

- 1 The electrolyte in batteries is a sulphuric acid solution which is fatal if it hits your eyes, and which can cause burns if it contacts your skin. Therefore, be careful when handling batteries, e.g. when checking the charge condition.
- 2 Install a sign prohibiting fire, open flame and smoking at the post where batteries are being charged.
- 3 When batteries are being charged, an explosive gas mixture forms in the cells and might escape through the vent holes in the plugs. Thus an explosive atmosphere may form around the battery if ventilation is poor, and can remain in and around the battery for several hours after it has been charged. Therefore:
  - never smoke near batteries being, or having recently been, charged,
  - never break live circuits at battery terminals, because a spark usually occurs.
- 4 When connecting an auxiliary battery (AB) in parallel to the unit battery (CB) with booster cables: connect the + pole of AB to the + pole of CB, then connect the - pole of CB to the mass of the unit. Disconnect in the reverse order.

---

# STANDARD

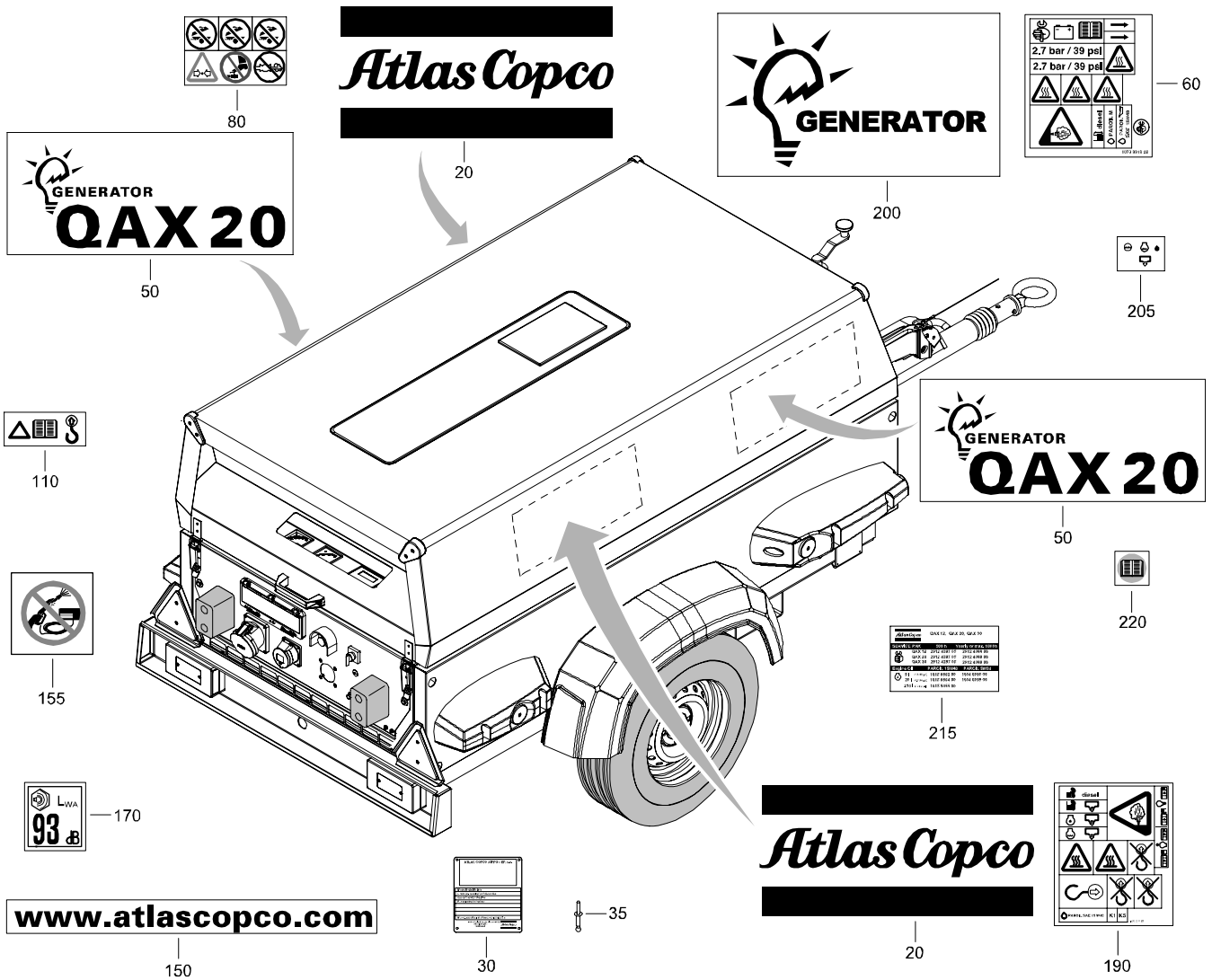
## ENGINE AND ACCESSORIES

---

REF	PART NUMBER	DESIGNATION	QTY	REF	PART NUMBER	DESIGNATION	QTY
20	1626 0422 00	ENGINE	1				
25	1604 5186 01	SUPPORT	1				
30	0147 1438 03	HEX. HEAD SCREW	4				
35	0301 2371 00	PLAIN WASHER	4				
40	0147 1373 03	HEX. HEAD SCREW	2				
45	0301 2344 00	PLAIN WASHER	2				
50	1615 6595 00	ANTIVIBR. PAD	2				
55	0147 1359 03	HEX. HEAD SCREW	4				
60	0301 2344 00	PLAIN WASHER	4				
100	1615 7658 00	GASKET	1				
105	1604 5804 00	PIPE WITH FLEXIBLE	1				
115	0291 1185 04	LOCKNUT	3				
135	1615 5664 00	HEX. HEAD SCREW	4				
137	1604 3861 32	SILENCER	1				
155	0346 3001 08	PIPE CLAMP	1				
230	1604 4053 04	SCREEN	1				
240	1615 5664 00	HEX. HEAD SCREW	2				
245	1604 4054 02	PLATE	1				
250	0147 1322 03	HEX. HEAD SCREW	4				
255	0301 2335 00	PLAIN WASHER	4				
260	0266 2110 00	HEXAGON NUT	4				

# STANDARD

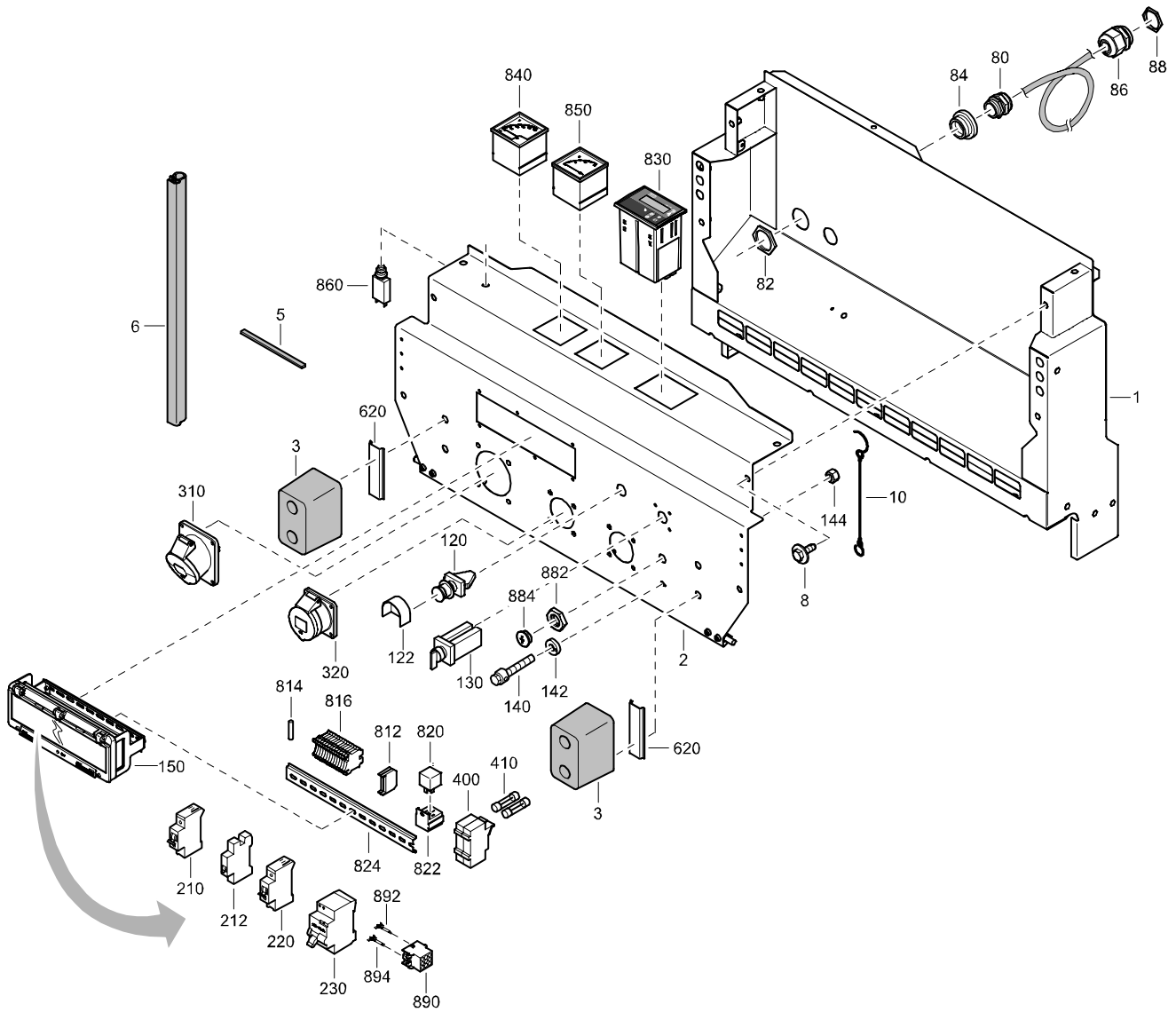
## MARKINGS



REF	PART NUMBER	DESIGNATION	QTY	REF	PART NUMBER	DESIGNATION	QTY
20	0690 1140 00	HOUSE MARK	2				
30	-	DATA PLATE (Not available separately)	1				
35	0129 3270 35	BLIND RIVET	4				
50	1604 5852 00	DECAL	2				
60	1079 9919 28	INFORMATION LABEL	1				
80	1079 9902 29	WARNING LABEL	1				
110	1079 9902 58	WARNING LABEL	1				
150	1079 9921 03	INFORMATION LABEL	1				
155	1079 9903 61	LABEL	1				
170	1604 3317 14	LABEL NOISE	1				
190	1079 9922 77	WARNING LABEL	1				
200	1604 5855 00	LABEL	1				
205	1079 9922 08	INFORMATION LABEL	2				
215	1079 9925 78	INFORMATION LABEL	1				
220	1079 9922 07	INFORMATION LABEL	2				

# STANDARD

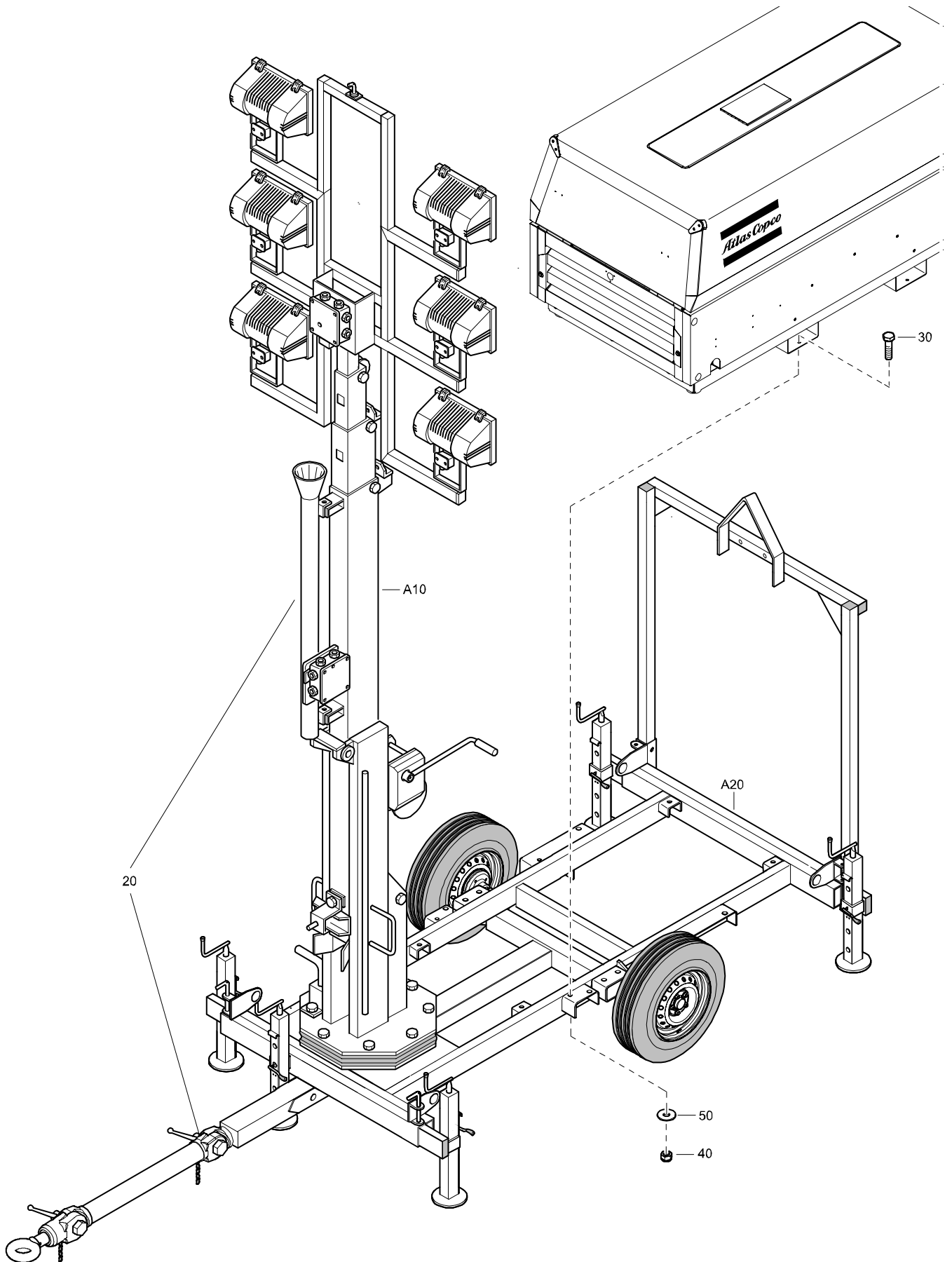
## CUBICLE



REF	PART NUMBER	DESIGNATION	QTY	REF	PART NUMBER	DESIGNATION	QTY
-	1900 1028 02	CUBICLE	(From page 35)	•310	1089 0662 36	SOCKET	1
•1	1604 7673 03	BAFFLE REAR	1	•320	1089 0662 12	SOCKET OUTLET	1
•2	1604 7674 02	DOOR	1	•400	1089 9333 01	FUSE HOLDER	2
•3	1604 7964 00	BUFFER	2	•410	1089 9332 01	FUSE	2
•5	1615 7057 00	SEAL	AR	•620	0993 7106 14	RAIL	1
•6	1604 4317 00	SEAL	AR	•812	1089 0506 19	DIODE	1
•8	1604 3423 00	SCRAPER BOLT	6	•814	1089 0310 14	RESISTOR	1
•10	1604 9322 00	HOOK	2	•816	1089 0577 12	TERMINAL	13
•80	0698 5140 63	CABLE GLAND BRASS	1	•820	1089 0341 07	RELAY	2
•82	0697 9809 06	LOCKNUT BRASS	1	•822	1089 0358 01	SOCKET	2
•84	0697 9745 29	REDUCER	1	•824	0993 7106 30	RAIL	1
•86	1604 7803 00	CABLE GLAND	1	•830	1604 9382 00	CONTROLLER	1
•88	0697 9807 00	NUT	1	•840	1089 9383 02	VOLT METER	1
•120	1089 9422 01	EMERGENCY STOP	1	•850	1089 9381 06	AMPEREMETER	1
•122	1089 0362 28	PROTECTIVE COLLAR	1	•860	1089 9206 31	CIRCUIT BREAKER	1
•130	1089 0263 45	SWITCH	1	•882	0697 9809 20	LOCK NUT	1
•140	1615 7280 00	TERMINAL	1	•884	0697 9810 58	PLUG	1
•142	1604 5646 00	SPACER	1	•890	1088 0015 32	CONNECTOR CAP	1
•144	0266 2110 00	HEXAGON NUT	1	•892	1088 0015 14	PIN	4
•150	1089 0694 03	BOX	1	•894	1088 0015 16	PIN	3
•210	1089 9472 11	CIRCUIT BREAKER	1				
•212	1089 9473 13	SHUNT TRIP COIL	1				
•220	1089 9472 26	CIRCUIT BREAKER	1				
•230	1089 9473 01	CIRCUIT BREAKER	1				

# OPTIONS

## LIGHTING TOWER SIMPLIFIED



---

# OPTIONS

## TOWBAR & AXLE FOR GENERATOR WITH FIXED TOWBAR WITHOUT BRAKES

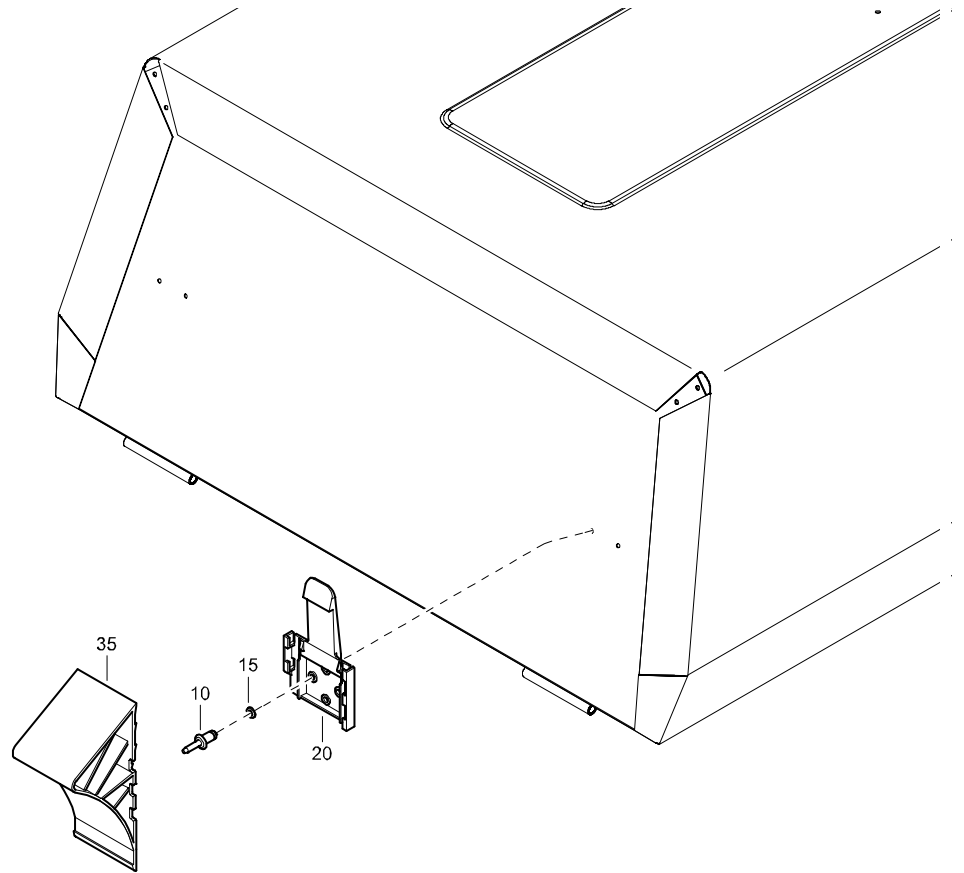
---

REF	PART NUMBER	DESIGNATION	QTY	REF	PART NUMBER	DESIGNATION	QTY
20	1079 9902 00	WARNING LABEL	1				
25	1079 9902 54	LABEL	1				
50	1604 3802 00	AXLE	1				
		(For details see page 80)					
60	0291 1112 00	LOCKNUT	4				
80	1604 3804 09	FIXED NOBRAKES	1				
		(For details see page 82)					
85	0147 1403 03	HEX. HEAD SCREW	4				
90	0301 2358 00	PLAIN WASHER	8				
100	0291 1112 00	LOCKNUT	4				
105	0147 1412 03	HEX. HEAD SCREW	2				
106	1615 9575 00	SPACER	2				
150	1615 9618 87	TYRE ASSY	2				
•A20	1604 0333 00	DISC WHEEL	1				
•A30	0538 0400 21	TYRE	1				
•A40	1615 6322 00	VENTIL	1				
200	0371 1100 21	LIFTING EYE	2				

# OPTIONS

## WHEELCHOCKS

**Zul. Stützlast max. 50 kg**  
 Mindeststützlast 4% der Anhängelast,  
 mehr als 25 kg nicht nötig.  
 Zul. Stützlast des Zugfahrzeugs beachten !



REF	PART NUMBER	DESIGNATION	QTY	REF	PART NUMBER	DESIGNATION	QTY
10	0129 3177 00	BLIND RIVET	4				
15	0301 2321 00	PLAIN WASHER	4				
20	1613 5440 00	BRACKET	2				
35	1613 5439 00	WHEELCHOCK	2				
50	1079 9902 54	LABEL	1				

CLICK HERE TO **DOWNLOAD** THE COMPLETE MANUAL

- Thank you very much for reading the preview of the manual.
- You can download the complete manual from: [www.heydownloads.com](http://www.heydownloads.com) by clicking the link below



- Please note: If there is no response to CLICKING the link, please download this PDF first and then click on it.

CLICK HERE TO **DOWNLOAD** THE COMPLETE MANUAL