

Parts List
For Portable Generators

QAS 70 Pd

CLICK HERE TO **DOWNLOAD** THE COMPLETE MANUAL

- Thank you very much for reading the preview of the manual.
- You can download the complete manual from: www.heydownloads.com by clicking the link below



- Please note: If there is no response to CLICKING the link, please download this PDF first and then click on it.

CLICK HERE TO **DOWNLOAD** THE COMPLETE MANUAL

- 13 When using compressed air or inert gas to clean down equipment, do so with caution and use the appropriate protection, at least safety glasses, for the operator as well as for any bystander. Do not apply compressed air or inert gas to your skin or direct an air or gas stream at people. Never use it to clean dirt from your clothes.
- 14 When washing parts in or with a cleaning solvent, provide the required ventilation and use appropriate protection such as a breathing filter, safety glasses, rubber apron and gloves, etc.
- 15 Safety shoes should be compulsory in any workshop and if there is a risk, however small, of falling objects, wearing of a safety helmet should be included.
- 16 If there is a risk of inhaling hazardous gases, fumes or dust, the respiratory organs must be protected and depending on the nature of the hazard, so must the eyes and skin.
- 17 Remember that where there is visible dust, the finer, invisible particles will almost certainly be present too; but the fact that no dust can be seen is not a reliable indication that dangerous, invisible dust is not present in the air.
- 18 Never operate the generator in excess of its limits as indicated in the technical specifications and avoid long no-load sequences.
- 19 Never operate the generator in a humid atmosphere. Excessive moisture causes worsening of the generator insulation.
- 20 Do not open electrical cabinets, cubicles or other equipment while voltage is supplied. If such cannot be avoided, e.g. for measurements, tests or adjustments, have the action carried out by a qualified electrician only, with appropriate tools, and ascertain that the required bodily protection against electrical hazards is applied.
- 21 Never touch the power terminals during operation of the machine.
- 22 Whenever an abnormal condition arises, e.g. excessive vibration, noise, odour, etc., switch the circuit breakers to OFF and stop the engine. Correct the faulty condition before restarting.
- 23 Check the electric cables regularly. Damaged cables and insufficient lightening of connections may cause electric shocks. Whenever damaged wires or dangerous conditions are observed, switch the circuit breakers to OFF and stop the engine. Replace the damaged wires or correct the dangerous condition before restarting. Make sure that all electric connections are securely tightened.
- 24 Avoid overloading the generator. The generator is provided with circuit breakers for overload protection. When a breaker has tripped, reduce the concerned load before restarting.
- 25 If the generator is used as stand-by for the mains supply, it must not be operated without control system which automatically disconnects the generator from the mains when the mains supply is restored.
- 26 Never remove the cover of the output terminals during operation. Before connecting or disconnecting wires, switch off the load and the circuit breakers, stop the machine and make sure that the machine cannot be started inadvertently or there is any residual voltage on the power circuit.
- 27 Running the generator at low load for long periods will reduce the lifetime of the engine.

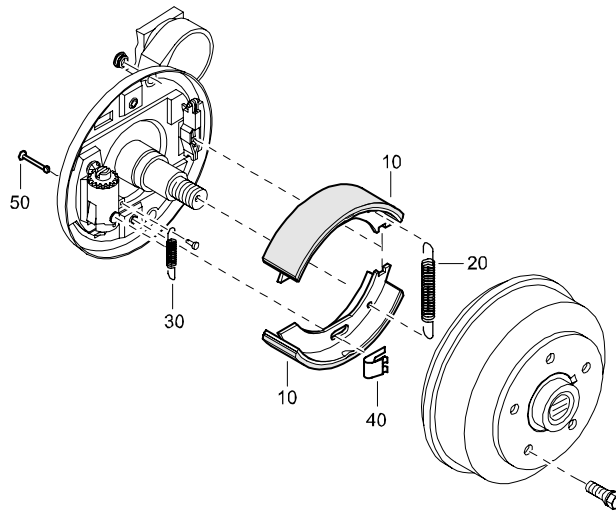
1.5 SAFETY DURING MAINTENANCE AND REPAIR

Maintenance, overhaul and repair work shall only be carried out by adequately trained personnel; if required, under supervision of someone qualified for the job.

- 1 Use only the correct tools for maintenance and repair work, and only tools which are in good condition.
- 2 Parts shall only be replaced by genuine Atlas Copco replacement parts.
- 3 All maintenance work, other than routine attention, shall only be undertaken when the unit is stopped. Steps shall be taken to prevent inadvertent starting. In addition, a warning sign bearing a legend such as "work in progress; do not start" shall be attached to the starting equipment.
On engine-driven units the battery shall be disconnected and removed or the terminals covered by insulating caps.
On electrically driven units the main switch shall be locked in open position and the fuses shall be taken out. A warning sign bearing a legend such as "work in progress; do not supply voltage" shall be attached to the fuse box or main switch.
- 4 Prior to stripping an engine or other machine or undertaking major overhaul on it, prevent all movable parts from rolling over or moving.
- 5 Make sure that no tools, loose parts or rags are left in or on the machine. Never leave rags or loose clothing near the engine air intake.
- 6 Never use flammable solvents for cleaning (fire-risk).
- 7 Take safety precautions against toxic vapours of cleaning liquids.
- 8 Never use machine parts as a climbing aid.
- 9 Observe scrupulous cleanliness during maintenance and repair. Keep away dirt, cover the parts and exposed openings with a clean cloth, paper or tape.
- 10 Never weld on or perform any operation involving heat near the fuel or oil systems. Fuel and oil tanks must be completely purged, e.g. by steam-cleaning, before carrying out such operations. Never weld on, or in any way modify, pressure vessels. Disconnect the alternator cables during arc welding on the unit.
- 11 Support the towbar and the axle(s) securely if working underneath the unit or when removing a wheel. Do not rely on jacks.
- 12 Do not remove any of, or tamper with, the sound-damping material. Keep the material free of dirt and liquids such as fuel, oil and cleansing agents. If any sound-damping material is damaged, replace it to prevent the sound pressure level from increasing.
- 13 Use only lubricating oils and greases recommended or approved by Atlas Copco or the machine manufacturer. Ascertain that the selected lubricants comply with all applicable safety regulations, especially with regard to explosion or fire-risk and the possibility of decomposition or generation of hazardous gases. Never mix synthetic with mineral oil.
- 14 Protect the engine, alternator, air intake filter, electrical and regulating components, etc., to prevent moisture ingress, e.g. when steam-cleaning.
- 15 When performing any operation involving heat, flames or sparks on a machine, the surrounding components shall first be screened with non-flammable material.
- 16 Never use a light source with open flame for inspecting the interior of a machine.
- 17 When repair has been completed, the machine shall be barred over at least one revolution for reciprocating machines, several revolutions for rotary ones to ensure that there is no mechanical interference within the machine or driver. Check the direction of rotation of electric motors when starting up the machine initially and after any alteration to the electrical connection(s) or switch gear, to check that the oil pump and the fan function properly.

SERVICE KIT

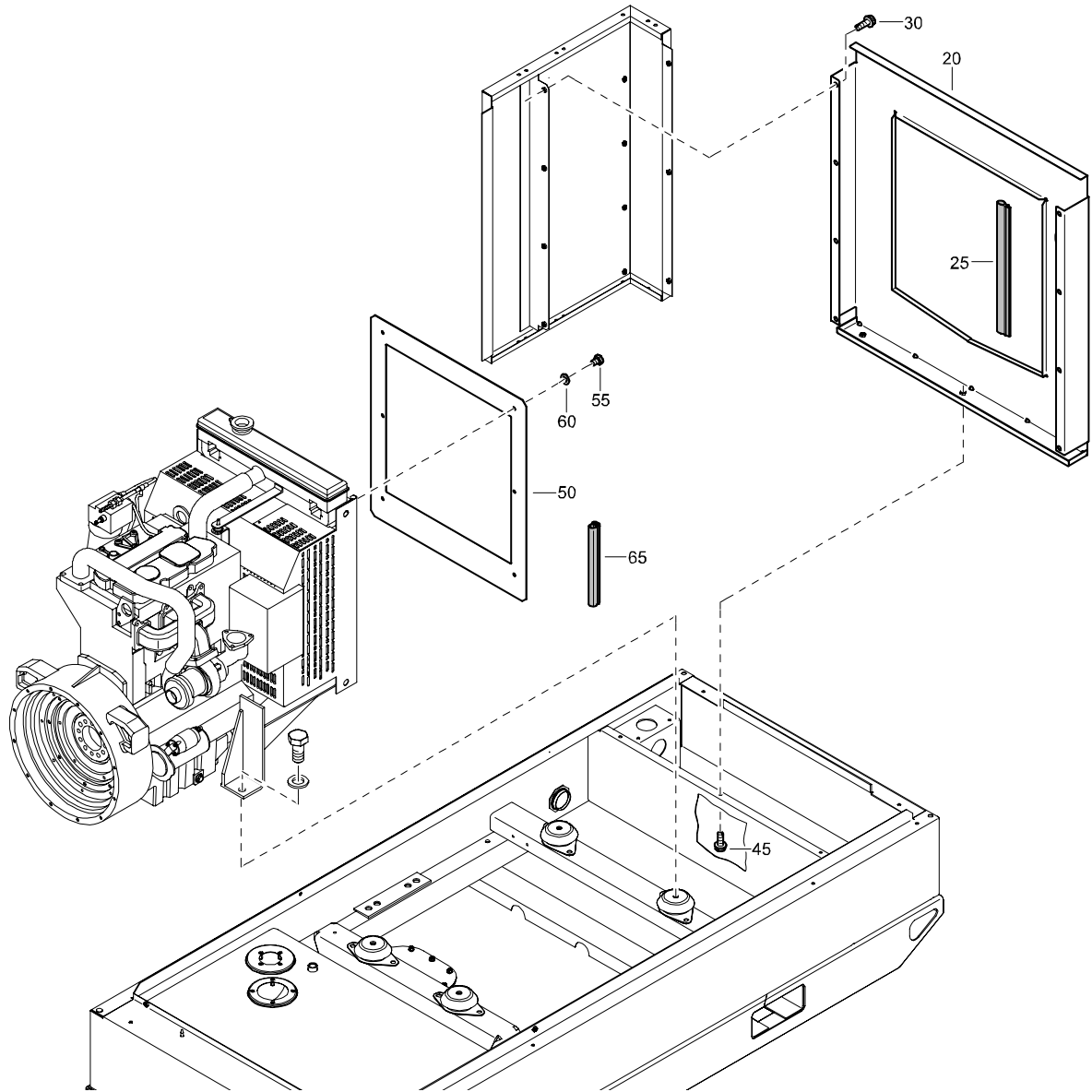
BRAKE SHOES



REF	PART NUMBER	DESIGNATION	QTY	REF	PART NUMBER	DESIGNATION	QTY
-	2911 0073 00	SERVICE KIT BRAKE SHOES					
•10	-	BRAKE SHOE	2				
•20	-	SPRING	1				
•30	-	SPRING	1				
•40	-	SPRING	2				
•50	-	PIN	2				

STANDARD

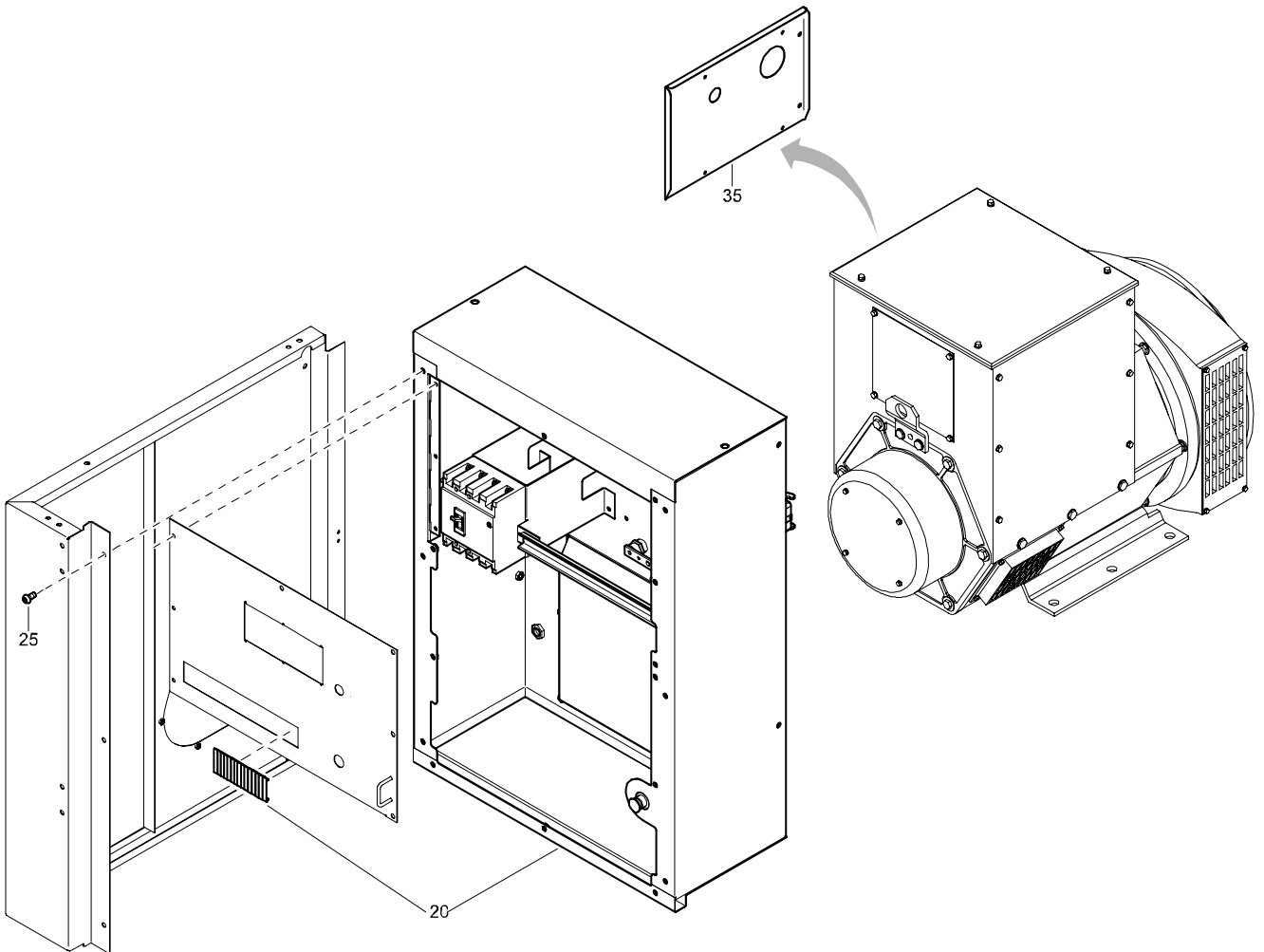
COOLING



REF	PART NUMBER	DESIGNATION	QTY	REF	PART NUMBER	DESIGNATION	QTY
20	1604 4987 01	PLATE	1				
25	1604 9515 00	SEAL	AR				
30	1615 5664 00	HEX. HEAD SCREW	8				
45	1619 2766 00	HEX. HEAD SCREW	3				
50	1604 5920 01	PLATE	1				
55	0147 1319 03	HEX. HEAD SCREW	6				
60	0301 2335 00	PLAIN WASHER	6				
65	1604 4317 00	SEAL	AR				

STANDARD

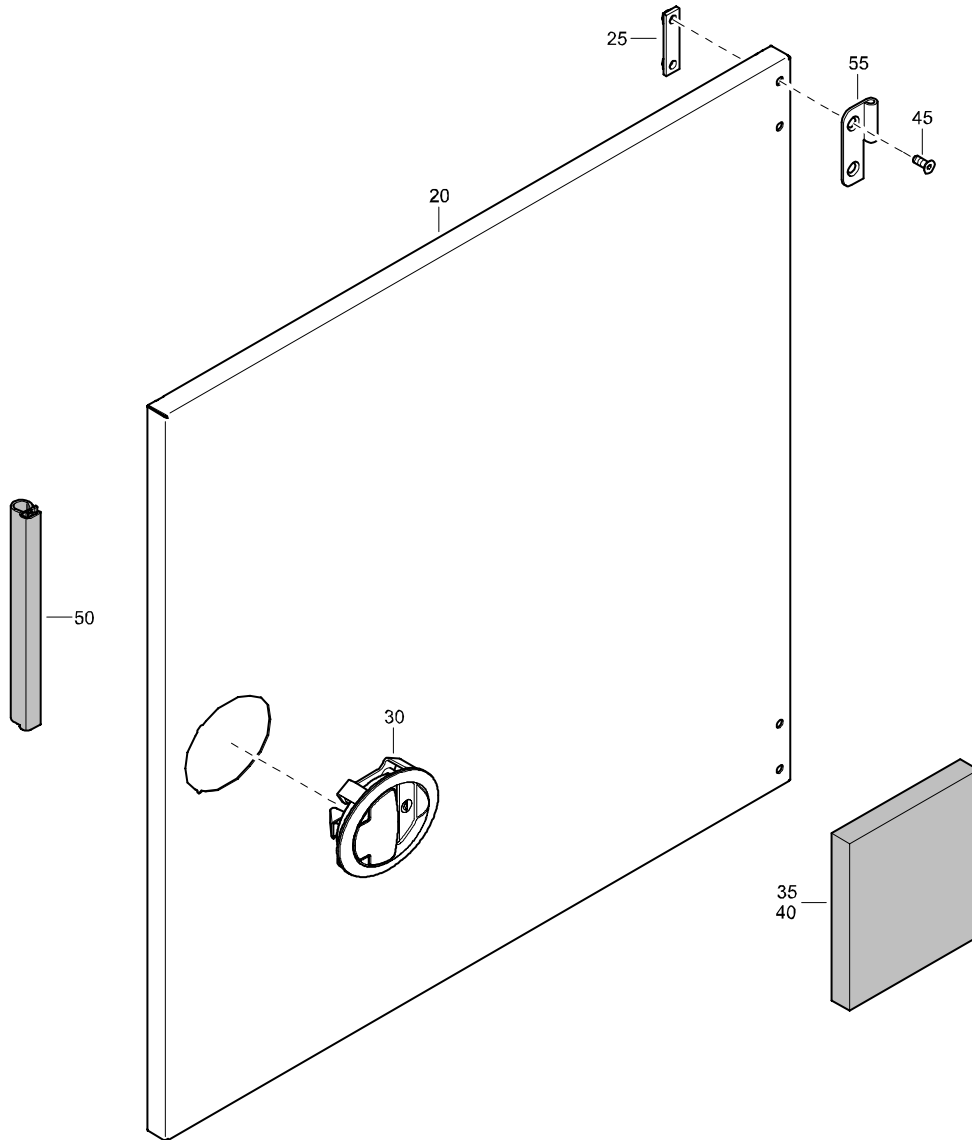
CUBICLE AND ACCESSORIES 240V



REF	PART NUMBER	DESIGNATION	QTY	REF	PART NUMBER	DESIGNATION	QTY
20	1900 1032 27	CUBICLE (For details see page 56)	1				
25	0215 0003 77	HEX SOCK. SCREW	6				
35	1604 7723 00	PLATE	1				

STANDARD

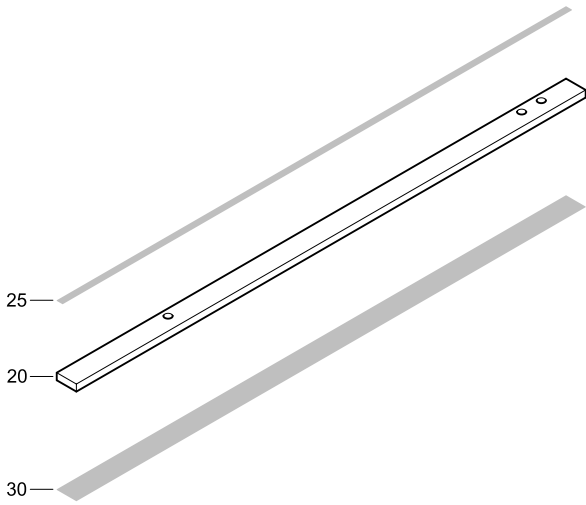
DOOR



REF	PART NUMBER	DESIGNATION	QTY	REF	PART NUMBER	DESIGNATION	QTY
-	1604 4961 93	DOOR	(From page 34)				
•20	1604 4961 03	DOOR	1				
•25	1615 5684 00	BRACKET	2				
•30	1604 6151 00	HANDLE	1				
•35	-	SILENCING FOAM (30 mm)	1				
•40	-	SILENCING FOAM (30 mm)	1				
•45	0216 1324 03	HEX SOCK. SCREW	4				
•50	1604 4317 00	SEAL	AR				
•55	1604 3431 00	HINGE	2				
-	1079 0003 32	SILENCING FOAM 2000 mm x 1500 mm x 30 mm					

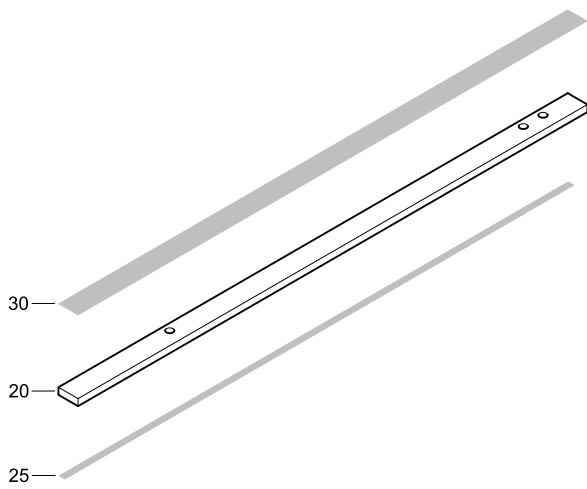
STANDARD

STRIP



REF	PART NUMBER	DESIGNATION	QTY
-	1604 5968 80	STRIP	(From page 43, 44)
•20	1604 5968 00	STRIP	1
•25	1615 7057 00	SEAL	AR
•30	1604 6079 00	SEAL	AR

1604 5968 80/01



REF	PART NUMBER	DESIGNATION	QTY
-	1604 5968 90	STRIP	(From page 43, 44)
•20	1604 5968 00	STRIP	1
•25	1615 7057 00	SEAL	AR
•30	1604 6079 00	SEAL	AR

1604 5968 90/01

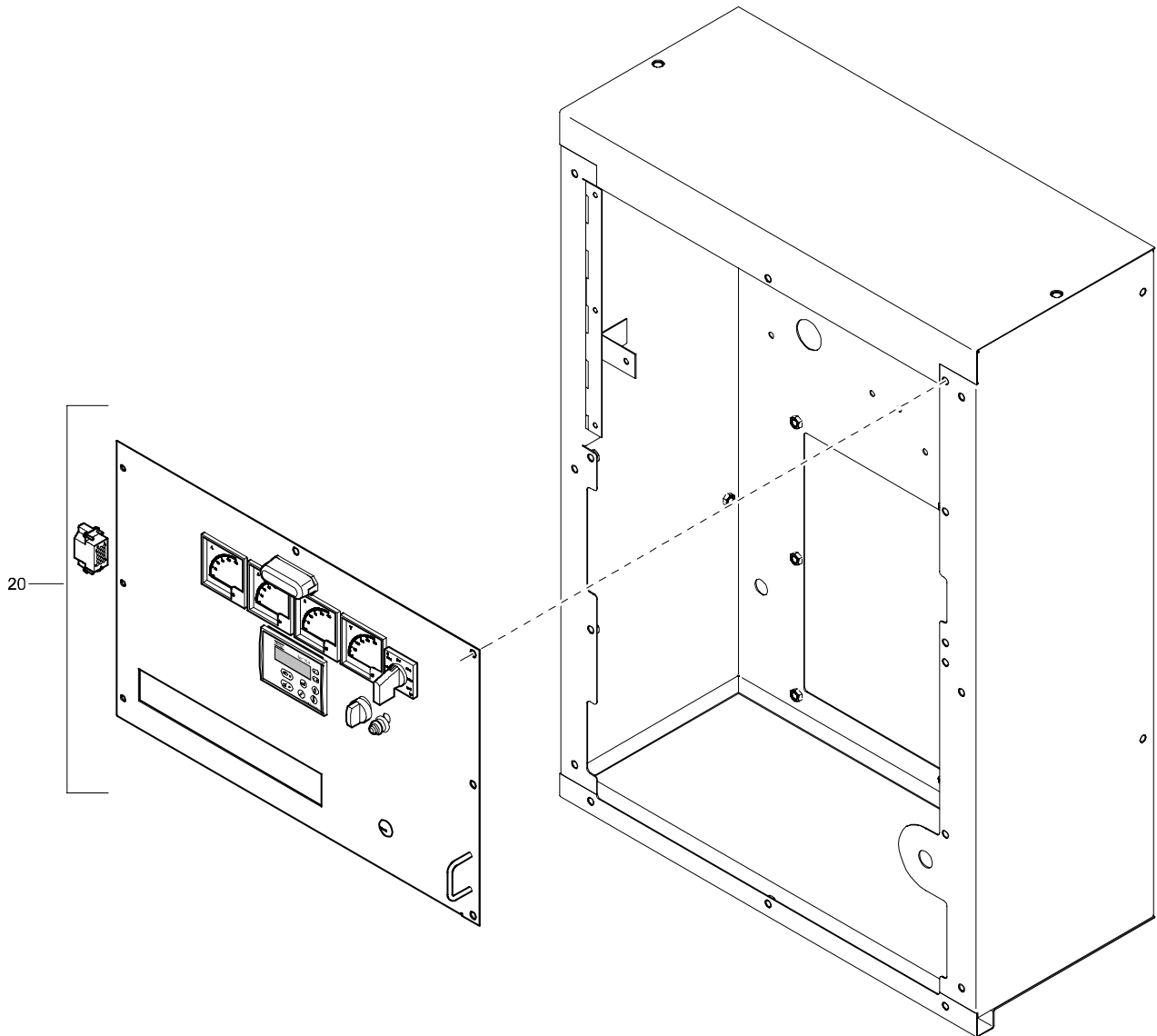
OPTIONS

EXTERNAL FUEL TANK CONNECTION

REF	PART NUMBER	DESIGNATION	QTY	REF	PART NUMBER	DESIGNATION	QTY
20	1604 6111 00	VALVE	1				
25	0147 1362 03	HEX. HEAD SCREW	2				
30	0301 2344 00	PLAIN WASHER	2				
32	0266 2111 00	HEXAGON NUT	2				
100	0560 0200 23	ELBOW	2				
105	0653 1124 00	FLAT GASKET	2				
110	0571 0020 14	HOSE NIPPLE	2				
115	1604 4137 00	HOSE CLIP	2				
120	0075 4005 55	FUEL HOSE	AR				
125	0075 4005 55	FUEL HOSE	AR				
130	0653 1124 00	FLAT GASKET	2				
135	0571 0020 14	HOSE NIPPLE	2				
140	1604 4137 00	HOSE CLIP	2				
200	1079 9925 00	INFORMATION LABEL	1				

OPTIONS

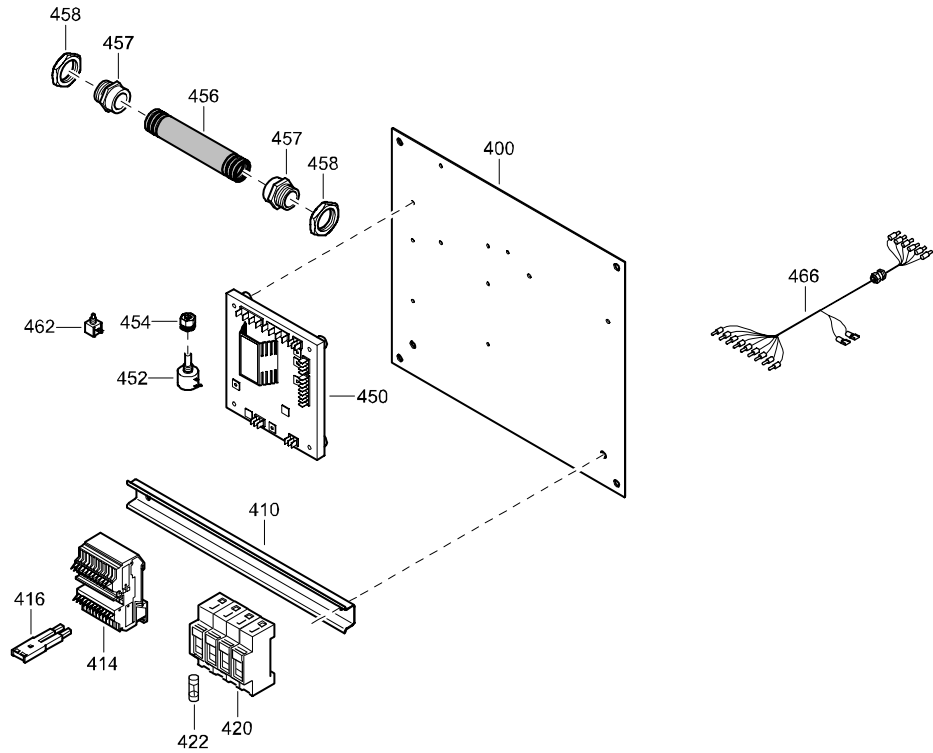
CONTROL PANEL QC1001 100A



REF	PART NUMBER	DESIGNATION	QTY	REF	PART NUMBER	DESIGNATION	QTY
20	1900 1032 81	CONTROL PANEL (For details see page 93)	1				

OPTIONS

MOUNTING PLATE



REF	PART NUMBER	DESIGNATION	QTY	REF	PART NUMBER	DESIGNATION	QTY
-	1900 1032 46	ELECTRICAL ASSEMBLY(From page 83)					
•400	1604 5065 03	PLATE	1				
•410	0090 1400 02	RAIL	AR				
•414	1089 0577 53	TERMINAL	11				
•416	1089 0577 83	JUMPER BAR	3				
•420	1089 9333 04	FUSE HOLDER	1				
•422	1089 9332 01	FUSE	3				
•450	1089 9592 02	VOLTAGE REGULATOR	1				
•452	1089 9371 21	POTMETER	1				
•454	1089 9371 50	SPINDLE LOCK	2				
•456	0070 4022 14	FLEX.CONDUIT	AR				
•457	0698 6125 42	CONDUIT FITTING	2				
•458	1088 0302 06	NUT	2				
•462	1089 9371 05	POTMETER	1				
•466	1604 6024 02	WIRE HARNESS	1				

CLICK HERE TO **DOWNLOAD** THE COMPLETE MANUAL

- Thank you very much for reading the preview of the manual.
- You can download the complete manual from: www.heydownloads.com by clicking the link below



- Please note: If there is no response to CLICKING the link, please download this PDF first and then click on it.

CLICK HERE TO **DOWNLOAD** THE COMPLETE MANUAL