

Parts List
For Portable Generators

QAS 22 Pd

CLICK HERE TO **DOWNLOAD** THE COMPLETE MANUAL

- Thank you very much for reading the preview of the manual.
- You can download the complete manual from: www.heydownloads.com by clicking the link below



- Please note: If there is no response to CLICKING the link, please download this PDF first and then click on it.

CLICK HERE TO **DOWNLOAD** THE COMPLETE MANUAL

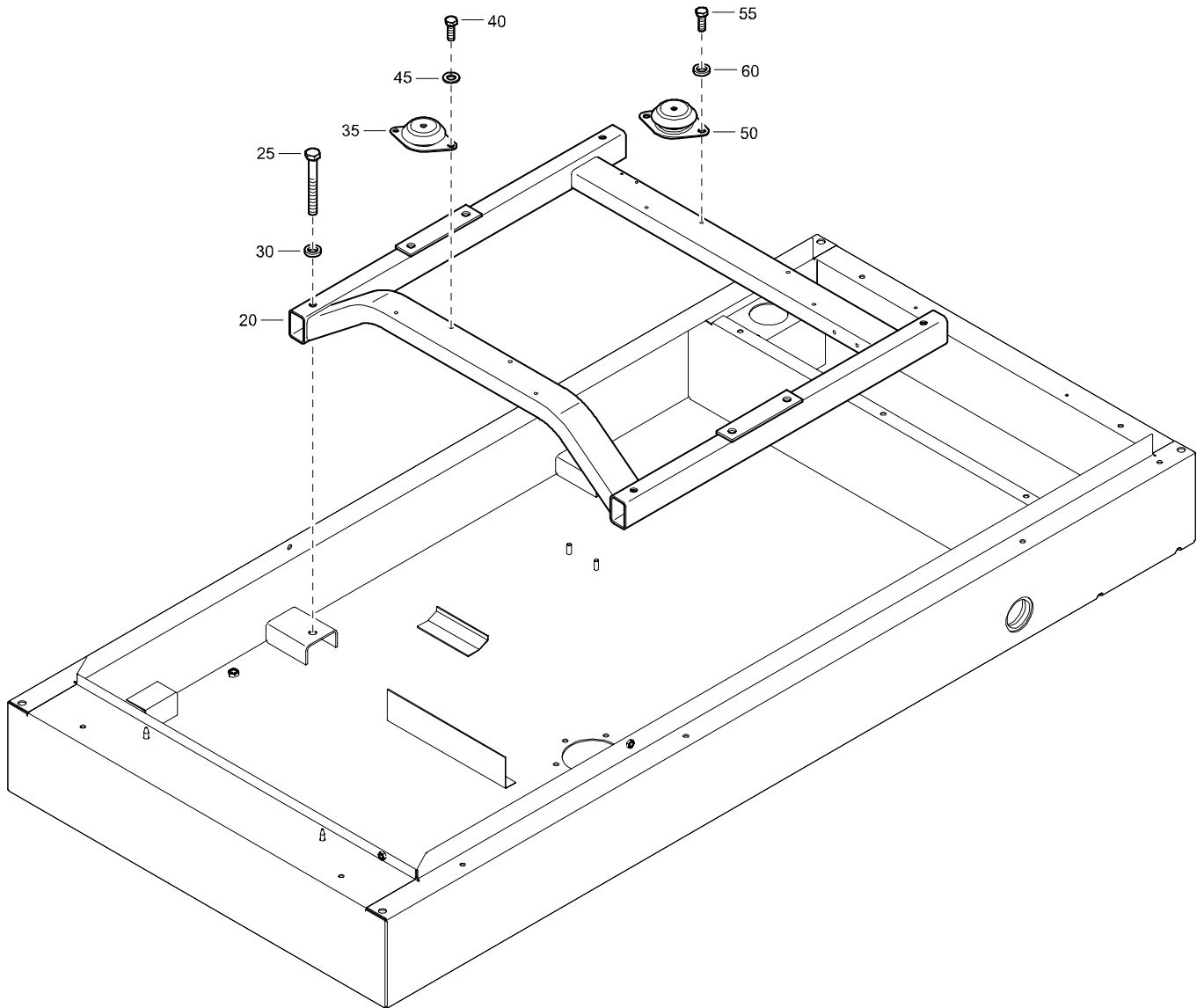
PARTS LIST

PARTS INDEX

PART	PAGE	PART	PAGE
A			
AC EYE	66	DISTANCE SLEEVE	93, 94, 95
ACTUATOR	62	DOOR	32, 42, 43, 44, 50, 57
ADAPTER	83	DRUM	96
AIR FILTER	17	E	
AIR INLET	31	EARTH LEAKAGE DETECTION	75
ALTERNATOR	28	EARTH PIN	91
ALTERNATOR AND ACCESSORIES	28	EARTH RELAY	91
AMPERE METER	93	ELBOW	31, 70, 73, 82
APPLIANCE INLET	86	ELECTRICAL ASSEMBLY	39, 56, 73, 75, 81, 82, 89, 91, 92
ASSEMBLY	84, 88	ELECTRICAL SYSTEM	34
AXLE	86, 96	ELECTRONIC SPEED REGULATOR	62, 81
B			
BAFFLE	32	EMERGENCY STOP	54, 55
BALL COUPLING	66, 85	ENGINE	27, 62
BATTERY CABLE	34	ENGINE AND ACCESSORIES	27, 62
BATTERY CHARGER	76, 92	ENGINE BREATHER	17
BATTERY SWITCH	74	ENGINE COOLANT	20
BEAM	46, 49, 50, 47, 48	ENGINE OIL	18, 19
BEARING	96	EXHAUST	26
BELT	17	EXHAUST COVER	26, 63
BEND	52, 84	EXHAUST PIPE	26, 63
BODYWORK	32, 33	EXTERNAL FUEL TANK CONNECTION	70, 71
BOX	54, 55	F	
BRAKE CABLE	86, 97	FILTER	31, 73
BRAKE SHOE	96	FILTERELEMENT	53
BULB	93, 95	FLANGE	24, 60, 61
BUMPER	98	FRAME	22, 52, 60, 86, 88
BUMPER ASSEMBLY	86, 98	FRAME AND MOUNTS	21, 22, 23
BUSH	66, 103	FUEL FILTER	17, 24, 53
BUSHING	37, 62, 82, 96	FUEL GAUGE	24
C			
CABLE	64, 103	FUEL HOSE	24, 70, 84
CABLE GLAND	54, 55, 56, 89, 93, 94, 95	FUEL LEVEL	84
CABLE STRIP	82, 86, 98	FUEL SYSTEM	24, 25
CABLE TIE	29, 30, 34	FUELTANK	84
CAP	32, 88, 96	FUNNEL	24, 51
CIRCLIPS	96	FUSE	56, 89
CIRCUIT BREAKER	54, 55, 93, 94, 95	FUSE HOLDER	56, 89
CLAMP	31, 34, 73, 97	G	
CLASP	96, 103	GB50 EYE	67
COIL	54, 55	GROMMET	61, 86, 92
CONNECTION	73	H	
CONNECTOR	89, 92	HANDLE	42, 43, 44
CONNECTOR ASSEMBLY	89	HINGE	42, 43, 44, 47, 48, 90
CONTROL PANEL	77, 78, 79, 93, 94, 95	HOSE	24, 30, 31, 73, 82
COOLANT HEATER	82	HOSE ASSEMBLY	88
COOLING	29	HOSE CLAMP	24, 31, 73, 82, 84, 88
CORNER	32, 46, 49, 47, 48	HOSE CLIP	24, 30, 70, 86
COUPLING	72	HOUSE MARK	44, 45
COVER	24, 34, 60	HOUSING	54, 55, 97, 103
COVER PLATE	54, 55	I	
CUBICLE	40, 41, 54, 55	INDICATOR	31, 73
CUBICLE AND ACCESSORIES	40, 41	INLET SHUT DOWN VALVE	73
CURRENT TRANSFORMER	54, 55, 94	INSTRUCTION LABEL	35
D			
DATA PLATE	35	ISOLATOR	56, 89
DIN EYE	66	ITA EYE	67
DIODE	92, 93, 94, 95	J	
		JUMPER BAR	56, 89, 92

STANDARD

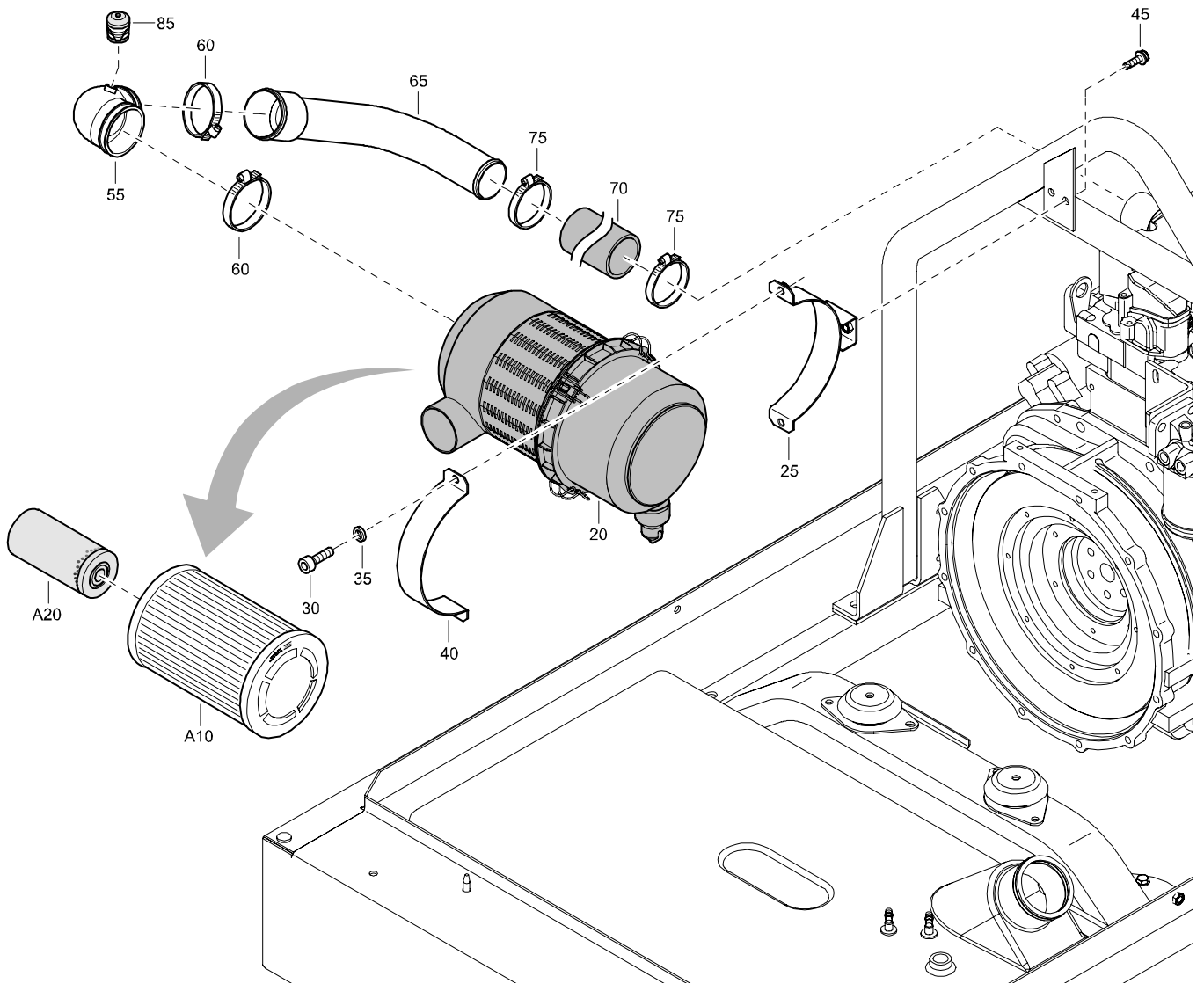
FRAME AND MOUNTS



REF	PART NUMBER	DESIGNATION	QTY	REF	PART NUMBER	DESIGNATION	QTY
20	1604 4914 00	SUB FRAME	1				
25	0147 1411 03	HEX. HEAD SCREW	4				
30	0301 2358 00	PLAIN WASHER	4				
35	1619 5502 02	VIBR. DAMPER	2				
40	0147 1323 15	HEX. HEAD SCREW	4				
45	0301 2335 00	PLAIN WASHER	4				
50	1615 6595 00	ANTIVIBR. PAD	2				
55	0147 1323 15	HEX. HEAD SCREW	4				
60	0301 2335 00	PLAIN WASHER	4				

STANDARD

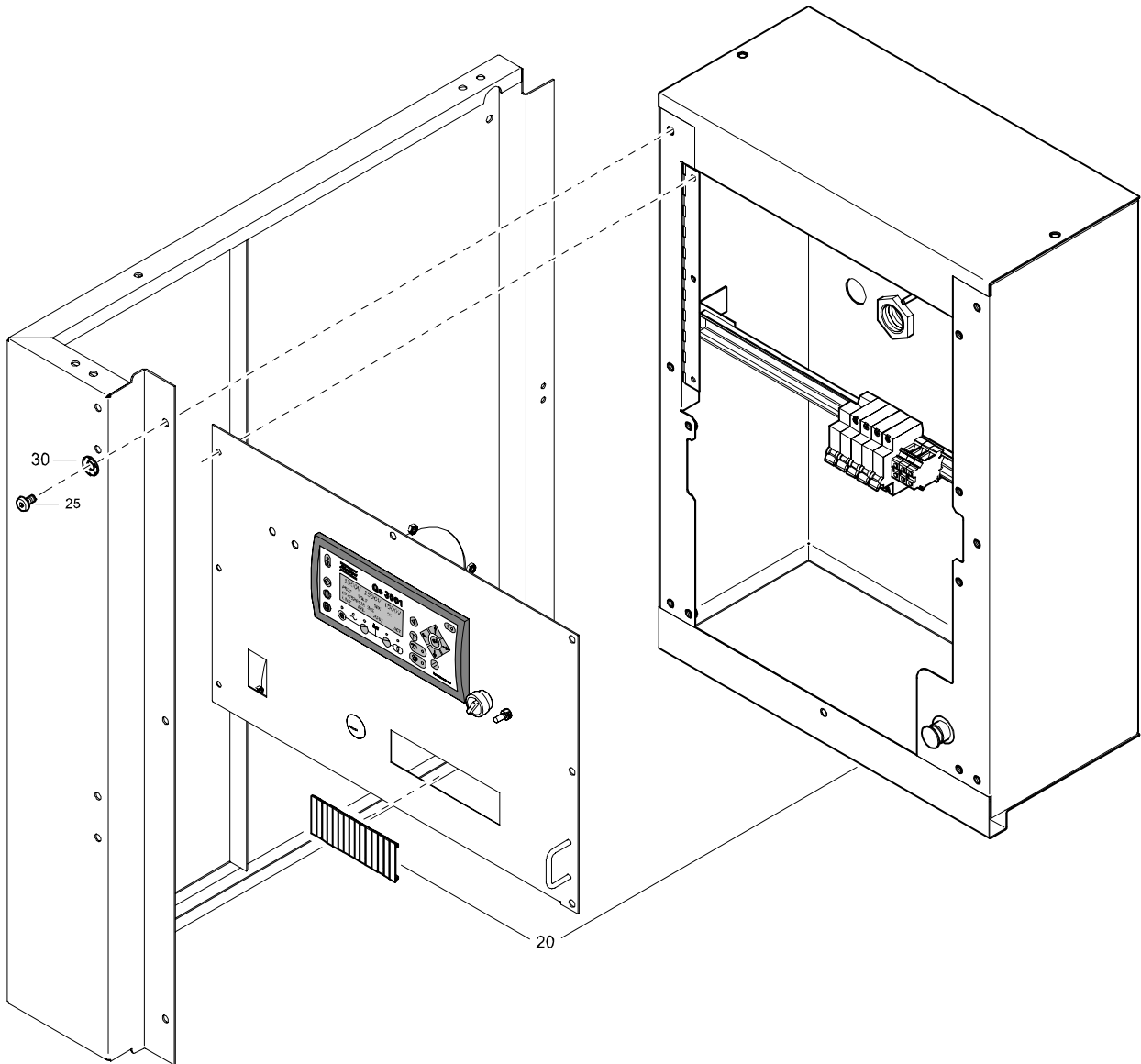
AIR INLET



REF	PART NUMBER	DESIGNATION	QTY	REF	PART NUMBER	DESIGNATION	QTY
20	1604 6985 00	FILTER	1				
•A10	2914 9302 00	ELEMENT	1				
•A20	2914 9303 00	SAFETY CARTRIDGE	1				
25	1604 4971 00	CLAMP	1				
30	0211 1325 03	HEX SOCK. SCREW	2				
35	0301 2335 00	PLAIN WASHER	2				
40	1604 5053 00	CLAMP	1				
45	1619 5337 01	HEX. HEAD SCREW	2				
55	1604 5012 00	ELBOW	1				
60	0347 6114 00	HOSE CLAMP	2				
65	1604 4984 00	PIPE	1				
70	1604 5013 00	HOSE	1				
75	0347 6113 00	HOSE CLAMP	2				
85	1613 7912 03	INDICATOR	1				

STANDARD

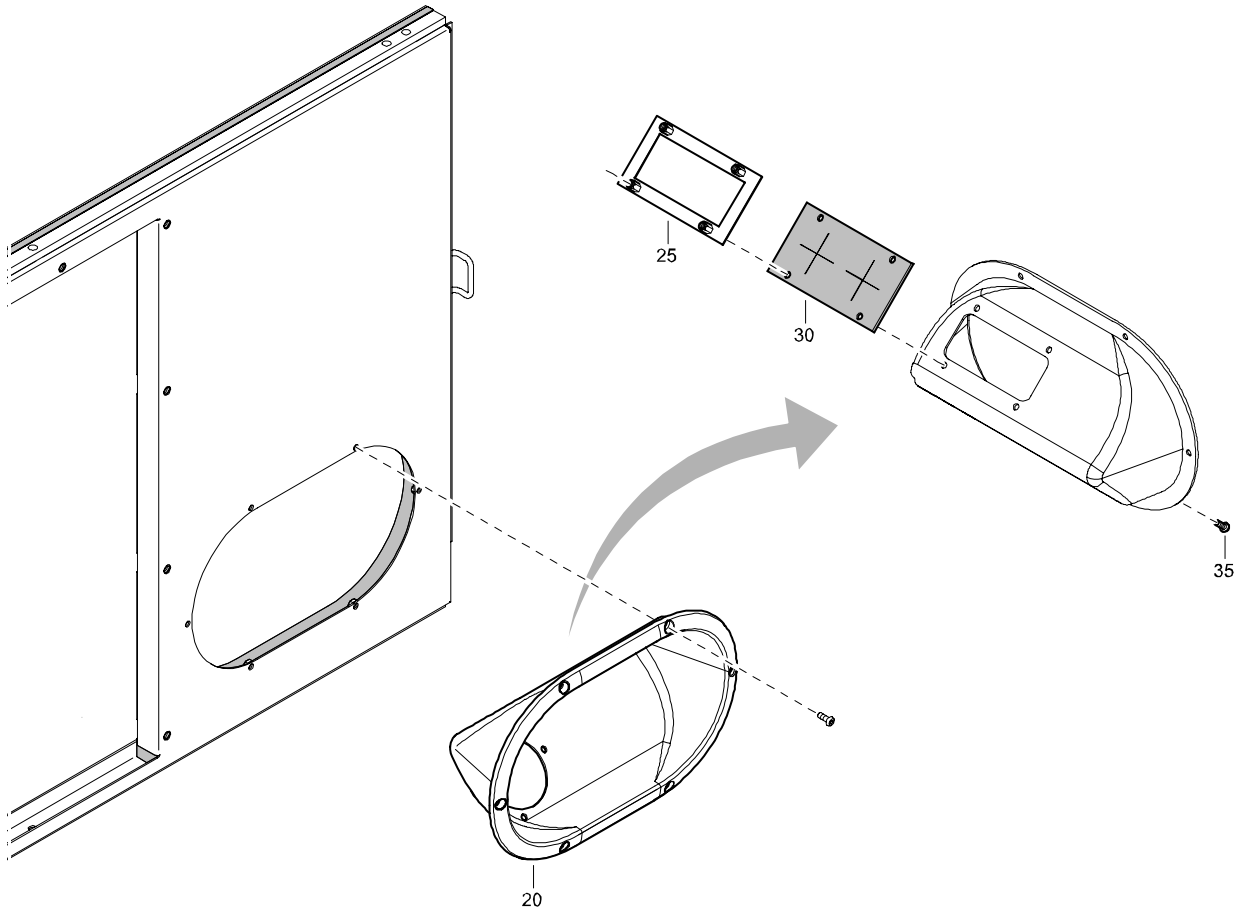
CUBICLE AND ACCESSORIES 240VYY 60Hz



REF	PART NUMBER	DESIGNATION	QTY	REF	PART NUMBER	DESIGNATION	QTY
20	1900 1031 27	CUBICLE (For details see page 55)	1				
25	0215 0003 77	HEX SOCK. SCREW	6				
30	1088 0019 01	CONTACT WASHER	1				

STANDARD

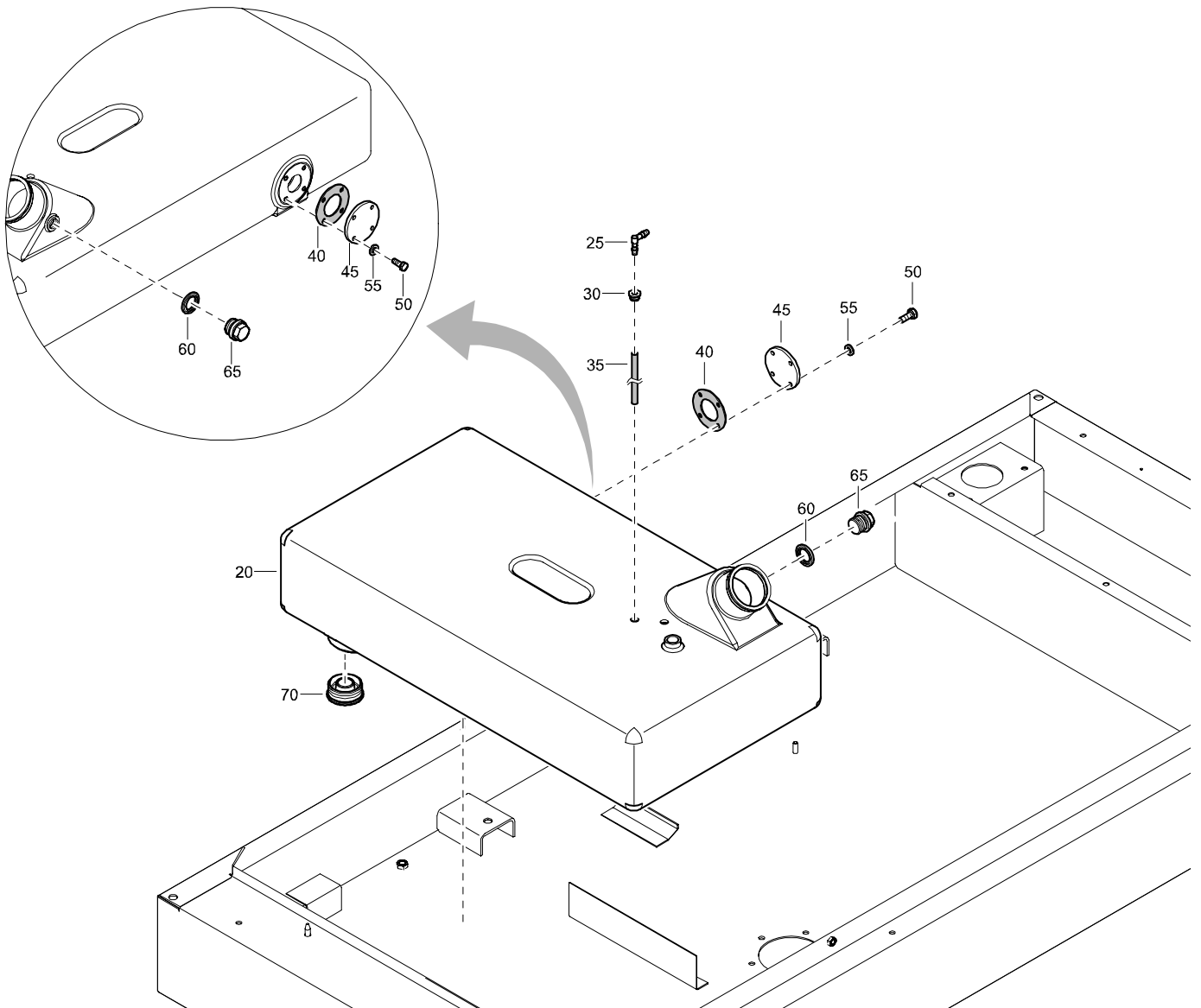
FUNNEL



REF	PART NUMBER	DESIGNATION	QTY	REF	PART NUMBER	DESIGNATION	QTY
-	1604 5037 80	FUNNEL	(From page 24)				
• 20	1604 5037 01	FUNNEL	1				
• 25	1604 6296 00	PLATE	1				
• 30	1604 6295 00	SEAL	1				
• 35	3222 3112 92	BOLT	4				

STANDARD

TANK



REF	PART NUMBER	DESIGNATION	QTY	REF	PART NUMBER	DESIGNATION	QTY
-	1604 6107 80	TANK	(From page 60)				
•20	1604 6107 00	TANK	1				
•25	1615 6651 00	ADAPTOR	2				
•30	1615 6652 00	GROMMET	2				
•35	0070 6002 15	PLASTIC TUBE	AR				
•40	1604 4345 00	GASKET	1				
•45	1604 4344 00	FLANGE	1				
•50	0147 1246 03	HEX. HEAD SCREW	4				
•55	0301 2321 00	PLAIN WASHER	4				
•60	0661 1000 27	SEALING WASHER	1				
•65	0686 3716 02	HEXAGON PLUG	1				
•70	1615 5577 00	PLUG	1				

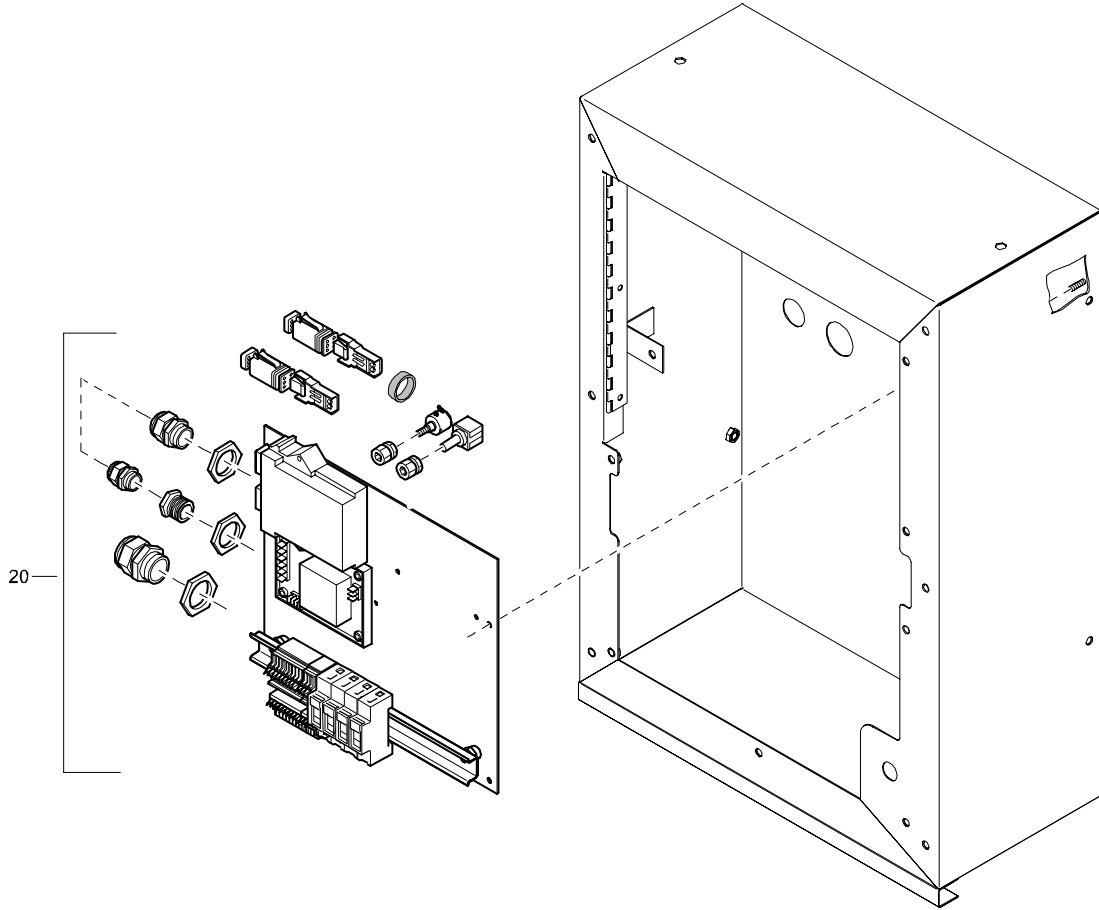
OPTIONS

EXTERNAL FUEL TANK CONNECTION

REF	PART NUMBER	DESIGNATION	QTY	REF	PART NUMBER	DESIGNATION	QTY
20	1604 6111 00	VALVE	1				
30	0147 1363 03	HEX. HEAD SCREW	2				
35	0301 2344 00	PLAIN WASHER	4				
40	0266 2111 00	HEXAGON NUT	2				
45	1615 8934 00	HOSE NIPPLE	1				
50	0560 0200 23	ELBOW	2				
120	0653 1124 00	FLAT GASKET	2				
125	0571 0020 14	HOSE NIPPLE	2				
130	1604 4137 00	HOSE CLIP	2				
135	0075 4005 55	FUEL HOSE	AR				
140	0075 4005 55	FUEL HOSE	AR				
145	0653 1124 00	FLAT GASKET	2				
150	0571 0020 14	HOSE NIPPLE	2				
155	1604 4137 00	HOSE CLIP	2				

OPTIONS

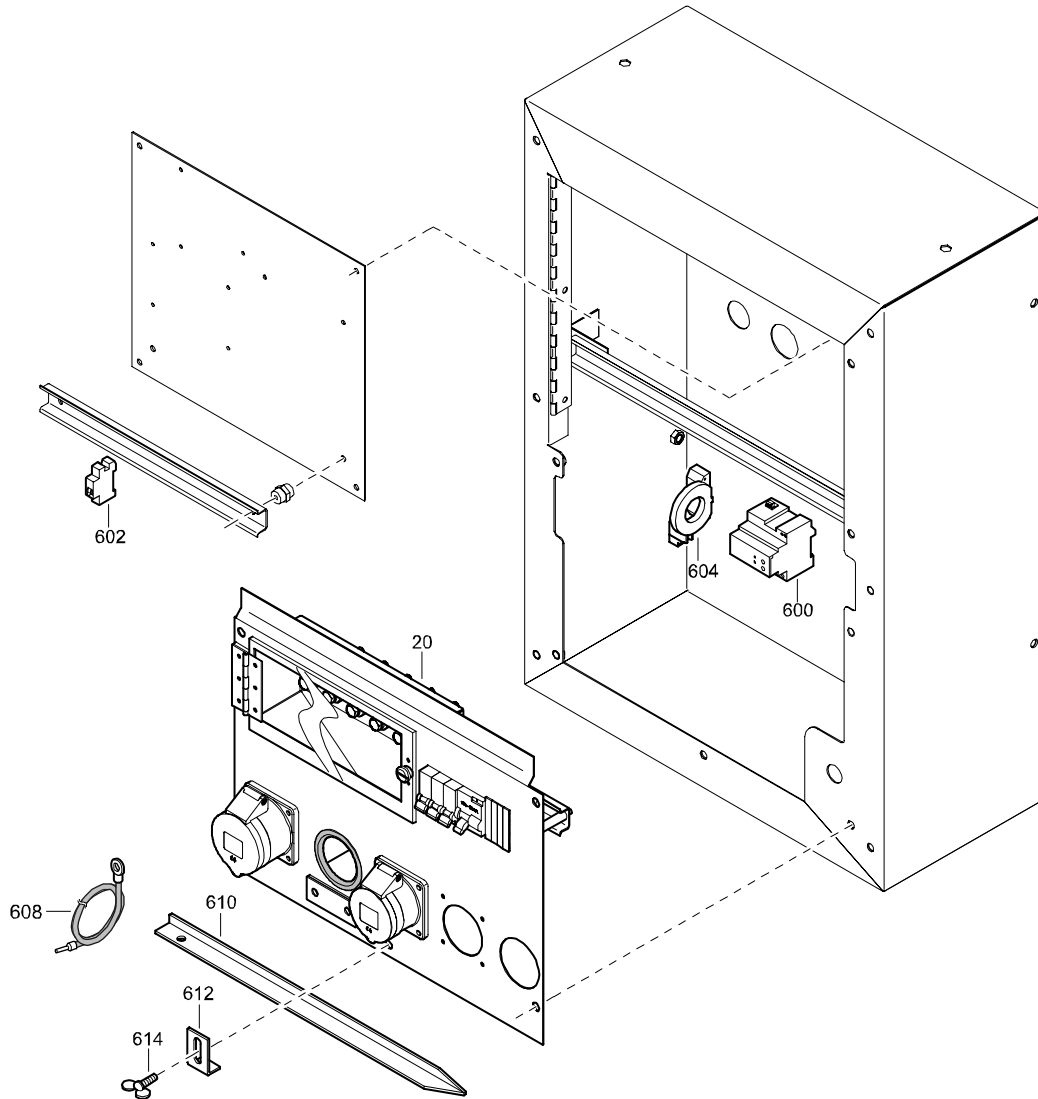
MOUNTING PLATE ELECTRONIC SPEED REGULATOR



REF	PART NUMBER	DESIGNATION	QTY	REF	PART NUMBER	DESIGNATION	QTY
20	1900 1031 45	ELECTRICAL ASSEMBLY (For details see page 89)	1				

OPTIONS

ELECTRICAL ASSEMBLY



REF	PART NUMBER	DESIGNATION	QTY	REF	PART NUMBER	DESIGNATION	QTY
-	1900 1031 60	ELECTRICAL ASSEMBLY(From page 75)					
•600	1089 9473 54	EARTH RELAY	1				
•602	1089 9473 20	SWITCH	1				
•604	1089 9473 55	TORUS	1				
•608	1615 9503 00	WIRE ASS'Y	1				
•610	1089 9358 06	EARTH PIN	1				
•612	1615 7297 01	BRACKET	1				
•614	0223 1957 07	WING SCREW	1				

CLICK HERE TO **DOWNLOAD** THE COMPLETE MANUAL

- Thank you very much for reading the preview of the manual.
- You can download the complete manual from: www.heydownloads.com by clicking the link below



- Please note: If there is no response to CLICKING the link, please download this PDF first and then click on it.

CLICK HERE TO **DOWNLOAD** THE COMPLETE MANUAL