

**Parts List**  
**For Portable Generators**

**QAS 15 Pd**

CLICK HERE TO **DOWNLOAD** THE COMPLETE MANUAL

- Thank you very much for reading the preview of the manual.
- You can download the complete manual from: [www.heydownloads.com](http://www.heydownloads.com) by clicking the link below



- Please note: If there is no response to CLICKING the link, please download this PDF first and then click on it.

CLICK HERE TO **DOWNLOAD** THE COMPLETE MANUAL

- 13 When using compressed air or inert gas to clean down equipment, do so with caution and use the appropriate protection, at least safety glasses, for the operator as well as for any bystander. Do not apply compressed air or inert gas to your skin or direct an air or gas stream at people. Never use it to clean dirt from your clothes.
- 14 When washing parts in or with a cleaning solvent, provide the required ventilation and use appropriate protection such as a breathing filter, safety glasses, rubber apron and gloves, etc.
- 15 Safety shoes should be compulsory in any workshop and if there is a risk, however small, of falling objects, wearing of a safety helmet should be included.
- 16 If there is a risk of inhaling hazardous gases, fumes or dust, the respiratory organs must be protected and depending on the nature of the hazard, so must the eyes and skin.
- 17 Remember that where there is visible dust, the finer, invisible particles will almost certainly be present too; but the fact that no dust can be seen is not a reliable indication that dangerous, invisible dust is not present in the air.
- 18 Never operate the generator in excess of its limits as indicated in the technical specifications and avoid long no-load sequences.
- 19 Never operate the generator in a humid atmosphere. Excessive moisture causes worsening of the generator insulation.
- 20 Do not open electrical cabinets, cubicles or other equipment while voltage is supplied. If such cannot be avoided, e.g. for measurements, tests or adjustments, have the action carried out by a qualified electrician only, with appropriate tools, and ascertain that the required bodily protection against electrical hazards is applied.
- 21 Never touch the power terminals during operation of the machine.
- 22 Whenever an abnormal condition arises, e.g. excessive vibration, noise, odour, etc., switch the circuit breakers to OFF and stop the engine. Correct the faulty condition before restarting.
- 23 Check the electric cables regularly. Damaged cables and insufficient lightening of connections may cause electric shocks. Whenever damaged wires or dangerous conditions are observed, switch the circuit breakers to OFF and stop the engine. Replace the damaged wires or correct the dangerous condition before restarting. Make sure that all electric connections are securely tightened.
- 24 Avoid overloading the generator. The generator is provided with circuit breakers for overload protection. When a breaker has tripped, reduce the concerned load before restarting.
- 25 If the generator is used as stand-by for the mains supply, it must not be operated without control system which automatically disconnects the generator from the mains when the mains supply is restored.
- 26 Never remove the cover of the output terminals during operation. Before connecting or disconnecting wires, switch off the load and the circuit breakers, stop the machine and make sure that the machine cannot be started inadvertently or there is any residual voltage on the power circuit.
- 27 Running the generator at low load for long periods will reduce the lifetime of the engine.

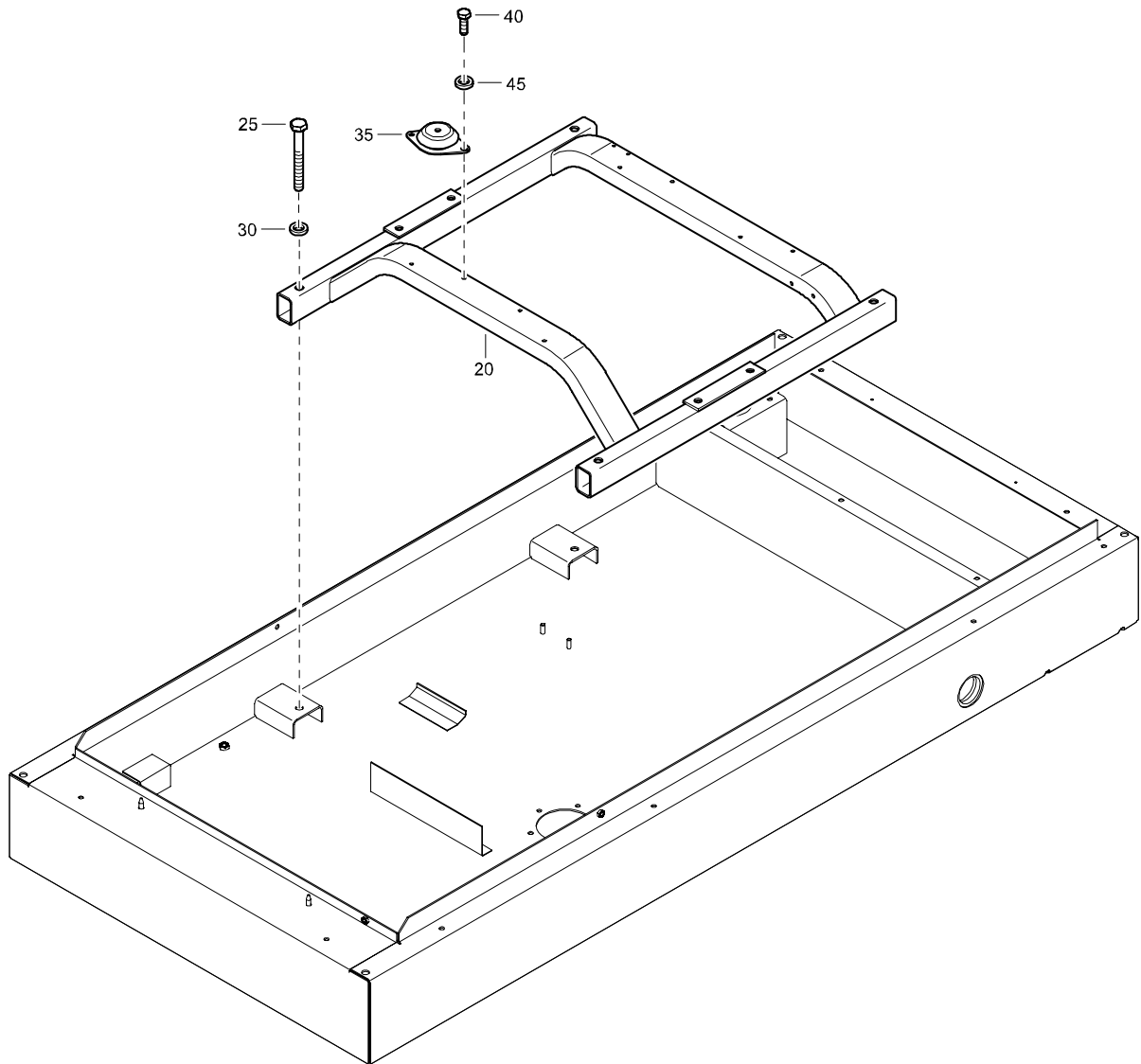
## 1.5 SAFETY DURING MAINTENANCE AND REPAIR

Maintenance, overhaul and repair work shall only be carried out by adequately trained personnel; if required, under supervision of someone qualified for the job.

- 1 Use only the correct tools for maintenance and repair work, and only tools which are in good condition.
- 2 Parts shall only be replaced by genuine Atlas Copco replacement parts.
- 3 All maintenance work, other than routine attention, shall only be undertaken when the unit is stopped. Steps shall be taken to prevent inadvertent starting. In addition, a warning sign bearing a legend such as "work in progress; do not start" shall be attached to the starting equipment.  
On engine-driven units the battery shall be disconnected and removed or the terminals covered by insulating caps.  
On electrically driven units the main switch shall be locked in open position and the fuses shall be taken out. A warning sign bearing a legend such as "work in progress; do not supply voltage" shall be attached to the fuse box or main switch.
- 4 Prior to stripping an engine or other machine or undertaking major overhaul on it, prevent all movable parts from rolling over or moving.
- 5 Make sure that no tools, loose parts or rags are left in or on the machine. Never leave rags or loose clothing near the engine air intake.
- 6 Never use flammable solvents for cleaning (fire-risk).
- 7 Take safety precautions against toxic vapours of cleaning liquids.
- 8 Never use machine parts as a climbing aid.
- 9 Observe scrupulous cleanliness during maintenance and repair. Keep away dirt, cover the parts and exposed openings with a clean cloth, paper or tape.
- 10 Never weld on or perform any operation involving heat near the fuel or oil systems. Fuel and oil tanks must be completely purged, e.g. by steam-cleaning, before carrying out such operations. Never weld on, or in any way modify, pressure vessels. Disconnect the alternator cables during arc welding on the unit.
- 11 Support the towbar and the axle(s) securely if working underneath the unit or when removing a wheel. Do not rely on jacks.
- 12 Do not remove any of, or tamper with, the sound-damping material. Keep the material free of dirt and liquids such as fuel, oil and cleansing agents. If any sound-damping material is damaged, replace it to prevent the sound pressure level from increasing.
- 13 Use only lubricating oils and greases recommended or approved by Atlas Copco or the machine manufacturer. Ascertain that the selected lubricants comply with all applicable safety regulations, especially with regard to explosion or fire-risk and the possibility of decomposition or generation of hazardous gases. Never mix synthetic with mineral oil.
- 14 Protect the engine, alternator, air intake filter, electrical and regulating components, etc., to prevent moisture ingress, e.g. when steam-cleaning.
- 15 When performing any operation involving heat, flames or sparks on a machine, the surrounding components shall first be screened with non-flammable material.
- 16 Never use a light source with open flame for inspecting the interior of a machine.
- 17 When repair has been completed, the machine shall be barred over at least one revolution for reciprocating machines, several revolutions for rotary ones to ensure that there is no mechanical interference within the machine or driver. Check the direction of rotation of electric motors when starting up the machine initially and after any alteration to the electrical connection(s) or switch gear, to check that the oil pump and the fan function properly.

# STANDARD

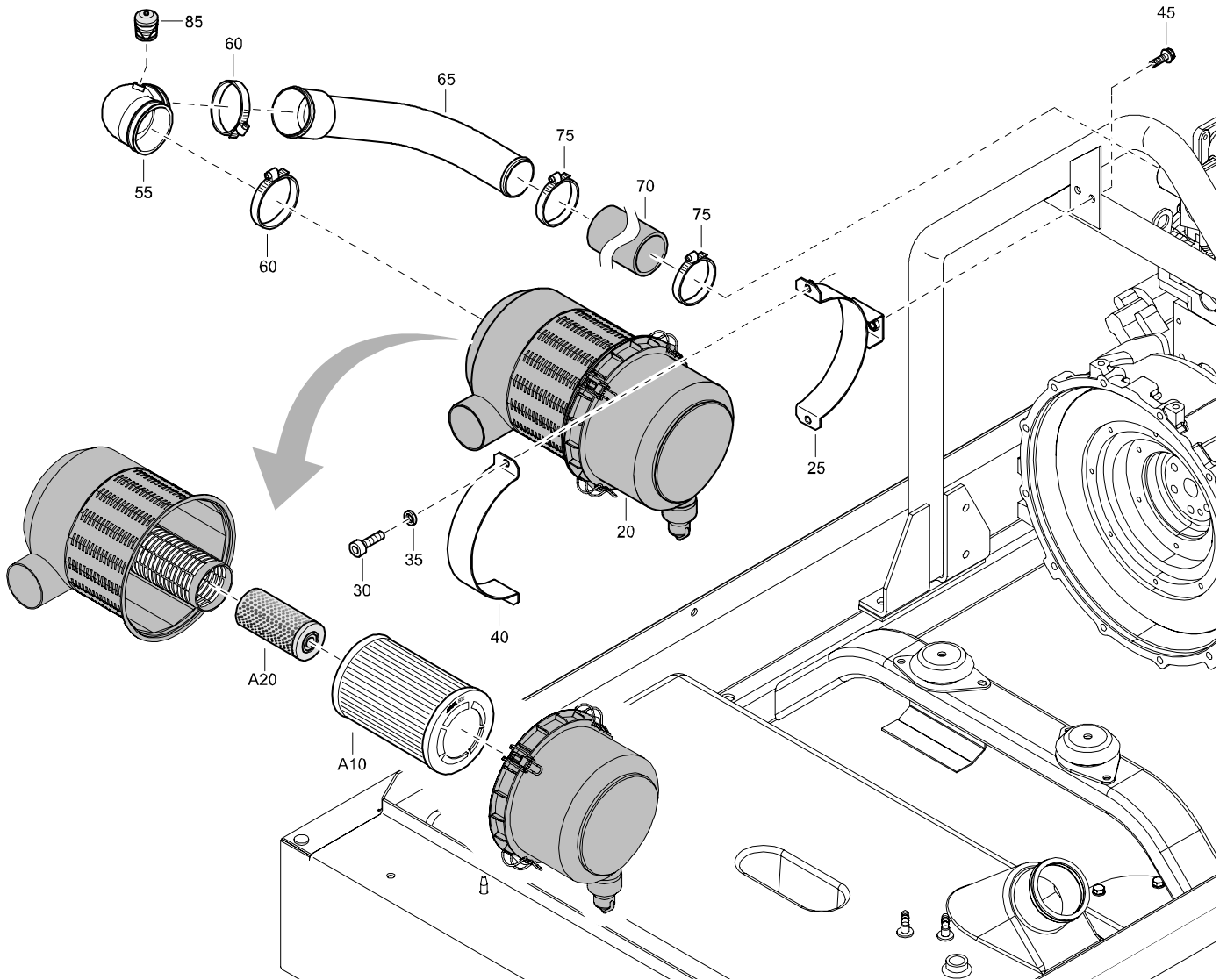
## FRAME AND MOUNTS



REF	PART NUMBER	DESIGNATION	QTY	REF	PART NUMBER	DESIGNATION	QTY
20	1604 4975 01	FRAME	1				
25	0147 1411 03	HEX. HEAD SCREW	4				
30	0301 2358 00	PLAIN WASHER	4				
35	1615 6595 00	ANTIVIBR. PAD	4				
40	0147 1323 15	HEX. HEAD SCREW	8				
45	0301 2335 00	PLAIN WASHER	8				

# STANDARD

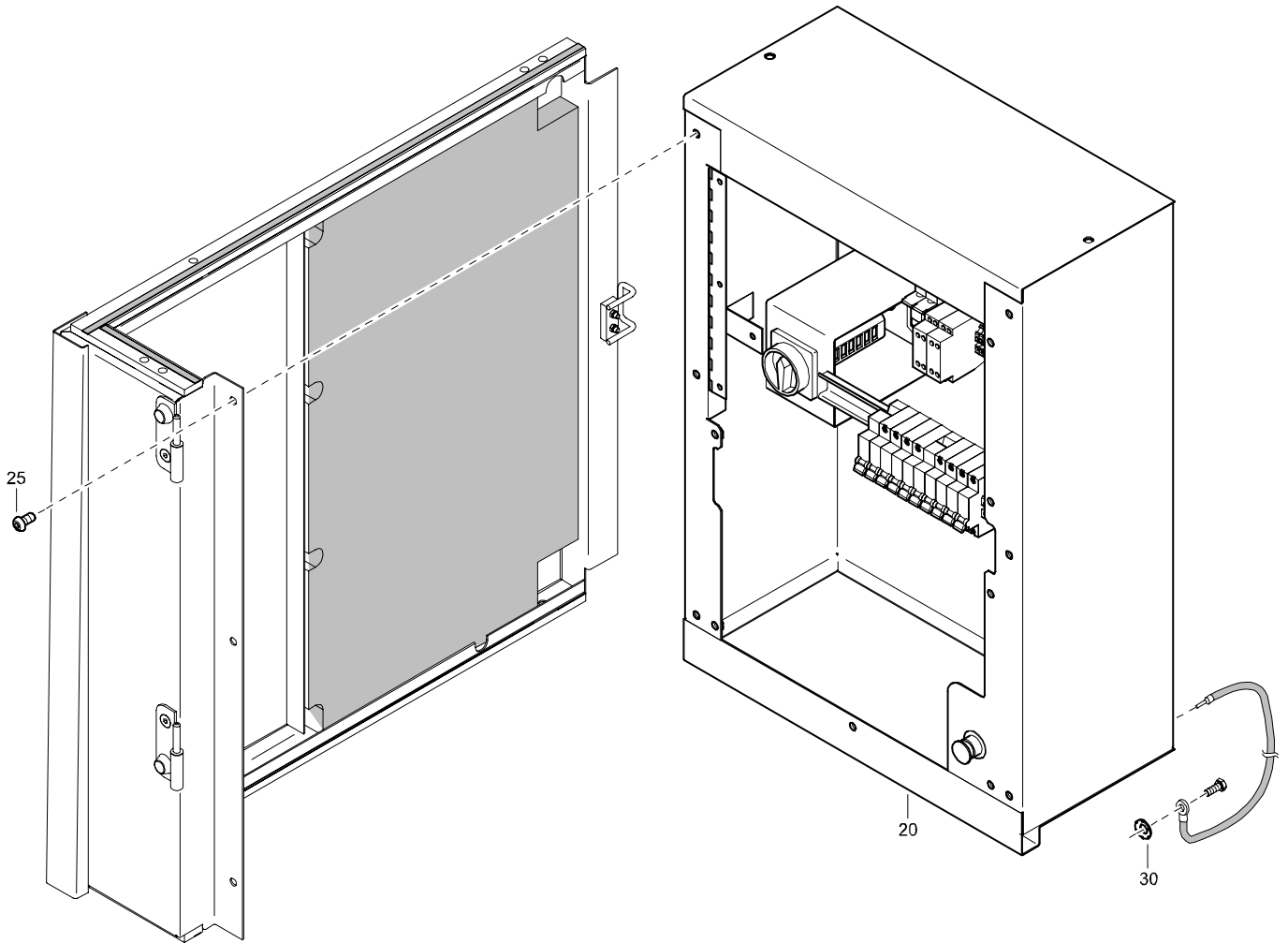
## AIR INLET



REF	PART NUMBER	DESIGNATION	QTY	REF	PART NUMBER	DESIGNATION	QTY
20	1604 6985 00	FILTER	1				
•A10	2914 9302 00	ELEMENT	1				
•A20	2914 9303 00	SAFETY CARTRIDGE	1				
25	1604 4971 00	CLAMP	1				
30	0211 1325 03	HEX SOCK. SCREW	2				
35	0301 2335 00	PLAIN WASHER	2				
40	1604 5053 00	CLAMP	1				
45	1619 5337 01	HEX. HEAD SCREW	2				
55	1604 5012 00	ELBOW	1				
60	0347 6114 00	HOSE CLAMP	2				
65	1604 4984 00	PIPE	1				
70	1604 5013 00	HOSE	1				
75	0347 6113 00	HOSE CLAMP	2				
85	1613 7912 03	INDICATOR	1				

# STANDARD

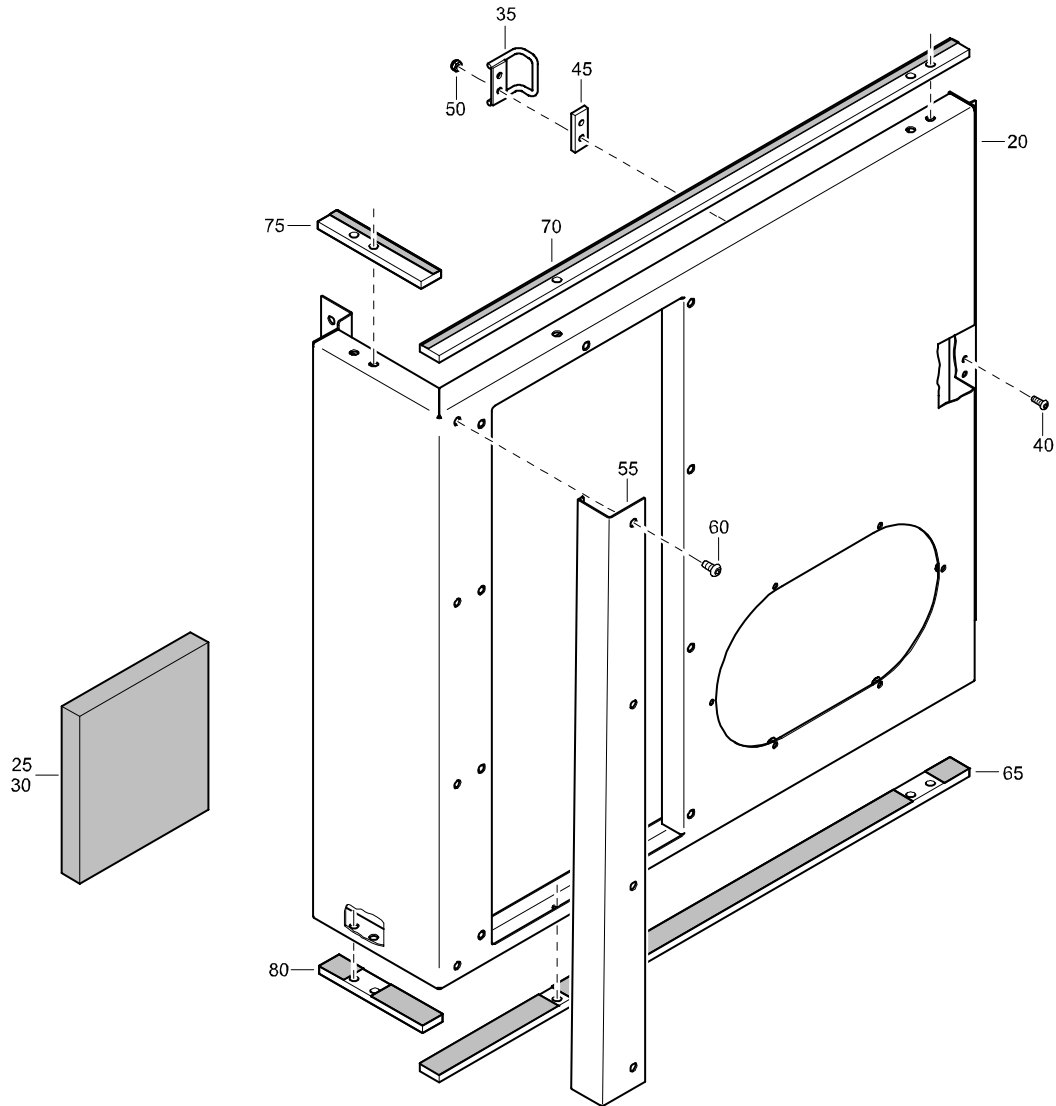
CUBICLE AND ACCESSORIES  
240V 3PH, 480V 3PH, 240V 1PH



REF	PART NUMBER	DESIGNATION	QTY	REF	PART NUMBER	DESIGNATION	QTY
20	1900 1031 04	CUBICLE <a href="#">(For details see page 55)</a>	1				
25	0215 0003 77	HEX SOCK. SCREW	6				
30	1088 0019 01	CONTACT WASHER	1				

# STANDARD

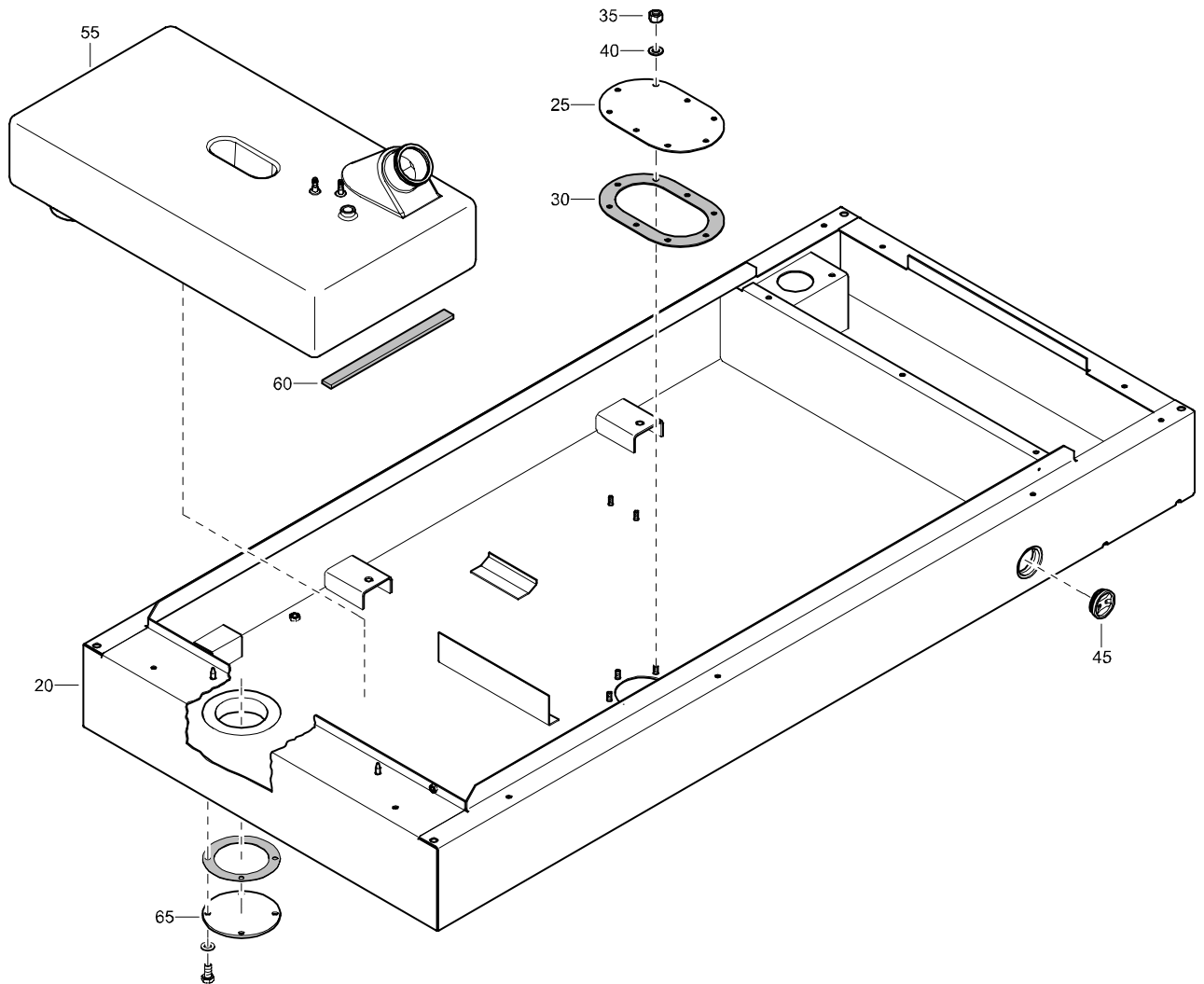
## CORNER



REF	PART NUMBER	DESIGNATION	QTY	REF	PART NUMBER	DESIGNATION	QTY
-	1604 4910 82	CORNER	(From page 36)	-	1079 0003 32	SILENCING FOAM	
•20	1604 4910 01	CORNER	1			2000 mm x 1500 mm x 30 mm	
•25	-	SILENCING FOAM (30 mm)	1				
•30	-	SILENCING FOAM (30 mm)	1				
•35	1604 5031 00	BRACKET	1				
•40	0215 0003 89	SCREW	2				
•45	1604 5079 00	SPACER	1				
•50	0291 1107 00	LOCKNUT	2				
•55	1604 5086 01	BEAM	1				
•60	0215 0003 77	HEX SOCK. SCREW	4				
•65	1604 5067 80	STRIP	1				
		(For details see page 62)					
•70	1604 5067 90	STRIP	1				
		(For details see page 62)					
•75	1604 5068 80	STRIP	1				
		(For details see page 63)					
•80	1604 5068 90	STRIP	1				
		(For details see page 63)					

# STANDARD

## FRAME WITH FUEL TANK

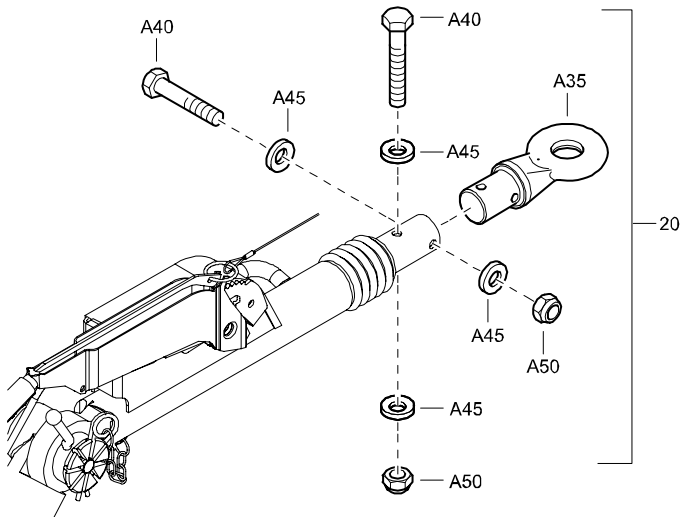


REF	PART NUMBER	DESIGNATION	QTY	REF	PART NUMBER	DESIGNATION	QTY
-	1604 4915 86	FRAME	(From page 54, 89, 92)				
•20	1604 4915 05	FRAME	1				
•25	1604 5077 01	COVER	1				
•30	1604 5076 00	SEAL	1				
•35	0266 2110 00	HEXAGON NUT	8				
•40	0301 2335 00	PLAIN WASHER	8				
•45	1613 2655 00	PLUG	1				
•55	1604 6107 81	TANK	1				
		(For details see page 64)					
•60	1604 5044 00	SEAL	AR				
•65	1604 6551 00	FLANGE	1				

# OPTIONS

## TOWING EYES ITA EYE, NATO EYE, GB50 EYE

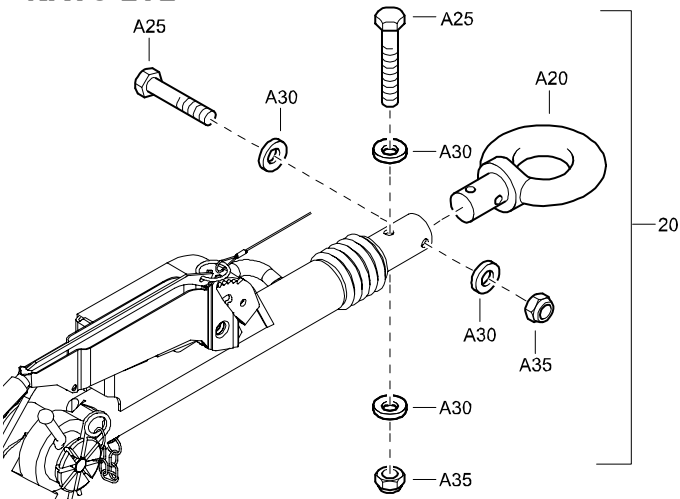
### ITA EYE



REF	PART NUMBER	DESIGNATION	QTY
20	1615 6820 85	ITA EYE	1
•A35	1615 6820 02	TOWING EYE	1
•A40	1202 9844 02	BOLT	2
•A45	1202 9845 00	WASHER	4
•A50	0291 1185 13	LOCKNUT	2

1611 7714 85/00

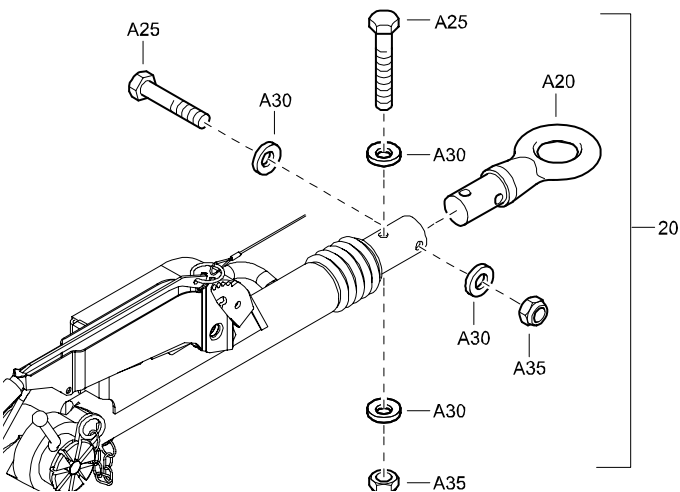
### NATO EYE



REF	PART NUMBER	DESIGNATION	QTY
20	1614 4678 85	NATO EYE	1
•A20	1614 4678 00	NATO EYE	1
•A25	1202 9844 02	BOLT	2
•A30	1202 9845 00	WASHER	4
•A35	0291 1185 13	LOCKNUT	2

1611 7717 85/00

### GB50 EYE



REF	PART NUMBER	DESIGNATION	QTY
20	1615 8659 85	GB50 EYE	1
•A20	1615 8659 01	50MM EYE	1
•A25	1202 9844 02	BOLT	2
•A30	1202 9845 00	WASHER	4
•A35	0291 1185 13	LOCKNUT	2

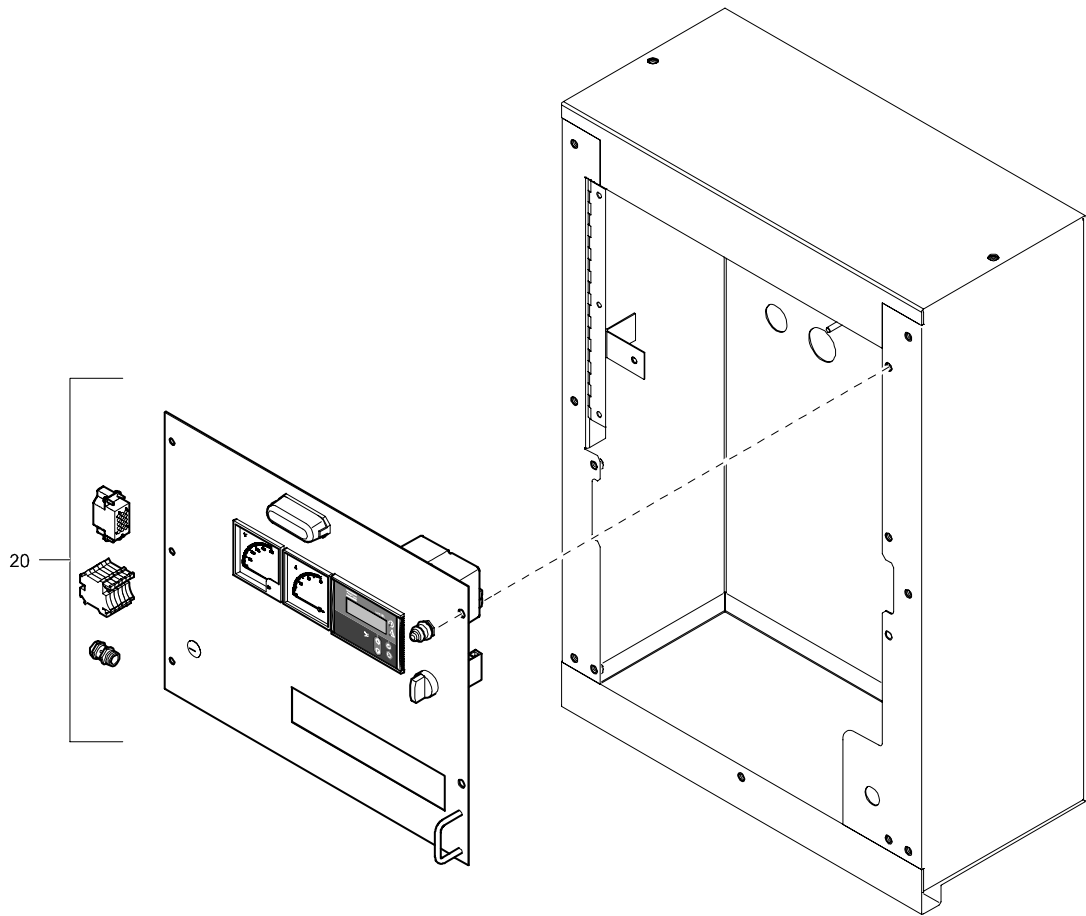
1611 7718 85/00

---

# OPTIONS

## CONTROL PANEL QC1002 30A

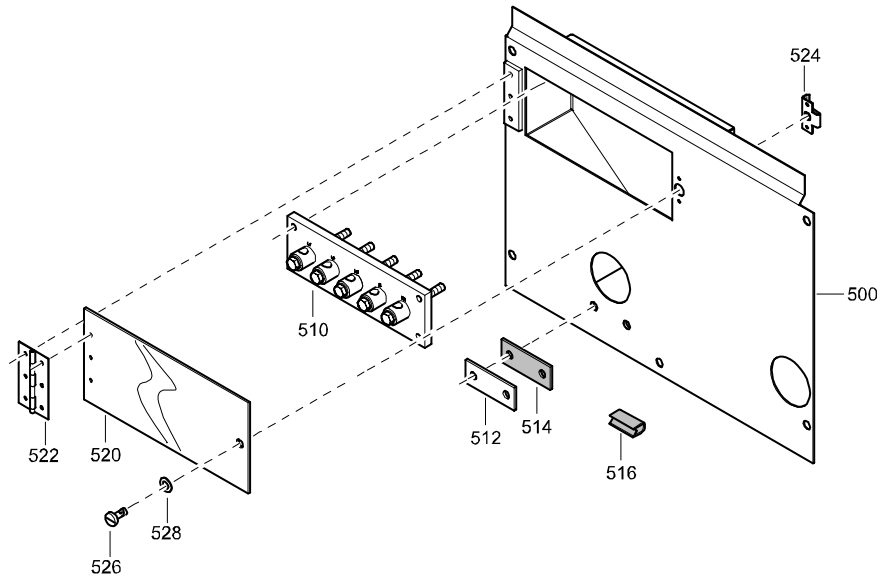
---



REF	PART NUMBER	DESIGNATION	QTY	REF	PART NUMBER	DESIGNATION	QTY
20	1900 1031 82	CONTROL PANEL (For details see page 95)	1				

# OPTIONS

## TERMINAL



REF	PART NUMBER	DESIGNATION	QTY	REF	PART NUMBER	DESIGNATION	QTY
-	1900 1031 50	TERMINAL	(From page 83)				
•500	1604 6136 02	PANEL	1				
•510	1604 6174 00	TERMINAL BOARD	1				
•512	1604 6322 01	PLATE	1				
•514	1604 6328 00	SEAL	1				
•516	1503 1056 00	SEAL	AR				
•520	1604 5048 01	SCREEN	1				
•522	1604 5052 02	HINGE	1				
•524	1615 6728 00	PLATE	1				
•526	1615 7166 00	STUD	1				
•528	1615 6727 00	WASHER	1				

CLICK HERE TO **DOWNLOAD** THE COMPLETE MANUAL

- Thank you very much for reading the preview of the manual.
- You can download the complete manual from: [www.heydownloads.com](http://www.heydownloads.com) by clicking the link below



- Please note: If there is no response to CLICKING the link, please download this PDF first and then click on it.

CLICK HERE TO **DOWNLOAD** THE COMPLETE MANUAL