

Parts List
For Portable Compressors

PTS 916 Cd

CLICK HERE TO **DOWNLOAD** THE COMPLETE MANUAL

- Thank you very much for reading the preview of the manual.
- You can download the complete manual from: www.heydownloads.com by clicking the link below



- Please note: If there is no response to CLICKING the link, please download this PDF first and then click on it.

CLICK HERE TO **DOWNLOAD** THE COMPLETE MANUAL

- 14 All doors shall be shut during operation so as not to disturb the cooling air flow inside the bodywork and/or render the silencing less effective. A door should be kept open for a short period only e.g. for inspection or adjustment.
- 15 Periodically carry out maintenance works according to the maintenance schedule.
- 16 Stationary housing guards are provided on all rotating or reciprocating parts not otherwise protected and which may be hazardous to personnel. Machinery shall never be put into operation, when such guards have been removed, before the guards are securely reinstalled.
- 17 Noise, even at reasonable levels, can cause irritation and disturbance which, over a long period of time, may cause severe injuries to the nervous system of human beings.
When the sound pressure level, at any point where personnel normally has to attend, is:
below 70 dB(A): no action needs to be taken,
above 70 dB(A): noise-protective devices should be provided for people continuously being present in the room,
below 85 dB(A): no action needs to be taken for occasional visitors staying a limited time only,
above 85 dB(A): room to be classified as a noise-hazardous area and an obvious warning shall be placed permanently at each entrance to alert people entering the room, for even relatively short times, about the need to wear ear protectors,
above 95 dB(A): the warning(s) at the entrance(s) shall be completed with the recommendation that also occasional visitors shall wear ear protectors,
above 105 dB(A): special ear protectors that are adequate for this noise level and the spectral composition of the noise shall be provided and a special warning to that effect shall be placed at each entrance.
- 18 Insulation or safety guards of parts the temperature of which can be in excess of 80 °C (175 °F) and which may be accidentally touched by personnel shall not be removed before the parts have cooled to room temperature.
- 19 Never operate the unit in surroundings where there is a possibility of taking in flammable or toxic fumes.
- 20 If the working process produces fumes, dust or vibration hazards, etc., take the necessary steps to eliminate the risk of personnel injury.
- 21 When using compressed air or inert gas to clean down equipment, do so with caution and use the appropriate protection, at least safety glasses, for the operator as well as for any bystander. Do not apply compressed air or inert gas to your skin or direct an air or gas stream at people. Never use it to clean dirt from your clothes.
- 22 When washing parts in or with a cleaning solvent, provide the required ventilation and use appropriate protection such as a breathing filter, safety glasses, rubber apron and gloves, etc.
- 23 Safety shoes should be compulsory in any workshop and if there is a risk, however small, of falling objects, wearing of a safety helmet should be included.
- 24 If there is a risk of inhaling hazardous gases, fumes or dust, the respiratory organs must be protected and depending on the nature of the hazard, so must the eyes and skin.
- 25 Remember that where there is visible dust, the finer, invisible particles will almost certainly be present too; but the fact that no dust can be seen is not a reliable indication that dangerous, invisible dust is not present in the air.
- 26 Never operate the unit at pressures or speeds below or in excess of its limits as indicated in the technical specifications.

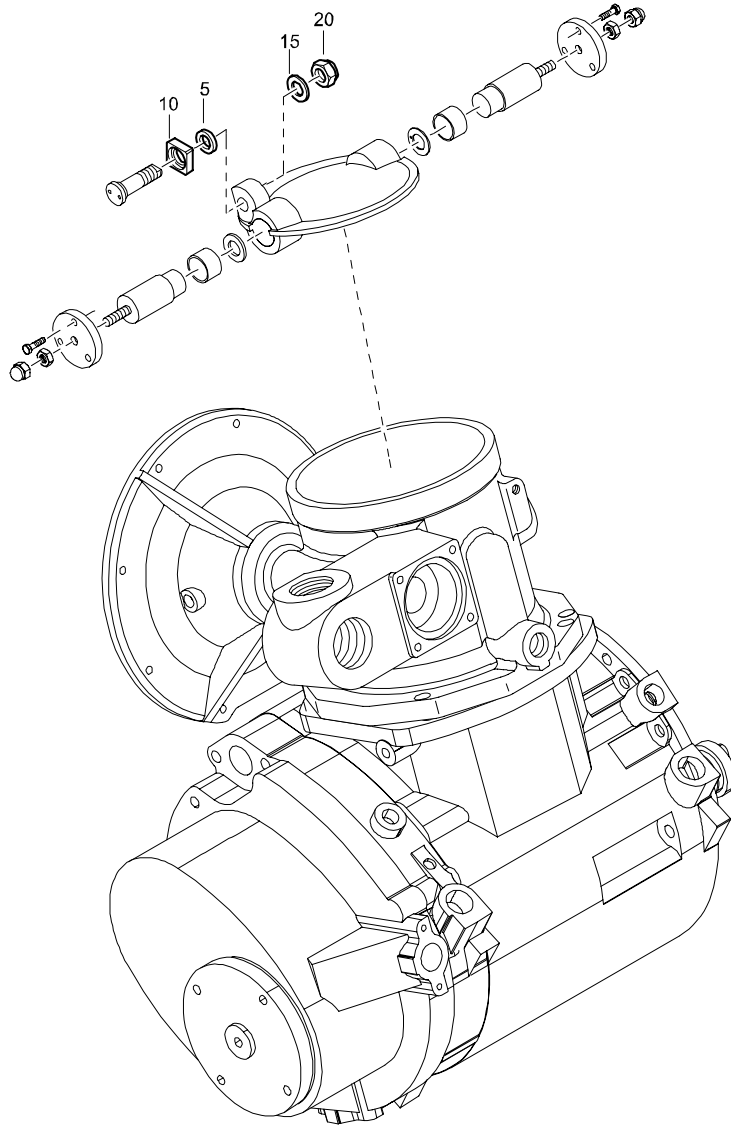
1.5 SAFETY DURING MAINTENANCE AND REPAIR

Maintenance, overhaul and repair work shall only be carried out by adequately trained personnel; if required, under supervision of someone qualified for the job.

- 1 Use only the correct tools for maintenance and repair work, and only tools which are in good condition.
- 2 Parts shall only be replaced by genuine Atlas Copco replacement parts.
- 3 All maintenance work, other than routine attention, shall only be undertaken when the unit is stopped. Steps shall be taken to prevent inadvertent starting. In addition, a warning sign bearing a legend such as "work in progress; do not start" shall be attached to the starting equipment.
On engine-driven units the battery shall be disconnected and removed or the terminals covered by insulating caps.
On electrically driven units the main switch shall be locked in open position and the fuses shall be taken out. A warning sign bearing a legend such as "work in progress; do not supply voltage" shall be attached to the fuse box or main switch.
- 4 Before dismantling any pressurized component, the compressor or equipment shall be effectively isolated from all sources of pressure and the entire system shall be relieved of pressure. Do not rely on non-return valves (check valves) to isolate pressure systems. In addition, a warning sign bearing a legend such as "work in progress; do not open" shall be attached to each of the outlet valves.
- 5 Prior to stripping an engine or other machine or undertaking major overhaul on it, prevent all movable parts from rolling over or moving.
- 6 Make sure that no tools, loose parts or rags are left in or on the machine. Never leave rags or loose clothing near the engine air intake.
- 7 Never use flammable solvents for cleaning (fire-risk).
- 8 Take safety precautions against toxic vapours of cleaning liquids.
- 9 Never use machine parts as a climbing aid.
- 10 Observe scrupulous cleanliness during maintenance and repair. Keep away dirt, cover the parts and exposed openings with a clean cloth, paper or tape.
- 11 Never weld on or perform any operation involving heat near the fuel or oil systems. Fuel and oil tanks must be completely purged, e.g. by steam-cleaning, before carrying out such operations. Never weld on, or in any way modify, pressure vessels. Disconnect the alternator cables during arc welding on the unit.
- 12 Support the towbar and the axle(s) securely if working underneath the unit or when removing a wheel. Do not rely on jacks.
- 13 Do not remove any of, or tamper with, the sound-damping material. Keep the material free of dirt and liquids such as fuel, oil and cleansing agents. If any sound-damping material is damaged, replace it to prevent the sound pressure level from increasing.
- 14 Use only lubricating oils and greases recommended or approved by Atlas Copco or the machine manufacturer. Ascertain that the selected lubricants comply with all applicable safety regulations, especially with regard to explosion or fire-risk and the possibility of decomposition or generation of hazardous gases. Never mix synthetic with mineral oil.
- 15 Protect the engine, alternator, air intake filter, electrical and regulating components, etc., to prevent moisture ingress, e.g. when steam-cleaning.
- 16 When performing any operation involving heat, flames or sparks on a machine, the surrounding components shall first be screened with non-flammable material.
- 17 Never use a light source with open flame for inspecting the interior of a machine.

SERVICE KIT

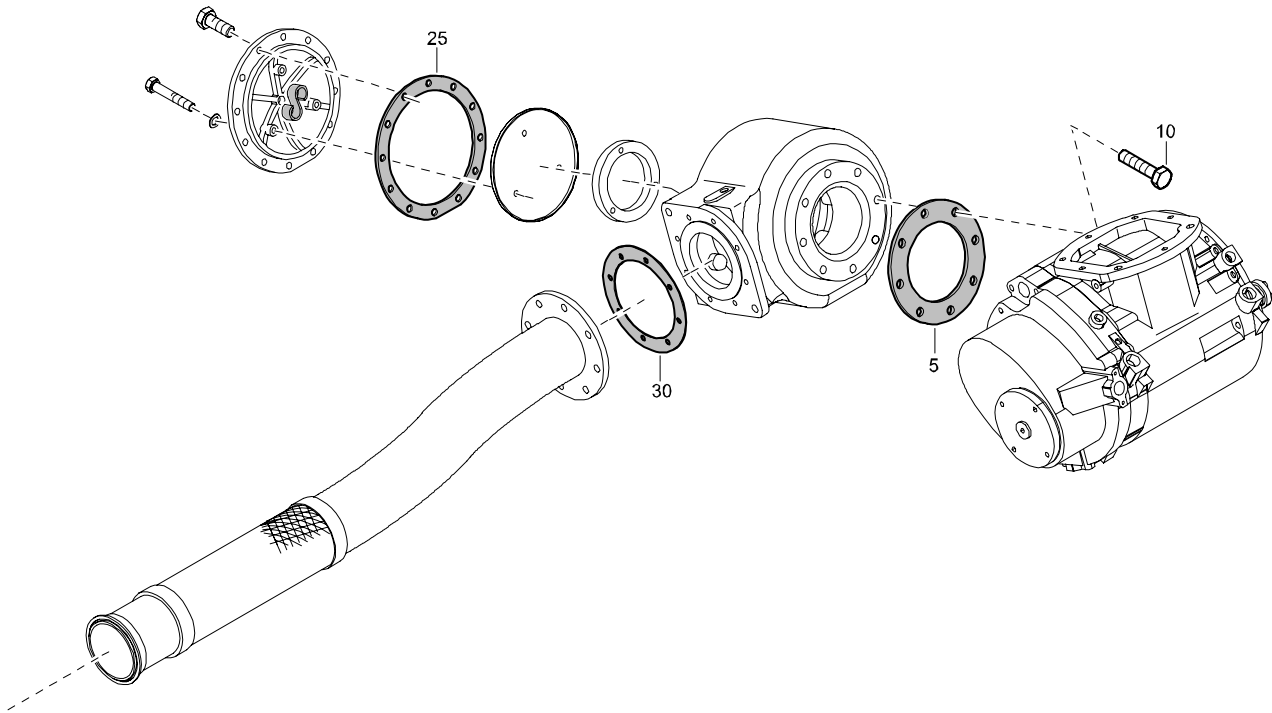
INLET BEARING BLOCK



REF	PART NUMBER	DESIGNATION	QTY	REF	PART NUMBER	DESIGNATION	QTY
-	2911 0078 00	SERVICE KIT INLET BEARING BLOCK					
•5	-	RING	1				
•10	-	BEARING BLOCK	1				
•15	-	PLAIN WASHER	1				
•20	-	LOCKNUT	1				

SERVICE KIT

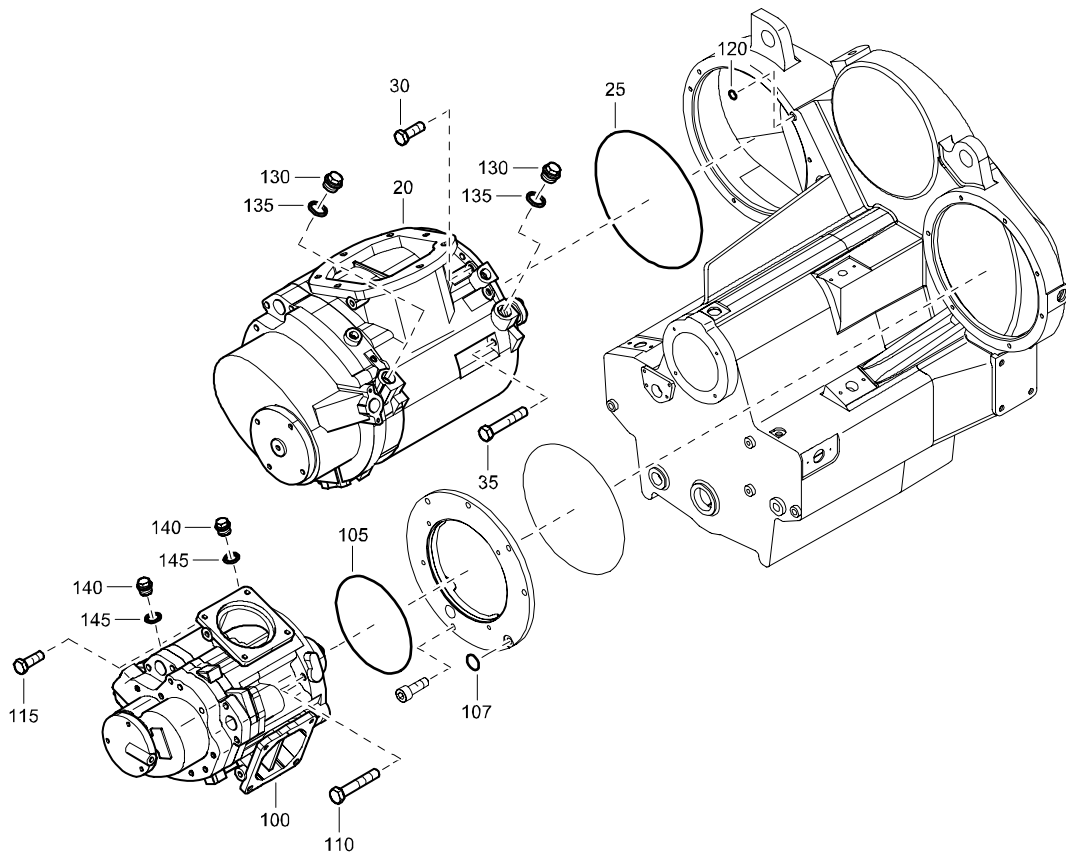
SILENCER LP



REF	PART NUMBER	DESIGNATION	QTY	REF	PART NUMBER	DESIGNATION	QTY
-	2911 0088 00	SERVICE KIT LP SILENCER					
•5	-	GASKET	1				
•10	-	HEX. HEAD SCREW	8				
•25	-	GASKET	1				
•30	-	FLANGE GASKET	1				

STANDARD

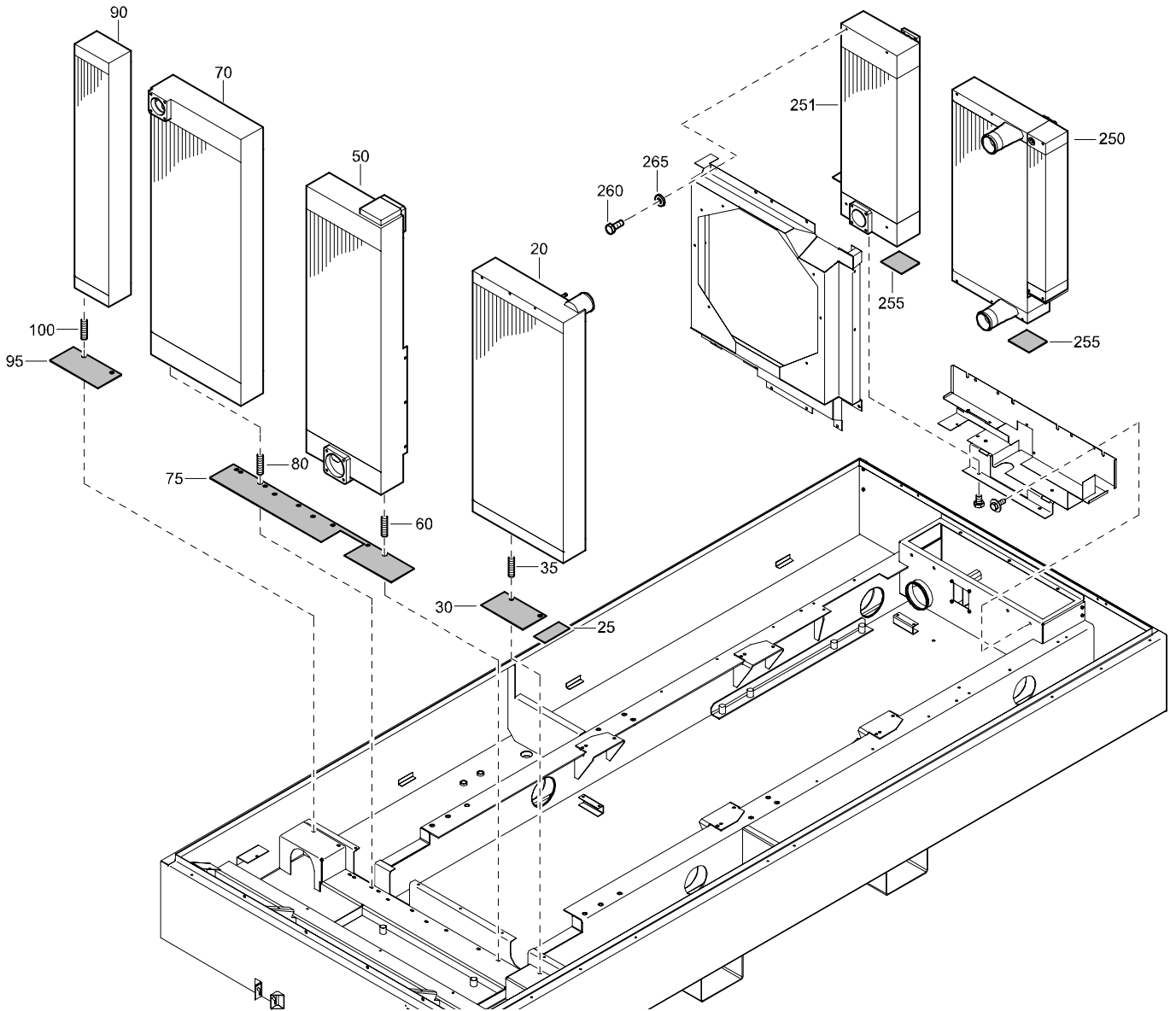
ELEMENTS



REF	PART NUMBER	DESIGNATION	QTY	REF	PART NUMBER	DESIGNATION	QTY
20	1616 5904 81	O.F.S. M-21	1	145	0661 1038 00	SEALING WASHER	2
25	-	O-RING <i>(Part of service kit, see page 24)</i>	1				
30	-	HEX. HEAD SCREW <i>(Part of service kit, see page 24)</i>	3				
35	-	HEX. HEAD SCREW <i>(Part of service kit, see page 24)</i>	4				
100	1616 6792 81	OFS I-41	1				
105	-	O-RING <i>(Part of service kit, see page 33)</i>	1				
107	0663 3132 00	O-RING	2				
110	-	HEX. HEAD SCREW <i>(Part of service kit, see page 33)</i>	2				
115	-	HEX. HEAD SCREW <i>(Part of service kit, see page 33)</i>	2				
120	-	O-RING <i>(Part of service kit, see page 33)</i>	2				
130	0686 3716 07	HEXAGON PLUG	2				
135	0661 1049 00	SEALING WASHER	2				
140	0686 3716 35	HEXAGON PLUG	2				

STANDARD

COOLERS



REF	PART NUMBER	DESIGNATION	QTY	REF	PART NUMBER	DESIGNATION	QTY
20	1604 0026 00	RADIATOR	1				
25	1604 0210 00	PAD	1				
30	1604 0203 00	PAD	1				
35	0246 5236 00	STUD	2				
50	1604 0029 01	INTERCOOLER	1				
60	0246 5236 00	STUD	2				
70	1604 0027 00	AFTERCOOLER	1				
75	1604 0204 02	PAD	1				
80	0246 5236 00	STUD	2				
90	1604 0028 00	OILCOOLER	1				
95	1604 0202 00	PAD	1				
100	0246 5236 00	STUD	2				
250	1604 7384 80	COOLER	1				
		(For details see page 121)					
251	1604 0758 00	COOLER	1				
255	1604 0206 00	PAD	2				
260	0147 1360 03	HEX. HEAD SCREW	9				
265	0302 1274 01	PLAIN WASHER	12				

CLICK HERE TO **DOWNLOAD** THE COMPLETE MANUAL

- Thank you very much for reading the preview of the manual.
- You can download the complete manual from: www.heydownloads.com by clicking the link below



- Please note: If there is no response to CLICKING the link, please download this PDF first and then click on it.

CLICK HERE TO **DOWNLOAD** THE COMPLETE MANUAL

STANDARD

FANDRIVE ARRANGEMENT

REF	PART NUMBER	DESIGNATION	QTY	REF	PART NUMBER	DESIGNATION	QTY
20	1604 7263 01	SUPPORT	1				
26	0147 1962 20	HEX. HEAD SCREW	6				
31	0302 1274 04	PLAIN WASHER	6				
42	0337 4225 00	PARALLEL KEY	1				
45	1604 0240 00	WASHER	1				
50	0147 1403 03	HEX. HEAD SCREW	1				
60	1604 0039 00	BELT	1				
72	0337 8158 00	PARALLEL KEY	1				
75	1615 5441 00	WASHER	1				
80	0147 1403 03	HEX. HEAD SCREW	1				
90	1604 7265 00	SHAFT	1				
95	0502 2235 00	BALL BEARING	1				
100	0502 3167 00	BALL BEARING	1				
105	0335 2165 00	CIRCLIP	1				
120	1604 7264 00	HOUSING	1				
125	0147 1403 03	HEX. HEAD SCREW	4				
130	0291 1112 00	LOCKNUT	4				
140	1615 9372 01	ADAPTOR	1				
145	0337 8158 00	PARALLEL KEY	1				
150	1615 5441 00	WASHER	1				
155	0147 1403 03	HEX. HEAD SCREW	1				
170	1604 0079 01	FAN	1				
175	0108 1320 00	SPRING PIN	1				
180	1615 5439 00	CLAMP RING	1				
185	0147 1365 03	HEX. HEAD SCREW	6				
190	0291 1111 00	LOCKNUT	6				
220	1604 0034 80	TENSION PULLEY ASSY	1				
		(For details see page 89)					
225	0147 1410 03	HEX. HEAD SCREW	1				
230	0147 1375 03	HEX. HEAD SCREW	1				
235	1615 5551 00	SPACER	1				
240	1604 0209 00	LEVER	1				
250	0147 1379 12	HEX. HEAD SCREW	1				
255	0266 2111 00	HEXAGON NUT	1				
260	1615 7622 00	SUPPORT	1				
265	0216 1957 46	HEX SOCK. SCREW	2				
270	0291 1110 00	LOCKNUT	2				
280	1604 0952 00	GUARD	2				
281	1615 5684 00	BRACKET	2				
282	1503 0205 00	WASHER	8				
283	1615 5664 00	HEX. HEAD SCREW	8				
285	1604 7702 00	GUARD	2				
286	1615 5684 00	BRACKET	2				
287	1503 0205 00	WASHER	12				
288	1615 5664 00	HEX. HEAD SCREW	14				
290	1604 1402 00	GUARD	1				
295	1503 0205 00	WASHER	4				
300	1615 5664 00	HEX. HEAD SCREW	4				
305	1615 6183 00	CLAMP	6				
310	1503 0205 00	WASHER	12				
315	0147 1326 03	HEX. HEAD SCREW	12				
320	0291 1110 00	LOCKNUT	12				

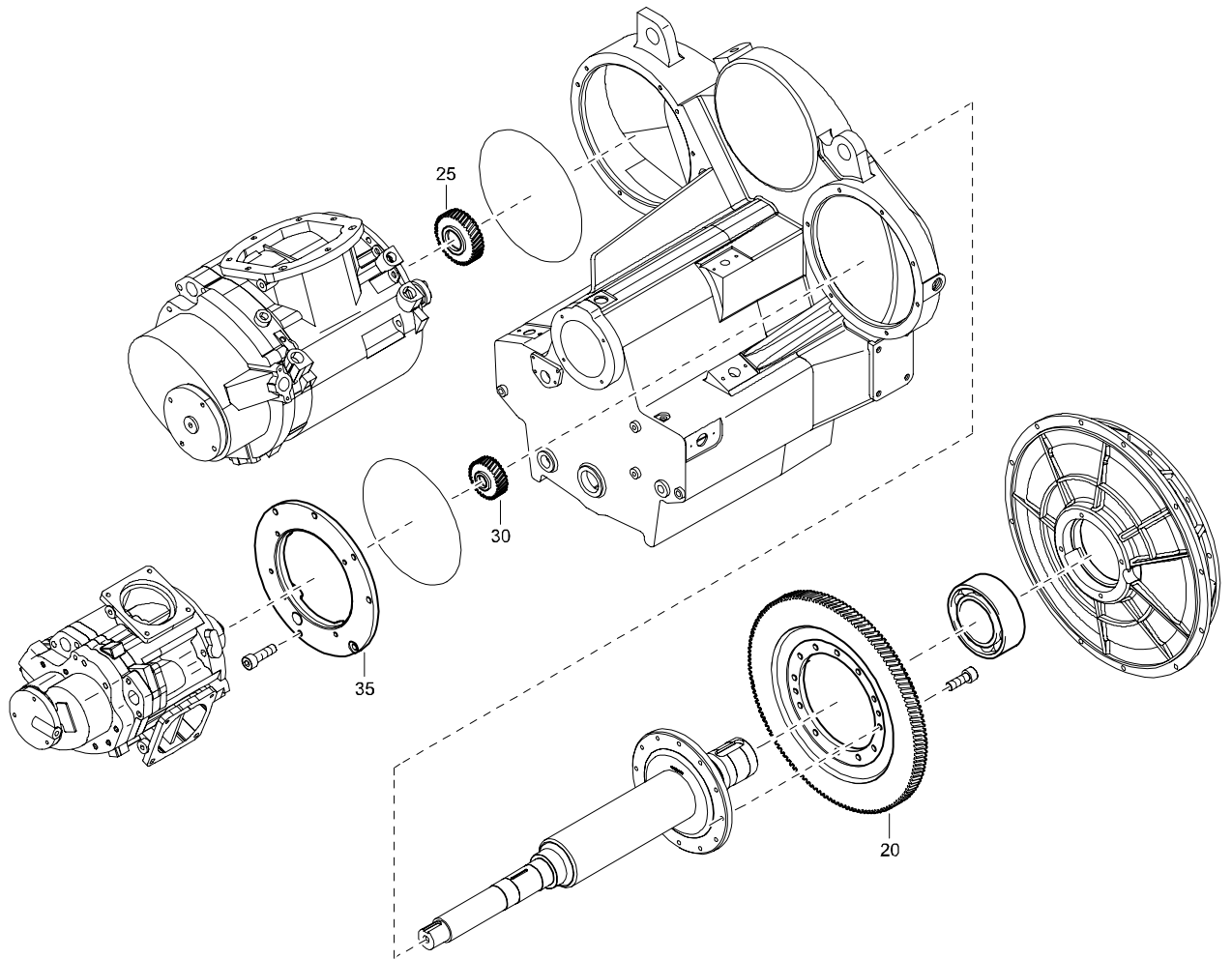
STANDARD

ROOFS AND BEAMS

REF	PART NUMBER	DESIGNATION	QTY	REF	PART NUMBER	DESIGNATION	QTY
20	1604 0102 01	BEAM	2				
25	1615 5664 00	HEX. HEAD SCREW	4				
40	1604 0103 01	BEAM	2				
45	1615 5664 00	HEX. HEAD SCREW	4				
60	1604 0104 02	BEAM	1				
65	1615 5664 00	HEX. HEAD SCREW	2				
70	1604 0144 01	BEAM	1				
75	1615 5664 00	HEX. HEAD SCREW	2				
85	1604 1275 00	SEAL	AR				
130	1615 5664 00	HEX. HEAD SCREW	10				
135	0147 1323 03	HEX. HEAD SCREW	3				
140	0300 8019 00	PLAIN WASHER	3				
145	0266 2110 00	HEXAGON NUT	3				
170	1604 9588 80	ROOF ASSY	1				
		(For details see page 126)					
200	0147 1323 03	HEX. HEAD SCREW	8				
205	0300 8019 00	PLAIN WASHER	8				
210	0266 2110 00	HEXAGON NUT	8				
215	1615 5664 00	HEX. HEAD SCREW	10				
250	1604 0107 81	ROOF ASSY	1				
		(For details see page 104)					
280	1615 5664 00	HEX. HEAD SCREW	9				
285	0147 1323 03	HEX. HEAD SCREW	4				
290	0300 8019 00	PLAIN WASHER	4				
295	0266 2110 00	HEXAGON NUT	4				
320	1604 0105 84	ROOF ASSY	1				
		(For details see page 102)					
322	1604 0851 00	STRAP MOUNT	2				
323	1088 1301 03	CABLE STRIP	2				
350	0147 1323 03	HEX. HEAD SCREW	3				
355	0300 8019 00	PLAIN WASHER	3				
360	0266 2110 00	HEXAGON NUT	3				
365	1615 5664 00	HEX. HEAD SCREW	10				
445	0301 2318 00	PLAIN WASHER	1				
465	1615 5664 00	HEX. HEAD SCREW	6				

STANDARD

GEARS



REF	PART NUMBER	DESIGNATION	QTY	REF	PART NUMBER	DESIGNATION	QTY
20	1616 6564 00	GEAR WHEEL BULL	1				
25	1616 6565 00	GEAR WHEEL LP	1				
30	1616 6566 00	GEAR WHEEL HP	1				
35	1616 6567 01	ECCECTRING RING	1				

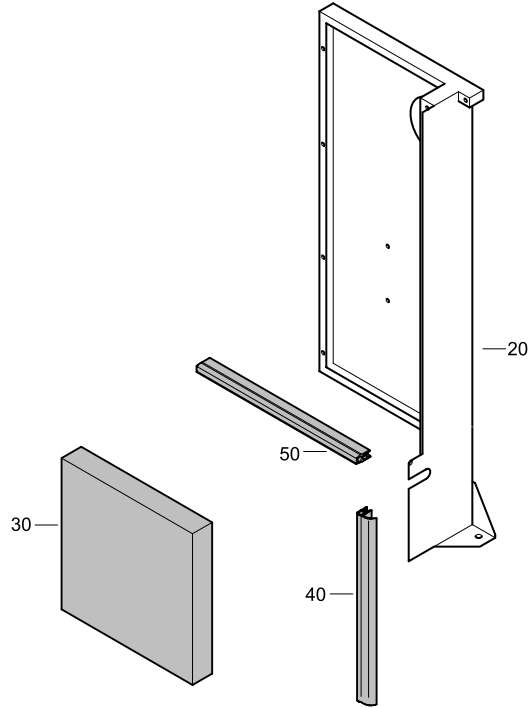
STANDARD

FRAME-AXLE ASSEMBLY

REF	PART NUMBER	DESIGNATION	QTY	REF	PART NUMBER	DESIGNATION	QTY
-	1604 0045 87	FRAME-AXLE ASSEMBLY (From page 34)					
•10	1604 0045 04	FRAME (PT/PN)	1				
•20	1604 0111 00	REAR AXLE	1				
		(For details see page 133)					
•30	0147 1479 03	HEX. HEAD SCREW	8				
•40	1604 0110 01	FRONT AXLE	1				
		(For details see page 132)					
•50	0147 1402 15	HEX. HEAD SCREW	8				
•60	-	SILENCING FOAM (50 mm)	2				
•70	-	SILENCING FOAM (50 mm)	2				
•80	-	SILENCING FOAM (50 mm)	2				
•150	1604 0205 00	PAD	3				
•160	1619 5188 00	SEAL	AR				
•170	1604 0016 81	FUELTANK RH	1				
		(For details see page 130)					
•250	1604 0205 00	PAD	3				
•260	1619 5188 00	SEAL	AR				
•270	1604 0017 82	FUELTANK LH ASSY	1				
		(For details see page 131)					
•290	0216 1324 03	HEX SOCK. SCREW	2				
•300	0301 2335 00	PLAIN WASHER	2				
•350	1604 0800 00	CONNECTION	2				
•360	0070 8403 95	HOSE	AR				
•370	0347 6114 00	HOSE CLAMP	4				
•380	1604 0795 00	LOCKING	1				
•390	0147 1405 03	HEX. HEAD SCREW	2				
•400	1619 5188 00	SEAL	AR				
•410	1604 0872 01	PIPE	1				
-	1079 0003 33	SILENCING FOAM 2000 mm x 1500 mm x 50 mm					

STANDARD

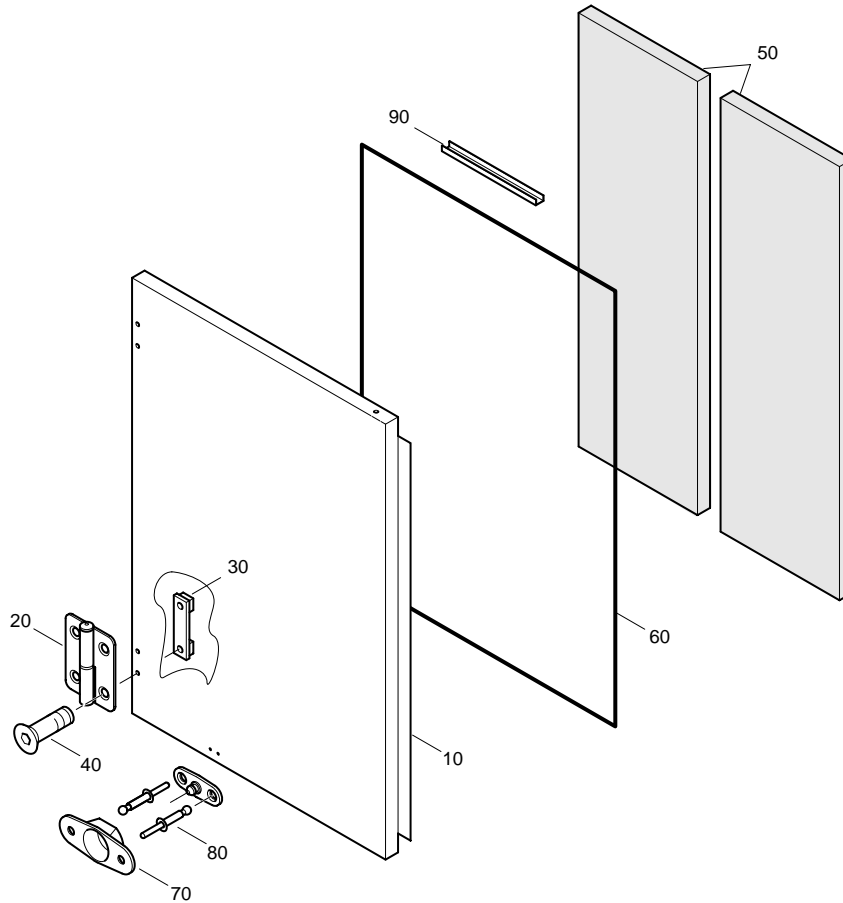
BAFFLE ASSEMBLY



REF	PART NUMBER	DESIGNATION	QTY	REF	PART NUMBER	DESIGNATION	QTY
-	1604 0100 85	BAFFLE ASSEMBLY	(From page 68)				
•20	1604 0100 06	BAFFLE	1				
•30	-	SILENCING FOAM (50 mm)	1				
•40	1604 4318 00	SEAL	AR				
•50	1202 6584 00	SEAL	AR				
-	1079 0003 33	SILENCING FOAM 2000 mm x 1500 mm x 50 mm					

STANDARD

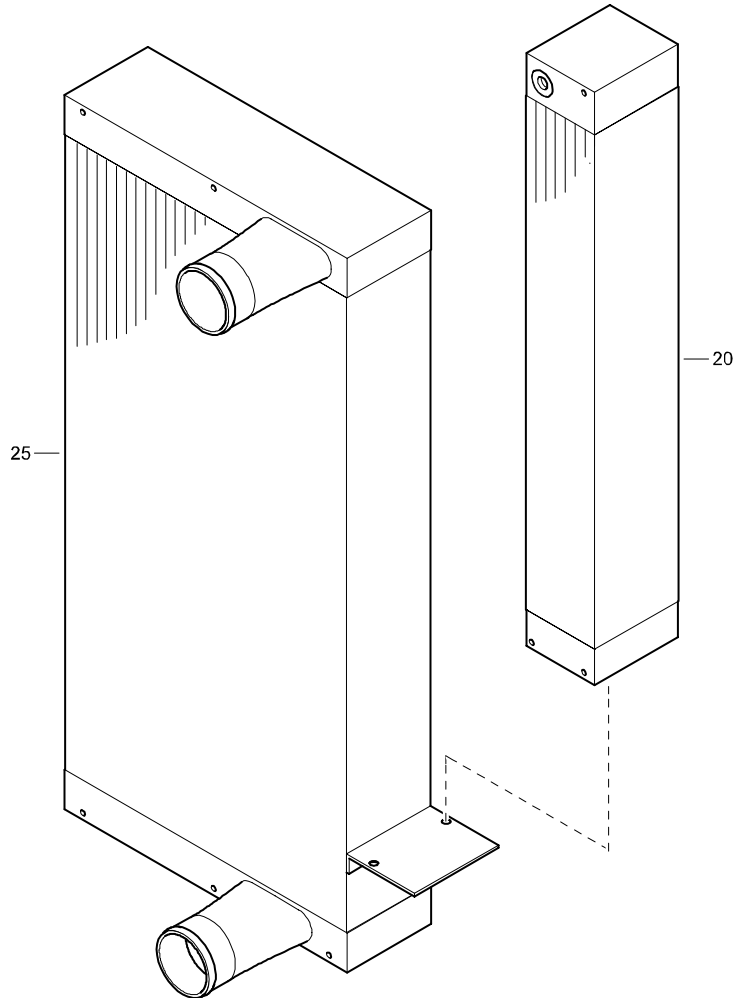
DOOR ASSEMBLY



REF	PART NUMBER	DESIGNATION	QTY	REF	PART NUMBER	DESIGNATION	QTY
-	1604 0160 82	DOOR ASSEMBLY	(From page 66)	1604 0160 82/00			
•10	1604 0160 02	DOOR	1				
•20	1615 5686 01	HINGE (RH)	2				
•30	1615 5684 00	BRACKET	4				
•40	0216 1324 03	HEX SOCK. SCREW	8				
•50	-	SILENCING FOAM (40 mm)	2				
•60	1619 2665 00	SEAL	AR				
•70	1619 1663 00	DOOR HOOK	1				
•80	0129 3270 17	BLIND RIVET	4				
•90	1604 0812 00	PROFILE	2				
-	1079 0001 91	SILENCING FOAM 2000 mm x 1500 mm x 40 mm					

STANDARD

COOLER



REF	PART NUMBER	DESIGNATION	QTY	REF	PART NUMBER	DESIGNATION	QTY
-	1604 7384 80	COOLER	(From page 51)				
•20	1604 7384 00	COOLER	1				
•25	1604 7707 00	COOLER	1				

CLICK HERE TO **DOWNLOAD** THE COMPLETE MANUAL

- Thank you very much for reading the preview of the manual.
- You can download the complete manual from: www.heydownloads.com by clicking the link below



- Please note: If there is no response to CLICKING the link, please download this PDF first and then click on it.

CLICK HERE TO **DOWNLOAD** THE COMPLETE MANUAL