



PARTS CATALOG

GL1800'05
GOLD WING

GL1800A'05
GOLD WING

SEPTEMBER, 2004

American Honda Motor Co., Inc.

14MCA501M (Fiche Version)

CLICK HERE TO **DOWNLOAD** THE COMPLETE MANUAL

- Thank you very much for reading the preview of the manual.
- You can download the complete manual from: www.heydownloads.com by clicking the link below



- Please note: If there is no response to CLICKING the link, please download this PDF first and then click on it.

CLICK HERE TO **DOWNLOAD** THE COMPLETE MANUAL

COLOR TABLE

When ordering a colored part:

1. Confirm the color code for the required part from the color table according to the part name and color type.
2. Select the corresponding part number from the appropriate PAGE/GRID.
3. Parts marked "X" are unused.
4. "*" = Basic Part Number, no extension (i.e. ZA, ZB).

GL1800A'05 2005

No.	DESCRIPTION	COLOR CODE	NHA27	NHA27B	NHA29	NHA45	PB356	R287	A R E A
		BASE COLOR	Billet silver metallic NHA27M	Billet silver metallic NHA27M	Arctic white NHA29	Portland gray metallic NHA45M	Nova blue metallic PB356M	Bloodstone red metallic R287M	
		BASIC PART NO.							
1	BODY, L. SADDLEBAG	81411-MCA-000	ZR	ZR	ZQ	ZU	ZT	ZM	
2	BODY, R. SADDLEBAG	81211-MCA-000	ZR	ZR	ZQ	ZU	ZT	ZM	
3	BOX, TRUNK	81111-MCA-000	ZR	ZR	ZQ	ZU	ZT	ZM	
4	CLIP, PANEL FIXING	91549-MW0-790	ZA	ZA	ZA	ZA	ZA	ZA	
5	COVER B, L. ARMREST	82430-MCA-000	ZA	ZA	ZA	ZA	ZA	ZA	
6	COVER B, R. ARMREST	82330-MCA-000	ZA	ZA	ZA	ZA	ZA	ZA	
7	COVER SET, L. SIDE	83700-MCA-000	ZR	ZR	ZQ	ZU	ZT	ZM	
8	COVER SET, R. SIDE	83600-MCA-000	ZR	ZR	ZQ	ZU	ZT	ZM	
9	COVER, L. PILLION STEP (LOWER)	50817-MCA-000	ZA	ZA	ZA	ZA	ZA	ZA	
10	COVER, L. PILLION STEP HOLDER	50741-MCA-000	ZA	ZA	ZA	ZA	ZA	ZA	
11	COVER, L. PIVOT PLATE	50415-MCA-000	ZA	ZA	ZA	ZA	ZA	ZA	
12	COVER, R. PILLION STEP (LOWER)	50717-MCA-000	ZA	ZA	ZA	ZA	ZA	ZA	
13	COVER, R. PILLION STEP HOLDER	50740-MCA-000	ZA	ZA	ZA	ZA	ZA	ZA	
14	COVER, R. PIVOT PLATE	50410-MCA-000	ZA	ZA	ZA	ZA	ZA	ZA	
15	COVER, TRUNK (LOWER)	81141-MCA-000	ZR	ZR	ZQ	ZU	ZT	ZM	
16	COVER, WELD BEAD	83613-MCA-000	ZB	ZB	ZB	ZB	ZB	ZB	
17	COVER, WELD BEAD	83713-MCA-000	ZB	ZB	ZB	ZB	ZB	ZB	
18	COWL, CENTER (INNER)	64501-MCA-000	ZA	ZA	ZA	ZA	ZA	ZA	
19	COWL, FR. (LOWER)	64302-MCA-000	ZA	ZA	ZA	ZA	ZA	ZA	
20	COWL, FR. CENTER	64216-MCA-000	ZR	ZR	ZQ	ZU	ZT	ZM	
21	COWL, L. (INNER)	64503-MCA-000	ZR	ZR	ZQ	ZU	ZT	ZM	
22	COWL, L. SIDE	64292-MCA-000	ZR	ZR	ZQ	ZU	ZT	ZM	
23	COWL, R. (INNER)	64502-MCA-000	ZR	ZR	ZQ	ZU	ZT	ZM	
24	COWL, R. SIDE	64282-MCA-000	ZR	ZR	ZQ	ZU	ZT	ZM	
25	CUSHION, L. ARMREST	82440-MCA-000	ZA	ZA	ZA	ZA	ZA	ZA	
26	CUSHION, R. ARMREST	82340-MCA-000	ZA	ZA	ZA	ZA	ZA	ZA	
27	EMBLEM, FR. GARNISH	64180-MCA-A40	ZA	ZA	ZC	ZE	ZD	ZB	
28	EMBLEM, KEY	35113-MCA-A41	ZA	ZA	ZC	ZE	ZD	ZB	
29	EMBLEM, RR. TRUNK	81127-MCA-A40	ZA	ZA	ZC	ZE	ZD	ZB	
30	EMBLEM, RR. TRUNK	87111-MCA-A40	ZA	ZA	ZC	ZE	ZD	ZB	
31	FENDER A, FR.	61101-MCA-000	ZR	ZR	ZQ	ZU	ZT	ZM	
32	FENDER A, RR.	80100-MCA-000	ZR	ZR	ZQ	ZU	ZT	ZM	
33	FENDER B, FR.	61103-MCA-000	ZR	ZR	ZQ	ZU	ZT	ZM	
34	FRAME	50100-MCA-020	ZA	ZA	ZA	ZA	ZA	ZA	
35	GARNISH SET, SCREEN (WL)	64120-MCA-A40	ZG	ZG	ZJ	ZN	ZK	ZH	

CYLINDER HEAD

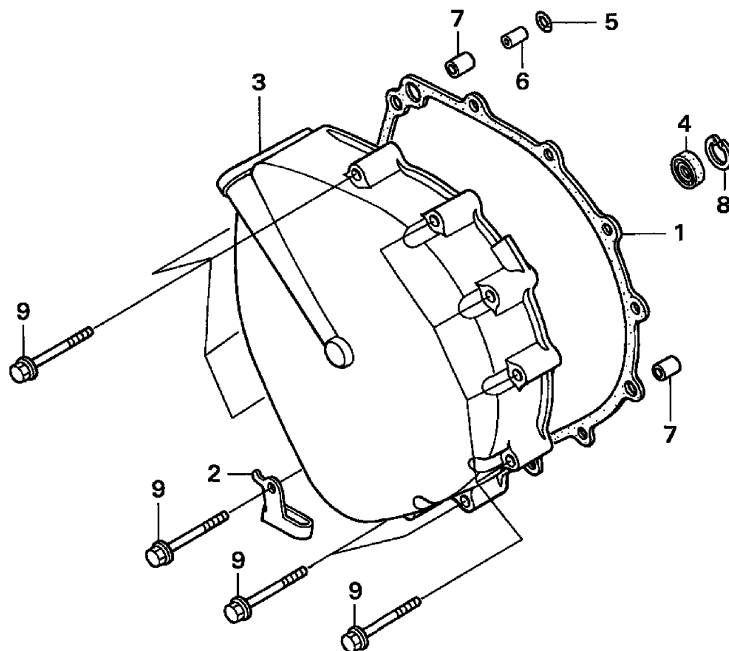
5 =GL1800'05
5A=GL1800A'05

E-2

Engine
Serial Number

Ref	Description	Model	From	To	QTY	Part Number	H/C
19	BOLT, RECESSED (5X28).....	5 5A	-----	-----	4	90023-MM5-000	2574390
20	BOLT, STUD (8/6X40)	5 5A	-----	-----	12	90035-MM5-000	2810679
21	WASHER, SPECIAL (12MM)	5 5A	-----	-----	1	90454-MC7-000	1210848
22	PIN, DOWEL (8X20).....	5 5A	-----	-----	4	94301-08200	1417369
23	PIN A, DOWEL (12X20)	5 5A	-----	-----	4	94301-12200	0165324
24	BOLT, FLANGE (6X45)	5 5A	-----	-----	6	95701-06045-08	2552537
25	BOLT, FLANGE (6X12)	5 5A	-----	-----	4	96001-06012-07	2105948
26	BOLT, FLANGE (6X25)	5 5A	-----	-----	12	96001-06025-00	2105989
27	SPARK PLUG (BKR5E-11) (NGK)	5 5A	-----	-----	(6)	98079-5514E	4556569
	SPARK PLUG (K16PR-U11) (DENSO)	5 5A	-----	-----	(6)	98079-5515E	4853404
	SPARK PLUG (BKR6E-11) (NGK)	5 5A	-----	-----	6	98079-5614E	3899663
	SPARK PLUG (BKR7E-11) (NGK)	5 5A	-----	-----	(6)	98079-5714E	3899697
	SPARK PLUG (K22PR-U11) (DENSO)	5 5A	-----	-----	(6)	98079-5715E	3899705

CLUTCH COVER



MCAA-E0700

MCAAE0700

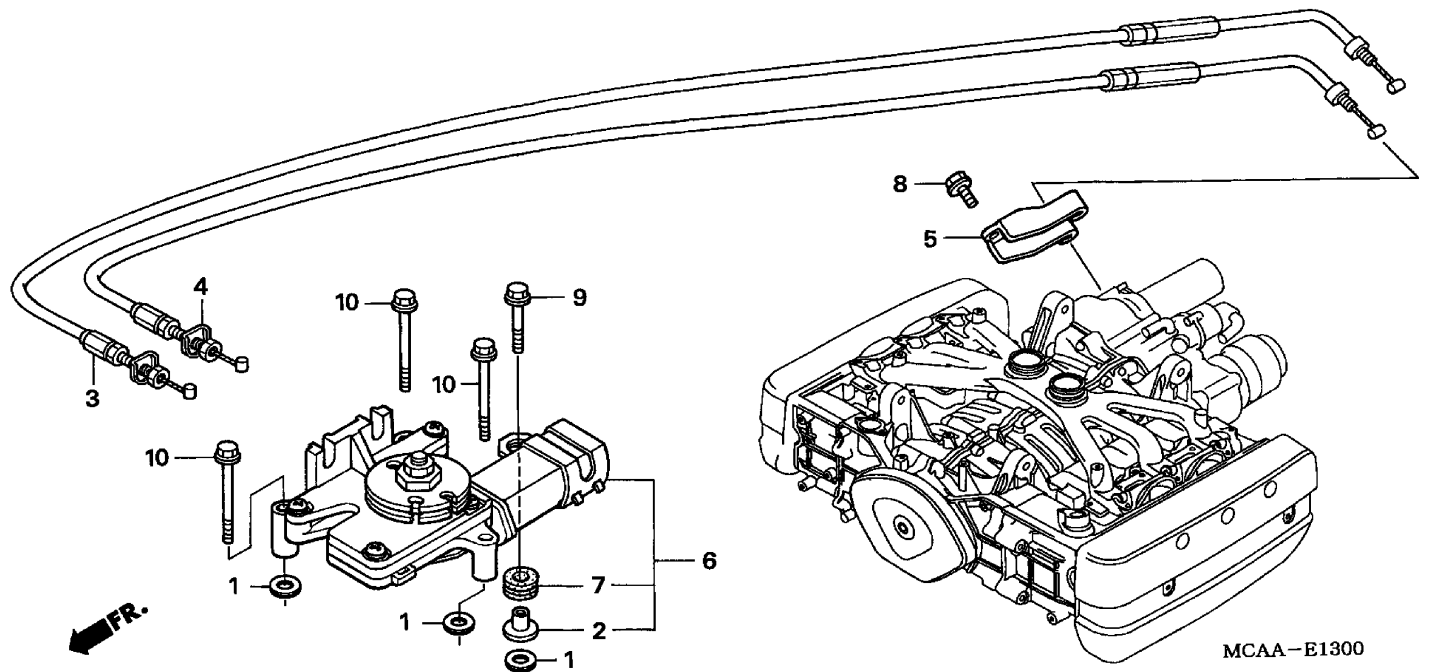
5 =GL1800'05
5A=GL1800A'05

E-7

Engine
Serial Number

Ref	Description	Model	From	To	QTY	Part Number	H/C
1	GASKET, CLUTCH COVER.....	5 5A	-----	-----	1	11351-MCA-000	6617047
2	CLAMP, TUBE	5 5A	-----	-----	1	11354-MCA-780	6775480
3	COVER, CLUTCH	5 5A	-----	-----	1	11370-MEC-000	7376783
4	OIL SEAL (7X18X5) (ARAI)	5 5A	-----	-----	1	91220-MG8-003	2016244
5	O-RING (5.7X2.2) (ARAI)	5 5A	-----	-----	1	91308-MB0-003	1260835
6	PIN A, DOWEL (6X10)	5 5A	-----	-----	1	94301-06100	0294256
7	PIN A, DOWEL (8X14)	5 5A	-----	-----	2	94301-08140	0069310
8	CIRCLIP (INNER) (18MM)	5 5A	-----	-----	1	94520-18000	0192773
9	BOLT, FLANGE (6X38)	5 5A	-----	-----	11	95701-06038-08	3007861

REVERSE SHIFT ACTUATOR



5 =GL1800'05
5A=GL1800A'05

E-13

Engine
Serial Number

Ref	Description	Model	From	To	QTY	Part Number	H/C
1	GASKET, PROTECTOR.....	5 5A	-----	-----	4	18293-MCA-780	6775928
2	COLLAR, CANISTER MOUNT.....	5 5A	-----	-----	1	19052-MB4-880	1781517
3	CABLE, REVERSE.....	5 5A	-----	-----	1	24810-MCA-000	6619068
4	CABLE, NEUTRAL.....	5 5A	-----	-----	1	24820-MCA-000	6619076
5	PLATE, REVERSE CABLE HOLDER	5 5A	-----	-----	1	28214-MCA-000	6619134
6	ACTUATOR ASSY., REVERSE SHIFT	5 5A	-----	-----	1	36800-MCA-671	6537161
7	RUBBER, RR. FENDER CUSHION.....	5 5A	-----	-----	1	80101-310-000	0113449
8	BOLT, FLANGE (6X16)	5 5A	-----	-----	2	95701-06016-08	2105807
9	BOLT, FLANGE (6X22)	5 5A	-----	-----	1	95701-06022-08	2129682
10	BOLT, FLANGE (6X45)	5 5A	-----	-----	3	95701-06045-08	2552537

TRANSMISSION

5 =GL1800'05
5A=GL1800A'05

E-19

Engine
Serial Number

Ref	Description	Model	From	To	QTY	Part Number	H/C
18	PIN, GEARSHIFT FORK GUIDE	5 5A	-----	-----	1	24261-283-000	0075911
19	BOLT, FLANGE (6X20)	5 5A	-----	-----	3	90118-KY1-000	3377496
20	WASHER, SPLINE (30X36X1.5)	5 5A	-----	-----	2	90452-MAT-000	5216247
21	WASHER, SPLINE (32X17X1.667)	5 5A	-----	-----	1	90452-MCA-000	6622039
22	WASHER B, THRUST (22MM).....	5 5A	-----	-----	1	90455-ML7-000	2408631
23	WASHER C, THRUST (25MM)	5 5A	-----	-----	1	90459-357-000	0322255
24	WASHER, SPLINE (30MM)	5 5A	-----	-----	1	90463-MAT-000	5216270
25	WASHER, SPLINE (28MM)	5 5A	-----	-----	1	90463-MR7-000	3453446
26	WASHER, LOCK (30MM).....	5 5A	-----	-----	1	90464-MAT-000	5216288
27	WASHER, LOCK (28MM).....	5 5A	-----	-----	1	90464-MR7-000	3453453
28	WASHER (22.1X36X2.6)	5 5A	-----	-----	1	90498-MEC-000	7419005
29	WASHER, THRUST (28MM)	5 5A	-----	-----	1	90554-MCA-000	6622070
30	CIRCLIP (32MM)	5 5A	-----	-----	1	90604-MCA-780	6776876
31	CIRCLIP (30MM)	5 5A	-----	-----	2	90604-MM5-000	2552032
32	BEARING, RADIAL BALL (63/22)	5 5A	-----	-----	1	91001-MN8-911	3618394
	BEARING, RADIAL BALL (63/22)	5 5A	-----	-----	1	91002-KY4-901	4186003
33	BEARING, RADIAL BALL (28X75X19) (NTN CORP.)	5 5A	-----	-----	1	91004-MCA-003	6622286
34	BEARING, NEEDLE (25X29X17) (NTN CORP.).....	5 5A	-----	-----	1	91005-MCA-003	6622294
35	BEARING, NEEDLE (22MM)	5 5A	-----	-----	1	91023-MM5-641	3377694
36	BOLT, FLANGE (8X18)	5 5A	-----	-----	2	95701-08018-08	2563237

FRAME SECTION

Chapter Table of Contents

Page Title	Grid	Page
HEADLIGHT	1-E1	2-2
METER PANEL	1-E2	2-4
SPEEDOMETER	1-E2	2-5
HANDLE SWITCH	1-E3	2-7
DELAY VALVE	1-E5	2-10
FRONT BRAKE MASTER CYLINDER	1-E6	2-12
CLUTCH MASTER CYLINDER	1-E7	2-14
HANDLEBAR • TOP BRIDGE	1-E8	2-16
STEERING STEM	1-E9	2-18
FRONT FENDER	1-E10	2-20
FRONT FORK	1-E11	2-22
RIGHT FRONT BRAKE CALIPER (GL1800)	1-E12	2-24
RIGHT FRONT BRAKE CALIPER (GL1800A)	1-E13	2-26
LEFT FRONT BRAKE CALIPER	1-E14	2-28
FRONT WHEEL	1-E15	2-30
REAR BRAKE MASTER CYLINDER	1-E16	2-32
PROPORTION CONTROL VALVE	1-F1	2-34
REAR BRAKE CALIPER	1-F2	2-36
REAR WHEEL	1-F3	2-38
FINAL DRIVEN GEAR	1-F3	2-39
SHELTER	1-F5	2-42
SEAT	1-F7	2-46
FUEL TANK	1-F7	2-47
AIR CLEANER	1-F8	2-49
AIR INJECTION VALVE	1-F9	2-51
SIDE COVER	1-F10	2-52
MUFFLER	1-F11	2-54
PEDAL	1-F12	2-57
STEP	1-F13	2-58
STAND	1-F14	2-60
SWINGARM	1-F15	2-62
REAR SHOCK ABSORBER	1-F15	2-63
REAR FENDER	1-F16	2-65
TURN SIGNAL • MIRROR	1-G1	2-67
REAR COMBINATION LIGHT	1-G3	2-70
BATTERY	1-G3	2-71
IGNITION COIL	1-G4	2-73
WIRE HARNESS	1-G5	2-74
CONTROL UNIT	1-G6	2-76
RADIATOR	1-G7	2-78
COOLING FAN	1-G8	2-80
FRAME	1-G8	2-81
TOOLS	1-G10	2-84
WINDSCREEN	1-G11	2-86
COWL	1-G13	2-90
AIR DUCT	1-G15	2-94
COWL STAY	1-G16	2-96
TRUNK BOX	1-G16	2-97
SADDLEBAG	1-H3	2-103
OPENER UNIT	1-H7	2-111
ENGINE GUARD	1-H8	2-113
RADIO	1-H9	2-115
AUTO CRUISE	1-H10	2-117
EVAP CANISTER	1-H11	2-118
CAUTION LABEL	1-H12	2-120

DELAY VALVE

5 =GL1800'05
5A=GL1800A'05

F-5

Frame
Serial Number

Ref	Description	Model	From	To	QTY	Part Number	H/C
19	JOINT SET, BRAKE ROD	5 5A	-----	-----	1	45630-MAT-006	5214994
20	CIRCLIP, MASTER CYLINDER	5 5A	-----	-----	1	46182-500-013	0506139
21	VALVE ASSY., DELAY	5 5A	-----	-----	1	46300-MCA-006	6620199
22	CLAMP A, BRAKE HOSE	5 5A	-----	-----	1	52115-MCA-A20	7544919
23	CLAMP B, BRAKE HOSE	5 5A	-----	-----	1	52116-MCA-A20	7544927
24	RUBBER, SEAT HINGE	5 5A	-----	-----	1	77218-GB2-720	4485165
25	BOLT, FLANGE SOCKET (8X32)	5 5A	-----	-----	2	90133-MAT-000	5216189
26	BOLT, TORX (8X25)	5 5A	-----	-----	1	90134-MAT-000	5216197
27	BOLT, OIL (10X22)	5 5A	-----	-----	9	90145-MS9-612	5369418
28	WASHER, OIL BOLT	5 5A	-----	-----	18	90545-300-000	0189902
29	BOLT, HEX. (6X45)	5 5A	-----	-----	1	93201-06045-0G	6622450
30	BOLT, FLANGE (6X25)	5 5A	-----	-----	1	95801-06025-07	3039765
31	BOLT, FLANGE (6X30)	5 5A	-----	-----	2	95801-06030-07	3678349
32	BOLT, FLANGE (6X12)	5 5A	-----	-----	4	96001-06012-07	2105948
33	BOLT, FLANGE (6X25)	5 5A	-----	-----	1	96001-06025-00	2105989
34	BOLT, FLANGE (6X25)	5 5A	-----	-----	1	96001-06025-07	2105997
35	BOLT, FLANGE (6X30)	5 5A	-----	-----	3	96001-06030-07	4009569

FRONT FENDER

5 =GL1800'05
5A=GL1800A'05

F-10

Frame
Serial Number

Ref	Description	Model	From	To	QTY	Part Number	H/C
4	FENDER B, FR. *NHA27M* (BILLET SILVER METALLIC).....	5 5A	-----	-----	1	61103-MCA-000ZR	7794225
	FENDER B, FR. *PB356M* (NOVA BLUE METALLIC).....	5 5A	-----	-----	1	61103-MCA-000ZT	7794233
	FENDER B, FR. *NHA45M* (PORTLAND GRAY METALLIC)	5 5A	-----	-----	1	61103-MCA-000ZU	7802002
5	EMBLEM, R. (ABS)	5A	-----	-----	1	61104-MCA-A50	7840093
6	COVER, FR. FORK	5 5A	-----	-----	1	61105-MCA-000	6540249
7	WASHER, RUBBER.....	5 5A	-----	-----	2	61108-MCA-000	6620603
8	STAY, R. FR. FENDER	5 5A	-----	-----	1	61109-MCA-000	6565287
9	FENDER SET, R. FR.....	5A	-----	-----	1	61110-MCA-A50	7802010
10	COVER, L. FR. FENDER	5 5A	-----	-----	1	61112-MCA-000	6540264
11	EMBLEM, L. (ABS).....	5A	-----	-----	1	61114-MCA-A50	7840101
12	STAY, L. FR. FENDER.....	5 5A	-----	-----	1	61119-MCA-000	6539712
13	FENDER SET, L. FR.	5A	-----	-----	1	61120-MCA-A50	7794258
14	SCREW, SPECIAL (6X19)	5 5A	-----	-----	2	90104-MM4-000	2568830
15	SCREW, SPECIAL (5X12)	5 5A	-----	-----	6	90106-MBY-000	6092043
16	SCREW, PAN (6X14)	5 5A	-----	-----	2	90113-MM5-000	2568855
17	CLIP, SPLASH	5 5A	-----	-----	1	90657-SB0-003	1477280
18	NUT, CLIP (5MM).....	5 5A	-----	-----	4	90677-KAN-961	5750450
19	NUT, FLANGE (5MM).....	5 5A	-----	-----	2	94050-05080	0612671
20	WASHER, PLAIN (5MM)	5 5A	-----	-----	2	94101-05800	0285791
21	BOLT, FLANGE (6X12)	5 5A	-----	-----	6	96001-06012-00	2105930

FRONT WHEEL

5 =GL1800'05
5A=GL1800A'05

F-13

Frame
Serial Number

Ref	Description	Model	From	To	QTY	Part Number	H/C
16	BOLT, BRAKE DISK (6X17).....	5 5A	-----	-----	12	90106-MBB-000	5365259
17	BOLT, TORX (5X10).....	5A	-----	-----	3	90131-KPB-751	6621841
18	BOLT, FR. AXLE	5 5A	-----	-----	1	90305-ML7-000	2408540
19	BEARING, RADIAL BALL (6004) (X2) (LU)	5 5A	-----	-----	2	91055-MCA-003	6622393
20	DUST SEAL (30X47X8)	5 5A	-----	-----	1	91253-443-761	1237197
	DUST SEAL (30X47X8)	5 5A	-----	-----	1	91253-443-762	1237205
21	DUST SEAL (28X42X8) (NOK)	5 5A	-----	-----	1	91257-MAY-003	5216452
22	BOLT, FLANGE (6X16)	5A	-----	-----	2	96001-06016-00	2105955
23	BOLT, FLANGE (6X20)	5A	-----	-----	1	96001-06020-00	2529154

FINAL DRIVEN GEAR

5 =GL1800'05
5A=GL1800A'05

F-18

Frame
Serial Number

Ref	Description	Model	From	To	QTY	Part Number	H/C
14	SHIM P, RING GEAR	5 5A	-----	-----	2	41544-MCA-000	6620074
15	BOLT, PLUG (14MM)	5 5A	-----	-----	1	90081-MC7-000	1210681
16	BOLT, STUD (12X53).....	5 5A	-----	-----	4	90124-MCA-300	6621775
17	BOLT, STUD (12X46).....	5 5A	-----	-----	5	90125-MCA-300	6621783
18	SCREW, FLAT (6X16)	5 5A	-----	-----	2	90132-MCA-000	6621866
19	BOLT, FLANGE (8X30)	5 5A	-----	-----	6	90133-MCA-000	6621874
20	BOLT, FLANGE (10X38)	5 5A	-----	-----	2	90134-MCA-000	6621882
21	O-RING (94.5X2)	5 5A	-----	-----	1	90351-MCA-003	6621999
22	NUT, HEX. (16MM).....	5 5A	-----	-----	1	90381-MT3-000	3487980
23	CIRCLIP (INNER) (47MM)	5 5A	-----	-----	1	90652-MCA-003	6622112
24	CIRCLIP (INNER) (125MM)	5 5A	-----	-----	1	90653-MCA-000	6622120
25	BEARING, RADIAL BALL (100X125X26)....	5 5A	-----	-----	1	91051-MCA-003	6622336
26	BEARING, NEEDLE (30X47X23)	5 5A	-----	-----	1	91052-MCA-003	6622351
27	BEARING, RADIAL BALL (QJ3/28V1)	5 5A	-----	-----	1	91061-MT3-003	3488152
28	OIL SEAL (39X56X7) (NOK)	5 5A	-----	-----	1	91262-MY3-003	3956703
29	OIL SEAL (110X125X7)	5 5A	-----	-----	1	91265-MCA-003	6622419
30	O-RING (30.8MM)	5 5A	-----	-----	1	91302-001-020	0001065
31	O-RING (64.5X3.5).....	5 5A	-----	-----	1	91359-MG9-003	1532381
32	BOLT, HEX. (6X12)	5 5A	-----	-----	1	92101-06012-0A	3591500
33	WASHER, DRAIN PLUG (14MM).....	5 5A	-----	-----	1	94109-14000	0171876
34	PIN A, DOWEL (14X20)	5 5A	-----	-----	2	94301-14200	0295626
35	PIN, DOWEL (10X16).....	5 5A	-----	-----	2	94303-10160	0690628

CLICK HERE TO **DOWNLOAD** THE COMPLETE MANUAL

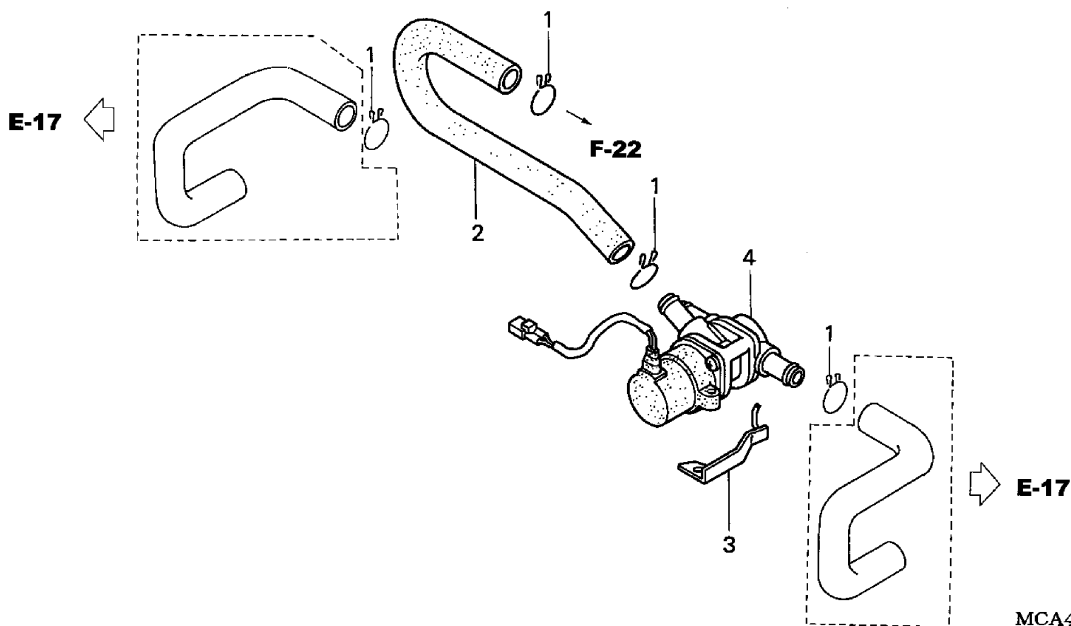
- Thank you very much for reading the preview of the manual.
- You can download the complete manual from: www.heydownloads.com by clicking the link below



- Please note: If there is no response to CLICKING the link, please download this PDF first and then click on it.

CLICK HERE TO **DOWNLOAD** THE COMPLETE MANUAL

AIR INJECTION VALVE



5 =GL1800'05
5A=GL1800A'05

F-22-1

Frame
Serial Number

Ref	Description	Model	From	To	QTY	Part Number	H/C
1	CLIP, SUB-TANK HOSE	5 5A	-----	-----	4	17724-102-700	0290213
2	TUBE A, AIR IN.	5 5A	-----	-----	1	18661-MCA-000	6538086
3	STAY, SOLENOID	5 5A	-----	-----	1	18665-MCA-000	6543409
4	VALVE ASSY., EX. AIR INJECTION	5 5A	-----	-----	1	36450-MCA-003	6619639

STAND

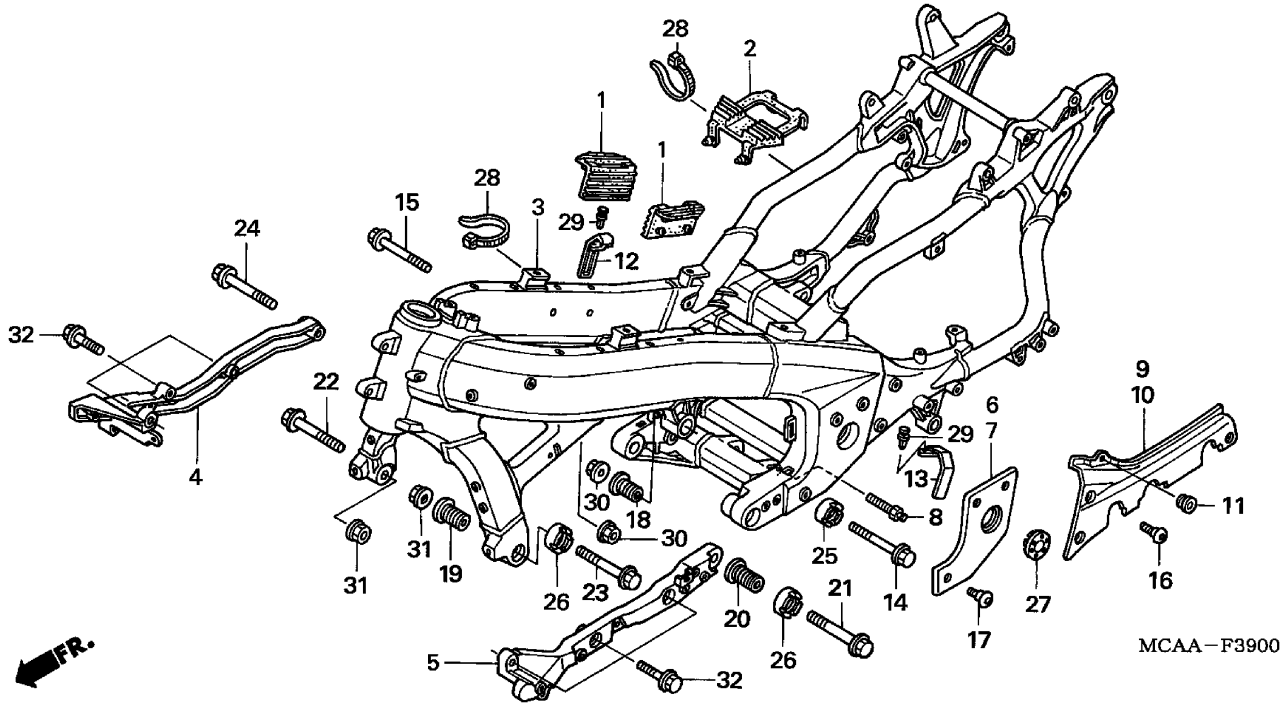
5 =GL1800'05
5A=GL1800A'05

F-27

Frame
Serial Number

Ref	Description	Model	From	To	QTY	Part Number	H/C
18	BOLT, FLANGE (10X35)	5 5A	-----	-----	2	96400-10035-07	4046942

FRAME



MCAA-F3900

5 =GL1800'05
5A=GL1800A'05

F-39

Frame
Serial Number

Ref	Description	Model	From	To	QTY	Part Number	H/C
1	CUSHION, FR. FUEL TANK.....	5 5A	-----	-----	2	17611-MCA-000	6537997
2	CUSHION, FUEL TANK CENTER	5 5A	-----	-----	1	17614-MCA-000	6538003
3	FRAME *NH456M* (IO SILVER METALLIC)	5 5A	-----	-----	1	50100-MCA-020ZA	7769763
4	BEAM, R. ENGINE SUPPORT.....	5 5A	-----	-----	1	50351-MCA-000	6539092
5	BEAM, L. ENGINE SUPPORT	5 5A	-----	-----	1	50352-MCA-000	6539126
6	COVER, R. PIVOT PLATE *NH248R* (GRAY).....	5 5A	-----	-----	1	50410-MCA-000ZA	6645188
7	COVER, L. PIVOT PLATE *NH248R* (GRAY).....	5 5A	-----	-----	1	50415-MCA-000ZA	6645196
8	HOOK, MAIN STAND SPRING	5 5A	-----	-----	1	50538-MCA-000	6620298
9	COVER, R. PILLION STEP HOLDER *NH454M* (ECLIPSE SILVER METALLIC).....	5 5A	-----	-----	1	50740-MCA-000ZA	6539837
10	COVER, L. PILLION STEP HOLDER *NH454M* (ECLIPSE SILVER METALLIC).....	5 5A	-----	-----	1	50741-MCA-000ZA	6539845
11	GROMMET, SIDE COVER.....	5 5A	-----	-----	2	83501-MG7-000	2015360
12	COVER, WELD BEAD *NH466M* (R/L) (PRESTO SILVER METALLIC)	5 5A	-----	-----	1	83613-MCA-000ZB	6646335

COWL

5 =GL1800'05
5A=GL1800A'05

F-42

Frame
Serial Number

Ref	Description	Model	From	To	QTY	Part Number	H/C
4	COWL, R. SIDE *NHA27M* (BILLET SILVER METALLIC).....	5 5A	-----	-----	1	64282-MCA-000ZR	7794415
	COWL, R. SIDE *PB356M* (NOVA BLUE METALLIC).....	5 5A	-----	-----	1	64282-MCA-000ZT	7794423
	COWL, R. SIDE *NHA45M* (PORTLAND GRAY METALLIC)	5 5A	-----	-----	1	64282-MCA-000ZU	7794431
5	LOUVER, R. SIDE COWL *Y130P* (PEARL HOT ROD YELLOW)	5 5A	-----	-----	1	64285-MCA-000ZD	6541619
	LOUVER, R. SIDE COWL *R287M* (BLOODSTONE RED METALLIC).....	5 5A	-----	-----	1	64285-MCA-000ZM	7526189
	LOUVER, R. SIDE COWL *NHA29* (ARCTIC WHITE)	5 5A	-----	-----	1	64285-MCA-000ZQ	7526213
	LOUVER, R. SIDE COWL *NHA27M* (BILLET SILVER METALLIC).....	5 5A	-----	-----	1	64285-MCA-000ZR	7794449
	LOUVER, R. SIDE COWL *PB356M* (NOVA BLUE METALLIC)	5 5A	-----	-----	1	64285-MCA-000ZT	7794456
	LOUVER, R. SIDE COWL *NHA45M* (PORTLAND GRAY METALLIC)	5 5A	-----	-----	1	64285-MCA-000ZU	7794464
6	DUCT, R. AIR.....	5 5A	-----	-----	1	64286-MCA-000	6543342
7	DUCT, R. SIDE COWL.....	5 5A	-----	-----	1	64287-MCA-000	6538896
8	COWL, L. SIDE *Y130P* (PEARL HOT ROD YELLOW)	5 5A	-----	-----	1	64292-MCA-000ZD	6565386
	COWL, L. SIDE *R287M* (BLOODSTONE RED METALLIC)	5 5A	-----	-----	1	64292-MCA-000ZM	7526882
	COWL, L. SIDE *NHA29* (ARCTIC WHITE)	5 5A	-----	-----	1	64292-MCA-000ZQ	7526916
	COWL, L. SIDE *NHA27M* (BILLET SILVER METALLIC).....	5 5A	-----	-----	1	64292-MCA-000ZR	7794472
	COWL, L. SIDE *PB356M* (NOVA BLUE METALLIC).....	5 5A	-----	-----	1	64292-MCA-000ZT	7794480
	COWL, L. SIDE *NHA45M* (PORTLAND GRAY METALLIC)	5 5A	-----	-----	1	64292-MCA-000ZU	7794498
9	LOUVER, L. SIDE COWL *Y130P* (PEARL HOT ROD YELLOW)	5 5A	-----	-----	1	64295-MCA-000ZD	6541700
	LOUVER, L. SIDE COWL *R287M* (BLOODSTONE RED METALLIC).....	5 5A	-----	-----	1	64295-MCA-000ZM	7526239
	LOUVER, L. SIDE COWL *NHA29* (ARCTIC WHITE)	5 5A	-----	-----	1	64295-MCA-000ZQ	7526262
	LOUVER, L. SIDE COWL *NHA27M* (BILLET SILVER METALLIC).....	5 5A	-----	-----	1	64295-MCA-000ZR	7794506

TRUNK BOX

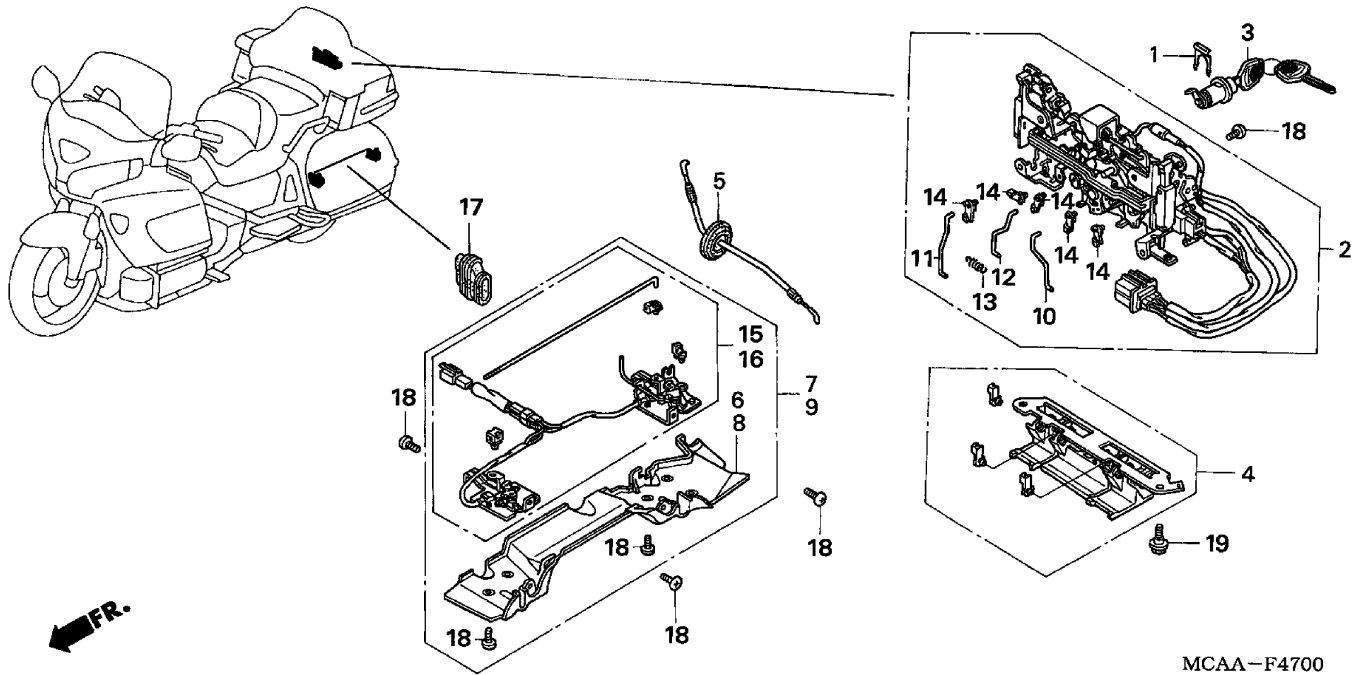
5 =GL1800'05
5A=GL1800A'05

F-45

Frame
Serial Number

Ref	Description	Model	From	To	QTY	Part Number	H/C
32	DAMPER, TRUNK POCKET	5 5A	-----	-----	2	82140-MCA-000	6621254
33	SPRING, TRUNK POCKET	5 5A	-----	-----	2	82150-MCA-000	6621262
34	LEVER, R. TRUNK POCKET	5 5A	-----	-----	1	82160-MCA-000	6639009
35	HINGE, R. TRUNK POCKET	5 5A	-----	-----	1	82170-MCA-000	6542211
36	GEAR, TRUNK POCKET DAMPER.....	5 5A	-----	-----	2	82180-MCA-000	6542229
37	RUBBER C, TRUNK POCKET SEAL.....	5 5A	-----	-----	2	82190-MCA-000	6621270
38	OUTER, L. TRUNK POCKET	5 5A	-----	-----	1	82211-MCA-000	6639017
39	INNER, L. TRUNK POCKET	5 5A	-----	-----	1	82212-MCA-000	6542245
40	LID, L. TRUNK POCKET	5 5A	-----	-----	1	82220-MCA-000	6639025
41	LEVER, L. TRUNK POCKET	5 5A	-----	-----	1	82260-MCA-000	6639033
42	HINGE, L. TRUNK POCKET	5 5A	-----	-----	1	82270-MCA-000	6565410
43	BODY, R. ARMREST	5 5A	-----	-----	1	82310-MCA-000	6639041
44	COVER A, R. ARMREST	5 5A	-----	-----	1	82320-MCA-000	6639058
45	COVER B, R. ARMREST *NH1* (BLACK) ..	5 5A	-----	-----	1	82330-MCA-000ZA	6542351
46	CUSHION, R. ARMREST *NH1* (BLACK)..	5 5A	-----	-----	1	82340-MCA-000ZA	6621288
47	RUBBER A, R. ARMREST	5 5A	-----	-----	1	82350-MCA-000	6621296
48	RUBBER B, ARMREST	5 5A	-----	-----	2	82360-MCA-000	6621304
49	BODY, L. ARMREST	5 5A	-----	-----	1	82410-MCA-000	6639066
50	COVER A, L. ARMREST	5 5A	-----	-----	1	82420-MCA-000	6645162
51	COVER B, L. ARMREST *NH1* (BLACK) ..	5 5A	-----	-----	1	82430-MCA-000ZA	6542401
52	CUSHION, L. ARMREST *NH1* (BLACK) ..	5 5A	-----	-----	1	82440-MCA-000ZA	6621312
53	RUBBER A, L. ARMREST	5 5A	-----	-----	1	82450-MCA-000	6621320
54	EMBLEM, RR. TRUNK (TYPE1) (HONDA)	5 5A	-----	-----	1	87111-MCA-A40ZA	7840283
	EMBLEM, RR. TRUNK (TYPE2) (HONDA)	5 5A	-----	-----	1	87111-MCA-A40ZB	7840291
	EMBLEM, RR. TRUNK (TYPE3) (HONDA)	5 5A	-----	-----	1	87111-MCA-A40ZC	7840309
	EMBLEM, RR. TRUNK (TYPE4) (HONDA)	5 5A	-----	-----	1	87111-MCA-A40ZD	7840317
	EMBLEM, RR. TRUNK (TYPE5) (HONDA)	5 5A	-----	-----	1	87111-MCA-A40ZE	7840325
	EMBLEM, RR. TRUNK (TYPE6) (HONDA)	5 5A	-----	-----	1	87111-MCA-A40ZF	7840333
55	SCREW, PAN (5X12)	5 5A	-----	-----	3	90104-964-000	1423714
56	SCREW, PAN (6X11)	5 5A	-----	-----	12	90106-KY2-701	3134053
57	BOLT, FLANGE (6MM).....	5 5A	-----	-----	6	90111-GE2-760	3472958
58	WASHER, TANK SETTING	5 5A	-----	-----	4	90136-428-870	0812834
59	SCREW, TAPPING (5X12).....	5 5A	-----	-----	6	90140-MCA-000	6621924
60	NUT, CLIP	5 5A	-----	-----	10	90301-GE0-000	2829166

OPENER UNIT



MCAA-F4700

MCAAF4700

5 =GL1800'05
5A=GL1800A'05

F-47

Frame
Serial Number

Ref	Description	Model	From	To	QTY	Part Number	H/C
1	SPRING, LOCK KEY SETTING	5 5A	-----	-----	1	37222-MCA-000	6619670
2	OPENER UNIT	5 5A	-----	-----	1	81310-MCA-A22	7700768
3	LOCK ASSY., OPENER UNIT	5 5A	-----	-----	1	81312-MCA-003	6536940
4	LEVER ASSY., LUGGAGE BAG	5 5A	-----	-----	1	81335-MCA-003	6621163
5	CABLE, SADDLEBAG OPENER	5 5A	-----	-----	2	81345-MCA-003	6621171
6	COVER, R. SADDLEBAG CATCH.....	5 5A	-----	-----	1	81360-MCA-000	6621197
7	CATCH ASSY., R. SADDLEBAG	5 5A	-----	-----	1	81361-MCA-003	6654131
8	COVER, L. SADDLEBAG CATCH	5 5A	-----	-----	1	81370-MCA-000	6621205
9	CATCH ASSY., L. SADDLEBAG	5 5A	-----	-----	1	81371-MCA-003	6654149
10	ROD, L.....	5 5A	-----	-----	1	81381-MCA-003	6762512
11	ROD, R.	5 5A	-----	-----	1	81382-MCA-003	6762520
12	ROD, CENTER.....	5 5A	-----	-----	1	81383-MCA-003	6762538
13	SPRING	5 5A	-----	-----	4	81384-MCA-003	6762546
14	SNAP	5 5A	-----	-----	5	81385-MCA-003	6762553
15	CATCH SET, R. SADDLEBAG.....	5 5A	-----	-----	1	81386-MCA-003	6762561
16	CATCH SET, L. SADDLEBAG	5 5A	-----	-----	1	81396-MCA-003	6762579
17	GROMMET, CATCH ROD	5 5A	-----	-----	2	81399-MCA-000	6621213
18	SCREW, PAN (5X12).....	5 5A	-----	-----	23	90104-964-000	1423714

CAUTION LABEL

5 =GL1800'05
5A=GL1800A'05

F-52

Frame
Serial Number

Ref	Description	Model	From	To	QTY	Part Number	H/C
11	LABEL, COLOR (TYPE8).....	5A	-----	-----	1	87565-MCA-A50ZH	7798010
	LABEL, COLOR (TYPE9).....	5A	-----	-----	1	87565-MCA-A50ZJ	7798028

PART NUMBER INDEX

Part Number	Grid	Page	Part Number	Grid	Page	Part Number	Grid	Page
64204-MCA-000ZU	1-F5	2-42	64295-MCA-000ZQ	1-G13	2-91	64542-MCA-000	1-G11	2-87
64205-MCA-A20	1-G11	2-87	64295-MCA-000ZR	1-G13	2-91	64543-MCA-000	1-G11	2-87
64214-MCA-000ZD	1-F5	2-43	64295-MCA-000ZT	1-G14	2-92	64544-MCA-000	1-G11	2-87
64214-MCA-000ZM	1-F5	2-43	64295-MCA-000ZU	1-G14	2-92	64547-MCA-000	1-G11	2-87
64214-MCA-000ZQ	1-F5	2-43	64296-MCA-000	1-G14	2-92	64548-MCA-000	1-G11	2-87
64214-MCA-000ZR	1-F5	2-43	64297-MCA-000	1-G14	2-92	64549-MCA-000	1-G11	2-87
64214-MCA-000ZT	1-F5	2-43	64302-MCA-000ZA	1-G14	2-92	66871-KY2-700	1-G14	2-93
64214-MCA-000ZU	1-F5	2-43	64303-MCA-000	1-C2	1-4			
64216-MCA-000ZD	1-G13	2-90	64304-MCA-000	1-C2	1-4	(7)		
64216-MCA-000ZM	1-G13	2-90	64386-MS2-000	1-C1	1-2			
64216-MCA-000ZQ	1-G13	2-90	64410-MCA-780	1-G15	2-94	72147-MCA-671	1-E8	2-17
64216-MCA-000ZR	1-G13	2-90	64412-MCA-000	1-G15	2-94	72148-S10-003	1-E8	2-17
64216-MCA-000ZT	1-G13	2-90	64413-MCA-000	1-G15	2-94	72148-S84-A10	1-E8	2-17
64216-MCA-000ZU	1-G13	2-90	64414-MCA-000	1-G15	2-94	72149-MCA-A41	1-E8	2-17
64228-MCA-300	1-G15	2-94	64415-MCA-780	1-G15	2-94	72149-S10-003	1-E8	2-17
64229-MCA-300	1-G15	2-94	64416-MCA-000	1-G15	2-94	77200-MCA-A20ZA	1-F7	2-46
64231-MCA-000	1-H10	2-116	64419-MCA-000	1-G15	2-94	77200-MCA-A20ZB	1-F7	2-46
64236-MCA-000	1-H10	2-116	64420-MCA-000	1-G15	2-94	77205-286-000	1-F7	2-46
64240-MCA-000ZA	1-E2	2-4	64423-MCA-000	1-G15	2-94	77206-426-000	1-F7	2-46
64242-MCA-000	1-E2	2-4	64425-MCA-000	1-G15	2-95	77211-965-000	1-H8	2-113
64246-MCA-000	1-E2	2-4	64428-MCA-000	1-G15	2-95	77215-MCA-000	1-F7	2-46
64246-MJ4-670	1-G11	2-87	64429-MCA-000	1-G15	2-95	77218-GB2-720	1-E5	2-11
64251-MCA-000	1-E2	2-4	64431-MCA-000	1-G15	2-95		1-G6	2-77
64255-MCA-000ZA	1-G11	2-87	64433-MCA-000	1-G15	2-95	77233-MCA-003	1-F5	2-43
64256-MCA-000ZA	1-G11	2-87	64434-MCA-000	1-G15	2-95	77234-MCA-003	1-F5	2-43
64257-MCA-000	1-G1	2-67	64435-MCA-000	1-G15	2-95	77236-MCA-000	1-F5	2-43
64259-MCA-300	1-E2	2-4	64436-MCA-000	1-G15	2-95	77241-MCA-000	1-F5	2-43
64265-MCA-000	1-G11	2-87	64438-MCA-000	1-G15	2-95	77500-MCA-A20ZA	1-F7	2-46
64266-MCA-000ZA	1-G11	2-87	64439-MCA-000	1-G15	2-95	77500-MCA-A20ZB	1-F7	2-46
64267-MCA-000	1-G1	2-67	64445-MCA-000	1-F5	2-43	78121-SZ3-901	1-E2	2-5
64275-MCA-000	1-G15	2-94	64448-MCA-300	1-G14	2-92			
64276-MCA-000	1-G15	2-94	64450-MCA-780	1-F5	2-43	(8)		
64278-MCA-000	1-G15	2-94	64455-MCA-000	1-F5	2-43			
64279-MCA-000	1-G15	2-94	64460-MCA-780	1-F5	2-43	80100-MCA-000ZD	1-F16	2-65
64282-MCA-000ZD	1-G13	2-90	64501-MCA-000ZA	1-G14	2-92	80100-MCA-000ZM	1-F16	2-65
64282-MCA-000ZM	1-G13	2-90	64502-MCA-000ZD	1-G14	2-92	80100-MCA-000ZQ	1-F16	2-65
64282-MCA-000ZQ	1-G13	2-90	64502-MCA-000ZM	1-G14	2-92	80100-MCA-000ZR	1-F16	2-65
64282-MCA-000ZR	1-G13	2-91	64502-MCA-000ZQ	1-G14	2-92	80100-MCA-000ZT	1-F16	2-65
64282-MCA-000ZT	1-G13	2-91	64502-MCA-000ZR	1-G14	2-92	80100-MCA-000ZU	1-F16	2-65
64282-MCA-000ZU	1-G13	2-91	64502-MCA-000ZT	1-G14	2-92	80101-310-000	1-C12	1-25
64285-MCA-000ZD	1-G13	2-91	64502-MCA-000ZU	1-G14	2-93	80101-MCA-000	1-F16	2-65
64285-MCA-000ZM	1-G13	2-91	64503-MCA-000ZD	1-G14	2-93	80103-MG2-000	1-G16	2-96
64285-MCA-000ZQ	1-G13	2-91	64503-MCA-000ZM	1-G14	2-93	80104-KJ2-000	1-F16	2-65
64285-MCA-000ZR	1-G13	2-91	64503-MCA-000ZQ	1-G14	2-93	80105-028-000	1-G16	2-96
64285-MCA-000ZT	1-G13	2-91	64503-MCA-000ZR	1-G14	2-93	80105-MAH-610	1-G16	2-97
64285-MCA-000ZU	1-G13	2-91	64503-MCA-000ZT	1-G14	2-93	80108-KF9-900	1-F7	2-47
64286-MCA-000	1-G13	2-91	64503-MCA-000ZU	1-G14	2-93	80110-MCA-000	1-G3	2-71
64287-MCA-000	1-G13	2-91	64510-MCA-000	1-G16	2-96	80111-MCA-000	1-G3	2-71
64292-MCA-000ZD	1-G13	2-91	64511-MCA-000	1-G11	2-87	80112-MCA-000	1-G3	2-71
64292-MCA-000ZM	1-G13	2-91	64513-MCA-000	1-G6	2-76	80123-GN5-900	1-F16	2-65
64292-MCA-000ZQ	1-G13	2-91	64514-MCA-000	1-G16	2-96	80201-MCA-000	1-H3	2-103
64292-MCA-000ZR	1-G13	2-91	64515-MCA-000	1-G16	2-96	80202-MCA-000	1-G16	2-97
64292-MCA-000ZT	1-G13	2-91	64516-MCA-000	1-E1	2-2	81111-MCA-000ZD	1-G16	2-97
64292-MCA-000ZU	1-G13	2-91	64517-MCA-000	1-G14	2-93	81111-MCA-000ZM	1-G16	2-97
64295-MCA-000ZD	1-G13	2-91	64525-MCA-000	1-G16	2-96	81111-MCA-000ZQ	1-G16	2-97
64295-MCA-000ZM	1-G13	2-91	64541-MCA-000	1-G11	2-87	81111-MCA-000ZR	1-G16	2-97

DESCRIPTION INDEX

Description	Grid	Page	Ref	Description	Grid	Page	Ref
BODY, L. SADDLEBAG *Y130P* (PEARL HOT ROD YELLOW)	1-H5	2-106	23	BOLT, FLANGE (6MM)	1-H10	2-116	23
BODY, R. ARMREST	1-H2	2-101	43	BOLT, FLANGE (6X10)	1-C1	1-3	27
BODY, R. SADDLEBAG *NHA27M* (BILLET SILVER METALLIC)	1-H3	2-103	5		1-F11	2-55	38
BODY, R. SADDLEBAG *NHA29* (ARCTIC WHITE) ...	1-H3	2-103	5		1-G4	2-73	14
BODY, R. SADDLEBAG *NHA45M* (PORTLAND GRAY METALLIC)	1-H3	2-103	5		1-H9	2-114	20
BODY, R. SADDLEBAG *PB356M* (NOVA BLUE METALLIC)	1-H3	2-103	5	BOLT, FLANGE (6X10) (NSHF)	1-C5	1-10	14
BODY, R. SADDLEBAG *R287M* (BLOODSTONE RED METALLIC)	1-H3	2-103	5		1-F11	2-55	37
BODY, R. SADDLEBAG *Y130P* (PEARL HOT ROD YELLOW)	1-H3	2-103	5	BOLT, FLANGE (6X12)	1-C1	1-3	26
BODY, SCAVENGE OIL PUMP STRAINER	1-C10	1-21	4		1-C2	1-5	25
BODY SET	1-D4	1-40	7		1-C11	1-22	23
BOLT (5X13)	1-G3	2-71	15		1-D3	1-39	28
	1-G5	2-75	26		1-D5	1-42	22
BOLT (5X39)	1-C9	1-19	14		1-E5	2-11	32
BOLT A, PIN (NISSIN)	1-E12	2-24	12		1-E8	2-17	31
	1-E13	2-26	11		1-E10	2-21	21
	1-E14	2-28	11		1-F1	2-35	44
BOLT, ADJUSTING (M20-43.5)	1-G9	2-82	18		1-F12	2-56	50
BOLT, ADJUSTING (M22-40)	1-G9	2-82	20		1-F16	2-64	24
BOLT, ADJUSTING (M22-47)	1-G9	2-82	19		1-G5	2-75	39
BOLT, BANJO (12MM)	1-D4	1-41	13		1-G12	2-89	67
BOLT, BRAKE DISK (6X17)	1-E15	2-31	16		1-G16	2-96	9
BOLT, CAP (6X12)	1-F13	2-59	26		1-H7	2-110	59
BOLT, CHANGE PIVOT	1-F12	2-57	6	BOLT, FLANGE (6X12) (CT200)	1-C6	1-12	7
BOLT, CONNECTING ROD	1-C16	1-33	7	BOLT, FLANGE (6X14)	1-C7	1-14	21
BOLT, DRAIN PLUG (14MM)	1-C6	1-13	18		1-C14	1-28	12
BOLT, FLANGE	1-C9	1-18	9		1-E16	2-33	31
BOLT, FLANGE (10X120)	1-C15	1-31	20		1-H10	2-117	12
	1-C15	1-31	21		1-H11	2-119	18
BOLT, FLANGE (10X197)	1-C15	1-31	22	BOLT, FLANGE (6X16)	1-C5	1-11	24
BOLT, FLANGE (10X32)	1-F2	2-37	20		1-C7	1-14	22
BOLT, FLANGE (10X35)	1-E8	2-17	32		1-C11	1-22	24
	1-F14	2-61	18		1-C12	1-25	8
BOLT, FLANGE (10X38)	1-F4	2-41	20		1-C14	1-29	20
BOLT, FLANGE (10X40)	1-G9	2-83	32		1-C15	1-31	37
BOLT, FLANGE (10X55)	1-F15	2-63	17		1-D2	1-37	27
BOLT, FLANGE (10X60) (LEFT HAND THREAD)	1-F14	2-60	14		1-D3	1-39	26
BOLT, FLANGE (10X62)	1-G9	2-82	15		1-D3	1-39	29
BOLT, FLANGE (10X85)	1-G9	2-82	14		1-D5	1-43	8
BOLT, FLANGE (12X72)	1-G9	2-82	22		1-E15	2-31	22
BOLT, FLANGE (12X84)	1-G9	2-82	24		1-F1	2-35	45
BOLT, FLANGE (12X92)	1-G9	2-82	21		1-F8	2-48	22
	1-G9	2-82	23		1-G1	2-66	13
BOLT, FLANGE (12X99)	1-F15	2-63	16		1-G4	2-72	24
BOLT, FLANGE (5X14)	1-C15	1-31	23		1-G4	2-72	25
BOLT, FLANGE (6MM)	1-F16	2-65	8		1-G4	2-73	13
	1-G7	2-79	31		1-G6	2-77	28
	1-G8	2-80	8		1-G6	2-77	29
	1-H2	2-101	57		1-G7	2-79	37
	1-H8	2-112	19	BOLT, FLANGE (6X18)	1-G12	2-89	68
					1-C5	1-11	25
					1-E1	2-3	24
				BOLT, FLANGE (6X20)	1-C11	1-23	18
					1-D1	1-35	19
					1-D3	1-39	27
					1-E15	2-31	23

DESCRIPTION INDEX

Description	Grid	Page	Ref	Description	Grid	Page	Ref
LENS, TURN SIGNAL (A)	1-E4	2-8	22	LOCK ASSY., OPENER UNIT	1-H7	2-111	3
LENS, TURN SIGNAL (B)	1-E4	2-8	23	LOCK ASSY., POCKET LID	1-F5	2-43	15
LEVER ASSY., L. HANDLE	1-E7	2-15	17	LOCK B, BEARING ADJ.	1-F3	2-39	10
LEVER ASSY., LUGGAGE BAG	1-H7	2-111	4	LOCK SET (TYPE1)	1-E8	2-16	3
LEVER ASSY., R. HANDLE	1-E6	2-12	13	LOCK SET (TYPE2)	1-E8	2-16	3
LEVER, L. TRUNK POCKET	1-H2	2-101	41	LOCK SET (TYPE3)	1-E8	2-16	3
LEVER, R. TRUNK POCKET	1-H2	2-101	34	LOCK SET (TYPE4)	1-E8	2-16	3
LID, L. SADDLEBAG *NHA27M* (BILLET SILVER METALLIC)	1-H5	2-107	24	LOCK SET (TYPE5)	1-E8	2-16	3
LID, L. SADDLEBAG *NHA29* (ARCTIC WHITE)	1-H5	2-107	24	LOCK SET (TYPE6)	1-E8	2-16	3
LID, L. SADDLEBAG *NHA45M* (PORTLAND GRAY METALLIC)	1-H5	2-107	24	LOCKING RING, FUEL PUMP	1-F7	2-47	4
LID, L. SADDLEBAG *PB356M* (NOVA BLUE METALLIC)	1-H5	2-107	24	LOCKING RING, FUEL UNIT	1-F7	2-47	5
LID, L. SADDLEBAG *R287M* (BLOODSTONE RED METALLIC)	1-H5	2-107	24	LOUVER, L. SIDE COWL *NHA27M* (BILLET SILVER METALLIC)	1-G13	2-91	9
LID, L. SADDLEBAG *Y130P* (PEARL HOT ROD YELLOW)	1-H5	2-107	24	LOUVER, L. SIDE COWL *NHA29* (ARCTIC WHITE) ..	1-G13	2-91	9
LID, L. TRUNK POCKET	1-H2	2-101	40	LOUVER, L. SIDE COWL *NHA45M* (PORTLAND GRAY METALLIC)	1-G14	2-92	9
LID, R. SADDLEBAG *NHA27M* (BILLET SILVER METALLIC)	1-H4	2-104	6	LOUVER, L. SIDE COWL *PB356M* (NOVA BLUE METALLIC)	1-G14	2-92	9
LID, R. SADDLEBAG *NHA29* (ARCTIC WHITE)	1-H4	2-104	6	LOUVER, L. SIDE COWL *R287M* (BLOODSTONE RED METALLIC)	1-G13	2-91	9
LID, R. SADDLEBAG *NHA45M* (PORTLAND GRAY METALLIC)	1-H4	2-104	6	LOUVER, L. SIDE COWL *Y130P* (PEARL HOT ROD YELLOW)	1-G13	2-91	9
LID, R. SADDLEBAG *PB356M* (NOVA BLUE METALLIC)	1-H4	2-104	6	LOUVER, R. SIDE COWL *NHA27M* (BILLET SILVER METALLIC)	1-G13	2-91	5
LID, R. SADDLEBAG *R287M* (BLOODSTONE RED METALLIC)	1-H3	2-103	6	LOUVER, R. SIDE COWL *NHA29* (ARCTIC WHITE) ..	1-G13	2-91	5
LID, R. SADDLEBAG *Y130P* (PEARL HOT ROD YELLOW)	1-H3	2-103	6	LOUVER, R. SIDE COWL *NHA45M* (PORTLAND GRAY METALLIC)	1-G13	2-91	5
LID, R. TRUNK POCKET	1-H2	2-100	29	LOUVER, R. SIDE COWL *PB356M* (NOVA BLUE METALLIC)	1-G13	2-91	5
LID SET, TRUNK (TYPE1) (WL)	1-G16	2-97	9	LOUVER, R. SIDE COWL *R287M* (BLOODSTONE RED METALLIC)	1-G13	2-91	5
LID SET, TRUNK (TYPE2) (WL)	1-H1	2-98	9	LOUVER, R. SIDE COWL *Y130P* (PEARL HOT ROD YELLOW)	1-G13	2-91	5
LID SET, TRUNK (TYPE3) (WL)	1-H1	2-98	9				
LID SET, TRUNK (TYPE4) (WL)	1-H1	2-98	9	(M)			
LID SET, TRUNK (TYPE5) (WL)	1-H1	2-98	9	MAIN HOSE A, FR. BRAKE	1-E6	2-12	2
LID SET, TRUNK (TYPE6) (WL)	1-H1	2-98	9	MAIN HOSE A, RR. BRAKE	1-E16	2-32	2
LID, SHELTER *NHA27M* (BILLET SILVER METALLIC)	1-F6	2-44	23	MAIN HOSE B, FR. BRAKE	1-E5	2-10	10
LID, SHELTER *NHA29* (ARCTIC WHITE)	1-F6	2-44	23	MAIN HOSE B, RR. BRAKE	1-F1	2-34	10
LID, SHELTER *NHA45M* (PORTLAND GRAY METALLIC)	1-F6	2-44	23	MAIN HOSE C, FR. BRAKE	1-E5	2-10	13
LID, SHELTER *PB356M* (NOVA BLUE METALLIC) ...	1-F6	2-44	23	MAIN PIPE A, FR. BRAKE	1-F1	2-35	23
LID, SHELTER *R287M* (BLOODSTONE RED METALLIC)	1-F6	2-44	23	MAIN PIPE A, RR. BRAKE	1-F1	2-34	6
LID, SHELTER *Y130P* (PEARL HOT ROD YELLOW) .	1-F5	2-43	23	MAIN PIPE B, FR. BRAKE	1-E5	2-10	11
LIFTER ASSY., TENSIONER	1-C5	1-10	9	MAIN PIPE B, RR. BRAKE	1-F1	2-34	7
LIFTER B, CLUTCH	1-C8	1-16	12	MAIN PIPE C, FR. BRAKE	1-F1	2-35	24
LIFTER, FINAL DAMPER	1-C13	1-27	4	MAIN PIPE D, FR. BRAKE	1-F1	2-35	25
LIFTER, VALVE	1-C3	1-6	6	MAIN PIPE D, RR. BRAKE	1-F1	2-34	8
LIGHT ASSY., LICENSE	1-G3	2-70	6	MAIN PIPE E, RR. BRAKE	1-F1	2-34	9
LINK, L. ADJUSTING	1-G11	2-87	18	MANIFOLD, IN.	1-C2	1-4	9
LINK, R. ADJUST	1-G11	2-87	16	MASTER CYLINDER ASSY., SECOND	1-E5	2-10	18
LOCK A, BEARING ADJ.	1-F3	2-39	10	MASTER CYLINDER SUB-ASSY., CLUTCH	1-E7	2-14	4
LOCK ASSY., FUEL LID	1-F5	2-43	16	MASTER CYLINDER SUB-ASSY., FR.	1-E6	2-12	4
				MASTER CYLINDER SUB-ASSY., RR.	1-E16	2-32	5
				MAT, L. ENGINE SIDE COVER	1-H8	2-113	11
				METER ASSY., COMBINATION	1-E2	2-5	2

CLICK HERE TO **DOWNLOAD** THE COMPLETE MANUAL

- Thank you very much for reading the preview of the manual.
- You can download the complete manual from: www.heydownloads.com by clicking the link below



- Please note: If there is no response to CLICKING the link, please download this PDF first and then click on it.

CLICK HERE TO **DOWNLOAD** THE COMPLETE MANUAL