

PARTS MANUAL

CHALLENGER

**H14.00-18.00XM-12, -12EC
(A214)**

CUSTOMER EDITION

HYSTER

CLICK HERE TO **DOWNLOAD** THE COMPLETE MANUAL

- Thank you very much for reading the preview of the manual.
- You can download the complete manual from: www.heydownloads.com by clicking the link below



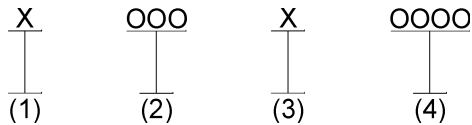
- Please note: If there is no response to CLICKING the link, please download this PDF first and then click on it.

CLICK HERE TO **DOWNLOAD** THE COMPLETE MANUAL

TABLE OF CONTENTS (Continued)

DESCRIPTION	PAGE
O	
OIL COOLER	
TIER I ENGINE	2-17
OIL COOLER AND ATTACHING PARTS	
EMPTY CONTAINER HANDLER	
TIER II ENGINE	9-8
OIL FILLER ARRANGEMENT	
S/N A214E-01951A⇒	2-52
TIER I ENGINE	2-19
TIER II ENGINE	
⇒S/N A214E-01950A	2-50
OIL LEVEL GAUGE	
TIER I ENGINE	2-18
OPERATOR COMPARTMENT	
WITH CAB	
SHEET 1 OF 3	1-16
SHEET 2 OF 3	1-18
SHEET 3 OF 3	1-22
WITHOUT CAB	1-14
OUTER MAST	
EMPTY CONTAINER HANDLER	11-4
TWO STAGE VISTA	10-2
P	
PARK BRAKE	
⇒S/N A214E-01994B (H450H)(FLT), ⇒S/N A214E-02000B (ECH) ⇒S/N PENDING PER ECN 68236 (H360-400H)(FLT)	6-14
PRE-CLEANER ASSEMBLY	2-77
R	
RADIATOR PLUMBING	
TIER II ENGINE	2-55
S	
SEAT	
HIGH BACK	
KAB	1-52
SUSPENSION, HIGH BACK, GRAMMER	
SHEET 1 OF 2	
S/N PENDING PER ECN 99782⇒	1-54
SHEET 2 OF 2	
S/N PENDING PER ECN 99782⇒	1-58
SIDE-SHIFT CYLINDER	
CONTAINER HANDLING ATTACHMENT	
⇒S/N A214E-1806	11-66
S/N A214E-1807⇒	11-68
SINGLE HORIZONTAL TWIST LOCK HEAD ASSEMBLY	
CONTAINER HANDLING ATTACHMENT (573)	
S/N A214E-1807⇒	11-42
SLAVE BEAM	
EMPTY CONTAINER HANDLER	

IDENTIFICATION OF ATTACHMENT AND SIDE-SHIFT CARRIAGE SERIAL NUMBERS

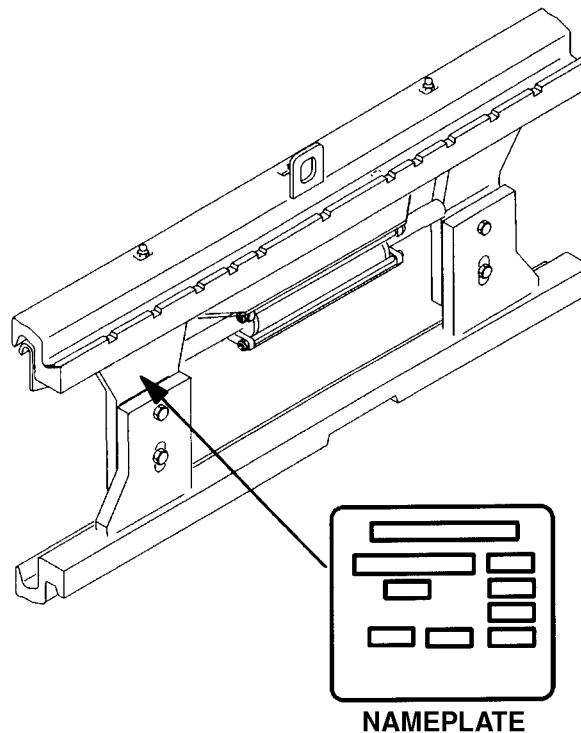


(1) and (2) The first letter and three numbers indicate the attachment unit code.

(3) The second letter indicates the plant of manufacture.

(4) The four or five digit number indicates the production sequence number.

For pending production sequence numbers contact your local dealer for Hyster lift trucks.



HP990003

Side-shift carriages and attachments have nameplates. Use the serial number found on the nameplate to identify the attachment.

Always refer to the group, serial, or part number when ordering service parts.

Modifications of attachments and side-shift carriages by SPED (Special Products Engineering Department) are identified by a model prefix code beginning with the letter "S". Contact your dealer for Hyster lift trucks for information on these assemblies.

OPERATOR COMPARTMENT WITH CAB SHEET 1 OF 3

KEY:**A: Empty Container Handler****B: Fork Lift Truck**

ITEM	PART NO.	DESCRIPTION	QTY	
			A	B
1	1325567	Bracket.....	2	2
2	1325576	Bracket.....	2	2
3	309637	Screw.....	12	12
4	1325582	Seal	AR	AR
5	1384506	Cover	1	..
6	1384659	Capscrew.....	8	..
7	1324577	Washer	8	..
8	1312226	Fan Assembly	1	1
8	1307755	Fan	1	1
8	181045	Connector.....	1	1
8	134810	Blade	1	1
8	1301783	Ring.....	1	1
9	16750	Screw.....	4	4
10	15152	Lockwasher.....	4	4
11	1301254	Dome Light	1	1
12	1307051	Bulb	1	1
13	302236	Screw.....	2	2
14	1311217	Plug	2	2
15	816046	Wiper Blade	4	4
16	a 1306902	Wiper Motor	3	3
16	b 1504017	Retrofit Kit.....	1	1
16	b 1517976	Wiper Motor Assembly	1	1
16	b 1504014	Wire Harness (Adapter)	1	1
17	816045	Wiper Arm (Rear)	1	1
18	1458609	Wiper Arm (Front).....	1	1
19	816372	Wiper Arm (Top)	1	1
20	1318443	Wiper Blade	1	1
21	1373701	Operator Compartment.....	1	..
21	1373725	Operator Compartment.....	..	1
22	d 1369520	Striker	2
22	c 1393748	Striker Plate	2
23	d 1373690	Spacer	2
24	287854	Capscrew.....	..	4
25	292682	Lockwasher.....	..	4
26	320159	Washer	4
27	136692	Nut.....	..	4

FOOTNOTES:

- a** ⇒ S/N A214E-1797
b S/N A214E-1798 ⇒
c D/B 01/1998 ⇒
d ⇒ D/B 03/1998

COVERS EMPTY CONTAINER HANDLER

ITEM	PART NO.	DESCRIPTION	QTY
1	1382634	Cover	1
2	1383879	Cover	1
3	1382846	Bracket.....	1
4	a 1450761	Pan	1
4	b 1516916	Pan	1
5	c 1384507	Mud Guard.....	1
5	d 1465470	Mud Guard.....	1
6	1382848	Bracket.....	1
7	1383876	Stop Plate	1
8	1385584	Gas Spring.....	1
9	362030	Handle	1
10	1450759	Button	2
11	316836	Nut	2
12	287854	Capscrew.....	7
13	292501	Capscrew.....	2
14	320156	Washer	3
15	292680	Lockwasher.....	3
16	136687	Nut	2
17	292500	Capscrew.....	1
18	320160	Washer	16
19	292681	Lockwasher.....	6
20	136692	Nut	16
21	239503	Nut	2
22	292682	Lockwasher.....	16
23	320159	Washer	4
24	136985	Capscrew.....	2
25	1384667	Bracket.....	1
26	1384661	Nut	6
27	1384532	Cover (LH)	1
27	1384648	Cover (RH).....	1
28	1393861	Cover	1
29	1384652	Cover	1
30	1384653	Cover	1
31	1384651	Mount.....	1
32	329067	Screw.....	18
33	320158	Washer	23
34	136749	Capscrew.....	6
35	320160	Washer	4
36	292681	Lockwasher.....	6
37	d 1302109	Edge Trim	AR
38	d 238810	Adhesive	AR

FOOTNOTES:

- a** ⇒ S/N A214E-01842Z
b S/N A214E-01843Z ⇒
c ⇒ S/N A214E-1658
d S/N A214E-1659 ⇒

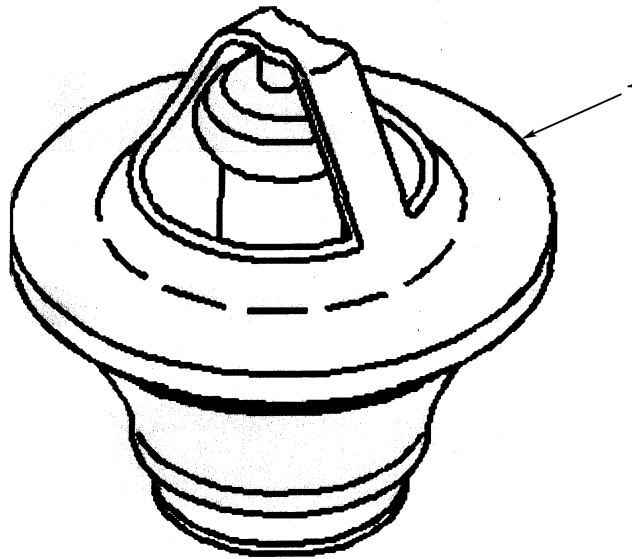
COUNTERWEIGHTS**KEY:****A: H14.00XM****B: H15.00XM****C: H16.00XM****D: H18.00XM****E: H20.00XM**

ITEM	PART NO.	DESCRIPTION	QTY				
			A	B	C	D	E
1	1373570	Counterweight (Center)	1	1	1	1	1
2	b 1373571	Counterweight (LH) (Rear Fender)	1	1	..	1	1
2	a 1453024	Counterweight (LH) (Rear Fender)	1	1	..
3	b 1373572	Counterweight (RH) (Rear Fender)	1	1	..	1	1
3	a 1453025	Counterweight (RH) (Rear Fender)	1	1	..
4	376319	Capscrew	2	2	2	2	2
5	149531	Washer	2	2	2	2	2
6	197070	Washer	2	2	2	2	2
7	221372	Nut	2	2	2	2	2
8	1301086	Washer	4	4	4	4	6
9	316829	Nut	4	4	4	4	4
10	1373760	Tow Pin	1	1	1	1	1
11	c 302497	Tow Pin	1	1	1	1	1
11	d 1453739	Tow Pin (Coated)	1	1	1	1	1
12	296431	Washer	4	4	4	4	4
13	b 1373573	Counterweight (Tier I Engine)	1	1	1	1
13	b 1517108	Counterweight (Tier II Engine)	1	1	1	1
13	a 1373573	Counterweight (Tier I Engine)	1	1	..
13	a 1517108	Counterweight (Tier II Engine)	1	1	..
14	b 1373750	Cam	2	2	2	2
14	a 1373750	Cam	2	2	..
15	b 292591	Capscrew	2	2	2	2
15	a 292591	Capscrew	2	2	..
16	b 296431	Washer	4	4	4	4
16	a 296431	Washer	4	4	..
17	b 316829	Nut	2	2	2	..
17	a 316829	Nut	2	2	..
18	b 1373773	Counterweight	1	2	..	2	..
19	b 1382624	Capscrew	1
19	b 1385545	Capscrew	1	..	1	..
20	b 292687	Lockwasher	3	3	..	3	..
21	b 1301086	Washer	3	3	..	3	..
22	b 1493615	Counterweight	1	1
22	a 1493615	Counterweight	1
23	b 292597	Capscrew	2	2
23	a 292597	Capscrew	2
24	b 1301086	Washer	1	2
25	b 292687	Lockwasher	1	2
26	b 1373574	Counterweight	2	2
27	b 1373761	Capscrew	4	4
28	a 1382624	Capscrew	2	2	..
28	264134	Sealant	AR	AR	AR	AR	AR
28	b 309707	Capscrew	4	4	4
28	a 309707	Capscrew	2	2	..

2

ENGINES

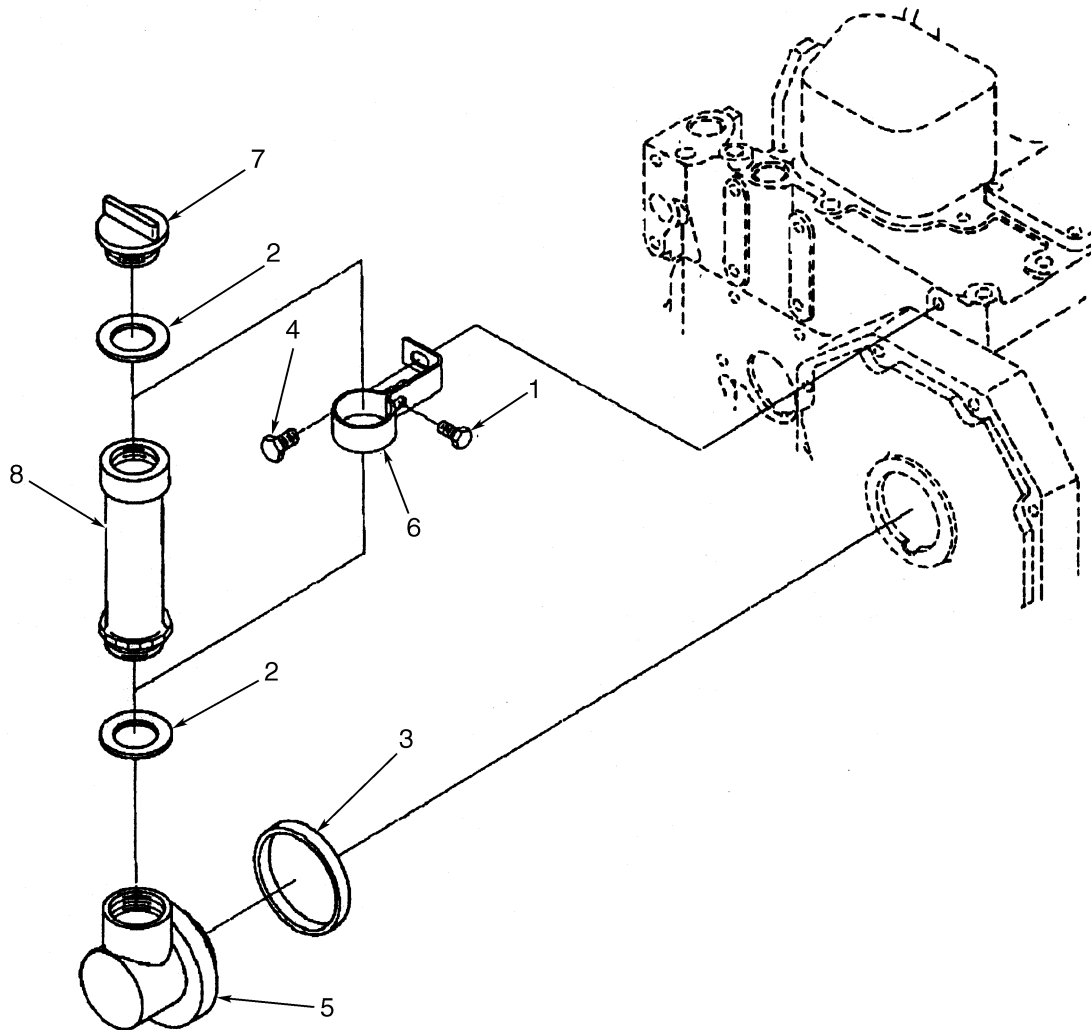
**THERMOSTAT (Figure 2-6)
TIER I ENGINE**



HP090872

ITEM	PART NO.	DESCRIPTION	QTY
	1484262	Engine Assembly.....	1
1	1512000	Thermostat.....	1

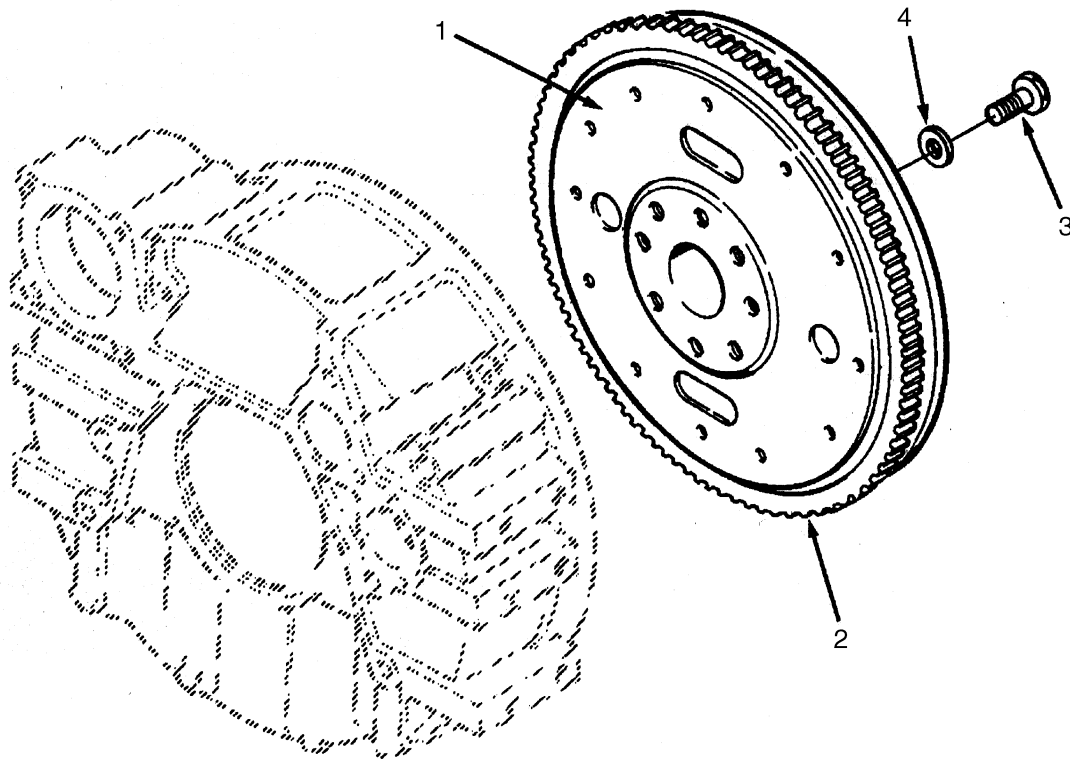
**OIL FILLER ARRANGEMENT (Figure 2-16)
TIER I ENGINE**



HP090883

ITEM	PART NO.	DESCRIPTION	QTY
	1484262	Engine Assembly	1
1	1512051	Capscrew	1
2	1512459	Seal Ring	2
3	1512012	Seal Ring	1
4	1512460	Capscrew	1
5	1512461	Connection	1
6	1512462	Brace	1
7	1512463	Cap	1
8	1512464	Tube	1

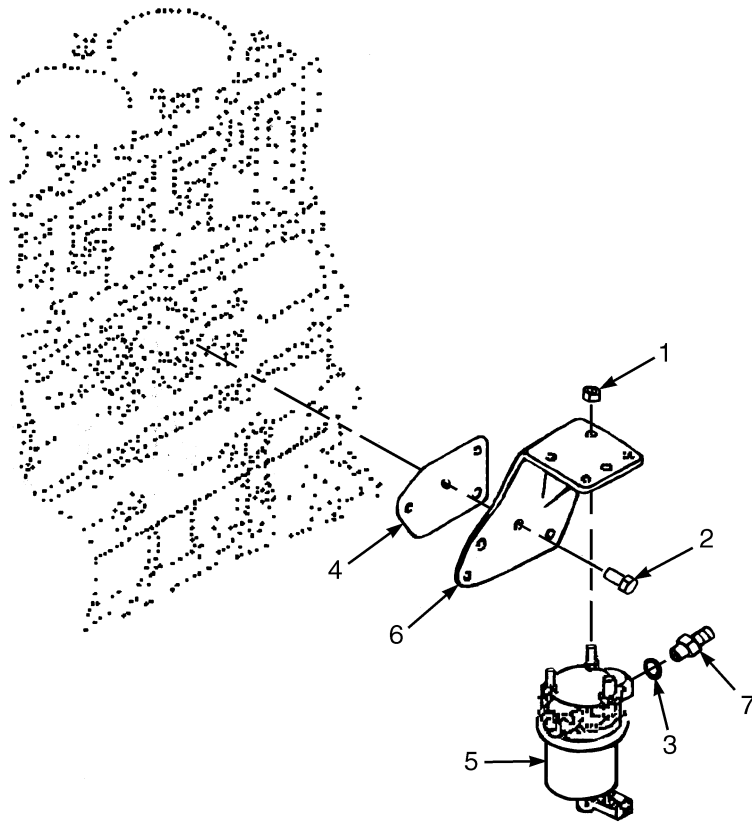
**FLYWHEEL (Figure 2-26)
TIER I AND TIER II ENGINES**



HP090879

ITEM	PART NO.	DESCRIPTION	QTY
	1484262	Engine Assembly	1
1	1512444	Flywheel	1
2	1512445	Ring Gear.....	1
3	1512106	Capscrew	8
4	1512107	Washer	8

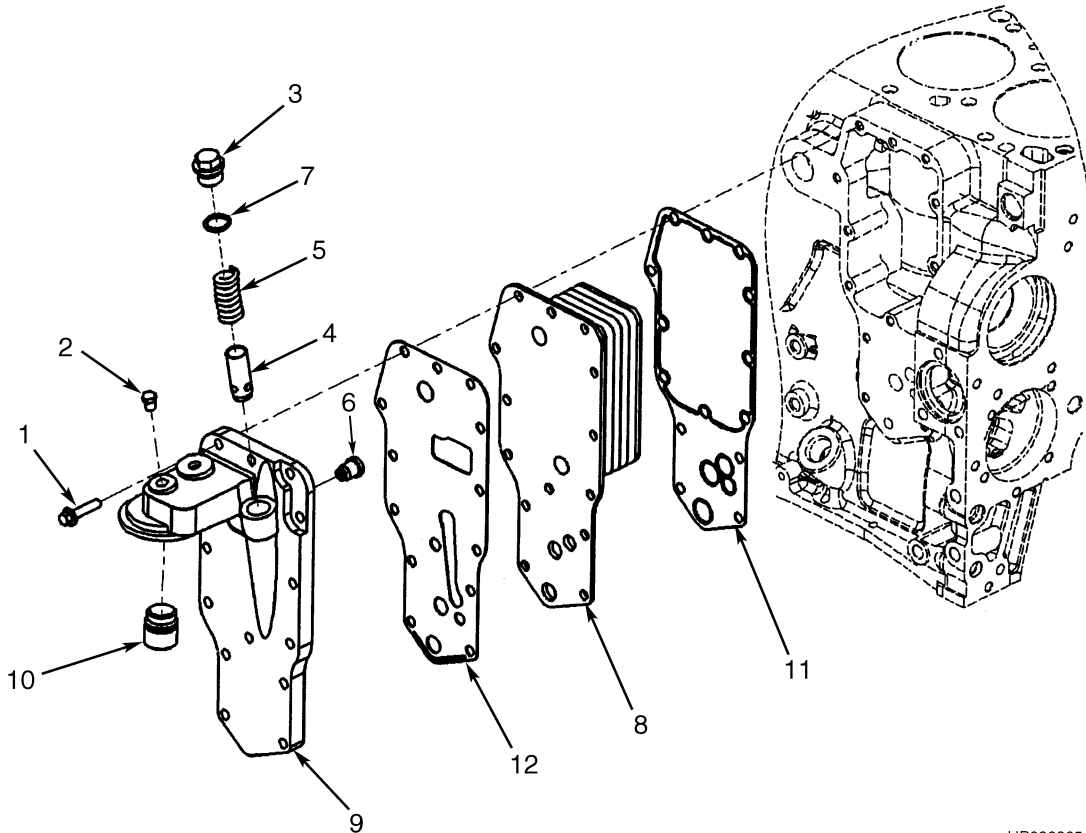
**LIFT PUMP (Figure 2-34)
TIER II**



HP091071

ITEM	PART NO.	DESCRIPTION	QTY
	1499323	Engine Assembly	1
	1532627	Engine Assembly	1
1	1521860	Nut	3
2	1512004	Capscrew.....	4
3	1543359	Washer	1
4	1521861	Gasket	1
5	1521864	Lift Pump	1
6	1521863	Bracket.....	1
7	1521862	Coupling	1

**ENGINE OIL COOLER (Figure 2-42)
TIER II ENGINE**



HP090905

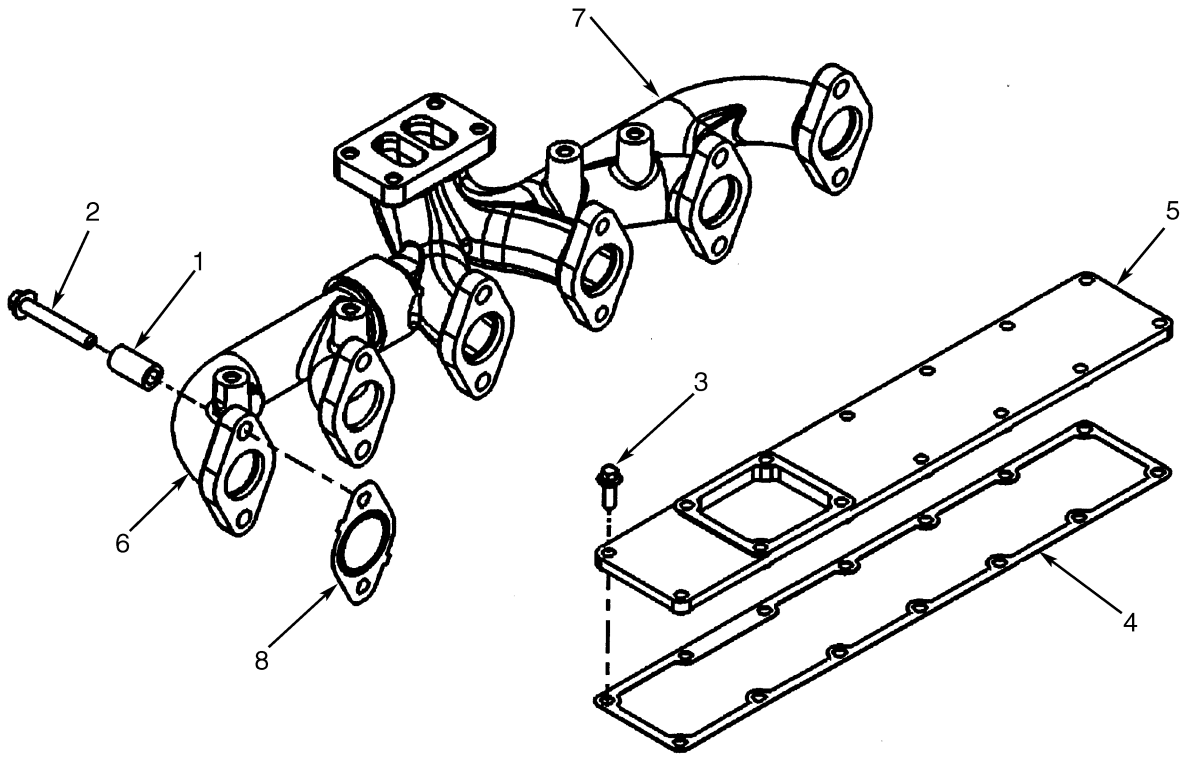
ITEM	PART NO.	DESCRIPTION	QTY
	a 1499323	Engine Assembly	1
	b 1532627	Engine Assembly	1
1	1512033	Capscrew	14
2	1512448	Plug	1
3	1512453	Plug	3
4	1512119	Plunger	1
5	1512112	Spring	1
6	1513772	Valve (Pressure Relief)	1
7	1512118	O-Ring	1
8	a 1512114	Cooler Core	1
8	b 1552286	Cooler Core	1
9	1521897	Filter Head	1
10	Adapter	1
11	1512120	Gasket	1
12	1512452	Gasket	1
	1524551	Filter Element (Not Illustrated)	1

FOOTNOTES:

a ⇒ S/N A214E-01950A

b S/N A214E-01951A ⇒

**EXHAUST MANIFOLD (Figure 2-49)
TIER II ENGINE**



HP090911

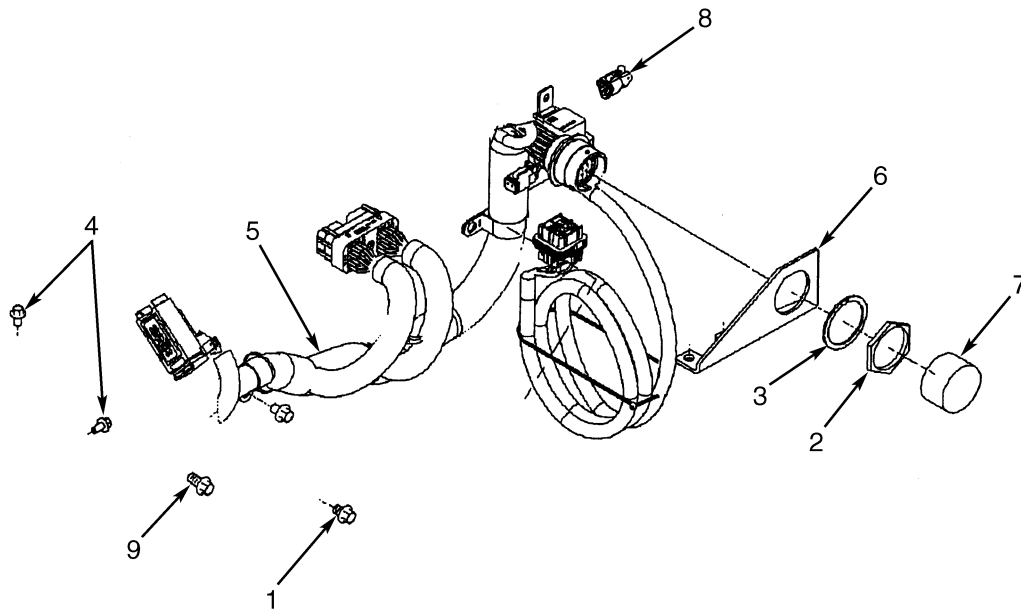
ITEM	PART NO.	DESCRIPTION	QTY
	a 1499323	Engine Assembly	1
	b 1532627	Engine Assembly	1
1	1517256	Spacer	12
2	1517257	Capscrew	12
3	1512295	Capscrew	3
4	1512300	Gasket	1
5	1521949	Cover	1
6	1521950	Exhaust Manifold	1
7	1521951	Exhaust Manifold	1
8	a 1521952	Gasket	6
8	b 1553965	Gasket	6

FOOTNOTES:

a ⇒ S/N A214E-01950A

b S/N A214E-01951A ⇒

**WIRING ACCESSORIES (Figure 2-57)
TIER II ENGINE**



HP090919

ITEM	PART NO.	DESCRIPTION	QTY
	a 1499323	Engine Assembly	1
	b 1532627	Engine Assembly	1
1	1517266	Capscrew	5
2	1515694	Nut.....	1
3	1517299	Lockwasher	1
4	1512097	Capscrew	3
5	a 1521979	Wire Harness	1
5	b 1553991	Wire Harness	1
6	1521980	Bracket	1
7	1521981	Cover.....	1
8	1521982	Cover.....	1
9	1513789	Capscrew	2

FOOTNOTES:

- a** ⇒ S/N A214E-01950A
- b** S/N A214E-01951A ⇒

**COOLING
TIER I ENGINE****KEY:****A: Empty Container Handler****B: Fork Lift Truck**

ITEM	PART NO.	DESCRIPTION	QTY	
			A	B
1	1384681	Radiator	1	1
1	1393166	Oil cooler	1	1
1	1393157	Shroud.....	1	1
1	1393158	Bolt	16	16
1	1393159	Frame (Bottom)	1	1
2	1373452	Hose	1	1
3	1385561	Hose	1	1
4	112989	Clamp	4	4
5	14682	Fitting.....	1	1
6	127238	Hose	1	1
7	130845	Clamp	4	4
8	323549	Hose	1	1
9	168718	Clamp	2	2
10	201800	Fitting.....	1	1
11	17215	Fitting.....	1	1
12	69815	Fitting.....	1	1
13	17215	Fitting.....	1	1
14	369801	Hose	1	1
15	118807	Clamp	3	2
16	287854	Capscrew.....	6	6
17	320159	Washer	8	8
18	136692	Nut	8	8
19	119055	Cap	1	1
20	1384682	Oil Cooler.....	1	1
21	1385560	Hose	1	1
22	c 132860	Capscrew.....	10	10
22	d 132860	Capscrew.....	4	4
23	216877	Nut	2	6
24	c 292683	Lockwasher.....	10	14
24	d 292683	Lockwasher.....	4	4
25	c 1385552	Bracket (LH).....	1	1
25	d 1480334	Bracket (LH).....	1	1
26	a 1384695	Bracket (RH)	1	1
26	b 1462536	Bracket (RH)	1	1
26	c 1462572	Spacer	2	2
26	d 1480333	Bracket.....	1	1
27	273775	Strap Clamp.....	1	1
28	1384536	Tube	1	1
29	287136	Hose	1	1
30	12815	Drain Valve	1	1
31	119236	Clamp	2	2
32	1393895	Bracket (LH).....	1	1
32	1453780	Bracket (LH).....	1	1
33	1393894	Bracket (RH)	1	1
33	1453781	Bracket (RH)	1	1
34	1391900	Plate	1	..

3

FUEL SYSTEM

**THROTTLE
TIER I ENGINE**

ITEM	PART NO.	DESCRIPTION	QTY
1	284847	Pedal Assembly (☞ Figure 3-5)	1
2	18460	Capscrew.....	3
3	15154	Lockwasher.....	3
4	15054	Nut	3
5	220499	Screw.....	2
6	15152	Lockwasher.....	2
7	15002	Nut	2
8	392016	Clamp	1
9	314170	Shim	1
10	125	Rod End.....	1
11	126	Rod End Pin	1
12	15200	Cotter Pin.....	1
13	293782	Washer	1
14	1373381	Capscrew.....	1
15	1391441	Lever Assembly	1
15	1391440	Lever.....	1
15	127611	Bushing	1
16	1474197	Plate	1
17	1391435	Bracket.....	1
18	1391445	Link	1
19	15024	Nut	2
20	1391439	Rod End.....	2
21	287816	Capscrew.....	2
22	292680	Lockwasher.....	2
23	1391437	Insert.....	1
24	1391438	Insert.....	1
25	1391444	Spring	1
26	130443	Shoulder Bolt	1
27	145639	Nut	1
28	1391448	Washer	1
29	136681	Capscrew.....	2
30	292681	Lockwasher.....	4
31	136749	Capscrew.....	1
32	221767	Washer	1
33	136687	Nut	2
34	251099	Adhesive	AR
35	a 1391446	Throttle Cable	1
36	a 320156	Washer	4
37	a 293779	Lockwasher.....	2
38	a 164488	Clamp	2
39	a 136687	Nut	2
40	b 1391447	Throttle Cable	1
41	b 1373685	Grommet.....	1
42	320158	Washer	2
43	239503	Nut	1
44	320156	Washer	2

FOOTNOTES:

- a** Empty Container Handler
b Fork Lift Truck

4

ELECTRICAL SYSTEM

**ELECTRICAL
CHASSIS (TIER II ENGINE)
SHEET 1 OF 4**

ITEM	PART NO.	DESCRIPTION	QTY
1	b 1531383	Wire Harness (Engine)	1
1	a 1537659	Wire Harness (Engine)	1
2	b 15011	Nut	1
3	154208	Clamp	2
4	292526	Capscrew	2
5	292683	Lockwasher	2
6	397676	Strap Clamp	7
7	816441	Battery Cable	1
8	1356947	Strap	1
9	320159	Washer	4
10	302401	Locknut	1
11	1499053	Wire Harness	1
12	136681	Capscrew	3
13	320157	Washer	5
14	292681	Lockwasher	3
15	1520294	Wire Assembly	1
16	137852	Strap Clamp	AR
17	1350914	Strap	4
18	292513	Capscrew	3
19	292682	Lockwasher	3
20	1373791	Spacer	2
21	1362277	Static Strap	3
22	b 1391863	Battery Cable	1
22	a 1538099	Battery Cable	1
23	1507212	Wire Harness (Switch To Grid Heater)	1
24	1508986	Wire Harness (Grid Heater To Grid Heater)	1
25	1393788	Sender	1
26	1319190	Temperature Sender	2
27	114662	Temperature Sender	1
28	370009	Boot	1
29	1520495	Battery Cable	1
30	b 1520499	Battery Cable	1
30	a 1538100	Battery Cable	1
31	1521153	Battery Cable	1
32	1480320	Alternator	1

FOOTNOTES:**a** S/N A214E-01851A ⇒**b** ⇒ S/N A214E-01950A

**INSTRUMENT PANEL
SHEET 1 OF 2**

ITEM	PART NO.	DESCRIPTION	QTY
1	169781	Gauge (Oil Temperature)	1
2	1326108	Gauge (Transmission Oil)	1
3	1310688	Gauge	1
4	1393789	Gauge	1
5	169785	Socket Assembly (Light) (Tier I Engine)	4
5	169785	Socket Assembly (Light) (Tier II Engine)	5
6	1310692	Bulb (24 Volt)	4
6	1310692	Bulb (24 Volt) (Tier II Engine)	5
7	1336796	Wire Harness (Gauge) (Tier I Engine)	1
7	1514947	Wire Harness (Gauge) (Tier II Engine)	1
8	1307110	Resistor (Tier I Engine)	3
8	1307110	Resistor (Tier II Engine)	4
9	Control Panel (Attachment) (☞ Figure 4-8, ☞ Figure 4-9)	1
10	1383846	Panel (Fuse)	1
11	320157	Washer	3
12	320156	Washer	2
13	136687	Nut	2
14	1301296	Terminal Block	2
15	1301704	Jumper	2
16	1301284	Screw	7
17	370647	Fuse (10 Amp)	4
17	a 381846	Fuse Holder	1
18	370646	Fuse (5 Amp)	3
19	370648	Fuse (20 Amp)	1
20	1310630	Fuse (15 Amp)	1
21	d 1301282	Breaker (5 Amp)	3
21	e 1499598	Breaker (5 Amp)	3
22	1307694	Buzzer (Air Pressure Alarm)	1
23	1315872	Lamp Assembly (Tier I Engine)	1
23	1315872	Lamp Assembly (Tier II Engine)	2
23	134810	Blade	2
23	1377187	Lens	1
23	1377189	Bulb	1
23	181045	Connector	2
24	1385517	Wire Harness (Steering Pod) (Tier I Engine) (☞ Figure 4-40)	1
24	1518935	Wire Harness (Steering Pod) (Tier II Engine) (☞ Figure 4-40)	1
25	379902	Ignition Switch	1
25	186304	Key	2
26	1301739	Plate	1
27	379650	Screw	3
28	1301613	Switch (Cab Wiper/Washer)	3
29	136749	Capscrew	1
30	296380	Lockwasher	3
31	239503	Nut	2
32	1301640	Seal	1
33	1345720	Wire Harness	1
34	1393781	Alarm	1
35	1393779	Timer	1
35	1385516	Potentiometer	1
36	1301224	Diode Block	1
37	227176	Screw	1

LIGHT CONTROLS

ITEM	PART NO.	DESCRIPTION	QTY
1	370648	Fuse (20 Amp).....	1
2	1310630	Fuse (15 Amp).....	2
3	1336790	Wire Harness (Switch Lights) (☞ Figure 4-41)	1
4	1385513	Wire Harness (Rotating Beacon) (☞ Figure 4-39)	1
5	381846	Fuse Holder	1
6	370647	Fuse (10 Amp).....	3
7	1301619	Switch Assembly.....	1
7	1310627	Switch.....	1
7	1301157	Lens.....	1
8	2003859	Flasher Unit	1
9	1384495	Wire Harness (Warning Switch) (☞ Figure 4-42)	1
10	1452310	Switch Assembly (Hazard Warning)	1
10	1331560	Switch.....	1
10	1452308	Lens.....	1
11	1301617	Switch Assembly (Work Lights)	2
11	1310627	Switch.....	1
11	1301156	Lens.....	1

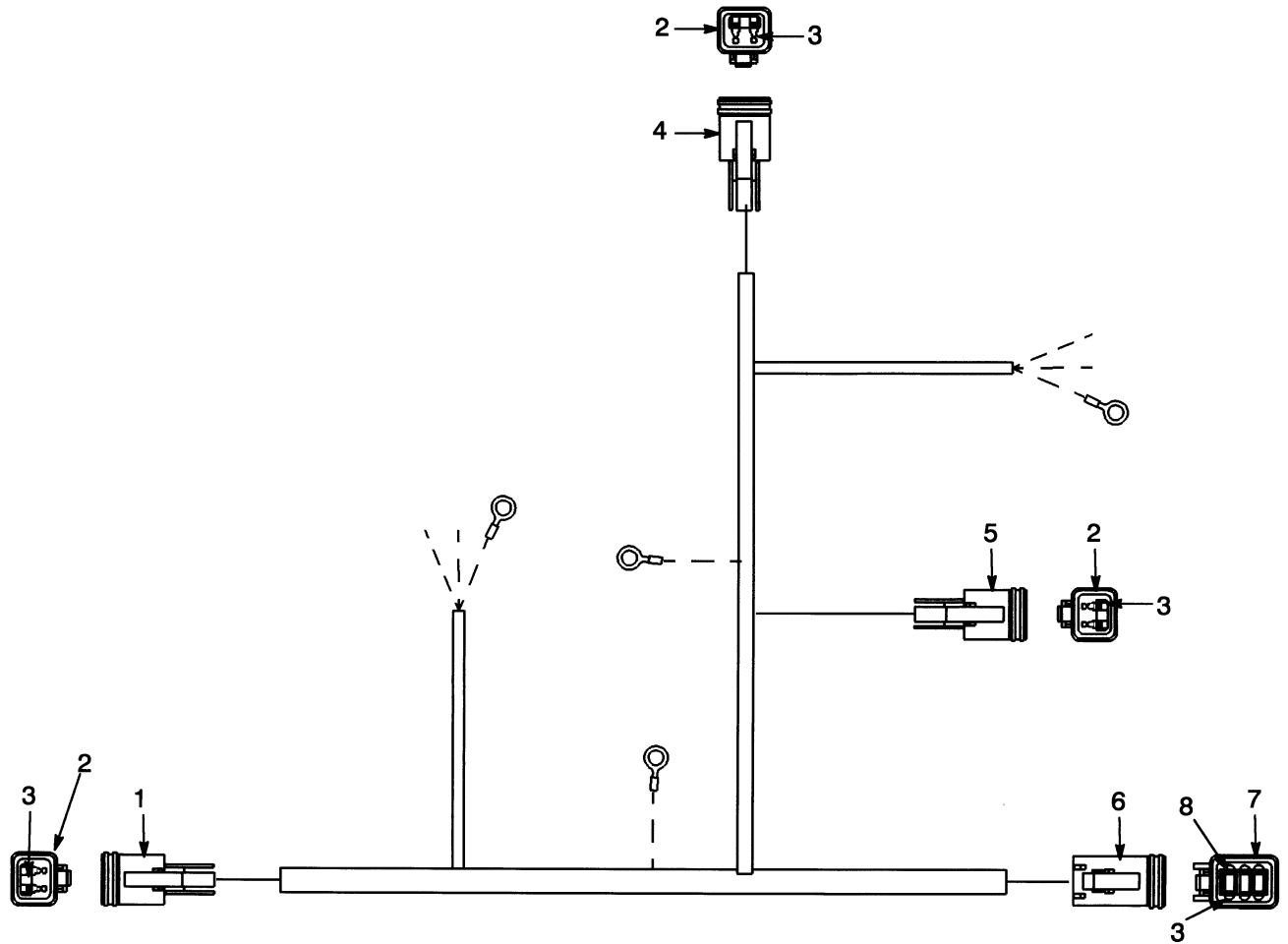
**LIGHTS
ROTATING BEACON**

ITEM	PART NO.	DESCRIPTION	QTY
1	250095	Guard.....	1
2	1385512	Plate	1
3	302049	Screw.....	2
4	320156	Washer	4
5	302399	Nut	2
6	1301727	Clamp	1
7	176640	Capscrew.....	2
8	292681	Lockwasher.....	2
9	280472	Sealant	AR
9	358674	Sealant (Optional).....	AR
10	137852	Strap Clamp.....	1
11	1385523	Rotating Beacon Assembly.....	1
12	1385521	Rotating Beacon.....	1
12	Lens	1
12	Belt.....	1
12	1453564	Bulb (24 Volt).....	1
13	1385513	Wire Harness.....	1
13	1330419	Connector.....	1
14	1330424	Secondary Lock.....	1
15	1330438	Socket	2
16	320162	Washer	1

**WIRE HARNESS
CHASSIS
FORK LIFT TRUCK**

ITEM	PART NO.	DESCRIPTION	QTY
	1385505	Wire Harness (Chassis).....	1
1	1330411	Connector (Gauge Wire Harness).....	1
2	1330416	Lock.....	1
3	1330413	Connector (Operator Compartment Harness).....	1
4	1330418	Lock.....	2
5	1330412	Connector (Operator Compartment Harness).....	2
6	1330417	Lock.....	2
7	1330421	Connector (Hydraulic Compartment Harness).....	1
8	1330427	Secondary Lock.....	1
9	1330420	Connector (Switch Wire Harness).....	1
10	1330426	Secondary Lock.....	1
11	1330409	Connector (Attachment Control Harness).....	1
12	1330414	Secondary Lock.....	1
13	1330422	Connector (Rear Light).....	1
14	1330428	Lock.....	1
15	1330423	Connector (Engine Wire Harness).....	1
16	1330429	Lock.....	1
17	1330413	Connector (Engine Wire Harness).....	1
18	1330437	Pin.....	32
19	1330438	Socket.....	20
20	1330439	Plug.....	3

**WIRE HARNESS (Figure 4-29)
FRONT LIGHTS**



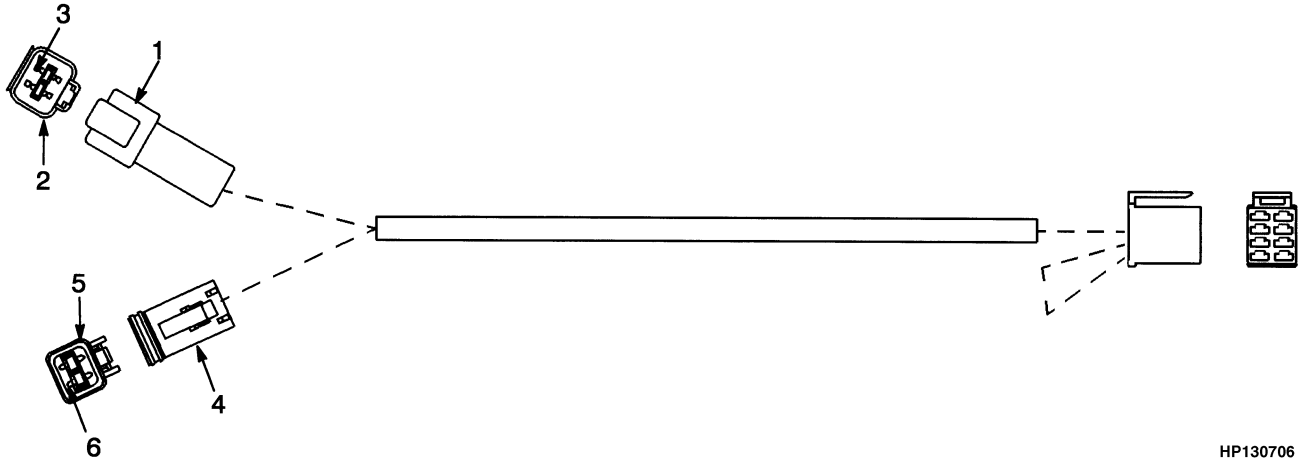
HP130698

ITEM	PART NO.	DESCRIPTION	QTY
	1384616	Wire Harness.....	1
1	1330419	Connector (LH) (Front Drive Lights)	1
2	1330424	Secondary Lock.....	3
3	1330438	Socket	11
4	1330419	Connector (RH) (Front Drive Light)	1
5	1330419	Connector (Front End Equipment Harness)	1
6	1330422	Connector (Chassis Wire Harness).....	1
7	1330428	Lock.....	1
8	1330439	Plug	1

**WIRE HARNESS
OPERATOR COMPARTMENT
SHEET 1 OF 2**

ITEM	PART NO.	DESCRIPTION	QTY
	1383845	Wire Harness (Tier I Engine)	1
	1518275	Wire Harness (Tier II Engine)	1
1	1330409	Connector.....	3
2	1330414	Secondary Lock.....	3
3	1330410	Connector.....	1
4	1330415	Lock.....	1
5	1330411	Connector.....	2
6	1330416	Lock.....	2
7	1330422	Connector.....	4
8	1330428	Lock.....	4
9	1330412	Connector.....	3
10	1330417	Lock.....	3
11	1330423	Connector.....	1
12	1330429	Lock.....	1

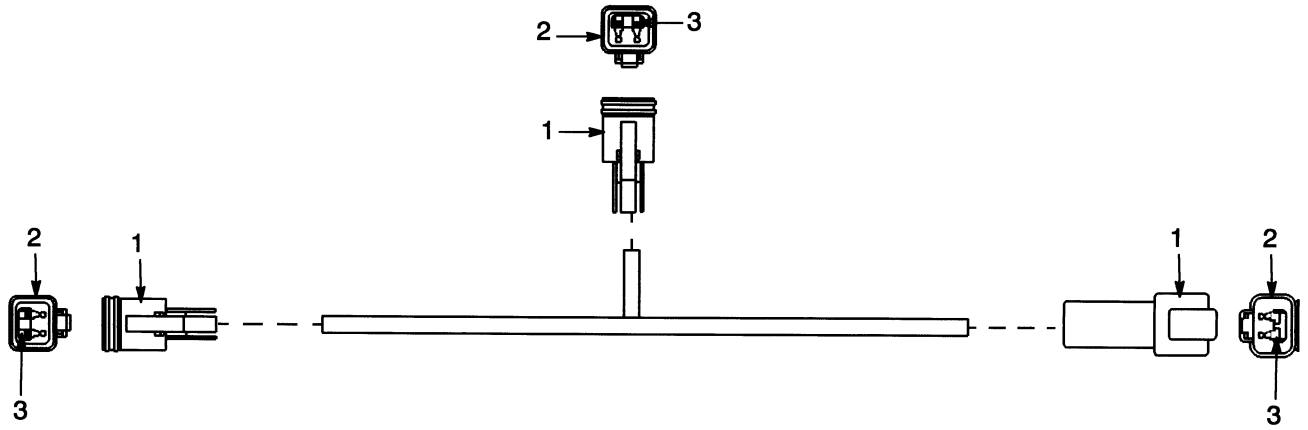
**WIRE HARNESS (Figure 4-42)
SWITCH
WARNING**



HP130706

ITEM	PART NO.	DESCRIPTION	QTY
	1384495	Wire Harness	1
1	1330411	Connector	1
2	1330416	Lock	1
3	1330437	Pin	4
4	1330421	Connector	1
5	1330427	Secondary Lock	1
6	1330438	Socket	4

**WIRE HARNESS (Figure 4-49)
WORK LIGHTS
EMPTY CONTAINER HANDLER**



HP130700

ITEM	PART NO.	DESCRIPTION	QTY
	1452319	Wire Harness.....	1
1	1330419	Connector.....	3
2	1330424	Secondary Lock.....	3
3	1330438	Socket	6

**TRANSMISSION
INPUT SHAFT**

ITEM	PART NO.	DESCRIPTION	QTY
	b 1372980	Transmission.....	1
	c 1459006	Transmission.....	1
1	1390084	Shaft.....	1
2	1390085	Cotter Pin.....	1
3	1390086	Cotter Pin.....	1
4	1390087	Bearing.....	1
5	1392405	Shim (0,305 mm).....	1
5	a 1392404	Shim (0,508 mm).....	1
5	a 1392406	Shim (0,610 mm).....	1
5	a 1392403	Shim (0,711 mm).....	1
5	a 1392408	Shim (0,787 mm).....	1
5	a 1392402	Shim (0,889 mm).....	1
5	a 1392407	Shim (0,991 mm).....	1
5	a 1392409	Shim (1,092 mm).....	1
5	a 1392410	Shim (1,194 mm).....	1
5	a 1392411	Shim (1,194 mm).....	1
5	a 1392412	Shim (1,397 mm).....	1
6	1390089	Retaining Ring.....	1
7	1390090	Spur Gear.....	1
8	1390091	Washer.....	1
9	1338881	Bearing.....	1
10	1390093	Retaining Ring.....	1
11	1390094	O-Ring.....	1
12	1390095	Flange.....	1
13	1390096	Cover.....	1
14	1390097	Gasket.....	1
15	1390098	Screw.....	8
16	1390099	Retaining Ring.....	1
17	1390776	Sleeve.....	1
18	1390777	Seal.....	1
19	1390778	Shaft.....	1
20	1390779	Retaining Ring.....	1
21	1390780	Gasket.....	1
22	1390781	Gear Pump.....	1
23	1390782	Bearing.....	1
24	1390783	Fitting.....	1
25	1385074	Shim (0,102 mm).....	1
25	1385073	Shim (0,203 mm).....	1
25	1390785	Shim (0,305 mm).....	1
25	1385072	Shim (0,406 mm).....	1
25	1385071	Shim (0,508 mm).....	1
25	1385070	Shim (0,610 mm).....	1
25	1385069	Shim (0,711 mm).....	1
25	1390784	Shim (0,787 mm).....	1
25	1385068	Shim (0,889 mm).....	1
25	1385067	Shim (0,991 mm).....	1
26	b 1390786	Screw.....	4
26	c 1467064	Screw.....	4
27	1390787	Screw.....	4
28	1390788	Retaining Ring.....	2
29	1390789	Cap.....	2

CLICK HERE TO **DOWNLOAD** THE COMPLETE MANUAL

- Thank you very much for reading the preview of the manual.
- You can download the complete manual from: www.heydownloads.com by clicking the link below



- Please note: If there is no response to CLICKING the link, please download this PDF first and then click on it.

CLICK HERE TO **DOWNLOAD** THE COMPLETE MANUAL

**TRANSMISSION
CONTROL VALVE
(S/N A214E-1616⇒)**

ITEM	PART NO.	DESCRIPTION	QTY
	1459006	Transmission.....	1
1	1390966	Housing	1
2	1390967	Screw Sleeve.....	1
3	1390968	O-Ring	3
4	1390969	Spring.....	1
5	1475350	Piston	1
6	1318005	Shim (Ring)	2
7	1390971	Orifice (0,610 mm)	1
7	b 1390973	Orifice (0,660 mm)	1
7	b 1385058	Orifice (0,711 mm)	1
7	b 1385059	Orifice (0,762 mm)	1
7	b 1390972	Orifice (0,787 mm)	1
7	b 1390974	Orifice (0,838 mm)	1
7	b 1393125	Orifice (0,889 mm)	1
7	b 1393126	Orifice (0,940 mm)	1
8	1390901	O-Ring	9
9	1390975	O-Ring	1
10	1390976	Piston	1
10	1466945	Ring Seal.....	1
11	1390977	Spring.....	1
11	a 1391022	Plug	1
12	1390978	Spring.....	1
13	1390979	Piston	1
14	1390984	Piston	1
15	1390985	Spring.....	1
16	1390986	Plate	1
17	1390987	Spring.....	5
18	1390988	Piston	2
19	1390989	Piston	1
20	1390990	Gasket	1
21	1466947	Housing	1
22	1390027	Capscrew	9
23	1390992	Washer	9
24	1390794	Plug	1
25	1390975	O-Ring.....	1
26	1467000	Piston (20,5 mm).....	1
26	b 1467001	Piston (21,5 mm).....	1
26	b 1467002	Piston (21 mm).....	1
27	1466949	Shim (2,007 mm).....	1
27	b 1466950	Shim (2,997 mm).....	1
27	b 1466951	Shim (3,988 mm).....	1
27	b 1466952	Shim (5,994 mm).....	1
27	b 1466953	Shim (8,001 mm).....	1
28	1466948	Roller.....	1
29	1390999	Ball	5
30	1466955	Spring.....	1
31	1466954	Piston	1
32	1466957	O-Ring	1
33	1466956	Plug	1
34	1390994	Piston	1

**TRANSMISSION
INCHING VALVE
(⇒S/N A214E-1615)**

ITEM	PART NO.	DESCRIPTION	QTY
	1391603	Inching Valve Assembly.....	1
1	1392443	Housing	1
2	1392444	Piston	1
3	1392445	Plate	1
4	1318002	Shim	1
4	a 1392447	Shim (1,092 mm).....	1
4	a 1392448	Shim (1,194 mm).....	1
4	a 1392449	Shim (1,397 mm).....	1
4	a 1317998	Shim (1,600 mm).....	1
4	a 1392451	Shim (1,803 mm).....	1
5	1392452	Spring.....	1
6	1392453	Gasket	1
7	1392454	Capscrew	4
8	1392455	Nut.....	4
9	1392456	Cover.....	1
10	287851	Capscrew	1
11	1392458	Piston	1
12	382848	Fitting.....	1
13	1392460	Washer	1
14	1392461	Washer	1
15	1392462	Pin	1
16	1392463	Retainer.....	1
17	1390982	Shim	1
17	a 1392465	Shim (1,194 mm).....	1
18	1392467	Spring.....	1
19	1392468	Sleeve.....	1
20	1392470	Spring.....	1
21	1392471	Retainer.....	1
22	a 1392475	Shim (0,102 mm).....	1
22	a 1392474	Shim (0,203 mm).....	1
22	1392473	Shim (0,305 mm).....	1
22	1392472	Shim (0,508 mm).....	1
22	1392476	Shim (0,991 mm).....	1
22	a 1392447	Shim (1,092 mm).....	1
22	a 1392477	Shim (1,194 mm).....	1
23	1392479	Stop	1
24	1392480	O-Ring	1
25	1392481	Seal	1
26	1392482	Gasket	2
27	1392484	Plate	1
28	1390801	Screw	2
29	1390900	Plug	3
30	1390901	O-Ring	3
31	1392488	Plate	1
32	1392489	Piston	1
33	382845	Ring Seal.....	1

FOOTNOTES:

a Optional

DRIVE AXLE
(S/N A214E-01995B⇒ (H450H)(FLT), S/N A214E-02001B⇒ (ECH) S/N PENDING PER ECN 68236⇒(H360-400H)(FLT))

KEY:**A: Fork Lift Truck (H18.00-20.00)****B: Empty Container Handler****C: Fork Lift Truck (H14.00-16.00)**

ITEM	PART NO.	DESCRIPTION	QTY		
			A	B	C
	1538766	Drive Axle	1
	1539016	Drive Axle	1	..
	1538765	Drive Axle	1
1	1382912	Housing	1
1	1554742	Housing	1	..
1	1453487	Housing	1
2	1482752	Bushing	2	2	2
3	1382913	Oil Seal	2	2	2
4	114826	Breather.....	1	1	..
4	200445	Breather.....	..	1	1
5	15316	Fitting.....	1	1	1
6	1382915	Plug	6	6	6
6	1382916	O-Ring.....	1	1	1
7	321293	Plug	3	3	3
8	1380784	Stud (Long).....	4	4	4
9	214195	Bolt (Short).....	8	8	8
10	86007	Washer	12	12	12
11	1382885	Disc Brake	26	26	26
11	1499566	Disc Brake	2	2	2
12	1452826	Brake Friction Disc	14	14	14
13	1382890	Back-Up Ring (Outer).....	2	2	2
14	1382888	Quadrant Ring (Outer).....	2	2	2
15	1382887	Piston	2	2	2
16	1382893	Capscrew	8	8	8
17	1382894	Spring.....	8	8	8
18	1382889	Quadrant Ring (Inner)	2	2	2
19	1382891	Back-Up Ring (Inner).....	2	2	2
20	1382897	Magnetic Plug.....	2	2	2
21	1382896	Bleeder Screw.....	2	2	2
22	1453488	Axle Shaft (LH)	1
22	1453489	Axle Shaft (RH)	1
22	1454959	Axle Shaft (RH)	1
22	1454960	Axle Shaft (LH)	1
22	1455997	Axle Shaft (LH)	1	..
22	1455998	Axle Shaft (RH)	1	..
23	1473840	Plug	4	4	4
23	1382902	O-Ring.....	1	1	1
24	1382884	Housing	2	2	2
25	1382895	Capscrew	8	8	8
26	1382898	Plug	2	2	2
27	208107	Snap Ring.....	2	2	2
28	1382571	Gear	2	2	2
29	1473839	Capscrew	60	60	60
30	88587	Washer	60	60	60

BRAKE ASSEMBLY**DISC**

(S/N A214E-01995B⇒ (H450H)(FLT), S/N A214E-02001B⇒ (ECH) S/N PENDING PER ECN 68236⇒(H360-400H)(FLT))

ITEM	PART NO.	DESCRIPTION	QTY
	1489408	Brake Assembly (Disc)	1
1	1495623	Housing	1
2	1495624	Retaining Ring.....	1
3	1495625	Piston (Stop).....	1
4	1495626	Piston	1
5	1495627	Cap.....	1
6	1495628	Bolt.....	2
7	1495629	Retaining Cup.....	2
8	1495630	Boot.....	1
9	1495631	Brake Pad.....	2
10	1495632	Sleeve (Friction)	2
11	1495633	Magnet	2
11	Retaining Ring.....	1
12	1495634	Seal (Cup)	1
13	1495635	Seal (Cup)	1
14	1495636	Screw	1
15	1495637	Locknut.....	1
16	1495638	Nut.....	2
17	1495639	Cotter Pin	2
18	1495640	Seal Ring.....	1
19	1495641	Seal Ring.....	1
20	1495642	Seal Ring.....	1
21	1495643	Spring (Disc)	6
22	1495644	Wear Plate.....	1
23	1495645	Ram.....	1
24	1495646	Bleeder Valve	1
25	1495647	Washer	1
26	1495648	Adapter.....	1
	1514331	Repair Kit (Includes Item).....	1

**STEERING HYDRAULICS
EMPTY CONTAINER HANDLER**

ITEM	PART NO.	DESCRIPTION	QTY
1	a 17062	Fitting.....	1
1	b 222331	Fitting.....	1
2	b 1304709	Hose	1
2	a 1382420	Hose	1
3	1382421	Hose	1
4	1383851	Hose	1
5	1383852	Hose	1
6	1383859	Hose	1
7	17315	Fitting.....	2
8	1383854	Plate	1
9	a 302401	Locknut	2
9	b 302401	Locknut	5
10	a 320159	Washer	4
10	b 320159	Washer	7
11	398184	Clamp	4
12	287854	Capscrew.....	2
13	293781	Washer	2
14	17218	Fitting.....	1
15	17319	Fitting.....	1
16	1382407	Hose	3
17	1382723	Hose	1
18	16556	Fitting.....	1
18	16481	O-Ring.....	1
19	1332941	Clamp	1
20	292681	Lockwasher.....	3
21	239503	Nut	3
22	1332940	Mount.....	1
23	1334491	Spacer	1
24	1382722	Hose	1
25	16541	Fitting.....	4
25	16484	O-Ring.....	1
26	1385591	Steer Cylinder (☞ Figure 7-4)	1
27	1393743	Steer Cylinder (Optional) (☞ Figure 7-5)	1
27	b 251994	Clamp	3

FOOTNOTES:**a** ⇒ S/N A214E-1534**b** S/N A214E-1535 ⇒

**STEERING CONTROL
BLOCK VALVE
(⇒S/N PENDING PER ECN 68163)**

ITEM	PART NO.	DESCRIPTION	QTY
	1311366	Valve Block	1
1	1462890	O-Ring	4
2	1462891	Screw	2
3	366063	Relief Valve	1
4	Housing	1
5	366064	Pin	1
6	366065	Seal	1
	366066	Service Kit (Includes Items 1-2).....	1

**BRAKE PEDAL LINKAGE
FORK LIFT TRUCK**

ITEM	PART NO.	DESCRIPTION	QTY
1	c 1452593	Valve (Inching) (☞ Figure 8-7)	1
1	1345719	Valve (Inching) (☞ Figure 8-7)	1
2	c 1373604	Valve (Brake) (☞ Figure 8-7)	1
2	d 1345719	Valve (Brake) (☞ Figure 8-7)	2
3	1488532	Valve (Brake) (☞ Figure 8-7)	2
3	176640	Capscrew.....	6
4	302400	Locknut	6
5	320158	Washer	6
6	16558	Fitting.....	2
6	16483	O-Ring	1
7	14594	Plug	1
7	16483	O-Ring	1
8	16567	Fitting.....	3
8	16483	O-Ring	1
9	16540	Fitting.....	3
9	16483	O-Ring	1
10	1384510	Tube	1
11	c 1384511	Tube	1
11	d 1459041	Tube	1
12	292505	Capscrew.....	2
13	320156	Washer	4
14	302399	Nut	4
15	1330171	Shuttle Valve.....	1
16	1343161	Body	1
17	1343162	Cartridge	1
18	359756	Seal Kit.....	1
19	131460	Fitting.....	2
19	16483	O-Ring	1
20	1385569	Tube	1
21	1384509	Tube	1
22	17062	Fitting.....	1
23	16549	Fitting.....	2
23	16483	O-Ring	1
24	17049	Fitting.....	2
25	1375381	Hose	2
26	1384517	Manifold	1
27	292507	Capscrew.....	2
28	16538	Fitting.....	2
28	16481	O-Ring	1
29	816117	Fitting.....	2
30	a 16478	Fitting.....	1
30	b 17054	Fitting.....	1
31	1451921	Hose	1
32	1451458	Hose	1
33	1332206	Pressure Switch (With Brake/Tails Light).....	1
33	14349	Fitting (Without Brake/Tail Lights)	1
34	1382440	Switch (Low Pressure Warning)	1
35	222369	Fitting.....	1
36	1451461	Hose	1
37	320160	Washer	5
38	302401	Locknut	5

9

HYDRAULIC SYSTEM

**OIL COOLER AND ATTACHING PARTS
EMPTY CONTAINER HANDLER
TIER II ENGINE**

ITEM	PART NO.	DESCRIPTION	QTY
1	298829	Clamp	3
2	136985	Capscrew.....	3
3	320160	Washer	6
4	292682	Lockwasher.....	3
5	136692	Nut	3
6	1517972	Hose	1
7	1517973	Hose	1
8	1517974	Hose	1
9	1517975	Hose	1
10	127045	Clamp	2
11	816232	Check Valve.....	1
12	16963	Fitting.....	2
13	30374	Clamp	1
14	1495139	Heat Exchanger Assembly	1
14	1384009	Core.....	1
14	1384010	Frame	1
14	1384011	Grill.....	1
14	1384012	Fan	1
14	1384013	Switch.....	1
14	1384014	Shock Absorber	2
15	292509	Capscrew.....	4
16	329069	Nut	4
17	320157	Washer	8
18	292681	Lockwasher.....	4
19	1517982	Adapter	2
20	112470	Fitting.....	2

HYDRAULIC LINES CONTROL VALVE (S/N A214E-1807⇒)

ITEM	PART NO.	DESCRIPTION	QTY
1	1393862	Tube	1
2	1373517	Fitting	1
3	16926	Fitting	1
4	1373682	Fitting	2
5	1373681	Fitting	1
6	1464433	Hose	1
7	1676261	Fitting	1
8	17780	Fitting	1
9	16567	Fitting (Fork Lift Truck)	1
9	16483	O-Ring	1
10	1384634	Fitting (Modified)	1
10	1331937	Fitting	1
10	O-Ring	1
11	1393863	Tube (Fork Lift Truck)	1
12	1373651	Tube	1
13	1497239	Tube	1
14	1331937	Fitting	1
15	1373516	Fitting	6
16	1373629	Tube	1
17	1373630	Tube	1
18	1373632	Tube	1
19	1373631	Tube	1
20	1373633	Tube	1
21	1373628	Tube	1
22	1384503	Fitting	2
23	1384649	Fitting	2
24	1336054	Fitting	2
25	17764	Fitting	4
26	1464430	Hose	1
26	1474761	Hose	1
27	1464431	Hose	1
27	1474762	Hose	1
28	17066	Fitting	2
29	1496458	Adapter	2
30	14494	Fitting	2
31	1473927	Fitting (Quick Disconnect)	2
32	142500	Fitting	2
32	16486	O-Ring	1
33	397676	Strap Clamp	3

**HYDRAULIC SOLENOID VALVE ATTACHING PARTS
LIFT AND LOWERING INTERRUPT
EMPTY CONTAINER HANDLER**

KEY:**A: Lowering Interrupt****B: Lift and Lowering Interrupt**

ITEM	PART NO.	DESCRIPTION	QTY	
			A	B
1	1383517	Solenoid Valve (Solenoid) (☞ Figure 9-14)	1	2
2	222443	Fitting	1	2
3	16558	Fitting	1	1
4	16969	Fitting	1	1
5	16540	Fitting	2
6	816694	Hose	1
7	816691	Hose	1	1
8	816690	Hose	1	1
9	816692	Hose	1	1
10	816693	Hose	1
11	816597	Bracket.....	1	1
12	18471	Capscrew.....	2	..
12	18480	Capscrew.....	..	2
13	15127	Washer	2	2
14	15054	Nut	2	2

HYDRAULIC PUMP

ITEM	PART NO.	DESCRIPTION	QTY
	1391499	Hydraulic Pump	1
1	1456195	Section Kit (Front).....	1
2	Drive Gear.....	1
3	Driven Gear.....	1
4	Section (Center).....	1
5	1318617	Wear Plate (Front).....	2
6	1318613	Wear Plate (Rear)	1
7	1456196	Section Kit (Rear)	1
8	Drive Gear.....	1
9	Driven Gear.....	1
10	Section (Center).....	1
11	1318617	Wear Plate (Front).....	1
12	1318613	Wear Plate (Rear)	1
13	1456198	Port Section Kit (Rear)	1
14	1456201	Pump Kit.....	1
15	1456199	Drive Port Kit (Center)	1
16	1456197	Cover Kit (Front)	1
17	1318619	Snap Ring.....	1
18	Seal	4
19	Seal	4
20	Seal	1
21	Seal	1
22	O-Ring	4
23	Stud.....	8
24	1318621	Lockwasher	8
25	221714	Nut.....	8
	1456194	Seal Kit (Includes Items 18-22)	8
	1456200	Stud Kit (Includes Items 23-25)	8

**BRAKE COOLING SYSTEM
FORK LIFT TRUCK
(⇒S/N A214E-1751)**

ITEM	PART NO.	DESCRIPTION	QTY
1	16551	Fitting.....	2
1	16485	O-Ring.....	1
2	1385558	Hose.....	1
3	292525	Capscrew.....	2
4	320159	Washer.....	3
5	302401	Locknut.....	3
6	398184	Clamp.....	1
7	287854	Capscrew.....	1
8	153049	Hose.....	1
9	201776	Fitting.....	1
9	16487	O-Ring.....	1
10	17064	Fitting.....	1
11	1483912	Brake Cooling Kit.....	1
12	222383	Fitting.....	2
12	16487	O-Ring.....	1
13	166112	Clamp.....	2
14	a 1451532	Hose.....	1
14	b 1460409	Hose.....	1
15	c 1451533	Hose.....	1
15	d 1468074	Hose.....	1
16	1496496	Accumulator (☞ Figure 9-25).....	1
17	1376844	Bracket.....	2
18	302402	Nut.....	4
19	292528	Capscrew.....	2
20	110174	Fitting.....	1
21	1382861	Tube.....	1
22	292539	Capscrew.....	2
23	c 17039	Fitting.....	1
24	292502	Capscrew.....	1
25	136687	Nut.....	1
26	296418	Washer.....	2

FOOTNOTES:

- a** ⇒ S/N A214E-1572
b S/N A214E-1573 ⇒
c ⇒ S/N A214E-1665
d S/N A214E-1666 ⇒

**TILT CYLINDER
EMPTY CONTAINER HANDLER**

ITEM	PART NO.	DESCRIPTION	QTY
	f 1391457	Tilt Cylinder.....	1
	e 1498532	Tilt Cylinder (3° Forward/4° Back).....	1
1	g 1453124	Rod.....	1
2	e 1498533	Rod (3° Forward/4° Back).....	1
2	c 816578	Wiper Rod	1
2	d 376186	Wiper Rod	1
3	221377	Nut.....	1
4	c 1391461	Tube.....	1
4	d 1470757	Tube.....	1
5	f 1391460	Spacer	1
5	g 1453123	Spacer	1
5	e 1498530	Spacer (3° Forward/4° Back)	1
6	c 2013361	Plug	1
6	d 1470765	Plug	1
7	c 816580	Seal	1
7	d 358300	Seal	1
8	c 146803	Back-Up Ring	1
8	d 1476882	Back-Up Ring	1
9	55289	O-Ring	1
10	387248	Piston	1
11	198518	O-Ring	1
12	15890	O-Ring	1
13	387246	Seal Ring.....	1
14	387247	Guide Ring	1
15	f 1453110	Spacer	1
16	a 246001	Capscrew.....	16
16	b 293649	Capscrew.....	16
17	292683	Lockwasher.....	16
18	a 1391472	Tube	2
18	b 1459293	Tube	2
	387325	Seal Kit (Includes Items 2, 7-9, 11-14)	2
	1476917	Seal Kit (Includes Items 2, 7-9, 11-14)	2

FOOTNOTES:

- a** ⇒ S/N A214E-1576
b S/N A214E-1577 ⇒
c ⇒ S/N A214E-1724
d S/N A214E-1725 ⇒
e S/N A214E-1807 ⇒
f ⇒ D/B 05/1997
g D/B 05/1997 ⇒

**MAIN LIFT
TWO STAGE VISTA
SHEET 2 OF 2**

H14.00-16.00XM

ITEM	DESCRIPTION 1 2 3 4	LIFT HEIGHT TO BOTTOM OF FORKS			
		2900 mm	3650 mm	4550 mm	5300 mm
	Mast Group Number	-	-	-	-
	Mast Assembly	b 1372870 c 1458388	b 1370078 c 1458389	b 1370079 c 1458390	b 1370080 c 1458391
1	Hose	88300	88300	123045	252388

H14.00-16.00XM (CONT.)

ITEM	DESCRIPTION 1 2 3 4	LIFT HEIGHT TO BOTTOM OF FORKS		
		6100 mm	6600 mm	6900 mm
	Mast Group Number	-	-	-
	Mast Assembly	b 1370081 c 1458392	b 1370082 c 1458393	b 1370083 c 1458394
1	Hose	159369	116046	276638

H18.00XM

ITEM	DESCRIPTION 1 2 3 4	LIFT HEIGHT TO BOTTOM OF FORKS			
		2900 mm	3650 mm	4550 mm	5300 mm
	Mast Group Number	-	-	-	-
	Mast Assembly	1372869	1370072	1370073	1370074
1	Hose	88300	88300	123045	252388

H18.00XM (CONT.)

ITEM	DESCRIPTION 1 2 3 4	LIFT HEIGHT TO BOTTOM OF FORKS		
		6100 mm	6600 mm	6900 mm
	Mast Group Number	-	-	-
	Mast Assembly	1370075	1370076	1370077
1	Hose	159369	116046	276638

**HEADER HOSE
TWO STAGE VISTA****H16.00XM**

ITEM	DESCRIPTION 1 2 3 4	LIFT HEIGHT TO BOTTOM OF FORKS			
		2900 mm	3650 mm	4550 mm	5300 mm
	Mast Group Number	-	-	-	-
	Mast Assembly	b 1372870 c 1458388	b 1370078 c 1458389	b 1370079 c 1458390	b 1370080 c 1458391
10	Wire Harness	1452025	1452025	1452026	1452027
24	Hose	1451999	1451999	1452000	1452001
25	Hose	1452014	1452014	1452015	1452016
26	Wire Harness	1452036	1452036	1452037	1452038

H16.00XM (CONT.)

ITEM	DESCRIPTION 1 2 3 4	LIFT HEIGHT TO BOTTOM OF FORKS		
		6100 mm	6600 mm	6900 mm
	Mast Group Number	-	-	-
	Mast Assembly	b 1370081 c 1458392	b 1370082 c 1458393	b 1370083 c 1458394
10	Wire Harness	1452028	1452029	1452030
24	Hose	1452002	1452003	1452004
25	Hose	1452017	1452018	1452019
26	Wire Harness	1452049	1452039	1452046

H18.00XM

ITEM	DESCRIPTION 1 2 3 4	LIFT HEIGHT TO BOTTOM OF FORKS			
		2900 mm	3650 mm	4550 mm	5300 mm
	Mast Group Number	-	-	-	-
	Mast Assembly	1372869	1370072	1370073	1370074
10	Wire Harness	1452031	1452031	1452032	1452033
24	Hose	1452005	1452005	1452006	1452007
25	Hose	1452020	1452020	1452021	1452022
26	Wire Harness	1452042	1452042	1452043	1452044

CARRIAGE HYDRAULIC SYSTEM TWO STAGE VISTA

KEY:**A: H16.00XM****B: H18.00XM**

ITEM	PART NO.	DESCRIPTION	QTY	
			A	B
1	1389399	Tube	1	..
1	1391897	Tube	1
2	1383865	Tube	1	..
2	1393805	Tube	1
3	1383866	Tube	1	..
3	1391899	Tube	1
4	1389398	Tube	1	..
4	1391887	Tube	1
5	1383868	Tube	1	..
5	1391898	Tube	1
6	1383869	Tube	1	..
6	1393804	Tube	1
7	136704	Capscrew.....	3	2
8	1393739	Cover	2	1
9	16559	Fitting.....	4	4
9	16484	O-Ring	1	1
10	16449	Fitting.....	2	2
11	16542	Fitting.....	2	2
11	16485	O-Ring	1	1
12	1373335	Clamp	1	1
13	1393803	Clamp	1	1
14	136703	Capscrew.....	..	1
14	292512	Capscrew.....	1	..
15	292681	Lockwasher.....	4	4
16	239503	Nut	4	4
17	1393802	Clamp	2	2
18	16909	Fitting.....	4	4
18	16485	O-Ring	1	1
19	320157	Washer	2	2
20	1372994	Valve (Solenoid) (Two Function) (☞ Figure 10-13)	1	1
21	1393730	Valve (Solenoid) (Four Function) (☞ Figure 10-13)	1	1
21	154208	Clamp	1	1
21	1393729	Valve (Solenoid) (Three Function) (☞ Figure 10-13)	1	1
21	1393731	Valve (Solenoid) (Five Function) (☞ Figure 10-13)	1	1
22	379048	Clamp (Four and Five Function)	2	2

**MAIN LIFT
EMPTY CONTAINER HANDLER
(S/N A214E-1655⇒)**

KEY:**A: H400H-EC5****B: H450H-EC6**

ITEM	PART NO.	DESCRIPTION	QTY	
			A	B
	c 1496375	Mast Assembly	1	..
	f 1533944	Mast Assembly	1	..
	b 1544032	Mast Assembly	1	..
	c 1496376	Mast Assembly	1
	f 1533945	Mast Assembly	1
	b 1544033	Mast Assembly	1
1	198324	Chain	1	..
1	330303	Chain	1
2	1373054	Chain	1	..
2	1373055	Chain	1
3	1389408	Lift Cylinder	2	..
3	1389409	Lift Cylinder	2
4	376682	Control Valve	2	2
5	136985	Capscrew	18	18
6	292682	Lockwasher	22	22
7	1303391	Washer	2	2
8	1465599	Housing (Chain Sheave)	2	2
9	292685	Lockwasher	8	8
10	292562	Capscrew	8	8
11	1455301	Chain Sheave	2	2
12	1455487	Shaft	2	2
13	1455992	Plate	2	2
14	110931	Shim (0,127 mm)	AR	AR
14	110932	Shim (0,178 mm)	AR	AR
14	110933	Shim (0,508 mm)	AR	AR
15	159296	Spacer	2	2
16	159297	Spacer	2	2
17	159299	Bearing Cup	4	4
18	230408	Bearing Cone	4	4
19	159295	Oil Seal	4	4
20	1465601	Guide (Front Sheave)	2	2
21	1393735	Chain Guide	4	4
22	293645	Capscrew	10	10
23	292683	Lockwasher	14	14
24	1393738	Capscrew	24	24
25	320156	Washer	48	48
26	313805	Nut	24	24
27	1383552	Chain Sheave	2	2
28	1373010	Shaft	2	2
29	1373014	Shim	AR	AR
29	1373015	Shim	AR	AR
29	1373016	Shim	AR	AR
30	1372971	Cover Plate	2	2
31	1373011	Spacer	2	2
32	1373012	Spacer	2	2

**VERTICAL END BEAM
EMPTY CONTAINER HANDLER
(⇒S/N A214E-1806)**

ITEM	PART NO.	DESCRIPTION	QTY
	1453932	Locking Head Assembly	1
1	1453926	Beam	1
2	1392351	Nut.....	1
3	1392370	Cylinder (☞ Figure 11-20)	1
4	1484112	Lock Pin.....	1
5	1392372	Bushing	1
6	1392373	Snap Ring.....	2
6	1460908	Snap Ring.....	2
7	1392374	Plate	1
8	1392375	Bolt	2
8	292531	Capscrew	2
9	1392376	Nut.....	2
9	1460909	Nut.....	2
10	1392377	Pin	1
11	1392378	Spring.....	2
12	1453928	Nut.....	1
13	1392371	Pin	1
14	1453929	Bolt	4
14	1460914	Lockwasher	4
15	1453930	Block.....	1
16	1453931	Capscrew	2
16	292583	Capscrew	2
16	1460911	Washer	2
17	1453927	Axle	1
18	1453988	Switch.....	3
19	1460505	Bracket	1
20	1460506	Bracket	1
21	1460912	Bolt	4
21	1460913	Washer	4
22	1392366	Bushing	1
23	1484113	Lube Fitting.....	1
24	1460511	Bushing (Not Illustrated).....	2

WEAR PADS
CONTAINER HANDLING ATTACHMENT (570)
(S/N A214E-1807⇒)

ITEM	PART NO.	DESCRIPTION	QTY
1	292516	Capscrew.....	8
2	6996003	Lockwasher.....	8
3	1334634	Pad	4
4	1332310	Wear Pad.....	8
5	6996025	Lockwasher.....	30
6	132860	Capscrew.....	30
7	1332278	Bracket.....	12
8	1332300	Wear Pad.....	4
9	6990385	Wear Pad.....	8
10	6996452	Screw (Brass)	48

**SINGLE HORIZONTAL TWIST LOCK HEAD ASSEMBLY
CONTAINER HANDLING ATTACHMENT (573)
(S/N A214E-1807⇒)**

ITEM	PART NO.	DESCRIPTION	QTY
1	Twist Lock Head Assembly	1
1	6990415	Plate	2
2	6996011	Bolt	8
2	6996003	Lockwasher	8
3	6990483	Housing (RH) (Lower)	1
3	6990484	Housing (LH) (Lower)	1
4	6990397	End Beam (RH)	1
4	6990410	End Beam (LH).....	1
5	6996443	Motor	2
5	6999025	Seal Kit.....	1
6	6990353	Ring	2
7	6990354	Sleeve.....	2
8	6990355	Collet	2
9	6990356	Ring	2
10	6990357	Ring	2
10	6996459	Screw (Allen)	4
11	6990358	Bracket	2
12	6996472	Bolt	8
13	6990485	Plate	1
14	6990520	Clamp	8
14	6996541	Bolt	16
14	6996542	Sensor (Ultra Sound).....	4
15	6996448	Bushing	4
16	6990360	Twistlock	2
17	6996330	Proximity Sensor	6
18	6996502	Nut.....	6
19	6996460	Screw	8
20	6990453	Clamp (RH)	1
20	6990503	Clamp (LH).....	1
21	6996514	Bolt	4
22	6996010	Clamp	2
22	6996475	Screw (Allen)	4
23	6996476	Key	2
24	6996477	Key	2
25	293726	Screw (Allen)	3

**EXTENSION CYLINDER
EMPTY CONTAINER HANDLER
(⇒S/N A214E-1806)**

ITEM	PART NO.	DESCRIPTION	QTY
	1392290	Cylinder Assembly	1
1	1392335	Tube.....	1
2	1392336	Nut.....	3
3	1392337	Piston	1
4	1392387	Piston Packing.....	1
5	1392338	O-Ring	1
6	1392339	Piston	1
7	1392340	Rod.....	1
8	1392341	O-Ring	2
9	1392342	Retainer.....	1
10	1392386	Piston Packing.....	1
11	1392344	Nut.....	1
12	1392361	Insert	1
13	1392345	Wiper.....	1
14	1392346	Bushing	1
15	1392347	Ring	6
16	1392348	Ring.....	1
17	1392349	Disc	24
	1454046	Packing Set (Includes Items 2, 5, 8, 10, 12-13).....	1

**ELECTRICAL SYSTEM
SPREADER 575
(S/N A214E-1807⇒)**

ITEM	PART NO.	DESCRIPTION	QTY
1	6996494	Housing	1
1	6996087	Connector	1
1	6996495	Cover	1
2	6996533	Gland	2
2	6996534	Fitting	2
3	6996071	Cable (Electric)	1
4	6990511	Cable (Electric)	1
5	1334633	Cover	1
6	6996129	Allen Screw	2
7	6990490	Interface Box	1
8	6990466	Light (Working)	2
9	6996079	Bulb	2
10	6996499	Cover	2
11	6990512	Cable (Electric)	2
12	6996216	Gland	2
13	6996306	Gland	1
14	6990479	Card (Fuse)	1
15	6990515	Bracket	1
16	6990516	Box (Electric)	1
17	6990189	Bracket	2
17	1459409	Shock Absorber	4
17	302400	Locknut	4

**AUXILIARY ATTACHMENTS
EMPTY CONTAINER HANDLER**

ITEM	PART NO.	DESCRIPTION	QTY
1	a 1393905	Hose	2
1	b 1452850	Hose	2
2	b 16449	Fitting.....	2
2	a 16467	Fitting.....	2
3	1384472	Plate	1
4	302401	Locknut	4
5	b 320159	Washer	4
5	a 320161	Washer	4
6	255578	Clamp	2
7	1384527	Bracket.....	1
8	a 292505	Capscrew.....	1
8	b 292507	Capscrew.....	1
9	302399	Nut	1
10	320156	Washer	1

FOOTNOTES:**a** ⇒ S/N A214E-1534**b** S/N A214E-1535 ⇒

**SECTION 12
OPTIONS**

DESCRIPTION	PAGE
FORKS	
HOOK TYPE.....	12-10
PIN TYPE.....	12-8
WHEEL AND TIRE	
BIAS TIRE.....	12-2
RADIAL TIRE.....	12-4
SOLID TIRE	
SMOOTH.....	12-6
WITH TREAD.....	12-5

**FORKS
HOOK TYPE**

KEY:

A: H14.00-16.00XM

B: H18.00-20.00XM

ITEM	PART NO.	DESCRIPTION	QTY	
			A	B
1	1372954	Fork.....	2	..
1	1372952	Fork.....	..	2
2	15236	Cotter Pin.....	2	2
3	1451183	Pin	2	..
3	1373174	Pin	2

NUMERICAL INDEX (Continued)

<u>PART NO.</u>	<u>PG</u>	<u>ITEM</u>	<u>PART NO.</u>	<u>PG</u>	<u>ITEM</u>	<u>PART NO.</u>	<u>PG</u>	<u>ITEM</u>	<u>PART NO.</u>	<u>PG</u>	<u>ITEM</u>
292529	4-32	60		11-85	3		4-25	18		5-43	38
	7-3	15	292668	1-33	21		4-31	11		7-3	6
	9-11	12		1-35	21		4-31	31		7-7	13
	10-31	3		1-45	12		4-35	11		7-17	24
	10-33	3		4-6	70		4-35	31		8-3	9
292531	10-4	2		4-31	17		4-39	8		8-8	38
	11-5	11		4-35	17		5-7	21		8-19	21
	11-10	51		5-41	13		5-41	3		8-21	6
	11-14	51	292679	1-9	28		5-43	2		9-9	4
	11-23	8		1-25	9		7-3	32		9-27	8
292533	10-27	22		1-33	22		7-5	20		9-27	8
	11-14	58		1-35	22		7-7	20		10-4	18
	11-77	22		1-39	41		8-3	26		10-12	25
	11-79	22		1-45	13		8-7	26		10-39	13
292535	1-5	43		4-5	21		9-9	18		11-9	6
	1-15	2		4-31	16		9-57	4		11-13	6
	1-19	1		4-35	16		9-57	31	292683	1-29	35
	1-48	31		5-41	12		9-61	6		1-36	47
	10-27	17	292680	1-9	19		9-65	17		2-79	24
	11-5	4		1-25	5		10-35	15		2-79	24
	11-77	17		1-27	15		11-79	29		2-83	18
	11-79	17		1-29	6	292682	1-5	10		2-87	18
292538	11-14	51		1-33	16		1-9	14		2-93	6
292539	9-55	22		1-35	16		1-17	25		2-95	6
	9-57	25		1-39	29		1-27	22		2-97	6
	9-59	22		1-45	4		1-29	19		3-3	13
	9-61	27		3-9	22		1-33	29		3-7	13
292540	1-36	46		4-5	11		1-35	29		4-5	5
292544	9-5	19		4-13	6		1-51	3		4-9	5
	9-11	19		4-13	26		1-53	18		4-32	62
292562	6-19	6		4-25	7		1-59	37		4-36	62
	10-29	9		5-41	9		2-71	18		5-7	23
	11-9	10	292681	1-9	10		2-73	12		7-17	7
	11-9	10		1-9	10		2-80	45		9-51	18
	11-13	10		1-27	19		2-83	14		9-53	3
	11-85	9		1-27	36		2-84	52		9-69	17
292563	1-5	33		1-33	2		2-87	14		10-4	4
292572	2-91	1		1-35	2		2-88	52		10-12	14
292573	5-7	29		1-39	32		2-93	10		10-13	36
292574	10-29	2		2-71	33		2-95	10		10-27	27
	11-85	2		2-75	13		2-97	10		10-31	4
292580	5-7	25		2-80	44		3-4	39		10-33	4
	10-13	29		2-87	45		3-7	21		11-5	6
292581	10-26	5		3-3	26		3-7	21		11-5	12
	11-77	5		3-9	30		4-5	32		11-9	23
	11-79	5		3-11	6		4-9	19		11-13	23
292583	11-23	16		4-5	25		4-17	12		11-14	60
292591	1-47	15		4-9	14		4-31	25		11-80	31
	1-47	15		4-13	18		4-35	25	292684	9-5	20
292597	1-47	23		4-14	48		4-36	58		9-11	20
	1-47	23		4-17	8		5-9	2	292685	10-29	3
292600	10-29	4		4-20	48		5-17	9		11-9	9

NUMERICAL INDEX (Continued)

<u>PART NO.</u>	<u>PG</u>	<u>ITEM</u>	<u>PART NO.</u>	<u>PG</u>	<u>ITEM</u>	<u>PART NO.</u>	<u>PG</u>	<u>ITEM</u>	<u>PART NO.</u>	<u>PG</u>	<u>ITEM</u>
	5-29		1373120	10-8	1	1373311	10-33	10			10-16
	5-33		1373126	11-17	9	1373312	10-33	9			10-26
	5-37		1373127	11-17	7	1373319	12-9		1373381	3-9	14
1372982	5-41	6	1373129	11-17	12	1373320	12-9		1373389	9-31	21
1372990	7-3	1	1373136	11-5		1373329	10-8	17			9-37
	7-13			11-7			10-31	11	1373412	3-3	3
1372994	10-35	20		11-9			10-33	25	1373413	3-3	3
	10-39			11-77			11-7	16	1373415	3-3	19
1372995	9-31	20		11-79			11-29	29		3-7	2
	9-33		1373137	11-5		1373335	10-35	12	1373416	3-3	20
1373010	11-9	28		11-7			11-79	11		3-7	3
	11-13	28		11-9			11-79	23	1373430	2-93	3
1373011	11-9	31		11-77		1373346	12-9			2-95	3
	11-13	31		11-79		1373347	12-9	1		2-97	3
1373012	11-9	32	1373174	12-11	3	1373349	11-10	45	1373431	2-93	16
	11-13	32	1373175	10-31	18		11-14	45		2-97	16
1373014	11-9	29		10-33	18	1373358	10-12	2	1373435	2-93	31
	11-13	29	1373176	10-31	14	1373359	10-12	2	1373436	2-93	4
1373015	11-9	29		10-33	14	1373360	10-12	2		2-95	4
	11-13	29	1373177	10-33	11	1373368	10-4			2-97	4
1373016	11-9	29		12-9	2		10-8		1373437	2-71	13
	11-13	29	1373180	10-12	2		10-12			2-73	9
1373020	11-10	44	1373181	10-12	2		10-16		1373438	2-93	1
	11-14	44	1373182	10-12	2		10-26			2-97	1
1373025	11-7	7	1373183	10-12	2	1373369	10-4		1373440	6-5	59
1373026	11-7	7	1373196	10-31	19		10-8		1373446	2-71	12
1373028	11-7	4		10-33	19		10-12			2-73	3
1373029	11-7	4	1373203	10-33	9		10-16			2-75	3
1373030	11-7	4	1373204	10-31	17		10-26		1373448	2-71	10
	11-7	7		10-33	17	1373370	10-4			2-75	6
1373031	11-5	10	1373212	10-33	10		10-8		1373450	12-9	1
1373032	11-5	10	1373215	10-27	23		10-12		1373451	12-9	1
1373033	11-5	10	1373216	10-31	22		10-16		1373452	2-79	2
1373034	11-5	18		10-33	22		10-26		1373502	8-19	2
1373035	11-5	18	1373230	12-9	1	1373371	10-4			8-21	10
1373036	11-5	18	1373233	12-9			10-8		1373505	9-31	14
1373037	11-5	9	1373236	12-9	1		10-12		1373506	9-31	15
1373038	11-5	17	1373237	12-9	1		10-16		1373507	9-31	16
1373039	11-7	3	1373238	12-9			10-26		1373508	9-31	18
1373049	11-7	2	1373239	12-9		1373372	10-4		1373509	9-31	19
1373050	11-5	16	1373265	6-19			10-8		1373510	9-31	25
1373051	11-5	8	1373269	2-80	47		10-12		1373511	9-31	26
1373054	11-9	2	1373270	5-7	27		10-16		1373514	9-15	14
	11-13	2	1373274	2-91	3		10-26		1373515	9-15	33
1373055	11-9	2	1373280	5-7	24	1373373	10-4		1373516	9-15	22
	11-13	2	1373285	2-71	10		10-8			9-19	15
1373089	10-33	17		2-73	6		10-12		1373517	9-15	8
1373115	10-8	1	1373292	2-71	22		10-16			9-19	2
1373116	10-8	1		2-73	7		10-26		1373527	1-33	13
1373117	10-8	1	1373293	2-97	30	1373374	10-4		1373540	1-33	1
1373118	10-8	1	1373300	10-31	17		10-8		1373541	1-33	1
1373119	10-8	1		10-33	17		10-12		1373547	1-33	37

NUMERICAL INDEX (Continued)

<u>PART NO.</u>	<u>PG</u>	<u>ITEM</u>	<u>PART NO.</u>	<u>PG</u>	<u>ITEM</u>	<u>PART NO.</u>	<u>PG</u>	<u>ITEM</u>	<u>PART NO.</u>	<u>PG</u>	<u>ITEM</u>
1454960	6-4	22	1456196	9-49	7				1459676	11-79	26
	6-7	22	1456197	9-49	16	1458392	10-4			11-87	
1455040	1-35	1	1456198	9-49	13		10-8		1459839	3-3	6
1455042	1-35	1	1456199	9-49	15		10-12		1459840	3-3	5
1455044	1-36	58	1456200	9-49	27		10-16		1459841	3-3	6
1455049	1-35	26	1456201	9-49	14		10-26		1459842	3-3	4
1455060	1-35	36	1456470	1-19	33	1458393	10-4		1459848	5-13	15
1455087	1-29	36	1456475	9-5	4		10-8		1459951	10-21	
1455169	9-11	5		9-53			10-12		1460265	10-13	37
1455170	9-5	5	1456622	1-5	12		10-16		1460312	4-36	63
1455171	9-11	17	1456875	9-34	70		10-26		1460380	8-4	37
1455172	9-5	11	1457096	8-16	47	1458394	10-4		1460394	9-22	41
	9-11	11	1457097	1-5	42		10-8		1460396	9-22	42
1455174	9-5	37		1-10	52		10-12		1460398	12-4	1
1455177	1-35	36		8-12	39		10-16		1460402	12-4	1
1455191	1-36	59	1457201	5-41	16		10-26		1460403	12-4	1
1455192	1-36	59	1457954	4-20	49	1458395	10-31	21	1460404	12-4	1
1455225	9-67	12		4-95			10-33	21	1460405	12-4	1
1455301	11-9	11		5-41	14		10-37		1460406	12-4	1
	11-13	11	1457993	5-7	14	1458396	10-31	21	1460408	8-4	45
1455347	11-9	8	1458018	5-7	15		10-33	21		8-11	32
1455377	11-10	38	1458125	11-10	53		10-37		1460409	9-59	14
1455378	11-10	39		11-14	53	1458578	5-41	1		9-61	19
1455396	11-9	20	1458337	9-71	1	1458609	1-17	18	1460436	11-14	38
1455411	9-5	6	1458338	9-71		1458769	1-61	23	1460437	11-14	39
	9-11	6	1458339	9-71	2	1458892	2-93	29	1460448	12-4	1
1455432	10-12	17	1458378	10-4	1	1459006	5-3		1460451	12-4	1
1455466	1-35	13	1458379	10-4	1		5-15		1460505	11-23	19
1455467	10-13	30	1458380	10-4	1		5-19		1460506	11-23	20
1455468	10-12	2	1458381	10-4	1		5-25		1460511	11-23	24
1455487	11-9	12	1458382	10-4	1		5-29		1460618	11-88	6
	11-13	12	1458383	10-4	1		5-33			11-89	6
1455490	11-10	41	1458384	10-4	1		5-37		1460908	11-23	6
	11-14	41	1458388	10-4		1459041	8-11	11	1460909	11-23	9
1455572	10-12	21		10-8			8-15	11	1460911	11-23	16
1455594	9-33	26		10-12		1459042	8-11	38	1460912	11-23	21
1455595	9-33	27		10-16			8-16	46	1460913	11-23	21
1455596	9-33	28		10-26		1459108	5-41	6	1460914	11-23	14
1455801	2-97	26	1458389	10-4		1459178	8-3	1	1461600	11-79	30
1455820	9-45	18		10-8			8-7	1	1462198	2-93	28
1455851	4-6	69		10-12		1459254	8-4	41		2-95	26
1455951	10-12	11		10-16			8-8	36	1462536	2-79	26
1455992	11-9	13		10-26		1459293	9-69	18	1462572	2-79	26
	11-13	13	1458390	10-4		1459351	10-12	2	1462890	7-15	1
1455997	6-4	22		10-8		1459352	10-12	2	1462891	7-15	2
	6-7	22		10-12		1459409	11-71	21	1463253	6-5	59
1455998	6-4	22		10-16			11-73	17		6-8	59
	6-7	22		10-26			11-75	21	1463254	6-4	58
1456014	9-37	12	1458391	10-4		1459430	9-5	38		6-8	58
1456189	1-9	26		10-8			9-11	38	1463483	6-5	62
1456194	9-49	26		10-12		1459675	11-79	26		6-8	42
1456195	9-49	1		10-16			11-87		1463599	6-3	

CLICK HERE TO **DOWNLOAD** THE COMPLETE MANUAL

- Thank you very much for reading the preview of the manual.
- You can download the complete manual from: www.heydownloads.com by clicking the link below



- Please note: If there is no response to CLICKING the link, please download this PDF first and then click on it.

CLICK HERE TO **DOWNLOAD** THE COMPLETE MANUAL