

1982 CX500TC Parts Manual

The data contained herein was collected from sources on the Internet freely available to the general public.

Disclaimer: The information contained herein is believed to be accurate but the user of this data assumes all risk associated with its usage.

CLICK HERE TO **DOWNLOAD** THE COMPLETE MANUAL

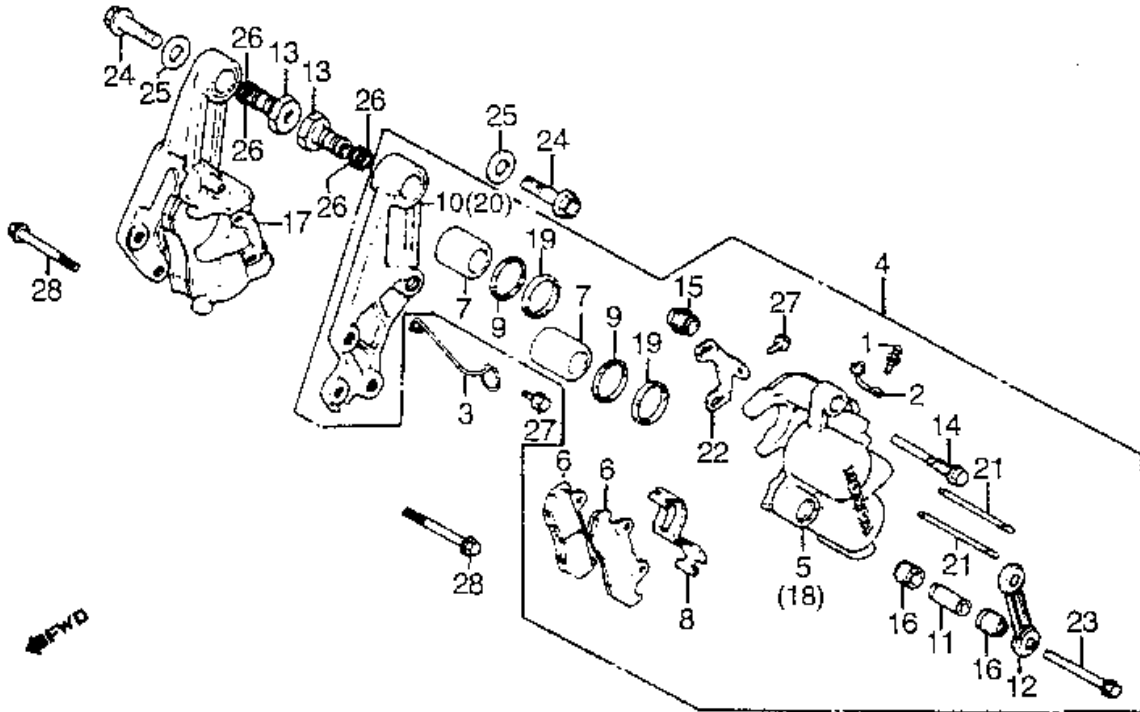
- Thank you very much for reading the preview of the manual.
- You can download the complete manual from: www.heydownloads.com by clicking the link below



- Please note: If there is no response to CLICKING the link, please download this PDF first and then click on it.

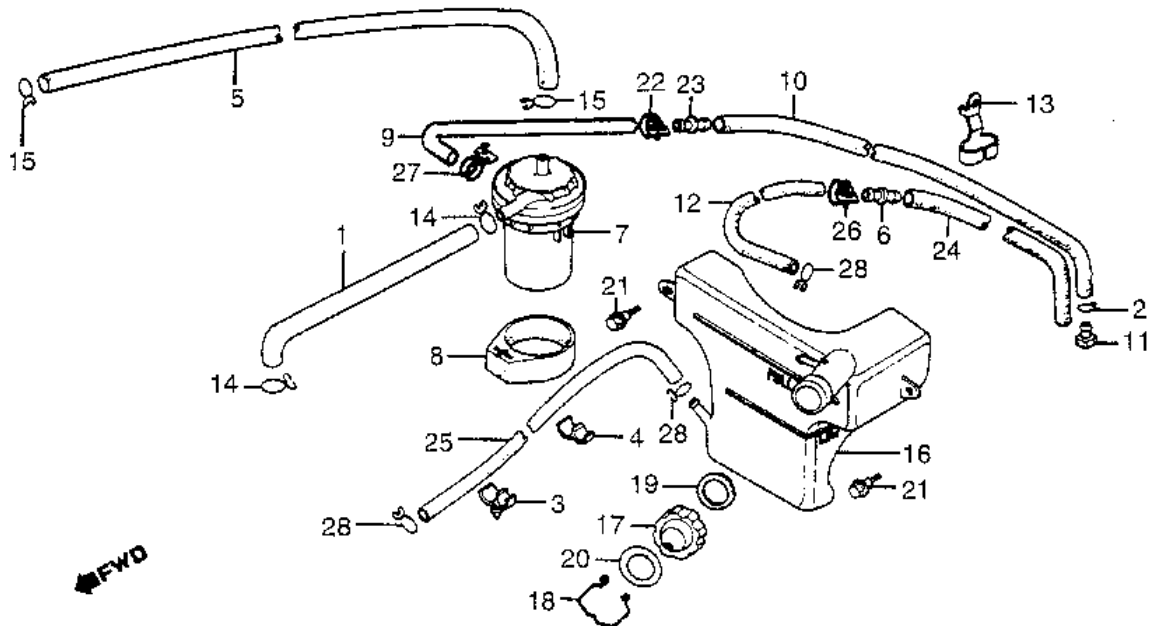
CLICK HERE TO **DOWNLOAD** THE COMPLETE MANUAL

Brake Caliper, Front



REF#	PART		#REQ
01	SCREW, BLEEDER	43352-568-003	002
02	CAP, BLEEDER	43353-461-771	002
03	CLAMP	44833-MC7-000	001
04	CALIPER, L. FR.	45100-MC7-016	
	(replaces	45100-MC7-006)	
	(replaces	45100-MC7-007)	001
05	CALIPER, L.	45101-MA3-006	001
06	PAD	45105-KL8-014	
	(replaces	45105-KL8-004)	
	(replaces	45105-MC7-004)	
	(replaces	45105-MC7-014)	004
07	PISTON	45107-MA3-006	004
08	SPRING, PAD	45108-MA3-006	002
09	DUST SEAL	45109-166-006	004
10	BRACKET, L. FR.	45110-MC7-006	001
11	SLEEVE	45111-MA3-006	002
12	BRIDGE	45113-MC7-610	002
13	SLEEVE, FR.	45114-MC7-611	002
14	PIN, BOLT	45131-MA3-006	002
15	BOOT B	45133-MA3-006	002
16	BOOT, PIN	45133-166-016	004
17	CALIPER, R. FR.	45200-MC7-016	
	(replaces	45200-MC7-006)	
	(replaces	45200-MC7-007)	001
18	CALIPER, R.	45201-MA3-006	001
19	SEAL, PISTON	45209-166-006	004
20	BRACKET, R. FR.	45210-MC7-006	001
21	PIN, HANGER	45215-MA3-006	004
22	PLATE	45217-MA3-006	002
23	BOLT, FLANGE (8X49)	90180-MA3-006	002
24	BOLT, FLANGE (10X50)	90185-MC7-013	
	(replaces	90185-MC7-003)	

Coolant Reserve Tank and Breather Separator

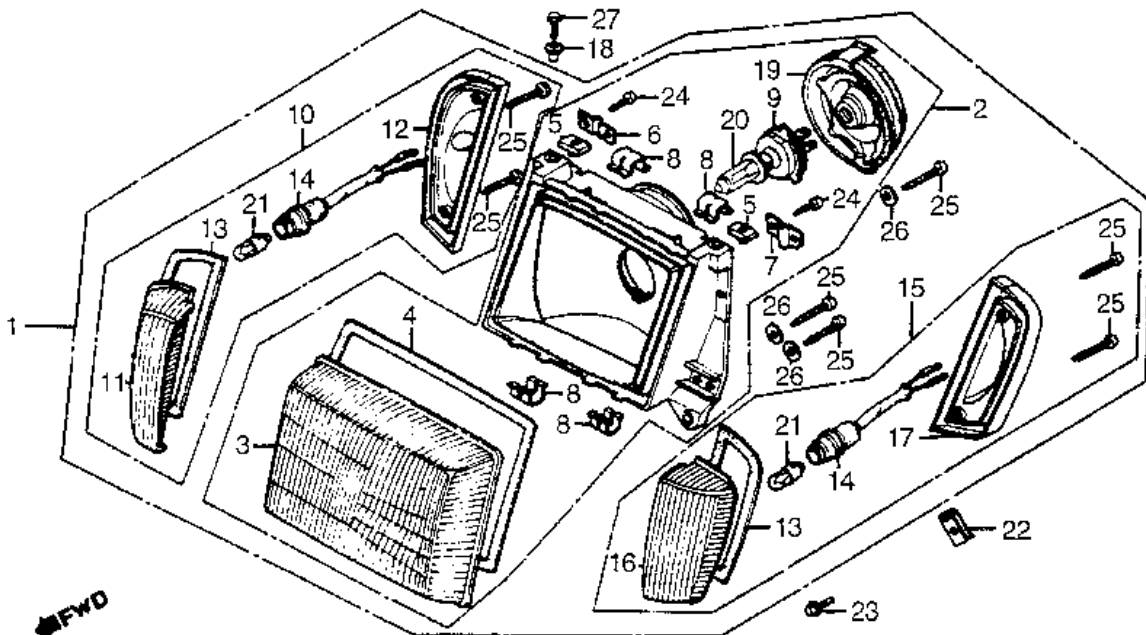


REF#	PART		#REQ
01	TUBE B, BREATHER	15761-MC7-000	001
02	CLIP, BREATHER TUBE	15772-292-010	001
03	CLIP C	17355-MC7-000	001
04	CLIP A	17357-MC7-000	001
05	TUBE, BREATHER	17358-MC7-000	001
06	JOINT, BREATHER TUBE	17359-419-670	001
07	SEPARATOR, BREATHER	17360-MC7-000	001
08	BAND	17366-435-000	001
09	TUBE C, DRAIN	17367-MC7-000	001
10	TUBE B, DRAIN	17369-MC7-000	001
11	PLUG, BREATHER TUBE	17370-382-870	001
12	TUBE A, FUEL	17371-MC7-000	001
13	GUIDE, DRAIN TUBE	17375-MC7-000	001
14	CLIP, SUB-TANK HOSE	17724-102-700	002
15	CLIP (16MM)	18534-634-670	002
16	TANK, RESERVE	19103-MA1-000	001
17	CAP, RESERVE TANK	19104-415-000	001
18	CABLE, CAP LOCK	19105-415-000	001
19	GASKET, RESERVE TANK	19106-415-000	001
20	LABEL, RESERVE TANK	87507-415-670	001
21	BOLT, FLANGE (6MM)	90111-162-000	002
22	CLIP, TUBE	91462-393-780	001
23	JOINT, TUBE	91463-393-780	001
24	BULK HOSE (7.5X8000)	95001-75008-60M	001
25	BULK HOSE (7.5X8000)	95001-75008-60M	001
26	CLIP, TUBE (A15)	95002-01150	001
27	CLIP, TUBE (A16)	95002-01160	001
28	CLIP, TUBE (B12)	95002-02120	003

20 BOLT, FLANGE (8X40) 95701-08040-00
(replaces 95700-08040-00) 002

33	BOOT, PISTON CASE	51442-MC7-003	004
34	WASHER R SIDE	51443-MC7-505	
	(replaces	51443-MC7-003)	001
34	WASHER, R. SIDE	51443-MC7-013	001
35	WASHER B, SIDE	51444-MC7-505	
	(replaces	51444-MC7-003)	001
35	WASHER, L. SIDE	51444-MC7-013	001
36	HOLDER, BOOT	51445-MC7-003	004
37	CIRCLIP (50MM)	51447-461-003	002
38	BOLT ASSY., FR. FORK	51450-MC7-003	001
39	VALVE, AIR	51456-469-013	001
40	MARK, FR. FORK	51496-MC7-670	002
41	S/ABS ASSY., L. FR.	51500-MC7-670	
	(replaces	51500-MC7-003)	001
42	CASE, L. (LOWER)	51521-MC7-013	
	(replaces	51521-MC7-003)	001
43	CASE, L. PISTON	51530-MC7-013	001
44	BOLT, L. FR. FORK	51555-461-003	001
45	HOLDER, AXLE	51634-MC7-003	002
46	HOSE, FR. FORK JOINT	53137-MC7-003	001
47	CONNECTOR	53139-463-000	001
48	LABEL, FR.	87509-MC7-610	001
49	BOLT, STUD (8X53)	90102-MC7-003	004
50	BOLT, SOCKET (8X27)	90116-383-721	
	(replaces	90116-283-010)	002
51	BOLT, SOCKET (6X18)	96700-06018-17	
	(replaces	90118-MC7-003)	008
52	GASKET, FR.	90543-273-000	002
53	WASHER (8MM)	90544-283-000	002
54	DUST SEAL	91254-KAZ-003	
	(replaces	91254-461-003)	
	(replaces	91254-461-004)	002
55	OIL SEAL (37X50X11)	91255-461-003	
	(replaces	91255-461-004)	002
56	O-RING (5.8X1.9)	91305-323-000	
	(replaces	91301-469-003)	003
56	O-RING (5.6X1.9)	91318-ME5-003	003
57	O-RING E (33.5X2)	91306-MC7-003	002
58	O-RING (13.8X2.4)	91311-PH7-003	
	(replaces	91308-MC7-003)	002
59	O-RING (53.8X3.1)	91302-657-000	
	(replaces	91309-MC7-003)	
	(replaces	91309-PC6-003)	002
60	O-RING (6.8X1.9)	91306-PJ4-000	
	(replaces	91310-MC7-003)	002
61	O-RING (29X2.4)	91344-PC9-004	
	(replaces	91356-371-000)	002
62	BOLT, HEX. (6X8)	92101-06008-0A	
	(replaces	92000-06008-0A)	002
63	SCREW, PAN (4X10)	93500-04010-1B	004
63	SCREW, FLAT (4X10)	93600-04010-1B	004
64	SCREW, PAN (5X10)	93500-05010-0A	
	(replaces	93500-05010-1A)	
	(replaces	93510-05010-0A)	002
65	NUT, HEX. (8MM)	94030-08000	004
66	WASHER, PLAIN (8MM)	94101-08000	004
67	WASHER, SPRING (8MM)	94111-08000	004
68	BALL (#5) (5/32)	96211-05000	002

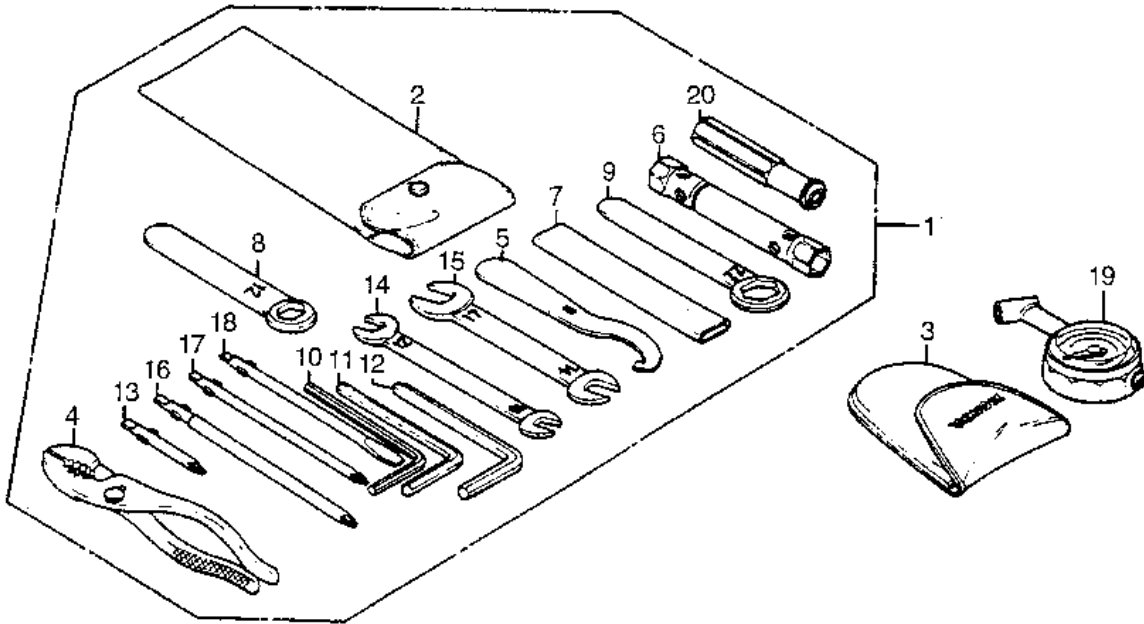
Light, Front Combination



REF#	PART		#REQ
01	LIGHT ASSY., FR.	33100-MC7-672	001
02	HEADLIGHT ASSY.	33101-MC7-671	001
03	LENS, HEADLIGHT	33102-MC7-671	001
04	GASKET, HEADLIGHT	33103-MC7-611	001
05	NUT (6MM)	33109-MC7-611	002
06	HOLDER A	33111-MC7-611	001
07	HOLDER B	33112-MC7-611	001
08	CLIP, LENS HOLDER	33113-MC7-611	004
09	HLDR, HEADLIGHT BULB	33114-MC7-611	001
10	LIGHT, R. POSITION	33160-MC7-601	001
11	LENS, R.	33161-MC7-611	001
12	HOUSING, R.	33162-MC7-601	001
13	GASKET, POSITION	33163-MC7-611	002
14	SOCKET ASSY.	33164-MC7-601	002
15	LIGHT, L. POSITION	33170-MC7-601	001
16	LENS, L.	33171-MC7-611	001
17	HOUSING, L.	33172-MC7-601	001
18	COLLAR, TAILLIGHT	33713-428-610	002
19	COVER, RUBBER	33905-MC7-611	001
20	BULB (12V60/55W)	34901-MC7-601AH	
	(replaces	34901-371-601)	
	(replaces	34901-MC7-601)	001
21	BULB (12V4W) (T8/4)	34903-388-611	002
22	NUT, CLIP (6MM)	64529-MC7-000	002
23	BOLT B, A/CLNR HSG	90114-428-900	002
24	SCREW, TAP (4X10)	93901-34220	006
25	SCREW, TAP (5X20)	93901-35420	010
26	WASHER, PLAIN (5MM)	94101-05800	006
27	BOLT, FLANGE (6X16)	95701-06016-00	
	(replaces	95700-06016-00)	002

25	BOLT, CUSHION ARM	90186-MC7-000	002
26	BOLT D, FLANGE	90189-MA2-000	001
27	NUT, AXLE (10MM)	90304-GA6-003	005
28	CLIP, HOSE	90662-MA1-003	001
29	OIL SEAL	91257-MC7-003	001
30	SEAL, RR.	91262-MA0-015	
		(replaces 91262-MA0-013)	006
31	DUST SEAL	91262-MB2-005	
		(replaces 91262-MA1-005)	002
32	O-RING (5.8X1.9)	91305-323-000	
		(replaces 91301-469-003)	002
32	O-RING (5.6X1.9)	91318-ME5-003	002

Tools



REF#	PART		#REQ
01	TOOL SET	89010-MC7-000	001
02	TOOL BAG	89101-MC7-000	001
02	BAG, TOOL	89101-ME5-670	001
03	BAG, AIR PRES GA	89102-469-003	001
04	PLIERS (150)	89210-422-000	001
05	WRENCH, PIN	89215-422-000	001
06	WRENCH (18.5X17)	89216-415-000	001
06	WRENCH (18.5X17)	89216-MC7-000	001
07	HANDLE (120MM)	89217-422-000	001
08	WRENCH, EYE (12)	89218-MC7-000	001
09	WRENCH, EYE (22MM)	89218-422-000	001
10	WRENCH, HEX. (6MM)	89221-422-000	001
11	WRENCH, HEX. (8MM)	89222-422-000	001
12	WRENCH, HEX. (10MM)	89223-MC7-000	001
13	SCREWDRIVER 4	89224-MC7-000	001
14	SPANNER (10X12)	89225-422-000	001
15	WRENCH (14X17)	89226-422-000	001
16	SCREWDRIVER 1	89227-MC7-000	001
17	SCREWDRIVER 3	89228-422-000	001
18	SCREWDRIVER 2	89229-422-000	001
19	GAUGE, AIR PRESSURE	89301-MN5-003	001
	(replaces	89301-463-771)	001
20	GRIP	99003-50000	001

CLICK HERE TO **DOWNLOAD** THE COMPLETE MANUAL

- Thank you very much for reading the preview of the manual.
- You can download the complete manual from: www.heydownloads.com by clicking the link below



- Please note: If there is no response to CLICKING the link, please download this PDF first and then click on it.

CLICK HERE TO **DOWNLOAD** THE COMPLETE MANUAL