

INPUT SHAFT

Ref	Part Number	Part Name	Qty	IC	S/N	Lbs	Remarks
080	3C211-23200	ASSY CLUTCH SHUTTLE	1			27.06	
090	3C291-28080	KEY FEATHER	1	>>	>=52729	0	
090	05712-00755	KEY FEATHER	1		<=52728	0.048	
100	3C211-23340	GEAR	1			2.31	29T
110	08101-06007	BEARING BALL	2		<=54239	0.352	
110	6A700-16510	BEARING BALL	2	NI	>=54240	0.33	
120	3C211-23460	COLLAR	1		<=51720	0.151	19.5mm
120	3C211-23462	COLLAR	1	>>	>=51721	0.151	19.5mm
130	T2050-23460	BEARING BALL	1			0.616	

CLICK HERE TO **DOWNLOAD** THE COMPLETE MANUAL

- Thank you very much for reading the preview of the manual.
- You can download the complete manual from: www.heydownloads.com by clicking the link below



- Please note: If there is no response to CLICKING the link, please download this PDF first and then click on it.

CLICK HERE TO **DOWNLOAD** THE COMPLETE MANUAL

THIRD SHAFT

Ref	Part Number	Part Name	Qty	IC	S/N	Lbs	Remarks
070	TC220-22160	BEARING BALL	1			0.418	
080	3C001-31232	GEAR	1			5.17	44-21T
090	3A152-31220	BEARING NEEDLE	2			0.081	
100	3C001-24780	COLLAR	1			0.017	
110	3C001-31240	GEAR	1			5.72	44T
120	08101-06914	BEARING BALL	1			0.765	
130	04611-01000	CIR CLIP INTERNAL	1			0.092	
140	3C001-31362	COUPLING	1			0.363	
150	36280-41150	WASHER THRUST	1			0.088	
160	TD030-12540	BEARING BALL	1			0.99	
170	3C001-32010	COUPLING	1			0.484	

PTO CLUTCH

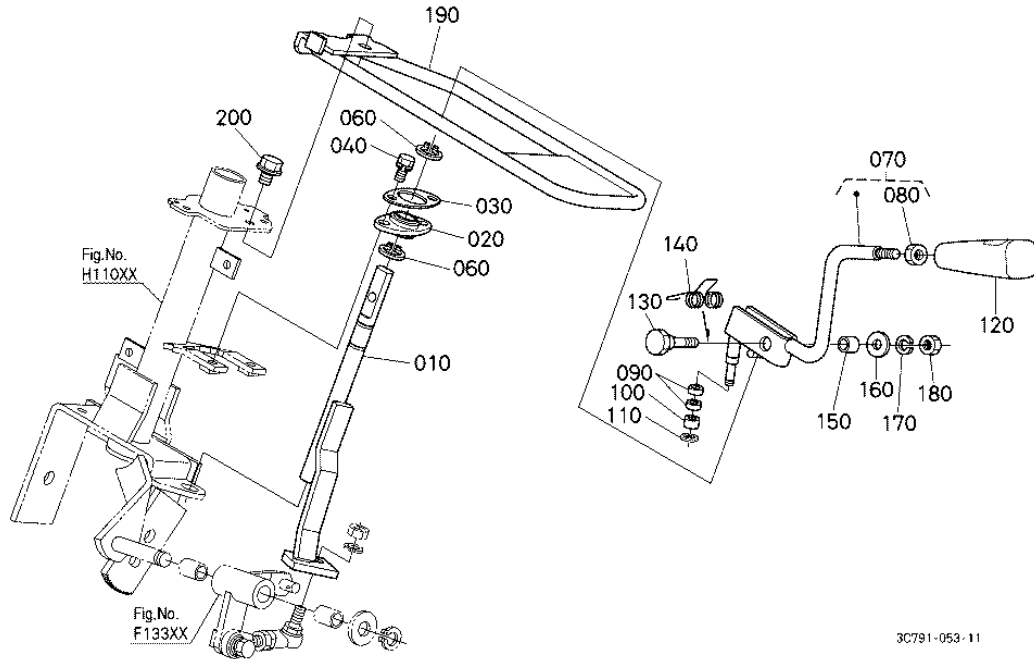
Ref	Part Number	Part Name	Qty	IC	S/N	Lbs	Remarks
070	3C001-27000	ASSY CLUTCH PTO	1			13.42	
080	3C081-27290	PIN STRAIGHT	3			0.044	
090	3C081-27370	PLATE BRAKE	1			0.319	
100	3C081-27380	DISK BRAKE	1			0.891	
110	TA040-69160	BEARING NEEDLE	1			0.063	
120	3G700-27372	RING SEAL	3			0.002	
130	08101-06007	BEARING BALL	1			0.352	
140	33740-27292	CIR CLIP EXTERNAL	1			0.015	

RANGE GEAR SHIFT FORK

Ref	Part Number	Part Name	Qty	IC	S/N	Lbs	Remarks
070	52200-15670	SEAL OIL	1			0.011	
080	3C501-29853	LEVER RANGE SHIFT	1	>>	>=52639	0.88	
080	3C501-29852	LEVER RANGE SHIFT	1		<=52638	0.88	
090	05411-00635	PIN SPRING	1			0.011	
100	30442-15310	PIN SPRING	1			0.011	
110	34070-24350	STOPPER	1			0.044	
120	01754-50812	BOLT FLANGE	1			0.022	

SHUTTLE SHIFT LEVER

Figure Num 01F12502

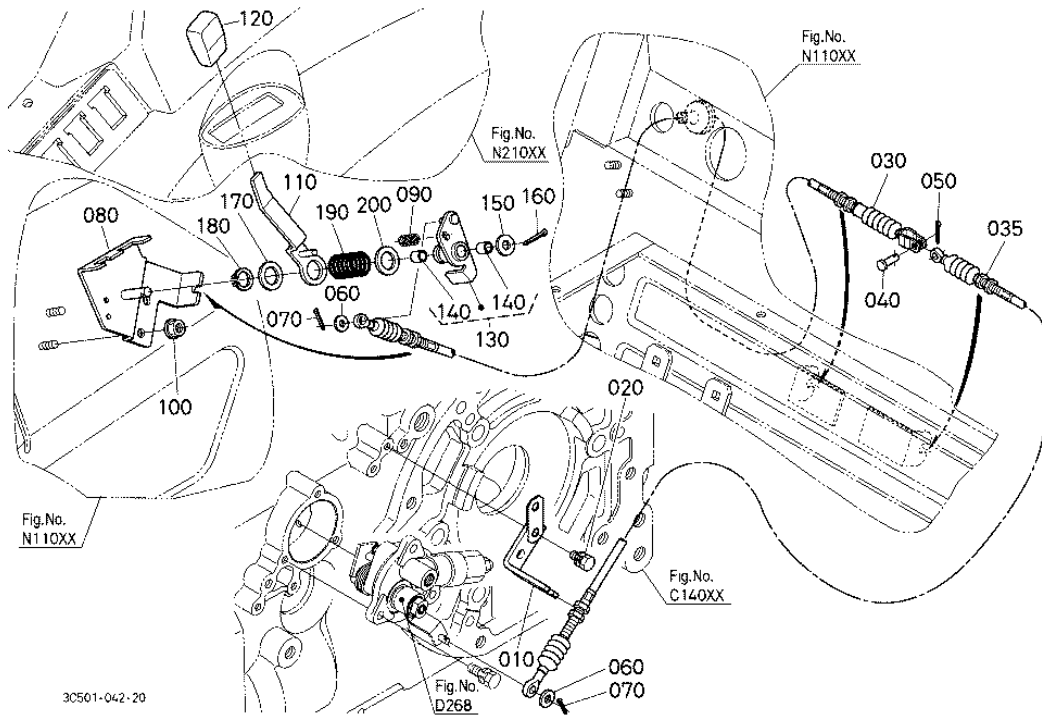


SHUTTLE SHIFT LEVER

Ref	Part Number	Part Name	Qty	IC	S/N	Lbs	Remarks
010	3C791-43540	SHAFT SHUTTLE	1			0.891	
020	TA040-43870	BEARING FLANGE	1			0.044	
030	3C081-34450	PLATE BEARING	1			0.044	
040	01023-50618	BOLT	2			0.013	
060	04612-00150	CIR CLIP EXTERNAL	2			0.002	
070	3C791-34443	LEVER SHUTTLE	1		<=50512	0.682	
070	3C791-34444	LEVER SHUTTLE	1	>>	>=50513	0.682	

PTO CLUTCH LEVER

Figure Num 01F145

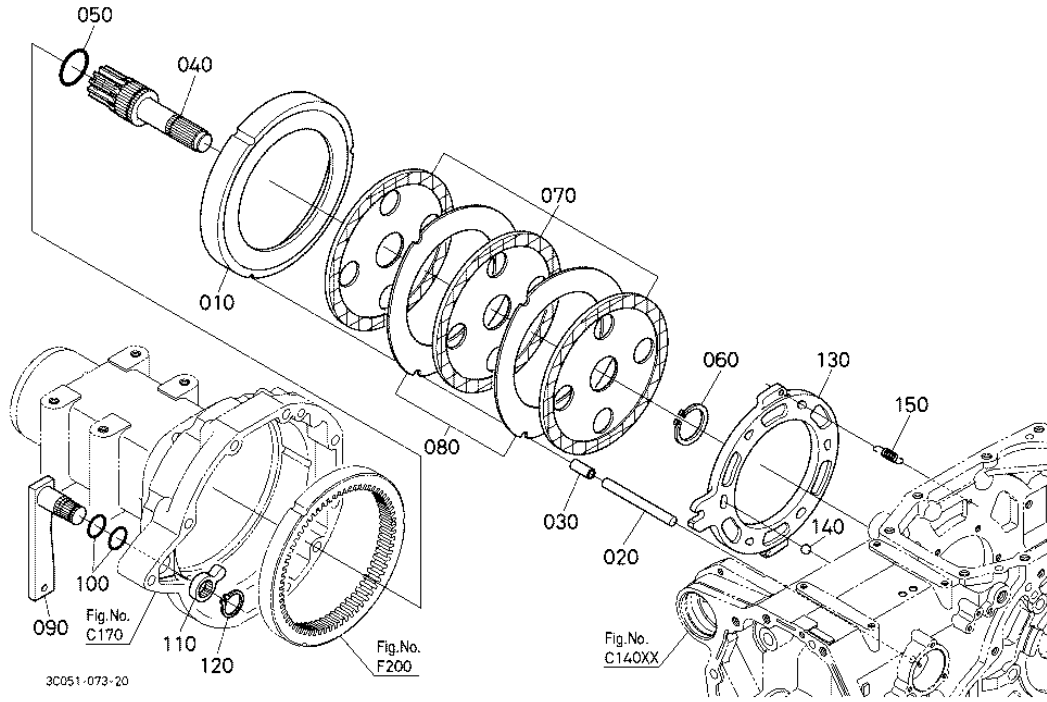


PTO CLUTCH LEVER

Ref	Part Number	Part Name	Qty	IC	S/N	Lbs	Remarks
010	3C001-27792	STAY WIRE	1			0.187	
020	01123-60816	BOLT	2			0.022	
030	3C501-27742	WIRE PTO	1			0.308	
035	3C501-27750	WIRE PTO VALVE	1			0.275	
040	05122-50614	PIN JOINT	1			0.008	
050	05511-51612	PIN SPLIT	1			0.002	
060	04012-50060	WASHER PLAIN	2			0.002	

BRAKE RH

Figure Num 01F206



BRAKE RH

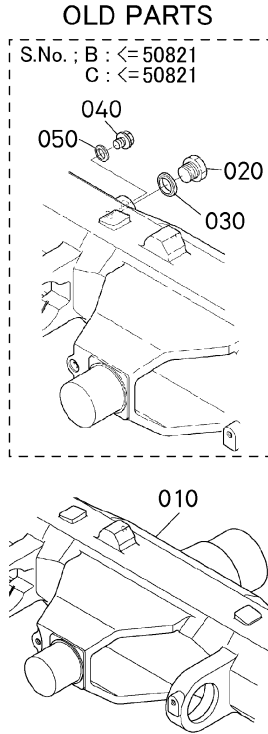
Ref	Part Number	Part Name	Qty	IC	S/N	Lbs	Remarks
010	3C011-65120	PLATE STOPPER	1	NI	>=52300	8.8	
010	3C001-65120	PLATE STOPPER	1		<=52299	9.24	
020	3C081-48410	PIN BRAKE	3			0.165	
030	3A011-65160	COLLAR	3			0.030	
040	3C001-48460	GEAR-SHAFT BRAKE	1			4.312	12T
050	04816-08480	O RING	1			0.011	
060	04612-00550	CIR CLIP EXTERNAL	1			0.022	

BRAKE PEDAL

Ref	Part Number	Part Name	Qty	IC	S/N	Lbs	Remarks
060	3C501-44110	PEDAL BRAKE LH	1		<=52790	3.08	
070	08511-02520	BUSH	2			0.044	

FRONT DIFFERENTIAL CASE

Figure Num 01G15001



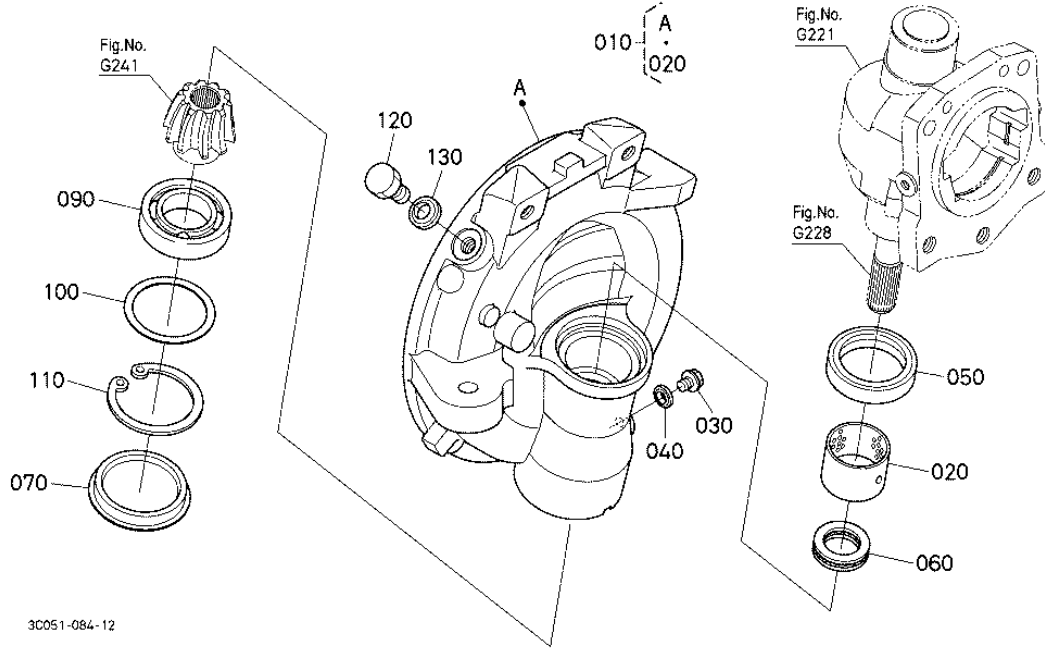
3C211-801-11

FRONT DIFFERENTIAL CASE

Ref	Part Number	Part Name	Qty	IC	S/N	Lbs	Remarks
010	3C051-42153	CASE FRONT AXLE	1	>>	>=53679	92.4	
010	3C051-42150	CASE FRONT AXLE	1		<=53678	92.4	
020	06331-35020	PLUG	1			0.149	
030	04717-02000	WASHER WITH RUBBER	1			0.008	
040	06331-45010	PLUG	1			0.044	
050	04717-01000	WASHER WITH RUBBER	1			0.002	

FRONT AXLE CASE RH

Figure Num 01G223



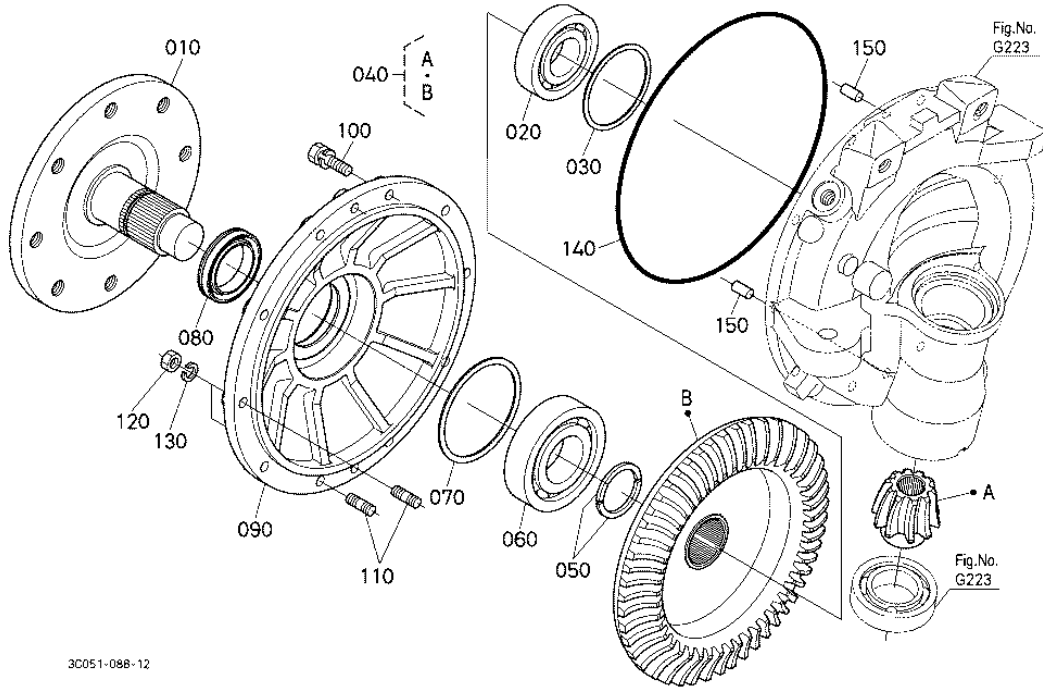
3C051-084-12

FRONT AXLE CASE RH

Ref	Part Number	Part Name	Qty	IC	S/N	Lbs	Remarks
010	3C011-43660	ASSY CASE GEAR R	1			34.76	
020	52200-22280	BUSH	1			0.242	
030	06331-45010	PLUG	2		<=53202	0.044	
030	06331-45010	PLUG	1		>=53203	0.044	
040	04717-01000	WASHER WITH RUBBER	2		<=53202	0.002	
040	04717-01000	WASHER WITH RUBBER	1		>=53203	0.002	
050	33670-43360	SEAL OIL	1			0.22	

FRONT AXLE RH

Figure Num 01G241



3C051-088-12

FRONT AXLE RH

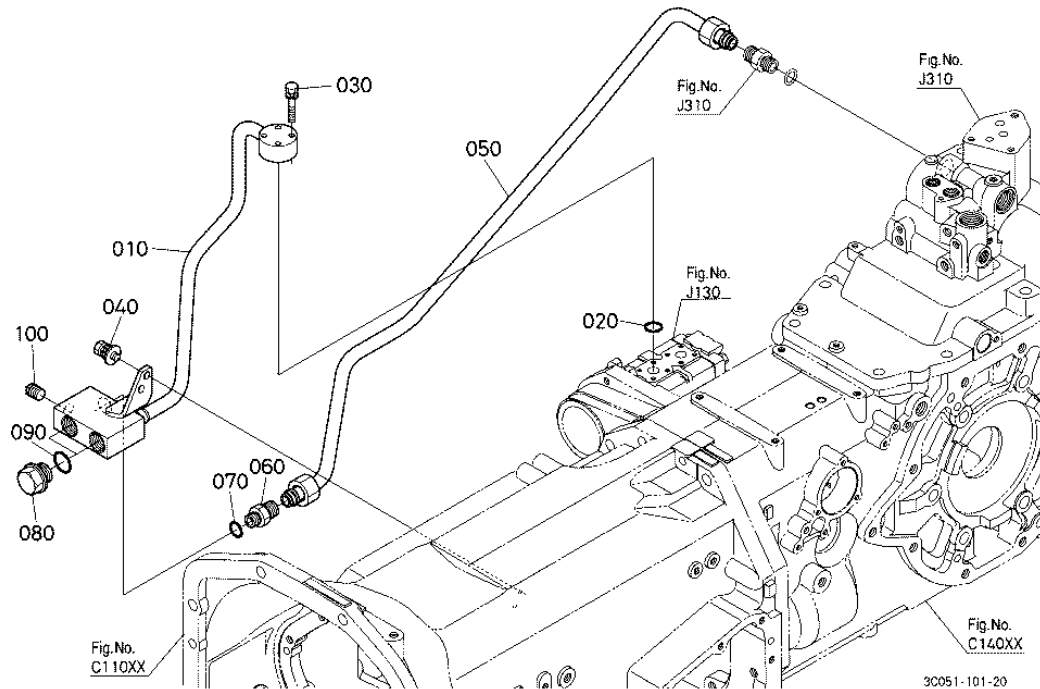
Ref	Part Number	Part Name	Qty	IC	S/N	Lbs	Remarks
010	3C011-43710	AXLE FRONT	1			16.72	
020	08101-06308	BEARING BALL	1			1.399	
030	3A021-44060	SHIM	1			0.035	1.2mm
030	3A021-44050	SHIM	1			0.030	1.0mm
030	3A021-44040	SHIM	1			0.024	0.8mm
030	3A021-44030	SHIM	1			0.019	0.6mm
030	3A021-44020	SHIM	1			0.013	0.4mm

STEERING JOINT

Ref	Part Number	Part Name	Qty	IC	S/N	Lbs	Remarks
080	04611-00470	CIR CLIP INTERNAL	1			0.013	
090	04612-00200	CIR CLIP EXTERNAL	2			0.002	
100	3C581-63420	JOINT UNIVERSAL	1			1.111	
110	01123-50825	BOLT	1			0.028	
120	3G700-63410	JOINT UNIVERSAL	1			1.276	
130	06613-10010	NIPPLE GREASE	1			0.013	
140	01123-50825	BOLT	1			0.028	

HYDRAULIC PIPE (DELIVERY)

Figure Num 01J220



HYDRAULIC PIPE (DELIVERY)

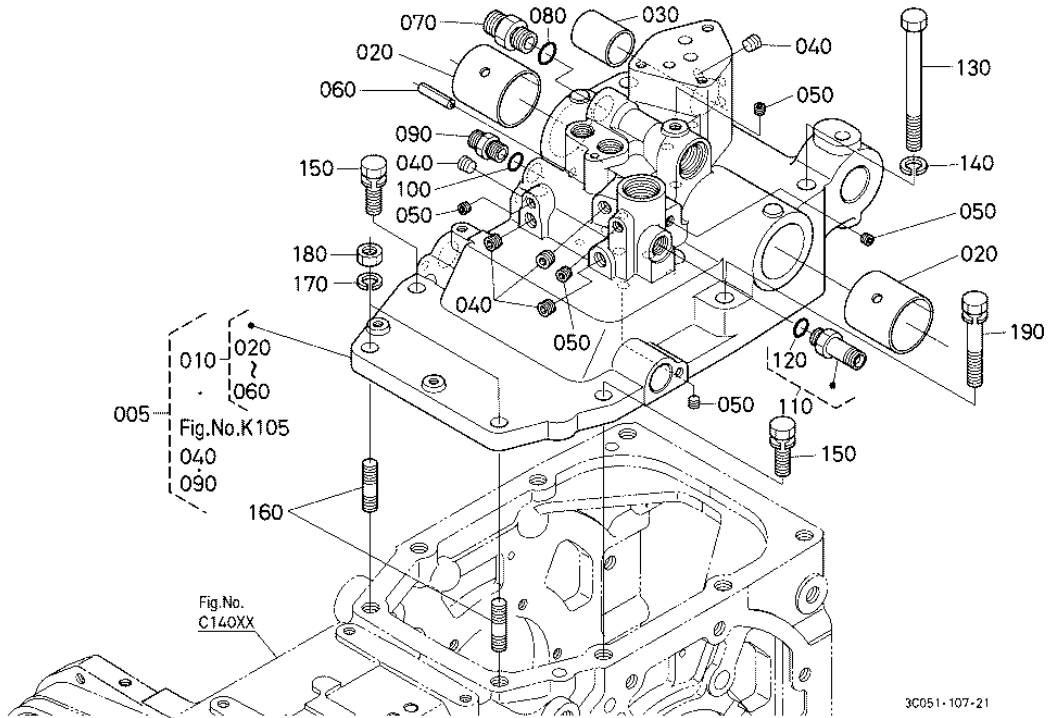
Ref	Part Number	Part Name	Qty	IC	S/N	Lbs	Remarks
010	3C001-82735	COMP.PIPE DELIVERY	1			3.96	
020	35880-63650	O RING	1			0.002	
030	01023-60640	BOLT	4			0.022	
040	01125-60820	BOLT	2			0.033	
050	3C001-82742	COMP.PIPE DELIVERY	1			1.32	
060	06012-51543	JOINT PIPE	1			0.176	
070	04816-00180	O RING	1			0.004	

HYDRAULIC OIL LINE (STEERING/PTO) [NEW TYPE]

Ref	Part Number	Part Name	Qty	IC	S/N	Lbs	Remarks
080	T1270-33580	SUPPORT P/S PIPE	1			0.154	
090	T1270-33590	TUBE PS PIPE	1			0.013	
100	01754-50812	BOLT FLANGE	1			0.022	

HYDRAULIC CYLINDER

Figure Num 01J310



HYDRAULIC CYLINDER

Ref	Part Number	Part Name	Qty	IC	S/N	Lbs	Remarks
005	3C001-97060	KIT CASE COVER	1			0	
010	3C001-82124	ASSY CASE COVER	1		<=52299	0	ORDER BY REF.No.00
010	3C001-82125	ASSY CASE COVER	1	>>	>=52300	43.34	ORDER BY REF.No.00
010	3C001-82127	ASSY CASE COVER	1	>>	>=53106	0.002	
020	3C001-82410	BUSH	2			0.264	
030	52600-23190	BUSH	1			0.088	
040	36741-94022	PLUG TAPER	5			0.022	

LOWERRING LOCK LEVER

Figure Num 01J32301

OLD PARTS



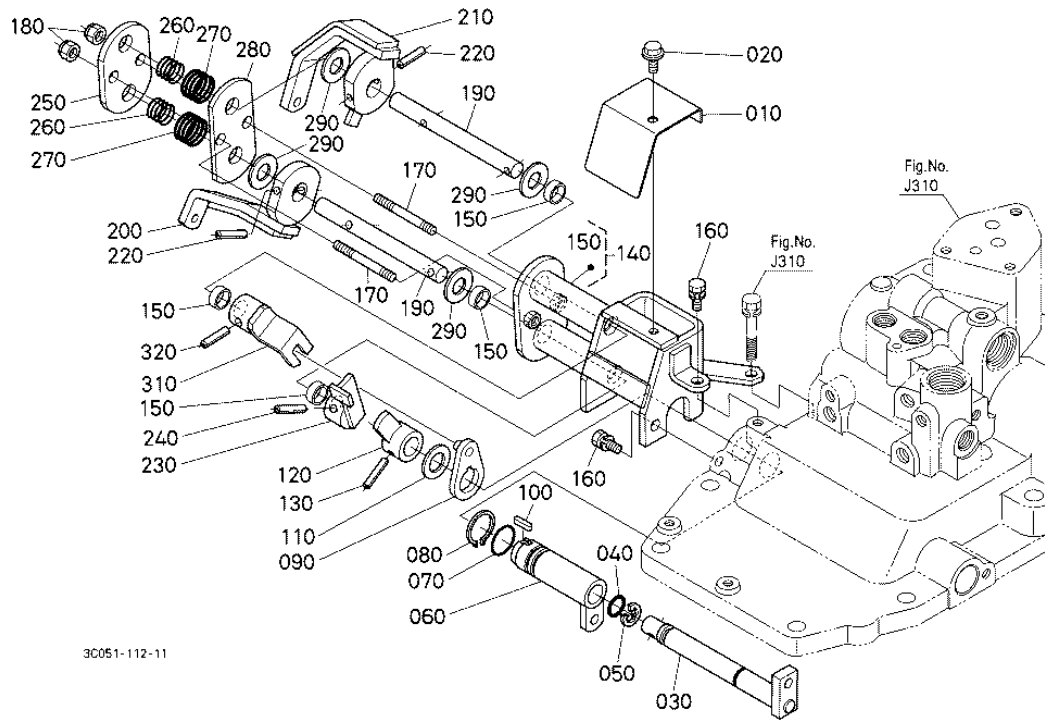
3C791-806-10

LOWERRING LOCK LEVER

Ref	Part Number	Part Name	Qty	IC	S/N	Lbs	Remarks
110	3C581-81673	SHAFT	1	>>	>=50822	0.396	
110	3C581-81672	SHAFT	1		<=50821	0.391	

POSITION AND DRAFT SHAFT

Figure Num 01J38201



POSITION AND DRAFT SHAFT

Ref	Part Number	Part Name	Qty	IC	S/N	Lbs	Remarks
010	3C081-81190	COVER GUIDE	1			0.22	
020	01754-50610	BOLT FLANGE	1			0.013	
030	3C001-81110	SHAFT CONTROL	1			0.528	
040	04816-00120	O RING	1			0.002	
050	04613-50150	CIR CLIP EXTERNAL	1			0.008	
060	3C081-81120	SHAFT CONTROL	1			0.382	
070	04816-00200	O RING	1			0.006	

CLICK HERE TO **DOWNLOAD** THE COMPLETE MANUAL

- Thank you very much for reading the preview of the manual.
- You can download the complete manual from: www.heydownloads.com by clicking the link below

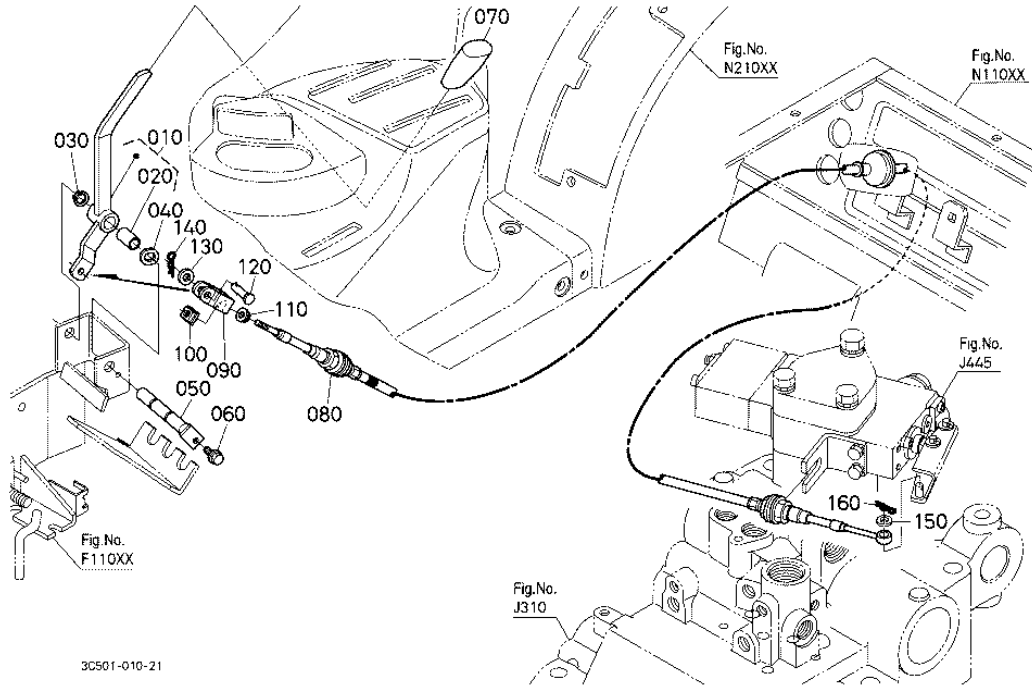


- Please note: If there is no response to CLICKING the link, please download this PDF first and then click on it.

CLICK HERE TO **DOWNLOAD** THE COMPLETE MANUAL

AUXILIARY CONTROL VALVE LEVER

Figure Num 01J455



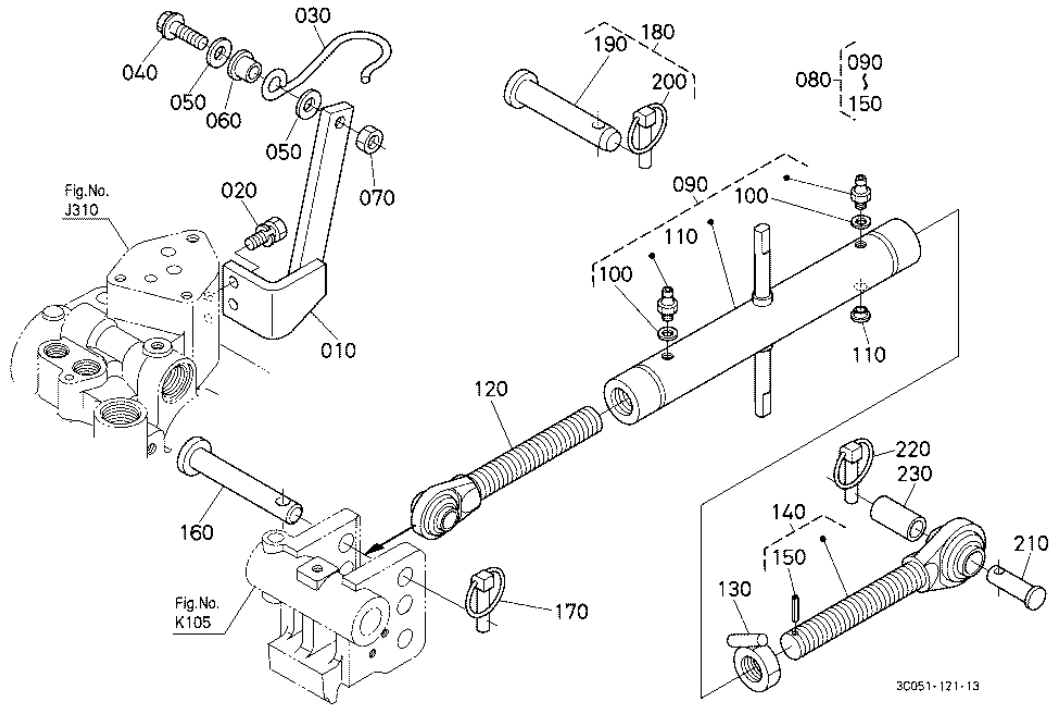
3C501-010-21

AUXILIARY CONTROL VALVE LEVER

Ref	Part Number	Part Name	Qty	IC	S/N	Lbs	Remarks
010	3C581-82430	ASSY LEVER AUX.CON.	1			0.418	
020	08511-01220	BUSH	1			0.008	
030	04612-00120	CIR CLIP EXTERNAL	1			0.002	
040	36919-92360	WASHER WAVE	1			0.002	
050	3C081-82930	SHAFT AUX.CONT.VALVE	1			0.165	
060	3G710-71140	BOLT	1			0.011	
070	3P300-43560	GRIP LEVER	1			0.077	

TOP LINK

Figure Num 01K110

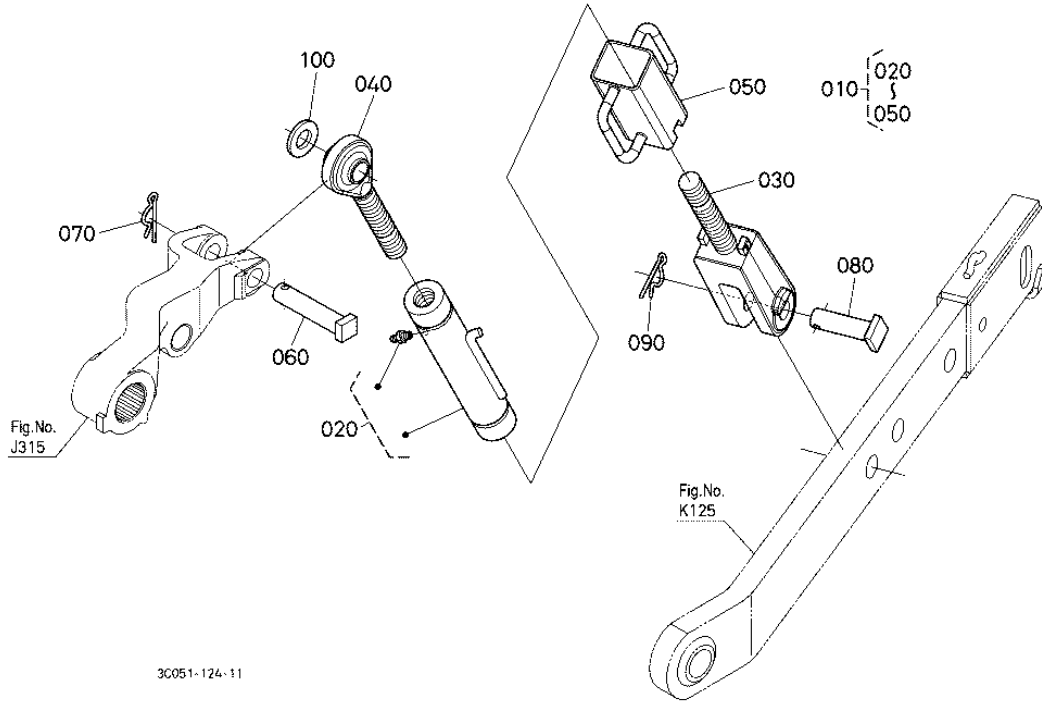


TOP LINK

Ref	Part Number	Part Name	Qty	IC	S/N	Lbs	Remarks
010	3C001-82530	HOLDER TOP LINK	1			1.144	
020	01123-50820	BOLT	2			0.024	
030	3A651-91960	SUPPORT TOP LINK	1			0.253	
040	01754-50835	BOLT FLANGE	1			0.041	
050	04015-60080	WASHER PLAIN	2			0.022	
060	34070-41630	CUSHION RUBBER	1			0.011	
070	02114-50080	NUT	1			0.011	

LIFT ROD RH

Figure Num 01K140

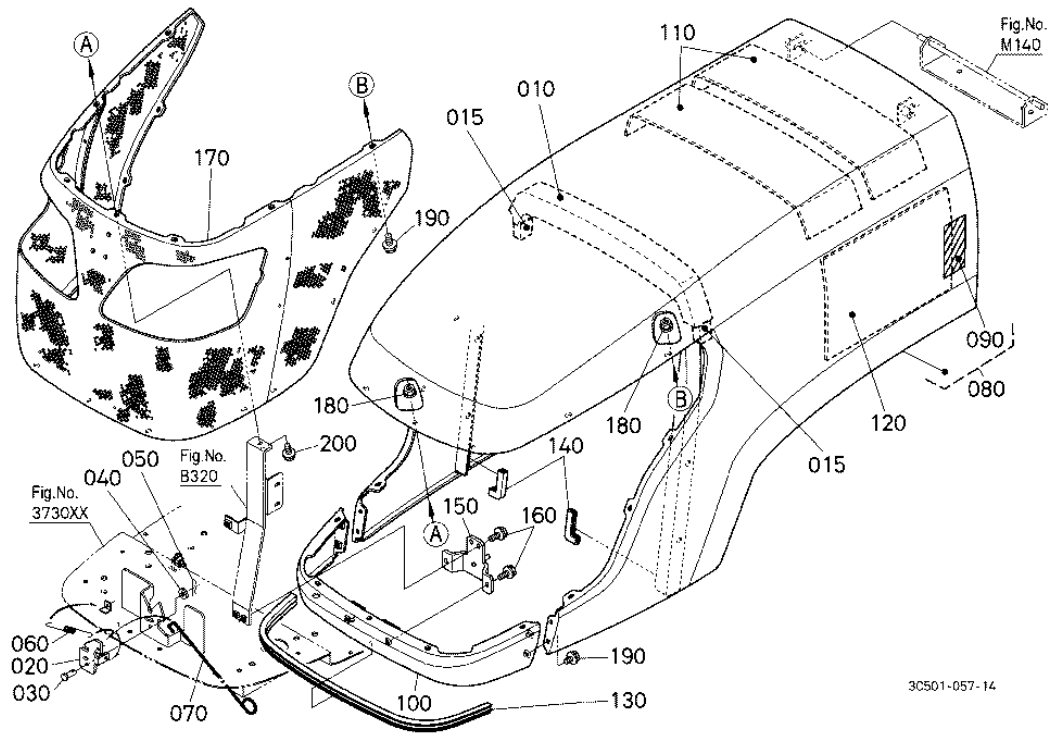


LIFT ROD RH

Ref	Part Number	Part Name	Qty	IC	S/N	Lbs	Remarks
010	3C001-91232	ASSY ROD LIFT RH	1			11.66	
020	3C001-91270	ASSY SLEEVE LIFT ROD	1			0	
030	3C001-91260	ROD LIFT	1			0	
040	3C001-91240	ROD LIFT	1			0	
050	3C001-91320	HANDLE LIFT ROD	1			0	
060	3A151-91540	PIN LIFT ROD	1			0.671	
070	33251-91860	PIN SET	1			0.050	

HOOD(BONNET) UPPER

Figure Num 01M120

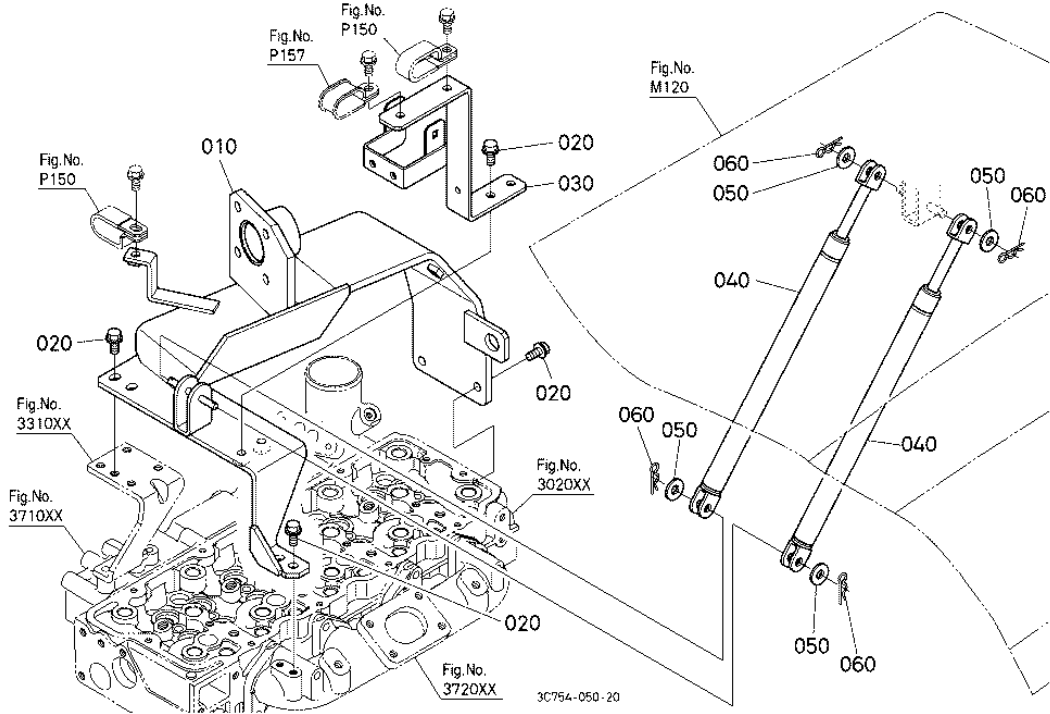


HOOD(BONNET) UPPER

Ref	Part Number	Part Name	Qty	IC	S/N	Lbs	Remarks
010	3C501-17172	SPONGE UPPER	1	>>	>=51502	0.352	
010	3C501-17170	SPONGE UPPER	1		<=51501	0	
015	3C501-17180	SPONGE	2			0.004	
020	3C081-21790	BRACKET LOCK	1		<=52419	0	
020	3C081-21792	BRACKET LOCK	1	>>	>=52420	0.242	
030	05122-50614	PIN JOINT	1			0.008	
040	04015-60060	WASHER PLAIN	1			0.011	

HOOD(BONNET) DAMPER ## S.No.;>=80001

Figure Num 01M12302

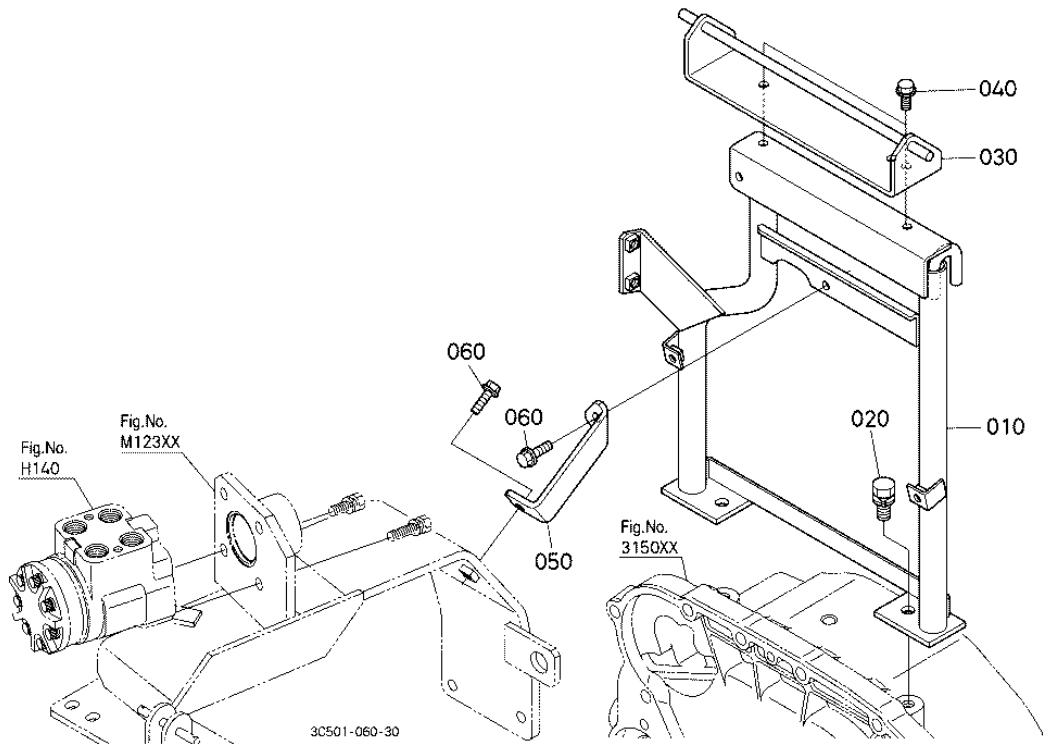


HOOD(BONNET) DAMPER

Ref	Part Number	Part Name	Qty	IC	S/N	Lbs	Remarks
010	3C502-83342	BRACKET CONTROLLER	1			0	
020	01754-50816	BOLT FLANGE	6			0.024	
030	3C502-83412	STAY HOSE	1			0	
040	3C081-83310	DAMPER BONNET	2			0.957	
050	04013-60080	WASHER PLAIN	4			0.004	
060	05516-50800	PIN SNAP	4			0.004	

BONNET SUPPORT [NEW TYPE] ## S.No.;>=80001

Figure Num 01M14002

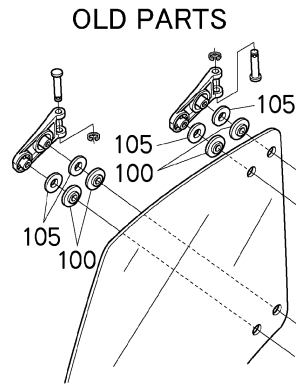


BONNET SUPPORT [NEW TYPE]

Ref	Part Number	Part Name	Qty	IC	S/N	Lbs	Remarks
010	3C754-83590	SUPPORT BONNET REAR	1			0	
020	01133-51225	BOLT	2			0.077	
030	3C581-83652	SUPPORT BONNET REAR	1			2.31	
040	01754-50816	BOLT FLANGE	2			0.024	
050	3C502-83580	STAY P/S	1			0	
060	01754-50825	BOLT FLANGE	2			0.022	

DOOR RH ## NOTE:ORDER BY REF.No.010 to 030 and 100,105 NEW PARTS.

Figure Num 01N125



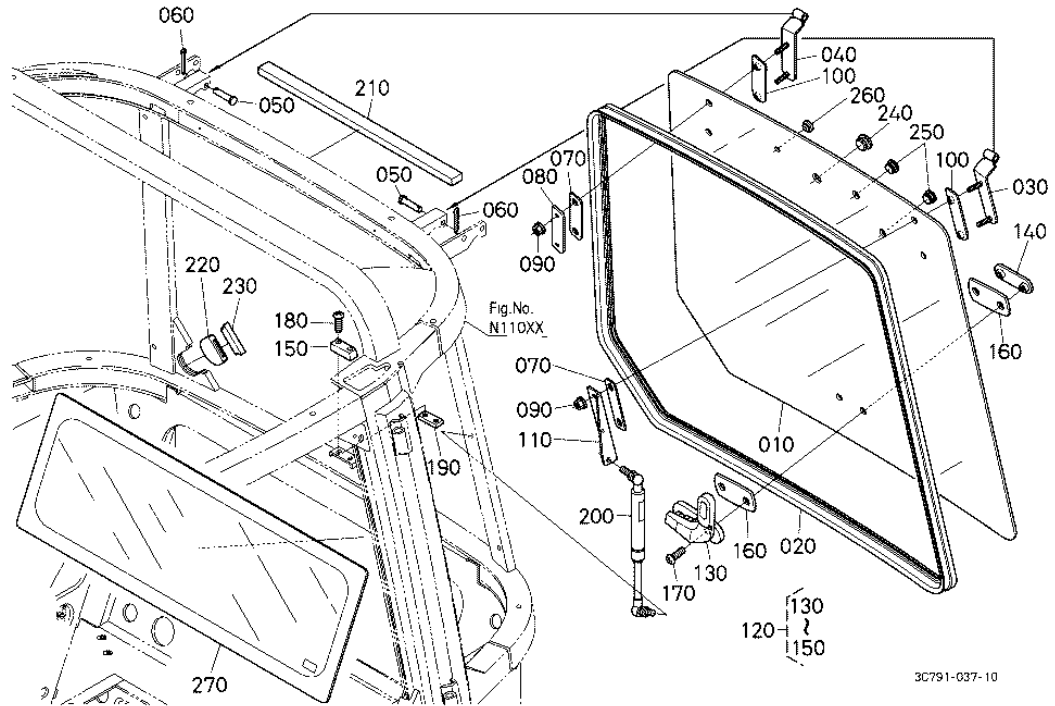
3C501-829-10

DOOR RH

Ref	Part Number	Part Name	Qty	IC	S/N	Lbs	Remarks
100	3C581-70800	GASKET DOOR HINGE	2	>>	>=51721	0.033	
100	T0270-70800	GASKET DOOR HINGE	4		<=51720	0.024	
105	3C581-70810	GASKET DOOR HINGE	2	>>	>=51721	0.044	
105	3C581-70850	WASHER PLAIN	4		<=51720	0.066	

REAR WINDOW [A] ## NOTE:ORDER BY REF.No.020,030 and 040 NEW PARTS.

Figure Num 01N15001

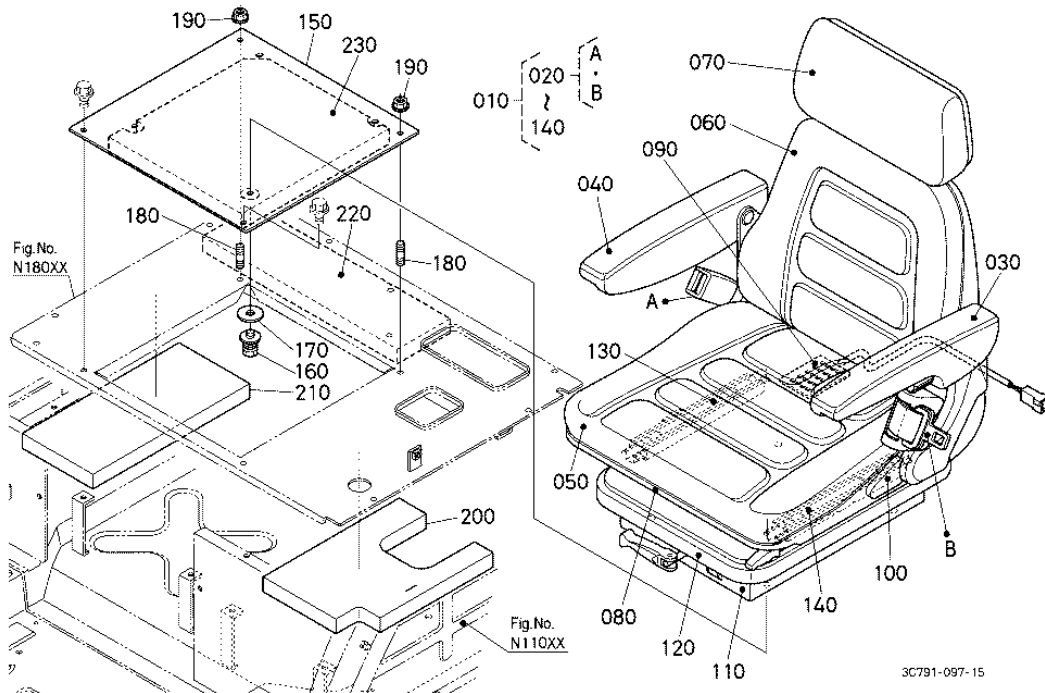


REAR WINDOW [A]

Ref	Part Number	Part Name	Qty	IC	S/N	Lbs	Remarks
010	3C581-70553	GLASS HATCH BACK	1	>>		14.3	NEW PART
010	3C581-70550	GLASS HATCH BACK	1			0	OLD PART
020	3C581-71042	STRIP REAR WEATHER	1			1.716	OLD PART SEE NOTE
020	3C581-71043	STRIP REAR WEATHER	1	NI		1.716	NEW PART
030	3C581-71020	HINGE LH	1			0	OLD PART SEE NOTE
030	3C581-71022	HINGE LH	1	>>		0.286	NEW PART

SEAT

Figure Num 01N170

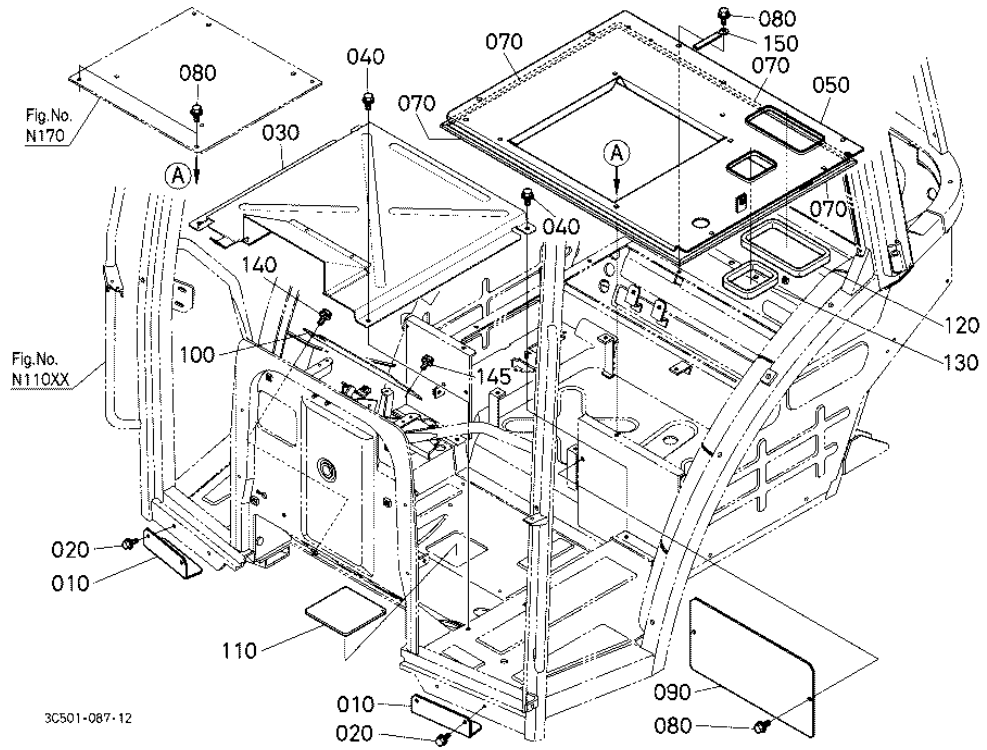


SEAT

Ref	Part Number	Part Name	Qty	IC	S/N	Lbs	Remarks
010	3N300-75750	ASSY SEAT	1			74.8	
020	3N300-85060	ASSY BELT SEAT	1			2.156	
030	3N300-85090	ASSY ARMREST LH	1			3.124	
040	3N300-85100	ASSY ARMREST RH	1			3.014	
050	3N300-85020	CUSHION	1			2.75	
060	3N300-85030	CUSHION BACKREST	1			2.09	
070	3N300-85040	BACK REST UPPER	1			3.674	

INSPECTION PLATE

Figure Num 01N18002



INSPECTION PLATE

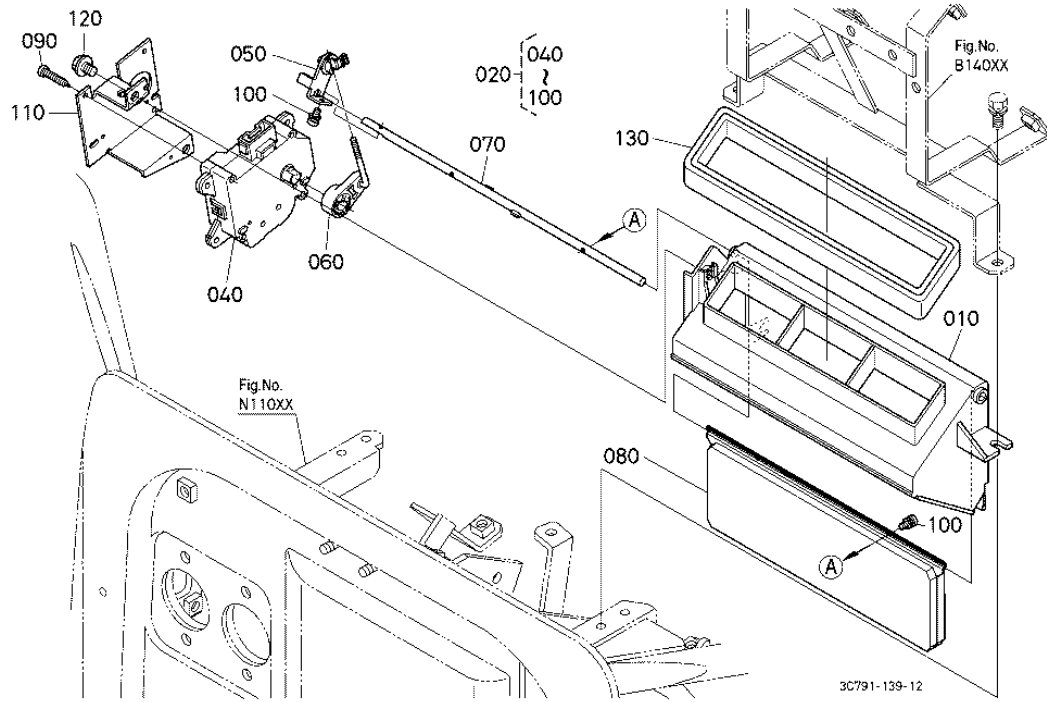
Ref	Part Number	Part Name	Qty	IC	S/N	Lbs	Remarks
010	3C581-54420	COVER	2			0.506	
020	30400-19060	BOLT FLANGE	4			0.013	
030	3C581-54360	COVER STEP	1			12.1	
040	01754-50816	BOLT FLANGE	5			0.024	
050	3C581-75946	COVER FLOOR SHEET	1			10.78	
070	3G710-75980	GASKET	4			0.017	
080	01754-60818	BOLT FLANGE	11			0.033	

CAB BRACKET REAR

Ref	Part Number	Part Name	Qty	IC	S/N	Lbs	Remarks
070	T2055-71090	WASHER	2			2.992	
080	04512-60140	WASHER SPRING	2			0.017	
090	02076-50140	NUT	2			0.048	
100	3C501-71750	BRACKET REAR LH	1			16.28	
110	3C501-71760	BRACKET REAR RH	1			16.28	
120	01138-51645	BOLT	8	>>	>=54755	0.22	
120	01138-51650	BOLT	8		<=54754	0.121	

MODE CASE

Figure Num 01P141

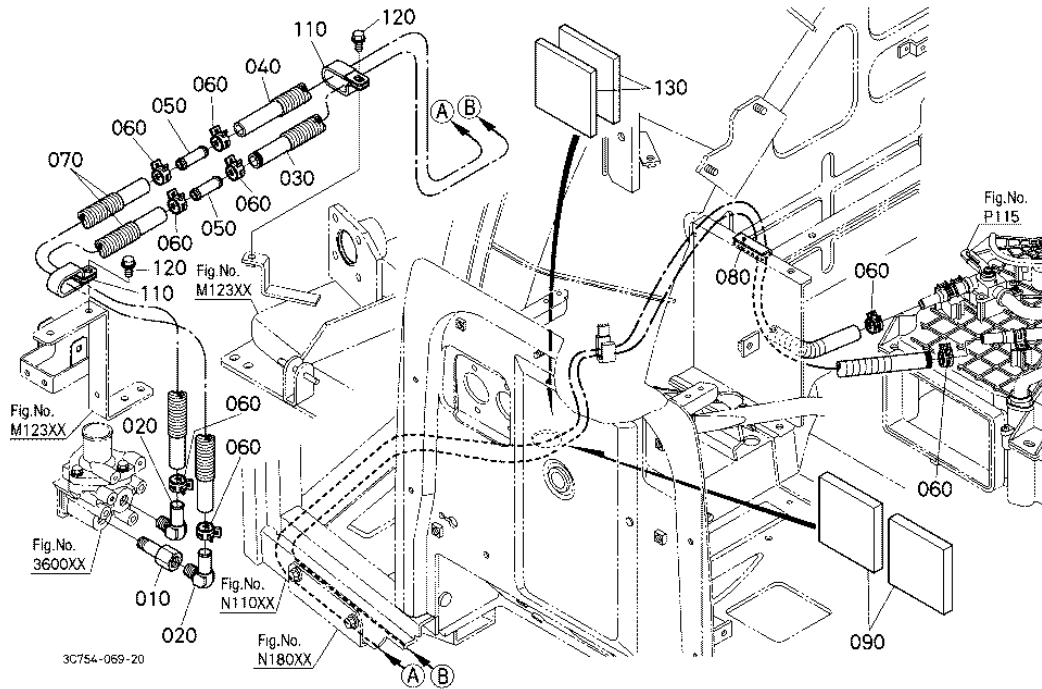


MODE CASE

Ref	Part Number	Part Name	Qty	IC	S/N	Lbs	Remarks
010	3C581-57223	CASE MODE	1	NI	>=53203	1.056	
010	3C581-57222	CASE MODE	1		<=53202	1.056	
020	3C581-57200	ASSY LINK MODE	1		<=53202	0.88	
020	3C581-57202	ASSY LINK MODE	1	NI	>=53203	0.88	
040	T1275-72200	MOTOR SERVO CHANGE	1			0.33	
050	3C581-57240	ASSY LEVER MODE	1			0.022	
060	3C581-57250	ASSY LEVER MODE	1			0.022	

HEATER HOSE [NEW TYPE] ## S.No.;>=80001

Figure Num 01P15001

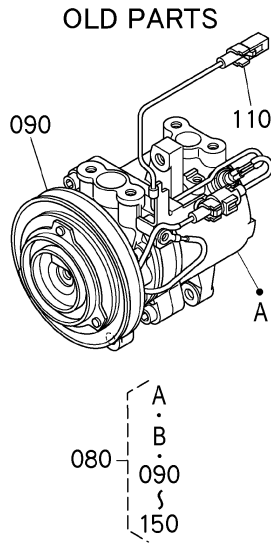


HEATER HOSE [NEW TYPE]

Ref	Part Number	Part Name	Qty	IC	S/N	Lbs	Remarks
010	3C501-72350	JOINT WATER	1			0.22	
020	3G700-72532	JOINT	2			0.002	
030	3C511-72560	HOSE UNIT	1			1.716	
040	3C511-72570	HOSE UNIT	1			1.65	
050	34070-72850	PIPE JOINT	2			0.055	
060	T2255-38260	CLAMP HOSE	8			0.008	
070	3C591-72590	HOSE UNIT	2			0	

COMPRESSOR

Figure Num 01P160



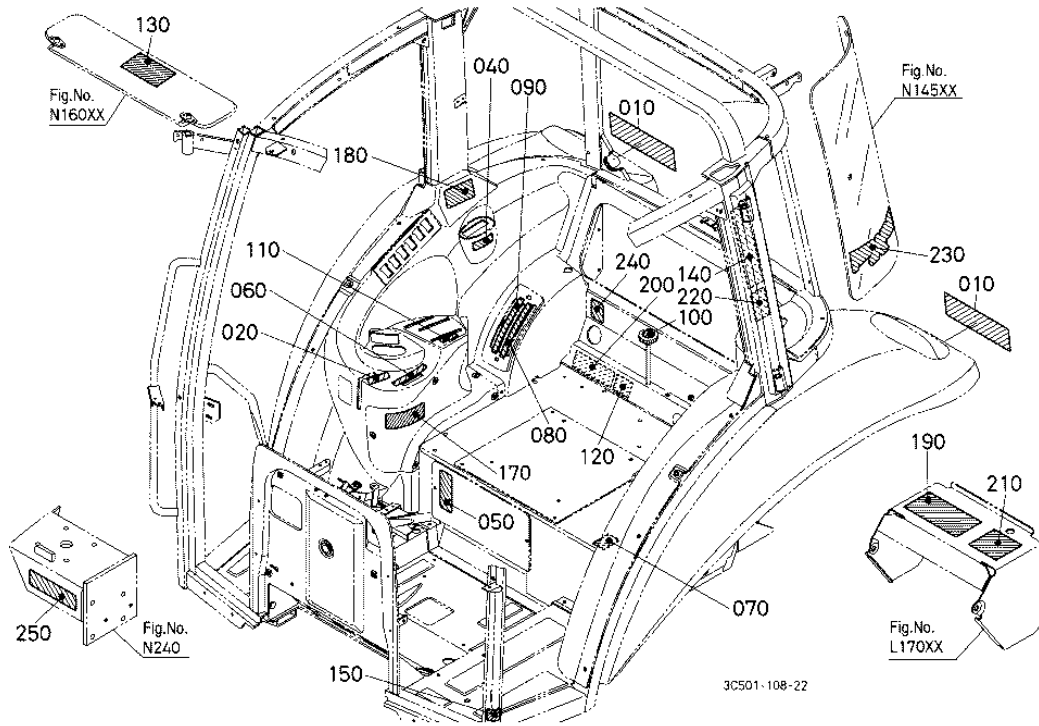
3C501-835-10

COMPRESSOR

Ref	Part Number	Part Name	Qty	IC	S/N	Lbs	Remarks
080	3C581-97590	ASSY COMPRESSOR	1	>>	>=52300	7.7	
080	3C581-50060	ASSY COMPRESSOR	1		<=52299	7.7	ORDER BY REF.No.08
090	3C581-96110	ASSY CLUTH MAGNETIC	1	>>	>=52300	2.497	
090	6A671-97310	ASSY CLUTH MAGNETIC	1		<=52299	3.278	
110	T1065-87330	ASSY WIRE	1		<=52299	0.044	

LABEL 2 (REAR) [A]

Figure Num 01S13003



LABEL 2 (REAR) [A]

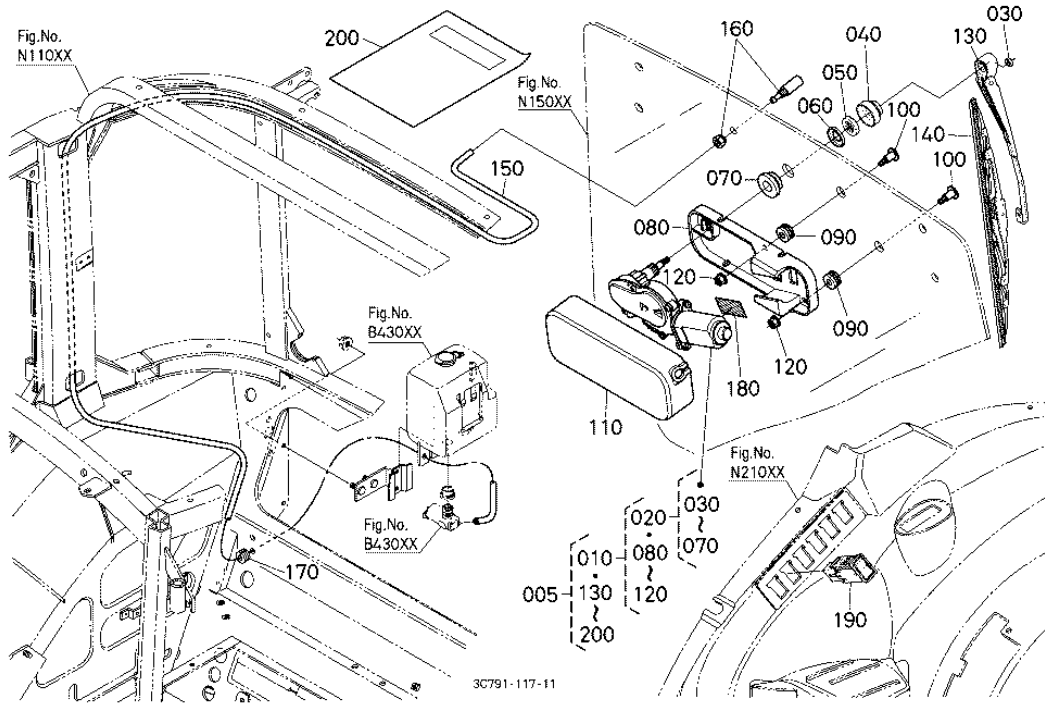
Ref	Part Number	Part Name	Qty	IC	S/N	Lbs	Remarks
010	3A211-75800	REFLECTOR LABEL	2			0.008	
020	3C081-98960	MARK H-L	1			0.002	
040	33740-98290	LABEL PTO CLUTCH	1		<=51720	0.002	
040	3C581-98290	LABEL PTO CLUTCH	1	>>	>=51721	0	
050	3C081-98410	MARK DIFF.LOCK	1			0.002	
060	3C081-98320	MARK ACCEL.LEVER	1			0.002	
070	3A121-98650	LABEL 4WD	1			0.002	

4WD INDICATOR [OLD TYPE] [OPTION]

Ref	Part Number	Part Name	Qty	IC	S/N	Lbs	Remarks
050	3C011-41403	ASSY LEVER F.DRIVE	1			0.286	
060	3C011-41440	STAY SPRING	1			0.418	
070	01123-50818	BOLT	2			0.026	
080	3C511-77250	WIRE HARNESS BODY	1			0	

REAR WIPER KIT [A] [OPTION]

Figure Num 01U190

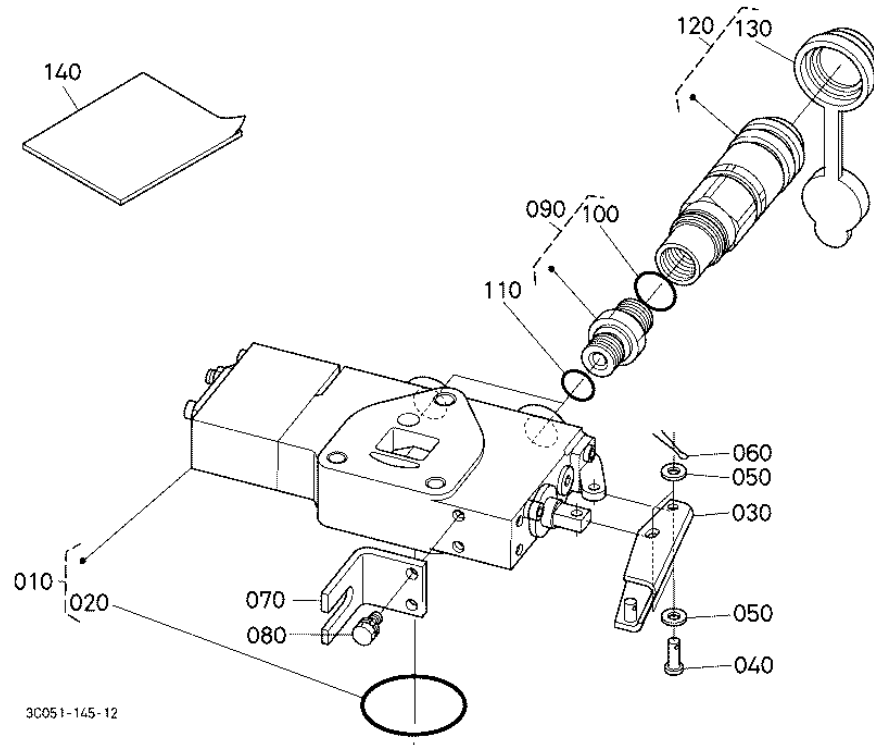


REAR WIPER KIT [A] [OPTION]

Ref	Part Number	Part Name	Qty	IC	S/N	Lbs	Remarks
005	3C581-97752	KIT WIPER REAR	1			1.232	
010	3C581-55780	MOTOR REAR WIPER	1			2.486	
020	3C581-57420	MOTOR BODY	1			1.782	
030	3P300-57510	NUT REAR WIPER	1			0.006	
040	3P300-57470	CAP REAR WIPER	1			0.017	
050	3P300-57450	NUT REAR WIPER	1			0.006	
060	3P300-57440	WASHER REAR WIPER	1			0.008	

AUXILIARY CONTROL VALVE KIT (SCD) [OPTION]

Figure Num 01U70001



AUXILIARY CONTROL VALVE KIT (SCD) [OPTION]

Ref	Part Number	Part Name	Qty	IC	S/N	Lbs	Remarks
010	3C081-82540	VALVE AUX.CONTROL	1			9.24	
020	04815-07560	O RING	1			0.004	
030	3F740-82390	SUPPORT AUX.CON.VALV	1			0.275	
040	05122-50518	PIN JOINT	2			0.004	
050	04012-50050	WASHER PLAIN	4			0.002	
060	05511-51212	PIN SPLIT	2			0.002	
070	3F740-82380	HOLDER	1			0.198	

CLICK HERE TO **DOWNLOAD** THE COMPLETE MANUAL

- Thank you very much for reading the preview of the manual.
- You can download the complete manual from: www.heydownloads.com by clicking the link below



- Please note: If there is no response to CLICKING the link, please download this PDF first and then click on it.

CLICK HERE TO **DOWNLOAD** THE COMPLETE MANUAL