

Instructions for Parts Books

The heading at the top of the page will be the same for the picture of the parts as it is for the page with the part numbers.

Definition of column headings on part number pages:

REF.No → The number referring to the part on the picture page of the parts book.

Part No. → The number assigned to this part at the time of printing the parts book.

Description → Description of part.

Q'ty → Quantity of part used on that page.

S.No. → Serial number range of the equipment that this part will fit.

>= Your serial number should be greater than or equal to the number shown.

<= Your serial number should be lesser than or equal to the serial number shown.

I/C → Interchangeability of part shown.

↔ The part shown will work for the older and later serial number.

The part shown is not interchangeable with the other serial number.

← new for old

→ old for new

Remarks → Notes about this particular part. Sometimes this may say except [FR] or [CA]

Note about Country Codes:

The parts books we use in the United States of America may also contain information about a part that would be different in another country. It is important that you are aware of the country codes in some instances.

Symbol	Country
A	United States of America
CA	Canada
FR	France
GR	Greece
PO	Portugal
AU	Australia

If the remarks column says for example EXCEPT [FR] this part works in all countries except France. That means it will work here in the USA.

CLICK HERE TO **DOWNLOAD** THE COMPLETE MANUAL

- Thank you very much for reading the preview of the manual.
- You can download the complete manual from: www.heydownloads.com by clicking the link below



- Please note: If there is no response to CLICKING the link, please download this PDF first and then click on it.

CLICK HERE TO **DOWNLOAD** THE COMPLETE MANUAL



GEAR CASE

↔ Interchangeable; ≠ not interchangeable; ← new for old; → old for new

REF.No	Part No.	Description	Q'ty	S.No.	I/C	REMARKS	Weight (kgf)	Weight (lb)
001	15221-04020	ASSY CASE,GEAR	1	<=8948			0	0
001	15221-04023	ASSY CASE,GEAR	1	>=8949			4.25	9.35
002	99999-99999	BLANK	0			ORDER BY REF.No.001	0	0
003	15221-33620	PLUG,PIN	2				0.002	0.0044
003	15221-33620	PLUG,PIN	1				0.002	0.0044
004	15221-33640	PLUG,PIN	1				0.003	0.0066
004	15221-33660	PLUG,PIN	2	>=1001			0.004	0.0088
005	15221-72880	PIPE,WATER	1				0.115	0.253
006	04811-00150	O RING	3				0.001	0.0022
007	15221-56280	PIN,START SPRING	1				0.006	0.0132
008	15221-04130	GASKET,GEAR CASE	1	<=8948			0	0
008	15601-04130	GASKET,GEAR CASE	1	>=8949			0	0
009	01053-50885	BOLT	4	<=8948			0.031	0.0682
009	01153-50885	BOLT	4	>=8949			0.031	0.0682
010	15221-91040	BOLT	6	<=8948			0	0
010	15521-91010	BOLT	7	>=8949			0	0
011	01053-50870	BOLT	4	<=8948			0.027	0.0594
011	01153-50870	BOLT	4	>=8949			0.026	0.0572
012	04512-50080	WASHER,SPRING	14	<=8948			0.001	0.0022
012	04512-50080	WASHER,SPRING	15	>=8949			0.001	0.0022
013	04012-50080	WASHER,PLAIN	14	<=8948			0.001	0.0022
014	07715-00803	BALL	1				0.004	0.0088
015	15221-38440	SPRING	1				0.004	0.0088
016	15221-38420	CAP	1				0.025	0.055
017	04811-00100	O RING	1				0.001	0.0022
018	04811-40240	O RING	1				0.002	0.0044
019	15221-73910	COVER,WATER	1				0.21	0.462
020	15221-73920	GASKET,WATER COVER	1				0.01	0.022
021	15221-88210	STUD	9				0.005	0.011
022	02056-50060	NUT	9				0.002	0.0044
023	04512-50060	WASHER,SPRING	9				0	0
024	04012-50060	WASHER,PLAIN	9				0.001	0.0022
025	15221-88130	PACKING,HOUR METER	1				0	0
026	15221-88210	STUD	4				0.005	0.011
027	02056-50060	NUT	4				0.002	0.0044
028	04512-50060	WASHER,SPRING	4				0	0
029	04012-50060	WASHER,PLAIN	4	<=8948			0.001	0.0022
030	37150-34660	ASSY UNIT,HOUR METER	1				0.32	0.704



**MUFFLER [L185DT]**

↔ Interchangeable; ≠ not interchangeable; ← new for old; → old for new

REF.No	Part No.	Description	Q'ty	S.No.	I/C	REMARKS	Weight (kgf)	Weight (lb)
001	15221-12110	MUFFLER	1				0	0
002	15221-12320	FLANGE,MUFFLER	1				0	0
003	15221-12370	GASKET,M-FLANGE	1				0	0
004	01517-51025	STUD	2				0	0
005	15021-12260	NUT	2				0.013	0.0286
006	04512-50100	WASHER,SPRING	2				0	0
007	15221-12130	BAND,MUFFLER	1				0	0
008	01153-50878	BOLT	1				0.029	0.0638
009	02156-50080	NUT	1				0.004	0.0088
010	04512-50080	WASHER,SPRING	1				0.001	0.0022
011	04012-50080	WASHER,PLAIN	2				0.001	0.0022
012	34219-12410	PIPE,EXHAUST	1				0.54	1.188
013	15221-12430	BAND,PIPE	1				0	0
014	01153-50860	BOLT	1				0.024	0.0528
015	02156-50080	NUT	1				0.004	0.0088
016	04512-50080	WASHER,SPRING	1				0.001	0.0022
017	04012-50080	WASHER,PLAIN	2				0.001	0.0022
018	15221-12310	MANIFOLD,EXHAUST	1				0	0
019	15221-12360	GASKET,EX-MANIFOLD	1	<=8948			0	0
020	15221-12350	GASKET,EX-MANIFOLD	2				0	0
020	15521-12350	GASKET,EX-MANIFOLD	2	>=1001			0	0
021	15221-91530	STUD	4				0.011	0.0242
022	02056-50080	NUT	4				0.005	0.011
023	04512-50080	WASHER,SPRING	4				0.001	0.0022



FLYWHEEL

↔ Interchangeable; ≠ not interchangeable; ← new for old; → old for new

REF.No	Part No.	Description	Q'ty	S.No.	I/C	REMARKS	Weight (kgf)	Weight (lb)
001	15291-25012	ASSY FLYWHEEL	1				0	0
002	99999-99999	BLANK	0			ORDER BY REF.No.001	0	0
003	15221-63820	GEAR,RING	1				1.2	2.64
004	05012-00814	PIN,STRAIGHT	3				0.006	0.0132
005	15321-25160	BOLT,FLYWHEEL	6				0.05	0.11
006	15321-25170	WASHER,FLYWHEEL	3				0.01	0.022
007	15291-04600	ASSY HOUSING,FLYWHEE	1				7.7	16.94
008	99999-99999	BLANK	0			ORDER BY REF.No.007	0	0
009	05012-01025	PIN,STRAIGHT	2				0.016	0.0352
010	31220-14290	PLUG	4				0.002	0.0044
011	31220-14170	COVER	1				0.014	0.0308
012	01053-50812	BOLT	1				0.009	0.0198
012	01153-50812	BOLT	1	>=1001			0.008	0.0176
013	04512-50080	WASHER,SPRING	1				0.001	0.0022
014	01073-51030	BOLT	11				0.028	0.0616
015	04512-50100	WASHER,SPRING	11				0	0
016	15221-63010	ASSY STARTER	1				4.4	9.68
016	15221-63016	ASSY STARTER	1	>=1001			0	0
017	01173-51030	BOLT	1				0.023	0.0506
017	01133-51030	BOLT	1	>=1001			0.025	0.055
018	01517-51025	STUD	1				0	0
019	02176-50100	NUT	1				0.005	0.011
020	04512-50100	WASHER,SPRING	1				0	0
021	02114-50080	NUT	1				0.005	0.011
022	04512-50080	WASHER,SPRING	1				0.001	0.0022

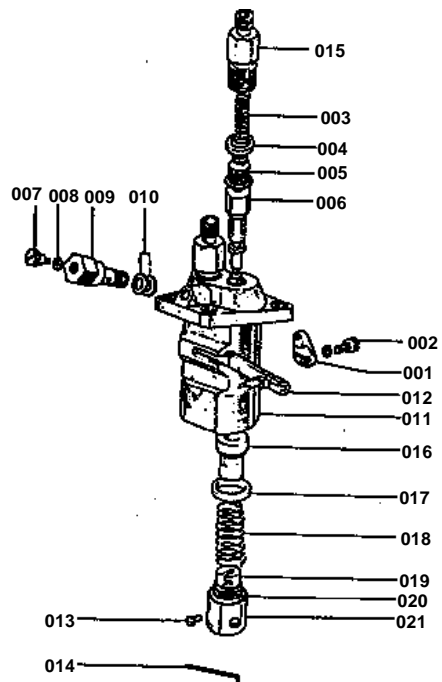


DYNAMO

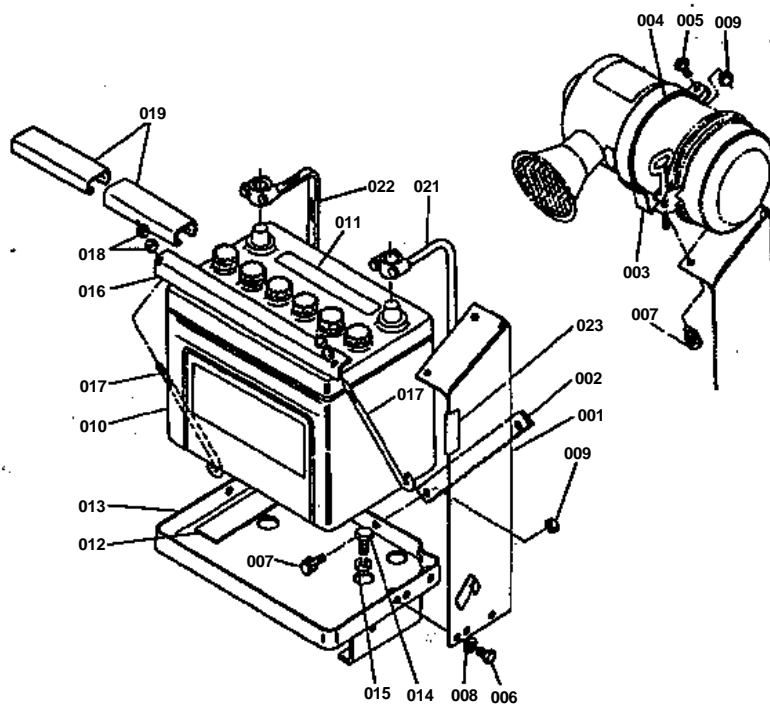
↔ Interchangeable; ≠ not interchangeable; ← new for old; → old for new

REF.No	Part No.	Description	Q'ty	S.No.	I/C	REMARKS	Weight (kgf)	Weight (lb)
001	15321-64010	ASSY DYNAMO	1				0	0
002	15221-91010	BOLT	1				0	0
002	15521-91030	BOLT	1	>=1001			0	0
003	01053-50835	BOLT	1				0.016	0.0352
003	01153-50835	BOLT	1	>=1001			0.016	0.0352
004	04512-50080	WASHER,SPRING	4				0.001	0.0022
004	04512-50080	WASHER,SPRING	2	>=1001			0.001	0.0022
005	04012-50080	WASHER,PLAIN	2				0.001	0.0022
005	04012-50080	WASHER,PLAIN	1	>=1001			0.001	0.0022
006	02056-50060	NUT	1				0.002	0.0044
007	04512-50060	WASHER,SPRING	1				0	0
008	15221-64355	SUPPORT,DYNAMO	1				0.398	0.8756
009	01053-50825	BOLT	2				0.014	0.0308
009	01123-50825	BOLT	2	>=1001			0.013	0.0286
010	15221-64420	STAY,DYNAMO	1				0.07	0.154
011	15221-74110	FAN	1				0.31	0.682
012	01053-50610	BOLT	4				0.004	0.0088
013	15131-74230	WASHER,FAN	2				0.005	0.011
014	15221-74140	SHAFT,FAN	1				0.315	0.693
015	08143-06203	BEARING,BALL (6203UU	2				0.064	0.1408
016	05712-00515	KEY,FEATHER	1				0.003	0.0066
017	04013-50120	WASHER,PLAIN	1				0	0
018	04512-50120	WASHER,SPRING	1				0	0
019	02076-50120	NUT	1				0.015	0.033
020	04611-00400	CIR-CLIP,INTERNAL	2				0.005	0.011
021	15221-74190	COLLAR,FAN SHAFT	1				0.04	0.088
022	15221-74250	PULLEY,FAN	1				0.31	0.682
023	15221-74280	PULLEY,FAN DRIVE	1				0	0
024	05712-00720	KEY,FEATHER	1				0.008	0.0176
025	15221-72530	BELT,FAN	1				0.086	0.1892
026	15221-23360	NUT,CRANKSHAFT	1				0.11	0.242
027	15221-23380	WASHER,CRANKSHAFT	1				0.02	0.044
028	34155-13860	COVER,BELT LH	1	<=13492		FP,TP	0	0
028	34155-13866	COVER,BELT LH	1	>=13493		FP,TP	0.27	0.594
028	34155-13860	COVER,BELT LH	1	<=51501		DTP	0	0
028	34155-13866	COVER,BELT LH	1	>=51502		DTP	0.27	0.594
029	04013-50080	WASHER,PLAIN	1				0	0

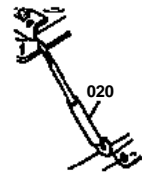
INJECTION PUMP



BATTERY



REF. No. 34150-3328-0



Discontinua.

CLICK HERE TO **DOWNLOAD** THE COMPLETE MANUAL

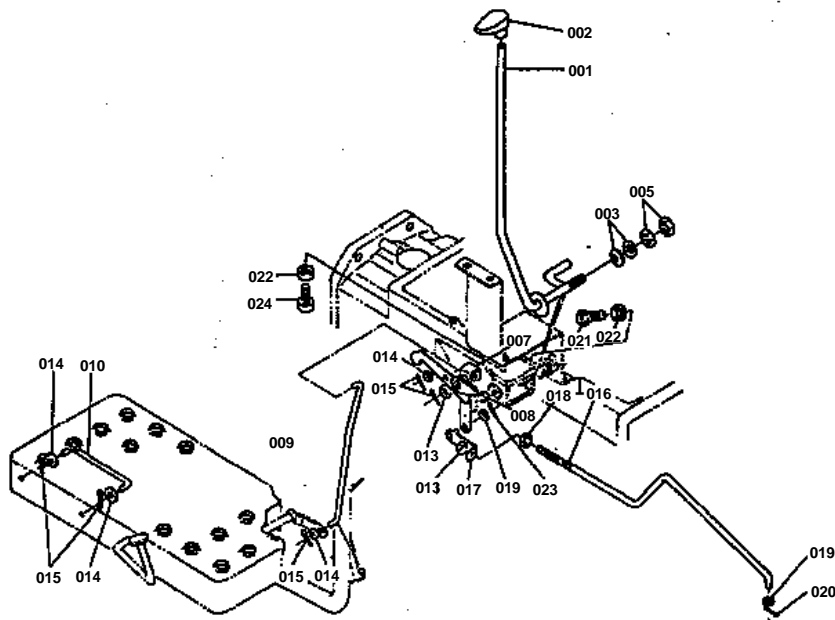
- Thank you very much for reading the preview of the manual.
- You can download the complete manual from: www.heydownloads.com by clicking the link below



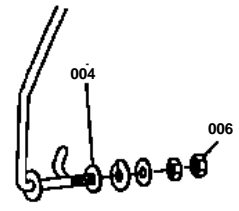
- Please note: If there is no response to CLICKING the link, please download this PDF first and then click on it.

CLICK HERE TO **DOWNLOAD** THE COMPLETE MANUAL

HAND ACCEL

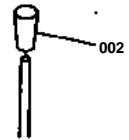


REF. No. ① 04015-50100
② 04118-50100
③ 35180-1758-0

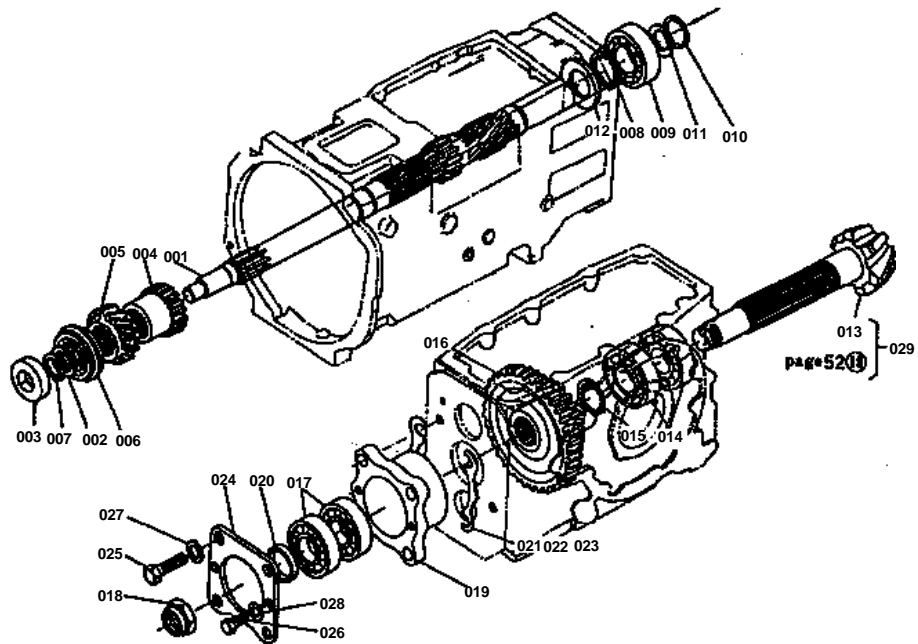


Discontinuo.

REF. No. ④ 34150-2458-0



GEAR DRIVE SYSTEM 1





SPEED CHANGE SYSTEM 2

↔ Interchangeable; ≠ not interchangeable; ← new for old; → old for new

REF.No	Part No.	Description	Q'ty	S.No.	I/C	REMARKS	Weight (kgf)	Weight (lb)
001	37150-24110	FORK,SHIFT	1				0.182	0.4004
002	37150-24130	SHAFT,FORK	1				0.11	0.242
003	05515-51200	PIN,SNAP	1				0	0
004	37150-23120	SCREW,SET	1				0.02	0.044
005	04717-00800	WASHER,SEAL	1				0.001	0.0022
006	07715-01605	BALL	1				0.003	0.0066
007	62231-18530	SPRING,STOPPER	1				0.01	0.022
008	37150-24310	LEVER,SHIFT	1				0.145	0.319
009	04811-00150	O RING	1				0.001	0.0022
010	34150-24350	STOPPER,LEVER	1				0.015	0.033
011	01120-50816	BOLT	1				0	0
012	35110-24430	LEVER,AUX SPEED CHAN	1				0.15	0.33
013	37150-24560	GRIP,LEVER	1				0.018	0.0396
014	05411-00632	PIN,SPRING	1				0.004	0.0088
015	35110-24830	COVER	1				0.536	1.1792
016	34650-59330	GASKET	1				0	0
017	01513-50828	STUD	3				0.013	0.0286
018	01153-50870	BOLT	2				0.026	0.0572
019	04512-50080	WASHER,SPRING	5				0.001	0.0022
020	02114-50080	NUT	3				0.005	0.011



AXLE CASE

↔ Interchangeable; ≠ not interchangeable; ← new for old; → old for new

REF.No	Part No.	Description	Q'ty	S.No.	I/C	REMARKS	Weight (kgf)	Weight (lb)
001	37150-27310	CASE,AXLE RH	1	<=55446			11.8	25.96
001	37220-91382	CASE,AXLE RH	1	>=55447		(L185-3)	11.5	25.3
002	37150-27322	CASE,AXLE LH	1	<=55446			11	24.2
002	37220-91392	CASE,AXLE LH	1	>=55447		(L185-3)	12.2	26.84
003	37150-27330	COVER,AXLE LH	2	<=55446			5	11
003	37220-91372	COVER,AXLE LH	2	>=55447		(L185-3)	6.5	14.3
004	37150-27340	GASKET	2				0	0
005	99999-99999	BLANK	0				0	0
006	37150-27370	PIN,STRAIGHT	4				0.009	0.0198
007	01173-51260	BOLT	14				0.06	0.132
008	04512-50120	WASHER,SPRING	24				0	0
009	37150-27350	STUD	10	<=53943			0.06	0.132
009	37150-27350	STUD	8	>=53944			0.06	0.132
010	02176-50120	NUT	10				0.01	0.022
011	37150-27390	BOLT,REAMER	4				0.02	0.044
012	02118-50100	NUT	4				0.005	0.011
013	01176-51022	BOLT	42				0.019	0.0418
014	04512-50100	WASHER,SPRING	46				0	0
015	06331-35016	PLUG	4	<=51010			0.04	0.088
015	06331-35016	PLUG	2	>=10001			0.04	0.088
016	04717-01600	WASHER,SEAL	4	<=51010			0.003	0.0066
016	04717-01600	WASHER,SEAL	2	>=10001			0.003	0.0066
017	37150-27560	SEAL,OIL	2				0.14	0.308
018	01173-51080	BOLT	2				0.049	0.1078



ELECTICAL 2

↔ Interchangeable; ≠ not interchangeable; ← new for old; → old for new

REF.No	Part No.	Description	Q'ty	S.No.	I/C	REMARKS	Weight (kgf)	Weight (lb)
001	33251-74010	ASSY REGULATOR	1				0.35	0.77
002	37150-33420	COVER,REGULATOR	1				0.03	0.066
003	01020-50618	BOLT	2				0.006	0.0132
004	04012-50060	WASHER,PLAIN	2				0.001	0.0022
005	99999-99999	BLANK	0				0	0
006	37150-33600	CASE,FUSE	1				0.115	0.253
007	03024-50516	SCREW,WITH WASHER	2				0.004	0.0088
008	04512-50050	WASHER,SPRING	2				0	0
009	04012-50050	WASHER,PLAIN	2				0.001	0.0022
010	02054-50050	NUT	2				0.002	0.0044
011	37150-34600	METER,TRACTOR	1				0.35	0.77
012	32150-31740	BULB,LAMP	2				0.003	0.0066
013	34150-34620	BULB,LAMP	1				0.001	0.0022
014	37150-34650	CABLE,TRACTOR METER	1				0	0
014	35170-34650	CABLE,TRACTOR METER	1				0.21	0.462
015	34150-34700	WIRE,DECOMPRESS	1				0	0
015	35170-34700	WIRE,DECOMPRESS	1				0.1	0.22
016	99999-99999	BLANK	0				0	0
017	34159-34790	LABEL,DECOMPRESS	1				0.002	0.0044
018	34159-34920	LABEL	1				0.002	0.0044
019	34350-29380	CLAMP,CORD	1				0.001	0.0022
020	34150-29390	CLAMP,CORD	1				0.004	0.0088
021	35151-32410	SWITCH,HORN	1			L185-3	0.025	0.055
022	66591-55300	ASSY,HORN	1			L185-3	0.15	0.33
023	35176-32430	LABEL,HORN	1	≤55446		L185-3	0.001	0.0022
024	01050-50612	BOLT	2	≥55447		L185-3	0.005	0.011
025	04512-50060	WASHER,SPRING	2			L185-3	0	0
026	35114-34380	CLAMP,CORD HORN	1			L185-3	0.01	0.022





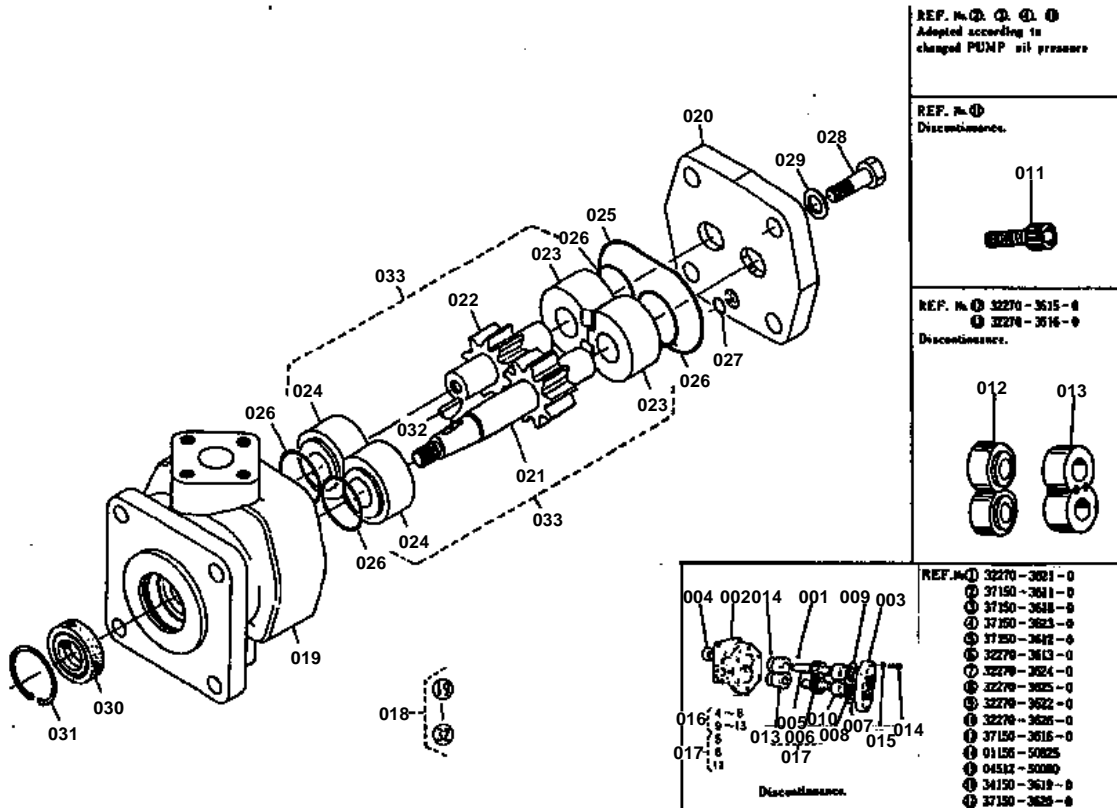
OIL PRESSURE 2

↔ Interchangeable; ≠ not interchangeable; ← new for old; → old for new

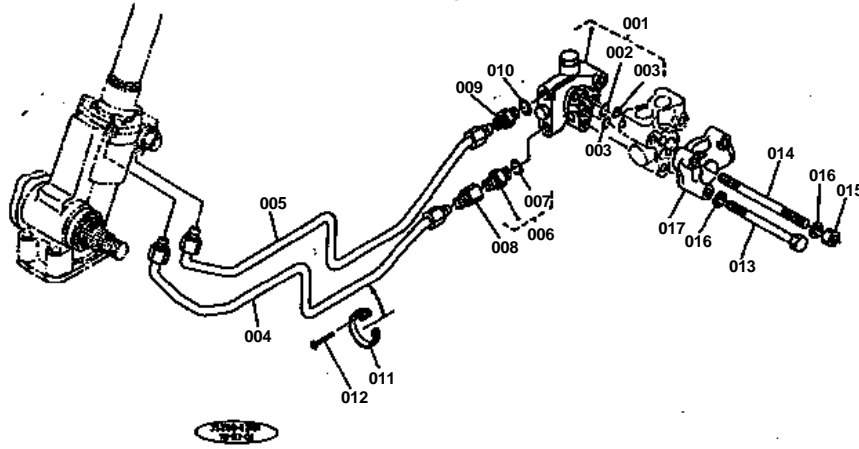
REF.No	Part No.	Description	Q'ty	S.No.	I/C	REMARKS	Weight (kgf)	Weight (lb)
001	37150-36400	VALVE,CONTROL	1				1.675	3.685
002	37150-36410	JOINT,SPOOL 1	1				0.001	0.0022
003	37150-36420	JOINT,SPOOL 2	1				0.02	0.044
004	04613-00060	CIR-CLIP,EXTERNAL	1				0	0
005	02112-50080	NUT	1				0.003	0.0066
006	01153-50850	BOLT	3				0.02	0.044
007	37150-36430	LEVER,SPOOL DRIVE	1				0.09	0.198
008	04512-50080	WASHER,SPRING	6				0.001	0.0022
009	37150-36600	ASSY VALVE,RELIEF	1				0.865	1.903
010	37150-36610	SPACER,VALVE	1				0.14	0.308
011	01153-50865	BOLT	3	≤11675			0.025	0.055
011	01153-50865	BOLT	2	≥11676			0.025	0.055
011	35300-36810	BOLT	2	≥50001			0.048	0.1056
011	35300-36810	BOLT	2	≥52311			0.048	0.1056
012	06331-35010	PLUG	1				0.012	0.0264
013	04717-01000	WASHER,SEAL	1				0.001	0.0022
014	04810-00140	O RING	6				0.001	0.0022
015	32360-36870	STOPPER,LEVER	1				0.039	0.0858
016	04013-50100	WASHER,PLAIN	1				0	0
017	02870-50100	NUT,WING	1				0.015	0.033
018	35110-36850	LEVER,CONTROL	1	≤10605			0.355	0.781
018	35210-36855	LEVER,CONTROL	1	≥10606			0.365	0.803
018	35210-36855	LEVER,CONTROL	1	≥50001			0.365	0.803
019	37150-36860	GUIDE,LEVER	1				0.285	0.627
020	37150-36910	STOPPER	1				0.02	0.044
021	01120-50814	BOLT	1				0	0
022	37150-36870	COLLAR	2				0.02	0.044
023	34260-36880	SPRING	2				0.006	0.0132
024	05411-00525	PIN,SPRING	1				0.002	0.0044
025	01150-50845	BOLT	2				0.019	0.0418
026	37150-36890	GRIP,LEVER	1				0.035	0.077
027	35110-37650	ARM,CONTROL	1				0.11	0.242
028	35110-36890	PLATE,SET	1				0.006	0.0132
029	01153-50816	BOLT	1				0.01	0.022
030	04512-50080	WASHER,SPRING	1				0.001	0.0022
031	04811-00110	O RING	1				0.001	0.0022
032	02174-50140	NUT	1				0.014	0.0308
033	02172-50140	NUT	1				0.01	0.022
034	35110-36810	LABEL,CONTROL	1				0	0
034	35176-36980	LABEL,CONTROL	1	≥50001			0.001	0.0022
035	37150-37670	SHAFT,LEVER	1				0.085	0.187
036	05411-00420	PIN,SPRING	1				0.001	0.0022
037	04811-00110	O RING	1				0.001	0.0022
038	37150-37680	LEVER	1				0.05	0.11
039	37150-37690	ROD 1	1	≤11675			0.02	0.044
039	37220-37690	ROD	1	≥11676			0.06	0.132
039	37220-37690	ROD	1	≥50001			0.06	0.132
040	66591-42410	TURNBUCKLE	1	≤11675			0.046	0.1012
041	34260-36890	PLATE,SET	1	≤11675			0.009	0.0198
042	37150-39560	ROD 2	1	≥11676			0.015	0.033
042	37220-37640	PLATE,CONTROL	1	≥50001			0.025	0.055
043	02114-50080	NUT	1	≥11676			0.005	0.011
043	02114-50080	NUT	1	≥50001			0.005	0.011
043	02114-50080	NUT	2				0.005	0.011
044	04013-50080	WASHER,PLAIN	2				0	0



OIL PRESSURE PUMP



FLOW PRIORITY VALVE



CLICK HERE TO **DOWNLOAD** THE COMPLETE MANUAL

- Thank you very much for reading the preview of the manual.
- You can download the complete manual from: www.heydownloads.com by clicking the link below



- Please note: If there is no response to CLICKING the link, please download this PDF first and then click on it.

CLICK HERE TO **DOWNLOAD** THE COMPLETE MANUAL