

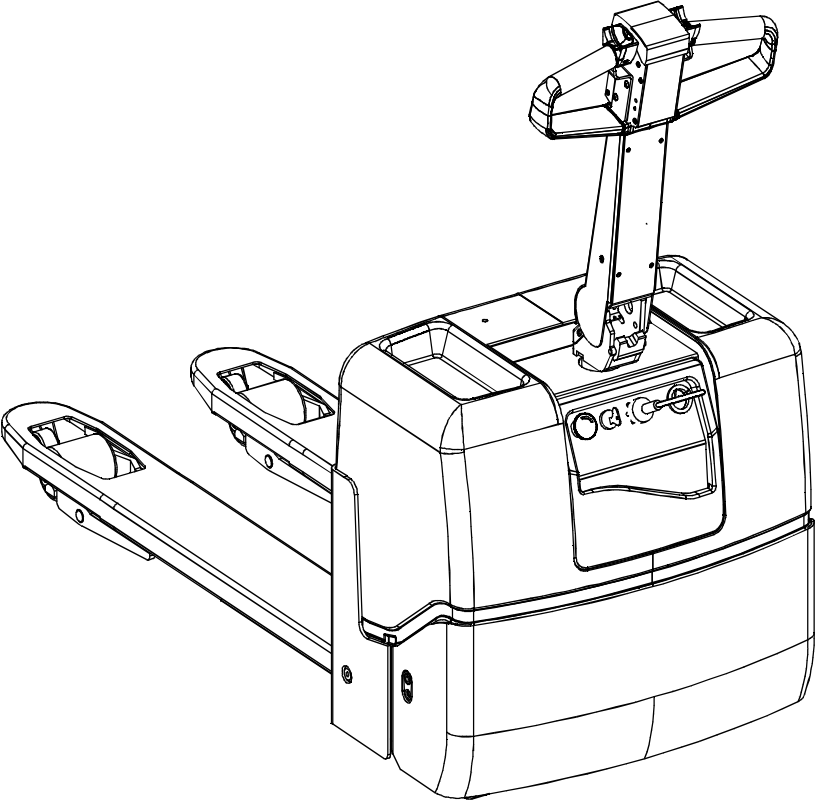
TOYOTA

Powered Pallet Truck PP 13

Valid for machine number: 555494AT -

Only valid for machine number:

--	--	--	--	--	--	--	--



Spare Parts Catalogue

Ordering number208585

Date.....2002-06-26/ITS

CLICK HERE TO **DOWNLOAD** THE COMPLETE MANUAL

- Thank you very much for reading the preview of the manual.
- You can download the complete manual from: www.heydownloads.com by clicking the link below



- Please note: If there is no response to CLICKING the link, please download this PDF first and then click on it.

CLICK HERE TO **DOWNLOAD** THE COMPLETE MANUAL

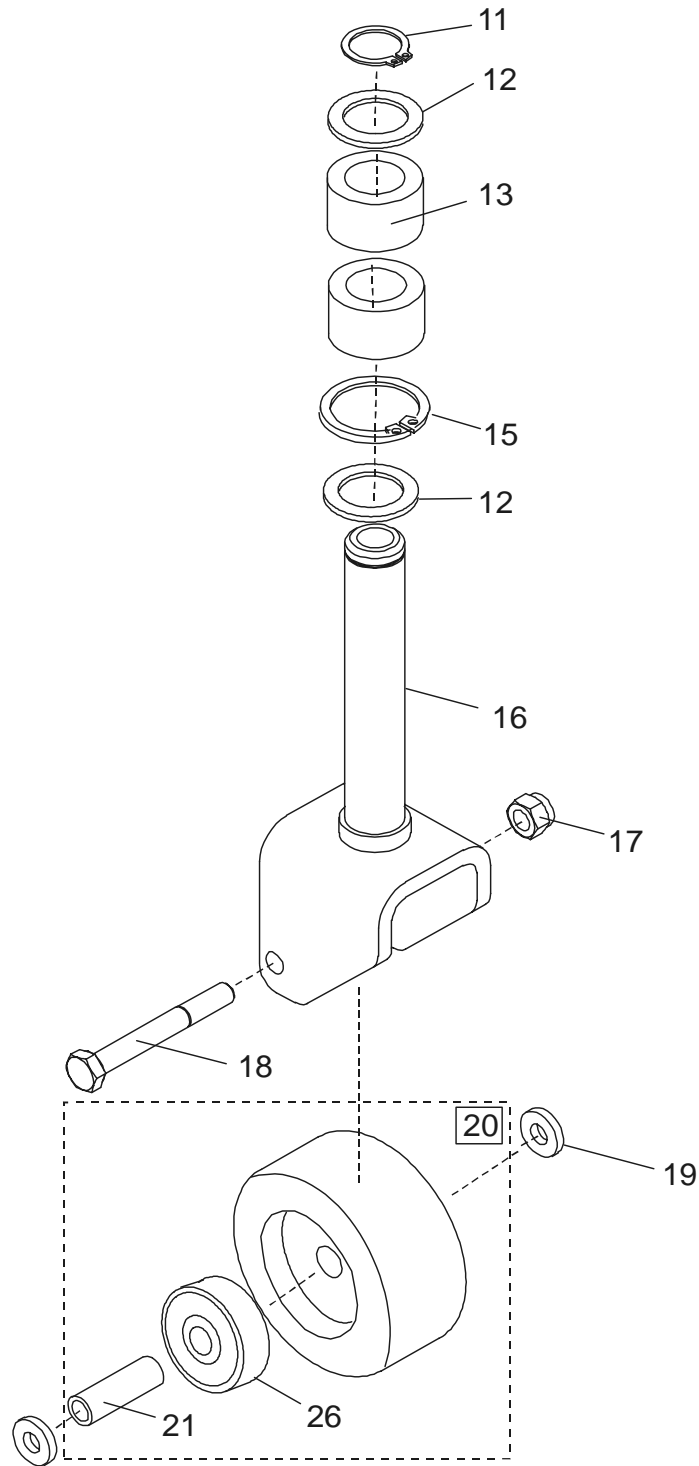
Pos	Description	Pcs	Part No	Note
23	Push rod compl Tryckstång kompl; Druckstange Kompl; Tringle compl	2	167799-100	l = 1000 mm
23	Push rod compl Tryckstång kompl; Druckstange Kompl; Tringle compl	2	167799-107	l = 1070 mm
23	Push rod compl Tryckstång kompl; Druckstange Kompl; Tringle compl	2	167799-115	l = 1150 mm
23	Push rod compl Tryckstång kompl; Druckstange Kompl; Tringle compl	2	167799-122	l = 1220 mm
24	Bush Bussning; Bague; Bague	2	146933	
25	Bush Bussning; Bague; Bague	2	177816	
26	Cotter pin Saxpinne; Gespalter stift; Goupille fendue	2	20313	
27	Torsion tube Vridrör; Drehrohr; Levier de tringle	1	165915-450	b5=450 mm
27	Torsion tube Vridrör; Drehrohr; Levier de tringle	1	165915-520	b5=520 mm
27	Torsion tube Vridrör; Drehrohr; Levier de tringle	1	165915-685	b5=685 mm

0850-177 Signs, warnings, decals

[2002-02-07]

Skyltar, varningar, dekaler; Schilder, Warnzeichen, Aufkleber; Vignettes, avertissements, autocollants

			675 PP 13	435280 -
Pos	Description	Pcs	Part No	Note
11	Sign Skylt; Schild; Vignette	2	168388	
12	Sign Skylt; Schild; Vignette	1	201025	
13	Sign Skylt; Schild; Vignette	2	152027	
14	Sign Skylt; Schild; Vignette	1	161150	
15	Sign Skylt; Schild; Vignette	1	72082	
16	Sign Skylt; Schild; Vignette	1	148227	
17	Sign Skylt; Schild; Vignette	1	148223	
18	Sign Skylt; Schild; Vignette	1	148224	
19	Sign Skylt; Schild; Vignette	1	148225	

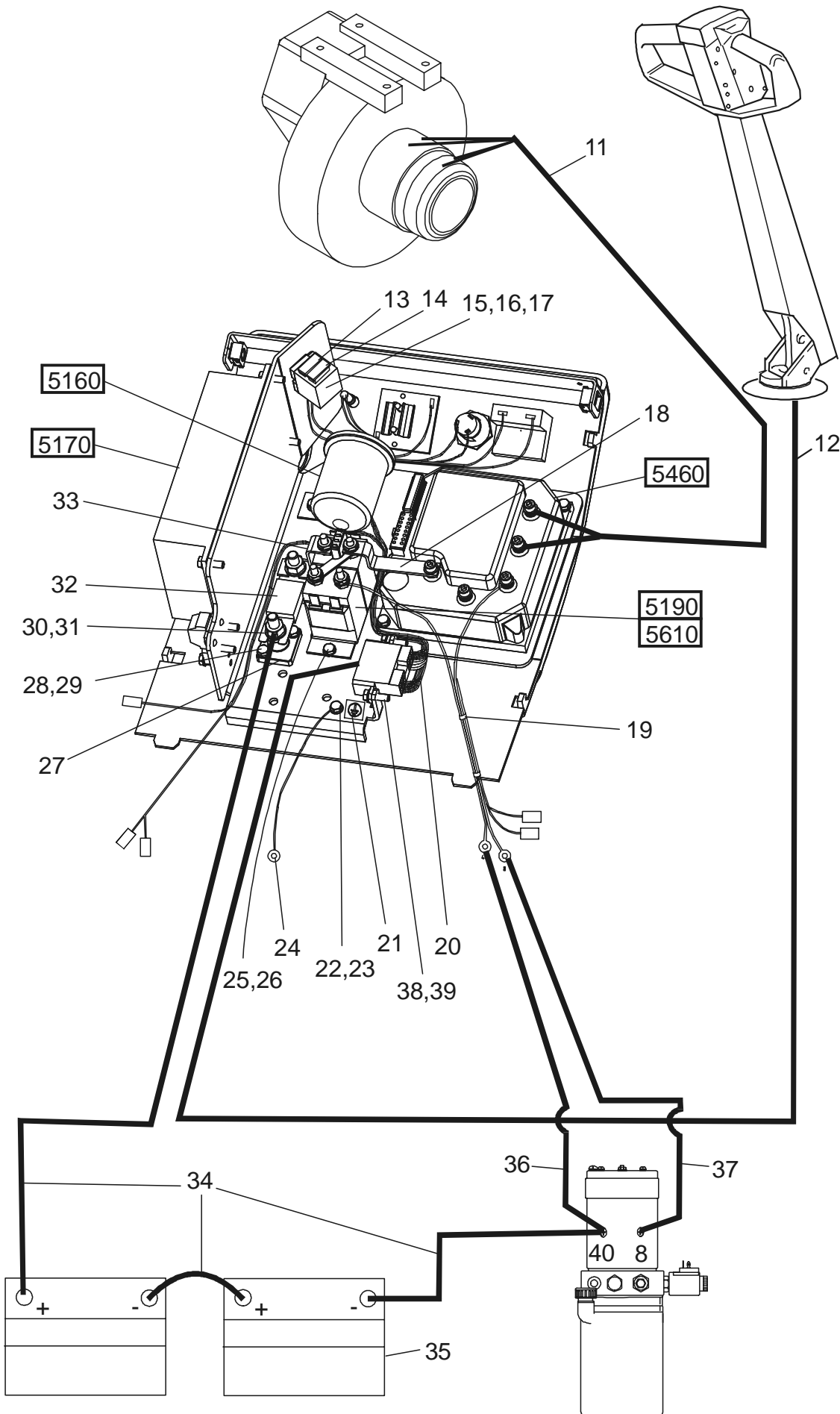


5160-070 General alarm signals (audible/visual)

[2002-06-26]

Signal/larm (ljud-/ljus-); Warn-/Alarmsignale (Aukust./Opt.); Avertisseur (sonore/lumineux), dispositifs d'alarme

			675 PP 13	555494 -
Pos	Description	Pcs	Part No	Note
11	Screw Skruv; Schraube; Vis	1	178789	
12	Washer Bricka; Scheibe; Rondelle	1	20236	
13	Horn Signalhorn; Signalhorn; Avertisseur	1	203331	
14	Push-button Tryckknapp; Druckknopf; Bouton	1	140856	
15	Nut Mutter; Mutter; Ecrou	1	46205	
16	Micro switch Mikrobrytare; Mikroschalter; Interrupteurs	1	21945	



CLICK HERE TO **DOWNLOAD** THE COMPLETE MANUAL

- Thank you very much for reading the preview of the manual.
- You can download the complete manual from: www.heydownloads.com by clicking the link below



- Please note: If there is no response to CLICKING the link, please download this PDF first and then click on it.

CLICK HERE TO **DOWNLOAD** THE COMPLETE MANUAL