



DONGFENG TRACTOR

Illustrated Parts Catalogue

DFM 254s

DFM 304s

CLICK HERE TO **DOWNLOAD** THE COMPLETE MANUAL

- Thank you very much for reading the preview of the manual.
- You can download the complete manual from: www.heydownloads.com by clicking the link below



- Please note: If there is no response to CLICKING the link, please download this PDF first and then click on it.

CLICK HERE TO **DOWNLOAD** THE COMPLETE MANUAL

油门操纵机构总成 Throttle Control Mechanism

序号 Ser.No.	代号 Part No.& Standard Code	名称及规格	Name & Specifications	数量 Quantity	备注 Remarks
1	254G2.20.012	油门拉线总成	Throttle Pull-rod	1	
2	GB97.1-85	垫圈 6	Plain washer 6-140HV	10	
3	200.20.134	减压摇臂	Rocker arm	1	
4	254G2.20.028	踏板轴焊合件	Pedal axes weldment	1	
5	GB91-86	销2×16	Split pin 2×16	7	
6	200.20.012	踏板拉杆焊合件	Pull-rod	1	
7	GB5782-86	螺栓M6×30	Hex. head bolt M6×30	2	
8	GB93-87	垫圈6	Spring lock washer 6	2	
9	GB6170-86	螺母M6	Hex. Nut M6	5	
10	GB6170-86	螺母 M8	Hex. nut M8	1	
11	GB5782-86	螺栓M6×65	Hex. Head bolt M6×65	1	
12	254G2.20.021	减压拉杆焊合件	Pull-rod	1	
13	254G2.20.111	减压手柄	Decompressor handle	1	
14	GB97.1-85	垫圈 10	Plain washer 10-140HV	4	
15	254G2.20.110	塑料把	Plastic handle	1	
16	GB91-86	销2.5×20	Split pin 2.5×20	4	
17	GB97.1-85	垫圈10	Spring lock washer 10	2	
18	200.20.013	脚踏板焊合件	Pedal weldment	1	
19	GB5783-86	螺栓M8×30	Hex. head bolt M8×30	1	
20	200.20.023	铰链板焊合件	General-board weldment	1	
21	GB93-87	垫圈8	Spring lock washer 8	2	
22	GB97.1-85	垫圈 5	Plain washer 5-140HV	1	
23	GB93-87	垫圈8	Spring lock washer 8	2	
24	300.20A.110	夹头	Collet	1	
25	GB5783-86	螺栓M8×35	Hex. head bolt M8×35	1	
26	254G2.20.020	手油门拉线组合件	Pull-thread, hand throttle	1	

前驱动桥总成 (中) Front Drive Axle (middle)

序号 Ser. No.	代号 Part No. & Standard Cord	名称及规格 Name & Specifications	数量 Quantity	备注 Remarks
1	GB5783-86	螺栓 M6×12 Hex. head bolt M6×12	4	
2	GB93-87	垫圈 6 Spring lock washer 6	4	
3	GB1152-89	油杯 M10×1 Grease cup M10×1	2	
4	304.31.019	前支座端盖组合件 End cover of front pedestal	1	
5	304.31.122	端盖垫片 End cover gasket	1	
6	GB6170-86	螺母 M16 Hex. nut M16	4	
7	GB93-87	垫圈 16 Spring lock washer 16	4	
8	254D.31.220	前支座 Front pedestal	1	
9	GB27-88	螺栓 M16×65 Hex. head bolt M16×65	4	
10	304.31.219-1	前支座衬套 Front pedestal bush	1	
11	304.31.123-1	前摆轴垫片 Shims for front swing axle	1组 one set	1组每种各1片 One pcs for each size
12	GB3452.1-82	O型圈 65×2.65 O-ring seal 65×2.65	1	
13	ZB T32003-88	碗形塞片 24 Casing cap	1	
14	GB5786-86	螺栓 M12×1.5×35 Hex. head bolt M12×1.5×35	8	
15	GB93-87	垫圈 12 Spring lock washer 12	24	
16	304.31.124-2	前摆轴 Front swing axle	1	
17	GB3452.1-82	O型圈 69×3.55 O-ring seal 69×3.55	1	
18	304.31.116-2	主传动壳体 Main drive case	1	
19	200.38.024	放油螺塞总成 Oil drain plug	1	
20	12.37.149	组合密封垫圈 Combined seal washer	3	
21	304.31.125-1	轴承座垫片 Shims for bearing seat	1组 one set	1组每种各2片 Two pcs for each size
22	254D.31.022	主动锥齿轮总成 Bevel drive pinion assembly	1	
23	254D.31.222	后支座 Rear pedestal	1	

前驱动桥总成 (右边减速) Front Drive Axle (Right side-Slowdown)

序号 Ser. No.	代号 Part No. & Standard Cord	名称及规格	Name & Specifications	数量 Quantity	备注 Remarks
1	GB6176-86	螺母 M18×1.5	Hex. nut M18×1.5	2	
2	GB93-87	垫圈 18	Spring lock washer 18	6	
3	304.31.179	螺柱	Stud	2	
4	GB5786-86	螺栓 M18×1.5×35	hex. head bolt M18×1.5×35	4	
5	304.31.101-2	驱动轴	Drive shaft	1	
6	HG4-692-67	油封 W50×72×7	Oil-seal W50×72×7	2	
7	HG4-692-67	油封 PD50×72×12	Oil-seal PD50×72×12	2	
8	GB5783-86	螺栓 M10×30	Hex. head bolt M10×30	20	
9	GB93-87	垫圈 10	Spring lock washer 10	26	
10	304.31.104-3	驱动轴盖	Drive shaft cover	1	
11	GB276-89	轴承 209	Ball bearing 209	1	
12	304.31.102-2	驱动轴固定圈	Fixing ring of drive shaft	2	
13	304.31.103-2	驱动轴垫圈	Drive shaft sleeve	1	
14	304.31.132-2	末减速被动齿轮	Crown gear of final drive	1	
15	GB276-89	轴承 207	Ball bearing 207	1	
16	304.31.105-1	驱动轴盖垫片	Gasket for drive shaft cover	1	
17	304.31.216-4	右边减速壳体	Right final drive housing	1	
18	GB119-86	销 A10×28	Parallel pin A10×28	2	
19	304.30.130	毛毡圈	Felt washer	1	
20	304.31.217-1	边减速壳体衬套	Final drive housing bushing	1	
21	GB301-84	轴承 8106	Thrust ball bearing 8106	1	
22	304.31.131-2	末减速主动齿轮	Bevel pinion gear of final drive	1	
23	304.31.140	隔套	Spacer	1	
24	304.31.107-3	立轴	Upright shaft	1	

变速箱总成 (A) Gearbox (A)

续表

序号 Ser. No	代号 Part No. & Standard Cord	名称及规格	Name & Specifications	数量 Quantity	备注 Remarks
46	304G2.37.016	梭形档换挡杆手柄总成	Patrol shift lever handle	1	
47	304G2.37.180	梭形档操纵杆	Patrol shift lever	1	
48	GB5783-86	螺栓M12×25	Hex. head bolt M12×25	1	
49	GB3541-83	垫圈 12	Washer 12	1	
50	304G2.37.155	梭形档拨叉中轴	Patrol Fork Middle Shaft	1	
51	GB3452.1-92	O形圈 11.2×2.65	O-ring seal 11.2×2.65	1	
52	304G2.37.127	III-IV档拨叉轴	Shaft, III-IV shift fork	1	
53	304G2.37.126	I - II档拨叉轴	Shaft, I - II shift fork	1	
54	450.37.102	互锁销	Mutual locking plunger	1	
55	304G2.37.102	变速箱盖纸垫	Gasket, gearbox cover	1	
56	304G2.37.130	梭形档拨叉	Patrol fork	1	
57	304G2.37.127	III-IV档拨叉	III-IV Fork	1	
58	304G2.37.126	I - II档拨叉	I - II Fork	1	
59	GB75-85	螺钉M8×30	Blot M8×30	1	
60	GB3452.1-92	O形圈 10.6×2.65	O-ring seal 10.6×2.65	1	

CLICK HERE TO **DOWNLOAD** THE COMPLETE MANUAL

- Thank you very much for reading the preview of the manual.
- You can download the complete manual from: www.heydownloads.com by clicking the link below



- Please note: If there is no response to CLICKING the link, please download this PDF first and then click on it.

CLICK HERE TO **DOWNLOAD** THE COMPLETE MANUAL

后桥总成 (A) Rear Axle (A)

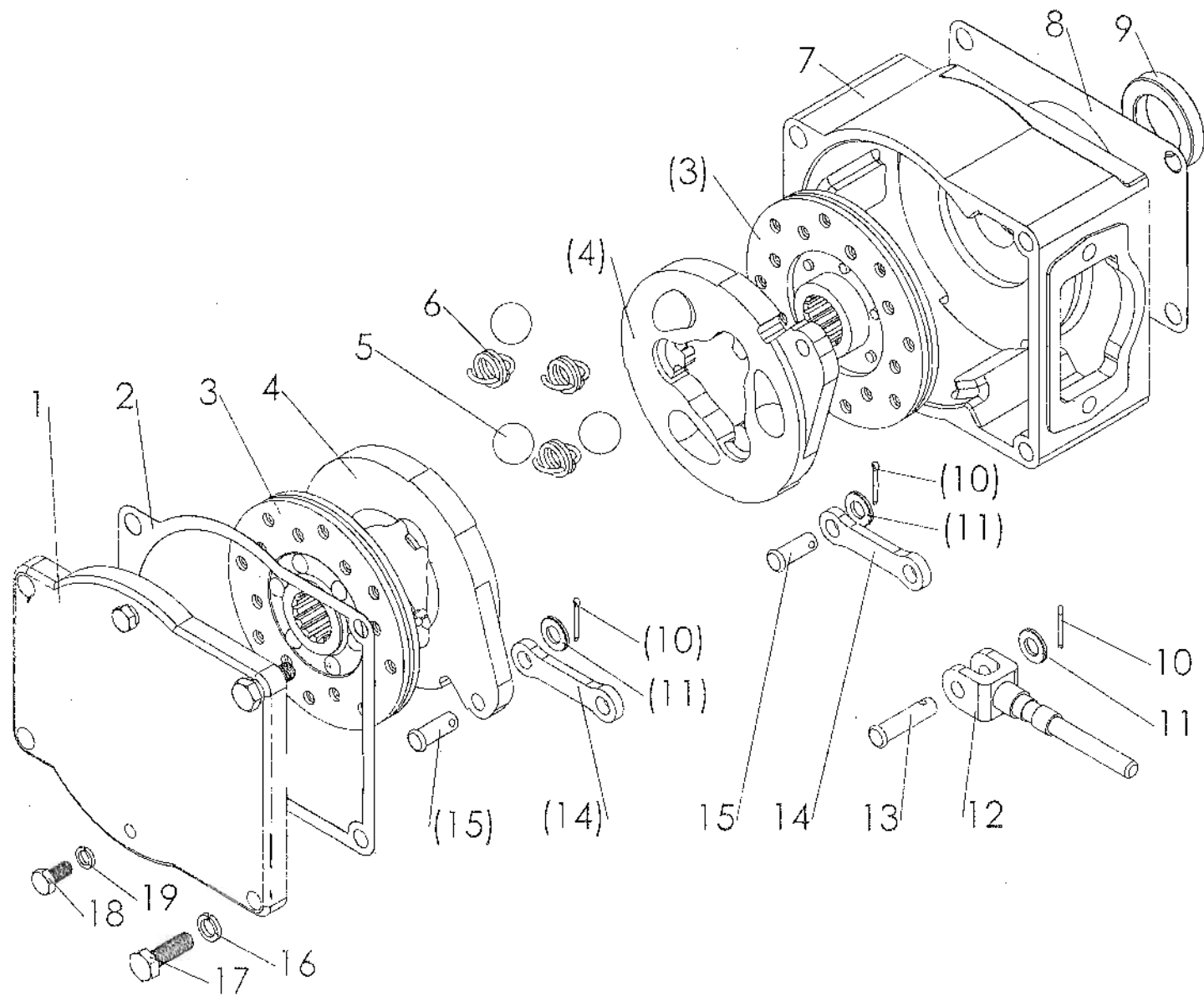
序号 Ser. No.	代号 Part No. & Standard Cord	名称及规格	Name & Specifications	数量 Quantity	备注 Remarks
1	GB297-84	轴承 2007111	Tapered roller bearing 2007111	2	
2	200.38.124	衬套	Bush	2	
3	200.38.126	行星轴固定螺钉	Fixing bolt, planet gear shaft	1	
4	GB5783-86	螺栓 M10×25	Hex. head bolt M10×25	9	
5	200.38.125	锁紧垫片	Lock piece	5	
6	200.38.117	差速器盖	Differential case cover	1	
7	200.38.120	半轴齿轮	Half shaft gear	2	
8	200.38.123	半轴齿轮垫片	Shim halfshaft gear	2	
9	300.38.143	行星轴	Planet gear shaft	1	
10	200.38.119A	行星齿轮	Planet gear	2	
11	200.38.122A	行星齿轮垫片	Planet gear shim	2	
12	200.38.116A	差速器壳	Differential case	1	
13	250.38.118A	主传动被动齿轮	Spiral crown gear	1	
14	200.38.149	锁紧垫片	Lock piece	5	
15	GB5785-87	螺栓 M12×1.5×25	Fine thread hex. head bolt M12×1.5×25	10	
16	200.38.130	锁紧螺母	Lock nut	2	
17	200.38.131	止退垫片	Lock washer	1	
18	200.38.134	锁片	Lock piece	1	
19	GB297-84	轴承 7507	Tapered roller bearing 7507	1	
20	250.38.128A	主动齿轮轴承座	Bearing seat, spiral bevel pinion	1	
21	GB297-84	轴承 27307E	Tapered roller bearing 27307E	1	
22	304G2.38.110	主传动主动圆锥齿轮	Shank-type spiral bevel pinion	1	

液压转向器总成 Full Hydraulic Power Steering Gear

续表

序号 Ser. No.	代号 Part No. & Standard Cord	名称及规格	Name & Specifications	数量 Quantity	备注 Remarks
25	GB3081-82	热镀锌钢丝 I-1.4	Steel wire I-1.4	1	
26	254D.40.161	橡胶护套	Rubber jacket	1	
27	254D.40.138	法兰	Flange	1	
28	254G2.40.011	转向器回油管合件	Oil return pipe assy	1	
29	BZZ1-E80	转向器总成	Full hydraulic steering gear	1	
30	GB3541-83	垫圈 20	Washer 20	4	
31	254G2.40.122	转向轴	Steering shaft	1	
32	GB6171-86	螺母 M16×1.5	Hex. nut M16×1.5	1	
33	304.40.112	橡胶轴承	Rubber sleeve	1	
34	200.40.015	方向盘总成	Steering wheel assy	1	
35	254G2.40.035	转向管柱合件	Steering column assy	1	
36	GB5783-86	螺栓 M10×25	Hex. head bolt M10×25	10	
37	254G2.40.114	接管	Connector	1	
38	254G2.40.0.36	转向器支架合件	Bracket assy	1	
39	GB5783-86	螺栓 M10×40	Hex. head bolt M10×40	8	
40	GB3541-83	铰接螺栓 M16×1.5	Hollow bolt M16×1.5	6	
41	254G2.40.022	转向油缸油管焊合件 (一)	Steering cylinder pipe (1)	1	
42	254G2.40.024	转向油缸油管焊合件 (二)	Steering cylinder pipe (2)	1	
43	254G2.40.032	转向器进油管后段焊合件	Oil delivery pipe back weldment	1	
44	GB3541-83	垫圈 16	Washer 16	12	
45	304.40.140	接管 (二)	Connector (2)	3	
46	GB5783-86	螺栓 M8×30	Hex. head bolt M8×30	3	
47	254G2.40.101	管夹 (一)	Hose clip (1)	1	
48	254G2.40.102	管夹 (二)	Hose clip (2)	1	

盘式制动器总成 Disc Brake



折叠式安全架总成 Folding Safety Frame

序号 Ser.No.	代号 Part No.& Standard Cord	名称及规格	Name & Specifications	数量 Quantity
1	254G2.46.011	安全架左撑杆焊合件	Left support frame	1
2	GB97.1-85	垫圈24	Plain washer 24	4
3	254G2.46.015	锁销连接总成	Lock pin	2
4	280.46D.012	安全架上框焊合件	Upper frame weldment	1
5	GB6170-86	螺母M24	Hex.nut M24	2
6	GB93-87	垫圈24	Spring lock washer 24	2
7	GB5782-86	螺栓M24×100	Bolt M24×100	2
8	254G2.46.012	安全架右撑杆焊合件	Right support frame	1
9	GB97.1-85	垫圈16	Spring lock washer 16	8
10	GB6170-86	螺母M16	Hex.nut M16	8
11	GB93-85	垫圈16	Spring lock washer 16	8
12	GB5782-86	螺栓M16×175	Bolt M16×175	8

燃油箱总成 Fuel Tank

序号 Ser. No.	代号 Part No.& standard code	名称及规格 Name & Specifications	数量 Quantity	备注 Remarks
1	254G2.50.117	油管转接头 Oil pipe connector	1	
2	JB/T8870-99	喉箍 2A(13-20) Hoop 2A (13-20)	2	
3	GB5783-86	螺栓 M10×35 Hex. head bolt M10×35	8	
4	GB97.1-85	垫圈 10 Plain washer 10	16	
5	GB93-87	垫圈 10 Spring lock washer 10	16	
6	GB6170-86	螺母 M10 Hex. nut M10	16	
7	254G2.50.012	燃油回油管路总成 Fuel return pipe	1	
8	GB3451-83	垫圈 12 Copper Washer 12	4	
9	GB3451-83	铰接螺栓 M12×1.25 Hollow hex.head bolt M12×1.25	1	
10	195.01300	燃油箱盖 Fuel tank cap	1	
11	254G2.50.011	燃油箱焊合件 Fuel tank	1	
12	254G2.50.102	固定板 Locating board	2	
13	GB5783-86	螺栓 M10×25 Hex. head bolt M10×25	6	
14	254G2.50.103	调整垫片 Adjusting shim	按需要	
15	254G2.50.101	油箱护罩 Fuel tank hood	1	
16	GB5786-86	螺栓 M12×1.25×16 Hex.head fine pitch bolt M12×1.25×16	1	
17	200.48B.108	线夹 Wire clip	2	
18	254G2.50.013	燃油输油管路总成 Fuel delivery pipe	1	

提升器总成 Hydraulic Power Lift

序号 Ser. No.	代号 Part No. & Standard Cord	名称及规格 Name & Specifications	数量 Quantity	备注 Remarks
1	GB5783-86	螺栓 M10×25	2	
2	GB93-87	垫圈 10	6	
3	200.55.105	提升臂销	2	
4	GB93-87	垫圈 16	2	
5	GB6170-86	螺母 M16	2	
6	GB93-87	垫圈 14	4	
7	GB5782-86	螺栓 M14×45	4	
8	200.55.114-1	油缸盖	1	
9	200.55.118-1	液压锁紧阀	1	
10	GB3452.1-82	O形密封圈 6.3×1.8	2	
11	JB1002-77	垫圈 22	1	
12	200.55.112-1	阀杆螺母	1	
13	GB879-86	销 5×24	1	
14	300.55.020	手轮胶合件	1	
15	GB3452.1-82	O形密封圈 10.6×1.8	2	
16	GB3541-83	垫圈 14	4	
17	JB1000-77	螺塞 M14×1.5	2	
18	200.55.124	铰接螺栓 M14×1.5	1	
19	200.55.165	夹紧板	1	
20	GB5782-86	螺栓 M12×50	1	
21	200.55.022	输出油管焊合件	1	
22	GB91-86	销 2×16	2	
23	GB97.1-85	垫圈 8-140HV	1	
24	200.55.013	联动杆焊合件	1	
25	200.55.119-1	挡块	2	
26	GB6170-86	螺母 M8	3	

CLICK HERE TO **DOWNLOAD** THE COMPLETE MANUAL

- Thank you very much for reading the preview of the manual.
- You can download the complete manual from: www.heydownloads.com by clicking the link below



- Please note: If there is no response to CLICKING the link, please download this PDF first and then click on it.

CLICK HERE TO **DOWNLOAD** THE COMPLETE MANUAL