



**COSTRUZIONI INDUSTRIALI
VIA CRISTOFORO COLOMBO 2
LOC. CAVAZZONA
41013 CASTELFRANCO EMILIA
MODENA TEL. 059/959811**

REF: 648653

02/2012

MHT 10180L

- E3 -

**CATALOGO RICAMBI
CATALOGUE PIECES
PARTS CATALOGUE
ERSATZTEILKATALOG
CATALOGO PIEZAS**

PARTE

1/2

CLICK HERE TO **DOWNLOAD** THE COMPLETE MANUAL

- Thank you very much for reading the preview of the manual.
- You can download the complete manual from: www.heydownloads.com by clicking the link below



- Please note: If there is no response to CLICKING the link, please download this PDF first and then click on it.

CLICK HERE TO **DOWNLOAD** THE COMPLETE MANUAL

1/2	648653	IMPIANTO IDRAULICO (Circuito cambio di velocità)					Quantità				4ABDI		
		HYDRAULIQUE (Circuit changement vitesse) HYDRAULIC (Speed changer circuit) HYDRAULIK (Geschw-wechselkreis) HIDRAULICO (Circuito cambio de velocidad)					Quantity	Menge			021		
Rep Item	Part. Number	DESCRIZIONE	DESIGNATION	DESCRIPTION	BEZEICHNUNG	DESCRIPCION	MHT 10180L						
1	569309	valvola	soupape	valve	ventil	valvula	1						
2	569257	bobina	bobine	reel	rolle	bobina	4						
3	584613	supporto	support	support	lager	soporte	1						
4	569686	accumulatore	accumulateur	accumulator	akkumulator	acumulator	1						
5	503804	raccordo	raccord	pipe fitting	rohrverbindung	conexion	1						
6	488487	raccordo	raccord	pipe fitting	rohrverbindung	conexion	2						
7	499372	raccordo	raccord	pipe fitting	rohrverbindung	conexion	3						
8	508476	raccordo	raccord	pipe fitting	rohrverbindung	conexion	2						
9	455018	rondella	rondelle	washer	unterlegscheibe	arandela	2						
10	659586	tubo	tuyau	hose	schlauch	tubo	2						
11	501219	guarnizione	joint	seal	dichtung	guarnicion	8						
12	488489	raccordo	raccord	pipe fitting	rohrverbindung	conexion	2						
13	508685	valvola	soupape	valve	ventil	valvula	1						
14	503594	raccordo	raccord	pipe fitting	rohrverbindung	conexion	1						
15	659588	tubo	tuyau	hose	schlauch	tubo	1						
16	487366	raccordo	raccord	pipe fitting	rohrverbindung	conexion	6						
17	488488	raccordo	raccord	pipe fitting	rohrverbindung	conexion	2						
18	488487	raccordo	raccord	pipe fitting	rohrverbindung	conexion	1						
19	659589	tubo	tuyau	hose	schlauch	tubo	2						
20	501200	guarnizione	joint	seal	dichtung	guarnicion	8						
21	659590	tubo	tuyau	hose	schlauch	tubo	3						
22	488486	raccordo	raccord	pipe fitting	rohrverbindung	conexion	3						
23	174598	raccordo	raccord	pipe fitting	rohrverbindung	conexion	3						
24	485425	tappo	bouchon	plug	stopfen	tapon	1						
25	471360	rondella	rondelle	washer	unterlegscheibe	arandela	2						

1/1	648653	ZAVORRE LEST BALLAST BALLAST CONTRAPESO					Quantità Quantity Quantité		Menge Quantità		6AADI 006	
		Rep Item	Part. Number	DESCRIZIONE	DESIGNATION	DESCRIPTION	BEZEICHNUNG	DESCRIPCION	MHT 10180L			
1	527804	zavorra	lest	ballast	ballast	contrapeso	1					
2	527805	zavorra	lest	ballast	ballast	contrapeso	1					
3	527473	vite	vis	screw	schraube	tornillo	4					
4	471318	rondella	rondelle	washer	unterlegscheibe	arandela	6					
5	527987	vite	vis	screw	schraube	tornillo	2					
6	887683	zavorra	lest	ballast	ballast	contrapeso	1					
9	718493	vite	vis	screw	schraube	tornillo	2					
10												
11												
12	479890	rondella	rondelle	washer	unterlegscheibe	arandela	4					
13	470139	copiglia	goupille	cotter pin	splint	clavija	1					
14	509930	perno	pivot	pin	bolzen	perno	1					
15	579646	protezione	protection	guard	schutz	proteccion	1					
16	471400	rondella	rondelle	washer	unterlegscheibe	arandela	4					
17	544179	staffa	etrier	bracket	buegel	estribo	1					
18	487198	rondella	rondelle	washer	unterlegscheibe	arandela	4					
19	512860	vite	vis	screw	schraube	tornillo	4					

**ASSALE ANTERIORE
ESSIEU AVANT
FRONT AXLE
VORNACHSE
EJE DELANTERO**

TIPO TYPE TYPE TYPEN TIPO	NUMERO REFERENCE NUMBER NUMMER NUMERO
ASK3720031	687612

**ASSALE POSTERIORE
ESSIEU ARRIERE
REAR AXLE
HINTERACHSE
EJE TRASERO**

TIPO TYPE TYPE TYPEN TIPO	NUMERO REFERENCE NUMBER NUMMER NUMERO
ASK3720030	687614

**ASSALE POSTERIORE
ESSIEU ARRIERE - REAR AXLE
HINTERACHSE - EJE TRASERO**

TIPO - TYPE

TYPE - TYPEN ASK 7320030

TIPO

NUMERO - REFERENCE

NUMBER - NUMMER 687614

NUMERO

1/1	648653	CABINA (Particolari)					Quantità				8ABDI			
		CABINE (Details)					Quantity	Menge			003			
Rep Item	Part. Number	DESCRIZIONE	DESIGNATION	DESCRIPTION	BEZEICHNUNG	DESCRIPCION	MHT 10180L							
		CAB (Details)												
		KABINE (Einzelteile)												
		CABINA (Detalles)												
1	883264	vetro	glace	glass	glasscheibe	vidrio	1							
2	882888	guarnizione	joint	seal	dichtung	guarnicion	1							
3	883265	inserto	insert	insert	stuck	pion	8							
4	882616	staffa	etrier	bracket	buegel	estribo	2							
5	882617	rondella	rondelle	washer	unterlegscheibe	arandela	8							
6	882658	vite	vis	screw	schraube	tornillo	4							
7	882713	guarnizione	joint	seal	dichtung	guarnicion	1							
8	882714	supporto	support	support	lager	soporte	1							
9	883266	pompa	pompe	pump	pumpe	bomba	1							
10	882658	vite	vis	screw	schraube	tornillo	4							
11	882716	raccordo	raccord	pipe fitting	rohrverbindung	conexion	1							
12														
13	882717	braccio	fleche	arm	arm	brazo	1							
14	882889	spazzola	brosse	brush	buerste	cepillo	1							

1/2	648653	INTERNO CABINA ADAPTATION CABINE CAB ADAPTATION KABINE ANPASSUNG ADAPTACION CABINA					Quantità Quantity Quantité				Menge Quantità		8ACDI 001	
		Rep Item	Part. Number	DESCRIZIONE	DESIGNATION	DESCRIPTION	BEZEICHNUNG	DESCRIPCION	MHT 10180L					
1	239588	supporto	support	support	lager	soporte	1							
2	239337	livella	niveau	level	hoehenanzeige	nivel	1							
3	719261	dado	ecrou	nut	mutter	tuerca	2							
4	719268	vite	vis	screw	schraube	tornillo	2							
5	505234	vite	vis	screw	schraube	tornillo	2							
6	264527	volante	volant	steering wheel	lenkrad	volante	1							
7	746362	pomello	bouton	knob	knebelgriff	boton	1							
8	746361	coperchio	couvercle	cover	deckel	tapa	1							
9	774202	vite	vis	screw	schraube	tornillo	2							
10	260415	carter	carter	housing	gehaeuse	carter	1							
11	260416	carter	carter	housing	gehaeuse	carter	1							
12	499774	vite	vis	screw	schraube	tornillo	4							
13	501409	rondella	rondelle	washer	unterlegscheibe	arandela	4							
14	505168	vite	vis	screw	schraube	tornillo	19							
15	708310	rondella	rondelle	washer	unterlegscheibe	arandela	3							
16														
17	271900	carter	carter	housing	gehaeuse	carter	1							
18	216229	supporto	support	support	lager	soporte	1							
19	78310	vite	vis	screw	schraube	tornillo	1							
20	580971	molla	ressort	spring	feder	resorte	1							
21	198138	rondella	rondelle	washer	unterlegscheibe	arandela	1							
22	656702	dado	ecrou	nut	mutter	tuerca	2							
23	487981	vite	vis	screw	schraube	tornillo	2							
24	265791	supporto	support	support	lager	soporte	1							
25	226372	coperchio	couvercle	cover	deckel	tapa	1							

1/1	648653	IMPIANTO IDRAULICO (Sollevamento)					Quantità				10AEDI		
		HYDRAULIQUE (Circuit levage) HYDRAULIC (Lifting circuit) HYDRAULIK (Aufwinden) HIDRAULICO (Levantamiento)					Quantity	Menge			010		
Rep Item	Part. Number	DESCRIZIONE	DESIGNATION	DESCRIPTION	BEZEICHNUNG	DESCRIPCION	MHT 10180L						
1	482664	raccordo	raccord	pipe fitting	rohrverbindung	conexion	1						
2	885657	tubo	tuyau	hose	schlauch	tubo	1						
3	501225	guarnizione	joint	seal	dichtung	guarnicion	6						
4	672477	raccordo	raccord	pipe fitting	rohrverbindung	conexion	2						
5	885655	tubo	tuyau	hose	schlauch	tubo	1						
6	488516	vite	vis	screw	schraube	tornillo	4						
7	471360	rondella	rondelle	washer	unterlegscheibe	arandela	4						
8	567586	valvola	soupape	valve	ventil	valvula	1						
9	486134	guarnizione	joint	seal	dichtung	guarnicion	2						
10	607425	perno	pivot	pin	bolzen	perno	1						
11	487239	vite	vis	screw	schraube	tornillo	1						
12	479467	dado	ecrou	nut	mutter	tuerca	1						
13	577578	raccordo	raccord	pipe fitting	rohrverbindung	conexion	2						
14	514207	raccordo	raccord	pipe fitting	rohrverbindung	conexion	1						
15	885656	tubo	tuyau	hose	schlauch	tubo	1						
16	503778	raccordo	raccord	pipe fitting	rohrverbindung	conexion	1						
17	579561	protezione	protection	guard	schutz	proteccion	1						
18	448285	rondella	rondelle	washer	unterlegscheibe	arandela	4						

1/2	648653	IMPIANTO IDRAULICO (Circuito sterzo)					Quantità			10BADI			
		HYDRAULIQUE (Circuit direction) HYDRAULIC (Steering circuit) HYDRAULIK (Lenkungkreis) HIDRAULICO (Circuito direcciòn)					Quantity	Menge		001			
Rep Item	Part. Number	DESCRIZIONE	DESIGNATION	DESCRIPTION	BEZEICHNUNG	DESCRIPCION	MHT 10180L						
1	887661	elettrovalvola	soupape electrique	solenoid valve	elektroventil	electrovalvula	1						
2	738056	raccordo	raccord	pipe fitting	rohrverbindung	conexion	2						
3	908828	bobina	bobine	reel	rolle	bobina	2						
4													
5	887654	raccordo	raccord	pipe fitting	rohrverbindung	conexion	2						
6	503921	raccordo	raccord	pipe fitting	rohrverbindung	conexion	1						
7	479153	vite	vis	screw	schraube	tornillo	2						
8	448285	rondella	rondelle	washer	unterlegscheibe	arandela	2						
9													
10	74362	raccordo	raccord	pipe fitting	rohrverbindung	conexion	4						
11	887777	tubo	tuyau	hose	schlauch	tubo	1						
12	448677	vite	vis	screw	schraube	tornillo	4						
13	501224	guarnizione	joint	seal	dichtung	guarnicion	10						
14													
15	887778	tubo	tuyau	hose	schlauch	tubo	1						
16	659631	tubo	tuyau	hose	schlauch	tubo	1						
17	659632	tubo	tuyau	hose	schlauch	tubo	1						
18	719253	vite	vis	screw	schraube	tornillo	2						
19	261322	piatto	plateau	plate	teller	plato	1						
20	659629	tubo	tuyau	hose	schlauch	tubo	1						
21	501219	guarnizione	joint	seal	dichtung	guarnicion	2						
22	471326	rondella	rondelle	washer	unterlegscheibe	arandela	4						
23	487365	raccordo	raccord	pipe fitting	rohrverbindung	conexion	1						
24	488487	raccordo	raccord	pipe fitting	rohrverbindung	conexion	1						
25	606584	idroguida	direction hydraul.	power steering	hydrolenkung	hidroguia	1						

1/1	648653	IMPIANTO IDRAULICO (Cilindro sfilo)					Quantità			10CCDI			
		HYDRAULIQUE (Vérin telescopage) HYDRAULIC (Telescope cylinder) HYDRAULIK (Zusammenstroll zylinder) HIDRAULICO (Cilindro de telescopaje)					Quantity	Menge			001		
Rep Item	Part. Number	DESCRIZIONE	DESIGNATION	DESCRIPTION	BEZEICHNUNG	DESCRIPCION	MHT 10180L						
1	609424	camicia	chemise	cylinder liner	laufbuchse	camisa	1						
2	609425	stelo	tige	rod	spindel	vastago	1						
3	609426	testata	culasse	cylinder head	zylinderkopf	cabezera	1						
4	609427	semipistone	demi piston	half piston	halbkolben	semipiston	1						
5	609428	semipistone	demi piston	half piston	halbkolben	semipiston	1						
6	609429	distanziale	entretoise	spacer	abstandstuck	separador	1						
7	609430	guarnizione	joint	seal	dichtung	guarnicion	1						
8	609431	guarnizione	joint	seal	dichtung	guarnicion	1						
9	488001	guarnizione	joint	seal	dichtung	guarnicion	1						
10	609432	guarnizione	joint	seal	dichtung	guarnicion	1						
11	609433	guarnizione	joint	seal	dichtung	guarnicion	1						
12	609434	guarnizione	joint	seal	dichtung	guarnicion	1						
13	568475	guarnizione	joint	seal	dichtung	guarnicion	1						
14	543957	grano	pivot de repere	dowel pin	stift	perno de centrado	1						
15	609435	guarnizione	joint	seal	dichtung	guarnicion	1						
16	609436	guarnizione	joint	seal	dichtung	guarnicion	1						
17	609437	guarnizione	joint	seal	dichtung	guarnicion	1						
18	609438	grano	pivot de repere	dowel pin	stift	perno de centrado	1						
19	609439	kit guarnizioni	kit joints	seal kit	dichtungssatz	junta de repuesto	1						
20	606817	cilindro completo	verin complet	cylinder ass'y	kompletter zylinder	cilindro completo	1						
21	478786	pattino	bloc de glissement	sliding block	gleitstueck	patin	1						
22	471389	vite	vis	screw	schraube	tornillo	2						

1/1	648653	IMPIANTO IDRAULICO (Cilindro di livellamento)					Quantità			10CFDI			
		HYDRAULIQUE (Vérin de nivellement) HYDRAULIC (Leveling cylinder) HYDRAULIK (Neigungszylinder) HIDRAULICO (Cilindro de nivelacion)					Quantity	Menge		008			
Rep Item	Part. Number	DESCRIZIONE	DESIGNATION	DESCRIPTION	BEZEICHNUNG	DESCRIPCION	MHT 10180L						
1	884408	cilindro completo	verin complet	cylinder ass'y	kompletter zylinder	cilindro completo	2						
2	585027	guarnizione	joint	seal	dichtung	guarnicion	2						
3	484443	guarnizione	joint	seal	dichtung	guarnicion	2						
4	709763	guarnizione	joint	seal	dichtung	guarnicion	2						
5	886371	guarnizione	joint	seal	dichtung	guarnicion	2						
6	886373	guarnizione	joint	seal	dichtung	guarnicion	2						
7	609665	grano	pivot de repere	dowel pin	stift	perno de centrado	4						
8	486223	boccola	douille	bushing	buchse	buje	4						
9	609666	boccola	douille	bushing	buchse	buje	4						
10	886372	guarnizione	joint	seal	dichtung	guarnicion	2						
11	886374	guarnizione	joint	seal	dichtung	guarnicion	2						
12	609668	anello	bague	ring	ring	anillo	4						
13	609669	anello	bague	ring	ring	anillo	4						
14	609670	camicia	chemise	cylinder liner	laufbuchse	camisa	2						
15	886369	pistone	jeu de piston	piston kit	kolbensatz	embolo	2						
16	886370	testata	culasse	cylinder head	zylinderkopf	cabezera	2						
17	609673	stelo	tige	rod	spindel	vastago	2						
18	609674	fondello	culot	end plate	bodenteller	tapon	2						
19	609677	kit guarnizioni	kit joints	seal kit	dichtungssatz	junta de repuesto	2						
20	709762	guarnizione	joint	seal	dichtung	guarnicion	2						

1/1	648653	MANIPOLATORE MANIPOLATEUR CONTROL LEVER STEVERHEBEL MANIPULADOR					Quantità Quantity Quantité				Menge Quantità		10EADI 006	
		Rep Item	Part. Number	DESCRIZIONE	DESIGNATION	DESCRIPTION	BEZEICHNUNG	DESCRIPCION	MHT 10180L					
1	244910	manipolatore	manipulateur	control lever	steverhebel	manipulador	1							
2	702509	kit fissaggio	kit de fixation	fixing kit	schraube kit	kit de sujecion	1							
3	702510	supporto	support	support	lager	soporte	1							
4	702511	kit pistone	kit piston	piston kit	kolbensatz	kit piston	1							
5	702512	kit regolazione	kit de régulation	adjuster kit	regelbausatz	kit regulacion	1							
6	702513	kit molle	kit ressorts	spring kit	federsatz	kit resorte	1							
7	478571	vite	vis	screw	schraube	tornillo	1							
8	485976	prigioniero	goujon	stud bolt	stiftschraube	tornillo esparrago	1							
9	471368	dado	ecrou	nut	mutter	tuerca	1							
10	776043	supporto	support	support	lager	soporte	1							
11	505168	vite	vis	screw	schraube	tornillo	4							
12	719248	rondella	rondelle	washer	unterlegscheibe	arandela	4							
13	258260	soffietto	soufflet	flexible dust cover	schutzbalg	fuelle	1							
14	484213	dado	ecrou	nut	mutter	tuerca	1							

1/1	648653	ELETTRICITA' (Cablaggio principale carro)					Quantità				11AADI		
		ELECTRICITE (Cablage principal chariot) ELECTRICITY (Truck main wiring) ELEKTRIZITAT (Hanpteurkabelung wagen) ELECTRICIDAD (Cableado principal carro)					Quantity	Menge			061		
Rep Item	Part. Number	DESCRIZIONE	DESIGNATION	DESCRIPTION	BEZEICHNUNG	DESCRIPCION	MHT 10180L						
1	882458	testina	tete	head	kopf	cabeza	5						
2	504598	piastrino	plaquette	small plate	plaettchen	chapita	1						
3	504487	terminale	borne	terminal	endverschluss	terminal	x						
4	504592	connettore	connecteur	connector	verbindung	conector	1						
5	738233	protezione	protection	guard	schutz	proteccion	1						
6	882470	protezione	protection	guard	schutz	proteccion	4						
7	729371	connettore	connecteur	connector	verbindung	conector	1						
8	729372	piastrino	plaquette	small plate	plaettchen	chapita	1						
9	775991	terminale	borne	terminal	endverschluss	terminal	x						
10	909698	connettore	connecteur	connector	verbindung	conector	1						
11	909699	piastrino	plaquette	small plate	plaettchen	chapita	1						
12	738498	tappo	bouchon	plug	stopfen	tapon	x						
13	568968	connettore	connecteur	connector	verbindung	conector	1						
14	568971	piastrino	plaquette	small plate	plaettchen	chapita	1						
15	568969	connettore	connecteur	connector	verbindung	conector	1						
16	568970	piastrino	plaquette	small plate	plaettchen	chapita	1						
17	738317	otturatore	bouchon	lock	verschluss	obturador	x						
18	659934	protezione	protection	guard	schutz	proteccion	2						

1/1	648653	ELETTRICITA' (Cavi batteria) ELECTRICITE (Cable batterie) ELECTRICITY (Battery cable) ELEKTRIZITAT (Batterie kabel) ELECTRICIDAD (Cable bateria)					Quantità		Menge		11AADI 090	
		Quantity	Quantité									
Rep Item	Part. Number	DESCRIZIONE	DESIGNATION	DESCRIPTION	BEZEICHNUNG	DESCRIPCION	MHT 10180L					
1	737688	batteria	batterie	battery	batterie	bateria	1					
2	780426	gomma	caoutchouc	rubber	gummi	caucho	1					
3	526858	fermo	arretoir	retainer	halterung	reten	1					
4	499341	vite	vis	screw	schraube	tornillo	1					
5	448285	rondella	rondelle	washer	unterlegscheibe	arandela	3					
6	883717	cavo	cabale	cabale	kabel	cabale	1					
7	471360	rondella	rondelle	washer	unterlegscheibe	arandela	2					
8	887667	cavo massa	fil de masse	ground cable	massekabel	cabale de masa	1					
9	885330	cavo	cabale	cabale	kabel	cabale	1					
10	738505	morsetto	etau	clamp	klemme	mordaza	1					
11	883712	cavo	cabale	cabale	kabel	cabale	1					
12	738502	morsetto	etau	clamp	klemme	mordaza	1					
13	883716	cavo	cabale	cabale	kabel	cabale	1					
14	471320	dado	ecrou	nut	mutter	tuerca	1					
15	742884	protezione	protection	guard	schutz	proteccion	1					
16	738506	protezione	protection	guard	schutz	proteccion	2					
17	738501	protezione	protection	guard	schutz	proteccion	1					
18	738503	vite	vis	screw	schraube	tornillo	5					
19	887666	fusibile	fusibile	fuse	sicherung	fusibile	1			80A		
20	887665	supporto	support	support	lager	soporte	1					

CLICK HERE TO **DOWNLOAD** THE COMPLETE MANUAL

- Thank you very much for reading the preview of the manual.
- You can download the complete manual from: www.heydownloads.com by clicking the link below

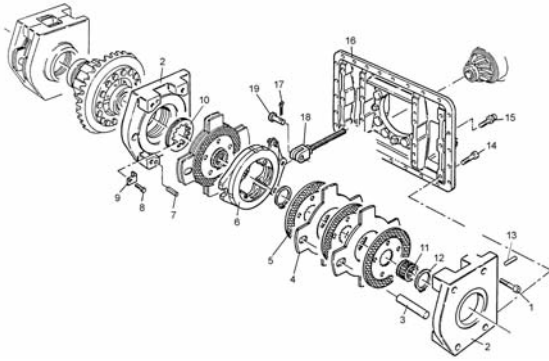


- Please note: If there is no response to CLICKING the link, please download this PDF first and then click on it.

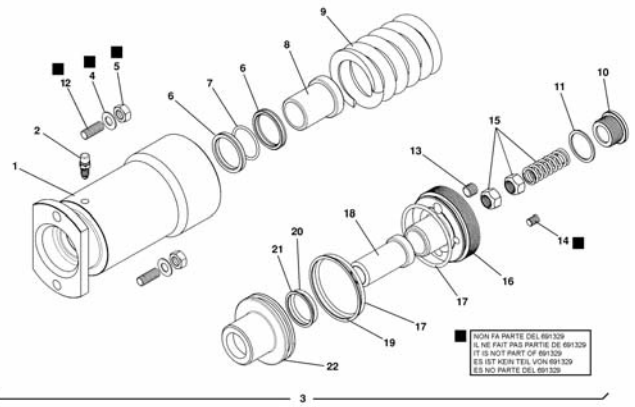
CLICK HERE TO **DOWNLOAD** THE COMPLETE MANUAL

INDEX

7ABDI005

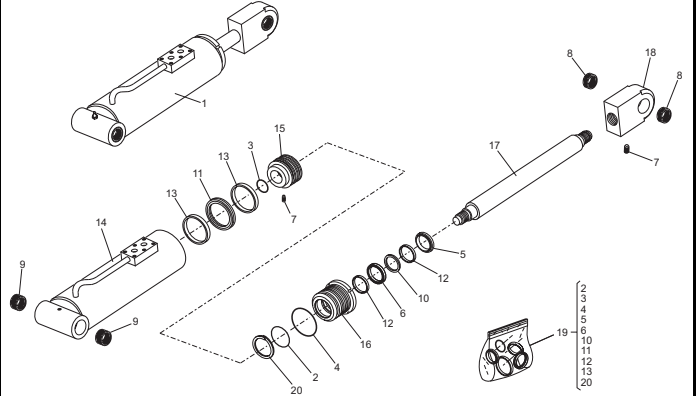


7ABDI006

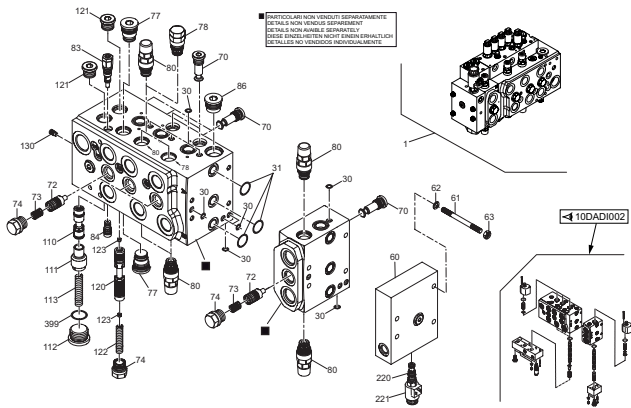


INDEX

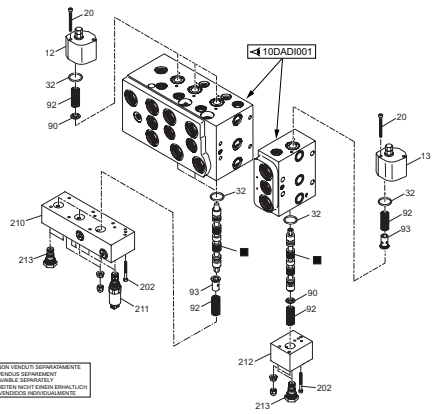
10CFDI008



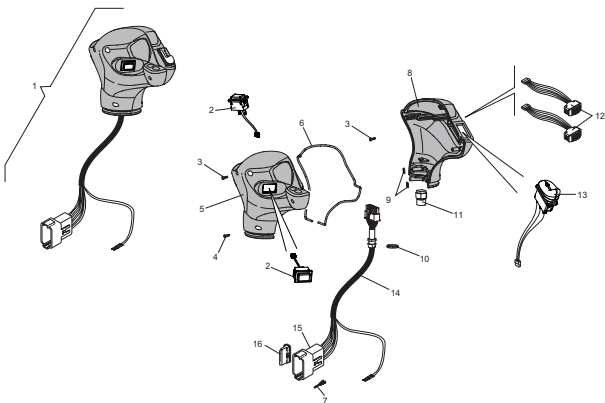
10DADI001



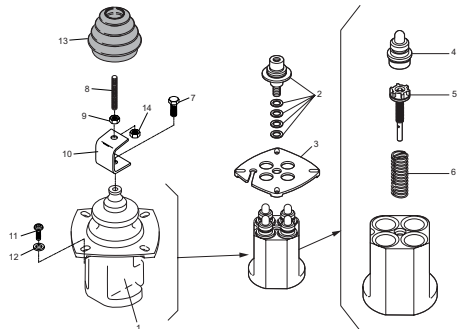
10DADI002



10EADI005



10EADI006



INDEX

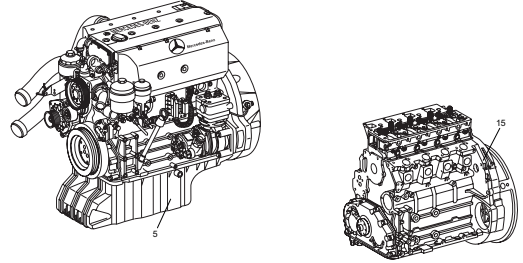
BMDI001

MOTORE MOTEUR - ENGINE MOTOR - MOTOR

TIPO - TYPE
TYPE - TYPEN **OM904LA.E3 129Kw**
TIPO

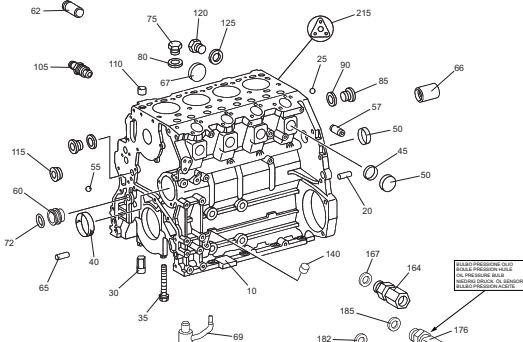
NUMERO - REFERENCE
NUMBER - NUMMER **884082**

NUMERO



PARTICOLARI FORNIBILI SOLOAMENTE COMUNICANDO LA MATRICOLA DEL MOTORE
DETAILS QUI PEUVENT ETRE FOURNI SEULEMENT EN COMMUNICANT LE NUMERO DE SERIE DU MOTEUR
DETAILS FURNISHED ONLY COMMUNICATING THE ENGINE SERIAL NUMBER
DIESE ENZELHETEN SIND LIEFERBAR NUR WENN DIE SERIENUMMER DES MOTORS MITGETEILT WIRD
DETALLES QUE PUEDENT SER PROVISTOS SOLO COMUNICANDO EL NUMERO DEL MOTOR

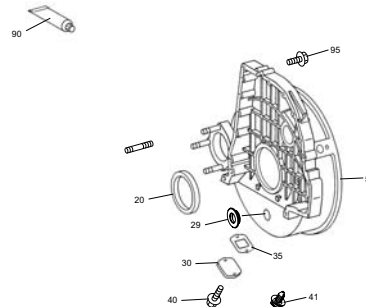
BMDI002



PARTICOLARI FORNIBILI SOLOAMENTE COMUNICANDO LA MATRICOLA DEL MOTORE
DETAILS QUI PEUVENT ETRE FOURNI SEULEMENT EN COMMUNICANT LE NUMERO DE SERIE DU MOTEUR
DETAILS FURNISHED ONLY COMMUNICATING THE ENGINE SERIAL NUMBER
DIESE ENZELHETEN SIND LIEFERBAR NUR WENN DIE SERIENUMMER DES MOTORS MITGETEILT WIRD
DETALLES QUE PUEDENT SER PROVISTOS SOLO COMUNICANDO EL NUMERO DEL MOTOR

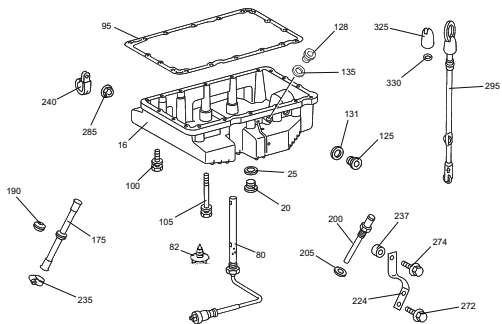
SELEKTIV FORNIBILI SOLOAMENTE COMUNICANDO LA MATRICOLA DEL MOTORE
DETAILS QUI PEUVENT ETRE FOURNI SEULEMENT EN COMMUNICANT LE NUMERO DE SERIE DU MOTEUR
DETAILS FURNISHED ONLY COMMUNICATING THE ENGINE SERIAL NUMBER
DIESE ENZELHETEN SIND LIEFERBAR NUR WENN DIE SERIENUMMER DES MOTORS MITGETEILT WIRD
DETALLES QUE PUEDENT SER PROVISTOS SOLO COMUNICANDO EL NUMERO DEL MOTOR

BMDI003



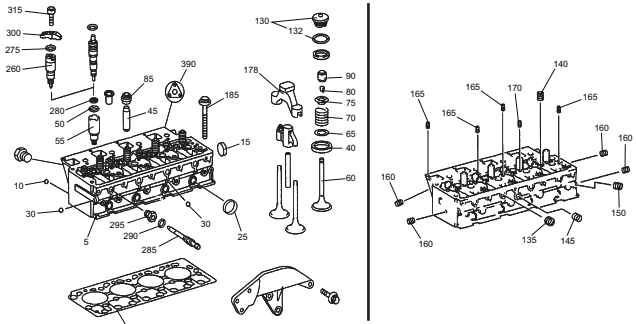
PARTICOLARI FORNIBILI SOLOAMENTE COMUNICANDO LA MATRICOLA DEL MOTORE
DETAILS QUI PEUVENT ETRE FOURNI SEULEMENT EN COMMUNICANT LE NUMERO DE SERIE DU MOTEUR
DETAILS FURNISHED ONLY COMMUNICATING THE ENGINE SERIAL NUMBER
DIESE ENZELHETEN SIND LIEFERBAR NUR WENN DIE SERIENUMMER DES MOTORS MITGETEILT WIRD
DETALLES QUE PUEDENT SER PROVISTOS SOLO COMUNICANDO EL NUMERO DEL MOTOR

BMDI004



PARTICOLARI FORNIBILI SOLOAMENTE COMUNICANDO LA MATRICOLA DEL MOTORE
DETAILS QUI PEUVENT ETRE FOURNI SEULEMENT EN COMMUNICANT LE NUMERO DE SERIE DU MOTEUR
DETAILS FURNISHED ONLY COMMUNICATING THE ENGINE SERIAL NUMBER
DIESE ENZELHETEN SIND LIEFERBAR NUR WENN DIE SERIENUMMER DES MOTORS MITGETEILT WIRD
DETALLES QUE PUEDENT SER PROVISTOS SOLO COMUNICANDO EL NUMERO DEL MOTOR

BMDI005

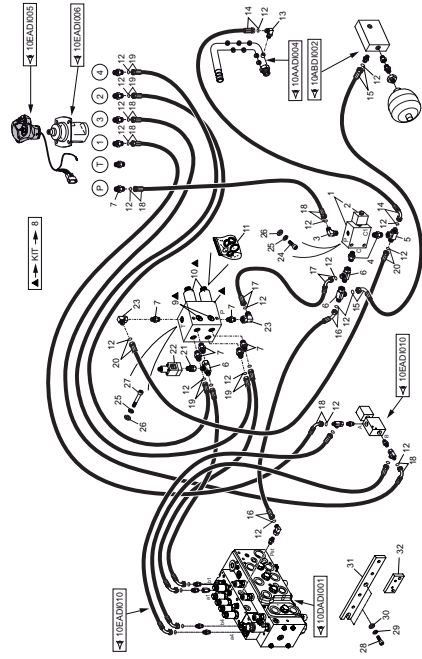


PARTICOLARI FORNIBILI SOLOAMENTE COMUNICANDO LA MATRICOLA DEL MOTORE
DETAILS QUI PEUVENT ETRE FOURNI SEULEMENT EN COMMUNICANT LE NUMERO DE SERIE DU MOTEUR
DETAILS FURNISHED ONLY COMMUNICATING THE ENGINE SERIAL NUMBER
DIESE ENZELHETEN SIND LIEFERBAR NUR WENN DIE SERIENUMMER DES MOTORS MITGETEILT WIRD
DETALLES QUE PUEDENT SER PROVISTOS SOLO COMUNICANDO EL NUMERO DEL MOTOR

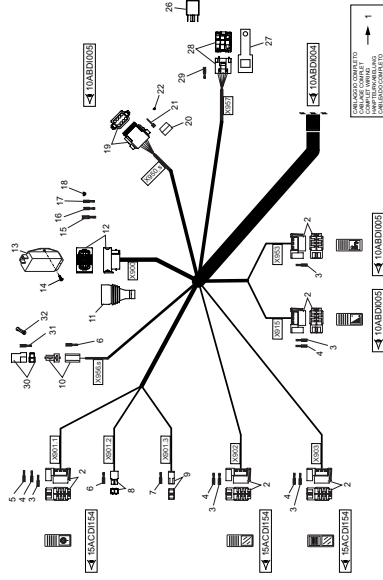
INDEX

OPTIONAL BASKET PREDISPOSITION (885149)

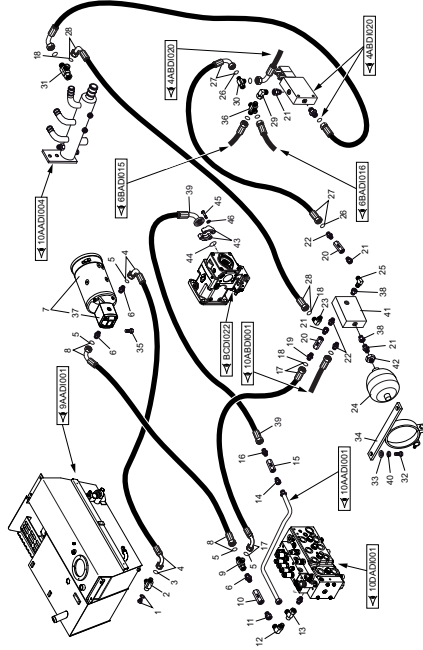
10ABDI001



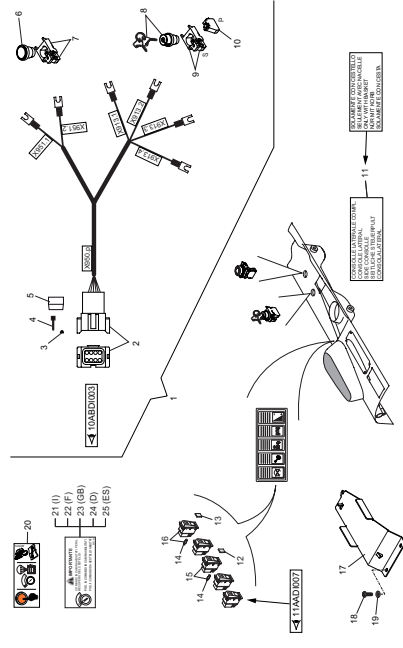
10ABDI003



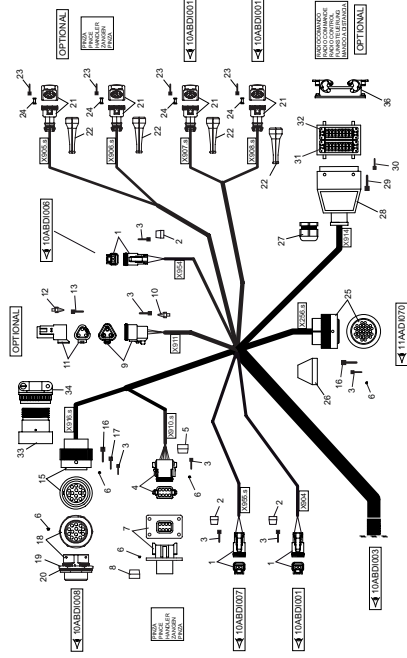
10ABDI002



10ABDI005



10ABDI004



**MOTORE
MOTEUR - ENGINE
MOTOR - MOTOR**

TIPO - TYPE

TYPE - TYPEN

OM904LA.E3 129Kw

TIPO

NUMERO - REFERENCE

NUMBER - NUMMER

884082

NUMERO

1/1	648653	MANOVELLISMO ORGANES MOTEURS MOVING PARTS TRIEBWERKTEILE PIEZAS MONTCES					Quantità Quantity Quantité				Menge Quantità		BMDI 008	
		Rep Item	Part. Number	DESCRIZIONE	DESIGNATION	DESCRIPTION	BEZEICHNUNG	DESCRIPCION	MHT 10180L					
5	743966	biella	bielle	connecting rod	pleuel	biela		4						
10	656334	vite	vis	screw	schraube	tornillo		8						
15	710876	pistone	piston	piston	kolben	embolo		4						
15	710877	pistone	piston	piston	kolben	embolo (H.-0,30KS)		4						
15	710878	pistone	piston	piston	kolben	embolo (H.-0,60KS)		4						
15	710879	pistone	piston	piston	kolben	embolo (H.-0,90KS)		4						
15	887165	pistone	piston	piston	kolben	piston (102.30mm)		4						
15	887168	pistone	piston	piston	kolben	piston (102.60mm)		4						
15	887174	pistone	piston	piston	kolben	piston (102.90mm)		4						
20	743852	kit anelli	jeu de bagues	rings kit	ringsatz	kit anillos (102,00mm)		4						
20	743851	kit anelli	jeu de bagues	rings kit	ringsatz	kit anillos (102,30mm)		4						
20	743850	kit anelli	jeu de bagues	rings kit	ringsatz	kit anillos (102,60mm)		4						
20	743849	kit anelli	jeu de bagues	rings kit	ringsatz	kit anillos (102,90mm)		4						
25	710881	perno	pivot	pin	bolzen	perno		4						
30	710882	arresto	bague d'arret	stop ring	sperring	anillo de seguridad		8						

1/1	648653	LUBRIFICAZIONE MOTORE GRAISSAGE DU MOTEUR ENGINE LUBRICATION MOTORSSCHMIERUNG LUBRICACION DEL MOTOR					Quantità Quantity Quantité				Menge Quantità		BMDI 023	
		Rep Item	Part. Number	DESCRIZIONE	DESIGNATION	DESCRIPTION	BEZEICHNUNG	DESCRIPCION	MHT 10180L					
5	744018	filtro olio	filtre huile	oil filter	oelfilter	filtro de aceite		1						
20	656519	coperchio	couvercle	cover	deckel	tapa		1						
25	709666	cartuccia	cartouche	cartridge	patrone	cartucho		1						
27	710945	anello	bague	ring	ring	anillo		1						
30	710946	bocchettone	goulotte	pipe union	stutzen	boca		1						
70	656521	guarnizione	joint	seal	dichtung	guarnicion		1						
80	710947	valvola	soupape	valve	ventil	valvula		1						
85	710817	guarnizione	joint	seal	dichtung	guarnicion		1						
90	743995	vite	vis	screw	schraube	tornillo (M8x40)		4						
90	656523	vite	vis	screw	schraube	tornillo (M8x60)		1						
100	710948	radiatore	radiateur	radiator	kuhler	radiador		1						
105	656525	elemento	element	element	element	elemento		1						
110	710949	coperchio	couvercle	cover	deckel	tapa		1						
115	656527	guarnizione	joint	seal	dichtung	guarnicion		1						
118	656394	vite	vis	screw	schraube	tornillo (M8x16)		1						
140	656528	guarnizione	joint	seal	dichtung	guarnicion		1						
145	656368	vite	vis	screw	schraube	tornillo (M8x35)		10						
150	725273	emittente	emetteur	sender	geber	emisor		1						
155	710951	guarnizione	joint	seal	dichtung	guarnicion		1						
160	725232	tappo	bouchon	plug	stopfen	tapon		x						
165	656210	guarnizione	joint	seal	dichtung	guarnicion		x						

Ref. 648653



COSTRUZIONI INDUSTRIALI
VIA CRISTOFORO COLOMBO 2
LOC. CAVAZZONA
41013 CASTELFRANCO EMILIA
MODENA TEL. 059/959811

OPTIONAL

MHT 10180L

E3

CATALOGO RICAMBI
CATALOGUE PIECES
PARTS CATALOGUE
ERSATZTEILKATALOG
CATALOGO PIEZAS

1a DATA DI PUBBLICAZIONE	1ère DATE D'EDITION	
1st DAT PUBLICATION	1st DATUM AUSGABE	02/2012
1a FECHA DE PUBLICACION		

INFORMAZIONI CATALOGO
INFORMATION CATALOGUE
CATALOGUE INFORMATION
KATALOG
INFORMACIONES CATALOGO

DATA DI PUBBLICAZIONE
DATE D'EDITION
DATE PUBLICATION
DATUM AUSGABE
FECHES DE PUBLICACION

OSSERVAZIONI
OBSERVATION
OBSERVATION
BEMERKUNG
OBSERVACIONES

02/2012

-1a edizione
-1ère édition
-1st publication
-1st ausgabe
-1a publicacion

1/2	648653	CLIMATIZZATORE AIR CONDITIONEE A/C CIRCUIT KLIMATISIERUNGSAPPARAT ACONDICIONADOR					Quantità Quantity Quantité				Menge Quantità		8ADDI 025	
		Rep Item	Part. Number	DESCRIZIONE	DESIGNATION	DESCRIPTION	BEZEICHNUNG	DESCRIPCION	MHT 10180L					
1	885227	cablaggio	cablage	wiring	verkabelung	cableado	1							
2	738334	connettore	connecteur	connector	verbindung	conector	1							
3	738252	terminale	borne	terminal	endverschluss	terminal	x							
4	775539	connettore	connecteur	connector	verbindung	conector	1							
5	775585	supporto	support	support	lager	soporte	1							
6	775587	gommino	caoutchouc	rubber	gummi	gomita	x							
7	775586	terminale	borne	terminal	endverschluss	terminal	x							
8	780935	connettore	connecteur	connector	verbindung	conector	1							
9	780929	gommino	caoutchouc	rubber	gummi	gomita	x							
10	710310	gommino	caoutchouc	rubber	gummi	gomita	x							
11	659936	terminale	borne	terminal	endverschluss	terminal	x							
12	780928	terminale	borne	terminal	endverschluss	terminal	x							
13	780934	connettore	connecteur	connector	verbindung	conector	1							
14	780932	connettore	connecteur	connector	verbindung	conector	1							
15	780933	terminale	borne	terminal	endverschluss	terminal	x							
16	568968	connettore	connecteur	connector	verbindung	conector	3							
17	568971	piastrino	plaquette	small plate	plaettchen	chapita	3							
18	777380	terminale	borne	terminal	endverschluss	terminal	x							
19	504487	terminale	borne	terminal	endverschluss	terminal	x							
20	886298	connettore	connecteur	connector	verbindung	conector	2							
21														
22														
23	742991	connettore	connecteur	connector	verbindung	conector	1							
24	742992	terminale	borne	terminal	endverschluss	terminal	x							
25	738324	connettore	connecteur	connector	verbindung	conector	2							



OPTIONAL

BASKET PREDISPOSITION

885149

MHT 10180L

E3

**CATALOGO RICAMBI
CATALOGUE PIECES
PARTS CATALOGUE
ERSATZTEILKATALOG
CATALOGO PIEZAS**

1/2	648653	PREDISPOSIZIONE CESTELLO PREDISPOSITION NACELLE BASKET PREDISPOSITION KORB VORBEREITUNG PREDISPOSICION CESTO					Quantità Quantity Quantité				Menge Quantità		10ABDI 003	
		Rep Item	Part. Number	DESCRIZIONE	DESIGNATION	DESCRIPTION	BEZEICHNUNG	DESCRIPCION	MHT 10180L					
1	885250	cablaggio	cablage	wiring	verkabelung	cableado	1							
2	606777	connettore	connecteur	connector	verbindung	conector	2							
3	659686	terminale	borne	terminal	endverschluss	terminal	x							
4	775716	terminale	borne	terminal	endverschluss	terminal	x							
5	738440	terminale	borne	terminal	endverschluss	terminal	x							
6	886434	terminale	borne	terminal	endverschluss	terminal	x							
7	738601	terminale	borne	terminal	endverschluss	terminal	x							
8	738334	connettore	connecteur	connector	verbindung	conector	1							
9	738604	connettore	connecteur	connector	verbindung	conector	1							
10	659988	connettore	connecteur	connector	verbindung	conector	1							
11	778439	cappuccio	capuchon	cover	kappe	capucha	1							
12	738324	connettore	connecteur	connector	verbindung	conector	1							
13	738328	centralina	boite interrupteurs	switching box	stevergehaeuse	centralita	1							
14	719258	vite	vis	screw	schraube	tornillo	2							
15	738326	terminale	borne	terminal	endverschluss	terminal	x							
16	738327	terminale	borne	terminal	endverschluss	terminal	x							
17	780926	terminale	borne	terminal	endverschluss	terminal	x							
18	777389	otturatore	bouchon	lock	verschluss	obturador	x							
19	504594	connettore	connecteur	connector	verbindung	conector	1							
20	504598	piastrino	plaquette	small plate	plaettchen	chapita	1							
21	504487	terminale	borne	terminal	endverschluss	terminal	x							
22	738317	otturatore	bouchon	lock	verschluss	obturador	x							
23	504595	connettore	connecteur	connector	verbindung	conector	1							
24	504599	piastrino	plaquette	small plate	plaettchen	chapita	1							
25	504486	terminale	borne	terminal	endverschluss	terminal	x							

1/1	648653	PREDISPOSIZIONE CESTELLO PREDISPOSITION NACELLE BASKET PREDISPOSITION KORB VORBEREITUNG PREDISPOSICION CESTO					Quantità Quantity Quantité				Menge Quantità		10ABDI 006		
		Rep Item	Part. Number	DESCRIZIONE	DESIGNATION	DESCRIPTION	BEZEICHNUNG	DESCRIPCION	MHT 10180L						
1	907128	cavo	cable	cable	kabel	cable		1							
2	907129	cavo	cable	cable	kabel	cable		1							
3	907127	cavo	cable	cable	kabel	cable		1							
4	717712	protezione	protection	guard	schutz	proteccion		4							
5	907131	protezione	protection	guard	schutz	proteccion		2							
6	567794	teleruttore	telerupteur	solenoid switch	fernshalter	teleruptor		1							
7	779166	supporto	support	support	lager	soporte		1							
8	907130	cablaggio	cablage	wiring	verkabelung	cableado		1							
9	568969	connettore	connecteur	connector	verbindung	conector		1							
10	568970	piastrino	plaquette	small plate	plaettchen	chapita		1							
11	504486	terminale	borne	terminal	endverschluss	terminal		x							
12	482769	vite	vis	screw	schraube	tornillo		2							
13	485641	rondella	rondelle	washer	unterlegscheibe	arandela		2							
14	479802	rondella	rondelle	washer	unterlegscheibe	arandela		2							
15	499764	fusibile	fusible	fuse	sicherung	fusible	7,5A	1							



OPTIONAL

G.S.S. SAFETY SYSTEM

885133

MHT 10180L

E3

**CATALOGO RICAMBI
CATALOGUE PIECES
PARTS CATALOGUE
ERSATZTEILKATALOG
CATALOGO PIEZAS**

1/2	648653	PREDISPOSIZIONE PINZA PREDISPOSITION PINCE TIRE HUNDLER PREDISPOSITION ZANGEN VERANLAGUNG PREDISPOSICION DE LA PINZA					Quantità Quantity Quantité				Menge Quantità		15ACDI 151	
		Rep Item	Part. Number	DESCRIZIONE	DESIGNATION	DESCRIPTION	BEZEICHNUNG	DESCRIPCION	MHT 10180L					
1	885250	cablaggio	cablage	wiring	verkabelung	cableado	1							
2	606777	connettore	connecteur	connector	verbindung	conector	2							
3	659686	terminale	borne	terminal	endverschluss	terminal	x							
4	775716	terminale	borne	terminal	endverschluss	terminal	x							
5	738440	terminale	borne	terminal	endverschluss	terminal	x							
6	886434	terminale	borne	terminal	endverschluss	terminal	x							
7	738601	terminale	borne	terminal	endverschluss	terminal	x							
8	738334	connettore	connecteur	connector	verbindung	conector	1							
9	738604	connettore	connecteur	connector	verbindung	conector	1							
10	659988	connettore	connecteur	connector	verbindung	conector	1							
11	778439	cappuccio	capuchon	cover	kappe	capucha	1							
12	738324	connettore	connecteur	connector	verbindung	conector	1							
13	738328	centralina	boite interrupteurs	switching box	stevergehaeuse	centralita	1							
14	719258	vite	vis	screw	schraube	tornillo	2							
15	738326	terminale	borne	terminal	endverschluss	terminal	x							
16	738327	terminale	borne	terminal	endverschluss	terminal	x							
17	780926	terminale	borne	terminal	endverschluss	terminal	x							
18	777389	otturatore	bouchon	lock	verschluss	obturador	x							
19	504594	connettore	connecteur	connector	verbindung	conector	1							
20	504598	piastrino	plaquette	small plate	plaettchen	chapita	1							
21	504487	terminale	borne	terminal	endverschluss	terminal	x							
22	738317	otturatore	bouchon	lock	verschluss	obturador	x							
23	504595	connettore	connecteur	connector	verbindung	conector	1							
24	504599	piastrino	plaquette	small plate	plaettchen	chapita	1							
25	504486	terminale	borne	terminal	endverschluss	terminal	x							

CLICK HERE TO **DOWNLOAD** THE COMPLETE MANUAL

- Thank you very much for reading the preview of the manual.
- You can download the complete manual from: www.heydownloads.com by clicking the link below



- Please note: If there is no response to CLICKING the link, please download this PDF first and then click on it.

CLICK HERE TO **DOWNLOAD** THE COMPLETE MANUAL