

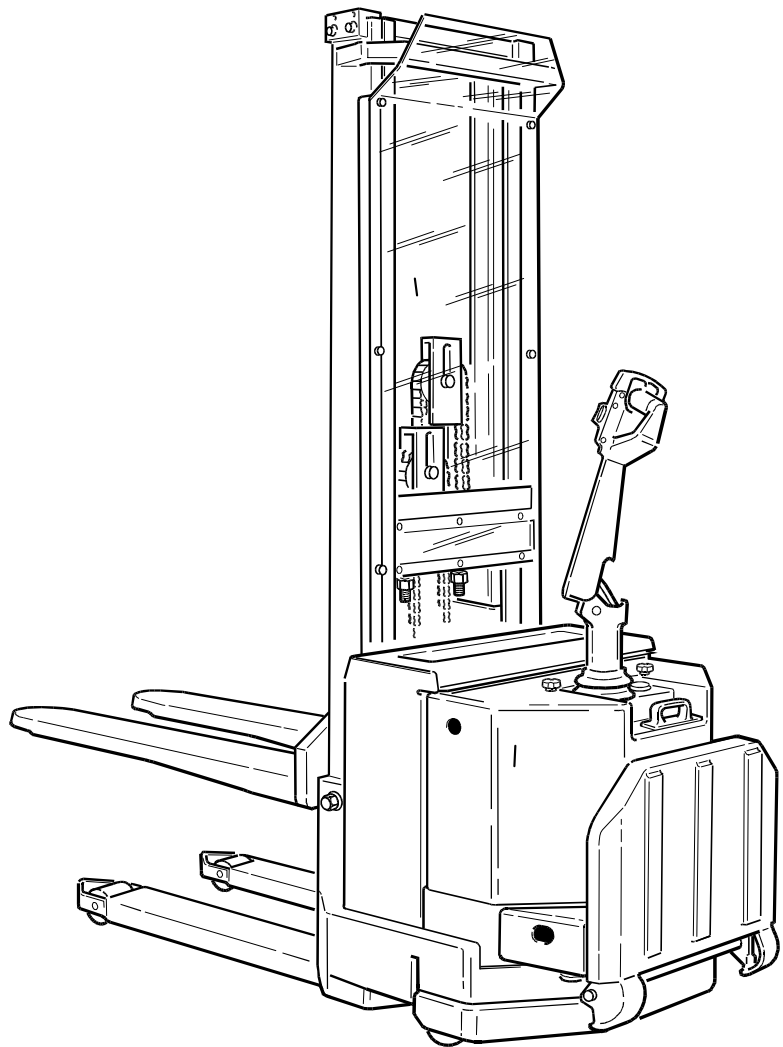
# MPL 10 / MPL 12

## Powered pallet stacker

Valid for machine number: 309700AM-

Only valid for machine number:

--	--	--	--	--	--	--	--	--	--



## Spare Parts Catalogue

Ordering number ..... 161981

Date ..... 1997-11-14 / BDJ

CLICK HERE TO **DOWNLOAD** THE COMPLETE MANUAL

- Thank you very much for reading the preview of the manual.
- You can download the complete manual from: [www.heydownloads.com](http://www.heydownloads.com) by clicking the link below



- Please note: If there is no response to CLICKING the link, please download this PDF first and then click on it.

CLICK HERE TO **DOWNLOAD** THE COMPLETE MANUAL

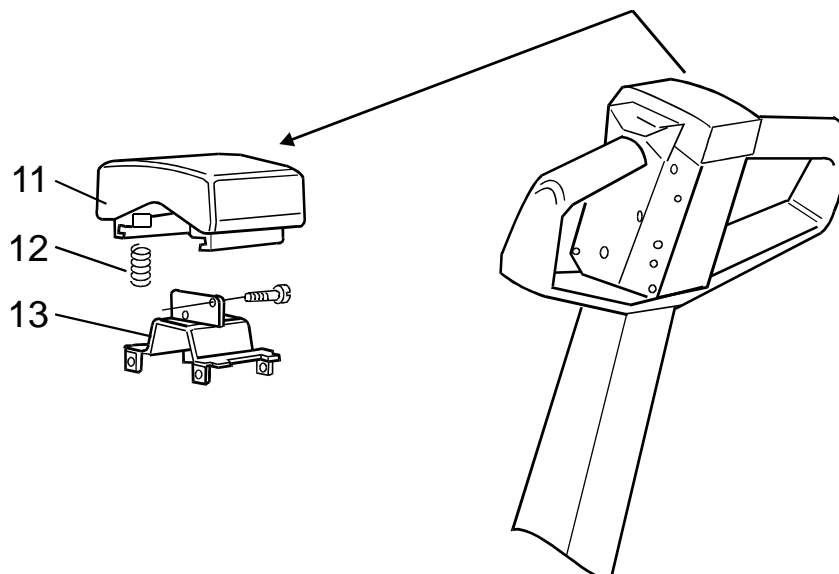
**0400-006 Frame/Chassis components**

[1995-11-28]

Ram-monterade detaljer; Rahmen mont. Teile; Composants du chassis

Pos	Description	Pcs	Part No	Note
			442 MPL 10 443 MPL 12	270001 - 270001 -
11	<b>Dust guard</b> Damask; Gamaschen; Dispositif de protection	1	147049	
12	<b>List</b> List; Leiste; Bande		22420	
13	<b>Clamp</b> Klamma; Rohrschelle; Collier		28192	
14	<b>Clamp</b> Klamma; Rohrschelle; Collier	1	138966	
15	<b>Conduit entry</b> Kabelgenomföring; Kabeldurchgang; Traversée de câble		134334	
16	<b>Nut</b> Mutter; Mutter; Ecrou	2	20130	
17	<b>Screw</b> Skruv; Schraube; Vis	4	20044	
18	<b>Bracket</b> Fäste; Halterung; Support	1	146793	
22	<b>Screw</b> Skruv; Schraube; Vis	2	20184	
23	<b>Washer</b> Bricka; Scheibe; Rondelle	2	21275	
24	<b>Screw</b> Skruv; Schraube; Vis	2	22635	
25	<b>Bracket</b> Fäste; Halterung; Support	1	134511	
26	<b>Washer</b> Bricka; Scheibe; Rondelle	2	20375	
27	<b>Nut</b> Mutter; Mutter; Ecrou	2	20433	

## 0840-010


**0840-010 Driver protection**

Förarskydd; Fahrersschutz; Protection de chauffeur

[1996-11-18]

Pos	Description	Pcs	Part No	Note
			442 MPL 10 443 MPL 12	301306 - 301306 -
11	Push-button Tryckknapp; Druckknopf; Bouton	1	109624	
12	Spring Fjäder; Feder; Ressort	4	27309	
13	Consol Konsol; Konsole; Console	1	109850	

**3160-007 Brake drum / disc assembly**

[1995-12-05]

Trumbroms / skivbroms; Trommel / Scheibenbremse; Moyeu de freinage

Pos	Description	Pcs	Part No	Note
			442 MPL 10 443 MPL 12	270001 - 270001 -
11	<b>Arm</b> Arm; Arm; Bras	1	137191	
12	<b>Nut</b> Mutter; Mutter; Ecrou	1	20016	
13	<b>Nut</b> Mutter; Mutter; Ecrou	1	20433	
14	<b>Nut</b> Mutter; Mutter; Ecrou	1	20396	
15	<b>Screw</b> Skruv; Schraube; Vis	4	20055	
16	<b>Washer</b> Bricka; Scheibe; Rondelle	8	20375	
17	<b>Spring</b> Fjäder; Feder; Ressort	4	29603	
18	<b>Pressure plate</b> Tryckplatta; Drückplättchen; Plaque de pression	1	138730	
19	<b>Nut</b> Mutter; Mutter; Ecrou	4	134482	
20	<b>Screw</b> Skruv; Schraube; Vis	1	147693	Without driver platform Utan förarplattform; Ohne Fahrerplattform; Sans plate forme du conducteur  With driver platform Med förarplattform; Mit Fahrerplattform; Avec plate forme du conducteur
20	<b>Screw</b> Skruv; Schraube; Vis	1	153957	
21	<b>Brake disc</b> Bromsskiva; Innenlamelle; Disque de freinage	1	28044	
22	<b>Locking ring</b> Spärring; Schliessring; Circlip	1	20004	
23	<b>Washer</b> Bricka; Scheibe; Rondelle	1	20882	
24	<b>Driver</b> Medbringare; Kupplung.; Couplement	1	28049	
25	<b>Disc</b> Skiva; Runde Scheibe; Disque	1	138729	
26	<b>Screw</b> Skruv; Schraube; Vis	2	23913	
27	<b>Nut</b> Mutter; Mutter; Ecrou	2	21110	
28	<b>Screw</b> Skruv; Schraube; Vis	1	20460	
29	<b>Roller</b> Rulle; Rolle; Roleau	1	21955	



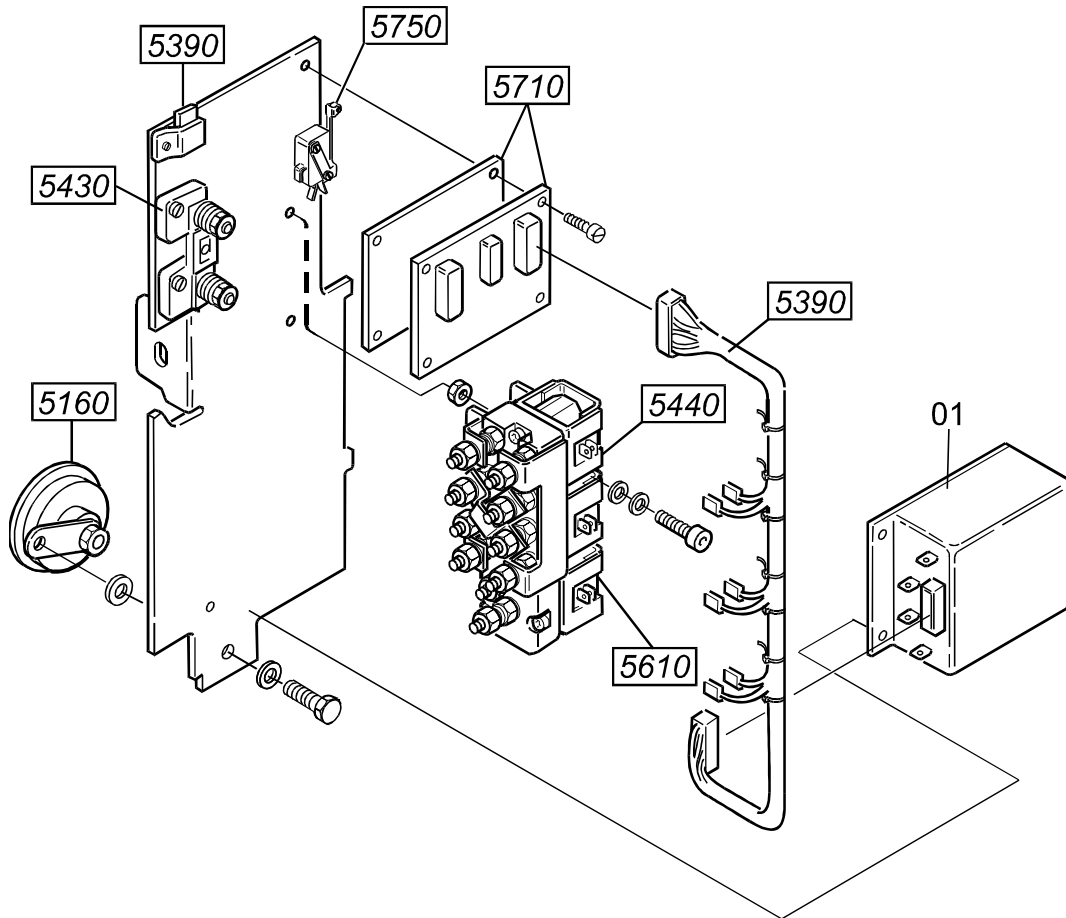
**5170-003 Integrated chargers**

[1996-09-17]

Batteriladdare; Batterieladevorrichtung; Chargeur ( batterie )

Pos	Description	Pcs	Part No	Note
			442 MPL 10 443 MPL 12	284059 - 284059 -
01	Battery charger(220-230V 50Hz) Batteriladdare; Batterieladevorrichtung; Chargeur ( batterie )	1	142697-001	
01	Battery charger(240V 50Hz) Batteriladdare; Batterieladevorrichtung; Chargeur ( batterie )	1	142697-002	
11	Fuse(30A) Säkring; Sicherung; Fusible	1	142698	
12	Relay Relä; Relais; Relais	1	137550	
13	Varistor Varistor; Varistor; Varistor	1	137551	
14	Logic card Logikkort; Steuerkarte; Carte de loughique	1	137549	
15	Diode Diod; Diode; Diode	2	25746	
16	Transformer(220-230V 50Hz) Transformator; Transformator; Transformateur	1	137547	
16	Transformer(240V 50Hz) Transformator; Transformator; Transformateur	1	137548	
17	Cable(+) Kabel; Kabel; Câble	1	151440	
18	Cable(40) Kabel; Kabel; Câble	1	151441	
19	Cable Kabel; Kabel; Câble	1	151449	

## 5460-013

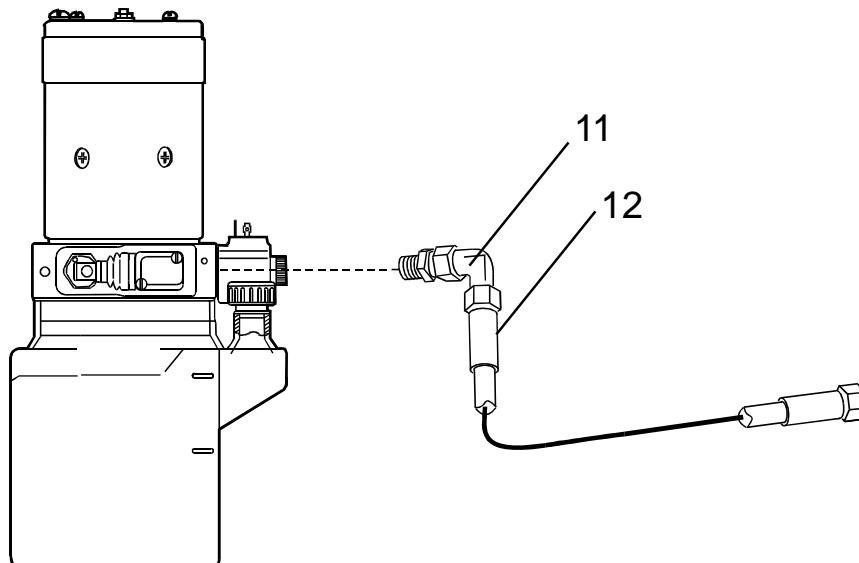

**5460-013 Transistor panel**

Kraftelektronik transistor; Transistor paneel; Panneau transistor

[1997-10-15]

Pos	Description	Pcs	Part No	Note
01	Transistor controller Transistorregulator; Transistorregulator; Regulateur des transistors	1	137197-004	

## 6120-087

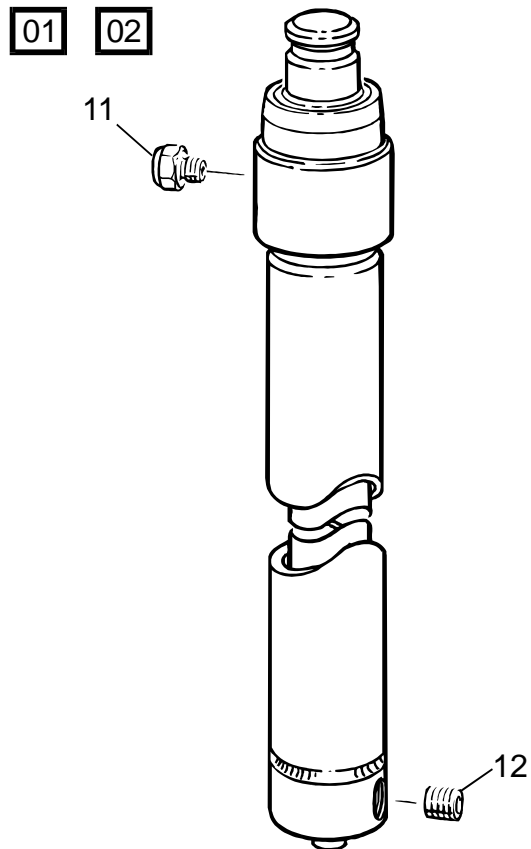

**6120-087 Hoses and pipes, connection, fixation**

[1997-05-28]

Rör/slang-ledning, Koppl., fastsättning; Rohr/Schlauch/Verschraubung, befestig.; Tuyaux / flexibles raccords

Pos	Description	Pcs	Part No	Note
			442 MPL 10	270001 -
			443 MPL 12	270001 -
11	Connection Koppling; Kupplung; Raccord	1	29812	
12	Hose Slang; Schlauch; Tuyau flexible	1	138075	

## 7310-018


**7310-018 Lift cylinders**

Lyftcylinder; Hubzylinder; Verin de levage

[1997-05-28]

<i>Tele; Tele; Tele; Tele</i>			442 MPL 10	270001 -
Pos	Description	Pcs	Part No	Note
01	Lifting cylinder compl Lyftcylinder kompl.; Hubzylinder Kompl.; Verin de levage compl.	1	144690-005	H3 = 2700 mm
01	Lifting cylinder compl Lyftcylinder kompl.; Hubzylinder Kompl.; Verin de levage compl.	1	144690-006	H3 = 3300 mm
01	Lifting cylinder compl Lyftcylinder kompl.; Hubzylinder Kompl.; Verin de levage compl.	1	144690-009	H3 = 2900 mm
01	Lifting cylinder compl Lyftcylinder kompl.; Hubzylinder Kompl.; Verin de levage compl.	1	144690-015	H3 = 3200 mm
02	Packing set Packningssats; Packungssatz; Jeux d' étanchéité.	1	129165	
11	Air bleeder Luftventil; Luftnippel; Soupape ( air )	1	25299	
12	Valve Ventil; Ventil; Soupape	1	25150	

CLICK HERE TO **DOWNLOAD** THE COMPLETE MANUAL

- Thank you very much for reading the preview of the manual.
- You can download the complete manual from: [www.heydownloads.com](http://www.heydownloads.com) by clicking the link below



- Please note: If there is no response to CLICKING the link, please download this PDF first and then click on it.

CLICK HERE TO **DOWNLOAD** THE COMPLETE MANUAL