

0CS10-M44901EN

CLICK HERE TO **DOWNLOAD** THE COMPLETE MANUAL

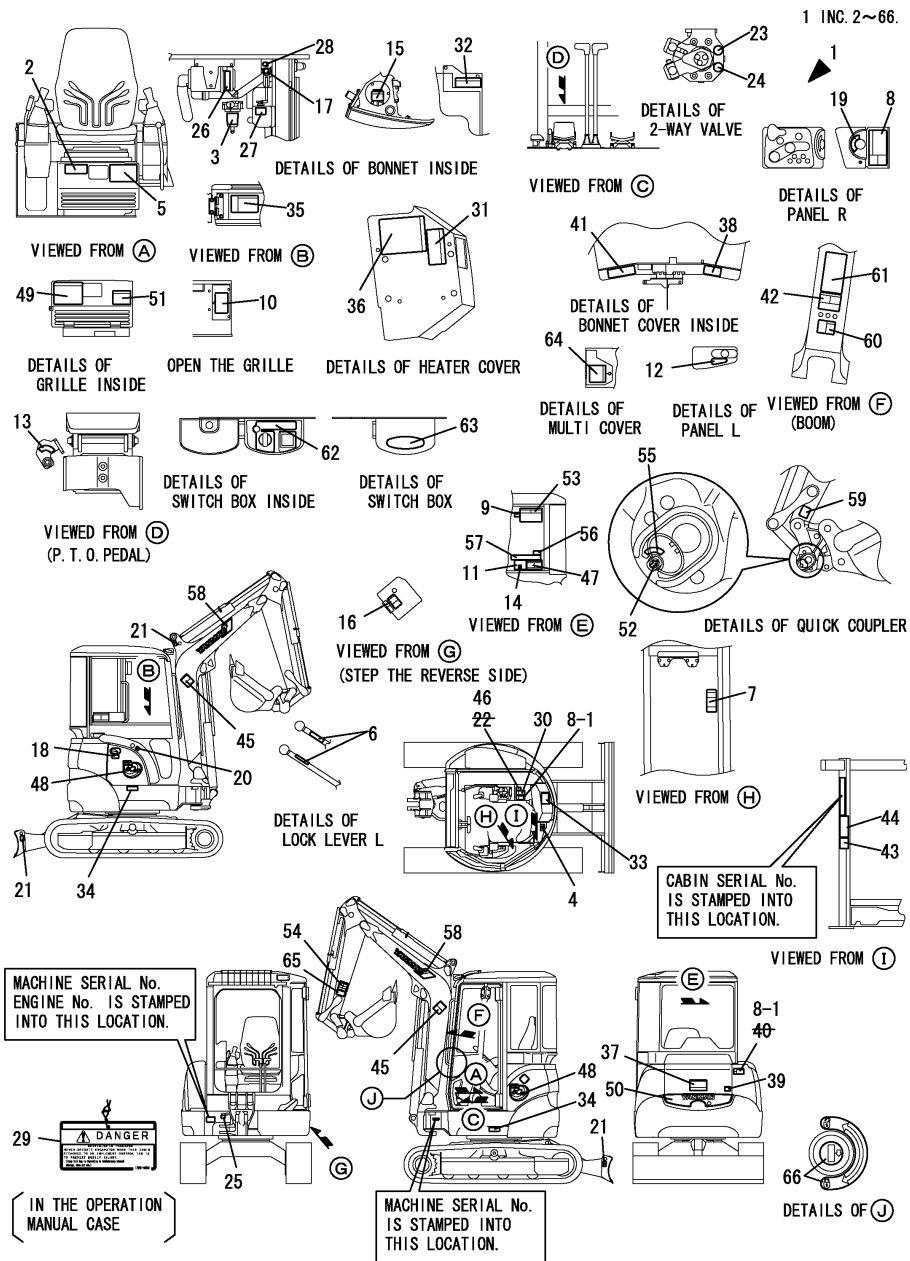
- Thank you very much for reading the preview of the manual.
- You can download the complete manual from: www.heydownloads.com by clicking the link below



- Please note: If there is no response to CLICKING the link, please download this PDF first and then click on it.

CLICK HERE TO **DOWNLOAD** THE COMPLETE MANUAL

Fig.1. LABEL(CABIN)



(A)=VIO27-3 C(US)
 (B)=VIO27-3 P(US)
 (C)=VIO27-3 C(AS)

(D)=VIO27-3 P(AS)
 (E)=VIO27-3 C(NZ)
 (F)=VIO27-3 P(NZ)

No.	Lev.	Parts No.	Description	Q'ty						I	R
				(A)	(B)	(C)	(D)	(E)	(F)		
28-1	2	172A38-03210 (A=M/#30778)	LABEL,ANTI-FREEZING (C=M/#30778)	1	1		1				N
28-2	2	172A38-03211 (A=M/#31282)	LABEL, ANTI-FREEZING (C=M/#31282)	1	1		1				N
29	2	172437-03250	TAG ASSY, CAUTION	1	1		1				N
29-1	2	172437-03251 (A=M/#31112)	TAG ASSY, CAUTION (C=M/#31112)	1	1		1				N
29-2	2	172437-03252 (A=M/#31282)	TAG ASSY, CAUTION (C=M/#31282)	1	1		1				N
30	2	172437-03300	LABEL,MANUAL	1	1		1				N
30-1	2	172437-03301 (A=M/#30778)	LABEL, MANUAL US (C=M/#30778)	1	1		1				N
30-2	2	172437-03302 (A=M/#31282)	LABEL, MANUAL (C=M/#31282)	1	1		1				N
31	2	172437-03310	LABEL,SLOPE	1	1		1				N
31-1	2	172437-03311 (A=M/#30778)	LABEL, SLOPE US (C=M/#30778)	1	1		1				N
31-2	2	172437-03312 (A=M/#31112)	LABEL, SLOPE (C=M/#31112)	1	1		1				N
32	2	172437-03321	LABEL,HYD.OIL TANK	1	1		1				N
32-1	2	172437-03322 (A=M/#30778)	LABEL, RESEVOIR (C=M/#30778)	1	1		1				N
33	2	172437-03341	LABEL,TRANSPORT	1	1		1				N
33-1	2	172437-03342 (A=M/#30778)	LABEL, TRANSPORT US (C=M/#30778)	1	1		1				N
33-2	2	172437-03343 (A=M/#31282)	LABEL, TRANSPORT (C=M/#31282)	1	1		1				N
34	2	172437-03351	LABEL,GREASE CYL.	2	2		2				N
34-1	2	172437-03352 (A=M/#30778)	LABEL, CYLINDER (C=M/#30778)	2	2		2				N
35	2	172437-03360	LABEL,BATTERY	1	1		1				N
35-1	2	172437-03361 (A=M/#30778)	LABEL, BATTERY (C=M/#30778)	1	1		1				N
36	2	172437-03371	LABEL	1	1		1				N
36-1	2	172437-03372 (A=M/#30778)	LABEL, NEUTRAL (C=M/#30778)	1	1		1				N
37	2	172437-03380	LABEL,SWING AREA	1	1		1				N
37-1	2	172437-03381 (A=M/#30778)	LABEL, SWING AREA (C=M/#30778)	1	1		1				N
38	2	172437-03390	LABEL,RADIATOR	1	1		1				N
38-1	2	172437-03391 (A=M/#30778)	LABEL, RADIATOR (C=M/#30778)	1	1		1				N
39	2	172437-03401	LABEL (ENG COVER US)	1	1		1				N
39-1	2	172437-03402 (A=M/#30778)	LABEL, ENGINE COVER (C=M/#30778)	1	1		1				N
40	2	172437-03411 (A=M/#30958)	LABEL (ENG ROOM US) (C=M/#30958)	1	1		1				Z
41	2	172437-03421	LABEL,MUFFLER	1	1		1				N
41-1	2	172437-03422 (A=M/#30778)	LABEL, MUFFLER (C=M/#30778)	1	1		1				N
42	2	172437-03431	LABEL,STEERING	1	1		1				N

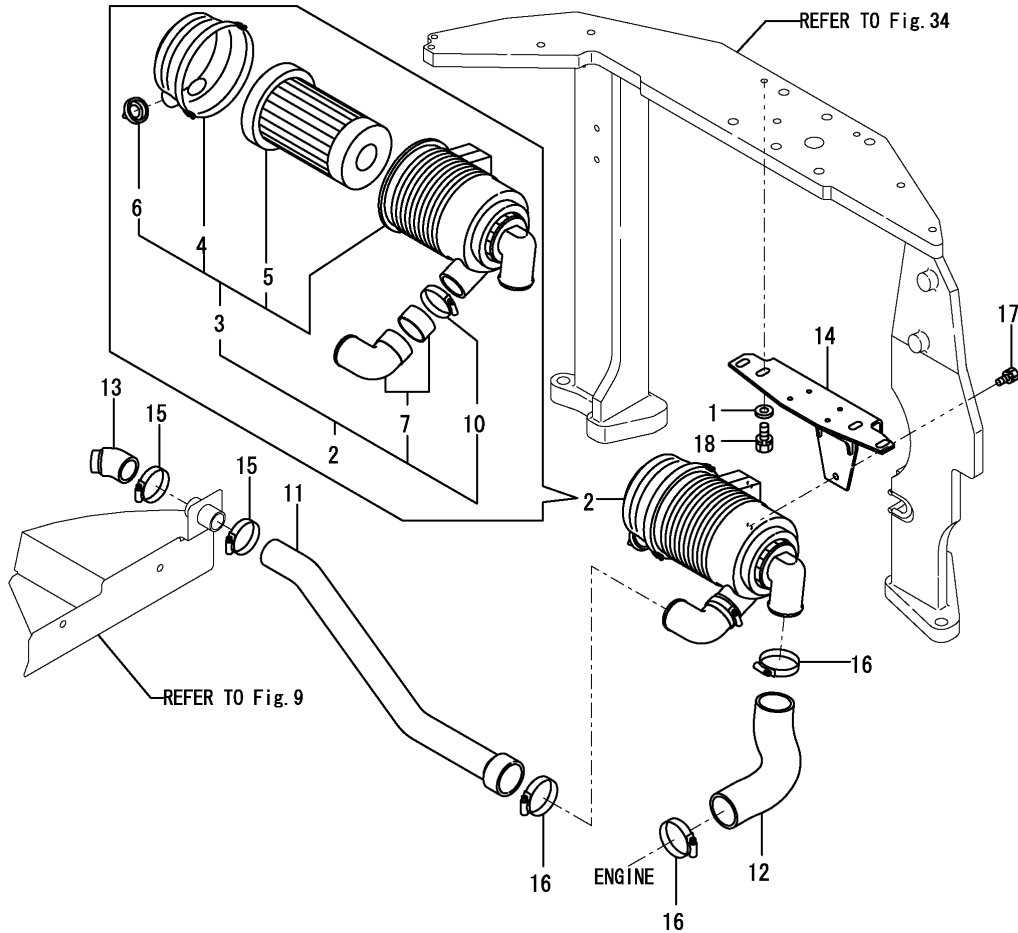
Remarks

(1)Rubber crawler specification.

Fig.6. AIR CLEANER

(A)=VIO27-3 C(US)
 (B)=VIO27-3 P(US)
 (C)=VIO27-3 C(AS)

(D)=VIO27-3 P(AS)
 (E)=VIO27-3 C(NZ)
 (F)=VIO27-3 P(NZ)



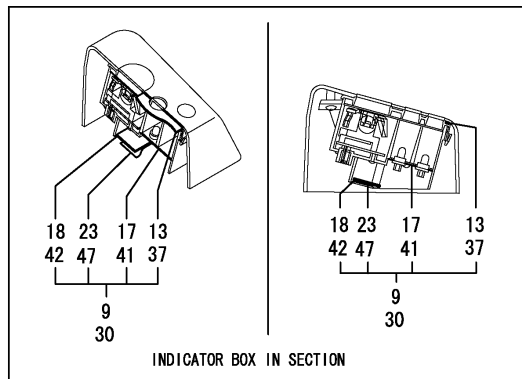
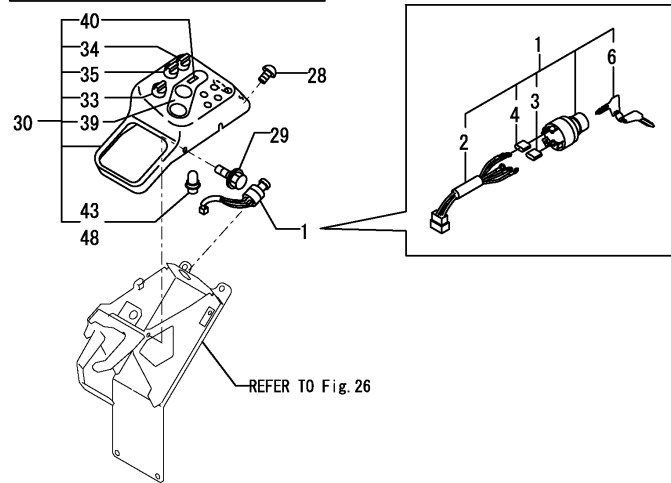
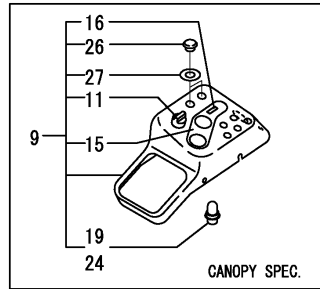
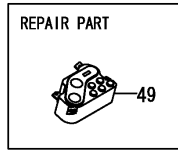
No.	Lev.	Parts No.	Description	Qty						I	R
				(A)	(B)	(C)	(D)	(E)	(F)		
1	1	194145-04810	WASHER, 10	2	2	2	2	2	2		
2	1	172458-11500	CLEANER ASSY, AIR	1	1	1	1	1	1		
3	2	172458-11530	CLEANER, AIR	1	1	1	1	1	1		
4	3	172458-11650	COVER ASSY	1	1	1	1	1	1		1
5	3	119808-12520	ELEMENT, OUTER	1	1	1	1	1	1		
6	3	119808-12540	VALVE, UNLOAD	1	1	1	1	1	1		
7	2	129612-12560	ELBOW, INTAKE	1	1	1	1	1	1		
10	2	23000-060000	CLAMP, 60	1	1	1	1	1	1		
11	1	172458-11511	HOSE, AIR INTAKE	1	1	1	1	1	1		
12	1	172458-11520	HOSE, AIR INTAKE	1	1	1	1	1	1		
13	1	172458-11540	HOSE, AIR INTAKE	1	1	1	1	1	1		
14	1	172458-11552	BRACKET ASSY	1	1	1	1	1	1		
15	1	23000-048000	CLAMP, 48	2	2	2	2	2	2		
16	1	23000-070000	CLAMP, 70	3	3	3	3	3	3		
17	1	26013-080162	BOLT, M8X 16	2	2	2	2	2	2		
18	1	26013-100252	BOLT, M10X 25	2	2	2	2	2	2		
19A	1	172125-03950	LABEL, AIR CLEANER	1	1	1	1	1	1		2
19A-1	1	172125-03951	LABEL, AIR CLEANER	1	1	1	1	1	1		N 2
				(A=M/#30778)	(B=M/#30778)	(C=M/#30778)	(D=M/#30778)	(E=M/#30778)	(F=M/#30778)		

Remarks
 (1) Attach the No.19A label to this part.
 (2) Label is not illustrated.

Fig.16. INSTRUMENT PANEL & STARTER SWITCH

(A)=VIO27-3 C(US)
 (B)=VIO27-3 P(US)
 (C)=VIO27-3 C(AS)

(D)=VIO27-3 P(AS)
 (E)=VIO27-3 C(NZ)
 (F)=VIO27-3 P(NZ)



No.	Lev.	Parts No.	Description	Q'ty						I	R
				(A)	(B)	(C)	(D)	(E)	(F)		
1	1	172187-17100	SWITCH ASSY, STARTER	1	1	1	1	1	1		
2	2	172187-17070	CORD ASSY	1	1	1	1	1	1		
3	2	172187-17080	COVER	3	3	3	3	3	3		
4	2	172187-17090	COVER	2	2	2	2	2	2		
6	2	933110-00301	KEY ASSY	1	1	1	1	1	1		
9	1	172458-17501	BOX,INDICATOR(CANOPY)		1		1		1		1
11	2	172187-17280	SWITCH ASSY, LIGHT		1		1		1		
13	2	172187-17320	PACKING		1		1		1		
15	2	172187-17341	GAUGE ASSY		1		1		1		
16	2	172187-17350	METER ASSY, HOUR		1		1		1		
17	2	172187-17360	PRINT, CIRCUIT		1		1		1		
18	2	172187-17371	CIRCUIT ASSY		1		1		1		
19	2	172187-17380	BULB		4		4		4		
23	2	172187-17470	PLATE		1		1		1		
24	2	172187-17480	BULB		2		2		2		
26	2	172187-17560	CAP		2		2		2		
27	2	172187-17570	GASKET		2		2		2		
28	1	172458-46720	BOLT	1	1	1	1	1	1		
29	1	172519-63240	BOLT	3	3	3	3	3	3		
30	1	172472-17351	BOX, INDICATOR	1		1		1			1
33	2	172187-17280	SWITCH ASSY, LIGHT	1		1		1			
34	2	172187-17290	SWITCH ASSY, HEATER	1		1		1			
35	2	172472-17300	SWITCH ASSY, WASHER	1		1		1			
37	2	172187-17320	PACKING	1		1		1			
39	2	172187-17341	GAUGE ASSY	1		1		1			
40	2	172187-17350	METER ASSY, HOUR	1		1		1			
41	2	172187-17360	PRINT, CIRCUIT	1		1		1			
42	2	172187-17371	CIRCUIT ASSY	1		1		1			
43	2	172187-17380	BULB	4		4		4			
47	2	172187-17470	PLATE	1		1		1			
48	2	172187-17480	BULB	2		2		2			
49	1	172A77-17500	MONITOR ASSY	1	1	1	1	1	1	1	W 3
		(A=MZZZZZ)	(B=MZZZZZ)	(C=MZZZZZ)	(D=MZZZZZ)	(E=MZZZZZ)	(F=MZZZZZ)				
50A	1	172141-03360	LABEL, START SWITCH	1	1	1	1	1	1	1	2

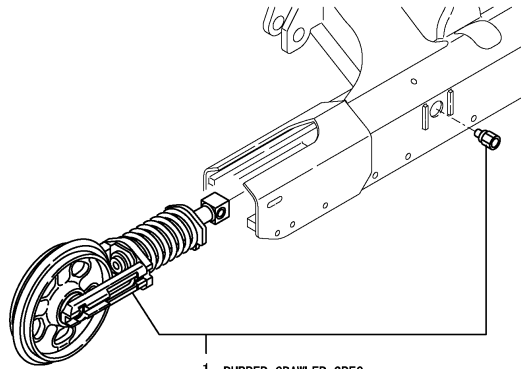
Remarks

- (1)Hour meter = analog type. Attach the No.32A label to this part.
- Only the monitor port copes in No.49.
- (2)Label is not illustrated.
- (3)Hour meter = L.C.D. type.

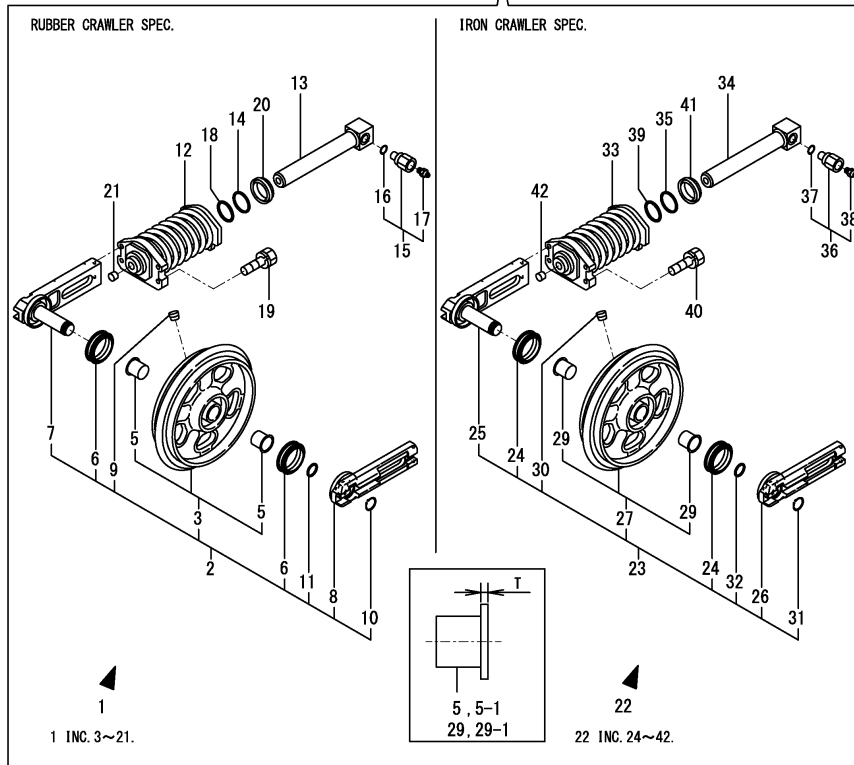
Fig.24. IDLER & ADJUST

(A)=VIO27-3 C(US)
 (B)=VIO27-3 P(US)
 (C)=VIO27-3 C(AS)

(D)=VIO27-3 P(AS)
 (E)=VIO27-3 C(NZ)
 (F)=VIO27-3 P(NZ)



1 RUBBER CRAWLER SPEC.
 22 IRON CRAWLER SPEC.

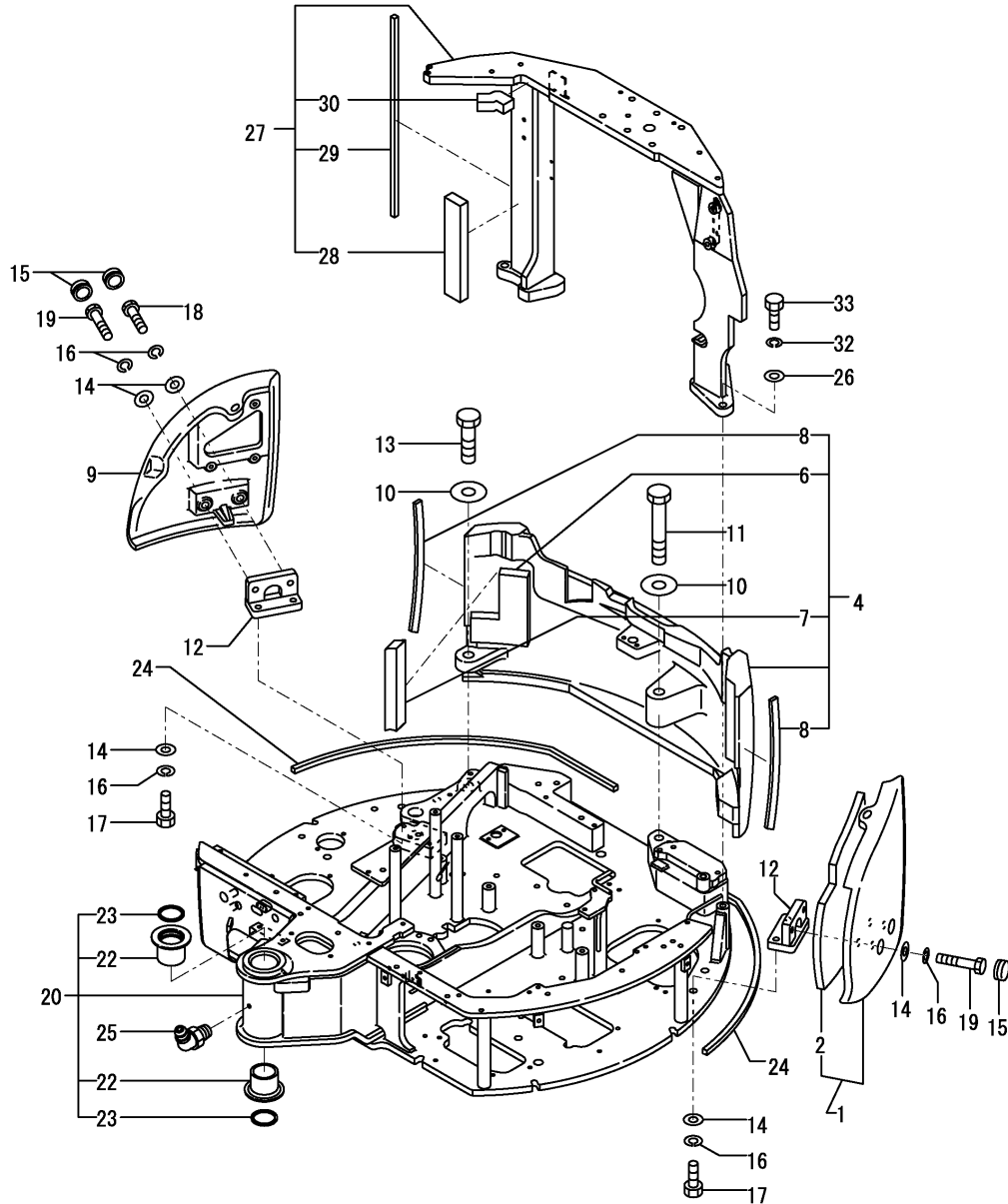


No.	Lev.	Parts No.	Description	Q'ty						I	R
				(A)	(B)	(C)	(D)	(E)	(F)		
32	3	24321-000300	O-RING, 1AG30.0	2	2	2	2	2	2		
33	2	172458-37700	SPRING ASSY, CRAWLER	2	2	2	2	2	2		
34	2	172422-37780	PISTON ASSY, ADJUST	2	2	2	2	2	2		
35	2	172122-37830	RING, BUCK UP	2	2	2	2	2	2		
35-1	2	172460-37750	RING, BACK UP	2	2	2	2	2	2		N
		(A=M/#31112) (B=M/#31112) (C=M/#31112) (D=M/#31112)		(E=M/#31112)	(F=M/#31112)						
36	2	172122-37844	VALVE ASSY, NIPPLE	2	2	2	2	2	2		
37	3	24315-000140	O-RING, 1BP14.0	2	2	2	2	2	2		
38	3	24761-020000	NIPPLE, GREASE PT1/8	2	2	2	2	2	2		
39	2	24325-000400	O-RING, 1BG40.0	2	2	2	2	2	2		
40	2	26013-100402	BOLT, M10X 40	8	8	8	8	8	8		
41	2	933111-23600	SEAL, OIL	2	2	2	2	2	2		
42	2	933171-13691	PLUG	2	2	2	2	2	2		

Remarks

- (1)Rubber crawler specification.
- (2)Iron crawler specification.
- (3)T=No.5, 29 : 2mm, No.5-1, 29-1 : 4.5mm.

Fig.34. TURNING FRAME



(A)=VIO27-3 C(US)
 (B)=VIO27-3 P(US)
 (C)=VIO27-3 C(AS)

(D)=VIO27-3 P(AS)
 (E)=VIO27-3 C(NZ)
 (F)=VIO27-3 P(NZ)

No.	Lev.	Parts No.	Description	Q'ty						I	R
				(A)	(B)	(C)	(D)	(E)	(F)		
1	1	172458-53280-1	WEIGHT	1	1	1	1	1	1		
1-1	1	172458-53282-1	WEIGHT ASSY	1	1	1	1	1	1		R
		(A=M/#30501) (B=M/#30501) (C=M/#30501) (D=M/#30501)						(E=M/#30501)		(F=M/#30501)	
2	2	172458-53290	SPONGE	1	1	1	1	1	1		
2-1	2	172458-53292	SPONGE	1	1	1	1	1	1		R
		(A=M/#30501) (B=M/#30501) (C=M/#30501) (D=M/#30501)						(E=M/#30501)		(F=M/#30501)	
4	1	172457-53292-1	WEIGHT, COUNTER	1	1	1	1	1	1		
6	2	172457-53331	SEAL, WEIGHT	1	1	1	1	1	1		
7	2	172487-53330	SEAL	1	1	1	1	1	1		
8	2	172458-53370	SEAL, COUNTER	2	2	2	2	2	2		
9	1	172457-53310-1	WEIGHT	1	1	1	1	1	1		
10	1	172187-53320	WASHER	2	2	2	2	2	2		
10-1	1	172187-53321	WASHER	2	2	2	2	2	2		N
		(A=M/#35252) (B=M/#35252) (C=M/#35252) (D=M/#35252)						(E=M/#35252)		(F=M/#35252)	
11	1	172455-53330	BOLT	1	1	1	1	1	1		
11-1	1	172455-53331	BOLT	1	1	1	1	1	1		N
		(A=M/#35252) (B=M/#35252) (C=M/#35252) (D=M/#35252)						(E=M/#35252)		(F=M/#35252)	
12	1	172458-53330	BRACKET ASSY	2	2	2	2	2	2		
13	1	172458-53360	BOLT	1	1	1	1	1	1		
14	1	172165-53500	WASHER	8	8	8	8	8	8		
15	1	172456-53700	GROMMET	4	4	4	4	4	4		
16	1	22217-160000	WASHER, SPRING 16	8	8	8	8	8	8		
17	1	26116-160452	BOLT, M16X 45 PLATED	4	4	4	4	4	4		
18	1	26116-160652	BOLT, M16X 65 PLATED	1	1	1	1	1	1		
19	1	26116-160752	BOLT, M16X 75 PLATED	3	3	3	3	3	3		
20	1	172A24-54090-1	FRAME ASSY, TURNING	1	1	1	1	1	1		1
22	2	172168-54750	BUSH 60X70	2	2	2	2	2	2		
23	2	172168-54760	SEAL, DUST	2	2	2	2	2	2		
24	1	172458-54750	SEAL	2	2	2	2	2	2		
25	1	24761-040000	NIPPLE, GREASE B	1	1	1	1	1	1		
26	1	172165-53500	WASHER	4	4	4	4	4	4		
27	1	172458-67203	MOUNT, CANOPY	1	1	1	1	1	1		2
28	2	172480-54130	SEAL, FRAME	1	1	1	1	1	1		
29	2	172458-66220	SPONGE	1	1	1	1	1	1		
30	2	172458-66240	SPONGE	1	1	1	1	1	1		
32	1	22217-160000	WASHER, SPRING 16	4	4	4	4	4	4		
33	1	26116-160652	BOLT, M16X 65 PLATED	4	4	4	4	4	4		
38A	1	172157-03740	LABEL	1	1	1	1	1	1		3
38A-1	1	172157-03741	LABEL, GREASE US	1	1	1	1	1	1		N 3
		(A=M/#30778) (B=M/#30778) (C=M/#30778) (D=M/#30778)						(E=M/#30778)		(F=M/#30778)	
39A	1	124764-44920	LABEL, ANTI-FREEZING	1	1	1	1	1	1		3
39A-1	1	172A38-03210	LABEL, ANTI-FREEZING	1	1	1	1	1	1		3
		(A=M/#30778) (B=M/#30778) (C=M/#30778) (D=M/#30778)						(E=M/#30778)		(F=M/#30778)	
39A-2	1	172A38-03211	LABEL, ANTI-FREEZING	1	1	1	1	1	1		N 3
		(A=M/#31282) (B=M/#31282) (C=M/#31282) (D=M/#31282)						(E=M/#31282)		(F=M/#31282)	

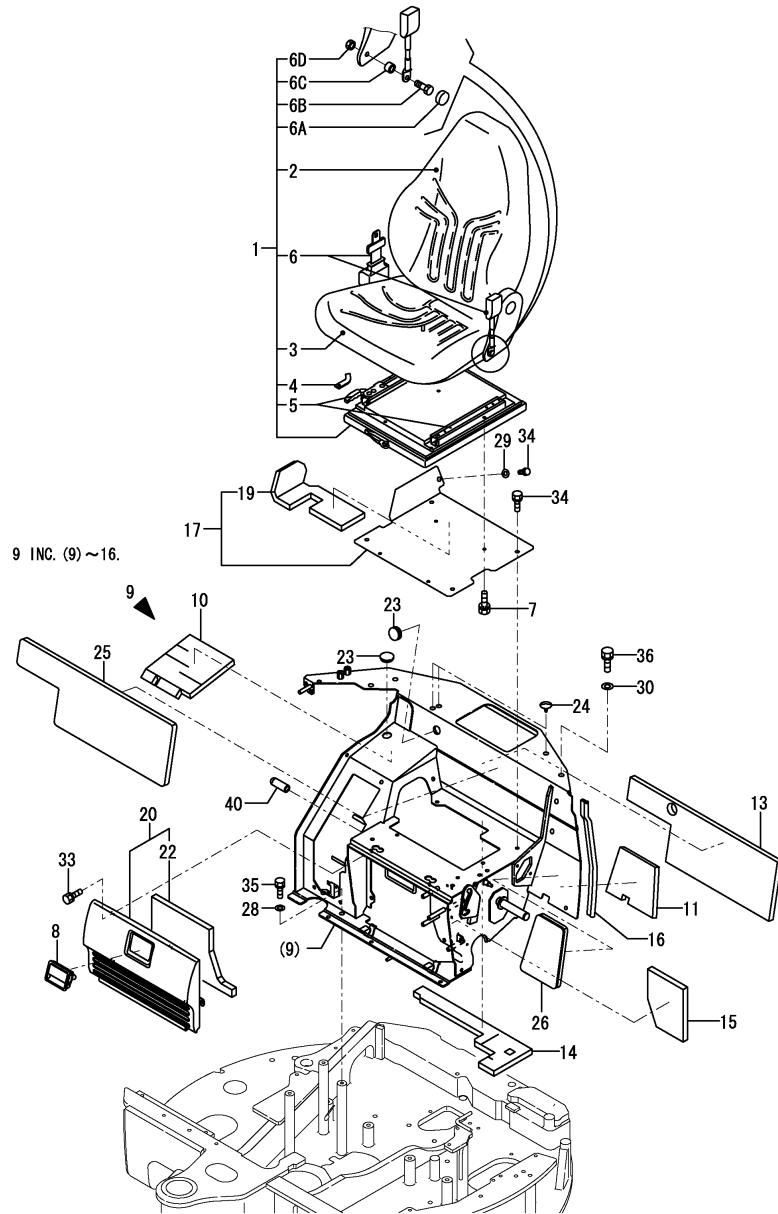
Remarks

- (1) Attach the No.38A label to this part.
- (2) Attach the No.39A label to this part.
- (3) Label is not illustrated.

Fig.43. SEAT & SEAT MOUNT(CABIN)

(A)=VIO27-3 C(US)
 (B)=VIO27-3 P(US)
 (C)=VIO27-3 C(AS)

(D)=VIO27-3 P(AS)
 (E)=VIO27-3 C(NZ)
 (F)=VIO27-3 P(NZ)



No.	Lev.	Parts No.	Description	Q'ty						I	R
				(A)	(B)	(C)	(D)	(E)	(F)		
34	1	26013-100202	BOLT, M10X 20			5		5			
35	1	26013-100252	BOLT, M10X 25			3		3			
36	1	26013-120302	BOLT, M12X 30			1		1			
36-1	1	26013-120252	BOLT, M12X 25 (C=M/#30901)			2		2		N	
40	1	172187-64800	CAP			1		1			
41A	1	172472-03171	LABEL,FUSE US			1		1		3	
41B	1	172437-03530	LABEL,RE-START (C=M/#30778)			1		1		Z 3	
41C	1	172437-03300	LABEL,MANUAL			1		1		3	
41C-1	1	172437-03301	LABEL, MANUAL US (C=M/#30778)			1		1		N 3	
41C-2	1	172437-03302	LABEL, MANUAL (C=M/#31282)			1		1		N 3	
41D	1	172437-03470	LABEL,LEVER LOCK			1		1		3	
41D-1	1	172437-03471	LABEL, LEVER LOCK (C=M/#30778)			1		1		N 3	
41E	1	172A36-03411	LABEL, ENGINE ROOM (C=M/#31031)			1		1		W 3	
42A	1	172A37-03110	LABEL,SPECIFICATION			1		1		3	
42A-1	1	172A37-03111	LABEL, SPECIFICATION (C=M/#30739)			1		1		N 3	
42B	1	172472-03200	LABEL,SUPPORT C US			1		1		3	
42B-1	1	172472-03141	LABEL, SUPPORT (C=M/#30778)			1		1		N 3	
42C	1	172472-03150	LABEL,OIL&WATER			1		1		3	
42D	1	172472-03160	LABEL,GREASE			1		1		3	

Remarks

- (1)Attach the No.41A, 41B, 41C, 41D & 41E label to this part.
- (2)Attach the No.42A, 42B, 42C & 42D label to this part.
- (3)Label is not illustrated.

CLICK HERE TO **DOWNLOAD** THE COMPLETE MANUAL

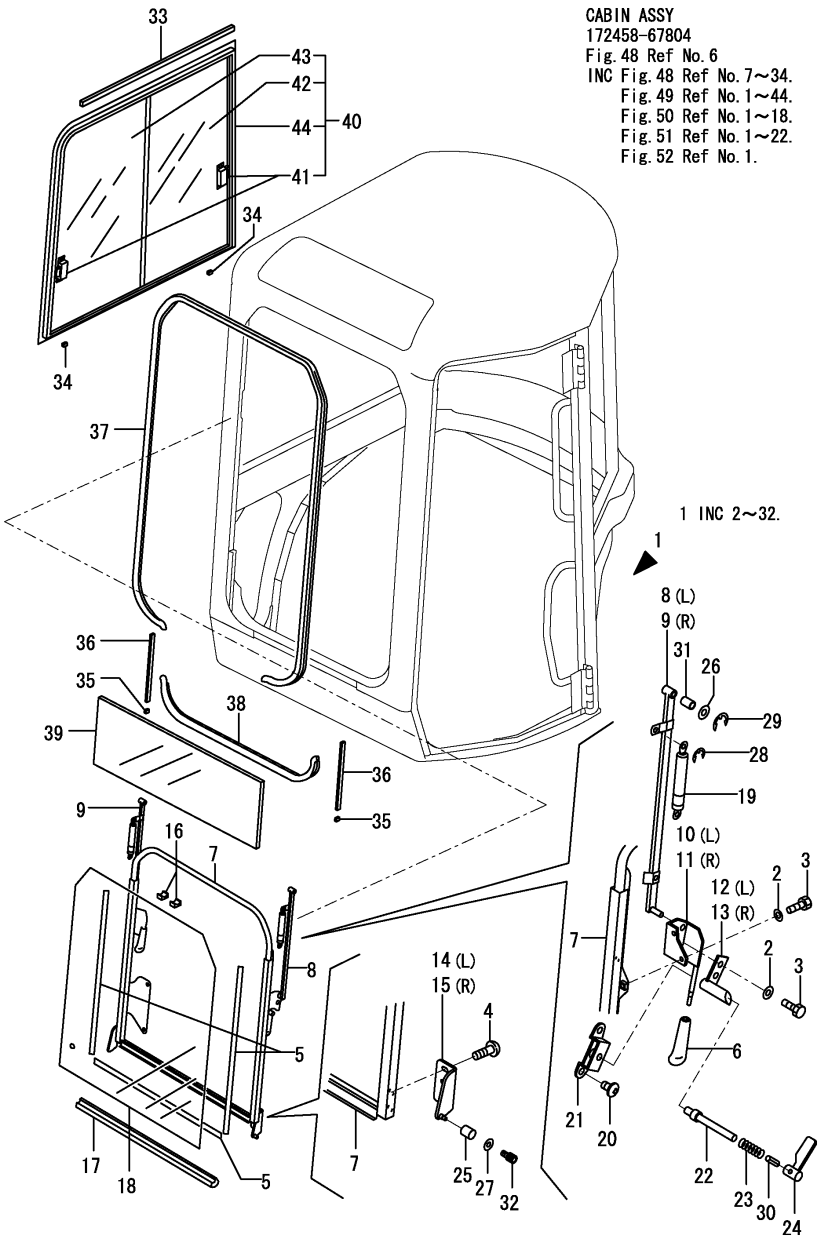
- Thank you very much for reading the preview of the manual.
- You can download the complete manual from: www.heydownloads.com by clicking the link below



- Please note: If there is no response to CLICKING the link, please download this PDF first and then click on it.

CLICK HERE TO **DOWNLOAD** THE COMPLETE MANUAL

Fig.49. CABIN(GLASS)



CABIN ASSY
172458-67804
Fig. 48 Ref No. 6
INC Fig. 48 Ref No. 7~34.
Fig. 49 Ref No. 1~44.
Fig. 50 Ref No. 1~18.
Fig. 51 Ref No. 1~22.
Fig. 52 Ref No. 1.

(A)=VIO27-3 C(US) (D)=VIO27-3 P(AS)
(B)=VIO27-3 P(US) (E)=VIO27-3 C(NZ)
(C)=VIO27-3 C(AS) (F)=VIO27-3 P(NZ)

No.	Lev.	Parts No.	Description	Q'ty						I	R
				(A)	(B)	(C)	(D)	(E)	(F)		
1	2	172459-67810	SASH ASSY			1			1		
2	3	172458-63670	WASHER			8			8		
3	3	172458-63680	BOLT			8			8		
4	3	172458-63730	SCREW			4			4		
5	3	172458-63790	SEAL, DAM			3			3		
6	3	172445-66750	GRIP			2			2		
7	3	172458-67340	FRAME			1			1		
8	3	172458-67440	LINK			1			1		
9	3	172458-67510	LINK			1			1		
10	3	172458-67520	HANDLE			1			1		
11	3	172458-67550	HANDLE			1			1		
12	3	172458-67570	LATCH ASSY			1			1		
13	3	172458-67610	LATCH ASSY			1			1		
14	3	172458-67670	SHAFT ASSY, ROLLER			1			1		
15	3	172458-67680	SHAFT ASSY, ROLLER			1			1		
16	3	172458-67850	RUBBER, STOPPER			2			2		
17	3	172458-67870	RUBBER, SEAL			1			1		
18	3	172458-67900	GLASS			1			1		
19	3	172458-67920	SPRING, GAS			2			2		
20	3	172463-69150	SCREW			4			4		
21	3	172463-69160	HOLDER ASSY			2			2		
22	3	172463-69190	PIN, LATCH			2			2		
23	3	172463-69200	SPRING			2			2		
24	3	172463-69210	LEVER ASSY			2			2		
25	3	172445-69740	ROLLER			2			2		
26	3	22117-120000	WASHER, 12			4			4		
27	3	22137-060000	WASHER, 6			2			2		
28	3	22272-000060	RING, E- 6			4			4		
29	3	22272-000080	RING, E- 8			4			4		
30	3	22351-030012	PIN, SPRING 3.0X12			2			2		
31	3	24550-012200	BUSH, 12X20			4			4		
32	3	26450-060102	BOLT, M6X 10			2			2		
33	2	172458-63760	SEAL, SPONGE			1			1		
34	2	172455-67610	SPACER			2			2		
35	2	172455-67710	RUBBER, STOPPER			2			2		
36	2	172458-67830	RUN, GLASS			2			2		
37	2	172458-67860	RUBBER, SEAL			1			1		
38	2	172458-67880	RUBBER, SEAL			1			1		
39	2	172458-67910	GLASS			1			1		
40	2	172458-69250	SASH ASSY			1			1		1
41	3	172455-67770	LOCK ASSY, SASH			2			2		
42	3	172458-69260	GLASS, SASH			1			1		
43	3	172458-69270	GLASS, SASH			1			1		
44	3	172458-69280	FRAME, SASH			1			1		
45A	1	172437-03550	LABEL, WINDOW			1			1		2
45A-1	1	172437-03551	LABEL, WINDOW US			1			1		N 2
			(C=M/#30778)						(E=M/#30778)		
45B	1	172490-03200	LABEL, OPERATION			1			1		2
45C	1	172496-03250	LABEL, PTO			1			1		2
45D	1	172472-03222	LABEL, LIFT Q US			1			1		2
45D-1	1	172472-03223	LABEL, LIFT Q US			1			1		N 2

Remarks
(1) Attach the No.45A, 45, 45C, 45D, 45E, 45F & 45G label to this part.
(2) Label is not illustrated.

Fig.58. TIM CABIN(FRONT WINDOW)

(A)=VIO27-3 C(US)
 (B)=VIO27-3 P(US)
 (C)=VIO27-3 C(AS)

(D)=VIO27-3 P(AS)
 (E)=VIO27-3 C(NZ)
 (F)=VIO27-3 P(NZ)

CABIN ASSY
 172472-68400

Fig. 54 Ref. No. 1

INC. Fig. 54 Ref. No. 2~39.

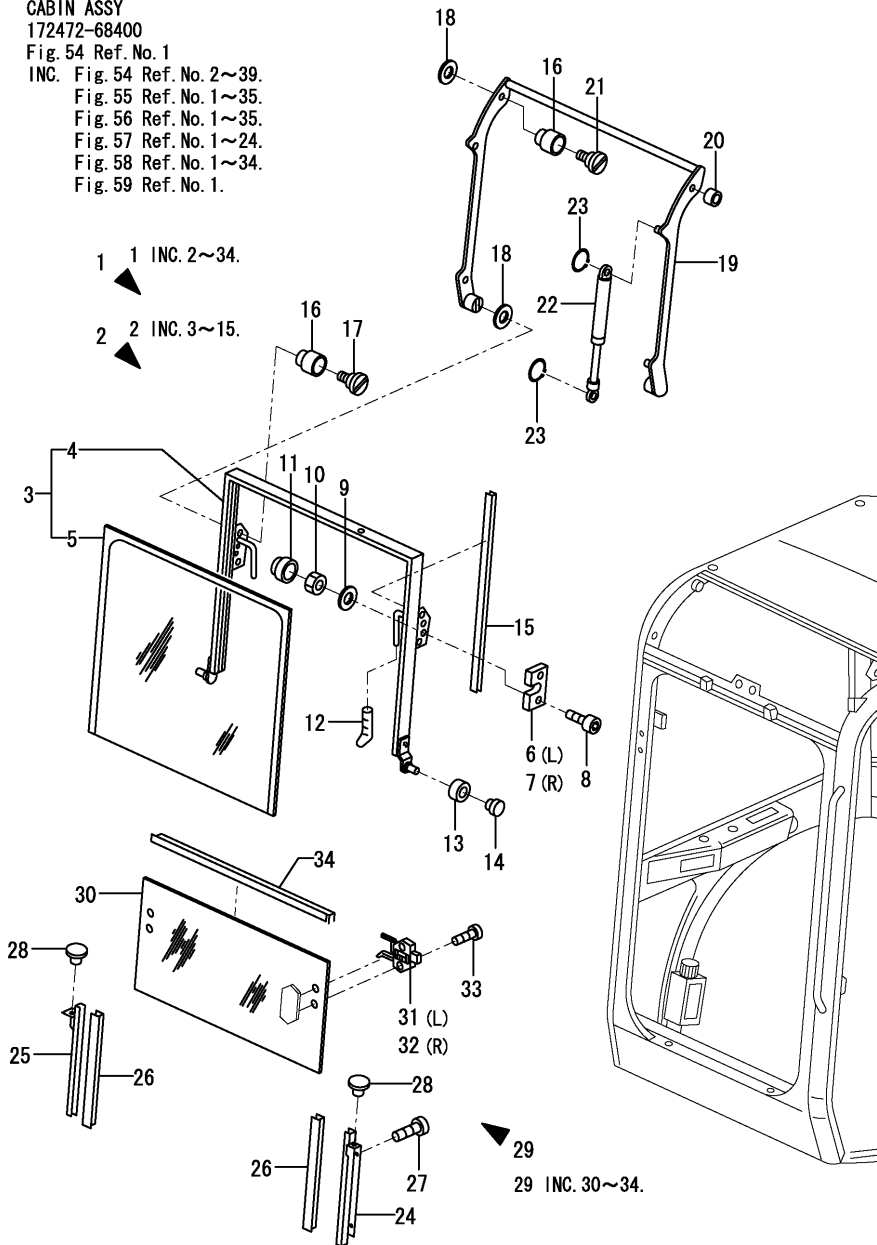
Fig. 55 Ref. No. 1~35.

Fig. 56 Ref. No. 1~35.

Fig. 57 Ref. No. 1~24.

Fig. 58 Ref. No. 1~34.

Fig. 59 Ref. No. 1.



No.	Lev.	Parts No.	Description	Q'ty						I	R
				(A)	(B)	(C)	(D)	(E)	(F)		
1	2	172472-68420	GLASS ASSY	1							
2	3	172472-68850	GLASS ASSY	1							
3	4	172472-68860	GLASS ASSY	1							
4	4	172472-68870	FLAME FRONT GLASS	1							1
5	4	172472-68880	GLASS	1							1
6	4	172437-68690	LOCK L,UPPER WINDOW	1							
7	4	172437-68710	LOCK R,UPPER WINDOW	1							
8	4	172456-69840	SCREW, M8X40	4							
9	4	172456-69990	WASHER, 8	4							
10	4	172456-68100	NUT, M8	4							
11	4	172A21-69030	CAP, NUT M8	4							
12	4	172456-69380	GRIP	2							
13	4	172456-69390	BUSH, NYLON	2							
14	4	172456-69400	PLUG	1							
15	4	172456-69410	SEAL, 780	2							
16	3	172456-69420	SPACER, NYLON	2							
17	3	172456-68800	SCREW	2							
18	3	172456-68780	WASHER	4							
19	3	172472-68910	LINK	1							
20	3	172456-69430	WASHER, NYLON	1							
21	3	172456-68800	SCREW	2							
22	3	172456-69450	SPRING, GAS	4							
23	3	172456-69460	CIRCLIP	2							
24	3	172456-68080	GUIDE	1							
25	3	172456-68090	GUIDE	1							
26	3	172437-69080	SEAL, NYLON 440	2							
27	3	172456-68950	SCREW, M6X16	4							
28	3	172456-68550	STOPPER	2							
29	3	172472-68920	GLASS ASSY	1							
30	4	172472-68930	GLASS	1							
31	4	172456-69550	LOCK L, UNDER GLASS	1							
31-1	4	172456-69551	LOCK, L UNDER GLASS	1							N
(A=MXXXXX)											
32	4	172456-69560	LOCK R, UNDER GLASS	1							
32-1	4	172456-69561	LOCK, R UNDER GLASS	1							N
(A=MXXXXX)											
33	4	172456-69570	SCREW, M5X25	4							
34	4	172472-69240	SEAL, 790	1							

Remarks

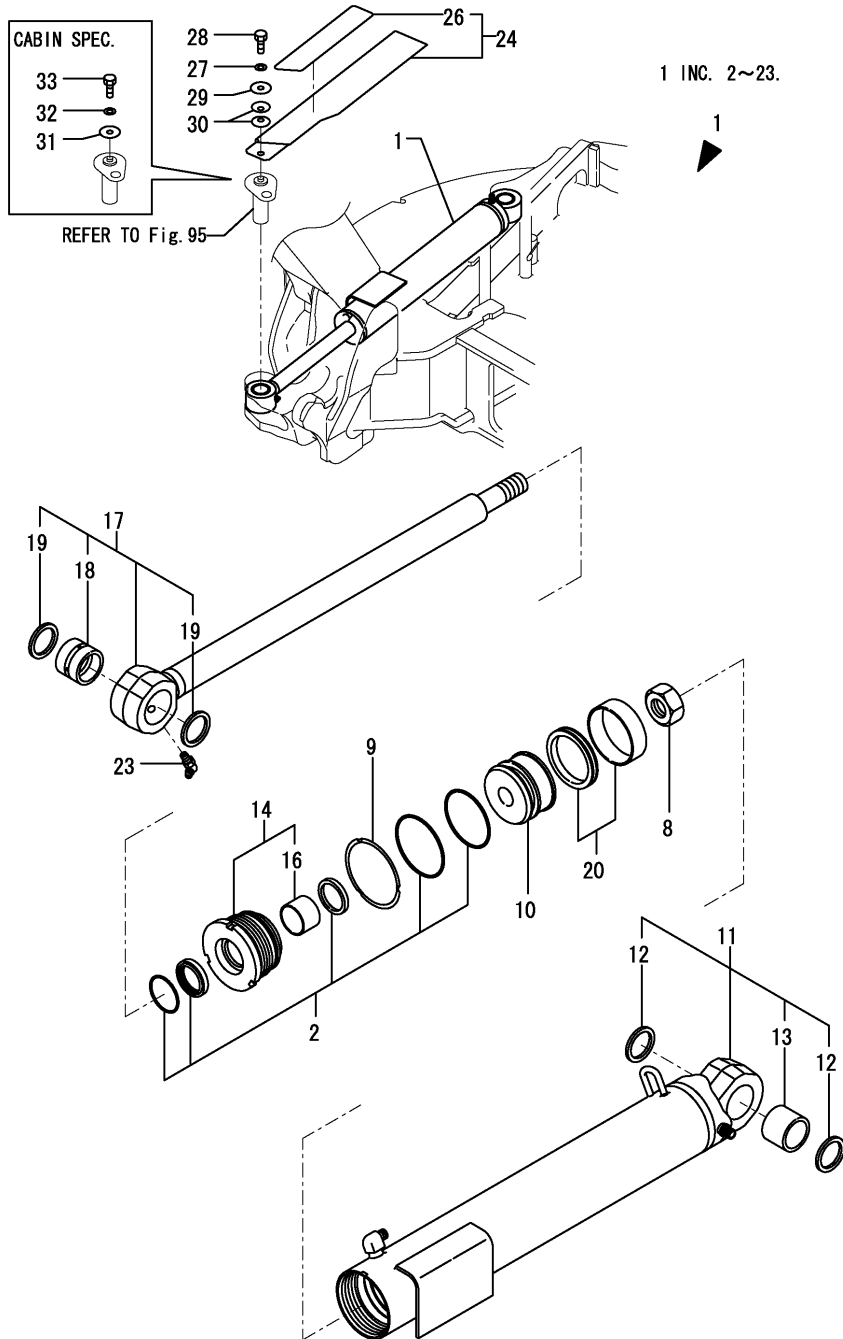
(1)Inner parts of No.3.

N:Old $\begin{matrix} \leftarrow \text{Yes} \\ \text{No} \end{matrix}$ New, Q:Old $\begin{matrix} \leftarrow \text{No} \\ \text{Yes} \end{matrix}$ New, R:Old $\begin{matrix} \leftarrow \text{Yes} \\ \text{Yes} \end{matrix}$ New, S:Old $\begin{matrix} \leftarrow \text{No} \\ \text{No} \end{matrix}$ New, W:Add, Z:Discontinued, F:Interchangeable by set, K:Q'ty Change

Fig.67. SWING CYLINDER

(A)=VIO27-3 C(US)
 (B)=VIO27-3 P(US)
 (C)=VIO27-3 C(AS)

(D)=VIO27-3 P(AS)
 (E)=VIO27-3 C(NZ)
 (F)=VIO27-3 P(NZ)



No.	Lev.	Parts No.	Description	Q'ty						I	R
				(A)	(B)	(C)	(D)	(E)	(F)		
1	1	172457-72700-1	CYLINDER ASSY, SWING	1	1	1	1	1	1		
2	2	172458-72050	SEAL SET, HEAD	1	1	1	1	1	1		
8	2	172141-72250	NUT	1	1	1	1	1	1		
9	2	172142-72260	WASHER, LOCK	1	1	1	1	1	1		
10	2	172175-72480	PISTON 80	1	1	1	1	1	1		
11	2	172457-72760	TUBE ASSY, SWING	1	1	1	1	1	1		
12	3	172448-72650	SEAL, DUST	2	2	2	2	2	2		
13	3	172458-72740	BUSH	1	1	1	1	1	1		
14	2	172422-72760	HEAD	1	1	1	1	1	1		
16	3	24550-040300	BUSH, 40X30	1	1	1	1	1	1		
17	2	172458-72880	ROD ASSY, SWING	1	1	1	1	1	1		
18	3	172165-72310	BUSH	1	1	1	1	1	1		
19	3	172448-72650	SEAL, DUST	2	2	2	2	2	2		
20	2	172142-72951	SEAL SET, PISTON	1	1	1	1	1	1		
23	2	24761-050000	NIPPLE, GREASE C	1	1	1	1	1	1		
24	1	172458-72860-1	COVER, SWING			1		1			
26	2	172458-72850	SHEET, SWING			1		1			
27	1	22217-100000	WASHER, SPRING 10			1		1			
28	1	26116-100162	BOLT, M10X 16 PLATED			1		1			
29	1	933147-03400	WASHER, BRAKE ARM			1		1			
30	1	933168-14170	SPRING			2		2			
31	1	22157-100000	WASHER, 10			1		1			
32	1	22217-100000	WASHER, SPRING 10			1		1			
33	1	26116-100162	BOLT, M10X 16 PLATED			1		1			

Fig.76. CONTROL VALVE(4/6)

(A)=VIO27-3 C(US)
 (B)=VIO27-3 P(US)
 (C)=VIO27-3 C(AS)

(D)=VIO27-3 P(AS)
 (E)=VIO27-3 C(NZ)
 (F)=VIO27-3 P(NZ)

CONTROL VALVE ASSY
 172457-74101

Fig. 73 Ref. No. 1

INC. Fig. 73 Ref. No. 2~22.

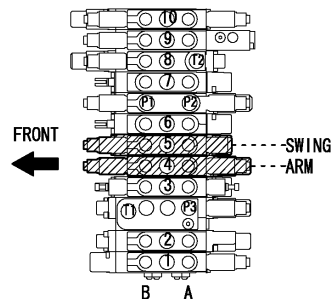
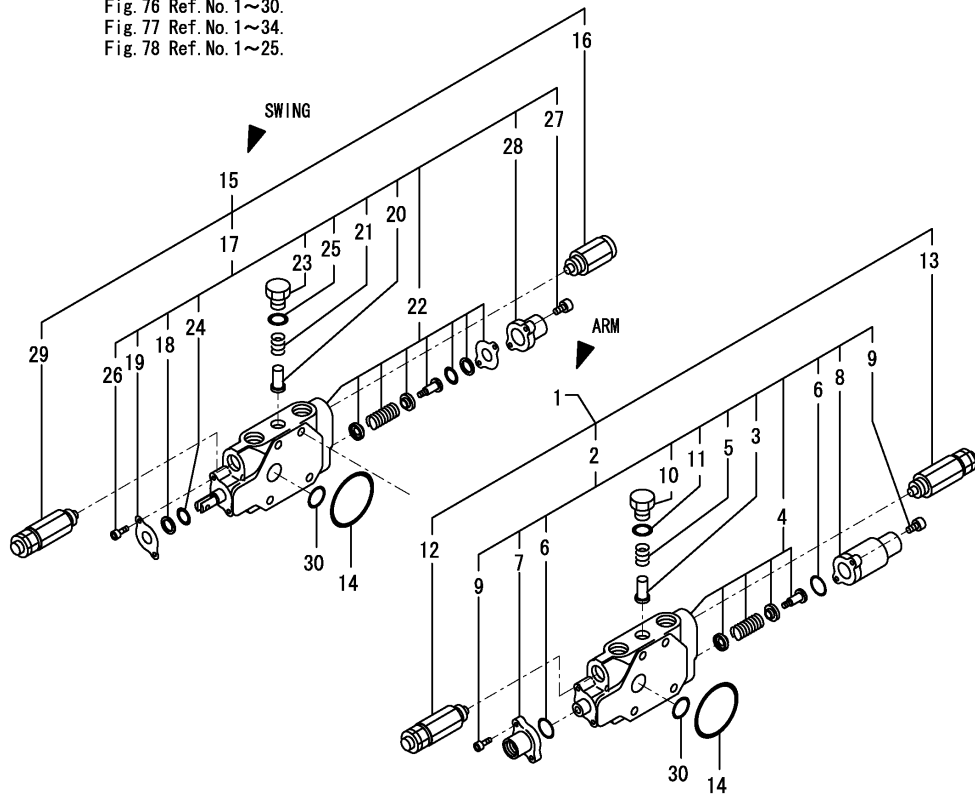
Fig. 74 Ref. No. 1~28.

Fig. 75 Ref. No. 1~25.

Fig. 76 Ref. No. 1~30.

Fig. 77 Ref. No. 1~34.

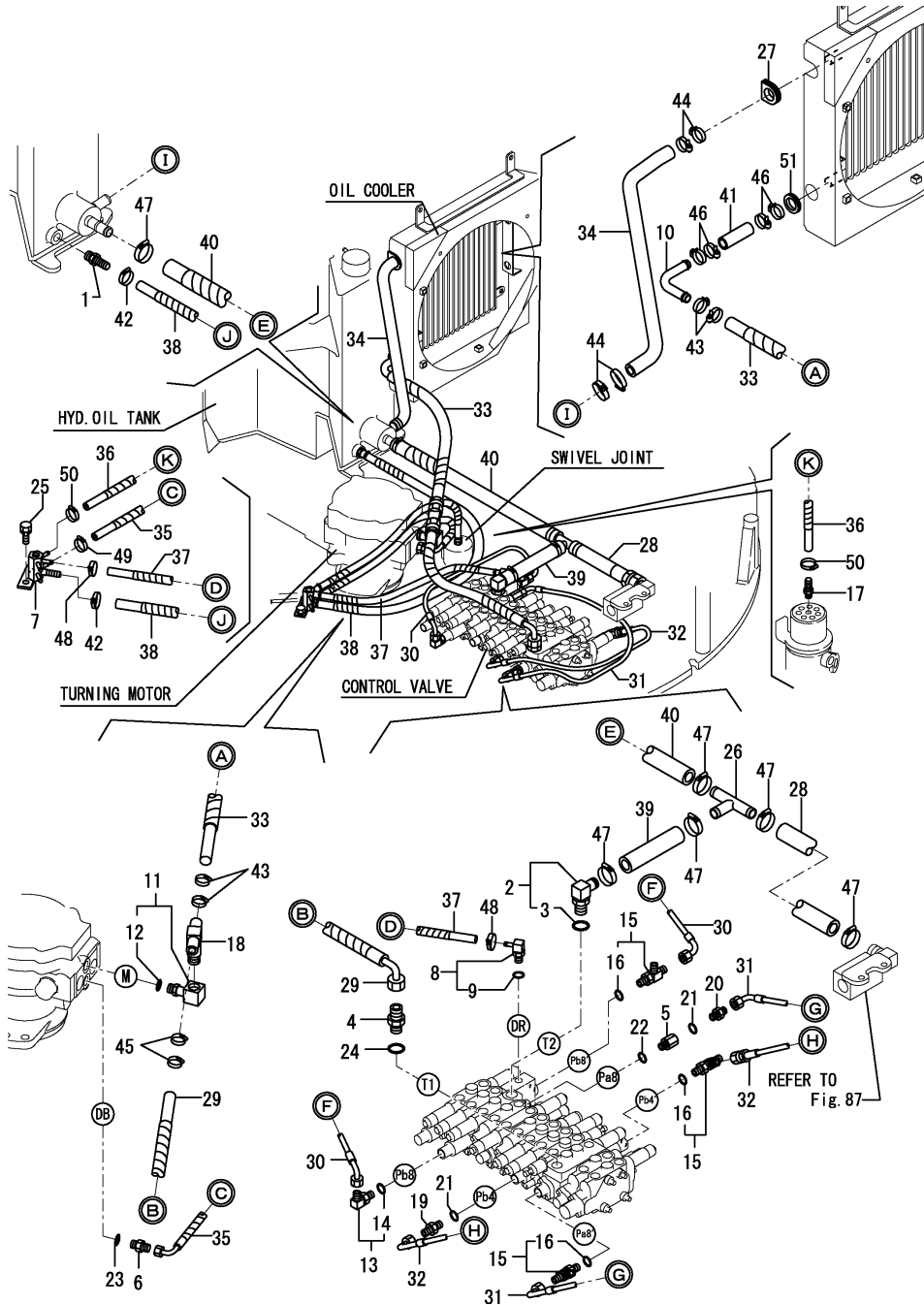
Fig. 78 Ref. No. 1~25.



No.	Lev.	Parts No.	Description	Q'ty						I	R
				(A)	(B)	(C)	(D)	(E)	(F)		
1	2	172457-74220	SECTION, ARM	1	1	1	1	1	1		
2	3	172457-74150	SECTION ASSY, ARM	1	1	1	1	1	1		
3	4	172458-74150	VALVE, REVERSE	1	1	1	1	1	1		
4	4	172457-74160	SPOOL ASSY, ARM	1	1	1	1	1	1		
5	4	172458-74160	SPRING, VALVE	1	1	1	1	1	1		
6	4	172458-74230	O-RING	2	2	2	2	2	2		
7	4	172458-74240	COVER, PILOT	1	1	1	1	1	1		
8	4	172458-74250	COVER, PILOT	1	1	1	1	1	1		
9	4	172458-74260	BOLT	4	4	4	4	4	4		
10	4	172458-74630	STAY, VALVE	1	1	1	1	1	1		
11	4	24315-000110	O-RING, 1BP11.0	1	1	1	1	1	1		
12	3	172447-74221	VALVE ASSY, RELIEF	1	1	1	1	1	1		
13	3	172458-74710	VALVE, RELIEF	1	1	1	1	1	1		
14	2	172458-74720	O-RING	2	2	2	2	2	2		
15	2	172458-74800	SECTION, SWING	1	1	1	1	1	1		
16	3	172447-74230	ANTI-CAVITATION	1	1	1	1	1	1		
17	3	172458-74420	SECTION ASSY, SWING	1	1	1	1	1	1		
18	4	172458-74130	WIPER, DUST	1	1	1	1	1	1		
19	4	172458-74140	RETAINER, SEAL	1	1	1	1	1	1		
20	4	172458-74150	VALVE, REVERSE	1	1	1	1	1	1		
21	4	172458-74160	SPRING, VALVE	1	1	1	1	1	1		
22	4	172458-74430	SPOOL ASSY, SWING	1	1	1	1	1	1		
23	4	172458-74630	STAY, VALVE	1	1	1	1	1	1		
24	4	24311-000120	O-RING, 1AP12.0	1	1	1	1	1	1		
25	4	24315-000110	O-RING, 1BP11.0	1	1	1	1	1	1		
26	4	26450-050102	BOLT, M5X 10	2	2	2	2	2	2		
27	4	26450-050182	BOLT, M5X 18	2	2	2	2	2	2		
28	4	172458-74170	CAP, SPRING	1	1	1	1	1	1		
29	3	172458-74710	VALVE, RELIEF	1	1	1	1	1	1		
30	2	24311-000180	O-RING, 1AP18.0	2	2	2	2	2	2		

Fig.86. RETURN

(A)=VIO27-3 C(US) (D)=VIO27-3 P(AS)
 (B)=VIO27-3 P(US) (E)=VIO27-3 C(NZ)
 (C)=VIO27-3 C(AS) (F)=VIO27-3 P(NZ)



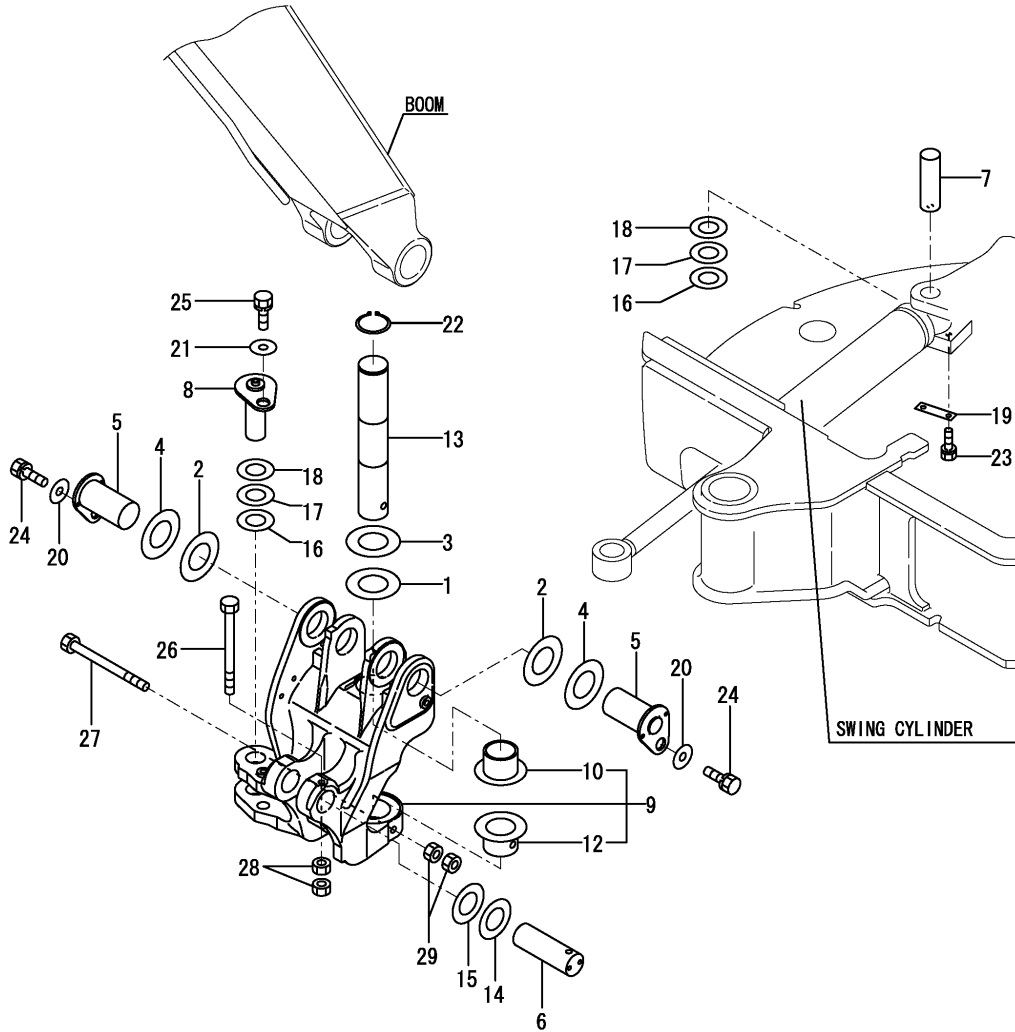
No.	Lev.	Parts No.	Description	Q'ty						I	R
				(A)	(B)	(C)	(D)	(E)	(F)		
1	1	172137-76110	NIPPLE	1	1	1	1	1	1	1	Z
		(A=M/#30997) (B=M/#30997) (C=M/#30997) (D=M/#30997)						(E=M/#30997) (F=M/#30997)			
2	1	172164-76131	ELBOW	1	1	1	1	1	1	1	
3	2	24315-000180	O-RING, 1BP18.0	1	1	1	1	1	1	1	
4	1	172458-76130	CONNECTOR	1	1	1	1	1	1	1	
5	1	172422-76140	CONNECTOR	1	1	1	1	1	1	1	
6	1	172157-76150	CONNECTOR	1	1	1	1	1	1	1	
7	1	172445-76152	BLOCK, DRAIN	1	1	1	1	1	1	1	
7-1	1	172445-76153	BLOCK, DRAIN	1	1	1	1	1	1	1	R
		(A=M/#30778) (B=M/#30778) (C=M/#30778) (D=M/#30778) (E=M/#30778) (F=M/#30778)									
8	1	172458-76150	NIPPLE, ELBOW	1	1	1	1	1	1	1	
9	2	24315-000110	O-RING, 1BP11.0	1	1	1	1	1	1	1	
10	1	172490-76150	PIPE	1	1	1	1	1	1	1	
11	1	172458-76160	ELBOW	1	1	1	1	1	1	1	
12	2	24315-000140	O-RING, 1BP14.0	1	1	1	1	1	1	1	
13	1	172141-76180	CONNECTOR ASSY	1	1	1	1	1	1	1	
14	2	24315-000110	O-RING, 1BP11.0	1	1	1	1	1	1	1	
15	1	172162-76180	JOINT ASSY, 3-1/4	3	3	3	3	3	3	3	
16	2	24315-000110	O-RING, 1BP11.0	3	3	3	3	3	3	3	
17	1	172141-76220	NIPPLE, 02	1	1	1	1	1	1	1	
18	1	172458-76230	CONNECTOR, T JOINT	1	1	1	1	1	1	1	
19	1	172164-76330	JOINT, PF1/4-0.7	1	1	1	1	1	1	1	
20	1	172164-76330	JOINT, PF1/4-0.7	1	1	1	1	1	1	1	
21	1	24315-000110	O-RING, 1BP11.0	2	2	2	2	2	2	2	
22	1	24315-000110	O-RING, 1BP11.0	1	1	1	1	1	1	1	
23	1	24315-000140	O-RING, 1BP14.0	1	1	1	1	1	1	1	
24	1	24315-000180	O-RING, 1BP18.0	1	1	1	1	1	1	1	
25	1	26013-100202	BOLT, M10X 20	2	2	2	2	2	2	2	
26	1	172472-76110	JOINT	1	1	1	1	1	1	1	
27	1	172165-62800	GROMMET	1	1	1	1	1	1	1	
28	1	172447-75320	HOSE, DRAIN	1	1	1	1	1	1	1	
29	1	172458-78261	HOSE, G608CY045S	1	1	1	1	1	1	1	
30	1	172458-78290	HOSE, F403CC042	1	1	1	1	1	1	1	
31	1	172458-78300	HOSE, F403CC074	1	1	1	1	1	1	1	
32	1	172458-78310	HOSE, F403BC053	1	1	1	1	1	1	1	
33	1	172458-78321	HOSE, G608YY055S	1	1	1	1	1	1	1	
34	1	172A25-78510	HOSE	1	1	1	1	1	1	1	
35	1	172458-78520	HOSE, G604CY060S	1	1	1	1	1	1	1	
36	1	172458-78530	HOSE, G604YY054S	1	1	1	1	1	1	1	
37	1	172458-78540	HOSE, G604YY045S	1	1	1	1	1	1	1	
38	1	172458-78550	HOSE, G606YY093S	1	1	1	1	1	1	1	
39	1	172472-78560	HOSE	1	1	1	1	1	1	1	
40	1	172472-78570	HOSE	1	1	1	1	1	1	1	
41	1	172A23-78850	HOSE	1	1	1	1	1	1	1	
42	1	23001-016000	CLAMP, HOSE 16	2	2	2	2	2	2	2	
43	1	23001-022000	CLAMP, HOSE 22	4	4	4	4	4	4	4	
44	1	23001-022000	CLAMP, HOSE 22	4	4	4	4	4	4	4	
45	1	23001-022000	CLAMP, HOSE 22	2	2	2	2	2	2	2	
46	1	23001-022000	CLAMP, HOSE 22	4	4	4	4	4	4	4	
47	1	23001-035000	CLAMP, HOSE 35	6	6	6	6	6	6	6	
48	1	23010-014000	CLAMP, 14	2	2	2	2	2	2	2	

N:Old \xrightarrow{Yes} New, Q:Old \xrightarrow{No} New, R:Old \xrightarrow{Yes} New, S:Old \xrightarrow{No} New, W:Add, Z:Discontinued, F:Interchangeable by set, K:Q'ty Change
 ++ CONTINUE ++
 Copyright (C) YANMAR CO., LTD. All Rights Reserved.

Fig.95. BOOM BRACKET

(A)=VIO27-3 C(US)
 (B)=VIO27-3 P(US)
 (C)=VIO27-3 C(AS)

(D)=VIO27-3 P(AS)
 (E)=VIO27-3 C(NZ)
 (F)=VIO27-3 P(NZ)



No.	Lev.	Parts No.	Description	Q'ty						I	R
				(A)	(B)	(C)	(D)	(E)	(F)		
1	1	172175-81700	SHIM	1	1	1	1	1	1		
2	1	172175-81700	SHIM	2	2	2	2	2	2		
3	1	172175-81710	SHIM	1	1	1	1	1	1		
4	1	172175-81710	SHIM	2	2	2	2	2	2		
5	1	172458-81800	PIN ASSY	2	2	2	2	2	2		
6	1	172458-81830	PIN	1	1	1	1	1	1		
7	1	172458-81920	PIN	1	1	1	1	1	1		
8	1	172458-81930-1	PIN	1	1	1	1	1	1		
9	1	172458-82300-1	BRACKET, BOOM	1	1	1	1	1	1		
10	2	172142-82310	BUSH 60X50	1	1	1	1	1	1		
12	2	172458-82320	BUSH 60X50	1	1	1	1	1	1		
13	1	172458-82330	PIN 60X334.5	1	1	1	1	1	1		
14	1	172165-82520	SHIM	1	1	1	1	1	1		
15	1	172165-82530	SHIM	1	1	1	1	1	1		
16	1	172165-82580	SHIM	2	2	2	2	2	2		
17	1	172165-82590	SHIM	2	2	2	2	2	2		
18	1	172165-82600	SHIM	2	2	2	2	2	2		Z
		(A=M/#30876)	(B=M/#30876)	(C=M/#30876)	(D=M/#30876)	(E=M/#30876)	(F=M/#30876)				
18-1	1	172A25-81900	SHIM	2	2	2	2	2	2		W
		(A=M/#30876)	(B=M/#30876)	(C=M/#30876)	(D=M/#30876)	(E=M/#30876)	(F=M/#30876)				
19	1	172117-83970-6	PLATE, LOCK	1	1	1	1	1	1		
20	1	22157-120000	WASHER, 12	2	2	2	2	2	2		
21	1	22157-120000	WASHER, 12	1	1	1	1	1	1		
22	1	22242-000600	RING, 60	1	1	1	1	1	1		
23	1	26013-100202	BOLT, M10X 20	2	2	2	2	2	2		
24	1	26013-120302	BOLT, M12X 30	2	2	2	2	2	2		
25	1	26013-120302	BOLT, M12X 30	1	1	1	1	1	1		
26	1	26116-121402	BOLT, M12X140 PLATED	1	1	1	1	1	1		
27	1	26206-141502	BOLT, M14X150 PLATED	1	1	1	1	1	1		
28	1	26716-120002	NUT, M12	2	2	2	2	2	2		
29	1	26716-140002	NUT, M14	2	2	2	2	2	2		

Parts No. Index

Parts No.	Fig. No.	Ref. No.
172437-03401	1	39
	2	36
	3	14
	4	13
	46	32 D
172437-03402	1	39 -1
	2	36 -1
	3	14 -1
	4	13 -1
	46	32 D-1
172437-03411	1	40
	2	37
	3	15
	4	14
172437-03421	1	41
	2	38
	3	16
	4	15
	46	32 E
172437-03422	1	41 -1
	2	38 -1
	3	16 -1
	4	15 -1
	46	32 E-1
172437-03431	1	42
	2	39
	3	17
	4	16
	96	27 E
172437-03432	1	42 -1
	2	39 -1
	3	17 -1
	4	16 -1
	96	27 E-1
172437-03440	1	43
	2	40
	3	18
	4	17
	48	38 A
	54	43 A
	62	7 F
172437-03441	1	43 -1
	2	40 -1
	3	18 -1
	4	17 -1
	48	38 A-1
	54	43 A-1
	62	7 F-1
172437-03450	1	44
	2	41

Parts No.	Fig. No.	Ref. No.
172437-03450	3	19
	4	18
	48	38 B
	54	43 B
	62	7 G
172437-03451	1	44 -1
	2	41 -1
	3	19 -1
	4	18 -1
	48	38 B-1
	54	43 B-1
	62	7 G-1
172437-03460	1	45
	2	42
	3	20
	4	19
	96	27 F
172437-03461	1	45 -1
	2	42 -1
	3	20 -1
	4	19 -1
	96	27 F-1
172437-03470	1	46
	2	43
	3	21
	4	20
	43	41 D
	44	43 D
	45	35 D
172437-03471	1	46 -1
	2	43 -1
	3	21 -1
	4	20 -1
	43	41 D-1
	44	43 D-1
	45	35 D-1
172437-03500	1	20
	2	17
	47	44 A
172437-03501	1	20 -1
	2	17 -1
	47	44 A-1
172437-03510	1	21
	2	18
	96	27 A
	101	18 A
172437-03511	1	21 -1
		21 -2
	2	18 -1
		18 -2

Parts No.	Fig. No.	Ref. No.
172437-03511	96	27 A-1
	101	18 A-1
172437-03530	1	22
	2	19
	43	41 B
	44	43 B
	45	35 B
172437-03550	1	9
	3	3
	49	45 A
	55	36 A
172437-03551	1	9 -1
	3	3 -1
	49	45 A-1
	55	36 A-1
172437-03600	1	47
	2	44
	3	22
	4	21
	49	45 G
	55	36 G
	62	7 H
172437-03601	1	47 -1
	2	44 -1
	3	22 -1
	4	21 -1
	49	45 G-1
	55	36 G-1
	62	7 H-1
172437-03610	1	23
	2	20
	79	21 A
172437-03620	1	24
	2	21
	79	21 B
172437-68210	57	23
172437-68250	60	25
172437-68350	55	34
172437-68400	56	29
172437-68430	57	22
172437-68440	57	24
172437-68460	56	33
172437-68520	56	28
172437-68540	56	20
172437-68640	54	11
		37
172437-68690	58	6
172437-68710	58	7
172437-68760	56	17
172437-68780	55	7

Parts No.	Fig. No.	Ref. No.
172437-69080	58	26
172437-74711	79	4
172437-74720	79	5
172437-74732	79	6
172438-03300	1	16
	2	13
	41	24 A
172441-37301-1	23	3
172441-37302	23	3 -1
		3 -2
172441-44320	42	15
172441-74030	80	2
		12
172441-74040	80	3
		13
172441-74050	80	14
172444-13210	10	4
172444-13220	10	5
172444-14200	11	6
172444-14270	11	18
172444-14410	11	24
172444-14450	11	7
172444-14460	11	8
172444-14470	11	9
172444-14480	11	10
172444-14490	11	11
172444-17620	47	21
172444-17660	20	17
	39	1
172444-54910	9	11
172444-54920	47	22
172444-64730	46	3
172444-65610	82	11
172444-65680	9	5
172444-68810	39	7
172444-72940	68	15
172444-72961	64	28
	65	26
	68	22
172444-73802	72	1
172444-73803	72	1 -1
172444-73810	72	2
172444-73831	72	3
172444-73840	72	4
172444-73880	72	6
172444-76400	83	3
172444-81310	97	8
172444-82990	96	22
172445-66750	49	6
172445-68850	36	20

CLICK HERE TO **DOWNLOAD** THE COMPLETE MANUAL

- Thank you very much for reading the preview of the manual.
- You can download the complete manual from: www.heydownloads.com by clicking the link below



- Please note: If there is no response to CLICKING the link, please download this PDF first and then click on it.

CLICK HERE TO **DOWNLOAD** THE COMPLETE MANUAL