

OCK10-M39703EN

CLICK HERE TO **DOWNLOAD** THE COMPLETE MANUAL

- Thank you very much for reading the preview of the manual.
- You can download the complete manual from: www.heydownloads.com by clicking the link below



- Please note: If there is no response to CLICKING the link, please download this PDF first and then click on it.

CLICK HERE TO **DOWNLOAD** THE COMPLETE MANUAL

Contents

OCK10-M39703

Fig. No. Fig. Name

- 61. CABIN(BODY)
- 62. CABIN(FRONT GLASS)
- 63. CABIN(SIDE DOOR)
- 64. CABIN(JP SPEC. ACCESSORY)
- 145. (64A)CABIN(ACCESSORY)(T SPEC.)(FROM M3B682 TO M3F855)
- 146. (64B)CABIN(EXTERIOR)
- 147. (64C)CABIN(INTERIOR)
- 148. (64D)CABIN(GLASS)
- 149. (64E)CABIN(WIPER)
- 150. (64F)CABIN(ELECTRIC PARTS)
- 151. (64G)CABIN DOOR
- 152. (64H)CABIN(FRONT GLASS)
- 168. (64I)CABIN(ACCESSORY)(Y SPEC.)(FROM M3F856)

CANOPY

- 65. CANOPY
- 143. (65A)4P CANOPY

HYDRAULIC OIL EQUIPMENT

- 66. HYD.OIL PUMP & JOINT(TO M36239)
- 126. (66A) HYD.OIL PUMP & JOINT(FROM M36240)
- 67. HYD.OIL PUMP & JOINT(QUICK COUPLER SPEC.)(TO M36239)
- 127. (67A)HYD. OIL PUMP & JOINT(QUICK COUPLER SPEC.)(FROM M36240)
- 68. BOOM CYLINDER(CABIN SPEC.)(Y SPEC.)
- 133. (68A)BOOM CYLINDER(CABIN SPEC.)(K SPEC.)

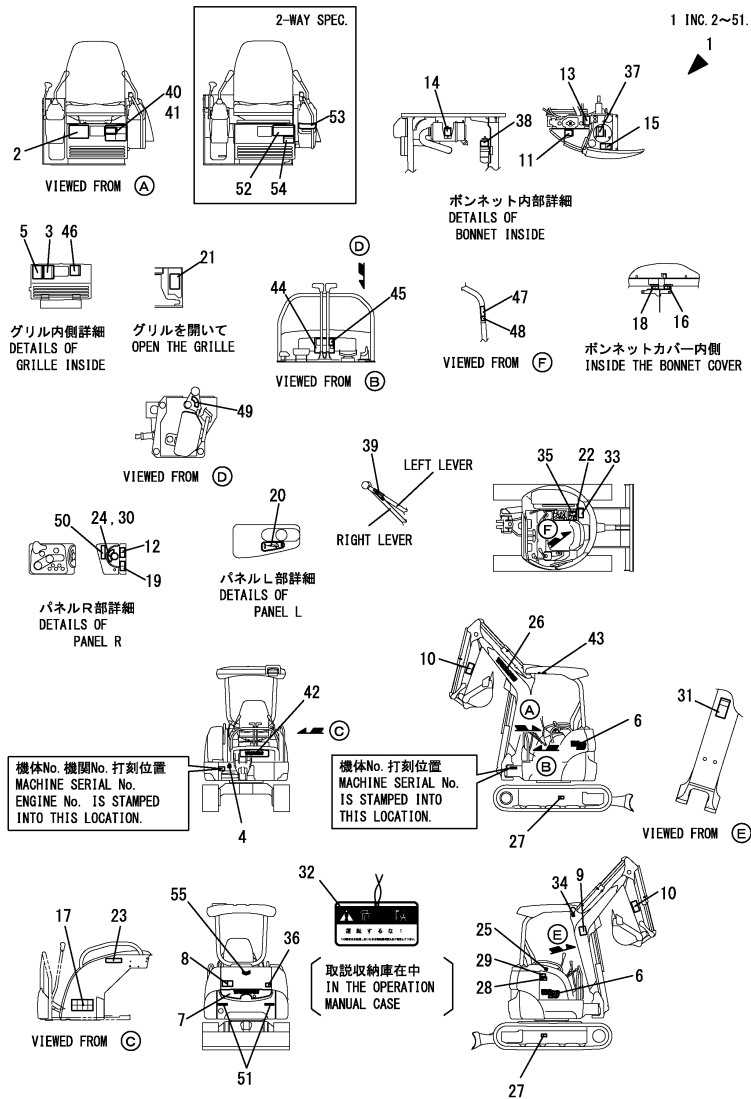
Fig. No. Fig. Name

- 69. BOOM CYLINDER(CANOPY SPEC.)(Y SPEC.)
- 134. (69A)BOOM CYLINDER(CANOPY SPEC.)(K SPEC.)
- 70. ARM CYLINDER(Y SPEC.)
- 135. (70A)ARM CYLINDER(K SPEC.)
- 71. BUCKET CYLINDER(Y SPEC.)
- 136. (71A)BUCKET CYLINDER(K SPEC.)
- 72. BUCKET CYLINDER(Q SPEC.)(Y SPEC.)
- 137. (72A)BUCKET CYLINDER(Q SPEC.)(K SPEC.)
- 73. SWING CYLINDER(Y SPEC.)
- 138. (73A)SWING CYLINDER(K SPEC.)
- 74. BLADE CYLINDER
- 75. HITCH CYLINDER
- 76. TRAVEL MOTOR
- 131. (76A)TRAVEL MOTOR(B)
- 77. TURNING MOTOR
- 78. SWIVEL JOINT(Y SPEC.)(TO M39318)
- 132. (78A)SWIVEL JOINT(N SPEC.)(FROM M39319)
- 79. CONTROL VALVE(1/6)
- 80. CONTROL VALVE(2/6)
- 81. CONTROL VALVE(3/6)
- 82. CONTROL VALVE(4/6)
- 83. CONTROL VALVE(5/6)
- 84. CONTROL VALVE(6/6)
- 85. REMOTE CONTROL VALVE
- 86. ROTARY VALVE(4-WAY SPEC.)

Fig.156. (2A)LABEL(CANOPY)(JP)(FROM M3F001)

(A)=VIO20-3 C(JP)
 (B)=VIO20-3 P(JP)
 (C)=VIO20-3 P(EX)

(D)=
 (E)=
 (F)=



No.	Lev.	Parts No.	Description	Q'ty						I	R
				(A)	(B)	(C)	(D)	(E)	(F)		
1	1	172A23-03422	LABEL SET,VIO20-3JPP	1							
2	2	172A23-03113	LABEL,SPEC	1							
3	2	172456-03121	LABEL,OIL & WATER	1							
4	2	172A23-03130	LABEL,GREASE	1							
5	2	172458-03130	LABEL,GREASE FEED	1							
6	2	172A23-03470	LABEL,MODEL VIO20	2							
7	2	172A23-03790	LABEL,REAR	1							
8	2	172444-03170	LABEL	1							
9	2	172A23-03180	LABEL,LIFTING	1							
10	2	172444-03181	LABEL	2							
11	2	172444-03190	LABEL	1							
12	2	172448-03190	LABEL,FAN	1							
13	2	172458-03190	LABEL,OILING	1							
14	2	172141-03202	LABEL,CAUTION	1							
15	2	172450-03200	LABEL,BATTERY	1							
16	2	172458-03200	LABEL,FAN	1							
17	2	172444-03210	LABEL	1							
18	2	172458-03210	LABEL,BELT	1							
19	2	172446-03220	LABEL,BELT	1							
20	2	172458-03220	LABEL,ACCELERATOR	1							
21	2	172458-03231	LABEL,HUSE	1							
22	2	172A23-03240	LABEL,OPEN	1							
23	2	172444-03240	LABEL	1							
24	2	172A64-03750	LABEL,START SWITCH	1							5
25	2	172183-03250	LABEL,FUEL	1							
26	2	172A86-03790	LABEL,YANMAR 450 B	1							
27	2	172444-03280	LABEL	2							
28	2	172142-03302	LABEL,CAUTION	1							
29	2	172455-03340	LABEL	1							
30	2	172A64-03700	LABEL,START SWITCH	1							
31	2	172964-03370	LABEL	1							
32	2	172964-03481	TAG ASSY, CAUTION	1							
33	2	172164-03510	LABEL,LOADING	1							
34	2	172437-03511	LABEL,HOOK	1							
35	2	172164-03540	LABEL	1							
36	2	172519-04180	LABEL,WARNING	1							
37	2	172519-04290	LABEL,WARNING	1							
38	2	121470-44540	LABEL,SUB-TANK	1							
39	2	172183-03280	LABEL,LOCK	2							
40	2	172444-03290	MAGNET	1							1
41	2	172151-03551	LABEL	1							1
42	2	172A86-03750	LABEL,YANMAR 280 B	1							
43	2	172444-03330	LABEL	1							
44	2	172490-03200	LABEL,OPERATION	1							
45	2	172490-03210	LABEL,P.T.O.	1							2
46	2	172165-03240	LABEL	1							3
47	2	172460-03230	LABEL,SEAT BELT	1							2
48	2	172460-03241	LABEL,ROPS	1							2
49	2	172458-03240	LABEL,LOCK	1							2
50	2	172A47-03400	LABEL,START	1							
51	2	172B04-03980	LABEL,REFLECTOR M	2							

Remarks

* P.T.O. kit is shown in Fig.154.

* IMMOBILIZER kit is shown in Fig.160.

(1)4-WAY MULT SPEC.

(2)P.T.O. SPEC.

(3)RUBBER CRAWLER SPEC.

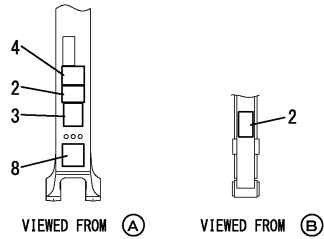
(4)2-WAY MULTI SPEC.

(5)IMMOBILIZER SPEC.

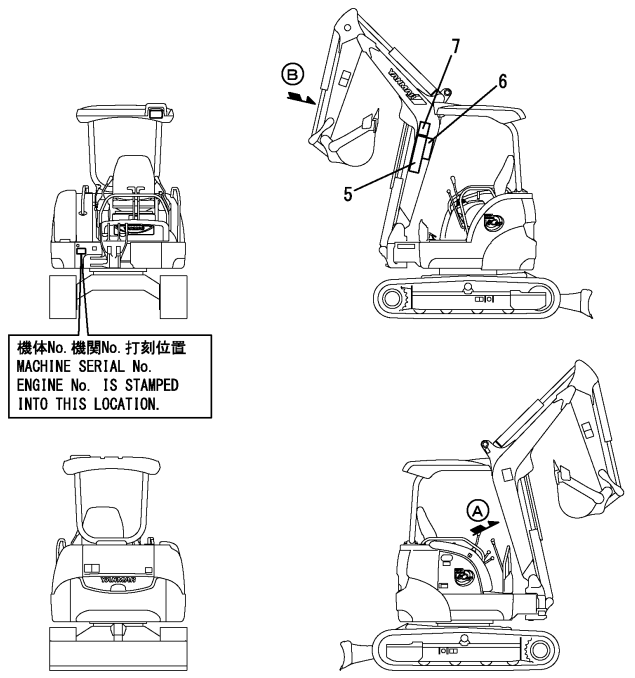
Fig.5. LABEL(CRANE)(JP)(TO M3F000)

(A)=VIO20-3 C(JP)
 (B)=VIO20-3 P(JP)
 (C)=VIO20-3 P(EX)

(D)=
 (E)=
 (F)=



No.	Lev.	Parts No.	Description	Q'ty						I	R
				(A)	(B)	(C)	(D)	(E)	(F)		
1	1	772A23-03200	LABEL SET		1						
2	2	172425-03350	LABEL		2						
3	2	172425-03720	LABEL		1						
4	2	172A23-03740	LABEL,LOAD		1						
5	2	172187-03750	LABEL		1						
6	2	172A23-03760	LABEL		1						
7	2	172A23-03770	LABEL		1						
8	2	172187-03781	LABEL		1						

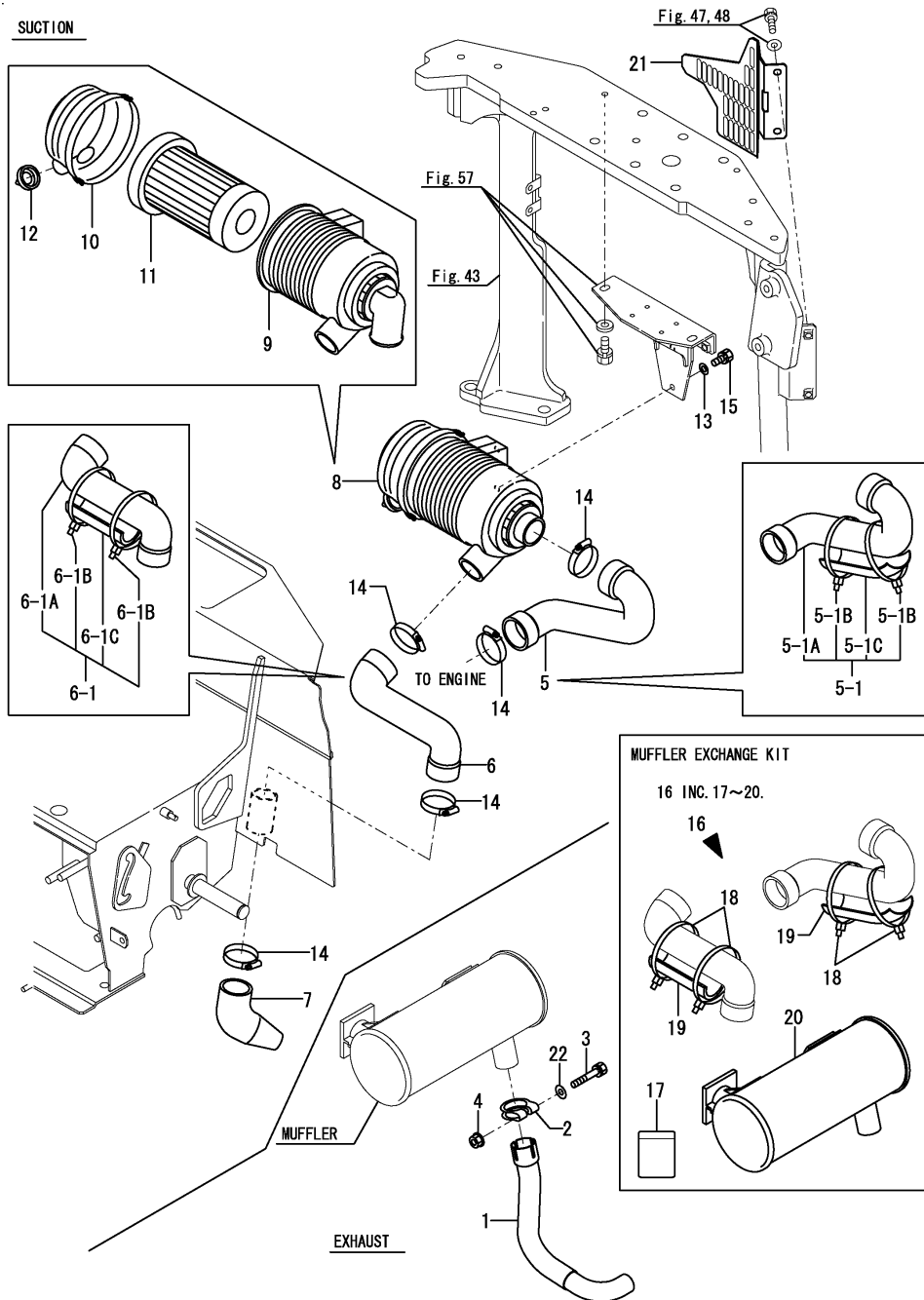


Remarks
 * CRANE kit, CANOPY is shown in Fig.130.

Fig.12. SUCTION PIPE & EXHAUST PIPE

(A)=VIO20-3 C(JP)
 (B)=VIO20-3 P(JP)
 (C)=VIO20-3 P(EX)

(D)=
 (E)=
 (F)=

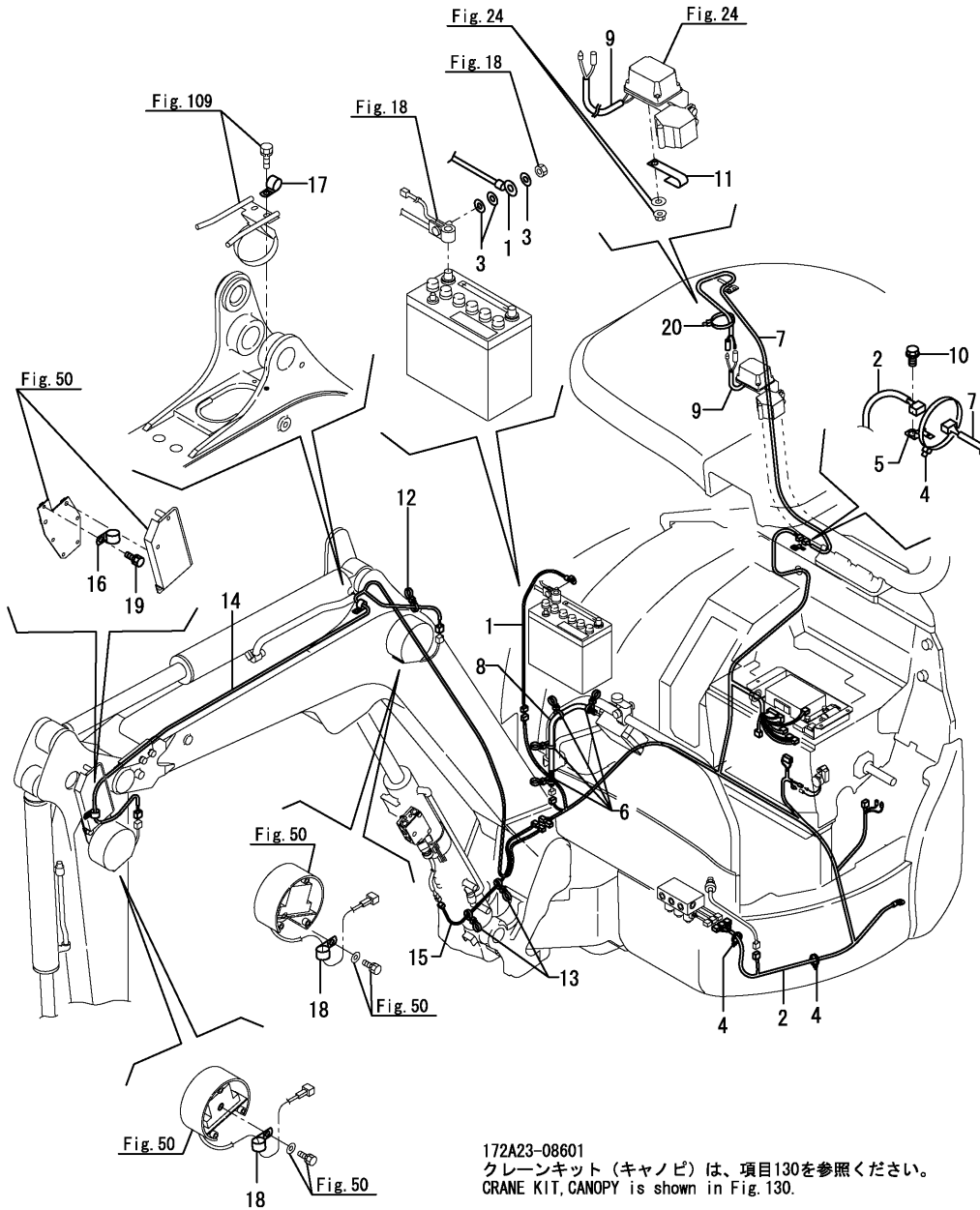


No.	Lev.	Parts No.	Description	Q'ty						I	R
				(A)	(B)	(C)	(D)	(E)	(F)		
1	1	172487-11350	PIPE ASSY, EXHAUST	1	1	1					
2	1	172487-11400	CLAMP	1	1	1					
3	1	26013-100552	BOLT, M10X 55	1	1	1					
4	1	26366-100002	NUT, M10	1	1	1					
5	1	172A23-11490	HOSE A, AIR CLEANER	1	1	1					
5-1	1	172A23-11470	HOSE A ASSY,AIRCLEAN	1	1	1					N
5-1A	2	(A=M33952) 172A23-11490	HOSE A, AIR CLEANER	1	1	1					
5-1B	2	(B=M33952) 172126-11510	BAND	2	2	2					
5-1C	2	(C=M33952) 172A23-11600	INSULATOR	1	1	1					
6	1	172A23-11500	HOSE B, AIR CLEANER	1	1	1					
6-1	1	172A23-11480	HOSE B ASSY,AIRCLEAN	1	1	1					N
6-1A	2	(A=M33952) 172A23-11500	HOSE B, AIR CLEANER	1	1	1					
6-1B	2	(B=M33952) 172126-11510	BAND	2	2	2					
6-1C	2	(C=M33952) 172A23-11600	INSULATOR	1	1	1					
7	1	172456-11500	HOSE C,AIR CLEANER	1	1	1					
8	1	172456-11510	CLEANER ASSY, AIR	1	1	1					
9	2	172456-11590	BODY	1	1	1					
10	2	172456-11600	COVER ASSY	1	1	1					
11	2	129619-12520	ELEMENT	1	1	1					
12	2	119808-12540	VALVE, UNLOADER	1	1	1					
13	1	22137-080000	WASHER, 8	2	2	2					
14	1	23000-060000	CLAMP, 60	5	5	5					
15	1	26013-080202	BOLT, M8X 20	2	2	2					
16	1	172A23-08400	CHANGE KIT, MUFFLER	1	1						W
17	2	(A=M/#34332) 172141-03202	LABEL,CAUTION	1	1						W
18	2	(B=M/#34332) 172126-11510	BAND	4	4						W
19	2	(A=M/#34332) 172A23-11600	INSULATOR	2	2						W
20	2	(B=M/#34332) 119740-13511	SILENCER	1	1						W
21	1	(A=M33952) 172487-65160	GUARD, MUFFLER	1	1	1					W
22	1	(B=M33952) 22137-100000	WASHER, 10	1	1						W
		(C=M33952) (A=*2014.04) (B=*2014.04)									

Fig.20. WIRING(CRANE)

(A)=VIO20-3 C(JP)
 (B)=VIO20-3 P(JP)
 (C)=VIO20-3 P(EX)

(D)=
 (E)=
 (F)=



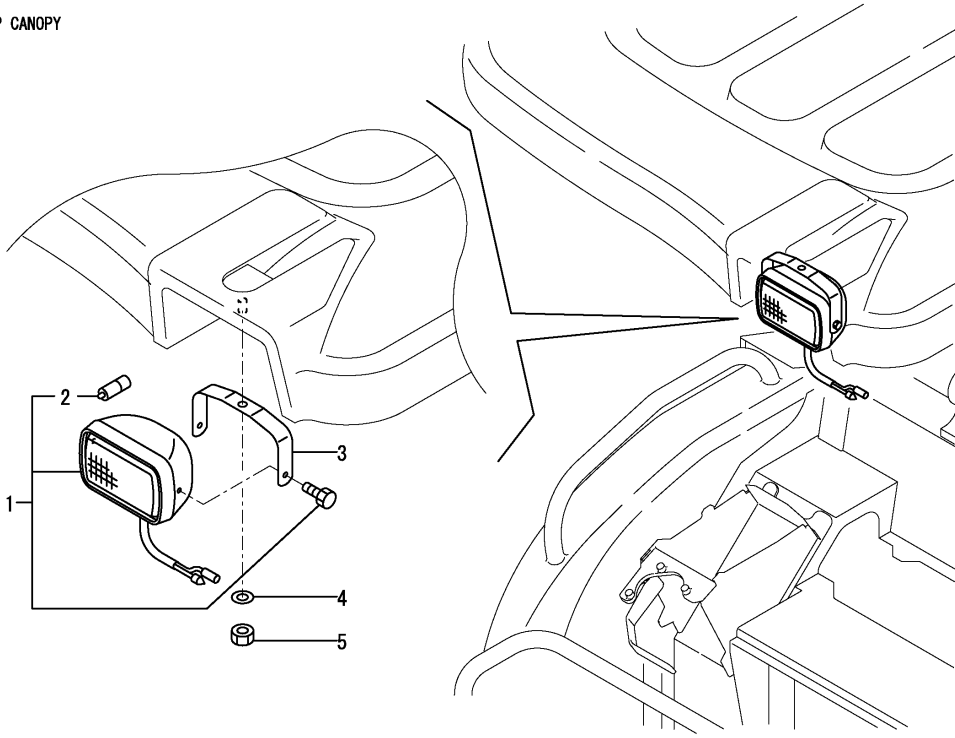
No.	Lev.	Parts No.	Description	Q'ty						I	R
				(A)	(B)	(C)	(D)	(E)	(F)		
1	1	172732-16560	LINK, FUSIBLE		1						
2	1	172A25-16710	HARNESS,C-B		1						
3	1	22137-060000	WASHER, 6		3						
4	1	933152-09280	BAND		6						
5	1	172A23-14200	SUPPORT, CONNECTOR		1						
6	1	172137-16560	BAND		4						
7	1	172A25-16730	HARNESS,C-D		1						
8	1	172425-16741	TUBE, CORRUGATED		1						
9	1	172187-16780	TUBE		1						
10	1	26013-100202	BOLT, SPRING M10X 20		1						
11	1	172126-16540	CLAMP		1						
12	1	172137-16560	BAND		6						
13	1	172137-16560	BAND		2						
14	1	172A23-16720	HARNESS,C-C		1						
15	1	172A23-16740	HARNESS,C-E		1						
16	1	184016-44300	CLAMP, WRC12		1						
17	1	172183-46440	CLAMP, WRC10		1						
18	1	172183-46440	CLAMP, WRC10		2						
19	1	26013-080162	BOLT, SPRING M8X 16		1						
20	1	933152-09280	BAND		1						

Fig.28. CANOPY LAMP

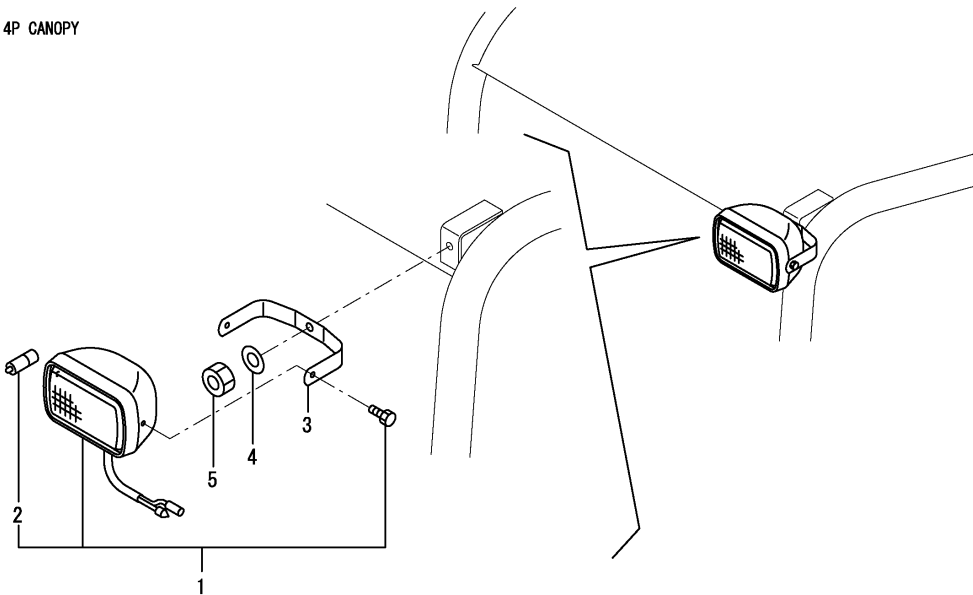
(A)=VIO20-3 C(JP)
 (B)=VIO20-3 P(JP)
 (C)=VIO20-3 P(EX)

(D)=
 (E)=
 (F)=

2P CANOPY



4P CANOPY

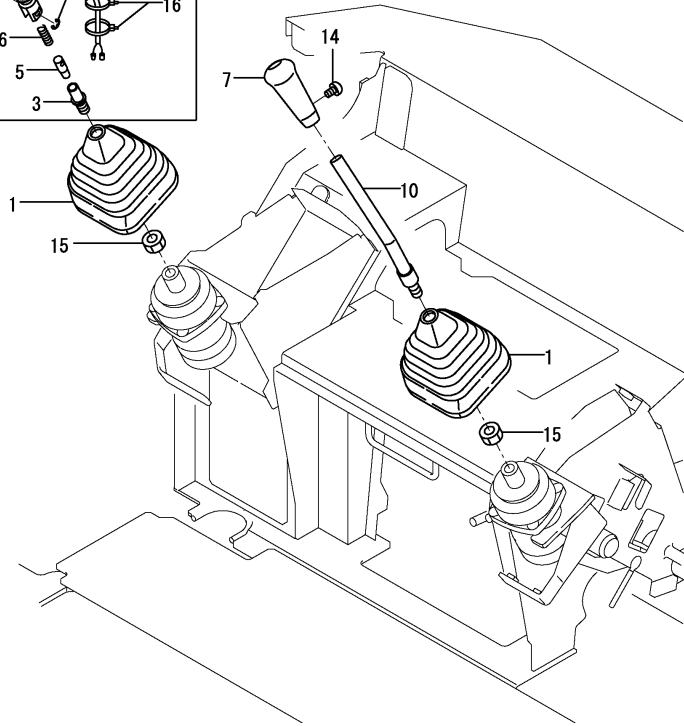
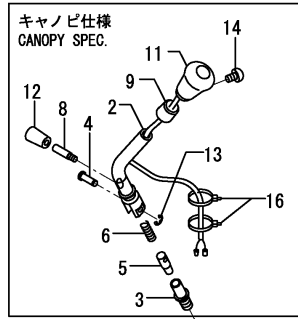
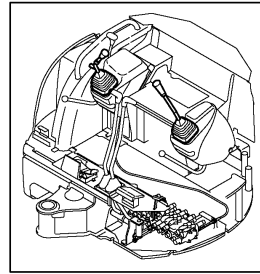
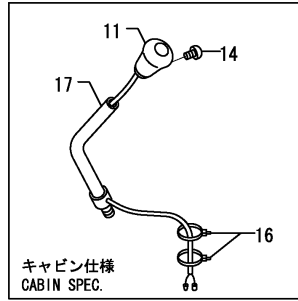


No.	Lev.	Parts No.	Description	Q'ty						I	R
				(A)	(B)	(C)	(D)	(E)	(F)		
1	1	172458-17400	LAMP	1	1	1					
2	2	172458-17420	BULB	1	1	1					
3	1	172458-17410	STAY, LAMP	1	1	1					
3-1	1	172458-17410-4	STAY, LAMP	1	1	1					S
		(A=M3F001) (B=M3F001) (C=M3F001)									
4	1	22137-100000	WASHER, 10	1	1	1					
5	1	26346-100002	NUT, M10	1	1	1					

Fig.36. CONTROL EQUIPMENT(OPERATION LEVER)

(A)=VIO20-3 C(JP)
 (B)=VIO20-3 P(JP)
 (C)=VIO20-3 P(EX)

(D)=
 (E)=
 (F)=



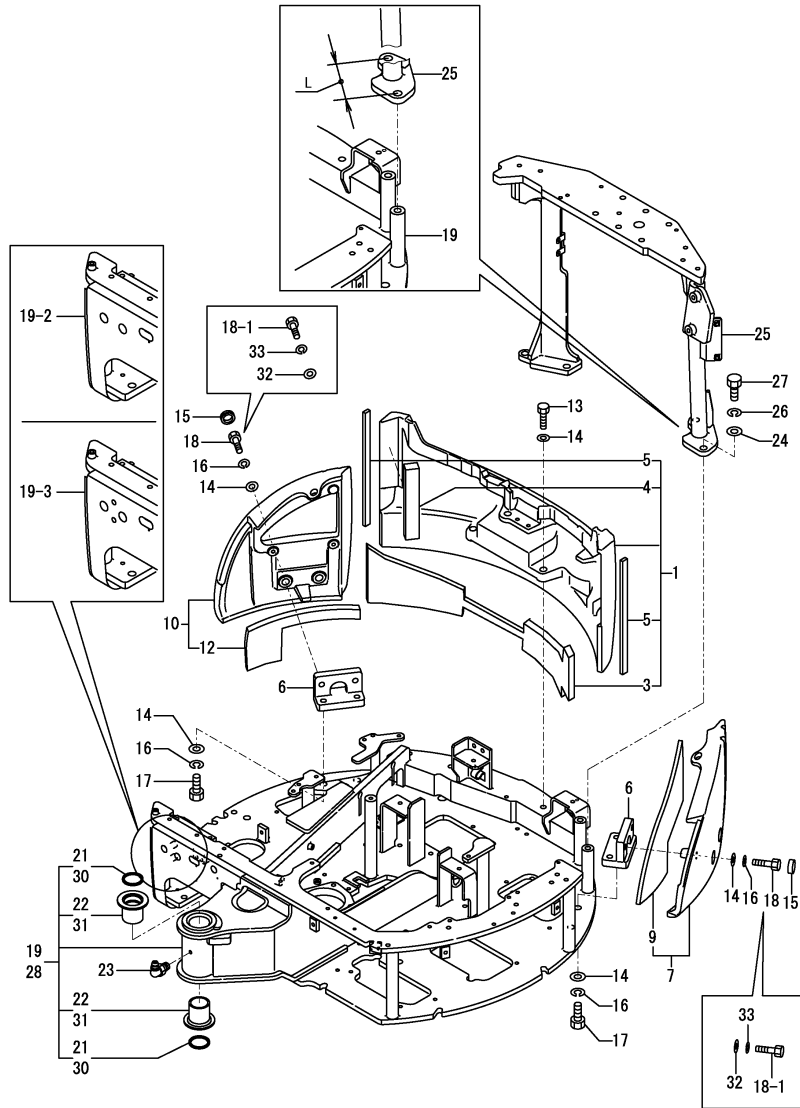
No.	Lev.	Parts No.	Description	Q'ty						I	R
				(A)	(B)	(C)	(D)	(E)	(F)		
1	1	172151-45010	BOOT P,LEVER	2	2	2					
2	1	172456-45010	LEVER		1	1					
2-1	1	172456-45010-1	LEVER		1	1					S
		(B=M/#33092)	(C=M/#33092)								
3	1	172164-45041	HINGE		1	1					
4	1	172164-45050	PIN 8X 22		1	1					
5	1	172164-45061	PIN		1	1					
6	1	172164-45070	SPRING		1	1					
7	1	172165-45071	KNOB ASSY	1	1	1					
8	1	172164-45080	SCREW, M6		1	1					
9	1	172164-45090	CAP		1	1					
10	1	172165-47851	LEVER	1	1	1					
10-1	1	172165-47851-2	LEVER	1	1	1					S
		(A=M/#33092)	(B=M/#33092)	(C=M/#33092)							
11	1	172165-47871	KNOB ASSY	1	1	1					1
12	1	172157-58830	KNOB, 6.5X18X35		1	1					
13	1	22272-000060	RING, E- 6		1	1					
14	1	26587-040062	SCREW, M4X 6	2	2	2					
15	1	26776-140002	NUT, LOCK M14	2	2	2					
16	1	933168-55770	BAND 146	2	2	2					
17	1	172165-47821	LEVER	1							
17-1	1	172165-47821-2	LEVER	1							S
		(A=M/#33092)									

Remarks
 (1)A KNOB WITH A BUILT-IN HORN SWITCH.

Fig.43. TURNING FRAME(TO M37000)

(A)=VIO20-3 C(JP)
 (B)=VIO20-3 P(JP)
 (C)=VIO20-3 P(EX)

(D)=
 (E)=
 (F)=



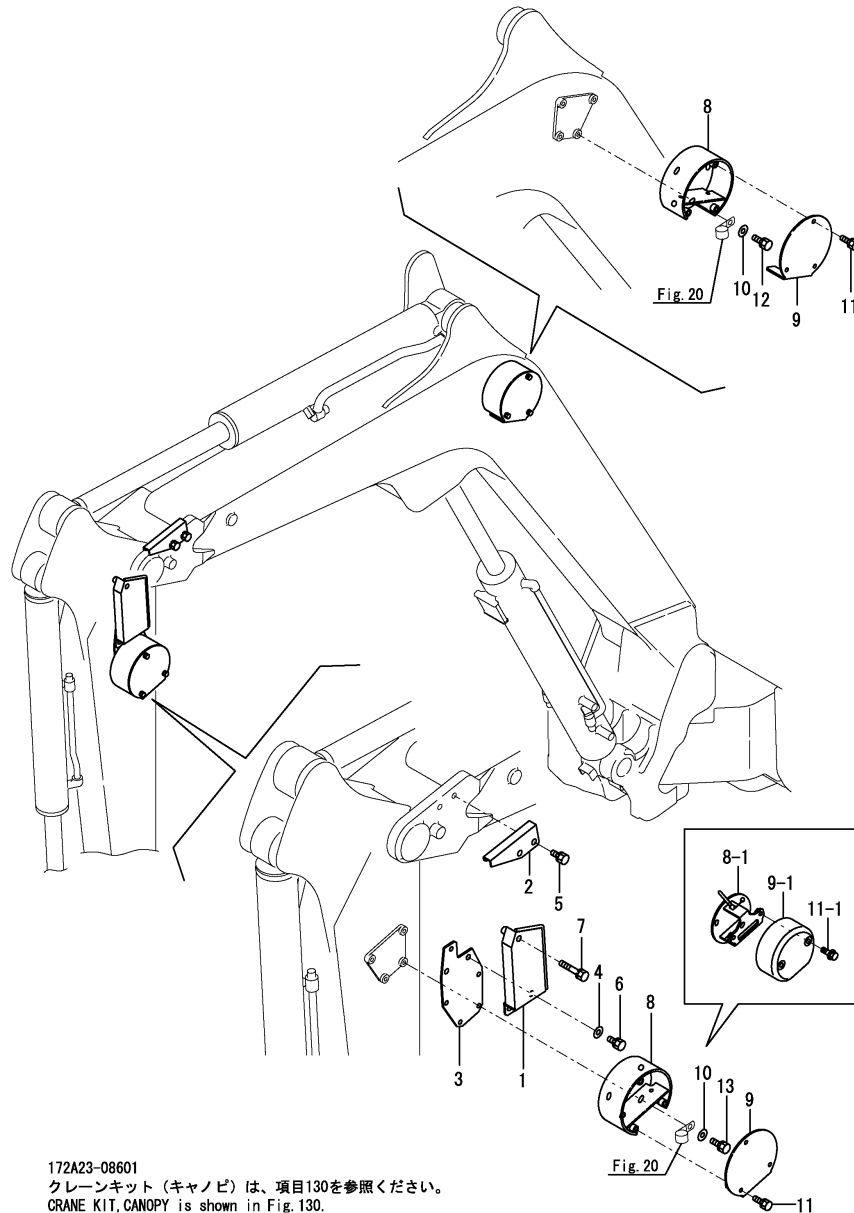
No.	Lev.	Parts No.	Description	Q'ty						I	R	
				(A)	(B)	(C)	(D)	(E)	(F)			
28-2	1	172A23-54080-1 (B=M36239)	FRAME ASSY, TURNING		1						Z	2
30	2	172448-54120	SEAL, DUST		2							1
31	2	172171-54750	BUSH 50X65		2							1
32	1	172A23-53260 (A=*2014.10) (B=*2014.10) (C=*2014.10)	WASHER, 16.5X35	4	4	4						W
33	1	172A23-53270 (A=*2014.10) (B=*2014.10) (C=*2014.10)	WASHER, SPRING	4	4	4						W

Remarks
 (1)CRANE SPEC.
 (2)TURNING FRAME OF STD.SPEC. AND
 CRANE SPEC. BECOME SHARE
 REF.NO.19-1 L=143.45MM,
 NO.19-2 L=135.23MM.
 (3)REF.NO.25-1 L=143.45MM,
 NO.25-2 L=135.23MM.

Fig.50. COVER(CRANE)

(A)=VIO20-3 C(JP)
 (B)=VIO20-3 P(JP)
 (C)=VIO20-3 P(EX)

(D)=
 (E)=
 (F)=



172A23-08601
 クレーンキット (キャノピ) は、項目130を参照ください。
 CRANE KIT,CANOPY is shown in Fig.130.

No.	Lev.	Parts No.	Description	Q'ty						I	R
				(A)	(B)	(C)	(D)	(E)	(F)		
1	1	172A23-61800	COVER, HARNESS		1						
1-1	1	172A23-61800-Y (B=M38501)	COVER, HARNESS		1						S
2	1	172A25-61831	COVER, HARNESS		1						
2-1	1	172A25-61831-Y (B=M38501)	COVER, HARNESS		1						S
3	1	172A23-61840	STAY ASSY		1						
3-1	1	172A23-61840-Y (B=M38501)	STAY ASSY		1						S
4	1	22137-100000	WASHER, 10		2						
5	1	26013-100202	BOLT, M10X 20		2						
6	1	26013-100202	BOLT, M10X 20		2						
7	1	26013-100552	BOLT, M10X 55		1						
8	1	172187-61800	CASE ASSY, SENSOR		2						
8-1	1	172A78-61800-2 (B=M36288)	CASE ASSY		2						S 1
8-2	1	172A78-61800-Y (B=M38501)	CASE ASSY		2						S
9	1	172187-61840	COVER, SENSOR CASE		2						
9-1	1	172A78-61840 (B=M36288)	COVER,SENSOR		2						S
9-2	1	172A78-61840-Y (B=M38501)	COVER, SENSOR		2						S
10	1	22137-080000	WASHER, 8		8						
11	1	26013-060162	BOLT, M6X 16		6						
11-1	1	26014-100252 (B=M36288)	BOLT, M10X 25		4						S
12	1	26013-080162	BOLT, M8X 16		4						
13	1	26013-080202	BOLT, M8X 20		4						

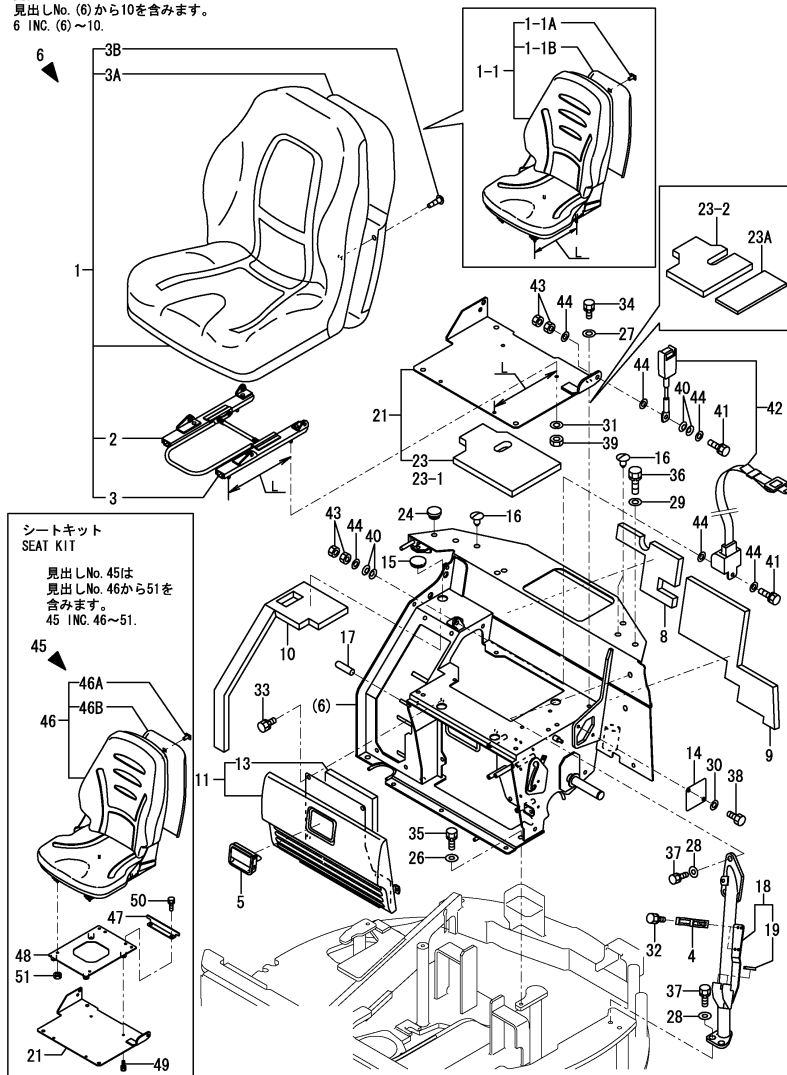
Remarks
 (1)INTERCHANGEABLE BY SIMULTANEOUS
 REPLACEMENT WITH REF.8-1,9-1
 & 11-1.

Fig.55. SEAT & SEAT MOUNT(CANOPY)(TO M3F494)

(A)=VIO20-3 C(JP)
 (B)=VIO20-3 P(JP)
 (C)=VIO20-3 P(EX)

(D)=
 (E)=
 (F)=

見出しNo.6は
 見出しNo.(6)から10を含みます。
 6 INC.(6)~10.



シートキット
 SEAT KIT
 見出しNo.45は
 見出しNo.46から51を
 含みます。
 45 INC.46~51.

No.	Lev.	Parts No.	Description	Q'ty						I	R	
				(A)	(B)	(C)	(D)	(E)	(F)			
44-1	1	22137-100000	WASHER, 10 (B=M35974) (C=M35974)		4	4					F	3
44-2	1	22137-100000	WASHER, 10 (B=M35974) (C=M35974)		6	6						K
45	1	172456-08600	SEAT KIT (B=M/#33595) (C=M/#33595)		1	1						W
45-1	1	172456-08600-N	SEAT KIT (B=M3F001) (C=M3F001)		1	1						S
45-2	1	172456-08600-N	SEAT KIT (B=M3F495) (C=M3F495)		1	1						Z 7
46	2	172A46-64200	SEAT, OPERATOR (B=M/#33595) (C=M/#33595)		1	1						W
46A	2	172A46-64180	LOCK-FUSE,LID (B=M33595) (C=M33595)		1	1						W
46B	3	172A46-64190	COVER, BACK (B=M33595) (C=M33595)		1	1						W
47	2	172A46-64520	STOPPER ASSY (B=M/#33595) (C=M/#33595)		1	1						W
47-1	2	172A46-64520-N	STOPPER ASSY (B=M3F001) (C=M3F001)		1	1						S
48	2	172A46-64500	PLATE ASSY,SEAT (B=M/#33595) (C=M/#33595)		1	1						W
48-1	2	172A46-64500-N	PLATE ASSY,SEAT (B=M3F001) (C=M3F001)		1	1						S
49	2	26013-080202	BOLT, SPRING M8X 20 (B=M/#33595) (C=M/#33595)		4	4						W
50	2	26013-100202	BOLT, SPRING M10X 20 (B=M/#33595) (C=M/#33595)		2	2						W
51	2	26051-080002	NUT, M8 (B=M/#33595) (C=M/#33595)		4	4						W

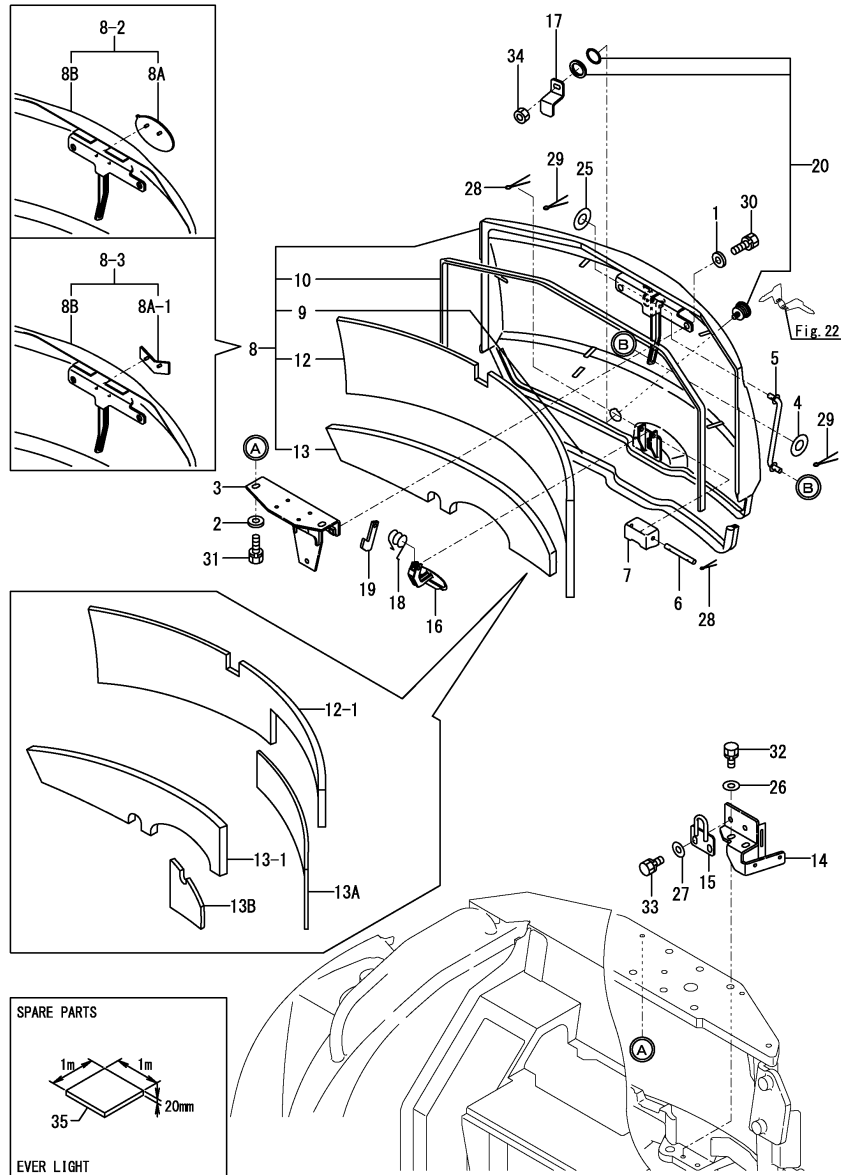
Remarks

- (1)L=No.1 & 21 : 255mm, No.1-1 & 21-1 : 285mm.
 Interchangeable by simultaneous replacement with No.1-1 & 21-1.
- (2)Interchangeable by simultaneous replacement with No.23A.
- (3)Interchangeable by simultaneous replacement with No.40-1, 41-1, 43-1 & 44-1.
- (4)Color = DARK OLIVE GRAY.
- (5)Color = WARM GARY.
- (6)Color = BLACK.
- (7)Spare parts is shown in Fig.166.

Fig.57. BONNET(1)

(A)=VIO20-3 C(JP)
 (B)=VIO20-3 P(JP)
 (C)=VIO20-3 P(EX)

(D)=
 (E)=
 (F)=



No.	Lev.	Parts No.	Description	Q'ty						I	R
				(A)	(B)	(C)	(D)	(E)	(F)		
35	1	172478-65750	SPONGE	1	1	1					

Remarks
 (1)INTERCHANGEABLE BY SIMULTANEOUS REPLACEMENT WITH REF.NO.13A.
 (2)INTERCHANGEABLE BY SIMULTANEOUS REPLACEMENT WITH REF.NO.13B.

CLICK HERE TO **DOWNLOAD** THE COMPLETE MANUAL

- Thank you very much for reading the preview of the manual.
- You can download the complete manual from: www.heydownloads.com by clicking the link below



- Please note: If there is no response to CLICKING the link, please download this PDF first and then click on it.

CLICK HERE TO **DOWNLOAD** THE COMPLETE MANUAL

Fig.145. (64A)CABIN(Accessory)(T SPEC.)(FROM M3B682 TO M3F855)

(A)=VIO20-3 C(JP)

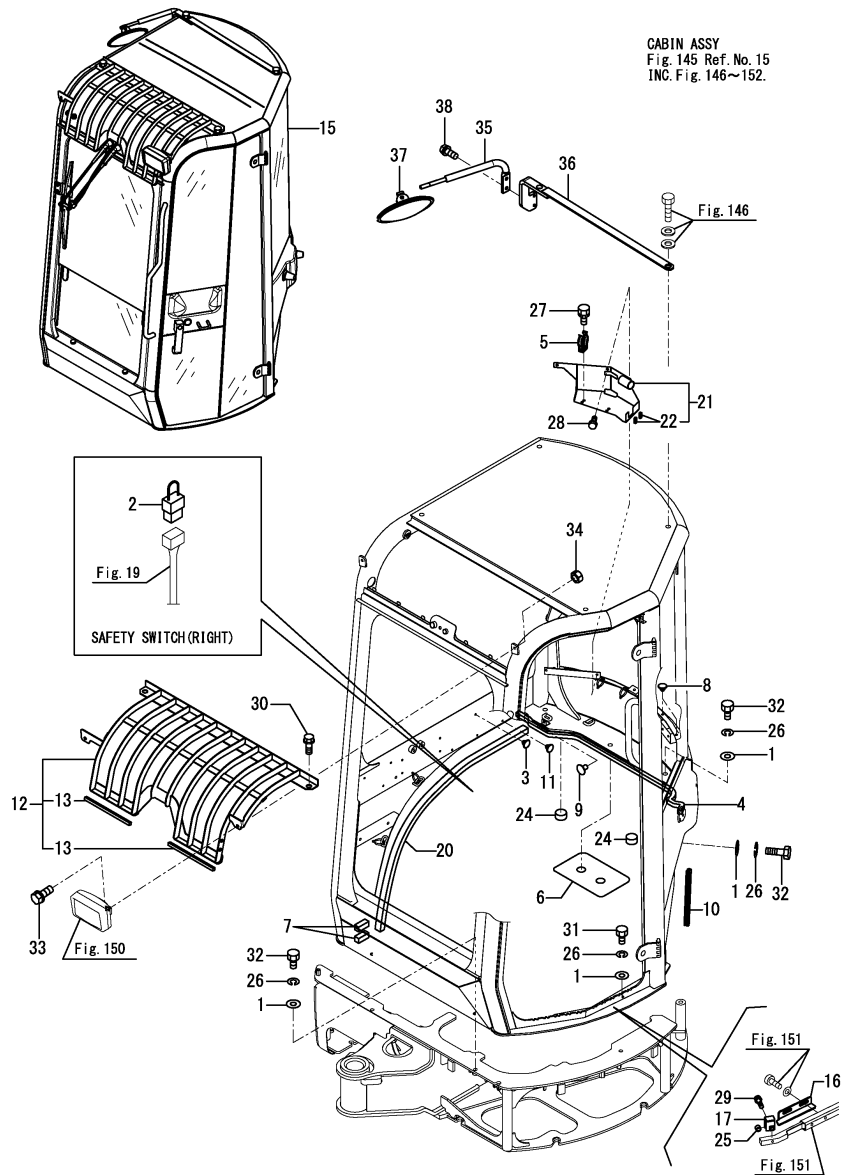
(B)=VIO20-3 P(JP)

(C)=VIO20-3 P(EX)

(D)=

(E)=

(F)=



No.	Lev.	Parts No.	Description	Q'ty						I	R
				(A)	(B)	(C)	(D)	(E)	(F)		
1	1	172165-13220	WASHER	9							
2	1	172190-16500	HARNES, WIRE	1							
3	1	172444-17660	CLIP, TREE	1							
4	1	172458-54750	SEAL	1							
5	1	172122-55061	BRACKET, PUMP	2							
6	1	172458-63580	SPACER, CAB	1							
6-1	1	172458-63580-N	SPACER	1							S
(A=M3F001)											
7	1	172458-63900	STOPPER	2							
8	1	172458-64610	CLIP, TREE	3							1
8-1	1	183341-91800	CLIP, TREE 5	3							S 2
(A=M3F001)											
9	1	172458-64610	CLIP, TREE	2							1
9-1	1	183341-91800	CLIP, TREE 5	2							S 2
(A=M3F001)											
10	1	172456-65800	RUBBER, SEAL 150	1							
11	1	172176-67790	PLUG	3							
12	1	172A23-68191	FOPS GUARD ASSY	1							
13	2	172480-13530	SEAL	2							
15	1	172456-68403	CABIN ASSY	1							W
(A=M3B682)											
15-1	1	172456-68404	CABIN ASSY	1							S
(A=M3F001)											
15-2	1	172456-68404	CABIN ASSY	1							Z 3
(A=M3F855)											
16	1	172A23-68550	GUIDE, STOPPER	1							
17	1	172A23-68600	CLAMP ASSY, STOPPER	1							
20	1	172456-68810	SEAL	1							
21	1	172A23-68900	PLATE ASSY, GREASEGUN	1							
21-1	1	172A23-68900-N	PLATE ASSY, GREASEGUN	1							S
(A=M3F001)											
22	2	172478-65220	TRIM	2							
24	1	172A23-68950	RUBBER, SEAT MOUNT	2							
25	1	172A46-72070	SPACER	1							
26	1	22217-120000	WASHER, SPRING 12	9							
27	1	26013-060102	BOLT, SPRING M6X 10	4							
28	1	26013-060162	BOLT, SPRING M6X 16	2							
29	1	26013-060202	BOLT, SPRING M6X 20	1							
30	1	26013-080202	BOLT, SPRING M8X 20	1							
31	1	26076-120302	BOLT, 10.912X 30	2							
32	1	26076-120402	BOLT, 10.912X 40	7							
33	1	26116-080202	BOLT, M8X 20 PLATED	1							
34	1	26716-080002	NUT, M8	2							
35	1	172A25-68301-1	BRACKET, MIRROR	1							
35-1	1	172A25-68301-2	BRACKET ASSY_MIRROR	1							S
(A=M3F001)											
36	1	172A23-68500-1	BRACKET ASSY, MIRROR	1							
36-1	1	172A23-68500-2	BRACKET ASSY, MIRROR	1							S
(A=M3F001)											
37	1	172A25-68500	MIRROR, REARVIEW	1							
38	1	26013-100252	BOLT, SPRING M10X 25	2							

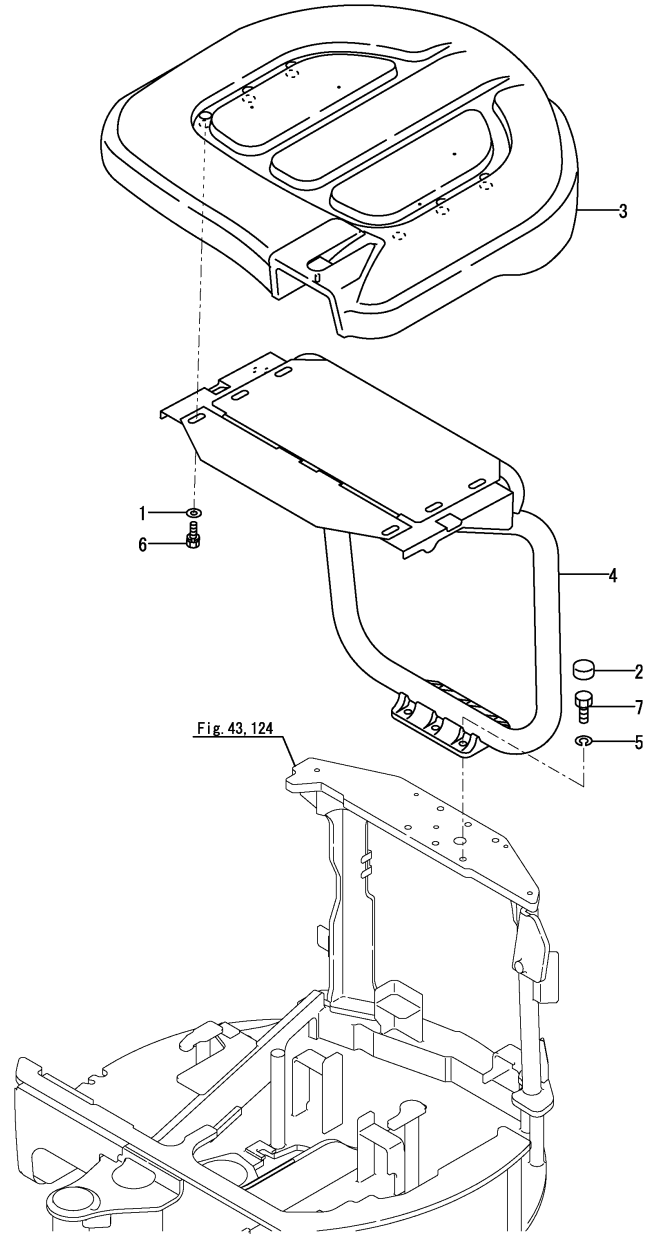
Remarks

- (1)Color = GRAY.
 - (2)Color = BLACK.
 - (3)Replacement with Fig.168(64I) No13.
- The inner parts are not compatible.

Fig.65. CANOPY

(A)=VIO20-3 C(JP)
 (B)=VIO20-3 P(JP)
 (C)=VIO20-3 P(EX)

(D)=
 (E)=
 (F)=



No.	Lev.	Parts No.	Description	Qty						I	R	
				(A)	(B)	(C)	(D)	(E)	(F)			
1	1	172730-05250	WASHER		6	6						
2	1	172458-67090	CAP		6	6						Z
		(B=M33876)	(C=M33876)									
3	1	172458-67100	ROOF ASSY,CANOPY		1	1						1
3-1	1	172458-67000	ROOF ASSY, CANOPY D		1	1						S 2
		(B=M3F001)	(C=M3F001)									
4	1	172A23-67110	CANOPY ASSY, TOPS		1	1						S
4-1	1	172A23-67110-1	CANOPY ASSY, TOPS		1	1						S
		(B=M/#33092)	(C=M/#32643)									
4-2	1	172A23-67111-1	CANOPY ASSY, TOPS		1	1						N
		(B=M36157)	(C=M36157)									
4-3	1	172A23-67111-N	CANOPY ASSY, TOPS		1	1						S
		(B=M3F001)	(C=M3F001)									
5	1	22217-160000	WASHER, SPRING 16		6	6						
6	1	26013-120302	BOLT, SPRING M12X 30		6	6						
7	1	26076-160402	BOLT, 10.916X 40		6	6						

Remarks

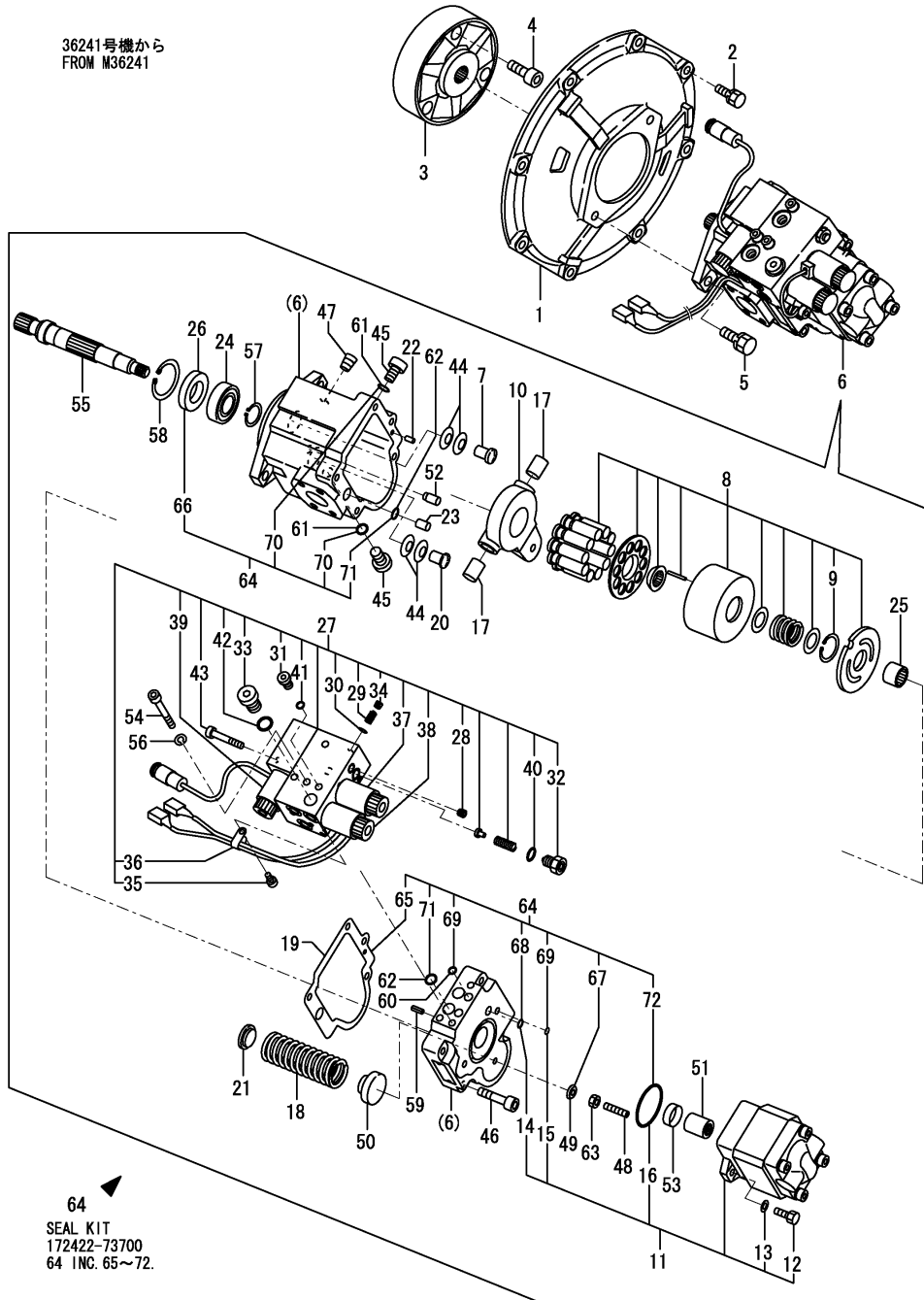
- (1)Color = NATURAL WHITE.
- (2)Color = NAVY GRAY.

Fig.127. (67A)HYD. OIL PUMP & JOINT(QUIK COUPLER SPEC.)(FROM M36240)

(A)=VIO20-3 C(JP)
 (B)=VIO20-3 P(JP)
 (C)=VIO20-3 P(EX)

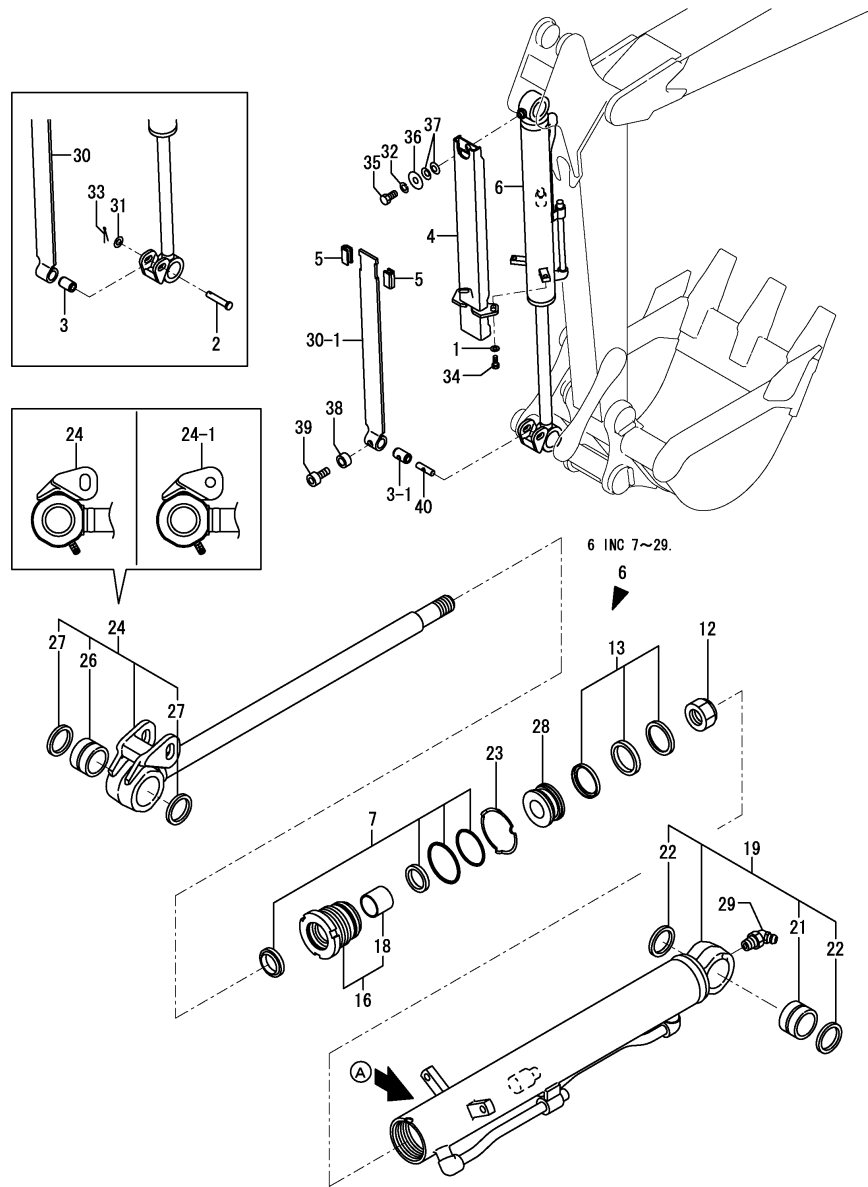
(D)=
 (E)=
 (F)=

36241号機から
 FROM M36241



No.	Lev.	Parts No.	Description	Q'ty						I	R
				(A)	(B)	(C)	(D)	(E)	(F)		
1	1	172168-71101	COVER, FLYWHEEL	1	1	1					
2	1	26013-100302	BOLT, M10X 30	8	8	8					
3	1	172165-71200	COUPLING	1	1	1					
4	1	26450-120402	BOLT, M12X 40	3	3	3					
5	1	26013-120302	BOLT, M12X 30	2	2	2					
6	1	172A30-73100	PUMP Q ASSY	1	1	1					
7	2	172450-73110	PIN,STOPPER	1	1	1					
8	2	172A23-73110	BARREL KIT	1	1	1					
9	3	172448-73190	SNAP RING	1	1	1					
10	2	172422-73140	PLATE, SWASH	1	1	1					
11	2	172A23-73140	PUMP ASSY	1	1	1					
12	3	172450-73120	BOLT	2	2	2					
13	3	172450-73130	WASHER	2	2	2					
14	3	24315-000070	O-RING, 1BP7.0	1	1	1					
15	3	24315-000080	O-RING, 1BP8.0	1	1	1					
16	3	24325-000550	O-RING, 1BG55.0	1	1	1					
17	2	172422-73160	PIN	2	2	2					
18	2	172A23-73160	SPRING	1	1	1					
19	2	172422-73170	GASKET	1	1	1					
20	2	172448-73180	PIN A,STOPPER	1	1	1					
21	2	172422-73200	HOLDER	1	1	1					
22	2	172422-73220	PIN	1	1	1					
23	2	172422-73280	PIN	1	1	1					
24	2	172422-73290	BEARING, BALL	1	1	1					
25	2	172422-73500	BEARING, NEEDLE	1	1	1					
26	2	172422-73510	SEAL, OIL	1	1	1					
27	2	172958-73510	BLOCK ASSY, VALVE	1	1	1					
27-1	2	172958-73511	BLOCK ASSY, VALVE	1	1	1					N
		(A=M46211)	(B=M46211)	(C=M46211)							
28	3	172422-73550	PLUG	8	8	8					
29	3	172422-73620	SPRING	1	1	1					
30	3	172422-73630	FILTER	1	1	1					
31	3	172458-73630	PLUG	1	1	1					
32	3	172422-73640	ADJUSTER KIT	1	1	1					
33	3	172458-73640	PLUG	1	1	1					
34	3	172422-73650	PLUG	2	2	2					
35	3	172422-73660	BOLT	1	1	1					
36	3	172422-73670	CLAMP	1	1	1					
37	3	172458-73680	VALVE ASSY	1	1	1					
38	3	172458-73690	VALVE ASSY	1	1	1					
39	3	172458-73790	VALVE,SOLENOID	1	1	1					
40	3	24311-000110	O-RING, 1AP11.0	1	1	1					
41	3	24315-000080	O-RING, 1BP8.0	1	1	1					
42	3	24315-000140	O-RING, 1BP14.0	1	1	1					
43	3	26450-050452	BOLT, M5X 45	4	4	4					
44	2	172422-73520	SPRING	4	4	4					
45	2	172422-73530	PLUG	2	2	2					
46	2	172422-73540	BOLT	5	5	5					
47	2	172422-73550	PLUG	5	5	5					
48	2	172422-73560	SCREW	1	1	1					
49	2	172422-73570	WASHER	1	1	1					

Fig.71. BUCKET CYLINDER(Y SPEC.)



(A)=VIO20-3 C(JP)
 (B)=VIO20-3 P(JP)
 (C)=VIO20-3 P(EX)

(D)=
 (E)=
 (F)=

No.	Lev.	Parts No.	Description	Q'ty						I	R
				(A)	(B)	(C)	(D)	(E)	(F)		
31-2	1	(A=M/#30829) (B=M/#30829) 172A23-72020	WASHER	1	1						Z
		(A=M/#33361) (B=M/#33361)									
32	1	22217-100000	WASHER, SPRING 10	1	1						
33	1	22417-500250	PIN, COTTER 5.0X25	1	1						Z
34	1	(A=M/#33361) (B=M/#33361) 26076-100202	BOLT, 10.910X 20	2	2						
		(A=M35892) (B=M35892) 26076-100252	BOLT, 10.910X 25	2	2						N
35	1	26116-100162	BOLT, M10X 16 PLATED	1	1						
36	1	933147-03400	WASHER, BRAKE ARM	1	1						
37	1	933168-14170	SPRING	2	2						
38	1	172A46-72070	SPACER	1	1						W
39	1	(A=M/#33361) (B=M/#33361) 26450-060162	BOLT, M6X 16	1	1						W
		(A=M/#33361) (B=M/#33361) 172A47-72840	BOLT	1	1						N
39-1	1	(A=M34875) (B=M34875) 172A47-72840	BOLT	1	1						N
		(A=M/#33361) (B=M/#33361) 172A23-72043	SHAFT	1	1						W

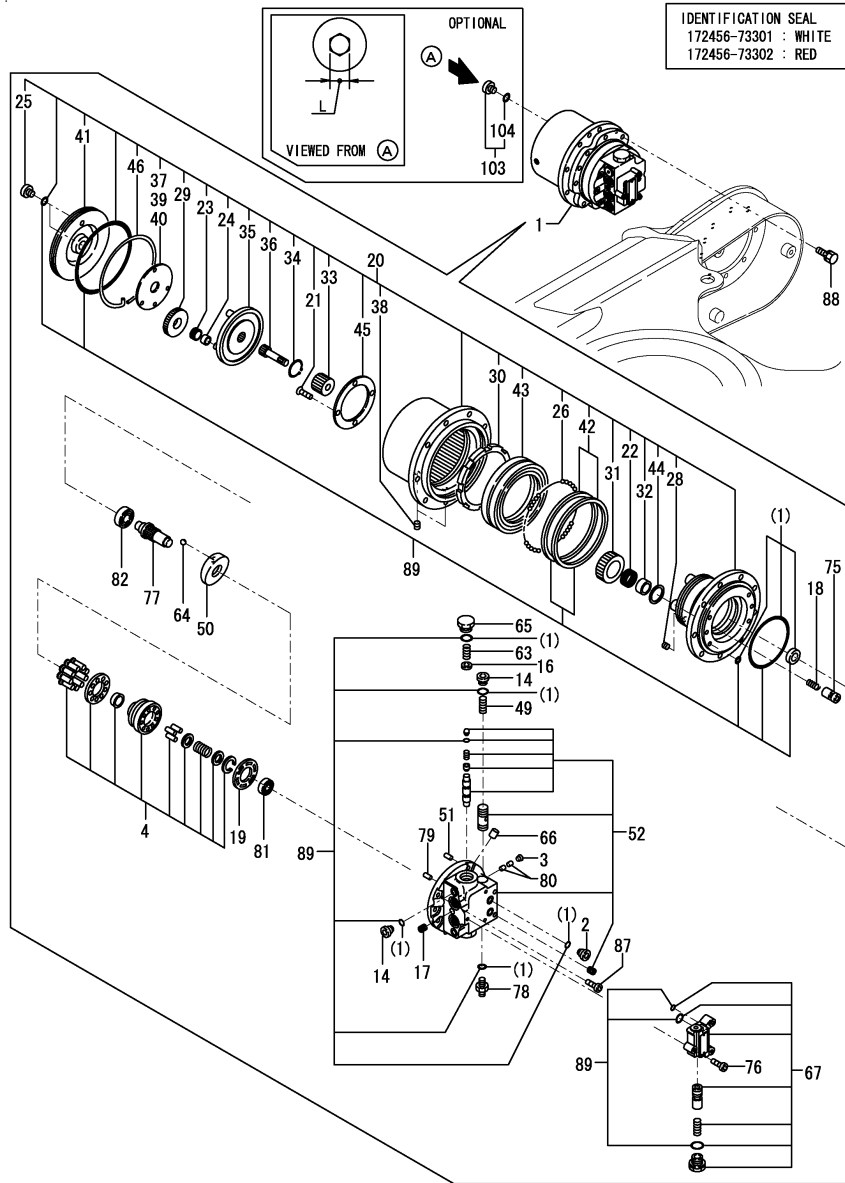
Remarks

- (1) Interchangeable by simultaneous replacement with No.34-1.
 - (2) A : no mark.
- Interchangeable by Fig.136(71A) No.1.

Fig.76. TRAVEL MOTOR

(A)=VIO20-3 C(JP)
 (B)=VIO20-3 P(JP)
 (C)=VIO20-3 P(EX)

(D)=
 (E)=
 (F)=



No.	Lev.	Parts No.	Description	Q'ty						I	R
				(A)	(B)	(C)	(D)	(E)	(F)		
49	2	172421-73400	SPRING	2	2	2					
50	2	172456-73460	PLATE	2	2	2					
50-1	2	172456-73461	PLATE	2	2	2					N
		(A=M35238) (B=M35238) (C=M35238)									
51	2	172122-73470	PIN	2	2	2					
52	2	172456-73330	BASE PLATE ASSY	2	2	2					
52-1	2	172456-73331	BASE PLATE KIT	2	2	2					N 1
		(A=M/#31553) (B=M/#31553) (C=M/#31553)									
52-2	2	172A23-73550	PLATE KIT, BASE	2	2	2					S 2
		(A=M35238) (B=M35238) (C=M35238)									
63	2	172456-73500	SPRING	4	4	4					
64	2	172450-73510	BALL, STEEL	4	4	4					
65	2	172456-73510	CAP	4	4	4					
66	2	172456-73520	ORIFICE	4	4	4					
67	2	172456-73540	VALVE ASSY	2	2	2					
75	2	172450-73550	PISTON ASSY	4	4	4					1
75-1	2	172450-73551	PISTON ASSY	4	4	4					S 2
		(A=M33831) (B=M33831) (C=M33831)									
76	2	172456-73570	BOLT, SOCKET HEAD	6	6	6					
77	2	172183-73670	SHAFT	2	2	2					
78	2	172183-73780	PLUG	2	2	2					Z 1
		(A=M33831) (B=M33831) (C=M33831)									
78-1	2	172A23-73540	PLUG	2	2	2					W 2
		(A=M33831) (B=M33831) (C=M33831)									
79	2	172122-73480	PIN	4	4	4					
80	2	172312-74790	ORIFICE	8	8	8					
81	2	24101-060024	BEARING, BALL 6002	2	2	2					
82	2	24101-060044	BEARING, BALL 6004	2	2	2					
87	2	26450-080202	BOLT, M8X 20	12	12	12					
88	1	26013-100252	BOLT, M10X 25	16	16	16					
89	1	172456-73320	SEAL SET	2	2	2					
103	1	172A77-73320	PLUG	4	4	4					3
104	2	24315-000110	O-RING, 1BP11.0	4	4	4					

Remarks

(1) IDENTIFICATION SEAL COLOR : WHITE

(2) IDENTIFICATION SEAL COLOR : RED

(3) OPTIONAL.

REF.NO.103 B=8MM, NO.25 B= 6MM.

Fig.84. CONTROL VALVE(6/6)

コントロールバルブASSY
CONTROL VALVE ASSY
172456-74101

項目NO. 79の見出しNO. 1は、
項目NO. 79の見出しNO. 2~33と
項目NO. 80の見出しNO. 1~28と
項目NO. 81の見出しNO. 1~25と
項目NO. 82の見出しNO. 1~30と
項目NO. 83の見出しNO. 1~34と
項目NO. 84の見出しNO. 1~25を含みます。

Fig. 79 Ref. No. 1

INC. Fig. 79 Ref. No. 2~33.

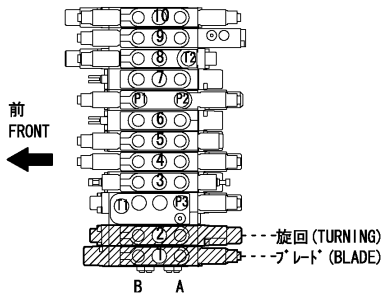
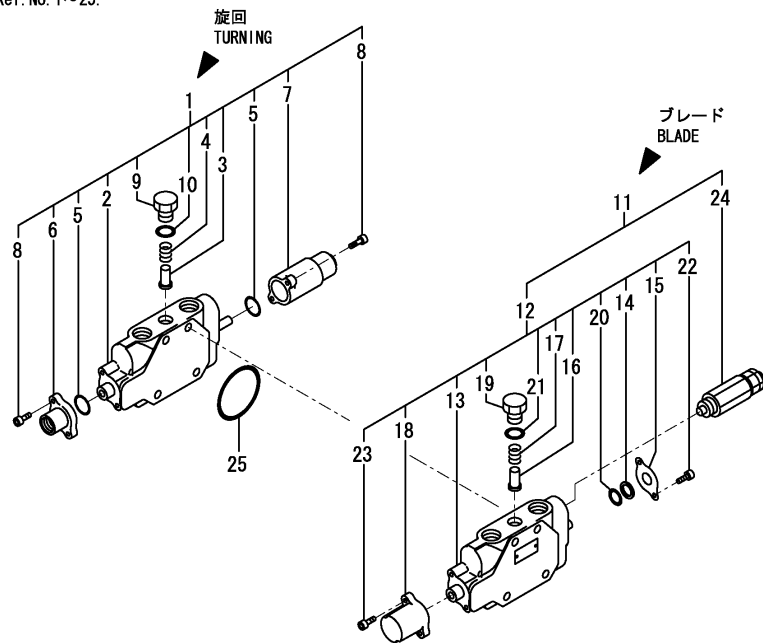
Fig. 80 Ref. No. 1~28.

Fig. 81 Ref. No. 1~25.

Fig. 82 Ref. No. 1~30.

Fig. 83 Ref. No. 1~34.

Fig. 84 Ref. No. 1~25.



(A)=VIO20-3 C(JP)

(B)=VIO20-3 P(JP)

(C)=VIO20-3 P(EX)

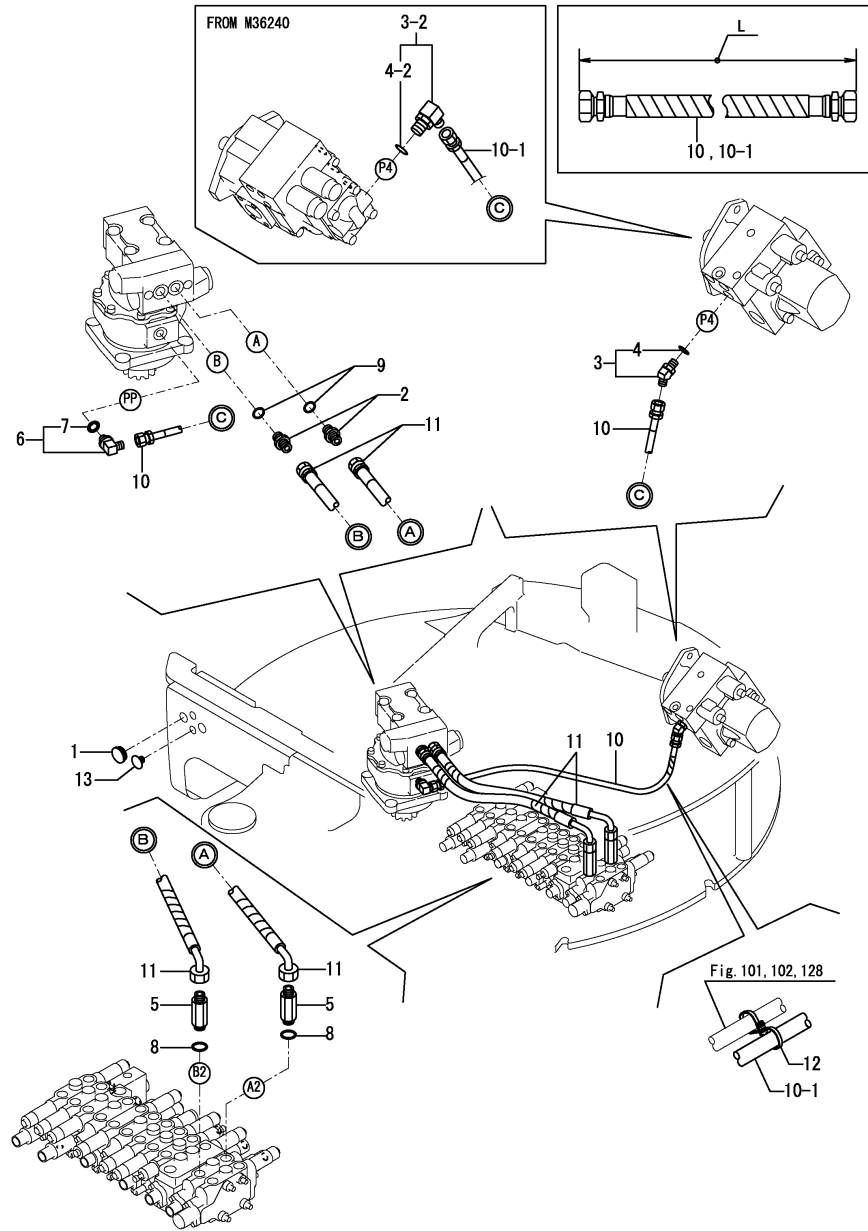
(D)=

(E)=

(F)=

No.	Lev.	Parts No.	Description	Q'ty						I	R
				(A)	(B)	(C)	(D)	(E)	(F)		
1	2	172456-74110	SECTION ASSY	1	1	1					
2	3	172456-74120	SPOOL ASSY, SWING	1	1	1					
3	3	172458-74150	VALVE, REVERSE	1	1	1					
4	3	172458-74160	SPRING, VALVE	1	1	1					
5	3	172458-74230	O-RING	2	2	2					
6	3	172458-74240	COVER, PILOT	1	1	1					
7	3	172458-74250	COVER, PILOT	1	1	1					
8	3	172458-74260	SWP HEX.BOLT 5X20	4	4	4					
9	3	172458-74630	STAY, VALVE	1	1	1					
10	3	24315-000110	O-RING, 1BP11.0	1	1	1					
11	2	172458-74750	SECTION, BLADE	1	1	1					
12	3	172458-74110	SECTION ASSY, BLADE	1	1	1					
13	4	172458-74120	SPOOL ASSY, BLADE	1	1	1					
14	4	172458-74130	DUST WIPER	1	1	1					
15	4	172458-74140	RETAINER, SEAL	1	1	1					
16	4	172458-74150	VALVE, REVERSE	1	1	1					
17	4	172458-74160	SPRING, VALVE	1	1	1					
18	4	172458-74170	CAP, SPRING	1	1	1					
19	4	172458-74630	STAY, VALVE	1	1	1					
20	4	24311-000120	O-RING, 1AP12.0	1	1	1					
21	4	24315-000110	O-RING, 1BP11.0	1	1	1					
22	4	26450-050102	BOLT, M5X 10	2	2	2					
23	4	26450-050182	BOLT, M5X 18	2	2	2					
24	3	172458-74700	VALVE, RELIEF	1	1	1					
25	2	172458-74720	O-RING	1	1	1					

Fig.93. HYD.OIL PIPING(PUMP, CONTROL VALVE - TURNING MOTOR)



(A)=VIO20-3 C(JP)
 (B)=VIO20-3 P(JP)
 (C)=VIO20-3 P(EX)

(D)=
 (E)=
 (F)=

No.	Lev.	Parts No.	Description	Q'ty						I	R
				(A)	(B)	(C)	(D)	(E)	(F)		
1	1	172312-17260	GROMMET	2	2	2					
2	1	172730-75141	ADAPTER	2	2	2					
3	1	172173-76101	CONNECTOR ASSY	1	1	1					
3-1	1	172173-76102 (A=M35241) (B=M35241) (C=M35241)	CONNECTOR ASSY	1	1	1					N
3-2	1	172141-76920 (A=M36240) (B=M36240) (C=M36240)	CONNECTOR ASSY	1	1	1					S
4	2	24315-000110	O-RING, 1BP11.0	1	1	1					
4-1	2	41851-000110 (A=M35241) (B=M35241) (C=M35241)	O-RING	1	1	1					N
4-2	2	24315-000140 (A=M36240) (B=M36240) (C=M36240)	O-RING, 1BP14.0	1	1	1					S
5	1	172162-76131	ADAPTER	2	2	2					
6	1	172141-76180	CONNECTOR ASSY	1	1	1					
6-1	1	172141-76181 (A=M35241) (B=M35241) (C=M35241)	CONNECTOR ASSY, 02FF	1	1	1					N
7	2	24315-000110 (A=M35241) (B=M35241) (C=M35241)	O-RING, 1BP11.0	1	1	1					
7-1	2	41851-000110	O-RING	1	1	1					N
8	1	24315-000140 (A=M35460) (B=M35460) (C=M35460)	O-RING, 1BP14.0	2	2	2					
8-1	1	41851-000140	O-RING	2	2	2					N
9	1	24315-000140 (A=M35460) (B=M35460) (C=M35460)	O-RING, 1BP14.0	2	2	2					
9-1	1	41851-000140	O-RING	2	2	2					N
10	1	172456-78140 (A=M36240) (B=M36240) (C=M36240)	HOSE	1	1	1					
10-1	1	172423-78940	HOSE	1	1	1					S 1
11	1	172422-78210 (A=M3A673) (B=M3A673) (C=M3A673)	HOSE	2	2	2					
12	1	172137-16560	BAND	1	1	1					W
13	1	172176-68210 (A=*2014.12) (B=*2014.12) (C=*2014.12)	CLIP, TREE	2	2	2					W

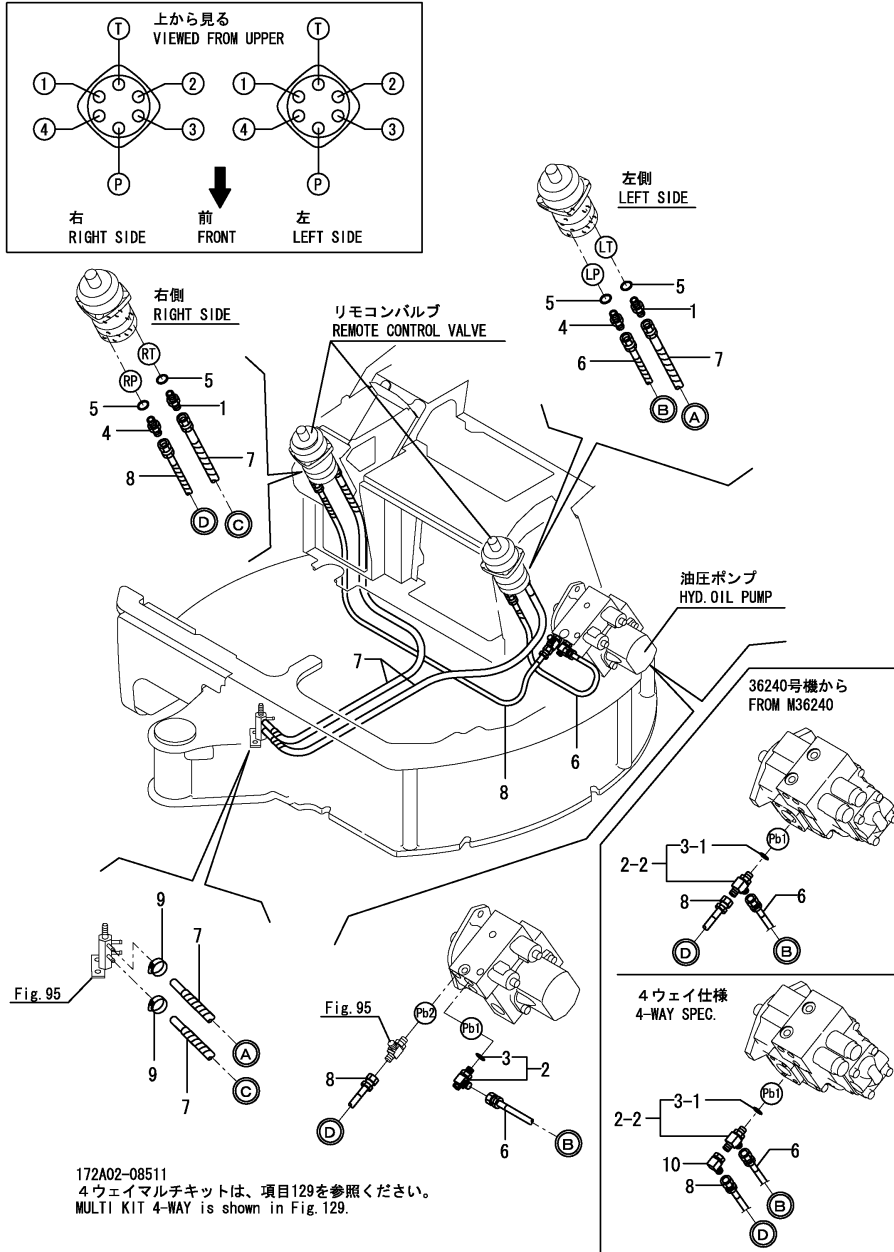
Remarks
 (1) REF.NO.10 L=700MM,
 NO.10-1 H=1000MM.

Fig.101. CONTROL PIPING(PUMP - REMOTE CONTROL VALVE - RETURN)

(A)=VIO20-3 C(JP)
 (B)=VIO20-3 P(JP)
 (C)=VIO20-3 P(EX)

(D)=
 (E)=
 (F)=

No.	Lev.	Parts No.	Description	Qty						I	R
				(A)	(B)	(C)	(D)	(E)	(F)		
1	1	172123-76121	ADAPTER	2	2	2					
2	1	172187-76210	ELBOW	1	1	1					
2-1	1	172187-76211	ELBOW	1	1	1					N
2-2	1	172162-76181	JOINT ASSY	1	1	1					S
3	2	24315-000110	O-RING, 1BP11.0	1	1	1					N
3-1	2	41851-000110	O-RING	1	1	1					N
4	1	172455-76220	CONNECTOR	2	2	2					
5	1	24315-000110	O-RING, 1BP11.0	4	4	4					
5-1	1	41851-000110	O-RING	4	4	4					N
6	1	172456-78350	HOSE	1	1	1					
7	1	172456-78360	HOSE	2	2	2					
8	1	172456-78410	HOSE	1	1	1					
9	1	23000-013000	CLAMP, 13	2	2	2					
10	1	172828-76330	CONNECTOR, 1/4X1/4	1	1						W 1

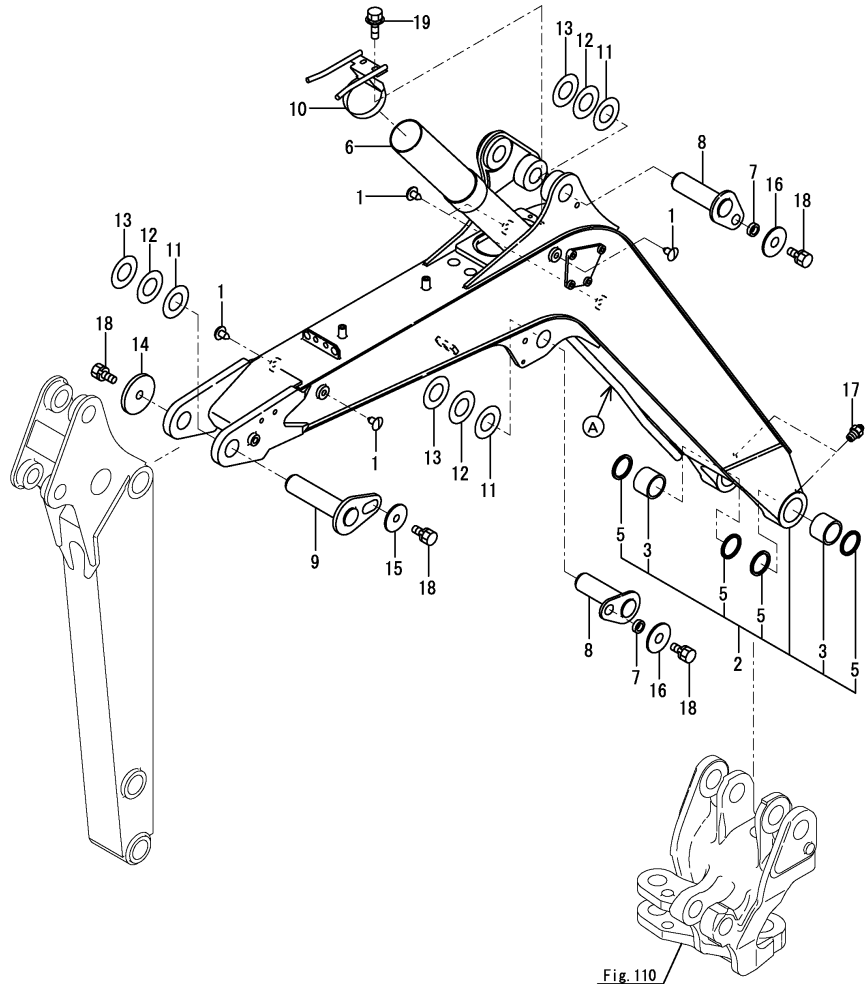


Remarks
 (1)4-WAY MULTI SPEC.

Fig.109. BOOM(CRANE SPEC.)

(A)=VIO20-3 C(JP)
 (B)=VIO20-3 P(JP)
 (C)=VIO20-3 P(EX)

(D)=
 (E)=
 (F)=



No.	Lev.	Parts No.	Description	Q'ty						I	R
				(A)	(B)	(C)	(D)	(E)	(F)		
1	1	172176-68210	CLIP, TREE (B=MXXXXX)		5						Z
2	1	172A23-81050	BOOM ASSY, CRANE		1						
2-1	1	172A23-81050-Y	BOOM ASSY, CRANE (B=M38501)		1						S
2-2	1	172A23-81051	BOOM ASSY,CRANE (B=M3A362)		1						F 1
3	2	172168-72400	BUSH 45X55X40		2						
5	2	172168-81410	SEAL, DUST		4						
6	1	172456-81450	PIPE ASSY, PROTECT		1						
7	1	172164-81670	SPACER		2						
8	1	172456-81710	PIN 40X134		2						
9	1	172456-81740	PIN 40X167.5 ASSY		1						
10	1	172458-81751	CLAMP, PIPE		1						
10-1	1	172458-81751-Y	CLAMP, PIPE (B=M38501)		1						S
11	1	172165-82580	SHIM		3						
12	1	172165-82590	SHIM		3						
13	1	172165-82600	SHIM		3						
14	1	172146-82910	SPACER		1						
15	1	172444-82990	WASHER		1						
16	1	22157-120000	WASHER, 12		2						
17	1	24761-050000	NIPPLE, GREASE C		2						
18	1	26013-120252	BOLT, M12X 25		4						
19	1	26014-080162	BOLT, M8X 16		2						

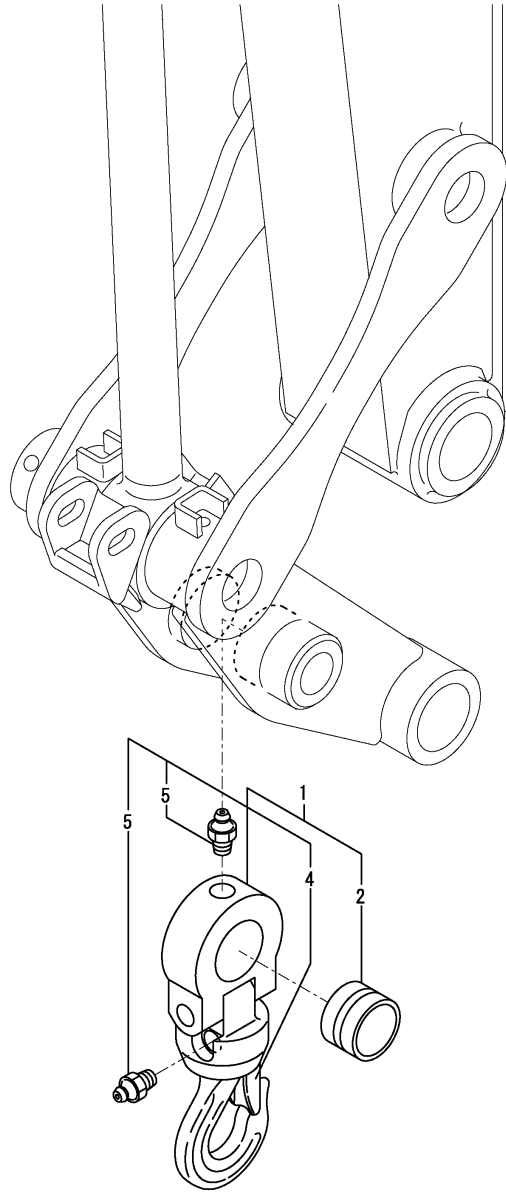
Remarks

(1)A=No.2-1 have a pipe and there is no pipe in No.2-2.
 Interchangeable by simultaneous replacement with Fig.19 No.16-1, Fig.119 No.7-2.

Fig.118. HOOK(CRANE SPEC.)

(A)=VIO20-3 C(JP)
 (B)=VIO20-3 P(JP)
 (C)=VIO20-3 P(EX)

(D)=
 (E)=
 (F)=



172A23-08601
 クレーンキット (キャノピ) は、項目130を参照ください。
 CRANE KIT,CANOPY is shown in Fig.130.

No.	Lev.	Parts No.	Description	Q'ty						I	R	
				(A)	(B)	(C)	(D)	(E)	(F)			
1	1	172A23-84600	HOOK ASSY		1							
1-1	1	172A23-84601 (B=M37103)	HOOK ASSY		1							R
1-2	1	172A23-84601-Y (B=M38501)	HOOK ASSY		1							S
2	2	172141-72561	BUSH (35-45-30)		1							
4	3	172460-84161	RATCH ASSY, CRANE		1							
5	3	172A25-84630	NIPPLE, GREASE M6		2							
5-1	3	24761-010000 (B=M37103)	NIPPLE, GREASE M6F		2							S 1

Remarks
 (1)REF.NO.5 = M6X1, NO.5-1 - M6X0.75

Fig.167. SEAT KIT(CRANE)(OPTIONAL)(REPAIR PARTS)

(A)=VIO20-3 C(JP)

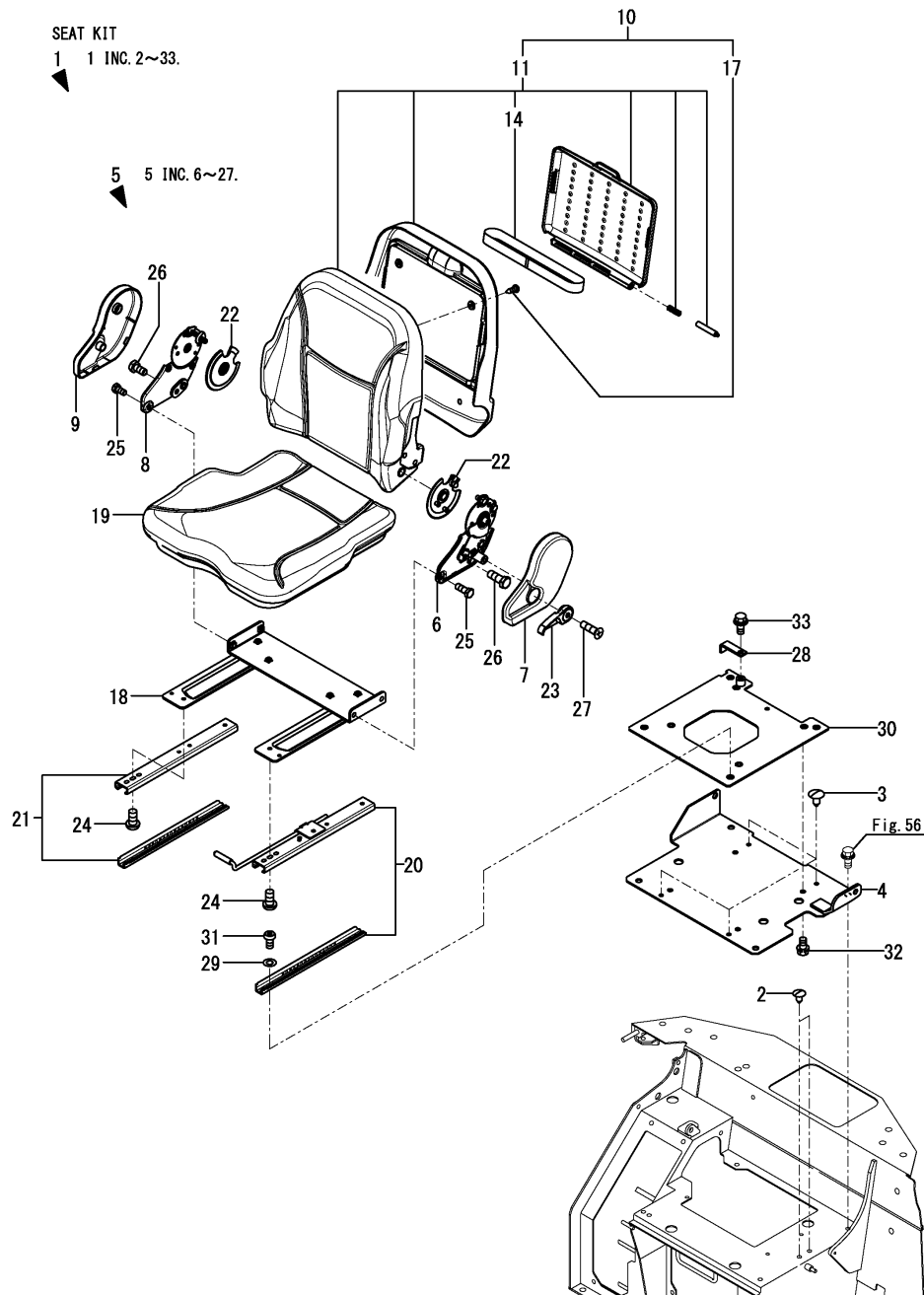
(B)=VIO20-3 P(JP)

(C)=VIO20-3 P(EX)

(D)=

(E)=

(F)=



No.	Lev.	Parts No.	Description	Q'ty						I	R
				(A)	(B)	(C)	(D)	(E)	(F)		
1	1	172A23-08810	SEAT KIT,JP K WOOCOA		1						
2	2	172122-17190	CLIP, TREE		2						
3	2	172122-17190	CLIP, TREE		4						
4	2	172A23-64060	PLATE ASSY,SEAT K		1						
5	2	172A64-64070	SEAT ASSY, RECLINING		1						
6	3	172A64-64040	HINGE ASSY		1						
7	3	172A64-64060	COVER		1						
8	3	172A64-64080	HINGE ASSY		1						
9	3	172A64-64090	COVER		1						
10	3	172B02-64210	SEAT ASSY, BACK		1						
11	4	172B02-64270	BOX ASSY,MANUAL		1						
14	5	172A89-64950	BAND		1						
17	4	22859-500200	SCREW, 5.0 X 20		4						
18	3	172B02-64230	BRACKET ASSY, SEAT		1						
19	3	172A89-64780	SEAT, CUSHION		1						
20	3	172A89-64800	RAIL ASSY, TL		1						
21	3	172A89-64810	RAIL ASSY, TR		1						
22	3	172A89-64870	COVER		2						
23	3	172A89-64880	LEVER		1						
24	3	26106-080252	BOLT, M8X 25 PLATED		4						
25	3	26106-100162	BOLT, M10X 16 PLATED		6						
26	3	26106-100252	BOLT, M10X 25 PLATED		2						
27	3	26559-050202	SCREW, M5X20		1						
28	2	172A36-64450	PLATE, LOCK		1						
29	2	172A23-64600	COLLAR		4						
30	2	172A23-64730	PLATE ASSY,MOUNT K		1						
31	2	172958-83320	BOLT		4						
32	2	26013-100162	BOLT, M10X 16		4						
33	2	26014-100202	BOLT, M10X 20		1						

Parts No. Index

Parts No.	Fig. No.	Ref. No.
172456-69360-1	152	6 -1
172456-69370	62	5 B
	152	7
172456-69380	62	6
	152	8
172456-69390	62	7
	152	9
172456-69400	62	8
	152	10
172456-69410	62	9
	152	11
172456-69420	62	10
	152	12
172456-69430	62	11
	152	13
172456-69440	62	12
	152	14
172456-69440-1	152	14 -1
172456-69450	62	13
	152	15
172456-69460	62	14
	152	16
172456-69470	62	18
	152	20
172456-69470-1	152	20 -1
172456-69480	62	19
	152	21
172456-69480-1	152	21 -1
172456-69490	62	20
	152	22
172456-69520	62	21
	148	18
	152	23
172456-69530	62	15
	152	17
172456-69540	62	22
	152	24
172456-69550	62	23
172456-69551	62	23 -1
	152	25
172456-69560	62	24
172456-69561	62	24 -1
	152	26
172456-69570	62	25
172456-69580	62	26
	152	27
172456-69590	63	1
172456-69591	151	1
172456-69591-N	151	1 -1
172456-69610	63	7

Parts No.	Fig. No.	Ref. No.
172456-69610	151	11
172456-69610-N	151	11 -1
172456-69620	63	8
	151	12
172456-69620-N	151	12 -1
172456-69630	63	9
	151	13
172456-69640	63	10
	151	14
172456-69650	63	11
	151	15
172456-69660	63	12
	151	16
172456-69670	63	13
	151	17
172456-69680	63	14
	151	18
172456-69690	63	15
	151	19
172456-69700	63	16
	151	20
172456-69710	63	17
	151	21
172456-69720	63	18
	151	22
172456-69720-1	151	22 -1
172456-69730	63	19
	151	23
172456-69740	63	20
	151	24
172456-69750	63	21
	151	25
172456-69760	63	22
	151	26
172456-69770	63	23
	151	27
172456-69780	63	24
	151	28
172456-69790	63	25
	151	29
172456-69800	63	26
	151	30
172456-69810	63	27
	151	31
172456-69820	63	28
	151	32
172456-69830	63	29
	151	33
172456-69840	63	30
	151	34

Parts No.	Fig. No.	Ref. No.
172456-69850	63	31
	151	35
172456-69850-1	151	35 -1
172456-69860	63	32
		32 -1
	151	36
172456-69870	63	33
172456-69880	63	34
	151	37
172456-69890	63	35
	151	38
172456-69900	63	36
	151	39
172456-69910	63	37
	148	19
	151	40
172456-69920	63	38
	151	41
172456-69930	63	39
	151	42
172456-69940	63	40
	151	43
172456-69950	63	41
	151	44
172456-69960	64	1
172456-69961	64	1 -1
172456-69970	64	20
	150	4
172456-69980	150	5
172456-69990	64	21
	150	6
172456-72010	68	5
	69	2
172456-72020	70	2
172456-72031	71	7
172456-72050	73	2
172456-72100	69	1
172456-72100-N	69	1 -1
		1 -2
172456-72170	69	20
172456-72190	68	23
	69	23
	73	11
172456-72200	68	1
	69	29
	133	29
172456-72200-N	68	1 -1
	69	29 -1
	134	29
172456-72250	68	16 -1

Parts No.	Fig. No.	Ref. No.
172456-72250	69	13 -1
172456-72250-N	68	16 -2
	69	13 -2
172456-72260	68	19 -1
	69	16 -1
172456-72580	71	28
172456-72700	73	1
172456-72700-2	73	1 -1
		1 -2
172456-72790	73	24
172456-72790-2	73	24 -1
	138	20
172456-72830	73	26
172456-72850	73	17 -1
172456-72850-2	73	17 -2
172456-72860	73	20 -1
172456-73070	66	112
	67	109
172456-73100	66	5
172456-73110	66	6
	67	6
172456-73120	66	7
	67	7
172456-73130	66	8
	67	8
172456-73140	66	9
		113
	67	9
		110
172456-73150	66	10
		114
	67	10
		111
172456-73160	66	11
	67	11
172456-73170	66	12
	67	12
172456-73180	66	13
	67	13
172456-73280	66	22
	67	40
172456-73290	66	25
	67	43
172456-73300	76	1
172456-73301	76	1 -1
172456-73302	76	1 -2
172456-73310	77	1
172456-73311	77	1 -1
172456-73320	76	89
172456-73330	76	52

CLICK HERE TO **DOWNLOAD** THE COMPLETE MANUAL

- Thank you very much for reading the preview of the manual.
- You can download the complete manual from: www.heydownloads.com by clicking the link below



- Please note: If there is no response to CLICKING the link, please download this PDF first and then click on it.

CLICK HERE TO **DOWNLOAD** THE COMPLETE MANUAL