

OCK20-M36003EN

CLICK HERE TO **DOWNLOAD** THE COMPLETE MANUAL

- Thank you very much for reading the preview of the manual.
- You can download the complete manual from: www.heydownloads.com by clicking the link below



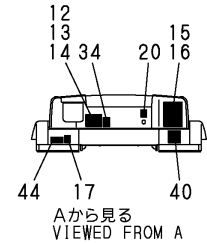
- Please note: If there is no response to CLICKING the link, please download this PDF first and then click on it.

CLICK HERE TO **DOWNLOAD** THE COMPLETE MANUAL

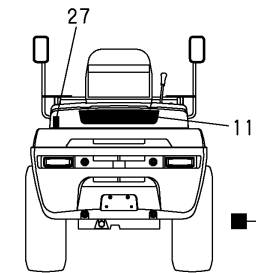
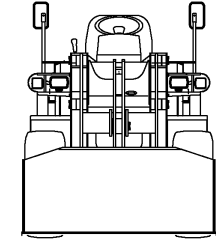
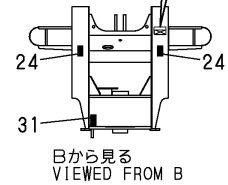
Fig.1. LABEL(1)

(A)=V3-5
(B)=V3-5(M/C)
(C)=V4-5

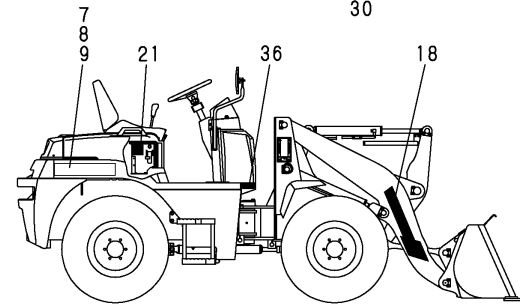
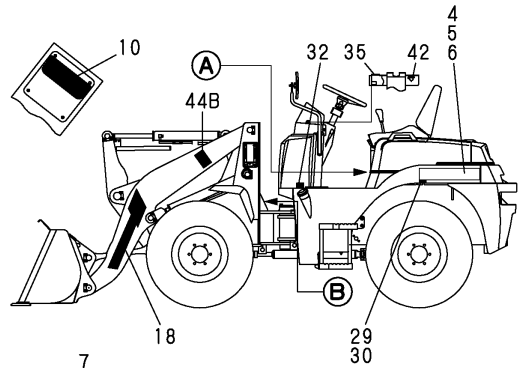
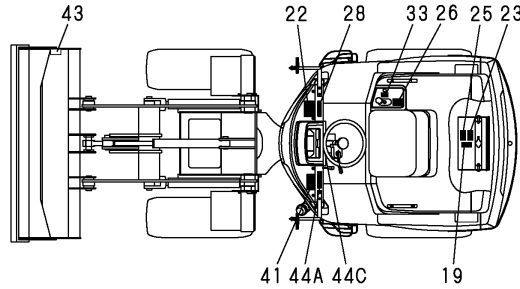
(D)=V4-5A
(E)=V5
(F)=V5-A



機体、機関NO. 打刻位置
MACHINE SERIAL NO. &
ENGINE SERIAL NO.
IS STAMPED INTO
THIS LOCATION



1,2,3 inc.4 ~ 44C

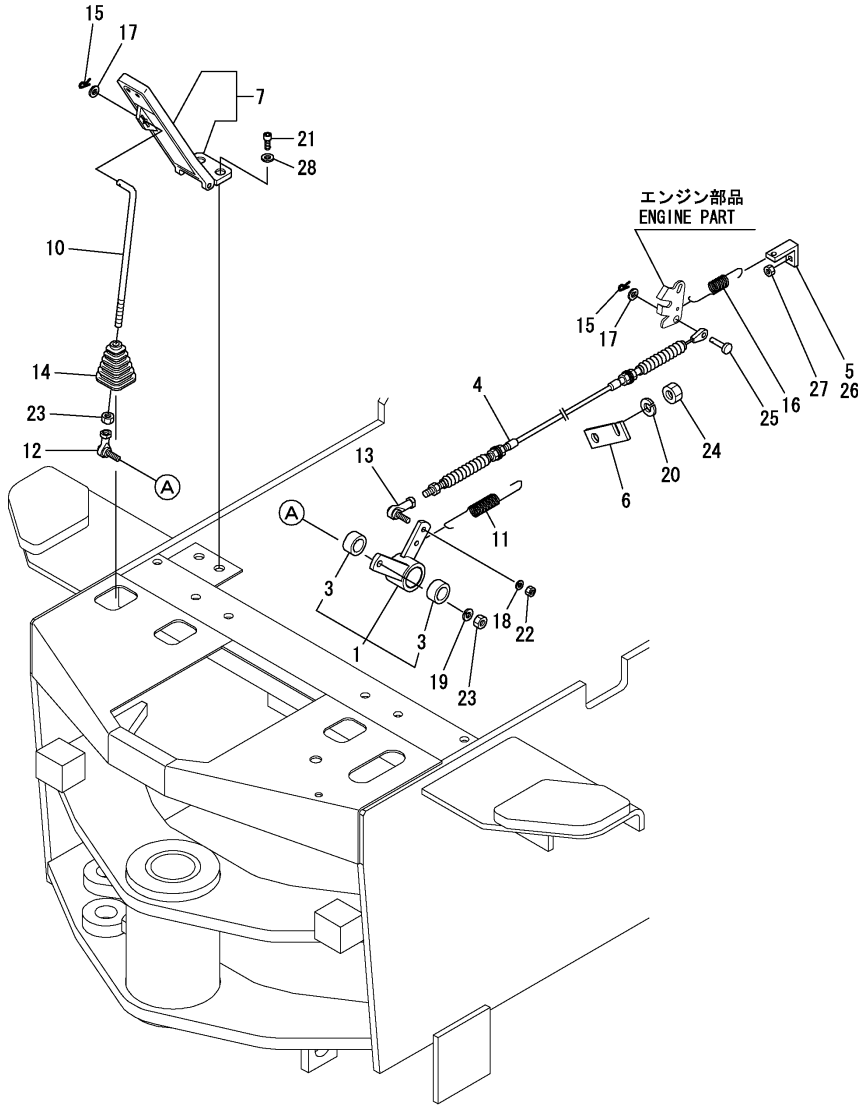


No.	Lev.	Parts No.	Description	Q'ty						I	R
				(A)	(B)	(C)	(D)	(E)	(F)		
44	2	172142-03302	LABEL,CAUTION	1	1		1				
44A	2	172530-03210	LABEL	1	1		1			W	
		(A=*2004.04)	(C=*2004.04)				(E=*2004.04)				
44B	2	172530-03220	LABEL	2	2		2			W	
		(A=*2004.04)	(C=*2004.04)				(E=*2004.04)				
44C	2	172530-03230	LABEL	1	1		1			W	
		(A=*2004.04)	(C=*2004.04)				(E=*2004.04)				
45	1	172478-03900	LABEL (FRON GAS	1	1		1				

Fig.9. FOOT ACCELERATOR(2)

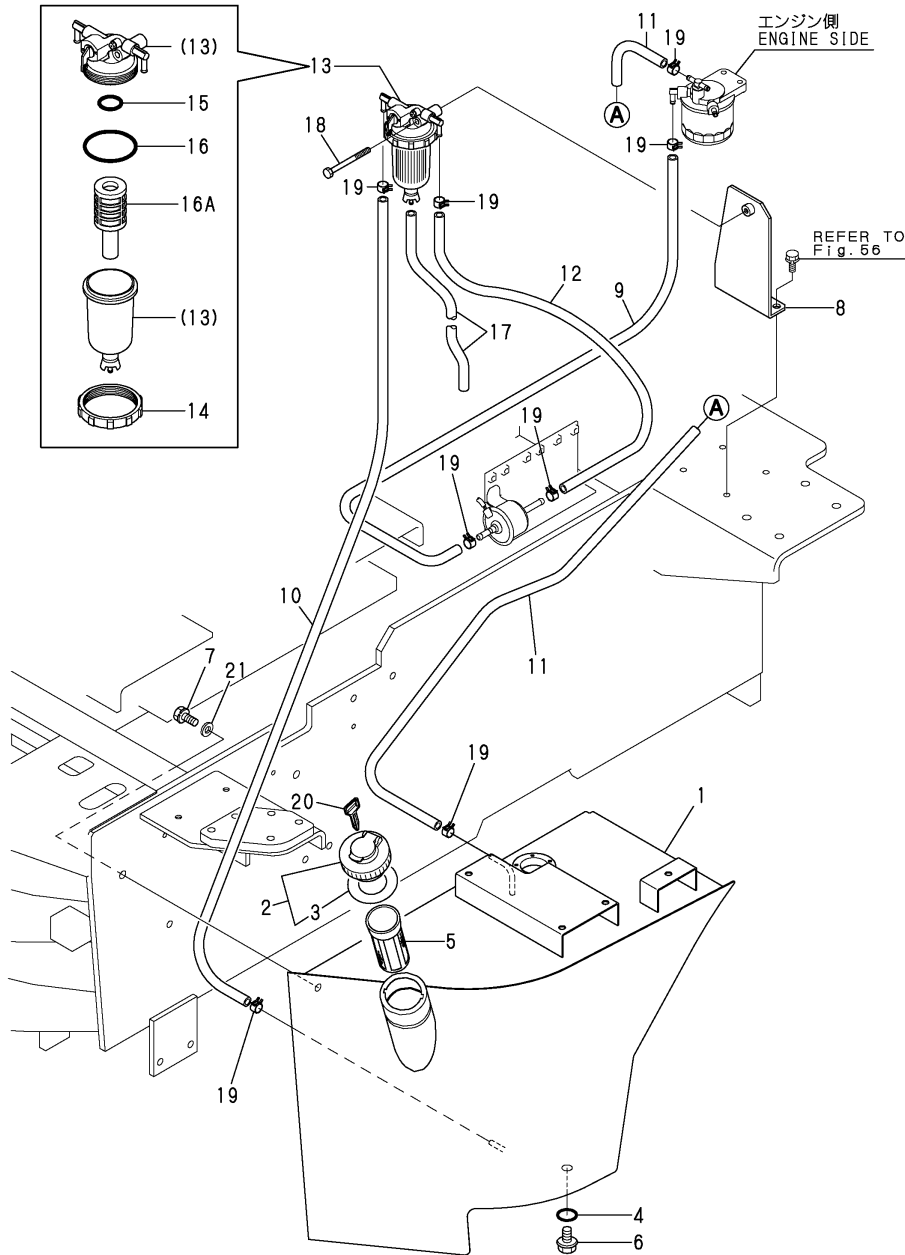
(A)=V3-5
(B)=V3-5(M/C)
(C)=V4-5

(D)=V4-5A
(E)=V5
(F)=V5-A



No.	Lev.	Parts No.	Description	Q'ty						I	R
				(A)	(B)	(C)	(D)	(E)	(F)		
1	1	172527-12200	LEVER		1		1		1		
1-1	1	172527-12201	LEVER ASSY,AXLE CAM		1		1		1		N
		(B=*2013.10)									(F=*2013.10)
3	2	24550-025150	BUSH, 25X15		2		2		2		
4	1	172527-12251	WIRE		1		1		1		
5	1	172521-12260	HOOK, SPRING		1						
6	1	172524-12260	BRACKET E,WIRE		1		1		1		
7	1	172520-12310	PEDAL ASSY, THROTTLE		1		1		1		
7-1	1	172538-12310	PEDAL ASSY,ACCEL		1		1		1		N
		(B=*2010.02)									(F=*2010.02)
10	1	172524-12362	ROD A ASSY, LINK		1		1		1		
11	1	172524-12380	SPRING, RETURN		1		1		1		
12	1	1E4760-43090	BALL RBL8,LINK		1		1		1		
13	1	172446-45820	LINK BALL 6		1		1		1		
14	1	172520-46150	BOOT		1		1		1		
15	1	1C6281-52310	PIN, SNAP 6		2		2		2		
16	1	1C6320-66451	SPRING, SIDE FLOAT		1		1		1		
17	1	22137-060000	WASHER, 6		3		3		3		
18	1	22217-060000	WASHER, SPRING 6		1		1		1		
19	1	22217-080000	WASHER, SPRING 8		1		1		1		
20	1	22217-120000	WASHER, SPRING 12		1		1		1		
21	1	26450-060162	BOLT, M6X 16		2		2		2		
22	1	26716-060002	NUT, M6		1		1		1		
23	1	26716-080002	NUT, M8		2		2		2		
24	1	26716-120002	NUT, M12		1		1		1		
25	1	172113-12522	PIN, CABLE		1		1		1		
26	1	172528-12260	HOOK, SPRING				1		1		
27	1	26716-080002	NUT, M8				1		1		
28	1	22137-060000	WASHER, 6		2		2		2		W
		(B=*2010.02)									(F=*2010.02)

Fig.15. FUEL TANK(2)



(A)=V3-5
(B)=V3-5(M/C)
(C)=V4-5

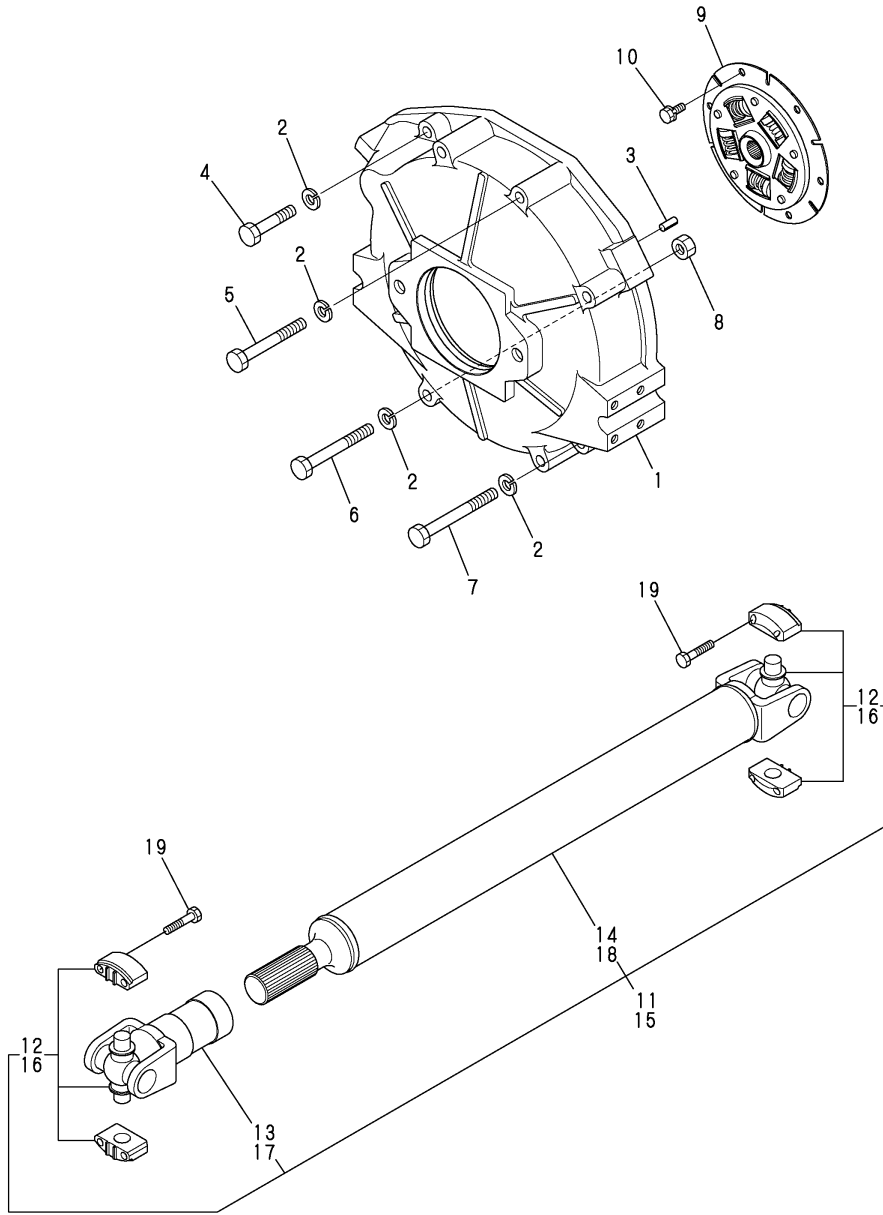
(D)=V4-5A
(E)=V5
(F)=V5-A

No.	Lev.	Parts No.	Description	Q'ty						I	R
				(A)	(B)	(C)	(D)	(E)	(F)		
1	1	172527-14101	TANK ASSY, FUEL				1			1	
2	1	172122-14301	CAP ASSY, TANK				1			1	
3	2	172122-14350	GASKET				1			1	
4	1	24311-000160	O-RING, 1AP16.0				1			1	
5	1	101504-55101	STRAINER, FUEL				1			1	
6	1	23491-140002	PLUG, 14				1			1	
7	1	26013-120302	BOLT, M12X 30				3			3	
8	1	172528-14610	BRACKET				1			1	
9	1	172137-14620	PIPE, FUEL				1			1	
10	1	172122-14620	PIPE, FUEL				1			1	
11	1	172141-14610	HOSE, FUEL				1			1	
12	1	172141-14620	HOSE, FUEL				1			1	
12-1	1	172183-14640	HOSE, FUEL				1		1	1	N
			(D=M/#52135)							(F=M/#02052)	
13	1	184016-55700	SEPARATOR ASSY,WATER				1			1	
13-1	1	184016-55701	SEPARATOR ASSY				1		1	1	N
			(D=M60985)							(F=MXXXXX)	
14	2	129100-55690	RING, RETAINING				1			1	
15	2	24311-000160	O-RING, 1AP16.0				1			1	
16	2	24321-000650	O-RING, 1AG65.0				1			1	
16A	2	119802-55710	ELEMENT				1			1	W
			(D=FROM 1ST)							(F=FROM 1ST)	
17	1	23061-050300	PIPE, 5X 300				1			1	
18	1	26106-080652	BOLT, M8X 65 PLATED				1			1	
19	1	124766-59050	CLIP, HOSE 12				8			8	
20	1	933110-07101	KEY				1			1	
21	1	22137-120000	WASHER, 12				3			3	

Fig.22. CLUTCH HOUSING & DRIVE SHAFT

(A)=V3-5
(B)=V3-5(M/C)
(C)=V4-5

(D)=V4-5A
(E)=V5
(F)=V5-A

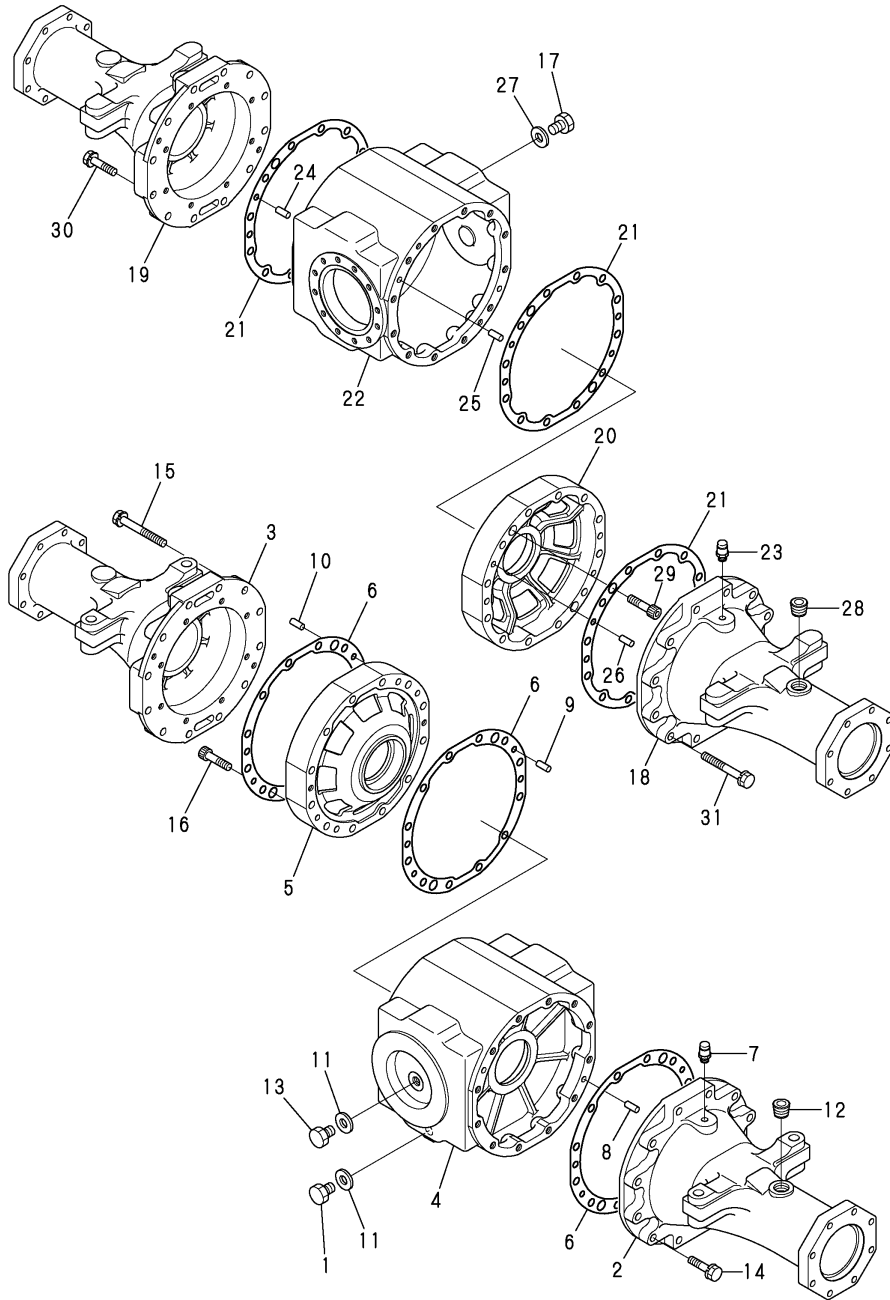


No.	Lev.	Parts No.	Description	Q'ty						I	R
				(A)	(B)	(C)	(D)	(E)	(F)		
1	1	172527-21210	COVER, FLYWHEEL	1	1	1	1	1	1		
2	1	22217-120000	WASHER, SPRING 12	8	8	8	8	8	8		
3	1	22351-080020	PIN, SPRING 8.0X20	2	2	2	2	2	2		
4	1	26116-120602	BOLT, M12X 60 PLATED	1	1	1	1	1	1		
5	1	26116-120952	BOLT, M12X 95 PLATED	2	2	2	2	2	2		
6	1	26116-121002	BOLT, M12X100 PLATED	2	2	2	2	2	2		
7	1	26116-121102	BOLT, M12X110 PLATED	3	3	3	3	3	3		
8	1	26716-120002	NUT, M12	2	2	2	2	2	2		
9	1	172527-21510	DISK, DAMPER	1	1	1	1	1	1		
10	1	26013-080162	BOLT, M8X 16	6	6	6	6	6	6		
11	1	172527-21800	SHAFT ASSY,PROPELLER	1	1						
12	2	172527-21810	JOINT, UNIVERSAL	2	2						
13	2	172527-21820	YOKE,SLEEVE	1	1						
14	2	172527-21830	YOKE,SHAFT	1	1						
15	1	172528-21800	SHAFT ASSY,PROPELLER			1	1	1	1		
16	2	172527-21810	JOINT, UNIVERSAL			2	2	2	2		
17	2	172528-21820	YOKE,SLEEVE			1	1	1	1		
18	2	172528-21830	YOKE, SHAFT			1	1	1	1		
19	1	26116-080402	BOLT, M8X 40 PLATED	8	8	8	8	8	8		

Fig.32. AXLE CASE(1)

(A)=V3-5
(B)=V3-5(M/C)
(C)=V4-5

(D)=V4-5A
(E)=V5
(F)=V5-A

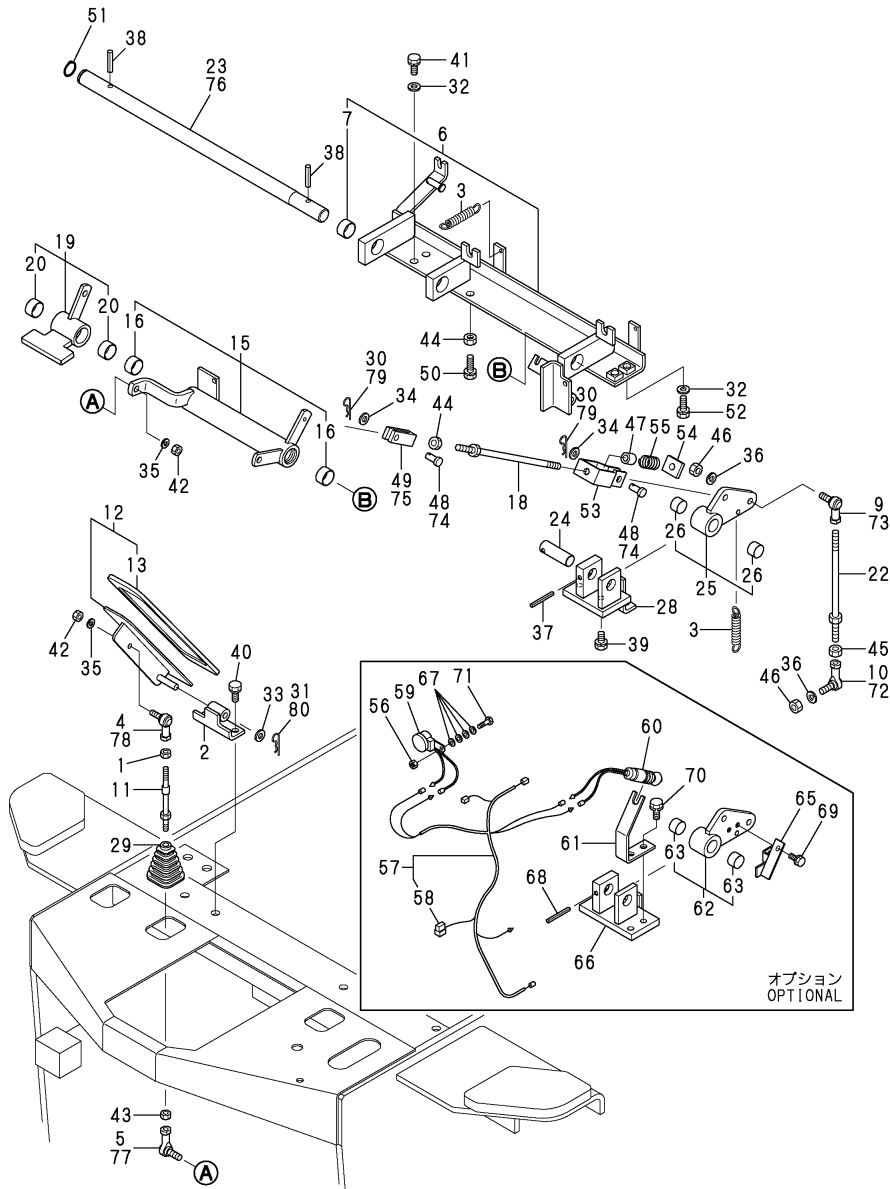


No.	Lev.	Parts No.	Description	Q'ty						I	R
				(A)	(B)	(C)	(D)	(E)	(F)		
1	1	177035-02920	PLUG, MAGNET M16X1.5	1	1						
2	1	172527-31110	CASE, AXLE	1	1						
3	1	172527-31120	CASE, AXLE	1	1						
4	1	172527-31150	CASE	1	1						
5	1	172527-31160	HOLDER, BEARING	1	1						
6	1	172527-31170	GASKET, AXLE CASE	3	3						
7	1	1E6681-56621	BREATHER	1	1						
7-1	1	172527-35900	BREATHER(ACCEL.)	1	1						N
		(A=*2005.02) (B=*2005.02)									
8	1	22312-100200	PIN, PARALLEL M10X20	2	2						
9	1	22312-100200	PIN, PARALLEL M10X20	2	2						
10	1	22312-100200	PIN, PARALLEL M10X20	2	2						
11	1	23414-160000	GASKET, 16X1.0	2	2						
12	1	23871-060000	PLUG, R06	1	1						
13	1	23887-160002	PLUG, 16	1	1						
14	1	26013-120502	BOLT, M12X 50	12	12						
15	1	26013-120952	BOLT, M12X 95	12	12						
16	1	26450-100452	BOLT, M10X 45	2	2						
17	1	177035-02920	PLUG, MAGNET M16X1.5	1	1						
18	1	172527-31130	CASE, AXLE	1	1						
19	1	172527-31140	CASE, AXLE	1	1						
20	1	172527-31160	HOLDER, BEARING	1	1						
21	1	172527-31170	GASKET, AXLE CASE	3	3						
22	1	172527-31250	CASE	1	1						
23	1	1E6681-56621	BREATHER	1	1						
23-1	1	172527-35900	BREATHER(ACCEL.)	1	1						N
		(A=*2005.02) (B=*2005.02)									
24	1	22312-100200	PIN, PARALLEL M10X20	2	2						
25	1	22312-100200	PIN, PARALLEL M10X20	2	2						
26	1	22312-100200	PIN, PARALLEL M10X20	2	2						
27	1	23414-160000	GASKET, 16X1.0	1	1						
28	1	23871-060000	PLUG, R06	1	1						
29	1	26450-100452	BOLT, M10X 45	2	2						
30	1	26013-120502	BOLT, M12X 50	12	12						
31	1	26013-120952	BOLT, M12X 95	12	12						

Fig.41. BRAKE PEDAL(1)

(A)=V3-5
(B)=V3-5(M/C)
(C)=V4-5

(D)=V4-5A
(E)=V5
(F)=V5-A



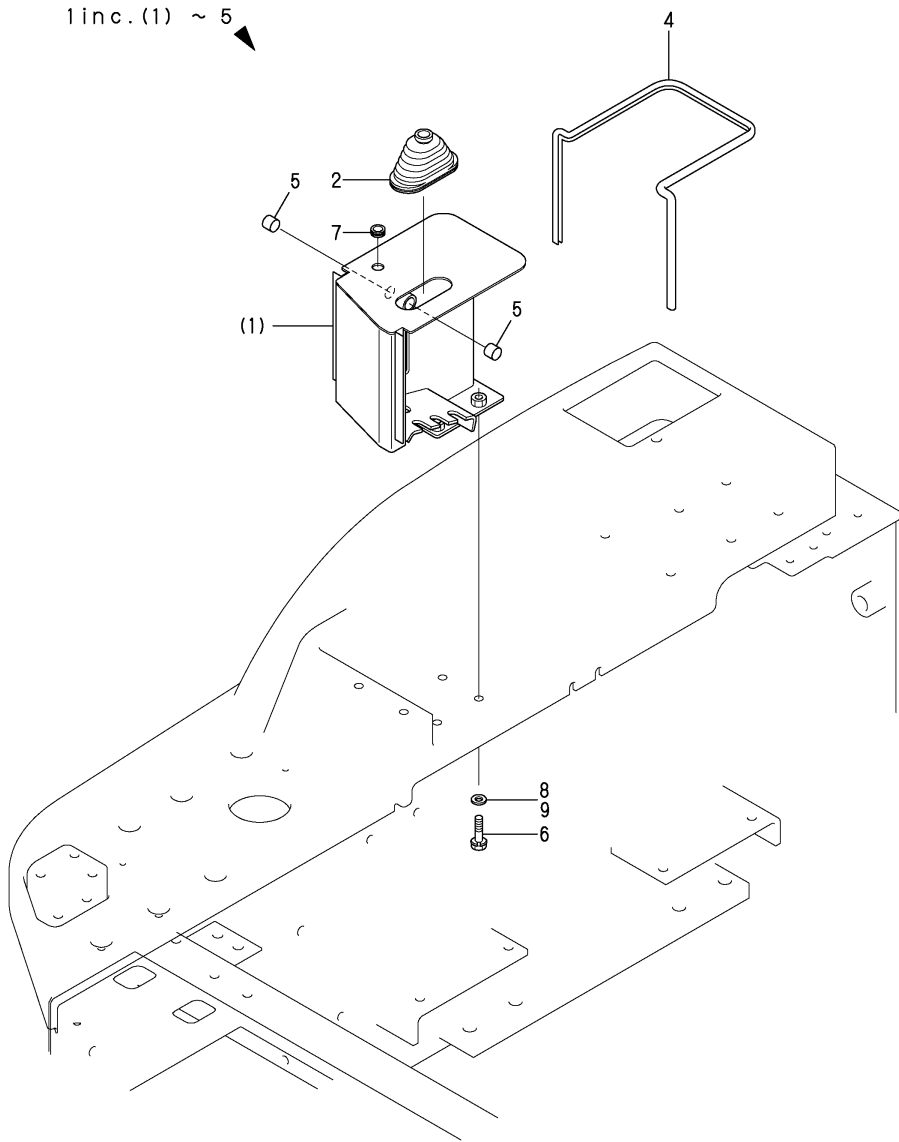
No.	Lev.	Parts No.	Description	Q'ty						I	R
				(A)	(B)	(C)	(D)	(E)	(F)		
49	1	981083-27520	JOINT, FORKED	1							
50	1	26116-100454	BOLT, M10X 45 PLATED	1	1						
51	1	22242-000250	RING, 25	1	1						
52	1	26013-100352	BOLT, M10X 35	2	2						
53	1	172527-42010	CONNECTOR	1	1						
54	1	172527-42020	NUT	1	1						
55	1	172527-42030	SPRING, 415X19.5X32	1	1						
56	1	26716-060002	NUT, M6	1							1
57	1	172527-16360	HARNESS,WIRE P	1							1
58	2	119643-66900	DIODE	1							1
59	1	172141-17150	BUZZER	1							1
60	1	172524-17280	SWITCH, STOP LAMP	1							1
61	1	172527-43110	HOLDER	1							1
62	1	172527-43120	CAM ASSY, LINK	1							1
63	2	172511-12220	LINER M 2015	2							1
63-1	2	24550-020150 (A=MXXX)	BUSH, 20X15	2							S 1
65	1	172527-43150	PLATE	1							1
66	1	172527-43160	HOLDER	1							1
67	1	22137-060000	WASHER, 6	4							1
68	1	22351-060050	PIN, SPRING 6.0X50	1							1
69	1	26013-080162	BOLT, M8X 16	2							1
70	1	26013-100202	BOLT, M10X 20	2							1
71	1	26116-060202	BOLT, M6X 20 PLATED	1							1
72	1	1A6210-16150	BALL, LINK BL10D		1						
73	1	1A6210-16160	BALL, LINK BL10DL		1						
74	1	172527-42190	PIN, 10X22		2						
75	1	172527-42200	JOINT	1							
76	1	172527-42671	SHAFT, 25X566	1							
77	1	1E4760-43090	BALL RBL8,LINK	1							
78	1	1E6740-64200	BALL, LINK	1							
79	1	22372-100000	PIN, SNAP 10	2							
80	1	22372-100000	PIN, SNAP 10	1							

Remarks
(1)OPTIONAL

Fig.50. CONTROL COVER

(A)=V3-5
(B)=V3-5(M/C)
(C)=V4-5

(D)=V4-5A
(E)=V5
(F)=V5-A

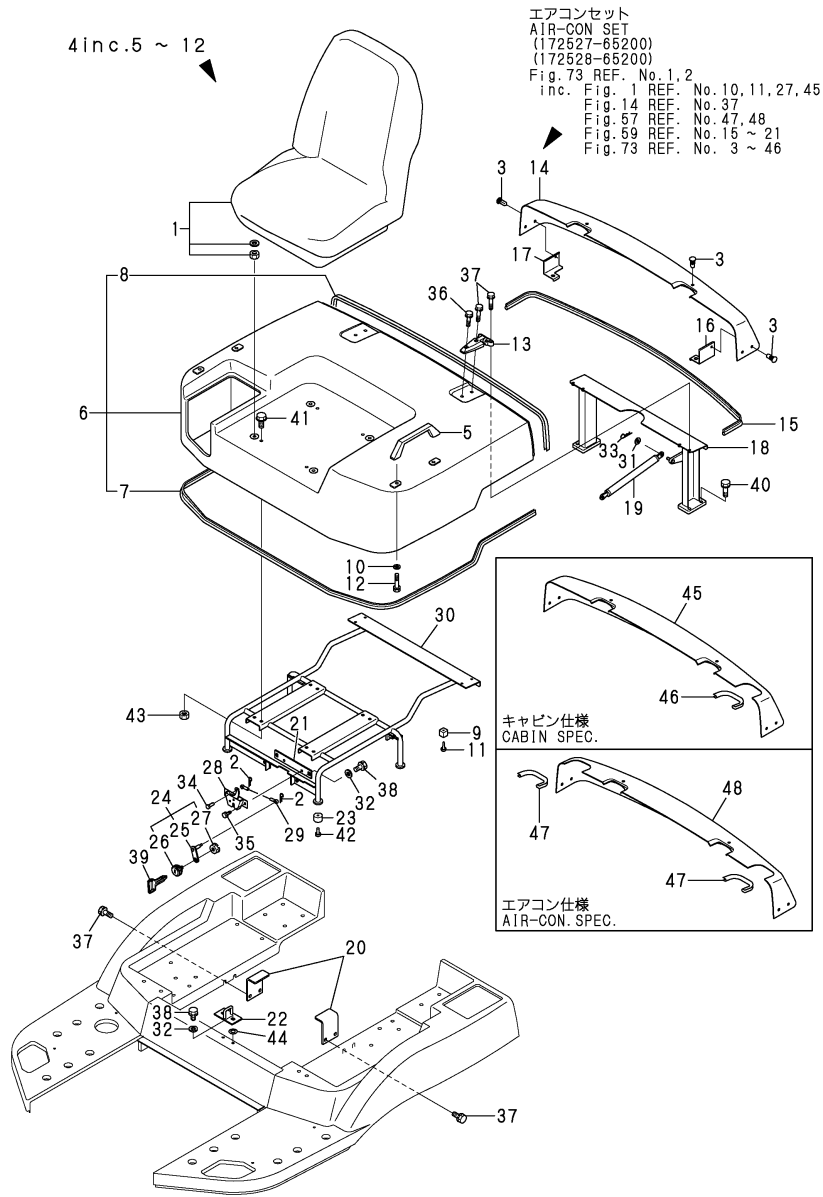


No.	Lev.	Parts No.	Description	Q'ty						I	R
				(A)	(B)	(C)	(D)	(E)	(F)		
1	1	172527-49100	STAY ASSY, LEVER	1	1	1	1	1	1		
1-1	1	172527-49500	STAY ASSY, LEVER						1		N
				(D=M/#52168)		(F=M/#02060)					
2	2	172141-41340	BOOT	1	1	1	1	1	1		
4	2	172527-49190	SEAL	1		1			1		
4-1	2	172458-61660	RUBBER, SEAL 930	1	1	1	1	1	1		S
				(A=MXXX)		(C=MXXX)		(E=MXXX)			
5	2	24550-016150	BUSH, 16X15	2	2	2	2	2	2		
6	1	26013-100352	BOLT, M10X 35	6	6	6	6	6	6		
7	1	29311-124000	GROMMET, 12.0X4	1		1			1		
7-1	1	172162-61850	GROMMET	1	1	1	1	1	1		S
				(A=MXXX)		(C=MXXX)		(E=MXXX)			
8	1	172527-61640	WASHER	6		6			6		
9	1	194145-04810	WASHER		6		6		6		

Fig.57. SEAT & BONNET(1)

(A)=V3-5
(B)=V3-5(M/C)
(C)=V4-5

(D)=V4-5A
(E)=V5
(F)=V5-A



No.	Lev.	Parts No.	Description	Q'ty						I	R	
				(A)	(B)	(C)	(D)	(E)	(F)			
1	1	172527-64200	SEAT ASSY	1	1		1					
2	1	1C6281-52310	PIN, SNAP 6	2	2		2					
3	1	172527-61990	FASTENER	6	6		6					
4	1	172527-65100	BONNET ASSY	1	1		1					
5	2	198220-62410	BAR, ASSIST	2	2		2					
6	2	172527-65110	BONNET	1	1		1					
7	3	172527-65130	SEAL, BONNET	1	1		1					
8	3	172527-65140	SEAL, BONNET	1	1		1					
9	2	172524-65140	RUBBER	4	4		4					
10	2	22137-080000	WASHER, 8	4	4		4					
11	2	22857-500160	SCREW, 5X16	4	4		4					
12	2	26013-080302	BOLT, M8X 30	4	4		4					
13	1	172520-65151	HINGE	2	2		2					
14	1	172527-65150	COVER	1	1		1					
15	1	172527-65170	SEAL, COVER	1	1		1					
16	1	172527-65180	BRACKET L	1	1		1					
17	1	172527-65190	BRACKET R	1	1		1					
18	1	172527-65210	STAY ASSY, HINGE	1	1		1					
19	1	172527-65270	SPRING, GAS	1	1		1					
20	1	172527-65310	STAY, BONNET	2	2		2					
21	1	172527-65350	PLATE, ROCK	1	1		1					
22	1	172527-65360	PLATE, CATCH	1	1		1					
23	1	172524-65670	CUSHION, RUBBER	4	4		4					
24	1	172524-65700	KEY ASSY, CYLINDER	1	1		1					
25	2	172524-65710	PLATE, KEY	1	1		1					
25-1	2	172524-65711	PLATE ASSY, KEY	1	1		1				R	
				(A=MXXX)			(C=MXXX)				(E=MXXX)	
26	2	172524-65720	KEY SET, CYLINDER	1	1		1					
26-1	2	172164-66170	KEY ASSY, CYLINDER	1	1		1				R	
				(A=MXXX)			(C=MXXX)				(E=MXXX)	
27	2	26346-100002	NUT, M10	1	1		1					
28	1	172527-65730	ROCK, BONNET	1	1		1					
29	1	172527-65750	WIRE, BONNET	1	1		1					
30	1	172527-65810	FRAME, BONNET	1	1		1					
31	1	22137-080000	WASHER, 8	2	2		2					
32	1	22137-100000	WASHER, 10	4	4		4					
33	1	22360-080000	SNAP PIN 8	2	2		2					
34	1	22487-060160	PIN, H 6X 16	1	1		1					
35	1	26013-080162	BOLT, M8X 16	2	2		2					
36	1	26013-080302	BOLT, M8X 30	2	2		2					
37	1	26013-080352	BOLT, M8X 35	10	10		10					
38	1	26013-100252	BOLT, M10X 25	4	4		4					
39	1	933110-07101	KEY	1	1		1					
40	1	26013-100302	BOLT, M10X 30	4	4		4					
41	1	26018-080202	BOLT, M8X 20	4	4		4					
42	1	26023-060162	SCREW, M6X16	4	4		4					
43	1	26366-080002	NUT, M8	4	4		4					
44	1	172527-65370	SHIM	1	1		1				W 1	
				(A=M/#50645)			(C=M/#50586)				(E=M/#01001)	
45	1	172527-65550	COVER	1	1		1				2	
46	1	172527-65560	TRIM, COVER	1	1		1				2	

Remarks
(1)SELECT PART.
(2)CABIN SPEC.
(3)AIR-CON.SPEC.

CLICK HERE TO **DOWNLOAD** THE COMPLETE MANUAL

- Thank you very much for reading the preview of the manual.
- You can download the complete manual from: www.heydownloads.com by clicking the link below



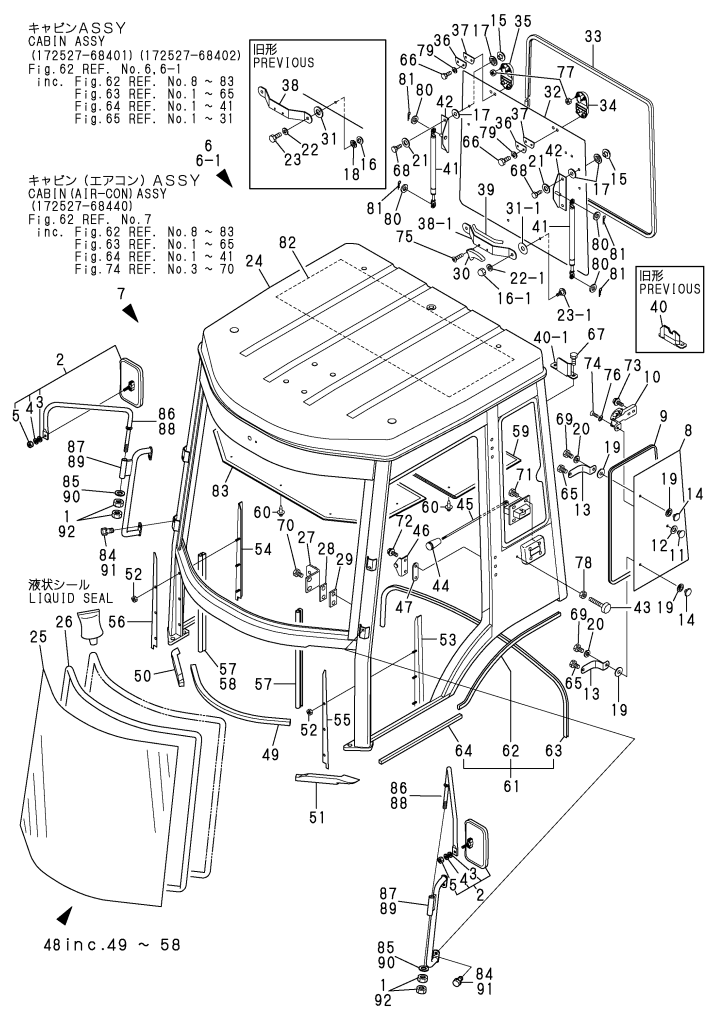
- Please note: If there is no response to CLICKING the link, please download this PDF first and then click on it.

CLICK HERE TO **DOWNLOAD** THE COMPLETE MANUAL

Fig.62. CABIN

(A)=V3-5
(B)=V3-5(M/C)
(C)=V4-5

(D)=V4-5A
(E)=V5
(F)=V5-A



No.	Lev.	Parts No.	Description	Q'ty						I	R
				(A)	(B)	(C)	(D)	(E)	(F)		
		(A=M/#51365)		(C=M/#51153)		(E=M/#01060)					
32	2	172527-68610	GLASS	1	1	1	1	1			
32-1	2	172527-67190	GLASS	1	1	1	1	1	1	1	N
		(A=M/#51365)		(C=M/#51153)		(E=M/#01060)					
33	2	172527-68620	TRIM	1	1	1	1	1	1	1	
34	2	172527-68630	HINGE L	1	1	1	1	1	1	1	
35	2	172527-68640	HINGE R	1	1	1	1	1	1	1	
36	2	172527-68650	PLATE	2	2	2	2	2	2	2	
37	2	172527-68660	CUSHION	2	2	2	2	2	2	2	
38	2	172527-68680	BRACKET	1		1		1			
38-1	2	172527-68681	BRACKET, RGH	1	1	1	1	1	1	1	N
		(A=M/#51365)		(C=M/#51153)		(E=M/#01060)					
39	2	172527-68690	TRIM	1	1	1	1	1	1	1	
40	2	172527-68710	STOPPER	1		1		1			
40-1	2	172527-68711	STOPPER	1	1	1	1	1	1	1	N
		(A=M/#51365)		(C=M/#51153)		(E=M/#01060)					
41	2	172527-68720	SPRING, GAS	2	2	2	2	2	2	2	
42	2	172527-68730	STAY	2	2	2	2	2	2	2	
43	2	172527-68750	STOPPER	2	2	2	2	2	2	2	
44	2	172527-68760	GRIP	2	2	2	2	2	2	2	
45	2	172527-68770	LATCH	2	2	2	2	2	2	2	
46	2	172527-68780	BRACKET	2	2	2	2	2	2	2	
47	2	172527-68790	PLATE	4	4			4			Z
		(A=M/#51365)		(C=M/#51153)		(E=M/#01060)					
48	2	172527-69101	SEAL	1	1	1	1	1	1	1	
49	3	172527-69130	SEAL	1	1	1	1	1	1	1	
50	3	172527-69140	SEAL	1	1	1	1	1	1	1	
51	3	172527-69150	SEAL	1	1	1	1	1	1	1	
52	3	172527-69850	NUT, 6H	6	6	6	6	6	6	6	
53	3	172527-69950	PLATE	1		1		1			
53-1	3	172527-69951	PLATE, SEAL L	1	1	1	1	1	1	1	S
		(A=M/#51365)		(C=M/#51153)		(E=M/#01060)					
54	3	172527-69960	PLATE	1		1		1			
54-1	3	172527-69961	PLATE, SEAL R	1	1	1	1	1	1	1	S
		(A=M/#51365)		(C=M/#51153)		(E=M/#01060)					
55	3	172527-69970	SEAL	1		1		1			
55-1	3	172527-69971	SEAL	1	1	1	1	1	1	1	S
		(A=M/#51365)		(C=M/#51153)		(E=M/#01060)					
56	3	172527-69980	SEAL	1		1		1			
56-1	3	172527-69981	SEAL	1	1	1	1	1	1	1	S
		(A=M/#51365)		(C=M/#51153)		(E=M/#01060)					
57	3	172527-69990	RUBBER	2		2		2			
57-1	3	172527-69991	RUBBER, TRIM	1	1	1	1	1	1	1	S
		(A=M/#51365)		(C=M/#51153)		(E=M/#01060)					
58	3	172527-69090	RUBBER, TRIM R	1	1	1	1	1	1	1	W
		(A=M/#51365)		(C=M/#51153)		(E=M/#01060)					
59	2	172527-69181	COVER	1	1	1	1	1	1	1	
60	2	172527-69190	RIVET	13	13	13	13	13	13	13	
61	2	172527-69200	SEAL	1	1	1	1	1	1	1	
62	3	172527-69210	SEAL	2	2	2	2	2	2	2	
63	3	172527-69220	SEAL	1	1	1	1	1	1	1	

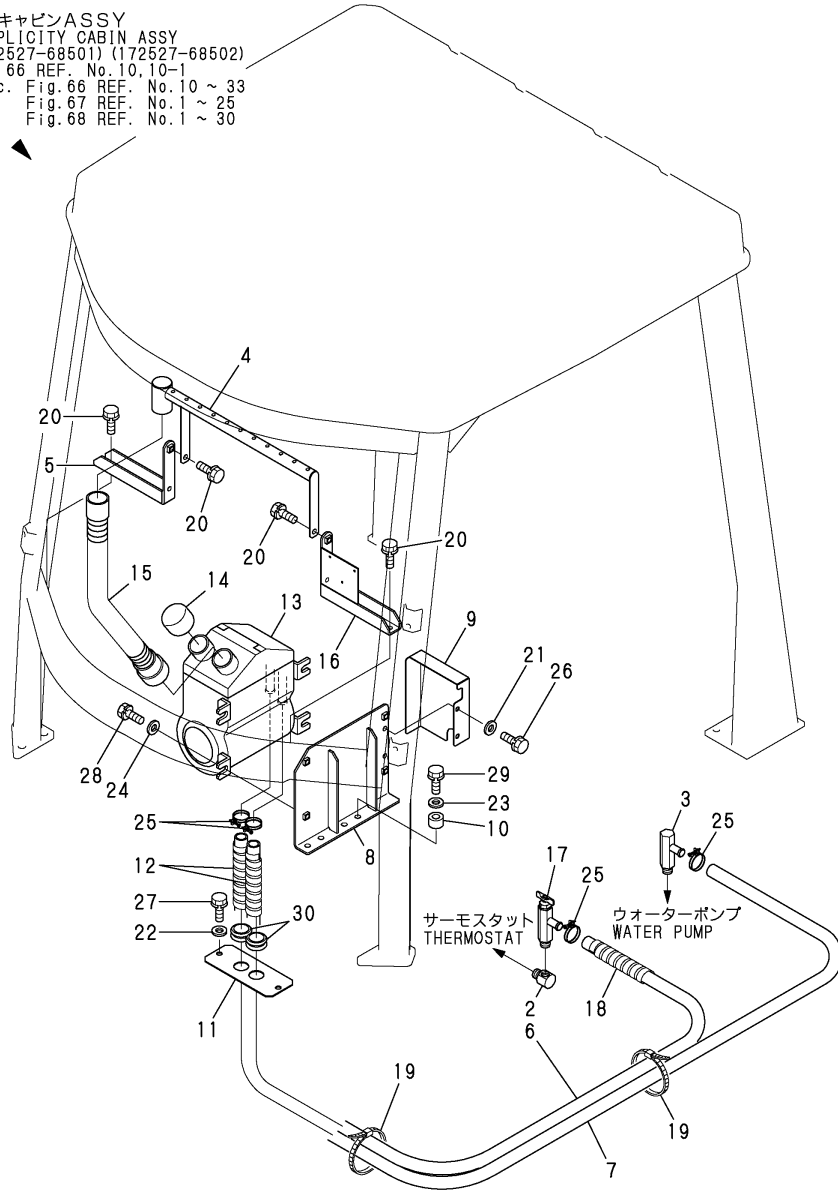
Remarks
 (1)INC.FIG.62 REF.NO.8- 83,
 FIG.63 REF.NO.1- 65,
 FIG.64 REF.NO.1- 41 &
 FIG.65 REF.NO.1- 31.
 (2)INC.FIG.62 REF.NO.8- 83,
 FIG.63 REF.NO.1- 65,
 FIG.64 REF.NO.1- 41 &
 FIG.74 REF.NO.3- 70.
 (3)INTERCHANGEABLE BY SIMULTANEOUS
 REPLACEMENT WITH FIG.54
 REF.NO.14-1,22-1.

Fig.68. HEATER & DEFROSTER

(A)=V3-5
(B)=V3-5(M/C)
(C)=V4-5

(D)=V4-5A
(E)=V5
(F)=V5-A

簡易キャビンASSY
SIMPLICITY CABIN ASSY
(172527-68501) (172527-68502)
Fig.66 REF. No.10,10-1
inc. Fig.66 REF. No.10 ~ 33
Fig.67 REF. No.1 ~ 25
Fig.68 REF. No.1 ~ 30



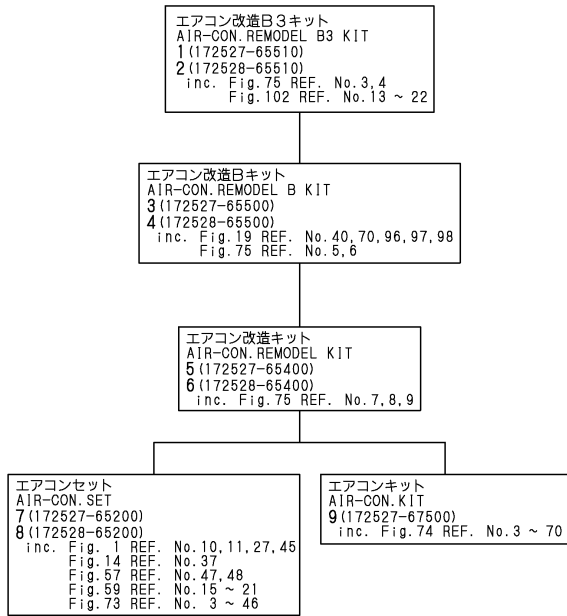
1inc.2 ~ 30

No.	Lev.	Parts No.	Description	Qty						I	R
				(A)	(B)	(C)	(D)	(E)	(F)		
1	2	172527-69500	HEATER ASSY	1	1		1				
2	3	172524-68280	ELBOW	1		1		1			
3	3	172524-68290	CONNECTOR	1		1		1			
4	3	172527-69310	DEFROSTER	1		1		1			
5	3	172524-69320	STAY	1		1		1			
6	3	172524-69370	HOSE,HEATER INLET	1		1		1			
7	3	172524-69380	HOSE,HEATER OUTLET	1		1		1			
8	3	172527-69450	BRACKET, HEATER	1		1		1			
9	3	172527-69460	COVER, HOSE	1		1		1			
10	3	172527-69470	COLLAR, 12.7X17.3X11	2		2		2			
11	3	172527-69480	PLATE	1		1		1			
12	3	172527-69490	PLUMBER	2		2		2			
13	3	172520-69510	HEATER ASSY	1		1		1			
14	3	172520-69520	COVER, DEFROSTER	1		1		1			
15	3	172520-69530	DUCT	1		1		1			
16	3	172527-69560	STAY	1		1		1			
17	3	172520-69580	COCK	1		1		1			
18	3	172520-69650	TUBE, SPIRAL	2		2		2			
19	3	172520-69690	CLAMP	3		3		3			Z
		(A=M/#51365)	(C=M/#51153)			(E=M/#01060)					
20	3	172527-69690	BOLT	4		4		4			
21	3	22137-080000	WASHER, 8	2		2		2			
22	3	22137-080000	WASHER, 8	2		2		2			
23	3	22137-100000	WASHER, 10	2		2		2			
24	3	22137-100000	WASHER, 10	4		4		4			
25	3	23000-022000	CLAMP, 22	4		4		4			
26	3	26013-080162	BOLT, M8X 16	2		2		2			
27	3	26013-080162	BOLT, M8X 16	2		2		2			
28	3	26013-100202	BOLT, M10X 20	4		4		4			
29	3	26013-100352	BOLT, M10X 35	2		2		2			
30	3	29311-253000	GROMET, 25.0X3	2		2		2			

Fig.75. AIR CONDITIONER REMODEL B KIT

(A)=V3-5
(B)=V3-5(M/C)
(C)=V4-5

(D)=V4-5A
(E)=V5
(F)=V5-A



No.	Lev.	Parts No.	Description	Q'ty						I	R
				(A)	(B)	(C)	(D)	(E)	(F)		
1	1	172527-65510	REMODEL KIT	1							1
2	1	172528-65510	AIR-CON REMODEL B3			1		1			1
3	2	172527-65500	REMODEL KIT	1							2
4	2	172528-65500	AIR-CON REMODEL B			1		1			2
5	3	172527-65400	REMODEL KIT	1							
6	3	172528-65400	REMODEL KIT			1		1			
7	4	172527-65200	CONDITIONER SET, AIR	1							
8	4	172528-65200	CONDITIONER SET, AIR			1		1			
9	4	172527-67500	CONDITIONER KIT, AIR	1		1		1			

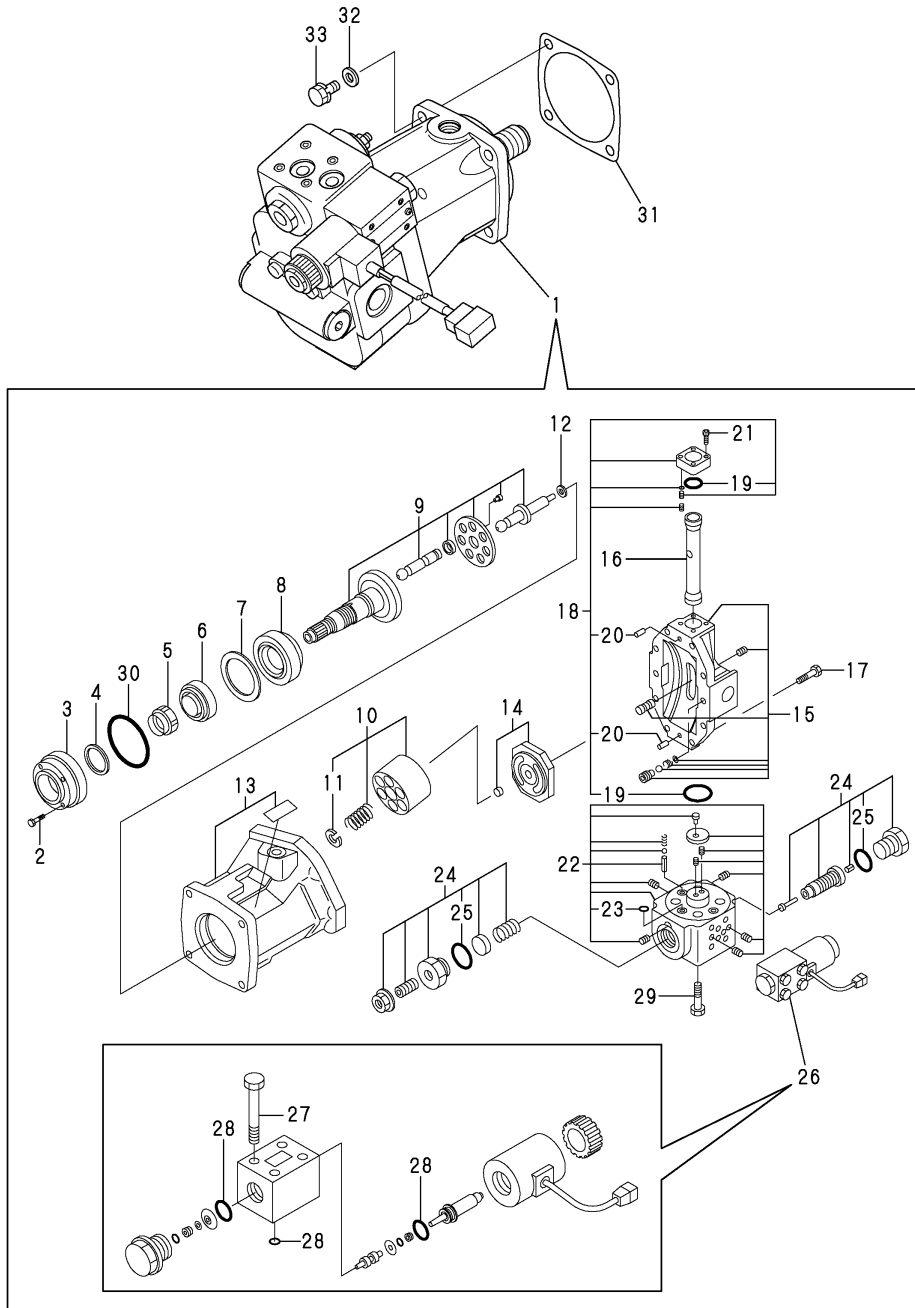
Remarks

- (1)INC.FIG.75 REF.NO.3,4 & FIG.102 REF.NO.13-22.
- (2)INC.FIG.19 REF.NO.40,70,96,97,98, FIG.73 REF.NO.1,2 & FIG.74 REF.NO.1,2.

Fig.83. HST MOTOR(1)

(A)=V3-5
(B)=V3-5(M/C)
(C)=V4-5

(D)=V4-5A
(E)=V5
(F)=V5-A

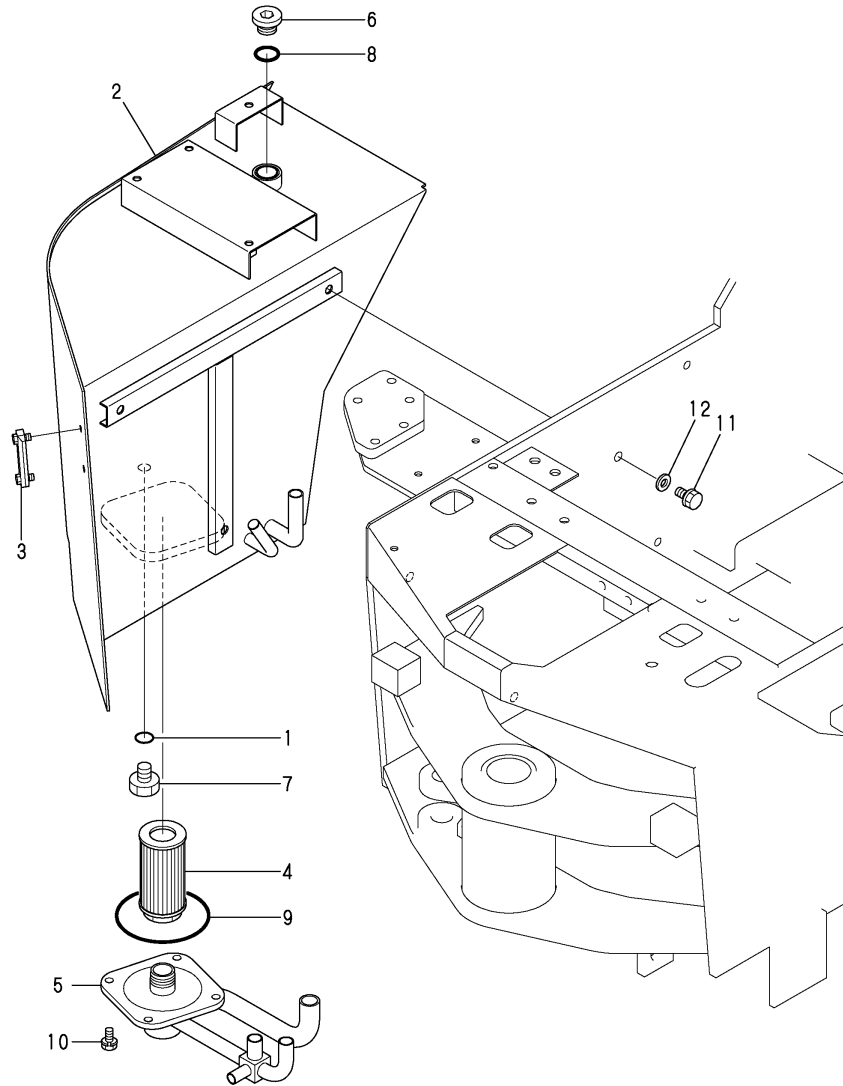


No.	Lev.	Parts No.	Description	Q'ty						I	R
				(A)	(B)	(C)	(D)	(E)	(F)		
1	1	172527-73300	MOTOR ASSY H.S.T.	1	1						
2	2	172527-73180	BOLT M5X16-12.9	3	3						
3	2	172527-73190	COVER,OIL SEAL	1	1						
4	2	172527-73210	SEAL, 30427	1	1						
5	2	172527-73320	NUT M35X1	1	1						
6	2	172527-73330	BEARING	1	1						
7	2	172527-73340	SHIM SET	1	1						
8	2	172527-73660	BEARING 4T-30308D	1	1						
9	2	172527-73670	SHAFT SET	1	1						
10	2	172527-73680	CYLINDER BLOCK	1	1						
11	3	22252-000250	RING, 25	2	2						
12	2	172527-73690	SHIM SET	1	1						
13	2	172527-73710	HOUSING	1	1						
14	2	172527-73720	PORT PLATE SET	1	1						
15	2	172527-73730	COVER SET	1	1						
16	2	172527-73740	PISTON 0.25	1	1						
17	2	172527-73750	BOLT M8X30-12.9	8	8						
18	2	172527-73760	COVER SET	1	1						
19	3	172527-73920	O-RING KIT	1	1						
20	3	22312-060100	PIN, PARALLEL M6X10	2	2						
21	2	172527-73770	BOLT M6X30-12.9	4	4						
22	2	172527-73780	BODY SET	1	1						
23	3	172527-73940	O-RING	4	4						
24	2	172527-73790	SPOOL SET	1	1						
25	3	172527-73650	O-RING 1B P 18	2	2						
26	2	172527-73800	SOLENOID VALVE ASSY	1	1						
27	3	172527-73550	BOLT M5X45-12.9	4	4						
28	3	172527-73960	O-RING KIT	1	1						
29	2	172527-73810	BOLT M6X60X12.9	4	4						
30	2	24341-000750	O-RING, 1AS75.0	1	1						
31	1	172527-73310	GASKET, MOTOR	1	1						
32	1	22137-100000	WASHER, 10	4	4						
33	1	26013-100302	BOLT, M10X 30	4	4						

Fig.93. HYD.OIL TANK(2)

(A)=V3-5
(B)=V3-5(M/C)
(C)=V4-5

(D)=V4-5A
(E)=V5
(F)=V5-A

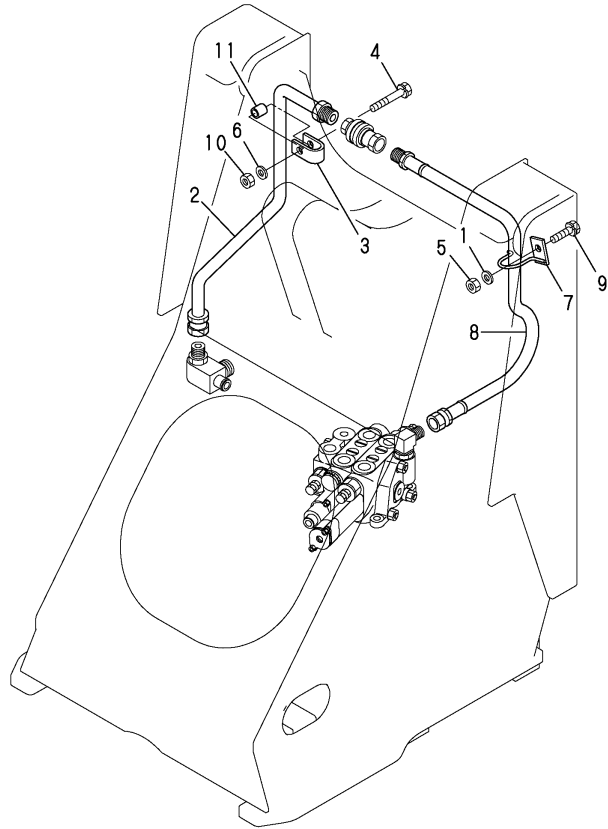


No.	Lev.	Parts No.	Description	Q'ty						I	R
				(A)	(B)	(C)	(D)	(E)	(F)		
1	1	24311-000160	O-RING, 1AP16.0		1		1			1	
2	1	172527-75111	TANK ASSY, RESERVOIR		1		1			1	
3	1	172524-75190	GAUGE, OIL LEVEL		1		1			1	
4	1	172520-75320	FILTER, SUCTION		1		1			1	
5	1	172527-75411	FLANGE		1		1			1	
6	1	172116-75850-8	PLUG, OIL FEED		1		1			1	
7	1	23491-140002	PLUG, 14		1		1			1	
8	1	24311-000380	O-RING, 1AP38.0		1		1			1	
9	1	24321-001050	O-RING, 1AG105.0		1		1			1	
10	1	26013-100202	BOLT, M10X 20		4		4			4	
11	1	26013-120302	BOLT, M12X 30		3		3			3	
12	1	22137-120000	WASHER, 12		3		3			3	

Fig.101. HYD.OIL PIPING(FPTO)

(A)=V3-5
(B)=V3-5(M/C)
(C)=V4-5

(D)=V4-5A
(E)=V5
(F)=V5-A

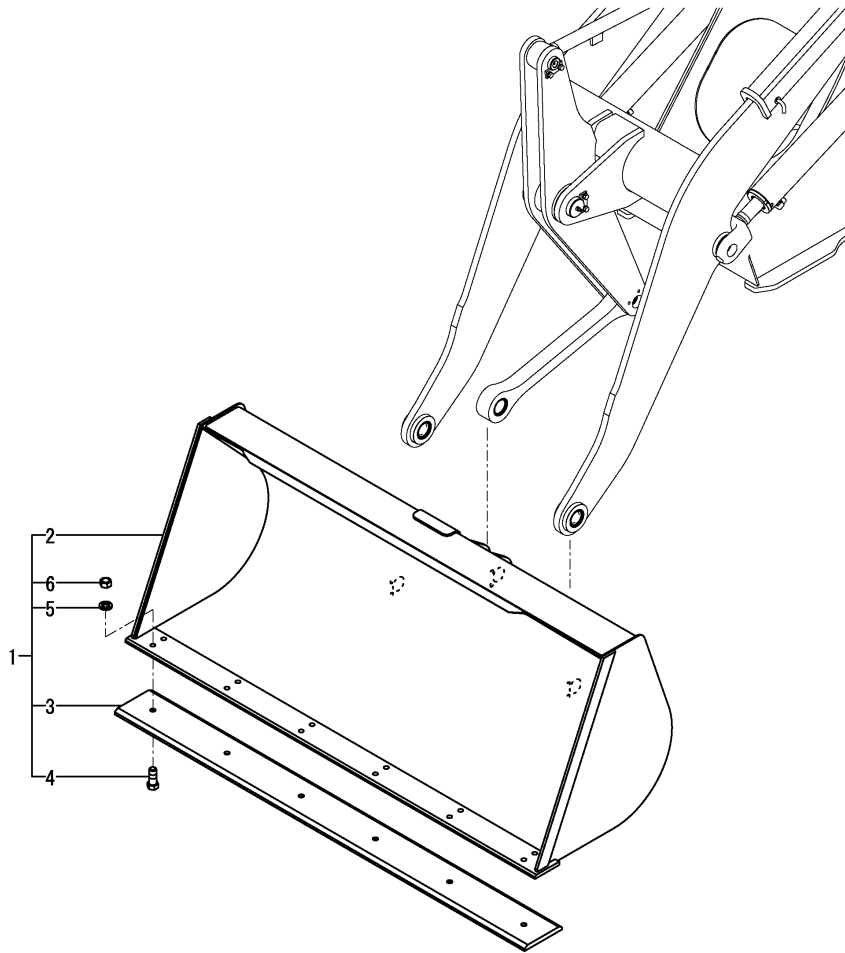


No.	Lev.	Parts No.	Description	Q'ty						I	R
				(A)	(B)	(C)	(D)	(E)	(F)		
1	1	172527-61640	WASHER	1		1		1			
2	1	172527-76170	PIPE	1		1		1			
3	1	172511-76770	CLAMP, PIPE	1		1		1			
4	1	26013-100602	BOLT, M10X 60	1		1		1			
5	1	26716-100002	NUT, M10	1		1		1			
6	1	172527-61640	WASHER	1		1		1			
7	1	172527-76160	CLAMP	1		1		1			
8	1	172527-78180	HOSE	1		1		1			
9	1	26013-100352	BOLT, M10X 35	1		1		1			
10	1	26716-100002	NUT, M10	1		1		1			
11	1	172524-77350	COLLAR, 10X16X17	1		1		1			

Fig.115. (109B)BUCKET(0.5)

(A)=V3-5
(B)=V3-5(M/C)
(C)=V4-5

(D)=V4-5A
(E)=V5
(F)=V5-A

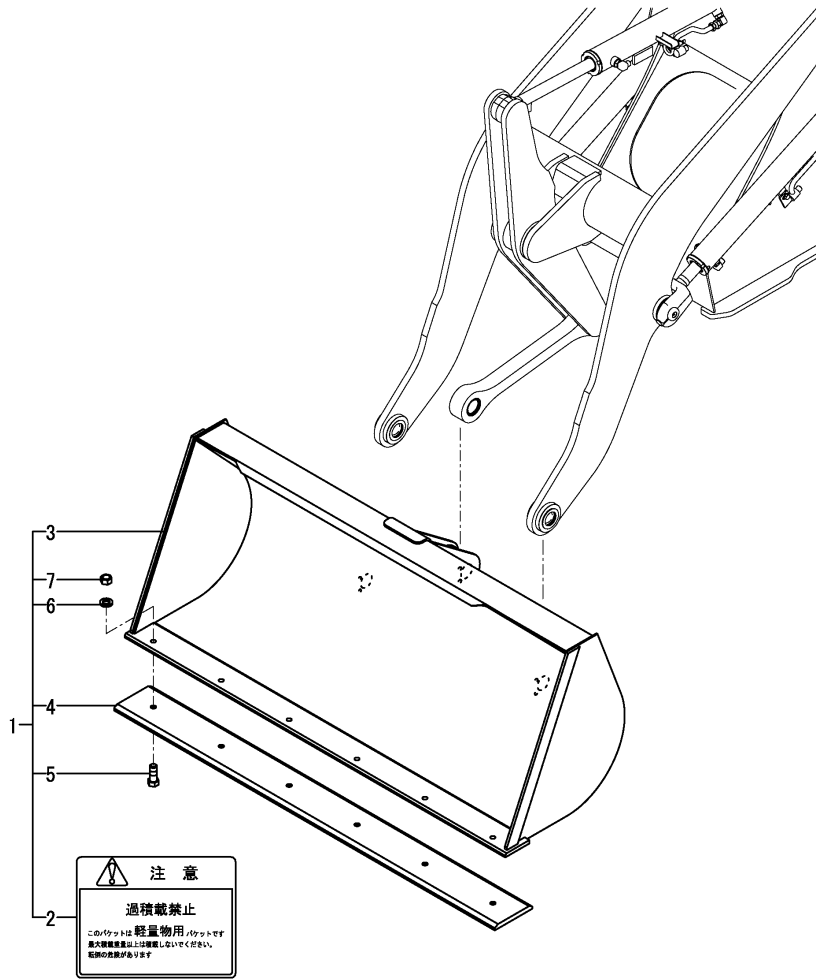


No.	Lev.	Parts No.	Description	Q'ty						I	R
				(A)	(B)	(C)	(D)	(E)	(F)		
1	1	172539-08400	BUCKET KIT			1	1				
2	2	172528-91400-1	BUCKET ASSY			1	1				
3	2	172528-91390-1	CRAW			1	1				
4	2	172524-91520	BOLT M14X 35 PLATED			6	6				
5	2	22217-140000	WASHER, SPRING 14			6	6				
6	2	26736-140002	NUT, M14			6	6				

Fig.121. BUCKET(0.6)(PLATING)KIT(OPTIONAL)

(A)=V3-5
(B)=V3-5(M/C)
(C)=V4-5

(D)=V4-5A
(E)=V5
(F)=V5-A



No.	Lev.	Parts No.	Description	Q'ty						I	R
				(A)	(B)	(C)	(D)	(E)	(F)		
1	1	172538-08510	BUCKET KIT	1	1						
2	2	172519-03360	LABEL	1	1						
3	2	172527-91201	BUCKET ASSY	1	1						
4	2	172527-91390-3	EDGE 1570	1	1						
5	2	172524-91520	BOLT M14X 35 PLATED	6	6						
6	2	22217-140000	WASHER, SPRING 14	6	6						
7	2	26736-140002	NUT, M14	6	6						

Parts No. Index

Parts No.	Fig. No.	Ref. No.
101504-55101	14	5
	15	5
103954-13200	6	14
103954-13201	6	41
104200-55321	14	29
104200-55330	14	18
104200-55750	14	25
104200-92350	4	5
105900-55330	14	19
119247-77100	19	51
	20	51
	21	7
119632-77920	19	57
119643-66900	17	3
		7
	19	50
	20	50
	21	2
		6
	41	58
	42	58
119650-77910	19	54
	20	54
119802-55710	15	16 A
119808-12520	7	11
119808-12540	7	12
119869-13501	6	16
121120-13580	6	3
121250-49121	11	29
	12	29
		53
	13	29
121257-55731	14	24
121267-44760	73	7
121400-92690	4	6
121450-44531	11	21
	12	21
	13	21
121450-49100	11	28
	12	28
	13	28
121450-49110	11	27
	12	27
	13	27
121468-44510	11	19
	12	19
	13	19
121468-44540	11	22
	12	22
	13	22

Parts No.	Fig. No.	Ref. No.
121470-44540	11	26
	12	26
	13	26
121470-44581	11	24
	12	24
	13	24
121855-12060	7	7
124450-44560	11	23
	12	23
	13	23
124550-77030	17	16
124617-91920	19	27
	20	27
124701-11911	6	13
124756-77040	17	17
124766-59050	11	31
	12	31
	13	31
	14	30
	15	19
124970-77920	19	58
	20	58
129012-12500	7	8
129012-12510	7	9
129012-12530	7	10
129012-13500	6	17
129052-55630	14	36
129100-55650	14	21
129100-55670	14	22
129100-55690	14	23
	15	14
129107-44590	11	18
	12	18
	13	18
129126-44570	12	59
	13	51
129211-77920	19	57 -1
	20	57
129322-77401	19	53
	20	53
129400-13201	6	15
129612-52100	20	53 -1
129612-55510	14	20
129612-55620	14	17
160970-77350	19	52
	20	52
172020-10620	107	28 -1
		32 -1
		36 -1
	108	28

Parts No.	Fig. No.	Ref. No.
172020-10620	108	32
		36
172110-76170	100	3
172110-76170-4	103	5
172113-12522	9	25
172116-14620	14	11 A
172116-16310	16	18
172116-75850-8	93	6
172120-14660	12	50
	14	10 A
172122-14301	14	2
	15	2
172122-14350	14	3
	15	3
172122-14620	14	14 A
	15	10
172122-45830	43	14
172122-46571	45	15
	47	4
172122-79930	17	14 -1
	18	21
172122-79940	17	15 -1
	18	22
172124-14650	12	14
172137-14620	12	13
	14	13 A
	15	9
172137-16560	17	23
	18	17
172137-72431	81	7
172137-72453	77	14
	79	10
	81	8
172141-03182	1	17
	2	17
	3	7
172141-03202	1	20
	2	20
	3	6
172141-03360	2	42
172141-14610	15	11
172141-14620	15	12
172141-17150	41	59
	42	59
172141-41340	43	1
	50	2
	51	5
	52	2
172141-72190	77	60
	79	66

Parts No.	Fig. No.	Ref. No.
172141-72250	77	32
	79	31
172141-72420	77	40
	79	44
172141-72540	77	17
	79	13
172141-72580	81	11
172141-76900	95	18
172141-84610	81	46
172141-84620	81	47
172142-03302	1	44
	2	43
	3	8
172142-72560	81	42
172142-76180	95	15
172142-76181	95	15 -1
172143-72400	77	37
	79	35
172148-72050	77	51
	79	52
172148-72390	77	57
	79	57
172148-72941	81	29
172151-76160	98	17
172151-76161	98	17 -1
172155-03310	1	34
	2	34
172156-17400	69	1 -1
172156-17401	69	1
172156-17420	69	2
172162-61380	12	8
172162-61850	43	32
	50	7 -1
	52	6
172164-03510	1	40
	2	40
	3	5
172164-03540	1	41
	2	41
	3	3
172164-65730	12	9
172164-66170	57	26 -1
	58	27
172164-66640	12	9 -1
172164-76131	95	13
	98	9
		11
172164-81770	108	39
172165-47871	45	5
172165-47880	44	5

CLICK HERE TO **DOWNLOAD** THE COMPLETE MANUAL

- Thank you very much for reading the preview of the manual.
- You can download the complete manual from: www.heydownloads.com by clicking the link below



- Please note: If there is no response to CLICKING the link, please download this PDF first and then click on it.

CLICK HERE TO **DOWNLOAD** THE COMPLETE MANUAL