

0CS10-M59900EN

CLICK HERE TO **DOWNLOAD** THE COMPLETE MANUAL

- Thank you very much for reading the preview of the manual.
- You can download the complete manual from: [www.heydownloads.com](http://www.heydownloads.com) by clicking the link below



- Please note: If there is no response to CLICKING the link, please download this PDF first and then click on it.

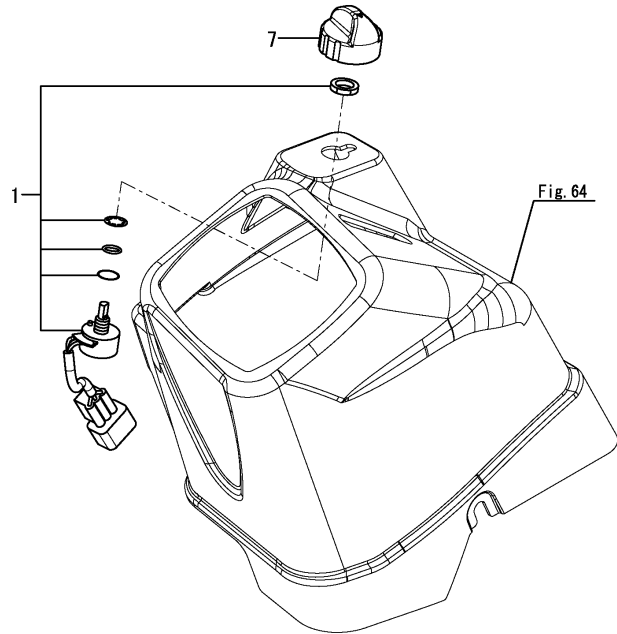
CLICK HERE TO **DOWNLOAD** THE COMPLETE MANUAL



# Fig.9. ACCELERATOR

(A)=SV100-2B(US)  
 (B)=SV100-2B(AS)  
 (C)=SV100-2B(NZ)

(D)=  
 (E)=  
 (F)=

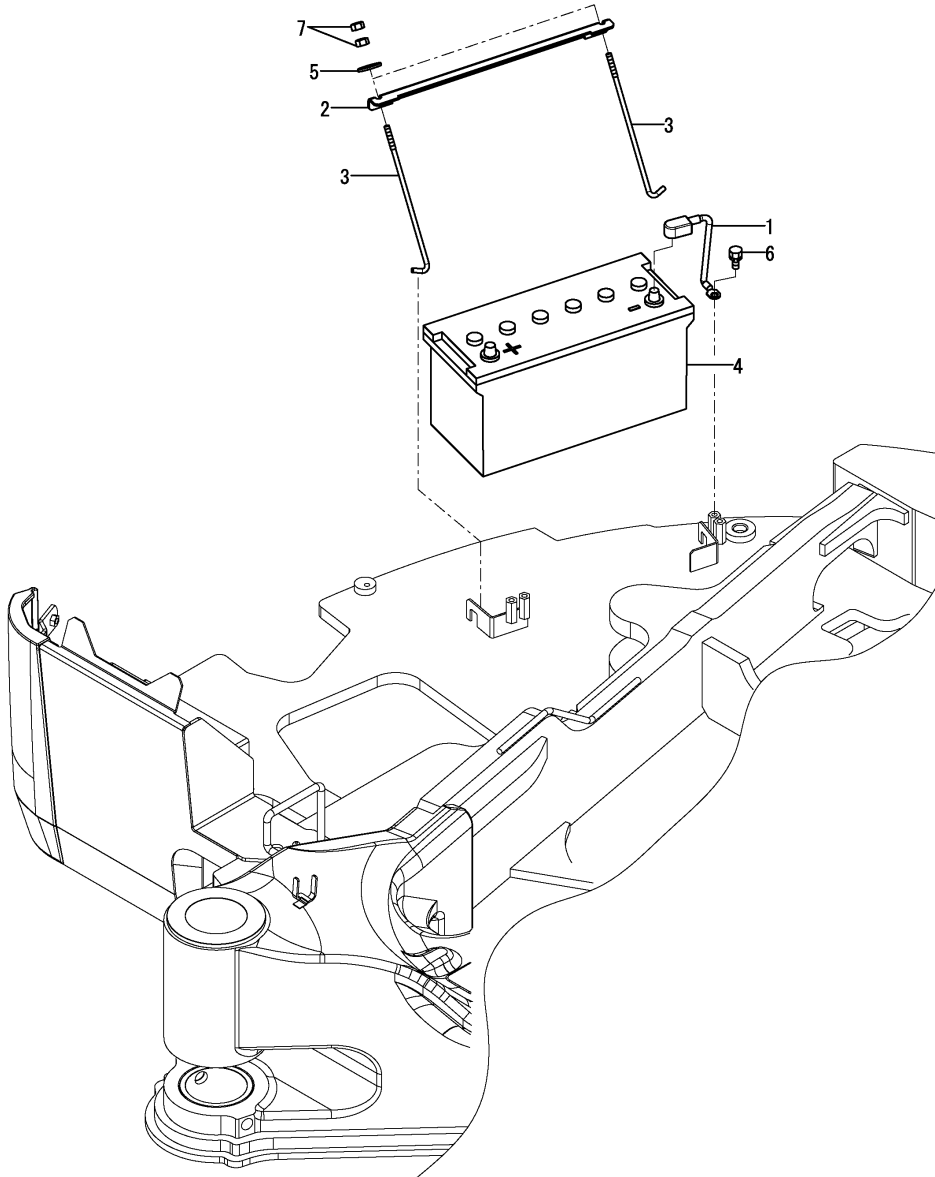


No.	Lev.	Parts No.	Description	Qty						I	R
				(A)	(B)	(C)	(D)	(E)	(F)		
1	1	172A69-12100	VOLUME, ACCEL ASSY	1	1	1					
7	1	172A69-12120	KNOB ASSY	1	1	1					

Fig.19. ELECTRIC PART(BATTERY)(AS,NZ)

(A)=SV100-2B(US)  
 (B)=SV100-2B(AS)  
 (C)=SV100-2B(NZ)

(D)=  
 (E)=  
 (F)=

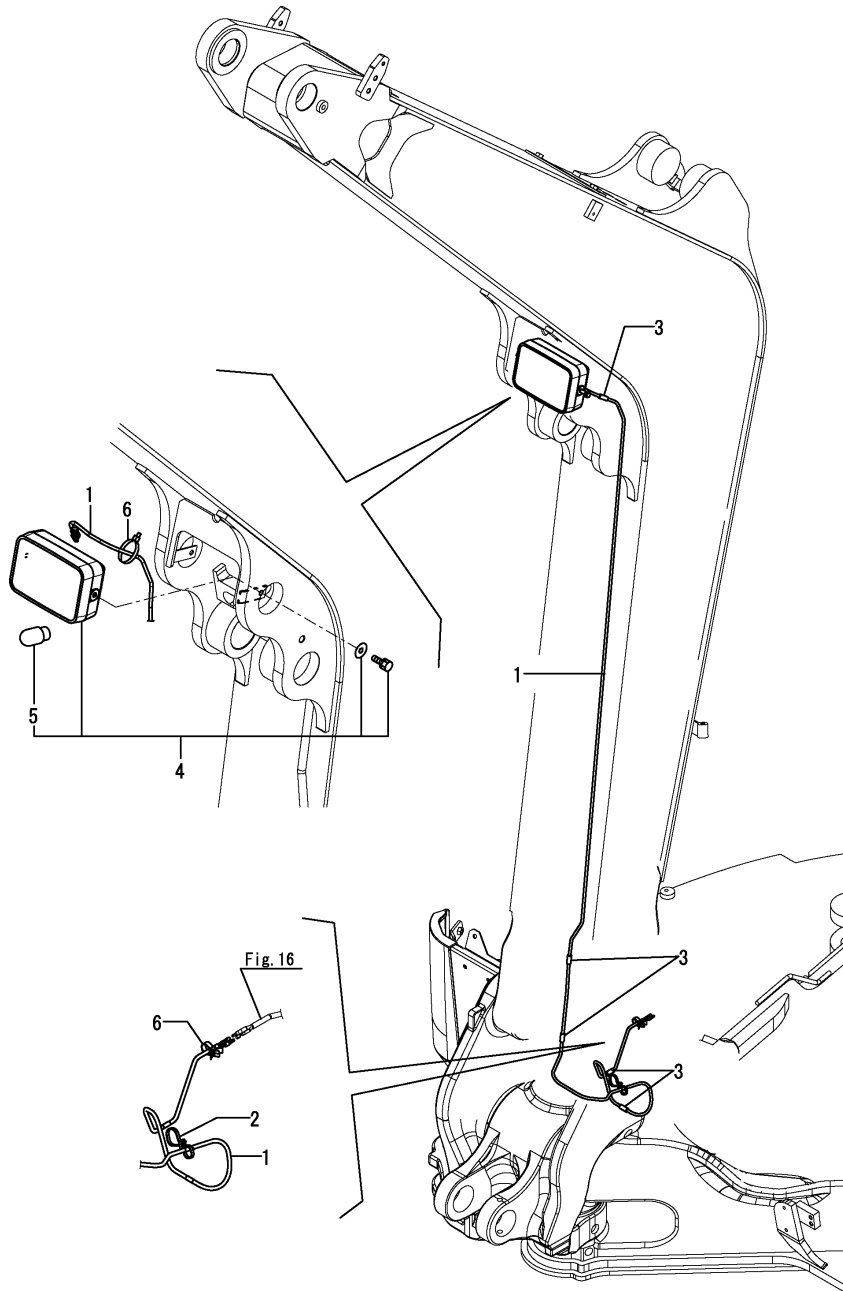


No.	Lev.	Parts No.	Description	Q'ty						I	R
				(A)	(B)	(C)	(D)	(E)	(F)		
1	1	172A69-16120	CABLE, BATTERY		1	1					
2	1	172112-16201	RETAINER, BATTERY		1	1					
3	1	172164-16370	ROD		2	2					
4	1	1E8080-83321	BATTERY, 130E41R		1	1					
5	1	22157-080000	WASHER, 8		2	2					
6	1	26013-100162	BOLT, M10X 16		1	1					
7	1	26716-080002	NUT, M8		4	4					

Fig.29. ELECTRIC PART(WORK LAMP)

(A)=SV100-2B(US)  
 (B)=SV100-2B(AS)  
 (C)=SV100-2B(NZ)

(D)=  
 (E)=  
 (F)=



No.	Lev.	Parts No.	Description	Q'ty						I	R
				(A)	(B)	(C)	(D)	(E)	(F)		
1	1	172A89-16440	HARNES, WIRE	1	1	1					
2	1	172137-16560	BAND	1	1	1					
3	1	172B11-16780	RUBBER, CLAMP A	5	5	5					
4	1	172162-17400	LAMP ASSY, WORK	1	1	1					
5	2	172141-17211	BULB	1	1	1					
6	1	1E8775-84120	CLAMP, BAND	1	1	1					

Fig.37. AIR CONDITIONER(CONDENSER ASSY : INNER PARTS)

(A)=SV100-2B(US)  
 (B)=SV100-2B(AS)  
 (C)=SV100-2B(NZ)

(D)=  
 (E)=  
 (F)=

No.	Lev.	Parts No.	Description	Q'ty						I	R
				(A)	(B)	(C)	(D)	(E)	(F)		
1	1	172B03-19680	CONDENSER ASSY	1	1	1					
2	2	172B06-19260	CONDENSER	1	1	1					
3	2	172B03-19650	BRACKET ASSY, COND	2	2	2					
4	2	172B03-19660	COVER ASSY, COND FAN	1	1	1					
5	2	172B03-19670	MOTOR ASSY, FAN	1	1	1					
6	2	26106-060162	BOLT, M6X 16 PLATED	4	4	4					
7	2	26106-060602	BOLT, M6X 60 PLATED	6	6	6					
8	2	26366-060002	NUT, M6	6	6	6					

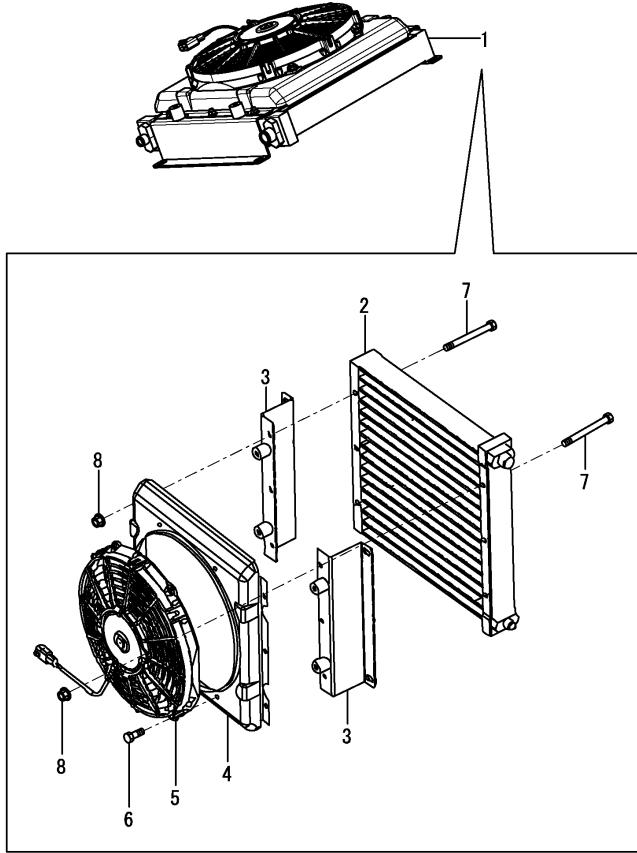
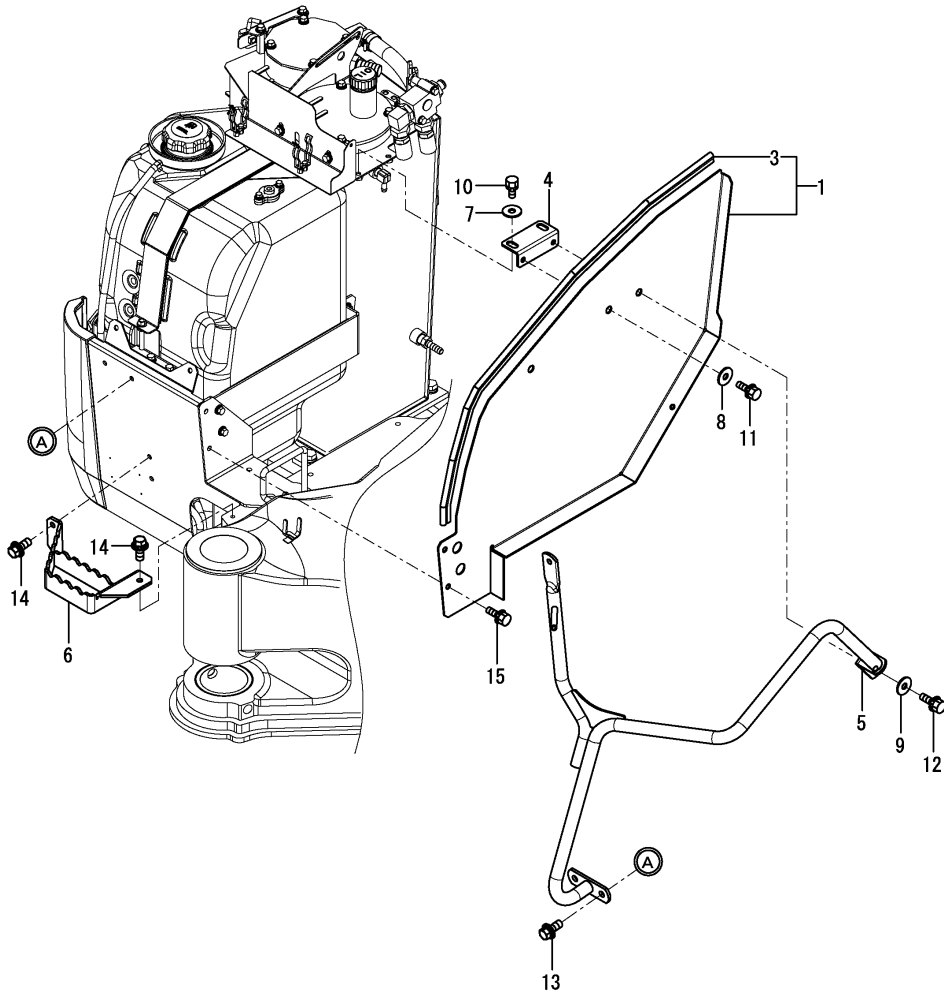




Fig.55. COVER(FUEL TANK SIDE)

(A)=SV100-2B(US)  
 (B)=SV100-2B(AS)  
 (C)=SV100-2B(NZ)

(D)=  
 (E)=  
 (F)=

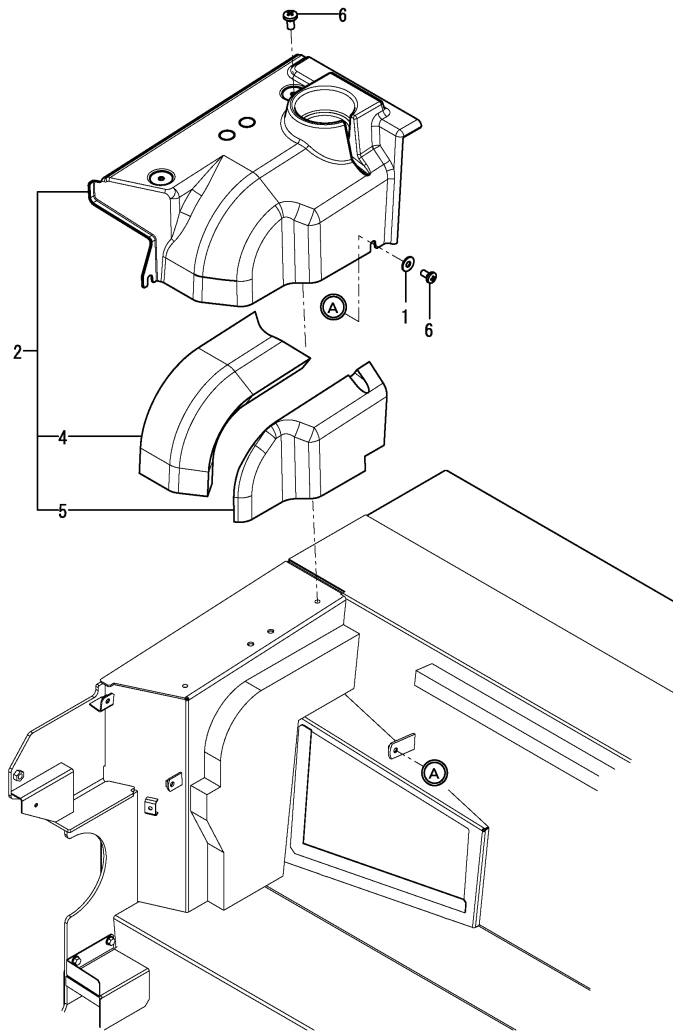


No.	Lev.	Parts No.	Description	Q'ty						I	R
				(A)	(B)	(C)	(D)	(E)	(F)		
1	1	172B11-61600	COVER ASSY,FO	1	1	1					
3	2	172B11-61650	SEAL,1060	1	1	1					
4	1	172B11-61660	STAY ASSY,COVER	1	1	1					
5	1	172B11-61830	GRIP ASSY, MIRROR	1	1	1					
6	1	172A69-62050	STEP ASSY	1	1	1					
7	1	22157-100000	WASHER, 10	2	2	2					
8	1	22157-100000	WASHER, 10	1	1	1					
9	1	22157-100000	WASHER, 10	1	1	1					
10	1	26013-100252	BOLT, M10X 25	2	2	2					
11	1	26013-100252	BOLT, M10X 25	1	1	1					
12	1	26013-100252	BOLT, M10X 25	1	1	1					
13	1	26014-100252	BOLT, M10X 25	2	2	2					
14	1	26014-100252	BOLT, M10X 25	3	3	3					
15	1	26014-100252	BOLT, M10X 25	2	2	2					

Fig.65. SIDE COVER

(A)=SV100-2B(US)  
 (B)=SV100-2B(AS)  
 (C)=SV100-2B(NZ)

(D)=  
 (E)=  
 (F)=



No.	Lev.	Parts No.	Description	Qty						I	R
				(A)	(B)	(C)	(D)	(E)	(F)		
1	1	172458-62430	WASHER	1	1	1					
2	1	172B12-63150	COVER ASSY,SIDE	1	1	1					1
2-1	1	172B12-63250	COVER ASSY,SIDE D	1	1	1					S 2
		(A=MBF001)	(B=MBF001)	(C=MBF001)							
4	2	172B12-63170	SPONGE,SIDE COVER A	1	1	1					
5	2	172B12-63180	SPONGE,SIDE COVER B	1	1	1					
6	1	172137-69850	SCREW	3	3	3					

Remarks

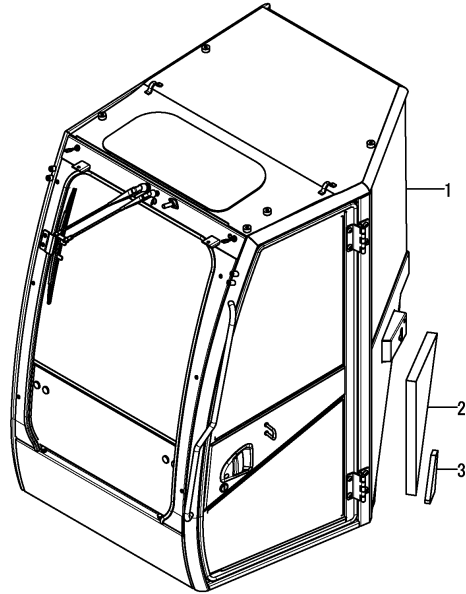
- (1)Color = WARM IVORY.
- (2)Color = PANTONE 425C.

Fig.75. CABIN

(A)=SV100-2B(US)  
 (B)=SV100-2B(AS)  
 (C)=SV100-2B(NZ)

(D)=  
 (E)=  
 (F)=

CABIN ASSY  
 Fig. 75 Ref. No.1  
 INC. Fig. 76~85.



No.	Lev.	Parts No.	Description	Q'ty						I	R
				(A)	(B)	(C)	(D)	(E)	(F)		
1	1	172B11-68000	CABIN ASSY	1	1	1					1
2	1	172B11-68910	SPONGE,CAB A	1	1	1					
3	1	172B11-68920	SPONGE,CAB B	1	1	1					
4A	1	172437-03302	LABEL, MANUAL	1	1	1					2
4B	1	172437-03312	LABEL, SLOPE	1	1	1					2
4C	1	172437-03343	LABEL, TRANSPORT	1	1	1					2
4D	1	172A69-03360	LABEL,LIFT Q	1	1	1					2
4D-1	1	172A69-03361	LABEL,LIFT Q	1	1	1					N 2
		(A=*2013.12.) (B=*2013.12.) (C=*2013.12.)									
4D-2	2	172B12-03381	LABEL, LIFT US	1	1	1					N 2
		(A=MBF004) (B=MBF004) (C=MBF004)									
4E	1	172437-03372	LABEL, NEUTRAL	1	1	1					2
4F	1	172437-03432	LABEL, STEERING	1	1	1					2
4G	1	172437-03441	LABEL, ROPS	1	1	1					2
4H	1	172437-03451	LABEL, SEAT BELT	1	1	1					2
4I	1	172437-03471	LABEL, LEVER LOCK	1	1	1					2
4J	1	172437-03551	LABEL, WINDOW US	1	1	1					2

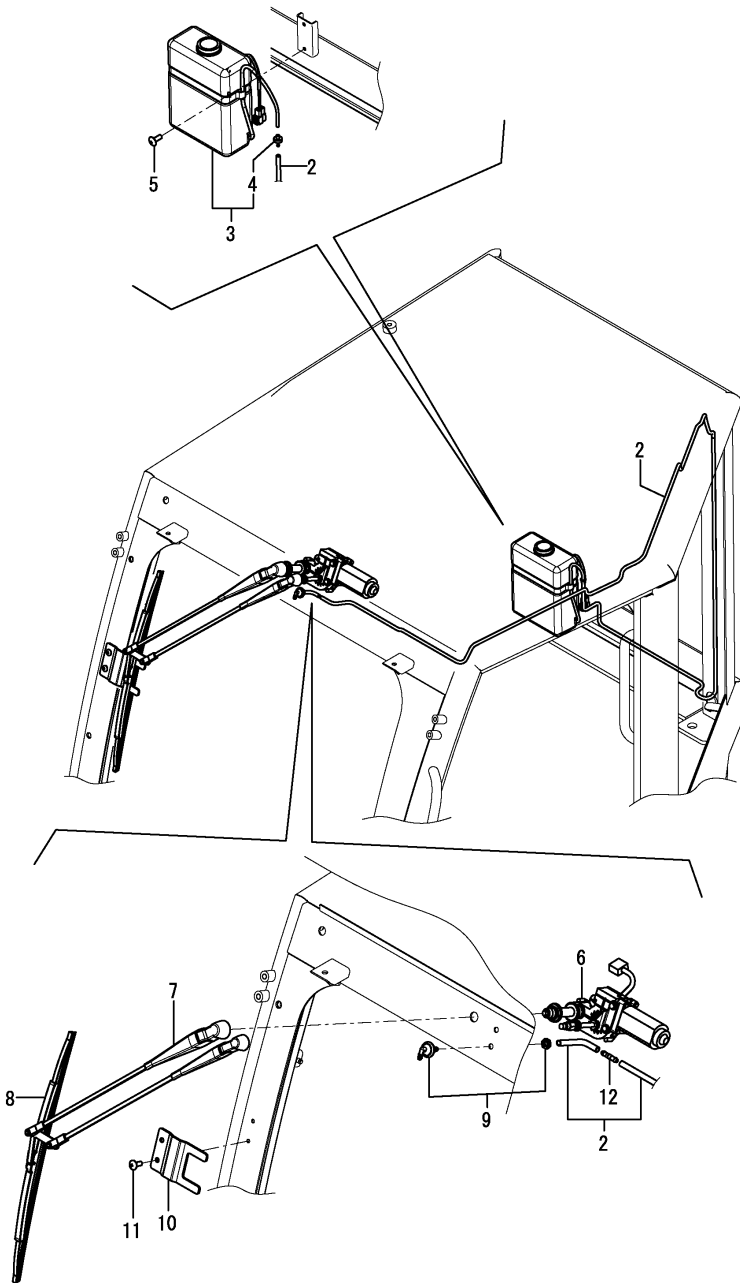
Remarks

- (1) Please use this part with following label at the same time.  
 Ref.No.4A~4G
- (2) Label is not illustrated.

Fig.83. CABIN(WIPER)

(A)=SV100-2B(US)  
 (B)=SV100-2B(AS)  
 (C)=SV100-2B(NZ)

(D)=  
 (E)=  
 (F)=



No.	Lev.	Parts No.	Description	Qty						I	R
				(A)	(B)	(C)	(D)	(E)	(F)		
2	3	172B11-68030	HOSE,2710	1	1	1					
3	3	172B06-68310	TANK, WASHER	1	1	1					
3-1	3	172B11-68340	TANK, WASHER	1	1	1					N
4	4	172B06-68410	VALVE, CHECK	1	1	1					Z
5	3	172B11-68800	SCREW,M6X16	2	2	2					
6	3	172B11-69220	MOTOR, WIPER	1	1	1					
7	3	172B11-69230	ARM,WIPER	1	1	1					
8	3	172B06-69240	BLADE ASSY,500	1	1	1					
9	3	172B11-69240	CONNECTOR,90 ELBOW	1	1	1					
10	3	172B11-69250	BRACKET ASSY,WIPER	1	1	1					
11	3	172B11-69420	SCREW,TR-HD	2	2	2					
12	3	172B11-69700	VALVE ASSY	1	1	1					

CLICK HERE TO **DOWNLOAD** THE COMPLETE MANUAL

- Thank you very much for reading the preview of the manual.
- You can download the complete manual from: [www.heydownloads.com](http://www.heydownloads.com) by clicking the link below



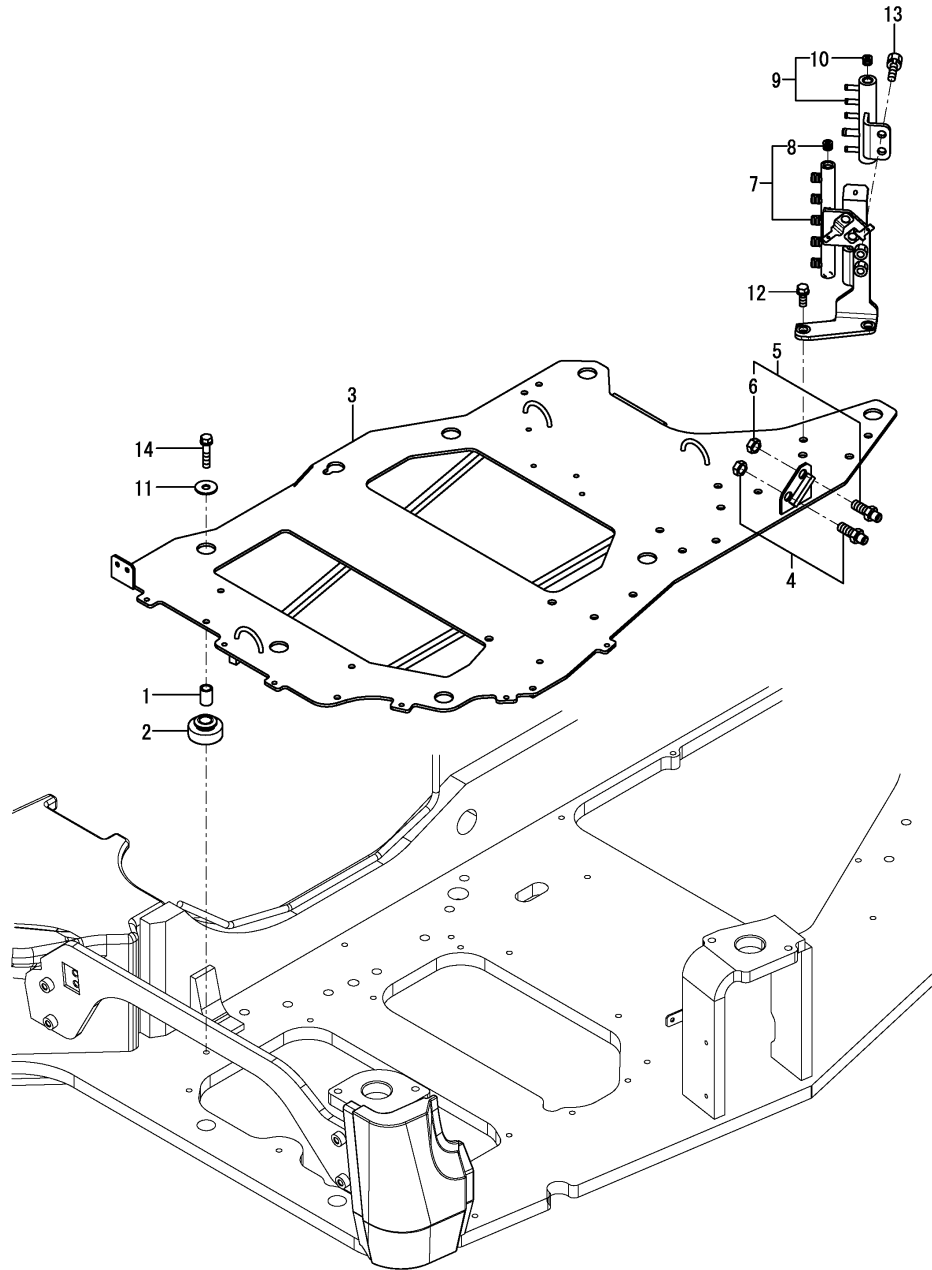
- Please note: If there is no response to CLICKING the link, please download this PDF first and then click on it.

CLICK HERE TO **DOWNLOAD** THE COMPLETE MANUAL

Fig.92. CONTROL VALVE PLATE

(A)=SV100-2B(US)  
 (B)=SV100-2B(AS)  
 (C)=SV100-2B(NZ)

(D)=  
 (E)=  
 (F)=

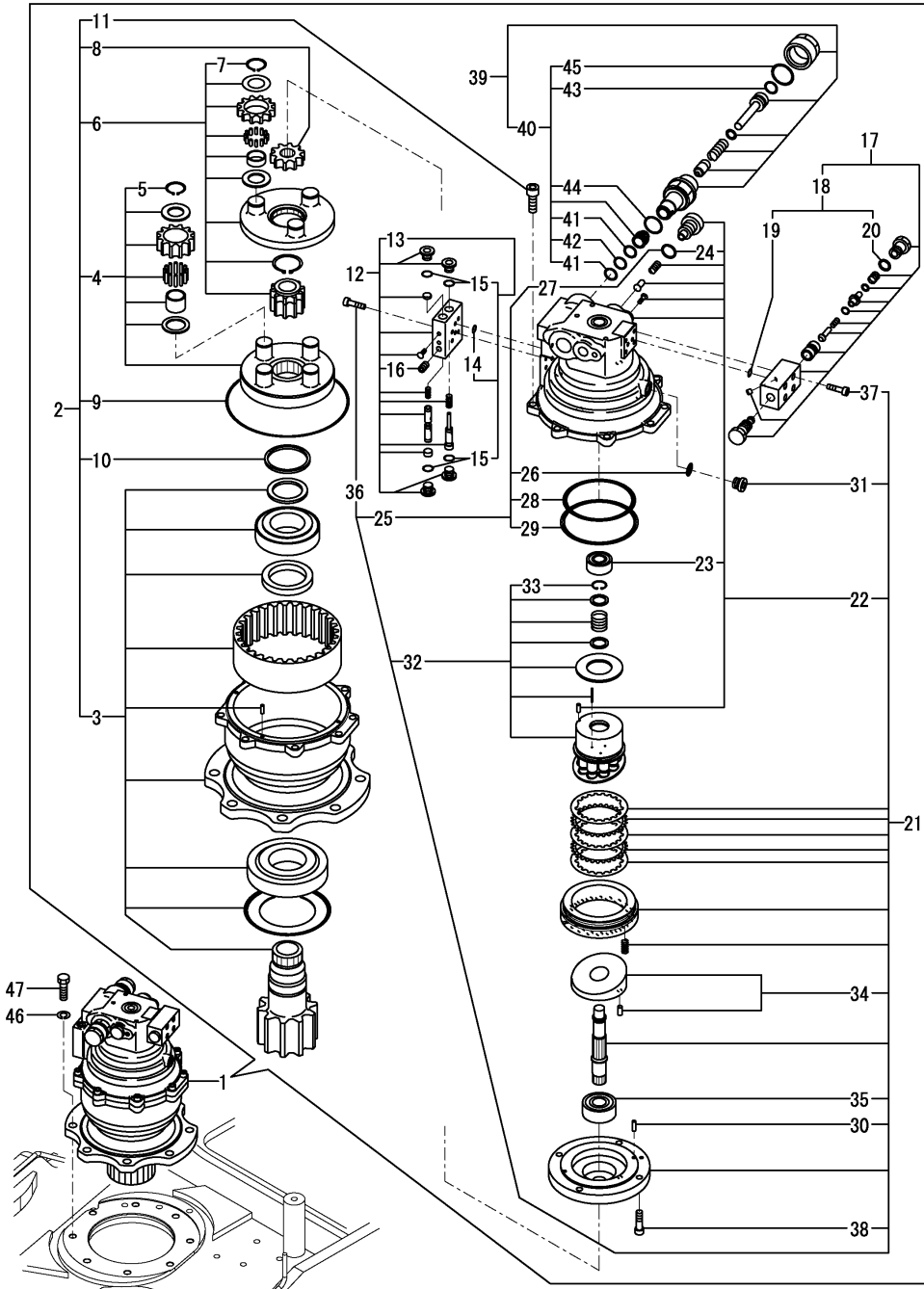


No.	Lev.	Parts No.	Description	Q'ty						I	R
				(A)	(B)	(C)	(D)	(E)	(F)		
1	1	172A69-71550	COLLAR	7	7	7					
2	1	172A69-71560	GROMMET	7	7	7					
3	1	172B11-71600	PLATE ASSY, VALVE	1	1	1					
4	1	172151-76050	JOINT	1	1	1					
5	1	172A89-76150	JOINT	1	1	1					
6	2	172A89-76160	NUT, LOCK	1	1	1					
7	1	172A69-76680	MOUNT ASSY, BLOCK	1	1	1					
8	2	23871-020000	PLUG, R02	1	1	1					
9	1	172B11-76720	MOUNT ASSY, BLOCK DR	1	1	1					
10	2	23871-020000	PLUG, R02	1	1	1					
11	1	22157-100000	WASHER, 10	7	7	7					
12	1	26013-100252	BOLT, M10X 25	2	2	2					
13	1	26013-100252	BOLT, M10X 25	2	2	2					
14	1	26013-100452	BOLT, M10X 45	7	7	7					

Fig.100. TURNING MOTOR

(A)=SV100-2B(US)  
 (B)=SV100-2B(AS)  
 (C)=SV100-2B(NZ)

(D)=  
 (E)=  
 (F)=

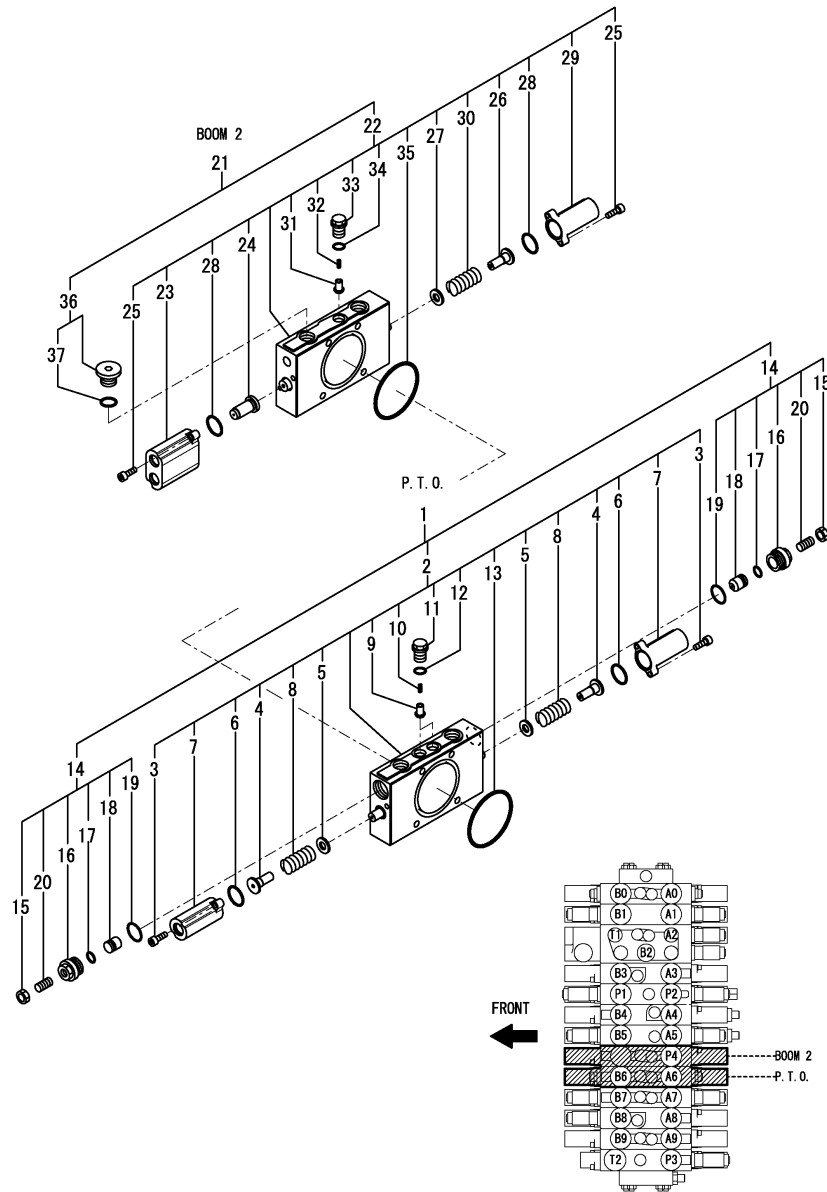


No.	Lev.	Parts No.	Description	Q'ty						I	R
				(A)	(B)	(C)	(D)	(E)	(F)		
1	1	172A69-73031	MOTOR ASSY, SWING	1	1	1					
2	2	172A69-73040	GEAR ASSY, REDUCTION	1	1	1					
3	3	172A69-70100	PINION KIT	1	1	1					
4	3	172A69-70110	CARRIER KIT	1	1	1					
5	4	172A69-71830	RING, SNAP	4	4	4					
6	3	172A69-70120	CARRIER KIT	1	1	1					
7	4	172A69-71830	RING, SNAP	3	3	3					
8	3	172A69-71800	GEAR	1	1	1					
9	3	172A69-71810	O-RING, 270-90	1	1	1					
10	3	172A69-71820	RING	1	1	1					
11	3	26450-080252	BOLT, M8X 25	8	8	8					
12	2	172A69-73070	VALVE ASSY, P/BTIMER	1	1	1					
13	3	172A69-70180	SEAL SET, VALVE	1	1	1					
14	4	24315-000070	O-RING, 1BP7.0	2	2	2					
15	4	24315-000110	O-RING, 1BP11.0	4	4	4					
16	3	23871-010000	PLUG, R01	1	1	1					
17	2	172A69-73080	VALVE ASSY,	1	1	1					
18	3	172A69-70190	SEAL SET, VALVE	1	1	1					
19	4	24315-000090	O-RING, 1BP9.0	2	2	2					
20	4	24315-000180	O-RING, 1BP18.0	2	2	2					
21	2	172A69-73950	MOTOR ASSY	1	1	1					
22	3	172A69-70130	BODY KIT,H	1	1	1					
23	4	172A69-71850	BEARING, 5204C3	1	1	1					
24	4	24315-000180	O-RING, 1BP18.0	2	2	2					
25	3	172A69-70160	SEAL SET, MOTOR	1	1	1					
26	4	24315-000110	O-RING, 1BP11.0	1	1	1					
27	4	24315-000180	O-RING, 1BP18.0	2	2	2					
28	4	24325-001300	O-RING, 1BG130.0	1	1	1					
29	4	24325-001400	O-RING, 1BG140.0	1	1	1					
30	3	172A69-71860	PIN, PARALLEL	3	3	3					
31	3	172A69-71870	PLUG, PF1/4	1	1	1					
32	3	172A69-73960	BARREL KIT,CYLINDER	1	1	1					
33	4	22252-000350	RING, 35	1	1	1					
34	3	172A69-73970	PLATE, SWASH	1	1	1					
35	3	24512-053054	BEARING, BALL 5305	1	1	1					
36	3	26450-060162	BOLT, M6X 16	4	4	4					
37	3	26450-060202	BOLT, M6X 20	4	4	4					
38	3	26450-100352	BOLT, M10X 35	14	14	14					
39	2	172A69-73980	VALVE ASSY, RELIEF	2	2	2					
40	3	172A69-70170	SEAL SET, RELIEF	2	2	2					
41	4	172A69-71880	RING, BACK UP	4	4	4					
42	4	24315-000160	O-RING, 1BP16.0	2	2	2					
43	4	24315-000180	O-RING, 1BP18.0	2	2	2					
44	4	24315-000250	O-RING, 1BP25.0	2	2	2					
45	4	24315-000300	O-RING, 1BP30.0	2	2	2					
46	1	22217-160000	WASHER, SPRING 16	8	8	8					
47	1	26076-160502	BOLT, 10.916X 50	8	8	8					

Fig.110. CONTROL VALVE(A-TYPE)(7/9)(TO M2A188)

(A)=SV100-2B(US)  
 (B)=SV100-2B(AS)  
 (C)=SV100-2B(NZ)

(D)=  
 (E)=  
 (F)=



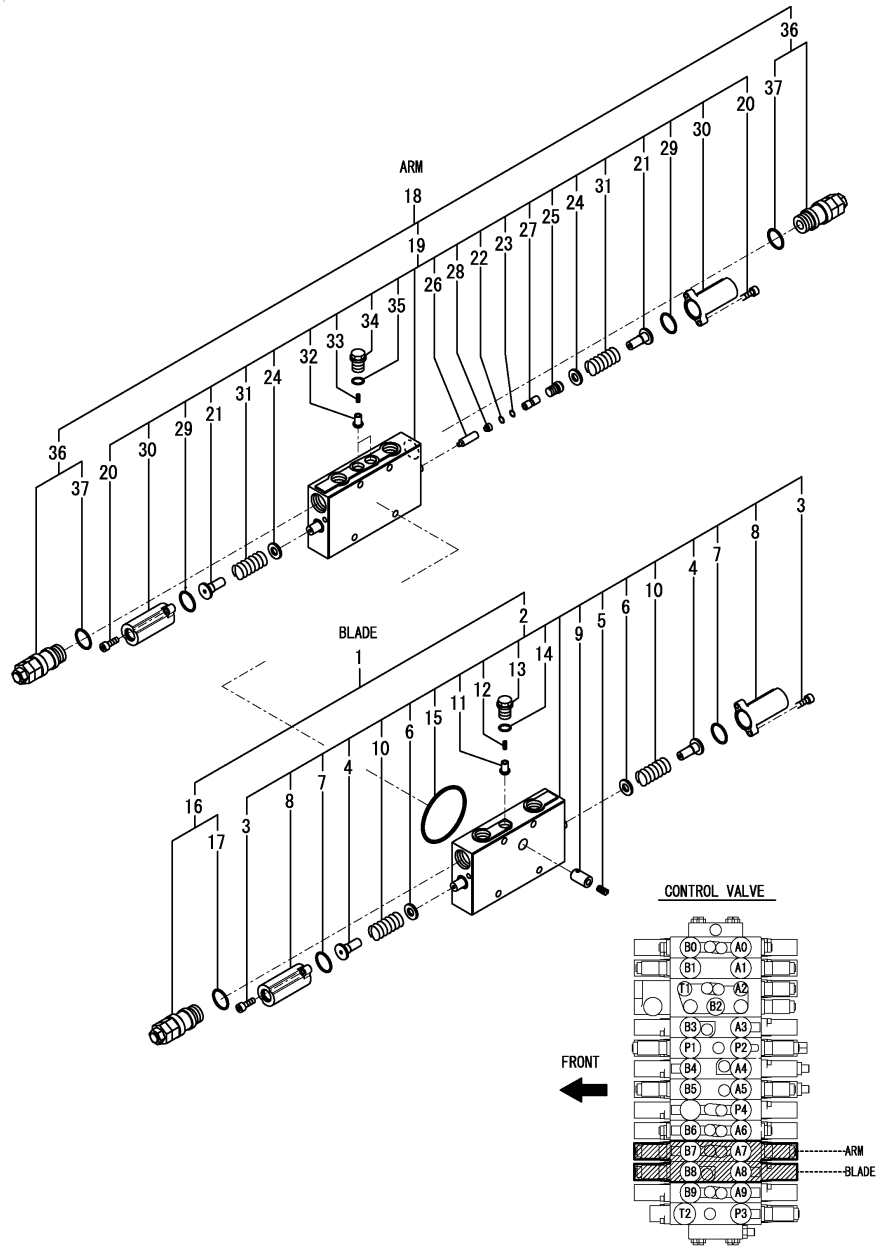
No.	Lev.	Parts No.	Description	Qty						I	R
				(A)	(B)	(C)	(D)	(E)	(F)		
1	2	172A69-71130	SECTION ASSY, PTO	1	1	1					
2	3	172A69-71140	SECTION, PTO	1	1	1					
3	4	172151-74060	BOLT, SOCKET HEAD	4	4	4					
4	4	172478-74180	SEAT, SPRING	2	2	2					
5	4	172175-74220	SEAT, SPRING	2	2	2					
6	4	172151-74320	O-RING	2	2	2					
7	4	172455-74390	CAP	2	2	2					
8	4	172455-74410	SPRING	2	2	2					
9	4	172455-74420	POPPET	2	2	2					
10	4	172455-74440	SPRING	2	2	2					
11	4	172455-74450	PLUG	2	2	2					
12	4	172455-74460	O-RING	2	2	2					
13	4	24321-000700	O-RING, 1AG70.0	1	1	1					
14	3	172455-74320	VALVE ASSY, SHUT-OFF	2	2	2					
15	4	172455-74010	NUT, SHOE	2	2	2					
16	4	172455-74020	PLUG	2	2	2					
17	4	172455-74030	O-RING	2	2	2					
18	4	172455-74040	POPPET	2	2	2					
19	4	172116-74150	O-RING	2	2	2					
20	4	172455-74990	SCREW, SETTING	2	2	2					
21	2	172A69-74291	SECTION ASSY, BOOM	1	1	1					
22	3	172A69-74301	SECTION, BOOM	1	1	1					
23	4	172A69-71110	CAP	1	1	1					
24	4	172A69-71120	PISTON	1	1	1					
25	4	172151-74060	BOLT, SOCKET HEAD	4	4	4					
26	4	172478-74180	SEAT, SPRING	1	1	1					
27	4	172175-74220	SEAT, SPRING	1	1	1					
28	4	172151-74320	O-RING	2	2	2					
29	4	172455-74390	CAP	1	1	1					
30	4	172455-74410	SPRING	1	1	1					
31	4	172455-74420	POPPET	1	1	1					
32	4	172455-74440	SPRING	1	1	1					
33	4	172455-74450	PLUG	1	1	1					
34	4	172455-74460	O-RING	1	1	1					
35	4	24321-000700	O-RING, 1AG70.0	1	1	1					
36	3	172187-74550	PLUG ASSY	1	1	1					
37	4	24315-000180	O-RING, 1BP18.0	1	1	1					

Remarks

\* Control valve assy is shown in Fig.104.

N:Old  $\xrightarrow{\text{Yes}}$  New, Q:Old  $\xrightarrow{\text{No}}$  New, R:Old  $\xrightarrow{\text{Yes}}$  New, S:Old  $\xrightarrow{\text{No}}$  New, W:Add, Z:Discontinued, F:Interchangeable by set, K:Qty Change

Fig.197. (112H)CONTROL VALVE(B-TYPE)(8/9)(FROM M2A189)



(A)=SV100-2B(US)  
 (B)=SV100-2B(AS)  
 (C)=SV100-2B(NZ)

(D)=  
 (E)=  
 (F)=

No.	Lev.	Parts No.	Description	Q'ty						I	R
				(A)	(B)	(C)	(D)	(E)	(F)		
1	2	172A69-71170	SECTION ASSY, BLADE	1	1	1					
2	3	172A69-71190	SECTION, BLADE	1	1	1					
3	4	172151-74060	BOLT, SOCKET HEAD	4	4	4					
4	4	172478-74180	SEAT, SPRING	2	2	2					
5	4	172113-74190	SPRING	1	1	1					
6	4	172175-74220	SEAT, SPRING	2	2	2					
7	4	172151-74320	O-RING	2	2	2					
8	4	172455-74390	CAP	2	2	2					
9	4	172187-74410	POPPET	1	1	1					
10	4	172455-74410	SPRING	2	2	2					
11	4	172455-74420	POPPET	1	1	1					
12	4	172455-74440	SPRING	1	1	1					
13	4	172455-74450	PLUG	1	1	1					
14	4	172455-74460	O-RING	1	1	1					
15	4	24321-000700	O-RING, 1AG70.0	1	1	1					
16	3	172B12-74440	RELIEF, 15.0/50	1	1	1					
17	4	172116-74150	O-RING	1	1	1					
18	2	172B12-74150	SECTION ASSY, ARM	1	1	1					
19	3	172B12-74160	SECTION, ARM	1	1	1					
20	4	172151-74060	BOLT, SOCKET HEAD	4	4	4					
21	4	172478-74180	SEAT, SPRING	2	2	2					
22	4	172425-74200	O-RING	1	1	1					
23	4	172425-74210	RING	1	1	1					
24	4	172175-74220	SEAT, SPRING	2	2	2					
25	4	172B11-74230	PLUG	1	1	1					
26	4	172B11-74240	SPOOL, POPEET	1	1	1					
27	4	172B11-74250	SPACER	1	1	1					
28	4	172B11-74260	SPRING	1	1	1					
29	4	172151-74320	O-RING	2	2	2					
30	4	172455-74390	CAP	2	2	2					
31	4	172455-74410	SPRING	2	2	2					
32	4	172455-74420	POPPET	2	2	2					
33	4	172455-74440	SPRING	2	2	2					
34	4	172455-74450	PLUG	2	2	2					
35	4	172455-74460	O-RING	2	2	2					
36	3	172A69-74200	VALVE, RELIEF	2	2	2					
37	4	172116-74150	O-RING	2	2	2					

Remarks

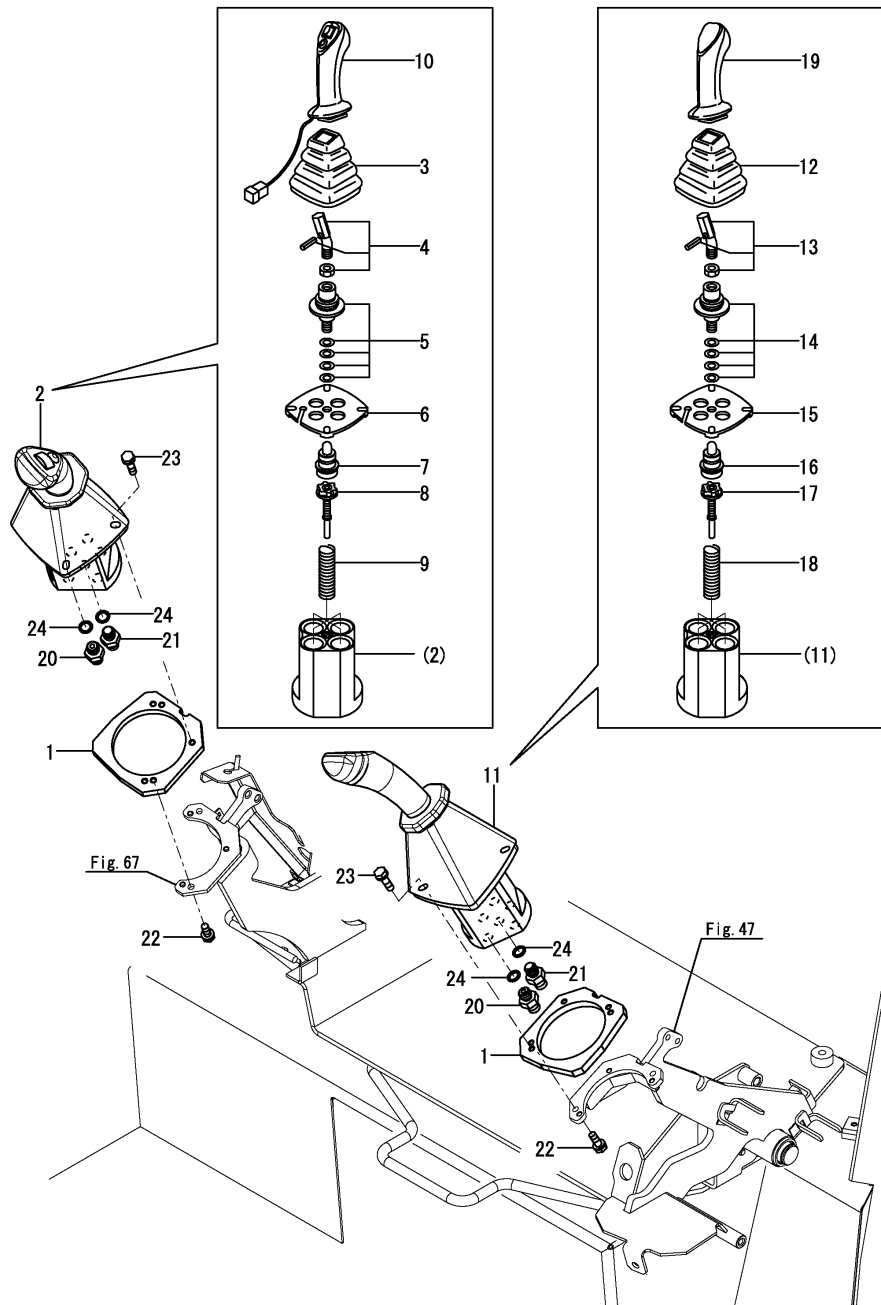
\* Control valve assy is shown in Fig.190(112A).

N:Old  $\xrightarrow{Yes}$  New, Q:Old  $\xrightarrow{No}$  New, R:Old  $\xrightarrow{Yes}$  New, S:Old  $\xrightarrow{No}$  New, W:Add, Z:Discontinued, F:Interchangeable by set, K:Q'ty Change

Fig.120. REMOTE CONTROL VALVE(OPERATION)

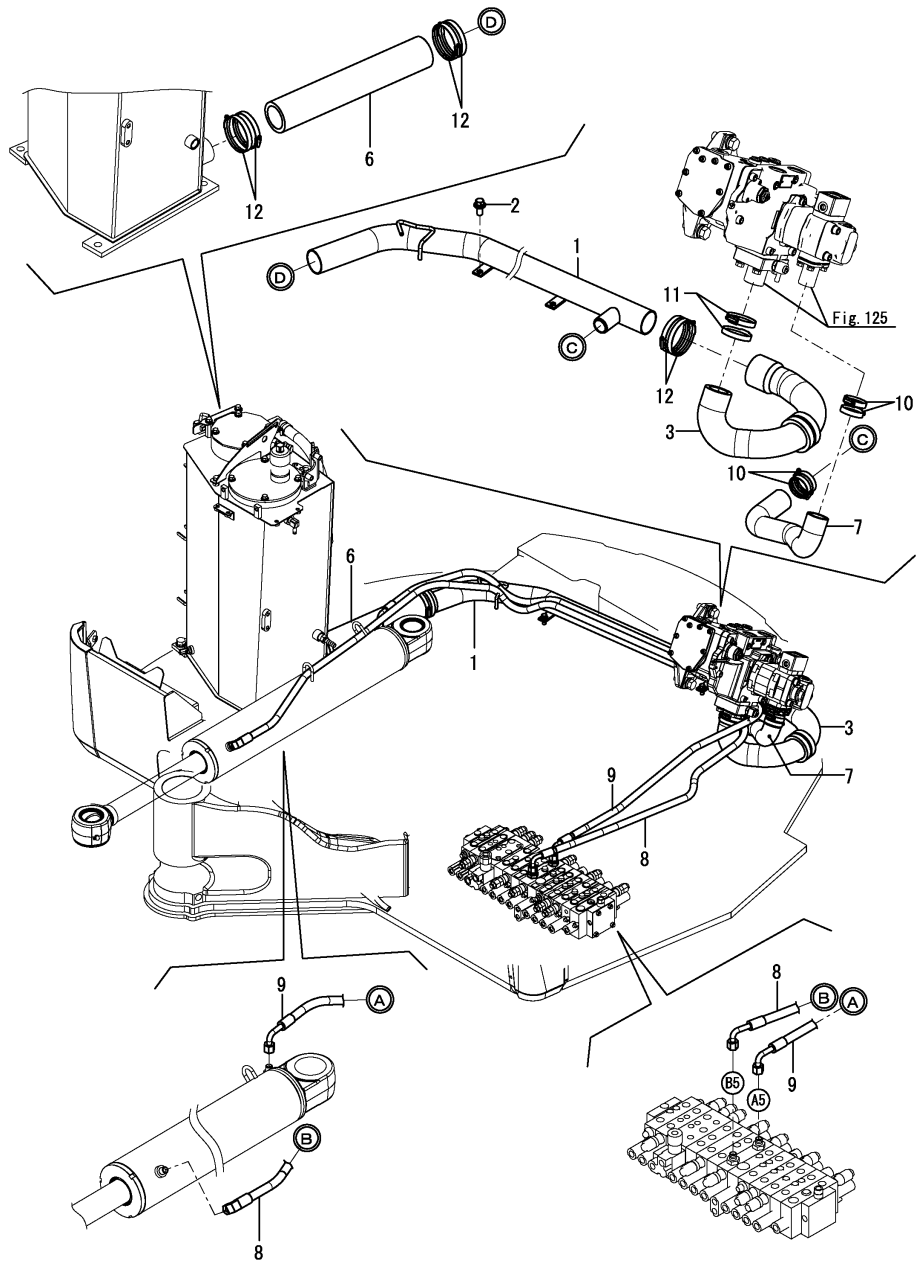
(A)=SV100-2B(US)  
 (B)=SV100-2B(AS)  
 (C)=SV100-2B(NZ)

(D)=  
 (E)=  
 (F)=



No.	Lev.	Parts No.	Description	Qty						I	R
				(A)	(B)	(C)	(D)	(E)	(F)		
1	1	172A78-64510	SPACER, VALVE	2	2	2					
2	1	172B11-74850	VALVE ASSY,R	1	1	1					
3	2	172441-74030	BOOT	1	1	1					
4	2	172441-74040	LEVER KIT	1	1	1					
5	2	172463-74530	CARDAN KIT	1	1	1					
6	2	172463-74540	PLATE, RETAINING	1	1	1					
7	2	172463-74551	PLUNGER KIT	1	1	1					
8	2	172463-74561	REGULATION KIT	4	4	4					
9	2	172463-74570	SPRING KIT	1	1	1					
10	2	172B11-74860	HANDLE ASSY	1	1	1					
11	1	172A69-74900	VALVE ASSY,L	1	1	1					
12	2	172441-74030	BOOT	1	1	1					
13	2	172441-74040	LEVER KIT	1	1	1					
14	2	172463-74530	CARDAN KIT	1	1	1					
15	2	172463-74540	PLATE, RETAINING	1	1	1					
16	2	172463-74551	PLUNGER KIT	1	1	1					
17	2	172463-74561	REGULATION KIT	4	4	4					
18	2	172463-74570	SPRING KIT	1	1	1					
19	2	172A69-74910	HANDLE	1	1	1					
20	1	172123-76121	ADAPTER	10	10	10					
21	1	172455-76220	CONNECTOR	2	2	2					
22	1	26014-060162	BOLT, M6X 16	4	4	4					
23	1	26014-060162	BOLT, M6X 16	6	6	6					
24	1	41851-000110	O-RING	12	12	12					

Fig.127. HYD. OIL PIPING(TANK - PUMP, SWING CYLINDER)



(A)=SV100-2B(US)  
 (B)=SV100-2B(AS)  
 (C)=SV100-2B(NZ)

(D)=  
 (E)=  
 (F)=

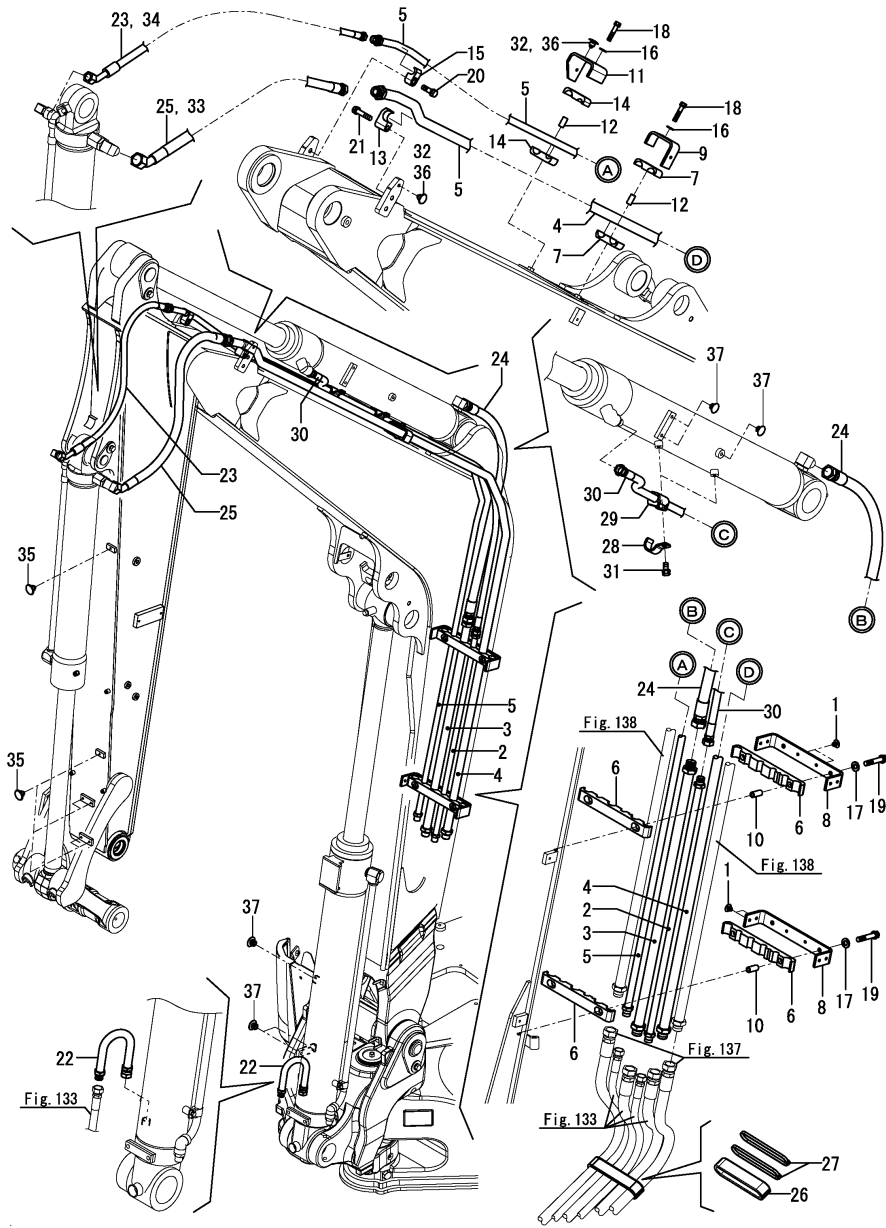
No.	Lev.	Parts No.	Description	Qty						I	R
				(A)	(B)	(C)	(D)	(E)	(F)		
1	1	172B12-76470	TUBE ASSY,SUCTION	1	1	1					
2	1	26014-100252	BOLT, M10X 25	2	2	2					
3	1	172B12-78080	HOSE ASSY,47	1	1	1					
6	1	172B12-78110	HOSE,59	1	1	1					
7	1	172B12-78120	HOSE,39.5	1	1	1					
8	1	172A69-78380	HOSE	1	1	1					
9	1	172A69-78390	HOSE	1	1	1					
10	1	23001-054000	CLAMP, HOSE 54	4	4	4					
11	1	23001-070000	CLAMP, HOSE 70	2	2	2					
12	1	23001-090000	CLAMP, HOSE 90	6	6	6					

Remarks

\* Fitting(control valve) is shown in Fig.129,130.

N:Old  $\xrightarrow{\text{Yes}}$  New, Q:Old  $\xrightarrow{\text{No}}$  New, R:Old  $\xrightarrow{\text{Yes}}$  New, S:Old  $\xrightarrow{\text{No}}$  New, W:Add, Z:Discontinued, F:Interchangeable by set, K:Qty Change

Fig.136. HYD. OIL PIPING(BOOM)



(A)=SV100-2B(US)

(B)=SV100-2B(AS)

(C)=SV100-2B(NZ)

(D)=

(E)=

(F)=

No.	Lev.	Parts No.	Description	Qty						I	R
				(A)	(B)	(C)	(D)	(E)	(F)		
1	1	172444-17660	CLIP, TREE	6	6	6					
1-1	1	172B11-76900	CLIP, TREE 8	6	6	6					N
		(A=*2015.07.)	(B=*2015.07.)	(C=*2015.07.)							
2	1	172A69-76200-Y	TUBE ASSY, ARM	1	1	1					
3	1	172A69-76220-Y	TUBE ASSY, ARM	1	1	1					
4	1	172A69-76250-Y	TUBE, BUCKET	1	1	1					
5	1	172A69-76270-Y	TUBE ASSY, BUCKET	1	1	1					
6	1	172A69-76400	CLAMP, RUBBER	4	4	4					
7	1	172A69-76410	CLAMP, RUBBER	2	2	2					
8	1	172B11-76420	CLAMP,TUBE A	2	2	2					
9	1	172B12-76440	CLAMP,TUBE B	1	1	1					
10	1	172A69-76450	COLLAR, CLAMP	4	4	4					
11	1	172B11-76460	CLAMP, TUBE Q PTO2	1	1	1					
12	1	172187-76520	COLLAR, CLAMP	2	2	2					
13	1	172142-76940-Y	CLAMP	1	1	1					
14	1	172187-76940	RUBBER	2	2	2					
15	1	172142-76950-Y	CLAMP	1	1	1					
16	1	22137-100000	WASHER, 10	2	2	2					
17	1	22137-100000	WASHER, 10	4	4	4					
18	1	26013-100502	BOLT, SPRING M10X 50	2	2	2					
19	1	26013-100552	BOLT, SPRING M10X 55	4	4	4					
20	1	26013-120402	BOLT, SPRING M12X 40	1	1	1					
21	1	26013-120552	BOLT, SPRING M12X 55	1	1	1					
22	1	172A69-72070-Y	TUBE ASSY, BOOM	1							
23	1	172499-78210	HOSE,H108BE091W	1	1	1					
24	1	172A69-78550	HOSE G112BB102K	1	1	1					
25	1	172A69-78570	HOSE G112BE091W	1	1	1					
26	1	172A69-78680	HOSE COVER 23X330	1	1	1					
27	1	172A69-79890	HOSE CLIP 400	2	2	2					
28	1	172A69-72680	CLAMP,HOSE 1/2	2							
29	1	172187-78100	RUBBER A, HOSE CLAMP	2							
30	1	172A69-78280	HOSE H108BB202K	1							
31	1	26013-100162	BOLT, SPRING M10X 16	2							
32	1	172444-17660	CLIP, TREE	6	6	6					
32-1	1	172B11-76900	CLIP, TREE 8	6	6	6					N
		(A=*2015.07.)	(B=*2015.07.)	(C=*2015.07.)							
33	1	172B12-78300	HOSE, H112BE115W	1	1	1					1
34	1	172B12-78310	HOSE, H108BE115W	1	1	1					1
35	1	172444-17660	CLIP, TREE 8	6							2
36	1	172B11-76900	CLIP, TREE 8	6							2
37	1	172183-81160	CLIP, TREE 9.5	6							2

Remarks

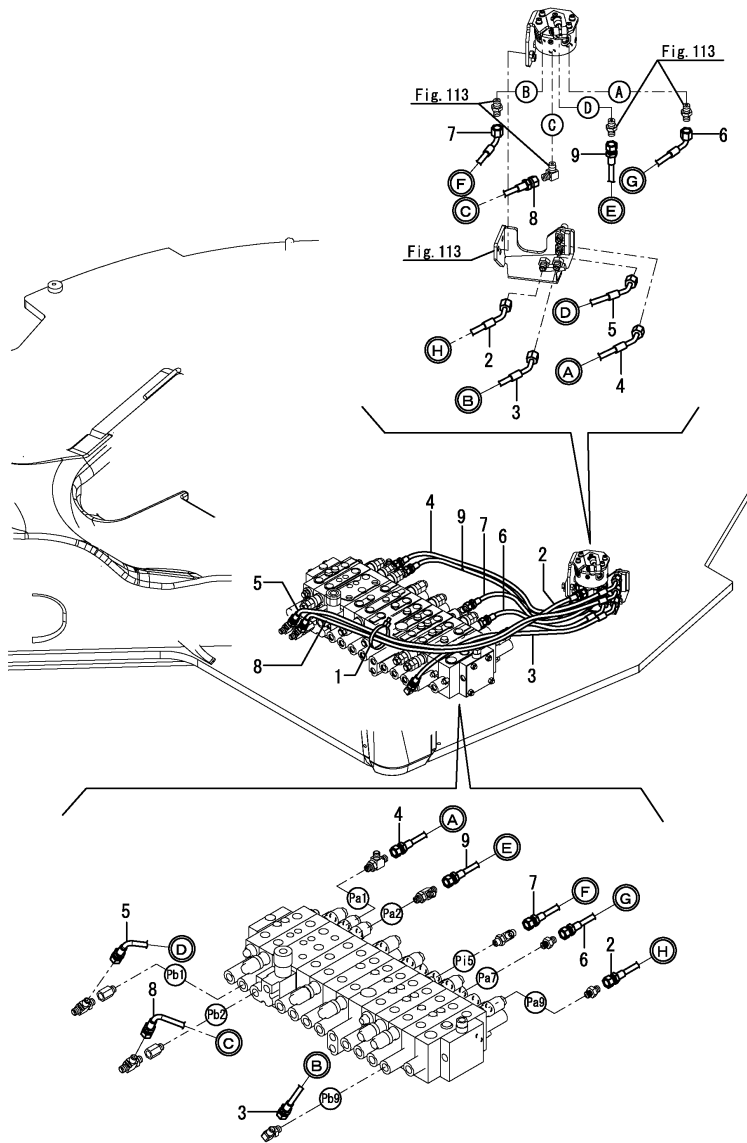
(1)Long arm specification.

(2)Not applied for quick coupler specification.

Fig.142. CONTROL PIPING(CONTROL VALVE - 2-WAY VALVE)

(A)=SV100-2B(US)  
 (B)=SV100-2B(AS)  
 (C)=SV100-2B(NZ)

(D)=  
 (E)=  
 (F)=



No.	Lev.	Parts No.	Description	Q'ty						I	R
				(A)	(B)	(C)	(D)	(E)	(F)		
1	1	194202-56460	BAND, 200	1	1	1					
2	1	172A69-79800	HOSE H603BE030	1	1	1					
3	1	172A69-79810	HOSE F403BE075	1	1	1					
4	1	172A69-79820	HOSE F403BE079	1	1	1					
5	1	172A69-79830	HOSE F403BE112	1	1	1					
6	1	172A69-79840	HOSE F403BC040	1	1	1					
7	1	172A69-79850	HOSE F403BC082	1	1	1					
8	1	172A69-79860	HOSE F403BB081	1	1	1					
9	1	172A69-79870	HOSE F403BB071	1	1	1					

Remarks

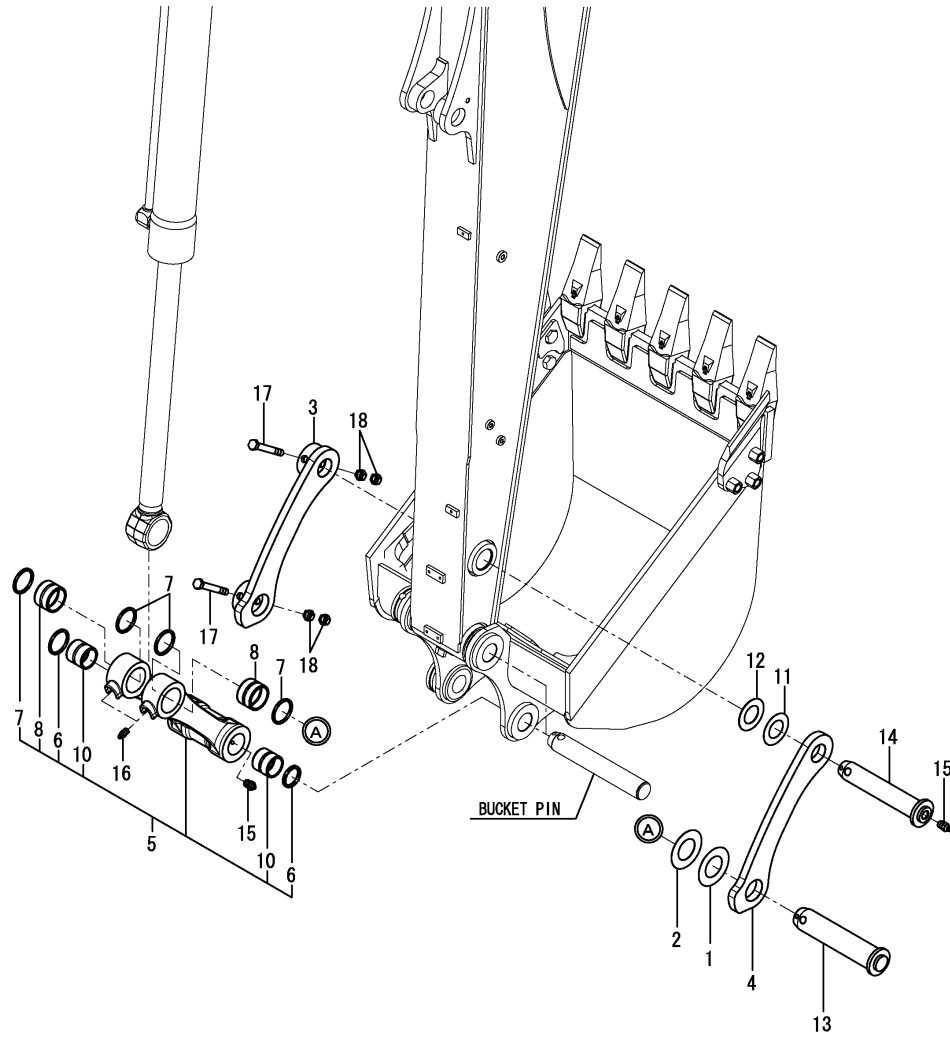
\* Fitting(control valve) is shown in Fig.130.

N:Old  $\xrightarrow{\text{Yes}}$  New, Q:Old  $\xrightarrow{\text{No}}$  New, R:Old  $\xrightarrow{\text{Yes}}$  New, S:Old  $\xrightarrow{\text{No}}$  New, W:Add, Z:Discontinued, F:Interchangeable by set, K:Q'ty Change

Fig.151. BUCKET ARM & LINK

(A)=SV100-2B(US)  
 (B)=SV100-2B(AS)  
 (C)=SV100-2B(NZ)

(D)=  
 (E)=  
 (F)=

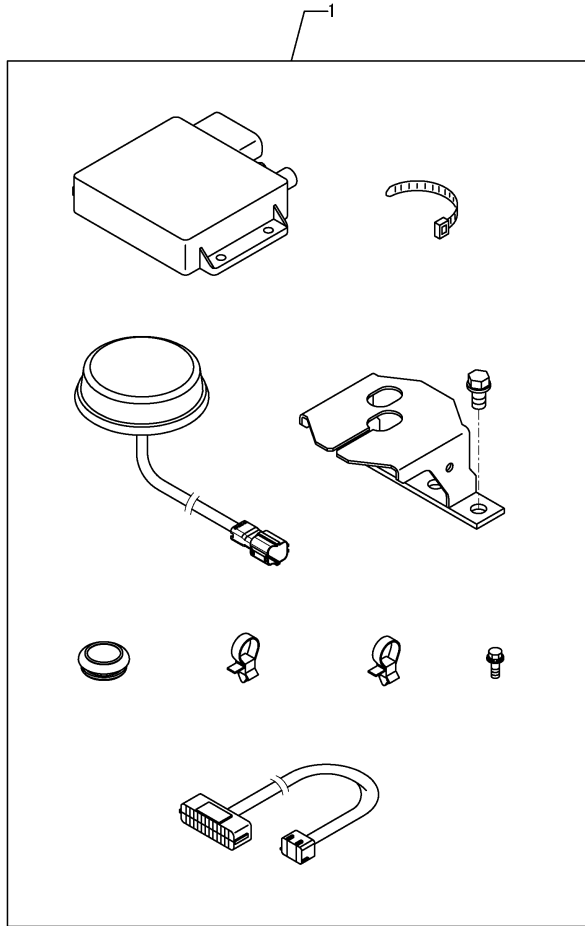


No.	Lev.	Parts No.	Description	Qty						I	R
				(A)	(B)	(C)	(D)	(E)	(F)		
1	1	172175-81700	SHIM	1	1	1					
2	1	172175-81710	SHIM	1	1	1					
3	1	172455-82380-Y	ARM, BUCKET	1	1	1					
4	1	172455-82391-Y	ARM, BUCKET	1	1	1					
5	1	172499-82400-Y	LINK, BUCKET	1	1	1					
6	2	172448-54120	SEAL, DUST	2	2	2					
7	2	172168-54760	SEAL, DUST	4	4	4					
8	2	172455-82360	BUSH	2	2	2					
10	2	172187-83040	BUSH	2	2	2					
11	1	172165-82520	SHIM	1	1	1					
12	1	172165-82530	SHIM	1	1	1					
13	1	172455-83350	PIN ASSY	1	1	1					
14	1	172455-83360	PIN ASSY	1	1	1					
15	1	24761-020000	NIPPLE, GREASE PT1/8	3	3	3					
16	1	24761-020000	NIPPLE, GREASE PT1/8	2	2	2					
17	1	26116-161202	BOLT, M16X120 PLATED	2	2	2					
18	1	26716-160002	NUT, M16	4	4	4					

Fig.160. REMOTE CONTROLLER KIT(OPTIONAL)

(A)=SV100-2B(US)  
 (B)=SV100-2B(AS)  
 (C)=SV100-2B(NZ)

(D)=  
 (E)=  
 (F)=



No.	Lev.	Parts No.	Description	Q'ty						I	R
				(A)	(B)	(C)	(D)	(E)	(F)		
1	1	172B11-08320	CONTROLLER KIT,RM			1					1

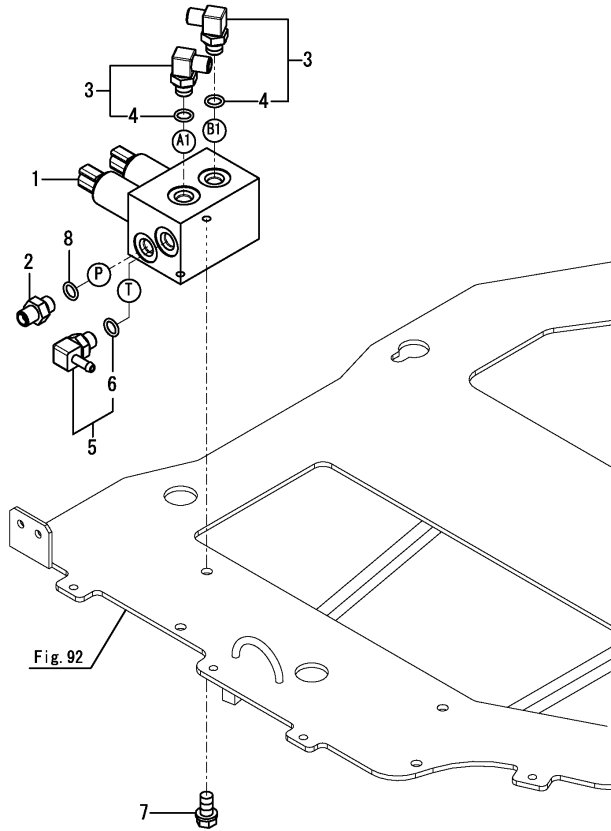
Remarks

(1)Before installing, always set the unique information at an authorized dealer.  
 Carrier registration is required when replacing this part.  
 For more information, contact the service department of the dealer you purchased from.  
 Registration is required when replacing this part.  
 For more information, contact the service department of the dealer you purchased from.

Fig.170. P.T.O. 2 KIT(ARM END)(OPTIONAL)(3/7)

(A)=SV100-2B(US)  
 (B)=SV100-2B(AS)  
 (C)=SV100-2B(NZ)

(D)=  
 (E)=  
 (F)=



No.	Lev.	Parts No.	Description	Q'ty						I	R
				(A)	(B)	(C)	(D)	(E)	(F)		
1	2	172B11-74410	VALVE ASSY,PTO	1	1	1					
2	2	172123-76121	ADAPTER	1	1	1					
3	2	172141-76181	CONNECTOR ASSY, 02FF	2	2	2					
4	3	41851-000110	O-RING	2	2	2					
5	2	172186-76430	NIPPLE, ELBOW	1	1	1					
6	3	24315-000110	O-RING, 1BP11.0	1	1	1					
7	2	26013-080162	BOLT, M8X 16	2	2	2					
8	2	41851-000110	O-RING	1	1	1					

## Parts No. Index

Parts No.	Fig. No.	Ref. No.
172455-74640	193	16
172455-74650	107	17
	193	17
172455-74660	107	18
	193	18
172455-74670	107	19
	193	19
172455-74680	107	20
	193	20
172455-74720	107	23
	193	23
172455-74990	105	26
	110	20
	191	26
	196	20
172455-75290	122	19
172455-75300	122	20
172455-76200	129	20
172455-76220	120	21
	182	21
172455-77140	91	61
	123	12
	124	12
172455-77150	118	29
	123	13
	124	13
172455-82360	151	8
172455-82380-Y	151	3
172455-82391-Y	151	4
172455-82650-2	154	5
172455-82660-2	154	6
172455-82671	154	4
		14
172455-82681	154	10
		16
172455-82691	154	11
		18
172455-82701	154	12
		19
172455-82710	154	7
172455-82720	154	8
172455-82750	154	13
172455-82760	154	9
		15
172455-82770	154	17
172455-83300	150	15
	178	9
172455-83340	152	2
	159	7
172455-83350	151	13

Parts No.	Fig. No.	Ref. No.
172455-83360	151	14
172456-13470	24	16
	25	16
172456-53700	36	43
	52	4
172458-03240	4	4
172458-14203	14	13
172458-17700	32	2
172458-18850	66	9
172458-50480-2	50	2
172458-61500	11	12
172458-61510	11	13
172458-62430	30	10
	32	27
	65	1
	86	6 -1
172458-63730	77	1
	82	2
	85	2
172458-63950	80	2
	81	2
	85	3
172458-63960	80	3
	85	4
172458-64140	32	22
172458-65050	72	2
172458-65060	72	3
172460-16700	15	22
172460-73320	38	2
	51	2
	69	8
		9
	99	81
172462-03320	2	10
172463-03290	2	8
172463-69150	81	4
	82	6
172463-69240	82	9
172463-69270	76	22
	175	22
172463-74530	120	5
		14
	164	4
	171	4
	182	5
		14
172463-74540	120	6
		15
	164	5
	171	5

Parts No.	Fig. No.	Ref. No.
172463-74540	182	6
		15
172463-74551	120	7
		16
	164	6
	171	6
	182	7
		16
172463-74561	120	8
		17
	164	7
	171	7
	182	8
		17
172463-74570	120	9
		18
	164	8
	171	8
	182	9
		18
172467-76120	137	7
172469-03261	157	9
172469-03320	157	15
172469-03360	157	17
172469-03480	157	29
172469-03540	157	36
172472-03141	1	4
	61	3 A
	201	4
172472-03230	4	3
172472-03241	4	5
	80	15 E
172472-03261	4	6
	150	8 A
172472-03290	23	2
172472-03300	23	3
172472-03330	4	7
	150	8 B
172478-17201	26	2
	27	1
172478-74170	106	4
	192	4
172478-74180	105	10
	106	5
	106	5
	107	6
	108	15
	109	3
		18
	110	4
		26

Parts No.	Fig. No.	Ref. No.
172478-74180	111	6
		21
	112	3
		19
	191	10
	192	5
	193	6
	194	15
	195	3
		18
	196	4
		26
	197	4
		21
	198	3
		22
172478-74360	105	4
	112	28
	191	4
	198	14
172478-74370	112	29
	198	15
172479-73590	99	22
172479-73650	99	29
172479-73750	99	49
172479-73760	99	50
172479-73930	99	41
172487-68450	12	10
172488-74200	107	7
	193	7
172488-74210	107	10
	193	10
172488-74220	107	11
	193	11
172491-76140	129	6
172491-76330	115	32
	119	24
172499-03280	3	2
	202	2
172499-13750	12	15
172499-13760	12	16
172499-29100-1	38	1
172499-37101-1	39	2
172499-37111	39	3
172499-37131	39	5
172499-37142	39	6
172499-37152	39	7
172499-37161	39	8
172499-37172	39	9
172499-37180	39	10

CLICK HERE TO **DOWNLOAD** THE COMPLETE MANUAL

- Thank you very much for reading the preview of the manual.
- You can download the complete manual from: [www.heydownloads.com](http://www.heydownloads.com) by clicking the link below



- Please note: If there is no response to CLICKING the link, please download this PDF first and then click on it.

CLICK HERE TO **DOWNLOAD** THE COMPLETE MANUAL