



PARTS CATALOG

Published

2011/4 (Apr.)

0CR10-G57702

CLICK HERE TO **DOWNLOAD** THE COMPLETE MANUAL

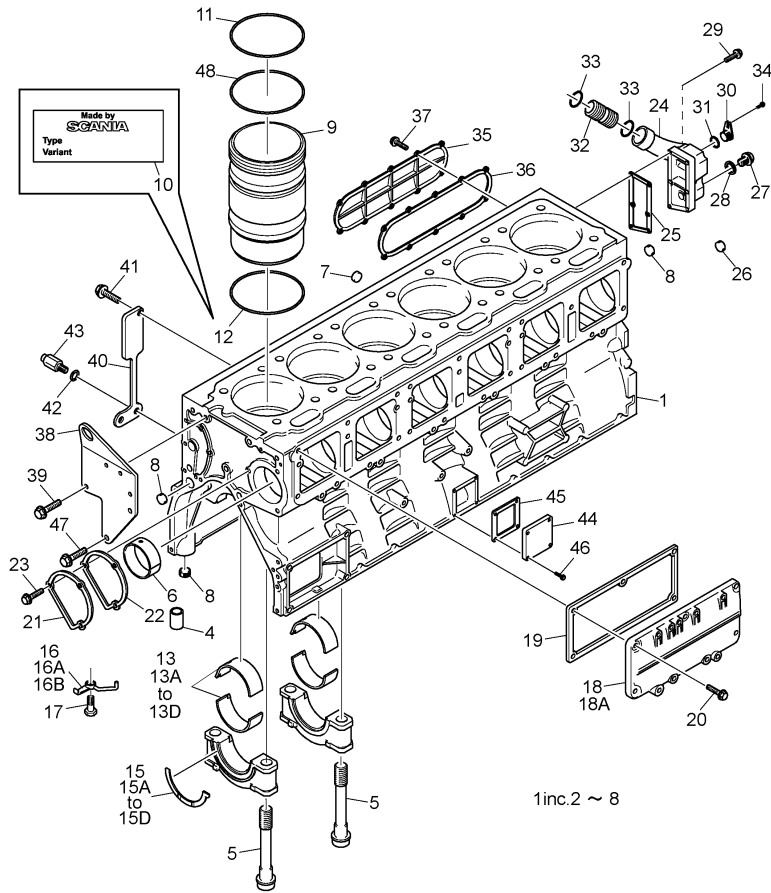
- Thank you very much for reading the preview of the manual.
- You can download the complete manual from: www.heydownloads.com by clicking the link below



- Please note: If there is no response to CLICKING the link, please download this PDF first and then click on it.

CLICK HERE TO **DOWNLOAD** THE COMPLETE MANUAL

Fig.4. CYLINDER BLOCK(-E6517583)



(A)=6SY-STP (D)=6SY650
 (B)=6SY655 (E)=6SY720
 (C)=6SY-STP2 (F)=6SY750

REF.	LEV.	PARTS NO.	DESCRIPTION	QTY						I	R
				(A)	(B)	(C)	(D)	(E)	(F)		
15D	1	165000-33570	BEARING,(THRUST 1.02	2	2	2	2	2	2		2
16	1	165000-35520	NOZZLE	6	6	6					
I 16A	1	165001-26550	NOZZLE		6	6					N
		(B=E6516123) (C=E6516123)									
I 16B	1	165001-36090	NOZZLE				6	6	6		N
17	1	165000-26860	SCREW 10,(BANJO	6	6	6					
I 17-1	1	165001-26560	SCREW 10,(BANJO		6	6	6	6	6		N
		(B=E6516123) (C=E6516123)									
18	1	165000-34300	COVER,(SIDE OUTER	2	2	2	2	2	2		
I 18A	1	165000-34310	COVER,(SIDE CENTRAL	1	1	1					N
		(B=E6516123) (C=E6516123)									
I 18A-1	1	165001-30870	COVER, SIDE		1	1	1	1	1		N
		(B=E6515259) (C=E6515259)									
I 19	1	165000-34780	GASKET	2	2	2	2	2	2		K
20	1	165000-36990	SCREW,(FLANGE	21	21	21	21	21	21		
21	1	165000-34200	COVER	1	1	1	1	1	1		
22	1	165000-34730	GASKET	1	1	1	1	1	1		
23	1	165000-27300	SCREW,(M8X20	3	3	3	3	3	3		
24	1	165000-35950	FLANGE PIPE	1	1	1	1	1	1		
25	1	165000-34710	GASKET	1	1	1	1	1	1		
26	1	165000-36210	PLUG,(CORE	1	1	1	1	1	1		
27	1	165000-30940	PLUG, M22X1.5X9	1	1	1					
28	1	165000-27920	RING, SEALING	1	1	1	1	1	1		
29	1	165000-27300	SCREW, M8X20	6	6	6					
29-1	1	165000-27410	SCREW, M8X50				6	6	6		
30	1	165000-30780	PLUG	1	1	1	1	1	1		
31	1	165000-24520	RING, 11.3X2.4	1	1	1	1	1	1		
32	1	165000-35710	PIPE	1	1	1	1	1	1		
33	1	165000-35610	O-RING, 49.2X5.7	2	2	2	2	2	2		
34	1	165000-27230	SCREW, M6X16	1	1	1	1	1	1		
35	1	165000-25830	COVER	1	1	1					
I 35-1	1	165000-53150	COVER	1	1	1	1	1	1		N
		(A=E6515259) (B=E6515259) (C=E6515259)									
36	1	165000-25460	GASKET	1	1	1	1	1	1		
37	1	165000-27400	SCREW, M8X40	10	10	10	10	10	10		
38	1	165000-34430	EYE, LIFTING	1	1	1	1	1	1		
39	1	165000-37010	SCREW, FLANGE	3	3	3					
I 39-1	1	165001-30880	SCREW, FLANGE	3	3	3	3	3	3		N
		(A=E6515259) (B=E6515259) (C=E6515259)									
40	1	165000-34550	FLANGE	1	1	1	1	1	1		
41	1	165000-27290	SCREW, M8X20	2	2	2					
I 41-1	1	165000-27300	SCREW, M8X20	2	2	2	2	2	2		N
		(A=E6515259) (B=E6515259) (C=E6515259)									
42	1	165000-35600	O-RING, 19.2X3	1	1		1	1	1		
43	1	165000-37390	TAP, DRAIN	1	1	1	1	1	1		
I 44	1	165000-34230	COVER	1	1	1	1	1	1		N
45	1	165000-25320	GASKET	1	1	1	1	1	1		
46	1	165000-27300	SCREW, M8X20	4	4	4	4	4	4		
I 47	1	165000-27080	HEXAGON SCREW,M12X35		1	1	1	1	1		N
		(B=E6515260) (C=E6515260)									
I 48	1	165001-36100	RING				6	6	6		N

Remarks
 (1)UNDER SIZE METAL
 (2)OVER SIZE METAL

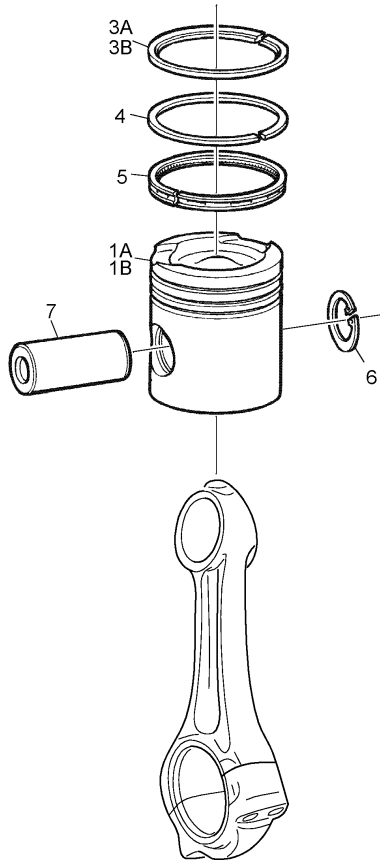
Fig.12. PISTON

OCR10-G57702 12. PISTON

(A)=6SY-STP
(B)=6SY655
(C)=6SY-STP2

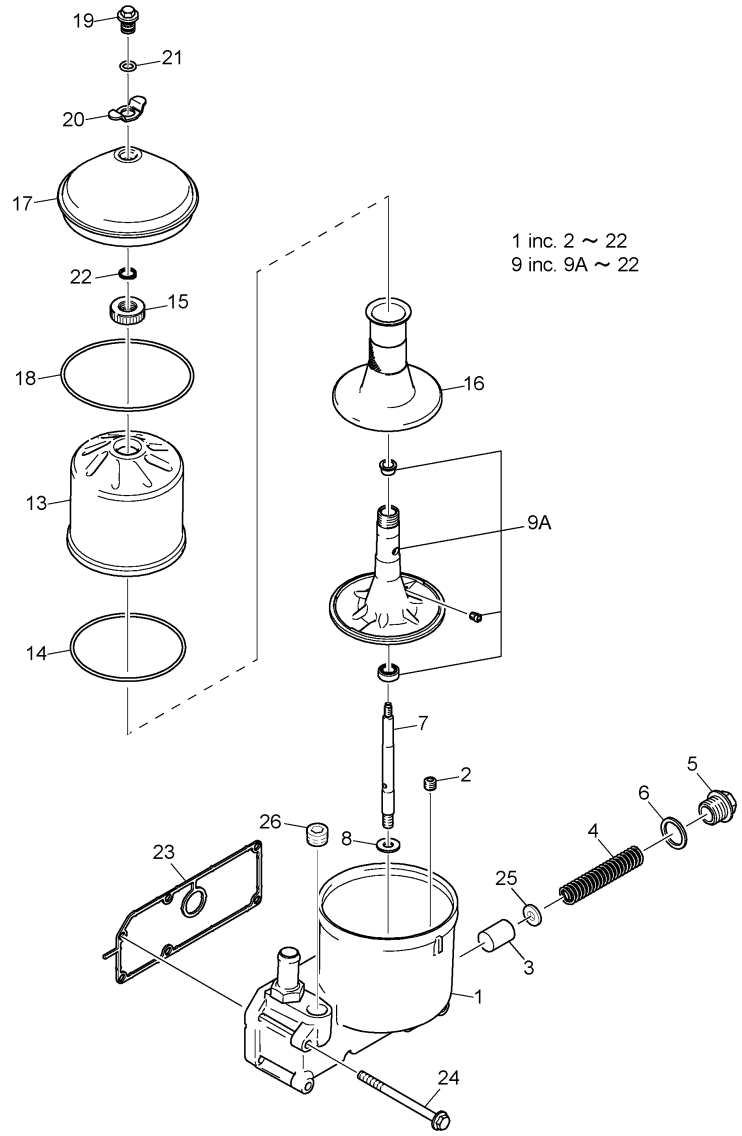
(D)=6SY650
(E)=6SY720
(F)=6SY750

1A inc. 3A,4~7
1B inc. 3B,4~7



REF.	LEV.	PARTS NO.	DESCRIPTION	Q'TY						I	R
				(A)	(B)	(C)	(D)	(E)	(F)		
1A	1	165000-49230	PISTON ASSY	6	6	6					
I 1A-1	1	165000-91070 (B=E6513530) (C=E6513873)	PISTON ASSY		6	6					N
1B	2	165001-36110	PISTON ASSY				6	6	6		
3A	3	165000-32610	RING, COMPRESSION	1	1	1					
I 3A-1	3	165001-30890 (A=E*****) (B=E6513530) (C=E6513873)	RING, COMPRESSION	1	1	1					N
3B	3	165001-36120	RING, COMPRESSION				1	1	1		
4	3	165000-32600	RING, COMPRESSION	1	1	1	1	1	1		
5	3	165000-25080	RING, OIL SCRAPER	1	1	1					
I 5-1	3	165001-26270 (A=E*****) (B=E6513530) (C=E6513873)	RING, OIL SCRAPER	1	1	1	1	1	1	1	N
6	2	165000-32710	RING, RETAINING	2	2	2	2	2	2		
7	2	165000-30470	PIN, GUDGEON	1	1	1					
I 7-1	2	165000-91080	PIN, PISTON	1	1	1					S
I 7-2	2	165001-26720 (B=E6513530) (C=E6513873)	PIN, GUDGEON		1	1	1	1	1	1	N

Fig.21. CENTRIFUGAL OIL CLEANER (RH)



OCR10-G57702 21. CENTRIFUGAL OIL CLEANER (RH)

(A)=6SY-STP
(B)=6SY655
(C)=6SY-STP2

(D)=6SY650
(E)=6SY720
(F)=6SY750

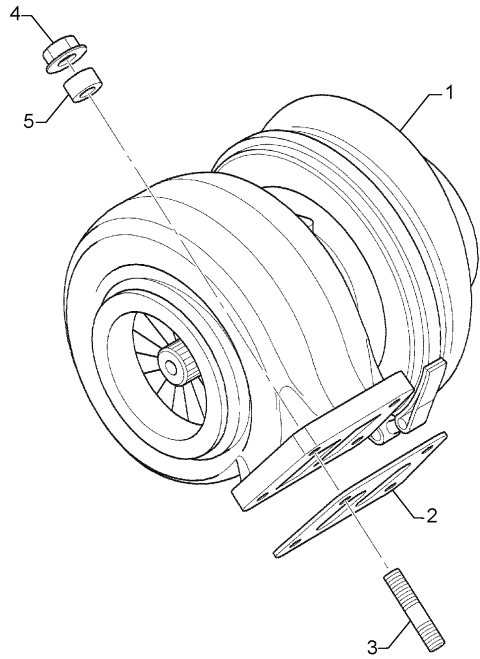
REF.	LEV.	PARTS NO.	DESCRIPTION	QTY						I	R
				(A)	(B)	(C)	(D)	(E)	(F)		
1	1	165000-34060	CLEANER ASSY, OIL	1	1	1					
1-1	1	165001-30910	CLEANER ASSY, OIL	1	1	1	1	1	1		
		(A=E*****) (B=E*****) (C=E*****) (D=E*****) (E=E*****) (F=E*****)									
1-2	1	165001-44330	CLEANER ASSY, OIL		1	1	1	1	1	1	
		(A=E6519976) (B=E6519976) (C=E6519976) (D=E6519976) (E=E6519976) (F=E6519976)									
2	2	165000-36240	PLUG, M12	1	1	1	1	1	1	1	
3	2	165000-30380	PISTON	1	1	1	1	1	1	1	
4	2	165000-37290	SPRING	1	1	1					
4-1	2	165001-26290	SPRING	1	1	1	1	1	1	1	
		(A=E*****) (B=E*****) (C=E*****) (D=E*****) (E=E*****) (F=E*****)									
5	2	165000-30940	PLUG, M22	1	1	1	1	1	1	1	
6	2	165000-25610	GASKET	1	1	1					
6-1	2	165000-27920	RING, SEALING	1	1	1	1	1	1	1	
		(A=E*****) (B=E*****) (C=E*****) (D=E*****) (E=E*****) (F=E*****)									
7	2	165000-37160	SHAFT	1	1	1	1	1	1	1	
8	2	165000-32930	WASHER	1	1	1	1	1	1	1	
9	2	165000-36690	ROTOR COVER ASSY	1	1	1	1	1	1	1	
9A	3	165000-36680	ROTOR	1	1	1	1	1	1	1	
13	3	165000-34250	COVER	1	1	1	1	1	1	1	
14	3	165000-35660	O-RING	1	1	1					
14-1	3	165001-30920	O-RING	1	1	1	1	1	1	1	
		(A=E*****) (B=E*****) (C=E*****) (D=E*****) (E=E*****) (F=E*****)									
15	3	165000-35530	NUT	1	1	1	1	1	1	1	
16	3	165000-37310	STRAINER	1	1	1	1	1	1	1	
17	3	165000-25720	COVER	1	1	1	1	1	1	1	
18	3	165000-24400	O-RING	1	1	1					
18-1	3	165001-30930	O-RING	1	1	1	1	1	1	1	
		(A=E*****) (B=E*****) (C=E*****) (D=E*****) (E=E*****) (F=E*****)									
19	3	165000-32860	NUT, LOCK	1	1	1	1	1	1	1	
20	3	165000-32960	WASHER	1	1	1	1	1	1	1	
21	3	165000-24380	RING, SNAP	1	1	1	1	1	1	1	
22	3	165000-28090	RING	1	1	1	1	1	1	1	
23	1	165000-34820	GASKET	1	1	1	1	1	1	1	
23-1	1	165001-44340	GASKET		1	1	1	1	1	1	
		(A=E6519976) (B=E6519976) (C=E6519976) (D=E6519976) (E=E6519976) (F=E6519976)									
24	1	165000-27260	SCREW, M8X100	4	4	4	4	4	4	4	
I	25	165000-34910	GASKET KIT	1	1	1					Z
I	26	165000-36240	PLUG, M12		1	1	1	1	1	1	W
		(A=E6519976) (B=E6519976) (C=E6519976) (D=E6519976) (E=E6519976) (F=E6519976)									

Fig.31. AIR-COOLD TURBINE

(A)=6SY-STP
(B)=6SY655
(C)=6SY-STP2

(D)=6SY650
(E)=6SY720
(F)=6SY750

REF.	LEV.	PARTS NO.	DESCRIPTION	Q'TY						I	R
				(A)	(B)	(C)	(D)	(E)	(F)		
1	1	165000-49660	TURBINE	1							
2	1	165000-34650	GASKET	1							
3	1	165000-37340	STUD	4							
4	1	165000-35580	NUT, LOCK	4							
5	1	165000-38010	WASHER, SPACING	4							



112650

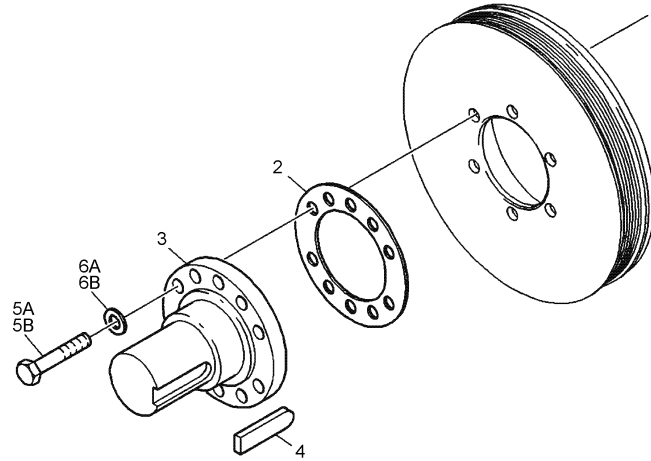
Fig.41. POWER TAKE-OFF

OCR10-G57702 41. POWER TAKE-OFF

(A)=6SY-STP
(B)=6SY655
(C)=6SY-STP2

(D)=6SY650
(E)=6SY720
(F)=6SY750

REF.	LEV.	PARTS NO.	DESCRIPTION	Q'TY						I	R
				(A)	(B)	(C)	(D)	(E)	(F)		
2	1	165000-49600	SPACER	1	1	1	1	1	1		
3	1	165001-26580	JOURNAL, SHAFT	1	1	1	1	1	1		
4	1	165000-25940	KEY	1	1	1	1	1	1		
5A	1	165000-49440	SCREW, HEXAGON	6	6	6	6	6	6		1
5B	1	165000-49440	SCREW, HEXAGON	10	10	10	10	10	10		2
6A	1	165000-33090	WASHER, 13X24	6	6	6	6	6	6		1
6B	1	165000-33090	WASHER, 13X24	10	10	10	10	10	10		2



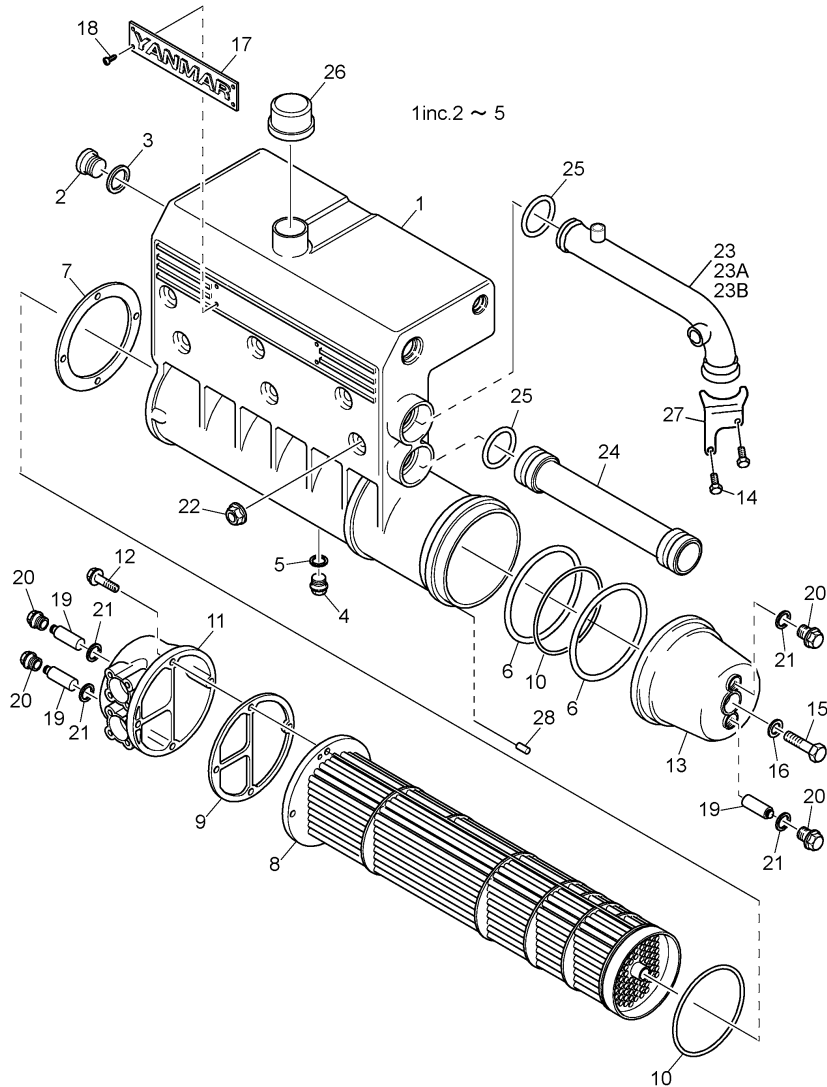
137334

Remarks
(1)635Nm
(2)1200Nm

Fig.51. HEAT EXCHANGER(E6516088-)

(A)=6SY-STP
(B)=6SY655
(C)=6SY-STP2

(D)=6SY650
(E)=6SY720
(F)=6SY750



REF.	LEV.	PARTS NO.	DESCRIPTION	QTY						I	R
				(A)	(B)	(C)	(D)	(E)	(F)		
1	1	165001-26590	EXCHANGER, HEAT	1	1	1	1	1	1		
2	2	165000-36270	PLUG, M44X1.5	3	3	3	3	3	3		
3	2	165000-34660	GASKET	3	3	3	3	3	3		
4	2	165000-36220	PLUG, M10X1X6	2	2	2	2	2	2		
5	2	165000-25560	GASKET, 10.2X13.4	2	2	2	2	2	2		
6	1	165000-35620	O-RING, 154.3X5.7	2	2	2	2	2	2		
7	1	165000-34680	GASKET	1	1	1	1	1	1		
8	1	165000-34150	CORE, COOLER	1	1	1	1	1	1		
9	1	165001-44370	GASKET	1	1	1	1	1	1		
10	1	165000-35650	O-RING	1	1	1	1	1	1		
11	1	165000-34190	COVER	1	1	1	1	1	1		
12	1	165000-26990	SCREW, M10X40	5	5	5	5	5	5		
13	1	165000-34180	COVER	1	1	1	1	1	1		
14	1	165000-49500	SCREW, M8X22	2	2	2	2	2	2		
15	1	165000-36820	SCREW	1	1	1	1	1	1		
16	1	165000-24700	O-RING, 9X3	1	1	1	1	1	1		
17	1	165000-36110	PLATE	1	1	1	1	1	1		
18	1	165000-36720	SCREW	4	4	4	4	4	4		
19	1	165000-33440	ANODE, SACRIFICIAL	3	3	3	3	3	3		
20	1	165000-31370	PLUG	4	4	4	4	4	4		
21	1	165000-27920	RING, SEALING	4	4	4	4	4	4		
22	1	165000-28870	NUT, FLANGE M10	6	6	6	6	6	6		
23	1	165001-26600	PIPE, WATER	1	1	1	1	1	1		
23A	1	165000-30950	PLUG, M26X1.5X9	1	1	1	1	1	1		
23B	1	165000-37090	SEAL	1	1	1	1	1	1		
24	1	165000-35720	PIPE	1	1	1	1	1	1		
25	1	165000-35610	O-RING	4	4	4	4	4	4		
26	1	165000-26090	CAP, PRESSURE	1	1	1	1	1	1		
27	1	165001-26610	BRACKET	1	1	1	1	1	1		
28	1	165001-39270	PIN	1	1	1	1	1	1		

CLICK HERE TO **DOWNLOAD** THE COMPLETE MANUAL

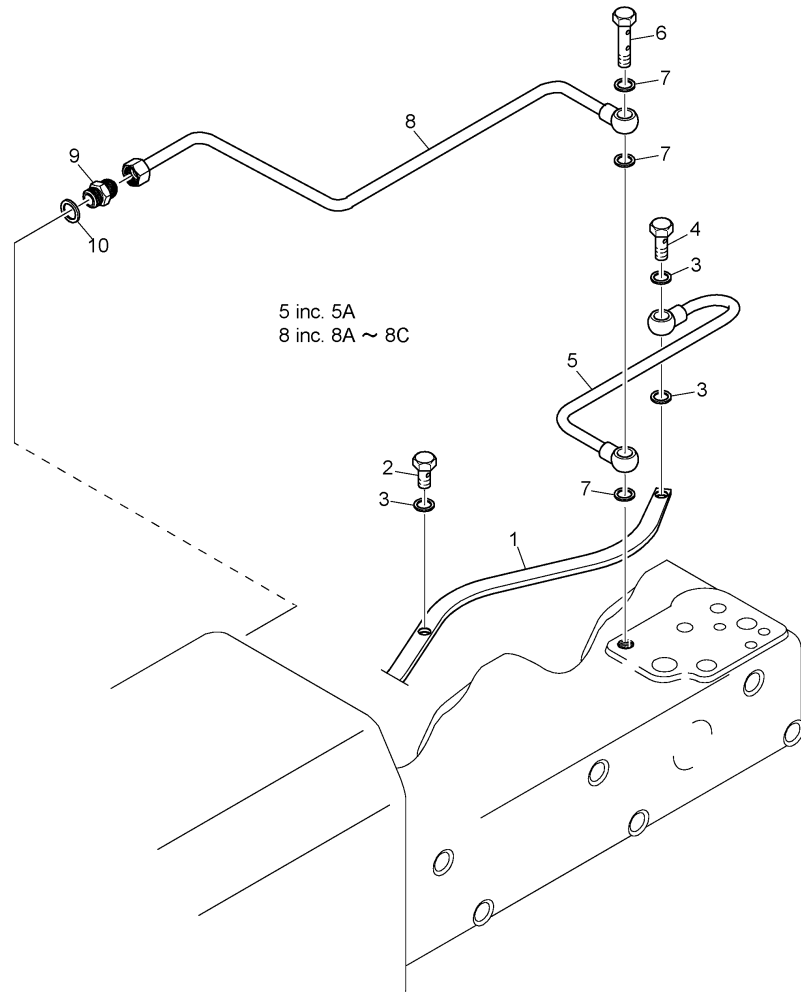
- Thank you very much for reading the preview of the manual.
- You can download the complete manual from: www.heydownloads.com by clicking the link below



- Please note: If there is no response to CLICKING the link, please download this PDF first and then click on it.

CLICK HERE TO **DOWNLOAD** THE COMPLETE MANUAL

Fig.61. BLEED PIPE



(A)=6SY-STP
(B)=6SY655
(C)=6SY-STP2

(D)=6SY650
(E)=6SY720
(F)=6SY750

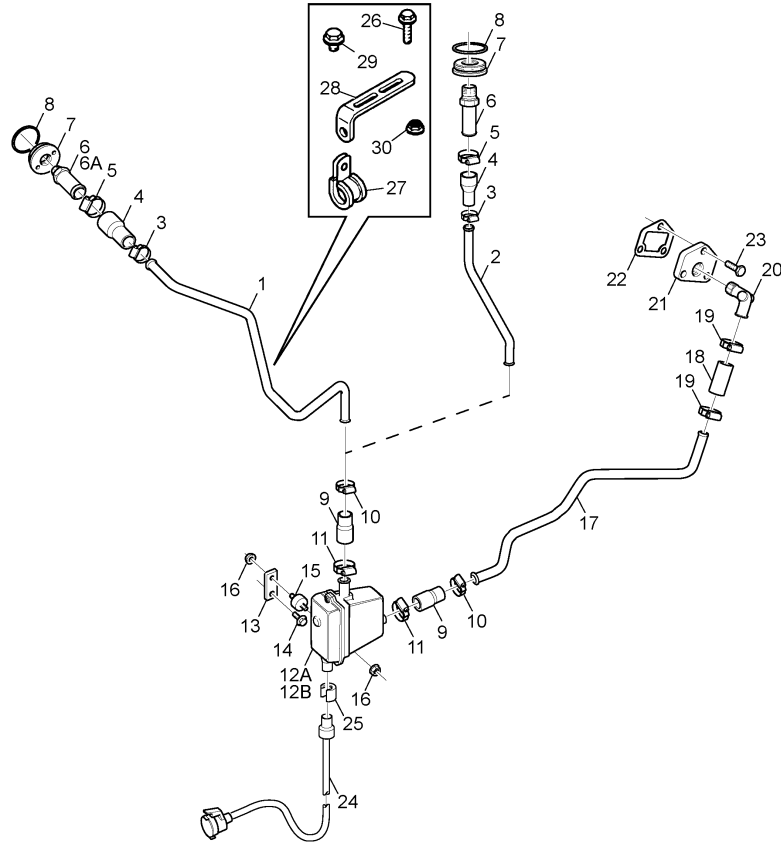
REF.	LEV.	PARTS NO.	DESCRIPTION	Q'TY						I	R
				(A)	(B)	(C)	(D)	(E)	(F)		
1	1	165000-37490	TUBE	1	1	1	1	1	1		
2	1	165000-26840	SCREW, BANJO	5	5	5	5	5	5		
3	1	165000-37100	SEAL	13	13	13	13	13	13		
4	1	165000-36880	SCREW, BANJO	1	1	1	1	1	1		
5	1	165000-37530	TUBE	1	1	1	1	1	1		
5A	2	165000-37650	UNION, BANJO	1	1	1	1	1	1		
		(A=E*****)	(B=E*****)	(C=E*****)							
6	1	165000-26810	SCREW, BANJO	1	1	1	1	1	1		
7	1	165000-27810	SEAL	3	3	3					
I	7-1	1	165000-93540	SEAL WASHER	3	3	3	3	3	3	N
		(A=E*****)	(B=E*****)	(C=E*****)							
8	1	165000-35810	PIPE	1	1	1	1	1	1		
8A	2	165000-37650	UNION, BANJO	1	1	1	1	1	1		
8B	2	165000-32510	NUT, UNION M6	1	1	1	1	1	1		
8C	2	165000-26150	FERRULE, 6	1	1	1	1	1	1		
9	1	165000-37700	UNION, STRAIGHT	1	1	1	1	1	1		
10	1	165000-27770	SEAL	1	1	1	1	1	1		

132711

Fig.71. AUX HEATER, 500/1500W (OP)(-E6519498)

(A)=6SY-STP
(B)=6SY655
(C)=6SY-STP2

(D)=6SY650
(E)=6SY720
(F)=6SY750

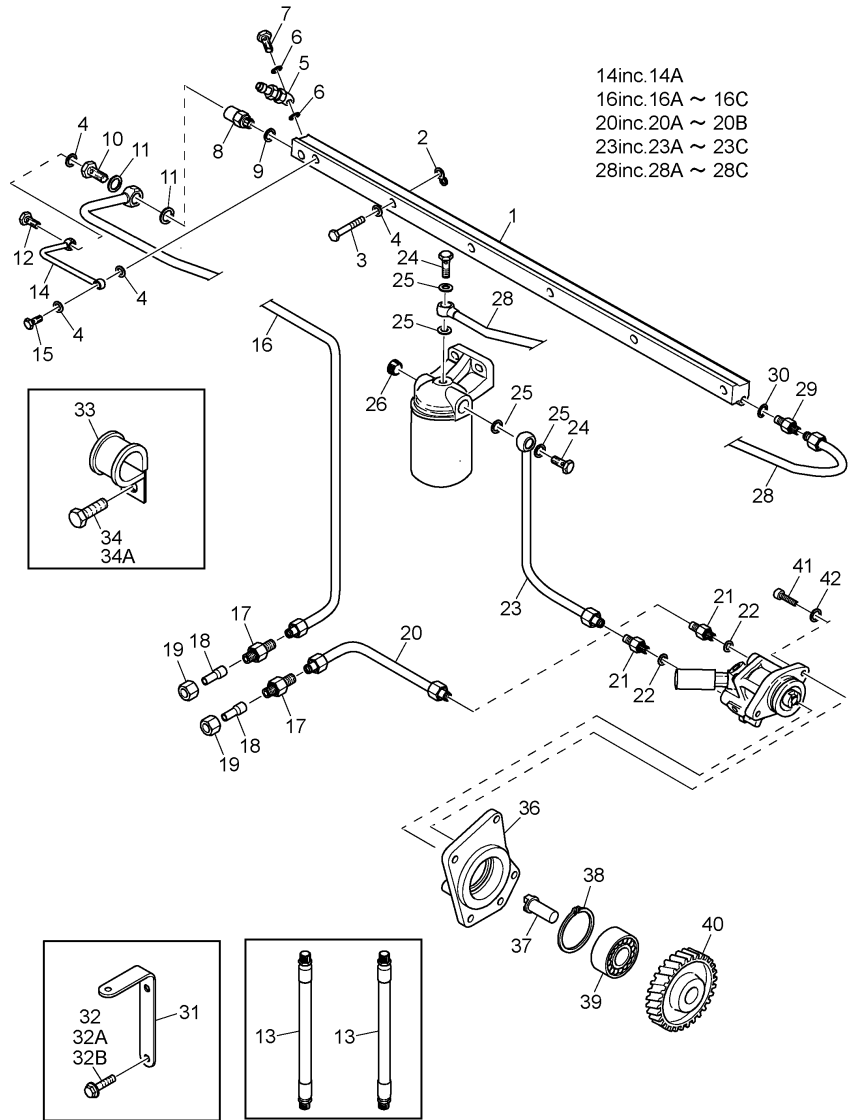


REF.	LEV.	PARTS NO.	DESCRIPTION	QTY						I	R
				(A)	(B)	(C)	(D)	(E)	(F)		
1	1	165000-37540	TUBE KEEL COOLING	1	1	1					
2	1	165000-37550	TUBE HEAT EXCHNGER	1	1	1					
3	1	165000-34090	CLAMP, HOSE	1	1	1					
4	1	165000-35130	HOSE	1	1	1					
5	1	165000-31830	CLAMP, HOSE	1	1	1					
6	1	165000-37670	UNION, HOSE	1	1	1					
6A	1	165000-37090	SEAL	1	1	1					
7	1	165000-36260	PLUG, M44	1	1	1					
8	1	165000-34660	GASKET	1	1	1					
9	1	165000-35130	HOSE	2	2	2					
10	1	165000-34090	CLAMP, HOSE	2	2	2					
11	1	165000-31830	CLAMP, HOSE	2	2	2					
12A	1	165000-30410	HEATER, 500W	1	1	1					
12B	1	165000-30400	HEATER, 1500W	1	1	1					
13	1	165000-33680	BRACKET	1	1	1					
14	1	165000-36760	SCREW	1	1	1					
15	1	165000-24820	INSULATOR, VIBRATION	2	2	2					
16	1	165000-29040	NUT, FLANGE M8	2	2	2					
17	1	165000-37510	TUBE	1	1	1					
18	1	165000-35120	HOSE	1	1	1					1
19	1	165000-34090	CLAMP, HOSE	2	2	2					
20	1	165000-37660	UNION, ELBOW	1	1	1					
21	1	165000-34170	COVER	1	1	1					
22	1	165000-25190	GASKET	1	1	1					
23	1	165000-37050	SCREW, M6X20	3	3	3					
I 23-1	1	165001-27150	SCREW, FLANGE	3	3	3					N
		(A=E*****)	(B=E*****)	(C=E*****)							
24	1	165000-26400	CABLE, INPUT L=2000	1	1	1					
25	1	165000-48890	CLIP	1	1	1					
I 26	1	165000-27240	SCREW, M6X16	1	1	1					W
I 27	1	165000-26200	CLAMP, 16	1	1	1					W
I 28	1	165001-45830	BRACKET	1	1	1					W
I 29	1	165000-27280	SCREW, M8X14	1	1	1					W
I 30	1	165000-29010	NUT, FLANGE M6	1	1	1					W

301469

Remarks
(1)L=54mm

Fig.79. FUEL MANIFOLD,LH(E6510529-6511717)



(A)=6SY-STP
 (B)=6SY655
 (C)=6SY-STP2

(D)=6SY650
 (E)=6SY720
 (F)=6SY750

REF.	LEV.	PARTS NO.	DESCRIPTION	Q'TY						I	R
				(A)	(B)	(C)	(D)	(E)	(F)		
29	1	165000-37770	UNION, STRAIGHT	1	1	1					
30	1	165000-37080	SEAL	1	1	1					
31	1	165000-33740	BRACKET	1	1	1					
32	1	165000-36760	SCREW	2	2	2					
32A	1	165000-26290	CLAMP, 12MM	2	2	2					
32B	1	165000-27240	SCREW, M6X16	1	1	1					
33	1	165000-26190	CLAMP, 12	2	2	2					
34	1	165000-27360	SCREW, M8X30	2	2	2					
34A	1	165000-36170	PLATE, SEPARATOR	2	2	2					
36	1	165000-34540	FLANGE	1	1	1					
37	1	165000-27700	SHAFT	1	1	1					
38	1	165000-32720	RING, RETAINING	1	1	1					
39	1	165000-31920	BEARING, BALL	1	1	1					
40	1	165000-34950	GEAR	1	1	1					
41	1	165000-27370	SCREW, M8X30	2	2	2					
42	1	165000-33150	WASHER, 8.4X16X1.6	2	2	2					

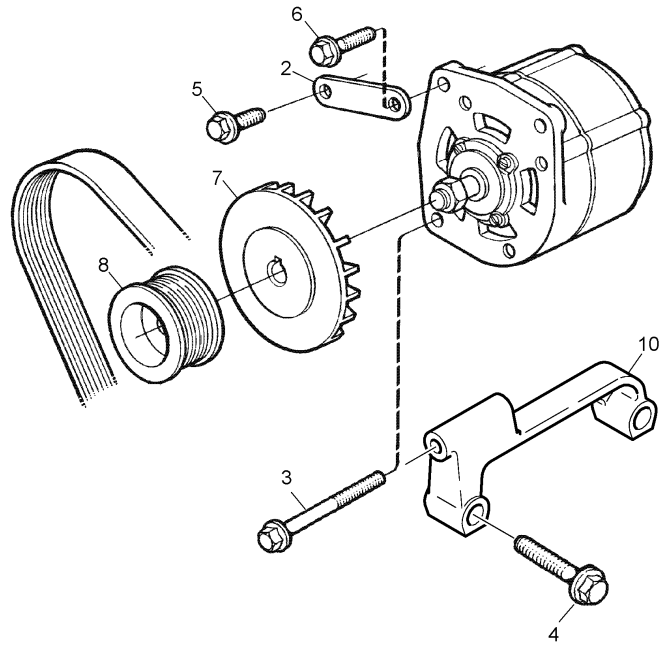
Fig.86. ALTERNATOR, MOUNTING

OCR10-G57702 86. ALTERNATOR, MOUNTING

(A)=6SY-STP
(B)=6SY655
(C)=6SY-STP2

(D)=6SY650
(E)=6SY720
(F)=6SY750

REF.	LEV.	PARTS NO.	DESCRIPTION	Q'TY						I	R
				(A)	(B)	(C)	(D)	(E)	(F)		
2	1	165000-33630	BRACKET	1	1	1	1	1	1		
3	1	165000-36970	SCREW, M10X115	1	1	1	1	1	1		
4	1	165000-27160	SCREW, M16X90	2	2	2	2	2	2		
5	1	165000-26950	SCREW, M10X35	1	1	1	1	1	1		
6	1	165000-26950	SCREW, M10X35	1	1	1	1	1	1		
7	1	165000-34440	FAN	1	1	1	1	1	1		
8	1	165000-36280	PULLEY	1	1	1	1	1	1		
10	1	165000-33710	BRACKET	1	1	1	1	1	1		



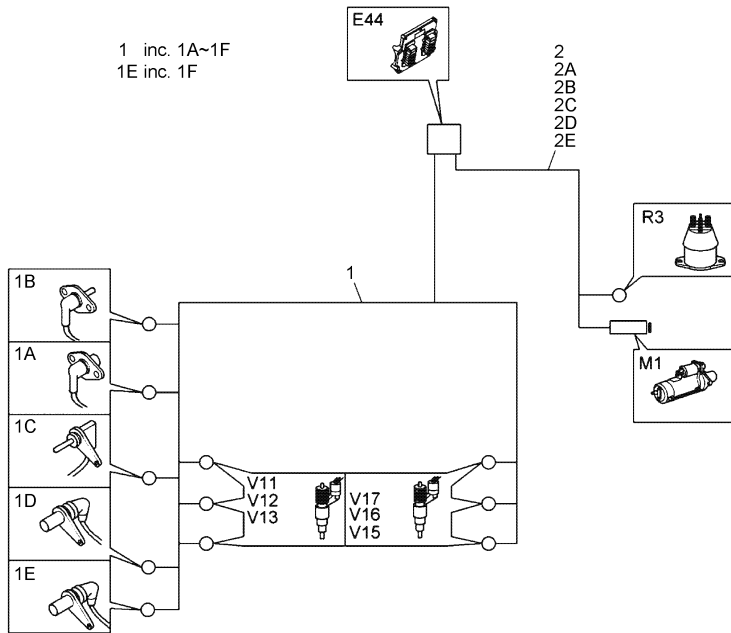
120923

Fig.96. CABLE HARNESS,ENGINE(-E6513142)

(A)=6SY-STP
(B)=6SY655
(C)=6SY-STP2

(D)=6SY650
(E)=6SY720
(F)=6SY750

REF.	LEV.	PARTS NO.	DESCRIPTION	Q'TY						I	R
				(A)	(B)	(C)	(D)	(E)	(F)		
1	1	165001-26480	HARNESS, CABLE ASSY	1							
I	1-1	165001-31110	HARNESS, CABLE ASSY	1							N
				(A=E*****)							
1A	2	165001-31120	SENSOR, OIL PRESSURE	1							
1B	2	165001-31130	SENSOR, BOOST PRESSU	1							
1C	2	165001-31510	SENSOR, TEMPERATURE	1							
1D	2	165001-31150	SENSOR, SPEED	1							1
1E	2	165001-31160	SENSOR, SPEED	1							2
1F	3	165000-37120	SENSOR, SPEED	1							
2	1	165000-35030	HARNESS, CABLE	1							
2A	1	165000-48820	BRACKET	1							
2B	1	165000-36760	SCREW, M10X20	1							
2C	1	165000-51220	WASHER, 10.5X22	1							
2D	1	165000-48860	CLAMP, 20	1							
2E	1	165000-27240	SCREW, M6X16	1							



132257

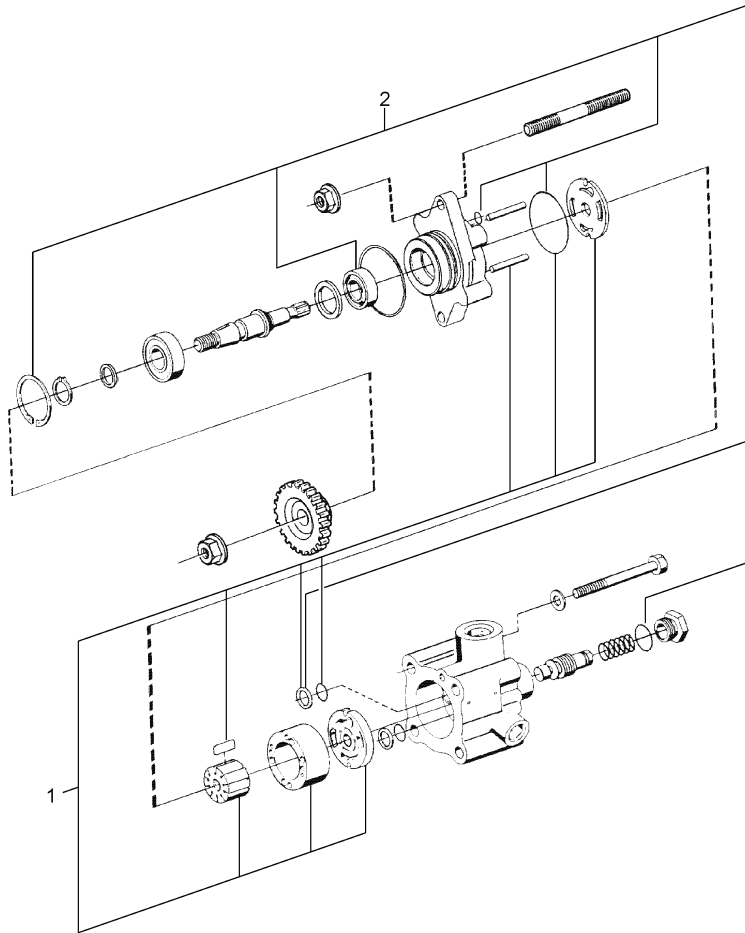
Remarks
(1)ENGINE SPEED 1
(2)ENGINE SPEED 2

Fig.105. REPAIR KIT, HYDRAULIC PUMP

(A)=6SY-STP
(B)=6SY655
(C)=6SY-STP2

(D)=6SY650
(E)=6SY720
(F)=6SY750

REF.	LEV.	PARTS NO.	DESCRIPTION	Q'TY						I	R
				(A)	(B)	(C)	(D)	(E)	(F)		
1	1	165000-24870	INSERT	1	1	1					1
2	2	165000-27880	SEAL KIT	1	1	1					2



01850

PARTS No. INDEX

PARTS No.	Fig.	Ref.No.	
165000-27400	26	12	
	56	3 A	
	59	10	
	3	4	
165000-27410	4	29 -1	
	5	29 A	
	16	7	
	33	8	
	34	7	
	35	8	
	43	2	
	45	9	
	165000-27420	58	17
		66	14
			14 -1
	67	14	
	69	18	
165000-27430	7	6	
	15	18	
	20	42	
	94	2 A	
		2 B	
165000-27440	11	4	
	17	4	
165000-27450	58	11	
165000-27460	18	4	
	19	4	
	94	2 C	
	165000-27470	36	3
37		6	
165000-27500	1	27	
		30	
165000-27510	2	5	
	3	6	
	73	7	
165000-27520	73	7	
165000-27550	88	7	
165000-27610	56	4	
165000-27620	65	9	
165000-27700	78	37	
	79	37	
	80	37	
	81	37	
	82	37	
	165000-27730	14	23
		5	41
	165000-27750	36	8
		37	10
	165000-27760	1	11
165000-27770	23	11	
	50	5 B	

PARTS No.	Fig.	Ref.No.	
165000-27770	61	10	
	62	1	
		1 -1	
	63	2	
	85	9 B	
165000-27780	10	16	
	15	5	
	16	5	
	19	17	
	29	25	
	78	9	
	79	9	
	80	9	
	81	9	
	82	9	
	165000-27790	22	4
80		25	
165000-27800	78	4	
	79	4	
	80	4	
	81	4	
	82	4	
	101	8	
	102	8	
	165000-27810	61	7
		62	5
		78	6
	79	6	
	80	6	
	81	6	
	82	6	
165000-27820	78	11	
		25	
	79	11	
		25	
	80	11	
	81	11	
		25	
	82	11	
		25	
165000-27830	100	7	
165000-27880	105	2	
165000-27890	8	22	
165000-27900	7	2	
165000-27920	4	28	
	5	28	
	15	20	
	19	20	
	20	6 -1	
		31	

PARTS No.	Fig.	Ref.No.
165000-27920	21	6 -1
	35	29
	50	21
	51	21
	65	20
165000-27940	8	7
165000-27960	89	22
165000-28000	8	11
	110	10
165000-28040	90	2
165000-28050	36	2
	37	5
165000-28090	20	22
	21	22
	14	24
165000-28100	14	24
165000-28130	88	5
165000-28150	18	11
	19	11
165000-28170	89	4
165000-28190	28	27
165000-28200	4	15
	5	15
165000-28230	1	2
165000-28240	100	6
165000-28260	14	8
	17	1 B
	59	8
165000-28290	14	25
165000-28310	28	16
	76	6 A
165000-28330	74	3
165000-28400	29	24 B
165000-28510	76	4
165000-28570	1	19
165000-28780	43	3
	45	10
	87	2
165000-28800	94	7 A
165000-28860	30	4
165000-28870	28	28
	29	19
	33	25
	34	29
	35	35
	43	15
	50	22
	51	22
	72	15
	83	30
	84	30

PARTS No.	Fig.	Ref.No.
165000-28870	85	10
	93	7
	110	11
165000-28880	1	28
		31 A
165000-28890	1	31
165000-28900	89	11
165000-28910	8	12
165000-28930	89	13
165000-28940	1	34
165000-28950	90	3
165000-28970	83	28
	84	28
	85	6
165000-29000	88	12
165000-29010	10	34
	22	14
	24	15
	25	15
	26	15
	27	15
	28	14
	65	18
	71	30
	72	29
	81	49
	82	49
	110	8
165000-29020	88	15
165000-29040	9	17
	71	16
165000-29050	89	18
165000-29060	33	17
	34	16
165000-29070	36	5
	37	7
165000-29100	78	5
	79	5
	80	5
	81	5
	82	5
165000-29120	89	5
165000-29220	28	15
	76	6
165000-29780	10	17
165000-29830	89	1
165000-29930	100	1 D
165000-29940	100	1
165000-29950	100	1 A
165000-29960	100	1 B

CLICK HERE TO **DOWNLOAD** THE COMPLETE MANUAL

- Thank you very much for reading the preview of the manual.
- You can download the complete manual from: www.heydownloads.com by clicking the link below



- Please note: If there is no response to CLICKING the link, please download this PDF first and then click on it.

CLICK HERE TO **DOWNLOAD** THE COMPLETE MANUAL