

# TOYOTA

## INDUSTRIAL EQUIPMENT PARTS CATALOG

MODEL	7 F D	
FRAME NO.	7 F D	
ENGINE NO.	1 5 Z	
LIFTING HEIGHT	_ , _ _ _	m m

**7FDU35,45,60,70,80**  
**7FDKU40**  
**7FDAU50**

**No.G839-3**

14/04 15Z

### DESCRIPTION

	3-Way Catalytic Muffler
	Catalytic Muffler
	Cyclone Air Cleaner Dual Element
	E/G Shut Down
	EZ Pedal
	Fully Oil Charged Lift Cylinder
	Upswept Exhaust Muffler

## TOYOTA Material Handling Company

A Division of TOYOTA INDUSTRIES CORPORATION

CLICK HERE TO **DOWNLOAD** THE COMPLETE MANUAL

- Thank you very much for reading the preview of the manual.
- You can download the complete manual from: [www.heydownloads.com](http://www.heydownloads.com) by clicking the link below



- Please note: If there is no response to CLICKING the link, please download this PDF first and then click on it.

CLICK HERE TO **DOWNLOAD** THE COMPLETE MANUAL



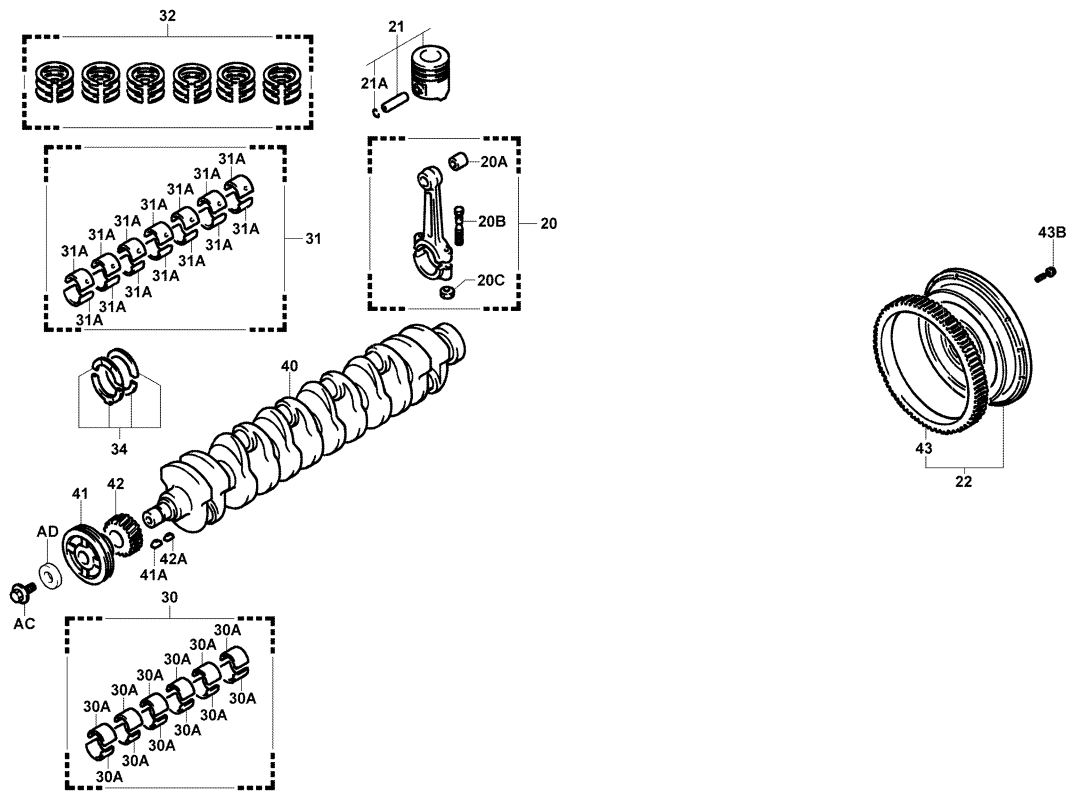
1301

CRANKSHAFT & PISTON  
VILEBREQUIN & PISTON

KURBELWELLE & KOLBEN  
CIG7 EΔAL Y PISTON

15Z

15Z [FLYWHEEL]



1301-165A

1301-165A

1301-203

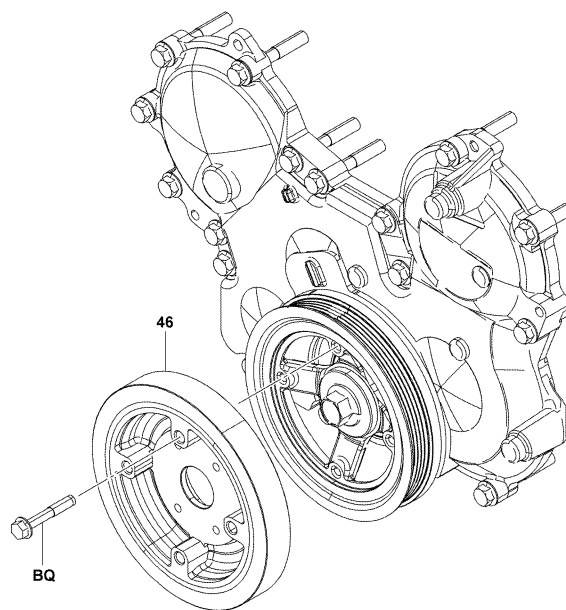
1301-203\_

1301

CRANKSHAFT & PISTON  
VILEBREQUIN & PISTON

KURBELWELLE & KOLBEN  
CIG7 EΔAL Y PISTON

15Z [DAMPER]



1301-176

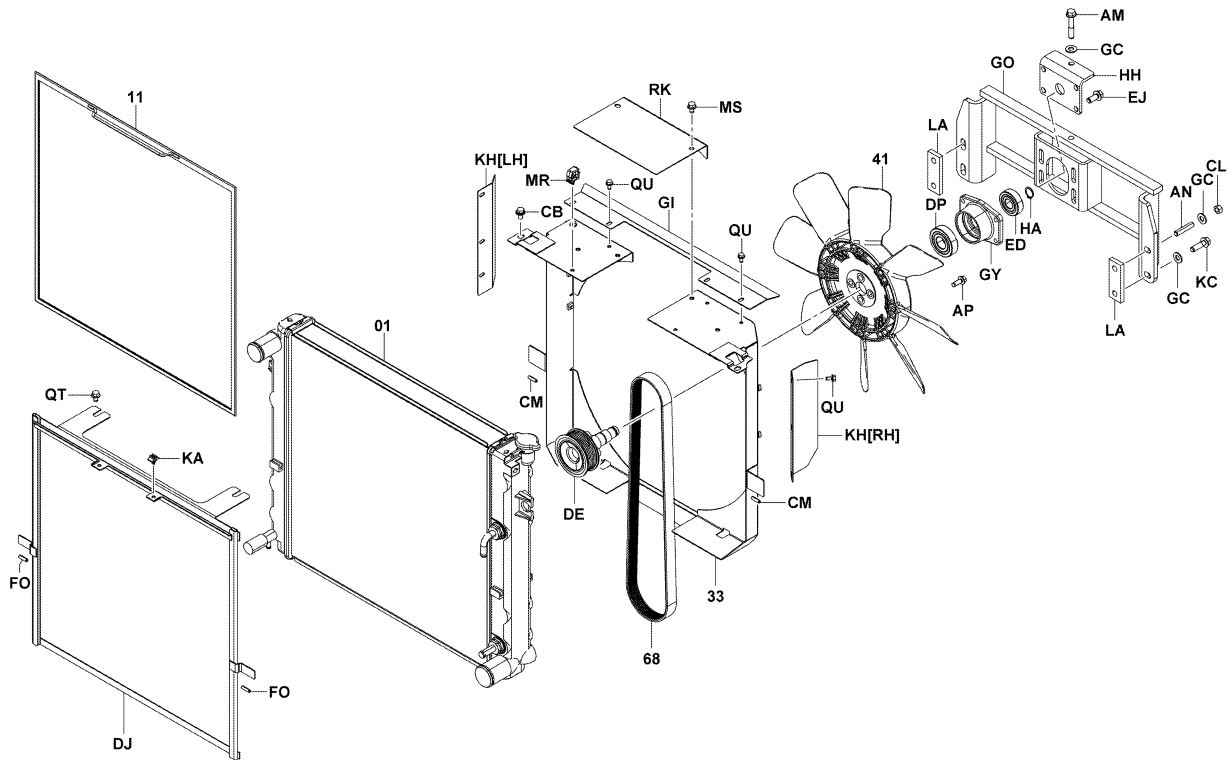
1301-176\_

1603

RADIATOR & WATER OUTLET  
RADIATEUR & ORIFICE D'EAU

K7 HLER & WASSERAUSLASS  
RADIADOR Y SALIDA DE AGUA

15Z..35,K40,45,A50 (PLATE FIN) [DRIVE PULLEY & FAN]



1603-579

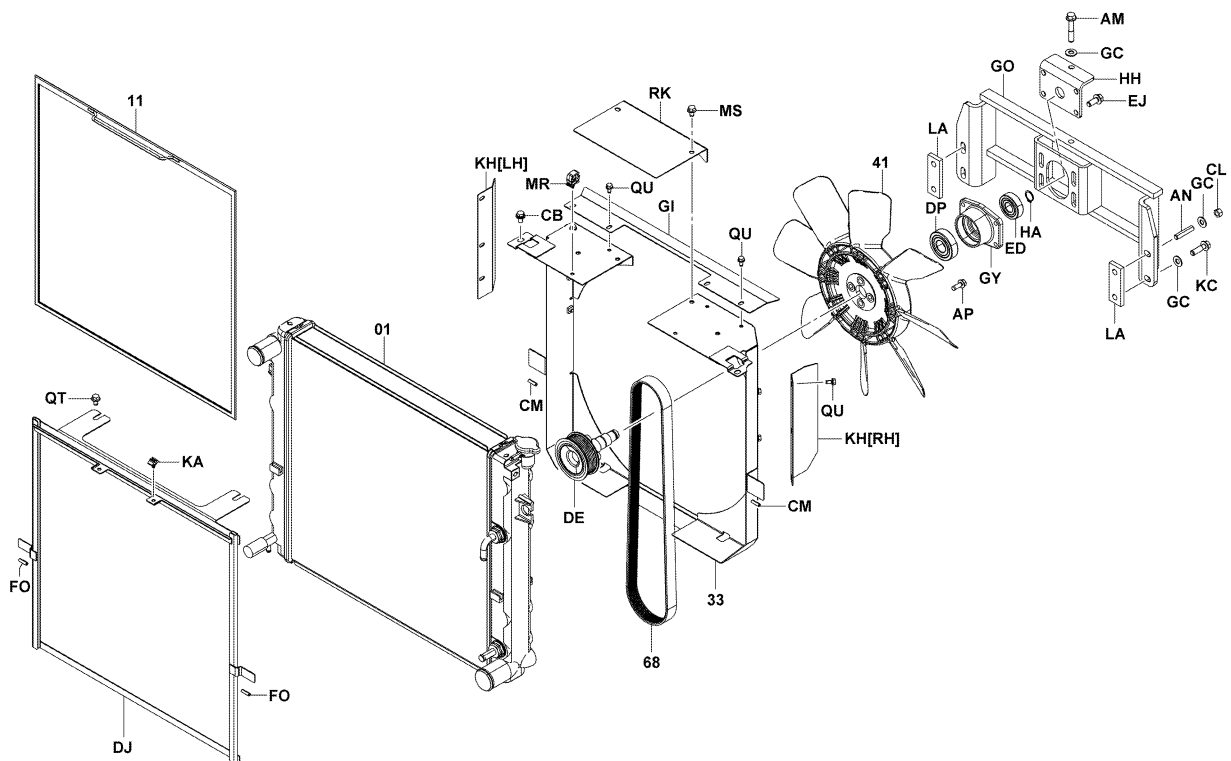
1603-579\_

1603

RADIATOR & WATER OUTLET  
RADIATEUR & ORIFICE D'EAU

K7 HLER & WASSERAUSLASS  
RADIADOR Y SALIDA DE AGUA

15Z..35,K40,45,A50 (VENTILATION PAC) [PULLEY&FAN]



1603-579

1603-579\_

<b>1702</b>		<b>EXHAUST PIPE &amp; MUFFLER</b>		<b>AUSPUFFLEITUNG &amp; AUSPUFFTOPF</b>	
		<b>SILENCIEUX &amp; TUYAU D'ECHAPPEMENT</b>		<b>TUBO DE ESCAPE Y SIENCIADOR</b>	
<b>PART NAME CODE</b>	<b>PART NAME</b>	<b>QTY</b>	<b>PART NAME CODE</b>	<b>PART NAME</b>	<b>QTY</b>
<b>1702-BZ</b>	<b>BOLT</b> ----- BOULON SCHRIFT BE PERNO	<b>1</b>			
<b>1702-DX</b>	<b>CLAMP</b> ----- PINSE KLEMME ABRAZADERA	<b>1</b>			
<b>1702-DY</b>	<b>CLAMP</b> ----- PINSE KLEMME ABRAZADERA	<b>1</b>			
<b>1702-EE</b>	<b>INSULATOR</b> ----- ISOLATEUR ISOLATOR AISLADOR	<b>2</b>			
<b>1702-EK</b>	<b>BOLT</b> ----- BOULON SCHRIFT BE PERNO	<b>4</b>			
<b>1702-EL</b>	<b>NUT</b> ----- ECROU MUTTER TUERCA	<b>1</b>			
<b>1702-EN</b>	<b>NUT</b> ----- ECROU MUTTER TUERCA	<b>4</b>			
<b>1702-ES</b>	<b>BOLT</b> ----- BOULON SCHRIFT BE PERNO	<b>2</b>			
<b>1702-FA</b>	<b>BOLT</b> ----- BOULON SCHRIFT BE PERNO	<b>1</b>			
<b>1702-HX</b>	<b>BOLT</b> ----- BOULON SCHRIFT BE PERNO	<b>2</b>			

<b>1702</b>		<b>EXHAUST PIPE &amp; MUFFLER</b>		<b>AUSPUFFLEITUNG &amp; AUSPUFFTOPF</b>	
		<b>SILENCIEUX &amp; TUYAU D'ECHAPPEMENT</b>		<b>TUBO DE ESCAPE Y SIENCIADOR</b>	
<b>PART NAME CODE</b>	<b>PART NAME</b>	<b>QTY</b>	<b>PART NAME CODE</b>	<b>PART NAME</b>	<b>QTY</b>

1910		CONTROLLER CONTROLEUR		STEUERTEIL CONTROLADOR	
PART NAME CODE	PART NAME	QTY	PART NAME CODE	PART NAME	QTY
1910-10	CONTROLLER ASSY ENS. DE CONTROLEUR STEUERTEIL, VOLLST. CONJUNTO DEL CONTROLADOR	1	1910-AQ	PLATE PLAQUE PLATTE PLACA	1
1910-11	CONTROLLER ASSY, STK ENS. DE CONTROLEUR STEUERTEIL, VOLLST. CONJUNTO DEL CONTROLADOR	1	1910-AR	PLATE PLAQUE PLATTE PLACA	1
1910-16	CONTROLLER ASSY, OPS ENS. DE CONTROLEUR STEUERTEIL, VOLLST. CONJUNTO DEL CONTROLADOR	1	1910-AS	INSULATOR ISOLATEUR ISOLATOR AISLADOR	3
1910-33	SENSOR ASSY, YAWRATE ENS. DE DETECTEUR SENSOR, VOLLST. CONJUNTO DEL SENSOR	1	1910-AT	COLLAR COLLIER BUCHSE COLLAR	3
1910-AA	BOLT BOULON SCHRAUBE PERNO	3	1910-AU	SCREW VIS SCHRAUBE TORNILLO	6
1910-AD	SCREW VIS SCHRAUBE TORNILLO	3	1910-AV	WASHER RODELLE UNTERLEGSSCHEIBE ARANDELA	3
1910-AJ	RUBBER CAOUTCHOUC GUMMI GOMA	3	1910-AZ	SCREW VIS SCHRAUBE TORNILLO	3
1910-AK	RUBBER CAOUTCHOUC GUMMI GOMA	3	1910-BN	BOLT BOULON SCHRAUBE PERNO	2
1910-AN	RING, O ANNEAU RING ANILLO	1			
1910-AO	SCREW VIS SCHRAUBE TORNILLO	8			

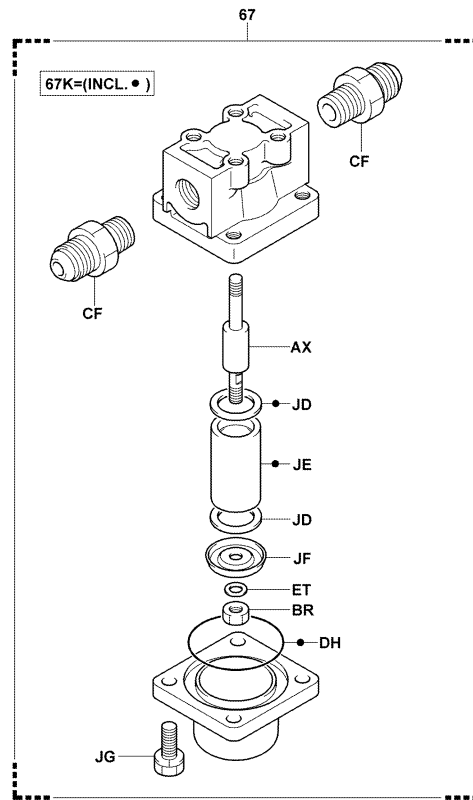
1910		CONTROLLER CONTROLEUR		STEUERTEIL CONTROLADOR	
PART NAME CODE	PART NAME	QTY	PART NAME CODE	PART NAME	QTY

**2311**

LPG FUEL PIPE  
CONDUITE DE COMBUSTIBLE GPL

LPG-LEITUNG  
TUBO DE COMBUSTIBLE LPG

C35,C45,C55 (COMPACT SPEC..UL-LP, UL-LPS, UL-G/LP)



2311-210A

2311-210A

**2311**

LPG FUEL PIPE  
CONDUITE DE COMBUSTIBLE GPL

LPG-LEITUNG  
TUBO DE COMBUSTIBLE LPG

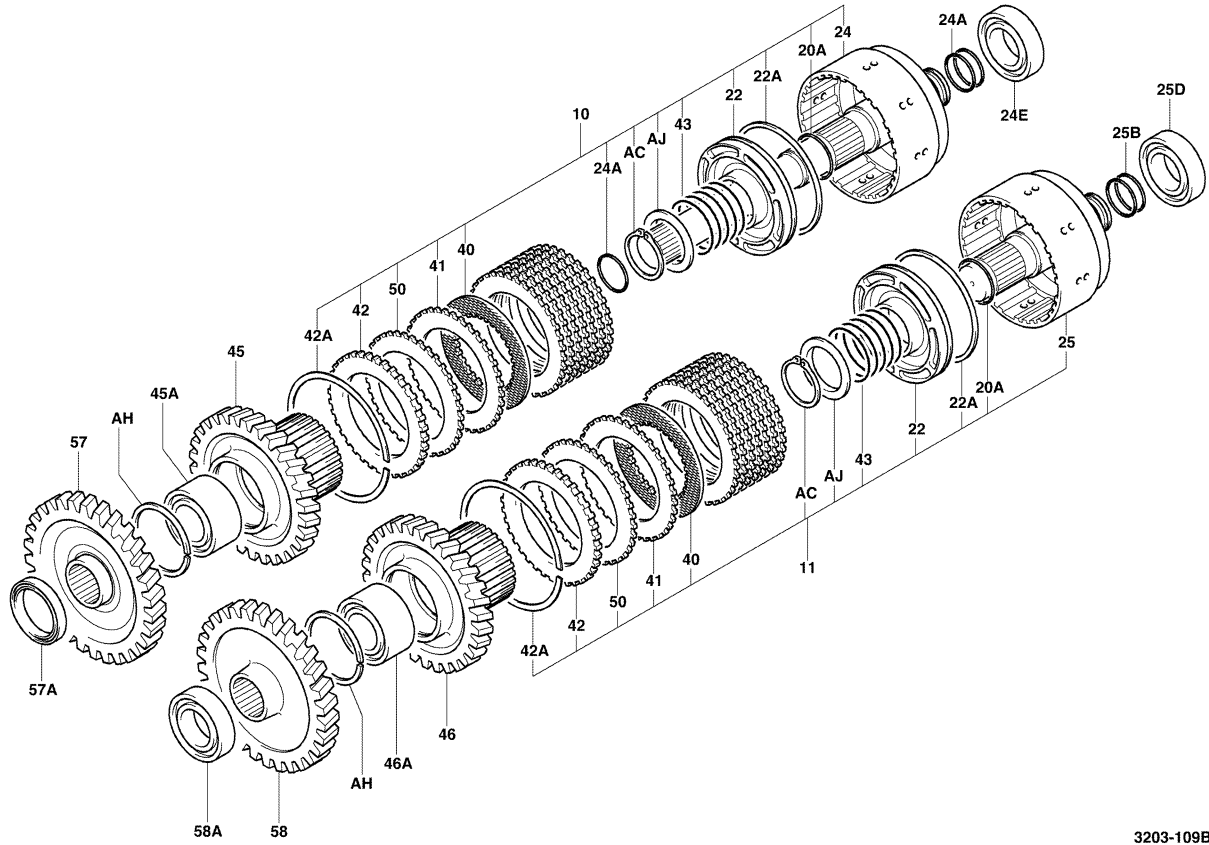
PART NAME CODE	PART NAME	QTY	PART NAME CODE	PART NAME	QTY
2311-17	VALVE ASSY, RELIEF, LPG ENS. DE SOUPAPE VENTIL, VOLLST. CONJUNTO DE VALVULA	1	2311-BR	NUT ECROU MUTTER TUERCA	1
2311-18	COUPLING ASSY, LPG ENS. D'ACCOUPLMENT KUPPLUNGS, VOLLST. CONJUNTO DE ACOPLAMIENTO	1	2311-BV	BRACKET SUB-ASSY SOUS-ENS. DE SUPPORT TRAGER-TEILGRUPPE SUBCONJUNTO DE LA SOPORTE	1
2311-48	HOSE, HIGH PRESSURE FLEXIBLE SCHLAUCH MANGUERA	1	2311-CE	CONNECTOR CONNECTEUR STECKVERBINDER CONECTOR	1
2311-53	HOSE, HIGH PRESSURE FLEXIBLE SCHLAUCH MANGUERA	1	2311-CF	CONNECTOR CONNECTEUR STECKVERBINDER CONECTOR	2
2311-67	FILTER ASSY, LPG ENS. DE FILTRE FILTER, VOLLST. CONJUNTO DEL FILTRO	1	2311-CL	BOLT BOULON SCHRAUBE PERNO	2-3
2311-67K	ELEMENT KIT, LPG FILTER KIT ELEMENT ELEMENT-AUSRUSTUNG JUEGO DEL ELEMENTO	1	2311-CY	FITTING RACCORD ANSCHLUSSTUCK ACOPLADOR	1
2311-AK	ELBOW COUDE KRUMMER ACODADO	1	2311-DH	RING, O ANNEAU RING ANILLO	1
2311-AL	CLAMP PINSE KLEMME ABRAZADERA	1-2	2311-DJ	FITTING SUB-ASSY SOUS-ENS. DE RACCORD ANSCHLUSSTUCK-TEILGRUPPE SUBCONJUNTO DE ACOPLADOR	1
2311-AX	BOLT, STUD BOULON SCHRAUBE PERNO	1	2311-DR	CLAMP PINSE KLEMME ABRAZADERA	1-3
2311-BK	ELBOW COUDE KRUMMER ACODADO	1	2311-DT	BOLT BOULON SCHRAUBE PERNO	2

3203

TORQUECONVERTER CLUTCH  
EMBRAYAGE DE CONVERTISSEUR DE COUPLE

DREHMOMENTWANDLER, KUPPLUNG  
EMGRAGUE DEL CONVERTIDOR DE PAR

35, K40, 45, A50, C35, C45, C55, C60, C70



3203-109B

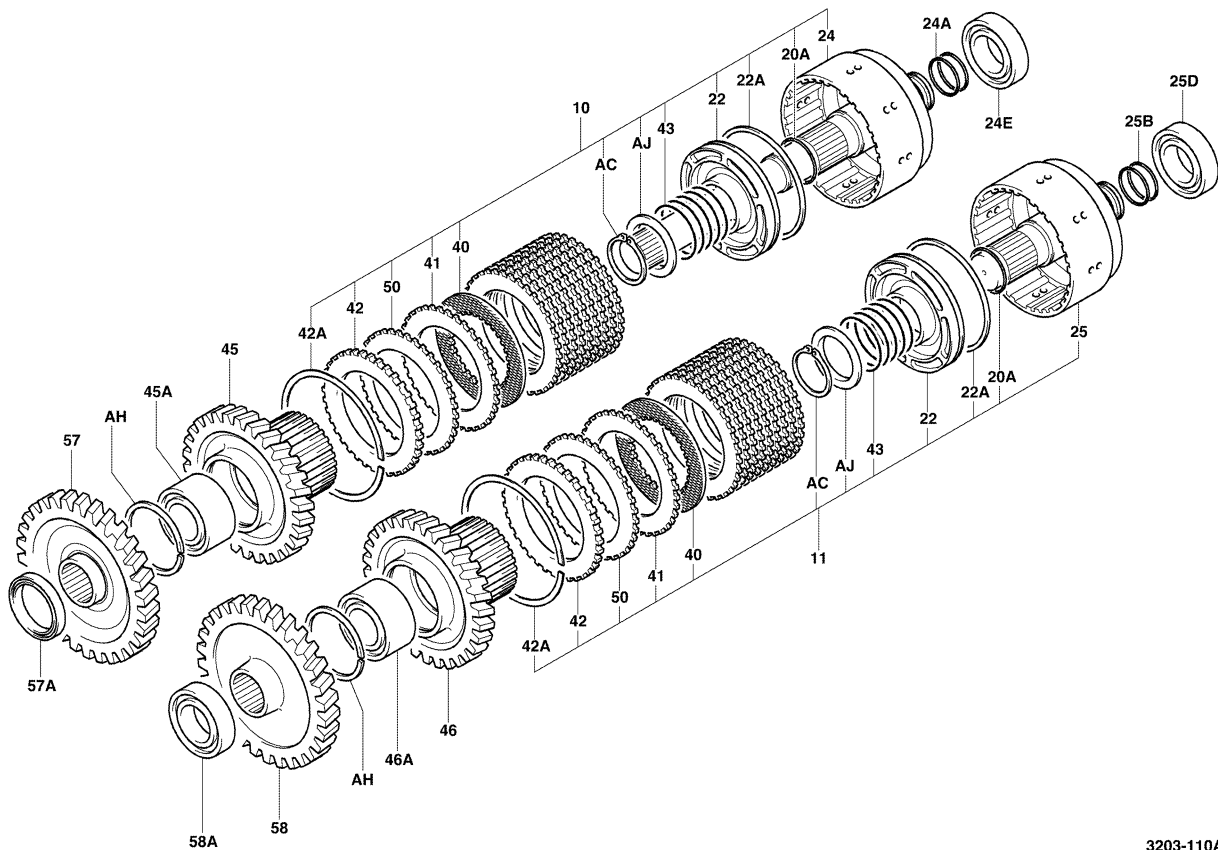
3203-109B

3203

TORQUECONVERTER CLUTCH  
EMBRAYAGE DE CONVERTISSEUR DE COUPLE

DREHMOMENTWANDLER, KUPPLUNG  
EMGRAGUE DEL CONVERTIDOR DE PAR

60, 70, 80



3203-110A

3203-110A

4101			DIFFERENTIAL DIFFERENTIEL			DIFFERENTIAL DIFERENCIAL		
PART NAME CODE	PART NAME	QTY	PART NAME CODE	PART NAME	QTY			
4101-49	PLUG, DRAIN BOUCHON STOPFEN TAPON	1-2	4101-AB	BOLT BOULON SCHRAUBE PERNO	4			
4101-49A	GASKET, DRAIN PLUG JOINT DICHTUNG EMPAQUETADURA	1-2	4101-AD	NUT ECROU MUTTER TUERCA	2			
4101-50	RETAINER, DRIVE PINION BEARING ARRETOIR SEEGERRING RETENEDOR	1	4101-AF	LOCK, ADJUSTING VERROU SCHLOSS CIERRE	2			
4101-55	BOLT, RING GEAR SET BOULON SCHRAUBE PERNO	12	4101-AG	PLUG BOUCHON STOPFEN TAPON	1			
4101-59	COVER, DIFFERENTIAL CARRIER COUVERCLE DECKEL CUBIERTA	1	4101-AJ	GASKET JOINT DICHTUNG EMPAQUETADURA	1			
4101-59A	SEAL, OIL (FOR CARRIER COVER) JOINT ABDICHTUNG SELLO	1	4101-AK	BOLT BOULON SCHRAUBE PERNO	16			
4101-60	GEAR, REDUCTION PIGNON ZAHNRAD ENGRANAJE	1	4101-AL	BOLT BOULON SCHRAUBE PERNO	1-2			
4101-60A	BEARING, NO.1, REDUCTION GEAR ROULEMENT LAGER COJINETE	2	4101-AT	WASHER, SPRING RODELLE UNTERLEGSCHIEBE ARANDELA	8			
4101-61	GEAR, OUTPUT PIGNON ZAHNRAD ENGRANAJE	1	4101-AX	WASHER, PLATE RODELLE UNTERLEGSCHIEBE ARANDELA	1			
4101-64	INSULATOR, MOUNTING ISOLATEUR ISOLATOR AISLADOR	2	4101-BD	BOLT BOULON SCHRAUBE PERNO	8			

4101			DIFFERENTIAL DIFFERENTIEL			DIFFERENTIAL DIFERENCIAL		
PART NAME CODE	PART NAME	QTY	PART NAME CODE	PART NAME	QTY			
4101-BE	GASKET JOINT DICHTUNG EMPAQUETADURA	1						
4101-BQ	PLATE PLAQUE PLATTE PLACA	2						
4101-CG	PIPE, BREATHER EXTENSION TUYAU ROHR TUBO	1						
4101-CL	WASHER, CLAW RODELLE UNTERLEGSCHIEBE ARANDELA	1						
4101-CN	PIN, STRAIGHT GOUPILLE STIFT PASADOR	2						
4101-DY	BOLT BOULON SCHRAUBE PERNO	3-10						
4101-EN	BOLT BOULON SCHRAUBE PERNO	2						
4101-EV	STABILIZER STABILISATEUR STABILISATOR ESTABILIZADOR	2						
4101-EW	COVER, RR COUVERCLE DECKEL CUBIERTA	1						
4101-EX	RING, STOPPER ANNEAU RING ANILLO	1						

4302		REAR AXLE CYLINDER CYLINDRE D'ESSIEU ARRIERE		HINTERACHSZYLINDER CILINDRO DEL EJE TRASERO	
PART NAME CODE	PART NAME	QTY	PART NAME CODE	PART NAME	QTY
4302-01	CYLINDER ASSY, REAR AXLE ENS. DE CYLINDRE ZYLINDER, VOLLST. CONJUNTO DEL CILINDRO	1	4302-BA	SEAL, RING JOINT ABDICHTUNG SELLO	1
4302-01K	CYLINDER O/H KIT, REAR AXLE JEU O/H DE CYLINDRE ZYLINDER-?BERHOLSATZ JUEGO O/H DEL CILINDRO	1	4302-BB	FITTING RACCORD ANSCHLUSSTUCK ACOPLADOR	2
4302-21	ROD SUB-ASSY, REAR AXLE CYLINDER SOUS-ENS. DE BIELLE STANGEN-TEILGRUPPE SUBCONJUNTO DE LA VARILLA	1	4302-BC	RING, O ANNEAU RING ANILLO	2
4302-45	CYLINDER, REAR AXLE CYLINDRE ZYLINDER CILINDRO	1	4302-BS	BOLT, STUD BOULON SCHRAUBE PERNO	2-4
4302-46	GUIDE, ROD GUIDE FUHRUNG GUIA	2	4302-BT	NUT ECROU MUTTER TUERCA	4-8
4302-AB	SEAL, DUST JOINT ABDICHTUNG SELLO	2			
4302-AC	PACKING, U CALE DICHTUNG EMPAQUETADURA	2			
4302-AD	RING, O ANNEAU RING ANILLO	2			
4302-AF	RING, BACK UP ANNEAU RING ANILLO	2			
4302-AX	BUSHING BAGUE BUCHSE BUJE	2			

4302		REAR AXLE CYLINDER CYLINDRE D'ESSIEU ARRIERE		HINTERACHSZYLINDER CILINDRO DEL EJE TRASERO	
PART NAME CODE	PART NAME	QTY	PART NAME CODE	PART NAME	QTY

<b>4502</b>		<b>STEERING POST</b>		<b>LENKSÜBLE</b>	
		<b>MONTANT DE DIRECTION</b>		<b>PUNTAL DE LA DIRECCION</b>	
<b>PART NAME CODE</b>	<b>PART NAME</b>	<b>QTY</b>	<b>PART NAME CODE</b>	<b>PART NAME</b>	<b>QTY</b>
<b>4502-FU</b>	<b>BEARING</b> ----- ROULEMENT LAGER COJINETE	<b>1</b>			
<b>4502-GP</b>	<b>BRACKET</b> ----- SUPPORT TRAGER SOPORTE	<b>1</b>			
<b>4502-GR</b>	<b>COVER, STEERING COLUMN</b> ----- COUVERCLE DECKEL CUBIERTA	<b>1</b>			
<b>4502-GS</b>	<b>COVER, STEERING COLUMN</b> ----- COUVERCLE DECKEL CUBIERTA	<b>1</b>			
<b>4502-GW</b>	<b>PLUG, HOLE</b> ----- BOUCHON STOPFEN TAPON	<b>1</b>			
<b>4502-JK</b>	<b>NUT, ADJUSTING</b> ----- ECROU MUTTER TUERCA	<b>1</b>			
<b>4502-JL</b>	<b>WASHER, PLATE</b> ----- RODELLE UNTERLEGSCHIEBE ARANDELA	<b>2</b>			

<b>4502</b>		<b>STEERING POST</b>		<b>LENKSÜBLE</b>	
		<b>MONTANT DE DIRECTION</b>		<b>PUNTAL DE LA DIRECCION</b>	
<b>PART NAME CODE</b>	<b>PART NAME</b>	<b>QTY</b>	<b>PART NAME CODE</b>	<b>PART NAME</b>	<b>QTY</b>

CLICK HERE TO **DOWNLOAD** THE COMPLETE MANUAL

- Thank you very much for reading the preview of the manual.
- You can download the complete manual from: [www.heydownloads.com](http://www.heydownloads.com) by clicking the link below



- Please note: If there is no response to CLICKING the link, please download this PDF first and then click on it.

CLICK HERE TO **DOWNLOAD** THE COMPLETE MANUAL

4707		BRAKE BOOSTER SERVO FREIN		BREMSKRAFTVERSTÄRKER SERVOFRENO	
PART NAME CODE	PART NAME	QTY	PART NAME CODE	PART NAME	QTY
4707-AW	RING, O ANNEAU RING ANILLO	1	4707-DC	PIN GOUPILLE STIFT PASADOR	1
4707-BA	RING, O ANNEAU RING ANILLO	1	4707-DD	RING, O ANNEAU RING ANILLO	1
4707-BB	RING, SNAP ANNEAU RING ANILLO	1	4707-DE	RING, O ANNEAU RING ANILLO	1
4707-BD	BOLT BOULON SCHRAUBE PERNO	2	4707-DF	RING, O ANNEAU RING ANILLO	1
4707-BE	GASKET JOINT DICHTUNG EMPAQUETADURA	2	4707-DR	PLUG BOUCHON STOPFEN TAPON	1
4707-CG	UNION RACCORD ROHRVERSCHRAUBUNG UNION	1	4707-DU	PLUG BOUCHON STOPFEN TAPON	1
4707-CI	BALL, STEEL BILLE KUGEL BOLA	1	4707-DV	SPRING RESSORT FEDER RESORTE	1
4707-CZ	PLUG BOUCHON STOPFEN TAPON	1	4707-DZ	SPOOL, FLOW DIVIDER TIROIR SPULE BOBINA	1
4707-DA	SPRING RESSORT FEDER RESORTE	1	4707-EA	PISTON, REACTION PISTON KOLBEN PISTON	1
4707-DB	PLUG BOUCHON STOPFEN TAPON	1	4707-EB	SPRING, RELIEF VALVE RESSORT FEDER RESORTE	1

4707		BRAKE BOOSTER SERVO FREIN		BREMSKRAFTVERSTÄRKER SERVOFRENO	
PART NAME CODE	PART NAME	QTY	PART NAME CODE	PART NAME	QTY
4707-EC	PISTON, REACTION PISTON KOLBEN PISTON	1	4707-EN	VALVE, OUTLET CHECK SOUPAPE VENTIL VALVULA	1
4707-ED	SPRING, VALVE RETURN RESSORT FEDER RESORTE	1	4707-EU	BOLT, UNION BOULON SCHRAUBE PERNO	1
4707-EF	GUIDE, REACTION PISTON GUIDE FUHRUNG GUIA	1			
4707-EG	CUP, CYLINDER COUPELLE DICHTMANSCHETTE TAZA	1			
4707-EH	CLEVIS, PUSH ROD CHAPE GABELKOPF GRILLETE	1			
4707-EI	ROD, PUSH BIELLE STANGE VARILLA	1			
4707-EJ	RING, SNAP ANNEAU RING ANILLO	1			
4707-EK	RING, SNAP ANNEAU RING ANILLO	1			
4707-EL	RING, SNAP ANNEAU RING ANILLO	1			
4707-EM	BALL BILLE KUGEL BOLA	1			

<b>5201</b>		<b>HOOD &amp; HINGE CAPOT &amp; CHARNIERE</b>		<b>HAUBE &amp; SCHARNIER CAPO Y BISAGRA</b>	
<b>PART NAME CODE</b>	<b>PART NAME</b>	<b>QTY</b>	<b>PART NAME CODE</b>	<b>PART NAME</b>	<b>QTY</b>
<b>5201-GR</b>	<b>RIVET</b> ----- RIVET NIET REMACHE	<b>28</b>			
<b>5201-KW</b>	<b>BRACKET</b> ----- SUPPORT TRAGER SOPORTE	<b>2</b>			
<b>5201-LZ</b>	<b>LOCK SUB-ASSY, ENGINE HOOD</b> ----- SOUS-ENS. DE VERROU SCHLOSS-TEILGRUPPE SUBCONJUNTO DEL CIERRE	<b>1</b>			
<b>5201-NA</b>	<b>STRIKER SUB-ASSY</b> ----- SOUS-ENS. DE PERCUTEUR SCHLAGBOLZEN-TEILGRUPPE SUBCONJUNTO DE CERRADERO	<b>1</b>			
<b>5201-NL</b>	<b>PLATE</b> ----- PLAQUE PLATTE PLACA	<b>2</b>			
<b>5201-PI</b>	<b>BRACKET</b> ----- SUPPORT TRAGER SOPORTE	<b>1</b>			

<b>5201</b>		<b>HOOD &amp; HINGE CAPOT &amp; CHARNIERE</b>		<b>HAUBE &amp; SCHARNIER CAPO Y BISAGRA</b>	
<b>PART NAME CODE</b>	<b>PART NAME</b>	<b>QTY</b>	<b>PART NAME CODE</b>	<b>PART NAME</b>	<b>QTY</b>

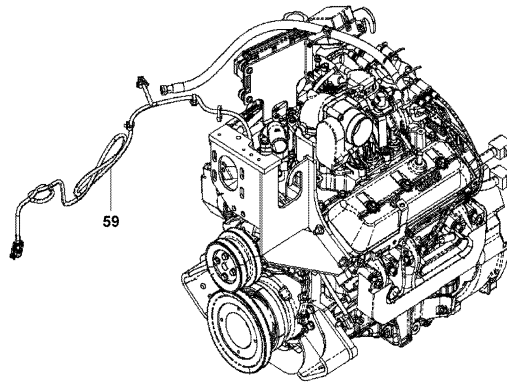


**5601**

**WIRING & CLAMP  
CABLAGE & COLLIER**

**KABEL & KABELKLEMMEN  
CABLES Y ABRAZADERA**

GM6-262 [ENGINE WIRE]



5601-663

5601-663\_

**5601**

**WIRING & CLAMP  
CABLAGE & COLLIER**

**KABEL & KABELKLEMMEN  
CABLES Y ABRAZADERA**

PART NAME CODE	PART NAME	QTY	PART NAME CODE	PART NAME	QTY
5601-21	HARNESS, PANEL FAISCEAU KABELBAUM RAMAL DE CABLES	1	5601-AH	GROMMET RONDELLE ISOLANTE DURCHFUEHRUNG ANILLO PROTECTOR	1
5601-22	HARNESS, RR FAISCEAU KABELBAUM RAMAL DE CABLES	1	5601-AM	CLAMP PINSE KLEMME ABRAZADERA	1
5601-23	HARNESS, FRONT FAISCEAU KABELBAUM RAMAL DE CABLES	1	5601-AS	BOLT BOULON SCHRAUBE PERNO	2
5601-29	HARNESS, ENGINE FAISCEAU KABELBAUM RAMAL DE CABLES	1	5601-AT	PLATE SUB-ASSY SOUS-ENS. DE PLAQUE PLATTEN-TEILGRUPPE SUBCONJUNTO DE PLACA	1
5601-40	FUSE FUSIBLE SICHERUNG FUSIBLE	1-11	5601-AV	GROMMET RONDELLE ISOLANTE DURCHFUEHRUNG ANILLO PROTECTOR	1
5601-49	HARNESS, REAR LAMP FAISCEAU KABELBAUM RAMAL DE CABLES	1	5601-BA	CLAMP PINSE KLEMME ABRAZADERA	6
5601-57	HARNESS, FRONT LAMP FAISCEAU KABELBAUM RAMAL DE CABLES	2	5601-BC	CLAMP PINSE KLEMME ABRAZADERA	2-3
5601-59	WIRE ASSY, ENGINE ENS. DE FIL DRAHT, VOLLST. CONJUNTO DE ALAMBRE	1	5601-BE	CLAMP PINSE KLEMME ABRAZADERA	1-6
5601-AC	CORD, TORCON HEAT GAGE CORDE Z7 NDKABEL CABLE	1	5601-BG	CLAMP PINSE KLEMME ABRAZADERA	1
5601-AF	CLAMP PINSE KLEMME ABRAZADERA	1-99	5601-BJ	CLAMP PINSE KLEMME ABRAZADERA	1-2

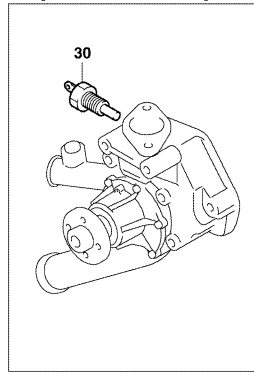
5701

METER & SWITCH  
INDICATEUR & COMMUTEUR

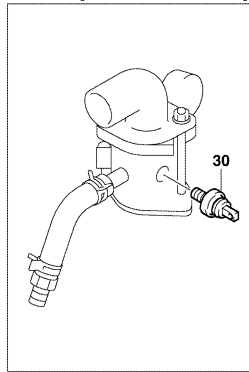
INSTRUMENTE & SCHALTER  
MEDIDOR E INTERRUPTOR

[5]

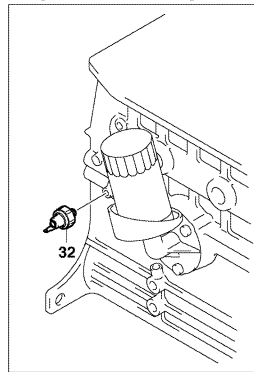
13Z [WATER TEMP. GAGE]



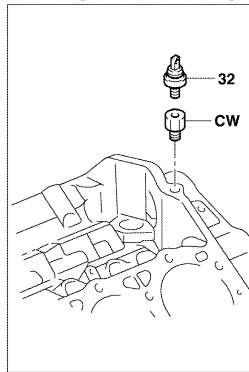
GM6-262 [WATER TEMP. GAGE]



13Z [OIL PRESSURE SW]



GM6-262 [OIL PRESSURE SW]



5701-240A

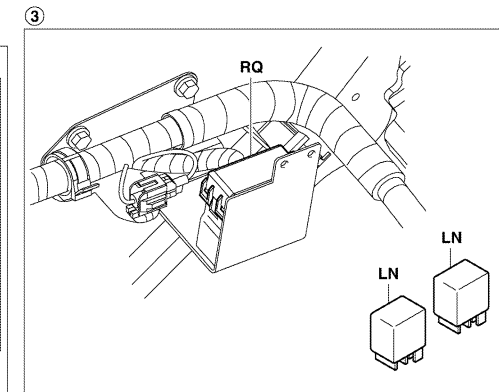
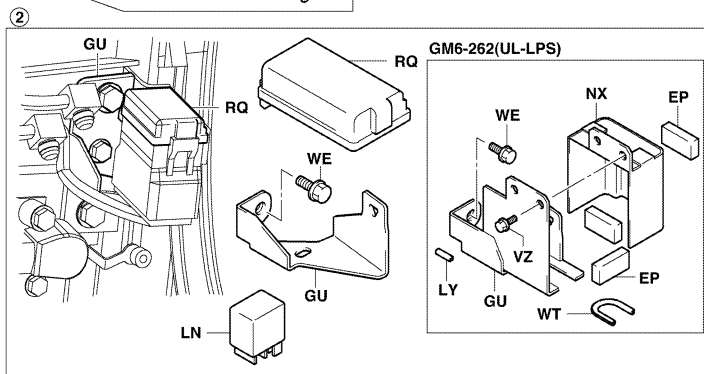
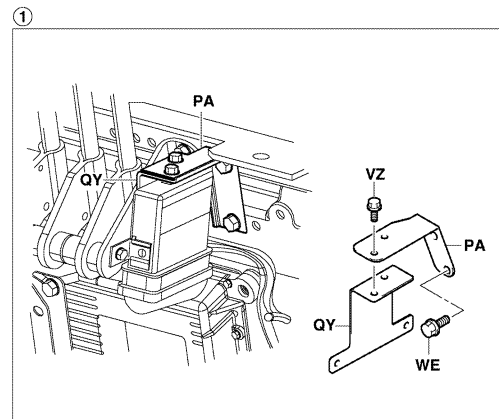
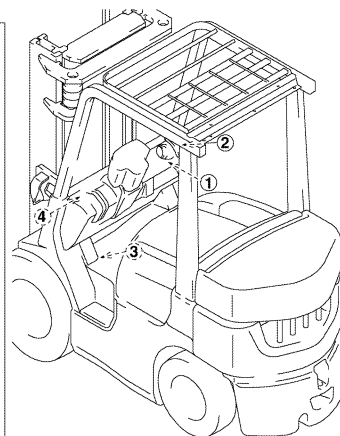
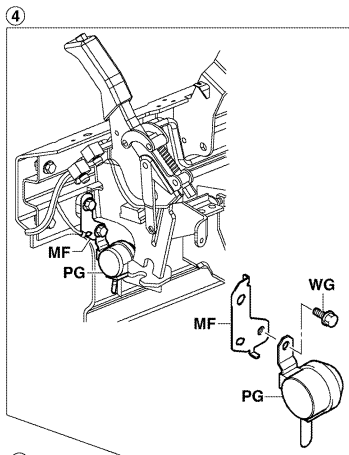
5701-240A

5701

METER & SWITCH  
INDICATEUR & COMMUTEUR

INSTRUMENTE & SCHALTER  
MEDIDOR E INTERRUPTOR

[6]



5701-471

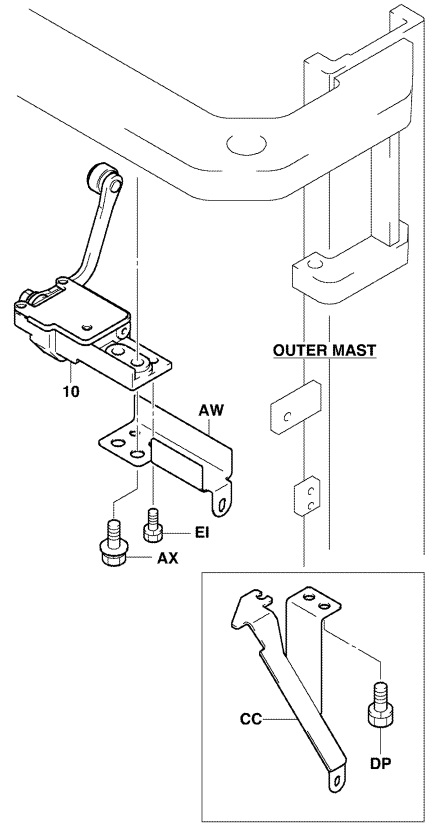
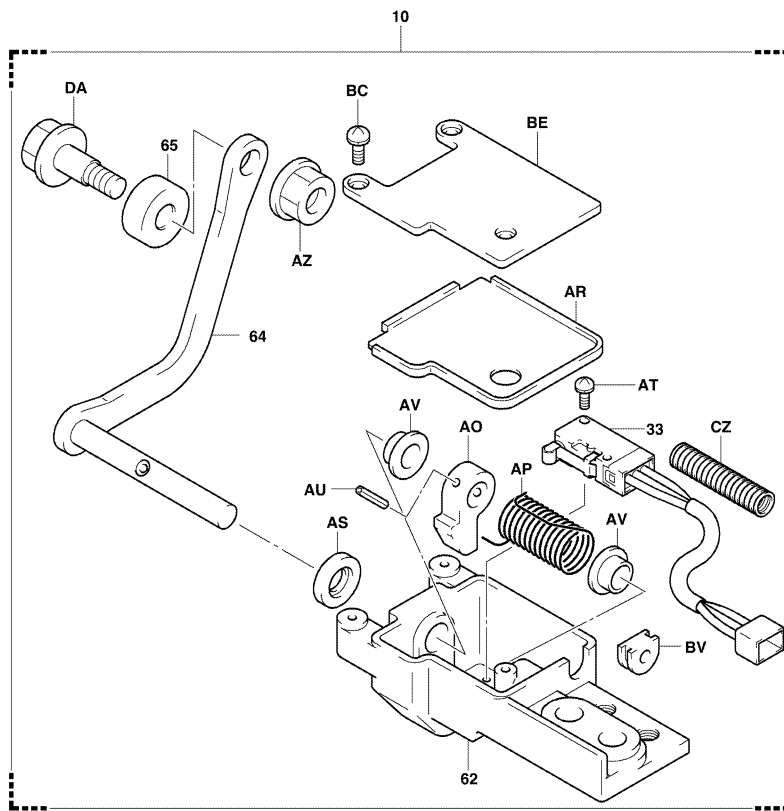
5701-471\_

5803

SENSOR  
DETECTEUR

SENSOR  
SENSOR

45,A50..FSV [HEIGHT SENSOR]



5803-069B

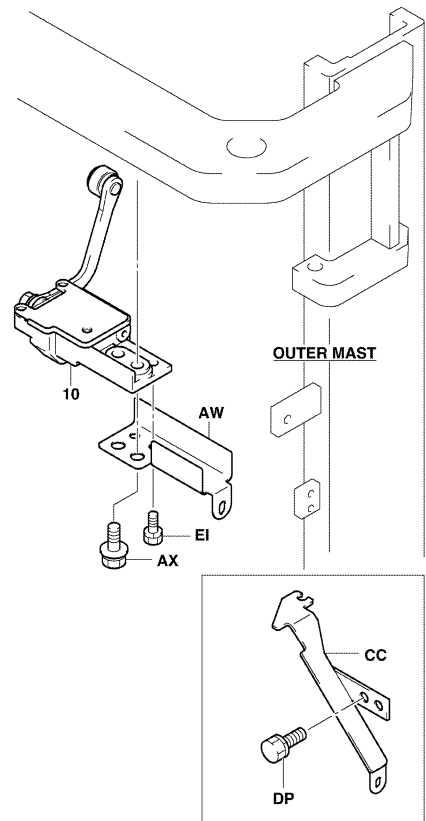
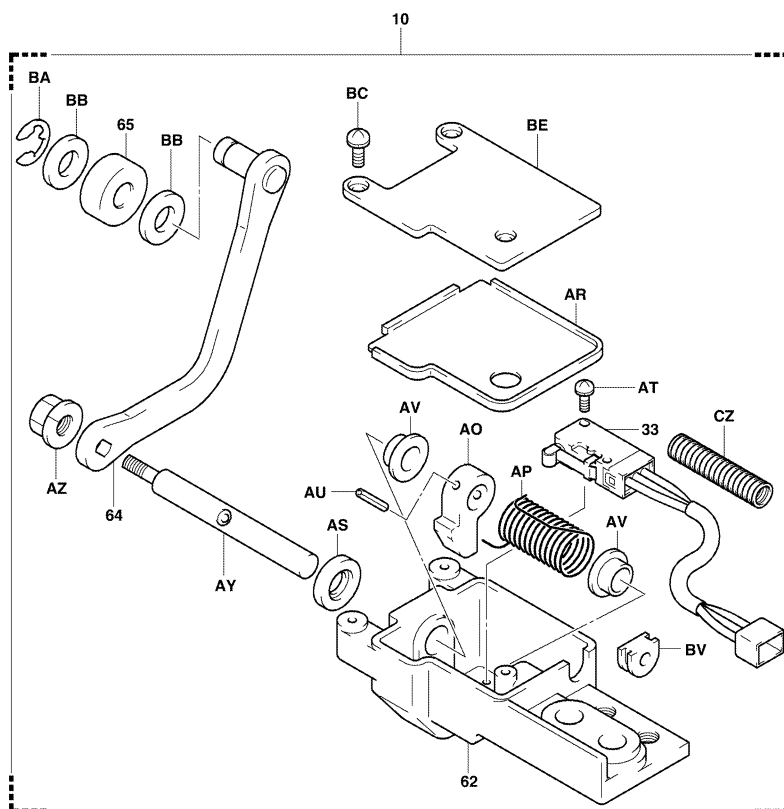
5803-069B

5803

SENSOR  
DETECTEUR

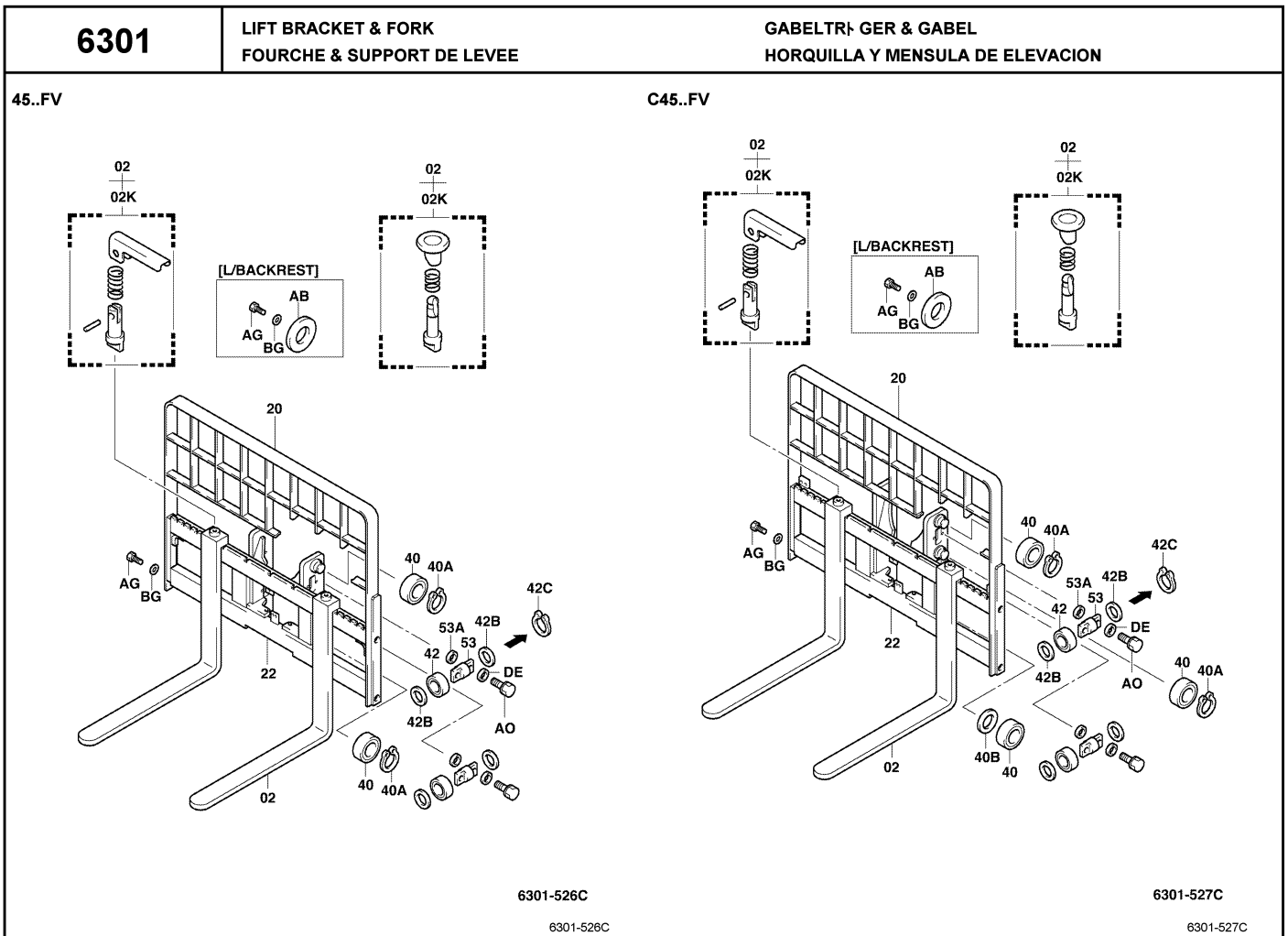
SENSOR  
SENSOR

60,70,C55,C60,C70..FSV [HEIGHT SENSOR]



5803-067C

5803-067C



<b>6301</b>	LIFT BRACKET & FORK FOURCHE & SUPPORT DE LEVEE	GABELTRÄGER & GABEL HORQUILLA Y MENSULA DE ELEVACION			
PART NAME CODE	PART NAME	QTY	PART NAME CODE	PART NAME	QTY
6301-02	FORK ASSY ENS. DE FOURCHE GABEL, VOLLST. CONJUNTO DE LA HORQUILLA	2	6301-42	ROLLER, SIDE GALET ROLLE RODILLO	4
6301-02K	LEVER PIN KIT, FORK KIT LEVIER GOUPILLE HEBEL STIFT-AUSRÜSTUNG REPUESTO DE PALANCA PASADOR	2	6301-42C	RING, SHAFT SNAP (FOR SIDE ROLLER) ANNEAU RING ANILLO	8
6301-20	BACKREST SUB-ASSY SOUS-ENS. DE DOSSIER RÜCKENLEHNE-TEILGRUPPE SUBCONJUNTO DEL RESPALDO DEL ASIENTO	1	6301-53	PIN, SIDE ROLLER GOUPILLE STIFT PASADOR	4
6301-21	FORK SUB-ASSY SOUS-ENS. DE FOURCHE GABEL-TEILGRUPPE SUBCONJUNTO DE LA HORQUILLA	2	6301-53A	SHIM (FOR SIDE ROLLER PIN) ANNEAU RING ANILLO	99
6301-22	BRACKET SUB-ASSY, LIFT SOUS-ENS. DE SUPPORT TRÄGER-TEILGRUPPE SUBCONJUNTO DE LA SOPORTE	1	6301-AB	PLATE, SIDE PLAQUE PLATTE PLACA	2
6301-40	ROLLER, LIFT (UPPER, LOWER) GALET ROLLE RODILLO	4-6	6301-AG	BOLT BOULON SCHRAUBE PERNO	2-4
6301-40A	RING, SHAFT SNAP (UPPER, LOWER) ANNEAU RING ANILLO	2-4	6301-AO	BOLT BOULON SCHRAUBE PERNO	8
6301-40B	SHIM, LIFT ROLLER CALE AUSGLEICHSCHEIBE CALCE	99	6301-BG	WASHER RODELLE UNTERLEGSCHLEIBE ARANDELA	2-4
6301-41	ROLLER, LIFT (CENTER) GALET ROLLE RODILLO	2			
6301-41A	RING, SHAFT SNAP (CENTER) ANNEAU RING ANILLO	2			

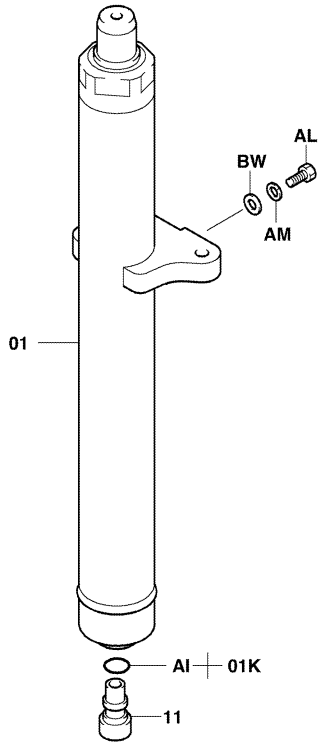
6502

FRONT LIFT CYLINDER  
CYLINDRE DE LEVEE AVANT

VORDERER HUBZYLINDER  
CILINDRO DE ELEVACION FRONTAL

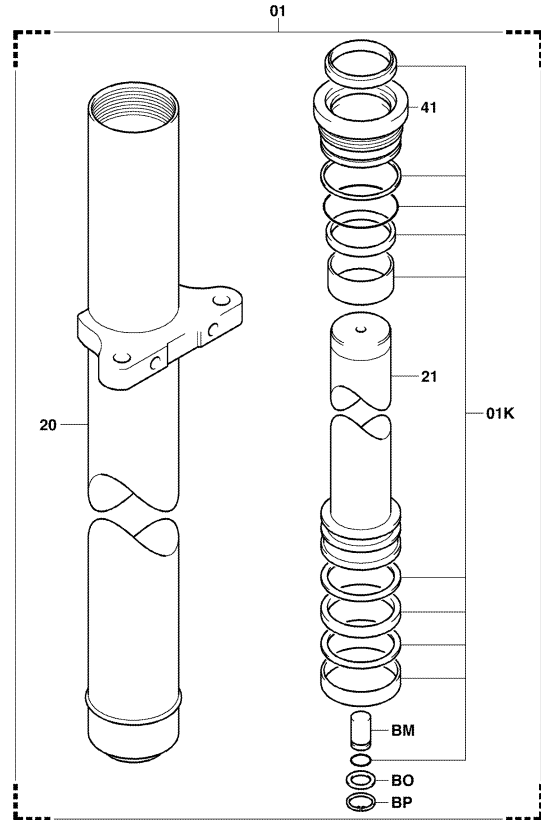
35,K40,C35..FSV,FV [1/2]

35,K40,C35..FSV,FV [2/2]



6502-099

6502-099\_



6502-101A

6502-101A

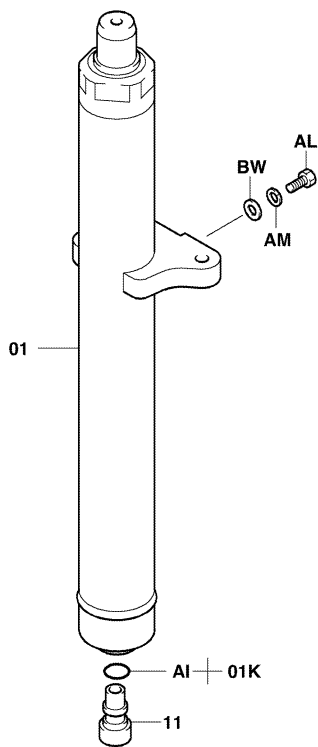
6502

FRONT LIFT CYLINDER  
CYLINDRE DE LEVEE AVANT

VORDERER HUBZYLINDER  
CILINDRO DE ELEVACION FRONTAL

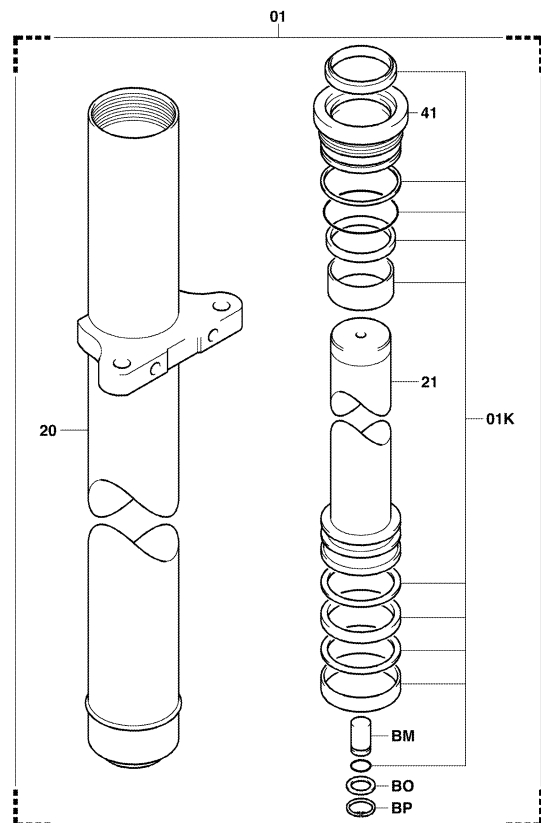
45,C45..FSV,FV [1/2]

45,C45..FSV,FV [2/2]



6502-099

6502-099\_



6502-101A

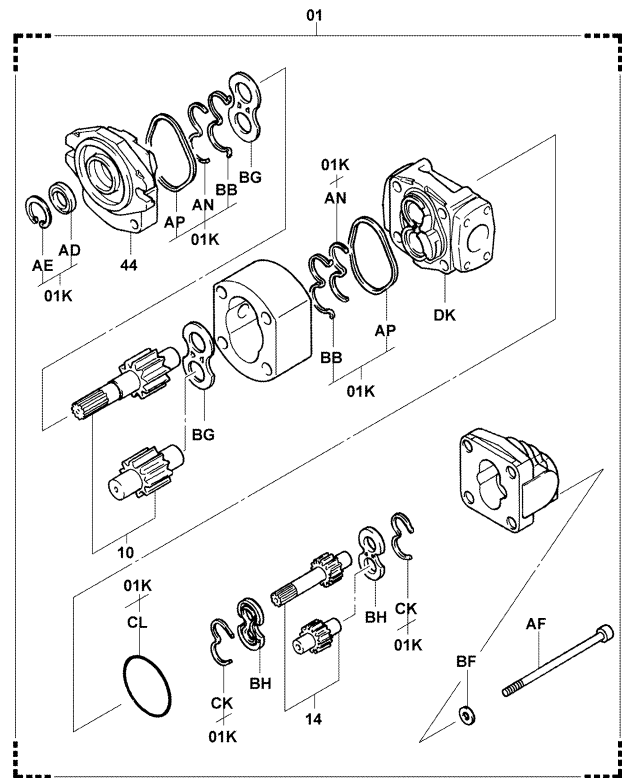
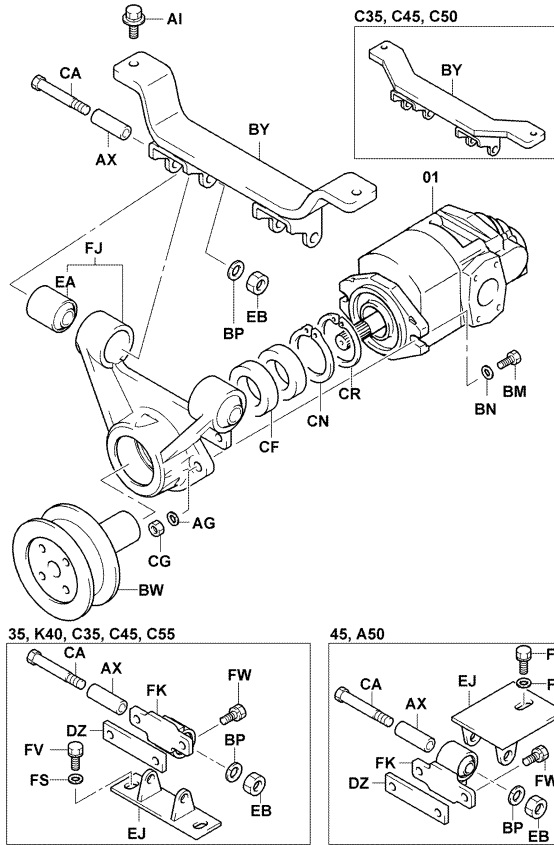
6502-101A

6701

OIL PUMP  
POMPE A HUILE

3 LPUMPE  
BOCBA DE ACEITE

35, K40, 45, A50, C35, C45, C55



6701-180C

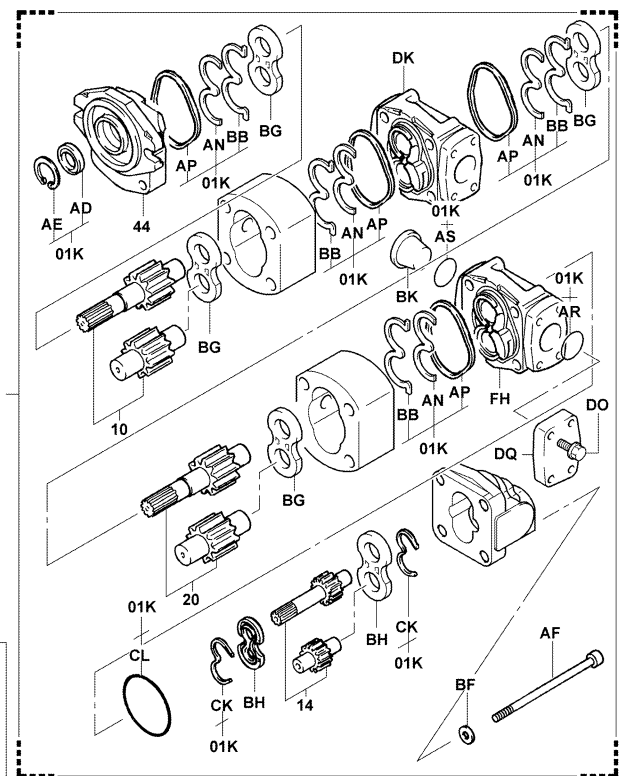
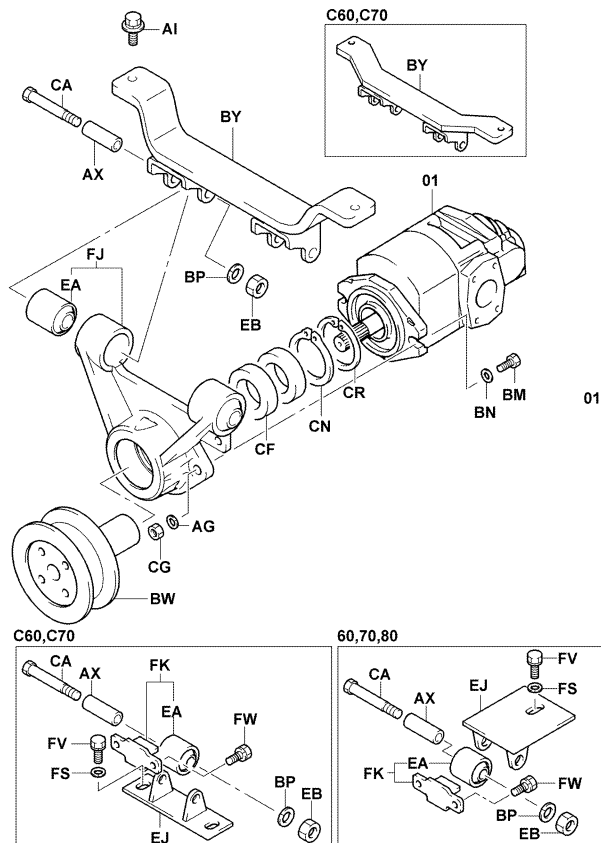
6701-180C

6701

OIL PUMP  
POMPE A HUILE

3 LPUMPE  
BOCBA DE ACEITE

60, 70, 80, C60, C70



6701-181C

6701-181C

6705		OIL CONTROL VALVE SOUPAPE DE COMMANDE D'HUILE		STEUERVENTIL CALVULA DE CONTROL DE ACEITE	
PART NAME CODE	PART NAME	QTY	PART NAME CODE	PART NAME	QTY
6705-ER	BOLT BOULON SCHRAUBE PERNO	4	6705-GP	COVER COUVERCLE DECKEL CUBIERTA	2
6705-ES	BODY, RELIEF VALVE, A CARROSSERIE KAROSSERIE CARROCERIA	1	6705-GS	COVER COUVERCLE DECKEL CUBIERTA	1
6705-EW	NUT ECROU MUTTER TUERCA	1	6705-GX	HOLDER, SPRING SUPPORT DUSENSTOCR SOPORTE PORTADOR	4
6705-EZ	RING, O ANNEAU RING ANILLO	2	6705-HJ	BOLT BOULON SCHRAUBE PERNO	4
6705-FN	FITTING RACCORD ANSCHLUSSTUCK ACOPLADOR	1-2	6705-HP	SPRING RESSORT FEDER RESORTE	1
6705-FZ	END, SPOOL EXTREMITÉ ENDE EXTREMO	1	6705-IA	CASE CARTER GEHAUSE CAJA	1
6705-GA	HOUSING, OUTLET BOITIER GEHAUSE FUNDA	1	6705-IQ	RING, O ANNEAU RING ANILLO	1
6705-GF	BOLT BOULON SCHRAUBE PERNO	4	6705-JQ	PLUG BOUCHON STOPFEN TAPON	1
6705-GK	FITTING RACCORD ANSCHLUSSTUCK ACOPLADOR	2-4	6705-JX	RING, O ANNEAU RING ANILLO	2
6705-GN	BOLT BOULON SCHRAUBE PERNO	4	6705-KB	PISTON PISTON KOLBEN PISTON	1

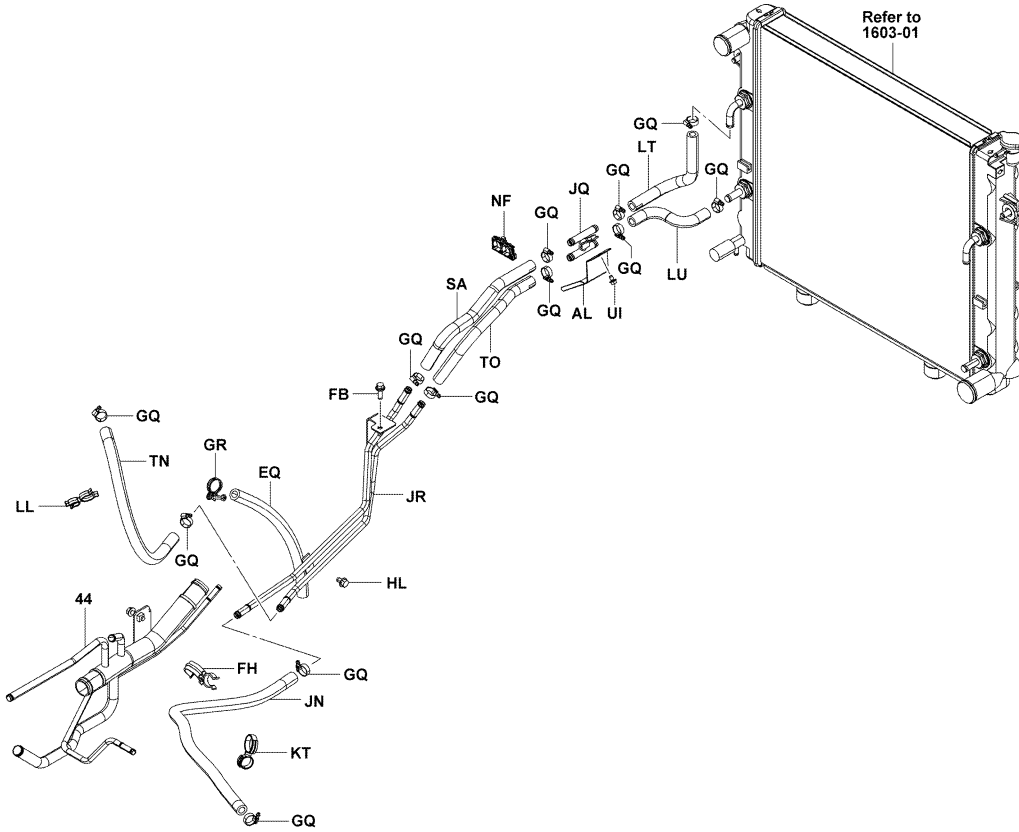
6705		OIL CONTROL VALVE SOUPAPE DE COMMANDE D'HUILE		STEUERVENTIL CALVULA DE CONTROL DE ACEITE	
PART NAME CODE	PART NAME	QTY	PART NAME CODE	PART NAME	QTY
6705-KZ	RUBBER, CUSHION CAOUTCHOUC GUMMI GOMA	4	6705-LT	SPRING, COMPRESSION RESSORT FEDER RESORTE	1
6705-LC	RING, O ANNEAU RING ANILLO	1	6705-LU	BOLT BOULON SCHRAUBE PERNO	3
6705-LD	CLAMP PINSE KLEMME ABRAZADERA	1	6705-LV	RING, O ANNEAU RING ANILLO	1
6705-LE	RUBBER, CUSHION CAOUTCHOUC GUMMI GOMA	4	6705-LW	RING, O ANNEAU RING ANILLO	1
6705-LF	RING, O ANNEAU RING ANILLO	1	6705-LY	SPRING, COMPRESSION RESSORT FEDER RESORTE	1
6705-LH	SPRING, COMPRESSION RESSORT FEDER RESORTE	1	6705-LZ	RING, O ANNEAU RING ANILLO	1-2
6705-LJ	BRACKET SUPPORT TRAGER SOPORTE	1	6705-MA	RING, O ANNEAU RING ANILLO	1
6705-LM	SPOOL TIROIR SPULE BOBINA	1	6705-MB	RING, O ANNEAU RING ANILLO	1
6705-LO	BOLT BOULON SCHRAUBE PERNO	2	6705-MC	RING, O ANNEAU RING ANILLO	1
6705-LS	BOLT BOULON SCHRAUBE PERNO	2	6705-MD	RING, O ANNEAU RING ANILLO	1

6801

BODY PIPING  
TUYAUTERIE DE CARROSSERIE

KAROSSERIE, LEITUNGEN  
TUBOS DE CARROCERIA

15Z..35,K40,45,A50 (HYD OIL COOLER) [4/4]



6801-700

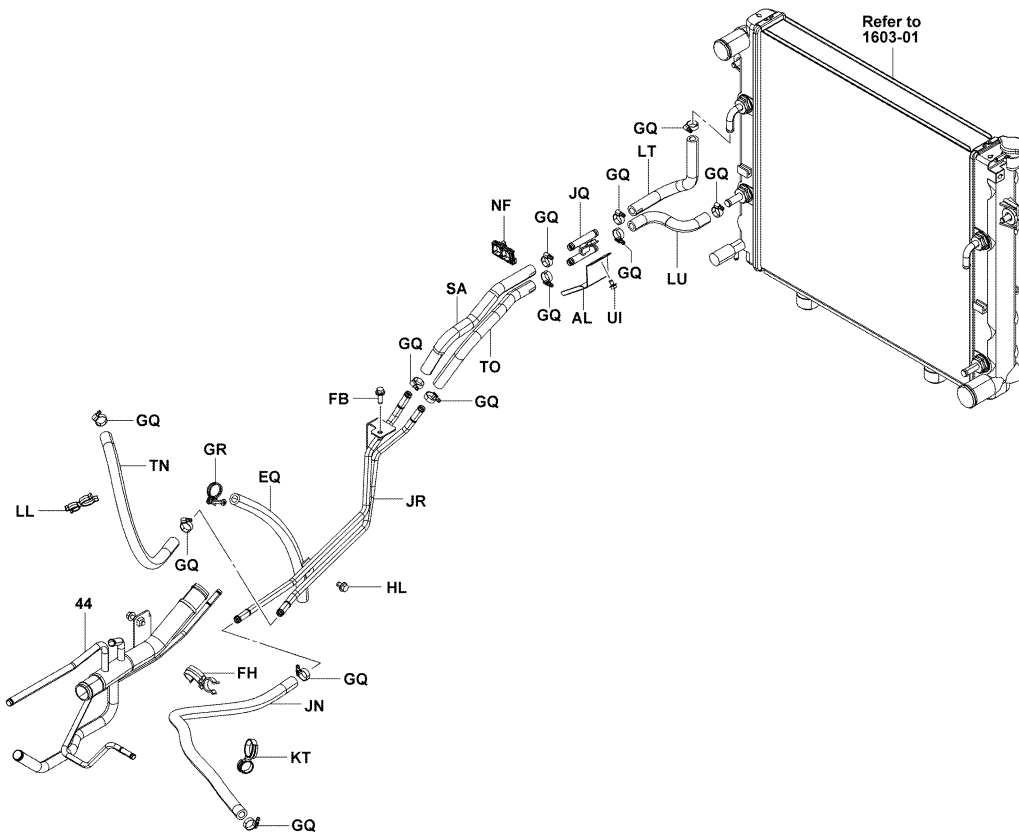
6801-700\_

6801

BODY PIPING  
TUYAUTERIE DE CARROSSERIE

KAROSSERIE, LEITUNGEN  
TUBOS DE CARROCERIA

15Z..35,K40,45,A50 (PLATE FIN) [4/4]



6801-700

6801-700\_



CLICK HERE TO **DOWNLOAD** THE COMPLETE MANUAL

- Thank you very much for reading the preview of the manual.
- You can download the complete manual from: [www.heydownloads.com](http://www.heydownloads.com) by clicking the link below



- Please note: If there is no response to CLICKING the link, please download this PDF first and then click on it.

CLICK HERE TO **DOWNLOAD** THE COMPLETE MANUAL