



INDUSTRIAL EQUIPMENT

PARTS CATALOG
FOR MODEL

7BPUE15

Serial Number 80,001 and Up

CLICK HERE TO **DOWNLOAD** THE COMPLETE MANUAL

- Thank you very much for reading the preview of the manual.
- You can download the complete manual from: www.heydownloads.com by clicking the link below



- Please note: If there is no response to CLICKING the link, please download this PDF first and then click on it.

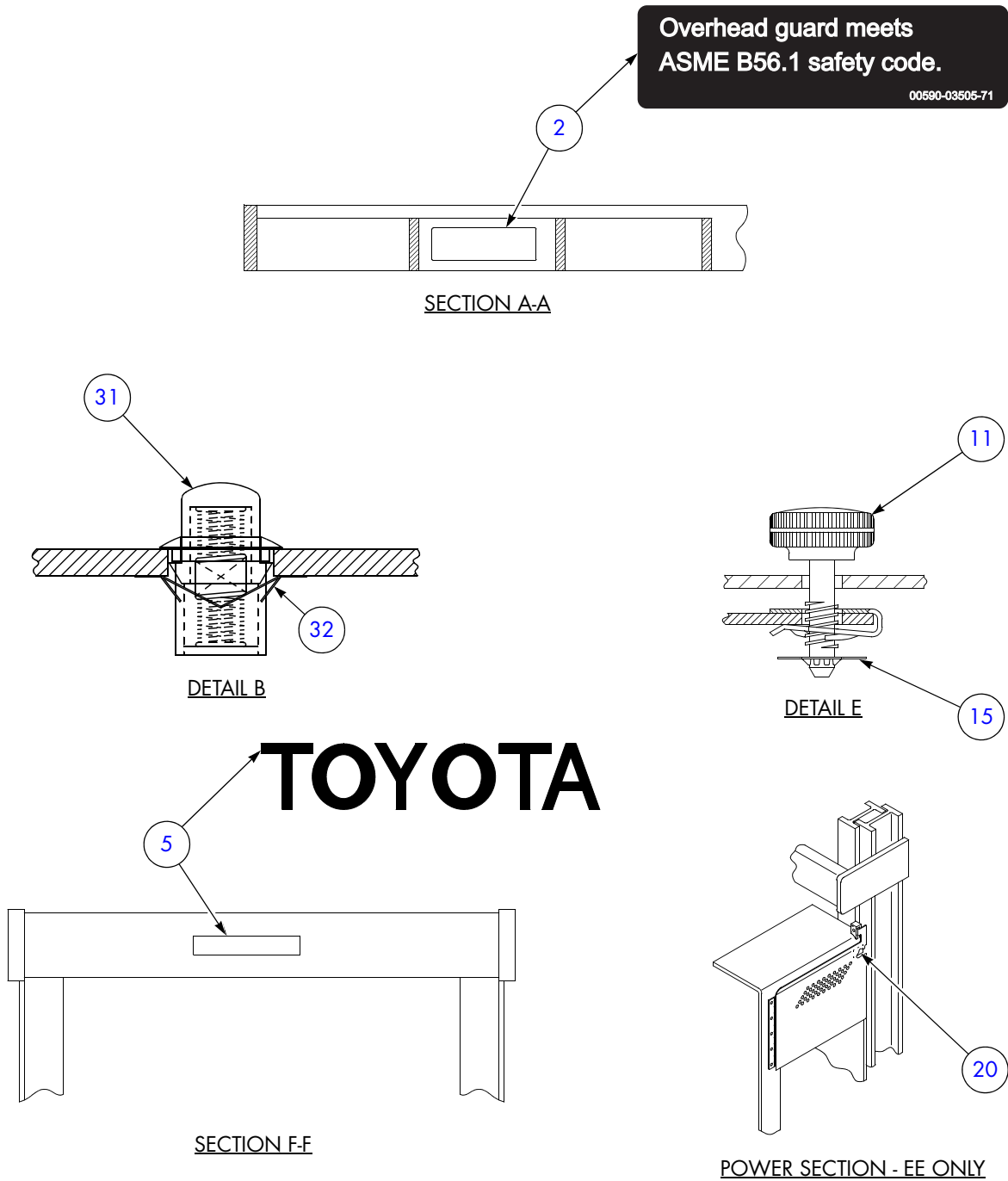
CLICK HERE TO **DOWNLOAD** THE COMPLETE MANUAL

List 1-2: Major Assemblies

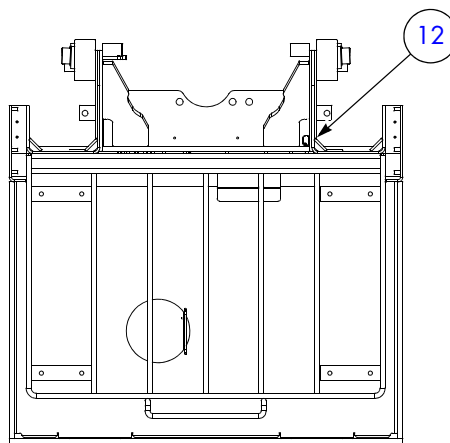
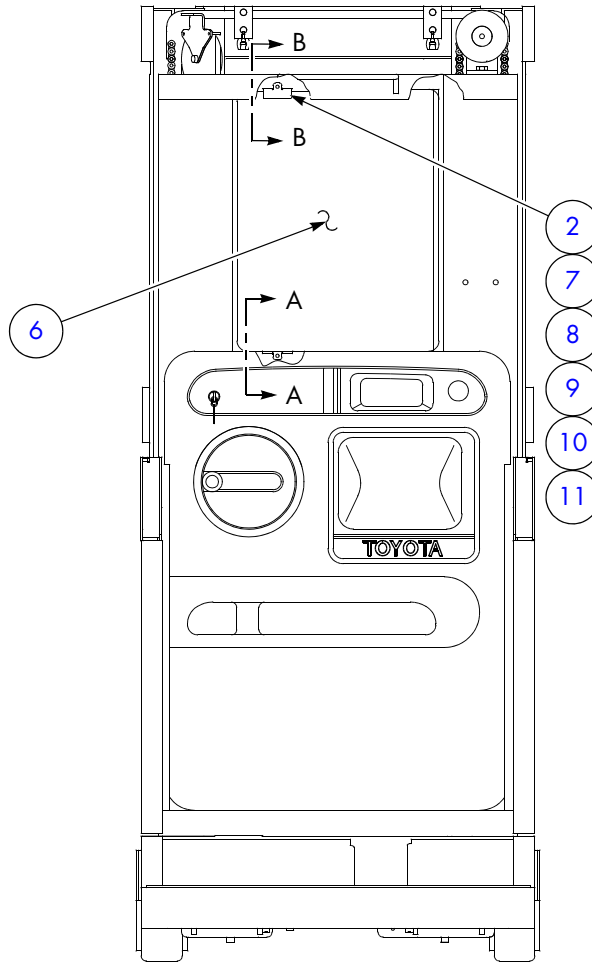
FIGURE 1-2 ITEM NO.	QTY	PART NUMBER	DESCRIPTION	USED ON
1	1	Ref.	Section, Power	
2	1	Ref.	Battery Roller and Gate Installation (See Figure 2-3.)	
3	1	Ref.	Steering and Control Components (See Figure 3-1a.)	
4	1	Ref.	Drive and Brake Components (See Figure 4-1a.)	
5	1	Ref.	Electrical System (See Figure 5-1a.)	
6	1	Ref.	Contactora Plate Assembly (See Figure 5-2a.)	
7	1	Ref.	Lift/Lower Manifold (See Figure 6-3.)	
8	1	Ref.	Motors (See Figure 5-12.)	
9	1	Ref.	Lift Pump Assembly (See Figure 6-4.)	
10	1	Ref.	Lift Ram Assemblies (See Figure 6-5.), (See Figure 6-6.) and (See Figure 6-7.)	
11	1	Ref.	Elevating Sections (See Figure 7-1a.) and (See Figure 7-2a.)	

Finish Instructions

Figure 2-1c: Finish Instructions



Mast Guard Installation
Figure 2-5a: Mast Guard Installation



TOP VIEW

O1034192_A2, O1034192_A1 SHT 1 OF 2

Pallet Clamp Installation (S/N 81,263 and Up)

List 2-8: Pallet Clamp Installation (S/N 81,263 and Up)

FIGURE 2-8 ITEM NO.	QTY	PART NUMBER	DESCRIPTION	USED ON
3	4	00590-03175-71	Screw	
4	3	00590-02960-71	Screw, Thread-Forming	
5	1	00590-03584-71	Nut	
6	1	00590-02992-71	Nut	
7	1	00590-45932-71	Nut	
8	1	00590-03204-71	Screw	
10	1	00590-50005-71	Clamp Assembly, Pallet (See Figure 2-9.)	
12	3	00590-50852-71	Bracket	
13	1	00590-50853-71	Pedal	R
14	1	00590-50858-71	Bracket, Plate	A

A= Without Pallet Clamp

R= Recommended Spare

List 2-13: Platform Extension

FIGURE 2-13 ITEM NO.	QTY	PART NUMBER	DESCRIPTION	USED ON
1	1	00590-47679-71	Bracket Weldment, Platform Extension, Right-Hand	A
	1	00590-47680-71	Bracket Weldment, Platform Extension, Right-Hand	B
	1	00590-50854-71	Bracket Weldment, Platform Extension, Right-Hand	H
	1	00590-47681-71	Bracket Weldment, Platform Extension, Right-Hand	C
	1	00590-47682-71	Bracket Weldment, Platform Extension, Right-Hand	D
	1	00590-47683-71	Bracket Weldment, Platform Extension, Right-Hand	E
	1	00590-50855-71	Bracket Weldment, Platform Extension, Right-Hand	I
	1	00590-47684-71	Bracket Weldment, Platform Extension, Right-Hand	F
	1	00590-47685-71	Bracket Weldment, Platform Extension, Right-Hand	G
	2	1	00590-47686-71	Bracket Weldment, Platform Extension, Left-Hand
1		00590-47687-71	Bracket Weldment, Platform Extension, Left-Hand	B
1		00590-50856-71	Bracket Weldment, Platform Extension, Left-Hand	H
1		00590-47688-71	Bracket Weldment, Platform Extension, Left-Hand	C
1		00590-47689-71	Bracket Weldment, Platform Extension, Left-Hand	D
1		00590-47690-71	Bracket Weldment, Platform Extension, Left-Hand	E
1		00590-50857-71	Bracket Weldment, Platform Extension, Left-Hand	I
1		00590-47691-71	Bracket Weldment, Platform Extension, Left-Hand	F
1		00590-47692-71	Bracket Weldment, Platform Extension, Left-Hand	G
3	16	00590-02960-71	Screw, Thread-Forming	

A= Overall Width: 44 in.

B= Overall Width: 47 in.

C= Overall Width: 51 in.

D= Overall Width: 55 in.

E= Overall Width: 59 in.

F= Overall Width: 63 in.

G= Overall Width: 67 in.

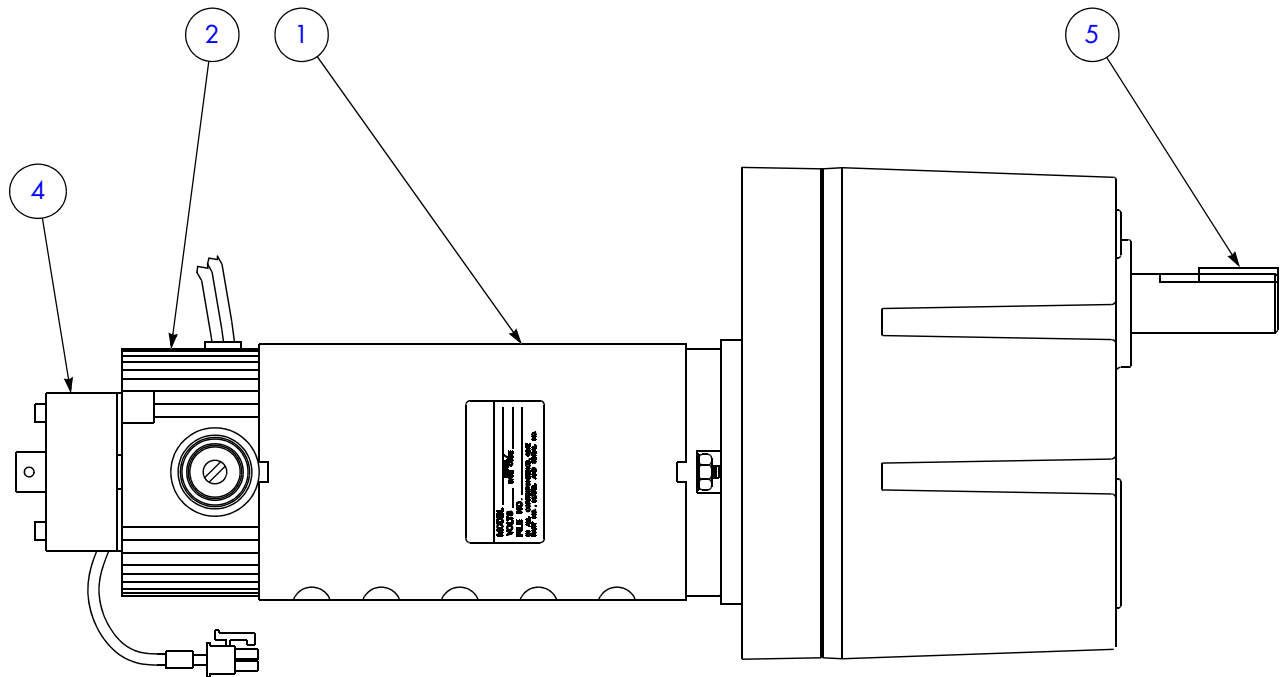
H= Overall Width: 48 in.

I= Overall Width: 62 in.

List 2-18: Guide Rollers (53.5 to 67.00 in.)

FIGURE 2-18 ITEM NO.	QTY	PART NUMBER	DESCRIPTION	USED ON
1	4	00590-39704-71	Roller Assembly, Guide (See Figure 2-19.)	
2	16	00590-03592-71	Nut	
3	16	00590-02813-71	Washer, Flat	
4	16	00590-39705-71	Washer, Lock	
5	16	00590-39687-71	Screw, M12 x 30	
6	16	00590-39688-71	Screw	
7	16	00590-03168-71	Screw, M12 x 50	
8	2	00590-03121-71	Angle, Support Rollers	
9	8	00590-03580-71	Plate, 0.12 in. Thick	
10	4	00590-39709-71	Plate, 0.25 in. Thick	
11	4	00590-39691-71	Plate, 0.38 in. Thick	
12	4	00590-39710-71	Plate, 0.50 in. Thick	
13	4	00590-39711-71	Plate, 0.63 in. Thick	
14	4	00590-03581-71	Plate, 0.75 in. Thick	
15	4	00590-39712-71	Plate, 0.88 in. Thick	
16	4	00590-03589-71	Plate, 1.00 in. Thick	
17	12	00590-03378-71	Plate, 0.06 in. Thick	
18	4	00590-39722-71	Spacer, 3 in. Roller	
19	4	00590-03379-71	Spacer, 4 in. Roller	
20	4	00590-39723-71	Spacer, 5 in. Roller	
21	4	00590-39689-71	Spacer, 6 in. Roller	
22	4	00590-39724-71	Spacer, 7 in. Roller	
23	4	00590-03380-71	Spacer, 8 in. Roller	
24	4	00590-39725-71	Spacer, 9 in. Roller	

Steering Motor Group
 Figure 3-2: Steering Motor Group



1049357_C

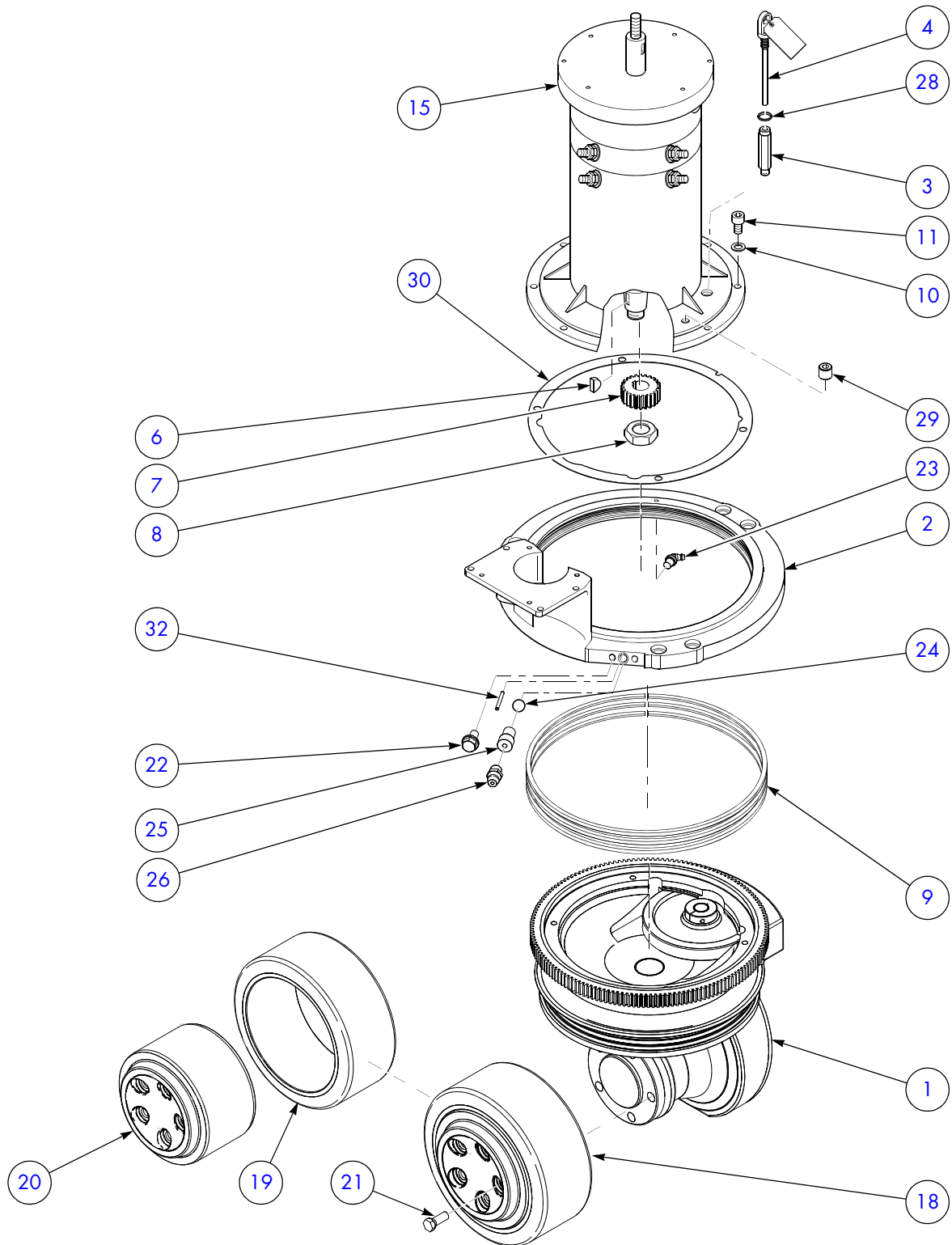
List 3-2: Steering Motor Group

FIGURE 3-2 ITEM NO.	QTY	PART NUMBER	DESCRIPTION	USED ON
	1	00590-46689-71	Motor Assembly, Steer	
1	1	00590-46695-71	Motor, 24 Volt (includes:)	
2	1	00590-45774-71	Brush and Spring Assembly	R
3	1	00590-46697-71	Cap, Brush Holder (Not Shown)	R
4	1	00590-46698-71	Encoder Assembly	R
5	1	00590-46699-71	Key	R

R= Recommended Spare

Drive Unit Assembly

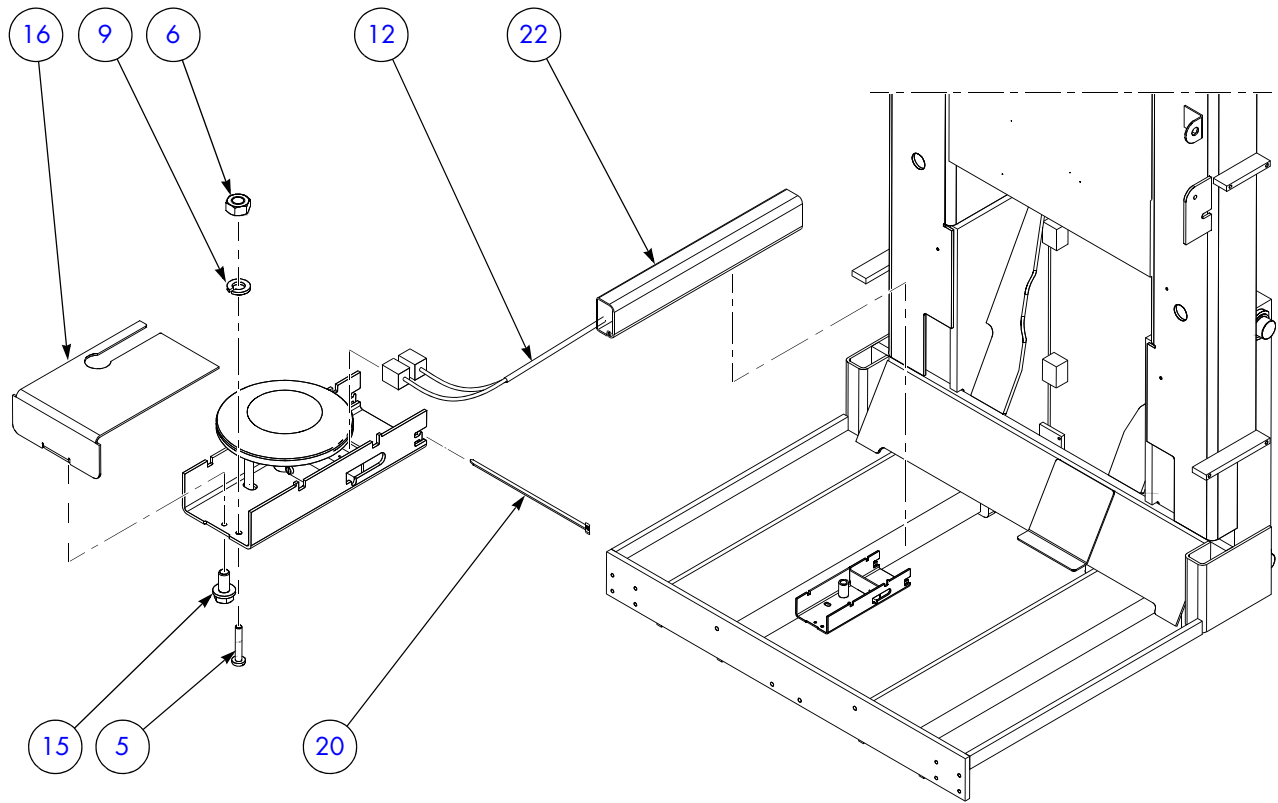
Figure 4-3a: Drive Unit Assembly



O114-021-526J SHT 1 OF 2

Deadman Pedal

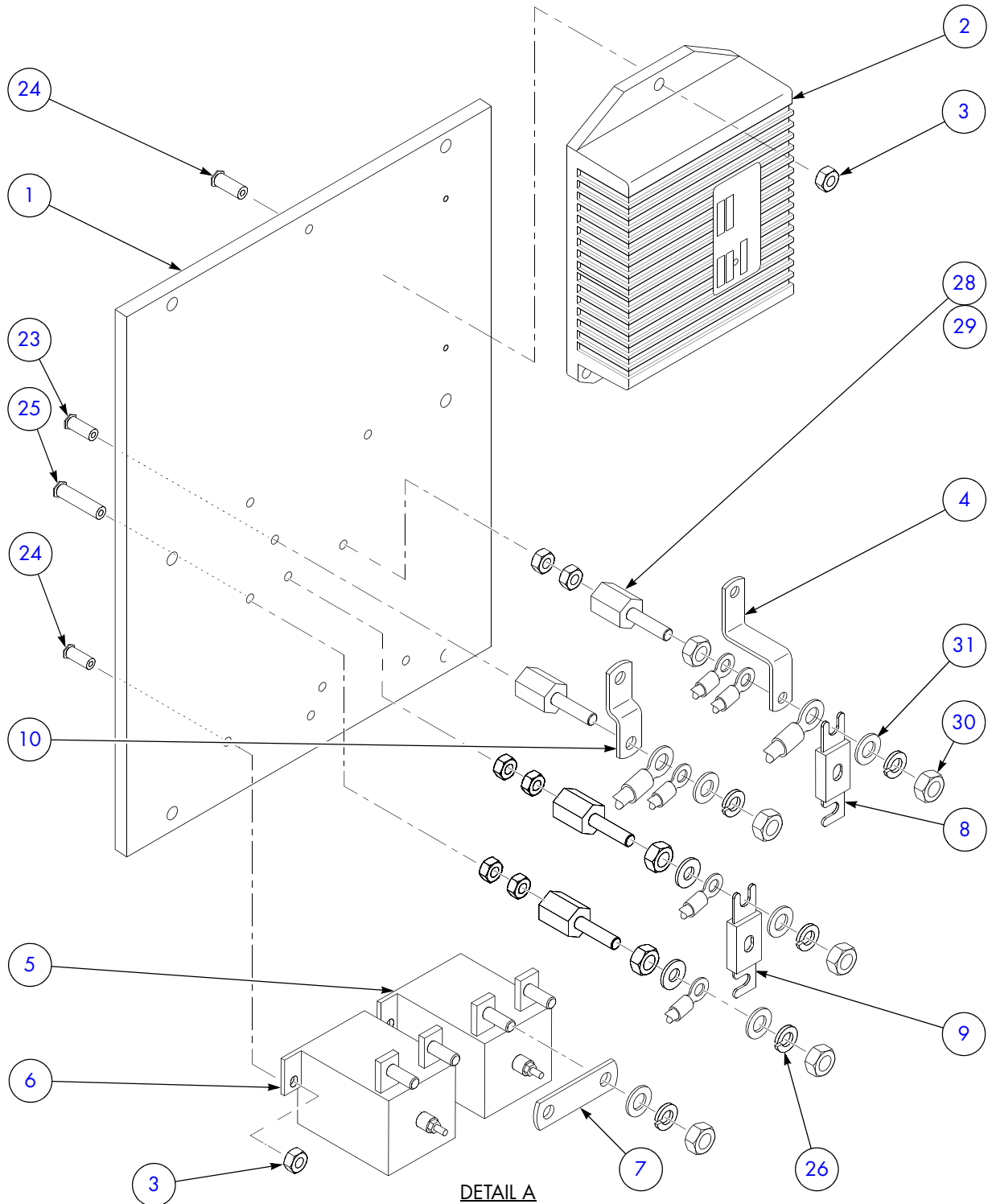
Figure 4-5c: Deadman Pedal



COLD STORAGE

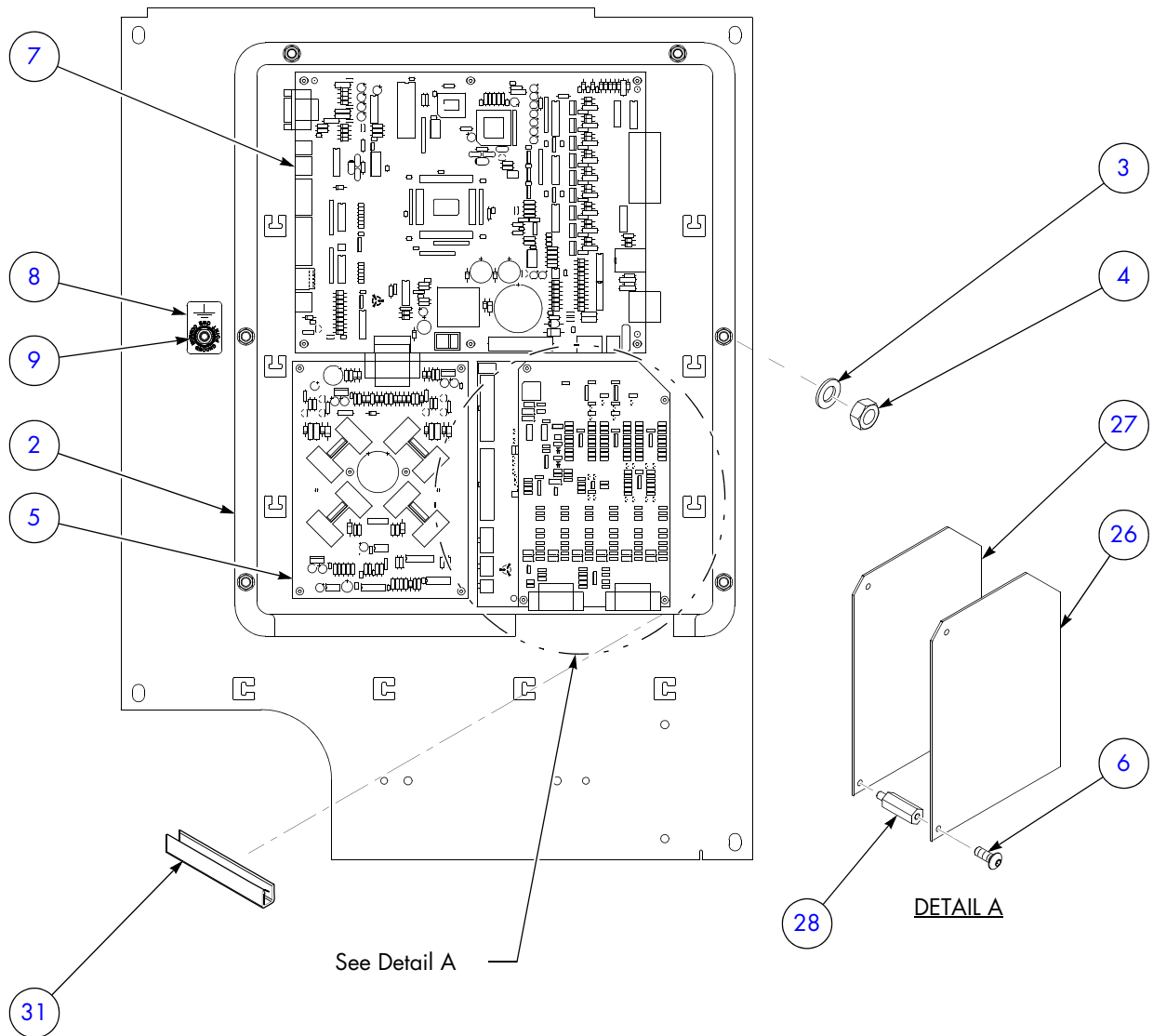
Contactor Plate Assembly

Figure 5-2b: Contactor Plate Assembly



114-021-710_K2 SHT 2 OF 5

Tractor Plate Assembly
Figure 5-4a: Tractor Plate Assembly



CLICK HERE TO **DOWNLOAD** THE COMPLETE MANUAL

- Thank you very much for reading the preview of the manual.
- You can download the complete manual from: www.heydownloads.com by clicking the link below



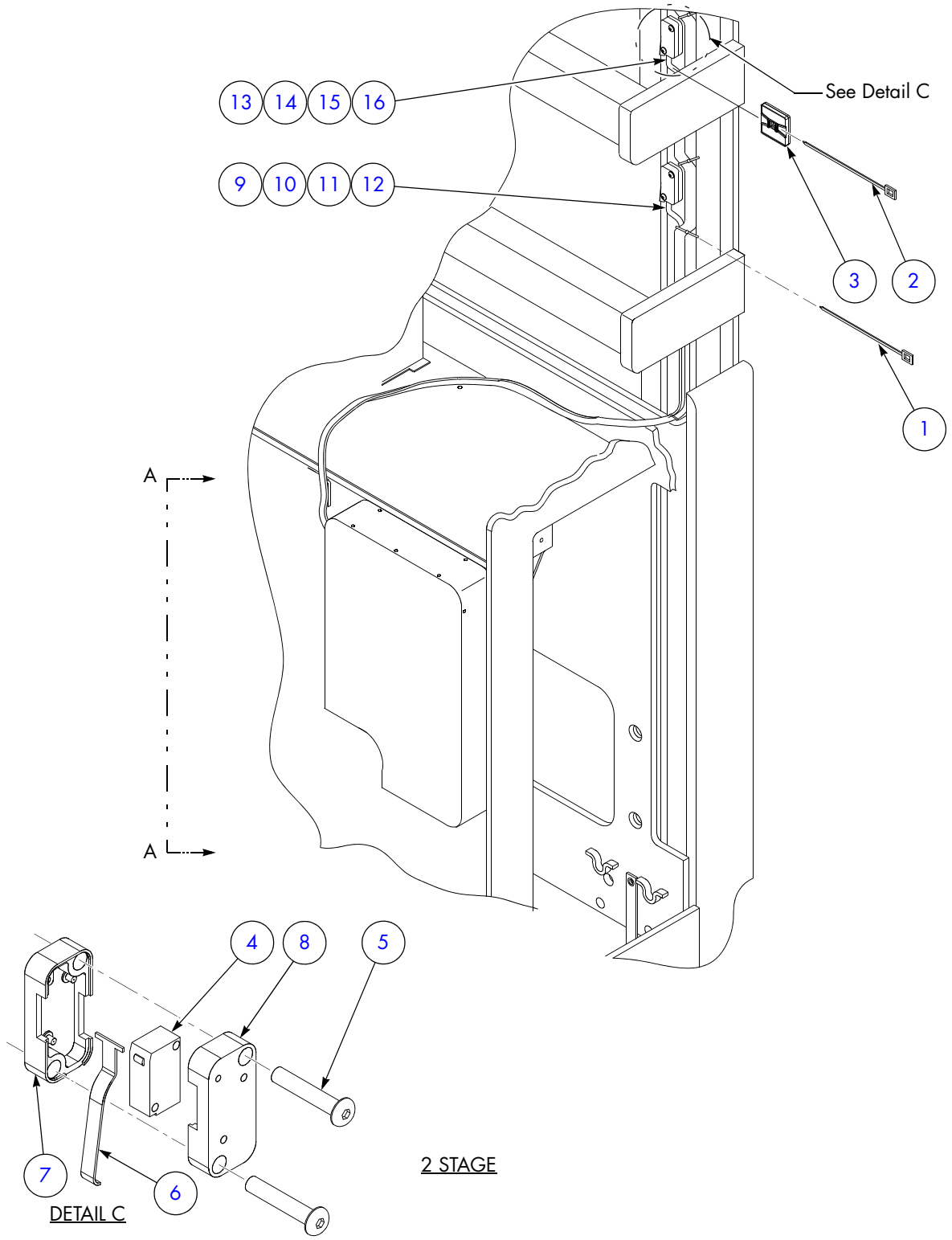
- Please note: If there is no response to CLICKING the link, please download this PDF first and then click on it.

CLICK HERE TO **DOWNLOAD** THE COMPLETE MANUAL



Travel Limit Switch Installation

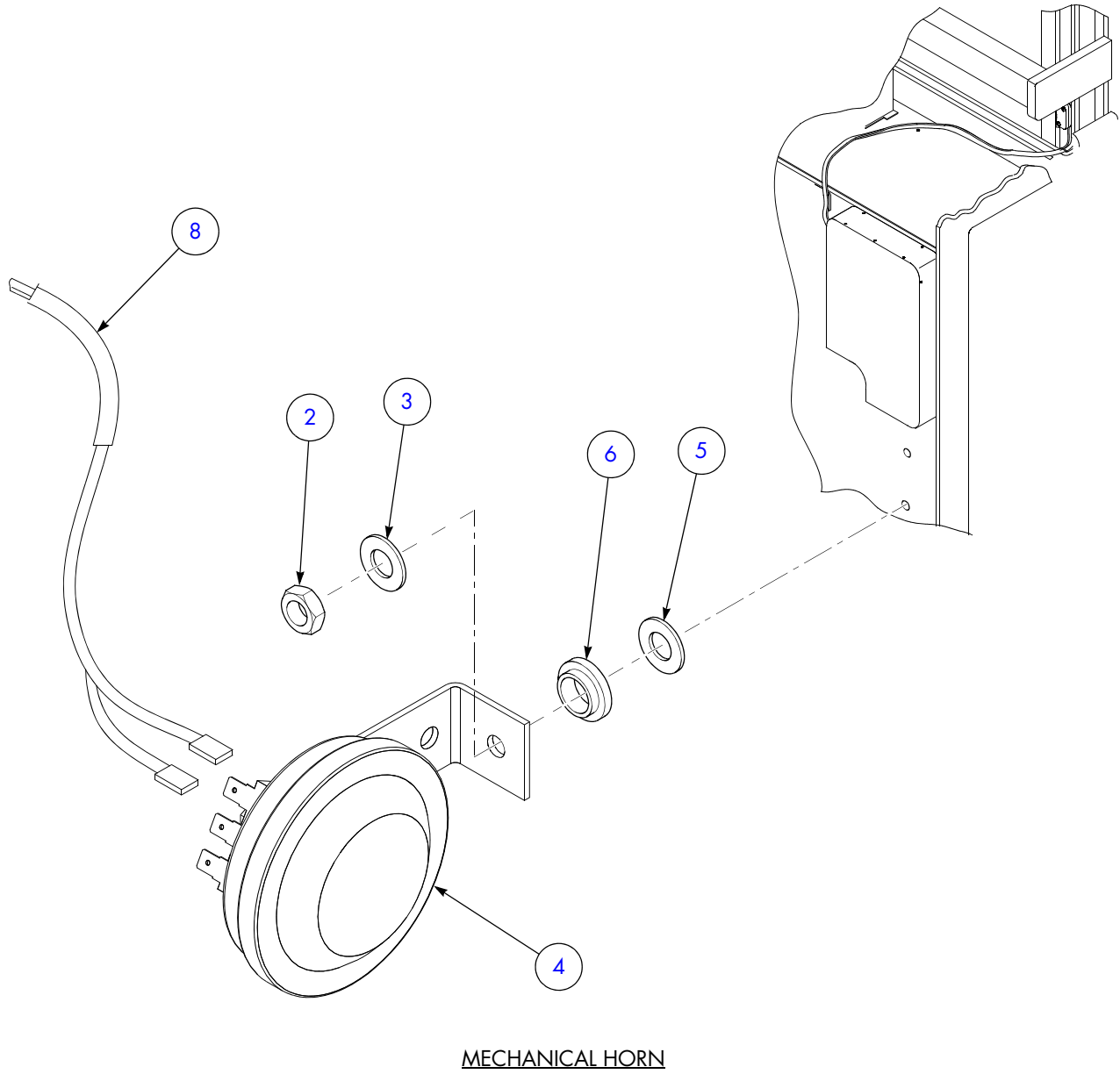
Figure 5-9b: Travel Limit Switch Installation



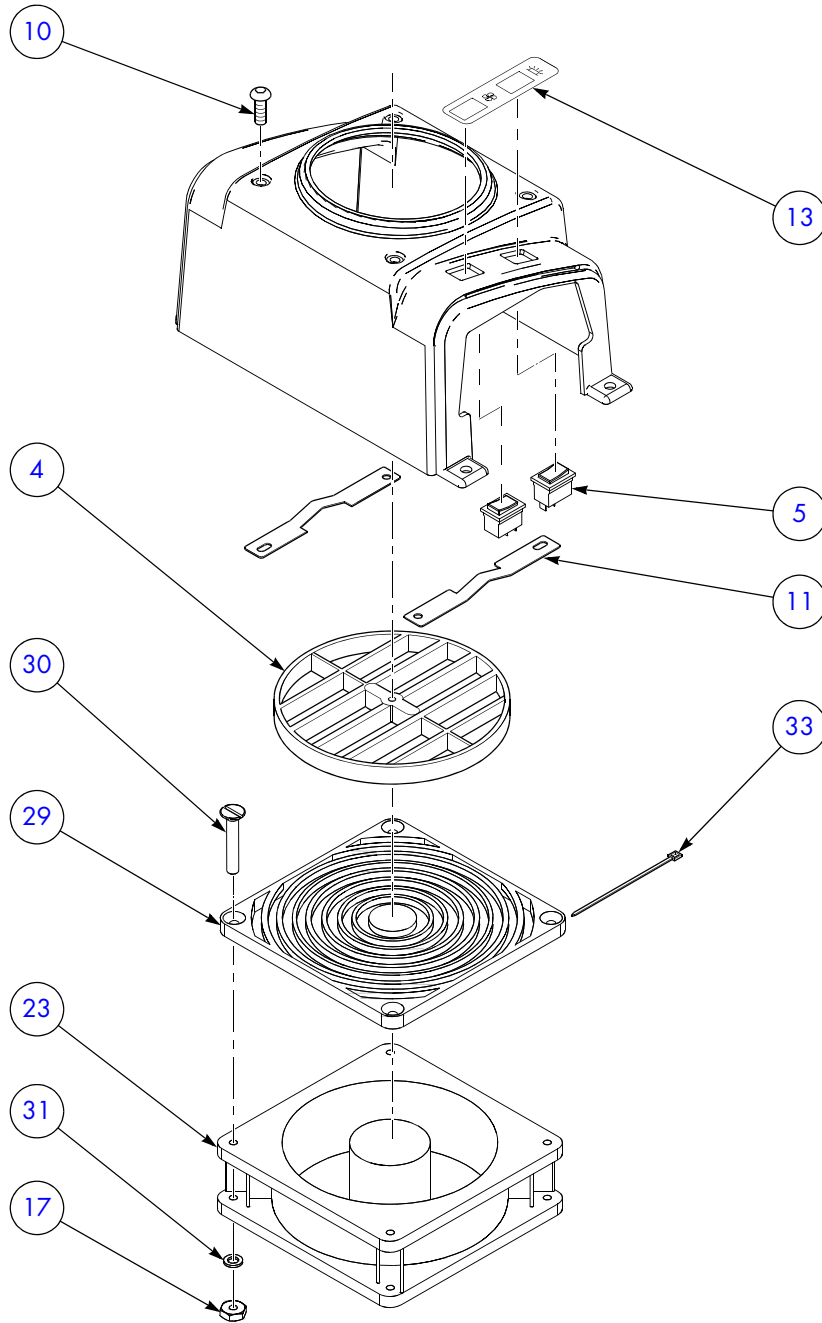
O114-021-608-B2 SHT 2 OF 3

Horn Installation

Figure 5-13a: Horn Installation



Cold Storage Light and Fan Assembly
Figure 5-16b: Cold Storage Light and Fan Assembly



DETAIL A

List 5-20: Bin Light Installation

FIGURE 5-20 ITEM NO.	QTY	PART NUMBER	DESCRIPTION	USED ON
1	1	00590-02722-71	Light Assembly, Bin, Right-Hand (See Figure 5-21.)	
	1	00590-02723-71	Light Assembly, Bin, Left-Hand (See Figure 5-21.) (Not Shown)	
3	3	00590-03591-71	Screw	
4	3	00590-03458-71	Tie, Cable	
5	1	00590-47666-71	Raceway, Cable	
6	1	00590-47674-71	Cable Assembly	
7	8	00590-00556-71	Tie, Cable	
9	4	00590-02929-71	Screw	
10	4	00590-02992-71	Nut	
11	4	00590-03092-71	Washer, Flat	
12	1	00590-03137-71	Anchor, Plastic Mounting (Not Shown)	
13	1	00590-42978-71	Tie, Cable (Not Shown)	
17	2	Ref.	Fuse, 6 Amp (See Figure 5-18b.)	R

R= Recommended Spare

List 6-1: Hydraulic System

FIGURE 6-1 ITEM NO.	QTY	PART NUMBER	DESCRIPTION	USED ON
1	1	00590-45907-71	Reservoir Assembly (See Figure 6-2.)	
2	2	00590-46036-71	Screw	
3	1	00590-03185-71	Hose, Formed	
4	4	00590-03138-71	Clamp, Hose	
5	1	00590-41853-71	Bracket, Reservoir	
6	8	00590-02960-71	Screw, Thread-Forming	
7	1	00590-45977-71	Motor, Lift, Standard (See Figure 5-12.)	A
	1	00590-45990-71	Motor, Lift, High Performance (See Figure 5-12.)	B
	1	00590-47723-71	Motor, Lift, High Performance (See Figure 5-12.)	B, C
8	1	00590-47710-71	Pump, Lift (See Figure 6-4.)	A
	1	00590-47712-71	Pump, Lift (See Figure 6-4.)	B
	1	00590-47708-71	Pump, Lift (See Figure 6-4.)	C
9	1	00590-03000-71	Connector, Hydraulic, Beaded	
10	2	00590-02940-71	Washer, Flat	
11	2	00590-02770-71	Screw	
12	1	00590-41879-71	Elbow, 90 Degree	
13	1	00590-41809-71	Hose Assembly	
14	1	00590-47714-71	Filter, Cartridge, Mechanical	R
15	1	00590-45946-71	Manifold, Lift/Lower (See Figure 6-3.)	
16	1	00590-45856-71	Hose, Return	
17	2	00590-03029-71	Screw	
18	1	00590-45861-71	Bracket, Manifold	
19	1	00590-03233-71	Hose Assembly	
20	1	00590-03487-71	Tee	
21	1	00590-03302-71	Line Assembly, Hydraulic	
22	1	00590-03303-71	Line Assembly, Hydraulic	
24	1	00590-03491-71	Cap, Tube Fitting	
27	1	00590-45902-71	Hose Assembly, 88 in. OACH	
	1	00590-45903-71	Hose Assembly, 95 in. OACH	
	1	00590-45904-71	Hose Assembly, 107 in. OACH	
28	1	00590-42213-71	Clamp Kit, Hose	R

A= Standard

B= High Performance

C= EE and EE with Wire Guidance

R= Recommended Spare

Lift Ram Assembly, Main Lift, 1.75 in., Three Stage

List 6-6: Lift Ram Assembly, Main Lift, 1.75 in., Three Stage

FIGURE 6-6 ITEM NO.	QTY	PART NUMBER	DESCRIPTION	USED ON
	1	00590-50863-71	Ram Assembly, Lift, 1.75 in., Three Stage, Right-Hand	E
	1	00590-50864-71	Ram Assembly, Lift, 1.75 in., Three Stage, Left-Hand	E
	1	00590-50861-71	Ram Assembly, Lift, 1.75 in., Three Stage, Right-Hand	F
	1	00590-50862-71	Ram Assembly, Lift, 1.75 in., Three Stage, Left-Hand	F
	1	00590-49912-71	Ram Assembly, Lift, 1.75 in., Three Stage, Right-Hand	B
	1	00590-49913-71	Ram Assembly, Lift, 1.75 in., Three Stage, Left-Hand	B
	1	00590-47004-71	Ram Assembly, Lift, 1.75 in., Three Stage, Right-Hand	C
	1	00590-47005-71	Ram Assembly, Lift, 1.75 in., Three Stage, Left-Hand	C
	1	00590-47568-71	Ram Assembly, Lift, 1.75 in., Three Stage, Right-Hand	D
	1	00590-47569-71	Ram Assembly, Lift, 1.75 in., Three Stage, Left-Hand	D
1	1	00590-02802-71	Seal	R
3	1	00590-02941-71	Seal, Oil	R
4	1	Ref.	Housing, Cylinder	A
5	1	00590-03059-71	Plug, Packing Backup	
6	1	00590-48295-71	Ring, Backup	R
7	1	00590-03142-71	Plug, Cylinder, Machined	
8	1	00590-48296-71	Screw	
9	1	00590-03141-71	Ring, Snap	
10	2	00590-03493-71	Ring, Snap	
11	1	00590-46062-71	Spring	R
12	1	00590-45759-71	Piston	
14	1	Ref.	Manifold, Cylinder	
15	1	00590-03596-71	Adapter	
16	1	00590-45760-71	Ring, Retainer	
17	1	00590-50873-71	Rod, Piston, Right Hand and Left-Hand	E
	1	00590-48737-71	Rod, Piston, Right Hand and Left-Hand	F
	1	00590-03600-71	Rod, Piston, Right-Hand and Left-Hand	B
	1	00590-03601-71	Rod, Piston, Right-Hand and Left-Hand	C
	1	00590-03602-71	Rod, Piston, Right-Hand and Left-Hand	D
18	1	00590-47642-71	Plug, Piston (11 in. Overall)	
	1	00590-47643-71	Plug, Piston (14 in. Overall)	
20	1	00590-03251-71	Bracket, Cylinder	
21	1	00590-45945-71	Valve, Check	R
22	1	00590-45921-71	Decal	
23	1	00590-42999-71	Kit, Seal (includes: items 1, 3, 5, 10, and 15) (Not Shown)	R
26	1	00590-47719-71	O-Ring	R
27	1	00590-47720-71	O-Ring	R
28	1	00590-47717-71	Ring, Wear	R
29	1	00590-47718-71	Ring, Piston	R

A= Not Available for Service

B= 88 in. OACH/183 in. Elevated

C= 95 in. OACH/204 in. Elevated

D= 107 in. OACH/240 in. Elevated

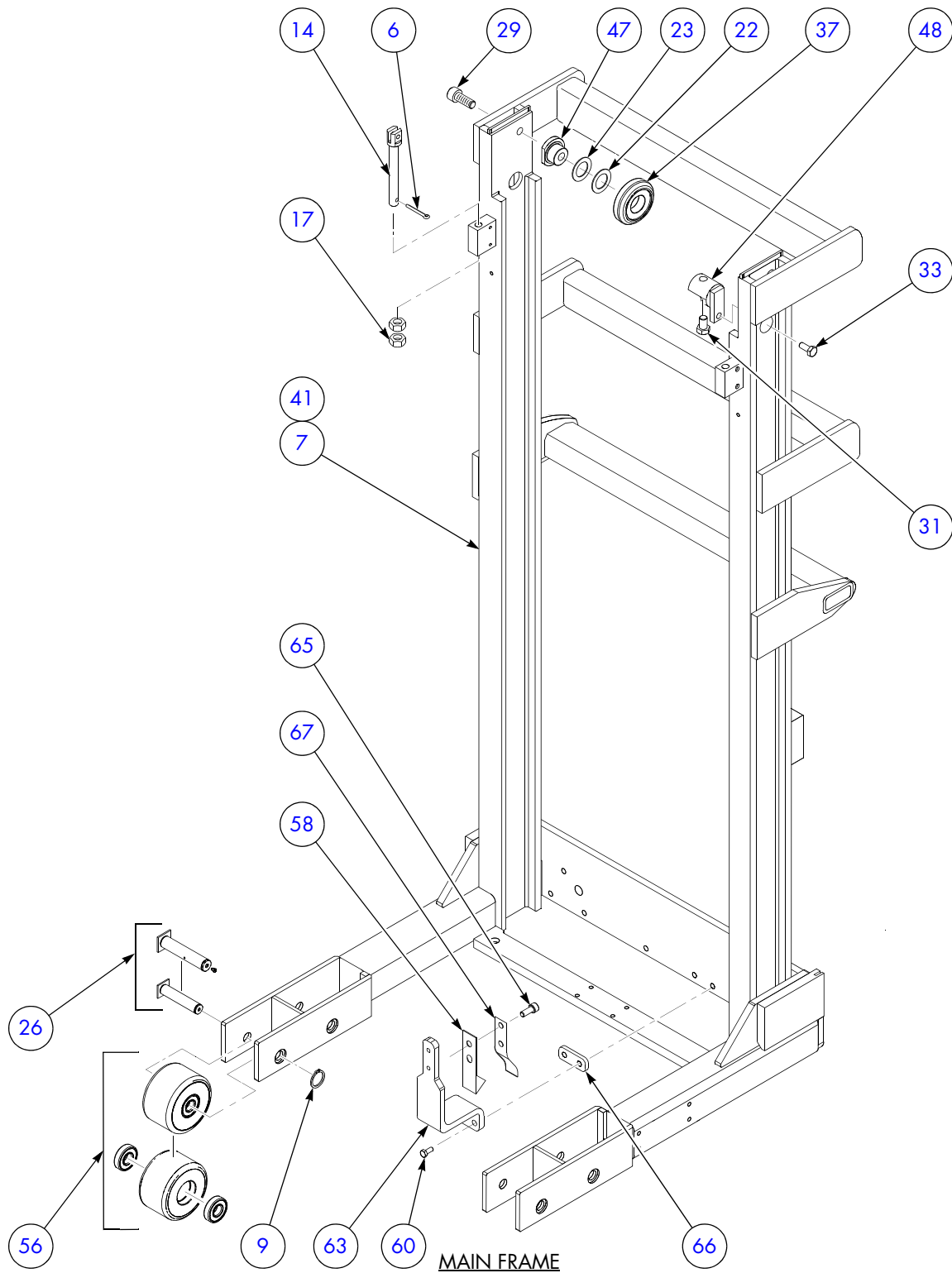
E= 88 in. OACH/189 in. Elevated

F= 95 in. OACH/210 in. Elevated

R= Recommended Spare

Elevating Section, Three Stage

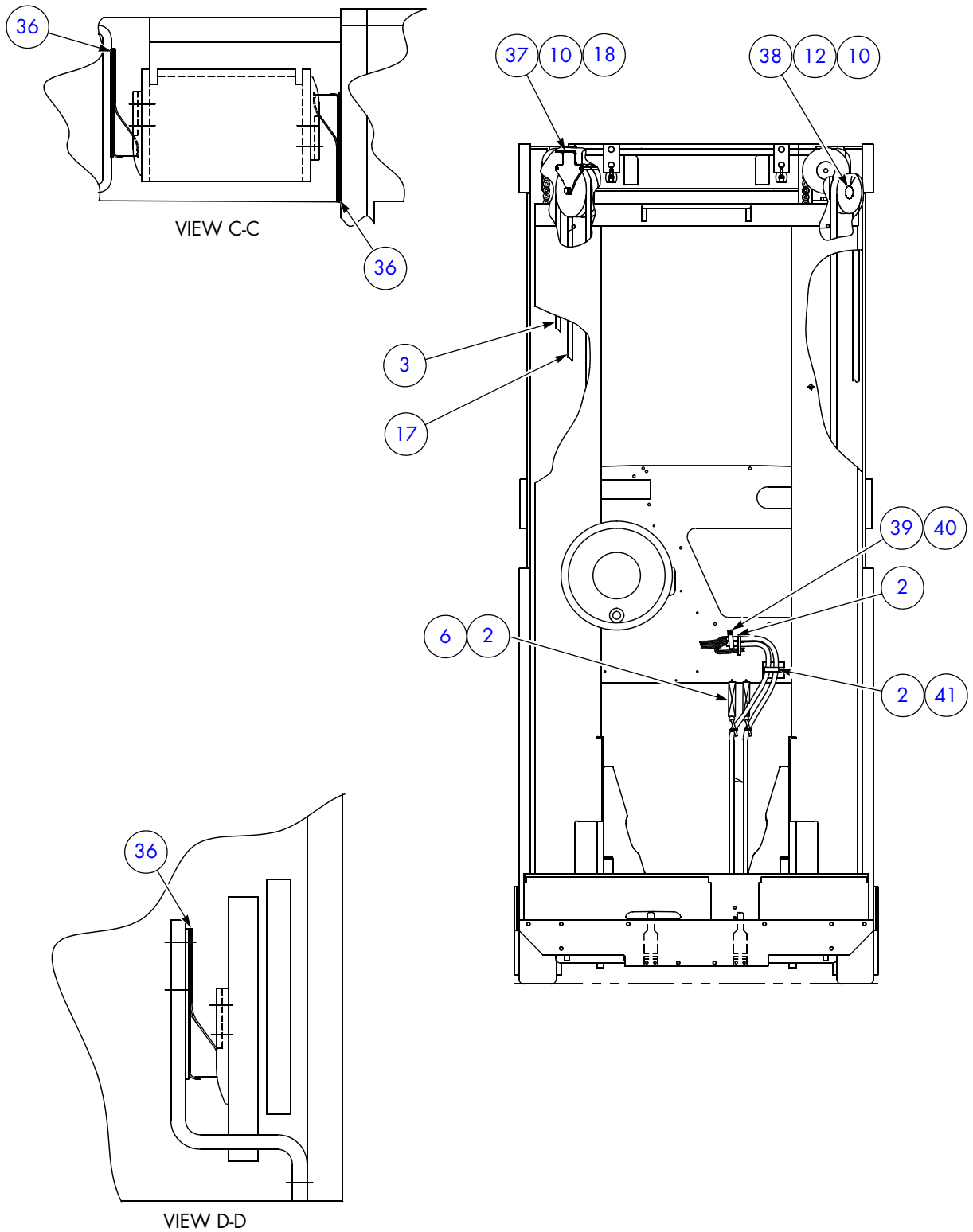
Figure 7-2a: Elevating Section, Three Stage



O1001667-C1 BADGER SHT 1 OF 4

Mast to Tractor Assembly, Three Stage

Figure 7-4b: Mast to Tractor Assembly, Three Stage



1111334-D2 SHT 2 OF 3

Pulley Assembly, Free Lift, Three Stage

List 7-8: Pulley Assembly, Free Lift, Three Stage

FIGURE 7-8 ITEM NO.	QTY	PART NUMBER	DESCRIPTION	USED ON
		00590-45743-71	Pulley Assembly	
1	1	00590-47130-71	Cap, End Cylinder	
2	2	00590-02884-71	Pulley	
3	1	00590-02947-71	Shim, Spacer	
4	1	00590-47704-71	Nut	
6	2	00590-03115-71	Pulley, Sheave	
7	AR	00590-03159-71	Shim	
9	1	00590-03311-71	Rod, Extension	
10	4	00590-03351-71	Shim, Spacer	
12	1	00590-03483-71	Washer, Flat	
13	1	00590-03167-71	Screw	
14	1	00590-03312-71	Pulley, Shaft	
15	1	00590-42081-71	Washer	

AR= As Required

Switched Guide Roller Assembly

List 7-13: Switched Guide Roller Assembly

FIGURE 7-13 ITEM NO.	QTY	PART NUMBER	DESCRIPTION	USED ON
		00590-41846-71	Roller Assembly with Switch	
1	1	00590-39694-71	Axle, Wheel	
2	2	00590-39695-71	Ring, Snap	
3	1	00590-41843-71	Pivot Weldment, Roller	
4	1	00590-39697-71	Plate Weldment	
5	1	00590-02834-71	Wheel Assembly (each assembly includes:)	
	1	00590-02763-71	Wheel	
	2	00590-02835-71	Bearing	
6	2	00590-02969-71	Washer	
7	1	00590-02706-71	Screw	
8	1	00590-41842-71	Shaft, Pivot	
9	1	00590-03076-71	Pin, Cotter	
10	2	00590-39699-71	Bearing, Flanged	
11	1	00590-39700-71	Pin, Dowel	
12	1	00590-03565-71	Spring	
14	1	00590-02995-71	Switch	
15	2	00590-02794-71	Housing, Inner	
16	1	00590-02871-71	Housing, Outer	
17	1	00590-02931-71	Lever	
18	2	00590-44375-71	Screw	
20	1	00590-39701-71	Cable Assembly	
21	1	00590-39702-71	Housing, Inner	

Description	Part No.	Page	Description	Part No.	Page
Rod, Piston, Right-Hand and Left-Hand	00590-03603-71	6-15	Screw	00590-03158-71	7-30
Rod, Piston, Right-Hand and Left-Hand	00590-03604-71	6-15	Screw	00590-03167-71	7-11
Rod, Piston, Right-Hand and Left-Hand	00590-49579-71	6-15	Screw	00590-03167-71	7-15
Rod, Piston, Right-Hand and Left-Hand	00590-50872-71	6-15	Screw	00590-03167-71	7-19
Roller Assembly	00590-50004-71	2-13	Screw	00590-03167-71	7-27
Roller Assembly	00590-39734-71	2-47	Screw	00590-03167-71	7-5
Roller Assembly	00590-47007-71	2-11	Screw	00590-03175-71	2-25
Roller Assembly with Switch	00590-41846-71	7-35	Screw	00590-03175-71	7-11
Roller Assembly with Switch	00590-41846-71	7-37	Screw	00590-03175-71	7-5
Roller Assembly, Guide	00590-39704-71	2-41	Screw	00590-03204-71	2-21
Roller Assembly, Guide	00590-39704-71	2-43	Screw	00590-03204-71	2-25
Roller Assembly, Guide	00590-39704-71	2-45	Screw	00590-03204-71	5-79
Roller Assembly, Guide	00590-39704-71	2-47	Screw	00590-03254-71	6-9
Roller Weldment	00590-39733-71	2-47	Screw	00590-03421-71	2-27
Roller, Battery	00590-05311-71	2-11	Screw	00590-03421-71	3-5
Roller, Battery	00590-05311-71	2-13	Screw	00590-03421-71	5-5
Screw (88 in. OACH ONLY with High Performance)	00590-03428-71	5-41	Screw	00590-03421-71	6-9
Screw	00590-00282-71	3-9	Screw	00590-03421-71	7-11
Screw	00590-02706-71	2-39	Screw	00590-03421-71	7-12
Screw	00590-02706-71	5-25	Screw	00590-03422-71	2-23
Screw	00590-02706-71	7-19	Screw	00590-03424-71	7-11
Screw	00590-02706-71	7-35	Screw	00590-03425-71	7-11
Screw	00590-02706-71	7-37	Screw	00590-03425-71	7-5
Screw	00590-02770-71	4-5	Screw	00590-03426-71	7-11
Screw	00590-02770-71	6-7	Screw	00590-03428-71	7-33
Screw	00590-02929-71	5-77	Screw	00590-03430-71	3-5
Screw	00590-02951-71	7-25	Screw	00590-03432-71	3-5
Screw	00590-02960-71	7-19	Screw	00590-03432-71	5-25
Screw	00590-02989-71	2-31	Screw	00590-03433-71	2-37
Screw	00590-02989-71	5-43	Screw	00590-03433-71	7-11
Screw	00590-03001-71	2-17	Screw	00590-03433-71	7-5
Screw	00590-03001-71	5-19	Screw	00590-03434-71	5-71
Screw	00590-03001-71	7-15	Screw	00590-03468-71	7-11
Screw	00590-03001-71	7-19	Screw	00590-03471-71	5-55
Screw	00590-03006-71	7-21	Screw	00590-03471-71	5-59
Screw	00590-03008-71	7-23	Screw	00590-03482-71	2-31
Screw	00590-03021-71	2-17	Screw	00590-03585-71	7-35
Screw	00590-03021-71	5-25	Screw	00590-03591-71	2-21
Screw	00590-03022-71	5-39	Screw	00590-03591-71	3-5
Screw	00590-03022-71	5-75	Screw	00590-03591-71	4-19
Screw	00590-03022-71	7-19	Screw	00590-03591-71	5-19
Screw	00590-03029-71	2-28	Screw	00590-03591-71	5-25
Screw	00590-03029-71	2-31	Screw	00590-03591-71	5-33
Screw	00590-03029-71	6-7	Screw	00590-03591-71	5-5
Screw	00590-03032-71	5-12	Screw	00590-03591-71	5-65
Screw	00590-03032-71	5-71	Screw	00590-03591-71	5-77
Screw	00590-03071-71	2-11	Screw	00590-03607-71	2-43
Screw	00590-03085-71	5-19	Screw	00590-03625-71	5-33
Screw	00590-03085-71	5-65	Screw	00590-03628-71	5-33
Screw	00590-03085-71	5-71	Screw	00590-31677-71	7-35
Screw	00590-03085-71	7-6	Screw	00590-39658-71	5-65
Screw	00590-03098-71	5-79	Screw	00590-39687-71	7-35
Screw	00590-03100-71	2-31	Screw	00590-39688-71	2-13
Screw	00590-03113-71	3-5	Screw	00590-39688-71	2-43
Screw	00590-03113-71	5-65	Screw	00590-39688-71	2-45
Screw	00590-03113-71	7-15	Screw	00590-39688-71	7-35
Screw	00590-03113-71	7-19	Screw	00590-39706-71	2-43
Screw	00590-03125-71	5-19	Screw	00590-39812-71	5-55
Screw	00590-03125-71	5-71	Screw	00590-39812-71	5-59
Screw	00590-03127-71	7-11	Screw	00590-41865-71	7-11
			Screw	00590-41865-71	7-5

CLICK HERE TO **DOWNLOAD** THE COMPLETE MANUAL

- Thank you very much for reading the preview of the manual.
- You can download the complete manual from: www.heydownloads.com by clicking the link below



- Please note: If there is no response to CLICKING the link, please download this PDF first and then click on it.

CLICK HERE TO **DOWNLOAD** THE COMPLETE MANUAL