

# **SL-15-2-00003 WITH WINCH,SLIDE CARRIER**

**PF1000746-00 WINCH SYSTEM**

**PK1000777-00 FRAME (BODY)**

**PK2001637-00 FRAME UNIT**

**PO1000152-01 INDICATION PLATES**

**PY1000373-00 OPTIONS**

**ASSEMBLY**

CLICK HERE TO **DOWNLOAD** THE COMPLETE MANUAL

- Thank you very much for reading the preview of the manual.
- You can download the complete manual from: [www.heydownloads.com](http://www.heydownloads.com) by clicking the link below



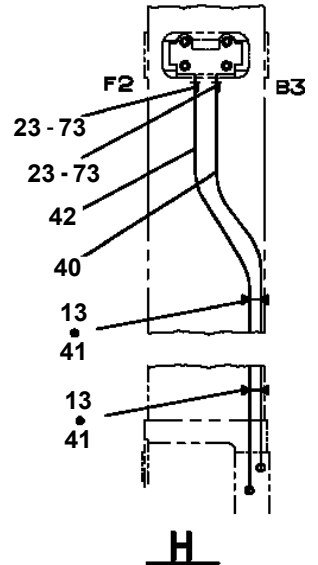
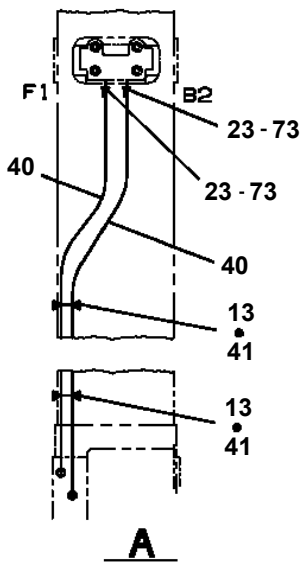
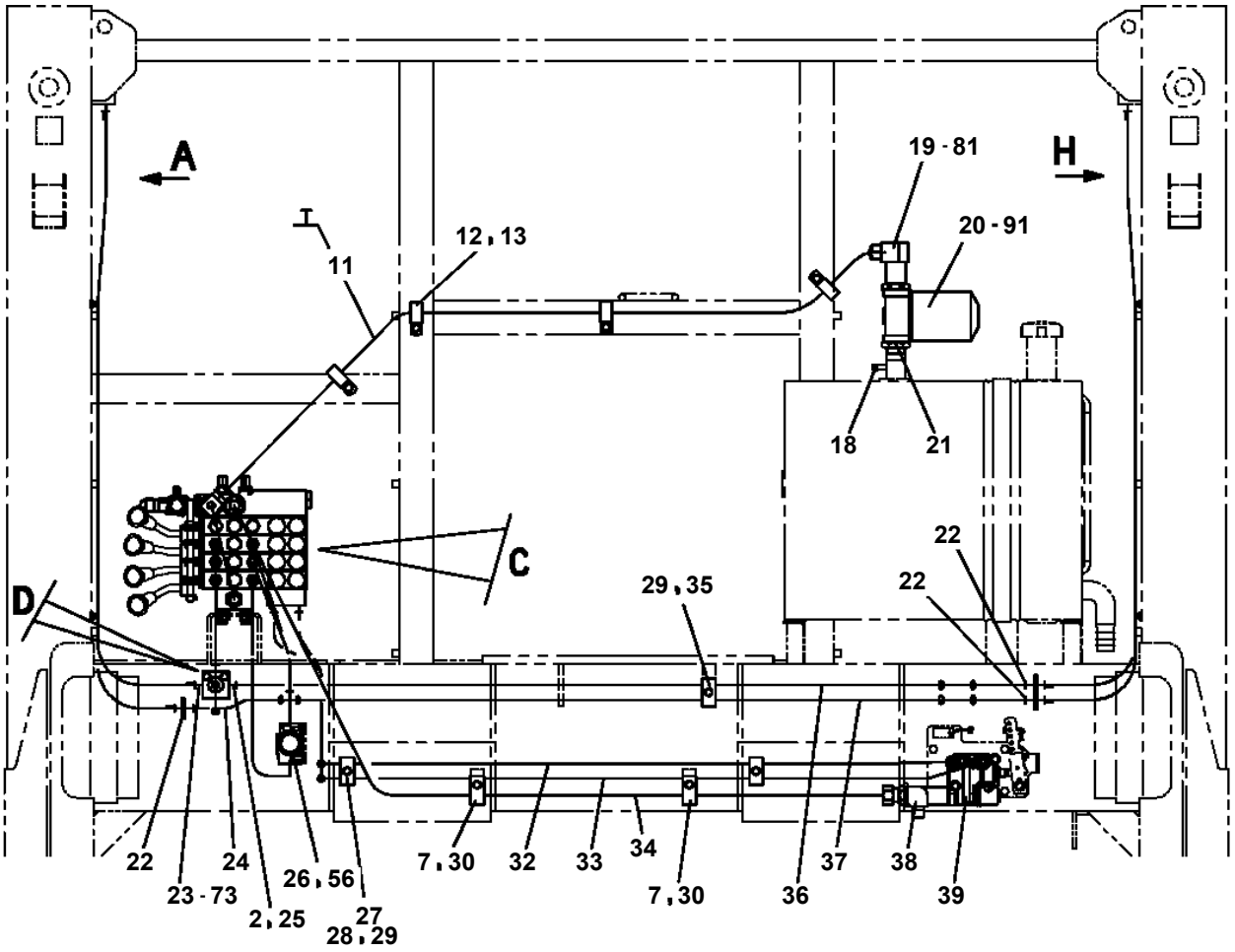
- Please note: If there is no response to CLICKING the link, please download this PDF first and then click on it.

CLICK HERE TO **DOWNLOAD** THE COMPLETE MANUAL

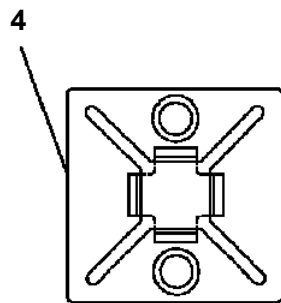
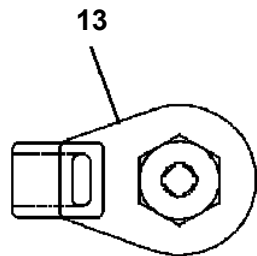
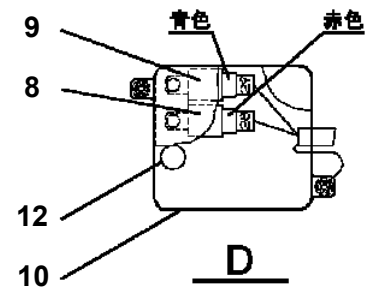
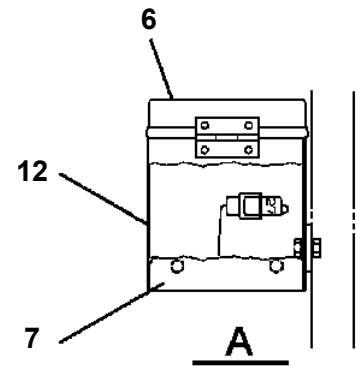
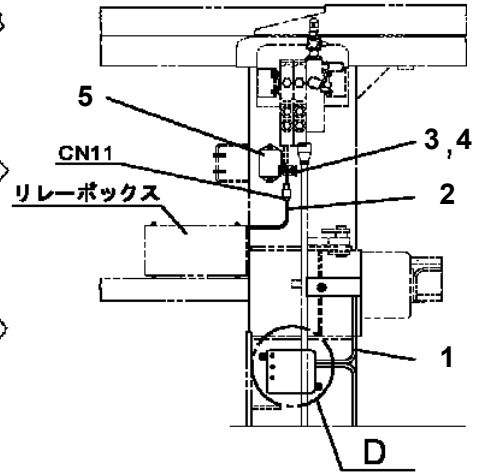
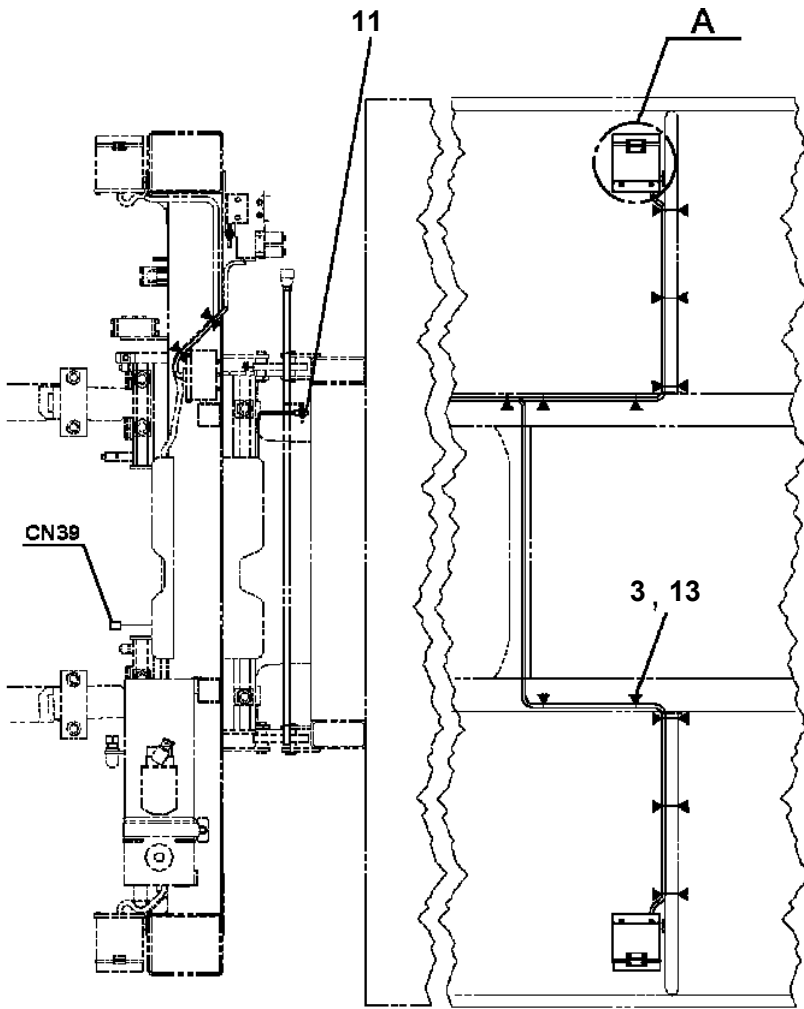
# SL-15-2-00003 WITH WINCH,SLIDE CARRIER

Pos No.	Parts No	Parts Name	Qty	Unit	Technical Data	Serial No (Start)	Serial No (End)	Remarks
11	(*****)	RADIO CONTROLLER ASSY	1					

**SL-15-2-00003 WITH WINCH,SLIDE CARRIER  
PB1411813-00 PIPING,LOWER**

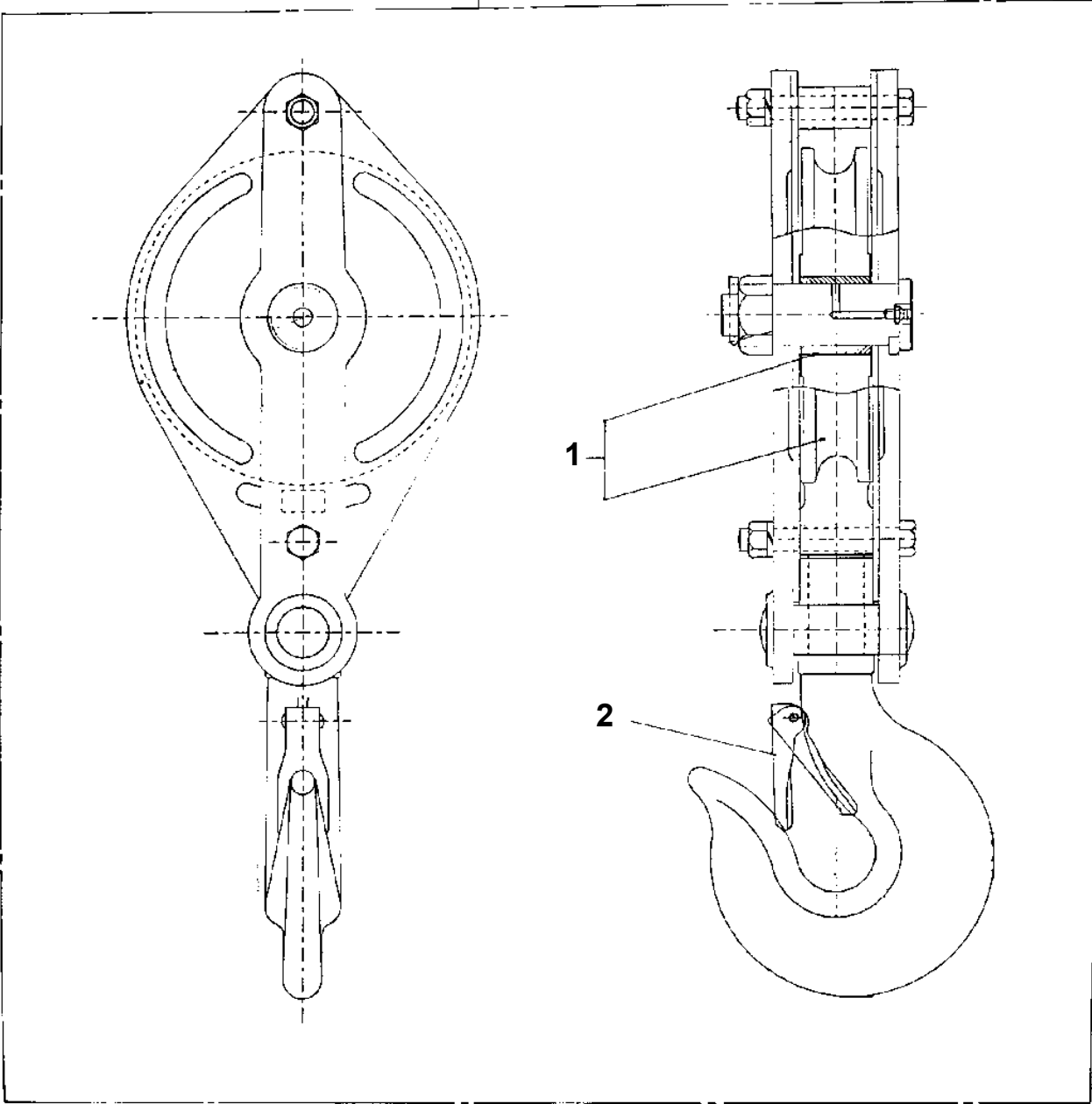


**SL-15-2-00003 WITH WINCH,SLIDE CARRIER  
PE5020498-00 ELEC.ASSY (LOWER)**

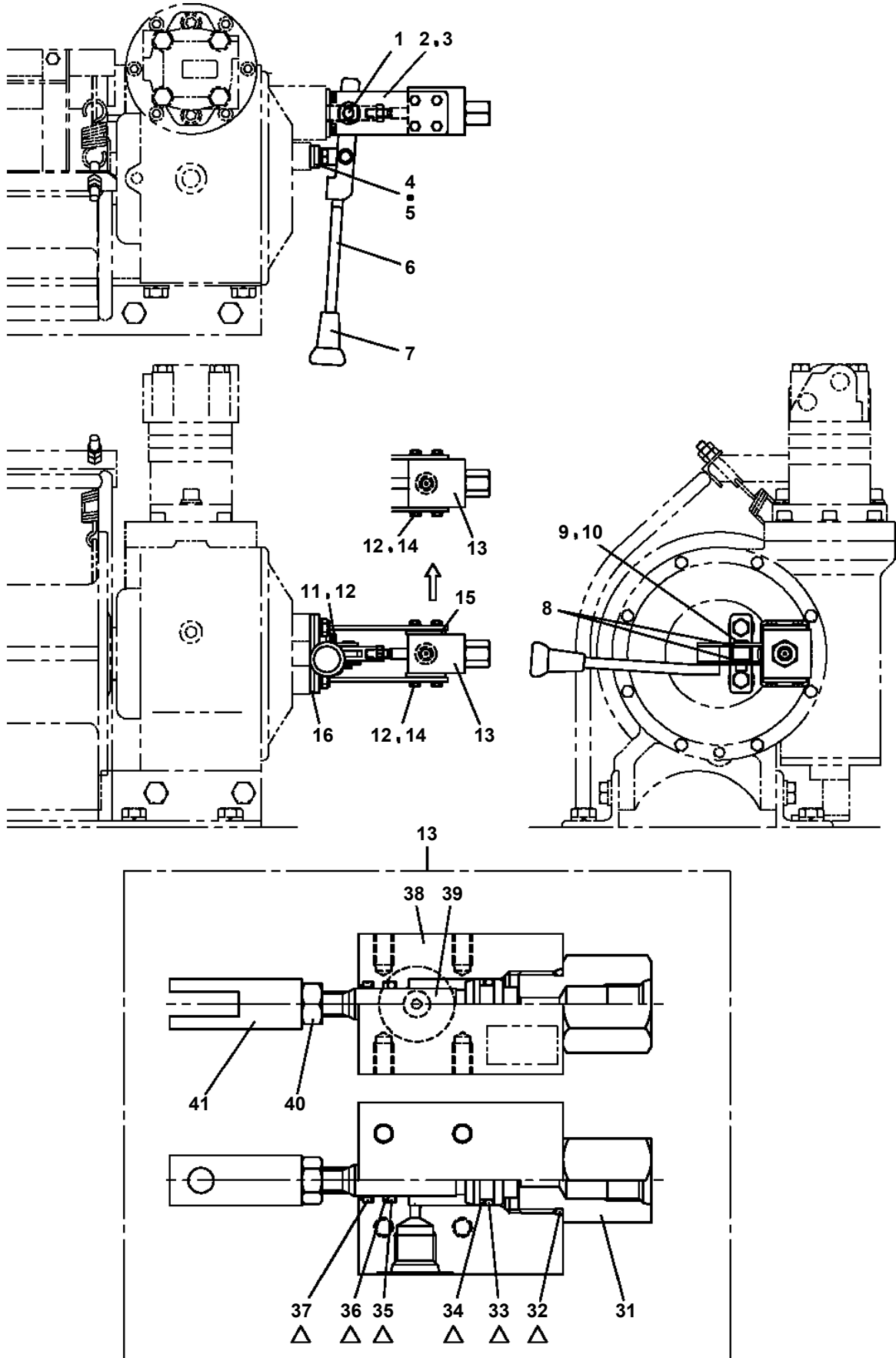


SL-15-2-00003 WITH WINCH,SLIDE CARRIER  
PF1050243-01 HOOK (8TON)

10

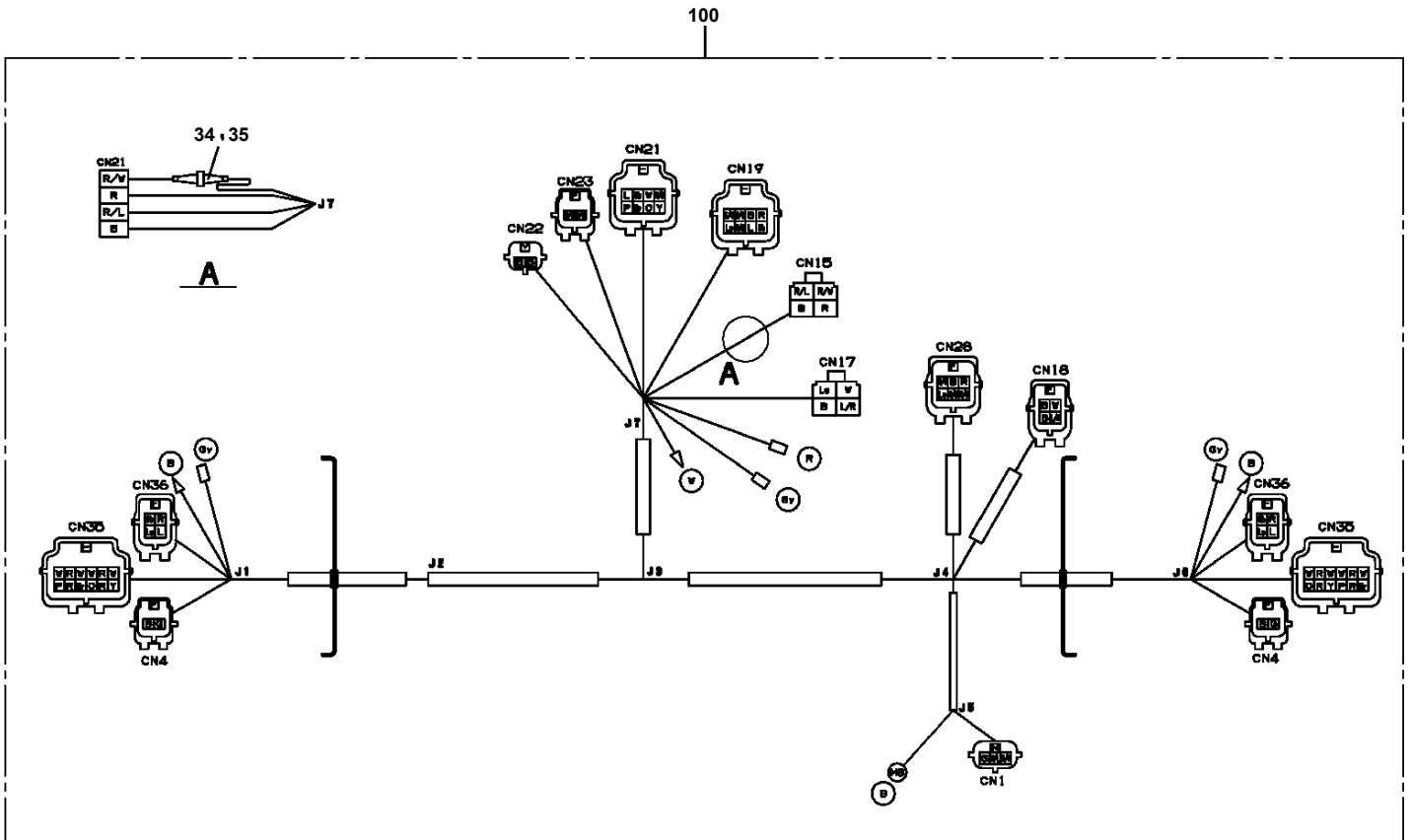


**SL-15-2-00003 WITH WINCH,SLIDE CARRIER**  
**PF1160066-02 OPE.ASSY,CLUTCH (SL WINCH,RADIO CONTROL)**

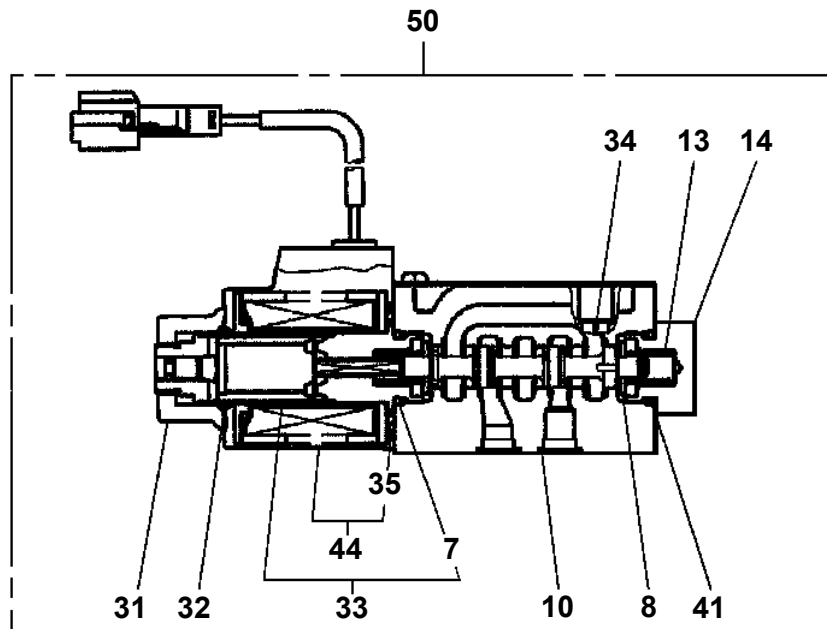
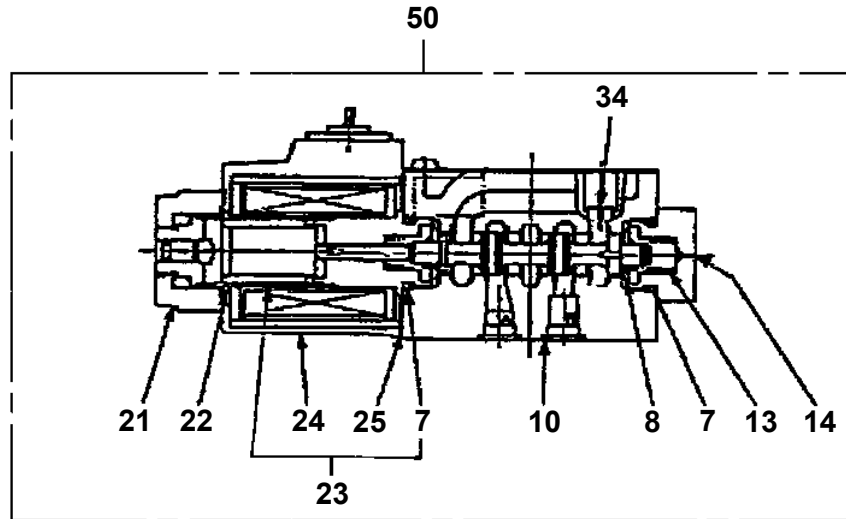
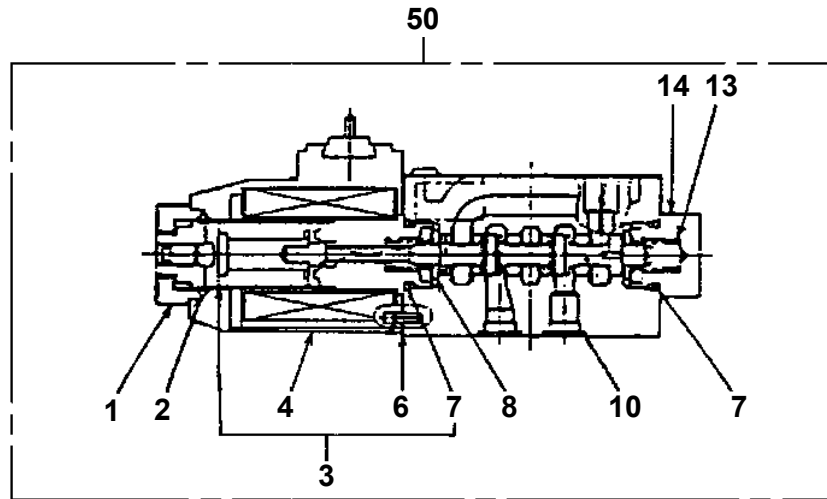


△:PACKING SET KEY NO.50 (KEY NO.32,33,34,35,36,37)

**SL-15-2-00003 WITH WINCH,SLIDE CARRIER  
PH5030504-00 HARNESS**



**SL-15-2-00003 WITH WINCH,SLIDE CARRIER  
PI1120142-02 VALVE,SOLENOID**



CLICK HERE TO **DOWNLOAD** THE COMPLETE MANUAL

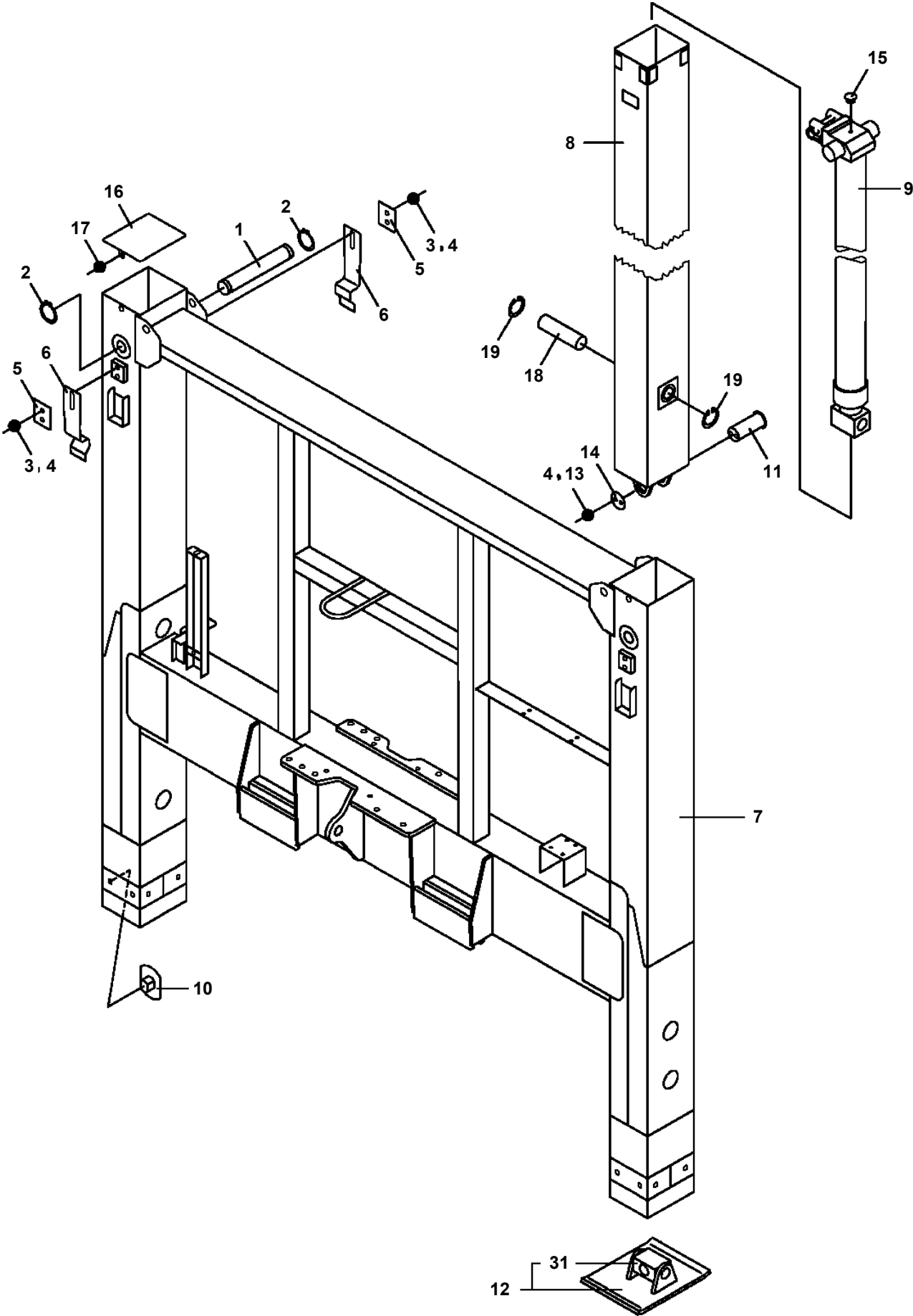
- Thank you very much for reading the preview of the manual.
- You can download the complete manual from: [www.heydownloads.com](http://www.heydownloads.com) by clicking the link below



- Please note: If there is no response to CLICKING the link, please download this PDF first and then click on it.

CLICK HERE TO **DOWNLOAD** THE COMPLETE MANUAL

**SL-15-2-00003 WITH WINCH,SLIDE CARRIER  
PK1011141-00 FRAME**



## SL-15-2-00003 WITH WINCH,SLIDE CARRIER

Pos No.	Parts No	Parts Name	Qty	Unit	Technical Data	Serial No (Start)	Serial No (End)
1	31653632100	HARNESS	1				
2	31654010100	PLUG (6POLES,MALE)	1				
3	82400000475	PLATE	11				
4	90186206010	BOLT,FLANGE	12		M6X10		
6	91850310405	CLAMP (BLACK)	3				
7	91810130240	FASTENER	18				
8	31652232010	COVER	1				
9	91850100802	CLAMP	11				
10	82401800060	PLUG (FOR M6)	40				
11	31702040300	PLATE,NAME	4				
12	31653600100	HARNESS	1				
13	31653600300	HARNESS	1				
14	91850400601	CLAMP	2				
15	90186206020	BOLT,FLANGE	2		M6X20		
16	82401800080	PLUG (FOR M8)	3				
17	82401800120	PLUG (FOR M12)	4				
18	90186208010	BOLT,FLANGE	6		M8X10		
19	31653602500	COVER	1				
21	31653600500	PLUG (8POLES,MALE)	1				
43	31653601950	PANEL	2				
44	82100001406	CONNECTOR (SEAL)	2				
45	82400000368	CATCH	2				
46	90302040301	WASHER,SPRING	20		3		
47	90201200300	NUT	20		M3		
48	80171303008	SCREW,MACHINE	8		M3X8		
49	82109833131	SWITCH	2				
50	42433333300	LAMP ASSY (RED)<24V)	2				
51	31653601900	PLATE,NAME	2				
52	31653601800	CABLE	2				
53	82197518114	CAP (MATSUSHITA/BLACK)	4				
	82197518119	CAP (PLUS ONE MFG./BLACK)	4				
54	82197600101	CAP (BLACK)	2				
55	31653601850	COVER	2				
57	80192484016	SCREW,MACHINE	4		M4X16		
58	31653601870	COVER	2				
59	31653322200	SWITCH ASSY (WITH HARNESS,2-SW)	2				
62	80175303008	SCREW,MACHINE	12		M3X8		
64	82464020205	HINGE	2				
65	82114203040	CONNECTOR (CAP)	2				
66	82121502040	PLATE	2				
67	82111203020	TERMINAL	8				
68	82121501020	PLUG	8				
84	82100001348	FUSE	1		15A,6.5X30		
85	82100002832	HOLDER,FUSE	1				
91	90201200600	NUT	3		M6		
92	82100002597	RELAY	1				
93	31653602100	BOX	1				
94	90186206016	BOLT,FLANGE	3		M6X16		
95	82100002596	RELAY	2				
125	82100002462	LAMP,PILOT (RED)	2				
131	82101940130	SWITCH,PUSH (3PJW106F-021-CC)	2				
141	82101429241	SWITCH,PUSH (GREEN)	2				
151	31653303200	SWITCH ASSY (NIHON AUTOMATIC)	2				
152	31653303300	SWITCH ASSY (MATSUSHITA)	2				

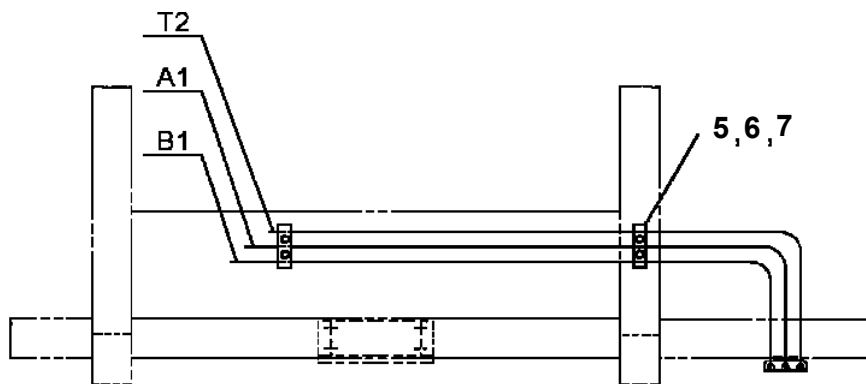
## SL-15-2-00003 WITH WINCH,SLIDE CARRIER

Pos No.	Parts No	Parts Name	Qty	Unit	Technical Data	Serial No (Start)	Serial No (End)
1	82466030035	PACKING	1		2M		
2	82466030035	PACKING	1		2M		
4	82100001406	CONNECTOR (SEAL)	1				
5	82400000368	CATCH	1				
6	90302040301	WASHER,SPRING	10		3		
7	90201200300	NUT	10		M3		
8	80171303008	SCREW,MACHINE	4		M3X8		
9	82109833131	SWITCH	1				
10	42433333300	LAMP ASSY (RED)<24V)	1				
11	31653601900	PLATE,NAME	1				
12	31653601800	CABLE	1				
13	82197518119	CAP (PLUS ONE MFG./BLACK)	2				
	82197518114	CAP (MATSUSHITA/BLACK)	2				
14	82197600101	CAP (BLACK)	1				
15	31653601850	COVER	1				
16	82472077912	PACKING	1	M			763795
	82420100813	TRIM	1	M		763796	
17	80192484016	SCREW,MACHINE	2		M4X16		
18	31653601870	COVER	1				
19	31653322200	SWITCH ASSY (WITH HARNESS,2-SW)	1				
20	31653303300	SWITCH ASSY (MATSUSHITA)	1				
	31653303200	SWITCH ASSY (NIHON AUTOMATIC)	1				
21	82472077912	PACKING	1	M			763795
22	80175303008	SCREW,MACHINE	6		M3X8		
24	82464020205	HINGE	1				
25	82114203040	CONNECTOR (CAP)	1				
26	82121502040	PLATE	1				
27	82111203020	TERMINAL	4				
28	82121501020	PLUG	4				
29	31653601950	PANEL	1				
30	82472077912	PACKING	1	M			763795
51	82100002462	LAMP,PILOT (RED)	1				
300	31653601501	SWITCH ASSY	1				

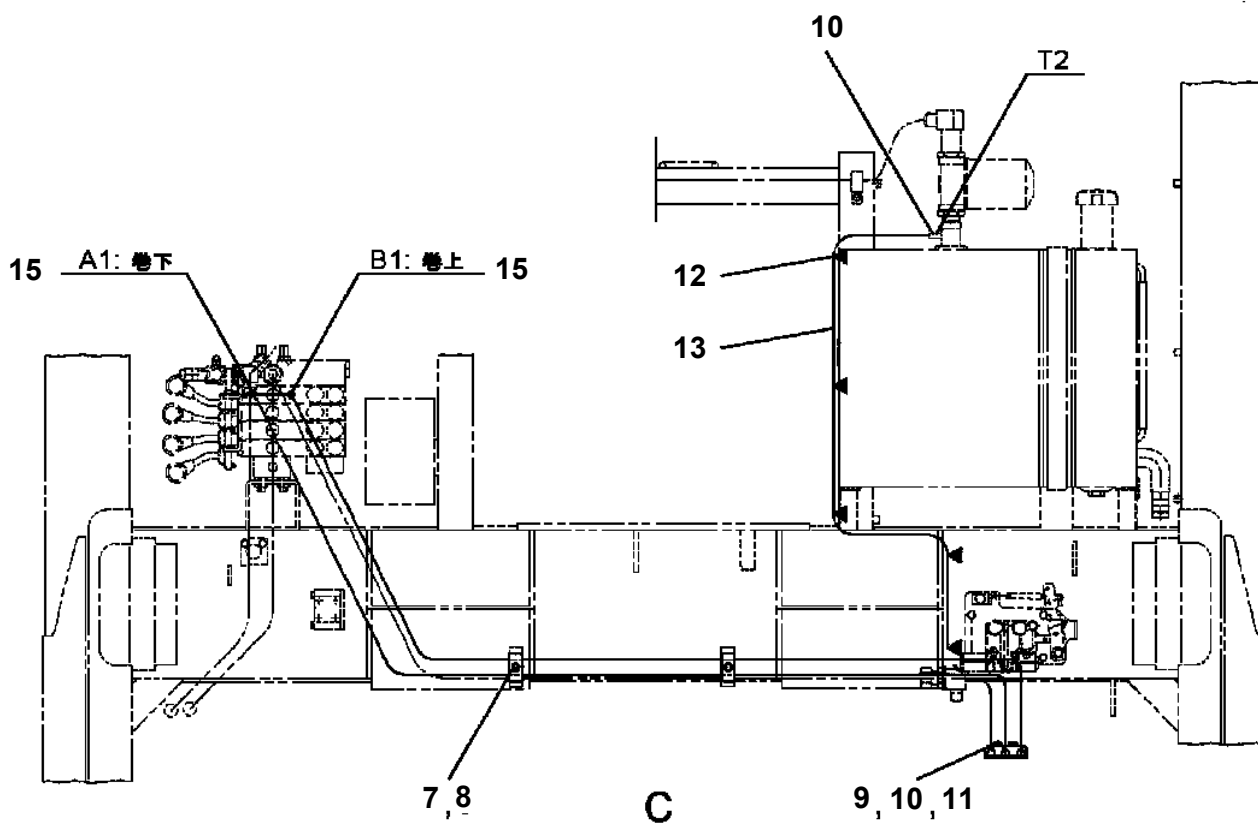
# SL-15-2-00003 WITH WINCH,SLIDE CARRIER

Pos No.	Parts No	Parts Name	Qty	Unit	Technical Data	Serial No (Start)	Serial No (End)	Remarks
1	37002222850	PLATE,NAME	1					
2	31478151100	PLATE,CAUTION	1					
3	31394550201	PLATE,CAUTION	2					
4	31396210100	PLATE,CAUTION	1					
5	37002221390	PLATE,NAME	1					
6	37002206490	PLATE,NAME (GREASE)	1					

SL-15-2-00003 WITH WINCH, SLIDE CARRIER  
PP6010270-00 PIPING ASSY

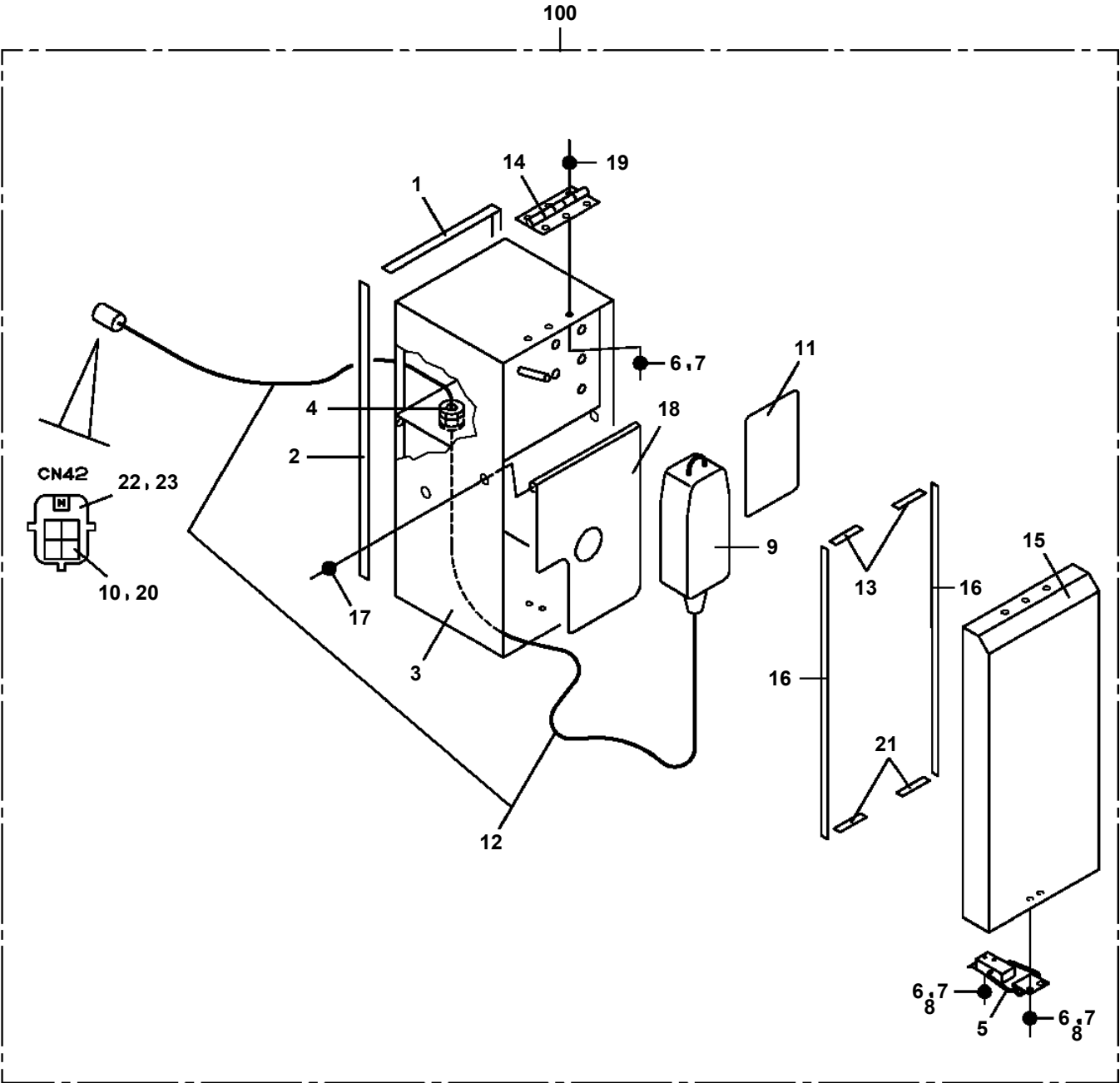


D



C

SL-15-2-00003 WITH WINCH,SLIDE CARRIER  
PS5530180-00 SWITCH ASSY



## SL-15-2-00003 WITH WINCH,SLIDE CARRIER

Pos No.	Parts No	Parts Name	Qty	Unit	Technical Data	Serial No (Start)	Serial No (End)	Remarks
1	36645695050	BOLT,TIE	4					
2	90201200800	NUT	8		M8			
3	36649385010	COVER ASSY (FRONT)	1					
4	80316030040	PLUG	1		PT1/4			
5	36645875080	BOLT,TIE (C)	1					
7	36646515050	VALVE,CONTROL (JACK 1)	2				764346	
	36740605050	VALVE ASSY (JACK1)	2			764347		
8	36646515040	VALVE,CONTROL (JACK2)	2				764346	
	36646515110	VALVE ASSY (JACK2)	2			764347		
9	36645695040	COVER (BOTTOM)	1					
10	80720104012	PIN,SPRING	1		4X12			
11	36645495080	JOINT	1					
12	90203200800	NUT	1		M8		763883	
	90203200800	NUT	2		M8	763884		
15	36647055060	HARNES ASSY (GND)	1					
16	36644015120	CONNECTOR	1					
17	36644015110	CONNECTOR	1				764346	
	36644015110	CONNECTOR	2			764347		
18	11615111410	BAND	4				763883	
	11615111410	BAND	2			763884	764346	
	11615111410	BAND	5			764347		
19	36644015130	TUBE	2				764346	
	36644015130	TUBE	3			764347		
20	36646515060	CONNECTOR	1					
21	36646515070	PLATE	1					
22	36646515080	CONNECTOR	1					
23	36646515090	PLATE	1					
24	36645405160	BAND	1				763883	
	36740765040	BAND	1			763884		
25	36646875090	TUBE	2		10B			
26	36644015240	TUBE	1		7B			
27	36062635030	FASTENER	2				763883	
	36062635030	FASTENER	3			763884		
28	90303070401	WASHER,PLAIN	1		4		763883	
	90303070401	WASHER,PLAIN	2		4	763884		
29	80192434016	SCREW,MACHINE	1		M4X16			
30	36062635050	TUBE,CORRUGATE	1		10		764346	
	36646875100	TUBE	1		15	764347		
31	36646865060	FASTENER	2					
32	80162105012	SCREW,MACHINE	2		M5X12			
37	36640755070	CAP	8					
38	36645405060	TUBE	2					
39	36644115130	PLUG	2					
40	91001101100	O-RING	2		1A P11			
41	36646555010	VALVE,RELIEF	1				763883	
	36648230070	VALVE ASSY,RELIEF	1			763884		
42	36645615230	C-BOLT	4		5X12			
44	36646865100	CLIP	1			763884		
45	80172104010	SCREW,MACHINE	1		M4X10	763884		
67	91002905500	O-RING	5		1B G55			
68	91001100600	O-RING	23		1A P6			
70	36647055100	SEAT	1					
71	36647055110	SPRING (A)	1					
72	36647055120	SPRING (B)	1					
75	91001101400	O-RING	14		1A P14			
77	36647055140	SPRING	1					
78	91001002600	O-RING	2		S26			
79	36647395150	PLUG	2		M24			
80	80560057000	BALL,STEEL	2		1/4			
81	36640625220	SPRING	1					
82	36640625210	CAP	1					
83	36640625260	SPRING	1					
84	80316030020	PLUG	6		PT1/8			

# SL-15-2-00003 WITH WINCH,SLIDE CARRIER

Pos No.	Parts No	Parts Name	Qty	Unit	Technical Data	Serial No (Start)	Serial No (End)	Remark
181	36649545050	VALVE ASSY,SOLENOID	4			764393		
300	36649540000	VALVE,REMOTE CONTROL	1					

# SL-15-2-00003 WITH WINCH,SLIDE CARRIER

Pos No.	Parts No	Parts Name	Qty	Unit	Technical Data	Serial No (Start)	Serial No (End)
1	36805775010	CONTROL UNIT (RADIO CONTROL)	1				
2	36805775020	SWITCH BOX	1				
3	36804995010	STRAP	1				
100	36805770000	RADIO CONTROL (KYOKUTO:6CH)	1				

CLICK HERE TO **DOWNLOAD** THE COMPLETE MANUAL

- Thank you very much for reading the preview of the manual.
- You can download the complete manual from: [www.heydownloads.com](http://www.heydownloads.com) by clicking the link below



- Please note: If there is no response to CLICKING the link, please download this PDF first and then click on it.

CLICK HERE TO **DOWNLOAD** THE COMPLETE MANUAL