

AT-270-2 42083200001 UPPER

PD2000050-00 SWING UNIT
PG2000064-00 BOOM UNIT
PH1000509-00 SAFETY DEVICES
PJ3000242-00 BASKET SYSTEM
PK2000227-00 FRAME UNIT
PO1000123-00 INDICATION PLATES
PW1000118-00 ACCESSORIES & TOOLS
PY1000663-04 OPTIONS,1
PY2000126-02 OPTION UNIT,2 (UPPER)
ASSEMBLY

CLICK HERE TO **DOWNLOAD** THE COMPLETE MANUAL

- Thank you very much for reading the preview of the manual.
- You can download the complete manual from: www.heydownloads.com by clicking the link below



- Please note: If there is no response to CLICKING the link, please download this PDF first and then click on it.

CLICK HERE TO **DOWNLOAD** THE COMPLETE MANUAL

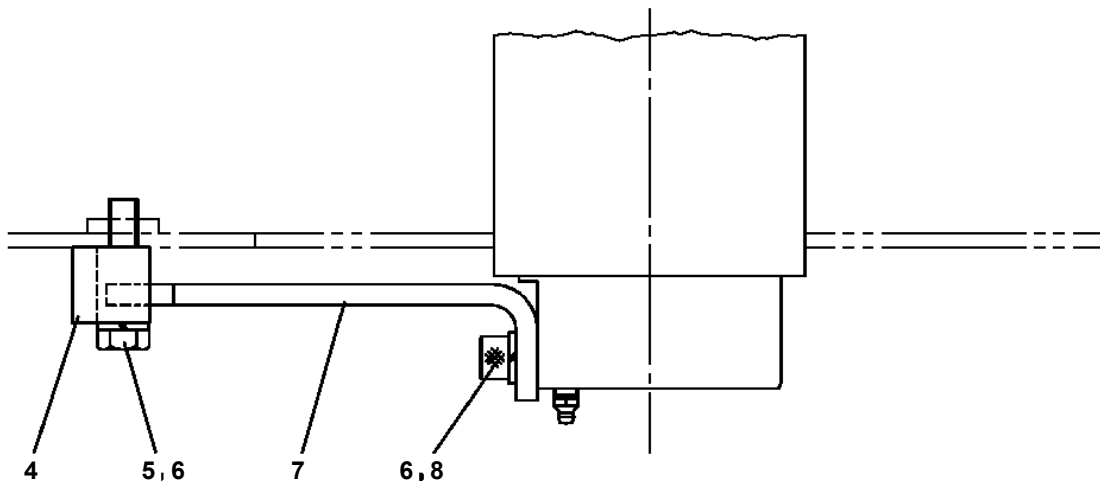
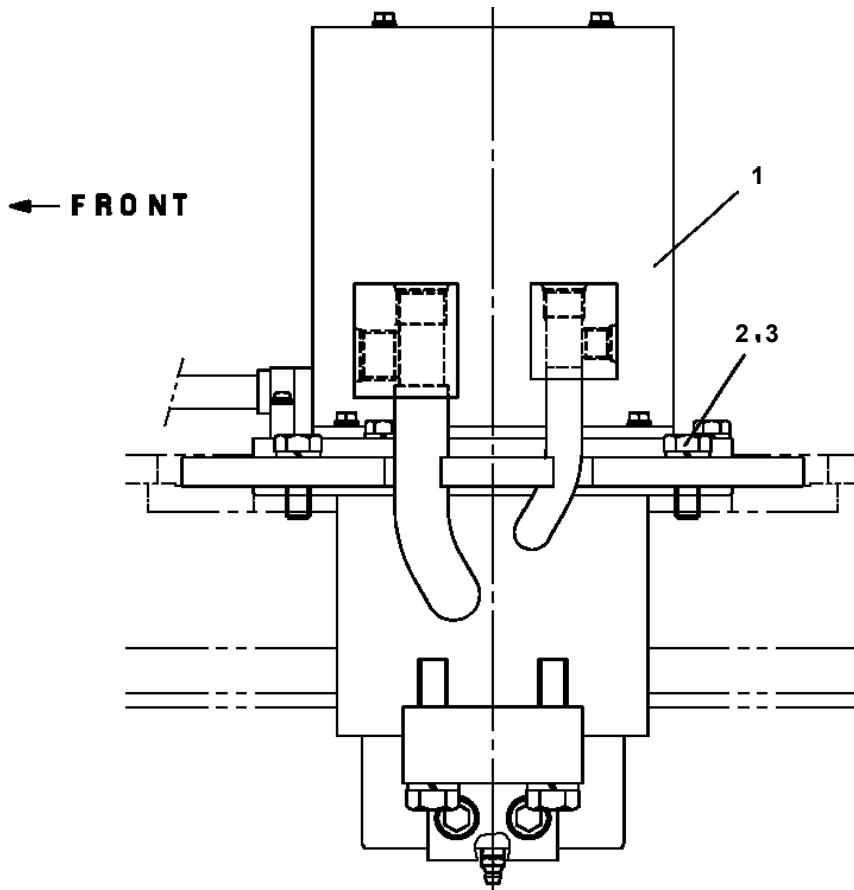
AT-270-2 42083200001 UPPER

Pos No.	Parts No	Parts Name	Qty	Unit	Technical Data	Serial No (Start)	Serial No (End)	Remarks	Pa
1	(*****)	FRAME	1						000
2	(*****)	OUTRIGGER (FRONT)	1						000
3	(*****)	OUTRIGGER (REAR)	1						000
4	(*****)	PIPING,OUTRIGGER	1						000
5	(*****)	OPE.ASSY,OUTRIGGER	1						000
6	(*****)	ELEC.ASSY (FRAME)	1				370390		000
	(*****)	ELEC.ASSY (FRAME)	1			370391			000
7	(*****)	TANK,OIL (MOUNT)	1				370390		000
	(*****)	TANK,OIL (MOUNT)	1			370391			000

AT-270-2 42083200001 UPPER

PH5032713-00 HARNESS
PH5033071-00 HARNESS
PH5033072-00 HARNESS
PH5034232-00 HARNESS
PH5034233-00 HARNESS
PH5034234-00 HARNESS
PH5034235-00 HARNESS
PH5034365-00 HARNESS
PH5034497-00 HARNESS
PH5034604-00 HARNESS
PH5034605-00 HARNESS
PI1010074-00 MOTOR,HYDRAULIC (SWING)
PI1100007-00 VALVE,RELIEF
PI1100122-00 VALVE,RELIEF
PI1100134-01 VALVE,RELIEF
PI1140133-01 VALVE,CHECK
PI1140145-00 VALVE,CHECK
PI1140162-01 VALVE,CHECK
PI1140194-00 VALVE,CHECK
PI1140213-00 VALVE,CHECK
PI1250123-00 VALVE,COUNTERBALANCE
PI1250124-00 VALVE,COUNTERBALANCE
PI1250141-00 VALVE,COUNTERBALANCE
PJ3010149-03 BASKET
PJ3010162-02 BASKET
PJ3010249-02 BASKET
PJ3040003-01 OPE.ASSY (BASKET OR BASKET)
PJ3160001-01 BEAR,CABLE
PK1010580-06 FRAME
PK1100320-02 SWING FRAME
PK1200341-01 COVER,SWING FRAME (MODIFICATION/OPTION)
PK1200342-03 COVER,SWING FRAME
PK1200375-03 COVER,SWING FRAME (MODIF./OPTION)
PL1010827-03 OPE.ASSY,CONT.VALVE
PL1011043-03 OPE.ASSY,CONT.VALVE
PL1011044-02 OPE.ASSY,CONT.VALVE
PL1020044-01 LEVER,CONTROL
PL1100199-01 BOX,OPERATION
PM5230001-01 MOTOR,OIL
PN1012340-04 ELEC.ASSY (FRAME)
PN1012537-00 ELEC.ASSY (BOOM)
PN1012538-02 ELEC.ASSY (BOOM,DETECTOR)
PN1012539-01 ELEC.ASSY (SWING FRAME)
PN1012540-04 ELEC.ASSY
PN1012939-03 ELEC.ASSY (FRAME)
PN1014099-02 ELEC.ASSY (FLICKER LAMP)
PN1080322-03 LAMP (YELLOW)
PN1080439-01 LAMP (YELLOW MARKER,FOR O/R)
PN1110289-01 RELAY
PN1140164-00 SWITCH ASSY (WITH HARNESS,3 SW)
PO1013132-04 PLATE ASSY,NAME
PO1013214-01 PLATE ASSY,NAME (VEHICLE)
PO1013242-02 PLATE ASSY,NAME (BASKET CONTROL)
PO1013730-01 PLATE ASSY,NAME (OIL)
PO1014383-00 PLATE ASSY,NAME (ENG./SHIPMENT PARTS)
PO1014384-01 PLATE ASSY,NAME (COMMON)
PO1014385-01 PLATE ASSY,NAME (IRON-BASKET)
PP5450003-00 PUMP,GREASE (240CC)
PP5450004-00 PUMP,GREASE (400CC)
PP6160006-00 PIPING ASSY,GREASE
PS5530450-00 SWITCH ASSY
PV1020236-02 VALVE,REMOTE CONTROL
PV5040021-00 VALVE ASSY,CHECK
PV5170018-00 VALVE ASSY,SELECTOR

**AT-270-2 42083200001 UPPER
PB1300319-00 JOINT,ROTARY (MOUNT)**



AT-270-2 42083200001 UPPER

Pos No.	Parts No	Parts Name	Qty	Unit	Technical Data	Serial No (Start)	Serial No (End)	Remarks
1	90101208016	BOLT	2		M8X16			
2	90302040801	WASHER,SPRING	2		8			
3	36630910060	NEEDLE	1					
4	36630910030	HOLDER	1					
5	91002801000	O-RING	1		1B P10			
6	91410001000	RING,BACKUP	1		P10			
8	36630910050	POPPET	1					
9	52255101000	SPRING	1					
10	91002801400	O-RING	1		1B P14			
11	36620030050	PLUG	1					
12	82400000350	KNOB	1					
13	37000508510	PLATE	1					
14	80172303006	SCREW,MACHINE	1		M3X6			
100	36636340000	VALVE,MANUAL CONTROL	1					

AT-270-2 42083200001 UPPER

Pos No.	Parts No	Parts Name	Qty	Unit	Technical Data	Serial No (Start)	Serial No (End)	R
1	42612881000	OUTRIGGER (CASE INNER,REAR)	2				370886	
	42612881001	CASE ASSY,INNER (REAR)	2			370887	371090	
2	42611150100	PLATE	8				370383	
	42612850200	PLATE	8		T=6	370384		
3	42611150020	PLATE,SLIDE	8		T=15		370383	
	37002011280	PLATE,SLIDE	8		T=9.5	370384		
4	42611150110	SHIM	N		T=1.6		370383	
	37000501960	PLATE	N		T=0.5	370384	370441	
5	42611150120	SHIM	N		T=0.5		370383	
	37000501970	PLATE	N		T=1.5	370384	370441	
6	42612130010	SHIM	N		T=1.0		370383	
7	90171110022	BOLT	16		M10X22		370383	
	90171110016	BOLT	16		M10X16	370384		
8	90302041001	WASHER,SPRING	16		10			
9	37000504780	PLATE	N		T=0.6			
10	31611640150	SPRING	2					
11	90171108014	BOLT	4		M8X14			
12	37002009220	PLATE,SLIDE	4					
13	37000581940	PLATE	N		T=0.5	370442		
14	37000506590	PLATE	N		T=1.6	370442		
15	42612883000	CASE ASSY,INNER (REAR,RIGHT)	1				371090	
16	42612884000	CASE ASSY,INNER (REAR,LEFT)	1				371090	
17	42614050020	PLATE,SLIDE	2			371091		
18	37001510810	BOLT	4		M8X25	371091		
25	42612883001	CASE ASSY,INNER (REAR,RIGHT)	1			371091	371185	
	42612883002	CASE ASSY,INNER (REAR,RIGHT)	1			371186		
26	42612884001	CASE ASSY,INNER (REAR,LEFT)	1			371091	371185	
	42612884002	CASE ASSY,INNER (REAR,LEFT)	1			371186		

AT-270-2 42083200001 UPPER

Pos No.	Parts No	Parts Name	Qty	Unit	Technical Data	Serial No (Start)	Serial No (End)	Rema
1	42651727510	CASE ASSY (WITH HARENSS)	1					
2	42651727520	COVER (CASE)	1					
3	42651727530	PACKING (COVER)	1					
4	42651727540	PANEL	1					
5	42651727550	BOARD,CIRCUIT	1					
31	(*****)	P-ROM	1					
50	42651721000	INDICATOR,OUTRIGGER	1					

AT-270-2 42083200001 UPPER

Pos No.	Parts No	Parts Name	Qty	Unit	Technical Data	Serial No (Start)	Serial No (End)	R
1	36132155010	PLATE (BASE)	1					
2	36132155020	CASE	1					
3	36132155030	COVER	1					
8	36132155080	BRACKET	1					
9	36131805010	PACKING	1					
10	36131745010	POTENTIOMETER	1					
11	36132155090	GEAR	1					
12	36132155100	GEAR	1					
13	36132155110	WIRE ASSY	1					
14	36132155120	CORD ASSY	1					
51	36132155140	SPRING ASSY	1					
100	36132140000	DETECTOR,OUTRIGGER LENGTH	1					

AT-270-2 42083200001 UPPER

Pos No.	Parts No	Parts Name	Qty	Unit	Technical Data	Serial No (Start)	Serial No (End)	Remark
1	32610000040	SPACER	2		L=12			
2	42611531300	COVER	1					
3	90302040801	WASHER,SPRING	4		8			
4	90101208012	BOLT	2		M8X12			
5	42610280010	PIN	1					
6	80601110320	RING,RITAINING	2		S32			
8	42612581101	CASE,INNER	1					
9	37000158840	PIN	1					
10	80601110300	RING,RITAINING	2		S30			
12	90302041001	WASHER,SPRING	4		10			
13	90172110040	BOLT,HEXAGON SOCKET	2		M10X40			
14	42612871301	CASE,INNER (FRONT)	1					
15	37000166850	PIN	2		18X55			
16	80136332036	PIN,SPLIT	4		3.2X36			
18	37000166980	PIN	1					
19	80601110120	RING,RITAINING	2		S12			
21	90101210016	BOLT	2		M10X16			
22	90201200800	NUT	2		M8			
23	37000600920	CLAMP	1		L=90			
24	36030140001	CYLINDER,JACK	1					
25	36625490000	VALVE,CHECK	1					
26	80400160127	JOINT	1					
27	91002801100	O-RING	1		1B P11			
28	36672460000	FILTER (NIPPLE TYPE)	1					
51	82100002004	CLAMP	1		WR8			
52	90101206010	BOLT	2		M6X1.0			
53	90302040601	WASHER,SPRING	3		6		371105	
	90302040601	WASHER,SPRING	2		6	371106		
54	90101208012	BOLT	2		M8X12			
55	42611521250	PLATE	1					
56	42950203010	BOLT	1		M6X18			
57	90201200600	NUT	2		M6		371105	
	90201200600	NUT	1		M6	371106		
58	82104502010	SWITCH,LIMIT	1					
59	90101204030	BOLT	2		M4X30			
60	90302040401	WASHER,SPRING	2		4			
61	42611483300	PLATE	1		T=3			
62	42611483200	PLATE	1		T=3			
63	91810130240	FASTENER	3					
64	90302040801	WASHER,SPRING	4		8			
65	90101206016	BOLT	1		M6X16		371105	
66	82100002035	CLAMP	1		WE8			
67	90303070601	WASHER,PLAIN	1		6	370347	371105	
81	36042780000	CYLINDER,EXTENSION	1					
82	37002436270	HOSE,TWIN	1		L=2220			
83	42612872500	HARNESS	1		L=4535			
84	91810130250	FASTENER	13					
85	80400160127	JOINT	2					
86	82100001413	TUBE,SPIRAL	1	M	SE-15BK			
87	91002801100	O-RING	3		1B P11			
100	42612871002	CASE ASSY,INNER (FRONT)	1					
101	42612581600	SUPPORT	1					
102	37002010620	PLATE,SLIDE	1					
103	80185308020	SCREW,MACHINE	2		M8X20			
105	90201200800	NUT	2		M8			

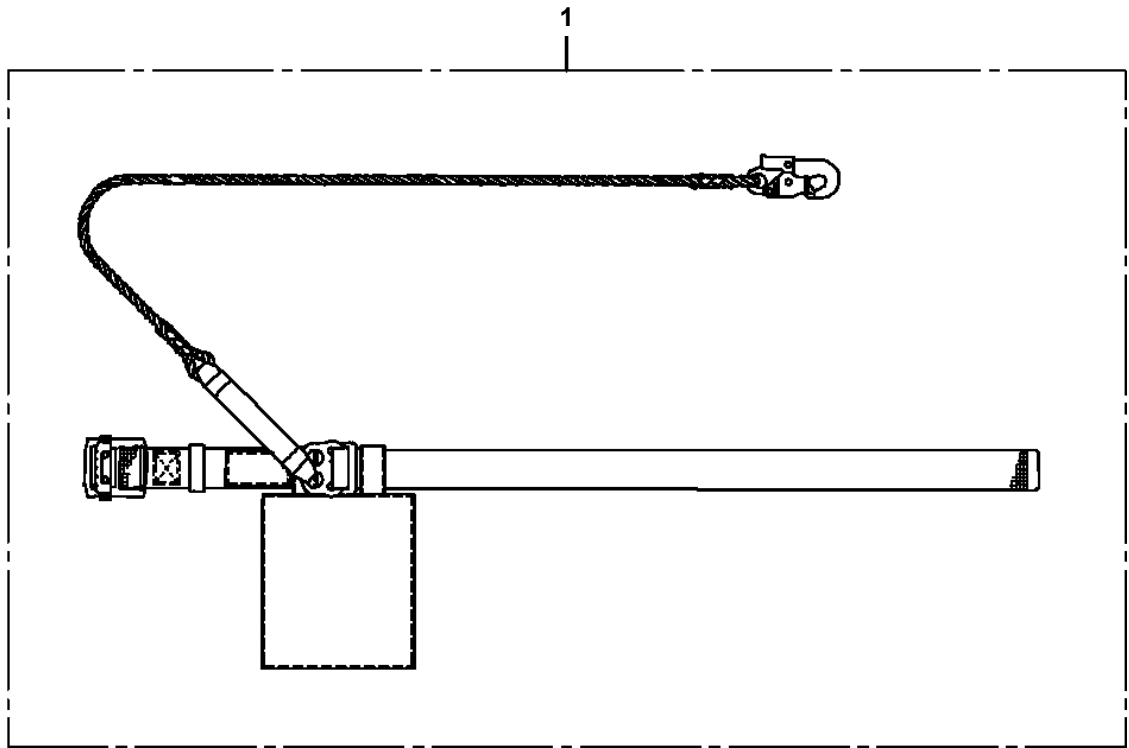
AT-270-2 42083200001 UPPER

Pos No.	Parts No	Parts Name	Qty	Unit	Technical Data	Serial No (Start)	Serial No (End)	Re
1	32610000040	SPACER	2		L=12			
2	42611531300	COVER	1					
3	90302040801	WASHER,SPRING	6		8		371260	
	90302040801	WASHER,SPRING	2		8	371261		
4	90101208012	BOLT	2		M8X12			
5	42610280010	PIN	1					
6	80601110320	RING,RITAINING	2		S32			
8	42612581101	CASE,INNER	1					
9	37000158840	PIN	1					
10	80601110300	RING,RITAINING	2		S30			
11	36625490000	VALVE,CHECK	1					
12	90302041001	WASHER,SPRING	2		10			
13	90172110040	BOLT,HEXAGON SOCKET	2		M10X40			
14	42612884102	CASE ASSY,INNER (REAR,LEFT)	1				371260	
	42612884103	CASE ASSY,INNER (REAR,LEFT)	1			371261		
15	37000166850	PIN	2		18X55			
16	80136332036	PIN,SPLIT	4		3.2X36			
18	37000166980	PIN	1					
19	80601110120	RING,RITAINING	2		S12			
20	80400160127	JOINT	1					
21	91002801100	O-RING	1		1B P11			
22	90201200800	NUT	4		M8		371260	
23	37000600920	CLAMP	2		L=90		371260	
	37000600700	CLAMP	2		12X3	371261		
24	36030140001	CYLINDER,JACK	1					
25	36672460000	FILTER (NIPPLE TYPE)	1					
26	31201770100	PLATE,SLIDE	8		T=3.0			
27	90280200600	NUT,FLANGE	2		M6	371261		
51	82100002004	CLAMP	1		WR8			
52	90101206010	BOLT	2		M6X1.0			
53	90302040601	WASHER,SPRING	2		6			
54	90101208012	BOLT	2		M8X12			
55	42612871110	PLATE	1					
56	42950203010	BOLT	1		M6X18			
57	90201200600	NUT	1		M6			
58	82104501140	SWITCH,LIMIT	1					
59	90101204030	BOLT	2		M4X30			
60	90302040401	WASHER,SPRING	2		4			
61	42613831800	PLATE	1					
62	42613831700	PLATE	1					
63	91810130240	FASTENER	3					
64	90302040801	WASHER,SPRING	2		8			
65	82100002035	CLAMP	1		WE8			
66	82100001801	TUBE,CORRUGATE	1	M	7			
81	36042780000	CYLINDER,EXTENSION	1					
82	37002420870	HOSE,TWIN	1		L=2500			
83	42612592500	HARNESS	1		L=4760			
84	91810130250	FASTENER	13					
85	80400160127	JOINT	2					
86	82100001413	TUBE,SPIRAL	1	M	SE-15BK			
87	91002801100	O-RING	3		1B P11			
100	42612884002	CASE ASSY,INNER (REAR,LEFT)	1					

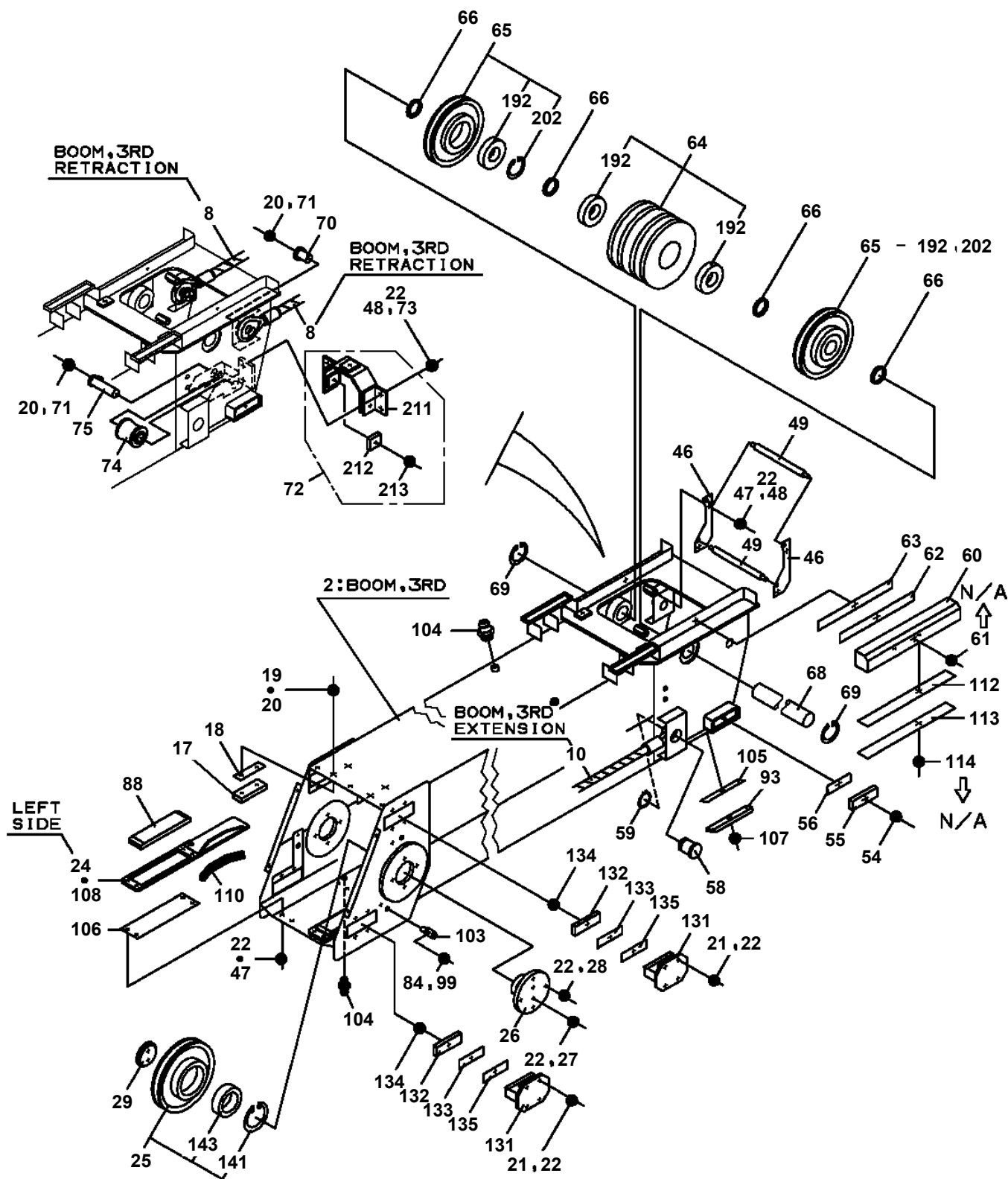
AT-270-2 42083200001 UPPER

Pos No.	Parts No	Parts Name	Qty	Unit	Technical Data	Serial No (Start)	Serial No (End)	Remarks
3	91280439941	SEAL,OIL	1					
4	36081565010	CASE,GEAR	1					
5	80515006312	BEARING,BALL	1					
6	36081395040	KEY	1					
7	36081395050	WHEEL,WORM	1		4X32-34			
8	90102510025	BOLT	6		M10X25			
9	90302041001	WASHER,SPRING	6		10			
10	80516006211	BEARING,BALL	1					
11	80601110550	RING,RITAINING	1		S55			
12	36081395060	CASE,GEAR	1					
13	36072725350	BEARING,TAPER ROLLER	1					
14	36081395070	WORM	1		4X20			
15	36081325110	BEARING,TAPER ROLLER	1					
16	36081325080	SHIM SET	1					
17	36081325010	SPACER	1					
18	36081325090	RING,SNAP	1					
19	36080495090	GAUGE,OIL	1					
20	36080235080	WASHER,SEAL	1		M16			
21	80316090040	PLUG SOCKET	1		R1/4			
31	36081435500	GEAR,SPUR	1					
50	36081570000	REDUCER,SWING SPEED	1					

**AT-270-2 42083200001 UPPER
PF5190001-00 FALL ARREST SYSTEM (TB-LSA-550/FUJII-DENKO)**



**AT-270-2 4208320001 UPPER
PG1010828-03 BOOM**



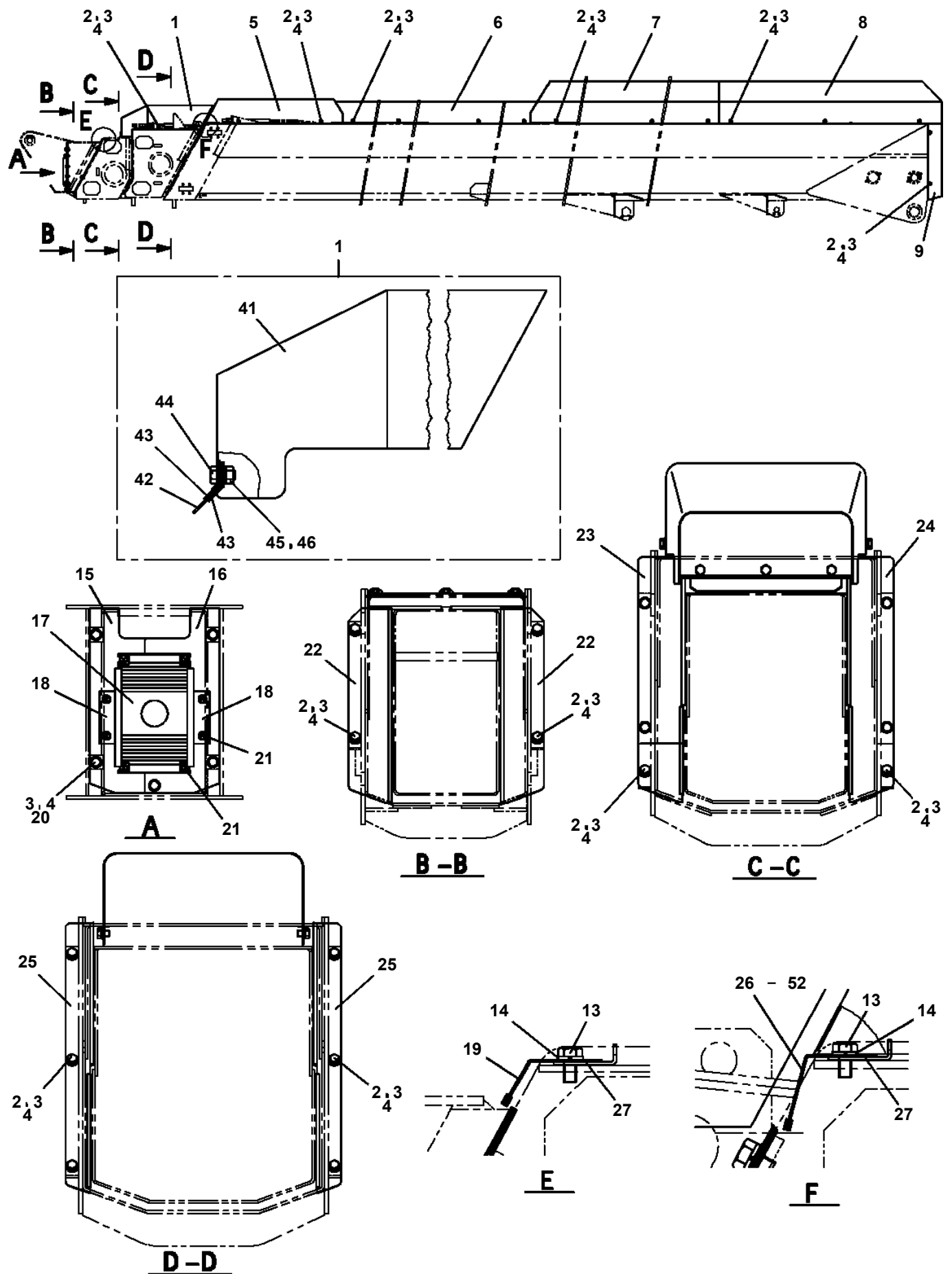
図中の左右の表示は、ブーム後端から先端を見たものです。

THE RIGHT AND LEFT IN FIGURE ARE THE EXPRESSION THAT SEES FROM BOOM END TO TOP.

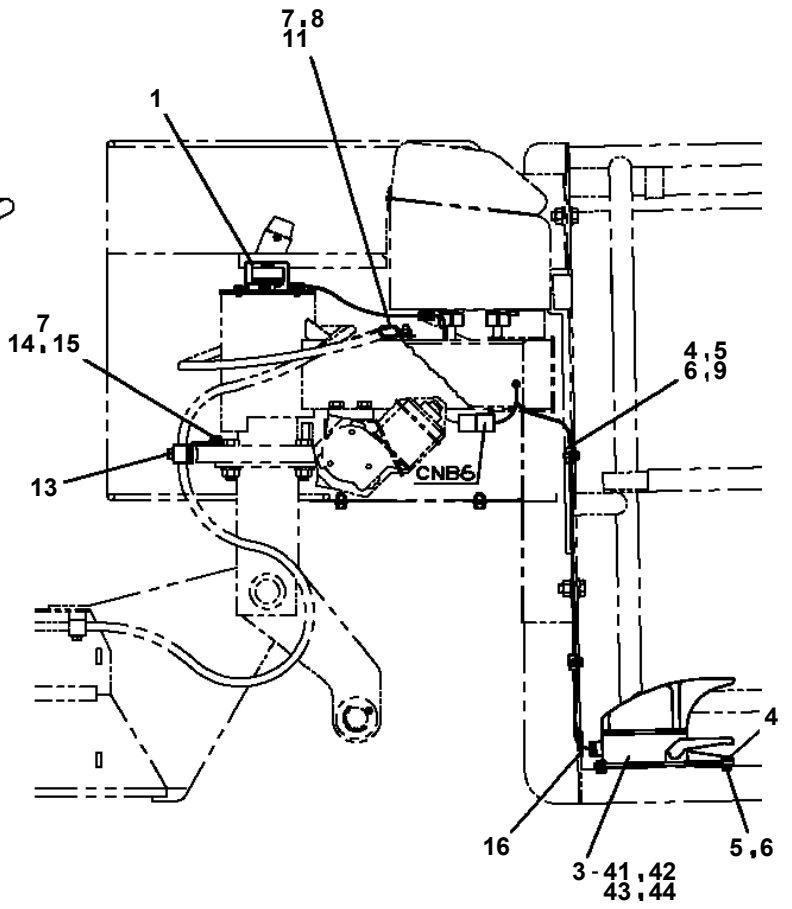
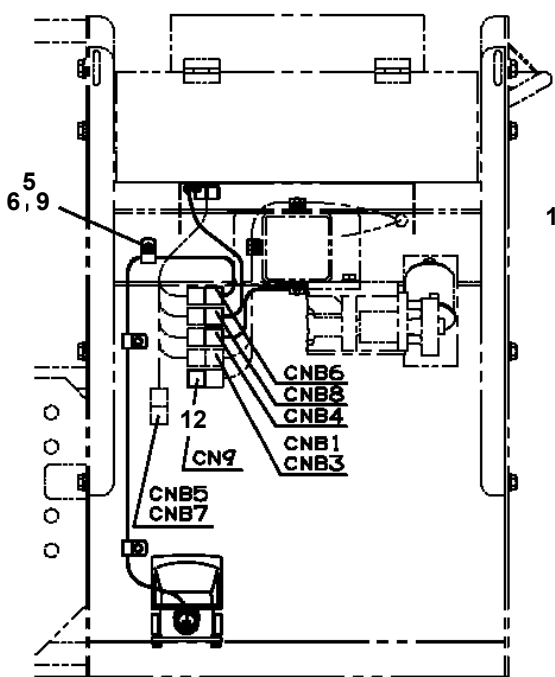
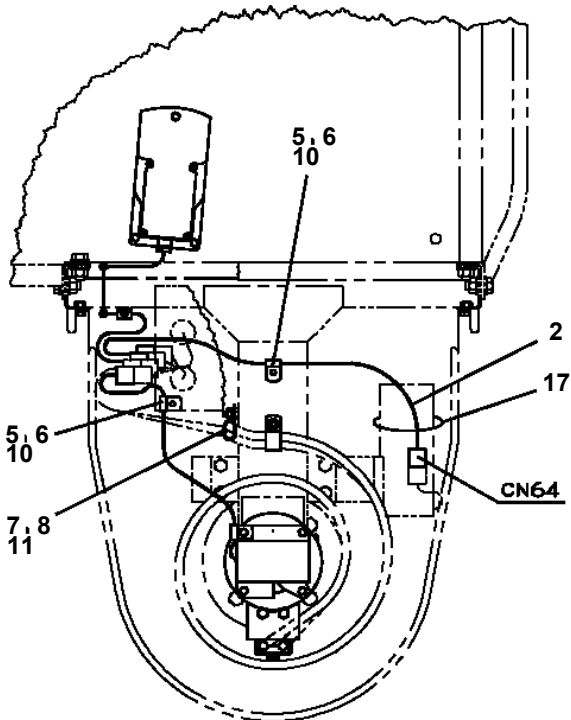
AT-270-2 42083200001 UPPER

Pos No.	Parts No	Parts Name	Qty	Unit	Technical Data	Serial No (Start)	Serial No (End)	Remark
1	36130235010	PLATE (BASE)	1					
2	36131825010	CASE	1					
3	36131825020	DRUM ASSY	1					
4	36131345010	COVER	1					
5	31370105030	PACKING	1					
	36131825070	PACKING	1			370949	370948	
6	31370005030	PACKING	1					
7	36130235090	WASHER,SEAL	1					
8	36131825030	BRACKET	1					
9	36131825040	CABLE ASSY	1					
10	36131195030	POTENTIOMETER	1					
11	36130235100	CLAMP (CORD)	1					
12	36130045090	CLIP (NYLON)	1					
13	32360005150	CLIP (NYLON)	1					
14	36130235070	GEAR (A)	1					
15	36131825050	GEAR	1					
18	36160435100	COLLAR	1					
19	31370005080	GUIDE (CORD)	1					
20	36131825060	LOCK (CORD)	1					
21	82100000191	TERMINAL	1					
31	82100000080	CORD (1-LINE)	8	M				
100	36131820000	DETECTOR,BOOM LENGTH	1					

**AT-270-2 42083200001 UPPER
PG1410095-01 COVER,BOOM**

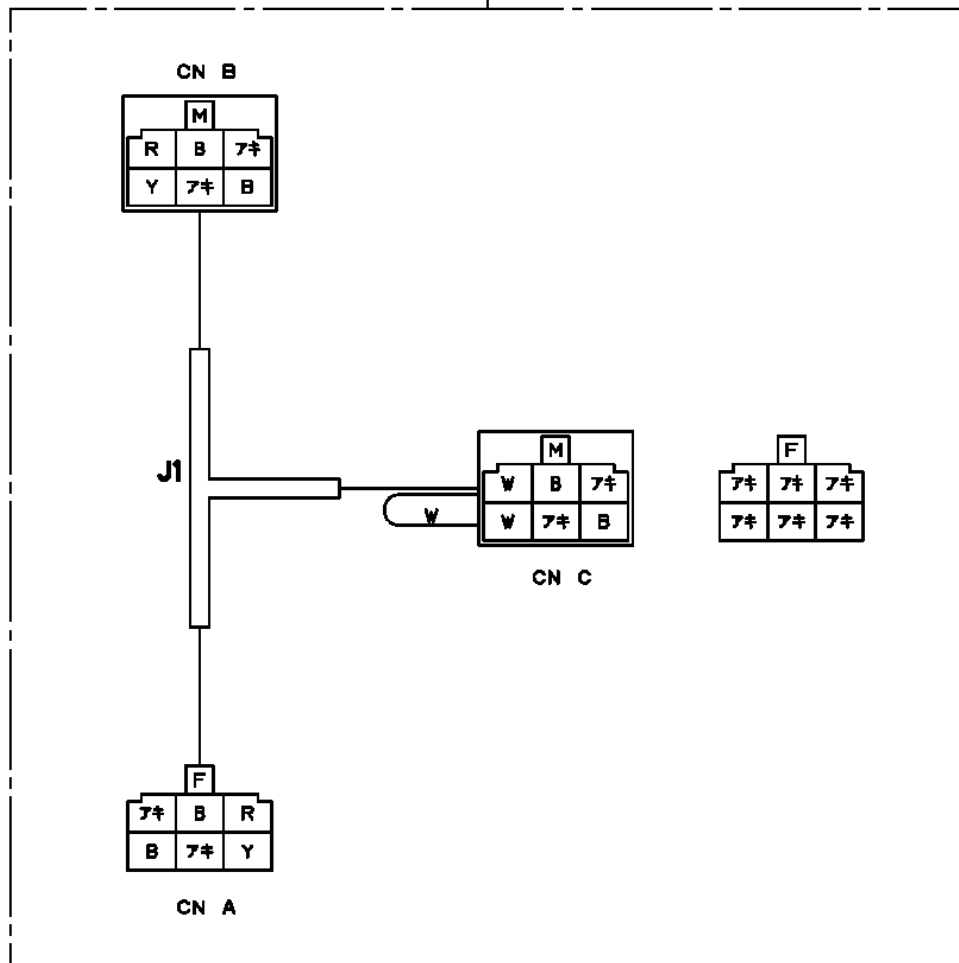


**AT-270-2 42083200001 UPPER
PH1540031-02 FOOT SWITCH**



AT-270-2 4208320001 UPPER
PH5030628-00 HARNESS

10



CLICK HERE TO **DOWNLOAD** THE COMPLETE MANUAL

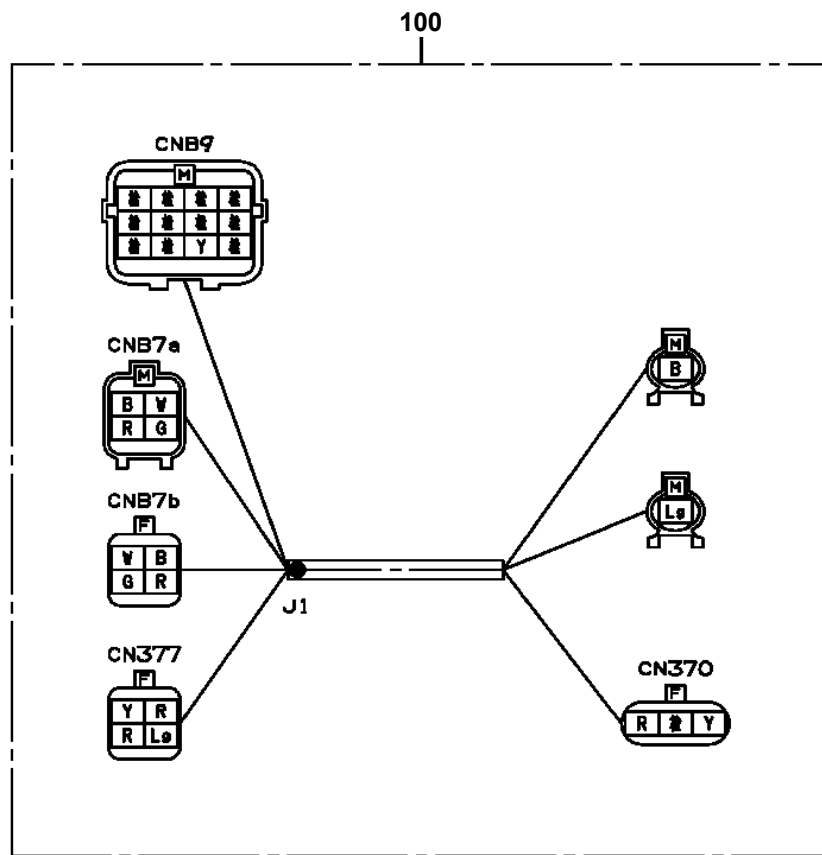
- Thank you very much for reading the preview of the manual.
- You can download the complete manual from: www.heydownloads.com by clicking the link below



- Please note: If there is no response to CLICKING the link, please download this PDF first and then click on it.

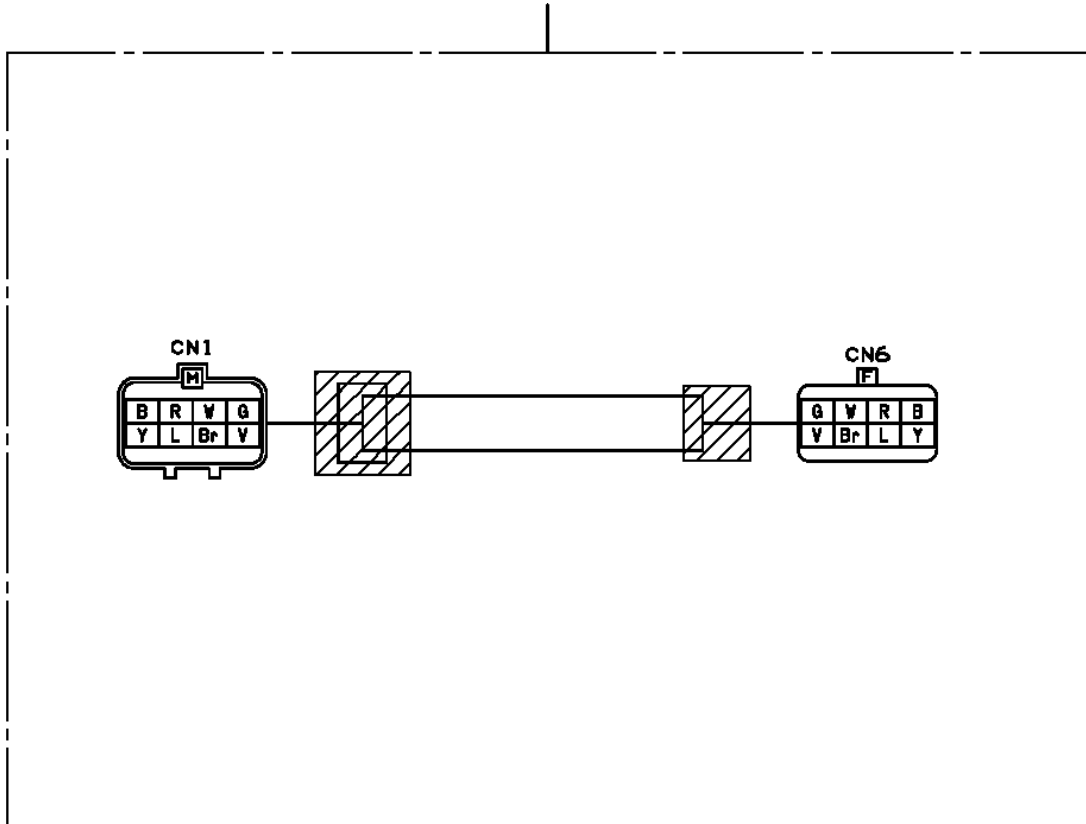
CLICK HERE TO **DOWNLOAD** THE COMPLETE MANUAL

AT-270-2 42083200001 UPPER
PH5033071-00 HARNESS

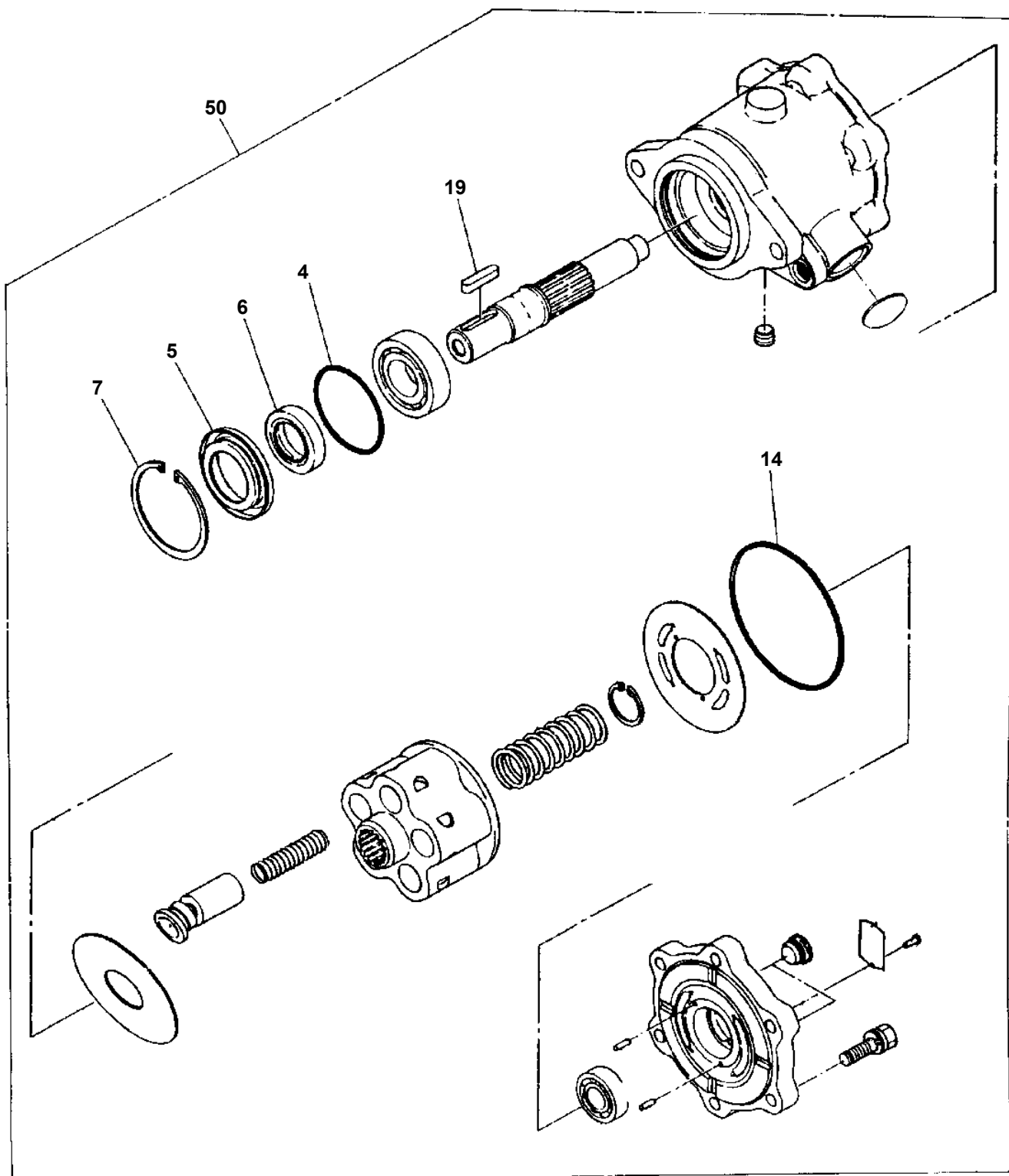


AT-270-2 42083200001 UPPER
PH5034235-00 HARNESS

100

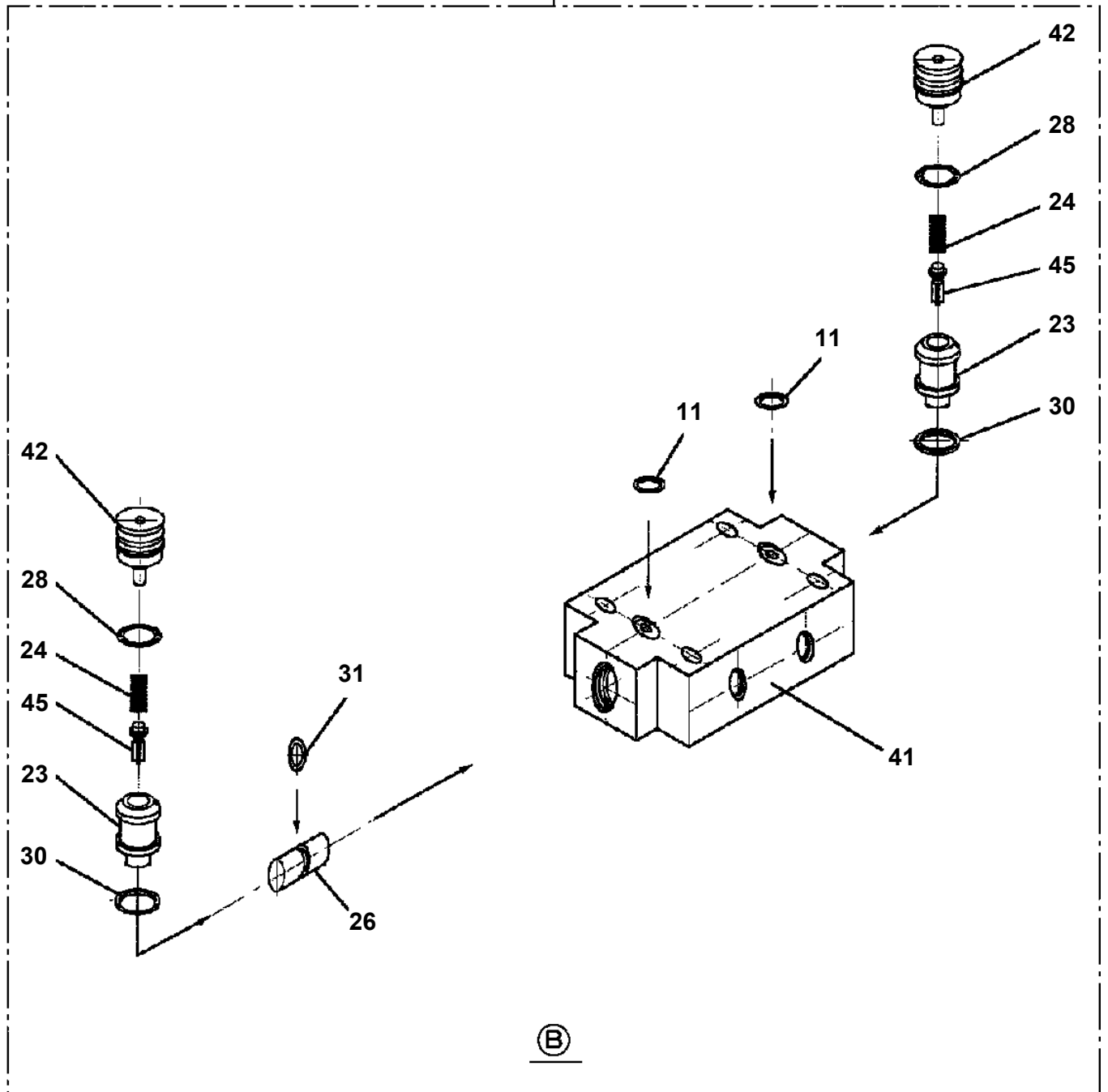


AT-270-2 42083200001 UPPER
PI1010074-00 MOTOR, HYDRAULIC (SWING)



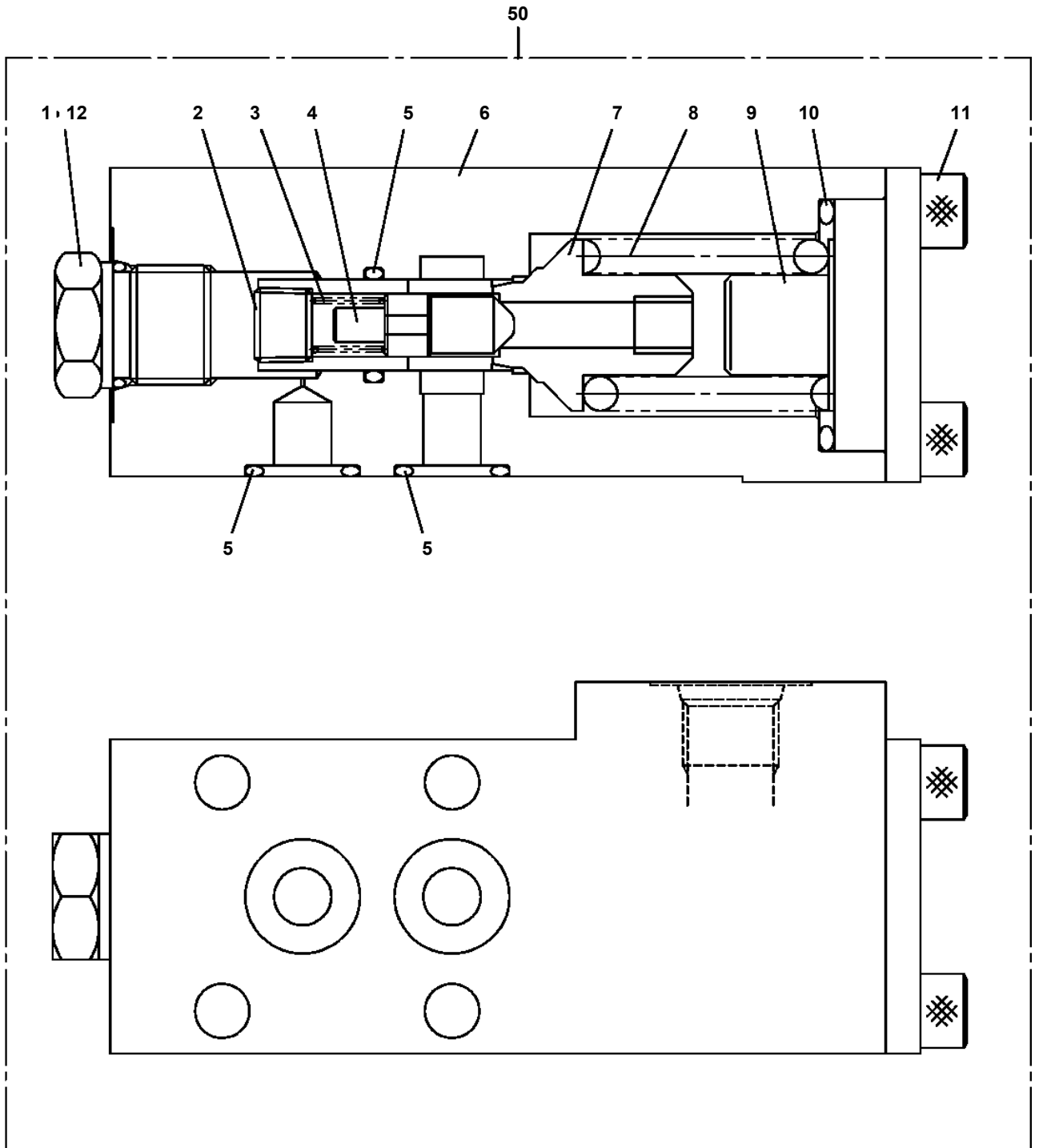
AT-270-2 42083200001 UPPER
PI1140133-01 VALVE,CHECK

100



(B)

**AT-270-2 42083200001 UPPER
PI1250123-00 VALVE,COUNTERBALANCE**



AT-270-2 42083200001 UPPER

Pos No.	Parts No	Parts Name	Qty	Unit	Technical Data	Serial No (Start)	Serial No (End)	Remarks
1	42264151000	POST ASSY	1					
2	42264042001	FRAME ASSY	1					
3	42264043001	BASKET ASSY	1					
5	90102212050	BOLT	2		M12X50			
6	90201201200	NUT	2		M12			
7	42264040401	COVER	1					
8	82456106000	NIPPLE,GREASE	1		1/4-28UNF			
9	42264040200	PLATE	2					
10	42261620020	PIN	1					
11	80136363050	PIN,SPLIT	1		6.3X50			
12	37000525140	PLATE	1					
13	80601110750	RING,RITAINING	1		S75			
14	42262252100	WHEEL,WORM	1					
15	90171112030	BOLT	12		M12X30			
16	90201781200	NUT	16		M12			
17	90303501201	WASHER,PLAIN	32		12			
18	90171112050	BOLT	4		M12X50			
19	90171110030	BOLT	4		M10X30			
20	90302041001	WASHER,SPRING	4		10			
21	90303071001	WASHER,PLAIN	4		10			
22	90101208016	BOLT	10		M8X16			
23	90302040801	WASHER,SPRING	10		8			
24	90303070801	WASHER,PLAIN	10		8			
25	82400000366	INSULATOR	1					
26	80172305020	SCREW,MACHINE	1		M5X20			
27	90201200500	NUT	1		M5			
28	90302040501	WASHER,SPRING	1		5			
29	82400000459	CAP	1					
30	42264040300	COVER	1					
31	42264040500	GUARD	1					
52	80801003030	BEARING,PLAIN	2					
62	80513006015	BEARING,BALL	2					
72	42261743480	GROMMET	2					
81	42262053400	MOTOR,ELECTRIC	1					
82	90172105022	BOLT,HEXAGON SOCKET	3		M5X22			
83	90302040501	WASHER,SPRING	3		5			
85	80913112140	KEY	2					
86	42264154100	GEAR ASSY	1					
87	44260300130	PLATE	1				370766	
	37000549940	PLATE	1		T=3.2	370767		
88	44260300210	SUPPORT	1				370766	
	42264154030	SUPPORT	1			370767		
89	44260300600	COUPLING	1					
90	90710004040	SCREW,SET	1		M4X4		370766	
	90710004040	SCREW,SET	2		M4X4	370767		
91	42264154010	SPACER	1					
92	42264154020	SHIM	N		T=0.5			
101	42264040800	WHEEL,WORM	1			370350		
102	42264040700	STOPPER	1			370350	370418	
	42265680200	STOPPER	1			370419		
103	90172110035	BOLT,HEXAGON SOCKET	2		M10X35	370350		
104	90309341003	WASHER,SPRING (10)	2			370350		
111	42262053410	MOTOR,ELECTRIC	1					
112	44260301150	COVER	1					
113	91810132530	FASTENER	2					
121	42264154200	SUPPORT	1				370351	
	42264154110	SUPPORT	1			370352		
	42264153550	SUPPORT (IP)	1			370870		
122	42264154300	WORM	1					
123	42264154400	COVER	1				370351	
	42264154120	COVER	1			370352		
124	90171108016	BOLT	4		M8X16			
125	90302040801	WASHER,SPRING	4		8			

AT-270-2 42083200001 UPPER

Pos No.	Parts No	Parts Name	Qty	Unit	Technical Data	Serial No (Start)	Serial No (End)	Remarks	Pages
1	42622511000	FRAME ASSY	1				370784		
	42622511001	FRAME ASSY	1			370785			
2	90303501601	WASHER,PLAIN	36		16				
3	37001501340	BOLT	36		M16X85				
4	90303070301	WASHER,PLAIN	2		3				
5	82400000393	INSULATOR	2						
6	80172303016	SCREW,MACHINE	2		M3X16				
8	82401800100	PLUG (FOR M10)	2						
32	42622255000	COVER ASSY	1						
51	42622259510	COVER ASSY	1				370498		
	42622259520	COVER ASSY	1			370499	371072		
	42622259521	COVER ASSY	1			371073	371218		
	42622259522	COVER ASSY	1			371219	371588		
	42622259523	COVER ASSY	1			371589			
52	82400000311	GROMMET	2		L=1000		371072		
	82400000311	GROMMET	2		L=1000	370499	371072		
	82400000311	GROMMET	1		L=1000	371073	371218		
53	82400000357	CATCH	1				371072		
	82400000357	CATCH	1			370499	371072		
	82400000357	CATCH	1			371219			
54	80172305012	SCREW,MACHINE	4		M5X12		371072		
	80172305012	SCREW,MACHINE	4		M5X12	370499	371072		
	80172305012	SCREW,MACHINE	4		M5X12	371219			
55	90302040501	WASHER,SPRING	4		5		370498		
	90302040501	WASHER,SPRING	6		5		370784		
	90302040501	WASHER,SPRING	4		5	370499	371072		
	90302040501	WASHER,SPRING	6		5	370785			
	90302040501	WASHER,SPRING	4		5	371219			
56	90201200500	NUT	6		M5		370784		
	90201200500	NUT	4		M5		370498		
	90201200500	NUT	4		M5	370499	371072		
	90201200500	NUT	6		M5	370785			
	90201200500	NUT	4		M5	371219			
57	82400000314	HINGE	2				371072		
	82400000314	HINGE	2			370499	371072		
	82400000314	HINGE	2			371219			
58	80175305016	SCREW,MACHINE	6		M5X16				
60	90303070501	WASHER,PLAIN	4		5		371219		
62	82400000540	GROMMET	1	M			371219		

AT-270-2 42083200001 UPPER

Pos No.	Parts No	Parts Name	Qty	Unit	Technical Data	Serial No (Start)	Serial No (End)
1	42477611100	LEVER,CONTROL	1				
2	42477611200	GUARD	1				
3	90186206020	BOLT,FLANGE	4		M6X20		
4	82199504017	NUT	3		AT-401N	370859	
5	42477611010	HARNESS (WITH SWITCH)	1				
6	44350230400	PLUG (8 POLES,MALE)	1				370455
7	42651306900	SWITCH ASSY	1				370455
	42354541300	SWITCH ASSY (WITH HARNESS,1 SW)	1			370456	
8	42351460100	SWITCH ASSY	1				370455
	42354541100	SWITCH ASSY	1			370456	
9	82100002594	RING	1		OGL-31		
10	42651593400	SWITCH ASSY (WITH HARNESS,1 SW)	1				370455
	42354541200	SWITCH ASSY (WITH HARNESS,1 SW)	1			370456	
11	82197518114	CAP (MATSUSHITA/BLACK)	3				370858
	82197518119	CAP (PLUS ONE MFG./BLACK)	3				370858
	82199514013	CAP	3			370859	
68	82100002308	COVER	1				
91	82101361003	BUTTON	1				

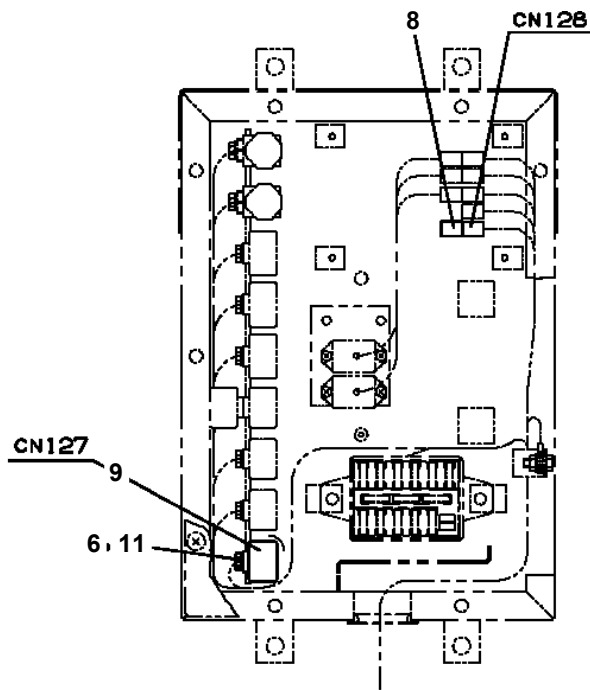
AT-270-2 42083200001 UPPER

Pos No.	Parts No	Parts Name	Qty	Unit	Technical Data	Serial No (Start)	Serial No (End)	Remarks
1	36663955100	SHAFT	1					
2	80500006206	BEARING,BALL	1					
4	91001206500	O-RING	1		1A G65			
5	36660025021	COVER (OIL SEAL)	1					
6	36660025140	SEAL,OIL	1					
7	36663485110	RING,RETAINING	1		R72			
8	36663955020	PLATE,THRUST	1					
9	36663955030	BARREL ASSY (CYLINDER)	1					
10	36663955040	PLATE (VALVE)	1					
11	36661925030	COVER (BOTTOM)	1					
12	80500006203	BEARING,BALL	1					
13	36662355110	PIN	2					
14	36663955050	O-RING	1					
15	36663955060	BOLT	6		M10X35			
16	14125151020	KEY	1					
17	36660125060	PLUG	2		PF3/8			
18	36081315130	PROTECTOR (THREAD)	2					
44	36660025100	SPRING (PLUNGER)	5					
45	14125151300	RING,RETAINING	1					
46	12645103171	SPRING (CENTER)	1					
100	36664070000	MOTOR,OIL	1					

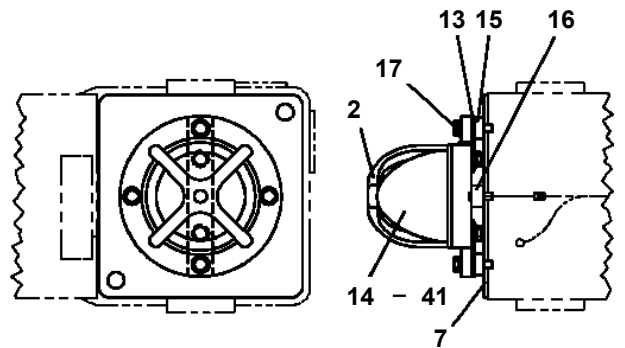
AT-270-2 42083200001 UPPER

Pos No.	Parts No	Parts Name	Qty	Unit	Technical Data	Serial No (Start)	Serial No (End)
1	42353460010	HARNESS	1				
2	42651593400	SWITCH ASSY (WITH HARNESS,1 SW)	1				
3	82100002596	RELAY	3				
4	80192486010	SCREW,MACHINE	3		M6X10		
5	80192484016	SCREW,MACHINE	16		M4X16		
6	91850400601	CLAMP	5				
7	91810132530	FASTENER	13				
8	90280200800	NUT,FLANGE	1		M8		
9	82100001807	TUBE,CORRUGATE	1	M	28		
10	82100002010	CLAMP	1		WR15		
11	42353011000	PANEL ASSY	1				
12	82100002017	CLAMP	1		WR30		
13	90280200600	NUT,FLANGE	3		M6		
14	82100001801	TUBE,CORRUGATE	1	M	7		
15	82100002014	CLAMP	1		WR20		
41	42651306900	SWITCH ASSY	1				
42	42351460100	SWITCH ASSY	1				
43	82100002594	RING	1		OGL-31		
44	42651593400	SWITCH ASSY (WITH HARNESS,1 SW)	1				
45	42651591300	SWITCH ASSY (WITH HARNESS,3 SW)	1				
46	42353011100	PLATE,NAME (SWING,BOOM TEL/ELE)	1				
47	42353011200	PANEL	1		T=1.6		
48	82197518119	CAP (PLUS ONE MFG./BLACK)	5				
	82197518114	CAP (MATSUSHITA/BLACK)	5				
58	82100002308	COVER	1				
101	82101361003	BUTTON	1				

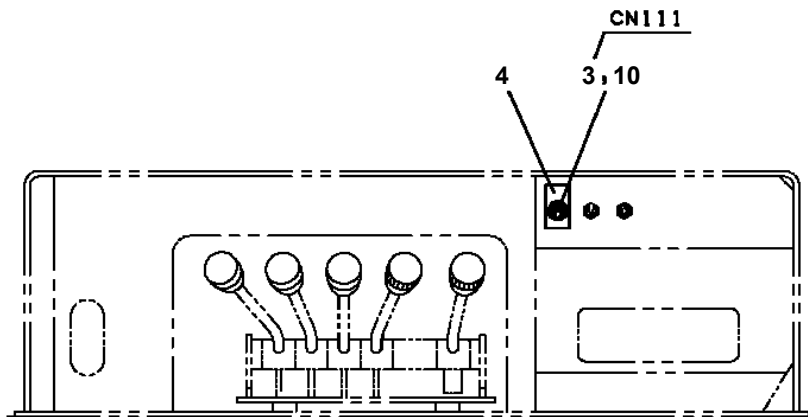
**AT-270-2 4208320001 UPPER
PN1080439-01 LAMP (YELLOW MARKER, FOR O/R)**



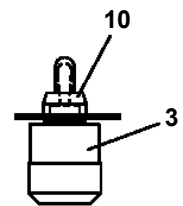
リレーボックス内
INSIDE OF RELAY BOX



アウトリガジャッキ上部
OUTRIGGER JACK UPPER
(4 PLACES)



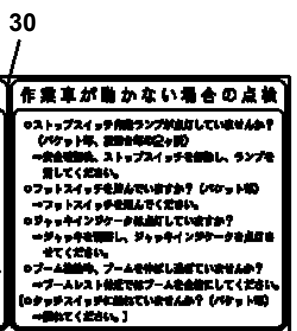
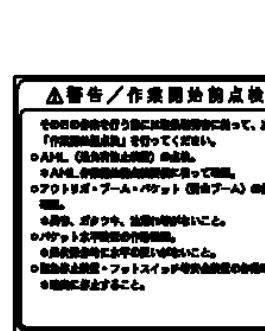
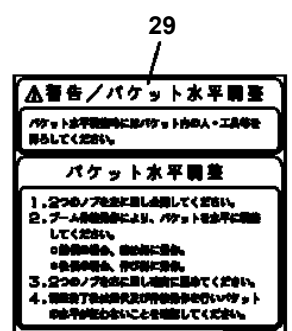
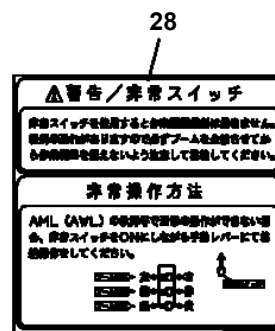
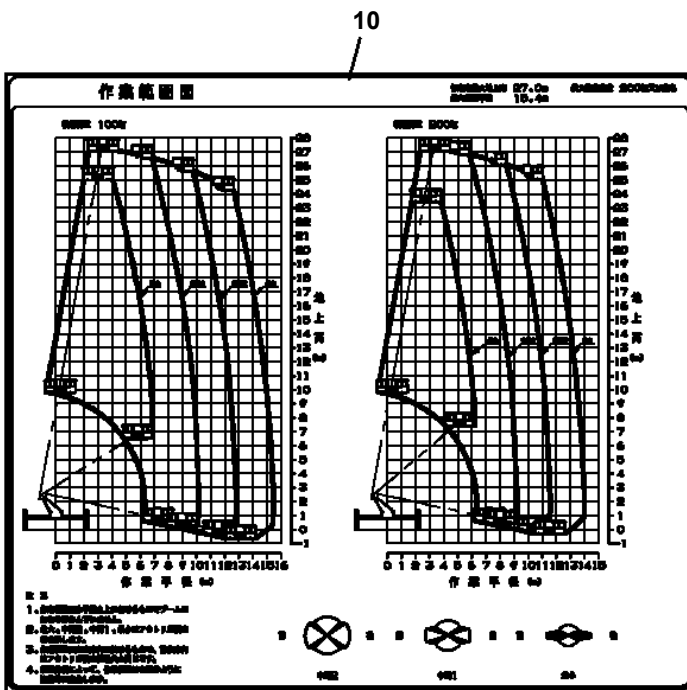
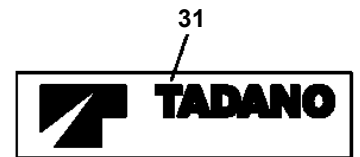
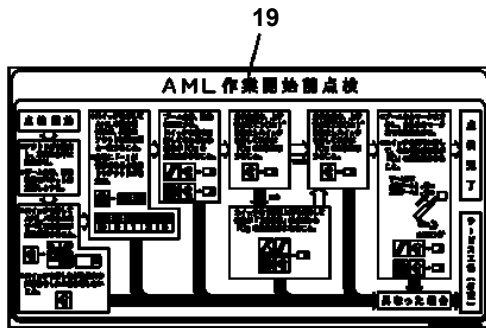
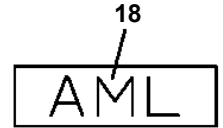
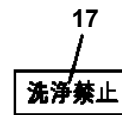
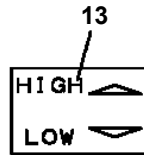
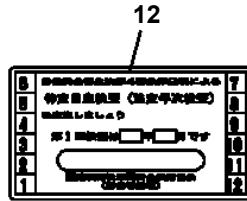
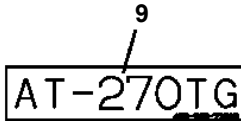
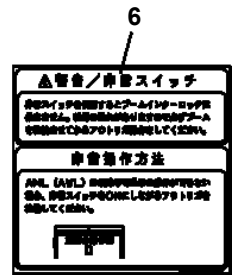
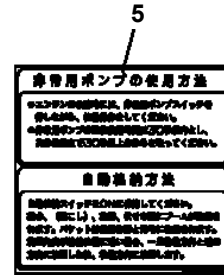
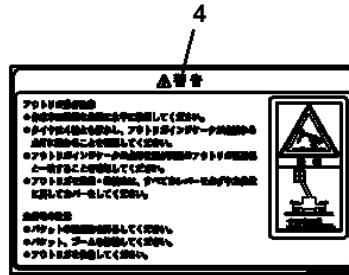
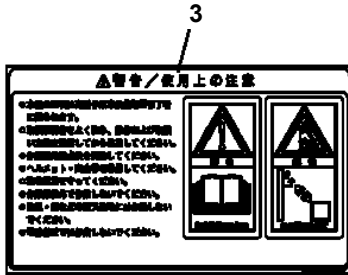
フレーム後部アウトリガ操作部
OUTRIGGER CONTROLS
AT REAR OF FRAME



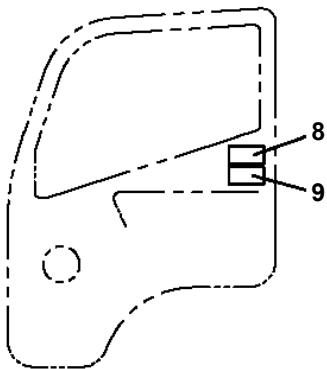
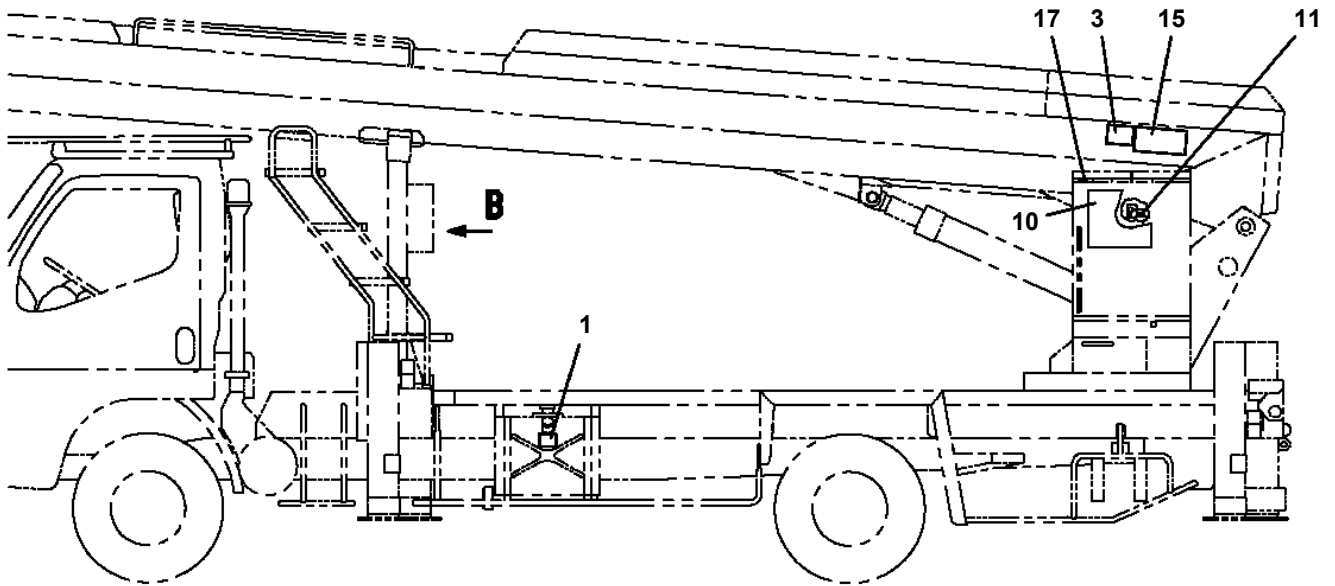
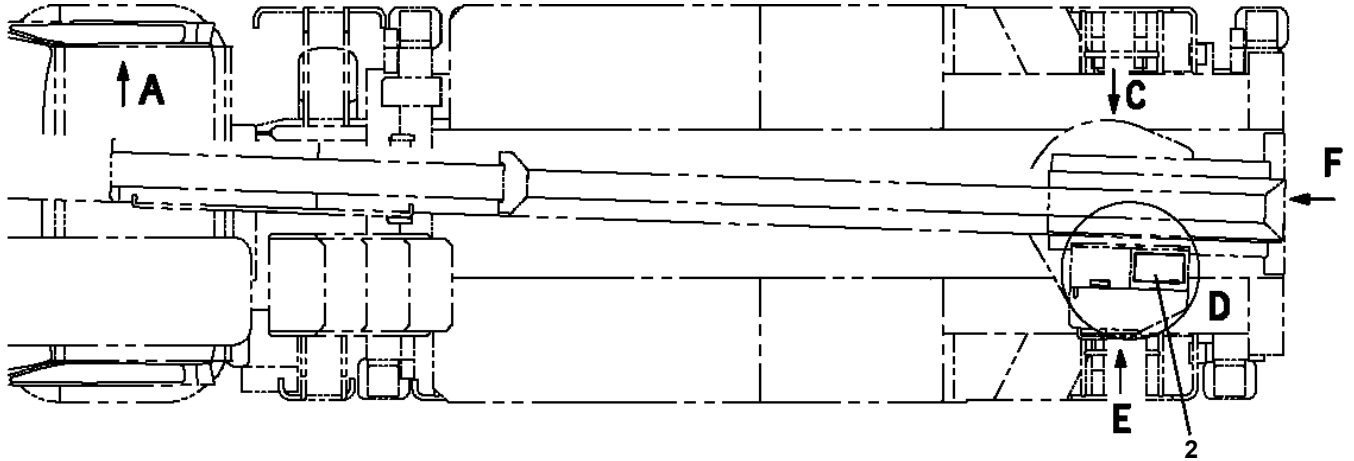
TOGGLE SW



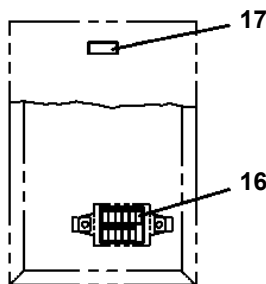
AT-270-2 4208320001 UPPER PO1013214-01 PLATE ASSY,NAME (VEHICLE)



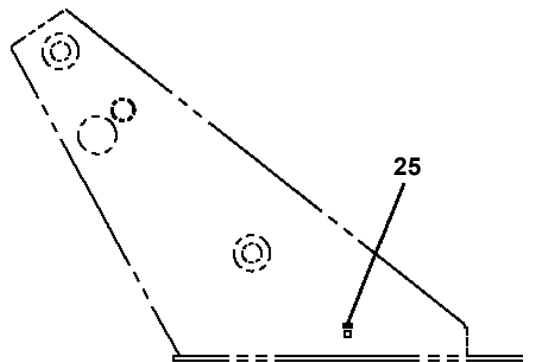
**AT-270-2 42083200001 UPPER
PO1014384-01 PLATE ASSY,NAME (COMMON)**



A

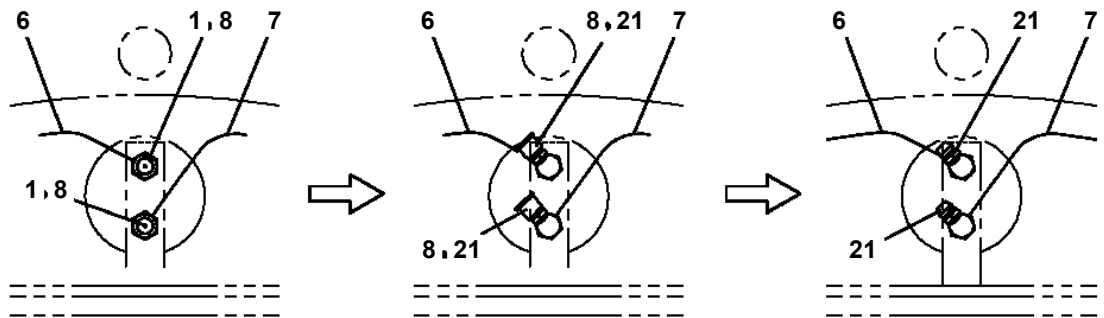
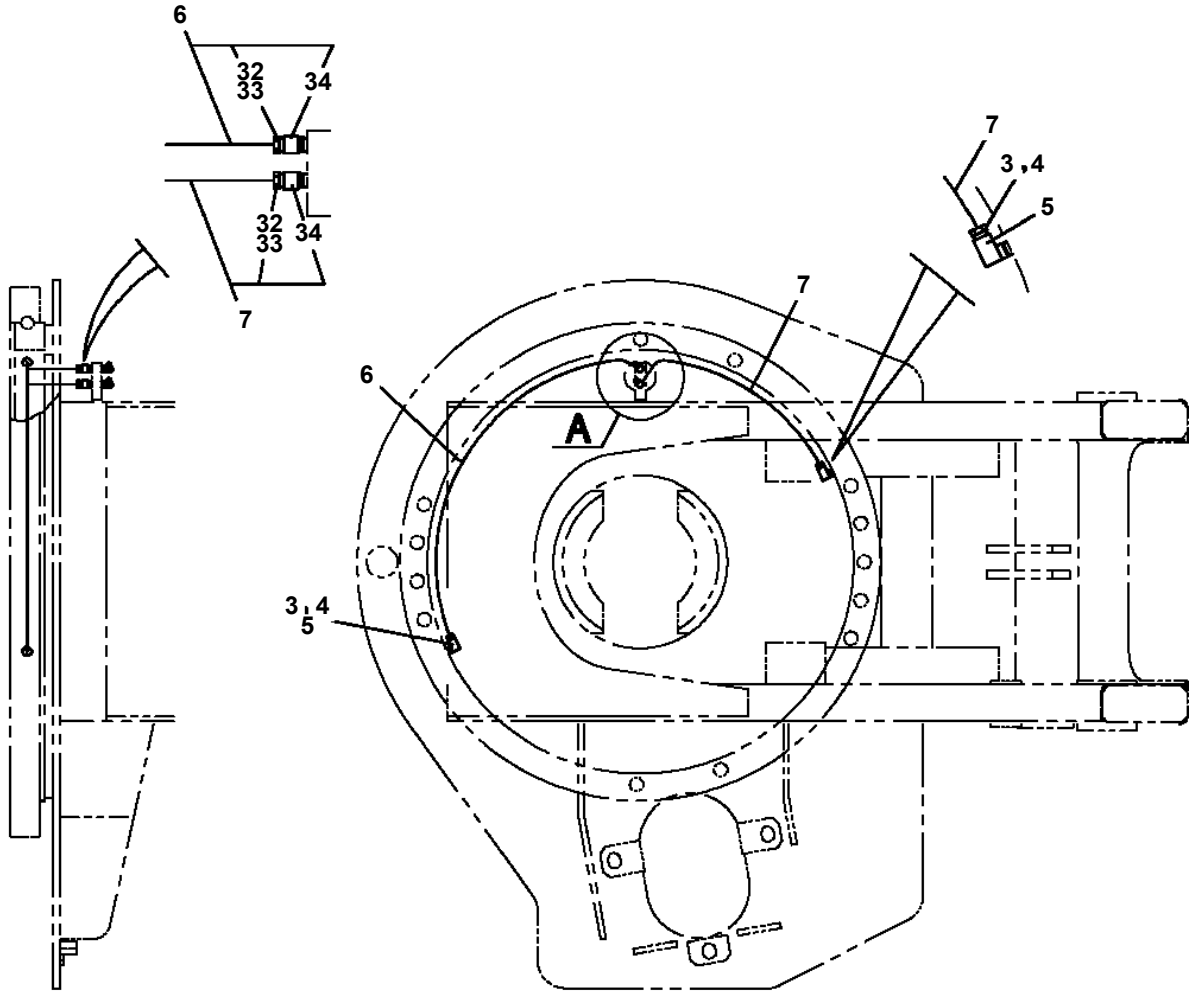


B
RELAY BOX



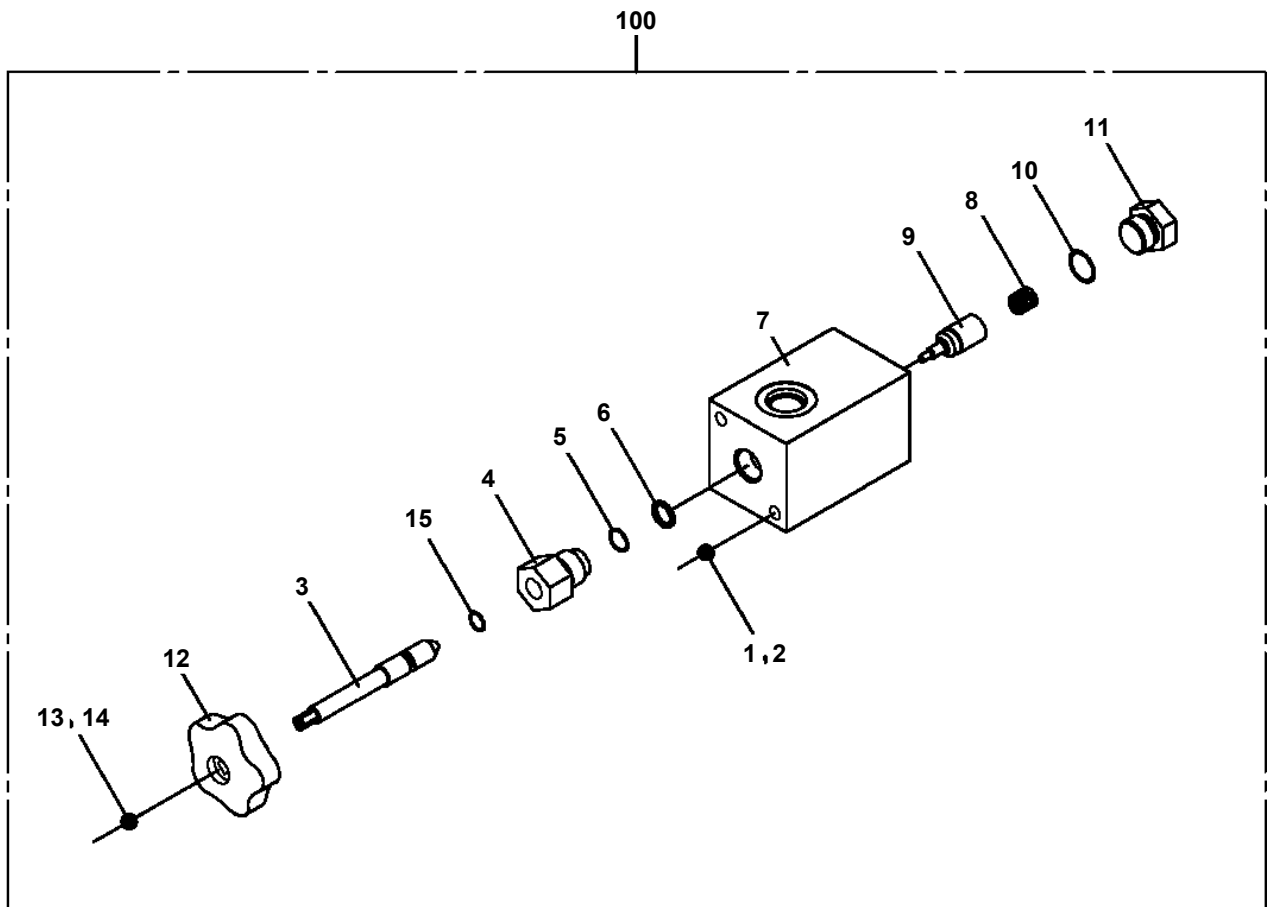
C

**AT-270-2 42083200001 UPPER
PP6160006-00 PIPING ASSY, GREASE**

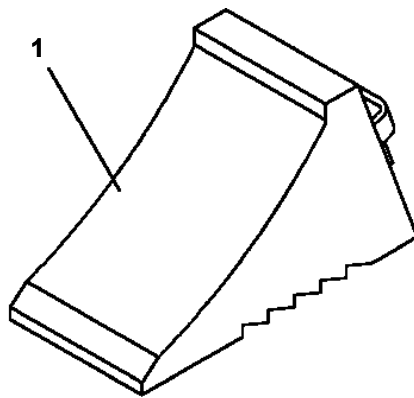


A

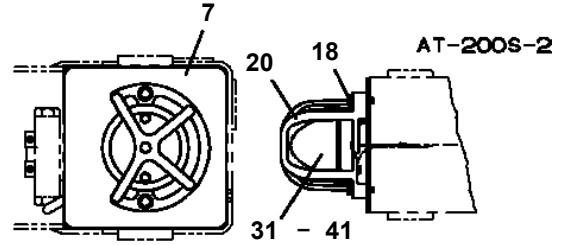
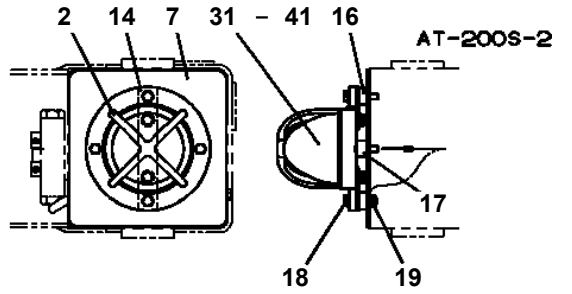
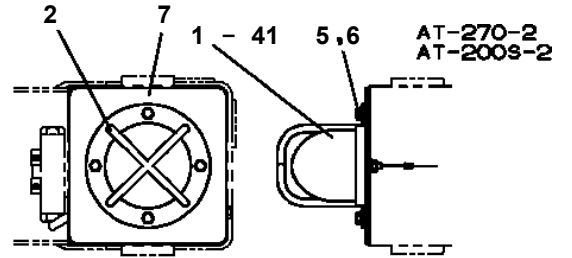
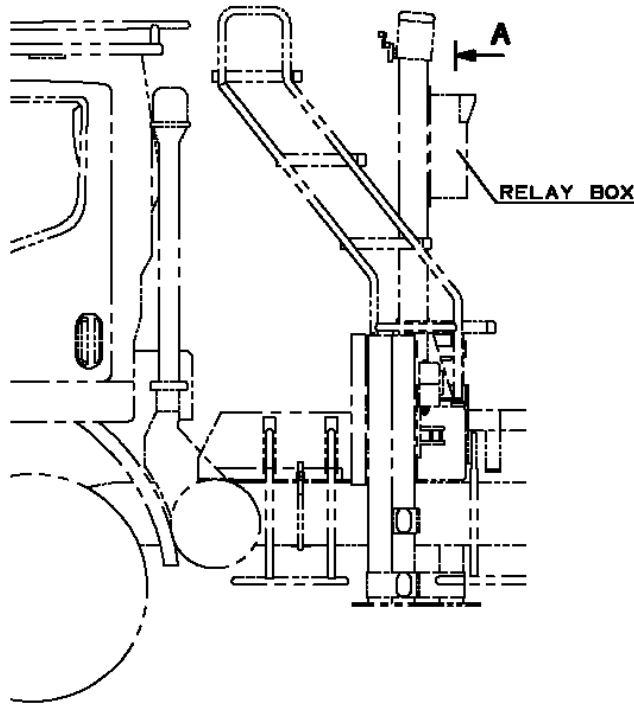
**AT-270-2 42083200001 UPPER
PV5170018-00 VALVE ASSY,SELECTOR**



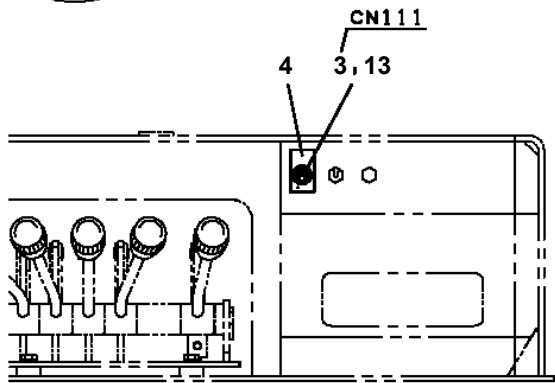
**AT-270-2 42083200001 UPPER
PW5110003-00 WEDGE (STOPPER FOR TIRE/NAKAMURA KIKI)**



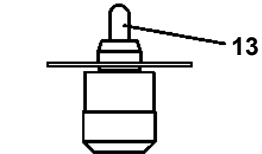
**AT-270-2 42083200001 UPPER
PY1180274-03 LAMP (O/R FLICKER)**



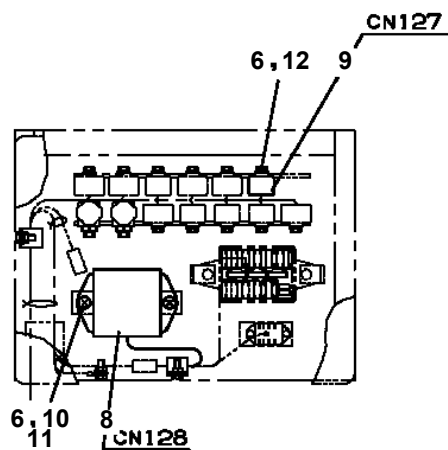
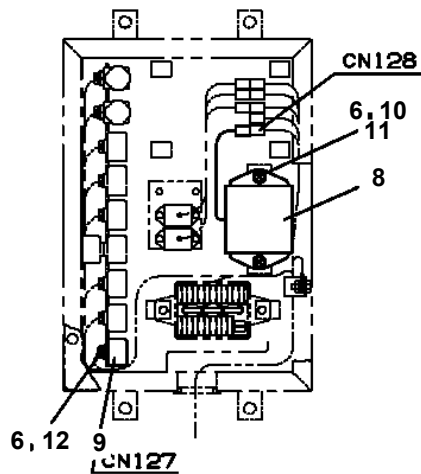
**OUTRIGGER CONTROLS
AT REAR OF FRAME**



OUTRIGGER JACK UPPER



TOGGLE SW



(AT-200S ONLY)

CLICK HERE TO **DOWNLOAD** THE COMPLETE MANUAL

- Thank you very much for reading the preview of the manual.
- You can download the complete manual from: www.heydownloads.com by clicking the link below



- Please note: If there is no response to CLICKING the link, please download this PDF first and then click on it.

CLICK HERE TO **DOWNLOAD** THE COMPLETE MANUAL