

AT-150S-2 42068232215 UPPER, LOWER, HINO 2PG-XZU712M-TKFRX3

PB0000349-01 UPPER STRUCTURE SYSTEM

PB0000505-00 LOWER STRUCTURE SYSTEM

ASSEMBLY

CLICK HERE TO **DOWNLOAD** THE COMPLETE MANUAL

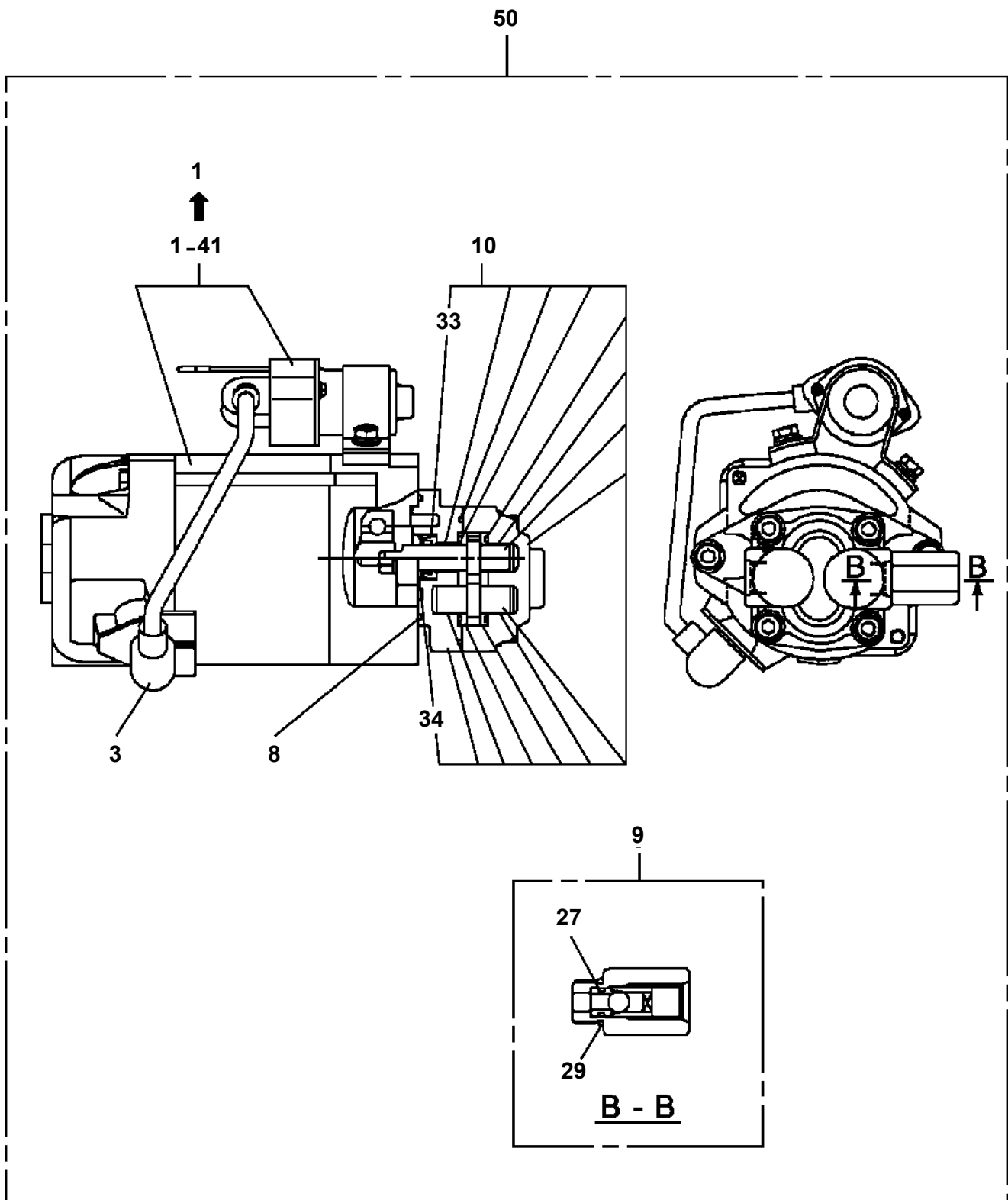
- Thank you very much for reading the preview of the manual.
- You can download the complete manual from: www.heydownloads.com by clicking the link below



- Please note: If there is no response to CLICKING the link, please download this PDF first and then click on it.

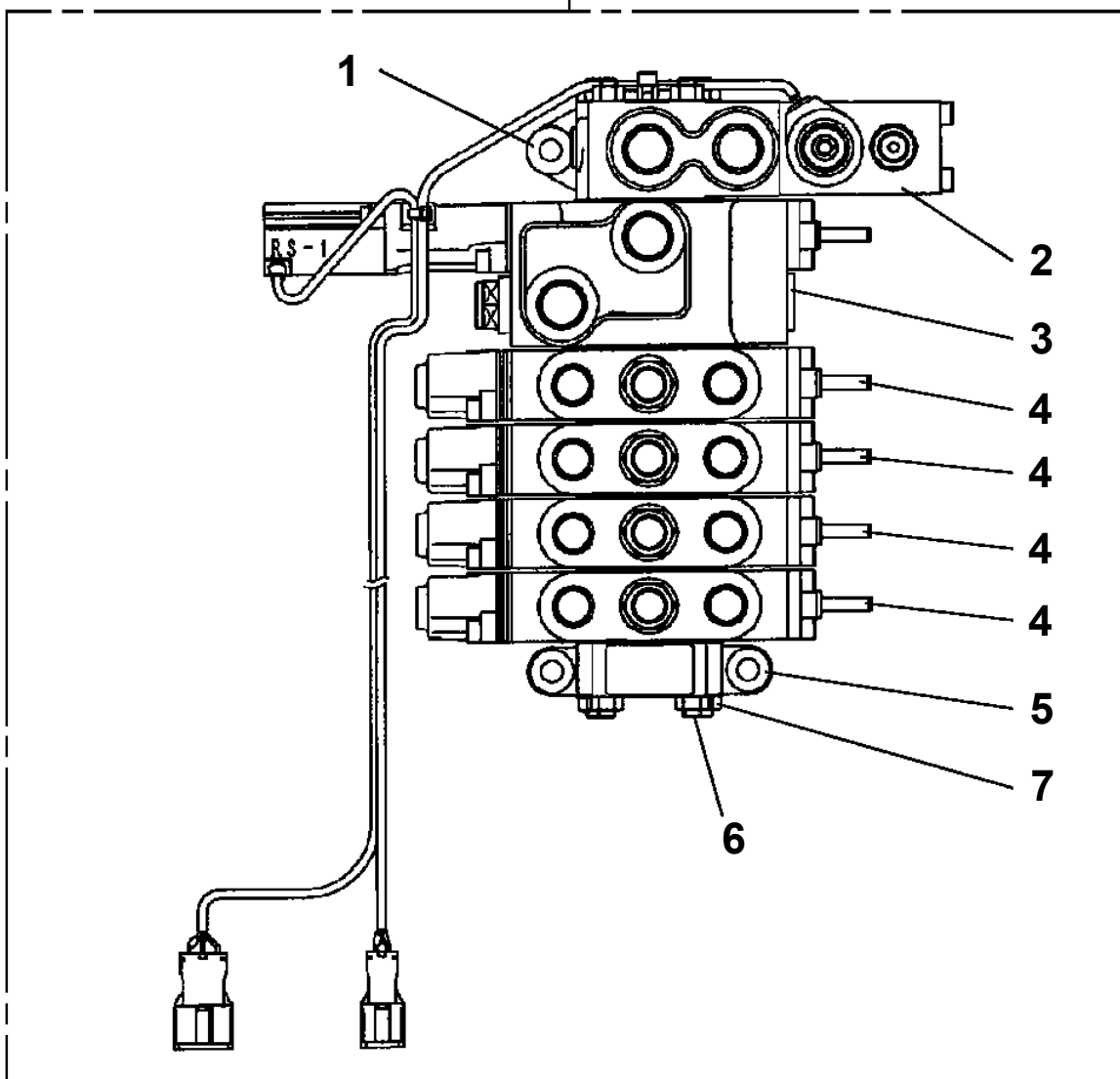
CLICK HERE TO **DOWNLOAD** THE COMPLETE MANUAL

AT-150S-2 42068232215 UPPER, LOWER, HINO 2PG-XZU712M-TKFRX3
PB1100101-02 PUMP, HYDRAULIC (EMERGENCY)

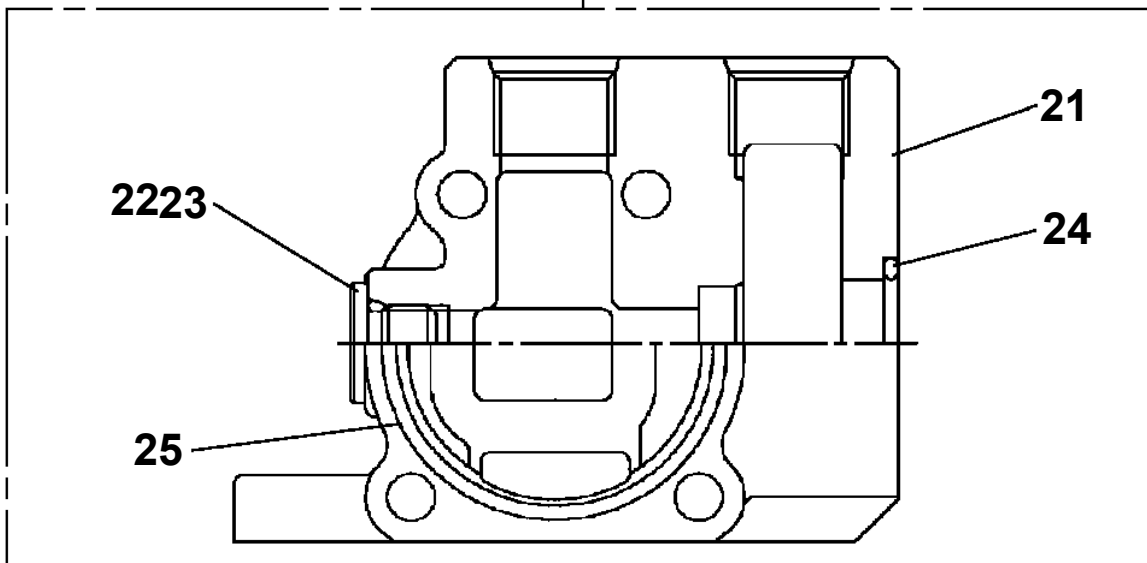


AT-150S-2 42068232215 UPPER, LOWER, HINO 2PG-XZU712M-TKFRX3
PB1320537-01 VALVE, MANUAL CONTROL

200



1



AT-150S-2 42068232215 UPPER, LOWER, HINO 2PG-XZU712M-TKFRX3

Pos No.	Parts No	Parts Name	Qty	Unit	Technical Data	Serial No (Start)	Serial N
1	(*****)	PUMP, HYDRAULIC (MOUNT)	1				
3	(*****)	POWER SUPPLY (MOUNT, EMERGENCY PUMP)	1				

AT-150S-2 42068232215 UPPER, LOWER, HINO 2PG-XZU712M-TKFRX3

Pos No.	Parts No	Parts Name	Qty	Unit	Technical Data	Serial No (Start)	Serial No (End)	Remarks	P
1	90209201800	NUT	1		M18				
2	91684004500	PACKING	2						
3	91002802000	O-RING	1		1B P20				
4	36042810400	PISTON	1						
5	36042840100	ROD	1						
6	36042841000	CYLINDER	1						
7	36042810300	COVER,ROD	1						
8	91002904000	O-RING	1		1B G40				
9	91694003000	PACKING	1						
10	91660003001	SEAL,DUST	1						
11	90302041801	WASHER,SPRING	1		18				
12	90303071801	WASHER,PLAIN	1		18				
13	91002904500	O-RING	1		1B G45				
14	91411203501	RING,BACKUP	2						
30	36042819900	PACKING SET	1		30X45				
100	36042840000	CYLINDER,EXTENSION	1						

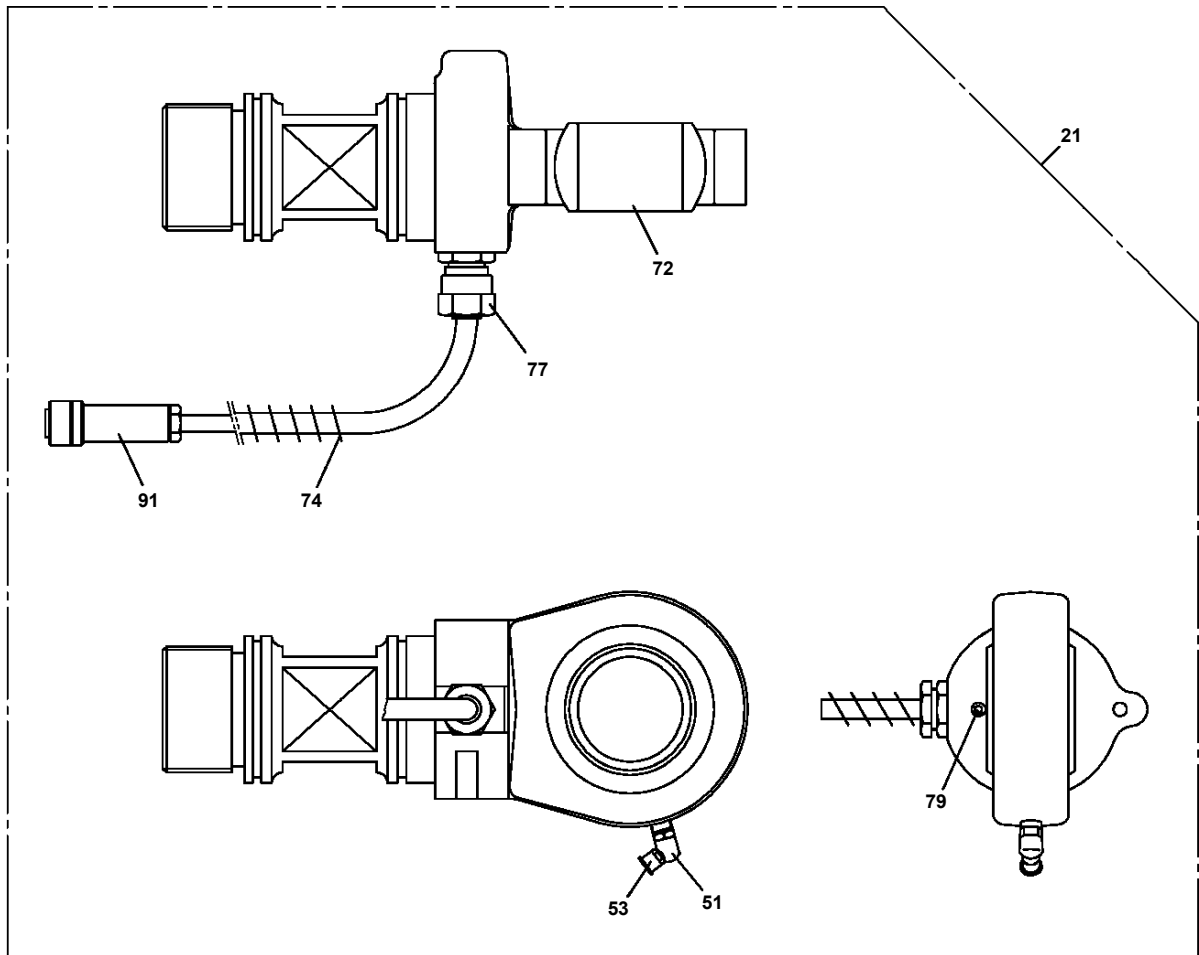
AT-150S-2 42068232215 UPPER, LOWER, HINO 2PG-XZU712M-TKFRX3

Pos No.	Parts No	Parts Name	Qty	Unit	Technical Data	Serial No (Start)	Serial No (End)	Remark
1	42614882100	CASE,INNER (FRONT)	1					
2	42613611200	CASE,INNER	1					
4	36034700000	CYLINDER,JACK	1					
5	91810130240	FASTENER	2					
6	37000171790	PIN	1					
7	80601110250	RING,RITAINING	2		S25			
8	37000169010	PIN	1		30			
9	80601110300	RING,RITAINING	2		S30			
10	36625740001	VALVE,CHECK	1					
11	90171108055	BOLT	4		M8X55			
12	37000138750	PIN	1		18			
13	80136332036	PIN,SPLIT	2		3.2X36			
14	80400160127	JOINT	1					
15	91002801100	O-RING	1		1B P11			
16	36672460000	FILTER (NIPPLE TYPE)	1					
17	42612851010	COVER	1					
18	90186206014	BOLT,FLANGE	2		M6X14			
19	90280200600	NUT,FLANGE	1		M6			
20	37000600700	CLAMP	1		12X3			
21	37000112320	PIN	1					
22	80601110120	RING,RITAINING	2		S12			
23	31201770100	PLATE,SLIDE	8		T=3.0			
41	36042840000	CYLINDER,EXTENSION	1					
42	80400160127	JOINT	2					
43	91002801100	O-RING	3		1B P11			
44	37002464860	HOSE,TWIN	1		L=2210			
45	42613601300	HARNESS	1					
46	91810130250	FASTENER	16					
100	42614882000	CASE ASSY,INNER (FRONT)	1					

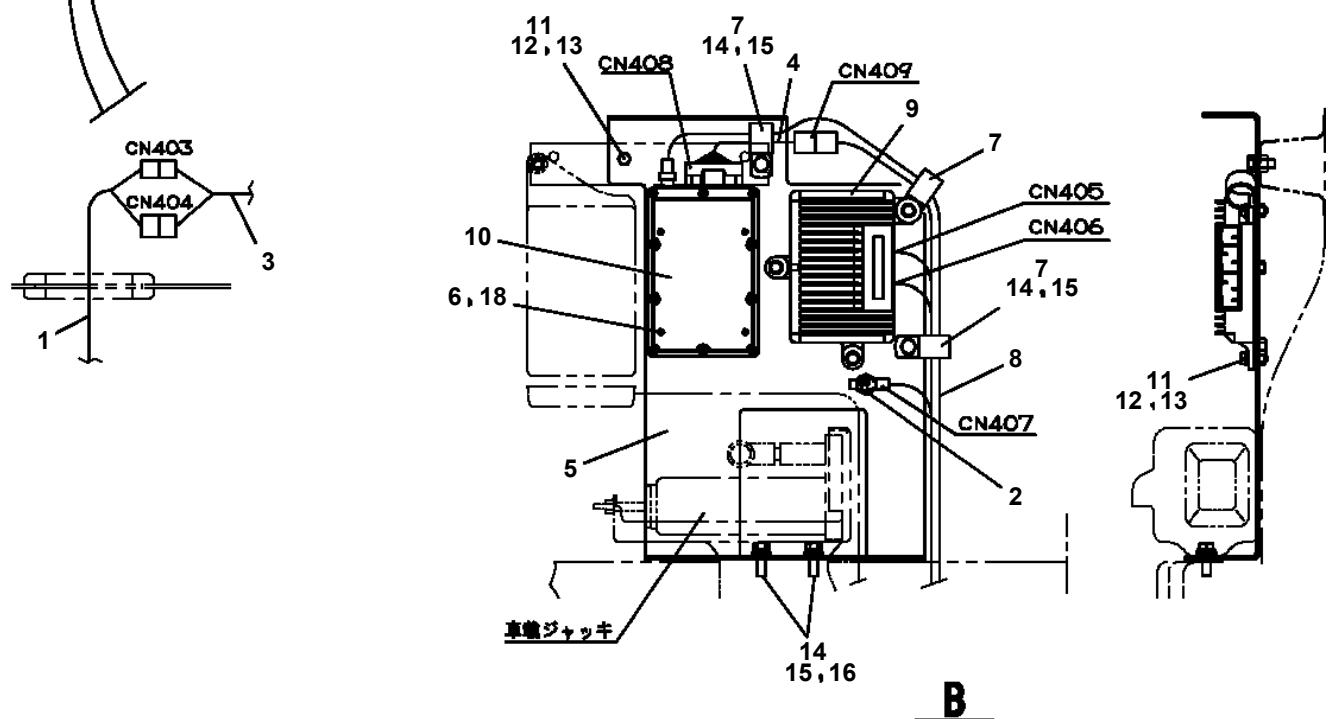
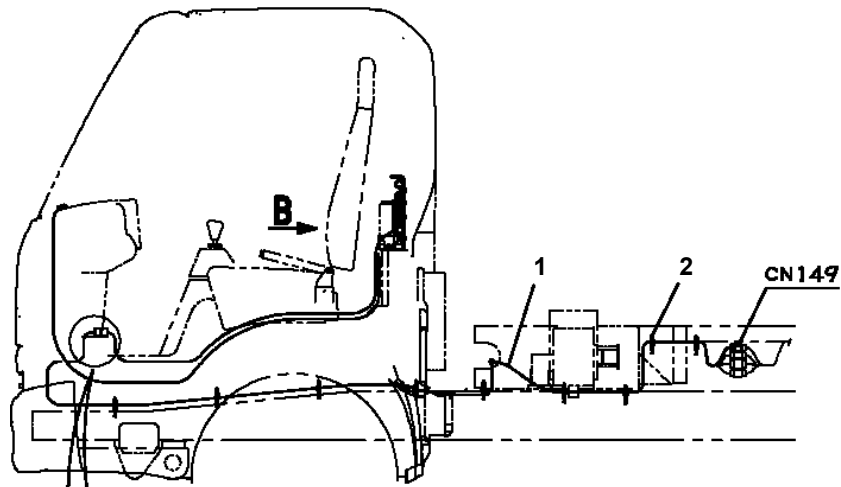
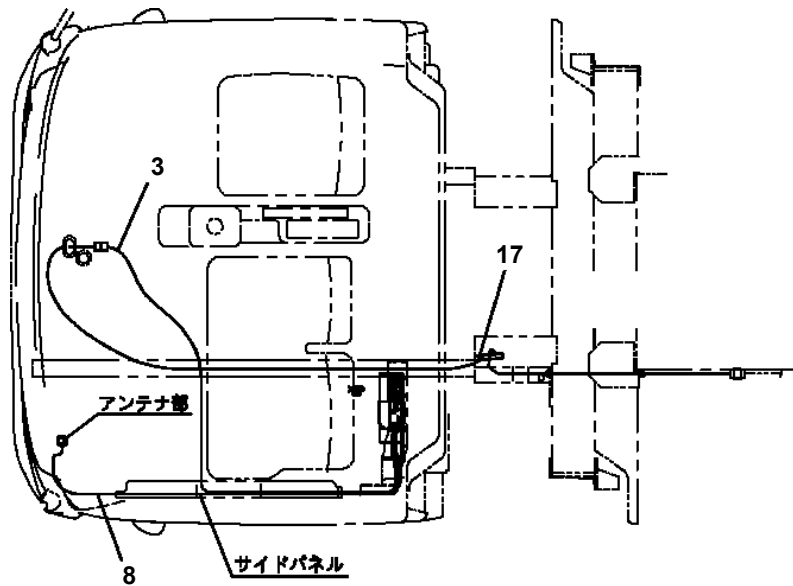
AT-150S-2 42068232215 UPPER, LOWER, HINO 2PG-XZU712M-TKFRX3

Pos No.	Parts No	Parts Name	Qty	Unit	Technical Data	Serial No (Start)	Serial No (End)
1	36027141001	CYLINDER	1				
2	90730008120	SCREW,SET	1		M8X12		
3	36025970100	PISTON	1				
4	91350211000	BEARING,PLAIN (WITH PACKINGX2)	1				
5	91002904500	O-RING	1		1B G45		
6	36027140100	ROD	1				
7	80316030020	PLUG	1		PT1/8		
8	80612110720	RING,RITAINING	1		AR72		
9	80801006540	BEARING,PLAIN	1				
10	91002910500	O-RING	1		1B G105		
11	36024499510	COVER,ROD	1				
12	91694106500	PACKING	1				
13	91410206503	RING,BACKUP	1				
14	91660006500	SEAL,DUST	1				
15	80622000650	RING,RITAINING	1		SP65		
17	36026003000	END,ROD	1				
32	37000401020	BEARING,PLAIN	2				
51	80604110620	RING,RETAINING	2				
52	80530000114	BEARING,SPHERICAL	1				
53	82100000548	CONNECTOR	1				
55	82100001411	TUBE,SPIRAL	1	M	SE-08BK		
61	82100001155	CONNECTOR	1				
75	91002904500	O-RING	1		1B G45		
90	36025219900	PACKING SET	1		65X110		
100	36027148011	CYLINDER ASSY,LEVELING	1				

AT-150S-2 42068232215 UPPER, LOWER, HINO 2PG-XZU712M-TKFRX3
PE1010434-02 CYLINDER,ELEVATING



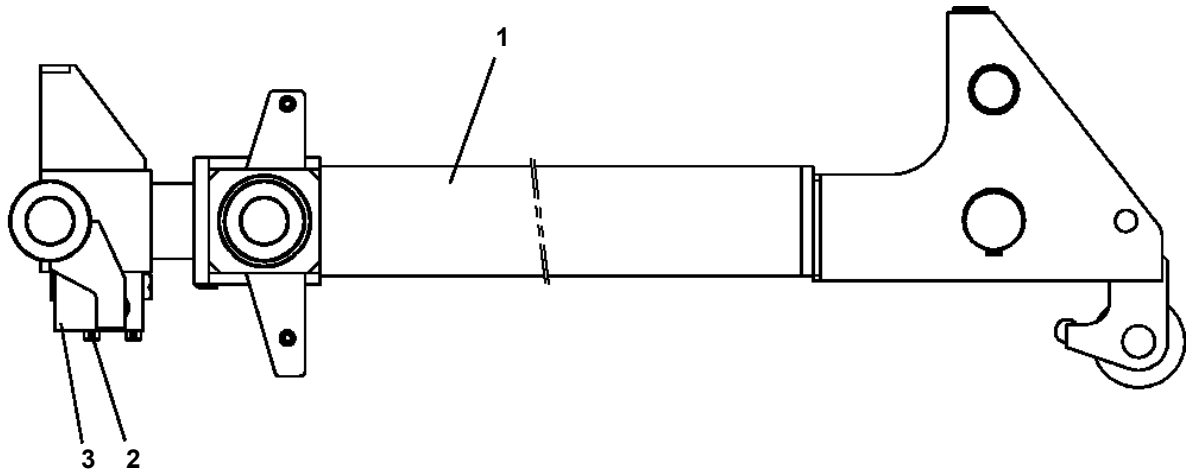
AT-150S-2 42068232215 UPPER, LOWER, HINO 2PG-XZU712M-TKFRX3
 PE5021463-00 ELEC.ASSY (TELEMATICS/HINO)



AT-150S-2 42068232215 UPPER, LOWER, HINO 2PG-XZU712M-TKFRX3

Pos No.	Parts No	Parts Name	Qty	Unit	Technical Data	Serial No (Start)	Serial No (End)
2	42354541200	SWITCH ASSY (WITH HARNESS,1 SW)	1				
3	34354781710	RELAY (WITH BRACKET)	2				
6	80192484016	SCREW,MACHINE	16		M4X16		
7	91810132530	FASTENER	24				
8	91850400601	CLAMP	4				
9	82100002007	CLAMP	1		WRC10		
10	90280200800	NUT,FLANGE	2		M8		
11	42358311000	PANEL ASSY	1				
12	90280200600	NUT,FLANGE	2		M6		
13	82467300116	PLUG	1				
14	82100002010	CLAMP	2		WR15		
16	42358310100	HARNESS	1				
21	42232510100	HARNESS	1				
22	42350250080	PLUG (3 POLES,MALE)	1				
24	90302040601	WASHER,SPRING	4		6		
25	90101206025	BOLT	4		M6X25		
26	90303070601	WASHER,PLAIN	4		6		
27	80197586012	SCREW,MACHINE	4		M6X12		
28	36171980000	CONTROLLER (ASSY ONLY)	1				
30	31624791100	PLUG	1				

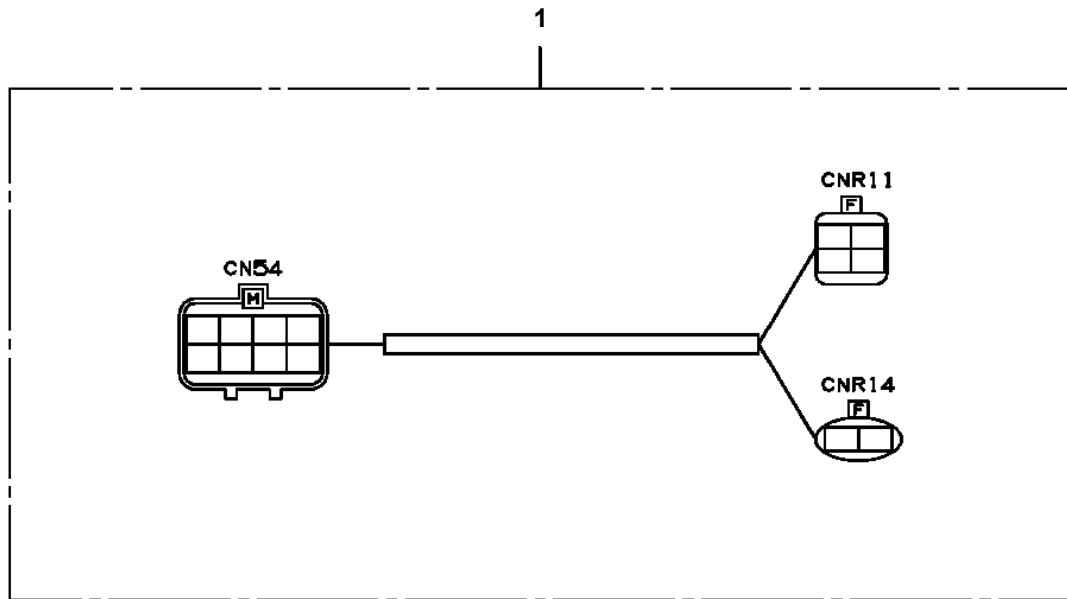
AT-150S-2 42068232215 UPPER, LOWER, HINO 2PG-XZU712M-TKFRX3
PG1050530-00 CYLINDER,TELESCOPING



AT-150S-2 42068232215 UPPER, LOWER, HINO 2PG-XZU712M-TKFRX3

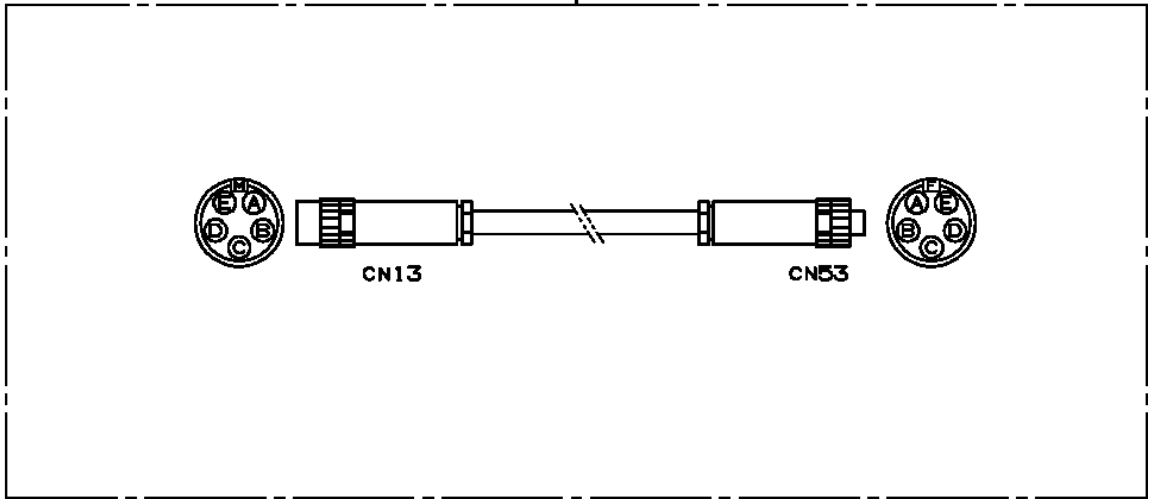
Pos No.	Parts No	Parts Name	Qty	Unit	Technical Data	Serial No (Start)	Serial No (End)	Remarks	F
1	(*****)	BOOM	1						0
2	(*****)	CYLINDER,TELESCOPING	1						0
3	(*****)	PIPING,BOOM	1						0
5	(*****)	CYLINDER,LEVELING	1						0
6	(*****)	STEP	1						0
11	(*****)	ELEC.ASSY,BOOM	1						0
12	(*****)	ELEC.ASSY (DETECTOR)	1						0

AT-150S-2 42068232215 UPPER, LOWER, HINO 2PG-XZU712M-TKFRX3
PH5030404-00 HARNESS

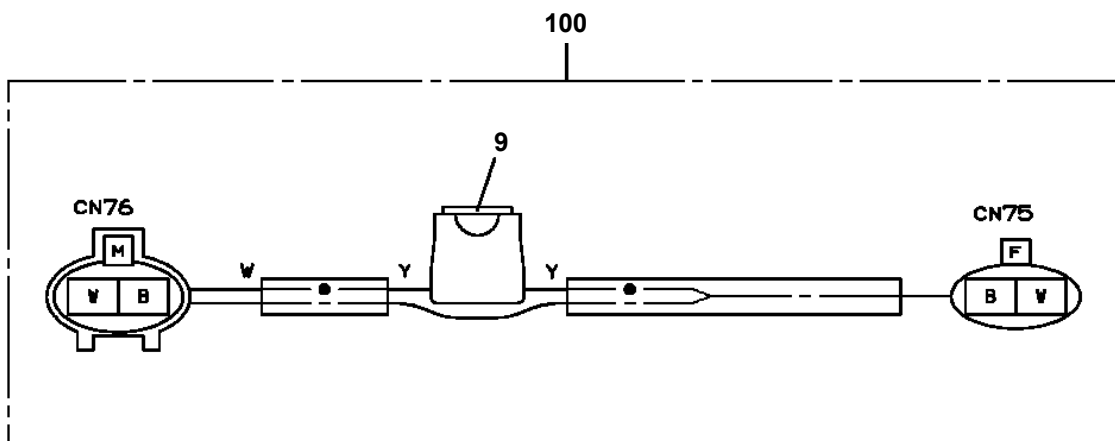


AT-150S-2 42068232215 UPPER, LOWER, HINO 2PG-XZU712M-TKFRX3
PH5030730-00 HARNESS (L=15200)

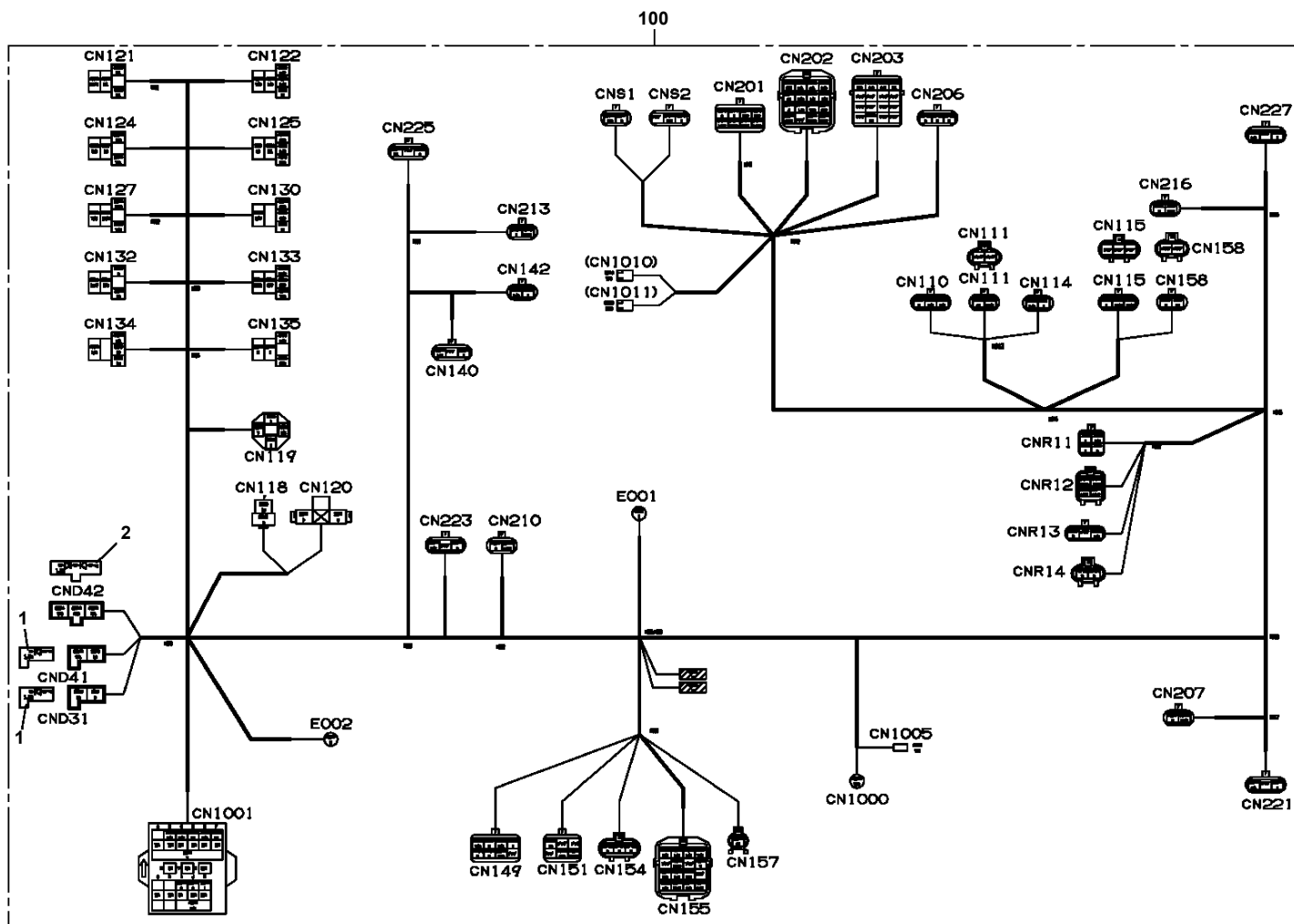
10



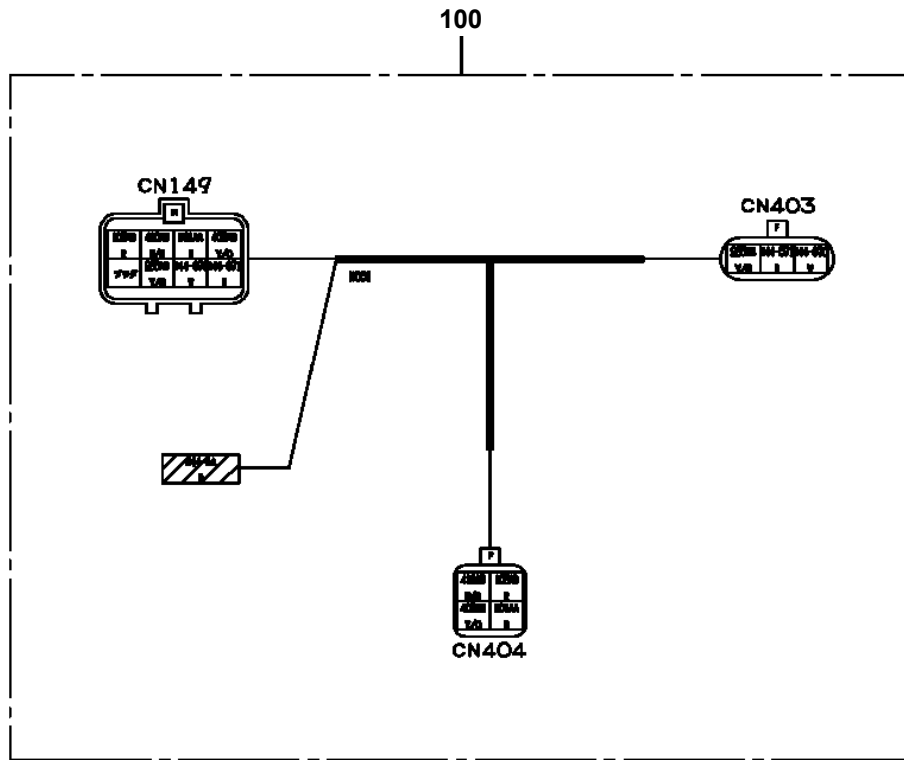
AT-150S-2 42068232215 UPPER, LOWER, HINO 2PG-XZU712M-TKFRX3
PH5032700-00 HARNESS



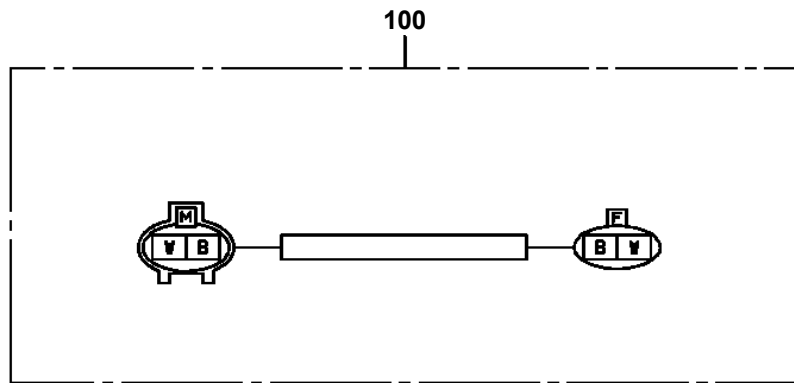
**AT-150S-2 42068232215 UPPER, LOWER, HINO 2PG-XZU712M-TKFRX3
PH5033861-00 HARNESS (FRAME)**



AT-150S-2 42068232215 UPPER, LOWER, HINO 2PG-XZU712M-TKFRX3
PH5033866-00 HARNESS

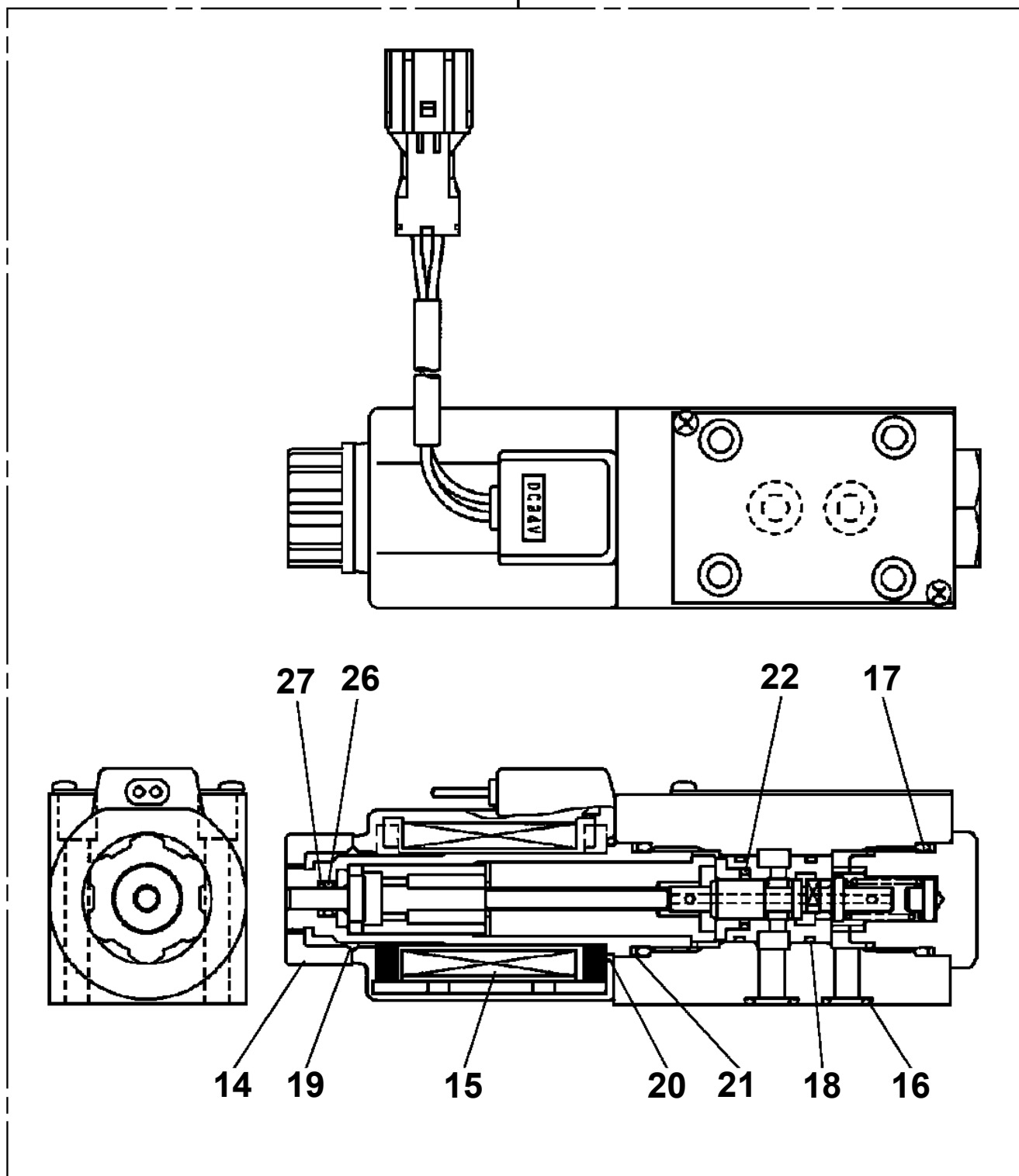


**AT-150S-2 42068232215 UPPER, LOWER, HINO 2PG-XZU712M-TKFRX3
PH5034230-00 HARNESS**

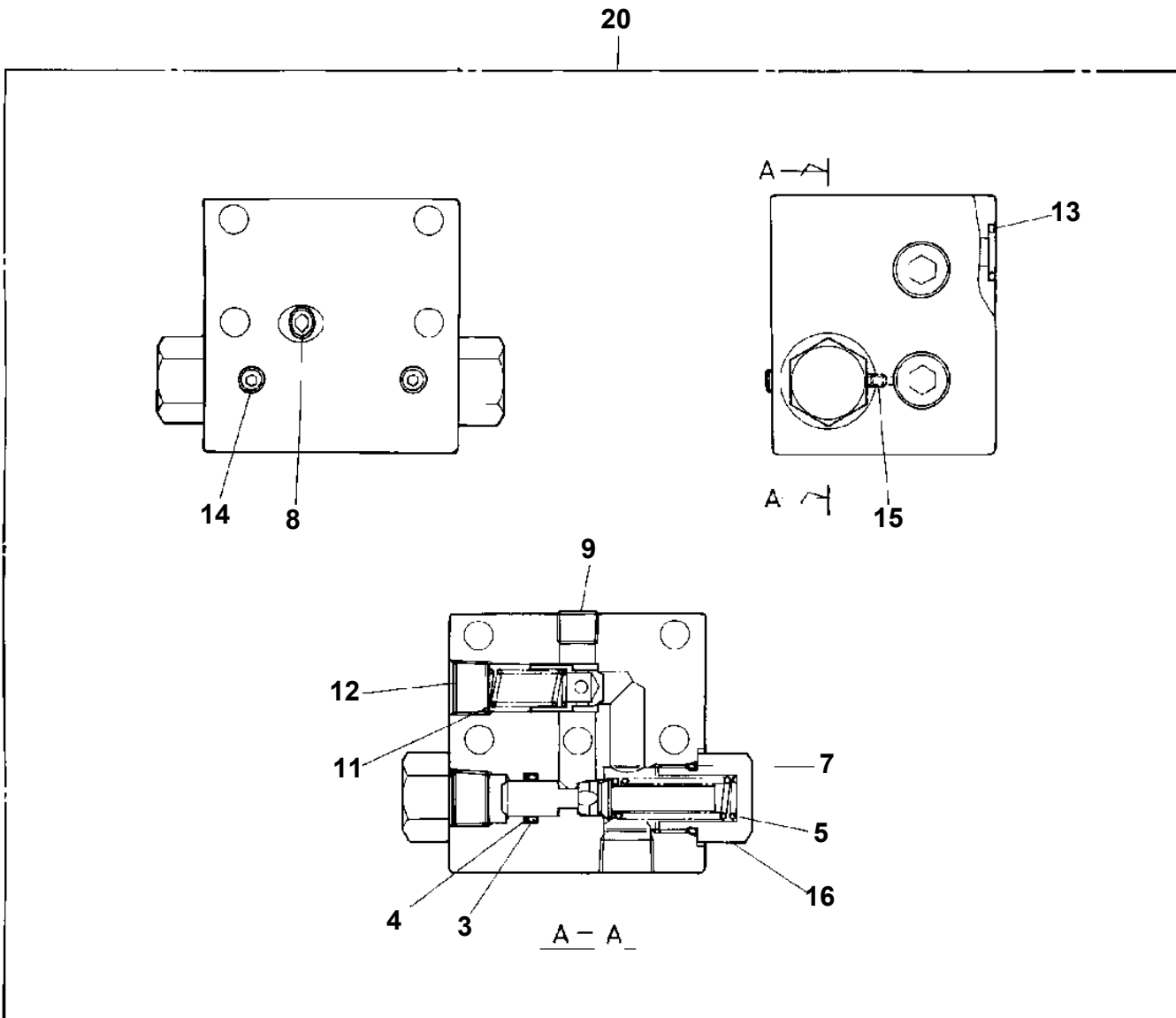


AT-150S-2 42068232215 UPPER, LOWER, HINO 2PG-XZU712M-TKFRX3
PI1120303-00 VALVE,SOLENOID

100



AT-150S-2 42068232215 UPPER, LOWER, HINO 2PG-XZU712M-TKFRX3
PI1250027-00 VALVE, COUNTERBALANCE



CLICK HERE TO **DOWNLOAD** THE COMPLETE MANUAL

- Thank you very much for reading the preview of the manual.
- You can download the complete manual from: www.heydownloads.com by clicking the link below

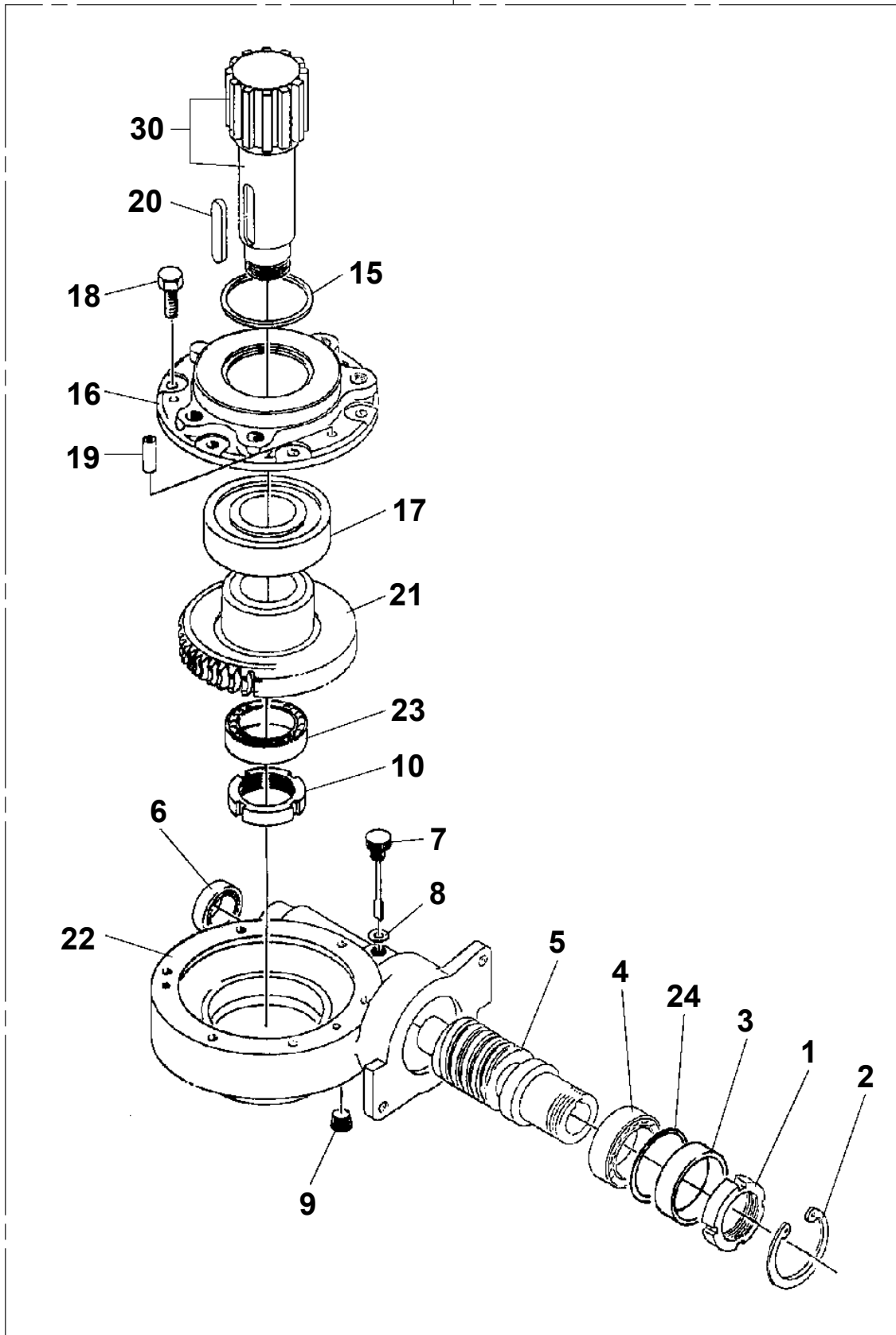


- Please note: If there is no response to CLICKING the link, please download this PDF first and then click on it.

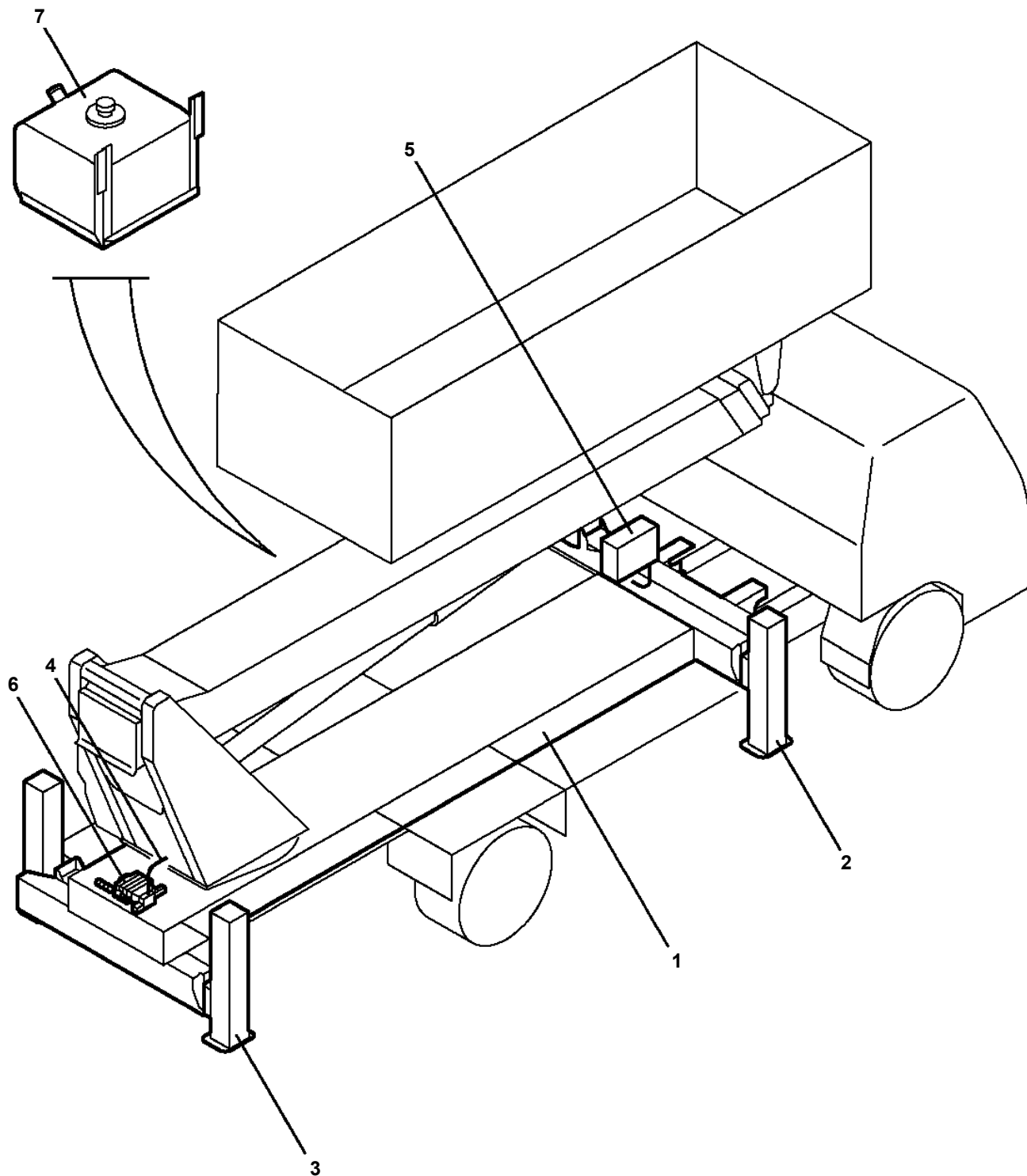
CLICK HERE TO **DOWNLOAD** THE COMPLETE MANUAL

AT-150S-2 42068232215 UPPER, LOWER, HINO 2PG-XZU712M-TKFRX3
PJ3170003-00 REDUCER, PLATFORM SWING SPEED

100



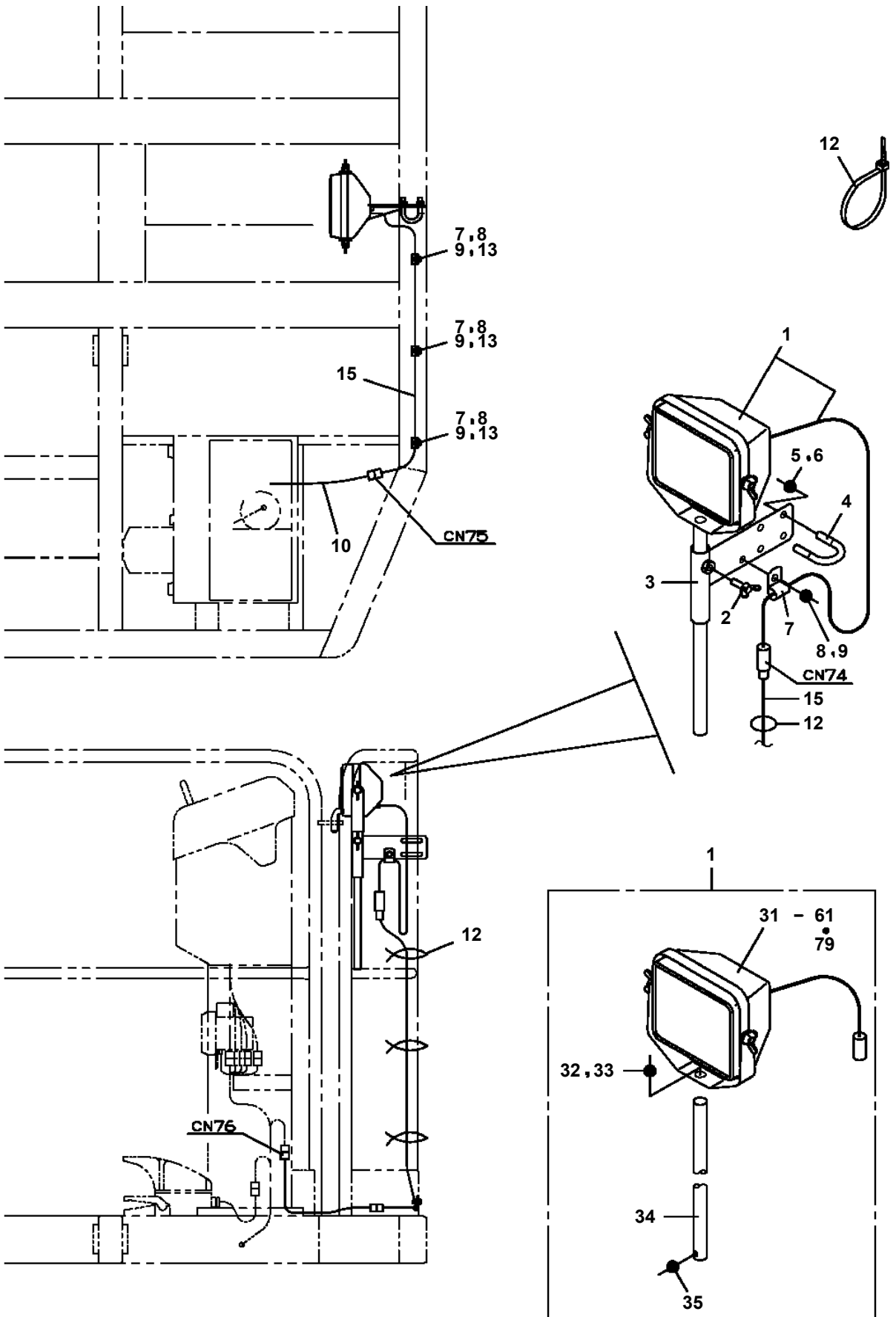
AT-150S-2 42068232215 UPPER, LOWER, HINO 2PG-XZU712M-TKFRX3
PK2002195-00 FRAME UNIT



適用製造番号によっては取り付けがないものもあります。

MACHINES OF SOME SERIAL NO. ARE NOT EQUIPPED WITH THESE PARTS.

AT-150S-2 42068232215 UPPER, LOWER, HINO 2PG-XZU712M-TKFRX3
PL5020064-01 LAMP ASSY (WORKING LAMP FOR STD DECK)



AT-150S-2 42068232215 UPPER, LOWER, HINO 2PG-XZU712M-TKFRX3

Pos No.	Parts No	Parts Name	Qty	Unit	Technical Data	Serial No (Start)	Serial No (End)	Re
1	42505221200	GUARD	4					
	42505221100	GUARD (STEEL CAST)	4					
2	42736070100	SWITCH ASSY (WITH HARNESS)	1					
3	42739790010	PLATE,NAME	1					
4	80181306014	SCREW,MACHINE	2		M6X14			
5	82199514013	CAP	1					
6	90280200600	NUT,FLANGE	8		M6			
7	90302040601	WASHER,SPRING	2		6			
8	42739040100	SUPPORT	2					
9	82100001802	TUBE,CORRUGATE	1	M	10			
10	82199444329	LAMP (YELLOW)	4		24V 12W			
11	90186206030	BOLT,FLANGE	8		M6X30			
12	82199504017	NUT	1		AT-401N			
13	90303070601	WASHER,PLAIN	2		6			
14	91810130240	FASTENER	1					
15	82100002008	CLAMP	2		WR12			
51	82166600010	BULB,LAMP	4		24V/12W			

AT-150S-2 42068232215 UPPER, LOWER, HINO 2PG-XZU712M-TKFRX3

Pos No.	Parts No	Parts Name	Qty	Unit	Technical Data	Serial No (Start)	Serial No (End)	Remarks	Pages
1	37000562770	PLATE	2						
2	82400000202	GROMMET	1						

AT-150S-2 42068232215 UPPER, LOWER, HINO 2PG-XZU712M-TKFRX3

Pos No.	Parts No	Parts Name	Qty	Unit	Technical Data	Serial No (Start)	Serial No (End)
1	36132010000	DETECTOR,BOOM LENGTH	1				
2	90101206012	BOLT	2		M6X12		
3	90186206020	BOLT,FLANGE	4		M6X20		
4	90280200600	NUT,FLANGE	13		M6		
6	90186208010	BOLT,FLANGE	6		M8X10		
7	90302040601	WASHER,SPRING	2		6		
8	42354762100	SUPPORT	1				
9	80175304010	SCREW,MACHINE	1		M4X10		
10	42354762200	CABLE	1		L=4500		
11	42360030060	WASHER	1				
13	42433521000	ROLLER ASSY	1				
16	42354762300	COVER	1				
17	91810130230	FASTENER	N				
19	82100002010	CLAMP	1		WR15		
20	82100002004	CLAMP	4		WR8		
21	82400000204	GROMMET	1		L=320		
22	82100002008	CLAMP	4		WR12		
23	82100002014	CLAMP	1		WR20		
24	36140760000	DETECTOR ASSY,ANGLE (ASSY ONLY)	1				
41	42433521100	SUPPORT	1				
42	37001102350	ROLLER	1				
43	37000302060	SPACER	1		L=11.2		
44	90303071001	WASHER,PLAIN	1		10		
45	90201201000	NUT	1		M10		
46	90302041001	WASHER,SPRING	1		10		

AT-150S-2 42068232215 UPPER, LOWER, HINO 2PG-XZU712M-TKFRX3

Pos No.	Parts No	Parts Name	Qty	Unit	Technical Data	Serial No (Start)	Serial No (End)	Remarks	Pages
1	42500090100	HARNESS	1						000056
2	91810132530	FASTENER	2						

AT-150S-2 42068232215 UPPER, LOWER, HINO 2PG-XZU712M-TKFRX3

Pos No.	Parts No	Parts Name	Qty	Unit	Technical Data	Serial No (Start)	Serial No (End)	Remarks	Pages
1	42511810100	PLATE (NON-SLIP)	3						
2	42511810200	PLATE (NON-SLIP)	1						
3	42511810300	PLATE (NON-SLIP)	2						
4	42511810400	PLATE (NON-SLIP)	2						
5	42511810500	PLATE (NON-SLIP)	1						

AT-150S-2 42068232215 UPPER, LOWER, HINO 2PG-XZU712M-TKFRX3

Pos No.	Parts No	Parts Name	Qty	Unit	Technical Data	Serial No (Start)	Serial No (E
3	90451700100	SCREW,TAPPING	4		M4X6.4		
4	34393926550	PLATE (NON-SLIP)	3				
5	34393926560	PLATE (NON-SLIP)	1				
6	37002212700	PLATE,NAME	1				
7	(*****)	PLATE ASSY,NAME (BOX,OPERATION)	1				
8	42592421010	PLATE,NAME	1				
9	37002217330	PLATE,CAUTION (TADANO HYDRAULIC)	1				
10	37002202120	PLATE,NAME (HIGH/LOW)	1				
11	42834482100	PLATE (NON-SLIP)	2				
12	34393906540	PLATE (NON-SLIP)	1				
13	42834433300	PLATE (NON-SLIP)	2				
14	31642171550	PLATE,NAME	1				
15	42592432010	PLATE,NAME	1				
31	37002228460	PLATE,NAME (BLUE & BLACK)	2				
32	37002228470	PLATE,NAME (WHITE & WHITE)	2				

AT-150S-2 42068232215 UPPER, LOWER, HINO 2PG-XZU712M-TKFRX3

Pos No.	Parts No	Parts Name	Qty	Unit	Technical Data	Serial No (Start)	Serial No (End)	Remarks	Page
1	42391861100	PLATE,NAME	1						
2	44390611011	NAME PLATE ASSY	1						

AT-150S-2 42068232215 UPPER, LOWER, HINO 2PG-XZU712M-TKFRX3

Pos No.	Parts No	Parts Name	Qty	Unit	Technical Data	Serial No (Start)	Serial No (End)
1	42736070100	SWITCH ASSY (WITH HARNESS)	1				
2	42433932100	SWITCH ASSY (WITH HARNESS,1 SW)	1				
3	42652802001	INDICATOR,OUTRIGGER	1				
4	80192486014	SCREW,MACHINE (WITH WASHER)	4		M6X14		
5	90302040601	WASHER,SPRING	4		6		
6	90201200600	NUT	4		M6		
7	42654072100	PANEL	1				
8	82199514013	CAP	2				
9	44320516500	PLUG (12 POLES,FEMALE)	1				
10	42352970010	PLUG (14 POLES,FEMALE)	1				
11	82199504017	NUT	2		AT-401N		
12	82154201010	METER,HOUR	1				
13	80172303012	SCREW,MACHINE	2		M3X12		
14	90303070301	WASHER,PLAIN	2		3		
15	90201200300	NUT	2		M3		
16	90302040301	WASHER,SPRING	2		3		
17	82467300104	PLUG	2				
18	82467300114	PLUG	1				
19	82467300101	PLUG	2				
100	42654072000	PANEL ASSY,CONTROL	1				

AT-150S-2 42068232215 UPPER, LOWER, HINO 2PG-XZU712M-TKFRX3

Pos No.	Parts No	Parts Name	Qty	Unit	Technical Data	Serial No (Start)	Serial No (End)	Remark
1	37004100040	PUMP,GREASE (DOMESTIC)	1					

AT-150S-2 42068232215 UPPER, LOWER, HINO 2PG-XZU712M-TKFRX3

Pos No.	Parts No	Parts Name	Qty	Unit	Technical Data	Serial No (Start)	Serial No (End)	Remarks
96	80430620800	JOINT	1					
98	80400160132	JOINT	1					
99	91002802400	O-RING	2		1B P24			
101	80400160176	JOINT	1		S,G1/2-1/4			
102	37000927640	JOINT	1					
121	42345680110	JOINT	1					
122	36645900000	VALVE,SOLENOID	1					
123	36649300000	VALVE,SOLENOID	1					
124	80430620600	JOINT (WITH O-RING)	4		L,G3/8-G3/8			
125	80303130141	FITTING,ELBOW	1		KLO12-020E			
126	80491303030	JOINT (WITH O-RING)	1		L,PF3/8-PF3/8			
128	90172105045	BOLT,HEXAGON SOCKET	4		M5X45			
141	42345680410	JOINT	1					
142	80400160129	JOINT	1					
143	91002801400	O-RING	13		1B P14			
145	36180130000	SENDER,PRESSURE	1					
146	80430620400	JOINT	2					
161	91002801100	O-RING	8		1B P11			
171	36607210000	VALVE ASSY,RELIEF	1					
173	31474594210	JOINT	1		3-G1/4			
174	80302090141	FITTING	2		KCO12-020N			
176	36672630000	FILTER (WITH O-RING)	1					

AT-150S-2 42068232215 UPPER, LOWER, HINO 2PG-XZU712M-TKFRX3

Pos No.	Parts No	Parts Name	Qty	Unit	Technical Data	Serial No (Start)	Serial No (End)	Remarks	Page
1	36607215010	BODY	1						
4	36606665012	PLUG	1						
5	91002902500	O-RING	2		1B G25				
6	36606655020	SPRING	1						
7	36606405070	SPACER	1						
21	36606669010	POPPET ASSY	1						
100	36607210000	VALVE ASSY,RELIEF	1						

AT-150S-2 42068232215 UPPER, LOWER, HINO 2PG-XZU712M-TKFRX3

Pos No.	Parts No	Parts Name	Qty	Unit	Technical Data	Serial No (Start)	Serial No (End)
1	42460012550	WEDGE (STOPPER FOR TIRE/JUSTIN)	1				

AT-150S-2 42068232215 UPPER, LOWER, HINO 2PG-XZU712M-TKFRX3

Pos No.	Parts No	Parts Name	Qty	Unit	Technical Data	Serial No (Start)	Serial No (End)	Remarks	Pages
1	82400000520	REFLECTOR	2		RED				

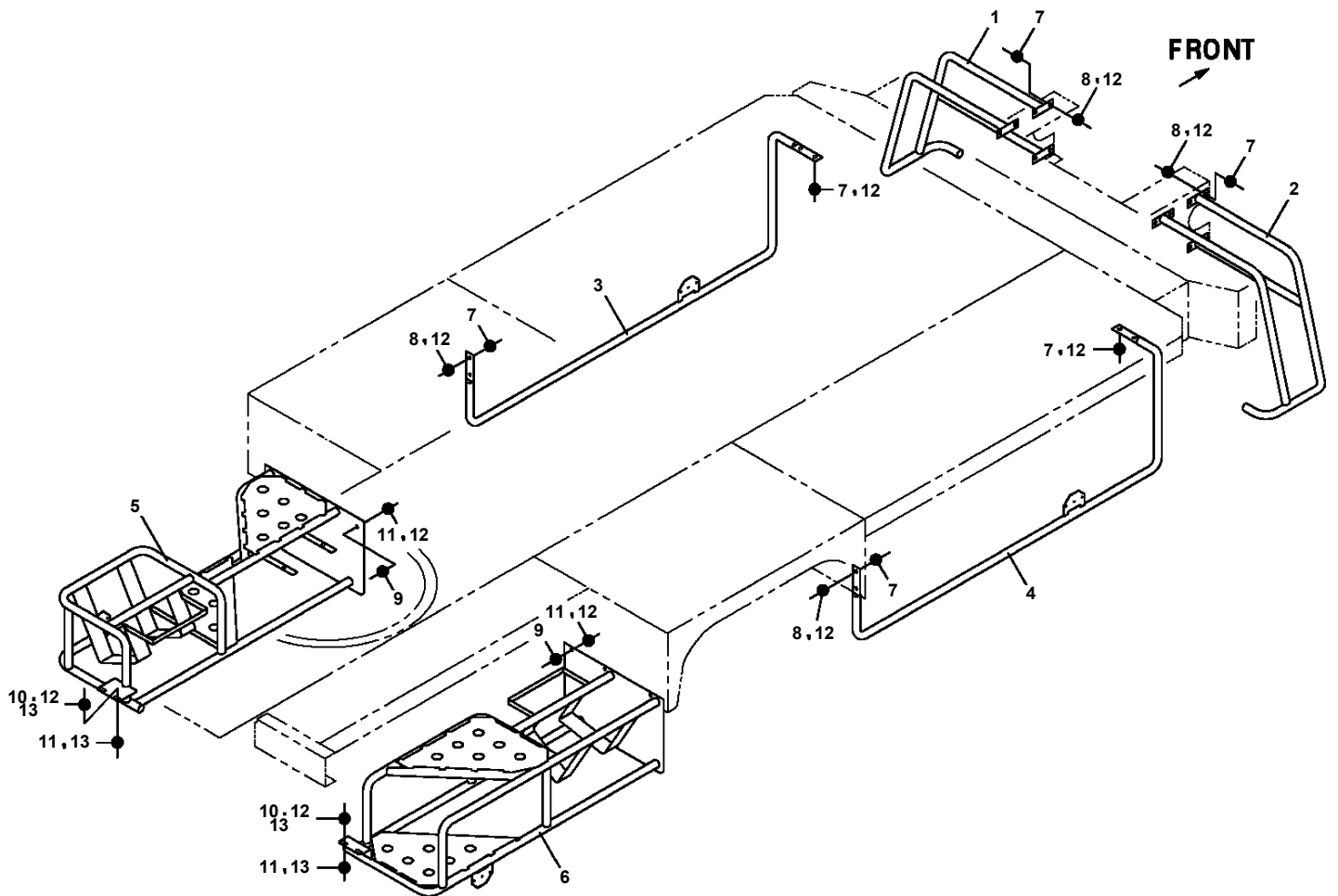
AT-150S-2 42068232215 UPPER, LOWER, HINO 2PG-XZU712M-TKFRX3

Pos No.	Parts No	Parts Name	Qty	Unit	Technical Data	Serial No (Start)	Serial No (End)	Remarks
1	(*****)	MOUNT ASSY,DECK	1					
2	(*****)	MOUNT ASSY,SIDE GUARD	1					
3	(*****)	BUMPER IMSTALLATION	1					

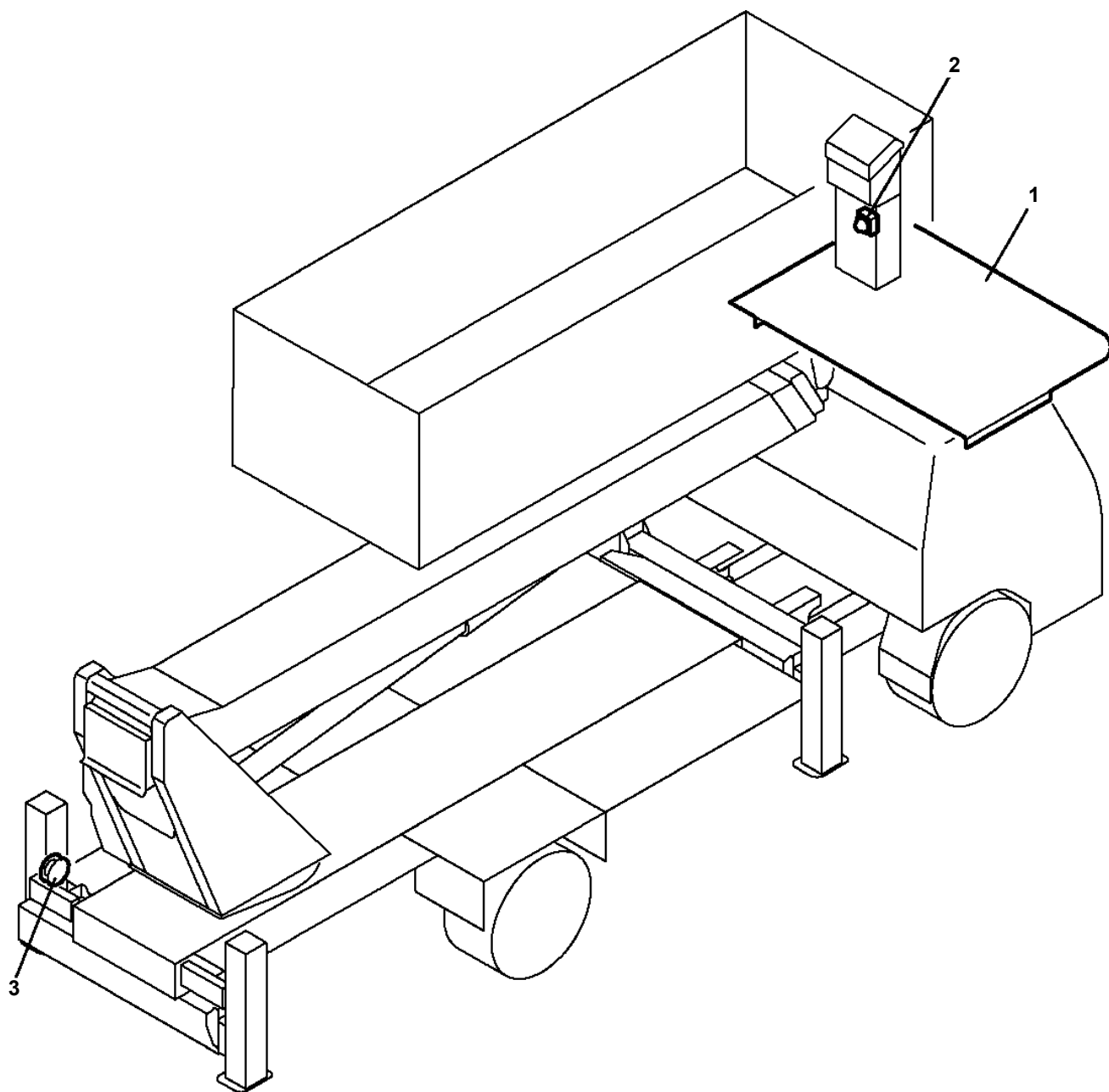
AT-150S-2 42068232215 UPPER, LOWER, HINO 2PG-XZU712M-TKFRX3

Pos No.	Parts No	Parts Name	Qty	Unit	Technical Data	Serial No (Start)	Serial No (End)	Rem
1	(*****)	POWER SOURCE (UPPER/100V)	1					
2	(*****)	MOUNT ASSY,GENERATOR	1					
3	(*****)	MODIFICATION ASSY	1					
4	(*****)	MODIFICATION ASSY (AMC DATA)	1					

**AT-150S-2 42068232215 UPPER, LOWER, HINO 2PG-XZU712M-TKFRX3
PX5650019-00 MOUNT ASSY,SIDE GUARD**



**AT-150S-2 42068232215 UPPER, LOWER, HINO 2PG-XZU712M-TKFRX3
PY1001503-01 OPTIONS**



適用製造番号によっては取り付けがないものもあります。

MACHINES OF SOME SERIAL NO. ARE NOT EQUIPPED WITH THESE PARTS.

AT-150S-2 42068232215 UPPER, LOWER, HINO 2PG-XZU712M-TKFRX3

Pos No.	Parts No	Parts Name	Qty	Unit	Technical Data	Serial No (Start)	Serial No (End)	Remarks	Pages
10	37002455450	HOSE	1		L=337				

CLICK HERE TO **DOWNLOAD** THE COMPLETE MANUAL

- Thank you very much for reading the preview of the manual.
- You can download the complete manual from: www.heydownloads.com by clicking the link below



- Please note: If there is no response to CLICKING the link, please download this PDF first and then click on it.

CLICK HERE TO **DOWNLOAD** THE COMPLETE MANUAL