

AT-150S-2 42068200013 UPPER

PD2000236-00 SWING UNIT

PG2000255-00 BOOM UNIT

PH1000550-00 SAFETY DEVICES (MOTION CONTROLLER)

PJ3000498-00 PLATFORM SYSTEM

PK2001005-00 FRAME UNIT

PO1000189-00 INDICATION PLATES

PW1000118-00 ACCESSORIES & TOOLS

PY1001502-00 OPTIONS,1

PY2000225-04 OPTION UNIT,2 (UPPER)

ASSEMBLY

CLICK HERE TO **DOWNLOAD** THE COMPLETE MANUAL

- Thank you very much for reading the preview of the manual.
- You can download the complete manual from: www.heydownloads.com by clicking the link below



- Please note: If there is no response to CLICKING the link, please download this PDF first and then click on it.

CLICK HERE TO **DOWNLOAD** THE COMPLETE MANUAL

AT-150S-2 42068200013 UPPER

Pos No.	Parts No	Parts Name	Qty	Unit	Technical Data	Serial No (Start)	Serial No (End)	Remarks
1	(***** *****)	FRAME ASSY	1				HD5631	
	(***** *****)	FRAME ASSY	1			HD5632		
2	(***** *****)	OUTRIGGER (FRONT)	1				HD5619	
	(***** *****)	OUTRIGGER ASSY,FRONT	1			HD5620		
3	(***** *****)	OUTRIGGER (REAR)	1				HD5619	
	(***** *****)	OUTRIGGER ASSY,REAR	1			HD5620		
4	(***** *****)	PIPING,OUTRIGGER	1					
5	(***** *****)	ELEC.ASSY (FRAME)	1					
6	(***** *****)	OPE.ASSY,OUTRIGGER	1					
7	(***** *****)	PIPING,LOWER (TANK)	1					

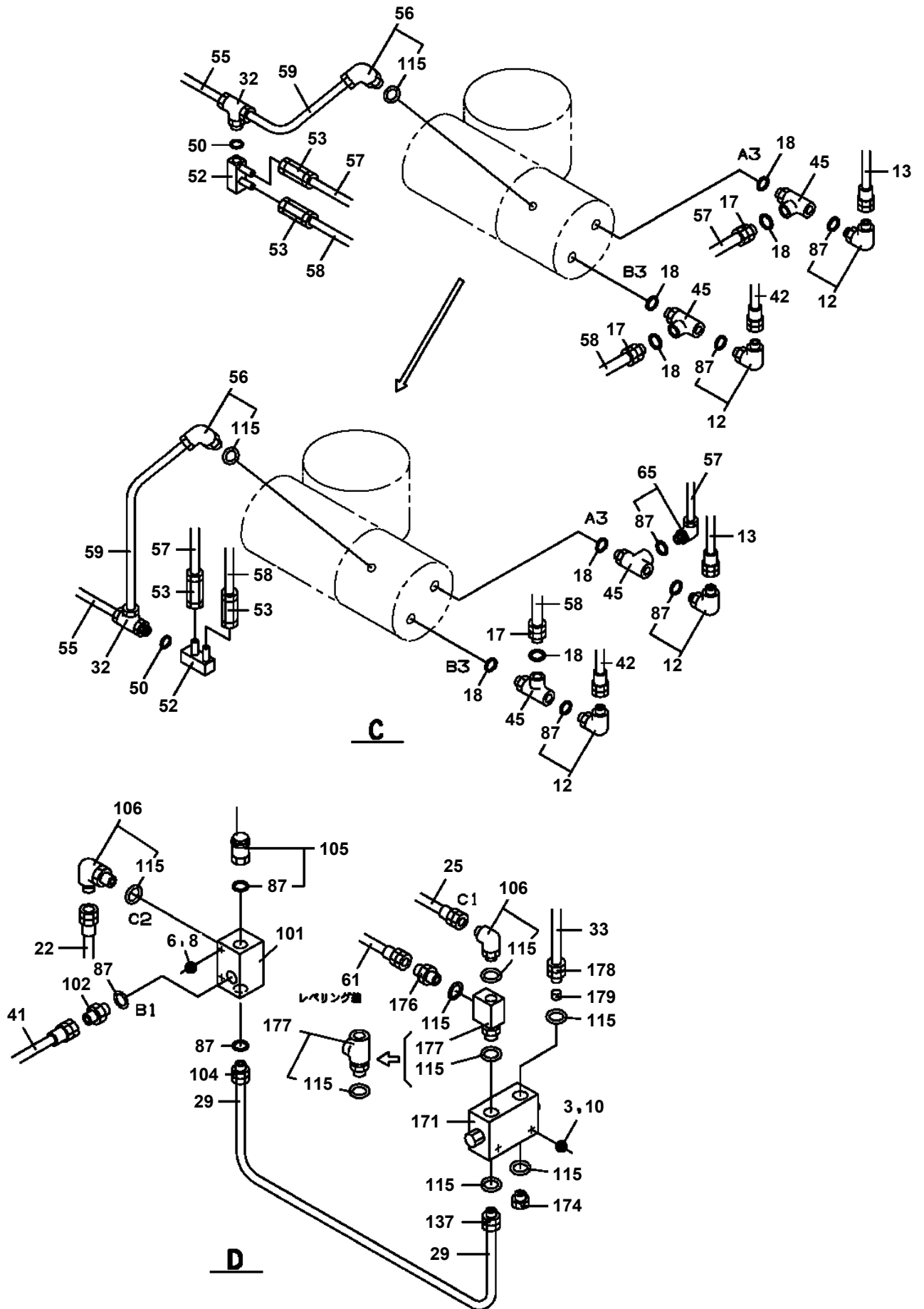
AT-150S-2 42068200013 UPPER

PB1130266-01 TANK,OIL
PB1300407-00 JOINT,ROTARY
PB1300408-02 JOINT,ROTARY
PB1300409-01 JOINT,ROTARY
PB1310044-00 BRUSH,ROTARY JOINT
PB1320537-01 VALVE,MANUAL CONTROL
PB1400383-05 PIPING,UPPER
PB1411371-01 PIPING,LOWER (TANK)
PB5270005-01 BOX ASSY,OPERATION
PC1011026-00 OUTRIGGER (FRONT)
PC1011028-00 OUTRIGGER (REAR)
PC1011465-01 OUTRIGGER (FRONT/INNER CASE)
PC1011466-01 OUTRIGGER (REAR/INNER CASE,RIGHT)
PC1011467-01 OUTRIGGER (REAR/INNER CASE,LEFT)
PC1030304-00 CYLINDER,JACK
PC1050224-00 CYLINDER,EXTENSION
PC1050251-00 CYLINDER,EXTENSION
PC1100235-01 OPE.ASSY,OUTRIGGER
PC1190054-01 INDICATOR,OUTRIGGER
PC1200500-04 PIPING,OUTRIGGER
PC1380015-01 DETECTOR,OUTRIGGER LENGTH
PC5150028-01 CASE ASSY,INNER (FRONT)
PC5150029-01 CASE ASSY,INNER (REAR,RIGHT)
PC5150030-02 CASE ASSY,INNER (REAR,LEFT)
PC5150083-00 CASE ASSY,INNER (FRONT)
PC5150084-00 CASE ASSY,INNER (REAR,RIGHT)
PC5150085-00 CASE ASSY,INNER (REAR,LEFT)
PC5150111-00 CASE ASSY,INNER (FRONT)
PC5150112-00 CASE ASSY,INNER (REAR,RIGHT)
PC5150113-00 CASE ASSY,INNER (REAR,LEFT)
PC5570166-00 COVER ASSY
PC6400016-00 CYLINDER ASSY,LEVELING
PD1010160-00 REDUCER,SWING SPEED
PD1020047-01 SWING UNIT
PD1020048-00 SWING UNIT (PLATFORM)
PE1010434-02 CYLINDER,ELEVATING
PE1010489-01 CYLINDER,ELEVATING (MOUNT)
PE1050127-03 CYLINDER,LEVELING
PE1050128-01 CYLINDER,LEVELING
PE5190010-00 ELEC.ASSY,SWING FRAME
PF5100076-00 FRAME ASSY (PLATFORM)
PF5100077-01 FRAME ASSY
PF5100104-00 FRAME ASSY
PF5190001-00 FALL ARREST SYSTEM (TB-LSA-550/FUJII-DENKO)
PG1010921-00 BOOM
PG1050530-00 CYLINDER,TELESCOPING
PG1050531-01 CYLINDER,TELESCOPING
PG1120191-01 DETECTOR,BOOM LENGTH
PG1220110-01 PIPING,BOOM
PH5030113-00 HARNESS
PH5030225-00 HARNESS
PH5030308-00 HARNESS
PH5030309-00 HARNESS
PH5030314-01 HARNESS (CONTACT SENSOR)
PH5030403-00 HARNESS
PH5030404-00 HARNESS
PH5030414-00 HARNESS
PH5030418-00 HARNESS
PH5030419-00 HARNESS
PH5030728-00 HARNESS (L=15300)
PH5030729-00 HARNESS (L=15500)
PH5030730-00 HARNESS (L=15200)
PH5030739-00 HARNESS
PH5030882-00 HARNESS

AT-150S-2 42068200013 UPPER

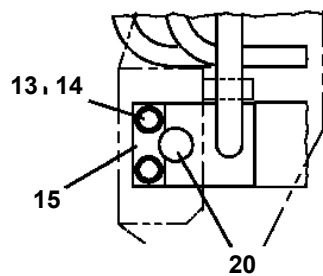
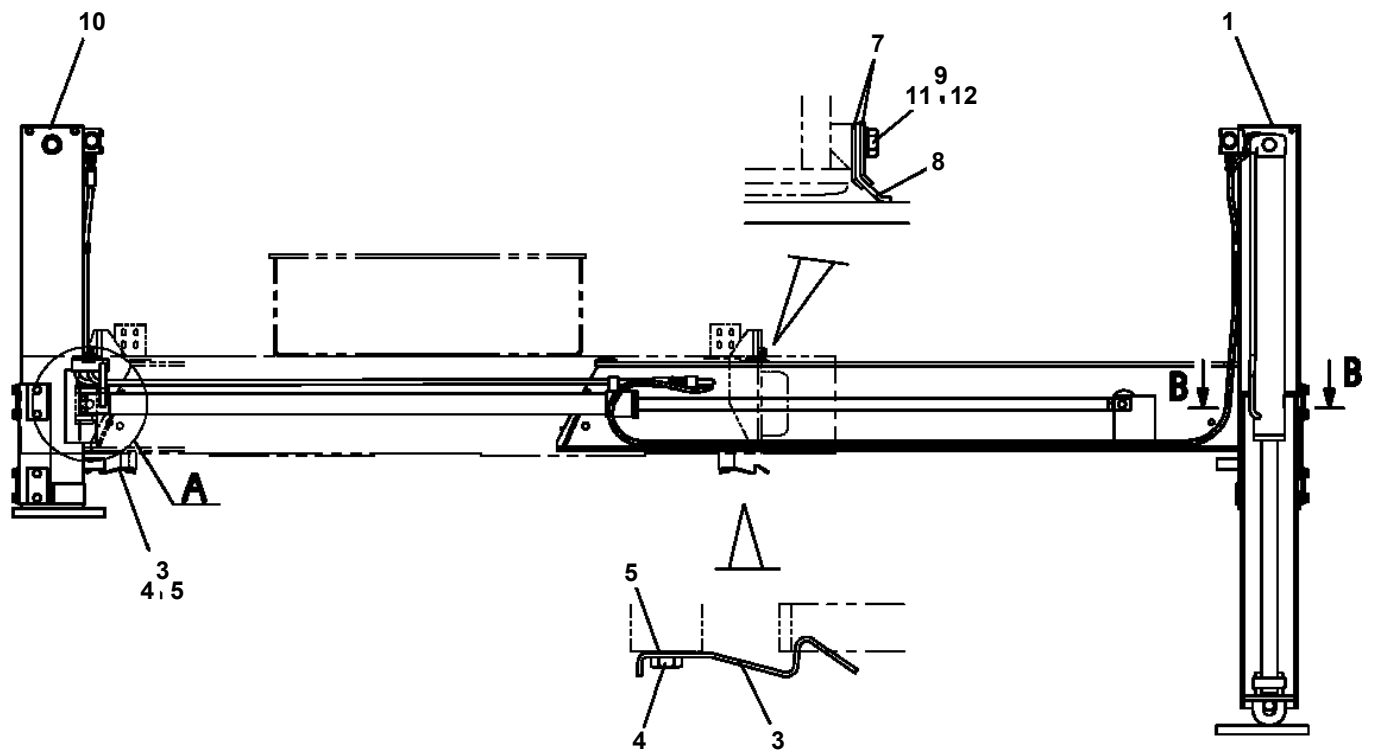
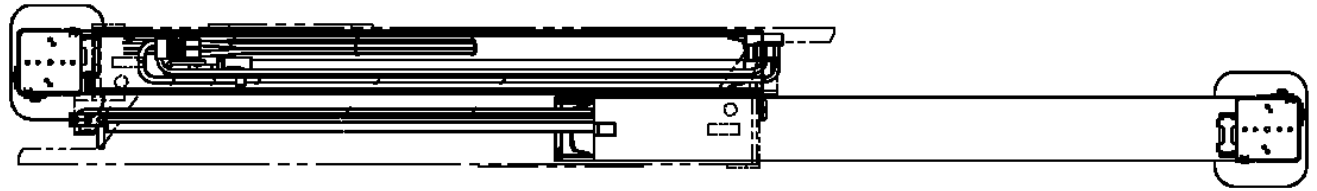
Pos No.	Parts No	Parts Name	Qty	Unit	Technical Data	Serial No (Start)	Serial No (End)	Remarks	Pages
1	42265551000	BRUSH ASSY	1						
2	90101208020	BOLT	3		M8X20				
3	90302040801	WASHER,SPRING	5		8				
4	82100002012	CLAMP	1		WR18				
5	90186206016	BOLT,FLANGE	1		M6X16				
6	90280200600	NUT,FLANGE	1		M6				
7	42265550100	SUPPORT	1						
10	90101208014	BOLT	2		M8X14				

**AT-150S-2 42068200013 UPPER
PB1400383-05 PIPING,UPPER**

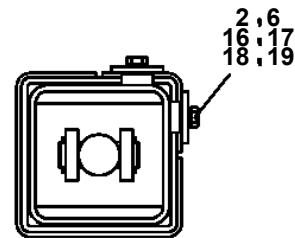


AT-150S-2 42068200013 UPPER
PC1011028-00 OUTRIGGER (REAR)

FRONT



A



B - B

AT-150S-2 42068200013 UPPER

Pos No.	Parts No	Parts Name	Qty	Unit	Technical Data	Serial No (Start)	Serial No (End)	Re
1	42614891100	CASE,INNER	1					
2	42613611200	CASE,INNER	1					
4	36034700000	CYLINDER,JACK	1					
5	91810130240	FASTENER	2					
6	37000171790	PIN	1					
7	80601110250	RING,RITAINING	2		S25			
8	37000169010	PIN	1		30			
9	80601110300	RING,RITAINING	2		S30			
10	36625740001	VALVE,CHECK	1					
11	90171108055	BOLT	4		M8X55			
12	37000138750	PIN	1		18			
13	80136332036	PIN,SPLIT	2		3.2X36			
14	80400160127	JOINT	1					
15	91002801100	O-RING	1		1B P11			
16	36672460000	FILTER (NIPPLE TYPE)	1					
17	42613611010	COVER	1					
18	90186206014	BOLT,FLANGE	2		M6X14			
19	90280200600	NUT,FLANGE	1		M6			
20	37000600700	CLAMP	1		12X3			
21	37000112320	PIN	1					
22	80601110120	RING,RITAINING	2		S12			
34	91002801100	O-RING	3		1B P11			
51	36042840000	CYLINDER,EXTENSION	1					
52	80400160127	JOINT	2					
54	37002420880	HOSE,TWIN	1		L=2430			
55	42613611400	HARNESS	1					
56	91810130250	FASTENER	17					
100	42614892000	CASE ASSY,INNER (REAR,LEFT)	1					

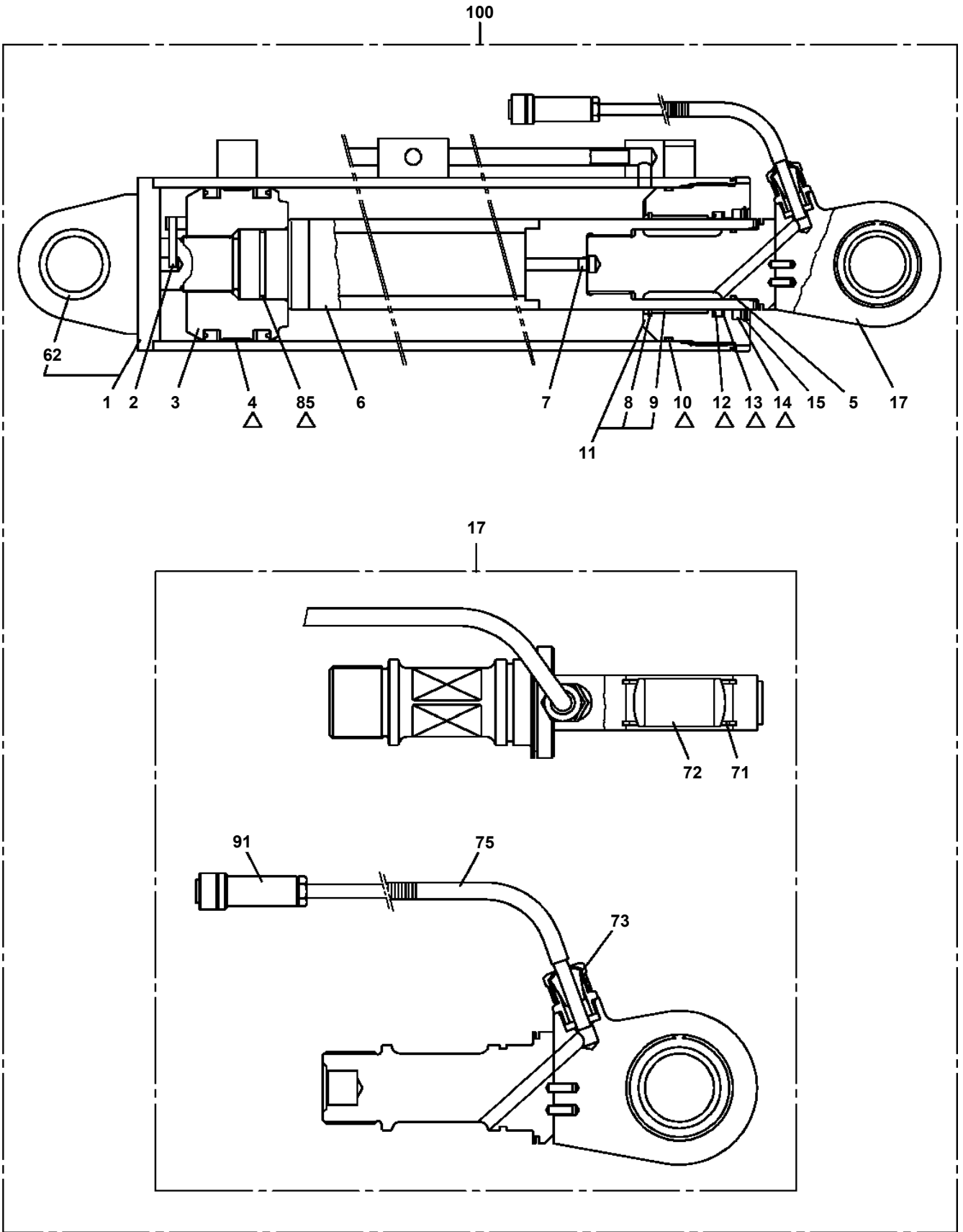
AT-150S-2 42068200013 UPPER

Pos No.	Parts No	Parts Name	Qty	Unit	Technical Data	Serial No (Start)	Serial No (End)	R
1	42614893100	CASE,INNER (REAR)	1					
2	42613611200	CASE,INNER	1					
4	36034700000	CYLINDER,JACK	1					
5	91810130240	FASTENER	2					
6	37000171790	PIN	1					
7	80601110250	RING,RITAINING	2		S25			
8	37000169010	PIN	1		30			
9	80601110300	RING,RITAINING	2		S30			
10	36625740001	VALVE,CHECK	1					
11	90171108055	BOLT	4		M8X55			
12	37000138750	PIN	1		18			
13	80136332036	PIN,SPLIT	2		3.2X36			
14	80400160127	JOINT	1					
15	91002801100	O-RING	1		1B P11			
16	36672460000	FILTER (NIPPLE TYPE)	1					
17	42612851010	COVER	1					
18	90186206014	BOLT,FLANGE	2		M6X14			
19	90280200600	NUT,FLANGE	1		M6			
20	37000600700	CLAMP	1		12X3			
21	37000112320	PIN	1					
22	80601110120	RING,RITAINING	2		S12			
23	31201770100	PLATE,SLIDE	8		T=3.0			
41	36043220000	CYLINDER,EXTENSION	1					
42	80400160127	JOINT	2					
43	91002801100	O-RING	3		1B P11			
44	37002420880	HOSE,TWIN	1		L=2430			
45	42613611400	HARNESS	1					
46	91810130250	FASTENER	17					
100	42614893000	CASE ASSY,INNER (REAR,RIGHT)	1					

AT-150S-2 42068200013 UPPER

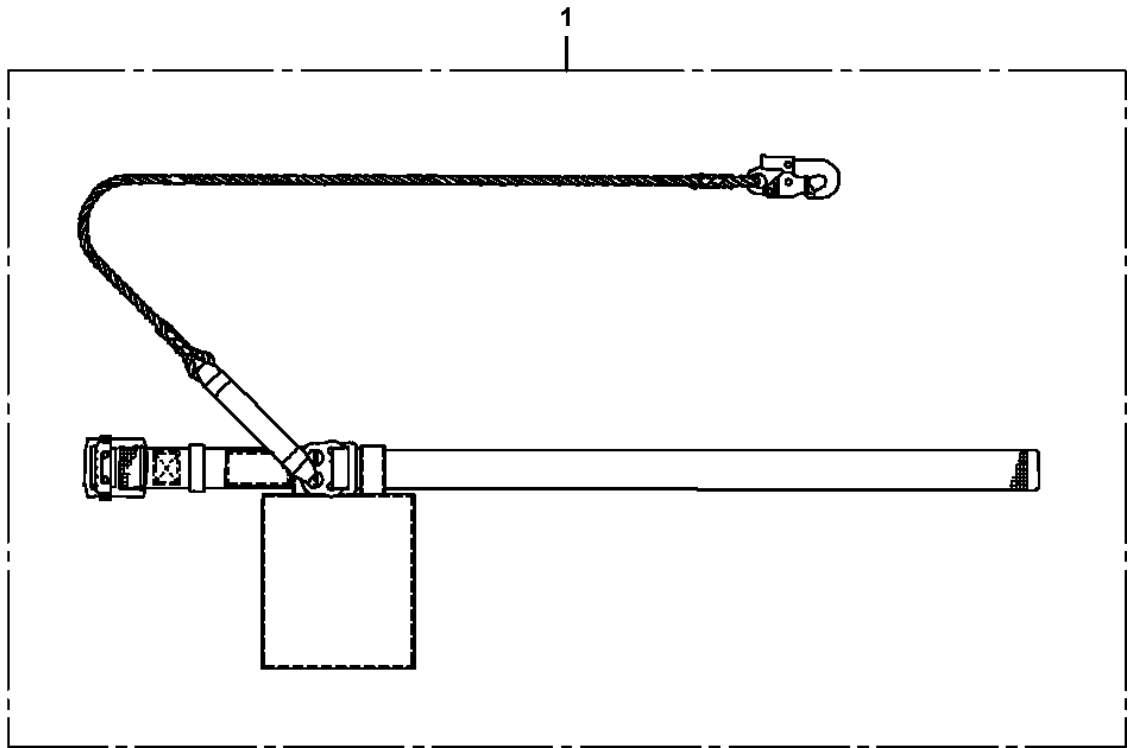
Pos No.	Parts No	Parts Name	Qty	Unit	Technical Data	Serial No (Start)	Serial No (End)	Remarks
1	37002304390	BEARING,SWING	1					
2	36081560000	REDUCER,SWING SPEED	1					
3	90171118070	BOLT (DACRO)	3		M18X70			
4	90303501805	WASHER,PLAIN	6		18			
5	90201781800	NUT (DACRO)	3		M18			
6	90171212035	BOLT (DACRO)	2		M12X35			
7	90710012400	SCREW,SET	2		M12X40			
8	90203201200	NUT	4		M12			
9	90172112035	BOLT,HEXAGON SOCKET	2		M12X35			
10	90302041201	WASHER,SPRING	2		12			
11	36664070000	MOTOR,OIL	1					
12	91002908500	O-RING	1		1B G85			
13	82458202000	NIPPLE,GREASE	1		B-TYPE PT1/8			
14	37000912420	JOINT	1					
15	82400000459	CAP	1					

**AT-150S-2 42068200013 UPPER
PE1050128-01 CYLINDER,LEVELING**



△:PACKING SET KEY NO. 41 (KEY NO.4,10,12,13,14,85)

**AT-150S-2 42068200013 UPPER
PF5190001-00 FALL ARREST SYSTEM (TB-LSA-550/FUJII-DENKO)**

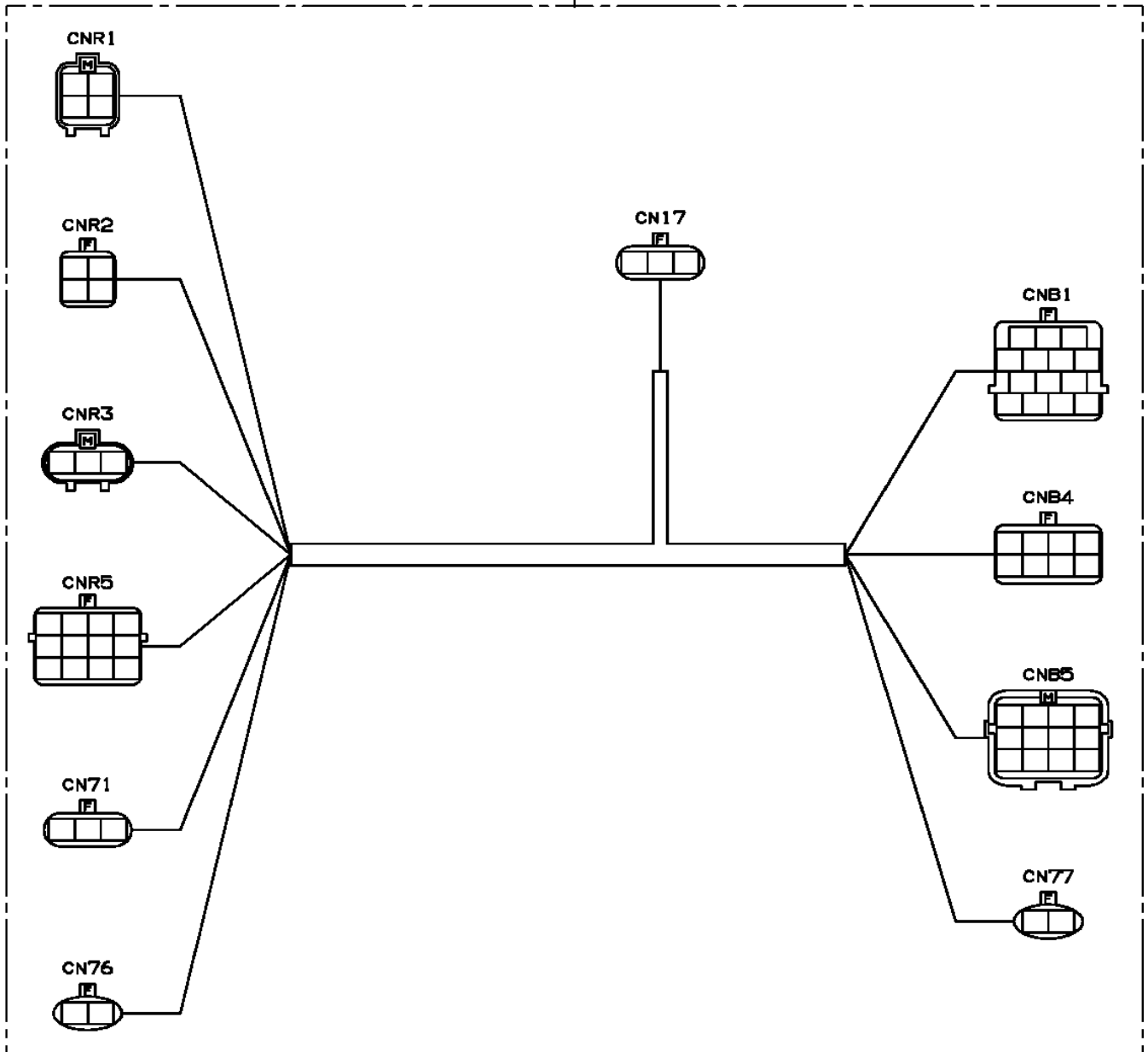


AT-150S-2 42068200013 UPPER

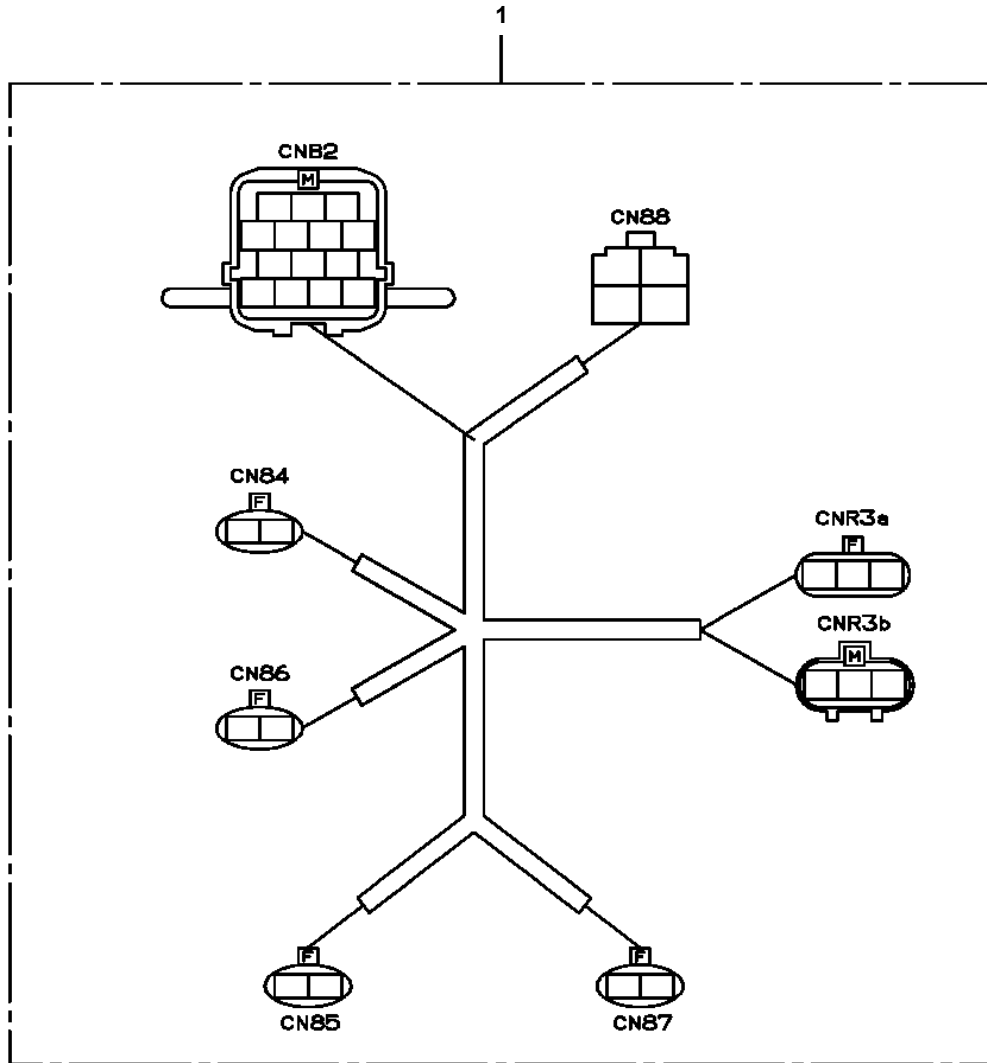
Pos No.	Parts No	Parts Name	Qty	Unit	Technical Data	Serial No (Start)	Serial No (End)	Remarks
1	36017481000	ROD	1					
2	91660006501	SEAL,DUST	1					
3	36014740200	COVER,ROD	1					
4	91002909500	O-RING	1		1B G95			
5	91301106500	BEARING,PLAIN	1					
6	91410206503	RING,BACKUP	1					
7	91694106500	PACKING	1					
8	91251100650	RING,DAMPER	1					
9	91410108500	RING,BACKUP	1					
10	91002908500	O-RING	1		1B G85			
13	36014740300	PISTON	1					
14	91002903500	O-RING	1		1B G35			
15	91684008501	PACKING	2					
16	91411207002	RING,BACKUP	2					
17	91302208500	BEARING,PLAIN	2					
19	36014180200	PLATE	1					
20	36015178820	CYLINDER ASSY	1					
21	90750006121	SCREW,SET	1		M6X12			
22	36014740400	NUT	1					
42	36014389902	PACKING SET	1		65X85			
52	80612110720	RING,RITAINING	1		AR72			
53	80801006530	BEARING,PLAIN	1					
62	37000186420	PIN	1					
63	80601110500	RING,RITAINING	2		S50			
64	37000557720	PLATE	2					
65	37001100380	ROLLER ASSY	1					
66	37000303270	SPACER	2		L=9.5			
67	37000123030	PIN	1					
68	80601110200	RING,RITAINING	1		S20			
69	36014382700	GUIDE	2					
81	80516006204	BEARING,BALL	1					
82	80602110470	RING,RITAINING	1		R47			
100	36017480000	CYLINDER,TELESCOPING	1					

AT-150S-2 42068200013 UPPER
PH5030308-00 HARNESS

100



AT-150S-2 42068200013 UPPER
PH5030414-00 HARNESS



CLICK HERE TO **DOWNLOAD** THE COMPLETE MANUAL

- Thank you very much for reading the preview of the manual.
- You can download the complete manual from: www.heydownloads.com by clicking the link below

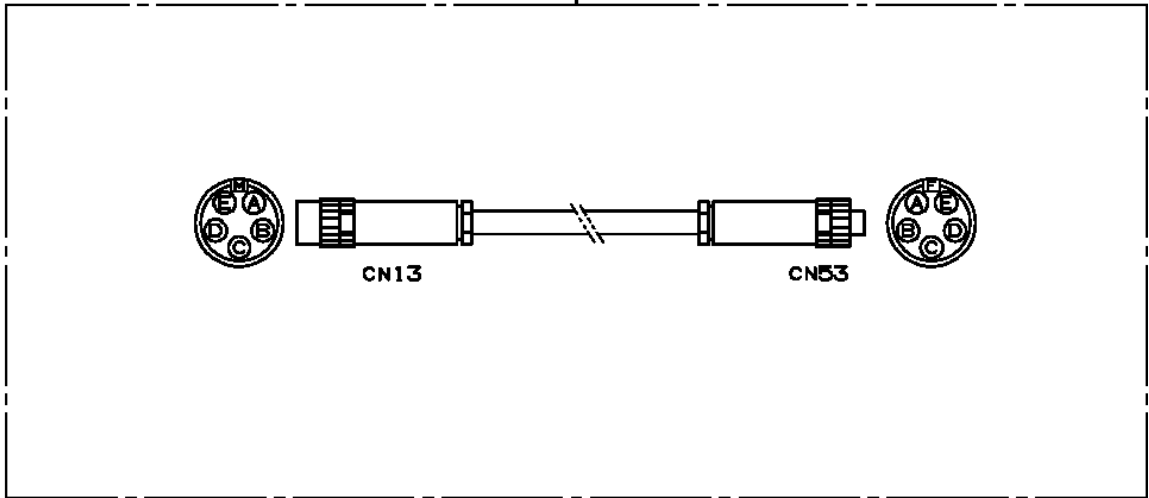


- Please note: If there is no response to CLICKING the link, please download this PDF first and then click on it.

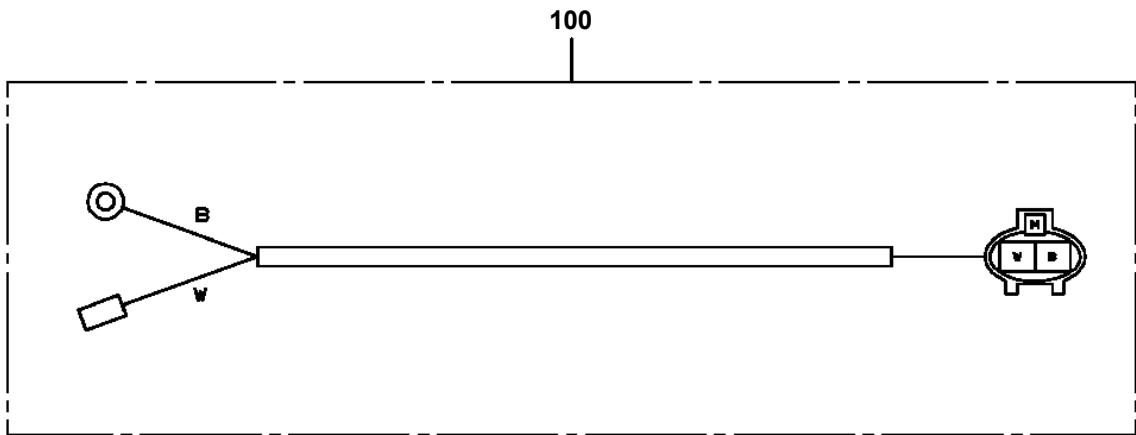
CLICK HERE TO **DOWNLOAD** THE COMPLETE MANUAL

**AT-150S-2 42068200013 UPPER
PH5030730-00 HARNESS (L=15200)**

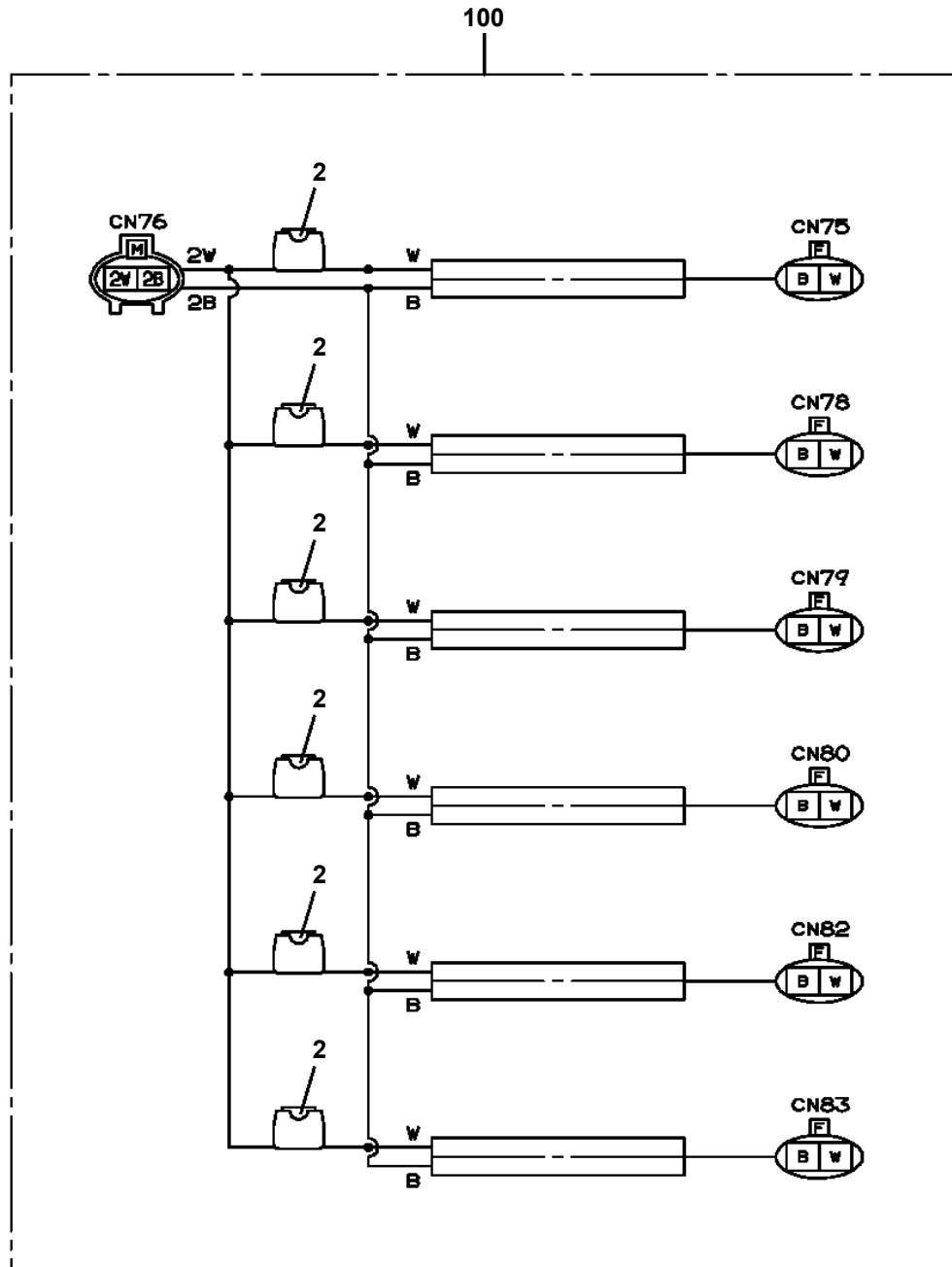
10



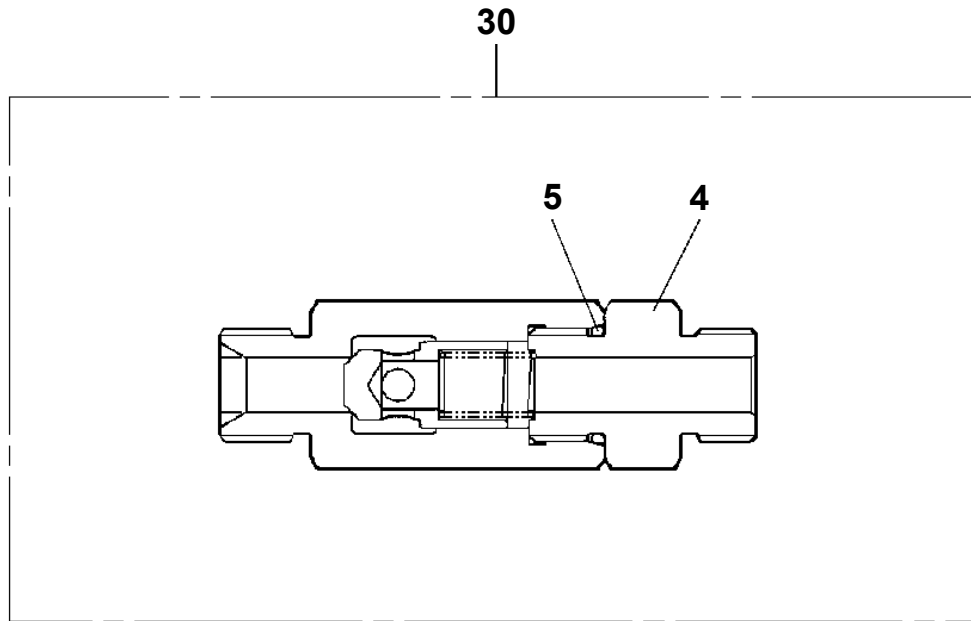
AT-150S-2 42068200013 UPPER
PH5031711-00 HARNESS



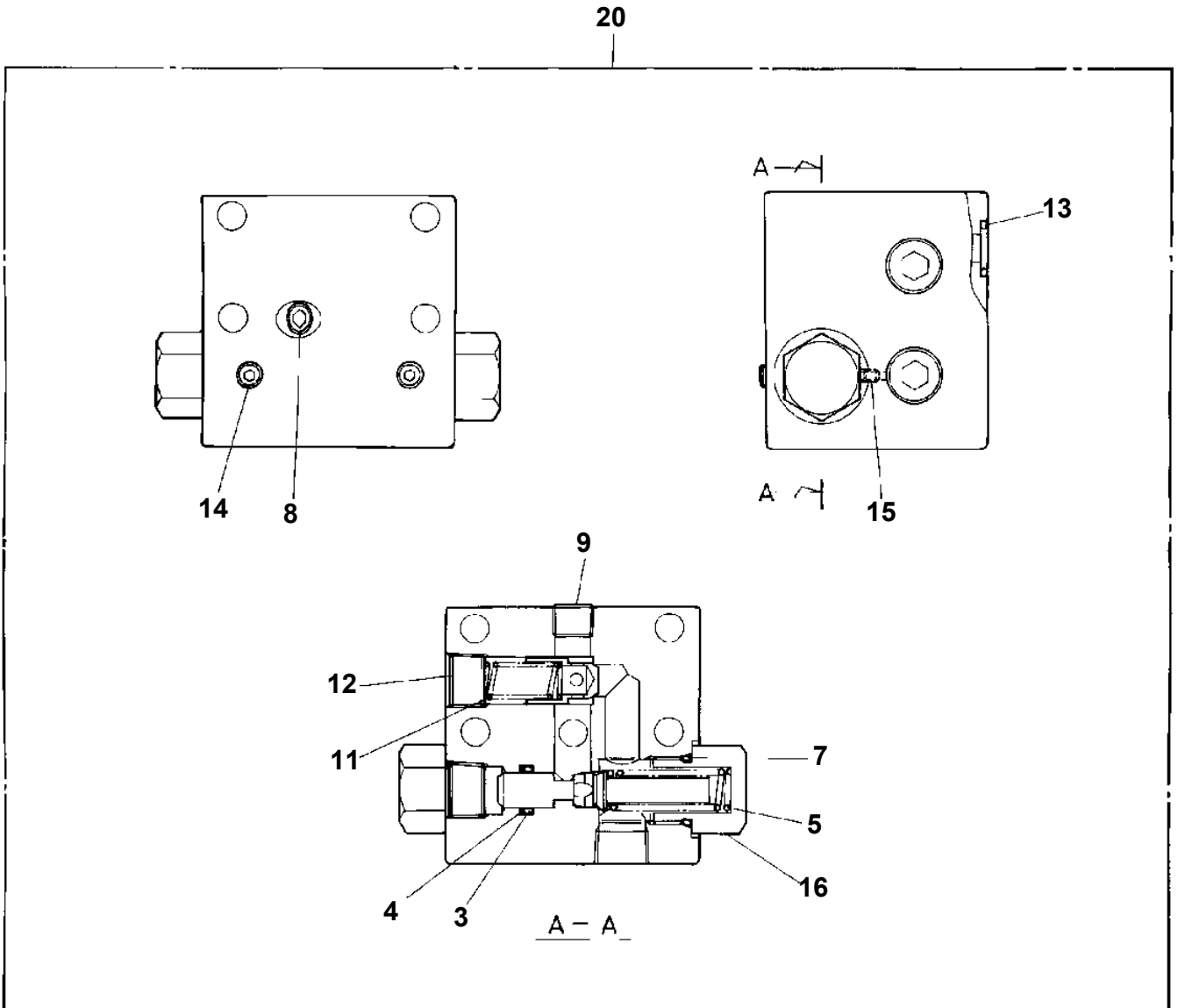
AT-150S-2 42068200013 UPPER
PH5032697-00 HARNESS



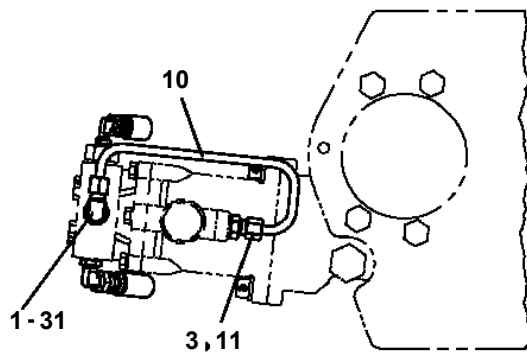
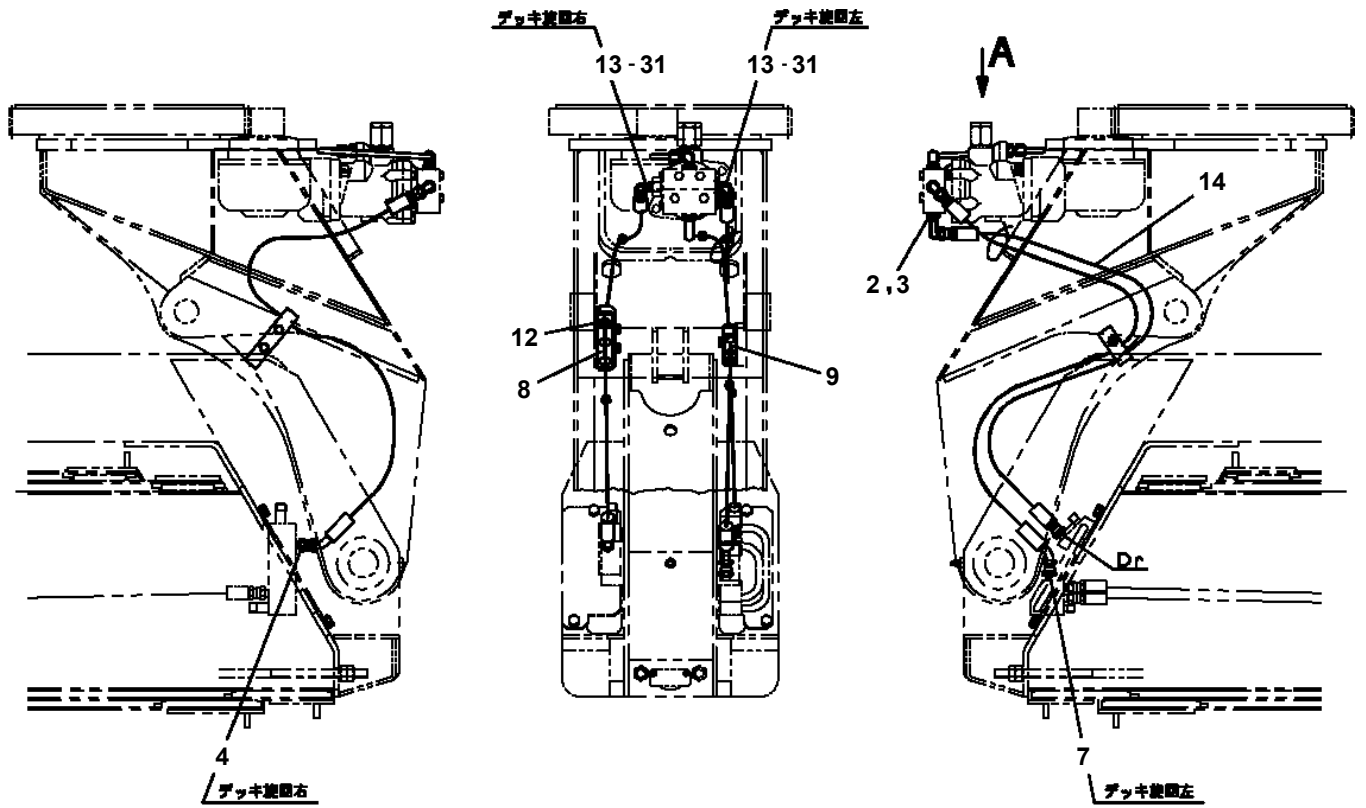
**AT-150S-2 42068200013 UPPER
PI1140158-00 VALVE,CHECK**



AT-150S-2 42068200013 UPPER
PI1250027-00 VALVE, COUNTERBALANCE

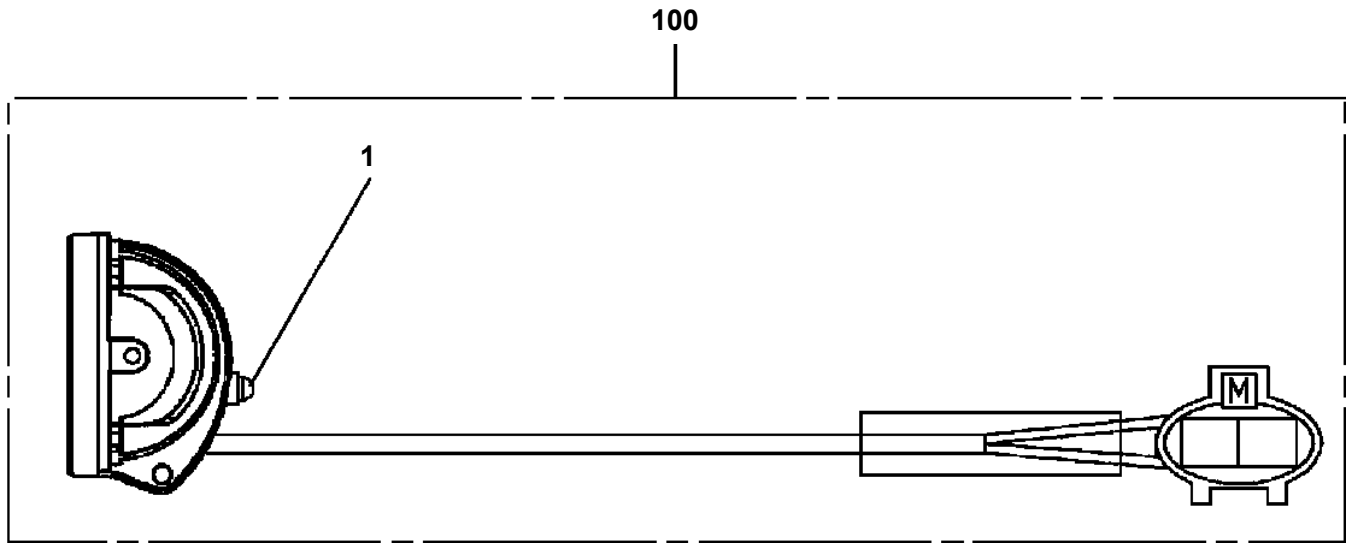


AT-150S-2 42068200013 UPPER
PJ3200086-00 PIPING, PLATFORM

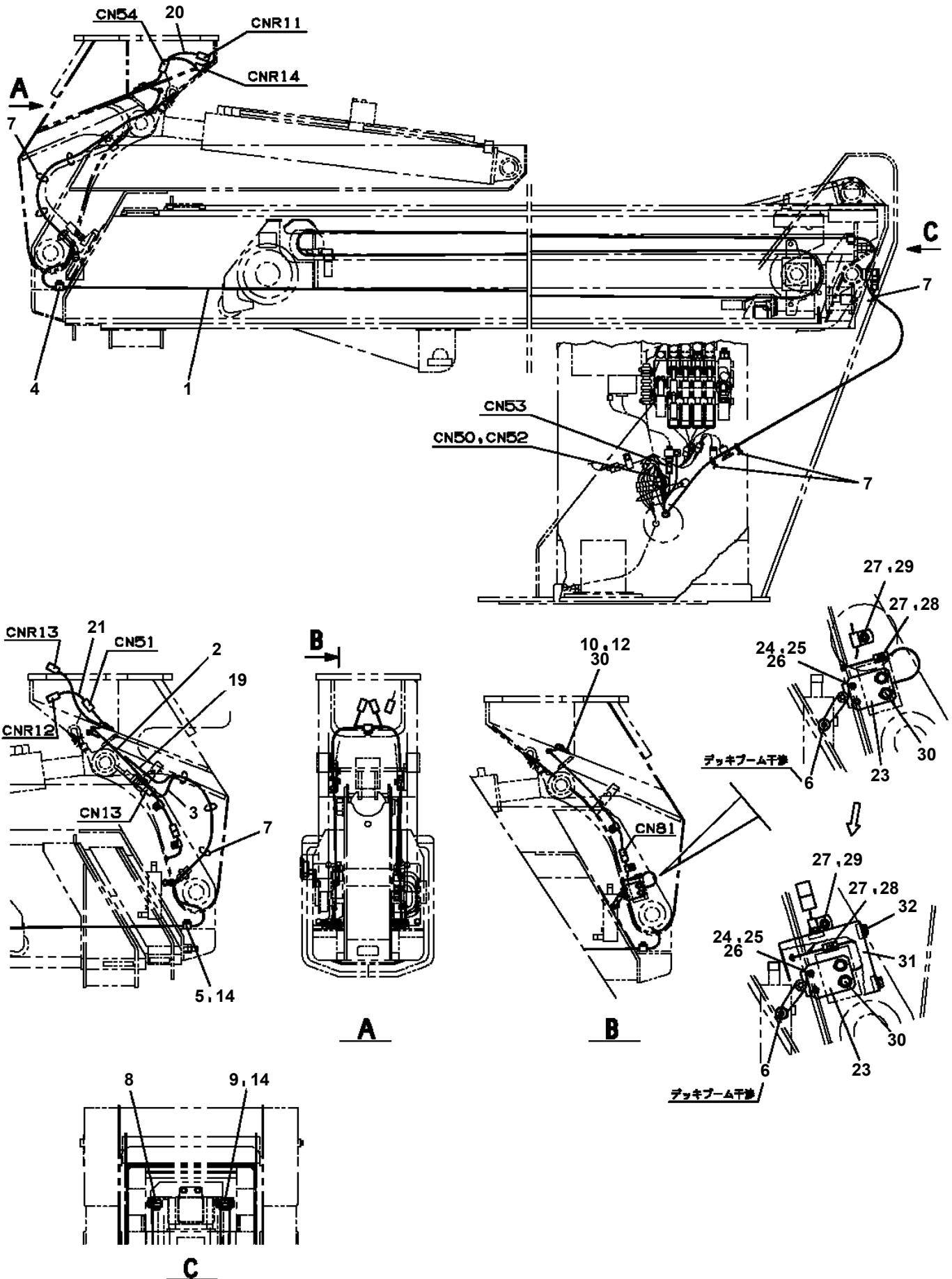


A

AT-150S-2 42068200013 UPPER
PL5330009-00 LAMP



AT-150S-2 42068200013 UPPER
 PN1013367-02 ELEC.ASSY (BOOM)



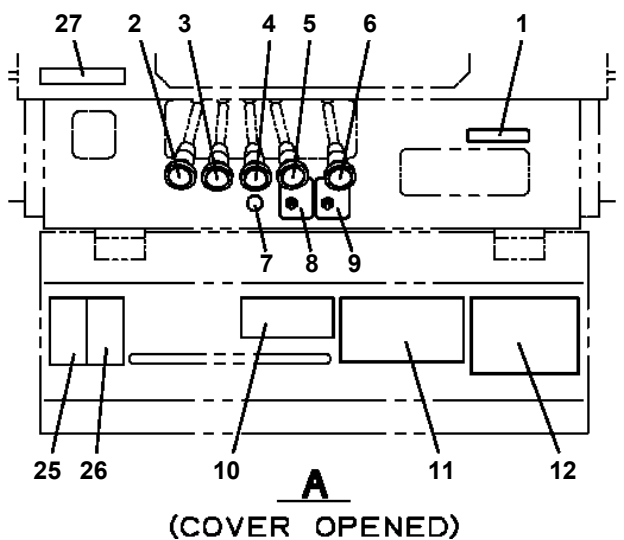
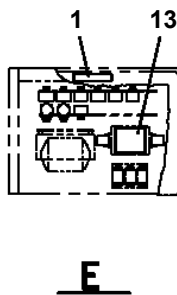
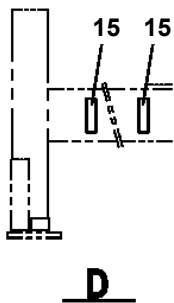
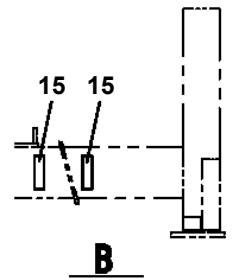
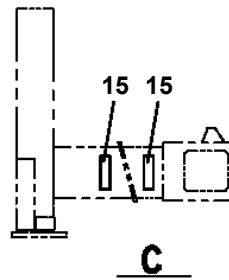
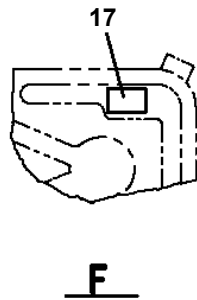
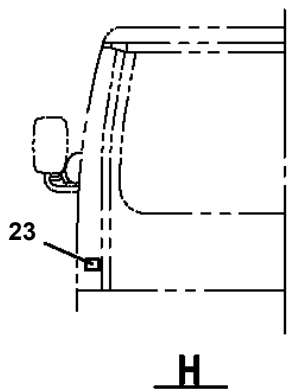
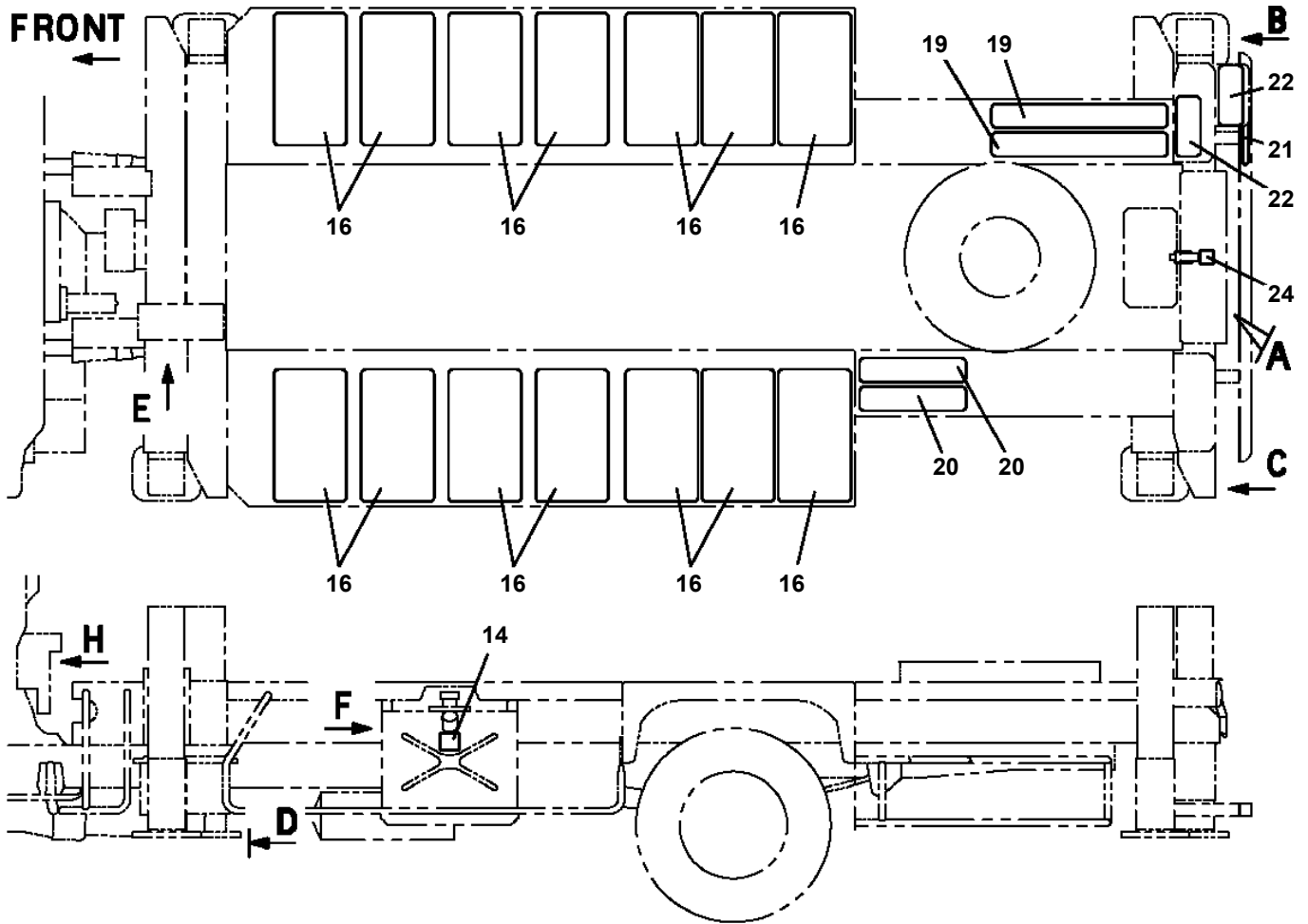
AT-150S-2 42068200013 UPPER

Pos No.	Parts No	Parts Name	Qty	Unit	Technical Data	Serial No (Start)	Serial No (End)
2	42651540100	HARNESS	1				
3	37002700980	CABLE ASSY	1		L=2500		
4	91810132530	FASTENER	N				
6	42654052000	RELAY BOX	1				HD5624
	42654052001	RELAY BOX ASSY	1			HD5625	HD5778
	42654052002	RELAY BOX ASSY	1			HD5779	
7	90101210012	BOLT	4		M10X12		
8	90302041001	WASHER,SPRING	4		10		
9	82104501140	SWITCH,LIMIT	1				
10	90101204030	BOLT	2		M4X30		
11	44430680200	BUZZER ASSY (WITH HARNESS)	1				
13	90302040601	WASHER,SPRING	13		6		
14	82100001216	CAP	1				
15	37002708100	CABLE ASSY	1		L=1700		
16	90201200800	NUT	1		M8		
17	90302040801	WASHER,SPRING	1		8		
18	91850400601	CLAMP	36				
19	42433330020	PLUG (2 POLES,FEMALE)	1				
20	91810130240	FASTENER	N				
21	42653971000	PANEL ASSY,CONTROL	1				HD5763
22	80192486014	SCREW,MACHINE (WITH WASHER)	4		M6X14		HD5748
	99172106012	BOLT,TAPPING	4		M6X12	HD5749	
25	90172106016	BOLT,HEXAGON SOCKET	12		M6X16		
26	36132150000	DETECTOR,OUTRIGGER LENGTH	4				
27	80136320012	PIN,SPLIT	4		2X12		
28	90303070601	WASHER,PLAIN	36		6		
30	90101206010	BOLT	1		M6X1.0		
31	90302040401	WASHER,SPRING	2		4		
34	90303070401	WASHER,PLAIN	2		4		
35	82100001803	TUBE,CORRUGATE	3	M	13		
36	37000519850	PLATE	1				
37	42654070500	HARNESS	1				
51	42736070100	SWITCH ASSY (WITH HARNESS)	1				HD5763
52	42433932100	SWITCH ASSY (WITH HARNESS,1 SW)	1				HD5763
53	42652802001	INDICATOR,OUTRIGGER	1				HD5763
54	80192486014	SCREW,MACHINE (WITH WASHER)	4		M6X14		HD5763
55	90302040601	WASHER,SPRING	4		6		HD5763
56	90201200600	NUT	4		M6		HD5763
57	42653971100	PANEL	1				HD5721
58	82199514013	CAP	2				HD5763
59	44320516500	PLUG (12 POLES,FEMALE)	1				HD5763
60	42352970010	PLUG (14 POLES,FEMALE)	1				HD5763
61	82199504017	NUT	2		AT-401N		HD5763
62	82154201010	METER,HOUR	1				HD5763
63	80172303012	SCREW,MACHINE	2		M3X12		HD5763
64	90303070301	WASHER,PLAIN	2		3		HD5763
65	90201200300	NUT	2		M3		HD5763
66	90302040301	WASHER,SPRING	2		3		HD5763
67	82467300104	PLUG	2			HD5722	HD5763
68	82467300114	PLUG	1			HD5722	HD5763
69	82467300101	PLUG	2			HD5722	HD5763
77	42653971101	PANEL	1			HD5722	HD5763
81	42651713400	COVER	1				
82	90186206014	BOLT,FLANGE	10		M6X14		
83	90101208020	BOLT	8		M8X20		
84	90302040801	WASHER,SPRING	8		8		
85	90303070801	WASHER,PLAIN	8		8		
86	82104501140	SWITCH,LIMIT	4				
87	42651710350	SUPPORT	4				
88	42651713450	COVER	1				
91	42654072000	PANEL ASSY,CONTROL	1			HD5764	
101	42651893100	COVER	3				
113	82400000201	GROMMET	1		KG-016		

AT-150S-2 42068200013 UPPER

Pos No.	Parts No	Parts Name	Qty	Unit	Technical Data	Serial No (Start)	Serial No (End)
1	82100002253	LAMP	1				
2	80176304016	SCREW,MACHINE	2		M4X16		
3	90201200400	NUT	2		M4		
4	90302040401	WASHER,SPRING	2		4		
5	90303070401	WASHER,PLAIN	2		4		
6	42504900100	SWITCH ASSY (WITH HARNESS,1 SW)	1				
7	82199514013	CAP	1				
8	42738200010	PLATE,NAME	1				
9	82100000711	CLAMP	2				HD5679
	91850310305	CLAMP	2			HD5680	
10	82199504017	NUT	1		AT-401N		
11	91810130240	FASTENER	2			HD5680	
31	82100000783	BULB,LAMP	1		24V 12W		

**AT-150S-2 42068200013 UPPER
PN5010349-00 NAME PLATE ASSY (LOWER)**



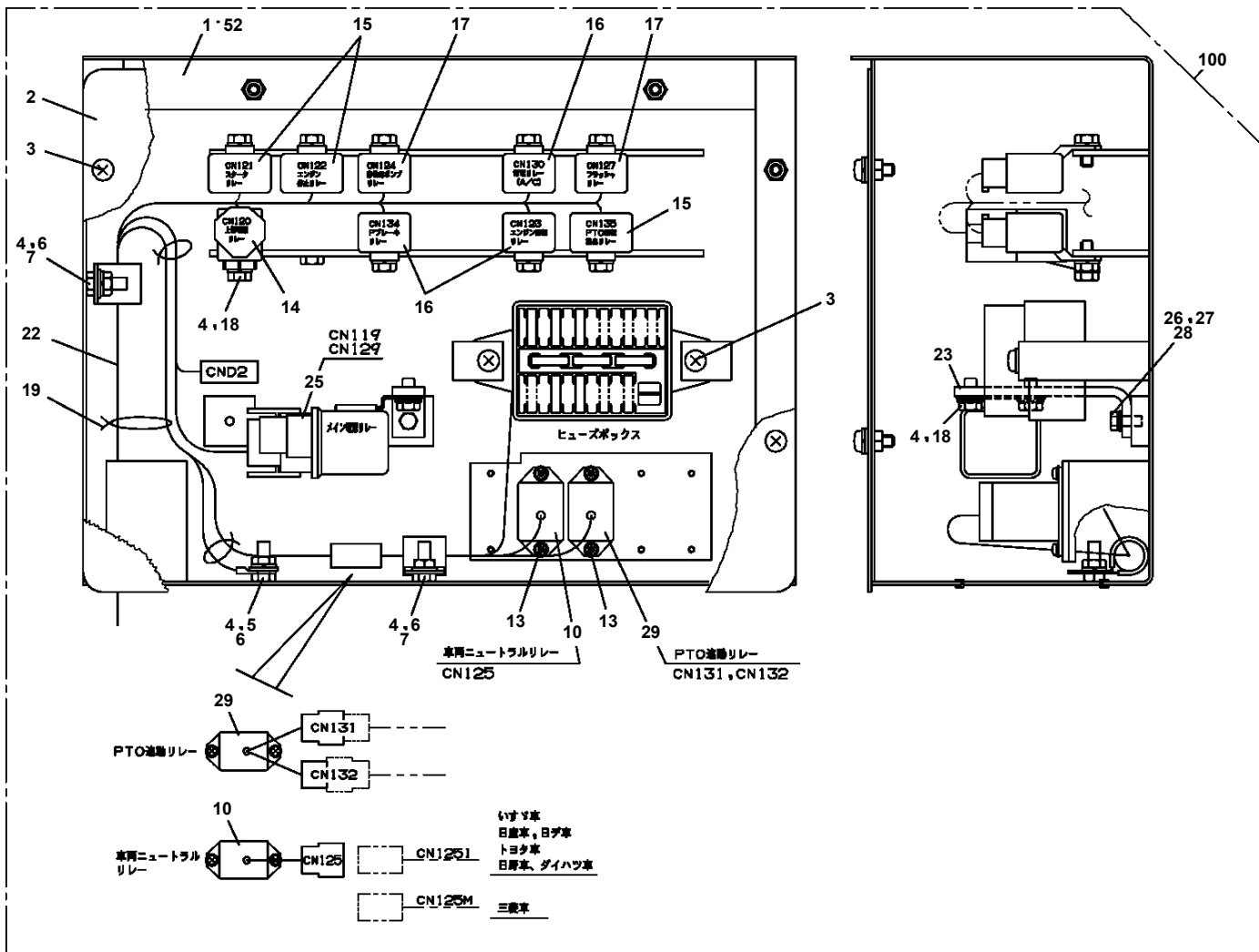
AT-150S-2 42068200013 UPPER

Pos No.	Parts No	Parts Name	Qty	Unit	Technical Data	Serial No (Start)	Serial No (End)	R
1	42614891000	CASE ASSY,INNER (REAR,RIGHT)	1				HD5657	
	42614891001	CASE ASSY,INNER (REAR,RIGHT)	1			HD5658	HD5695	
2	37002013590	PLATE,SLIDE	8		T=11		HD5695	
	37002011280	PLATE,SLIDE	8		T=9.5	HD5696		
3	31611640150	SPRING	2					
4	90171108016	BOLT	4		M8X16			
5	37000504780	PLATE	4		T=0.6			
6	90302041001	WASHER,SPRING	16		10			
7	42613610010	PLATE	4					
8	42613610020	BLADE	2					
9	90303070601	WASHER,PLAIN	2		6			
10	42614892000	CASE ASSY,INNER (REAR,LEFT)	1				HD5657	
	42614892001	CASE ASSY,INNER (REAR,LEFT)	1			HD5658	HD5695	
11	90101206014	BOLT	2		M6X14		HD6070	
	90101206016	BOLT	2		M6X16	HD6071		
12	90302040601	WASHER,SPRING	2		6			
13	90101208012	BOLT	4		M8X12			
14	90302040801	WASHER,SPRING	4		8			
15	37000575240	PLATE	2		T=3			
16	42612850200	PLATE	8		T=6			
17	90171110018	BOLT	16		M10X18		HD5695	
	90101210016	BOLT	16		M10X16	HD5696		
18	37000581940	PLATE	N		T=0.5			
19	37000506590	PLATE	N		T=1.6			
20	37000178190	PIN	2					
21	42614050020	PLATE,SLIDE	2			HD5658		
22	37001510810	BOLT	4		M8X25	HD5658		
23	42614893000	CASE ASSY,INNER (REAR,RIGHT)	1			HD5696		
24	42614894000	CASE ASSY,INNER (REAR,LEFT)	1			HD5696		

AT-150S-2 42068200013 UPPER

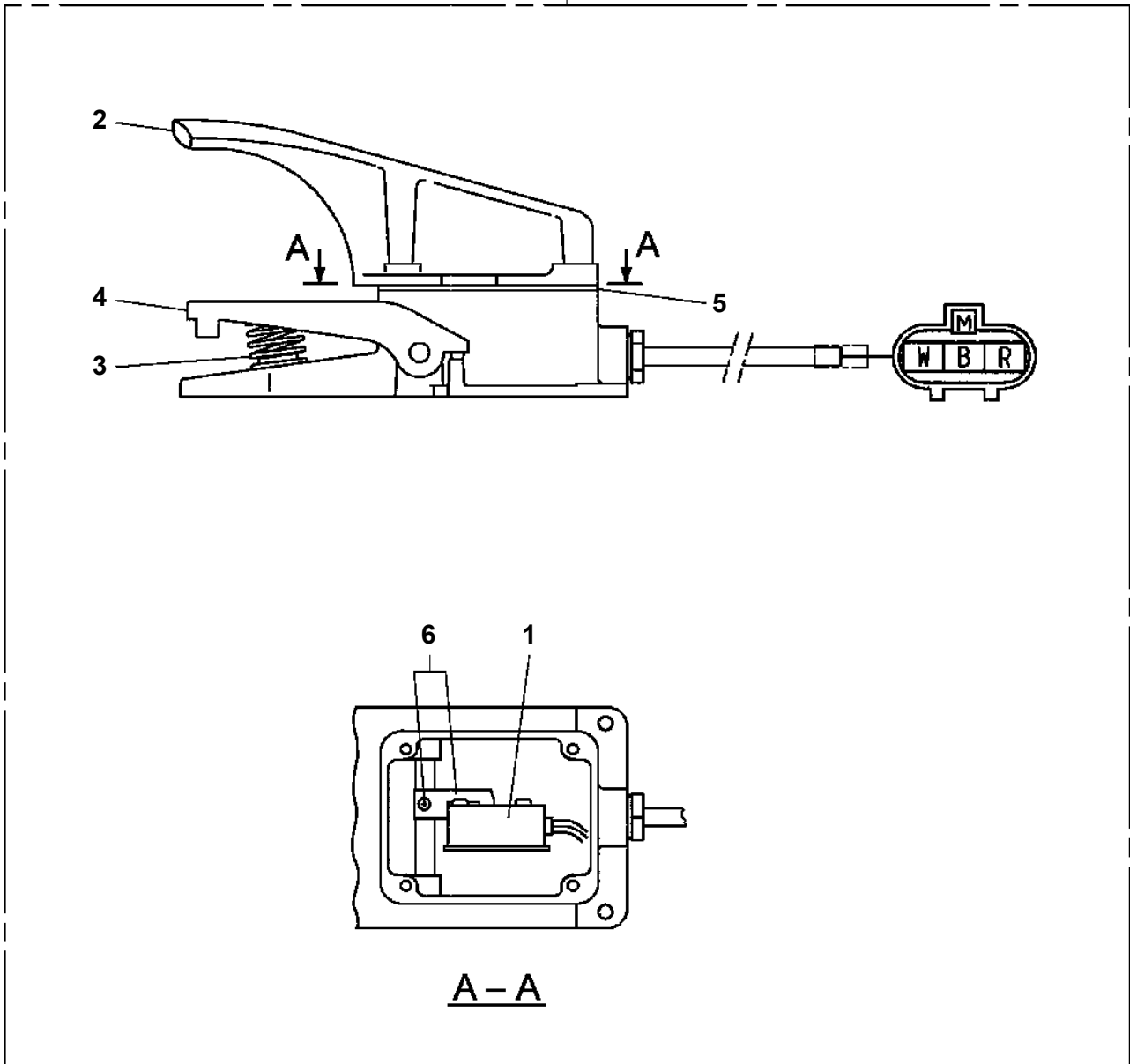
Pos No.	Parts No	Parts Name	Qty	Unit	Technical Data	Serial No (Start)	Serial No (End)	Remarks	Pa
1	42266200100	GUARD	2						
2	42266200200	GUARD	1						
3	42266200300	GUARD	1						
4	42266200400	GUARD	1						
5	42266200500	GUARD ASSY	1						
6	42266200800	GUARD	1						
7	42268411000	PLATFORM ASSY	1						
9	80182808020	SCREW,MACHINE	4						
10	90302510801	WASHER,SPRING (8)	4						
11	(*****)	PIPING,GREASE	1						000
12	42265890900	GUARD	1						
13	90101210020	BOLT	6		M10X20				
14	90302041001	WASHER,SPRING	6		10				
15	42266200020	FLOOR	1						
16	82112001022	SLEEVE	6						
17	42220249510	ROPE,WIRE	2	M					
18	42479250400	COVER	3						
19	82400000324	RING	6						
41	42266200700	GUARD	1						
42	42266200600	GUARD	1						
43	82400000392	HINGE (RIGHT TYPE)	1						
44	82464156301	HINGE (LEFT TYPE)	1						
45	42266200510	LEVER	1						
46	90201200800	NUT	2		M8				
47	90101208070	BOLT	1		M8X70				
61	42268413100	FLOOR	1						
62	42268413200	FLOOR	1						
63	42268413300	FLOOR	1						
64	42266203400	FLOOR	1						
65	42266203500	FLOOR	1						
83	82420102413	TRIM	2	M					
85	42265894010	PIN,SNAP	2						
87	42266204010	PIN,SNAP	8						
100	42268410000	PLATFORM ASSY	1						

AT-150S-2 42068200013 UPPER PR5100013-00 RELAY BOX ASSY

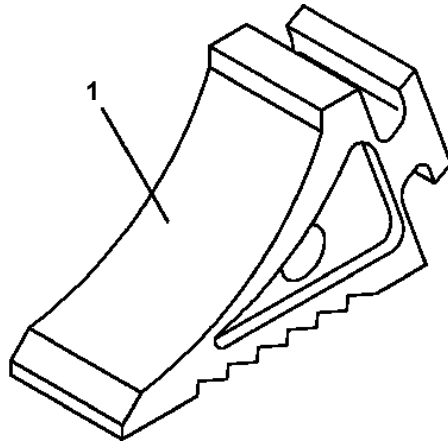


AT-150S-2 42068200013 UPPER
PS5530449-00 SWITCH ASSY

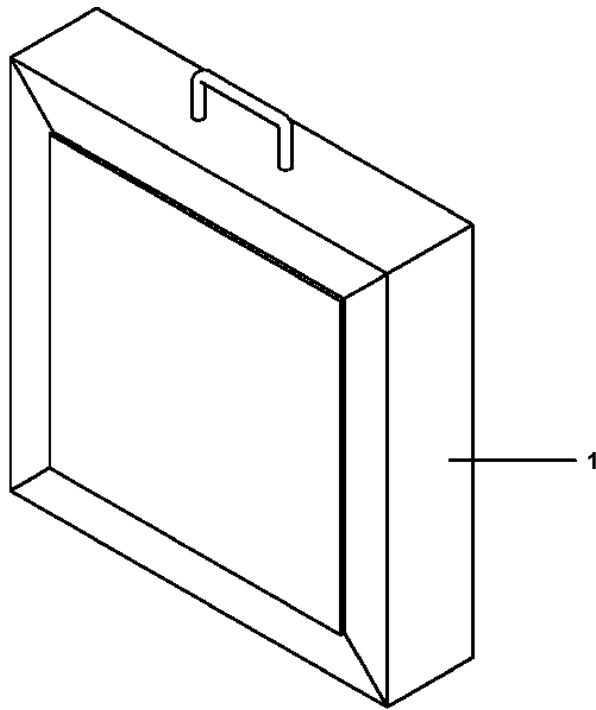
100



**AT-150S-2 42068200013 UPPER
PW1050018-01 WEDGE (STOPPER FOR TIRE/JUSTIN)**



**AT-150S-2 42068200013 UPPER
PX1270086-01 WOOD BLOCK (W=350,H=80)**



CLICK HERE TO **DOWNLOAD** THE COMPLETE MANUAL

- Thank you very much for reading the preview of the manual.
- You can download the complete manual from: www.heydownloads.com by clicking the link below



- Please note: If there is no response to CLICKING the link, please download this PDF first and then click on it.

CLICK HERE TO **DOWNLOAD** THE COMPLETE MANUAL