

## **AT-147-3 43010100069 UPPER**

**PD2000186-01 SWING UNIT  
PF1000691-00 WINCH SYSTEM  
PG2000244-00 BOOM UNIT  
PH1000550-00 SAFETY DEVICES (MOTION CONTROLLER)  
PJ3000567-00 BUCKET SYSTEM  
PJ5000003-00 BOOSTER UNIT  
PK2001848-00 FRAME UNIT  
PO1000171-00 INDICATION PLATES  
PW1000118-00 ACCESSORIES & TOOLS  
PX1001201-00 MOUNTING PARTS  
PY1001439-00 OPTIONS  
ASSEMBLY**

CLICK HERE TO **DOWNLOAD** THE COMPLETE MANUAL

- Thank you very much for reading the preview of the manual.
- You can download the complete manual from: [www.heydownloads.com](http://www.heydownloads.com) by clicking the link below



- Please note: If there is no response to CLICKING the link, please download this PDF first and then click on it.

CLICK HERE TO **DOWNLOAD** THE COMPLETE MANUAL

# AT-147-3 43010100069 UPPER

Pos No.	Parts No	Parts Name	Qty	Unit	Technical Data	Serial No (Start)	Serial No (End)
1	42267241000	BUCKET	1				
2	(*****)	BUCKET (INNER CASE)	1				
4	(*****)	ARM ASSY	1				
5	(*****)	PIPING ASSY,ARM	1				
6	(*****)	PIPING ASSY,BUCKET	1				
9	(*****)	COVER,BOOM (TOP/FRP,WHITE)	1				
10	(*****)	BUCKET FRAME ASSY	1				
11	(*****)	COVER (ARM/FRP,WHITE)	1				
12	(*****)	COVER (WINCH/FRP,WHITE)	1				
13	42267274000	COVER (CLOTH,WHITE/BUCKET)	1				
14	(*****)	COVER (BUCKET/FRP,WHITE)	1				
15	(*****)	COVER (ARM HOSE,CLOTH)	1				
16	(*****)	COVER	1				
17	42262804000	COVER,WINCH (CLOTH,WHITE/WINCH)	1				
21	(*****)	OPE.ASSY (BUCKET)	1				
22	(*****)	ELEC.ASSY (ARM)	1				
23	(*****)	ELEC.ASSY,BUCKET	1				
24	(*****)	ACCESSORIES (BUCKET INNER MAT)	1				

# AT-147-3 43010100069 UPPER

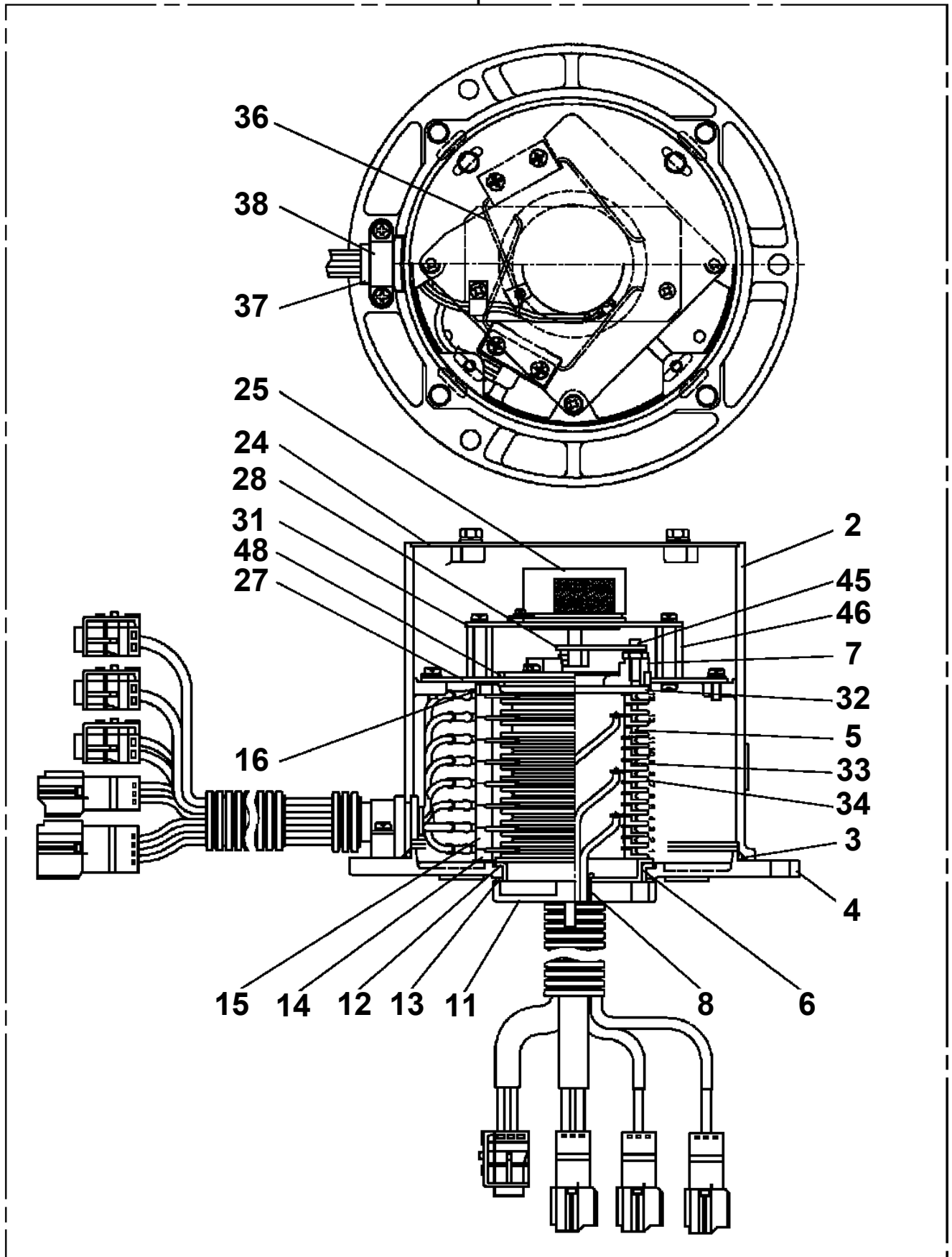
Pos No.	Parts No	Parts Name	Qty	Unit	Technical Data	Serial N
1	(*****)	MOUNT ASSY,TOOL BOX (LEFT/FRONT:2-DECKER,R:1-DECKER)	1			
2	(*****)	MOUNT ASSY,TOOL BOX (RIGHT)	1			
3	(*****)	EARTHING DEVICE (8X10M, TOP CLIP)	1			

# AT-147-3 43010100069 UPPER

Pos No.	Parts No	Parts Name	Qty	Unit	Technical Data	Serial No (Start)	Serial No (End)	Remarks	Pages
1	36654445010	SEAL KIT	1						
100	36654440000	PUMP,HYDRAULIC	1						

AT-147-3 43010100069 UPPER  
PB1310045-00 BRUSH,ROTARY JOINT

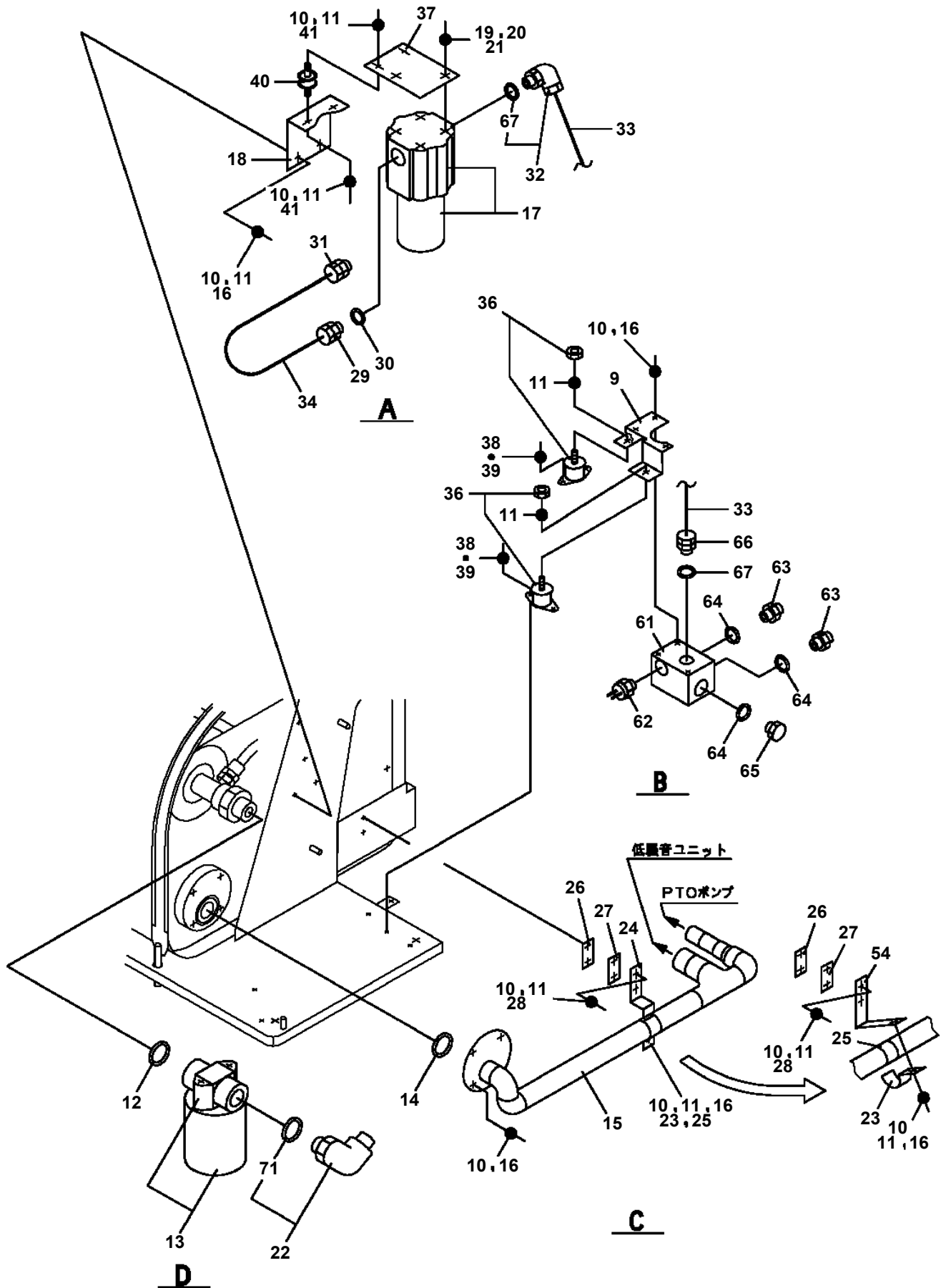
100



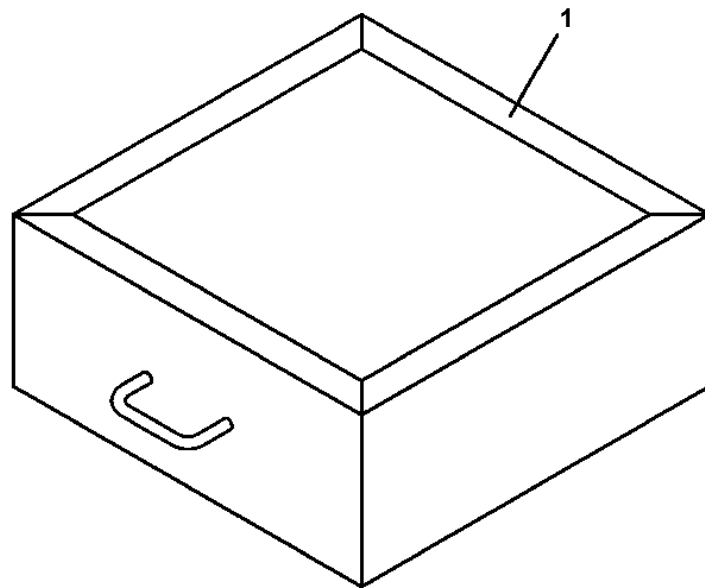
# AT-147-3 43010100069 UPPER

Pos No.	Parts No	Parts Name	Qty	Unit	Technical Data	Serial No (Start)	Serial No (End)	Remarks
2	90101212025	BOLT	8		M12X25			
3	90302041201	WASHER,SPRING	8		12			
4	90303071201	WASHER,PLAIN	8		12			
21	(*****)	MOUNT ASSY,POWER TRAIN	1					
22	(*****)	EXHAUST	1					
23	(*****)	ELEC.ASSY	1					
24	(*****)	PIPING (ENGINE UNIT)	1					
25	(*****)	COVER (ENGINE UNIT)	1				590460	
	(*****)	COVER ASSY (ENGINE UNIT)	1			590461		

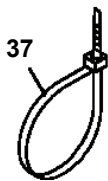
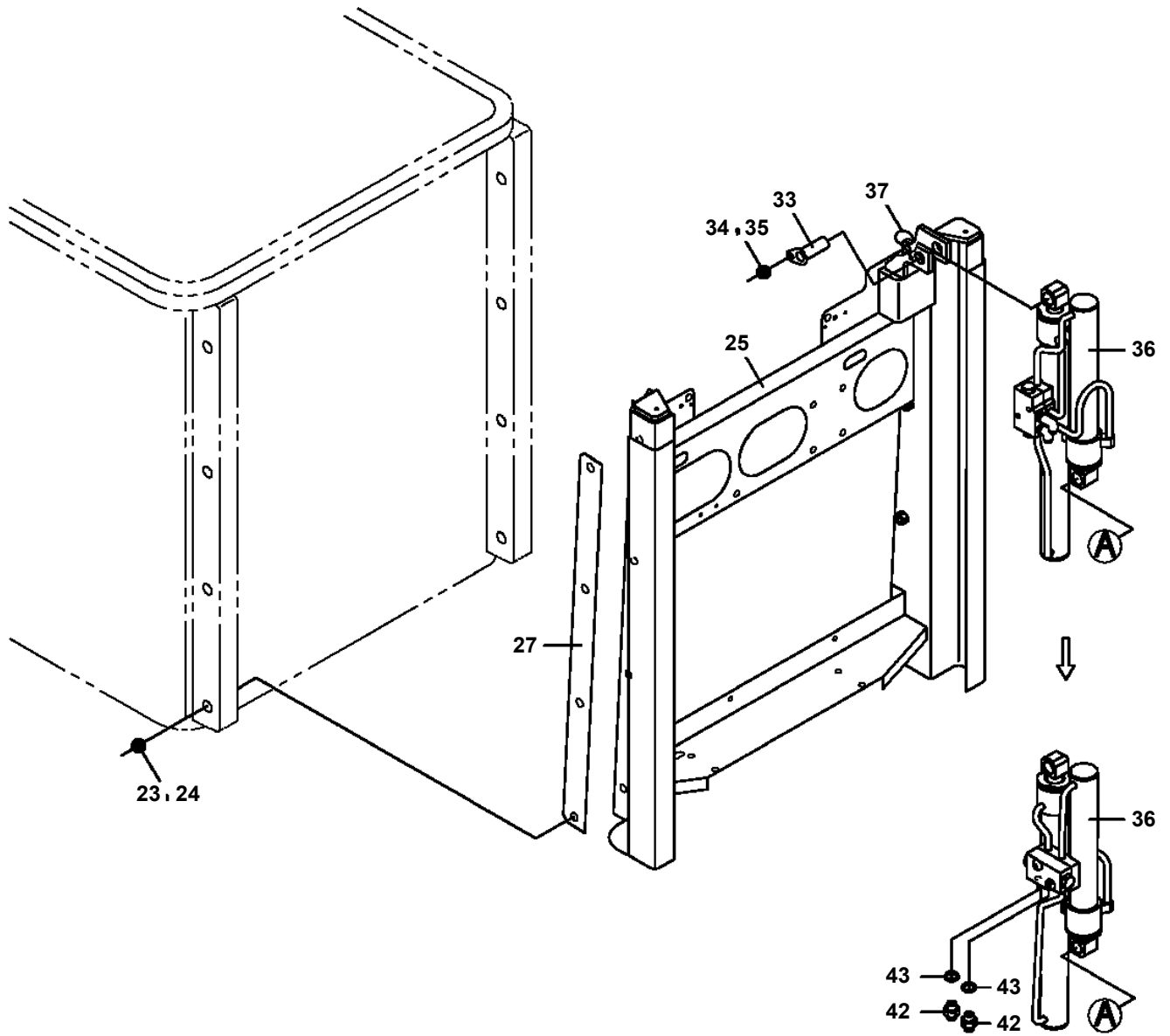
**AT-147-3 43010100069 UPPER  
PB1411917-03 PIPING,LOWER (TANK)**



AT-147-3 43010100069 UPPER  
PB5140002-00 BLOCK,WOOD

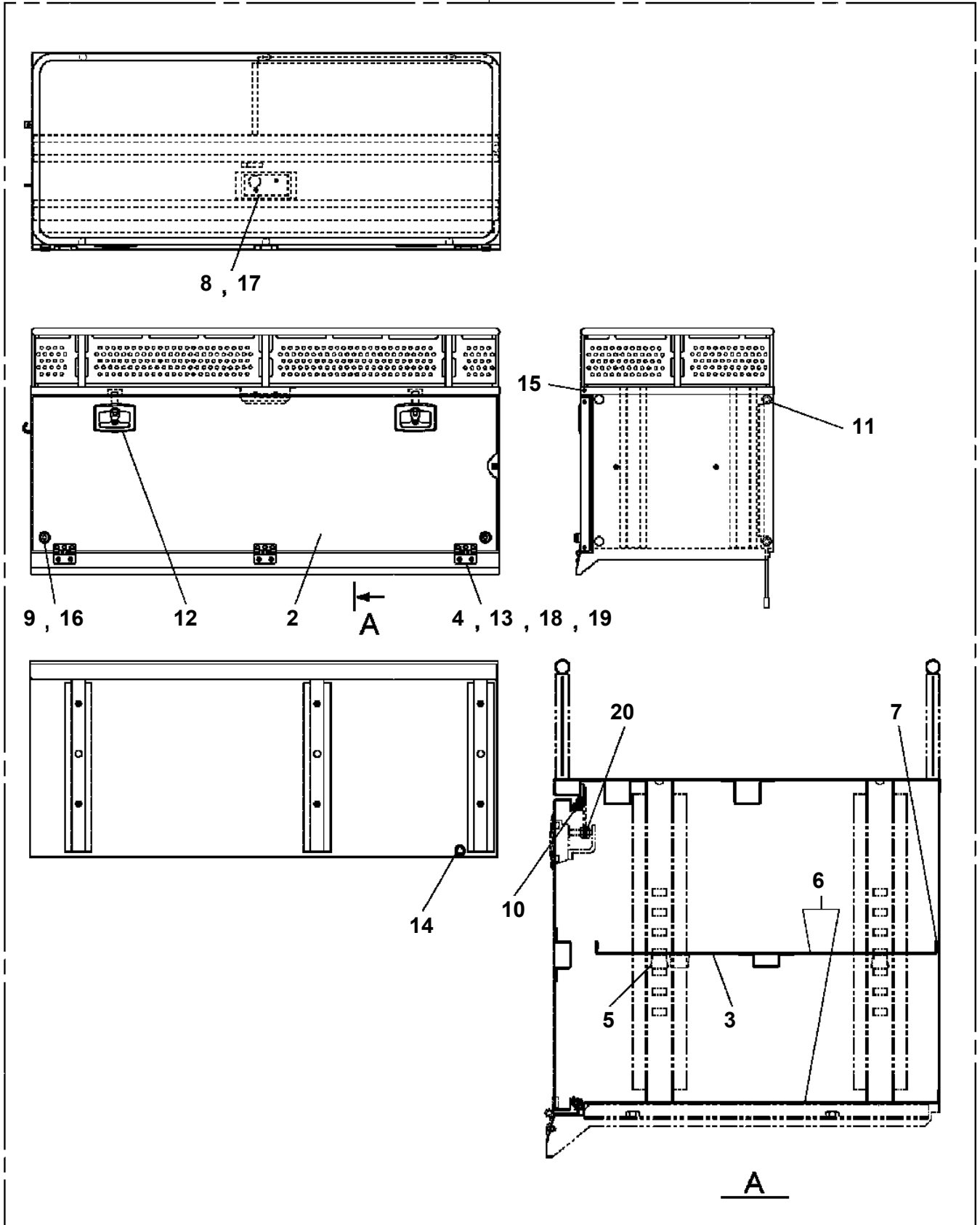


**AT-147-3 43010100069 UPPER  
PB5370001-02 BUCKET FRAME ASSY**

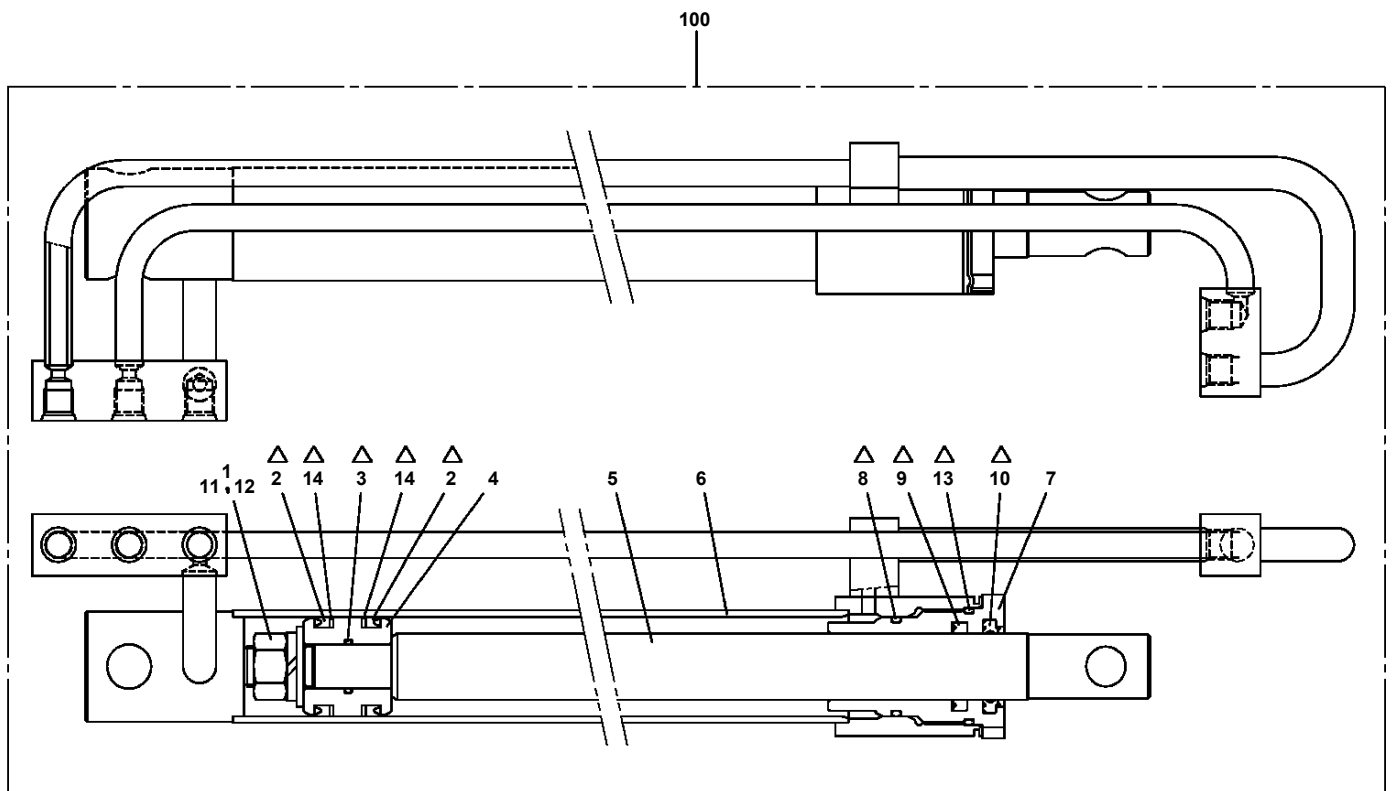


AT-147-3 43010100069 UPPER  
PB5410122-00 BOX, TOOL

100

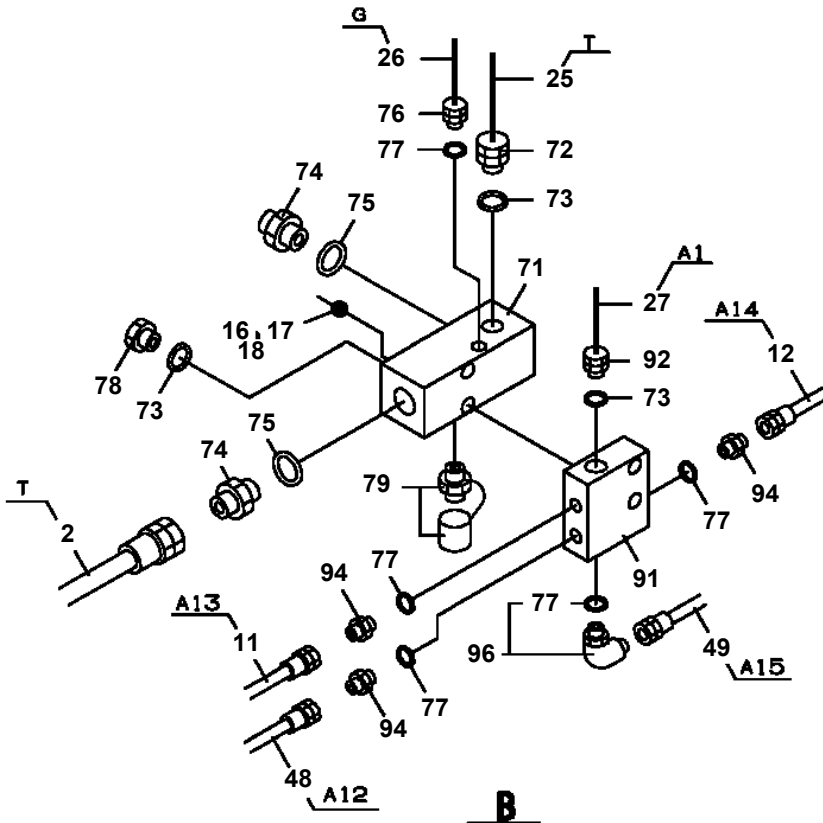
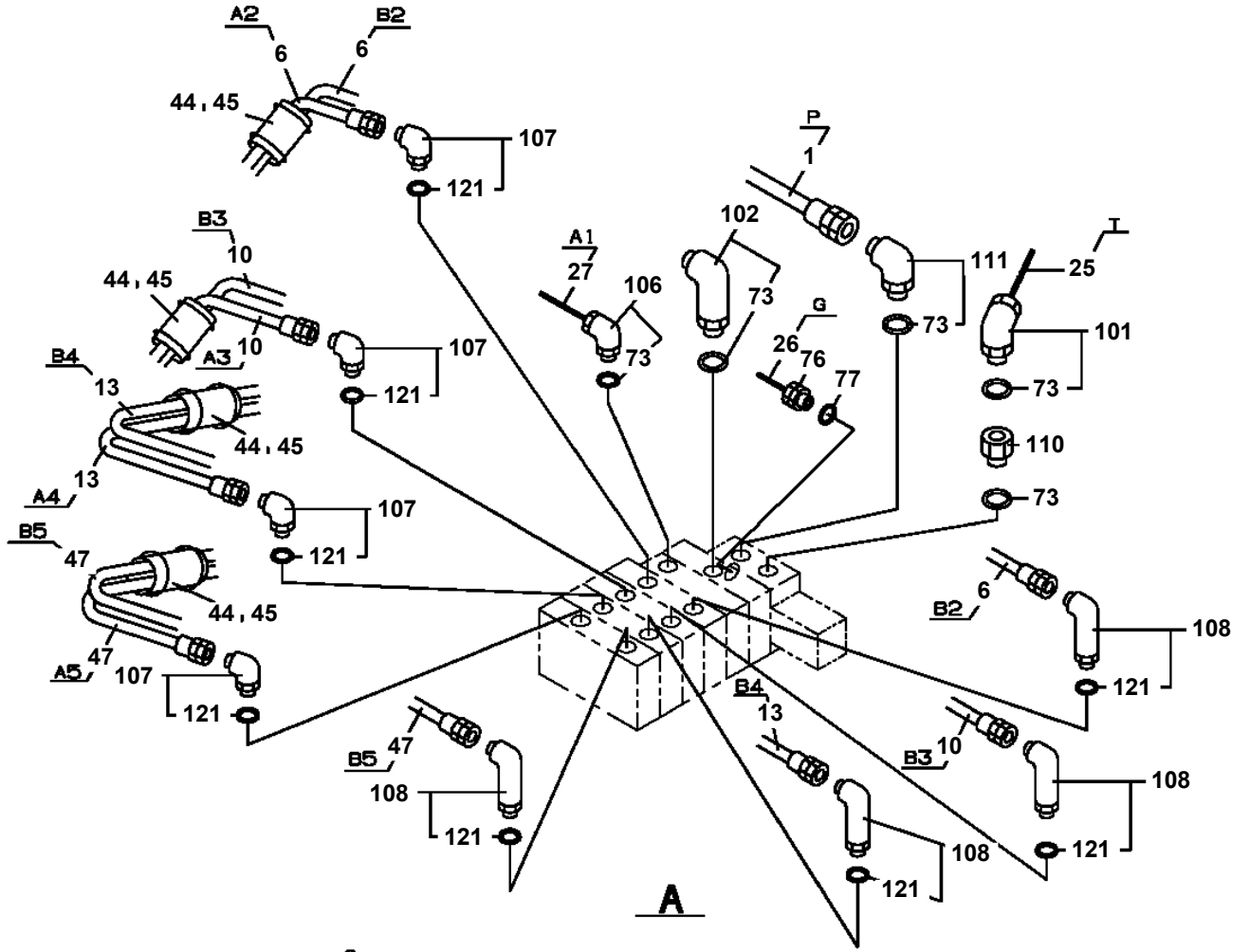


**AT-147-3 43010100069 UPPER  
PC1050221-00 CYLINDER,EXTENSION (FRONT)**



$\Delta$ :PACKING SET KEY NO.30 (KEY NO.2,3,8,9,10,13,14)

**AT-147-3 43010100069 UPPER  
PC1200578-06 PIPING,OUTRIGGER**



# AT-147-3 43010100069 UPPER

Pos No.	Parts No	Parts Name	Qty	Unit	Technical Data	Serial No (Start)	Serial No (End)
1	42614464100	CASE,INNER	1				
2	42613351200	CASE,INNER (JACK)	1				
4	36035100000	CYLINDER,JACK	1				
5	42502970200	FLOAT ASSY	1				
6	37000171720	PIN	1				
7	80601110250	RING,RITAINING	2		S25		
8	37000169010	PIN	1		30		
9	80601110300	RING,RITAINING	2		S30		
10	36625740001	VALVE,CHECK	1				
11	90171108055	BOLT	4		M8X55		
12	37000138750	PIN	1		18		
13	80136332036	PIN,SPLIT	2		3.2X36		
14	80400160127	JOINT	1				
15	91002801100	O-RING	1		1B P11		
16	36672460000	FILTER (NIPPLE TYPE)	1				
17	42612851010	COVER	1				
18	90186206014	BOLT,FLANGE	2		M6X14		
19	37000112320	PIN	1				
20	80601110120	RING,RITAINING	2		S12		
21	91810130240	FASTENER	2				
22	31201770100	PLATE,SLIDE	8		T=3.0		
23	90280200600	NUT,FLANGE	1		M6		
24	37000600700	CLAMP	1		12X3		
25	82467300106	PLUG	4				
41	36042810000	CYLINDER,EXTENSION (FRONT)	1				
42	80400160127	JOINT	2				
43	91002801100	O-RING	3		1B P11		
44	37002485300	HOSE	1		L=1805		
45	42614053350	HARNESS	1				
46	91810130240	FASTENER	13				
63	42612851420	TRUNNION	1				
100	42614464000	CASE ASSY,INNER (FRONT,RIGHT)	1				

**AT-147-3 43010100069 UPPER**

Pos No.	Parts No	Parts Name	Qty	Unit	Technical Data	Serial No (Start)	Serial No (End)	Remarks
1	42272361103	COVER	1					
2	42272361201	COVER	1					
3	42272361301	COVER	1					
4	90101206016	BOLT	8		M6X16			
5	80172803008	SCREW,MACHINE	8		M3X8			
6	90201500300	NUT	8		M3			
7	90302510301	WASHER,SPRING (SUS 3)	8					
8	82466100702	CATCH	2					
9	80172804012	SCREW,MACHINE	12		M4X12			
10	90201500400	NUT	12		M4			
11	90302510401	WASHER,SPRING	12		4			
12	82464110305	HINGE	2					
13	90302040601	WASHER,SPRING	8		6			
14	90303070601	WASHER,PLAIN	8		6			
50	42272361004	COVER ASSY	1					

# AT-147-3 43010100069 UPPER

Pos No.	Parts No	Parts Name	Qty	Unit	Technical Data	Serial No (Start)	Serial No (E
1	90211201200	NUT	2		M12		
2	42220105030	PACKING	4				
3	91002801400	O-RING	2		1B P14		
4	36054010100	PISTON	2				
5	36054431000	CYLINDER	1				
6	36054011000	ROD	1				
7	91002803500	O-RING	2		1B P35		
8	91694002500	PACKING	2				
9	91660002501	SEAL,DUST	2				
10	36054010200	COVER,ROD	2				
11	36054012000	ROD	1				
12	90302041201	WASHER,SPRING	2		12		
13	91410202501	RING,BACKUP	2				
14	91332402500	BEARING,PLAIN	2				
15	91431303501	RING,BACKUP	4				
16	91301403500	BEARING,PLAIN	2				
30	36054019900	PACKING SET	2		25X35		
100	36054430000	CYLINDER ASSY (LIFT,BUCKET FRAME)	1				

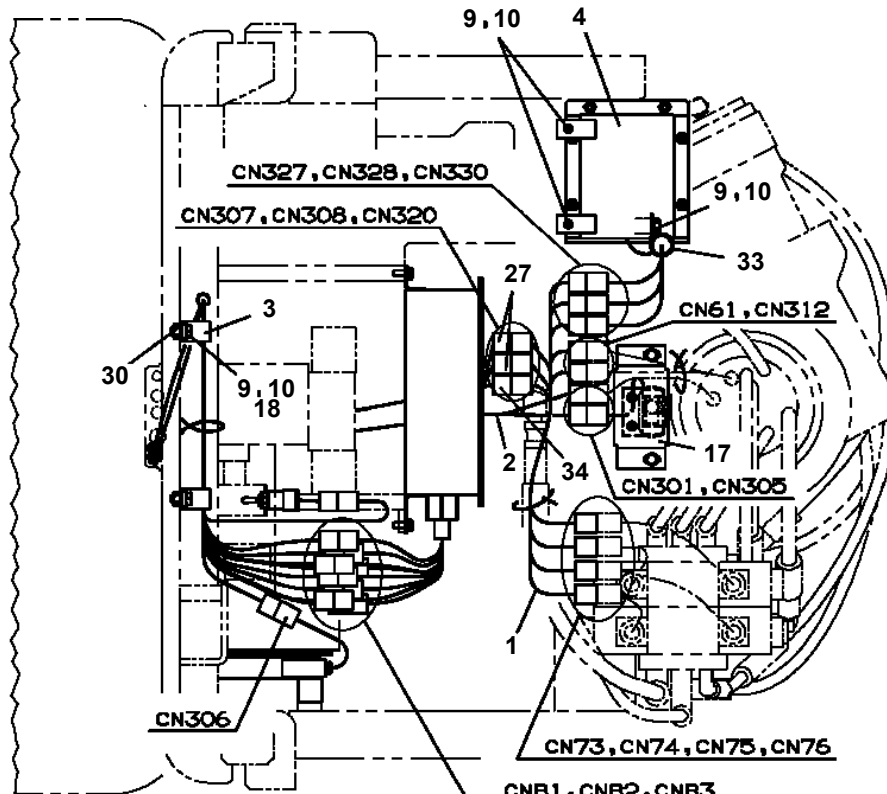
# AT-147-3 43010100069 UPPER

Pos No.	Parts No	Parts Name	Qty	Unit	Technical Data	Serial No (Start)	Serial No (End)
2	36081560000	REDUCER,SWING SPEED	1				
3	90171118070	BOLT (DACRO)	3		M18X70		
4	90303501805	WASHER,PLAIN	6		18		
5	90201781800	NUT (DACRO)	3		M18		
6	90174112035	BOLT	2		M12X35		
7	90710012400	SCREW,SET	2		M12X40		
8	90203201200	NUT	4		M12		
9	90172112035	BOLT,HEXAGON SOCKET	2		M12X35		
10	90302041201	WASHER,SPRING	2		12		
11	36664070000	MOTOR,OIL	1				
12	91002908500	O-RING	1		1B G85		
31	37002302450	BEARING,SWING (NSK)	1				
32	37002304750	BEARING,SWING (KOYO)	1				
	37002303560	BEARING,SWING (NIHON MONORACE)	1				
41	37002399010	SEAL (UP,DOWN-SIDE SET)	1				
42	82456201000	NIPPLE,GREASE	6		A-TYPE PT1/8		

# AT-147-3 43010100069 UPPER

Pos No.	Parts No	Parts Name	Qty	Unit	Technical Data	Serial No (Start)	Serial No (End)	Remarks	Pages
1	(*****)	REEL ASSY,CORD	1						00021
2	42512320100	SUPPORT	1						
3	42512320200	SUPPORT	1						
4	90101208020	BOLT	2		M8X20				
5	90302040801	WASHER,SPRING	2		8				
6	42421721500	CABLE ASSY	1		L=700				

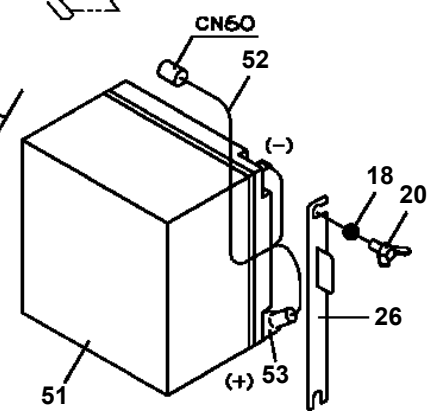
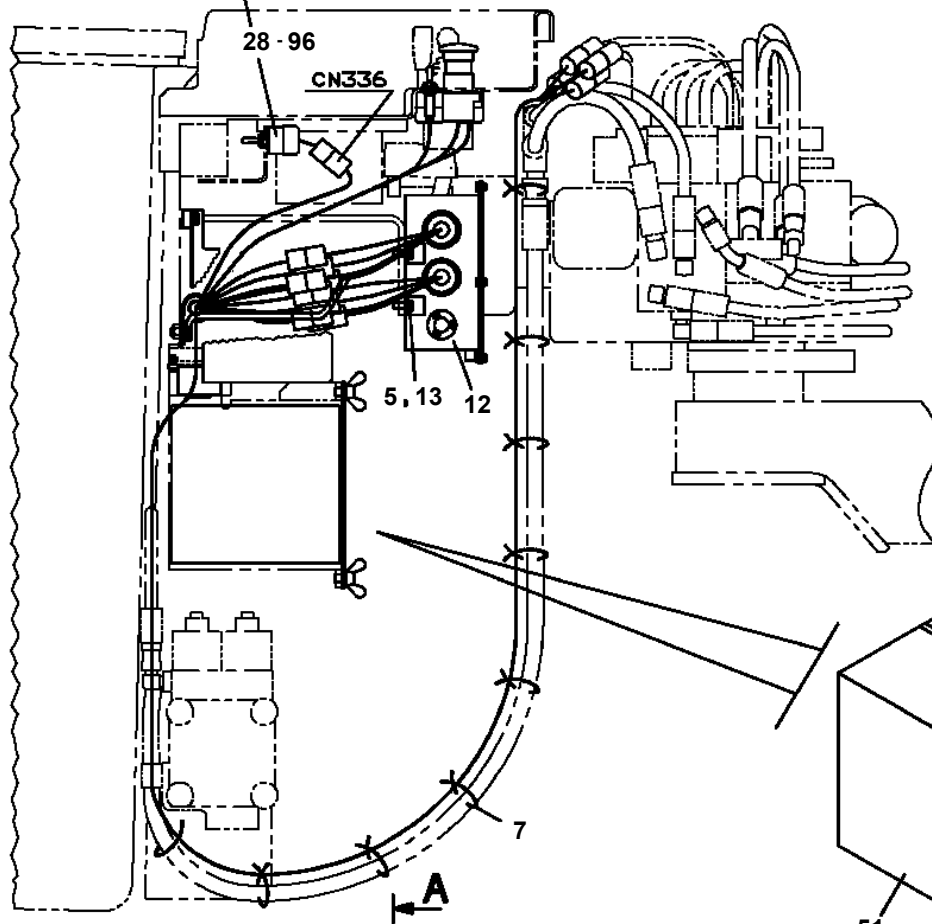
AT-147-3 43010100069 UPPER  
PE5060007-00 ELEC.ASSY,BUCKET



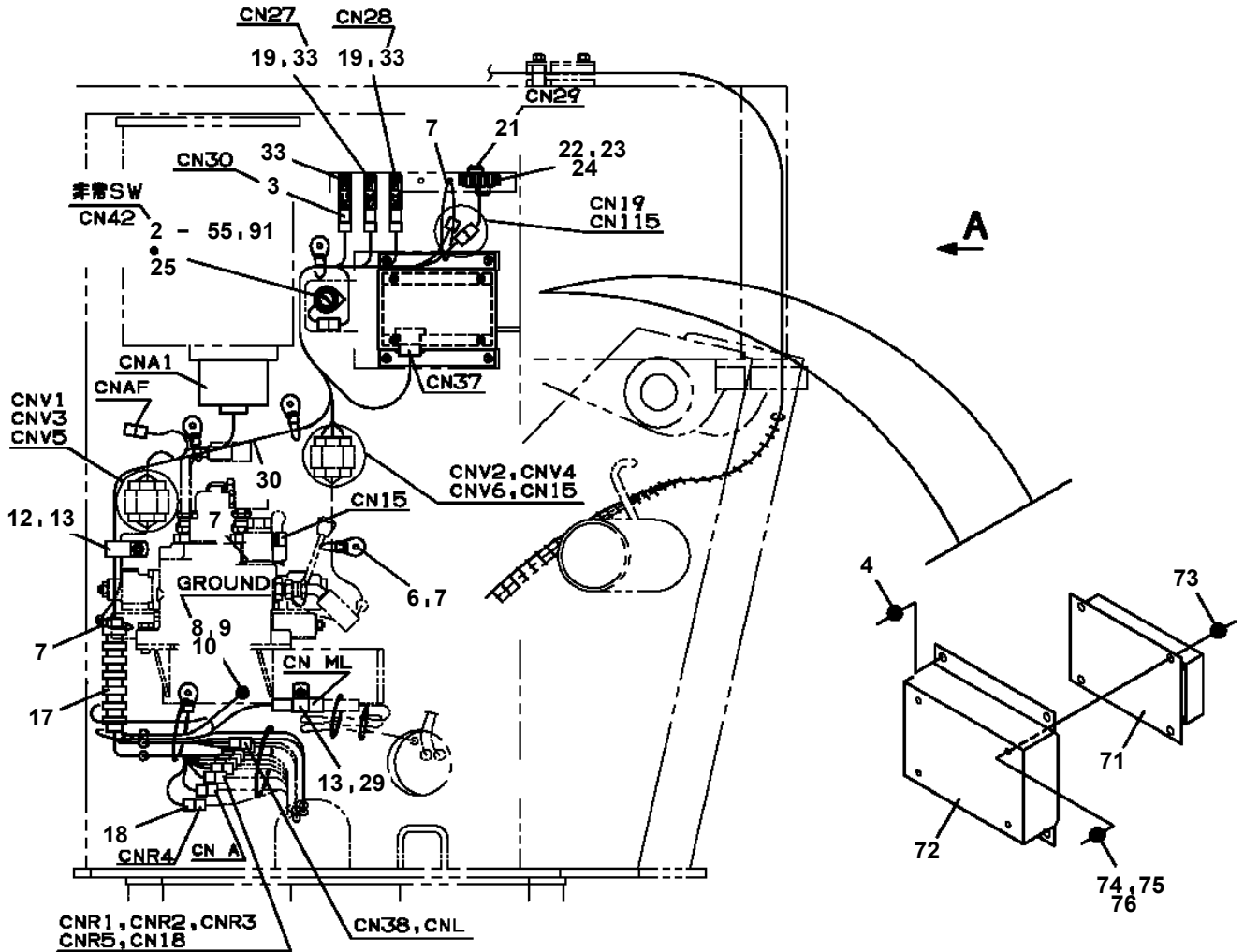
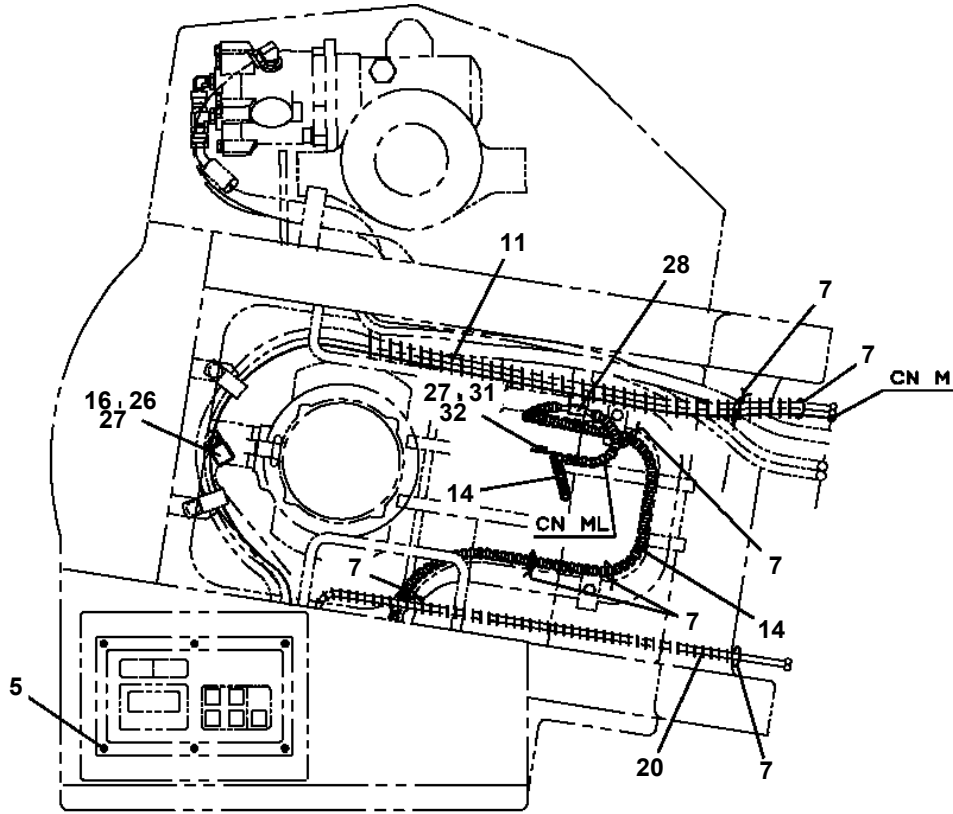
CNB1, CNB2, CNB3  
CNB4, CNB5, CNB6, CNB7  
CNB8, CNB9, CNBF, CN345

非帯電作用SW

A



**AT-147-3 43010100069 UPPER  
PE5190027-00 ELEC.ASSY,SWING FRAME**



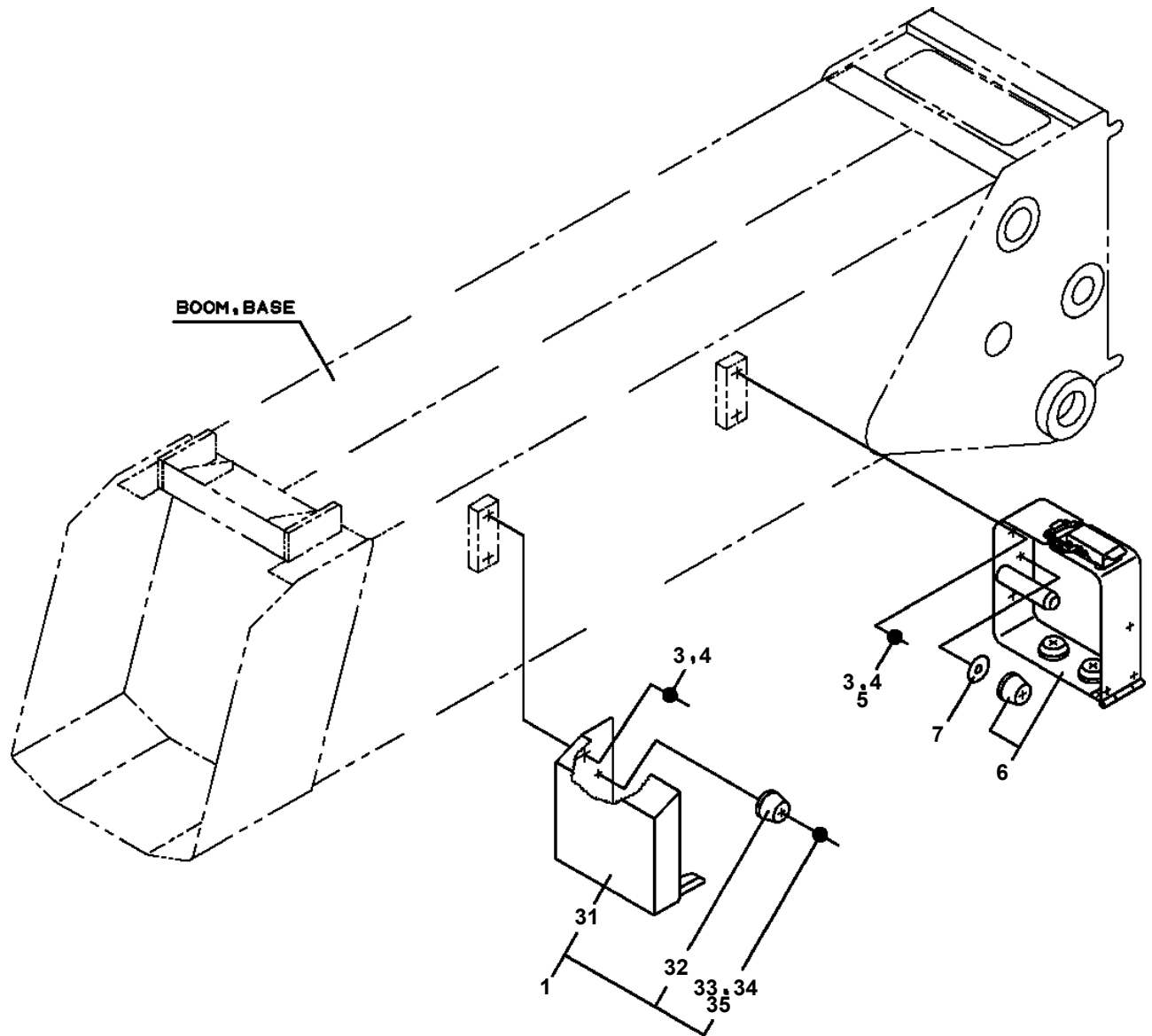
# AT-147-3 43010100069 UPPER

Pos No.	Parts No	Parts Name	Qty	Unit	Technical Data	Serial No (Start)	Serial No (End)	Remarks	Pages
1	42220011200	SUPPORT	1						
2	90201201600	NUT	1		M16				
3	90303071601	WASHER,PLAIN	1		16				

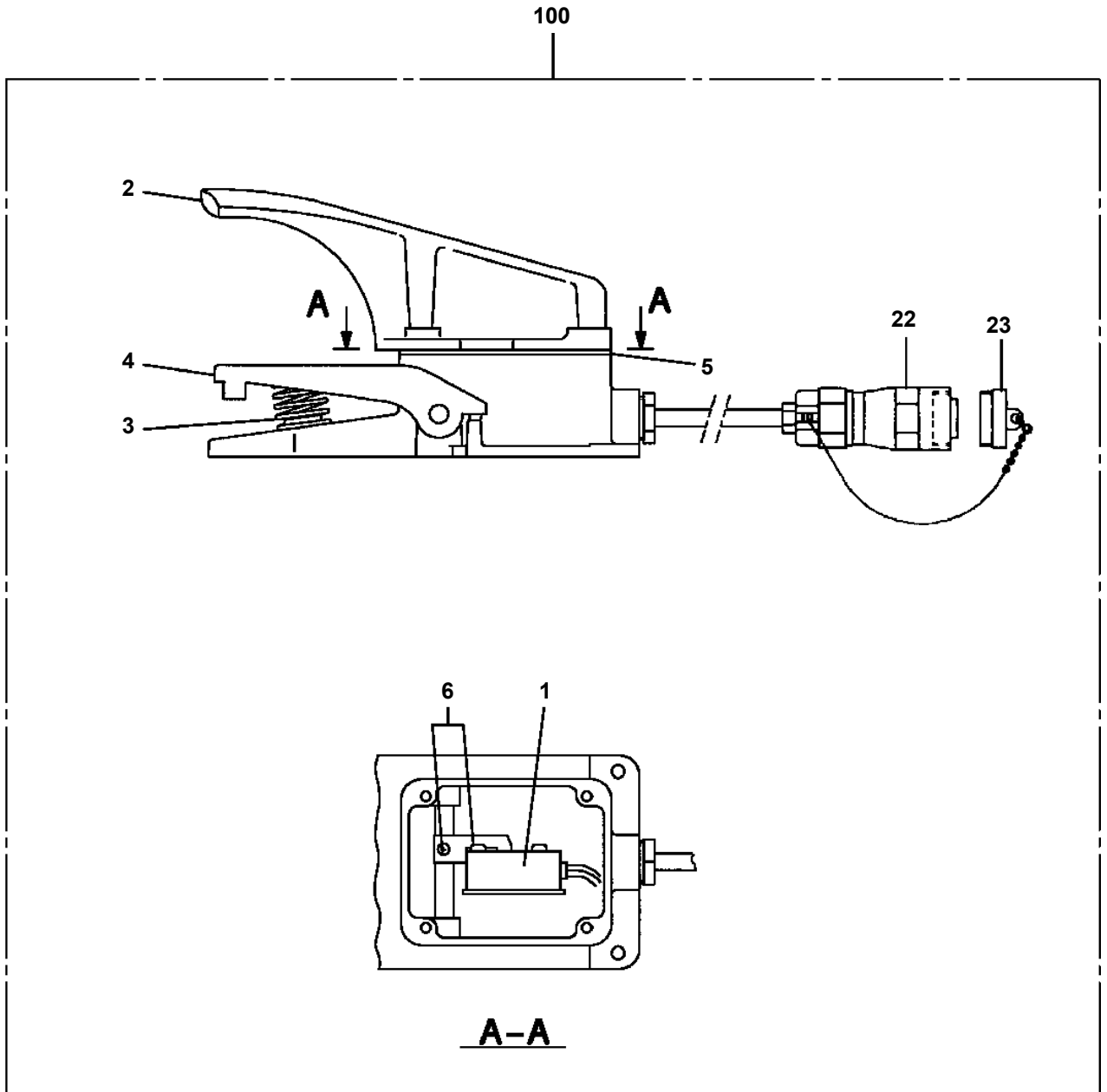
# AT-147-3 43010100069 UPPER

Pos No.	Parts No	Parts Name	Qty	Unit	Technical Data	Serial No (Start)	Serial No (End)	Remarks	Pages
2	36673325020	HEAD ASSY	1						
3	36673325030	CASE	1						
4	36673325040	O-RING	1						
5	36673325050	RING,BACKUP	1						
11	36673730030	ELEMENT KIT	1						
100	36673730000	FILTER ASSY	1						

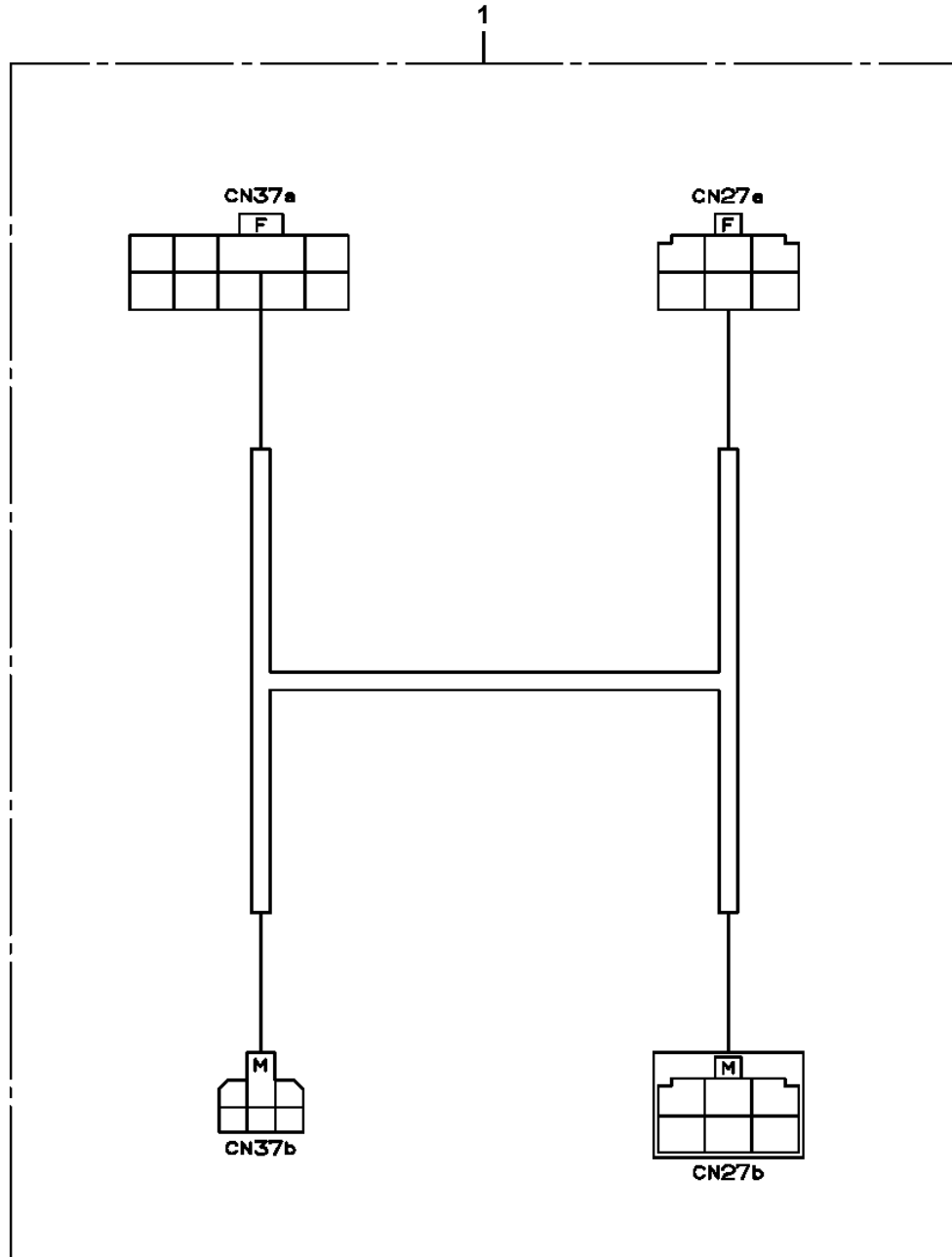
AT-147-3 43010100069 UPPER  
PG1250024-02 ATTACHMENT, JIB (JIB)



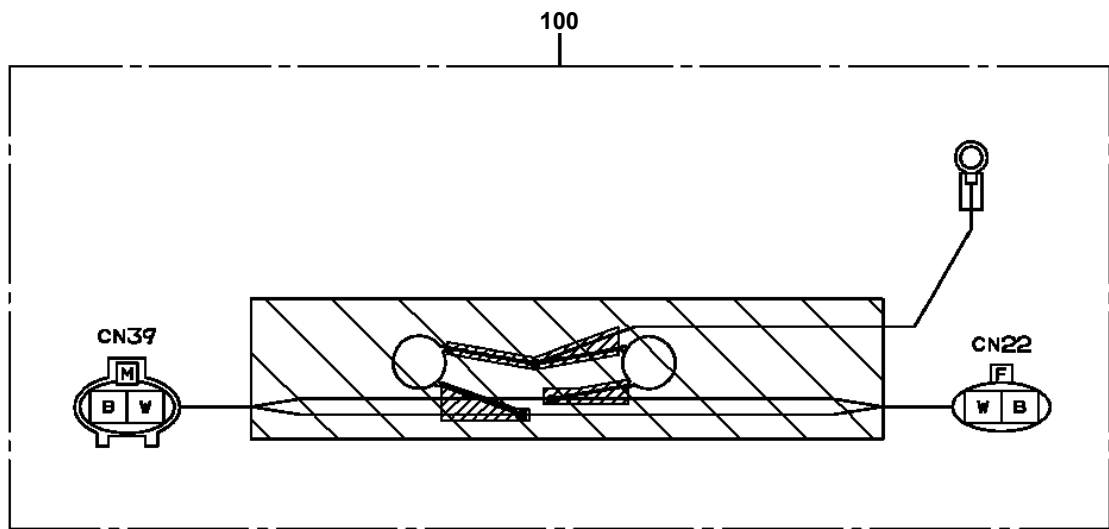
AT-147-3 43010100069 UPPER  
PH1540019-04 FOOT SWITCH (OPTION)



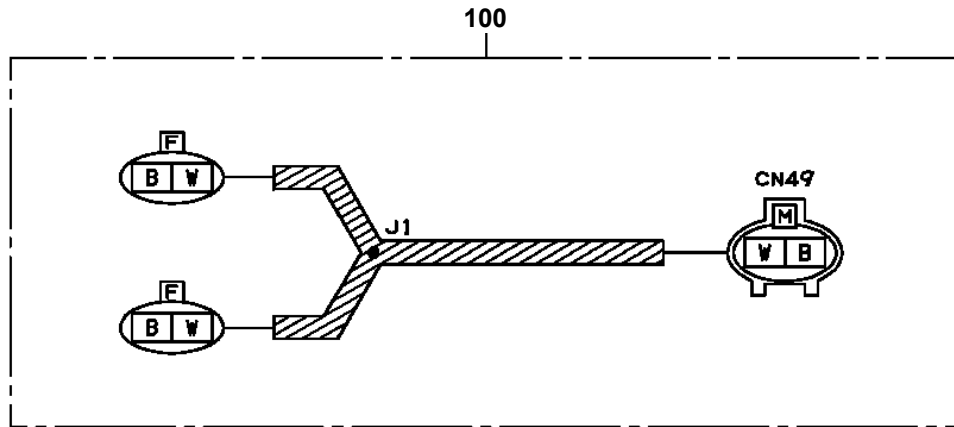
AT-147-3 43010100069 UPPER  
PH5030468-00 HARNESS



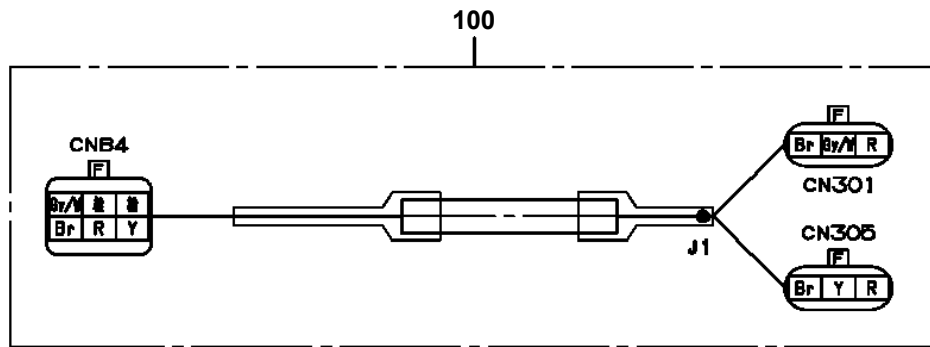
AT-147-3 43010100069 UPPER  
PH5031070-00 HARNESS



AT-147-3 43010100069 UPPER  
PH5031080-00 HARNESS

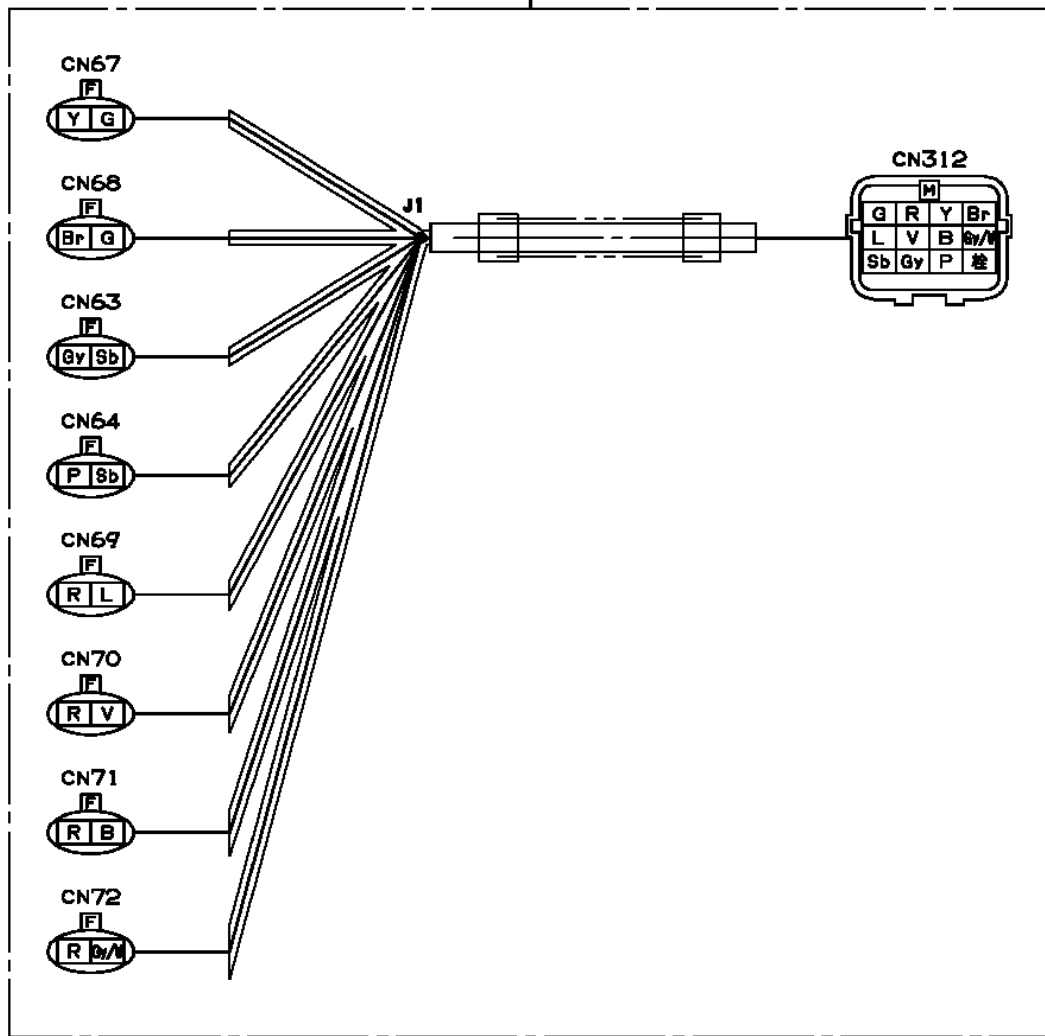


AT-147-3 43010100069 UPPER  
PH5032331-00 HARNESS



AT-147-3 43010100069 UPPER  
PH5032345-00 HARNESS

100

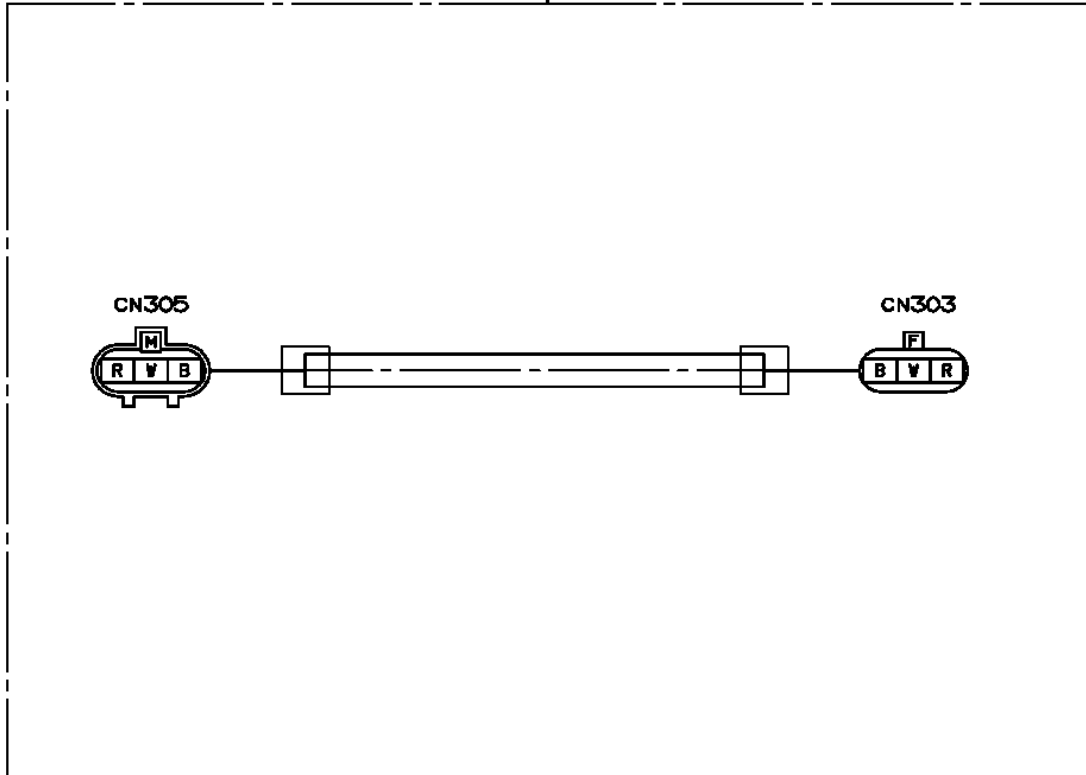


# AT-147-3 43010100069 UPPER

Pos No.	Parts No	Parts Name	Qty	Unit	Technical Data	Serial No (Start)	Serial No (End)	Remarks	Pages
100	42505310100	HARNESS	1						

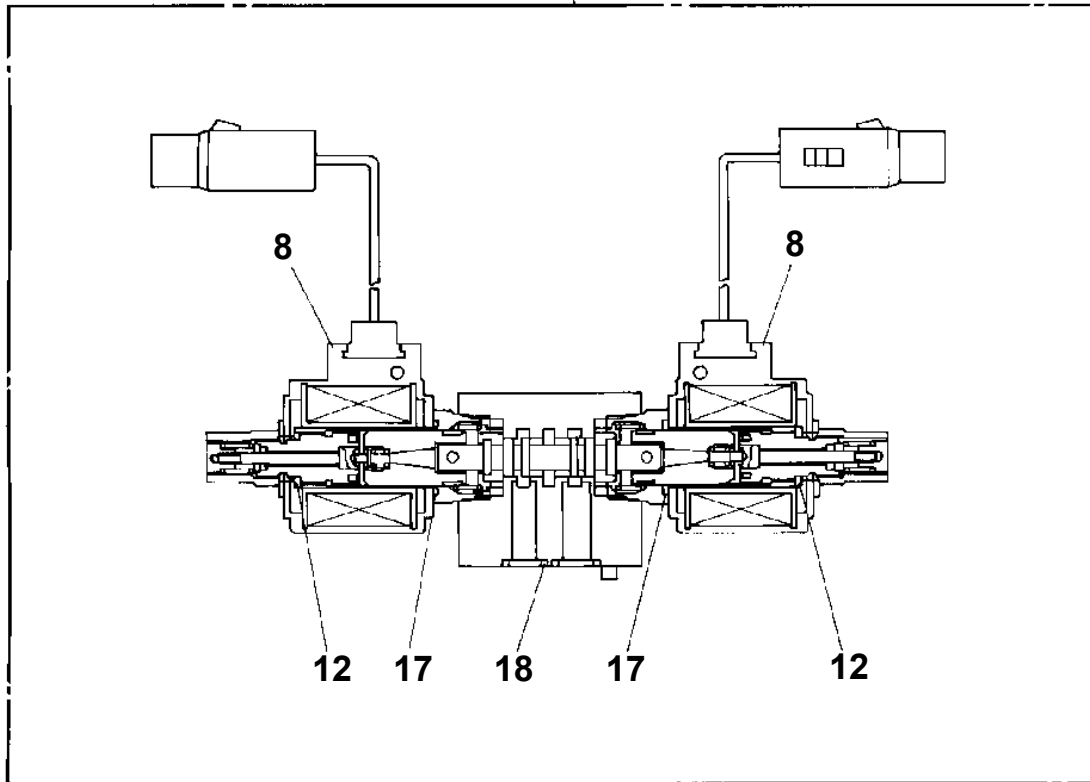
**AT-147-3 43010100069 UPPER  
PH5034242-00 HARNESS**

100



**AT-147-3 43010100069 UPPER  
PI1120097-00 VALVE, SOLENOID**

30



# AT-147-3 43010100069 UPPER

Pos No.	Parts No	Parts Name	Qty	Unit	Technical Data	Serial No (Start)	Serial No (End)	Remarks	Page
1	36642765010	NUT	2						
2	36645417510	CORE ASSY	2						
3	36741775010	SOLENOID ASSY	2						
4	36741775020	SPRING	2						
5	36647105010	PIN,SPRING	2						
8	91000501200	O-RING	4						
9	36642765060	WASHER (CENTER)	2						
10	36741775030	PACKING	2						
11	91001102100	O-RING	2		1A P21				
12	36643435040	PIN,SPRING	4						
100	36741780000	VALVE,SOLENOID	1						

# AT-147-3 43010100069 UPPER

Pos No.	Parts No	Parts Name	Qty	Unit	Technical Data	Serial No (Start)	Serial No (End)	Remarks	Pages
3	36625060040	SPRING	1						
4	36625515020	PLUG	1						
5	91002801800	O-RING	1		1B P18				
50	36625510000	VALVE,CHECK	1						

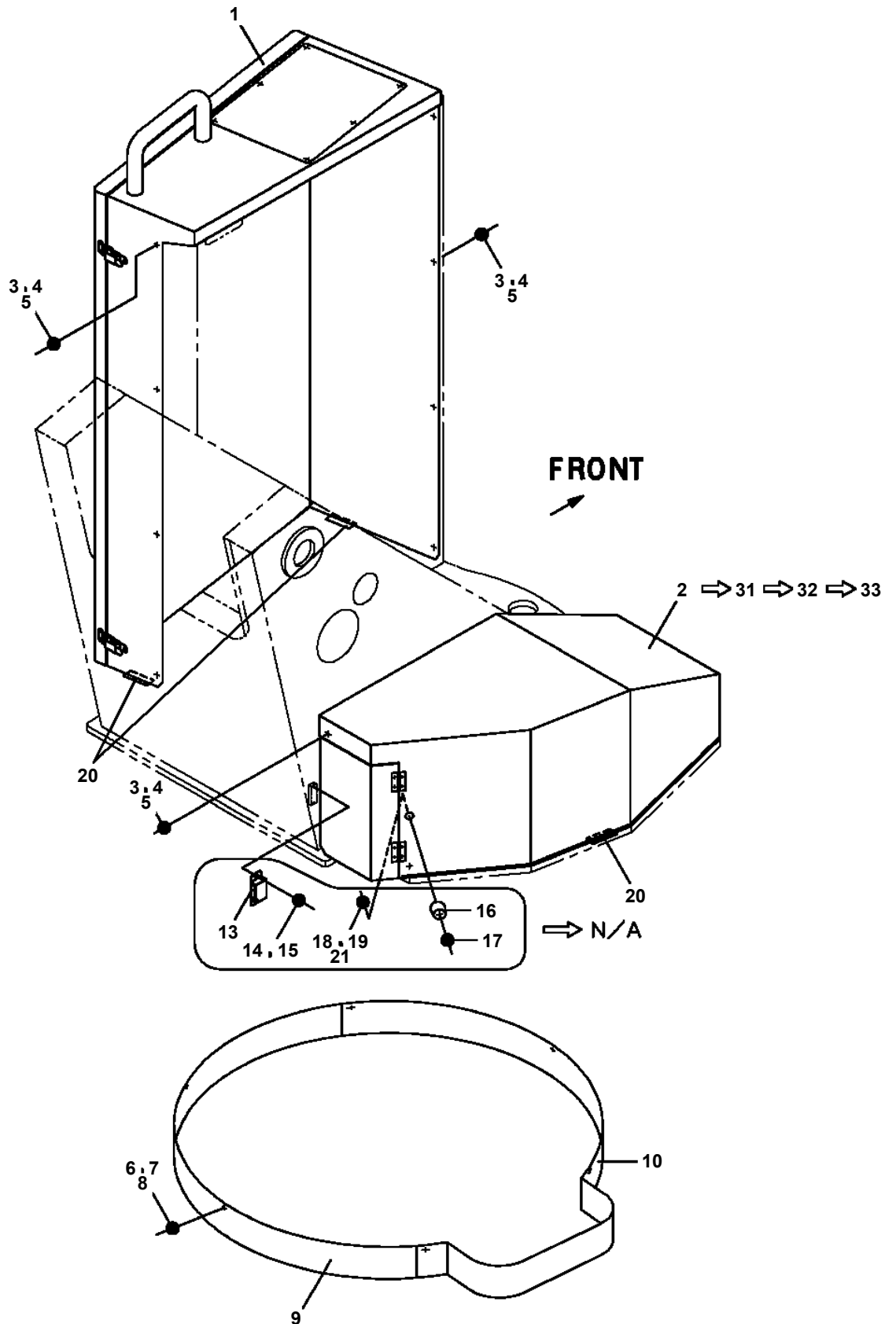
# AT-147-3 43010100069 UPPER

Pos No.	Parts No	Parts Name	Qty	Unit	Technical Data	Serial No (Start)	Serial No (End)	Remark
1	80316100040	PLUG	1		PF1/2			
2	91002801800	O-RING	1		1B P18			
7	91002801600	O-RING	1		1B P16			
10	36606335030	SPRING	1					
11	91002902500	O-RING	1		1B G25			
12	36606335020	GUIDE	1					
13	36606335010	COVER	1					
14	36620030010	PLUG	1		PF3/8			
15	91002801400	O-RING	2		1B P14			
16	52255101000	SPRING	1					
18	36605515060	PISTON	1					
19	91002801000	O-RING	1		1B P10			
20	80316100030	PLUG	1		G3/8			
21	91002801200	O-RING	2		1B P12			
22	90172108040	BOLT,HEXAGON SOCKET	4		M8X40			
23	80316090020	PLUG	3		KKT PT1/8			
31	36605515070	BODY ASSY	1					
32	36605515082	VALVE,CHECK	1					
100	36606330000	VALVE,COUNTERBALANCE	1					

# AT-147-3 43010100069 UPPER

Pos No.	Parts No	Parts Name	Qty	Unit	Technical Data	Serial No (Start)	Serial No (End)	Remarks	Pages
1	42267241000	BUCKET	1						

AT-147-3 43010100069 UPPER  
 PK1200454-03 COVER, SWING FRAME



展開圖有  
 ILLUSTRATED BREAKDOWN NO. 2, 31, 32, 33

# AT-147-3 43010100069 UPPER

Pos No.	Parts No	Parts Name	Qty	Unit	Technical Data	Serial No (Start)	Serial No (End)	Remarks	Pages
1	42267276101	COVER	1						
2	91810130270	FASTENER	4						

CLICK HERE TO **DOWNLOAD** THE COMPLETE MANUAL

- Thank you very much for reading the preview of the manual.
- You can download the complete manual from: [www.heydownloads.com](http://www.heydownloads.com) by clicking the link below



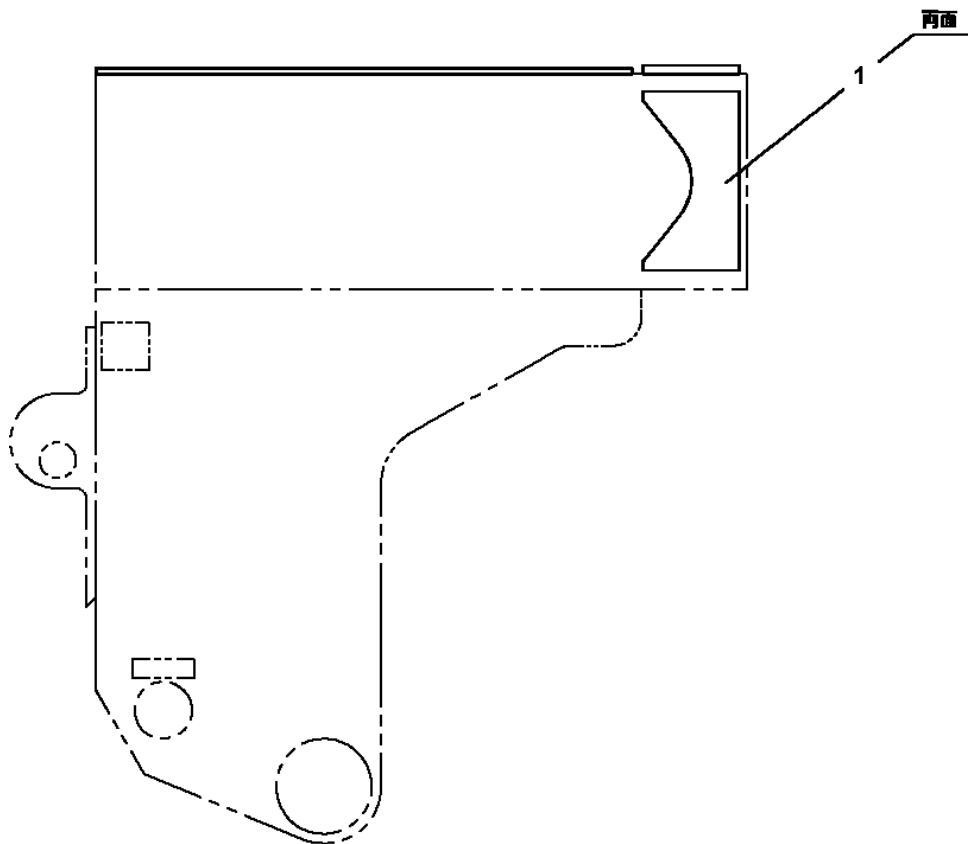
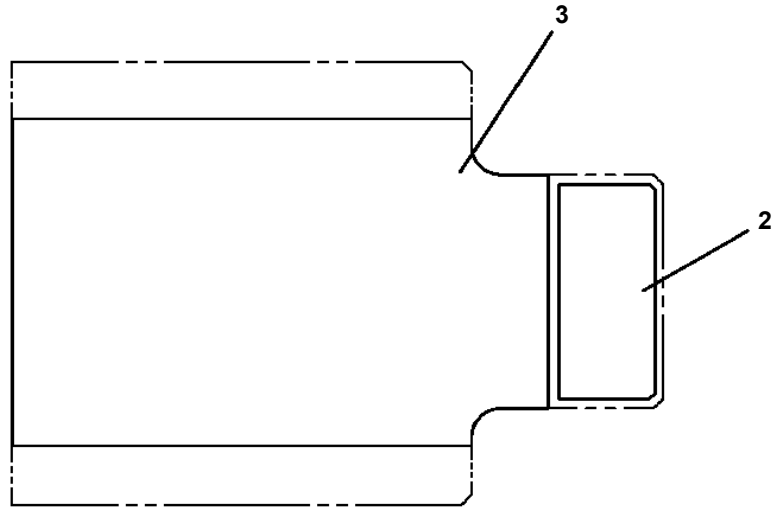
- Please note: If there is no response to CLICKING the link, please download this PDF first and then click on it.

CLICK HERE TO **DOWNLOAD** THE COMPLETE MANUAL

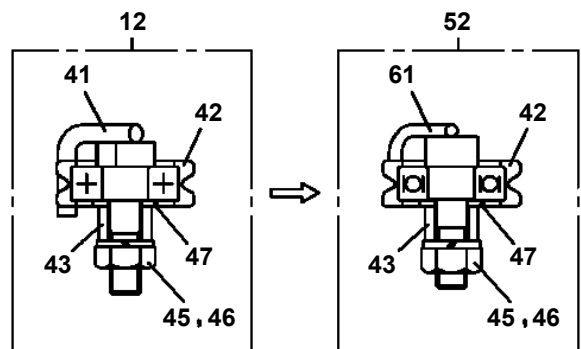
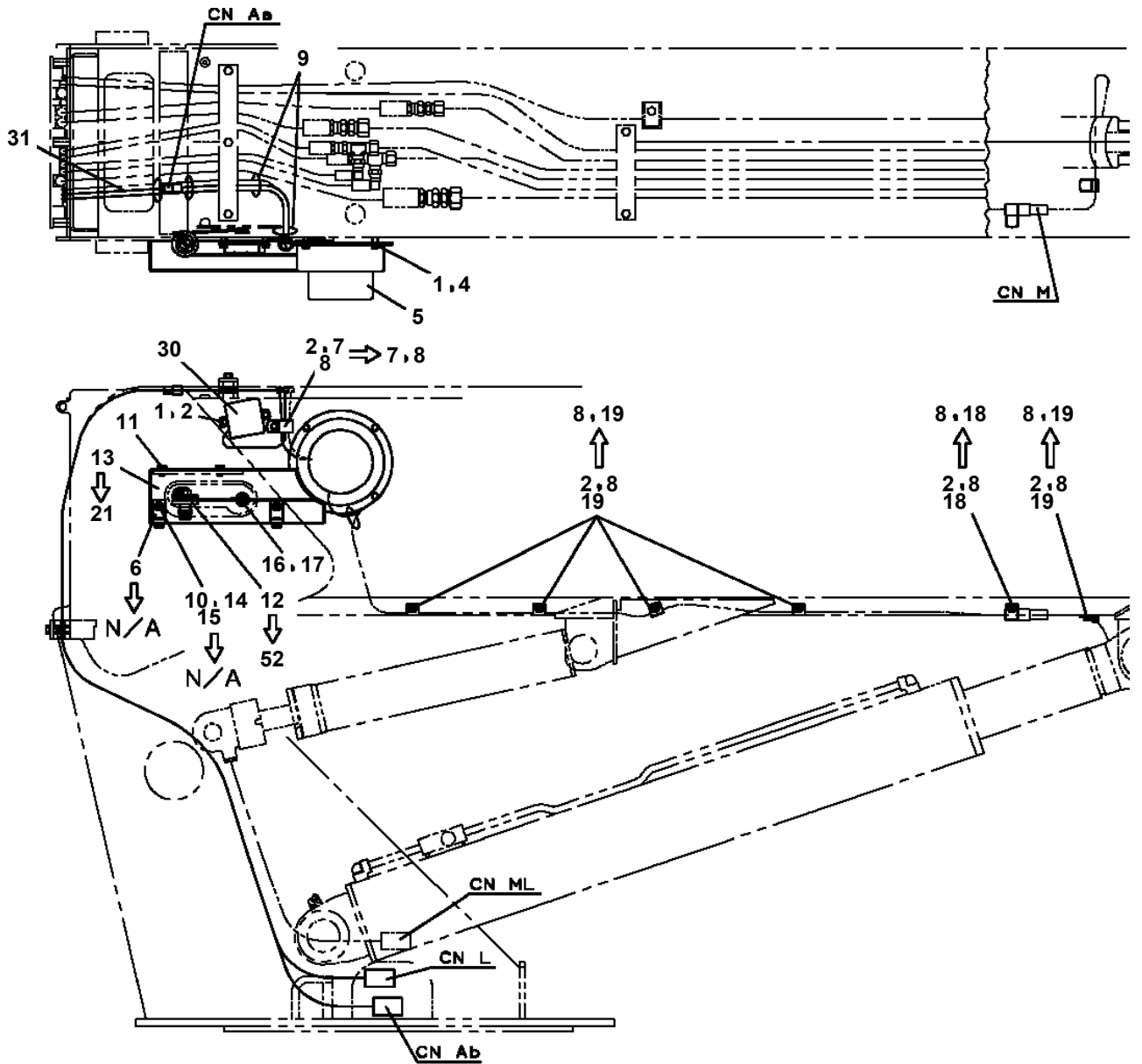
**AT-147-3 43010100069 UPPER**

Pos No.	Parts No	Parts Name	Qty	Unit	Technical Data	Serial No (Start)	Serial No (End)	Remarks	Pages
1	42267273100	COVER	1						
2	42267273200	COVER	1						
3	42267273300	COVER	1						
4	42267273400	COVER	1						
5	90183108015	BOLT	14		M8X15				
8	37000565980	PLATE	8						
9	42310995600	PLATE	5						
10	37000585820	PLATE	2						
12	90183108030	BOLT	5		M8X30				
13	37000576600	PLATE	1		T=8.0				
14	90183108020	BOLT	5		M8X20				
15	37000517000	PLATE	2			590474			

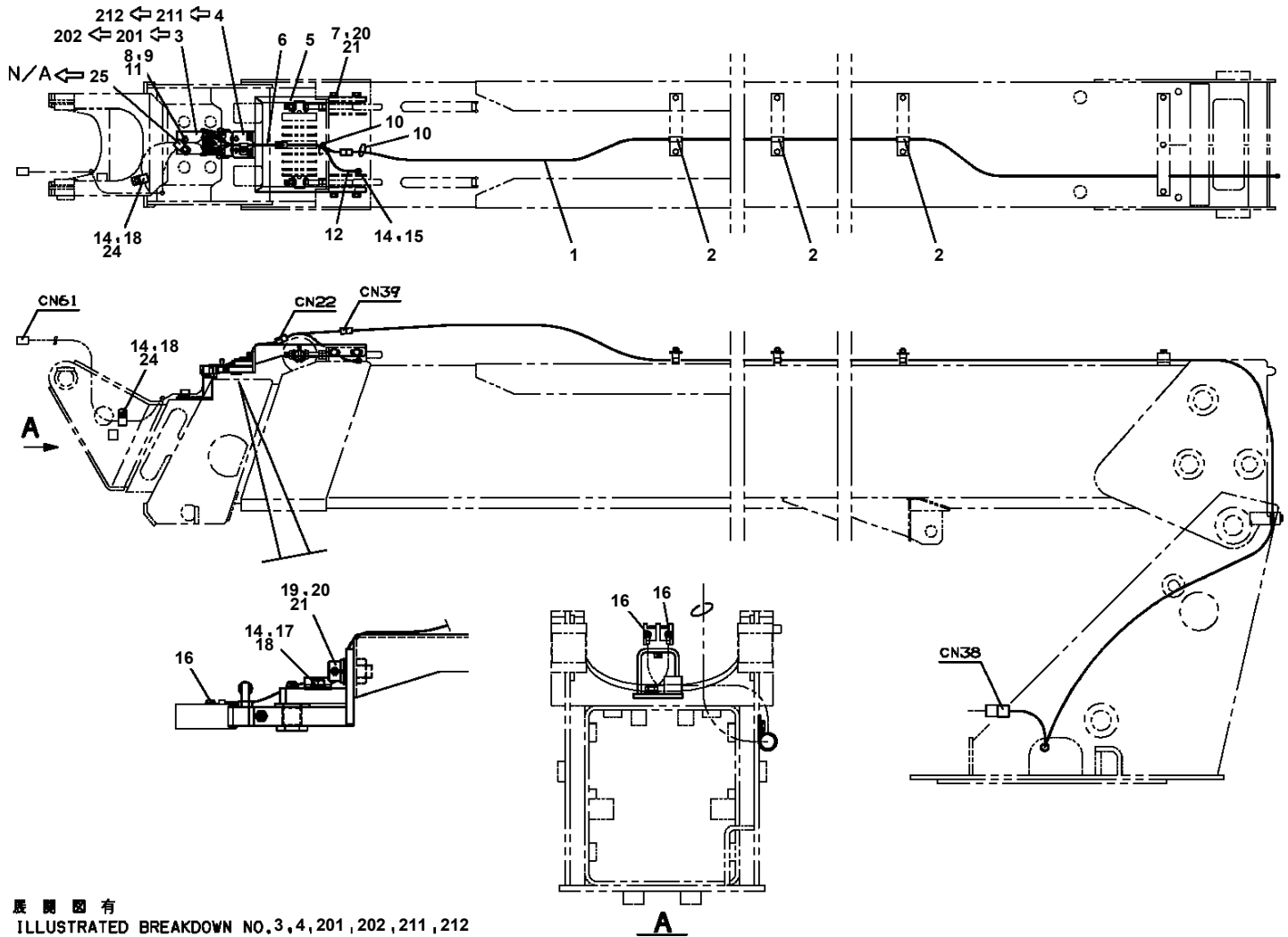
AT-147-3 43010100069 UPPER  
PM5151045-00 MODIFICATION ASSY



**AT-147-3 43010100069 UPPER  
PN1014441-05 ELEC.ASSY (BOOM)**



**AT-147-3 43010100069 UPPER  
PN1014491-03 ELEC.ASSY (CHARGER)**



展開図有  
ILLUSTRATED BREAKDOWN NO.3,4,201,202,211,212

# AT-147-3 43010100069 UPPER

Pos No.	Parts No	Parts Name	Qty	Unit	Technical Data	Serial No (Start)	Serial No (End)	Re
1	42502951000	BOX ASSY (PLUG SOCKET)	2					
2	91810132530	FASTENER	16					
3	90101206016	BOLT	4		M6X16			
4	90302040601	WASHER,SPRING	4		6			
5	42442470050	PLATE	2					
6	42502950100	HARNESS	1					
7	82401601002	CLAMP	8				590499	
	82401601002	CLAMP	9			590500		
8	91810130240	FASTENER	8				590499	
	91810130240	FASTENER	9			590500		
9	42733650040	PLATE,NAME (POWER SOURCE)	2					
21	82114101020	CONNECTOR (2P,MALE)	2					
22	82121102020	HOLDER	2					
23	82111101010	TERMINAL	4					
24	82121101085	PLUG (AVS0.85)	4					
25	82100001425	CABLE	2	M				
26	82100000592	TERMINAL (M40.3 TO 1.25)	4					
27	82100001220	INSULATOR	4					
28	82100002399	CONNECTOR	2					
29	82100002129	PLATE	2					
30	80172304008	SCREW,MACHINE	4		M4X8			
31	90302040401	WASHER,SPRING	4		4			
32	42502951200	CASE	2					
33	82400000214	GROMMET	2					

# AT-147-3 43010100069 UPPER

Pos No.	Parts No	Parts Name	Qty	Unit	Technical Data	Serial No (Start)	Serial No (End)	Remarks	Pages
1	42738200100	SWITCH ASSY	1						
3	90101208016	BOLT	2		M8X16				
4	90302040801	WASHER,SPRING	2		8				
5	91810130230	FASTENER	5						
6	42502910200	SUPPORT	1						
7	90201200400	NUT	1		M4				
8	42738200010	PLATE,NAME	1						
9	90303070401	WASHER,PLAIN	1		4				
10	90303070801	WASHER,PLAIN	2		8				
11	90201200800	NUT	2		M8				
12	82199514013	CAP	1						
13	82199504017	NUT	1		AT-401N				
14	80172304016	SCREW,MACHINE	2		M4X16				
22	42502910100	LAMP ASSY	1						
44	82166300100	BULB,LAMP	1		24V 10W				

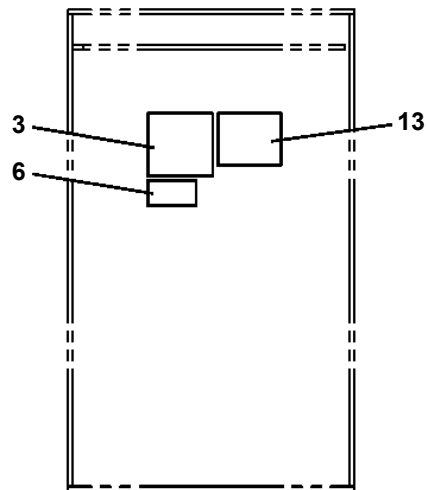
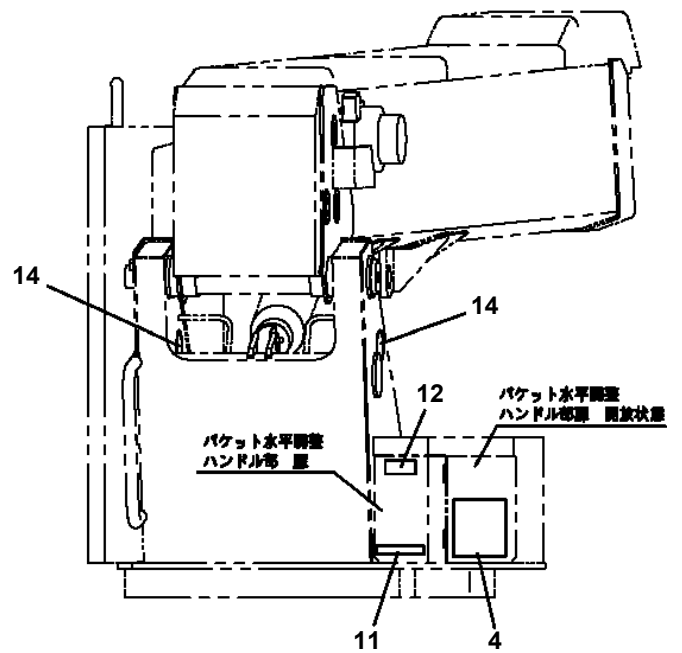
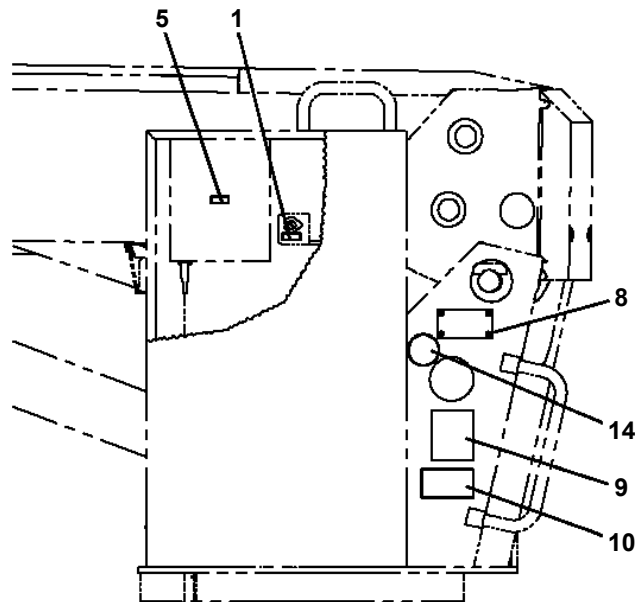
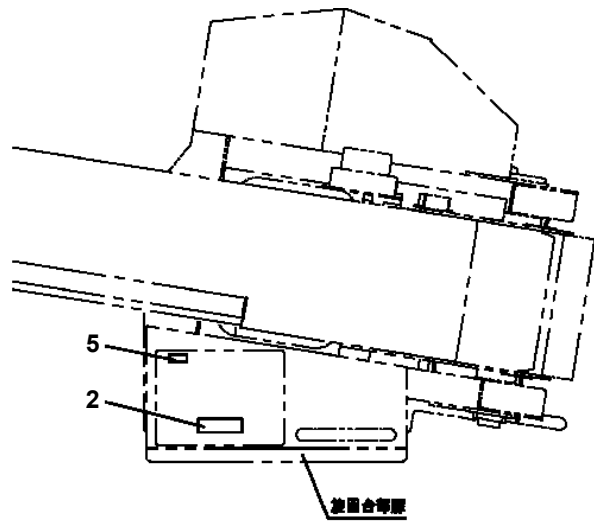
# AT-147-3 43010100069 UPPER

Pos No.	Parts No	Parts Name	Qty	Unit	Technical Data	Serial No (Start)	Serial No (End)	Remarks
2	42356377510	COVER	1					
3	42356377520	SCREW	12		M4X8			
4	42356377530	WASHER	12		M4			
5	42356377540	HARNESS	1					
6	42356377550	HARNESS	1					
7	42356377560	COVER	2					
8	42356377570	SCREW	4		M3X4			
9	42357167510	BOARD,POWER	1					
11	42356371170	BOARD ASSY	1					
12	42356377580	SEAT (SILICONE)	1					
13	42356377590	SEAT (SILICONE)	1					
15	42356377600	SPACER	9					
16	42356377610	SCREW	24		M3X6			
21	42357167530	BOARD,CPU (WITH DATA)	1					
	42357167540	BOARD,CPU (WITH DATA)	1			590480	590479	
100	42357161000	TRANSMITTER,SIGNAL	1					

# AT-147-3 43010100069 UPPER

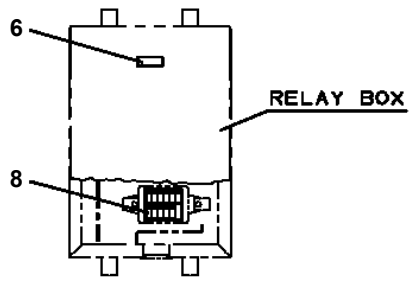
Pos No.	Parts No	Parts Name	Qty	Unit	Technical Data	Serial No (Start)	Serial No (End)	Remarks	Pages
1	42391164010	PLATE,NAME	1						
2	42398322010	PLATE,NAME	1						
3	42398322020	PLATE,NAME	1						
4	42399342010	PLATE,NAME	1						
5	42393204010	PLATE,NAME	1						
6	42398322060	PLATE,NAME	1						
7	42398322050	PLATE,NAME	1						
8	42399342020	PLATE,NAME	1						

AT-147-3 43010100069 UPPER  
 PO1014999-01 PLATE ASSY,NAME (SWING FRAME)

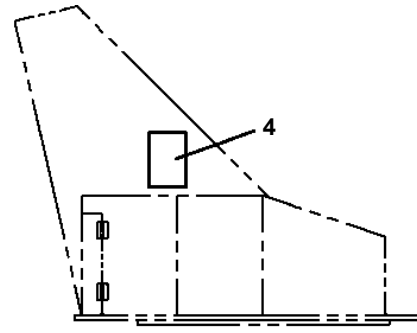


旋回合部裏内側

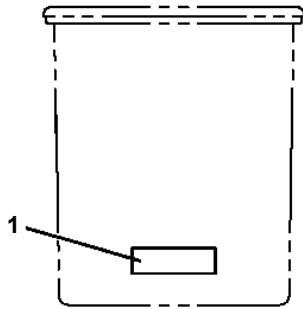
**AT-147-3 43010100069 UPPER  
PO1015670-01 PLATE ASSY,NAME (VEHICLE)**



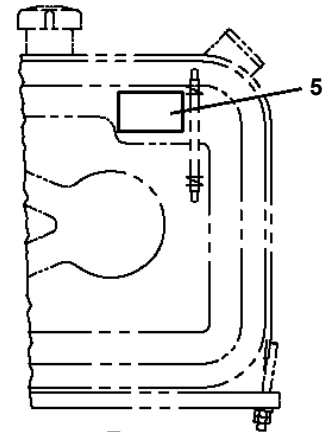
**A**



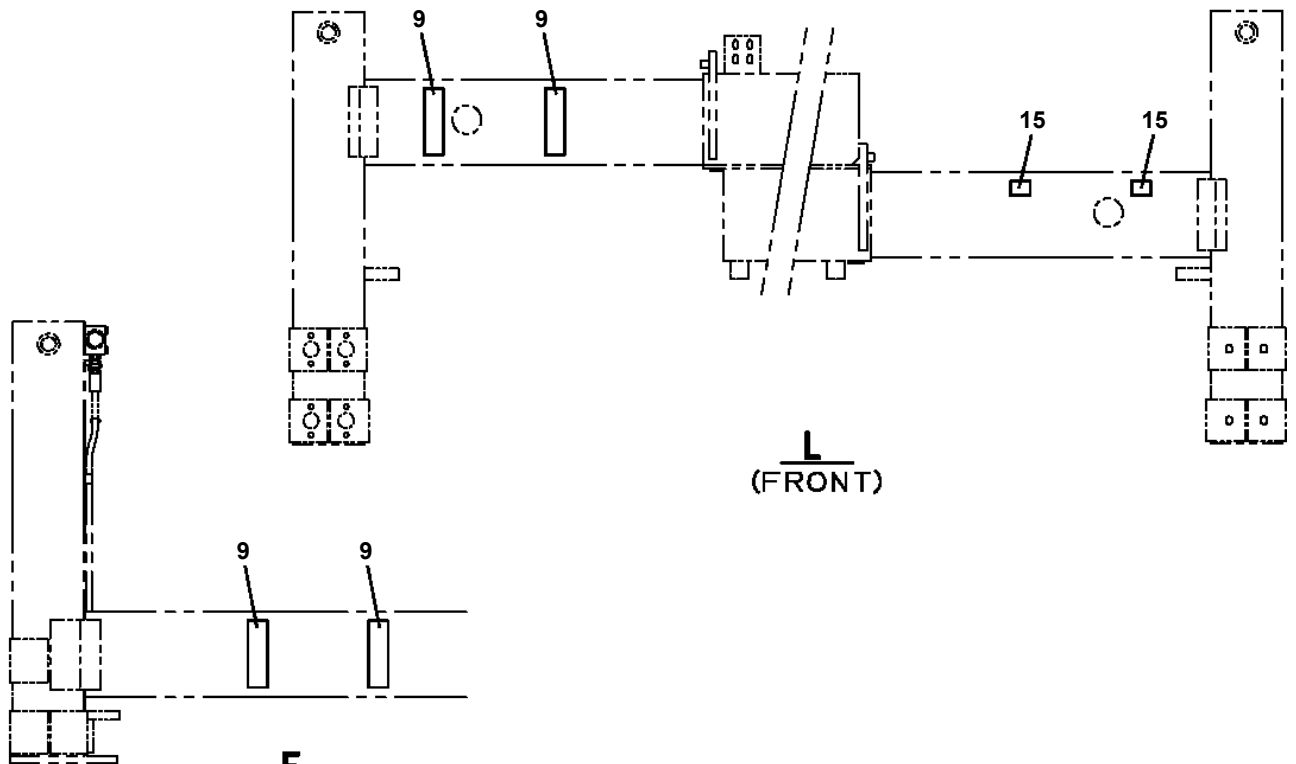
**E**



**J**



**B**



**L**  
**(FRONT)**

**F**  
**(REAR)**

# AT-147-3 43010100069 UPPER

Pos No.	Parts No	Parts Name	Qty	Unit	Technical Data	Serial No (Start)	Serial No (End)	Rema
20	42332677560	SPRING	1					
25	42332677520	PLUG	1					
26	42332677530	BOOT	1					
36	42332677590	STOPPER	1					
41	42332677600	SPRING	2					
45	42332677610	COVER	1					
46	42332677620	CAP	1					
53	42332677630	BEARING	2					
54	42332677540	SPRING	1					
55	42332677650	SPRING	2					
61	42332677660	WASHER	1					
100	42332672003	OPE.ASSY (LEVER,CONTROL)	1					

# AT-147-3 43010100069 UPPER

Pos No.	Parts No	Parts Name	Qty	Unit	Technical Data	Serial No (Start)	Serial No (End)	Remarks
1	37004100040	PUMP,GREASE (DOMESTIC)	1					

# AT-147-3 43010100069 UPPER

Pos No.	Parts No	Parts Name	Qty	Unit	Technical Data	Serial No (Start)	Serial No (End)	Remarks	Page
1	90171108040	BOLT	6		M8X40				
3	90302040801	WASHER,SPRING	8		8				
4	90201780800	NUT	3		M8				
5	42422262300	PIPE,FLEXIBLE	1						
6	90101210020	BOLT	2		M10X20				
7	90302041001	WASHER,SPRING	4		10				
8	90201201000	NUT	6		M10				
9	42422262200	MUFFLER	1						
10	42422262010	PLATE	1						
11	90162260500	U-BOLT	1		50AXM10				
12	42422262020	SUPPORT	1						
13	90101208025	BOLT	2		M8X25				
14	90201200800	NUT	2		M8				
31	36361361040	GASKET (EXHAUST)	2						
51	36361361050	MUFFLER	1						

# AT-147-3 43010100069 UPPER

Pos No.	Parts No	Parts Name	Qty	Unit	Technical Data	Serial No (Start)	Serial No (End)	Remarks
1	42900002300	CASE	1					
2	42654272100	COVER ASSY	1					
3	34354781710	RELAY (WITH BRACKET)	15					
4	34354781740	RELAY	1					
5	34354781730	RELAY	1					
6	80197585012	SCREW,MACHINE	19		M5X12			
7	90302040601	WASHER,SPRING	7		6			
8	90201200600	NUT	1		M6			
9	90303070601	WASHER,PLAIN	8		6			
10	82100002016	CLAMP	1		WR25			
11	80182306014	SCREW,MACHINE	6		M6X14			
12	82161324080	RELAY	2					
13	42900002400	SUPPORT	1					
15	90186206010	BOLT,FLANGE	3		M6X10			
17	42900002100	TERMINAL ASSY	1					
18	80172303016	SCREW,MACHINE	2		M3X16			
19	90302040301	WASHER,SPRING	4		3			
20	90303070301	WASHER,PLAIN	4		3			
21	42651091100	RELAY ASSY	1					
22	80172303008	SCREW,MACHINE	2		M3X8			
41	42654272110	COVER	1					
42	42653235321	COVER	1					
43	90813106015	BOLT	2		M6X15			
44	90302040601	WASHER,SPRING	2		6			
45	90303070601	WASHER,PLAIN	2		6			
100	42901452001	RELAY BOX ASSY	1					

# AT-147-3 43010100069 UPPER

Pos No.	Parts No	Parts Name	Qty	Unit	Technical Data	Serial No (Start)	Serial No (End)	Remarks	Pages
1	42443243100	SUPPORT	1						
2	42443243200	SUPPORT	1						
3	82466154603	CATCH	1						
4	80175803006	SCREW,MACHINE	3		M3X6				
5	42698150300	INSULATOR	3						
6	80172804010	SCREW,MACHINE	3		M4X10				
7	90302510401	WASHER,SPRING	8		4				
8	90303520401	WASHER,PLAIN	4		4				
9	82400000393	INSULATOR	1						
10	80172804014	SCREW,MACHINE	1		M4X14				
11	82464107812	HINGE	1						
12	80172804008	SCREW,MACHINE	4		M4X8				
13	80175804006	SCREW,MACHINE	2		M4X6				
14	42875640010	PLATE	2		T=0.5	590456			
100	42443243002	SUPPORT ASSY	1						

# AT-147-3 43010100069 UPPER

Pos No.	Parts No	Parts Name	Qty	Unit	Technical Data	Se
1	82109833232	SWITCH	1			
2	82100002220	CABLE	6	M		
3	82100002173	CONNECTOR	1			
50	42509170000	SWITCH ASSY (ELEC.BOOSTER, REMOTE:5M,NANABOSI,KASUGA)	1			

# AT-147-3 43010100069 UPPER

Pos No.	Parts No	Parts Name	Qty	Unit	Technical Data	Se
1	42470980100	SWITCH,PUSH	1			
2	82100002220	CABLE	3	M		
3	82100002173	CONNECTOR	1			
10	42470983000	SWITCH BOX (ELECTRIC BOOSTER, 3M,NANABOSI,SINKOU DENKI)	1			

# AT-147-3 43010100069 UPPER

Pos No.	Parts No	Parts Name	Qty	Unit	Technical Data	Serial No (Start)	Serial No (End)	Remarks	Page
5	91002902500	O-RING	4		1B G25				
8	80316090020	PLUG	4		KKT PT1/8				
9	36606975020	PLUG	1						
10	91002801400	O-RING	1		1B P14				
12	16066241000	SPRING	1						
22	36606985020	RELIEF ASSY	1						
100	36606980000	VALVE ASSY,RELIEF	1						

# AT-147-3 43010100069 UPPER

Pos No.	Parts No	Parts Name	Qty	Unit	Technical Data	Serial No (Start)	Serial No (End)
1	42460821200	BLOCK,RUBBER (NAKAMURA)	4				
2	42460012550	WEDGE (STOPPER FOR TIRE/JUSTIN)	4				

# AT-147-3 43010100069 UPPER

Pos No.	Parts No	Parts Name	Qty	Unit	Technical Data	Serial No (Start)	Serial No (End)	Remarks	Pages
1	42461681000	WEDGE (YELLOW)	1						

# AT-147-3 43010100069 UPPER

Pos No.	Parts No	Parts Name	Qty	Unit	Technical Data	Serial No (Start)	Serial No (End)
1	42731680000	WOOD BLOCK (WITH RUBBER,T=80)	1				

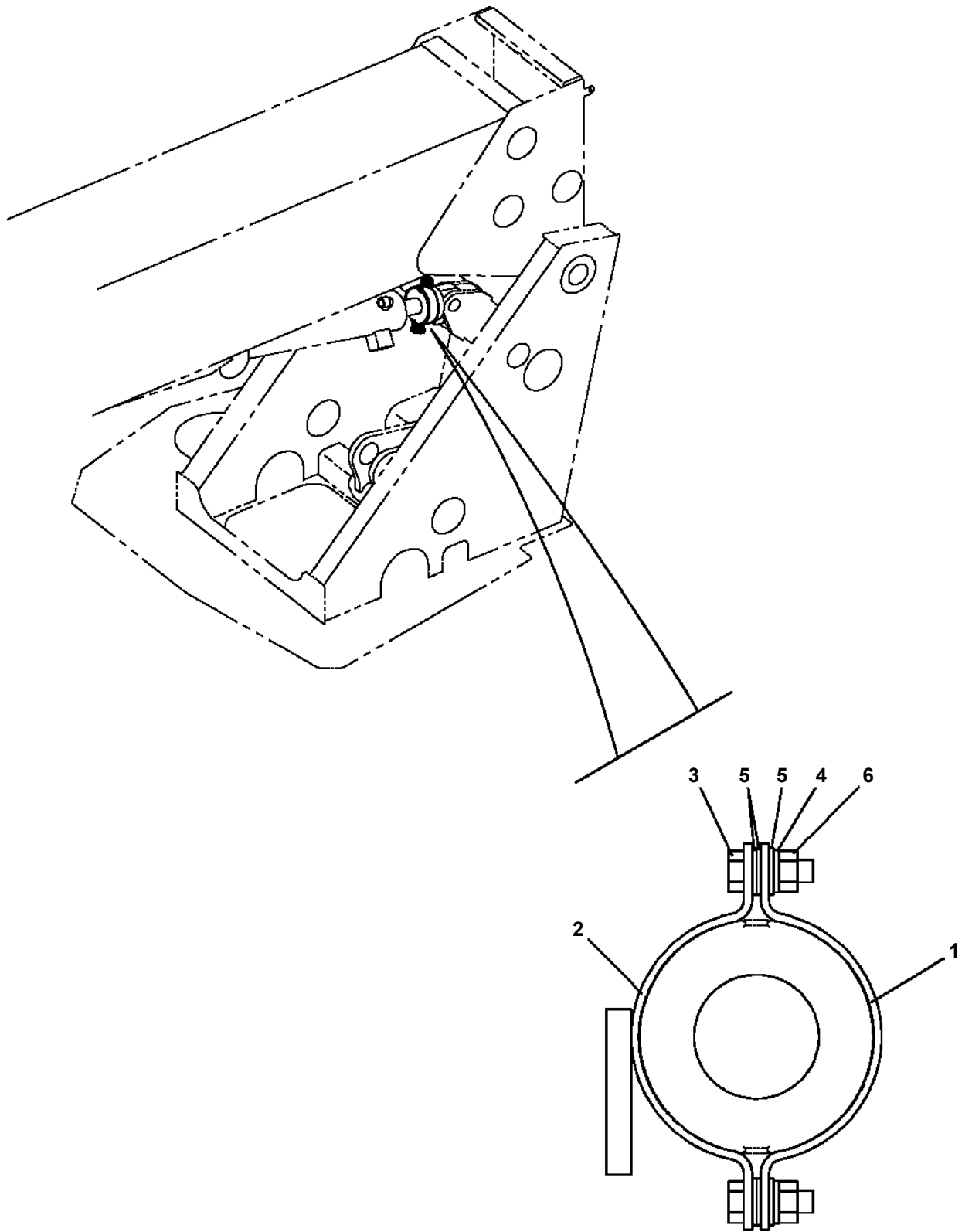
# AT-147-3 43010100069 UPPER

Pos No.	Parts No	Parts Name	Qty	Unit	Technical Data	Serial No (Start)	S
1	42971851000	WOOD BLOCK (KANSAI DENRYOKU/DETACHABLE)	1				

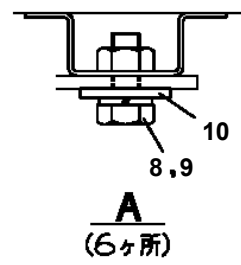
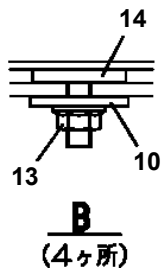
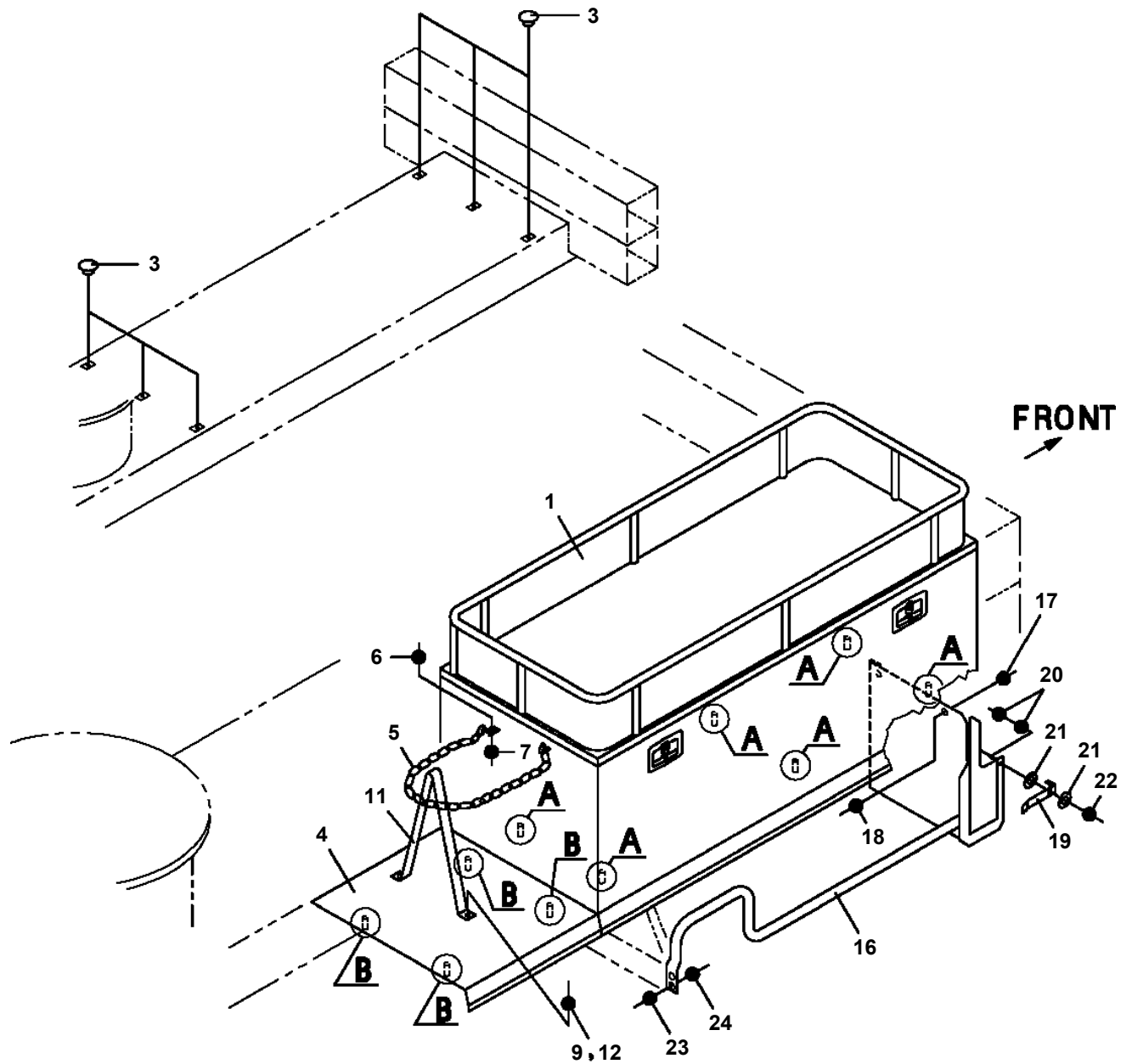
# AT-147-3 43010100069 UPPER

Pos No.	Parts No	Parts Name	Qty	Unit	Technical Data	Serial No (Start)	Serial No (End)	Remarks	Pages
1	42443130300	SUPPORT	1						
2	90101208018	BOLT	4		M8X18				
3	90302040801	WASHER,SPRING	4		8				
4	42443130401	SUPPORT	1						
5	90201200800	NUT	2		M8				

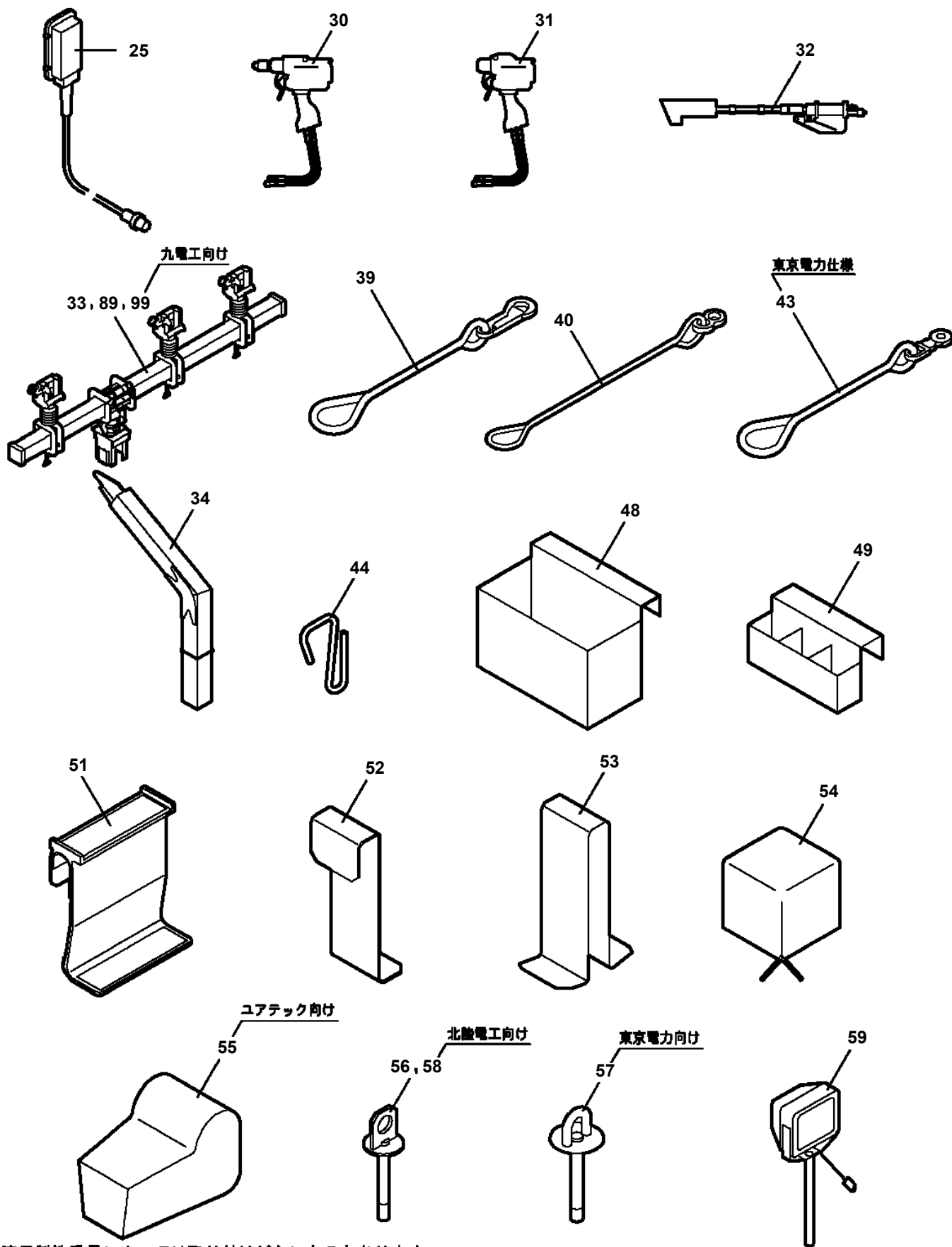
**AT-147-3 43010100069 UPPER  
PX5690015-00 MOUNT ASSY,SUPPORT (DISTORTED DETECTION/LEVELING CYL)**



**AT-147-3 43010100069 UPPER  
PX5780221-00 MOUNT ASSY, TOOL BOX (RIGHT/FRONT:1-DECKER)**



AT-147-3 43010100069 UPPER  
PY1020001-10 OPTION UNIT,2



適用製造番号によっては取り付けがないものもあります。

MACHINES OF SOME SERIAL NO. ARE NOT EQUIPPED WITH THESE PARTS.

# AT-147-3 43010100069 UPPER

Pos No.	Parts No	Parts Name	Qty	Unit	Technical Data	Serial No (Start)	Serial No (End)	Re
1	42473857510	SCREW	4					
2	42473857515	SPRING	4					
3	80560053000	BALL,STEEL	4		1/8			
4	42470027510	HEAD (SCM)	1					
5	42473857530	SPRING	1					
6	42473857535	PIN	1					
7	42470027520	COLLAR	1					
8	42473857545	SPRING	1					
9	42473857550	PISTON	1					
10	91411003500	RING,BACKUP	1					
11	91001103500	O-RING	1		1A P35			
12	42470027530	CYLINDER	1					
13	42473857570	HOLDER	1					
14	42473857575	CAP	1					
15	91001101400	O-RING	1		1A P14			
16	42473857580	CAP	1					
17	42473857590	COVER	1					
18	42473857595	BUTTON (PUSH )	1					
19	42473857600	SPRING	1					
20	42473857605	SWITCH	1					
21	42473857610	HOLDER (SWITCH)	1					
22	42473857615	SCREW	1					
24	42473857620	BINDER	4					
25	42473857625	TUBE	1					
26	42473857630	TUBE	1					
27	42473857635	TUBE	1					
28	42473857640	BINDER	6					
29	42473857645	HOSE	1					
30	42473857650	JOINT	1					
31	42473857655	CABLE	1					
32	82100002173	CONNECTOR	1					
38	80136320010	PIN,SPLIT	1		2X10			
39	42473857675	SEPARATOR	1					
61	42473857670	PROTECTOR ASSY	1					
62	42473857690	CLAMP ASSY	1					
100	42470020000	CLAMP HEAD (IZUMI 8TON,2.5M)	1					

# AT-147-3 43010100069 UPPER

Pos No.	Parts No	Parts Name	Qty	Unit	Technical Data	Serial No (Start)	Serial No (End)	Rem
1	42473857510	SCREW	4					
2	42473857515	SPRING	4					
3	80560053000	BALL,STEEL	4		1/8			
4	42473857520	HEAD (TITAN)	1					
5	42473857530	SPRING	1					
6	42473857535	PIN	1					
7	42473857540	COLLAR	1					
8	42473857545	SPRING	1					
9	42473857550	PISTON	1					
10	91411003500	RING,BACKUP	1					
11	91001103500	O-RING	1		1A P35			
12	42473857560	CYLINDER	1					
13	42473857570	HOLDER	1					
14	42473857575	CAP	1					
15	91001101400	O-RING	1		1A P14			
16	42473857580	CAP	1					
17	42473857590	COVER	1					
18	42473857595	BUTTON (PUSH )	1					
19	42473857600	SPRING	1					
20	42473857605	SWITCH	1					
21	42473857610	HOLDER (SWITCH)	1					
22	42473857615	SCREW	1					
24	42473857620	BINDER	4					
25	42473857625	TUBE	1					
26	42473857630	TUBE	1					
27	42473857635	TUBE	1					
28	42473857640	BINDER	6					
29	42473857645	HOSE	1					
30	42473857650	JOINT	1					
31	42473857655	CABLE	1					
32	42473857660	PLUG (SANWA)	1					
38	80136320010	PIN,SPLIT	1		2X10			
39	42473857675	SEPARATOR	1					
61	42473857670	PROTECTOR ASSY	1					
62	42473857690	CLAMP ASSY	1					
100	42473850000	CLAMP HEAD (IZUMI 8TO,3.5M)	1					

# AT-147-3 43010100069 UPPER

Pos No.	Parts No	Parts Name	Qty	Unit	Technical Data	Serial No (Start)
1	42473190000	CUTTER HEAD (IZUMI 6.4TON 2.5M ELECTRICSANWA)	1			

# AT-147-3 43010100069 UPPER

Pos No.	Parts No	Parts Name	Qty	Unit	Technical Data	Serial No (Start)	Serial No (End)	Remarks
1	42473650000	ROPE (SAFETY,0.5M,D=24)	1					

# AT-147-3 43010100069 UPPER

Pos No.	Parts No	Parts Name	Qty	Unit	Technical Data	Serial No (Start)	Serial No (End)	Remarks	Pages
1	42470121000	ARM ASSY	1						
2	42471231000	HOLDER	3						
3	42470123000	CLAMP ASSY	1						
4	42470044000	HOT STICK	1						
5	42476851000	SUPPORT	1						
6	90101216130	BOLT	1		M16X130				
7	90303071601	WASHER,PLAIN	2		16				
8	90201201600	NUT	2		M16				
9	42220011200	SUPPORT	1						
31	42470121100	ARM	1						
32	42470121200	CAP	2						

# AT-147-3 43010100069 UPPER

Pos No.	Parts No	Parts Name	Qty	Unit	Technical Data	Serial No (Start)	Serial No (End)	Remarks	Pages
2	80560057000	BALL,STEEL	1		1/4				
7	36052132030	PIN	1						
8	37001200350	SPRING	1						
9	90104212020	BOLT	1		M12X20				
10	90201201200	NUT	1		M12				
11	91002800700	O-RING	1		1B P7				
12	36053842040	PLUG	14						
13	36052132040	ORIFICE	1		1/16				
24	36042042030	SPRING	1						
25	36053842021	PLUG	1						
100	36053842000	BOOSTER (JOINT)	1						

# AT-147-3 43010100069 UPPER

Pos No.	Parts No	Parts Name	Qty	Unit	Technical Data	Serial No (Start)	Serial No (E
1	82400000422	FASTENER	2				
2	80456240600	JOINT,SELF SEALING (WITH DUST CAP)	2				
3	42502783100	LEVER	1				
4	82430208020	GRIP	1				
5	90101206010	BOLT	2		M6X1.0		
6	90302040601	WASHER,SPRING	2		6		
7	36631120050	NUT	2		M20		
8	42478183102	VALVE ASSY,SELECTOR	1				
9	37002459180	HOSE	1		L=565		
10	82104501180	SWITCH,LIMIT	1				
11	42502853010	PLATE,NAME	1				
12	42310040050	ROPE (TETORON)	2				
13	82100001735	SLEEVE	4				
14	91810130230	FASTENER	2				
15	37000925920	JOINT	1				
16	37000526010	PLATE	2				
17	37000928400	JOINT	1				
18	37002461530	HOSE	2		L=540		
19	42502853020	PLATE,NAME	1				
41	42471437520	CAP	2				

# AT-147-3 43010100069 UPPER

Pos No.	Parts No	Parts Name	Qty	Unit	Technical Data	Serial No (Start)	Serial No (End)
1	42470367770	HOSE,AIR	1		3M		
2	42470362100	JOINT,SELF SEALING	1				
3	42506287510	PUMP	1				
4	42470367780	JOINT	1				
100	42506280000	HOSE,BOOSTER (LARGE,AIR BALLOON ONLY)	1				

# AT-147-3 43010100069 UPPER

Pos No.	Parts No	Parts Name	Qty	Unit	Technical Data	Serial No (Start)	Serial No (End)
1	42471271000	DRILL ASSY	1				
2	80460003080	JOINT	2		S,G3/8-3/4-16UNF		
3	37002425110	HOSE	2		L=2500		
4	91810132530	FASTENER	4				
5	80456020610	JOINT,SELF SEALING	1				
6	42340013200	JOINT,SELF SEALING (WITH CAP)	1				
11	42340017550	CAP (DUST)	1				
16	42340017510	CAP (DUST)	1				
20	42471270000	DRIL,HYDRAULIC	1				

# AT-147-3 43010100069 UPPER

Pos No.	Parts No	Parts Name	Qty	Unit	Technical Data	Serial No (Start)	Serial No (End)	Remarks	Pages
1	42473340000	STEP,BUCKET	1						

# AT-147-3 43010100069 UPPER

Pos No.	Parts No	Parts Name	Qty	Unit	Technical Data	Serial No (Start)	Serial No (End)	Remarks
1	42474540000	HANGER (FOR BUCKET,FRP)	1					

# AT-147-3 43010100069 UPPER

Pos No.	Parts No	Parts Name	Qty	Unit	Technical Data	Serial No (Start)	Serial No (End)	Rem
1	42503180000	BOX,TOOL (FOR BUCKET,FRP)	1					

CLICK HERE TO **DOWNLOAD** THE COMPLETE MANUAL

- Thank you very much for reading the preview of the manual.
- You can download the complete manual from: [www.heydownloads.com](http://www.heydownloads.com) by clicking the link below



- Please note: If there is no response to CLICKING the link, please download this PDF first and then click on it.

CLICK HERE TO **DOWNLOAD** THE COMPLETE MANUAL