

AT-146-2 42095200017 UPPER

**PB3000131-00 POWER UNIT
PD2000078-00 SWING UNIT
PF1000578-00 WINCH SYSTEM
PG2000086-01 BOOM UNIT
PH1000463-01 SAFETY DEVICES (MOTION CONTROLLER)
PJ3000273-00 BUCKET SYSTEM
PJ5000003-00 BOOSTER UNIT
PK2000687-00 FRAME UNIT
PO1000127-01 INDICATION PLATES
PW1000109-01 ACCESSORIES & TOOLS
PX1000893-00 MOUNTING PARTS
PY1000992-03 OPTIONS,1
PY2000059-06 OPTIONS,2
ASSEMBLY**

CLICK HERE TO **DOWNLOAD** THE COMPLETE MANUAL

- Thank you very much for reading the preview of the manual.
- You can download the complete manual from: www.heydownloads.com by clicking the link below



- Please note: If there is no response to CLICKING the link, please download this PDF first and then click on it.

CLICK HERE TO **DOWNLOAD** THE COMPLETE MANUAL

AT-146-2 42095200017 UPPER

Pos No.	Parts No	Parts Name	Qty	Unit	Technical Data	Serial No (Start)	Serial No (End)	Remarks
1	36191070001	MOTION CONTROLLER (AMC)	1					

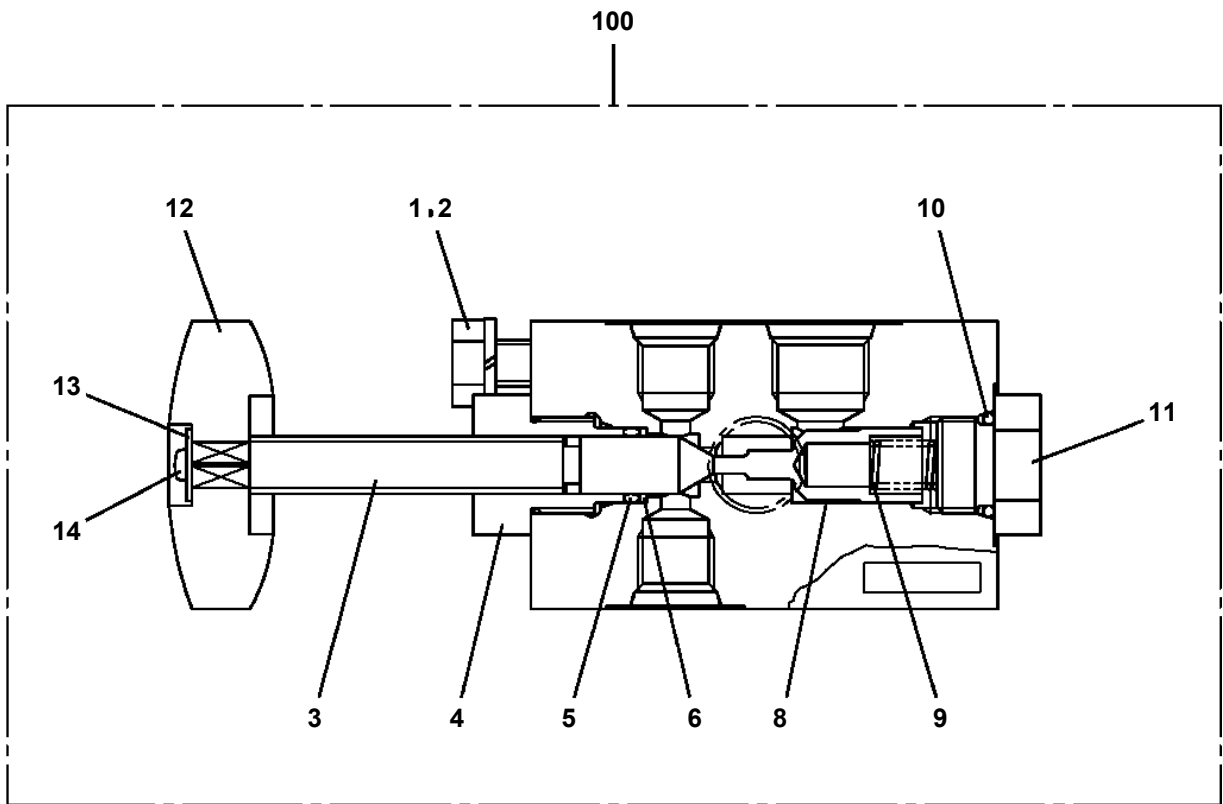
AT-146-2 42095200017 UPPER

Pos No.	Parts No	Parts Name	Qty	Unit	Technical Data	Serial No (Start)	Serial No (End)	Remarks	Pages
1	(*****)	ACCESSORIES	1						000176

AT-146-2 42095200017 UPPER

PH5031073-00 HARNESS
PH5031078-00 HARNESS
PH5031372-00 HARNESS (FOR DETECTOR,O/R LENGTH)
PH5031797-00 HARNESS
PH5032296-00 HARNESS
PH5032326-00 HARNESS
PH5032327-00 HARNESS
PH5032328-00 HARNESS
PH5032499-00 HARNESS
PH5032807-00 HARNESS
PH5034371-00 HARNESS
PH5034444-00 HARNESS
PI1010074-00 MOTOR,HYDRAULIC (SWING)
PI1010177-00 MOTOR,HYDRAULIC
PI1100061-00 VALVE,RELIEF
PI1100122-00 VALVE,RELIEF
PI1100134-01 VALVE,RELIEF
PI1100135-00 VALVE,RELIEF
PI1120199-02 VALVE,SOLENOID
PI1120201-02 VALVE,SOLENOID
PI1120238-02 VALVE,SOLENOID
PI1140133-01 VALVE,CHECK
PI1140212-00 VALVE,CHECK
PI1140213-00 VALVE,CHECK
PI1140227-00 VALVE,CHECK
PI1240030-00 VALVE
PI1250141-00 VALVE,COUNTERBALANCE
PI1250153-00 VALVE,COUNTERBALANCE
PI1280041-01 VALVE,PILOT CHECK
PI1300031-00 FILTER,OIL
PI1300041-00 FILTER,OIL
PJ3010104-00 BUCKET
PJ3010107-00 BUCKET (INNER CASE)
PJ3020029-02 FRAME
PJ3040025-00 OPE.ASSY
PJ3110025-01 PIPING (BUCKET)
PJ3240003-00 COVER (CLOTH,WHITE)
PJ3240027-00 COVER (FRP,WHITE)
PJ3250012-01 PIPING,GREASE
PJ3340007-00 CYLINDER,LIFT
PK1011096-00 FRAME
PK1100374-03 SWING FRAME
PK1200397-02 COVER,SWING FRAME
PK1330180-00 COVER (BOOM)
PK1330216-02 COVER (MOTOR UNIT)
PL1020056-02 LEVER,CONTROL
PN1013281-01 ELEC.ASSY (BUCKET)
PN1013283-05 ELEC.ASSY (SWING FRAME)
PN1013474-01 ELEC.ASSY (BOOM)
PN1013475-02 ELEC.ASSY (CHARGER)
PN1013507-00 ELEC.ASSY (MOTOR UNIT)
PN1013513-00 ELEC.ASSY (FRAME)
PN1013528-01 ELEC.ASSY (POWER UNIT)
PN1013741-00 ELEC.ASSY
PN1014135-00 ELEC.ASSY (MOTOR UNIT)
PN1030056-00 OPTICAL CABLE
PN1080104-04 LAMP (AML)
PN1080105-00 LAMP
PN1080106-00 LAMP (BUCKET)
PN1080107-02 LAMP (SWING FRAME)
PN1080225-01 LAMP (LEFT,TOOL BOX)
PN1080302-00 LAMP (O/R CONTROL PANEL)
PN1080350-00 LAMP (O/R CONTROL PANEL)
PN1110364-00 RELAY ASSY

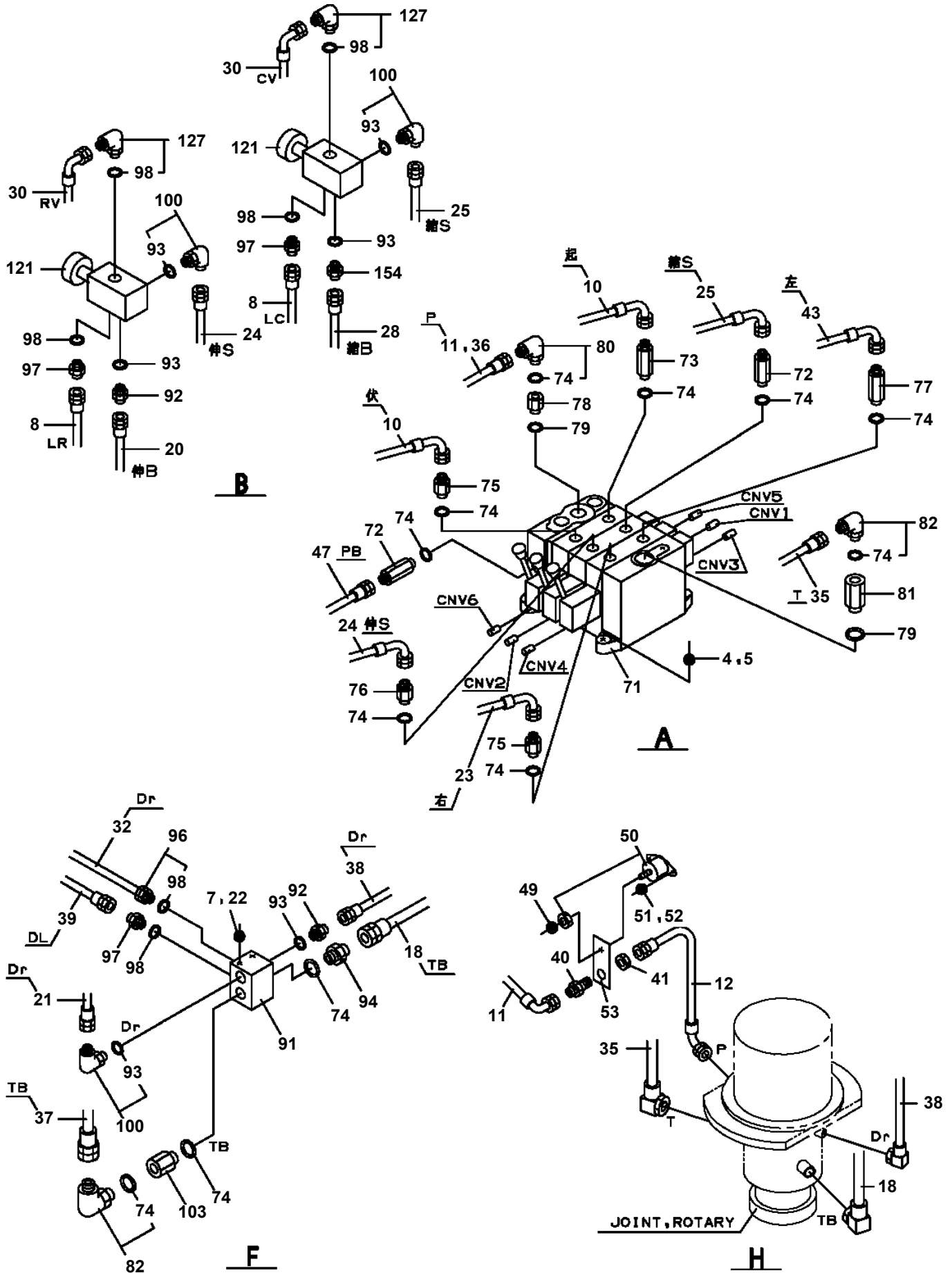
**AT-146-2 42095200017 UPPER
PB1320319-00 VALVE,MANUAL CONTROL**



AT-146-2 42095200017 UPPER

Pos No.	Parts No	Parts Name	Qty	Unit	Technical Data	Serial No (Start)	Serial No (End)
2	36634515010	PLUG ASSY	1				
3	36636425090	BOLT	4		L=235		
4	36637855010	VALVE,CONTROL	1				
5	36637855020	VALVE,CONTROL	1				
6	36636415020	VALVE,CONTROL (WINCH)	1				
7	36636435050	VALVE,CONTROL (ATTACHMENT)	1				
8	36634365090	VALVE,RELIEF	1				
24	91002905500	O-RING	5		1B G55		
32	91000501500	O-RING	1		AS568-015		
33	91002802200	O-RING	1		1B P22		
44	36631975010	O-RING	6				
45	36634365190	WIPER,DUST	8				
46	36634365200	RETAINER (SEAL)	8				
47	36636435060	VALVE,CHECK	3				
48	36635555080	SPRING	3				
49	36635045040	RETAINER (VALVE)	4				
50	91002801400	O-RING	4		1B P14		
51	12435101180	RETAINER (SEAL)	7				
52	36636435070	END,SPOOL	3				
53	12435101170	RETAINER (SPRING)	6				
54	36630045140	SPRING	3				
55	36636435080	COVER (SPRING)	2				
56	36635535150	SWITCH,PUSH	3				
57	36630045150	COVER	2				
58	90131906015	BOLT,HEXAGON SOCKET	2		M6X15		
59	90131906020	BOLT,HEXAGON SOCKET	4		M6X20		
60	90131904015	BOLT,HEXAGON SOCKET	4		M4X15		
61	90303100401	WASHER,PLAIN	5		4		
63	80172304008	SCREW,MACHINE	1		M4X8		
64	36637625030	TIE (MOUNT)	1				
65	36637625040	INSULOCK (TIE)	1				
71	36636435090	SHIM (T=0.3)	4				
72	36636435100	SHIM (T=0.5)	4				
73	36636435110	SHIM (T=0.7)	4				
85	36636435120	COVER (SPRING)	2				
87	90131906010	BOLT,HEXAGON SOCKET	2		M6X10		
94	36643175030	O-RING	2		P13		
109	90131506020	BOLT,HEXAGON SOCKET	2		M6X20		
110	90131504015	BOLT,HEXAGON SOCKET	4		M4X15		
111	90303070401	WASHER,PLAIN	2		4		
125	90131506010	BOLT,HEXAGON SOCKET	2		M6X10		
141	36636435150	SWITCH,LEAD (WITH CONNECTOR)	1				
158	90131506015	BOLT,HEXAGON SOCKET	2		M6X15		
172	13115102010	RETAINER (SEAL)	2				
173	36636435140	END,SPOOL	1				
174	80560005000	BALL,STEEL	2		5		
175	13115102030	CASE (BALL)	1				
176	13115102050	RETAINER (BALL)	1				
177	13115102040	SPRING	1				
181	90131506025	BOLT,HEXAGON SOCKET	2		M6X25		
195	91001101001	O-RING	1		1A P10A		
196	36634365100	RING,BACKUP	1				
197	19215101010	O-RING	2				
203	91001001600	O-RING	2		1A S16		
205	36634365110	RING,BACKUP	1				
206	91001100600	O-RING	1		1A P6		
211	36636435130	SWITCH,PUSH	1				
221	36636415040	SWITCH,LEAD (WINCH)	1				
300	36637870000	VALVE,MANUAL CONTROL	1				

**AT-146-2 42095200017 UPPER
PB1400399-05 PIPING,UPPER**



AT-146-2 42095200017 UPPER

Pos No.	Parts No	Parts Name	Qty	Unit	Technical Data	Serial No (Start)	Serial No (End)	Remarks
1	42882091000	SUPPORT	1					
2	36102590000	TANK,OIL	1					
3	42880550100	BAND	2					
4	56560009000	PIN	2					
5	80136330025	PIN,SPLIT	2					
6	90303071201	WASHER,PLAIN	4		12			
7	90301021001	WASHER	2					
8	90201201000	NUT	4		M10			
9	42881880100	SUPPORT	1					
10	91001204500	O-RING	1		1A G45			
11	91002802900	O-RING	2		1B P29			
12	90101208016	BOLT	13		M8X16			
13	90302040801	WASHER,SPRING	33		8			
14	36672810001	FILTER,OIL	1					
15	42881460100	FITTING,FLANGE	1					
16	90280200800	NUT,FLANGE	4		M8			
17	37000547660	PLATE	4		T=2.3			
19	42881490100	JOINT	1					
20	90302041001	WASHER,SPRING	5		10			
21	90303071001	WASHER,PLAIN	4		10			
22	90101210025	BOLT	1		M10X25			
23	37000600520	CLAMP	1		R=22			
24	42882090300	SUPPORT	1					
25	37000542310	PLATE	1					
26	90303070801	WASHER,PLAIN	6		8			
27	80430621200	JOINT	1					
28	80316070060	PLUG	1		PF3/8			
29	91002801400	O-RING	1		1B P14			
30	37000558540	PLATE	1					
31	37000558550	PLATE	1					
33	90171112025	BOLT	2		M12X25			
34	90302041201	WASHER,SPRING	2		12			
35	42882090020	SUPPORT	1					
36	42881870030	SUPPORT	1					
37	90101208020	BOLT	2		M8X20			
38	90201200800	NUT	10		M8			
39	34471141300	CUSHION	4					
40	90101208025	BOLT	2		M8X25			
41	36672760000	FILTER,OIL	1					
42	80303130241	FITTING,ELBOW	2		KLO18-040E			
43	81408000241	PIPE,STEEL	1	M	18X1.9T			
44	90101210020	BOLT	4		M10X20			
45	42882090040	SUPPORT	1					
46	42882090200	SUPPORT	1					
47	81408000241	PIPE,STEEL	1	M	18X1.9T			
48	90101208014	BOLT	4		M8X14			
49	42882090010	COVER	1					
50	42882090100	JOINT	2		L,G1/2-G1/2			
51	42882090090	COVER	1					
52	42882090070	SUPPORT	1					
53	90101208010	BOLT	4		M8X10			
54	42882090400	PLATE	2					
71	42882092100	JOINT	1					
72	42643051000	SWITCH ASSY (THERMO)	1					
73	80400160131	JOINT	2					
74	91002801800	O-RING	9		1B P18			
75	80316070080	PLUG	2		PF1/2			
76	80430620800	JOINT	1					
77	80303130241	FITTING,ELBOW	2		KLO18-040E			
81	91002802400	O-RING	1		1B P24			
111	82109902020	SWITCH,THERMO	1					

AT-146-2 42095200017 UPPER

Pos No.	Parts No	Parts Name	Qty	Unit	Technical Data	Serial No (Start)	Serial No (End)	R
1	42613361001	OUTRIGGER (REAR/INNER CASE)	2					
4	31611640150	SPRING	2					
5	90171108016	BOLT	4		M8X16			
6	37000504780	PLATE	N		T=0.6			
7	90302041001	WASHER,SPRING	24		10			
9	42612850300	PLATE	4					
11	90101206014	BOLT	4		M6X14			
12	90302040601	WASHER,SPRING	4		6			
13	42612850400	BLADE	2					
16	42613350100	PLATE	12					
17	90171110025	BOLT	24		M10X25			
18	37000581940	PLATE	N		T=0.5			
19	37000506590	PLATE	N		T=1.6			
20	90303070601	WASHER,PLAIN	4		6			
21	37002011280	PLATE,SLIDE	16		T=9.5			
22	90101208012	BOLT	4		M8X12			
23	90302040801	WASHER,SPRING	4		8			
24	37000575240	PLATE	2		T=3			
25	37000178190	PIN	2					

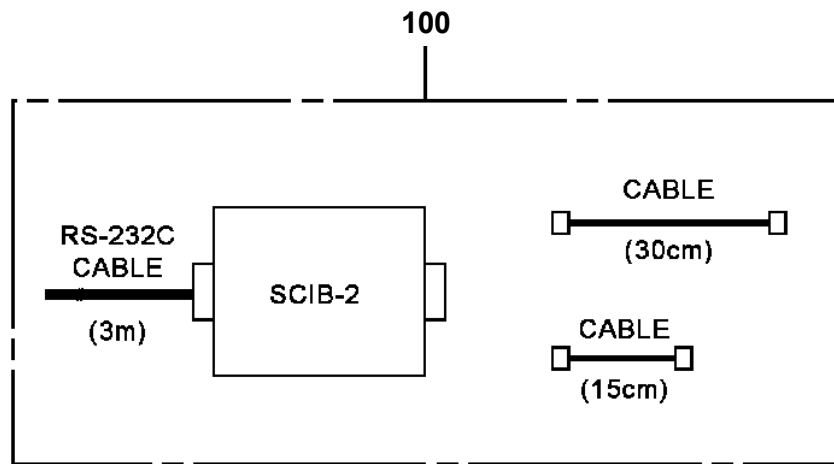
AT-146-2 42095200017 UPPER

Pos No.	Parts No	Parts Name	Qty	Unit	Technical Data	Serial No (Start)	Serial No (End)
1	42614073100	CASE,INNER	1				
2	42613351200	CASE,INNER (JACK)	1				
4	36035100000	CYLINDER,JACK	1				
5	42613351400	FLOAT ASSY	1				
6	37000171720	PIN	1				
7	80601110250	RING,RITAINING	2		S25		
8	37000169010	PIN	1		30		
9	80601110300	RING,RITAINING	2		S30		
10	36625740001	VALVE,CHECK	1				
11	901711108055	BOLT	4		M8X55		
12	37000138750	PIN	1		18		
13	80136332036	PIN,SPLIT	2		3.2X36		
14	80400160127	JOINT	1				
15	91002801100	O-RING	1		1B P11		
16	36672460000	FILTER (NIPPLE TYPE)	1				
17	42612851010	COVER	1				
18	90186206014	BOLT,FLANGE	2		M6X14		
19	37000112320	PIN	1				
20	80601110120	RING,RITAINING	2		S12		
21	91810130240	FASTENER	2				
22	31201770100	PLATE,SLIDE	8		T=3.0		
23	90280200600	NUT,FLANGE	1		M6		
24	37000600700	CLAMP	1		12X3		
41	36042810000	CYLINDER,EXTENSION (FRONT)	1				
42	80400160127	JOINT	2				
43	91002801100	O-RING	3		1B P11		
44	37002485300	HOSE	1		L=1805		
45	42612853350	HARNESS	1				228539
	42614053350	HARNESS	1			228540	
46	91810130240	FASTENER	13				
51	42612851420	TRUNNION	1				
100	42614073001	OUTRIGGER (FRONT,R/INNER CASE)	1				

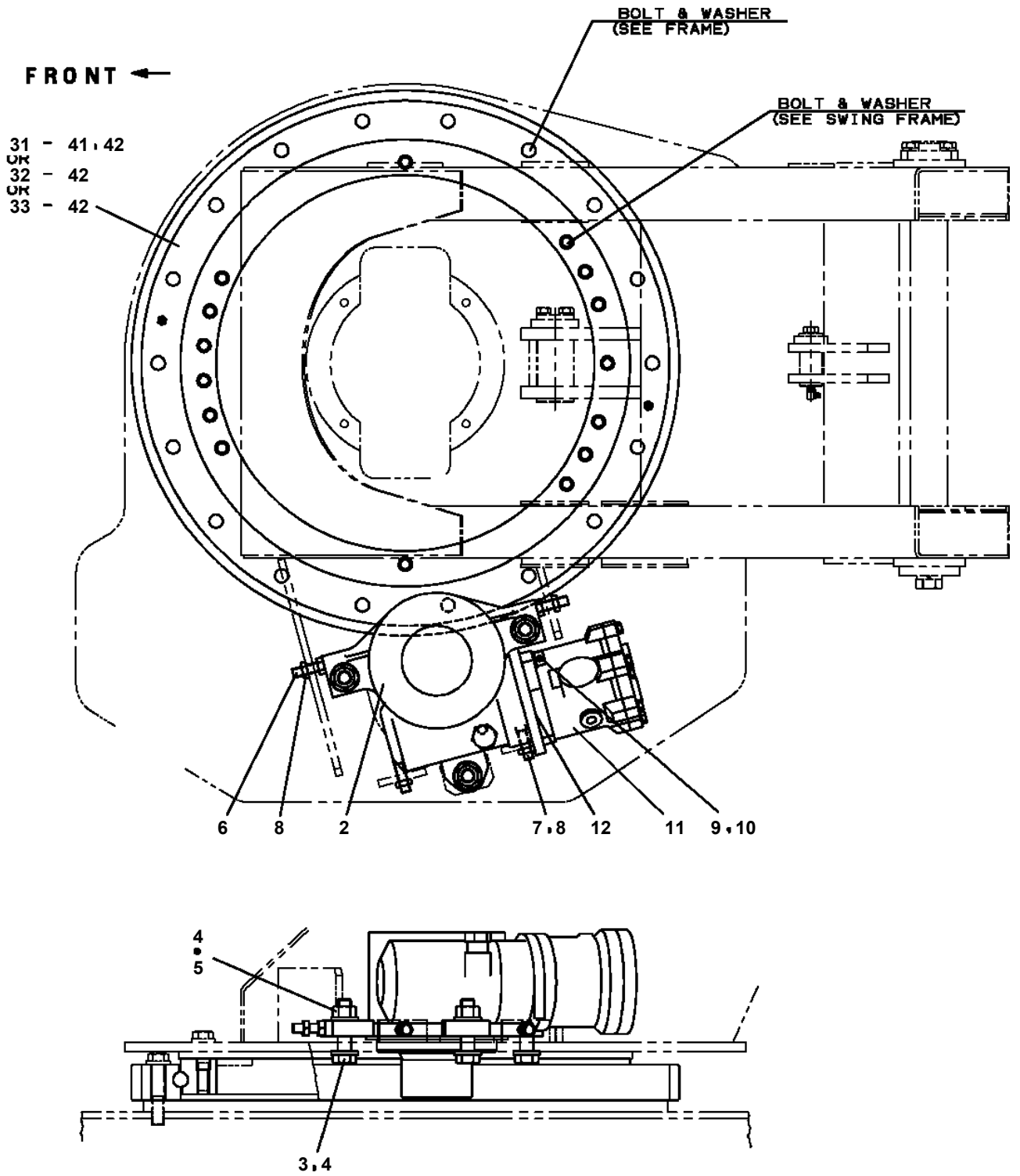
AT-146-2 42095200017 UPPER

Pos No.	Parts No	Parts Name	Qty	Unit	Technical Data	Serial No (Start)	Serial No (End)	Remarks
1	36637490000	VALVE,MANUAL CONTROL	1					
2	90101208025	BOLT	3		M8X25			
3	90302040801	WASHER,SPRING	3		8			
4	32700007500	LEVEL	1					
5	42701200100	LEVER	1					
6	42701200200	LEVER	1					
7	42701200300	LEVER	1					
8	42701200400	LEVER	1					
9	42701200500	LEVER	1					
10	31323330200	KNOB (RED)	1					
11	31323330100	KNOB (BLACK)	4					
12	37000105610	PIN	10		L=18			
13	90303070501	WASHER,PLAIN	10		5			
14	80136320010	PIN,SPLIT	10		2X10			

**AT-146-2 42095200017 UPPER
PC5020022-00 CABLE ASSY (PC CONNECTION CABLE)**

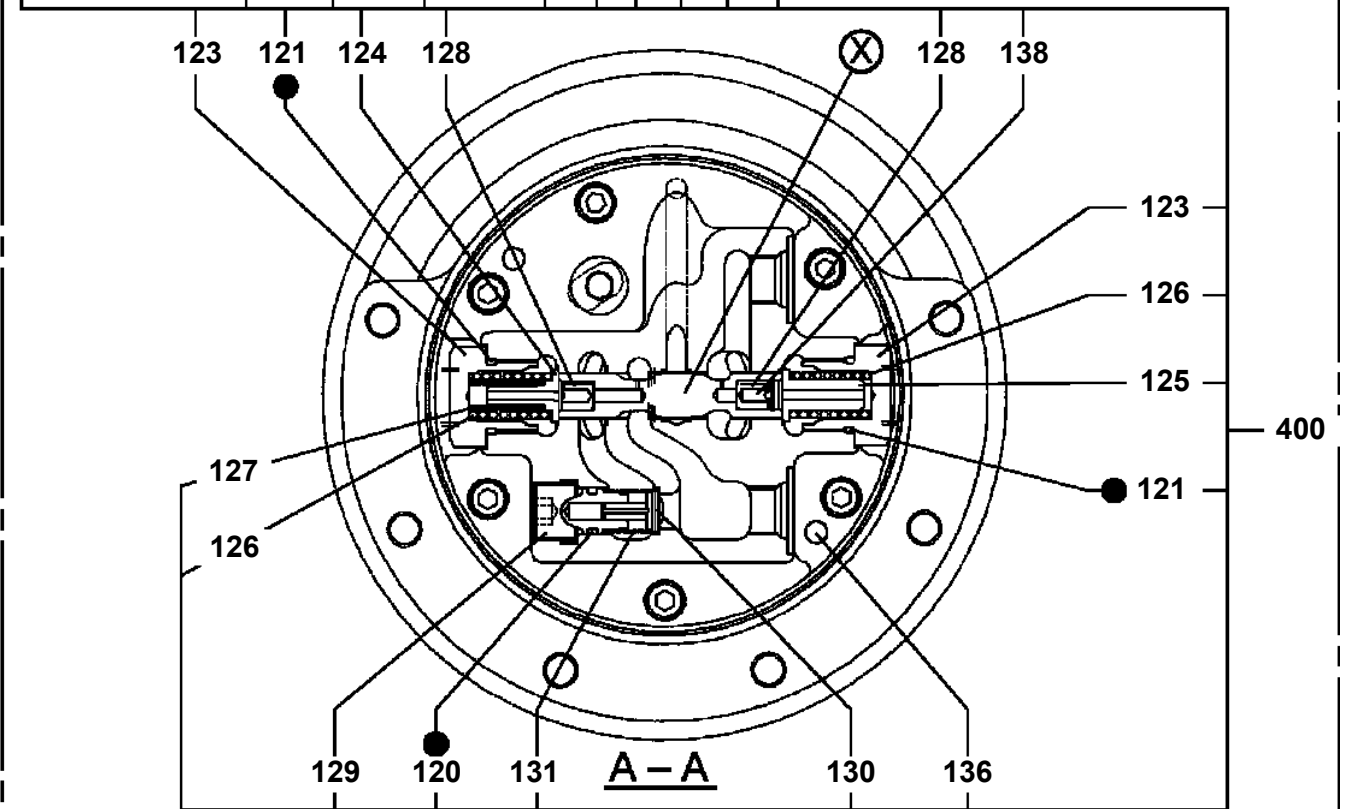
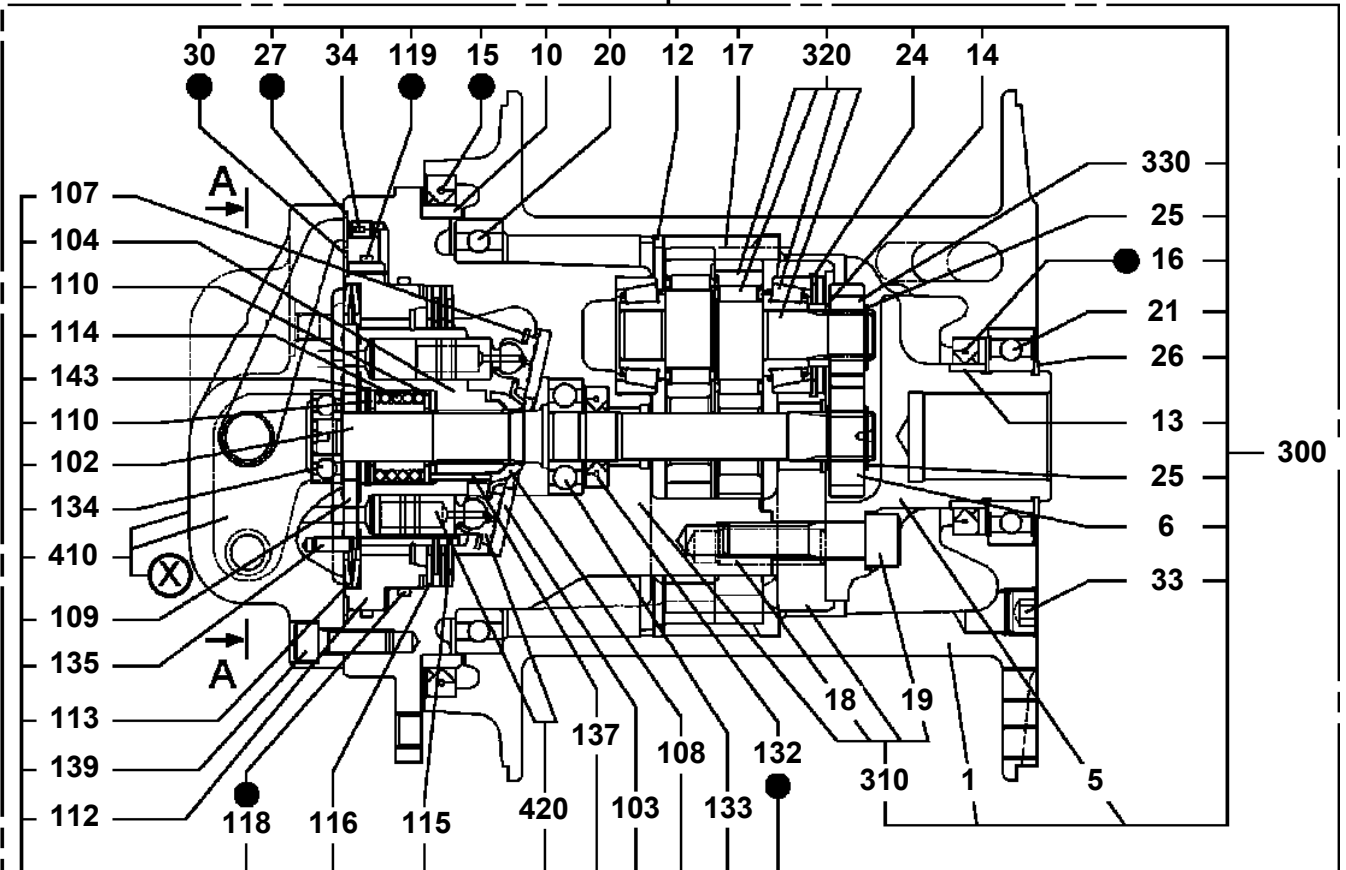


AT-146-2 42095200017 UPPER
PD1020021-01 SWING UNIT



AT-146-2 42095200017 UPPER
PF1010392-01 WINCH

500



● : SEAL KIT KEY NO 490 (KEY NO.15,16,27,30,118,119,120,121,132)

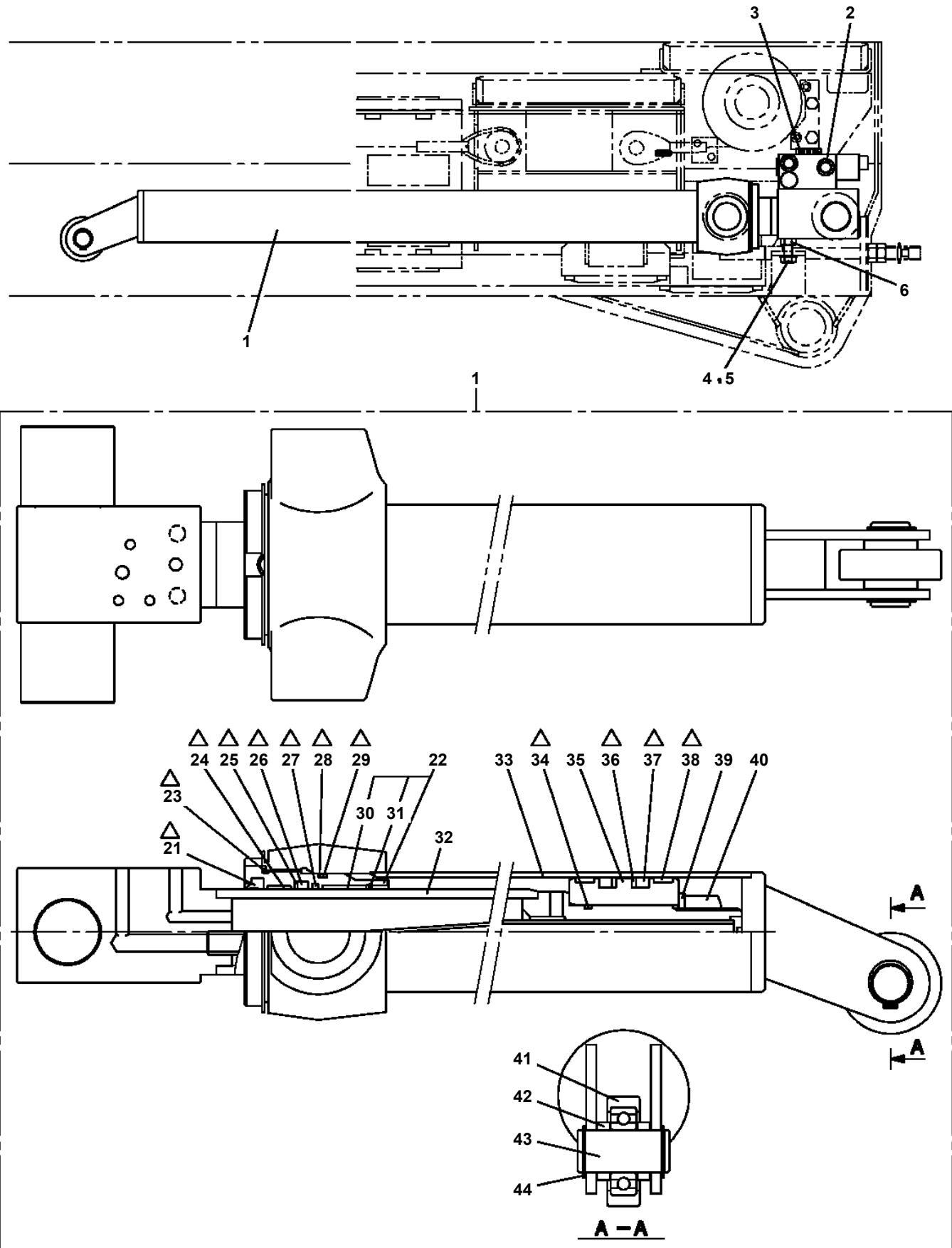
AT-146-2 42095200017 UPPER

Pos No.	Parts No	Parts Name	Qty	Unit	Technical Data	Serial No (Start)	Serial No (End)	Remarks	Pages
1	42478760010	SUPPORT	1						
2	90201201600	NUT	1		M16				
3	90303071601	WASHER,PLAIN	1		16				

AT-146-2 42095200017 UPPER

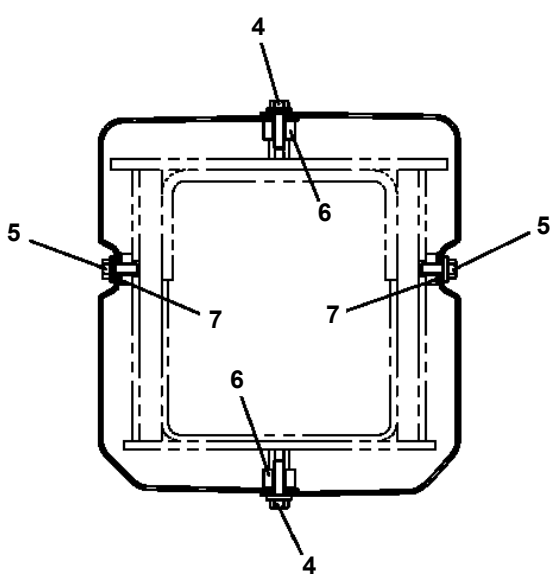
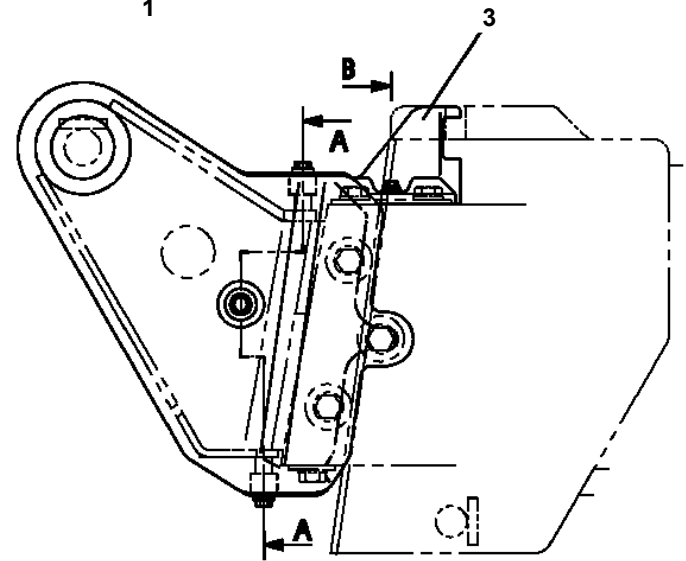
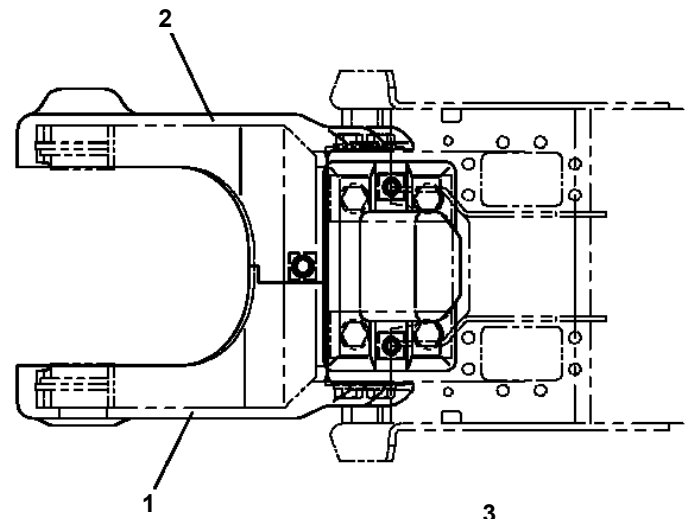
Pos No.	Parts No	Parts Name	Qty	Unit	Technical Data	Serial No (Start)	Serial No (End)	Remarks	Pages
1	42220691000	SUPPORT	1				227949		
	42220691001	SUPPORT	1			227950			
2	42220692000	JIB ASSY	1				227955		
	42220692001	JIB	1			227956	229146		
	42220692002	JIB	1			229147			
3	80601110350	RING,RITAINING	2		S35				
4	37000188130	PIN	1						
5	37001002260	SHEAVE	1						
6	90101216125	BOLT	1		M16X125				
7	90303071601	WASHER,PLAIN	2		16				
8	90302041601	WASHER,SPRING	1		16				
9	90240201600	NUT,CAP	1		M16				
10	37000314520	SPACER	2						
11	42220690100	PLATE	1		T=1.0				
12	42220690200	PLATE	1		T=2.0				
13	42220041050	PLATE,NAME	2						
31	80516006207	BEARING,BALL	1						

**AT-146-2 42095200017 UPPER
PG1050438-01 CYLINDER,TELESCOPING**

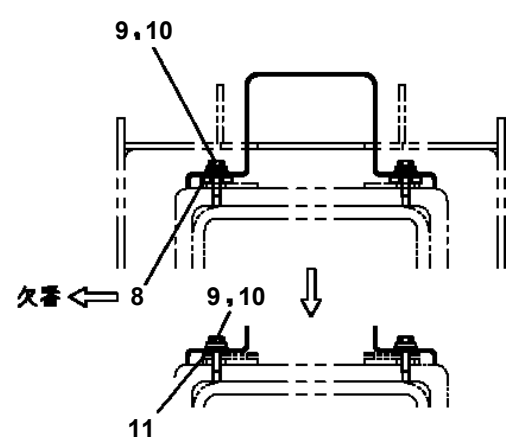


△:PACKING SET KEY NO. 51 (KEY NO.21,23,24,25,26,27,28,29,34,36,37,38)

AT-146-2 42095200017 UPPER
 PG1410079-02 COVER,BOOM (TOP/FRP,WHITE)



A-A



B

AT-146-2 42095200017 UPPER

Pos No.	Parts No	Parts Name	Qty	Unit	Technical Data	Serial No (Start)	Serial No (End)	Remarks	Pages
100	42350200310	HARNESS	1						

AT-146-2 42095200017 UPPER

Pos No.	Parts No	Parts Name	Qty	Unit	Technical Data	Serial No (Start)	Serial No (End)	Remarks	Pages
100	42614061350	HARNESS	1						

AT-146-2 42095200017 UPPER

Pos No.	Parts No	Parts Name	Qty	Unit	Technical Data	Serial No (Start)	Serial No (End)	Remarks	Pages
100	42612853350	HARNESS	1						

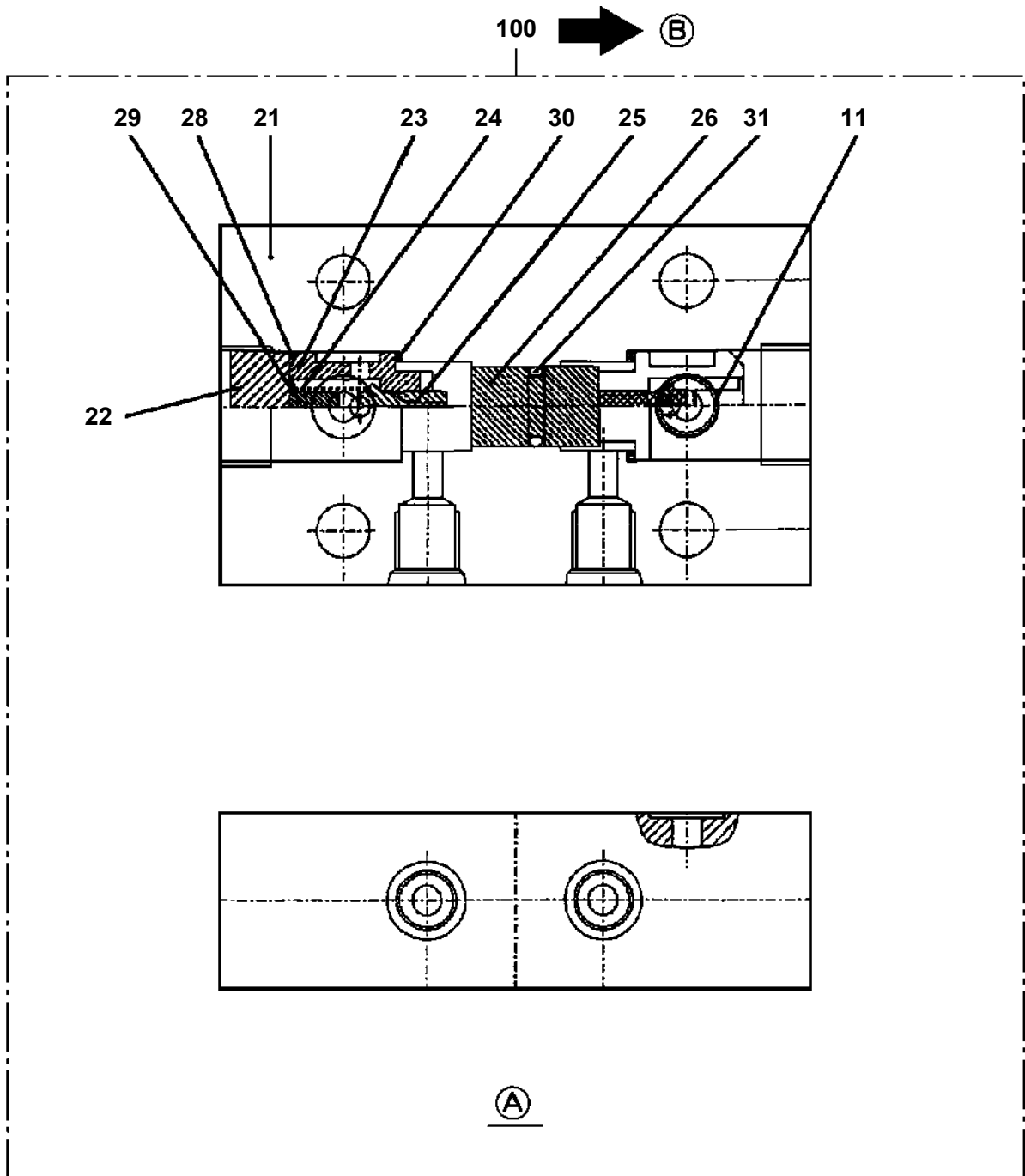
AT-146-2 42095200017 UPPER

Pos No.	Parts No	Parts Name	Qty	Unit	Technical Data	Serial No (Start)	Serial No (End)	Remarks	Pages
100	42475401400	HARNESS	1						

AT-146-2 42095200017 UPPER

Pos No.	Parts No	Parts Name	Qty	Unit	Technical Data	Serial No (Start)	Serial No (End)	Remark
1	36606420000	VALVE,RELIEF	1					
2	90309331003	WASHER,CONICAL SPRING	4					

AT-146-2 42095200017 UPPER
PI1140133-01 VALVE,CHECK



AT-146-2 42095200017 UPPER

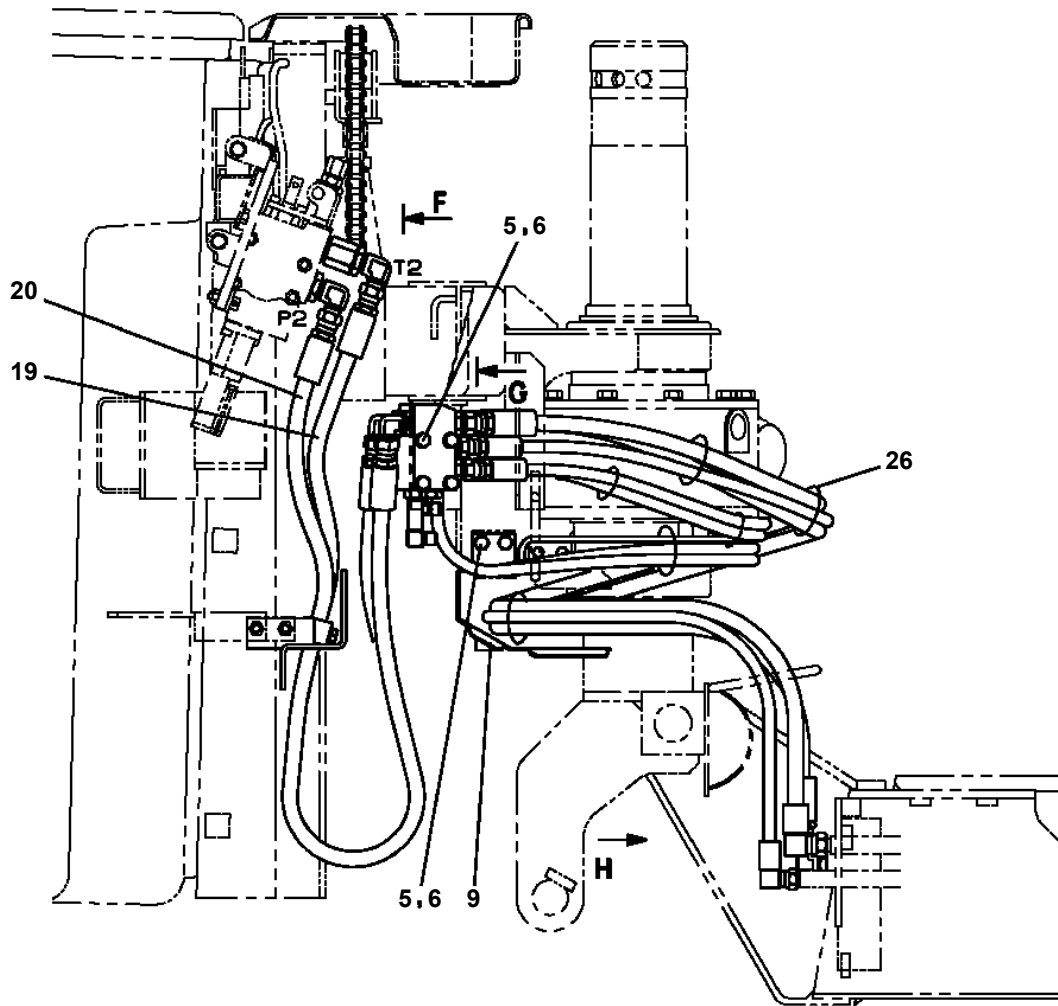
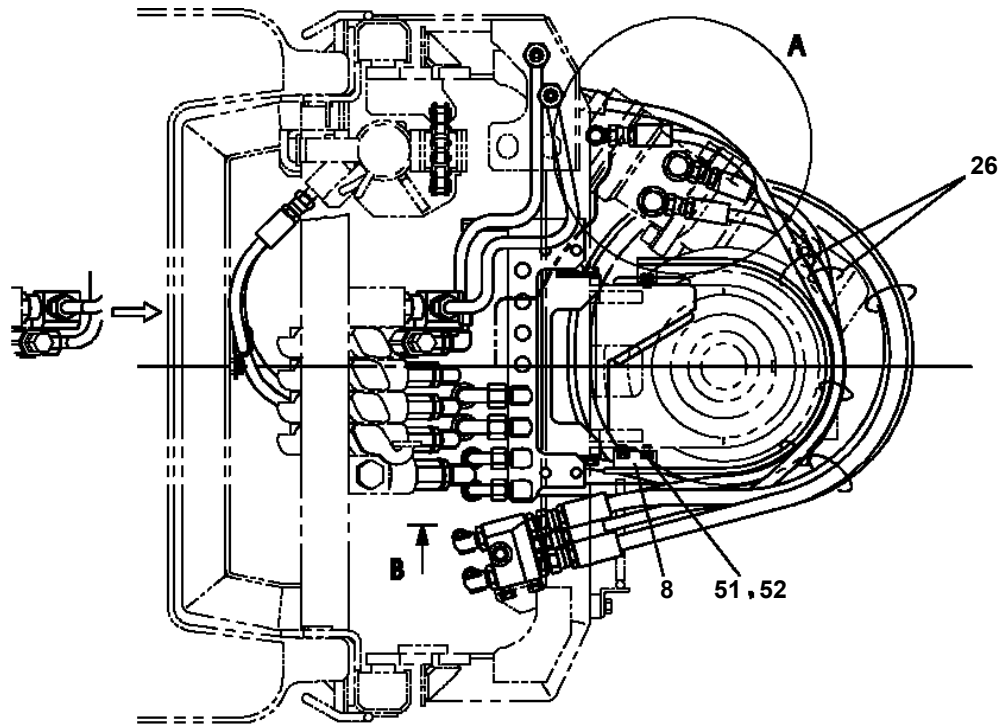
Pos No.	Parts No	Parts Name	Qty	Unit	Technical Data	Serial No (Start)	Serial No (End)	Remarks	Pa
2	90101210090	BOLT	2		M10X90				
3	90201201000	NUT	2		M10				
4	90302041001	WASHER,SPRING	2		10				
5	90303071001	WASHER,PLAIN	2		10				
6	42345722100	SUPPORT	1						
7	90101208016	BOLT	2		M8X16				
8	90303070801	WASHER,PLAIN	2		8				
9	90302040801	WASHER,SPRING	2		8				
31	80430620400	JOINT	2						
32	80430620600	JOINT (WITH O-RING)	2		L,G3/8-G3/8				
33	36625760000	VALVE,CHECK	1						
41	91002801100	O-RING	2		1B P11				
51	91002801400	O-RING	2		1B P14				

000

AT-146-2 42095200017 UPPER

Pos No.	Parts No	Parts Name	Qty	Unit	Technical Data	Serial No (Start)	Serial No (End)	Remarks	Page
1	36672815040	HEAD ASSY	1						
3	36672815030	FILTER,CARTRIDGE	1				229521		
	36672810030	FILTER,CARTRIDGE	1			229522			
10	36672810001	FILTER,OIL	1						

AT-146-2 42095200017 UPPER
PJ3110025-01 PIPING (BUCKET)



AT-146-2 42095200017 UPPER

Pos No.	Parts No	Parts Name	Qty	Unit	Technical Data	Serial No (Start)	Serial No (End)	Remarks	Pages
1	16715401000	NIPPLE	2						
2	16715403000	SLEEVE	4						
3	16715404000	NIPPLE	4						
4	16715402000	FITTING,ELBOW	2						
5	82456101000	NIPPLE,GREASE	2		A-PT1/8				
6	42345289510	PIPE ASSY	1						
7	82459103000	NIPPLE,GREASE	1		C-PT1/8				
8	42345849510	PIPE ASSY	1						

AT-146-2 42095200017 UPPER

Pos No.	Parts No	Parts Name	Qty	Unit	Technical Data	Serial No (Start)	Serial No (End)	Remarks	Pages
1	42500400100	COVER	1						

AT-146-2 42095200017 UPPER

Pos No.	Parts No	Parts Name	Qty	Unit	Technical Data	Serial No (Start)	Serial No
1	42354740101	HARNESS	1				
2	42354740200	SWITCH ASSY	1				
3	82100002596	RELAY	1				
4	80192486010	SCREW,MACHINE	7		M6X10		
5	80192484016	SCREW,MACHINE	6		M4X16		
6	91850400601	CLAMP	7				
7	91810132530	FASTENER	15				
8	90201200800	NUT	1		M8		
9	90302040801	WASHER,SPRING	1		8		
10	90303070801	WASHER,PLAIN	1		8		
11	42354741000	PANEL ASSY	1				
12	82100002017	CLAMP	1		WR30		
13	90280200600	NUT,FLANGE	3		M6		
14	82100001801	TUBE,CORRUGATE	1	M	7		
16	82100002014	CLAMP	1		WR20		
17	82100001807	TUBE,CORRUGATE	1	M	28		
18	82100002010	CLAMP	1		WR15		
19	82161201010	RELAY	2				
20	42350250150	PLUG (6 POLES,MALE)	1				
21	42352190100	RESISTANCE	1				
22	80172303012	SCREW,MACHINE	2		M3X12		
23	90302040301	WASHER,SPRING	2		3		
24	90303070301	WASHER,PLAIN	2		3		
25	42351460010	HARNESS	1		L=3500		
26	42470201060	PLATE	1				
28	80192484012	SCREW,MACHINE (WITH WASHER)	10		M4X12		
29	42350250070	PLUG (2 POLES,MALE)	1				
31	82100001819	TUBE,SPIRAL	1	M	SE-18BK		
37	82100002308	COVER	2				
53	82100002594	RING	1		OGL-31		
56	42353381100	PLATE,NAME	1				
57	42353381200	PANEL	1				
58	82197518114	CAP (MATSUSHITA/BLACK)	5				
	82197518119	CAP (PLUS ONE MFG./BLACK)	5				
72	42353383100	COVER	1				
73	80172305012	SCREW,MACHINE	4		M5X12		
74	90201200500	NUT	4		M5		
75	90302040501	WASHER,SPRING	4		5		
76	90303070501	WASHER,PLAIN	4		5		
121	42352457510	KEY	1				
131	82101361003	BUTTON	1				
141	42354541300	SWITCH ASSY (WITH HARNESS,1 SW)	1				
142	42354541100	SWITCH ASSY	1				
144	42354541200	SWITCH ASSY (WITH HARNESS,1 SW)	1				
145	42354541400	SWITCH ASSY (WITH HARNESS,3 SWITCH)	1				
181	42356091000	CONVERTER (ASSY ONLY)	1				

AT-146-2 42095200017 UPPER

Pos No.	Parts No	Parts Name	Qty	Unit	Technical Data	Serial No (Start)	Serial No
1	42652901000	HARNESS (MAIN)	1				
2	42651890300	HARNESS (FOR DETECTOR,O/R LENGTH)	1				
3	82100002002	CLAMP	2		WR6		
4	91810132530	FASTENER	30				
5	90186208014	BOLT,FLANGE	2		M8X14		
9	82104503104	SWITCH,LIMIT	1				
10	90172105014	BOLT,HEXAGON SOCKET	2		M5X14		
11	44430680200	BUZZER ASSY (WITH HARNESS)	1				
12	42474530100	LAMP ASSY	1				
13	90302040601	WASHER,SPRING	12		6		
16	90201200800	NUT	1		M8		
17	90302040801	WASHER,SPRING	1		8		
18	91850400601	CLAMP	34				
19	42350980010	PLUG (6POLES,FEMALE)	1				
20	91810130240	FASTENER	30				
24	90813108020	BOLT,WING	1		M8X20		
25	90172106016	BOLT,HEXAGON SOCKET	12		M6X16		
26	36132150000	DETECTOR,OUTRIGGER LENGTH	4				
29	90280200600	NUT,FLANGE	3		M6		
30	80136320012	PIN,SPLIT	4		2X12		
31	90303070601	WASHER,PLAIN	39		6		
36	82100002016	CLAMP	2		WR25		
54	44960012000	BUZZER ASSY	1				
61	82165904020	LAMP	1		24V 60W		
62	90101212020	BOLT	1		M12X20		
63	90302041201	WASHER,SPRING	1		12		
64	37000159530	PIN	1				
65	80620210160	PIN,SNAP	1				
73	90101208020	BOLT	8		M8X20		
74	90302040801	WASHER,SPRING	8		8		
75	90303070801	WASHER,PLAIN	8		8		
76	82104501140	SWITCH,LIMIT	4				
77	42651710350	SUPPORT	4				
81	42651893100	COVER	2				
82	90186206014	BOLT,FLANGE	8		M6X14		
91	42651894100	COVER	1				
98	42651713450	COVER	1				
111	82100000054	BULB,LAMP	1		24V 60W		
112	82100002838	SWITCH ASSY (WITH HARNESS,TERMINAL)	1				
123	82400000201	GROMMET	2		KG-016		
132	34351562510	BOX,FUSE	1				
133	82100001841	FUSE	3		20A,YELLOW		
135	82100001839	FUSE	9		10A.RED		
148	82161202010	RELAY	2				
152	82100001836	FUSE	1		3A		
155	82100001840	FUSE	1		15A,BLUE		
157	82182809623	DIODE	1				

CLICK HERE TO **DOWNLOAD** THE COMPLETE MANUAL

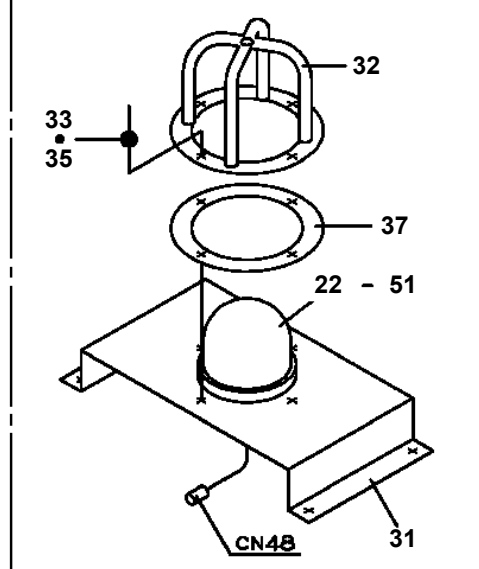
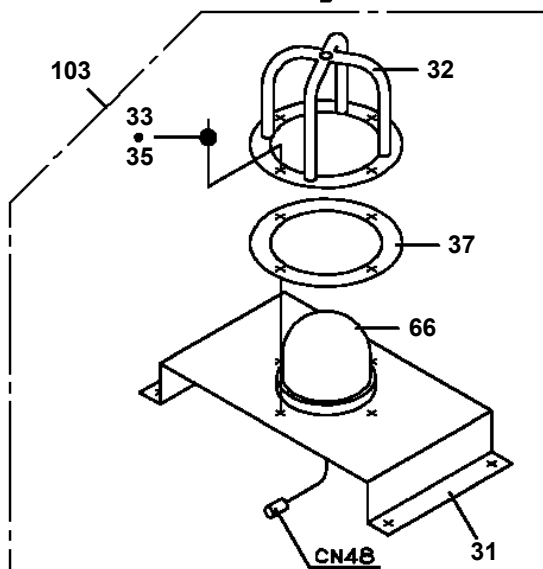
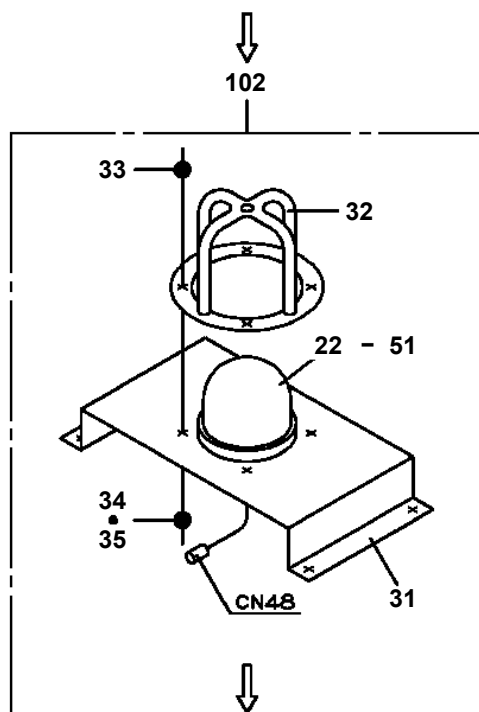
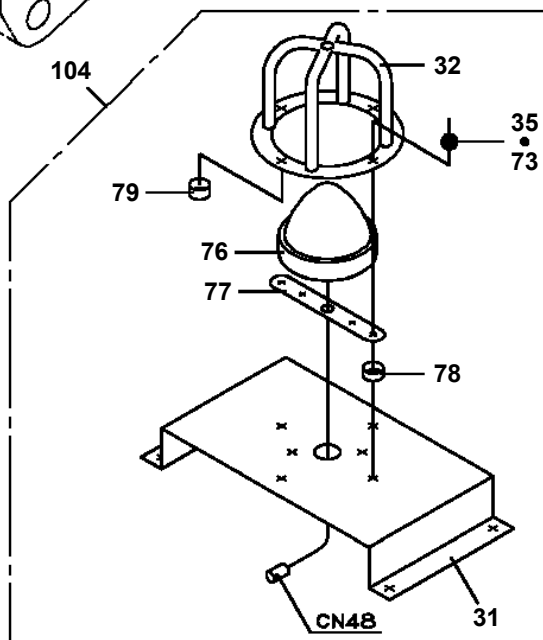
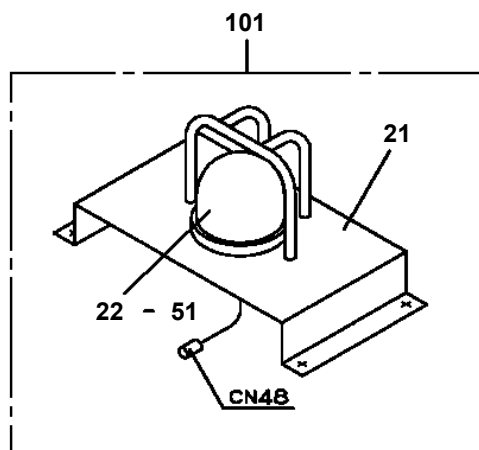
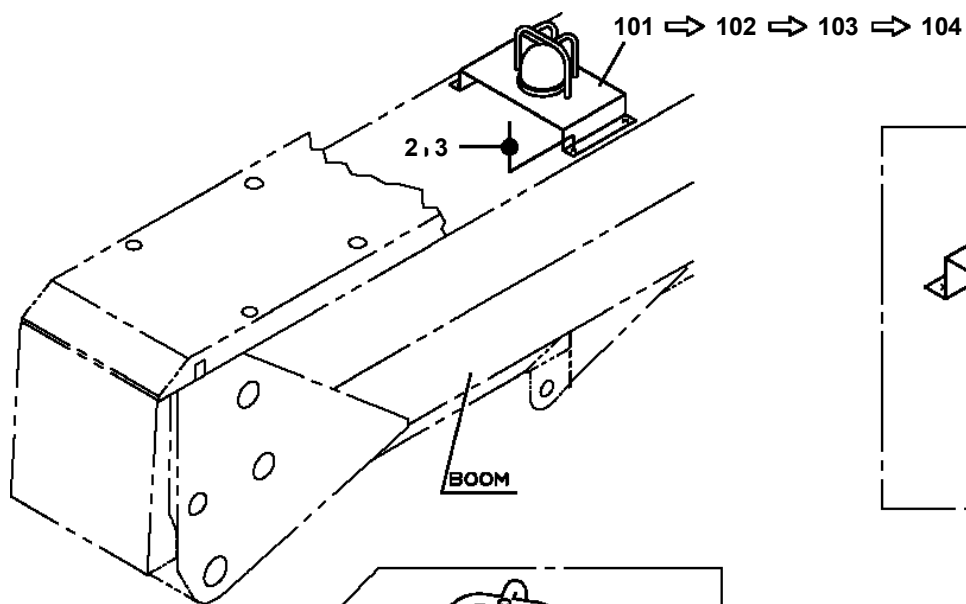
- Thank you very much for reading the preview of the manual.
- You can download the complete manual from: www.heydownloads.com by clicking the link below



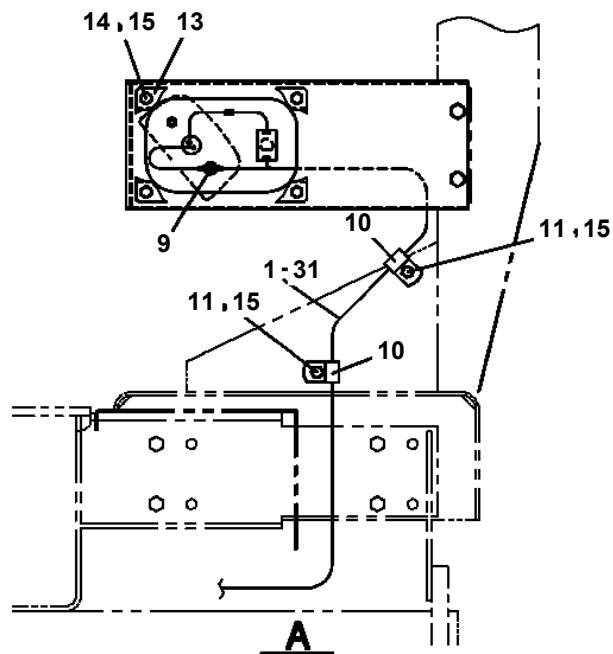
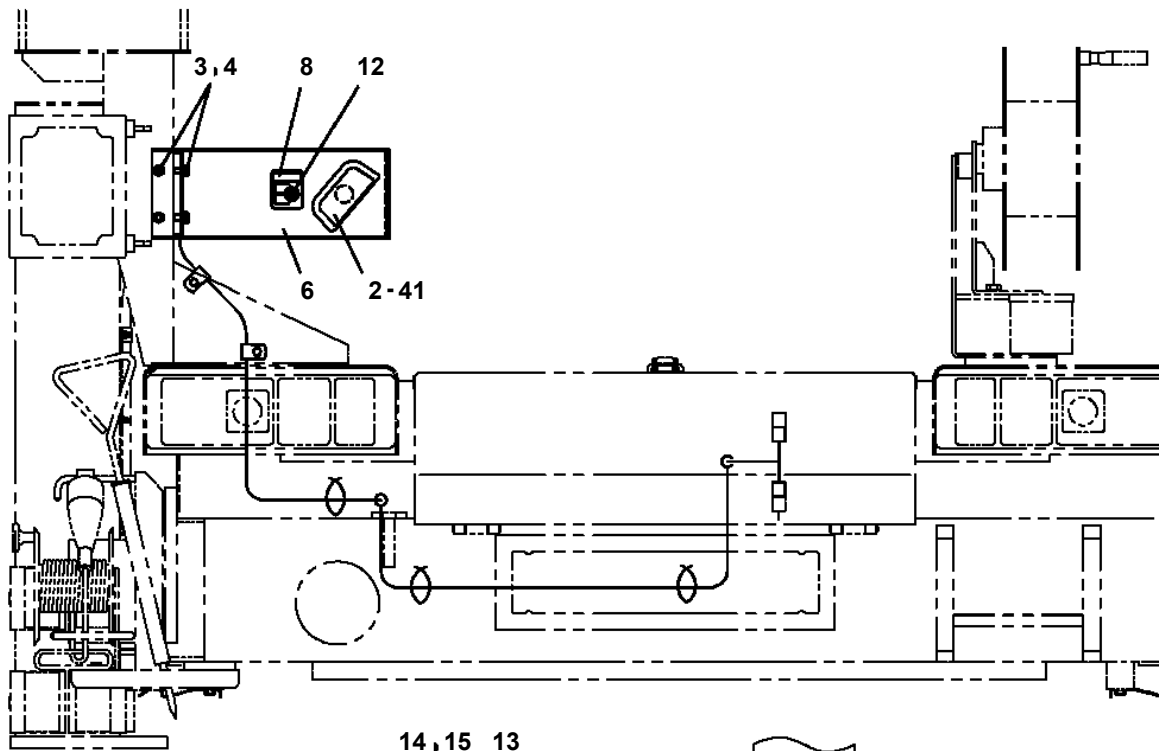
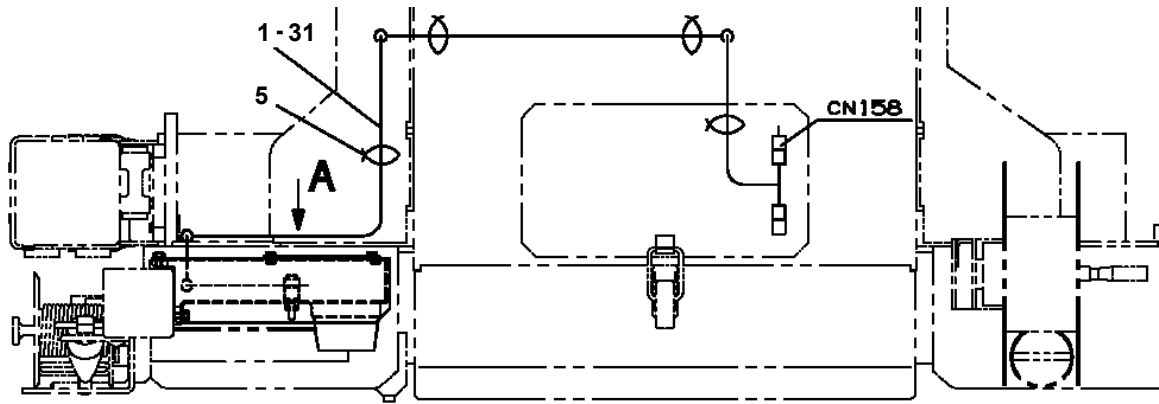
- Please note: If there is no response to CLICKING the link, please download this PDF first and then click on it.

CLICK HERE TO **DOWNLOAD** THE COMPLETE MANUAL

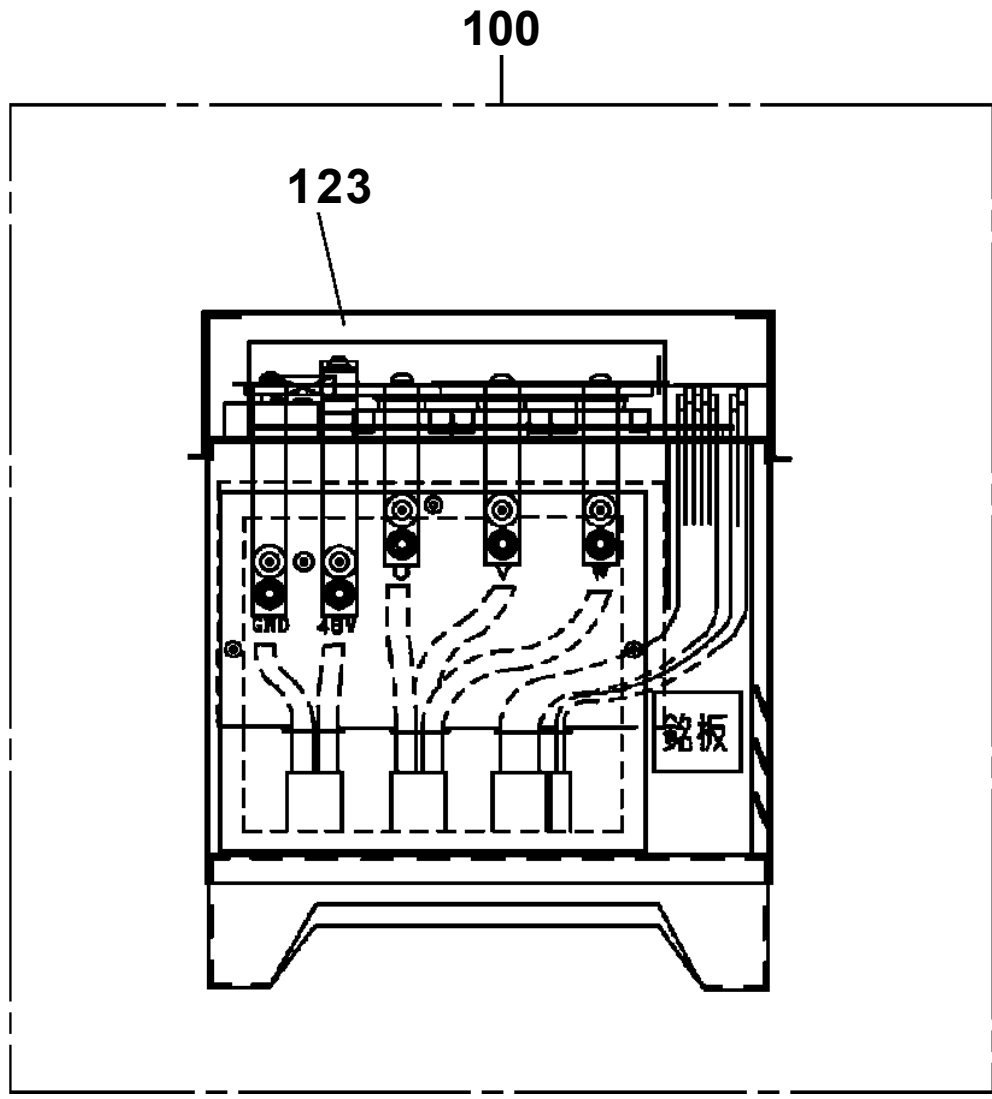
**AT-146-2 42095200017 UPPER
PN1080104-04 LAMP (AML)**



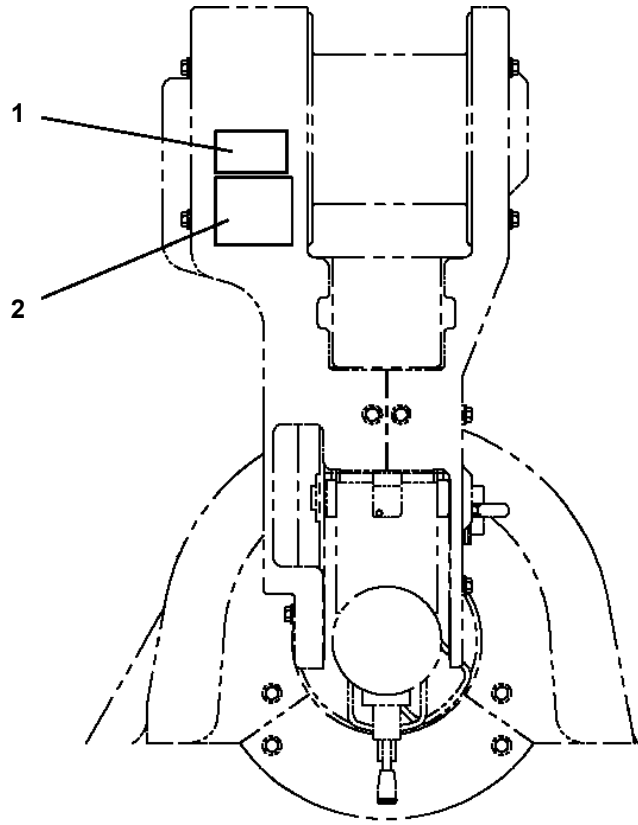
AT-146-2 42095200017 UPPER
PN1080302-00 LAMP (O/R CONTROL PANEL)



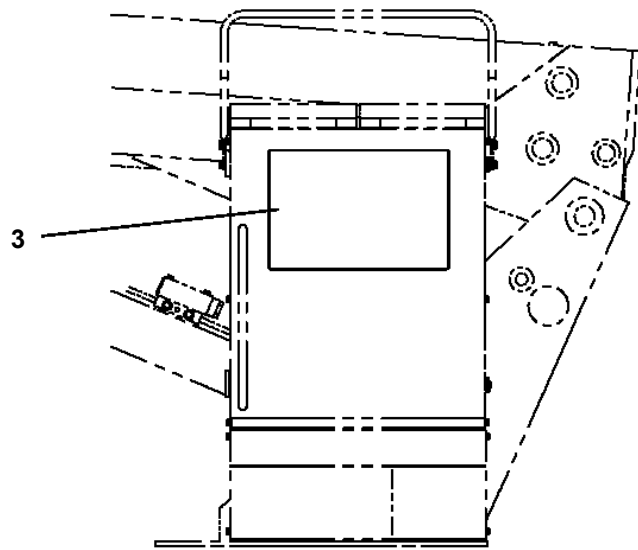
AT-146-2 42095200017 UPPER
PN1240003-00 INVERTER



**AT-146-2 42095200017 UPPER
PO1013350-00 PLATE ASSY,NAME (WINCH)**

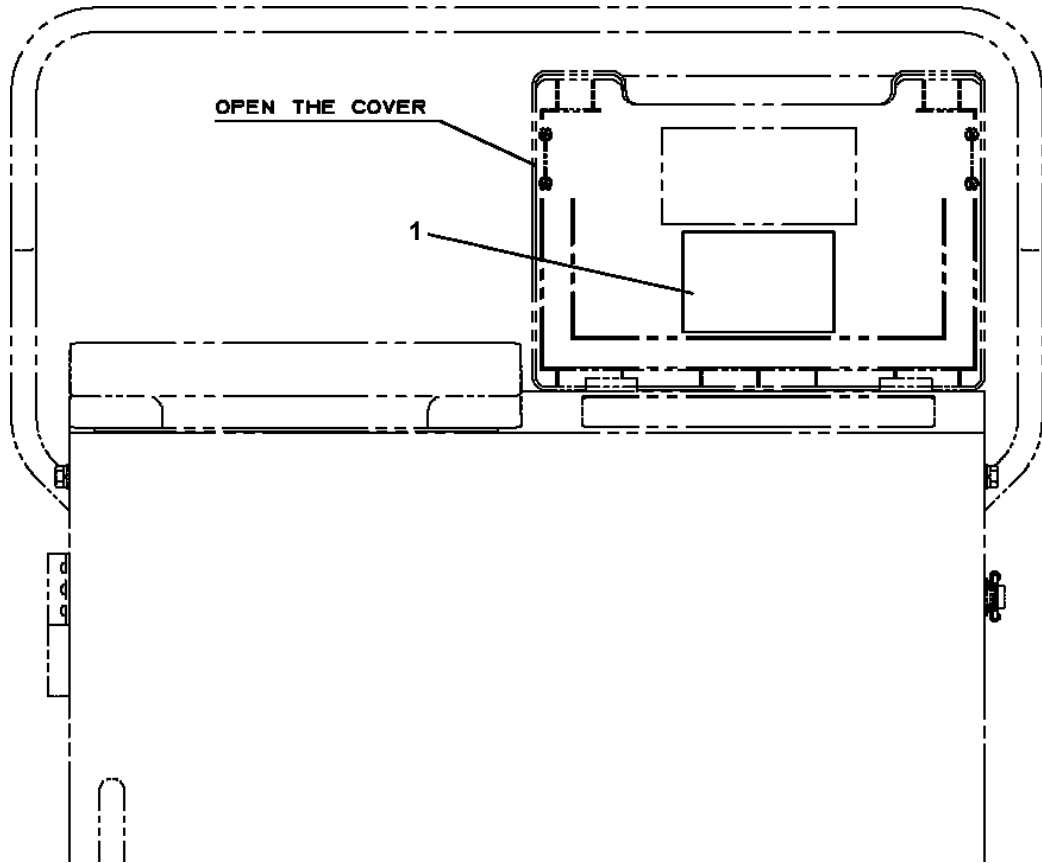


WINCH



SWING FRAME

AT-146-2 42095200017 UPPER
PO1013897-00 PLATE ASSY,NAME



AT-146-2 42095200017 UPPER

Pos No.	Parts No	Parts Name	Qty	Unit	Technical Data	Serial No (Start)	Serial No (End)	Remarks	Pages
1	42397301100	PLATE,CAUTION	1						

AT-146-2 42095200017 UPPER

Pos No.	Parts No	Parts Name	Qty	Unit	Technical Data	Serial No (Start)	Serial No (End)	Remarks	Pa
2	42470721010	JOINT	2				229107		
	37000933940	JOINT	2			229108			
3	42470721301	PRUNER	1						
4	80456020410	JOINT,SELF SEALING	1						
5	80456010410	JOINT,SELF SEALING	1						
6	42470721200	HOSE ASSY	1						
7	42470721100	COVER	1						
8	91000590800	O-RING	2		AS568-908	229108			
21	42470727530	CAP (DUST)	1						
24	42470727540	CAP (DUST)	1						
26	42470727520	CAP (DUST)	1						
27	42470727510	CAP (DUST)	1						
51	42340017540	CAP	1						
61	42340017530	CAP	1						

AT-146-2 42095200017 UPPER

Pos No.	Parts No	Parts Name	Qty	Unit	Technical Data	Serial No (Start)	Serial No (End)	Rem
1	42470980100	SWITCH,PUSH	1					
2	82100002220	CABLE	2	M				
3	82100002173	CONNECTOR	1					
10	42470980000	SWITCH BOX (FOR BOOSTER)	1					

AT-146-2 42095200017 UPPER

Pos No.	Parts No	Parts Name	Qty	Unit	Technical Data	Serial No (Start)	Serial No (End)	Remarks	Page
5	50815054503	PACKING	2						
6	36624970600	SPRING	2						
7	91002801800	O-RING	2		1B P18				
8	50815054703	PIN (STOP)	2						
9	36623835900	PLUG	2						
10	36624971100	SPACER	2						
100	36625000000	VALVE ASSY,CHECK	1						

AT-146-2 42095200017 UPPER

Pos No.	Parts No	Parts Name	Qty	Unit	Technical Data	Serial No (Start)	Serial No (End)
1	42460012550	WEDGE (STOPPER FOR TIRE/JUSTIN)	1				

AT-146-2 42095200017 UPPER

Pos No.	Parts No	Parts Name	Qty	Unit	Technical Data	Serial No (Start)	Serial No (End)	Remarks	Pages
1	42774721000	GUARD,SIDE	1						
2	42774351000	GUARD,SIDE	1						
3	42774352000	GUARD,SIDE	1						
4	42774633000	SUPPORT	1						
5	42774105000	SUPPORT	1						
6	90186210025	BOLT,FLANGE	3		M10X25				
7	90303071001	WASHER,PLAIN	6		10				
8	90280201000	NUT,FLANGE	2		M10				
9	90101208016	BOLT	2		M8X16				
10	37000547660	PLATE	2		T=2.3				
11	90280200800	NUT,FLANGE	2		M8				
12	90171110025	BOLT	6		M10X25				
13	90201781000	NUT	6		M10				
14	90302041001	WASHER,SPRING	6		10				
15	90171112040	BOLT	4		M12X40				
16	90302041201	WASHER,SPRING	4		12				
17	37000579050	PLATE	4						
18	90302040801	WASHER,SPRING	2		8				
19	42774354000	SUPPORT	1						
20	90186208020	BOLT,FLANGE	4		M8X20				

AT-146-2 42095200017 UPPER

Pos No.	Parts No	Parts Name	Qty	Unit	Technical Data	Serial No (Start)	Serial No (End)	Remarks	Pages
1	42739671000	BLOCK,WOOD	1						

AT-146-2 42095200017 UPPER

Pos No.	Parts No	Parts Name	Qty	Unit	Technical Data	Serial No (Start)	Serial No (End)	Remarks	Pages
1	42833771000	BOX,TOOL	1						00019
2	90101210025	BOLT	5		M10X25				
3	90302041001	WASHER,SPRING	5		10				
4	37000505950	PLATE	5		T=3.2				
21	42394484020	PLATE (NON-SLIP)	5						

AT-146-2 42095200017 UPPER

Pos No.	Parts No	Parts Name	Qty	Unit	Technical Data	Serial No (Start)	Serial No (End)	Remarks	Pages
1	42897620100	SUPPORT	1						
2	90101208020	BOLT	7		M8X20				
3	90302040801	WASHER,SPRING	15		8				
4	90201200800	NUT	3		M8				
5	90101206020	BOLT	3		M6X20				
6	90302040601	WASHER,SPRING	3		6				
7	90201200600	NUT	3		M6				
8	42811311000	SUPPORT	1						
9	90101210025	BOLT	8		M10X25				
10	90201201000	NUT	8		M10				
11	90302041001	WASHER,SPRING	8		10				
12	90303071001	WASHER,PLAIN	2		10				
13	42896260200	SUPPORT	1						
14	90101212022	BOLT	4		M12X22				
15	90302041201	WASHER,SPRING	4		12				
16	42834050400	GUARD	1						
17	42834050601	SUPPORT	1						
18	37000560120	PLATE	10		T=3.2				
19	42737540100	SUPPORT	4						
20	90101208016	BOLT	8		M8X16				
21	42737540200	SUPPORT	2						

AT-146-2 42095200017 UPPER

Pos No.	Parts No	Parts Name	Qty	Unit	Technical Data	Serial No (Start)	Serial No (End)	R
1	42470230000	CLAMP HEAD (IZUMI 12TON 3.5M)	1					

AT-146-2 42095200017 UPPER

Pos No.	Parts No	Parts Name	Qty	Unit	Technical Data	Serial No (Start)	Serial No
1	42472640000	CLAMP HEAD (IZUMI 8TON 3.5M ELECTRIC)	1				

AT-146-2 42095200017 UPPER

Pos No.	Parts No	Parts Name	Qty	Unit	Technical Data	Serial No (Start)	Serial
1	42470030000	CUTTER HEAD (IZUMI 6.4TON 2.5M ELECTRIC)	1				

AT-146-2 42095200017 UPPER

Pos No.	Parts No	Parts Name	Qty	Unit	Technical Data	Serial No (Start)	Serial No (End)	Remarks	P
1	42472670000	ROPE (SAFETY,WHITE)	1						

AT-146-2 42095200017 UPPER

Pos No.	Parts No	Parts Name	Qty	Unit	Technical Data	Serial No (Start)	Serial No (End)	Remarks	Pages
1	42470121000	ARM ASSY	1						
2	42471231000	HOLDER	3						
3	42470123000	CLAMP ASSY	1						
4	42470044000	HOT STICK	1						
5	42475751001	SUPPORT	1						
6	90101216150	BOLT	1		M16X150				
7	90303071601	WASHER,PLAIN	2		16				
8	90201201600	NUT	2		M16				
9	42220011200	SUPPORT	1						
21	42470121100	ARM	1						
22	42470121200	CAP	2						

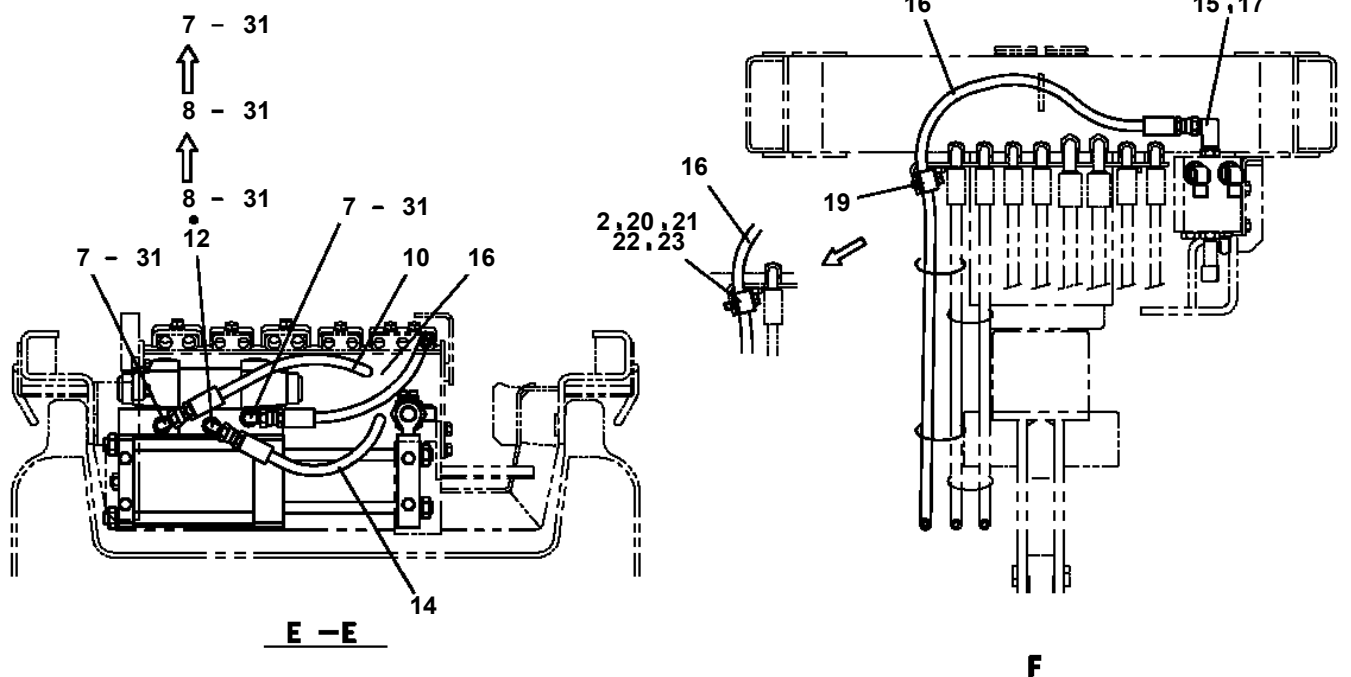
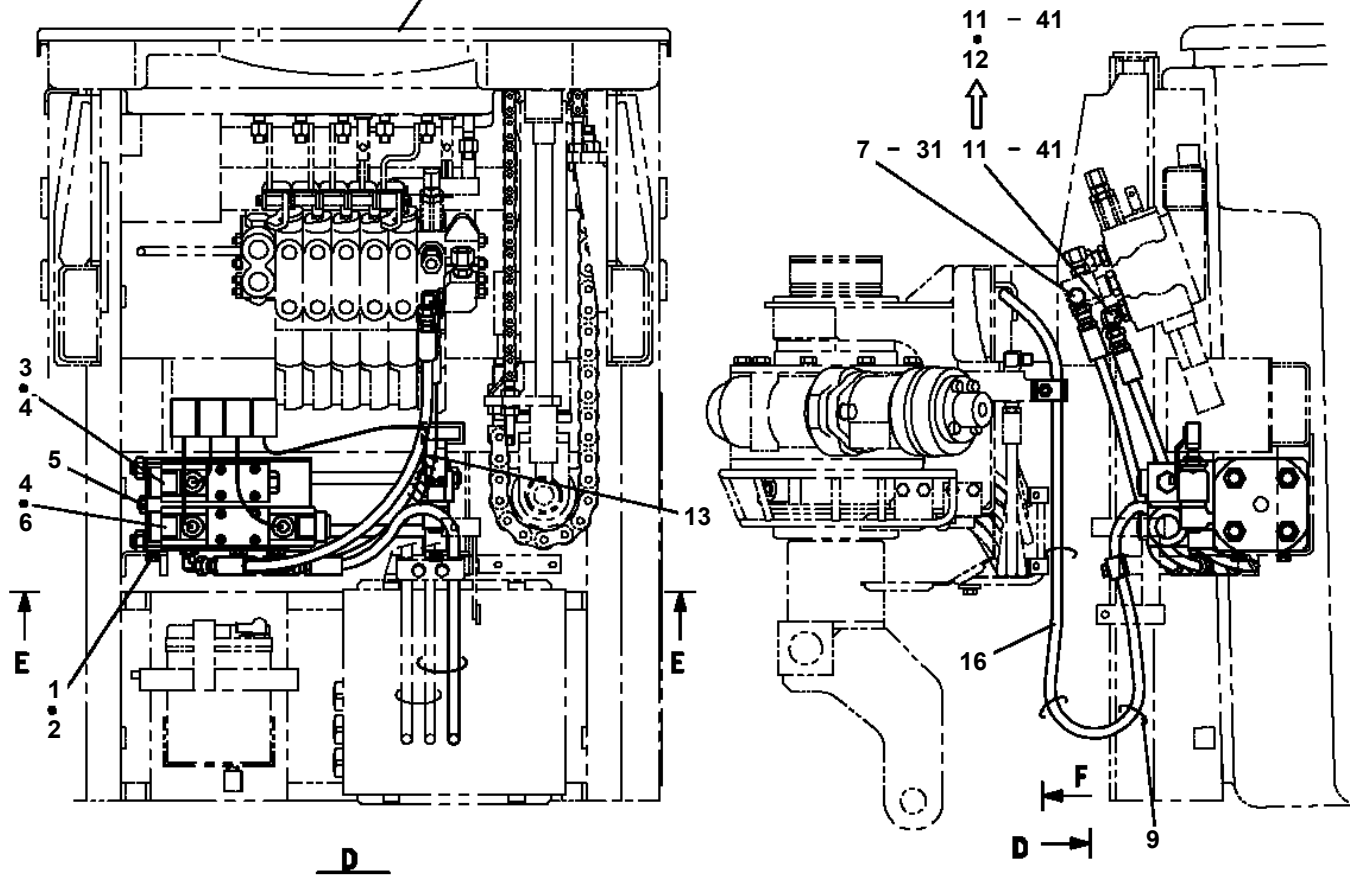
AT-146-2 42095200017 UPPER

Pos No.	Parts No	Parts Name	Qty	Unit	Technical Data	Serial No (Start)	Serial No (End)	Remarks	Pages
1	42470121000	ARM ASSY	1						
2	42470421000	HOLDER	3						
3	42470123000	CLAMP ASSY	1						
4	42470044000	HOT STICK	1						
5	42476851000	SUPPORT	1						
6	90101216130	BOLT	1		M16X130				
7	90303071601	WASHER,PLAIN	2		16				
8	90201201600	NUT	2		M16				
9	42220011200	SUPPORT	1						
21	42470121100	ARM	1						
22	42470121200	CAP	2						

AT-146-2 42095200017 UPPER
 PY1160089-03 BOOSTER (AIR&ELECTRIC)

動力ジブの場合

SEE ELEC. ASSY (BUCKET)



AT-146-2 42095200017 UPPER

Pos No.	Parts No	Parts Name	Qty	Unit	Technical Data	Serial No (Start)	Serial No (End)	Re
1	42478182010	PLATE,NAME	1					
2	42736070100	SWITCH ASSY (WITH HARNESS)	1					
3	42476303100	CABLE ASSY	1		L=1000			
4	42392583090	PLATE,CAUTION	1					
5	82100001802	TUBE,CORRUGATE	1	M	10			
6	42478151100	HARNESS	1					
7	82100000665	CAP (BLACK)	1					
8	91810132530	FASTENER	20					
9	82100001411	TUBE,SPIRAL	1	M	SE-08BK	228070		
21	82105220112	SWITCH,TOGGLE	1					
36	82117920411	CONNECTOR	1					
37	82122910400	CAP	1					

AT-146-2 42095200017 UPPER

Pos No.	Parts No	Parts Name	Qty	Unit	Technical Data	Serial No (Start)	Serial No (End)	Re
1	(*****)	BOOSTER (AIR&ELECTRIC)	1					
2	(*****)	BOOSTER (WIRING/AIR)	1					
3	(*****)	BOOSTER (PIPING/AIR&ELECTRIC)	1					

AT-146-2 42095200017 UPPER

Pos No.	Parts No	Parts Name	Qty	Unit	Technical Data	Serial No (Start)	Serial No (End)	R
1	42503770100	SUPPORT	1					
	42501020100	SUPPORT	1			228027	228026	
3	90101208025	BOLT	9		M8X25			
4	90302040801	WASHER,SPRING	9		8			
5	42502730301	SUPPORT	1					
6	(*****)	PIPING	1					
7	(*****)	ELEC.ASSY	1					
10	42501020400	SUPPORT	1					
11	(*****)	PLATE ASSY,NAME	1					
12	(*****)	MOUNT,SUPPORT (COLOR CONE)	1					
15	42736631000	CABLE ASSY	1					
16	42772470100	WEIGHT	1					
17	90171110025	BOLT	4		M10X25			
18	42503770200	PLATE	2					
31	82100002173	CONNECTOR	1					
33	82117920411	CONNECTOR	1					
34	82100001219	INSULATOR	8					
35	82122910400	CAP	1					

AT-146-2 42095200017 UPPER

Pos No.	Parts No	Parts Name	Qty	Unit	Technical Data	Serial No (Start)	Serial No (E
23	80172403006	SCREW,MACHINE	3		M3X6		
	80172403006	SCREW,MACHINE	3		M3X6		
	80172403006	SCREW,MACHINE	3		M3X6		
24	80161203006	SCREW,MACHINE	1		M3X6		
	80161203006	SCREW,MACHINE	1		M3X6		
	80161203006	SCREW,MACHINE	1		M3X6		
25	42643594530	SUPPORT	1				
	42643594530	SUPPORT	1				
	42643594530	SUPPORT	1				
26	42643594540	RELAY ASSY	1				
	42643594540	RELAY ASSY	1				
	42643594540	RELAY ASSY	1				
27	42643594550	SHAFT	1				
	42643594550	SHAFT	1				
	42643594550	SHAFT	1				
28	42643594560	HOSE,VINYL	1		6X8X700		
	42643594560	HOSE,VINYL	1		6X8X700		
	42643594560	HOSE,VINYL	1		6X8X700		
29	42643594570	HOSE,VINYL	1		4X6X20		
	42643594570	HOSE,VINYL	1		4X6X20		
	42643594570	HOSE,VINYL	1		4X6X20		
30	42643594580	FASTENER	4				
	42643594580	FASTENER	4				
	42643594580	FASTENER	4				
31	42736602010	JOINT	2				
	42736602010	JOINT	2				
	42736602010	JOINT	2				
32	42647202030	CORD ASSY	3				
	42647202030	CORD ASSY	3				
	42647202030	CORD ASSY	3				
33	42647202040	CORD ASSY	1				
	42647202040	CORD ASSY	1				
	42647202040	CORD ASSY	1				
51	42471437520	CAP	1				
	42471437520	CAP	1				
	42471437520	CAP	1				
61	42470407570	CAP	1				
	42470407570	CAP	1				
	42470407570	CAP	1				
102	36645930000	VALVE,SOLENOID	1				
	36645930000	VALVE,SOLENOID	1				
	36645930000	VALVE,SOLENOID	1				
104	42736603000	BOOSTER	1				
	42736603000	BOOSTER	1				
	42736603000	BOOSTER	1				
300	42647201001	BOOSTER	1				
	42647201001	BOOSTER	1				
	42647201001	BOOSTER	1				

AT-146-2 42095200017 UPPER

Pos No.	Parts No	Parts Name	Qty	Unit	Technical Data	Serial No (Start)	Serial No (End)
1	(*****)	BOOSTER (AIR&ELECTRIC)	1				
2	(*****)	BOOSTER (WIRING/AIR ELEC.,NANABOSHI)	1				
3	(*****)	BOOSTER (PIPING/AIR ELEC.,NANABOSHI)	1				

AT-146-2 42095200017 UPPER

Pos No.	Parts No	Parts Name	Qty	Unit	Technical Data	Serial No (Start)	Serial No (End)	Remarks	Pages
1	90101208020	BOLT	6		M8X20				
	90101208020	BOLT	6		M8X20				
2	90302040801	WASHER,SPRING	6		8				
	90302040801	WASHER,SPRING	6		8				
3	90303070801	WASHER,PLAIN	6		8				
	90303070801	WASHER,PLAIN	6		8				
21	42693793100	SUPPORT	1						
	42693793100	SUPPORT	1						
22	42693793500	PIN	1						
	42693793500	PIN	1						
23	90101208016	BOLT	2		M8X16				
	90101208016	BOLT	2		M8X16				
24	90302040801	WASHER,SPRING	2		8				
	90302040801	WASHER,SPRING	2		8				
25	90303070801	WASHER,PLAIN	2		8				
	90303070801	WASHER,PLAIN	2		8				
26	42693793300	SUPPORT	1						
	42693793300	SUPPORT	1						
27	82430153010	KNOB	1						
	82430153010	KNOB	1						
28	90101212030	BOLT	1		M12X30				
	90101212030	BOLT	1		M12X30				
29	42693793400	ROD	1						
	42693793400	ROD	1						
30	37000311380	PIN	2						
	37000311380	PIN	2						
31	37000169080	PIN	2						
	37000169080	PIN	2						
32	80601110100	RING,RITAINING	4		S10				
	80601110100	RING,RITAINING	4		S10				
33	80172803006	SCREW,MACHINE	2		M3X6				
	80172803006	SCREW,MACHINE	2		M3X6				
34	90302040301	WASHER,SPRING	2		3				
	90302040301	WASHER,SPRING	2		3				

AT-146-2 42095200017 UPPER

Pos No.	Parts No	Parts Name	Qty	Unit	Technical Data	Serial No (Start)	Serial No (End)
5	80456210600	JOINT,SELF SEALING	2				
10	42472130000	HOSE,BOOSTER (FEMALE-FEMALE,5M)	1				

AT-146-2 42095200017 UPPER

Pos No.	Parts No	Parts Name	Qty	Unit	Technical Data	Serial No (Start)	Serial No (End)	Remarks	Pages
1	42733561000	EARTH	1						
2	42733560100	CABLE	1						
3	90101208016	BOLT	1		M8X16				
4	42733560030	PLATE	1						
5	80720104028	PIN,SPRING	1		4X28				
6	90303070801	WASHER,PLAIN	1		8				

AT-146-2 42095200017 UPPER

Pos No.	Parts No	Parts Name	Qty	Unit	Technical Data	Serial No (Start)	Serial No
1	42474030000	STEP, BUCKET (GRAY, FOR BUCKET INNER)	1				

AT-146-2 42095200017 UPPER

Pos No.	Parts No	Parts Name	Qty	Unit	Technical Data	Serial No (Start)	Serial No (End)	Remarks
1	42474540000	HANGER (FOR BUCKET,FRP)	1					

AT-146-2 42095200017 UPPER

Pos No.	Parts No	Parts Name	Qty	Unit	Technical Data	Serial No (Start)	Serial No (End)	Remarks
1	42472990000	BOX,TOOL (FOR BUCKET)	1					

CLICK HERE TO **DOWNLOAD** THE COMPLETE MANUAL

- Thank you very much for reading the preview of the manual.
- You can download the complete manual from: www.heydownloads.com by clicking the link below



- Please note: If there is no response to CLICKING the link, please download this PDF first and then click on it.

CLICK HERE TO **DOWNLOAD** THE COMPLETE MANUAL