

AT-140-2 42002200006 UPPER

PD2000131-00 SWING UNIT

PG2000150-00 BOOM UNIT

PH1000550-00 SAFETY DEVICES (MOTION CONTROLLER)

PJ3000396-00 BUCKET SYSTEM

PK2000620-00 FRAME UNIT

PO1000149-00 INDICATION PLATES

PW1000118-00 ACCESSORIES & TOOLS

ASSEMBLY

CLICK HERE TO **DOWNLOAD** THE COMPLETE MANUAL

- Thank you very much for reading the preview of the manual.
- You can download the complete manual from: www.heydownloads.com by clicking the link below



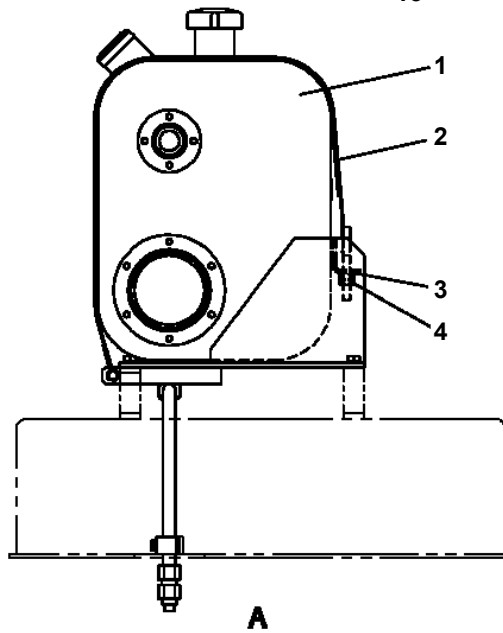
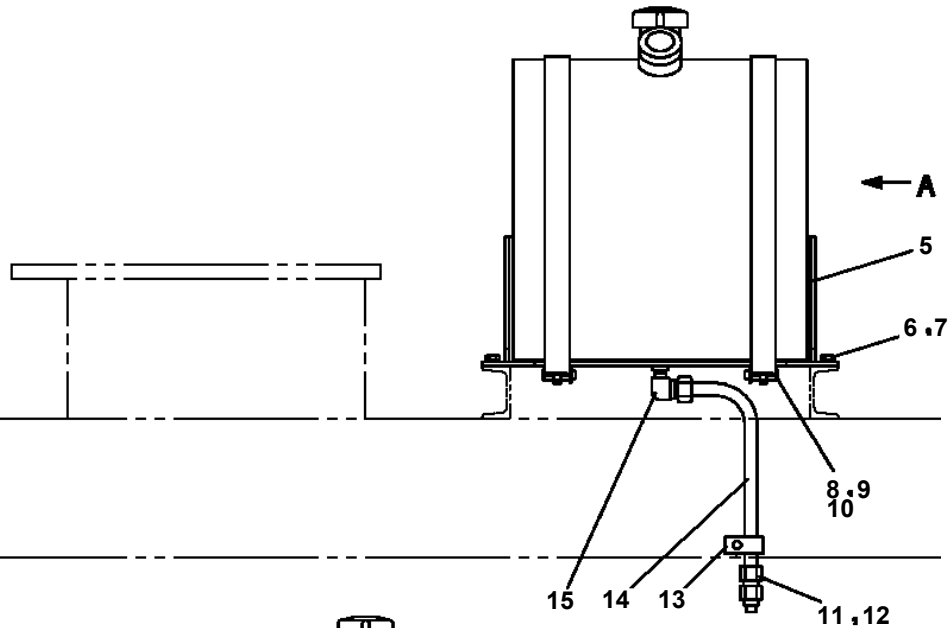
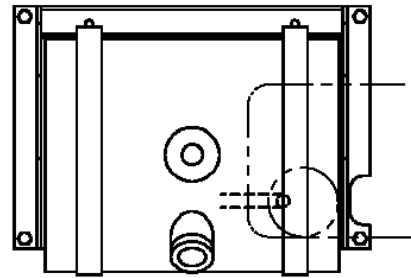
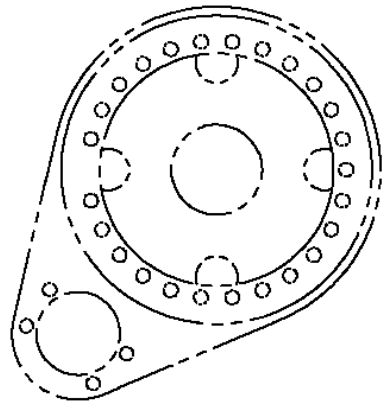
- Please note: If there is no response to CLICKING the link, please download this PDF first and then click on it.

CLICK HERE TO **DOWNLOAD** THE COMPLETE MANUAL

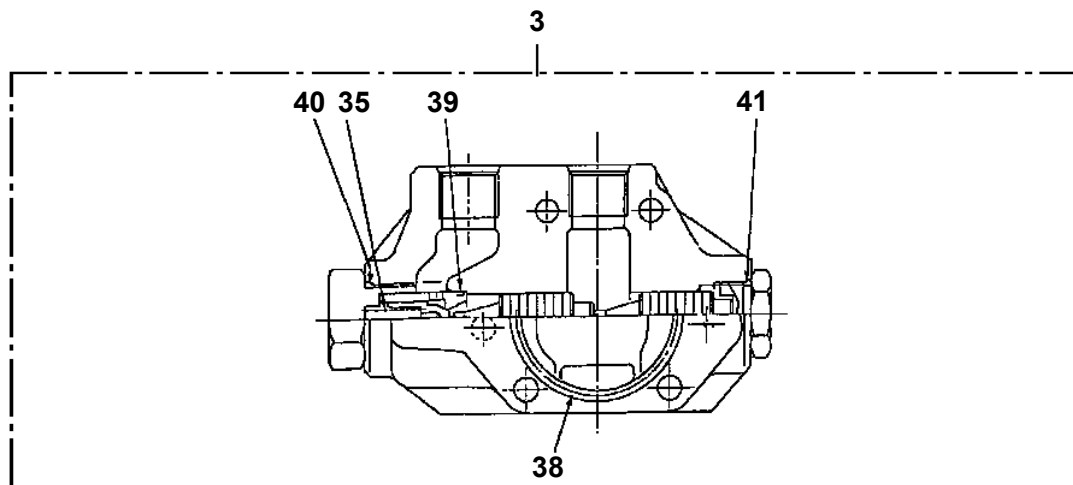
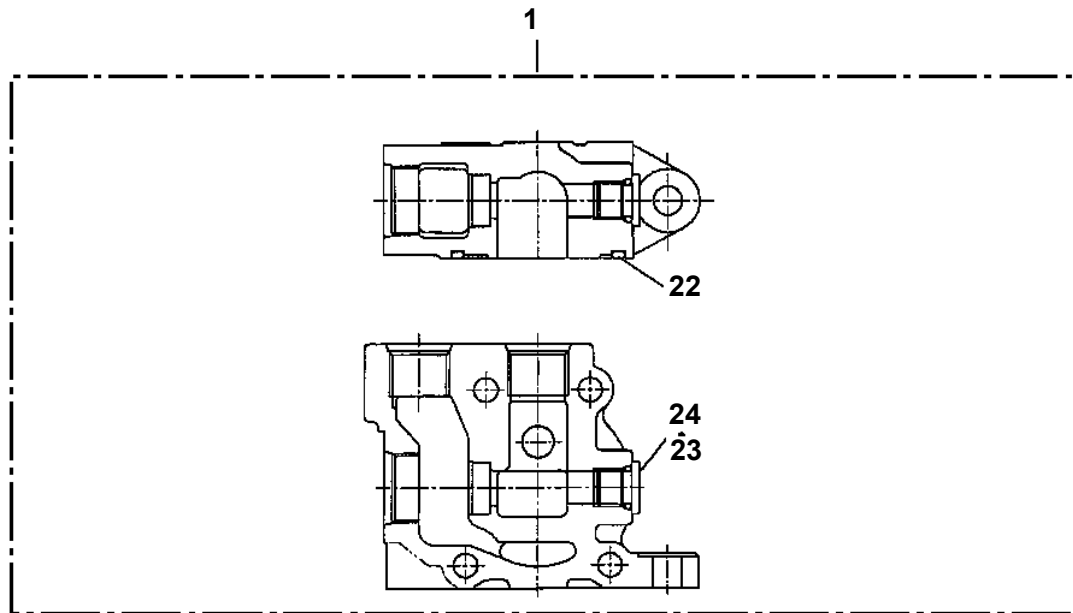
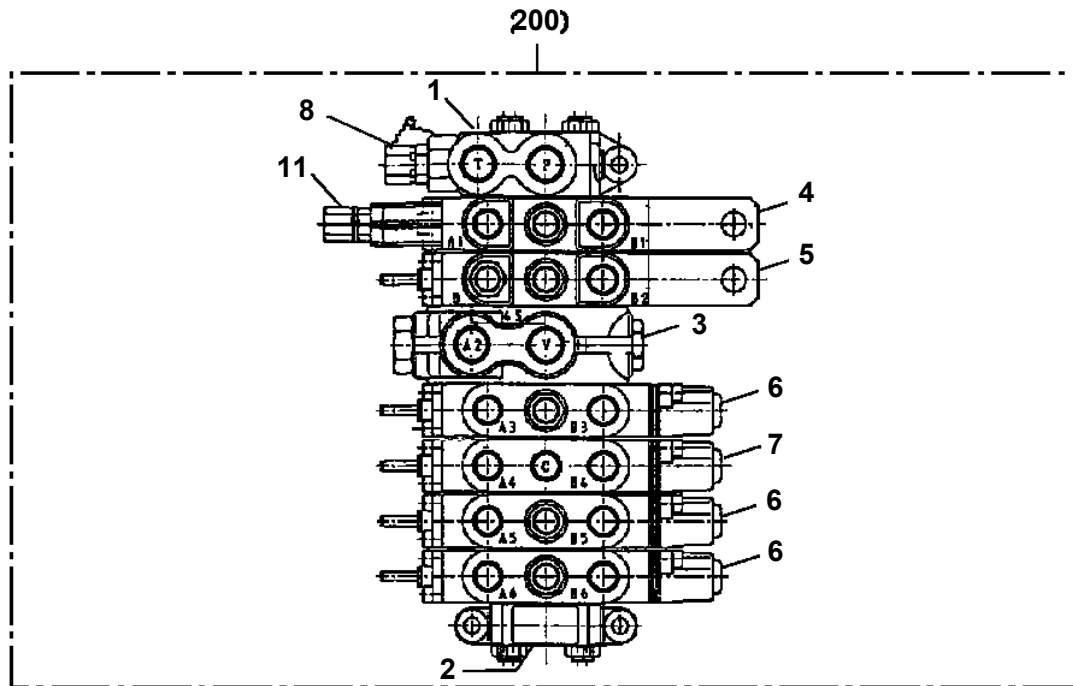
AT-140-2 42002200006 UPPER

Pos No.	Parts No	Parts Name	Qty	Unit	Technical Data	Serial No (Start)	Serial No (End)	Remarks	Pa
1	(*****)	FRAME	1						000
2	(*****)	OUTRIGGER (FRONT)	1						000
3	(*****)	OUTRIGGER (REAR)	1						000
4	(*****)	PIPING,OUTRIGGER	1						000
5	(*****)	ELEC.ASSY (FRAME)	1						000
6	(*****)	TANK,OIL (SUPPORT)	1						000
7	(*****)	OPE.ASSY,OUTRIGGER	1						000

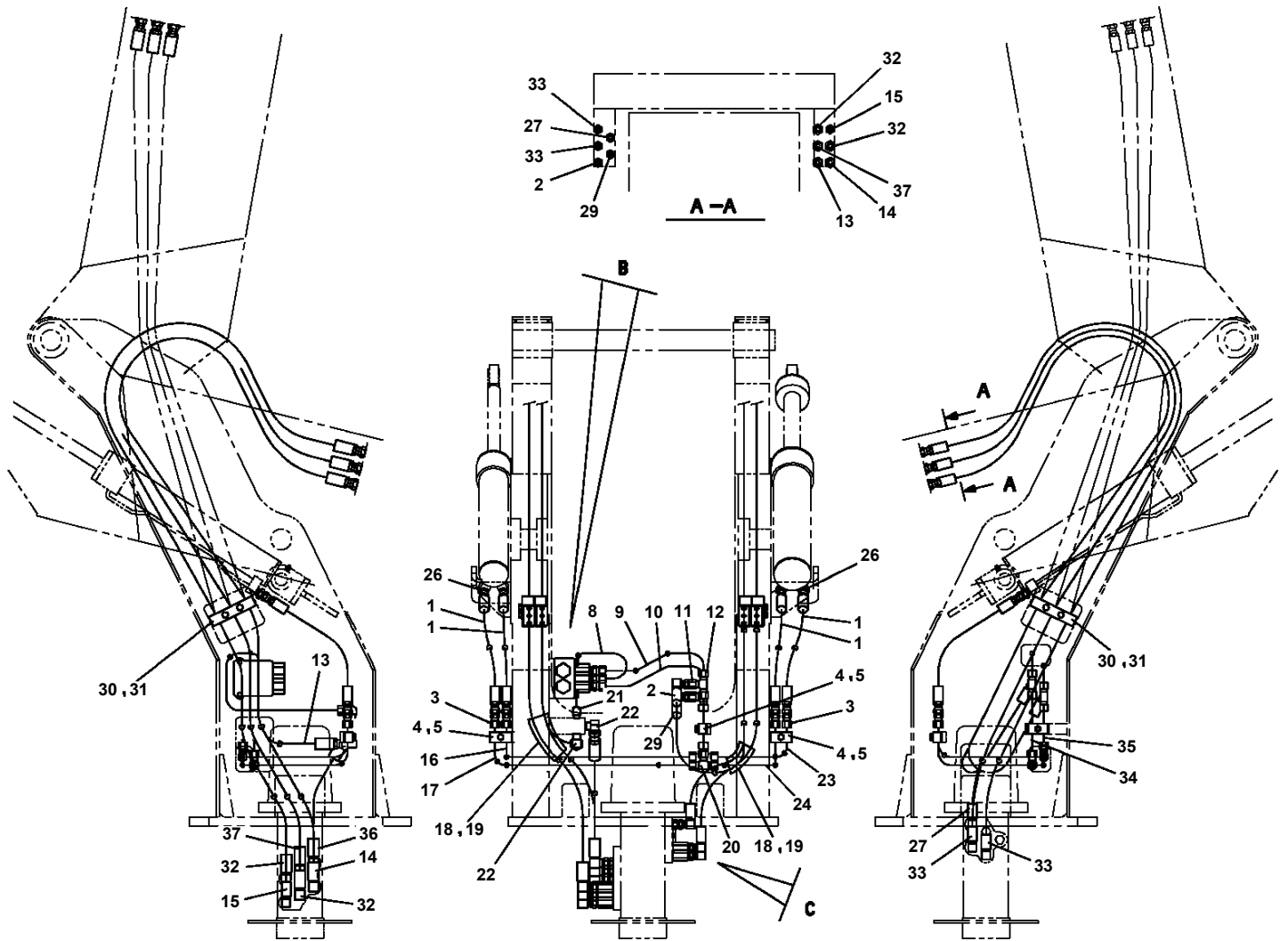
**AT-140-2 42002200006 UPPER
PB1130139-01 TANK,OIL (SUPPORT)**



AT-140-2 42002200006 UPPER
PB1320436-00 VALVE, MANUAL CONTROL (OUTRIGGER)



**AT-140-2 42002200006 UPPER
PB1400365-00 PIPING,UPPER**



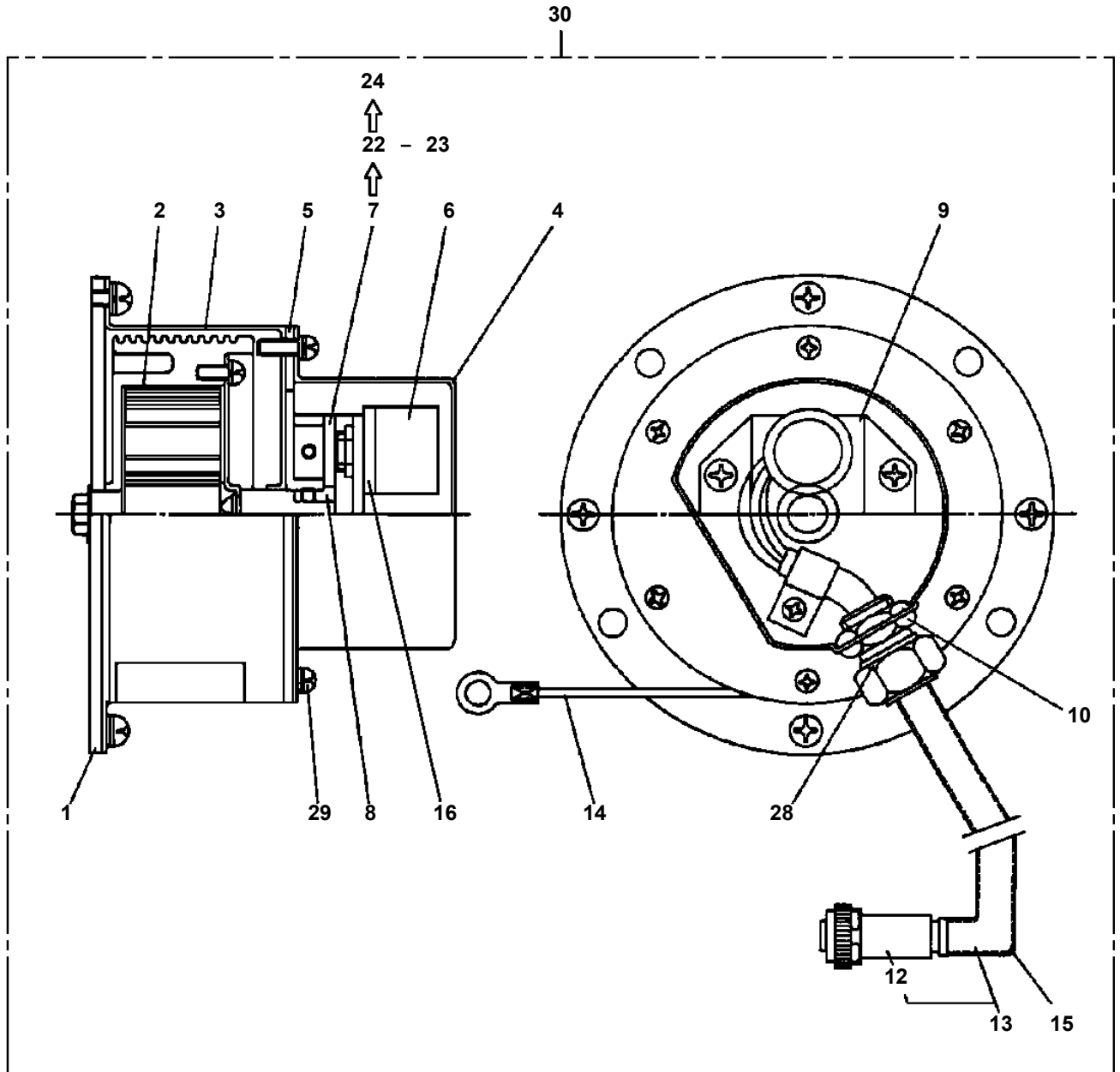
AT-140-2 42002200006 UPPER

Pos No.	Parts No	Parts Name	Qty	Unit	Technical Data	Serial No (Start)	Serial No (End)	Remarks
1	42612451000	OUTRIGGER (INNER,CASE)	2				220194	
	42612451001	OUTRIGGER (INNER,CASE)	2			220195		
2	37000504780	PLATE	N		T=0.6			
3	31611640150	SPRING	2					
4	90101208016	BOLT	44		M8X16		220158	
	90101208016	BOLT	40		M8X16	220159		
5	90302040801	WASHER,SPRING	40		8			
6	42610260030	PLATE,SLIDE	8					
7	42610260020	PLATE	8		T=0.8			
8	42610260050	PLATE	8		T=0.4			
9	80728103014	PIN,SPRING	8		3X14			
10	42610260010	PLATE	8					
11	90171108016	BOLT	4		M8X16	220159		

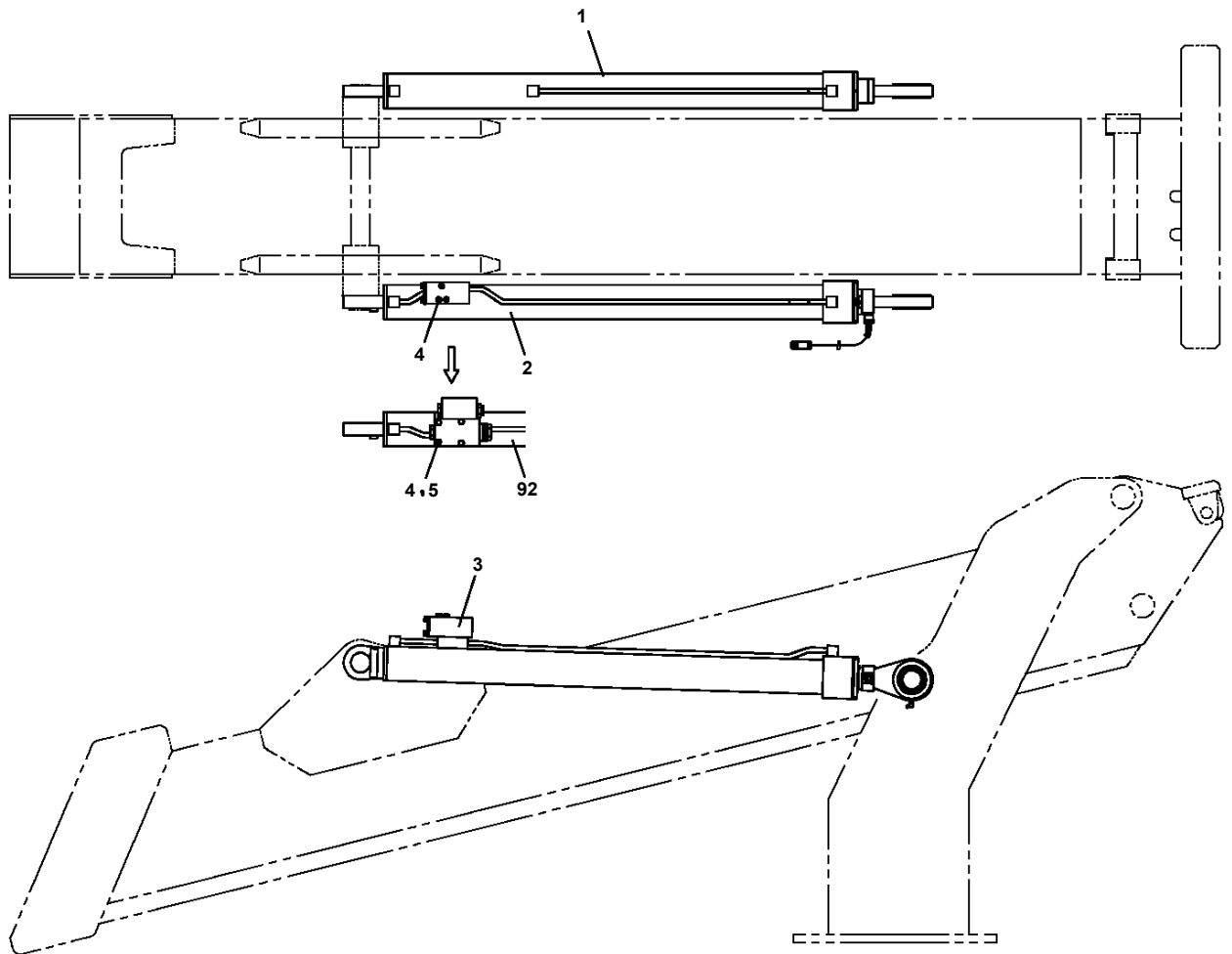
AT-140-2 42002200006 UPPER

Pos No.	Parts No	Parts Name	Qty	Unit	Technical Data	Serial No (Start)	Serial No (End)	Rem
1	91660003001	SEAL,DUST	1					
2	91694003000	PACKING	1					
3	91001204000	O-RING	1		1A G40		220149	
	91002904000	O-RING	1		1B G40	220150		
4	36040335021	COVER,ROD	1					
5	36042095500	CYLINDER	1					
6	36042105600	ROD	1					
7	36041030300	PISTON	1				220149	
8	91100104500	SEAL,RING	1				220149	
9	90302041801	WASHER,SPRING	1		18			
10	90209201800	NUT	1		M18			
11	80430410450	JOINT	2					
12	80316030010	PLUG	2		NPTF1-16			
13	91002802000	O-RING	1		1B P20	220150		
14	91411203501	RING,BACKUP	2			220150		
15	36042405301	PISTON	1			220150		
16	91684004500	PACKING	2			220150		
50	36040369900	PACKING SET	1				220149	
60	36042419902	PACKING SET	1		30X45	220150		
100	36042090000	CYLINDER,EXTENSION (REAR)	1					

AT-140-2 42002200006 UPPER
PC1380006-05 DETECTOR,OUTRIGGER LENGTH



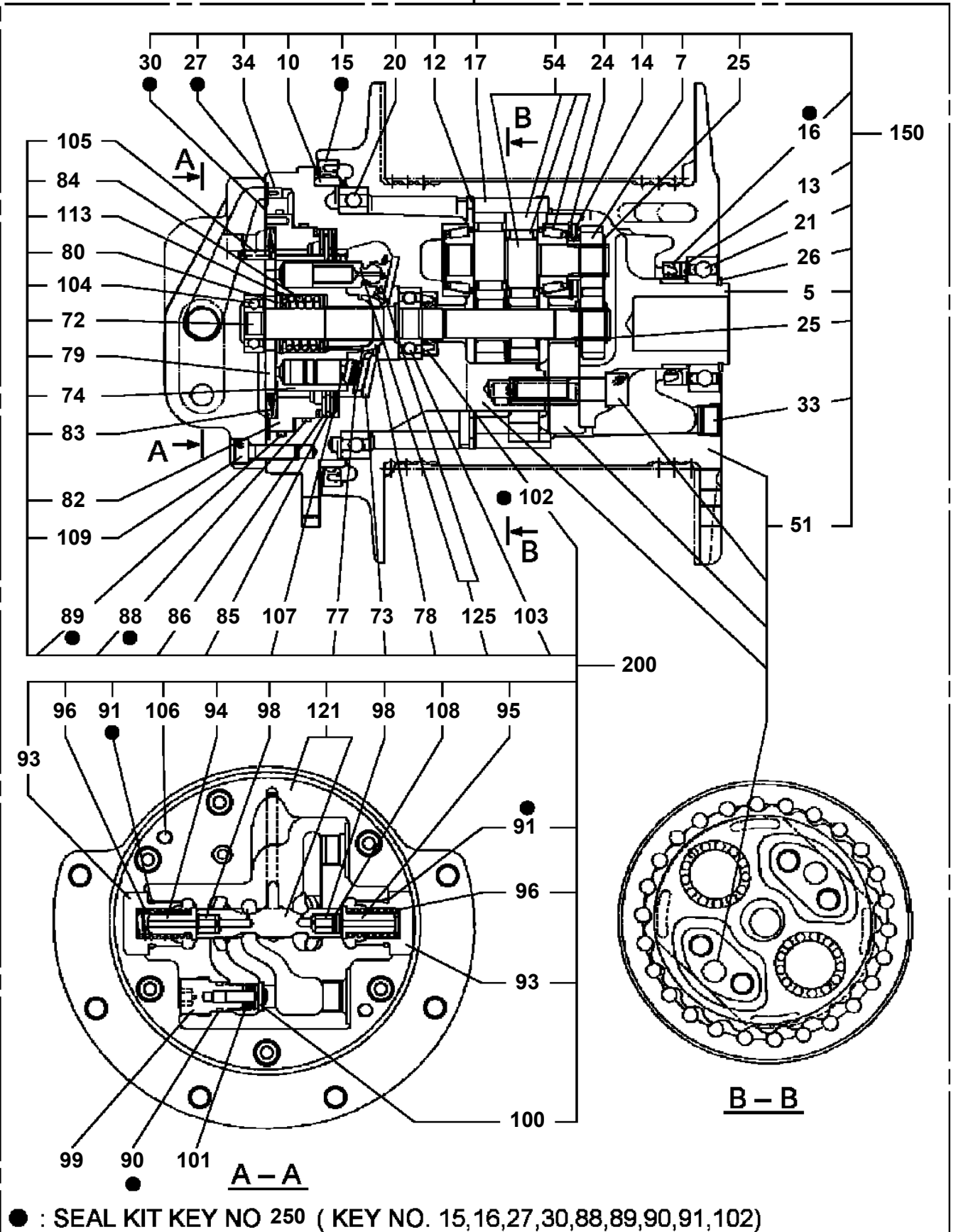
AT-140-2 42002200006 UPPER
PE1010232-04 CYLINDER,ELEVATING



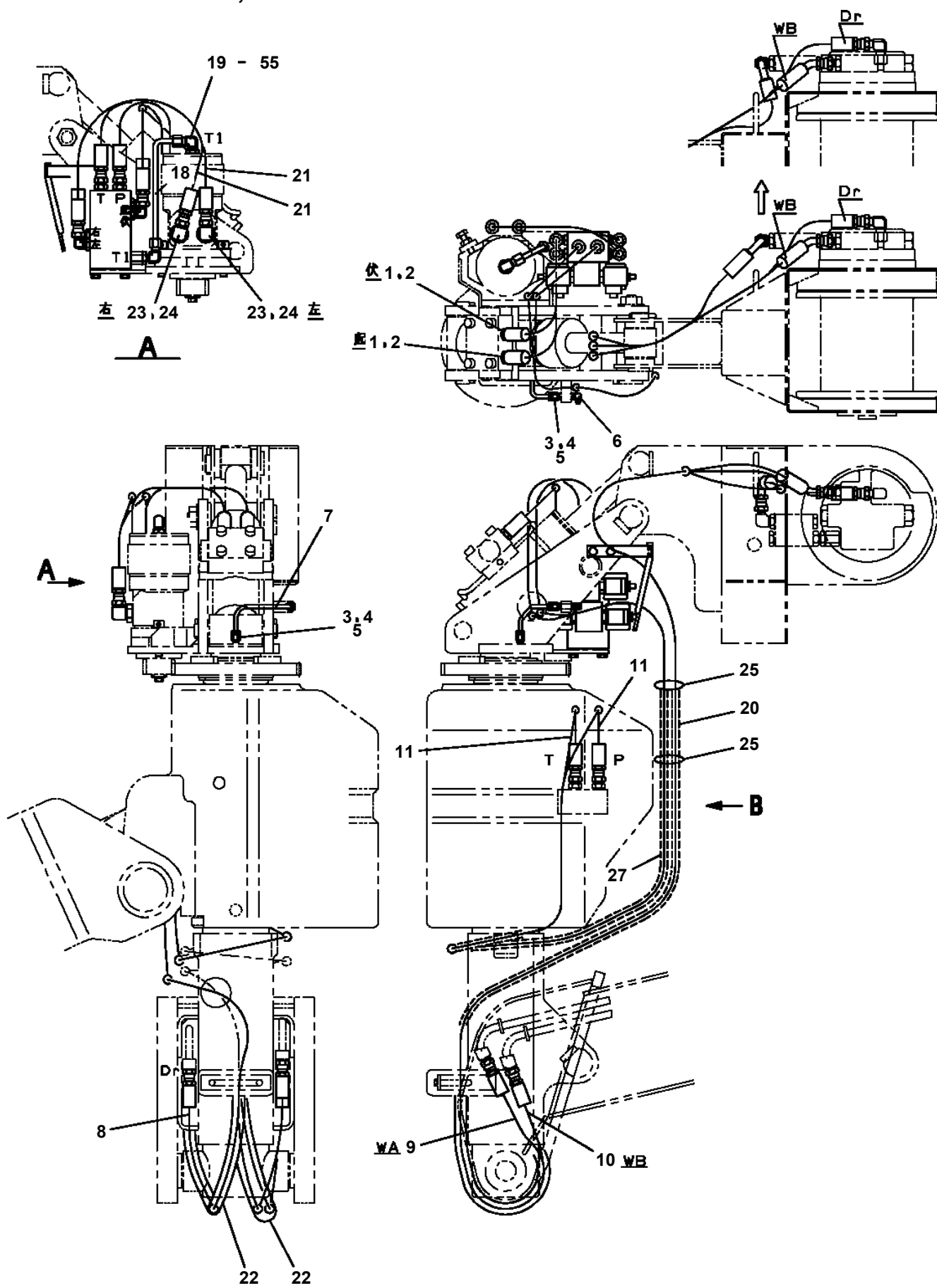
展開図有
ILLUSTRATED BREAKDOWN NO.1,2:922

AT-140-2 42002200006 UPPER
PF1010168-01 WINCH

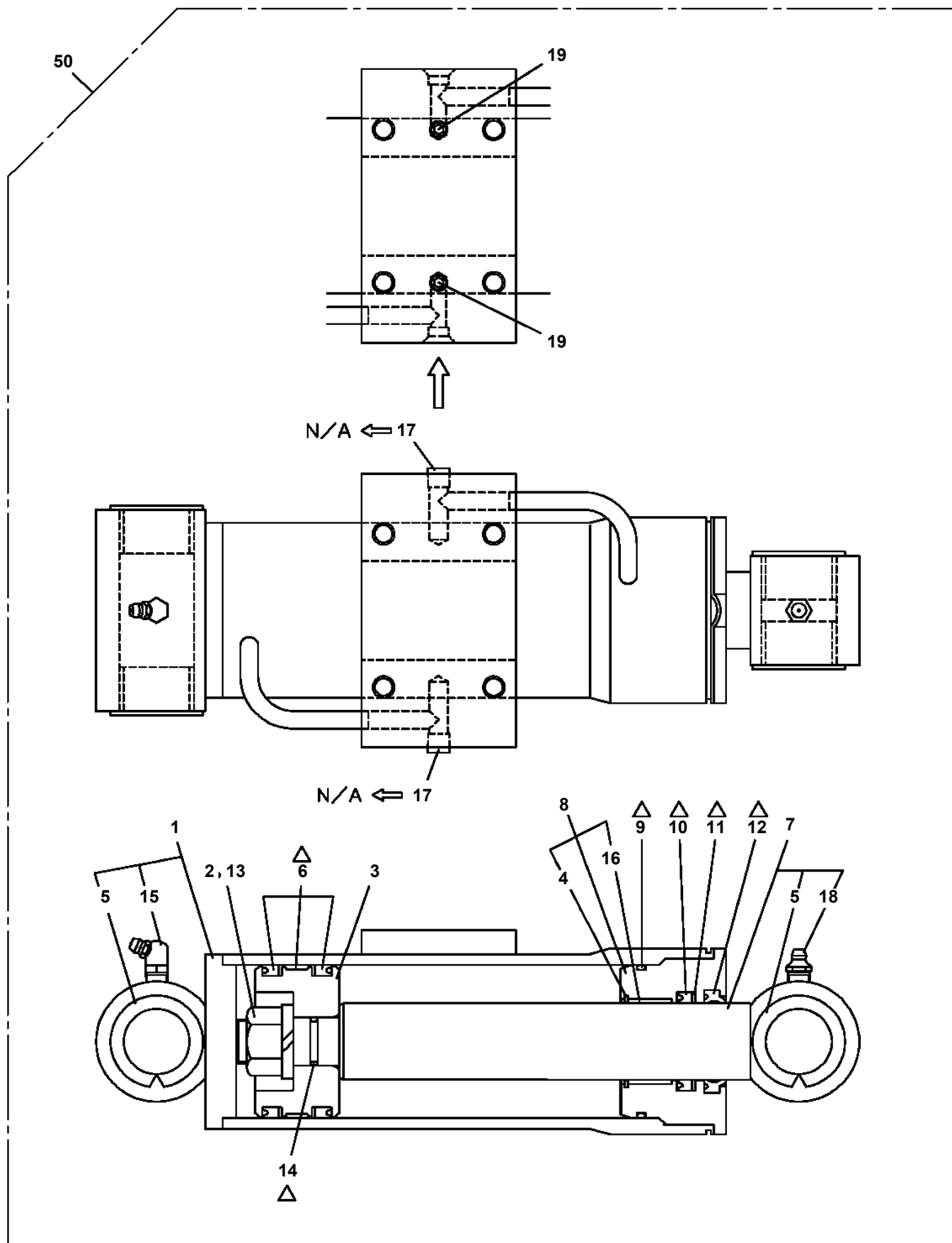
300



**AT-140-2 42002200006 UPPER
PF1200392-01 PIPING,WINCH**



**AT-140-2 42002200006 UPPER
PF1360003-05 CYLINDER,WINCH JIB (POWER)**

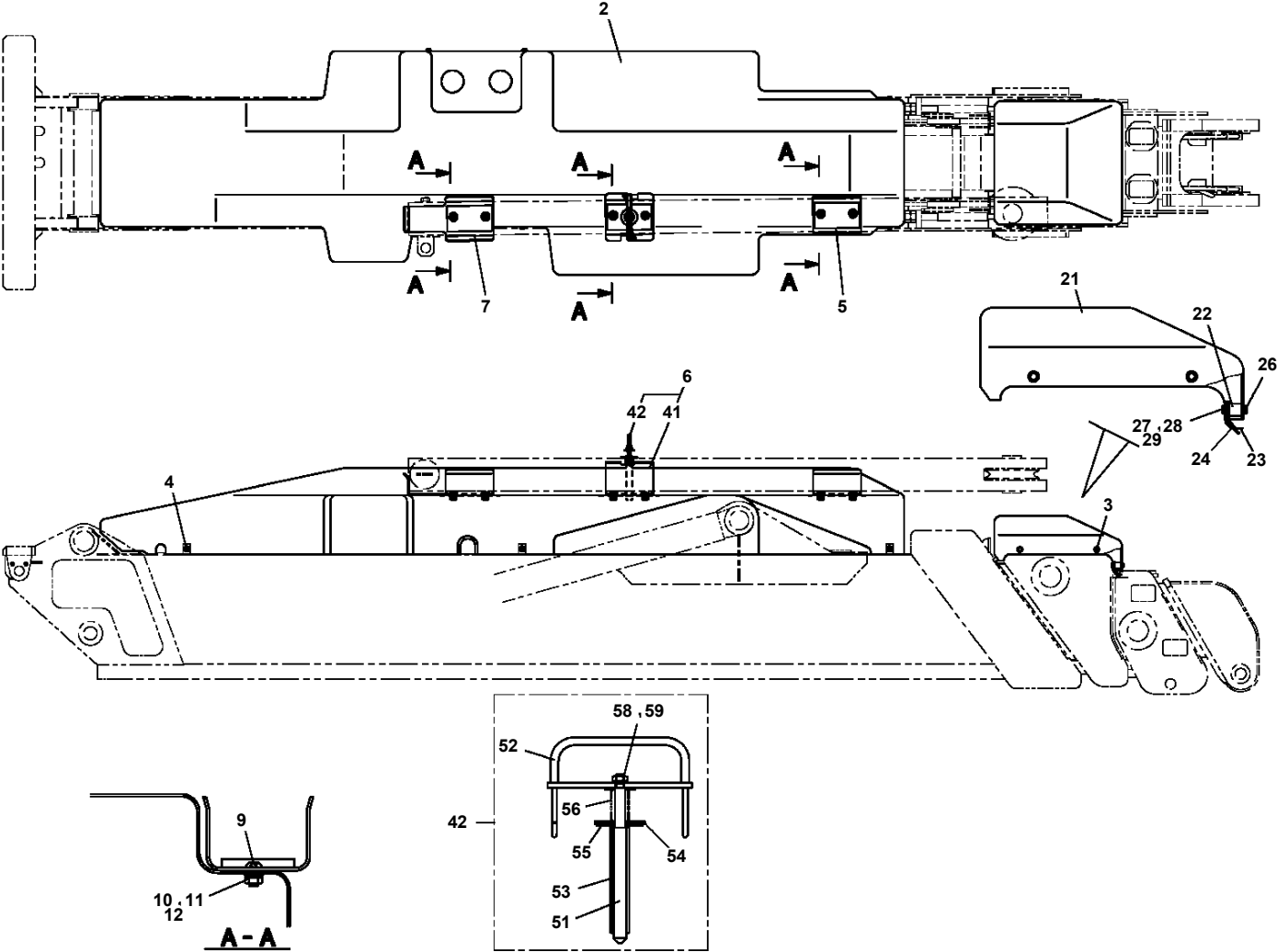


△:PACKING SET KEY NO.30 (KEY NO.6,9,10,11,12,14)

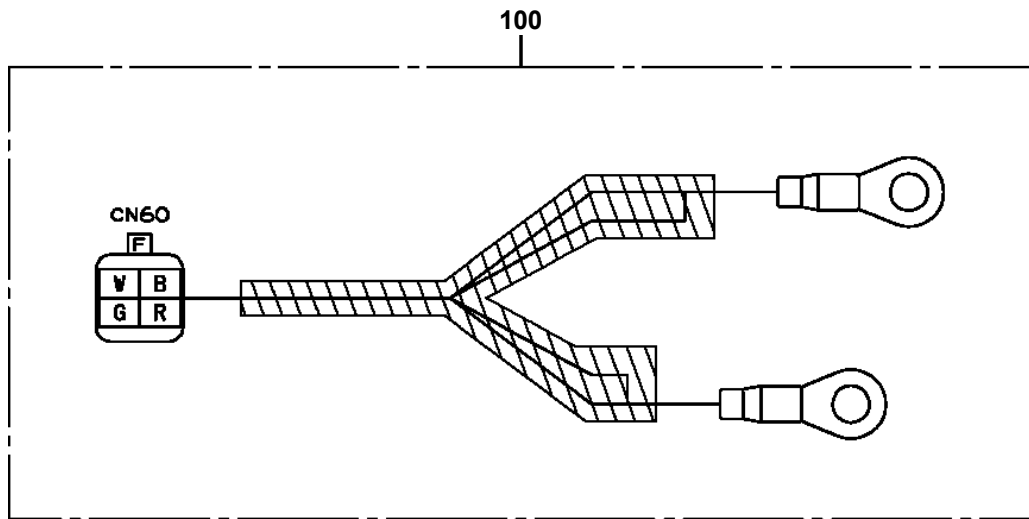
AT-140-2 42002200006 UPPER

Pos No.	Parts No	Parts Name	Qty	Unit	Technical Data	Serial No (Start)	Serial No (End)	Remarks
163	42200870510	SUPPORT	6					
164	80569036905	BEARING,NEEDLE	6					
165	80569123031	SPACER (NTN)	6					
166	42200014240	SPACER	6					
172	80516006012	BEARING,BALL	2					
181	80801003012	BEARING,PLAIN	2					
182	37000164180	PIN	1					
183	90238402408	NUT,CASTLE	1		M24			
184	90303072401	WASHER,PLAIN	1		24			
185	80136350045	PIN,SPLIT	1		5X45			
186	80601110250	RING,RITAINING	4		S25			
187	42200706020	PLATE	2					
188	42200706030	PIN	2					
189	42200706040	ROLLER ASSY	2					
190	37000308170	SPACER	4					
202	80612111100	RING,RETAINING	2					
203	80516006212	BEARING,BALL	2					
211	42200013410	SUPPORT	4					
212	37002008530	PLATE,SLIDE	4					
213	37000508520	PLATE	4		T=0.8			
214	80184306014	SCREW,MACHINE	4		M6X14			
222	80576000205	BEARING,BALL	4					
231	42200870310	SUPPORT	1					
232	37000156120	PIN	1					
233	42200706480	ROLLER	1					
234	80136340036	PIN,SPLIT	1		4X36			
241	42200870810	SUPPORT	1					
242	42200870860	ROLLER	2					
243	42200870850	SUPPORT	1					
244	42200870240	SUPPORT	1					
245	90101208014	BOLT	2		M8X14			
248	33610002520	PLATE,SLIDE	1					
252	80612110620	RING,RITAINING	2		AR62			
	80612110620	RING,RITAINING	2		AR62		220192	
253	80516006206	BEARING,BALL	2					
254	80513006206	BEARING,BALL	4					
271	42392242010	PLATE,NAME (MARKING)	1			220159		
283	37002000290	PLATE,SLIDE	2		100X30		220158	
	37002000290	PLATE,SLIDE	4		100X30			
	37002000290	PLATE,SLIDE			100X30	220159		
312	82400000476	INSULATOR	2	M				
322	82400000310	GROMMET	1		L=1000			
332	82400000201	GROMMET	1		KG-016			

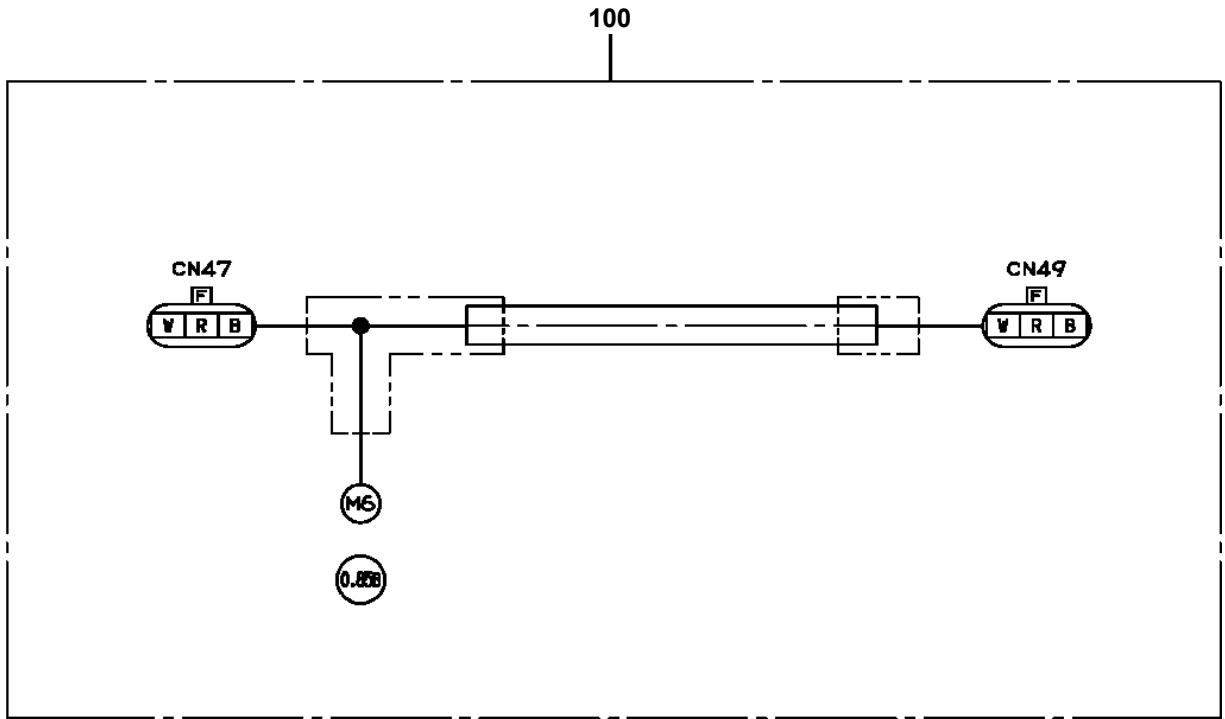
**AT-140-2 42002200006 UPPER
PG1410045-00 COVER,BOOM**



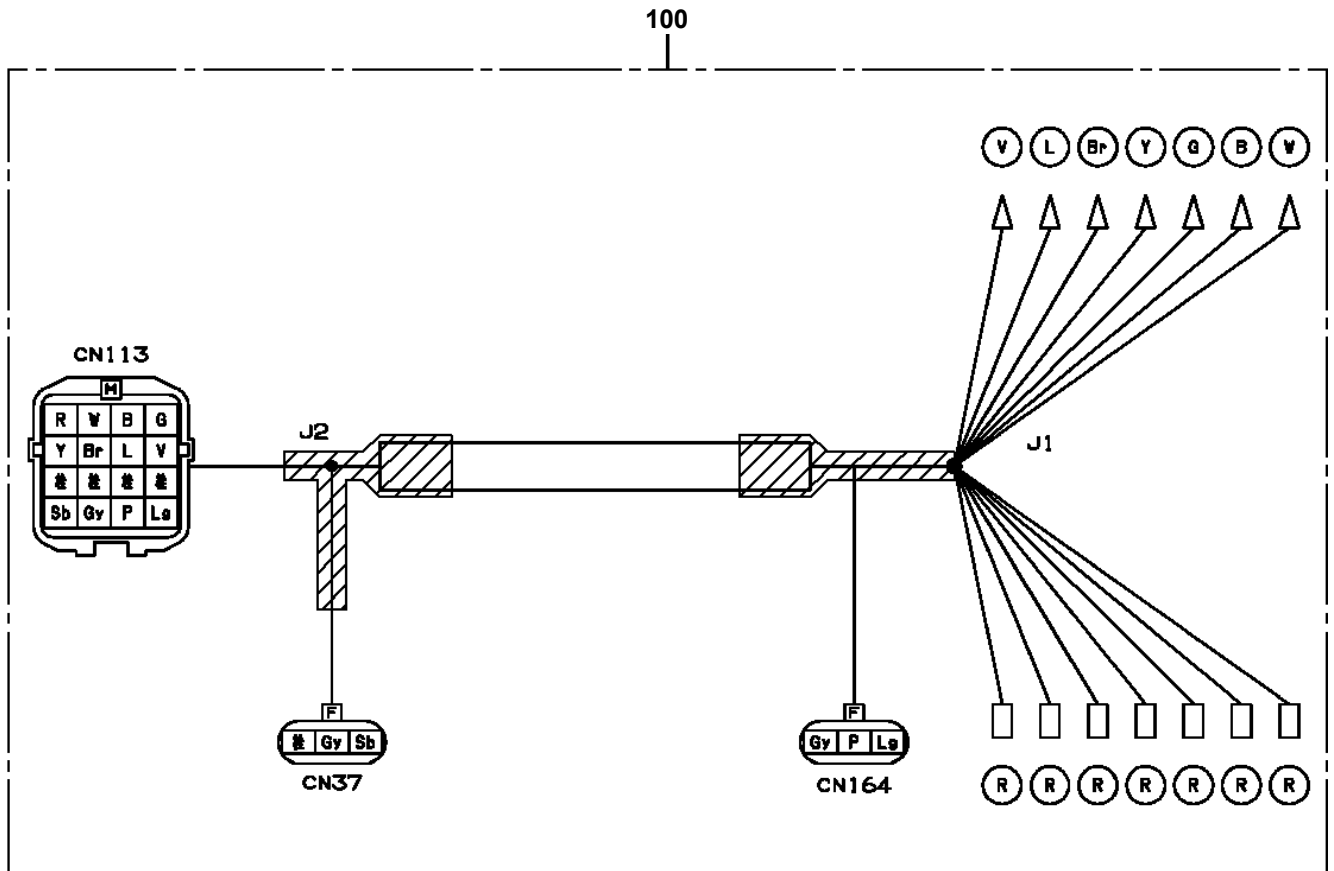
AT-140-2 42002200006 UPPER
PH5031064-00 HARNESS



AT-140-2 42002200006 UPPER
PH5031886-00 HARNESS

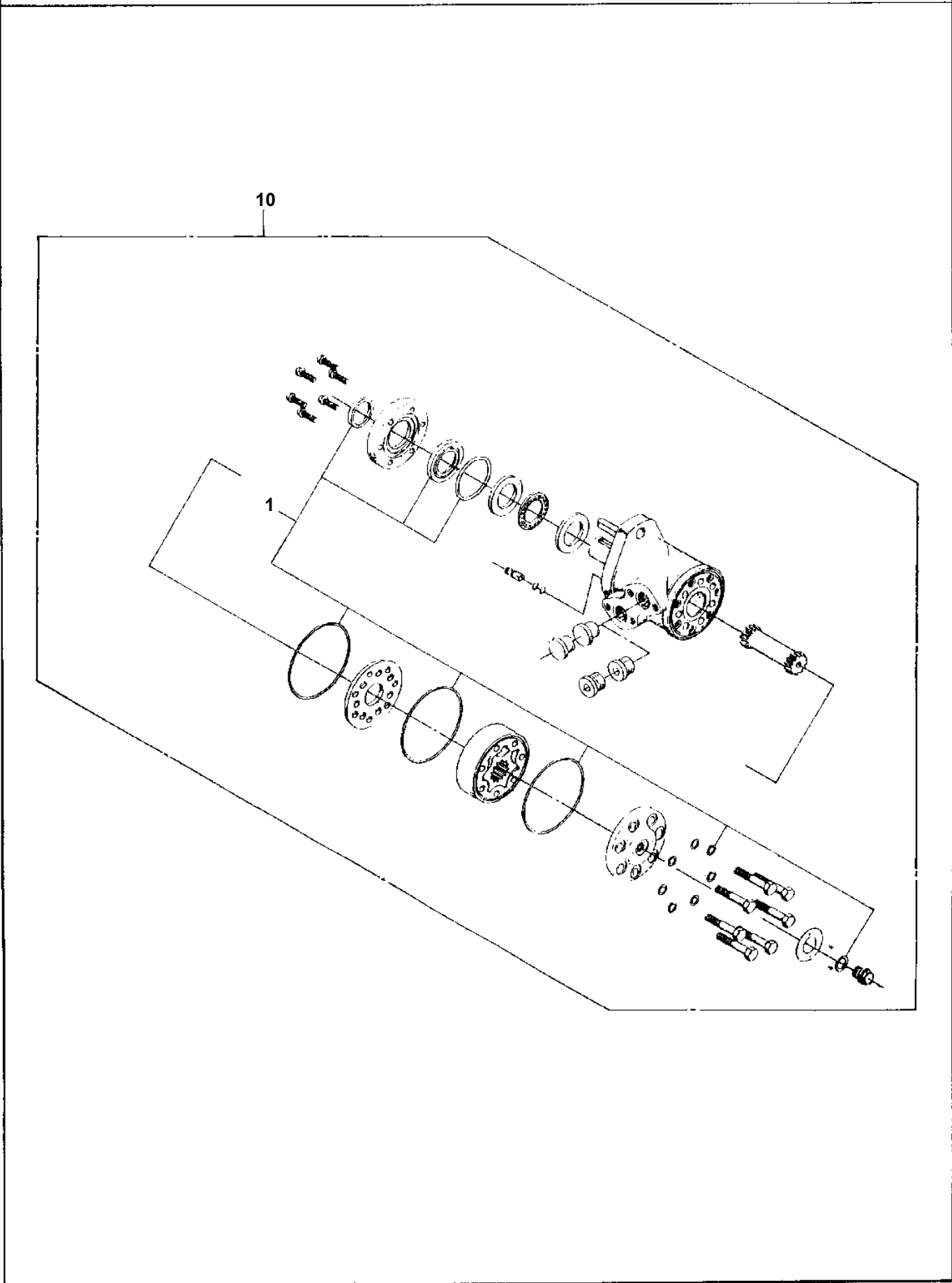


AT-140-2 42002200006 UPPER
PH5031937-00 HARNESS



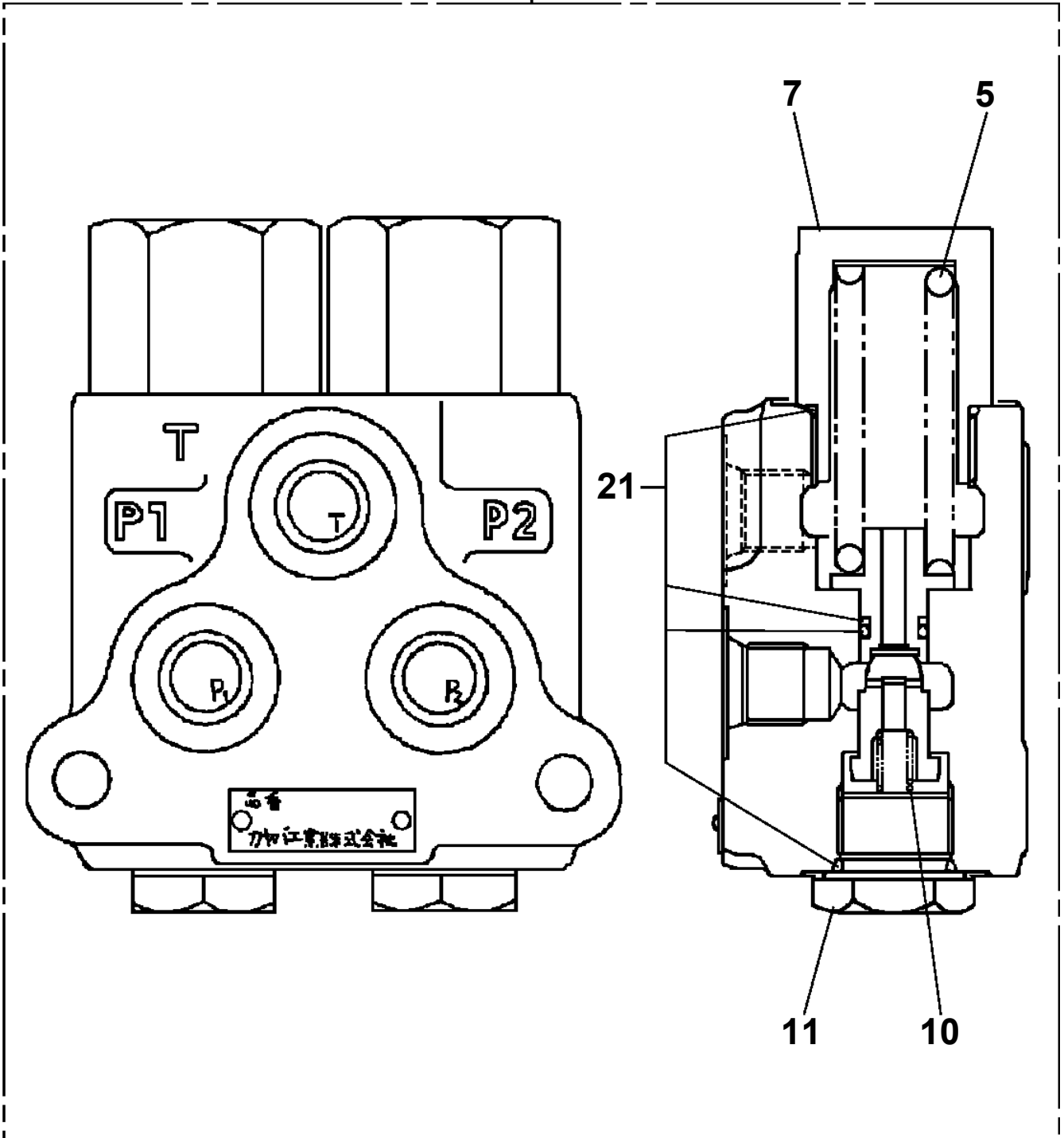
**AT-140-2 42002200006 UPPER
PI1010079-00 MOTOR, HYDRAULIC**

Assembly Name MOTOR, HYDRAULIC



AT-140-2 42002200006 UPPER
PI1100123-00 VALVE,RELIEF

100



CLICK HERE TO **DOWNLOAD** THE COMPLETE MANUAL

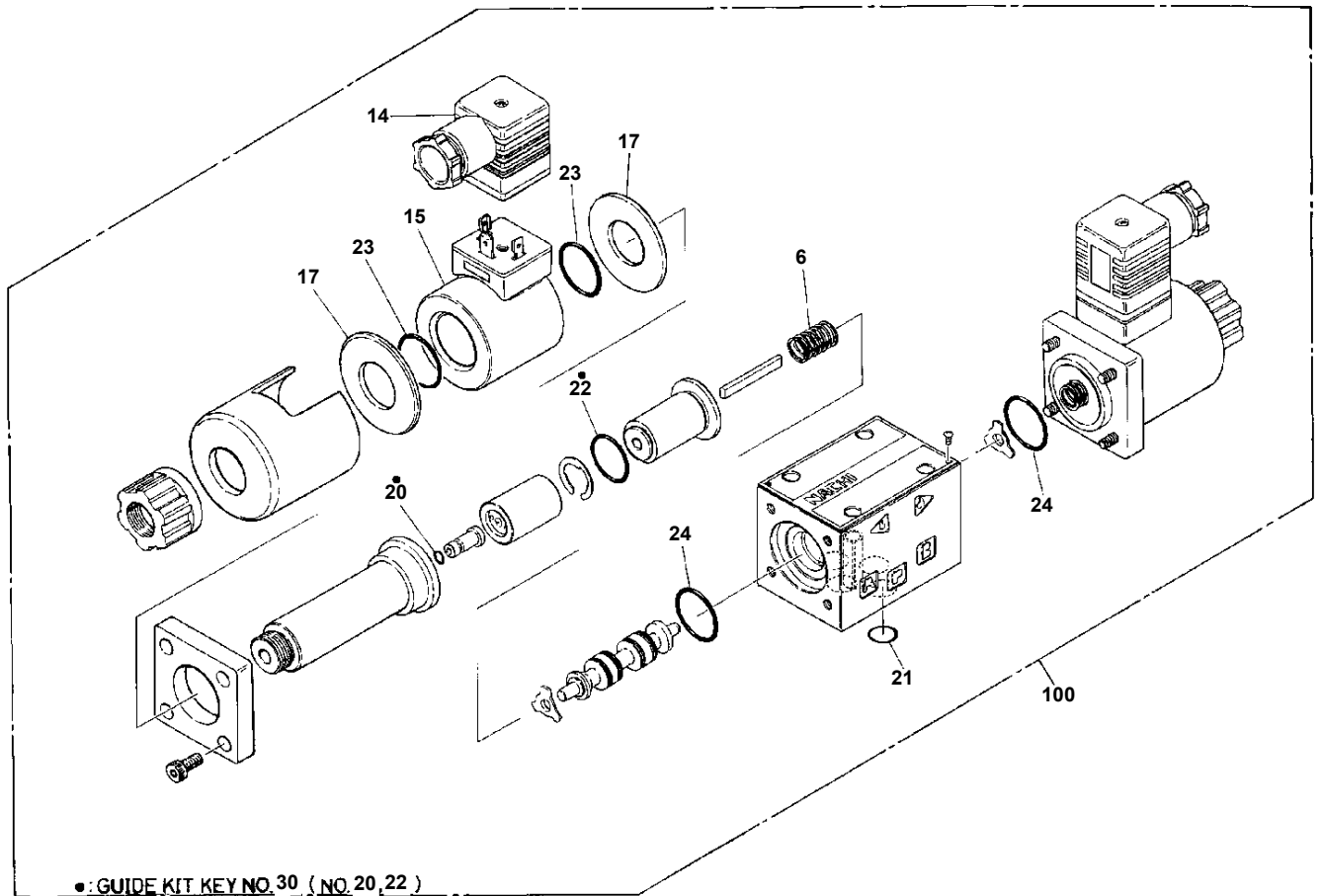
- Thank you very much for reading the preview of the manual.
- You can download the complete manual from: www.heydownloads.com by clicking the link below



- Please note: If there is no response to CLICKING the link, please download this PDF first and then click on it.

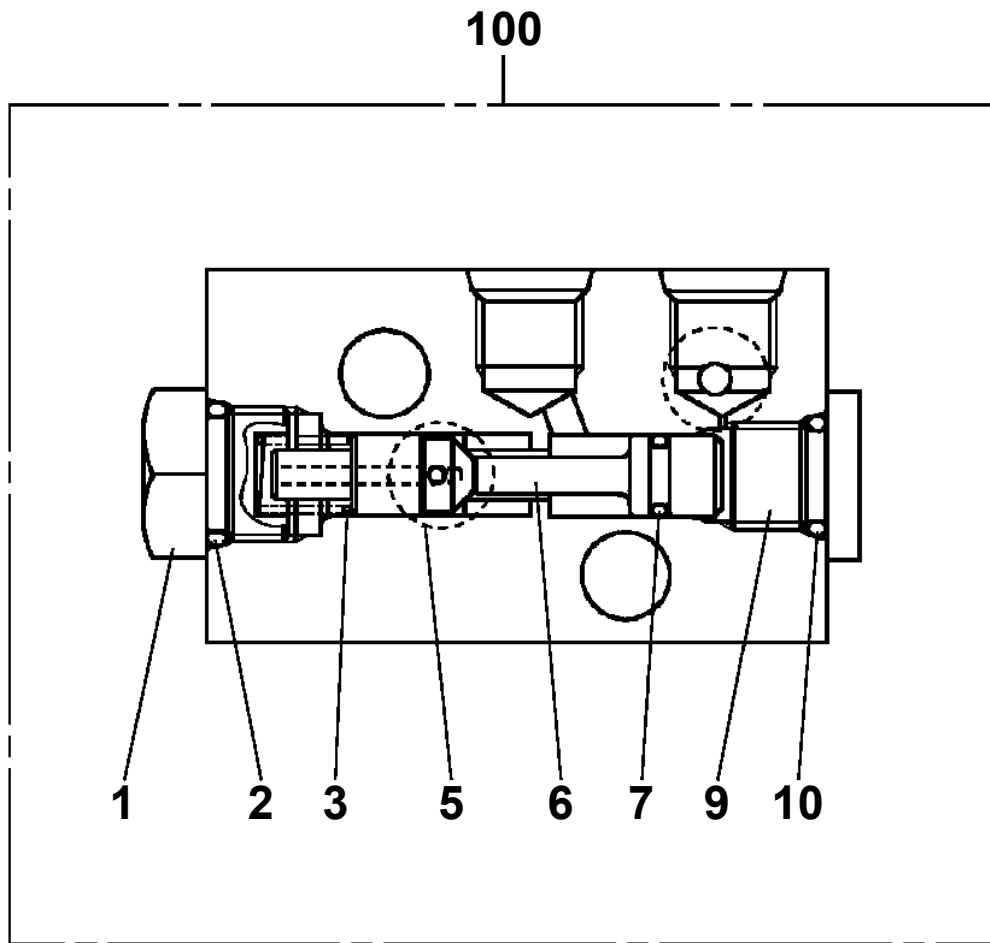
CLICK HERE TO **DOWNLOAD** THE COMPLETE MANUAL

**AT-140-2 42002200006 UPPER
PI1120149-00 VALVE,SOLENOID**

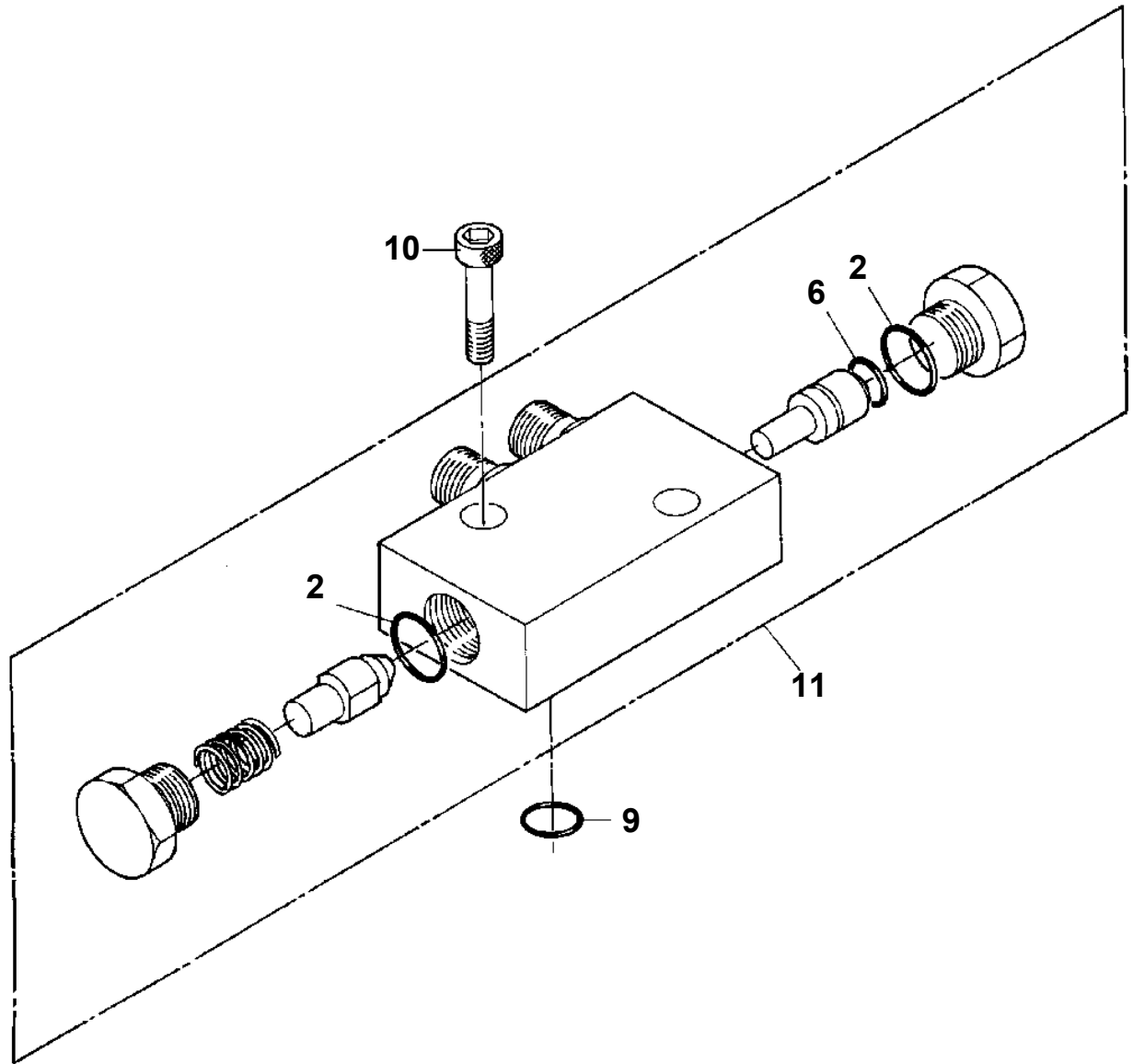


VALVE, SOLENOID

**AT-140-2 42002200006 UPPER
PI1140194-00 VALVE,CHECK**



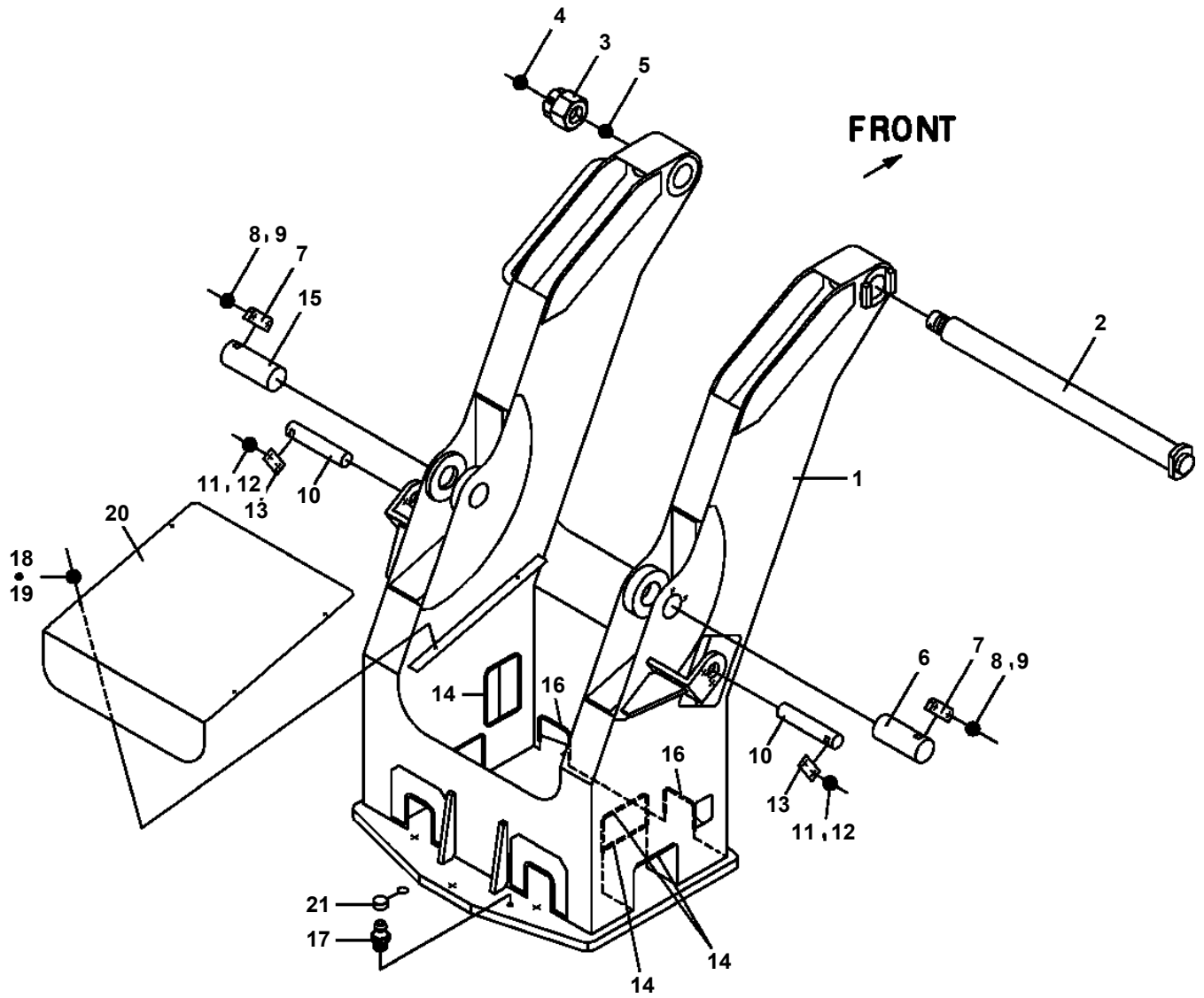
AT-140-2 42002200006 UPPER
PI1280041-01 VALVE,PILOT CHECK



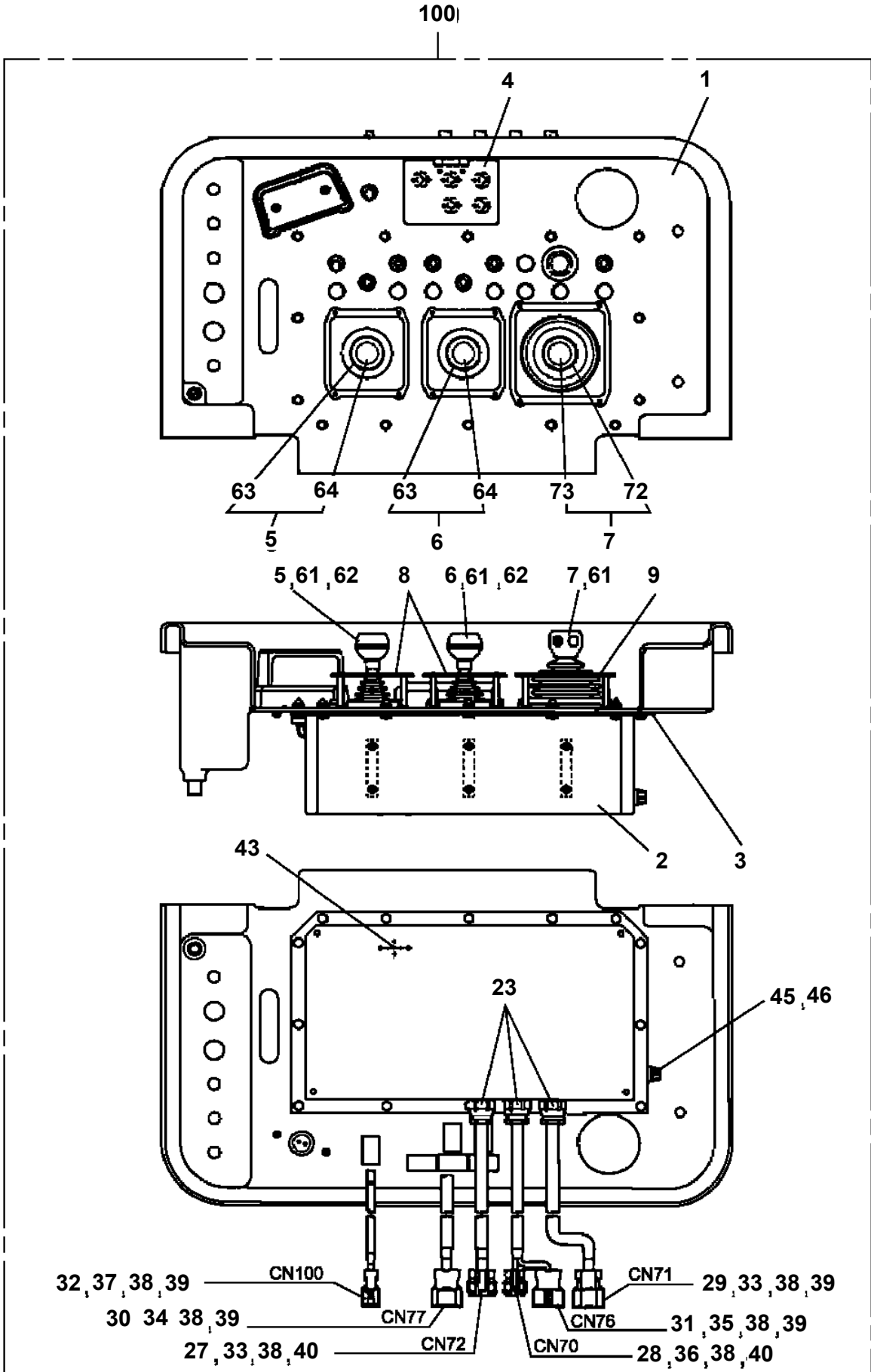
AT-140-2 42002200006 UPPER

Pos No.	Parts No	Parts Name	Qty	Unit	Technical Data	Serial No (Start)	Serial No (End)
105	36024160200	PISTON	1				
106	91002801800	O-RING	1		1B P18		
107	80820003030	BEARING,PLAIN	2				
108	80820003015	BEARING,PLAIN	2				
111	37001506520	BOLT	20		M8X15		220158
	90183108015	BOLT	20		M8X15	220159	
112	42261854100	COVER	1				
113	42261854150	COVER	1				
114	42262422100	COVER	1				
115	42262422200	COVER	1				
116	42261854300	COVER	1				
117	42261854350	COVER	1				
118	42261854010	SUPPORT	1				
119	90101208016	BOLT	2		M8X16		
120	90302040801	WASHER,SPRING	2		8		
121	90303070801	WASHER,PLAIN	2		8		
122	80183808014	SCREW,MACHINE	2		M8X14		
131	42262421100	POST	1				
132	42260010040	BEARING,PLAIN	1				
135	80807075040	BEARING,PLAIN	2				
136	42263642500	SPACER	1				
137	80811000450	BEARING,PLAIN	1				
151	36023619900	PACKING SET	1		35X70		

**AT-140-2 42002200006 UPPER
PK1100430-00 SWING FRAME**



AT-140-2 42002200006 UPPER
 PL1100176-01 BOX, OPERATION (BUCKET PANEL)



AT-140-2 42002200006 UPPER

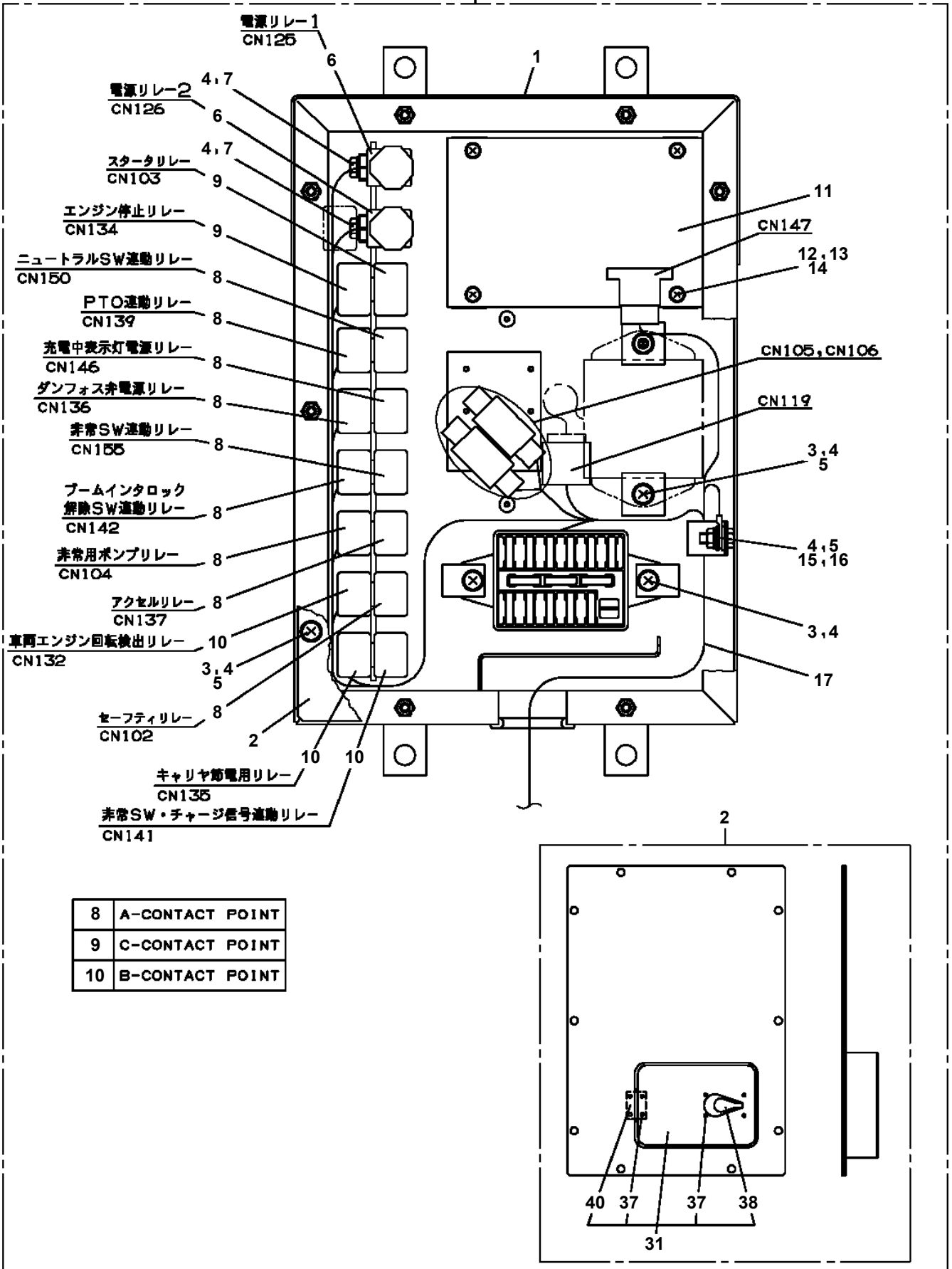
Pos No.	Parts No	Parts Name	Qty	Unit	Technical Data	Serial No (Start)	Serial No (End)	Remarks	Page
1	82104501120	SWITCH,LIMIT	2						
2	90101208012	BOLT	6		M8X12				
3	90302040801	WASHER,SPRING	8		8				
4	42350970100	SUPPORT	1						
5	42351230010	SUPPORT	1						
6	82100002008	CLAMP	3		WR12				
7	90201200600	NUT	3		M6				
8	90302040601	WASHER,SPRING	3		6				
9	42351230020	HARNESS	1						0000
10	82100002003	CLAMP	1						
11	82100002016	CLAMP	3		WR25				
12	91810132530	FASTENER	40						
13	90302040301	WASHER,SPRING	1		3				
14	90201200800	NUT	2		M8				
15	82104501130	SWITCH,LIMIT	2						
16	42351230031	HARNESS	1						0000
17	82100001804	TUBE,CORRUGATE	1	M	15				
18	42350200100	SUPPORT	1						
19	82100002628	CAP	1						
20	80172303008	SCREW,MACHINE	5		M3X8				

AT-140-2 42002200006 UPPER

Pos No.	Parts No	Parts Name	Qty	Unit	Technical Data	Serial No (Start)	Serial No (End)
1	42461007510	POWER SOURCE	1				
2	42461007520	CHARGER,BATTERY	1				
3	42461007530	CORD ASSY	1				
4	42461007540	LAMP ASSY	1				
11	42461007670	BULB,LAMP	1		12V 15W		
23	42461007550	PLATE	1				
24	42461007560	SUPPORT	1				
25	42461007570	PLATE (KEEP)	1				
26	42461007580	PLATE (KEEP)	1				
27	42461007590	PANEL ASSY	1				
30	42461007600	SWITCH,STARTER	1				
31	42461007610	BATTERY	1				
33	42461007620	CABLE	1				
34	42461007630	CABLE	1				
35	42461007640	CABLE	1				
46	42461007650	SPACER	1				
47	42461007660	SPACER	1				
100	42461003000	POWER SOURCE (CHARGER ASSY)	1				

AT-140-2 42002200006 UPPER
PN1100023-01 RELAY BOX

100



AT-140-2 42002200006 UPPER
PO1014405-01 PLATE ASSY,NAME

メイン電源	リレー回路
アーク溶接	リレー回路
フースタ	AMC回路
バルブ電圧	作動灯
アンロードホ	フラッシュ
アークヒューズ	

警告 / バケット水平調整

バケット水平調整時にはバケット内の人・工具等を降ろしてください。

充電用コネクタの操作方法

【接続】
コネクタのガイドを合せ、まっすぐに押し込む。
(コネクタの矢印を上にして下さい。)

【撤去】
矢印通りカップリングナットを左へ45°回転させ、引き抜きます。

足掛け禁止

後傾 (縮) 前傾 (伸)

バケット

注意

・ポンプの油圧等により最大吊上荷重の範囲とを必ず守り、作業時「最大吊上荷重」を超過したときは、必ず純正ポンプのエア抜きを行ってください。
・暴風は、必ず作業場所で確認してください。

純正作動油

タダハイドリックオイル LL

370-022-17330

HIGH

LOW

370-022-14690

作動油

リセットスイッチ

油圧工具を作業途中で戻したい時に操作してください。

フースタ

ツール

吊上荷重

100kg

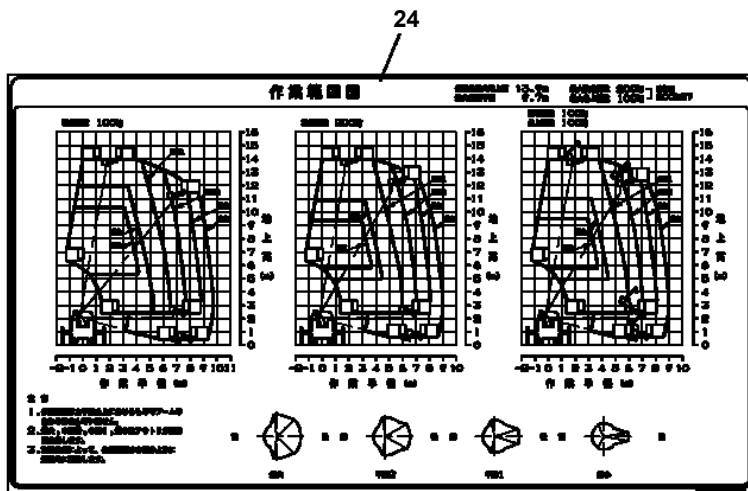
420-644-80000

充電用コネクタ

特別安全検査済証(4)記載事項による
特定自主検査 (法定年次検査)
を済ませました。

第1回検査は 〇月 〇月です

設備検査済証(4)記載事項による
(検査済証等)



フースタ本体スイッチ

バケット水平調整

- 2つのノブを完全に閉じ合わせてください。
- ブーム伸縮操作により、バケットを水平に調整してください。
○前傾の場合、油めねに操作。
○後傾の場合、伸びねに操作。
- 2つのノブを右に回し確実に閉めてください。
- 調整後は暴風及び伸縮操作を行いバケットの水平が狂わないことを確認してください。

積載荷重

200kg

洗浄禁止

注意

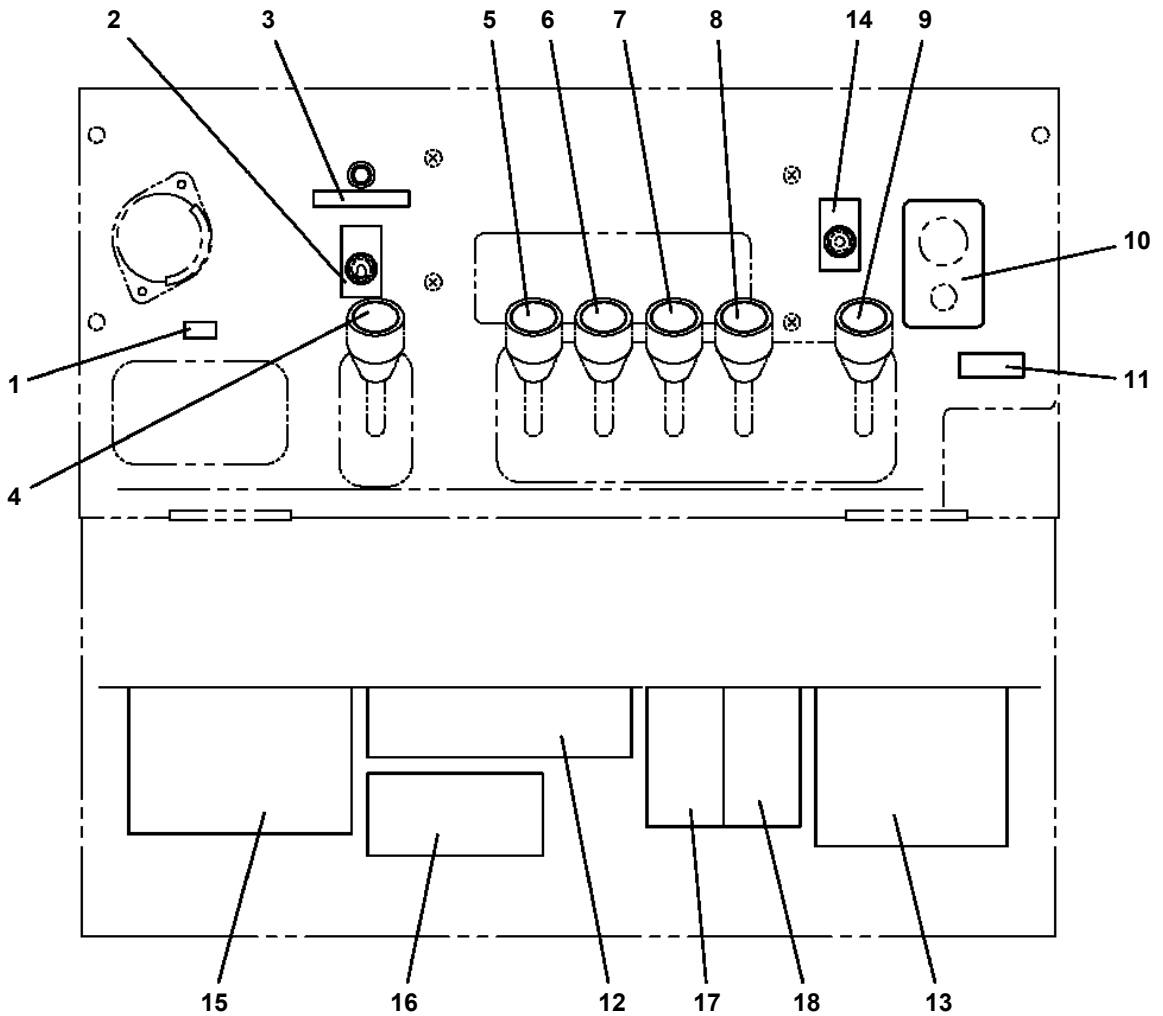
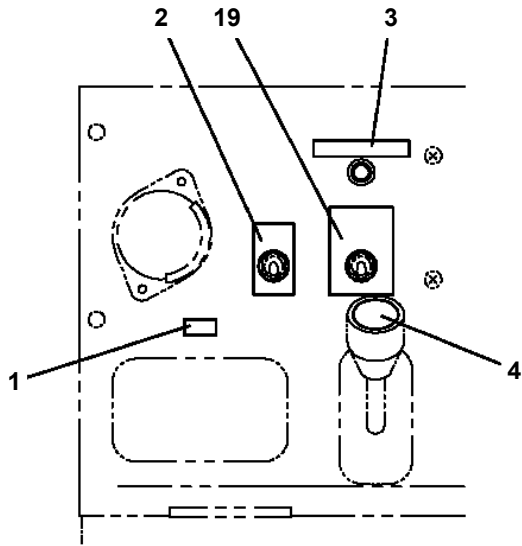
ウインチ操作は、レバーを中立に戻しても若干の停止遅れがあります。停止操作時は早めにレバーを戻してください。

警告

はさまれ注意

定員 1名

**AT-140-2 42002200006 UPPER
PO1014411-01 PLATE ASSY,NAME**



扉を開けた状態

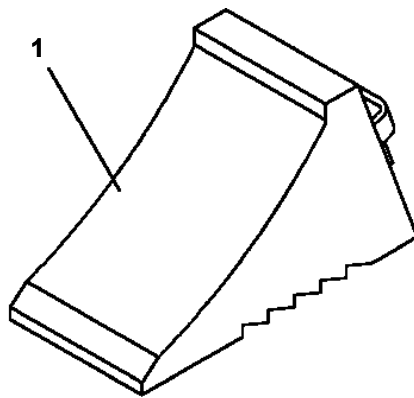
AT-140-2 42002200006 UPPER

Pos No.	Parts No	Parts Name	Qty	Unit	Technical Data	Serial No (Start)	Serial No (End)	R
1	91002801400	O-RING	2		1B P14			
100	36606450000	VALVE ASSY,COUNTERBALANCE	1					

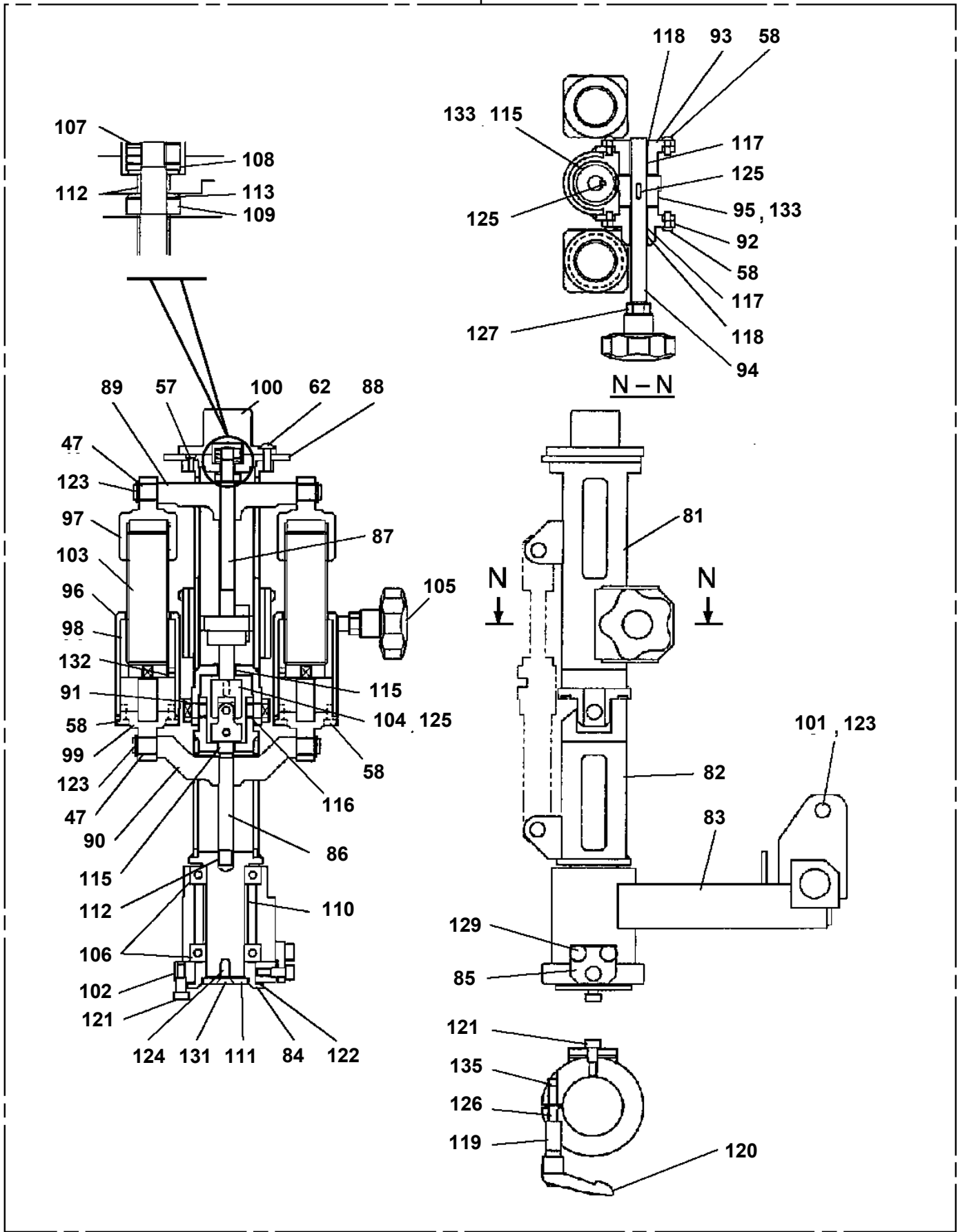
AT-140-2 42002200006 UPPER

Pos No.	Parts No	Parts Name	Qty	Unit	Technical Data	Serial No (Start)	Serial No (End)	Remarks
1	91991601013	ACCESSORIES (WRENCH)	1					

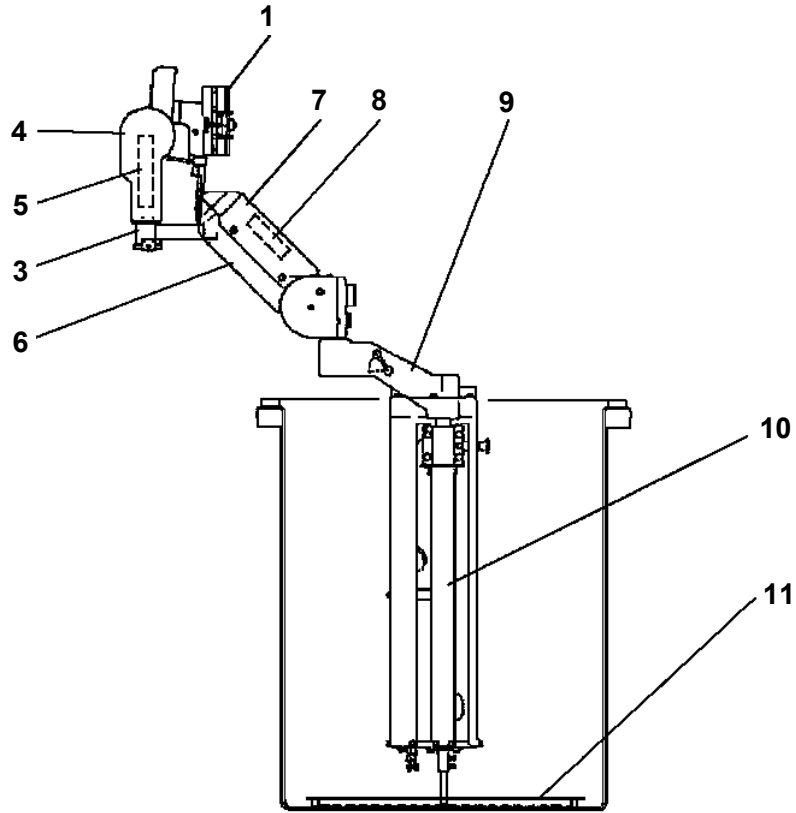
**AT-140-2 42002200006 UPPER
PW5110003-00 WEDGE (STOPPER FOR TIRE/NAKAMURA KIKI)**



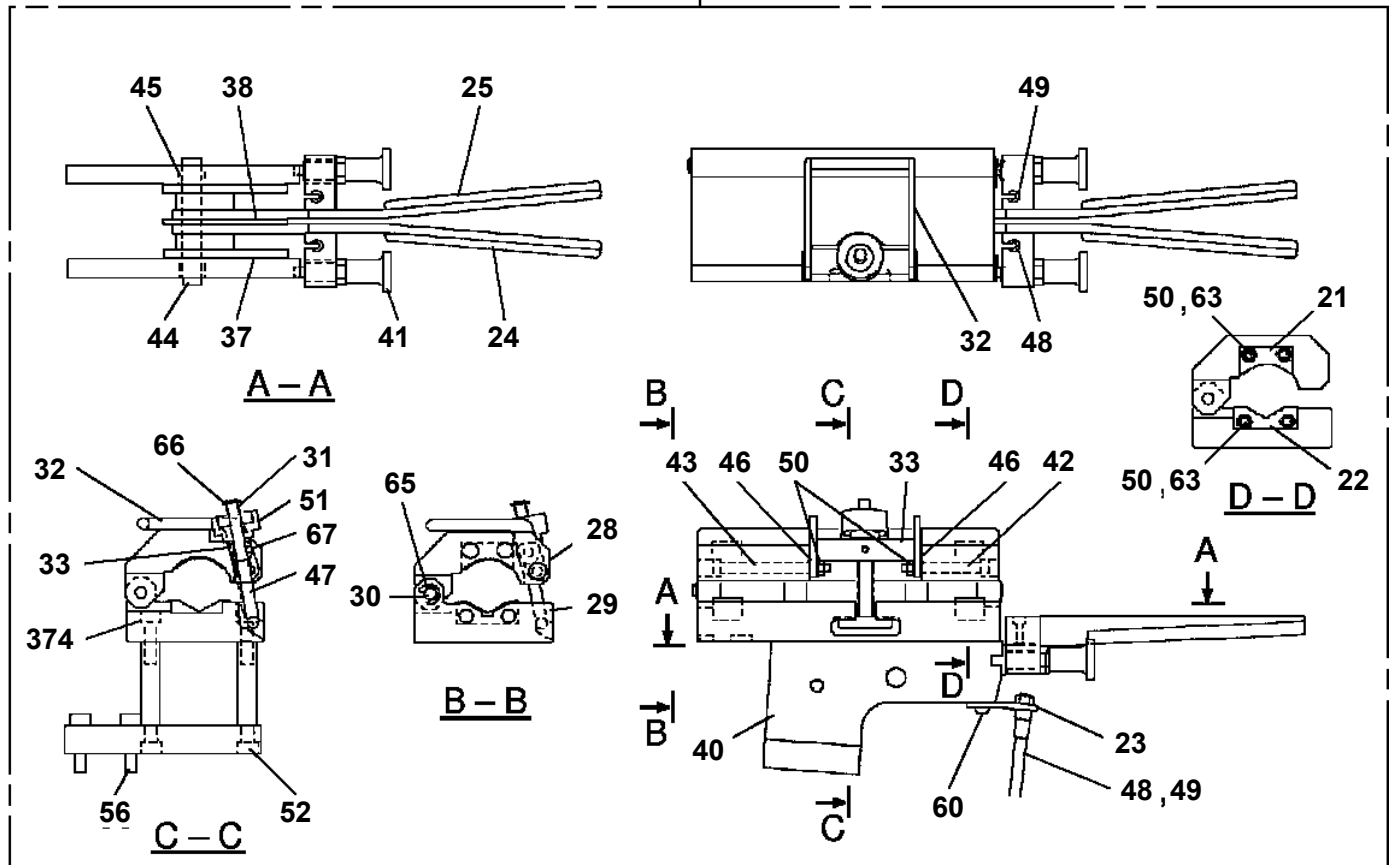
AT-140-2 42002200006 UPPER
PY1080030-00 ARM, HOLDING



**AT-140-2 42002200006 UPPER
PY1080031-00 ARM,HOLDING**



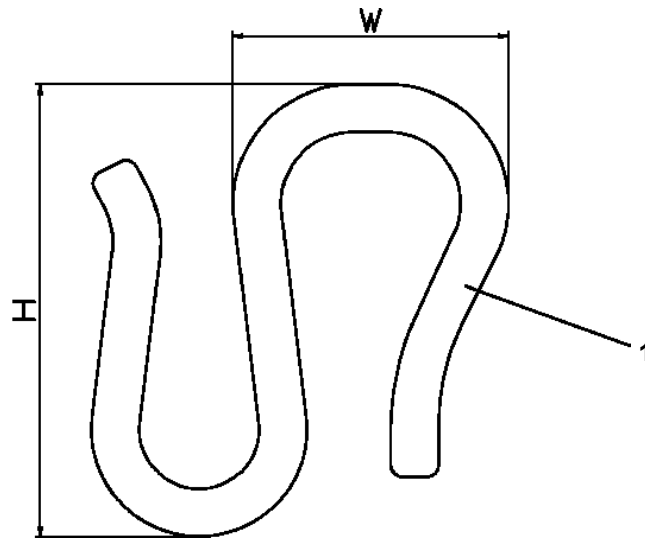
1



AT-140-2 42002200006 UPPER

Pos No.	Parts No	Parts Name	Qty	Unit	Technical Data	Serial No (Start)	Serial No
259	42290517823	BOLT	4		M6X15		
260	42290517824	BELT	1				
261	42290517825	BELT	1				
262	42290517826	SPRING	1				
271	42290517827	LOCK (SHAFT)	1				
274	42290517830	CASING	1				
275	42290517831	KNUCKLE	1				
277	42290517833	BRACKET	1				
279	42290517835	GUIDE	1				
280	42290517836	PIN	1				
281	42290517837	PIN	1				
282	42290517838	SPRING	1				
283	42290517839	CLAMP	1				
284	42290517840	WASHER	1				
286	90740003040	SCREW,SET	5		M3X4		
288	90172104006	BOLT,HEXAGON SOCKET	2		M4X6		
301	42290517861	ARM,HORIZONTAL	1				
302	42290517862	BRAKE	2				
303	42290517863	SHAFT	1				
304	42290517864	SHAFT	1				
305	42290517865	RING (BRAKE)	2				
306	42290517866	BLOCK	2				
307	42290517867	WEDGE	2				
308	42290517868	BOLT (ADJUSTING)	2				
309	42290517869	LINK (BAR)	2				
310	42290517870	LINK	2				
311	42290517871	HOLDER	2				
312	42290517872	LEVER (SHAFT)	1				
313	42290517873	LEVER	2				
314	42290517874	PLATE	2				
315	42290517875	STOPPER	1				
316	42290517876	BEARING	4				
317	42290517877	BALL	2				
318	42290517878	BUSHING	2				
319	42290517879	NUT,LOCK	2				
320	42290517759	KEY (SLIDING)	1				
321	80720104012	PIN,SPRING	2		4X12		
323	90203600500	NUT	2		M5		
324	90293600500	NUT	2		M5		
325	42290517881	BOLT,HEXAGON SOCKET	2		M6X60		
328	90180204020	BOLT,BUTTON	2		M4X20		
329	80172803008	SCREW,MACHINE	2		M3X8		
330	42290517882	PIN,SPRING	1		2.5X10		
332	42290517883	COVER	1				
333	42290517884	COVER	1				
334	42290517885	BOLT (SUPER)	4				
335	42290517886	SCREW	4				
336	80720104015	PIN,SPRING	2		4X15		
341	42290517715	HANGER	1				
342	42290517716	POLE	1				
343	42290517717	PLATE	1				
344	42290517718	BASE	1				
345	42290517720	PULLEY	1				
346	42290517721	GUIDE	1				
347	42290517722	STOPPER	2				
348	42290517723	BRACKET	1				
349	42290517724	END	1				
350	42290517725	HANGER	1				
351	42290517726	PIN	1				
352	42290517727	PLATE	1				
353	42290517741	PLATE	1				
354	42290517742	BRACKET	1				
355	42290517743	BRACKET	1				

**AT-140-2 42002200006 UPPER
PY1790004-01 HANGER (FOR BUCKET,FRP)**



CLICK HERE TO **DOWNLOAD** THE COMPLETE MANUAL

- Thank you very much for reading the preview of the manual.
- You can download the complete manual from: www.heydownloads.com by clicking the link below



- Please note: If there is no response to CLICKING the link, please download this PDF first and then click on it.

CLICK HERE TO **DOWNLOAD** THE COMPLETE MANUAL